

## **Increased Risk for Type 2 Diabetes in Relation to Adiposity in Middle-Aged Black South African Men compared to Women**

Clement N. Kufe<sup>1§</sup>, Lisa K. Micklesfield<sup>1</sup>, Maphoko Masemola<sup>1</sup>, Tinashe Chikowore<sup>1</sup>, Andre Pascal Kengne<sup>2</sup>, Fredrik Karpe<sup>3,4</sup>, Shane A. Norris<sup>1,5</sup>, Nigel J. Crowther<sup>6</sup>, Tommy Olsson<sup>7</sup>, Julia H. Goedecke<sup>1,2</sup>

### **Authors affiliations:**

<sup>1</sup>South African Medical Research Council/University of the Witwatersrand, Developmental Pathways for Health Research Unit (DPHRU), Department of Paediatrics, Faculty of Health Sciences, University of the Witwatersrand, Johannesburg, South Africa

<sup>2</sup>Non-Communicable Diseases Research Unit, South African Medical Research Council, Cape Town, South Africa

<sup>3</sup>Oxford Centre for Diabetes, Endocrinology and Metabolism, University of Oxford, Oxford, UK

<sup>4</sup>National Institute for Health Research, Oxford Biomedical Research Centre, Oxford Radcliffe Hospitals Trust, OCDEM, Churchill Hospital, Oxford, UK

<sup>5</sup>Global Health Research Institute, School of Health and Human Development, University of Southampton, UK

<sup>6</sup>Department of Chemical Pathology, National Health Laboratory Service and School of Pathology, Faculty of Health Sciences, University of the Witwatersrand, Johannesburg, South Africa

<sup>7</sup>Department of Public Health and Clinical Medicine, Medicine, Umeå University, Umeå, Sweden

**Running title: Increased Risk for T2D from Adiposity**

§ Corresponding author

Clement N. Kufe

SAMRC/WITS Developmental Pathways for Health Research Unit,

Department of Paediatrics,

School of Clinical Medicine,

Faculty of Health Sciences,

University of the Witwatersrand, Johannesburg, South Africa

Phone: +27 63 092 6943

E-mail: [klekufe@gmail.com](mailto:klekufe@gmail.com)

**Email addresses:**

CNK: [klekufe@gmail.com](mailto:klekufe@gmail.com)

LKM: [lisa.micklesfield@wits.ac.za](mailto:lisa.micklesfield@wits.ac.za)

MM: [maphokomasemola@gmail.com](mailto:maphokomasemola@gmail.com)

TC: [tinashedoc@gmail.com](mailto:tinashedoc@gmail.com)

APK: [andre.kengne@mrc.ac.za](mailto:andre.kengne@mrc.ac.za)

FK: [fredrik.karpe@ocdem.ox.ac.uk](mailto:fredrik.karpe@ocdem.ox.ac.uk)

SAN: [shane.norris@wits.ac.za](mailto:shane.norris@wits.ac.za)

NC: [nigel.crowther@nhls.ac.za](mailto:nigel.crowther@nhls.ac.za)

TO: [tommy.g.olsson@umu.se](mailto:tommy.g.olsson@umu.se)

JHG: [julia.goedecke@mrc.ac.za](mailto:julia.goedecke@mrc.ac.za)

**Word count: 3498 (3500 maximum)**

**Number of tables and figures: 4**

## **Abstract**

**Aims:** Despite a higher prevalence of overweight/obesity in black South African women compared to men, the prevalence of type 2 diabetes does not differ. We explored if this could be due to sex differences in insulin sensitivity, clearance and/or beta-cell function, and also sex-specific associations with total and regional adiposity.

**Methods:** This cross-sectional study included 804 black South African men (n=388) and women (n=416). Dual-energy x-ray absorptiometry was used to measure total and regional adiposity. Insulin sensitivity (Matsuda index), secretion (C-peptide index) and clearance (C-peptide/insulin ratio) were estimated from an oral glucose tolerance test.

**Results:** After adjusting for sex differences in fat mass index, men were less insulin sensitive and had lower beta cell function than women ( $p < 0.001$ ), with the strength of the associations with measures of total and central adiposity being greater in men than women ( $p < 0.001$  for interactions). Further, the association between total adiposity and type 2 diabetes risk was also greater in men than women (relative risk ratio (95% confidence interval): 2.05 (1.42–2.96),  $p < 0.001$  vs. 1.38 (1.03–1.85),  $p = 0.031$ ).

**Conclusion:** With increasing adiposity, particularly increased centralisation of body fat linked to decreased insulin sensitivity and beta cell function, black African men are at greater risk for type 2 diabetes than their female counterparts.

**Key words:** Body fat distribution, insulin sensitivity, insulin secretion, beta-cell function, basal and postprandial insulin clearance, ethnicity. **(Word count abstract: 207)**

## 1 **Introduction**

2 Type 2 diabetes (T2D) is a global health problem, with low-middle income countries  
3 particularly affected. It is projected that sub-Saharan Africa (SSA) will have the highest  
4 increase in T2D compared to the rest of the world, and in 2019 South Africa (SA) had the  
5 highest estimated number of people with diabetes (4.6 million) in the SSA region, and the  
6 highest age-adjusted comparative prevalence of diabetes (12.7%) in adults (1), which is  
7 higher than the global average (2). Within SSA and SA, the prevalence of T2D does not  
8 differ by sex, despite large sexual dimorphism in obesity rates (3). For example, in SA the  
9 prevalence of T2D in black SA men and women is similar (10.2% vs. 13.8%) (4), but the  
10 prevalence of overweight and obesity differs markedly (27.4% vs. 67.4%) (5).

11

12 The reason for this discrepancy in the association between overweight/obesity and diabetes  
13 risk in men and women is not clear. Our group have started to explore the underlying  
14 pathophysiology of T2D in Africans (6–10), and shown that black African women present  
15 with a phenotype of low insulin sensitivity and hyperinsulinemia due to higher insulin  
16 secretion and lower hepatic insulin clearance compared to white SA women (7) and black SA  
17 men (8). However, the majority of these studies have been undertaken in premenopausal  
18 women (6,7,10), with limited data in middle-aged men and women (8).

19

20 Notably, men typically have greater central fat mass (particularly visceral adipose tissue  
21 (VAT)) and less peripheral subcutaneous adipose tissue (SAT) than women, which is  
22 associated with a higher risk for T2D (8,11,12). However, the sex differences in the  
23 association between whole body and regional adiposity, and T2D risk, including insulin  
24 sensitivity, secretion and clearance, to our knowledge, has not been studied in African men  
25 and women.

26

27 Accordingly, the aims of this study were to compare insulin sensitivity, clearance and beta-  
28 cell function between middle-aged black South African men and women who differ in  
29 obesity prevalence, and to explore sex-specific associations with total and regional adiposity.

30

### 31 **Methods**

32 This cross-sectional study includes the analysis of the follow-up data that was part of a  
33 longitudinal study designed to investigate the determinants of T2D risk in middle-aged black  
34 SA men and women. Data collection for the baseline study, as part of the AWI-Gen (Africa  
35 Wits-INDEPTH partnerships for Genomic Research) study (13), took place between 2011  
36 and 2015 in black SA men (n=1027) and women (n=1008) residing in Soweto, South Africa  
37 (14). Follow-up data, analysed for this study, was collected between January 2017 and  
38 August 2018 on a sample of 502 men and 527 women randomly selected from the original  
39 sample. Participants living with HIV were excluded from this data analysis to avoid the  
40 confounding effects of the virus and antiretroviral therapy on the outcomes. Complete data  
41 was available for 804 participants (388 men and 416 women) and complete oral glucose  
42 tolerance (OGTT) data was available on 734 of these participants (Supplementary files:  
43 Figure 1).

44

45 The study was conducted in accordance with the tenets of the Helsinki declaration and was  
46 approved by the Human Research Ethics Committee (HREC) of the University of the  
47 Witwatersrand (M160604 and M160975). Prior to inclusion in the study all procedures and  
48 possible risks were explained and all participants signed a consent form. Data collection took  
49 place at the South African Medical Research Council/University of the Witwatersrand

50 Developmental Pathways for Health Research Unit at the Chris Hani Baragwanath Hospital  
51 in Soweto, Johannesburg, South Africa.

52

### 53 **Socio–demographic and medical questionnaire**

54 Interviewer administered questionnaires were completed and captured onto REDCap (15).

55 Data collected included age, marital status (married/unmarried), current employment  
56 (employed/not employed), highest educational level completed (no formal  
57 schooling/elementary school, secondary school level, tertiary education), alcohol intake and  
58 tobacco consumption (Yes/No), and self–reported diabetes and/or diabetes medication taken.

59 Menopausal stage was classified according to last menstrual period (16).

60

### 61 **Anthropometry**

62 Weight was measured to the nearest 0.1 kg using a TANITA digital scale (model: TBF-410,  
63 TANITA Corporation, US). Height was measured to the nearest 0.1cm using a wall–mounted  
64 stadiometer (Holtain, UK). Waist circumference (WC) and hip circumference (HC) were  
65 measured to the nearest 0.1cm with a non–stretchable tape. For the WC, the tape was placed  
66 horizontally between the iliac crest in the mid–axillary plane and the lowest rib margin. For  
67 the HC, the tape was placed around the level of the greatest protrusion of the buttocks. Waist-  
68 to-hip ratio (WHR) and BMI were calculated, and participants categorised according to the  
69 World Health Organisation (WHO) criteria (17).

70

### 71 **Body composition and body fat distribution measurements**

72 Dual–energy X-ray absorptiometry (DXA) was used to measure whole body composition,  
73 including sub-total (total body minus head to account for any artefacts that may influence the  
74 DXA reading) fat mass (FM, kg and % body mass) and fat–free soft tissue mass (FFSTM),

75 and regional FM including trunk, arm and leg FM (QDR 4500A, Hologic Inc., Bedford,  
76 USA, APEX software version 4.0.2). Fat mass index (FMI, sub-total fat mass kg/height<sup>2</sup>) and  
77 FFSTM index (FFSTM/height<sup>2</sup>) were calculated. Regional fat distribution was expressed  
78 relative to sub-total FM (%FM), with trunk fat (%FM) representing central fat distribution  
79 and arm and leg fat (%FM) representing upper- and lower-body peripheral fat distribution,  
80 respectively. Abdominal VAT and SAT areas were estimated from DXA (18).

81

## 82 **Blood sampling and analysis**

83 **Participants were instructed to not eat, smoke, drink alcohol or exercise for at least 8 hours**  
84 **prior to testing. A single baseline blood sample (10 ml) was drawn** for the determination of  
85 glycated haemoglobin (HbA1c), plasma glucose, serum insulin, C-peptide and follicle  
86 stimulating hormone (FSH) concentrations. Participants then completed a standard 75g oral  
87 glucose tolerance test (OGTT) over 2-hours during which blood samples (5 ml) were drawn  
88 at 30 min intervals for the determination of glucose, insulin and C-peptide concentrations.  
89 Participants with known diabetes and/or those with fasting blood glucose  $\geq 11.1$  mmol/l  
90 (n=76) (ACCU-CHEK<sup>®</sup>, MedNet GmbH, Munster, Germany) did not complete the OGTT.

91

92 Plasma glucose concentrations were measured on the Randox RX Daytona Chemistry  
93 Analyser (Randox Laboratories Ltd., London, UK). HbA1c concentrations were measured  
94 using the D-10<sup>TM</sup> Haemoglobin Analyser (Bio-Rad Laboratories, Inc. USA). Serum insulin  
95 and C-peptide concentrations were measured on the Immulite<sup>®</sup> 1000 Immunoassay System  
96 (Siemens Chemiluminescent Healthcare GmbH, Henkestr, Germany). FSH was measured on  
97 serum using the ARCHITECT Chemiluminescent Microparticle Immunoassay assay (Abbott  
98 Laboratories, Abbott Ireland).

99

100 Based on the fasting plasma glucose (FPG) and 2-h OGTT glucose results, participants were  
101 classified according to the WHO criteria (19). Participants with impaired fasting glucose and  
102 impaired glucose tolerance were combined and described as having impaired glucose  
103 metabolism (IGM).

104

### 105 **Calculations from the OGTT**

106 The homeostasis model assessment (HOMA-IR) was used to estimate fasting insulin  
107 resistance (20). The Matsuda Index (21), was used to estimate insulin sensitivity for  
108 participants with complete OGTT data (n=628), alongside the composite score (22) for  
109 participants who only had data for 0 and 120 minutes (n=106). These composite measures  
110 have been shown to compare well (22), and were significantly correlated in this study  
111 ( $r=0.874$ ;  $p<0.001$ ) to the Matsuda Index. Early phase insulin response to the OGTT was  
112 estimated using the insulinogenic index (IGI) (23). Participants without data at 30 minutes or  
113 whose insulin response was  $<0$  were excluded from the analysis. Insulin secretion was  
114 calculated using the C-peptide index, the ratio of the increment in C-peptide relative to  
115 glucose in the first 30 minutes of the OGTT (23). C-peptide is produced in equimolar  
116 quantities to endogenous insulin, and unlike insulin, there is negligible hepatic extraction of  
117 C-peptide, and hence the C-peptide index and the C-peptide to insulin ratio may serve as  
118 proxy measures of insulin secretion and clearance, respectively (24,25). Basal and  
119 postprandial insulin clearance were calculated as the ratio of fasting C-peptide to insulin, and  
120 the incremental area under the curve (iAUC) of C-peptide to iAUC insulin, calculated using  
121 the trapezoidal method, respectively. The oral disposition index (oDI), which reflects insulin  
122 secretion adjusted for the level of insulin sensitivity (26–28), was calculated as the product of  
123 the C-peptide index and Matsuda index (23) which demonstrated a hyperbolic relationship  
124 and was used as the measure of beta-cell function. These calculations were only performed in



125 participants without known T2D and/or not taking medications for T2D, and who underwent  
126 an OGTT.

127

## 128 **Statistical analysis**

129 Data were analysed using Stata 15.1/IC (StataCorp, College Station, TX, USA). Variables are  
130 summarised as percentages for categorical data, mean  $\pm$  standard deviation (SD) for normally  
131 distributed continuous data, and median (25<sup>th</sup>-75<sup>th</sup> percentile) if not normally distributed.  
132 Normality was assessed using the Shapiro–Wilk test and Q-Q probability plots. Sex  
133 differences were determined using Students t-test for normally distributed continuous data,  
134 Mann-Whitney U and Kruskal–Wallis tests for skewed continuous data, and Chi-squared test  
135 for categorical data. Sex differences in glucose and insulin measures are presented before and  
136 after adjusting for FMI using one–way analysis of covariance (ANCOVA). Z-scores were  
137 derived for the total and regional adiposity measures for the combined sample, as well as sex-  
138 stratified using Fisher’s Yates transformation (29). By using Z-scores we were able to  
139 compare the risk magnitude per 1 SD change in total and regional adiposity measurements.  
140 Multinomial logistic regression was used to explore the relationship between total and  
141 regional adiposity measures, and IGM and T2D, using NGT as the reference, and including  
142 age, sex, smoking, alcohol intake, education, and FMI (for regional measures), as covariates.  
143 All participants with known (n=65) and newly diagnosed (n=42) diabetes were included in  
144 the multinomial analyses. We explored sex\*adiposity z-score interactions and only found a  
145 significant interaction for FMI. Accordingly, the data (excluding FMI) were analysed in the  
146 combined sample and the relative risk ratio (RRR) and 95% confidence intervals for IGM  
147 and T2D are presented. For the continuous measures of insulin sensitivity (Matsuda index),  
148 clearance (fasting C–peptide/insulin ratio) and beta-cell function (oDI), robust regressions  
149 were used to explore associations with adiposity z-scores, including age, smoking, alcohol

150 intake, education and FMI (for regional adiposity measures) as covariates. **As we were**  
151 **exploring risk factors for T2DM**, participants with known diabetes and/or taking medication  
152 for diabetes and those without OGTT data were excluded from the robust regression  
153 analyses. Due to significant sex interactions in most models, the analyses were completed  
154 separately for men and women using sex-specific total and regional adiposity z-scores. A p-  
155 value of <0.05 was considered significant.

156

## 157 **Results**

### 158 **Socio-demographic and body composition characteristics**

159 A total of 804 participants (48.3% men) with a mean age of 54.6±6.0 years were included  
160 (Table 1). Men were younger than women and significantly more men were married than  
161 women. Current employment status was not different between the sexes, however more men  
162 than women (18.1 vs. 12.5%) had completed tertiary education. **More men currently smoked**  
163 **(46.1% vs. 7.2%) and frequently consumed alcohol (30.4% vs. 4.6%) than women.**

164

165 Mean BMI was higher in women than men ( $p<0.001$ ), and accordingly a larger proportion of  
166 the women presented with obesity (70.2% vs. 26.6%) (Table 1). While waist circumference  
167 was similar, men had higher WHR due to the higher hip circumference of the women. While  
168 FFSTM was higher in men, FM (kg and %) and FMI were higher in women. When expressed  
169 relative to FM, women had significantly greater leg FM, while men had more central FM  
170 (trunk), but arm FM did not differ. Within the central depot, men had less VAT and SAT  
171 (both  $p<0.001$ ), but a higher VAT/SAT ratio.

172

### 173 **Differences in glucose and insulin measures between men and women**

174 Although fasting glucose and iAUC for glucose were not different between the sexes,  
175 HbA1C and 2 h glucose were higher in women than men (Table 1). Fasting insulin and C-  
176 peptide, and iAUC for insulin, were also higher in women than men. Accordingly, HOMA-IR  
177 was higher and insulin sensitivity (Matsuda index) was lower in women compared to men,  
178 accompanied by a higher insulin response (IGI) characterised by higher insulin secretion (C-  
179 peptide index) and lower insulin clearance (basal and postprandial). However, the oDI, a  
180 measure of beta-cell function, did not differ by sex.

181

182 When adjusting for differences in FMI (Table 2), there were no longer sex differences in  
183 HbA1C, 2-hour glucose, insulin response, or basal and postprandial insulin clearance, while  
184 insulin secretion remained higher in women. In contrast, fasting insulin and C-peptide, as  
185 well as HOMA-IR were higher, and insulin sensitivity and beta-cell function were lower in  
186 men compared to women.

187

188 The prevalences of NGT, IGM and T2DM were not significantly different between men and  
189 women.

190

### 191 **Associations between total and regional adiposity and risk for IGM and type 2 diabetes**

192 There was a significant sex\*FMI z-score interaction ( $p < 0.001$ ), such that the RRR for IGM  
193 and T2D were greater for men than women (Figure 1A). Associations between regional  
194 adiposity z-scores and risk for IGM and T2D did not differ by sex, and the RRR for the  
195 combined sample are presented in Table 3. Trunk fat and VAT z-scores were associated with  
196 a higher risk for both IGM and T2D, with every 1 SD increase in trunk fat and VAT being  
197 associated with a 4.8 fold and 2.6 fold increased risk for T2D, respectively. In contrast,  
198 higher leg fat z-score was associated with a 58% and 79% lower risk for IGM and T2D,

199 respectively, while a 1 SD higher arm fat z-score was associated with a 2.2-fold greater risk  
200 for T2D only. SAT z-score was not associated with IGM or T2D.

201

202 **Sex-specific associations between total and regional adiposity z-scores and insulin**  
203 **measures**

204 There were significant sex\*FMI z-score interactions for insulin sensitivity, clearance and  
205 beta-cell function, with associations consistently being stronger in men than women (Figure  
206 1B–1D). There were also significant sex\*regional adiposity interactions for most measures of  
207 insulin sensitivity and response and therefore the results are presented separately for men and  
208 women (Table 4). Lower insulin sensitivity was associated with higher central fat mass (trunk  
209 fat and VAT), and lower leg fat in both men and women, but the associations with central fat  
210 mass were stronger in men than women ( $p < 0.001$  for all interactions). In contrast, arm fat  
211 mass was associated with lower insulin sensitivity in women only ( $p < 0.001$  for interaction).  
212 Beta-cell function (oDI) was negatively associated with VAT in both men and women. In  
213 contrast beta-cell function was positively associated with peripheral fat mass in women only  
214 ( $p = 0.040$  for interaction). Basal insulin clearance was negatively associated with trunk fat  
215 mass in both men and women, with a stronger association in men ( $p = 0.017$  for interaction).  
216 In contrast, basal insulin clearance was negatively associated with VAT and arm fat, and  
217 positively associated with leg fat in women only, but the strength of the association did not  
218 differ significantly between sexes. The associations for postprandial insulin clearance were  
219 similar to those for basal insulin clearance (data not shown). As the women were at different  
220 phases of the menopausal transition with 17.6% being premenopausal, 14.7% perimenopausal  
221 and 67.7% being postmenopausal, we wanted to ascertain whether the associations presented  
222 above differed by menopausal phase. The associations between total and regional adiposity  
223 and insulin sensitivity, secretion and beta-cell function did not differ between menopausal

224 groups. In contrast, the associations between FMI, trunk, leg and arm z-scores and basal  
225 insulin clearance differed by menopausal phase, being stronger in the pre- than peri- and  
226 postmenopausal women (data not shown).

227

## 228 **Discussion**

229 The main and novel findings of this study were that in a sample of black men and women  
230 with a mean age of 54.6 years, after adjustments for differences in body fat, insulin  
231 sensitivity, secretion and beta-cell function were lower in black SA men compared to women,  
232 while insulin clearance did not differ by sex. In line with this, the strength of the association  
233 between total adiposity and T2D risk was greater in men compared to women. Although  
234 black SA women have a higher prevalence of obesity (70.2 vs. 26.6%) and greater whole-  
235 body fatness (43.6 vs. 26.3%) than men, they present with a more 'favourable' body fat  
236 distribution, characterised by less central fat mass and greater peripheral fat mass. This  
237 phenotype has been associated with lower diabetes risk. This together with the greater impact  
238 of body fatness on diabetes risk could explain the similar prevalence of diabetes in men and  
239 women (11.1 vs. 15.4%) despite the lower adiposity in men in this study.

240

241 These findings also suggest that with increasing adiposity, black SA men will be at greater  
242 risk for T2D than their female counterparts. We found that the association between total  
243 adiposity and risk for T2D was higher in men than women (Figure 1A). Further we showed  
244 that with increasing FMI the decline in insulin sensitivity was greater in men compared to  
245 women, similar to earlier studies from SA (8,30), which was also associated with a more  
246 pronounced decrease in beta-cell function in men compared to women. **The higher risk in**  
247 **men compared to women was independent of smoking and alcohol intake, lifestyle risk**  
248 **factors were also higher in men compared to women.**

249

250 The finding of similar T2D prevalence (1) despite marked differences in the prevalence of  
251 obesity (3) between sexes are consistent and representative of South Africa and the SSA  
252 region. In order to understand the sexual dimorphism in this relationship, it is obviously  
253 essential to account for sex differences in body fatness as well as disentangle the sex-specific  
254 associations between regional adiposity and T2D risk. After adjusting for differences in body  
255 fatness, men had lower insulin sensitivity, insulin secretion and beta-cell function compared  
256 to women, placing the men at higher risk for T2D. Indeed, a lower beta-cell function,  
257 estimated using the oDI, has been shown to predict the development of T2D over a 10 year  
258 period in a Japanese American cohort (26).

259

260 Black African women have been shown to present with hyperinsulinaemia compared to their  
261 European counterparts, often beyond that required to maintain normoglycaemia (8,31).  
262 Hyperinsulinemia in black African women has previously been attributed to alterations in  
263 both insulin secretion and clearance, depending on age, and/or level of glycemia (10,32).  
264 Studies in African American women have shown that decreased hepatic insulin clearance is  
265 the main contributor to hyperinsulinemia (33). In contrast, we show that the higher IGI in  
266 women compared to men, was associated with higher insulin secretion without differences in  
267 insulin clearance. Due to limited longitudinal studies, it is not known whether the higher IGI  
268 in women is protective or may actually cause insulin resistance (9).

269

270 It is well recognised globally and in South Africa that men have greater central body fat and  
271 less lower body peripheral fat compared to women (8,30). Similarly, we showed that men had  
272 greater trunk fat mass, a higher VAT/SAT ratio, and less leg and similar arm fat mass than  
273 women. This adiposity phenotype is associated with greater diabetes risk as previously

274 reported by our group (8,30,32,34). Indeed, we showed that a 1SD increase in trunk z-score  
275 was associated with a more than two-fold greater risk for IGM and nearly five times greater  
276 risk for T2D, and was also associated with lower insulin sensitivity and lower basal insulin  
277 clearance. In contrast, peripheral fat is typically associated with reduced risk for diabetes  
278 (30,34) as it acts as a metabolic sink to sequester excess free fatty acids that may otherwise  
279 be directed at ectopic sites such as the liver and pancreas (35). We showed that a 1 SD  
280 increase in leg z-score was associated with a 58% lower risk for IGM and a 79% lower risk  
281 for T2D, as well as higher insulin sensitivity in both sexes. Notably, the strength of the  
282 inverse association between central fat distribution and insulin sensitivity was greater in men  
283 compared to women. Several studies in different populations have shown VAT to be more  
284 strongly associated with insulin resistance, and therefore a greater risk for T2DM, in men  
285 than women (30,36–38). A further novel finding of the study was that the positive  
286 relationship between beta-cell function and leg FM was weaker in men compared to women,  
287 suggesting lower ‘protective’ effect of leg FM on beta-cell function in men compared to  
288 women. Accordingly, despite a lower prevalence of overweight and obesity in men compared  
289 to women in our study, this ‘unfavourable’ regional fat distribution and the sex-specific  
290 relationships with insulin sensitivity and beta-cell function places them at greater risk for  
291 future T2D.

292

293 This is the first study, to our knowledge, in black SA men and women with detailed measures  
294 of insulin sensitivity, secretion and clearance, and beta-cell function, based on estimates from  
295 an OGTT. We were also able to use DXA, which provides an accurate assessment of body  
296 composition and regional adiposity. A limitation is the cross-sectional nature of the study  
297 which does not allow us to infer causality. Although the sex differences in obesity and total  
298 adiposity may be seen as a limitation, it reflects the status of obesity within South Africa and

299 the sub-Saharan African region (3), and adjustments for total body fatness and the calculation  
300 of z-scores were used in the analyses to determine whether these sex differences in adiposity  
301 were influencing the insulin- and glucose-related variables. There were no effects of the  
302 menopausal transition *per se* on the association between adiposity and insulin sensitivity,  
303 secretion and beta-cell function and therefore the sex differences reported cannot be  
304 explained by menopausal status. However, the premenopausal women were not tested at a  
305 specific time during their menstrual cycle, which is noted as a limitation of the study.  
306 Furthermore, the conclusions for this study are valid only for HIV negative individuals.

307

308 In summary, for the same level of body fatness, black South African men are less insulin  
309 sensitive and had lower insulin secretion and beta-cell function than women, with the  
310 strength of the association between adiposity and T2D risk being greater in men compared to  
311 women. This suggests that with increasing adiposity, particularly an increase in central  
312 adiposity, black SA men face an increased risk for T2D in comparison with their female  
313 counterparts. Longitudinal studies are required to confirm the results of this study.

**Funding:** The study was jointly funded by the South African Medical Research Council (MRC) from South African National Department of Health, MRC UK (via the Newton Fund) and GSK Africa Non-Communicable Disease Open Lab (via a supporting Grant project Number: ES/N013891/1) and South African National Research Foundation (Grant no: UID:98561).

**Conflict of Interest:** No potential conflicts of interest relevant to this article were reported



**Authors' contributions:** CNK, JHG and LKM designed the study and CNK analysed the data, drafted and revised the manuscript under the supervision of JHG and LKM. All authors reviewed/edited, read and approved all the drafts and the final version of the manuscript. The authors retained the control of the final content of the publication.

**Acknowledgements:** We are grateful to the participants as well as the following DPHRU staff for their input during data collection and entry: Melikhanya Soboyisi, Tshifhiwa Ratshikombo, Vukosi Mkansi, Sphume Thango, Mosadiapula Nakedi, Thabile Sibiya, Bonisiwe Mlambo, Caroline Makura, Dr Mamosilo Lichaba, Karabo Pearl Nkhahle and team, and Prof Michèle Ramsay for AWI-Gen study development and oversight.

## References

1. IDF. Diabetes Atlas, 9th Edition 2019. 2019.
2. Kengne AP, Bentham J, Zhou B, Peer N, Matsha TE, Bixby H, et al. Trends in obesity and diabetes across Africa from 1980 to 2014: An analysis of pooled population-based studies. *Int J Epidemiol*. 2017;46(5):1421–32.
3. Ramsay M, Crowther NJ, Agongo G, Ali SA, Boua RP, Gómez-olivé FX, et al. Regional and sex-specific variation in BMI distribution in four sub-Saharan African countries □: The H3Africa AWI-Gen study Regional and sex-specific variation in BMI distribution in four sub-Saharan. *Glob Health Action*. 2018;11(2).
4. Peer N, Steyn K, Lombard C, Lambert E V., Vythilingum B, Levitt NS. Rising Diabetes Prevalence among Urban-Dwelling Black South Africans. *PLoS One*. 2012;7(9).
5. NDoH, Stats SA S& I. South Africa Demographic and Health Survey 2016. Pretoria; 2019.
6. Goedecke JH, Dave JA, Faulenbach M V, Utschneider KM, Lambert E V, West S, et al. Insulin response in relation to insulin sensitivity: An appropriate  $\beta$ -cell response in black South African women. *Diabetes Care*. 2009;32(5):860–5.
7. Goedecke JH, Keswell D, Weinreich C, Fan J, Victor H. Ethnic differences in hepatic and systemic insulin sensitivity and their associated determinants in obese black and white South African women. 2015;58(11):2647–52.
8. Goedecke JH, George C, Veras K, Peer N, Lombard C, Victor H, et al. Sex differences in insulin sensitivity and insulin response with increasing age in black South African men and women. *Diabetes Res Clin Pract*. 2016;122:207–14.
9. Goedecke JH, Olsson T. Pathogenesis of type 2 diabetes risk in black Africans: a South African perspective. *J Intern Med*. 2020;1–11.
10. Goedecke JH, Mtintsilana A, Dlamini SN, Pascal Kengne A. Type 2 diabetes mellitus in African women. *Diabetes Res Clin Pract*. 2017;123:87–96.
11. Bredella MA. Sex differences in body composition. *Adv Exp Med Biol*. 2017;1043:9–27.
12. Schorr M, Dichtel LE, Gerweck A V., Valera RD, Torriani M, Miller KK, et al. Sex differences in body composition and association with cardiometabolic risk. *Biol Sex Differ*. 2018;9(1):1–10.
13. Ramsay M, Crowther N, Tambo E, Agongo G, Baloyi V, Dikotope S, et al. H3Africa AWI-Gen Collaborative Centre: A resource to study the interplay between genomic and environmental risk factors for cardiometabolic diseases in four sub-Saharan African countries. *Glob Heal Epidemiol Genomics*. 2016;
14. Ali SA, Soo C, Agongo G, Alberts M, Amenga-Etego L, Boua RP, et al. Genomic and environmental risk factors for cardiometabolic diseases in Africa: methods used for Phase 1 of the AWI-Gen population cross-sectional study. *Glob Health Action*. 2018;11(sup2).
15. Harris PA, Taylor R, Thielke R, Payne J, Gonzalez N, Conde JG. Research Electronic Data Capture (REDCap) - A metadata-driven methodology and workflow process for providing translational research informatics support. *J Biomed Inf*. 2009;42(2):377–81.
16. Jaff NG, Snyman T, Norris SA, Crowther NJ. Staging reproductive aging using stages of reproductive aging workshop + 10 in black urban african women in the study of women entering and in endocrine transition. *Menopause*. 2014;21(11):1225–33.
17. WHO. Expert Committee on Physical Status: The use and interpretation of anthropometric physical status. World Health Organization technical report series. Geneva; 1995.

18. Micklesfield LK, Goedecke JH, Punyanitya M, Wilson KE, Kelly TL. Dual-Energy X-Ray Performs as Well as Clinical Computed Tomography for the Measurement of Visceral Fat. *Obesity*. 2012;20(5):1109–14.
19. WHO. Classification of diabetes mellitus. Vol. 21, WHO. Geneva; 2019.
20. Matthews DR, Hosker JP, Rudenski AS, Naylor BA, Treacher DF, Turner RC. Homeostasis model assessment: insulin resistance and  $\beta$ -cell function from fasting plasma glucose and insulin concentrations in man. *Diabetologia*. 1985;28(7):412–9.
21. Matsuda M, DeFronzo RA. Insulin sensitivity indices obtained from oral glucose tolerance testing: Comparison with the euglycemic insulin clamp. *Diabetes Care*. 1999;22(9):1462–70.
22. DeFronzo RA, Matsuda M. Reduced time points to calculate the composite index. Vol. 33, *Diabetes Care*. 2010. p. 2010.
23. Tura A, Kautzky-Willer A, Pacini G. Insulinogenic indices from insulin and C-peptide: Comparison of beta-cell function from OGTT and IVGTT. *Diabetes Res Clin Pract*. 2006;72(3):298–301.
24. Polonsky KS, Rubenstein AH. C-peptide as a measure of the secretion and hepatic extraction of insulin. Pitfalls and limitations. Vol. 33, *Diabetes*. 1984. p. 486–94.
25. Leighton E, Sainsbury CA, Jones GC. A Practical Review of C-Peptide Testing in Diabetes. Vol. 8, *Diabetes Therapy*. Springer Healthcare; 2017. p. 475–87.
26. Utzschneider KM, Prigeon RL, Faulenbach M V., Tong J, Carr DB, Boyko EJ, et al. Oral Disposition index predicts the development of future diabetes above and beyond fasting and 2-h glucose levels. *Diabetes Care*. 2009;32(2):335–41.
27. Kahn SE, Prigeon RL, McCulloch DK, Boyko EJ, Bergman RN, Schwartz MW, et al. Quantification of the relationship between insulin sensitivity and  $\beta$ -cell function in human subjects: Evidence for a hyperbolic function. *Diabetes*. 1993;42(11):1663–72.
28. Mather KJ, Chen M, Hannon TS. Linearization of the Disposition Index equation allows evaluation of secretion-sensitivity coupling slopes. *J Diabetes Complications*. 2020;34(7):107589.
29. Armitage P BG. *Statistical Methods in Medical Research*, 2002. Blackwell Science Ltd: Oxford, UK. Blackwell Science Ltd: Oxford, UK; 2002.
30. Davidson FE, Matsha TE, Erasmus RT, Kengne AP, Goedecke JH. Associations between body fat distribution and cardiometabolic risk factors in mixed-ancestry South African women and men. *Cardiovasc J Afr*. 2019;30(6):321–30.
31. Lee CC, Haffner SM, Wagenknecht LE, Lorenzo C, Norris JM, Bergman RN, Stefanovski D, Anderson AM, Rotter JI, Goodarzi MO HA. Insulin Clearance and the Incidence of Type 2 Diabetes in Hispanics and African Americans. *Diabetes Care*. 2013;36:901–7.
32. Mtintsilana A, Micklesfield LK, Chorell E, Olsson T, Goedecke JH. Fat redistribution and accumulation of visceral adipose tissue predicts type 2 diabetes risk in middle-aged black South African women: a 13-year longitudinal study. *Nutr Diabetes*. 2019;9(1).
33. Kodama K, Tojjar D, Yamada S, Toda K, Patel CJ BA. Ethnic Differences in the Relationship Between Insulin Sensitivity and Insulin Response. A systematic review and meta-analysis. *Diabetes Care*. 2013;36(6):1789–96.
34. Keswell D, Tootla M, Goedecke JH. Associations between body fat distribution, insulin resistance and dyslipidaemia in black and white South African women. *Cardiovasc J Afr*. 2016;27(3):177–83.
35. Stefan N. Causes, consequences, and treatment of metabolically unhealthy fat distribution. *The Lancet Diabetes and Endocrinology*. 2020.
36. Kautzky-Willer A, Harreiter J, Pacini G. Sex and gender differences in risk,

- pathophysiology and complications of type 2 diabetes mellitus. Vol. 37, Endocrine Reviews. 2016. p. 278–316.
37. Geer EB, Shen W. Gender differences in insulin resistance, body composition, and energy balance. *Gend Med*. 2009;
  38. De Mutsert R, Gast K, Widya R, De Koning E, Jazet I, Lamb H, et al. Associations of Abdominal Subcutaneous and Visceral Fat with Insulin Resistance and Secretion Differ between Men and Women: The Netherlands Epidemiology of Obesity Study. *Metab Syndr Relat Disord*. 2018;16(1):54–63.

**Table 1: Socio-demographic, body composition, glucose and insulin measures in black South African men and women (n=804)**

Variable	Men	Women	p-value
n (%)	388 (48.3%)	416 (51.7%)	-
Age (years)	54.2±6.2	55.0±5.8	0.047
<b>Socio-demographic characteristics, row: n (%)</b>			
Married, n (%)	219 (56.7)	186 (44.9)	0.001
Currently employed (n, %)	232 (47.3)	258 (52.6)	0.519
Currently smokes, n (%)	179 (46.1)	30 (7.2)	<0.001
<b>Alcohol intake, n (%)</b>			
Never	107 (27.6)	304 (73.1)	
Sometimes (monthly or less and 2-4 times a month)	163 (42.0)	93 (22.4)	
Often (2-3 times and 4 or more times a week)	118 (30.4)	19 (4.6)	<0.001
<b>Educational attainment, n (%)</b>			
No formal schooling/elementary school level	43 (11.1)	38 (9.2)	0.042
Secondary school level	274 (70.8)	325 (78.3)	
Tertiary education	70 (18.1)	52 (12.5)	
<b>Body composition</b>			
Height (cm)	171±6	158±6	<0.001
Weight (kg)	77.4±18.4	85.4±18.0	<0.001
BMI (kg/m <sup>2</sup> )	26.4±6.0	34.0±7.0	<0.001
Waist circumference (cm)	96.1±15.4	97.4±13.1	0.191
Hip circumference (cm)	100.6±11.1	116.6±13.6	<0.001
WHR	0.95±0.06	0.84±0.10	<0.001
<b>BMI categories, n (%)</b>			
Underweight (<18.5 kg/m <sup>2</sup> )	26 (6.7)	2 (0.5)	<0.001
Normal weight (18.50-24.99 kg/m <sup>2</sup> )	145 (37.4)	31 (7.5)	
Overweight (25-29.99 kg/m <sup>2</sup> )	115 (29.6)	90 (21.6)	
Obese (≥30.0 kg/m <sup>2</sup> )	102 (26.3)	293 (70.4)	
<b>DXA (n=763)</b>			
Fat-free soft tissue mass (kg)	49.4±9.1	41.7±7.0	<0.001
Fat-free soft tissue mass index (kg/m <sup>2</sup> )	16.8±2.8	16.6±2.6	0.270
Body fat mass (kg)	20.9±8.9	37.7±10.3	<0.001
Body fat (%)	26.3±6.2	44.0±4.8	<0.001
Fat mass index (kg/m <sup>2</sup> )	7.1±3.0	15.1±4.1	<0.001
Trunk (% FM)	46.9±5.3	43.5±5.7	<0.001
Leg (% FM)	40.8±5.0	43.9±6.2	<0.001
Arm (% FM)	12.4±1.3	12.6±1.8	0.055
VAT (cm <sup>2</sup> )	91.9±47.4	109.6±44.7	<0.001
SAT (cm <sup>2</sup> )	215.8±129.5	474.6±144.3	<0.001
VAT/SAT	0.50±0.19	0.24±0.09	<0.001
<b>Glucose and insulin measures (n=804)</b>			
HbA1c (%)	5.8±1.1	6.3±1.4	<0.001
Fasting glucose (mmol/L)	5.3±1.5	5.5±2.0	0.057
2 h glucose (mmol/L) (n) (n=735)	6.1±2.6	6.6±2.7	0.009
iAUC for glucose (mmol/L) (n=735)	177 (72 – 297)	157 (79 – 262)	0.368
Fasting insulin (mIU/ml)	5.9 (2.3 – 11.9)	9.4 (5.2 – 15.2)	<0.001
iAUC for insulin (mIU/ml) (n=735)	4 132 (2526–7304)	4 692 (3080–7216)	0.021

Fasting C-peptide (ng/ml)	1.84±1.07	2.09±1.17	0.002
iAUC for C-peptide (ng/ml) (n=735)	641 (447 – 925)	638 (465 – 875)	0.915
HOMA-IR	1.37 (0.51 – 2.81)	2.11 (1.13 – 3.69)	<0.001
Matsuda index (mg <sup>1</sup> /mU min) (n=734)	7.1 (3.6 – 13.2)	5.0 (3.1 – 8.4)	<0.001
Insulinogenic Index (mIU/mmol) (n=624)	16.9 (8.3 – 33.0)	23.4 (12.7 – 43.4)	0.001
C-peptide Index (ng/mmol) (n=612)	2.25 (1.27 – 3.79)	2.73 (1.56 – 4.57)	0.002
oDI (mIU/mmol) (n=644)	13.74 (7.22 – 26.09)	13.40 (5.98 – 28.08)	0.917
Basal insulin clearance (ng/mIU)	0.28 (0.20 – 0.39)	0.20 (0.15 – 0.27)	<0.001
Postprandial insulin clearance (ng/mIU) (n=698)	0.18 (0.14 – 0.25)	0.14 (0.12 – 0.17)	<0.001
<b>Glucose tolerance status<sup>1</sup></b>			
NGT: (FPG <6.1 / 2-h PG <7.8mmol/L)	263 (67.8)	261 (62.7)	0.163
IGM: (FPG: 6.1–6.9 / IGT 2hPG: 7.8–11.0)	82 (21.1)	91 (21.9)	
T2DM: (FPG ≥7/2-h PG≥11.1/diabetes medication)	43 (11.1)	64 (15.4)	

Values expressed as mean±SD, median (25<sup>th</sup> – 75<sup>th</sup> percentile) or n (percentage). BMI: body mass index, WHR: waist-hip ratio, DXA: dual x-ray absorptiometry, VAT: visceral adipose tissue, SAT: subcutaneous adipose tissue; HbA1c: glycated haemoglobin, iAUC: integrated area under the curve, HOMA-IR: Homeostatic Model Assessment of Insulin Resistance, NGT: normal glucose tolerance, IGM: impaired glucose metabolism, T2DM: type 2 diabetes mellitus.

Matsuda Index: measure of insulin sensitivity (21,22); Insulinogenic Index: measure of insulin response:  $\Delta I_{30}/\Delta G_{30}$  (23); C-peptide Index: measure of insulin secretion:  $\Delta CP_{30}/\Delta G_{30}$  (23); oDI: oral disposition index, measure of beta-cell function, calculated as product of C-peptide index and Matsuda index (26–28); Glycaemic tolerance status<sup>1</sup>: definition and diagnosis of diabetes and intermediate hyperglycemia: report of a WHO/IDF consultation

**Table 2: Glucose and insulin measures in black SA men and women adjusted for FMI**

Variable, n	Adjusted for FMI		
	Men	Women	p-value
<b>Glucose and insulin measures</b>			
HbA1c (%) (n=761)	6.0 (5.8, 6.1)	6.1 (6.0 – 6.3)	0.256
Fasting glucose (mmol/L) (n=763)	5.5 (5.3 – 5.7)	5.2 (5.0 – 5.5)	0.160
2 h glucose (mmol/L) (n=697)	6.5 (6.2 – 6.9)	6.0 (5.7 – 6.4)	0.116
iAUC for glucose (mmol/L) (n=697)	221 (198 – 244)	163 (140 – 185)	0.003
Fasting insulin (mIU/ml) (n=761)	12.3 (11.1 – 13.5)	7.8 (6.6 – 8.9)	<0.001
iAUC for insulin (mIU/ml) (n=697)	6387 (5842 – 6932)	4704 (4165 – 5244)	0.001
Fasting C-peptide (ng/ml) (n=761)	2.29 (2.16 – 2.41)	1.59 (1.47 – 1.72)	<0.001
iAUC for C-peptide (ng/ml) (n=698)	746 (631 – 861)	895 (781 – 1009)	0.123
HOMA-IR (n=761)	3.03 (2.62 – 3.44)	2.06 (1.66 – 2.45)	0.005
Matsuda Index ( $\text{mg}^2/\text{mU min}$ ) (n=696)	6.3 (5.5 – 7.2)	9.8 (8.9 – 10.6)	<0.001
Insulinogenic index (mIU/mmol) (n=659)	27.4 (16.6 – 38.3)	43.3 (32.3 – 54.2)	0.089
C-peptide index (ng/mmol) (n=613)	2.75 (1.43 – 4.07)	6.91 (5.60 – 8.22)	<0.001
oDI (mIU/mmol) (n=613)	14.0 (1.7 – 26.3)	62.3 (50.0 – 74.5)	<0.001
Basal insulin clearance (ng/mIU) (n=761)	0.27 (0.25 – 0.28)	0.28 (0.26 – 0.29)	0.448
Postprandial insulin clearance (ng/mIU) (n=698)	0.19 (0.18 – 0.21)	0.18 (0.17 – 0.19)	0.403

Data adjusted for fat mass index (FMI) presented as median (95% Confidence Interval);

HbA1c: glycated haemoglobin,

iAUC: integrated area under the curve,

HOMA-IR: Homeostatic Model Assessment of Insulin Resistance,

Matsuda Index: measure of insulin sensitivity (24, 25),

Insulinogenic Index: measure of insulin response:  $\Delta I_{30}/\Delta G_{30}$  (26),

C-peptide Index: measure of insulin secretion:  $\Delta CP_{30}/\Delta G_{30}$  (26),

oDI: oral disposition index, measure of beta-cell function, calculated as the product of the C-peptide index and Matsuda index (29-31)

**Table 3: Associations between regional adiposity z-scores and risk for IGM and type 2 diabetes in men and women combined**

<b>Men and women</b>	<b>RRR</b>	<b>95% CI</b>	<b>p-value</b>	<b>Model R<sup>2</sup></b>
<b>Trunk z-score (n=761)</b>				
IGM	2.35	1.43 – 3.87	0.001	<0.001
Type 2 diabetes	4.76	2.68 – 8.45	<0.001	
<b>Leg z-score (n=759)</b>				
IGM	0.42	0.24 – 0.71	0.001	<0.001
Type 2 diabetes	0.21	0.11 – 0.39	<0.001	
<b>Arm z-score (n=759)</b>				
IGM	1.35	0.83 – 2.21	0.224	<0.001
Type 2 diabetes	2.19	1.25 – 3.81	0.006	
<b>VAT z-score (n=753)</b>				
IGM	1.76	1.35 – 2.28	<0.001	<0.001
Type 2 diabetes	2.58	1.92 – 3.48	<0.001	
<b>SAT z-score (n=753)</b>				
IGM	1.35	0.74 – 2.48	0.331	<0.001
Type 2 diabetes	1.37	0.68 – 2.75	0.376	

Results of multinomial logistic regression presented as relative risk ratios (RRR) and 95% confidence interval and represent risk of outcome with 1 SD increase in regional adiposity. Model used normal glucose tolerance (NGT) as the reference group compared to impaired glucose metabolism (IGM) and type 2 diabetes, adjusted for: age, smoking, alcohol intake, education attainment, FMI and sex



**Table 4: Associations between regional adiposity z-scores and insulin sensitivity, basal insulin clearance and Beta-cell function**

	$\beta$	95% CI	p-value	Model R <sup>2</sup>	Model p-value	$\beta$	95% CI	p-value	Model R <sup>2</sup>	Model p-value
	<b>Men</b>					<b>Women</b>				
	<b>Insulin Sensitivity (n=344)</b>					<b>Insulin Sensitivity (n=349)</b>				
FMI z-score <sup>#</sup>	-3.442	-4.011 to -2.873	<0.001	0.284	<0.001	-1.225	-1.631 to -0.819	<0.001	0.069	<0.001
Trunk z-score <sup>#</sup>	-2.680	-4.829 to -0.532	0.015	0.295	<0.001	-1.748	-2.545 to -0.950	<0.001	0.097	<0.001
Leg z-score	1.695	0.233 to 3.157	0.023	0.293	<0.001	1.218	0.454 to 1.982	0.002	0.086	<0.001
Arm z-score <sup>#</sup>	0.027	-1.667 to 1.722	0.975	0.284	<0.001	-0.893	-1.716 to -0.070	0.033	0.080	<0.001
VAT z-score <sup>#</sup>	-1.679	-2.540 to -0.818	<0.001	0.309	<0.001	-1.174	-1.657 to -0.691	<0.001	0.106	<0.001
SAT z-score <sup>#</sup>	-1.043	-2.961 to 0.876	0.286	0.286	<0.001	-0.693	-1.582 to 0.195	0.126	0.075	<0.001
	<b>Beta-cell function (n=304)</b>					<b>Beta-cell function (n=306)</b>				
FMI z-score <sup>#</sup>	-3.9594	-5.3600 - -2.5589	<0.001	0.065	<0.001	-2.6420	-4.0684 to -1.2156	<0.001	0.027	0.001
Trunk z-score	-4.0597	-9.2112 to 1.0917	0.122	0.068	<0.001	-4.3905	-7.2286 to -1.5524	0.003	0.040	<0.001
Leg z-score <sup>#</sup>	3.182	-0.3294 to 6.6940	0.076	0.071	<0.001	4.3120	1.7781 to 6.8460	0.001	0.044	<0.001
Arm z-score <sup>#</sup>	0.1387	-3.8845 to 4.1618	0.946	0.065	<0.001	-0.5693	-3.3668 to 2.2282	0.689	0.028	0.001
VAT z-score	-2.6180	-4.7016 to 0.5344	0.014	0.074	<0.001	-3.8567	-5.5820 to -2.1314	<0.001	0.051	<0.001
SAT z-score	1.6166	-2.9625 to 6.1957	0.488	0.066	<0.001	-1.8141	-4.7217 to 1.0936	0.220	0.029	0.001
	<b>Basal Insulin Clearance (n=346)</b>					<b>Basal Insulin Clearance (n=351)</b>				
FMI z-score <sup>#</sup>	-0.047	-0.062 to -0.033	<0.001	0.121	<0.001	-0.027	-0.035 to -0.018	<0.001	0.092	<0.001
Trunk z-score <sup>#</sup>	-0.055	-0.109 to -0.001	0.047	0.129	<0.001	-0.026	-0.044 to -0.009	0.002	0.108	<0.001
Leg z-score	0.006	-0.031 to 0.044	0.738	0.121	<0.001	0.017	0.001 to 0.033	0.036	0.099	<0.001
Arm z-score <sup>#</sup>	-0.015	-0.058 to 0.027	0.477	0.122	<0.001	-0.022	-0.038 to -0.005	0.011	0.104	<0.001
VAT z-score	0.001	-0.022 to 0.023	0.945	0.121	<0.001	-0.018	-0.028 to -0.008	0.001	0.111	<0.001
SAT z-score <sup>#</sup>	-0.033	-0.082 to 0.015	0.175	0.125	<0.001	-0.005	-0.024 to 0.013	0.555	0.093	<0.001

Beta coefficients for robust regression models for men and women, adjusted for age, smoking, alcohol intake, education attainment and FMI (except for FMI z-score), VAT: visceral adipose tissue, SAT: subcutaneous adipose tissue, Insulin sensitivity estimated from the Matsuda Index (24, 25) and beta-cell function was estimated using the oral Disposition index calculated as the product of C-peptide and Matsuda Index (26), and basal insulin clearance calculated as the ratio of fasting C-peptide to fasting insulin  
<sup>#</sup>p<0.05 for sex\*z-score body fat interaction term

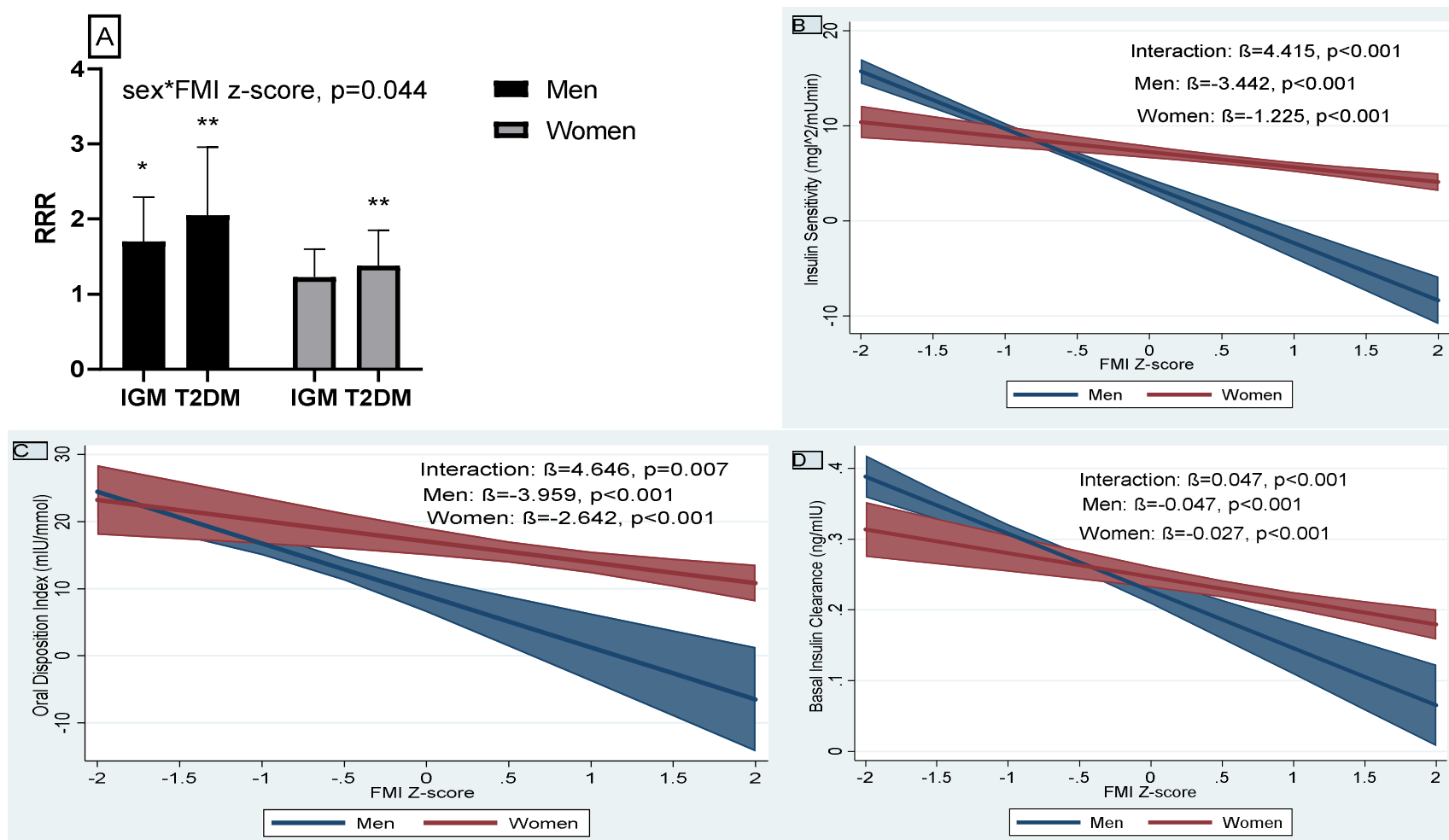


Figure 1: Bar Graph of the relative risk ratio (RRR) of impaired glucose metabolism (IGM) and type 2 diabetes mellitus compared to the normal glucose tolerant (NGT) in men and women, IGM: (RRR (95% CI): 1.70 (1.27–2.29),  $p<0.001$  vs. 1.23 (0.95–1.60),  $p=0.115$ ) and T2D: (2.05 (1.42–2.96),  $p<0.001$  vs. 1.38 (1.03–1.85),  $p=0.031$ ) for men and women, respectively (A); Sex-specific associations between FMI z-scores and insulin sensitivity (Matsuda index) (B), beta-cell function (oral disposition index) (C) and basal insulin clearance (D), modelled as predictive margins of sex with 95% CI