

1 **Waist circumference thresholds predicting incident dysglycemia and type 2**  
2 **diabetes in Black African men and women**

3

4 **Running title:** Waist thresholds for type 2 diabetes in Africa

5

6 Julia H. Goedecke<sup>1,2</sup>, Kim Nguyen<sup>1</sup>, Clement Kufe<sup>2</sup>, Maphoko Masemola<sup>2</sup>, Tinashe  
7 Chikowore<sup>2</sup>, Amy E. Mendham<sup>2,3</sup>, Shane A. Norris<sup>2</sup>, Nigel J. Crowther<sup>4</sup>, Fredrik Karpe<sup>5</sup>,  
8 Tommy Olsson<sup>6</sup>, Andre Pascal Kengne<sup>1</sup>, Lisa K Micklesfield<sup>2</sup>

9

10 <sup>1</sup>Non-Communicable Diseases Research Unit, South African Medical Research  
11 Council, Cape Town, South Africa

12 <sup>2</sup>South African Medical Research Council/WITS Developmental Pathways for Health  
13 Research Unit (DPHRU), Department of Paediatrics, Faculty of Health  
14 Sciences, University of the Witwatersrand, Johannesburg, South Africa

15 <sup>3</sup>Health through Physical Activity, Lifestyle and Sport Research Centre (HPALS),  
16 FIMS International Collaborating Centre of Sports Medicine, Division of Physiological  
17 Sciences, Department of Human Biology, Faculty of Health Sciences, University of  
18 Cape Town

19 <sup>4</sup>Department of Chemical Pathology, National Health Laboratory Service and School  
20 of Pathology, Faculty of Health Sciences, University of the Witwatersrand,  
21 Johannesburg, South Africa

22 <sup>5</sup>Oxford Centre for Diabetes, Endocrinology and Metabolism (OCDEM), Nuffield  
23 Department of Clinical Medicine, University of Oxford, Oxford, U.K.

24 <sup>6</sup>Department of Public Health and Clinical Medicine, Medicine, Umeå University, Umeå,  
25 Sweden

26

27 **Corresponding Author:**

28 Julia H. Goedecke

29 Non-Communicable Diseases Research Unit, South African Medical Research

30 Council, Francie van Zijl Drive, Parow Valley, 7505, Cape Town, South Africa

31 Tel: +27-219380862

32 Email: [Julia.goedecke@mrc.ac.za](mailto:Julia.goedecke@mrc.ac.za)

33

34 **Abstract count:** 249

35 **Word count:** 3787

36 **Tables/figures:** 4

37

38 **KEYWORDS**

39 Sub-Saharan African cohort, risk stratification, obesity, metabolic syndrome,

40

41 **ABSTRACT**

42 **Objective:** To determine the waist circumference (WC) thresholds for the prediction  
43 of incident dysglycemia and type 2 diabetes in Black South African (SA) men and  
44 women and compare these to advocated International Diabetes Federation (IDF)  
45 Europid thresholds.

46 **Research design and methods:** In this prospective study, Black SA men (n=502)  
47 and women (n=527) from the Middle Aged Sowetan Cohort (MASC) study who had  
48 normal or impaired fasting glucose at baseline (2011-2015) were followed up through  
49 2017-2018. Baseline measurements included anthropometry, blood pressure and  
50 fasting glucose, HDL-cholesterol and triglyceride concentrations. At follow-up, glucose  
51 tolerance was assessed using an oral glucose tolerance test. The Youden index was  
52 used to determine the optimal threshold of WC to predict incident dysglycemia and  
53 type 2 diabetes.

54 **Results:** In men, the optimal WC threshold was 96.8 cm for both dysglycemia and  
55 type 2 diabetes (sensitivity 56 and 70%, specificity 74 and 70%, respectively), which  
56 performed similarly to the IDF threshold of 94 cm. In women, the optimal WC threshold  
57 for incident dysglycemia was 91.8 cm (sensitivity 86%, specificity 37%) and for type 2  
58 diabetes was 95.8 cm (sensitivity 85%, specificity 45%). In comparison, the IDF  
59 threshold of 80 cm in women had higher sensitivity (97 and 100%), but lower specificity  
60 (12 and 11%) to predict incident dysglycemia and type 2 diabetes, respectively.

61 **Conclusions:** In this first prospective study of incident type 2 diabetes in Africa, we  
62 show that African-specific WC thresholds perform better than the IDF WC thresholds  
63 to predict incident dysglycemia and type 2 diabetes.

64

65 **INTRODUCTION**

66 The global prevalence of type 2 diabetes is increasing, with sub-Saharan Africa (SSA)  
67 having the highest projected relative rates of increase (1). The burden of type 2  
68 diabetes in SSA is reflected by the high estimated type 2 diabetes-associated deaths  
69 (~312,000 deaths in 2017), with 73% of these being in people under the age of 60  
70 years, a higher proportion than any other region in the world (1). Within SSA, South  
71 Africa (SA) has the highest number of people with type 2 diabetes (1), and type 2  
72 diabetes was the second leading cause of death in SA in 2016 (5.5% of deaths), and  
73 the highest amongst women (7.2% of deaths) (2). Notably, SSA has the highest  
74 proportion (59.7%) of people with undiagnosed type 2 diabetes (1). Accordingly, risk  
75 stratification that is accessible and cost effective is essential for the early detection of  
76 type 2 diabetes to prevent or delay the progression of the disease.

77

78 Obesity, in particular central obesity, are important risk factors for type 2 diabetes (3;  
79 4). Although imaging techniques are more accurate measures of total and central  
80 adiposity, they are not practical or affordable for routine practice and population-based  
81 risk stratification. Accordingly, anthropometric measures are used as surrogate  
82 markers for risk stratification for type 2 diabetes. Body mass index (BMI) is the most  
83 commonly used proxy of total adiposity, while waist circumference (WC), waist-to-hip  
84 ratio (WHR) and waist-to-height ratio (WHtR) are used as proxy measures of central  
85 adiposity (5). Waist circumference requires only a single measure, is not reliant on a  
86 ratio that is difficult to interpret and is the most accepted marker of central adiposity  
87 and disease risk (4; 6).

88

89 Waist circumference represents the sum of abdominal visceral (VAT) and  
90 subcutaneous adipose tissue (SAT), with VAT being the most significant determinant  
91 of type 2 diabetes (7; 8). However, we and others have shown that for the same level  
92 of WC, Black Africans have less VAT than their white European counterparts (9-11).  
93 Accordingly, the WC threshold used for defining risk for type 2 diabetes may differ in  
94 Black Africans. Indeed, both the World Health Organization (WHO) and the  
95 International Diabetes Federation (IDF) acknowledge that optimal thresholds for  
96 abdominal obesity vary across different ethnicities and population groups (6; 12).  
97 Although, several studies in SSA have been undertaken to identify WC thresholds for  
98 risk, these have all been cross-sectional and relied on metabolic syndrome (MetS)  
99 (excluding WC) as the outcome (13-16). As there is no consensus on an appropriate  
100 WC threshold for Black Africans, the IDF has recommended the use of Europid  
101 thresholds ( $\geq 80$  cm in women and  $\geq 94$  cm in men) for SSA (6). Prospective studies  
102 are therefore required to identify the optimal WC thresholds that identifies incident type  
103 2 diabetes in Black African men and women.

104

105 While WC is regarded as a useful primary screening tool for type 2 diabetes, it is also  
106 a key feature of the MetS, which is also typically used in risk prediction for type 2  
107 diabetes and cardiovascular diseases (6). The MetS is a cluster of risk factors that  
108 occur together more often than by chance alone, and in addition to WC, include  
109 elevated blood pressure, fasting glucose and triglycerides, and low fasting HDL-  
110 cholesterol concentrations (6). However, it is not clear whether including these  
111 additional MetS risk factors improves the discriminatory ability to predict type 2  
112 diabetes in African men and women when compared to WC alone.

113

114 Therefore, the aim of the study was to determine the WC thresholds for the prediction  
115 of incident dysglycemia (prediabetes and type 2 diabetes) and type 2 diabetes in Black  
116 SA men and women, and to compare these to advocated Europid thresholds, as  
117 defined by the IDF. A secondary aim was to determine if the derived WC thresholds  
118 for the prediction of incident dysglycemia and type 2 diabetes performed similarly to  
119 the MetS in Black SA men and women.

120

121

## 122 **METHODS**

### 123 **Design, study population and setting**

124 Baseline data collection was part of the African WITS-INDEPTH Partnerships for  
125 Genomic Research (AWI-Gen) Collaborative Centre which is a Human Heredity and  
126 Health in Africa (H3A) Consortium study (17; 18), and included 1027 men and 1004  
127 women from which the Middle-aged Soweto Cohort (MASC) was randomly selected  
128 (n=1112). The MASC cohort is a longitudinal study of Black SA men and women  
129 residing in Soweto, SA on whom baseline data was collected between 2011 and 2015,  
130 and again between January 2017 and August 2018 (Figure 1). Data in this study was  
131 collected from a sample of 1029 participants (502 men and 527 women) who were  
132 representative of the AWI-Gen sample and did not differ in terms of age, sex,  
133 sociodemographic or lifestyle factors from the main cohort (data not shown). Only  
134 participants with normal glucose tolerance or impaired fasting glucose, and  
135 anthropometric measures at baseline, as well as measures of glycaemia from an oral  
136 glucose tolerance test at follow-up, were included in this analysis (Figure 1). Complete  
137 data was available for 890 participants (452 men and 438 women).

138

139 The study was conducted in accordance with the Declaration of Helsinki and was  
140 approved by the Human Research Ethics Committee (HREC) (Medical) of the  
141 University of the Witwatersrand (Clearance Certificate No. M160604 and M160975).  
142 Prior to inclusion in the study, all the procedures and possible risks were explained to  
143 the participants prior to providing signed consent.

144

#### 145 **Socio–demographic and health questionnaires**

146 The same interviewer-administered questionnaire was completed at both time points  
147 and included age, current employment (employed/not employed), and highest  
148 educational level attained (no formal schooling/elementary school, secondary school,  
149 tertiary education). In addition, participants were asked to bring all other current  
150 medications, including diabetes medications, to the testing facility for recording and  
151 verification. Participants were classified as current smokers/non-smokers and current  
152 alcohol consumers/non-consumers.

153

#### 154 **Anthropometry and blood pressure**

155 Weight was measured to the nearest 0.1 kg using a TANITA digital scale (model: TBF-  
156 410, TANITA Corporation, US). Height was measured to the nearest 0.1 cm using a  
157 wall–mounted stadiometer (Holtain, Crymych, UK). Waist circumference and hip  
158 circumference were measured to the nearest 0.1 cm with a non–stretchable tape.  
159 Waist circumference was measured in the mid–axillary line at the midpoint between  
160 the lower margin of the last palpable rib and the top of the iliac crest at the end of  
161 normal expiration, and hip circumference was measured as the greatest protrusion of  
162 the buttocks (12). Waist-to-hip ratio (WHR), waist-height ratio (WHtR) and body mass  
163 index (BMI) were calculated. Participants were categorized according to the WHO

164 criteria: underweight (BMI <18.5 kg/m<sup>2</sup>), normal weight (BMI: 18.5-24.9 kg/m<sup>2</sup>),  
165 overweight (25-29.9 kg/ m<sup>2</sup>) and obese (BMI ≥ 30 kg/ m<sup>2</sup>).

166

167 Systolic and diastolic blood pressure were measured on the left arm using a digital  
168 blood pressure monitor (Omron M6, Kyoto, Japan) and appropriate cuffs. After the  
169 participant had been seated for at least five minutes, three blood pressure readings  
170 were taken at two-minute intervals. For each participant, the average of the second  
171 and third readings were used in the analyses.

172

### 173 **Blood sampling and biochemistry**

174 At both baseline and follow-up, blood samples were drawn after an overnight fast (10-  
175 12 hours) for the measurement of plasma glucose and serum lipid (total cholesterol,  
176 HDL-cholesterol, LDL-cholesterol and triglyceride) concentrations. In the follow-up  
177 sample only, participants then completed a standard 2-hour oral glucose tolerance  
178 test (OGTT). After ingestion of 75 g of anhydrous glucose in 250 ml water within 5  
179 minutes, blood samples were drawn at 30 min intervals for 2 hours for the subsequent  
180 determination of plasma glucose concentrations. Participants with known diabetes  
181 and/or those with fasting blood glucose ≥11.1 mmol/l (ACCU-CHEK® point-of-care  
182 glucose analyzer, MedNet GmbH, Munster, Germany) did not complete the OGTT.

183

184 Serum lipid concentrations at baseline and plasma glucose concentrations at baseline  
185 and follow-up were measured on the Randox RX Daytona Chemistry Analyzer using  
186 enzymatic methods (Randox Laboratories Ltd., Crumlin, Northern Ireland). The LDL-  
187 cholesterol concentrations were calculated using the Friedewald equation (19).

188



## 189 **Glucose tolerance and metabolic syndrome (MetS) classification**

190 Glucose tolerance was defined based on the WHO criteria (20). At baseline, only  
191 fasting glucose samples were available, and hence the participants were classified as  
192 having normal glucose tolerance (NGT) if fasting glucose was  $<6.1$  mmol/L; impaired  
193 fasting glucose (IFG) if fasting glucose was 6.1-6.9 mmol/l; or type 2 diabetes if fasting  
194 glucose was  $\geq 7$  mmol/l and/or taking type 2 diabetes medications. Only those with  
195 NGT or IFG at baseline were included in this study. At follow-up, glucose tolerance  
196 was defined based on both fasting and 2 hour OGTT results as follows: NGT if fasting  
197 glucose was  $<6.1$  mmol/l and 2-hour post glucose load was  $<7.8$  mmol/L; IFG (as  
198 defined above); impaired glucose tolerance (IGT) if 2-hour post glucose load was 7.8–  
199 11.0 mmol/L; and type 2 diabetes if fasting glucose was  $>7.0$  mmol/L and/or 2-hour  
200 post glucose load  $\geq 11.1$  mmol/L. Participants who were taking diabetes medications  
201 were classified with type 2 diabetes. At follow-up dysglycemia, which encompasses  
202 both prediabetes and diabetes, was defined as IFG and/or IGT and/or type 2 diabetes.

203

204 The presence of the MetS was based on the 2009 harmonized criteria (6). Participants  
205 with three or more of the following components were classified as having the MetS: i)  
206 elevated waist circumference ( $\geq 94$  cm in men or  $\geq 80$  cm in women); ii) elevated fasting  
207 triglycerides ( $\geq 1.7$  mmol/L); iii) reduced fasting HDL cholesterol ( $<1.0$  mmol/L in men  
208 or  $<1.3$  mmol/L in women); iv) elevated blood pressure ( $\geq 130$  mmHg for systolic and/or  
209  $\geq 85$  mmHg for diastolic and/or using blood pressure medication); v) elevated fasting  
210 glucose ( $\geq 5.6$  mmol/L and/or using diabetes medication).

211

## 212 **Statistics**

213 Data analysis was conducted in STATA SE Version 15 (StataCorp, College Station,  
214 Tx, USA). Normality of the data was assessed using Shapiro Wilks test. As all the  
215 descriptive variables were skewed, the continuous variables are presented as median  
216 (25-75<sup>th</sup> percentiles) and the categorical variables are presented as frequencies and  
217 percentages. Wilcoxon-Mann-Whitney tests and Chi-square tests were used to  
218 compare continuous and categorical variables between men and women, respectively.  
219 Receiver operating characteristic (ROC) area-under-the-curves (AUC) were used to  
220 assess and compare the ability of the baseline WC and other anthropometric  
221 measures to predict incident dysglycemia (prediabetes or type 2 diabetes) and type 2  
222 diabetes at follow-up. For the prediction of incident dysglycemia, only those with NGT  
223 at baseline were included in the analysis, whereas for the prediction of incident type 2  
224 diabetes, those with NGT and IFG at baseline were included in the analysis. Optimal  
225 WC thresholds to predict incident dysglycemia and type 2 diabetes were determined  
226 using Youden's index in men and women separately (21). The prognostic performance  
227 of the WC thresholds derived in this longitudinal study were assessed alongside the  
228 IDF-defined threshold, as well as WC thresholds defined in other South African and  
229 African cross-sectional studies that have been used to predict the presence of at least  
230 two components of the MetS, excluding WC (22). These studies were used as  
231 comparators as, to our knowledge, there are no other studies that have previously  
232 defined WC thresholds for predicting incident type 2 diabetes in Africa. Finally, we  
233 determined whether including additional MetS risk factors together with the derived  
234 WC threshold improved the prediction of incident dysglycemia and type 2 diabetes  
235 compared to the derived WC thresholds alone.

## 236 **RESULTS**

### 237 *Participant characteristics*

238 At baseline, the sample were middle-aged (~50 years) with men being slightly older  
239 than women (Table 1). More men were employed (65.0% vs. 53.0%,  $p < 0.001$ ) and  
240 had completed secondary (75.0 vs. 16.9%) and tertiary education (16.4% vs. 0%),  
241 compared to women (both  $p < 0.001$ ). In addition, more men than women currently  
242 smoked any form of tobacco (52.2% vs. 5.3%,  $p < 0.001$ ). In contrast, women had  
243 significantly higher BMI and a greater proportion of women compared to men were  
244 classified with overweight or obesity (88.6% vs. 47.4%,  $p < 0.001$ , Table 1). Accordingly,  
245 WC and WHtR were higher, but WHR was lower in women compared to men (Table  
246 1). Fasting glucose concentrations were higher in men compared to women, but  
247 women had higher triglyceride, total- and LDL-cholesterol concentrations compared to  
248 men, while HDL-cholesterol concentrations did not differ (Table 1). Similarly, both  
249 systolic and diastolic blood pressure did not differ by sex. In terms of the sex  
250 differences in MetS criteria, a greater proportion of women had elevated WC, while a  
251 greater proportion of men had elevated fasting glucose and reduced HDL-cholesterol  
252 concentrations; however, the prevalence of MetS did not differ significantly between  
253 men and women.

254

255 The median (25-75<sup>th</sup> percentile) follow-up times were 3.1 (2.9-3.5) years in men and  
256 4.8 (4.0-5.5) years in women. Of the 430 men and 421 women with NGT at baseline,  
257 73 men and 101 women developed dysglycemia at follow-up, resulting in a cumulative  
258 incidence (95% confidence incidence (CI)) of 17.0 (13.4-28.1)% in men and 24.0  
259 (19.9-41.1)% in women. Of the 452 men and 438 women with NGT or IFG at baseline,  
260 20 men and 47 women developed type 2 diabetes at follow-up, resulting in a lower

261 cumulative incidence of type 2 diabetes (95% CI) in men (4.4 (2.5-5.9)%) compared  
262 to women (10.7 (7.8-16.8)%).

263

264 *Comparative abilities of anthropometric measures to predict incident dysglycemia and*  
265 *type 2 diabetes*

266 When comparing the discriminatory power of the anthropometric measures to predict  
267 incident dysglycemia and type 2 diabetes in men and women (Supplementary Table  
268 S1), we showed that there were no significant differences between any of the AUC's,  
269 except where WHtR performed better than BMI in predicting dysglycemia in men  
270 ( $p=0.017$ ). As WC is a single simple measure that is most commonly used for risk  
271 prediction (6) and recommended for clinical practice (4), we chose to use this measure  
272 in all subsequent analyses.

273

274 *Performance of different WC thresholds to predict incident dysglycemia and type 2*  
275 *diabetes*

276 The ROC analyses for WC to predict incident dysglycemia and type 2 diabetes in men  
277 and women are presented in Figure 2. Waist circumference showed acceptable  
278 discrimination to predict dysglycemia and type 2 diabetes in men and women, with the  
279 AUCs being higher in men than women (Figure 2). Based on the Youden's index, the  
280 optimal WC thresholds to predict incident dysglycemia in men and women were 96.8  
281 cm and 91.8 cm, respectively (Table 2). In men, this threshold was similar to the IDF  
282 threshold of 94 cm, and accordingly had similar sensitivity, specificity, and positive and  
283 negative predictive values. However, the threshold of 96.8 cm was higher than those  
284 derived from cross-sectional studies of other African populations to detect MetS (84-  
285 90 cm), with a resultant lower sensitivity, but higher specificity.

286

287 In women, the threshold of 91.8 cm to predict incident dysglycemia was higher than  
288 the IDF recommended threshold of 80 cm but was similar to most thresholds from  
289 other African studies to detect MetS (Table 2). Although the sensitivity was lower than  
290 the IDF threshold (0.86 vs. 0.97), the specificity (0.37 vs. 0.12) was higher using the  
291 derived threshold of 91.8 cm.

292

293 The optimal WC threshold to predict incident type 2 diabetes in men (Table 3) was the  
294 same as that for dysglycemia (96.8 cm) and consequently all the performance  
295 variables are the same as those reported for dysglycemia in Table 2. In contrast, the  
296 optimal WC threshold to predict incident type 2 diabetes in women was 95.8 cm (Table  
297 3), which is similar to the threshold for dysglycemia and type 2 diabetes in men, but  
298 higher than the threshold for dysglycemia (91.8 cm), and the IDF cut point (80 cm) and  
299 most other thresholds derived to detect MetS in African women (81-94 cm). Although  
300 the sensitivity of the optimal threshold of 95.8 cm was lower than IDF (0.85 vs. 1.00)  
301 and other African studies (0.87-1.00), the specificity was higher (0.45 vs. 0.11 and  
302 0.12-0.40).

303

304 *Comparative ability of derived WC thresholds vs. MetS to predict incident dysglycemia*  
305 *and type 2 diabetes*

306 We then determined whether including additional MetS risk factors together with the  
307 derived WC thresholds improved the prediction of incident dysglycemia and type 2  
308 diabetes compared to the derived WC thresholds alone. In Tables 2 and 3, we showed  
309 that the cut-point to predict incident dysglycemia and T2D in men, and T2D in women  
310 were similar (~96 cm). Other African studies that have examined cut-points to detect

311 MetS have also suggested similar cut-points for men and women (13; 15; 16). Thus,  
312 we used the WC cut-point of 96 cm in both men and women as the WC component of  
313 MetS and compared this to the WC cut-points alone, to predict incident dysglycemia  
314 and T2D in men and women (Tables 2 and 3). Despite including additional risk factors,  
315 MetS had lower sensitivity, but similar specificity compared to the optimal WC  
316 threshold of 96.8 cm to predict incident dysglycemia and type 2 diabetes in men  
317 (Tables 2 and 3). In contrast, the sensitivity of MetS using a WC threshold of 96cm to  
318 predict both incident dysglycemia and type 2 diabetes in women was lower than the  
319 derived thresholds alone, while the specificity was higher (Tables 2 and 3).

320

321

## 322 **DISCUSSION**

323 This is the first prospective study to examine WC thresholds to predict incident  
324 dysglycemia and type 2 diabetes in an African population and showed that the optimal  
325 thresholds differed to those in European populations. The optimal thresholds to predict  
326 incident dysglycemia and type 2 diabetes in Black SA men were 96.8 cm for both  
327 outcomes and in women 91.8 and 95.8 cm, respectively. Importantly, these African-  
328 specific WC thresholds had higher specificity than the IDF Europid thresholds.

329

330 The WC thresholds to predict incident dysglycemia and type 2 diabetes in women  
331 were higher than the IDF threshold of 80 cm. This is consistent with the findings of  
332 several cross-sectional studies in SA that detected MetS, defined as at least two  
333 components of the MetS excluding WC, and reported optimal thresholds of 90-94 cm  
334 (13; 14; 16; 23). We showed that in women the thresholds of 91.8 and 95.8 cm had  
335 lower sensitivity and higher specificity than the IDF threshold to predict incident

336 dysglycemia and type 2 diabetes, respectively. The specificity of the IDF threshold  
337 was as low as 0.11, suggesting 89% of Black SA women who will remain free of  
338 dysglycemia or type 2 diabetes over time may be incorrectly classified among those  
339 who will go on to develop the conditions if this threshold was used alone as a risk  
340 screening tool.

341

342 Nonetheless, the devised African-specific threshold still had low specificity (0.37 and  
343 0.45) for incident dysglycemia and type 2 diabetes in Black SA women. This was also  
344 lower than that reported in Black SA men using the derived threshold of 96.8 cm  
345 (specificity ~0.70). The poor discriminatory ability of the WC thresholds to predict  
346 incident dysglycaemia and type 2 diabetes in women may be due to their high levels  
347 of obesity (66.7% vs. 20.9%) and central obesity (90% WC >80 cm vs. 37.6% WC >94  
348 cm) compared to the men in this sample. However, this is representative of men and  
349 women of this age group in SA (24). Further, these discrepant findings may be  
350 explained by the stronger association between total and central adiposity and type 2  
351 diabetes risk in Black SA men compared to Black SA women (Kufe et al, in review).  
352 Waist circumference incorporates both VAT and SAT; and it has been shown in Black  
353 South Africans and African-born Black people living in America that for the same WC,  
354 women have less VAT and more abdominal SAT than men (25) (Kufe et al., in review).  
355 Higher SAT for every level of VAT explained the higher WC cut point required for  
356 predicting insulin resistance in African-born black women living in America compared  
357 to their male counterparts (96 cm vs. 91 cm) (25). Further, a prospective study in Black  
358 SA women showed that only VAT, but not SAT, predicted the development of T2D (7).  
359 Accordingly, high levels of SAT in Black SA women may mask the association with  
360 VAT and lead to poor discriminatory power of WC to predict incident type 2 diabetes.

361

362 Previous studies from SSA have suggested that the WC of risk should be similar for  
363 African men and women (13; 15; 16). The findings from this study support this  
364 recommendation. Indeed, a WC of 96.8 cm predicted both incident dysglycemia and  
365 type 2 diabetes in men, whilst a very similar WC of 95.8 cm predicted incident type 2  
366 diabetes in women. However, larger longitudinal studies are required to confirm our  
367 findings for the SA population. We do agree that WC thresholds are dependent on the  
368 underlying obesity prevalence and should be region specific (15).

369

370 Another important finding of this study was that when including additional MetS risk  
371 factors together with the derived WC threshold to predict incident dysglycemia and  
372 type 2 diabetes in men, the predictive accuracy did not change. In contrast, in women,  
373 the inclusion of the additional MetS risk factors resulted in a decrease in sensitivity  
374 (0.85-0.86 to 0.38-0.49), but an increase in specificity (0.37-0.45 to 0.80-0.76). In both  
375 men and women, the most common feature of MetS were reduced HDL-cholesterol  
376 and elevated blood pressure. In African populations, reduced HDL-cholesterol levels  
377 are not necessarily a marker of cardiometabolic risk, and the WHO sex-based cut-offs  
378 are inappropriate (26-28); while blood pressure is a risk factor for cardiovascular  
379 disease rather than type 2 diabetes. Further, it has been previously shown that MetS  
380 and its components, in particular triglyceride and HDL-cholesterol levels, are not  
381 associated with insulin resistance in Black African women (29-31) and that MetS may  
382 not be a good indicator of cardiometabolic risk in Black African populations (32-34).  
383 The time and cost associated with these additional measures is unlikely to offset the  
384 reduction in false positives associated with WC measures alone in Black SA women.  
385 Concomitantly, this highlights the need for future studies to establish accessible and



386 cost-effective risk biomarkers that have high sensitivity and specificity for the early  
387 detection of type 2 diabetes in SSA.

388

389 The major strengths of this study are the prospective design and the diagnosis of  
390 incident dysglycemia and type 2 diabetes using an OGTT. To date, all studies that  
391 have explored thresholds for WC have been cross-sectional and were designed for  
392 identifying the optimal WC cut point for detecting MetS (13; 14; 16; 23). We used an  
393 OGTT to diagnose type 2 diabetes at follow-up, which is considered the gold standard,  
394 particularly in African populations where fasting glucose and HbA1c may perform sub-  
395 optimally (35-38). Another strength of this study is the inclusion of equal numbers of  
396 men and women. Most studies in SA have either focused on women only or included  
397 small samples of men (13-16; 23). Limitations of the study include the relatively small  
398 sample size that precluded the validation of the threshold in a sub-sample of the  
399 participants.

400

401 In conclusion, we show for the first time using prospective cohort data from SA that  
402 African-specific thresholds derived for WC perform better than the IDF Europid WC  
403 thresholds for predicting incident dysglycemia and type 2 diabetes in Black SA men  
404 and women.

405

406

407 **ACKNOWLEDGEMENTS**

408

409 **Author contributions:** The authors confirm contribution to the paper as follows: study  
410 conception and design: JHG and LKM; data collection: CK, MM, TC; data analysis:  
411 JHG, KN, APK; interpretation of results: JHG, KN, APK, AEM, SAM, NJC, FK, TO,  
412 LKM; draft manuscript preparation: JHG; All authors reviewed the results and  
413 approved the final version of the manuscript.

414 Julia H. Goedecke is the guarantor and takes full responsibility for the contents of the  
415 manuscript.

416

417 **Funding:** The study was jointly funded by the South African Medical Research  
418 Council (MRC) from South African National Department of Health, MRC UK (via the  
419 Newton Fund) and GSK Africa Non-Communicable Disease Open Lab (via a  
420 supporting Grant project Number: ES/N013891/1) and South African National  
421 Research Foundation (Grant no: UID:99108). TC is an International Training Fellow  
422 supported by the Wellcome Trust grant (214205/Z/18/Z).

**Acknowledgements:** We are grateful to the participants as well as the following  
DPHRU staff for their input during data collection and entry: Vukosi Mkansi, Sphume  
Thango, Mosadiapula Nakedi, Bonisiwe Mlambo, Melikhanya Soboyisi, Tshifhiwa  
Ratshikombo, and team.

423

424 **Conflict of interest:** The authors declare no conflicts of interest.

425

426 **Data availability:** Some or all datasets generated during and/or analyzed during the  
427 current study are not publicly available but are available from the corresponding  
428 author on reasonable request.

429

## 430 **References**

- 431 1. Saeedi P, Petersohn I, Salpea P, Malanda B, Karuranga S, Unwin N, Colagiuri S,  
432 Guariguata L, Motala AA, Ogurtsova K, Shaw JE, Bright D, Williams R, Committee IDFDA.  
433 Global and regional diabetes prevalence estimates for 2019 and projections for 2030 and  
434 2045: Results from the International Diabetes Federation Diabetes Atlas, 9(th) edition.  
435 *Diabetes Res Clin Pract* 2019;157:107843
- 436 2. STATS-SA. Mortality and causes of death in South Africa, 2016: Findings from death  
437 notification. *Statistics South Africa*, 2018, p. 1-142
- 438 3. Okosun IS, Cooper RS, Rotimi CN, Osotimehin B, Forrester T. Association of waist  
439 circumference with risk of hypertension and type 2 diabetes in Nigerians, Jamaicans, and  
440 African-Americans. *Diabetes Care* 1998;21:1836-1842
- 441 4. Ross R, Neeland IJ, Yamashita S, Shai I, Seidell J, Magni P, Santos RD, Arsenault B,  
442 Cuevas A, Hu FB, Griffin BA, Zambon A, Barter P, Fruchart JC, Eckel RH, Matsuzawa Y,  
443 Despres JP. Waist circumference as a vital sign in clinical practice: a Consensus Statement  
444 from the IAS and ICCR Working Group on Visceral Obesity. *Nat Rev Endocrinol*  
445 2020;16:177-189
- 446 5. Pi-Sunyer FX. Obesity: criteria and classification. *Proc Nutr Soc* 2000;59:505-509
- 447 6. Alberti KG, Eckel RH, Grundy SM, Zimmet PZ, Cleeman JI, Donato KA, Fruchart JC,  
448 James WP, Loria CM, Smith SC, Jr., International Diabetes Federation Task Force on E,  
449 Prevention, Hational Heart L, Blood I, American Heart A, World Heart F, International  
450 Atherosclerosis S, International Association for the Study of O. Harmonizing the metabolic  
451 syndrome: a joint interim statement of the International Diabetes Federation Task Force on  
452 Epidemiology and Prevention; National Heart, Lung, and Blood Institute; American Heart  
453 Association; World Heart Federation; International Atherosclerosis Society; and International  
454 Association for the Study of Obesity. *Circulation* 2009;120:1640-1645
- 455 7. Mtintsilana A, Micklesfield LK, Chorell E, Olsson T, Goedecke JH. Fat redistribution and  
456 accumulation of visceral adipose tissue predicts type 2 diabetes risk in middle-aged black  
457 South African women: a 13-year longitudinal study. *Nutr Diabetes* 2019;9:12
- 458 8. Chantler S, Dickie K, Micklesfield LK, Goedecke JH. Longitudinal Changes in Body Fat  
459 and Its Distribution in Relation to Cardiometabolic Risk in Black South African Women.  
460 *Metab Syndr Relat Disord* 2015;13:381-388
- 461 9. Goedecke JH, Levitt NS, Lambert EV, Utzschneider KM, Faulenbach MV, Dave JA, West  
462 S, Victor H, Evans J, Olsson T, Walker BR, Seckl JR, Kahn SE. Differential effects of  
463 abdominal adipose tissue distribution on insulin sensitivity in black and white South African  
464 women. *Obesity (Silver Spring)* 2009;17:1506-1512
- 465 10. Keswell D, Tootla M, Goedecke JH. Associations between body fat distribution, insulin  
466 resistance and dyslipidaemia in black and white South African women. *Cardiovasc J Afr*  
467 2016;27:177-183

- 468 11. Sumner AE, Micklesfield LK, Ricks M, Tambay AV, Avila NA, Thomas F, Lambert EV,  
469 Levitt NS, Evans J, Rotimi CN, Tulloch-Reid MK, Goedecke JH. Waist circumference, BMI,  
470 and visceral adipose tissue in white women and women of African descent. *Obesity* (Silver  
471 Spring) 2011;19:671-674
- 472 12. World Health Organisation. Waist circumference and waist-hip ratio: report of a WHO  
473 expert Consultation. Geneva, 2011
- 474 13. Matsha TE, Hassan MS, Hon GM, Soita DJ, Kengne AP, Erasmus RT. Derivation and  
475 validation of a waist circumference optimal cutoff for diagnosing metabolic syndrome in a  
476 South African mixed ancestry population. *Int J Cardiol* 2013;168:2954-2955
- 477 14. Crowther NJ, Norris SA. The current waist circumference cut point used for the diagnosis  
478 of metabolic syndrome in sub-Saharan African women is not appropriate. *PLoS One*  
479 2012;7:e48883
- 480 15. Ekoru K, Murphy GAV, Young EH, Delisle H, Jerome CS, Assah F, Longo-Mbenza B,  
481 Nzambi JPD, On'Kin JBK, Buntix F, Muyer MC, Christensen DL, Wesseh CS, Sabir A,  
482 Okafor C, Gezawa ID, Puepet F, Enang O, Raimi T, Ohwovoriole E, Oladapo OO, Bovet P,  
483 Mollentze W, Unwin N, Gray WK, Walker R, Agoudavi K, Siziya S, Chifamba J, Njelekela M,  
484 Fourie CM, Kruger S, Schutte AE, Walsh C, Gareta D, Kamali A, Seeley J, Norris SA,  
485 Crowther NJ, Pillay D, Kaleebu P, Motala AA, Sandhu MS. Deriving an optimal threshold of  
486 waist circumference for detecting cardiometabolic risk in sub-Saharan Africa. *Int J Obes*  
487 (Lond) 2017;
- 488 16. Motala AA, Esterhuizen T, Pirie FJ, Omar MA. The prevalence of metabolic syndrome  
489 and determination of the optimal waist circumference cutoff points in a rural South african  
490 community. *Diabetes Care* 2011;34:1032-1037
- 491 17. Ali SA, Soo C, Agongo G, Alberts M, Amenga-Etego L, Boua RP, Choudhury A,  
492 Crowther NJ, Depuur C, Gomez-Olive FX, Guiraud I, Haregu TN, Hazelhurst S, Kahn K,  
493 Khayeka-Wandabwa C, Kyobutungi C, Lombard Z, Mashinya F, Micklesfield L, Mohamed  
494 SF, Mukomana F, Nakanabo-Diallo S, Natama HM, Ngomi N, Nonterah EA, Norris SA,  
495 Oduro AR, Some AM, Sorgho H, Tindana P, Tinto H, Tollman S, Twine R, Wade A, Sankoh  
496 O, Ramsay M. Genomic and environmental risk factors for cardiometabolic diseases in  
497 Africa: methods used for Phase 1 of the AWI-Gen population cross-sectional study. *Glob*  
498 *Health Action* 2018;11:1507133
- 499 18. Ramsay M, Crowther N, Tambo E, Agongo G, Baloyi V, Dikotope S, Gomez-Olive X, Jaff  
500 N, Sorgho H, Wagner R, Khayeka-Wandabwa C, Choudhury A, Hazelhurst S, Kahn K,  
501 Lombard Z, Mukomana F, Soo C, Soodyall H, Wade A, Afolabi S, Agorinya I, Amenga-Etego  
502 L, Ali SA, Bognini JD, Boua RP, Depuur C, Diallo S, Fato E, Kazienga A, Konkobo SZ,  
503 Kouraogo PM, Mashinya F, Micklesfield L, Nakanabo-Diallo S, Njamwea B, Nonterah E,  
504 Ouedraogo S, Pillay V, Somande AM, Tindana P, Twine R, Alberts M, Kyobutungi C, Norris  
505 SA, Oduro AR, Tinto H, Tollman S, Sankoh O. H3Africa AWI-Gen Collaborative Centre: a  
506 resource to study the interplay between genomic and environmental risk factors for  
507 cardiometabolic diseases in four sub-Saharan African countries. *Glob Health Epidemiol*  
508 *Genom* 2016;1:e20
- 509 19. Friedewald WT, Levy RI, Fredrickson DS. Estimation of the Concentration of Low-  
510 Density Lipoprotein Cholesterol in Plasma, Without Use of the Preparative Ultracentrifuge.  
511 *Clinical Chemistry* 1972;18:499-502
- 512 20. World Health Organization, International Diabetes F. Definition and diagnosis of diabetes  
513 mellitus and intermediate hyperglycaemia : report of a WHO/IDF consultation. Geneva,  
514 World Health Organization, 2006
- 515 21. Youden WJ. Index for rating diagnostic tests. *Cancer* 3:4

- 516 22. Bewick V, Cheek L, Ball J. Statistics review 13: receiver operating characteristic curves.  
517 Crit Care 2004;8:508-512
- 518 23. Peer N, Steyn K, Levitt N. Differential obesity indices identify the metabolic syndrome in  
519 Black men and women in Cape Town: the CRIBSA study. J Public Health (Oxf)  
520 2016;38:175-182
- 521 24. National Department of Health, ICF. South Africa Demographic and Health Survey 2016.  
522 Pretoria, National Department of Health - NDoH - ICF, 2019
- 523 25. Kabakambira JD, Baker RL, Jr., Briker SM, Courville AB, Mabundo LS, DuBose CW,  
524 Chung ST, Eckel RH, Sumner AE. Do current guidelines for waist circumference apply to  
525 black Africans? Prediction of insulin resistance by waist circumference among Africans living  
526 in America. BMJ Glob Health 2018;3:e001057
- 527 26. Woudberg NJ, Goedecke JH, Blackhurst D, Frias M, James R, Opie LH, Lecour S.  
528 Association between ethnicity and obesity with high-density lipoprotein (HDL) function and  
529 subclass distribution. Lipids Health Dis 2016;15:92
- 530 27. Woudberg NJ, Lecour S, Goedecke JH. HDL Subclass Distribution Shifts with Increasing  
531 Central Adiposity. Journal of Obesity 2019;2019:1-6
- 532 28. Greiner R, Nyrienda M, Rodgers L, Asiki G, Banda L, Shields B, Hattersley A, Crampin  
533 A, Newton R, Jones A. Associations between low HDL, sex and cardiovascular risk markers  
534 are substantially different in sub-Saharan Africa and the UK: analysis of four population  
535 studies. BMJ Glob Health 2021;6
- 536 29. Knight MG, Goedecke JH, Ricks M, Evans J, Levitt NS, Tulloch-Reid MK, Sumner AE.  
537 The TG/HDL-C ratio does not predict insulin resistance in overweight women of African  
538 descent: a study of South African, African American and West African women. Ethn Dis  
539 2011;21:490-494
- 540 30. Sumner AE, Cowie CC. Ethnic differences in the ability of triglyceride levels to identify  
541 insulin resistance. Atherosclerosis 2008;196:696-703
- 542 31. Sumner AE, Zhou J, Doumatey A, Imoisili OE, Amoah A, Acheampong J, Oli J, Johnson  
543 T, Adebamowo C, Rotimi CN. Low HDL-Cholesterol with Normal Triglyceride Levels is the  
544 Most Common Lipid Pattern in West Africans and African Americans with Metabolic  
545 Syndrome: Implications for Cardiovascular Disease Prevention. CVD Prev Control  
546 2010;5:75-80
- 547 32. Sumner AE. Ethnic differences in triglyceride levels and high-density lipoprotein lead to  
548 underdiagnosis of the metabolic syndrome in black children and adults. J Pediatr  
549 2009;155:S7 e7-11
- 550 33. Yu SS, Ramsey NL, Castillo DC, Ricks M, Sumner AE. Triglyceride-based screening  
551 tests fail to recognize cardiometabolic disease in African immigrant and African-American  
552 men. Metab Syndr Relat Disord 2013;11:15-20
- 553 34. Evans J, Micklesfield L, Jennings C, Levitt NS, Lambert EV, Olsson T, Goedecke JH.  
554 Diagnostic ability of obesity measures to identify metabolic risk factors in South African  
555 women. Metab Syndr Relat Disord 2011;9:353-360
- 556 35. Kengne AP, Erasmus RT, Levitt NS, Matsha TE. Alternative indices of glucose  
557 homeostasis as biochemical diagnostic tests for abnormal glucose tolerance in an African  
558 setting. Prim Care Diabetes 2017;11:119-131
- 559 36. Wade AN, Crowther NJ, Abrahams-Gessel S, Berkman L, George JA, Gomez-Olive FX,  
560 Manne-Goehler J, Salomon JA, Wagner RG, Gaziano TA, Tollman SM, Cappola AR.  
561 Concordance between fasting plasma glucose and HbA1c in the diagnosis of diabetes in  
562 black South African adults: a cross-sectional study. BMJ Open 2021;11:e046060

- 563 37. Peer N, Steyn K, Lombard C, Lambert EV, Vythilingum B, Levitt NS. Rising diabetes  
564 prevalence among urban-dwelling black South Africans. PLoS One 2012;7:e43336
- 565 38. Motala AA, Esterhuizen T, Gouws E, Pirie FJ, Omar MA. Diabetes and other disorders of  
566 glycemia in a rural South African community: prevalence and associated risk factors.  
567 Diabetes Care 2008;31:1783-1788
- 568

569 **Table 1.** Characteristics of men and women at baseline  
570

|                                 | <b>Men (n=452)</b>  | <b>Women (n=438)</b> | <b>P value</b> |
|---------------------------------|---------------------|----------------------|----------------|
| Age (years)                     | 50 (45-55)          | 49 (45-54)           | 0.017          |
| <b>Anthropometry</b>            |                     |                      |                |
| BMI (kg/m <sup>2</sup> )        | 24.5 (20.8-29.1)    | 32.8 (28.5-37.3)     | <0.001         |
| Waist circumference (cm)        | 88.1 (78.0-100.0)   | 98.1 (89.5-107.0)    | <0.001         |
| Hip circumference (cm)          | 99.4 (91.2-106.1)   | 117.0 (108.5-126.0)  | <0.001         |
| WHR                             | 0.90 (0.85-0.95)    | 0.84 (0.78-0.89)     | <0.001         |
| WHtR                            | 0.52 (0.46-0.58)    | 0.62 (0.56-0.67)     | <0.001         |
| <b>BMI categories</b>           |                     |                      |                |
| Underweight (%(n))              | 10.0 (46)           | 0.5 (2)              | <0.001         |
| Normal weight (%(n))            | 42.6 (196)          | 11.0 (48)            |                |
| Overweight (%(n))               | 26.5 (122)          | 21.9 (96)            |                |
| Obese (%(n))                    | 20.9 (96)           | 66.7 (292)           |                |
| <b>Biochemistry</b>             |                     |                      |                |
| Fasting glucose (mmol/l)        | 5.1 (4.7-5.4)       | 4.8 (4.5-5.2)        | <0.001         |
| Triglycerides (mmol/l)          | 0.9 (0.6-1.3)       | 1.0 (0.7-1.4)        | <0.001         |
| Total cholesterol (mmol/l)      | 4.1 (3.4-4.8)       | 4.5 (3.8-5.2)        | <0.001         |
| HDL-cholesterol (mmol/l)        | 1.2 (0.9-1.5)       | 1.2 (1.0-1.5)        | 0.063          |
| LDL-cholesterol (mmol/l)        | 2.5 (1.8-3.1)       | 2.7 (2.2-3.3)        | <0.001         |
| <b>Blood pressure</b>           |                     |                      |                |
| Systolic (mmHg)                 | 129.0 (117.0-144.0) | 128.5 (117.0-141.5)  | 0.518          |
| Diastolic (mmHg)                | 88.8 (79.5-96.5)    | 87.5 (79.0-96.0)     | 0.357          |
| <b>Metabolic syndrome (JIS)</b> |                     |                      |                |
| Elevated WC (%(n))              | 37.6 (170)          | 90.4 (396)           | <0.001         |
| Elevated fasting glucose (%(n)) | 15.9 (72)           | 10.5 (46)            | 0.017          |
| Elevated triglycerides (%(n))   | 13.1 (59)           | 14.4 (63)            | 0.564          |
| Reduced HDL-cholesterol (%(n))  | 69.3 (313)          | 46.1 (202)           | <0.001         |
| Elevated blood pressure (%(n))  | 61.3 (279)          | 59.6 (261)           | 0.514          |
| MetS (%(n))                     | 30.3 (137)          | 35.4 (155)           | 0.107          |

571  
572 Values are median (25-75<sup>th</sup> percentile). WHR, waist-to-hip ratio; WHtR, waist-to-  
573 height ratio; MetS, metabolic syndrome, defined using the Joint Interim Statement  
574 (JIS) (6) and defined as meeting any three of the following criteria: elevated waist  
575 circumference ( $\geq 80$  cm in women;  $\geq 94$  cm in men); elevated blood glucose ( $\geq 5.6$   
576 mmol/l and/or using diabetes medication); elevated fasting triglycerides ( $\geq 1.7$   
577 mmol/L); reduced fasting HDL-cholesterol ( $<1.0$  mmol/L in men,  $<1.3$  mmol/L in  
578 women); elevated blood pressure ( $\geq 135/85$  mmHg and/or using antihypertension  
579 medication).  
580

581 **Table 2.** Performance measures of different waist circumference thresholds to  
 582 predict incident dysglycemia in Black African men and women  
 583

| Reference            | Cut-off (cm) | Sensitivity (95%CI) | Specificity (95%CI)  | PPV (95%CI)         | NPV (95%CI)         | Youden index (95% CI) |
|----------------------|--------------|---------------------|----------------------|---------------------|---------------------|-----------------------|
| <b>Men</b>           |              |                     |                      |                     |                     |                       |
| Youden               | 96.8         | 0.56<br>(0.44-0.68) | 0.74<br>(0.69-0.78)  | 0.30<br>(0.23-0.39) | 0.89<br>(0.85-0.92) | 0.30<br>(0.13-0.46)   |
| IDF (6)              | 94           | 0.59<br>(0.47-0.70) | 0.68<br>(0.63-0.73)  | 0.27<br>(0.21-0.35) | 0.89<br>(0.85-0.92) | 0.27<br>(0.10-0.43)   |
| Matsha et al. (13)   | 90           | 0.66<br>(0.54-0.76) | 0.59<br>(0.54-0.64)  | 0.25<br>(0.19-0.31) | 0.89<br>(0.85-0.93) | 0.25<br>(0.07-0.40)   |
| Ekoru et al. (15)    | 81           | 0.82<br>(0.72-0.90) | 0.35<br>(0.30-0.40)  | 0.20<br>(0.16-0.26) | 0.91<br>(0.84-0.95) | 0.17<br>(0.01-0.30)   |
| Motala et al. (16)   | 86           | 0.68<br>(0.57-0.79) | 0.48<br>(0.43-0.53)  | 0.21<br>(0.16-0.27) | 0.88<br>(0.83-0.92) | 0.17<br>(0.01-0.32)   |
| Peer et al. (23)     | 83.9         | 0.74<br>(0.62-0.84) | 0.45<br>(0.40- 0.50) | 0.22<br>(0.17-0.27) | 0.89<br>(0.84-0.94) | 0.19<br>(0.02-0.34)   |
| <b>MetS</b>          | 96           | 0.44<br>(0.32-0.56) | 0.77<br>(0.72-0.81)  | 0.28<br>(0.20-0.37) | 0.87<br>(0.83-0.90) | 0.21<br>(0.04-0.37)   |
| <b>Women</b>         |              |                     |                      |                     |                     |                       |
| Youden               | 91.8         | 0.86<br>(0.78-0.92) | 0.37<br>(0.32-0.42)  | 0.30<br>(0.25-0.36) | 0.89<br>(0.83-0.94) | 0.23<br>(0.09-0.35)   |
| IDF (6)              | 80           | 0.97<br>(0.92-0.99) | 0.12<br>(0.09-0.16)  | 0.26<br>(0.22-0.31) | 0.93<br>(0.81-0.99) | 0.09<br>(0.01-0.16)   |
| Matsha et al. (13)   | 90           | 0.88<br>(0.80-0.94) | 0.31<br>(0.26- 0.36) | 0.29<br>(0.24-0.34) | 0.89<br>(0.82-0.94) | 0.19<br>(0.06-0.30)   |
| Ekoru et al. (15)    | 81           | 0.97<br>(0.92-0.99) | 0.14<br>(0.10- 0.18) | 0.26<br>(0.22-0.31) | 0.94<br>(0.83-0.99) | 0.11<br>(0.02-0.18)   |
| Motala et al. (16)   | 92           | 0.86<br>(0.78-0.92) | 0.37<br>(0.32- 0.42) | 0.30<br>(0.25-0.36) | 0.89<br>(0.83-0.94) | 0.23<br>(0.09-0.35)   |
| Crowther et al. (14) | 91.5         | 0.86<br>(0.78-0.92) | 0.36<br>(0.30- 0.41) | 0.30<br>(0.25-0.35) | 0.89<br>(0.82-0.94) | 0.22<br>(0.08-0.33)   |
| Peer et al. (23)     | 94           | 0.76<br>(0.67-0.84) | 0.43<br>(0.37-0.48)  | 0.30<br>(0.24-0.36) | 0.85<br>(0.79-0.90) | 0.19<br>(0.04-0.33)   |
| <b>MetS</b>          | 96           | 0.38<br>(0.28-0.48) | 0.80<br>(0.75-0.84)  | 0.37<br>(0.28-0.47) | 0.80<br>(0.75-0.84) | 0.17<br>(0.03-0.32)   |

584 Dysglycemia defined as impaired fasting glucose and/or impaired glucose tolerance  
 585 or type 2 diabetes; IDF, International Diabetes Federation; Sensitivity = TP/(TP+FN);  
 586 Specificity = TN/(TN+FP); PPV, positive predictive value = TP/(TP+FP); NPV,  
 587 negative predictive value = sensitivity/1-specificity; Youden's index = (sensitivity +  
 588 specificity)– 1, where TP, true positive; FP, false positive; TN, true negative; FN,  
 589 false negative; MetS, metabolic syndrome using a waist circumference threshold of  
 590 96 cm for men and women derived from this study.

591



592 **Table 3.** Performance measures of different waist circumference thresholds to  
 593 predict incident type 2 diabetes in Black African men and women  
 594

| Reference            | Cut-off (cm) | Sensitivity (95%CI) | Specificity (95%CI) | PPV (95%CI)         | NPV (95%CI)          | Youden index (95% CI) |
|----------------------|--------------|---------------------|---------------------|---------------------|----------------------|-----------------------|
| <b>Men</b>           |              |                     |                     |                     |                      |                       |
| Youden               | 96.8         | 0.70<br>(0.46-0.88) | 0.70<br>(0.65-0.74) | 0.10<br>(0.05-0.16) | 0.98<br>(0.96- 0.99) | 0.40<br>(0.11- 0.62)  |
| IDF (6)              | 94           | 0.70<br>(0.46-0.88) | 0.64<br>(0.59-0.68) | 0.08<br>(0.05-0.13) | 0.98<br>(0.95- 0.99) | 0.34<br>(0.05-0.57)   |
| Matsha et al. (13)   | 90           | 0.75<br>(0.51-0.91) | 0.55<br>(0.50-0.59) | 0.07<br>(0.04-0.11) | 0.98<br>(0.95- 0.99) | 0.30<br>(0.01-0.51)   |
| Ekoru et al. (15)    | 81           | 0.90<br>(0.68-0.99) | 0.32<br>(0.27-0.36) | 0.06<br>(0.03-0.09) | 0.99<br>(0.95- 1.00) | 0.22<br>(-0.04-0.35)  |
| Motala et al. (16)   | 86           | 0.85<br>(0.62-0.97) | 0.45<br>(0.40-0.50) | 0.07<br>(0.04-0.10) | 0.98<br>(0.96- 1.00) | 0.30<br>(0.02-0.46)   |
| Peer et al. (23)     | 83.9         | 0.85<br>(0.62-0.87) | 0.41<br>(0.37-0.46) | 0.06<br>(0.04-0.10) | 0.98<br>(0.95- 1.00) | 0.26<br>(-0.01-0.43)  |
| <b>MetS</b>          | 96           | 0.45<br>(0.23-0.68) | 0.72<br>(0.68-0.77) | 0.07<br>(0.03-0.13) | 0.97<br>(0.94-0.98)  | 0.17<br>(-0.09-0.45)  |
| <b>Women</b>         |              |                     |                     |                     |                      |                       |
| Youden               | 95.8         | 0.85<br>(0.72-0.94) | 0.45<br>(0.40-0.50) | 0.16<br>(0.11-0.21) | 0.96<br>(0.92 0.98)  | 0.30<br>(0.12- 0.44)  |
| IDF (6)              | 80           | 1.00<br>(0.92-1.00) | 0.11<br>(0.08-0.14) | 0.12<br>(0.09-0.15) | 1.00<br>(0.92- 1.00) | 0.11<br>(0.01-0.14)   |
| Matsha et al. (13)   | 90           | 0.91<br>(0.80-0.98) | 0.28<br>(0.23-0.32) | 0.13<br>(0.10-0.17) | 0.96<br>(0.91- 0.99) | 0.19<br>(0.03-0.30)   |
| Ekoru et al. (15)    | 81           | 1.00<br>(0.92-1.00) | 0.12<br>(0.09-0.16) | 0.12<br>(0.09-0.16) | 1.00<br>(0.93- 1.00) | 0.12<br>(0.02-0.16)   |
| Motala et al. (16)   | 92           | 0.91<br>(0.80-0.98) | 0.33<br>(0.29-0.38) | 0.14<br>(0.10-0.19) | 0.97<br>(0.93- 0.99) | 0.24<br>(0.08-0.36)   |
| Crowther et al. (14) | 91.5         | 0.91<br>(0.80-0.98) | 0.32<br>(0.28-0.37) | 0.14<br>(0.10-0.18) | 0.97<br>(0.92- 0.99) | 0.24<br>(0.07-0.35)   |
| Peer et al. (23)     | 94           | 0.87<br>(0.74-0.95) | 0.40<br>(0.36-0.45) | 0.15<br>(0.11-0.20) | 0.96<br>(0.92-0.99)  | 0.28<br>(0.10-0.41)   |
| <b>MetS</b>          | 96           | 0.49<br>(0.34-0.64) | 0.76<br>(0.72-0.80) | 0.20<br>(0.13-0.28) | 0.93<br>(0.89-0.95)  | 0.25<br>(0.06-0.44)   |

595 IDF, International Diabetes Federation; Sensitivity = TP/(TP+FN); Specificity =  
 596 TN/(TN+FP); PPV, positive predictive value = TP/(TP+FP); NPV, negative predictive  
 597 value = sensitivity/1-specificity; Youden's index = (sensitivity + specificity)– 1, where  
 598 TP, true positive; FP, false positive; TN, true negative; FN, false negative; MetS,  
 599 metabolic syndrome using a waist circumference threshold of 96 cm for men and  
 600 women derived from this study.

601

602

603 **FIGURE LEGENDS**

604

605 **Figure 1.** Consort Diagram for the Middle Aged Sowetan Cohort (MASC) waist

606 circumference study

607

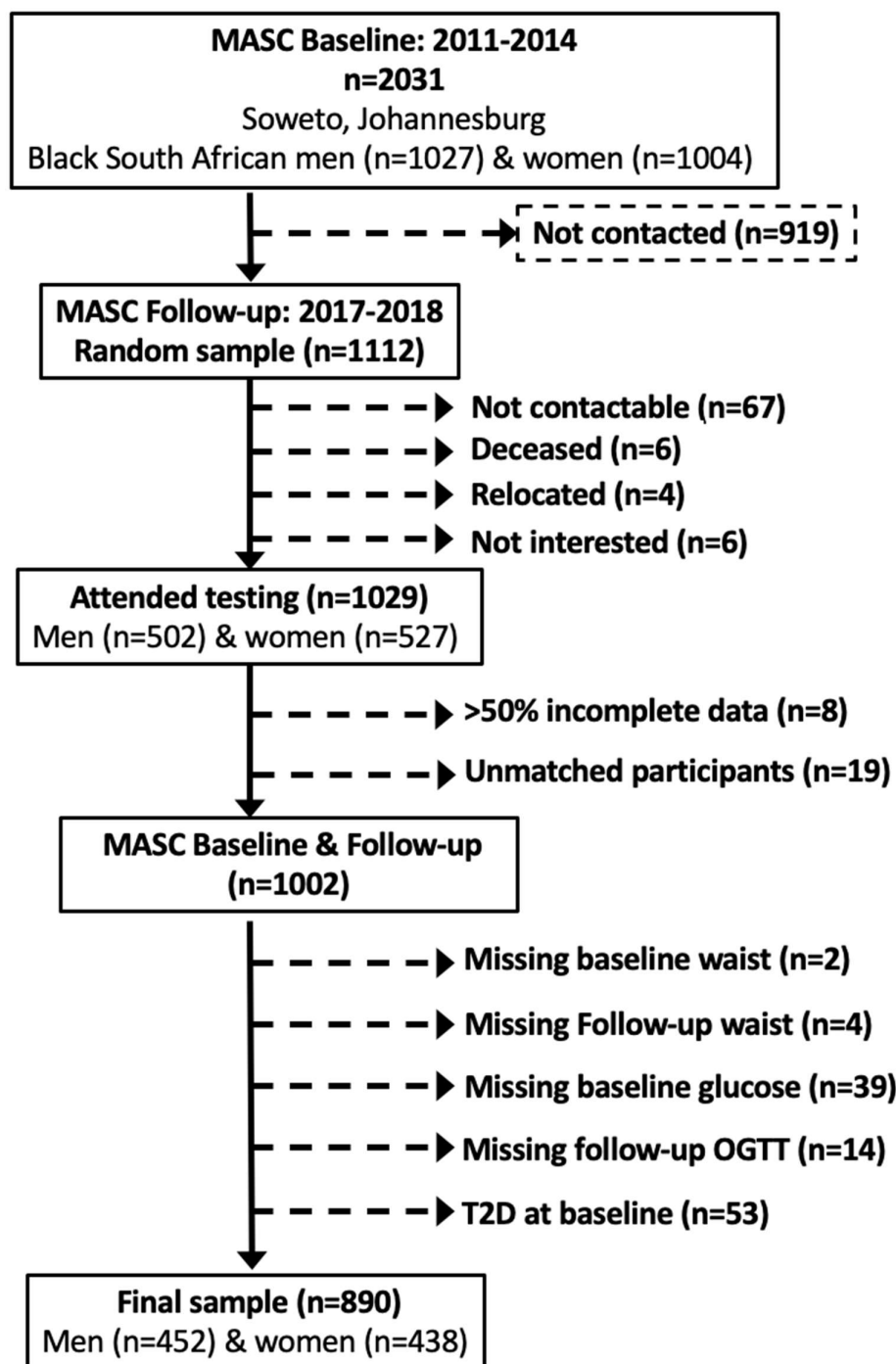
608 **Figure 2.** Receiver operating characteristics (ROC) curve of waist circumference to

609 predict incident dysglycemia (A) and type 2 diabetes (B) in Black African men and

610 women.

611

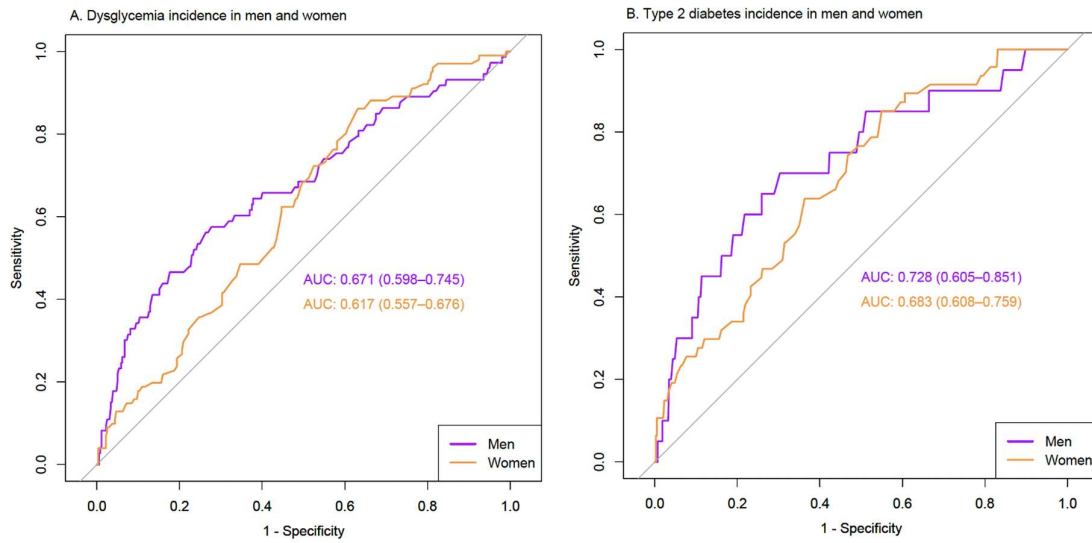
612 **Figure 1.**



613  
614  
615  
616  
617

618 **Figure 2.**

619



620

621

622 **Supplementary Table S1.** Comparative abilities of anthropometric measures at  
 623 baseline to predict incident dysglycemia and type 2 diabetes at follow-up in Black  
 624 African men and women  
 625

|                        | AUC (95%CI)         | P value vs. WC | P value vs. WHR | P value vs. WHtR |
|------------------------|---------------------|----------------|-----------------|------------------|
| <b>Dysglycemia</b>     |                     |                |                 |                  |
| <b>Men (n=429)</b>     |                     |                |                 |                  |
| Waist circumference    | 0.674 (0.600-0.748) | -              |                 |                  |
| Waist-to-hip ratio     | 0.655 (0.584-0.726) | 0.591          | -               |                  |
| Waist-to-height ratio  | 0.681 (0.610-0.751) | 0.425          | 0.395           | -                |
| Body mass index        | 0.653 (0.578-0.727) | 0.073          | 0.938           | <b>0.017</b>     |
| <b>Women (n=420)</b>   |                     |                |                 |                  |
| Waist circumference    | 0.620 (0.561-0.679) | -              |                 |                  |
| Waist-to-hip ratio     | 0.625 (0.561-0.688) | 0.866          | -               |                  |
| Waist-to-height ratio  | 0.639 (0.579-0.699) | 0.058          | 0.593           | -                |
| Body mass index        | 0.610 (0.550-0.670) | 0.623          | 0.731           | 0.142            |
| <b>Type 2 diabetes</b> |                     |                |                 |                  |
| <b>Men (n=451)</b>     |                     |                |                 |                  |
| Waist circumference    | 0.728 (0.605-0.851) | -              |                 |                  |
| Waist-to-hip ratio     | 0.710 (0.604-0.816) | 0.587          | -               |                  |
| Waist-to-height ratio  | 0.724 (0.603-0.845) | 0.686          | 0.683           | -                |
| Body mass index        | 0.688 (0.556-0.821) | 0.130          | 0.663           | 0.199            |
| <b>Women (n=437)</b>   |                     |                |                 |                  |
| Waist circumference    | 0.683 (0.607-0.758) | -              |                 |                  |
| Waist-to-hip ratio     | 0.652 (0.570-0.735) | 0.429          | -               |                  |
| Waist-to-height ratio  | 0.693 (0.619-0.767) | 0.351          | 0.289           | -                |
| Body mass index        | 0.691 (0.620-0.762) | 0.721          | 0.473           | 0.944            |

626 Values are area under the Receiver Operating Curve (AUC) and 95% confidence  
 627 interval (95%CI) and P-values for the difference in the AUC between adiposity  
 628 markers. WC, waist circumference; WHR, waist-to-hip ratio; WHtR, waist-to-height  
 629 ratio; BMI, body mass index.

630  
 631