

# 1 **Novel Investigation of SARS-CoV-2 in COVID-19 Survivors'**

## 2 **Semen in Surabaya, Indonesia**

3 **Supardi Supardi,<sup>1,2</sup> Reviany V. Nidom,<sup>3,4\*</sup> Eni M. Sisca,<sup>1</sup> Jefry A. Tribowo,<sup>1</sup> Patricia S.**  
4 **Kandar,<sup>1</sup> Joice M. Budiharto,<sup>1</sup> Eko Siswidiyanto,<sup>1</sup> Maitra Djiang Wen,<sup>6,7,8</sup> Tiara**  
5 **Kirana,<sup>8</sup> Astria N. Nidom,<sup>3</sup> Arif N. M. Ansori,<sup>3</sup> Irine Normalina,<sup>3</sup> Setyarina Indrasari,<sup>3,4</sup>**  
6 **Reny I'tishom<sup>1,5</sup>**

7  
8 <sup>1</sup>Andrology Specialist Program, Faculty of Medicine, Universitas Airlangga, Surabaya,  
9 Indonesia.

10 <sup>2</sup>Dr. Soetomo General Hospital, Surabaya, Indonesia.

11 <sup>3</sup>Coronavirus and Vaccine Formulation Research Group, Professor Nidom Foundation,  
12 Surabaya, Indonesia.

13 <sup>4</sup>Riset AIRC Indonesia, Surabaya, Indonesia.

14 <sup>5</sup>Department of Biomedical Science, Faculty of Medicine, Universitas Airlangga, Surabaya,  
15 Indonesia.

16 <sup>6</sup>Wahidin Sudiro Husodo General Hospital, Mojokerto, Indonesia.

17 <sup>7</sup>Signum Fertility Clinic, Husada Utama Hospital, Surabaya, Indonesia.

18 <sup>8</sup>Bocah Indonesia, Primaya Hospital, Tangerang, Indonesia.

19

20 Correspondence should be addressed to Reviany V. Nidom; [reviany@pnfinstitute.org](mailto:reviany@pnfinstitute.org)

21

### 22 **Abstract**

23

24 The emergence and the widespread of Coronavirus disease 2019 (COVID-19) demands an  
25 accurate detection method to establish a diagnosis. Real-time polymerase chain reaction  
26 (real-time PCR) is accounted for the perfect point of reference in detecting this virus. The  
27 notion that this virus also invades the male reproductive tract requires further investigation to  
28 prove the presence of severe acute respiratory syndrome coronavirus-2 (SARS-CoV-2) in the  
29 semen. This investigation was designed to detect SARS-CoV-2 in COVID-19 survivors'  
30 semen. This study design was a cross-sectional examination and conducted between  
31 November 2020 and March 2021 in the Andrology Unit of Dr. Soetomo General Hospital and  
32 Professor Nidom Foundation, both located in the City of Surabaya, Indonesia. The sample  
33 was 34 male participants aged above 18 years old and had been confirmed COVID-19 by  
34 nasopharyngeal swab PCR test. Part of the semen was taken for real-time PCR testing with  
35 the QuantStudio 5 Applied Biosystem (AB) PCR machine and the kits utilized were the  
36 STANDARD M nCOV Real-Time Detection Kit and mBioCov-19 RT-PCR Kit.  
37 Furthermore, the mean of participants' ages was 35.74 years old with 25% of them had had a  
38 history of primary infertility and 21.8% of secondary infertility. From the real-time PCR  
39 COVID-19 of the semen examination, this investigation found that 27 participants had been  
40 negatives (74.4%), six inconclusive (17.6%), and one positive (3%) of SARS CoV-2. In  
41 summary, SARS-CoV-2 could be found in the semen of COVID-19 survivors. This should be  
42 a concern for the potential impact of COVID-19 in male fertility and the possibility of  
43 transmission reproductively.

44

45

46

47

## 48 **1. Introduction**

49

50 COVID-19 occurs as the result of contagiousness from severe acute respiratory syndrome  
51 coronavirus-2 (SARS-CoV-2) spread abruptly and became a global pandemic since  
52 December 2019 as the first report of the emergence of this virus in Wuhan [1,2]. As of June  
53 2021, there is around 170 million confirmed prevalence of COVID 19 infection globally with  
54 more than 3.5 million global deaths. To be specific, Indonesia has about 1.8 million cases and  
55 around 50 thousand deaths [1,2,3,4,5]. The involvement of this disease causes a very broad  
56 impact and clinical manifestations that vary, ranging from asymptomatic to systemic  
57 dysfunction [6,7]. Furthermore, SARS-CoV-2 involves angiotensin II converting enzymes  
58 (ACE2) as a receptor for entering into the cells. This expression of ACE 2 is found in the  
59 intestine, kidney, and testicle [8]. Although ACE2 expression is present in the testes, the  
60 direct involvement of SARS-CoV-2 infection in the testes or male genital tract is still in  
61 question [9].

62 Various testing approaches were developed to detect this virus. An accurate and fast  
63 detection method is needed as part of preventive and curative efforts [10]. Until recently,  
64 three types of diagnostic tests have been developed, namely reverse transcription-polymerase  
65 chain reaction (RT-PCR) assay, antibody detection and tissue culture isolation [11]. The most  
66 highly recommended, which puts a highly accurate benchmark, uses a nucleic acid-based  
67 approach such as the polymerase chain reaction (PCR) method as it has rapid, sensitive, and  
68 specific virus detection capabilities, even PCR can detect early SARS-CoV-2 infection. PCR  
69 analysis utilizes specimens generated from saliva; the swabbing activity of nasal, trachea and  
70 nasopharyngeal; tissues of lungs; blood; semen; and even; excrement. [12,13]. The extraction  
71 process of ribonucleic acid (RNA) in the specimen starts from the purification process of  
72 total RNA into viral RNA and host RNA, then continued by reversed transcription into the  
73 complementary DNA (cDNA) and followed by amplification using the polymerization of  
74 chain reaction which is the foundation of real time reverse transcription-polymerase chain  
75 reaction (rRT-PCR) examination. [14]. Although rRT-PCR is the most widely used and  
76 recommended as the barometer of SARS COV-2 diagnostics, it also has drawbacks. Errors in  
77 the preparation, analysis, and interpretation stages will give false positive or false negative or  
78 inconclusive rRT-PCR results [15,16].

79 Unlike rRT-PCR examination of nasopharyngeal specimens which is routinely performed,  
80 the use of rRT-PCR in semen specimens is still limited and is more for research purposes.  
81 There were various studies discussing COVID-19 rRT-PCR in semen [11,13,15,16,17].  
82 Among these various studies, only two studies detected SARS-CoV-2 in the semen [18,19].  
83 Therefore, this investigation was the novel finding in Indonesia to examine the semen of male  
84 COVID-19 survivors using rRT-PCR test method to confirm whether SARS-COV-2 was  
85 found in the men reproductive tract of the survivors.

86

## 87 **2. Materials and Methods**

88

89 *2.1. Design study and participants.* This research is a cross-sectional examination. This  
90 investigation was conducted between November 2020 and March 2021 in the Andrology Unit  
91 of Dr. Soetomo Regional Hospital and in the Professor Nidom Foundation, both located in  
92 Surabaya, Indonesia. A total of 34 male participants were registered as research subjects.  
93 Inclusion criteria were males older than 18 years old, had been confirmed COVID-19 by  
94 nasopharyngeal PCR test, and already in the recovery phase. This research was ethically  
95 evaluated with an ethical exemption with the reference number of  
96 274/EC/KEPK/FKUA/2020 from the Faculty of Medicine, Universitas Airlangga.



97  
98  
99  
100  
101

Figure 1. Location of the Study. This study conducted in the Andrology Unit, Dr. Soetomo Regional Hospital Surabaya and Professor Nidom Foundation, Surabaya, Indonesia.

102  
103  
104  
105  
106  
107  
108  
109  
110  
111  
112  
113  
114  
115  
116  
117  
118  
119  
120  
121  
122  
123  
124  
125

*2.2. Data collection.* This investigation performed historical consideration and semen analysis on the participants who met the inclusion criteria. Participants were then instructed to abstain 2-7 days and wash their hands before doing masturbation for the semen collection.

*2.3. Real-Time PCR.* The examination was implemented using RT-PCR with QuantStudio 5 Applied Biosystem (AB) PCR machine, the kit applied was STANDARD M nCOV Real-Time Detection Kit (Lot #MNCO0120026) and MBioCoV-19 RT-PCR Kit (Lot # 6900820) carried out at the Research Group of Coronavirus and Vaccine Formulation, at Professor Nidom Foundation, Surabaya, Indonesia. This investigation utilized a kit based on Taqman probe real time fluorescent PCR technology. The foundation of PCR examination was the transcription of coronavirus RNA into cDNA by reverse transcriptase as the first step, then cDNA was employed as a framework for PCR amplification.

PCR reaction simultaneously applied activities of polymerase such as DNA polymerase and exo-nuclease. The detachment of both fluorophore and quencher along with the activity of dicer, which has the capability to discredit the TaqMan probe, provoke the instrument to indicate the signal of fluorescence; for example, new coronavirus ORP1ab (RdRp) gene was detected by FAM channel qualitative, coronavirus E gene was identified by JOE (VIC or HEX) channel qualitative indication, and internal reference was recognized by CY5 channel detection. In preventing the contamination of amplification products, dUTP and UNG enzymes were employed by this kit. Positive criteria were detected if 2 gene (E and RdRP)  $\leq 36$ . If the results only found in E gene  $\leq 36$ , it meant that the inconclusive. Negative criteria are E and RdRP not detected.

Moreover, PCR examination was carried out in two stages. In the first stage, PCR examination of semen sample code 1-15 was performed on January, 2021 and in the second

126 stage, PCR for semen sample code 16-34 was implemented on March, 2021. Before the rRT  
127 PCR examination was conducted, the specimens were stored in a refrigerator at 4°C.

128 *2.4. Statistical analysis.* The data from anamnesis and the interpretation of PCR results that  
129 had been collected were analyzed and grouped by demographics, the rRT-PCR results, the  
130 rRT-PCR results based on the degree of symptoms, the duration of time between  
131 nasopharyngeal PCR and semen PCR, and lastly, the symptoms.

132

### 133 **3. Results**

134

135 In this investigation, the rate of male COVID-19 survivors' age was  $37.60 \pm 7.834$ , while for  
136 their spouses was  $37.44 \pm 5.525$ . The average duration of marriage was 9.11 years with 90% of  
137 them were married. Furthermore, the primary infertility rate was 44.4%, and, for secondary  
138 infertility, it was 22.2% (Table 1). In the results of real-time PCR COVID-19 in the semen, it  
139 was found that 27 participants were negative (74.4%), 6 participants were inconclusive  
140 (17.6%), and 1 participant was positive (3%) (Table 2 and Figure 1).

141 Meanwhile, rRT-PCR examinations based on the degree of COVID-19 symptoms were  
142 classified into 4 groups, they were asymptomatic with negative semen rRT-PCR result in 13  
143 participants (38.23%), asymptomatic COVID-19 with positive semen rRT-PCR result in 1  
144 participant (2.94%), mild symptoms with negative semen rRT-PCR result in 11 participants  
145 (32.35%), mild symptoms with inconclusive semen rRT-PCR result in 6 participants  
146 (17.64%), and moderate symptoms with negative semen rRT-PCR result in 3 participants  
147 (8.82%) (Table 3 and Figure 2).

148 Furthermore, the average of interval duration between positive or inconclusive rRT for  
149 nasopharyngeal PCR and rRT for semen PCR with positive or inconclusive results was  
150 113.28 days. The fastest interval duration between positive and inconclusive nasopharyngeal  
151 PCR and semen PCR was 53 days, while the longest interval duration to produce positive or  
152 inconclusive PCR was 186 days (Table 4).

153 Based on the severity classification of COVID-19 according to WHO [18], this study  
154 distributed the symptoms of COVID 19 into asymptomatic, mild, moderate and severe  
155 COVID 19 (Table 5). There were not any participants in this study who had a severe  
156 symptom of COVID-19.

157

158 Table 1: Demographic Characteristics of Participants

Variable	
Total participants (n)	10
Mean age	$37.60 \pm 7.834$
Mean couples age	$37.44 \pm 5.525$
Mean marriage duration	9.11
Marital Status	
Married	9 (90%)
Not Married	1 (10%)
Primary Infertility	
Yes	4 (44.4%)
No	5 (55.6%)
Secondary Infertility	
Yes	2 (22.2%)
No	7 (77.8%)

159

160

161 Table 2: Semen rRT-PCR Results.

<b>Code</b>	<b>E</b>	<b>RdRP</b>	<b>IC</b>	<b>Interpretation</b>
S1	-	-	23.91	Negative
S2	-	-	21.11	Negative
S3	-	-	26.07	Negative
S4	-	-	21.24	Negative
S5	-	-	20.21	Negative
S6	-	-	20.49	Negative
S7	-	-	21.95	Negative
S8	-	-	25.59	Negative
S9	-	-	22.87	Negative
S10	32.64	36.16	23.31	Positive
S11	-	-	26.58	Negative
S12	-	-	27.96	Negative
S13	-	-	25.29	Negative
S14	-	-	24,23	Negative
S15	-	-	26.41	Negative
S16	-	-	26.88	Negative
S17	-	-	19.35	Negative
S18	-	-	21.11	Negative
S19	-	35.86	21.57	Inconclusive
S20	-	-	22.9	Negative
S21	-	35.99	20.47	Inconclusive
S22	33.77	42.62	19.36	Inconclusive
S23	-	35.64	23.78	Inconclusive
S24	-	34.99	17.52	Inconclusive
S25	-	27.65	21.19	Inconclusive
S26	-	-	24.51	Negative
S27	-	-	24.05	Negative
S28	-	-	26.45	Negative
S29	-	-	27.47	Negative
S30	-	-	23.5	Negative
S31	-	-	25.33	Negative
S32	-	-	24.43	Negative

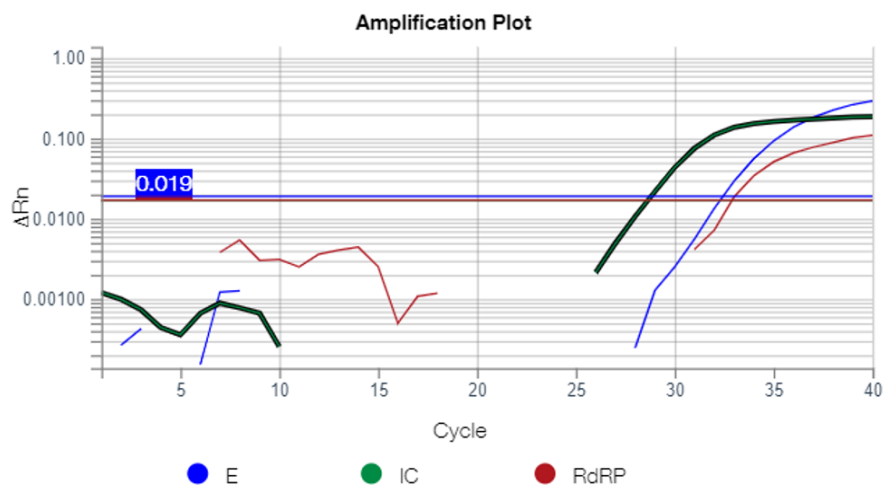
S33	-	-	24.91	Negative
S34	-	-	26.86	Negative

162

163 Table 3: Interval Duration of rRT-PCR Examination in Nasopharyngeal and Semen

Sample	rRT PCR Semen (n = 7)	rRT PCR Nasopharyngeal	Interval Duration
S10	Positive	Positive	121 days
S19	Inconclusive	Positive	177 days
S21	Inconclusive	Positive	126 days
S22	Inconclusive	Positive	59 days
S23	Inconclusive	Positive	186 days
S24	Inconclusive	Positive	53 days
S25	Inconclusive	Positive	71 days
Total			793 days
Mean			113.28 days

164



165

166 Figure 2. rRT-PCR of S10 with IC: 23.31.

167

168 Table 4. Distribution of PCR results based on disease severity.

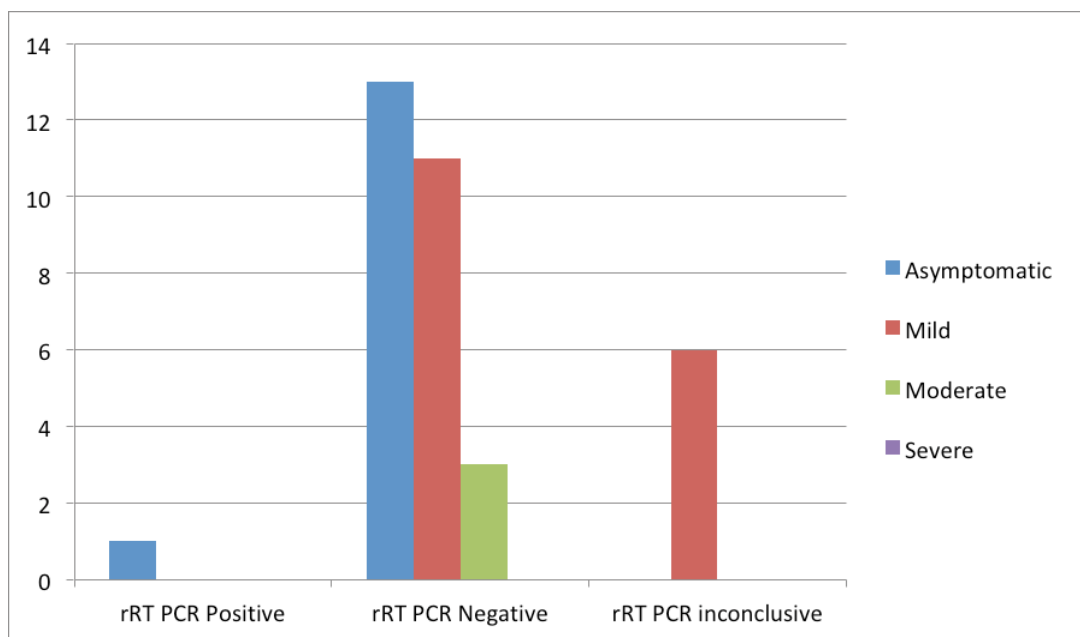
169

COVID-19 Symptoms	Asymptomatic (n=14)	Mild (n= 20)	Moderate	Severe
<b>Semen rRT-PCR</b>				
rRT-PCR Negative	13 (38.23%)	11 (32.35%)	3 (8.82%)	NA
rRT-PCR Positive	1 (2.94%)	0	0	NA
rRT-PCR Inconclusive	0	6 (17.64%)	0	NA
Total	14 (41.17%)	17 (50%)	3 (8.82%)	NA

170

NA: Not Available

171



172  
173 Figure 3: Distribution of rRT-PCR results based on disease severity

174  
175 Table 5: COVID-19 symptoms of participants

Symptoms	Total (n=34)
Asymptomatic	14 (41.18%)
Mild	
Anosmia	8 (23.53%)
Hypogeusia	1 (2.94%)
Flu-like Syndrome (fever, cough, cold, and sore throat)	10 (29.41%)
Gastrointestinal Symptoms (vomit and diarrhea)	2 (5.88%)
Insomnia	1 (2.94%)
Orchitis	1 (2.94%)
Moderate	
Shortness of Breath	3 (8.82%)
Pneumonia on Chest X-ray	3 (8.82%)

176  
177 **4. Discussion**  
178

179 In this examination, as the mean of participants' age was 37.7 years, the oldest was about  
180 50's years old and the youngest was about 20's years old. Most of the participators were  
181 sexually active and had children. Age is one of the prognostic factors of participants infected



182 with COVID-19, as the older is the age, the greater is the possible risk of worsening  
183 symptoms [20,21,22].

184 Meanwhile, the results of the semen PCR in this examination were inconclusive for 6  
185 participants (17.6%). In Gacci *et al.* (2021) research, they revealed one participant was  
186 inconclusive [18], while the study of Bhattacharya *et al.* (2020) stated that the results of rRT  
187 nasopharyngeal swab were inconclusive around 5%. There are several factors that affect the  
188 inconclusive PCR results from the virologic perspective; due to RNA extraction errors,  
189 inadequate sample quality (internal housekeeping genes were not detected in RT-PCR), other  
190 beta corona virus infections, very early or late stage of infection, differences in analytic  
191 sensitivity in E and S gene or RdRP, distinction in the specificity of screening and confirming  
192 gene PCRs. In addition, it can be caused as well because of the improper preanalytical stage  
193 in the form of sampling and no cold chain provision leading to RNA degradation, poor  
194 quality of transporter medium, poor storage space, and lack of amplification in internal  
195 control or housekeeping genes [23].

196 Correspondingly, there was only one participant with positive semen rRT-PCR in this study.  
197 The time span between positive nasopharyngeal rRT-PCR and positive semen rRT-PCR in  
198 this participant was 121 days. This participant was about 30's years old, married, and had 2  
199 children. He had asymptomatic on COVID-19 and no history of any systematic disease. He  
200 had central obesity according to the Asian-Pacific criteria [24].

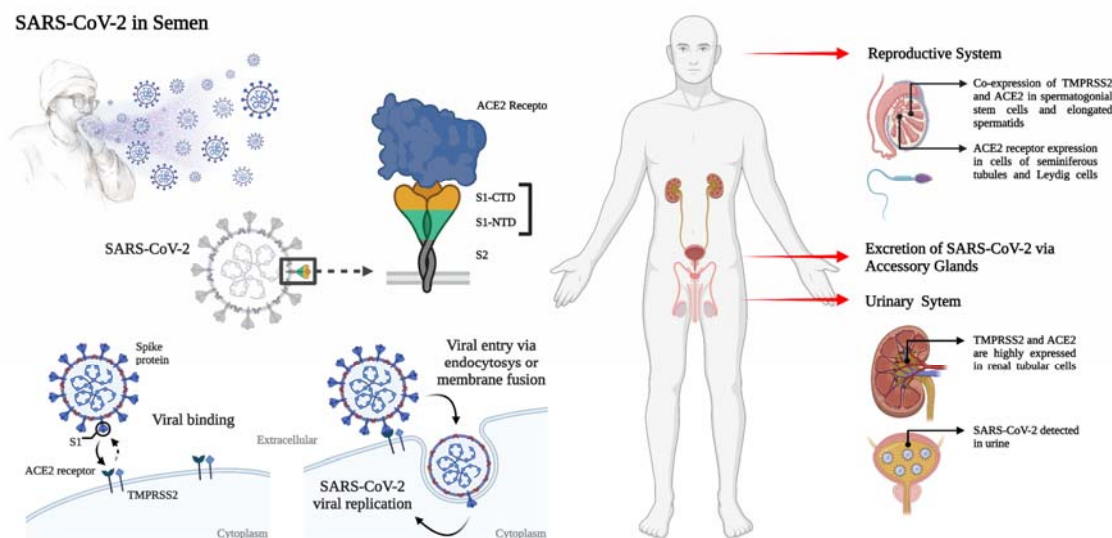
201 Furthermore, Li et al (2020) stated that SARS COV-2 was found in semen in two positive  
202 participants based rRT PCR examination in the recovery phase, while other 4 participants  
203 were detected positive in the semen during the acute phase. In this study, the discovery of one  
204 participant who was positive for SARS COV-2 in the semen has similarities with the study of  
205 Gacci *et al.* (2021) where there was only one participant who was positive for SARS COV-2  
206 in the semen, but when the nasopharyngeal PCR test was evaluated, the results were negative  
207 [18]. Whereas in this investigation, a nasopharyngeal PCR for reevaluation was not  
208 performed on this patient.

209 Additionally, one participant in this study complained on the testicular pain at initial  
210 symptom onset. In other study, it was found there were 6 cases of orchitis from the autopsy of  
211 SARS patients [25]. This spread in the reproductive tract is probably related to viral loads in  
212 the body and related to the infectious process (Figure 3 and Figure 4) [26].

213 Since most of the participants were detected negative for semen PCR (74.4%), this was  
214 probably because the recruited participants had already passed the recovery phase.  
215 Furthermore, the results of rRT PCR were more often negative because there was only <1%  
216 chance of detecting positivity in the semen [15,16].

217 Finally, the weakness in this current investigation was that the transport of the samples did  
218 not use a cold chain box, thus, there was an opportunity for errors occurring at the pre-  
219 analytic stage. This PCR examination was not examined when the sample first received,  
220 instead it was stored in the refrigerator for several days. Participants with positive PCR  
221 results in semen were no longer confirmed by nasopharyngeal PCR, therefore, it was not  
222 known whether there was a recurrent positive.





223

224

Figure 4: Feasible scenarios and viral entry action for SARS-CoV-2 in semen. Infection of this virus is dependent on both TMPRSS2 and ACE2 expression for the entry into the host cell. This figure created with BioRender.

225

226

227

228

## 5. Conclusions

229

In summary, SARS-CoV-2 could be found in the semen of COVID-19 survivors. It should be noted that PCR is influenced by preanalytical, analytical, and interpretive circumstances. The SARS-CoV-2 existence in the semen sample requires to be further evaluated in future study, as this could be a concern for the consequences of COVID-19 on male fertility status and the possibility of sexual transmission.

230

231

232

233

234

## Data Availability

235

The utilized data to contribute in this investigation are available from the corresponding author on reasonable request.

236

237

238

## Conflicts of Interest

239

The authors declare that there is not any conflict of interest in this study.

240

241

## Acknowledgments

242

The authors would like to convey gratitude to all employees at the Andrology Unit, Dr. Soetomo Regional Hospital Surabaya and the Department of Biomedical Science in the Faculty of Medicine of Universitas Airlangga, specifically to all participants, colleagues, and acquaintances contributed in this study for their tremendous assistance to complete this investigation. This research was fully supported by Universitas Airlangga's grant for COVID-19 Research (Grant Number: 664/UN.3.14/PT/2020) and the Professor Nidom Foundation, Surabaya, Indonesia (Grant Number: 006/PNF-RF/10/2020).

243

244

245

246

247

248

249

250

## References

251

[1] Nidom RV, Indrasari S, Normalina I, Nidom AN, Afifah B, Dewi L, Putra AK, Ansori ANM, Kusala MKJ, Alamudi MY, Nidom CA. An updated investigation prior to COVID-19 vaccination program in Indonesia: Full-length genome mutation analysis of SARS-CoV-2. bioRxiv. 2021.

252

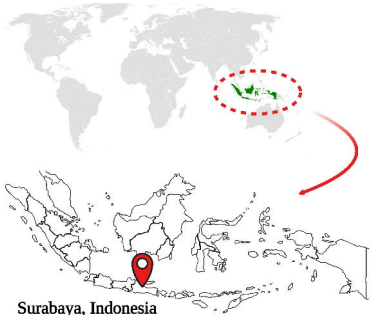
253

254

255

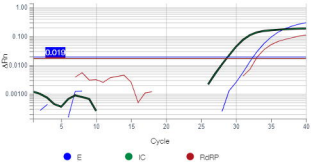
- 256 [2] Ansori ANM, Nidom RV, Kusala MKJ, Indrasari S, Normalina I, Nidom AN, Afifah B,  
257 Sari KB, Ramadhaniyah NL, Alamudi MY, Cahyaningsih U, Santoso KP, Kuswanto H,  
258 Nidom CA. Viroinformatics investigation of B-cell epitope conserved region in SARS-  
259 CoV-2 lineage B. 1.1. 7 isolates originated from Indonesia to develop vaccine candidate  
260 against COVID-19. *J Pharm Pharmacogn Res.* 2021; 9(6): 766-779.
- 261 [3] Normalina I, Indrasari S, Nidom RV, Kusala MKJ, Alamudi MY, Santoso KP,  
262 Rachmawati K, Nidom CA. Characterization of the spike glycoprotein and construction  
263 of an epitope-based vaccine candidate against Indonesian SARS-CoV-2: *In silico* study.  
264 *Sys Rev Pharm.* 2020; 11(7): 404-413.
- 265 [4] Nidom RV, Indrasari S, Normalina I, Kusala MKJ, Ansori ANM, Nidom CA.  
266 Investigation of the D614G mutation and antibody-dependent enhancement sequences in  
267 Indonesian SARS-CoV-2 isolates and comparison to southeast Asian isolates. *Sys Rev*  
268 *Pharm.* 2020; 11(8), 203-213.
- 269 [5] Nidom RV, Ansori ANM, Indrasari S, Normalina I, Kusala MKJ, Saefuddin A, Nidom  
270 CA. Recent updates on COVID-19 vaccine platforms and its immunological aspects: A  
271 review. *Sys Rev Pharm.* 2020; 11(10): 807-818.
- 272 [6] Ansori ANM, Kusala MKJ, Normalina I, Indrasari S, Alamudi MY, Santoso KP,  
273 Rachmawati K, Nidom CA. Immunoinformatic investigation of three structural protein  
274 genes in Indonesian SARS-CoV-2 isolates. *Sys Rev Pharm.* 2020; 11(7): 422-434.
- 275 [7] Zaim S, Chong JH, Sankaranarayanan V, Harky A. COVID-19 and multiorgan response.  
276 *Curr Probl Cardiol.* 2020; 45(8): 100618.
- 277 [8] Paoli D, Pallotti F, Colangelo S, Basilico F, Mazzuti L, Turriziani O, Antonelli G, Lenzi  
278 A, Lombardo F. Study of SARS-CoV-2 in semen and urine samples of a volunteer with  
279 positive naso-pharyngeal swab. *J Endocrinol Invest.* 2020; 43(12): 1819-1822.
- 280 [9] Hu Z, Song C, Xu C, Jin G, Chen Y, Xu X, Ma H, Chen W, Lin Y, Zheng Y, Wang J,  
281 Hu Z, Yi Y, Shen H. Clinical characteristics of 24 asymptomatic infections with  
282 COVID-19 screened among close contacts in Nanjing, China. *Sci China Life Sci.* 2020;  
283 63(5): 706-711.
- 284 [10] Tahamtan A, Ardebili A. Real-time RT-PCR in COVID-19 detection: Issues affecting  
285 the results. *Expert Rev Mol Diagn.* 2020; 20(5): 453-454.
- 286 [11] Emery SL, Erdman DD, Bowen MD, Newton BR, Winchell JM, Meyer RF, Tong S,  
287 Cook BT, Holloway BP, McCaustland KA, Rota PA, Bankamp B, Lowe LE, Ksiazek  
288 TG, Bellini WJ, Anderson LJ. Real-time reverse transcription-polymerase chain reaction  
289 assay for SARS-associated coronavirus. *Emerg Infect Dis.* 2004; 10(2): 311-6.
- 290 [12] Nascimento Junior JAC, Santos AM, Oliveira AMS, Guimarães AG, Quintans-Júnior LJ,  
291 Coutinho HDM, Martins N, Borges LP, Serafini MR. Trends in MERS-CoV, SARS-  
292 CoV, and SARS-CoV-2 (COVID-19) diagnosis strategies: A patent review. *Front Public*  
293 *Health.* 2020; 8: 563095.
- 294 [13] Paoli D, Pallotti F, Nigro G, Mazzuti L, Hirsch MN, Valli MB, Colangelo S, Mastroianni  
295 CM, Antonelli G, Lenzi A, Turriziani O, Lombardo F. Molecular diagnosis of SARS-  
296 CoV-2 in seminal fluid. *J Endocrinol Invest.* 2021: 1-10.
- 297 [14] Weissleder R, Lee H, Ko J, Pittet MJ. COVID-19 diagnostics in context. *Sci Transl Med.*  
298 2020; 12(546): eabc1931.
- 299 [15] Lippi G, Simundic AM, Plebani M. Potential preanalytical and analytical vulnerabilities  
300 in the laboratory diagnosis of coronavirus disease 2019 (COVID-19). *Clin Chem Lab*  
301 *Med.* 2020; 58(7): 1070-1076.
- 302 [16] Lippi G, Henry BM, Sanchis-Gomar F, Mattiuzzi C. Updates on laboratory  
303 investigations in coronavirus disease 2019 (COVID-19). *Acta Biomed.* 2020; 91(3):  
304 e2020030.

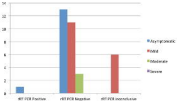
- 305 [17]Gonzalez DC, Khodamoradi K, Pai R, Guarch K, Connelly ZM, Ibrahim E, Arora H,  
306 Ramasamy R. A systematic review on the investigation of SARS-CoV-2 in semen. *Res*  
307 *Rep Urol.* 2020; 12: 615-621.
- 308 [18]Gacci M, Coppi M, Baldi E, Sebastianelli A, Zaccaro C, Morselli S, Pecoraro A, Manera  
309 A, Nicoletti R, Liaci A, Bisegna C, Gemma L, Giancane S, Pollini S, Antonelli A, Lagi  
310 F, Marchiani S, Dabizzi S, Degl'Innocenti S, Annunziato F, Maggi M, Vignozzi L,  
311 Bartoloni A, Rossolini GM, Serni S. Semen impairment and occurrence of SARS-CoV-2  
312 virus in semen after recovery from COVID-19. *Hum Reprod.* 2021; 36(6): 1520-1529.
- 313 [19]Ruan Y, Hu B, Liu Z, Liu K, Jiang H, Li H, Li R, Luan Y, Liu X, Yu G, Xu S, Yuan X,  
314 Wang S, Yang W, Ye Z, Liu J, Wang T. No detection of SARS-CoV-2 from urine,  
315 expressed prostatic secretions, and semen in 74 recovered COVID-19 male patients: A  
316 perspective and urogenital evaluation. *Andrology.* 2021; 9(1): 99-106.
- 317 [20]Li D, Jin M, Bao P, Zhao W, Zhang S. Clinical characteristics and results of semen tests  
318 among men with Coronavirus Disease 2019. *JAMA Netw Open.* 2020; 3(5): e208292.
- 319 [21]Jang JG, Hur J, Choi EY, Hong KS, Lee W, Ahn JH. Prognostic factors for severe  
320 Coronavirus Disease 2019 in Daegu, Korea. *J Korean Med Sci.* 2020; 35(23): e209.
- 321 [22]Izcovich A, Ragusa MA, Tortosa F, Lavena Marzio MA, Agnoletti C, Bengolea A,  
322 Ceirano A, Espinosa F, Saavedra E, Sanguine V, Tassara A, Cid C, Catalano HN,  
323 Agarwal A, Foroutan F, Rada G. Prognostic factors for severity and mortality in patients  
324 infected with COVID-19: A systematic review. *PLoS One.* 2020; 15(11): e0241955.
- 325 [23]Bhattacharya S, Vidyadharan A, Joy VM. Inconclusive SARS-COV-2 reverse  
326 transcription-polymerase chain reaction test reports: Interpretation, clinical and infection  
327 control implications. *J Acad Clin Microbiol.* 2020; 22(1): 59-61
- 328 [24]Lim JU, Lee JH, Kim JS, Hwang YI, Kim TH, Lim SY, Yoo KH, Jung KS, Kim YK,  
329 Rhee CK. Comparison of World Health Organization and Asia-Pacific body mass index  
330 classifications in COPD patients. *Int J Chron Obstruct Pulmon Dis.* 2017; 12: 2465-2475.
- 331 [25]Xu J, Qi L, Chi X, Yang J, Wei X, Gong E, Peh S, Gu J. Orchitis: A complication of  
332 severe acute respiratory syndrome (SARS). *Biol Reprod.* 2006; 74(2): 410-6.
- 333 [26]Arnaout R, Lee RA, Lee GR, Callahan C, Yen CF, Smith KP, Arora R, Kirby JE. SARS-  
334 CoV2 testing: The limit of detection matters. *bioRxiv.* 2020: 2020.06.02.131144.



**Surabaya, Indonesia**

# Amplification Plot





# SARS-CoV-2 in Semen

