

TIME TRENDS IN SOCIAL CONTACTS BEFORE AND DURING THE COVID-19 PANDEMIC: THE CONNECT STUDY

Mélanie Drolet¹, Aurélie Godbout^{1,2}, Myrto Mondor¹, Guillaume Béraud³, Léa Drolet-Roy¹, Philippe Lemieux-Mellouki^{1,2}, Éric Demers¹, Marie-Claude Boily⁴, Chantal Sauvageau^{1,2,5}, Gaston De Serres^{1,2,5}, Niel Hens^{6,7}, Philippe Beutels^{7,8}, Benoit Dervaux⁹, Marc Brisson^{1,2,4 *}

1. Centre de recherche du CHU de Québec- Université Laval, Québec, Canada
2. Laval University, Québec, Canada
3. Department of Infectious Diseases, Centre Hospitalier Universitaire de Poitiers, 86021, Poitiers, France.
4. MRC Centre for Global Infectious Disease Analysis, School of Public Health, Imperial College London, United Kingdom.
5. Institut national de santé publique du Québec, Québec, Canada
6. I-BioStat, Data Science Institute, Hasselt University, Hasselt, Belgium
7. Centre for Health Economic Research and Modelling Infectious Diseases, Vaccine and Infectious Disease Institute, University of Antwerp, Belgium
8. School of Public health, University of New South Wales, Sydney, Australia
9. Univ Lille, Inserm, CHU Lille, Institut Pasteur U1167 – RID-AGE – Facteurs de risque et déterminants moléculaires des maladies liées au vieillissement, F-59000 Lille, France.

* Author to whom correspondence should be addressed:

Centre de recherche du CHU de Québec – Université Laval
Axe Santé des populations et pratiques optimales en santé
1050 Chemin Sainte-Foy, Québec, Canada, G1S 4L8
Telephone: (418) 682-7386
e-mail: marc.brisson@crchudequebec.ulaval.ca

ABSTRACT

Background: Since the beginning of the Covid-19 pandemic, many countries, including Canada, have adopted unprecedented physical distancing measures such as closure of schools and non-essential businesses, and restrictions on gatherings and household visits. We described time trends in social contacts for the pre-pandemic and pandemic periods in Quebec, Canada.

Methods: CONNECT is a population-based study of social contacts conducted shortly before (2018/2019) and during the Covid-19 pandemic (April 2020 – February 2021), using the same methodology for both periods. We recruited participants by random-digit-dialing and collected data by self-administered web-based questionnaires. Questionnaires documented socio-demographic characteristics and social contacts for two assigned days. A contact was defined as a two-way conversation at a distance ≤ 2 meters or as a physical contact, irrespective of masking. We used weighted generalized linear models with a Poisson distribution and robust variance (taking possible overdispersion into account) to compare the mean number of social contacts over time by characteristics.

Results: A total of 1291 and 5516 Quebecers completed the study before and during the pandemic, respectively. Contacts significantly decreased from a mean of 8 contacts/day prior to the pandemic to 3 contacts/day during the spring 2020 lockdown. Contacts remained lower than the pre-Covid period thereafter (lowest=3 contacts/day during the Christmas 2020/2021 holidays, highest=5 in September 2020). Contacts at work, during leisure activities/other locations, and at home with visitors showed the greatest decreases since the beginning of the pandemic. All sociodemographic subgroups showed significant decreases of contacts since the beginning of the pandemic.

Conclusion: Physical distancing measures in Quebec significantly decreased social contacts, which most likely mitigated the spread of Covid-19.

KEYWORDS

Covid-19, social contacts, public health, social distancing measures, mathematical modeling, infectious disease

BACKGROUND

On September 1st 2021, Canada surpassed 1.5 million confirmed cases of COVID-19, and >25% of these cases were from Quebec(1). While the province of Quebec was the epicenter of the first wave, most Canadian provinces experienced stronger second and third waves in terms of cases and hospitalisations. Since the beginning of the pandemic, Canada has adopted unprecedented physical distancing measures from complete lockdowns to a combination of school and non-essential businesses closures and restrictions on gatherings and household visits, depending on epidemiological indicators and regions(2).

Given that physical distancing measures are a cornerstone of public health COVID-19 mitigation efforts, it is important to examine how social contacts changed over time: 1) to better understand the dynamics of the pandemic, 2) to inform future measures, and 3) to provide crucial data for mathematical modeling. To our knowledge, this is the first study that has compared social contacts documented shortly before and during the COVID-19 pandemic using the same methodology.

The main objective of this study is to describe the time trends in social contacts for the COVID-19 pre-pandemic (2018-2019) and pandemic periods (April 2020-February 2021) in Quebec, Canada using a social contact survey and a representative sample of the population. Specific objectives are to describe the time trends in the number of social contacts, overall and by location (home, work, school, public transport, leisure, other) and by key socio-demographic characteristics.

METHODS

Study design

CONNECT (CONtact and Network Estimation to Control Transmission) is a population-based survey of epidemiologically relevant social contacts and mixing patterns conducted in the province of Quebec, Canada. The first phase of CONNECT was conducted in 2018-2019 (February 2018 to March 2019), one year before the Covid-19 pandemic. Four additional phases of CONNECT were undertaken to document changes in social contacts during the COVID-19 pandemic period (CONNECT2: April 21st-May 25th 2020 and CONNECT3,4,5: July 3rd 2020-February 26th 2021) (Appendix, Table S1). All CONNECT phases were conducted with the same methodology.

Recruitment of participants

The target population of CONNECT consisted of all non-institutionalized Quebecers without any age restriction (e.g., elderly living in retirement homes who generally have personal phone lines were

eligible but those living in long-term care home (nursing homes, Quebec CHSLD) were not eligible). We used random digit dialling to recruit participants. The randomly generated landline and mobile phone number sample was provided by ASDE, a Canadian firm specialized in survey sampling (3). After having explained the study, verified eligibility of the household and documented the age and sex of all household members, we randomly selected one person per household to participate in the study, using a probability sample stratified by age. This recruitment procedure was sequentially repeated for every new phase of CONNECT (i.e, new participants were recruited for every CONNECT phase).

Data collection

We collected data using a self-administered web-based questionnaire. A secured individualized web link to the questionnaire and information about the study were sent by email to each selected participant who consented to participate in the study. Parents of children aged less than 12 years were asked to complete the questionnaire on behalf of their child, whereas teenagers aged 12-17 years completed their own questionnaire, after parental consent.

The same questionnaire was used for all CONNECT phases. The first section of the questionnaire documented key socio-demographic characteristics. The second section was a social contact diary, based on instruments previously used in Polymod and other similar studies(4-6) (an example of the diary is provided in the Appendix, Figure S1). Briefly, participants were assigned two random days of the week (one week day and one weekend day) to record every different person they had contact with between 5 am and 5 am the following morning. A contact was defined as either physical (handshake, hug, kiss) or nonphysical (two-way conversation in the physical presence of the person, at a distance equal or less than 2 meters, irrespective of masking). Participants provided the characteristics of the contact persons (age, sex, ethnicity, and relationship to themselves (e.g., household member, friend, colleague)) as well as characteristics of the contacts with this person: location where the contact(s) occurred (home, work, daycare/school, public transport, leisure, other location), duration, usual frequency of contact with that person, and whether the contact was physical or not. Participants reporting more than 20 professional contacts per day were asked not to report all their professional contacts in the diary. Instead they were asked general questions about these professional contacts: age groups of the majority of contact persons, average durations of contacts and whether physical contacts were generally involved or not. Additional questions about teleworking were included from CONNECT2 onwards.

All CONNECT phases were approved by the ethics committee of the CHU de Québec research center (project 2016-2172) and we commissioned the market company Advanis for recruitment and data collection. All participants gave their consent to participate in the study during the recruitment phone call.

Analyses

We weighted the participants of the CONNECT 1-5 surveys by age, sex, region (Greater Montreal and other Quebec regions), and household composition (households without 0-17-year-olds, households with 0-5-year-olds, if not with 6-14-year-olds, if not with 15-17-year-olds), using the Quebec data of the 2016 Canadian census and we verified that they were representative of the Quebec population for key socio-demographic characteristics. To obtain daily number of social contacts on a weekly basis, we weighted the number of daily contacts reported during the week (5/7) and the weekend (2/7). We classified the type of employment of workers using the 2016 National occupation classification (NOC)(7).

We estimated the number of social contacts per person and per day, for all locations combined and for 6 different locations: home, work, school, public transportation, leisure, and other locations. To do so, several steps were necessary. First, for a contact person met in more than a single location during a single day, the location of the contact was assigned in the following hierarchical order, according to risk of transmission: home, work, school, public transport, leisure and other locations (8). For example, if a parent reported contacts with his child at home, in public transportation and in a leisure activity, we only considered the home contact to avoid counting contacts with the same person multiple times. Second, for workers reporting more than 20 professional contacts per working day, we added their reported number of professional contacts to the work location for their working day(s). Similar to other studies which allowed a maximal number of contacts per day (4, 5, 9), we truncated professional contacts at a maximum of 40 per day to eliminate extreme values and contacts at low risk of transmission of infectious diseases. Third, we identified all workers in schools through their NOC code and job descriptions and attributed their professional contacts to the school location. We did so to describe social contacts in schools, not only between students, but also between students and their teachers, educators, and other school's workers. Unless specified, we estimated the mean number of contacts in the different locations using a population-based denominator. With this method, all individuals were considered in the denominator of each location had they reported contacts or not for that location. The sum of contacts in the different locations gives the total number of contacts.

Using data available from CONNECT1-5, we determined different periods to reflect the Quebec Covid-19 epidemiology, their related physical distancing measures, and expected seasonality in social contacts (Appendix Figure S2). We used data collected from February 1st 2018 to March 17th 2019 as our pre-Covid period. We used data collected from April 21st to May 25th 2020 to represent the first wave, data collected from July 3rd to August 31st 2020 to represent the summer, and data collected from September 1st 2020 to February 26th 2021 to represent the second wave. We further stratified the second wave to represent periods of expected seasonality in social contacts: September with the return to school and at work, fall with gathering restrictions, the Christmas holidays with school and work vacations and closure of non-essential business, January and February 2021 with the gradual return to work and school after Christmas vacations and school/non-essential business closures, and the introduction of a curfew.

We compared the mean number of social contacts over time (total or by location) using weighted generalized linear models with a Poisson distribution and an identity link. Generalized estimating equations with robust variance (10) were used to account for the correlation between the two days of diary data collection and overdispersion. We also compared the mean number of social contacts according to different key socio-demographic characteristics using the same procedure and adjusting for age. Results are presented as the absolute difference in the mean number of contacts compared to the previous period or between subgroups.

All statistical analyses were performed with SAS version 9.4.

RESULTS

Participants

A total of 1291, 546, and 4970 Quebecers completed the social contact questionnaires during the pre-Covid period (CONNECT1), the first wave (CONNECT2), and summer 2020 and second wave (CONNECT3-5), respectively. Participation rates (number of questionnaires completed among consenting participant) were 30%, 38%, and 34% for CONNECT 1,2, and 3-5 respectively (Appendix Figure S3). These participants were generally representative of the Quebec general population, and they were comparable across the different phases of CONNECT (Table 1).

Time trends in the number of social contacts

During the pre-pandemic period, the mean number of social contacts per person per day was 7.8 (95% confidence interval (CI):7.2-8.5) (Figure 1 and Appendix Table S2). This number decreased

significantly by 60% during the spring 2020 lockdown to 3.1 (95% CI:2.6-3.5). It then increased gradually during summer 2020 and peaked at 5.0 (95% CI:4.3-5.8) contacts/day in September; this peak coincided with the return to school and work. The mean number of contacts decreased significantly again during fall 2020 to 4.1 (95% CI:3.7-4.5) when physical distancing measures were intensified in Quebec to control the second wave. The mean number of social contacts also decreased significantly during the Christmas holidays at 2.9 (95% CI:2.7-3.1) because of school and work vacations and closure of non-essential businesses. There was a trend towards increasing numbers of contacts in January (3.5, 95% CI (3.0-3.9)) with the gradual return to school and in February 2021 (4.0, 95% CI (3.3-4.6)) with the re-opening of non-essential businesses.

During the pre-pandemic period, the great majority of contacts occurred at home (2.3 contacts: 1.2 with household members and 1.1 with visitors), at work (2.7 contacts) and at school (1.6 contacts). The mean number of contacts at home with household members remained relatively constant over time (1.2 to 1.4 contacts), whereas the number of contacts at home with visitors varied significantly through the study period with lower numbers observed during the spring 2020 lockdown, in January and February 2021 (0.2-0.3 contacts). Compared to the pre-pandemic period, contacts at work and school decreased significantly during the spring lockdown (1.2 and 0.0, respectively), summer (1.2 and 0.2) and the holidays (0.8 and 0.0) and peaked in September 2020 (1.5 and 0.9) with the return at work and school. Contacts in the other locations (transport, leisure and other) represented a small proportion of overall contacts during the pre-pandemic period (1.3 contacts). They also decreased significantly since the beginning of the pandemic and stayed low through the study period.

Time trends in the number of social contacts by age

The location of social contacts varied substantially by age (Figure 2, Appendix Table S3). Contacts in households represented an important part of contacts for all age groups. Contacts in other locations were highly dependent on age. The main locations of contacts away from home for individuals aged 0-17, 18-65, and >65 years were, respectively, school, work, and other locations.

During the pre-pandemic period, the mean number of social contacts at school/daycare for youth aged 0-17 years was 3.3 contacts (Figure 2A). These contacts significantly decreased to nearly 0 during the spring 2020 lockdown and the Christmas holidays. They reached the pre-pandemic level with the return to school in September (4.0 contacts), during fall 2020 (3.0) and in February 2021 (3.7). Except for post-secondary, similar time trends in contacts at school/daycare were observed by education level (daycare, elementary, high school) (Appendix Table S4).

During the pre-pandemic period, the mean number of contacts at work for adults aged 18-65 years was 5.6 (Figure 2B). These contacts significantly decreased to 1.7 during the spring 2020 lockdown and thereafter remained significantly lower than the pre-pandemic period (from 1.3 during the Christmas holidays to 2.7 in September). The number of contacts at work varied by the type of occupation and the proportion of workers reporting teleworking, and therefore having no contact at work (Appendix Tables S5,S6). During the pre-pandemic period, the greatest number of contacts at work were reported by workers in the domains of Sales & services (10.8), Management (10.2), and Health (10.1). Contacts at work decreased during the spring 2020 lockdown for the majority of domains and remained lower than the pre-pandemic period thereafter. Except for workers in the domains of Health and Sales & Services, the majority of workers in the other domains (> 50%) reported teleworking since the beginning of the pandemic.

During the pre-pandemic period, the mean number of social contacts in other locations for adults older than 65 years was 1.6 (Figure 2C). These contacts decreased significantly at the beginning of the pandemic and remained low through the study period (between 0.2 and 0.8). Therefore, adults older than 65 years had virtually no contact outside their house during this period.

Time trends in the number of social contacts by key socio-demographic characteristics

During the pre-pandemic period, the mean number of social contacts was significantly higher among individuals living in households with ≥ 3 individuals (vs households with 1-2 individuals), in households with 0-17-year-olds (vs household without 0-17-year-olds), among native French or English speakers (vs other mother tongues), and among individuals with a university degree (vs no degree) (Figure 3, Appendix Table S3). During the first wave, social contacts significantly decreased for most socio-demographic characteristics. The mean number of social contacts slightly increased after the first wave for all socio-demographic characteristics, although it remained lower than the pre-pandemic period through the study period. During the second wave, the only significant differences between socio-demographic characteristics were a higher number of contacts in households with more individuals and/or households with 0-17-year-olds, mainly explained by the greater number of contacts with household members. Of note, individuals with a university degree had the greatest decrease of their social contacts during the first wave (from 10.7 to 2.5, $p < 0.0001$) and their contacts remained relatively low through the study period (2.5 to 4.4).

DISCUSSION

Public health measures to control the Covid-19 spread in Quebec had a significant impact on the number of social contacts. Contacts decreased from a mean of 8 contacts per day prior to the pandemic to 3 contacts per day during the spring 2020 lockdown, a 60% decline. Contacts then increased gradually during the summer to peak at 5 contacts per day in September with the return to school and at work (36% decline vs pre-Covid). Contacts decreased thereafter during the fall 2020 and winter 2021 to about 4 contacts per day as the physical distancing measures were intensified in Quebec to control the second wave of Covid-19 (47% decline vs pre-Covid). Contacts at work, at school, in leisure activities, and at home with visitors showed the greatest changes through the study period. Before the pandemic, adults aged 18-65 years, individual with a university degree, those living in households with 3 or more individuals and/or in households with 0-17-year-olds, and native French or English speakers reported the greatest number of social contacts. Contacts decreased significantly among all socio-demographic subgroups during the spring 2020 lockdown and remained lower than the pre-pandemic period through the study period.

Our results indicating a 60% reduction of social contacts during the spring 2020 lockdown in Quebec (from 7.8 to 3.1) are generally consistent with the results from similar studies. The CoMix survey, an ongoing empirical study of social contacts conducted in several European countries(11-13), estimated a 70-80% reduction in the number of social contacts during the spring 2020 lockdown compared to similar studies conducted in 2006 (POLYMOD) and 2010 (4, 14). For example, contacts decreased from 10.8 in 2006(4) to 2.8 contacts per day during the lockdown in United Kingdom(11). A Canadian study also estimated a 56-80% reduction in social contacts in May, July, September and December 2020(15) compared to POLYMOD data collected in United Kingdom in 2006(4). However, it is difficult to determine, from these studies, which part of the decrease is related to socio-demographic changes between 2006/2010 and 2020 and to the Covid-19 pandemic. Furthermore, the authors of the Canadian study recognized that social contacts collected in the United Kingdom in 2006 may not be representative of Canadian contacts before the pandemic(15). Other studies from different countries (e.g. Belgium, France, Germany, Italy, Netherlands, Spain, United Kingdom, United States, Luxembourg, China) have also estimated a mean of around 3 contacts per day during the spring 2020 lockdown period (12, 16-19) and similar increasing trends in social contacts after the first lockdown when physical distancing measures were relaxed(12, 18, 20). Our results are also consistent with Google phone mobility data for Quebec showing substantial decreases in visits of about 80% in retail & recreation, work, and transit transportation stations during the spring 2020 lockdown compared to

January 2020. Mobility increased thereafter but remained lower than the pre-Covid levels for these locations (mean decreases of 20%, 25% and 45% for visits in retail & recreation, work, and transit transportation stations, respectively, from September to Mid-December 2020)(21).

To our knowledge this is one of the few population-based studies of social contacts worldwide to compare social contacts during the pandemic to those documented shortly before the pandemic using the same methodology. Only one other study conducted in the Netherland included social contacts documented shortly before the pandemic (in 2016-2017) and during the pandemic using the same methodology(18). However, CONNECT has some limitations. Firstly, previous data suggested that social contacts measured with survey methodology could underestimate the number of social contacts compared with a sensors methodology, particularly for contacts of short duration(22, 23). More specifically, parents participating in CONNECT reported difficulties in reporting contacts at school on behalf of their child. Secondly, although CONNECT is population-based with a random recruitment of the general population, volunteer participants may differ from those refusing to participate in the study and may be those adhering the most to the public health measures. However, we have collected a wealth of information regarding the participant's characteristics and we are confident that the recruitment process was successful in providing a sample of participants generally representative of the Quebec general population (in terms of region, participation rate to education and employment, race, country of origin and mother tongue), and samples are comparable across the different phases of the study. Thirdly, given that public health measures undertaken aimed at limiting social contacts, social desirability may have contributed to an underestimation of contacts. Some participants may not have reported all their contacts, particularly contacts forbidden by public health measures. These three main limitations would likely bias our results towards an underestimation of social contacts. Nonetheless, changes in social contacts measured in our study closely followed the epidemiology and physical distancing measures in Quebec (Appendix Figure S2). For example, the beginning of the second wave coincided with an increasing number of social contacts related to school and work return in September. The number of cases stabilisation/decrease of the second wave coincided with a decreasing number of contacts related to the intensification of public health measures in January and February 2020.

Our results have important implications for Covid-19 control and policy decisions in Quebec and elsewhere. First, continuous monitoring of social contacts represents a measure of the effectiveness of public health measures aiming at reducing social contacts to contain and prevent Covid-19 transmission. Our results suggest that Quebecers have been generally adherent to public health

measures since the beginning of the pandemic. For example, restriction of household contacts with visitors was an important public health measure during the spring lockdown and since October 2020 in Quebec; this is clearly reflected by the small number of household contacts with visitors during the spring and fall 2020. Second, data on age- and location-specific changes in social contacts are proxies for contact events that can lead to transmission when made between susceptible and infectious individuals and are an essential input for transmission-dynamic mathematical models considering different types of contacts. Our social contacts data have been integrated and were regularly updated into our Covid-19 mathematical model for projections of the potential evolution of the pandemic in Quebec to help inform policy decisions (24). Finally, social contact data can generate hypothesis to improve our understanding of the Covid-19 transmission dynamics. For example, an important increase in the number of cases while the number of contacts remains relatively stable could suggest that the virus became more transmissible per contact. Hypothesis such as the introduction of a new variant more transmissible in a region, new transmission modes, or a higher transmissibility of the virus for specific meteorological conditions could then be explored.

In conclusion, physical distancing measures in Quebec were effective at significantly decreasing social contacts, which most likely helped prevent Covid-19 spread and generalized overflow of hospital capacity. It is important to continue monitoring contacts as vaccines are rolled out.

Acknowledgements

MCB acknowledges funding from the MRC Centre for Global Infectious Disease Analysis (reference MR/R015600/1), jointly funded by the UK Medical Research Council (MRC) and the UK Foreign, Commonwealth & Development Office (FCDO), under the MRC/FCDO Concordat agreement and is also part of the EDCTP2 programme supported by the European Union.

Author's contribution

MB, MD, and MCB designed the study. All authors participated in the development and validation of the study questionnaires. MB and MD drafted the article and supervised the data collection and analysis. AG, GB, and LDR participated in data collection. AG, MM, GB, LDR, PLM, and ED participated in the analysis. All authors interpreted the results and critically revised the manuscript for scientific content. All authors approved the final version of the article.

Funding

This study was funded by the Canadian Immunization Research Network, the Canadian Institutes of Health Research (foundation scheme grant FDN-143283), the Institut National de Santé Publique du Québec, and the Fonds de recherche du Québec – Santé research (scholars award to MB).

Availability of data and materials

The datasets generated and/or analysed during the current study are not publicly available due to the dataset containing sensitive personal data. Aggregated data are available from the corresponding author upon reasonable request.

DECLARATIONS

Ethics approval and consent to participate

The CONNECT study was approved by the ethics committee at the Centre de recherche du CHU de Québec-Université Laval (project 2016-2172). All participants provided informed consent during the recruitment phone call.

Consent for publication

Not applicable.

Competing interests

The authors declare that they have no competing interests.

REFERENCES

1. Government of Canada. Coronavirus disease (COVID-19): Outbreak update. Available at <https://www.canada.ca/en/public-health/services/diseases/2019-novel-coronavirus-infection.html>. Accessed September 3 2021. 2021.
2. Institut national de santé publique du Québec. Ligne du temps COVID-19 au Québec. Available at <https://www.inspq.qc.ca/covid-19/donnees/ligne-du-temps>. Accessed September 20, 2021. 2021.
3. ASDE Survey Sampler. Available at <http://surveysampler.com/samples/rdd-samples/>. Accessed September 2021.
4. Mossong J, Hens N, Jit M, Beutels P, Auranen K, Mikolajczyk R, et al. Social contacts and mixing patterns relevant to the spread of infectious diseases. *PLoS Med*. 2008;5(3):e74.
5. Beraud G, Kazmerczak S, Beutels P, Levy-Bruhl D, Lenne X, Mielcarek N, et al. The French Connection: The First Large Population-Based Contact Survey in France Relevant for the Spread of Infectious Diseases. *PLoS One*. 2015;10(7):e0133203.
6. Beutels P, Shkedy Z, Aerts M, Van Damme P. Social mixing patterns for transmission models of close contact infections: exploring self-evaluation and diary-based data collection through a web-based interface. *Epidemiology and infection*. 2006;134(6):1158-66.
7. Government of Canada. National Occupational Classification. Available at <https://noc.esdc.gc.ca/Home/Welcome/7ab7c22e13254181a057e5bbd5d0f33b?GoCTemplateCulture=en-CA>. Accessed February 4, 2021. 2016.
8. Willem L, Van Hoang T, Funk S, Coletti P, Beutels P, Hens N. SOCRATES: an online tool leveraging a social contact data sharing initiative to assess mitigation strategies for COVID-19. *BMC Res Notes*. 2020;13(1):293.
9. Hens N, Ayele GM, Goeyvaerts N, Aerts M, Mossong J, Edmunds JW, et al. Estimating the impact of school closure on social mixing behaviour and the transmission of close contact infections in eight European countries. *BMC infectious diseases*. 2009;9:187.
10. Zeger SL, Liang KY, Albert PS. Models for longitudinal data: a generalized estimating equation approach. *Biometrics*. 1988;44(4):1049-60.
11. Jarvis CI, Van Zandvoort K, Gimma A, Prem K, group CC-w, Klepac P, et al. Quantifying the impact of physical distance measures on the transmission of COVID-19 in the UK. *BMC Med*. 2020;18(1):124.
12. Coletti P, Wambua J, Gimma A, Willem L, Vercruyssen S, Vanhoutte B, et al. CoMix: comparing mixing patterns in the Belgian population during and after lockdown. *Sci Rep*. 2020;10(1):21885.
13. EpiPose Project. The Comix study. Available at <https://www.uhasselt.be/UH/71795-start/The-CoMix-study>. Accessed September 20, 2021 2021 [
14. Hoang TV, Coletti P, Kifle YW, Kerckhove KV, Vercruyssen S, Willem L, et al. Close contact infection dynamics over time: insights from a second large-scale social contact survey in Flanders, Belgium, in 2010-2011. *BMC infectious diseases*. 2021;21(1):274.
15. Brankston G, Merkley E, Fisman DN, Tuite AR, Poljak Z, Loewen PJ, et al. Quantifying Contact Patterns in Response to COVID-19 Public Health Measures in Canada. *medRxiv*. 2021:2021.03.11.21253301.
16. Latsuzbaia A, Herold M, Bertemes JP, Mossong J. Evolving social contact patterns during the COVID-19 crisis in Luxembourg. *PLoS One*. 2020;15(8):e0237128.
17. Del Fava E. CJ, Perrotta D., Grow A., Rampazzo F., Gil-Claver S., Zaghene E. The differential impact of physical distancing strategies on social contacts relevant for the spread of COVID-19: Evidence from a multi-country survey. *medRxiv* 2020; <https://doi.org/10.1101/2020.05.15.20102657>.
18. Backer JA, Mollema L, Vos ER, Klinkenberg D, van der Klis FR, de Melker HE, et al. Impact of physical distancing measures against COVID-19 on contacts and mixing patterns: repeated cross-sectional surveys, the Netherlands, 2016-17, April 2020 and June 2020. *Euro Surveill*. 2021;26(8).
19. Zhang J, Litvinova M, Liang Y, Wang Y, Wang W, Zhao S, et al. Changes in contact patterns shape the dynamics of the COVID-19 outbreak in China. *Science*. 2020;368(6498):1481-6.
20. Jarvis C.I. GA, van Zandvoort K., Wong K.L.M., Munday J.D., Klepac P., Funk S., Edmunds W.J. & CMMID COVID-19 working group. CoMix study - Social contact survey in the UK. Available at <https://cmmid.github.io/topics/covid19/comix-reports.html>. Accessed February 4, 2021. 2020.

21. Google. Community mobility reports. Available at <https://www.google.com/covid19/mobility/>. Accessed February 4, 2021. 2020.
22. Hoang T, Coletti P, Melegaro A, Wallinga J, Grijalva CG, Edmunds JW, et al. A Systematic Review of Social Contact Surveys to Inform Transmission Models of Close-contact Infections. *Epidemiology*. 2019;30(5):723-36.
23. Smieszek T, Barclay VC, Seeni I, Rainey JJ, Gao H, Uzicanin A, et al. How should social mixing be measured: comparing web-based survey and sensor-based methods. *BMC infectious diseases*. 2014;14:136.
24. Brisson M, Gingras, G., Drolet M., Laprise JF. and the Groupe de recherche en modélisation mathématique et en économie de la santé liée aux maladies infectieuses. Modélisations de l'évolution de la COVID-19 au Québec. Available at <https://www.inspq.qc.ca/covid-19/donnees/projections>. Accessed February 05, 2021. 2020.

Table 1. Key socio-demographic characteristics of CONNECT participants and the Quebec general population.

	2016 Census	Pre-Covid		1 st wave		Summer 2020 and 2 nd wave	
	%	N	% weighted	N	% weighted	N	% weighted
Total		1291		546		4970	
Age							
0-5 yrs old	6.2	222	6.6	40	8.4	298	7.0
6-11 yrs old	6.6	163	8.1	31	5.7	225	7.5
12-17 yrs old	5.9	91	6.8	60	8.0	506	7.3
18-25 yrs old	9.3	98	8.5	53	9.1	506	9.3
26-45 yrs old	26.4	204	27.9	181	26.3	1304	26.8
46-65 yrs old	27.6	303	25.8	131	25.8	1539	26.0
66-75 yrs old	10.6	162	9.7	45	9.8	514	9.7
>75 yrs old	7.4	48	6.4	5	6.8	78	6.5
Sex							
Male	49.6	609	49.9	238	49.2	2515	50.0
Female	50.4	682	50.1	308	50.8	2455	50.0
Region							
Rural	18.8	239	15.5	66	12.1	836	16.2
Urban	81.2	1049	84.5	480	87.9	4134	83.8
Region							
Greater Montreal ^e	61.0	635	61.0	371	61.0	2815	60.9
Other Quebec regions	39.0	642	39.0	175	39.0	2152	39.1
Household size							
1	33.3	239	23.2	125	23.3	968	19.6
2	34.8	408	34.1	188	36.2	2049	39.6
3	13.9	198	13.4	78	13.1	738	15.5
4	12.1	268	17.1	108	18.9	824	17.8
5+	6.0	178	12.3	47	8.5	391	7.6
Household composition							
Without 0-17-year-olds	61.0	734	65.2	346	65.2	3345	64.8
With 0-5-year-olds	17.1	256	16.2	84	16.4	743	16.6
If not, with 6-14-year-olds	14.0	255	16.1	90	15.8	734	16.0
If not, with 15-17-year-olds	2.6	46	2.5	26	2.5	148	2.6
0-17 without information	5.3	--	--	--	--	--	--
Level of education (among 25-64 yrs)							
No diploma, no degree	13.3	38	7.7	18	6.8	112	3.7
Secondary (high) school	18.5	63	12.1	34	12.5	293	10.1
College, cegep, other non-university certificate/diploma	38.8	184	37.6	99	32.3	916	31.9
University	29.3	210	42.7	164	48.4	1483	54.2
Employment rate							
among 15-19 yrs old	47.3	10	22.9	8	22.2	98	31.7
among 20-24 yrs old	72.1	37	42.5	20	55.4	160	51.1
among 25-44 yrs old	85.2	179	81.8	147	83.9	1183	89.6
among 45-64 yrs old	71.4	167	59.3	99	71.0	1074	72.8
among ≥ 65 yrs old	10.3	22	8.6	10	13.7	159	19.6

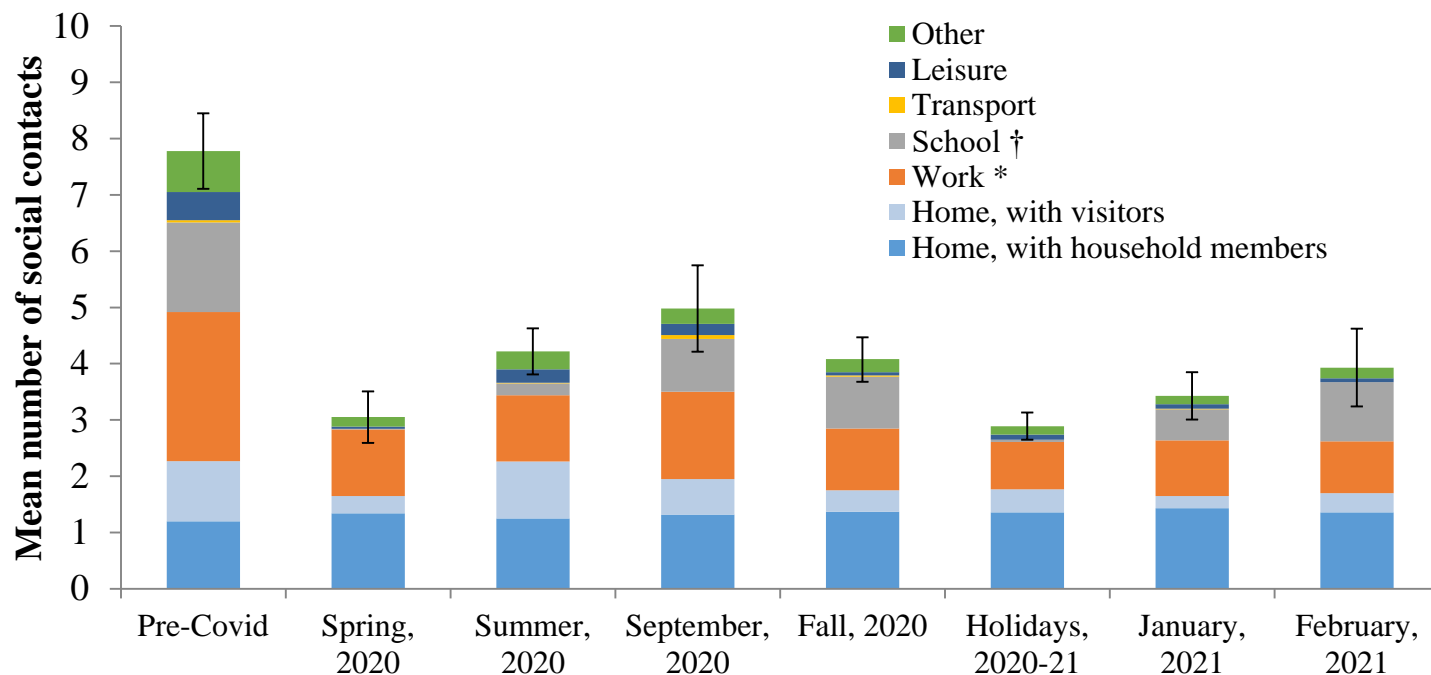
	2016 Census	Pre-Covid		1 st wave		Summer 2020 and 2 nd wave	
	%	N	% weighted	N	% weighted	N	% weighted
Participation rate in education							
among 18-24 yrs old	55.0	51	67.9	33	68.9	319	70.3
among 25-29 yrs old	14.0	12	19.5	7	16.5	66	18.2
among 30-34 yrs old	8.0	7	15.0	5	8.5	40	9.8
Ethnicity							
Caucasian	87.0	1124	88.5	460	87.6	4449	90.3
Other	13.0	156	11.5	77	12.4	455	9.7
Missing		11	--	9	--	66	--
Country of origin							
Canadian-born	85.0	1208	91.5	472	88.9	4498	89.8
Foreign-born	15.0	83	8.5	72	11.1	466	10.2
Missing		0	--	2	--	6	--
Mother tongue							
English	8.0	77	7.0	43	6.8	351	7.4
French	79.0	1122	88.1	440	84.1	4288	86.3
Other	13.0	54	4.9	56	9.2	291	6.3
Missing		38	--	7	--	40	--
Type of occupation (workers)*							
0. Management	9.8	52	13.3	35	13.5	346	12.5
1. Business, finance, administration	15.9	58	13.2	56	17.4	510	19.0
2. Natural & applied sciences	6.7	31	8.2	33	11.6	350	13.6
3. Health	7.0	48	10.8	32	9.6	224	8.3
4. Education, law & social, community & gov. service	11.8	89	20.3	48	15.4	446	16.2
5. Art, culture, recreation & sport	3.2	15	3.4	12	4.1	115	4.8
6. Sales & services	23.2	67	15.1	41	12.2	382	13.7
7. Trades, transport & equipment operators	13.5	43	12.6	26	11.0	240	8.6
8. Natural resources, agriculture & related production	1.6	3	1.0	3	1.4	21	0.9
9. Manufacturing & utilities	4.9	6	2.0	11	3.8	64	2.4
Unknown	2.4	3	--	2	--	48	--

© Greater Montreal: Regions of Montréal, Laval, Montérégie, Lanaudière, Laurentides

* 2016 National occupation classification

Pre-Covid: February 1st 2018 to March 17th 2019; **1st wave:** April 21st to May 25th 2020; **Summer 2020 and 2nd wave:** July 3rd 2020 to February 26th 2021

Figure 1. Time trends in the number of social contacts in the province of Quebec.



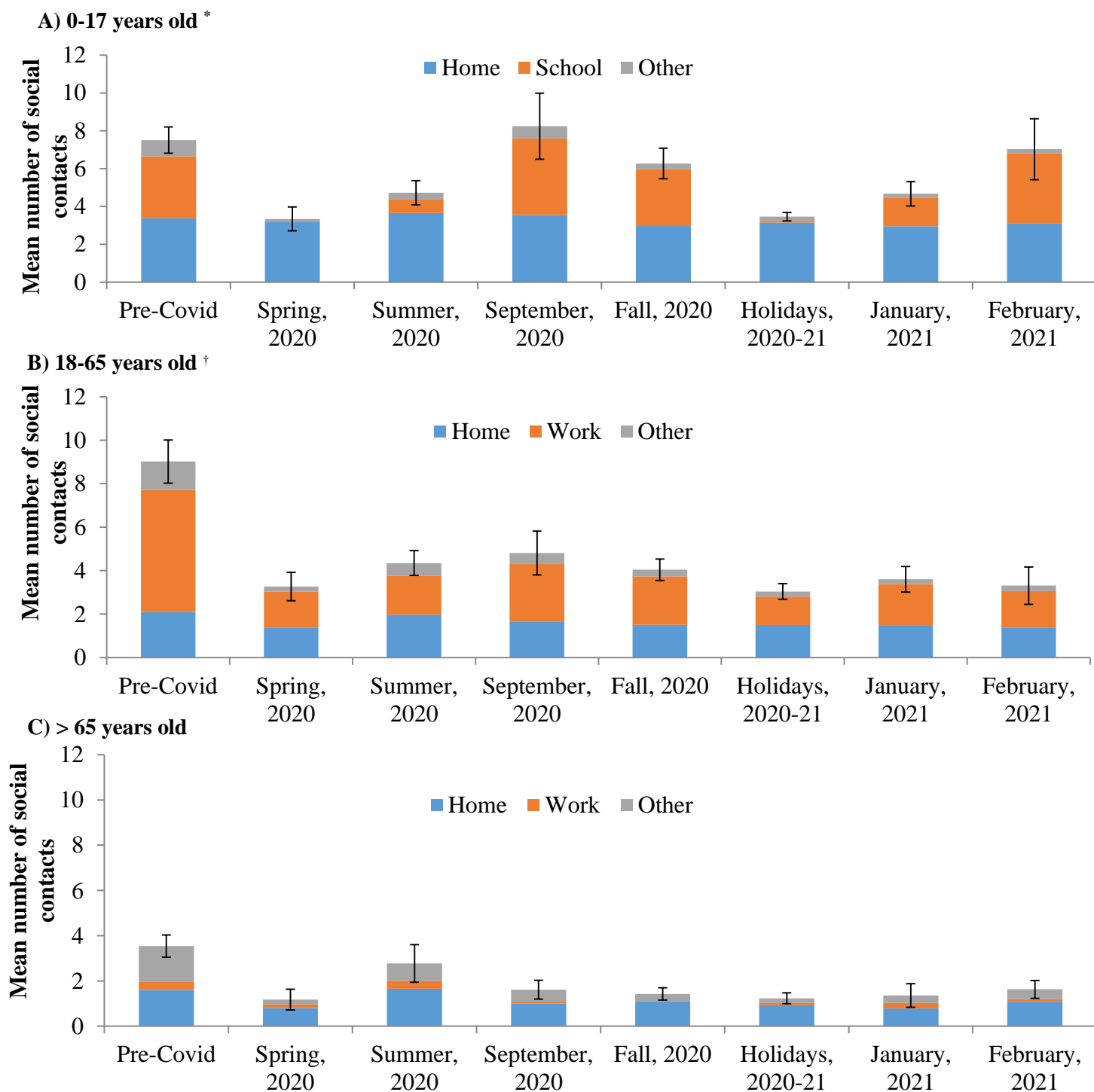
Pre-Covid: February 1st 2018 to March 17th 2019; **Spring 2020:** April 21st to May 25th 2020; **Summer 2020:** July 3rd to August 31st 2020; **Fall 2020:** October 1st to December 16th 2020; **Holidays 2020-2021:** December 17th 2020 to January 8th 2021.

1st wave: Spring 2020; **2nd wave:** September 2020 to February 2021

* Contacts at work were truncated to a maximum of 40 contacts per day.

† Contacts for workers in schools were included in the school location.

Figure 2. Time trends in the number of social contacts in the province of Quebec, according to age of participants and location of contacts.



Pre-Covid: February 1st 2018 to March 17th 2019; **Spring 2020:** April 21st to May 25th 2020; **Summer 2020:** July 3rd to August 31st 2020; **Fall 2020:** October 1st to December 16th 2020; **Holidays 2020-2021:** December 17th 2020 to January 8th 2021.

1st wave: Spring 2020; **2nd wave:** September 2020 to February 2021.

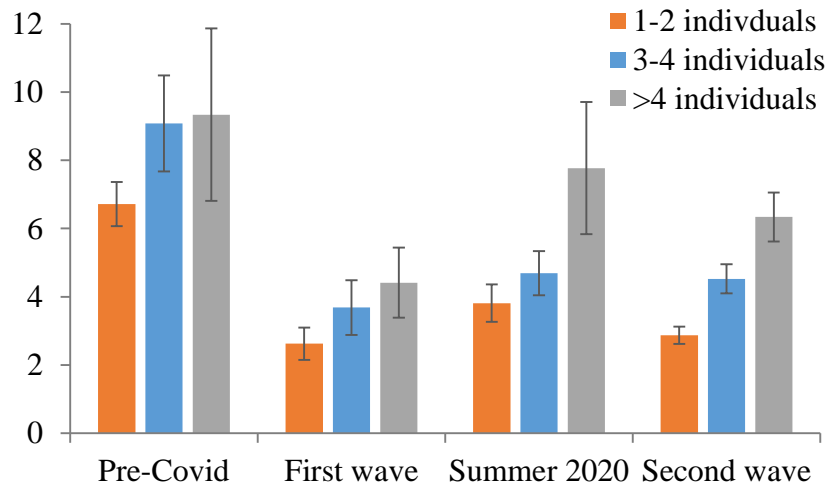
* Only the main locations of contacts were included in this figure for 0-17-year-olds (contacts at work were excluded)

† For adults: contacts at work are truncated to a maximum of 40 contacts per day and they include contacts in schools for school workers and students.

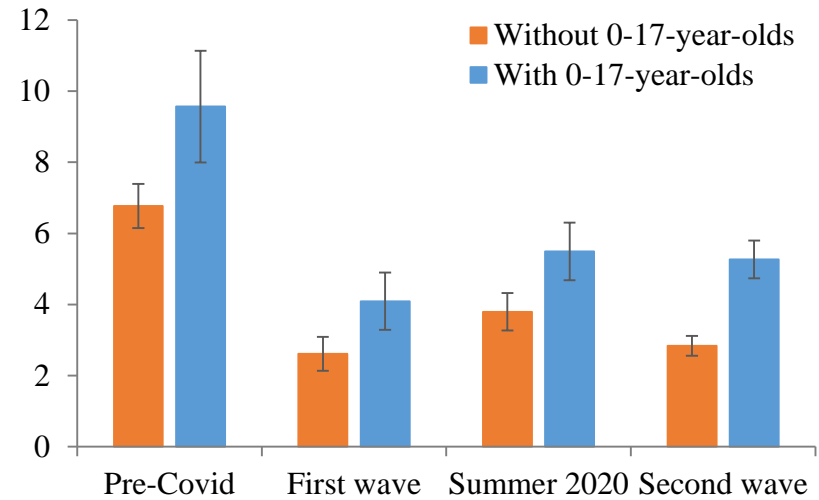
Contacts in other locations include transports, leisure and other locations.

Figure 3. Time trends in the total number of social contacts in the province of Quebec, according to key socio-demographic characteristics (adjusted for age).

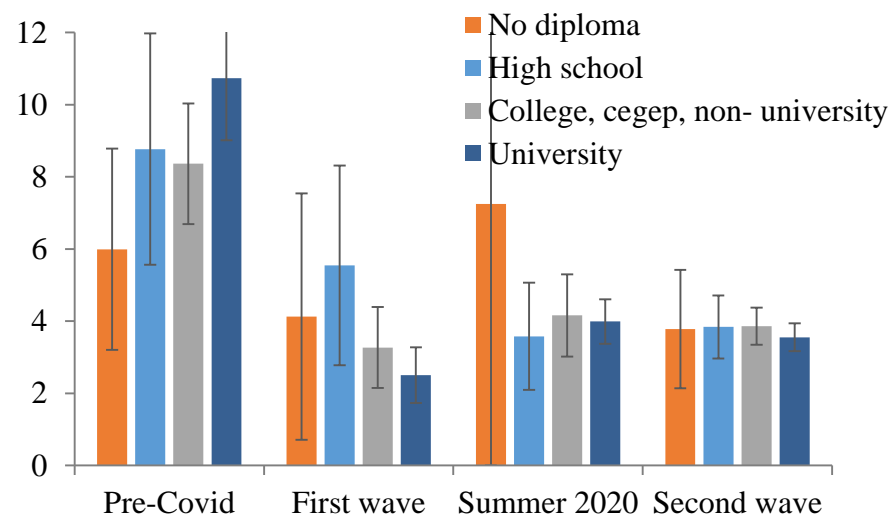
A) Household size



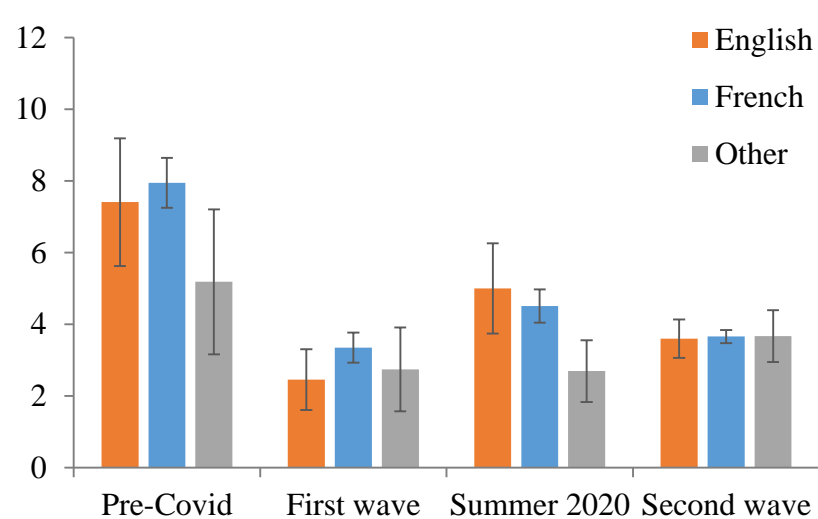
B) Household composition



C) Level of education (among ≥ 25 years old)



D) Mother tongue



Pre-Covid: February 1st 2018 to March 17th 2019; **1st wave:** April 21st to May 25th 2020; **Summer 2020:** July 3rd to August 31st 2020; **2nd wave:** Sept 1st 2020 to February 26th 2021