

1 **Recombinant adjuvanted zoster vaccine and reduced risk of COVID-19 diagnosis**
2 **and hospitalization in older adults**

3
4 Katia J. Bruxvoort, PhD,^{1,2*†} Bradley Ackerson, MD,^{1†} Lina S. Sy, MPH,¹ Amit Bhavsar,
5 MBBS, MHA,³ Hung Fu Tseng, PhD,^{1,4} Ana Florea, PhD,¹ Yi Luo, PhD,¹ Yun Tian, MS,¹
6 Zendi Solano, BS,¹ Robyn Widenmaier, MBiotech,⁵ Meng Shi, MS,⁵ Robbert Van Der
7 Most, PhD,⁶ Johannes Eberhard Schmidt, MD, MPH,⁷ Jasur Danier, MD,⁵ Thomas
8 Breuer, MD, MSc,³ Lei Qian, PhD¹

9
10 ¹Department of Research & Evaluation, Kaiser Permanente Southern California, 100 S
11 Los Robles, Pasadena, CA 91101, USA

12 ²Department of Epidemiology, University of Alabama at Birmingham, 1665 University
13 Blvd, Birmingham, AL 35233, USA

14 ³GSK, 20 Avenue Fleming, 1300 Wavre, Belgium

15 ⁴Kaiser Permanente Bernard J. Tyson School of Medicine, 98 S. Los Robles Ave.,
16 Pasadena, CA 91101, USA

17 ⁵GSK, 14200 Shady Grove Road, Rockville, MD 20850, USA

18 ⁶GSK, 89 Rue de l'Institut, 1330 Rixensart, Belgium

19 ⁷GSK, 1 Via Fiorentina, 53100 Siena, Italy

20

21 *Address for correspondence: kbruxvoort@uab.edu

22 †KJB and BA contributed equally to this work.

23

24 **Running Title:** RZV and reduced COVID-19risk

25

26 Dr. Ackerson, Dr. Bruxvoort, Dr. Florea, Dr. Luo, Dr. Qian, Ms. Solano, Ms. Sy, Ms.

27 Tian, and Dr. Tseng received research funding from the GSK group of companies for

28 work related to this paper. Dr. Ackerson, Dr. Bruxvoort, Dr. Qian, Ms. Solano, and Ms.

29 Sy received research funding from Dynavax for work unrelated to this paper. Dr.

30 Ackerson, Dr. Bruxvoort, Dr. Luo, Ms. Sy, and Dr. Tseng received research funding

31 from Seqirus for work unrelated to this paper. Dr. Bruxvoort, Dr. Florea, and Ms. Solano

32 received research funding from Gilead for work unrelated to this paper. Dr. Ackerson,

33 Dr. Bruxvoort, Dr. Florea, Dr. Luo, Dr. Qian, Ms. Sy, Ms. Tian, and Dr. Tseng received

34 research funding from Moderna for work unrelated to this paper. Dr. Ackerson, Dr.

35 Bruxvoort, and Dr. Florea received research funding from Pfizer for work unrelated to

36 this paper. KPSC received consultation fees for Dr. Tseng's consultation work with

37 Johnson and Johnson. Dr. Bhavsar, Ms. Widenmaier, Mr. Shi, Dr. Van Der Most, Dr.

38 Schmidt, Dr. Danier, and Dr. Breuer were employees of the GSK group of companies at

39 the time of the study conduct. Ms. Widenmaier, Dr. Van Der Most, Dr. Schmidt, Dr.

40 Danier, and Dr. Breuer hold shares in the GSK group of companies. All authors do not

41 have any non-financial relationships and activities to declare.

42 This work was supported by GlaxoSmithKline Biologicals SA. Costs associated with

43 manuscript editorial and coordination support were covered by GlaxoSmithKline

44 Biologicals SA.

45

46

47 Corresponding author:

48 Katia Bruxvoort, PhD MPH

49 Department of Epidemiology, University of Alabama at Birmingham, 1665 University

50 Blvd, Birmingham, AL 35233, USA

51 Phone: 205-975-8625

52 Email: kbruxvoort@uab.edu

53 **Abstract**

54 **Background:** Vaccines may elicit long-term boosting of innate immune responses that can
55 help protect against COVID-19. We evaluated the association between recombinant
56 adjuvanted zoster vaccine (RZV) and COVID-19 outcomes at Kaiser Permanente Southern
57 California.

58 **Methods:** In a cohort design, adults aged ≥ 50 years who received ≥ 1 RZV dose prior to
59 3/1/2020 were matched 1:2 to unvaccinated individuals and followed until 12/31/2020.
60 Adjusted hazard ratios (aHR) and 95% confidence intervals (CIs) for COVID-19
61 outcomes were estimated using Cox proportional hazards regression. In a test-negative
62 design, cases had a positive SARS-CoV-2 test and controls had only negative tests,
63 from 3/1/2020-12/31/2020. Adjusted odds ratios (aOR) and 95% CIs for prior receipt of
64 RZV were estimated using logistic regression.

65 **Results:** In the cohort design, 149,244 RZV recipients were matched to 298,488
66 unvaccinated individuals. The aHRs (95% CI) for COVID-19 diagnosis and
67 hospitalization were 0.84 (0.81-0.87) and 0.68 (0.64-0.74), respectively. In the test-
68 negative design, 8.4% of 75,726 test-positive cases and 13.1% of 340,898 test-negative
69 controls had received ≥ 1 RZV dose. The aOR (95% CI) was 0.84 (0.81-0.86).

70 **Conclusion:** RZV vaccination was associated with a 16% lower risk of COVID-19
71 diagnosis and 32% lower risk of hospitalization, suggesting RZV elicits heterologous
72 protection, possibly through trained immunity.

73

74 **Keywords:** COVID-19, zoster vaccine, trained immunity, non-specific effects

75 **Background**

76 The severe acute respiratory syndrome coronavirus 2 (SARS-CoV-2) that causes
77 coronavirus disease 2019 (COVID-19) has triggered a global pandemic with over 224
78 million infections and more than 4.6 million deaths.[1] Despite the extraordinary pace of
79 COVID-19 vaccine development, nearly 12 months were required to develop, evaluate,
80 and initiate large-scale production and administration of highly effective vaccines.[2] As
81 of September 2021, COVID-19 vaccines have been available for over 9 months, but
82 nearly 58% of the global population remains unvaccinated, despite ongoing efforts to
83 increase global vaccine production and distribution.[3]

84 Traditionally, immune memory consisting of pathogen-specific cellular and humoral
85 responses was thought to be the hallmark of the adaptive response. However, a
86 growing body of evidence suggests that the innate immune system can also develop
87 and maintain immune memory (i.e. trained immunity), which may be helpful in reducing
88 the impact of a broad array of infectious diseases.[4-6] Several studies with vaccines,
89 including the tuberculosis vaccine Bacillus Calmette-Guérin (BCG), and measles, oral
90 polio, and influenza vaccines, including vaccine adjuvants, demonstrate the ability of the
91 innate immune system to form memory and to provide non-specific protection against
92 heterologous infections.[5-9]

93 Recombinant adjuvanted zoster vaccine (RZV) is the first approved and widely used
94 vaccine with the novel AS01 adjuvant, which elicits an innate immune response and
95 robust cellular and humoral responses.[10, 11] We hypothesized that RZV could induce
96 trained immunity that might reduce SARS-CoV-2 infections in older adults, who are at
97 high risk of severe disease and poor outcomes following SARS-CoV-2 infection.[12]

98 Therefore, we evaluated the association of receipt of RZV with COVID-19 diagnosis and
99 COVID-19-associated hospitalizations in a large cohort of adults aged ≥ 50 years.

100 **Methods**

101 *Study setting*

102 We employed both matched cohort and test-negative designs in an observational study
103 conducted at Kaiser Permanente Southern California (KPSC), an integrated health care
104 system with 15 hospitals and 235 associated medical office buildings. The KPSC
105 population of over 4.6 million members is stable and mirrors the sociodemographic,
106 racial, and ethnic diversity of Southern California.[13] KPSC members are incentivized
107 to seek care within the KPSC system, and recommended vaccinations are proactively
108 offered free of charge at any visit or at walk-in nurse clinic visits. Comprehensive
109 electronic health records (EHR) capture all details of patient care, including diagnoses,
110 vaccinations, procedures, laboratory tests, and pharmacy records. Care received
111 outside of KPSC is captured through claims.

112 Molecular diagnostic testing for SARS-CoV-2 evolved during the study period (3/1/2020-
113 12/31/2020). In the early months of the pandemic, testing was prioritized for individuals
114 with symptoms and prior to hospital admissions or certain outpatient procedures. RT-
115 PCR was primarily conducted on nasopharyngeal/oropharyngeal swabs using the
116 Roche cobas[®] SARS-CoV-2 assay on the Roche cobas[®] 6800 and 8800 analyzers
117 (Roche Molecular Systems, New Jersey, USA) or the Aptima[®] SARS-CoV-2 assay on
118 Hologic Panther[®] analyzers (Hologic Inc, San Diego, California, USA). However, testing
119 guidelines were gradually expanded, such that by September 2020 testing was widely
120 available for symptomatic and asymptomatic individuals for any reason. By November

121 2020, implementation of saliva testing and a new COVID-19 laboratory using the
122 TaqPath™ COVID-19 High-Throughput Combo Kit on the Thermo Fisher Scientific
123 Amplitude Solution (Thermo Fisher Scientific, California, USA) increased testing
124 capacity at KPSC to approximately 52,000 tests per day.

125 *Cohort design*

126 The cohort design included individuals aged ≥ 50 years as of 3/1/2020 who had at least
127 1-year prior KPSC membership (allowing for a 31-day gap). Separate analyses were
128 conducted defining the exposure as either receipt of at least 1 dose of RZV prior to
129 3/1/2020, receipt of 2 doses of RZV ≥ 4 weeks apart prior to 3/1/2020, or receipt of 1
130 dose of RZV only prior to 3/1/2020. Outcomes were COVID-19 diagnosis, defined as a
131 positive SARS-CoV-2 molecular test or COVID-19 diagnosis code (**Supplementary**
132 **Table 1**), and COVID-19 hospitalization, defined as a hospitalization with a SARS-CoV-
133 2 positive test or a COVID-19 diagnosis, or a hospitalization occurring within 7 days
134 after a SARS-CoV-2 positive test. We excluded individuals with COVID-19 outcomes
135 occurring ≤ 14 days after receipt of RZV.

136 Recipients of at least 1 dose of RZV as of 3/1/2020 were matched 1:2 with RZV
137 unvaccinated individuals by age (50-59 years, 60-69 years, 70-79 years, and ≥ 80
138 years), sex, race/ethnicity (non-Hispanic White, non-Hispanic Black, Hispanic, non-
139 Hispanic Asian, and other/unknown), and zip code. Individuals were followed through
140 EHR from 3/1/2020 until occurrence of COVID-19 outcomes, termination of
141 membership, death, receipt of a first dose of RZV for unvaccinated individuals, or end of
142 the study period (12/31/2020), whichever came first.

143 We identified clinical characteristics in the year prior to 3/1/2020 including: most recent
144 body mass index (BMI), most recent smoking status, health care utilization (number of
145 outpatient visits, number of emergency department [ED] visits, number of
146 hospitalizations), frailty using the algorithm described by Kim et al.,[14] comorbidities
147 (cardiovascular disease, diabetes, hypertension, pulmonary disease, renal disease,
148 cancer, autoimmune disease using *International Classification of Diseases Tenth*
149 *Revision (ICD-10)* codes,[15] and HIV using the KPSC HIV registry), other vaccinations
150 (influenza, pneumococcal, and tetanus, diphtheria, and acellular pertussis [Tdap]), and
151 medical center area.

152 We used similar methods for the analysis comparing recipients of at least 1 dose of
153 RZV and their unvaccinated matches, the analysis comparing recipients of 2 doses of
154 RZV and their unvaccinated matches, and the analysis comparing recipients of 1 dose
155 of RZV only and their unvaccinated matches. We first described characteristics of RZV
156 vaccinated and RZV unvaccinated individuals, reporting absolute standardized
157 differences (ASD) to assess balance between covariates; characteristics that were
158 substantially different between RZV vaccinated and unvaccinated groups (ASD >0.1)
159 were considered potential confounders for inclusion in multivariable analyses. We
160 calculated incidence rates for COVID-19 outcomes by dividing the number of COVID-19
161 outcomes by the total number of person-years, and we used the Kaplan-Meier method
162 to estimate cumulative incidence. Finally, we used Cox proportional hazards regression
163 to estimate hazard ratios (HR) and 95% confidence intervals (CI) for COVID-19
164 outcomes comparing RZV vaccinated and unvaccinated individuals, adjusting for
165 potential confounders. To further control for differences in health care seeking behavior

166 by vaccination status and potential effect modification due to receipt of other vaccines,
167 sensitivity analyses were conducted to compare the risk of COVID-19 outcomes among
168 RZV vaccinated and unvaccinated individuals, in a subset of individuals who had
169 received influenza vaccine but no other vaccines in the year prior to 3/1/2020. Analyses
170 comparing recipients of at least 1 dose of RZV and their unvaccinated matches were
171 performed among this subset of individuals.

172 *Test-negative design*

173 The test-negative design included all individuals tested for SARS-CoV-2 from 3/1/2020
174 to 12/31/2020, who had at least 1-year prior membership (allowing for a 31-day gap)
175 and were aged ≥ 50 years as of the SARS-CoV-2 test date. Test-positive cases
176 comprised individuals with a positive SARS-CoV-2 test, and test-negative controls
177 comprised those with only negative SARS-CoV-2 tests during the same period. For
178 individuals with multiple SARS-CoV-2 tests, the test-positive case was defined as the
179 first positive test for individuals with any positive tests, and the test-negative control was
180 defined as the first negative test for individuals with only negative tests. Separate
181 analyses were conducted defining the exposure as either receipt of at least 1 dose of
182 RZV ≥ 14 days prior to the SARS-CoV-2 test or receipt of 2 doses of RZV ≥ 4 weeks
183 apart ≥ 14 days prior to the SARS-CoV-2 test. Individuals who received RZV < 14 days
184 prior to the SARS-CoV-2 test were excluded from the study.

185 We described characteristics of test-positive cases and test-negative controls in the
186 year prior to their SARS-CoV-2 test date, using similar methods as for the cohort
187 design. We used logistic regression to estimate odds ratios (OR) and 95% CI comparing
188 odds of RZV vaccination among test-positive cases and test-negative controls, adjusting

189 for age, sex, race/ethnicity, calendar time, and other confounders based on ASD >0.1.

190 We also conducted analyses stratifying the RZV exposure by time from most recent
191 RZV dose to SARS-CoV-2 test (15 days to <1 month, 1 to <6 months, 6 months to <1
192 year, and ≥1 year).

193 The KPSC Institutional Review Board reviewed and approved the study with a waiver
194 for the requirement of informed consent.

195 **Results**

196 *Cohort design – receipt of at least 1 dose of RZV*

197 The cohort design with at least 1 dose of RZV as the exposure included 149,244 RZV
198 vaccinated individuals and 298,488 matched RZV unvaccinated individuals (**Table 1**).
199 Overall, 16.2% were aged 50-59 years and 12.8% were ≥80 years, 57.8% were female,
200 and 54.1% were non-Hispanic White. Recipients of at least 1 dose of RZV had less
201 missing data on BMI (2.6% vs 13.2% of matched RZV unvaccinated individuals, ASD
202 0.41) and on smoking (2.7% vs 12.7%, ASD 0.39), and had more outpatient visits in the
203 year prior to 3/1/2020 (39.1% vs 28.8% with ≥11 visits, ASD 0.49). They more
204 commonly had hypertension (49.0% vs 43.9%, ASD 0.10) and had received other
205 vaccinations (93.6% vs 73.3%, ASD 0.57) in the year prior. Other characteristics,
206 including the number of ED visits and hospitalizations, frailty, other comorbidities in the
207 year prior, and medical center area, were well-balanced between recipients of at least 1
208 dose of RZV and their RZV unvaccinated matches.

209 Among recipients of at least 1 dose of RZV, there were 5,951 COVID-19 diagnoses and
210 1,066 COVID-19 hospitalizations, with incidence rates per 1,000 person-years (95% CI)
211 of 48.82 (47.60-50.08) and 8.69 (8.18-9.23), respectively (**Table 2**). Among RZV

212 unvaccinated individuals matched to recipients of at least 1 dose of RZV, there were
213 13,028 COVID-19 diagnoses and 2,765 COVID-19 hospitalizations, with incidence rates
214 per 1,000 person-years of 55.01 (54.07-55.96) and 11.59 (11.17-12.03), respectively. In
215 Kaplan-Meier analyses, the cumulative incidences of COVID-19 diagnosis and COVID-
216 19 hospitalization were lower among recipients of at least 1 dose of RZV compared to
217 their RZV unvaccinated matches (**Figure 1-2**). In fully adjusted analyses, recipients of at
218 least 1 dose of RZV had a 16% lower rate of COVID-19 diagnosis (HR 0.84 [95% CI:
219 0.81-0.87]) and a 32% lower rate of COVID-19 hospitalization (HR 0.68 [95% CI: 0.64-
220 0.74]) compared to RZV unvaccinated individuals (**Table 2**).

221 In sensitivity analyses among the subset of individuals who had received influenza
222 vaccine but no other vaccines in the year prior to 3/1/2020, we observed similar
223 reductions in COVID-19 diagnosis and hospitalization among recipients of at least 1
224 dose of RZV compared to RZV unvaccinated individuals (**Supplementary Table 2**). In
225 fully adjusted analyses of this subset, recipients of at least 1 dose of RZV had a 17%
226 lower rate of COVID-19 diagnosis (HR 0.83 [95% CI: 0.78-0.89]) and a 32% lower rate
227 of COVID-19 hospitalization (HR 0.68 [95% CI: 0.59-0.78]).

228 *Cohort design – receipt of 2 doses of RZV*

229 The cohort design with 2 doses of RZV as the exposure included 94,895 RZV
230 vaccinated individuals and 189,790 matched RZV unvaccinated individuals
231 (**Supplementary Table 3**). Differences in characteristics among recipients of 2 doses of
232 RZV and their RZV unvaccinated matches were similar to the distributions observed for
233 recipients of at least 1 dose of RZV and their RZV unvaccinated matches.

234 Among recipients of 2 doses of RZV, there were 3,403 COVID-19 diagnoses and 612
235 COVID-19 hospitalizations, with incidence rates per 1,000 person-years (95% CI) of
236 43.79 (42.34-45.28) and 7.83 (7.23-8.48), respectively (**Table 3**). Among unvaccinated
237 individuals matched to recipients of 2 doses of RZV, there were 7,689 COVID-19
238 diagnoses and 1,676 COVID-19 hospitalizations, with incidence rates per 1,000 person-
239 years of 51.03 (49.90-52.19) and 11.05 (10.53-11.59), respectively. In Kaplan-Meier
240 analyses, the cumulative incidences of COVID-19 diagnosis and COVID-19
241 hospitalization were lower among recipients of 2 doses of RZV compared to their RZV
242 unvaccinated matches (**Supplementary Figures 1-2**). In fully adjusted analyses, those
243 who received 2 doses of RZV had a 19% lower rate of COVID-19 diagnosis (HR 0.81
244 [95% CI: 0.77-0.84]) and a 36% lower rate of COVID-19 hospitalization (HR 0.64 [95%
245 CI: 0.58-0.70]) (**Table 3**).

246 *Cohort design – receipt of 1 dose of RZV only*

247 The cohort design with 1 dose of RZV only as the exposure included 54,349 RZV
248 vaccinated individuals and 108,698 matched RZV unvaccinated individuals
249 (**Supplementary Table 4**). Results of this analysis were similar, but less pronounced,
250 than results of the analyses for the other exposures (receipt of at least 1 dose of RZV
251 and receipt of 2 doses of RZV). Recipients of 1 dose of RZV only had a 14% lower rate
252 of COVID-19 diagnosis (HR 0.86 [95% CI: 0.82-0.91]) and 24% lower rate of COVID-19
253 hospitalization (HR 0.76 [95% CI: 0.68-0.86]).

254 *Test-negative design*

255 The test-negative design included 75,726 test-positive COVID-19 cases and 340,898
256 test-negative controls (**Table 4**). Cases were younger than controls (49.0% vs 36.1%

257 ages 50-59 years, ASD 0.31) and less often non-Hispanic White (25.2% vs 43.4%, ASD
258 0.50). A higher proportion of cases were obese, and a lower proportion of cases were
259 smokers as compared to controls, but cases also had more missing data for these
260 variables. Cases also had fewer outpatient and ED visits in the year prior to the SARS-
261 CoV-2 test date than controls (16.3% vs 27.8% with ≥ 11 outpatient visits, ASD 0.36,
262 and 6.5% vs 9.4% with ≥ 2 ED visits, ASD 0.14), were less frail (17.8% vs 26.6% in the
263 top quartile of the frailty index, ASD 0.21), less commonly had chronic comorbidities
264 (cardiovascular disease, hypertension, pulmonary disease, renal disease, and cancer),
265 and less commonly had received other vaccinations in the year prior (68.3% vs 76.7%,
266 ASD 0.19). There were also significant differences between cases and controls in test
267 month and medical center area.

268 Of cases and controls, respectively, 8.4% and 13.1% had received at least 1 dose of
269 RZV, 5.4% and 9.2% had received 2 doses of RZV, and 91.6% and 86.9% were RZV
270 unvaccinated (**Table 5**). The adjusted ORs (95% CI) comparing cases and controls
271 were 0.84 (0.81-0.86) for individuals who received at least 1 dose of RZV vs
272 unvaccinated individuals and 0.82 (0.79-0.85) for individuals who received 2 doses of
273 RZV vs unvaccinated individuals. Adjusted ORs did not appear to vary substantially by
274 time since RZV vaccination.

275 **Discussion**

276 This large retrospective study spanning the first year of the COVID-19 pandemic
277 provides evidence from both cohort and test-negative designs that receipt of RZV prior
278 to the availability of COVID-19 vaccines may have provided benefit in reducing the
279 burden of COVID-19 in adults aged ≥ 50 years. In the cohort design analysis, after

280 adjusting for potential confounders including other vaccinations, we found that the risk
281 of COVID-19 diagnosis was reduced by 16% among persons who had received at least
282 1 dose of RZV compared to RZV unvaccinated individuals, an association that was
283 similar and did not vary by time since most recent RZV dose in the test-negative
284 analysis. We also found that the risk of hospitalization with COVID-19 was reduced by
285 32% among recipients of at least 1 dose of RZV compared to RZV unvaccinated
286 individuals. These results were consistent in the test-negative design (16% lower odds
287 of RZV vaccination among SARS-CoV-2 test-positive cases versus test-negative
288 controls).

289 A similar reduction in risk of COVID-19 infection and severe disease has been reported
290 following receipt of influenza vaccine in several studies [16-18], although this
291 association was not observed in other studies.[19-23] A prior study at KPSC found a
292 reduction in risk of COVID-19 diagnosis and severe disease associated with receipt of
293 13-valent pneumococcal conjugate vaccine (PCV13) but not with receipt of influenza
294 vaccine.[24] Interestingly, in a sensitivity analysis among the subset of individuals who
295 received influenza vaccine but no other vaccines, we found that receipt of RZV was still
296 associated with a similar reduction in risk of COVID-19 diagnosis and hospitalization,
297 suggesting that influenza vaccination or healthy vaccinee bias had minimal impact on
298 our findings.

299 While the mechanism for the reduced risk of heterologous infections following receipt of
300 some vaccines is not clear, it is plausible that these vaccines induce a trained immune
301 response that results in an improved cytokine response to subsequent exposures; this
302 response may provide an antiviral effect against infection with SARS-CoV-2 or other

303 viruses.[25] Induction of an innate immune response has been suggested as a means
304 to control viral replication early in the course of infection to reduce the risk of severe
305 disease.[4, 9, 25] This may be particularly important for viral infections such as SARS-
306 CoV-2, which appear to attenuate the host innate immune response as a means of
307 increasing viral replication, possibly increasing disease severity and enhancing viral
308 transmission.[26, 27] Notably, induction of innate immunity by highly-effective COVID-
309 19 vaccines has been proposed as a possible mechanism of early protection following
310 vaccination prior to the development of a robust adaptive response.[28] Furthermore,
311 innate immunity has been found to play an important role in the control of infection in
312 coronavirus animal reservoirs and may similarly contribute to reduced severity of
313 COVID-19 disease observed in children compared to adults.[29, 30]

314 Our study found a durable reduction in the risk of COVID-19 infection following receipt
315 of RZV vaccine, consistent with the durable protection against heterologous infections
316 provided by trained immunity.[9] It is possible that the AS01 adjuvant used in RZV,
317 which activates innate immune responses including monocytes and the IFN-response
318 pathways, may be associated with the reduced risk of COVID-19 diagnosis and
319 hospitalization observed in this study.[10, 11, 31] Influenza and other vaccines may also
320 induce similar trained immunity against SARS-CoV-2 infection, although the duration
321 may be variable.[9, 25, 32-34] Additional research is needed to elucidate immunologic
322 mechanisms for our findings and to explore implications such as trained immunity-
323 based vaccines that might mitigate serious infections in future pandemics until specific
324 vaccines become available.[35]

325 Our study had several strengths and limitations. We leveraged comprehensive EHR
326 data on demographic and clinical characteristics, vaccinations, and COVID-19
327 outcomes from a large, diverse cohort of adults aged ≥ 50 years. Although data for BMI
328 and smoking status were missing for some individuals, we conducted a sensitivity
329 analysis limited to individuals without missing data and found similar results. As in all
330 observational studies, there may be some residual confounding. RZV recipients may
331 have differed from RZV unvaccinated individuals with respect to health status, health
332 care seeking behavior, and other factors that might, in part, explain the observed
333 differences in risk of COVID-19 diagnosis and hospitalization. However, to reduce
334 potential confounding, we used a cohort design, matching RZV recipients with
335 unvaccinated individuals on age, sex, race/ethnicity, and zip code, and adjusting for
336 health care utilization, other vaccinations, and comorbidities. We also used a test-
337 negative design, which may be less confounded by health care seeking behavior than
338 the cohort design,[36] but may also be less generalizable given that the study
339 population was limited to those who were tested for SARS-CoV-2. We observed similar
340 results using both designs, supporting the validity of the results. In addition, RZV
341 exposure could be misclassified if individuals were vaccinated outside of KPSC;
342 however, such misclassification was likely minimal, because KPSC members received
343 vaccines at KPSC without charge, and providers were required to document previous
344 receipt of recommended vaccines at all encounters.

345 **Conclusions:**

346 RZV recipients aged ≥ 50 years had a reduced risk of COVID-19 diagnosis and
347 hospitalization compared to RZV unvaccinated individuals, suggesting that RZV may

348 elicit durable innate immune responses that could offer heterologous protection against
349 COVID-19 infection. While this epidemiological study provides further evidence of the
350 concept of trained innate immunity using the adjuvanted RZV vaccine, additional
351 research is needed to identify and understand the underlying non-specific effects of
352 RZV and other vaccines.

353

354 **Acknowledgements**

355 The authors thank the members of Kaiser Permanente for helping to improve care
356 through the use of information collected through our electronic health record systems.
357 Editorial and coordination support was provided by Adrian Kremer (Modis c/o GSK).

358

359 **Data Sharing Statement**

360 The study details (GSK study number 217021) are available on the GSK Clinical Study
361 Register and can be accessed at www.gskclinicalstudyregister.com.

362

363

364 **References:**

- 365 1. WHO Coronavirus (COVID-19) Dashboard. Available at: <https://covid19.who.int/>. Accessed September
366 14, 2021.
- 367 2. Oliver SE, Gargano JW, Marin M, et al. The Advisory Committee on Immunization Practices' interim
368 recommendation for use of Pfizer-BioNTech COVID-19 vaccine - United States, December 2020. *MMWR*
369 *Morb Mortal Wkly Rep* **2020**; 69:1922-4.
- 370 3. Ritchie H, Mathieu E, Rodés-Guirao L, et al. Coronavirus Pandemic (COVID-19). Available at:
371 <https://ourworldindata.org/coronavirus>. Accessed September 14, 2021.
- 372 4. Benn CS, Netea MG, Selin LK, Aaby P. A small jab - a big effect: nonspecific immunomodulation by
373 vaccines. *Trends Immunol* **2013**; 34:431-9.
- 374 5. Goodridge HS, Ahmed SS, Curtis N, et al. Harnessing the beneficial heterologous effects of
375 vaccination. *Nat Rev Immunol* **2016**; 16:392-400.
- 376 6. Wimmers F, Donato M, Kuo A, et al. The single-cell epigenomic and transcriptional landscape of
377 immunity to influenza vaccination. *Cell* **2021**; 184:3915-35 e21.
- 378 7. Kleinnijenhuis J, Quintin J, Preijers F, et al. Bacille Calmette-Guerin induces NOD2-dependent
379 nonspecific protection from reinfection via epigenetic reprogramming of monocytes. *Proc Natl Acad Sci*
380 *U S A* **2012**; 109:17537-42.
- 381 8. Moorlag SJCFM, Arts RJW, van Crevel R, Netea MG. Non-specific effects of BCG vaccine on viral
382 infections. *Clin Microbiol Infect* **2019**; 25:1473-8.
- 383 9. Netea MG, Dominguez-Andres J, Barreiro LB, et al. Defining trained immunity and its role in health
384 and disease. *Nat Rev Immunol* **2020**; 20:375-88.
- 385 10. Coccia M, Collignon C, Herve C, et al. Cellular and molecular synergy in AS01-adjuvanted vaccines
386 results in an early IFN γ response promoting vaccine immunogenicity. *NPJ Vaccines* **2017**; 2:25.

- 387 11. Hastie A, Catteau G, Enemu A, et al. Immunogenicity of the adjuvanted recombinant zoster vaccine:
388 persistence and anamnestic response to additional doses administered 10 years after primary
389 vaccination. *J Infect Dis* **2020**;jjaa300.
- 390 12. Petrilli CM, Jones SA, Yang J, et al. Factors associated with hospital admission and critical illness
391 among 5279 people with coronavirus disease 2019 in New York City: prospective cohort study. *BMJ*
392 **2020**; 369:m1966.
- 393 13. Koebnick C, Langer-Gould AM, Gould MK, et al. Sociodemographic characteristics of members of a
394 large, integrated health care system: comparison with US Census Bureau data. *Perm J* **2012**; 16:37-41.
- 395 14. Kim DH, Schneeweiss S, Glynn RJ, Lipsitz LA, Rockwood K, Avorn J. Measuring frailty in medicare
396 data: development and validation of a claims-based frailty index. *J Gerontol A Biol Sci Med Sci* **2018**;
397 73:980-7.
- 398 15. Quan H, Sundararajan V, Halfon P, et al. Coding algorithms for defining comorbidities in ICD-9-CM
399 and ICD-10 administrative data. *Med Care* **2005**; 43:1130-9.
- 400 16. Conlon A, Ashur C, Washer L, Eagle KA, Hofmann Bowman MA. Impact of the influenza vaccine on
401 COVID-19 infection rates and severity. *Am J Infect Control* **2021**; 49:694-700.
- 402 17. Fink G, Orlova-Fink N, Schindler T, et al. Inactivated trivalent influenza vaccination is associated with
403 lower mortality among patients with COVID-19 in Brazil. *BMJ Evid Based Med* **2020**:bmjebm-2020-
404 111549.
- 405 18. Huang K, Lin SW, Sheng WH, Wang CC. Influenza vaccination and the risk of COVID-19 infection and
406 severe illness in older adults in the United States. *Sci Rep* **2021**; 11:11025.
- 407 19. Belingheri M, Paladino ME, Latocca R, De Vito G, Riva MA. Association between seasonal flu
408 vaccination and COVID-19 among healthcare workers. *Occup Med (Lond)* **2020**; 70:665-71.
- 409 20. Zein J, Whelan G, Erzurum S. Safety of influenza vaccine during COVID-19. *J Clin Transl Sci* **2021**;
410 5:E49.

- 411 21. Kissling E, Hooiveld M, Brytting M, et al. Absence of association between 2019-20 influenza
412 vaccination and COVID-19: results of the European I-MOVE-COVID-19 primary care project, March-
413 August 2020. *Influenza Other Respir Viruses* **2021**; 15:429-38.
- 414 22. Martinez-Baz I, Trobajo-Sanmartin C, Arregui I, et al. Influenza vaccination and risk of SARS-CoV-2
415 infection in a cohort of health workers. *Vaccines (Basel)* **2020**; 8:611.
- 416 23. Pedote PD, Termite S, Gigliobianco A, Lopalco PL, Bianchi FP. Influenza vaccination and health
417 outcomes in COVID-19 patients: a retrospective cohort study. *Vaccines (Basel)* **2021**; 9:358.
- 418 24. Lewnard JA, Bruxvoort KJ, Fischer H, et al. Prevention of COVID-19 among older adults receiving
419 pneumococcal conjugate vaccine suggests interactions between *Streptococcus pneumoniae* and SARS-
420 CoV-2 in the respiratory tract. *J Infect Dis* **2021**:jiab128.
- 421 25. Chumakov K, Avidan MS, Benn CS, et al. Old vaccines for new infections: exploiting innate immunity
422 to control COVID-19 and prevent future pandemics. *Proc Natl Acad Sci U S A* **2021**; 118:e2101718118.
- 423 26. Lei X, Dong X, Ma R, et al. Activation and evasion of type I interferon responses by SARS-CoV-2. *Nat*
424 *Commun* **2020**; 11:3810.
- 425 27. Yuen CK, Lam JY, Wong WM, et al. SARS-CoV-2 nsp13, nsp14, nsp15 and orf6 function as potent
426 interferon antagonists. *Emerg Microbes Infect* **2020**; 9:1418-28.
- 427 28. Sadarangani M, Marchant A, Kollmann TR. Immunological mechanisms of vaccine-induced protection
428 against COVID-19 in humans. *Nat Rev Immunol* **2021**; 21:475-84.
- 429 29. Silverstein NJ, Wang Y, Manickas-Hill Z, et al. Innate lymphoid cells and disease tolerance in SARS-
430 CoV-2 infection [Preprint]. July 4, 2021 [Cited September 14, 2021] Available from:
431 <https://doi.org/10.1101/2021011421249839>.
- 432 30. Mallapaty S. Kids and COVID: why young immune systems are still on top. *Nature* **2021**; 597:166-8.
- 433 31. De Mot L, Bechtold V, Bol V, et al. Transcriptional profiles of adjuvanted hepatitis B vaccines display
434 variable interindividual homogeneity but a shared core signature. *Sci Transl Med* **2020**; 12:eaay8618.

- 435 32. Ragni P, Marino M, Formisano D, et al. Association between exposure to influenza vaccination and
436 COVID-19 diagnosis and outcomes. *Vaccines (Basel)* **2020**; 8:675.
- 437 33. Escobar LE, Molina-Cruz A, Barillas-Mury C. BCG vaccine protection from severe coronavirus disease
438 2019 (COVID-19). *Proc Natl Acad Sci U S A* **2020**; 117:17720-6.
- 439 34. O'Neill LAJ, Netea MG. BCG-induced trained immunity: can it offer protection against COVID-19? *Nat*
440 *Rev Immunol* **2020**; 20:335-7.
- 441 35. Sanchez-Ramon S, Conejero L, Netea MG, Sancho D, Palomares O, Subiza JL. Trained immunity-based
442 vaccines: a new paradigm for the development of broad-spectrum anti-infectious formulations. *Front*
443 *Immunol* **2018**; 9:2936.
- 444 36. Ozasa K, Fukushima W. Commentary: Test-negative design reduces confounding by healthcare-
445 seeking attitude in case-control studies. *J Epidemiol* **2019**; 29:279-81.
- 446
- 447

448

Table 1. Baseline characteristics of RZV (at least 1 dose) vaccinated and unvaccinated cohort

	Vaccinated (N=149244)	Unvaccinated (N=298488)	Absolute Standardized Difference^d
	n (%)	n (%)	
Age at index date, years			N/A ^c
50-59	24169 (16.2)	48338 (16.2)	
60-69	56047 (37.6)	112094 (37.6)	
70-79	49986 (33.5)	99972 (33.5)	
≥80	19042 (12.8)	38084 (12.8)	
Sex			N/A ^c
Female	86206 (57.8)	172412 (57.8)	
Male	63038 (42.2)	126076 (42.2)	
Race/Ethnicity			N/A ^c
Non-Hispanic White	80743 (54.1)	161486 (54.1)	
Non-Hispanic Black	8411 (5.6)	16822 (5.6)	
Hispanic	30376 (20.4)	60752 (20.4)	
Non-Hispanic Asian	24434 (16.4)	48868 (16.4)	
Other/Unknown	5280 (3.5)	10560 (3.5)	
Body mass index ^a			0.41
<18.5	1925 (1.3)	4418 (1.5)	
18.5-<25	45482 (30.5)	76156 (25.5)	
25-<30	54387 (36.4)	93932 (31.5)	
30-<35	27736 (18.6)	52216 (17.5)	
35-<40	10398 (7.0)	20911 (7.0)	
40-<45	3647 (2.4)	7511 (2.5)	
≥45	1734 (1.2)	3993 (1.3)	
Unknown	3935 (2.6)	39351 (13.2)	
Smoking ^a			0.39
No	111269 (74.6)	194333 (65.1)	
Yes	34016 (22.8)	66278 (22.2)	
Unknown	3959 (2.7)	37877 (12.7)	
Number of outpatient visits ^b			0.49
0	862 (0.6)	26145 (8.8)	

1-4	33628 (22.5)	95907 (32.1)	
5-10	56401 (37.8)	90503 (30.3)	
≥11	58353 (39.1)	85933 (28.8)	
Number of emergency department visits ^b			0.05
0	121729 (81.6)	238943 (80.1)	
1	19135 (12.8)	39466 (13.2)	
≥2	8380 (5.6)	20079 (6.7)	
Number of hospitalizations ^b			0.01
0	130826 (87.7)	261940 (87.8)	
1	11291 (7.6)	22608 (7.6)	
≥2	7127 (4.8)	13940 (4.7)	
Frailty (top quartile) ^b	37951 (25.4)	73969 (24.8)	0.01
Baseline comorbidities ^b			
Cardiovascular disease	45251 (30.3)	81069 (27.2)	0.07
Diabetes	34703 (23.3)	69237 (23.2)	0.00
Hypertension	73201 (49.0)	131033 (43.9)	0.10
Pulmonary disease	23628 (15.8)	41768 (14.0)	0.05
Renal disease	18965 (12.7)	37487 (12.6)	0.00
Cancer	8484 (5.7)	17322 (5.8)	0.01
HIV	1201 (0.8)	818 (0.3)	0.07
Autoimmune disease	7566 (5.1)	13681 (4.6)	0.02
Other vaccinations ^b	139723 (93.6)	218851 (73.3)	0.57
Influenza vaccine	136984 (98.0)	211906 (96.8)	
PCV13/PPSV23	17920 (12.8)	25737 (11.8)	
Tdap	13806 (9.9)	17254 (7.9)	

Abbreviations: PCV13, 13-valent pneumococcal conjugate vaccine; PPSV23, pneumococcal polysaccharide vaccine; RZV, recombinant zoster vaccine; Tdap, tetanus, diphtheria, acellular pertussis vaccine

^a Most recent in 365 days prior to 3/1/2020

^b In 365 days prior to 3/1/2020

^c N/A= not applicable, for matching variable

^d Potential confounders were determined by absolute standardized difference >0.1

Medical center area not shown. There were no significant differences in the distribution of the vaccinated and unvaccinated individuals across the 19 medical center areas.

Table 2. Incidence rates and hazard ratios of COVID-19 diagnosis and hospitalization among vaccinated (at least 1 dose of RZV) versus unvaccinated individuals

Outcomes	Vaccinated (N=149244)			Unvaccinated (N=298488)			Hazard Ratio (95% CI)	
	Number of cases	Number of person-years	Incidence per 1000 person-years (95% CI)	Number of cases	Number of person-years	Incidence per 1000 person-years (95% CI)	Unadjusted	Adjusted ^a
COVID-19 diagnosis	5951	121887.27	48.82 (47.60-50.08)	13028	236826.63	55.01 (54.07-55.96)	0.86 (0.84-0.89)	0.84 (0.81-0.87)
COVID-19 hospitalization	1066	122689.85	8.69 (8.18-9.23)	2765	238530.10	11.59 (11.17-12.03)	0.73 (0.68-0.79)	0.68 (0.64-0.74)

Abbreviations: COVID-19, coronavirus disease 2019; RZV, recombinant zoster vaccine

^a Adjusted for covariates: body mass index, smoking, number of outpatient visits, hypertension, and other vaccinations.

Table 3. Incidence rates and hazard ratios of COVID-19 diagnosis and hospitalization among vaccinated (2 doses of RZV) versus unvaccinated individuals

Outcomes	Vaccinated (N=94895)			Unvaccinated (N=189790)			Hazard Ratio (95% CI)	
	Number of cases	Number of person-years	Incidence per 1000 person-years (95% CI)	Number of cases	Number of person-years	Incidence per 1000 person-years (95% CI)	Unadjusted	Adjusted ^a
COVID-19 diagnosis	3403	77714.97	43.79 (42.34-45.28)	7689	150668.58	51.03 (49.90-52.19)	0.83 (0.80-0.87)	0.81 (0.77-0.84)
COVID-19 hospitalization	612	78164.05	7.83 (7.23-8.48)	1676	151656.50	11.05 (10.53-11.59)	0.69 (0.63-0.76)	0.64 (0.58-0.70)

Abbreviations: COVID-19, coronavirus disease 2019; RZV, recombinant zoster vaccine

^a Adjusted for covariates: body mass index, smoking, number of outpatient visits, and other vaccinations.

Table 4. Characteristics of SARS-CoV-2 test-positive cases and test-negative controls

	Test Positive (N=75726) n (%)	Test Negative (N=340898) n (%)	Absolute Standardized Difference ^c
Age at index date, years			0.31
50-59	37127 (49.0)	122949 (36.1)	
60-69	23618 (31.2)	109724 (32.2)	
70-79	10478 (13.8)	73786 (21.6)	
≥80	4503 (5.9)	34439 (10.1)	
Sex			0.07
Female	39368 (52.0)	188539 (55.3)	
Male	36358 (48.0)	152359 (44.7)	
Race/Ethnicity			0.50
Non-Hispanic White	19061 (25.2)	147937 (43.4)	
Non-Hispanic Black	5371 (7.1)	33653 (9.9)	
Hispanic	42875 (56.6)	112928 (33.1)	
Non-Hispanic Asian	5627 (7.4)	34226 (10.0)	
Other/Unknown	2792 (3.7)	12154 (3.6)	
Body mass index ^a			0.32
<18.5	337 (0.4)	3860 (1.1)	
18.5-<25	8965 (11.8)	70079 (20.6)	
25-<30	20852 (27.5)	105730 (31.0)	
30-<35	17348 (22.9)	69340 (20.3)	
35-<40	8105 (10.7)	31094 (9.1)	
40-<45	3259 (4.3)	11767 (3.5)	
≥45	1806 (2.4)	6676 (2.0)	
Unknown	15054 (19.9)	42352 (12.4)	
Smoking ^a			0.24
No	48717 (64.3)	219476 (64.4)	
Yes	13358 (17.6)	83795 (24.6)	
Unknown	13651 (18.0)	37627 (11.0)	
Number of outpatient visits ^b			0.36
0	9556 (12.6)	23631 (6.9)	
1-4	32985 (43.6)	114891 (33.7)	
5-10	20824 (27.5)	107629 (31.6)	
≥11	12361 (16.3)	94747 (27.8)	

Number of emergency department visits ^b			0.14
0	60668 (80.1)	254199 (74.6)	
1	10127 (13.4)	54731 (16.1)	
≥2	4931 (6.5)	31968 (9.4)	
Number of hospitalizations ^b			0.07
0	65804 (86.9)	288216 (84.5)	
1	6048 (8.0)	31358 (9.2)	
≥2	3874 (5.1)	21324 (6.3)	
Frailty (top quartile) ^b	13452 (17.8)	90699 (26.6)	0.21
Baseline comorbidities ^b			
Cardiovascular disease	13226 (17.5)	92145 (27.0)	0.23
Diabetes	21328 (28.2)	88652 (26.0)	0.05
Hypertension	27689 (36.6)	148543 (43.6)	0.14
Pulmonary disease	9559 (12.6)	57428 (16.8)	0.12
Renal disease	6880 (9.1)	44884 (13.2)	0.13
Cancer	3039 (4.0)	24974 (7.3)	0.14
HIV	269 (0.4)	1604 (0.5)	0.02
Autoimmune disease	2703 (3.6)	17717 (5.2)	0.08
Other vaccinations ^b	51718 (68.3)	261421 (76.7)	0.19
Influenza vaccine	50027 (96.7)	254312 (97.3)	
PCV13/PPSV23	4558 (8.8)	24876 (9.5)	
Tdap	5709 (11.0)	27941 (10.7)	
SARS-CoV-2 test month			0.87
March 2020	3977 (1.2)	740 (1.0)	
April 2020	14834 (4.4)	2011 (2.7)	
May 2020	21942 (6.4)	1516 (2.0)	
June 2020	32736 (9.6)	4018 (5.3)	
July 2020	44639 (13.1)	7440 (9.8)	
August 2020	34386 (10.1)	2815 (3.7)	
September 2020	30468 (8.9)	2094 (2.8)	
October 2020	41914 (12.3)	3151 (4.2)	
November 2020	52420 (15.4)	10916 (14.4)	
December 2020	63582 (18.7)	41025 (54.2)	

Abbreviations: PCV13, 13-valent pneumococcal conjugate vaccine; PPSV23, pneumococcal polysaccharide vaccine; SARS-CoV-2, severe acute respiratory syndrome coronavirus 2; Tdap, tetanus, diphtheria, acellular pertussis vaccine

^a Most recent in 365 days prior to test date

^b In 365 days prior to test date

^c Potential confounders were determined by absolute standardized difference >0.1

Medical center area not shown. There were significant differences in the distribution of the test-positive and test-negative individuals across the 19 medical center areas.

Table 5. Odds ratio of RZV vaccination among SARS-CoV-2 test-positive cases versus test-negative controls

Exposure	Test Positive (N=75726)		Test Negative (N=340898)		Odds Ratio (95% CI)	
	n	%	n	%	Unadjusted	Adjusted ^a
RZV (at least 1 dose) vaccinated	6392	8.4	44786	13.1	0.61 (0.59-0.63)	0.84 (0.81-0.86)
15 days to <1 month ^b	302	0.4	1810	0.5	0.71 (0.63-0.81)	0.79 (0.69-0.90)
1 to <6 months	1703	2.3	10643	3.1	0.68 (0.65-0.72)	0.87 (0.82-0.92)
6 months to <1 year	1697	2.2	14606	4.3	0.50 (0.47-0.52)	0.83 (0.78-0.87)
≥1 year	2690	3.6	17727	5.2	0.65 (0.62-0.68)	0.82 (0.79-0.86)
RZV (2 doses) vaccinated	4108	5.4	31359	9.2	0.56 (0.54-0.58)	0.82 (0.79-0.85)
RZV unvaccinated	69334	91.6	296112	86.9	N/A ^c	N/A ^c

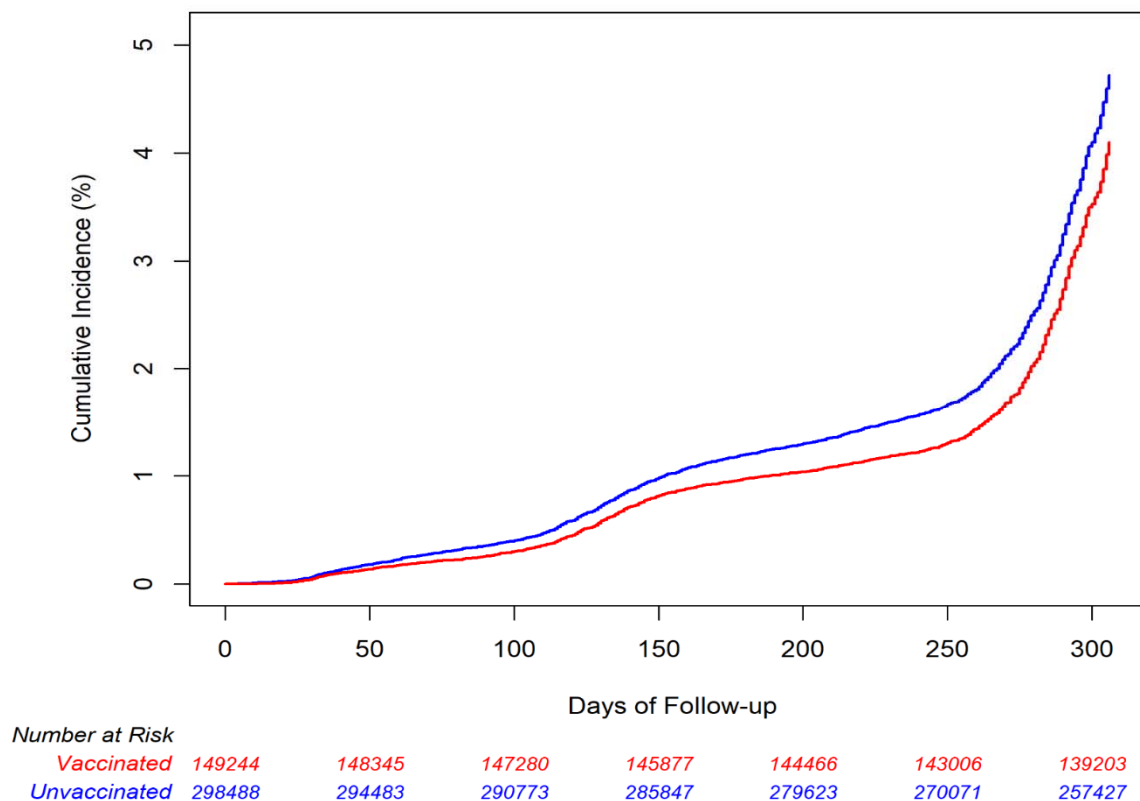
Abbreviation: RZV, recombinant zoster vaccine; SARS-CoV-2, severe acute respiratory syndrome coronavirus 2

^a Adjusted for covariates age, sex, race/ethnicity, calendar time, body mass index, smoking, number of outpatient visits, number of emergency department visits, frailty, cardiovascular disease, hypertension, pulmonary disease, renal disease, cancer, other vaccinations, and medical center area.

^b Time since most recent RZV vaccination

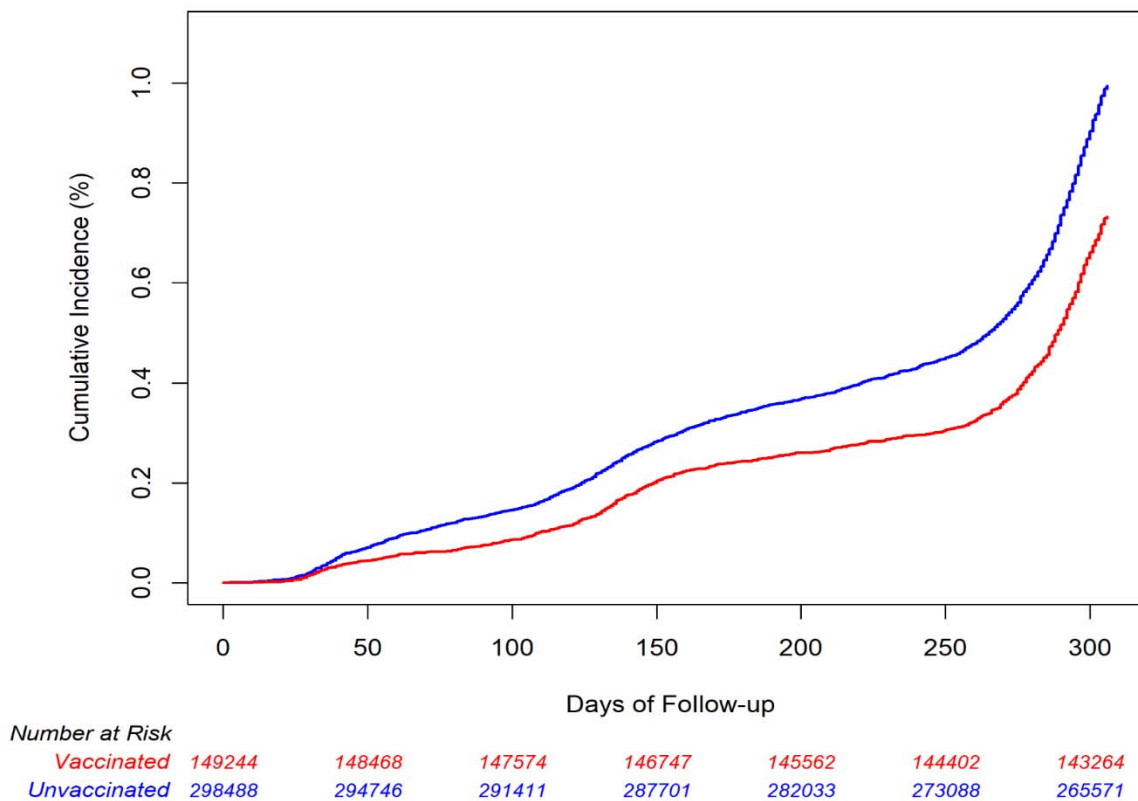
^c N/A= not applicable

Figure 1: Cumulative incidence estimates of COVID-19 diagnosis by RZV (at least 1 dose) vaccination status



Abbreviations: COVID-19, coronavirus disease 2019; RZV, recombinant zoster vaccine

Figure 2: Cumulative incidence estimates of COVID-19 hospitalization by RZV (at least 1 dose) vaccination status



Abbreviations: COVID-19, coronavirus disease 2019; RZV, recombinant zoster vaccine