

1 **Risk of cardiovascular disease after a diagnosis of common**
2 **psychiatric disorders: a matched cohort study of disease**
3 **susceptibility and progression trajectory in the UK Biobank**

4 Xin Han^{1,2}, MD; Yu Zeng^{1,2}, MS; Yannan Shang^{1,2}, PhD; Yao Hu^{1,2}, BS; Can Hou^{1,2}, PhD;
5 Huazhen Yang^{1,2}, MS; Wenwen Chen³, MS; Zhiye Ying^{1,2}, MS; Yajing Sun^{1,2}, MS; Yuanyuan
6 Qu^{1,2}, MA; Junren Wang^{1,2}, MS; Wei Zhang^{1,2,4}, MD; Fang Fang⁵, MD, PhD; Unnur A.
7 Valdimarsdóttir^{6,7,8}, PhD; Huan Song^{1,2,6*}, MD, PhD

8 1. West China Biomedical Big Data Center, West China Hospital, Sichuan University,

9 Chengdu, China

10 2. Med-X Center for Informatics, Sichuan University, Chengdu, China

11 3. Division of Nephrology, Kidney Research Institute, State Key Laboratory of Biotherapy
12 and Cancer Center, West China Hospital, Sichuan University, Chengdu, China

13 4. Mental Health Center, West China Hospital of Sichuan University, Chengdu, China

14 5. Institute of Environmental Medicine, Karolinska Institutet, Stockholm, Sweden

15 6. Center of Public Health Sciences, Faculty of Medicine, University of Iceland, Reykjavík,
16 Iceland

17 7. Department of Medical Epidemiology and Biostatistics, Karolinska Institutet, Stockholm,
18 Sweden

19 8. Department of Epidemiology, Harvard T H Chan School of Public Health, Boston, MA,
20 USA

21 * Corresponding to: Huan Song, MD, PhD, West China Biomedical Big Data Center, West

22 China Hospital, Sichuan University, Guo Xue Lane 37, Chengdu, China (telephone:

NOTE: This preprint reports new research that has not been certified by peer review and should not be used to guide clinical practice.

23 86-28-85164176 e-mail: songhuan@wchscu.cn)

24 **Word count:** abstract 245; main text 3341

25 **Abstract**

26 **Background:** Whether associations between psychiatric disorders and cardiovascular
27 diseases (CVDs) can be modified by disease susceptibility and the temporal pattern of these
28 associated CVDs remain unknown.

29 **Methods:** We conducted a matched cohort study of UK Biobank including 35,227 patients
30 with common psychiatry disorders (anxiety, depression, and stress-related disorders) between
31 1997 and 2019, together with 176,135 sex- and birth year- individually matched unexposed
32 individuals.

33 **Results:** The mean age at the index date was 51.76 years, and 66.0% of participants were
34 females. During a mean follow-up of 11.94 years, we observed an elevated risk of CVD
35 among patients with studied psychiatry disorders, compared with matched unexposed
36 individuals (hazard ratios [HRs]=1.16, 95% confidence interval [CI]: 1.14-1.19), especially
37 during the first six months of follow-up (HR=1.59 [1.42-1.79]). To assess the modification
38 role of disease susceptibility, we stratified analyses by family history of CVD and by CVD
39 PRS, which obtained similar estimates between subgroups with different susceptibilities to
40 CVD. We conducted trajectory analysis to visualize the temporal pattern of CVDs after
41 common psychiatry disorders, identifying primary hypertension, acute myocardial infarction,
42 and stroke as three main intermediate steps leading to further increased risk of other CVDs.

43 **Conclusions:** The association between common psychiatry disorders and subsequent CVD is
44 not modified by predisposition to CVD. Hypertension, acute myocardial infarction, and stroke
45 are three initial CVDs linking psychiatric disorders to other CVD sequelae, highlighting a need
46 of timely intervention on these targets to prevent further CVD sequelae among all individuals

47 with common psychiatric disorders.

48 **Key words:** Psychiatry disorders, Cardiovascular disease, Disease susceptibility, Disease

49 trajectory

50 **Funding:** This work is supported by the National Natural Science Foundation of China (No.

51 81971262 to HS), 1.3.5 project for disciplines of excellence, West China Hospital, Sichuan

52 University (No. ZYYC21005 to HS), EU Horizon2020 Research and Innovation Action Grant

53 (847776 to UV and FF).

54 **Introduction**

55 Both psychiatry disorders and cardiovascular disease (CVD) are leading causes of disability,
56 morbidity, and mortality worldwide according to the World Health Organization
57 (WHO)(DALYs et al., 2015; Whiteford et al., 2013). During the last decades, accumulating
58 evidence indicate a link between psychiatry disorders and CVD(Han et al., 2021; Kollia et al.,
59 2017; Momen et al., 2020; Song et al., 2019). Specifically, elevated risks of multiple CVDs,
60 including ischemic heart disease(Janszky, Ahnve, Lundberg, & Hemmingsson, 2010;
61 Wium-Andersen et al., 2019), hypertension(Stein et al., 2014), heart failure(Song et al., 2019),
62 atherosclerosis(Yu, Ho, Lam, Woo, & Ho, 2010), and stroke(Momen et al., 2020; Swain et al.,
63 2015), have been reported among patients with psychiatry disorders. Potential mechanisms
64 linking psychiatric disorders and cardiovascular abnormalities are multifactorial, including
65 chronic inflammation(Miller, Maletic, & Raison, 2009), alterations in hypothalamic–
66 pituitary–adrenal (HPA) axis(Jokinen & Nordstrom, 2009), and unhealthy lifestyle (e.g.,
67 smoking)(Weinberger et al., 2017).

68 Recent genome wide association studies (GWAS) have suggested a genetic predisposition
69 to different CVDs such as coronary artery disease(Consortium et al., 2013; Nikpay et al.,
70 2015) and stroke(Network & International Stroke Genetics, 2016), including multiple single
71 nucleotide polymorphisms (SNPs) significantly associated with these traits. Likewise, familial
72 factors, as a proxy for the joint impact of genetic background and shared environmental and
73 lifestyle factors, have been shown to play an important role in the development of
74 CVD(Forsdahl, 1979; Iannotti, Zuckerman, & Rifai, 2000). However, data are scarce
75 regarding whether predisposition to CVD can modify the association between psychiatry

76 disorders and subsequent CVD. Findings from a Danish twin study did not support a role of
77 shared familial factors on the associations of depression with CVD(Wium-Andersen et al.,
78 2020). In our previous study, however, we noted attenuated risk increase of CVD among
79 patients with stress-related disorders when comparing them with their full siblings, relative to
80 comparison with age- and sex-matched unexposed individuals from the general
81 populations(Song et al., 2019). These inconsistent results call for further investigations of this
82 question, ideally with direct assessment on disease susceptibility to CVD such as
83 individual-level genotype data.

84 Moreover, as there are shared etiologies and comorbidity between different
85 CVDs(Collaboration, 2015; Laurent & Boutouyrie, 2015), a further question is whether there
86 are specific CVDs that more directly related to psychiatric disorders and may lead to other
87 CVDs downstream. We therefore applied disease trajectory analysis to map out the temporal
88 pattern of CVDs after psychiatric disorders (Han et al., 2021; Siggaard et al., 2020). As the
89 illustration of the progression network of CVDs can aid the identification of key CVDs first
90 affected by psychiatric disorders, results of such analysis can be of importance in terms of
91 helping identify targets for preventive measures with the goal of reducing the risk of
92 subsequent CVDs.

93 In the present study, taking advantage of enriched phenotypic information, complete
94 follow-up and individual-level genotyping data in the UK Biobank, we aimed to clarify
95 whether disease susceptibility to CVD modifies the association of common psychiatry
96 disorders with subsequent CVDs. Further, we used trajectory network analysis to identify the
97 key CVDs directly associated with a prior diagnosis of common psychiatric disorders.

98 **Methods**

99 **Study design**

100 UK biobank is a community-based cohort study which enrolled a half million participants
101 aged 40 to 69 years at recruitment between 2006 and 2010 across England, Scotland, and
102 Wales. Baseline questionnaires and biological samples were collected at recruitment with
103 detailed description elsewhere(Sudlow et al., 2015). Health-related outcomes were obtained
104 by linkages to a range of health records(Sudlow et al., 2015). UK Biobank inpatient hospital
105 data were mapped from the Hospital Episode Statistics database, the Scottish Morbidity
106 Record, and the Patient Episode Database, covering 89% of UK Biobank participants since
107 1997. The primary care data were derived from various general practitioner computer system
108 suppliers, providing information on primary care visit for ~45% participants since
109 1985(Sudlow et al., 2015).

110 Based on these data, we conducted a matched cohort study. After the exclusion of 19
111 individuals who withdrew their informed consent forms, and 3 individuals who lost to
112 follow-up before a diagnosis of common psychiatry disorders, we identified an exposed
113 cohort of 39,960 participants who received their first diagnosis of anxiety, depression, or
114 stress-related disorders between 1 January 1997 and 31 December 2019 (**Figure 1**).

115 Individuals with those common psychiatry disorders were included in the exposed cohort
116 from the date of their diagnosis (i.e., the index date). We then excluded individuals with a
117 history of any CVD before the index date (n=4,733), leaving 35,227 exposed individuals in
118 the final analysis. For each exposed individual (i.e., the index patient), we randomly selected
119 five unexposed individuals per index patient, individually matched by sex and birth year (± 2

120 years), from individuals who were free of those common psychiatry disorders and CVD at the
121 diagnosis date of the index patient.

122 *Follow-up*

123 For all participants, follow-up was from the index date until the diagnosis of any or specific
124 CVDs, death, loss to follow-up, or the end of follow-up (31 December 2019), whichever
125 occurred first. The follow-up for matched unexposed individuals was additionally censored at
126 the time of their first diagnosis of studied psychiatry disorders, if any, during the follow-up.

127 *Ascertainment of common psychiatric disorders*

128 Common psychiatry disorders were defined as a diagnosis of anxiety, depression, or
129 stress-related disorders, based on the primary diagnoses from UK Biobank inpatient hospital
130 and primary care data. **eTable 1 in the supplement** lists details of diagnosis codes, including
131 the 9th to 10th versions of the International Classification of Diseases (ICD) codes for inpatient
132 hospital data, and version 2 and version 3 read codes (i.e., Read v2 and Read v3) for primary
133 care data. We considered a diagnosis of other psychiatry disorders before the index date as
134 history of other psychiatry disorders. Inpatient mental health diagnosis from the Hospital
135 Episode Statistics database was validated with a median accuracy of 73% against a
136 gold-standard research diagnosis(Davis et al., 2018), while the positive predictive value (PPV)
137 of Read codes for anxiety and depression from primary care data was 61%-76% against the
138 five-item Mental Health Inventory(John et al., 2016).

139 *Ascertainment of CVD*

140 With a specific focus on severe CVD consequences that require hospital care, we defined an
141 incident CVD (any or six major subtypes including hypertensive diseases, ischemic heart

142 diseases, embolism and thrombosis, arrhythmia/conduction disorders, heart failure, and
143 cerebrovascular disease) as a corresponding diagnosis documented in the UK Biobank
144 inpatient hospital data, according to ICD-9 and ICD-10 codes (**eTable 1 in the supplement**).
145 For disease trajectory analysis, we used the 3-digit ICD-10 codes for CVD identification
146 based on the UK Biobank inpatient hospital data and combined CVDs with clinical or
147 biological similarities(Han et al., 2021; Yang et al., 2019) (**eTable 2 in the supplement**). The
148 inpatient diagnosis of CVDs in UK Biobank has been validated, showing a satisfactory
149 accuracy (i.e., PPV= 72% for coronary heart disease and >90% for stroke(Kivimaki et al.,
150 2017; Woodfield et al., 2015)).

151 *Disease susceptibility of CVD*

152 In the present study, we assessed the disease susceptibility to CVD in two ways. First, we
153 defined family history of CVD by a self-reported history of heart diseases and stroke among
154 first-degree relatives (i.e., father, mother and siblings), obtained from baseline questionnaires
155 (Field ID: 20107, 20110, 20111). Second, a polygenic risk score (PRS) for CVD was
156 calculated for 376,019 individuals with eligible genotyping data (6,099,107 SNPs available
157 after a standard quality control(Marees et al., 2018)) using LDpred2(Prive, Arbel, &
158 Vilhjalmsjon, 2020), a method for PRS computation based on combination of summary
159 statistics and a matrix of correlations between genetic variants. The independent SNPs
160 associated with CVD were derived from meta-analyzed GWAS summary data from
161 CARDIoGRAMplusC4D Consortium(Nikpay et al., 2015). In a validation step, the generated
162 CVD PRS was shown to be significantly associated with an increased risk of the CVD

163 phenotype in our dataset (odds ratio [95% confidence intervals (CIs)]: 1.43 [1.40-1.45], per
164 one unite increase of PRS).

165 *Covariates*

166 We retrieved information on educational levels, ethnicity, smoking status, Townsend
167 deprivation index (TDI), and body mass index (BMI) through the baseline questionnaires.

168 Based on the UK Biobank inpatient hospital data, we calculated the Charlson comorbidity
169 index (CCI) on the index date for each individual, as a proxy of their baseline comorbidity
170 level(Quan et al., 2005).

171 **Statistical analysis**

172 We used Cox model to estimate hazard ratios (HRs) with 95% CIs of any CVD, in relation to
173 a previous diagnosis of common psychiatry disorders, using time since the index date as the
174 underlying time scale. The models were stratified by matched factors (sex and birth year), and
175 partially or fully adjusted for educational levels, ethnicity, smoking status, TDI, BMI, history
176 of other psychiatry disorders, family history of CVD, and CCI. As a high-risk time window
177 for CVD has been indicated after diagnosis of psychiatric disorders(Song et al., 2019), we
178 first visualized the changes of HRs over time by stratifying the Cox models to different
179 follow-up periods (≤ 3 , 3-6, 6-12, 12-18, 18-24, 24-60, 60-120, 120-240, and >240 months
180 follow-up). As the HR during the first six months of follow-up period was greater than those
181 of the later times (**eFigure 1 in the supplement**), we assessed the risk of CVD within and
182 beyond the first six months (i.e., ≤ 6 or >6 months of follow-up) separately in later analyses.
183 In addition, we did separate analyses for six main types of CVDs as well as for anxiety,
184 depression and stress-related disorders.

185 To determine the impact of disease susceptibility to CVD on the association between
186 common psychiatric disorders and CVD, we conducted stratified analyses by family history
187 of CVD (yes or no) and by level of CVD PRS (high, moderate, or low by tertile distribution).

188 The temporal progression of CVD subsequent to a diagnosis of psychiatry disorders was
189 explored using trajectory network analysis as described in our previous study(Han et al.,
190 2021). In brief, a phenome-wide association analysis (PheWAS) was performed to identify
191 specific CVDs associated with a prior diagnosis of psychiatry disorders. In this step, the
192 p-value for statistical significance was set to 0.05/number of analyses performed (Bonferroni
193 corrections), to account for multiple testing. We then used binomial tests to identify pairs of
194 CVD events with a temporal order, and assessed the magnitude of the associations between
195 CVD pairs through a nested case-control study design and conditional logistic regression
196 (eFigure 2 in the supplement).

197 To test the robustness of our results to the definition of CVD, we reassessed these
198 associations by identifying CVD solely based on the primary diagnosis from UK Biobank
199 inpatient hospital data. All statistical analyses were conducted by R (version 4.0.2), PLINK
200 (version 1.9), Python (version 3.8) and Cytoscape (version 3.8.0). Codes script used in the
201 primary analyses are available (Source code 1).

202

203 **Results**

204 In total, we identified 35,227 patients with studied common psychiatry disorders, together
205 with 176,135 sex- and birth year- matched unexposed individuals (Figure 1). Table 1 shows
206 the basic characteristics of the study population. Mean age at index date was 51.76 years, and

207 66.0% of participants were females. Compared with matched unexposed individuals, patients
208 with common psychiatry disorders were more likely to be smokers (either previous or current,
209 47.4% vs 41.6%), have a history of other psychiatric disorders (16.0% vs 4.1%), have lower
210 educational level (41.0% vs 44.9% for university level), but higher BMI (26.6% vs 22.2% for
211 more than 30 Kg/M²).

212 During a mean follow-up time of 11.94 years, 10,619 (crude incidence rate: 25.41 per 1000
213 person-years) and 43,192 (20.52 per 1000 person-years) incident cases of CVD were
214 identified among the exposed and matched unexposed individuals, respectively. According to
215 the fully adjusted Cox model, the risk of CVD was higher for patients with common
216 psychiatry disorders compared with matched unexposed individuals (HR [95% CIs]: 1.16
217 [1.14-1.19]), especially during the first six months of follow-up (1.59 [1.42-1.79], **Table 2**).
218 Except for heart failure, all other five main categories of CVD were associated with
219 psychiatry disorders, with the strongest association observed for cerebrovascular disease (1.28
220 [1.19-1.38], **Table 2**). The result patterns were similar for the periods beyond six months of
221 follow-up, while the highest HR was for heart failure within six months of follow-up (2.66
222 [1.42-4.97], **Table 2**). Comparable results were found for anxiety, depression, and
223 stress-related disorders (**eTable 3 in the supplement**).

224 *The role of disease susceptibility*

225 We observed similar associations among individuals with and without a family history of
226 CVD (1.54 [1.31-1.80] vs 1.61 [1.25-2.07], $P_{\text{interaction}} = 0.7703$ within six months of follow-up,
227 and 1.15 [1.11-1.18] vs 1.21 [1.16-1.27], $P_{\text{interaction}} = 0.0683$ beyond six months follow-up,
228 **Table 3**). Likewise, comparable risk elevations of CVD were observed among individuals

229 with different levels of CVD PRS, within six months of follow-up (2.29 [1.58-3.32] and 1.41
230 [0.98-2.02] for low and high PRS, $P_{\text{interaction}} = 0.0667$) and beyond (1.25 [1.16-1.34] and 1.18
231 [1.10-1.25] for low and high PRS, $P_{\text{interaction}} = 0.2412$) (**Table 3**). Analyses on subtypes of
232 CVD by family history of CVD and CVD PRS showed similar result patterns (**eFigure 3 in**
233 **the supplement**).

234 *Trajectory network analysis*

235 15 CVDs with more than 150 cases among patients with common psychiatry disorders were
236 involved in the PheWAS analysis (**eFigure 2 in the supplement**). Among these, eight CVDs
237 showed significant associations with a prior diagnosis of common psychiatry disorders
238 (**eTable 5 in the supplement**), forming 56 CVD pairs among which 21 passed the threshold
239 of prevalence (i.e., experienced by at least 75 individuals). Finally, 12 pairs contributed to the
240 visualized trajectory networks (**Figure 2 and eTable 5 in the supplement**), presenting as a
241 CVD disease tree originated from primary hypertension, acute myocardial infarction and
242 stroke, which further connected to a wide range of other CVDs.

243 In the sensitivity analysis, defining the CVD cases solely by primary diagnoses, instead
244 of all diagnoses, in UK Biobank inpatient data led to largely similar estimates (**Tables 6 and 7**
245 **in the supplement**). However, the number of CVDs involved in the trajectory network was
246 substantially reduced, due to insufficient data power, where we had only 2 CVD pairs in the
247 disease tree with an initial node of acute myocardial infarction (**eFigures 4 and 5 in the**
248 **supplement**).

249

250 **Discussion**

251 In this matched cohort study of UK Biobank, we found that individuals with common
252 psychiatry disorders (i.e., anxiety, depression, and stress-related disorders) were at elevated
253 risk of multiple CVDs, especially within first six months of follow-up. With mutually verified
254 results obtained from stratified analyses by family history of CVD and by CVD PRS, the
255 observed associations seemed to be constant across individuals with different predisposition
256 to CVD. Furthermore, trajectory network analysis indicated that primary hypertension, acute
257 myocardial infarction, and stroke were the CVD types firstly affected by a diagnosis of
258 common psychiatric disorders which then further led to other CVDs downstream. This result
259 highlights the need of timely intervention on these targets for preventing or interrupting
260 further CVD sequelae among individuals with common psychiatric disorders.

261 In line with our results, multiple large-scale cohort studies have reported an association
262 between a diagnosis of psychiatry disorders and subsequently elevated risk of CVD, despite
263 often insufficient control of important confounders, such as lifestyle(Han et al., 2021; Song et
264 al., 2019; Stein et al., 2014; Wium-Andersen et al., 2019) and familial factors(Han et al., 2021;
265 Kollia et al., 2017; Momen et al., 2020; Stein et al., 2014; Swain et al., 2015; Yu et al., 2010).
266 Our finding that the association was not modified by family history of CVD gains support
267 from two recent Danish twin studies(Wium-Andersen et al., 2020; Wium-Andersen et al.,
268 2019), both of which concluded that genetic factors and early-life environment did not explain
269 the association of depression with ischemic heart disease and stroke using a study sample of
270 6714 twins(Wium-Andersen et al., 2019) and 63,038 twins(Wium-Andersen et al., 2020),
271 respectively. The Nurses' Health Study II and the Normative Aging Study also revealed no
272 attenuation in the magnitude of association between psychiatric disorders and CVD after

273 additional adjustment for family history of CVD(Kubzansky, Koenen, Spiro, Vokonas, &
274 Sparrow, 2007; Sumner et al., 2015). Our analysis on CVD PRS expanded this
275 knowledgebase further and, for the first time, showed similar associations across groups with
276 different levels of disease susceptibility to CVD. Taken together, these results underscore the
277 importance of surveillance for CVD events among individuals with psychiatry disorders,
278 regardless of disease liability.

279 Based on the trajectory network analysis, we identified three specific CVDs first affected
280 by a prior diagnosis of common psychiatric disorders (i.e., primary hypertension, followed by
281 acute myocardial infarction and stroke). Although there are no existing studies on CVD
282 trajectory networks after psychiatry disorders, the direct effect of psychiatric disorders on
283 specifically these CVDs has been implied in previous studies. Mendelian randomization
284 analyses showed associations of genetic predisposition to depression with ischemic stroke(Cai
285 et al., 2019) and myocardial infarction(Lu, Wang, Georgakis, Lin, & Zheng, 2021), suggesting
286 a causal link between depression and these CVDs. Also, findings of experimental studies
287 indicated direct physiological responses to mental stress, including endothelial dysfunction
288 (monkeys(Strawn et al., 1991) and human(Ghiadoni et al., 2000)), dysregulation of blood
289 pressure(Nas, Riese, van Roon, & Rijdsdijk, 2020), and activated HPA axis(Jokinen &
290 Nordstrom, 2009). Moreover, similar downstream CVDs (e.g., chronic ischemic heart
291 diseases, other cerebrovascular diseases, and other cardiac arrhythmias) after primary
292 hypertension, and acute myocardial infarction can be identified using a disease trajectory
293 browser that was developed based on national data from inpatient wards, outpatient clinics,
294 and emergency room visits of Denmark(Siggaard et al., 2020). Collectively, these data

295 suggest that these key CVDs may be potential targets for preventing or interrupting further
296 CVD sequels among individuals with psychiatric disorders.

297 The major strength of our study includes the multidimensional data from UK Biobank, i.e.,
298 rich phenotypic information on family history of CVD, health-related outcomes, and
299 individual-level genotype information, which enabled a comprehensive assessment on the
300 modification role of CVD susceptibility on the studied associations and the temporal patterns
301 of CVD development following a diagnosis of common psychiatry disorders. This rich data
302 source also enabled vigorous control of a wide range of important confounders, including
303 socio-demographic and behavioral factors, as well as baseline health status. Other strengths
304 include the long and complete follow-up (mean follow-up time of 11.94 years), providing
305 sufficient surveillance period for CVD outcomes, and the independent collections of
306 diagnoses for psychiatry disorders and CVD, which minimizes the risk of information bias.

307 Our study has several limitations. First, as both primary and secondary diagnoses from UK
308 Biobank inpatient hospital data were used for CVD identification, the diagnosis date for some
309 mild forms of CVDs (e.g., primary hypertension) may not be accurate, leading to a risk of
310 reverse causality. Consequently, the appearance of primary hypertension as the initial node in
311 the CVD trajectory tree of the main analysis may rather imply the importance of primary
312 hypertension as a comorbidity of psychiatric disorders on other subsequent CVDs, instead of
313 a key progression pathway. Nevertheless, our analyses on acute and severe CVDs (e.g., acute
314 myocardial infarction) should be less affected by such concern. Second, the SNPs used in the
315 calculation for CVD PRS was obtained from GWAS studies which mainly focused on
316 coronary arterial diseases, not all CVDs. However, a common genetic basis has been

317 demonstrated between different CVDs(Dichgans et al., 2014; Jafaripour, Sasanejad,
318 Dadgarmoghaddam, & Sadr-Nabavi, 2019), and the generated PRS has been confirmed to be
319 associated with the CVD phenotype of our dataset in our validation step. Furthermore, we
320 obtained largely similar result patterns in the analyses of six major categories of CVDs. Third,
321 as the trajectory network analysis is a data-driven approach which requires a large sample size,
322 our analysis might have missed some rare CVDs in the trajectory networks after psychiatric
323 disorders. Further, because some important confounders, such as BMI and smoking status,
324 were measured at baseline, they might not accurately reflect the real status of these factors at
325 the time of psychiatric disorder diagnosis. Last, generalization of our findings to the entire
326 UK population, or other populations, should be done with caution because the UK Biobank
327 participants were overall healthier than the general UK population(Sudlow et al., 2015).

328 In conclusion, individuals with common psychiatry disorders have an elevated risk of
329 CVD regardless of their predisposition to CVD. Hypertension, acute myocardial infarction,
330 and stroke represent the three initial CVDs that link psychiatric disorders to further CVDs,
331 highlighting a need of a timely intervention to prevent further CVD sequels among
332 individuals with common psychiatric disorders.

333

334 **Acknowledgments**

335 This research has been conducted using the UK Biobank Resource under Application 54803.
336 We thank the team members and colleagues involved in West China Biomedical Big Data
337 Center- UK Biobank project for their support.

338

339 **Contributions**

340 HS, FF, and UAV were responsible for the study concept and design. XH, YH, YajingS, ZY,
341 YQ, and JW did the data and project management. XH, YZ, HY, WC, and CH did the data
342 cleaning and analysis. XH, YZ, HS, and FF interpreted the data. XH, YananS, UAV, FF, WZ,
343 and HS drafted the manuscript. All authors approved the final manuscript as submitted and
344 agree to be accountable for all aspects of the work. The corresponding author attests that all
345 listed authors meet authorship criteria and that no others meeting the criteria have been
346 omitted.

347

348 **Funding**

349 This work is supported by the National Natural Science Foundation of China (No. 81971262
350 to HS), 1.3.5 project for disciplines of excellence, West China Hospital, Sichuan University
351 (No. ZYYC21005 to HS), EU Horizon2020 Research and Innovation Action Grant (847776
352 to UV and FF).

353

354 **Disclosure**

355 We declare no competing interests.

356

357 **Data availability**

358 Source data for Figure 2 has been provided in the supplementary (eTable 5). Original Data is
359 held by UK Biobank Limited. Due to the ethical approval of UK Biobank from the NHS
360 National Research Ethics Service and the ethical approval of the current study, we cannot

361 make the data publicly available. However, all researchers can access the data upon making
362 an application to the UK Biobank. Detailed information on data application can be found at
363 <http://www.ukbiobank.ac.uk/>.

364

365 **Ethics approval**

366 The UK Biobank has full ethical approval from the NHS National Research Ethics Service
367 (reference number: 16/NW/0274), and this study was also approved by the biomedical
368 research ethics committee of West China Hospital (reference number: 2019-1171).

369

370 **Additional information**

371 Supplementary Tables and Figures are available at online website.

372

References

- 373 Cai, H., Cai, B., Zhang, H., Sun, W., Wang, Y., Zhou, S., . . . Liang, J. (2019). Major depression
374 and small vessel stroke: a Mendelian randomization analysis. *J Neurol*, *266*(11),
375 2859-2866. doi:10.1007/s00415-019-09511-w
- 376 Collaboration, T. E. R. F. (2015). Association of Cardiometabolic Multimorbidity With Mortality.
377 *JAMA*, *314*(1), 52-60. doi:10.1001/jama.2015.7008
- 378 Consortium, C. A. D., Deloukas, P., Kanoni, S., Willenborg, C., Farrall, M., Assimes, T. L., . . .
379 Samani, N. J. (2013). Large-scale association analysis identifies new risk loci for
380 coronary artery disease. *Nat Genet*, *45*(1), 25-33. doi:10.1038/ng.2480
- 381 DALYs, G. B. D., Collaborators, H., Murray, C. J., Barber, R. M., Foreman, K. J., Abbasoglu
382 Ozgoren, A., . . . Vos, T. (2015). Global, regional, and national disability-adjusted life
383 years (DALYs) for 306 diseases and injuries and healthy life expectancy (HALE) for
384 188 countries, 1990-2013: quantifying the epidemiological transition. *Lancet (London,*
385 *England)*, *386*(10009), 2145-2191. doi:10.1016/S0140-6736(15)61340-X
- 386 Davis, K. A. S., Bashford, O., Jewell, A., Shetty, H., Stewart, R. J., Sudlow, C. L. M., & Hotopf,
387 M. H. (2018). Using data linkage to electronic patient records to assess the validity of
388 selected mental health diagnoses in English Hospital Episode Statistics (HES). *PLoS*
389 *One*, *13*(3), e0195002. doi:10.1371/journal.pone.0195002
- 390 Dichgans, M., Malik, R., Konig, I. R., Rosand, J., Clarke, R., Gretarsdottir, S., . . . International
391 Stroke Genetics, C. (2014). Shared genetic susceptibility to ischemic stroke and
392 coronary artery disease: a genome-wide analysis of common variants. *Stroke*, *45*(1),
393 24-36. doi:10.1161/STROKEAHA.113.002707

- 394 Forsdahl, A. (1979). Are poor living conditions in childhood and adolescence and important
395 risk factor for arteriosclerotic heart disease? *Int J Rehabil Res*, 2(2), 238-239.
396 doi:10.1097/00004356-197905000-00008
- 397 Ghiadoni, L., Donald, A. E., Cropley, M., Mullen, M. J., Oakley, G., Taylor, M., . . . Deanfield, J.
398 E. (2000). Mental stress induces transient endothelial dysfunction in humans.
399 *Circulation*, 102(20), 2473-2478. doi:10.1161/01.cir.102.20.2473
- 400 Han, X., Hou, C., Yang, H., Chen, W., Ying, Z., Hu, Y., . . . Song, H. (2021). Disease
401 trajectories and mortality among individuals diagnosed with depression: a
402 community-based cohort study in UK Biobank. *Mol Psychiatry*.
403 doi:10.1038/s41380-021-01170-6
- 404 Iannotti, R. J., Zuckerman, A. E., & Rifai, N. (2000). Correlations of cardiovascular disease risk
405 factors between African American siblings. *J Pediatr*, 136(4), 511-519.
406 doi:10.1016/s0022-3476(00)90015-5
- 407 Jafaripour, S., Sasanejad, P., Dadgarmoghaddam, M., & Sadr-Nabavi, A. (2019). ADAMTS7
408 and ZC3HC1 Share Genetic Predisposition to Coronary Artery Disease and Large
409 Artery Ischemic Stroke. *Crit Rev Eukaryot Gene Expr*, 29(4), 351-361.
410 doi:10.1615/CritRevEukaryotGeneExpr.2019028209
- 411 Janszky, I., Ahnve, S., Lundberg, I., & Hemmingsson, T. (2010). Early-onset depression,
412 anxiety, and risk of subsequent coronary heart disease: 37-year follow-up of 49,321
413 young Swedish men. *J Am Coll Cardiol*, 56(1), 31-37. doi:10.1016/j.jacc.2010.03.033
- 414 John, A., McGregor, J., Fone, D., Dunstan, F., Cornish, R., Lyons, R. A., & Lloyd, K. R. (2016).
415 Case-finding for common mental disorders of anxiety and depression in primary care:

- 416 an external validation of routinely collected data. *BMC Med Inform Decis Mak*, 16, 35.
- 417 doi:10.1186/s12911-016-0274-7
- 418 Jokinen, J., & Nordstrom, P. (2009). HPA axis hyperactivity and cardiovascular mortality in
419 mood disorder inpatients. *J Affect Disord*, 116(1-2), 88-92.
420 doi:10.1016/j.jad.2008.10.025
- 421 Kivimaki, M., Batty, G. D., Singh-Manoux, A., Britton, A., Brunner, E. J., & Shipley, M. J. (2017).
422 Validity of Cardiovascular Disease Event Ascertainment Using Linkage to UK Hospital
423 Records. *Epidemiology*, 28(5), 735-739. doi:10.1097/EDE.0000000000000688
- 424 Kollia, N., Panagiotakos, D., Georgousopoulou, E., Chrysohoou, C., Yannakoulia, M.,
425 Stefanadis, C., . . . investigators, A. S. (2017). Exploring the path between depression,
426 anxiety and 10-year cardiovascular disease incidence, among apparently healthy
427 Greek middle-aged adults: The ATTICA study. *Maturitas*, 106, 73-79.
428 doi:10.1016/j.maturitas.2017.09.005
- 429 Kubzansky, L. D., Koenen, K. C., Spiro, A., 3rd, Vokonas, P. S., & Sparrow, D. (2007).
430 Prospective study of posttraumatic stress disorder symptoms and coronary heart
431 disease in the Normative Aging Study. *Arch Gen Psychiatry*, 64(1), 109-116.
432 doi:10.1001/archpsyc.64.1.109
- 433 Laurent, S., & Boutouyrie, P. (2015). The structural factor of hypertension: large and small
434 artery alterations. *Circ Res*, 116(6), 1007-1021.
435 doi:10.1161/CIRCRESAHA.116.303596
- 436 Lu, Y., Wang, Z., Georgakis, M. K., Lin, H., & Zheng, L. (2021). Genetic Liability to Depression
437 and Risk of Coronary Artery Disease, Myocardial Infarction, and Other Cardiovascular

- 438 Outcomes. *J Am Heart Assoc*, *10*(1), e017986. doi:10.1161/JAHA.120.017986
- 439 Marees, A. T., de Kluiver, H., Stringer, S., Vorspan, F., Curis, E., Marie-Claire, C., & Derks, E.
440 M. (2018). A tutorial on conducting genome-wide association studies: Quality control
441 and statistical analysis. *Int J Methods Psychiatr Res*, *27*(2), e1608.
442 doi:10.1002/mpr.1608
- 443 Miller, A. H., Maletic, V., & Raison, C. L. (2009). Inflammation and its discontents: the role of
444 cytokines in the pathophysiology of major depression. *Biol Psychiatry*, *65*(9), 732-741.
445 doi:10.1016/j.biopsych.2008.11.029
- 446 Momen, N. C., Plana-Ripoll, O., Agerbo, E., Benros, M. E., Borglum, A. D., Christensen, M.
447 K., . . . McGrath, J. J. (2020). Association between Mental Disorders and Subsequent
448 Medical Conditions. *N Engl J Med*, *382*(18), 1721-1731. doi:10.1056/NEJMoa1915784
- 449 Nas, Z., Riese, H., van Roon, A. M., & Rijdsdijk, F. V. (2020). Higher Anxiety Is Associated with
450 Lower Cardiovascular Autonomic Function in Female Twins. *Twin Res Hum Genet*,
451 *23*(3), 156-164. doi:10.1017/thg.2020.47
- 452 Network, N. S. G., & International Stroke Genetics, C. (2016). Loci associated with ischaemic
453 stroke and its subtypes (SiGN): a genome-wide association study. *Lancet Neurol*,
454 *15*(2), 174-184. doi:10.1016/S1474-4422(15)00338-5
- 455 Nikpay, M., Goel, A., Won, H. H., Hall, L. M., Willenborg, C., Kanoni, S., . . . Farrall, M. (2015).
456 A comprehensive 1,000 Genomes-based genome-wide association meta-analysis of
457 coronary artery disease. *Nat Genet*, *47*(10), 1121-1130. doi:10.1038/ng.3396
- 458 Prive, F., Arbel, J., & Vilhjalmsson, B. J. (2020). LDpred2: better, faster, stronger.
459 *Bioinformatics*. doi:10.1093/bioinformatics/btaa1029

- 460 Quan, H., Sundararajan, V., Halfon, P., Fong, A., Burnand, B., Luthi, J. C., . . . Ghali, W. A.
461 (2005). Coding algorithms for defining comorbidities in ICD-9-CM and ICD-10
462 administrative data. *Med Care*, 43(11), 1130-1139.
463 doi:10.1097/01.mlr.0000182534.19832.83
- 464 Siggaard, T., Reguant, R., Jorgensen, I. F., Haue, A. D., Lademann, M., Aguayo-Orozco,
465 A., . . . Brunak, S. (2020). Disease trajectory browser for exploring temporal,
466 population-wide disease progression patterns in 7.2 million Danish patients. *Nat*
467 *Commun*, 11(1), 4952. doi:10.1038/s41467-020-18682-4
- 468 Song, H., Fang, F., Arnberg, F. K., Mataix-Cols, D., Fernandez de la Cruz, L., Almqvist, C., . . .
469 Valdimarsdottir, U. A. (2019). Stress related disorders and risk of cardiovascular
470 disease: population based, sibling controlled cohort study. *BMJ*, 365, l1255.
471 doi:10.1136/bmj.l1255
- 472 Stein, D. J., Aguilar-Gaxiola, S., Alonso, J., Bruffaerts, R., de Jonge, P., Liu, Z., . . . Scott, K. M.
473 (2014). Associations between mental disorders and subsequent onset of hypertension.
474 *Gen Hosp Psychiatry*, 36(2), 142-149. doi:10.1016/j.genhosppsy.2013.11.002
- 475 Strawn, W. B., Bondjers, G., Kaplan, J. R., Manuck, S. B., Schwenke, D. C., Hansson, G.
476 K., . . . Clarkson, T. B. (1991). Endothelial dysfunction in response to psychosocial
477 stress in monkeys. *Circ Res*, 68(5), 1270-1279. doi:10.1161/01.res.68.5.1270
- 478 Sudlow, C., Gallacher, J., Allen, N., Beral, V., Burton, P., Danesh, J., . . . Collins, R. (2015). UK
479 biobank: an open access resource for identifying the causes of a wide range of
480 complex diseases of middle and old age. *PLoS Med*, 12(3), e1001779.
481 doi:10.1371/journal.pmed.1001779

- 482 Sumner, J. A., Kubzansky, L. D., Elkind, M. S., Roberts, A. L., Agnew-Blais, J., Chen, Q., . . .
- 483 Koenen, K. C. (2015). Trauma Exposure and Posttraumatic Stress Disorder
- 484 Symptoms Predict Onset of Cardiovascular Events in Women. *Circulation*, *132*(4),
- 485 251-259. doi:10.1161/CIRCULATIONAHA.114.014492
- 486 Swain, N. R., Lim, C. C., Levinson, D., Fiestas, F., de Girolamo, G., Moskalewicz, J., . . . Scott,
- 487 K. M. (2015). Associations between DSM-IV mental disorders and subsequent
- 488 non-fatal, self-reported stroke. *J Psychosom Res*, *79*(2), 130-136.
- 489 doi:10.1016/j.jpsychores.2015.05.008
- 490 Weinberger, A. H., Kashan, R. S., Shpigel, D. M., Esan, H., Taha, F., Lee, C. J., . . . Goodwin,
- 491 R. D. (2017). Depression and cigarette smoking behavior: A critical review of
- 492 population-based studies. *Am J Drug Alcohol Abuse*, *43*(4), 416-431.
- 493 doi:10.3109/00952990.2016.1171327
- 494 Whiteford, H. A., Degenhardt, L., Rehm, J., Baxter, A. J., Ferrari, A. J., Erskine, H. E., . . . Vos,
- 495 T. (2013). Global burden of disease attributable to mental and substance use
- 496 disorders: findings from the Global Burden of Disease Study 2010. *Lancet (London,*
- 497 *England)*, *382*(9904), 1575-1586. doi:10.1016/S0140-6736(13)61611-6
- 498 Wium-Andersen, M. K., Villumsen, M. D., Wium-Andersen, I. K., Jorgensen, M. B., Hjelmberg,
- 499 J. V. B., Christensen, K., & Osler, M. (2020). The familial and genetic contribution to
- 500 the association between depression and cardiovascular disease: a twin cohort study.
- 501 *Mol Psychiatry*. doi:10.1038/s41380-020-00954-6
- 502 Wium-Andersen, M. K., Wium-Andersen, I. K., Jorgensen, M. B., McGue, M., Jorgensen, T. S.
- 503 H., Christensen, K., & Osler, M. (2019). The association between depressive mood

504 and ischemic heart disease: a twin study. *Acta Psychiatr Scand*, 140(3), 265-274.
505 doi:10.1111/acps.13072

506 Woodfield, R., Grant, I., Group, U. K. B. S. O., Follow-Up, U. K. B., Outcomes Working, G., &
507 Sudlow, C. L. (2015). Accuracy of Electronic Health Record Data for Identifying Stroke
508 Cases in Large-Scale Epidemiological Studies: A Systematic Review from the UK
509 Biobank Stroke Outcomes Group. *PLoS One*, 10(10), e0140533.
510 doi:10.1371/journal.pone.0140533

511 Yang, H., Pawitan, Y., He, W., Eriksson, L., Holowko, N., Hall, P., & Czene, K. (2019). Disease
512 trajectories and mortality among women diagnosed with breast cancer. *Breast Cancer*
513 *Res*, 21(1), 95. doi:10.1186/s13058-019-1181-5

514 Yu, R. H., Ho, S. C., Lam, C. W., Woo, J. L., & Ho, S. S. (2010). Psychological factors and
515 subclinical atherosclerosis in postmenopausal Chinese women in Hong Kong.
516 *Maturitas*, 67(2), 186-191. doi:10.1016/j.maturitas.2010.06.014
517

518 **Figure legends:**

519 **Figure 1** Flow chart the participants selection

520 This figure shows the study design, the inclusion and exclusion process of study population selection.

521

522 **Figure 2** Trajectory progression of cardiovascular disease following a diagnosis of common
523 psychiatry disorders

524 This figure illustrates following trajectory progression of cardiovascular disease identified in our

525 analysis. The combined cardiovascular diseases are shown within the circle. The color of the circle

526 represents the hazard ratios of this cardiovascular disease when comparing patients with common

527 psychiatry disorders to matched unexposed individuals. The number above the arrow connecting two

528 circles corresponds to the number of pairs of two cardiovascular disease events among patients with

529 common psychiatry disorders. The color of the arrows indicates the odds ratio of the sequential

530 association between the two cardiovascular disease events among patients with common psychiatry

531 disorders.

532 **Table 1** Baselines characteristics of the study cohort

| | Total individuals | Individuals with psychiatry disorders (n=35,227) | Matched individuals without psychiatry disorders^b (n=176,135) |
|--|--------------------------|---|---|
| Follow-up time (years), mean (SD) | 11.94 (5.76) | 11.86 (5.81) | 11.95 (5.75) |
| Age at index date, mean (SD) | 51.76 (8.96) | 51.72 (9.00) | 51.77 (8.96) |
| Sex (%) | | | |
| Female | 139446 (66.0) | 23241 (66.0) | 116205 (66.0) |
| Male | 71916 (34.0) | 11986 (34.0) | 59930 (34.0) |
| Educational levels (%) | | | |
| University | 93568 (44.3) | 14452 (41.0) | 79116 (44.9) |
| High school | 24712 (11.7) | 3926 (11.1) | 20786 (11.8) |
| Middle school | 59307 (28.1) | 10219 (29.0) | 49088 (27.9) |
| Unknown | 33775 (16.0) | 6630 (18.8) | 27145 (15.4) |
| Ethnicity (%) | | | |
| White | 189912 (89.9) | 32142 (91.2) | 157770 (89.6) |
| Others | 20304 (9.6) | 2899 (8.2) | 17405 (9.9) |
| Unknown | 1146 (0.5) | 186 (0.5) | 960 (0.5) |
| BMI (%) | | | |
| < 18.5 | 1320 (0.6) | 216 (0.6) | 1104 (0.6) |
| 18.5-25 | 74888 (35.4) | 11180 (31.7) | 63708 (36.2) |
| 25-30 | 85499 (40.5) | 14257 (40.5) | 71242 (40.4) |
| > 30 | 48488 (22.9) | 9353 (26.6) | 39135 (22.2) |
| Unknown | 1167 (0.6) | 221 (0.6) | 946 (0.5) |
| Smoking status (%) | | | |
| Never | 120348 (56.9) | 18319 (52.0) | 102029 (57.9) |
| Previous smokers | 66836 (31.6) | 11593 (32.9) | 55243 (31.4) |
| Current smokers | 22991 (10.9) | 5101 (14.5) | 17890 (10.2) |
| Unknown | 1187 (0.6) | 214 (0.6) | 973 (0.6) |
| Townsend deprivation index^a, mean (SD) | -1.25 (3.10) | -1.02 (3.16) | -1.29 (3.09) |
| History of other psychiatry disorders (%) | | | |
| No | 198511 (93.9) | 29594 (84.0) | 168917 (95.9) |
| Yes | 12851 (6.1) | 5633 (16.0) | 7218 (4.1) |
| Family history of | | | |

| | | | |
|---------------------------------|----------------|---------------|----------------|
| CVD (%) | | | |
| No | 93808 (44.4) | 14973 (42.5) | 78835 (44.8) |
| Yes | 117554 (55.6) | 20254 (57.5) | 97300 (55.2) |
| CVD polygenic risk score | | | |
| Low | 54110 (25.60%) | 9243 (26.24%) | 44867 (25.47%) |
| Intermediate | 54110 (25.60%) | 9285 (26.36%) | 44825 (25.45%) |
| High | 54125 (25.61%) | 9400 (26.68%) | 44725 (25.39%) |
| Unknown | 49017 (23.19%) | 7299 (20.72%) | 41718 (23.69%) |
| CCI score, mean (SD) | 0.01 (0.19) | 0.01 (0.22) | 0.01 (0.19) |

533 This table shows the basic characteristics of the patients with common psychiatry disorders and their
534 matched unexposed individuals.

535 Abbreviation: CCI: Charlson comorbidity index; SD: standard deviation; BMI: Body Mass Index;
536 CVD: cardiovascular disease.

537 ^aTownsend deprivation index was assigned to each individual based on their postcode locations, with a
538 greater index score implying a greater degree of deprivation; missing data of TDI (n=300) was replaced
539 by mean TDI of all individuals.

540 ^bAt most 5 participants who were alive, retained in the cohort and free of psychiatry disorders at the
541 corresponding index date were individually matched to each individual with psychiatry disorders based
542 on sex, and year of birth.

543 **Table 2** Hazard ratios (HRs) with 95% confidence intervals (CIs) of cardiovascular disease among patients with common psychiatry disorders compared to
 544 matched unexposed individuals

| | All individuals | | <= 6 months follow-up | | > 6 months follow-up | |
|---|--|--------------------------|--|--------------------------|--|--------------------------|
| | No. of cases (incidence ^a) in patients/match ed individuals | HR (95% CI) ^b | No. of cases (incidence*) in patients/matched individuals | HR (95% CI) [#] | No. of cases (incidence*) in patients/matched individuals | HR (95% CI) [#] |
| Model information | | | | | | |
| Controlled for sex, birth year, educational level, ethnicity, smoking status, and TDI | | 1.23 (1.21-1.26) | | 1.70 (1.52-1.91) | | 1.22 (1.19-1.25) |
| As above + BMI | 10619 (25.41)/43192 | 1.20 (1.17-1.23) | 412 (23.88)/1183 (13.68) | 1.66 (1.48-1.86) | 10207 (25.47) /41403 (20.71) | 1.18 (1.16-1.21) |
| As above + history of other psychiatry disorders | (20.52) | 1.17 (1.14-1.20) | | 1.61 (1.43-1.81) | | 1.16 (1.13-1.18) |
| As above + family history of CVDs | | 1.16 (1.14-1.19) | | 1.59 (1.41-1.79) | | 1.15 (1.12-1.18) |
| As above + CCI | | 1.16 (1.14-1.19) | | 1.59 (1.42-1.79) | | 1.15 (1.12-1.18) |
| Subtypes of cardiovascular diseases^c | | | | | | |

| | | | | | | |
|--------------------------------|--------------------------|------------------|---------------------|------------------|--------------------------|------------------|
| Hypertensive diseases | 8249 (19)/33112 (15) | 1.16 (1.13-1.19) | 281 (16)/819 (9.5) | 1.55 (1.34-1.79) | 7968 (19)/31959 (15) | 1.15 (1.12-1.18) |
| Ischemic heart disease | 2684 (5.7)/9760 (4.2) | 1.22 (1.17-1.28) | 88 (5.1)/250 (2.9) | 1.66 (1.29-2.15) | 2597 (5.7)/9461 (4.3) | 1.21 (1.16-1.27) |
| Embolism and thrombosis | 497 (1)/1938 (0.82) | 1.12 (1.01-1.24) | 15 (0.86)/44 (0.51) | 1.71 (0.95-3.07) | 482 (1)/1892 (0.84) | 1.11 (1.00-1.23) |
| Arrhythmia/conduction disorder | 2354 (4.9)/9747 (4.2) | 1.10 (1.05-1.16) | 45 (2.6)/145 (1.7) | 1.55 (1.08-2.21) | 2309 (5)/9587 (4.3) | 1.10 (1.05-1.15) |
| Heart failure | 637 (1.3)/2382 (1) | 1.08 (0.98-1.19) | 15 (0.86)/28 (0.32) | 2.66 (1.42-4.97) | 622 (1.3)/2349 (1) | 1.07 (0.98-1.18) |
| Cerebrovascular disease | 1039 (2.2)/3524 (1.5) | 1.28 (1.19-1.38) | 29 (1.7)/68 (0.78) | 1.90 (1.18-3.08) | 1010 (2.2)/3450 (1.5) | 1.27 (1.18-1.37) |

545 ^a Per 1000 person years.

546 ^b Hazard ratios (with 95% confidence intervals) of cardiovascular disease in patients with common psychiatry disorders compared to sex and year of birth matched unexposed individuals, derived from Cox regression models and adjusted for covariates listed in model information column. Time since index date was used as time scale.

548 ^c Hazard ratios (with 95% confidence intervals) of subtypes of cardiovascular diseases in individual with common psychiatry disorders compared to sex and year of birth matched unexposed individuals, derived from Cox regression models and adjusted for sex, birth year, educational level, ethnicity, smoking status, TDI, BMI, history of other psychiatry disorders, family history of CVD, and CCI score. For subtypes of cardiovascular diseases with less than 20 cases in patients with common psychiatry disorders, hazard ratios were derived from Cox regression models and adjusted for sex, birth year. Definition of subtypes cardiovascular diseases by ICD-10 codes can be found in the eTable 1 in the supplement. Time since index date was used as time scale.

553

554 **Table 3** Hazard ratios (HRs) with 95% confidence intervals (CIs) of cardiovascular disease among patients with common psychiatry disorders compared to
 555 matched unexposed individuals, by different disease susceptibility

| Disease susceptibility | <= 6 months follow-up | | > 6 months follow-up | |
|--|--|--------------------------|--|--------------------------|
| | No. of cases (incidence ^a) in patients/matched individuals | HR (95% CI) ^b | No. of cases (incidence ^a) in patients/matched individuals | HR (95% CI) ^b |
| Family history of cardiovascular disease | | | | |
| No | 139 (18.94)/172 (10.03) | 1.61 (1.25-2.07) | 3675 (21.2)/6229 (15.56) | 1.21 (1.16-1.27) |
| Yes | 73 (27.55)/475 (16.88) | 1.54 (1.31-1.80) | 6532 (28.74)/15882 (24.65) | 1.15 (1.11-1.18) |
| $P_{\text{interaction}}^c$ | | 0.7703 | | 0.0683 |
| Level of polygenic risk score (PRS) of cardiovascular disease^d | | | | |
| Low PRS (<the lower tertile) | 105 (23.2)/62 (10.74) | 2.29 (1.58-3.32) | 2581 (24.14)/2665 (19.65) | 1.25 (1.16-1.34) |
| Moderate PRS (lower-upper tertiles) | 106 (23.31)/94 (16.18) | 1.38 (0.96-1.98) | 2723 (25.49)/2902 (21.32) | 1.16 (1.09-1.24) |
| High PRS (>the upper tertile) | 117 (25.42)/88 (14.88) | 1.41 (0.98-2.02) | 2936 (27.65)/3136 (22.86) | 1.18 (1.10-1.25) |
| $P_{\text{interaction}}$ | | 0.0667 | | 0.2412 |

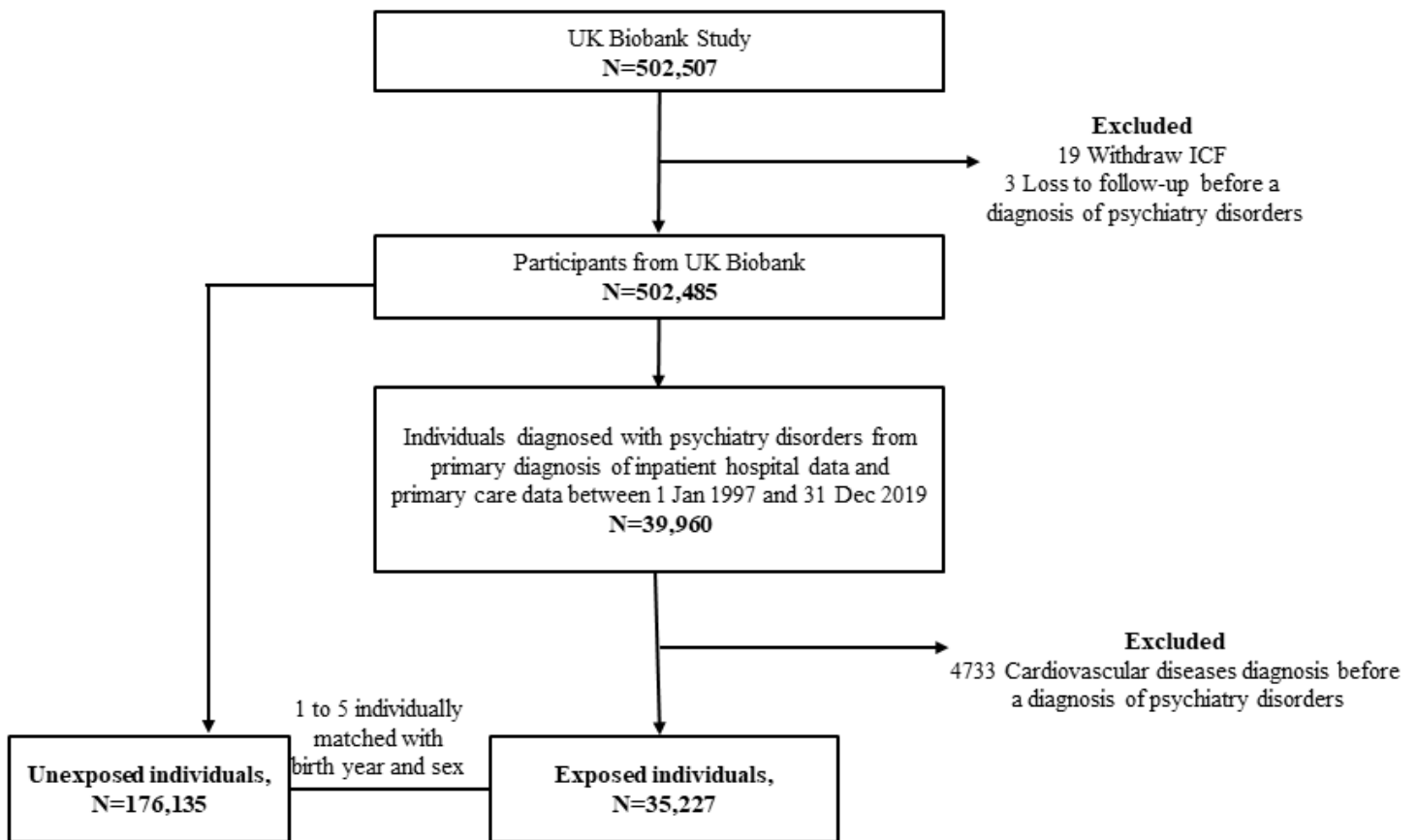
556 ^a Per 1000 person years.

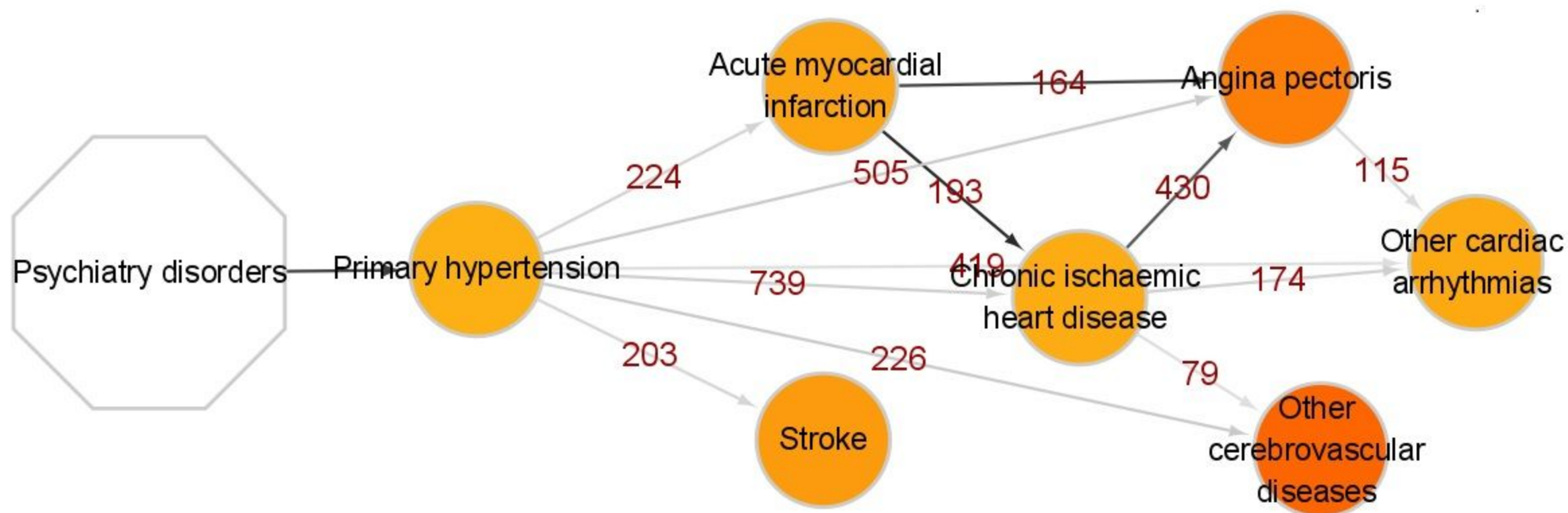
557 ^b Cox regression models were stratified by disease susceptibility and adjusted for sex, birth year, educational level, ethnicity, smoking status, TDI, BMI, history of other
 558 psychiatry disorders, and CCI score.

559 ^c The differences in hazard ratios for CVD polygenic risk score were assessed between low and high subgroups by Wald test.

560 ^d Polygenic risk score of cardiovascular disease were calculated based on published GWAS summary statistics data.

561





Hazard ratios compared to matched unexposed individuals



Odd ratios for pairs of CVDs



Supplementary tables and figures

eTable 1 International Classification of Diseases (ICD) codes and primary care codes for diseases identifications

eTable 2 Mapping between ICD-10 codes and Combined ICD codes for PheWAS analysis

eTable 3 Hazard ratios (HRs) with 95% confidence intervals (CIs) of cardiovascular disease among patients with common psychiatry disorders compared to matched unexposed individuals, by different psychiatry disorders

eTable 4 PheWAS results of hazard ratios (HRs) with 95% confidence intervals (CIs) of different individual cardiovascular diseases among patients with common psychiatry disorders compared to matched unexposed individuals

eTable 5 Odds ratios (ORs) with 95% confidence intervals (CIs) for the significant pairs of cardiovascular diseases following a diagnosis of common psychiatry disorders

eTable 6 Hazard ratios (HRs) with 95% confidence intervals (CIs) of primary diagnosis of cardiovascular disease among patients with common psychiatry disorders compared to matched unexposed individuals

eTable 7 Hazard ratios (HRs) with 95% confidence intervals (CIs) of primary diagnosis of cardiovascular disease among patients with common psychiatry disorders compared to matched unexposed individuals, by different disease susceptibility

eTable 8 Odds ratios (ORs) with 95% confidence intervals (CIs) for the significant pairs of primary diagnosis of cardiovascular diseases following a diagnosis of common psychiatry disorders

eFigure 1 Hazard ratios (95% CIs) of cardiovascular disease among patients with common psychiatry disorders compared with their matched unexposed individuals, stratified by time of follow-up

eFigure 2 Flow chart of identifying trajectory progression of cardiovascular disease following a diagnosis of common psychiatry disorder

eFigure 3 Relative risks of six subtypes of cardiovascular diseases among patients with common psychiatry disorders compared with their matched unexposed individuals, stratified by disease susceptibility, by time of follow-up (≤ 6 or > 6 months)

eFigure 4 Flow chart of identifying trajectory progression of primary diagnosis of cardiovascular disease following a diagnosis of common psychiatry disorders

eFigure 5 Trajectory progression of primary diagnosis of cardiovascular disease following a diagnosis of common psychiatry disorders

eTable 1 International Classification of Diseases (ICD) codes and primary care codes for diseases identifications

| | ICD-9 | ICD-10 | Primary care READ V2 code | Primary care READ V3 code |
|-------------------|------------|----------|--|---|
| Anxiety | 3000, 3002 | F40, F41 | E2000, E2001, E2002, E2004, E2005, E200z, E202., E2020, E2021, E2022, E2023, E2024, E2025, E2026, E2027, E2028, E2029, E202A,E202B, E202C, E202D, E202E, E202z, Eu40., Eu400, Eu401, Eu402, Eu403, Eu40y, Eu40z, Eu41., Eu410, Eu411, Eu412, Eu413, Eu41y, Eu41z | E200., E2000, E2002, E2004, E200z, E2020, E2021, E2022, E2023, E2024, E2025, E2026, E2027, E2028, E2029, E202E, Eu40., Eu400, Eu402, Eu40y, Eu40z, Eu41., Eu410, Eu413, Eu41y, Eu41z, Eu931, Ua1qa, Ua1qc, Ua1qd, Ua1qe, Ua1qf, Ua1qg, Ua1qh, Ua1qi, Ua1qj, Ua1qk, Ua1ql, , Ua1qm, Ua1qn, Ua1qo, Ua1qp, Ua1qs, Ua1qt, Ua1qU, Ua1qV, Ua1qW, Ua1qX, Ua1qY, X00RP, X00Sa, X00Sb, X00Sc, X00Sd, X00Se, X00Sr, X00SV, X00SW, X00SX, X00SY, X00SZ, X50G2, X50G3, X50G5, X50G6, X50GI, X75YV, X761d, X761n, X761q, X761t, X761u, X761y, X7627, X7628, X7629, X762a, X762C, X762E, X762F, X762G, X762H, X762T, X762Z, X78wp, Xa00r, Xa00s, Xa1a8, Xa1Ev, Xa3Vj, Xa3Vk, Xa3VI, Xa3WH, Xa3WI, Xa3WJ, Xa7k9, Xa7kB, Xalo7, XaKVA, XE0rb, XE1Y7, XE1YA, XE1YB, XE1Zj, XM0Ak |
| Depression | 2961 | F32, F33 | E112., E1120, E1121, E1122, E1123, E1124, E1125, E1126, E112z, E113., E1130, E1131, E1132, E1133, E1134, E1135, E1136, E1137, E113z, E135., Eu32., Eu320, Eu321, Eu322, Eu323, Eu324, Eu325, Eu326, | 2257, E0043, E1120, E1121, E1122, E1123, E1124, E1125, E1126, E112z, E1130, E1131, E1132, E1133, E1134, E1135, E1136, E1137, E113z, E11y2, E130, E2B0., E2B1., Eu320, Eu321, Eu322, Eu323, Eu32y, Eu32z, Eu330, Eu331, Eu332, Eu333, Eu334, Eu33y, Eu33z, X00SO, X00SQ, X00SS, X00SU, Xa0wV, XaB9J, XaCHo, XaCHr, XaCHs, XaClS, XaClt, XaClu, |

| | | | | |
|-----------------------------------|----------------|-------------------|-----------------------------|---|
| Stress disorders | related | 308, 309 | F43 | <p>Eu327, Eu328, Eu329, Eu32A, Eu32B, Eu32y, Eu32z, Eu33., Eu330, Eu331, Eu332, Eu333, Eu334, Eu33y, Eu33z</p> <p>E280., E281., E282., E283., E2830, E2831, E283z, E284., E28z., E2900, E2925, E292y, E292z, E293., E2930, E2931, E2932, E293z, E294., E29y., E29y1, E29y2, E29y4, E29yz, E29z., Eu43., Eu430, Eu431, Eu432, Eu433, Eu434, Eu435, Eu43y, Eu43z</p> <p>XaX53, XaX54, XaY2C, XE1Y0, XE1Y1, XE1YC, XE1Za, XE1Zb, XE1Zc, XE1Zd, XE1Ze, XE1Zf, XE1ZY, XE1ZZ, XM1GC, XSEGJ, XSGok, XSGol, XSGom, XSGon</p> <p>1B1L., 1BE., E280., E281., E282., E283., E2830, E2831, E283z, E284., E29., E290., E290z, E291., E292., E2920, E2921, E2922, E2924, E2925, E292y, E292z, E293., E2930, E2931, E2932, E293z, E294., E29y., E29y0, E29y1, E29y2, E29y3, E29y4, E29y5, E29yz, E29z., Eu430, Eu432, Eu43y, Eu43z, Eu930, Ry15., Ua18k, Ua18L, Ub1T9, X00Sf, X00TT, X40Js, Xa028, Xa18j, Xa18v, XaC2u, XaX55, XaX56, XaX58, XE1Ym, XE1Yn, XE1Yo, XE1Yp, XE2uz, XM0As, XM1Q3</p> |
| Any cardiovascular disease | | 390-438, 444, 445 | 440, 100-170, 1730, 174-175 | |
| Hypertensive diseases | | | | I10-I15 |
| Ischemic heart disease | | | | I20-I25 |
| Embolism and thrombosis | | | | I26, I74, I75 |
| Arrhythmia/conduction disorder | | | | I44-I49 |
| Heart failure | | | | I50 |
| Cerebrovascular disease | | | | I60-I69 |

| | |
|--|--|
| Covariates: history of other psychiatry disorders | F00-F31, F34- F39, F42, F44- F99 |
|--|--|

eTable 2 Mapping between ICD-10 codes and Combined ICD codes for PheWAS analysis

| ICD-10 | Combined ICD codes | DESCRIPTION |
|--------|--------------------|---------------------------------|
| I00 | I00 | Acute rheumatic fever |
| I01 | I00 | Acute rheumatic fever |
| I02 | I00 | Acute rheumatic fever |
| I05 | I05 | Chronic rheumatic heart disease |
| I06 | I05 | Chronic rheumatic heart disease |
| I07 | I05 | Chronic rheumatic heart disease |
| I08 | I05 | Chronic rheumatic heart disease |
| I09 | I05 | Chronic rheumatic heart disease |
| I10 | I10 | Primary hypertension |
| I11 | I11 | Other hypertensive disorders |
| I12 | I11 | Other hypertensive disorders |
| I13 | I11 | Other hypertensive disorders |
| I15 | I11 | Other hypertensive disorders |
| I20 | I20 | Angina pectoris |
| I21 | I21 | Acute myocardial infarction |
| I22 | I22 | Other ischaemic heart disease |
| I23 | I21 | Acute myocardial infarction |
| I24 | I21 | Acute myocardial infarction |
| I25 | I25 | Chronic ischaemic heart disease |
| I26 | I26 | Embolism and thrombosis |
| I27 | I27 | Other pulmonary heart diseases |
| I28 | I27 | Other pulmonary heart diseases |
| I30 | I30 | Diseases of pericardium |
| I31 | I30 | Diseases of pericardium |
| I32 | I30 | Diseases of pericardium |
| I33 | I33 | Endocarditis |
| I34 | I34 | Non-rheumatic valve disorders |
| I35 | I34 | Non-rheumatic valve disorders |
| I36 | I34 | Non-rheumatic valve disorders |
| I37 | I34 | Non-rheumatic valve disorders |
| I38 | I33 | Endocarditis |
| I39 | I33 | Endocarditis |
| I40 | I40 | Myocarditis |
| I41 | I40 | Myocarditis |
| I42 | I42 | Cardiomyopathy |
| I43 | I42 | Cardiomyopathy |
| I44 | I49 | Other cardiac arrhythmias |
| I45 | I49 | Other cardiac arrhythmias |

| | | |
|------|-----|---|
| I46 | I46 | Cardiac arrest |
| I47 | I49 | Other cardiac arrhythmias |
| I48 | I48 | Atrial fibrillation and flutter |
| I49 | I49 | Other cardiac arrhythmias |
| I50 | I50 | Heart failure |
| I51 | I51 | Complications and ill-defined descriptions of heart disease |
| I52 | I52 | Other heart disorders in diseases classified elsewhere |
| I60 | I60 | Stroke |
| I61 | I60 | Stroke |
| I62 | I60 | Stroke |
| I63 | I60 | Stroke |
| I64 | I60 | Stroke |
| I65 | I65 | Other cerebrovascular diseases |
| I66 | I65 | Other cerebrovascular diseases |
| I67 | I65 | Other cerebrovascular diseases |
| I68 | I65 | Other cerebrovascular diseases |
| I69 | I69 | Sequelae of cerebrovascular disease |
| I70 | I70 | Atherosclerosis |
| I730 | I73 | Peripheral vascular disease |
| I74 | I26 | Embolism and thrombosis |
| I75 | I26 | Embolism and thrombosis |

eTable 3 Hazard ratios (HRs) with 95% confidence intervals (CIs) of cardiovascular disease among patients with common psychiatry disorders compared to matched unexposed individuals, by different psychiatry disorders

| Subtype of psychiatry disorders | Cardiovascular diseases | <= 6 months follow-up | | > 6 months follow-up | |
|---------------------------------|------------------------------------|---|-------------------|---|------------------|
| | | No. of cases (incidence*) in patients/matched individuals | HR (95% CIs)# | No. of cases (incidence*) in patients/matched individuals | HR (95% CIs)# |
| Anxiety | Any cardiovascular diseases | 158 (24.64)/419 (13.02) | 2.29 (1.58-3.32) | 3838 (25.62)/15807 (21.28) | 1.16 (1.11-1.20) |
| | Hypertensive diseases | 99 (15)/288 (8.9) | 1.66 (1.30-2.12) | 3003 (19)/12245 (16) | 1.15 (1.11-1.21) |
| | Ischemic heart disease | 40 (6.2)/91 (2.8) | 2.21 (1.48-3.29) | 952 (5.6)/3637 (4.4) | 1.19 (1.11-1.29) |
| | Embolism and thrombosis | 6 (0.93)/13 (0.4) | 2.37 (0.89-6.28) | 163 (0.93)/725 (0.86) | 0.96 (0.80-1.15) |
| | Arrhythmia/conduction disorder | 17 (2.6)/52 (1.6) | 1.66 (0.96-2.88) | 886 (5.2)/3673 (4.4) | 1.13 (1.05-1.22) |
| | Heart failure | 5 (0.77)/5 (0.15) | 5.69 (1.46-22.16) | 214 (1.2)/911 (1.1) | 0.97 (0.82-1.14) |
| | Cerebrovascular disease | 10 (1.5)/27 (0.84) | 1.81 (0.87-3.74) | 362 (2.1)/1311 (1.6) | 1.24 (1.09-1.40) |
| Depression | Any cardiovascular diseases | 171 (23.76)/517 (14.34) | 1.42 (1.18-1.71) | 4310 (25.79)/17033 (20.24) | 1.15 (1.12-1.20) |
| | Hypertensive diseases | 124 (17)/358 (9.9) | 1.44 (1.16-1.80) | 3345 (19)/13154 (15) | 1.14 (1.09-1.19) |
| | Ischemic heart disease | 34 (4.7)/108 (3) | 1.41 (0.93-2.15) | 1158 (6.1)/3906 (4.2) | 1.25 (1.16-1.34) |
| | Embolism and thrombosis | 5 (0.69)/24 (0.66) | 1.03 (0.39-2.71) | 242 (1.2)/765 (0.8) | 1.35 (1.16-1.58) |
| | Arrhythmia/conduction disorder | 16 (2.2)/63 (1.7) | 1.26 (0.73-2.18) | 956 (4.9)/4003 (4.3) | 1.06 (0.98-1.14) |
| | Heart failure | 7 (0.97)/17 (0.47) | 2.06 (0.85-5.00) | 287 (1.5)/962 (1) | 1.17 (1.01-1.35) |
| | Cerebrovascular disease | 11 (1.5)/22 (0.61) | 2.53 (1.22-5.26) | 467 (2.4)/1444 (1.5) | 1.37 (1.23-1.53) |
| Stress-related disorders | Any cardiovascular diseases | 83 (22.8)/247 (13.55) | 1.56 (0.64-2.03) | 2059 (24.57)/8563 (20.64) | 1.28 (1.07-1.19) |

| | | | | |
|--------------------------------|-------------------|-------------------|----------------------|------------------|
| Hypertensive diseases | 58 (16)/173 (9.5) | 1.55 (1.13-2.15) | 1620 (19)/6560 (15) | 1.15 (1.08-1.21) |
| Ischemic heart disease | 14 (3.8)/51 (2.8) | 1.38 (0.76-2.51) | 487 (5.2)/1918 (4.2) | 1.17 (1.05-1.30) |
| Embolic and thrombosis | 4 (1.1)/7 (0.38) | 2.99 (0.85-10.48) | 77 (0.79)/402 (0.86) | 0.90 (0.70-1.17) |
| Arrhythmia/conduction disorder | 12 (3.3)/30 (1.6) | 2.00 (1.02-3.91) | 467 (4.9)/1911 (4.1) | 1.13 (1.01-1.25) |
| Heart failure | 3 (0.82)/6 (0.33) | 2.51 (0.63-10.09) | 121 (1.2)/476 (1) | 1.09 (0.88-1.36) |
| Cerebrovascular disease | 8 (2.2)/19 (1) | 2.12 (0.92-4.87) | 181 (1.9)/695 (1.5) | 1.12 (0.94-1.34) |

*Per 1000 person years.

#Hazard ratios (with 95% confidence intervals) of any or subtypes of cardiovascular diseases in individual with common psychiatry disorders compared to sex and year of birth matched unexposed individuals, derived from Cox regression models and adjusted for sex, birth year, educational level, ethnicity, smoking status, TDI, BMI, history of other psychiatry disorders, family history of CVD, and CCI score. For subtypes of cardiovascular diseases with less than 20 cases in patients with common psychiatry disorders, hazard ratios were derived from Cox regression models and adjusted for sex, birth year. Definition of subtypes cardiovascular diseases by ICD-10 codes can be found in the eTable 1. Time since index date was used as time scale.

eTable 4 PheWAS results of hazard ratios (HRs) with 95% confidence intervals (CIs) of different individual cardiovascular diseases among patients with common psychiatry disorders compared to matched unexposed individuals

| Cardiovascular diseases | Codes* | Case numbers [#] | HR (95% CIs) ^{&} | p |
|---|--------|---------------------------|-------------------------------|----------|
| Sequelae of cerebrovascular disease | I69 | 155 | 1.25 (1.02-1.54) | 0.0296 |
| Peripheral vascular disease | I73 | 198 | 1.29 (1.09-1.52) | 0.00307 |
| Chronic rheumatic heart disease | I05 | 275 | 0.84 (0.73-0.96) | 0.0106 |
| Embolism and thrombosis | I26 | 502 | 1.12 (1.01-1.24) | 0.037 |
| Other cerebrovascular diseases | I65 | 551 | 1.38 (1.24-1.53) | 1.77E-09 |
| Non-rheumatic valve disorders | I34 | 566 | 1.04 (0.94-1.15) | 0.411 |
| Complications and ill-defined descriptions of heart disease | I51 | 605 | 1.10 (1.00-1.21) | 0.041 |
| Heart failure | I50 | 637 | 1.08 (0.98-1.19) | 0.103 |
| Stroke | I60 | 694 | 1.20 (1.09-1.32) | 0.000129 |
| Acute myocardial infarction | I21 | 871 | 1.18 (1.09-1.29) | 0.000117 |
| Other cardiac arrhythmias | I49 | 1370 | 1.16 (1.09-1.24) | 7.83E-06 |
| Atrial fibrillation and flutter | I48 | 1404 | 1.03 (0.97-1.09) | 0.357 |
| Angina pectoris | I20 | 1521 | 1.30 (1.22-1.38) | 5.03E-17 |
| Chronic ischaemic heart disease | I25 | 2208 | 1.20 (1.14-1.26) | 5.96E-13 |
| Primary hypertension | I10 | 8239 | 1.16 (1.13-1.19) | 5.67E-28 |

*Combined ICD-10 code; mapping between the original ICD-10 code and the combined ICD-10 code can be found in the eTable 2;

[#]Numbers of the individuals of common psychiatry disorders diagnosed with the corresponding cardiovascular diseases after the diagnosis of common psychiatry disorders;

[&]Hazard ratios (with 95% confidence intervals) of different cardiovascular diseases more than 150 cases in patients with common psychiatry disorders compared to sex and year of birth matched individuals without psychiatry disorders, derived from Cox regression models and adjusted for sex, birth year, educational level, ethnicity, smoking status, TDI, BMI, history of other psychiatry disorders, family history of CVD, and CCI score.

eTable 5 Odds ratios (ORs) with 95% confidence intervals (CIs) for the significant pairs of cardiovascular diseases following a diagnosis of common psychiatry disorders

| Codes of CVD pairs* | No.# | OR (95% CI) ^{&} | Percentage [§] |
|---------------------|------|------------------------------|-------------------------|
| I10-I20 | 505 | 5.01 (4.17-6.01) | 30.98% |
| I10-I21 | 224 | 4.02 (3.10-5.20) | 31.45% |
| I10-I25 | 739 | 4.60 (3.97-5.33) | 26.55% |
| I10-I49 | 419 | 2.97 (2.48-3.56) | 19.88% |
| I10-I60 | 203 | 3.81 (2.88-5.05) | 32.85% |
| I10-I65 | 226 | 5.10 (3.80-6.86) | 21.47% |
| I20-I49 | 115 | 3.12 (2.33-4.18) | 24.00% |
| I21-I20 | 164 | 24.89 (14.15-43.79) | 25.00% |
| I21-I25 | 193 | 29.32 (16.72-51.42) | 55.94% |
| I25-I20 | 430 | 21.65 (15.53-30.17) | 36.83% |
| I25-I49 | 174 | 4.46 (3.41-5.84) | 26.34% |
| I25-I65 | 79 | 2.84 (1.99-4.07) | 17.65% |

A total of 12 CVD pairs with $N \geq 75$ and statistically significant odds ratios after Bonferroni correction for patients with common psychiatry disorders were show in this table;

Abbreviation: CVD, cardiovascular disease;

*Combined ICD-10 code for two CVDs; mapping between the original ICD-10 code and the combined ICD-10 code can be found in the eTable 2;

#Number of patients with common psychiatry disorders who experienced the corresponding pairs of two CVDs;

[&]Odds ratios (with 95% confidence intervals) of pairs of two CVDs;

[§]Number of individuals with psychiatry disorders having the same diagnosis date of two CVDs divided by the number of patients with common psychiatry disorders diagnosed with both two CVDs.

eTable 6 Hazard ratios (HRs) with 95% confidence intervals (CIs) of primary diagnosis of cardiovascular disease among patients with common psychiatry disorders compared to matched unexposed individuals

| | All individuals | | <= 6 months follow-up | | > 6 months follow-up | |
|---|---|------------------|---|------------------|---|------------------|
| | No. of cases (incidence*) in patients/matched individuals | HR (95% CI)# | No. of cases (incidence*) in patients/matched individuals | HR (95% CI) # | No. of cases (incidence*) in patients/matched individuals | HR (95% CI) # |
| Model information | | | | | | |
| Controlled for sex, birth year, education level, ethnic, smoke, and TDI | 1890 (4.522)/7982 (3.792) | 1.18 (1.12-1.24) | 92 (5.333)/273 (3.157) | 1.66 (1.31-2.11) | 1798 (4.487)/7601 (3.802) | 1.16 (1.10-1.22) |
| As above + BMI | | 1.16 (1.10-1.22) | | 1.65 (1.30-2.10) | | 1.14 (1.08-1.20) |
| As above + history of other psychiatry disorders | | 1.13 (1.08-1.20) | | 1.67 (1.31-2.13) | | 1.11 (1.05-1.18) |
| As above + family history of CVDs | | 1.13 (1.07-1.19) | | 1.67 (1.30-2.13) | | 1.11 (1.05-1.17) |
| As above + CCI | | 1.13 (1.07-1.19) | | 1.67 (1.30-2.13) | | 1.11 (1.05-1.17) |

| Subtypes of cardiovascular diseases^{&} | | | | | | |
|--|------------------------|------------------|---------------------|------------------|------------------------|------------------|
| Hypertensive diseases | 135 (0.28)/546 (0.23) | 1.13 (0.93-1.38) | 6 (0.35)/15 (0.17) | 2.31 (0.86-6.23) | 129 (0.27)/531 (0.23) | 1.11 (0.91-1.36) |
| Ischemic heart disease | 1796 (3.8)/6763 (2.9) | 1.19 (1.13-1.26) | 61 (3.5)/178 (2.1) | 1.68 (1.23-2.30) | 1736 (3.8)/6557 (2.9) | 1.18 (1.12-1.25) |
| Embolism and thrombosis | 352 (0.72)/1354 (0.58) | 1.13 (1.00-1.28) | 12 (0.69)/29 (0.33) | 2.07 (1.05-4.05) | 340 (0.73)/1325 (0.58) | 1.12 (0.98-1.27) |
| Arrhythmia/conduction disorder | 935 (1.9)/4141 (1.8) | 1.07 (0.99-1.15) | 25 (1.4)/72 (0.83) | 1.84 (1.12-3.03) | 910 (2)/4062 (1.8) | 1.05 (0.98-1.14) |
| Heart failure | 177 (0.36)/691 (0.29) | 1.08 (0.90-1.30) | 5 (0.29)/9 (0.1) | 2.81 (0.94-8.42) | 172 (0.37)/681 (0.3) | 1.07 (0.88-1.29) |
| Cerebrovascular disease | 644 (1.3)/2352 (1) | 1.17 (1.07-1.29) | 17 (0.98)/51 (0.59) | 1.64 (0.95-2.84) | 627 (1.3)/2297 (1) | 1.17 (1.06-1.28) |

*Per 1000 person years.

[#]Hazard ratios (with 95% confidence intervals) of cardiovascular disease in patients with common psychiatry disorders compared to sex and year of birth matched unexposed individuals without, derived from Cox regression models and adjusted for covariates listed in model information column. Time since index date was used as time scale.

[&]Hazard ratios (with 95% confidence intervals) of subtypes of cardiovascular diseases in individual with psychiatry disorders compared to sex and year of birth matched individuals without psychiatry disorders, derived from Cox regression models and adjusted for sex, birth year, educational level, ethnicity, smoking status, TDI, BMI, history of other psychiatry disorders, family history of CVD, and CCI score. For subtypes of cardiovascular diseases with less than 20 cases in patients with common psychiatry disorders, hazard ratios were derived from Cox regression models and adjusted for sex, birth year. Definition of subtypes cardiovascular diseases by ICD-10 codes can be found in the eTable 1. Time since index date was used as time scale.

eTable 7 Hazard ratios (HRs) with 95% confidence intervals (CIs) of primary diagnosis of cardiovascular disease among patients with common psychiatry disorders compared to matched unexposed individuals, by different disease susceptibility

| Disease susceptibility | <= 6 months follow-up | | > 6 months follow-up | |
|--|---|------------------|---|------------------|
| | No. of cases (incidence*) in patients/matched individuals | HR (95% CI)# | No. of cases (incidence*) in patients/matched individuals | HR (95% CI) # |
| Family history of cardiovascular disease | | | | |
| No | 29 (3.951)/35 (2.041) | 1.88 (1.04-3.38) | 636 (3.668)/1087 (2.714) | 1.25 (1.12-1.40) |
| Yes | 63 (6.357)/105 (3.732) | 1.94 (1.38-2.72) | 1162 (5.112)/2963 (4.598) | 1.09 (1.01-1.17) |
| $P_{\text{interaction}}$ | | 0.9283 | | 0.0445 |
| Level of polygenic risk score (PRS) of cardiovascular disease[§] | | | | |
| Low (<the lower tertile) | 17 (3.756)/17 (2.943) | 1.35 (0.57-3.20) | 448 (4.19)/415 (3.06) | 1.48 (1.25-1.75) |
| Moderate (lower-upper tertile) | 31 (6.817)/20 (3.442) | 2.02 (1.14-3.56) | 440 (4.12)/525 (3.857) | 1.02 (0.87-1.19) |
| High (>the upper tertile) | 29 (6.3)/22 (3.72) | 1.93 (0.62-6.02) | 579 (5.453)/656 (4.782) | 1.19 (1.04-1.37) |
| $P_{\text{interaction}}^*$ | | 0.6241 | | 0.0493 |

*Per 1000 person years.

#Cox regression models were stratified by disease susceptibility and adjusted for sex, birth year, educational level, ethnicity, smoking status, TDI, BMI, history of other psychiatry disorders, and CCI score.

§Polygenic risk score of cardiovascular disease were calculated based on published GWAS summary statistics data.

* The differences in hazard ratios for CVD polygenic risk score were assessed between low and high subgroups by Wald test.

eTable 8 Odds ratios (ORs) with 95% confidence intervals (CIs) for the significant pairs of primary diagnosis of cardiovascular diseases following a diagnosis of common psychiatry disorders

| Codes of CVD pairs** | No.# | OR (95% CI)[‡] | Percentage[§] |
|-----------------------------|-------------|--------------------------------|-------------------------------|
| I21-I20 | 89 | 19.77 (9.96-39.24) | 7.87% |
| I21-I25 | 184 | 29.99 (16.73-53.76) | 15.52% |

A total of 2 CVDs pairs with $N \geq 75$ and statistically significant odds ratios after Bonferroni correction for individuals with psychiatry disorders were show in this table;

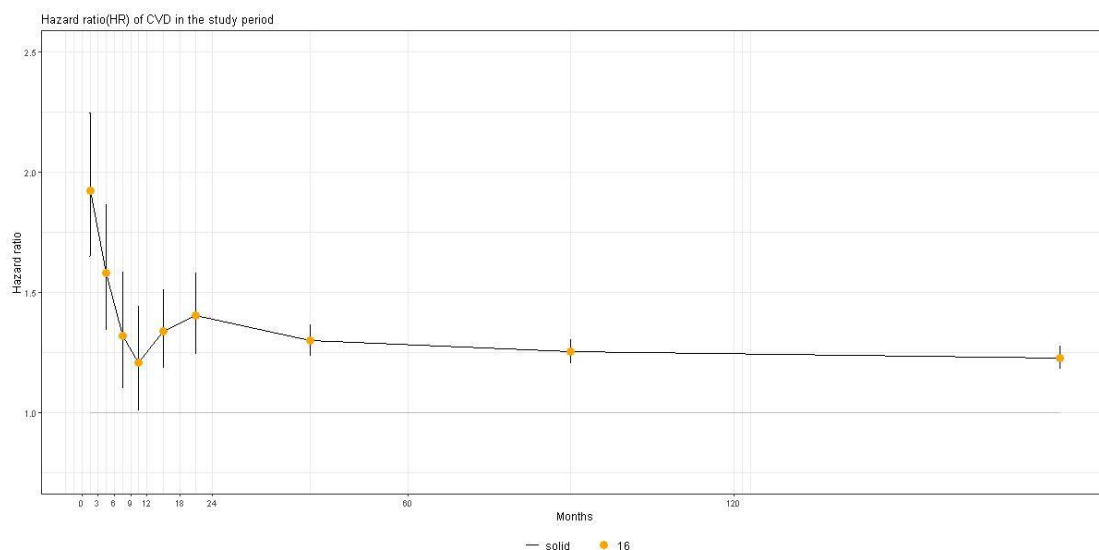
Abbreviation: CVD, cardiovascular disease;

[†]Combined ICD-10 code for two CVDs; mapping between the original ICD-10 code and the combined ICD-10 code can be found in the eTable 2;

[#]Number of patients with common psychiatry disorders who experienced the corresponding pairs of two CVDs;

[‡]Odds ratios (with 95% confidence intervals) of pairs of two CVDs;

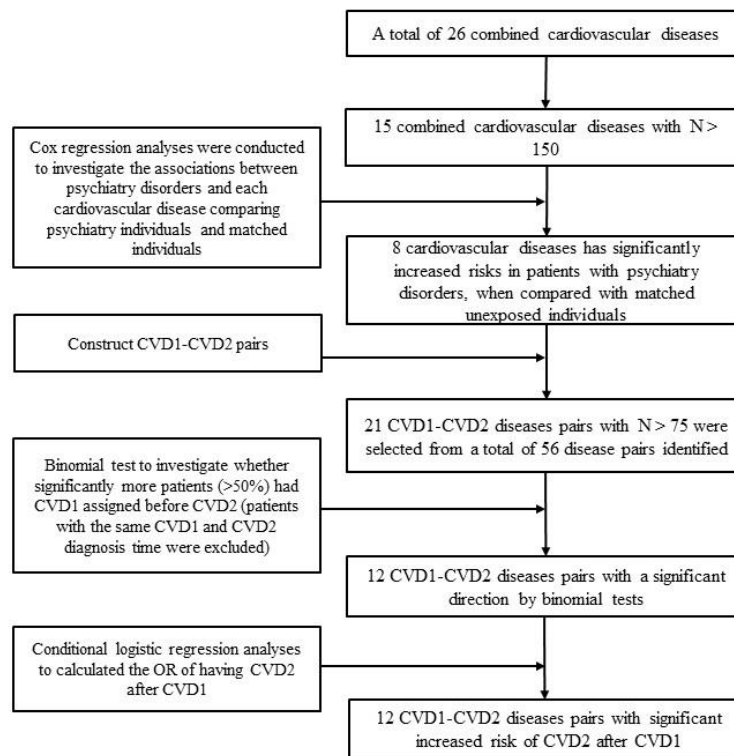
[§]Number of individuals with psychiatry disorders having the same diagnosis date of two CVDs divided by the number of patients with common psychiatry disorders diagnosed with both two CVDs.



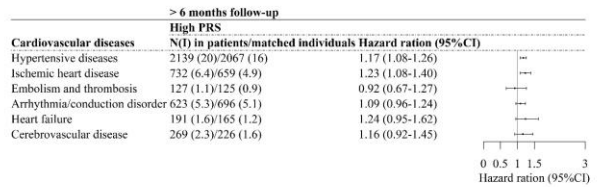
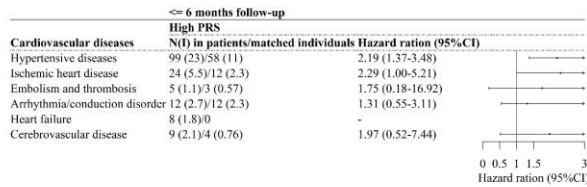
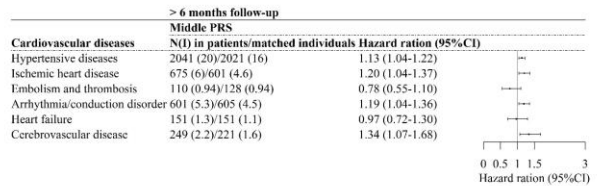
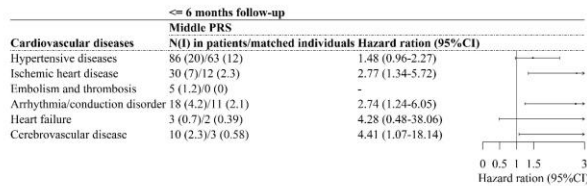
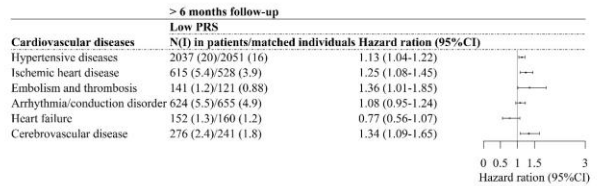
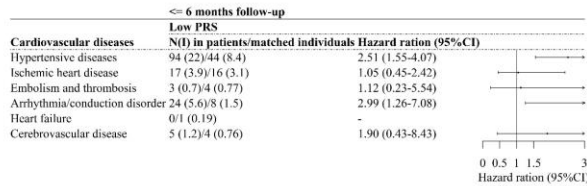
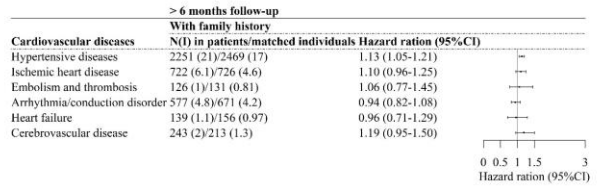
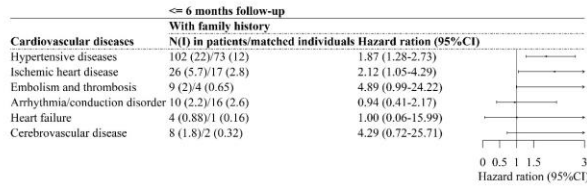
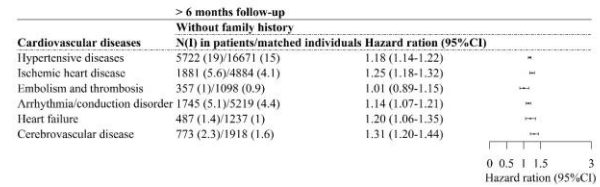
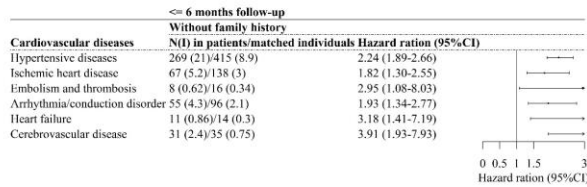
eFigure 1 Hazard ratios (95% CIs) of cardiovascular disease among patients with common psychiatry disorders compared with their matched unexposed individuals, stratified by time of follow-up

Abbreviation: CI: confidence interval.

The X axis shows the different follow-up period: ≤3, 3-6, 6-12, 12-18, 18-24, 24-60, 60-120, 120-240, and >240 months follow-up. The Y axis shows the significant hazard ratios of cardiovascular disease among patients with common psychiatry disorders compared with their matched unexposed individuals, derived from Cox models adjusted for sex, birth year and ethnicity.



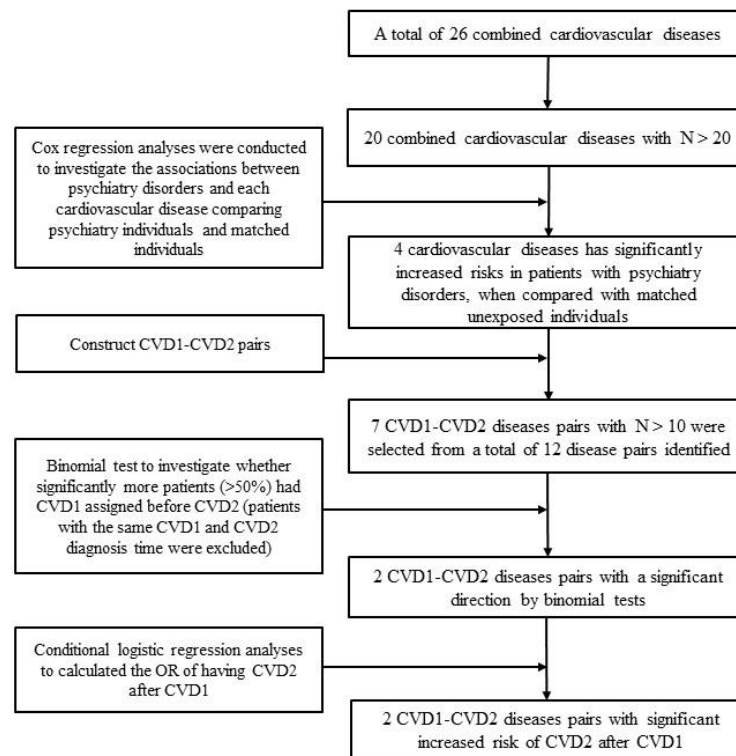
eFigure 2 Flow chart of identifying trajectory progression of cardiovascular disease following a diagnosis of common psychiatry disorders



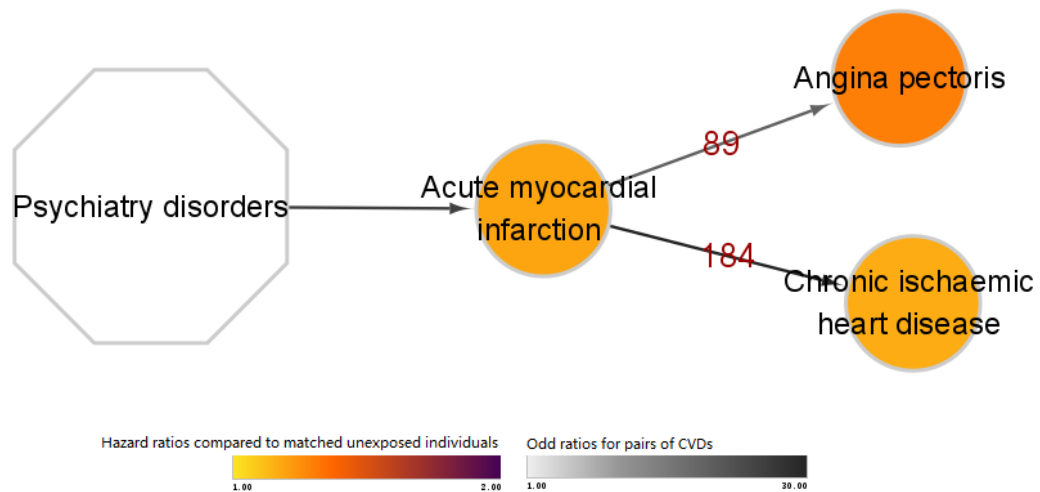
eFigure 3 Relative risks of six subtypes of cardiovascular diseases among patients with common psychiatry disorders compared with their matched unexposed individuals, stratified by disease susceptibility, by time of follow-up (≤ 6 or > 6 months)

Abbreviation: N: number of cases of specific cardiovascular disease; I: incidence.

Cox models were stratified by family history of cardiovascular disease (yes or no) and level of cardiovascular disease PRS (low, middle, and high) and adjusted for sex, birth year, educational level, ethnicity, smoke, TDI, BMI, history of other psychiatry disorders, and CCI score. For subtypes of cardiovascular diseases with less than 20 cases in patients with common psychiatry disorders, hazard ratios were derived from Cox regression models and adjusted for sex, birth year.



eFigure 4 Flow chart of identifying trajectory progression of primary diagnosis of cardiovascular disease following a diagnosis of common psychiatry disorders



eFigure 5 Trajectory progression of primary diagnosis of cardiovascular disease following a diagnosis of common psychiatry disorders

This figure illustrates following trajectory progression of primary diagnosis of cardiovascular disease identified in our analysis. The combined cardiovascular diseases are shown within the circle. The color of the circle represents the hazard ratios of this cardiovascular disease when comparing patients with common psychiatry disorders to matched unexposed individuals. The number above the arrow connecting two circles corresponds to the number of pairs of two cardiovascular disease events among patients with common psychiatry disorders. The color of the arrows indicates the odds ratio of the sequential association between the two cardiovascular disease events among patients with common psychiatry disorders.