

1 The impact of SARS-CoV-2 vaccination on Alpha & Delta variant 2 transmission

3

4 David W Eyre^{1,2}, Donald Taylor³, Mark Purver³, David Chapman⁴, Tom Fowler^{3,5}, Koen B
5 Pouwels^{2,6}, A Sarah Walker^{2,7}, Tim EA Peto^{2,7}

6

7 ¹Big Data Institute, Nuffield Department of Population Health, University of Oxford, Oxford,
8 UK

9 ²NIHR Health Protection Research Unit in in Healthcare Associated Infections and
10 Antimicrobial Resistance, University of Oxford, Oxford, UK

11 ³Department of Health and Social Care, UK Government, London, UK

12 ⁴Deloitte MCS Ltd, London, UK

13 ⁵William Harvey Research Institute, Queen Mary University of London, London UK

14 ⁶Health Economics Research Centre, Nuffield Department of Population Health, University
15 of Oxford, Oxford, UK

16 ⁷Nuffield Department of Medicine, University of Oxford

17

NOTE: This preprint reports new research that has not been certified by peer review and should not be used to guide clinical practice.

18 Abstract

19

20 Background

21 Pre-Delta, vaccination reduced SARS-CoV-2 transmission from individuals infected despite
22 vaccination, potentially via reducing viral loads. While vaccination still lowers the risk of
23 infection, similar viral loads in vaccinated and unvaccinated individuals infected with Delta
24 question how much vaccination prevents transmission.

25

26 Methods

27 We performed a retrospective observational cohort study of adult contacts of SARS-CoV-2-
28 infected adult index cases using English contact testing data. We used multivariable Poisson
29 regression to investigate associations between transmission and index case and contact
30 vaccination, and how these vary with Alpha and Delta variants (classified using S-gene
31 detection/calendar trends) and time since second vaccination.

32

33 Results

34 54,667/146,243(37.4%) PCR-tested contacts of 108,498 index cases were PCR-positive. Two
35 doses of BNT162b2 or ChAdOx1 vaccines in Alpha index cases were independently
36 associated with reduced PCR-positivity in contacts (aRR, adjusted rate ratio vs.
37 unvaccinated=0.32[95%CI 0.21-0.48] and 0.48[0.30-0.78] respectively). The Delta variant
38 attenuated vaccine-associated reductions in transmission: two BNT162b2 doses reduced
39 Delta transmission (aRR=0.50[0.39-0.65]), more than ChAdOx1 (aRR=0.76[0.70-0.82]).
40 Variation in Ct values (indicative of viral load) explained 7-23% of vaccine-associated

41 transmission reductions. Transmission reductions declined over time post-second
42 vaccination, for Delta reaching similar levels to unvaccinated individuals by 12 weeks for
43 ChAdOx1 and attenuating substantially for BNT162b2. Protection in contacts also declined
44 in the 3 months post-second vaccination.

45

46 **Conclusions**

47 Vaccination reduces transmission of Delta, but by less than the Alpha variant. The impact of
48 vaccination decreased over time. Factors other than PCR Ct values at diagnosis are
49 important in understanding vaccine-associated transmission reductions. Booster
50 vaccinations may help control transmission together with preventing infections.

51

52 Introduction

53 SARS-CoV-2 vaccines have been shown in randomised controlled trials¹⁻³ and real-world
54 population studies^{4,5} to prevent infection and adverse outcomes from several SARS-CoV-2
55 variants including Alpha (B.1.1.7) and Delta (B.1.617.2).⁶⁻⁸
56
57 Vaccination also potentially prevents onward transmission by at least two mechanisms:
58 reducing symptomatic and asymptomatic infections and therefore the number of infectious
59 individuals, and secondly via reduced onward spread from those infected despite
60 vaccination. Household studies show vaccination reduces onward transmission of the Alpha
61 variant from those infected despite vaccination.⁹⁻¹² One hypothesised mechanism is lower
62 viral loads observed in post-vaccination Alpha infections^{7,13} vs. unvaccinated individuals, as
63 viral load is associated with the likelihood of infection in contacts.^{14,15}
64
65 However, Delta viral loads are similar in vaccinated and unvaccinated infected
66 individuals,^{8,16} although the duration of viral shedding may be reduced.^{17,18} This questions
67 whether vaccination controls Delta spread as effectively as Alpha, and whether, with
68 increased transmissibility,¹⁹ this explains the rapid global dissemination of Delta despite
69 rising vaccination coverage.
70
71 We use national contact testing data from England to investigate the impact of vaccination
72 on onward transmission of SARS-CoV-2, and how this varies with Alpha and Delta variants
73 and time since second vaccination.
74

75 Methods

76 Setting and variants

77 We performed a retrospective observational cohort study of adult contacts (≥ 18 y) of
78 symptomatic and asymptomatic SARS-CoV-2-infected adult index cases. Data were obtained
79 from the English national contact tracing and testing service, NHS Test and Trace. Contacts
80 (living in the same household or in contact face-to-face, within < 1 m for ≥ 1 minute or < 2 m
81 for ≥ 15 minutes) were eligible for inclusion if they accessed PCR testing 1-10 days after the
82 index case's PCR test (typically following symptoms, but also after positive asymptomatic
83 antigen screening); 1-10 days chosen to enrich for contacts where the index case was the
84 most likely source for any infection¹⁵ (tested in a sensitivity analysis, see Supplement). Only
85 index cases with PCR tests performed by three national "lighthouse" laboratories (Milton
86 Keynes, Alderley Park, Glasgow) were included, using the same standardised workflow and
87 PCR assay (ThermoFisher TaqPath; S-gene, N-gene and ORF1ab targets). Contacts could be
88 tested by any community/hospital laboratory reporting results to NHS Test and Trace.
89 Vaccination status in cases and contacts was obtained from the
90 National Immunisation Management Service (see Supplement).
91
92 Contacts of index cases tested between 01-January-2021 and 31-July-2021 were included as
93 follows. Index cases were classified as Alpha (B.1.1.7) variant based on S-gene target failure
94 (SGTF), while this was considered a reliable proxy for Alpha, namely to 06-June-2021 (after
95 which $< 6\%$ cases had SGTF). From 10-May-2021 national spread of Delta meant $> 98\%$
96 sequenced cases were due to Alpha or Delta variants,¹⁹ such that we used S-gene detection
97 from 10-May-2021 as a proxy for Delta (see Supplement).

98

99 We restricted our analysis to contacts undergoing testing, excluding untested contacts, to
100 control as much as possible for biases related to health-seeking behaviour (including
101 differences before/after vaccination), access to testing, and case ascertainment.²⁰

102

103 [Statistical analysis](#)

104 We used multivariable Poisson regression to investigate how onward transmission, i.e.,
105 SARS-CoV-2 PCR-positive tests in contacts, varied with index case vaccination status:
106 unvaccinated, partially vaccinated (first vaccine date to 13 days after second vaccine), or
107 fully vaccinated (≥ 14 days after second vaccine), further considering whether vaccination
108 was AstraZeneca ChAdOx1 or Pfizer-BioNTech BNT162b2. We investigated how onward
109 transmission varied with Alpha vs. Delta index cases and whether any effects varied by
110 vaccine via pre-specified interaction terms. We additionally included model terms for time
111 since second BNT162b2 or ChAdOx1 vaccine.

112

113 We adjusted for the following covariates: contact event type; index case factors (age, sex,
114 and symptom status); contact factors (age, sex, vaccination status and time since
115 vaccination, as above); local deprivation, local weekly SARS-CoV-2 incidence from national
116 testing data, and calendar time (reflecting temporal changes in behaviour/social distancing,
117 the likelihood of acquisition from a third party, population-wide vaccine uptake, and the
118 percentage of unvaccinated people previously infected)(Table S1). We accounted for non-
119 linearity, interactions and multiple testing (see Supplement).

120

121 We refitted models including index case Ct values to investigate the relationship between Ct
122 values (indicative of viral load²¹) and transmission and performed a mediation analysis to
123 investigate whether the effect of index case vaccination status was explained by Ct values at
124 diagnosis (see Supplement).

125

126 Ethics

127 The study was performed as public health surveillance and NHS Test and Trace program
128 quality assurance, under Section 251 of the NHS Act 2006 with approvals from Public Health
129 England (PHE), the Department of Health and Social Care and NHS Test and Trace. PHE's
130 Research Ethics and Governance Group (PHE's Research Ethics Committee) reviewed the
131 study protocol and confirmed compliance with all regulatory requirements. As no regulatory
132 or ethical issues were identified, it was agreed that full ethical review was not needed, and
133 the protocol was approved.

134

135 Results

136 661,315 adult contacts of 374,115 adult index cases were recorded; 173,460(26.2%)
137 contacts underwent PCR testing between 02-January-2021 and 02-August-2021.
138 27,217(15.7%) contacts were excluded with incomplete data (see Supplement). Of the
139 remaining 146,243 contacts (108,498 index cases), 54,667(37.4%) tested PCR-positive. The
140 median(IQR)[range] index case and contact ages were 34(24-49)[18-102] and 43(29-54)[18-
141 107] years respectively. 55,354(51%) index cases and 83,206(57%) contacts were female
142 (Table S1-S2 for details by case/contact vaccine status). Contact events were predominantly

143 within households (97,204;66%), but also in household visitors (16,505;11%), at
144 event/activities (16,114;11%) and work/education (16,420;11%).

145

146 [Index case vaccination and onward transmission](#)

147 35,459/76,401(46%) contacts of unvaccinated index cases tested PCR-positive, as did
148 3,878/11,236(35%) and 7,947/31,039(26%) contacts of partially ChAdOx1 and BNT162b2
149 vaccinated cases, and 6,067/21,421(28%) and 1,316/6,146(21%) contacts of fully ChAdOx1
150 and BNT162b2 vaccinated cases. For index cases vaccinated twice with ChAdOx1 or
151 BNT162b2, the median(IQR) days from second vaccine to an Alpha variant PCR-positive test
152 was 27(18.5-43) and 42(26-63), respectively, and 51(35-70) and 90(69-110) for Delta. Dosing
153 intervals for fully-vaccinated index cases were >6 weeks for 14,811/15,083(98%) receiving
154 ChAdOx1 and 3,759/4,233(89%) for BNT162b2.

155

156 In a multivariable model (Tables 1, S4, Figures S2-S4), BNT162b2 vaccination in Alpha variant
157 index cases was independently associated with reduced PCR-positivity in contacts; two
158 doses (adjusted rate ratio at 14 days post-second vaccine vs. unvaccinated, aRR=0.32[95%CI
159 0.21-0.48]) reduced onward transmission more than one (aRR=0.88[0.85-0.91]). Similarly,
160 for ChAdOx1, two doses reduced transmission (aRR=0.48[0.30-0.78]) more than one
161 (aRR=0.90[0.86-0.94]). There was no evidence of a difference in transmission reductions
162 after two doses between vaccines for Alpha (heterogeneity RR, hRR=1.51[0.81-2.85]).

163

164 The Delta variant was associated with increased onward transmission vs. Alpha for
165 symptomatic index cases (aRR=1.24[1.12-1.38] when contact age=18y) and to a greater

166 extent for asymptomatic index cases (aRR=1.40[1.22-1.59]) independent of case and contact
167 vaccination status, but associations attenuated as contact age increased (Figure S2).
168
169 Vaccine-associated reductions in transmission post-second dose in index cases were
170 reduced with Delta for BNT162b2 by 1.6-fold (aRR=1.59[1.07-32.35]) vs. Alpha, and likely
171 also for ChAdOx1 (aRR=1.58[0.97-2.56]). Two BNT162b2 doses reduced transmission of
172 Delta by more than ChAdOx1 (aRR=0.50[0.39-0.65] vs. aRR=0.76[0.70-0.82, respectively,
173 hRR=1.51[1.15-1.97]).

174

175 [Vaccination in contacts](#)

176 The estimated effect of contact vaccination status does not necessarily reflect overall
177 vaccine effectiveness, as study inclusion was conditional on being a tested contact.
178 However, PCR-positivity was highest in unvaccinated contacts (34,041/65,117[52%]),
179 followed by those partially vaccinated with ChAdOx1, (3,987/12,307[32%]) and BNT162b2
180 (6,756/20,999[32%]) and lowest in after full ChAdOx1 (7,241/32,363[22%]) and BNT162b2
181 (2,642/15,457[17%]) vaccination. With Alpha, independently of effects in cases, BNT162b2-
182 fully vaccinated contacts had lower rates of PCR-positive tests than contacts receiving
183 ChAdOx1 (aRR 14-days post second vaccine vs. unvaccinated=0.15[0.11-0.21] vs.
184 aRR=0.40[0.27-0.59] respectively, hRR=2.68[1.61-4.47]). With Delta, more vaccinated
185 contacts tested PCR-positive than with Alpha, due to increases independent of vaccination
186 status, with no strong evidence of a difference vs. Alpha in vaccine effectiveness compared
187 to unvaccinated contacts for BNT162b2 (hRR vs. Alpha=1.26[0.91-1.75]) or ChAdOx1
188 (hRR=0.99[0.67-1.45]). Two doses of BNT162b2 remained more effective against Delta (aRR

189 vs. unvaccinated=0.19[0.16-0.23]) than ChAdOx1 (aRR=0.42[0.38-0.45], hRR=2.17[1.78-
190 2.65]).

191

192 Duration of protection and transmission reductions

193 Vaccine-associated reductions in onward transmission declined over time since second
194 vaccination in index cases (Figure 1A). Independently of contact vaccination status, for each
195 doubling of weeks since 14 days after second vaccination in index cases, the rate of contacts
196 testing PCR-positive increased 1.08-fold (95%CI 1.05-1.11) for ChAdOx1 and 1.13-fold (1.05-
197 1.21) for BNT162b2 with no evidence of a difference between vaccines (hRR=0.96[0.87-
198 1.03]). For Alpha, at two weeks post second dose of BNT162b, transmission was reduced by
199 68%(95%CI 52-79%) falling to 52%(29-67%) by 12 weeks, with reductions of 52%(22-70%)
200 and 38%(-1-62%) at 2 and 12 weeks post-second ChAdOx1 dose. For Delta and BNT162b,
201 reductions at 2 and 12 weeks were 50%(35-61%) and 24%(20-28%), respectively, and
202 24%(18-30%) and 2%(-2-6%) for ChAdOx1 (see Figure S5 for probabilities by case and
203 contact vaccine status). Findings were similar restricting to contacts tested 2-7 days after
204 the index case (Table S5, Figures S6-S7).

205

206 Contacts receiving BNT162b2 vs. ChAdOx1 remained at lower risk of testing positive
207 throughout 14 weeks post-second dose, despite the protective effect of BNT162b2 waning
208 faster than ChAdOx1 (Figure 1B, aRR per doubling of weeks since 14 days after second
209 vaccination=1.27[95%CI 1.21-1.34] vs. 1.13[1.10-1.16]; hRR=1.13[1.07-1.20]).

210

211 Other transmission risk factors

212 Multiple other factors were associated with contacts testing positive (Figures 2, S2-S4,
213 Table S4), including contact event type and index case age, with the highest rates of PCR-
214 positivity after household contact with index cases aged ≥ 40 years and lower rates following
215 contact at work/education or events/activities (Figure 2A). Contacts in their 30s and 70s had
216 the highest rates of positive tests after household contact, while contacts in their 20s had
217 the highest rates after contact events outside their own home (Figure 2B). Contacts of index
218 cases of the opposite sex were more likely to test positive (Figure 2C) and male contacts
219 were more likely than female contacts to be infected outside the home (Figure 2D).
220 Contacts of asymptomatic index cases were less likely to test positive (aRR at contact
221 age=18y vs. symptomatic for Alpha=0.53[95%CI 0.50-0.55], Delta=0.73[0.65-0.83]) likely
222 related to both lower viral loads (Figure 3) and lack of symptoms. Contacts living in more
223 deprived areas and areas with higher SARS-CoV-2 incidence (Figure S3) were more likely to
224 test positive. Positivity varied by calendar time (Figure S4).

225

226 Extent of vaccine impact on transmission explained by Ct value

227 Vaccination with BNT162b2 or ChAdOx1 was associated with higher PCR Ct values (lower
228 viral loads) in Alpha index cases at the time of their positive test, e.g. after two vaccinations
229 with symptoms, median Ct values (IQR) were 27.4(19.7-32.1) and 23.9(18.1-32.5) vs.
230 18.4(15.7-22.5) if unvaccinated. However, Delta variant infections had similar Ct values
231 whether cases were vaccinated or not (Figure 3), and lower Ct values than Alpha in both
232 symptomatic and asymptomatic infections.

233

234 Refitting our model to include Ct values (Figure 4A), lower Ct values (higher viral loads) were
235 independently associated with increased transmission for both Alpha and Delta, but with a
236 greater reduction in transmission as viral load decreased (Ct increased) for Alpha vs. Delta
237 (Figure 4B). Only a minority of the effect of full BNT162b and ChAdOx1 vaccination on
238 transmission was mediated via variation in Ct values at the time of index case diagnosis
239 (Figure 4C, Table S6): 18%(95%CI 9-64%) and 16%(1-80%), respectively, for Alpha and
240 23%(17-33%) and 7%(5-10%) for Delta.

241

242 Discussion

243 Using large-scale contact tracing data, we show that BNT162b2 and ChAdOx1 vaccination
244 both reduce onward transmission of SARS-CoV-2 from individuals infected despite
245 vaccination. However, reductions in transmission are lower for the Delta variant compared
246 to Alpha for BNT162b2 and likely lower for ChAdOx1 too. Vaccines continue to provide
247 protection against infection with Delta, but to a lesser degree than with Alpha in large
248 population-based studies, particularly for infections with symptoms or moderate/high viral
249 loads.⁸ Therefore, Delta erodes vaccine-associated protection against transmission by both
250 making infection more common and increasing the likelihood of transmission from
251 vaccinated individuals who become infected.

252

253 Vaccines have been hypothesised to reduce onward transmission from infected vaccinated
254 individuals by reducing viral loads, as higher viral loads are associated with transmission.^{14,15}
255 However, we found that most of the effect of vaccines persisted after adjusting for Ct values
256 at index case diagnosis; in a mediation analysis, index case Ct values only accounted for 7-

257 23% of the impact of vaccination. This highlights that Ct values from diagnostic testing are
258 not necessarily a surrogate of the impact of vaccination on transmission. It potentially
259 explains why we found vaccination reduces onward Delta transmission despite Ct values
260 being similar regardless of vaccination status. The single measured Ct value only
261 approximates viral load at the time of transmission, as viral loads are dynamic over time.²²
262 Hence, observed Ct values are likely imperfectly representative of viral loads at
263 transmission, despite the relationship observed between Ct values at diagnosis and risk of
264 prior onward transmission (Figure 4B). Vaccination may act by facilitating faster clearance of
265 viable infectious virions,^{17,18} but leaving damaged ineffective virions behind that still contain
266 PCR-detectable RNA. However this, and the performance of antigen assays post vaccination,
267 needs further study.

268

269 We found that contacts of Delta-infected index cases vaccinated with BNT162b2 were less
270 likely to test PCR-positive than those of index cases receiving ChAdOx1, with potentially
271 insufficient power to resolve differences for Alpha. Contacts vaccinated twice with
272 BNT162b2 also had lower rates of Alpha and Delta infections than those vaccinated with
273 ChAdOx1.

274

275 Protection against onward transmission waned within 3 months post-second vaccination.
276 For Alpha some protection against transmission remained, but for Delta this eroded much of
277 the protection against onward transmission, particularly for ChAdOx1. “Waning” of
278 protective behaviour may also explain some of the differences seen, with vaccination
279 facilitating reduced social distancing and mask wearing. However, reductions in antibody
280 levels²³ and vaccine effectiveness⁸ over time suggest biological explanations for increasing

281 transmission are likely important. Additionally, some of the observed decline may be
282 attributable to those clinically vulnerable with weaker immune systems being vaccinated
283 longer ago. We also found that the probability of a contact testing positive increased with
284 time since their second vaccination. Although BNT162b2 provided higher levels of
285 protection for contacts throughout the 3 months post-second vaccine, protection against
286 infection in contacts waned faster for BNT162b2 than ChAdOx1, as also seen for new
287 infections in a representative UK survey.⁸

288

289 This study has several limitations. We considered only contacts who underwent PCR testing,
290 to minimise bias introduced by differences in testing behaviour that may occur for multiple
291 reasons including contacts' vaccination status. Therefore, we cannot estimate secondary
292 attack rates by case and contact vaccination status, and absolute protective effects of
293 vaccination on transmission may be under-estimated as vaccine-protected uninfected
294 contacts may not have sought testing. Our approach is also unlikely to eliminate bias,
295 particularly if test-seeking behaviour is related to perceived vaccine efficacy, given non-
296 specificity of many symptoms.²⁴ Some contacts will have been infected by a source other
297 than the identified 'index case'. We restricted to contacts tested 1-10 days after an index
298 case to minimise this, with very similar findings restricting to 2-7 days; better data on
299 symptom onset and timing of contact events could improve estimates. We did not have
300 sufficient data to account for previous infection status, which is also imperfectly ascertained
301 in national testing programs. Declines over time in the adjusted probability of contacts
302 testing positive (Figure S4) may be partly explained by increasing prevalence of prior
303 infection in unvaccinated individuals, along with changes in test-seeking behaviour and the
304 incidence of other infections causing similar symptoms.²⁵ We used SGTF and time as a proxy

305 for Alpha vs. Delta infection rather than sequencing, meaning some low viral load Delta
306 infections with SGTF may have been misclassified as Alpha; however we restricted the time
307 period of our dataset to minimise this. As we considered all PCR results in contacts, not just
308 those tested with assays including an S-gene target, we could not assess SGTF concordance
309 as supporting evidence for transmission between case-contact pairs. Finally, we did not
310 have data to adjust for comorbidities; with clinically vulnerable individuals and healthcare
311 workers vaccinated earlier and more likely to receive shorter dosing intervals. This may have
312 impacted some findings, particularly on waning over time and differences by vaccine type; it
313 also precluded analysis of the impact of dosing interval.⁸

314

315 The Delta variant has spread globally and caused resurgences of infection even in the setting
316 of high vaccination coverage. Increased onward transmission from individuals who become
317 infected despite vaccination is an important reason for its spread. Booster vaccination
318 campaigns being considered and implemented²⁶ are likely to help control transmission as
319 well as preventing infections.

320

321 Data availability

322 Applications to use the data in this study can be made to NHS Digital's Data Access Request
323 Service, please see <https://digital.nhs.uk/services/data-access-request-service-dars> for more
324 details.

325

326 Declarations

327 DWE declares lecture fees from Gilead outside the submitted work. No other author has a
328 conflict of interest to declare.

329

330 Funding

331 This study was funded by the UK Government's Department of Health and Social Care. This
332 work was supported by the National Institute for Health Research Health Protection
333 Research Unit (NIHR HPRU) in Healthcare Associated Infections and Antimicrobial Resistance
334 at Oxford University in partnership with Public Health England (PHE) (NIHR200915), and the
335 NIHR Biomedical Research Centre, Oxford. The views expressed in this publication are those
336 of the authors and not necessarily those of the NHS, the National Institute for Health
337 Research, the Department of Health or Public Health England. DWE is a Robertson
338 Foundation Fellow and an NIHR Oxford BRC Senior Fellow. ASW is an NIHR Senior
339 Investigator.

340

341 References

342

343 1 Polack FP, Thomas SJ, Kitchin N, *et al.* Safety and Efficacy of the BNT162b2 mRNA Covid-19
344 Vaccine. *New Engl J Med* 2020; 383: 2603–15.

345 2 Voysey M, Clemens SAC, Madhi SA, *et al.* Safety and efficacy of the ChAdOx1 nCoV-19
346 vaccine (AZD1222) against SARS-CoV-2: an interim analysis of four randomised controlled
347 trials in Brazil, South Africa, and the UK. *Lancet* 2021; 397: 99–111.

348 3 Baden LR, Sahly HME, Essink B, *et al.* Efficacy and Safety of the mRNA-1273 SARS-CoV-2
349 Vaccine. *New Engl J Med* 2020; 384: 403–16.

350 4 Bernal JL, Andrews N, Gower C, *et al.* Effectiveness of the Pfizer-BioNTech and Oxford-
351 AstraZeneca vaccines on covid-19 related symptoms, hospital admissions, and mortality in
352 older adults in England: test negative case-control study. *Bmj* 2021; 373: n1088.

353 5 Dagan N, Barda N, Kepten E, *et al.* BNT162b2 mRNA Covid-19 Vaccine in a Nationwide
354 Mass Vaccination Setting. *New Engl J Med* 2021. DOI:10.1056/nejmoa2101765.

355 6 Bernal JL, Andrews N, Gower C, *et al.* Effectiveness of Covid-19 Vaccines against the
356 B.1.617.2 (Delta) Variant. *New Engl J Med* 2021; 385: 585–94.

357 7 Pritchard E, Matthews PC, Stoesser N, *et al.* Impact of vaccination on new SARS-CoV-2
358 infections in the United Kingdom. *Nat Med* 2021; 27: 1370–8.

359 8 Pouwels KB, Pritchard E, Matthews PC, *et al.* Impact of Delta on viral burden and vaccine
360 effectiveness against new SARS-CoV-2 infections in the UK. *Medrxiv* 2021; :
361 2021.08.18.21262237.

362 9 Harris RJ, Hall JA, Zaidi A, Andrews NJ, Dunbar JK, Dabrera G. Effect of Vaccination on
363 Household Transmission of SARS-CoV-2 in England. *New Engl J Med* 2021; 385: 759–60.

364 10 Layan M, Gilboa M, Gonen T, *et al.* Impact of BNT162b2 vaccination and isolation on
365 SARS-CoV-2 transmission in Israeli households: an observational study. *Medrxiv* 2021; :
366 2021.07.12.21260377.

367 11 Prunas O, Warren JL, Crawford FW, *et al.* Vaccination with BNT162b2 reduces
368 transmission of SARS-CoV-2 to household contacts in Israel. *Medrxiv* 2021; :
369 2021.07.13.21260393.

370 12 Salo J, Hägg M, Kortelainen M, *et al.* The indirect effect of mRNA-based Covid-19
371 vaccination on unvaccinated household members. *Medrxiv* 2021; : 2021.05.27.21257896.

372 13 Levine-Tiefenbrun M, Yelin I, Katz R, *et al.* Initial report of decreased SARS-CoV-2 viral
373 load after inoculation with the BNT162b2 vaccine. *Nat Med* 2021; 27: 790–2.

- 374 14 Marks M, Millat-Martinez P, Ouchi D, *et al.* Transmission of COVID-19 in 282 clusters in
375 Catalonia, Spain: a cohRRt study. *Lancet Infect Dis* 2021; 21: 629–36.
- 376 15 Lee LYW, Rozmanowski S, Pang M, *et al.* SARS-CoV-2 infectivity by viral load, S gene
377 variants and demographic factors and the utility of lateral flow devices to prevent
378 transmission. *Clin Infect Dis* 2021; : ciab421-.
- 379 16 Brown CM, Vostok J, Johnson H, *et al.* Outbreak of SARS-CoV-2 Infections, Including
380 COVID-19 Vaccine Breakthrough Infections, Associated with Large Public Gatherings —
381 Barnstable County, Massachusetts, July 2021. *Morbidity Mortal Wkly Rep* 2021; 70: 1059–
382 62.
- 383 17 Singanayagam A, Hakki S, Dunning J, *et al.* Community Transmission and Viral Load
384 Kinetics of SARS-CoV-2 Delta (B.1.617.2)Variant in Vaccinated and Unvaccinated Individuals.
385 *Ssrn Electron J* 2021. DOI:10.2139/ssrn.3918287.
- 386 18 Chia PY, Ong SWX, Chiew CJ, *et al.* Virological and serological kinetics of SARS-CoV-2
387 Delta variant vaccine-breakthrough infections: a multi-center cohRRt study. *Medrxiv* 2021; :
388 2021.07.28.21261295.
- 389 19 Public Health England. SARS-CoV-2 variants of concern and variants under investigation
390 in England: Technical briefing 21. 2021; published online Aug 20.
391 [https://assets.publishing.service.gov.uk/government/uploads/system/uploads/attachment_](https://assets.publishing.service.gov.uk/government/uploads/system/uploads/attachment_data/file/1012644/Technical_Briefing_21.pdf)
392 [data/file/1012644/Technical_Briefing_21.pdf](https://assets.publishing.service.gov.uk/government/uploads/system/uploads/attachment_data/file/1012644/Technical_Briefing_21.pdf) (accessed Sept 2, 2021).
- 393 20 Fukushima W, Hirota Y. Basic principles of test-negative design in evaluating influenza
394 vaccine effectiveness. *Vaccine* 2017; 35: 4796–800.
- 395 21 Public Health England. Understanding cycle threshold (Ct) in SARS-CoV-2 RT-PCR. 2020;
396 published online Oct 1.
397 [https://assets.publishing.service.gov.uk/government/uploads/system/uploads/attachment_](https://assets.publishing.service.gov.uk/government/uploads/system/uploads/attachment_data/file/926410/Understanding_Cycle_Threshold__Ct__in_SARS-CoV-2_RT-PCR_.pdf)
398 [data/file/926410/Understanding_Cycle_Threshold__Ct__in_SARS-CoV-2_RT-PCR_.pdf](https://assets.publishing.service.gov.uk/government/uploads/system/uploads/attachment_data/file/926410/Understanding_Cycle_Threshold__Ct__in_SARS-CoV-2_RT-PCR_.pdf)
399 (accessed Sept 27, 2021).
- 400 22 He X, Lau EHY, Wu P, *et al.* Temporal dynamics in viral shedding and transmissibility of
401 COVID-19. *Nat Med* 2020; 26: 672–5.
- 402 23 Wei J, Stoesser N, Matthews PC, *et al.* Antibody responses to SARS-CoV-2 vaccines in
403 45,965 adults from the general population of the United Kingdom. *Nat Microbiol* 2021; 6:
404 1140–9.
- 405 24 Lewnard JA, Patel MM, Jewell NP, *et al.* Theoretical Framework for Retrospective Studies
406 of the Effectiveness of SARS-CoV-2 Vaccines. *Epidemiology* 2021; 32: 508–17.
- 407 25 Vihta K-D, Pouwels KB, Peto T, *et al.* Symptoms and SARS-CoV-2 positivity in the general
408 population in the UK. *Medrxiv* 2021; : 2021.08.19.21262231.

409 26 Bar-On YM, Goldberg Y, Mandel M, *et al.* Protection of BNT162b2 Vaccine Booster
410 against Covid-19 in Israel. *New Engl J Med* 2021. DOI:10.1056/nejmoa2114255.

411

412 Table

Characteristic	Alpha		Delta		Delta vs. Alpha	
	aRR	95% CI	aRR	95% CI	Interaction RR	95% CI
<i>Impact on onward transmission: Case vaccination status</i>						
Unvaccinated	—	—	—	—	—	—
Partial ChAdOx1	0.90	0.86, 0.94	0.95	0.91, 0.99	1.06	1.00, 1.12
Partial BNT162b2	0.88	0.85, 0.91	0.83	0.81, 0.86	0.94	0.90, 0.99
Full ChAdOx1	0.48	0.30, 0.78	0.76	0.70, 0.82	1.58	0.97, 2.56
Full BNT162b2	0.32	0.21, 0.48	0.50	0.39, 0.65	1.59	1.07, 2.35
<i>Contact vaccination status</i>						
Unvaccinated	—	—	—	—	—	—
Partial ChAdOx1	0.94	0.91, 0.98	0.69	0.66, 0.72	0.73	0.69, 0.77
Partial BNT162b2	0.85	0.82, 0.88	0.67	0.65, 0.69	0.79	0.76, 0.83
Full ChAdOx1	0.40	0.27, 0.59	0.42	0.38, 0.45	1.04	0.70, 1.53
Full BNT162b2	0.15	0.11, 0.21	0.19	0.16, 0.23	1.28	0.92, 1.78

413

414 **Table 1. Relationship between PCR-positive results in contacts, and index case and**

415 **contact vaccination status according to Alpha/Delta variant in the index case.** Results for

416 those with two vaccine doses are estimated at day 14 post second vaccine, see Figure 1 for

417 trends with time post-second vaccine. aRR, adjusted rate ratio, CI confidence interval.

418 Adjustment made for contact event type; index case factors - age, sex, and symptom status;

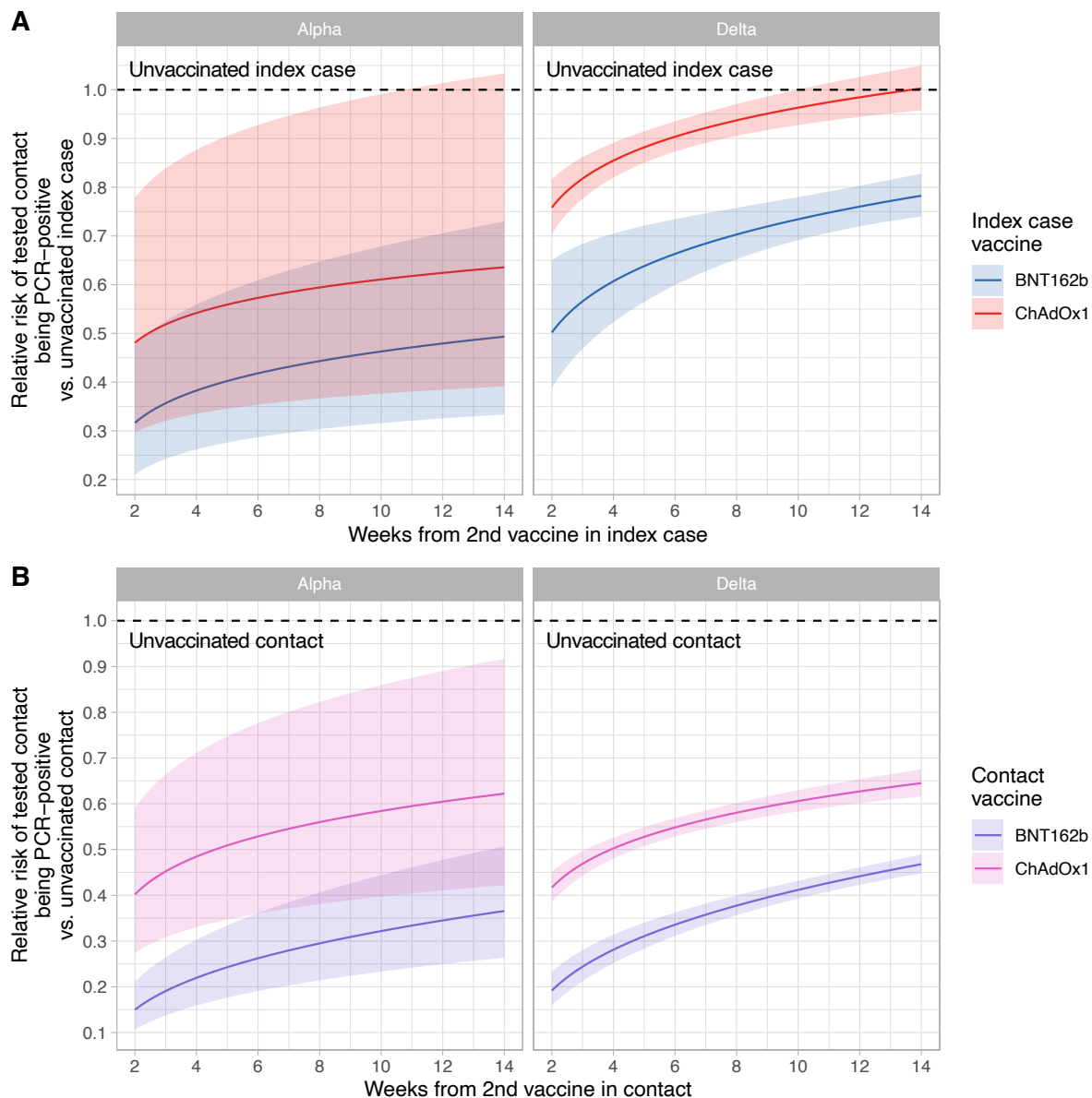
419 contact factors - age, sex; local deprivation, local SARS-CoV-2 incidence and calendar time

420 (see Table S4 and Figures S2-S4 for details). There was no evidence that adding an

421 interaction between case and contact vaccination status improved model fit.

422 Figures

423



424

425 **Figure 1. Rate ratios for positive PCR tests in contacts by time since second vaccination in**

426 **index cases (panel A) and in contacts (panel B), variant, and vaccine type. Panel A**

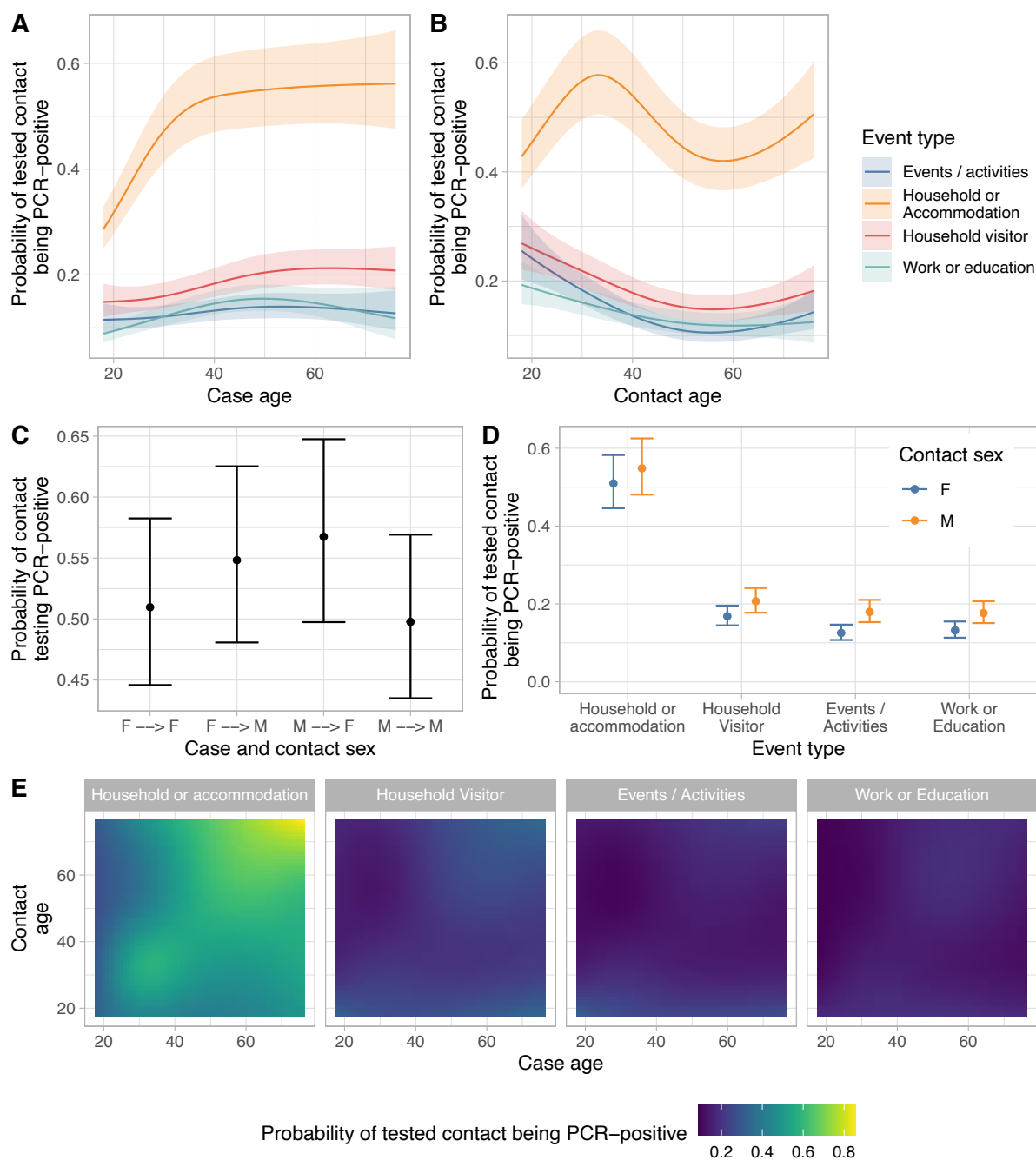
427 compares the rate of positive PCR results in tested contacts, comparing the impact of index

428 case vaccination status to an unvaccinated index case. Panel B compares the rate of positive

429 PCR results in tested contacts, comparing contact vaccination status to an unvaccinated

430 contact. See Figure S5 for probabilities of a positive test by variant and case and contact

431 vaccination status. The shaded area indicates the 95% confidence interval. There was no
432 evidence that fitting different rates by variant for the change in protection over weeks since
433 second vaccine improved model fit.
434



435

436

437 **Figure 2. Estimated probability of a positive PCR test in contacts by contact event type and**

438 **index case age (panel A) or contact age (panel B), contact sex and event type (panels C and**

439 **D) and case and contact age (panel E). For each panel all other covariates are set to**

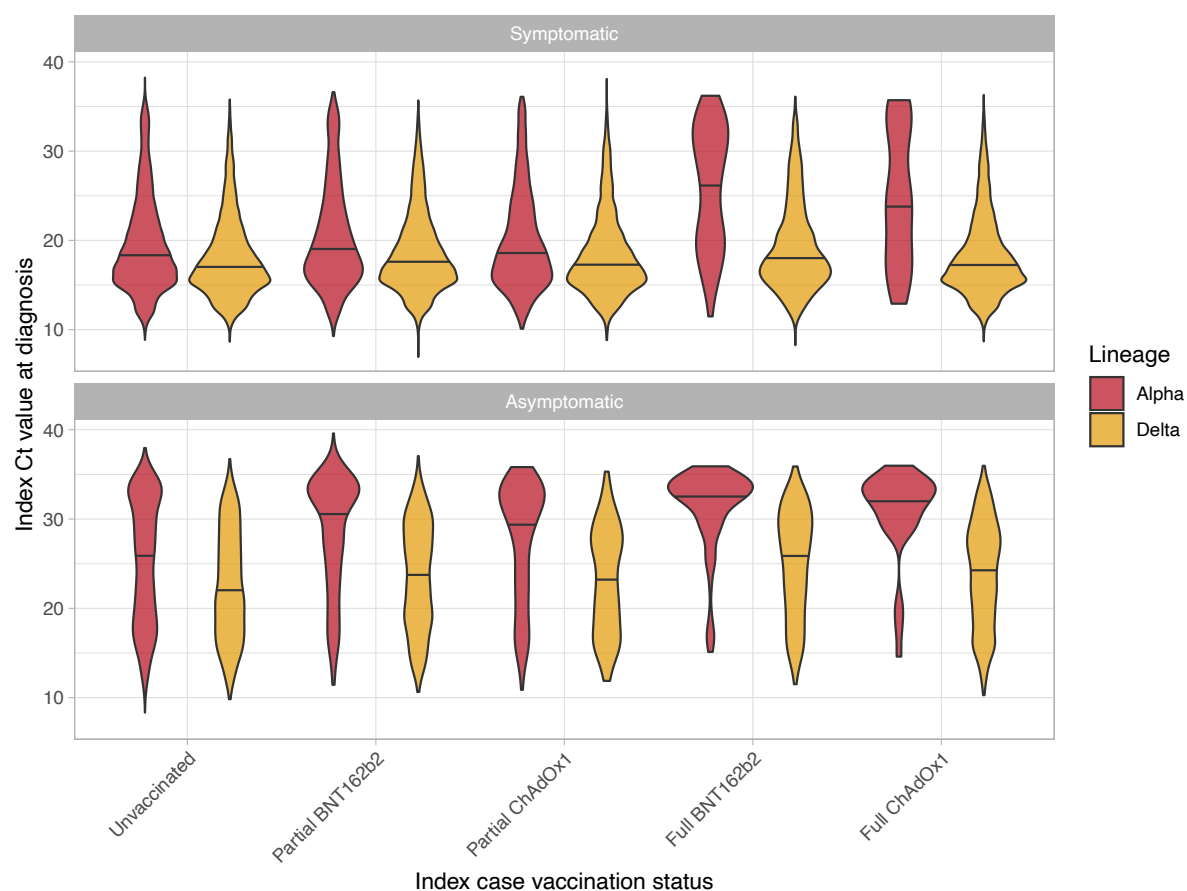
440 **reference values for categorical values and median values for continuous variables, i.e.**

441 **contact event type set to Household or accommodation; index case factors – age (median),**

442 sex (female), vaccination status (unvaccinated) and symptom status (symptomatic); contact
443 factors – age (median), sex (female), vaccination status (unvaccinated); local deprivation
444 (median), local SARS-CoV-2 incidence (median) and calendar time (median). Shaded ribbons
445 and error bars indicate 95% confidence intervals.

446

447



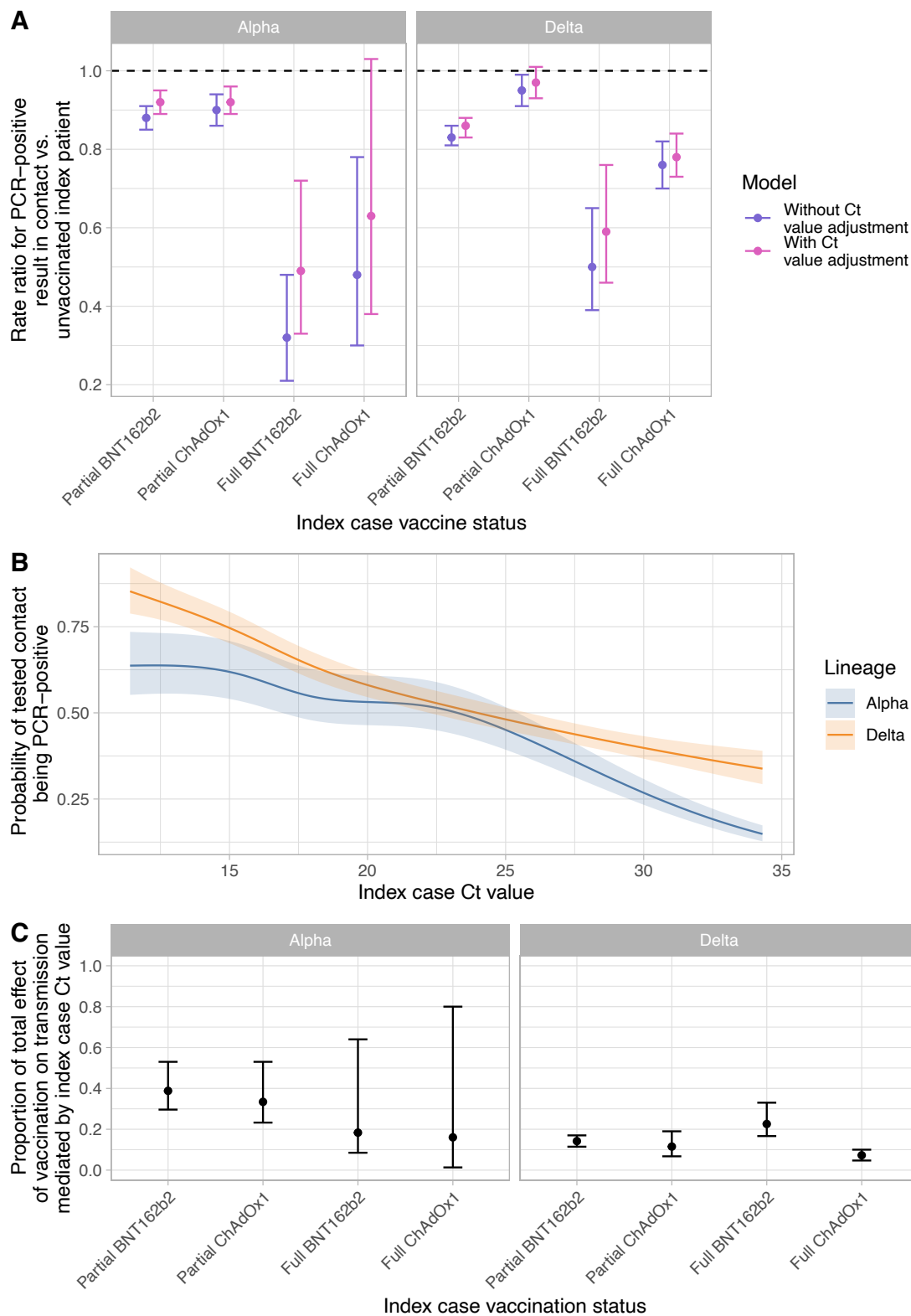
448

449 **Figure 3. Distribution of Ct values (indicative of viral load) by index case vaccination**

450 **status, variant, and symptoms.** The solid line in each violin plot indicates the median. See

451 Lee *et al* for details of equivalent viral loads in copies per ml ($\log_{10}(\text{VL}) = 12.0 - 0.328 \cdot \text{Ct}$).¹⁵

452



453

454

455 **Figure 4. Extent of vaccine-associated transmission reductions explained by change in Ct**

456 **values at index case diagnosis.** Panel A shows the impact of index case vaccination on

457 onward transmission in models with and without adjustment for index case Ct value. Panel
458 B shows the relationship between index case Ct value and onward transmission from the
459 model adjusting for index case Ct at the time of diagnosis. Panel C shows the proportion of
460 the total effect of index case vaccination mediated by changes in Ct value (further details in
461 Table S6). Adjusted rate ratios are shown in panel A and error bars (panel A and C) or the
462 shaded ribbon (panel B) indicate the 95% confidence interval.