

1 Lasting changes to circulating leukocytes in people with mild SARS-CoV-2 infections

2 Allison E. Kennedy^{1,2,3¶}, Laura Cook^{4,5¶}, Jessica A. Breznik^{1,2,3}, Braeden Cowbrough^{1,2,3}, Jessica G. Wallace^{1,2,3},
3 Angela Huynh³, James W Smith³, Kiho Son^{3,6}, Hannah Stacey^{1,2,7}, Jann Ang^{1,2,7}, Alison McGeer^{8,9}, Brenda L.
4 Coleman^{8,9}, Maggie Larché³, Mark Larché³, Nathan Hambly^{3,6}, Parameswaran Nair^{3,6}, Kjetil Ask^{3,6}, Matthew
5 S. Miller^{1,2,7}, Jonathan Bramson^{1,3}, Megan K. Levings^{10,11,12}, Ishac Nazy^{3,13}, Sarah Svenningsen^{3,6}, Manali
6 Mukherjee^{3,6}, Dawn M. E. Bowdish^{1,2,3,6*}

7

8 ¹McMaster Immunology Research Centre, McMaster University, Hamilton, Ontario, Canada

9 ²Michael G. DeGroot Institute for Infectious Disease Research, McMaster University, Hamilton, Ontario,
10 Canada

11 ³Department of Medicine, Michael G. DeGroot School of Medicine, McMaster University, Hamilton,
12 Ontario, Canada

13 ⁴Department of Microbiology and Immunology, University of Melbourne, Melbourne, Australia

14 ⁵The Peter Doherty Institute for Infection and Immunity, University of Melbourne, Melbourne, Australia

15 ⁶Firestone Institute of Respiratory Health, St Joseph's Healthcare, Hamilton, Ontario, Canada

16 ⁷Department of Biochemistry & Biomedical Sciences, McMaster University, Hamilton, Ontario, Canada

17 ⁸Sinai Health, Toronto, Ontario, Canada

18 ⁹University of Toronto, Toronto, Ontario, Canada

19 ¹⁰School of Biomedical Engineering, University of British Columbia, Vancouver, British Columbia, Canada

20 ¹¹Department of Surgery, University of British Columbia, Vancouver, British Columbia, Canada

21 ¹²British Columbia Children's Hospital Research Institute, Vancouver, British Columbia, Canada

22 ¹³McMaster Centre for Transfusion Research, Hamilton, Ontario, Canada

23 [¶]AEK and LC are Joint Senior Authors

24 *Corresponding author. Email: bowdish@mcmaster.ca (DMEB)

25

26 **Short Title:** Immune changes after mild COVID-19

27 **Abstract**

28 Survivors of severe SARS-CoV-2 infections frequently suffer from a range of post-infection sequelae.
29 Whether survivors of mild or asymptomatic infections can expect any long-term health consequences is not
30 yet known. Herein we investigated lasting changes to soluble inflammatory factors and cellular immune
31 phenotype and function in individuals who had recovered from mild SARS-CoV-2 infections (n=22)
32 compared to those that had recovered from other mild respiratory infections (n=11). Individuals who had
33 mild SARS-CoV-2 infections had elevated levels of C-reactive protein 1-3 months after symptom onset, and
34 changes in phenotype and function of circulating T cells that were not apparent in individuals 6-9 months
35 post-symptom onset. Markers of monocyte activation and expression of adherence and chemokine
36 receptors indicative of altered migratory capacity were also higher at 1-3 months post-infection in
37 individuals who had mild SARS-CoV-2, but these were no longer elevated by 6-9 months post-infection.
38 Perhaps most surprisingly, polyclonal activation of T cells was higher in individuals who had recently
39 experienced a mild SARS-CoV-2 infection compared to individuals with other recent respiratory infections.
40 These data are indicative of prolonged immune activation and systemic inflammation that persists for up to
41 three months after mild or asymptomatic SARS-CoV-2 infections.

42 Introduction

43 SARS-CoV-2 infection has unusual effects on circulating immune cells. In general, respiratory
44 infections are associated with rapid and sustained release of neutrophils and monocytes from the bone
45 marrow, with no immediate change in production or function of lymphocytes [1]. In contrast, SARS-CoV-2
46 infections are consistently associated with lymphopenia, which is a reliable predictor of mortality [2]. The
47 loss of T cells may be due to apoptosis in the secondary lymphoid organs, or possibly inappropriate
48 recruitment to the lungs and other organs [3, 4]. Severe cases of SARS-CoV-2 infection are also associated
49 with increased granularity and changes in nuclear morphology in neutrophils and monocytes, which are
50 generally due to premature egress from the bone marrow and stunted maturation [5]. Whether
51 myelopoiesis and egress are affected in mild COVID is not yet known.

52 Hospitalization with any respiratory infection is associated with long-term health consequences [6];
53 however, the consequences of COVID-19 appear to be particularly broad and include “long COVID” (a
54 constellation of symptoms that can include severe fatigue often exacerbated by exercise; pain, and
55 respiratory complications) [7, 8], and a higher than expected risk of re-hospitalization for a variety of
56 causes [9-11]. Although it has been documented that there are differences in acute immune responses in
57 asymptomatic, mild, moderate, and severe cases of SARS-CoV-2 infection [12, 13], it is not clear whether
58 there is any risk of long-term immune dysregulation or health consequences in survivors of asymptomatic
59 or mild cases.

60 We investigated whether there are any changes in phenotype and frequency of circulating
61 leukocytes in individuals who had mild COVID-19 (i.e. did not require medical attention) and compared
62 them to those who had other mild respiratory infections. We found evidence of transient changes in
63 circulating NK cells, T cells, and monocytes 1-3 months post mild COVID-19 but not after other mild
64 respiratory infections. These changes generally resolved 6-9 months post-COVID-19 infection, indicating

65 that there is an early period of immune dysregulation greater than that of other respiratory infections,
66 which occurs even after mild SARS-CoV-2 infection.

67

68 **Materials and Methods**

69 **Participant recruitment and blood collection**

70 Research participants with symptoms consistent with COVID-19 (as summarized in Table 1) were
71 recruited from the greater Hamilton area (Ontario, Canada) between February 2020 and January 2021. All
72 protocols were approved by the Hamilton Research Ethics Board (#10757 and #11471). Venous blood was
73 drawn in anti-coagulant free vacutainers for isolation of serum, and in heparin-coated vacutainers for
74 experiments that required viable leukocytes. Serum and leukocytes were isolated as per standard protocols
75 [14]. Immunophenotyping was performed on fresh blood within four hours of collection. None of the
76 participants had been vaccinated against SARS-CoV-2 at the time of sample collection. Three donors who
77 had a positive PCR test for SARS-CoV-2 were either asymptomatic or had mild symptoms (i.e. headache or
78 tiredness that lasted for a day). The remaining donors had symptoms that they reported as consistent with
79 a typical respiratory infection (e.g. cough, fever, chills) but these generally resolved within 2-4 weeks. The
80 duration of symptoms and demographics of the 38 participants in this study (i.e. sex, age, body mass index,
81 comorbid conditions, medications) are summarized in Table 1. Participants were characterized as having
82 had COVID-19, 'other respiratory infection', or 'indeterminate', as detailed in S1 Table. Most participants
83 did not consult a medical professional about their condition, consistent with the public health advice in the
84 early months of the pandemic that individuals who did not need medical attention should stay home, and
85 since none were hospitalized, we defined these as 'mild' infections. Donors recovered from COVID-19 gave
86 blood either 1-3 months post-symptom onset or 6-9 months post-symptom onset, but no donor gave blood
87 at both time points and therefore there were no repeat measures from the same donor.

88 **Table 1. Participant demographics**

	Other respiratory infections (not COVID-19) n=11	COVID-19 infections n=22	Indeterminate n=5	P value *
Age (mean ± STDEV)	55 ± 16	55 ± 15	57 ± 11	0.9249
Sex (% female)	8 (73%)	11 (50%)	3 (60%)	0.2783
BMI (kg/m ²)	24.0 ± 2.9	25.0 ± 3.6	24.5 ± 2.3	0.4172
Health Conditions (frequency)				
Asthma	1 (9%)	1 (5%)	1 (20%)	-
COPD (including emphysema and chronic bronchitis)	1 (9%)	0 (0%)	0 (0%)	-
Other lung disease	0 (0%)	1 (5%)	0 (0%)	-
Diabetes	0 (0%)	3 (14%)	0 (0%)	-
Hypertension	1 (9%)	1 (5%)	1 (20%)	-
Heart disease	0 (0%)	2 (9%)	0 (0%)	-
Cancer	2 (18%)	2 (9%)	0 (0%)	-
Autoimmune condition	1 (9%)	1 (5%)	1 (20%)	-
Medications				
Number of medications (mean ± STDEV)	1 ± 2	2 ± 2	1 ± 1	0.2049
Symptoms (frequency)				
Cough	6 (55%)	13 (59%)	2 (40%)	-
Shortness of breath	4 (36%)	9 (41%)	1 (20%)	-
Chest pain	3 (27%)	9 (41%)	2 (40%)	-
Fever	3 (27%)	12 (55%)	1 (20%)	-
Feeling generally unwell	9 (82%)	21 (95%)	2 (40%)	-
Abnormally tired	7 (64%)	20 (91%)	2 (40%)	-
New confusion	4 (36%)	1 (5%)	1 (20%)	-
New generalized muscle aches and pains	5 (45%)	16 (73%)	2 (40%)	-
New joint pain	3 (27%)	5 (23%)	2 (40%)	-
Earache/infection	0 (0%)	1 (5%)	0 (0%)	-
Headache	6 (55%)	14 (64%)	1 (20%)	-
Runny/stuffy nose	7 (64%)	7 (32%)	2 (40%)	-
Sinus pain	2 (18%)	4 (18%)	1 (20%)	-
Sore/scratchy throat	7 (64%)	10 (45%)	2 (40%)	-
Loss of appetite	4 (36%)	8 (36%)	2 (40%)	-
Loss of taste/smell	2 (18%)	11 (50%)	1 (20%)	-
Duration of Symptoms				
No symptoms - 1 week	4 (36%)	3 (14%)	1 (20%)	-
2-4 weeks	3 (27%)	11 (50%)	4 (80%)	-
4 or more weeks	4 (36%)	8 (36%)	0	-
Diagnosis				
PCR test for SARS-CoV-2 performed	0 (0%)	15 (68%)	0 (0%)	-
Told by a health care professional that they had SARS-CoV-2/COVID-19 without a PCR test	1 (8%)	5 (25%)	0 (0%)	-

89 **Statistical comparisons were made between 'other respiratory infections' and 'COVID-19 infections' groups only since*
 90 *the 'indeterminate' group was not used in subsequent analyses. Student's unpaired parametric t-test was used to*
 91 *compare age and BMI, which were normally distributed. Sex distribution was measured by Fisher's exact test to*
 92 *analyze a 2x2 contingency table. Differences in the number of medications, which was not normally distributed, was*
 93 *measured using an unpaired non-parametric test not assuming Gaussian distribution.*

94

95 **Measurements of anti-SARS-CoV-2 antibodies**

96 Anti-SARS-CoV-2 full-length S protein and RBD IgG and IgA seropositivity were identified via
97 validated serology ELISA as described by Huynh *et al.*, 2021 [15]. Briefly, NUNC™ Maxisorp 384 well plates
98 (ThermoScientific) were coated with S (5 µg/mL) or RBD (2 µg/mL) antigens in 50 mM carbonate buffer (pH
99 9.6) overnight at 4°C and blocked with 3% skim milk in PBS-0.05% Tween-20. After washing with PBS, plates
100 were coated with diluted serum (1:100) for 1 hour at room temperature, washed, and incubated with 25 µL
101 alkaline phosphatase conjugated antibodies goat anti-human IgG (1:2000) or goat anti-human IgA (1:500)
102 (Jackson Immuno). Plates were washed and antibody levels were quantified by adding 50 µL of substrate
103 buffer (0.27 µM p-nitrophenyl phosphate/diethanolamine buffer, 1M, pH 9.6) and reading optical density
104 (OD) at 405 nm detection every 1 min, with 490 nm reference.

105 **Assessment of T cell activation induced markers (AIM) for SARS-CoV-2** 106 **peptides**

107 To detect antigen-specific T cell recall responses, 100 µL of venous blood was cultured with an
108 equal amount of Iscove's Modified Dulbecco's Medium Glutamax (Invitrogen Life Technologies) and
109 antigen for 44 hours in 96-well flat bottom plates at 37°C. Wells were stimulated using SARS-CoV-2 peptide
110 pools (PepTivators from Miltenyi Biotec) containing overlapping peptides covering the complete sequence
111 of the membrane glycoprotein (M; #130-126-702), the nucleocapsid phosphoprotein (N; # 130-126-699) or
112 the immunodominant sequence domains of the spike glycoprotein (S; #130-126-701); each used 1 µg/mL.
113 Unstimulated wells served as negative controls, and polyclonal stimulation with CytoStim™ (0.5 µl/well,
114 Miltenyi Biotec) was included as positive control. The fluorescently conjugated monoclonal antibody panel
115 used for analysis is within S2 Table. Samples were run on a CytoFLEX LX (4 laser, Beckman Coulter). In this

116 AIM assay the antigen-specific T cells (AIM-positive) are defined by co-expression of CD25 and CD134
117 (OX40) for CD4⁺ T cells [16, 17] and by co-expression of CD69 and CD137 (4-1BB) for CD8⁺ T cells [18].

118 **Quantification of peripheral immunophenotype**

119 Circulating neutrophils, monocytes, T, B and NK cells were quantitated by multi-colour flow
120 cytometry as previously described [14, 19]. Direct application of monoclonal antibodies (specificities
121 outlined in S2 Table) to 100 μ L of whole blood was performed for 30 minutes at room temperature.
122 Following staining, samples were incubated with either 1 x Fix/Lyse Buffer (eBioscience) for 10 minutes or
123 following standard protocols for the FOXP3 Transcription Factor Staining Kit (eBioscience), washed with
124 PBS, and resuspended in FACS Wash (5 mM EDTA, 0.5% BSA in PBS) for analysis with a CytoFLEX LX (4 laser,
125 Beckman Coulter). Absolute counts for circulating immune populations were determined using
126 CountBright™ absolute counting beads (Invitrogen). Gating strategies and representative FACS dot plots to
127 determine circulating immune populations are shown in S1 Fig.

128 **Measurements of cytokines and C-reactive protein**

129 Serum cytokines IL-6 and TNF and C-reactive protein (CRP) were measured using the Ella™
130 Automated Immunoassay System (Biotechne). Serum was diluted 1:2 as per the manufacturer's protocol.
131 The lower limits of quantification for CRP, IL-6, and TNF are 32 pg/mL, 0.28 pg/mL, 0.3 pg/mL, respectively.

132 **Statistical analysis**

133 Data and statistical analyses were done in FlowJo version 10.7.1, GraphPad Prism version 9, and R.
134 Multiple group comparisons were tested using Welch's One-Way ANOVA and Games-Howell post-hoc test.
135 As data were non-normally distributed, correlations were tested using Spearman correlation. Outliers were
136 removed using Grubbs' test ($\alpha=0.05$).

137

138 **Results**

139 **Demographics and symptoms of individuals who had SARS-CoV-2 and** 140 **other respiratory infections**

141 During the early phase of the COVID-19 pandemic (February – June 2020) diagnostic PCR testing in
142 Ontario was generally limited to individuals who were hospitalized, had a confirmed exposure with an
143 infected person, or had travelled to an area with active infections. At the time, public health advice was
144 that people who did not need medical attention should self-isolate at home without being tested. Serologic
145 studies have been used to estimate an infection rate of 0.5-1.5% during the March-June ‘first wave’ [20].
146 Compounding the lack of testing were the high rates of influenza and unusually high rates of respiratory
147 syncytial virus (RSV) infections [21]. Consequently, some people with respiratory infections in this early
148 period were told by a health care professional that they had COVID-19 without a nasopharyngeal swab PCR
149 test, and not all of our study participants with symptoms of mild respiratory illness had COVID-19 (Table 1).
150 Participants were classified as having had COVID-19 if they received a positive diagnostic PCR test and/or
151 had anti-SARS-CoV-2 antibodies (S1 Table). There were no statistically significant differences in age, sex,
152 BMI, co-morbidities, medications, or duration of symptoms between individuals that had mild COVID-19
153 (n=22) and individuals that had other mild respiratory infections (n = 11, Table 1).

154 **Survivors of mild SARS-CoV-2 infections have reduced T cell responses** 155 **to SARS-CoV-2 peptides 6-9 months post symptom onset**

156 Lymphopenia is commonly reported in severe SARS-CoV-2 infections; however, it is not clear
157 whether mild infections impact T cell numbers or function. We measured T cell responses to the SARS-CoV-
158 2 structural membrane protein (M), nucleocapsid protein (N), and immunodominant regions of the spike
159 (S) protein in all participants. After 44 hours incubation with antigen this assay identifies antigen-specific

160 CD4⁺ T cells by induced co-expression of CD25 and CD134 (OX40) and antigen-specific CD8⁺ T cells by co-
161 expression of CD69 and CD137 (4-1BB) (Fig 1A) [22, 23]. A positive assay result was defined as > 3 standard
162 deviations above an unstimulated sample (negative control well) and consisting of at least 20 events. We
163 identified 5 individuals who had mild respiratory symptoms, did not have a positive diagnostic PCR test,
164 and were seronegative for SARS-CoV-2 antibodies but had detectable levels of SARS-CoV-2 reactive T cells
165 to some, but not all, of the SARS-CoV-2 M, N, and S peptides (S1 Table). Although it is possible these
166 individuals had been infected with SARS-CoV-2 and had antibodies at some point, these data are also
167 consistent with reports of pre-existing cross-reactive T cells to SARS-CoV-2 antigens in as many as 30% of
168 individuals [24]. Consequently, we classified these 5 individuals as “indeterminate” and did not include
169 them in subsequent analyses (their demographic data is summarized in Table 1).

170
171 **Fig 1. CD4⁺ and CD8⁺ T cell responses to the M, N, and S peptide pools after mild SARS-CoV-2 infection. A)**

172 The number of SARS-CoV-2 specific T cells is measured as a percent of CD4⁺ T cells expressing both CD25
173 and OX40 or CD8⁺ T cells expressing both CD69 and CD137 after activation with the S, M or N peptide pools
174 1-3 months and 6-9 months after infection. The polyclonal activator Cytostim is used as a positive control.
175 B) All COVID-19 seropositive donors had an increase in CD25⁺OX40⁺CD4⁺ T cells in response to at least one
176 of the M, N or S antigens 1-3 months after mild COVID-19 infection compared to seronegative individuals
177 recovered from other mild respiratory infections. Each participant is indicated by a single data point: other
178 respiratory infection n=11; 1-3 months post COVID-19 infection n=11; 6-9 months post COVID-19 infection
179 n=8. Multiple group comparisons were tested using Welch’s One-Way ANOVA and Games-Howell post-hoc
180 test; bars represent the mean ± standard deviation. *P<0.05; **P<0.01; ***P<0.001

181

182 For analysis of the T cell responses, we split our cohort into those without antibody or T cell
183 responses to SARS-CoV-2 (other respiratory infection; n=11) and those with antibody responses to SARS-

184 CoV-2 (COVID-19; n=22), the majority of whom also had detectable T cell responses to SARS-CoV-2 M, N,
185 and S antigens (90.9%; n=20/22) (Fig 1; S1 Fig). Of the 22 participants who had COVID-19 infections, 14
186 provided samples 1-3 months post-symptom onset and 8 provided samples 6-9 months post-symptom
187 onset. Consistent with other reports of lasting memory T cell responses to SARS-CoV-2 infection [13], we
188 observed that all COVID-19 participants that provided samples at 1-3 months or 6-9 months post-symptom
189 onset had generated T cell memory to at least one of the M, N and S peptides pools (Fig 1B, S3 Table).
190 These data are consistent with previous observations that survivors of mild infections have lasting memory
191 responses [13], however, there appear to be long-term differences in T cell functionality in COVID-19
192 survivors.

193 We saw similar frequencies of CD4⁺ T cell responses to all SARS-CoV-2 antigens and these were
194 highest in COVID-19 patients 1-3 months post symptom onset (means of ~3-4% of CD4⁺ T cells), being
195 significantly higher than in individuals with other respiratory infections (Fig 1B). Compared to COVID-19
196 patients 1-3 months post symptom onset, responses were reduced in COVID-19 patients 6-9 months post
197 symptom onset and were not significantly different to those in individuals recovered from other respiratory
198 infections. Similar results were found for CD8⁺ T cell responses, being highest in COVID-19 patients 1-3
199 months post symptom onset (means of ~0.4-0.5% of CD8⁺ T cells) although there were no significant
200 differences between groups.

201 **Survivors of mild SARS-CoV-2 infections have evidence of sustained** 202 **inflammation 1-3 months post symptom onset**

203 Prolonged immune activation can occur after recovery from severe infections and is thought to
204 contribute to malaise and other symptoms in survivors [25]. One of the unusual features of COVID-19 is
205 that a significant number of patients with mild to moderate illness report symptoms weeks to months after
206 infection, despite having cleared the virus [26]. Although the participants in our study generally had

207 symptoms resolve within 1 month post infection (Table 1), we have nonetheless found evidence of
208 prolonged inflammation. Seropositive individuals had higher levels of CRP, TNF, and IL-6 in circulation 1-3
209 months post-symptom onset; but in samples from individuals 6-9 months post-symptom onset, levels were
210 equivalent to those individuals who were seronegative and were recovered from other respiratory
211 infections (Fig 2A, B & C).

212
213 **Figure 2. Transient increases in soluble mediators of inflammation occur after mild SARS-CoV-2 infection.**

214 A) CRP levels in serum were higher 1-3 months after mild COVID-19 infection, and there was a trend
215 towards remaining elevated 6-9 months after mild COVID-19 infection, compared to levels observed in
216 seronegative individuals after other respiratory infections. Serum TNF levels (B) and IL-6 levels (C) were
217 higher 1-3 months after COVID-19 infection but returned to levels seen in individuals who had other
218 respiratory infections by 6-9 months. Each participant is indicated by a single data point: other respiratory
219 infection n=11; 1-3 months post-COVID n=9-12; 6-9 months post-COVID n=8. Multiple group comparisons
220 were tested using Welch's One-Way ANOVA and Games-Howell post-hoc test; bars are presented as mean
221 \pm standard deviation. *P<0.05; **P<0.01.

222
223 Surprisingly, there were differences in the degree of epitope independent polyclonal activation of T
224 cells between the COVID-19 and non-COVID-19 groups. When whole blood was stimulated with Cytostim,
225 which acts like a superantigen by crosslinking TCR (regardless of V β usage) and MHC, there was a
226 statistically significant difference in the percent of CD25⁺OX40⁺CD4⁺ T cells and CD69⁺CD137⁺CD8⁺ T cells in
227 COVID-19 patients 1-3 months post-symptom onset (Fig 3A&B). Whether this superantigen-like crosslinking
228 activation contributes to, or is a result of, systemic inflammation is not clear, but CRP levels correlate with
229 the percent of Cytostim-activated CD4⁺ T cells (Fig 3C). The Cytostim-activated T cells in the COVID-19
230 group also had higher expression levels of OX40, CCR6, CCR4 and CD69 than the other respiratory infection

231 group, implying a stronger activation (Fig 3D). Although these levels of OX40 and CD69 were reduced in
232 samples collected 6-9 months post-symptom onset compared to samples collected 1-3 months post-
233 symptom onset, levels of CCR4 and CCR6 remained similar. Collectively these data imply that there may be
234 subtle changes in inducible T cell activation in convalescent SARS-CoV-2 patients that do not occur in
235 response to other respiratory infections.

236

237 **Figure 3. Evidence of prolonged T cell activation after mild SARS-CoV-2 infection.**

238 The polyclonal activator Cytostim was used to measure T cell responses. COVID-19 seropositive individuals
239 had a higher proportion of CD4⁺ (A) and CD8⁺ (B) activated T cells 1 to 3 months after infection compared
240 to seronegative individuals after other respiratory infections. C) The number of CD4⁺ T cells that responded
241 to polyclonal stimulation correlated with CRP in COVID-19 seropositive individuals. D) Activation markers
242 on the Cytostim-responsive CD4⁺ T cells OX40, CCR6, CCR4, and CD69 were higher 1-3 months after COVID-
243 19 infection compared to after other respiratory infections. Each participant is indicated by a single data
244 point: other respiratory infection n=7-11; 1-3 months post COVID-19 infection n=11-12; 6-9 months post
245 COVID-19 infection n=5-8. Multiple group comparisons in A-B and D were tested using Welch's One-Way
246 ANOVA and Games-Howell post-hoc test; bars are presented as mean ± standard deviation. Data in C was
247 assessed by Spearman's rank correlation. *P<0.05; **P<0.01.

248

249 **Survivors of mild SARS-CoV-2 infections have changes in circulating** 250 **immunophenotype 1-3 months post-symptom onset**

251 The total numbers of circulating CD45⁺ cells, CD4⁺ T cells and CD8⁺ T cells were not different
252 between individuals who had other respiratory infections and those who had COVID-19 at either 1-3
253 months or 6-9 months post symptom onset (Fig 4A-C). Compared to participants who were recovered from

254 other respiratory infections, there was an expansion of T_{regs} ($CD45^+CD3^+CD4^+CD25^+CD127^{low}FOXP3^+$) and a
255 decrease in NK cells ($CD45^+CD56^+/NKp46^+$) in COVID-19 patients at 1-3 months post-symptom onset that
256 returned by 6-9 months post-symptom onset to levels observed in individuals with non-COVID-19
257 respiratory infections (Fig 4D,G). We also measured the proportions of circulating naïve ($CD45RA^+CCR7^+$),
258 central memory ($CD45RA^-CCR7^+$), effector memory ($CD45RA^-CCR7^-$), terminally differentiated effector
259 memory cells re-expressing CD45RA ($T_{EMRA}; CD45RA^+CCR7^-$), and terminally differentiated ($CD45RA^+CCR7^-$
260 $CD57^+CD28^-$) $CD4^+$ and $CD8^+$ T cells. Compared to patients with non-COVID-19 respiratory infections, there
261 was an expansion of central memory $CD4^+$ cells and terminally differentiated $CD8^+$ T cells in COVID-19
262 patients at 1-3 months post-symptom onset that returned to levels observed in patients with other
263 respiratory infections by 6-9 months post-symptom onset (Fig 4E,F). There were no significant differences
264 between participants who had other respiratory infections and those who had COVID-19 for any other
265 measured $CD4^+$ and $CD8^+$ T cell subsets.

266

267 **Figure 4. Transient changes in circulating lymphocytes occur 1-3 months after COVID-19 infection.**

268 Absolute numbers of circulating $CD45^+$ cells (A), $CD4^+$ T cells (B), and $CD8^+$ T cells (C) were not different
269 after 1-3 months or 6-9 months post-symptom presentation in seropositive individuals recovered from mild
270 COVID-19 infection compared to seronegative individuals recovered from other respiratory infections;
271 however, NK cell numbers (D) were lower in the 1-3 months post-COVID-19 infection group. At 1-3 months
272 post recovery from COVID-19 there was an increase in $CD45RA^-CCR7^+$ central memory $CD4^+$ cells (E) and an
273 increase in $CD45RA^+CCR7^-CD57^+CD28^-$ terminally differentiated $CD8^+$ T cells (F) compared to individuals
274 recovered from other respiratory infections, but these differences were not apparent in individuals who
275 had recovered from COVID-19 6-9 months prior. (G) Levels of circulating regulatory T cells (measured as a
276 % of $CD4^+$ T cells) were higher in individuals 1-3 months post COVID-19 infection. Each participant is
277 indicated by a single data point: other respiratory infection n=11; 1-3 months post COVID-19 infection

278 n=11-13; 6-9 months post COVID-19 infection n=8. Multiple group comparisons were tested using Welch's
279 One-Way ANOVA and Games-Howell post-hoc test; bars are presented as mean \pm standard deviation.
280 *P<0.05.

281
282 Six months after SARS-CoV-2 infection there was a statistical trend towards a lower ratio of
283 myeloid to lymphoid cells, though this was due to a non-significant decrease in neutrophil numbers rather
284 than changes in numbers of monocytes (Fig 5A-C). However, as circulating monocytes are a sensitive
285 marker of chronic inflammation, we assessed monocyte subsets as well as their expression of migratory
286 and activation markers (Fig 5D, S4 and S5 Tables). Classical monocytes (CD14⁺CD16⁻) expressing CCR2 are
287 the first to leave the bone marrow. They have a half-life in the circulation of less than 24 hours since they
288 are either recruited to sites of acute inflammation in response to CCL2/MCP or differentiate into CX₃CR₁-
289 expressing intermediate (CD14⁺CD16⁺) monocytes [27, 28]. Classical monocytes increase in the circulation
290 during acute infection so, as expected, there was no difference in the number of circulating monocytes
291 after COVID-19 infection had resolved (Fig 5C). Surprisingly, at 1-3 months after infection levels of CCR2
292 were lower on intermediate and non-classical monocyte populations (Fig 5D), implying that cells with the
293 highest levels of CCR2 emigrated from the circulation. In general, the chemokine receptor CX₃CR₁ is
294 expressed more highly on intermediate and non-classical (CD14^{low}CD16⁺) monocytes and is associated with
295 recruitment to the tissues or vasculature and repair of damage in response to CX₃CL₁/fractalkine [29, 30]. A
296 transient decrease in CX₃CR₁-expressing classical monocytes was found 1-3 months post COVID-19
297 infection, which likely indicates that monocytes with the highest levels of CX₃CR₁ (and therefore the most
298 responsive to CX₃CL₁) had emigrated from the circulation. Expression of the integrin CD11b was also
299 transiently increased on monocytes at 1-3 months post-symptom onset, but not neutrophils (data not
300 shown), providing further evidence of transient but systemic immune activation and possible changes in
301 the migratory capacity of monocytes after mild SARS-CoV-2 infection.

302
303 **Figure 5. Evidence of sustained cellular inflammation after mild SARS-CoV-2 infection.**
304 A) There was a trend towards a decreasing ratio of myeloid to lymphoid cells after SARS-CoV-2 infection,
305 compared to individuals recovered from other infections, which was driven by a decrease in circulating
306 neutrophils (B). Although total monocyte numbers did not change after infection (C), surface expression of
307 the migratory markers CX₃CR₁ and CCR2 decreased transiently (D). Concurrent increases in surface
308 expression of the migration and activation marker CD11b implies that the monocytes were activated. E)
309 Correlation analysis (Spearman's correlation) of SARS-CoV-2 specific CD4⁺ and CD8⁺ T cell responses with
310 measures of monocyte activation and migratory potential. Multiple group comparisons in A-D were tested
311 using Welch's One-Way ANOVA and Games-Howell post-hoc test; in A-C bars are presented as mean ±
312 standard deviation and each dot indicates a participant. The spread of expression of monocyte surface
313 markers in D was visualized by concatenating uncompensated CD45⁺CD19⁻CD3⁻CD56⁻CD11b⁺HLADR⁺CD14⁺
314 events in FlowJo for each infection group prior to overlaying geometric mean fluorescence intensity
315 expression data from all donors onto the same histogram plot. Other respiratory infection (grey) n=11, 1-3
316 months after COVID-19 infection (red) n=14, 6-9 months from COVID-19 infection (pink) n=8. Data in E
317 were assessed with the rcorr function in the Hmisc package in R and only statistically significant
318 associations are shown. *P<0.05.

319
320 Changes in monocyte activation markers could be due to the increase in basal inflammation or
321 could be proportionate to the SARS-CoV-2 specific immune response. We found that decreasing CX₃CR₁
322 expression was most strongly associated with the percentage of S-antigen specific CD4⁺ T cells (p=0.0389)
323 and that there was a strong association between M-antigen specific CD8⁺ T cells and HLA-DR expression on
324 non-classical/patrolling monocytes (p=0.0198) (Fig 5E). Importantly, there was no relationship between
325 polyclonal T cell activation (i.e. Cytostim) and myeloid activation, implying that these changes are not due

326 to the general increase in T cell activation observed in convalescent patients, but rather SARS-CoV-2
327 specific responses.

328

329 Discussion

330 Infections severe enough to require hospitalization can have long-term health consequences, but
331 one of the unusual features of COVID-19 is that a significant proportion of mild infections have lasting
332 cardiovascular, respiratory, and neurologic consequences [26, 31]. The range of long-term health
333 consequences and the multi-organ immune pathology observed post-SARS-CoV-2 infection implies that
334 there may be a greater degree of immune dysregulation than that commonly observed after infection with
335 other respiratory pathogens. Importantly, the participants in this study did not have “long-COVID” in that
336 they reported that their symptoms were mild and had mostly resolved within 2-4 weeks (Table 1);
337 however, participants with even mild COVID-19 symptoms experience elevated inflammation and immune
338 activation that endures at least 1-3 month after their infection had resolved. The fact that these
339 participants had increased measures of systemic inflammation (e.g. CRP), and lasting phenotypic and
340 functional changes to both monocytes and T cells, implies that inflammatory responses to mild COVID-19
341 infections are more protracted than expected.

342 The proportions of memory CD4⁺ and CD8⁺ T cells specific for SARS-CoV-2 S, M, and N proteins we
343 observed were consistent with those reported for convalescent patients who had had more severe
344 infections, implying that disease severity is not proportionate to SARS-CoV-2 memory T cell responses [24,
345 32]. Previous studies have reported differences in the expression of activation markers on SARS-CoV-2
346 specific memory CD4⁺ T cells between exposed but seronegative individuals compared to those who had
347 either mild or severe infections [13]; however, to our knowledge, this is the first report of elevated
348 activation of *non*-SARS-CoV-2 specific T cells (i.e. Cytostim treated) in convalescent COVID-19 patients.

349 Cytostim-activated CD4⁺ T cells in participants with mild COVID-19 1-3 months post-symptom onset,
350 compared to those in participants recovered from other respiratory infections, had higher expression of
351 the activation markers OX40, CCR4, CD69 and CCR6, and OX40 and CD69 expression remained elevated
352 after 6-9 months post-symptom onset. There were no differences between participant groups in the
353 expression of activation markers on circulating unstimulated cells (data not shown), demonstrating that
354 these differences are restricted to polyclonally activated cells. There are several possible explanations for
355 this result. CD4⁺ T cells from 1-3 months post-symptom onset of COVID-19 may be primed to respond
356 quicker and stronger to activation signals. Alternatively, since the number of activated CD4⁺ T cells in this
357 participant group correlated strongly with rising CRP levels, it is also possible that there may be circulating
358 cytokines (e.g. IL-6) or other factors that lower the threshold for T cell activation.

359 Our observations of transient increases in central memory CD4⁺ T cells and terminally
360 differentiated CD8⁺ T cells are consistent with T cell responses to acute infection³⁵; however, a pronounced
361 increase in regulatory T cells is generally associated with minimizing pathology during the acute, not the
362 convalescent, phase of respiratory viral infections [33, 34]. Severe SARS-CoV-2 infections are associated
363 with the development of autoantibodies that contribute to severity [35]. Mild SARS-CoV-2 infections are
364 associated with autoimmune inflammatory syndromes (e.g. arthritis, vasculitis) after the primary infection
365 has resolved [36, 37]. Whether this expansion of T_{regs} protects from autoimmune sequelae is not clear but
366 this has been reported to occur after other zoonotic infections [38]. Appropriate regulation of T_{regs} may be
367 especially important in SARS-CoV-2 infections, since pathology of these infections are caused in part by
368 dysregulation of TGF-β production, a major cytokine produced by T_{regs} [39] that is required for their
369 appropriate differentiation[40].

370 Severe COVID-19 infections are associated with a dysregulation of myelopoiesis that is so extreme
371 that monocytes and neutrophils are unrecognizable by blood smear [41] and have dramatic changes in
372 granularity, size and surface marker expression [42]. Both mild and severe COVID-19 are associated with

373 changes in number and migratory potential of dendritic cells for at least 7 months post infection [43]. We
374 do not know if the transient changes in expression of CCR2 and CX₃CR₁ on circulating monocytes 1-3
375 months after infection are due to emigration of cells with the highest expression of those markers to
376 inflamed or damaged tissues, however, CCL2 has been implicated in recruitment of monocyte to the lungs
377 during infection [44]. The observation that decreasing CX3CR1 is associated with the level of SARS-CoV-2
378 specific T cells may imply that there is a relationship between immune responsiveness and innate immune
379 activation. These observations in combination with the elevated expression of monocyte CD11b, which
380 increases during acute and chronic inflammation and alters monocyte migration and adherence to the
381 vasculature[45], imply even though the symptoms of mild COVID-19 infection may resolve in weeks,
382 immune activation persists for at least 1-3 months.

383 Collectively, these data provide evidence that mild, and in some individuals even asymptomatic
384 SARS-CoV-2 infections, can lead to sustained immune activation after resolution of symptoms, which is not
385 observed in response to other mild respiratory infections. Whether this immune activation is more
386 pronounced in patients with long-COVID, or more serious infections, remains to be seen.

387

388 **Acknowledgements**

389 The authors would like to thank Dr. Brian Dixon, Dr. Marc Aucoin, Dr. Mark Bruder and Dr. Aaron
390 Frenette (University of Waterloo) for the recombinant antigens used in the serology assays, and Carmen
391 Venegas for assistance with participant recruitment and data collection.

392 References

- 393 1. Alon R, Sportiello M, Kozlovski S, Kumar A, Reilly EC, Zarbock A, et al. Leukocyte trafficking to the
394 lungs and beyond: lessons from influenza for COVID-19. *Nature Reviews Immunology*. 2021;21(1):49-64.
395 doi: 10.1038/s41577-020-00470-2.
- 396 2. Huang I, Pranata R. Lymphopenia in severe coronavirus disease-2019 (COVID-19): systematic
397 review and meta-analysis. *Journal of Intensive Care*. 2020;8(1):36. doi: 10.1186/s40560-020-00453-4.
- 398 3. Chen Z, John Wherry E. T cell responses in patients with COVID-19. *Nature Reviews Immunology*.
399 2020;20(9):529-36. doi: 10.1038/s41577-020-0402-6.
- 400 4. de Candia P, Prattichizzo F, Garavelli S, Matarese G. T Cells: Warriors of SARS-CoV-2 Infection.
401 *Trends Immunol*. 2021;42(1):18-30. Epub 2020/12/06. doi: 10.1016/j.it.2020.11.002. PubMed PMID:
402 33277181; PubMed Central PMCID: PMCPCMC7664351.
- 403 5. Zhang D, Guo R, Lei L, Liu H, Wang Y, Wang Y, et al. COVID-19 infection induces readily detectable
404 morphologic and inflammation-related phenotypic changes in peripheral blood monocytes. *Journal of*
405 *leukocyte biology*. 2020.
- 406 6. Prescott HC, Girard TD. Recovery From Severe COVID-19: Leveraging the Lessons of Survival From
407 Sepsis. *JAMA*. 2020;324(8):739-40. doi: 10.1001/jama.2020.14103.
- 408 7. Greenhalgh T, Knight M, A'Court C, Buxton M, Husain L. Management of post-acute covid-19 in
409 primary care. *BMJ*. 2020;370:m3026. doi: 10.1136/bmj.m3026.
- 410 8. Ayoubkhani D, Khunti K, Nafilyan V, Maddox T, Humberstone B, Diamond I, et al. Post-covid
411 syndrome in individuals admitted to hospital with covid-19: retrospective cohort study. *BMJ*.
412 2021;372:n693. doi: 10.1136/bmj.n693.
- 413 9. Chopra V, Flanders SA, O'Malley M, Malani AN, Prescott HC. Sixty-Day Outcomes Among Patients
414 Hospitalized With COVID-19. *Ann Intern Med*. 2020. Epub 2020/11/12. doi: 10.7326/m20-5661. PubMed
415 PMID: 33175566; PubMed Central PMCID: PMCPCMC7707210
416 www.acponline.org/authors/icmje/ConflictOfInterestForms.do?msNum=M20-5661.
- 417 10. Donnelly JP, Wang XQ, Iwashyna TJ, Prescott HC. Readmission and Death After Initial Hospital
418 Discharge Among Patients With COVID-19 in a Large Multihospital System. *JAMA*. 2020. doi:
419 10.1001/jama.2020.21465.
- 420 11. Ayoubkhani D, Khunti K, Nafilyan V, Maddox T, Humberstone B, Diamond SI, et al. Epidemiology of
421 post-COVID syndrome following hospitalisation with coronavirus: a retrospective cohort study. *medRxiv*.
422 2021:2021.01.15.21249885. doi: 10.1101/2021.01.15.21249885.
- 423 12. Sekine T, Perez-Potti A, Rivera-Ballesteros O, Stralin K, Gorin JB, Olsson A, et al. Robust T Cell
424 Immunity in Convalescent Individuals with Asymptomatic or Mild COVID-19. *Cell*. 2020;183(1):158-68 e14.
425 Epub 2020/09/28. doi: 10.1016/j.cell.2020.08.017. PubMed PMID: 32979941; PubMed Central PMCID:
426 PMCPCMC7427556.
- 427 13. Sekine T, Perez-Potti A, Rivera-Ballesteros O, Strålin K, Gorin J-B, Olsson A, et al. Robust T Cell
428 Immunity in Convalescent Individuals with Asymptomatic or Mild COVID-19. *Cell*. 2020;183(1):158-68.e14.
429 doi: <https://doi.org/10.1016/j.cell.2020.08.017>.
- 430 14. Verschoor CP, Kohli V, Balion C. A comprehensive assessment of immunophenotyping performed in
431 cryopreserved peripheral whole blood. *Cytometry B Clin Cytom*. 2018;94(5):662-70. Epub 2017/04/06. doi:
432 10.1002/cyto.b.21526. PubMed PMID: 28378896.
- 433 15. Huynh A, Arnold DM, Smith JW, Moore JC, Zhang A, Chagla Z, et al. Characteristics of Anti-SARS-
434 CoV-2 Antibodies in Recovered COVID-19 Subjects. *Viruses*. 2021;13(4):697. PubMed PMID:
435 doi:10.3390/v13040697.

- 436 16. Zaunders JJ, Munier ML, Seddiki N, Pett S, Ip S, Bailey M, et al. High Levels of Human Antigen-
437 Specific CD4⁺ T Cells in Peripheral Blood Revealed by Stimulated Coexpression of CD25 and CD134 (OX40).
438 *The Journal of Immunology*. 2009;183(4):2827-36. doi: 10.4049/jimmunol.0803548.
- 439 17. Seddiki N, Cook L, Hsu DC, Phetsouphanh C, Brown K, Xu Y, et al. Human antigen-specific CD4(+)
440 CD25(+) CD134(+) CD39(+) T cells are enriched for regulatory T cells and comprise a substantial proportion
441 of recall responses. *Eur J Immunol*. 2014;44(6):1644-61. Epub 2014/04/23. doi: 10.1002/eji.201344102.
442 PubMed PMID: 24752698.
- 443 18. Wolfi M, Kuball J, Ho WY, Nguyen H, Manley TJ, Bleakley M, et al. Activation-induced expression of
444 CD137 permits detection, isolation, and expansion of the full repertoire of CD8+ T cells responding to
445 antigen without requiring knowledge of epitope specificities. *Blood*. 2007;110(1):201-10. Epub 2007/03/21.
446 doi: 10.1182/blood-2006-11-056168. PubMed PMID: 17371945; PubMed Central PMCID:
447 PMCPMC1896114.
- 448 19. Loukov D, Karampatos S, Maly MR, Bowdish DME. Monocyte activation is elevated in women with
449 knee-osteoarthritis and associated with inflammation, BMI and pain. *Osteoarthritis Cartilage*.
450 2018;26(2):255-63. Epub 2017/11/13. doi: 10.1016/j.joca.2017.10.018. PubMed PMID: 29128509.
- 451 20. Ontario). OAFHPaPPH. COVID-19 Serosurveillance Summary - Seroprevalence in Ontario: March 27,
452 2020 to June 30, 2020. In: Ontario PH, editor. Toronto: Queen's Printer for Ontario; 2020.
- 453 21. Canada Go. Respiratory Virus Report, week 34 - ending August 22, 2020 2020. Available from:
454 [https://www.canada.ca/en/public-health/services/surveillance/respiratory-virus-detections-canada/2019-](https://www.canada.ca/en/public-health/services/surveillance/respiratory-virus-detections-canada/2019-2020/week-34-ending-august-22-2020.html)
455 [2020/week-34-ending-august-22-2020.html](https://www.canada.ca/en/public-health/services/surveillance/respiratory-virus-detections-canada/2019-2020/week-34-ending-august-22-2020.html).
- 456 22. Sadler R, Bateman EA, Heath V, Patel SY, Schwingshackl PP, Cullinane AC, et al. Establishment of a
457 healthy human range for the whole blood "OX40" assay for the detection of antigen-specific CD4+ T cells by
458 flow cytometry. *Cytometry B Clin Cytom*. 2014;86(5):350-61. Epub 2014/05/16. doi: 10.1002/cyto.b.21165.
459 PubMed PMID: 24827553.
- 460 23. Zaunders JJ, Munier ML, Seddiki N, Pett S, Ip S, Bailey M, et al. High levels of human antigen-
461 specific CD4+ T cells in peripheral blood revealed by stimulated coexpression of CD25 and CD134 (OX40). *J*
462 *Immunol*. 2009;183(4):2827-36. Epub 2009/07/29. doi: 10.4049/jimmunol.0803548. PubMed PMID:
463 19635903.
- 464 24. Mateus J, Grifoni A, Tarke A, Sidney J, Ramirez SI, Dan JM, et al. Selective and cross-reactive SARS-
465 CoV-2 T cell epitopes in unexposed humans. *Science*. 2020;370(6512):89-94.
- 466 25. Honigsbaum M, Krishnan L. Taking pandemic sequelae seriously: from the Russian influenza to
467 COVID-19 long-haulers. *Lancet*. 2020;396(10260):1389-91. Epub 2020/10/16. doi: 10.1016/s0140-
468 6736(20)32134-6. PubMed PMID: 33058777; PubMed Central PMCID: PMCPMC7550169.
- 469 26. Mahase E. Covid-19: What do we know about "long covid"? *Bmj*. 2020;370:m2815. Epub
470 2020/07/16. doi: 10.1136/bmj.m2815. PubMed PMID: 32665317.
- 471 27. Kratoofil RM, Kubes P, Deniset JF. Monocyte Conversion During Inflammation and Injury.
472 *Arteriosclerosis, Thrombosis, and Vascular Biology*. 2017;37(1):35-42. doi:
473 doi:10.1161/ATVBAHA.116.308198.
- 474 28. El Khoury J, Toft M, Hickman SE, Means TK, Terada K, Geula C, et al. Ccr2 deficiency impairs
475 microglial accumulation and accelerates progression of Alzheimer-like disease. *Nature Medicine*.
476 2007;13(4):432-8. doi: 10.1038/nm1555.
- 477 29. Auffray C, Fogg D, Garfa M, Elain G, Join-Lambert O, Kayal S, et al. Monitoring of blood vessels and
478 tissues by a population of monocytes with patrolling behavior. *Science*. 2007;317(5838):666-70.
- 479 30. Thomas G, Tacke R, Hedrick CC, Hanna RN. Nonclassical Patrolling Monocyte Function in the
480 Vasculature. *Arteriosclerosis, Thrombosis, and Vascular Biology*. 2015;35(6):1306-16. doi:
481 doi:10.1161/ATVBAHA.114.304650.
- 482 31. Al-Aly Z, Xie Y, Bowe B. High-dimensional characterization of post-acute sequelae of COVID-19.
483 *Nature*. 2021. doi: 10.1038/s41586-021-03553-9.

- 484 32. Rydzynski Moderbacher C, Ramirez SI, Dan JM, Grifoni A, Hastie KM, Weiskopf D, et al. Antigen-
485 Specific Adaptive Immunity to SARS-CoV-2 in Acute COVID-19 and Associations with Age and Disease
486 Severity. *Cell*. 2020;183(4):996-1012.e19. Epub 2020/10/05. doi: 10.1016/j.cell.2020.09.038. PubMed
487 PMID: 33010815; PubMed Central PMCID: PMC7494270.
- 488 33. Sanchez AM, Zhu J, Huang X, Yang Y. The Development and Function of Memory Regulatory T Cells
489 after Acute Viral Infections. *The Journal of Immunology*. 2012;189(6):2805-14. doi:
490 10.4049/jimmunol.1200645.
- 491 34. Betts RJ, Prabhu N, Ho AWS, Lew FC, Hutchinson PE, Rotzschke O, et al. Influenza A Virus Infection
492 Results in a Robust, Antigen-Responsive, and Widely Disseminated Foxp3⁺ Regulatory T Cell Response.
493 *Journal of Virology*. 2012;86(5):2817-25. doi: 10.1128/jvi.05685-11.
- 494 35. Bastard P, Rosen LB, Zhang Q, Michailidis E, Hoffmann HH, Zhang Y, et al. Autoantibodies against
495 type I IFNs in patients with life-threatening COVID-19. *Science*. 2020;370(6515). Epub 2020/09/26. doi:
496 10.1126/science.abd4585. PubMed PMID: 32972996; PubMed Central PMCID: PMC7857397.
- 497 36. Verdoni L, Mazza A, Gervasoni A, Martelli L, Ruggeri M, Ciuffreda M, et al. An outbreak of severe
498 Kawasaki-like disease at the Italian epicentre of the SARS-CoV-2 epidemic: an observational cohort study.
499 *Lancet*. 2020;395(10239):1771-8. Epub 2020/05/16. doi: 10.1016/s0140-6736(20)31103-x. PubMed PMID:
500 32410760; PubMed Central PMCID: PMC7220177.
- 501 37. Ramos-Casals M, Brito-Zerón P, Mariette X. Systemic and organ-specific immune-related
502 manifestations of COVID-19. *Nature Reviews Rheumatology*. 2021. doi: 10.1038/s41584-021-00608-z.
- 503 38. Lanteri MC, O'Brien KM, Purtha WE, Cameron MJ, Lund JM, Owen RE, et al. Tregs control the
504 development of symptomatic West Nile virus infection in humans and mice. *The Journal of Clinical*
505 *Investigation*. 2009;119(11):3266-77. doi: 10.1172/JCI39387.
- 506 39. Stukalov A, Girault V, Grass V, Karayel O, Bergant V, Urban C, et al. Multilevel proteomics reveals
507 host perturbations by SARS-CoV-2 and SARS-CoV. *Nature*. 2021. Epub 2021/04/13. doi: 10.1038/s41586-
508 021-03493-4. PubMed PMID: 33845483.
- 509 40. Sun X, Cui Y, Feng H, Liu H, Liu X. TGF- β signaling controls Foxp3 methylation and T reg cell
510 differentiation by modulating Uhrf1 activity. *Journal of Experimental Medicine*. 2019;216(12):2819-37. doi:
511 10.1084/jem.20190550.
- 512 41. Lüke F, Orsó E, Kirsten J, Poeck H, Grube M, Wolff D, et al. Coronavirus disease 2019 induces multi-
513 lineage, morphologic changes in peripheral blood cells. *EJHaem*. 2020. Epub 2020/08/25. doi:
514 10.1002/jha2.44. PubMed PMID: 32838398; PubMed Central PMCID: PMC7361732.
- 515 42. Schulte-Schrepping J, Reusch N, Paclik D, Baßler K, Schlickeiser S, Zhang B, et al. Severe COVID-19 Is
516 Marked by a Dysregulated Myeloid Cell Compartment. *Cell*. 2020;182(6):1419-40.e23. Epub 2020/08/19.
517 doi: 10.1016/j.cell.2020.08.001. PubMed PMID: 32810438; PubMed Central PMCID: PMC7405822.
- 518 43. Pérez-Gómez A, Vitallé J, Gasca-Capote C, Gutierrez-Valencia A, Trujillo-Rodriguez M, Serna-Gallego
519 A, et al. Dendritic cell deficiencies persist seven months after SARS-CoV-2 infection. *Cellular & Molecular*
520 *Immunology*. 2021. doi: 10.1038/s41423-021-00728-2.
- 521 44. McKechnie JL, Blish CA. The Innate Immune System: Fighting on the Front Lines or Fanning the
522 Flames of COVID-19? *Cell Host Microbe*. 2020;27(6):863-9. Epub 2020/05/29. doi:
523 10.1016/j.chom.2020.05.009. PubMed PMID: 32464098; PubMed Central PMCID: PMC7237895.
- 524 45. Miller LJ, Bainton DF, Borregaard N, Springer TA. Stimulated mobilization of monocyte Mac-1 and
525 p150,95 adhesion proteins from an intracellular vesicular compartment to the cell surface. *The Journal of*
526 *clinical investigation*. 1987;80(2):535-44. doi: 10.1172/JCI113102. PubMed PMID: 3038962.

527 **Supporting information**

528 **Supplementary Figure 1. Gating strategies for flow cytometry data analysis**

529 **Supplementary Table 1. Criteria and identification of individuals with SARS-CoV-2 and other respiratory**
530 **infections**

531 **Supplementary Table 2. Fluorophore-conjugated antibodies used for flow cytometry**

532 **Supplementary Table 3. Summary of SARS-CoV-2 peptivator AIMS T cell activation observations**

533 **Supplementary Table 4. All immune parameter data analysis**

534 **Supplementary Table 5. Monocyte surface receptor expression as Mean Fluorescence Intensity (MFI)**

Figure 1

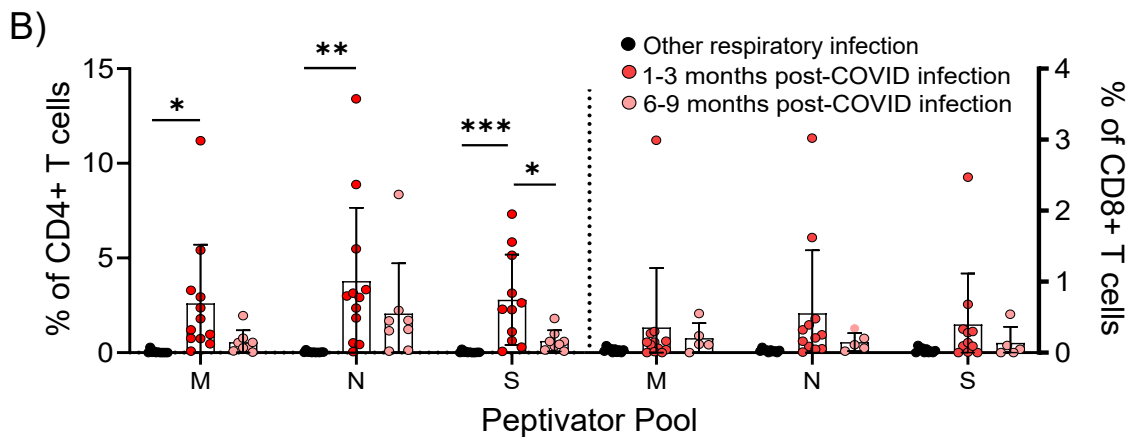
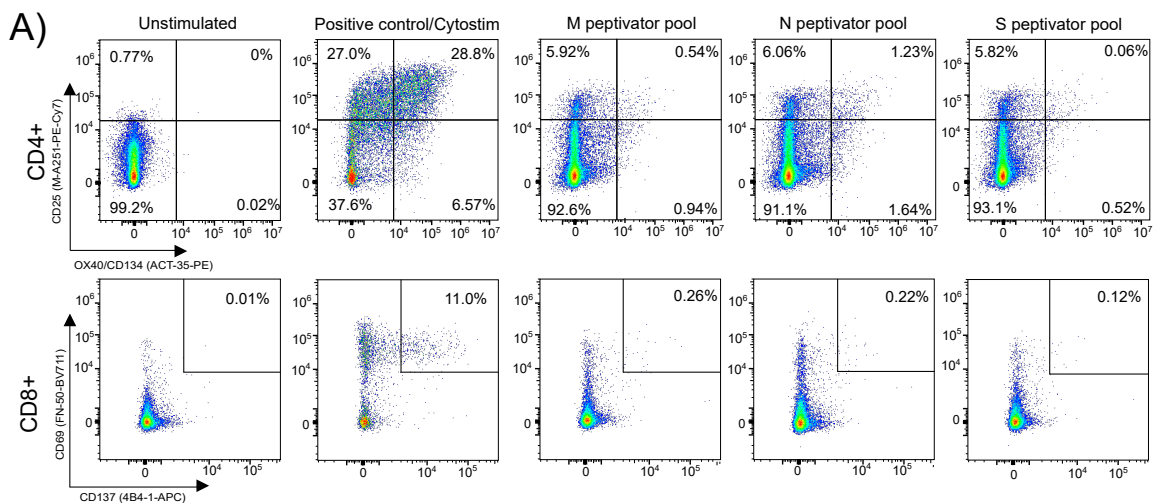


Figure 2

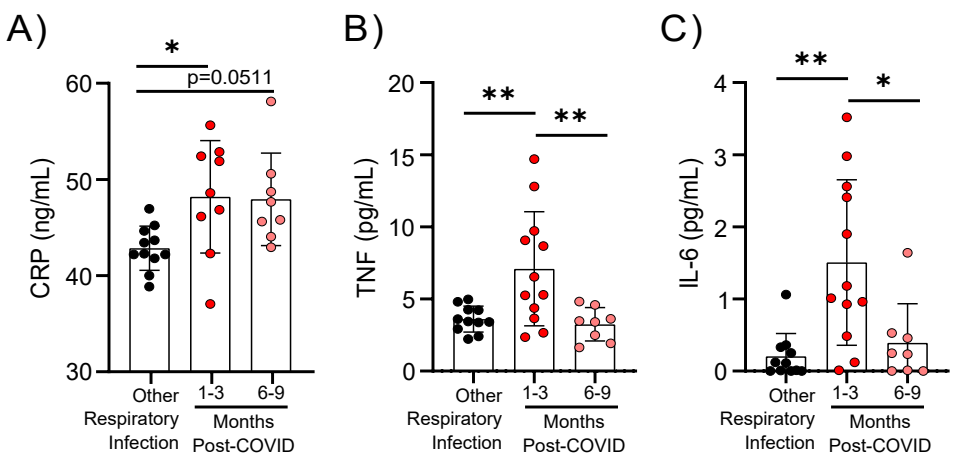


Figure 3

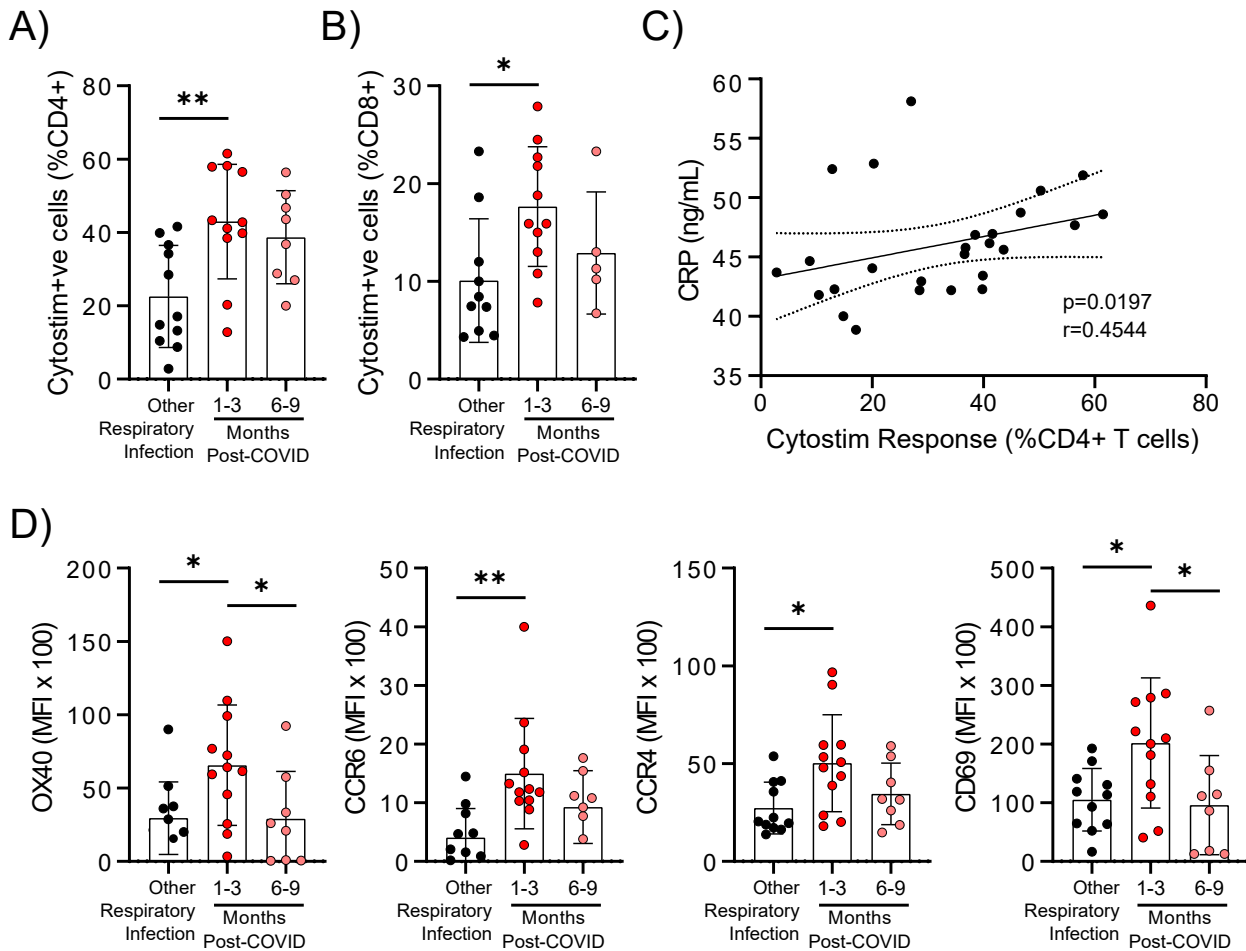
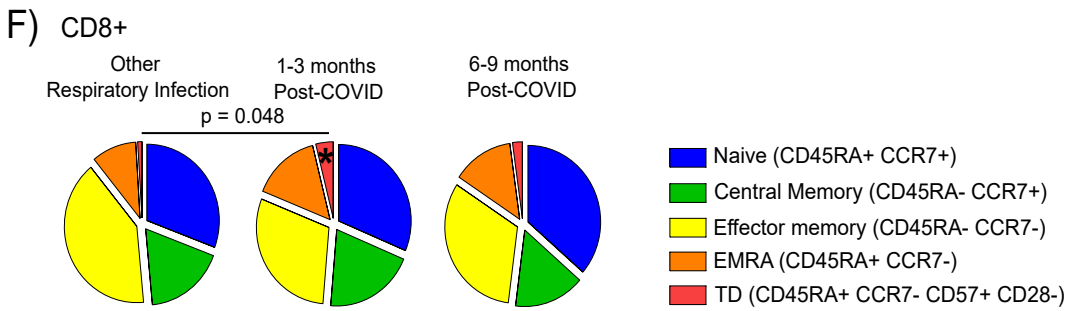
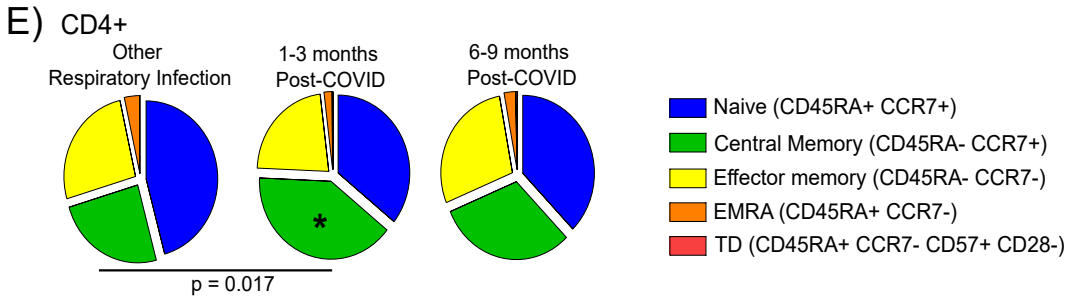
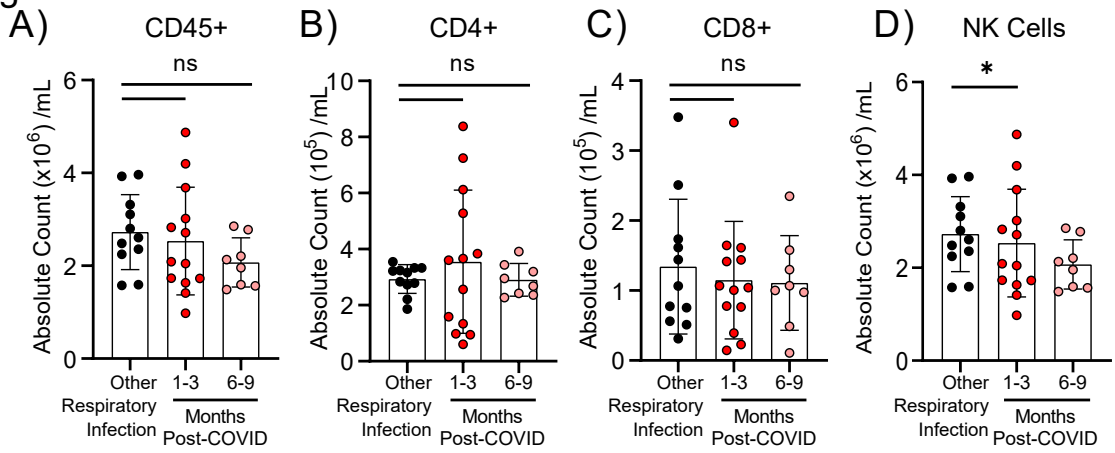


Figure 4



G) Regulatory T cells

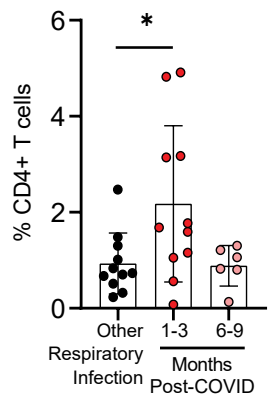


Figure 5

