

## **The unmutated common ancestor of Gp41 conformational epitope targeting variable heavy chain 1-02 utilizing antibodies maintains antibody dependent cell cytotoxicity.**

Brian H. Wrotniak<sup>1</sup>, Meghan Garrett<sup>2</sup>, Sarah Baron<sup>1</sup>, Hakimuddin Sojar<sup>1</sup>, Alyssa Shon<sup>3</sup>, Elizabeth Asiago-Reddy<sup>4</sup>, Jessica Yager<sup>5</sup>, Spyros Kalams<sup>6</sup>, Michael Croix<sup>1</sup>, and Mark D Hicar<sup>1</sup>.

1 Department of Pediatrics, University at Buffalo, Buffalo, New York, USA

2 Human Biology Division, Fred Hutchinson Cancer Research Center, Seattle, Washington, USA

3 Department of Medicine, University at Buffalo, Buffalo, NY, USA

4 Department of Medicine, SUNY Upstate, Syracuse, NY, USA

5 Department of Medicine, SUNY Downstate, New York City, NY, USA

6 Department of Internal Medicine, Vanderbilt University, Nashville, TN, USA

### **Corresponding author:**

Mark Daniel Hicar.

ORCID: 0000-0002-1768-5419

University at Buffalo

6072 UB CTRC

875 Ellicott Street

Buffalo, NY 14203 USA

Phone: (716) 888-4872

Fax: (716) 888-3804

Email: [markhica@buffalo.edu](mailto:markhica@buffalo.edu)

Alt email: [markhicar@gmail.com](mailto:markhicar@gmail.com)

1 **Abstract:**

2 In studies on monoclonal Abs (mAbs) from long-term non-progressors (LTNPs), our  
3 laboratory has previously described highly mutated Abs against a complex conformational  
4 epitope with contributions from both gp41 heptad repeat regions. Despite using the VH1-02  
5 gene segment, known to contribute to some of the broadest neutralizing Abs against HIV,  
6 members of these Abs, termed group 76C Abs, did not exhibit broad neutralization.

7 Because of the excessive mutations and use of VH1-02, our goal was to characterize  
8 the non-neutralizing functions of Abs of group 76C, to assess targeting of the epitope in  
9 various clinical presentations, and to assess the development of these Abs by comparison to  
10 their predicted common ancestor. Serum competition assays showed group 76C Abs were  
11 enriched in LTNPs, in comparison to VRC-01. Specific group 76C clones 6F5 and 6F11,  
12 expressed as recombinant Abs, both have robust ADCC activity, despite their sequence  
13 disparity. Sequence analysis predicted the common ancestor of this clonal group would utilize  
14 the germline non-mutated variable gene. We produced a recombinant ancestor Ab (76Canc)  
15 with a heavy chain utilizing the germline variable gene sequence paired to the 6F5 light chain.  
16 Competition with group 76C recombinant Ab 6F5 confirms 76Canc binds HIV envelope  
17 constructs near the original group C epitope. 76Canc demonstrates comparable ADCC to 6F5  
18 and 6F11 when targeting both clade B and C HIV constructs. The functional capability of Abs  
19 utilizing germline VH1-02 has implications for disease control and vaccine development.

20

21

## 22 **Introduction:**

23           The creation of a successful HIV vaccine continues to be a public health priority. A large  
24 effort has been focused on discovery and characterization of broadly neutralizing Abs (bnAbs).  
25 Whether similar bnAbs can be induced from stimulation of native B cells during immunization  
26 has been a challenge in HIV vaccine design. We previously used HIV virus-like particles to  
27 bind B cells from long-term non-progressor (LTNP) subjects. From these B cells, a number of  
28 mAbs were cloned and showed an extreme number of mutations, similar to many of the known  
29 bnAbs. When expressed as recombinant full-length Abs, some showed specificity or higher  
30 affinity for trimerized envelope and virus-like particles, which we termed quaternary-targeting  
31 Abs (QtAbs) (Hicar, Chen, Sulli, et al., 2016). Despite the highly mutated nature of these Abs,  
32 they are generally non-neutralizing Abs (nnAbs) (Hicar, Chen, Kalams, et al., 2016).

33           Recent studies have shown that a number of these highly mutated QtAbs have the  
34 capacity to mediate Ab dependent cell cytotoxicity (ADCC) (Sojar et al., 2019). ADCC was  
35 implicated in the RV144 vaccine trial success (Haynes et al., 2012). The Fc portion of Abs,  
36 which ADCC is dependent on, is crucial in protection (Hessell et al., 2007). Passive Ab  
37 infusions of both neutralizing (Hessell et al., 2009; Parren et al., 1995; Parren et al., 1996) and  
38 non-neutralizing Abs protect macaques in a SHIV mucosal challenge model (Santra et al.,  
39 2015). NnAbs targeting structural epitopes in gp41 have shown ADCC function and limiting of  
40 cell-to-cell spread of infection (Bonsignori et al., 2012). Other nnAbs targeting this same gp41  
41 epitope, such as F240 (Burton et al., 2011) and 7B2 (Santra et al., 2015), can protect  
42 macaques during SHIV vaginal challenge. ADCC-mediating Abs from an HIV-1 vaccine  
43 efficacy trial target multiple epitopes and preferentially use the VH1 gene family (Bonsignori et  
44 al., 2012). ADCC activity of Abs using VH1 genes correlated with the degree of somatic

45 mutation. ADCC activity has been associated with control of HIV in the past (Lambotte et al.,  
46 2009) and more recent polyfunctionality, including ADCC, of Abs has been shown to correlate  
47 with control (Das et al., 2020).

48 We have previously mapped another highly mutated (83% homologous to predicted  
49 heavy chain germline) QtAb, mAb 76-Q13-6F5 (6F5), to a novel structural epitope. The 6F5  
50 epitope encompasses areas in both heptad repeats of gp41, mapping by alanine scanning  
51 mutagenesis to amino acids R557, E654 and E657 of reference sequence HXB2 (Hicar, Chen,  
52 Sulli, et al., 2016). Since alanine scanning mutagenesis showed widely separated amino acids  
53 as potentially involved, this suggested a structural epitope that is available on post-fusion  
54 forms. From these studies, Abs from other genetically related groups (Q7 and Q11) also  
55 showed that E657 was critical for binding using alanine scanning mutagenesis. On sequence  
56 analysis, 10076-Q7-6F11 (6F11), 10076-Q7-7C6 (7C6), 10076-Q11-4E4 (4E4) and 6F5 had  
57 the same CDR3 length and, the same predicted germline sequences for both heavy (VH1-02)  
58 and light chains (VK1-39), but had < 90% of shared nucleotide sequence (Hicar, Chen, Sulli, et  
59 al., 2016). 6F11, 7C6, and 4E4 also competed with 6F5 binding to HIV envelope trimers, so  
60 these were classified into a single epitope group (group 76C). Despite the low homology, these  
61 similarities and the similar epitope mapping implied these were once distantly related to a  
62 single B cell lineage.

63 Since group 76C Abs bind trimers and interfere with the function of fusion inhibitors  
64 (Smith et al., 2018), the targeted epitope is at least partially available in the pre-fusion state.  
65 Since fusion of the viral membrane to the target cell depends on heptad repeat regions  
66 associating and forming a six-helix-bundle (6HB) post-fusion, these group 76C Abs allow us to  
67 explore development of functional targeting to this complex gp41 epitope. Because of the wide

68 disparity in the mature group 76C Abs, the predicted common ancestor of these Abs would  
69 utilize germline VH1-02. From exploring the derivation and possible cross-reactivity of such  
70 Abs, we discovered that the germline VH1-02 gene can support ADCC functional activity.

71

## 72 **Materials & Methods:**

73 **Clinical Samples:** LTNP were defined as those individuals who maintained CD4 counts  
74 > 300/mm<sup>3</sup> for minimally 7 years without therapy post-diagnosis. LTNP samples were collected  
75 from State University of New York clinical sites and shared as codified samples with  
76 associated clinical information under the UB IRB STUDY00000359. Biobanked samples from  
77 controls and additional LTNP samples accessed through the Biorepository at the University of  
78 Washington, through collaboration with receipt of deidentified samples from Vanderbilt  
79 University. Controls requested from the biorepository were infected for over 7 years and did  
80 not continually maintain CD4s and/or went on therapy prior to the seventh year of infection.

81

82 **Statistical analysis:** For the serum comparison of LTNP to other HIV infected, power  
83 calculations for 80% power with alpha of 0.05 based on means of 50% of inhibition versus 60%  
84 inhibition with relatively wide variance (10%) suggested we would need minimally 16 members  
85 in each group. The levels of binding antibodies in LTNPs were compared to serum from a group  
86 of HIV infected controls with comparable viral loads using Mann–Whitney U tests (two-tailed and  
87 alpha set at 0.05). Analyses were conducted using SYSTAT software version 13 (SYSTAT  
88 Software, 2004), with statistical tests applied as described in the figure legends. Graphpad  
89 Prism 9 was used for graphical representation of data was, with means and standard  
90 deviations shown unless otherwise noted.

91

92           **76 Group C antibodies:** During the initial characterization of recombinant Ab binding,  
93 the mAb 6F5 competed with three other Abs:76-Q7-6F11 (6F11), 76-Q7-7C6 (7C6), and 76-  
94 Q11-4E4 (4E4) (Hicar, Chen, Sulli, et al., 2016). These Abs shared the same predicted  
95 variable chain sequences (VH1-2, VK1-39) and had the same CDR lengths, consistent with a  
96 distal clonal relationship. Their original clone names contain the subject (76 for 10076),-  
97 Qxx(for quaternary targeting clonal group), and then the specific Ab reference. These were  
98 originally assigned to different groups (Q7, Q11, and Q13) using the definition of clonality of  
99 having same heavy chain CDR3 region length, >90% CDR3 nucleotide identity, and having  
100 overall amino acid sequence homology of > 90%. Two other heavy chains (76-Q2-1F7 and 76-  
101 Q2-1B1) had similar variable gene usage and structure, but did not have light chain pairs  
102 isolated so were not characterized as recombinant Abs. Within this manuscript, these Abs are  
103 referred to by their shortened specific clonal names (*i.e.* 6F5) (Hicar, Chen, Kalams, et al.,  
104 2016).

105

106           **Full-length Ab expression:** After cloning into an expression vector, heavy and light  
107 chain Ab plasmid DNA were amplified using the Pure Yield Plasmid Maxiprep System  
108 (Promega #A2392) following the manufacturer's instructions. Plasmids were then co-  
109 transfected into Free Style 293-F cells. Briefly, 50 µg of DNA per 100 ml of culture was mixed  
110 with 3 ml of Opti-MEM I Reduced Serum Medium (Thermo Scientific #31985062) and sterile  
111 filtered. Next, 100 ul of 1mg/ml polyethylenimine (PEI) per 100 ml of culture was added to 3 ml  
112 of Opti-MEM I reduced Serum Medium and sterile filtered. The DNA and PEI solutions were  
113 then mixed dropwise, vortexed, and incubated for 12 minutes at room temperature. The

114 mixture was added to 100 ml of Free Style 293-F cells seeded in Free Style 293 Expression  
115 Medium (Thermo Scientific #12338018) at a density of  $1 \times 10^6$  cells/ml and left to incubate for  
116 six days at 37°C 8% CO<sub>2</sub> on a shaker with 130 rpm speed. On the 6<sup>th</sup> day of transfection,  
117 culture supernatants were collected and cleared by centrifugation at 3000 x g for 15 minutes at  
118 4°C and then filtered through a 0.2 µm filter. Following filtration, immunoglobulins were purified  
119 using a 5 ml HiTrap Protein G column (GE Healthcare 17-0404-01) on an AKTA FPLC (GE  
120 Healthcare, Piscataway NJ). The IgG fraction was recovered from the column by elution with  
121 glycine buffer (100 mM, pH 2.5). The fractions containing IgG were pooled and exchanged with  
122 1x PBS (pH 7.4) via 3 washes using Amicon Ultra-2mL Ultracel-10kDa cutoff (Millipore Corp.,  
123 Bedford, MA). A Tris-HCl neutralization step was avoided as it may interfere with later  
124 biotinylation steps. Ab concentrations were measured on a Nano Drop Lite Spectrophotometer  
125 (Thermo Scientific).

126

127 **Ab binding ELISAs:** Immulon 2-HB plates were coated with respective antigen in 0.1  
128 mM sodium bicarbonate buffer pH 8.4 overnight at 4°C. The next day plates were blocked with  
129 10% Fetal bovine serum (FBS) in PBS for 2 hrs at 4°C. After removing blocking buffer, 100 ul  
130 of respective Ab diluted in 10% FBS was added and incubated at 37°C for 1 hr. After 1 hr  
131 ,plates were washed with washing buffer (PBS containing 0.1% Tween 20) three times. After  
132 washing 100 ul of HRP conjugated secondary Ab in blocking buffer was added and incubated  
133 at room temperature for 1 hr. Plates were washed three times with washing buffer and 50ul  
134 Ultra-TMB (Thermo Scientific) substrate was added to each well and the reaction was stopped  
135 by adding 50ul of 2N sulfuric acid. Absorbance was measured at 450nm optical density within  
136 30 min.

137

138           **Ab biotinylation competition ELISAs:** Ab biotinylation was performed as previously  
139 described (Hicar, Chen, Sulli, et al., 2016). First, 100-200  $\mu$ l of 3 mg/ml Abs were equilibrated  
140 in carbonate buffer (pH 9.3) using a 10k or 50k cutoff Amicon Ultra-4 Centrifugal Filter Unit  
141 (Millipore Corp., Billerica, MA) per the manufacturer's instructions. Ab concentrations were  
142 measured using a Nanodrop spectrophotometer (Thermo Scientific, Grand Island, NY).  
143 Sulfosuccinimide biotin (Sigma-Aldrich, St. Louis, MO) was added at a 30-fold molar excess  
144 over the concentration of Ab (approximately 90  $\mu$ g per mg of Ab). This solution was mixed and  
145 incubated for 30 minutes with gentle shaking at room temperature. Tris-HCl (pH 7.5) was  
146 added up to 10% by volume to bind residual biotin molecules. The biotinylated Ab was  
147 separated from residual biotin complexes and equilibrated with PBS (pH 7.4) using a G-25  
148 Sephadex Nap-5 (GE Healthcare, Piscataway NJ) column per the manufacturer's protocol.  
149 Biotinylated Abs were competed with a panel of known unlabeled HIV-specific Abs, as listed in  
150 the results section. ELISAs were performed similar to previous description, with streptavidin-  
151 HRP (Southern Biotech, Birmingham, Al) conjugated secondary Ab reagent for detection of  
152 binding.

153

154           **Western blot analysis:** After running on SDS-PAGE, proteins were transferred onto  
155 blotting membrane using Iblot dry blotting system (Thermo Fisher Scientific) according to the  
156 manufacturer's instructions. After transfer, the blot was blocked for 1 hr at room temperature.  
157 After rinsing, primary Ab was diluted in 10% FBS was added and incubated overnight at 4°C.  
158 Blot was washed (3 x 10 minutes) with gentle agitation. Secondary Ab (Alkaline phosphatase -  
159 conjugated anti-human IgG, Southern Biotech, Birmingham, AL) was added in wash buffer and



160 incubated for 1 hour at room temperature with gentle agitation. Blot was then washed  
161 5x5minutes, three times in PBST and twice in PBS. Bands were visualized with Alkaline  
162 phosphate substrate NBT/BCIP (Thermo Scientific, Grand Island, NY).

163

164 **Six-helix-bundle (6HB) formation and binding:** Protocol followed previous  
165 publication (Liu, Zhao, & Jiang, 2003). Peptide N36 in PBS was incubated with C34 at 37°C for  
166 1 hr. The mixture was added to 96- well plates which were precoated with NC-1 IgG (1ug/ml)  
167 purified from mouse antisera directed against the gp41 6HB. The plate was incubated for 2 hr  
168 at room temperature. Plate was extensively washed with washing buffer containing Tween-20.  
169 Then primary Abs were added at various dilutions and incubated at 37°C for 1 hr. The plate  
170 was washed extensively with washing buffer and secondary HRP-conjugated anti human IgG  
171 (H+L) at 1:2000 dilution was added in each well and incubated at room temperature for 1 hr.  
172 The plate was washed and TMB substrate was added for color development and the reaction  
173 was stopped using 2N sulfuric acid. Human anti-HIV-1 gp41 Ab HK20 was used as a control  
174 (Creative Biolabs, Shirley, NY).

175

176 **Ab dependent cellular cytotoxicity assay:** Rapid and fluorometric ADCC (RFADCC)  
177 assay was performed as described previously (Milligan, Richardson, John-Stewart, Nduati, &  
178 Overbaugh, 2015; Williams et al., 2015). Briefly, CEM-NKr target cells were double stained with  
179 PKH (a membrane stain) and CFSE (a cytosolic stain) and coated with 50ug/ml ZA 1197  
180 MNgp41 (NIH AIDS Reagent Program). The coated target cells (5000 cells/well) were  
181 incubated with the Ab for 10 minutes to allow binding of the Ab to gp41. Next, effector cells  
182 (HIV-negative donor PBMCs) were added at an effector target ratio of 50:1. The mixture was

183 incubated for 4 hours at 37<sup>0</sup> C. After the incubation, the cells were fixed in 1%  
184 paraformaldehyde in PBS. When ADCC occurred, the target cell membrane is permeabilized  
185 leading to the loss of CFSE and retention of PKH. ADCC was measured by flow cytometry as  
186 the percentage of PE (+) CFSE (-) cells among all PE (+) cells with background (average  
187 ADCC mediated against uncoated target cells) subtracted. Background was set to 3-5%.  
188 Influenza Ab F16V3 (500 ng/uL) was included as a negative control and results are normalized  
189 to HIV immunoglobulin (HIVIG, 500 ng/uL).

190

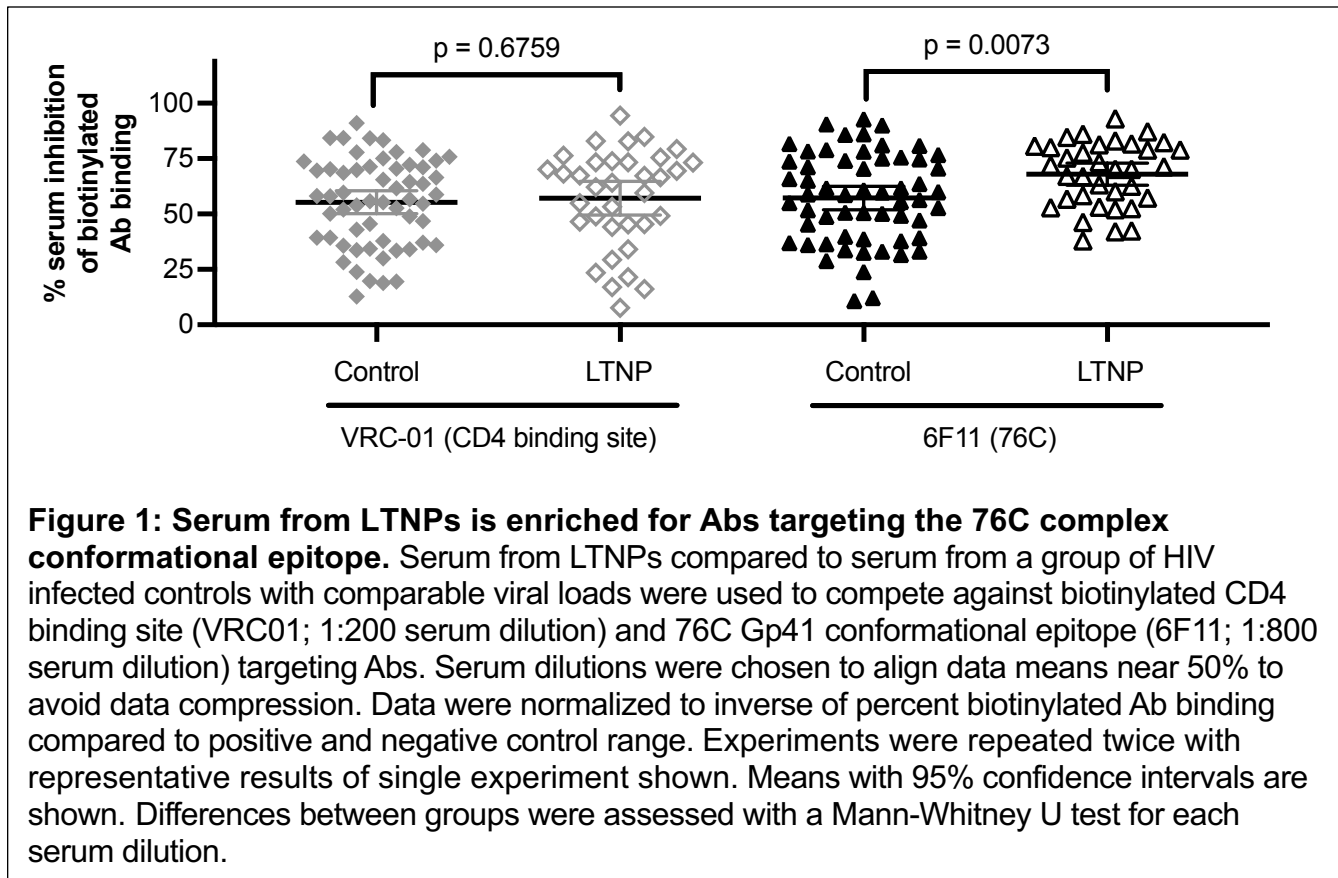
191

192

193 **Results:**

194 **Enrichment for Antibodies binding against 76C epitope in Long-term non-progressors**

195       Recent studies support that specific polyfunctional Abs may influence disease  
196 progression (Das et al., 2020). Prior studies that showed that ADCC was globally higher in  
197 controllers, also studied specific epitope targeting by serum competition with biotinylated Abs.  
198 No differences in Abs targeting the CD4 binding site or other epitopes associated with  
199 neutralization were shown between viremic individuals and viral controllers (Lambotte et al.,  
200 2009). The 76C group Abs target a previously unassessed conformational epitope in gp41. We  
201 used 6F11 as the representative biotinylated Ab since it had a higher affinity for HIV BaL  
202 foldon trimers (Hicar, Chen, Kalams, et al., 2016), the target we chose for this assay. Samples  
203 were obtained from recruitment and biobank access from 35 LTNP individuals (Minimally 7  
204 years off therapy with stable CD4 counts), and 58 HIV infected individuals with comparable



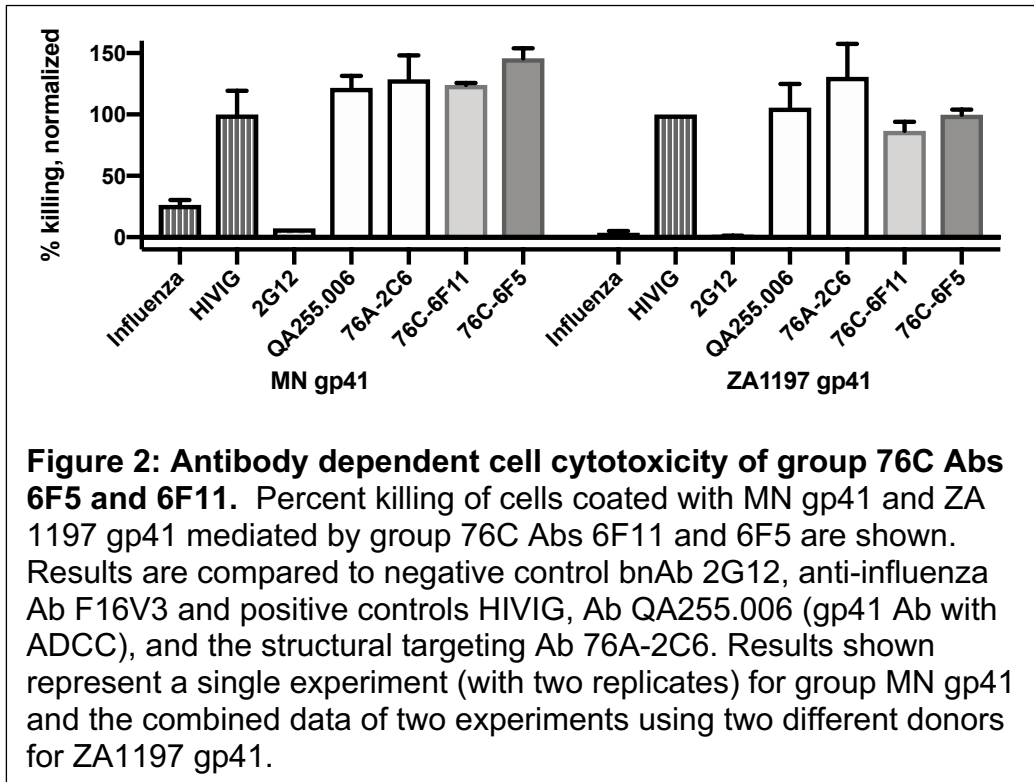
205 viral loads. We compared the pattern of Ab targeting in these groups between a 76C Ab (6F11)  
206 and the CD4 binding site Ab VRC01 which also utilizes VH1-02 (**Figure 1**); this serves as a  
207 control for inherent immunologic differences (CD4 helper variation, viral load associated  
208 inflammation, etc.). Abs that can compete with group 76C Abs were more prevalent in the  
209 cohort of LTNPs ( $p < 0.01$ ). Consistent with prior studies (Lambotte et al., 2009) the CD4  
210 targeting Ab VRC01 showed no difference between LTNPs and those with low CD4 cells.

211  
212  
213  
214

## 215 Functional activity

216 In prior studies, group 76C Abs did not neutralize various tiers of HIV strains (Hicar,

217 Chen, Kalams, et al., 2016). We have recently shown that members of this group 76C can



interfere in certain fusion interference assays implying that a portion of this epitope is available pre-fusion (Smith et al., 2018). In the original studies that identified 6F5, the clade B virus-like

229 particle also identified the Ab 76A-2C6 (classified as group A due to targeting of a separate  
230 epitope). 76A-2C6 targets a complex conformational epitope, recognizes multiple clades, and  
231 was shown to have robust ADCC activity using both clade B and clade C constructs (Sojar et  
232 al., 2019). So, we chose to test for ADCC activity in these group C Abs using clade B MN and  
233 clade C ZA1197 gp41 constructs. Group 76C members 6F5 and 6F11 both showed  
234 comparable ADCC activity to 76A-2C6, QA255.006 and HIVIG (**Figure 2**).

235

236

237 **Sequence, creation of group 76C ancestor**

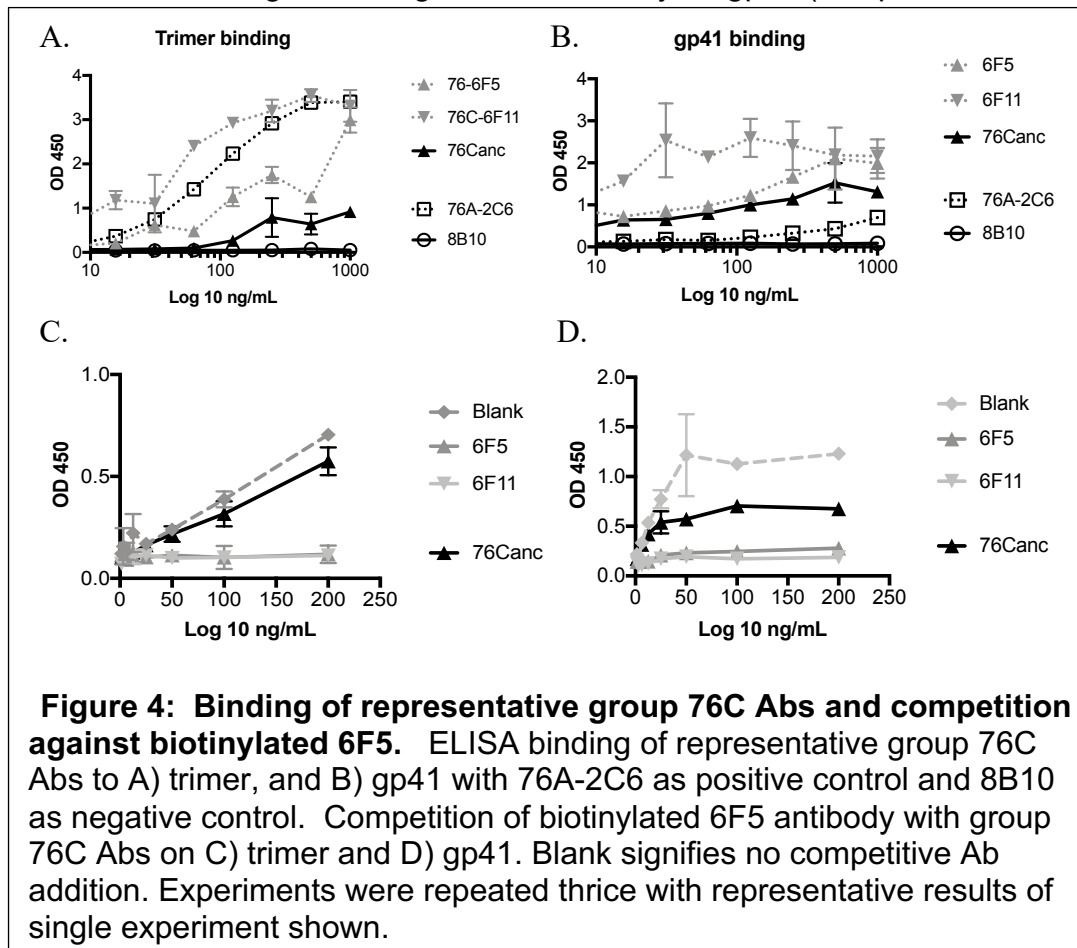
238 6F5 binds a conformational epitope on gp41. On analysis for common shared  
 239 mutations, besides those noted within the CDR3 regions, there were no shared mutations from  
 240 germline across all six putative members in heavy chain or of the four that had cloned light  
 241 chains (**Figure 3**). This surprisingly suggested a propensity for germline variable chain binding  
 242 to target this antigenic site. Notably 6F11 and 7C6 had the exact same CDR3 segment in both  
 243 the heavy and light chains. 4E4 shared rare mutations with all 76C members and was the least  
 244 mutated (87.5% homology to predicted germline) of the 76C members. Thus, we created an  
 245 ancestor Ab (76Canc) by expressing the 6F5 light chain with a heavy chain construct utilizing  
 246 the germline VH1-02 sequence (through framework 3) and the heavy chain CDR3 sequence of  
 247 mAb 4E4.

VHeavy 1-2	FR1 (11-26)	CDR1 (27-38)	FR2 (39-55)	CDR2 (56-65)	FR3 (66-104)	//	4E4 HCDR3
IGHV1-2	EVKPKGASVKVCKAS	GYTF...TGYY	MHWVRQAPQGQLEWMGR	INPN..SGGT.	NYAQKFQ.GRVTMTRDTSISTAYMELSRRLRSDDTAVVYC		CARGEIAGRRLDLW
1B1 (Q2)	--R-----R-----	-----I-F-	I--I-----	VK-S.--DA	D--R-----S-----T---D---S-F---L-F-		---S-TA-W--P-
1F7 (Q2)	-----R-----T-	-----I---	I-----	-K-...-D-	D--R-----I-----T-----N---E---L---		---STT-W--P-
6f11 (Q7)	-LR---L--R---I-	-----S---	I-----	-SST...-A-	-F--R---SL-----N-M-L--RG-T---S---		-G-TS--S-H--S-
7C6 (Q7)	-L-N--V--R---QL-	-----S-F-	I--I--R-H-----	-SST...-AA.	TS--R---L-----SN-F-L-VKG-TF--S-I-F-		-G-TS--S-H--S-
6F5 (Q13)	-----R-----	--I...SA-S	I-----	-T-S...-A-	V-----V---ATT-G-L-N--L---I---		---VQM--DA---
4E4 (Q11)	---R-----	--M...IA--	V-----	-K-...-A-	D-----G-S--N---D-TG-T---		-----
76Canc^	-----	-----	-----	-----	-----		-----
					<i>shared HCDR3 amino acids</i>		* * * * *
VKappa 1-39	FR1 (9-26)	CDR1 (27-38)	FR2 (39-55)	CDR2 (56-65)	FR3 (66-104)	//	6F5 KCDR3
IGKV1-39.	SSLSASVGDVTLTCRAS	QSI.SSY	LNWYQQKPGKAPKLLIY	AA.S	SLQSGVP.SRFSGSG.SGTDFTLTISLQPEDFATYY		CQQTYSPPWTF
6f11 (Q7)	-A-----G	-N-.AK-	-H-----S--H	D.-	---D-----V-----N-----		---E--SV-----
7c6 (Q7)	-A-----G	-N-.GKF	-H-----S--H	D.-	T-HD-----V-----S--F		---E--SV-----
6f5^ (Q13)	-----	---.TTF	-H-----E--S	T.-	-----H-----I---		-----
4e4 (Q11)	-----T-	-N-.R--	-Y---R--S---	T.-	T-----R-V---S---		---HI--T--F--
					<i>shared KCDR3 amino acids</i>		* * * * *

**Figure 3: Sequence comparison of group 76C Abs supports that germline VH1-02 can contribute to epitope recognition.** Comparison of the group 76C Abs (original clonal assignment by genetic relationship is shown; Q#, see methods) shows no mutations from germline shared in all clones. Despite the shared length, there are few shared amino acids in the CDR3 regions (\*). Germline 4E4 HCDR3 contributed to the final 76anc construct. Gaps in IMGT numbering system are shown (.). Amino acids shared with predicted germline sequence are noted by dashes (-) and mutations away from germline are noted by their predicted single amino acid designation. ^76Canc heavy chain and 6F5 light chain was used in the recombinant 76Canc antibody.

248 **Ab 6F5 competition**

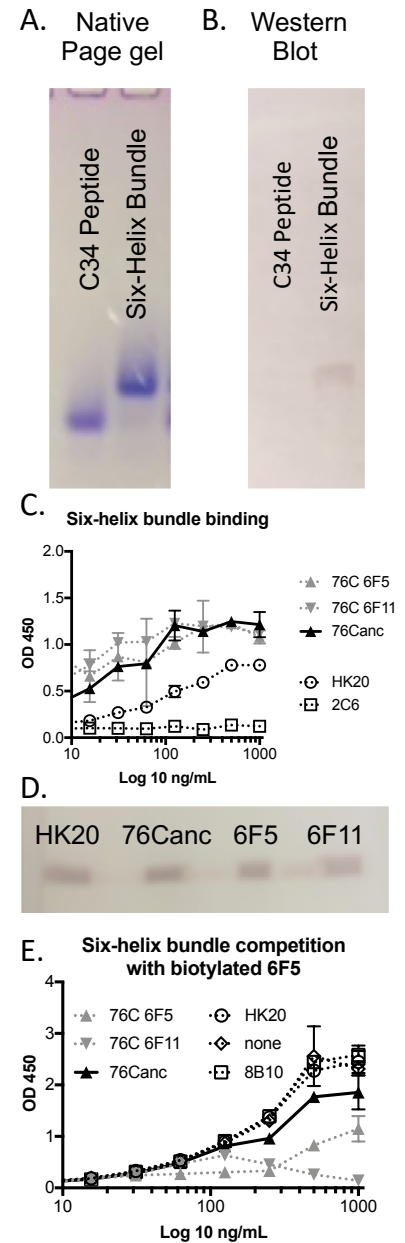
249 We initially compared HIV antigen binding of 76Canc to 6F5, 76A-2C6, and negative  
250 control 8B10. 76Canc showed specific recognition of BaL trimers (**Figure 4A**) and gp41 clade  
251 B protein (**Figure 4B**), but this was less than both 6F5 and 6F11. Results from 6F11, 76A-2C6  
252 and 6F5 had comparable EC50 estimates to those previously published (Hicar, Chen, Sulli, et  
253 al., 2016), as 76A-2C6 has a notably increased specificity for trimeric forms of envelope. From  
254 gp41 binding, the estimated EC50 of 76Canc was 113.6 (ng/ml). To confirm antigen targeting  
255 of 76Canc we performed competition ELISA using biotinylated 6F5 (6F5-biotin) recombinant  
256 Ab with Trimer (**Figure 4C**) as well as gp41 (**Figure 4D**). 76Canc partially competed with 6F5-  
257 biotin for both antigens, though more efficiently on gp41 (compared to non-competitive binding



signified by  
'blank' well).  
Notably, both  
6F11 and 6F5  
showed more  
efficient 6F5-  
biotin  
competition.

## 267 Post fusion six helix bundle (6HB) binding

268 Our earlier study (Hicar, Chen, Sulli, et al., 2016) showed  
269 mutations widely separated on the primary sequence (R557,  
270 E654 and E657; numbering per HXB2 reference sequence)  
271 affected 6F5 binding. To confirm these Abs can target the post-  
272 fusion forms of gp41, we used peptides previously described  
273 that can replicate this post-fusion form. The two peptides N36  
274 (SGIVQQQNLLRAIEAQQHLLQLTVWGIKQLQARI) and C34  
275 (WMEWDREINNYTSLIHSLIEESQNQQEKNEQELL), each  
276 containing one of the heptad repeats, can form the post-fusion  
277 6HB in vitro, which can be visualized by gel shift (Liu et al.,  
278 2003). On native gel PAGE (**Figure 5A**), the N36 peptide is not  
279 shown as it's higher pI of 11.2, prevented it from entering the  
280 gel. With mixing prior to gel loading of the C34 peptide (acidic pI  
281 of 3.4) with N36, an appreciable shift is noted compared to C34  
282 lane alone (**Figure 5A**). The 6HB formation was confirmed by  
283 probing with NC-1 Ab (**Figure 5B**); an Ab specific to the post-  
284 fusion form as shown by lack of binding to C34 alone (Jiang,  
285 Lin, & Lu). On sandwich ELISA testing  
286 using NC-1 as a capture Ab, 6F11,  
287 6F5, and 76Canc all bound the 6HB  
288 comparable to HK20, an Ab that  
289 targets the 6HB. Further, a 6HB



### Figure 5: Six-helix-bundle (6HB) formation and binding of various Abs.

A) Coomassie blue staining of C34 & 6HB formed by incubating N36 and C34. B) Western blot of C34 & 6HB with anti-mouse NC1 monoclonal Ab. C) 6HB sandwich ELISA binding using capture Ab NC1. D) Western blot analysis of 6HB binding of various Abs using decaprobe. E) 6HB binding competition against biotinylated 6F5 Ab. Experiments were repeated at least twice with representative results from single experiments shown.

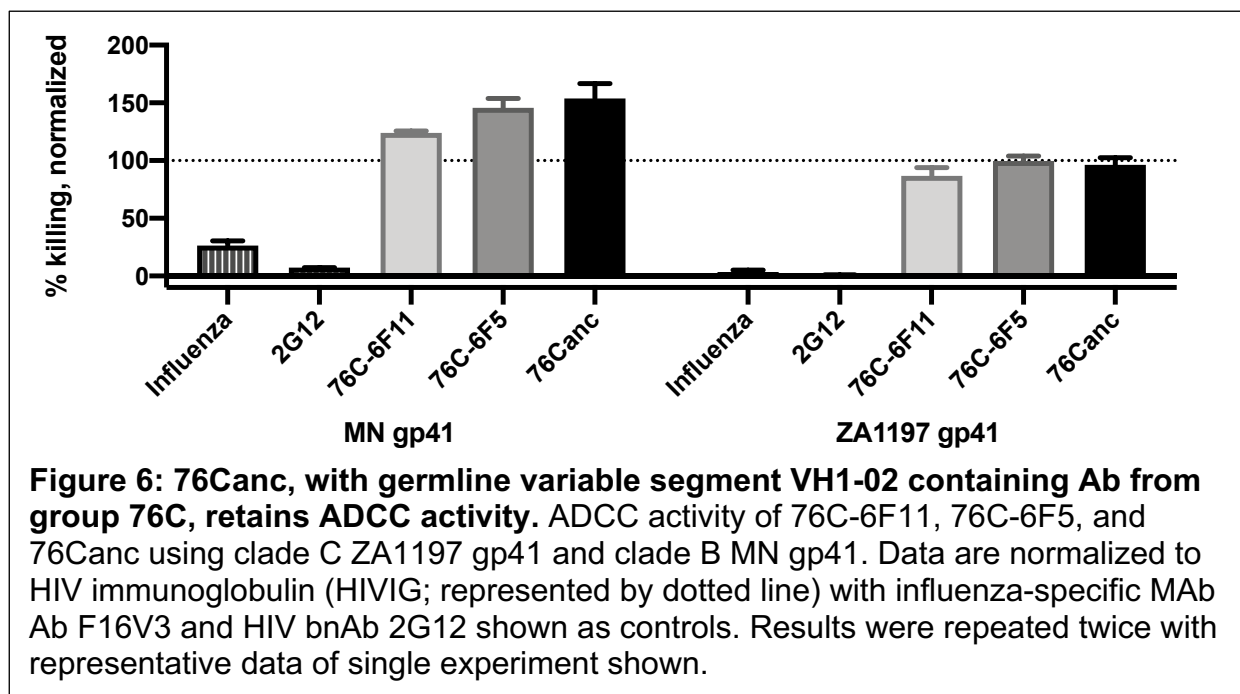


290 specific interaction was confirmed using western blot and decaprobe by running 6HB  
291 preparative gel on charge basis (**Figure 5D**). 6HB binding of these group 76 Abs was further  
292 confirmed by competition with 6F5-biotin (**Figure 5E**). Again, the 76Canc partially competes  
293 with 6F5 binding, where 6F11 and 6F5 more efficiently compete.

294

### 295 **Functional activity of Germline based 76Canc**

296 Because 76Canc competed with 6F5 and targeted the 6HB similarly to 6F5 and 6F11,  
297 we then assessed its ADCC function. 76Canc was surprisingly comparable in activity to 6F5  
298 and 6F11 against both clad B and C targets (**Figure 6**). despite having relatively lower EC50  
299 (**Figure 4**) and no mutations away from predicted germline heavy chain outside of the CDR3  
300 region (**Figure 3**).



301

302

303

## 304 **Discussion**

305 Elicitation of broadly neutralizing Abs remains a goal of HIV vaccine research. While  
306 these Abs can arise during HIV-1 infection, our limited knowledge of their germline, pre-  
307 immune Ab responses limits our ability to elicit them through vaccination (Yacoob et al., 2016).  
308 We show here that an Ab with germline VH1-02 can recognize and show appreciable ADCC  
309 activity against HIV. This ADCC activity with germline variable segment contributions, the  
310 diversity of these mature clones, and the initial cross-reactive binding studies shown here  
311 support that these Abs were formed from naïve B cell responses. This finding has direct  
312 implications on current vaccine regimens. Identification of epitopes that can be recognized by  
313 germline antibodies with functional activity may allow for a more direct route for vaccination  
314 (single antigen and/or low number of booster approach) (Stamatatos, Pancera, & McGuire,  
315 2017) rather than complicated multiple boosting regimens with variable antigens (Saunders et  
316 al., 2019).

317 Highly mutated anti-CD4bs bnAbs preferentially use the VH1 gene, in particular the VH  
318 1-02 and 1-46 segments, as the heavy chain predominantly drives CD4 binding site  
319 recognition (Scheid et al., 2011; Wu et al., 2010). VRC01 is highly mutated, with V-gene region  
320 amino acid predicted mutations of 42% in the VH1-02 heavy chain and 28% in the light chain  
321 (Wu et al., 2010; Zhou et al., 2010). There is structural convergence of VRC01 related Abs and  
322 these rely on short CDRs in chosen light chains (Zhou et al., 2010; Zhou et al., 2013). In  
323 contrast to 76Canc, unmutated common ancestors of VRC01 Abs don't interact with native  
324 trimers(Hoot et al., 2013). This potentially could interfere with vaccination strategies based on  
325 the concept of stimulating the naïve Ab to generate a HIV bnAb response(Hoot et al., 2013;  
326 McGuire et al., 2013; Zhou et al., 2010). Select framework mutations in VRC01 to 'near'

327 germline did maintain functionality (Georgiev et al., 2014). Recently, recombinant humanized  
328 immunoglobulin mouse models using VH1-02 sequences and a sequential immunization  
329 strategy have shown success in creating similarly matured Abs (Tian et al., 2016). Potentially  
330 these strategies can be utilized to similarly target 76C-like Abs.

331 As the members of 76C showed general structural homology, but few shared mutations,  
332 76C-like Abs may arise from a truly naïve initial response. However, Abs with low numbers of  
333 mutations may have been originally focused on other antigens. A number of the HIV bnAbs  
334 have been described as having autoimmune potential (Zandman-Goddard & Shoenfeld, 2002).  
335 As prior studies have suggested, gp41 targeting during initial infection relies predominantly on  
336 stimulating memory B cells that have previously been activated by non-HIV-1 antigens. A  
337 similar study with germline reversion of gp41 targeting Abs has been performed; however,  
338 germline Abs lacked HIV reactivity (Liao et al., 2011) . These Abs were found to be poly-  
339 reactive and bound to various host or gut flora antigens. A number of gut ileum B cell derived  
340 anti-gp41 Abs cross-reacted to commensal bacteria and showed non-HIV-1 polyreactivity  
341 (Trama et al.). Groups have postulated that germline Abs primed by reactions to commensal  
342 bacteria can be stimulated and form the basis for anti-gp41 Ab responses after infection.

343 The original antigen that was recognized by these clones remains unknown. We show  
344 that the 76Canc binds the 6HB comparable to other 76C Abs, but is less efficient at competing  
345 against 6F5. It may be that a structure similar to the 6HB was the original selective antigen.  
346 Since these Abs were cloned from LTNPs and similar Abs are more prevalent in LTNPs, it is  
347 intriguing to consider that the potential effects of this type of functional Ab response early in an  
348 infection could influence the global clinical course of disease.

349

350 **Conclusions:**

351 Here we show that the VH1-02 germline variable chain can support ADCC. Exploring  
352 the targeting of ancestor Abs such as this may help inform on future vaccine efforts. The  
353 shepherding of a naïve response all the way to highly mutated Abs remains a challenge.  
354 Targeting efforts to expand functional Abs utilizing germline sequences, such as 76Canc, may  
355 offer a simpler path to immune protection or assist in immunity during vaccination with more  
356 complex regimens.

357

358 **Acknowledgements:**

359 We thank Dr. Julie Overbaugh for her comments on previous versions of this  
360 manuscript. We thank Dr. J Bloom for providing influenza- specific monoclonal Ab F16V3. The  
361 following reagents were obtained through the AIDS Research and Reference Reagent  
362 Program, Division of AIDS, NIAID, NIH: monoclonal Abs 2G12 from Dr. Hermann Katinger;  
363 anti-HIV-1 gp41 monoclonal Ab NC-1 from Dr. Shibo Jiang. This research was supported  
364 through biorepository access by Research reported in this [publication/press release] was  
365 supported by the University of Washington / Fred Hutch Center for AIDS Research, an NIH-  
366 funded program under award number AI027757 which is supported by the following NIH  
367 Institutes and Centers: NIAID, NCI, NIMH, NIDA, NICHD, NHLBI, NIA, NIGMS, NIDDK. Study  
368 was supported by NIH R01 AI 125119-01; “The role of non-broadly neutralizing antibodies  
369 targeting gp41 structural epitopes in long term nonprogression of HIV infection.”

370

371 **Competing Interests:**

372 All authors declare no competing interests.

373 **References:**

- 374 Bonsignori, M., Pollara, J., Moody, M. A., Alpert, M. D., Chen, X., Hwang, K. K., . . . Haynes, B. F. (2012).  
375 Antibody-dependent cellular cytotoxicity-mediating antibodies from an HIV-1 vaccine efficacy  
376 trial target multiple epitopes and preferentially use the VH1 gene family. *J Virol*, *86*(21), 11521-  
377 11532. doi:10.1128/JVI.01023-12
- 378 Burton, D. R., Hessel, A. J., Keele, B. F., Klasse, P. J., Ketas, T. A., Moldt, B., . . . Moore, J. P. (2011).  
379 Limited or no protection by weakly or nonneutralizing antibodies against vaginal SHIV challenge  
380 of macaques compared with a strongly neutralizing antibody. *Proc Natl Acad Sci U S A*, *108*(27),  
381 11181-11186. doi:10.1073/pnas.1103012108
- 382 Das, J., Devadhasan, A., Linde, C., Broge, T., Sassic, J., Mangano, M., . . . Alter, G. (2020). Mining for  
383 humoral correlates of HIV control and latent reservoir size. *PLoS Pathog*, *16*(10), e1008868.  
384 doi:10.1371/journal.ppat.1008868
- 385 Georgiev, I. S., Rudicell, R. S., Saunders, K. O., Shi, W., Kirys, T., McKee, K., . . . Kwong, P. D. (2014).  
386 Antibodies VRC01 and 10E8 neutralize HIV-1 with high breadth and potency even with Ig-  
387 framework regions substantially reverted to germline. *J Immunol*, *192*(3), 1100-1106.  
388 doi:10.4049/jimmunol.1302515
- 389 Haynes, B. F., Gilbert, P. B., McElrath, M. J., Zolla-Pazner, S., Tomaras, G. D., Alam, S. M., . . . Kim, J. H.  
390 (2012). Immune-correlates analysis of an HIV-1 vaccine efficacy trial. *N Engl J Med*, *366*(14),  
391 1275-1286. doi:10.1056/NEJMoa1113425
- 392 Hessel, A. J., Hangartner, L., Hunter, M., Havenith, C. E., Beurskens, F. J., Bakker, J. M., . . . Burton, D. R.  
393 (2007). Fc receptor but not complement binding is important in antibody protection against  
394 HIV. *Nature*, *449*(7158), 101-104. doi:10.1038/nature06106
- 395 Hessel, A. J., Rakasz, E. G., Tehrani, D. M., Huber, M., Weisgrau, K. L., Landucci, G., . . . Burton, D. R.  
396 (2009). Broadly Neutralizing Monoclonal Antibodies 2F5 and 4E10, Directed Against the Human  
397 Immunodeficiency Virus Type 1 (HIV-1) gp41 Membrane Proximal External Region (MPER),  
398 Protect Against SHIVBa-L Mucosal Challenge. *J Virol*. doi:JVI.01272-09 [pii]  
399 10.1128/JVI.01272-09
- 400 Hicar, M. D., Chen, X., Kalams, S. A., Sojar, H., Landucci, G., Forthal, D. N., . . . Crowe, J. E., Jr. (2016).  
401 Low frequency of broadly neutralizing HIV antibodies during chronic infection even in  
402 quaternary epitope targeting antibodies containing large numbers of somatic mutations. *Mol*  
403 *Immunol*, *70*, 94-103. doi:10.1016/j.molimm.2015.12.002
- 404 Hicar, M. D., Chen, X., Sulli, C., Barnes, T., Goodman, J., Sojar, H., . . . Crowe, J. E., Jr. (2016). Human  
405 Antibodies that Recognize Novel Immunodominant Quaternary Epitopes on the HIV-1 Env  
406 Protein. *PLoS One*, *11*(7), e0158861. doi:10.1371/journal.pone.0158861
- 407 Hoot, S., McGuire, A. T., Cohen, K. W., Strong, R. K., Hangartner, L., Klein, F., . . . Stamatatos, L. (2013).  
408 Recombinant HIV envelope proteins fail to engage germline versions of anti-CD4bs bNAbs. *PLoS*  
409 *Pathog*, *9*(1), e1003106. doi:10.1371/journal.ppat.1003106
- 410 Jiang, S., Lin, K., & Lu, M. (1998). A conformation-specific monoclonal antibody reacting with fusion-  
411 active gp41 from the human immunodeficiency virus type 1 envelope glycoprotein. *J Virol*,  
412 *72*(12), 10213-10217.
- 413 Lambotte, O., Ferrari, G., Moog, C., Yates, N. L., Liao, H. X., Parks, R. J., . . . Delfraissy, J. F. (2009).  
414 Heterogeneous neutralizing antibody and antibody-dependent cell cytotoxicity responses in  
415 HIV-1 elite controllers. *AIDS*, *23*(8), 897-906. doi:10.1097/QAD.0b013e328329f97d

- 416 Liao, H. X., Chen, X., Munshaw, S., Zhang, R., Marshall, D. J., Vandergrift, N., . . . Haynes, B. F. (2011).  
417 Initial antibodies binding to HIV-1 gp41 in acutely infected subjects are polyreactive and highly  
418 mutated. *J Exp Med*, 208(11), 2237-2249. doi:10.1084/jem.20110363
- 419 Liu, S., Zhao, Q., & Jiang, S. (2003). Determination of the HIV-1 gp41 fusogenic core conformation  
420 modeled by synthetic peptides: applicable for identification of HIV-1 fusion inhibitors. *Peptides*,  
421 24(9), 1303-1313. doi:10.1016/j.peptides.2003.07.013
- 422 McGuire, A. T., Hoot, S., Dreyer, A. M., Lippy, A., Stuart, A., Cohen, K. W., . . . Stamatatos, L. (2013).  
423 Engineering HIV envelope protein to activate germline B cell receptors of broadly neutralizing  
424 anti-CD4 binding site antibodies. *J Exp Med*, 210(4), 655-663. doi:10.1084/jem.20122824
- 425 Milligan, C., Richardson, B. A., John-Stewart, G., Nduati, R., & Overbaugh, J. (2015). Passively acquired  
426 antibody-dependent cellular cytotoxicity (ADCC) activity in HIV-infected infants is associated  
427 with reduced mortality. *Cell Host Microbe*, 17(4), 500-506. doi:10.1016/j.chom.2015.03.002
- 428 Parren, P. W., Ditzel, H. J., Gulizia, R. J., Binley, J. M., Barbas, C. F., 3rd, Burton, D. R., & Mosier, D. E.  
429 (1995). Protection against HIV-1 infection in hu-PBL-SCID mice by passive immunization with a  
430 neutralizing human monoclonal antibody against the gp120 CD4-binding site. *AIDS*, 9(6), F1-6.
- 431 Parren, P. W., Fiscaro, P., Labrijn, A. F., Binley, J. M., Yang, W. P., Ditzel, H. J., . . . Burton, D. R. (1996).  
432 In vitro antigen challenge of human antibody libraries for vaccine evaluation: the human  
433 immunodeficiency virus type 1 envelope. *J Virol*, 70(12), 9046-9050.
- 434 Santra, S., Tomaras, G. D., Warriar, R., Nicely, N. I., Liao, H. X., Pollara, J., . . . Haynes, B. F. (2015).  
435 Human Non-neutralizing HIV-1 Envelope Monoclonal Antibodies Limit the Number of Founder  
436 Viruses during SHIV Mucosal Infection in Rhesus Macaques. *PLoS Pathog*, 11(8), e1005042.  
437 doi:10.1371/journal.ppat.1005042
- 438 Saunders, K. O., Wiehe, K., Tian, M., Acharya, P., Bradley, T., Alam, S. M., . . . Haynes, B. F. (2019).  
439 Targeted selection of HIV-specific antibody mutations by engineering B cell maturation. *Science*,  
440 366(6470). doi:10.1126/science.aay7199
- 441 Scheid, J. F., Mouquet, H., Ueberheide, B., Diskin, R., Klein, F., Oliveira, T. Y., . . . Nussenzweig, M. C.  
442 (2011). Sequence and structural convergence of broad and potent HIV antibodies that mimic  
443 CD4 binding. *Science*, 333(6049), 1633-1637. doi:10.1126/science.1207227
- 444 Smith, M., Hoffman, J., Sojar, H., Aalinkeel, R., Hsiao, C. B., & Hicar, M. D. (2018). Assessment of  
445 Antibody Interference of Enfuvirtide (T20) Function Shows Assay Dependent Variability. *Curr*  
446 *HIV Res*, 16(6), 404-415. doi:10.2174/1570162X17666190228154850
- 447 Sojar, H., Baron, S., Sullivan, J. T., Garrett, M., van Haaren, M. M., Hoffman, J., . . . Hicar, M. D. (2019).  
448 Monoclonal Antibody 2C6 Targets a Cross-Clade Conformational Epitope in gp41 with Highly  
449 Active Antibody-Dependent Cell Cytotoxicity. *J Virol*, 93(17). doi:10.1128/JVI.00772-19
- 450 Stamatatos, L., Pancera, M., & McGuire, A. T. (2017). Germline-targeting immunogens. *Immunol Rev*,  
451 275(1), 203-216. doi:10.1111/imr.12483
- 452 Tian, M., Cheng, C., Chen, X., Duan, H., Cheng, H. L., Dao, M., . . . Alt, F. W. (2016). Induction of HIV  
453 Neutralizing Antibody Lineages in Mice with Diverse Precursor Repertoires. *Cell*, 166(6), 1471-  
454 1484 e1418. doi:10.1016/j.cell.2016.07.029
- 455 Trama, Ashley M., Moody, M. Anthony, Alam, S. Munir, Jaeger, Frederick H., Lockwood, Bradley, Parks,  
456 Robert, . . . Haynes, Barton F. (2014). HIV-1 envelope gp41 antibodies can originate from  
457 terminal ileum B cells that share cross-reactivity with commensal bacteria. *Cell host & microbe*,  
458 16(2), 215-226.

- 459 Williams, K. L., Cortez, V., Dingens, A. S., Gach, J. S., Rainwater, S., Weis, J. F., . . . Overbaugh, J. (2015).  
460 HIV-specific CD4-induced Antibodies Mediate Broad and Potent Antibody-dependent Cellular  
461 Cytotoxicity Activity and Are Commonly Detected in Plasma From HIV-infected humans.  
462 *EBioMedicine*, 2(10), 1464-1477. doi:10.1016/j.ebiom.2015.09.001
- 463 Wu, X., Yang, Z. Y., Li, Y., Hogerkorp, C. M., Schief, W. R., Seaman, M. S., . . . Mascola, J. R. (2010).  
464 Rational design of envelope identifies broadly neutralizing human monoclonal antibodies to  
465 HIV-1. *Science*, 329(5993), 856-861. doi:10.1126/science.1187659
- 466 Yacoob, C., Pancera, M., Vigdorovich, V., Oliver, B. G., Glenn, J. A., Feng, J., . . . Stamatatos, L. (2016).  
467 Differences in Allelic Frequency and CDRH3 Region Limit the Engagement of HIV Env  
468 Immunogens by Putative VRC01 Neutralizing Antibody Precursors. *Cell Rep*, 17(6), 1560-1570.  
469 doi:10.1016/j.celrep.2016.10.017
- 470 Zandman-Goddard, G., & Shoenfeld, Y. (2002). HIV and autoimmunity. *Autoimmun Rev*, 1(6), 329-337.  
471 doi:10.1016/s1568-9972(02)00086-1
- 472 Zhou, T., Georgiev, I., Wu, X., Yang, Z. Y., Dai, K., Finzi, A., . . . Kwong, P. D. (2010). Structural basis for  
473 broad and potent neutralization of HIV-1 by antibody VRC01. *Science*, 329(5993), 811-817.  
474 doi:10.1126/science.1192819
- 475 Zhou, T., Zhu, J., Wu, X., Moquin, S., Zhang, B., Acharya, P., . . . Kwong, P. D. (2013). Multidonor analysis  
476 reveals structural elements, genetic determinants, and maturation pathway for HIV-1  
477 neutralization by VRC01-class antibodies. *Immunity*, 39(2), 245-258.  
478 doi:10.1016/j.immuni.2013.04.012  
479