

An 8 week randomized Dietary Guidelines for Americans -based diet intervention improves the omega-3 index of healthy women

Christine E. Richardson¹, Sridevi Krishnan^{1,2}, Ira J. Gray^{3,4}, Nancy L. Keim^{1,4}, John W. Newman^{1,3,4,*}

1 - Department of Nutrition, University of California Davis, Davis CA

2 – Department of Pediatrics, School of Medicine, University of California San Diego, San Diego CA

3 - West Coast Metabolomics Center, Genome Center, University of California Davis, Davis CA

4 - USDA-ARS Western Human Nutrition Research Center, Davis CA

Abstract - Background: The Dietary Guidelines for Americans (DGA) recommends consuming >1.75g/wk of long-chain omega-3 fatty acids to reduce the risk of cardiovascular disease (CVD) through triglyceride reduction, however individual responses to treatment vary. **Objective:** We sought to determine if a DGA-conforming diet (DGAD) can increase the omega-3 index (OM3I), a diet-sensitive biomarker of omega-3 fatty acid status, into a health promoting range and reduce fasting triglycerides in 8 weeks. We further explored determinants of the basal OM3I and its response to treatment. **Design:** This is a secondary analysis of a randomized, double-blind 8wk dietary intervention of overweight/obese women fed an 8d rotating DGAD (n =22) or typical American diet (TAD; n =20) registered at www.clinicaltrials.gov as NCT02298725. The DGAD and TAD provided individuals with 16 ± 2 g/wk and 1.2 ± 0.12 g/wk of eicosapentaenoic acid (EPA) + docosahexaenoic acid (DHA), respectively. Habitual diet and body composition were determined at baseline. OM3I, fasting triglycerides, glucose and insulin were measured at 0, 2 and 8wk. **Results:** Baseline OM3I (5.8 ± 1.3 ; n =42) was positively correlated to the dietary (EPA+DHA):dietary fat ratio (p =0.006), negatively correlated to the android fat mass (p =0.0007) and was not different between diet groups. At 8wk, while the TAD-group average OM3I was unchanged (5.8 ± 0.76), the DGAD-group OM3I increased (7.33 ± 1.36 ; p <0.001). In the DGAD-group 9 of 22 (i.e. 41%) participants achieving an OM3I >8%. Subgroup analyses of the DGAD-group revealed that body fat content and distribution influenced the baseline-dependent response to treatment. Fasting triglyceride and OM3I changes did not correlate. **Conclusions:** An 8wk TAD stabilized the OM3I in a healthy range, while a DGAD increased the OM3I into a health-promoting range, but did not reduce fasting triglycerides. Fat distribution and basal omega-3 status are primary factors influencing omega-3 efficacy in overweight/obese women.

*Corresponding author: John W. Newman (john.newman2@usda.gov)

Abbreviations: ALA – alpha-linolenic acid; FFQs - Block Food Frequency questionnaires; CVD - cardiovascular disease; Delta-OM3I_(wk0-8) – 8wk omega 3 index change from baseline; DGA - Dietary Guidelines for Americans; GC-MS - gas chromatography-mass spectrometry; DEXA - dual-energy x-ray absorptiometry; FAME – fatty acid methyl esters; OM3I - omega-3 index; OM3I_(wk0) – baseline omega 3 index; RBC – red blood cell; SFAT – dietary saturated fat; TAD - typical American diet; TFAT – total dietary fat; TG - triglycerides

1 **Introduction**

2 Cardiovascular disease (CVD) is a leading cause of mortality, accounting for nearly 18
3 million deaths worldwide in 2016 ([https://www.who.int/news-room/fact-](https://www.who.int/news-room/fact-sheets/detail/cardiovascular-diseases-(cvds))
4 [sheets/detail/cardiovascular-diseases-\(cvds\)](https://www.who.int/news-room/fact-sheets/detail/cardiovascular-diseases-(cvds))). Diet is a modifiable factor that can influence CVD
5 risk. The consumption of the long-chain omega-3 fatty acids eicosapentaenoic acid (EPA) and
6 docosahexaenoic acid (DHA) for CVD risk reduction has received much attention [1, 2]. Various
7 studies have demonstrated the cardioprotective properties of EPA and DHA, with proposed
8 mechanisms including improvements in endothelial function, fasting triglycerides (TG), blood
9 pressure, platelet aggregation, and inflammation [3-10]. Recently, a >3g/d dose of EPA + DHA
10 was suggested as the level required to attain these protections [9]. However, studies have shown
11 inconsistencies in response to omega-3 fatty acid intake, which can be attributed to differences in
12 body weight, gender, age, and genetics, among others [11-13].

13 Dietary polyunsaturated fatty acids are readily incorporated into cellular phospholipids,
14 and their incorporation into red blood cells (RBCs) combined with the average RBC life span of
15 ~115 days provides an accessible and time-integrated measure of dietary fatty acid intake [14,
16 15]. The omega-3 index (OM3I), a metric that expresses the red blood cell EPA + DHA content
17 as a percent of total fatty acids, is a validated diet-sensitive biomarker of tissues omega-3 fatty
18 acid levels [11, 16]. The OM3I reflects a saturable process that responds inversely to the basal
19 status, i.e., upon supplementation, the largest change happens in individuals that start with the
20 lowest values within that population [17]. An OM3I range of 8-12% is associated with reduced
21 CVD risk, while values <4% suggest elevated risk [11, 18]. Therefore, dietary modulation of the
22 OM3I by adherence to a healthful diet with high intermittent doses of omega-3 fatty acid-rich
23 foods may provide an alternative strategy to CVD risk reduction.

24 The Dietary Guidelines for Americans (DGA), first published in 1980 and currently
25 modified on a 5y cycle, aim to minimize the risk of developing metabolic diseases such as CVD
26 by focusing on consumption of a healthy, nutrient-dense diet. Accordingly, this intervention
27 study was planned using the 2010 DGAs, which was current at the time, that recommend a diet
28 full of fruits, vegetables, whole grains, low-fat dairy products, and a reduction of sodium, solid
29 fats, and added sugars. It also suggests the consumption of 8oz (i.e. 225g) per week of seafood to
30 consume a daily average of 250mg of eicosapentaenoic acid (EPA) and docosahexaenoic acid
31 (DHA) to enhance the omega-3 fatty acid status of the population [19]. These long-chain omega-
32 3 fatty acids have reported anti-inflammatory and anti-hyperlipidemic properties, and increasing
33 their intake may reduce the risk of cardiometabolic disease [20]. Common interventions
34 assessing impacts on the omega-3 status have included the consumption of EPA + DHA-rich
35 supplements or increasing the consumption of cold-water fatty fish or eggs and poultry raised on
36 DHA-rich diets [21-23]. The dominant form of omega-3 fatty acids consumed in the United
37 States is the essential fatty acid alpha-linolenic acid (ALA) [24]. While increasing the
38 consumption of plant-based foods increases the intake of ALA, due to its low rate of conversion
39 to EPA and DHA, it is generally believed that EPA and DHA consumption are required to
40 meaningfully increase their levels [25]. However, the rate of ALA conversion to EPA can be
41 significant in humans [26-28], despite a high degree of variability influenced by factors including
42 both the absolute [26] and relative [29] amounts of dietary ALA and linoleic acid, exercise [30]
43 and genetic variance in the desaturases and elongases involved in the process [31]. Therefore,
44 while EPA and DHA have a strong acute effect on omega-3 status, ALA-rich diets may
45 themselves influence this outcome. To the best of our knowledge, it is not currently known how
46 following a diet reflecting the DGAs or a typical American diet (TAD) will influence the OM3I

47 within 8 weeks. Moreover, it is unclear if such changes in the OM3I will correlate with changes
48 in circulating TGs of normo-lipidemic to mildly hyperlipidemic individuals in the same time
49 frame.

50 The current report describes a secondary analysis of a clinical intervention in pre-and
51 post-menopausal women evaluating the ability of a 2010 DGA-based diet (DGAD) to
52 beneficially alter the OM3I status and/or plasma TG levels when compared to a typical American
53 diet (TAD) defined as the median intake reported by the Centers for Disease Control and
54 Prevention, National Health and Nutrition Examination Survey. We hypothesize that the DGAD
55 will increase the OM3I status and changes in the OM3I will correlate with changes in plasma TG
56 concentrations.

57

58 **Subjects and Methods**

59 **Study design.** The present study used a randomized, double-blind, 8-week dietary intervention in
60 overweight and obese pre-and postmenopausal females registered at www.clinicaltrials.gov as
61 NCT02298725 conducted between Dec 2014 and Mar 2017. A detailed description of the study
62 design has already been published [32, 33]. All procedures were approved by the University of
63 California, Davis (UC Davis), Institutional Review Board. Briefly, volunteers were stratified by
64 menopausal status (pre- or post-) and glucose intolerance (normal compared with insulin
65 resistant), before random assignment in a 1:1 allocation ratio to the DGAD or TAD in blocks of
66 two using Microsoft Office Excel. The study statistician generated the randomization lists using
67 color to indicate treatment, and the principal dietitian assigned the colors to specific diets and
68 implemented the randomization scheme. The randomization schedules were only communicated
69 between the statistician and the dietitian, and the dietitian's assistant was aware of and had

70 access to the sequence. Both diets were designed to maintain body weight, to consist of food and
71 beverage items commonly available at grocery stores, and to have a similar appearance. The
72 TAD was based on the 50th percentile of the NHANES's "What We Eat in America" dietary
73 survey and the DGAD was based on food-group recommendations by the 2010 DGAs. The
74 DGAD consisted of more fruits, vegetables, whole grains, and dairy products, whereas the TAD
75 consisted of more refined grains, solid fats, and added sugars. Eight-day cyclical menus were
76 used, with each day consisting of 3 meals, snacks, and beverages designed to supply adequate
77 calories for participants to maintain their body weight. Menu planning to achieve the estimated
78 experimental differences in omega-3 fatty acid were performed using fatty acid estimates of
79 commercial food products contained in the 2014 version of the Nutrition Data System for
80 Research from the University of Minnesota - Nutrition Coordinating Center
81 (<http://www.ncc.umn.edu/products/>). All meals were prepared by the Metabolic Kitchen and
82 Human Feeding Laboratory at the USDA - Agricultural Research Service - Western Human
83 Nutrition Research Center and volunteers picked up their meals twice weekly and returned
84 packaging so that compliance could be checked. A more detailed description of the meal
85 preparations, menus, and nutrition composition has been previously published [33]. All analyses
86 were performed in a blinded fashion.

87

88 **Subjects.** Pre- and postmenopausal females (n = 44) aged 20-65 years with a BMI (kg/m²) of 25-
89 39.9 were recruited for this intervention. Sample size was based on the study primary outcome
90 investigating the impact of diet quality on glucose homeostasis in women with at least one risk
91 factor for the metabolic syndrome [33]. Sedentary women or those with low physical activity
92 levels were recruited with inclusion criteria below the physical activity guidelines of moderate

93 activity of 150 min/week, a resting blood pressure of $\leq 140/90$ mmHg, and if they had 1 or more
94 of the following clinical measures of glucose homeostasis or lipid metabolism: 100-126 mg/dL
95 fasting glucose; 140-199mg/dL oral glucose tolerance test 2-h glucose; Quantitative Insulin
96 Sensitivity Check Index score < 0.315 [34]; homeostasis model assessment of insulin resistance
97 (HOMA-IR) > 3.67 ; HbA1c between 5.7-6.5, fasting triglycerides > 150 mg/dL; high density
98 lipoprotein cholesterol < 50 mg/dL. Exclusion criteria included: resting blood pressure
99 $> 140/90$ mmHg; hemoglobin < 11.5 g/dL; total cholesterol > 300 mg/dL; low density lipoprotein
100 cholesterol > 189 mg/dL; triglycerides > 400 mg/dL; clinically diagnosed abnormal thyroid or liver
101 function; the presence of any metabolic disease, gastrointestinal disorders, cancer or other
102 serious chronic diseases; pregnancy or lactation; use of tobacco; use of medications for elevated
103 lipids or glucose; regular use of prescription or over-the-counter medications in the 6mo before
104 enrolling into the study; moderate or strenuous physical activity > 30 min/d on ≥ 5 d/wk; weight
105 change of $> 5\%$ of body weight in the 6mo before enrolling into the study; working “graveyard”
106 shifts or forced regular all-night wake cycles; dietary restrictions interfering with the intervention
107 foods.

108
109 ***Food Frequency Questionnaires:*** To evaluate the impact of habitual diet on the basal OM3I,
110 dietary intake estimates were assessed using Block Food Frequency questionnaires (FFQs). Each
111 participant completed an FFQ approximately 1 to 2 weeks prior to the initiation of the
112 intervention, and the responses were used to reflect habitual dietary intake.

113
114 ***Body Composition:*** To allow for the analysis of body composition impacts on basal OM3I, the
115 OM3I response to treatment, and as a compounding factor on fasting triglyceride levels, dual-

116 energy x-ray absorptiometry (DEXA) were performed. Once during baseline (Wk0) and once
117 during week 8 (Wk8), a whole-body DEXA scan was performed using a Hologic® Discovery™
118 QDR® Series 84994 (Hologic, Inc.). This scan provided values for total lean mass, total fat
119 mass, percent body fat, and estimates of gynoid and android fat distribution.

120

121 **Blood collection and clinical chemistry.** Fasting blood samples were collected by a licensed
122 phlebotomist, directly into EDTA containing vacutainers, mixed gently, and centrifuged at
123 1300rcf for 10min at 4°C within 30min of blood collection. After plasma and buffy coat removal,
124 RBCs from a 5mL blood tube were suspended in 14mL phosphate-buffered saline, gently mixed,
125 and pelleted by centrifugation as described above. The washing procedure was repeated and the
126 resulting washed RBCs were transferred to polypropylene Eppendorf tubes and stored at -70°C
127 until analysis.

128

129 **Fatty acid analyses.** To determine dietary fatty acid exposures and assess their impact on red
130 blood cell fatty acid composition, composites of each experimental meal and red blood cell fatty
131 acids were quantified as fatty acids methyl esters (FAMES) by gas chromatography-mass
132 spectrometry. FAMES were quantified against authentic standards correcting for methodological
133 recoveries of ~5µmol of d31-tripalmitoylglyceride (Avanti Polar Lipids, Alabaster AL) [35, 36].
134 Data quality assurance / quality control measures included sample randomization, the inclusion
135 of procedural blanks, duplication of 5% of samples, concurrent analysis of laboratory reference
136 materials in each analytical batch, and the use of isotopically labeled extraction surrogates.

137 Briefly, fatty acids in ~50 mg meal composites or 50 µL of phosphate-buffered saline-
138 washed RBCs were extracted with 10:8:11 cyclohexane:isopropanol: 0.1M ammonium acetate in

139 the presence of deuterated analytical surrogates [37]. Meal composite and RBC extracted lipid
140 residues were reconstituted in either 1 mL or 200 μ L of 1:1 methanol/toluene (v/v), respectively,
141 and stored at -20°C until derivatization. Isolated lipids were transformed into FAMES by
142 sequential incubation with methanolic sodium hydroxide and methanolic hydrochloric acid.
143 Specifically, 25 μ L of meal composite extract or 20 μ L of RBC extracts were further diluted
144 with 20 μ L of 1:1 toluene/methanol (v/v), enriched with 20 μ L of 60 μ M 10Z-pentadecenoic acid
145 in methanol, diluted with 140 μ L methanol, mixed with 100 μ L of 0.5 M sodium methoxide,
146 headspace flushed with nitrogen and incubated at 60 °C for 1 h. Samples were cooled 5 min
147 before addition of 100 μ L of 3 N methanolic hydrochloric acid, and returned to 60 °C for 30 min.
148 Reaction mixtures were then neutralized with 400 μ L potassium carbonate, mixed with 400 μ L
149 saturated sodium chloride, and back extracted with 400 μ L hexane.

150 FAMES were separated on a 30m x 0.25mm, 0.25 μ m DB-225ms on 7890B gas
151 chromatograph interfaced with a 5977B mass selective detector (Agilent Technologies) and
152 quantified against 6- to 8-point calibration curves. Calibrants and internal standards were
153 purchased from NuchekPrep (Elysian, MN) or Sigma-Aldrich (St. Louis, MO). Data were
154 acquired and processed with MassHunter v. 3.2. Results were corrected for
155 d31-tripalmitoylglyceride recoveries which were $47 \pm 15\%$ and $49 \pm 12\%$ for meal composites
156 and RBCs, respectively, with derivatization efficiencies of ~50%. Replicate precision indicated
157 precision of ~15% for RBC FAMES above the detection limits and recoveries did not differ by
158 treatment group or time.

159
160 **Statistics:** Data normality was assessed using Shapiro-Wilkes tests and Q-Q plots of raw, log,
161 and Johnson transformed data. Johnson transformations were the most robust and used for

162 analyses unless indicated. Mean differences were assessed with Student's t-test. Colinear dietary
163 and body composition factors were clustered using an implementation of the VARCLUS
164 algorithm. The influence of physiological parameters and habitual diet on the baseline OM3I
165 were evaluated using linear mixed models alone and together. The minimum set of strong OM3I
166 predictors were generated by stepwise linear regressions with the Bayesian information criterion
167 (BIC) minimization as the stopping function. The influence of diet group and study week on
168 RBC fatty acid composition was assessed using linear mixed models with participant as a
169 random effect with group and week as main effects, followed by adjusted multiple comparison
170 tests (Least Square Means Tukey HSD) if main or interaction effects were identified. Pearson's
171 correlations were used to assess correlations in change (wk8-wk0) after adjustment for baseline
172 values. Participants in the DGAD group with the lowest and highest OM3I change were
173 segregated into two magnitude response subgroups using hierarchical cluster analyses of the 0wk
174 to 8wk change in the OM3I ($\Delta\text{OM3I}_{\text{Wk0-8}}$). Participants were also segregated into OM3I rate
175 of change response subgroups by diet. To this end, K means clustering, the fold-change in the
176 Wk0 to Wk2 OM3I and the 8wk rate of change in the OM3I were used together. All statistical
177 analyses were performed in JMP Pro v 15.1 (SAS Institute, Cary, NC).

178

179 **Results**

180 ***Participant numbers and characteristics:*** A complete diagram of the enrollment, allocation,
181 follow-up and analysis is provided in **Figure 1**. Of the 52 participants enrolled, 44 completed the
182 intervention without adverse effects. Summarized baseline characteristics of the participants
183 included in the primary analysis are shown in **Table 1**, with participant level data provided in
184 **Supplemental Table S1**. However, RBC fatty acid results were unavailable for one baseline and

185 one terminal blood draw from 2 individuals in the TAD group due to poor analytical
186 performance (n =2/132; i.e. 1.5%). Therefore, analyses for the primary outcome of intervention
187 change in OM3I and secondary outcomes investigating the influence of body composition on the
188 change in OM3I and the interaction between OM3I change and fasting triglyceridemia were
189 performed with n =22 for the DGAD and n =20 for the TAD groups. In the DGAD group, a
190 single individual showed inconsistencies between their pre-screening and baseline fasting
191 triglyceride levels, and analyses were performed with and without this subject.

192

193 ***Diet and red blood cell fatty acids profiles:*** The average fatty acid composition of both diet
194 plans are shown in **Table 2**, while the corresponding average gram amounts delivered in the
195 8-day meal rotations are shown in **Table 3**. The individual participant daily intake of each fatty
196 acid is provided in **Supplemental Table S2**. These analyses confirmed that the aggregate TAD
197 contained higher saturated fatty acids (SFA) and monounsaturated fatty acids (MUFA) compared
198 to the DGAD (**Figure 2A**). The TAD also had lower omega-3 polyunsaturated fatty acids (n3-
199 PUFAs), with the relative abundance of n6-PUFAs being equivalent between the two diets. The
200 average daily intake of EPA + DHA for the 8-day menu cycle was 0.18 ± 0.02 and 2.24 ± 0.33
201 g/d for the TAD and DGAD, respectively. However, as can be seen in **Figure 2B** in the DGAD
202 meal plan, long-chain n3-PUFAs were provided solely in three independent meals on Day 1, Day
203 5, and Day 7 with the EPA + DHA levels of 3.0 ± 0.42 , 2.5 ± 0.37 , and 12 ± 1.7 g/d, or
204 approximately 34 ± 3 , 29 ± 3 and 133 ± 11 mg/kg body wt, respectively in menu day composites.
205 Moreover, both meal plans contained a substantial amount of ALA. The foods providing the
206 majority of omega-3 fatty acids are described in **Table 4**, and in more detail in **Supplemental**

207 **Table 3.** The diet group average RBC fatty acid composition at baseline and after 2 and 8wk of
208 dietary intervention are shown in **Table 5.**

209

210 ***Habitual diet and physiological correlates with baseline OM3I:*** Combined analyses of FFQ in
211 **Supplemental Table S4** and baseline body composition data in **Supplemental Table S1** using
212 the entire set of completing subjects (n = 44) identified the estimated dietary EPA +
213 DHA:dietary saturated fat ratio (i.e. (EPA+DHA):SFA) and android fat mass as the strongest
214 predictors of baseline OM3I (OM3I_(wk0)). Variable clustering of FFQ data showed the OM3I to
215 be contained in a cluster with the dietary EPA + DHA, the (EPA+DHA):dietary saturated fat
216 (SFAT) ratio, the (EPA+DHA):total dietary fat (TFAT) ratio, and the MUFA:TFAT ratio. Of
217 these, the (EPA+DHA):SFAT ratio and (EPA+DHA):TFAT ratio were the most strongly
218 correlated with the OM3I_(wk0) (p <0.01) and FFQ estimated EPA + DHA intake was the weakest
219 (p =0.06). Exploring the baseline OM3I correlations with body composition data showed android
220 fat to be negatively correlated and the single best body composition predictor of this status
221 marker (r² =0.25, p =0.0007). Combining dietary and body composition factors into a stepwise
222 linear regression analysis yielded an improved model explaining 43% of the variance in the
223 baseline OM3I (r² =0.43, p <0.0001), which included android fat mass (p =0.00012) and the
224 (EPA+DHA):SFA ratio (p =0.0018) or (EPA+DHA):TFAT ratio (**Supplemental Figure 1**). The
225 android fat mass and (EPA+DHA):SFA or (EPA+DHA):TFAT were not correlated (p =0.9).

226

227 ***Intervention diet impact on RBC lipids and the OM3I:*** The fatty acid composition of RBCs was
228 differentially altered by intervention diets. While no changes in SFAs or MUFAs were observed,
229 a variety of changes in the PUFAs were noted. In terms of the amount of lipid per mg of RBC,

230 DHA was increased by the DGAD ($p = 0.041$) but not TAD ($p = 0.3$). Concentrations of EPA
231 were marginally increased ($p = 0.08$) and decreased ($p = 0.1$) by the DGAD and TAD,
232 respectively. When expressed as a mole percent composition, the DGAD group showed increases
233 in EPA and DHA ($p < 0.0001$), and decreases in C22:5n6 (DPA; $p = 0.012$), while the TAD
234 showed a decreased EPA composition ($p = 0.013$), reflected in a 20% reduction in the EPA/DHA
235 relative abundance ($p = 0.0019$). The level of ALA in RBCs was near the analytical detection
236 limit in the assay as applied, and the resulting data were not available for analysis. This is in
237 agreement with reports of RBC ALA content of ~ 0.1 mol% [38].

238 While baseline OM3I of ~ 5.6 did not differ by group (**Table 1**), at study completion, the
239 DGAD-group OM3I increased to 7.33 ± 1.36 ($p < 0.001$), while the the TAD-group OM3I was
240 unchanged at 5.8 ± 0.76 ($p = 0.6$). As previously reported [17, 21], the baseline omega-3 status
241 influenced the individual response to the intervention. As seen in **Figure 3**, after 2 weeks of
242 feeding changes in the OM3I were driven by baseline associated interactions in both groups.
243 However, after 8 weeks of feeding, a significant elevation in the OM3I is observed in the
244 DGAD-group, with 21 of 22 (i.e. 95%) participants demonstrating an increase, as opposed to
245 only 30% of the TAD-group.

246

247 **OM3I response subgroup analysis:** Despite equivalent dietary omega-3 intake in the DGAD,
248 substantial variability in the response was observed that were not fully explained by the basal
249 OM3I status. A cluster analysis of the baseline adjusted 8wk change in the OM3I segregated the
250 DGAD-group into high and low responsive clusters, while the TAD-group remained as a single
251 group (**Figure 3A**). A linear mixed model of the DGAD 8wk change in OM3I
252 ($\Delta\text{OM3I}_{(\text{wk0-8})}$) using $\text{OM3I}_{(\text{wk0})}$ and the OM3I response group, revealed a significant

253 interaction between $OM3I_{(wk0)}$ and the 8wk Delta- $OM3I_{(wk0-8)}$ ($p = 0.049$), with the $OM3I_{(wk0)}$
254 having a weaker influence in the low responders. The low responsive group also showed evidence
255 of reduced insulin sensitivity as measured by HOMA-IR ($p = 0.045$), with 8 of 9 low responsive
256 individuals with HOMA-IR scores >2.1 , as opposed to only 6 of 13 high responsive individuals.
257 A K-means clustering of the rate of change in the OM3I between 0 and 8wk and the log of the
258 fold-change between wk 0 and 2, identified 3 unique clusters for both the TAD and DGAD
259 groups as shown in **Figure 3B**. In the DGAD-group, the OM3I increased 1.0 ± 0.5 , 2.6 ± 0.5 ,
260 and 3.4 ± 0.8 in clusters 1, 2, and 3, respectively. In the TAD-group, the average OM3I increased
261 by 0.8 ± 0.3 in cluster 1, remained unchanged (i.e. -0.1 ± 0.3) in cluster 2, and decreased by $1.4 \pm$
262 0.6 in cluster 3.

263

264 **Determinants of OM3I change:** It has previously been reported that baseline OM3I, body mass,
265 age, sex, and physical activity are strong determinants of the OM3I response to supplementation
266 [12]. Considering the TAD- and DGAD-groups together ($n = 42$), the baseline OM3I alone
267 explained 34% of the OM3I response (**Supplemental Figure 2**). However as intervention
268 exposures were significantly different, an analysis by diet was performed. In the TAD group
269 74% of the variance in the Delta- $OM3I_{(wk0-8)}$ was explained by negative correlations with the
270 baseline OM3I alone ($p < 0.0001$). In the DGA group only 30% of the variance was explained by
271 the $OM3I_{(wk0)}$. Models including $OM3I_{(wk0)}$ and the average EPA + DHA daily intake were
272 improved ($r^2 = 0.56$, $RMSE = 0.16$, $p = 0.0004$), however, the Delta- $OM3I_{(wk0-8)}$ showed a
273 counterintuitive negative correlation with intake (i.e. adjusting for basal status, as dose increased
274 change decreased). A stepwise linear regression built from DEXA-based body composition, BMI
275 and age data accounted for 70% of the variance in the DGAD Delta- $OM3I_{(wk0-8)}$. This false

276 discovery rate adjusted standard least squares regression model ($r^2 = 0.70$, RMSE =0.12;
277 $p = 0.002$) included negative associations with the $OM3I_{(wk0)}$ ($p_{adj} = 0.027$), trunk % fat
278 ($p_{adj} = 0.012$), lean body mass ($p_{adj} = 0.013$) and positive associations with android fat mass
279 ($p_{adj} = 0.027$) and BMI ($p_{adj} = 0.033$). As seen in **Figure 4**, the omega-3 fatty acid and body
280 variables condense into four correlated variable clusters. Of these factors, android fat mass is
281 positively correlated with lean body mass, BMI and trunk % fat ($p < 0.001$), along with the
282 average EPA+DHA daily intake. Notably, multidimensional outliers in highly correlated
283 independent variables were not observed. Exploring model factor interactions revealed
284 $OM3I_{(wk0)}$ interactions with android fat mass ($p = 0.014$), lean mass ($p = 0.020$) and BMI (p
285 $= 0.025$). Modeling the dose dependent change (i.e. $[\Delta OM3I_{(wk0-8)} / (EPA+DHA)]$ and
286 including the $OM3I_{(wk0)}$ by android fat interaction improved the model performance ($r^2 = 0.85$;
287 $p < 0.0001$, RMSE = 0.011; **Supplemental Figure 3**). A boosted tree analysis of the
288 $\Delta OM3I_{(wk0-8)}$, also showed the $OM3I_{(wk0)}$, along with % body fat, android % fat, and the
289 android:gynoid fat ratio as important explanatory variables (data not shown). These analyses
290 suggest that after adjusting for the basal $OM3I$ status, the omega-3 fatty acid response to dietary
291 EPA+DHA intake is lower as body size increases, but higher as android fat deposition increases.
292

293 ***Triglyceride response to OM3I changes:*** Omega 3 fatty acid intake has been reported to lower
294 circulating triglycerides. The current data set was evaluated for evidence of triglyceride
295 interactions with $OM3I$ status. Changes in triglycerides themselves were inversely related to
296 their baseline levels, and evenly distributed between increases and decreases regardless of the
297 diet intervention group, suggesting a substantial regression to the mean effect with respect to the
298 measured changes in fasting triglycerides (data not shown). Fasting triglyceride levels were not

299 directly correlated with the OM3I. In the DGAD-group, changes in the TGs, adjusted for
300 baseline TGs, were positively correlated with changes in the OM3I, adjusted for baseline OM3I
301 ($r^2=0.27$, $p=0.007$). However, removal of a single fasting TG measure, a statistical outlier at
302 baseline in poor agreement with its study pre-screening TG concentration, reduced the strength
303 of this correlation ($r^2=0.16$, $p=0.08$), although it remained stronger than that seen in the TAD-
304 group ($r^2=0.02$, $p=0.6$). Analysis of DGAD OM3I response subgroups also showed no
305 association between the OM3I and fasting TGs.

306

307 **Discussion**

308 Increasing long-chain omega-3 fatty acid consumption is associated with reductions in
309 lipidomic cardiovascular disease risk factors [39]. The omega-3 index, defined as the sum of the
310 EPA and DHA mole percent relative to the total fatty acid content in RBCs is an established and
311 valuable omega-3 fatty acid status marker [11, 16, 18]. An OM3I between 8-12% appears
312 protective, while a value <4% is associated with increased CVD risk [11, 18]. The present study
313 was established to determine if a diet based on the 2010 DGA can beneficially alter the OM3I
314 and/or blood TG concentrations when compared to a TAD, in pre-and postmenopausal women,
315 within 8 wks. A secondary analysis was performed to evaluate the influence of body composition
316 factors on the responsiveness of the OM3I to dietary omega-3 fatty acid intake.

317 It has been established that the baseline OM3I is negatively associated with the OM3I
318 response to omega-3 fatty acid intake, and various factors have been reported to influence this
319 status marker. For instance, FFQ-based estimates of the omega-3 fatty acid intake correlate with
320 the OM3I, and an increase in weekly additional servings of fish has been associated with a 6-
321 13% increase in the OM3I [40-43]. Fasting triglyceride levels, age, a history of high cholesterol,

322 and smoking have also been reported to influence the OM3I [21-23, 43]. In the current study, the
323 Block FFQ estimated EPA + DHA intake was poorly correlated with the basal OM3I unless
324 expressed as a percentage of the total dietary fat, or its relative abundance with the saturated fat
325 intake. Exploring associations between body composition and the OM3I, android fat mass was
326 found to have a strong negative association with the baseline OM3I, which was independent of
327 the dietary factors. Contradicting this finding, in a previous study of older women, a high dietary
328 omega-3/omega-6 ratio was associated with higher android fat [44]. That study also found that a
329 high dietary SFA/PUFA ratio was positively associated with android fat, a relationship that was
330 weakly observed in the current data ($p=0.1$). Regardless, elevations in android fat deposition are
331 reportedly associated with elevated plasma triglycerides, endothelial dysfunction, type 2
332 diabetes, and fatty liver disease [45-48], all conditions beneficially affected by high omega-3
333 fatty acid intake.

334 As demonstrated by the diet composition analysis, following the DGA recommendations
335 significantly alters the dietary fat balance relative to a TAD, with elevations in n3-PUFAs and
336 reductions in saturated fats. The DGAD provided $\sim 2.25\text{g/d}$ of EPA+DHA primarily in 3 meals of
337 the 8-day rotating menu. Meals on these days included servings of 80g of salmon or albacore
338 tuna in multiple forms including seafood pasta, a corn and salmon chowder, a salmon dinner, and
339 a seafood salad. In contrast, the TAD provided $\sim 0.25\text{g/d}$ of EPA+DHA. A more detailed
340 description of the meals and their composition has been previously reported [33]. Ultimately, in
341 this sample of overweight/obese women with a mean basal OM3I of $\sim 5.6\%$, 8 weeks of the
342 DGAD increased the OM3I by $1.7 \pm 1.1\%$, while the TAD only reduced it by $-0.15 \pm 0.86\%$,
343 with a final OM3I of $7.4 \pm 1.35\%$ and $5.8 \pm 0.72\%$, respectively. While most individuals on the
344 DGAD showed OM3I improvements of $\sim 1\%$ over the course of the intervention, one person was

345 unchanged, and 7 participants had 2.3 – 4.5% change in the OM3I, with 9 exceeding the
346 recommended 8% OM3I by the end of the intervention. Therefore, it is possible to achieve a
347 putatively beneficial OM3I status in 8 weeks by adhering to DGAD recommendations with
348 significant EPA and DHA sources in only 3 meals per week. However, there is significant
349 interindividual variability in response, and rates of improvement slow as the OM3I increases,
350 consistent with previous findings [21, 31]. In mixed models adjusting for the basal OM3I effect,
351 changes in the OM3I were lower as the percent trunk fat and lean body mass increased, but
352 higher as absolute android fat mass and BMI increased. Therefore, it appears that in women with
353 increased abdominal and overall adiposity the omega-3 intervention efficacy was enhanced after
354 adjusting for basal status and body size and android adiposity. However, it is also important to
355 note that women with a low OM3I intervention response also had reduced insulin sensitivity.
356 Considering that men with a higher OM3I were found to have higher insulin sensitivity [49],
357 these findings bring into question the cause-effect relationship between these factors. In contrast,
358 after the 8wk TAD intervention, the average OM3I of individuals either increased or decreased
359 toward an average OM3I of ~5.8%, again with some variability influence primarily by the basal
360 omega-3 fatty acid status. It is unclear if this maintenance of a modest OM3I was due to the low
361 level of EPA+DHA in the diet, or associated with ALA-dependent biosynthesis of EPA. Had this
362 change been purely associated with ALA conversion, an increase in EPA relative to DHA in the
363 TAD group might be expected [26-28]. However, the EPA:DHA ratio was actually reduced in
364 the TAD group at 8wks, suggesting that dietary DHA and/or its biosynthesis in this diet group
365 were sufficient to maintain the OM3I in a neutral range with respect to cardiovascular disease
366 risk.

367 Dietary long chain omega-3 fatty acids can have strong hypolipidemic effects in both
368 normal and hyperlipidemic individuals, with these lipid-lowering effects being both dose and
369 time-dependent [9, 39, 50]. For instance, in an 8wk intervention comparing 2 g/d of daily
370 supplements and 2 meals/wk of 250g of trout, both treatments reduced TGs in hyperlipidemic
371 participants [22]. In another effort, 0.85 g/d and 3.4g/d doses of EPA+DHA were compared in a
372 population with a baseline OM3I of $4.46 \pm 1.13\%$. After 8wks of treatment, the OM3I increased
373 to $6.49 \pm 0.21\%$ and $8.79 \pm 0.21\%$, for the low and high doses, respectively. However, only the
374 high dose resulted in TG lowering in the moderately hypertriglyceridemic cohort. Similarly, a
375 weak non-linear association between an increase in the OM3I and a decrease in fasting TG levels
376 was reported in dyslipidemic patients receiving 1.67 g/d of EPA+DHA as fish oil capsules for
377 6mo, with individuals having a change in the OM3I of $>4\%$ showing the greatest TG reduction
378 [51]. In the present study of women with a basal OM3I of $5.6 \pm 1.3\%$ and normal to mild
379 hypertriglyceridemia, only weak associations between increasing OM3I and reduced fasting TGs
380 were observed at 8wk in the DGAD group after outlier removal. Therefore, it cannot be
381 concluded from the current data that habitual consumption of a DGAD with elevated ALA and
382 intermittent exposure to substantial dietary EPA + DHA would reduce fasting TG in subjects if
383 maintained for a longer duration.

384

385 **Limitations**

386 While foods were purchased in lots to minimize variance in nutritional exposures, measured fatty
387 acids in meal composites were generated at a single time point during the course of the study and
388 the exact dietary exposures may differ from the measured composite meals. Thus omega-3 intake
389 could have varied between participants over the course of the study. The current study has a

390 relatively small sample size and includes individuals with a range of normal to mild fasting
391 triglyceridemia, limiting the power to detect hypotriglyceridemic effects. This fact is exacerbated
392 in the reported subgroup analysis. Moreover, genetic factors influencing both long chain omega-
393 3 fatty acid biosynthesis and triglyceridemic responsiveness were not evaluated.

394

395 **Conclusion**

396 Adherence to a DGAD with ~16g of EPA+DHA provided in 3 meals/wk for 8wks improves the
397 OM3I status in pre- and post-menopausal women with a basal OM3I of $5.6 \pm 1.3\%$, while an
398 ALA-rich TAD providing 1.4g/wk of EPA+DHA maintained an OM3I of ~6%, which is in the
399 neutral range with respect to CVD risk. While a cardioprotective OM3I of >8% was achieved in
400 40% of participants, no concurrent decreases in fasting TGs were observed in the current
401 timeframe. Notably in women with greater abdominal and overall adiposity the omega-3
402 intervention efficacy was higher after adjusting for basal omega-3 fatty acid status and body size.

403

404 **Acknowledgements**

405 This study was supported by the National Dairy Council, Campbell Soup Co., and USDA-ARS
406 Projects 2032-51530-022-00D, 2032-51530-025-00D and 6026-51000-010-05S. The USDA is
407 an equal opportunity provider and employer. The National Dairy Council and Campbell Soup
408 Company did not participate in the final design, implementation, analysis, or interpretation of the
409 data from this study. Campbell Soup provided some bulk foods and associated nutrient
410 information. None of the authors had a conflict of interest to report. We thank our colleagues
411 Sean H. Adams, Lindsay H. Allen, Kevin D. Laugero, and Charles B. Stephenson for their
412 efforts in the study design and execution of the larger study in which the current experiments

413 were nested; Dustin Burnett for menu design and production management; Leslie Woodhouse for
414 managing the generation of clinical data; Janet Peerson for guidance and review of statistical
415 analyses. The authors' responsibilities were as follows - JWN and NLK: conceived and
416 developed the research plan; JWN, SK, IJG, and NLK: conducted the research; JWN and IJG:
417 analyzed the data and performed the statistical analysis; CER, JWN: wrote the primary
418 manuscript; SK and NLK: provided significant editorial input of manuscript; all authors: have
419 primary responsibility for final content and read and approved the final manuscript.

420

421

422

423

424

425

426

427

428

429

430

431

432

433

434

435

Table 1: Study cohort baseline clinical and body composition characteristics ¹

Variables	Units	TAD	DGAD
n		20	22
Age	y	48.0 ± 10.0	50.7 ± 12.6
OM3I	%	5.98 ± 1.35	5.63 ± 1.27
Fasting TGs	mg/dL	111 ± 49	143 ± 101
HOMA-IR		3.77 ± 2.75	3.22 ± 2.43
BMI	kg/m ²	33.0 ± 3.68	32.0 ± 4.0
Body Weight	kg	88.5 ± 13.8	88.6 ± 15.6
Total Mass _{DEXA} ²	kg	87.0 ± 13.7	86.9 ± 15.3
Lean Mass _{DEXA} ²	kg	47.1 ± 7.1	47.0 ± 8.0
Fat Mass _{DEXA} ²	kg	38.0 ± 7.7	37.8 ± 7.8
Android Fat Mass ²	kg	3.33 ± 0.99	3.48 ± 1.04
Gynoid Fat Mass ²	kg	6.36 ± 1.45	6.37 ± 1.62
Android:Gynoid ²	%	52.1 ± 0.11	56.0 ± 15.1
% Body Fat ²	%	43.2 ± 3.9	43.3 ± 3.0
% Trunk Fat ²	%	44.2 ± 5.3	45.3 ± 3.7

- 1- All values are means ± SD. Group mean differences were not detected by Student's t-tests ($\alpha = 0.05$). DEXA – dual-energy x-ray absorptiometry; DGAD – Dietary Guidelines for Americans diet; OM3I – omega-3 index; TAD – typical American diet; TG – triglycerides.
- 2- Reported values were derived from DEXA measurements

Table 2: Aggregate meal composite fatty acid composition (mol%)¹

Fatty Acid	TAD	DGAD	p-value
C10:0	1.7 ± 0.7	0.90 ± 0.40	0.012
C12:0	3.7 ± 2.1	0.63 ± 0.43	0.0013
C14:0	5.6 ± 1.7	2.8 ± 1.0	0.0013
C15:0	0.39 ± 0.1	0.22 ± 0.07	0.0018
C16:0	24 ± 3	19 ± 4	0.0032
C17:0	0.32 ± 0.07	0.18 ± 0.06	0.0007
C18:0	8.5 ± 0.9	6.7 ± 1.0	0.0021
C19:0	0.025 ± 0.004	0.023 ± 0.005	0.3
C20:0	0.097 ± 0.029	0.11 ± 0.02	0.3
C21:0	0.0035 ± 0.0008	0.0035 ± 0.0007	1
C22:0	0.099 ± 0.082	0.13 ± 0.06	0.4
C24:0	0.046 ± 0.028	0.064 ± 0.024	0.2
C14:1n5	0.43 ± 0.09	0.18 ± 0.09	0.0001
C16:1n7	1.3 ± 0.5	0.90 ± 0.4	0.07
C18:1n9	31 ± 4	39 ± 4	0.0015
C18:1n7	1.6 ± 0.3	2.0 ± 0.4	0.022
C19:1n9	0.0088 ± 0.0049	0.0020 ± 0.003	0.005
C20:1n9	0.072 ± 0.030	0.11 ± 0.07	0.2
C18:2n6	18 ± 5	22 ± 4	0.05
C18:3n6	0.024 ± 0.011	0.025 ± 0.02	0.9
9c,11t-CLA	0.085 ± 0.017	0.036 ± 0.02	0.0001
C20:3n6	0.018 ± 0.0054	0.017 ± 0.009	0.6
C20:4n6	0.087 ± 0.036	0.093 ± 0.049	0.8
C22:4n6	0.019 ± 0.0083	0.020 ± 0.010	0.7
C22:5n6	0.0061 ± 0.0042	0.013 ± 0.010	0.1
C18:3n3	2.0 ± 0.6	3.6 ± 1.2	0.0046
C18:4n3	0.014 ± 0.027	0.05 ± 0.07	0.2
C20:3n3	0.0028 ± 0.0017	0.0076 ± 0.0059	0.046
C20:4n3	0.0017 ± 0.0007	0.0080 ± 0.0100	0.09
C20:5n3	0.0056 ± 0.0083	0.11 ± 0.17	0.1
C22:5n3	0.045 ± 0.012	0.086 ± 0.080	0.2
C22:6n3	0.021 ± 0.006	0.41 ± 0.73	0.2
SFA	45 ± 7	30 ± 6	0.0003
MUFA	35 ± 4	43 ± 4	0.0022
n-6 PUFA	18 ± 5	23 ± 4	0.05
n-3 PUFA	2 ± 1	4 ± 2	0.0023

¹ - All values are means ± SD. Group differences evaluated by Student's t-tests ($\alpha = 0.05$). DGAD – Dietary Guidelines for Americans diet; TAD – typical American diet;

Table 3: Average fatty acid intake (g/8-day rotation) ¹

Fatty Acid	TAD	DGAD	p-value
C10:0	18.2 ± 1.8	6.87 ± 0.99	<0.001
C12:0	45.3 ± 4.4	5.74 ± 0.83	<0.001
C14:0	78.3 ± 7.8	27.6 ± 4	<0.001
C15:0	5.89 ± 0.59	2.29 ± 0.33	<0.001
C16:0	405 ± 41	208 ± 30	<0.001
C17:0	5.69 ± 0.57	2.10 ± 0.3	<0.001
C18:0	159 ± 16	83.6 ± 12	<0.001
C19:0	0.488 ± 0.049	0.305 ± 0.044	<0.001
C20:0	2.09 ± 0.21	1.50 ± 0.22	<0.001
C21:0	0.0740 ± 0.0074	0.0500 ± 0.0072	<0.001
C22:0	2.42 ± 0.24	2.02 ± 0.29	<0.001
C24:0	1.18 ± 0.12	1.03 ± 0.15	<0.001
C14:1n5	6.22 ± 0.63	1.82 ± 0.26	<0.001
C16:1n7	22.9 ± 2.3	9.89 ± 1.4	<0.001
C18:1n9	600 ± 60	494 ± 71	<0.001
C18:1n7	29.3 ± 2.9	25.2 ± 3.6	<0.001
C19:1n9	0.171 ± 0.017	0.0238 ± 0.0034	<0.001
C20:1n9	1.54 ± 0.15	1.45 ± 0.21	0.1
C18:2n6	341 ± 34	279 ± 41	<0.001
C18:3n6	0.453 ± 0.046	0.300 ± 0.044	<0.001
9c,11t-CLA	1.55 ± 0.16	0.434 ± 0.062	<0.001
C20:3n6	0.366 ± 0.037	0.213 ± 0.030	<0.001
C20:4n6	1.77 ± 0.18	1.16 ± 0.17	<0.001
C22:4n6	0.423 ± 0.043	0.280 ± 0.041	<0.001
C22:5n6	0.140 ± 0.014	0.170 ± 0.025	<0.001
C18:3n3	37.6 ± 3.8	45.9 ± 6.7	<0.001
C18:4n3	0.243 ± 0.026	0.602 ± 0.088	<0.001
C20:3n3	0.0612 ± 0.0061	0.104 ± 0.015	<0.001
C20:4n3	0.0336 ± 0.0034	0.106 ± 0.015	<0.001
C20:5n3	0.097 ± 0.01	1.36 ± 0.2	<0.001
C22:5n3	0.973 ± 0.099	1.21 ± 0.18	<0.001
C22:6n3	1.29 ± 0.13	16.6 ± 2.4	<0.001
SFA	724 ± 73	341 ± 49	<0.001
MUFA	660 ± 66	532 ± 77	<0.001
n-6 PUFA	345 ± 35	282 ± 41	<0.001
n-3 PUFA	40.3 ± 4.1	65.9 ± 9.6	<0.001

¹ - All values are means ± SD. Group differences evaluated by Student's t-tests ($\alpha = 0.05$). DGAD – Dietary Guidelines for Americans diet; TAD – typical American diet

Table 4: Amounts of foods providing >0.3g/d of dietary ALA, EPA and DHA¹

Menu Day	TAD		DGAD	
	Food Items	g/d	Food Items	g/d
1	None		Roasted Potatoes	150
			Baked Salmon (1.7g/d)²	80
			Cinnamon Chex	30
2	Pizza Crust	86	Roasted Potatoes	150
	Mashed Potatoes	75	Stuffing	150
	Ranch Dressing	30	Cinnamon Chex	30
			pizza crust	86
			Ranch Dressing	30
3	None		Roasted Potatoes	150
			Goddess Dressing	g 30g
4	Ranch Dressing	30	Salsa Ranch Dressing	30
			Tomato Basil Sauce	150
			Tortilla Chips	30
5	Breakfast Muffins	65	Cinnamon Apples	150
			Baked Salmon (1.7g/d)²	80
			Salsa Ranch Dressing	30
			Walnuts	5
6	Corn-cheddar biscuit	130	Roasted Potatoes	150
	Caesar Salad dressing	30	Corn-cheddar biscuit	65
	Granola Bars	37	Ranch Dressing	30
			Walnuts	5
7	Seafood Salad (0.3g/d)²	100	Cinnamon Apples	150
	Mashed Pinto Beans	60	Canned Albacore Tuna (0.7g/d)²	80
	Popcorn Chicken	35	Thousand Island Dressing	30
	Corn Chips	30	Walnuts	5
	Club Crackers	28		
	Oreo Cookies	20		
8	Pancakes	150	None	
	Breaded Chicken Patty	85		

1 - DGAD – Dietary Guidelines for American’s diet; TAD – typical American diet

2 - Data in parentheses indicate EPA and DHA content estimated by the Nutrition Data System for Research (v 2014), University of Minnesota Nutrition Coordinating Center (<http://www.ncc.umn.edu/products/>).

Table 5: RBC fatty acid mole percent composition ¹

Fatty Acid	TAD (n =20)			DGAD (n =22)		
	Wk 0	Wk 2	Wk 8	Wk 0	Wk 2	Wk 8
C14:0	1.28 ± 0.73 ^{AB}	1.05 ± 1.00 ^B	1.55 ± 1.20 ^A	1.29 ± 0.93	1.11 ± 0.49	0.993 ± 0.66
C15:0	0.387 ± 0.300	0.371 ± 0.074	0.288 ± 0.54	0.346 ± 0.130	0.319 ± 0.082	0.306 ± 0.39
C16:0	29.5 ± 3.8	30.1 ± 3.3	29.8 ± 1.0	28.7 ± 4.1	30.0 ± 3.1	29.7 ± 3.3
C17:0	0.401 ± 0.11	0.362 ± 0.12	0.449 ± 0.34	0.430 ± 0.110	0.356 ± 0.095	0.404 ± 0.15
C18:0	24.2 ± 4.2	23.6 ± 4.1	23.7 ± 6.3	26.0 ± 5.4	24.9 ± 4.6	24.3 ± 5.2
C18:1n9	10.9 ± 1.3	10.7 ± 1.1	10.6 ± 5.5	10.8 ± 1.7	10.7 ± 1.6	10.9 ± 1.7
C18:1n7	2.07 ± 0.38	2.03 ± 0.26	1.92 ± 0.23	1.95 ± 0.65	2.02 ± 0.44	1.98 ± 0.43
C18:2n6	6.52 ± 0.94	6.42 ± 0.90	6.36 ± 6.2	6.31 ± 0.92	5.94 ± 0.73	5.91 ± 0.95
C20:3n6	1.25 ± 0.24	1.28 ± 0.35	1.33 ± 1.6	1.39 ± 0.46	1.42 ± 0.43	1.37 ± 0.19
C20:4n6	9.55 ± 1.4	9.93 ± 1.50	10.1 ± 2.2	9.21 ± 1.3	9.29 ± 1.4	9.22 ± 1.4
C22:4n6	4.06 ± 0.73	4.11 ± 0.83	4.28 ± 0.26	4.22 ± 0.88	4.20 ± 0.85	4.00 ± 0.88
C22:5n6	0.834 ± 0.32	0.877 ± 0.28	0.841 ± 0.23	0.899 ± 0.27 ^{ab}	0.945 ± 0.26 ^a	0.727 ± 0.3 ^b
C20:5n3	0.430 ± 0.130 ^A	0.381 ± 0.082 ^{AB}	0.345 ± 0.64 ^B	0.383 ± 0.15 ^b	0.422 ± 0.13 ^b	0.493 ± 0.18 ^a
C22:5n3	3.14 ± 0.73	3.20 ± 0.84	3.02 ± 1.20	2.90 ± 0.75	2.93 ± 0.59	2.89 ± 0.82
C22:6n3	5.47 ± 1.1	5.57 ± 0.69	5.45 ± 0.46	5.24 ± 0.89 ^b	5.47 ± 1.3 ^b	6.86 ± 1.3 ^a
Σ SFA	55.8 ± 3.5	55.5 ± 3.6	55.8 ± 9.5	56.7 ± 4.1	56.7 ± 4.1	55.7 ± 3.9
Σ MUFA	12.9 ± 1.6	12.7 ± 1.3	12.5 ± 1.6	12.7 ± 2.2	12.7 ± 2	12.8 ± 2
Σ n-6 PUFA	22.2 ± 2.3	22.6 ± 2.6	22.9 ± 1.2	22.0 ± 2.6	21.8 ± 2.2	21.2 ± 2.6
Σ n-3 PUFA	9.04 ± 1.4	9.15 ± 0.79	8.82 ± 1.8	8.52 ± 1.3 ^b	8.83 ± 1.8 ^b	10.3 ± 1.6 ^a
OM3-I	5.90 ± 1.4	5.95 ± 1.2	5.8 ± 0.72	5.63 ± 1.3 ^b	5.89 ± 0.95 ^b	7.36 ± 1.4 ^a

1- All values are means ± SD. Mean differences for each fatty acid between times within diet groups were assessed by ANOVAs controlling for participant as a random effect and a least squares mean difference Tukey HSD post-hoc tests. For each fatty acid residue, values within diet groups with different superscripts are different at $\alpha = 0.05$. TAD – typical American diet; DGAD – Dietary Guidelines for Americans diet; OM3I – omega-3 index

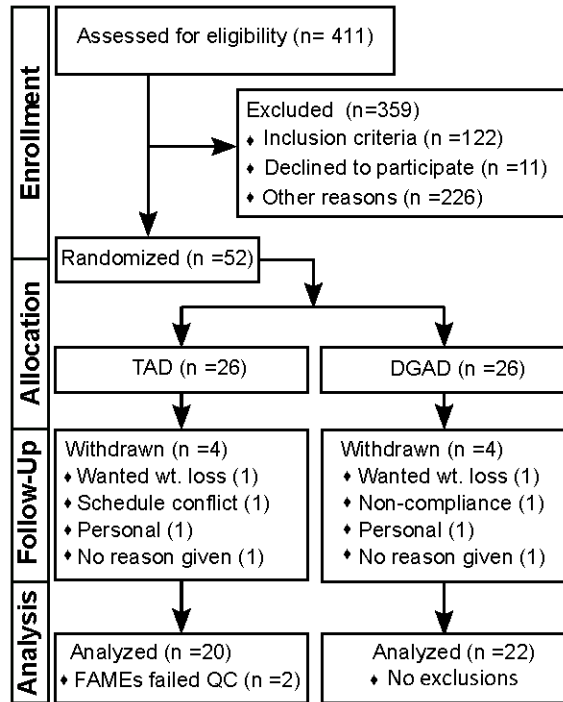


Figure 1: Study flow diagram documenting participant enrollement, allocation, follow-up and analysis. This diagram conforms the Consolidated Standards of Reporting Trials (i.e. CONSORT). TAD – typical American diet; DGAD - Dietary Guidelines for American’s diet; FAMEs – red blood cell fatty acid analysis; QC – quality control criterion.

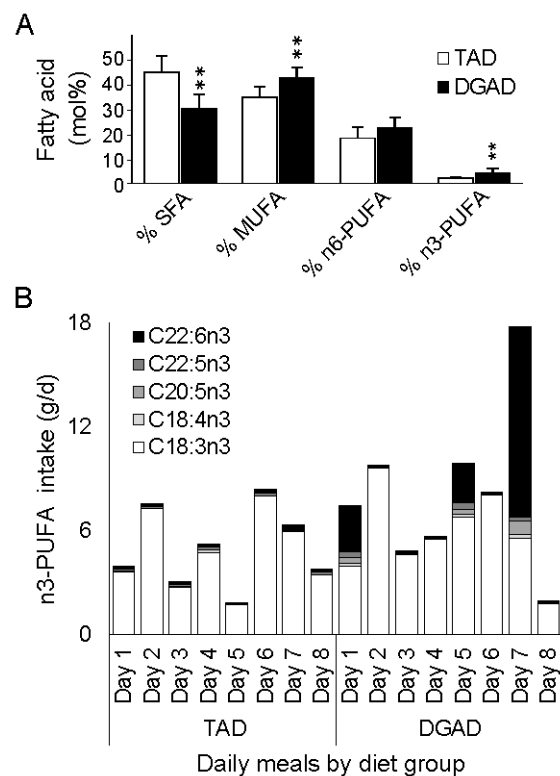


Figure 2: Fatty acid composition of TAD and DGAD menus. A) Aggregate meal composite fatty acid composition differences between the typical American diet (TAD) and Dietary Guidelines for American’s diet (DGAD) menus. Mean composition differences between meal plans are indicated at $p < 0.001$ (**). **B)** Omega-3 PUFA fatty acid composition in individual meals of the 8-day rotating TAD and DGAD plans. Individual fatty acid residues are displayed if occurring at >0.1 mol% of any meal. Fatty acid mol% composition was determined in duplicate from a single set of meal compositions by GC-MS analysis of fatty acid methyl esters.

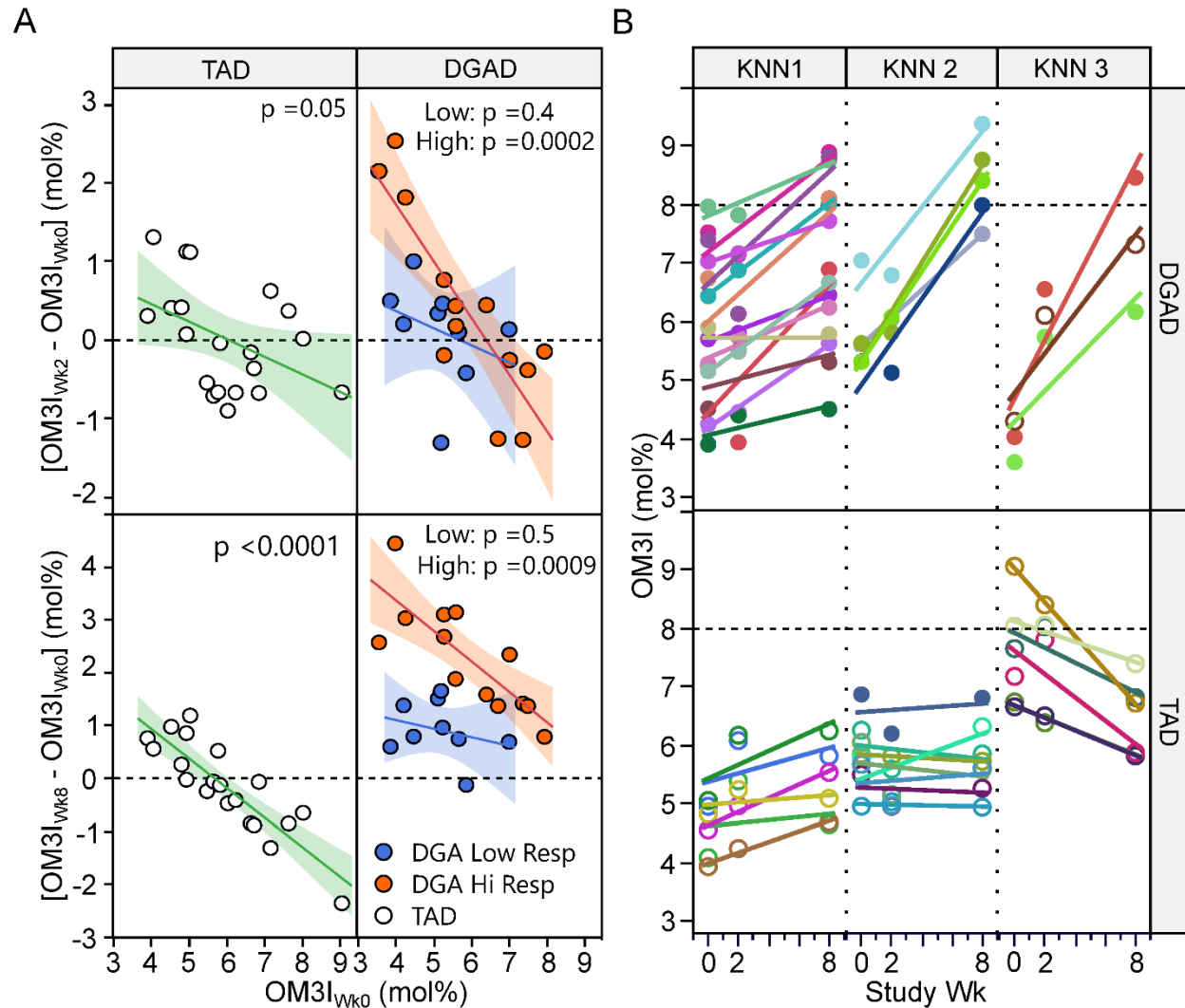


Figure 3: Omega-3 index response variance by diet group and time. A) Participants within the typical American diet (TAD) and Dietary Guidelines for American’s diet (DGAD) groups were clustered according to their baseline adjusted omega-3 index (OM3I) fold change at 8wks by hierarchical cluster analysis and projected on both 2wk (top) and 8wk (bottom) data. Identified DGAD subgroups are described as Low (blue) and High (orange) responding groups. The correlations between basal status and magnitude of change were significant in the High, but not Low response groups. B) Participants within the TAD and DGAD groups were clustered based on their OM3I rate of change and basal status, by K-means clustering, with each diet group being segregated into 3 groups of participants with different responses. In the TAD group ($n = 20$), the OM3I stabilized at 5.8 ± 0.7 across all groups, while participants in the DGAD group ($n = 22$) generally increased after 8wks of feeding.

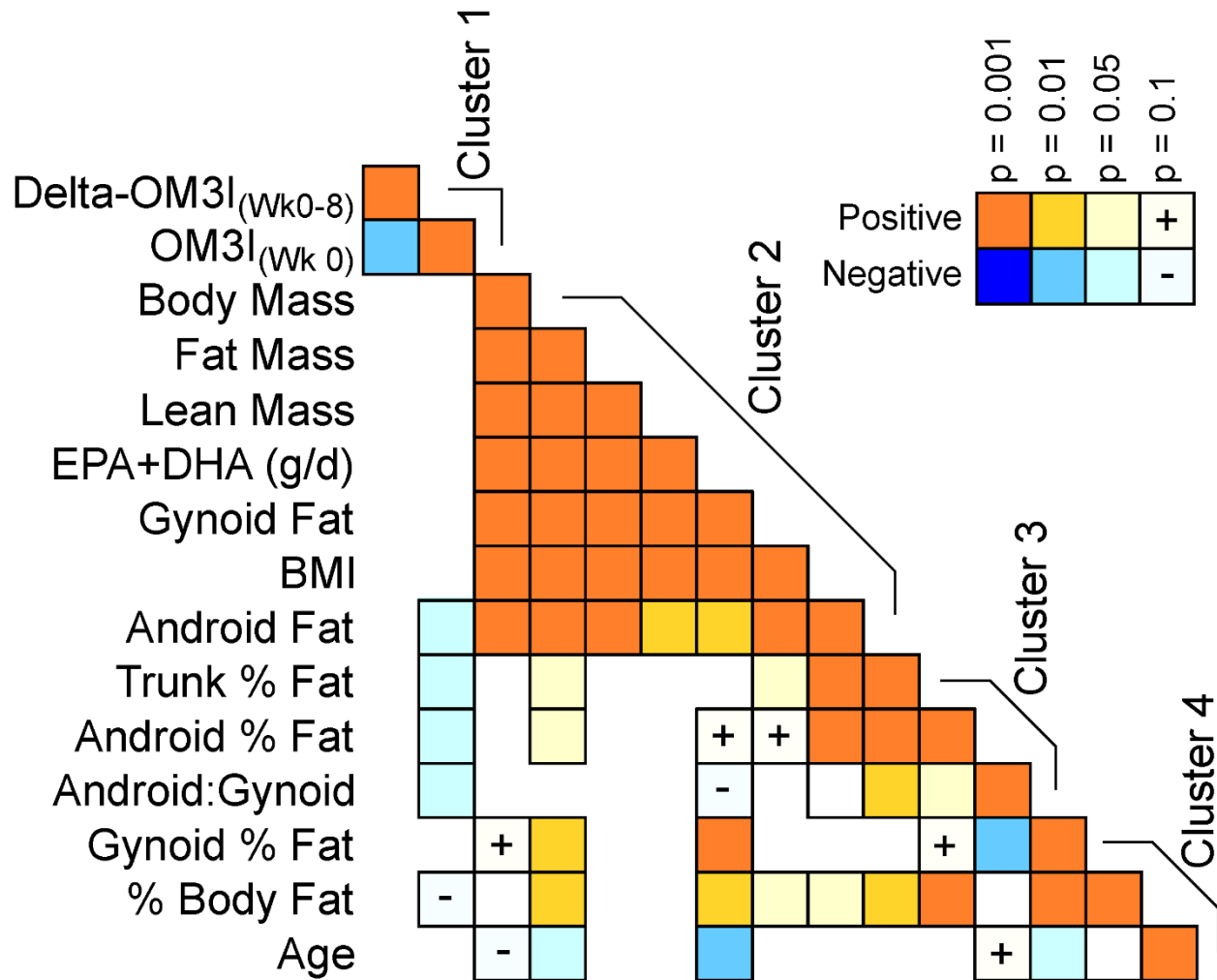


Figure 4: Pearson's correlation heatmap of the DGAD-group 8wk change in omega-3 status, basal omega-3 status and DEXA-dependent body composition measures. Correlation statistics are calculated on normally transformed data, with positive (orange) and negative (blue) correlation strength indicated by color intensity. Variables were clustered in Jmp v16 using implementation of the SAS Varclus algorithm. Delta-OM3I_(Wk0-8) – 8wk change in OM3I; EPA+DHA – estimated daily intake; OM3I_(Wk0) – basal omega 3 index.

References

1. Roger, V.L., et al., *Heart disease and stroke statistics--2011 update: a report from the American Heart Association*. Circulation, 2011. **123**(4): p. e18-e209.
2. Khan, S.U., et al., *Effect of omega-3 fatty acids on cardiovascular outcomes: A systematic review and meta-analysis*. EClinicalMedicine, 2021.
3. Jung, U.J., et al., *n-3 Fatty acids and cardiovascular disease: mechanisms underlying beneficial effects*. Am J Clin Nutr, 2008. **87**(6): p. 2003S-9S.
4. Jump, D.B., C.M. Depner, and S. Tripathy, *Omega-3 fatty acid supplementation and cardiovascular disease*. Journal of Lipid Research, 2012. **53**(12): p. 2525-2545.
5. Mozaffarian, D. and J.H. Wu, *Omega-3 fatty acids and cardiovascular disease: effects on risk factors, molecular pathways, and clinical events*. J Am Coll Cardiol, 2011. **58**(20): p. 2047-67.
6. Mori, T.A., *Marine OMEGA-3 fatty acids in the prevention of cardiovascular disease*. Fitoterapia, 2017. **123**: p. 51-58.
7. Handelsman, Y. and M.D. Shapiro, *Triglycerides, Atherosclerosis, and Cardiovascular Outcome Studies: Focus on Omega-3 Fatty Acids*. Endocr Pract, 2017. **23**(1): p. 100-112.
8. McKenney, J.M. and D. Sica, *Role of prescription omega-3 fatty acids in the treatment of hypertriglyceridemia*. Pharmacotherapy, 2007. **27**(5): p. 715-28.
9. Skulas-Ray, A.C., et al., *Omega-3 Fatty Acids for the Management of Hypertriglyceridemia: A Science Advisory From the American Heart Association*. Circulation, 2019. **140**(12): p. e673-e691.
10. Backes, J., et al., *The clinical relevance of omega-3 fatty acids in the management of hypertriglyceridemia*. Lipids Health Dis, 2016. **15**(1): p. 118.
11. Harris, W.S., L. Del Gobbo, and N.L. Tintle, *The Omega-3 Index and relative risk for coronary heart disease mortality: Estimation from 10 cohort studies*. Atherosclerosis, 2017. **262**: p. 51-54.
12. Flock, M.R., et al., *Determinants of erythrocyte omega-3 fatty acid content in response to fish oil supplementation: a dose-response randomized controlled trial*. J Am Heart Assoc, 2013. **2**(6): p. e000513.
13. Sarter, B., et al., *Blood docosahexaenoic acid and eicosapentaenoic acid in vegans: Associations with age and gender and effects of an algal-derived omega-3 fatty acid supplement*. Clin Nutr, 2015. **34**(2): p. 212-8.
14. Dougherty, R.M., et al., *Lipid and phospholipid fatty acid composition of plasma, red blood cells, and platelets and how they are affected by dietary lipids: a study of normal subjects from Italy, Finland, and the USA*. Am J Clin Nutr, 1987. **45**(2): p. 443-55.
15. Franco, R.S., *Measurement of red cell lifespan and aging*. Transfus Med Hemother, 2012. **39**(5): p. 302-7.
16. Harris, W.S. and C. Von Schacky, *The Omega-3 Index: a new risk factor for death from coronary heart disease?* Prev Med, 2004. **39**(1): p. 212-20.
17. Keenan, A.H., et al., *Basal omega-3 fatty acid status affects fatty acid and oxylipin responses to high-dose n3-HUFA in healthy volunteers*. J Lipid Res, 2012. **53**(8): p. 1662-9.
18. von Schacky, C., *Omega-3 index and cardiovascular health*. Nutrients, 2014. **6**(2): p. 799-814.

19. Zhang, Z., et al., *Dietary Intakes of EPA and DHA Omega-3 Fatty Acids among US Childbearing-Age and Pregnant Women: An Analysis of NHANES 2001-2014*. *Nutrients*, 2018. **10**(4).
20. Fazelian, S., et al., *Effect of omega-3 fatty acids supplementation on cardio-metabolic and oxidative stress parameters in patients with chronic kidney disease: a systematic review and meta-analysis*. *BMC Nephrol*, 2021. **22**(1): p. 160.
21. Walker, R.E., et al., *Predicting the effects of supplemental EPA and DHA on the omega-3 index*. *Am J Clin Nutr*, 2019. **110**(4): p. 1034-1040.
22. Zibaenezhad, M.J., et al., *Comparison of the effect of omega-3 supplements and fresh fish on lipid profile: a randomized, open-labeled trial*. *Nutr Diabetes*, 2017. **7**(12): p. 1.
23. Stanton, A.V., et al., *Omega-3 index and blood pressure responses to eating foods naturally enriched with omega-3 polyunsaturated fatty acids: a randomized controlled trial*. *Sci Rep*, 2020. **10**(1): p. 15444.
24. Papanikolaou, Y., et al., *U.S. adults are not meeting recommended levels for fish and omega-3 fatty acid intake: results of an analysis using observational data from NHANES 2003-2008*. *Nutr J*, 2014. **13**: p. 31.
25. Arterburn, L.M., E.B. Hall, and H. Oken, *Distribution, interconversion, and dose response of n-3 fatty acids in humans*. *Am J Clin Nutr*, 2006. **83**(6 Suppl): p. 1467S-1476S.
26. Goyens, P.L., et al., *Conversion of alpha-linolenic acid in humans is influenced by the absolute amounts of alpha-linolenic acid and linoleic acid in the diet and not by their ratio*. *Am J Clin Nutr*, 2006. **84**(1): p. 44-53.
27. Brenna, J.T., et al., *alpha-Linolenic acid supplementation and conversion to n-3 long-chain polyunsaturated fatty acids in humans*. *Prostaglandins Leukot Essent Fatty Acids*, 2009. **80**(2-3): p. 85-91.
28. Baker, E.J., et al., *Metabolism and functional effects of plant-derived omega-3 fatty acids in humans*. *Prog Lipid Res*, 2016. **64**: p. 30-56.
29. Harnack, K., G. Andersen, and V. Somoza, *Quantitation of alpha-linolenic acid elongation to eicosapentaenoic and docosahexaenoic acid as affected by the ratio of n6/n3 fatty acids*. *Nutr Metab (Lond)*, 2009. **6**: p. 8.
30. Plissonneau, C., et al., *High-Intensity Interval Training and alpha-Linolenic Acid Supplementation Improve DHA Conversion and Increase the Abundance of Gut Mucosa-Associated Oscillospira Bacteria*. *Nutrients*, 2021. **13**(3).
31. Minihaane, A.M., *Impact of Genotype on EPA and DHA Status and Responsiveness to Increased Intakes*. *Nutrients*, 2016. **8**(3): p. 123.
32. Krishnan, S., et al., *A randomized controlled-feeding trial based on the Dietary Guidelines for Americans on cardiometabolic health indexes*. *Am J Clin Nutr*, 2018. **108**(2): p. 266-278.
33. Krishnan, S., et al., *Challenges in Designing and Delivering Diets and Assessing Adherence: A Randomized Controlled Trial Evaluating the 2010 Dietary Guidelines for Americans*. *Curr Dev Nutr*, 2020. **4**(3): p. nzaa022.
34. Katz, A., et al., *Quantitative insulin sensitivity check index: a simple, accurate method for assessing insulin sensitivity in humans*. *J Clin Endocrinol Metab*, 2000. **85**(7): p. 2402-10.
35. Grapov, D., et al., *Type 2 diabetes associated changes in the plasma non-esterified fatty acids, oxylipins and endocannabinoids*. *PLoS One*, 2012. **7**(11): p. e48852.

36. Tepasamorndech, S., et al., *Zinc transporter 7 deficiency affects lipid synthesis in adipocytes by inhibiting insulin-dependent Akt activation and glucose uptake*. FEBS J, 2016. **283**(2): p. 378-94.
37. Smedes, F., *Determination of total lipid using non-chlorinated solvents*. Analyst, 1999. **124**: p. 1711-1718.
38. Lemaitre, R.N., et al., *Red blood cell membrane alpha-linolenic acid and the risk of sudden cardiac arrest*. Metabolism, 2009. **58**(4): p. 534-40.
39. Burns-Whitmore, B., et al., *Alpha-Linolenic and Linoleic Fatty Acids in the Vegan Diet: Do They Require Dietary Reference Intake/Adequate Intake Special Consideration?* Nutrients, 2019. **11**(10).
40. Garneau, V., et al., *Omega-3 fatty acids status in human subjects estimated using a food frequency questionnaire and plasma phospholipids levels*. Nutr J, 2012. **11**: p. 46.
41. Ritz, P.P., et al., *Dietary and Biological Assessment of the Omega-3 Status of Collegiate Athletes: A Cross-Sectional Analysis*. PLoS One, 2020. **15**(4): p. e0228834.
42. Zhang, A.C. and L.E. Downie, *Preliminary Validation of a Food Frequency Questionnaire to Assess Long-Chain Omega-3 Fatty Acid Intake in Eye Care Practice*. Nutrients, 2019. **11**(4).
43. Block, R.C., W.S. Harris, and J.V. Pottala, *Determinants of Blood Cell Omega-3 Fatty Acid Content*. Open Biomark J, 2008. **1**: p. 1-6.
44. Muka, T., et al., *Dietary fat composition, total body fat and regional body fat distribution in two Caucasian populations of middle-aged and older adult women*. Clin Nutr, 2017. **36**(5): p. 1411-1419.
45. Alferink, L.J.M., et al., *Nonalcoholic Fatty Liver Disease in The Rotterdam Study: About Muscle Mass, Sarcopenia, Fat Mass, and Fat Distribution*. J Bone Miner Res, 2019. **34**(7): p. 1254-1263.
46. Bouchi, R., et al., *Gender difference in the impact of gynoid and android fat masses on the progression of hepatic steatosis in Japanese patients with type 2 diabetes*. BMC Obes, 2017. **4**: p. 27.
47. Kang, S.M., et al., *Android fat depot is more closely associated with metabolic syndrome than abdominal visceral fat in elderly people*. PLoS One, 2011. **6**(11): p. e27694.
48. Sari, C.I., et al., *Android Fat Deposition and Its Association With Cardiovascular Risk Factors in Overweight Young Males*. Front Physiol, 2019. **10**: p. 1162.
49. Albert, B.B., et al., *Higher omega-3 index is associated with increased insulin sensitivity and more favourable metabolic profile in middle-aged overweight men*. Sci Rep, 2014. **4**: p. 6697.
50. Connor, W.E., *Effects of omega-3 fatty acids in hypertriglyceridemic states*. Semin Thromb Hemost, 1988. **14**(3): p. 271-84.
51. Skulas-Ray, A.C., et al., *Dose-response effects of omega-3 fatty acids on triglycerides, inflammation, and endothelial function in healthy persons with moderate hypertriglyceridemia*. Am J Clin Nutr, 2011. **93**(2): p. 243-52.