

1 **Virological and Serological Characterization of SARS-CoV-2 Infections Diagnosed After**
2 **mRNA BNT162b2 Vaccination.**

3 Francesca Colavita, Silvia Meschi, Cesare Ernesto Maria Gruber, Martina Rueca, Francesco Vairo,
4 Giulia Matusali, Daniele Lapa, Emanuela Giombini, Gabriella De Carli, Martina Spaziante,
5 Francesco Messina, Giulia Bonfiglio, Fabrizio Carletti, Eleonora Lalle, Lavinia Fabeni, Giulia Berno,
6 Vincenzo Puro, Antonino Di Caro, Barbara Bartolini*, Giuseppe Ippolito, Maria Rosaria
7 Capobianchi, Concetta Castilletti, on behalf of INMI Covid-19 laboratory surveillance team

8

9 *Affiliation: National Institute for Infectious Diseases “Lazzaro Spallanzani” IRCCS, Rome, Italy*

10

11 * Corresponding author:

12 Barbara Bartolini, PhD

13 Laboratory of Microbiology and Biorepository

14 National Institute for Infectious Diseases “L. Spallanzani”

15 Via Portuense 292, 00149 Rome, Italy

16 Tel: +39 0655170685; Fax +39 065594555

17 e-mail: barbara.bartolini@inmi.it

18

19

20

21

22

NOTE: This preprint reports new research that has not been certified by peer review and should not be used to guide clinical practice.

23

24 **Abstract**

25 Coronavirus disease 2019 (COVID-19) vaccines are proving to be very effective in preventing
26 severe illness; however, although rare, post-vaccine infections have been reported. The present
27 study describes 94 infections (47.9% symptomatic, 52.1% asymptomatic), occurred in Lazio
28 Region (Central Italy) in the first trimester 2021, after first or second dose of mRNA BNT162b2
29 vaccine. Median viral load at diagnosis was independent from number and time of vaccine dose
30 administration, despite the higher proportion of samples with low viral load observed in fully
31 vaccinated individuals. More importantly, infectious virus was cultured from NPS collected from
32 both asymptomatic and symptomatic vaccinated individuals, suggesting that, at least in principle,
33 they can transmit the infection to susceptible people. The majority of the post-vaccine infections
34 here reported, showed pauci/asymptomatic clinical course, confirming the impact of vaccination on
35 COVID-19 disease. Most cases (78%) showed infection in presence of neutralizing antibodies at
36 the time of infection diagnosis, presumably attributable to vaccination, due to the concomitant
37 absence of anti-N IgG in most cases. The proportion of post-vaccine infections attributed either to
38 Alpha and Gamma VOCs was similar to the proportion observed in the contemporary unvaccinated
39 population in Lazio region. In addition, mutational analysis did not suggest enrichment of a defined
40 set of Spike protein substitutions depending on the vaccination status. Characterization of host and
41 virus factors associated with vaccine breakthrough, coupled with intensive and continuous
42 monitoring of involved viral strains, is crucial to adopt informed vaccination strategies.

43

44 Introduction

45 In less than 12 months after the beginning of the COVID-19 pandemic, scientific research
46 succeeded in developing multiple vaccines against a previously unknown viral pathogen, severe
47 acute respiratory coronavirus 2 (SARS-CoV-2). The mRNA-based Pfizer-BioNTech vaccine
48 (BNT162b2) has been the first authorized, and on 27 December 2020, the European Union
49 countries launched a co-ordinated vaccination campaign that initially was prioritized for individuals
50 at high risk of SARS-CoV-2 exposure, such as the health-care workers (HCW), and for those at
51 high risk of severe COVID-19, including elderly and residents of assisted living facilities. One key
52 point is to identify and follow up post-vaccine infections and to assess vaccine effectiveness in
53 reducing disease severity and limiting infection transmission to unvaccinated individuals. As
54 expected due to the fact that COVID-19 vaccines do not offer 100% protection against the SARS-
55 CoV-2 infection, current evidence showed that individuals who received full vaccination can
56 become infected ¹; however, they seem to have lower risk to develop severe COVID-19 compared
57 to unvaccinated people, and to carry reduced viral loads with a likely lower transmission to others
58 ²⁻⁵. Nevertheless, definitive evidences are still lacking. An additional concern for vaccine
59 effectiveness is about SARS-CoV-2 variants in the Spike protein, which are emerging and
60 spreading across the globe; in fact, some showed potential of immunological escape from the
61 antibodies response that could impact the vaccination efficacy and lead to COVID-19 epidemic
62 rebounds ⁶⁻⁸. A specific surveillance on SARS-CoV-2 variants has been established in Lazio
63 Region (Central Italy) in line with the national and international guidelines ¹. SARS-CoV-2 positivity
64 after vaccination is one of the priority recommendation for genomic characterization in order to
65 identify genetic changes that may be associated with vaccine escape. Here, we described
66 virological and serological testing performed at the Regional Reference Laboratory (RRL) of
67 Virology of the National Institute for Infectious Diseases “L. Spallanzani” (INMI) in Rome, Italy, on
68 samples collected at the time of first RT-PCR positivity from 94 individuals, who resulted positive
69 for SARS-CoV-2 between December 27 and March 30, 2021, following one or two doses of
70 BNT162b2 vaccine.

71 **Materials and Methods**

72 **Study group**

73 In the frame of the Regional Surveillance programme, naso-pharyngeal swabs (NPS) and,
74 possibly, sera collected from individuals who resulted positive for SARS-CoV-2 after vaccination
75 were sent to INMI in Rome, Italy, for further laboratory investigation. These individuals were tested
76 at peripheral laboratories either following symptoms onset, for contact tracing or screening
77 activities. In this study, we included the first batch of samples (94 NPS) which were referred
78 between December 27 and March 30, 2021 to the RRL at INMI for virological evaluation of post-
79 vaccination RT-PCR positivity occurred at least one day after one or two BNT162b2 vaccine doses
80 and for which in-depth analysis was completed. For 79 individuals, a known date of vaccination
81 was reported and the time lapsing from vaccination to sample collection was calculated. We
82 classified the individuals with known vaccination date into three groups based on the time elapsed
83 from the first dose of vaccine to infection, i.e. time of SARS-CoV-2 positive test or symptoms onset
84 (here considered both as infection starting date): Group 1, individuals tested positive 1 to 15 days
85 after first dose; Group 2, 16 to 30 days after first dose vaccination, and Group 3, >30 days from
86 first dose, 10 days after the second dose injection (considered as full vaccinated group). For 50
87 individuals (44 of them with reported date of vaccination), a serum sample collected at time of
88 diagnosis was also available for serological testing. In fact, according to the local surveillance
89 system, serum collection was recommended but not mandatory for post-vaccine infections follow-
90 up. NPS and serum samples were shipped to INMI under controlled temperature (-80°C and
91 refrigerated at +4°C, respectively).

92 Sequencing data (n=1072) produced at INMI exclusively from randomly selected samples collected
93 from unvaccinated individuals during the same study period and representing all the regional
94 territory, were used to evaluate the prevalence of variants of concern (VOCs).

95 **Molecular testing and virus characterization**

96 Semi-quantitative estimation of viral load was assessed by RT-PCR using DiaSorin Simplexa®
97 COVID-19 Direct platform (DiaSorin, Saluggia, Italy), based on cycle threshold (Ct) value. For
98 whole-genome sequencing, nucleic acid extraction was performed using QiaSymphony automatic

99 extractor and the DPS Virus/Pathogen Midi Kit (QIAGEN), followed by Next-Generation
100 Sequencing (NGS) carried out on Ion Torrent or Illumina Platform using Ion AmpliSeq SARS-CoV-
101 2 Research Panel, following manufacturer's instructions (ThermoFisher, US). Sequencing was
102 performed on Ion Gene Studio S5 Sequencer and on Illumina MiSeq. Complete genome
103 sequences were obtained combining in-house pipeline ESCA⁹ with IRMA¹⁰ and DRAGEN RNA
104 Pathogen Detection 3.5.15 (Illumina BaseSpace) software, and submitted on GISAID platform¹¹.
105 In case of low coverage for the full-genome characterization, Sanger sequencing was used to fill
106 the NGS gaps in the Spike coding gene.

107 **Virus isolation**

108 Viral culture was performed in a biosafety level 3 (BSL-3) laboratory at INMI on Vero E6/TMPRSS2
109 (kindly provided by Dr. Oeda S., National Institute of Infectious Diseases, Tokyo, Japan), as
110 previously described¹².

111 **Serological testing**

112 Serological investigation included the detection of anti-N and anti-RBD Spike IgG using Abbott
113 SARS-CoV-2 assay on Abbott ARCHITECT® i2000sr (Abbott Diagnostics, Chicago, IL, USA) and
114 the evaluation of the neutralising antibodies (nAb) titres using SARS-CoV-2 microneutralization test
115 (MNT) based on live virus¹³. The viral strain used in MNT (lineage B.1 - clade G; GISAID
116 accession number: EPI_ISL_568579; EVAG Ref-SKU: 008V-04005) had been isolated in March
117 2020 in Italy and kindly provided by Prof. Baldanti F, Fondazione IRCCS Policlinico San Matteo,
118 Pavia, Italy. SARS-CoV-2 neutralization titers are expressed as the reciprocal of serum dilution
119 achieving 90% reduction of cytopathic effect. First international standard for anti-SARS-CoV-2
120 provided by the National Institute for Biological Standards and Control (NIBSC, UK) was used as
121 reference in MNT (Research reagent for anti-SARS-CoV-2 human immunoglobulin, NIBSC code:
122 20/136).

123 **Statistics**

124 Epidemiological and demographic data were extracted from the Regional Surveillance Information
125 System established by the regional health authority and analyzed using the STATA 14 software.
126 Demographic characteristics of the vaccinated individuals were described using median and

127 interquartile range (IQR) for continuous parameters, and absolute and relative (percentage)
128 frequencies for categorical variables. Inferential analysis of association were performed using chi-
129 square or Fisher exact tests for categorical variables, and Mann–Whitney or Kruskal-Wallis tests
130 for continuous parameters. Univariate analysis using Odd Ratio (OR) with 95% interval of
131 confidence (95%CI) are shown. Analyses were performed using GraphPad Prism version 8.00
132 (GraphPad Software, La Jolla California) and SPSS V.23 for Windows statistical software; p-
133 value<0.05 was considered statistically significant.

134 **Ethics**

135 This work was performed within the framework of the COVID-19 outbreak response and
136 surveillance program and the laboratory characterization of post-vaccination infections by INMI
137 laboratory as the RRL, is essential part of the Lazio surveillance regional plan. Use of laboratory
138 and epidemiological records for research purpose has been approved by the INMI Ethical
139 Committee (issue n. 214/20-11-2020), and the need of informed consent form was waived. The
140 study has been conducted in respect of current legislation on personal data protection, all data are
141 presented in non-identifiable form.

142 **Data availability statement**

143 Sequencing data that support the findings of this study have been deposited in GISAID; the list of
144 the accession codes is available from the corresponding author on reasonable request. The other
145 data used and/or analyzed during the current study are available, only for sections non-infringing
146 personal information, from the corresponding author upon request.

147 **Results**

148 **Cases of SARS-CoV-2 infections after BNT162b2 vaccination**

149 According to the Regional Surveillance Information System of the Lazio regional health authority,
150 from the 27th of December 2020, the start of the vaccination campaign, up to 30th March 2021,
151 735,616 individuals received one or two doses of BNT162b2 vaccine. Among these, 1,879 (0.3%)
152 tested positive for SARS-CoV-2 positive at least 1 day after vaccination. The majority (79.5%) of
153 these individuals are reported positive before the second dose injection.

154 In the study period, samples from 121 out of the reported 1,879 infections in vaccinated persons
155 were recovered from the laboratories that performed the diagnosis, and sent to the RRL to perform
156 the characterization foreseen in the framework of the COVID-19 outbreak response and
157 surveillance program established in Lazio Region. The results described in this study represent
158 those obtained on the first 94 NPS for which analysis was completed. The median time between
159 infection recognition (as symptoms onset or time of first diagnosis for asymptomatic patients) and
160 testing was 0.5 days (range: 0-9 days, with 7 tested samples collected >4 days after diagnosis or
161 symptoms onset).

162 Demographic and epidemiologic data, including clinical information, are shown in **Table 1**. The
163 majority (n=82, 87.2%) of the 94 individuals under investigation was HCW, the remaining samples
164 were from elderly people (over 80 years old). Median age was 50.5 years old (IQR: 62.0-39.8), 56
165 (59.6%) were female. Forty-nine (52.1%) were asymptomatic at the diagnosis, and underwent
166 SARS-CoV-2 testing for periodic screening or as contacts of positive cases. The majority (n=61,
167 64.9%) of post-vaccination cases had a pauci/a-symptomatic clinical course, while a mild disease
168 was reported for 26 (27.7%), and severe for 7 (7.4%) patients. All patients with severe disease had
169 one or more pre-existing co-morbidities, including cardiovascular chronic diseases, diabetes,
170 obesity, renal affections, and neurological disorders, 4 were over 80 years old. Age and co-
171 morbidities were significantly associated with severe disease ($p=0.008$ and <0.001 , respectively).
172 According to the information available at the time of writing (n=85), most infected persons (97.6%)
173 cleared the virus and recovered, while 2 patients died; both dead patients were over 85 years old,
174 presented pre-existing co-morbidities (i.e., cardiovascular chronic diseases, diabetes and
175 neurological disorders), and tested positive after full vaccination (9 and 19 days after the second
176 dose, respectively).

177 For 79 individuals, a known date of vaccination was reported (**Table 1**). The median time between
178 the first-dose vaccination and symptoms onset, or time of first diagnosis for asymptomatic cases,
179 was 47 days, ranging from 1 to 85 days after the first dose (corresponding to 64 days following the
180 full vaccination). Fifty-four (68.4%) individuals resulted infected after full vaccination.

181 Symptoms at diagnosis and hospitalization rate were significantly more frequent in patients
182 infected after a single dose as compared to patients infected after full vaccination course; a trend
183 towards less frequent severe course was observed in infections acquired after two doses.

184 **SARS-CoV-2 viral loads and infectivity in NPS from individuals infected up to 2 months after** 185 **full vaccination**

186 Median Ct values of NPS at diagnosis was 21.2 (IQR: 17.5-31.3), with no significant difference
187 between asymptomatic and symptomatic presentation (median Ct values: 22.0 vs 19.6, **Figure**
188 **1A**), even in those patients tested positive after full vaccine course (median Ct values: 21.8 vs
189 18.9; **Figure 1A**). To understand whether viral RNA was associated to infectiousness, virus
190 isolation was attempted on 84 NPS; 10 NPS were not tested due to due to viral infectivity
191 inactivation by guanidine isothiocyanate contained in the transport medium used for sample
192 collection. Notably, infectious virus was rescued from 44 (52.4%) NPS, 24 collected from
193 symptomatic individuals, 20 collected from asymptomatic subjects. No significant difference in
194 culture positivity rates were found between these two groups (54.5% in symptomatic vs 50.0% in
195 asymptomatic, $p=0.827$). Similar results were obtained when considering fully vaccinated patients
196 only (60.9% in symptomatic vs 48.2% in asymptomatic, $p=0.567$). The proportion of samples with
197 low viral load (Ct values >30) in asymptomatic individuals (32.6%) was higher compared to the
198 symptomatic patients (20.0%), but did not reach statistical significance ($p=0.242$).

199 We next considered the viral RNA levels according to time lapsed from first dose to diagnosis,
200 known for 79 individuals, who were divided in 3 groups. The results indicated similar median Ct
201 values in all 3 groups (**Fig. 1B**), despite the higher proportion of samples with low viral load in
202 Group 3. This finding coupled with the isolation rate, which was found higher in samples collected
203 shortly after the vaccination (Group 1), but did not reach statistical difference compared to the
204 other groups (Group 1: 85.7%, Group 2: 40.0%; Group 3: 54.0%, $p=0.411$). As shown in detail in
205 **Figure 2**, over 39 positive viral cultures , 27 (67.5%) were obtained from fully vaccinated
206 individuals, who tested positive for SARS-CoV-2 up to 85 days after the first vaccination dose. The
207 median Ct value of the samples with positive viral culture was 17.5 (IQR 15.6-20.1), and isolation

208 of infectious virus was strongly associated only with the viral RNA concentration in the NPS, with
209 OR >100 for Ct≤25 vs Ct>25 (**Table 2**).

210 **Antibody response at the time of infection diagnosis**

211 Serological testing was performed on the available serum samples (n=50) which have been
212 collected at the time of diagnosis at the peripheral laboratories and sent to the RRL
213 (**Supplementary Table 1**). The results showed that antibody response was detected in 48
214 individuals (96.0%, median anti-RBD Spike IgG BAU/ml=704.6, IQR 403.0-2111.0) at the time of
215 infection diagnosis since first dose vaccination; 42 (84.0%) of them presented also detectable nAb
216 (median titre=1:80, IQR 1:40-1:160), mostly (66.7%) fully vaccinated. Eight vaccinees (16.0%) did
217 not show detectable nAb at diagnosis, of whom 2 (4.0%) were fully vaccinated (both over 80 years
218 old and presenting co-morbidities), indicating primary non response to vaccine. Out of 44 samples
219 collected from individuals with known date of vaccination, we observed significant differences in
220 antibody titres, both anti-RBD Spike IgG and nAb (**Figure 3A-B**), along the different time-points
221 from vaccination, with high titres after 15 days from the first dose (Groups 2 and 3). Unexpectedly,
222 Group 2 presented higher antibody levels compared to Group 3, which included fully vaccinated
223 individuals. This difference resulted statistically significant for anti-S IgG ($p<0.01$), not for
224 neutralizing antibodies.

225 Since anti-N IgG seroconversion at diagnosis was observed only in 3 patients (6.0%), we
226 reasonably argue that the detected functional antibody response was mostly (39/50, 78.0%)
227 elicited by vaccination, and not by the infection per-se. In addition, we have formal evidence of pre-
228 infection (38 and 60 days before infection) vaccine-induced antibodies response in two patients,
229 with nAb titers of 1:160 at day 15 from full immunization for both infections. As shown in **Figure 3B**
230 and **Supplementary Table 1**, the presence of nAb in serum did not preclude virus isolation from
231 NPS, and titres were not correlated with viral load (median Ct values: 21.5, IQR 16.5-32.2;
232 Spearman $r=0.220$, $p\text{-value}=0.124$). Notably, data from **Table 2** show a trend to negative
233 association of viral isolation rate with high nAb titers (OR=0.28 for nAb $\geq 1:80$ vs $<1:80$).
234 Considering the immune status in relation to the clinical course of post-vaccination infections, no
235 statistically significant differences in both anti-RBD Spike IgG and nAb median values were found

236 amongst the different groups of disease severity (**Supplementary Figure 1**), with no significant
237 association between clinical course and presence or high titres ($\geq 1:80$) of nAb ($p=0.082$ and 0.224 ,
238 respectively).

239 **Distribution of VOCs in post-vaccination infections**

240 We next investigated the viral variants infecting the vaccinated individuals included in this study.
241 Whole-genome sequences (WGS) were obtained from the 58 NPS samples with adequately high
242 viral load ($Ct < 28$); additional variant strain identification was obtained for 6 patients by partial
243 Sanger sequencing of the S region. Out of these 63 SARS-CoV-2 sequences, 15 (23.8%)
244 belonged to B.1.177 lineage (GV clade), 14 (22.2%) were Gamma variants (P.1 lineage, GR clade)
245 and 28 (44.4 %) were Alpha variants (B.1.1.7 lineage, GRY clade). One (1.6%) resulted to be
246 Variant of Interest (VOI) Eta (B.1.525 lineage, G clade), and 5 (7.9%) sequences belonged to other
247 clades with 3 sequences to the clade GR (i.e., 2 of the B.1.1 lineage, 1 of the B.1.1.39 lineage) and
248 2 to the clade G (i.e., 1 of the B.1 lineage and 1 of the B.1.258.17 lineage) (**Supplementary**
249 **Figure 2A**). The distribution of variants amongst the vaccinated individuals grouped according to
250 vaccination status (i.e., days from vaccination) was related to the time of infection diagnosis and
251 reflected mostly the circulation of the variants in the general population at the time of the infection
252 (**Supplementary Figure 2B**). For instance, B.1.1.7 was detected mainly in those vaccinated
253 individuals who tested positive in March 2021, regardless the vaccination status; accordingly,
254 Group 3 showed the predominance of B.1.1.7 as this group included mainly vaccinated individuals
255 who tested positive in March 2021. As matter of fact, when we compared our study population to
256 unvaccinated contemporary population, based on 1072 samples randomly collected from Lazio
257 patients between January and March 2021 and sequenced by NGS and Sanger for surveillance
258 purpose, we observed that variants prevalence in vaccinated individuals followed the circulation in
259 the general population. In fact, as shown in Figure 4, we observed a similar temporal distribution
260 between the two groups, with a clear increase of B.1.1.7 followed by P.1 in both groups, without
261 significant difference for both P.1 ($p=0.08$ in Chi-square test) and B.1.1.7 lineages ($p=0.20$ in Chi-
262 square test) (**Figure 4**). Mutational analysis of Spike protein sequences obtained by NGS showed
263 that signature mutations for the VOCs are observed in all groups, and other changes are found in a

264 minority of patients (**Supplementary Figure 3**); especially for P.1, none of these minor changes
265 seems to be enriched in Group 3, suggesting no association with more resistant forms.

266 The rate of infectious virus isolation in the vaccinated patients was similar when dividing the
267 vaccinated patients according to the infecting virus variants (culture positivity rate: B.1.177; 80.0%;
268 P.1: 71.4%; B.1.1.7, 72.7%; others, 66.7%), with no significant differences in median Ct values
269 amongst the variants ($p=0.109$) (**Supplementary Figure 4**). Notably, these findings need to be
270 carefully interpreted since only NSP with high viral loads have been sequenced in order to have an
271 adequate coverage for the full-genome characterization and this could actually bias the analysis.

272 Discussion

273 The present study analyses 94 infections, occurring in Lazio Region (Central Italy) after first or
274 second dose administration of mRNA BNT162b2 vaccine, both from the host side (patients'
275 demographics, infection severity, antibody status) and from the virus side (viral load, infectivity and
276 infecting variants).

277 Encouraging evidence is accumulating worldwide about vaccine effectiveness against COVID-19 in
278 real-life vaccination campaigns¹⁴. Several case-control and population-level studies reported that
279 vaccination substantially reduce both asymptomatic and symptomatic infections, with more
280 significant impact after at least 7 days from the second dose ^{2,15–18}. SARS-CoV-2 infections in
281 previously vaccinated individuals are sporadic events compared to the total number of vaccine
282 administrations. Several recent studies including trials and observational reports, showed a lower
283 risk of documented cases in household members of vaccinated HCW and reduced viral load in
284 newly-infected individuals with previous vaccination ^{2,5,19}. This has been translated in hypothetical
285 lower infectivity and transmission risk. However, scientific evidence of COVID-19 vaccine
286 effectiveness against infectiousness of SARS-CoV-2 is still limited.

287 Our data show that vaccinated individuals who get infected after vaccination, although representing
288 a tiny proportion of the vaccinated population (0.3% in our setting), may carry high viral loads in
289 the upper respiratory tract, even when infected long time after the second dose, i.e. when vaccine-
290 related immunity should have been developed. More importantly, we evidenced for the first time

291 that infectious virus can be cultured from NPS collected from both asymptomatic and symptomatic
292 vaccinated individuals, suggesting that they could be able to transmit the infection to susceptible
293 people and potentially be part of transmission chains. As observed for infections in unvaccinated
294 people, high viral load ($Ct \leq 25$) is a strong determinant of isolation success ^{20,21}. This finding should
295 be carefully considered for public health policy, emphasizing the importance of a proper
296 communication that vaccine does not confer sterilizing immunity; therefore, continued adherence to
297 public health prevention measures is still recommended for vaccinated individuals until adequate
298 vaccination coverage of the population is reached or in presence of susceptible vulnerable
299 individuals ^{5,22,23}. On the other hand, the very small proportion of post-vaccine infections is
300 encouraging that overall risk of transmission from vaccinated persons will be low, supporting the
301 crucial role of vaccination.

302 The impact of emerging variants on the vaccination campaigns is under investigation as vaccine
303 escape variants may be associated to increased vaccine failure ⁶. In the vaccinated individuals
304 described in this study, the majority of infections were caused by Alpha VOC (B.1.1.7), followed by
305 the previously predominant strain in Lazio Region, B.1.177, and by the Gamma VOC (P.1). As
306 recently reported in the United States ²², the temporal distribution of the variants identified in the
307 vaccinated individuals clearly matches the pattern of strains circulation in the unvaccinated
308 population of the Lazio Region, with no evidence of vaccine-related immune escape. The
309 preliminary analysis of a more recently collected set of data confirms similar patterns of VOC
310 distribution (both B.1.1.7 and P.1) in vaccinated and unvaccinated individuals from Lazio region, at
311 least up to May 2021, i.e. before the ramp up of the new Delta variant (data not shown).

312 In a recent study from Israel, Kustin et al. ²⁴ reported that infection with Beta VOC was
313 disproportionally detected in fully vaccinated individuals, while Alpha VOC was disproportionally
314 involved in infections diagnosed between 2 weeks after the first dose and 6 days after the second
315 dose. The differences with our results may be due to different pattern of VOCs circulation, as, for
316 example, circulation of Beta VOC was very tiny in our territory. In addition, Spike mutations in each
317 lineage, broken down by Groups 1, 2 and 3, indicated that there is no selection for enrichment of

318 any particular mutation in fully vaccinated individuals (Group 3) as compared to individuals with
319 incomplete vaccination (Groups 1 and 2).

320 Serological findings showed that the majority (84.0%) of the individuals who tested positive after
321 vaccination had nAb at the time of diagnosis; 64.3% of them, infected after second dose
322 administration, showing relevant nAb titres ($\geq 1:80$). Although antibody immune status following
323 vaccination and prior infection was not available for most of these individuals (except for two
324 cases, who underwent serological testing before the infection), in line with recent report ²⁵, the nAb
325 titers measured shortly after the infection, together with negative anti-N IgG serology, suggest that
326 it is very likely that they had a immune responses to the vaccine, yet not sufficient to prevent the
327 contagion. On the contrary, 8 individuals tested SARS-CoV-2-positive after vaccination did not
328 present nAb, 2 of them reported as fully vaccinated, suggesting primary non response to vaccine.
329 Unexpectedly, Group 2 presented the highest antibody levels, even compared to Group 3 which
330 included fully vaccinated individuals; while it is reasonable that antibody levels in Group 2 is higher
331 than in Group 1 (due to the longer interval from vaccine administration), the observed difference
332 between Group 2 and 3 seems not to be explained with the available information concerning
333 symptomatic versus asymptomatic infection and distance from symptoms onset, which resulted to
334 be similar between the two groups. A weak response to the vaccination may be a possible
335 explanation. Studies including larger population will help clarify this point. In addition, our data
336 showed that the presence of nAb in serum did not preclude isolation of replication-competent virus
337 from NPS of vaccines; however, the relationship between the infectivity of released virus and the
338 presence of nAb in serum or in the nasopharyngeal tract deserves to be better investigated
339 through dedicated studies.

340 According to previous reports, the majority of infections observed in vaccinated individuals in this
341 study had a mild or asymptomatic clinical course, and those patients with severe symptoms
342 presented pre-existing co-morbidities and lower median antibody levels compared to those who
343 had a mild or asymptomatic presentation. Two deaths were observed, both in patients over 85
344 years old and with multiple co-morbidities, which represent a relevant risk factors for severe
345 disease and are prognostic for negative outcome ^{4,26-28}. This confirms overall vaccine effectiveness

346 against the disease, which represents a key factor to control morbidity and mortality of SARS-CoV-
347 2 infection, as well as to reduce the public health burden of this pandemic together with social and
348 economic global crisis.

349 Our study presents some limitation that should be acknowledged. First, the study was an
350 observational study based on real-life data obtained from pandemic surveillance activities, aimed
351 not to establish vaccine efficacy compared to a matched unvaccinated control group, but, to report
352 a virological characterization of those patients reported with SARS-CoV-2 infection despite being
353 vaccinated. Therefore, our observation should be replicated and extended on larger cohorts
354 established *ad hoc* and to other vaccine formulations. Furthermore, no follow-up samples were
355 available for the post-vaccination infected individuals, so that it was not possible to monitor the viral
356 loads and the shedding of infectious virus. In addition, as described above, pre-infection antibody
357 status was only available for few patients. Finally, the evaluation of the cellular immune response
358 would be of great interest to better understand the protection status in cases of vaccine
359 breakthrough infections.

360

361 **Acknowledgement**

362 We gratefully acknowledge the Local Health Authorities and the laboratory network (CoroNET) of
363 the Lazio Region. We acknowledge also the contributors of genome sequences of the newly
364 emerging coronavirus (i.e., the originating and submitting laboratories) for sharing their sequences
365 and other metadata through the GISAID Initiative.

366 **INMI Covid-19 laboratory surveillance team:** Abbate Isabella, Agrati Chiara, Agresta
367 Alessandro, Aleo Loredana, Alonzi Tonino, Amendola Alessandra, Apollonio Claudia, Arduini
368 Nicolina, Bartolini Barbara, Berno Giulia, Bettini Aurora, Biancone Silvia, Biava Mirella, Bibbò
369 Angela, Bonfiglio Giulia, Bordi Licia, Brega Carla, Butera Ornella, Canali Marco, Cannas Angela,
370 Capobianchi Maria Rosaria, Carletti Fabrizio, Carrara Stefania, Casetti Rita, Castilletti Concetta,
371 Chiappini Roberta, Ciafrone Lucia, Cimini Eleonora, Coen Sabrina, Colavita Francesca, Condello
372 Rossella, Coppola Antonio, D'Alessandro Gaetano, D'Arezzo Silvia, D'Amato Maurizio, De Santi
373 Claudia, Di Caro Antonino, Di Filippo Stefania, De Giuli Chiara, Fabeni Lavinia, Federici Luigi,

374 Felici Luisa, Ferraioli Valeria, Forbici Federica, Francalancia Massimo, Fusco Maria Concetta,
375 Garbuglia Anna Rosa, Giombini Emanuela, Gramigna Giulia, Graziano Silvia, Gruber Cesare
376 Ernesto Maria, Iazzetti Roberto, Khouri Daniele, Lalle Eleonora, Lapa Daniele, Leone Barbara,
377 Leone Sara, Marafini Giovanni, Marchetti Federica, Massimino Chiara, Matusali Giulia, Mazzarelli
378 Antonio, Meschi Silvia, Messina Francesco, Minosse Claudia, Montaldo Claudia, Mucciante Mirco,
379 Nazzaro Clara, Neri Stefania, Nisii Carla, Petrivelli Elisabetta, Petroni Fabrizio, Petruccioli Elisa,
380 Pisciotta Marina, Pitti Giovanni, Pizzi Daniele, Prota Gianluca, Rozera Gabriella, Rueca Martina,
381 Sabatini Rossella, Santini Francesco, Sarti Silvia, Sberna Giuseppe, Sciamanna Roberta, Scionti
382 Rachele, Selleri Marina, Specchiarello Eliana, Stelitano Chiara, Toffoletti Antonietta, Tonziello
383 Gilda, Truffa Silvia, Turchi Federica, Valli Maria Beatrice, Vantaggio Valentina, Venditti Carolina,
384 Vescovo Tiziana, Vincenti Donatella, Vulcano Antonella, Zambelli Emma.

385 **Contributions**

386 Study design: C.C., F.C., S.M., B.B., M.R.C., A.D.C.; Laboratory investigation: F.C., S.M., M.R.,
387 G.Bo., G.M., D.L., F.C., E.L., L.F., G.Be.; Data collection: F.C., M.R., E.L., G.Be, G.Bo., F.V., M.S.,
388 G.D.C., V.P.; Data analysis: F.C., F.V., C.G., E.G., F.M., L.F.; Data interpretation: F.C., C.G., C.C.,
389 F.V., M.R.C., A.D.C., Writing: F.C. and M.R.C., with revisions and comments from all authors;
390 Funding acquisition: C.C., A.D.C., M.R.C., G.I.. INMI COVID-19 laboratory surveillance Team
391 contributed to the data and samples collection and storage, and routine diagnostic and
392 epidemiological analyses.

393 **Funding**

394 The study was performed in the framework of the SARS-CoV-2 surveillance and response program
395 implemented by the Lazio Region Health Authority. This study was supported by funds to the
396 Istituto Nazionale per le Malattie Infettive (INMI) Lazzaro Spallanzani IRCCS, Rome (Italy), from
397 Ministero della Salute (Programma CCM 2020; Ricerca Corrente - linea 1; COVID-2020-
398 12371817); the European Commission – Horizon 2020 (EU project 101003544 – CoNVat; EU
399 project 101005111-DECISION; EU project 101005075-KRONO) and the European Virus Archive –
400 GLOBAL (grants no. 653316 and no. 871029).

401 **Authors Disclosure**

402 The authors declare no conflicts of interest.

403 **References**

- 404 1. European Centre for Disease Prevention and Control. Risk of SARS-CoV-2 transmission
405 from newly-infected individuals with documented previous infection or vaccination. *29th*
406 *March* (2021). Available at: [https://www.ecdc.europa.eu/en/publications-data/sars-cov-2-](https://www.ecdc.europa.eu/en/publications-data/sars-cov-2-transmission-newly-infected-individuals-previous-infection)
407 [transmission-newly-infected-individuals-previous-infection](https://www.ecdc.europa.eu/en/publications-data/sars-cov-2-transmission-newly-infected-individuals-previous-infection). (Accessed: 6th May 2021)
- 408 2. Levine-Tiefenbrun, M. *et al.* Initial report of decreased SARS-CoV-2 viral load after
409 inoculation with the BNT162b2 vaccine. *Nat. Med.* (2021). doi:10.1038/s41591-021-01316-7
- 410 3. Kawasuji, H. *et al.* Transmissibility of COVID-19 depends on the viral load around onset in
411 adult and symptomatic patients. *PLoS One* **15**, e0243597 (2020).
- 412 4. Dagan, N. *et al.* BNT162b2 mRNA Covid-19 Vaccine in a Nationwide Mass Vaccination
413 Setting. *N. Engl. J. Med.* **384**, 1412–1423 (2021).
- 414 5. Teran, R. A. *et al.* Postvaccination SARS-CoV-2 Infections Among Skilled Nursing Facility
415 Residents and Staff Members — Chicago, Illinois, December 2020–March 2021. *MMWR.*
416 *Morb. Mortal. Wkly. Rep.* **70**, 632–638 (2021).
- 417 6. Hoffmann, M. *et al.* SARS-CoV-2 variants B.1.351 and P.1 escape from neutralizing
418 antibodies. *Cell* **184**, 2384–2393.e12 (2021).
- 419 7. Fontanet, A. *et al.* SARS-CoV-2 variants and ending the COVID-19 pandemic. *Lancet*
420 *(London, England)* **397**, 952–954 (2021).
- 421 8. Wu, K. *et al.* Serum Neutralizing Activity Elicited by mRNA-1273 Vaccine. *N. Engl. J. Med.*
422 **384**, 1468–1470 (2021).
- 423 9. Rueca, M. *et al.* ESCA pipeline: Easy-to-use SARS-CoV-2 genome Assembler. *bioRxiv*
424 2021.05.21.445156 (2021). doi:10.1101/2021.05.21.445156
- 425 10. Shepard, S. S. *et al.* Viral deep sequencing needs an adaptive approach: IRMA, the iterative

- 426 refinement meta-assembler. *BMC Genomics* **17**, 708 (2016).
- 427 11. Elbe, S. & Buckland-Merrett, G. Data, disease and diplomacy: GISAID's innovative
428 contribution to global health. *Glob. challenges (Hoboken, NJ)* **1**, 33–46 (2017).
- 429 12. Colavita, F. *et al.* Virological Characterization of the First 2 COVID-19 Patients Diagnosed in
430 Italy: Phylogenetic Analysis, Virus Shedding Profile From Different Body Sites, and Antibody
431 Response Kinetics. *Open Forum Infect. Dis.* **7**, (2020).
- 432 13. Matusali, G. *et al.* SARS-CoV-2 Serum Neutralization Assay: A Traditional Tool for a Brand-
433 New Virus. *Viruses* **13**, 655 (2021).
- 434 14. Shilo, S., Rossman, H. & Segal, E. Signals of hope: gauging the impact of a rapid national
435 vaccination campaign. *Nat. Rev. Immunol.* **21**, 198–199 (2021).
- 436 15. Hall, V. J. *et al.* Do Antibody Positive Healthcare Workers Have Lower SARS-CoV-2
437 Infection Rates than Antibody Negative Healthcare Workers? Large Multi-Centre
438 Prospective Cohort Study (The SIREN Study), England: June to November 2020. *medRxiv*
439 (2021). doi:10.2139/ssrn.3768524
- 440 16. Keehner, J. *et al.* SARS-CoV-2 Infection after Vaccination in Health Care Workers in
441 California. *N. Engl. J. Med.* **384**, 1774–1775 (2021).
- 442 17. Thompson, M. G. *et al.* Interim Estimates of Vaccine Effectiveness of BNT162b2 and
443 mRNA-1273 COVID-19 Vaccines in Preventing SARS-CoV-2 Infection Among Health Care
444 Personnel, First Responders, and Other Essential and Frontline Workers - Eight U.S.
445 Locations, December 2020-March. *MMWR. Morb. Mortal. Wkly. Rep.* **70**, 495–500 (2021).
- 446 18. Haas, E. J. *et al.* Impact and effectiveness of mRNA BNT162b2 vaccine against SARS-CoV-
447 2 infections and COVID-19 cases, hospitalisations, and deaths following a nationwide
448 vaccination campaign in Israel: an observational study using national surveillance data.
449 *Lancet* (2021). doi:10.1016/S0140-6736(21)00947-8
- 450 19. Shah, A. *et al.* Effect of vaccination on transmission of COVID-19: an observational study in

- 451 healthcare workers and their households. *medRxiv* 2021.03.11.21253275 (2021).
- 452 20. Wölfel, R. *et al.* Virological assessment of hospitalized patients with COVID-2019. *Nature*
453 **581**, 465–469 (2020).
- 454 21. Jaafar, R. *et al.* Correlation Between 3790 Quantitative Polymerase Chain Reaction–
455 Positives Samples and Positive Cell Cultures, Including 1941 Severe Acute Respiratory
456 Syndrome Coronavirus 2 Isolates. *Clin. Infect. Dis.* (2020). doi:10.1093/cid/ciaa1491
- 457 22. Birhane, M. *et al.* COVID-19 Vaccine Breakthrough Infections Reported to CDC — United
458 States, January 1–April 30, 2021. *MMWR. Morb. Mortal. Wkly. Rep.* **70**, 792–793 (2021).
- 459 23. Vilches, T. N., Zhang, K., Van Exan, R., Langley, J. M. & Moghadas, S. M. Projecting the
460 impact of a two-dose COVID-19 vaccination campaign in Ontario, Canada. *Vaccine* **39**,
461 2360–2365 (2021).
- 462 24. Kustin, T. *et al.* Evidence for increased breakthrough rates of SARS-CoV-2 variants of
463 concern in BNT162b2-mRNA-vaccinated individuals. *Nat. Med.* (2021). doi:10.1038/s41591-
464 021-01413-7
- 465 25. Hacısuleyman, E. *et al.* Vaccine Breakthrough Infections with SARS-CoV-2 Variants. *N.*
466 *Engl. J. Med.* NEJMoa2105000 (2021). doi:10.1056/NEJMoa2105000
- 467 26. Rydyznski Moderbacher, C. *et al.* Antigen-Specific Adaptive Immunity to SARS-CoV-2 in
468 Acute COVID-19 and Associations with Age and Disease Severity. *Cell* **183**, 996–1012.e19
469 (2020).
- 470 27. Williamson, E. J. *et al.* Factors associated with COVID-19-related death using
471 OpenSAFELY. *Nature* **584**, 430–436 (2020).
- 472 28. Sanyaolu, A. *et al.* Comorbidity and its Impact on Patients with COVID-19. *SN Compr. Clin.*
473 *Med.* 1–8 (2020). doi:10.1007/s42399-020-00363-4

474

475 **Table 1. Demographic and epidemiological information available for the study cohort.**

Characteristic	Total cases tested positive after vaccination (N=94)	Cases with known date of vaccination (N=79)			p-value ^a
		Group 1 (n=9, 11.4%)	Group 2 (n=16, 20.3%)	Group 3 (n=54, 68.4%)	
Age (median, range)	55.5 (23-92)	53 (24-59)	57.5 (24-82)	49 (23-87)	0.540
Gender (n, %)					
Male	38 (40.4%)	2 (22.2%)	8 (50.0%)	22 (40.7%)	0.397
Female	56 (59.6%)	7 (77.8%)	8 (50.0%)	32 (59.3%)	
Category (n, %)					
HCW	82 (87.2%)	9 (100.0%)	13 (81.3%)	50 (92.6%)	0.228
Age over 80	12 (12.8%)	-	3 (18.8%)	4 (7.4%)	
Symptoms at diagnosis (n, %)					
Yes	45 (47.9%)	8 (88.9%)	8 (50.0%)	23 (42.6%)	0.037
No	49 (52.1%)	1 (11.1%)	8 (50.0%)	31 (57.4%)	
Clinical course (n, %)					
Pauci/asymptomatic	61 (64.9%)	5 (55.5%)	10 (62.5%)	38 (70.4%)	0.208
Mild	26 (27.7%)	2 (22.2%)	6 (37.5%)	13 (24.1%)	
Severe	7 (7.4%)	2 (22.2%)	-	3 (5.5%)	
Hospitalization (n, %)					
Yes	10 (10.6%)	2 (22.2%)	1 (6.3%)	4 (7.4%)	0.046
Admission to ICU	1 (10.0%)	-	-	-	
No	84 (89.4%)	7 (77.8%)	15 (93.7%)	50 (92.6%)	
COVID-19 outcome (n, %) [#]					
Recovered	83 (97.6%)	9 (100.0%)	15 (100.0%)	46 (95.8%)	0.598
Dead	2 (2.4%)	-	-	2 (4.2%)	

476 ^aBy Kruskal-Wallis tests (for quantitative variables) and Chi-squared test (for categorical variables);

477 p-values <0.05 were considered as statistically significant (in bold).

478 [#] Available at the time of analysis for: total vaccinees, 85/94; Group 1, 9/9; Group 2, 15/16; Group 3, 48/54.

479

480

481 **Table 2. Factors associated with positive viral cultures on NPS collected from vaccinated**
482 **individuals at the time of SARS-CoV-2 diagnosis.**

Variable	Positive viral culture n (%)	Univariate analysis OR (95% CI)	p-value
RT-PCR, Orf1ab gene (N=84)			
<i>Ct value</i> ≤25 [§] (n=55)	43 (78.2%)	100.30 (12.35-815.07)	<0.001
<i>Ct value</i> >25 (n=29)	1 (3.4%)		
Time of the infection diagnosis (N=72)			
10 days after the second dose [§] (n=49)	27 (55.1%)	1.02 (0.37-2.80)	0.966
10 days before the second dose (n=23)	17 (73.9%)		
Presence of symptoms at the diagnosis (N=84)			
Yes [§] (n=44)	24 (54.4%)	1.20 (0.51-2.83)	0.677
No (n=40)	20 (50.0%)		
Presence of P.1 VOC (N=57)			
Yes [§] (n=14)	10 (71.4 %)	0.97 (0.25-3.69)	0.962
No (n=43)	31 (72.1%)		
Presence of B.1.1.7 VOC (n=57)			
Yes [§] (n=23)	16 (69.6%)	0.82 (0.26-2.65)	0.744
No (n=34)	26 (76.5%)		
Presence of nAb in serum (N=44)			
Yes [§] (n=37)	19 (51.3%)	0.18 (0.02-1.61)	0.124
No (n=7)	6 (85.7%)		
nAb titres in serum (N=44)			
≥1:80 [§] (n=25)	10 (40.0%)	0.28 (0.08-1.02)	0.054
<1:80 (n=19)	14 (73.7%)		

483 Abbreviation: OR, Odds ratio; CI, confidence interval; N, total data available for the analysis; n, number of
484 data. Boldface indicates factor significantly associated (p<0.05) with positive viral cultures.

485 [§] Reference group (dummy)

486

487

488

489 **Figure 1. Viral loads and viral culture outcomes in NPS collected in individuals tested**
490 **positive after first dose vaccination. A)** Viral loads detected in all symptomatic and
491 asymptomatic individuals at the time of diagnosis (left, n=45 and 49, respectively), in a subgroup
492 including only individuals tested positive after 10 days from second dose vaccination (right; n=24
493 and 32, respectively). **B)** Viral loads detected in NPS collected at different time points from first
494 dose vaccination. Group 1 (time lapse 1-15 days), n=7; Group 2 (16-30 days), n=16; Group 3 (>30
495 days), n= 56. Viral RNA levels are expressed as Ct of Orf1ab gene amplification, horizontal dashed
496 line represents the limit of detection of RT-PCR (Ct: 40.0). Median Ct values and IQR are shown.
497 Statistical analysis was performed by Mann–Whitney test, p=0.053 (left) and p=0.098 (right) in (A),
498 and by Kruskal-Wallis test, p=0.135 in (B). Samples yielding positive or negative viral culture are
499 indicated in red and black, respectively; empty dots indicate samples for which viral culture was not
500 performed.

501 **Figure 2. Viral loads and viral culture outcomes in NPS collected in individuals tested**
502 **positive at different time from the first dose vaccination.** Viral RNA levels are expressed as Ct
503 of Orf1ab gene amplification, horizontal dashed lines represent the limit of detection of RT-PCR
504 (Ct: 40). Samples yielding positive or negative viral culture are indicated in red and black,
505 respectively; empty dots indicate samples for which viral culture was not performed. Vertical
506 dashed line represents the time of second dose vaccine administration.

507 **Figure 3. Antibody levels in vaccinated individuals tested positive for SARS-CoV-2. A)**
508 Antibody titers anti-RBD Spike IgG and **B)** nAb according to the different time-points from first dose
509 vaccination to testing (n=44; Group 1, n=3; Group 2, n=11; Group 3, n= 30). Antibody levels are
510 expressed as BAU/ml in (A) and reciprocal of serum dilution shown on a log₂ scale in (B). Dashed
511 line represents the limits of detection of the serological assays (7 BAU/ml in (A) and 1:10 in (B)).
512 Median values and IQR are shown, and statistical analysis was performed by Kruskal-Wallis tests,
513 p=0.0007 in (A) and p=0.0089 in (B). Mann–Whitney test for single comparisons was also
514 performed, p values are shown in the graph: *p<0.05; **p<0.01. Samples positive or negative for
515 anti-N IgG are indicated in red and black, respectively. Samples yielding positive or negative viral

516 culture are indicated in red and black, respectively; empty dots indicate samples for which viral
517 culture was not performed.

518 **Figure 4. Temporal distribution of PANGO lineages of SARS-CoV-2 genomes.** Sequences
519 obtained from unvaccinated individuals (**A-B**) and from vaccinated subjects (**C-D**) in Lazio Region
520 (Central Italy) between January and March 2021 are shown as absolute frequencies (A and C) and
521 percentages (B and D). Others included strains belonging to B.1.177 lineage, B.1.525 lineage,
522 B.1.1 lineage, B.1.1.39 lineage, B.1 lineage, and B.1.258.17 lineage.

523

524 **Supplementary Figures**

525 **Supplementary Figure 1. Antibody levels in vaccinated individuals tested positive for SARS-**
526 **CoV-2 according to the clinical course.** Neutralizing antibodies detected in all individuals
527 classified as pauci/asymptomatic (n=31), mild (n=15), and severe (n=4) are shown on the left,
528 those detected only in infections diagnosed after 10 days from second dose vaccination are
529 shown on the right (pauci/asymptomatic, n=19; mild, n=7; severe, n=2). nAb levels are expressed
530 as the reciprocal of serum dilution. Dashed line represents the limits of detection of 1:10. Median
531 values and IQR are shown, and statistical analysis was performed by Kruskal-Wallis test, p=0.220
532 (left) and p=0.556 (right).

533 **Supplementary Figure 2. SARS-CoV-2 strains detected in NPS samples collected from post-**
534 **vaccination infections. A)** Percentages over a total of 63 sequences obtained are shown. Viral
535 lineages detected in all vaccinated individuals (pie chart above) and divided according to the time
536 elapsed from the first dose of vaccine to infection diagnosis (pie charts below) are indicated:
537 Group 1 (time lapse 1-15 days), n=9; Group 2 (16-30 days), n=10; Group 3 (>30 days), n=34;
538 Unknown, vaccination date not available, n=10. B) Absolute frequencies of viral lineages
539 sequenced from the different vaccinated groups according to the time (month 2021) of infection
540 diagnosis. VOI included B.1.525 lineage; Other includes strains belonging to B.1.1 lineage,
541 B.1.1.39 lineage, B.1 lineage, and B.1.258.17 lineage.

542 **Supplementary Figure 3. Amino acid substitutions found in the Spike protein of SARS-CoV-**
543 **2 sequences obtained from NGS analysis of vaccinated individuals.** Mutations are shown
544 according to the different vaccinated groups identified on the basis of the time elapsed from the
545 first dose of vaccine to testing: Group 1 (time lapse 1-15 days), n=8; Group 2 (16-30 days), n=10;
546 Group 3 (>30 days), n=30; VTU: Vaccination time unknown, n=9. Mutations found in the receptor-
547 binding domain (RBD) sequence are reported in light-red colour; mutations that cannot be
548 confirmed nor excluded due to low coverage are reported in grey colour.

549

550 **Supplementary Figure 4. Viral loads and viral culture outcomes in NPS collected in**
551 **individuals tested positive after first dose vaccination according to the infecting SARS-CoV-**
552 **2 variants.** Viral RNA levels are expressed as cycle threshold values (Ct) of Orf1ab gene
553 amplification, horizontal dashed line represents the limit of detection of RT-PCR (Ct: 40). Median
554 Ct values and IQR are shown (n=63; B.1.177, n=15; B.1.1.7, n=28; P.1, n=14; other, n=6), and
555 statistical analysis was performed by Kruskal-Wallis test, $p=0.109$. Samples yielding positive or
556 negative viral culture are indicated in red and black, respectively; empty dots indicate samples for
557 which viral culture was not performed.

558

559 **Supplementary Table 1. Vaccinated individuals with available matching data on antibody**
560 **and RNA viral levels.**

ID	Viral load (Ct values)	Viral culture	Viral Strain	anti-S IgG (BAU/mL ≥ 7.1)	anti-N IgG (Index $\geq 1,4$)	nAb (VNT90 $\geq 1:10$)	DTV	DSV
1	17.1	Positive	B.1.177	<7.1	0.02	<1:10	8	n.a.
2	19.3	Positive	B.1.177	158.2	0.02	<1:10	14	14
3	21.5	Positive	B.1.177	25.9	0.02	1:10	15	12
4	18.2	Positive	B.1.177	1130.6	0.02	<1:10	16	13
5	26.0	Negative	B.1.177	5549.1	0.56	1:160	22	22
6	16.4	Positive	B.1.525	11360.0	0.16	1:1260	25	21
7	36.8	Negative	n.p.	11360.0	1.08	1:1260	25	21
8	38.0	Negative	n.p.	1615.2	0.11	1:80	26	24
9	33.4	Negative	n.p.	733.2	0.03	1:20	28	24
10	22.0	Positive	B.1.177	5306.6	0.02	1:160	28	n.a.
11	16.5	Positive	P.1	2.284.60	0.56	1:320	28	n.a.
12	31.0	Negative	n.p.	2678.0	6.47	1:1260	29	n.a.
13	31.3	n.p.	n.p.	1174.1	4.35	1:160	30	n.a.
14	15.0	Negative	P.1	9889.7	0.05	1:320	30	27
15	15.6	Positive	B.1.1.7	17.1	0.02	<1:10	31	31
16	26.6	Negative	B.1.177	4397.2	0.81	1:1260	31	n.a.
17	11.7	Positive	B.1.177	3311.7	0.11	1:80	33	n.a.
18	26.3	Positive	B.1.177	208.8	0.01	1:160	36	n.a.
19	20.1	Positive	B.1.1.39	1632.8	0.03	1:160	36	n.a.
20	39.0	Negative	B.1.1.7	<7.1	0.02	<1:10	37	37
21	17.1	Negative	P.1	799.1	0.19	1:80	38	n.a.
22	38.0	Negative	n.p.	313.7	0.17	1:1260	47	n.a.
23	32.6	n.p.	n.p.	2453.0	0.07	1:80	47	n.a.
24	15.8	Positive	n.p.	950.8	0.01	1:80	48	n.a.
25	21.9	Positive	n.p.	467.3	0.05	1:40	49	45
26	15.8	Positive	P.1	861.7	0.07	1:320	49	46
27	32.0	Negative	n.p.	568.2	0.04	1:40	49	47
28	18.3	Positive	B.1.1.7	2179.8	0.04	1:160	50	n.a.
29	27.2	Negative	n.p.	825.7	0.17	1:160	55	53
30	21.3	Positive	B.1.1.7	575.0	0.08	1:40	59	n.a.
31	15.3	Positive	B.1.177	200.8	0.03	1:40	64	57
32	39.0	Negative	n.p.	529.8	0.01	1:20	66	n.a.
33	39.0	Negative	n.p.	1379.6	0.06	1:160	67	n.a.
34	15.6	Positive	B.1.1.7	70.2	0.02	1:10	68	n.a.
35	17.5	Positive	B.1.1.7	599.1	0.05	1:160	68	64
36	39.0	Negative	n.p.	1742.9	2.55	1:160	69	n.a.

(continued next page)

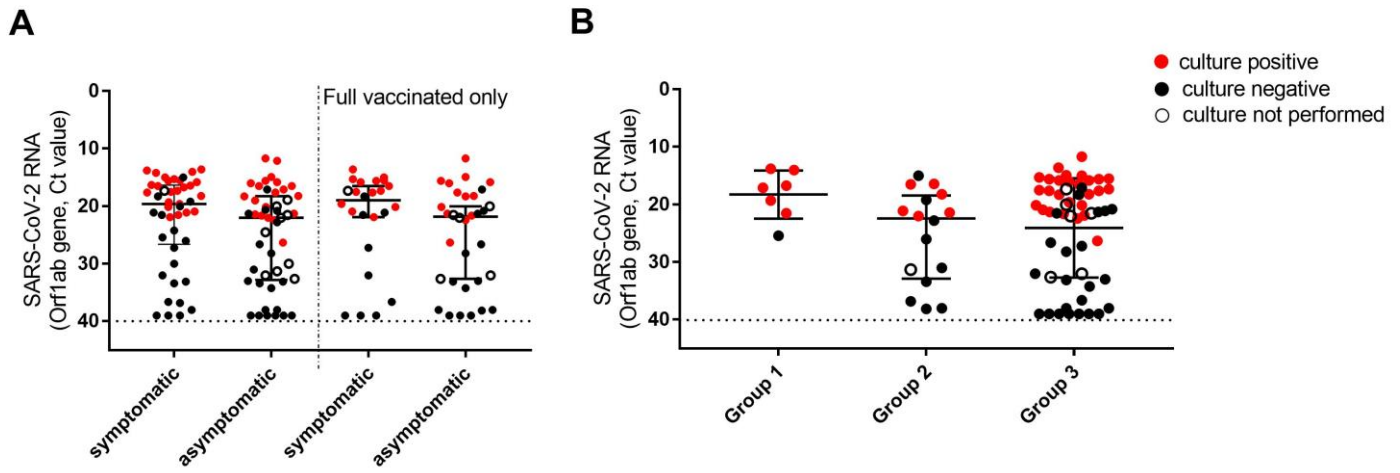
37	21.5	n.p.	B.1.1.7	475.0	0.04	1:20	69	n.a.
38	17.3	Positive	B.1.1.7	208.8	0.01	1:160	70	67
39	22.0	n.p.	P.1	1903.1	0.02	1:160	70	n.a.
40	13.6	Positive	P.1	574.7	0.03	1:40	72	70
41	38.0	Negative	n.p.	3569.7	0.49	1:1260	72	n.a.
42	36.6	Negative	n.p.	597.9	0.1	1:20	74	73
43	32.0	n.p.	n.p.	481.2	0.54	1:40	78	n.a.
44	21.6	Positive	B.1.1.7	506.8	0.01	1:20	83	n.a.
45	20.0	Negative	P.1	676.6	0.02	1:80	n.a.	n.a.
46	18.9	n.p.	B.1.1.7	69.6	0.03	<1:10	n.a.	n.a.
47	16.3	Positive	P.1	732.6	0.02	1:40	n.a.	n.a.
48	14.2	Positive	B.1.1.7	382.6	0.02	<1:10	n.a.	n.a.
49	33.1	Negative	n.p.	609.5	0.3	1:80	n.a.	n.a.
50	12.1	Positive	B.1.1.7	36.3	0.02	<1:10	n.a.	n.a.

561 Abbreviation: DTV, days from first dose vaccination to testing; DSV, days from first dose vaccination to
562 symptoms onset (for symptomatic individuals only); n.p., not performed; n.a., not available, as vaccination
563 date unknown, or absence of symptoms at diagnosis.

564

565 **Figure 1.**

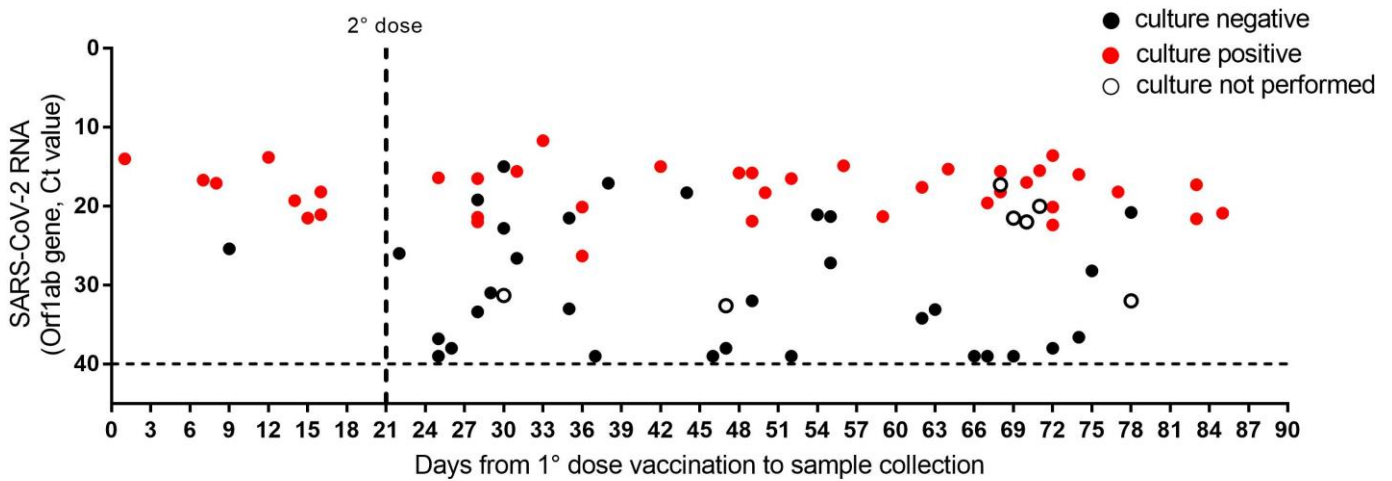
566



567

568

569 **Figure 2.**



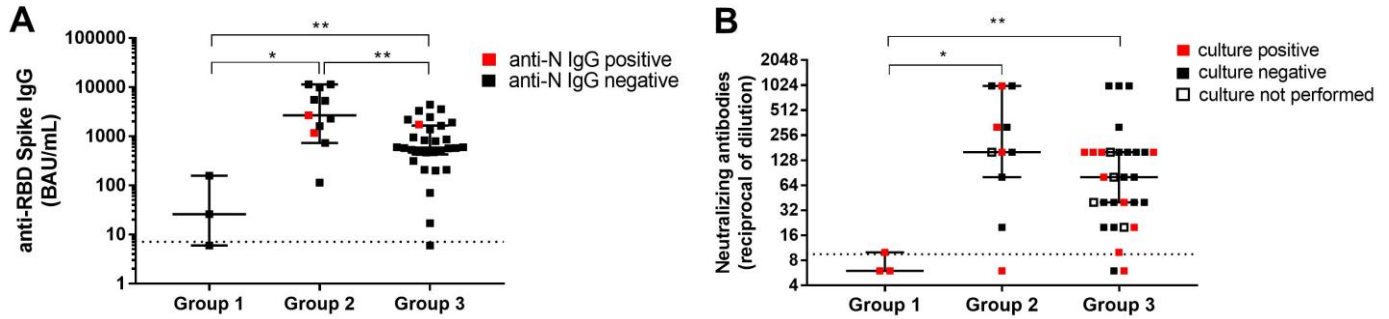
570

571

572

573 **Figure 3.**

574

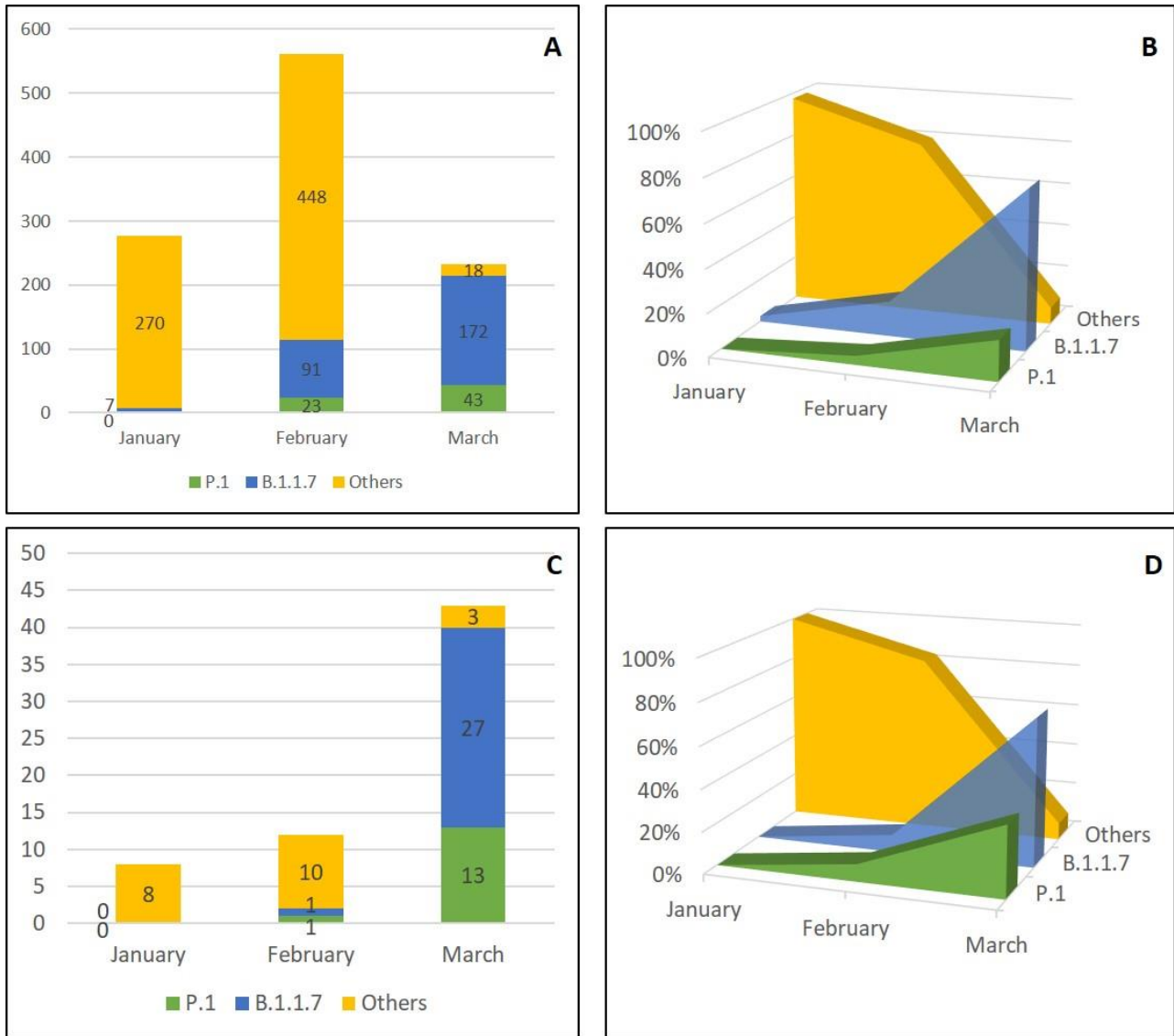


575

576

577 **Figure 4.**

578



579

580

581

582

583

584

585

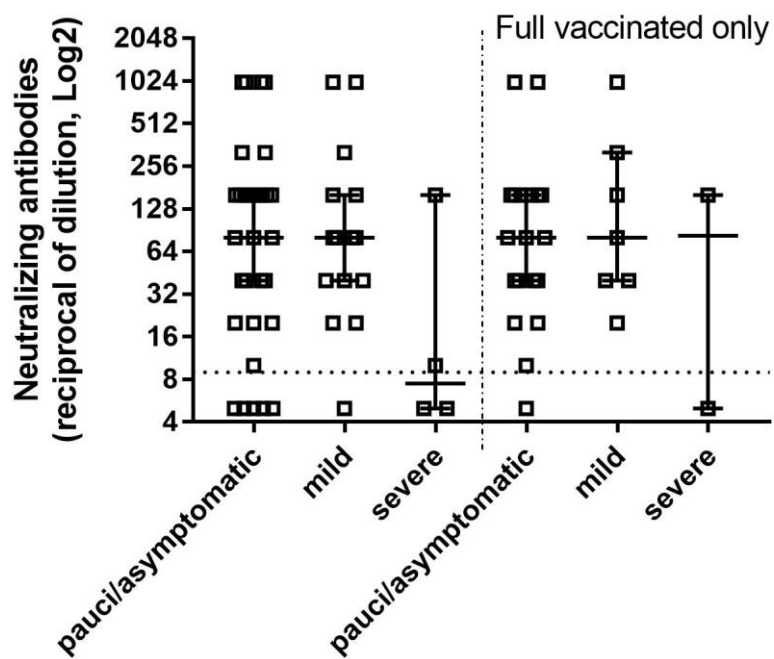
586

587

588

589

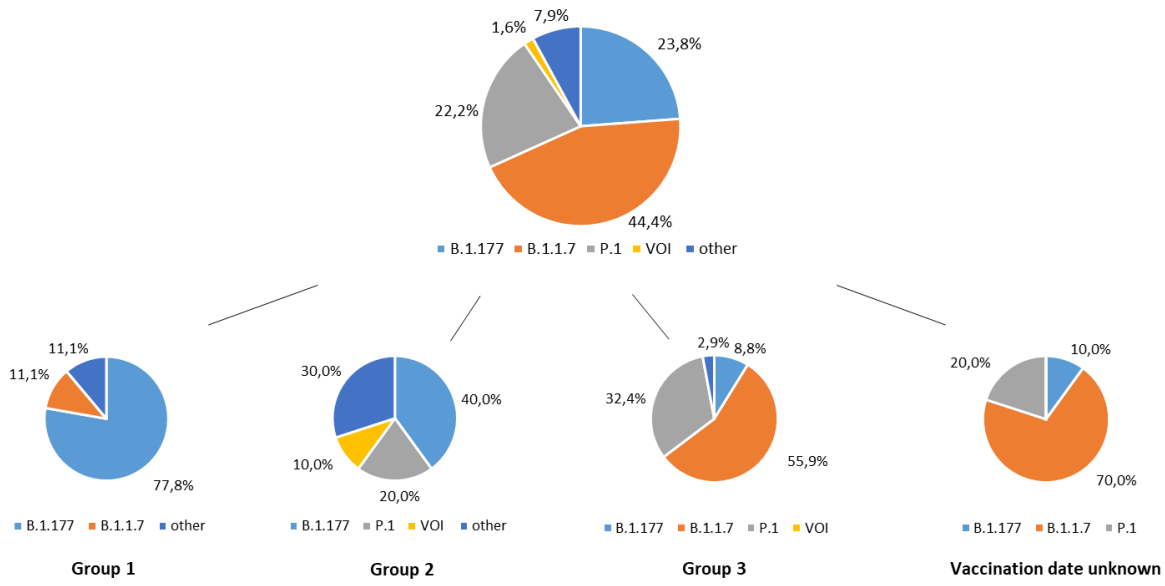
590 **Figure S1.**



591

592

593 **Figure S2.**



594

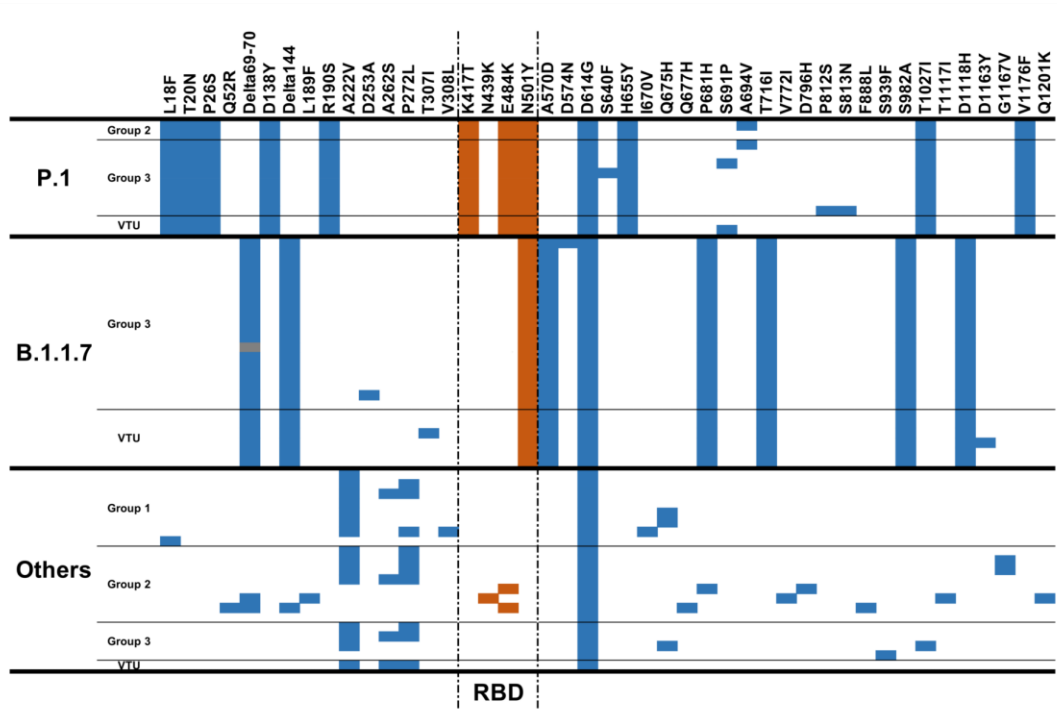
595

B)		January	February	March
Group 1	B.1.177	6	1	
	B.1.1.7			1
	P.1			
	VOI			
	Other	1		
Group 2	B.1.177		4	
	B.1.1.7			
	P.1		1	1
	VOI		1	
	Other		1	2
Group 3	B.1.177		2	1
	B.1.1.7		1	18
	P.1			11
	VOI			
	Other		1	
Vaccination date unknown	B.1.177	1		
	B.1.1.7			7
	P.1			2
	VOI			
	Other			

596

597

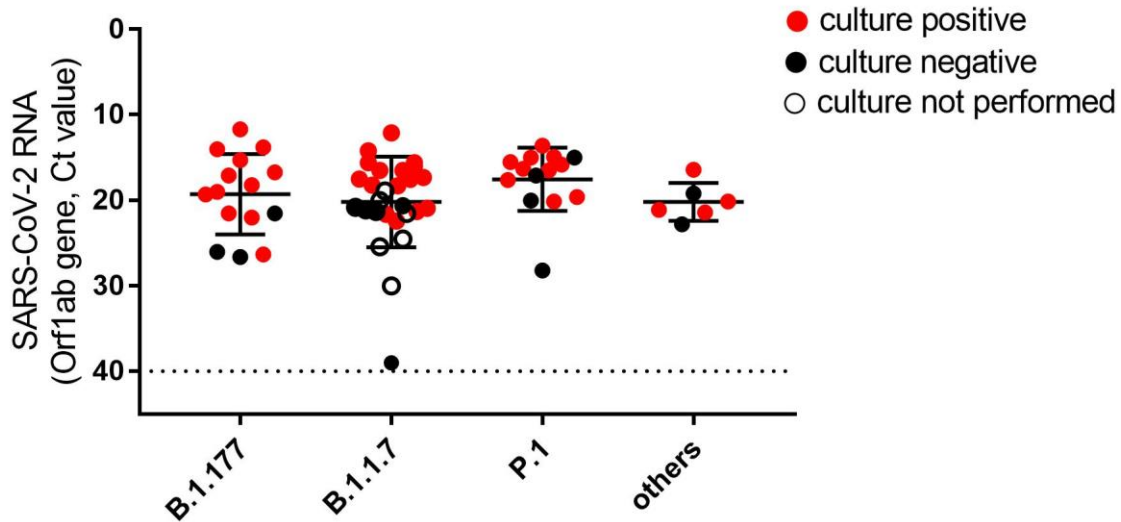
598 **Figure S3.**



599

600

601 **Figure S4.**



602

603