

Examining Health Service Rates Among Residents of Retirement Homes and Other Older Adult Populations in Ontario, Canada: A Population-Based Cohort Study

Derek R. Manis, MHSc (0000-0003-1396-3626)¹⁻³; Jeffrey W. Poss, PhD⁴; Aaron Jones, PhD (0000-0002-6282-3614)²; Paula A. Rochon, MD, MPH^{3,5-7}; Susan E. Bronskill, PhD (0000-0002-7341-0655)^{3,5,6,8}; Michael A. Campitelli, MPH³; Richard Perez, MSc³; Nathan M. Stall, MD (0000-0003-1239-1937)^{5,6,9,10}; Ahmad Rahim, MSc³; Glenda Babe, MA³; Jean-Éric Tarride, PhD^{1,2}; Julia Abelson, PhD^{1,2}; and Andrew P. Costa, PhD (0000-0001-9212-5641)^{1-3,11-13}

1. Centre for Health Economics and Policy Analysis, McMaster University, Hamilton, Ontario, Canada
2. Department of Health Research Methods, Evidence, and Impact, McMaster University, Hamilton, Ontario, Canada
3. ICES, Toronto, Ontario, Canada
4. School of Population and Public Health, University of Waterloo, Waterloo, Ontario, Canada
5. Women's College Research Institute, Toronto, Ontario, Canada
6. Institute for Health Policy, Management & Evaluation, University of Toronto, Toronto, Ontario, Canada
7. Division of Geriatric Medicine, Faculty of Medicine, University of Toronto, Toronto, Ontario, Canada
8. Sunnybrook Research Institute, Toronto, Ontario, Canada
9. Division of General Internal Medicine and Geriatrics, Sinai Health and University Health Network, Toronto, Ontario, Canada
10. National Institute on Ageing, Ryerson University, Toronto, Ontario, Canada
11. Centre for Integrated Care, St. Joseph's Health System, Hamilton, Ontario, Canada
12. Schlegel Research Institute for Aging, Waterloo, Ontario, Canada
13. Department of Medicine, McMaster University, Hamilton, Ontario, Canada

Corresponding Author: Andrew P. Costa, McMaster University, 1280 Main St W, MIP 309A, Hamilton, ON L8S 4K1, Canada. (acosta@mcmaster.ca)

Running Title: "EXAMINING RESIDENTS OF RETIREMENT HOMES"

Word Count: 2,464 (Max: 2,500)

Abstract: 250 (Max: 250)

References: 38

Exhibitions: 1 Figure; 3 Tables

Supplementary Material: 6 Tables

Funding: This work was supported partially by Schlegel Chair in Clinical Epidemiology in Aging at McMaster University, as well as the Ontario Ministry of Health System Research Fund (2017-01097).

Keywords: Retirement Homes; Assisted Living; Long-Term Care; Home Care; Older Adults

Competing Interests: We have no competing interests, financial or otherwise, to disclose.

1 **ABSTRACT**

2 **Background:** There are no standardized reporting systems or assessments specific to residents of
3 retirement homes in North America. As such, little is known about these older adults as a distinct
4 population. We created a new population-level cohort of residents of retirement homes and
5 examined their health service rates relative to other older adult populations.

6 **Methods:** We conducted a population-based retrospective cohort study in Ontario, Canada in 2018.
7 The postal codes of all licensed retirement homes ($n = 757$) were classified and linked to individual-
8 level health system administrative data to derive a cohort of residents of retirement homes. A
9 generalized linear model with a gamma distribution and log link function was used to model rates of
10 emergency department visits, hospitalizations, alternate levels of care (ALC) days, primary care visits,
11 and specialist physician visits.

12 **Results:** Residents of retirement homes comprised two percent of the older adult population in
13 Ontario ($n = 54,773$; 2.3%). After adjustment for relevant characteristics, residents of retirement
14 homes had 10 times the rate of emergency department visits (Relative Rate [RR] 10.02, 95%
15 Confidence Interval [CI] 9.83 to 10.21), 20 times the rate of hospitalizations (RR 20.43, 95% CI
16 20.08 to 20.78), and 44 times the rate ALC days (RR 43.91, 95% CI 43.28 to 44.54) compared to
17 community-dwelling older adults.

18 **Interpretation:** Residents of retirement homes are a distinct older adult population with high rates
19 of hospital-based care. Our findings contribute to policy debates about the provision of health care
20 in privately operated congregate care settings for older adults.

21 INTRODUCTION

22 Retirement homes are private, congregate living environments that deliver supportive care to
23 adults who are 65 years of age and older (1,2). Retirement homes are often marketed to provide a
24 lifestyle and community, and these homes provide a range of assisted living care services (e.g., meals,
25 administration of medication, nursing services, etc.) on a cost recovery basis (2). These homes
26 predominately operate on a private, for-profit business model, and the room, board, and services are
27 purchased by residents and/or their family or friend caregivers (1,2).

28 Retirement homes are referred to as assisted living facilities in other North American
29 jurisdictions. The legislative and regulatory operating requirements for these homes vary (3); Ontario
30 is the only jurisdiction to regulate and license retirement homes through an independent, not-for-
31 profit regulator (i.e., Retirement Homes Regulatory Authority [RHRA]) (2). There are more than 700
32 licensed retirement homes in Ontario that can house over 70,000 older adults, which is comparable
33 to the number of beds in the long-term care home sector (1,2,4). Unlike long-term care homes
34 where the validated Resident Assessment Instrument Minimum Data Set (RAI-MDS) is used, there
35 are no standardized assessments specific to residents of retirement homes (5). The absence of
36 standardized assessments that are periodically conducted on residents of retirement homes, coupled
37 with the privately financed nature of the sector, presents unique challenges to identify these older
38 adults using health system administrative data and understand their health service use relative to
39 other older adult populations.

40 While there is a body of research describing the assisted living sector and residents of
41 assisted living facilities in the United States (6–12), the Canadian literature requires a more in-depth
42 investigation. Canadian studies have investigated transitions to a long-term care home, risk of
43 hospitalization among those who live with dementia, and events and health conditions associated
44 with the transition to a congregate care setting for older adults (13–17). To date, no population- or

45 provincial-level cohort of residents of retirement homes in Canada has been created to define the
46 retirement home and assisted living sector, describe the characteristics and health service use of
47 older adults who purchase these services, and position the sector in the gradient of care services and
48 housing needs for older adults. In this study, we create a new population-level cohort of residents of
49 retirement homes and examine their health service rates relative to other older adult populations
50 (i.e., residents of long-term care homes, home care recipients in the community, and community-
51 dwelling older adults) in Ontario, Canada.

52 **METHODS**

53 **Study Design and Setting**

54 We conducted a population-based retrospective cohort study using linked, individual-level
55 health system administrative data in 2018 in Ontario, Canada at ICES. ICES is an independent, non-
56 profit research institute whose legal status under Ontario's health information privacy law allows it
57 to collect and analyze health care and demographic data, without consent, for health system
58 evaluation and improvement. The use of the data in this project is authorized under section 45 of
59 Ontario's *Personal Health Information Protection Act* (PHIPA) and does not require review by a Research
60 Ethics Board. We followed the REporting of studies Conducted using Observational Routinely-
61 collected health Data (RECORD) statement guideline (Supplemental Table 1) (18).

62 **Data**

63 The RHRA shared their public register of licensed retirement homes, which contains
64 historical data on the license of the home, resident and suite capacities, provision of regulated care
65 services, and full postal address. There were 757 licensed retirement homes in 2018 (Supplemental
66 Table 2). We verified and visualized the postal code of each licensed retirement home through a
67 variety of sources (i.e., Canada Post, Statistics Canada, and Google Maps). Building off research that
68 examined the feasibility of using postal codes to identify residents of retirement homes (19), we used

69 a modified taxonomy to classify the postal code of each licensed retirement home as unique, or not
70 unique, to the retirement home. We imported the RHRA's public register and our classified postal
71 code data on licensed retirement homes to ICES. The health system administrative datasets used are
72 listed and described in Supplemental Table 3. These datasets were linked using unique encoded
73 identifiers and analyzed at ICES.

74 **Identification of Residents of Retirement Homes**

75 We identified adults who were 65 years of age or older and had a postal code that ever
76 matched to a licensed retirement home with a unique postal code classification in 2018 (Figure 1).
77 There were substantially more adults who were 65 years of age or older and had a postal code that
78 matched to a licensed retirement home with a not unique postal code classification than beds in
79 licensed retirement homes. We limited our identification of residents of retirement homes with not
80 unique postal codes to those who received home care services in a retirement home, as the receipt of
81 home care services specified whether the services were provided in a retirement home. We defined
82 the index date as when the adults' postal code matched to the postal code of a licensed retirement
83 home; we terminated follow-up when the adult transitioned to a long-term care home, complex
84 continuing care facility, or died.

85 We excluded adults who were institutionalized in a long-term care home that was co-located
86 with a retirement home and adults who resided in a long-term care home for more than half of 2018
87 (i.e., six months plus one day) ($n = 15,626$). Adults who resided in a continuing care facility for the
88 whole year in 2018 were excluded ($n = 57$). We also excluded adults who received shift nursing in
89 retirement homes ($n = 168$), as these individuals were temporarily housed in the retirement home
90 through convalescent government programs, and so these individuals were not true residents of
91 retirement homes. We excluded duplicate adults who moved from one retirement home to another
92 during the year ($n = 807$). According to the RHRA's register, there were 75,822 beds in all licensed

93 retirement homes in 2018, and our approach identified a cohort of 54,733 residents of retirement
94 homes ($n = 54,733$; 72.2%).

95 **Identification of Other Older Adult Populations**

96 For comparison purposes, we identified residents of long-term care homes, older adults who
97 received home care services in the community, and community-dwelling adults who were 65 years of
98 age and older in 2018. Residents of long-term care homes were identified by their inclusion in the
99 Continuing Care Reporting System ($n = 96,528$). Adults who received home care services in their
100 community were differentiated from residents of retirement homes by their postal code that never
101 matched to a postal code associated with a licensed retirement home ($n = 290,245$). Community-
102 dwelling adults were defined as those who were 65 years of age and older and never met any of the
103 above criteria ($n = 1,967,612$). We defined the index date as when the adult met the criteria to be
104 categorized as one of the mutually exclusive older adult populations in 2018; we terminated follow-
105 up when the adult met the criteria to be categorized as a different older adult population or died.

106 **Measures**

107 The outcomes of interest were annual rates of emergency department visits, hospitalizations,
108 alternate levels of care (ALC) days, primary care visits, and specialist physician visits. These rates
109 were standardized at the level of the individual (i.e., from index to end of follow-up). Emergency
110 department visits were defined as any care received in an emergency department. Hospitalizations
111 were defined as any hospitalization. ALC days were obtained from the Discharge Abstract Database.

112 Primary care visits among residents of retirement homes, home care recipients in the
113 community, and community-dwelling older adults were defined as any billing by a family or
114 community medicine physician to the universal health insurance plan where the location of the visit
115 occurred in an office, home, or via the telephone. Primary care visits among residents of long-term
116 care homes were similarly defined in accordance with the Monthly Management System and

117 included a long-term care home as the visit location. Specialist physician visits were defined as any
118 physician billing whose speciality was not family or community medicine to the universal health
119 insurance plan. All individuals could only have one primary care and/or specialist physician visit per
120 physician per day.

121 Sociodemographic (i.e., age and sex) and community characteristics (i.e., urban location,
122 neighborhood income quintile, Ontario Marginalization Index) were obtained at the index date.
123 Clinical comorbidities were also obtained at the index date from physician-diagnosed billing codes to
124 the universal health insurance plan in Ontario, ICD-9 or ICD-10 diagnosis codes, and validated
125 ICES-derived cohorts (20–27).

126 **Statistical Analysis**

127 Counts and proportions were calculated for categorical sociodemographic, community, and
128 clinical variables; means and standard deviations were calculated for continuous, normally
129 distributed sociodemographic variables, and medians and interquartile ranges were calculated for
130 continuous, not normally distributed sociodemographic variables. A generalized linear model with a
131 gamma distribution and log link function was used to model the standardized health service rates
132 among the different older adult populations, and community-dwelling older adults were used as the
133 reference population. The gamma distribution and log link function is appropriate to model
134 dispersed rates and/or costs in dollars (28). Crude and adjusted relative rates and 95% confidence
135 intervals were calculated from exponentiated beta coefficients. All statistical tests were two-tailed,
136 and the level of statistical significance was $P < .05$. Variance inflation factors were calculated to
137 assess for multicollinearity. A sex-stratified subgroup analysis was conducted. Dataset processing
138 and statistical analyses were conducted in SAS Enterprise 9.4 (Cary, NC, USA).

139 **RESULTS**

140 Residents of retirement homes comprised two percent of adults aged 65 and older in
141 Ontario in 2018 ($n = 54,773$; 2.3%). More than two thirds of residents of retirement homes were
142 female ($n = 37,768$; 69.0%), and residents of retirement homes had a mean age of 87.7 years (Table
143 1). Hypertension ($n = 47,212$; 86.2%), osteoarthritis ($n = 36,978$; 67.5%), mood disorders ($n =$
144 $35,000$; 63.9%) and dementia ($n = 20,651$; 37.7%) were the most prevalent clinical comorbidities
145 among residents of retirement homes. More than 90% of all residents of retirement homes resided
146 in urban communities ($n = 50,650$; 92.5%).

147 The crude and sex-stratified health service rates are described in Supplemental Table 4. After
148 adjustment for sociodemographic characteristics and clinical comorbidities at index, residents of
149 retirement homes had 10 times the rate of emergency department visits (Relative Rate [RR] 10.02,
150 95% Confidence Interval [CI], 9.83 to 10.21), 20 times the rate of hospitalizations (RR 20.43, 95%
151 CI 20.08 to 20.78), 44 times the rate of ALC days (RR 43.91, 95% CI 43.28 to 44.54), and nearly
152 twice the rate of primary care (RR 1.99, 95% CI 1.97 to 2.02) and specialist physician visits (RR 1.62,
153 95% CI 1.59 to 1.65), compared to community-dwelling older adults (Table 2). Male residents of
154 retirement homes had higher rates of emergency department visits, hospitalizations, and ALC days
155 than female residents of retirement homes, but similar rates of primary care and specialist physician
156 visits (Table 3). Adjusted beta coefficients and standard errors are available in Supplementary Tables
157 5 and 6.

158 **INTERPRETATION**

159 Residents of retirement homes had the highest rates of emergency department visits,
160 hospitalizations, and ALC days relative to the other older adult populations in Ontario, Canada in
161 2018. These older adults purchase health care services from their retirement home to support
162 independent living, yet we found they consume more publicly funded hospital-based care and have
163 lower rates of primary care and specialist physician visits. Our findings contribute to on-going policy

164 debates about privately financed and delivered health care, and the provision of health care in
165 privately operated congregate care settings for older adults, in jurisdictions that provide universal
166 health insurance to its citizens (29,30).

167 The variation in legislative and operating requirements for retirement homes has been shown
168 to affect rates of hospital-based use among these residents (31,32). Previous studies found residents
169 of retirement homes have substantially higher rates of emergency department visits and
170 hospitalizations compared to community-dwelling older adults and residents of long-term care
171 homes (11,33). Our findings align with the literature and may suggest residents of retirement homes
172 have higher needs for care compared to other older adult populations.

173 Residents of retirement homes had the highest rates of ALC days relative to the other older
174 adult populations in our study, which suggests the needs of some residents may exceed the capacity
175 of their home to provide the level and scope of care needed. Moreover, some of these residents may
176 not be able to afford additional care from their retirement home, as rates for heavy care in Ontario
177 can exceed \$6,000 per month (34). Nearly half of the residents of retirement homes lived in middle-
178 and low-income neighborhoods. The costs for heavy care are likely out of reach for many of these
179 older adults (35–37), which underscores the need for equitable policies that support health and
180 housing for older adults.

181 Residents of retirement homes had lower rates of primary care and specialist physician visits
182 relative to home care recipients who lived in the community. Residents of long-term care homes
183 receive primary care through the Monthly Management System, but no similar model exists for
184 retirement homes. Our findings suggest the implementation and expansion of similar medical
185 models of care in retirement homes may be an important intervention to promote continuity of care
186 and reduce rates of hospital-based care among this population.

187 Retirement home and assisted living markets in North America are rapidly expanding to
188 accommodate the varying preferences of older adults for housing, health, and social care (2,5–
189 7,35,38). The growth and availability of beds in retirement homes and assisted living facilities
190 outpaces that of long-term care homes (2,38), and this growth is likely attributed to fewer legislative
191 and regulatory requirements than long-term care homes. The increased supply of retirement homes
192 may suggest that retirement homes are a substitute for a long-term care home (7,38), which suggests
193 that retirement homes are an important link in the continuum of care settings for older adults and
194 should be subject to similar regulatory oversight.

195 There are limitations to our study. We conducted a secondary analysis of health system
196 administrative data; as such, there is the possibility of misclassification bias and residual confounding
197 could influence our results and interpretation. We were unable to identify residents of retirement
198 homes who did not receive home care services in licensed retirement homes with not unique postal
199 codes. We were also unable to determine the occupancy of each retirement home, as the RHRA
200 does not require operators to disclose this statistic as a condition for licensing (2). As the occupancy
201 of each retirement home is unknown, the size of our cohort of residents of retirement homes may
202 reflect the actual population size.

203 Residents of retirement home are a unique older adult population in Ontario, Canada. Future
204 research should examine with more granularity the reasons why residents of retirement homes
205 visited emergency departments and/or were hospitalized to understand their needs for hospital-
206 based care that may not be met in their retirement home.

207 **ACKNOWLEDGMENTS**

208 This study was supported by ICES, which is funded by an annual grant from the Ontario
209 Ministry of Health (MOH) and the Ministry of Long-Term Care (MLTC). Parts of this material are
210 based on data and/or information compiled and provided by CIHI. The analyses, conclusions,

211 opinions, and statements expressed herein are solely those of the authors and do not reflect those of
212 the funding or data sources; no endorsement is intended or should be inferred. We extend our
213 gratitude to Paul Pham, Adriane Castellino, and Chloe Ma at the Retirement Homes Regulatory
214 Authority for sharing the registry of licensed retirement homes.

REFERENCES

1. Poss JW, Sinn C-LJ, Grinchenko G, Blums J, Peirce T, Hirdes J. Location, Location, Location: Characteristics and Services of Long-Stay Home Care Recipients in Retirement Homes Compared to Others in Private Homes and Long-Term Care Homes. *Health Policy Polit Sante*. 2017;12(3):80–93.
2. Roblin B, Deber R, Kuluski K, Silver MP. Ontario's Retirement Homes and Long-Term Care Homes: A Comparison of Care Services and Funding Regimes. *Can J Aging*. 2019 Jun;38(2):155–67.
3. Temkin-Greener H, Mao Y, Ladwig S, Cai X, Zimmerman S, Li Y. Variability and Potential Determinants of Assisted Living State Regulatory Stringency. *J Am Med Dir Assoc*. 2021;22(8):1714-1719.e2.
4. Poss J, Sinn C-L, Grinchenko G, Salam-White L, Hirdes J. Comparing Changes and Transitions of Home Care Clients in Retirement Homes and Private Homes. *Can J Aging*. 2019 Aug 15;1–11.
5. Simmons SF, Schnelle JF, Sathe NA, Slagle JM, Stevenson DG, Carlo ME, et al. Defining Safety in the Nursing Home Setting: Implications for Future Research. *J Am Med Dir Assoc*. 2016 Jun 1;17(6):473–81.
6. Cornell PY, Zhang W, Thomas KS. Changes in Long-Term Care Markets: Assisted Living Supply and the Prevalence of Low-Care Residents in Nursing Homes. *J Am Med Dir Assoc*. 2020 Aug;21(8):1161-1165.e4.
7. Grabowski DC, Stevenson DG, Cornell PY. Assisted living expansion and the market for nursing home care. *Health Serv Res*. 2012 Dec;47(6):2296–315.
8. Han K, Trinkoff AM, Storr CL, Lerner N, Yang BK. Variation Across U.S. Assisted Living Facilities: Admissions, Resident Care Needs, and Staffing. *J Nurs Scholarsh Off Publ Sigma Theta Tau Int Honor Soc Nurs*. 2017;49(1):24–32.
9. Thomas KS, Zhang W, Cornell PY, Smith L, Kaskie B, Carder PC. State Variability in the Prevalence and Healthcare Utilization of Assisted Living Residents with Dementia. *J Am Geriatr Soc*. 2020;68(7):1504–11.
10. Arneson L, Bender AA, Robert MN, Perkins MM. Optimizing Quality of Life With Cognitive Impairment: A Study of End-of-Life Care in Assisted Living. *J Am Med Dir Assoc*. 2020 May;21(5):692–6.
11. Bartley MM, Quigg SM, Chandra A, Takahashi PY. Health Outcomes From Assisted Living Facilities: A Cohort Study of a Primary Care Practice. *J Am Med Dir Assoc*. 2018 Mar;19(3).
12. Thomas KS, Dosa D, Gozalo PL, Grabowski DC, Nazareno J, Makineni R, et al. A Methodology to Identify a Cohort of Medicare Beneficiaries Residing in Large Assisted Living Facilities Using Administrative Data. *Med Care*. 2018;56(2):e10–5.

13. Maxwell CJ, Soo A, Hogan DB, Wodchis WP, Gilbert E, Amuah J, et al. Predictors of Nursing Home Placement from Assisted Living Settings in Canada. *Can J Aging Rev Can Vieil*. 2013 Dec;32(4):333–48.
14. Maxwell CJ, Amuah JE, Hogan DB, Cepoiu-Martin M, Gruneir A, Patten SB, et al. Elevated Hospitalization Risk of Assisted Living Residents With Dementia in Alberta, Canada. *J Am Med Dir Assoc*. 2015;16(7):568–77.
15. Rockwood JK, Richard M, Garden K, Hominick K, Mitnitski A, Rockwood K. Precipitating and predisposing events and symptoms for admission to assisted living or nursing home care. *Can Geriatr J CGJ*. 2014;17(1):16–21.
16. Manis DR, Rahim A, Poss JW, Bielska IA, Bronskill SE, Tarride J-E, et al. Association Between Dementia Care Programs in Assisted Living Facilities and Transitions to Nursing Homes in Ontario, Canada: A Population-Based Cohort Study. *J Am Med Dir Assoc*. 2021;(100893243).
17. Manis DR, Rahim A, Poss JW, Bielska IA, Bronskill SE, Tarride J-É, et al. Do assisted living facilities that offer a dementia care program differ from those that do not? A population-level cross-sectional study in Ontario, Canada. *BMC Geriatr*. 2021 Aug 16;21(1):463.
18. Benchimol EI, Smeeth L, Guttman A, Harron K, Moher D, Petersen I, et al. The REporting of studies Conducted using Observational Routinely-collected health Data (RECORD) Statement. *PLOS Med*. 2015 Oct 6;12(10):e1001885.
19. Brath H, Kim SJ, Bronskill SE, Rochon PA, Stall NM. Co-locating Older Retirement Home Residents: Uncovering an Under-Researched Population via Postal Code. *Healthc Policy*. 2020 Nov 10;16(2):69–81.
20. Austin PC, Daly PA, Tu JV. A multicenter study of the coding accuracy of hospital discharge administrative data for patients admitted to cardiac care units in Ontario. *Am Heart J*. 2002;144(2):290–6.
21. Gershon AS, Wang C, Guan J, Vasilevska-Ristovska J, Cicutto L, To T. Identifying Individuals with Physician Diagnosed COPD in Health Administrative Databases. *COPD J Chronic Obstr Pulm Dis*. 2009;6(5):388–94.
22. Gershon AS, Wang C, Guan J, Vasilevska-Ristovska J, Cicutto L, To T. Identifying patients with physician-diagnosed asthma in health administrative databases. *Can Respir J J Can Thorac Soc*. 2009;16(6):183–8.
23. Hux JE, Ivis F, Flintoft V, Bica A. Diabetes in Ontario: Determination of prevalence and incidence using a validated administrative data algorithm. *Diabetes Care*. 2002 Mar 1;25(3):512–6.
24. Jaakkimainen RL, Bronskill SE, Tierney MC, Herrmann N, Green D, Young J, et al. Identification of Physician-Diagnosed Alzheimer’s Disease and Related Dementias in Population-Based Administrative Data: A Validation Study Using Family Physicians’ Electronic Medical Records. *J Alzheimers Dis*. 2016 Jan 1;54(1):337–49.

25. Schultz SE, Rothwell DM, Chen Z, Tu K. Identifying cases of congestive heart failure from administrative data: a validation study using primary care patient records. *Chronic Dis Inj Can.* 2013 Jun;33(3):160–6.
26. Tu K, Campbell NR, Chen Z-L, Cauch-Dudek KJ, McAlister FA. Accuracy of administrative databases in identifying patients with hypertension. *Open Med.* 2007 Apr 14;1(1):e18–26.
27. Widdifield J, Bernatsky S, Paterson JM, Tu K, Ng R, Thorne JC, et al. Accuracy of Canadian Health Administrative Databases in Identifying Patients With Rheumatoid Arthritis: A Validation Study Using the Medical Records of Rheumatologists. *Arthritis Care Res.* 2013;65(10):1582–91.
28. Hardin JW, Hilbe JM. *Generalized Linear Models and Extensions*. 4th ed. College Station, Texas, USA: Stata Press; 2018.
29. Allin S, Rudoler D, Mullen J. Experiences with Two-Tier Home Care in Canada: A Focus on Inequalities in Home Care Use by Income in Ontario. In: Flood CM, Thomas B, editors. *Is Two-Tier Health Care the Future?* Ottawa: University of Ottawa Press; 2020. p. 123–44.
30. Hurley J. Borders, Fences, and Crossings: Regulating Parallel Private Finance in Health Care. In: Flood CM, Thomas B, editors. *Is Two-Tier Health Care the Future?* Ottawa: University of Ottawa Press; 2020. p. 69–91.
31. Hua CL, Zhang W, Cornell PY, Rahman M, Dosa DM, Thomas KS. Characterizing Emergency Department Use in Assisted Living. *J Am Med Dir Assoc.* 2021 Apr 1;22(4):913-917.e2.
32. Carder PC. State Regulatory Approaches for Dementia Care in Residential Care and Assisted Living. *The Gerontologist.* 2017;57(4):776–86.
33. McGregor MJ, McGrail KM, Abu-Laban RB, Ronald LA, Baumbusch J, Andrusiek D, et al. Emergency department visit rates and patterns in Canada’s Vancouver coastal health region. *Can J Aging Rev Can Vieil.* 2014 Jun;33(2):154–62.
34. Canadian Mortgage and Housing Corporation. Results from the 2020 Seniors Housing Survey [Internet]. 2020 [cited 2021 Jul 15]. Available from: <https://www.cmhc-schl.gc.ca/en/blog/2020-housing-observer/results-2020-seniors-housing-survey>
35. Pearson CF, Quinn CC, Loganathan S, Datta AR, Mace BB, Grabowski DC. The Forgotten Middle: Many Middle-Income Seniors Will Have Insufficient Resources For Housing And Health Care. *Health Aff Proj Hope.* 2019;38(5):101377hlthaff201805233.
36. Stevenson DG, Grabowski DC. Sizing up the market for assisted living. *Health Aff (Millwood).* 2010 Feb;29(1):35–43.
37. Bowblis JR. Nursing home prices and market structure: the effect of assisted living industry expansion. *Health Econ Policy Law.* 2014;9(1):95–112.

38. Silver BC, Grabowski DC, Gozalo PL, Dosa D, Thomas KS. Increasing Prevalence of Assisted Living as a Substitute for Private-Pay Long-Term Nursing Care. *Health Serv Res.* 2018;53(6):4906–20.

Figure 1. Creation of the Residents of Retirement Homes Cohort in 2018 ($n = 54,773$)

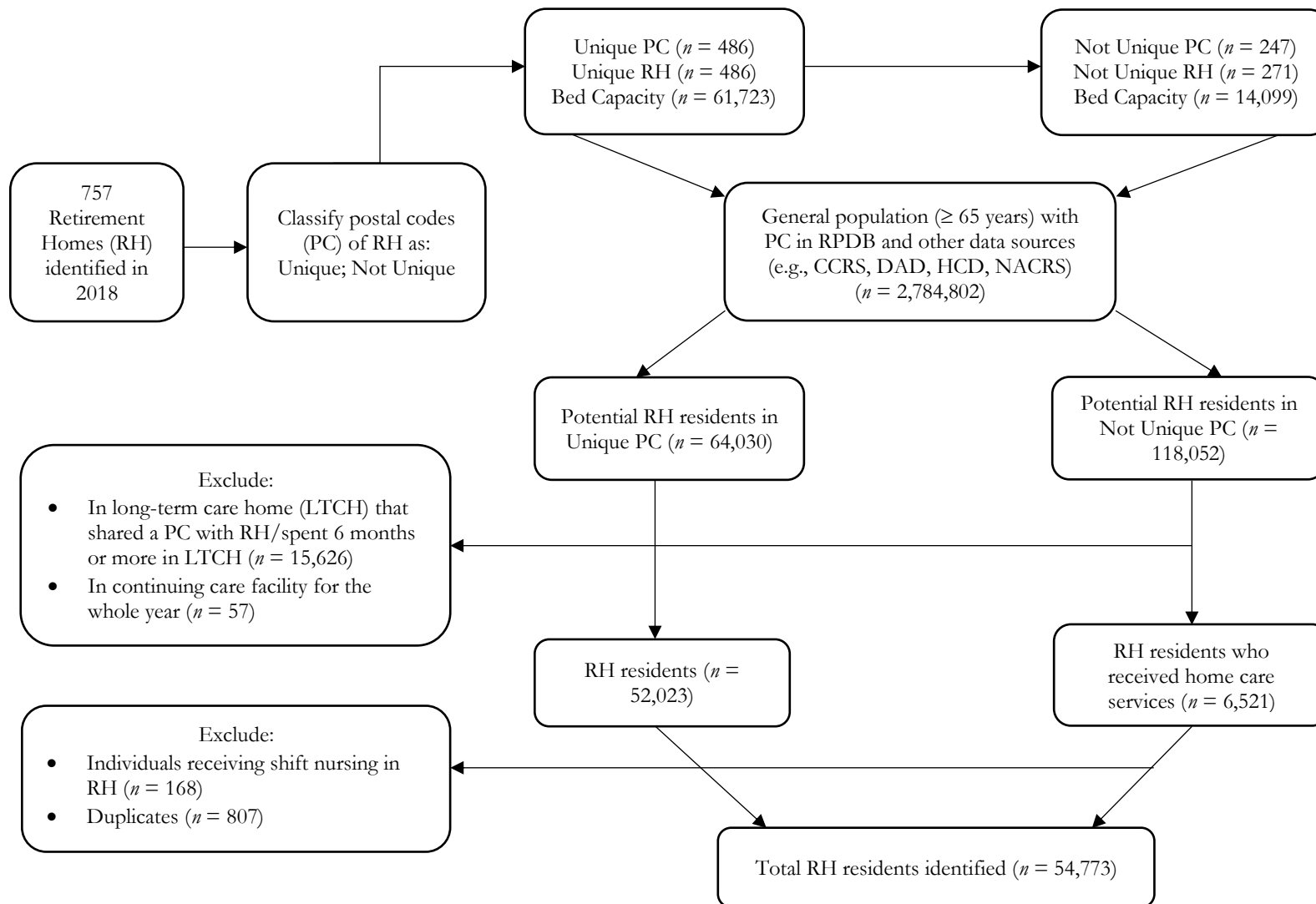


Table 1. Sociodemographic Characteristics and Clinical Comorbidities Among Residents of Retirement Homes, Residents of Long-Term Care Homes, Home Care Recipients in the Community, and Community-Dwelling Older Adults in 2018 ($n = 2,419,158$)

	Residents of Retirement Homes	Residents of Long-Term Care Homes	Home Care Recipients in the Community	Community-Dwelling Older Adults
<i>n</i> (%)	54,773 (2.3)	96,528 (4.0)	290,245 (12.0)	1,967,612 (81.6)
Demographic Characteristics, <i>n</i> (%)				
Age, mean (SD)	87.7 (7.21)	85.3 (8.22)	79.3 (8.41)	73.8 (6.68)
Female	37,768 (69.0)	66,097 (68.5)	163,216 (56.2)	1,046,805 (53.2)
Clinical Comorbidities, <i>n</i> (%)				
Asthma	8,334 (15.2)	13,903 (14.4)	52,169 (18.0)	250,749 (12.7)
Cancer	14,557 (26.6)	19,578 (20.3)	93,550 (32.2)	316,863 (16.1)
Cardiac Arrhythmias	19,723 (36.0)	28,585 (29.6)	90,111 (31.0)	320,234 (16.3)
Cerebrovascular Accident	11,796 (21.5)	26,781 (27.7)	51,683 (17.8)	109,713 (5.6)
Chronic Coronary Disease	23,210 (42.4)	39,091 (40.5)	119,603 (41.2)	494,772 (25.1)
Chronic Obstructive Pulmonary Disease	17,486 (31.9)	31,033 (32.1)	97,929 (33.7)	370,765 (18.8)
Congestive Heart Failure	16,063 (29.3)	25,119 (26.0)	73,498 (25.3)	130,132 (6.6)
Dementia	20,651 (37.7)	76,485 (79.2)	52,952 (18.2)	51,372 (2.6)
Diabetes	17,097 (31.2)	36,513 (37.8)	119,516 (41.2)	566,716 (28.8)
Hypertension	47,212 (86.2)	80,882 (83.8)	240,470 (82.9)	1,317,840 (67.0)
Mood Disorders	35,000 (63.9)	66,365 (68.8)	168,785 (58.2)	951,562 (48.4)
Myocardial Infarction	6,542 (11.9)	10,554 (10.9)	35,141 (12.1)	116,275 (5.9)
Osteoarthritis	36,978 (67.5)	65,335 (67.7)	169,423 (58.4)	794,611 (40.4)
Osteoporosis	8,334 (15.2)	13,903 (14.4)	49,938 (16.9)	261,113 (13.3)
Other Mental Health	16,097 (29.4)	34,350 (35.6)	94,282 (32.5)	475,043 (24.1)
Renal Disease	8,236 (15.0)	13,487 (14.0)	50,374 (17.4)	118,137 (6.0)
Rheumatoid Arthritis	2,091 (3.8)	3,261 (3.4)	12,639 (4.4)	46,713 (2.4)
Community Characteristics, <i>n</i> (%)				
Urban Location	50,650 (92.5)	83,171 (86.2)	253,336 (87.3)	1,712,634 (87.0)
Neighborhood Income Quintile				
1 (Least)	13,037 (23.8)	28,683 (29.7)	72,124 (24.9)	370,961 (18.9)
2	12,685 (23.2)	21,047 (21.8)	64,141 (22.1)	405,261 (20.6)
3	10,405 (19.0)	16,892 (17.5)	56,242 (19.4)	396,048 (20.1)
4	10,409 (19.0)	15,936 (16.5)	48,907 (16.9)	378,654 (19.2)

Table 1. Sociodemographic Characteristics and Clinical Comorbidities Among Residents of Retirement Homes, Residents of Long-Term Care Homes, Home Care Recipients in the Community, and Community-Dwelling Older Adults in 2018 ($n = 2,419,158$)

	Residents of Retirement Homes	Residents of Long-Term Care Homes	Home Care Recipients in the Community	Community-Dwelling Older Adults
5 (Highest)	7,639 (13.9)	13,291 (13.8)	48,093 (16.6)	412,074 (20.9)
Missing	598 (1.1)	679 (0.7)	728 (0.3)	4,614 (0.2)
Ontario Marginalization Index Summary Score, median (IQR)	3 (3 to 4)	4 (3 to 4)	3 (3 to 4)	3 (3 to 4)

Abbreviations: IQR, Interquartile Range; SD, Standard Deviation

Table 2. Annual, Standardized Health Service Rates Among Residents of Retirement Homes, Residents of Long-Term Care Homes, and Home Care Recipients in the Community in 2018

	Crude Relative Rates (95% CI)					Adjusted Relative Rates (95% CI) ¹				
	ED Visits	Hospitalizations	ALC Days	Primary Care Visits	Specialist Physician Visits	ED Visits	Hospitalizations	ALC Days	Primary Care Visits	Specialist Physician Visits
Residents of Retirement Homes	12.63 (12.23 to 13.04) *	33.40 (31.65 to 35.25) *	166.40 (152.51 to 181.56) *	2.29 (2.26 to 2.32) *	1.62 (1.57 to 1.69) *	10.02 (9.83 to 10.21) *	20.43 (20.08 to 20.78) *	43.91 (43.28 to 44.54) *	1.99 (1.97 to 2.02) *	1.62 (1.59 to 1.65) *
Residents of Long-Term Care Homes	4.90 (4.72 to 5.09) *	11.82 (11.12 to 12.58) *	75.53 (69.09 to 82.57) *	13.69 (13.55 to 13.82) *	0.76 (0.73 to 0.80) *	3.76 (3.70 to 3.82) *	7.37 (7.27 to 7.48) *	29.19 (28.87 to 29.52) *	13.30 (13.15 to 13.45) *	0.87 (0.86 to 0.89) *
Home Care Recipients in the Community	10.58 (10.36 to 10.80) *	18.60 (17.81 to 19.43) *	72.04 (66.32 to 78.25) *	2.27 (2.26 to 2.28) *	3.68 (3.63 to 3.73) *	8.89 (8.81 to 8.96) *	11.97 (11.88 to 12.06) *	27.49 (27.31 to 27.68) *	2.03 (2.01 to 2.04) *	3.15 (3.12 to 3.17) *
Community-Dwelling Older Adults	1.00 (Ref)	1.00 (Ref)	1.00 (Ref)	1.00 (Ref)	1.00 (Ref)	1.00 (Ref)	1.00 (Ref)	1.00 (Ref)	1.00 (Ref)	1.00 (Ref)

Abbreviations: ALC, Alternate Levels of Care; CI, Confidence Interval; ED, Emergency Department; Ref, Reference

¹Adjusted for all demographic and community characteristics and clinical comorbidities in Table 1

* $P < .001$

Table 3. Sex-Stratified Subgroup Analysis of Annual, Standardized Health Service Rates Among Residents of Retirement Homes, Residents of Long-Term Care Homes, and Home Care Recipients in the Community in 2018

		Crude Relative Rates (95% CI)					Adjusted Relative Rates (95% CI) ¹				
		ED Visits	Hospitalizations	ALC Days	Primary Care Visits	Specialist Physician Visits	ED Visits	Hospitalizations	ALC Days	Primary Care Visits	Specialist Physician Visits
Males (<i>n</i> = 1,094,635)	Residents of Retirement Homes	15.57 (15.08 to 16.07) *	35.69 (34.63 to 36.78) *	148.40 (144.46 to 152.44) *	2.48 (2.42 to 2.54) *	1.90 (1.84 to 1.95) *	12.15 (11.76 to 12.56) *	22.30 (21.63 to 22.99) *	51.07 (49.81 to 52.37) *	2.03 (1.98 to 2.07) *	1.64 (1.60 to 1.69) *
	Residents of Long-Term Care Homes	6.32 (6.17 to 6.47) *	12.97 (12.68 to 13.27) *	83.60 (81.92 to 85.31) *	14.67 (14.42 to 14.93) *	0.87 (0.85 to 0.89) *	4.88 (4.75 to 5.01) *	8.77 (8.56 to 9.00) *	58.72 (57.56 to 59.89) *	13.61 (13.34 to 13.88) *	0.86 (0.84 to 0.88) *
	Home Care Recipients in the Community	12.89 (12.73 to 13.04) *	19.05 (18.83 to 19.27) *	60.19 (59.57 to 60.82) *	2.54 (2.51 to 2.56) *	4.03 (3.99 to 4.08) *	11.19 (11.06 to 11.33) *	13.45 (13.29 to 13.60) *	31.77 (31.46 to 32.09) *	2.25 (2.23 to 2.27) *	3.35 (3.32 to 3.39) *
	Community-Dwelling Older Adults	1.00 (Ref)	1.00 (Ref)	1.00 (Ref)	1.00 (Ref)	1.00 (Ref)	1.00 (Ref)	1.00 (Ref)	1.00 (Ref)	1.00 (Ref)	1.00 (Ref)
	Residents of Retirement Homes	11.11 (10.87 to 11.36) *	30.92 (30.30 to 31.54) *	120.23 (118.08 to 122.41) *	2.18 (2.15 to 2.22) *	1.52 (1.49 to 1.55) *	8.89 (8.69 to 9.10) *	19.38 (18.98 to 19.78) *	40.09 (39.39 to 40.80) *	2.00 (1.96 to 2.03) *	1.66 (1.62 to 1.69) *
Females (<i>n</i> = 1,313,038)	Residents of Long-Term Care Homes	4.19 (4.12 to 4.26) *	10.78 (10.62 to 10.95) *	45.62 (45.00 to 46.26) *	13.09 (12.93 to 13.24) *	0.73 (0.72 to 0.74) *	3.17 (3.11 to 3.24) *	6.61 (6.50 to 6.73) *	15.26 (15.05 to 15.48) *	13.31 (13.12 to 13.50) *	0.92 (0.90 to 0.93) *
	Home Care Recipients in the Community	8.61 (8.51 to 8.70) *	16.19 (16.03 to 16.36) *	50.41 (49.94 to 50.87) *	2.07 (2.05 to 2.08) *	3.40 (3.36 to 3.43) *	7.17 (7.09 to 7.25) *	10.82 (10.71 to 10.93) *	24.02 (23.80 to 24.23) *	1.86 (1.85 to 1.88) *	3.01 (2.98 to 3.04) *
	Community-Dwelling Older Adults	1.00 (Ref)	1.00 (Ref)	1.00 (Ref)	1.00 (Ref)	1.00 (Ref)	1.00 (Ref)	1.00 (Ref)	1.00 (Ref)	1.00 (Ref)	1.00 (Ref)

Abbreviations: ALC, Alternate Levels of Care; CI, Confidence Interval; ED, Emergency Department; Ref, Reference

¹Adjusted for all demographic and community characteristics and clinical comorbidities in Table 1

* $P < .001$

SUPPLEMENTARY MATERIAL

Supplemental Table 1. RECORD Checklist

Supplemental Table 2. Characteristics of Licensed Retirement Homes in 2018

Supplemental Table 3. Descriptions of the Health System Administrative Databases

Supplemental Table 4. Annual, Standardized Health Service Rates Among Residents of Retirement Homes, Residents of Long-Term Care Homes, and Home Care Recipients in the Community in 2018

Supplemental Table 5. Adjusted Beta Coefficients (Standard Errors) from Annual, Standardized Health Service Rates Among Residents of Retirement Homes, Residents of Long-Term Care Homes, and Home Care Recipients in the Community in 2018

Supplemental Table 6. Sex-Stratified Subgroup Analysis Adjusted Beta Coefficients (Standard Errors) from Annual, Standardized Health Service Rates Among Residents of Retirement Homes, Residents of Long-Term Care Homes, and Home Care Recipients in the Community in 2018

Supplemental Table 1. RECORD Checklist

	Item No.	STROBE items	Location in manuscript where items are reported	RECORD items	Location in manuscript where items are reported
Title and Abstract					
	1	(a) Indicate the study's design with a commonly used term in the title or the abstract (b) Provide in the abstract an informative and balanced summary of what was done and what was found	p. 1,2	RECORD 1.1: The type of data used should be specified in the title or abstract. When possible, the name of the databases used should be included. RECORD 1.2: If applicable, the geographic region and timeframe within which the study took place should be reported in the title or abstract. RECORD 1.3: If linkage between databases was conducted for the study, this should be clearly stated in the title or abstract.	p. 1,2
Introduction					
Background rationale	2	Explain the scientific background and rationale for the investigation being reported	p. 3,4		
Objectives	3	State specific objectives, including any prespecified hypotheses	p. 4		
Methods					
Study Design	4	Present key elements of study design early in the paper	p. 4		

Supplemental Table 1. RECORD Checklist

	Item No.	STROBE items	Location in manuscript where items are reported	RECORD items	Location in manuscript where items are reported
Setting	5	Describe the setting, locations, and relevant dates, including periods of recruitment, exposure, follow-up, and data collection	p. 4		
Participants	6	<p><i>(a) Cohort study</i> - Give the eligibility criteria, and the sources and methods of selection of participants. Describe methods of follow-up</p> <p><i>Case-control study</i> - Give the eligibility criteria, and the sources and methods of case ascertainment and control selection. Give the rationale for the choice of cases and controls</p> <p><i>Cross-sectional study</i> - Give the eligibility criteria, and the sources and methods of selection of participants</p> <p><i>(b) Cohort study</i> - For matched studies, give matching criteria and number of exposed and unexposed</p>	p. 5,6	<p>RECORD 6.1: The methods of study population selection (such as codes or algorithms used to identify subjects) should be listed in detail. If this is not possible, an explanation should be provided.</p> <p>RECORD 6.2: Any validation studies of the codes or algorithms used to select the population should be referenced. If validation was conducted for this study and not published elsewhere, detailed methods and results should be provided.</p> <p>RECORD 6.3: If the study involved linkage of databases, consider use of a flow diagram or other graphical display to demonstrate the data linkage process, including the number of individuals with linked data at each stage.</p>	p. 5,6,16

Supplemental Table 1. RECORD Checklist

	Item No.	STROBE items	Location in manuscript where items are reported	RECORD items	Location in manuscript where items are reported
		<i>Case-control study</i> - For matched studies, give matching criteria and the number of controls per case			
Variables	7	Clearly define all outcomes, exposures, predictors, potential confounders, and effect modifiers. Give diagnostic criteria, if applicable.	p. 6,7	RECORD 7.1: A complete list of codes and algorithms used to classify exposures, outcomes, confounders, and effect modifiers should be provided. If these cannot be reported, an explanation should be provided.	p. 6,7
Data sources/ measurement	8	For each variable of interest, give sources of data and details of methods of assessment (measurement). Describe comparability of assessment methods if there is more than one group	p. 6,7		
Bias	9	Describe any efforts to address potential sources of bias			
Study size	10	Explain how the study size was arrived at			
Quantitative variables	11	Explain how quantitative variables were handled in the analyses. If applicable,	p. 6,7		

Supplemental Table 1. RECORD Checklist

Item No.	STROBE items	Location in manuscript where items are reported	RECORD items	Location in manuscript where items are reported
Statistical methods	12	describe which groupings were chosen, and why (a) Describe all statistical methods, including those used to control for confounding (b) Describe any methods used to examine subgroups and interactions (c) Explain how missing data were addressed (d) <i>Cohort study</i> - If applicable, explain how loss to follow-up was addressed <i>Case-control study</i> - If applicable, explain how matching of cases and controls was addressed <i>Cross-sectional study</i> - If applicable, describe analytical methods taking account of sampling strategy (e) Describe any sensitivity analyses	p. 7-8	
Data access and cleaning methods	..		RECORD 12.1: Authors should describe the extent to which the investigators had access to the	p. 6

Supplemental Table 1. RECORD Checklist

	Item No.	STROBE items	Location in manuscript where items are reported	RECORD items	Location in manuscript where items are reported
				database population used to create the study population.	
				RECORD 12.2: Authors should provide information on the data cleaning methods used in the study.	
Linkage	..			RECORD 12.3: State whether the study included person-level, institutional-level, or other data linkage across two or more databases. The methods of linkage and methods of linkage quality evaluation should be provided.	p. 6
Results					
Participants	13	(a) Report the numbers of individuals at each stage of the study (<i>e.g.</i> , numbers potentially eligible, examined for eligibility, confirmed eligible, included in the study, completing follow-up, and analysed) (b) Give reasons for non-participation at each stage. (c) Consider use of a flow diagram	p. 8, 24	RECORD 13.1: Describe in detail the selection of the persons included in the study (<i>i.e.</i> , study population selection) including filtering based on data quality, data availability and linkage. The selection of included persons can be described in the text and/or by means of the study flow diagram.	p. 8, 24
Descriptive data	14	(a) Give characteristics of study participants (<i>e.g.</i> ,	p. 8, 15-19		

Supplemental Table 1. RECORD Checklist

	Item No.	STROBE items	Location in manuscript where items are reported	RECORD items	Location in manuscript where items are reported
		demographic, clinical, social) and information on exposures and potential confounders (b) Indicate the number of participants with missing data for each variable of interest (c) <i>Cohort study</i> - summarise follow-up time (e.g., average and total amount)			
Outcome data	15	<i>Cohort study</i> - Report numbers of outcome events or summary measures over time <i>Case-control study</i> - Report numbers in each exposure category, or summary measures of exposure <i>Cross-sectional study</i> - Report numbers of outcome events or summary measures	p. 8-9		
Main results	16	(a) Give unadjusted estimates and, if applicable, confounder-adjusted estimates and their precision (e.g., 95% confidence interval). Make	p. 8-9		

Supplemental Table 1. RECORD Checklist

	Item No.	STROBE items	Location in manuscript where items are reported	RECORD items	Location in manuscript where items are reported
		clear which confounders were adjusted for and why they were included (b) Report category boundaries when continuous variables were categorized (c) If relevant, consider translating estimates of relative risk into absolute risk for a meaningful time period			
Other analyses	17	Report other analyses done—e.g., analyses of subgroups and interactions, and sensitivity analyses	p. 8-9		
Discussion					
Key results	18	Summarise key results with reference to study objectives	p. 10		
Limitations	19	Discuss limitations of the study, taking into account sources of potential bias or imprecision. Discuss both direction and magnitude of any potential bias	p. 12	RECORD 19.1: Discuss the implications of using data that were not created or collected to answer the specific research question(s). Include discussion of misclassification bias, unmeasured confounding, missing data, and changing eligibility over	p. 12

Supplemental Table 1. RECORD Checklist

	Item No.	STROBE items	Location in manuscript where items are reported	RECORD items	Location in manuscript where items are reported
				time, as they pertain to the study being reported.	
Interpretation	20	Give a cautious overall interpretation of results considering objectives, limitations, multiplicity of analyses, results from similar studies, and other relevant evidence	p. 10,11		
Generalisability	21	Discuss the generalisability (external validity) of the study results	p. 10,11		
Other Information					
Funding	22	Give the source of funding and the role of the funders for the present study and, if applicable, for the original study on which the present article is based	p. 1		
Accessibility of protocol, raw data, and programming code		..		RECORD 22.1: Authors should provide information on how to access any supplemental information such as the study protocol, raw data, or programming code.	p. 2

Supplemental Table 2. Characteristics of Licensed Retirement Homes in 2018 ($n = 757$)

Characteristic	<i>n</i> (%)
Urban	632 (83.5)
Facility Capacity, median (IQR)	87 (50 to 140)
Suites Capacity, median (IQR)	71 (42 to 115)
Chain Facility	358 (47.3)
Residential Home	80 (10.6)
Co-Located with a Long-Term Care Home	134 (17.7)
Care Services	
Assistance with Bathing	722 (95.4)
Assistance with Hygiene	672 (88.8)
Assistance with Ambulation	651 (86.0)
Assistance with Feeding	285 (37.6)
Assistance with Dressing	670 (88.5)
Continence Care	596 (78.7)
Skin and Wound Care	165 (21.8)
Dementia Care	126 (16.6)
Provision of Meals	751 to 757 (99.2 to 100.0)*
Administration of Medications	751 to 757 (99.2 to 100.0)*
Pharmacist Services	664 (87.7)
Nursing Services	714 (94.3)
Medical Services	519 (68.6)

Abbreviations: IQR, Interquartile Range

*Small cell sizes (i.e., where six or fewer retirement homes do not have a characteristic) are suppressed due to privacy restrictions at ICES

Supplemental Table 3. Descriptions of the Health System Administrative Databases

Database	Description
Client Agency Program Enrolment Data (CAPE)	Contains enrolment data on individuals in Ontario who are eligible for coverage under the universal health insurance plan in the province and enrolled or rostered to a health care program with a specific practitioner or group.
Continuing Care Reporting System (CCRS)	Contains person-level data (i.e., clinical, demographic) in nursing homes in Canada using the validated Resident Assessment Instrument Minimum Data Set (RAI-MDS) version 2.0. Complete assessments are conducted when people are admitted to the nursing home, every year thereafter, and after any significant change in the person's health by a health care provider.
Corporate Provider Database (CPDB)	Contains information on physician and allied health care practitioners (i.e., demographic characteristics, practice location, billing status and specialty) and/or groups (i.e., hospital groups and affiliated institutions, geographic location, group affiliation and composition) that are eligible to receive payments under the universal health insurance plan in Ontario.
Discharge Abstract Database (DAD)	Contains person-level data (i.e., demographic, administrative, diagnoses, procedures) for all admissions to acute care hospitals. The DAD is compiled and maintained by the Canadian Institute for Health Information.
Home Care Database (HCD)	Contains person-level data (i.e., social, clinical) for publicly funded home care services in Ontario, including types and volume of service provision.
National Ambulatory Care Reporting System (NACRS)	Contains person-level data (i.e., demographic, administrative, diagnoses, procedures) for all patient visits to ambulatory care centres in hospitals and communities (i.e., emergency departments, day surgery units, hemodialysis units, cancer care clinics). The NACRS is compiled and maintained by the Canadian Institute for Health Information.
Ontario Health Insurance Plan (OHIP) Database	Contains physician billings claims data among physicians who are remunerated by fee-for-service for outpatient visits. It also contains "shadow billings" for physicians who are remunerated through alternate payment schemes.
Ontario Marginalization Index (ONMARG)	Contains geographic, Census-based indices that quantify the extent of marginalization in communities in Ontario. There are four dimensions: residential instability, material deprivation, dependency, and ethnic concentration.
Postal Code Conversion File (PCCF+)	Specialized macro containing geographic identifiers based on Census data. This macro is based on 2016 Census information, identifies communities with less than 10,000 residents as rural, and includes related data from Canada Post Corporation.
Registered Persons Database (RPDP)	Contains demographic information (i.e., sex, age, date of birth, date of death for deceased individuals, area of residence, including postal code) and establishes eligibility for publicly funded universal health insurance in Ontario.

Supplemental Table 4. Annual, Standardized Health Service Rates Among Residents of Retirement Homes, Residents of Long-Term Care Homes, and Home Care Recipients in the Community in 2018

		ED Visits ¹	Hospitalizations ¹	ALC Days ¹	Primary Care Visits ¹	Specialist Physician Visits ¹
Total	Crude Rate	0.0001 (0.0001 to 0.029231)	0.0001 (0.0001 to 0.0001)	0.0001 (0.0001 to 0.0001)	0.0576923 (0.0192308 to 0.0961538)	0.0192308 (0.001 to 0.576923)
	Residents of Retirement Homes	0.019337 (0.0001 to 0.07)	0.0001 (0.0001 to 0.0216049)	0.0001 (0.0001 to 0.0001)	0.0769231 (0.0192308 to 0.1573034)	0.0192308 (0.0001 to 0.0576923)
	Residents of Long-Term Care Homes	0.0001 (0.0001 to 0.0001)	0.0001 (0.0001 to 0.0001)	0.0001 (0.0001 to 0.0001)	0.2307692 (0.2178988 to 0.2763158)	0.0001 (0.0001 to 0.0001)
	Home Care Recipients in the Community	0.0001 (0.0001 to 0.0551181)	0.0001 (0.0001 to 0.0001)	0.0001 (0.0001 to 0.0001)	0.0514706 (0.0001 to 0.1555556)	0.0269231 (0.0001 to 0.1609195)
	Community-Dwelling Older Adults	0.0001 (0.0001 to 0.0001)	0.0001 (0.0001 to 0.0001)	0.0001 (0.0001 to 0.0001)	0.0384615 (0.0192308 to 0.0961538)	0.0192308 (0.0001 to 0.0384615)
Males	Crude Rate	0.0001 (0.0001 to 0.0192308)	0.0001 (0.0001 to 0.0001)	0.0001 (0.0001 to 0.0001)	0.0393258 (0.0192308 to 0.0961538)	0.0192308 (0.0001 to 0.0576923)
	Residents of Retirement Homes	0.0233333 (0.0001 to 0.0823529)	0.0001 (0.0001 to 0.0290456)	0.0001 (0.0001 to 0.0001)	0.0769231 (0.0192308 to 0.1655405)	0.0192308 (0.0001 to 0.0769231)
	Residents of Long-Term Care Homes	0.0001 (0.0001 to 0.0191208)	0.0001 (0.0001 to 0.0001)	0.0001 (0.0001 to 0.0001)	0.2307692 (0.2115385 to 0.2884615)	0.0001 (0.0001 to 0.0192308)
	Home Care Recipients in the Community	0.0001 (0.0001 to 0.0707071)	0.0001 (0.0001 to 0.0001)	0.0001 (0.0001 to 0.0001)	0.0492958 (0.0001 to 0.168)	0.0384615 (0.0001 to 0.1891892)
	Community-Dwelling Older Adults	0.0001 (0.0001 to 0.0001)	0.0001 (0.0001 to 0.0001)	0.0001 (0.0001 to 0.0001)	0.0384615 (0.0192308 to 0.0769231)	0.0192308 (0.0001 to 0.0576923)
Females	Crude Rate	0.0001 (0.0001 to 0.0192308)	0.0001 (0.0001 to 0.0001)	0.0001 (0.0001 to 0.0001)	0.0576923 (0.0192308 to 0.1153846)	0.0192308 (0.0001 to 0.0576923)

Supplemental Table 4. Annual, Standardized Health Service Rates Among Residents of Retirement Homes, Residents of Long-Term Care Homes, and Home Care Recipients in the Community in 2018

	ED Visits ¹	Hospitalizations ¹	ALC Days ¹	Primary Care Visits ¹	Specialist Physician Visits ¹
Residents of Retirement Homes	0.0192308 (0.0001 to 0.0644172)	0.0001 (0.0001 to 0.0196629)	0.0001 (0.0001 to 0.0001)	0.0769231 (0.0192308 to 0.1538462)	0.0001 (0.0001 to 0.0576923)
Residents of Long-Term Care Homes	0.0001 (0.0001 to 0.0001)	0.0001 (0.0001 to 0.0001)	0.0001 (0.0001 to 0.0001)	0.2307692 (0.2210526 to 0.2705314)	0.0001 (0.0001 to 0.0001)
Home Care Recipients in the Community	0.0001 (0.0001 to 0.0384615)	0.0001 (0.0001 to 0.0001)	0.0001 (0.0001 to 0.0001)	0.0532319 (0.0001 to 0.15)	0.0192308 (0.0001 to 0.14)
Community-Dwelling Older Adults	0.0001 (0.0001 to 0.0001)	0.0001 (0.0001 to 0.0001)	0.0001 (0.0001 to 0.0001)	0.0576923 (0.0192308 to 0.0961538)	0.0192308 (0.0001 to 0.0384615)

Abbreviations: ALC, Alternate Levels of Care; ED, Emergency Department

¹ Medians and Interquartile Ranges are presented

Supplemental Table 5. Adjusted Beta Coefficients (Standard Errors) from Annual, Standardized Health Service Rates Among Residents of Retirement Homes, Residents of Long-Term Care Homes, and Home Care Recipients in the Community in 2018

	ED Visits	Hospitalizations	ALC Days	Primary Care Visits	Specialist Physician Visits
Demographic Characteristics					
Age	0.002 (0.000) *	0.001 (0.000) *	0.034 (0.000) *	-0.002 (0.000) *	-0.018 (0.000) *
Sex					
Male	(Ref)	(Ref)	(Ref)	(Ref)	(Ref)
Female	-0.026 (0.003) *	-0.163 (0.003) *	-0.092 (0.002) *	-0.023 (0.002) *	-0.100 (0.003) *
Clinical Comorbidities					
Asthma	0.159 (0.004) *	0.089 (0.004) *	-0.115 (0.003) *	0.160 (0.003) *	0.131 (0.004) *
Cancer	0.238 (0.004) *	0.694 (0.003) *	0.645 (0.003) *	0.178 (0.003) *	0.222 (0.003) *
Cardiac Arrhythmias	0.301 (0.004) *	0.335 (0.003) *	0.138 (0.003) *	0.119 (0.003) *	0.052 (0.005) *
Cerebrovascular Accident	0.251 (0.005) *	0.525 (0.005) *	1.080 (0.004) *	0.005 (0.004)	0.052 (0.005) *
Chronic Coronary Disease	0.188 (0.003) *	0.238 (0.003) *	-0.108 (0.003) *	0.064 (0.002) *	0.158 (0.003) *
Chronic Obstructive Pulmonary Disease	0.267 (0.003) *	0.329 (0.003) *	0.256 (0.003) *	0.079 (0.003) *	0.054 (0.003) *
Congestive Heart Failure	0.254 (0.005) *	0.630 (0.004) *	0.787 (0.004) *	0.001 (0.004)	0.072 (0.005) *
Dementia	-0.107 (0.006) *	0.007 (0.005)	1.083 (0.004) *	-0.138 (0.004) *	-0.237 (0.005) *
Diabetes	0.060 (0.003) *	0.079 (0.003) *	0.124 (0.002) *	0.215 (0.002) *	0.075 (0.003) *
Hypertension	0.134 (0.003) *	0.238 (0.003) *	0.088 (0.003) *	0.298 (0.002) *	0.132 (0.003) *
Mood Disorders	0.203 (0.003) *	0.023 (0.003) *	0.126 (0.002) *	0.222 (0.002) *	0.192 (0.003) *
Myocardial Infarction	0.207 (0.006) *	0.473 (0.005) *	0.302 (0.004) *	-0.030 (0.004) *	-0.005 (0.005)
Osteoarthritis	0.155 (0.003) *	0.326 (0.003) *	-0.140 (0.002) *	0.212 (0.002) *	0.287 (0.003) *
Osteoporosis	0.003 (0.004)	-0.062 (0.004) *	0.150 (0.003) *	0.174 (0.003) *	0.191 (0.004) *
Other Mental Health	0.165 (0.003) *	0.122 (0.003) *	0.397 (0.003) *	0.161 (0.002) *	0.228 (0.003) *
Renal Disease	0.223 (0.005) *	0.440 (0.005) *	0.665 (0.004) *	0.056 (0.004) *	0.475 (0.005) *
Rheumatoid Arthritis	0.166 (0.008) *	0.196 (0.008) *	0.307 (0.007) *	0.056 (0.006) *	0.301 (0.008) *
Community Characteristics					
Location					
Rural	(Ref)	(Ref)	(Ref)	(Ref)	(Ref)
Urban	-0.532 (0.004) *	-0.126 (0.004) *	-0.152 (0.003) *	0.289 (0.003) *	0.243 (0.004) *
Neighborhood Income Quintile					

Supplemental Table 5. Adjusted Beta Coefficients (Standard Errors) from Annual, Standardized Health Service Rates Among Residents of Retirement Homes, Residents of Long-Term Care Homes, and Home Care Recipients in the Community in 2018

	ED Visits	Hospitalizations	ALC Days	Primary Care Visits	Specialist Physician Visits
1 (Least)	(Ref)	(Ref)	(Ref)	(Ref)	(Ref)
2	-0.084 (0.004) *	-0.040 (0.004) *	-0.289 (0.003) *	0.032 (0.003) *	0.081 (0.004) *
3	-0.121 (0.005) *	-0.069 (0.004) *	-0.422 (0.004) *	0.050 (0.003) *	0.124 (0.004) *
4	-0.168 (0.005) *	-0.071 (0.005) *	-0.419 (0.004) *	0.062 (0.004) *	0.167 (0.005) *
5 (Highest)	-0.226 (0.005) *	-0.065 (0.005) *	-0.447 (0.004) *	0.053 (0.004) *	0.257 (0.005) *
Ontario Marginalization Index Summary Score	-0.043 (0.002) *	-0.042 (0.002) *	-0.009 (0.002) *	0.033 (0.002) *	0.062 (0.002) *
Constant	-5.016 (0.017) *	-7.243 (0.016) *	-10.781 (0.013) *	-3.694 (0.013) *	-3.364 (0.016) *

Abbreviations: ALC, Alternate Levels of Care; ED, Emergency Department

* $P < .001$

Supplemental Table 6. Sex-Stratified Subgroup Analysis Adjusted Beta Coefficients (Standard Errors) from Annual, Standardized Health Service Rates Among Residents of Retirement Homes, Residents of Long-Term Care Homes, and Home Care Recipients in the Community in 2018

	ED Visits	Hospitalizations	ALC Days	Primary Care Visits	Specialist Physician Visits	
Males	Demographic Characteristics					
	Age	0.003 (0.000) *	0.002 (0.000) *	0.038 (0.000) *	0.002 (0.000) *	-0.011 (0.000) *
	Clinical Comorbidities					
	Asthma	0.156 (0.007) *	0.080 (0.006) *	-0.044 (0.005) *	0.181 (0.005) *	0.129 (0.006) *
	Cancer	0.251 (0.005) *	0.677 (0.005) *	0.635 (0.004) *	0.164 (0.004) *	0.744 (0.005) *
	Cardiac Arrhythmias	0.282 (0.005) *	0.341 (0.005) *	0.004 (0.004)	0.105 (0.004) *	0.216 (0.005) *
	Cerebrovascular Accident	0.233 (0.007) *	0.491 (0.006) *	1.208 (0.005) *	-0.008 (0.005)	0.036 (0.006) *
	Chronic Coronary Disease	0.190 (0.005) *	0.283 (0.004) *	-0.171 (0.004) *	0.071 (0.004) *	0.186 (0.004) *
	Chronic Obstructive Pulmonary Disease	0.270 (0.005) *	0.312 (0.005) *	0.208 (0.004) *	0.092 (0.004) *	0.048 (0.005) *
	Congestive Heart Failure	0.256 (0.007) *	0.584 (0.006) *	0.829 (0.005) *	-0.013 (0.005) **	0.083 (0.006) *
	Dementia	-0.081 (0.009) *	0.015 (0.008)	1.214 (0.006) *	-0.122 (0.007) *	-0.169 (0.008) *
	Diabetes	0.046 (0.004) *	0.064 (0.004) *	0.097 (0.003) *	0.248 (0.003) *	0.086 (0.004) *
	Hypertension	0.104 (0.005) *	0.215 (0.004) *	0.031 (0.004) *	0.316 (0.003) *	0.158 (0.004) *
	Mood Disorders	0.173 (0.004) *	0.026 (0.004) *	0.175 (0.003) *	0.211 (0.003) *	0.168 (0.004) *
	Myocardial Infarction	0.189 (0.007) *	0.410 (0.007) *	0.180 (0.006) *	-0.035 (0.005) *	-0.026 (0.007) *
	Osteoarthritis	0.163 (0.004) *	0.297 (0.04) *	-0.136 (0.003) *	0.209 (0.003) *	0.272 (0.004) *
	Osteoporosis	0.004 (0.010)	-0.002 (0.010)	0.309 (0.008) *	0.190 (0.008) *	0.209 (0.009) *
	Other Mental Health	0.156 (0.005) *	0.116 (0.004) *	0.324 (0.004) *	0.152 (0.003) *	0.222 (0.004) *
	Renal Disease	0.195 (0.007) *	0.407 (0.007) *	0.761 (0.006) *	0.052 (0.005) *	0.490 (0.006) *
	Rheumatoid Arthritis	0.175 (0.015) *	0.187 (0.014) *	-0.109 (0.012) *	0.052 (0.001) *	0.305 (0.014) *
	Community Characteristics					
	Location					
	Rural	(Ref)	(Ref)	(Ref)	(Ref)	(Ref)
	Urban	-0.531 (0.006) *	-0.094 (0.006) *	-0.011 (0.005)	0.302 (0.004) *	0.235 (0.005) *

Supplemental Table 6. Sex-Stratified Subgroup Analysis Adjusted Beta Coefficients (Standard Errors) from Annual, Standardized Health Service Rates Among Residents of Retirement Homes, Residents of Long-Term Care Homes, and Home Care Recipients in the Community in 2018

	ED Visits	Hospitalizations	ALC Days	Primary Care Visits	Specialist Physician Visits
Neighborhood Income Quintile					
1 (Least)	(Ref)	(Ref)	(Ref)	(Ref)	(Ref)
2	-0.105 (0.007) *	-0.068 (0.006) *	-0.446 (0.005) *	0.034 (0.005) *	0.077 (0.006) *
3	-0.129 (0.007) *	-0.094 (0.007) *	-0.516 (0.005) *	0.047 (0.005) *	0.121 (0.006) *
4	-0.187 (0.008) *	-0.099 (0.007) *	-0.502 (0.006) *	0.058 (0.006) *	0.162 (0.007) *
5 (Highest)	-0.245 (0.008) *	-0.074 (0.007) *	-0.524 (0.006) *	0.046 (0.006) *	0.247 (0.007) *
Ontario Marginalization Index Summary Score					
Constant	-5.121 (0.026) *	-7.395 (0.024) *	-11.058 (0.018) *	-4.049 (0.019) *	-3.857 (0.024) *
Females					
Demographic Characteristics					
Age	0.001 (0.000) *	0.000 (0.000)	0.029 (0.000) *	-0.005 (0.000) *	-0.022 (0.000) *
Clinical Comorbidities					
Asthma	0.157 (0.005) *	0.092 (0.005) *	-0.173 (0.004) *	0.148 (0.004) *	0.130 (0.005) *
Cancer	0.223 (0.005) *	0.710 (0.005) *	0.679 (0.004) *	0.180 (0.004) *	0.675 (0.005) *
Cardiac Arrhythmias	0.315 (0.005) *	0.332 (0.005) *	0.266 (0.004) *	0.128 (0.004) *	0.222 (0.005) *
Cerebrovascular Accident	0.267 (0.007) *	0.566 (0.006) *	0.971 (0.005) *	0.014 (0.005)	0.063 (0.007) *
Chronic Coronary Disease	0.192 (0.005) *	0.201 (0.004) *	-0.041 (0.004) *	0.055 (0.003) *	0.128 (0.004) *
Chronic Obstructive Pulmonary Disease	0.264 (0.005) *	0.344 (0.004) *	0.331 (0.004) *	0.064 (0.003) *	0.055 (0.004) *
Congestive Heart Failure	0.260 (0.007) *	0.672 (0.006) *	0.750 (0.005) *	0.016 (0.005)	0.061 (0.006) *
Dementia	-0.119 (0.008) *	0.001 (0.007)	1.095 (0.005) *	-0.146 (0.005) *	-0.285 (0.007) *
Diabetes	0.074 (0.004) *	0.094 (0.004) *	0.128 (0.003) *	0.184 (0.003) *	0.066 (0.004) *
Hypertension	0.162 (0.004) *	0.257 (0.004) *	0.189 (0.003) *	0.290 (0.003) *	0.117 (0.004) *
Mood Disorders	0.224 (0.004) *	0.017 (0.004) *	0.102 (0.003) *	0.228 (0.003) *	0.207 (0.004) *
Myocardial Infarction	0.244 (0.009) *	0.565 (0.008) *	0.553 (0.007) *	-0.030 (0.007) *	0.012 (0.008)

Supplemental Table 6. Sex-Stratified Subgroup Analysis Adjusted Beta Coefficients (Standard Errors) from Annual, Standardized Health Service Rates Among Residents of Retirement Homes, Residents of Long-Term Care Homes, and Home Care Recipients in the Community in 2018

	ED Visits	Hospitalizations	ALC Days	Primary Care Visits	Specialist Physician Visits
Osteoarthritis	0.149 (0.004) *	0.351 (0.003) *	-0.133 (0.003) *	0.217 (0.003) *	0.299 (0.004) *
Osteoporosis	0.006 (0.004)	-0.067 (0.004) *	0.108 (0.003) *	0.172 (0.003) *	0.191 (0.004) *
Other Mental Health	0.178 (0.005) *	0.128 (0.004) *	0.348 (0.004) *	0.171 (0.003) *	0.233 (0.004) *
Renal Disease	0.250 (0.007) *	0.470 (0.007) *	0.599 (0.006) *	0.050 (0.005) *	0.448 (0.007) *
Rheumatoid Arthritis	0.166 (0.010) *	0.201 (0.009) *	0.501 (0.008) *	0.058 (0.007) *	0.297 (0.009) *
Community Characteristics					
Location					
Rural	(Ref)	(Ref)	(Ref)	(Ref)	(Ref)
Urban	-0.534 (0.006) *	-0.153 (0.005) *	-0.203 (0.005) *	0.276 (0.004) *	0.250 (0.005) *
Neighborhood Income Quintile					
1 (Least)	(Ref)	(Ref)	(Ref)	(Ref)	(Ref)
2	-0.066 (0.006) *	-0.015 (0.005)	-0.130 (0.005) *	0.030 (0.004) *	0.082 (0.005) *
3	-0.117 (0.006) *	-0.049 (0.006) *	-0.328 (0.005) *	0.051 (0.005) *	0.123 (0.006) *
4	-0.151 (0.007) *	-0.044 (0.006) *	-0.328 (0.005) *	0.063 (0.005) *	0.167 (0.007) *
5 (Highest)	-0.211 (0.007) *	-0.057 (0.007) *	-0.358 (0.006) *	0.056 (0.005) *	0.261 (0.007) *
Ontario Marginalization Index Summary Score	-0.046 (0.003) *	-0.062 (0.003) *	-0.001 (0.002)	0.035 (0.002) *	0.070 (0.003) *
Constant	-4.999 (0.023) *	-7.294 (0.021) *	-10.640 (0.017) *	-3.468 (0.017) *	-3.109 (0.022) *

Abbreviations: ALC, Alternate Levels of Care; ED, Emergency Department

* $P < .001$