

**Title:** The lost microbes of COVID-19: Bifidobacteria depletion and decreased microbiome diversity are a predictability marker of severe COVID 19, a cross sectional study

**Authors:** Sabine Hazan,<sup>\*1</sup> Neil Stollman,<sup>2</sup> Huseyin Bozkurt,<sup>3</sup> Sonya Dave,<sup>4</sup> Andreas J. Papoutsis,<sup>1</sup> Jordan Daniels,<sup>1</sup> Sibasish Dolai,<sup>5</sup> Brad D. Barrows,<sup>1</sup> Eamonn MM Quigley,<sup>6</sup> Thomas J. Borody<sup>5</sup>

<sup>1</sup>ProgenaBiome, Ventura, CA, USA; <sup>2</sup>Division of Gastroenterology, Alta Bates Summit Medical Center, Oakland CA; <sup>3</sup> Istanbul Maltepe University Medicine, Clinic of Gastroenterology, Istanbul, Turkey; <sup>4</sup> Microbiome Research Inc., Ventura, CA, USA; <sup>5</sup> Centre for Digestive Diseases, Five Dock, NSW, Australia; <sup>6</sup> Lynda K and David M Underwood Center for Digestive Disorders, Houston Methodist Hospital, Houston, TX, USA.

\* Corresponding author: Sabine Hazan, MD. [DrHazan@progenabiome.com](mailto:DrHazan@progenabiome.com)

## **Abstract:**

**Background:** The objective of this study was to compare gut microbiome diversity and composition in SARS-CoV-2 polymerase chain reaction (PCR)-confirmed positive patients whose symptoms ranged from asymptomatic to severe, versus PCR-negative exposed controls. Using a cross-sectional study design, we used shotgun next-generation sequencing (NGS) to evaluate microbiome composition and diversity in both patients with SARS-CoV-2 PCR-confirmed infections presenting to Ventura Clinical Trials for care from March 2020 through January 2021, and SARS-CoV-2 PCR-negative exposed controls. Patients were classified as being asymptomatic or having mild, moderate, or severe symptoms based on NIH criteria. Exposed controls were individuals with prolonged or repeated close contact with patients with SARS-CoV-2 infection or their samples, e.g. household members of patients or frontline healthcare workers. Microbiome diversity and composition were compared between patients and exposed controls and across patient subgroups at all taxonomic levels.

**Results:** Compared with controls (n=20), severely symptomatic covid patients (n=28) had significantly less bacterial diversity (Shannon Index,  $P=0.036$ ; Simpson Index,  $P=0.026$ ), and covid positive patients overall had lower relative abundances of *Bifidobacterium* ( $P<0.0001$ ), *Faecalibacterium*, and *Roseburia*, while having increased *Bacteroides* ( $P=0.0075$ ). Interestingly, there was an inverse association between disease severity and abundance of *Bifidobacterium*.

**Conclusions:** We hypothesize that low bacterial diversity and depletion of *Bifidobacterium* genera either before or after infection led to reduced pro-immune function, thereby allowing SARS-CoV-2 infection to become symptomatic. This particular dysbiosis pattern may be a

susceptibility marker for symptomatic severity from SARS-CoV-2 infection and may be amenable to pre-, intra-, or post infection intervention.

**Keywords:** SARS-CoV2, COVID, Microbiome, Bifidobacterium, Faecalibacterium, Bacteriodes, Shannon Index, Simpson Index, Severity, Microbiota

**Registration:** [clinicaltrials.gov](https://clinicaltrials.gov) NCT04031469 (PCR -) and 04359836 (PCR+)

## Introduction

Abundance of *Bifidobacterium* decreases with both increasing age and BMI(1), and is the active ingredient of many probiotics. *In vitro* studies have demonstrated the benefits of these gram positive bacteria to include enhanced ATP production, immune modulation and competence(2)(3)(4-7)(8), mucosal barrier integrity, restriction of bacterial adherence to and invasion of the intestinal epithelium, and modulation of central nervous system activity(9, 10). Additionally, many *Bifidobacterium* have anti-inflammatory properties: *Bifidobacterium animalis*, *longum*, and *bifidum* decrease the function of the “master switch(2)” pro-inflammatory tumor necrosis factor- (TNF-)  $\alpha$ , increase the anti-inflammatory cytokine interleukin- (IL-10), and promote TH1 while inhibiting TH2 immune response(8). In a mouse model of inflammatory bowel disease, *Bifidobacterium bifidum* and *animalis* reduced pro-inflammatory cytokines and restored intestinal barrier integrity(8).

With respect to SARS-CoV-2 infection, there is immunologic coordination between the gut and lungs(11-13). In the gut microbiome of SARS-CoV-2 infected patients, the increased abundance of the *Streptococcus*, *Rothia*, *Veilonella*, and *Actinomyces* genera was associated with inflammation (14), whereas increased abundance of *Collinsella aerofaciens*, *Collinsella tanakaei*, *Streptococcus infantis*, and *Morganella morganii* were associated with fecal samples with high SARS-CoV-2 infectivity(15), and increased Lachnospriaceae and Enterobacteriaceae abundance were associated with increased mortality and need for artificial ventilation(15). Potentially protective species include *Parabacteroides merdae*, *Bacteroides stercoris*, *Alistipes onderdonkii*, *Lachnospiraceae bacterium*(15) and *Faecalibacterium prausnitzii*(15, 16). Two reports have described a decreased abundance of *Bifidobacterium bifidum* associated with SARS-CoV-2 infection and severity(16, 17).

The scientific community and lay public are increasingly interested in the therapeutic potential of probiotics. *Bifidobacteria* spp. have potential to improve clinical conditions ranging from inflammatory bowel disease (IBD)(18) to *Clostridioides difficile* infections(18-21). Treatment with specific strains of *Bifidobacteria in vitro* have been shown to reduce toxins from *Clostridioides difficile* (20). *In vivo*, *Bifidobacteria* can restore colonic integrity(22), and *Bifidobacterium longum* administered intranasally in mice prior to exposure to influenza has been associated with reduction in mortality(4).

Numerous studies have suggested that a healthy gut microbiome may be associated with decreased SARS-CoV-2 related mortality(23) and that probiotics should be considered for prophylaxis(24) and/or treatment of SARS-CoV-2 infections(24), as adjuvants therapies(25), or to reduce the incidence of secondary infections resulting from bacterial translocation(26). Despite that, as of May 2021 nearly 8000 studies that had been registered worldwide to find therapies or vaccines for SARS-CoV-2 infection, only two studies (besides our own) focused on the effect of SARS-CoV-2 on the microbiome (clinicaltrials.gov: NCT04443075 and NCT04486482).

Herein, we evaluate the relationships between gut microbiome diversity and composition compared to clinical outcome in cross-sectional groups of SARS-CoV-2 PCR-confirmed positive patients (ranging from asymptomatic to severely symptomatic) versus SARS-CoV-2 PCR-confirmed negative controls. We compare SARS-CoV-2 positive patients versus SARS-CoV-2 exposed persons who remained PCR-negative and asymptomatic. The controls likely had similar viral exposures, but appeared protected against infection, and our data suggests some protection may reside in the microbiome.

## **Results**

## **Patient Characteristics**

Demographic and clinical characteristics of patients (n=50) and exposed controls (n=20) are presented in **Supplementary Table S1**. 48% of patients and 35% of exposed controls were male. The mean  $\pm$  SEM age in years was  $50.0 \pm 2.5$  for patients and  $44.4 \pm 3.6$  for exposed controls. 88.5% of patients were non-Hispanic White; 10%, Hispanic; and 2%, Native American and 85.0% of exposed controls were non-Hispanic White; 10.0%, Hispanic; and 5.0%, Black. Of patients, 56% had severe, 24% had moderate and 12% had mild disease, and 8% were asymptomatic. 74% of patients and 65.0% of exposed controls had underlying comorbidities considered risk factors for increased morbidity and mortality by the CDC(27). The mean  $\pm$  SEM BMI of the 46 patients with available data was  $27.1 \pm 0.98$  compared with  $25.1 \pm 0.96$  for the 20 exposed controls. There was no significant difference ( $P>0.05$ ) in gender, age, racial demographics, or presence of underlying comorbidity.

Of the exposed controls, 16 were household contacts of SARS-CoV-2 positive patients in the study, 2 were healthcare workers with extensive, non-protected, exposure to SARS-CoV-2 positive patients, and 2 were laboratory personnel exposed to thousands of SARS-CoV-2 samples (healthcare workers and laboratory personnel did not wear full PPE, i.e., did not wear a face mask, due its scarcity; see methods). During the timeframe of the study, none of the patients or controls were on SARS-CoV-2 prophylaxis or treatment, and none had yet been vaccinated.

## **Gut Microbiome Diversity and Composition**

Calculation of alpha-diversity (within samples) of the microbiome in positive covid patients categorized as severely affected based on NIH criteria versus SARS-CoV-2 negative controls is shown in **Figure 1**. Severely symptomatic covid patients had significant decreases in both

Shannon ( $P=0.036$ ) and Simpson ( $P=0.026$ ) indices compared to the negative control group, highlighting that the gut microflora of the SARS-CoV-2 infected ‘severe’ patients was less diverse than that of exposed controls. This data collectively presents that both the Shannon (richness and evenness) and the Simpson (evenness) indexes show divergence between the SARS-CoV-2 severe patients and negative controls. Data were analyzed utilizing the Mann-Whitney U test where  $P < 0.05$  indicates significance .

Further metagenomic analysis comparing the SARS-CoV-2 patients and controls revealed significant differences in relative abundance of specific bacteria. **Table 1** lists the bacteria that differed in relative abundance in relation to SARS-CoV-2 positivity (center column) and SARS-CoV-2 infection severity (right column). Patients with SARS-CoV-2 infection showed a significantly decreased relative abundance of *Bifidobacterium* and *Faecalibacterium*, and significantly increased relative abundance of *Bacteroides* (**Figure 2, Table 1** center column). **Table 1** right column shows that bacterial abundances were associated with symptom severity, tested via Kruskal-Wallis non-parametric test (many of the abundance data sets failed normality, and bacterial abundance frequently is non-normally distributed). Specifically, increased disease severity was associated with decreased relative abundance of *Bifidobacterium*, *Faecalibacterium*, *Faecalibacterium Prausnitzii*, and *Roseburia*, along with an increased relative abundance of *Bacteroides*. **Figure 2** summarizes **Table 1**, with green boxes depicting significant elevation and red boxes indicating significant depletion between changes in bacterial abundance and either SARS-CoV-2 positivity or infection severity.

**Figure 3A and 3B** exhibit the relative abundance of *Bifidobacterium* for each subject, grouped by SARS-CoV-2 infection severity. Analyzed via Kruskal-Wallis test with Dunn’s *post-hoc* test (comparing each SARS-CoV-2 infection severities including asymptomatic to

controls), there was a significant ( $P < 0.0001$ ) association between severity and *Bifidobacterium* relative abundance, particularly for severe ( $P < 0.0001$ ) and moderate ( $P = 0.0002$ ) but not for mild ( $P > 0.9999$ ) or asymptomatic ( $P > 0.9999$ ) severity infections.

Depicted in **Figure 4** are the 12 most abundant families and the 12 most abundant genera for patients, stratified by disease severity and exposed controls. Distinguished by color, the bars represent the relative percent bacterial families and genera abundance. In column B, for SARS-CoV-2 positive patients' microbiome (top), the reduced diversity compared to controls (bottom) can be subjectively observed.

The beta-diversity weighted (quantitative) UniFrac analysis featuring phyla bacterial profiles for all individuals in the study ( $n = 70$ ) in **Figure 5** reveals that, although there is a range of dissimilarity, the SARS-CoV-2 negative individuals are more similar to one another than they are to SARS-CoV-2 positive patients. The matrix also highlights clusters of similarity among SARS-CoV-2 positive patients, and darker quadrants of dissimilarity where positive and negative patients intersect. At a more granular level, **Figure 6** utilized principal component (PC) analysis of genera where the axes depict the percent of variance. Herein the PC1 accounts for 43.16% of the variation, whereas PC2 accounts for 12.78%. This analysis reveals a clear divergence of a subset of SARS-CoV-2 positive patients clustering on the right side tracking along the x-axis (PC1), highlighting microbiota divergence as a function of disease.

## **Discussion**

### **Immune function and health could be enhanced by bacterial abundance**

Interactions between the host and gut microbiota are complex, numerous, and bidirectional. Gut microbiota regulate the development and function of the innate and adaptive immune



systems(28), potentially allowing them to protect against infections and infection severity.

The primary findings of our study are that SARS-CoV-2 positivity and infection severity are associated with decreased levels of the protective *Bifidobacterium* and *Faecalibacterium* genera and with decreased bacterial diversity, as exemplified by the Shannon and Simpson indices. This concurs with studies showing bacterial diversity inversely relate to presence of various common disorders(29). Uniquely, our study compared SARS-CoV-2 exposed SARS-CoV-2 negative persons (i.e., controls) with symptomatic and asymptomatic SARS-CoV-2 positive patients. Thus, we controlled for SARS-CoV-2 exposure.

The genus *Bifidobacterium* has important immune functions(8), is a major component of the microbiome and is frequently used in probiotics(30). Bifidobacteria increase Treg responses and reduce cell damage by inhibiting TNF- $\alpha$  and macrophages(31). Bifidobacteria protect against intestinal epithelial cell damage independently from their effects on TNF- $\alpha$  production. The exopolysaccharide coat which is a feature of some *Bifidobacterium* plays a significant role in this protective effect(32). These immune functions of *Bifidobacterium* could be critical in relation to its SARS-CoV-2 infection-prevention effects.

Evidence has accumulated to support a beneficial effect from supplementation with *Bifidobacterium* in numerous disease states(33). The number of commensal bifidobacteria have been shown to decrease with age, a major SARS-CoV-2 infection risk factor. We demonstrate that patients with a more severe course of viral infection had decreased abundance of *Bifidobacterium*. However, it should be noted that there are no definitive studies concerning what constitutes a normal baseline abundance of *Bifidobacterium* in a “healthy” individual.

The abundance of *Faecalibacterium* genus and *Faecalibacterium prausnitzii* species were also inversely related to SARS-CoV-2 positivity and SARS-CoV-2 infection severity in this

analysis. Age and diabetes are risk factors for SARS-CoV-2 infection, and *Faecalibacterium prausnitzii* levels decline markedly in elder and diabetic populations(33). In fact, *Faecalibacterium* levels have been considered an indirect “indicator” of overall human health(34). The abundance of *F. prausnitzii* is reduced by the “Western” diet (consumption of more meat, animal fat, sugar, processed foods, and low fiber), while it is enhanced by the high-fiber containing “Mediterranean” diet of vegetables and fruits with low meat intake(35). Preliminary studies showed that reduced ingestion of a Mediterranean diet within the same country is associated with increased SARS-CoV-2 related death rates(36). In short, we show that *F. prausnitzii* levels negatively correlated to SARS-CoV-2 infection severity and prior studies show that reduced *F. prausnitzii* is associated with SARS-CoV-2 infection vulnerabilities such as age, diabetes, obesity, and possibly diet.

SARS-CoV-2 positivity and severity were also associated with decreased abundance of *Roseburia* and increased abundance of *Bacteroides*. The implications of these changes remain unclear.

### **Innate immunity could be enhanced by increased bacterial level**

The pathological impact of SARS-CoV-2 infection includes both direct effects from viral invasion and complex immunological responses including, in its most severe form, the ‘cytokine storm.’ The cytokine storm is the result of a sudden increase in circulating levels of pro-inflammatory cytokines produced by activated macrophages, mast cells, endothelial cells, and epithelial cells during innate immune responses, which appear to be modulated by the abundance of *Bifidobacteria* and *Faecalibacteria* and bacterial diversity(5, 23, 25) Steroid treatment has situational success in SARS-CoV-2 infection, based on suppressing this over activation of the innate immune system, reviewed by Tang et al(37).

Zhao et al. reported that elevated serum levels of pro-inflammatory cytokines such as IL-16 and IL-17 predict poor prognoses in patients with SARS-CoV-2 infection(38). Also, Tao et al. showed that changes in gut microbiota composition might contribute to SARS-CoV-2-induced production of inflammatory cytokines in the intestine, which may lead to cytokine storm onset(39). Both authors report significantly reduced gut microbiota diversity and increased opportunistic pathogens in SARS-CoV-2 patients. Interestingly, the bloom of opportunistic pathogens positively correlated with the number of Th17 cells. Bozkurt et al. reported that IL-6 and IL-17 promote viral persistence by immune interactions through cellular autophagy via the inositol-requiring enzyme 1 pathway(25). Additionally, some species of *Bifidobacterium* are likely to prevent the replication of coronaviruses by reducing endoplasmic reticulum stress, also through the inositol-requiring enzyme 1 pathway. Reduced *Bifidobacterium* abundance has been observed in the gut microbiome of patients with IBD, which has mechanisms involving IL-17(40). Furthermore, the direct endoscopic delivery of *Bifidobacterium* has been shown to be effective in promoting symptom resolution and mucosal healing in IBD—an effect likely to be associated with the anti-Th17 effect of *Bifidobacterium*(8). **Figure 7** demonstrates how bifidobacteria might hypothetically quell a heightened immune response by dampening the effect of the master switch TNF- $\alpha$ .

## Conclusions

Given our cross-sectional study design, it is not possible to determine whether the differences in *Bifidobacterium* levels observed between patients and exposed controls preceded or followed infection. If preceding infection, they could be a marker of susceptibility and boosting *Bifidobacterium* levels might decrease the risk or severity of SARS-CoV-2 infection. If these changes followed infection, then adjunctive refloweralization of the gut microbiome and boosting of *Bifidobacterium* through supplementation or fecal transplantation could speed

recovery and reduce organ damage. Refloralization may be particularly helpful for SARS-CoV-2 infected “long haulers,” and those with severe disease (including children with SARS-CoV-2-related multisystem inflammatory syndrome) or persistent symptoms. Future studies of individuals with baseline pre-pandemic microbiome data would be highly valuable, although acquiring such baseline pre-infection microbiome data is still costly. Developing outbreaks within tightly closed communities such as nursing homes might be a good setting in which to assess susceptibility: fecal samples could be collected during the outbreak and run *post hoc* on “cases” and “controls.”

SARS-CoV-2 infection presentation variability appears to show some correlation with colon microbiome bacterial composition and overall diversity. The same changes we observe due to SARS-CoV-2 infection, namely reduced *Bifidobacterium* and/or *Faecalibacterium* abundance, are likely associated with SARS-CoV-2 infection risk factors including old age, obesity, and diabetes(9, 33, 35, 41). Thus, colon microbiome diversity and relative abundance of *Bifidobacterium* and *Faecalibacterium* may be markers that could be used to predict SARS-CoV-2 infection severity. Moreover, this suggests that evaluating an individual’s gut microbiome could provide important information for SARS-CoV-2 treatment or prevention.

In summary, we demonstrate in a study of PCR-positive and PCR-negative SARS-CoV-2-exposed subjects, reduced bacterial diversity and reduced levels of various bacteria are significantly related to both SARS-CoV-2 positivity and SARS-CoV-2 infection severity. These findings suggest that *Bifidobacterium* and other probiotic supplementation or refloweralization via fecal transplantation might provide a therapeutic benefit, particularly for patients with severe disease. Additionally, individual colon microbiome evaluation may predict vulnerability to the development of severe SARS-CoV-2 infection. Lastly, our data suggest a new imperative: going forward, colon microbiome patterns should be controlled for

in studies intended to identify preventive (e.g., vaccines), prophylactic, or therapeutic measures for SARS-CoV-2 infections.

## **Methods**

### **Study Design and Patients**

Individuals who were tested for SARS-CoV-2 infection either because they were symptomatic or had been exposed to a “case” were eligible for enrollment the week following testing if either they or a household member was positive. Controls eligible for enrollment were PCR-negative for SARS-CoV-2, remained antibody negative for 3 to 6 months, and asymptomatic for 6 to 12 months. Additionally, controls had to either share a household with at least one symptomatic SARS-CoV-2-positive individual or be a healthcare worker who had been repeatedly exposed to symptomatic SARS-CoV-2-positive patients or numerous SARS-CoV-2 positive samples. All exposed controls were ones that, despite exposure to SARS-CoV-2, chose not to quarantine or take prophylaxis for SARS-CoV-2 infection and none had yet been vaccinated. Patients did not wear PPE inside their homes and staff did not wear *full* PPE (i.e., did not wear masks) at the office because of its scarcity during this global pandemic. Patients undergoing treatment with total parenteral nutrition, or those with a history of significant gastrointestinal surgery (e.g. bariatric surgery, total colectomy with ileorectal anastomosis, proctocolectomy, postoperative stoma, ostomy, or ileoanal pouch) were excluded.

The study was conducted in accordance with ethical principles of the Declaration of Helsinki, the International Council for Harmonisation (ICH) Harmonised Tripartite Guideline for Good Clinical Practice (GCP), and the Ethical and Independent Review Board (IRB). All patients provided written informed consent to participate.

## **Assessments**

A self-administered questionnaire solicited information on symptom severity, past medical history, current medication and probiotic use, and exposure to recreational drugs or animals. Patients with SARS-CoV-2 infection were further classified as being either asymptomatic carriers or having mild, moderate, or severe symptoms as per National Institute of Health, Clinical Spectrum of SARS-CoV-2 Infection criteria(39, 42). PCR-confirmed SARS-CoV-2 positive household members of SARS-CoV-2 infected patients who lacked symptoms were categorized as asymptomatic carriers. Patients and controls were classified as underweight, normal weight, overweight, obese, or severely obese based on body mass index criteria of the Center for Disease Control and Prevention(40).

## **Stool Sample Collection and Processing**

Patients and controls within the same household collected stool samples within a week of the index case being positive. They were instructed to collect 1 mL of fresh stool and place it directly in a Zymo Research DNA/RNA Shield fecal collection tube. Following fecal collection, each individual sample DNA was extracted and purified with the Qiagen PowerFecal Pro DNA extraction kit. The isolated DNA was then quantitated utilizing the Quantus Fluorometer with the QuantFluor ONE dsDNA kit. After DNA quantification, the DNA was normalized, and libraries were prepared using shotgun methodology with Illumina's Nextera Flex kit. Per our lab shotgun metagenomic processes, samples underwent tagmentation, amplification, indexing, and purification. After completion of sequencing on the Illumina NextSeq with 500/550 High-Output Kits v2.5 (300 cycles), the raw data was streamed in real-time to Illumina's BaseSpace cloud for FASTQ conversion. The FASTQ files were then pushed through One Codex's bioinformatics pipeline for metagenomic

annotation and analyses to elucidate the microflora composition and relative abundances of the top genera and species for all patients and controls.

## **Data Analysis**

We assessed differences in relative abundance across taxa between the gut microbiome of SARS-CoV-2 infected patients and exposed controls and calculated Shannon and Simpson alpha diversity indices with One Codex's bioinformatics analysis pipeline utilizing Jupyter Notebook in Python. Specifically, the One Codex Database consists of ~114K complete microbial genomes (One Codex, San Francisco, CA, USA). During processing, reads were first screened against the human genome, then mapped to the microbial reference database using a k-mer based classification. Individual sequences (NGS read or contig) were compared against the One Codex Database (One Codex) by exact alignment using k-mers, where  $k = 31(43, 44)$ . Based on the relative frequency, unique k-mers were filtered to control for sequencing or reference genome artifacts. The relative abundance of each microbial taxonomic classification was estimated based on the depth and coverage of sequencing across every available reference genome. Beta-diversity was calculated as weighted UniFrac distance visualized in a distance matrix using the phylum-level relative abundance obtained from One Codex. To compare patients across subgroups and patients to exposed controls, t-test, ANOVA, Mann-Whitney U, Kruskal-Wallis tests, and chi-square test statistics were conducted using R version 3.6.1, GraphPad version 8, and SigmaPlot version 12.0 with P-values  $<0.05$  considered as significant.

All authors had access to study data and reviewed and approved the final manuscript.

**Abbreviations:** B. (*Bifidobacterium*); CDC (Center for Disease Control); F.

(*Faecalibacterium*); GCP (good clinical practice); IBD (inflammatory bowel disease); ICH

(International Council for Harmonisation); IL (interleukin); IRB (Independent Review Board); NGS (next generation sequencing); NIH (National Institute of Health); PCR (polymerase chain reaction); PPE (personal protective equipment); SARS-CoV-2 (Coronavirus, COVID, COVID-19); TNF (tumour necrosis factor)

## **Declarations**

Ethics approval and consent to participate: The study was conducted in accordance with ethical principles of the Declaration of Helsinki, the International Council for Harmonisation (ICH) Harmonised Tripartite Guideline for Good Clinical Practice (GCP), and the Ethical and Independent Review Board (IRB, #IRB00007807 ). All patients provided written informed consent to participate.

Consent for publication: Not applicable

Availability of data and materials: The datasets used and analyzed during the current study are available from the corresponding author on reasonable request.

Competing interests: SH declares that she has pecuniary interest in Topelia Pty Ltd in Australia, and Topelia Pty Ltd in USA where development of COVID-19 preventative/treatment options are being pursued. She has also filed patents relevant to Coronavirus treatments. She is the Founder and owner of Microbiome research foundation, Progenabiome and Ventura Clinical Trials.

TJB declares that he has pecuniary interest in Topelia Pty Ltd in Australia, and Topelia Therapeutics Inc. in USA developing COVID-19 preventative/treatment medications. He has also filed patents relevant to COVID-19 treatments.



S. Dave declares she has corporate affiliation to McKesson Specialty Health / Ontada and North End Advisory, LLC. S. Dave is unaware of SARS-CoV-2 and microbiome projects and not directly involved in COVID-19 relevant projects at McKesson, but they may exist.

AJP and BDB have corporate affiliations to Progenabiome. EMMQ serves as a consultant to Precisionbiotics, Novazymes, Salix, Biocodex and Axon Pharma and has received research support from 4D Pharma.

Funding: No funding was received for this manuscript. Several authors were compensated or salaried by ProgenaBiome.

Authors' contributions: All authors (SH, NS, HB, S Dave, AJP, JD, S Dolai, BDB, EMMQ, and TJB) participated in the drafting, critical revision, and approval of the final version of the manuscript. SH led study design. SH and AJP conducted the bioinformatic analysis. S Dave conducted the statistical analysis and was a major contributor to writing the paper. SH was primarily responsible for interpretation of the study results, with contributions from all authors. EMMQ and TJB are senior authors who provided overall direction and advice.

Acknowledgements: Medical writing assistance was provided by Sonya Dave, PhD (an author on the publication) and was funded by ProgenaBiome. The authors thank all clinicians for their involvement and contribution to the study. The authors thank Kate Hendricks, MD, MPH&TM for many helpful editorial suggestions. Finally, the authors thank the late Sydney M Finegold, MD for mentorship that sparked the interest in the microbiome to many scientists, including authors of this paper.

Authors' information: N/A

## References

1. De Vuyst L, Moens F, Selak M, Riviere A, Leroy F. Summer Meeting 2013: growth and physiology of bifidobacteria. *J Appl Microbiol.* 2014;116(3):477-91.
2. Parameswaran N, Patial S. Tumor necrosis factor-alpha signaling in macrophages. *Crit Rev Eukaryot Gene Expr.* 2010;20(2):87-103.
3. Martins AKS, Martins FS, Gomes DA, Elian SDA, Vieira AT, Teixeira MM, et al. Evaluation of in vitro antagonism and of in vivo immune modulation and protection against pathogenic experimental challenge of two probiotic strains of *Bifidobacterium animalis* var. *lactis*. *Arch Microbiol.* 2010;192(12):995-1003.
4. Groeger D, Schiavi E, Grant R, Kurnik-Lucka M, Michalovich D, Williamson R, et al. Intranasal *Bifidobacterium longum* protects against viral-induced lung inflammation and injury in a murine model of lethal influenza infection. *EBioMedicine.* 2020;60:102981.
5. Konieczna P, Akdis CA, Quigley EM, Shanahan F, O'Mahony L. Portrait of an immunoregulatory *Bifidobacterium*. *Gut Microbes.* 2012;3(3):261-6.
6. Konieczna P, Ferstl R, Ziegler M, Frei R, Nehrbass D, Lauener RP, et al. Immunomodulation by *Bifidobacterium infantis* 35624 in the murine lamina propria requires retinoic acid-dependent and independent mechanisms. *PLoS One.* 2013;8(5):e62617.
7. Schiavi E, Plattner S, Rodriguez-Perez N, Barcik W, Frei R, Ferstl R, et al. Exopolysaccharide from *Bifidobacterium longum* subsp. *longum* 35624 modulates murine allergic airway responses. *Benef Microbes.* 2018;9(5):761-73.
8. Ruiz L, Delgado S, Ruas-Madiedo P, Sánchez B, Margolles A. Bifidobacteria and their molecular communication with the immune system. *Front Microbiol.* 2017;8:2345-.
9. Marras L, Caputo M, Bisicchia S, Soato M, Bertolino G, Vaccaro S, et al. The Role of Bifidobacteria in Predictive and Preventive Medicine: A Focus on Eczema and Hypercholesterolemia. *Microorganisms.* 2021;9(4).

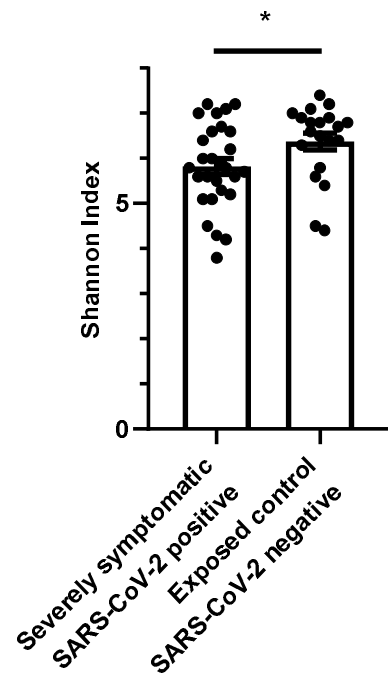
10. Stavropoulou E, Bezirtzoglou E. Probiotics in medicine: A long debate. *Front Immunol.* 2020;11:2192-.
11. Ahlawat S, Asha, Sharma KK. Immunological co-ordination between gut and lungs in SARS-CoV-2 infection. *Virus Res.* 2020;286:198103-.
12. Follmer C. Viral infection-induced gut dysbiosis, neuroinflammation, and  $\alpha$ -synuclein aggregation: Updates and perspectives on COVID-19 and neurodegenerative disorders. *ACS chemical neuroscience.* 2020;11(24):4012-6.
13. Marsland BJ, Trompette A, Gollwitzer ES. The Gut-Lung Axis in Respiratory Disease. *Ann Am Thorac Soc.* 2015;12 Suppl 2:S150-6.
14. Gu S, Chen Y, Wu Z, Chen Y, Gao H, Lv L, et al. Alterations of the Gut Microbiota in Patients With Coronavirus Disease 2019 or H1N1 Influenza. *Clin Infect Dis.* 2020;71(10):2669-78.
15. Zuo T, Liu Q, Zhang F, Lui GC, Tso EY, Yeoh YK, et al. Depicting SARS-CoV-2 faecal viral activity in association with gut microbiota composition in patients with COVID-19. *Gut.* 2021;70(2):276-84.
16. Yeoh YK, Zuo T, Lui GC, Zhang F, Liu Q, Li AY, et al. Gut microbiota composition reflects disease severity and dysfunctional immune responses in patients with COVID-19. *Gut.* 2021;70(4):698-706.
17. Xu K, Cai H, Shen Y, Ni Q, Chen Y, Hu S, et al. [Management of COVID-19: the Zhejiang experience]. *Zhejiang Da Xue Xue Bao Yi Xue Ban.* 2020;49(2):147-57.
18. Din AU, Hassan A, Zhu Y, Zhang K, Wang Y, Li T, et al. Inhibitory effect of *Bifidobacterium bifidum* ATCC 29521 on colitis and its mechanism. *J Nutr Biochem.* 2020;79:108353.
19. Nitzan O, Elias M, Peretz A, Saliba W. Role of antibiotics for treatment of inflammatory bowel disease. *World J Gastroenterol.* 2016;22(3):1078-87.

20. Valdes-Varela L, Hernandez-Barranco AM, Ruas-Madiedo P, Gueimonde M. Effect of Bifidobacterium upon Clostridium difficile Growth and Toxicity When Co-cultured in Different Prebiotic Substrates. *Front Microbiol.* 2016;7:738.
21. Wei Y, Yang F, Wu Q, Gao J, Liu W, Liu C, et al. Protective effects of Bifidobacterial strains against toxigenic Clostridium difficile. *Front Microbiol.* 2018;9:888-.
22. Philippe D, Heupel E, Blum-Sperisen S, Riedel CU. Treatment with Bifidobacterium bifidum 17 partially protects mice from Th1-driven inflammation in a chemically induced model of colitis. *Int J Food Microbiol.* 2011;149(1):45-9.
23. Janda L, Mihalcin M, Stastna M. Is a healthy microbiome responsible for lower mortality in COVID-19? *Biologia (Bratisl).* 2020:1-11.
24. Tiwari SK, Dicks LMT, Popov IV, Karaseva A, Ermakov AM, Suvorov A, et al. Probiotics at War Against Viruses: What Is Missing From the Picture? *Front Microbiol.* 2020;11:1877.
25. Bozkurt HS, Quigley EM. The probiotic Bifidobacterium in the management of Coronavirus: A theoretical basis. *Int J Immunopathol Pharmacol.* 2020;34:2058738420961304.
26. Jin X, Lian JS, Hu JH, Gao J, Zheng L, Zhang YM, et al. Epidemiological, clinical and virological characteristics of 74 cases of coronavirus-infected disease 2019 (COVID-19) with gastrointestinal symptoms. *Gut.* 2020;69(6):1002-9.
27. van den Hoek JA, van de Weerd JA, Baayen TD, Molenaar PM, Sonder GJ, van Ouwkerk IM, et al. A persistent problem with scabies in and outside a nursing home in Amsterdam: indications for resistance to lindane and ivermectin. *Euro Surveill.* 2008;13(48).
28. Negi S, Das DK, Pahari S, Nadeem S, Agrewala JN. Potential role of gut microbiota in induction and regulation of innate immune memory. *Front Immunol.* 2019;10(2441).

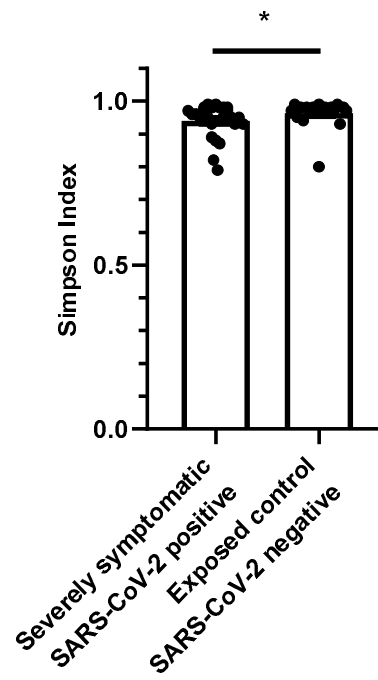
29. Lloyd-Price J, Abu-Ali G, Huttenhower C. The healthy human microbiome. *Genome Med.* 2016;8(1):51.
30. Ghouri YA, Richards DM, Rahimi EF, Krill JT, Jelinek KA, DuPont AW. Systematic review of randomized controlled trials of probiotics, prebiotics, and synbiotics in inflammatory bowel disease. *Clin Exp Gastroenterol.* 2014;7:473-87.
31. Hughes KR, Hamisch LC, Alcon-Giner C, Mitra S, Wright CJ, Ketskemety J, et al. *Bifidobacterium breve* reduces apoptotic epithelial cell shedding in an exopolysaccharide and MyD88-dependent manner. *Open Biol.* 2017;7(1).
32. Fanning S, Hall LJ, Cronin M, Zomer A, MacSharry J, Goulding D, et al. *Bifidobacterial* surface-exopolysaccharide facilitates commensal-host interaction through immune modulation and pathogen protection. *Proc Natl Acad Sci U S A.* 2012;109(6):2108-13.
33. Arboleya S, Watkins C, Stanton C, Ross RP. Gut *Bifidobacteria* Populations in Human Health and Aging. *Front Microbiol.* 2016;7:1204.
34. Ferreira-Halder CV, Faria AVS, Andrade SS. Action and function of *Faecalibacterium prausnitzii* in health and disease. *Best Pract Res Clin Gastroenterol.* 2017;31(6):643-8.
35. Ganesan K, Chung SK, Vanamala J, Xu B. Causal Relationship between Diet-Induced Gut Microbiota Changes and Diabetes: A Novel Strategy to Transplant *Faecalibacterium prausnitzii* in Preventing Diabetes. *Int J Mol Sci.* 2018;19(12).
36. Greene MW, Roberts AP, Fruge AD. Negative Association Between Mediterranean Diet Adherence and COVID-19 Cases and Related Deaths in Spain and 23 OECD Countries: An Ecological Study. *Front Nutr.* 2021;8:591964.
37. Tang L, Yin Z, Hu Y, Mei H. Controlling Cytokine Storm Is Vital in COVID-19. *Front Immunol.* 2020;11:570993.

38. Zhao M. Cytokine storm and immunomodulatory therapy in COVID-19: Role of chloroquine and anti-IL-6 monoclonal antibodies. *Int J Antimicrob Agents*. 2020;55(6):105982.
39. Tao W, Zhang G, Wang X, Guo M, Zeng W, Xu Z, et al. Analysis of the intestinal microbiota in COVID-19 patients and its correlation with the inflammatory factor IL-18. *Med Microecol*. 2020;5:100023.
40. Kostic AD, Xavier RJ, Gevers D. The microbiome in inflammatory bowel disease: current status and the future ahead. *Gastroenterology*. 2014;146(6):1489-99.
41. Biagi E, Nylund L, Candela M, Ostan R, Bucci L, Pini E, et al. Through ageing, and beyond: gut microbiota and inflammatory status in seniors and centenarians. *PLoS One*. 2010;5(5):e10667.
42. Yagisawa M FP, Hanaki H, Ōmura S. Global trends in clinical studies of ivermectin in COVID-19. *Japanese Journal of Antibiotics*. 2021;74(1):44-94.
43. Ames SK, Hysom DA, Gardner SN, Lloyd GS, Gokhale MB, Allen JE. Scalable metagenomic taxonomy classification using a reference genome database. *Bioinformatics*. 2013; 29(18):2253-60.
44. Wood DE, Salzberg SL. Kraken: ultrafast metagenomic sequence classification using exact alignments. *Genome Biol*. 2014 Mar 3;15(3):R46.

A.

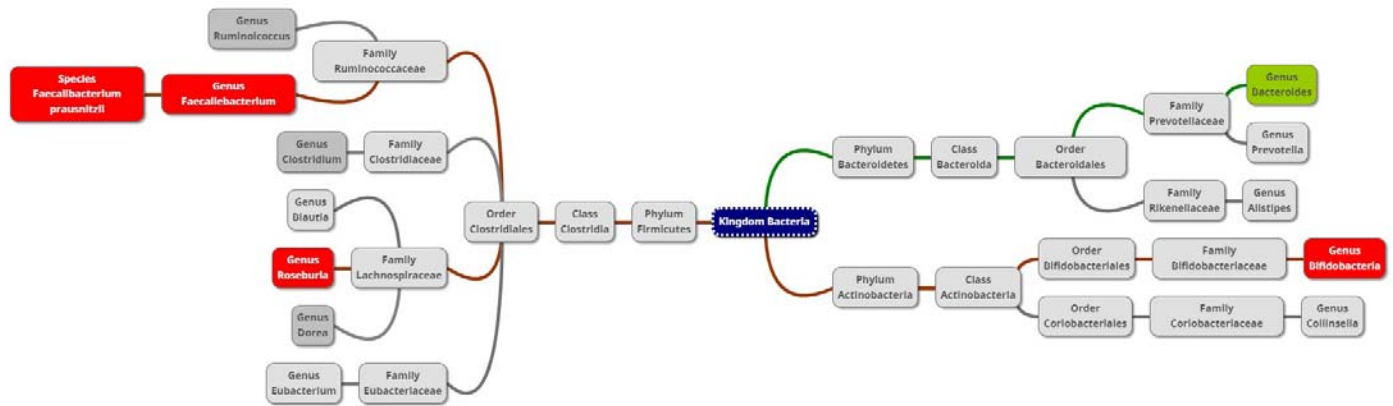


B.



**Figure 1 Alpha diversity of SARS-CoV-2 positive patients with severe symptoms (n=28) vs. exposed controls (n=20).**

A. Shannon index (P=0.036) B. Simpson index (P=0.026). Differences between severely symptomatic positive and exposed negative were analyzed using the Mann-Whitney U test.

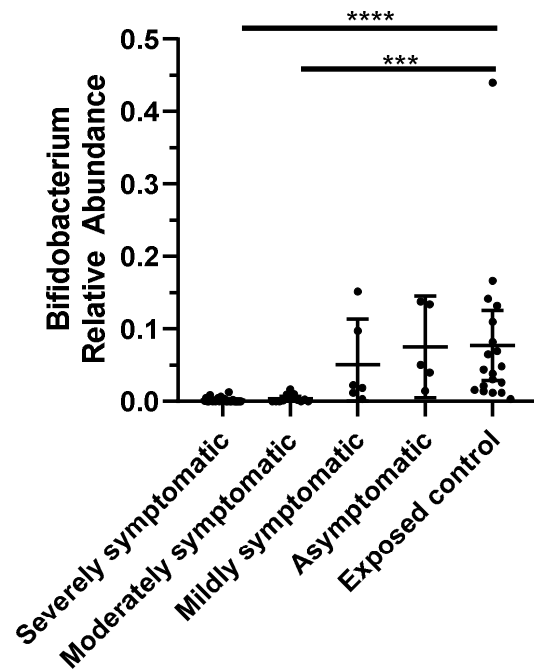


**Figure 2 Diagram of taxa comparing the gut microbiome of SARS-CoV-2 patients and exposed controls.**

Red or green background indicates a significant depletion or increase, respectively, of the genus or species in SARS-CoV-2 positive subjects.



A.



B.

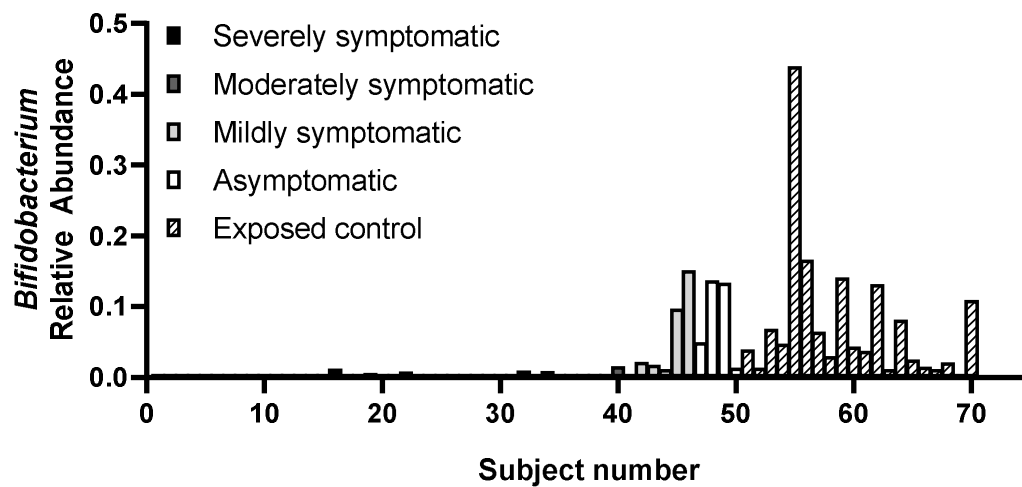
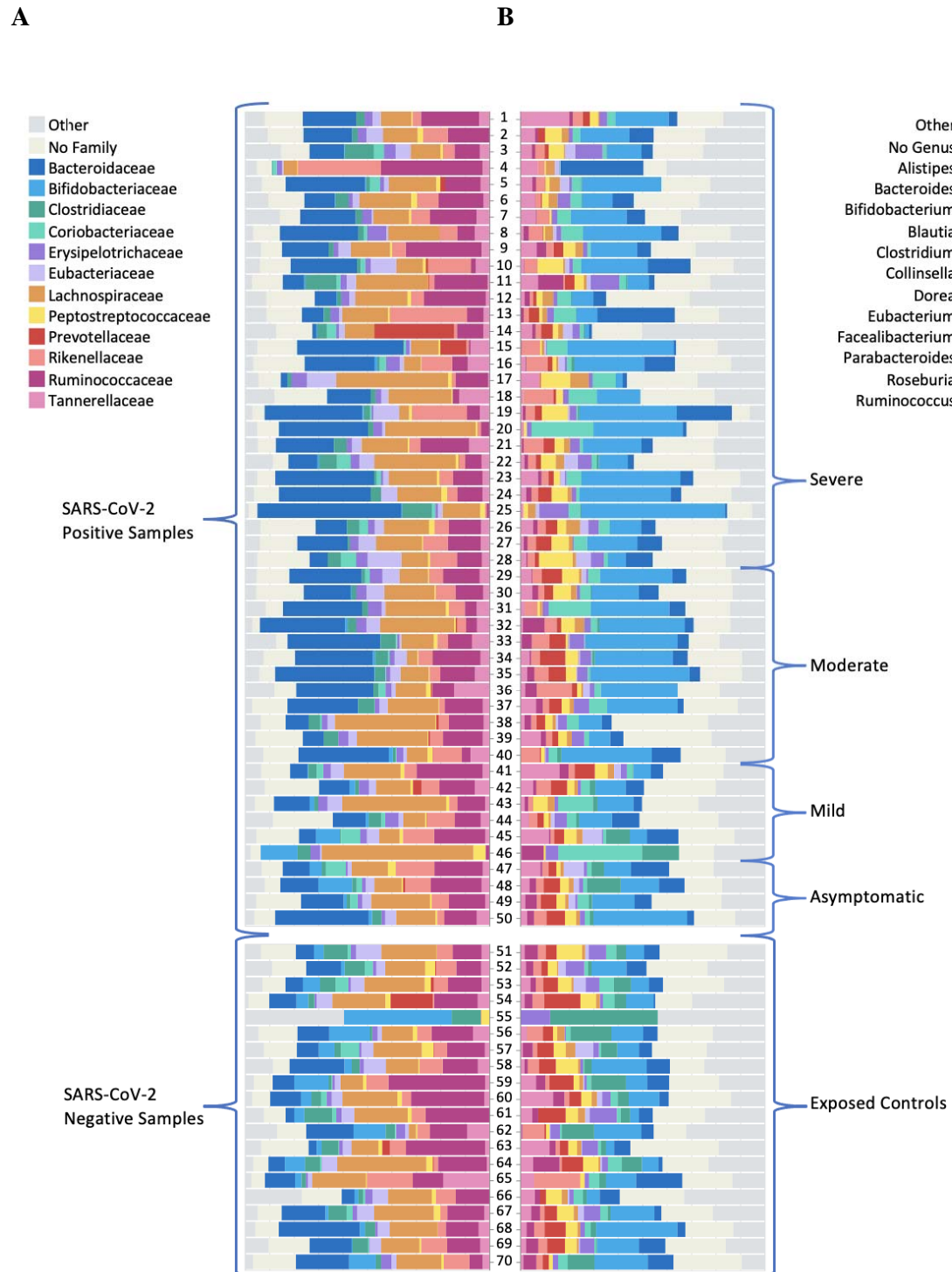


Figure 3 Relative abundance of *Bifidobacteria* in SARS-CoV-2 positive patients (n=50) vs. SARS-CoV-2 negative exposed controls (n=20), plotted as A. mean with error bars for 95% CI and B. individual points.

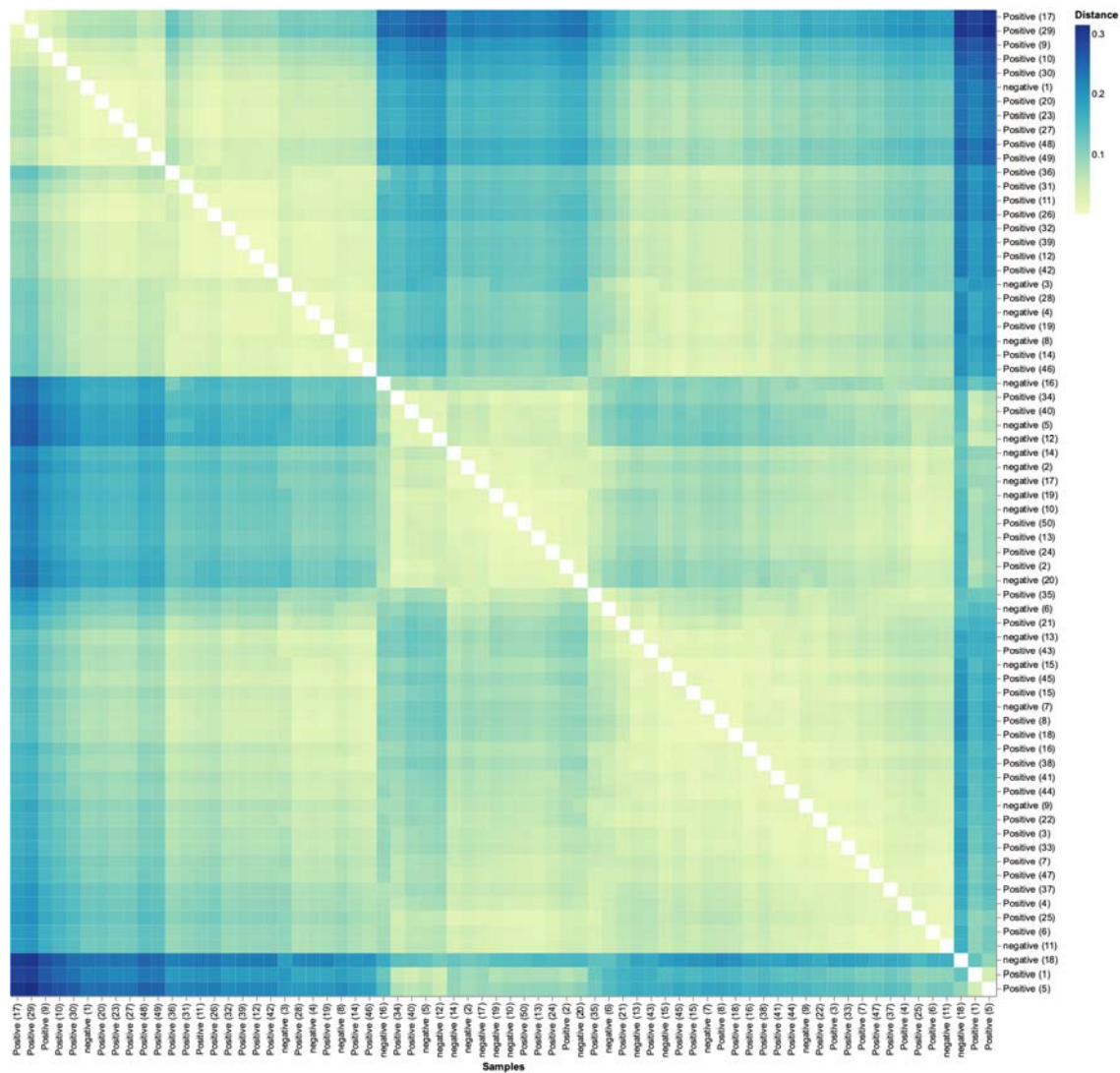
Analyzed via Kruskal-Wallis test, there were significant reductions in *Bifidobacteria* relative abundance for severely ( $P < 0.0001$ ) and moderately ( $P = 0.0002$ ) symptomatic patients.



**Figure 4 Relative abundance of the 12 most common A. families and B. genera.**

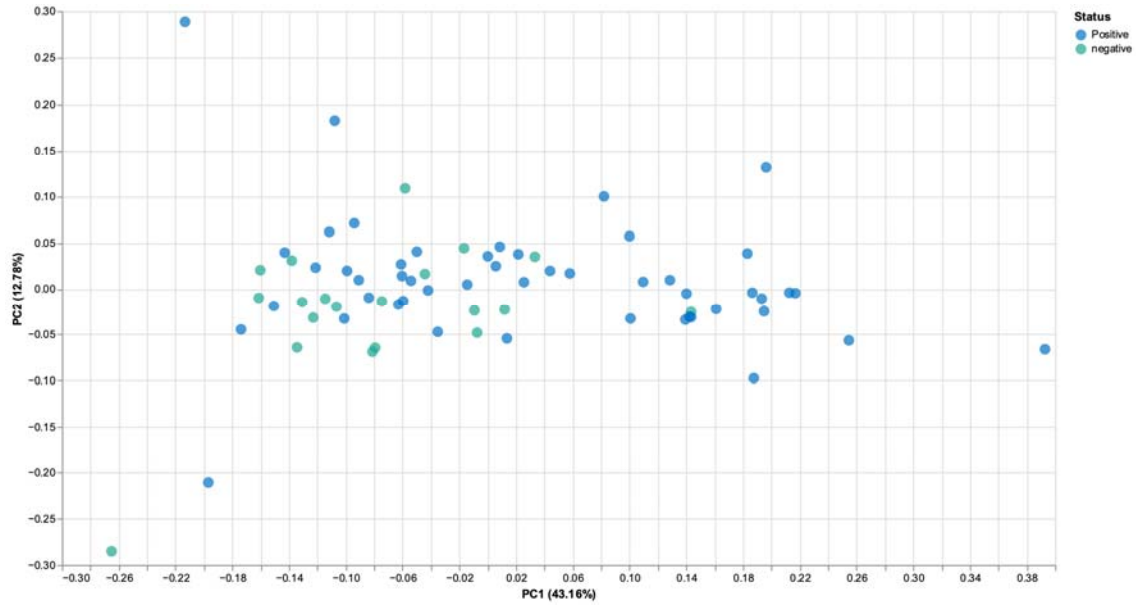
The top group represents the SARS-CoV-2 positive samples (n=50), stratified by severity.

The bottom group represents the exposed control samples (n=20).



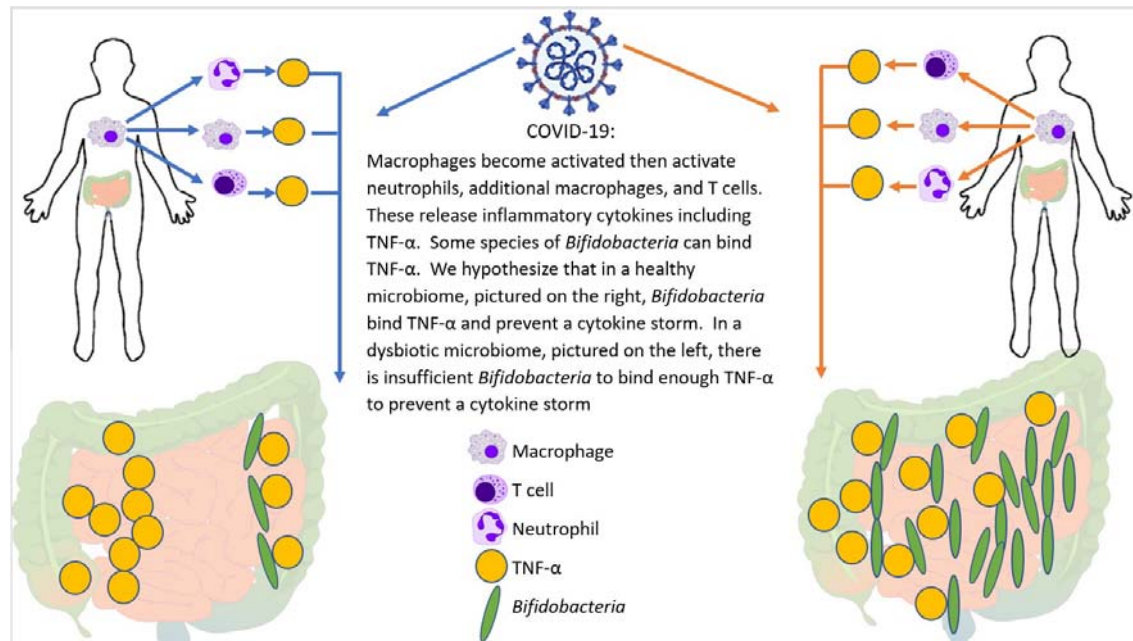
**Figure 5 Weighted UniFrac distance matrix of phylum level SARS-CoV-2 positive(n=50) and exposed negative control samples(n=20).**

Distance of microbiome differences increases with increasing blue color intensity (see legend top right).



**Figure 6 Principal component analysis of microbiota from SARS-CoV-2 positive (n=50) and exposed negative controls (n=20).**

Dots closer in distance are more similar in microbiome composition. Axes depict the percent of variance explained by principal component (PC) 1 and 2. Plots are based on bacterial genera relative abundance profiles.



**Figure 7 Potential mechanism for cytokine storm and immune hyper-response in SARS-CoV-2 positive patients.**

In individuals infected with SARS-CoV-2, the macrophages become activated; these in turn activate T-cells, additional macrophages, and neutrophils—all of which release cytokines, including TNF- $\alpha$ . *Bifidobacteria*, when present in sufficient numbers, can bind to TNF- $\alpha$  and prevent the subsequent cytokine storm. Therefore, patients with a bifidobacterial dysbiosis characterized by low levels of *Bifidobacteria* lack this line of defense, which may lead to a cytokine storm.

**Table S1 Demographic and baseline clinical characteristics of SARS-CoV-2-positive patients and SARS-CoV-2-negative exposed controls.**

**Table 1 Associations of SARS-CoV-2 positivity (center) and infection severity (right) with bacterial (left) abundance.**

P-values determined by either unpaired t-test (center) or one-way ANOVA (right), with P<0.05 shown bold. The arrow direction indicates direction of bacterial abundance change.

## Tables

**Table 1.** Demographic and baseline clinical characteristics of SARS-CoV-2-positive patients and SARS-CoV-2-negative exposed controls

Ranges: 1-5, 6-10, 11-15, 16-20, 21-25

No	Age	Sex	Ethnicity <sup>†</sup>	Risk Factors	BMI*	PCR Result	Category
1	21-25	F	NHW	none	24.8	positive	severe
2	71-75	M	H	none	18.4	positive	severe
3	86-90	M	NHW	Alzheimer's	21.1	positive	severe
4	16-20	F	NHW	none	22.0	positive	severe
5	31-35	M	NHW	overweight	26.9	positive	severe
6	41-45	F	NHW	overweight	25.8	positive	severe
7	66-70	F	NHW	overweight	25.8	positive	severe
8	56-60	M	NHW	overweight	27.3	positive	severe
9	41-45	F	NHW	overweight	27.8	positive	severe
10	51-55	M	NHW	obesity	30.7	positive	severe
11	36-40	M	NHW	hypertension	23.8	positive	mild
12	56-60	M	NHW	none	22.7	positive	severe
13	66-70	F	NHW	hypertension	22.9	positive	severe
14	55-60	M	NHW	obesity, HIV	37.2	positive	severe



<b>15</b>	66-70	F	NHW	hypertension, diabetes mellitus, obesity, cerebral aneurysm	48.5	positive	severe
<b>16</b>	66-70	M	NHW	hypertension, obesity, pulmonary embolus	33.2	positive	severe
<b>17</b>	46-50	F	NHW	overweight	27.4	positive	severe
<b>18</b>	56-60	M	NHW	hypertension, overweight	26.2	positive	severe
<b>19</b>	61-65	F	NHW	hypertension, overweight	28.1	positive	severe
<b>20</b>	56-60	F	NHW	hypertension	NA	positive	severe
<b>21</b>	51-55	F	NHW	none	24.5	positive	severe
<b>22</b>	36-40	M	NHW	obesity	30.7	positive	severe
<b>23</b>	6-10	M	NHW	none	14.5	positive	severe
<b>24</b>	51-55	M	NHW	none	24.1	positive	severe
<b>25</b>	51-55	F	NHW	hypertension, overweight	25.0	positive	severe
<b>26</b>	61-65	F	NHW	none	23.8	positive	severe
<b>27</b>	71-75	F	NHW	none	19.5	positive	severe
<b>28</b>	61-65	M	NHW	obesity, hypertension	31.5	positive	severe

<b>29</b>	21-25	F	NHW	obesity	30.9	positive	moderate
<b>30</b>	21-25	F	NHW	obesity, asthma	30.6	positive	moderate
<b>31</b>	21-25	F	NHW	asthma	NA	positive	moderate
<b>32</b>	36-40	F	H	hypertension, overweight	25.4	positive	moderate
<b>33</b>	31-35	M	H	none	18.4	positive	moderate
<b>34</b>	61-65	F	H	overweight	NA	positive	moderate
<b>35</b>	61-65	M	NHW	COPD	NA	positive	moderate
<b>36</b>	71-75	M	NHW	hypertension, severe obesity	48.5	positive	moderate
<b>37</b>	66-70	M	NHW	obesity	33.1	positive	moderate
<b>38</b>	66-70	M	NHW	obesity	30.7	positive	moderate
<b>39</b>	56-60	F	NHW	obesity	32.0	positive	moderate
<b>40</b>	66-70	F	NHW	hypertension	20.9	positive	moderate
<b>41</b>	16-20	M	NHW	none	23.5	positive	mild
<b>42</b>	36-40	F	NHW	none	18.6	positive	mild
<b>43</b>	31-35	F	NHW	overweight	28.5	positive	mild
<b>44</b>	51-55	M	NHW	overweight	29.0	positive	mild
<b>45</b>	36-40	F	--	obesity	31.3	positive	mild

46	41-45	F	NHW	hypertension	23.0	positive	mild
47	21-25	M	NHW	overweight	25.8	positive	asymptomatic
48	46-50	F	H	none	20.4	positive	asymptomatic
49	66-70	M	NHW	overweight	28.5	positive	asymptomatic
50	51-55	M	NHW	obesity, diabetes	35.3	positive	asymptomatic
51	66-70	F	NHW	overweight, + relative	26.6	negative	exposed
52	56-60	F	H	obesity, + relative	30.0	negative	exposed
53	51-55	F	NHW	hypertension, prediabetes, + relatives	25.0	negative	exposed
54	61-65	M	NHW	overweight, + relative	26.4	negative	exposed
55	26-30	M	NHW	overweight, + relative	26.4	negative	exposed
56	21-25	F	NHW	overweight, + relative	26.4	negative	exposed
57	61-65	F	NHW	none, (kissed)	17.4	negative	exposed

+ boyfriend								
<b>58</b>	51-55	F	NHW	none,		19.9	negative	exposed
+ relatives								
<b>59</b>	16-20	F	NHW	none,	+	21.2	negative	exposed
				relative				
<b>60</b>	26-30	M	--	none,	+	19.5	negative	exposed
patients								
<b>61</b>	56-60	F	--	none,	+	25.5	negative	exposed
				patient samples				
<b>62</b>	51-55	F	--	none,	+	24.0	negative	exposed
				workers,	+			
				patients,	+			
				patient samples				
<b>63</b>	31-35	M	NHW	none,	+	23.7	negative	exposed
				relative				
<b>64</b>	31-35	M	NHW	none,	+	21.7	negative	exposed
roommate								
<b>65</b>	61-65	F	H	prediabetic,		26.0	negative	exposed
				overweight,				
				+ physician,	+			
				relative				

**66** 41-45 F -- overweight, 26.6 negative exposed

+ patient samples

<b>67</b>	41-45	F	--	obesity, patients	+	35.1	negative	exposed
-----------	-------	---	----	----------------------	---	------	----------	---------

**68** 41-45 M -- overweight, + 27.2 negative exposed

patients, +

patient samples

<b>69</b>	51-55	M	--	overweight, + patients		27.1	negative	exposed
-----------	-------	---	----	---------------------------	--	------	----------	---------

**70** 11-15 F NHW overweight, + 27.1 negative exposed

relative

\*BMI, body mass index; + NHW = non-Hispanic White, H = Hispanic, B=Black, NA = Native American; Note: some ethnicities removed to maintain confidentiality.

\*BMI, body mass index; <sup>+</sup> NHW = non-Hispanic White, H = Hispanic, B=Black, NA =  
Native American

**Table 1.** Associations of SARS-CoV-2 positivity (center) and SARS-CoV-2 infection severity (right) with bacterial abundance for all bacteria (left) tested. P-values determined by either Mann-Whitney U test (center) or Kruskal-Wallis test (right), with P<0.05 shown bold. The arrow direction indicates direction of significant bacterial abundance change.

Genus (+/- Species)	Association of SARS-CoV-2 positivity and bacterial abundance based on Mann-Whitney U		Association of SARS-CoV-2 infection severity and bacterial abundance based on Kruskal-Wallis	
	P-value	Direction	P-value	Direction
<i>Alistpies</i>	0.8709		0.8119	
<i>Bacteroides</i>	<b>0.0025</b>	↑	<b>0.0075</b>	↑
<i>Bifidobacterium</i>	<b>&lt;0.0001</b>	↓	<b>&lt;0.0001</b>	↓
<i>Blautia</i>	0.1349		0.2096	
<i>Clostridium</i>	0.9948		0.2721	
<i>Collinsella</i>	0.9948		0.7476	
<i>Dorea</i>	0.2777		0.4820	
<i>Eubacterium</i>	0.4786		0.9619	
<i>Faecalibacterium</i>	<b>0.0137</b>	↓	<b>0.0077</b>	↓
<i>Faecalibacterium prausnitzii</i>	<b>0.0153</b>	↓	<b>0.0077</b>	↓
<i>Prevotella</i>	0.6538		0.1687	
<i>Roseburia</i>	<b>0.0097</b>	↓	<b>0.0327</b>	↓
<i>Ruminococcus</i>	0.9844		0.8033	