

## 1 **Longitudinal analysis of SARS-CoV-2 vaccine breakthrough infections reveal** 2 **limited infectious virus shedding and restricted tissue distribution**

3  
4 Ruian Ke<sup>1#</sup>, Pamela P. Martinez<sup>2,3,4#</sup>, Rebecca L. Smith<sup>4,5,6</sup>, Laura L. Gibson<sup>7</sup>, Chad J.  
5 Achenbach<sup>8,9</sup>, Sally McFall<sup>10,11</sup>, Chao Qi<sup>12</sup>, Joshua Jacob<sup>8</sup>, Etienne Dembele<sup>8</sup>, Camille Bundy<sup>13</sup>,  
6 Lacy M. Simons<sup>8,9</sup>, Egon A. Ozer<sup>8,9</sup>, Judd F. Hultquist<sup>8,9</sup>, Ramon Lorenzo-Redondo<sup>8,9</sup>, Anita K.  
7 Opdycke<sup>14</sup>, Claudia Hawkins<sup>8,9</sup>, Robert L. Murphy<sup>8,9</sup>, Agha Mirza<sup>15</sup>, Madison Conte<sup>15</sup>, Nicholas  
8 Gallagher<sup>16</sup>, Chun Huai Luo<sup>16</sup>, Junko Jarrett<sup>16</sup>, Abigail Conte<sup>17</sup>, Ruifeng Zhou<sup>17</sup>, Mireille Farjo<sup>2</sup>,  
9 Gloria Rendon<sup>18</sup>, Christopher J. Fields<sup>18</sup>, Leyi Wang<sup>19</sup>, Richard Fredrickson<sup>19</sup>, Melinda E.  
10 Baughman<sup>4</sup>, Karen K. Chiu<sup>4</sup>, Hannah Choi<sup>4</sup>, Kevin R. Scardina<sup>4</sup>, Alyssa N. Owens<sup>20</sup>, John  
11 Broach<sup>21,22</sup>, Bruce Barton<sup>23,24</sup>, Peter Lazar<sup>23</sup>, Matthew L. Robinson<sup>15</sup>, Heba H. Mostafa<sup>16</sup>, Yukari  
12 C. Manabe<sup>15,17</sup>, Andrew Pekosz<sup>17</sup>, David D. McManus<sup>25</sup>, Christopher B. Brooke<sup>2,4\*</sup>

13  
14 <sup>1</sup> T-6, Theoretical Biology and Biophysics, Los Alamos National Laboratory, Los Alamos, NM  
15 87545, USA

16 <sup>2</sup> Department of Microbiology, University of Illinois at Urbana-Champaign, Urbana, IL 61801,  
17 USA

18 <sup>3</sup> Department of Statistics, University of Illinois at Urbana-Champaign, Urbana, IL 61801, USA

19 <sup>4</sup> Carl R. Woese Institute for Genomic Biology, University of Illinois at Urbana-Champaign,  
20 Urbana, IL 61801, USA

21 <sup>5</sup> Department of Pathobiology, University of Illinois at Urbana-Champaign, Urbana, IL 61802,  
22 USA

23 <sup>6</sup> Carle Illinois College of Medicine, University of Illinois at Urbana-Champaign, Urbana, IL  
24 61801, USA

25 <sup>7</sup> Division of Infectious Diseases and Immunology, Departments of Medicine and Pediatrics,  
26 University of Massachusetts Medical School, Worcester, MA 01655, USA

27 <sup>8</sup> Institute for Global Health, Northwestern University Feinberg School of Medicine, Chicago, IL  
28 60611, USA

29 <sup>9</sup> Department of Medicine, Division of Infectious Diseases, Northwestern University Feinberg  
30 School of Medicine, Chicago, IL 60611, USA

31 <sup>10</sup> Center for Innovation in Point-of-Care Technologies for HIV/AIDS at Northwestern University,  
32 Evanston, IL 60208, USA

33 <sup>11</sup> Department of Biomedical Engineering, Northwestern University, Evanston, IL 60208, USA

34 <sup>12</sup> Department of Pathology, Northwestern University Feinberg School of Medicine, Chicago, IL  
35 60611, USA

36 <sup>13</sup> Institute for Sexual and Gender Minority Health and Wellbeing, Northwestern University  
37 Feinberg School of Medicine, Chicago, IL 60611, USA

38 <sup>14</sup> Department of Health Service, Northwestern University, Evanston, IL 60208, USA

39 <sup>15</sup> Division of Infectious Diseases, Department of Medicine, Johns Hopkins School of Medicine,  
40 Baltimore, MD 21287, USA

41 <sup>16</sup> Division of Medical Microbiology, Department of Pathology, Johns Hopkins University School  
42 of Medicine, Baltimore, MD 21287, USA

43 <sup>17</sup> W. Harry Feinstone Department of Molecular Microbiology and Immunology, Johns Hopkins  
44 Bloomberg School of Public Health, Baltimore, MD 21205, USA

45 <sup>18</sup> High-Performance Biological Computing at the Roy J. Carver Biotechnology Center,  
46 University of Illinois at Urbana-Champaign, Urbana, IL 61801, USA

47 <sup>19</sup> Veterinary Diagnostic Laboratory, University of Illinois at Urbana-Champaign, Urbana, IL  
48 61802, USA

49 <sup>20</sup> Center for Clinical and Translational Research, University of Massachusetts Medical School,  
50 Worcester, MA 01655, USA

51 <sup>21</sup> UMass Memorial Medical Center, Worcester, MA 01655, USA

52 <sup>22</sup> Department of Emergency Medicine, University of Massachusetts Medical School, Worcester,  
53 MA 01655, USA

54 <sup>23</sup> Division of Biostatistics and Health Services Research, University of Massachusetts Medical  
55 School, Worcester, MA 01655, USA

56 <sup>24</sup> Department of Population and Quantitative Health Sciences, University of Massachusetts  
57 Medical School, Worcester, MA 01655, USA

58 <sup>25</sup> Division of Cardiology, University of Massachusetts Medical School, Worcester, MA 01655,  
59 USA

60 # These authors contributed equally

61 \* Corresponding author (cbrooke@illinois.edu)

62

## 63 **ABSTRACT**

64 The global effort to vaccinate people against SARS-CoV-2 in the midst of an ongoing  
65 pandemic has raised questions about the nature of vaccine breakthrough infections and  
66 the potential for vaccinated individuals to transmit the virus. These questions have  
67 become even more urgent as new variants of concern with enhanced transmissibility,  
68 such as Delta, continue to emerge. To shed light on how vaccine breakthrough  
69 infections compare with infections in immunologically naive individuals, we examined  
70 viral dynamics and infectious virus shedding through daily longitudinal sampling in a  
71 small cohort of adults infected with SARS-CoV-2 at varying stages of vaccination. The  
72 durations of both infectious virus shedding and symptoms were significantly reduced in  
73 vaccinated individuals compared with unvaccinated individuals. We also observed that  
74 breakthrough infections are associated with strong tissue compartmentalization and are  
75 only detectable in saliva in some cases. These data indicate that vaccination shortens  
76 the duration of time of high transmission potential, minimizes symptom duration, and  
77 may restrict tissue dissemination.

78

## 79 **MAIN TEXT**

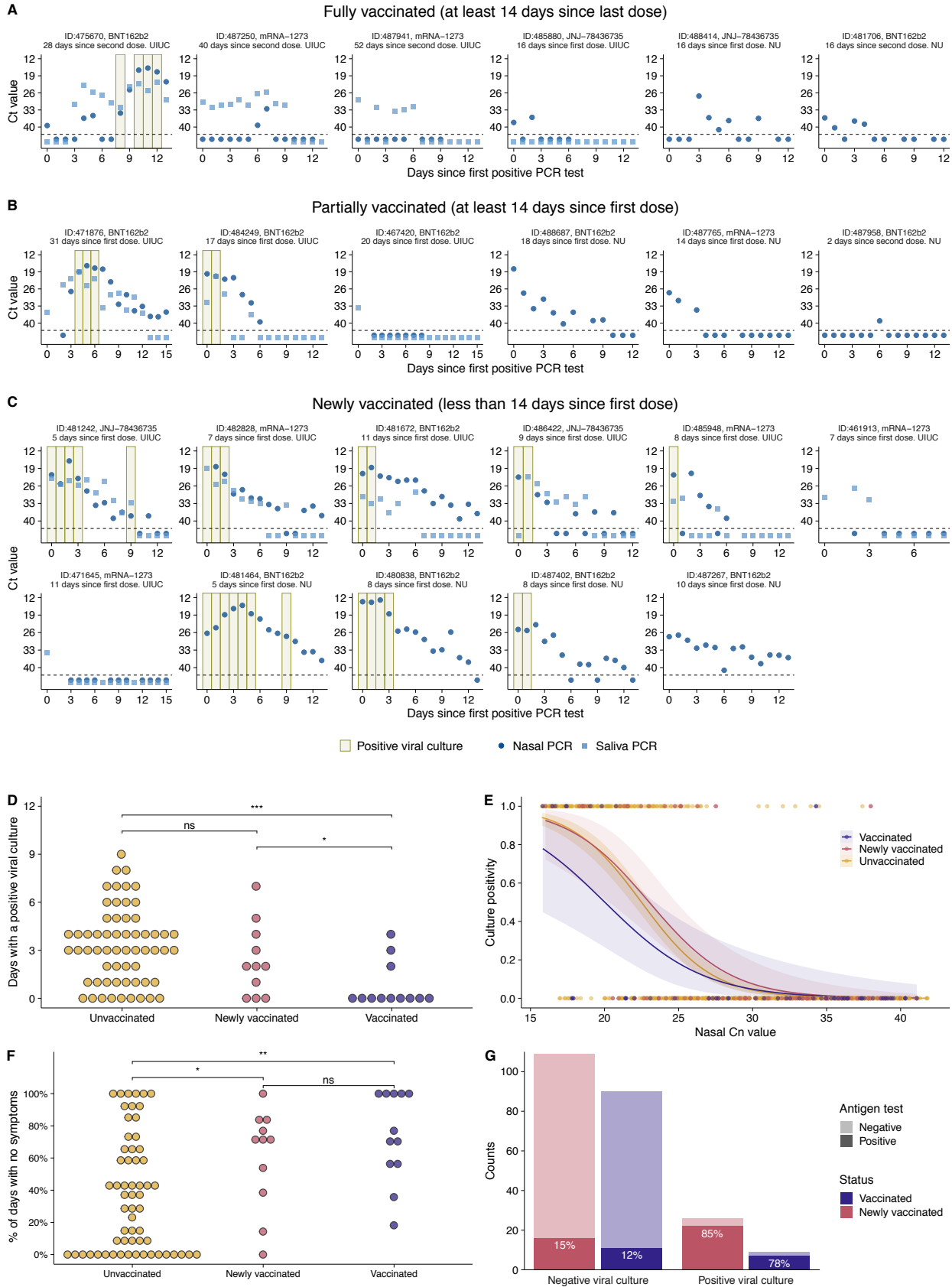
80 Licensed vaccines against SARS-CoV-2 have already established a clear record of  
81 success in reducing case numbers and disease severity in areas that have achieved  
82 high vaccination rates. While vaccination clearly limits susceptibility to the virus,  
83 breakthrough infections can occur, as no vaccines are capable of eliciting sterilizing  
84 immunity, particularly against viruses that infect mucosal tissues<sup>1</sup>. Characterizing the  
85 unique features of breakthrough infections is critical for evaluating the potential for  
86 vaccinated individuals to transmit virus and understanding how vaccine-induced  
87 immunity suppresses viral replication and mitigates disease severity.

88

89 A study performed in Israel estimated that vaccination with the BNT162b2  
90 (Pfizer/BioNTech) mRNA vaccine substantially reduced the potential for transmission  
91 among household contacts<sup>2</sup>. Other recent data have suggested that vaccinated  
92 individuals may shed virus (as measured by RTqPCR) at similar levels to unvaccinated  
93 individuals, particularly when infected with the Delta variant<sup>3-5</sup>. Some interpretations of  
94 these preliminary studies have suggested that the risk for secondary transmission is  
95 similar for vaccinated and unvaccinated individuals. However, most studies to date base  
96 their conclusions on cross sectional sampling of viral genome loads (as measured by  
97 RTqPCR), which may not directly translate to infectiousness<sup>6</sup>. In a cohort of

98 longitudinally sampled participants who screened positive for SARS-CoV-2, we  
99 previously showed that the relationship between viral genome load and infectious virus  
100 load can vary greatly across individuals and over time, making the use of cross-  
101 sectional RTqPCR data problematic for estimations of infectiousness<sup>7</sup>. Therefore,  
102 longitudinal comparisons of viral genome shedding and infectious virus shedding across  
103 tissue compartments between vaccinated and unvaccinated individuals are needed to  
104 more accurately assess the effects of vaccination on viral dynamics and transmission  
105 potential.

106  
107 Here, we present the longitudinal dynamics of SARS-CoV-2 infection in 23 individuals  
108 infected at varying stages of vaccination (6 fully vaccinated, *i.e.* enrolled at least 14  
109 days after second mRNA vaccine dose or first J&J vaccine dose; 6 partially vaccinated,  
110 *i.e.* not fully vaccinated but enrolled at least 14 days past first mRNA vaccine dose; and  
111 11 newly vaccinated individuals that enrolled less than 14 days after first vaccine dose  
112 (either mRNA or J&J)), captured at two study sites through daily nasal swab and saliva  
113 collection, along with symptom reporting (**Fig 1A-C**). These individuals were primarily  
114 infected with B.1.1.7 (Alpha) and P.1 (Gamma) variants, as enrollment in this study  
115 concluded before the widespread circulation of Delta at the study sites (**Table 1**)  
116



118 **Figure 1: Viral dynamics in vaccinated individuals. (A)** Temporal trends for the  
119 saliva RTqPCR (light blue squares), nasal swab RTqPCR (dark blue dots), and positive  
120 nasal swab viral culture results (tan bars) in fully vaccinated individuals that enrolled  $\geq$   
121 14 days after second mRNA vaccine dose or first J&J vaccine dose. The X axis shows  
122 days since the first positive PCR result. The Y axis indicates Ct values for saliva  
123 RTqPCR assay (covidSHIELD) and Cn values for nasal swab RTqPCR assay (Abbott  
124 Alinity). Horizontal dashed line indicates limit of detection of RTqPCR assays. For  
125 individuals at the NU study site, saliva samples were not collected thus only nasal swab  
126 data are shown. **(B)** Same data as in (A) but for partially vaccinated individuals that  
127 enrolled  $\geq$ 14 days after first mRNA vaccine dose but were not yet fully vaccinated. **(C)**  
128 Same data as in (A) but for newly vaccinated individuals that enrolled  $<$  14 days after  
129 first mRNA or J&J vaccine dose. **(D)** Numbers of days that vaccinated (combined fully  
130 and partially vaccinated individuals), newly vaccinated individuals, and unvaccinated  
131 individuals (from Ke et al.<sup>7</sup>) tested viral culture positive. ns,  $p>0.05$ ; \*  $p<0.05$ ; \*\*  $p<0.01$ ;  
132 \*\*\*  $p<0.001$ . **(E)** Association between the nasal Cn values and the probability of the  
133 sample being viral culture positive summarized across the vaccinated individuals, newly  
134 vaccinated individuals, and unvaccinated individuals (from Ke et al.<sup>7</sup>). Dots indicate  
135 individual viral culture results, 1 being a positive result, and 0 a negative result. The  
136 solid line and the shaded area are the mean and the confidence intervals, respectively,  
137 of a logistic regression fit. **(F)** Proportion of days post-enrollment (up to 14 days) that  
138 vaccinated, newly vaccinated, and unvaccinated individuals reported no symptoms. ns,  
139  $p>0.05$ ; \*  $p<0.05$ ; \*\*  $p<0.01$ ; \*\*\*  $p<0.001$ . **(G)** Plot showing antigen FIA results from  
140 days where participants tested either positive or negative by viral culture. The text inside  
141 the bars indicates the percentage of antigen FIA results that were positive when  
142 concurrent viral culture sample was positive or negative.

143  
144 5 out of 6 fully vaccinated individuals remained viral culture negative throughout their  
145 enrollment period, suggesting minimal shedding of infectious virus and little to no  
146 transmission risk. Moreover, the 5 individuals who remained viral culture negative had  
147 either undetectable or sporadic and low-level (generally  $Cn>35$ ) viral genome loads in  
148 the nasal compartment.

149  
150 Interestingly, in 2 (487941 and 487250) of the 3 viral culture negative individuals for  
151 which we collected both saliva and nasal samples, viral RNA was detectable in saliva  
152 for 5 to 10 days while remaining either undetectable (487941) or detectable at very low  
153 level for 2 days (487250) in nasal swabs. These data suggest that in 2 of the 4 fully  
154 vaccinated individuals for which both saliva and nasal swabs were collected, infection  
155 was initially established within the oral cavity or other saliva-exposed tissue site and  
156 was restricted from disseminating to the nasal passages. We did not observe a similar  
157 restriction of virus to saliva across 60 non-vaccinated individuals that we examined in a  
158 previous report<sup>7</sup>, suggesting that severe compartmentalization and tissue-restriction of  
159 virus may be a unique feature of vaccine breakthrough infections.

160  
161 The one fully vaccinated individual (475670) that did test viral culture positive exhibited  
162 highly discordant patterns of viral shedding between saliva and nasal swabs. Viral  
163 genome loads expanded and declined in saliva samples over the first week of sample

164 collection while remaining very low or undetectable in nasal swabs. At day nine post-  
165 enrollment, viral genome loads suddenly spiked in nasal samples and the individual  
166 began testing viral culture positive. This pattern is consistent with initial containment of  
167 the virus in saliva-associated tissue, followed by eventual viral breakthrough and  
168 dissemination to the nasal compartment.

169  
170 Patterns of viral shedding in partially vaccinated individuals were more variable. Of the 6  
171 individuals that were not considered fully vaccinated but enrolled  $\geq 14$  days after  
172 receiving the first dose of mRNA vaccine, 2 only tested positive by RT-qPCR in a single  
173 sample (out of 13 or 15 total samples) (**Fig. 1B**), suggesting highly restricted infection  
174 with minimal transmission risk. In the other 3 individuals, viral shedding dynamics were  
175 indistinguishable from what we previously observed in unvaccinated individuals<sup>7</sup>, and 2  
176 of these 3 tested viral culture positive on at least one day (**Fig. 1B**). Of the 11  
177 individuals that enrolled within 14 days of receiving their first vaccine dose (“newly  
178 vaccinated”), most appeared similar to unvaccinated individuals with the exception of  
179 three that appeared to exhibit restricted shedding (**Fig. 1C**). These data are consistent  
180 with individual variation in the onset and magnitude of vaccine-mediated protection.

181  
182 We directly compared duration of infectious virus shedding between fully and partially  
183 vaccinated individuals (combined here as “vaccinated” due to low numbers), newly  
184 vaccinated individuals, and unvaccinated individuals from our previous study (**Fig. 1D**)<sup>7</sup>.  
185 The total numbers of days that vaccinated individuals tested viral culture positive was  
186 significantly fewer than both newly vaccinated and unvaccinated groups, indicating that  
187 vaccination significantly reduces infectious virus shedding.

188  
189 We also examined whether the relationship between nasal swab Cn value and viral  
190 culture status differed in vaccinated (both fully and partially), newly vaccinated, and  
191 unvaccinated individuals (from Ke et al<sup>7</sup>) (**Fig. 1E**). For samples with Cn values below  
192 27, we found that the probability of being viral culture positive was lower for samples  
193 coming from vaccinated individuals versus newly vaccinated and unvaccinated  
194 individuals. These data suggest that for a given viral genome load (as measured by  
195 RTqPCR), vaccinated individuals may be less infectious than unvaccinated individuals,  
196 consistent with a recent report examining Delta breakthrough infections<sup>8</sup>. However, we  
197 must emphasize that this difference is not statistically significant, potentially due to both  
198 the relatively small number of samples from vaccinees and the fact that only 6 out of 12  
199 individuals included in the vaccinated group were fully vaccinated at the time of  
200 enrollment. Regardless, these data further illustrate that Ct/Cn values cannot be used  
201 as a simple surrogate for infectious potential.

202  
203 We next examined whether there were any differences in self-reported symptoms  
204 between vaccinated and unvaccinated individuals (using the 60 unvaccinated  
205 individuals previously reported<sup>7</sup>) (**Fig. 1F**). A Poisson regression shows that those who  
206 received at least one vaccine dose had significantly more days with no reported  
207 symptoms than the unvaccinated ( $p < 0.0001$ ). The mean proportion of study days with  
208 no symptoms was 0.74 in the vaccinated group dose compared with 0.37 in the  
209 unvaccinated group (range: 0 to 1 for both groups).

210  
211 Finally, we examined the relationship between viral culture and antigen FIA results in  
212 vaccinated (fully plus partially) and newly vaccinated individuals (**Fig 1G**). We observed  
213 that vaccinated and newly vaccinated participants tested positive by antigen FIA on  
214 78% and 85% of the days on which they also tested positive by viral culture, suggesting  
215 that antigen FIA can be used to identify vaccine breakthrough infections with high  
216 transmission risk, especially if used as part of a serial screening program<sup>9</sup>. These  
217 results are consistent with our previous results in unvaccinated individuals as well as  
218 earlier cross-sectional studies examining the relationship between antigen tests  
219 positivity and infectious virus shedding<sup>7,10,11</sup>.

220  
221 This study has several limitations that must be considered. First, the study cohort size is  
222 small, thus making it hard to draw firm quantitative conclusions. Second, our study  
223 cohort is biased towards breakthrough infections that were detected in our on-campus  
224 screening programs (saliva-based RTqPCR at UIUC, nasal swab-based LAMP assay at  
225 NU). Finally, enrollment in this study concluded before the arrival of the Delta variant at  
226 either study site. It remains unclear how well the effects of vaccination on viral infection  
227 dynamics that we describe apply to Delta variant breakthrough infections, given the  
228 unique features<sup>12</sup> and enhanced transmissibility<sup>13</sup> of this variant relative to the viruses  
229 we captured here.

230  
231 Overall, our data suggest that vaccinated individuals are less likely to be shedding  
232 infectious virus at a given viral genome load and shed for a shorter period of time  
233 compared to unvaccinated and report fewer days of symptoms. We also show that  
234 some breakthrough infections in fully vaccinated individuals may be tissue restricted  
235 and only detectable through saliva screening. The clinical implications of  
236 compartmentalization are that testing (RT-PCR or antigen) based on nasal swabs may  
237 underestimate the true number of breakthrough infections, and that an important role of  
238 vaccine-elicited immunity may be restricting viral dissemination and thus limiting  
239 symptom severity and transmission potential. These data also further support a role for  
240 the oral cavity or other saliva-associated tissue sites as an initial site for SARS-CoV-2  
241 infection prior to dissemination and replication of the virus in nasal passages in some  
242 individuals. Altogether, this study provides a set of high resolution data that ratify the  
243 role of the current SARS-CoV-2 vaccines not only in reducing severity of the disease,  
244 but also the infectiousness of individuals with breakthrough infections.

## 245 246 **METHODS**

247 This study was approved by the Western Institutional Review Board, and all participants  
248 provided informed consent.

### 249 250 ***Participants***

251 University of Illinois at Urbana-Champaign (UIUC) enrollment site: All on-campus  
252 students and employees of the University of Illinois at Urbana-Champaign were required  
253 to submit saliva for RTqPCR testing every 2-4 days as part of the SHIELD campus  
254 surveillance testing program<sup>14</sup>. Those testing positive were instructed to isolate and  
255 were eligible to enroll in this study for a period of 24 hours following receipt of their

256 positive test result. Close contacts of individuals who test positive (particularly those co-  
257 housed with them) were instructed to quarantine and were eligible to enroll for up to 5  
258 days after their last known exposure to an infected individual. All participants were also  
259 required to have received a negative saliva RTqPCR result 7 days prior to enrollment.  
260

261 Northwestern University (NU) enrollment site: All NU on-campus students were  
262 required to have nasal swab samples collected for LAMP testing once per week as part  
263 of the campus surveillance program. Those testing positive were required to go in the  
264 Health Service Quarantine and Isolation (QI) program for isolation. They were eligible  
265 for enrollment in this study within 24 hours of going into isolation. Close contacts of  
266 individuals who tested positive (particularly those co-housed with them) were also  
267 entered in the NU QI program. They were instructed to quarantine and were eligible to  
268 enroll in this study for up to 5 days after their last known exposure to an infected  
269 individual. All participants were also required to have received a negative nasal swab  
270 LAMP assay result 7 days prior to enrollment.  
271

272 Individuals were recruited via either a link shared in an automated text message  
273 providing isolation information sent within 30 minutes of a positive test result, a call from  
274 a study recruiter, or a link shared by an enrolled study participant or included in  
275 information provided to all quarantining close contacts. In addition, signs/flyers were  
276 used at each testing location and a website was available to inform the community  
277 about the study.  
278

279 Participants were required to be at least 18 years of age, have a valid university ID,  
280 speak English, have internet access, and live within 8 miles of the university campus.  
281 After enrollment and consent, participants completed an initial survey to collect  
282 information on demographics, vaccination status, prior infection history, and health  
283 history and were provided with sample collection supplies. Participants who tested  
284 positive prior to enrollment or during quarantine were followed for up to 14 days.  
285 Quarantining participants who continued to test negative by saliva RTqPCR (UIUC) or  
286 nasal swab RTqPCR (NU) were followed for up to 7 days after their last exposure. All  
287 participants' data and survey responses were collected in the Eureka digital study  
288 platform.  
289

### 290 **Sample collection**

291 Each day, participants were remotely observed by trained study staff collecting:

- 292 1. 2 mL of saliva into a 50mL conical tube (UIUC study site only).
- 293 2. 1 nasal swab from a single nostril using a foam-tipped swab that was placed  
294 within a dry collection tube.
- 295 3. 1 nasal swab from the other nostril using a flocked swab that was subsequently  
296 placed in a collection vial containing viral transport media (VTM).  
297

298 The order of nostrils (left vs. right) used for the two different swabs was randomized. For  
299 nasal swabs, participants were instructed to insert the soft tip of the swab at least 1 cm  
300 into the indicated nostril until they encountered mild resistance, rotate the swab around  
301 the nostril 5 times, leaving it in place for 10-15 seconds. After daily sample collection,



302 participants completed a symptom survey. A courier collected all participant samples  
303 within 1 hour of collection using a no-contact pickup protocol designed to minimize  
304 courier exposure to infected participants.

### 306 ***Saliva RTqPCR***

307 After collection, saliva samples were stored at room temperature and RTqPCR was run  
308 within 12 hours of initial collection. The protocol for the covidSHIELD direct saliva-to-  
309 RTqPCR assay used has been detailed previously<sup>14,15</sup>. In brief, saliva samples were  
310 heated at 95°C for 30 minutes, followed by the addition of 2X Tris/Borate/EDTA buffer  
311 (TBE) at a 1:1 ratio (final concentration 1X TBE) and Tween-20 to a final concentration  
312 of 0.5%. Samples were assayed using the Thermo TaqPath COVID-19 Combo kit  
313 assay.

### 315 ***Antigen testing***

316 Foam-tipped nasal swabs were placed in collection tubes, transported with cold packs,  
317 and stored at 4°C overnight based on guidance from the manufacturer. The morning  
318 after collection, swabs were run through the Sofia SARS antigen FIA on Sofia 2 devices  
319 according to the manufacturer's protocol.

### 321 ***Nasal swab RTqPCR***

322 For UIUC cohort, collection tubes containing VTM and flocked nasal swabs were stored  
323 at -80°C after collection and were subsequently shipped to Johns Hopkins University for  
324 RTqPCR and virus culture testing. After thawing, VTM was aliquoted for RTqPCR and  
325 infectivity assays. One ml of VTM from the nasal swab was assayed on the Abbott  
326 Alinity per manufacturer's instructions in a College of American Pathologist and CLIA-  
327 certified laboratory. Calibration curve for Alinity assay was determined using digital  
328 droplet PCR (ddPCR) as previously described<sup>16</sup>.

### 330 ***Virus culture from nasal swabs***

331 Vero-TMPRSS2 cells were grown in complete medium (CM) consisting of DMEM with  
332 10% fetal bovine serum (Gibco), 1 mM glutamine (Invitrogen), 1 mM sodium pyruvate  
333 (Invitrogen), 100 U/ml of penicillin (Invitrogen), and 100 µg/ml of streptomycin  
334 (Invitrogen)<sup>17</sup>. Viral infectivity was assessed on Vero-TMPRSS2 cells as previously  
335 described using infection media (IM; identical to CM except the FBS is reduced to  
336 2.5%)<sup>11</sup>. When a cytopathic effect was visible in >50% of cells in a given well, the  
337 supernatant was harvested. The presence of SARS-CoV-2 was confirmed through  
338 RTqPCR as described previously by extracting RNA from the cell culture supernatant  
339 using the Qiagen viral RNA isolation kit and performing RTqPCR using the N1 and N2  
340 SARS-CoV-2-specific primers and probes in addition to primers and probes for human  
341 RNaseP gene using synthetic RNA target sequences to establish a standard curve<sup>18</sup>.

### 343 ***Viral genome sequencing and analysis***

344 Viral RNA was extracted from 140 µL of heat inactivated (30 minutes at 95°C, as part of  
345 protocol detailed in<sup>15</sup>) saliva samples using the QIAamp viral RNA mini kit (QIAGEN).  
346 100ng of viral RNA was used to generate cDNA using the SuperScript IV first strand  
347 synthesis kit (Invitrogen). Viral cDNA was then used to generate sequencing libraries

348 using the Swift SNAP Amplicon SARS CoV2 kit with additional coverage panel and  
349 unique dual indexing (Swift Biosciences) which were sequenced on an Illumina  
350 Novaseq SP lane. Data were run through the nf-core/viralrecon workflow (<https://nf-co.re/viralrecon/1.1.0>), using the Wuhan-Hu-1 reference genome (NCBI accession  
351 NC\_045512.2). Swift v2 primer sequences were trimmed prior to variant analysis from  
352 iVar version 1.3.1 (<https://genomebiology.biomedcentral.com/articles/10.1186/s13059-018-1618-7>) retaining all calls with a minimum allele frequency of 0.01 and higher. Viral  
353 lineages were called using the Pangolin tool (<https://github.com/cov-lineages/pangolin>)  
354 version 2.4.2, pango version 1.2.6, and the 5/19/21 version of the pangoLEARN model.  
355  
356

357  
358 **Acknowledgments.** We wish to thank Shumon Ahmed, Carly Bell, Nate Bouton,  
359 Shannon Bradley, Callie Brennen, Justin Brown, Coleco Buie, Emmaline Cler, Gary  
360 Cole, Trey Coleman, Alastair Dunnett, Darci Edmonson, Lauren Engels, Savannah  
361 Feher, Kelsey Fox, Lexi Freeman, Stacy Gloss, Yesenia Gonzalez, Montez Harris,  
362 Darcy Henness, Dan Hiser, Ayeshah Hussain, Daryl Jackson, Junko Jarrett, Michael  
363 Jenkins, Kalombo Kalonji, Syntyche Kanku, Steven Krauklis, Mary Krouse, Elmore  
364 Leshoure, Joe Lewis, Maggie Li, Angel Lopez, Guadalupe Lopez, Emily Luna, Chun  
365 Huai Luo, Colby Mackey, Skyler McLain, Yared Berhanu Melesse, Madison O'Donnell,  
366 Savanna Pflugmacher, Denver Piatt, Skyler Pierce, Jessica Quicksall, Gina Quitanilla,  
367 Crystal Reinhart, Ameera Samad, MacKenzie Scroggins, Monique Settles, Macie Sinn,  
368 Pete Varney, Evette Vlach, Raeshun Williams-Chatman, Jagadeesh Yedetore, and  
369 Todd Young for their efforts supporting recruitment, enrollment, logistics, and/or sample  
370 collection and processing at the UIUC study site.  
371

372 We also wish to thank Kate Klein, Amelia Kelly, Nour Sayegh, Michael Govern,  
373 Mackenzie Furnari-Stickney, Sara Caudillo, Elizabeth Christain, Kristen Weber, James  
374 Jackson, Sowmya Ravi, Jack Novotny, Reno Stephens, Benjamin Engebretson,  
375 Patricia Helbin, Jessica Orozco, Alema Jackson, Adriana Quintatna, Hiba Abbas, Rana  
376 Saber, Eric Fickes, Matthew Butzler, Rocio Avila, Abhishek Agarwal, Robin Kim, William  
377 Zeng, Tosin Odumuye, Kirsten Knapton, Melissa Mongrella, Michael Newcomb,  
378 Kenyetta Sims, and Carol Govern for their efforts supporting recruitment, enrollment,  
379 logistics, and/or sample collection and processing at the NU study site.  
380

381 We also thank Jeffrey Olgin, Noah Peyser, and Xochitl Butcher for assistance with the  
382 Eureka platform, Michelle Lore for assistance with REDcap, Melanie Loots for  
383 assistance with administration, Gillian Snyder for assistance in development of study  
384 protocols and logistics, and Erin Iturriaga and Jue Chen for study protocol development.  
385 Finally, we are grateful to Dr. Alvaro Hernandez and Ms. Chris Wright of the DNA  
386 Services Lab within the Roy J. Carver Biotechnology Center for expert assistance in  
387 establishment of a SARS-CoV-2 genomic sequencing protocol. Vero-TMPRSS2 cells  
388 were kindly provided by the National Institute of Infectious Diseases, Japan. Sofia 2  
389 devices and associated supplies were provided to Carle Foundation Hospital by Quidel,  
390 however Quidel played no role in the design of the study or the interpretation or  
391 presentation of the data.  
392

393 **Funding.** This work was supported by the National Heart, Lung, and Blood Institute at  
394 the National Institutes of Health [3U54HL143541-02S2] through the RADx-Tech  
395 program. This work was also supported by the National Institute of Biomedical Imaging  
396 and Bioengineering through the Center for Innovation in Point of Care Technologies for  
397 HIV/AIDS at Northwestern (C-THAN) [3U54EB027049-02S1]. The views expressed in  
398 this manuscript are those of the authors and do not necessarily represent the views of  
399 the National Institute of Biomedical Imaging and Bioengineering; the National Heart,  
400 Lung, and Blood Institute; the National Institutes of Health, or the U.S. Department of  
401 Health and Human Services.

402

## 403 REFERENCES

- 404 1. Yewdell, J. W. Individuals cannot rely on COVID-19 herd immunity: Durable  
405 immunity to viral disease is limited to viruses with obligate viremic spread. *PLoS*  
406 *Pathog* **17**, e1009509 (2021).
- 407 2. Prunas, O. *et al.* *Vaccination with BNT162b2 reduces transmission of SARS-CoV-2*  
408 *to household contacts in Israel.*  
409 <http://medrxiv.org/lookup/doi/10.1101/2021.07.13.21260393> (2021)  
410 doi:10.1101/2021.07.13.21260393.
- 411 3. Riemersma, K. K. *et al.* *Vaccinated and unvaccinated individuals have similar viral*  
412 *loads in communities with a high prevalence of the SARS-CoV-2 delta variant.*  
413 <http://medrxiv.org/lookup/doi/10.1101/2021.07.31.21261387> (2021)  
414 doi:10.1101/2021.07.31.21261387.
- 415 4. Chia, P. Y. *et al.* *Virological and serological kinetics of SARS-CoV-2 Delta variant*  
416 *vaccine-breakthrough infections: a multi-center cohort study.*  
417 <http://medrxiv.org/lookup/doi/10.1101/2021.07.28.21261295> (2021)  
418 doi:10.1101/2021.07.28.21261295.
- 419 5. Luo, C. H. *et al.* *Infection with the SARS-CoV-2 Delta Variant is Associated with*  
420 *Higher Infectious Virus Loads Compared to the Alpha Variant in both Unvaccinated*  
421 *and Vaccinated Individuals.*  
422 <http://medrxiv.org/lookup/doi/10.1101/2021.08.15.21262077> (2021)  
423 doi:10.1101/2021.08.15.21262077.
- 424 6. Kennedy-Shaffer, L., Kahn, R. & Lipsitch, M. *Estimating vaccine efficacy against*  
425 *transmission via effect on viral load.*  
426 <http://medrxiv.org/lookup/doi/10.1101/2021.05.03.21256556> (2021)  
427 doi:10.1101/2021.05.03.21256556.
- 428 7. Ke, R. *et al.* *Daily sampling of early SARS-CoV-2 infection reveals substantial*  
429 *heterogeneity in infectiousness.*  
430 <http://medrxiv.org/lookup/doi/10.1101/2021.07.12.21260208> (2021)  
431 doi:10.1101/2021.07.12.21260208.
- 432 8. Shamier, M. C. *et al.* *Virological characteristics of SARS-CoV-2 vaccine*  
433 *breakthrough infections in health care workers.*  
434 <http://medrxiv.org/lookup/doi/10.1101/2021.08.20.21262158> (2021)  
435 doi:10.1101/2021.08.20.21262158.

- 436 9. Smith, R. L. *et al.* Longitudinal assessment of diagnostic test performance over the  
437 course of acute SARS-CoV-2 infection. *The Journal of Infectious Diseases* jjab337  
438 (2021) doi:10.1093/infdis/jjab337.
- 439 10. Monel, B. *et al.* Release of infectious virus and cytokines in nasopharyngeal swabs  
440 from individuals infected with non-B.1.1.7 or B.1.1.7 SARS-CoV-2 variants.  
441 <http://medrxiv.org/lookup/doi/10.1101/2021.05.20.21257393> (2021)  
442 doi:10.1101/2021.05.20.21257393.
- 443 11. Pekosz, A. *et al.* Antigen-Based Testing but Not Real-Time Polymerase Chain  
444 Reaction Correlates With Severe Acute Respiratory Syndrome Coronavirus 2 Viral  
445 Culture. *Clin Infect Dis* (2021) doi:10.1093/cid/ciaa1706.
- 446 12. Liu, Y. *et al.* Delta spike P681R mutation enhances SARS-CoV-2 fitness over Alpha  
447 variant. <http://biorxiv.org/lookup/doi/10.1101/2021.08.12.456173> (2021)  
448 doi:10.1101/2021.08.12.456173.
- 449 13. Kang, M. *et al.* Transmission dynamics and epidemiological characteristics of Delta  
450 variant infections in China.  
451 <http://medrxiv.org/lookup/doi/10.1101/2021.08.12.21261991> (2021)  
452 doi:10.1101/2021.08.12.21261991.
- 453 14. Ranoa, D. R. E. *et al.* Mitigation of SARS-CoV-2 Transmission at a Large Public  
454 University. <http://medrxiv.org/lookup/doi/10.1101/2021.08.03.21261548> (2021)  
455 doi:10.1101/2021.08.03.21261548.
- 456 15. Ranoa, D. R. E. *et al.* Saliva-Based Molecular Testing for SARS-CoV-2 that  
457 Bypasses RNA Extraction. <http://biorxiv.org/lookup/doi/10.1101/2020.06.18.159434>  
458 (2020) doi:10.1101/2020.06.18.159434.
- 459 16. Gniazdowski, V. *et al.* Repeat COVID-19 Molecular Testing: Correlation of SARS-  
460 CoV-2 Culture with Molecular Assays and Cycle Thresholds. *Clin Infect Dis* (2020)  
461 doi:10.1093/cid/ciaa1616.
- 462 17. Matsuyama, S. *et al.* Enhanced isolation of SARS-CoV-2 by TMPRSS2-expressing  
463 cells. *Proc Natl Acad Sci U S A* **117**, 7001–7003 (2020).
- 464 18. Waggoner, J. J. *et al.* Triplex Real-Time RT-PCR for Severe Acute Respiratory  
465 Syndrome Coronavirus 2. *Emerg. Infect. Dis.* **26**, 1633–1635 (2020).  
466