

1 **Evaluation of Residual Disinfectant Levels in Public Drinking Water Distribution Systems**

2 **in Relation to an *Acanthamoeba* Keratitis Outbreak—Illinois, 2002–2009**

3 **Hannah Holsinger^{a,c#}, Anna Blackstock^b, Susan Shaw^{c*}, and Sharon L. Roy^b**

4

5

6 Association of Schools and Programs of Public Health Fellow, Washington DC^a;

7 Centers for Disease Control and Prevention, Atlanta GA^b; United States Environmental

8 Protection Agency, Washington DC^c

9

10

11 #Hannah Holsinger conducted the study discussed in this publication as part of her Association

12 of Schools and Programs of Public Health Fellowship at the United States Environmental

13 Protection Agency (U.S. EPA). Currently, she is a physical scientist at the U.S. EPA, Address

14 correspondence to Hannah Holsinger, holsinger.hannah@epa.gov.

15 *Retired

16

17

18

19

20

21

22

23

24 **Abstract:**

25

26 *Acanthamoeba* keratitis (AK) is a painful, potentially blinding eye disease associated with
27 contact lens use and corneal injury. AK, caused by the free-living amoeba *Acanthamoeba*, is
28 ubiquitous in the environment and has been isolated from municipal water supplies. It can be
29 tolerant of normal chlorine levels in drinking water. An AK outbreak investigated in 2003–2005
30 in five Illinois counties showed a lower AK age-standardized rate ratio in Cook County than in
31 surrounding counties and was hypothesized to be due in part to reductions in residual disinfectant
32 levels (RDLs) in drinking water. We evaluated RDLs in public water systems in the same five
33 Illinois counties over eight years (2002–2009) using a multivariable model of water system RDL
34 measurements. Fitted RDLs for each county were in the acceptable range by United States
35 Environmental Protection Agency standards for the entire study period. After correcting for
36 multiple testing, two of the surrounding counties had fitted RDLs that differed from Cook
37 County for one year—this pattern differed from the epidemiologic pattern of cases observed in
38 the AK outbreak. Our findings do not support the hypothesis that the development of AK was
39 associated with changes in RDLs in the five Illinois counties.

40

41

42 **Key Words:**

43 *Acanthamoeba*, chloramine, chlorine, disinfectant, keratitis, water

44

45

46

47 **Introduction:**

48 *Acanthamoeba* keratitis (AK) is a rare eye infection that can lead to corneal scarring and
49 loss of sight (Bacton et al.1993). It is caused by the amoeba *Acanthamoeba*. *Acanthamoeba* is
50 ubiquitous in the environment and can be found in soil (Sawyer 1989), air (Kingston and
51 Warhurst 1969), sewage (Gaze et al. 2011), fresh and brackish water (John and Howard 1995),
52 swimming pools (Cerva 1971), hot tubs (Samples et al. 1984), and tap water (Seal et al. 1999,
53 Shoff et al. 2008, Stockman et al. 2011, Trzyna et al. 2010). *Acanthamoeba* has been detected in
54 both water and biofilms growing on pipe surfaces at various points in drinking water treatment
55 plants and distribution systems (Thomas and Ashbolt 2011) where, in general, the amoebae have
56 been shown to increase in numbers at distal points (Power and Nagy 1999; Långmark et al.
57 2007).

58 *Acanthamoeba* can survive a range of harsh conditions including extreme temperatures
59 (Brown and Cursons 1977), salinity (Bergmanson et al. 2011), antimicrobial agents (Ficker et al.
60 1990), and disinfectants (De Jonckheere and Van De Voorde 1976). The *Acanthamoeba* cyst is
61 much more tolerant than the trophozoite form, but both forms can be tolerant of normal chlorine
62 residual levels found in tap water. Studies have shown that trophozoites are inactivated in free
63 chlorine concentrations of 1.25 mg/L (Cursons et al. 1980) to 1.4 mg/L (Derreumaux et al. 1974)
64 after 30 minutes. However, as part of their normal life cycle and under adverse conditions,
65 trophozoites can encyst. Cysts have been shown to survive up to 75 mg/L of free chlorine for 7
66 days (Kilvington and Price 1990). The maximum residual disinfectant level (MRDL) of chlorine
67 and chloramine allowed in drinking water is 4 mg/L based on a running annual average of
68 monthly averages of all samples, computed quarterly (USEPA 1998, 2001a). Therefore, cysts are

69 only affected at disinfectant levels much higher than levels found in drinking water distribution
70 systems (Trzyna et al. 2010).

71 AK has been associated with eye trauma (Bharathi et al 2009) and contact lens use
72 (Thebpatiphat et al. 2007). A multi-state outbreak investigation in the United States found 89%
73 of AK cases involved contact lens users (Verani et al. 2009). AK has been associated with
74 rinsing contact lenses in tap water (Seal et al. 1999), wearing contact lenses while swimming,
75 and use of homemade contact lens solution (Stehr-Green et al. 1987). Many commercial
76 multipurpose contact lens solutions (MPS) have limited disinfection efficacy against
77 *Acanthamoeba* (Johnston et al. 2009, Shoff et al. 2008). A study evaluating AK in non-contact
78 lens users found the main AK risk factors were eye trauma and ocular surface disease (Erdem et
79 al. 2014).

80 In 2006, an outbreak of AK was detected in Illinois when the Department of
81 Ophthalmology at the University of Illinois at Chicago (UIC) noted a considerable increase in
82 the number of AK cases seen between June 1, 2003, and November 30, 2005 (Joslin et al. 2006).
83 Subsequent investigation revealed it to be a nationwide outbreak (Verani et al. 2009). Cases
84 seemed to increase across the United States in 2003 and 2004, and the MPS Advanced Medical
85 Optics[®] Complete MoisturePlus[™] was shown to be the main risk factor and was voluntarily
86 recalled. Concurrent with the nationwide investigation, the AK outbreak cases in Chicago and
87 surrounding counties were evaluated and the four counties around Chicago were found to have
88 had higher AK age-standardized rate ratios than the referent county (Cook County, which
89 includes Chicago) (Joslin et al. 2006). Since the risk of AK appeared to vary based on
90 geographic location, investigators speculated that water quality might be playing a role and
91 conjectured that the increase in AK, particularly outside of Cook County, might be partially

92 explained by reductions in tap water disinfection and by the effects of long-distance drinking
93 water distribution (Joslin et al. 2006, 2007).

94 The first two theories involved a temporal association between the increase in cases of
95 AK and the implementation of the United States Environmental Protection Agency's (EPA)
96 Stage 1 Disinfectant and Disinfection Byproduct Rule (DBPR) that went into effect between
97 2002 and 2004 (Joslin et al. 2006, 2007, 2010; Shoff et al. 2008; Thebpatiphat et al. 2007). The
98 Stage 1 and 2 DBPR are intended to reduce the public's exposure to disinfection byproducts.
99 Animal studies have shown disinfection byproducts to be carcinogenic, causing adverse
100 reproductive and developmental effects. The Stage 1 and 2 DBPR established MRDLs for
101 common water disinfectants (USEPA 1998, 2001a, 2006). In order to comply with the Stage 1
102 DBPR, public water systems have options to reduce the disinfection byproducts by modifying
103 their disinfection practices, including, but not limited to, reducing the contact time or
104 concentration of the disinfectant they are using, or switching to a different type of disinfectant
105 (USEPA 2006). For example, water systems could use chloramines, rather than chlorine, as a
106 secondary disinfectant in water distribution pipelines (Seidel et al. 2005). EPA also requires
107 certain public water systems using surface water to maintain minimum residual disinfectant
108 levels in their water distribution systems. The residual disinfectant level (RDLs) entering the
109 distribution system can be no lower than 0.2 mg/L for more than 4 hours and the level within the
110 distribution system must not be undetectable in more than 5% of water samples within a month
111 for two consecutive months (USEPA 2004). During the study period Illinois had additional
112 requirements for systems chlorinating to have a minimum free chlorine residual of 0.1 mg/L at
113 distant points in the distribution systems, 0.2 mg/L minimum free chlorine residual for
114 chlorinating systems using surface waters, and a minimum free chlorine residual of 0.4 mg/L in

115 storage tanks (IAC 1995). The frequency of residual disinfectant monitoring within each system
116 depends on the size of the population served (USEPA 2001b, 2004). Investigators theorized that
117 differences in the AK age-standardized rate ratios observed in Illinois between Cook County and
118 the four outlying counties might have resulted from changes in the microbial environment,
119 potentially due to either reduced disinfectant levels or the transition from chlorine to chloramine
120 as a secondary disinfectant (Joslin et al. 2006). Another hypothesis was related to the distance
121 between the location of water disinfection and the end user. Investigators reasoned that biofilms
122 were more highly developed in the distal parts of the water distribution system, hypothesizing
123 that the observed geographic variation in AK rates between Cook County and the four outlying
124 counties may be due to the distance between water treatment and use (Joslin et al. 2006).

125 To explore these three hypotheses, we evaluated RDLs in the public drinking water
126 systems in Cook County and the four surrounding counties to determine if decreases in RDLs
127 occurred over time or between the counties.

128 **Materials and Methods:**

129 RDLs from January 1, 2002 through September 25, 2009 (the entire study period), were
130 obtained from the Illinois Environmental Protection Agency (Illinois EPA) for public drinking
131 water systems within five counties including and surrounding Chicago (Cook, DuPage, Lake,
132 McHenry, and Will). These were the same five counties of residence of the AK case-patients
133 assessed at UIC during June 1, 2003–November 30, 2005 (Joslin et al. 2006). Data provided by
134 Illinois EPA included water system name, county, population served, water source, date of water
135 sample measurement, type of residual disinfectant used (chlorine or chloramine), and free and/or
136 total chlorine levels measured in the distribution system. Total chlorine is the combination of
137 chlorine that is free to disinfect (called free chlorine) plus chlorine combined with ammonia and

138 certain other nitrogenous compounds (called combined chlorine or chloramine) (CDC 2014).
139 Some public water systems were missing data (i.e., either a free or a total chlorine measurement
140 was unavailable or not reported) for 1–3 years during the study period (indicated by the
141 “Neither” category in Figure 1). Since the number of water systems reporting free chlorine was
142 more stable compared to total chlorine over time, free chlorine was used for the analysis and is
143 henceforth referred to as the residual disinfectant level (RDL). Due to variation in the
144 populations served by each of the systems, the number of measurements reported per year by
145 each system also varied—systems serving small populations had few measurements whereas
146 systems serving large populations had many. For each system, the median of the RDLs for each
147 year was used as the outcome in statistical models.

148 A multivariable model for annual facility RDL measurement was chosen from several
149 candidate models. Each model was fit using generalized estimating equations (GEE) to account
150 for the fact that facilities had repeated measurements over time (Liang and Zeger 1986). Since
151 both location and time were of interest, each model included county and year. Other variables
152 under consideration were number of measurements per facility per year (divided into quartiles),
153 water source (ground or surface water), and two-way interactions involving county, year, and
154 water source. Various correlation structures were also considered. The quasilielihood
155 information criterion (QIC) was used to choose the final model (Pan 2001), which used an
156 exchangeable correlation structure and included county, year, and the interaction between county
157 and year. Using this model, the fitted mean RDLs of the five counties (using Cook as a
158 reference) were compared for each year individually, and the yearly fitted mean RDLs were
159 compared (using 2002 as a reference) within each county. The False Discovery Rate (FDR) was
160 used to control for multiple comparisons (Benjamini and Hochberg 1995). To assess whether or

161 not the variability within systems would affect the results, resampling was used to fit 1000
162 models with the same three covariates (county, year, and the county-year interaction), each with
163 a randomly chosen single RDL measurement for each facility for each year of the study.

164

165 **Results:**

166 Data were available for 434 public water systems in the five counties from January 1,
167 2002–September 25, 2009. Eight systems were inactive and 20 were missing county information.
168 For the remaining 406 systems, 218 surface water and 188 ground water systems, a total of
169 532,685 RDLs were collected. Residual disinfection type was available for 325 systems—the
170 majority used chlorine and a small minority used chloramines (around 1.5%). Table 1 shows
171 descriptive statistics for the 406 active systems.

172 During the study period, 76 of the 406 systems (19%) reported 134 samples
173 (134/532,685; 0.03%) with RDLs > 4 mg/L and 43 systems (11%) reported 61 samples (0.01%)
174 with RDLs ≥ 10 mg/L, far above the 4 mg/L MRDL. It is conceivable that RDL levels might be
175 over the acceptable maximum annual average of 4 mg/L, but RDLs of 10 mg/L or more were not
176 expected and are likely due to reporting error and therefore were excluded from the analysis.
177 Conversely, 262 systems (65%) reported 28,504 samples (5%) with RDLs of < 0.2 mg/L (the
178 minimum residual disinfectant limit for certain surface water systems) and 96 systems (24%)
179 reported 1108 samples (0.2%) with RDLs of 0 mg/L. The overall median RDL was 0.63 mg/L,
180 and 99% of values were from 0.03 to 2.1 mg/L.

181 The model containing year, county, and the county-year interaction was found to be best
182 by QIC and was chosen as the final model. Table 2 shows estimated mean RDLs and confidence
183 intervals resulting from the final model for each county during all years evaluated, and Figure 2

184 displays these values graphically. While Lake, McHenry, and Will Counties had at least one year
185 with fitted mean RDLs significantly different than those of Cook County for the same year
186 before correcting for multiple comparisons, only Lake County in 2004 had an estimated mean
187 RDL that was significantly different and lower than Cook County's value after correcting for
188 multiple comparisons using an FDR threshold of 0.05. McHenry County in 2009 was also
189 significantly different from Cook County after FDR correction, but McHenry County values
190 were higher than Cook County in all years. Comparing years within counties yielded several
191 significant results. All counties except for Cook County had at least one year with fitted mean
192 RDLs significantly different than those of 2002 within the same county. However, after FDR
193 correction only two counties, McHenry and Will, had fitted mean RDLs significantly different
194 than those in 2002. McHenry County had significantly higher fitted mean RDL values in 2005,
195 2007, and 2009 than in 2002, and Will County had fitted mean values from 2004–2009 that were
196 all significantly lower than the 2002 measurement and that all remained significantly lower after
197 FDR correction. The plots of estimates and confidence intervals based on resampling models
198 revealed similar relationships between counties and over time.

199 **Discussion:**

200 The aim of this study was to evaluate RDLs in public drinking water systems in the five
201 counties including and surrounding Chicago to determine if significant reductions had occurred
202 in these levels over time or between the counties that could explain the observed geographic
203 discrepancy in the AK age-standardized rate ratios. UIC investigators put forth several water-
204 related hypotheses for why AK rate ratios were higher in the outlying counties compared to
205 Cook County. We focused on three of these hypotheses—decreased RDLs, a change in the
206 disinfectant type, and increased distance between water treatment and use (Joslin et al. 2006).

207 Results of our fitted model did not indicate a dramatic shift in RDLs during 2002 through
208 September 2009, nor was there a pattern of reduction in RDLs that mirrored the pattern of
209 increased AK age-standardized rate ratios observed in the outlying counties during the Illinois
210 outbreak investigation as displayed in Figure 2. After FDR correction for multiple testing, only
211 one county had a significantly lower RDL than Cook County in only one year during 2002–2009.
212 Although McHenry and Will Counties each had at least one year with a fitted mean annual RDL
213 significantly different from that of 2002 after FDR correction, the pattern was inconsistent with
214 and therefore not supportive of the working hypothesis that reductions in RDLs were associated
215 with AK risk. In Will County, the fitted mean annual RDLs were significantly lower in 2004–
216 2009, but in McHenry County, the RDLs were higher in 2005, 2007, and 2009.

217 Another hypothesis put forward to explain the epidemiology of AK observed in Illinois
218 during 2003–2005 was a switch in secondary disinfectant type. The majority of all public water
219 systems evaluated used chlorine as a secondary disinfectant. The City of Chicago Department of
220 Water Management provided water to the majority of the public water systems. Only McHenry
221 County, a ground water system, did not receive any water from the City of Chicago or Lake
222 Michigan. The City of Chicago Department of Water Management has treated its water with
223 chlorine for >30 years (Verani et al. 2009) and made no change in disinfection chemicals
224 (Methvin 2009). Therefore, the type of chemical disinfectant used by the majority of the 406
225 public water systems evaluated in the five-county area remained unchanged during the entire
226 study period, during periods of changing regulations associated with the Stage 1 DBPR that went
227 into effect during 2002–2004 (U.S. EPA 1998, 2001a, 2006).

228 The third hypothesis concerning the risk factors for AK in Illinois involved distance from
229 water treatment and the risk for *Acanthamoeba*-contaminated water. The UIC investigators

230 hypothesized that the outlying counties, being a greater distance from Chicago, had greater
231 distances between water treatment and the end users in their respective counties, thereby
232 contributing to the observed increased risk for AK compared to the referent Cook County (Joslin
233 et al. 2006). Loss of residual disinfectant and microbial regrowth in the drinking water
234 distribution system has many causes including water age (LeChevallier 2003; NRC 2005) and
235 distance from treatment (Långmark et al. 2007; Power and Nagy 1999). This hypothesis could
236 not be directly evaluated with the data collected for this evaluation because county is not a proxy
237 for distance from treatment. Although most water was initially treated by the City of Chicago
238 Department of Water Management, booster residual disinfectant stations are used in some
239 systems in Illinois to maintain RDLs and not every county received water from the City of
240 Chicago Department of Water Management (IEPA 2015). Without knowing which water system
241 served each AK-case patient and where each person resided, evaluations of issues possibly
242 contributing to RDL degradation and biofilm development in each distribution system or premise
243 plumbing serving those patients are not possible.

244 Not knowing which water systems served the AK-case patients was the most problematic
245 limitation of this study. Private water systems were also not included, and it is possible that some
246 of the AK-case patients identified by UIC (Joslin et al. 2006) were private well owners and not
247 represented in our dataset. This was an ecological study, and interpretation of the results was
248 hindered by the limitation of all such studies, namely the fallacy that group characteristics are
249 shared by individuals. Although ecologic studies cannot demonstrate a causal relationship, they
250 can identify promising avenues of research that might further our understanding of causal
251 relationships. However, our study found no evidence of systematic reductions in RDLs and does
252 not support the hypothesis that reductions in RDLs that were hypothesized to be associated with

253 Stage 1 DBPR regulations led to the AK outbreak. Another limitation is the number and
254 frequency of RDL measurements taken varied depending on system size. Therefore, the
255 measurements analyzed in this study over-represent large public water systems. Using median
256 RDLs helped to control for systematic bias that may have been introduced into the calculation
257 had mean RDLs been used.

258 Although no apparent pattern that would support the hypothesized relationship between
259 reduced RDLs and the development of AK was identified, there is no question that
260 *Acanthamoeba* spp. are present in some water systems and that tap water could be one of the
261 sources of exposure. Several studies have isolated *Acanthamoeba* in water distribution systems
262 (Seal et al. 1992; Shoff et al. 2008; Stockman et al. 2011; Trzyna et al. 2010). Free-living
263 amoebae, including *Acanthamoeba* spp., appear to be common in premise plumbing.
264 *Acanthamoeba* can provide protection and aid in life cycles for amoeba-resistant microorganisms
265 such as *Legionella* (Pruden et al. 2013). Further research is needed to understand the role of
266 biofilm growth and *Acanthamoeba* keratitis.

267 Although tap water is a possible source of exposure to *Acanthamoeba*, (Cerva 1971; Gaze
268 et al. 2011; John and Howard 1995; Kingston and Warhurst 1969; Samples et al. 1984; Sawyer
269 1989), the high level of chlorine tolerance (De Jonckheere and Van De Voorde 1976) likely
270 limits the feasibility of mitigating *Acanthamoeba* colonization in water distribution systems,
271 given current chemical disinfection practices. Since *Acanthamoeba* are unlikely to be eliminated
272 from the environment, other methods to limit eye exposure to water should be prioritized.
273 Established guidelines should be followed by contact lens users to help reduce the risk of eye
274 infections.

275 Good lens-handling practices are important because the efficacy of contact lens
276 disinfection solutions against *Acanthamoeba* has been questioned. Two studies investigating the
277 nationwide outbreak of AK (Joslin et al. 2007; Verani et al. 2009) both found a particular brand
278 of MPS to be the primary cause of the outbreak. Studies of a variety of brands of MPS (Cursons
279 et al. 1980; Shoff et al. 2008) showed that these solutions in general are ineffective disinfectants
280 of *Acanthamoeba*. No standard protocols for efficacy testing of contact lens solutions against
281 *Acanthamoeba* currently exist. Furthermore, neither the United States Food and Drug
282 Administration nor the International Organization for Standardization requires testing of the
283 efficacies of contact lens solutions against *Acanthamoeba* species (Cursons et al. 1980; Shoff et
284 al. 2008). Standardized procedures for determining the disinfection efficacy of contact lens
285 solutions against *Acanthamoeba* would likely improve this situation for public health. Following
286 the voluntary recall in May 2007 of the brand of MPS implicated in the AK outbreak, CDC
287 worked with a group of reference laboratories and ophthalmologic institutions to monitor the
288 occurrence of laboratory-confirmed AK at these sites. From these data, it appeared that the
289 collective number of AK cases at these sites failed to return to pre-outbreak levels following the
290 product recall (Yoder et al. 2012). There could have been many reasons for this, including
291 surveillance artifact, but the general ineffectiveness of MPSs as disinfectants of *Acanthamoeba*
292 was hypothesized to play a primary role (Johnston et al. 2009). The failure of a main barrier
293 against *Acanthamoeba* is of great concern, particularly since it remains ubiquitous in the
294 environment. Prevention of future cases of AK requires contact lens solutions that are effective
295 disinfectants of *Acanthamoeba* coupled with continued emphasis on proper lens care practices
296 and hygiene.

297 Our ecological study found no evidence of systematic reductions in RDLs in the outbreak
298 areas and does not support the hypothesis that there were reductions in RDLs resulting from
299 actions taken by public water systems to comply with the EPA's Stage 1 Disinfectant and
300 Disinfection Byproduct Rule or because of changes in disinfection chemical type that might have
301 affected the microbial environment in the distribution systems (Joslin et al. 2006).

302 Nevertheless, *Acanthamoeba* spp. are known contaminants of drinking water distribution
303 systems regardless of geography (Seal et al. 1992; Shoff et al. 2008, Stockman et al. 2011,
304 Trzyna et al. 2010) and both trophozoite and cyst forms are known to be tolerant of chlorine at
305 regulated levels within distribution systems. Therefore, tap water mitigation is not a practical or
306 timely way to reduce *Acanthamoeba* exposure. Other strategies to reduce exposure and prevent
307 *Acanthamoeba* amplification should be prioritized, including reinforcing appropriate contact lens
308 hygiene, removing contact lenses before contact with water, and developing MPSs that are more
309 efficacious at disinfecting *Acanthamoeba*. Guidelines for contact lens wearers to prevent AK and
310 other eye infections are available at <http://www.cdc.gov/contactlenses/protect-your-eyes.html>.

311

312 **Acknowledgements:**

313 We wish to acknowledge data collection conducted by Illinois Environmental Protection
314 Agency, as well as Janet Kuefler from U.S. EPA Region 5.

315 **Disclaimer:**

316 The views expressed in this paper are those of the individual authors and do not necessarily
317 reflect the views and policies of the U.S. Environmental Protection Agency or the Centers for
318 Disease Control and Prevention. This work was partially developed under Cooperative

319 Agreement No. X3 83388101 awarded by the U.S. Environmental Protection Agency to the
 320 Association of Schools of Public Health.

321

322

323

324

325 **Table 1. Public Water System Descriptions and *Acanthamoeba* Keratitis Age-Standardized**
 326 **Rate Ratios, by County—Illinois, 2002–2009**

County	Cook	DuPage	Lake	McHenry	Will	Total
# Systems	163	51	102	35	55	406*
# Surface Water Systems (%)	139 (85.3)	36 (70.6)	36 (35.3)	0 (0)	7 (12.7)	218 (53.7)
# Ground Water Systems (%)	24 (14.7)	15 (29.4)	66 (64.7)	35 (100)	48 (83.3)	188 (46.3)
Number of AK cases[†] June 03–Nov 05	14	8	2	2	5	31
Age-Standardized Rate Ratios[§]	1.00	3.59 **	1.31	2.69	3.66 **	-

327 *Out of the 434 public water systems evaluated during the study period, 20 had missing county
 328 information and an additional eight were listed as inactive in the Illinois EPA database at the
 329 time of analysis. These 28 systems were excluded from the estimated populations in Table 1.

330 [†]AK: *Acanthamoeba* keratitis. Numbers of cases diagnosed between June 1, 2003 and November
 331 30, 2005 (Joslin 2006).

332 § Joslin, C.E., Tu, E.Y., McMahon, T.T., Passaro, D.J., Stayner, L.T., Sugar, J. 2006
 333 Epidemiological characteristics of a Chicago-area *Acanthamoeba* keratitis outbreak. Am J
 334 Ophthalmol. 142, 212–217.

335 ** Statistically significant at alpha = 0.05.

336

337

338

339 **Table 2. Estimated Mean Residual Disinfectant Levels and 95% Confidence Intervals from**
 340 **Public Water Systems in Five Counties—Illinois, 2002 – 2009**

	Cook (ref)	DuPage	Lake	McHenry	Will
2002 (ref)	0.63 (0.59, 0.68)	0.62 (0.55, 0.69)	0.59 (0.50, 0.67)	0.64 (0.52, 0.77)	0.74 (0.62, 0.86)
2003	0.69 (0.62, 0.76)	0.60 (0.53, 0.67)	0.59 (0.50, 0.67)	0.70 (0.59, 0.82)	0.69 (0.58, 0.80)
2004	0.64 (0.59, 0.68)	0.57* (0.50, 0.63)	0.50**^ (0.44, 0.56)	0.73 (0.63, 0.83)	0.58** (0.50, 0.67)
2005	0.63 (0.59, 0.67)	0.58 (0.50, 0.67)	0.53^ (0.46, 0.61)	0.82**^ (0.66, 0.97)	0.55** (0.47, 0.64)
2006	0.65 (0.60, 0.69)	0.59 (0.51, 0.67)	0.53^ (0.46, 0.60)	0.78 (0.65, 0.91)	0.52**^ (0.43, 0.60)
2007	0.64 (0.60, 0.68)	0.62 (0.54, 0.70)	0.53^ (0.46, 0.61)	0.81**^ (0.68, 0.93)	0.51**^ (0.43, 0.60)
2008	0.63 (0.59, 0.68)	0.64 (0.55, 0.73)	0.55 (0.48, 0.62)	0.77**^ (0.66, 0.89)	0.53**^ (0.45, 0.61)
2009 [†]	0.65 (0.60, 0.69)	0.65 (0.57, 0.74)	0.57 (0.49, 0.64)	0.85**^ (0.73, 0.98)	0.53**^ (0.45, 0.61)

341

342 Table 2 shows estimated mean residual disinfectant levels (RDLs) (mg/L) and their confidence
 343 intervals. The estimated means were obtained from the model containing county, year, and the
 344 county by year interaction.

345 *Significantly different from same county in 2002 at alpha = 0.05 before False Discovery Rate

346 (FDR) correction. (Significance indicated by “***” holds after FDR correction.)

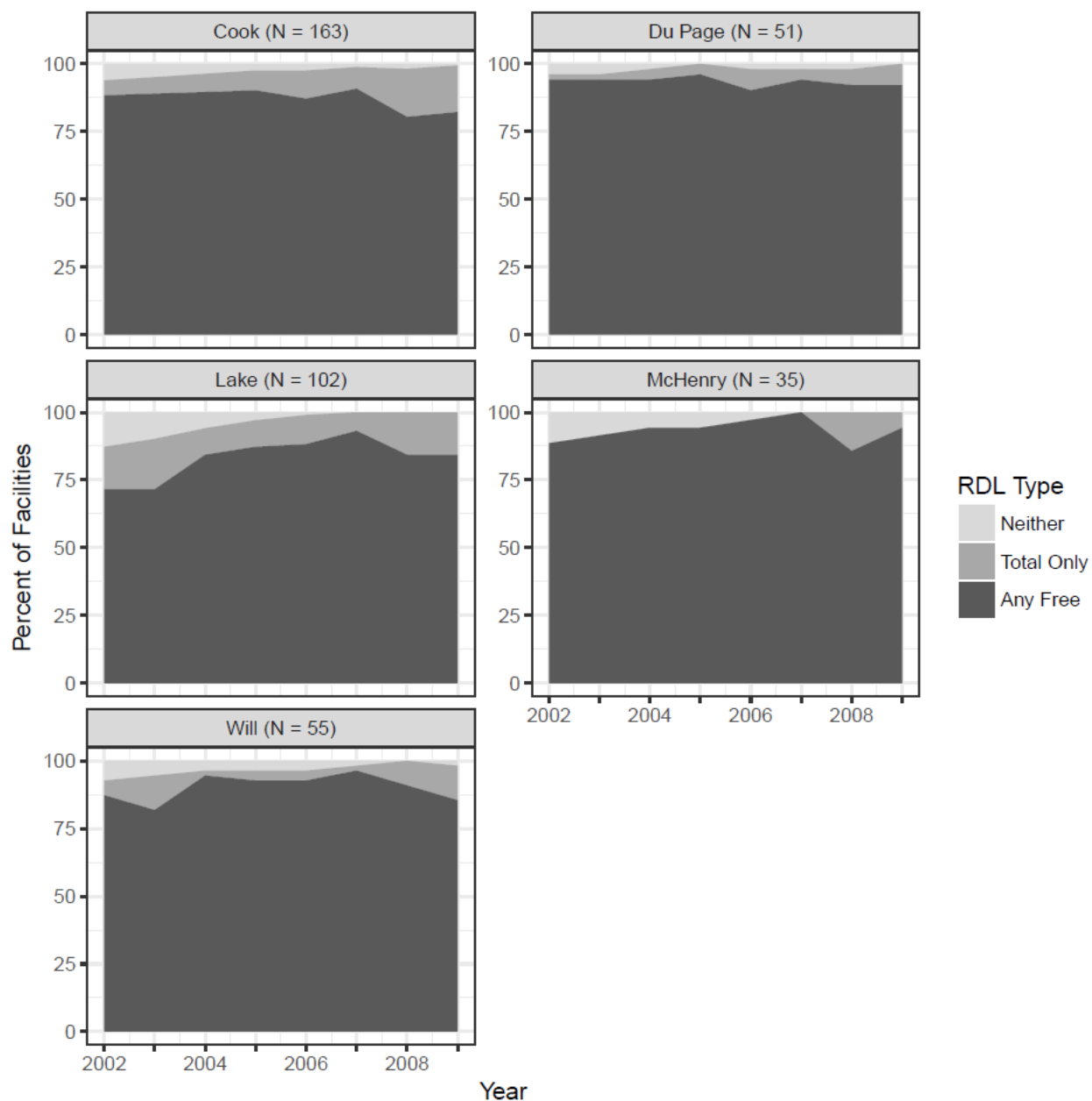
347

348 ^Significantly different from Cook County in same year at alpha = 0.05 before FDR correction.

349 (Significance indicated by “^^” holds after FDR correction.)

350

351 †Data was available through September of 2009.



352

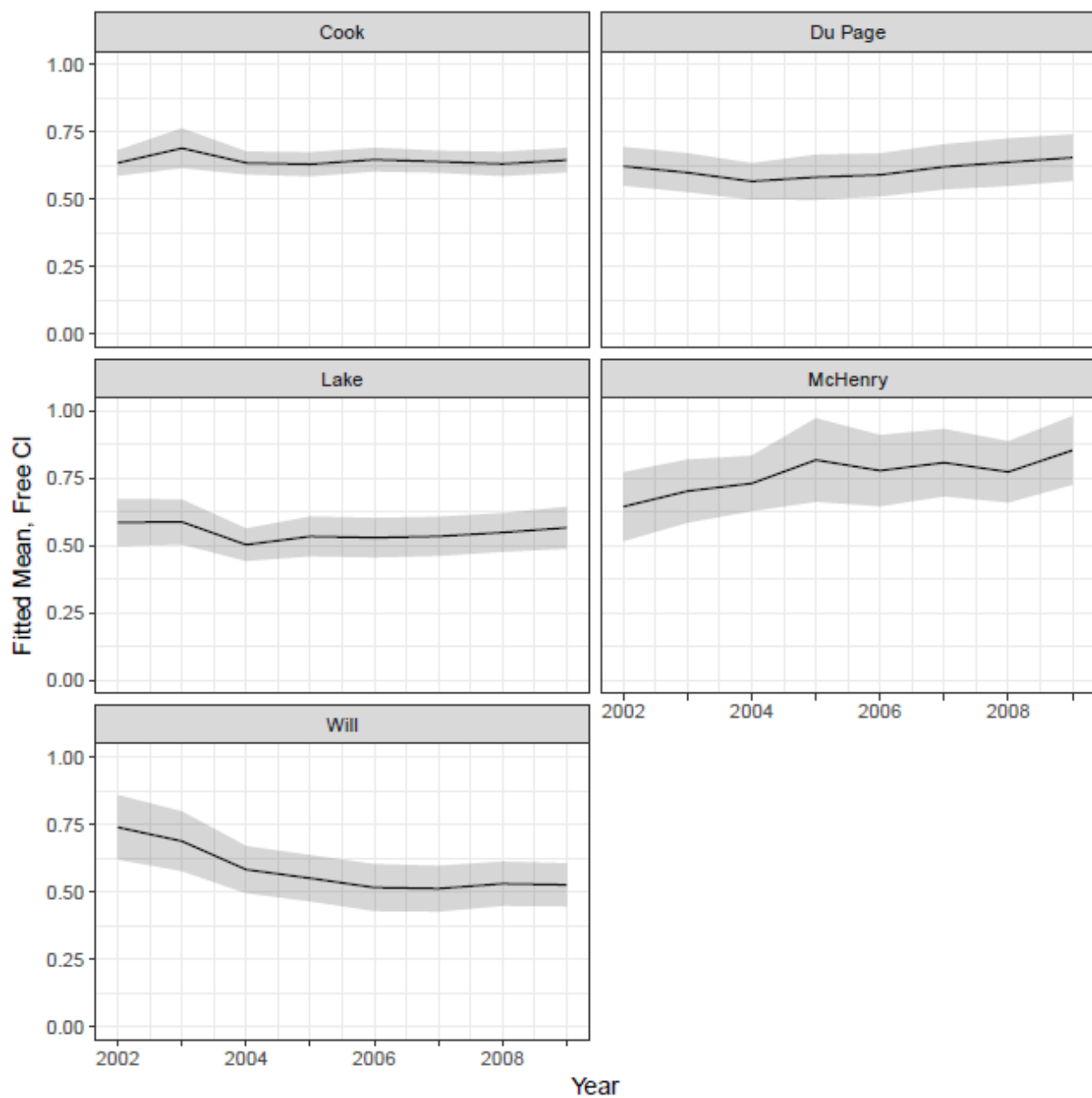
353 **Figure 1. Number of Facilities Reporting Free Chlorine, Total Chlorine, or Neither**

354 **Residual Disinfectant Levels during the Study Period**

355

356

357



358

359

360 **Figure 2. Estimated Mean Residual Disinfectant Levels for Five Counties—Illinois, 2002 –**

361 **2009***

362 *Data was available through September of 2009.

363 **References:**

- 364 1. Bacon AS, Frazer DG, Dart JK, Matheson M, Ficker LA, Wright P (1993) A review of
365 72 consecutive cases of *Acanthamoeba* keratitis, 1984–1992. *Eye (Lond)* 7(Pt 6):719–
366 725.
- 367 2. Benjamini Y, Hochberg Y (1995) Controlling the false discovery rate: a practical and
368 powerful approach to multiple testing. *J R Stat Soc Series B Stat Methodol* 57(1):289–
369 300.
- 370 3. Bergmanson JP, Wang E, Gire AI, Osato MS (2011) *In vitro* effects of medium tonicity,
371 nutrient concentration, and free chlorine content on *Acanthamoeba*. *Contact Lens*
372 *Anterior Eye* 34(4):164–168.
- 373 4. Bharathi MJ, Ramakrishnan R, Meenakshi R, Shivakumar C, Raj DL (2009) Analysis of
374 the risk factors predisposing to fungal, bacterial & *Acanthamoeba* keratitis in south India.
375 *Indian J Med Res* 130(6):749–757.
- 376 5. Brown TJ, Cursons RT (1977) Pathogenic free-living amebae (PFLA) from frozen
377 swimming areas in Oslo, Norway. *Scand J Infect Dis* 9(3):237–240.
- 378 6. Centers for Disease Control and Prevention (CDC) (2014) The Safe Water System: Free
379 Chlorine Testing, [cited 2016 Dec 13] [http://www.cdc.gov/safewater/chlorine-residual-](http://www.cdc.gov/safewater/chlorine-residual-testing.html)
380 [testing.html](http://www.cdc.gov/safewater/chlorine-residual-testing.html)
- 381 7. Cerva L (1971) Studies of limax amoeba in a swimming pool. *Hydrobiologica*
382 38(1):141–161.
- 383 8. Cursons RT, Brown TJ, Keys EA (1980) Effect of disinfectants on pathogenic free-living
384 amoebae: in axenic conditions. *Appl Environ Microbiol* 40(1):62–66.

- 385 9. De Jonckheere J, Van De Voorde H (1976) Differences in destruction of cysts of
386 pathogenic and nonpathogenic *Naegleria* and *Acanthamoeba* by chlorine. *Appl Environ*
387 *Microbiol* 31(2):294–297.
- 388 10. Derreumaux AL, Jadin JB, Willaert E, Moret R (1974) Effect of chlorine on aquatic
389 amoebae. *Ann Soc Belg Med Trop* 54:415–428.
- 390 11. Erdem A, Evcil Y, Yagmur M, Eroglu F, Koltas S, Ersoz R (2014) Non-contact lens use-
391 related *Acanthamoeba* keratitis in southern Turkey: evaluation of risk factors and clinical
392 features. *Eur J Ophthalmol* 24(2):164–172.
- 393 12. Ficker L, Seal D, Warhurs D, Wright P (1990) *Acanthamoeba* keratitis—resistance to
394 medical therapy. *Eye (Lond)* 4(Pt 6):835–838.
- 395 13. Gaze WH, Morgan G, Zhang L, Wellington EM (2011). Mimivirus-like particles in
396 *Acanthamoeba* from sewage sludge. *Emerg Infect Dis* 17(6):1127–1129.
- 397 14. Illinois Administrative Code (IAC) (1995) 77 Ill. Adm. Code Part 900 Drinking Water
398 Systems Code, 2015 [cited 2016 Dec 13] [http://www.idph.state.il.us/rulesregs/rules-](http://www.idph.state.il.us/rulesregs/rules-index.htm)
399 [index.htm](http://www.idph.state.il.us/rulesregs/rules-index.htm).
- 400 15. Illinois Environmental Protection Agency (IEPA). Drinking Water Watch. Safe Drinking
401 Water Information System, [cited 2015 September 18]
402 <http://water.epa.state.il.us/dww/index.jsp>
- 403 16. John DT, Howard MJ (1995) Seasonal distribution of pathogenic free-living amebae in
404 Oklahoma waters. *Parasitol Res* 81(3):193–201.
- 405 17. Johnston SP, Sriram R, Qvarnstrom Y, Roy S, Verani J, Yoder J, Lorick S, Roberts J,
406 Beach MJ, Visvesvara G (2009) Resistance of *Acanthamoeba* cysts to disinfection in
407 multiple contact lens solutions. *J Clin Microbiol* 47(7):2040–2045.

- 408 18. Joslin CE, Tu EY, McMahon TT, Passaro DJ, Stayner LT, Sugar J (2006)
409 Epidemiological characteristics of a Chicago-area *Acanthamoeba* keratitis outbreak. *Am*
410 *J Ophthalmol* 142(2):212–217.
- 411 19. Joslin CE, Tu EY, Shoff ME, Booton GC, Fuerst PA, McMahon TT, Anderson RJ,
412 Dworkin MS, Sugar J, Davis FG, Stayner LT (2007) The association of contact lens
413 solution use and *Acanthamoeba* keratitis. *Am J Ophthalmol* 144(2):169–180.
- 414 20. Joslin CE, Tu EY, Shoff ME, Anderson RJ, Davis FG (2010) Shifting distribution of
415 Chicago-area *Acanthamoeba* keratitis cases. *Arch Ophthalmol* 128(1):137–139.
- 416 21. Kingston D, Warhurst DC (1969) Isolation of amoeba from the air. *J Med Microbiol*
417 2(1):27–36.
- 418 22. Kilvington S, Price J (1990) Survival of *Legionella pneumophila* within cysts of
419 *Acanthamoeba polyphaga* following chlorine exposure. *J Appl Bacteriol* 68(5):519–525.
- 420 23. Långmark J, Storey MV, Ashbolt NJ, Stenström TA (2007) The effects of UV
421 disinfection on distribution pipe biofilm growth and pathogen incidence within the
422 greater Stockholm area, Sweden. *Water Res* 41(15):3327–3336.
- 423 24. LeChevallier MW (2003) Conditions favouring coliform and HPC bacterial growth in
424 drinking-water and on contact surfaces. In: *Heterotrophic Plate Counts and Drinking-*
425 *water Safety*, IWA Publishing, London, pp 177–197.
- 426 25. Liang KY, Zeger Z (1986) Longitudinal data analysis using generalized linear models.
427 *Biometrika* 73(1):13–22.
- 428 26. Methvin, R (2009) *Microbial ecology of Acanthamoeba polyphaga and Sulfate-Reducing*
429 *Bacteria in Premise Plumbing*. Virginia Tech, Blacksburg, VA. [cited 2015 September

- 430 18] <http://scholar.lib.vt.edu/theses/available/etd-05132009->
431 [163159/unrestricted/MethvinFinalThesis.pdf](http://scholar.lib.vt.edu/theses/available/etd-05132009-163159/unrestricted/MethvinFinalThesis.pdf)
- 432 27. National Research Council of the National Academies (NRC)(2005) Chapter 4—Medium
433 Priority Issues. Public Water Supply Distribution Systems: Assessing and Reducing
434 Risks—First Report [cited 2015 September 18]
435 http://www.nap.edu/openbook.php?record_id=11262&page=19
- 436 28. Pan W (2001) Akaike's information criterion in generalized estimating equations.
437 *Biometrics* 57(1):120–125.
- 438 29. Power KN, Nagy LA (1999) Relationship between bacterial regrowth and some physical
439 and chemical parameters within Sydney's drinking water distribution system. *Water Res*
440 33(3):741–750.
- 441 30. Pruden A, Edwards MA, Falkinham JO. III (2013) State of the Science and Research
442 Needs for Opportunistic Pathogens in Premise Plumbing. Report of the Water Research
443 Foundation. Water Research Foundation, Denver.
- 444 31. Samples JR, Binder PS, Luibel FJ, Font RL, Visvesvara GS, Peter CR (1984)
445 *Acanthamoeba* keratitis possibly acquired from a hot tub. *Arch Ophthal* 102(5):707–710.
- 446 32. Sawyer TK (1989) Free-living pathogenic and nonpathogenic amoebae in Maryland soils.
447 *Appl Environ Microbiol* 55(5):1074–1077.
- 448 33. Seal D, Stapleton F, Dart J (1992) Possible environmental sources of *Acanthamoeba* spp
449 in contact lens wearers. *Br J Ophthalmol* 76(7):424–427.
- 450 34. Seal DV, Kirkness CM, Bennett HG, Peterson M, Keratitis Study Group (1999)
451 *Acanthamoeba* keratitis in Scotland: risk factors for contact lens wearers. *Contact Lens*
452 *Anterior Eye* 22(2):58–68.

- 453 35. Seidel CJ, McGuire MJ, Summers RS, Via S (2005) Have utilities switched to
454 chloramines? J Am Water Works Assoc 97(10):87-97.
- 455 36. Shoff ME, Joslin CE, Tu EY, Kubatko L, Fuerst PA (2008) Efficacy of contact lens
456 systems against recent clinical and tap water *Acanthamoeba* isolates. Cornea 27(6):713–
457 719.
- 458 37. Shoff ME, Rogerson A, Kessler K, Schatz S, Seal DV (2008) Prevalence of
459 *Acanthamoeba* and other naked amoebae in South Florida domestic water. J Water
460 Health 6(1):99–104.
- 461 38. Stehr-Green JK, Bailey TM, Brandt FH, Carr JH, Bond WW, Visvesvara GS (1987)
462 *Acanthamoeba* keratitis in soft contact lens wearers. A case-control study. JAMA
463 258(1):57–60.
- 464 39. Stockman LJ, Wright CJ, Visvesvara GS, Fields BS, Beach MJ (2011) Prevalence of
465 *Acanthameoba* spp. and other free-living amoebae in household water, Ohio, USA—
466 1990–1992. Parasitol Res 108(3):621–627.
- 467 40. Thebpatiphat N, Hammersmith KM, Rocha FN, Rapuano CJ, Ayres BD, Laibson PR,
468 Eagle RC Jr, Cohen EJ (2007) *Acanthamoeba* keratitis: a parasite on the rise 26(9):701–
469 706.
- 470 41. Thomas JM, Ashbolt NJ (2011) Do free-living amoebae in treated drinking water systems
471 present an emerging health risk? Environ Sci Tech 45(3):860–869.
- 472 42. Trzyna WC, Mbugua MW, Rogerson A (2010) *Acanthamoeba* in the domestic water
473 supply of Huntington, West Virginia, U.S.A. Acta Protozool 49(1):9–15.

- 474 43. United State Environmental Protection Agency (USEPA) (1998) “National Primary
475 Drinking Water Regulations: Disinfectants and Disinfection Byproducts,” 63 Federal
476 Register 241 (16 December 1998), pp. 69390-69476.
- 477 44. United States Environmental Protection Agency (USEPA) (2001a) Stage 1 Disinfectants
478 and Disinfection Byproducts Rule. Report No. EPA 816-F-01-014.
- 479 45. United States Environmental Protection Agency (USEPA) (2001b) Total Coliform Rule:
480 A Quick Reference Guide. Report No. EPA 816-F-01-035.
- 481 46. United States Environmental Protection Agency (USEPA) (2004) Comprehensive
482 Surface Water Treatment Rules Quick Reference Guide: Systems Using Conventional or
483 Direct Filtration. Report No. EPA 816-F-04-003.
- 484 47. United States Environmental Protection Agency (USEPA) (2006) Complying with the
485 Stage 1 Disinfectants and Disinfections Byproducts Rule: Basic Guide. Report No. EPA
486 816-B-05-004.
- 487 48. Verani JR, Lorick SA, Yoder JS, Beach MJ, Braden CR, Roberts JM, Conover CS, Chen
488 S, McConnell KA, Chang DC, Park BJ, Jones DB, Visvesvara GS, Roy SL (2009)
489 *Acanthamoeba* Keratitis Investigation Team. National outbreak of *Acanthamoeba*
490 keratitis associated with use of a contact lens solution, United States. *Emerg Infect Dis*
491 15(8):1236–1242.
- 492 49. Yoder JS, Verani J, Heidman N, Hoppe-Bauer J, Alfonso EC, Miller D, Jones DB,
493 Langston, R, Jeng BH, Joslin CE, Tu E, Colby K, Vetter E, Ritterband D, Mathers W,
494 Kowalski RP, Acharya NR, Limaye AP, Leiter C, Roy S, Lorick S, Roberts J, Beach MJ
495 (2012) *Acanthamoeba* keratitis: the persistence of cases following a multistate outbreak.
496 *Ophthalmic Epidemiol* 19(4):221–225.