

1 **COVID-19-associated hospitalizations among vaccinated and unvaccinated adults ≥18 years – COVID-**
2 **NET, 13 states, January 1 – July 24, 2021**

3 **Authors:**

4 Fiona P. Havers, MD, MHS^{1,2}; Huong Pham, MPH¹; Christopher A. Taylor, PhD¹; Michael Whitaker, MPH¹;
5 Kadam Patel, MPH^{1,3}; Onika Anglin, MPH^{1,3}; Anita K. Kambhampati, MPH¹; Jennifer Milucky, MSPH¹;
6 Elizabeth Zell, MStat^{1,4}; Shua J. Chai, MD, MPH^{5,6}; Pam Daily Kirley, MPH⁶; Nisha B. Alden, MPH⁷; Isaac
7 Armistead, MD MPH⁷; Kimberly Yousey-Hindes, MPH, CPH⁸; James Meek, MPH⁸; Kyle P. Openo, DrPH^{9,10};
8 Evan J. Anderson, MD^{10,11,12}; Libby Reeg, MPH¹³; Alexander Kohrman, MPH¹³; Ruth Lynfield, MD¹⁴;
9 Kathryn Como-Sabetti, MPH¹⁴; Elizabeth M. Davis, MA¹⁵; Cory Cline, MPH¹⁵; Alison Muse, MPH¹⁶; Grant
10 Barney, MPH¹⁶; Sophrena Bushey, MHS¹⁷; Christina B. Felsen, MPH¹⁷; Laurie M. Billing, MPH¹⁸; Eli Shiltz,
11 MPH¹⁸; Melissa Sutton, MD, MPH¹⁹; Nasreen Abdullah, MD, MPH¹⁹; H. Keipp Talbot, MD, MPH²⁰; William
12 Schaffner, MD²⁰; Mary Hill, MPH²¹; Andrea George, MPH²¹; Bhavini Patel Murthy, MD^{1,2}; Meredith
13 McMorrow, MD, MPH^{1,2}

14 **Affiliations:**

15 ¹ CDC COVID-19 Response, Atlanta, GA
16 ² United States Public Health Service Commissioned Corps, Rockville, MD
17 ³ General Dynamics Information Technology, Atlanta, GA
18 ⁴ Stat-Epi Associates, Inc., Ponte Vedra Beach, FL
19 ⁵ Division of State and Local Readiness, Center for Preparedness and Response, Centers for Disease
20 Control and Prevention, Atlanta, GA
21 ⁶ California Emerging Infections Program, Oakland, CA
22 ⁷ Colorado Department of Public Health and Environment, Denver, CO
23 ⁸ Connecticut Emerging Infections Program, Yale School of Public Health, New Haven, CT
24 ⁹ Division of Infectious Diseases, School of Medicine, Emory University, Atlanta, GA
25 ¹⁰ Georgia Emerging Infections Program, Georgia Department of Public Health, Atlanta, GA
26 ¹¹ Departments of Medicine and Pediatrics, Emory School of Medicine, Atlanta, GA
27 ¹² Atlanta Veterans Affairs Medical Center, Atlanta, GA
28 ¹³ Michigan Department of Health and Human Services, Lansing, MI
29 ¹⁴ Minnesota Department of Health, St. Paul, MN
30 ¹⁵ New Mexico Department of Health, Santa Fe, NM
31 ¹⁶ New York State Department of Health, Albany, NY
32 ¹⁷ University of Rochester School of Medicine and Dentistry, Rochester, NY
33 ¹⁸ Ohio Department of Health, Columbus, OH
34 ¹⁹ Public Health Division, Oregon Health Authority, Portland, OR
35 ²⁰ Vanderbilt University Medical Center, Nashville, TN
36 ²¹ Salt Lake County Health Department, Salt Lake City, UT

37

38

39 Corresponding author:

40 Fiona Havers, MD, MHS

41 1600 Clifton RD, MS H24-6

42 Atlanta, GA 30329

43 Phone: 404-639-5062; Email: fhavers@cdc.gov

44

45

46 **Disclaimer:** The findings and conclusions in this report are those of the authors and do not necessarily

47 represent the views of the U.S. Centers for Disease Control and Prevention.

48 **Abstract**

49 **Background:** As of August 21, 2021, >60% of the U.S. population aged ≥ 18 years were fully vaccinated
50 with vaccines highly effective in preventing hospitalization due to Coronavirus Disease-2019 (COVID-19).
51 Infection despite full vaccination (vaccine breakthrough) has been reported, but characteristics of those
52 with vaccine breakthrough resulting in hospitalization and relative rates of hospitalization in
53 unvaccinated and vaccinated persons are not well described, including during late June and July 2021
54 when the highly transmissible Delta variant predominated.

55 **Methods:** From January 1–June 30, 2021, cases defined as adults aged ≥ 18 years with laboratory-
56 confirmed Severe Acute Respiratory Coronavirus-2 (SARS-CoV-2) infection were identified from >250
57 acute care hospitals in the population-based COVID-19-Associated Hospitalization Surveillance Network
58 (COVID-NET). Through chart review for sampled cases, we examine characteristics associated with
59 vaccination breakthrough. From January 24–July 24, 2021, state immunization information system data
60 linked to both >37,000 cases representative cases and the defined surveillance catchment area
61 population were used to compare weekly hospitalization rates in vaccinated and unvaccinated
62 individuals. Unweighted case counts and weighted percentages are presented.

63 **Results:** From January 1 – June 30, 2021, fully vaccinated cases increased from 1 (0.01%) to 321 (16.1%)
64 per month. Among 4,732 sampled cases, fully vaccinated persons admitted with COVID-19 were older
65 compared with unvaccinated persons (median age 73 years [Interquartile Range (IQR) 65-80] v. 59 years
66 [IQR 48-70]; $p < 0.001$), more likely to have 3 or more underlying medical conditions (201 (70.8%) v. 2,305
67 (56.1%), respectively; $p < 0.001$) and be residents of long-term care facilities [37 (14.5%) v. 146 (5.5%),
68 respectively; $p < 0.001$]. From January 24 – July 24, 2021, cumulative hospitalization rates were 17 times
69 higher in unvaccinated persons compared with vaccinated persons (423 cases per 100,000 population v.
70 26 per 100,000 population, respectively); rate ratios were 23, 22 and 13 for those aged 18-49, 50-64,

71 and ≥ 65 years respectively. For June 27 – July 24, hospitalization rates were ≥ 10 times higher in
72 unvaccinated persons compared with vaccinated persons for all age groups across all weeks.

73 **Conclusion:** Population-based hospitalization rates show that unvaccinated adults aged ≥ 18 years are 17
74 times more likely to be hospitalized compared with vaccinated adults. Rates are far higher in
75 unvaccinated persons in all adult age groups, including during a period when the Delta variant was the
76 predominant strain of the SARS-CoV-2 virus. Vaccines continue to play a critical role in preventing
77 serious COVID-19 illness and remain highly effective in preventing COVID-19 hospitalizations.

78 **Introduction**

79 As of August 21, 2021, 170 million people in the United States were fully vaccinated against COVID-19,
80 including >62% of the population aged ≥ 18 years.² Consistent with other studies, data from the Centers
81 for Disease Control and Prevention's (CDC) Coronavirus Disease 2019-Associated Hospitalization
82 Surveillance Network (COVID-NET) have previously shown that all three vaccine products currently
83 available are highly effective in preventing hospitalization in adults aged ≥ 65 years.^{3,4} Infections in fully
84 vaccinated persons (i.e., vaccine breakthrough cases) are expected,⁵ even in the setting of highly
85 effective vaccines. While most infections occurring in fully vaccinated individuals have been mild or
86 asymptomatic,⁵ more serious SARS-CoV-2 infections can occur in fully vaccinated individuals.⁴ However,
87 the characteristics of fully vaccinated patients hospitalized with COVID-19 and factors associated with
88 risk of vaccine breakthrough have not been well described. Using COVID-NET data representing >67,000
89 COVID-19-associated hospitalizations from January–June 2021, we compare characteristics of persons
90 hospitalized with laboratory-confirmed SARS-CoV-2 virus infection by vaccination status and assess
91 characteristics of hospitalized cases with vaccination breakthrough. We also compare clinical outcomes
92 between unvaccinated and fully vaccinated persons admitted for COVID-19-associated illness. We use
93 state immunization information system (IIS) linked to both hospitalized cases with laboratory-confirmed
94 SARS-CoV-2 infection and the population of the defined COVID-NET catchment area to compare weekly
95 population-based hospitalization rates in vaccinated and unvaccinated individuals, including for late
96 June and July 2021, a period when the highly-transmissible Delta variant was the predominant strain
97 circulating.⁶

98 **Methods**

99 ***COVID-NET description and data collected for all COVID-NET Cases***

100 COVID-NET is a population-based surveillance system of laboratory-confirmed COVID-19-associated
101 hospitalizations comprising 99 counties in 14 states (California, Colorado, Connecticut, Georgia, Iowa,
102 Maryland, Michigan, Minnesota, New Mexico, New York, Ohio, Oregon, Tennessee, and Utah) and
103 covering approximately 10% of the US population. Hospitalized patients residing in a surveillance
104 catchment area with a positive molecular or rapid antigen detection test for SARS-CoV-2 during
105 hospitalization or within 14 days before admission are included as COVID-NET cases.⁷ One site (Iowa)
106 does not have access to the state IISs and was excluded from this analysis.

107 Basic demographic information, including age, race and Hispanic ethnicity, sex, hospital admission date,
108 and evidence of a positive SARS-CoV-2 test are transmitted weekly on all patients.⁷ Since few children
109 were fully vaccinated during the analysis period, this analysis was limited to adult cases aged ≥ 18 years.

110 ***COVID-NET Sampling/Weighting Methodology***

111 Detailed data on patient demographics, COVID-19 vaccination status, primary reason for admission,
112 select underlying medical conditions, and clinical outcomes, including ICU admission and death, are
113 collected on a representative sample of patients stratified by age and site. To select sampled cases,
114 random numbers are generated and assigned to each case. Sampling weights are based on the
115 probability of selection and adjusted for non-response; sample sizes vary by surveillance month, site and
116 age group and are based on the total number of cases identified in each of these strata.⁸ Monthly
117 demographic and clinical data through June 2021 were the most recent data available at the time of this
118 study.

119 ***Vaccination definitions, weighting of cases with known vaccination status***

120 Fully vaccinated cases were defined as having a positive SARS-CoV-2 test ≥ 14 days after either the
121 second dose of a 2-dose series or after one dose of a single dose series. Partial vaccination was defined

122 as ≥ 14 days after a single dose through < 14 days after the second dose in a 2-dose series. If the SARS-
123 CoV-2 test date was not available, hospital admission date was used. Partially vaccinated patients and
124 patients with positive tests < 14 days after one vaccine dose, regardless of type, were excluded from
125 further analyses.

126 Vaccination status for both hospitalized cases and the underlying population was determined by state IIS
127 data, as previously described.³ We collected COVID-19 vaccination status (doses, dates administered,
128 and product) from state IISs for all sampled COVID-NET cases. Some sites expanded collection of
129 vaccination status to non-sampled cases, which were included for analysis of demographic factors and
130 population-based rates associated with vaccination if all cases in a single month and age group had
131 vaccination status available (“vaccine sample”).

132 For fully vaccinated sampled cases only, COVID-NET personnel reviewed state health department
133 electronic laboratory records and other data sources for a positive SARS-CoV-2 tests predating the test
134 associated with the current hospitalization. This was done to exclude those who were reinfected or had
135 prolonged viral shedding from a prior SARS-CoV-2 infection that predated full vaccination and,
136 therefore, did not meet the definition of vaccine breakthrough (**Supplementary Table 2**). Data on prior
137 positive SARS-CoV-2 tests were not available for unvaccinated persons.

138 ***Comparison of Clinical Characteristics and Outcomes among a Weighted Sample of Fully*** 139 ***Vaccinated and Unvaccinated Hospitalized Cases with COVID-19***

140 For all sampled cases, trained surveillance staff conduct medical chart abstractions using a standard case
141 report form. We compared demographic information, underlying medical conditions, clinical outcomes,
142 signs and symptoms at admission, and reasons for admission between unvaccinated and fully vaccinated
143 sampled cases (“comparison sample”). Underlying medical conditions were categorized into major
144 groups (**Supplementary Table 1**). Two physicians reviewed reason for admission and symptoms, and

145 those cases whose reason for admission might not have been primarily related to COVID-19, despite
146 receiving a positive SARS-CoV-2 laboratory test, were excluded from the comparison sample.³

147 We used multivariable logistic regression to examine factors associated with vaccine breakthrough
148 cases; models included age, race and Hispanic ethnicity, long-term care facility (LTCF) residence, and
149 underlying medical conditions. We also used multivariable logistic regression to examine the association
150 of vaccination with severe COVID-19, defined as ICU admission or in-hospital death. Because older
151 adults were eligible for vaccination earlier than other age groups⁹ and older age has been associated
152 with increased risk of vaccine breakthrough with other infections, we stratified all models, analyzing
153 those aged <65 and ≥65 years separately.

154 ***Description of Population-Based COVID-19-Associated Hospitalization Rates among Unvaccinated and*** 155 ***Vaccinated Persons***

156 We collected a minimum set of data on all identified cases to produce weekly hospitalization rates
157 (https://gis.cdc.gov/grasp/COVIDNet/COVID19_3.html) for all COVID-NET cases. Incidence rates were
158 calculated using the National Center for Health Statistics' vintage 2019 bridge-race postcensal
159 population estimates for the counties included in COVID-NET surveillance.¹⁰ To determine population-
160 based rates of hospitalization by vaccination status per 100,000 persons ≥18 years of age, county-level
161 coverage in the COVID-NET catchment area was estimated using population denominators. Vaccination
162 status was classified as described above for hospitalized cases using the vaccine sample; weekly
163 population-based rates were calculated based on denominators that changed weekly depending on the
164 vaccination status of individuals in the underlying population. Rate ratios were calculated for all fully
165 vaccinated and unvaccinated cases who met the case definition, regardless of prior SARS-CoV-2 test
166 results or reason for admission; overall rates for those ≥18 years were standardized to the underlying
167 population. We excluded partially vaccinated persons from rate calculations. For analyses comparing

168 hospitalization rates in unvaccinated with vaccinated persons only, data through the week ending July
169 24, 2021 were included, as they were the most recent data available at the time of this study. Weeks in
170 which the Delta variant was estimated to cause >50% of new SARS-COV-2 infections, June 27 – July 24,
171 2021,⁶ were examined. A method for formally calculating vaccine effectiveness from COVID-NET data
172 has been published;¹¹ VE estimates will be included in a forthcoming manuscript.

173 ***Statistical Analysis***

174 Data from all cases aged ≥ 18 years and hospitalized with laboratory-confirmed COVID-19 during January
175 1–June 30, 2021 with linked vaccine registry data were used to describe the vaccination status of
176 hospitalized cases by age, sex, race and Hispanic ethnicity, and month of admission. The comparison
177 sample used in multivariable models included age groups (18–49, 50–64, ≥ 65 years), sex, and race and
178 ethnicity; models incorporated clustering by site to account for geographic differences. Other variables
179 with p-values < 0.10 in bivariate analyses were included in the multivariable analyses. Model fit was
180 assessed with Quasi-likelihood under Independence Model Criterion (QIC). Log-linked Poisson
181 generalized estimating equations regression with an independent working correlation structure was
182 used to generate adjusted risk ratios (aRR) and 95% confidence intervals (CI). Data were analyzed using
183 SAS survey procedures to account for sampling weights. Unweighted case counts and weighted
184 percentages are presented unless otherwise noted. Proportions by month with 95% confidence intervals
185 are presented for binary measures, and medians with interquartile ranges for continuous measures. We
186 used Taylor series linearization methods for variance estimation. All analyses were conducted using SAS
187 9.4 software (SAS Institute Inc., Cary, NC).

188 This activity was reviewed by CDC and was conducted consistent with applicable federal law and CDC
189 policy (see e.g., 45 C.F.R. part 46.102(l)(2), 21 C.F.R. part 56; 42 U.S.C. §241(d); 5 U.S.C.

190 **Results**

191 During January 1–June 30, 2021, there were 67,311 laboratory-confirmed COVID-19-associated
192 hospitalized cases ≥ 18 years identified in COVID-NET and meeting the case definition, among whom a
193 representative sample of 35,846 had vaccination data linked to state vaccination registries (vaccine
194 sample) (**Supplementary Figure 1**). Among these, 30,967 (87.6% (weighted percentages shown
195 throughout)) were unvaccinated, 1,791 (5.0%) had received 1 dose < 14 d prior to admission, 1,753
196 (4.4%) were partially vaccinated and 1,255 (3%) were fully vaccinated (**Table 1**). The number of cases
197 that were fully vaccinated increased from 1 (0.0%) in January to 321 (16.1%) in June. A greater
198 proportion of cases in older age groups were fully vaccinated; 32% of hospitalized cases aged ≥ 65 years
199 in June were fully vaccinated (**Supplementary Figure 2**).

200 Among a representative sample of 6,115 hospitalized adults aged ≥ 18 years, the following were
201 excluded (unweighted percentages shown for excluded cases): 282 (4.6%) who had received one dose of
202 vaccine < 14 days prior to the positive SARS-CoV-2 test, 286 (4.7%) who were partially vaccinated, 14
203 (0.2%) with unknown vaccination status, and 33 (0.5%) cases with incomplete data. Among remaining
204 the cases ($n=5,550$), 390 were fully vaccinated and 5,160 were unvaccinated; among fully vaccinated
205 cases, 52/390 (13%) had evidence of prior SARS-CoV-2 positive tests and were also excluded. An
206 additional 716 (13%) of the remaining 5,448 cases were excluded as their reason for admission might
207 not have been primarily related to COVID-19; the proportion of cases excluded for this reason was
208 similar among the remaining vaccinated cases compared with unvaccinated cases ((46/338 (14%) v.
209 670/5110 (13%), respectively; p -value = 0.79)). (**Supplementary Figure 1**).

210 The comparison sample was thus restricted to the remaining 4,732 cases with hospitalization associated
211 primarily with COVID-19 illness, including 4,440 unvaccinated and 292 fully vaccinated cases (**Table 2**).
212 Among fully vaccinated cases, the median time from full vaccination status until hospital admission was
213 42 days (IQR 28–68). Among all adults aged ≥ 18 years, fully vaccinated cases were older when compared
214 to unvaccinated cases [median age 73 years (IQR 65-80) v. 59 years (IQR 48-70); $p < 0.001$] and more

215 likely to be LTCF residents [37 (14.5%) v. 146 (5.5%), respectively; $p < 0.001$]. In addition, 69 (32.1%) fully
216 vaccinated cases were more likely to be immunosuppressed compared with 442 (11.3%) unvaccinated
217 cases ($p < 0.001$); these fully vaccinated immunosuppressed cases included 25 (36%) and 14 (20%) cases
218 with solid organ malignancy and a history of a solid organ transplant, respectively. Vaccinated cases
219 were also more likely to have 3 or more underlying medical conditions compared with unvaccinated
220 cases (201 (70.8%) v. 2,305 (56.1%), respectively; $p < 0.001$).

221 On multivariable analysis, after adjusting for, age, sex, race and Hispanic ethnicity, LTCF status, and
222 underlying medical conditions, and excluding those whose reason for hospitalization was likely not
223 primarily COVID-19-related, fully vaccinated patients aged ≥ 65 years, were more likely to be
224 immunosuppressed (aRR: 3.2 (95% CI 2.0-5.1) and to be obese (aRR: 1.6 (95% CI 1.0-2.5) than
225 unvaccinated patients (**Figure 1B**). Fully vaccinated patients aged < 65 years were more likely to have
226 underlying neurologic and gastrointestinal/liver diseases (aRRs: 1.6 (95% CI 1.0-2.6) and 2.3 (95% CI 1.0-
227 5.4), respectively).

228 The number and proportion of fully vaccinated persons admitted to the ICU was similar to unvaccinated
229 persons (60 (20.6%) v. 931 (20.0%), respectively; p -value=0.66), as were results for in-hospital death (23
230 (7.5%) v. 342 (8.4%), respectively; p -value=0.69). Median length of stay was significantly longer in fully
231 vaccinated persons (median 5 days (IQR 3–8) v. 4 days (IQR 2–9), respectively; $p < 0.001$) (**Table 2**). On
232 multivariable analysis adjusting for age, sex, race, and underlying medical conditions, being fully
233 vaccinated was significantly associated with reduced risk of severe disease (i.e. ICU admission and/or
234 death) in those aged < 65 years (aRR 0.8 (95% CI 0.6–1.0), but this association was not significant in those
235 aged ≥ 65 years (aRR 1.1 (95% CI 0.7–1.6) (**Supplementary Tables 3A-B**).

236 **Population-based rates of COVID-19-associated hospitalization by vaccination status**

237 During the study period, the percentage of persons aged ≥ 18 years in the COVID-NET catchment area
238 who were fully vaccinated increased from 0.9% in January to 57% in June 2021. The COVID-NET
239 catchment population that was fully vaccinated varied by week and age group (**Supplementary Figure**
240 **3A–D**). From January 24–July 24, 2021, the age-adjusted cumulative hospitalization rate among persons
241 ≥ 18 years of age was 432 hospitalized cases per 100,000 unvaccinated persons compared with 26 per
242 100,000 fully vaccinated persons, a 17-fold higher cumulative rate (**Figure 2A**); cumulative rate ratios
243 were 26, 22 and 13 for those aged 18–49, 50–64, and ≥ 65 years respectively (**Supplementary Table 4**).
244 The weekly overall COVID-NET hospitalization rates tracked closely with the hospitalization rates of the
245 unvaccinated population earlier in the study period, but as vaccination coverage increased, the overall
246 rate started to converge with the rate in the fully vaccinated population (**Figure 2B, Figure 3A-C**). The
247 weekly rate ratio varied each week with no clear pattern (range in those aged ≥ 18 years: 6–31). For June
248 27–July 24, hospitalization rates were ≥ 10 times higher in unvaccinated persons compared with
249 vaccinated persons for all age groups across all weeks (rate ratio range in those aged ≥ 18 years: 12-19)
250 (**Supplementary Table 4**).

251 Discussion

252 In this analysis using data from a representative sample of over 67,000 laboratory-confirmed COVID-19-
253 associated hospitalizations in persons aged ≥ 18 years, we demonstrated that cumulative population-
254 based rates of COVID-19-associated hospitalization were approximately 17 times higher in unvaccinated
255 persons compared with vaccinated persons, and more than 13 times higher in adults aged ≥ 65 years.
256 Rates remained ≥ 10 times higher in unvaccinated persons compared with vaccinated persons in all adult
257 age groups across all weeks in late June and July 2021, a period in which the Delta variant has
258 predominated, suggesting that vaccines remain highly effective in preventing hospitalizations in all adult
259 age groups. Those persons who were hospitalized despite being fully vaccinated were more medically
260 fragile at baseline than those who were unvaccinated. Fully vaccinated cases were older, more likely to

261 reside in LCTFs, and had more underlying medical conditions; nearly a third (32%) had
262 immunosuppressive conditions, compared with 11% of those who were unvaccinated.

263 Our finding that a substantial and growing proportion of hospitalized persons were fully vaccinated is
264 not surprising; the proportion of hospitalized cases who are fully vaccinated is expected to increase as
265 population vaccination coverage increases. Given the high vaccination coverage, particularly in older age
266 groups, which was more than 80% in July for those ≥ 65 years,² the finding that 16% of hospitalized cases
267 ≥ 18 years during that month were fully vaccinated is consistent with what we would expect from highly
268 effective vaccines.

269 This analysis demonstrated that population-based rates of hospitalization were consistently far higher in
270 unvaccinated persons compared with fully vaccinated persons in all age groups and over time. Using
271 detailed IIS data from of a defined population, a 17-times greater cumulative hospitalization rate in
272 unvaccinated persons is consistent with ongoing high levels of vaccine effectiveness in preventing
273 hospitalizations and suggests that increasing vaccination coverage can prevent serious illness and death.
274 Some of the differences in hospitalization rates between the unvaccinated and vaccinated populations
275 may be attributable in part to differences in mask-wearing and physical distancing between the two
276 groups. Cumulative rate ratios were lower in older adults than younger groups, but vaccinated adults
277 aged ≥ 65 years had hospitalization rates that were more than 90% lower than unvaccinated persons in
278 the same age group; recent increases in hospitalization rates appear to be driven disproportionately by
279 unvaccinated persons. Far higher rates of hospitalization among unvaccinated persons compared to
280 vaccinated persons of all ages persisted in July 2021, a time when the highly-transmissible Delta variant
281 was the predominant variant circulating⁶ and hospitalization rates among vaccinated individuals
282 remained comparatively low and stable. Although studies have suggested that current vaccines may be
283 less effective in preventing SARS-CoV-2 infections due to the Delta variant compared than with

284 previously circulating variants,¹²⁻¹⁴ this analysis suggests that vaccination remains highly effective against
285 the Delta variant in preventing severe disease resulting in hospitalization.⁶

286 We demonstrated that, consistent with other studies, among hospitalized cases, vaccinated persons
287 reflected older and more medically fragile populations that were prioritized to receive the vaccine early.
288 Those aged ≥75 years, LTCF residents, those who are immunocompromised or have multiple underlying
289 conditions may be among the most vulnerable to severe infection and the least likely to mount an
290 adequate immune response to immunization; given early receipt of the vaccine, these populations may
291 also be vulnerable to any potential waning of effectiveness over time.^{4,15,16} Increased vulnerability to
292 severe disease resulting in hospitalization, even if fully vaccinated, supports the importance of
293 vaccination among LTCF staff and visitors in protecting persons vulnerable to severe COVID-19. The high
294 proportion of fully vaccinated patients who were immunocompromised also supports the recent
295 recommendation for a third vaccine dose for immunocompromised adults who had previously received
296 mRNA vaccines, although more research is needed to understand the extent to which an additional dose
297 of vaccine results in increased protection in immunocompromised individuals.¹⁷

298 In the outpatient setting, vaccination likely attenuates disease severity if a breakthrough infection
299 occurs,⁵ but our analysis showed that conditional on being hospitalized, vaccinated persons were still at
300 a high risk of severe outcomes, with more than 20% admitted to the ICU. We did not find any clear
301 difference in the risk for ICU admission or in-hospital death between vaccinated and unvaccinated
302 persons. This may reflect the fact that those who were hospitalized despite vaccination may be more
303 vulnerable to severe infection at baseline than those who are not vaccinated. In addition, unidentified
304 confounders that are not well-accounted for may affect these results; further detailed analyses
305 examining clinical presentation and outcomes are planned.

306 This analysis has several limitations. Although COVID-NET covers approximately 10% of the U.S.
307 population, our findings may not be generalizable to the entire country. Since SARS-CoV-2 testing was
308 conducted at the discretion of healthcare professionals, COVID-NET may not have captured all COVID-
309 19-associated hospitalizations. The primary reason for hospital admission was not always clear, and
310 some patients who met the COVID-NET case definition may have been hospitalized for reasons that
311 were not primarily related to COVID-19. The inclusion of these hospitalizations in rate calculations could
312 have resulted in an overestimation of hospitalization rates for COVID-19 for both unvaccinated and
313 vaccinated persons.

314 Using population-based hospitalization rates, our study found unvaccinated adults are hospitalized at
315 rates that are 17 times higher than for vaccinated adults in the same catchment areas. Rates of COVID-
316 19-associated hospitalizations are far higher in unvaccinated persons in all adult age groups, even during
317 a period when the highly-transmissible Delta variant was the predominant circulating variant.¹²
318 Population-based hospitalization rates will be a critical metric in the continued assessment of the
319 effectiveness of vaccines in the population, and complementary to vaccine effectiveness studies using
320 other methods.^{4,18} The much higher rates observed in unvaccinated persons compared to vaccinated
321 adults suggest that vaccines remain highly effective in preventing hospitalization for COVID-19 illness.
322 Continuing to increase vaccination coverage in all eligible groups is crucial to preventing severe COVID-
323 19.

324

325 **Funding:** This work was supported by the Centers of Disease Control and Prevention through an
326 Emerging Infections Program cooperative agreement (grant CK17-1701) and through a Council of State
327 and Territorial Epidemiologists cooperative agreement (grant NU38OT000297-02-00).

328 **Acknowledgments:** Roxanne Archer, Susan Brooks, Monica Napoles, Jeremy Roland, Tiffany Tsukuda, CA
329 Emerging Infections Program; Arthur Reingold, University of California, Berkeley; Rachel Herlihy,
330 Breanna Kawasaki, Colorado Department of Public Health and Environment; Ann Basting, Tessa Carter,
331 Maria Correa, Daewi Kim, Carol Lyons, Amber Maslar, Julie Plano, Connecticut Emerging Infections
332 Program, Yale School of Public Health; Katelyn Ward, Georgia Emerging Infections Program, Georgia
333 Department of Health, Division of Infectious Diseases, School of Medicine, Emory University; Marina
334 Bruck, Rayna Ceasar, Gracie Chambers, Taylor Eisenstein, Emily Fawcett, Asmith Joseph, Grayson Kallas,
335 Stephanie Lehman, Jana Manning, Annabel Patterson, Allison Roebling, Chandler Surell, Georgia
336 Emerging Infections Program, Georgia Department of Health, Veterans Affairs Medical Center,
337 Foundation for Atlanta Veterans Education and Research; David Blythe, Alicia Brooks, Elisabeth Vaeth,
338 Cindy Zerlout, Maryland Department of Health; Rachel Park, Michelle Wilson, Maryland Emerging
339 Infections Program - The Johns Hopkins Bloomberg School of Public Health; Chloe Brown, Jim Collins,
340 Justin Henderson, Shannon Johnson, Sue Kim, Lauren Leegwater, Sierra Peguies-Khan, Val Tellez Nunez,
341 Michigan Department of Health and Human Services; Aaron Bieringer, Erica Bye, Richard Danila, Kristen
342 Ehresmann, Corinne Holtzman, Sydney Kuramoto, Stephanie Meyer, Miriam Muscoplat, Rachel
343 Ostadkar, Minnesota Department of Health; Marianne Murphy, Murtada Khalifa, Yassir Talha, CDC
344 Foundation/New Mexico Department of Health; Melissa Judson, Sunshine Martinez, Jasmyn Sanchez,
345 Chad Smelser, Daniel Sosin, New Mexico Department of Health; Kathy M. Angeles, Melissa Christian,
346 Nancy Eisenberg, Emily B. Hancock, Sarah A. Khanlian, Sarah Lathrop, Wickliffe Omondi, Mayvilynne
347 Poblete, Dominic Rudin, Yadira Salazar-Sanchez, Sarah Shrum Davis, Chelsea McMullen,

348 Susan Ropp, New Mexico Emerging Infections Program; Kerianne Engesser, Suzanne McGuire, Adam
349 Rowe, Nancy Spina, New York State Department of Health; Nancy Bennett, Virginia Cafferky, Maria
350 Gaitan, Christine Long, Thomas Peer, Kevin Popham, University of Rochester School of Medicine and
351 Dentistry; Kylie Seeley, Oregon Health & Science University School of Medicine; Ama Owusu-Domney,
352 Emily Youngers, Breanna McArdle, Public Health Division; Oregon Health Authority; Kathy Billings,
353 Katie Dyer, Anise Elie, Karen Leib, Tiffanie Markus, Terri McMinn, Danielle Ndi, Manideepthi
354 Pemmaraju, John Ujwok, Vanderbilt University Medical Center; Ian Buchta, Amanda Carter,
355 Ryan Chatelain, Andrew Haraghey, Laine McCullough, Jacob Ortega, Andrea Price, Tyler Riedesel,
356 Ilene Risk, Caitlin Shaw, Melanie Spencer, Ashley Swain, Salt Lake County Health Department;
357 Keegan McCaffrey, Utah Department of Health; Kelly Oakeson, Alessandro Rossi, Utah Public Health
358 Laboratory
359

360 **References**

- 361 1. Garg S, Patel K, Pham H, et al. Clinical Trends Among U.S. Adults Hospitalized with COVID-19,
362 March-December 2020. medRxiv 2021:2021.04.21.21255473. DOI:
363 10.1101/2021.04.21.21255473.
- 364 2. CDC COVID Data Tracker. Centers for Diseases Control and Prevention.
365 (https://covid.cdc.gov/covid-data-tracker/#vaccinations_vacc-total-admin-rate-total).
- 366 3. Moline HL, Whitaker M, Deng L, et al. Effectiveness of COVID-19 Vaccines in Preventing
367 Hospitalization Among Adults Aged ≥ 65 Years - COVID-NET, 13 States, February-April 2021.
368 MMWR Morbidity and mortality weekly report 2021;70(32):1088-1093. DOI:
369 10.15585/mmwr.mm7032e3.
- 370 4. Tenforde MW, Patel MM, Ginde AA, et al. Effectiveness of SARS-CoV-2 mRNA Vaccines for
371 Preventing Covid-19 Hospitalizations in the United States. Clinical infectious diseases : an official
372 publication of the Infectious Diseases Society of America 2021. DOI: 10.1093/cid/ciab687.
- 373 5. Thompson MG, Burgess JL, Naleway AL, et al. Prevention and Attenuation of Covid-19 with the
374 BNT162b2 and mRNA-1273 Vaccines. The New England journal of medicine 2021;385(4):320-
375 329. DOI: 10.1056/NEJMoa2107058.
- 376 6. CDC Data Tracker: Variant Proportions. Centers for Disease Control and Prevention.
377 (<https://covid.cdc.gov/covid-data-tracker/#variant-proportions>).
- 378 7. Garg S, Kim L, Whitaker M, et al. Hospitalization Rates and Characteristics of Patients
379 Hospitalized with Laboratory-Confirmed Coronavirus Disease 2019 - COVID-NET, 14 States,
380 March 1-30, 2020. MMWR Morbidity and mortality weekly report 2020;69(15):458-464. DOI:
381 10.15585/mmwr.mm6915e3.
- 382 8. Garg S, Patel K, Pham H, et al. Clinical Trends Among U.S. Adults Hospitalized With COVID-19,
383 March to December 2020 : A Cross-Sectional Study. Annals of internal medicine 2021. DOI:
384 10.7326/M21-1991.
- 385 9. McClung N, Chamberland M, Kinlaw K, et al. The Advisory Committee on Immunization
386 Practices' Ethical Principles for Allocating Initial Supplies of COVID-19 Vaccine - United States,
387 2020. MMWR Morbidity and mortality weekly report 2020;69(47):1782-1786. DOI:
388 10.15585/mmwr.mm6947e3.
- 389 10. U.S. Census Populations With Bridged Race Categories
390 (https://www.cdc.gov/nchs/nvss/bridged_race.htm).
- 391 11. Tenforde MW, Olson SM, Self WH, et al. Effectiveness of Pfizer-BioNTech and Moderna Vaccines
392 Against COVID-19 Among Hospitalized Adults Aged ≥ 65 Years - United States, January-March
393 2021. MMWR Morbidity and mortality weekly report 2021;70(18):674-679. DOI:
394 10.15585/mmwr.mm7018e1.
- 395 12. Lopez Bernal J, Andrews N, Gower C, et al. Effectiveness of Covid-19 Vaccines against the
396 B.1.617.2 (Delta) Variant. The New England journal of medicine 2021. DOI:
397 10.1056/NEJMoa2108891.
- 398 13. S. Nanduri TP, G. Derado et al. Effectiveness of Pfizer-BioNTech and Moderna Vaccines in
399 Preventing SARS-CoV-2 Infection Among Nursing Home Residents Before and During
400 Widespread Circulation of the SARS-CoV-2 B.1.617.2 (Delta) Variant — National Healthcare
401 Safety Network, March 1–August 1, 2021. MMWR Morbidity and mortality weekly report 2021.
- 402 14. Puranik A, Lenehan PJ, Silvert E, et al. Comparison of two highly-effective mRNA vaccines for
403 COVID-19 during periods of Alpha and Delta variant prevalence. medRxiv
404 2021:2021.08.06.21261707. DOI: 10.1101/2021.08.06.21261707.

- 405 15. Dooling K, Marin M, Wallace M, et al. The Advisory Committee on Immunization Practices'
406 Updated Interim Recommendation for Allocation of COVID-19 Vaccine - United States,
407 December 2020. MMWR Morbidity and mortality weekly report 2021;69(5152):1657-1660. DOI:
408 10.15585/mmwr.mm695152e2.
- 409 16. Brosh-Nissimov T, Orenbuch-Harroch E, Chowers M, et al. BNT162b2 vaccine breakthrough:
410 clinical characteristics of 152 fully vaccinated hospitalized COVID-19 patients in Israel. Clinical
411 microbiology and infection : the official publication of the European Society of Clinical
412 Microbiology and Infectious Diseases 2021. DOI: 10.1016/j.cmi.2021.06.036.
- 413 17. Media Statement from CDC Director Rochelle P. Walensky, MD, MPH, on Signing the Advisory
414 Committee on Immunization Practices' Recommendation for an Additional Dose of an mRNA
415 COVID-19 Vaccine in Moderately to Severely Immunocompromised People. CDC.
- 416 18. Thompson MG, Burgess JL, Naleway AL, et al. Interim Estimates of Vaccine Effectiveness of
417 BNT162b2 and mRNA-1273 COVID-19 Vaccines in Preventing SARS-CoV-2 Infection Among
418 Health Care Personnel, First Responders, and Other Essential and Frontline Workers - Eight U.S.
419 Locations, December 2020-March 2021. MMWR Morbidity and mortality weekly report
420 2021;70(13):495-500. DOI: 10.15585/mmwr.mm7013e3.

421

Tables

Table 1. Demographics of a representative sample^a of hospitalized adults ≥ 18 years with laboratory-confirmed COVID-19-associated hospitalization admitted January 1–June 30, 2021, by vaccination status — COVID-NET, 13 States^b

Table 2. Demographics, underlying conditions, reason for admission, and clinical outcomes among a representative sample of unvaccinated and fully vaccinated hospitalized adults aged ≥ 18 years with laboratory-confirmed COVID-19-associated hospitalization admitted January 1–June 30, 2021, stratified by age (< 65 and ≥ 65 years) and restricted to those with COVID-19-associated hospitalization as the likely primary reason for admission — COVID-NET, 13 States^a

Figures

Figure 1. Multivariable model^a assessing factors associated with full vaccination status in hospitalized adults with laboratory-confirmed COVID-19-associated hospitalization admitted January 1–June 30, 2021, restricting to those with COVID-19-associated hospitalization as the likely primary reason for admission, among those aged A) < 65 years and B) ≥ 65 years — COVID-NET, 13 States^b

Figure 2. Age-adjusted population-based rates^a of COVID-19-associated hospitalizations among unvaccinated and fully vaccinated adults ≥ 18 years of age admitted January 24–June 26, 2021, A) cumulative and B) by week of admission — COVID-NET, 13 States^b

Figure 3. Age-specific population-based rates^a of COVID-19-associated hospitalizations among unvaccinated and fully vaccinated adults ≥ 18 years of age admitted January 24–July 24, 2021, by week of admission and age A) 18–49 years B) 50–64 years and C) ≥ 65 years — COVID-NET, 13 States^b

Supplementary material

Supplementary Table 1. Categorization of Underlying Medical Conditions

Supplementary Table 2. Characteristics of fully vaccinated cases who had a prior positive SARS-CoV-2 test compared with fully vaccinated cases with no evidence of prior infection, among adults ≥ 18 years admitted January 1–June 30, 2021 — COVID-NET, 13 States^a

Supplementary Table 3A. Multivariable model^a assessing factors associated with severe COVID-19 diseases (ICU, in-hospital death) in hospitalized adults with laboratory-confirmed COVID-19-associated hospitalization admitted January 1 – June 30, 2021, restricting to those with COVID-19-associated hospitalization as the likely primary reason for admission, among those aged < 65 years — COVID-NET, 13 States^b

Supplementary Table 3B. Multivariable model^a assessing factors associated with severe COVID-19 diseases (ICU, in-hospital death) in hospitalized adults with laboratory-confirmed COVID-19-associated hospitalization admitted January 1–June 30, 2021, restricting to those with COVID-19-associated hospitalization as the likely primary reason for admission, among those aged ≥ 65 years — COVID-NET, 13 States^b

Supplementary Table 4. Rate ratios of COVID-19-associated hospitalizations in unvaccinated vs vaccinated patients among all adults aged ≥ 18 years and by age group^a, January 24–June 26, 2021 — COVID-NET, 13 States^b

Supplementary Figures

Supplementary Figure 1. Selection of cases for analysis of adults ≥ 18 years with laboratory-confirmed COVID-19-associated hospitalization admitted January 1–June 30, 2021, by vaccination status — COVID-NET, 13 States^a

Supplementary Figure 2. Proportion of adults ≥ 18 years with COVID-19-associated hospitalizations admitted January 1 – June 30, 2021 who are fully vaccinated, by age group and month of admission — COVID-NET, 13 States

Supplementary Figure 3. COVID-NET catchment population by vaccination status and week, used as denominator in population-based-rate calculations^a among A) all adults aged ≥ 18 years, B) 18–49 years, C) 50–64 years, and D) ≥ 65 years — COVID-NET, January 24–July 24, 2021

Tables

Table 1. Demographics of a representative sample^a of hospitalized adults aged ≥18 years with laboratory-confirmed COVID-19-associated hospitalization admitted January 1–June 30, 2021, by vaccination status — COVID-NET, 13 States^b

Characteristics	Adults ≥18 years	Unvaccinated n (weighted %)	Vaccinated <14 days prior to positive test n (weighted %) ^c	Partially vaccinated ^d n (weighted %)	Fully vaccinated n (weighted %)
Total^e	35,766	30,967 (87.6)	1,791 (5.0)	1,753 (4.4)	1,255 (3.0)
Age group (median, IQR)	60 (46–72)	58 (45–70)	69 (59–80)	71 (61–82)	72 (63–81)
18–49 years	10,979	10,342 (95.1)	285 (2.4)	197 (1.4)	155 (1.2)
50–64 years	10,407	9,265 (90.9)	507 (4.0)	396 (3.5)	239 (1.6)
65–74 years	6,686	5,573 (82.9)	401 (6.9)	400 (5.8)	312 (4.4)
75–84 years	4,788	3,692 (79.4)	343 (6.1)	428 (7.4)	325 (7.1)
≥85 years	2,906	2,095 (74.2)	255 (11.5)	332 (9.4)	224 (4.9)
Sex					
Male	17,737	15,357 (87.3)	895 (5.3)	866 (4.2)	619 (3.1)
Female	18,029	15,610 (87.8)	896 (4.8)	887 (4.5)	636 (3.0)
Race and Hispanic ethnicity^f					
Black	8,099	7,277 (91.0)	349 (3.6)	319 (3.6)	154 (1.8)
White	16,355	13,594 (84.9)	916 (5.4)	1,019 (5.4)	826 (4.3)
Hispanic or Latino	6,253	5,691 (90.1)	251 (5.9)	187 (2.3)	124 (1.6)
American Indian/Alaska Native	355	309 (83.8)	8 (7.9)	18 (5.3)	20 (3.0)
Asian/Pacific Islander	1,967	1,690 (85.5)	128 (6.7)	96 (4.9)	53 (2.9)
Other/Unknown	2,385	2,096 (89.0)	116 (4.4)	101 (4.3)	72 (2.4)

Characteristics	Adults ≥18 years	Unvaccinated n (weighted %)	Vaccinated <14 days prior to positive test n (weighted %) ^c	Partially vaccinated ^d n (weighted %)	Fully vaccinated n (weighted %)
Month of admission					
January	9,136	8,648 (93.9)	347 (4.7)	140 (1.3)	1 (0.0)
February	7,549	6,682 (89.0)	383 (4.1)	437 (6.3)	47 (0.6)
March	5,899	4,963 (85.2)	385 (6.0)	382 (5.7)	169 (3.1)
April	6,468	5,232 (82.0)	452 (6.7)	469 (6.7)	315 (4.6)
May	4,673	3,855 (81.5)	179 (4.2)	237 (5.3)	402 (9.0)
June	2,041	1,587 (76.6)	45 (2.5)	88 (4.9)	321 (16.1)

Abbreviations: COVID-19 = coronavirus disease 2019; COVID-NET = COVID-19–Associated Hospitalization Surveillance Network; IQR = interquartile range.

^aPercentages are weighted and represent row percentages

^bCalifornia, Connecticut, Colorado, Georgia, Maryland, Michigan, Minnesota, New Mexico, New York, Ohio, Oregon, Tennessee, and Utah.

^cThis group is excluded from further analyses.

^dReceived one dose of two-dose series (for Pfizer/BioNTech and Moderna). This group is excluded from further analyses.

^e80 additional cases were excluded from all analyses due to unknown vaccination status

^fRace and Hispanic ethnicity: Data on race and ethnicity were categorized as follows: non-Hispanic White (White), non-Hispanic Black (Black), non-Hispanic Asian or Pacific Islander (Asian/Pacific Islander), non-Hispanic American Indian or Alaska Native (American Indian/Alaska Native) and Other/Unknown. If ethnicity was unknown (8% of cases), non-Hispanic ethnicity was assumed.

Table 2. Demographics, underlying conditions, reason for admission, and clinical outcomes among a representative sample of unvaccinated and fully vaccinated hospitalized adults aged ≥18 years with laboratory-confirmed COVID-19-associated hospitalization admitted January 1– June 30, 2021, stratified by age (<65 and ≥65 years) and restricted to those with COVID-19-associated hospitalization as the likely primary reason for admission — COVID-NET, 13 States^a

Category	Adults ≥18 years				<65 years				≥65 years			
	Total	Unvaccinated n (weighted %)	Fully vaccinated n (weighted %)	p-value ^b	Total	Unvaccinated n (weighted %)	Fully vaccinated n (weighted %)	p-value ^b	Total	Unvaccinated n (weighted %)	Fully vaccinated n (weighted %)	p-value ^b
Total	4,732	4,440 (97.1)	292 (2.9)		3,131	3,039 (98.7)	92 (1.3)		1,601	1,401 (94.8)	200 (5.2)	
Age group (median, IQR)	59 (48– 70)	59 (48–70)	73 (65–80)	<.001	51 (42– 58)	51 (42–58)	52 (36–60)	0.15	73 (65– 101)	73 (65–101)	77 (65–99)	0.70
18–49 years	1,428	1,399 (26.3)	29 (8.7)		1,428	1,399 (44.5)	29 (34.9)					
50–64 years	1,703	1,640 (32.9)	63 (16.3)		1,703	1,640 (55.5)	63 (65.1)					
≥65 years	1,601	1,401 (40.8)	200 (75.0)						1,601	1,401 (100.0)	200 (100.0)	
Sex				0.63				0.32				0.70
Male	2,420	2,275 (51.6)	145 (49.3)		1,616	1,576 (50.3)	40 (43.7)		804	699 (53.5)	105 (51.1)	
Female	2,312	2,165 (48.4)	147 (50.7)		1,515	1,463 (49.7)	52 (56.3)		797	702 (46.5)	95 (48.9)	
Race and Hispanic ethnicity^c				<.001				<.001				0.34
White	2,467	2,263 (45.9)	204 (66.3)		1,407	1,347 (37.9)	60 (61.7)		1,060	916 (57.4)	144 (67.8)	
Black	1,058	1,023 (29.3)	35 (17.5)		796	785 (33.4)	11 (14.8)		262	238 (23.4)	24 (18.5)	

Category	Adults ≥18 years				<65 years				≥65 years			
	Total	Unvaccinated n (weighted %)	Fully vaccinated n (weighted %)	p-value ^b	Total	Unvaccinated n (weighted %)	Fully vaccinated n (weighted %)	p-value ^b	Total	Unvaccinated n (weighted %)	Fully vaccinated n (weighted %)	p-value ^b
Hispanic or Latino	731	701 (13.4)	30 (9.0)		597	581 (17.1)	16 (18.6)		134	120 (8.2)	14 (5.7)	
Other/Unknown ^d	476	453 (11.4)	23 (7.2)		331	326 (11.7)	5 (4.9)		145	127 (11.0)	18 (8.0)	
Month of admission				<.001				<.001				<.001
January	852	851 (39.0)	1 (0.6)		545	544 (31.8)	1 (2.3)		307	307 (49.5)	0 (0.0)	
February	739	737 (16.4)	2 (1.5)		490	490 (14.9)	0 (0.0)		249	247 (18.6)	2 (2.1)	
March	719	701 (14.3)	18 (13.0)		531	527 (16.0)	4 (7.0)		188	174 (11.7)	14 (15.0)	
April	713	674 (17.6)	39 (34.2)		472	464 (22.0)	8 (19.8)		241	210 (11.3)	31 (39.0)	
May	924	825 (9.4)	99 (31.2)		602	568 (11.3)	34 (41.8)		322	257 (6.7)	65 (27.7)	
June	785	652 (3.3)	133 (19.3)		491	446 (4.1)	45 (29.0)		294	206 (2.2)	88 (16.1)	
Code status on admission				<.001				0.51				0.17
Full code	4,010	3,788 (84.8)	222 (74.5)		2,815	2,735 (91.3)	80 (87.4)		1,195	1,053 (75.5)	142 (70.3)	
DNR/DNI/CMO	303	256 (6.3)	47 (17.3)		49	47 (1.2)	2 (2.7)		254	209 (13.7)	45 (22.1)	
Unknown	419	396 (8.8)	23 (8.2)		267	257 (7.5)	10 (10.0)		152	139 (10.8)	13 (7.6)	
LTCF residence^e	183	146 (5.5)	37 (14.5)	<.001	49	44 (1.8)	5 (5.0)	0.06	134	102 (10.9)	32 (17.7)	0.09
Any underlying medical condition	4,319	4,040 (92.0)	279 (96.4)	0.02	2,785	2,701 (89.1)	84 (89.4)	0.95	1,534	1,339 (96.2)	195 (98.7)	0.04
Hypertension	2,600	2,398 (59.9)	202 (70.5)	0.02	1,389	1,342 (46.4)	47 (52.7)	0.34	1,211	1,056 (79.6)	155 (76.5)	0.53

Category	Adults ≥18 years				<65 years				≥65 years			
	Total	Unvaccinated n (weighted %)	Fully vaccinated n (weighted %)	p-value ^b	Total	Unvaccinated n (weighted %)	Fully vaccinated n (weighted %)	p-value ^b	Total	Unvaccinated n (weighted %)	Fully vaccinated n (weighted %)	p-value ^b
Obesity ^f	2,429	2,308 (49.9)	121 (48.4)	0.76	1,815	1,769 (58.2)	46 (50.0)	0.21	614	539 (37.8)	75 (47.9)	0.10
Chronic metabolic disease	1,907	1,765 (43.5)	142 (48.5)	0.29	1,117	1,083 (37.2)	34 (42.6)	0.41	790	682 (52.6)	108 (50.5)	0.73
Diabetes mellitus	1,526	1,420 (36.1)	106 (38.1)	0.66	906	877 (30.2)	29 (38.9)	0.17	620	543 (44.6)	77 (37.8)	0.26
Chronic lung disease	1,458	1,352 (30.5)	106 (39.2)	0.06	910	875 (30.1)	35 (40.8)	0.08	548	477 (31.1)	71 (38.6)	0.12
Asthma/Reactive airway disease	683	637 (13.7)	46 (18.7)	0.15	493	472 (15.5)	21 (23.9)	0.08	190	165 (11.1)	25 (16.9)	0.17
COPD	435	392 (9.8)	43 (14.2)	0.13	191	180 (6.6)	11 (10.2)	0.28	244	212 (14.5)	32 (15.6)	0.80
Cardiovascular disease ^g	1,504	1,347 (35.6)	157 (58.6)	<.001	635	606 (20.7)	29 (31.7)	0.04	869	741 (57.3)	128 (67.5)	0.07
Heart failure	456	399 (12.8)	57 (24.6)	0.003	187	180 (7.5)	7 (5.3)	0.37	269	219 (20.4)	50 (31.1)	0.07
Coronary artery disease	520	462 (13.0)	58 (18.6)	0.09	159	155 (5.5)	4 (6.2)	0.85	361	307 (23.8)	54 (22.7)	0.84
Neurologic disease	743	661 (17.2)	82 (33.0)	<.001	345	327 (10.5)	18 (22.9)	0.004	398	334 (27.0)	64 (36.4)	0.09
Renal disease	673	584 (16.5)	89 (30.4)	<.001	274	259 (10.3)	15 (18.2)	0.05	399	325 (25.4)	74 (34.5)	0.10
Immunosuppressive condition	511	442 (11.3)	69 (32.1)	<.001	297	275 (10.1)	22 (23.8)	<.001	214	167 (13.2)	47 (34.9)	<.001
Solid organ malignancy	177	152 (3.8)	25 (13.7)	<.001	80	72 (2.6)	8 (8.6)	0.007	97	80 (5.6)	17 (15.4)	0.005
Transplant	59	45 (1.8)	14 (5.5)	0.004	41	33 (1.9)	8 (9.5)	<.001	18	12 (1.8)	6 (4.2)	0.19
Gastrointestinal or liver	289	265 (5.6)	24 (7.3)	0.35	192	181 (5.1)	11 (15.0)	0.001	97	84 (6.3)	13 (4.8)	0.53

Category	Adults ≥18 years				<65 years				≥65 years			
	Total	Unvaccinated n (weighted %)	Fully vaccinated n (weighted %)	p-value ^b	Total	Unvaccinated n (weighted %)	Fully vaccinated n (weighted %)	p-value ^b	Total	Unvaccinated n (weighted %)	Fully vaccinated n (weighted %)	p-value ^b
disease												
Blood disorder	164	145 (2.9)	19 (5.4)	0.03	95	90 (2.2)	5 (6.1)	0.03	69	55 (3.9)	14 (5.2)	0.46
Rheumatologic or autoimmune disease	174	150 (3.5)	24 (8.7)	0.01	94	91 (3.2)	3 (4.3)	0.63	80	59 (3.9)	21 (10.1)	0.02
Number of underlying conditions ^h				<.001				0.12				0.27
0	444	431 (8.6)	13 (3.6)		377	369 (11.9)	8 (10.6)		67	62 (3.8)	5 (1.3)	
1	735	711 (14.3)	24 (6.3)		578	565 (18.3)	13 (10.8)		157	146 (8.5)	11 (4.8)	
2	1,047	993 (21.0)	54 (19.3)		760	737 (23.2)	23 (19.1)		287	256 (17.7)	31 (19.3)	
≥3	2,506	2,305 (56.1)	201 (70.8)		1,416	1,368 (46.5)	48 (59.4)		1,090	937 (70.0)	153 (74.6)	
Outcomes												
ICU admission	991	931 (20.0)	60 (21.6)	0.66	646	627 (19.2)	19 (17.7)	0.75	345	304 (21.2)	41 (22.9)	0.72
In-hospital death	365	342 (8.4)	23 (7.5)	0.69	168	165 (5.7)	3 (3.2)	0.36	197	177 (12.3)	20 (9.0)	0.30
Median length of stay in days (IQR)		4 (2–9)	5 (3–8)	<.001		4 (2–7)	4 (2–6)	<.001		6 (3–11)	5 (3–9)	<.001

Abbreviations: BIPAP = bilevel positive airway pressure; CMO = comfort measures only; COVID-19 = coronavirus disease 2019; COVID-NET = COVID-19–Associated Hospitalization Surveillance Network; CPAP = continuous positive airway pressure; DNI = do not intubate; DNR = do not resuscitate; ICU = intensive care unit; IQR = interquartile range; LTCF = long-term care facility

^aCalifornia, Connecticut, Colorado, Georgia, Maryland, Michigan, Minnesota, New Mexico, New York, Ohio, Oregon, Tennessee, and Utah

^bStatistical significance for univariate analyses was determined as p<.10

^cRace and Hispanic ethnicity: Data on race and ethnicity were categorized as follows: Hispanic or Latino, non-Hispanic White (White), non-Hispanic Black (Black), and Other/Unknown. If ethnicity was unknown (7% of cases), non-Hispanic ethnicity was assumed.

^dIncludes American Indian/Alaska Native (68, 1%), Asian/Pacific Islander (240, 7%), and multiple/unknown race (168, 3%). For adults aged <65 years, the breakdown was: American Indian/Alaska Native (50, 1%), Asian/Pacific Islander (164, 7%), and multiple/unknown race (117, 4%). For those aged ≥65 years, American Indian/Alaska Native (18, 1%), Asian/Pacific Islander (76, 7%), and multiple/unknown race (51, 2%).

^eLong-term care facility (LTCF) residence was defined as residence in rehabilitation facilities, assisted living/residential care, group homes, nursing homes, skilled nursing facilities, long-term care facilities, long-term acute care hospitals, residential care facilities or other long-term care facilities.

^fObesity is defined as calculated body mass index (BMI) ≥30 kg/m², and if BMI is missing, by International Classification of Diseases discharge diagnosis codes.

^gCardiovascular disease excludes hypertension.

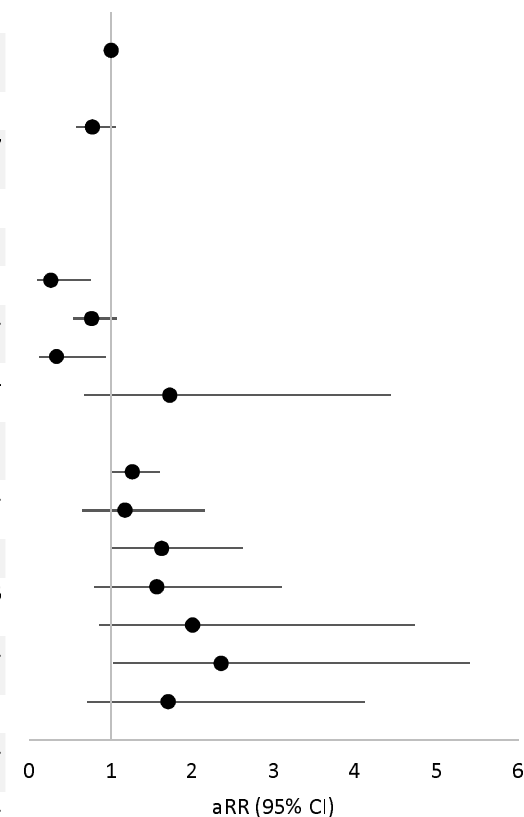
^hOverall condition categories as defined in Supplementary Table 1.

Figures

Figure 1. Multivariable model^a assessing factors associated with full vaccination status in hospitalized adults with laboratory-confirmed COVID-19-associated hospitalization admitted January 1 – June 30, 2021, restricting to those with COVID-19-associated hospitalization as the likely primary reason for admission, among those aged A) <65 years and B) aged ≥65 years — COVID-NET, 13 States^b

A)

Demographic characteristic	Unvaccinated		Fully vaccinated		Unadjusted Risk Ratio		Adjusted Risk Ratio		p-value	Standard error
	N	Weighted %	N	Weighted %	RR	(95% CI)	aRR	(95% CI)		
Age (in years)							1	(0.98, 1.02)	0.81	0.0093
Sex										
Male	1,576	50.3	40	43.7	0.77	(0.55, 1.09)	0.77	(0.57, 1.05)	0.10	0.1537
Female	1,463	49.7	52	56.3	Ref		Ref			
Race and Hispanic ethnicity^c										
White	1347	37.9	60	61.7	Ref		Ref			
Black	785	33.4	11	14.8	0.28	(0.09, 0.81)	0.26	(0.09, 0.75)	0.01	0.5394
Hispanic or Latino	581	17.1	16	18.6	0.68	(0.5, 0.92)	0.76	(0.54, 1.07)	0.12	0.1741
Other/Unknown ^d	326	11.7	5	4.9	0.26	(0.1, 0.72)	0.33	(0.12, 0.94)	0.04	0.5272
LTCF residence^e	44	1.8	5	5.0	2.85	(1.23, 6.6)	1.72	(0.67, 4.43)	0.26	0.4834
Underlying medical condition										
Chronic lung disease	875	30.1	35	40.8	1.59	(1.1, 2.3)	1.26	(0.99, 1.6)	0.06	0.1216
Cardiovascular disease ^f	606	20.7	29	31.7	1.77	(0.93, 3.36)	1.17	(0.64, 2.15)	0.60	0.3094
Neurologic disease	327	10.5	18	22.9	2.5	(1.64, 3.8)	1.62	(1, 2.61)	0.05	0.2433
Renal disease	259	10.3	15	18.2	1.92	(1.02, 3.61)	1.56	(0.79, 3.09)	0.20	0.3484
Immunosuppressive condition	275	10.1	22	23.8	2.74	(1.24, 6.03)	2	(0.85, 4.72)	0.11	0.4384



Gastrointestinal or liver disease	181	5.1	11	15.0	3.18	(1.38, 7.36)	2.35	(1.02, 5.4)	0.04	0.425	2	1.02	5.4	1.33	3.05
Blood disorder	90	2.2	5	6.1	2.83	(1.09, 7.33)	1.7	(0.71, 4.12)	0.24	0.4496					

Abbreviations: COVID-19 = coronavirus disease 2019; COVID-NET = COVID-19–Associated Hospitalization Surveillance Network; LTCF = long-term care facility

^aLog-linked Poisson Regression using generalized estimating equations (GEE) clustered on site with independent covariance structure. Statistical significance was determined at $p < 0.05$.

^bCalifornia, Connecticut, Colorado, Georgia, Maryland, Michigan, Minnesota, New Mexico, New York, Ohio, Oregon, Tennessee, and Utah.

^cRace/ethnicity: Data on race and ethnicity were categorized as follows: non-Hispanic White (White), non-Hispanic Black (Black), Other/Unknown. If ethnicity was unknown (7%), non-Hispanic ethnicity was assumed.

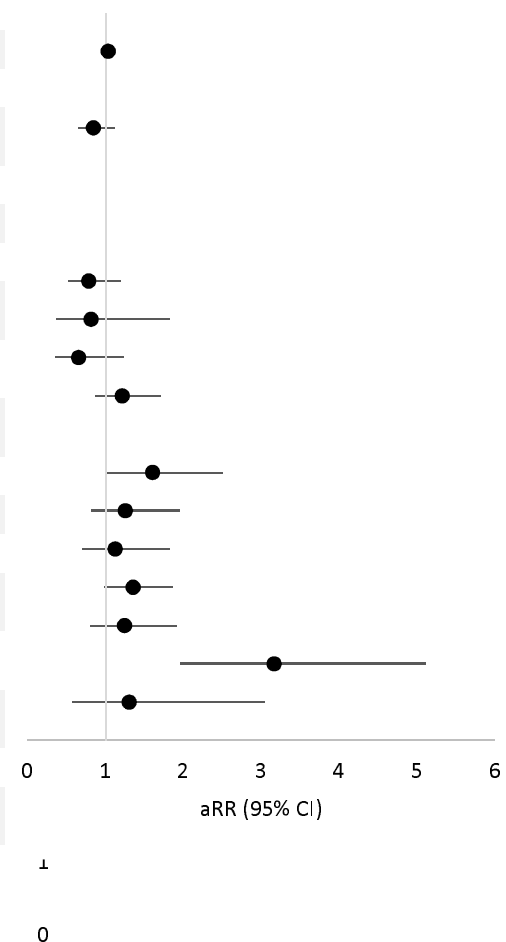
^dIncludes American Indian/Alaska Native (50), Asian/Pacific Islander (164), and multiple/unknown race (117).

^eLong-term care facility (LTCF) residence was defined as residence in rehabilitation facilities, assisted living/residential care, group homes, nursing homes, skilled nursing facilities, long-term care facilities, long-term acute care hospitals, residential care facilities or other long-term care facilities.

^fCardiovascular disease excludes hypertension.

B)

Demographic characteristic	Unvaccinated		Fully vaccinated		Unadjusted Risk Ratio		Adjusted Risk Ratio		p-value	Standard error
	N	Weighted %	N	Weighted %	RR	(95% CI)	aRR	(95% CI)		
Age (in years)							1.03	(1, 1.07)	0.04	0.0162
Sex										
Male	699	53.5	105	51.1	0.91	(0.68, 1.23)	0.84	(0.64, 1.11)	0.22	0.1397
Female	702	46.5	95	48.9	Ref		Ref			
Race and Hispanic ethnicity^c										
White	916	57.4	144	67.8	Ref		Ref			
Non-Hispanic Black	238	23.4	24	18.5	0.68	(0.46, 1)	0.78	(0.51, 1.19)	0.25	0.2171
Hispanic or Latino	120	8.2	14	5.7	0.61	(0.27, 1.37)	0.81	(0.36, 1.81)	0.61	0.4092
Other/Unknown ^d	127	11	18	8	0.63	(0.38, 1.07)	0.65	(0.35, 1.23)	0.18	0.3227
LTCF residence	102	10.9	32	17.7	1.69	(1.21, 2.37)	1.21	(0.86, 1.7)	0.27	0.1731
Underlying medical condition										
Obesity ^f	539	37.8	75	47.9	1.48	(0.93, 2.33)	1.6	(1.02, 2.5)	0.04	0.2282
Chronic lung disease	477	31.1	71	38.6	1.37	(0.94, 2)	1.25	(0.81, 1.94)	0.31	0.2218
Cardiovascular disease ^g	741	57.3	128	67.5	1.52	(0.9, 2.55)	1.12	(0.69, 1.82)	0.65	0.2487
Neurologic disease	334	27	64	36.4	1.51	(1.12, 2.05)	1.35	(0.98, 1.86)	0.07	0.1647
Renal disease	325	25.4	74	34.5	1.51	(1.09, 2.09)	1.24	(0.8, 1.92)	0.34	0.223
Immunosuppressive condition	167	13.2	47	34.9	3.21	(2.21, 4.67)	3.16	(1.96, 5.11)	<.001	0.245
Rheumatologic or autoimmune disease	59	3.9	21	10.1	2.55	(1, 6.52)	1.3	(0.56, 3.04)	0.54	0.4317



Abbreviations: COVID-19 = coronavirus disease 2019; COVID-NET = COVID-19–Associated Hospitalization Surveillance Network; LTCF = long-term care facility

^aLog-linked Poisson Regression using generalized estimating equations (GEE) clustered on site with independent covariance structure

^bCalifornia, Connecticut, Colorado, Georgia, Maryland, Michigan, Minnesota, New Mexico, New York, Ohio, Oregon, Tennessee, and Utah.

^cRace and Hispanic ethnicity: Data on race and ethnicity were categorized as follows: non-Hispanic White (White), non-Hispanic Black (Black), Other/Unknown. If ethnicity was unknown (7%), non-Hispanic ethnicity was assumed.

^dIncludes American Indian/Alaska Native (18), Asian/Pacific Islander (76), and multiple/unknown race (51)

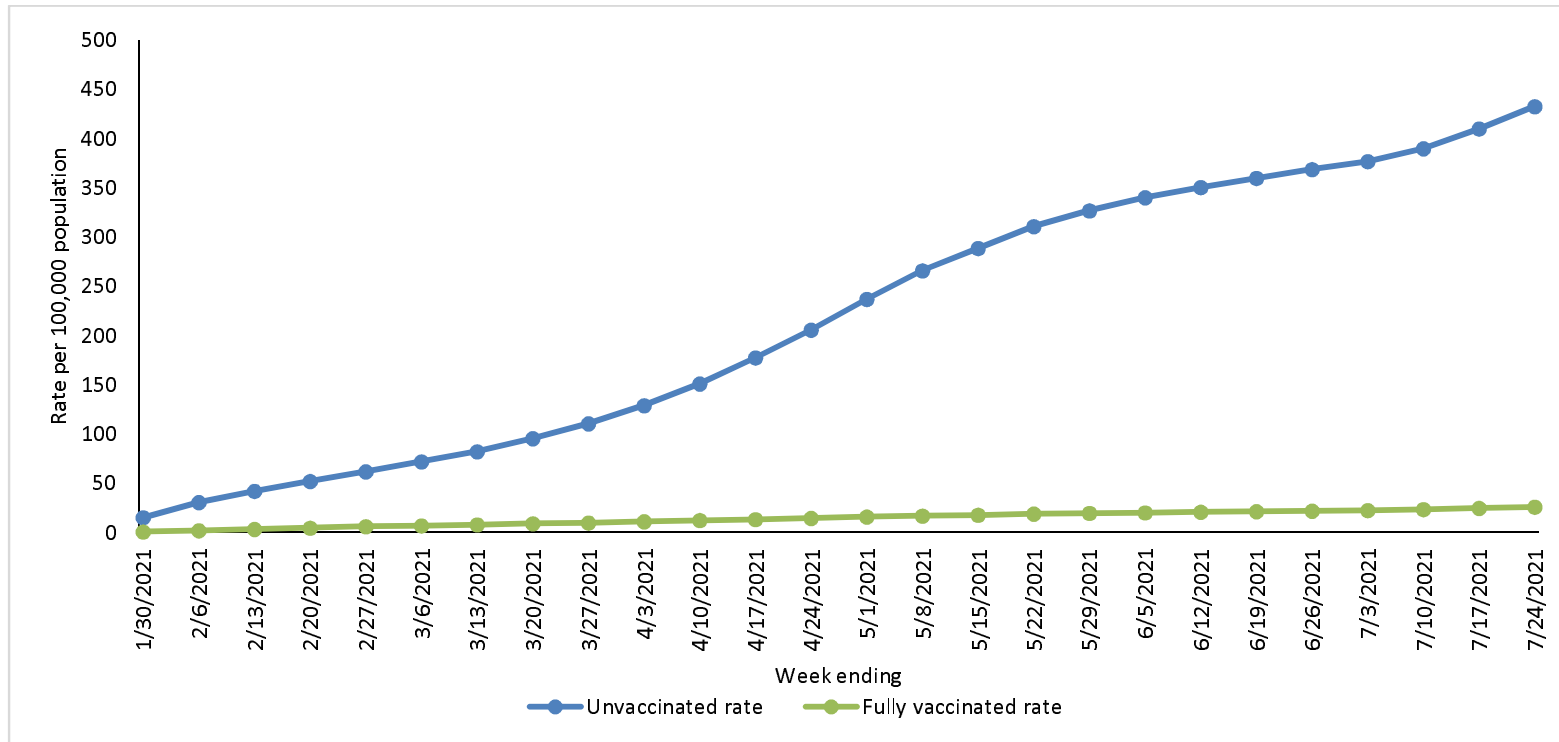
^eLong-term care facility (LTCF) residence was defined as residence in rehabilitation facilities, assisted living/residential care, group homes, nursing homes, skilled nursing facilities, long-term care facilities, long-term acute care hospitals, residential care facilities or other long-term care facilities.

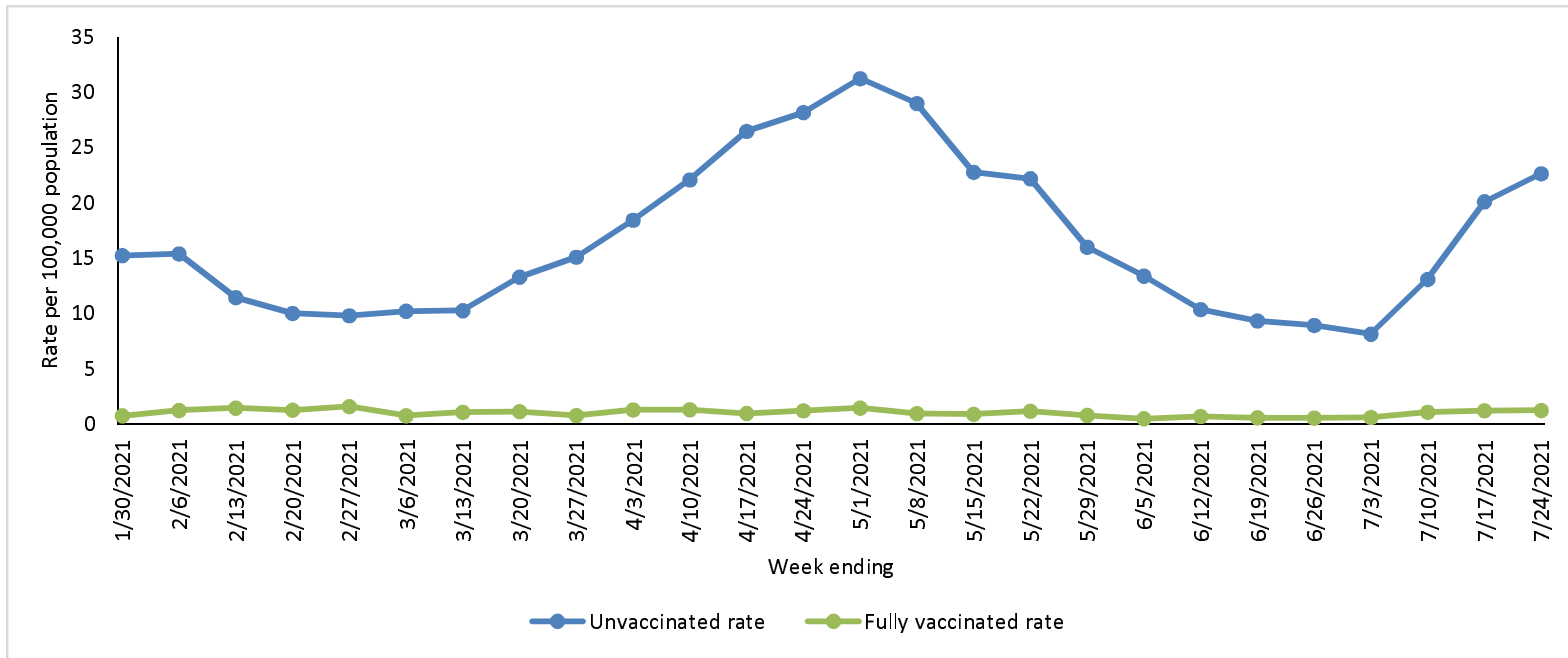
^fObesity is defined as calculated body mass index (BMI) ≥ 30 kg/m², and if BMI is missing, by International Classification of Diseases discharge diagnosis codes.

^gCardiovascular disease excludes hypertensio

Figure 2. Age-adjusted population-based rates^a of COVID-19-associated hospitalizations among unvaccinated and fully vaccinated adults aged ≥ 18 years admitted January 24–July 24, 2021, ^b A) cumulative and B) by week of admission — COVID-NET, 13 States^c

A)





B)

Abbreviations: COVID-19 = coronavirus disease 2019; COVID-NET = COVID-19–Associated Hospitalization Surveillance Network

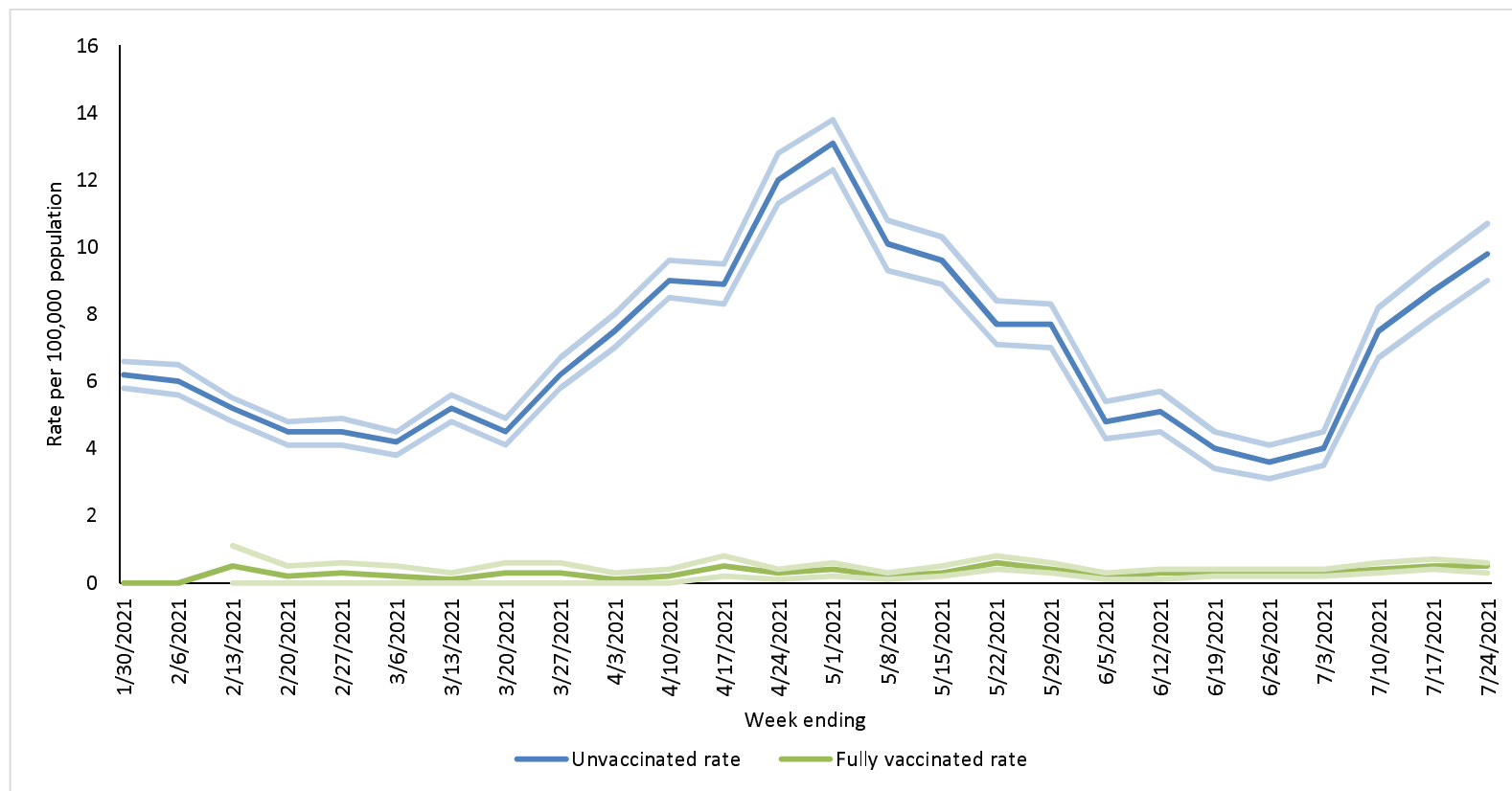
^aNumber of patients with laboratory-confirmed COVID-19–associated hospitalizations per 100,000 population.

^bCOVID-NET hospitalization data are preliminary and subject to change as more data become available. In particular, rates for recent hospital admissions are subject to lag.

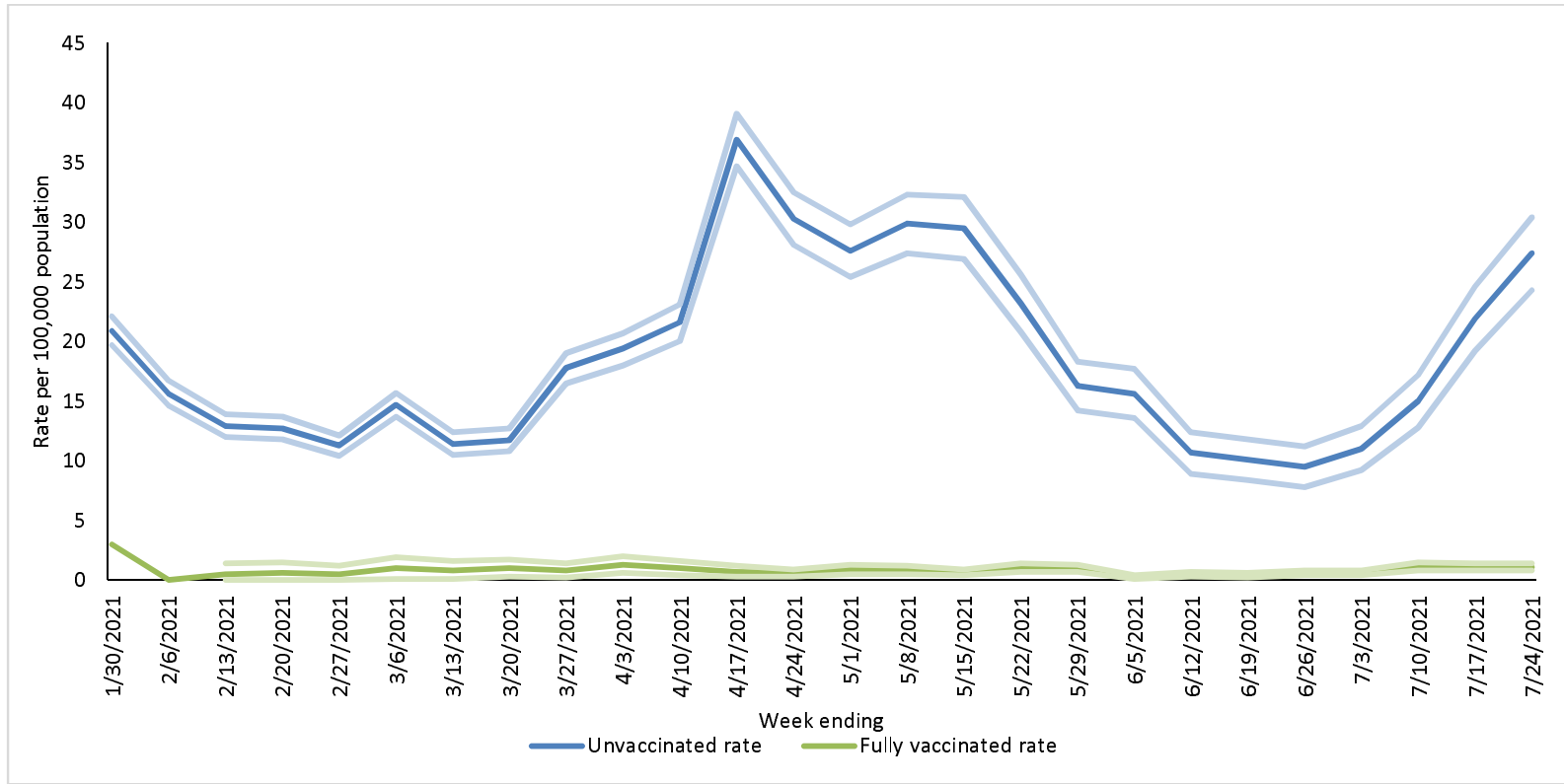
^cCalifornia, Colorado, Connecticut, Georgia, Maryland, Michigan, Minnesota, New Mexico, New York, Ohio, Oregon, Tennessee, and Utah

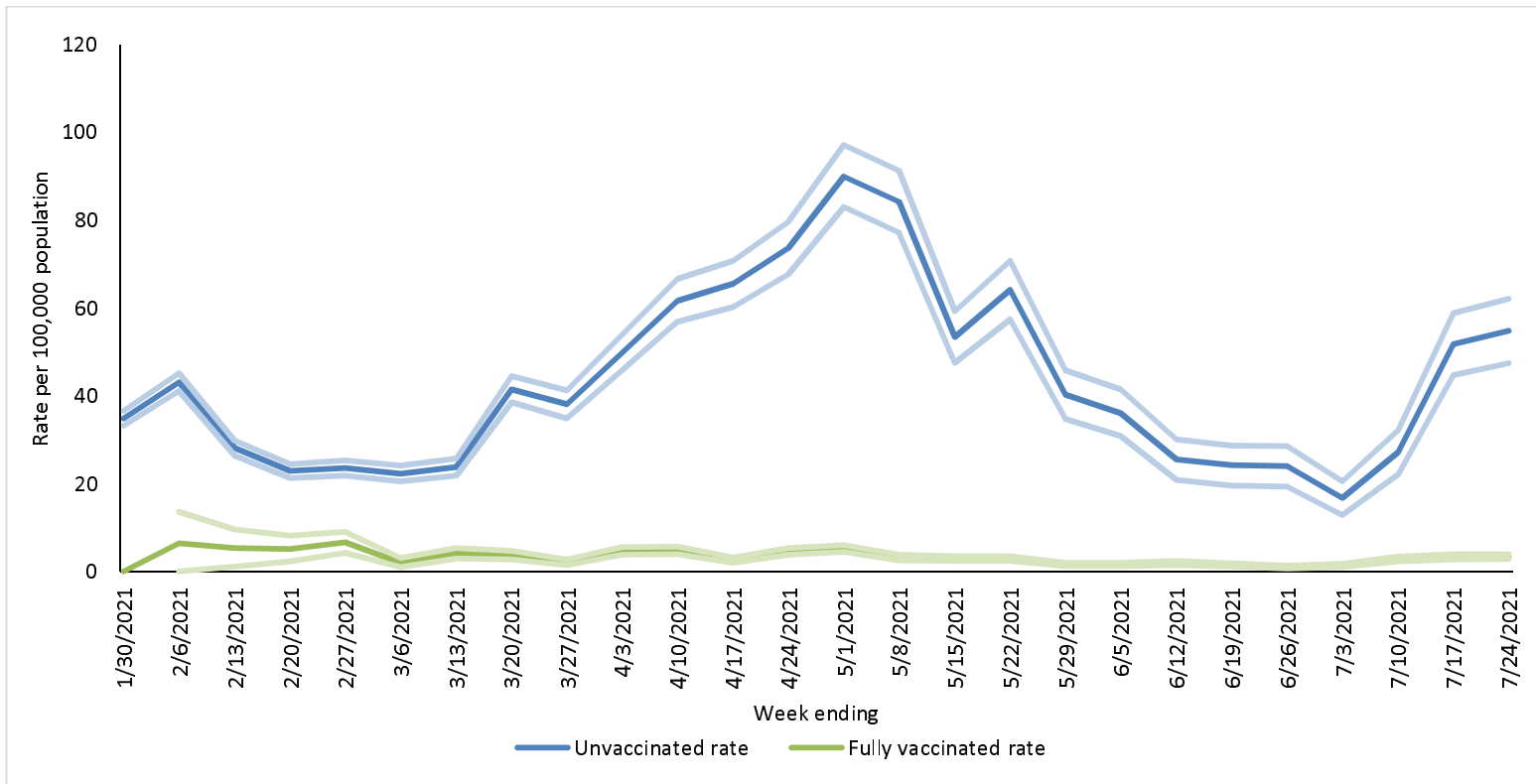
Figure 3. Age-specific population-based rates^a of COVID-19-associated hospitalizations among unvaccinated and fully vaccinated adults aged ≥ 18 years admitted January 24–July 24, 2021,^b by week of admission and aged A) 18–49 years B) 50–64 years and C) ≥ 65 years — COVID-NET, 13 States^c. Rates are shown with 95% confidence intervals.

A)



B)





c)

Abbreviations: COVID-19 = coronavirus disease 2019; COVID-NET = COVID-19–Associated Hospitalization Surveillance Network

^aNumber of patients with laboratory-confirmed COVID-19–associated hospitalizations per 100,000 population. Lighter shades around each line represent 95% confidence intervals

^bCOVID-NET hospitalization data are preliminary and subject to change as more data become available. In particular, rates for recent hospital admissions are subject to lag.

^cCalifornia, Colorado, Connecticut, Georgia, Maryland, Michigan, Minnesota, New Mexico, New York, Ohio, Oregon, Tennessee, and Utah.

Supplementary Content

Supplementary Tables:

Supplement Table 1. Categorization of Underlying Medical Conditions^a

Chronic Lung Disease	<ul style="list-style-type: none"> • Active tuberculosis • Asbestosis • Asthma/Reactive airway disease • Bronchiectasis • Bronchiolitis obliterans • Chronic bronchitis • Chronic respiratory failure • Cystic fibrosis • Emphysema/Chronic Obstructive Pulmonary Disease • Interstitial lung disease • Obstructive sleep apnea • Oxygen dependent • Pulmonary fibrosis • Restrictive lung disease • Sarcoidosis
Diabetes Mellitus	
Other Chronic Metabolic Disease (except Diabetes Mellitus)	<ul style="list-style-type: none"> • Adrenal Disorders (Addison’s, Adrenal Insufficiency, Cushing Syndrome, Congenital Adrenal Hyperplasia) • Glycogen or other storage diseases • Hyper/Hypo function of pituitary gland • Inborn errors of metabolism • Metabolic Syndrome • Parathyroid Dysfunction (Hyperparathyroidism, Hypoparathyroidism) • Thyroid dysfunction (Grave’s disease, Hashimoto’s Disease, Hyperthyroidism, Hypothyroidism)
Blood Disorders/Hematologic Conditions	<ul style="list-style-type: none"> • Alpha thalassemia • Aplastic anemia • Beta thalassemia • Coagulopathy (Factor V Leiden, Von Willebrand Disease) • Hemoglobin S-beta thalassemia • Leukopenia • Myelodysplastic syndrome • Neutropenia • Pancytopenia • Polycythemia vera • Sickle cell disease • Splenectomy/Asplenia • Thrombocytopenia
Cardiovascular Disease (except hypertension)	<ul style="list-style-type: none"> • Aortic aneurysm, history of • Aortic/Mitral/Tricuspid/Pulmonic valve replacement, history of • Aortic regurgitation • Aortic stenosis • Atherosclerotic cardiovascular disease • Atrial fibrillation

	<ul style="list-style-type: none"> • Atrioventricular blocks • Automated implantable devices/Pacemaker • Bundle branch block • Cardiomyopathy • Carotid stenosis • Cerebral vascular accident/Incident/Stroke, history of • Congenital heart disease • Coronary artery bypass grafting, history of • Coronary artery disease • Deep vein thrombosis, history of • Heart failure/congestive heart failure • Myocardial infarction, history of • Mitral regurgitation • Mitral stenosis • Peripheral artery disease • Peripheral vascular disease • Pulmonary embolism, history of • Pulmonary hypertension • Pulmonic regurgitation • Pulmonic stenosis • Transient ischemic attack, history of • Tricuspid regurgitation • Tricuspid stenosis • Ventricular fibrillation, history of • Ventricular tachycardia, history of
Hypertension	
Neurologic Disorder	<ul style="list-style-type: none"> • Amyotrophic lateral sclerosis • Cerebral palsy • Cognitive dysfunction • Dementia/Alzheimer's disease • Developmental delay • Down syndrome/Trisomy 21 • Edward's syndrome/Trisomy 18 • Epilepsy/seizure/seizure disorder • Mitochondrial disorder • Multiple sclerosis • Muscular dystrophy • Myasthenia gravis • Neural tube defects/Spina bifida • Neuropathy • Parkinson's disease • Plegias/Paralysis/Quadriplegia • Scoliosis/Kyphoscoliosis • Traumatic brain injury, history of
History of Guillain-Barre Syndrome	
Immunocompromised Conditions	<ul style="list-style-type: none"> • AIDS or CD4 count <200 • Complement deficiency • Graft vs. host disease • HIV Infection • Immunoglobulin deficiency/Immunodeficiency

	<ul style="list-style-type: none"> • Immunosuppressive therapy (within the last 12 months prior to admission) • Leukemia^b • Lymphoma/Hodgkins/Non-Hodgkins^b • Metastatic cancer^b • Multiple myeloma^b • Solid organ malignancy^b • Steroid therapy (within 2 weeks of admission) • Transplant, hematopoietic stem cell (Bone marrow transplant, peripheral stem cell transplant), history of • Transplant, solid organ, history of
Renal Disease	<ul style="list-style-type: none"> • Chronic kidney disease/chronic renal insufficiency • Dialysis • End stage renal disease • Glomerulonephritis • Nephrotic syndrome • Polycystic kidney disease
Gastrointestinal/Liver Disease	<ul style="list-style-type: none"> • Alcoholic hepatitis • Autoimmune hepatitis • Barrett's esophagitis • Chronic liver disease • Chronic pancreatitis • Cirrhosis/End stage liver disease • Crohn's disease • Esophageal varices • Esophageal strictures • Hepatitis B, chronic • Hepatitis C, chronic • Non-alcoholic fatty liver disease/Non-alcoholic steatohepatitis • Ulcerative colitis
Rheumatologic/Autoimmune Conditions	<ul style="list-style-type: none"> • Ankylosing spondylitis • Dermatomyositis • Juvenile idiopathic arthritis • Kawasaki disease • Microscopic polyangiitis • Polyarteritis nodosum • Polymyalgia rheumatica • Polymyositis • Psoriatic arthritis • Rheumatoid arthritis • Systemic Lupus Erythematosus/Lupus • Systemic sclerosis • Takayasu arteritis • Temporal/Giant Cell arteritis • Vasculitis, other
Other, specify	<ul style="list-style-type: none"> • Post-partum (2 weeks or less) • Feeding tube dependent • Tracheostomy dependent/ventilator dependent • Wheelchair dependent • Free text field for other underlying medical conditions that

	were not specified above
--	--------------------------

^aUnderlying medical conditions were selected before hospitalization surveillance began.

^bCurrent/in treatment or diagnosed in previous 12 months

Supplementary Table 2. Characteristics of fully vaccinated cases who had a prior positive SARS-CoV-2 test compared with fully vaccinated cases with no evidence of prior infection, among adults ≥ 18 years admitted January 1–June 30, 2021 — COVID-NET, 13 States^a

Characteristics	No evidence of prior infection n=292	Prior positive test n=47 ^b	p-value ^c
Age group			0.82
18-49 years	29 (8.7)	4 (5.9)	
50-64 years	63 (16.3)	11 (18.6)	
≥65 years	200 (75.0)	32 (75.5)	
Sex			0.77
Male	145 (49.3)	26 (45.4)	
Female	147 (50.7)	21 (54.6)	
Race and Hispanic ethnicity^d			
White	204 (66.3)	33 (69.9)	0.10
Black	35 (17.5)	7 (15.5)	
Hispanic or Latino	30 (9.0)	4 (9.4)	
Other/Unknown	23 (7.2)	3 (5.2)	
Month of admission			0.08
January	1 (0.6)	0 (0.0)	
February	2 (1.6)	0 (0.0)	
March	18 (13.0)	5 (37.1)	
April	39 (34.2)	7 (21.8)	
May	99 (31.2)	13 (22.7)	
June	133 (19.3)	22 (18.4)	
Code status on admission			0.62
Full code	222 (74.5)	36 (82.5)	
DNR/DNI/CMO	47 (17.3)	9 (10.9)	
Unknown	23 (8.2)	2 (6.6)	
LTCF residence^e	37 (14.5)	16 (31.6)	0.07
Any symptom	250 (88.2)	35 (65.0)	0.02
Hypertension	202 (70.5)	33 (75.6)	0.61
Obesity^f	121 (48.4)	15 (46.5)	0.90
Severe obesity^g	34 (14.1)	5 (8.9)	0.39
Chronic metabolic disease	142 (48.5)	23 (63.6)	0.20
Diabetes mellitus	106 (38.1)	18 (53.5)	0.23
Chronic lung disease	106 (39.2)	23 (43.7)	0.72
Asthma/Reactive airway disease	46 (18.7)	10 (18.8)	0.99
COPD	43 (14.2)	11 (21.7)	0.36
Cardiovascular disease^h	157 (58.6)	30 (78.0)	0.04
Heart failure	57 (24.6)	17 (34.1)	0.40
Coronary artery disease	58 (18.6)	12 (19.1)	0.94
Neurologic disease	82 (33.0)	18 (31.9)	0.92
Renal disease	89 (30.4)	14 (21.2)	0.32

Characteristics	No evidence of prior infection n=292	Prior positive test n=47 ^b	p-value ^c
Immunosuppressive condition	69 (32.1)	6 (9.8)	0.006
Gastrointestinal or liver disease	24 (7.3)	6 (9.6)	0.63
Blood disorder	19 (5.4)	4 (2.8)	0.30
Rheumatologic or autoimmune disease	24 (8.7)	1 (3.0)	0.28
Number of underlying conditionsⁱ			0.07
0	13(3.6)	0 (0.0)	
1	24 (6.3)	9 (17.3)	
2	54 (19.3)	5 (5.1)	
≥3	201 (70.8)	33 (77.7)	
ICU admission	60 (21.6)	7 (11.4)	0.22
In-hospital death	23 (7.5)	2 (1.2)	0.006
ICU admission or in-hospital death	66 (23.3)	8 (12.0)	0.18
Median length of stay in days (IQR)	5 (3–8)	5 (2–14)	<.001
ICU admission, invasive mechanical ventilation, or in-hospital death	69 (23.9)	10 (34.3)	0.47
Invasive mechanical ventilation	25 (8.7)	3 (23.0)	0.23
Vasopressor use	29 (11.0)	5 (4.9)	0.19
BIPAP or CPAP use	44 (14.5)	4 (6.7)	0.31
Renal Replacement Therapy	14 (3.1)	2 (1.2)	0.23

Abbreviations: BIPAP = bilevel positive airway pressure; CMO = comfort measures only; COVID-NET = COVID-19–Associated Hospitalization Surveillance Network; CPAP = continuous positive airway pressure; DNI = do not intubate; DNR = do not resuscitate; ICU = intensive care unit; IQR = interquartile range; LTCF = long-term care facility; SARS-CoV-2 = severe acute respiratory syndrome coronavirus 2

^aCalifornia, Connecticut, Colorado, Georgia, Maryland, Michigan, Minnesota, New Mexico, New York, Ohio, Oregon, Tennessee, and Utah

^bFive cases with hospitalization not primarily associated with COVID-19 illness were excluded

^cStatistical significance for univariate analyses was determined as $p < .10$

^dRace and Hispanic ethnicity: Data on race and ethnicity were categorized as follows: Hispanic or Latino, non-Hispanic White (White), non-Hispanic Black (Black), and Other/Unknown. If ethnicity was unknown, non-Hispanic ethnicity was assumed.

^eLong-term care facility (LTCF) residence was defined as residence in rehabilitation facilities, assisted living/residential care, group homes, nursing homes, skilled nursing facilities, long-term care facilities, long-term acute care hospitals, residential care facilities or other long-term care facilities.

^fObesity is defined as calculated body mass index (BMI) ≥ 30 kg/m², and if BMI is missing, by International Classification of Diseases discharge diagnosis codes.

^gSevere obesity is defined as calculated body mass index (BMI) ≥ 40 kg/m², and if BMI is missing, by International Classification of Diseases discharge diagnosis codes.

^hCardiovascular disease excludes hypertension

ⁱOverall condition categories as defined in Supplementary Table 1

Supplementary Table 3A. Multivariable model^a assessing factors associated with severe COVID-19 diseases (ICU, in-hospital death) in hospitalized adults with laboratory-confirmed COVID-19-associated hospitalization admitted January 1 – June 30, 2021, restricting to those with COVID-19-associated hospitalization as the likely primary reason for admission, among those aged <65 years — COVID-NET, 13 States^b

Category	No severe illness n (weighted %)	Have severe illness n (weighted %)	Unadjusted risk ratio	Adjusted risk ratio	p-value	Standard error
Race and Hispanic ethnicity^c						
White	1,096 (37.2)	311 (42.6)	R	R	R	R
Black	653 (34.9)	143 (26.0)	0.7 (0.5, 1)	0.8 (0.6, 1.1)	0.14	0.1716
Hispanic or Latino	475 (16.7)	122 (18.4)	1 (0.8, 1.2)	1 (0.8, 1.3)	0.78	0.1106
Other/Unknown ^d	249 (11.2)	82 (12.9)	1 (0.8, 1.2)	1.1 (0.9, 1.3)	0.20	0.0815
Sex						
Male	1,237 (49.3)	379 (53.9)	1.2 (1, 1.3)	1.2 (1, 1.3)	0.02	0.0626
Female	1,236 (50.7)	279 (46.1)	R	R	R	R
Age (in years)				1 (1, 1)	0.002	0.0039
Unvaccinated	2,400 (98.7)	639 (98.9)	R	R	R	R
Fully vaccinated	73 (1.3)	19 (1.1)	0.9 (0.7, 1.2)	0.8 (0.6, 1.0)	0.028	0.1283
LTCF residence^e	34 (1.7)	15 (2.1)	1.2 (0.6, 2.2)	0.9 (0.5, 1.7)	0.74	0.3428
Underlying medical condition						
Chronic metabolic disease	829 (35.1)	288 (46.0)	1.4 (1.2, 1.7)	1.3 (1.1, 1.5)	0.001	0.0823
Chronic lung disease	702 (29.4)	208 (33.6)	1.2 (1, 1.4)	1.1 (0.9, 1.3)	0.48	0.1052
Cardiovascular disease ^f	462 (19.3)	173 (27.1)	1.4 (1.1, 1.8)	1.2 (1, 1.6)	0.11	0.1316
Neurologic disease	261 (10.2)	84 (12.6)	1.2 (1, 1.4)	1 (0.9, 1.2)	0.78	0.0881
Renal disease	191 (9.6)	83 (13.6)	1.4 (1, 1.8)	1.1 (0.9, 1.4)	0.31	0.1202
Immunosuppressive condition	227 (9.7)	70 (12.4)	1.2 (1, 1.5)	1.2 (0.9, 1.5)	0.29	0.1362
Gastrointestinal or liver disease	140 (4.7)	52 (7.8)	1.5 (1.2, 2)	1.4 (1, 2)	0.04	0.1736

Abbreviations: COVID-19 = coronavirus disease 2019; COVID-NET = COVID-19–Associated Hospitalization Surveillance Network; LTCF = long-term care facility

^aLog-linked Poisson Regression using generalized estimating equations (GEE) clustered on site with exchangeable covariance structure

^bCalifornia, Connecticut, Colorado, Georgia, Maryland, Michigan, Minnesota, New Mexico, New York, Ohio, Oregon, Tennessee, and Utah.

^cRace and Hispanic ethnicity: Data on race and ethnicity were categorized as follows: non-Hispanic White (White), non-Hispanic Black (Black), Other/Unknown. If ethnicity was unknown (4%), non-Hispanic ethnicity was assumed.

^dIncludes American Indian/Alaska Native, Asian/Pacific Islander, and multiple/unknown race.

^eLong-term care facility (LTCF) residence was defined as residence in rehabilitation facilities, assisted living/residential care, group homes, nursing homes, skilled nursing facilities, long-term care facilities, long-term acute care hospitals, residential care facilities or other long-term care facilities.

^fCardiovascular disease excludes hypertension.

Supplementary Table 3B. Multivariable model^a assessing factors associated with severe COVID-19 diseases (ICU, in-hospital death) in hospitalized adults with laboratory-confirmed COVID-19-associated hospitalization admitted January 1 – June 30, 2021, restricting to those with COVID-19-associated hospitalization as the likely primary reason for admission, among those aged ≥65 years — COVID-NET, 13 States^b

Category	No severe illness n (weighted %)	Have severe illness n (weighted %)	Unadjusted risk ratio	Adjusted risk ratio	p-value	Standard error
Race and Hispanic ethnicity^c						
White	829 (60.5)	231 (50.0)	R	R	R	R
Black	185 (21.5)	77 (28.4)	1.4 (0.9, 2.3)	1.6 (1, 2.6)	0.05	0.2433
Hispanic or Latino	89 (7.4)	45 (10.1)	1.4 (1, 2.1)	1.6 (1.2, 2.3)	0.005	0.1736
Other/Unknown ^d	101 (10.6)	44 (11.5)	1.2 (0.9, 1.7)	1.3 (0.9, 1.8)	0.15	0.1722
Sex						
Male	576 (52.5)	228 (55.9)	1.1 (0.8, 1.5)	1.1 (0.8, 1.4)	0.47	0.1326
Female	628 (47.5)	169 (44.1)	R	R	R	R
Age (in years)				1 (1, 1)	0.34	0.0086
Unvaccinated	1,051 (94.8)	350 (94.6)	R	R	R	R
Fully vaccinated	153 (5.2)	47 (5.4)		1.1 (0.7, 1.6)	0.80	0.2167
LTCF residence^e	90 (10.3)	44 (14.2)	1.3 (0.9, 1.9)	1.5 (1, 2.2)	0.06	0.2019
Underlying medical condition						
Neurologic disease	304 (29.0)	94 (22.5)	0.8 (0.6, 1)	0.7 (0.5, 0.9)	0.02	0.1486
Immunosuppressive condition	155 (13.0)	59 (18.5)	1.4 (1.1, 1.7)	1.4 (1.1, 1.7)	0.002	0.1097

Abbreviations: COVID-19 = coronavirus disease 2019; COVID-NET = COVID-19–Associated Hospitalization Surveillance Network; LTCF = long-term care facility

^aLog-linked Poisson Regression using generalized estimating equations (GEE) clustered on site with exchangeable covariance structure

^bCalifornia, Connecticut, Colorado, Georgia, Maryland, Michigan, Minnesota, New Mexico, New York, Ohio, Oregon, Tennessee, and Utah.

^cRace and Hispanic ethnicity: Data on race and ethnicity were categorized as follows: non-Hispanic White (White), non-Hispanic Black (Black), Other/Unknown. If ethnicity was unknown (7% of cases), non-Hispanic ethnicity was assumed.

^dIncludes American Indian/Alaska Native, Asian/Pacific Islander, and multiple/unknown race

^eLong-term care facility (LTCF) residence was defined as residence in rehabilitation facilities, assisted living/residential care, group homes, nursing homes, skilled nursing.

Supplementary Table 4. Rate ratios of COVID-19-associated hospitalizations in unvaccinated vs vaccinated patients among all adults aged ≥ 18 years and by age group^a, January 24–July 24, 2021^b – COVID-NET, 13 States^c

	Rate ratio of hospitalizations all adults ≥ 18 years (age-adjusted)	Rate ratio, 18–49 years	Rate ratio, 50–64 years	Rate ratio, ≥ 65 years
MMWR week ending				
1/30/2021	21	-	7	-
2/6/2021	13	-	-	7
2/13/2021	8	10	26	5
2/20/2021	8	23	21	4
2/27/2021	6	15	23	4
3/6/2021	14	21	15	11
3/13/2021	10	52	14	6
3/20/2021	12	15	12	11
3/27/2021	20	21	22	18
4/3/2021	15	75	15	11
4/10/2021	17	45	22	13
4/17/2021	28	18	53	25
4/24/2021	24	40	51	16
5/1/2021	22	33	31	17
5/8/2021	31	51	33	26
5/15/2021	26	32	49	18
5/22/2021	19	13	23	21
5/29/2021	21	19	16	25
6/5/2021	29	24	78	23
6/12/2021	15	17	21	13
6/19/2021	17	13	25	16
6/26/2021	17	12	16	22
7/3/2021	14	13	18	12
7/10/2021	12	19	13	10
7/17/2021	17	17	20	15
7/24/2021	19	20	25	16
Cumulative	17	23	22	13
Range	6–31	10–75	7–78	4–26

Abbreviations: COVID-19 = coronavirus disease 2019; COVID-NET = COVID-19–Associated Hospitalization Surveillance Network

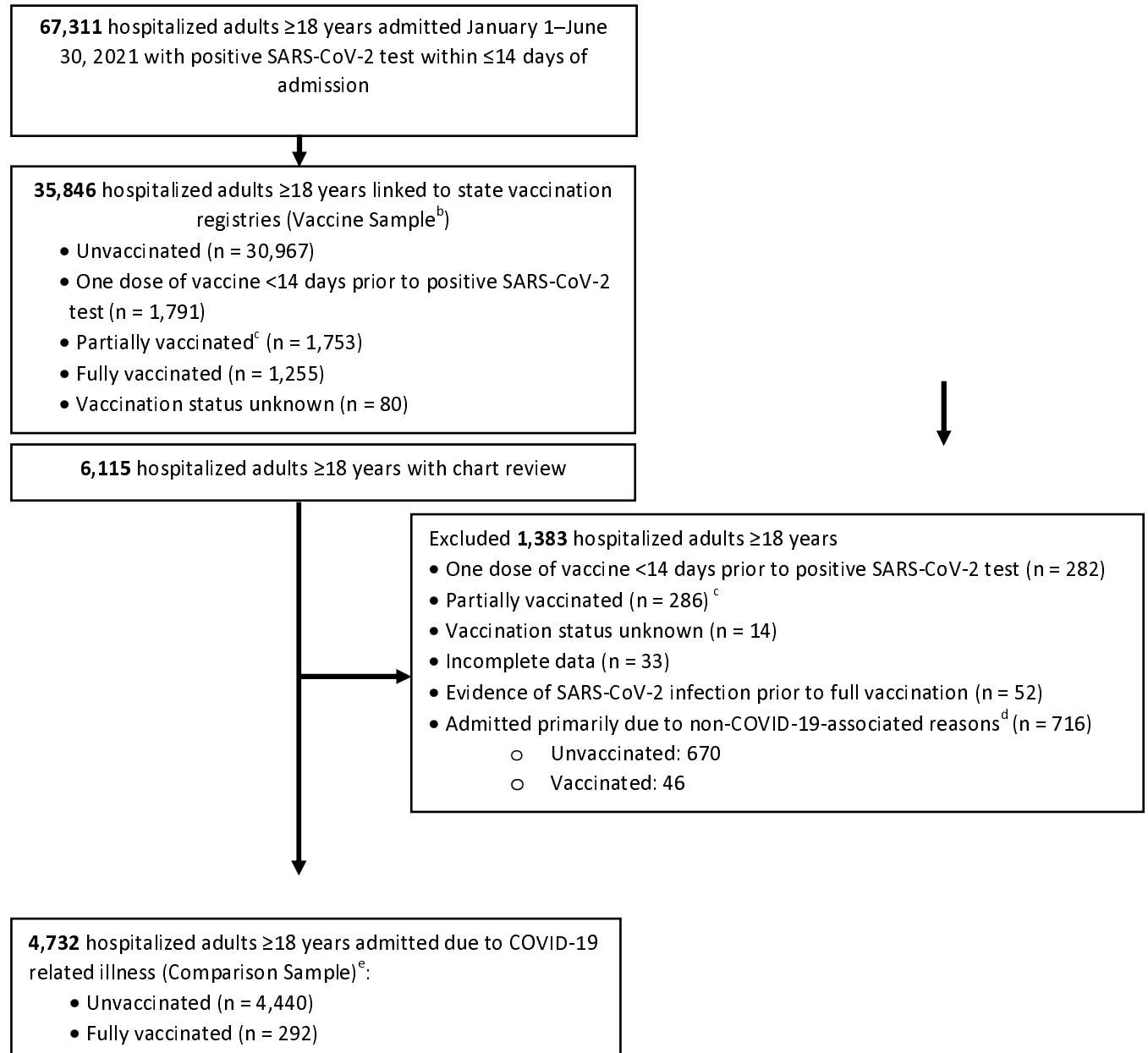
^aAge-specific rate ratios could not be calculated for weeks during which zero vaccinated cases were reported and are represented by a dash (-).

^bCOVID-NET hospitalization data are preliminary and subject to change as more data become available. In particular, rates for recent hospital admissions are subject to lag.

^cCalifornia, Connecticut, Colorado, Georgia, Maryland, Michigan, Minnesota, New Mexico, New York, Ohio, Oregon, Tennessee, and Utah.

Supplementary Figures:

Supplementary Figure 1. Selection of cases for analysis of adults ≥18 years with laboratory-confirmed COVID-19-associated hospitalization admitted January 1 – June 30, 2021, by vaccination status — COVID-NET, 13 States^a



Abbreviation: COVID-NET, Coronavirus Disease 2019 (COVID-19-associated Hospitalization Surveillance Network)

^aCalifornia, Connecticut, Colorado, Georgia, Maryland, Michigan, Minnesota, New Mexico, New York, Ohio, Oregon, Tennessee, and Utah

^bVaccine sample includes representative random sample from each site (sampled cases) as well as all non-sampled cases if all cases from a single site and age strata had vaccination status available.

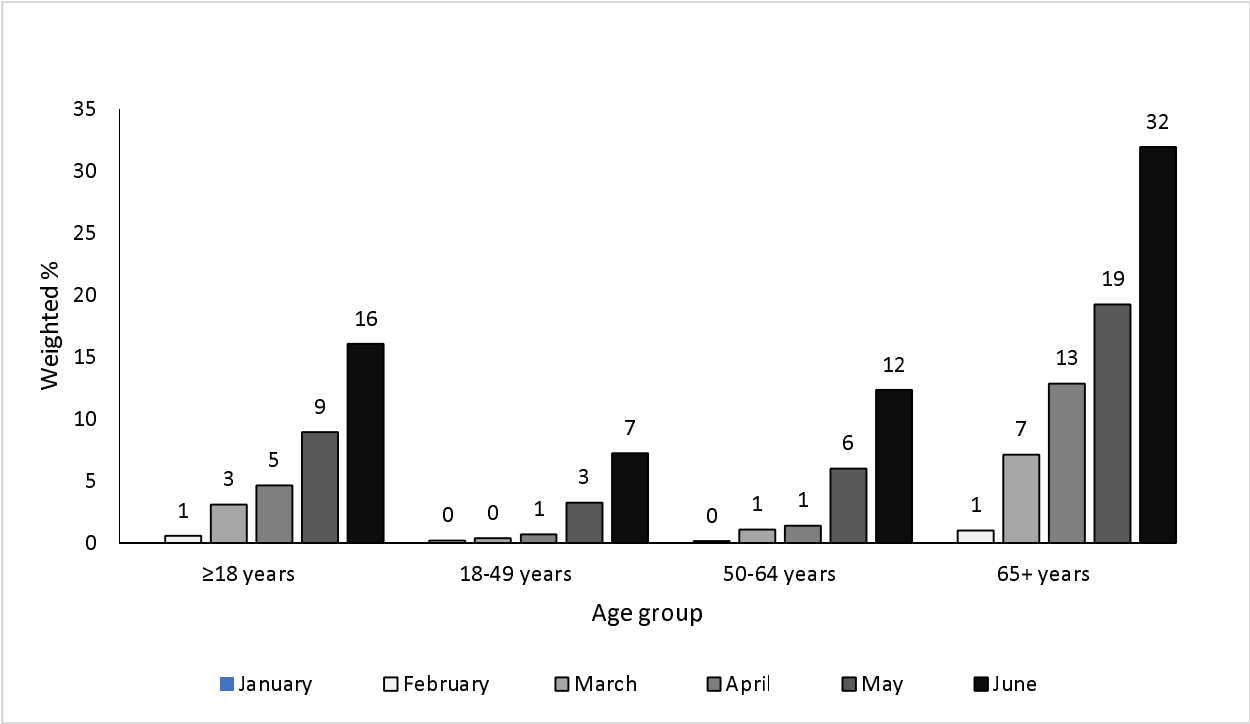
^cReceived one dose of two-dose series (for Pfizer/BioNTech and Moderna)

^dIncludes cases admitted due to obstetrics/labor and delivery admission (316), surgery (103), psychiatric admission needing acute medical care (99), trauma (124), "other" (2) and unknown reason (72).

^eComparison sample includes only those sampled cases with complete medical chart abstraction who were either unvaccinated or fully vaccinated; vaccinated cases who had evidence of prior SARS-CoV-2 infection prior to qualifying as fully vaccinated were excluded.

NOTE: For both the vaccine sample and the analytic sample, sampling weights were created based on the probability of selection. Weights were adjusted for non-response, adjusted to population catchment totals based on combinations of surveillance site, time period of admission, age, sex, and race/ethnicity via published raking procedures, and trimmed to reduce variability, as previously described.¹

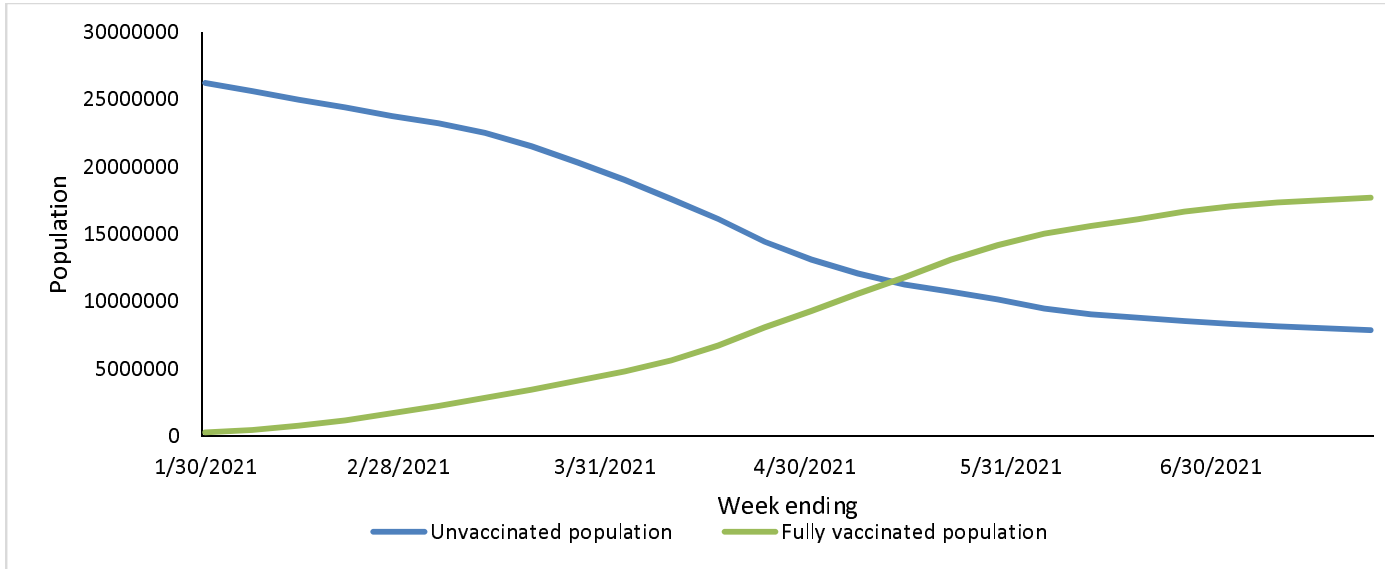
Supplementary Figure 2. Proportion of adults ≥18 years with COVID-19-associated hospitalizations admitted January 1 – June 30, 2021 who are fully vaccinated, by age group and month of admission – COVID-NET, 13 States^a



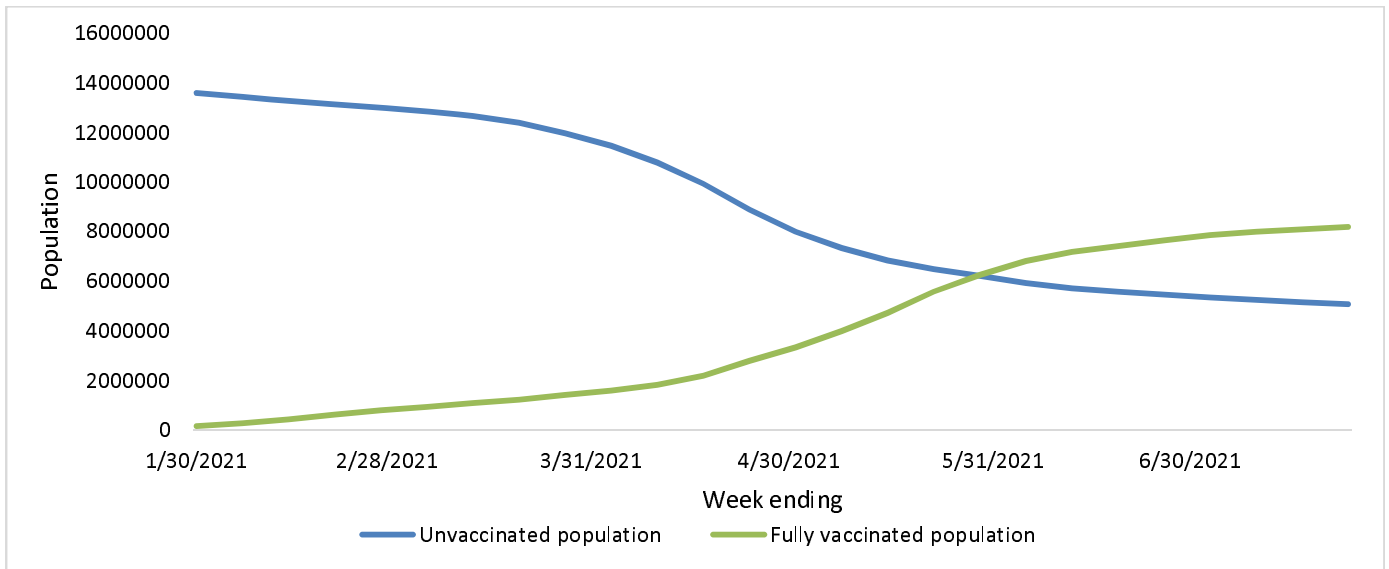
^aCalifornia, Connecticut, Colorado, Georgia, Maryland, Michigan, Minnesota, New Mexico, New York, Ohio, Oregon, Tennessee, and Utah

Supplementary Figure 3. COVID-NET catchment population by vaccination status^a and week, used as denominator in population-based-rate calculations^b among A) all adults ≥ 18 years, B) 18–49 years, C) 50–64 years, and D) ≥ 65 years, January 24–July 24, 2021—COVID-NET,^c 13 States^d

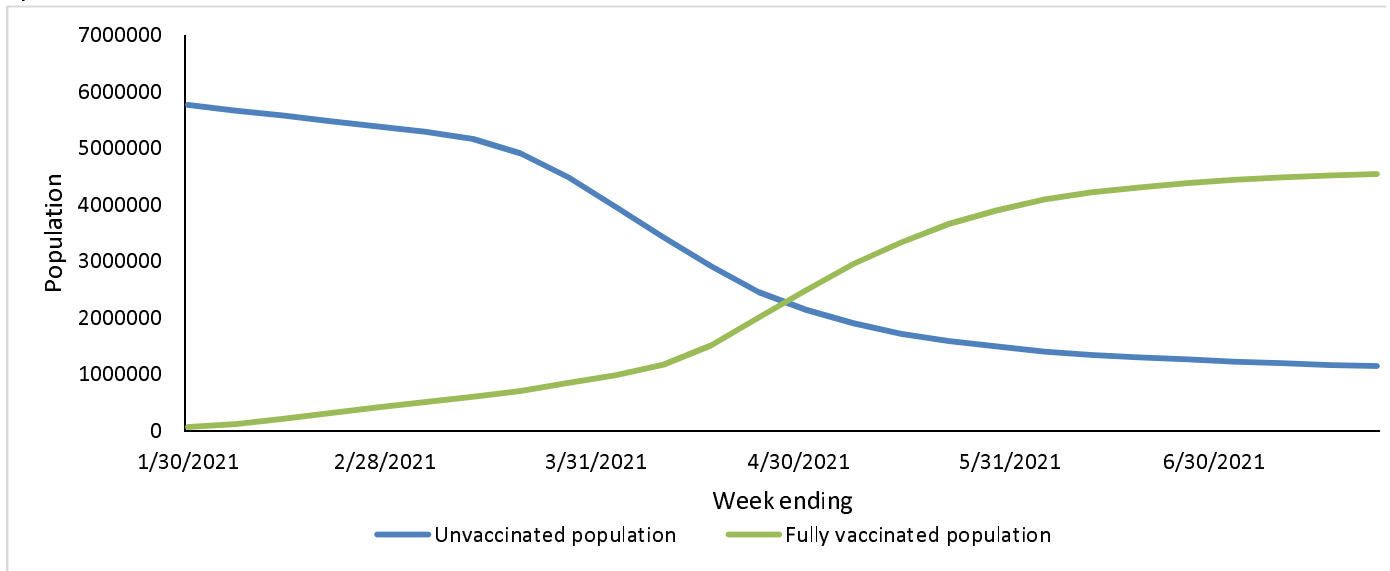
A)



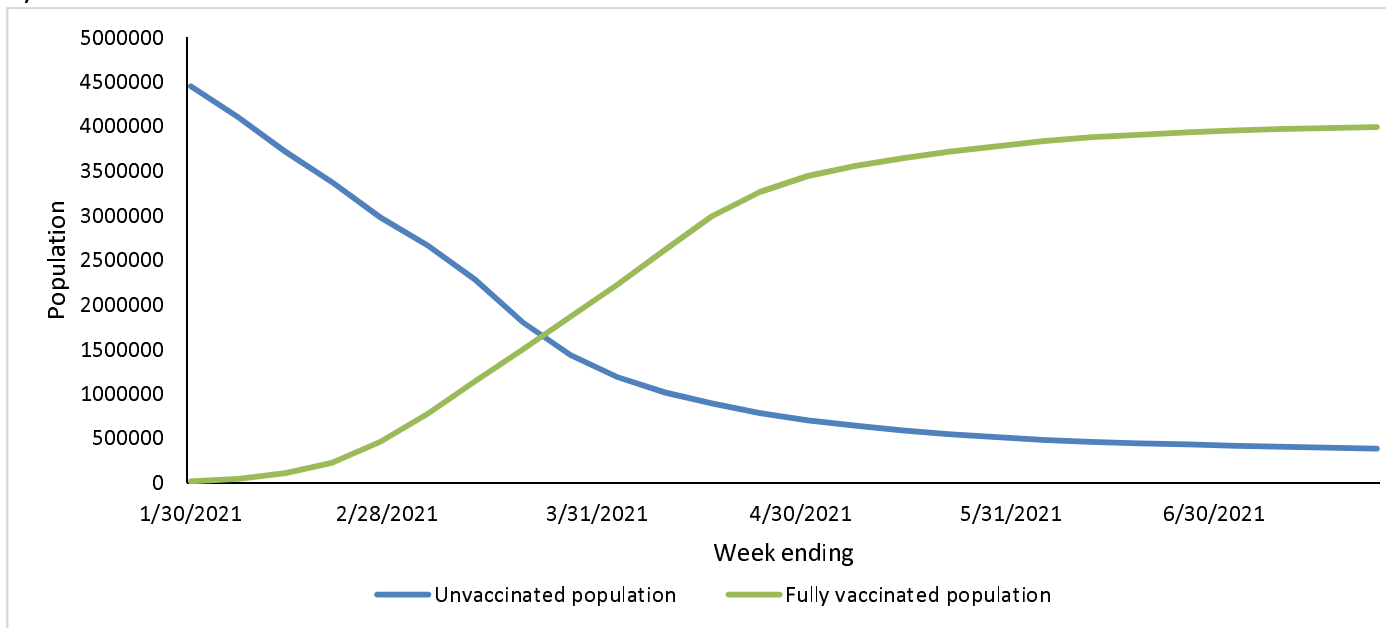
B)



c)



d)



^a Partially vaccinated persons are excluded.

^b Data from CDC immunization information systems county-level data for the Coronavirus Disease 2019 (COVID-19)-Associated Hospitalization Surveillance Network (COVID-NET) surveillance area.

^c The COVID-NET hospitalization data are preliminary and subject to change as more data become available. Rates for recent hospital admissions are subject to lag.

^d California, Connecticut, Colorado, Georgia, Maryland, Michigan, Minnesota, New Mexico, New York, Ohio, Oregon, Tennessee, and Utah

