

1 *Article*

2 **Evidence of a causal relationship between genetic tendency to**
3 **gain muscle mass and uterine leiomyomata**

4 Eeva Sliz^{1,2}, Jaakko Tyrmi^{1,2}, Nilufer Rahmioglu^{6,7}, Krina T. Zondervan^{6,7}, Christian M.
5 Becker⁶, FinnGen, Outi Uimari^{3,4,5*}, Johannes Kettunen^{1,2*}

6 ¹ Center for Life Course Health Research, Faculty of Medicine, University of Oulu, Finland

7 ² Biocenter Oulu, Oulu, Finland

8 ³ Department of Obstetrics and Gynecology, Oulu University Hospital, Oulu, Finland

9 ⁴ PEDEGO Research Unit, University of Oulu and Oulu University Hospital, Oulu, Finland

10 ⁵ Medical Research Center Oulu, University of Oulu and Oulu University Hospital, Oulu,
11 Finland

12 ⁶ Oxford Endometriosis CaRe Centre, Nuffield Department of Women's and Reproductive
13 Health, University of Oxford, UK

14 ⁷ Wellcome Centre for Human Genetics, University of Oxford, UK

15 *Equal contribution of the last authors

16 Address for correspondence:

17 Eeva Sliz

18 Center For Life Course Health Research

19 Faculty of Medicine

20 Aapistie 5A

21 P.O.Box 5000, 90014 University of Oulu

22 Oulu, Finland

23 phone: +358 50 305 4865

24 e-mail: eeva.sliz@oulu.fi

25 Word count – Introductory paragraph: 150

26 Word count – Manuscript main body: 1627

27 Figures: 4

28 Tables: 1

29 Supplementary figures: 63

30 Supplementary tables: 9

31 References: 68

32 Key words: Uterine leiomyoma, GWAS, smooth muscle, muscle mass

33 *Summary statistics will be made available through the NHGRI-EBI GWAS Catalog with*
34 *GCSTxxxxxx upon publication.*

35 **Uterine leiomyomata (UL) are the most common benign tumours of the female genital**
36 **tract with an estimated lifetime incidence of up to 70%¹. To date, 7 genome-wide**
37 **association studies (GWASs) have identified 35 loci predisposing to UL. To improve the**
38 **understanding of the underlying genetic pathways, we conducted the largest genetic**
39 **association study of UL to date in 426,558 European women from FinnGen and a**
40 **previously published UL meta-GWAS². We identified 36 novel and replicated 31**
41 **previously reported loci. Annotations of the potential candidate genes suggest**
42 **involvement of smooth muscle cell (SMC) differentiation and/or proliferation-**
43 **regulating genes in modulating UL risk. Our results further advocate that genetic**
44 **predisposition to increased fat-free mass may be causally related to UL risk,**
45 **underscoring the involvement of altered muscle tissue biology in UL pathophysiology.**
46 **Overall, our findings provide novel insights into genetic risk factors related to UL,**
47 **which may aid in developing novel treatment strategies.**

48 UL are hormone-driven benign neoplasms of the uterus composed mostly of SMC and
49 fibroblasts with a profound component of extracellular matrix (ECM). UL are present in
50 single or multiple numbers, with size ranging from millimeters to 20 cm or more in
51 diameter³. In 25-50% of women with ULs, the enlarged and deformed uterus can cause
52 symptoms such as heavy or prolonged menstrual bleeding resulting in anemia, reduced
53 fertility, and pregnancy complications⁴. Major risk factors for UL are family history, African
54 ancestry, increasing age up to menopause, and nulliparity⁵. Also, metabolic factors, including
55 hypertension and increased body mass index (BMI), have been reported in association with
56 UL susceptibility⁶. Familial aggregation, twin studies, and disparity in prevalence between
57 different ethnic groups suggest that genetic factors modulate UL risk⁷⁻¹⁰.

58 Until recently, the focus in the genetics of UL has been on somatic rearrangements, and key
59 driver variations in *MED12*, *FH*, *HMG2* and *COL4A6-COL4A5* have been reported¹¹. To
60 add understanding to the heritable genetic underpinnings, we conducted two sets of fixed-
61 effect, inverse-variance weighted meta-analyses with data from FinnGen (18,060 cases and
62 105,519 female controls) and 1) a previously published UL meta-GWAS² totaling 53,534
63 cases and 373,024 female controls in 'META-1' and 2) the UK Biobank totaling 33,244
64 cases and 311,271 controls in 'META-2'. META-1 was restricted to publicly available
65 10,000 variants from the previous meta-GWAS², whereas the META-2 included 10,693,588
66 variants across the genome. In META-1, we identified 63 loci associating with UL at
67 $p < 5 \times 10^{-8}$ (Figure 1, Table S1); of these, 32 were novel (Table 1). In META-2, we identified
68 51 loci out of which 4 had not been associated with UL risk in prior GWASs or in META-1
69 (Figure 1, Table 1, Table S2). Regional association plots of the novel loci are presented in
70 Figures S1-S36. There was no evidence of inflation in the test statistics (Figure S37). LD
71 score (LDSC) regression-derived SNP-based heritability was estimated to be 0.099 (standard
72 error=0.01) on the liability scale. Characterization of the genome-wide results of META-2
73 suggested that the key UL associated variants were mostly intronic (Figure 2A). Genes
74 associated with UL risk (Figure 2B) were significantly enriched on pathways related to gonad
75 development, positive regulation of growth, and cellular senescence (Figure 2C) and they
76 were mostly expressed in uterus, cervix, and fallopian tube (Figure 2D). In two of the novel
77 loci, we found evidence that altered gene expression mediates UL association (Figures S38-
78 S40).

79 Previous GWAS findings^{2,12-17} have indicated that genetic factors altering pathways involved
80 in estrogen signalling, Wnt signalling, transforming growth factor (TGF)- β signalling, and
81 cell cycle progression are associated with UL risk¹⁸. The novel loci identified in this study
82 further underscore the involvement of pathways regulating SMC proliferation in modulation
83 of UL risk. Many of these pathways are interrelated: for example, both estrogen and

84 progesterone increase the secretion of Wnt ligands from myometrial or leiomyoma SMC,
85 which promotes cell proliferation and tumorigenesis via activation of β -catenin¹⁹. Steroid
86 hormones also influence the production of ECM via signalling through the TGF- β family of
87 ligands and receptors that are highly expressed in multiple fibrotic conditions²⁰⁻²⁶ and
88 contribute to the fibrotic phenotype seen in UL^{24,25,27-29}. We identified multiple loci with
89 potential candidate genes functioning in one or more of these pathways, and, in the following,
90 we describe some of our key findings with the focus on loci involved in regulation of SMC
91 proliferation.

92 A central finding is the novel association at 17p12 harbouring myocardin (*MYOCD*; [Figure](#)
93 [S27](#)). Myocardin is a transcription factor expressed in smooth muscle tissues, including most
94 prominently arteries and colon, but also uterus ([Figure S41](#)), and it is required for SMC
95 differentiation³⁰. The expression of myocardin has been shown to be downregulated in UL
96 tissue compared with normal myometrium³¹. Also, it has been proposed that the loss of
97 myocardin function may be a key factor in driving SMC proliferation in UL³¹; however, there
98 are no reported GWAS associations implicating myocardin until now. The lead variants near
99 *MYOCD* are intergenic variants with no strong evidence of altered regulatory consequences
100 ([Table S3](#)) and, thus, a possible association-driving mechanism remains inconclusive. We
101 identified another myocardin-related novel UL risk association near ‘myocardin-induced
102 smooth muscle cell lncRNA, inducer of differentiation’ (*MYOSLID*), a transcriptional target
103 of myocardin³² ([Figure S6](#)). RegulomeDB³³ annotation provided robust evidence that the
104 association lead variant is a regulatory variant ([Table S4](#)) altering binding of multiple
105 transcription factors ([Table S5](#)), including Fos proto-oncogene (FOS) that has been shown to
106 be downregulated in UL³⁴. To add yet another example of a myocardin-related UL risk loci, a
107 well-established UL risk association at 22q13.1^{2,12,16,35,36} locates near ‘myocardin related
108 transcription factor A’ (*MRTFA*; also known as *MKLI*), a gene interacting with myocardin³⁷.
109 Also, expression of *MRTFA/MKLI* has been shown to be downregulated in UL-related
110 deletions at 22q³⁸.

111 Others have suggested that loss of myocardin function may account for the differentiation
112 defects of human leiomyosarcoma cells during malignant transformation³⁹: downregulation
113 of myocardin resulted in lower expression of cyclin dependent kinase inhibitor 1A
114 (*CDKN1A*; also known as p21), a mediator of cell cycle G1 phase arrest, which facilitated
115 cell cycle progression. We identified a novel UL association at 6p21.2 near *CDKN1A* ([Figure](#)
116 [S13](#)); the association lead variants locate on intergenic region with possible regulatory
117 consequences ([Table S6](#)). Previous evidence suggests that *CDKN1A* is among the genes, the
118 expression of which correlates with UL size⁴⁰. Another novel UL association at 20q13.31
119 harbours RNA binding motif protein 38 (*RBM38*; [Figure S29](#)) that specifically binds to and
120 regulates the stability of *CDKN1A* transcripts³⁷. In this locus, the UL risk-increasing
121 rs13039273-C associates with lower *RBM38* expression in ovary ($p=8.7 \times 10^{-6}$) ([Table S7](#),
122 [Figure S42](#); eQTL in uterus $p=2.2 \times 10^{-3}$). Relevant to UL, a variant in the same locus
123 (rs760640162) has been previously associated with ‘pregnancy examination and test’
124 ($p=5.97 \times 10^{-15}$) in the UK Biobank^{41,42}. Interestingly, estrogen receptor (ER) α has been shown
125 to inhibit expression of myocardin³¹, suggesting that the ability of myocardin-*CDKN1A*-
126 signalling to inhibit cell cycle progression may be impaired in tissues enriched with ER α .
127 Taken together our findings and previous evidence, it seems highly probable that
128 downregulation of myocardin-*CDKN1A* signalling increases the risk of UL.

129 We used an automated LDSC regression pipeline⁴³ to evaluate the genetic correlations (r_g) of
130 UL with other traits ([Figure 2](#); [Table S8](#)). The most robustly correlated traits were seen for
131 other gynecological traits, such as bilateral oophorectomy ($r_g=0.74$, $p=1.05 \times 10^{-25}$),
132 hysterectomy ($r_g=0.62$, $p=3.24 \times 10^{-19}$), age at menarche ($r_g=-0.18$, $p=1.40 \times 10^{-9}$), excessive

133 frequent and irregular menstruation ($r_g=0.51$, $p=5.66 \times 10^{-7}$), having had menopause ($r_g=-0.33$,
134 $p=2.31 \times 10^{-5}$), and usage of hormonal replacement therapy ($r_g=0.20$, $p=5.54 \times 10^{-5}$). Strong
135 correlations were also seen between UL and anthropometric and metabolic measures,
136 including whole body fat-free mass ($r_g=0.11$, $p=4.21 \times 10^{-5}$), high blood pressure ($r_g=0.15$,
137 $p=4.58 \times 10^{-6}$), and serum triglyceride level ($r_g=0.16$, $p=4.80 \times 10^{-5}$). Genetic susceptibility for
138 UL was also correlated with genetic susceptibility for multiple psychiatric or mood-related
139 traits, including depressive symptoms ($r_g=0.20$, $p=3.31 \times 10^{-5}$) or neuroticism score ($r_g=0.14$,
140 $p=3.88 \times 10^{-5}$).

141 To estimate the causal relationships between UL and the key traits showing significant r_g
142 with UL, we applied two-sample Mendelian randomization. Our results suggest that genetic
143 tendency to accumulate fat-free mass may be causally linked to higher risk of UL
144 ($p=2.37 \times 10^{-3}$; [Figure 3](#); [Table S9](#)). In line with this, the higher impedance of whole body (i.e.,
145 a bioelectrical measure used for estimating body composition; lower muscle mass leads to
146 higher impedance) was causally associated with a lower risk of UL ($p=1.05 \times 10^{-3}$). When
147 considering the null causal effect of whole-body fat mass on UL risk ($p=0.46$), it seems
148 apparent that the nominally significant ($p=8.40 \times 10^{-3}$) causal effect of BMI on UL in the
149 present study and the previously reported associations of BMI with UL risk⁴⁴⁻⁴⁶ arise from the
150 increased lean body mass rather than fat mass. Although we did not observe horizontal
151 pleiotropy, the causal estimates were heterogenic for many key traits ([Table S9](#)), suggesting
152 that all the underlying genetic pathways may not function in a consistent manner – thus, these
153 results need to be interpreted with caution. However, in the leave-one-out sensitivity analyses
154 all causal estimates were consistently positive (higher fat-free mass was causally associated
155 with higher risk of UL) or negative (higher impedance was causally associated with lower
156 risk of UL) suggesting that there is no single variant driving the causal associations ([Figures](#)
157 [S50-S63](#)). Regarding most of the gynecological traits, the causal direction with UL was not
158 clear ([Table S9](#)), suggesting that the shared molecular factors predispose to multiple
159 gynecological complications simultaneously instead of one being causal to another. Of note,
160 we replicated the previously reported finding of genetic predisposition to UL being causal to
161 excessive menstrual bleeding² ($p=1.07 \times 10^{-4}$).

162 The discovered causal relationship between genetic tendency to accumulate fat-free mass and
163 UL risk provides a novel perspective on UL-related pathophysiology. UL are considered
164 estrogen-dependent, and UL have higher ER α expression compared with normal uterine
165 myometria^{47,48}. ERs are expressed in a variety of tissues, including all musculoskeletal
166 tissues⁴⁹. In females, muscle mass and strength are closely coupled with estrogen status: girls
167 begin to gain muscle mass after the onset of puberty⁵⁰ whereas in older age during
168 perimenopausal and postmenopausal periods, muscle strength declines considerably^{51,52}. If
169 estrogen enhances muscle growth⁵³, the observed causal relationship between fat-free mass
170 and UL risk could arise secondary to high estrogen contributing to the muscle growth. Many
171 of the newly identified candidate genes, however, directly regulate cell proliferation – thus, it
172 remains possible that the estrogen-rich environment, due to sexual maturity, may trigger
173 excess SMC growth resulting in ULs in women who are genetically susceptible to build up
174 muscle.

175 Currently, the only essentially curative treatment for UL is hysterectomy, which underscores
176 the high demand for the development of alternative effective therapies. Our findings double
177 the number of known UL risk loci and, thus, the herein presented results provide several
178 potential targets for translational research to develop pharmacologic interventions for UL.
179 Therapies targeted at myocardin-CDKN1A signalling or, considering the causal evidence,
180 other factors regulating muscle growth may hold the greatest potential.

1 **Table 1. Novel UL risk loci.**

2 The table reports novel distinct loci (more than 1Mb apart) containing at least one variant identified to be associated with UL at $p < 5 \times 10^{-8}$ in a meta-analysis of
 3 53,534 UL cases and 373,024 female controls from FinnGen and a previously published meta-GWAS of UL² (META-1) and in a meta-analysis of 33,244 UL
 4 cases and 311,271 female controls from FinnGen and the UK Biobank (META-2).

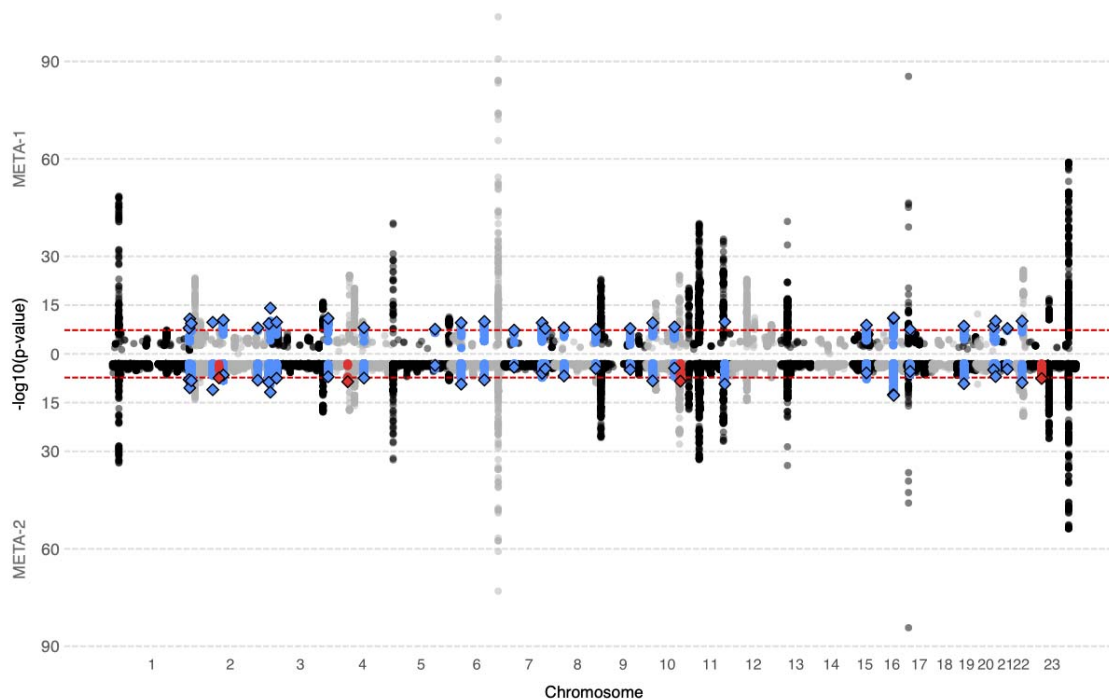
Locus	Chr:Pos (hg38)	Nearest gene(s)	Candidate gene(s)	rsID	EA	EAF	OR (95% CI)	P-value	HetPVal	FIN enr.
<i>Novel loci in META-1</i>										
1q43	1:241860596	<i>EXO1</i>	<i>EXO1, FH</i>	rs4149909	G	0.03	1.13 (1.08-1.18)	1.16E-08	0.265	1.03
1q44	1:244151650	<i>ZBTB18, C1orf100</i>	<i>ZBTB18, AKT3</i>	rs2183478	G	0.18	1.07 (1.05-1.09)	1.75E-11	0.774	1.57
1q44	1:248897507	<i>PGBD2</i>	<i>ZNF692</i>	rs4335411	A	0.76	1.06 (1.04-1.08)	4.12E-10	0.376	0.98
2p14	2:66863235	<i>MEIS1</i>	<i>MEIS1</i>	rs17631680	C	0.10	0.93 (0.91-0.95)	1.93E-10	0.127	0.96
2q11.2	2:99454113	<i>REV1</i>	<i>REV1</i>	rs13392042	G	0.58	1.05 (1.03-1.06)	4.21E-11	0.217	1.21
2q33.3	2:207258660	<i>MYOSLID, KLF7</i>	<i>MYOSLID</i>	rs10804157	C	0.44	1.04 (1.03-1.05)	1.04E-08	0.143	0.87
2q37.3	2:241720139	<i>ING5</i>	<i>ING5</i>	rs34766121	T	0.24	1.06 (1.04-1.08)	5.02E-10	0.278	1.03
3p26.1	3:4674530	<i>ITPR1</i>	<i>ITPR1</i>	rs3804984	C	0.38	0.95 (0.93-0.96)	8.06E-15	0.021	1.42
3p24.2	3:24213259	<i>THRB</i>	<i>THRB</i>	rs1010961	A	0.45	1.04 (1.03-1.06)	1.64E-10	0.109	0.98
3q27.2	3:185807411	<i>IGF2BP2</i>	<i>IGF2BP2</i>	rs13060777	G	0.26	1.05 (1.04-1.07)	1.14E-11	0.595	1.10
4q23	4:99031559	<i>METAP1</i>	<i>EIF4E, ADH5</i>	rs1037475	G	0.57	1.04 (1.03-1.05)	8.38E-09	0.707	0.95
5q31.1	5:133099880	<i>HSPA4</i>	<i>HSPA4</i>	rs4367292	T	0.27	0.96 (0.94-0.97)	2.49E-08	0.882	1.15
6p21.2	6:36653670	<i>CDKN1A</i>	<i>CDKN1A</i>	rs10456443	A	0.20	0.95 (0.93-0.96)	2.67E-10	0.039	0.91
6q21	6:109054915	<i>SESNI</i>	<i>SESNI</i>	rs11153158	C	0.13	0.93 (0.92-0.95)	1.05E-10	0.243	1.19
7p14.3	7:33008785	<i>FKBP9, NT5C3A</i>	<i>NT5C3A, BBS9</i>	rs4723230	T	0.80	1.05 (1.03-1.07)	4.68E-08	0.946	1.03
7q31.31	7:121132432	<i>CPEDI</i>	<i>WNT16</i>	rs12706314	A	0.53	1.04 (1.03-1.06)	2.69E-10	0.777	0.89
7q32.3	7:130935964	<i>LINC-PINT</i>	<i>LINC-PINT</i>	rs35908158	C	0.08	1.08 (1.05-1.10)	1.60E-08	0.883	1.41
8p12	8:30452819	<i>RBPMS</i>	<i>RBPMS</i>	rs13275869	C	0.49	0.96 (0.95-0.97)	8.64E-09	0.520	0.98
8q24.21	8:128506035	<i>LINC00824</i>	<i>LINC00824</i>	rs1516980	C	0.25	0.96 (0.94-0.97)	2.72E-08	0.987	0.76
9q22.2	9:89639982	<i>GADD45G</i>	<i>GADD45G</i>	rs28508285	G	0.09	1.07 (1.04-1.09)	1.49E-08	0.362	1.05
10p12.31	10:21517903	<i>SKIDA1</i>	<i>DNAJC1</i>	rs946711	C	0.33	1.05 (1.03-1.06)	2.96E-10	0.460	0.96
10q23.31	10:88331783	<i>RNLS</i>	<i>RNLS</i>	rs1426619	T	0.45	1.04 (1.03-1.06)	4.92E-09	0.653	1.09
11q23.2	11:112703765	<i>LOC1053694962</i>	<i>LOC105369496</i>	rs10891420	C	0.42	1.05 (1.03-1.06)	1.38E-10	0.019	1.16
15q23	15:67922458	<i>SKOR1</i>	<i>PIAS1</i>	rs12148374	C	0.44	0.96 (0.95-0.97)	1.37E-09	0.832	1.10
16q12.1	16:50059327	<i>HEATR3</i>	<i>BRD7</i>	rs12599260	A	0.73	1.05 (1.04-1.07)	1.09E-11	0.002	1.08
16q12.1	16:51447685	<i>AC007344.1</i>	<i>AC007344.1</i>	rs66998222	A	0.19	0.94 (0.93-0.96)	7.53E-12	0.345	0.79
17p12	17:12652500	<i>MYOCD</i>	<i>MYOCD</i>	rs12601765	T	0.30	1.04 (1.03-1.06)	3.08E-08	0.400	1.17
19p12	19:22032639	<i>ZNF257</i>	<i>ZNF257</i>	rs8105767	G	0.30	1.05 (1.03-1.06)	2.63E-09	0.143	1.15
20q13.31	20:57441016	<i>CTCF</i>	<i>RBM38, BMP7</i>	rs13039273	C	0.46	1.04 (1.03-1.06)	3.08E-09	0.874	1.22
20q13.33	20:63638397	<i>STMN3</i>	<i>SLC2A4RG</i>	rs75691080	T	0.10	0.92 (0.90-0.95)	7.79E-11	0.044	1.25
21q22.12	21:35072824	<i>RUNX1</i>	<i>RUNX1</i>	rs2834747	G	0.30	0.96 (0.94-0.97)	1.44E-08	0.711	1.17
22q12.3	22:36287509	<i>MYH9, APOL1</i>	<i>MYH9</i>	rs9610482	T	0.19	1.06 (1.04-1.08)	7.89E-11	0.354	0.94
<i>Novel loci in META-2</i>										
2p11.2	2:86458018	<i>KDM3A</i>	<i>KDM3A</i>	rs573520030	T	0.99	0.62 (0.53-0.74)	3.87E-08	0.918	1.83
4p11	4:49085558	<i>CWH43</i>	<i>OCIAD1</i>	rs538533131	A	0.99	0.53 (0.43-0.65)	2.61E-09	0.002	1.15
10q25.1	10:106821670	<i>SORCS1</i>	<i>SORCS1</i>	rs12247648	T	0.03	1.26 (1.17-1.36)	3.86E-09	0.825	39.55
Xp11.23	X:46904059	<i>JADE3, RP2</i>	<i>SLC9A7</i>	rs6611312	T	0.53	1.05 (1.03-1.07)	2.54E-08	0.355	1.07

5 Chr, chromosome; Pos, position (build 38); EA, effect allele; EAF, effect allele frequency; OR, odds ratio; CI, confidence interval; P, p-value; HetPVal, p-value for heterogeneity; FIN enr,
 6 Finnish enrichment (calculated as FIN AF / NFEE AF in the Genome Aggregation Database (gnomAD), where FIN AF is the Finnish allele frequency and NFEE AF is the non-Finnish-non-
 7 Estonian European allele frequency). 'Nearest gene(s)' reports the gene closest to the association lead variant. 'Candidate gene(s)' indicates the biologically most relevant gene within 1Mb
 8 window around the association lead variant.

9

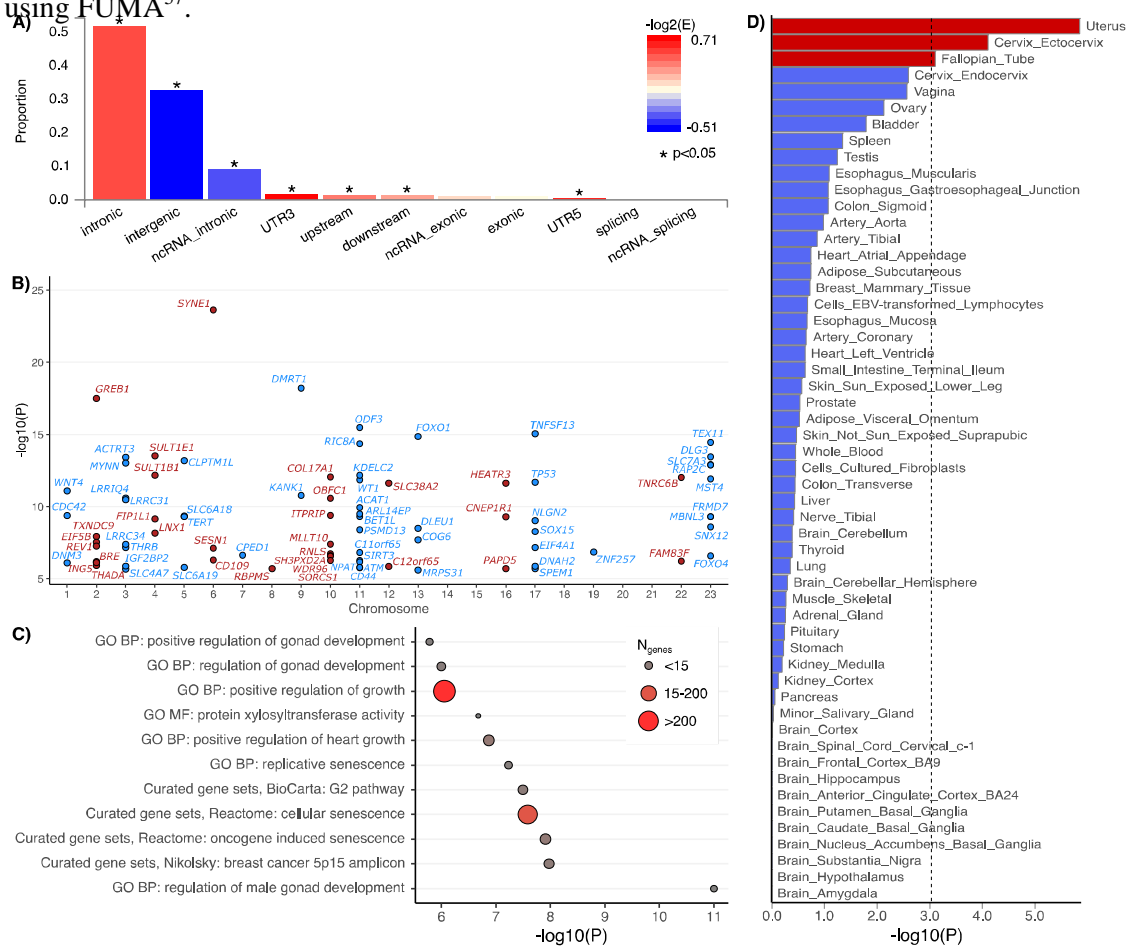
190 **Figure 1. A combined Manhattan plot of UL associations in META-1 and META-2.**

191 We conducted UL GWAS in FinnGen and, subsequently, two sets of meta-analyses with data
192 from a previously published UL meta-analysis² and the UK Biobank, adding up to 53,534 UL
193 cases and 373,024 female controls in META-1 (top) and 33,244 UL cases and 311,271
194 female controls in META-2 (bottom), respectively. Blue color denotes novel UL risk loci
195 identified in META-1, and red color indicates novel loci identified in META-2 that were not
196 associated previously with UL risk in prior GWASs or META-1. Black and grey colours
197 indicate odd and even chromosome numbers, respectively. The red dashed lines correspond
198 to the threshold for genome-wide significance ($p < 5 \times 10^{-8}$).



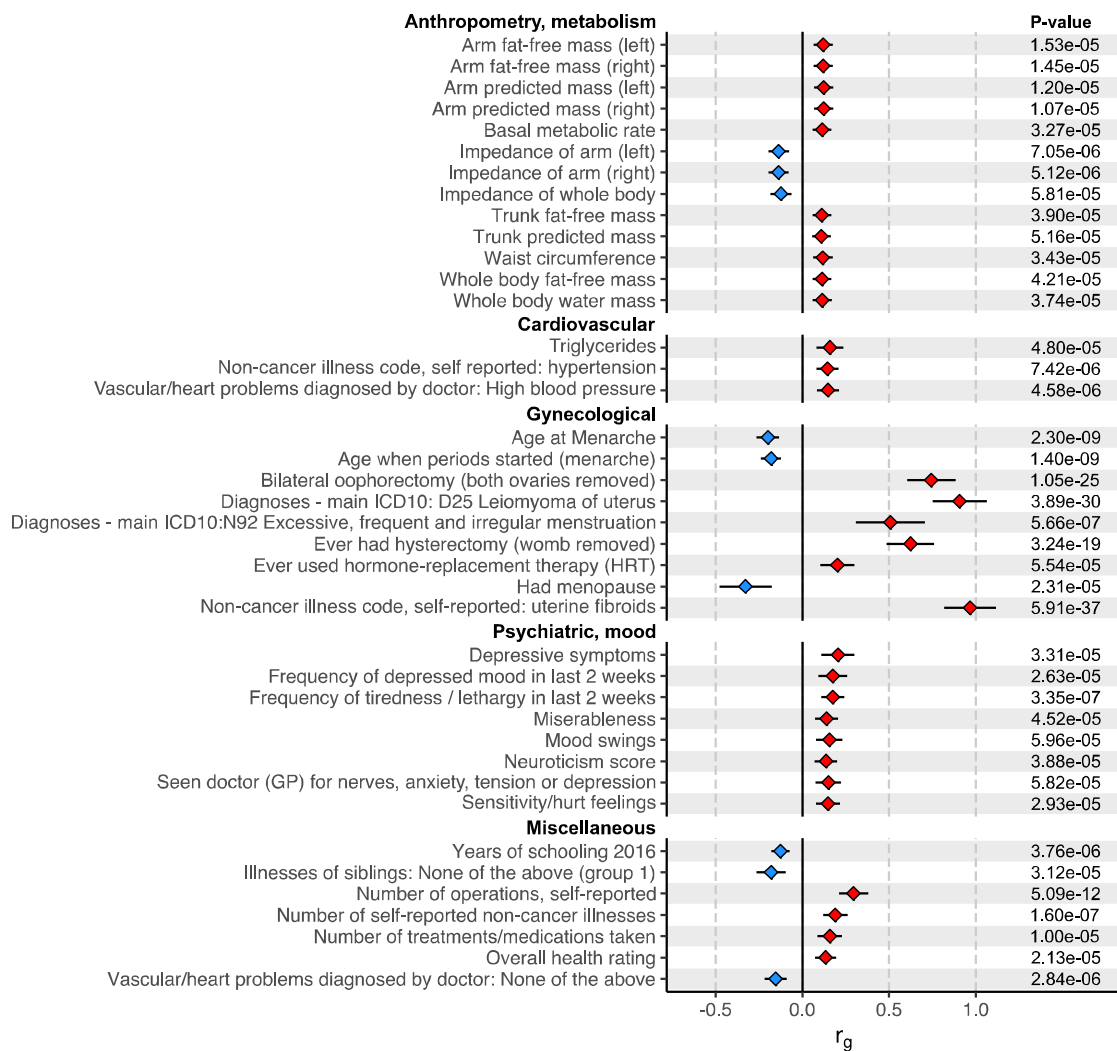
199 **Figure 2. Variant summary and gene set-based results using summary statistics from**
 200 **META-2.**

201 A) The proportions of ‘independent genome-wide significant variants’ and ‘variants in LD
 202 with independent significant variants’ having corresponding functional annotation. Bars are
 203 colored according to $-\log_2(\text{enrichment})$ relative to all variants in the reference panel. B) A
 204 Manhattan plot of the gene-based test computed by MAGMA⁵⁴. The input variants were
 205 mapped to 19,920 protein coding genes and, thus, significance was considered at $p < 2.51 \times 10^{-6}$
 206 ($0.05/19,920$); only 87 genes with p-values below this threshold are plotted. Blue and red
 207 colours indicate odd and even chromosome numbers, respectively. C) MAGMA⁵⁴ gene-set
 208 enrichment analysis was performed for curated gene sets and GO terms available at
 209 MsigDB⁵⁵. The plot shows the results for significantly enriched pathways ($p_{\text{Bonferroni}} < 0.05$).
 210 D) Results of MAGMA⁵⁴ tissue expression analysis testing a positive relationship between
 211 tissue-specific gene expression profiles and disease-gene associations. Tissue-specific gene-
 212 expression data were from GTEx (v8)⁵⁶. All data plotted in Figure 2 A-D were produced
 213 using FUMA⁵⁷.



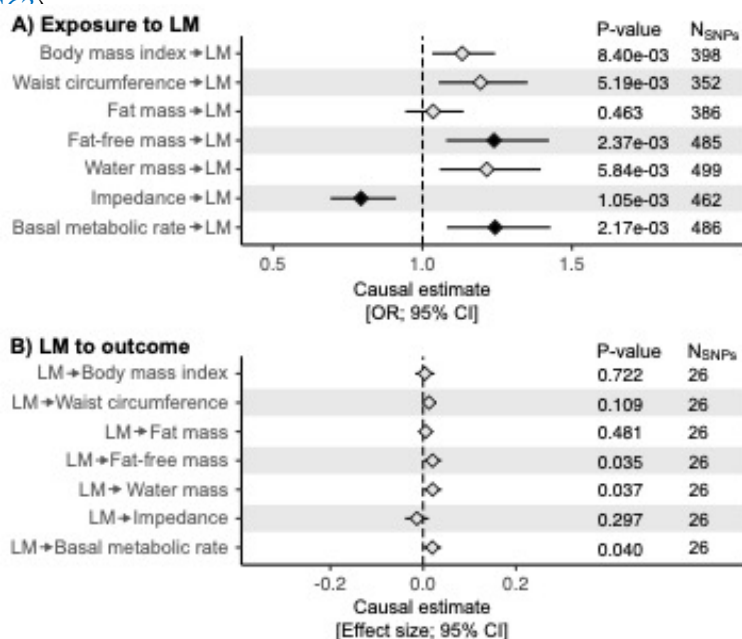
214 **Figure 3. Genetic correlations (r_g) of UL with other traits.**

215 The analyses were completed using an automated LD score regression pipeline available at
 216 <http://ldsc.broadinstitute.org>⁴³. Statistical significance was considered at $p < 6 \times 10^{-5}$ (0.05/830,
 217 where 830 is the number of traits tested). The results of traits that showed significant r_g with
 218 UL are plotted (more results are provided in [Table S8](#)). Traits are named as reported in the
 219 LD Hub output.



220 **Figure 4. Causal relationships between UL and body composition measures.**

221 We estimated causal relationships between UL and the key traits showing significant genetic
 222 correlation with UL using two-sample Mendelian randomization implemented in
 223 ‘TwoSampleMR’ R library^{58,59}. Bi-directional causal estimates were obtained by using
 224 summary statistics provided by the MRC Integrative Epidemiology Unit (IEU) GWAS
 225 database and UL GWAS results obtained in FinnGen in the present study to extract genetic
 226 instruments for other, mostly UKBB-based, traits and UL, respectively. LD pruning was
 227 completed using European population reference, threshold of $r^2=0.001$, and clumping
 228 window of 10kb. Statistical significance was considered at $p < 3 \times 10^{-3}$ (0.05/19, where 19 is the
 229 number of traits tested; black diamonds). The plot shows the causal estimates obtained using
 230 inverse variance weighted method for key body composition measures (more results are
 231 provided in [Table S9](#); the scatter plots for the body composition measures can be found in
 232 [Figures S43-S49](#), and the results of the leave-one-out sensitivity analyses are shown in
 233 [Figures S50-S56](#).



234 **Methods**

235 *Study populations*

236 **FinnGen** (www.finnngen.fi/en) is a public-private partnership project launched in 2017 with
237 an aim to improve human health through genetic research. The project utilizes genome
238 information from a nationwide network of Finnish biobanks that are linked with digital health
239 records from national hospital discharge (available from 1968), death (1969-), cancer (1953-
240), and medication reimbursement (1995-) registries using the unique national personal
241 identification codes. Ultimately, the data resource will cover roughly 10% of the Finnish
242 population. We studied data from 123,579 female participants (18,060 UL cases and 105,519
243 female controls) from FinnGen Preparatory Phase Data Freeze 5. UL cases were required to
244 have an entry of ICD-10: D25, ICD-9: 218, or ICD-8: 21899, and participants who had no
245 records of these entries were deemed as controls. The Coordinating Ethics Committee of the
246 Hospital District of Helsinki and Uusimaa (HUS) approved the FinnGen study protocol Nr
247 HUS/990/2017.

248 The FinnGen study is approved by Finnish Institute for Health and Welfare (THL), approval
249 number THL/2031/6.02.00/2017, amendments THL/1101/5.05.00/2017,
250 THL/341/6.02.00/2018, THL/2222/6.02.00/2018, THL/283/6.02.00/2019,
251 THL/1721/5.05.00/2019, Digital and population data service agency VRK43431/2017-3,
252 VRK/6909/2018-3, VRK/4415/2019-3 the Social Insurance Institution (KELA) KELA
253 58/522/2017, KELA 131/522/2018, KELA 70/522/2019, KELA 98/522/2019, and Statistics
254 Finland TK-53-1041-17.

255 The Biobank Access Decisions for FinnGen samples and data utilized in FinnGen Data
256 Freeze 5 include: THL Biobank BB2017_55, BB2017_111, BB2018_19, BB_2018_34,
257 BB_2018_67, BB2018_71, BB2019_7, BB2019_8, BB2019_26, Finnish Red Cross Blood
258 Service Biobank 7.12.2017, Helsinki Biobank HUS/359/2017, Auria Biobank AB17-5154,
259 Biobank Borealis of Northern Finland_2017_1013, Biobank of Eastern Finland 1186/2018,
260 Finnish Clinical Biobank Tampere MH0004, Central Finland Biobank 1-2017, and
261 Terveyystalo Biobank STB 2018001.

262 **FibroGENE** is consortium of conventional, population-based and direct-to-consumer cohorts
263 that was assembled to replicate and identify UL risk variants. In the study by Gallagher *et al.*,
264 they studied data from 35,474 UL cases and 267,505 female controls including participants
265 from four population-based cohorts (Women's Genome Health Study, WGHS; Northern
266 Finland Birth Cohort, NFBC; QIMR Berghofer Medical Research Institute, QIMR; the UK
267 Biobank, UKBB) and one direct-to-consumer cohort (23andMe) Detailed descriptions of
268 cohorts and sample selections are available in Supplementary Methods².

269 **The UK Biobank** is a large national and international health resource following the health
270 and wellbeing of 500,000 male and female volunteer participants, enrolled at ages from 40 to
271 69⁶⁰. The study began in 2006 with the aim to follow the participants for at least 30 years
272 thereafter. Information has been collected from participants during recruitment using
273 questionnaires on socioeconomic status, lifestyle, family history and medical history.
274 Participants have also been followed up for cause-specific morbidity and mortality through
275 linkage to disease registries, death registries, and hospital admission records. For this study,
276 altogether 220,936 women of European ancestry were considered. Based on both hospital-
277 linked medical records and self-report (interview with research nurse), women with a history
278 of UL were selected as cases (n=15,184), while controls (n=205,752) had no previous history
279 of UL. Informed consent was obtained from all participants. The UKBB project is approved
280 by the North West Multi-Centre Research Ethics Committee.

281 *Genotyping, imputation, and quality control*

282 In FinnGen, genotyping of the samples was performed using Illumina and Affymetrix arrays
283 (Illumina Inc., San Diego, and Thermo Fisher Scientific, Santa Clara, CA, USA). Sample
284 quality control (QC) was performed to exclude individuals with high genotype missingness
285 (>5%), ambiguous gender, excess heterozygosity ($\pm 4SD$) and non-Finnish ancestry.
286 Regarding variant QC, all variants with low Hardy-Weinberg equilibrium (HWE) p-value
287 ($< 1e-6$), high missingness (>2%) and minor allele count (MAC) < 3 were excluded. Chip
288 genotyped samples were pre-phased with Eagle 2.3.5 with the number of conditioning
289 haplotypes set to 20,000. Genotype imputation was carried out by using the Finnish
290 population-specific SISu v3 reference panel with Beagle 4.1 (version 08Jun17.d8b) as
291 described in the following protocol: dx.doi.org/10.17504/protocols.io.nmndc5e. In post-
292 imputation QC, variants with imputation INFO < 0.6 were excluded.

293 In UK Biobank, genotyping of samples was performed either on the Affymetrix UK BiLEVE
294 or Affymetrix UK Biobank Axiom array. The UK Biobank genotype data passed centralised
295 quality control and was imputed by the UKBB team up to the HRC reference panel⁶¹.

296 *GWAS*

297 The UL GWAS in FinnGen was completed using the Scalable and Accurate Implementation
298 of Generalized (SAIGE) software⁶². The association models were adjusted for age, sex, the
299 first 10 genetic principal components, and genotyping batch, and only variants with minimum
300 allele count of 5 were included in the analysis.

301 Given the extensive relatedness in the UK Biobank data, a linear mixed model (LMM) was
302 utilised for association testing that accounts for population structure and model the related
303 individuals, including genotyping array, age and BMI as covariates as implemented in Bolt-
304 LMM V2.3.

305 *Meta-analyses*

306 Two sets of fixed-effect, inverse-variance weighted meta-analyses (implemented in
307 METAL⁶³) were performed: the results obtained in FinnGen were meta-analyzed with 1) the
308 top 10,000 most significant variants associating with UL in a published GWAS² (META-1)
309 and 2) UL GWAS results obtained in the UKBB. Statistical significance was considered at
310 the standard genome-wide significance level ($p < 5 \times 10^{-8}$). Genomic inflation factor was
311 estimated using an automated LD score (LDSC) regression pipeline⁴³.

312 *Characterization of association signals*

313 We used a web-based platform FUMA⁵⁷ to perform functional annotations of the GWAS
314 results: we completed functional gene mapping and gene-based association and enrichment
315 tests using the genome-wide UL associations from META-2 (FinnGen and UKBB) and
316 predefined lead variants as reported in Table S2. FUMA identifies variants showing genome-
317 wide significant association ($p < 5 \times 10^{-8}$) with the study trait and, among the significant
318 variants, identifies variants in low LD ($r^2 < 0.6$) as ‘independent significant variants’ and
319 further identifies variants in LD ($r^2 > 0.6$) with the ‘independent significant variants’;
320 ANNOVAR⁶⁴ annotations are performed for all these variants to obtain information on the
321 functional consequences of the key variants. MAGMA⁵⁴, also implemented in FUMA, was
322 used to perform gene-based association testing and gene-set enrichment analyses: gene-based
323 p-values were computed for protein-coding genes by mapping variants to genes and
324 subsequent enrichment analyses were performed for the significant genes using 4728 curated
325 gene sets and 6166 GO terms as reported in MsigDB⁵⁵.

326 To further characterize the potential UL candidate gene(s) according to biological relevance,
327 we annotated all genes within $\pm 1\text{Mb}$ window from the association lead variant. We explored
328 information provided by GenBank³⁷ and UniProt⁶⁵ to determine functions of the genes. To
329 complement the information available in these databases, a broad literature search was
330 performed to identify previous work published regarding to the genes of interest.

331 In each locus, we explored the associations of the lead variant with gene expression levels in
332 the Genotype-Tissue Expression (GTEx) Portal; GTEx was accessed during 02/10/2021-
333 02/11/2021. To further test if altered gene expression mediates UL risk associations, we used
334 a method proposed by Zhu *et al.*⁶⁶ as implemented in Complex Traits Genetics Virtual Lab
335 (CTG-VL)⁶⁷; we performed these tests using genome-wide UL results from META-2 and
336 tissue-specific gene expression data (GTEx, V7) for uterus and whole blood. We further used
337 RegulomeDB³³ to discover regulatory elements overlapping with the intergenic variants in
338 the novel loci showing genome-wide significant association with UL risk. Here, significant
339 results for the novel loci are reported.

340 *SNP-based heritability and genetic correlations*

341 The SNP-based heritability (h^2_{SNP}) of UL was estimated using LDSC regression implemented
342 in LDSC software⁶⁸. Population prevalence of 0.30 (as in ²) and sample prevalence of 0.11
343 were used to estimate h^2_{SNP} on liability scale. We further applied LDSC to estimate genetic
344 correlation (r_g) of UL with other traits using LD Hub⁴³, a web interface for performing
345 automated LDSC regression. As recommended, we excluded the major histocompatibility
346 complex region from the analyses⁴³. We tested r_g between UL and all 830 traits available in
347 the LD Hub database and, thus, statistical significance was considered at $p < 6 \times 10^{-5}$
348 (0.05/830).

349 *Mendelian randomization*

350 To test for causal inferences between UL and the key traits showing significant r_g with UL,
351 we performed bi-directional two-sample Mendelian randomization. These analyses were
352 completed using ‘TwoSampleMR’ R library⁵⁸ (<https://mrcieu.github.io/TwoSampleMR/>). To
353 avoid possible bias from overlapping samples, we extracted genetic instruments for UL from
354 the GWAS results obtained in FinnGen, and for other traits from the GWAS database
355 provided by the MRC Integrative Epidemiology Unit (IEU) available at
356 <https://gwas.mrcieu.ac.uk/> and integrated in TwoSampleMR. LD pruning was completed
357 using European population reference, threshold of $r^2 = 0.001$, and clumping window of 10kb,
358 as set as default in ‘clump_data’ function; the numbers of SNPs available for the analyses are
359 listed in [Table S9](#). Inverse variance weighted (IVW) method was considered as a primary
360 analysis, and MR Egger estimates were derived in sensitivity analyses: the estimates were
361 required to be to a matching direction with the IVW-estimates and Egger intercepts were
362 evaluated to assess horizontal pleiotropy. Cochran’s Q statistics were derived using
363 ‘mr_heterogeneity’ function to test for heterogeneity. To screen for highly influential variants
364 that could drive the association for example due to horizontal pleiotropy, we performed
365 leave-one-out analyses using ‘mr_leaveoneout’ function. Statistical significance for the
366 causal effects was considered at $p < 3 \times 10^{-3}$ (0.05/19) to correct for 19 traits tested.

367 **Acknowledgements and funding**

368 The work was supported through The Sigrid Juselius Foundation (JK) and funds from the
369 Academy of Finland [grant numbers 297338 and 307247](JK), Novo Nordisk Foundation
370 [grant number NNF17OC0026062] (JK), and The Finnish Medical Association (OU).

371 The FinnGen project is funded by two grants from Business Finland (HUS 4685/31/2016 and
372 UH 4386/31/2016) and eleven industry partners (AbbVie Inc, AstraZeneca UK Ltd, Biogen
373 MA Inc, Celgene Corporation, Celgene International II Sàrl, Genentech Inc, Merck Sharp &
374 Dohme Corp, Pfizer Inc., GlaxoSmithKline, Sanofi, Maze Therapeutics Inc., Janssen Biotech
375 Inc). Following biobanks are acknowledged for delivering biobank samples to FinnGen:
376 Auria Biobank (www.auria.fi/biopankki), THL Biobank (www.thl.fi/biobank), Helsinki
377 Biobank (www.helsinginbiopankki.fi), Biobank Borealis of Northern Finland
378 ([https://www.ppsHP.fi/Tutkimus-ja-opetus/Biopankki/Pages/Biobank-Borealis-briefly-in-](https://www.ppsHP.fi/Tutkimus-ja-opetus/Biopankki/Pages/Biobank-Borealis-briefly-in-English.aspx)
379 [English.aspx](https://www.ppsHP.fi/Tutkimus-ja-opetus/Biopankki/Pages/Biobank-Borealis-briefly-in-English.aspx)), Finnish Clinical Biobank Tampere ([www.tays.fi/en-](http://www.tays.fi/en-US/Research%20and%20development/Finnish%20Clinical%20Biobank%20Tampere)
380 [US/Research and development/Finnish Clinical Biobank Tampere](http://www.tays.fi/en-US/Research%20and%20development/Finnish%20Clinical%20Biobank%20Tampere)), Biobank of Eastern
381 Finland (www.ita-suomenbiopankki.fi/en), Central Finland Biobank ([www.ksshp.fi/fi-](http://www.ksshp.fi/fi-FI/Potilaille/Biopankki)
382 [FI/Potilaille/Biopankki](http://www.ksshp.fi/fi-FI/Potilaille/Biopankki)), Finnish Red Cross Blood Service Biobank
383 (www.veripalvelu.fi/verenluovutus/biopankkitoiminta) and Terveystalo Biobank
384 (www.terveystalo.com/fi/Yritystietoa/Terveystalo-Biopankki/Biopankki/). All Finnish
385 Biobanks are members of BBMRI.fi infrastructure (www.bbmri.fi).

386 This research has been conducted using data from UK Biobank, a major biomedical database,
387 (<http://www.ukbiobank.ac.uk/>) under project ID 9637 (Gallagher et al., 2019).

388 The Genotype-Tissue Expression (GTEx) Project was supported by the Common Fund of the
389 Office of the Director of the National Institutes of Health, and by NCI, NHGRI, NHLBI,
390 NIDA, NIMH, and NINDS. The data used for the analyses described in this manuscript were
391 obtained from the GTEx Portal on 02/10/2021-02/11/2021.

392 **Author contributions**

393 OU conceptualized the study. ES, NR, KTZ, CMB, and JK contributed to the analysis plan.
394 ES, JT and NR analyzed data and generated results. ES, JT, NR, KTZ, and OU interpreted
395 the results. ES and OU wrote the original manuscript. JK supervised the study, obtained
396 funding and provided additional study resources. All authors contributed to revising the
397 content of the manuscript and approved the final version.

398 **Competing interests**

399 KTZ: Competing financial interests: Scientific collaborations (grant funding) with Bayer AG,
400 Roche Diagnostics Inc, MDNA Life Sciences, and Evotec. Competing non-financial
401 interests: Board memberships of the World Endometriosis Society, World Endometriosis
402 Research Foundation, and research advisory committee member of Wellbeing of Women
403 UK.

404 CMB: Competing financial interests: Scientific collaborations (grant funding) with Bayer
405 AG, Roche Diagnostics Inc, MDNA Life Sciences, and Evotec. Scientific board Myovant;
406 IDDM Member ObsEva. Competing non-financial interests: Chair ESHRE Endometriosis
407 Guideline Development Group.

408 References

- 409 1 Baird, D. D., Dunson, D. B., Hill, M. C., Cousins, D. & Schectman, J. M. High cumulative
410 incidence of uterine leiomyoma in black and white women: ultrasound evidence. *Am. J.*
411 *Obstet. Gynecol.* **188**, 100-107 (2003).
- 412 2 Gallagher, C. S. *et al.* Genome-wide association and epidemiological analyses reveal
413 common genetic origins between uterine leiomyomata and endometriosis. *Nat Commun* **10**,
414 4857, doi:10.1038/s41467-019-12536-4 (2019).
- 415 3 Abdul Ghaffar, N. A., Ismail, M. P., Nik Mahmood, N. M., Daud, K. & Abu Dzarr, G. A.
416 Huge uterine fibroid in a postmenopausal woman associated with polycythaemia: a case
417 report. *Maturitas* **60**, 177-179, doi:10.1016/j.maturitas.2008.03.013 (2008).
- 418 4 Stewart, E. A. *et al.* Uterine fibroids. *Nat Rev Dis Primers* **2**, 16043,
419 doi:10.1038/nrdp.2016.43 (2016).
- 420 5 Stewart, E. A., Cookson, C. L., Gandolfo, R. A. & Schulze-Rath, R. Epidemiology of uterine
421 fibroids: a systematic review. *BJOG* **124**, 1501-1512, doi:10.1111/1471-0528.14640 (2017).
- 422 6 Pavone, D., Clemenza, S., Sorbi, F., Fambrini, M. & Petraglia, F. Epidemiology and Risk
423 Factors of Uterine Fibroids. *Best Pract. Res. Clin. Obstet. Gynaecol.* **46**, 3-11,
424 doi:10.1016/j.bpobgyn.2017.09.004 (2018).
- 425 7 Van Voorhis, B. J., Romitti, P. A. & Jones, M. P. Family history as a risk factor for
426 development of uterine leiomyomas. Results of a pilot study. *J. Reprod. Med.* **47**, 663-669
427 (2002).
- 428 8 Luoto, R. *et al.* Heritability and risk factors of uterine fibroids--the Finnish Twin Cohort
429 study. *Maturitas* **37**, 15-26 (2000).
- 430 9 Treloar, S. A., Martin, N. G., Dennerstein, L., Raphael, B. & Heath, A. C. Pathways to
431 hysterectomy: insights from longitudinal twin research. *Am. J. Obstet. Gynecol.* **167**, 82-88,
432 doi:10.1016/s0002-9378(11)91632-9 (1992).
- 433 10 Wise, L. A. *et al.* African ancestry and genetic risk for uterine leiomyomata. *Am. J.*
434 *Epidemiol.* **176**, 1159-1168, doi:10.1093/aje/kws276 (2012).
- 435 11 Mehine, M., Makinen, N., Heinonen, H. R., Aaltonen, L. A. & Vahteristo, P. Genomics of
436 uterine leiomyomas: insights from high-throughput sequencing. *Fertil. Steril.* **102**, 621-629,
437 doi:10.1016/j.fertnstert.2014.06.050 (2014).
- 438 12 Cha, P. C. *et al.* A genome-wide association study identifies three loci associated with
439 susceptibility to uterine fibroids. *Nat. Genet.* **43**, 447-450, doi:10.1038/ng.805 (2011).
- 440 13 Eggert, S. L. *et al.* Genome-wide linkage and association analyses implicate FASN in
441 predisposition to Uterine Leiomyomata. *Am. J. Hum. Genet.* **91**, 621-628,
442 doi:10.1016/j.ajhg.2012.08.009 (2012).
- 443 14 Hellwege, J. N. *et al.* A multi-stage genome-wide association study of uterine fibroids in
444 African Americans. *Hum. Genet.* **136**, 1363-1373, doi:10.1007/s00439-017-1836-1 (2017).
- 445 15 Valimaki, N. *et al.* Genetic predisposition to uterine leiomyoma is determined by loci for
446 genitourinary development and genome stability. *Elife* **7**, doi:10.7554/eLife.37110 (2018).
- 447 16 Rafnar, T. *et al.* Variants associating with uterine leiomyoma highlight genetic background
448 shared by various cancers and hormone-related traits. *Nat Commun* **9**, 3636,
449 doi:10.1038/s41467-018-05428-6 (2018).
- 450 17 Sakai, K. *et al.* Identification of a novel uterine leiomyoma GWAS locus in a Japanese
451 population. *Sci. Rep.* **10**, 1197, doi:10.1038/s41598-020-58066-8 (2020).
- 452 18 Sepulveda, P. V., Bush, E. D. & Baar, K. Pharmacology of manipulating lean body mass.
453 *Clin. Exp. Pharmacol. Physiol.* **42**, 1-13, doi:10.1111/1440-1681.12320 (2015).

- 454 19 Ono, M. *et al.* Paracrine activation of WNT/beta-catenin pathway in uterine leiomyoma stem
455 cells promotes tumor growth. *Proc. Natl. Acad. Sci. U. S. A.* **110**, 17053-17058,
456 doi:10.1073/pnas.1313650110 (2013).
- 457 20 Willert, K. & Nusse, R. Wnt proteins. *Cold Spring Harb. Perspect. Biol.* **4**, a007864,
458 doi:10.1101/cshperspect.a007864 (2012).
- 459 21 Borahay, M. A. *et al.* Estrogen Receptors and Signaling in Fibroids: Role in Pathobiology and
460 Therapeutic Implications. *Reprod. Sci.* **24**, 1235-1244, doi:10.1177/1933719116678686
461 (2017).
- 462 22 Massaad-Massade, L. *et al.* HMGA1 enhances the transcriptional activity and binding of the
463 estrogen receptor to its responsive element. *Biochemistry* **41**, 2760-2768,
464 doi:10.1021/bi011455j (2002).
- 465 23 Dhamad, A. E., Zhou, Z., Zhou, J. & Du, Y. Systematic Proteomic Identification of the Heat
466 Shock Proteins (Hsp) that Interact with Estrogen Receptor Alpha (ERalpha) and Biochemical
467 Characterization of the ERalpha-Hsp70 Interaction. *PLoS One* **11**, e0160312,
468 doi:10.1371/journal.pone.0160312 (2016).
- 469 24 Prossnitz, E. R. *et al.* Estrogen signaling through the transmembrane G protein-coupled
470 receptor GPR30. *Annu. Rev. Physiol.* **70**, 165-190,
471 doi:10.1146/annurev.physiol.70.113006.100518 (2008).
- 472 25 Ciarmela, P. *et al.* Growth factors and myometrium: biological effects in uterine fibroid and
473 possible clinical implications. *Hum. Reprod. Update* **17**, 772-790,
474 doi:10.1093/humupd/dmr031 (2011).
- 475 26 Peng, L. *et al.* Expression of insulin-like growth factors (IGFs) and IGF signaling: molecular
476 complexity in uterine leiomyomas. *Fertil. Steril.* **91**, 2664-2675,
477 doi:10.1016/j.fertnstert.2007.10.083 (2009).
- 478 27 Perrot, V. & Rechler, M. M. The coactivator p300 directly acetylates the forkhead
479 transcription factor Foxo1 and stimulates Foxo1-induced transcription. *Mol. Endocrinol.* **19**,
480 2283-2298, doi:10.1210/me.2004-0292 (2005).
- 481 28 Guo, S. *et al.* Phosphorylation of serine 256 by protein kinase B disrupts transactivation by
482 FKHR and mediates effects of insulin on insulin-like growth factor-binding protein-1
483 promoter activity through a conserved insulin response sequence. *J. Biol. Chem.* **274**, 17184-
484 17192, doi:10.1074/jbc.274.24.17184 (1999).
- 485 29 Lewis, T. D. *et al.* Ulipristal acetate decreases active TGF-beta3 and its canonical signaling in
486 uterine leiomyoma via two novel mechanisms. *Fertil. Steril.* **111**, 806-815 e801,
487 doi:10.1016/j.fertnstert.2018.12.026 (2019).
- 488 30 Chen, J., Kitchen, C. M., Streb, J. W. & Miano, J. M. Myocardin: a component of a molecular
489 switch for smooth muscle differentiation. *J. Mol. Cell. Cardiol.* **34**, 1345-1356,
490 doi:10.1006/jmcc.2002.2086 (2002).
- 491 31 Liao, X. H. *et al.* ERalpha inhibited myocardin-induced differentiation in uterine fibroids.
492 *Exp. Cell Res.* **350**, 73-82, doi:10.1016/j.yexcr.2016.11.007 (2017).
- 493 32 Zhao, J. *et al.* MYOSLID Is a Novel Serum Response Factor-Dependent Long Noncoding
494 RNA That Amplifies the Vascular Smooth Muscle Differentiation Program. *Arterioscler.*
495 *Thromb. Vasc. Biol.* **36**, 2088-2099, doi:10.1161/ATVBAHA.116.307879 (2016).
- 496 33 Boyle, A. P. *et al.* Annotation of functional variation in personal genomes using
497 RegulomeDB. *Genome Res.* **22**, 1790-1797, doi:10.1101/gr.137323.112 (2012).
- 498 34 Raimundo, N., Vanharanta, S., Aaltonen, L. A., Hovatta, I. & Suomalainen, A.
499 Downregulation of SRF-FOS-JUNB pathway in fumarate hydratase deficiency and in uterine
500 leiomyomas. *Oncogene* **28**, 1261-1273, doi:10.1038/onc.2008.472 (2009).

- 501 35 Edwards, T. L., Hartmann, K. E. & Velez Edwards, D. R. Variants in BET1L and TNRC6B
502 associate with increasing fibroid volume and fibroid type among European Americans. *Hum.*
503 *Genet.* **132**, 1361-1369, doi:10.1007/s00439-013-1340-1 (2013).
- 504 36 Masuda, T. *et al.* GWAS of five gynecologic diseases and cross-trait analysis in Japanese.
505 *Eur. J. Hum. Genet.* **28**, 95-107, doi:10.1038/s41431-019-0495-1 (2020).
- 506 37 Clark, K., Karsch-Mizrachi, I., Lipman, D. J., Ostell, J. & Sayers, E. W. GenBank. *Nucleic*
507 *Acids Res.* **44**, D67-72, doi:10.1093/nar/gkv1276 (2016).
- 508 38 Mehine, M. *et al.* Integrated data analysis reveals uterine leiomyoma subtypes with distinct
509 driver pathways and biomarkers. *Proc. Natl. Acad. Sci. U. S. A.* **113**, 1315-1320,
510 doi:10.1073/pnas.1518752113 (2016).
- 511 39 Kimura, Y., Morita, T., Hayashi, K., Miki, T. & Sobue, K. Myocardin functions as an
512 effective inducer of growth arrest and differentiation in human uterine leiomyosarcoma cells.
513 *Cancer Res.* **70**, 501-511, doi:10.1158/0008-5472.CAN-09-1469 (2010).
- 514 40 Markowski, D. N. *et al.* HMGA2 and the p19Arf-TP53-CDKN1A axis: a delicate balance in
515 the growth of uterine leiomyomas. *Genes Chromosomes Cancer* **49**, 661-668,
516 doi:10.1002/gcc.20777 (2010).
- 517 41 Staley, J. R. *et al.* PhenoScanner: a database of human genotype-phenotype associations.
518 *Bioinformatics* **32**, 3207-3209, doi:10.1093/bioinformatics/btw373 (2016).
- 519 42 Kamat, M. A. *et al.* PhenoScanner V2: an expanded tool for searching human genotype-
520 phenotype associations. *Bioinformatics* **35**, 4851-4853, doi:10.1093/bioinformatics/btz469
521 (2019).
- 522 43 Zheng, J. *et al.* LD Hub: a centralized database and web interface to perform LD score
523 regression that maximizes the potential of summary level GWAS data for SNP heritability
524 and genetic correlation analysis. *Bioinformatics* **33**, 272-279,
525 doi:10.1093/bioinformatics/btw613 (2017).
- 526 44 Marshall, L. M. *et al.* Risk of uterine leiomyomata among premenopausal women in relation
527 to body size and cigarette smoking. *Epidemiology* **9**, 511-517 (1998).
- 528 45 Wise, L. A. *et al.* Influence of body size and body fat distribution on risk of uterine
529 leiomyomata in U.S. black women. *Epidemiology* **16**, 346-354 (2005).
- 530 46 Lee, J. E. *et al.* Weight change and risk of uterine leiomyomas: Korea Nurses' Health Study.
531 *Curr. Med. Res. Opin.* **34**, 1913-1919, doi:10.1080/03007995.2018.1462783 (2018).
- 532 47 Bakas, P. *et al.* Estrogen receptor alpha and beta in uterine fibroids: a basis for altered
533 estrogen responsiveness. *Fertil. Steril.* **90**, 1878-1885, doi:10.1016/j.fertnstert.2007.09.019
534 (2008).
- 535 48 Valladares, F. *et al.* Characterization of estrogen receptors alpha and beta in uterine
536 leiomyoma cells. *Fertil. Steril.* **86**, 1736-1743, doi:10.1016/j.fertnstert.2006.05.047 (2006).
- 537 49 Sipila, S. & Poutamo, J. Muscle performance, sex hormones and training in peri-menopausal
538 and post-menopausal women. *Scand. J. Med. Sci. Sports* **13**, 19-25, doi:10.1034/j.1600-
539 0838.2003.20210.x (2003).
- 540 50 Wood, C. L., Lane, L. C. & Cheetham, T. Puberty: Normal physiology (brief overview). *Best*
541 *Pract. Res. Clin. Endocrinol. Metab.* **33**, 101265, doi:10.1016/j.beem.2019.03.001 (2019).
- 542 51 Barros, R. P. & Gustafsson, J. A. Estrogen receptors and the metabolic network. *Cell Metab*
543 **14**, 289-299, doi:10.1016/j.cmet.2011.08.005 (2011).
- 544 52 Chidi-Ogbolu, N. & Baar, K. Effect of Estrogen on Musculoskeletal Performance and Injury
545 Risk. *Front. Physiol.* **9**, 1834, doi:10.3389/fphys.2018.01834 (2018).

- 546 53 Velders, M. & Diel, P. How sex hormones promote skeletal muscle regeneration. *Sports Med.*
547 **43**, 1089-1100, doi:10.1007/s40279-013-0081-6 (2013).
- 548 54 de Leeuw, C. A., Mooij, J. M., Heskes, T. & Posthuma, D. MAGMA: generalized gene-set
549 analysis of GWAS data. *PLoS Comput. Biol.* **11**, e1004219,
550 doi:10.1371/journal.pcbi.1004219 (2015).
- 551 55 Liberzon, A. *et al.* Molecular signatures database (MSigDB) 3.0. *Bioinformatics* **27**, 1739-
552 1740, doi:10.1093/bioinformatics/btr260 (2011).
- 553 56 Consortium, G. T. The Genotype-Tissue Expression (GTEx) project. *Nat. Genet.* **45**, 580-585,
554 doi:10.1038/ng.2653 (2013).
- 555 57 Watanabe, K., Taskesen, E., van Bochoven, A. & Posthuma, D. Functional mapping and
556 annotation of genetic associations with FUMA. *Nat Commun* **8**, 1826, doi:10.1038/s41467-
557 017-01261-5 (2017).
- 558 58 Hemani, G. *et al.* The MR-Base platform supports systematic causal inference across the
559 human phenome. *Elife* **7**, doi:10.7554/eLife.34408 (2018).
- 560 59 Hemani, G., Tilling, K. & Davey Smith, G. Orienting the causal relationship between
561 imprecisely measured traits using GWAS summary data. *PLoS genetics* **13**, e1007081,
562 doi:10.1371/journal.pgen.1007081 (2017).
- 563 60 Sudlow, C. *et al.* UK biobank: an open access resource for identifying the causes of a wide
564 range of complex diseases of middle and old age. *PLoS Med.* **12**, e1001779,
565 doi:10.1371/journal.pmed.1001779 (2015).
- 566 61 Bycroft, C. *et al.* The UK Biobank resource with deep phenotyping and genomic data. *Nature*
567 **562**, 203-209, doi:10.1038/s41586-018-0579-z (2018).
- 568 62 Zhou, W. *et al.* Efficiently controlling for case-control imbalance and sample relatedness in
569 large-scale genetic association studies. *Nat. Genet.* **50**, 1335-1341, doi:10.1038/s41588-018-
570 0184-y (2018).
- 571 63 Willer, C. J., Li, Y. & Abecasis, G. R. METAL: fast and efficient meta-analysis of
572 genomewide association scans. *Bioinformatics* **26**, 2190-2191,
573 doi:10.1093/bioinformatics/btq340 (2010).
- 574 64 Wang, K., Li, M. & Hakonarson, H. ANNOVAR: functional annotation of genetic variants
575 from high-throughput sequencing data. *Nucleic Acids Res.* **38**, e164, doi:10.1093/nar/gkq603
576 (2010).
- 577 65 UniProt, C. UniProt: a worldwide hub of protein knowledge. *Nucleic Acids Res.* **47**, D506-
578 D515, doi:10.1093/nar/gky1049 (2019).
- 579 66 Zhu, Z. *et al.* Integration of summary data from GWAS and eQTL studies predicts complex
580 trait gene targets. *Nat. Genet.* **48**, 481-487, doi:10.1038/ng.3538 (2016).
- 581 67 Cuéllar-Partida, G. *et al.* Complex-Traits Genetics Virtual Lab: A community-driven web
582 platform for post-GWAS analyses. *bioRxiv*, 518027, doi:10.1101/518027 (2019).
- 583 68 Bulik-Sullivan, B. K. *et al.* LD Score regression distinguishes confounding from polygenicity
584 in genome-wide association studies. *Nat. Genet.* **47**, 291-295, doi:10.1038/ng.3211 (2015).
585
586

587 **Contributors of FinnGen**

588 **Steering Committee**

589 Aarno Palotie Institute for Molecular Medicine Finland, HiLIFE, University of Helsinki, Finland
590 Mark Daly Institute for Molecular Medicine Finland, HiLIFE, University of Helsinki, Finland

591

592 **Pharmaceutical companies**

593 Bridget Riley-Gills Abbvie, Chicago, IL, United States
594 Howard Jacob Abbvie, Chicago, IL, United States
595 Dirk Paul Astra Zeneca, Cambridge, United Kingdom
596 Heiko Runz Biogen, Cambridge, MA, United States
597 Sally John Biogen, Cambridge, MA, United States
598 Robert Plenge Celgene, Summit, NJ, United States/Bristol Myers Squibb, New York, NY, United States
599 Joseph Maranville Celgene, Summit, NJ, United States/Bristol Myers Squibb, New York, NY, United States
600 Mark McCarthy Genentech, San Francisco, CA, United States
601 Julie Hunkapiller Genentech, San Francisco, CA, United States
602 Meg Ehm GlaxoSmithKline, Brentford, United Kingdom
603 Kirsi Auro GlaxoSmithKline, Brentford, United Kingdom
604 Simonne Longereich Merck, Kenilworth, NJ, United States
605 Caroline Fox Merck, Kenilworth, NJ, United States
606 Anders Mälarstig Pfizer, New York, NY, United States
607 Katherine Klingner Sanofi, Paris, France
608 Deepak Raipal Sanofi, Paris, France
609 Eric Green Maze Therapeutics, San Francisco, CA, United States
610 Robert Graham Maze Therapeutics, San Francisco, CA, United States
611 Robert Yang Janssen Biotech, Beerse, Belgium
612 Chris O'Donnell Novartis, Basel, Switzerland

613

614 **University of Helsinki & Biobanks**

615 Tomi Mäkelä HiLIFE, University of Helsinki, Finland, Finland
616 Jaakko Kaprio Institute for Molecular Medicine Finland, HiLIFE, Helsinki, Finland, Finland
617 Petri Virolainen Auria Biobank / University of Turku / Hospital District of Southwest Finland, Turku, Finland
618 Antti Hakanen Auria Biobank / University of Turku / Hospital District of Southwest Finland, Turku, Finland
619 Terhi Kilpi THL Biobank / The National Institute of Health and Welfare Helsinki, Finland
620 Markus Perola THL Biobank / The National Institute of Health and Welfare Helsinki, Finland
621 Jukka Partanen Finnish Red Cross Blood Service / Finnish Hematology Registry and Clinical Biobank,
622 Helsinki, Finland
623 Anne Pitkäranta Helsinki Biobank / Helsinki University and Hospital District of Helsinki and Uusimaa,
624 Helsinki
625 Juhani Junttila Northern Finland Biobank Borealis / University of Oulu / Northern Ostrobothnia Hospital
626 District, Oulu, Finland
627 Raisa Serpi Northern Finland Biobank Borealis / University of Oulu / Northern Ostrobothnia Hospital
628 District, Oulu, Finland
629 Tarja Laitinen Finnish Clinical Biobank Tampere / University of Tampere / Pirkanmaa Hospital District,
630 Tampere, Finland
631 Veli-Matti Kosma Biobank of Eastern Finland / University of Eastern Finland / Northern Savo Hospital District,
632 Kuopio, Finland
633 Urho Kujala Central Finland Biobank / University of Jyväskylä / Central Finland Health Care District,
634 Jyväskylä, Finland
635 Marco Hautalahti FINBB - Finnish biobank cooperative

636

637 **Other Experts/ Non-Voting Members**

638 Outi Tuovila Business Finland, Helsinki, Finland
639 Raimo Pakkanen Business Finland, Helsinki, Finland

640

641 **Scientific Committee**

642 **Pharmaceutical companies**

643 Jeffrey Waring Abbvie, Chicago, IL, United States
644 Bridget Riley-Gillis Abbvie, Chicago, IL, United States
645 Ioanna Tachmazidou Astra Zeneca, Cambridge, United Kingdom
646 Chia-Yen Chen Biogen, Cambridge, MA, United States
647 Heiko Runz Biogen, Cambridge, MA, United States
648 Shameek Biswas Celgene, Summit, NJ, United States/Bristol Myers Squibb, New York, NY, United States
649 Sarah Pendergrass Genentech, San Francisco, CA, United States
650 Julie Hunkapiller Genentech, San Francisco, CA, United States
651 Meg Ehm GlaxoSmithKline, Brentford, United Kingdom
652 David Pulford GlaxoSmithKline, Brentford, United Kingdom
653 Neha Raghavan Merck, Kenilworth, NJ, United States

654	Adriana Huertas-Vazquez	Merck, Kenilworth, NJ, United States
655	Jae-Hoon Sul	Merck, Kenilworth, NJ, United States
656	Anders Mälarstig	Pfizer, New York, NY, United States
657	Xinli Hu	Pfizer, New York, NY, United States
658	Katherine Klinger	Sanofi, Paris, France
659	Matthias Gossel	Sanofi, Paris, France
660	Robert Graham	Maze Therapeutics, San Francisco, CA, United States
661	Eric Green	Maze Therapeutics, San Francisco, CA, United States
662	Sahar Mozaffari	Maze Therapeutics, San Francisco, CA, United States
663	Dawn Waterworth	Janssen Research & Development, LLC, Spring House, PA, United States
664	Nicole Renaud	Novartis, Basel, Switzerland
665	Ma'en Obeidat	Novartis, Basel, Switzerland
666		
667	University of Helsinki & Biobanks	
668	Samuli Ripatti	Institute for Molecular Medicine Finland, HiLIFE, Helsinki, Finland
669	Johanna Schleutker	Auria Biobank / Univ. of Turku / Hospital District of Southwest Finland, Turku, Finland
670	Markus Perola	THL Biobank / The National Institute of Health and Welfare Helsinki, Finland
671	Mikko Arvas	Finnish Red Cross Blood Service / Finnish Hematology Registry and Clinical Biobank,
672	Helsinki, Finland	
673	Olli Carpén	Helsinki Biobank / Helsinki University and Hospital District of Helsinki and Uusimaa,
674	Helsinki	
675	Reetta Hinttala	Northern Finland Biobank Borealis / University of Oulu / Northern Ostrobothnia Hospital
676	District, Oulu, Finland	
677	Johannes Kettunen	Northern Finland Biobank Borealis / University of Oulu / Northern Ostrobothnia Hospital
678	District, Oulu, Finland	
679	Arto Mannermaa	Biobank of Eastern Finland / University of Eastern Finland / Northern Savo Hospital District,
680	Kuopio, Finland	
681	Katriina Aalto-Setälä	Finnish Clinical Biobank Tampere / University of Tampere / Pirkanmaa Hospital District,
682	Tampere, Finland	
683	Jari Laukkanen	Central Finland Biobank / University of Jyväskylä / Central Finland Health Care District,
684	Jyväskylä, Finland	
685	Urho Kujala	Central Finland Biobank / University of Jyväskylä / Central Finland Health Care District,
686	Jyväskylä, Finland	
687	Johanna Mäkelä	FINBB - Finnish biobank cooperative
688		
689	Clinical Groups	
690	Neurology Group	
691	Reetta Kälviäinen	Northern Savo Hospital District, Kuopio, Finland
692	Valteri Julkunen	Northern Savo Hospital District, Kuopio, Finland
693	Hilkka Soinen	Northern Savo Hospital District, Kuopio, Finland
694	Anne Remes	Northern Ostrobothnia Hospital District, Oulu, Finland
695	Mikko Hiltunen	Northern Savo Hospital District, Kuopio, Finland
696	Jukka Peltola	Pirkanmaa Hospital District, Tampere, Finland
697	Minna Raivio	Hospital District of Helsinki and Uusimaa, Helsinki, Finland
698	Pentti Tienari	Hospital District of Helsinki and Uusimaa, Helsinki, Finland
699	Juha Rinne	Hospital District of Southwest Finland, Turku, Finland
700	Roosa Kallionpää	Hospital District of Southwest Finland, Turku, Finland
701	Juulia Partanen	Institute for Molecular Medicine Finland, HiLIFE, University of Helsinki, Finland
702	Ali Abbasi	Abbvie, Chicago, IL, United States
703	Adam Ziemann	Abbvie, Chicago, IL, United States
704	Jeffrey Waring	Abbvie, Chicago, IL, United States
705	Sahar Esmaeeli	Abbvie, Chicago, IL, United States
706	Nizar Smaoui	Abbvie, Chicago, IL, United States
707	Anne Lehtonen	Abbvie, Chicago, IL, United States
708	Susan Eaton	Biogen, Cambridge, MA, United States
709	Heiko Runz	Biogen, Cambridge, MA, United States
710	Sanni Lahdenperä	Biogen, Cambridge, MA, United States
711	Janet van Adelsberg	Celgene, Summit, NJ, United States/ Bristol Myers Squibb, New York, NY, United States
712	Shameek Biswas	Celgene, Summit, NJ, United States/ Bristol Myers Squibb, New York, NY, United States
713	Julie Hunkapiller	Genentech, San Francisco, CA, United States
714	Natalie Bowers	Genentech, San Francisco, CA, United States
715	Edmond Teng	Genentech, San Francisco, CA, United States
716	Sarah Pendergrass	Genentech, San Francisco, CA, United States
717	Fanli Xu	GlaxoSmithKline, Brentford, United Kingdom
718	David Pulford	GlaxoSmithKline, Brentford, United Kingdom
719	Kirsi Auro	GlaxoSmithKline, Brentford, United Kingdom
720	Laura Addis	GlaxoSmithKline, Brentford, United Kingdom

721	John Eicher	GlaxoSmithKline, Brentford, United Kingdom
722	Qingqin S Li	Janssen Research & Development, LLC, Titusville, NJ 08560, United States
723	Karen He	Janssen Research & Development, LLC, Spring House, PA, United States
724	Ekaterina Khrantsova	Janssen Research & Development, LLC, Spring House, PA, United States
725	Beryl Cummings	Maze Therapeutics, San Francisco, CA, United States
726	Neha Raghavan	Merck, Kenilworth, NJ, United States
727	Kari Linden	Pfizer, New York, NY, United States
728		
729	Gastroenterology Group	
730	Martti Färkkilä	Hospital District of Helsinki and Uusimaa, Helsinki, Finland
731	Jukka Koskela	Hospital District of Helsinki and Uusimaa, Helsinki, Finland
732	Sampsa Pikkarainen	Hospital District of Helsinki and Uusimaa, Helsinki, Finland
733	Airi Jussila	Pirkanmaa Hospital District, Tampere, Finland
734	Katri Kaukinen	Pirkanmaa Hospital District, Tampere, Finland
735	Timo Blomster	Northern Ostrobothnia Hospital District, Oulu, Finland
736	Mikko Kiviniemi	Northern Savo Hospital District, Kuopio, Finland
737	Markku Voutilainen	Hospital District of Southwest Finland, Turku, Finland
738	Mark Daly	Institute for Molecular Medicine Finland, HiLIFE, University of Helsinki, Finland
739	Ali Abbasi	Abbvie, Chicago, IL, United States
740	Graham Heap	Abbvie, Chicago, IL, United States
741	Jeffrey Waring	Abbvie, Chicago, IL, United States
742	Nizar Smaoui	Abbvie, Chicago, IL, United States
743	Fedik Rahimov	Abbvie, Chicago, IL, United States
744	Anne Lehtonen	Abbvie, Chicago, IL, United States
745	Keith Usiskin	Celgene, Summit, NJ, United States/ Bristol Myers Squibb, New York, NY, United States
746	Tim Lu	Genentech, San Francisco, CA, United States
747	Natalie Bowers	Genentech, San Francisco, CA, United States
748	Danny Oh	Genentech, San Francisco, CA, United States
749	Sarah Pendergrass	Genentech, San Francisco, CA, United States
750	Linda McCarthy	GlaxoSmithKline, Brentford, United Kingdom
751	Amy Hart	Janssen Research & Development, LLC, Spring House, PA, United States
752	Meijian Guan	Janssen Research & Development, LLC, Spring House, PA, United States
753	Jason Miller	Merck, Kenilworth, NJ, United States
754	Kirsi Kalpala	Pfizer, New York, NY, United States
755	Melissa Miller	Pfizer, New York, NY, United States
756	Xinli Hu	Pfizer, New York, NY, United States
757		
758	Rheumatology Group	
759	Kari Eklund	Hospital District of Helsinki and Uusimaa, Helsinki, Finland
760	Antti Palomäki	Hospital District of Southwest Finland, Turku, Finland
761	Pia Isomäki	Pirkanmaa Hospital District, Tampere, Finland
762	Laura Pirilä	Hospital District of Southwest Finland, Turku, Finland
763	Oili Kaipainen-Seppänen	Northern Savo Hospital District, Kuopio, Finland
764	Johanna Huhtakangas	Northern Ostrobothnia Hospital District, Oulu, Finland
765	Nina Mars	Institute for Molecular Medicine Finland, HiLIFE, Helsinki, Finland
766	Ali Abbasi	Abbvie, Chicago, IL, United States
767	Jeffrey Waring	Abbvie, Chicago, IL, United States
768	Fedik Rahimov	Abbvie, Chicago, IL, United States
769	Apinya Lertratanakul	Abbvie, Chicago, IL, United States
770	Nizar Smaoui	Abbvie, Chicago, IL, United States
771	Anne Lehtonen	Abbvie, Chicago, IL, United States
772	David Close	Astra Zeneca, Cambridge, United Kingdom
773	Marla Hochfeld	Celgene, Summit, NJ, United States/ Bristol Myers Squibb, New York, NY, United States
774	Natalie Bowers	Genentech, San Francisco, CA, United States
775	Sarah Pendergrass	Genentech, San Francisco, CA, United States
776	Jorge Esparza Gordillo	GlaxoSmithKline, Brentford, United Kingdom
777	Kirsi Auro	GlaxoSmithKline, Brentford, United Kingdom
778	Dawn Waterworth	Janssen Research & Development, LLC, Spring House, PA, United States
779	Fabiana Farias	Merck, Kenilworth, NJ, United States
780	Kirsi Kalpala	Pfizer, New York, NY, United States
781	Nan Bing	Pfizer, New York, NY, United States
782	Xinli Hu	Pfizer, New York, NY, United States
783		
784	Pulmonology Group	
785	Tarja Laitinen	Pirkanmaa Hospital District, Tampere, Finland
786	Margit Pelkonen	Northern Savo Hospital District, Kuopio, Finland
787	Paula Kauppi	Hospital District of Helsinki and Uusimaa, Helsinki, Finland

788	Hannu Kankaanranta	Pirkanmaa Hospital District, Tampere, Finland
789	Terttu Harju	Northern Ostrobothnia Hospital District, Oulu, Finland
790	Riitta Lahesmaa	Hospital District of Southwest Finland, Turku, Finland
791	Nizar Smaoui	Abbvie, Chicago, IL, United States
792	Alex Mackay	Astra Zeneca, Cambridge, United Kingdom
793	Glenda Lassi	Astra Zeneca, Cambridge, United Kingdom
794	Susan Eaton	Biogen, Cambridge, MA, United States
795	Steven Greenberg	Celgene, Summit, NJ, United States/ Bristol Myers Squibb, New York, NY, United States
796	Hubert Chen	Genentech, San Francisco, CA, United States
797	Sarah Pendergrass	Genentech, San Francisco, CA, United States
798	Natalie Bowers	Genentech, San Francisco, CA, United States
799	Joanna Betts	GlaxoSmithKline, Brentford, United Kingdom
800	Soumitra Ghosh	GlaxoSmithKline, Brentford, United Kingdom
801	Kirsi Auro	GlaxoSmithKline, Brentford, United Kingdom
802	Rajashree Mishra	GlaxoSmithKline, Brentford, United Kingdom
803		
804	Cardiometabolic Diseases Group	
805	Teemu Niiranen	The National Institute of Health and Welfare Helsinki, Finland
806	Felix Vaura	The National Institute of Health and Welfare Helsinki, Finland
807	Veikko Salomaa	The National Institute of Health and Welfare Helsinki, Finland
808	Markus Juonala	Hospital District of Southwest Finland, Turku, Finland
809	Kaj Metsärinne	Hospital District of Southwest Finland, Turku, Finland
810	Mika Kähönen	Pirkanmaa Hospital District, Tampere, Finland
811	Juhani Junttila	Northern Ostrobothnia Hospital District, Oulu, Finland
812	Markku Laakso	Northern Savo Hospital District, Kuopio, Finland
813	Jussi Pihlajamäki	Northern Savo Hospital District, Kuopio, Finland
814	Daniel Gordin	Hospital District of Helsinki and Uusimaa, Helsinki, Finland
815	Juha Sinisalo	Hospital District of Helsinki and Uusimaa, Helsinki, Finland
816	Marja-Riitta Taskinen	Hospital District of Helsinki and Uusimaa, Helsinki, Finland
817	Tiinamaija Tuomi	Hospital District of Helsinki and Uusimaa, Helsinki, Finland
818	Jari Laukkanen	Central Finland Health Care District, Jyväskylä, Finland
819	Amanda Elliott	Institute for Molecular Medicine Finland, HiLIFE, University of Helsinki, Finland / Broad
820	Institute, Cambridge, MA, United States	
821	Joel Rämö	Institute for Molecular Medicine Finland, HiLIFE, University of Helsinki, Finland
822	Samuli Ripatti	Institute for Molecular Medicine Finland, HiLIFE, University of Helsinki, Finland
823	Mary Pat Reeve	Institute for Molecular Medicine Finland, HiLIFE, University of Helsinki, Finland
824	Sanni Ruotsalainen	Institute for Molecular Medicine Finland, HiLIFE, University of Helsinki, Finland
825	Benjamin Challis	Astra Zeneca, Cambridge, United Kingdom
826	Dirk Paul	Astra Zeneca, Cambridge, United Kingdom
827	Keith Usiskin	Celgene, Summit, NJ, United States/ Bristol Myers Squibb, New York, NY, United States
828	Julie Hunkapiller	Genentech, San Francisco, CA, United States
829	Natalie Bowers	Genentech, San Francisco, CA, United States
830	Sarah Pendergrass	Genentech, San Francisco, CA, United States
831	Audrey Chu	GlaxoSmithKline, Brentford, United Kingdom
832	Kirsi Auro	GlaxoSmithKline, Brentford, United Kingdom
833	Dermot Reilly	Janssen Research & Development, LLC, Boston, MA, United States
834	Jaakko Parkkinen	Pfizer, New York, NY, United States
835	Melissa Miller	Pfizer, New York, NY, United States
836	Russell Miller	Pfizer, New York, NY, United States
837		
838	Oncology Group	
839	Tuomo Meretoja	Hospital District of Helsinki and Uusimaa, Helsinki, Finland
840	Heikki Joensuu	Hospital District of Helsinki and Uusimaa, Helsinki, Finland
841	Olli Carpén	Hospital District of Helsinki and Uusimaa, Helsinki, Finland
842	Lauri Aaltonen	Hospital District of Helsinki and Uusimaa, Helsinki, Finland
843	Johanna Mattson	Hospital District of Helsinki and Uusimaa, Helsinki, Finland
844	Annika Auranen	Pirkanmaa Hospital District, Tampere, Finland
845	Peeter Karhitala	Northern Ostrobothnia Hospital District, Oulu, Finland
846	Saila Kauppila	Northern Ostrobothnia Hospital District, Oulu, Finland
847	Päivi Auvinen	Northern Savo Hospital District, Kuopio, Finland
848	Klaus Elenius	Hospital District of Southwest Finland, Turku, Finland
849	Johanna Schleutker	Hospital District of Southwest Finland, Turku, Finland
850	Esa Pitkänen	Institute for Molecular Medicine Finland, HiLIFE, University of Helsinki, Finland
851	Nina Mars	Institute for Molecular Medicine Finland, HiLIFE, University of Helsinki, Finland
852	Mark Daly	Institute for Molecular Medicine Finland, HiLIFE, University of Helsinki, Finland
853	Relja Popovic	Abbvie, Chicago, IL, United States
854	Jeffrey Waring	Abbvie, Chicago, IL, United States

855	Bridget Riley-Gillis	Abbvie, Chicago, IL, United States
856	Anne Lehtonen	Abbvie, Chicago, IL, United States
857	Jennifer Schutzman	Genentech, San Francisco, CA, United States
858	Julie Hunkapiller	Genentech, San Francisco, CA, United States
859	Natalie Bowers	Genentech, San Francisco, CA, United States
860	Sarah Pendergrass	Genentech, San Francisco, CA, United States
861	Diptee Kulkarni	GlaxoSmithKline, Brentford, United Kingdom
862	Kirsi Auro	GlaxoSmithKline, Brentford, United Kingdom
863	Alessandro Porello	Janssen Research & Development, LLC, Spring House, PA, United States
864	Andrey Loboda	Merck, Kenilworth, NJ, United States
865	Heli Lehtonen	Pfizer, New York, NY, United States
866	Stefan McDonough	Pfizer, New York, NY, United States
867	Marika Crohns	Sanofi, Paris, France
868	Sauli Vuoti	Sanofi, Paris, France
869		
870	Ophthalmology Group	
871	Kai Kaarniranta	Northern Savo Hospital District, Kuopio, Finland
872	Joni A Turunen	Hospital District of Helsinki and Uusimaa, Helsinki, Finland
873	Terhi Ollila	Hospital District of Helsinki and Uusimaa, Helsinki, Finland
874	Sanna Seitsonen	Hospital District of Helsinki and Uusimaa, Helsinki, Finland
875	Hannu Uusitalo	Pirkanmaa Hospital District, Tampere, Finland
876	Vesa Aaltonen	Hospital District of Southwest Finland, Turku, Finland
877	Hannele Uusitalo-Järvinen	Pirkanmaa Hospital District, Tampere, Finland
878	Marja Luodonpää	Northern Ostrobothnia Hospital District, Oulu, Finland
879	Nina Hautala	Northern Ostrobothnia Hospital District, Oulu, Finland
880	Juha Karjalainen	Institute for Molecular Medicine Finland, HiLIFE, University of Helsinki, Finland
881	Esa Pitkänen	Institute for Molecular Medicine Finland, HiLIFE, University of Helsinki, Finland
882	Mengzhen Liu	Abbvie, Chicago, IL, United States
883	Heiko Runz	Biogen, Cambridge, MA, United States
884	Stephanie Loomis	Biogen, Cambridge, MA, United States
885	Erich Strauss	Genentech, San Francisco, CA, United States
886	Natalie Bowers	Genentech, San Francisco, CA, United States
887	Hao Chen	Genentech, San Francisco, CA, United States
888	Sarah Pendergrass	Genentech, San Francisco, CA, United States
889		
890	Dermatology Group	
891	Kaisa Tasanen	Northern Ostrobothnia Hospital District, Oulu, Finland
892	Laura Huilaja	Northern Ostrobothnia Hospital District, Oulu, Finland
893	Katariina Hannula-Jouppi	Hospital District of Helsinki and Uusimaa, Helsinki, Finland
894	Teea Salmi	Pirkanmaa Hospital District, Tampere, Finland
895	Sirkku Peltonen	Hospital District of Southwest Finland, Turku, Finland
896	Leena Koulu	Hospital District of Southwest Finland, Turku, Finland
897	Nizar Smaoui	Abbvie, Chicago, IL, United States
898	Fedik Rahimov	Abbvie, Chicago, IL, United States
899	Anne Lehtonen	Abbvie, Chicago, IL, United States
900	David Choy	Genentech, San Francisco, CA, United States
901	Sarah Pendergrass	Genentech, San Francisco, CA, United States
902	Dawn Waterworth	Janssen Research & Development, LLC, Spring House, PA, United States
903	Kirsi Kalpala	Pfizer, New York, NY, United States
904	Ying Wu	Pfizer, New York, NY, United States
905		
906	Odontology Group	
907	Pirkko Pussinen	Hospital District of Helsinki and Uusimaa, Helsinki, Finland
908	Aino Salminen	Hospital District of Helsinki and Uusimaa, Helsinki, Finland
909	Tuula Salo	Hospital District of Helsinki and Uusimaa, Helsinki, Finland
910	David Rice	Hospital District of Helsinki and Uusimaa, Helsinki, Finland
911	Pekka Nieminen	Hospital District of Helsinki and Uusimaa, Helsinki, Finland
912	Ulla Palotie	Hospital District of Helsinki and Uusimaa, Helsinki, Finland
913	Juha Sinisalo	Hospital District of Helsinki and Uusimaa, Helsinki, Finland
914	Maria Sipilä	Northern Savo Hospital District, Kuopio, Finland
915	Liisa Suominen	Northern Savo Hospital District, Kuopio, Finland
916	Päivi Mäntylä	Northern Savo Hospital District, Kuopio, Finland
917	Ulvi Gursoy	Hospital District of Southwest Finland, Turku, Finland
918	Vuokko Anttonen	Northern Ostrobothnia Hospital District, Oulu, Finland
919	Kirsi Sipilä	Northern Ostrobothnia Hospital District, Oulu, Finland
920	Sarah Pendergrass	Genentech, San Francisco, CA, United States
921		

922 **Women's Health and Reproduction Group**

923	Hannele Laivuori	Institute for Molecular Medicine Finland, HiLIFE, University of Helsinki, Finland
924	Venla Kurra	Pirkanmaa Hospital District, Tampere, Finland
925	Oskari Heikinheimo	Hospital District of Helsinki and Uusimaa, Helsinki, Finland
926	Ilkka Kalliala	Hospital District of Helsinki and Uusimaa, Helsinki, Finland
927	Laura Kotaniemi-Talonen	Pirkanmaa Hospital District, Tampere, Finland
928	Kari Nieminen	Pirkanmaa Hospital District, Tampere, Finland
929	Päivi Polo	Hospital District of Southwest Finland, Turku, Finland
930	Kaarin Mäkikallio	Hospital District of Southwest Finland, Turku, Finland
931	Eeva Ekholm	Hospital District of Southwest Finland, Turku, Finland
932	Marja Väärämäki	Northern Ostrobothnia Hospital District, Oulu, Finland
933	Outi Uimari	Northern Ostrobothnia Hospital District, Oulu, Finland
934	Laure Morin-Papunen	Northern Ostrobothnia Hospital District, Oulu, Finland
935	Marjo Tuppurainen	Northern Savo Hospital District, Kuopio, Finland
936	Katja Kivinen	Institute for Molecular Medicine Finland, HiLIFE, University of Helsinki, Finland
937	Elisabeth Widen	Institute for Molecular Medicine Finland, HiLIFE, University of Helsinki, Finland
938	Taru Tukiainen	Institute for Molecular Medicine Finland, HiLIFE, University of Helsinki, Finland
939	Mary Pat Reeve	Institute for Molecular Medicine Finland, HiLIFE, University of Helsinki, Finland
940	Mark Daly	Institute for Molecular Medicine Finland, HiLIFE, University of Helsinki, Finland
941	Liu Aoxing	Institute for Molecular Medicine Finland, HiLIFE, University of Helsinki, Finland
942	Andrea Ganna	Institute for Molecular Medicine Finland, HiLIFE, University of Helsinki, Finland
943	Eija Laakkonen	University of Jyväskylä, Jyväskylä, Finland
944	Niko Välimäki	University of Helsinki, Helsinki, Finland
945	Lauri Aaltonen	Hospital District of Helsinki and Uusimaa, Helsinki, Finland
946	Johannes Kettunen	Northern Ostrobothnia Hospital District, Oulu, Finland
947	Mikko Arvas	Finnish Red Cross Blood Service, Helsinki, Finland
948	Jeffrey Waring	Abbvie, Chicago, IL, United States
949	Bridget Riley-Gillis	Abbvie, Chicago, IL, United States
950	Mengzhen Liu	Abbvie, Chicago, IL, United States
951	Sarah Pendergrass	Genentech, San Francisco, CA, United States
952	Janet Kumar	GlaxoSmithKline, Brentford, United Kingdom
953	Kirsi Auro	GlaxoSmithKline, Brentford, United Kingdom

954

955 **FinnGen Analysis working group**

956	Justin Wade Davis	Abbvie, Chicago, IL, United States
957	Bridget Riley-Gillis	Abbvie, Chicago, IL, United States
958	Reza Hammond	Abbvie, Chicago, IL, United States
959	Fedik Rahimov	Abbvie, Chicago, IL, United States
960	Sabah Kadri	Abbvie, Chicago, IL, United States
961	Sahar Esmaeeli	Abbvie, Chicago, IL, United States
962	Mengzhen Liu	Abbvie, Chicago, IL, United States
963	Slavé Petrovski	Astra Zeneca, Cambridge, United Kingdom
964	Eleonor Wigmore	Astra Zeneca, Cambridge, United Kingdom
965	Adele Mitchell	Biogen, Cambridge, MA, United States
966	Benjamin Sun	Biogen, Cambridge, MA, United States
967	Ellen Tsai	Biogen, Cambridge, MA, United States
968	Denis Baird	Biogen, Cambridge, MA, United States
969	Paola Bronson	Biogen, Cambridge, MA, United States
970	Ruoyu Tian	Biogen, Cambridge, MA, United States
971	Stephanie Loomis	Biogen, Cambridge, MA, United States
972	Yunfeng Huang	Biogen, Cambridge, MA, United States
973	Joseph Maranville	Celgene, Summit, NJ, United States/ Bristol Myers Squibb, New York, NY, United States
974	Shameek Biswas	Celgene, Summit, NJ, United States/ Bristol Myers Squibb, New York, NY, United States
975	Elmutaz Mohammed	Celgene, Summit, NJ, United States/ Bristol Myers Squibb, New York, NY, United States
976	Samir Wadhawan	Celgene, Summit, NJ, United States/ Bristol Myers Squibb, New York, NY, United States
977	Erika Kvikstad	Celgene, Summit, NJ, United States/ Bristol Myers Squibb, New York, NY, United States
978	Minal Caliskan	Celgene, Summit, NJ, United States/ Bristol Myers Squibb, New York, NY, United States
979	Diana Chang	Genentech, San Francisco, CA, United States
980	Julie Hunkapiller	Genentech, San Francisco, CA, United States
981	Tushar Bhangale	Genentech, San Francisco, CA, United States
982	Natalie Bowers	Genentech, San Francisco, CA, United States
983	Sarah Pendergrass	Genentech, San Francisco, CA, United States
984	Karen S King	GlaxoSmithKline, Brentford, United Kingdom
985	Padhraig Gormley	GlaxoSmithKline, Brentford, United Kingdom
986	Jimmy Liu	GlaxoSmithKline, Brentford, United Kingdom
987	Karsten Sieber	Janssen Research & Development, LLC, Spring House, PA, United States
988	Amy Hart	Janssen Research & Development, LLC, Spring House, PA, United States

989	Meijian Guan	Janssen Research & Development, LLC, Spring House, PA, United States
990	Shicheng Guo	Janssen Research & Development, LLC, Spring House, PA, United States
991	Beryl Cummings	Maze Therapeutics, San Francisco, CA, United States
992	Matt Brauer	Maze Therapeutics, San Francisco, CA, United States
993	Jason Miller	Merck, Kenilworth, NJ, United States
994	Fabiana Farias	Merck, Kenilworth, NJ, United States
995	Jorge Del-Aguila	Merck, Kenilworth, NJ, United States
996	Kirill Shkura	Merck, Kenilworth, NJ, United States
997	Victor Neduva	Merck, Kenilworth, NJ, United States
998	Huilei Xu	Novartis, Basel, Switzerland
999	Amy Cole	Novartis, Basel, Switzerland
1000	Jonathan Chung	Novartis, Basel, Switzerland
1001	Jaison Jacob	Novartis, Basel, Switzerland
1002	Katrina de Lange	Novartis, Basel, Switzerland
1003	Jonas Zierer	Novartis, Basel, Switzerland
1004	Xing Chen	Pfizer, New York, NY, United States
1005	Åsa Hedman	Pfizer, New York, NY, United States
1006	Clarence Wang	Sanofi, Paris, France
1007	Ethan Xu	Sanofi, Paris, France
1008	Franck Auge	Sanofi, Paris, France
1009	Clement Chatelain	Sanofi, Paris, France
1010	Deepak Rajpal	Sanofi, Paris, France
1011	Dongyu Liu	Sanofi, Paris, France
1012	Katherine Call	Sanofi, Paris, France
1013	Tai-He Xia	Sanofi, Paris, France
1014	Mitja Kurki	Institute for Molecular Medicine Finland, HiLIFE, University of Helsinki, Finland / Broad
1015	Institute, Cambridge, MA, United States	
1016	Samuli Ripatti	Institute for Molecular Medicine Finland, HiLIFE, University of Helsinki, Finland
1017	Mark Daly	Institute for Molecular Medicine Finland, HiLIFE, University of Helsinki, Finland
1018	Juha Karjalainen	Institute for Molecular Medicine Finland, HiLIFE, University of Helsinki, Finland
1019	Aki Havulinna	Institute for Molecular Medicine Finland, HiLIFE, University of Helsinki, Finland
1020	Juha Mehtonen	Institute for Molecular Medicine Finland, HiLIFE, University of Helsinki, Finland
1021	Priit Palta	Institute for Molecular Medicine Finland, HiLIFE, University of Helsinki, Finland
1022	Shabbeer Hassan	Institute for Molecular Medicine Finland, HiLIFE, University of Helsinki, Finland
1023	Pietro Della Briotta Parolo	Institute for Molecular Medicine Finland, HiLIFE, University of Helsinki, Finland
1024	Wei Zhou	Broad Institute, Cambridge, MA, United States
1025	Mutaamba Maasha	Broad Institute, Cambridge, MA, United States
1026	Shabbeer Hassan	Institute for Molecular Medicine Finland, HiLIFE, University of Helsinki, Finland
1027	Susanna Lemmelä	Institute for Molecular Medicine Finland, HiLIFE, University of Helsinki, Finland
1028	Manuel Rivas	University of Stanford, Stanford, CA, United States
1029	Aarno Palotie	Institute for Molecular Medicine Finland, HiLIFE, University of Helsinki, Finland
1030	Arto Lehisto	Institute for Molecular Medicine Finland, HiLIFE, University of Helsinki, Finland
1031	Andrea Ganna	Institute for Molecular Medicine Finland, HiLIFE, University of Helsinki, Finland
1032	Vincent Llorens	Institute for Molecular Medicine Finland, HiLIFE, University of Helsinki, Finland
1033	Hannele Laiivuori	Institute for Molecular Medicine Finland, HiLIFE, University of Helsinki, Finland
1034	Mari E Niemi	Institute for Molecular Medicine Finland, HiLIFE, University of Helsinki, Finland
1035	Taru Tukiainen	Institute for Molecular Medicine Finland, HiLIFE, University of Helsinki, Finland
1036	Mary Pat Reeve	Institute for Molecular Medicine Finland, HiLIFE, University of Helsinki, Finland
1037	Henrike Heyne	Institute for Molecular Medicine Finland, HiLIFE, University of Helsinki, Finland
1038	Nina Mars	Institute for Molecular Medicine Finland, HiLIFE, University of Helsinki, Finland
1039	Kimmo Palin	University of Helsinki, Helsinki, Finland
1040	Javier Garcia-Tabuenca	University of Tampere, Tampere, Finland
1041	Harri Siirtola	University of Tampere, Tampere, Finland
1042	Tuomo Kiiskinen	Institute for Molecular Medicine Finland, HiLIFE, University of Helsinki, Finland
1043	Jiwoo Lee	Institute for Molecular Medicine Finland, HiLIFE, University of Helsinki, Finland / Broad
1044	Institute, Cambridge, MA, United States	
1045	Kristin Tsuo	Institute for Molecular Medicine Finland, HiLIFE, University of Helsinki, Finland / Broad
1046	Institute, Cambridge, MA, United States	
1047	Amanda Elliott	Institute for Molecular Medicine Finland, HiLIFE, University of Helsinki, Finland / Broad
1048	Institute, Cambridge, MA, United States	
1049	Kati Kristiansson	THL Biobank / The National Institute of Health and Welfare Helsinki, Finland
1050	Mikko Arvas	Finnish Red Cross Blood Service / Finnish Hematology Registry and Clinical Biobank,
1051	Helsinki, Finland	
1052	Kati Hyvärinen	Finnish Red Cross Blood Service, Helsinki, Finland
1053	Jarmo Ritari	Finnish Red Cross Blood Service, Helsinki, Finland
1054	Miika Koskinen	Helsinki Biobank / Helsinki University and Hospital District of Helsinki and Uusimaa,
1055	Helsinki	

1056	Olli Carpén	Helsinki Biobank / Helsinki University and Hospital District of Helsinki and Uusimaa,
1057	Helsinki	
1058	Johannes Kettunen	Northern Finland Biobank Borealis / University of Oulu / Northern Ostrobothnia Hospital
1059	District, Oulu, Finland	
1060	Katri Pylkäs	University of Oulu, Oulu, Finland
1061	Eeva Sliz	University of Oulu, Oulu, Finland
1062	Minna Karjalainen	University of Oulu, Oulu, Finland
1063	Tuomo Mantere	Northern Finland Biobank Borealis / University of Oulu / Northern Ostrobothnia Hospital
1064	District, Oulu, Finland	
1065	Eeva Kangasniemi	Finnish Clinical Biobank Tampere / University of Tampere / Pirkanmaa Hospital District,
1066	Tampere, Finland	
1067	Sami Heikkinen	University of Eastern Finland, Kuopio, Finland
1068	Arto Mannermaa	Biobank of Eastern Finland / University of Eastern Finland / Northern Savo Hospital District,
1069	Kuopio, Finland	
1070	Eija Laakkonen	University of Jyväskylä, Jyväskylä, Finland
1071	Dhanaprakash Jambulingam	University of Turku, Turku, Finland
1072	Venkat Subramaniam Rathinakaran	University of Turku, Turku, Finland
1073	Nina Pitkänen	Auria Biobank / University of Turku / Hospital District of Southwest Finland, Turku, Finland
1074		
1075	Biobank directors	
1076	Lila Kallio	Auria Biobank / University of Turku / Hospital District of Southwest Finland, Turku, Finland
1077	Sirpa Soini	THL Biobank / The National Institute of Health and Welfare Helsinki, Finland
1078	Jukka Partanen	Finnish Red Cross Blood Service / Finnish Hematology Registry and Clinical Biobank,
1079	Helsinki, Finland	
1080	Eero Punkka	Helsinki Biobank / Helsinki University and Hospital District of Helsinki and Uusimaa,
1081	Helsinki	
1082	Raisa Serpi	Northern Finland Biobank Borealis / University of Oulu / Northern Ostrobothnia Hospital
1083	District, Oulu, Finland	
1084	Kimmo Savinainen (acting)	Finnish Clinical Biobank Tampere / University of Tampere / Pirkanmaa Hospital District,
1085	Tampere, Finland	
1086	Veli-Matti Kosma	Biobank of Eastern Finland / University of Eastern Finland / Northern Savo Hospital District,
1087	Kuopio, Finland	
1088	Teijo Kuopio	Central Finland Biobank / University of Jyväskylä / Central Finland Health Care District,
1089	Jyväskylä, Finland	
1090		
1091	FinnGen Teams	
1092	Administration	
1093	Anu Jalanko	Institute for Molecular Medicine Finland, HiLIFE, University of Helsinki, Finland
1094	Huei-Yi Shen	Institute for Molecular Medicine Finland, HiLIFE, University of Helsinki, Finland
1095	Risto Kajanne	Institute for Molecular Medicine Finland, HiLIFE, University of Helsinki, Finland
1096	Mervi Aavikko	Institute for Molecular Medicine Finland, HiLIFE, University of Helsinki, Finland
1097		
1098	Analysis	
1099	Mitja Kurki	Institute for Molecular Medicine Finland, HiLIFE, University of Helsinki, Finland / Broad
1100	Institute, Cambridge, MA, United States	
1101	Juha Karjalainen	Institute for Molecular Medicine Finland, HiLIFE, University of Helsinki, Finland
1102	Pietro Della Briotta Parolo	Institute for Molecular Medicine Finland, HiLIFE, University of Helsinki, Finland
1103	Arto Lehisto	Institute for Molecular Medicine Finland, HiLIFE, University of Helsinki, Finland
1104	Juha Mehtonen	Institute for Molecular Medicine Finland, HiLIFE, University of Helsinki, Finland
1105	Wei Zhou	Broad Institute, Cambridge, MA, United States
1106	Masahiro Kanai	Broad Institute, Cambridge, MA, United States
1107	Mutaamba Maasha	Broad Institute, Cambridge, MA, United States
1108		
1109	Clinical Endpoint Development	
1110	Hannele Laivuori	Institute for Molecular Medicine Finland, HiLIFE, University of Helsinki, Finland
1111	Aki Havulinna	Institute for Molecular Medicine Finland, HiLIFE, University of Helsinki, Finland
1112	Susanna Lemmelä	Institute for Molecular Medicine Finland, HiLIFE, University of Helsinki, Finland
1113	Tuomo Kiiskinen	Institute for Molecular Medicine Finland, HiLIFE, University of Helsinki, Finland
1114	L. Elisa Lahtela	Institute for Molecular Medicine Finland, HiLIFE, University of Helsinki, Finland
1115		
1116	Communication	
1117	Mari Kaunisto	Institute for Molecular Medicine Finland, HiLIFE, University of Helsinki, Finland
1118		
1119	E-Science	
1120	Elina Kilpeläinen	Institute for Molecular Medicine Finland, HiLIFE, University of Helsinki, Finland
1121	Timo P. Sipilä	Institute for Molecular Medicine Finland, HiLIFE, University of Helsinki, Finland
1122	Oluwaseun Alexander Dada	Institute for Molecular Medicine Finland, HiLIFE, University of Helsinki, Finland

1123	Awaisa Ghazal	Institute for Molecular Medicine Finland, HiLIFE, University of Helsinki, Finland
1124	Anastasia Shcherban	Institute for Molecular Medicine Finland, HiLIFE, University of Helsinki, Finland
1125		
1126	Genotyping	
1127	Kati Donner	Institute for Molecular Medicine Finland, HiLIFE, University of Helsinki, Finland
1128	Timo P. Sipilä	Institute for Molecular Medicine Finland, HiLIFE, University of Helsinki, Finland
1129	Sample Collection Coordination	
1130	Anu Loukola	Helsinki Biobank / Helsinki University and Hospital District of Helsinki and Uusimaa,
1131	Helsinki	
1132		
1133	Sample Logistics	
1134	Päivi Laiho	THL Biobank / The National Institute of Health and Welfare Helsinki, Finland
1135	Tuuli Sistonen	THL Biobank / The National Institute of Health and Welfare Helsinki, Finland
1136	Essi Kaiharju	THL Biobank / The National Institute of Health and Welfare Helsinki, Finland
1137	Markku Laukkanen	THL Biobank / The National Institute of Health and Welfare Helsinki, Finland
1138	Elina Järvensivu	THL Biobank / The National Institute of Health and Welfare Helsinki, Finland
1139	Sini Lähteenmäki	THL Biobank / The National Institute of Health and Welfare Helsinki, Finland
1140	Lotta Männikkö	THL Biobank / The National Institute of Health and Welfare Helsinki, Finland
1141	Regis Wong	THL Biobank / The National Institute of Health and Welfare Helsinki, Finland
1142		
1143	Registry Data Operations	
1144	Hannele Mattsson	THL Biobank / The National Institute of Health and Welfare Helsinki, Finland
1145	Kati Kristiansson	THL Biobank / The National Institute of Health and Welfare Helsinki, Finland
1146	Susanna Lemmelä	Institute for Molecular Medicine Finland, HiLIFE, University of Helsinki, Finland
1147	Sami Koskelainen	THL Biobank / The National Institute of Health and Welfare Helsinki, Finland
1148	Tero Hiekkalinna	THL Biobank / The National Institute of Health and Welfare Helsinki, Finland
1149	Teemu Paaajanen	THL Biobank / The National Institute of Health and Welfare Helsinki, Finland
1150		
1151	Sequencing Informatics	
1152	Priit Palta	Institute for Molecular Medicine Finland, HiLIFE, University of Helsinki, Finland
1153	Kalle Pärn	Institute for Molecular Medicine Finland, HiLIFE, University of Helsinki, Finland
1154	Mart Kals	Institute for Molecular Medicine Finland, HiLIFE, University of Helsinki, Finland
1155	Shuang Luo	Institute for Molecular Medicine Finland, HiLIFE, University of Helsinki, Finland
1156	Vishal Sinha	Institute for Molecular Medicine Finland, HiLIFE, University of Helsinki, Finland
1157		
1158	Trajectory	
1159	Tarja Laitinen	Pirkanmaa Hospital District, Tampere, Finland
1160	Mary Pat Reeve	Institute for Molecular Medicine Finland, HiLIFE, University of Helsinki, Finland
1161	Marianna Niemi	University of Tampere, Tampere, Finland
1162	Harri Siirtola	University of Tampere, Tampere, Finland
1163	Javier Gracia-Tabuena	University of Tampere, Tampere, Finland
1164	Mika Helminen	University of Tampere, Tampere, Finland
1165	Tiina Luukkaala	University of Tampere, Tampere, Finland
1166	Iida Vähätalo	University of Tampere, Tampere, Finland
1167		
1168	Data protection officer	
1169	Tero Jyrhämä	Institute for Molecular Medicine Finland, HiLIFE, University of Helsinki, Finland
1170		
1171	FINBB - Finnish biobank cooperative	
1172	Marco Hautalahti	
1173	Johanna Mäkelä	
1174	Laura Mustaniemi	
1175	Mirkka Koivusalo	
1176	Sarah Smith	
1177	Tom Southerington	