

1 **Article Summary Line:** Potential impact of *Anopheles stephensi* establishment on the
2 transmission of *falciparum* malaria in Ethiopia and prospective control measures.

3 **Running title (50 characters):** Impact of *Anopheles stephensi* in Ethiopia

4 **Keywords:** *Anopheles stephensi*, *Indoor residual spraying*, *Larval source management*,
5 *Insecticide treated nets*, *invasive mosquito*, *Ethiopia*, *Djibouti*,

6 **The potential impact of *Anopheles stephensi* establishment on the**
7 **transmission of *Plasmodium falciparum* in Ethiopia and**
8 **prospective control measures**

9 Arran Hamlet^{1*}, Dereje Dengela², J. Eric Tongren^{3,4}, Fitsum G Tadesse^{5,6}, Teun Bousema^{6,7},
10 Marianne Sinka⁸, Aklilu Seyoum², Seth R. Irish⁹, Jennifer S. Armistead¹⁰ and Thomas
11 Churcher¹

12 ¹MRC Centre for Global Infectious Disease Analysis; and the Abdul Latif Jameel Institute for
13 Disease and Emergency Analytics, School of Public Health, Imperial College London,
14 London, UK

15 ² PMI VectorLink Project, Abt Associates, 6130 Executive Blvd, Rockville, MD 20852,
16 USA.

17 ³US President's Malaria Initiative (PMI), Addis Ababa, Ethiopia.

18 ⁴Malaria Branch, Division of Parasitic Diseases and Malaria, Center for Global Health,
19 Centers for Disease Control and Prevention, Atlanta, GA, USA.

20 ⁵Armauer Hansen Research Institute, Addis Ababa, Ethiopia.

21 ⁶Radboud Institute for Health Sciences, Radboud University Medical Center, Nijmegen, The
22 Netherlands.

23 ⁷Department of Immunology and Infection, London School of Hygiene and Tropical
24 Medicine, London, UK.

25 ⁸Department of Zoology, University of Oxford, Oxford, United Kingdom, OX1 3SZ

26 ⁹US President's Malaria Initiative, Entomology Branch Division of Parasitic Diseases and
27 Malaria, Center for Global Health, Centers for Disease Control and Prevention, Atlanta, GA,
28 USA.

29 ¹⁰ U.S. President's Malaria Initiative, U.S. Agency for International Development,
30 Washington, D.C., USA

31 *Corresponding author – arran.hamlet14@imperial.ac.uk

32 **Abstract (149 words of 150 words)**

33 *Anopheles stephensi*, the primary urban malaria vector in Asia, was first detected in Africa
34 during 2012 in Djibouti and was subsequently identified in Ethiopia in 2016, and later in Sudan
35 and Somalia. In Djibouti, malaria cases have increased 30-fold from 2012 to 2019 though the
36 impact in the wider region remains unclear.

37 A mechanistic model of malaria transmission was used to estimate the increase in vector
38 density required to explain the trends in malaria cases seen in Djibouti. Applying this vector
39 density to Ethiopia, we assess the potential impact of *An. stephensi* establishment on
40 *Plasmodium falciparum* transmission, accounting for pre-existing transmission and control

41 **.NOTE:** This preprint reports new research that has not been certified by peer review and should not be used to guide clinical practice.
interventions.

42 We estimate that annual *P. falciparum* malaria cases could increase by 50% (95% CI 14-90) if
43 no additional interventions are implemented. Substantial heterogeneity across the country is
44 predicted and large increases in vector control interventions could be needed to prevent a major
45 public health emergency.

46 **Text word count (3482 of 3500 words)**

47 **Introduction**

48 Sub-Saharan Africa, where 94% of the global malaria burden occurs, has seen substantial
49 reductions in cases and deaths due to malaria over the past two decades (1). While this
50 reduction is primarily due to an increase in investments and expansion of interventions such as
51 insecticide treated nets (ITNs), indoor residual spraying (IRS), and diagnosis and treatment,
52 urbanisation also has played a part.

53 Africa has experienced rapid urbanization in recent years, rising from 31.5% of the population
54 in 1990, to 42.5% in 2018. By 2050, approximately 60% of the population is expected to live
55 in urban areas (2). This will likely have a positive effect on reducing the malaria burden in
56 Africa, as urban areas typically experience substantially lower rates of malaria transmission
57 than rural areas (3). Primarily, this is thought to be due to improved housing and the reduced
58 availability of suitable larval habitats for African *Anopheles* vector species (4).

59 This protective effect conferred by urbanization may be partially lost with the invasion and
60 establishment of *Anopheles stephensi*. *Anopheles stephensi* is found throughout South Asia,
61 where it is capable of transmitting both *Plasmodium falciparum* and *P. vivax* parasites (5) in a
62 diverse set of habitats, from rural to highly urban settings (6). The success of this vector in
63 urban locations is due to its ability to utilise water tanks, wells, and other artificial containers
64 as larval habitats (7, 8). Furthermore, it has shown substantial resistance to water pollution (9).
65 *An. stephensi* has been discovered at locations further outside of its traditional endemic region
66 in Asia, and was first detected in Djibouti in 2012 (10).

67 Prior to 2013, Djibouti had reported less than 3000 cases per year. Following the year of initial
68 detection of *An. stephensi*, malaria cases have increased substantially, and in 2019 there were
69 49,402 confirmed cases of malaria (11). While causation has not been established between
70 increasing *An. stephensi* detection and malaria incidence in Djibouti, it has been heavily
71 implicated (12). *Anopheles stephensi* has now been found in Sudan, Somalia, and Ethiopia (13).

72 Here we quantify the potential impact of *An. stephensi* invasion in Djibouti to make projections
73 about what could happen in Ethiopia, where the species has been found in numerous sites and
74 is spreading (14). Translating the invasion of *An. stephensi* to its public health impact is
75 difficult due to uncertainty in its vectorial capacity and how public health entities and
76 governments will respond. Different illustrative scenarios are investigated, exploring the public
77 health impact of different vector control interventions.

78 **Methods**

79 **Mechanistic malaria model**

80 A deterministic version of a well-established compartmental model of *P. falciparum* malaria
81 transmission (15-19) was utilised. The human population was split into susceptible or infected
82 individuals with those infected being either asymptomatic, having clinical disease, sub-
83 microscopic infections, having been treated, or being in a period of prophylaxis following
84 treatment. The numbers of mosquito larvae, pupae and adults were simulated with adult
85 mosquitoes being either susceptible, exposed, or infectious (after the extrinsic incubation
86 period, EIP). The model accounts for heterogeneity in transmission as well as age-dependent
87 mosquito biting rates and the acquisition of natural immunity. The model is summarised in
88 Appendix Figure 1 and accompanying text with code found at [https://github.com/mrc-](https://github.com/mrc-ide/deterministic-malaria-model)
89 [ide/deterministic-malaria-model](https://github.com/mrc-ide/deterministic-malaria-model).

90 **Vector bionomics and Latin hypercube sampling**

91 The epidemiological impact of *An. stephensi* invasion will depend on the characteristics of the
92 vector in the new environment. Vector behaviours such as crepuscular biting, and resting
93 outside of houses could translate, compared to other African *Anopheles* species, to a reduced
94 efficacy of interventions such as ITN and IRS, and therefore accurate parameterisation is
95 important. A literature search was undertaken to find *An. stephensi*-specific bionomic data to
96 parameterise the mechanistic model. These included the daily mortality, proportion of blood
97 meals taken on humans, anthropophily (the preference of the vector to biting humans over other
98 sources), bites taken indoors and in sleeping spaces. The impact of these is further explored in
99 Appendix Figure 7 and the accompanying text. Data on *An. stephensi* behaviour within Africa
100 was sparse, and so estimates were primarily acquired from studies in Iran, India and Pakistan,
101 with limited data from Ethiopia. A full list of studies and parameter range estimates are in the
102 Appendix Table 1 and Appendix Table 5.

103 Due to the relatively low number of studies from which the data were collected, and large
104 uncertainty around how the vector would behave, we incorporated parameter sampling in the
105 model fitting and extrapolation stage. This was done through taking the median value from the
106 data, and sampling from values 25% smaller and 25% larger unless otherwise stated (Appendix
107 Table 1). From this we undertook Latin hypercube sampling (LHS) which is a statistical
108 method for generating near-random samples of parameter values from a multidimensional
109 distribution. This allowed us to efficiently sample different parameter combinations in order to
110 generate broad uncertainty in predictions (20).

111 The efficacy of current and future ITNs will also depend on the level of pyrethroid resistance.
112 Substantial pyrethroid resistance has been found in Ethiopia, with a mean across years and sites
113 of 57% mosquito survival upon exposure to pyrethroids in a discriminating dose bioassay (14).
114 This value was assumed throughout the country. There is no clear picture of how *An. stephensi*
115 abundance will change seasonally in Ethiopia, and so mosquito density was assumed to remain
116 consistent throughout the year. Ethiopia is geographically diverse, with many regions at high
117 altitudes, reducing malaria transmission. The relationship of the extrinsic incubation period and

118 temperature were provided from Stopard et al. (2021) (21). How this influences transmission
119 is outlined in the Appendix Figure 3 and 6.

120 **Fitting to Djibouti data**

121 The severity of the public health impact of *An. stephensi* invasion will depend on the number
122 of mosquitoes per person (vector density) and how it changes over time. In the absence of
123 information on the speed and magnitude of *An. stephensi* establishment in Ethiopia, we made
124 the simplest assumption that density increases in a sigmoidal manner that mirrors what has
125 happened in Djibouti. Here, given the low levels of malaria reported prior to *An. stephensi*
126 detection we assumed that the increase is singly due to *An. stephensi*, though native *Anopheles*
127 species such as *An. arabiensis* are present. This process is conducted in conjunction with 200
128 LHS parameterisations of vector bionomics. From this, we take the 100 best LHS
129 combinations, as defined by their likelihood, and calculate the 2.5, 50 and 97.5% quantiles.
130 This provides us with estimates of the vector density required to explain malaria incidence in
131 Djibouti (Appendix Figure 4). We then take the vector density required to explain the final year
132 where it appears to have plateaued, 2019, and apply this to Ethiopia.

134 **Current level of disease**

135 Estimates of the geographical distribution of malaria within Ethiopia were generated from
136 malaria slide prevalence in 2–10-year-olds estimates extracted using the Malaria Atlas Project
137 (MAP) R package, malariaAtlas (22). These were aggregated to the 3rd administrative division
138 (woreda) using a population weighted mean. Estimates were adjusted so that the number of
139 cases predicted by the model matched those reported in the World Malaria Report (WMR). In
140 2019 (the last year data were available) a total of 738,155 cases of *P. falciparum* malaria were
141 reported in Ethiopia. Here we concentrate on *falciparum* malaria as this is the dominant malaria
142 species with the biggest public health impact. ITN usage was provided at the 1st administrative
143 division (region) assuming pyrethroid-only ITNs, and IRS coverage at the woreda level (23).
144 Human population sizes were taken from UN World Population Prospects (24). Historical use
145 of antimalarial drug treatment was also extracted from malariaAtlas. In order to reduce
146 computational demands, prevalence was rounded to 0, 1, 5, 10, 15, 25%, ITN/IRS/treatment to
147 the nearest 20%, and EIP the nearest 1. This reduced the number of administrative locations
148 considered from 690 3rd administrative (woreda) units to 64 administrative groupings (see
149 Appendix).

151 **Projections of future malaria burden**

152 Models were used to project the change in malaria prevalence over time following the invasion
153 of *An. stephensi*. Here, we assumed an equal and simultaneous introduction in all groupings,
154 which while unrealistic is the most parsimonious response (see Appendix). Simulations were
155 run for each administrative grouping. It is likely that *An. stephensi* will not invade all regions
156 of the country (25), and that invasion in areas above an altitude of 2000m is unlikely to result
157 in an increased malaria burden due to the low temperatures. We therefore estimated the increase
158 in the number of malaria cases in the population within areas found suitable by previous
159 research (25), and beneath 2000 meters (26).

160 Different vector control interventions are considered to mitigate the impact of *An. stephensi*
161 invasion. As possible scenarios, we investigated the potential impact of increasing ITN usage,
162 deploying IRS and larval source management (LSM). ITN usage was increased from its current
163 level (Appendix Figure 2) up to 80% usage assuming mass distribution every 3-years
164 (assuming pyrethroid-only ITNs). For the implementation of synergist piperonyl butoxide
165 (PBO) via PBO-pyrethroid ITNs, a current usage of 0% was assumed and scale-up involved
166 replacing all existing standard pyrethroid-only ITNs. Pyrethroid-only and PBO-pyrethroid
167 ITNs decline in efficacy over their lifespan as detailed in Churcher et al., (2016)(27). In costing
168 future interventions, we subtracted the cost of existing ITN coverage, as we were calculating
169 the additional cost. IRS covering 80% of structures of human habitation is conducted annually
170 with a long-lasting product which the local mosquito population is fully susceptible to; this
171 decays throughout the year as previously described (28). The impact of LSM against
172 *An. stephensi* is highly unclear but in the absence of this information it was assumed to be
173 constant and at a level to reduce adult emergence by 40%. To illustrate the broad economic
174 cost of this additional vector control, simple estimates of total costs are provided. Approximate
175 estimates of the cost of intervention (purchasing, delivering, and applying) were provided from
176 literature and from the U.S. President's Malaria Initiative (Appendix Table 3).

177

178 Results

179 Projected changes in malaria epidemiology

180 The establishment of *An. stephensi* is predicted to increase the malaria burden across Ethiopia
181 according to pre-existing transmission levels, interventions and vector bionomics. As an
182 example, three locations at very low (~0.1%), low (~2.5%) and moderate (~12%) current *P.*
183 *falciparum* prevalence are displayed (Figure 2). In all example locations, the introduction of
184 *An. stephensi* leads to increased prevalence, with the most substantial increases in areas with
185 the lowest existing transmission (~0.1%), though estimates are highly uncertain (Figure 1A).
186 The rate at which prevalence increases depends on the current levels of transmission, with areas
187 at current negligible levels of transmission taking substantially longer than those areas with
188 current moderate-high transmission to reach the new level of endemicity after mosquito
189 establishment. Sub-nationally, there is considerable variation in the projected increases in
190 prevalence, with some administrative groupings experiencing minimal (~0%) increases to
191 absolute prevalence following *An. stephensi* establishment, and others increasing by ~5.5%
192 (Figure 1B). Overall, the median absolute parasite prevalence increase is ~3.4% in
193 administrative regions, an increase from ~1.2% pre-*An. stephensi* to 4.6% post-*An. stephensi*.
194 At a national level, we predict a median increase of ~368,000 (95% CI 103,000 – 664,000)
195 clinical *P. falciparum* malaria cases annually, from a report of ~740,000 in 2019 (1). This
196 represents a ~49.7% (95% CI 13.9 - 89.7%) increase if *An. stephensi* only establishes itself in
197 areas previously found suitable, and located under 2000m (**Error! Reference source not**
198 **found.C**). Substantially greater increases are seen if *An. stephensi* invades the whole country
199 and can establish malaria transmission at higher altitudes (Appendix Table 4). Temporal
200 changes in clinical incidence over time for the different settings are shown in Figure 2. Some
201 model runs predicted a substantial increase in malaria cases following a subsequent decline
202 over time. This phenomenon is greatest in areas with the lowest current malaria prevalence and
203 is driven by the model assumptions on the acquisition of immunity to clinical disease.

204 Impact of increasing vector control

205 The impact of additional vector control interventions following *An. stephensi* establishment is
206 dependent on the level of transmission, pre-existing use of interventions and vector bionomics.
207 Mosquito characteristics such as the proportion of bites taken indoors are unknown and can
208 substantially influence the effectiveness of ITNs and IRS (Appendix Table 5, Figure 7 and
209 accompanying text). In some circumstances the model predicts that scaling up of standard
210 ITNs, IRS or LSM in combination is sufficient to suppress malaria to pre-*An. stephensi* levels,
211 and sometimes beyond (Figure 2A).

212 In areas with low levels of transmission (~0.1%), increases in incidence are substantial, and in
213 order to reduce transmission to pre-*An. stephensi* levels of transmission, a suite of interventions
214 must be considered (Figure 2B). At higher levels of transmission (~12%), the implementation
215 of PBO-ITNs alone may be suitable to reduce, however if only pyrethroid-ITNs are available,
216 they should be used in conjunction with IRS and LSM to reduce transmission to pre-*An.*
217 *stephensi* levels (Figure 2B). The efficacy of LSM in the area is highly unclear, but a 40%
218 reduction in mosquito emergence is predicted to have a larger impact in areas of lower

219 endemicity; conversely, ITNs are predicted to be more effective at higher endemicities. The
220 extent of IRS impact is unclear. Overall, we find that if using standard pyrethroid-only ITNs,
221 a combination of ITN/IRS/LSM is needed to reduce national *P. falciparum* incidence to pre-
222 *An. stephensi* levels. However, given the unknowns in *An. stephensi* responses to these
223 interventions, even this may be insufficient (Table 1, Figure 2B).

224 The mass distribution of PBO-pyrethroid nets may offer a more cost-effective tool given the
225 high levels of pyrethroid resistance and relatively low levels of endophily in Ethiopian *An.*
226 *stephensi* populations (Figure 2 and Table 1). PBO-pyrethroid nets are predicted to have the
227 most substantial impact on transmission of any single intervention examined, and almost
228 achieves the reduction provided by a combination of standard ITNs, IRS and LSM (139,000
229 (60,000-157,000) vs 194,000 (44,000-410,000) cases averted). Furthermore, PBO-pyrethroid
230 nets only account for a fraction of the cost of this more comprehensive intervention packet,
231 \$3.5 (2.9-3.7) vs \$70.3 million USD (38.4-100.9).

232 Layering multiple vector control interventions are predicted to have the largest impact.
233 However, because of the number of sites with minimal malaria transmission before *An.*
234 *stephensi* invasion, this may be insufficient to push the national malaria burden beneath current
235 levels unless PBO-pyrethroid nets, higher coverage (ITNs, IRS) or improved effectiveness
236 (LSM) can be achieved (Table 1). Increases in IRS coverage to 80% alone offers substantial
237 improvements due to the relatively limited use of IRS currently nationwide (Appendix Figure
238 2). However, due to low rates of endophily and crepuscular biting, the impact is substantially
239 less than would be expected against African *Anopheles* species. The cost of implementing
240 interventions is expected to be substantial, with the most comprehensive set of interventions
241 (80% use of PBO-pyrethroid ITN and IRS, 40% reduction in adult emergence) estimated to
242 cost an additional \$72.0 million USD (\$39.9 - \$102.5 million) annually or \$238.5 USD
243 (\$132.1-\$339.4) per case averted (over existing malaria prevention budgets).

244

245 **Discussion**

246 The invasion and establishment of *Anopheles stephensi* represents an imminent and substantial
247 threat to the Horn of Africa and wider region which could jeopardize progress achieved in
248 malaria control. The **modeled** increase in malaria is highly uncertain, but without additional
249 interventions, the impact could be considerable, with an estimated ~50% increase from the
250 reported ~740,000 *P. falciparum* malaria cases in Ethiopia, 2019, to an estimated 1,130,000
251 (95% CI 843,000-1,404,000) after establishment and disease equilibrium has been reached.
252 This assumes that malaria cases only increase in areas previously predicted as suitable for
253 *An. stephensi* establishment located under 2000m. Numbers could be substantially higher if
254 invasion is more widespread.

255 Sub-nationally, significant heterogeneity in public health impact is expected. Analysis suggests
256 that low altitude urban areas that currently experience negligible malaria transmission may
257 experience the largest increases in disease burden. In these areas, the absence of existing vector
258 control and low human population immunity indicates the possibility for substantial increases
259 in transmission. Our finding that areas with low pre-existing levels of transmission (much of

260 Ethiopia) take substantially longer to see increases in malaria after *An. stephensi* introduction
261 is particularly worrying. In these locations, in the absence of widespread and routine
262 surveillance for *An. stephensi*, the first signal detected could be an increase in malaria, which
263 would occur a considerable amount of time after mosquito establishment. While this would not
264 be of significant concern if the vector was easily removed, or only led to a relatively minor and
265 easily combatable increase in malaria, our model findings and what has been observed in
266 Djibouti (11, 12) suggest that this is not the case. Once *An. stephensi* becomes established, it
267 could lead to significant increases in malaria transmission that are not easily reversed. This
268 unnoticed proliferation and subsequent increase in transmission was previously seen in
269 *Anopheles arabiensis* in North-Eastern Brazil, where its “silent spread” led to a large malaria
270 epidemic (25, 29). Nevertheless, this work shows that the absence of an increase in reported
271 malaria cases following the identification of the presence of *An. stephensi* should not be overly
272 interpreted.

273 To combat the possible increase of malaria transmission following *An. stephensi* establishment,
274 the deployment of a wide array of vector control interventions should be considered. High
275 levels of pyrethroid resistance observed in *An. stephensi* captured in Ethiopia (14, 30) suggest
276 that pyrethroid-only ITNs (already in use across the country) will have a limited efficacy for
277 control of malaria transmitted by *An. stephensi*. Adoption of PBO-ITNs is predicted to be both
278 highly impactful and cost-effective. The impact of different control interventions is unclear
279 given the receptiveness of *An. stephensi* in this new environment is unquantified. For example,
280 if the mosquito feeds at night and rests inside structures sprayed with IRS then the widespread
281 use of this intervention alone could be sufficient to mitigate the public health impact (Appendix
282 Table 5, Figure 7 and accompanying text). However, if the mosquito was less amenable to
283 indoor vector control, then layering of ITNs and IRS may be insufficient. Within its endemic
284 range, *An. stephensi* shows a propensity to both crepuscular biting and resting outside of houses
285 compared to African *Anopheles* species, suggesting a reduced efficacy if it behaves as it does
286 in its endemic range (25) (Appendix Table 6). Compounding this, high density urban locations,
287 where large scale vector-control campaigns have been historically absent, will present a
288 challenge for establishing ITN access and use, as well as achieving sufficient IRS coverage.
289 Additional data on *An. stephensi* bionomics and the impact of vector control interventions
290 should therefore be collected as a matter of urgency to enable model estimates to be refined
291 and contribute to the decision-making process, (see Appendix). These compound uncertainties
292 combined with the crude method of economic evaluation adopted here make cost projections
293 highly variable. Though these are substantial (\$74.6 million USD (\$42.6 - \$105.4)), the
294 economic burden of an additional ~368,000 (95% CI 103,000 – 664,000) malaria cases should
295 not be underestimated.

296 This work was intended to provide initial estimates of the possible scale and impact of *An.*
297 *stephensi* invasion rather than detailed predictions of what will happen. As such, there are many
298 limitations to this approach (further detailed in the Appendix) and results should not be overly
299 interpreted. The public health impact is likely to be underestimated as we only consider
300 *P. falciparum* malaria, despite *An. stephensi* having been shown to be capable of efficiently
301 transmitting *P. vivax* in Ethiopia (31). Due to the presence of additional *Anopheles* species in
302 Djibouti, it is unlikely the increases we have seen are purely due to *An. stephensi*, which we

303 have assumed, and while highly correlated (11), and increasingly implicated (12), the causative
304 role in *An. stephensi* in the increases seen in Djibouti has not been established. However, the
305 trends observed along with evidence of underreporting in Djibouti are cause for significant
306 concern. Malaria burden is related to the extent to which *An. stephensi* may invade a region
307 (i.e., the number of mosquitoes per person and not just its presence). While we have made use
308 of available published and unpublished sources on *An. stephensi* bionomics in its endemic
309 range, there is either insufficient data or substantial intra-species variability to simply ascribe
310 a set of characteristics to how *An. stephensi* will interact with humans and control interventions
311 in Ethiopia. In order to improve predictions, we have identified priority aspects of *An. stephensi*
312 bionomics (such as anthropophagy, endophily, indoor biting), local transmission (existing
313 distribution of malaria cases between rural and urban areas) and intervention parameters
314 (efficacy of ITNs, IRS and LSM give a certain effort) that should be explored as a priority in
315 order to inform additional mathematical modelling of the impact of *An. stephensi* on malaria
316 transmission in Africa (see Appendix).

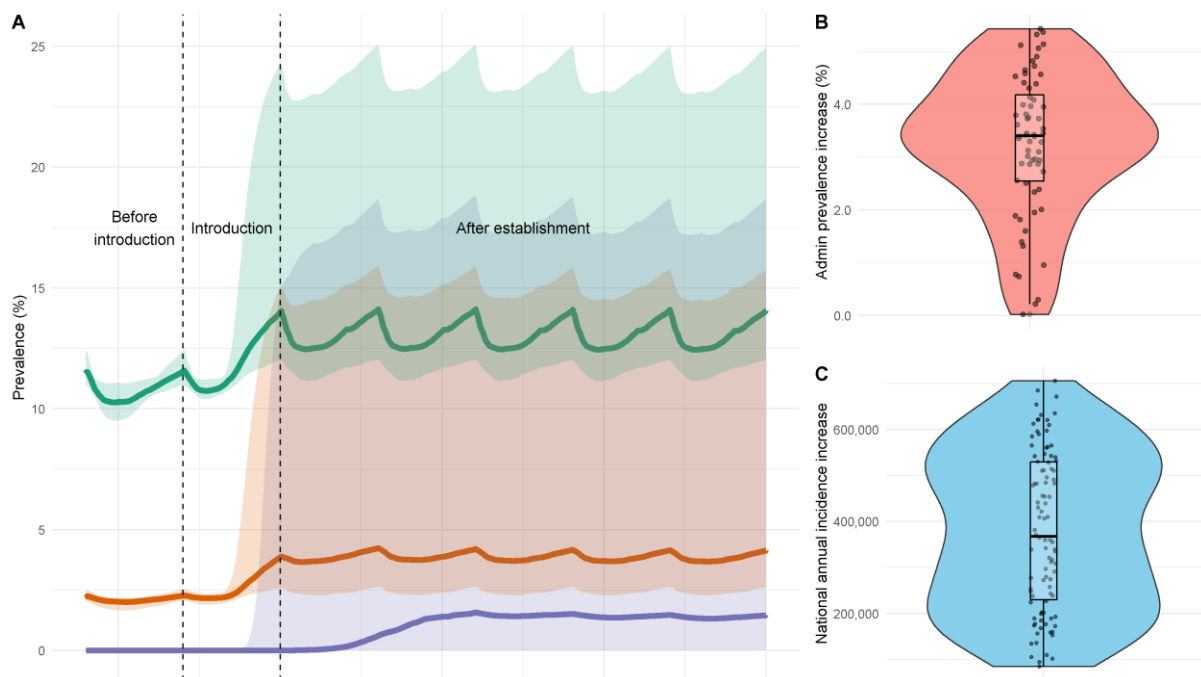
317 While there is substantial uncertainty in what will happen if *An. stephensi* becomes established
318 in Ethiopia and other locations across Africa, the estimates provided here, and the situation
319 seen in Djibouti, should be a stark warning against complacency and highlight the need to
320 rapidly improve surveillance and evaluate effective control interventions in response to this
321 developing threat.

322

323

324

325



326

327 **Figure 1. The impact of *An. stephensi* introduction on malaria prevalence and incidence**
328 **in areas of Ethiopia in areas under 2000m and identified to be suitable.** A) Changes in
329 prevalence following introduction and establishment of *An. stephensi* in 3 areas of malaria
330 transmission in Ethiopia. Vertical dashed lines span the period in which *An. stephensi* is
331 introduced and coloured shapes the 95% CI's. Green represents a transmission scenario of
332 ~12% prevalence, orange, 2.5%, and purple <0.1% B) The median difference of *P. falciparum*
333 prevalence following establishment in the different administrative groupings which have been
334 predicted to be suitable based on Sinka et al., (2020) and under 2000m. C) The annual increase
335 in clinical incidence of malaria caused by *P. falciparum* nationally. Individual dots show
336 uncertainty in predictions given differences in mosquito bionomics (for 100 samples of the
337 Latin hyper cube). Periodicity is caused by ongoing distribution of ITNs and IRS which are
338 assumed to continue at pre-invasion levels.

339

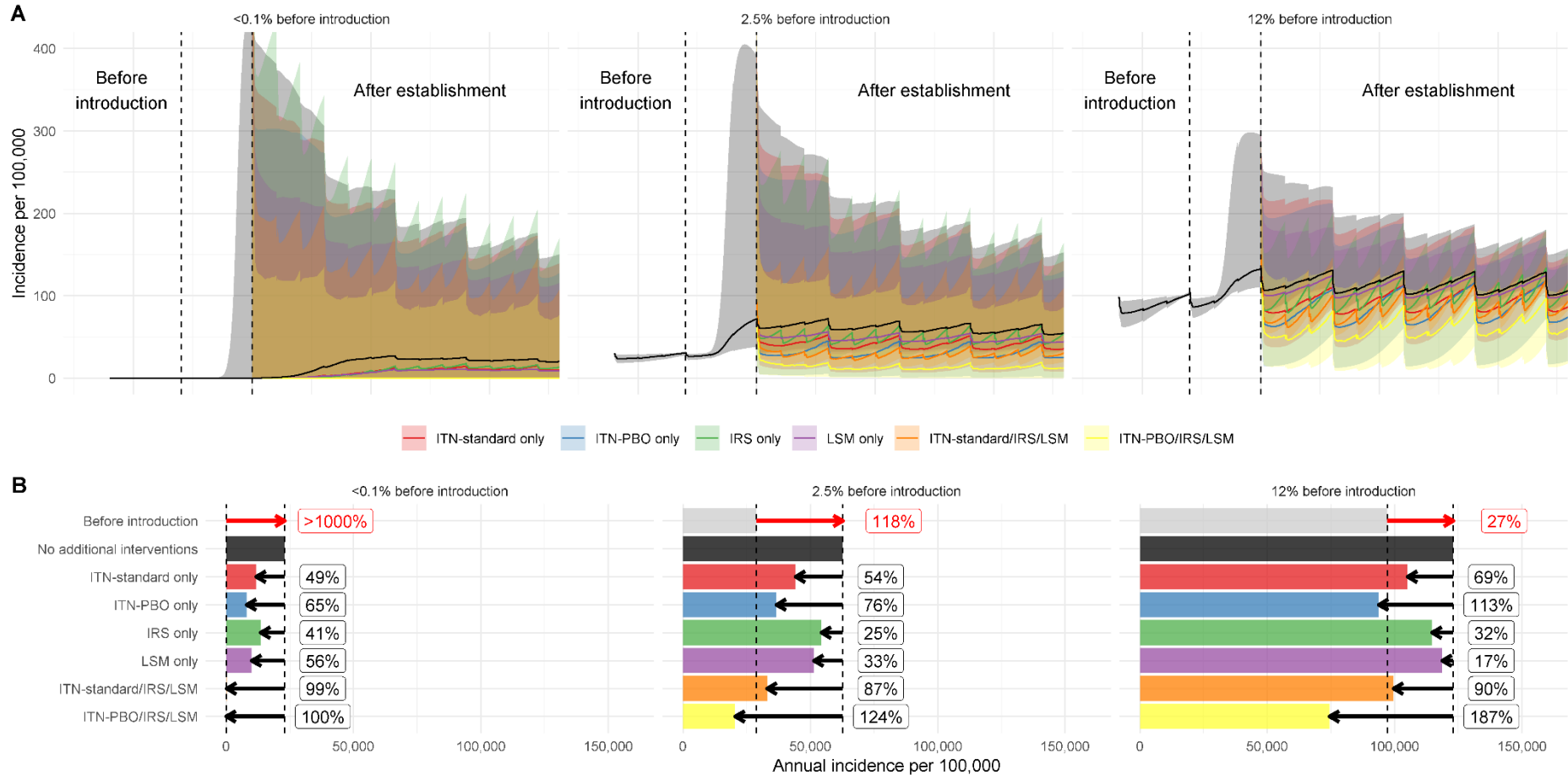


Figure 2. The effect of control measures on mitigating the impact of *An. stephensi* introduction for regions with different pre-existing malaria endemicity. A) The change in clinical incidence over time (per 100,000 people per year) following *An. stephensi* introduction in three locations, with low ($\sim 0.1\%$), medium ($\sim 2.5\%$) and high slide prevalence ($\sim 12\%$). Each location had an EIP of 8 and 40% ITN coverage, 0% IRS and 0% LSM pre-*An. stephensi* introduction and establishment. Different coloured lines indicate intervention scenarios be it no additional interventions (black), or scale up of ITNs (to 80% use, red), IRS (to 80%, blue), the use of LSM (reducing mosquito emergence by 40%, green) or the use of all three (at previous levels, purple). Coloured shapes show the 95% CIs for model predictions given uncertainty in parameters. The left

vertical dashed line indicates the start to the introduction of *An. stephensi*, which occurs between the dashed lines and is fully established by year 3. B) The median annual increase in malaria incidence per 100,000 per year comparing before and after scenarios for each of the locations across a range of intervention combinations. Red arrows and numbers refer to the percentage increase in the median incidence following the establishment of *An. stephensi* compared to the 3 years prior to the introduction. Black lines and numbers show the percentage reduction in cases relative to no additional interventions over three years caused by the introduction of the different control interventions.

Table 1. Different combinations of ITN/ITN-PBO/IRS/LSM and the associated annual cases averted and costs, total and per person. ITN/ITN-PBO/IRS values refer to the coverage among the population exposed to *An. stephensi* introduction and LSM the reduction in adult emergence of the established *An. stephensi*. Values in brackets for the cases averted refer to the difference in minimum and maximum 95% CI's and as such the cases averted median value does not always fall within this, or in numerical order. Total costs and costs per case refer to the median cases averted, and the range in the brackets as the minimum and maximum costs defined in the Appendix.

ITN	ITN-PBO	IRS	LSM	Cases averted (thousands)	Total costs (million USD)	Cost per case averted (USD)
0%		0%	40%	68 (9-143)	9.9 (5.0-14.9)	18 (9-27)
80%		0%	0%	71 (29-31)	1.8 (1.7-1.9)	3 (3-3)
0%		80%	0%	75 (16-99)	58.6 (31.7 -84.2)	96 (52-138)
80%		80%	40%	172 (39-301)	70.3 (38.4-100.9)	50 (27-72)
	80%	0%	0%	139 (60-157)	3.5 (2.9-3.7)	25 (21-27)
	80%	80%		207 (70-33)	64.6 (37.2-90.8)	91 (52-127)
	80%		80%	210 (49-361)	16.0 (10.6-21.5)	22 (15-30)
	80%	80%	40%	302 (79-879)	72.0 (39.9-102.5)	239 (132-339)

Acknowledgements

We acknowledge funding support from the United States President's Malaria Initiative and the MRC Centre for Global Infectious Disease Analysis (reference MR/R015600/1). The MRC Centre for Global Infectious Disease Analysis is jointly funded by the UK Medical Research Council (MRC) and the UK Foreign, Commonwealth & Development Office (FCDO), under the MRC/FCDO Concordat agreement and is also part of the EDCTP2 programme supported by the European Union; and acknowledges funding by Community Jameel. The findings and conclusions in this report are those of the author(s) and do not necessarily represent the official position of the Centers for Disease Control and Prevention or the U.S. President's Malaria Initiative.

Author Bio (first author only)

Dr Arran Hamlet is a mathematical modeller of infectious disease in the MRC Centre for Global Infectious Disease Epidemiology at Imperial College London. His research interests include the application of mathematical and statistical modelling to further understand the epidemiology of vector-borne diseases and the impact of control measures against them.

References

1. World Health Organization. World malaria report 2020: 20 years of global progress and challenges,. Geneva: World Health Organization; 2020.
2. United Nations. DoEaSA, Population Division. World Urbanization Prospects: The 2018 Revision (ST/ESA/SER.A/420). New York: United Nations; 2019.
3. Hay SI, Guerra CA, Tatem AJ, Atkinson PM, Snow RW. Urbanization, malaria transmission and disease burden in Africa. *Nat Rev Microbiol*. 2005 Jan;3(1):81-90.
4. Trape JF, Zoulani A. Malaria and urbanization in central Africa: the example of Brazzaville. Part III: Relationships between urbanization and the intensity of malaria transmission. *Trans R Soc Trop Med Hyg*. 1987;81 Suppl 2:19-25.
5. Thomas S, Ravishankaran S, Justin NA, Asokan A, Mathai MT, Valecha N, et al. Resting and feeding preferences of *Anopheles stephensi* in an urban setting, perennial for malaria. *Malar J*. 2017 Mar 10;16(1):111.
6. Subbarao SK, Nanda N, Rahi M, Raghavendra K. Biology and bionomics of malaria vectors in India: existing information and what more needs to be known for strategizing elimination of malaria. *Malar J*. 2019 Dec 3;18(1):396.
7. Kumar A, Thavaselvam D. Breeding habitats and their contribution to *Anopheles stephensi* in Panaji. *Indian J Malariol*. 1992 1992/03//;29(1):35-40.
8. Gayan Dharmasiri AG, Perera AY, Harishchandra J, Herath H, Aravindan K, Jayasooriya HTR, et al. First record of *Anopheles stephensi* in Sri Lanka: a potential challenge for prevention of malaria reintroduction. *Malaria J*. 2017 2017/08/10;16(1):326.
9. Batra CP, Adak T, Sharma VP, Mittal PK. Impact of urbanization on bionomics of *An. culicifacies* and *An. stephensi* in Delhi. *Indian J Malariol*. 2001 Sep-Dec;38(3-4):61-75.
10. Faulde MK, Rueda LM, Khaireh BA. First record of the Asian malaria vector *Anopheles stephensi* and its possible role in the resurgence of malaria in Djibouti, Horn of Africa. *Acta tropica*. 2014 Nov;139:39-43.
11. Seyfarth M, Khaireh BA, Abdi AA, Bouh SM, Faulde MK. Five years following first detection of *Anopheles stephensi* (Diptera: Culicidae) in Djibouti, Horn of Africa: populations established-malaria emerging. *Parasitol Res*. 2019 Mar;118(3):725-32.
12. de Santi VP, Khaireh BA, Chiniard T, Pradines B, Taudon N, Larreche S, et al. Role of *Anopheles stephensi* Mosquitoes in Malaria Outbreak, Djibouti, 2019. *Emerging infectious diseases*. 2021;27(6):1697-700.
13. World Health Organization. Malaria Threat Map. 2021 [cited 28/06/21]; Available from:
14. Balkew M, Mumba P, Yohannes G, Abiy E, Getachew D, Yared S, et al. An update on the distribution, bionomics, and insecticide susceptibility of *Anopheles stephensi* in Ethiopia, 2018-2020. *Malar J*. 2021 Jun 9;20(1):263.
15. Griffin JT, Ferguson NM, Ghani AC. Estimates of the changing age-burden of *Plasmodium falciparum* malaria disease in sub-Saharan Africa. *Nature communications*. 2014;5:3136.
16. Challenger JD, Olivera Mesa D, Da DF, Yerbanga RS, Lefèvre T, Cohuet A, et al. Predicting the public health impact of a malaria transmission-blocking vaccine. *Nature communications*. 2021 2021/03/08;12(1):1494.
17. Griffin JT, Hollingsworth TD, Okell LC, Churcher TS, White M, Hinsley W, et al. Reducing *Plasmodium falciparum* malaria transmission in Africa: a model-based evaluation of intervention strategies. *PLoS medicine*. 2010 Aug 10;7(8).
18. White MT, Griffin JT, Churcher TS, Ferguson NM, Basanez MG, Ghani AC. Modelling the impact of vector control interventions on *Anopheles gambiae* population dynamics. *Parasites & vectors*. 2011 Jul 28;4:153.
19. Griffin JT, Bhatt S, Sinka ME, Gething PW, Lynch M, Patouillard E, et al. Potential for reduction of burden and local elimination of malaria by reducing *Plasmodium falciparum* malaria transmission: a mathematical modelling study. *Lancet Infect Dis*. 2016 Apr;16(4):465-72.
20. Iman RL. Latin Hypercube Sampling. *Wiley StatsRef: Statistics Reference Online*; 2014.

21. Stopard IJ, Churcher TS, Lambert B. Estimating the extrinsic incubation period of malaria using a mechanistic model of sporogony. *Plos Comput Biol*. 2021 Feb;17(2):e1008658.
22. Pfeiffer DA, Lucas TCD, May D, Harris J, Rozier J, Twohig KA, et al. malariaAtlas: an R interface to global malariometric data hosted by the Malaria Atlas Project. *Malar J*. 2018 Oct 5;17(1):352.
23. National Malaria Control and Elimination Programme. A survey on ownership and use of long-lasting insecticidal nets and malaria treatment seeking behavior in Ethiopia (2020). Addis Ababa: Ethiopian Public Health Institute; 2020.
24. World Population Prospects. <https://www.worldpop.org/>. [cited 11/01/2021]; Available from:
25. Sinka ME, Pironon S, Massey NC, Longbottom J, Hemingway J, Moyes CL, et al. A new malaria vector in Africa: Predicting the expansion range of *Anopheles stephensi* and identifying the urban populations at risk. *Proceedings of the National Academy of Sciences of the United States of America*. 2020 Oct 6;117(40):24900-8.
26. Fick SE, Hijmans RJ. WorldClim 2: new 1-km spatial resolution climate surfaces for global land areas. *Int J Climatol*. 2017 Oct;37(12):4302-15.
27. Churcher TS, Lissenden N, Griffin JT, Worrall E, Ranson H. The impact of pyrethroid resistance on the efficacy and effectiveness of bednets for malaria control in Africa. *Elife*. 2016 Aug 22;5.
28. Sherrard-Smith E, Griffin JT, Winskill P, Corbel V, Pennetier C, Djenontin A, et al. Systematic review of indoor residual spray efficacy and effectiveness against *Plasmodium falciparum* in Africa. *Nature communications*. 2018 Nov 26;9(1):4982.
29. Killeen GF, Fillinger U, Kiche I, Gouagna LC, Knols BG. Eradication of *Anopheles gambiae* from Brazil: lessons for malaria control in Africa? *Lancet Infect Dis*. 2002 Oct;2(10):618-27.
30. Yared S, Gebressielasie A, Damodaran L, Bonnell V, Lopez K, Janies D, et al. Insecticide resistance in *Anopheles stephensi* in Somali Region, eastern Ethiopia. *Malar J*. 2020 May 12;19(1):180.
31. Tadesse FG, Ashine T, Teka H, Esayas E, Messenger LA, Chali W, et al. *Anopheles stephensi* Mosquitoes as Vectors of *Plasmodium vivax* and *falciparum*, Horn of Africa, 2019. *Emerging infectious diseases*. 2021 Feb;27(2):603-7.