

1 **Title:**

2 Islet autoantibody level distributions in type 1 diabetes and their association with genetic and  
3 clinical characteristics

4 **Authors:**

5 Sian Louise Grace<sup>1</sup>, Jack Bowden<sup>1</sup>, Helen C. Walkey<sup>2</sup>, Akaal Kaur<sup>2</sup>, Shivani Misra<sup>2</sup>,  
6 Beverley M. Shields<sup>1</sup>, Trevelyan J. McKinley<sup>1</sup>, Nick S. Oliver<sup>2</sup>, Timothy McDonald<sup>1,3</sup>,  
7 Desmond G. Johnston<sup>2</sup>, Angus G. Jones<sup>1,4</sup>, Kashyap Amratial Patel<sup>1,4</sup>

8 **Author affiliations:**

9 <sup>1</sup>The Institute of Biomedical & Clinical Science, University of Exeter Medical School,  
10 Exeter, U.K.

11 <sup>2</sup>Division of Diabetes, Endocrinology and Metabolism, Imperial College London, London,  
12 U.K.

13 <sup>3</sup>Academic Department of Clinical Biochemistry, Royal Devon and Exeter NHS Foundation  
14 Trust, Exeter, U.K.

15 <sup>4</sup>Macleod Diabetes and Endocrine Centre, Royal Devon and Exeter NHS Foundation Trust,  
16 Exeter, U.K.

17 **Corresponding author:**

18 Dr Kashyap A. Patel; Level 3 RILD Building, RD&E Wonford, Barrack Road, Exeter,  
19 Devon, EX2 5DW. K.A.Patel@exeter.ac.uk, Tel: +44 1392 408237

20 **Word count: 3493**

21 **Number of tables and figures:** 2 x Figures & 2 x Tables

22 **Electronic Supplemental Material:** 2 x Figures & 5 x Tables

23 **Abstract**

24 Positivity for islet autoantibodies is used for diagnosis of type 1 diabetes. However, the  
25 importance of the autoantibody level at diagnosis of type 1 diabetes is not clear. Here, we  
26 assessed the association of glutamate decarboxylase (GADA), islet antigen-2 (IA-2A) and  
27 zinc transporter 8 (ZnT8A) autoantibody levels, measured using radiobinding assays, on  
28 genetic and clinical characteristics at diagnosis of 1536 participants with diabetes who were  
29 positive for these autoantibodies. We show that GADA and IA-2A levels had bimodal  
30 distributions, but ZnT8A level did not. The comparison of genetic and clinical characteristics  
31 between high and low level categories showed high GADA level was associated with older  
32 age at diagnosis, female sex and *HLA-DR3-DQ2*, whereas high IA-2A level was associated  
33 with younger age of diagnosis, ZnT8A positivity and *HLA-DR4-DQ8*. We replicated our  
34 findings in an independent cohort of 427 people with type 1 diabetes where autoantibodies  
35 were measured using enzyme-linked immunosorbent assays. In conclusion, Islet autoantibody  
36 levels provide additional information over positivity in type 1 diabetes at diagnosis. The  
37 bimodality of islet autoantibody levels highlights the novel aspect of heterogeneity of type 1  
38 diabetes which may have implications on prediction, treatment and prognosis.

39

40

41 Islet autoantibodies are commonly used in the diagnosis and prediction of type 1 diabetes.  
42 They are well established as the biomarkers of the underlying autoimmune pathogenesis (1).  
43 Autoantibodies to islet cell antigen (ICA), glutamate decarboxylase (GADA), islet antigen-2  
44 (IA-2A) , insulin (IAA) and zinc transporter 8 (ZnT8A) are the most commonly used islet  
45 autoantibodies at diagnosis (2). As detectable islet autoantibodies overlap between health and  
46 disease, a test is usually considered positive for a given islet autoantibody when the antibody  
47 level is higher than a 97.5–99<sup>th</sup> centile of a control population (3; 4). In routine clinical  
48 practice, quantitative islet autoantibody results are usually interpreted as positive or negative,  
49 and the level of the islet autoantibody, is not thought to be clinically meaningful.

50 Islet autoantibody levels may provide additional information over positivity in type 1 diabetes  
51 at diagnosis. Similar to type 1 diabetes, autoantibodies to a specific antigen are commonly  
52 used for diagnosis in many other autoimmune diseases (such as TSH receptor antibodies in  
53 Graves' disease and Rheumatoid Factor and Citrullinated Protein in rheumatoid arthritis). For  
54 Graves' disease and rheumatoid arthritis, along with autoantibody positivity for these  
55 antigens, autoantibody level at diagnosis is associated with disease severity, prognosis and  
56 treatment success (5; 6). Multiple studies have shown a role for islet autoantibody level in the  
57 prediction of onset of type 1 diabetes, those with a higher levels of IA-2A, IAA and ICA have  
58 an increased risk of developing type 1 diabetes in at-risk populations (1; 7-9). However, it is  
59 not clear if the islet autoantibody level at diagnosis of type 1 diabetes, in addition to its  
60 interpretation as 'positive', is associated with the clinical phenotype similar to other  
61 autoimmune diseases.

62 In this study, we undertook an analysis of GADA, IA-2A and ZnT8A levels at diagnosis in a  
63 large cohort of participants with type 1 diabetes, assessing the association of islet  
64 autoantibody levels on genetic and clinical characteristics at diagnosis in people with type 1  
65 diabetes.

66

## 67 **Research Design and Methods**

### 68 *Study cohorts*

69 We recruited 1536 participants with a clinician-assigned diagnosis of type 1 diabetes (age at  
70 diagnosis range 4–74 years) who were positive for any of GADA, IA-2A or ZnT8A at  
71 diagnosis. These participants were recruited as part of the UK-wide ADDRESS-2 study. The  
72 detailed protocol for the study has been published previously (10). The included participants  
73 were recruited at diagnosis (<6 months), were >4y of age, insulin-treated from diagnosis, and  
74 were self-reported to be of white European ethnicity. We excluded individuals with non-  
75 European ethnicity as the type 1 diabetes genetic risk score is only validated for those with  
76 European ancestry. DNA and serum samples, clinical data (including the characteristics of  
77 diabetes at diagnosis) were collected at recruitment. The overall cohort characteristics are  
78 provided in ESM Table 1.

79 We used a second independent replication cohort of 427 participants with clinically  
80 diagnosed type 1 diabetes (age at diagnosis range 17–81 years) and positivity to any of the  
81 three islet autoantibodies (GADA, IA-2A and ZnT8A). The participants were part of the UK-  
82 wide StartRight study (11). All were recruited <12 months from diagnosis, insulin-treated  
83 from diagnosis and self-reported to be of white European ethnicity. The overall cohort  
84 characteristics is provided in ESM Table 1.

### 85 *Islet autoantibody measurement*

86 *ADDRESS-2 study:* The islet autoantibodies (GADA, IA-2A and ZnT8A) were measured  
87 using established radiobinding assays by the Diabetes and Metabolism group at the  
88 University of Bristol (Bristol, U.K.) (12; 13) at a median of 10.1 weeks diabetes duration.  
89 Results for GADA and IA-2A are expressed in digestive and kidney units/mL (DK units/mL)

90 units/mL or arbitrary units (AU/mL) for ZnT8A calculated from standard curves consisting of  
91 diluted patient sera in antibody-negative sera from healthy donors. Positive thresholds were  
92 set at 97.5<sup>th</sup> percentile of 974 control samples for GADA ( $\geq 33$  DK U/ml), the 98<sup>th</sup> percentile  
93 of 500 control samples for IA-2A ( $\geq 1.4$  DK U/ml) and the 97.5<sup>th</sup> percentile of 523 healthy  
94 school children for ZnT8A ( $\geq 1.8$  AU/ml) (14). The laboratory participates in the Islet  
95 Autoantibody Standardisation Program (IASP) (ESM Table 2).

96 *StartRight study*: GADA, IA-2A and ZnT8A islet autoantibodies were measured using  
97 ELISA assays (RSR Limited, Cardiff, U.K.) on a Dynex DS2 automated ELISA system  
98 (Launch Diagnostics, Longfield, U.K.), at a median of 14.9 weeks diabetes duration by the  
99 Academic Department of Blood Sciences, Royal Devon and Exeter Hospital (Exeter, U.K.)  
100 (15). Positive thresholds were set at the 97.5<sup>th</sup> percentile of 1559 non-diabetic control subjects  
101 (GAD  $\geq 11$  WHO (World Health Organization) U/mL, IA-2  $\geq 7.5$  WHO U/mL, ZnT8 age  $\geq$   
102 30 years  $\geq 10$  U/mL, ZnT8 age < 30 years  $\geq 65$  U/mL). Upper reporting limits for GADA,  
103 IA-2A and ZnT8A were 2000 WHO U/mL, 4000 WHO U/mL and 2000 U/mL respectively.  
104 The laboratory also participates in IASP (ESM Table 2) (16).

#### 105 *Type 1 diabetes genetic risk score and HLA genotypes*

106 We generated weighted T1D-GRS from 30 common type 1 diabetes genetic variants (single  
107 nucleotide polymorphisms [SNPs]) for HLA and non-HLA loci as described in our previous  
108 papers (17). *HLA DR3-DQ2* and *HLA-DR4-DQ8* were imputed from two SNPs as described  
109 in our previous paper (15).

#### 110 *Statistical Analysis*

111 We used histograms to assess the distribution of islet autoantibody levels in those positive for  
112 that autoantibody. Autoantibody levels with bimodal distributions were split into high or low  
113 level categories using the nadir (lowest point between distributions). We also used a normal

114 mixture model analysis and likelihood ratio tests to assess whether uni-modal, bi-modal or  
115 multi-modal distributions were best supported by the data. This analysis was performed on  
116 log-transformed autoantibody level data so that it was better approximated by a mixture of  
117 continuous, symmetric normal distributions. This was implemented using the mixtools  
118 package in R (18).

119 We performed Mann-Whitney tests to compare the continuous variables and Pearson chi-  
120 square tests were used to compare categorical variables between autoantibody level  
121 categories. All statistical analysis was carried out using Stata/SE 16.0 (StataCorp, College  
122 Station, TX) unless otherwise stated.

## 123 **Results**

### 124 **GAD and IA-2 but not ZnT8 autoantibody levels exhibit a bimodal distribution at** 125 **diagnosis in type 1 diabetes**

126 We first assessed the distribution of GADA level in GADA positive type 1 diabetes people  
127 (n=1268), IA-2A level in IA-2A positive type 1 diabetes people (n=1034), and ZnT8A level  
128 in ZnT8A positive type 1 diabetes people (n=906). The distribution of the GADA and IA-2A  
129 levels showed two peaks consistent with a bimodal distribution (Fig. 1A & 1B). ZnT8A level  
130 showed a single peak with right-skewed distribution (Fig. 1C). Bimodality of GADA and IA-  
131 2A levels was also confirmed using a mixture model analysis (ESM Fig. 1A & 1B).  
132 Specifically, we analysed IA-2A and GADA levels on the log scale and used a likelihood  
133 ratio test (LRT) on 3 degrees of freedom to compare the log-likelihood of a one-component  
134 normal distribution with two parameters (one mean and one variance) versus that of a two-  
135 component, five parameter normal mixture (two means, two variances and a weight  
136 determining the relative proportion of each component). Under the null hypothesis that the  
137 single normal distribution was the true data generating model, twice the difference in log-  
138 likelihoods between the one-component and two-component models (referred to as the LRT)

139 follows a chi-squared distribution on  $5-2 = 3$  degrees of freedom. Both analyses yielded  
140 overwhelming evidence in favour of the two-component model ( $LRT_{IA-2A} = 1129$ ,  $p < 2 \times 10^{-16}$ ,  
141  $LRT_{GADA} = 345$ ,  $p < 2 \times 10^{-16}$ ). We used the nadir value between the two peaks to divide the  
142 bimodal distribution of the autoantibody levels into two groups (low vs. high levels) for the  
143 subsequent analysis. The nadir value for GADA levels was 452 DK U/ml. All participants  
144 with a GADA level lower than this value were grouped into a low level GADA group (mean  
145 level 180.3, SD +/-118.4, 711/1268 (56%)) and the participants with a GADA level above or  
146 equal this value were grouped into a high level GADA group (760.9, +/-229.3, 557/1268  
147 (44%)). Similarly, the nadir value of 130 DK U/ml between the two peaks of IA-2A levels  
148 divided people into a low level IA-2A group (mean level 41.2, SD +/-37.4, 285/1034 (28%))  
149 and a high level IA-2A group (301.0, +/-88.3, 749/1034 (72%)).

150 **Higher GADA levels were associated with later age at diagnosis of type 1 diabetes,**  
151 **female sex, and *HLA-DR3-DQ2*.**

152 To assess the association of bimodal GADA levels to clinical features at diagnosis, we  
153 compared the clinical features between the people with low level (lower mode) and high level  
154 (higher mode) GADA as defined above (Table 1). Those in the high level GADA group were  
155 diagnosed later compared to the low GADA level group (median 27.1 y [IQR 17.5-38.8] vs.  
156 19.4 y [12.9-29.7],  $P = 3 \times 10^{-16}$ ) (Fig. 2) (Table 1). They were more likely to be female (52%  
157 vs. 36%,  $P = 1 \times 10^{-8}$ ), and more likely to have other autoimmune diseases (13% vs. 5%,  
158  $P = 5 \times 10^{-6}$ ) compared to low level GADA group (Table 1). They had modest enrichment for  
159 *HLA DR3-DQ2* (59% vs. 50%,  $P = 3 \times 10^{-3}$ ) but had similar T1D-GRS (median 0.275 [IQR  
160 0.256-0.293] vs. 0.274 [0.253-0.292],  $P = 0.53$ ) based on 30 T1D associated common variants  
161 (19). The presentation characteristics (DKA, weight loss, polyuria, HbA1c and BMI), the  
162 number of other islet autoantibodies and other islet autoantibody levels were similar between  
163 the two GADA level groups.

164 **Higher IA-2A levels were associated with earlier age at diagnosis of type 1 diabetes and**  
165 ***HLA DR4-DQ8* and *ZnT8A* positivity.**

166 We next compared the clinical features of low and high IA-2A level groups to assess  
167 association of bimodal IA-2A level distribution to clinical features at diagnosis. (Table 2).  
168 Contrary to GADA, those in the higher level IA-2A group were diagnosed earlier compared  
169 to the lower IA-2A level group (median 17.0 years [IQR 11.9-25.2 years] vs. 22.4 years  
170 [13.1-33.5 years],  $P=4\times 10^{-6}$ ) (Fig. 2) (Table 2). They were more likely to be multiple  
171 autoantibody positive (60% vs. 42% with three autoantibodies,  $P=1\times 10^{-9}$ ), positive for  
172 ZnT8A (78% vs. 52%,  $P=2\times 10^{-16}$ ) and more likely to have higher ZnT8A levels (median  
173 level 44 AU/ml [IQR 16-86] vs. 26 [7.7-55]) ( $P=1\times 10^{-5}$ ). Those with higher IA-2A levels  
174 were more likely to have *HLA DR4-DQ8* (68% vs. 51%,  $P=5\times 10^{-7}$ ). The presentation  
175 characteristics were similar between IA-2A level groups (Sex, DKA, weight loss, polyuria,  
176 HbA1c and BMI, parent with diabetes) (Table 2).

177 **ZnT8A level at diagnosis was not associated with age at diagnosis of type 1 diabetes**

178 To assess the association of ZnT8A level to clinical features at diagnosis, we divided 906  
179 T1D cases who were positive for ZnT8A by the median value of the distribution (35.4  
180 AU/ml) due to lack of clear bimodal distribution. No statistically or clinically significant  
181 relationship was found between ZnT8A level and age at diagnosis (19.0 years [12.3-30.1] vs.  
182 17.4 [12.2, 26.4],  $p=0.07$ ) (Fig. 2) or *HLA DR3-DQ2* or *DR4-DQ8*. Both groups also  
183 exhibited similar presentation characteristics (DKA, weight loss, polyuria, HbA1c and BMI).  
184 However, those with higher level ZnT8A were more likely to be multiple autoantibody  
185 positive (71% vs. 55% with three autoantibodies) and more likely to be positive for IA-2A  
186 (86% vs. 76%  $P=1.5\times 10^{-4}$ ) (ESM Table 3) and GADA (83% vs. 74%  $P=0.002$ ). Similar  
187 results for the lack of association of ZnT8A level to age at diagnosis were observed with



188 linear regression analysis of log ZnT8A level to age at diagnosis ( $\beta=-0.57$ , 95% CI -1.2,0.08,  
189  $P=0.09$ ).

190 **Bimodal distributions of GAD and IA-2 islet autoantibody levels were also observed in**  
191 **second independent cohort**

192 To replicate our results with different assay and different cohort, we analysed GADA, IA-2A  
193 and ZnT8A levels in 427 patients with type 1 diabetes at diagnosis from the StartRight study  
194 where islet autoantibody levels were measured using ELISA assays; another commonly used  
195 assay for islet autoantibody measurement.

196 Similar to our primary cohort, GADA and IA-2A levels showed a bimodal distribution in this  
197 replication cohort, with ZnT8A showing one peak with right skewed distribution (ESM  
198 Figure 2). The shape of the distribution is different in this cohort due to the clinical laboratory  
199 conducting the ELISAs not reporting results that are outside the standard curve leading to  
200 truncation at higher levels.

201 Using the same method as our primary cohort, we divided the GADA and IA-2A bimodal  
202 distributions into high and low autoantibody level groups using the nadir between the peaks  
203 (ESM Figure 2). Similarly to our primary analysis, those in the high level GADA group were  
204 diagnosed later compared to the low GADA level group (41 years [IQR 32-53 years] vs. 30  
205 years [IQR 24-38 years],  $P=7 \times 10^{-13}$ ), were more likely to be female (61% vs. 42%,  $P=2 \times 10^{-4}$ )  
206 and were more likely to have a concurrent autoimmune disease (22% vs. 11%,  $P=2 \times 10^{-3}$ )  
207 (ESM table 4). There were no differences in presentation characteristics, parent with diabetes,  
208 or C-peptide (ESM Table 4). The participants with higher IA-2A levels were younger  
209 (median 29 years vs. 33 years) compared to the ones with lower IA-2A levels, as our primary  
210 cohort, but this difference was not statistically significant (ESM Table 5).

211

## 212 **Discussion**

213 Our study shows that GADA and IA-2A level at diagnosis of type 1 diabetes show clear  
214 bimodal distributions. Dichotomising levels into high or low groups according to the  
215 observed modes exhibits strong associations with age at diagnosis of type 1 diabetes but not  
216 with severity of type 1 diabetes at diagnosis.

217 There have been multiple studies of islet autoantibody levels in at-risk populations for type 1  
218 diabetes (1; 7-9) and within type 1 diabetes populations but none of the studies to our  
219 knowledge have suggested that GADA and IA-2A have a bimodal distribution of level.  
220 However, the bimodality of GADA levels but not IA-2A levels has been reported in people  
221 with latent autoimmune diabetes (LADA) (20; 21). We were able to show the bimodality of  
222 levels using a second independent cohort of people with type 1 diabetes as well as using a  
223 second method for measuring islet autoantibodies. These data suggest that the bimodality of  
224 GADA and IA-2A levels is likely to be a true biological phenomenon, rather than an assay  
225 artefact, that is observed at diagnosis of type 1 diabetes.

226 The underlying biology of bimodality of GADA and IA-2A levels is not known and will need  
227 further investigation. We observed an enrichment of *HLA DR3-DQ2* and *HLA DR4-DQ8* in  
228 people with higher GADA levels and IA-2A levels respectively. Both these associations are  
229 well-described with the positivity of the respective autoantibodies but not with the  
230 autoantibody levels (22; 23). The difference in HLA susceptibility suggests a role for  
231 humoral immunity and antigen recognition as one of the factors underlying bimodality.  
232 However, the association with HLA was modest in our study and the overall genetic risk  
233 score was similar with high and low autoantibody level groups suggesting that there are  
234 additional factors which are responsible for the observed bimodality. Previous studies have  
235 shown that high GADA levels are correlated with higher affinity autoantibodies, the central

236 and c-terminal epitopes, and multiple autoantibodies positivity (24). We did not observe the  
237 association of high GADA level with multiple autoantibodies, but we did observe the  
238 association of higher IA-2A level with multiple autoantibodies. These data suggest that  
239 affinity, the difference in epitopes, and the presence of other autoantibodies may also  
240 contribute towards bimodality.

241 GADA and IA-2A levels are associated with age at onset but in opposite directions. The  
242 participants who had high GADA levels were nearly 7 years older at diagnosis compared to  
243 the ones with low level GADA. This was replicated in a second independent cohort of adults  
244 with type 1 diabetes. Contrary to GADA, participants with high IA-2A levels were 5.4 years  
245 younger at diagnosis compared to those with low IA-2A levels. Interestingly, we note that  
246 both GADA and IA-2A levels but not ZnT8A level follows the same association with age as  
247 positivity of these autoantibodies (14; 25; 26). It has been shown that the pattern of positive  
248 autoantibody changes with age. The older-onset type 1 diabetes have a higher proportion of  
249 GADA whereas childhood-onset diabetes has a higher proportion of IA-2A, IAA and ZnT8A.  
250 The underlying reason for this observation is not clear. However, it is not due to change in  
251 overall humoral immunity due to age as we see the opposite effect of autoantibody levels on  
252 age with different autoantibodies. In contrast to our findings in type 1 diabetes, studies of  
253 LADA have shown that higher GADA level is associated with early age of onset. This may  
254 relate to the very different populations studied and the relationship between age and prior  
255 prevalence of autoimmune diabetes which, as recently suggested, may markedly alter  
256 antibody false positive rates in populations of apparent type 2 diabetes (21; 26). Studies of  
257 the at-risk population have shown higher IA-2A level is associated with earlier age of onset  
258 of type 1 diabetes supporting our observation of an inverse relationship between IA-2A level  
259 and age (27; 28). In contrast, studies of at-risk individuals have not reported an association of

260 GADA level with the age of onset of type 1 diabetes (1; 28). The lack of inclusion of adults  
261 and focus on children in these studies may explain the lack of association.

262 We show that despite greatly different autoantibody levels, autoantibody level at diagnosis  
263 was not strongly associated with severity of presentation of type 1 diabetes as reflected by  
264 symptoms of hyperglycaemia, proportions with DKA, osmotic symptoms and weight loss, as  
265 well as C-peptide and HbA1c at diagnosis. These results contrast previous studies in LADA  
266 where high levels of GADA were associated with lower BMI, C-peptide and higher HbA1c  
267 (21). In contrast to LADA, higher levels of ICA but not GADA and IA-2A at diagnosis of  
268 type 1 diabetes was associated with C-peptide <50 pmol at 2 years (29). In a recent cross-  
269 sectional study of patients with type 1 diabetes; high GADA levels, but not IA-2A and  
270 ZnT8A levels, were individually associated with lower c-peptide (<2.5 pmol). However, in  
271 this study islet autoantibodies were measured at median 7.5 years after diagnosis and  
272 association of GADA levels were only seen at 2.1 years (30). Further longitudinal studies are  
273 needed to assess the association of bimodality of autoantibody level at diagnosis with beta-  
274 cell function over time in type 1 diabetes.

275 Our findings have important implications for the prediction, treatment and prognosis of type  
276 1 diabetes. It is well known that type 1 diabetes is a heterogeneous disease with heterogeneity  
277 in islet autoantibodies, beta-cell function, genetics as well as response to immunomodulatory  
278 therapy (31). The research to date mainly focuses on the positivity of autoantibodies rather  
279 than autoantibody levels in type 1 diabetes. We believe that autoantibody levels showing a  
280 bimodality for GADA and IA-2A is an important consideration in understanding the  
281 heterogeneity of type 1 diabetes. It is well known that immunomodulatory therapy has a  
282 variable response on beta-cell function in clinical trials (32). Currently, the reason for this  
283 variable response is not entirely known but is proposed to be due to variation in T cell  
284 response (33; 34). The bimodality of the levels may represent a surrogate marker of a specific

285 immune response and identify the subgroup of individuals with differential response to  
286 immunomodulatory therapy but this needs testing in further studies. This, along with the  
287 association of GADA level with c-peptide in a recent study, provides an exciting possibility  
288 of a stratified approach to type 1 diabetes treatment and prognosis which is currently lacking  
289 (30). Our findings also make a strong case to assess the usefulness of the bimodality of  
290 GADA and IA-2A levels in the prediction models of progression of diabetes in at-risk  
291 population in addition to autoantibody positivity.

292 Our autoantibody levels were assessed using radiobinding assays in our primary cohort. We  
293 did not measure autoantibody levels by ELISA on the same cohort to validate our findings  
294 using this more-commonly used assay in routine clinical laboratories. However, we observed  
295 similar results with ELISA assay in the second cohort; both laboratories participate in IASP  
296 and a high correlation of levels between the ELISA and radiobinding assay (35; 36) meaning  
297 that our findings are applicable to levels measured by both methods. Although a bimodal  
298 distribution of GADA and IA-2A was observed using both assay methods, the shape of the  
299 distributions does look different between assays. We believe this is due to the clinical  
300 laboratory conducting the ELISAs not reporting results that are outside the standard curve  
301 causing truncation at both ends in comparison the RBA laboratory which reports extrapolated  
302 results.

303 Our study is limited to white-European populations, due to lack of validity of T1D GRS in  
304 non-European ethnicity and further studies are needed in non-white ethnicity. Also, we only  
305 had c-peptide information at diagnosis and only in one of the study cohorts, therefore we are  
306 limited in our ability to assess the impact of autoantibody level distribution on beta cell  
307 function. We did not study insulin autoantibodies (IAA) as this would not be appropriate due  
308 to the nature of our cohorts being recruited weeks after diagnosis of type 1 diabetes and  
309 commencement of insulin therapy.

310 In conclusion, we show that GADA and IA-2A levels exhibit a bimodal distribution at  
311 diagnosis of type 1 diabetes, which is biologically important to the understanding of the  
312 heterogeneity of type 1 diabetes and opens the exciting possibility of further research to  
313 assess its implication on prediction, treatment and prognosis of type 1 diabetes.

#### 314 **Article Information**

#### 315 **Acknowledgements**

316 The authors acknowledge the staff of the Diabetes and Metabolism Group (University of  
317 Bristol) and of the Academic Department of Biochemistry (Royal Devon and Exeter NHS  
318 Trust) for their role in collecting the autoantibody data. K.A.P is the guarantor of this work  
319 and, as such, has full access to all the data in the study and takes responsibility for the  
320 integrity of the data and the accuracy of the data analysis. Finally, the authors would like to  
321 thank all the participants of the ADDRESS-2 and StartRight studies.

#### 322 **Author Contributions**

323 S.L.G assayed the Address-2 autoantibody samples at Bristol, researched the data and wrote  
324 the manuscript. S.L.G, K.A.P and J.B researched the data and wrote the manuscript. A.G.J  
325 and T.J.McD helped plan the research, contributed to the discussion and reviewed/edited the  
326 manuscript. B.M.S and T.J.McK contributed to data analysis and reviewed/edited the  
327 manuscript. A.G.J set up the study from which the replication cohort was selected. H.C.W,  
328 A.K, S.M, N.S.O and D.G.J. set up the ADDRESS-2 study from which the original cohort  
329 was selected, collected the clinical data and reviewed/edited the manuscript. This work, in  
330 part, has been presented as a poster at the nPOD conference (2021) and the Diabetes UK  
331 Professional Conference (2021).

#### 332 **Funding**

333 S.L.G is supported by a PhD Studentship funded by an Expanding Excellence in England  
334 (E3) award from Research England. K.A.P has a Career Development fellowship funded by

335 the Wellcome Trust (219606/Z/19/Z). A.G.J was supported by an NIHR Clinician Scientist  
336 award (CS-2015-15-018). T.J.McD is a National Institute for Health Research Senior Clinical  
337 Senior Lecturer. JB and T.J.McK are funded by an Expanding Excellence in England (E3)  
338 research grant to the University of Exeter. S.M is a recipient of the Future Leaders  
339 Mentorship award from the European Federation for the Study of Diabetes. D.G.J, S.M and  
340 N.S.O are supported by the National Institute for Health Research (NIHR) Biomedical  
341 Research Centre based at Imperial College London. The views given in this article do not  
342 necessarily represent those of the National Institute for Health Research, The National Health  
343 Service, the Department of Health and Social Care, or Research England.

#### 344 **Duality of Interest**

345 No potential conflicts of interest relevant to this article were reported.

#### 346 **References**

- 347 1. Achenbach PW, K.; Reiter, J.; Naserke, H.E.; Williams, A.J.K.; Bingley, P.J.; Bonifacio,  
348 E.; Ziegler, A-G.: Stratification of Type 1 Diabetes Risk on the Basis of Islet Autoantibody  
349 Characteristics. *Diabetes* 2004;53:384-392
- 350 2. Bingley PJ, Williams AJ: Islet autoantibody testing: an end to the trials and tribulations?  
351 *Diabetes* 2013;62:4009-4011
- 352 3. Bingley PJ: Clinical applications of diabetes antibody testing. *The Journal of clinical*  
353 *endocrinology and metabolism* 2010;95:25-33
- 354 4. Schlosser M, Strebelow M, Rjasanowski I, Kerner W, Wassmuth R, Ziegler M: Prevalence  
355 of Diabetes-Associated Autoantibodies in Schoolchildren: The Karlsburg Type 1 Diabetes  
356 Risk Study. *Annals of the New York Academy of Sciences* 2004;1037:114-117
- 357 5. de Brito Rocha S, Baldo DC, Andrade LEC: Clinical and pathophysiologic relevance of  
358 autoantibodies in rheumatoid arthritis. *Advances in Rheumatology* 2019;59:2
- 359 6. Hesarghatta Shyamasunder A, Abraham P: Measuring TSH receptor antibody to influence  
360 treatment choices in Graves' disease. *Clinical Endocrinology* 2017;86:652-657
- 361 7. Steck AK, Dong F, Waugh K, Frohnert BI, Yu L, Norris JM, Rewers MJ: Predictors of  
362 slow progression to diabetes in children with multiple islet autoantibodies. *Journal of*  
363 *Autoimmunity* 2016;72:113-117
- 364 8. Sosenko JM, Skyler JS, Palmer JP, Krischer JP, Yu L, Mahon J, Beam CA, Boulware DC,  
365 Rafkin L, Schatz D, Eisenbarth G: The Prediction of Type 1 Diabetes by Multiple  
366 Autoantibody Levels and Their Incorporation Into an Autoantibody Risk Score in Relatives  
367 of Type 1 Diabetic Patients. *Diabetes Care* 2013;36:2615
- 368 9. Bonifacio E, Bingley PJ, Shattock M, Dean BM, Dunger D, Gale EA, Bottazzo GF:  
369 Quantification of islet-cell antibodies and prediction of insulin-dependent diabetes. *Lancet*  
370 1990;335:147-149



- 371 10. Walkey HC, Kaur A, Bravis V, Godsland IF, Misra S, Williams AJK, Bingley PJ, Dunger  
372 DB, Oliver N, Johnston DG: Rationale and protocol for the After Diabetes Diagnosis  
373 REsearch Support System (ADDRESS): an incident and high risk type 1 diabetes UK cohort  
374 study. *BMJ Open* 2017;7:e013956
- 375 11. Clinicaltrials.gov [internet]. Bethesda (MD): National Library of Medicine (US). 2000  
376 Feb 29 - StartRight: Getting the Right Classification and Treatment From Diagnosis in Adults  
377 With Diabetes; 2016. Available from: <https://ClinicalTrials.gov/show/NCT03737799>.
- 378 12. Bonifacio E, Yu L, Williams AK, Eisenbarth GS, Bingley PJ, Marcovina SM, Adler K,  
379 Ziegler AG, Mueller PW, Schatz DA, Krischer JP, Steffes MW, Akolkar B: Harmonization  
380 of glutamic acid decarboxylase and islet antigen-2 autoantibody assays for national institute  
381 of diabetes and digestive and kidney diseases consortia. *J Clin Endocrinol Metab*  
382 2010;95:3360-3367
- 383 13. Long AE, Gooneratne AT, Rokni S, Williams AJK, Bingley PJ: The Role of  
384 Autoantibodies to Zinc Transporter 8 in Prediction of Type 1 Diabetes in Relatives: Lessons  
385 from the European Nicotinamide Diabetes Intervention Trial (ENDIT) Cohort. *The Journal of*  
386 *Clinical Endocrinology & Metabolism* 2012;97:632-637
- 387 14. Bravis V, Kaur A, Walkey HC, Godsland IF, Misra S, Bingley PJ, Williams AJK, Dunger  
388 DB, Dayan CM, Peakman M, Oliver NS, Johnston DG, Address-2 Management Committee  
389 PAG, Investigators: Relationship between islet autoantibody status and the clinical  
390 characteristics of children and adults with incident type 1 diabetes in a UK cohort. *BMJ Open*  
391 2018;8:e020904
- 392 15. Thomas NJ, Lynam AL, Hill AV, Weedon MN, Shields BM, Oram RA, McDonald TJ,  
393 Hattersley AT, Jones AG: Type 1 diabetes defined by severe insulin deficiency occurs after  
394 30 years of age and is commonly treated as type 2 diabetes. *Diabetologia* 2019;62:1167-1172
- 395 16. McDonald TJ, Colclough K, Brown R, Shields B, Shepherd M, Bingley P, Williams A,  
396 Hattersley AT, Ellard S: Islet autoantibodies can discriminate maturity-onset diabetes of the  
397 young (MODY) from Type 1 diabetes. *Diabetic Medicine* 2011;28:1028-1033
- 398 17. Oram RA, Patel K, Hill A, Shields B, McDonald TJ, Jones A, Hattersley AT, Weedon  
399 MN: A Type 1 Diabetes Genetic Risk Score Can Aid Discrimination Between Type 1 and  
400 Type 2 Diabetes in Young Adults. *Diabetes Care* 2016;39:337
- 401 18. Benaglia T, Chauveau D, Hunter DR, Young DS: mixtools: An R Package for Analyzing  
402 Mixture Models. *Journal of Statistical Software*; Vol 1, Issue 6 (2010) 2009;
- 403 19. Patel KA, Oram RA, Flanagan SE, De Franco E, Colclough K, Shepherd M, Ellard S,  
404 Weedon MN, Hattersley AT: Type 1 Diabetes Genetic Risk Score: A Novel Tool to  
405 Discriminate Monogenic and Type 1 Diabetes. *Diabetes* 2016;65:2094-2099
- 406 20. Zhou Z, Xiang Y, Ji L, Jia W, Ning G, Huang G, Yang L, Lin J, Liu Z, Hagopian WA,  
407 Leslie RD: Frequency, Immunogenetics, and Clinical Characteristics of Latent Autoimmune  
408 Diabetes in China (LADA China Study). *Diabetes* 2013;62:543
- 409 21. Buzzetti R, Di Pietro S, Giaccari A, Petrone A, Locatelli M, Suraci C, Capizzi M, Arpi  
410 ML, Bazzigaluppi E, Dotta F, Bosi E: High titer of autoantibodies to GAD identifies a  
411 specific phenotype of adult-onset autoimmune diabetes. *Diabetes Care* 2007;30:932-938
- 412 22. Wenzlau JM, Frisch LM, Hutton JC, Fain PR, Davidson HW: Changes in Zinc  
413 Transporter 8 Autoantibodies Following Type 1 Diabetes Onset: The Type 1 Diabetes  
414 Genetics Consortium Autoantibody Workshop. *Diabetes Care* 2015;38 Suppl 2:S14-20
- 415 23. Hagopian WA, Sanjeevi CB, Kockum I, Landin-Olsson M, Karlens AE, Sundkvist G,  
416 Dahlquist G, Palmer J, Lernmark A: Glutamate decarboxylase-, insulin-, and islet cell-  
417 antibodies and HLA typing to detect diabetes in a general population-based study of Swedish  
418 children. *The Journal of Clinical Investigation* 1995;95:1505-1511



- 419 24. Mayr A, Schlosser M, Grober N, Kenk H, Ziegler AG, Bonifacio E, Achenbach P: GAD  
420 Autoantibody Affinity and Epitope Specificity Identify Distinct Immunization Profiles in  
421 Children at Risk for Type 1 Diabetes. *Diabetes* 2007;56:1527
- 422 25. Graham J, Hagopian WA, Kockum I, Li LS, Sanjeevi CB, Lowe RM, Schaefer JB,  
423 Zarghami M, Day HL, Landin-Olsson M, Palmer JP, Janer-Villanueva M, Hood L, Sundkvist  
424 G, Lernmark Å, Breslow N, Dahlquist G, Blohmé G: Genetic Effects on Age-Dependent  
425 Onset and Islet Cell Autoantibody Markers in Type 1 Diabetes. *Diabetes* 2002;51:1346
- 426 26. Sabbah E, Savola K, Ebeling T, Kulmala P, Vahasalo P, Ilonen J, Salmela PI, Knip M:  
427 Genetic, autoimmune, and clinical characteristics of childhood- and adult-onset type 1  
428 diabetes. *Diabetes Care* 2000;23:1326-1332
- 429 27. Mrena S, Virtanen SM, Laippala P, Kulmala P, Hannila M-L, Åkerblom HK, Knip M:  
430 Models for Predicting Type 1 Diabetes in Siblings of Affected Children. *Diabetes Care*  
431 2006;29:662
- 432 28. Steck AK, Johnson K, Barriga KJ, Miao D, Yu L, Hutton JC, Eisenbarth GS, Rewers MJ:  
433 Age of Islet Autoantibody Appearance and Mean Levels of Insulin, but Not GAD or IA-2  
434 Autoantibodies, Predict Age of Diagnosis of Type 1 Diabetes. *Diabetes Care* 2011;34:1397
- 435 29. Decochez K, Keymeulen B, Somers G, Dorchy H, De Leeuw IH, Mathieu C, Rottiers R,  
436 Winnock F, ver Elst K, Weets I, Kaufman L, Pipeleers DG, Rottiers R: Use of an islet cell  
437 antibody assay to identify type 1 diabetic patients with rapid decrease in C-peptide levels  
438 after clinical onset. Belgian Diabetes Registry. *Diabetes Care* 2000;23:1072
- 439 30. Williams MD, Bacher R, Perry DJ, Grace CR, McGrail KM, Posgai AL, Muir A,  
440 Chamala S, Haller MJ, Schatz DA, Brusko TM, Atkinson MA, Wasserfall CH: Genetic  
441 Composition and Autoantibody Titers Model the Probability of Detecting C-Peptide  
442 Following Type 1 Diabetes Diagnosis. *Diabetes* 2021;db200937
- 443 31. Atkinson MA, Roep BO, Posgai A, Wheeler DCS, Peakman M: The challenge of  
444 modulating  $\beta$ -cell autoimmunity in type 1 diabetes. *Lancet Diabetes Endocrinol* 2019;7:52-64
- 445 32. Warshauer JT, Bluestone JA, Anderson MS: New Frontiers in the Treatment of Type 1  
446 Diabetes. *Cell Metabolism* 2020;31:46-61
- 447 33. Eichmann M, Baptista R, Ellis RJ, Heck S, Peakman M, Beam CA: Costimulation  
448 Blockade Disrupts CD4<sup>+</sup> T Cell Memory Pathways and Uncouples  
449 Their Link to Decline in  $\beta$ -Cell Function in Type 1 Diabetes. *The Journal of Immunology*  
450 2020;204:3129
- 451 34. Haller MJ, Gitelman SE, Gottlieb PA, Michels AW, Perry DJ, Schultz AR, Hulme MA,  
452 Shuster JJ, Zou B, Wasserfall CH, Posgai AL, Mathews CE, Brusko TM, Atkinson MA,  
453 Schatz DA: Antithymocyte Globulin Plus G-CSF Combination Therapy Leads to Sustained  
454 Immunomodulatory and Metabolic Effects in a Subset of Responders With Established Type  
455 1 Diabetes. *Diabetes* 2016;65:3765
- 456 35. Takagi S, Miura J, Hoshina S, Uchigata Y, Babazono T: Clinical and genetic  
457 characteristics of people with type 1 diabetes who have discrepancies in titers of anti-  
458 glutamic acid decarboxylase antibody measured by radioimmunoassay and enzyme-linked  
459 immunosorbent assay. *Journal of Diabetes Investigation* 2020;11:356-362
- 460 36. Miao D, Steck AK, Zhang L, Guyer KM, Jiang L, Armstrong T, Muller SM, Krischer J,  
461 Rewers M, Yu L: Electrochemiluminescence Assays for Insulin and Glutamic Acid  
462 Decarboxylase Autoantibodies Improve Prediction of Type 1 Diabetes Risk. *Diabetes*  
463 *Technology & Therapeutics* 2015;17:119-127

Characteristic	Low Level GADA	High Level GADA	P value
<b>n (%)</b>	711 (56)	557 (44)	
<b>GADA level (DK U/ml)</b>	147 (75, 277)	719 (592, 866)	
<b>Female (%)</b>	259 (36)	292 (52)	1x10 <sup>-8*</sup>
<b>Age of Diagnosis (years)</b>	19.4 (12.9, 29.7)	27.1 (17.5, 38.8)	3x10 <sup>-16*</sup>
<b>Duration of Diabetes (weeks)</b>	11 (6, 18)	10 (6, 17.5)	0.43
<b>Hospital Admission (%)</b>	531 (75)	396 (71)	0.15
<b>DKA (%)</b>	303 (43)	223 (41)	0.40
<b>Polyuria (%)</b>	666 (95)	534 (97)	0.26
<b>Weight Loss (%)</b>	597 (85)	479 (88)	0.24
<b>HbA1c (mmol/mol)</b>	81 (57, 106)	87 (64, 110)	0.01
<b>BMI, kg/m<sup>2</sup></b>	23.3 (20.9, 26.2)	23.7 (21.5, 26.7)	0.02
<b>Parent with Diabetes (%)</b>	92 (13)	112 (20)	6x10 <sup>-4*</sup>
<b>Other autoimmune condition (%)</b>	39 (5)	71 (13)	5x10 <sup>-6*</sup>
<b>T1D-GRS</b>	0.275 (0.256, 0.293)	0.274 (0.253, 0.292)	0.58
<b>HLA-DR3-DQ2 (%)</b>	359 (50)	328 (59)	3x10 <sup>-3</sup>
<b>HLA-DR4-DQ8 (%)</b>	382 (54)	273 (49)	0.10
<b>Number of positive autoantibodies</b>			0.43
<b>One (%)</b>	179 (25)	148 (27)	
<b>Two (%)</b>	201 (28)	170 (31)	
<b>Three (%)</b>	331 (47)	239 (43)	
<b>IA-2A (%)</b>	454 (64)	345 (62)	0.48
<b>IA-2A level (DK U/ml)<sup>#</sup></b>	255 (125, 340)	254 (95, 339)	0.59
<b>ZnT8A (%)</b>	409 (58)	303 (54)	0.27
<b>ZnT8A level (AU/ml)<sup>#</sup></b>	36 (11, 78)	43 (13, 86)	0.13

465 **Table 1: Comparison of clinical characteristics at diagnosis between high and low**  
466 **GADA level groups for GADA positive type 1 diabetes cases.** Bimodal GADA level  
467 distribution was divided into two groups using the nadir between the two modes at 452 DK  
468 U/ml. Values expressed as median (interquartile range) unless stated. <sup>#</sup> Only for people who  
469 were positive for that antibody \* indicates a p value lower than threshold the P value for  
470 multiple comparisons (0.05/19 =0.0026)

471

Characteristic	Low Level IA-2A	High Level IA-2A	P value
n (%)	285 (28)	749 (72)	
IA-2A level (DK U/ml)	27 (9, 71)	297 (239, 359)	
Female (%)	111 (39)	327 (44)	0.17
Age of Diagnosis (years)	22.4 (13.1, 33.5)	17.0 (11.9, 25.2)	4x10 <sup>-6</sup> *
Duration of Diabetes (weeks)	11.3 (5.9, 18.6)	11.5 (6.6, 18.6)	0.41
Hospital Admission (%)	207 (73)	605 (81)	4x10 <sup>-3</sup>
DKA (%)	123 (44)	323 (44)	0.97
Polyuria (%)	268 (95)	714 (97)	0.20
Weight Loss (%)	236 (84)	629 (86)	0.32
HbA1c (mmol/mol)	83 (58, 114)	76 (56, 101)	0.02
BMI	23.6 (21.3, 26.4)	23.2 (21.2, 25.9)	0.27
Parent with Diabetes (%)	45 (16)	101 (14)	0.35
Other autoimmune condition (%)	24 (8)	41 (5)	0.08
T1D-GRS	0.275 (0.254, 0.294)	0.275 (0.258, 0.293)	0.78
HLA-DR3-DQ2 (%)	157 (55)	327 (44)	9x10 <sup>-4</sup> *
HLA-DR4-DQ8 (%)	145 (51)	749 (68)	5x10 <sup>-7</sup> *
Number of positive autoantibodies			1x10 <sup>-9</sup> *
One (%)	39 (14)	35 (5)	
Two (%)	127 (45)	263 (35)	
Three (%)	119 (42)	451 (60)	
GADA (%)	217 (76)	582 (78)	0.59
GADA level (DK U/ml)	374 (161, 671)	323 (114, 690)	0.10
ZnT8A (%)	148 (52)	583 (78)	2x10 <sup>-16</sup> *
ZnT8A level (AU/ml)	26 (7.7, 55)	44 (16, 86)	1x10 <sup>-5</sup> *

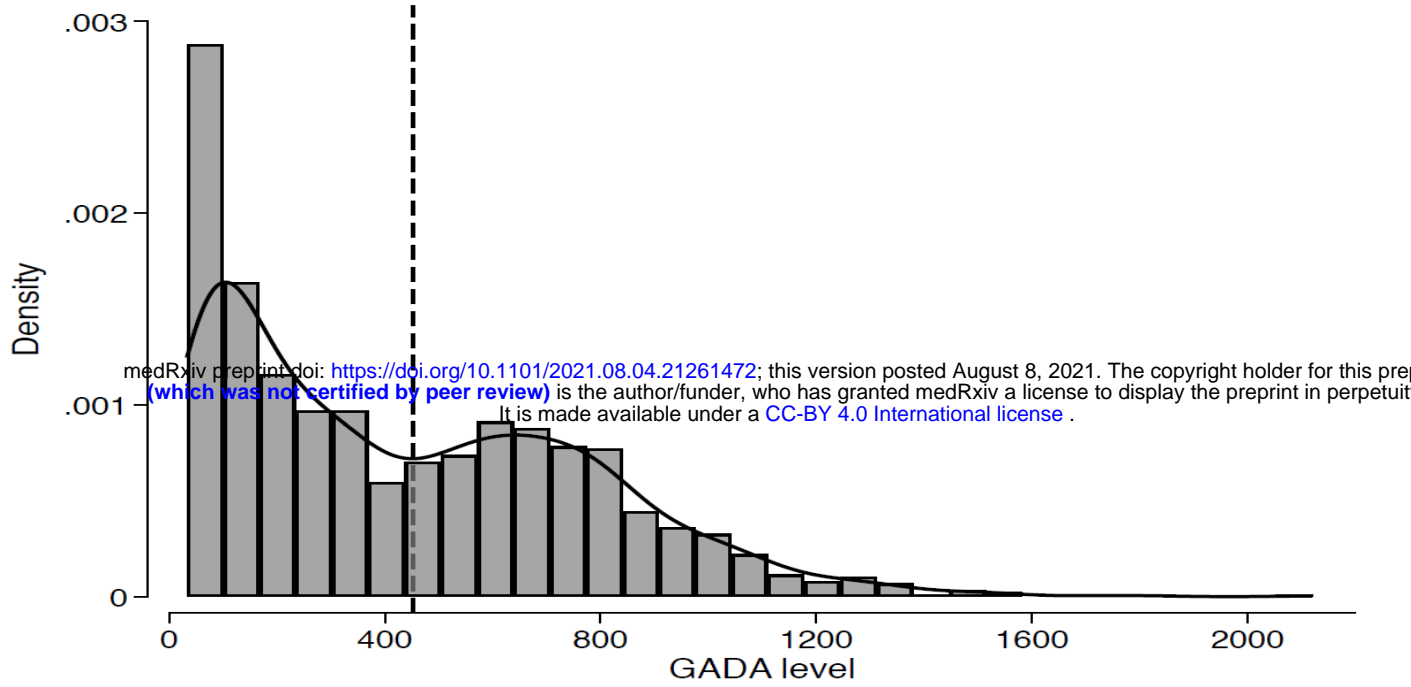
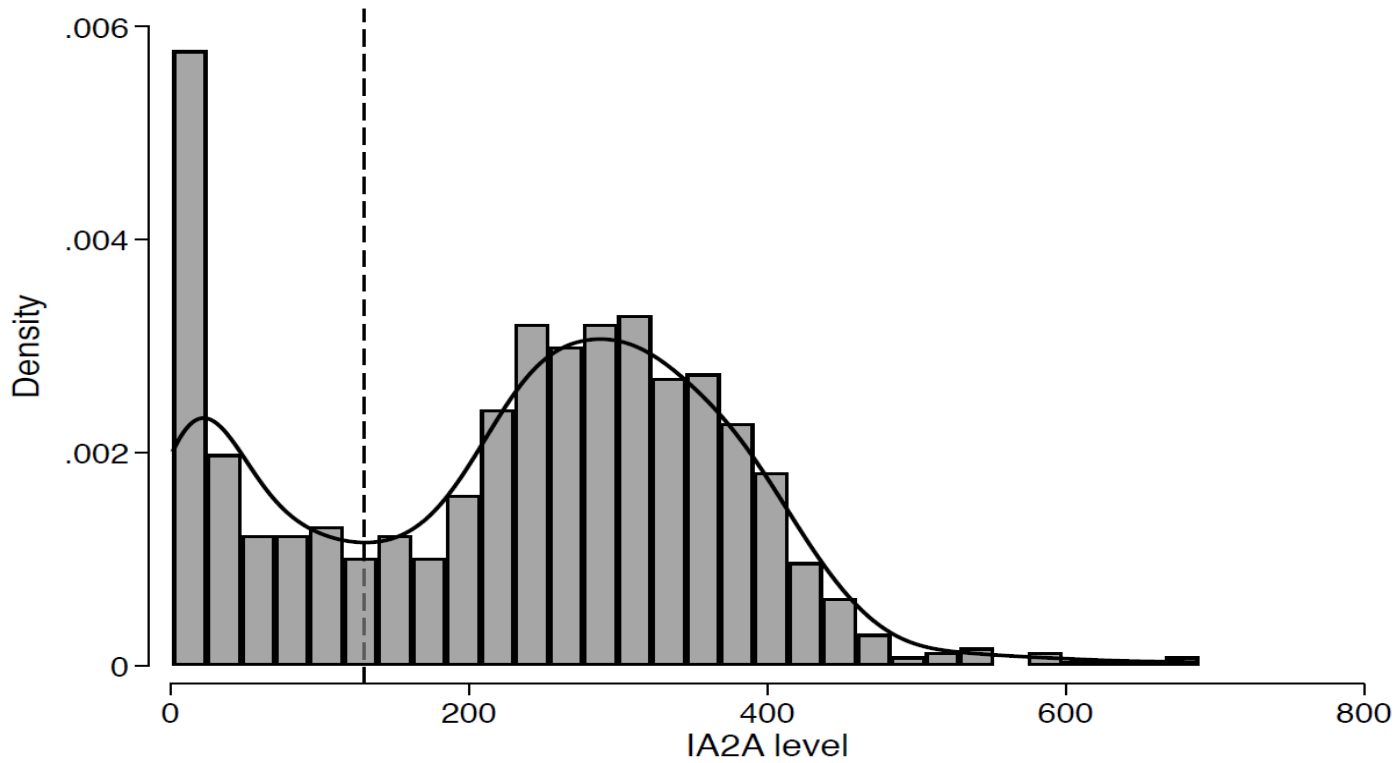
472 **Table 2: Comparison of clinical characteristics at diagnosis between high and low IA-2A**  
473 **level groups for positive IA-2A type 1 diabetes cases.** Bimodal IA-2A level distribution  
474 was divided into low and high level groups using the nadir between the mode at 130 DK  
475 U/ml. # only for people who were positive for that antibody \* indicates a P value lower than  
476 threshold the P value for multiple comparisons (0.05/19 =0.0026)

477 **Figure Legends**

478 **Figure 1: Histograms with kernel density curves showing the distribution of islet**  
479 **autoantibody levels in patients with type 1 diabetes at diagnosis.** A) Histogram of GADA  
480 level at diagnosis measured using radiobinding assay for type 1 diabetes cases who were  
481 positive for GADA (n=1,268). GADA level exhibits a bimodal distribution. The nadir value  
482 of 452 DK U/ml between the two mode is highlighted with black dashed line and used to  
483 defined high GADA level group ( $\geq 452$  DK U/ml) and low level group ( $< 452$  DK U/ml). B)  
484 Histogram of IA-2A level at diagnosis measured using radiobinding assay for type 1 diabetes  
485 cases who were positive for IA-2A (n=1,034). IA-2A level exhibits a bimodal distribution.  
486 The nadir value of 130 DK U/ml between the two mode is highlighted with black dashed line  
487 and used to defined high IA-2A level group ( $\geq 130$  DK U/ml) and low level group ( $< 130$  DK  
488 U/ml). C) Histogram of ZnT8A levels at diagnosis measured using radiobinding assay for  
489 type 1 diabetes cases who were positive for ZnT8 (n=906) show a right skewed distribution.  
490 Median value of the distribution (35.4 AU/ml) is highlighted with black dashed lines and  
491 used to define high level ZnT8A ( $\geq 35.4$  AU/ml) and low level ( $< 35.4$  AU/ml) groups.

492 **Figure 2: Box plot showing age of diagnosis of type 1 diabetes in high and low level**  
493 **groups for GADA, IA-2A and ZnT8A.** The nadir value between the two modes of GADA  
494 level (452 DK U/mL) and IA-2A level (130 DK U/mL) distribution at diagnosis of type 1  
495 diabetes who were positive for respective autoantibodies was used to define high and low  
496 level categories. There were 711/1,268 and 557/1,268 cases in low and high level GADA  
497 groups and 285/1,034 and 749/1,034 cases in low and high level IA-2A groups. The median  
498 value of ZnT8A level (35.4 AU/ml) was used for defining low and high level groups (n=453  
499 each). Median age of diagnosis was higher for the high level GADA group ( $P=3 \times 10^{-16}$ ),  
500 lower for the higher level IA-2A ( $P=4 \times 10^{-6}$ ) and similar between ZnT8A level categories  
501 ( $P=0.07$ ).

502

**A****B****C**