

1 **A mucosal antibody response is induced by intra-muscular SARS-CoV-2 mRNA vaccination**

2
3 Salma Sheikh-Mohamed¹, Gary Y.C. Chao^{*1}, Baweleta Isho^{1*}, Michelle Zuo^{*1}, George R. Nahass²,
4 Rachel E. Salomon-Shulman², Grace Blacker², Mahya Fazel-Zarandi³, Bhavisha Rathod³, Karen
5 Colwill³, Alainna Jamal³, Zhijie Li⁴, Keelia Quin de Launay⁵, Alyson Takaoka⁵, Julia Garnham-
6 Takaoka⁵, Christina Fahim⁵, Aimee Paterson³, Angel Xinliu Li³, Nazrana Haq³, Shiva Barati³, Lois
7 Gilbert³, Karen Green³, Mohammad Mozafarihashjin³, Philip Samaan⁶, Walter L. Siqueira⁷,
8 Samira Mubareka^{6,8}, Mario Ostrowski^{1,9,10}, James M. Rini^{4,11}, Olga L. Rojas¹², Allison McGeer³,
9 Irving L. Weissman², Michal Caspi Tal², Sharon Straus⁵, Anne-Claude Gingras^{3,4,13}, Jennifer L.
10 Gommerman^{1,13}

11
12 ¹Department of Immunology, University of Toronto, Toronto, Canada
13 ²Institute for Stem Cell Biology and Regenerative Medicine and the Ludwig Cancer Center,
14 Stanford University School of Medicine, Stanford, CA, USA
15 ³Lunenfeld-Tanenbaum Research Institute and Mount Sinai Hospital, Toronto, Canada
16 ⁴Department of Molecular Genetics, University of Toronto, Toronto, Canada
17 ⁵ Li Ka Shing Knowledge Institute of St. Michael's Hospital, Unity Health Toronto, Canada
18 ⁶Department of Laboratory Medicine and Pathobiology, University of Toronto, Toronto, Canada
19 ⁷College of Dentistry, University of Saskatchewan, Saskatoon, Canada.
20 ⁸Sunnybrook Health Sciences Centre, Toronto, Canada
21 ⁹Department of Medicine, University of Toronto
22 ¹⁰Keenan Research Centre for Biomedical Science, Toronto, Canada
23 ¹¹Department of Biochemistry, University of Toronto
24 ¹²Krembil Research Institute, University Health Network, Toronto, Canada
25 ¹³Correspondence to sharon.Straus@unityhealth.to, gingras@lunenfeld.ca and
26 jen.gommerman@utoronto.ca

27 *Equal Contribution

28

29 **Summary**

30 Vaccines against SARS-CoV-2 administered via the parenteral route (intra-muscular – i.m.) are
31 effective at preventing COVID-19 in part by inducing neutralizing antibodies in the blood. The
32 first line of defense against SARS-CoV-2 is in the upper respiratory tract, yet we know very little
33 about whether COVID-19 vaccines induce immunity in this compartment, if at all. We analysed
34 salivary antibodies against the SARS-CoV-2 Spike protein and its receptor binding domain (RBD)
35 following 2 i.m. injections of either BNT162b2 or mRNA-1273 vaccines. Salivary anti-
36 Spike/RBD IgG was detected after 1 dose and increased further after dose 2, reflecting the systemic
37 immune response. Interestingly, salivary anti-Spike/RBD IgA associated with the secretory
38 component (sIgA) was detected in nearly all vaccinated participants after one dose of mRNA
39 vaccine, with anti-Spike sIgA diminishing after dose 2. Vaccination with ChAdOx1-S (Ad)
40 followed by mRNA induced similar levels of salivary anti-Spike/RBD IgG and IgA, and both
41 mRNA/mRNA and Ad/mRNA regimes provoked modest neutralizing capacity in this biofluid.
42 Our results demonstrate that SARS-CoV-2 mRNA/mRNA and Ad/mRNA vaccination induces
43 antibodies in the saliva, and in response to one dose of mRNA, a compartmentalized and transient
44 antigen-specific sIgA response is generated that does not correlate with systemic immunity.

45

46 **Main**

47 SARS-CoV-2 is a novel and highly contagious respiratory virus that has quickly spread across the
48 globe. The virus uses a protein called Spike and its associated receptor binding domain (RBD) to
49 interact with angiotensin converting enzyme 2 (ACE2) on the surface of epithelial cells in the
50 upper respiratory tract¹. SARS-CoV-2 is mainly transmitted via inhaled respiratory droplets,
51 making the immune response in the oral and nasal mucosa an important first line of defense².

52
53 Saliva is an important biofluid that can provide information about the mucosal antibody response
54 to SARS-CoV-2^{3,4}. Antibodies detected in the saliva may be derived from the blood, entering via
55 the gingival crevicular fluid⁵. However, local antibody responses that include secretory IgA (sIgA)
56 can also be generated in the salivary glands. SIgA exist as IgA dimers that are associated with the
57 secretory component, a proteolytic cleavage product which remains associated with IgA after it is
58 transported across epithelial cells via the polymeric Ig receptor (pIgR)⁶.

59
60 Recent studies have shown that saliva contains infectious viral particles in symptomatic and
61 asymptomatic individuals exposed to the virus, and a positive correlation exists between salivary
62 viral load and COVID-19 symptoms³, highlighting the importance of saliva as a proxy for studying
63 the early mucosal immune response. The salivary glands themselves express ACE2 and harbour a
64 significant population of IgA-producing plasma cells³. We and others recently showed that IgM,
65 IgG and IgA antibodies against the SARS-CoV-2 Spike and RBD proteins are readily detected in
66 the saliva of COVID-19 acute and convalescent patients^{4,7}.

67

68 Approximately 4 billion people doses of COVID-19 vaccines have been administered worldwide,
69 including, but not limited to, mRNA vaccines (eg BNT162b2, mRNA-1273) and adenovirus-based
70 vaccines (eg Ad26.COV2). These vaccines are administered via the parenteral intramuscular route
71 (i.m.). While these i.m. vaccinations induce a robust systemic IgG response capable of neutralizing
72 SARS-CoV-2⁸⁻¹¹, whether they can induce antibodies in the saliva is unclear. To address this gap,
73 we applied a previously established ELISA-based method for the detection of SARS-CoV-2-
74 specific antibodies in saliva⁴ to samples from 150 long-term care home (LTCH) workers that
75 received either BNT162b2 or mRNA-1273 (Supplementary Table 1). Saliva from 51 participants
76 that were collected pre-pandemic or during the early months of the pandemic in a low prevalence
77 region were pooled, and a positive cut-off was established that was 2 standard deviations above
78 the median for these negative samples (Supplementary Tables 2a,b). Saliva from COVID-19 acute
79 and convalescent patients was used as a positive control (Supplementary Table 2c). We expressed
80 the data as a percentage relative to a pooled positive control that was present in each plate (see
81 Methods). When we analyse only those participants who had no evidence of prior SARS-CoV-2
82 infection (n=107), we found that 94% and 41% of participants were positive for anti-Spike IgG
83 and IgA, and 93% and 20% of participants, were positive for anti-RBD IgG and IgA antibodies in
84 their saliva (Fig 1). Furthermore, anti-Spike and anti-RBD IgG and IgA levels correlated well with
85 the level of these antibodies in the blood (Supplementary Fig. 1), suggesting that antibodies
86 detected in the saliva after 2 doses of mRNA COVID-19 vaccine were at least in part derived from
87 the systemic immune response. In multivariable analysis, age and prior SARS-CoV-2 infection
88 were independently associated with the salivary anti-Spike IgA response (Supplementary Table
89 3a). In contrast, male sex had a negative independent association with the salivary anti-Spike IgG
90 response (Supplementary Table 3b) as has been observed before for other vaccines¹². Lastly, prior

91 SARS-CoV-2 infection and time since vaccination were independently associated with higher and
92 lower serum anti-RBD IgA levels, respectively (Supplementary Table 3c).

93

94 In some countries, including Canada and the United Kingdom, vaccine dose sparing has resulted
95 in a delayed administration of COVID-19 booster shots. As of June 2021, although most LTCH
96 workers had been fully vaccinated, significant sectors of the Canadian population had only been
97 administered a single dose of a COVID-19 vaccine, and the interval between dose 1 vs dose 2 was
98 extended. Thus, we wished to ascertain if salivary antibodies could be detected after a single dose
99 of a COVID-19 mRNA vaccine, and how long these titres would persist. Therefore, to measure
100 anti-SARS-CoV2 salivary antibodies over time we collected samples from a second cohort of
101 healthy adults that we followed over time (Medical Sciences Building cohort – MSB-1;
102 Supplementary Table 4). These subjects received 1 dose of BNT1162b2 and a second dose
103 approximately 3 months later with samples taken at baseline, 2 weeks post-dose 1, 3 months post-
104 dose 1-, and 2-weeks post-dose 2. For the entire sampling period, of those participants that did not
105 show evidence of prior SARS-CoV-2 infection (n=27) IgM levels were higher than baseline only
106 for anti-Spike post-dose 2, and anti-RBD at 2 weeks post-dose 1 measurements (Fig. 2A-B).
107 Focusing therefore on IgG and IgA we observed that 97% and 93% of participants were positive
108 for anti-Spike IgG and IgA, and 52% and 41% were positive for anti-RBD IgG and IgA antibodies
109 in their saliva 2 weeks after dose 1. However 3 months after dose 1, the median level of salivary
110 anti-Spike and anti-RBD IgG had diminished (25.14+/-15.35 and 73.93 +/- 35.22 versus 13.56+/-
111 1.197 and 0.4545 +/- 0.1 at 2 weeks and 3 months post-dose 1, respectively. Two weeks after the
112 second dose, median IgG levels recovered (anti-RBD) or were elevated (anti-Spike). Thus 2 doses
113 are required to maintain anti-Spike/RBD IgG levels in the saliva (Fig. 2C-F). Curiously, in contrast

114 to IgG, anti-Spike and anti-RBD IgA levels were higher 2 weeks after dose 1 compared to 2 weeks
115 after dose 2 (11.55 +/- 9.64 and 20.82 +/- 12.72 versus 5.757 +/- 2.686 and 2.435 +/- 1.5 at 2
116 weeks post-dose 1 and post-dose 2, respectively).

117

118 Of note, although the level of anti-Spike and anti-RBD IgG in the serum and saliva correlate with
119 each other after a single dose of BNT162b2, this is not the case for anti-Spike and anti-RBD IgA
120 (Supplementary Fig. 2). We hypothesized that the IgA response to Spike and RBD induced by i.m.
121 BNT162b2 vaccination provoked a localized IgA response in the oral cavity. To test this, we
122 designed an ELISA that would detect secretory chain associated with anti-Spike/RBD antibodies.
123 We determined that the secretory chain signal associated with anti-SARS-CoV-2 salivary
124 antibodies could be out-competed with recombinant secretory chain, and no anti-Spike/RBD
125 secretory chain signal was detected in pre-pandemic colostrum, demonstrating assay specificity
126 (Supplementary Fig. 3A). We then measured secretory component associated anti-SARS-CoV-2
127 antibodies in the saliva of vaccinated LTCH participants who had received two doses of either
128 BNT162b2 or mRNA-1273. We found that secretory component associated anti-Spike and anti-
129 RBD antibodies could be detected in 30% and 58% of participants, respectively, although the
130 levels were lower than what was observed in COVID-19 patients (Fig. 3A-B). The anti-SARS-
131 CoV2 associated secretory chain signal was independent of prior SARS-CoV-2 exposure as we
132 observed no significant difference in this signal comparing participants who were positive vs
133 negative for serum anti-nucleocapsid protein antibodies (Fig. 3C-D). Of note, if we divided the
134 LTCH cohort into those participants who were positive versus negative for anti-Spike/RBD IgA,
135 we observed that the secretory component signal was only detected in the IgA⁺ participants (Fig.
136 3E-F). In combination with the finding that most participants did not produce IgM antibodies to

137 anti-Spike/RBD, we conclude that secretory component is associating with anti-Spike/RBD IgA
138 (sIgA). Therefore, a local sIgA response to Spike/RBD is produced in response to vaccination with
139 BNT162b2 or mRNA-1273.

140

141 In addition to a longer interval between dose 1 and dose 2 (3 months), an additional modification
142 in the Canadian COVID-19 response has been to provide a second dose of mRNA vaccine to
143 subjects who received a first dose of ChAdOx1-S (Ad). Serum antibody levels to Ad/mRNA
144 heterologous vaccination have only been recently assessed¹³, and nothing is known about how this
145 regime impacts salivary antibodies. To test this, we recruited participants who had received a first
146 dose of ChAdOx1-S followed 3 months later by a second dose of either BNT162b2 or mRNA-
147 1273 (MSB-2 cohort) and compared the salivary and serum antibody levels to those elicited by 2
148 doses of BNT162b2, also 3 months apart (MSB-1 cohort). With respect to salivary anti-SARS-
149 CoV-2 antibodies, we observed no significant difference 2 weeks post-dose 2 for either
150 mRNA/mRNA versus Ad/mRNA participants for any of the IgM, IgG, IgA or secretory
151 component readouts, except for anti-RBD IgG levels which were higher in the Ad/mRNA group
152 (Fig. 2A-F last two columns). In the serum, no significant differences in anti-SARS-CoV-2 IgG or
153 IgA antibodies were observed between MSB-1 mRNA/mRNA and MSB-2 Ad/m-RNA cohorts.
154 However, the LTCH mRNA/mRNA cohort exhibited higher levels of anti-Spike and anti-RBD
155 serum IgG antibodies compared to MSB-1 and MSB-2 (Supplementary Fig. 4A-B). In addition,
156 correlation analysis showed that, like in the LTCH cohort, IgG but not IgA levels in the serum
157 versus saliva were positively correlated (Supplementary Fig. 5). In summary, when first and
158 second doses are 3 months apart, heterologous Ad/mRNA vaccination induces similar or greater

159 levels of anti-RBD and anti-Spike salivary antibodies compared to mRNA/mRNA vaccination,
160 and like mRNA/mRNA vaccination, Ad/mRNA can induce antigen specific sIgA.

161

162 Antibodies against SARS-CoV-2 can prevent viral spread through a variety of mechanisms,
163 including preventing cellular entry by blocking interactions between the viral RBD and
164 angiotensin converting enzyme-2 (ACE-2) expressed on host cells¹⁴. To assess if either COVID-
165 19 vaccine provokes neutralizing antibodies (nAb) against SARS-CoV-2 in the oral cavity, we
166 tested saliva from the MSB-1 and MSB-2 cohorts in a pseudovirus entry assay. Specifically, saliva
167 at two-fold dilutions was added to hACE2-mCherry expressing HEK293 cells that were co-
168 incubated with recombinant Vesicular Stomatitis Virus (rVSV)-eGFP-SARS-CoV-2-Spike.
169 Infection of HEK293 cells was measured by fluorescence over the course of 72 hours (see
170 methods). In most cases, a greater proportion of hACE2 expressing HEK293 cells were infected
171 with rVSV-eGFP-SARS-CoV-2-Spike when co-incubated with baseline saliva compared to saliva
172 acquired after 1 or 2 doses of BNT162b2 (Supplementary Fig. 6A). Moreover, the highest
173 concentration of MSB-1 saliva samples had the strongest inhibitory effect on hACE2 HEK293
174 infection (Supplementary Fig. 6B). However, when FRNT50 or FRNT70 values was tabulated
175 across the cohort, statistical significance was not achieved compared to baseline (Supplementary
176 Fig. 6C). Similar results were observed for Ad/mRNA MSB-2 participants (Supplementary Fig.
177 6D-E). Thus, saliva from MSB-1 and MSB-2 vaccinated participants has a modest impact on
178 preventing infection of hACE2 expressing HEK293 cells by rVSV-eGFP-SARS-CoV-2-Spike.

179

180 In summary, we observe a robust IgG response to Spike/RBD in the saliva of participants
181 immunized with BNT162b2 or mRNA-1273 that correlates with the systemic IgG response, and

182 heterologous Ad/mRNA vaccination provokes a similar response in the saliva compared to a
183 homologous mRNA/mRNA vaccine regime. We further show that IgG antibodies to SARS-CoV-
184 2 diminish at 3 months post-dose 1, suggesting that a timely boost is required to maintain salivary
185 antibody levels - future work will determine how long salivary IgG antibodies can be detected
186 post-dose 2. In many participants we also observed an IgA response to Spike/RBD in the saliva,
187 particularly after dose 1, although anti-Spike/RBD IgA are lower than what is observed in COVID-
188 19 patients. Our results are consistent with a recent report by Ketas et al who likewise showed that
189 after two doses of BNT162b2 or mRNA-1273 anti-Spike and anti-RBD antibodies could be
190 detected in saliva¹⁵. However, in our study we now distinguish between locally produced and
191 systemically derived IgA using secretory chain detection. To our surprise, we detect anti-
192 Spike/RBD sIgA in the saliva, and these sIgA levels do not correlate with the levels of systemic
193 anti-Spike/RBD IgA in serum, suggesting that mRNA vaccination induces a compartmentalized
194 sIgA response in the oral mucosae.

195

196 It is unclear how sIgA anti-Spike/RBD are generated in the saliva following i.m. immunization
197 with BNT162b2 or mRNA-1273. Of note, Spike protein can be detected in the plasma, increasing
198 one to 5 days after mRNA-1273 vaccination using an ultra-sensitive detection technique¹⁶. Thus
199 one possibility is that plasma-associated Spike antigen may reach the salivary glands (which are
200 surrounded by capillaries¹⁷), provoking a local sIgA response. We further hypothesize that the
201 decline in anti-RBD sIgA at dose 2 may be due to rapid opsonization of Spike antigen by the
202 exceedingly high levels of pre-existing serum anti-Spike IgG induced by dose 1. While beyond
203 the scope of this study, using a highly sensitive assay such as Simoa® to measure Spike antigen
204 in the saliva 1-5 days post-dose 1 versus post-dose 2 (which we did not collect) would be a logical

205 next step to test this hypothesis. Another possibility is that a mucosal IgA response to mRNA
206 vaccination takes place in the gut, and plasma cells generated at this location leave the gut (as we
207 have shown before¹⁸) and disseminate to other mucosal surfaces, including the salivary glands.
208 Indeed, transient expression of the gut homing integrin $\alpha 4\beta 7$ on yellow fever specific CD8⁺ T cells
209 is observed following sub-cutaneous yellow fever vaccination in humans¹⁹. If gut priming occurs
210 in response to mRNA vaccination, then the kinetics and relative level of antibodies we detect in
211 the saliva post-vaccination should also be evident in the feces. Animal models are ideal for
212 obtaining further insights into mechanisms that explain how SARS-CoV-2 mRNA vaccines
213 provoke antigen-specific sIgA production at mucosal surfaces.

214

215 There are some limitations to our study: due to the sudden and rapid vaccine rollout we were only
216 able to collect samples from LTCH participants after their second dose of mRNA. Moreover, this
217 cohort contained a mixture of BNT162b2 and mRNA-1273 recipients, and these two mRNA
218 vaccines have been shown to elicit slightly different levels of anti-SARS-CoV-2 nAb which may
219 have impacted our results¹¹. Moreover, while the interval between dose 1 and dose two in the
220 LTCH cohort was 3-4 weeks, the interval for MSB1 and MSB2 was 3 months due to dose sparing
221 measures implemented in the Canadian vaccine rollout. For this reason, heterologous Ad/mRNA
222 vaccinated subjects (MSB-2) were directly compared with MSB-1, and this could likewise explain
223 why the LTCH participants had higher levels of serum anti-Spike/RBD IgG compared to MSB-1
224 and MSB-2 subjects. Lastly, while both MSB-1 and MSB-2 saliva showed hints of neutralizing
225 activity, when averaged across the cohort as an FRNT50 or FRNT70 value, this did not reach
226 statistical significance over baseline samples. The reason for this may be technical – anti-viral
227 properties of saliva beyond antibodies (i.e. enzymes) may impact the ability of rVSV-eGFP-

228 SARS-CoV-2-Spike to infect hACE2 expressing HEK293 cells, thus introducing background into
229 the assay²⁰.

230

231 A single dose of BNT162b2 has been shown to blunt transmission²¹. Among other mechanisms,
232 protection against transmission could involve an antibody response that engages effector
233 mechanisms (i.e., blocking viral entry and/or engagement of antibody-dependent or complement-
234 dependent cytotoxicity) at the site of infection. We provide evidence of anti-Spike/RBD IgG and
235 sIgA antibodies in the saliva of vaccinated participants that may have the capacity to contribute to
236 reducing person-to-person transmission of SARS-CoV-2.

237

238 **Main references**

239

- 240 1 Walls, A. C. *et al.* Structure, Function, and Antigenicity of the SARS-CoV-2 Spike
241 Glycoprotein. *Cell* **181**, 281-292 e286, doi:10.1016/j.cell.2020.02.058 (2020).
- 242 2 Zou, L. *et al.* SARS-CoV-2 Viral Load in Upper Respiratory Specimens of Infected Patients.
243 *N Engl J Med* **382**, 1177-1179, doi:10.1056/NEJMc2001737 (2020).
- 244 3 Huang, N. *et al.* SARS-CoV-2 infection of the oral cavity and saliva. *Nat Med* **27**, 892-903,
245 doi:10.1038/s41591-021-01296-8 (2021).
- 246 4 Isho, B. *et al.* Persistence of serum and saliva antibody responses to SARS-CoV-2 spike
247 antigens in COVID-19 patients. *Sci Immunol* **5**, doi:10.1126/sciimmunol.abe5511 (2020).
- 248 5 Ebersole, J. L. Humoral immune responses in gingival crevice fluid: local and systemic
249 implications. *Periodontol 2000* **31**, 135-166, doi:10.1034/j.1600-0757.2003.03109.x
250 (2003).
- 251 6 Stadtmueller, B. M. *et al.* The structure and dynamics of secretory component and its
252 interactions with polymeric immunoglobulins. *Elife* **5**, doi:10.7554/eLife.10640 (2016).
- 253 7 Sterlin, D. *et al.* IgA dominates the early neutralizing antibody response to SARS-CoV-2.
254 *MedRxiv* <https://www.medrxiv.org/content/10.1101/2020.06.10.20126532v1> (2020).
- 255 8 Walsh, E. E. *et al.* Safety and Immunogenicity of Two RNA-Based Covid-19 Vaccine
256 Candidates. *N Engl J Med* **383**, 2439-2450, doi:10.1056/NEJMoa2027906 (2020).
- 257 9 Anderson, E. J. *et al.* Safety and Immunogenicity of SARS-CoV-2 mRNA-1273 Vaccine in
258 Older Adults. *N Engl J Med* **383**, 2427-2438, doi:10.1056/NEJMoa2028436 (2020).
- 259 10 Sadoff, J. *et al.* Interim Results of a Phase 1-2a Trial of Ad26.COV2.S Covid-19 Vaccine. *N*
260 *Engl J Med* **384**, 1824-1835, doi:10.1056/NEJMoa2034201 (2021).
- 261 11 Khoury, D. S. *et al.* Neutralizing antibody levels are highly predictive of immune
262 protection from symptomatic SARS-CoV-2 infection. *Nat Med*, doi:10.1038/s41591-021-
263 01377-8 (2021).
- 264 12 Fischinger, S., Boudreau, C. M., Butler, A. L., Streeck, H. & Alter, G. Sex differences in
265 vaccine-induced humoral immunity. *Semin Immunopathol* **41**, 239-249,
266 doi:10.1007/s00281-018-0726-5 (2019).
- 267 13 Barros-Martins, J. *et al.* Immune responses against SARS-CoV-2 variants after
268 heterologous and homologous ChAdOx1 nCoV-19/BNT162b2 vaccination. *Nat Med*,
269 doi:10.1038/s41591-021-01449-9 (2021).
- 270 14 Sadarangani, M., Marchant, A. & Kollmann, T. R. Immunological mechanisms of vaccine-
271 induced protection against COVID-19 in humans. *Nat Rev Immunol*, doi:10.1038/s41577-
272 021-00578-z (2021).
- 273 15 Ketas, T. J. *et al.* Antibody responses to SARS-CoV-2 mRNA vaccines are detectable in
274 saliva. *bioRxiv*, doi:10.1101/2021.03.11.434841 (2021).
- 275 16 Ogata, A. F. *et al.* Circulating SARS-CoV-2 Vaccine Antigen Detected in the Plasma of
276 mRNA-1273 Vaccine Recipients. *Clin Infect Dis*, doi:10.1093/cid/ciab465 (2021).
- 277 17 Zhang, C. Z. *et al.* Saliva in the diagnosis of diseases. *Int J Oral Sci* **8**, 133-137,
278 doi:10.1038/ijos.2016.38 (2016).

- 279 18 Rojas, O. L. *et al.* Recirculating Intestinal IgA-Producing Cells Regulate
280 Neuroinflammation via IL-10. *Cell* **176**, 610-624 e618, doi:10.1016/j.cell.2018.11.035
281 (2019).
- 282 19 Masopust, D. *et al.* Dynamic T cell migration program provides resident memory within
283 intestinal epithelium. *J Exp Med* **207**, 553-564, doi:10.1084/jem.20090858 (2010).
- 284 20 Malamud, D. *et al.* Antiviral activities in human saliva. *Adv Dent Res* **23**, 34-37,
285 doi:10.1177/0022034511399282 (2011).
- 286 21 Jones, N. K. *et al.* Single-dose BNT162b2 vaccine protects against asymptomatic SARS-
287 CoV-2 infection. *Elife* **10**, doi:10.7554/eLife.68808 (2021).
- 288 22 Wrapp, D. *et al.* Cryo-EM structure of the 2019-nCoV spike in the prefusion
289 conformation. *Science* **367**, 1260-1263, doi:10.1126/science.abb2507 (2020).
- 290 23 Case, J. B. *et al.* Neutralizing Antibody and Soluble ACE2 Inhibition of a Replication-
291 Competent VSV-SARS-CoV-2 and a Clinical Isolate of SARS-CoV-2. *Cell Host Microbe* **28**,
292 475-485 e475, doi:10.1016/j.chom.2020.06.021 (2020).
- 293 24 Zang, R. *et al.* Cholesterol 25-hydroxylase suppresses SARS-CoV-2 replication by blocking
294 membrane fusion. *Proc Natl Acad Sci U S A* **117**, 32105-32113,
295 doi:10.1073/pnas.2012197117 (2020).
- 296
- 297

298 **Methods**

299 *Study Approvals:* The Mount Sinai Hospital Research Ethics Board (REB) granted approval for
300 recruiting staff in long-term care facilities located in the Greater Toronto Area for blood and saliva
301 collection and for conducting serum ELISAs at the Lunenfeld-Tanenbaum Research Institute
302 (study number: 20-0339-E). The University of Toronto REB granted approval for subject
303 recruitment to collect blood and saliva samples and for conducting saliva ELISAs (study number:
304 23901). The University of Saskatchewan REB granted approval for saliva sample collection during
305 the pre-COVID era (study number: BIO-USask-1579).

306

307 *Recruitment and participants- LTCH cohort (Supplementary Table 1):* Staff working in Long-
308 Term Care Homes (LTCHs) in Ontario were eligible to participate in the study if: 1) they were
309 over the age of 18, 2) they were comfortable a) reading and writing in English, b) providing blood
310 samples, and c) sharing their COVID-19 diagnostic status with the study team. To invite LTCH
311 staff to participate in the study, study staff approached the administrators and/or directors of
312 LTCHs to assess if they were interested in being a participating site in the study. If they were
313 interested, the administrators and/or directors shared information about the study with their staff
314 and provided a deadline by which staff should opt-out if they did not want to be contacted about
315 the study by a member of the study team. The LTCH administration then shared with the study
316 team the contact information of all LTCH staff who did not opt-out of further communication
317 about the study. The study team then contacted these staff by phone to invite them to participate
318 in the study. This active recruitment strategy was paired with passive recruitment strategies,
319 including having the participating LTCHs and/or relevant staff organizations share recruitment
320 advertisements about the study, as well as having participants approach study staff when they were

321 on-site for sample collection. A total of 12 LTCHs participated as a site in this study. Across these
322 12 sites, 647 individuals were invited to participate. Of these 647, a subset of individuals was not
323 able to be reached by phone (n=242, 37%), were not eligible to participate (n=105, 16%), or
324 refused to participate (n=131, 20%). Common reasons for participant ineligibility included being
325 beyond 6 weeks after their 2nd dose of their COVID-19 vaccine or not being interested in receiving
326 a COVID-19 vaccine. The most common reason for refusal to participate was lack of interest in
327 being part of research. Finally, a subset of individuals (n=13) withdrew prior to their first sample
328 collection, resulting in a final sample size of 156 participants.

329

330 *Recruitment of negative control subjects (Supplementary Table 2a):* Control saliva samples were
331 collected from unexposed, asymptomatic individuals residing in an area of very low COVID-19
332 case numbers (Grey County, Ontario) and throughout the Greater Toronto Area (GTA) in April of
333 2020. Pre-COVID era samples were collected at the University of Saskatchewan.

334

335 *Recruitment and participants- COVID-19 acute and convalescent participants (Supplementary*
336 *Table 2b):* Acute and convalescent serum and saliva samples were obtained from patients
337 identified by surveillance of COVID-19 (confirmed by PCR; in- and out-patients) by the Toronto
338 Invasive Bacterial Diseases Network in metropolitan Toronto and the regional municipality of Peel
339 in south-central Ontario, Canada (REB studies #20-044 Unity Health Network, #02-0118-U/05-
340 0016-C, Mount Sinai Hospital). Consecutive consenting patients admitted to four TIBDN hospitals
341 were enrolled: these patients had serum and saliva collected at hospital admission, and survivors
342 were asked to submit repeat samples at 4-12 weeks PSO. Consecutive out-patients diagnosed at
343 the same 4 hospitals prior to March 15th and on a convenience sample of later days were

344 approached for consent to collect serum and saliva at 4-12 weeks PSO. Patients were interviewed
345 and patient charts reviewed to determine age, sex, symptom onset date, and disease severity (mild,
346 moderate, and severe).

347 *Recruitment and participants – Medical Sciences Building (MSB-1). Supplementary Table 4:* Pre-
348 vaccination baseline, 2-3 weeks post-dose 1, 3 months post-dose 1- and 2-4-weeks post-dose 2
349 serum and saliva samples were obtained from an independently recruited cohort at the University
350 of Toronto in Toronto, Ontario, Canada under REB protocol 23901. Of the n=31 recruited
351 participants, 2 were excluded based on prior COVID-19 exposure and 2 left the study after the first
352 sampling (moved out of country). For the 3 months post-dose 1, 11 out of the 27 eligible
353 participants provided samples, whereas all other timepoints had n=27 subjects. Upon arrival at the
354 sampling site, participants gave informed consent and serum and saliva samples were collected.

355

356 *Recruitment and participants – MSB-2. Supplementary Table 5:* Subjects who received 1 dose
357 ChAdOx1-S and a second dose of either BNT162b2 or mRNA-1273 were independently recruited
358 through a Twitter drive and sampled for blood and serum 2-4 weeks post-dose 2 at the University
359 of Toronto in Toronto, Ontario, Canada under REB protocol 23901. 42 subjects were sampled in
360 total; however one sample did not provide enough saliva for analysis resulting in a total of 41
361 samples analyzed from this cohort.

362

363 *Enzyme-linked immunosorbent assays for detecting antigen-specific IgG, IgA, and IgM in serum:*
364 We used a previously published method for detection of saliva and serum anti-SARS-CoV-2
365 antibodies⁴. Briefly, an automated chemiluminescent ELISA assay was used to analyze the levels
366 of IgG, IgA, and IgM antibodies to the Spike trimer, its RBD, and the nucleocapsid, as reported

367 previously with the following modifications. The nucleocapsid (PRO47, 7 ng/well) and RBD
368 (PRO1151, 20 ng/well) antigens were produced in CHO (Chinese Hamster Ovary) cells, and were
369 a kind gift from Dr. Yves Durocher, National Research Council of Canada (NRC). The secondary
370 antibody for IgG was an IgG-HRP fusion (PRO1146, 1:6700 or 0.9 ng/well), donated by the NRC.
371 A standard curve of the VHH72 monoclonal antibody²² fused to a human IgG1 Fc domain (PRO23,
372 also from the NRC) was generated for calibrating the anti-Spike and anti-RBD IgG response. All
373 other antigens, detection reagents and calibration reagents were as previously described⁴. The data
374 analysis also proceeded as in⁴, with the following exceptions. Blanks were not subtracted from the
375 chemiluminescence raw values of the samples, and the raw values were normalized to a blank-
376 subtracted point in the linear range of the calibration standard curve (for Spike and RBD, the
377 reference point was 0.0156 µg/ml and for N, 0.0625 µg/ml). The results are represented as a
378 “relative ratio” to this reference point. To define the cutoff for positive antibody calls for each
379 antigen for IgG when 0.0625 µl/well of sample was added, 3 standard deviations from the mean
380 of the log negative control distribution from >20 different runs collected over 4 months was used.
381 For IgA, negatives from 2 different runs over one month and for IgM negatives from 3 runs over
382 2 months were used. In all cases, the selected cut offs correspond to <2% False Positive Rate (FPR)
383 assessment, based on Receiver Operating Characteristic Curves.

384

385 *Saliva collection:* Saliva samples from both cohorts were collected using Salivette® tubes
386 (Sarstedt, Numbrecht, Germany), a collection system which consists of a cotton ball which
387 participants chew for exactly three minutes and place into a tube, which is then placed into a larger
388 outer tube. The entire system is spun in a centrifuge at 1000 x g for five minutes at room
389 temperature. The inner tube contains a hole at the bottom, which allows all the saliva absorbed by

390 the cotton ball to filter into the larger outer tube. The total saliva volume from each participant was
391 then separated into 300-500 μ l aliquots and stored at -80°C until the time of testing. Given that
392 these samples were collected from vaccinated participants who reported no symptoms of COVID-
393 19 infection, we did not conduct any measures for viral inactivation.

394

395 *Antigen production- Saliva assay:* The expression, purification and biotinylation of the SARS-
396 CoV-2 RBD and Spike ectodomain were performed as recently described⁴. The human codon
397 optimized cDNA of the SARS-CoV-2 Spike protein was purchased from Genscript
398 (MC_0101081). The soluble RBD (residues 328-528, RFPN...CGPK) was expressed as a fusion
399 protein containing a C-terminal 6xHis tag followed by an AviTag. The soluble trimeric Spike
400 protein ectodomain (residues 1-1211, MFVF...QYIK) was expressed with a C-terminal phage
401 foldon trimerization motif followed by a 6xHis tag and an AviTag. To help stabilize the Spike
402 trimer in its prefusion conformation, residues 682–685 (RRAR) were mutated to SSAS to remove
403 the furin cleavage site and residues 986 and 987 (KV) were each mutated to a proline residue (51).
404 Stably transfected FreeStyle 293-F cells secreting the RBD and soluble Spike trimer were
405 generated using a previously reported piggyBac transposon-based mammalian cell expression
406 system (52). Protein production was scaled up in 1L shake flasks containing 300 mL FreeStyle
407 293 medium. At a cell density of 10⁶ cells/mL, 1 μ g/mL doxycycline and 1 μ g/mL Aprotinin were
408 added. Every other day 150 mL of medium was removed and replaced by fresh medium. The
409 collected medium was centrifuged at 10000 \times g to remove the cells and debris and the His-tagged
410 proteins were purified by Ni-NTA chromatography. The eluted protein was stored in PBS
411 containing 300 mM imidazole, 0.1% (v/v) protease inhibitor cocktail (Sigma, P-8849) and 40%
412 glycerol at -12°C. Shortly before use, the RBD and Spike proteins were further purified by size-

413 exclusion chromatography on a Superdex 200 Increase (GE healthcare) or Superose 6 Increase
414 (GE healthcare) column, respectively. Purity was confirmed by SDS-PAGE. For the Spike protein,
415 negative stain electron microscopy was used show evidence of high-quality trimers. The Avi-
416 tagged proteins, at a concentration of 100 μM or less, were biotinylated in reaction mixtures
417 containing 200 μM biotin, 500 μM ATP, 500 μM MgCl_2 , 30 $\mu\text{g/mL}$ BirA, 0.1% (v/v) protease
418 inhibitor cocktail. The mixture was incubated at 30°C for 2 hours followed by size-exclusion
419 chromatography to remove unreacted biotin.

420

421 *Enzyme-linked immunosorbent assays for detecting anti-Spike and anti-RBD IgA, IgG and IgM in*
422 *saliva:* 96- well plates pre-coated with streptavidin were used for all saliva assays. We have
423 previously determined that coating plates with 50ul per well of 2ug/ml of biotinylated RBD or
424 20ug/ml of biotinylated Spike diluted in sterile phosphate-buffered saline (PBS) was the ideal
425 coating solution. Control wells were coated with 50ul per well of sterile PBS. After coating with
426 the antigen of interest and incubating overnight at 4°C, the coating solution was discarded and
427 plates were blocked with 5% BLOTTO solution (5% w/vol skim milk powder (BioShop, CAT#
428 SKI400.500)). Plates were incubated with the blocking solution at 37°C for 2 hours, and the
429 solution was discarded immediately prior to adding samples to each well. During the blocking
430 incubation, frozen saliva samples were removed from -80°C storage, thawed and diluted using
431 2.5% BLOTTO at a range of 1:5-1:20. Sample dilutions were pre-incubated in a separate
432 streptavidin-coated plate with no antigen to reduce anti-streptavidin activity in the saliva. Samples
433 were incubated in the pre-adsorption plate for 30 minutes at 37°C, after which 50ul of each sample
434 from the pre-adsorption plate was transferred to the corresponding wells of the antigen-coated
435 plates and incubated for 2 hours at 37°C. Next, samples were discarded from the antigen-coated

436 plates, and the plates were washed 3x with PBS+0.05% Tween 20 (PBS-T (BioShop, CAT#
437 TWN510)). 50ul of Horse radish peroxidase (HRP)-conjugated goat anti human-IgG, IgA and IgM
438 secondary antibodies (Southern Biotech, IgG: 2044-05, IgA: 2053-05, IgM: 2023-05) were added
439 to the appropriate wells at dilutions of 1:1000, 1:2000 and 1:1000 in 2.5% BLOTTO, respectively,
440 and incubated for 1 hour at 37°C. Plate development was done by adding 50uL of
441 3,3',5,5'tetramethylbenzidine (TMB) Substrate Solution (ThermoFisher, 00-4021-56) to each
442 well. The reaction was then stopped by adding 50µl/well of 1N H₂SO₄, and optical density (OD)
443 was read at a wavelength of 450nm (OD₄₅₀) on a spectrophotometer (Thermo Multiskan FC).

444

445 *ELISA for detection of secretory component associated anti-Spike/RBD antibodies:* Secretory
446 chain associated antibodies were detected by modifying our saliva Spike/RBD ELISA by using an
447 HRP-conjugated Goat anti-human secretory component detection reagent at a dilution of 1/750
448 from Nordic MUBio (Cat# GAHu/SC/PO).

449

450 *Flow Cytometry method for detection of nAb antibodies:* Neutralizing antibodies were measured
451 at two step saliva dilutions (1:12-1:384) following incubation with recombinant Vesicular
452 Stomatitis Virus (rVSV)-eGFP-SARS-CoV-2-Spike in which the VSV-G protein was replaced
453 with SARS-CoV-2-Spike protein was propagated on MA104 cells²³. MA104 cells were
454 maintained in Medium 199 (Gibco, Cat. No. 11150067) supplemented with 10% FBS and 1%
455 Penicillin/Streptomycin (Fisher Scientific, Cat. No. 15-140-163). After visible cytopathic affect,
456 supernatant was filtered, aliquoted and stored at -80 °C. Supernatant was added to Human
457 Embryonic Kidney (HEK) 293 cells were engineered to encode human angiotensin converting

458 enzyme 2 (hACE2 in the pDEST-mCherry vector) as previously described²⁴. HEK293-hACE2-
459 mCherry cells were cultured in Gibco Dulbecco's Modified Eagle Medium (DMEM) formulation
460 containing glucose, L-glutamine and sodium pyruvate (Gibco, Cat. No. 11995065) with 1x
461 Penicillin/Streptomycin. Geneticin Selective Antibiotic (G418) (Gibco, Cat. No. 10131035) was
462 added at a concentration of 500 $\mu\text{g}/\text{mL}$ to maintain hACE2-mCherry expression. Cells were grown
463 in 5% carbon dioxide (CO_2) at 37 °C and passaged every 3 days using Versene solution (Gibco,
464 Cat. No. 15040066). HEK293-hACE2-mCherry cells were seeded at a density of 25,000 cells per
465 well in a 96-well, flat-bottom tissue culture coated plate. Outer rows were avoided to reduce assay
466 variations resulting from edge effect in the IncuCyte. In a separate 96 well plate, samples were
467 serially diluted and incubated with 50 μl of rVSV-eGFP-SARS-CoV-2-S for 2 hours at 37 °C in
468 5% CO_2 . Each sample plate included a dilution of anti-RBD antibody (Invitrogen, Cat. No.
469 703958) of 10 $\mu\text{g}/\text{mL}$, 5 $\mu\text{g}/\text{mL}$, 1 $\mu\text{g}/\text{mL}$, 0.5 $\mu\text{g}/\text{mL}$, 0.1 $\mu\text{g}/\text{mL}$, and 0.05 $\mu\text{g}/\text{mL}$ as a positive
470 control. After incubation, the mixture of sample and rVSV-eGFP-SARS-CoV-2-S was transferred
471 to the plated HEK293-hACE2-mCherry cells at a 1:1 ratio of culture media to virus/sample
472 suspension. Plates loaded in the IncuCyte were imaged every 1-4 hours for a total of 72 hours with
473 4 scans per sample well to visualize neutralization. The total integrated intensity of the fluorescent
474 value of the lowest anti-RBD condition (0.05 $\mu\text{g}/\text{mL}$) with the rVSV-eGFP-SARS-CoV-2-S
475 controls at 12-hour intervals was used to normalize separate experiment runs. Each plate was
476 normalized either to the mean of the rVSV-eGFP-SARS-CoV-2-S supernatant controls or to the
477 0.05 $\mu\text{g}/\text{mL}$ anti-RBD antibody. Normalization to 0.05 $\mu\text{g}/\text{mL}$ anti-RBD was performed only if
478 division by the triplicate rVSV-eGFP-SARS-CoV-2 control conditions resulted in loss of a
479 sigmoidal shape of the anti-RBD curve. To quantitatively determine assay sensitivity, fluorescent
480 reduction of neutralization titers (FRNT) 50 and 70 were calculated to determine the amount of

481 monoclonal anti-RBD needed to prevent 50% and 30%, respectively, of the maximum infection
482 (Sup. Fig. 10B and C) and plotted in log₁₀ scale for plasma and log₂ scale for saliva due to
483 variations in antibody titers in different tissue types. This assay is sufficiently sensitive down to 5
484 µg/mL of neutralizing antibodies.

485

486 *Sample Analysis:* For each sample, the raw OD₄₅₀ for the PBS control well was subtracted from
487 the raw antigen-specific OD₄₅₀ value for each sample, at each sample dilution (1:5, 1:10, 1:20).
488 The adjusted OD₄₅₀ value for each sample dilution (1:5, 1:10, 1:20) was used to calculate the area
489 under the curve (AUC) for each individual sample. The sample AUC was then normalized to the
490 AUC of the positive control, which consisted of saliva collected from COVID-19 acute and
491 convalescent participants. The normalized AUC was multiplied by 100 to give a final percentage,
492 which we deemed the “% of positive control”. Each plate also included 1-3 negative controls,
493 which consisted of pre-COVID era saliva incubated in antigen-coated wells. Integrated scores were
494 calculated for all negative control samples, using the same calculation method used for cohort 1
495 and 2 samples. “Positive” cut off values for each antigen-specific isotype were calculated using
496 the following formula: average integrated scores of negative samples + 2(standard deviation of
497 negative control integrated scores). Samples whose score was above the resulting cut off for each
498 antigen-specific isotype was used to determine which samples from cohorts 1 and 2 had detectable
499 antibody levels in their saliva.

500

501 *Multivariable analysis:* The relationships between clinical predictors (age, sex, SARS-CoV-2
502 infection prior to vaccination, and time from vaccination to sample collection) and antibody levels

503 were examined in bivariate and *a priori* multivariable linear regression models. For saliva, four
504 multivariable linear regression models were constructed to examine potential independent
505 associations between the four clinical predictors and anti-RBD IgA/IgG and anti-Spike IgA/IgG.
506 For serum, two multivariable linear regression models were constructed to examine potential
507 independent associations between the four clinical predictors and anti-RBD IgA/IgG. In each
508 model, antibody levels were appropriately transformed to ensure homoscedasticity, and the
509 absence of multicollinearity was confirmed with variance inflation factors being <5 for all
510 predictors. All analysis was performed in SAS 9.4M6 (SAS Institute, Cary, NC). P values of <0.05
511 were considered statistically significant.

512

513 **Acknowledgments**

514 This work was supported by an “Ontario Together” province of Ontario grant to JG and ACG and
515 a Foundation grant from the Canadian Institutes of Health Research to JG (Fund #15992). Funding
516 for the LTCH cohort was provided through a Canada COVID-19 Immunity Task force grant (to
517 SS, AM, MO, ACG and JG). Funding for initial development of the assays in the Gingras lab was
518 provided through generous donations from the Royal Bank of Canada (RBC) and the Krembil
519 Foundation to the Sinai Health System Foundation. The robotics equipment used is housed in the
520 Network Biology Collaborative Centre at the Lunenfeld-Tanenbaum Research Institute, a facility
521 supported by Canada Foundation for Innovation funding, by the Ontarian Government and by
522 Genome Canada and Ontario Genomics (OGI-139). Dr. Yves Durocher at the National Research
523 Council of Canada (NRC) kindly donated reagents for the serum assays. Recombinant Vesicular
524 Stomatitis Virus (rVSV)-eGFP-SARS-CoV-2-Spike was generously provided by Dr. Sean
525 Whelan, and hACE2-mCherry expressing HEK293 cells was generously provided by Dr. Siyuan
526 Ding, Washington University, St. Louis for neutralization assays performed by the Stanford
527 scientists. We thank Elizabeth Yue, Antonio Estacio, Serena Loklam Chau, Ryan Law and Eric
528 Yixiao Cao for LTCH sample processing and sustaining the infrastructure of sample processing
529 in the Ostrowski lab. We thank Jeff Browning for critical reading of this manuscript. We would
530 like to thank Florian Krammer for advice on secretory component detection by ELISA.

531 **Author contributions**

532 SS-M, BI and MZ conducted experiments and prepared figures. SS-M also wrote portions of the
533 manuscript. GC performed phlebotomy and sample intake, coordinated sample collection and
534 storage and created and managed a sample database. GRN, RES-S and GB performed the nAb
535 assays under the supervision of ILW and MCT. MF-Z performed sample intake, ELISAs and data

536 analysis. BR performed sample intake and ELISAs. KC performed data analysis and project
537 oversight. MF-Z, BR and KC were supervised by A-CG who also contributed to the writing of this
538 study. AJ conducted the multivariate analysis. JR and ZL synthesized Spike and RBD proteins.
539 KQdL, AT, JG-T and CF coordinated the LTHC study under the leadership of SS. PS and MO
540 recruited and prepared samples from COVID-19 patients at St. Michael's Hospital. AP, AXL, NH,
541 SB, LG, KG and MM recruited and prepared samples from COVID-19 from Mount Sinai Hospital
542 and Sunnybrook Hospital under the supervision of AM and SM. WLS coordinated sample
543 collection and storage and created and managed a sample database. AM recruited and collected
544 samples from COVID-19 patients at Mount Sinai Hospital.

545

546 **Competing interest declaration**

547 The authors have not competing interests that are relevant to the work in this study. None of the
548 authors have commercial interests in any of the 3 vaccines that were studied herein.

549

550 **Additional information**

551 The study contains 5 supplementary Tables and 6 supplementary Figures. Correspondence should
552 be directed to Drs. Sharon Straus Sharon.Straus@unityhealth.to, Anne-Claude Gingras
553 gingras@lunenfeld.ca and Jennifer Gommerman, jen.gommerman@utoronto.ca

554

555 **Data Availability statement**

556 The datasets generated during and/or analysed during the current study are available from the
557 corresponding author on reasonable request

Figures and Figure Legends

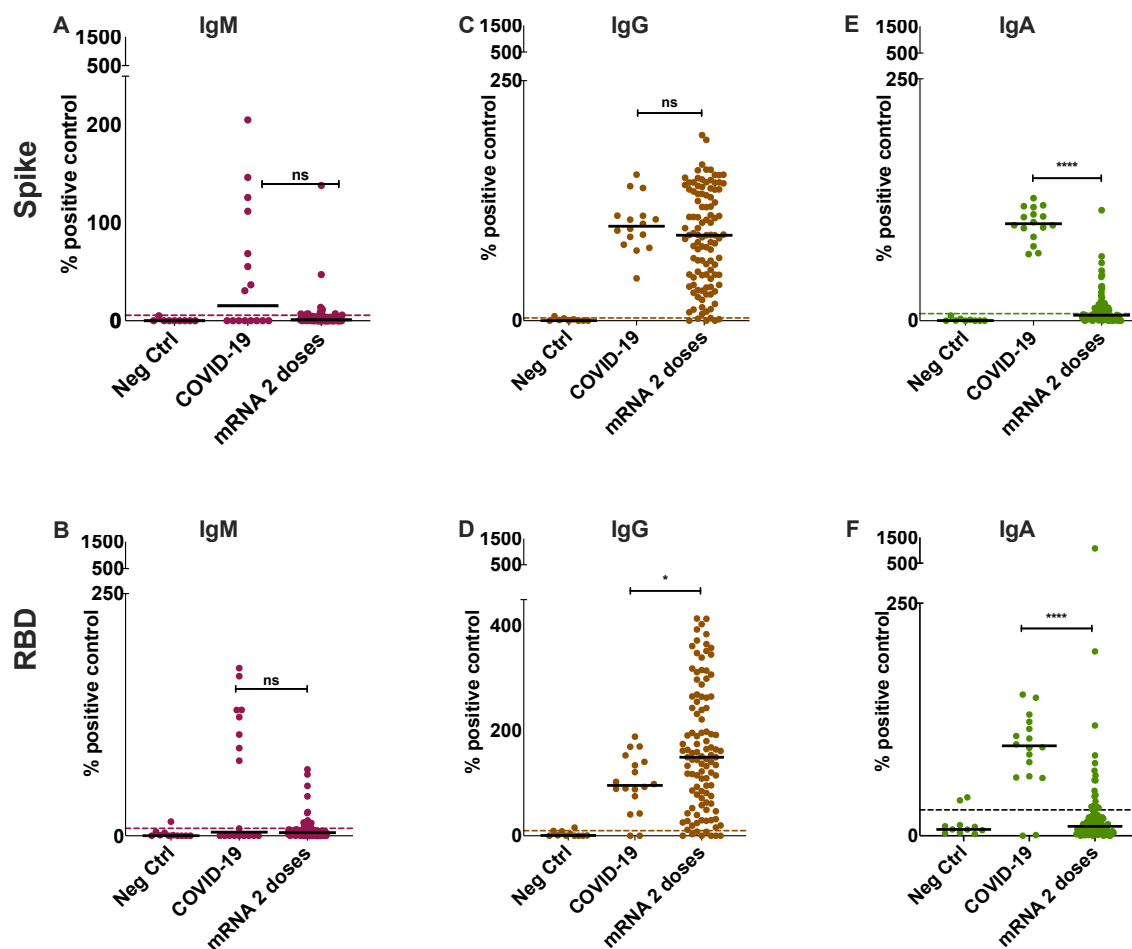


Fig 1. Detection of anti-SARS-CoV-2 Spike and RBD specific antibodies in the saliva of mRNA vaccinated participants.

Anti-Spike (A,C,E) and anti-RBD (B,D,F) antibodies were detected using an ELISA-based assay in the saliva of vaccinated participants after two-doses of either BNT162b2 or mRNA-1273 (n=107 for both combined). COVID-19 controls consisted of saliva collected from acute and convalescent patients (n = 18). These were compared to n=9 individually run negative controls. The positive cutoff (dotted line) was calculated as 2 standard deviations above the mean of a pool of negative control samples (n=51) for each individual assay. Y-axis was set at 1500% for all plots as this was the highest value for measurements in Fig. 2D, allowing for cross-isotype comparison in all cohorts. All data is expressed as a percentage of the pooled positive plate control, calculated using the AUC for each sample normalized to the AUC of the positive control (see Methods). Solid black bars denote the median for each cohort. Mann-Whitney U test was used to calculate significance, where ns=not significant, *=p<0.05 and ****=p<0.0001.

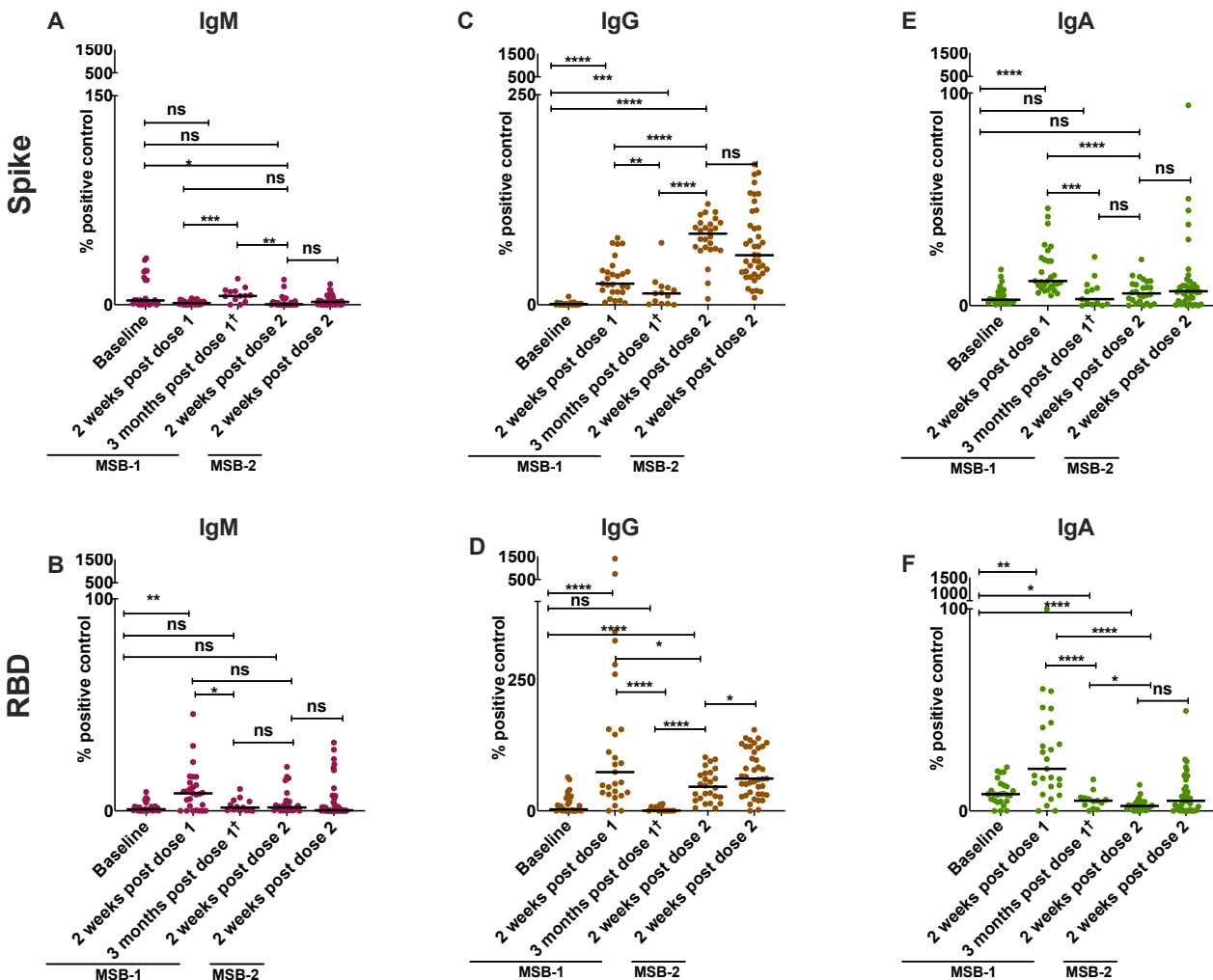


Fig 2. Detection of anti-SARS-CoV-2 Spike and RBD specific antibodies in the saliva of a longitudinal mRNA/mRNA cohort and Ad/mRNA vaccinated participants.

Anti-Spike (A,C,E) and anti-RBD (B,D,F) antibodies were detected using an ELISA-based assay in the saliva of vaccinated participants that were followed at sequential timepoints before and after dose 1 and dose 2 of BNT162b2 (MSB-1, n=27 with † = n=11 participants at this timepoint), as well as participants who received dose 1 of ChAdOx1-S and dose 2 of either BNT162b2 or mRNA1273 (MSB-2, n=36). Y-axis was set at 1500% for all plots as this was the highest value for measurements in Fig. 2D, allowing for cross-isotype comparison in all cohorts. All data is expressed as a percentage of the pooled positive plate control, calculated using the AUC for each sample normalized to the AUC of the positive control (see Methods). Solid black bars denote the median for each cohort. Mann-Whitney U test was used to calculate significance, where ns=not significant, *=p<0.05, **=p<0.01, ***=p<0.001 and ****=p<0.0001.

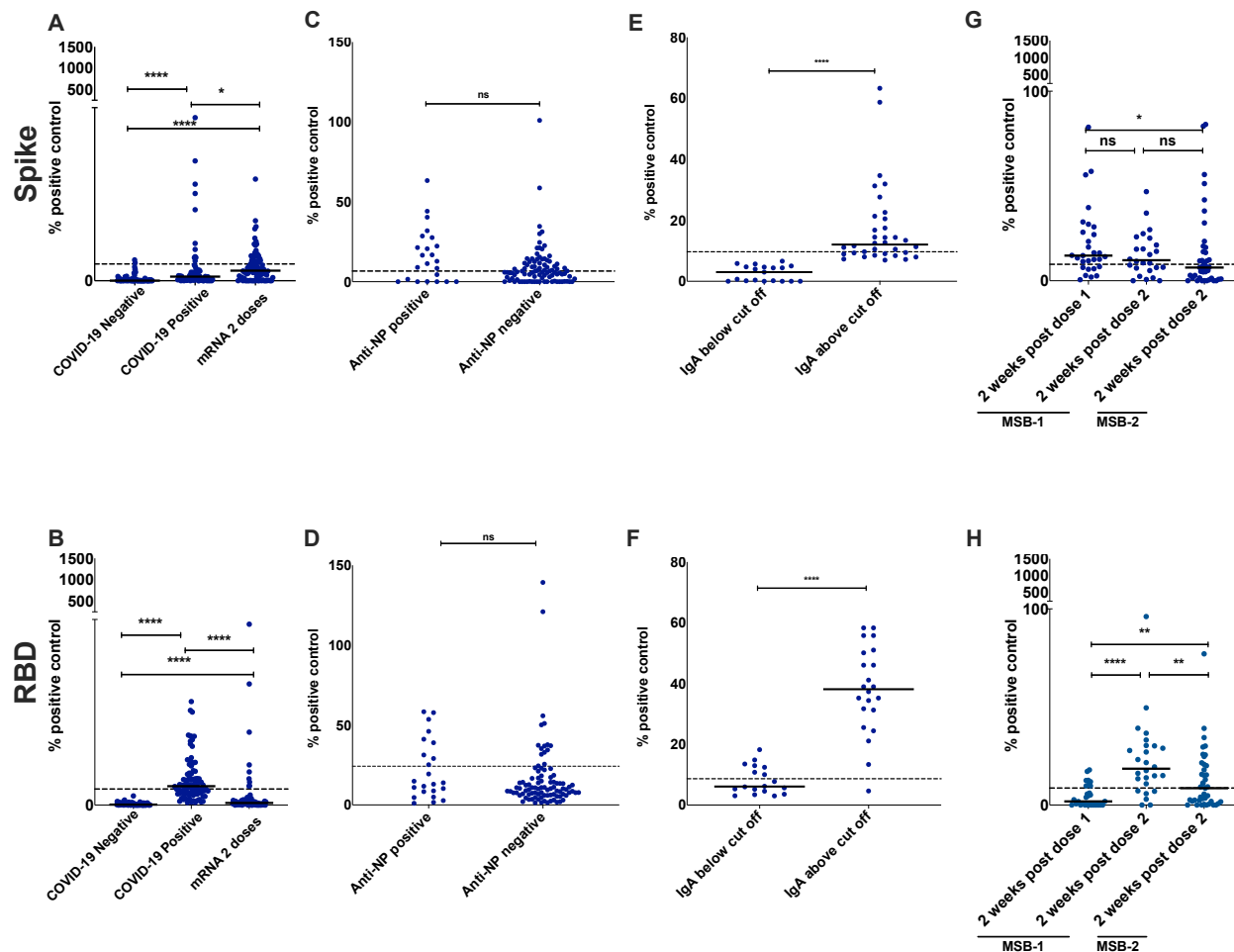


Fig 3. Secretory component is associated with Spike/RBD-specific antibodies in the saliva of mRNA vaccinated participants

We used an ELISA-based method to detect secretory component associated with anti-Spike (A) and anti-RBD (B) antibodies in the saliva of 2-dose vaccinated subjects ($n=93$), as well as saliva taken from COVID-19 negative and positive patients ($n=77$ and 75 , respectively). Subjects receiving 2 doses of BNT162b2 or mRNA1273 (C,D) were further grouped based on anti-NP antibody status, which is indicative of previous exposure/infection. For comparison, pre-COVID era negative control saliva is included for further validation, we grouped a subset of 2-dose vaccinated subjects into those that were considered above ($n=34$) or below ($n=19$) the positive cut off for salivary IgA and analyzed them for the presence of secretory component (E,F). Lastly, Secretory component associated with anti-spike (G) and anti-RBD (H) antibodies in samples collected post-dose 1 and dose 2 from both MSB-1 ($n=27$) and MSB-2 ($n=36$) cohorts was also detected using an ELISA-based method. Solid black bars denote the median for each cohort, while the dotted black line denotes the positive cutoff, calculated as 2 standard deviations above the mean of a pool of negative control samples. Mann-Whitney U test was used to calculate significance, with ns=not significant, and ****= $p<0.0001$.