

1 **COVID-ONE-humoral immune: The One-stop Database for COVID-19-specific Antibody**  
2 **Responses and Clinical Parameters**

3 Zhaowei Xu <sup>1,2 #,a</sup>, Yang Li<sup>1, #,b</sup>, Qing Lei<sup>3, #,c</sup>, Likun Huang<sup>5, #,d</sup>, Dan-yun Lai<sup>1, #,e</sup>, Shu-juan  
4 Guo<sup>1, #,f</sup>, He-wei Jiang<sup>1,g</sup>, Hongyan Hou<sup>4,h</sup>, Yun-xiao Zheng<sup>1,i</sup>, Xue-ning Wang<sup>1,j</sup>, Jiaoxiang  
5 Wu<sup>6,k</sup>, Ming-liang Ma<sup>1,l</sup>, Bo Zhang<sup>4,m</sup>, Hong Chen<sup>1,n</sup>, Caizheng Yu<sup>7,o</sup>, Jun-biao Xue<sup>1,p</sup>,  
6 Hai-nan Zhang<sup>1,q</sup>, Huan Qi<sup>1,r</sup>, Siqi Yu<sup>2,s</sup>, Mingxi Lin<sup>2,t</sup>, Yandi Zhang<sup>3,u</sup>, Xiaosong Lin<sup>3,v</sup>,  
7 Zongjie Yao<sup>3,w</sup>, Huiming Sheng<sup>6,x</sup>, Ziyong Sun<sup>3,y</sup>, Feng Wang<sup>4, \*,z</sup>, Xionglin Fan<sup>3, \*,aa</sup>,  
8 Sheng-ce Tao<sup>1,\*,ab</sup>

9  
10 <sup>1</sup>Shanghai Center for Systems Biomedicine, Key Laboratory of Systems Biomedicine  
11 (Ministry of Education), Shanghai Jiao Tong University, Shanghai 200240, China

12 <sup>2</sup>Key Laboratory of Gastrointestinal Cancer (Fujian Medical University), Ministry of  
13 Education, School of Basic Medical Sciences, Fujian Medical University, Fuzhou 350122,  
14 China

15 <sup>3</sup>Department of Pathogen Biology, School of Basic Medicine, Tongji Medical College,  
16 Huazhong University of Science and Technology, Wuhan 430074, China

17 <sup>4</sup>Department of Clinical Laboratory, Tongji Hospital, Tongji Medical College, Huazhong  
18 University of Science and Technology, Wuhan 430074, China

19 <sup>5</sup>Fujian Key Laboratory of Crop Breeding by Design, Key Laboratory of Genetics,  
20 Breeding and Multiple Utilization of Crops, Ministry of Education, Fujian Agriculture and  
21 Forestry University, Fuzhou 350028, Fujian

22 <sup>6</sup>Tongren Hospital, Shanghai Jiao Tong University School of Medicine, Shanghai 200025,  
23 China

24 <sup>7</sup>Department of Public Health, Tongji Hospital, Tongji Medical College, Huazhong  
25 University of Science and Technology, Wuhan 430074, China

26 #These authors contribute equally to this work.

27 \*Corresponding Authors, e-mail: taosc@sjtu.edu.cn (S.-C. Tao), xlfan@hust.edu.cn (X.-L.

28 Fan), fengwang@tjh.tjmu.edu.cn (F. Wang)

29

30 **Running title:** *Xu ZW et al / Database for COVID-19 Antibody Immune*

31

32 The manuscript includes 5011 words, 4 figures, 4 tables, 2 supplementary figures and 2

33 supplementary datasets. All of the 30 references in the manuscript are references from

34 2020. And there are 106 characters in article title, 42 characters in running title, 5

35 keywords, 180 words in abstract.

36 **Abstract**

37 Coronavirus disease 2019 (COVID-19), which is caused by SARS-CoV-2, varies with

38 regard to symptoms and mortality rates among populations. Humoral immunity plays

39 critical roles in SARS-CoV-2 infection and recovery from COVID-19. However, differences

40 in immune responses and clinical features among COVID-19 patients remain largely

41 unknown. Here, we report a database for COVID-19-specific IgG/IgM immune responses

42 and clinical parameters (COVID-ONE humoral immune). COVID-ONE humoral immunity

43 is based on a dataset that contains the IgG/IgM responses to 21 of 28 known

44 SARS-CoV-2 proteins and 197 spike protein peptides against 2,360 COVID-19 samples

45 collected from 783 patients. In addition, 96 clinical parameters for the 2,360 samples and

46 information for the 783 patients are integrated into the database. Furthermore,

47 COVID-ONE humoral immune provides a dashboard for defining samples and a one-click

48 analysis pipeline for a single group or paired groups. A set of samples of interest is easily

49 defined by adjusting the scale bars of a variety of parameters. After the “START” button is

50 clicked, one can readily obtain a comprehensive analysis report for further interpretation.

51 COVID-ONE-humoral immune is freely available at [www.COVID-ONE.cn](http://www.COVID-ONE.cn).

52

53 **KEYWORDS:** SARS-CoV-2; Protein microarray; Humoral immunity; One-stop tool; Shiny

54 **Introduction**

55 COVID-19 is an unprecedented global threat caused by severe acute respiratory  
56 syndrome coronavirus 2 (SARS-CoV-2), which has already caused 188,843,580  
57 infections and claimed 4,065,400 lives as of July 16, 2021  
58 (<https://coronavirus.jhu.edu/map.html>) [1]. There is still no effective medicine [2, 3] for  
59 treating COVID-19.

60 Most patients recover via their own immunity, including SARS-CoV-2-specific IgG  
61 responses, especially neutralizing antibodies [4-6]. Overall, it is of great interest to  
62 decipher SARS-CoV-2-specific IgG and IgM responses at a systems level and to correlate  
63 responses to clinical parameters.

64 To understand how the human immune system responds to SARS-CoV-2, we  
65 constructed a SARS-CoV-2 proteome microarray containing 18 of the 28 predicted  
66 proteins and applied it to characterize IgG and IgM antibodies in the sera of 29  
67 convalescent patients [7]. Recently, we upgraded the SARS-CoV-2 protein microarray,  
68 and the new microarray contains 21 predicted SARS-CoV-2 proteins and 197 spike  
69 protein peptides (with full coverage of spike) [8]. Using this microarray, we screened 2,360  
70 serum samples from 783 COVID-19 patients, covering mild, severe and critical cases.  
71 Thus, we compiled a dataset with comprehensive information on SARS-CoV-2-specific  
72 humoral responses and rich in clinical parameters.

73 To share the dataset efficiently, in addition to the related research that we have already  
74 published [9-13], we built a database for COVID-19-specific humoral immune responses  
75 and clinical parameters, namely, COVID-ONE-humoral immune ([www.covid-one.cn](http://www.covid-one.cn)),  
76 using Shiny. This database contains a comprehensive dataset of IgG and IgM responses  
77 to the 21 predicted SARS-CoV-2 proteins and 197 spike protein peptides from a cohort of  
78 783 COVID-19 patients. To bolster clinical relevance, 96 clinical parameters and basic

79 patient information were also included. COVID-ONE humoral immunity provides search,  
80 data analysis, and visualization functions. In particular, COVID-ONE-humoral immune  
81 integrates antibody response landscape analysis, correlation analysis, machine learning,  
82 *etc.* In the data analysis module, users can easily define sample groups of interest by  
83 adjusting scale bars, and the sample groups can be either one group or paired groups.  
84 In-depth analysis is achieved by clicking a single button; optionally, the results can be  
85 saved and downloaded as an independent package for further analysis.

86 To our knowledge, COVID-ONE humoral immune is the first database for  
87 SARS-CoV-2-specific humoral immune responses. We believe that COVID-19 humoral  
88 immune will be of broad interest and will facilitate understanding of immune responses in  
89 COVID-19 to combat the pandemic.

90

## 91 **Materials and methods**

92 **Patients and samples.** All 783 COVID-19 cases were laboratory confirmed; the patients  
93 were hospitalized at Tongji Hospital from 25 January 2020 to 28 April 2020. The criteria  
94 for defining severity, *i.e.*, mild, severe and critically severe, referenced the Diagnosis and  
95 Treatment Protocol for Novel Coronavirus Pneumonia (Trial Version 7), as released by  
96 the National Health Commission & State Administration of Traditional Chinese Medicine.  
97 For many of the patients, sera were collected during hospitalization at several time points.  
98 Negative reference samples were obtained from the National Institutes for Food and Drug  
99 Control. All serum samples were stored at -80°C until use.

100

101 **Peptide preparation.** In this study, the SARS-CoV-2 spike protein (1,273 aa) was divided  
102 into 211 peptides of 12 aa, with 6 aa overlapping between adjacent peptides. After  
103 cysteine was added to the N-terminus, these peptides were synthesized by GL Biochem,

104 Ltd. (Shanghai) and conjugated to BSA using Sulfo-SMCC (Thermo Fisher Scientific, MA,  
105 USA). Briefly, BSA was activated by Sulfo-SMCC at a molar ratio of 1:30 and dialyzed  
106 against PBS buffer. A total of 197 soluble peptides were individually conjugated with  
107 activated BSA in a w/w ratio of 1:1 and incubated for 2 h at room temperature. Free  
108 peptides were removed by dialysis with a pore size of 10 kD. The conjugates were  
109 assessed by SDS-PAGE.

110

111 **Protein preparation.** SARS-CoV-2 protein sequences were downloaded from GenBank  
112 (Accession number: MN908947.3) and converted to *Escherichia coli* codon-optimized  
113 gene sequences. The optimized genes were synthesized and cloned into pET32a or  
114 pGEX-4T-1 by Sangon Biotech (Shanghai). Recombinant proteins were expressed in *E.*  
115 *coli* BL21 by growing cells in 200 mL LB medium to OD<sub>600</sub>~0.6 at 37 °C followed by  
116 induction with 0.2 mM isopropyl-β-d-thiogalactoside (IPTG) overnight at 16 °C. For the  
117 purification of 6xHis-tagged proteins, cell pellets were re-suspended in lysis buffer  
118 containing 50 mM Tris-HCl, 500 mM NaCl, and 20 mM imidazole (pH 8.0) and lysed  
119 using a high-pressure cell cracker (Union Biotech, Shanghai). After centrifugation at  
120 12,000 x g for 20 min at 4 °C, the lysates were incubated with Ni<sup>2+</sup> Sepharose beads  
121 (Senhui Microsphere Technology, Suzhou) for 1 h at 4 °C, washed 3 times with lysis  
122 buffer and eluted with buffer containing 50 mM Tris-HCl, 500 mM NaCl, and 300 mM  
123 imidazole (pH 8.0). For the purification of GST-tagged proteins, cells were harvested and  
124 lysed by a high-pressure cell cracker in lysis buffer containing 50 mM Tris-HCl, 500 mM  
125 NaCl, and 1 mM DTT at pH 8.0. After centrifugation, the supernatant was incubated with  
126 GST-Sepharose beads (Senhui Microsphere Technology, Suzhou). The target proteins  
127 were washed with lysis buffer and eluted with 50 mM Tris-HCl, 500 mM NaCl, 1 mM DTT,  
128 and 40 mM glutathione at pH 8.0. The purified proteins were quality checked by

129 SDS-PAGE and Coomassie blue staining and stored at -80°C until use.

130

131 **Protein microarray fabrication.** The SARS-CoV-2 proteome microarray used in this study  
132 is an updated version of the original microarray[7], which contains 18 of the 28 predicted  
133 SARS-CoV-2 proteins. Three more proteins, *i.e.*, ORF3a, ORF3b, and ORF7b, and 197  
134 spike protein peptides were added to the updated version. Therefore, the protein  
135 microarray used in this study contained 21/28 SARS-CoV-2 proteins and 197 peptides,  
136 with full coverage of the spike protein. The proteins and spike protein peptides, along with  
137 BSA and anti-human IgG/IgM (Jackson ImmunoResearch Laboratories), were used as  
138 negative and positive controls, respectively, and printed in triplicate on PATH substrate  
139 slides (Grace Bio-Labs, Oregon, USA) to generate identical arrays in a 2 x 7 subarray  
140 format using a Super Marathon printer (Arrayjet). Anti-His (Millipore), anti-GST (Sigma),  
141 and anti-BSA (Sangon Biotech) antibodies were used for quality control of the  
142 SARS-CoV-2 proteome microarray. The protein microarrays were stored at -80°C until  
143 use.

144

145 **Microarray-based serum analysis.** A 14-chamber rubber gasket was mounted onto each  
146 slide to create individual chambers for 14 identical subarrays. The microarray was used  
147 for serum profiling as described previously, with minor modifications[14]. Briefly, arrays  
148 stored at -80°C were warmed to room temperature and then incubated in blocking buffer  
149 (3% BSA in 1×PBS buffer with 0.1% Tween 20) for 3 h. A total of 200 µL of diluted serum  
150 or antibodies was incubated with each subarray for 2 h. For most samples, sera were  
151 diluted to 1:200; for the competition experiment, free peptides were added at a  
152 concentration of 0.25 mg/mL. For the enriched antibodies, 0.1-0.5 µg antibodies were  
153 included in 200 µL incubation buffer. The arrays were washed with 1× PBST, and the

154 bound antibodies were monitored by incubating with Cy3-conjugated goat anti-human IgG  
155 and Alexa Fluor 647-conjugated donkey anti-human IgM (Jackson ImmunoResearch, PA)  
156 diluted 1:1,000 in 1× PBST at room temperature for 1 h. The microarrays were then  
157 washed with 1×PBST, dried by centrifugation at room temperature and scanned using a  
158 LuxScan 10K-A (CapitalBio Corporation, Beijing) with the parameters set as 95% laser  
159 power/PMT 550 and 95% laser power/PMT 480 for IgM and IgG, respectively. The  
160 fluorescence intensity was extracted with GenePix Pro 6.0 software (Molecular Devices,  
161 CA).

162

163 **Protein microarray data analysis.** IgG and IgM signal intensities were defined as  
164 foreground medians (F) subtracted by background medians (B) for each spot, and the  
165 signal intensity of a protein was averaged for triplicate spots. Block #14 of each slide was  
166 incubated with SARS-CoV-2 immunopositive serum as the positive control. Data  
167 normalization between slides was performed by a linear method according to the positive  
168 control; specifically, a normalization factor for each slide was calculated by linear  
169 regression according to the positive control. To reduce error among microarrays, the  
170 signals of all the proteins from each slide were divided by its normalization factor.

171

172 **Quantification and statistical analysis.** To calculate the rate of antibody response for each  
173 protein, the mean plus 2 times the standard deviation (SD) of the control serum was set as  
174 the cut-off. R was used for most data analysis and drawing, *i.e.*, Pearson correlation  
175 coefficient, ROC, T-test, cluster analysis and machine learning.

176

177 **Data collection.** Specific IgG/IgM immune response data were obtained by  
178 microarray-based serum analysis. Blood parameters were collected from Tongji Hospital,



179 Tongji Medical College, Huazhong University of Science and Technology, Wuhan, China.

180

181 **Database architecture and web interface.** COVID-ONE-humoral immune is a Shiny-based  
182 (1.5.0) database. Shinydashboard (0.7.1) and Shiny BS (0.61) were used to shape the UI,  
183 and the package DT (0.15) was used to format data tables. For data analysis, dplyr (1.0.2),  
184 tidyverse (1.3.0), randomForest (4.6-14), pROC (1.16.2), and umap (0.2.6.0) were  
185 integrated into Shiny. Pheatmap (1.0.12) and ggplot2 (3.3.2) carry out plotting. For the  
186 basic environment, the operation system is Ubuntu 20.04 LTS, and the version of R is  
187 3.6.3.

188

## 189 **Results**

### 190 **The database framework and clinical information for the patients**

191 In this study, we collected 2,360 serum samples from 783 patients with an average age of  
192 61.4 years and average onset time of 50 days. There were 387 males and 396 females  
193 and 369 non-severe, 309 severe, 105 critical cases. Regarding outcome, there were 723  
194 survivors and 60 deaths (**Fig. 1 A, Table 1, Supplementary dataset 1**).

195 To systematically analyse immune responses to SARS-CoV-2 infection, we screened  
196 2,360 serum samples using a COVID-19 protein microarray that contains 21 proteins and  
197 197 spike protein peptides. Additionally, we analysed 89 blood parameters for the 2,360  
198 serum samples, *i.e.*, complete blood count, blood chemistry study and blood enzyme tests.  
199 Hence, we obtained a comprehensive dataset that contains SARS-CoV-2-specific  
200 humoral responses and is rich in clinical parameters.

201 By combining clinical information, IgG/IgM immune responses and blood parameters,  
202 we established a database (COVID-ONE humoral immune) that provides a one-stop  
203 analysis pipeline for COVID-19-specific immune responses and clinical parameters (**Fig. 1**

204 **B).** To allow users to obtain more COVID-19 serum profiling data, we set up a page on the  
205 COVID-ONE humoral immune website, named “More studies”, to archive other highly  
206 related data of COVID-19 serum profiling (protein/peptide microarrays/phage display)  
207 [15-20]. In addition, a healthy control dataset was added to the HELP page, which  
208 contains the IgG and IgM responses for 528 healthy people to the 21 proteins and spike  
209 protein peptides (Supplementary dataset 2).

210 The following steps are included in the analysis module:

- 211 ● Users select a set of samples in the panel of patient information and click START.
- 212 ● COVID-ONE humoral immune filters candidate samples according to the given  
213 parameters.
- 214 ● COVID-ONE-humoral immune conducts analysis and provides results on the  
215 webpage.

216 To demonstrate how to use COVID-ONE humoral immunity for analysis, we provide 2  
217 datasets for a single group and paired groups as examples.

218

#### 219 **Case □: Antibody responses and clinical parameters of non-survivors of COVID-19**

220 To study features of COVID-19 non-survivors, we selected the “death” parameter of  
221 outcome in a single-group analysis module. This cohort contained 392 serum samples  
222 and 60 cases, with an average age of 69.6 years and sex (38 male, 22 female) (**Table 2**).

223 The IgG response landscape analysis of SARS-CoV-2 proteins showed positive rates for  
224 the S and N proteins and ORF3b of 95%, 93% and 87%, respectively, consistent with  
225 previous studies [21, 22] (**Fig. 2A**). Interestingly, non-structural protein 7 (NSP7) had an 88%  
226 IgG positive rate, which suggests that NSP7 may play an important role in COVID-19 (**Fig.**  
227 **2A**). Spike peptide S1-45 had the highest positive rate (87%) for the IgM response,  
228 indicating that the region including S1-45 may play an important role in IgM immunity (**Fig.**

229 **S1).**

230 Correlation analysis of clinical parameters showed that the neutrophil count had a  
231 negative correlation with the monocyte count and lymphocyte ratio (**Fig. 2B**). In addition,  
232 correlation analysis of antibody IgG responses showed a high correlation for IgG  
233 responses of the S1 and N proteins, but not for S2, with all non-structural protein IgG  
234 responses having no or very weak correlations (**Fig. 2C**). To study influencing factors of  
235 S1 antibody production, we analysed correlation between the S1 IgG response and  
236 clinical parameters and found the response to correlate with globulin in patients with  
237 critical COVID-19 (**Fig. 2D**).

238

239 **Case □: Differences in IgG/IgM immune responses and clinical parameters associated**  
240 **with sex**

241 Previous studies have shown that sex has a considerable effect on the outcome of  
242 COVID-19 [23, 24] and is associated with underlying differences in immune responses to  
243 infection [25]. To study differences in IgG/IgM immune responses and clinical parameters  
244 between the sexes, we defined Group A as female and Group B as male for severe  
245 patients, with 231 males at an average age of 64.3 and 183 females at an average age of  
246 68.1. Consistent with previous studies [26], males had a higher risk of severe disease  
247 than females (231/377 vs 183/379,  $p < 0.001$ ) (**Table 3, Table 4**).

248 UMAP results showed no overall difference in IgG immunity between males and  
249 females (**Fig. 3A**). To explore the disease mechanism in the sexes, we performed in-depth  
250 analysis for antibody response and blood parameters using COVID-ONE. The antibody  
251 response landscape shows that male patients have a higher positive rate than females for  
252 ORF-9b IgG, RdRp IgG, NSP1 IgG, *etc.* (**Fig. 3B**). Moreover, longitudinal antibody  
253 dynamic analysis showed a stronger ORF-9b IgG response in males during the whole

254 period of symptom onset, with a stronger NSP1 IgG response during the early stage of  
255 symptom onset; however, there was no significant difference for RdRp IgG (Fig. 3C-E).  
256 ORF-9b has been considered a drug target for the treatment of COVID-19 because it  
257 suppresses type I interferon responses[27-29]. To explore the relevance between ORF-9b  
258 antibody responses and COVID-19 severity, we compared ORF-9b antibody responses  
259 between mild and severe cases, and the results showed that males with severe disease  
260 had higher ORF-9b antibody responses than females (Fig. 3G-H).

261 To further decipher differences between female and male patients with COVID-19, we  
262 employed random forest for machine learning. The results showed creatinine, which is an  
263 acute kidney injury marker, to be the most significant factor between males and females  
264 (Fig. 4A). To explore the relevance between creatinine and sex in COVID-19, we  
265 compared the level and dynamic response of creatinine in males and females and  
266 observed that the creatinine level in males was significantly higher than that in females  
267 (Fig. 4B-C). To explore the relevance between creatinine and COVID-19 severity, we  
268 compared creatinine levels in mild and severe cases, and similar to ORF-9b antibody  
269 responses, male patients with severe COVID-19 had a higher level of creatinine (Fig.  
270 4D-E). Hence, ORF-9b antibodies and creatinine are associated with severe disease in  
271 male patients, which suggests different pathogeneses and complications between male  
272 and female COVID-19 patients.

273

## 274 Discussion

275 In this study, we built COVID-ONE humoral immune, a COVID-19-specific database,  
276 using R Shiny. COVID-ONE humoral immune is based on a comprehensive dataset  
277 generated by analysing 2,360 COVID-19 sera using a SARS-CoV-2 protein microarray  
278 containing 21 of the 28 known SARS-CoV-2 proteins and 197 peptides completely

279 covering the entire S protein sequence.

280 There are several published studies identifying the clinical characteristics, biomarkers and  
281 specific antibody responses of diverse COVID-19 patients (**Table S1**). To strengthen the  
282 credibility of our dataset, we compared COVID-19-specific antibody responses with other  
283 studies at different levels. At the protein level, we analysed the dynamic responses to the  
284 S and N proteins. The results showed that S and N responses peaked at 6 weeks after the  
285 onset of symptoms for IgG and 4 weeks for IgM, which is consistent with the results of  
286 previous studies[19, 21] (**Fig. S2**). At the peptide level, we compared IgG recognition of  
287 immunodominant regions in the SARS-CoV-2 spike protein and found that some high  
288 response areas that we identified[12] were consistent with those of Shrock *et al.* [15]:  
289 25-36 aa, 553-588 aa, 770-829 aa, 1148-1159 aa and 1256-1273 aa. Another hot spot (aa  
290 451-474) was only detected in our study. Regarding antibody diagnosis, Assia *et al.*  
291 achieved an AUC of 0.986 for IgG and 0.988 for IgM for the detection of prior  
292 SARS-CoV-2 infection when combining N and spike[20]. In our study, the AUC of the N  
293 protein was 0.995 for IgG and 0.988 for IgM, and the AUC of the S1 protein was 0.992 for  
294 IgG and 0.992 for IgM. We also found that S2-78 (1148-1159 aa) IgG is comparable to  
295 S1 IgG for COVID-19 patients, with an AUC of 0.99 for IgG and 0.953 for IgM[11].

296 To our knowledge, COVID-19 humoral immune is the first database for COVID-19-specific  
297 immune responses enriched in clinical parameters and has the following features. (i)  
298 Universality: COVID-ONE humoral immune contains 783 patients with 16 medical  
299 histories, which will be of broad interest for researchers and clinicians from diverse  
300 backgrounds. (ii) Accessibility: COVID-ONE-humoral immune provides a one-stop  
301 analysis pipeline, by which users can easily obtain meaningful information. (iii) Scalability:  
302 COVID-ONE humoral immune is built on the R platform, which is freely accessible, and  
303 many modular tools are readily available; thus, we can easily expand and incorporate new

304 analyses for the dataset whenever necessary without changing the overall structure of the  
305 database. Nonetheless, there are some limitations for COVID-ONE humoral immunity.  
306 For example, it lacks data for convalescent patients, peptide-level humoral responses to  
307 proteins other than S protein, and multicentre samples. In the future, we will assay the  
308 dynamic responses of SARS-CoV-2-specific antibodies using ~500 serum samples from  
309 ~100 COVID-19 convalescent patients. We will also integrate published peptide  
310 microarray/phage display-related data[15-17, 30] and attempt to update the database  
311 covering the whole SARS-CoV-2 proteome at the peptide or amino acid level. In addition,  
312 the SARS-CoV-2 protein microarray has already been promoted by CDI Labs  
313 ([www.cdi.bio](http://www.cdi.bio)) and ArrayJet ([www.arrayjet.co.uk](http://www.arrayjet.co.uk)), and we anticipate more diverse data for  
314 SARS-CoV-2-specific antibody responses from multicentre samples. We strongly believe  
315 that by sharing a large dataset and facilitating data analysis, COVID-19 humoral immune  
316 is a valuable resource for COVID-19 research.

317

318 **Ethics statement.** The study was approved by the Ethical Committee of Tongji Hospital,  
319 Tongji Medical College, Huazhong University of Science and Technology, Wuhan, China  
320 (ITJ-C20200128). Written informed consent was obtained from all participants enrolled in  
321 this study.

322

### 323 **Data and tool availability**

324 COVID-ONE-humoral immune is freely accessible at [www.covid-one.cn](http://www.covid-one.cn). The  
325 SARS-CoV-2 proteome microarray data are deposited on Protein Microarray Database  
326 under the accession number PMDE244 (<http://www.proteinmicroarray.cn>). If author need  
327 the raw data of antibody responses or clinical parameters, please contact the  
328 corresponding author ([taosc@sjtu.edu.cn](mailto:taosc@sjtu.edu.cn)).

329

330 **CRedit author statement**

331 **Sheng-ce Tao, Xionglin Fan, Feng Wang:** Developed the conceptual ideas and designed  
332 the study. **Zhaowei Xu, Yang Li, Qing Lei, Likun Huang, Dan-yun Lai, Shu-juan Guo:**  
333 Performed the experiments, data analysis, built the database, Writing - original draft.  
334 **He-wei Jiang, Hongyan Hou, Yun-xiao Zheng, Xue-ning Wang, Jiaoxiang Wu, Ming-liang**  
335 **Ma, Bo Zhang, Hong Chen, Caizheng Yu, Jun-biao Xue, Hai-nan Zhang, Huan Qi, Siqi Yu,**  
336 **Mingxi Lin, Yandi Zhang, Xiaosong Lin, Zongjie Yao, Huiming Sheng, Ziyong Sun:**  
337 Performed the experiments, data analysis.

338

339 **Competing interests**

340 The authors declare no competing interests.

341

342 **Acknowledgments**

343 This work was partially supported by the National Key Research and Development  
344 Program of China Grant (No.2016YFA0500600), National Natural Science Foundation of  
345 China (No. 31970130, 31600672, 31900112, 21907065 and 32000027).

346

347 **ORCID**

348 0000-0002-9134-1892 (Zhaowei Xu)

349 0000-0002-3182-6169 (Yang Li)

350 0000-0002-6679-1752 (Qing Lei)

351 0000-0002-3377-8340 (Likun Huang)

352 0000-0001-8719-6947 (Dan-yun Lai)

353 0000-0002-4252-0608 (Shu-juan Guo)

- 354 0000-0001-8700-7042 (He-wei Jiang)
- 355 0000-0003-2337-0509 (Hongyan Hou)
- 356 0000-0001-8461-8884 (Yun-xiao Zheng)
- 357 0000-0001-8550-7166 (Xue-ning Wang)
- 358 0000-0002-2309-4164 (Jiaoxiang Wu)
- 359 0000-0002-0045-4876 (Ming-liang Ma)
- 360 0000-0002-1441-3100 (Bo Zhang)
- 361 0000-0002-5412-7467 (Hong Chen)
- 362 0000-0003-4583-9339 (Caizheng Yu)
- 363 0000-0003-2029-7430 (Jun-biao Xue)
- 364 0000-0002-1058-0462 (Hai-nan Zhang)
- 365 0000-0002-3800-0140 (Huan Qi)
- 366 0000-0001-9373-4596 (Siqi Yu)
- 367 0000-0002-9745-9488 (Mingxi Lin)
- 368 0000-0001-6268-5461 (Yandi Zhang)
- 369 0000-0002-1792-9639 (Xiaosong Lin)
- 370 0000-0002-4383-1862 (Zongjie Yao)
- 371 0000-0001-9382-3687 (Huiming Sheng)
- 372 0000-0002-6443-9755 (Ziyong Sun)
- 373 0000-0001-6324-9135 (Feng Wang)
- 374 0000-0001-9754-372X (Xionglin Fan)
- 375 0000-0002-9210-1823 (Sheng-ce Tao)
- 376

377 **References:**

- 378 [1] Dong E, Du H, Gardner L. An interactive web-based dashboard to track COVID-19 in real time.  
379 The Lancet Infectious Diseases 2020;20:533-4.



380 [2] Knipe DM, Levy O, Fitzgerald KA, Mühlberger E. Ensuring vaccine safety. *Science*  
381 2020:eabf0357.

382 [3] Lipsitch M, Dean NE. Understanding COVID-19 vaccine efficacy. *Science* 2020;370:763-5.

383 [4] Chen Y, Zuiani A, Fischinger S, Mullur J, Atyeo C, Travers M, et al. Quick COVID-19 Healers  
384 Sustain Anti-SARS-CoV-2 Antibody Production. *Cell* 2020.

385 [5] Peng Y, Mentzer AJ, Liu G, Yao X, Yin Z, Dong D, et al. Broad and strong memory CD4(+) and  
386 CD8(+) T cells induced by SARS-CoV-2 in UK convalescent individuals following COVID-19. *Nat*  
387 *Immunol* 2020;21:1336-45.

388 [6] Cox RJ, Brokstad KA. Not just antibodies: B cells and T cells mediate immunity to COVID-19. *Nat*  
389 *Rev Immunol* 2020;20:581-2.

390 [7] Jiang HW, Li Y, Zhang HN, Wang W, Yang X, Qi H, et al. SARS-CoV-2 proteome microarray for  
391 global profiling of COVID-19 specific IgG and IgM responses. *Nat Commun* 2020;11:3581.

392 [8] Li Y, Lai DY, Zhang HN, Jiang HW, Tian X, Ma ML, et al. Linear epitopes of SARS-CoV-2 spike  
393 protein elicit neutralizing antibodies in COVID-19 patients. *Cell Mol Immunol* 2020;17:1095-7.

394 [9] Lei Q, Li Y, Hou HY, Wang F, Ouyang ZQ, Zhang Y, et al. Antibody dynamics to SARS-CoV-2 in  
395 asymptomatic COVID-19 infections. *Allergy* 2020.

396 [10] Lei Q, Yu C-z, Li Y, Hou H-y, Xu Z-w, Yao Z-j, et al. SARS-CoV-2 antibody signatures for  
397 predicting the outcome of COVID-19. *medRxiv* 2020.

398 [11] Li Y, Lai DY, Lei Q, Xu ZW, Wang F, Hou H, et al. Systematic evaluation of IgG responses to  
399 SARS-CoV-2 spike protein-derived peptides for monitoring COVID-19 patients. *Cell Mol Immunol*  
400 2021;18:621-31.

401 [12] Li Y, Ma M-l, Lei Q, Wang F, Hong W, Lai D-y, et al. Linear epitope landscape of the  
402 SARS-CoV-2 Spike protein constructed from 1,051 COVID-19 patients. *Cell Reports* 2021.

403 [13] Li Y, Xu Z, Lei Q, Lai DY, Hou H, Jiang HW, et al. Antibody landscape against SARS-CoV-2  
404 reveals significant differences between non-structural/accessory and structural proteins. *Cell Rep*  
405 2021;36:109391.

406 [14] Li Y, Li CQ, Guo SJ, Guo W, Jiang HW, Li HC, et al. Longitudinal serum autoantibody repertoire  
407 profiling identifies surgery-associated biomarkers in lung adenocarcinoma. *EBioMedicine*  
408 2020;53:102674.

409 [15] Shrock E, Fujimura E, Kula T, Timms RT, Lee IH, Leng Y, et al. Viral epitope profiling of  
410 COVID-19 patients reveals cross-reactivity and correlates of severity. *Science* 2020;370.

411 [16] Wang H, Wu X, Zhang X, Hou X, Liang T, Wang D, et al. SARS-CoV-2 Proteome Microarray for  
412 Mapping COVID-19 Antibody Interactions at Amino Acid Resolution. *ACS Cent Sci* 2020;6:2238-49.

413 [17] Schwarz T, Heiss K, Mahendran Y, Casilag F, Kurth F, Sander LE, et al. SARS-CoV-2  
414 Proteome-Wide Analysis Revealed Significant Epitope Signatures in COVID-19 Patients. *Front*  
415 *Immunol* 2021;12:629185.

416 [18] Holenya P, Lange PJ, Reimer U, Woltersdorf W, Panterodt T, Glas M, et al. Peptide  
417 microarray-based analysis of antibody responses to SARS-CoV-2 identifies unique epitopes with  
418 potential for diagnostic test development. *Eur J Immunol* 2021.

419 [19] Wu J, Liang B, Chen C, Wang H, Fang Y, Shen S, et al. SARS-CoV-2 infection induces sustained  
420 humoral immune responses in convalescent patients following symptomatic COVID-19. *Nat Commun*  
421 2021;12:1813.

422 [20] de Assis RR, Jain A, Nakajima R, Jasinskas A, Felgner J, Obiero JM, et al. Analysis of  
423 SARS-CoV-2 antibodies in COVID-19 convalescent blood using a coronavirus antigen microarray. *Nat*

424 Commun 2021;12:6.  
425 [21] Long QX, Liu BZ, Deng HJ, Wu GC, Deng K, Chen YK, et al. Antibody responses to  
426 SARS-CoV-2 in patients with COVID-19. Nat Med 2020;26:845-8.  
427 [22] Hachim A, Kavian N, Cohen CA, Chin AWH, Chu DKW, Mok CKP, et al. ORF8 and ORF3b  
428 antibodies are accurate serological markers of early and late SARS-CoV-2 infection. Nat Immunol  
429 2020;21:1293-301.  
430 [23] Williamson EJ, Walker AJ, Bhaskaran K, Bacon S, Bates C, Morton CE, et al. Factors associated  
431 with COVID-19-related death using OpenSAFELY. Nature 2020;584:430-6.  
432 [24] Scully EP, Haverfield J, Ursin RL, Tannenbaum C, Klein SL. Considering how biological sex  
433 impacts immune responses and COVID-19 outcomes. Nat Rev Immunol 2020;20:442-7.  
434 [25] Takahashi T, Ellingson MK, Wong P, Israelow B, Lucas C, Klein J, et al. Sex differences in  
435 immune responses that underlie COVID-19 disease outcomes. Nature 2020.  
436 [26] Chen N, Zhou M, Dong X, Qu J, Gong F, Han Y, et al. Epidemiological and clinical characteristics  
437 of 99 cases of 2019 novel coronavirus pneumonia in Wuhan, China: a descriptive study. The Lancet  
438 2020;395:507-13.  
439 [27] Jiang HW, Zhang HN, Meng QF, Xie J, Li Y, Chen H, et al. SARS-CoV-2 Orf9b suppresses type I  
440 interferon responses by targeting TOM70. Cell Mol Immunol 2020;17:998-1000.  
441 [28] Gordon DE, Hiatt J, Bouhaddou M, Rezelj VV, Ulferts S, Braberg H, et al. Comparative  
442 host-coronavirus protein interaction networks reveal pan-viral disease mechanisms. Science 2020;370.  
443 [29] Gao X, Zhu K, Qin B, Olieric V, Wang M, Cui S. Crystal structure of SARS-CoV-2 Orf9b in  
444 complex with human TOM70 suggests unusual virus-host interactions. Nat Commun 2021;12:2843.  
445 [30] Qi H, Ma ML, Jiang HW, Ling JY, Chen LY, Zhang HN, et al. Systematic profiling of  
446 SARS-CoV-2-specific IgG epitopes at amino acid resolution. Cell Mol Immunol 2021;18:1067-9.

447

448

#### 449 **Figure legends**

450 **Figure 1. Overview of data resources and functional modules of COVID-ONE humoral**  
451 **immunity.**

452 **(A)** The patient information of the study cohort showing sex, outcome, severe type, *etc.* **(B)**  
453 The framework of COVID-ONE-humoral immune. The one-stop database for  
454 COVID-19-specific humoral immune responses and clinical parameters. The COVID-ONE  
455 humoral immune dataset includes 220 protein/peptide antibody responses and 96 clinical  
456 parameters from 2360 serum samples. Using the Shiny package, COVID-ONE-humoral  
457 immune provides single-group or paired-group analysis based on the dataset.

458

459 **Figure 2. SARS-CoV-2-specific antibody responses and their correlations with clinical**  
460 **parameters: COVID-19 non-survivors.**

461 **(A)** The antibody IgG response landscape against SARS-CoV-2 proteins (upper part), S1  
462 protein peptides (middle part) and S2 protein peptides (lower part). **(B)** Heat map showing  
463 correlation analysis of blood parameters. **(C)** Heat map showing correlation analysis of  
464 antibody IgG responses against SARS-CoV-2 proteins. **(D)** Scatter plot showing  
465 correlation analysis between the S1 IgG response and protein IgG responses/blood  
466 parameters.

467

468 **Figure 3. Correlation of the ORF-9b IgG response based on COVID-19 severity in male**  
469 **patients.**

470 **(A)** Scatter plot showing uniform manifold approximation and projection (UMAP) for serum  
471 samples using 21 protein IgG/IgM responses in sex subgroup analysis. **(B)** Histogram  
472 showing different responses in males and females for the IgG response. **(C-E)** Scatter plot  
473 showing ORF9b, RdRp and NSP1 IgG dynamic responses using longitudinal samples  
474 from male and female patients. **(G-H)** Scatter plot of the dynamic anti-ORF9b IgG  
475 response in COVID-19 patients with mild and severe symptoms.

476

477 **Figure 4. Correlation of creatinine response based on COVID-19 severity in male patients.**

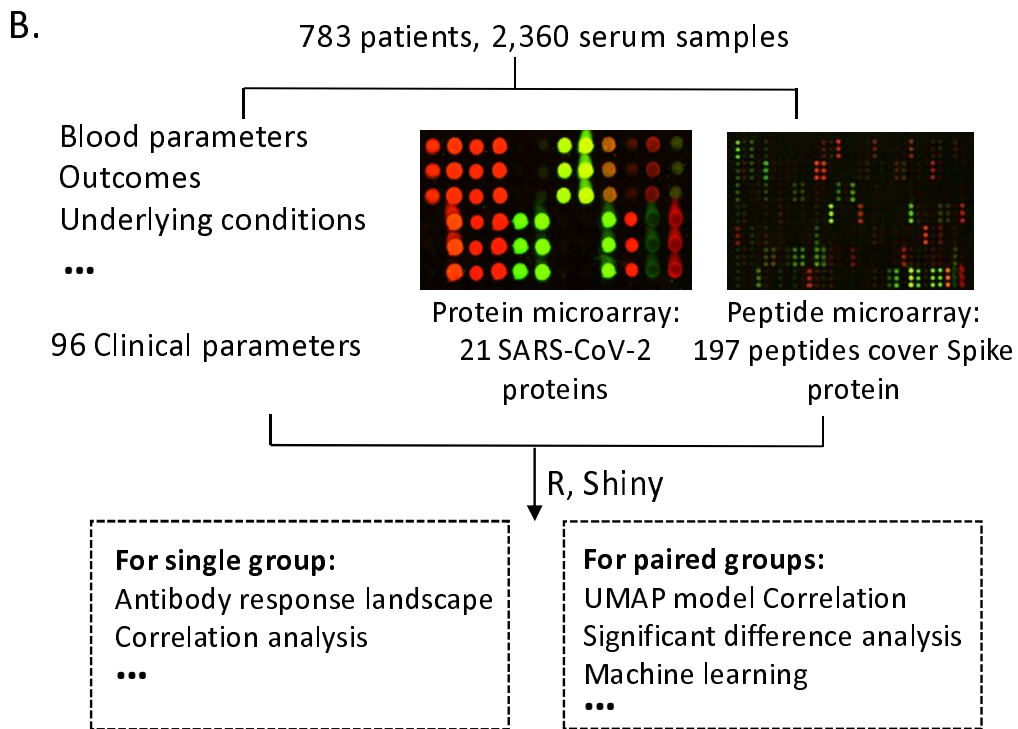
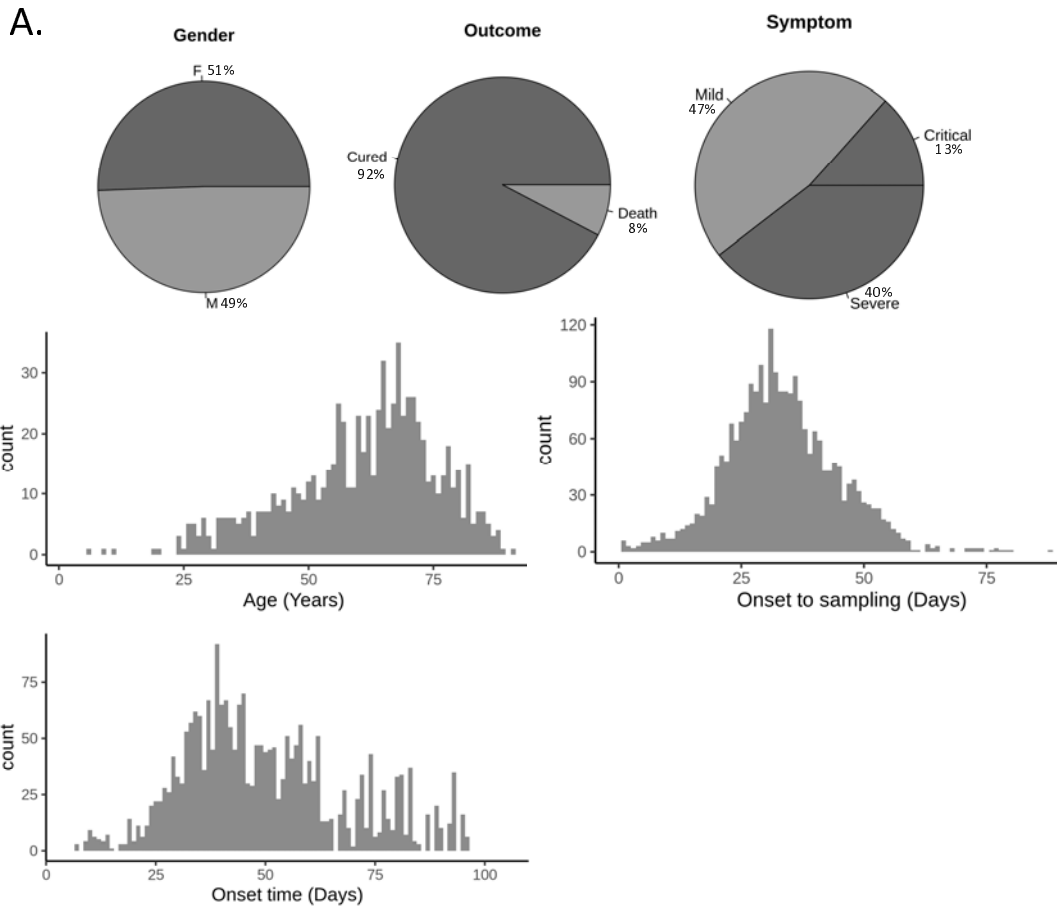
478 . **(A)** The top 15 sex-specific parameters by random forest analysis ranked by the mean  
479 decrease in accuracy and mean decrease in the Gini coefficient **(B)** The boxplot shows  
480 the significant difference in creatinine in sex subgroup analysis. The *P*-value was  
481 calculated by a two-sided t-test. **(C)** Scatter plot of creatinine levels of male and female  
482 COVID-19 patients. **(D-E)** Scatter plot of creatinine levels of COVID-19 patients with mild  
483 and severe disease.

484

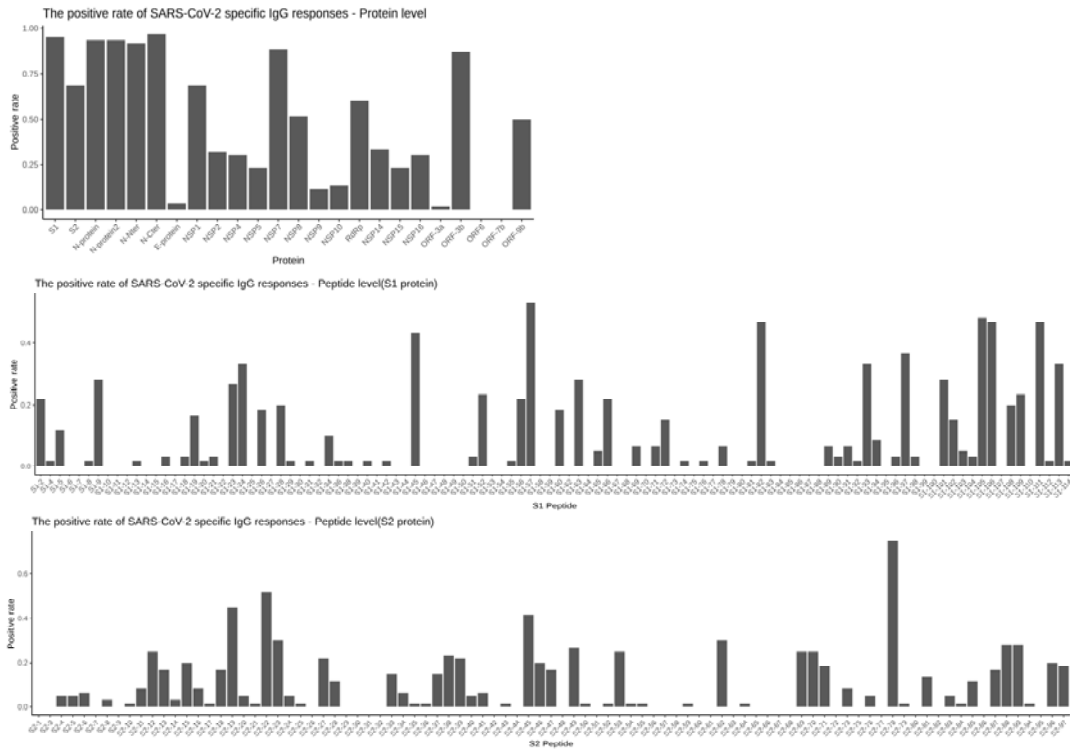
485 **Figure S1. The antibody IgM response landscape against SARS-CoV-2 proteins (upper**  
486 **part), S1 protein peptides (middle part) and S2 protein peptides (lower part).**

487

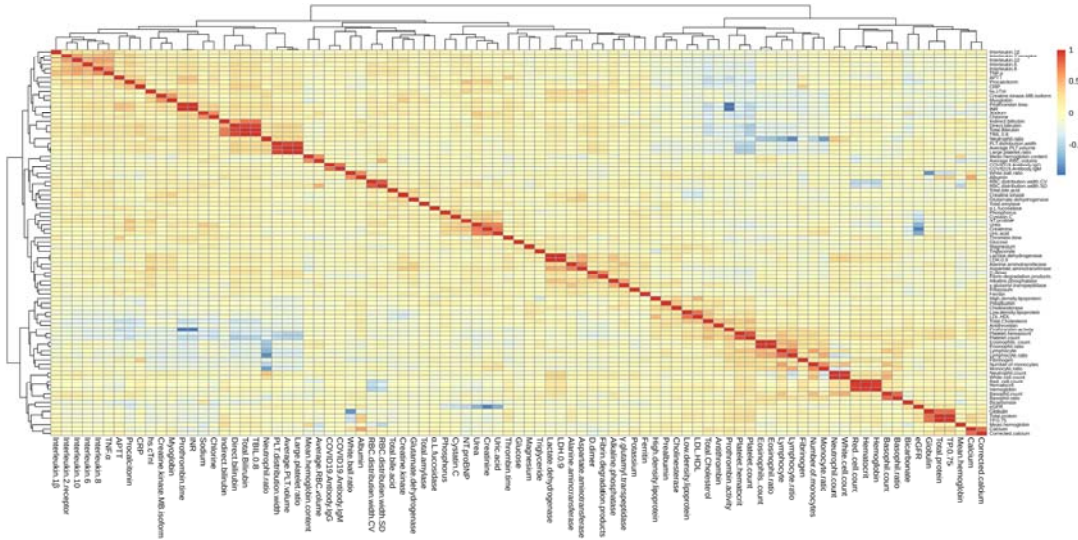
488 **Figure S2. Dynamic antibody responses to S1 and N proteins.** Scatter plot showing  
489 dynamic antibody responses to S1 IgG **(A)**, N protein IgG **(B)**, S1 IgM **(C)**, and N protein  
490 IgM **(D)**.



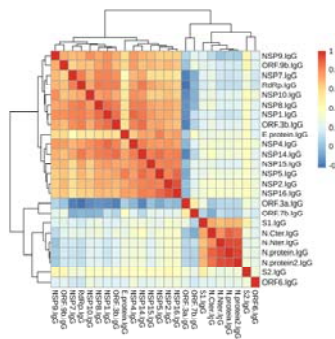
A.



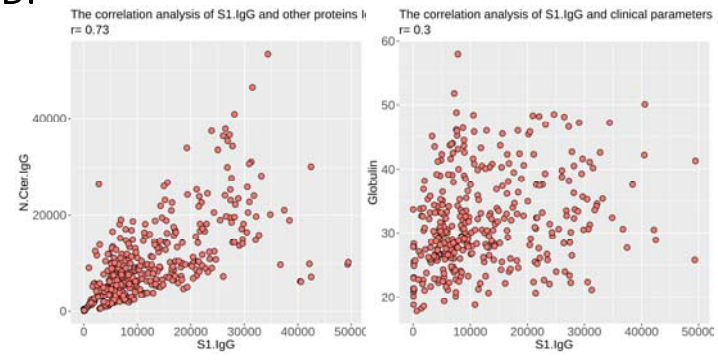
B.

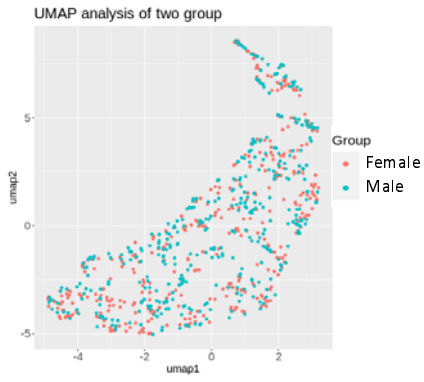
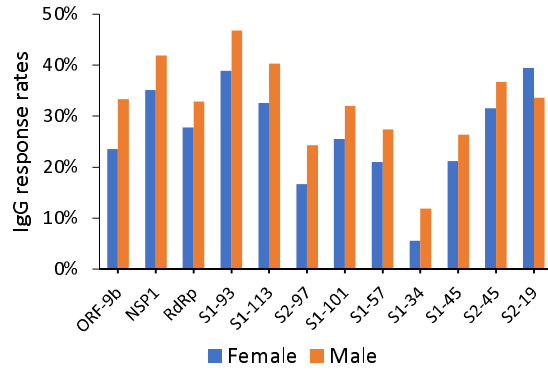
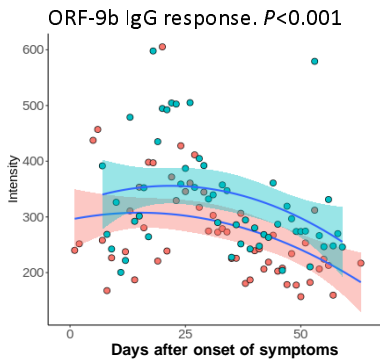
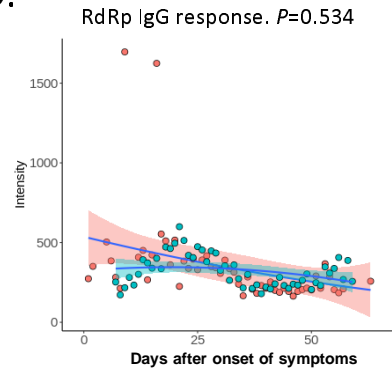
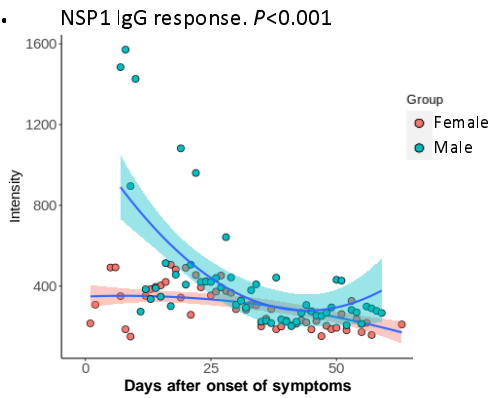
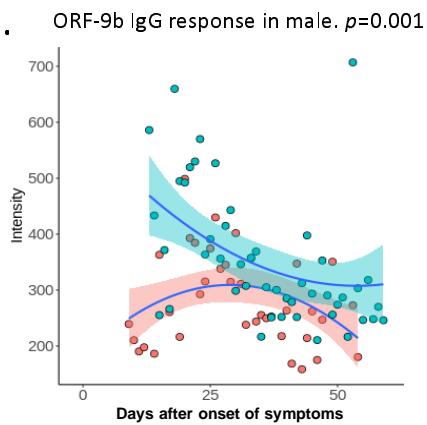
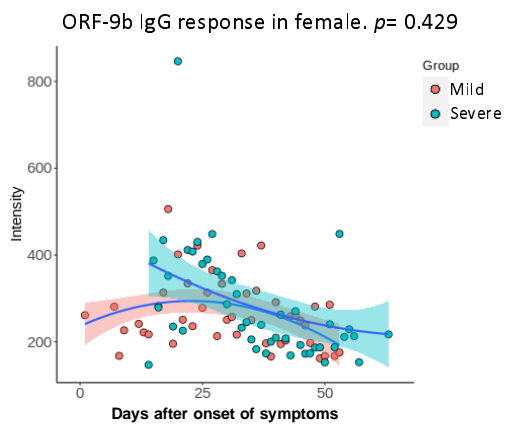


C.

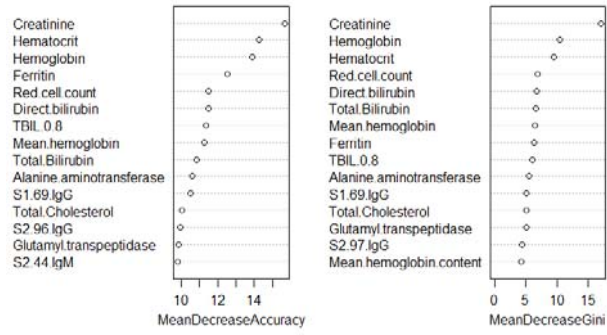


D.



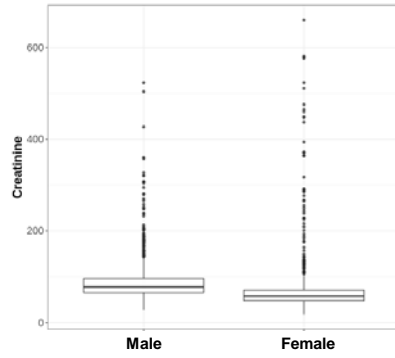
**A.****B.****C.****D.****E.****G.****H.**

A.



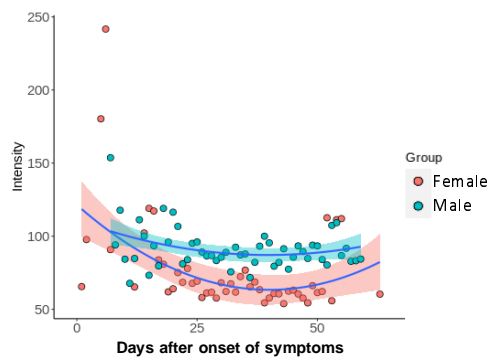
B.

$P < 0.001$



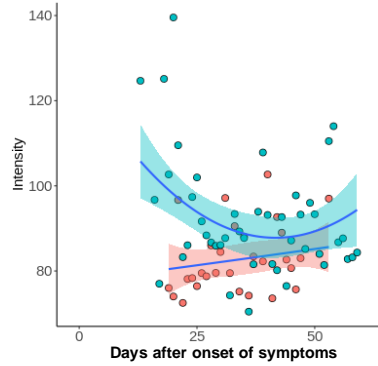
C.

Creatinine response.  $P < 0.001$



D.

Creatinine response in male.  
 $P = 0.002$



E.

Creatinine response in female.  
 $P = 0.458$

