

Covid-19 Associated Hepatitis in Children (CACH) during the second wave of SARS-CoV-2 infections in Central India: Is it a complication or transient phenomenon.

Sumit Kumar Rawat MD^{1*}, Ajit Anand Asat MD¹, Ashish Jain MD¹, R K Ratho MD²

1. Bundelkhand Medical College Sagar, Madhya Pradesh, India.
2. Post Graduate Institute of medical Sciences, Chandigarh, India

Grant support: NA

Key words: Hepatitis, Covid-19, SARS-CoV-2, Pediatric

Abstract

Background: Besides Covid-19, SARS-CoV-2 infection has been associated with Multiple Inflammatory Syndrome in children (MIS-C). However, a unique presentation of a transient form of hepatitis in pediatric age group occurring subsequent to the asymptomatic SARS-CoV-2 infection is yet to be reported in children. Presently the clinical presentation, temporal association and characteristics of the cases of CACH different than MIS-C, is being reported.

Methods: As a retrospective and follow up observational study we reviewed all pediatric patients presenting with acute hepatitis during the study period from April 2021 to mid-June 2021. We observed a sudden rise of features of hepatitis in a group of pediatric patients during the second wave of SARS CoV-2 infections, where “children or adolescents developing sudden onset acute hepatitis with no history of pre-existing liver disease or familiar etiology of acute hepatitis. The children had a COVID-19 RT-PCR positivity within 3-6 weeks or a retrospectively proven Covid-19 infection with high titer SARS CoV-2 antibodies”. Such subjects had asymptomatic Covid-19 infection, while another group of 8 patients having findings suggestive of MIS-C was observed with protracted and grave presentation, with multiple organ involvement along with Covid-19 diagnosis. Routine lab workup along with viral serology of acute hepatitis was performed in all such patients. These patients were negative for conventional Hepatitis A, B, C and E seromarkers but had high titer of SARS CoV-2 antibodies.

Results: Among 33 patients who presented with hepatitis, 25 patients had features of CAHC, they had hepatitis only. These patients did not have any typical Covid-19 symptoms, had normal to borderline inflammatory markers, admitted to general care wards, all recovered on supportive treatment uneventfully. Whereas patients with MIS-C (n=8) required admission to critical care, they had high level of inflammatory markers and 3 (37.5%) had an adverse outcome.

Conclusion: With emergence of newer variants of concern including the Delta variant which was responsible for the massive wave of Covid-19 across India, with varied presentations, CAHC is one of them. Such new entities need to be timely identified and differentiated from other types of emerging syndromes in children for appropriate management.

Introduction: Severe acute respiratory syndrome coronavirus 2 (SARS-CoV-2), the cause of ongoing pandemic, was first identified in China in December 2019, with its subsequent epicenters recognized in Western countries, thereafter the first wave of pandemic in India(1). Initial reports of SARS-CoV-2 infection indicated that young children were disproportionately spared from disease predominantly either asymptomatic or with mild disease (2). However, it didn't persist for long, and a novel "multisystem inflammatory syndrome in children" (MIS-C) likely related to SARS-CoV-2 infection surfaced out (3).

In children and adolescents in mid-2020 following features had been observed in patients of MIS-C; "Serious illness leading to hospitalization, an age of less than 21 years, fever (body temperature, $>38.0^{\circ}\text{C}$) or report of subjective fever lasting at least 24 hours, laboratory evidence of inflammation, multi organ involvement (i.e., at least two systems), and laboratory-confirmed SARS-CoV-2 infection (positive SARS-CoV-2 real-time reverse-transcriptase polymerase chain reaction [RT-PCR] or antibody test during hospitalization) or an epidemiologic link to a person with Covid-19" (4).

In September 2020, Covid-19 induced hepatitis (CIH) was coined to describe "benign new transient hepatitis in a SARS-CoV-2 patients which is characterized by the following: Gradual onset, elevated AST and ALT, dilated sinusoids with lymphocytic

infiltration of liver parenchyma, non-obstructive jaundice, stable underlying liver disease and no radiological new hepatobiliary changes”(5).

Similar to the reports from the west, the first wave of SARS-CoV-2 pandemic that lasted till November 2020 causing a large number of infections across India, but it did not cause any serious disease in children (6). However, in contrast the ongoing massive second wave of Covid-19, that started in April 2021 in India (7), serious concerns about children being affected became true. Newer variants of concern like the delta (B.1.617.2) variant which has now spread to more than 60 countries, were largely responsible for this massive upsurge in Covid-19 cases (8). Besides such newer variants bringing changes in disease presentations, they also led to rise in reports of not only respiratory disease in children but number of MIS-C cases (9).

Among adult patients of Covid-19, signs of liver injury are known to occur in 15-78% of cases(10), on the other hand among MIS-C cases hepatic injury has been reported in around 60% of cases (9). Although different phenotypes of liver injury have been proposed based on the presence/absence of pre-existing liver disease in Covid-19, any different presentations of liver injury have not been described in adults (11). Whereas a recent study documented two different phenotypes of liver injury were associated with SARS-CoV2 infection in children (12). To our knowledge, none of the published studies and reports took a detailed account of such incidences of post Covid-19 hepatitis in pediatric or adolescent age group, as in CAHC which was unique, different from both the phenotypes described earlier in children and has been observed during the ongoing second wave of SARS-CoV2 infections.

A sudden rise in cases of hepatitis among children, typically setting in beyond 2-week post Covid-19 during the ongoing second wave of SARS-CoV-2 infections, the study was planned to correctly identify the cases, to differentiate from the other entities, and to find out its temporal relation with COVID-19 infections.

Methods

Patients and Study Design: It was a retrospective and follow up observational study of children presented with acute hepatitis during April 2021 to Mid-June 2021 at a tertiary care institute in Sagar, which is a dedicated Covid-19 (500 beds) center for the entire region as shown in figure 1. During the study period a total of 5539 pediatric patients were screened in Sagar district (Central India) by Indian Council of Medical research (ICMR) recommended RT-PCR assay (13), where 469 children within 14 years of age were found to be positive for Covid-19. As per existing protocols, all the positive cases, their family members and contacts were monitored through central control command telemedicine center from the Sagar smart city control room (14). Children presented with serious symptoms including hepatitis, during post Covid illness were referred to our associated hospital and admitted on requirement. A record review for all such patients was performed and follow up information was collected from the control command center and from the hospital helpdesk center which looking the follow up of hospitalized patients during the second wave of the pandemic in Sagar district. The outline of the procedures has been shown in figure 2.

Inclusion criteria: Children presented with clinical features and laboratory findings (elevated transaminases) suggestive of acute hepatitis during post Covid-19 were enrolled in the study for further evaluation. Based on temporal association in relation to Covid-19, disease severity and presence or absence of multi system involvement we could differentiate these hepatitis patients into two entirely different entities.

- 1) Covid-19 associated hepatitis in children (CAHC): Those presented with transient self-limiting acute hepatitis beyond 2 weeks of Covid-19 or a history of contact with laboratory confirmed Covid-19 case and presented without involvement of any other organ system are referred as CAHC. “We defined CAHC as “New transient hepatitis in a pediatric patient with sudden onset, raised transaminases, non-obstructive jaundice, no history of underlying liver disease, negative for evidence of other known causes of acute hepatitis and with a laboratory evidence of recent Covid-19”. These patients developed hepatitis after a period of 2 or

more weeks from testing RT-PCR positive or they had been a close contact of a RT-PCR confirmed case of Covid-19 for the same duration. They did not have signs of any other obvious systemic disease, with normal to borderline inflammatory markers $\leq 2X$ upper limit of normal (ULN) and majority had turned RT-PCR negative for Covid-19 at the time of presentation.

- 2) MIS-C: Patients presenting with acute hepatitis i.e. elevated transaminases and falling within CDC case definitions of MIS-C (15). They presented within 2-3 weeks of testing positive by RT-PCR with admission to critical care wards. In contrast to CAHC, cases classified in this group had protracted grave illness with moderate to severe symptoms of Covid-19, high inflammatory markers $>2X$ ULN and multi system involvement.

Exclusion criteria: Those patients who had evidence of pre-existing liver disease, drug induced liver injury (DILI), MIS-C cases without evidence of liver injury or those who were positive for other known causes of acute hepatitis were excluded from the study.

Laboratory work up: SARS-CoV-2 RT-PCR was done at the ICMR recognized Virology research and diagnostic laboratory (VRDL) of the institute with established protocols and results were recorded on the national portal. All patients presenting with hepatitis were thoroughly evaluated in the institute as per the standard protocols including complete blood counts, liver function tests, renal function tests, serum ferritin, CRP, D Dimer, LDH, myocardial enzymes, procalcitonin and a repeat RT-PCR for Covid-19. All these Blood investigations were carried out at the Central clinical lab in the dedicated Covid-19 hospital of our institute. Those children with signs of acute hepatitis were further evaluated with additional tests including HbsAg, anti-hepatitis E virus (HEV) IgM, anti-hepatitis A virus (HAV) IgM, anti HCV, anti leptospira IgM, anti EBV IgM, anti VZV IgM, Widal test, malaria antigen, malaria antibody, antinuclear antibody (ANA), anti LKM antibody, total IgG, anti SARS-CoV-2 IgG, dengue NS1 antigen and IgM (All antibody tests were done in the department of Microbiology with ICMR recommended ELISA kits)(16).

Treatment: All children in the CAHC group (n=25) admitted in general wards were given supportive therapy consisting of anti-emetics, IV fluids, Multivitamins, Zinc without any use of steroids. Those with MIS-C (n=8) were treated as per the ICMR recommended Covid-19 regimen for children and other supportive treatment inclusive of IVIG (n=1) in child with neurologic symptoms, steroids in all, and oxygen administration (n=3) in intensive care settings, without mechanical ventilation.

Outcomes: Survival at 4 weeks of follow up was taken as an endpoint for assessment of outcomes.

Statistical analysis: The data was extracted and entered in MS excel, proportions and percentages were calculated for categorical variables. The chi-square test was performed to check out possible associations between the categorical variables like association of male sex, clinical outcome with either of entities. After checking the normality of data, t-test was applied to compare the mean values of different baseline laboratory parameters such as age, days of hospital stay etc. For those variables not having normality Mann Whitney U test was applied; A p-value of less than 0.05 was considered significant. The statistical analysis was performed using SPSS trial version 16 for windows.

Ethics approval: The follow-up and analysis work was performed after obtaining due approval of the institution human ethics committee.

Funding: No external funding was used for the study; routine workup was supported by the institutional funds used in patient care.

Results

Patient characteristics: During the study period from April 2021 to mid-June 2021 among the screened population of 5539, 469(8.46%) children with a male to female ratio of 299 : 170(1.8:1) were found to be Covid-19 RT-PCR positive. The age group of these children ranged from 4 months till 14 years with mean age of 8.9 ± 3.8 years, the age group wise distribution is shown in figure 3.a. Among the admitted patients, 33 presented with features of hepatitis (Table 1). As per the study criteria 25 patients

(Male:Female 16:9) and 8 (Male : Female 2:6) patients (n=25) could be categorized into CAHC and MIS-C respectively. The distribution of age groups for both entities is depicted in *figure 3.b* where majority belonged to 26 years age group. The cases started in mid-April 2021 and peaked around the end of May 2021. The relative incidences of hepatitis cases in temporal relation to Covid-19 cases have been shown in *figure 4*.

Clinical and laboratory findings:

CAHC group: Children presented with typical symptoms of hepatitis including nausea, vomiting, loss of appetite, weakness and mild fever usually not exceeding 100 °F. The frequency of symptoms is shown in *figure 5 a*. Icterus was present on examination in 18 of the cases. None of these children had experienced any serious or typical symptoms of Covid-19 on any significant findings on chest X-ray. The X-ray findings of CAHC versus MIS-C have been shown in *figure 5 b*.

On laboratory investigation at admission, 23 patients (23/25) had a RTPCR test negative for SARS CoV-2, CAHC cases had markedly raised transaminases >10X ULN (ALT 400-4000) with median 575.2 (190.5-1625.7) U/L (p <0.001), raised serum bilirubin with median 3.4 (2.45-6.55) mg/dl (p=0.000), raised C reactive protein (CRP) median 8.2 (5.5-11.7) mg/L (p< 0.015), normal or slightly raised IL-6, median 8.1 (10.3-15.3) pg/ml (p=0.000). They had slightly raised alkaline phosphatases 2X ULN (p=0.29), slightly elevated total IgG levels and normal platelet counts on majority of cases. All patients (100%) were positive for anti SARS-CoV-2, anti N protein antibodies in high titers. 8 (38%) of them had positive IgM for Dengue and in 19 (90.4%) a Widal titer of more than 1:160, with negative ANA was obtained. On further work-up anti VZV IgM antibodies were found in 7 (28%) of these and anti EBV IgM was found in 6 (24%) of them. The mean laboratory values of the groups have been depicted in *Table 2*.

Outcomes: All patients were discharged with supportive treatment without any complications with mean hospital stay of 5.8 (± 1.0) days and remained uneventful at 4 weeks follow up. There was no mortality reported in this group.

MIS-C group: Children presented with moderate to severe symptoms of Covid-19. The persistent fever of $>100^{\circ}\text{F}$ made them to be hospitalized in intensive care units. Besides persistent fever, they had cough, shortness of breath, abdominal pain, loss of appetite and weakness. Some of them developed ARDS and signs of multi organ failure mainly hypotension, swelling and some with liver failure. 4 (50%) children had features of pneumonia on chest X rays (*figure 5 b*).

On laboratory investigation MIS-C patients presented with hepatitis had RTPCR test positive for SARS CoV-2 within 2 weeks, they were associated with markedly raised CRP ($p=0.015$), markedly raised IL-6 ($p=0.001$) and reduced albumin levels with median 3.3 (2.7-3.58) gm/dl ($p=0.116$). They had reduced platelet counts in some cases, mild to moderately elevated transaminases (ALT 40-200 U/L), normal or borderline raised serum bilirubin, slightly raised alkaline phosphatases, raised procalcitonin, normal Widal titers (data available for $n=5$ cases), negative IgM for dengue, positive ANA in 1 case and positive SARS-CoV-2 antibody test in 3 cases (test was available for $n=5$ cases).

Outcomes: Among the MIS-C group, children were having multi systemic involvement including lung disease, vasculitis, encephalitis, one child developed paralytic ileus which resolved on conservative treatment, however 3 (37.5%) out of 8 had an adverse outcome. These cases had protracted illness, the mean hospital stay in this group was $9 (\pm 1.4)$ days, on 4 weeks follow up the remaining children recovered leading to a survival rate of 62.5%.

Discussion

With the emergence of newer variants of concern and different waves of the Covid-19 pandemic in different countries, like the recent second wave of infections in India. In our study, 25 cases were identified a unique presentation of acute hepatitis defined as CAHC, whereas MIS-C could account for hepatitis in 8 cases.

CAHC cases were more commonly reported in the age group of 6-11 years and with male preponderance. Similar findings were observed in other large cohort studies conducted among MIS-C cases. Somehow, with limited cases of 8 children with MIS-C

female preponderance was noticed. Nonetheless, the liver injury is more common among male patients, which is thought to occur because of higher expression of ACE2 receptors in males.

The findings to be noted that CAHC cases are not only asymptomatic Covid-19 course but also mild disease course. None of the CAHC cases had any underlying morbidity. These cases presented after 2-4 weeks of showing mild symptoms of Covid-19, or remained asymptomatic for the same period following exposure to a lab confirmed case of Covid-19. CAHC cases peaked following 3-4 weeks in relation to the peak of new cases of Covid-19 during the second wave of SARS-CoV-2 infections in central India.

These cases did not have any remarkably high inflammatory markers or systemic derangements except high levels of serum bilirubin and a more than 10x ULN, elevated transaminases. Prima facie, these biochemical parameters do not resemble that of an active Covid-19 disease which generally have a more protracted course more so in persons with documented comorbidities (17).

These cases had distinct antibody responses with raised anti SARS-CoV2 titers with values >50 COI in all the cases, significant Widal titers (>1:160 O, H), along with positive dengue IgM and VZV IgM in 7/25 patients respectively. Positive EBV IgG was seen in 6/25 cases. These findings points towards immune activation towards B cell stimulation giving rise to multiple antibody response as a result of polyclonal immune activation. Thus SARS-CoV-2 appears to be a potent immune-stimulator in these cases resulting polyclonal activation during transient hepatitis with self-limiting course seen exclusively in children. These findings are in coherence with previous studies reporting differences among the antibody responses in children, having a reduced breadth of spectrum against SARS-CoV-2 which may or may not be neutralizing versus a wide spectrum of neutralizing antibodies found in adults (18).

All cases of CAHC responded within a week with the help of supportive treatment and general care measures. None requiring specific anti-viral treatment. They were monitored carefully for deterioration in clinical course since these type of presentation

observed first time and no guidelines were available for treatment of such cases. None of them required antiviral drugs, oxygen therapy or mechanical ventilation, which was the recommended line of treatment for cases with deterioration in Covid-19 (19). Cases of CAHC had a hundred percent survival rate, at 4 week follow up thus indicating towards a separate phenotype than either Covid-19 induced liver injury or MIS-C which might have a grave outcome.

On the contrary, the MIS-C cases with hepatitis, presented clinically with fever often >100 °F, respiratory distress, abdominal pain, loss of appetite, rash, conjunctival hemorrhages and encephalitis like features necessitating intensive care facility. These cases typically presented within 2 weeks of symptomatology with moderate to severe symptoms of Covid-19. Such cases peaked at around same interval in relation to the peak of new cases of Covid-19, in Sagar.

Their laboratory assessment showed significant association with high inflammatory markers, which were often many folds to the UNL, with borderline elevated aminotransferases, slightly altered INR, markedly raised ferritin levels in 7/8 cases, elevated D-Dimer in 6/8 cases and decreased albumin levels in all patients. All had laboratory confirmed RTPCR positive for Covid-19, and 3/8 had developed anti SARS CoV-2 antibodies.

Cases diagnosed as MIS-C were administered standard recommended therapy, including anti-viral drugs when needed, steroids in all cases, IVIG in 1 case, oxygen administration in 3 cases, and mechanical ventilation in 1 case. Despite the best of the treatment and efforts, 3 patients succumbed to the disease.

In contrast to CAHC, MIS-C which is known to be associated with significantly higher mortality and a poor survival rate (20), our findings in these cases were no different and only they had fair survival rate of 62.5 percent.

Conclusion

The timely recognition of the newly described entity of CAHC, which is by far a transient phenomenon considering the distinct features described here, should not only facilitate the treating physician in using age and phenotype targeted approach for timely administering supportive therapy. But it will also help in preventing burden on resources in the times of pandemic, since the MIS-C phenotype is more associated with disease severity and increased mortality.

References

1. Hu B, Guo H, Zhou P, Shi Z-L. Characteristics of SARS-CoV-2 and COVID-19. *Nat Rev Microbiol*. 2021 Mar;19(3):141–54.
2. Guan W, Ni Z, Hu Y, Liang W, Ou C, He J, et al. Clinical Characteristics of Coronavirus Disease 2019 in China. *N Engl J Med* [Internet]. 2020 Feb 28 [cited 2021 Jun 20]; Available from: <https://www.nejm.org/doi/10.1056/NEJMoa2002032>
3. Viner RM, Whittaker E. Kawasaki-like disease: emerging complication during the COVID-19 pandemic. *The Lancet*. 2020 Jun 6;395(10239):1741–3.
4. Feldstein LR, Rose EB, Horwitz SM, Collins JP, Newhams MM, Son MBF, et al. Multisystem Inflammatory Syndrome in U.S. Children and Adolescents. *N Engl J Med*. 2020 Jul 23;383(4):334–46.
5. Gadour E, Shrwani K, Hassan Z. Covid-19 induced hepatitis (CIH), definition and diagnostic criteria of a poorly understood new clinical syndrome. *World J Gastroenterol, Hepatol and Endoscop* 2020;1(2): 1-6.6
6. Singh PP, Tamang R, Shukla M, Pathak A, Srivastava A, Gupta P, et al. Estimation of real-infection and immunity against SARS-CoV-2 in Indian populations. *medRxiv*. 2021 Apr 11;2021.02.05.21251118.
7. Mallapaty S. India's massive COVID surge puzzles scientists. *Nature*. 2021 Apr 21;592(7856):667–8.
8. Dougherty K. SARS-CoV-2 B.1.617.2 (Delta) Variant COVID-19 Outbreak Associated with a Gymnastics Facility — Oklahoma, April–May 2021. *MMWR Morb Mortal Wkly Rep* [Internet]. 2021 [cited 2021 Jul 14];70. Available from: <https://www.cdc.gov/mmwr/volumes/70/wr/mm7028e2.htm>
9. Gupta DCH S, Chopra MD N, Singh MD A, Gera R, Chellani MD H, Pandey PhD R, et al. Unusual Clinical Manifestations and Outcome of Multisystem Inflammatory Syndrome in Children (MIS-C) in a Tertiary Care Hospital of North India. *J Trop Pediatr*. 2021 Jan 29;67(1):fmaa127.
10. Phipps MM, Barraza LH, LaSota ED, Sobieszczyk ME, Pereira MR, Zheng EX, et al. Acute Liver Injury in COVID-19: Prevalence and Association with Clinical Outcomes in a Large U.S. Cohort. *Hepatol Baltim Md*. 2020 Sep;72(3):807–17.

11. Nardo AD, Schneeweiss-Gleixner M, Bakail M, Dixon ED, Lax SF, Trauner M. Pathophysiological mechanisms of liver injury in COVID-19. *Liver Int.* 2021;41(1):20–32.
12. Perez A, Cantor A, Rudolph B, Miller J, Kogan-Liberman D, Gao Q, et al. Liver involvement in children with SARS-COV-2 infection: Two distinct clinical phenotypes caused by the same virus. *Liver Int.* 2021 Apr 22;10.1111/liv.14887.
13. Technical Documents & Advisory [Internet]. [cited 2021 Jul 13]. Available from: <https://www.icmr.gov.in/ctechdocad.html>
14. 45 smart city command and control centres turn into Covid-19 war rooms - The Economic Times [Internet]. [cited 2021 Jul 13]. Available from: <https://economictimes.indiatimes.com/news/politics-and-nation/45-smart-city-command-and-control-centres-turn-into-covid-19-war-rooms/articleshow/74904329.cms>
15. Godfred-Cato S, Bryant B, Leung J, Oster ME, Conklin L, Abrams J, et al. COVID-19–Associated Multisystem Inflammatory Syndrome in Children — United States, March–July 2020. *Morb Mortal Wkly Rep.* 2020 Aug 14;69(32):1074–80.
16. ICMR_PR_IgG_Elisa_30052020.pdf [Internet]. [cited 2021 Jul 14]. Available from: https://main.icmr.nic.in/sites/default/files/press_release_files/ICMR_PR_IgG_Elisa_30052020.pdf
17. Lv Y, Zhao X, Wang Y, Zhu J, Ma C, Feng X, et al. Abnormal Liver Function Tests Were Associated With Adverse Clinical Outcomes: An Observational Cohort Study of 2,912 Patients With COVID-19. *Front Med.* 2021 Jun 9;8:639855.
18. Weisberg SP, Connors TJ, Zhu Y, Baldwin MR, Lin W-H, Wontakal S, et al. Distinct antibody responses to SARS-CoV-2 in children and adults across the COVID-19 clinical spectrum. *Nat Immunol.* 2021 Jan;22(1):25–31.
19. Sanders JM, Monogue ML, Jodlowski TZ, Cutrell JB. Pharmacologic Treatments for Coronavirus Disease 2019 (COVID-19): A Review. *JAMA.* 2020 May 12;323(18):1824–36.
20. Feldstein LR, Rose EB, Horwitz SM, Collins JP, Newhams MM, Son MBF, et al. Multisystem Inflammatory Syndrome in U.S. Children and Adolescents. *N Engl J Med.* 2020 Jun 29;NEJMoa2021680.

Conflict of interest- There is no conflicts of interest among the authors. All the authors have nothing to disclose in this manuscript.

Figure 1: Geographic location of the study

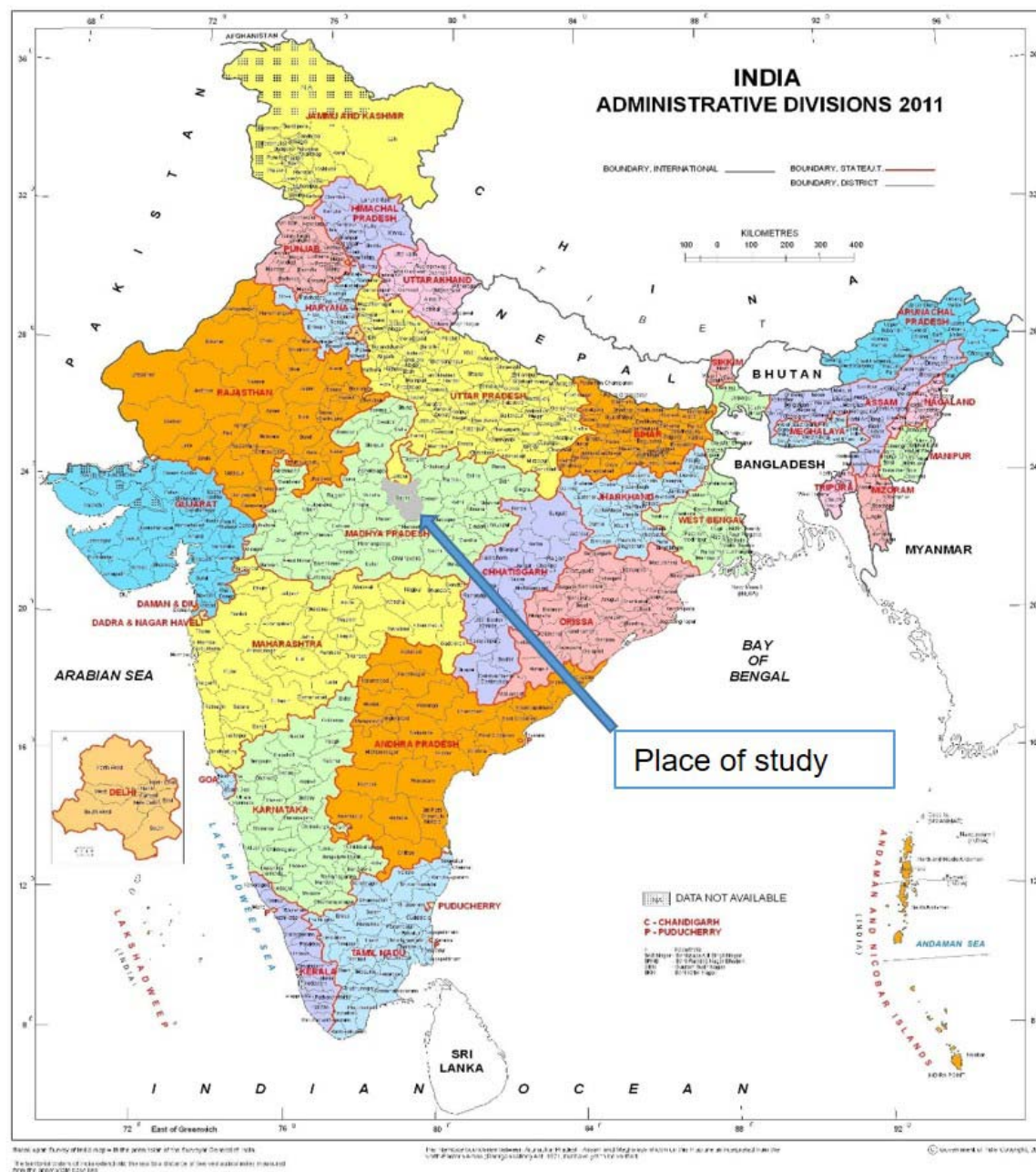


Figure 2, Study workflow and case work-up

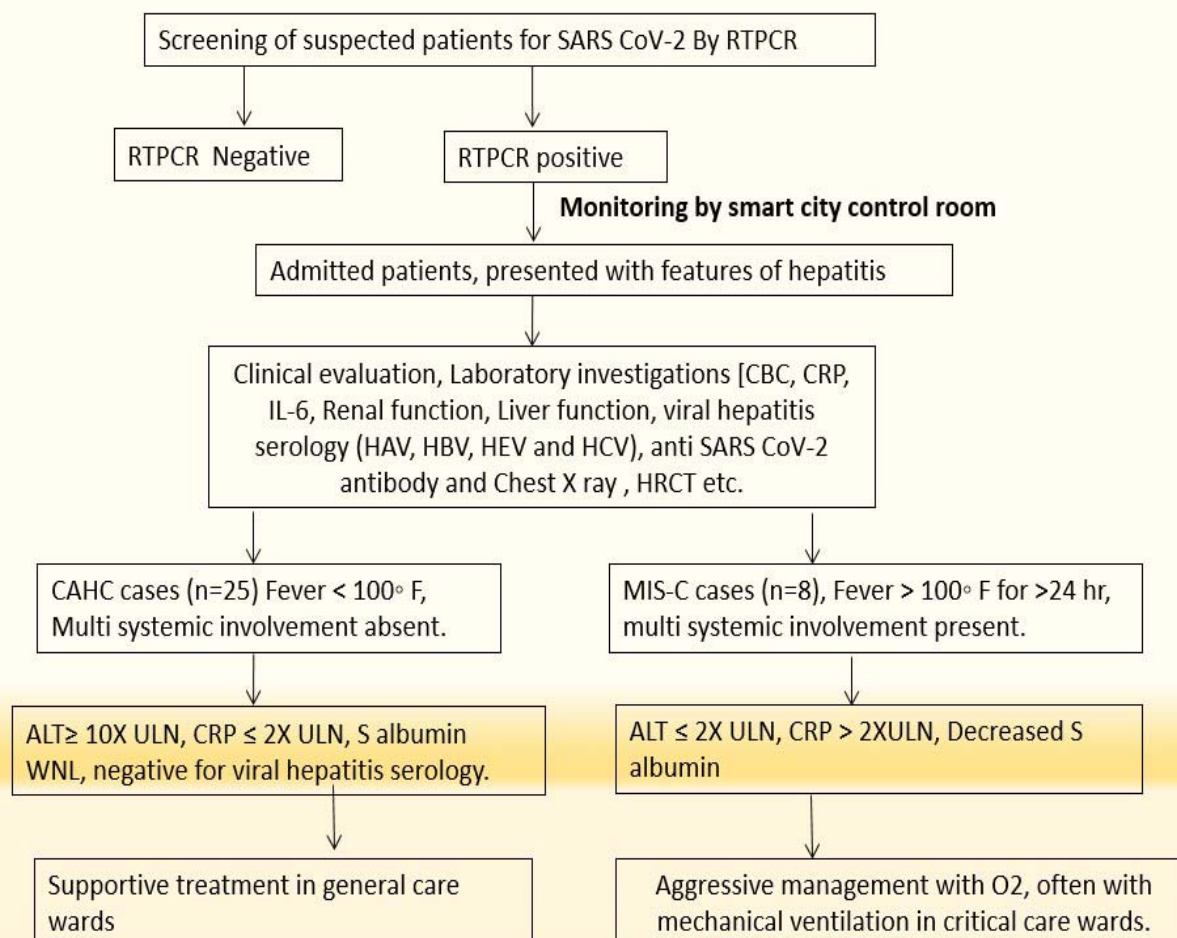


Figure 3 a : Age group distribution of total screened population vs study population

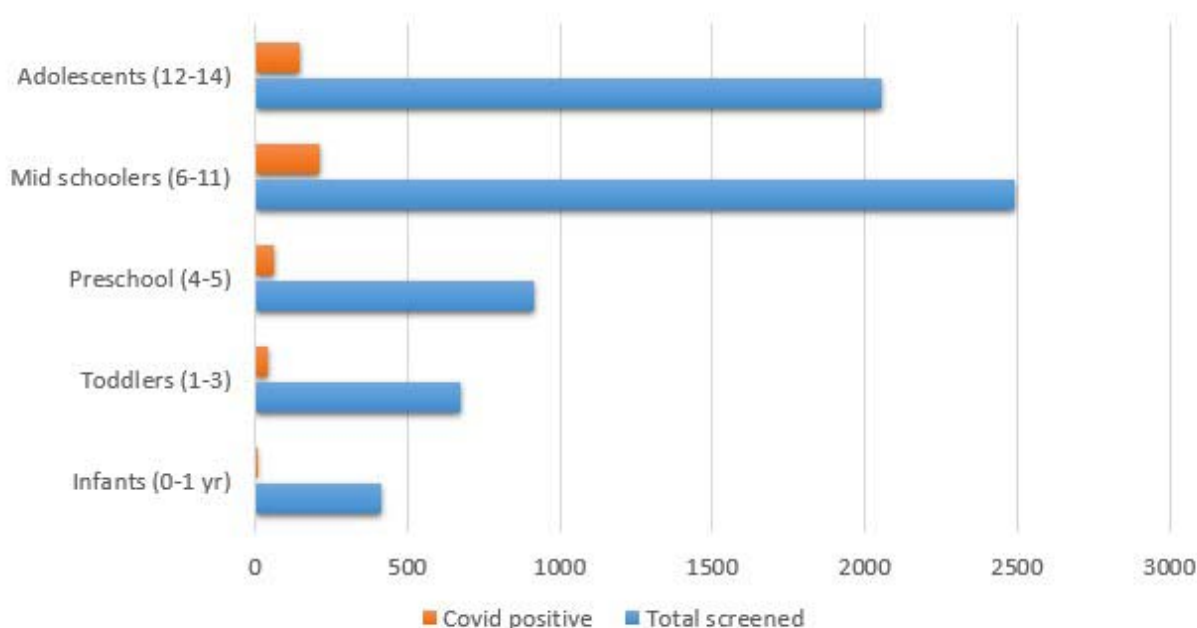


Figure 3 b: Age group distribution of CAHC Vs MIS-C cases

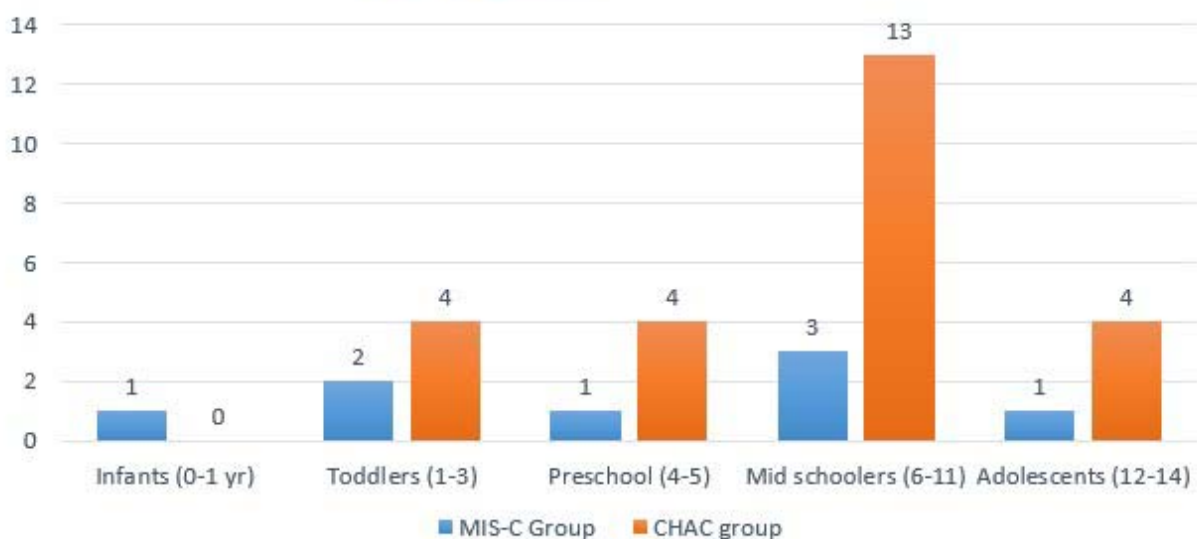


Figure 4: Relative incidences of Covid-19 new cases Vs hepatitis cases

Daily New Cases in India



Sourced from worldometers.org

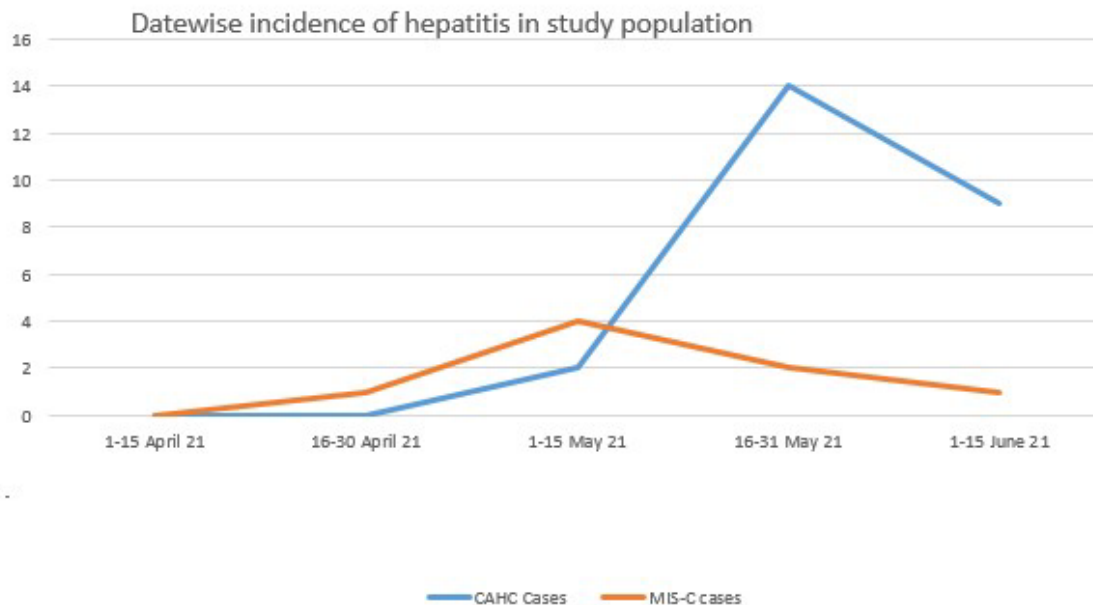


Figure 5a: Presenting signs and symptoms in CHAC Cases

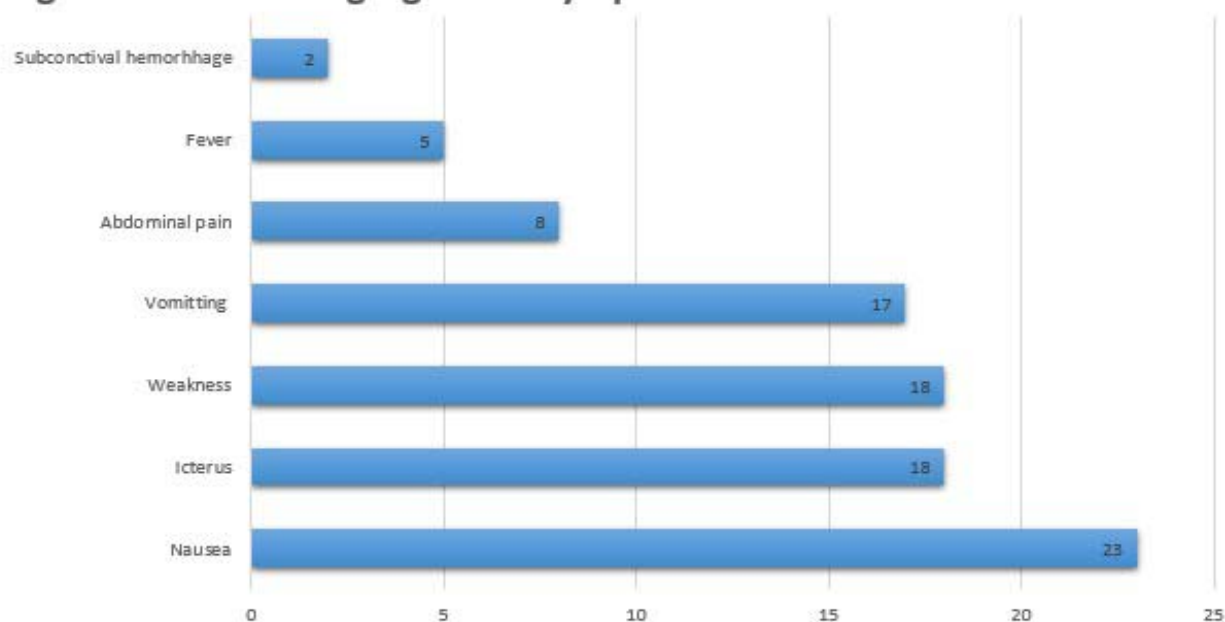


Figure 5 b : X ray findings of CAHC Vs MIS-C cases.

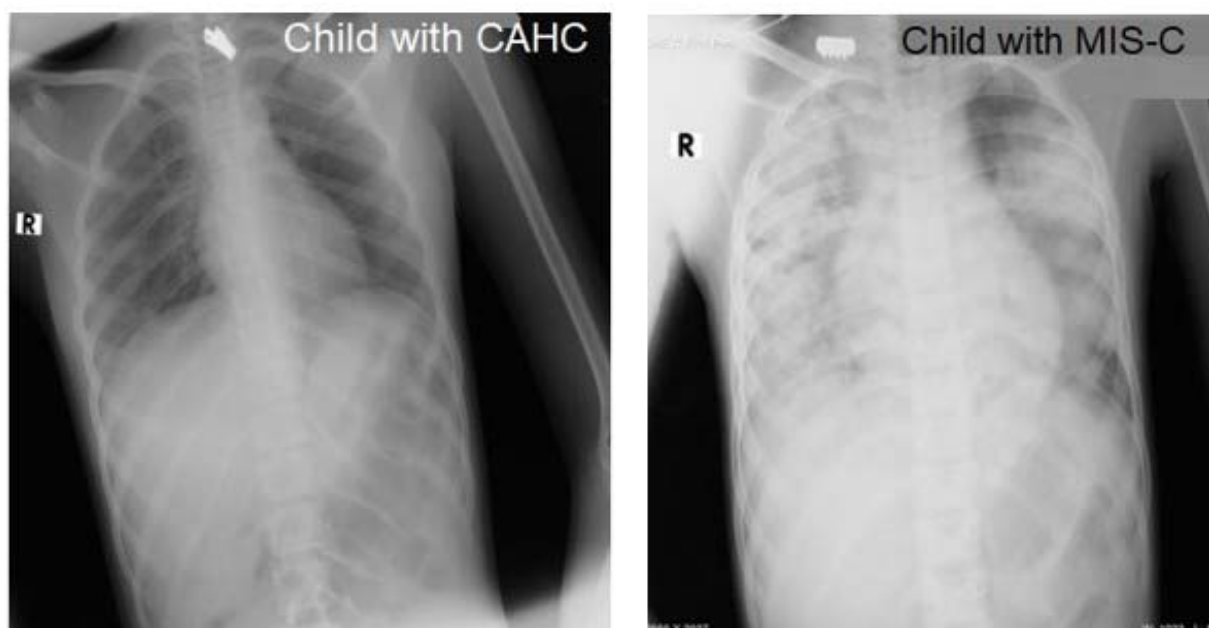


Table 1: Patient characteristics of CAHC Vs MIS-C

Characteristics	CAHC (n=25)	MIS-C (n=8)	P value \$
Age, mean \pm SD, years	7.04 \pm 3.2	5.5 \pm 4	
Male sex, No. (%)	16 (64)	2 (8)	0.045
ICU admission, n (%)	0 (0)	6 (75)	0.0003
Day of presentation mean \pm SD	20.2 \pm 2.38	5.3 \pm 1.1	
Anti SARS-CoV-2 antibody positive, n (%)	25 (100)	2 (25)	0.08
Hospital stay, mean	5.8 \pm 1.05	9 \pm 1.4	
Clinical outcomes: \pm SD			
Discharged alive n (%)	25 (100)	5 (62.5)	0.45
In hospital death n (%)	0 (0)	2 (25)	0.02
Post discharge death n (%)	0 (0)	1 (12.5)	0.09
			\$Chi square test

Table 2: Laboratory findings of CACH Vs MIS-C cases.

Lab values	CAHC	MIS-C	P-value*
	Median (IQR)	Median (IQR)	
CRP, mg/L	8.10 (5.55-11.75)	25.90 (9.68-31.48)	0.015
IL6, pg/ml	12.40 (10.35-15.35)	186.40 (60.28-261.78)	0.000
Platelet, /mm ³ X10 ³	2.40 (2.10-3.15)	2.70 (1.53-3.50)	0.705
T Bil, mg/dl	3.40 (2.45-6.55)	0.90 (0.90-1.32)	0.000
Albumin, gm/dl	3.50 (3.35-3.70)	3.30 (2.70-3.58)	0.116
AST, U/L	384.00 (129.00-1605.75)	97.00 (44.65-130.33)	0.002
ALT, U/L	575.20 (190.50-1625.75)	52.00 (43.47-150.50)	0.001
Alkaline PO4, U/L	326.10 (187.30-496.70)	245.50 (136.80-408.15)	0.294
INR, ratio	1.30 (1.00-1.52)	1.00 (1.00-1.59)	0.556
	*Mann-Whitney U test		
CRP, C-reactive protein; SD, standard deviation; IL-6, interleukin-6; AST, aspartate transaminase; ALT, alanine aminotransferase; TBil, Total bilirubin; INR, international normalized ratio			