

Effectiveness of the ChAdOx1 vaccine in the elderly during SARS-CoV-2 Gamma variant transmission in Brazil

Matt D.T. Hitchings^{1,2*}, Otavio T. Ranzani^{3,4*}, Murilo Dorion⁵, Tatiana Lang D'Agostini⁶, Regiane Cardoso de Paula⁶, Olivia Ferreira Pereira de Paula⁶, Edlaine Faria de Moura Villela⁶, Mario Sergio Scaramuzzini Torres⁷, Silvano Barbosa de Oliveira^{8,9}, Wade Schulz¹⁰, Maria Almiron⁸, Rodrigo Said⁸, Roberto Dias de Oliveira¹¹, Patricia Vieira da Silva¹², Wildo Navegantes de Araújo^{8,9,13}, Jean Carlo Gorinchteyn¹⁴, Jason R. Andrews^{†15}, Derek A.T. Cummings^{†1,2}, Albert I. Kot^{5,16}, Julio Croda^{†5,12,17}

1-Department of Biology, University of Florida, Gainesville, FL, USA

2-Emerging Pathogens Institute, University of Florida, Gainesville, FL, USA

3-Barcelona Institute for Global Health, ISGlobal, Barcelona, Spain

4-Pulmonary Division, Heart Institute (InCor), Hospital das Clinicas HCFMUSP, Faculdade de Medicina, Universidade de São Paulo, São Paulo, SP, Brazil

5-Department of Epidemiology of Microbial Diseases, Yale School of Public Health, New Haven, CT, USA

6-Disease Control Coordination of the São Paulo State Department of Health, São Paulo, Brazil

7-Municipal Health Secretary of Manaus, Brazil, AM, Brazil

8-Pan American Health Organization, Brasília, DF, Brazil

9-Universidade de Brasília, Brasília, DF, Brazil

10-Department of Laboratory Medicine, Yale University School of Medicine, New Haven, CT, USA

11-State University of Mato Grosso do Sul - UEMS, Dourados, MS, Brazil

12-Universidade Federal de Mato Grosso do Sul - UFMS, Campo Grande, MS, Brazil

13-National Institute for Science and Technology for Health Technology Assessment, Porto Alegre, RS, Brazil

14-Health Secretariat of the State of São Paulo, São Paulo, Brazil

15-Division of Infectious Diseases and Geographic Medicine, Stanford University, Stanford, CA, USA

16-Instituto Gonçalo Moniz, Fundação Oswaldo Cruz, Salvador, BA, Brazil

17-Fiocruz Mato Grosso do Sul, Fundação Oswaldo Cruz, Campo Grande, MS, Brazil

*Authors contributed equally

†Authors contributed equally

Correspondence to: Prof Julio Croda, Universidade Federal de Mato Grosso do Sul and Fundação Oswaldo Cruz, julio.croda@fiocruz.br

Keywords

Covid-19; ChAdOx1; Oxford-AstraZeneca; viral vector vaccine; Gamma variant; test-negative study; case-control study; Brazil

Word count: 2,565 (main text), 256 (abstract)

Abstract

Background A two-dose regimen of ChAdOx1 coronavirus disease 19 (Covid-19) vaccine with an inter-dose interval of three months has been implemented in many countries with restricted vaccine supply. However, there is limited evidence for the effectiveness of ChAdOx1 by dose in elderly populations in countries with high prevalence of the Gamma variant of severe acute respiratory syndrome 2 (SARS-CoV-2).

Methods We conducted a test-negative case-control study to estimate the effectiveness of ChAdOx1 vaccine in adults aged 60 years or older during a Gamma-variant-associated epidemic in São Paulo state, Brazil, between 17 January and 2 July 2021. Cases and matched test-negative controls were individuals, identified from surveillance databases, who experienced an acute respiratory illness and underwent SARS-CoV-2 RT-PCR testing. We used conditional logistic regression to estimate the effectiveness by dose against RT-PCR-confirmed Covid-19, Covid-19 hospitalization, and Covid-19-related death.

Results 61,164 individuals were selected into matched case-control pairs. Starting ≥ 28 days after the first dose, adjusted effectiveness of a single dose of ChAdOx1 was 33.4% (95% CI, 26.4 to 39.7) against Covid-19, 55.1% (95% CI, 46.6 to 62.2) against hospitalization, and 61.8% (95% CI, 48.9 to 71.4) against death. Starting ≥ 14 days after the second dose, the adjusted effectiveness of the two-dose schedule was 77.9% (95% CI, 69.2 to 84.2) against Covid-19, 87.6% (95% CI, 78.2 to 92.9) against hospitalization, and 93.6% (95% CI, 81.9 to 97.7) against death.

Conclusions Completion of the ChAdOx1 vaccine schedule afforded significantly increased protection over a single dose against mild and severe Covid-19 outcomes in elderly individuals during widespread Gamma variant transmission.

Introduction

Multiple vaccines against severe acute respiratory syndrome coronavirus 2 (SARS-CoV-2), the etiologic agent that causes coronavirus disease 19 (Covid-19), have been developed, proven efficacious, and deployed in mass vaccination campaigns^{1–3}. Prominent among these vaccines, particularly in lower- and middle-income countries, is the viral vector vaccine, ChAdOx1⁴. Randomized controlled trials (RCT) of ChAdOx1 delivered with a four-week inter-dose interval demonstrated 70.4% (95% CI, 54.8 to 80.6) efficacy against symptomatic Covid-19 in the period starting 14 days after the second vaccine dose⁴, and 64.1% 95% CI, (50.5-73.9) starting at 21 days following the first dose⁵. Based on measured immunogenicity and efficacy following a single dose, many countries have implemented a dose-spacing strategy that uses an inter-dose interval of up to 12 weeks to maximize vaccine coverage⁶ and has been endorsed by the World Health Organization (WHO)⁷.

The emergence of variants of concern (VOC) associated with decreased neutralization activity has created an urgent need to continuously monitor vaccine effectiveness⁸. Recent evidence has suggested reduced effectiveness of a single dose of ChAdOx1 against the Gamma and Delta VOCs^{9–11}. Local Gamma VOC transmission has been observed in countries in Latin America which are using ChAdOx1 in mass vaccination¹². A key question for these countries is the effectiveness of ChAdOx1 by dose against mild and severe Covid-19 outcomes, particularly in priority populations for vaccination such as the elderly.

The Gamma VOC was first detected in the city of Manaus¹³ and has been a driver of Covid-19 resurgence in Brazil and across South America¹⁴. The Brazilian national immunization program initiated a mass vaccination campaign in January 2021, which administered ChAdOx1 with three-month dose-spacing and provided an opportunity to evaluate vaccine effectiveness following one and two doses during a prolonged Gamma-variant-associated epidemic in São Paulo, the most populous state in Brazil.

Methods

Study setting

The study setting and design have been described in detail elsewhere^{15,16}. São Paulo State has experienced three Covid-19 epidemic waves, the latest peaking in March 2021, with cumulatively over 3.89 million reported cases, 430,000 hospitalizations, and 130,000 deaths due to Covid-19 as of 9 July 2021¹⁷ (Figure 1A). During the second and third waves, the Gamma variant increased in prevalence, reaching 80.2% from March to May 2021 among sequenced isolates, to become the predominant circulating variant in the state (Figure 1B). The State Secretary of Health of São Paulo (SES-SP) initiated a mass vaccination campaign on 17 January 2021, prioritizing healthcare workers and elderly populations. Two primary vaccines are being distributed: a two-dose regimen of ChAdOx1, separated by a 12-week interval, and a two-dose regimen of CoronaVac, separated by a two- to four-week interval¹⁸. As of 9 July 2021, 1.61 million doses of ChAdOx1 (1.11 million first doses and 0.51 million second doses) and 9.07 million doses of CoronaVac (5.62 million first doses and 3.45 million second doses) (Figure 1C) have been administered¹⁹.

We obtained individual-level information on demographic characteristics, comorbidities, SARS-CoV-2 testing, and Covid-19 vaccination by extracting information on 9 July 2021 from the SES-SP laboratory testing registry, the national surveillance databases for acute respiratory illness (ARI) and severe ARI, and the SES-SP vaccination registry. We retrieved information on SARS-CoV-2 variants from genotyped isolates deposited in the GISAID database¹². The protocol, including statistical analysis plan, further details of study design, and power calculations, is publicly available (<https://github.com/juliocroda/VebraCOVID-19>). The study was approved by the Ethical Committee for Research of Federal University of Mato Grosso do Sul (CAAE: 43289221.5.0000.0021).

Study population and design

The study population was adults ≥ 60 years of age who had a residential address in São Paulo State and complete and consistent information between data sources on age, sex, residence, and vaccination and testing status and dates. We selected cases who had an ARI, received a positive SARS-CoV-2 RT-PCR test during the study period of 17 January 2021 to 2 July 2021 with sample collection date within 10 days after symptom onset, and without a positive SARS-CoV-2 RT-PCR test in the previous 90 days. We selected test-negative controls who had an ARI, received a negative SARS-CoV-2 RT-PCR test during the study period with sample collection date within 10 days after symptom onset, and without a positive SARS-CoV-2 RT-PCR test in the previous 90 days or following 14 days. Cases and controls who had received a dose of another Covid-19 vaccine before their RT-PCR test were excluded. We matched one control to each case by date of testing (± 3 days), age (in 5-year bands), sex, self-reported race (brown, black, yellow, white, or indigenous)²⁰, municipality of residence, and prior ARI (defined as at least one previous symptomatic event that was reported to surveillance systems between 1 February 2020 and 16 January 2021).

Outcomes and Covariates

We estimated the effectiveness of ChAdOx1 against the primary outcome of symptomatic Covid-19 during the period ≥ 28 days after a single vaccine dose, and 0-13 and ≥ 14 days after two vaccine doses. Furthermore, we estimated the effectiveness of a single dose during the period 14-27 days after the first dose to understand the onset of protection, and in the period 0-13 days, when the vaccine has no or limited effectiveness^{21,22}. An association during this period may serve as a negative control exposure to detect unmeasured confounding in the effectiveness estimate in later time periods²³. In a secondary analysis, we estimated the vaccine effectiveness following the first dose in the time windows 28-41

days, 42-55 days, and ≥ 56 days separately. The reference group for vaccination status was individuals who had not received a first vaccine dose before the date of sample collection.

In addition, we estimated vaccine effectiveness against secondary outcomes of Covid-19 hospitalization, ICU admission with Covid-19, mechanical ventilation for Covid-19, and Covid-19-related death. We estimated single-dose effectiveness during the period ≥ 28 days after the first dose for all outcomes within subgroups defined by age (60-69 years vs. ≥ 70 years), sex, number of chronic comorbidities (none vs. at least one), reported cardiovascular disease, reported diabetes, and region of residence ("Grande São Paulo" health region vs. others).

Statistical analysis

We performed conditional logistic regression to estimate vaccine effectiveness for each time window following vaccination. Multivariable models were adjusted for the number of reported comorbidities (categorized as none, one-two, and at least three), previous positive SARS-CoV-2 RT-PCR or antigen test, and age as a continuous variable because we used 5-year age bands as a matching factor. For each outcome, we selected matched pairs in which cases had the outcome of interest, and fit the model described above to each subset.

Our protocol specified that we would conduct proposed analyses after achieving $\geq 80\%$ power to identify a vaccine effectiveness of 40% against symptomatic Covid-19 ≥ 28 days after a single dose of ChAdOx1, and 80% power to identify 50% effectiveness of two doses ≥ 14 days after the second dose. The power was estimated by fitting conditional logistic regressions on 1,000 simulated datasets. After extracting the surveillance databases on July 9 2021 and generating matched case-control pairs, we determined

that the power of the study was >99.8% for each analysis and performed the pre-specified analyses. All analyses were performed in R, version 4.0.2.

Results

Study population

Among 137,744 individuals eligible for selection as a case or control (Figure 2), 61,164 (44.4%) who provided 61,360 RT-PCR test results were selected into 30,680 matched case and control pairs. Table 1 shows the characteristics of eligible individuals and matched cases and controls. Supplementary Tables 1-3 show the distribution of matched pairs according to vaccination status of cases and controls at the time of RT-PCR testing for the analysis of symptomatic Covid-19, hospitalization, and death. Supplementary Figure 1 shows the timing of discordant pair enrollment, while Supplementary Figure 2 shows the distribution of intervals between administration of vaccine doses and RT-PCR testing.

Vaccine effectiveness

The adjusted effectiveness of a single dose of ChAdOx1 against symptomatic Covid-19 was 33.4% (95% CI, 26.4 to 39.7) for the period ≥ 28 days after administration of the first dose (Table 2). The effectiveness of a single dose reached a plateau after 28 days (Figure 3), with no increase observed in later time periods. The adjusted effectiveness of the full two-dose schedule against symptomatic Covid-19 was 38.1% (95% CI, 11.9 to 56.5) in the period 0-13 days after administration of the second dose, and 77.9% (95% CI, 69.2 to 84.2) in the period ≥ 14 days after administration of the second dose. The estimated effectiveness in the period 0-13 days following the first dose, which serves as a negative control exposure to indicate bias, was -7.1% (95% CI, -19.6 to 4.1). Increasing number of comorbidities were significantly associated with increased odds of Covid-19 in the adjusted analyses (aOR 1.54, 95% CI, 1.49 to 1.60, for one-two comorbidities, and aOR 2.20, 95% CI, 1.98 to 2.45, for three or more comorbidities).

compared to no comorbidities). A previous positive SARS-CoV-2 viral test was associated with lower odds of Covid-19 (aOR 0.65, 95% CI, 0.37 to 1.17).

In the period starting 28 days after the first dose, the adjusted effectiveness of a single dose was 55.1% (95% CI, 46.6 to 62.2) against hospitalization, and 61.8% (95% CI, 48.9 to 71.4) against death (Table 2). The adjusted effectiveness of the two-dose schedule starting 14 days after the second dose was higher: 87.6% (95% CI, 78.2 to 92.9) against hospitalization, and 93.6% (95% CI, 81.9 to 97.7) against death (Table 2). Effectiveness against ICU admission and mechanical ventilation was similar to effectiveness against hospitalization (Table 2). In general, vaccine effectiveness in the "bias-indicator" period 0-13 days after the first dose was low.

The effectiveness of a single dose against symptomatic Covid-19 was lower among those with reported diabetes (24.2%, 95% CI, 11.0 to 35.4) than in those without reported diabetes (35.3%, 95% CI, 28.3 to 41.6) ($p_{\text{interaction}} = 0.03$) (Supplementary Table 4). Similarly, effectiveness was lower among those with at least one reported comorbidity compared to those without a reported comorbidity (Supplementary Table 4). Finally, single-dose effectiveness against hospitalization and death was lower among older individuals, but these analyses lacked sufficient power (Supplementary Table 5).

Discussion

A key priority for mass vaccination campaigns is to reduce morbidity and mortality in the elderly and other vulnerable populations, especially in the context of limited vaccine supply and VOC emergence. Our test-negative case-control study found that the two-dose schedule of ChAdOx1 in the elderly had robust effectiveness against Covid-19 and severe outcomes during a Gamma-variant-associated Covid-19 epidemic in the period starting 14 days after administration of the second dose: 77.9% (95% CI, 69.2

to 84.2) against symptomatic Covid-19, 87.6% (95% CI, 78.2 to 92.9) against Covid-19 hospitalization, and 93.6% (95% CI, 81.9 to 97.7) against Covid-19-related death. However, a single dose of ChAdOx1 in adults 60 years of age had effectiveness of 33.4% (95% CI, 26.4 to 39.7) against symptomatic Covid-19, 55.1% (95% CI, 46.6 to 62.2) against hospitalization, and 61.8% (95% CI, 48.9 to 71.4) against death. Additionally, no clinically significant effectiveness was detected within 28 days of administration of the first dose.

Randomized controlled trials of ChAdOx1 conducted in multiple countries reported pooled vaccine efficacy of 70.4% (95% CI, 54.8 to 80.6) against symptomatic Covid-19 in the period starting 14 days after the second vaccine dose, and 100% (95% CI, not calculated) against hospitalization for Covid-19⁴. A secondary analysis estimated efficacy of 64.1% (95% CI, 50.5 to 73.9) starting at 21 days following the first dose⁵. Subsequent observational studies have largely supported the effectiveness of ChAdOx1 against symptomatic Covid-19 and hospitalization in elderly populations^{21,22,24-26}. In addition, these studies provided further evidence for the effectiveness of a single dose of ChAdOx1 against infection with SARS-CoV-2²⁶, symptomatic Covid-19²¹ and hospitalization^{22,24,25}, with onset of clinical effectiveness occurring between 21 and 28 days.

Emerging VOCs have been associated with reduced neutralization by serum from individuals who have been infected with non-VOC strains, and vaccinated^{27,28}, including those who are elderly²⁹, raising the possibility of decreased effectiveness. An RCT of ChAdOx1 conducted in South Africa found no effectiveness, albeit with low precision, of the two-dose vaccine schedule against mild-to-moderate Covid-19 caused by the Beta VOC³⁰. Further evidence from observational studies has suggested reduced vaccine effectiveness against symptomatic disease for a single dose of vaccine against Gamma: 48% (95% CI, 28 to 63) after 14 days for ChAdOx1¹¹, 61% (95% CI, 45 to 72) after 21 days for mRNA

vaccines³¹, and 11% (95% CI, -4 to 23) after 14 days for CoronaVac¹⁶. However, the complete BNT162b2 schedule has shown robust effectiveness against the Gamma VOC¹¹, and a complete schedule of CoronaVac was effective against mild and severe outcomes in settings of widespread Gamma VOC transmission¹⁶. These findings are consistent with reduced effectiveness of a single dose of BNT162b2 and ChAdOx1 against the Delta VOC observed in the UK^{9,10}. Our study adds to this evidence base by estimating single-dose effectiveness of ChAdOx1 over the duration of the inter-dose interval, and demonstrating the substantial benefit of the second dose in elderly individuals in a setting of high Gamma VOC prevalence.

Our findings have implications for vaccination policy in countries experiencing Gamma-variant-associated Covid-19 epidemics. Several countries, including Brazil, are administering the two-dose schedule of ChAdOx1 with a 12-week gap between doses to increase coverage, as WHO currently recommends⁷. The public health benefits of dose-spacing strategies were predicated on robust effectiveness following a single dose³²⁻³⁴. In the specific context of VOC emergence and spread, national programs should consider the reduced vaccine effectiveness of a single dose against the Gamma and Delta VOCs in the elderly, together with vaccine supply limitations, speed of vaccination, and logistics, when quantifying the benefits of dose-spacing strategies.

The design of this study lends strength to our findings. The six-month period during which the Gamma variant-associated epidemic and vaccination campaign occurred provided the opportunity to obtain robust estimates of single-dose effectiveness beyond 28 days, and effectiveness of the completed schedule in the same population for direct comparison. The test-negative design reduces bias caused by healthcare-seeking behavior³⁵, and we have controlled for additional sources of bias by matching on several predictors of healthcare access and utilization and Covid-19 risk³⁶. We used a negative control

exposure of vaccine effectiveness within 13 days of receiving the first dose to detect bias in our estimates, and found limited measured effectiveness in this period. This null association suggests that unvaccinated and vaccinated individuals were similar in their underlying risk of Covid-19 and healthcare-seeking behavior²³. The large sample size allowed us to produce robust estimates even against rare outcomes such as death and to perform subgroup analyses.

Our study has several limitations. We could not estimate the effectiveness against Gamma and non-Gamma Covid-19 cases within this study population, as we did not have access to individual-level genetic data on the virus. In addition, there was likely a proportion of the population that was seropositive without having received a previous positive RT-PCR or rapid antigen test before the study period. These individuals, even if unvaccinated, would be protected from reinfection by natural immunity, thus causing downward bias in our vaccine effectiveness estimates. Controls for the analysis of severe outcomes included controls with mild ARI, who may have had better access to healthcare, leading to bias in our estimates of effectiveness against severe outcomes. Finally, our results cannot be extrapolated to younger populations.

In a setting of widespread transmission of the SARS-CoV-2 Gamma variant, in the general population of elderly individuals, completion of the two-dose schedule of ChAdOx1 afforded a significant increase in protection against mild and severe Covid-19 outcomes compared to a single dose.

Author contributions

All authors conceived the study. OTR, MDTH and MD completed analyses with guidance from JRA, DATC, AIK, and JC. MSST, OFPP, OTR and MDTH curated and validated the data. OTR and MDTH wrote the first draft of the manuscript. TLD, RCP, OFPP, EFMV, MA, RS, JCG, WNA provided supervision. All authors contributed to, and approved, the final manuscript. JC is the guarantor. The corresponding author attests that all listed authors meet authorship criteria and that no others meeting the criteria have been omitted.

Declaration of interests

All authors have completed the ICMJE uniform disclosure form at www.icmje.org/coi_disclosure.pdf and declare: no support from any organization for the submitted work; no financial relationships with any organizations that might have an interest in the submitted work in the previous three years; no other relationships or activities that could appear to have influenced the submitted work.

Ethics approval

The study was approved by the Ethical Committee for Research of Federal University of Mato Grosso do Sul (CAAE: 43289221.5.0000.0021).

Data sharing

Deidentified databases as well as the R codes will be deposited in the repository <https://github.com/juliocroda/VebraCOVID-19>

Acknowledgements

We are grateful for the Pan American Health Organization's support and the São Paulo State in making the databases available for analysis. JC is supported by the Oswaldo Cruz Foundation (Edital Covid-19 – resposta rápida: 48111668950485). OTR is funded by a Sara Borrell fellowship (CD19/00110) from the Instituto de Salud Carlos III. OTR acknowledges support from the Spanish Ministry of Science and

Innovation through the Centro de Excelencia Severo Ochoa 2019-2023 Program and from the Generalitat de Catalunya through the CERCA Program.

Role of the funding source

All funders of the study had no role in study design, data collection, data analysis, data interpretation, or writing of the report. The Health Secretary of State of São Paulo and PRODESP reviewed the data and findings of the study, but the academic authors retained editorial control. OTR, MDTH, MSST, and JC had full access to de-identified data in the study and OTR and MDTH verified the data, and all authors approved the final version of the manuscript for publication.

References

1. Polack FP, Thomas SJ, Kitchin N, et al. Safety and Efficacy of the BNT162b2 mRNA Covid-19 Vaccine. *N Engl J Med* 2021;383(27):2603–15.
2. Baden LR, El-Sahly HM, Essink B, et al. Efficacy and Safety of the mRNA-1273 SARS-CoV-2 Vaccine. *N Engl J Med* 2021;384(5):403–16.
3. Dagan N, Barda N, Kepten E, et al. BNT162b2 mRNA Covid-19 Vaccine in a Nationwide Mass Vaccination Setting. *N Engl J Med* 2021;1–12.
4. Voysey M, Clemens SAC, Madhi SA, et al. Safety and efficacy of the ChAdOx1 nCoV-19 vaccine (AZD1222) against SARS-CoV-2: an interim analysis of four randomised controlled trials in Brazil, South Africa, and the UK. *Lancet* 2021;397(10269):99–111.
5. Voysey M, Ann S, Clemens C, et al. Single-dose administration and the influence of the timing of the booster dose on immunogenicity and efficacy of ChAdOx1 nCoV-19 (AZD1222) vaccine: a pooled analysis of four randomised trials. *Lancet* 2021;397:881–91.
6. Iacobucci G, Mahase E. Covid-19 vaccination: What's the evidence for extending the dosing interval? *BMJ* 2021;372:n18.
7. World Health Organization. COVID-19 Vaccine ChAdOx1-S [recombinant]. Geneva, Switzerland: 2021.
8. Krause PR, Fleming TR, Longini IM, et al. SARS-CoV-2 Variants and Vaccines. *N Engl J Med* 2021;385(2):179–86.
9. Bernal JL, Andrews N, Gower C, et al. Effectiveness of COVID-19 vaccines against the B.1.617.2 variant. *medRxiv Prepr* 2021;1–15.
10. Stowe J, Andrews N, Gower C, et al. Effectiveness of COVID-19 vaccines against hospital admission with the Delta (B.1.617.2) variant. *medRxiv Prepr* 2021;
11. Nasreen S, Chung H, He S, et al. Effectiveness of COVID-19 vaccines against variants of concern in Ontario, Canada. *medRxiv Prepr* 2021;
12. GISAID. hCoV-19 Variants [Internet]. [cited 2021 Jul 19];Available from: <https://www.gisaid.org/hcov19-variants/>
13. Faria NR, Mellan TA, Whittaker C, et al. Genomics and epidemiology of the P.1 SARS-CoV-2 lineage in Manaus, Brazil. *Science* (80-) 2021;372:815–21.
14. Naveca FG, Nascimento V, Souza VC De, et al. COVID-19 in Amazonas, Brazil, was driven by the persistence of endemic lineages and P.1 emergence. *Nat Med* [Internet] 2021;27:1230–8. Available from: <http://dx.doi.org/10.1038/s41591-021-01378-7>
15. Hitchings MDT, Ranzani OT, Torres MSS, et al. Effectiveness of CoronaVac among healthcare workers in the setting of high SARS-CoV-2 Gamma variant transmission in Manaus, Brazil: A test-negative case-control study. *medRxiv Prepr* 2021;
16. Ranzani OT, Hitchings M, Dorion M, et al. Effectiveness of the CoronaVac vaccine in the elderly population during a P.1 variant-associated epidemic of COVID-19 in Brazil: A test-negative case-control study. *medRxiv Prepr* 2021;1–27.
17. SEADE Foundation - São Paulo State. CORONAVIRUS - CASOS EM SP. Fundação SEADE. [Internet]. [cited 2021 Jul 19];Available from: <https://www.seade.gov.br/coronavirus/>
18. Palacios R, Batista AP, Albuquerque CSN. Efficacy and safety of a COVID-19 inactivated vaccine in healthcare professionals in Brazil: The PROFISCOV study. *SSRN Electron J* 2021;
19. Brazilian Ministry of Health. Campanha Nacional de Vacinação contra a Covid-19. Décimo oitavo informe técnico. [Internet]. [cited 2021 Jul 19];Available from: https://www.conasems.org.br/wp-content/uploads/2021/04/20a-distribuicao_Campanha_Nacional_de_Vacinacao_contra_a_Covid_19.pdf
20. Brazilian Institute of Geography and Statistics - IBGE. Ethnic and racial characteristics of the

- population. Classifications and identities [Internet]. 2013 [cited 2021 Jul 19]; Available from: <https://biblioteca.ibge.gov.br/visualizacao/livros/liv63405.pdf>
21. Bernal JL, Andrews N, Gower C, et al. Effectiveness of the Pfizer-BioNTech and Oxford-AstraZeneca vaccines on covid-19 related symptoms, hospital admissions, and mortality in older adults in England: test negative case-control study. *BMJ* 2021;373:n1088.
22. Vasileiou E, Simpson CR, Shi T, et al. Interim findings from first dose mass COVID-19 vaccination roll-out and COVID-19 hospitalisations in Scotland: National prospective cohort study of 5.4 million people. *Lancet* 2021;1139.
23. Hitchings MDT, Lewnard JA, Dean NE, et al. Use of recently vaccinated individuals to detect bias in test-negative case-control studies of COVID-19 vaccine effectiveness. *medRxiv Prepr* 2021;
24. Hyams C, Marlow R, Maseko Z, et al. Assessing the effectiveness of BNT162b2 and ChAdOx1 nCoV-19 COVID-19 vaccination in prevention of hospitalisations in elderly and frail adults: a single centre test negative case-control study. *SSRN Electron J* 2021;
25. Ismail SA, Vilaplana TG, Elgohari S, et al. Effectiveness of BNT162b2 mRNA and ChAdOx1 adenovirus vector COVID-19 vaccines on risk of hospitalisation among older adults in England: an observational study using surveillance data. *medRxiv Prepr* 2021;1–18.
26. Shrotri M, Krutikov M, Palmer T, et al. Vaccine effectiveness of the first dose of ChAdOx1 nCoV-19 and BNT162b2 against SARS-CoV-2 infection in residents of Long-Term Care Facilities (VIVALDI study). *medRxiv Prepr* 2021;1–24.
27. Jangra S, Ye C, Rathnasinghe R, et al. The E484K mutation in the SARS-CoV-2 spike protein reduces but does not abolish neutralizing activity of human convalescent and post-vaccination sera. *medRxiv Prepr* 2021;
28. Souza WM, Amorim MR, Sesti-Costa R, et al. Neutralisation of SARS-CoV-2 lineage P.1 by antibodies elicited through natural SARS-CoV-2 infection or vaccination with an inactivated SARS-CoV-2 vaccine: an immunological study. *Lancet Microbe* 2021;1–9.
29. Collier DA, Ferreira IATM, Kotagiri P, et al. Age-related immune response heterogeneity to SARS-CoV-2 vaccine BNT162b2. 2021;(April).
30. Madhi SA, Baillie V, Cutland CL, et al. Efficacy of the ChAdOx1 nCoV-19 Covid-19 Vaccine against the B.1.351 Variant. *N Engl J Med* 2021;384(20):1885–98.
31. Skowronski DM, Setayeshgar S, Zou M, et al. Single-dose mRNA vaccine effectiveness against SARS-CoV-2, including Alpha and Gamma variants: a test-negative design in adults 70 years and older in British Columbia, Canada. *Clin Infect Dis* 2021;
32. Matrajt L, Eaton J, Swan DA, Janes H. Optimizing vaccine allocation for COVID-19 vaccines shows the potential role of single-dose vaccination. *Nat Commun [Internet]* 2021;12(3449):1–18. Available from: <http://dx.doi.org/10.1038/s41467-021-23761-1>
33. Romero-Brufau S, Chopra A, Ryu AJ, et al. Public health impact of delaying second dose of BNT162b2 or mRNA-1273 covid-19 vaccine: simulation agent based modeling study. *BMJ* 2021;373(n1087):1–9.
34. Moghadas SM, Vilches TN, Zhang K, et al. Evaluation of COVID-19 vaccination strategies with a delayed second dose. *PLoS Biol [Internet]* 2021;19(4):1–13. Available from: <http://dx.doi.org/10.1371/journal.pbio.3001211>
35. Sullivan SG, Tchetgen Tchetgen EJ, Cowling BJ. Theoretical Basis of the Test-Negative Study Design for Assessment of Influenza Vaccine Effectiveness. *Am J Epidemiol* 2016;184(5):345–53.
36. Lewnard JA, Patel MM, Jewell NP, et al. Theoretical framework for retrospective studies of the effectiveness of SARS-CoV-2 vaccines. *Epidemiology* 2021;32(4):508–17.
37. Freire FH, de A, Gonzaga MR, Gomes MMF. Projeções populacionais por sexo e idade para pequenas áreas no Brasil. *RELAP* 2019;14:124–49.

Figure 1. Incidence of reported Covid-19, vaccination coverage, and prevalence of SARS-CoV-2 variants of concern from Oct 1, 2020 to July 2, 2021 in São Paulo State, Brazil. Panel A shows the weekly case count of cases, hospitalizations, and deaths based on positive RT-PCR/Antigen tests for the age group ≥ 60 years. Panel B shows the monthly prevalence of main SARS-CoV-2 variants of concern among genotyped isolates in the GISAID database¹² (extraction on July 7 2021). Prevalence was omitted for June and July due to low sample count. Panel C shows daily cumulative vaccination coverage for age group ≥ 60 years. Population estimates were obtained from national projections for 2020³⁷. Vertical lines, from left to right in each panel, show the dates that adults ≥ 90 , 80-89, 70-79, 65-69 and 60-64 years of age in the general population became eligible for vaccination. The gray shaded area represents the study period.

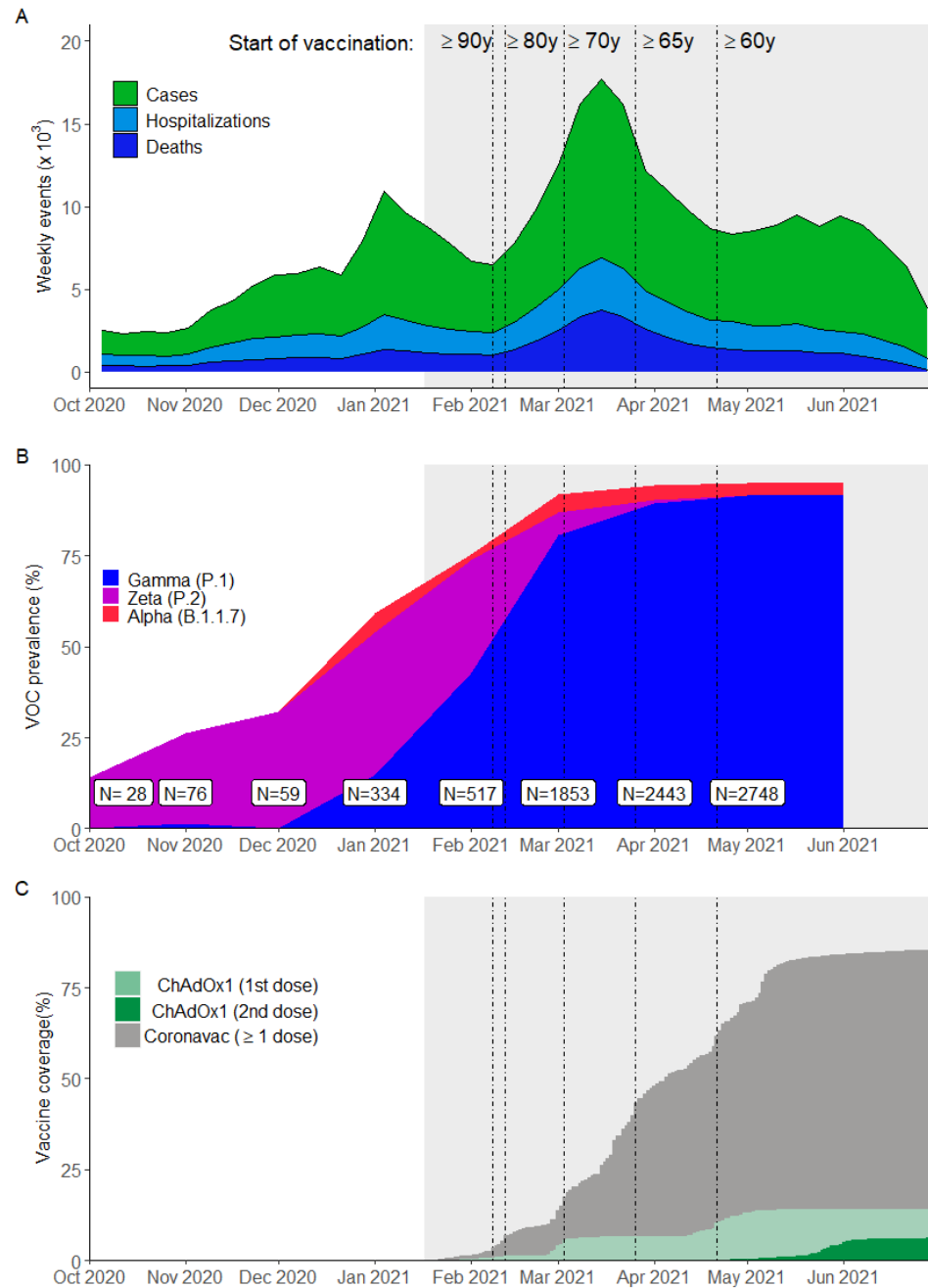


Figure 2. Flowchart of the identification of the study population from surveillance databases and selection of matched cases and controls.

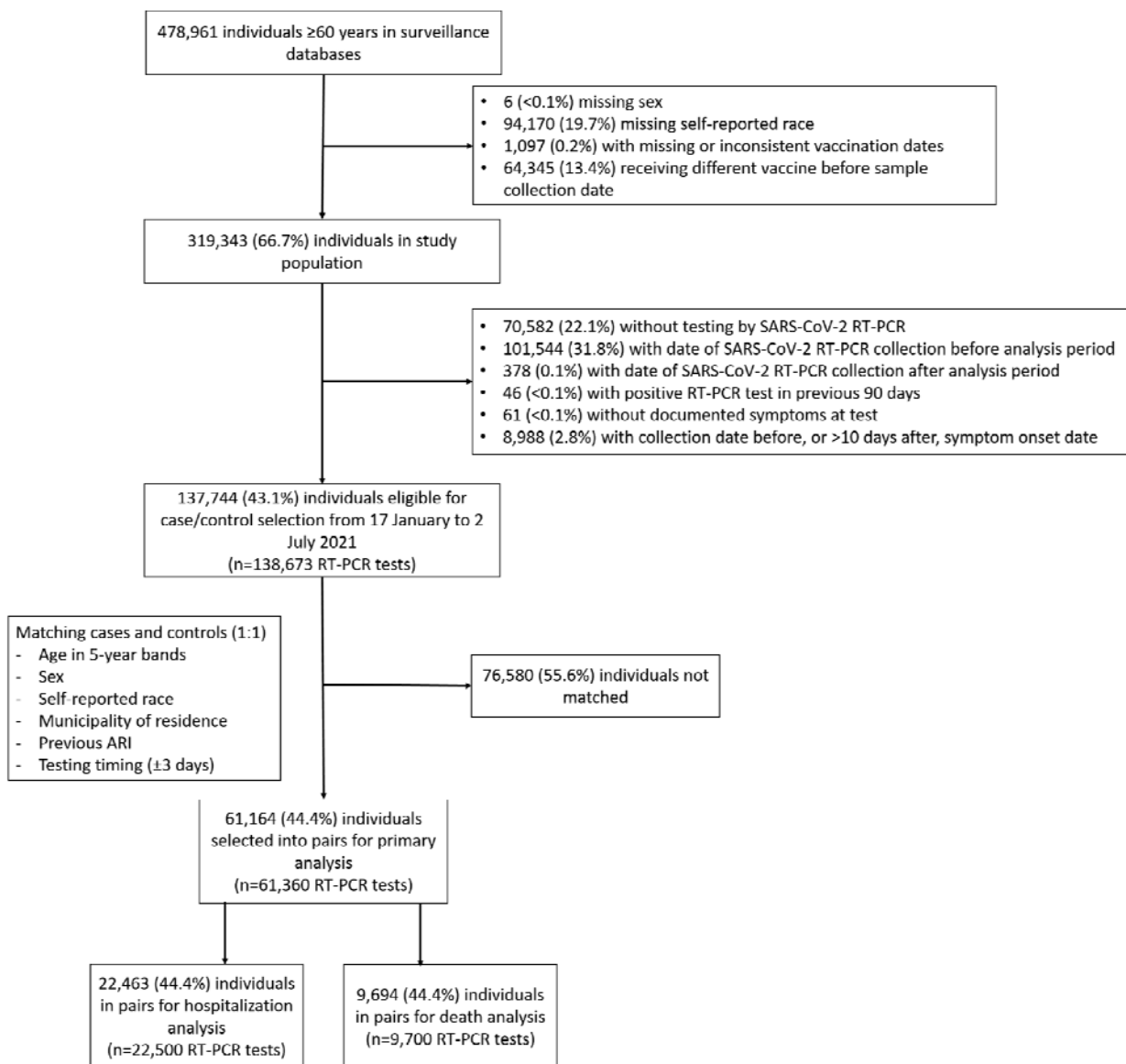


Figure 3. Adjusted vaccine effectiveness of one and two doses of ChAdOx1, by time since vaccination, against symptomatic Covid-19 (A), Covid-19 hospitalization (B), and Covid-19-related death (C)

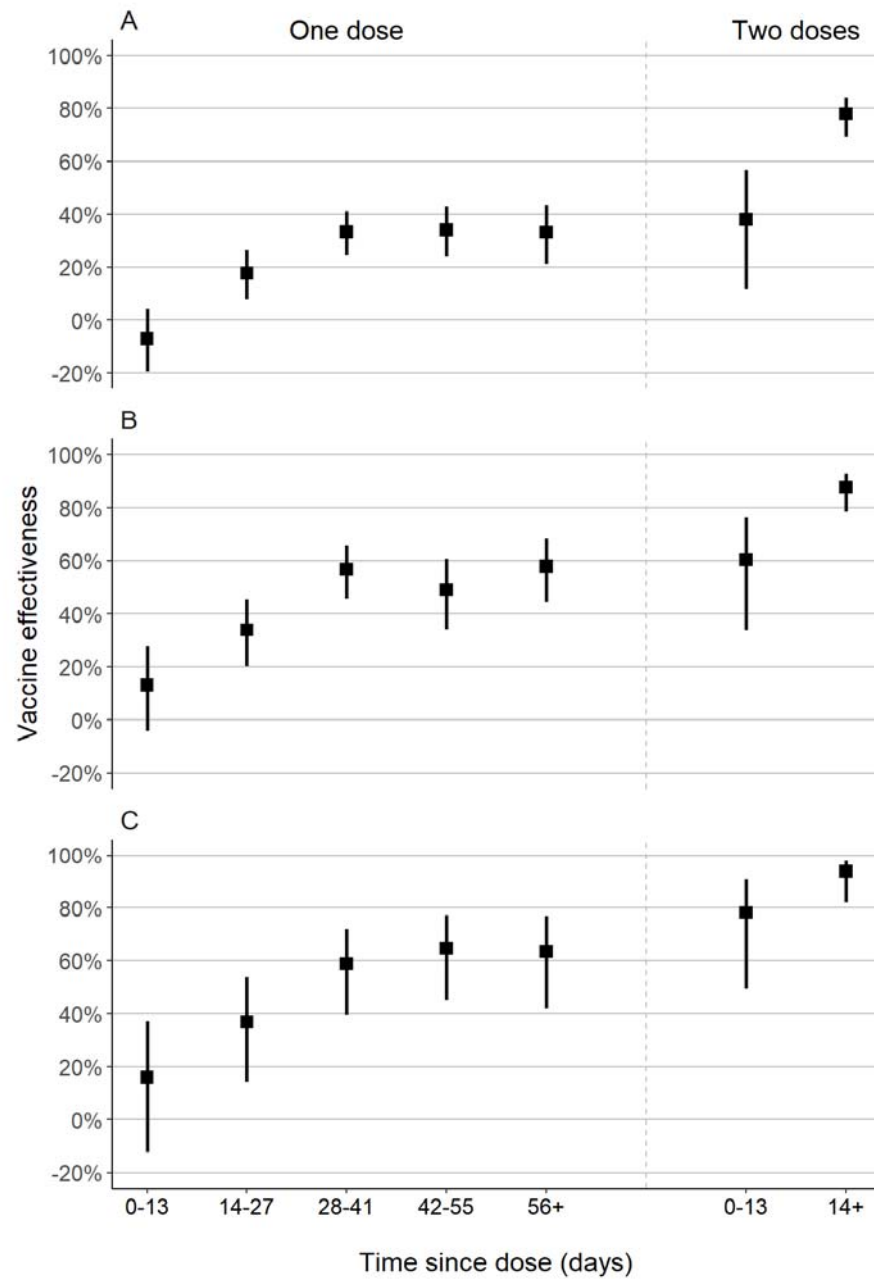


Table 1. Characteristics of adults ≥ 60 years of age who were eligible for matching and selected into case-test negative pairs.

	Eligible cases and controls		Matched pairs	
Characteristics*	Test-negative (n=56,676) [^]	Test-positive (n=81,997) [^]	Controls (n=30,680) [^]	Cases (n=30,680) [^]
Demographics				
Age, mean (SD), years	67.90 (7.8)	67.59 (7.2)	66.54 (6.5)	66.55 (6.5)
Age categories, n (%)				
60-69 years	39,842 (70.3)	58,181 (71.0)	23,684 (77.2)	23,684 (77.2)
70-79 years	10,346 (18.3)	15,963 (19.5)	4,858 (15.8)	4,858 (15.8)
80-89 years	5,570 (9.8)	6,949 (8.5)	1,966 (6.4)	1,966 (6.4)
≥ 90 years	918 (1.6)	904 (1.1)	172 (0.6)	172 (0.6)
Male sex, n (%)	24,313 (42.9)	39,180 (47.8)	12,976 (42.3)	12,976 (42.3)
Self-reported race [†] , n (%)				
White/Branca	40,860 (72.1)	58,565 (71.4)	23,046 (75.1)	23,046 (75.1)
Brown/Pardo	12,484 (22.0)	18,463 (22.5)	6,572 (21.4)	6,572 (21.4)
Black/Preta	2,720 (4.8)	4,063 (5.0)	943 (3.1)	943 (3.1)
Yellow/ Amarela	605 (1.1)	890 (1.1)	119 (0.4)	119 (0.4)
Indigenous/Indigena	7 (0.0)	16 (0.0)	-	-
Residence in “Grande São Paulo” Health Region, n (%)	39,767 (70.2)	53,540 (65.3)	17,771 (57.9)	17,771 (57.9)
Comorbidities				
Reported number [‡] , n (%)				
None	37,434 (66.0)	47,262 (57.6)	20,604 (67.2)	17,520 (57.1)
One or two	18,121 (32.0)	32,093 (39.1)	9,507 (31.0)	12,136 (39.6)
Three or more	1,121 (2.0)	2,642 (3.2)	569 (1.9)	1,024 (3.3)
Cardiovascular disease, n (%)	13,069 (23.1)	24,456 (29.8)	6,865 (22.4)	9,429 (30.7)

Diabetes, n (%)	8,078 (14.3)	16,592 (20.2)	4,308 (14.0)	6,319 (20.6)
Prior SARS-CoV-2 infection**				
At least one previous ARI event**, n (%)	2,722 (4.8)	1,381 (1.7)	299 (1.0)	299 (1.0)
Positive SARS-CoV-2 test result ^{††} , n (%)	310 (0.5)	72 (0.1)	31 (0.1)	19 (0.1)
Clinical outcomes				
ARI-related hospitalization, n/n not missing (%)	7,531/56,468 (13.3)	30,189/81,515 (37.0)	3,818/30,581 (12.5)	11,250/30,502 (36.9)
ARI-related death, n/n not missing (%)	2,571/55,495 (4.6)	14,082/78,921 (17.8)	1,321/30,144 (4.4)	4,850/29,543 (16.4)
Interval between symptom onset and RT-PCR testing, median (IQR), days	3 (2-5)	4 (3-6)	3 (2-5)	4 (2-6)
Interval between symptom onset and hospitalization, median (IQR), days	3 (1-5)	7 (4-10)	2 (1-5)	7 (4-10)
Interval between symptom onset and death, median (IQR), days	8 (4-15)	16 (11-24)	8.5 (4-16)	17 (11-25)
Vaccination status				
Not vaccinated, n (%)	44,285 (78.1)	65,582 (80.0)	24,868 (81.1)	25,215 (82.2)
Single dose, within 0-13 days, n (%)	1,877 (3.3)	3,535 (4.3)	1,042 (3.4)	1,141 (3.7)
Single dose, 14-27 days, n (%)	2,543 (4.5)	4,406 (5.4)	1,427 (4.7)	1,380 (4.5)
Single dose, ≥28 days, n (%)	6,918 (12.2)	7,704 (9.4)	3,009 (9.8)	2,731 (8.9)
2nd dose, within 0-13 days, n (%)	303 (0.5)	388 (0.5)	114 (0.4)	107 (0.3)
2nd dose, ≥14 days, n (%)	750 (1.3)	382 (0.5)	220 (0.7)	106 (0.3)
Interval between 1st and 2nd dose, median (IQR), days	85 (84-90)	86 (84-92)	85 (84-90)	86 (84-92)
Interval between 1st dose and RT-PCR testing, median (IQR), days	37 (21-57)	28 (15-48)	33 (18-50)	30 (15-48)
Interval between 2nd dose and	21 (12-33)	13 (8-24)	20 (10-34)	13 (8-24)

RT-PCR testing, median (IQR), days				
---------------------------------------	--	--	--	--

*Continuous variables are displayed as mean (SD); categorical variables are displayed as n (%).

^These numbers refer to RT-PCR tests and represent 120,483 individuals for the eligible cases and controls and 53,495 individuals in the matched cases and controls.

†Race/skin color as defined by the Brazilian national census bureau (Instituto Nacional de Geografia e Estatísticas).²⁰

‡Comorbidities included: cardiovascular, renal, neurological, hematological, or hepatic comorbidities, diabetes, chronic respiratory disorder, obesity, or immunosuppression.

**Prior to the start of the study on 17 January, 2021 and after systematic surveillance was implemented on 1 February, 2020.

** Reported illness with Covid-19 associated symptoms in the eSUS and SIVEP-Gripe databases.

†† Defined as a positive SARS-CoV-2 RT-PCR or antigen detection test result.

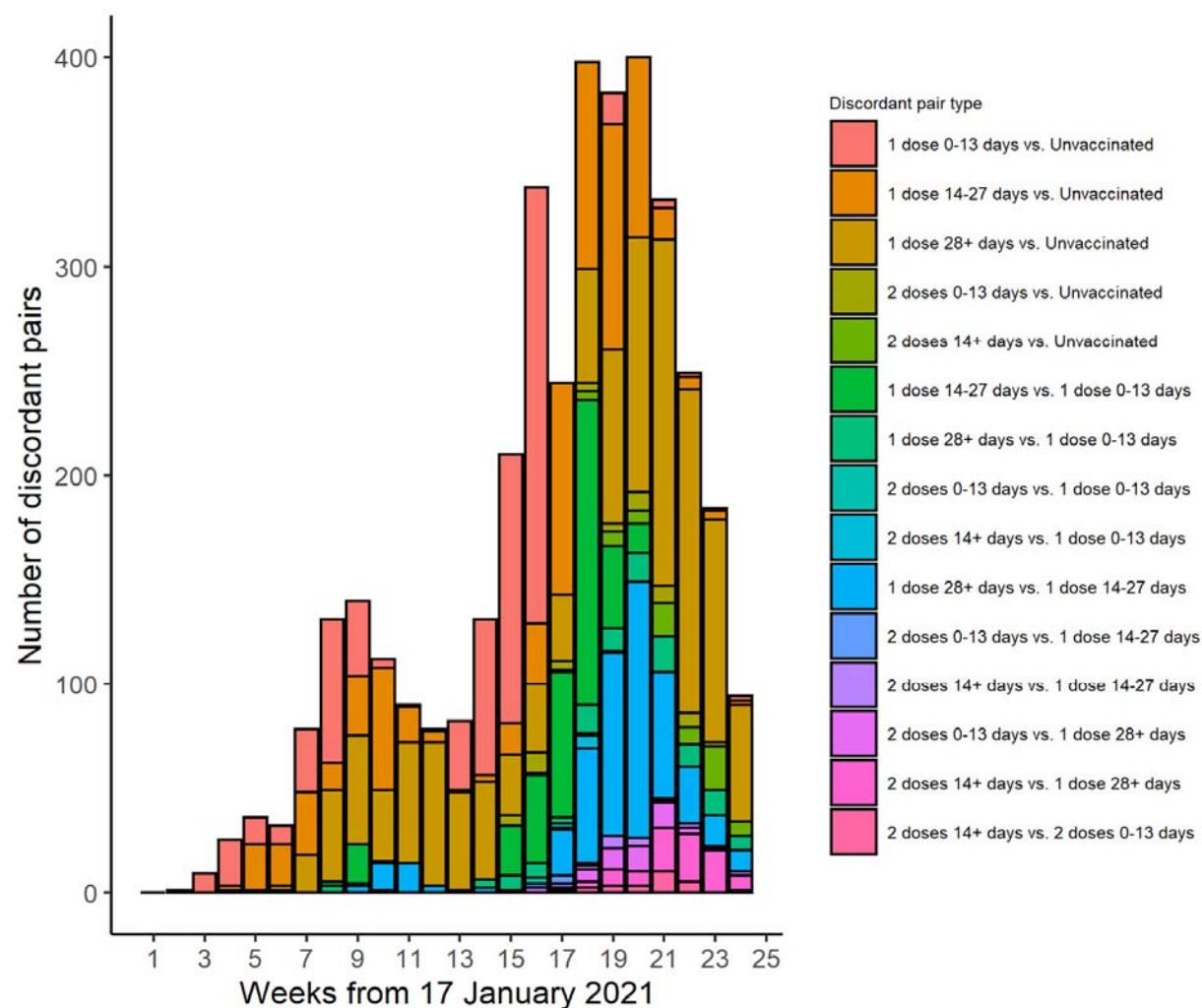
Table 2: Adjusted effectiveness of a ChAdOx1 against clinical Covid-19 outcomes in adults ≥60 years of age.

Vaccine doses and timing	Symptomatic Covid-19 (n pairs=30,680)		Covid-19 hospitalization (n pairs=11,250)		ICU admission (n pairs=4,445)		Invasive mechanical ventilation (n pairs=2,672)		Covid-19-related death (n pairs=4,850)	
	aVE (95% CI)	p-value	aVE (95% CI)	p-value	aVE (95% CI)	p-value	aVE (95% CI)	p-value	aVE (95% CI)	p-value
Single dose, within 0-13 days vs. unvaccinated*	-7.1% (-19.6-4.1)	0.23	13.1% (-4.4-27.7)	0.13	-9.1% (-46.6-18.8)	0.56	12.7% (-29.2-41)	0.50	16.1% (-11.9-37.2)	0.23
Single dose, 14-27 days vs. unvaccinated*	17.8% (8.0-26.5)	0.001	33.6% (19.9-45.0)	<0.001	39.6% (15.4-56.8)	0.003	51.8% (26.3-68.4)	0.001	37.5% (15.2-54.0)	0.001
Single dose, ≥28 days vs. unvaccinated*	33.4% (26.4-39.7)	<0.001	55.1% (46.6-62.2)	<0.001	50.9% (33.6-63.8)	<0.001	70.5% (54.9-80.8)	<0.001	61.8% (48.9-71.4)	<0.001
Two doses, within 0-13 days vs. unvaccinated*	38.1% (11.9-56.5)	0.01	59.2% (32.4-75.4)	0.001	50.9% (-41.8-83)	0.19	75.2% (-18.7-94.8)	0.08	77.8% (49.1-90.3)	<0.001
Two doses, ≥14 days vs. unvaccinated*	77.9% (69.2-84.2)	<0.001	87.6% (78.2-92.9)	<0.001	89.9% (70.9-96.5)	<0.001	96.5% (81.7-99.3)	<0.001	93.6% (81.9-97.7)	<0.001

aVE: Adjusted vaccine effectiveness

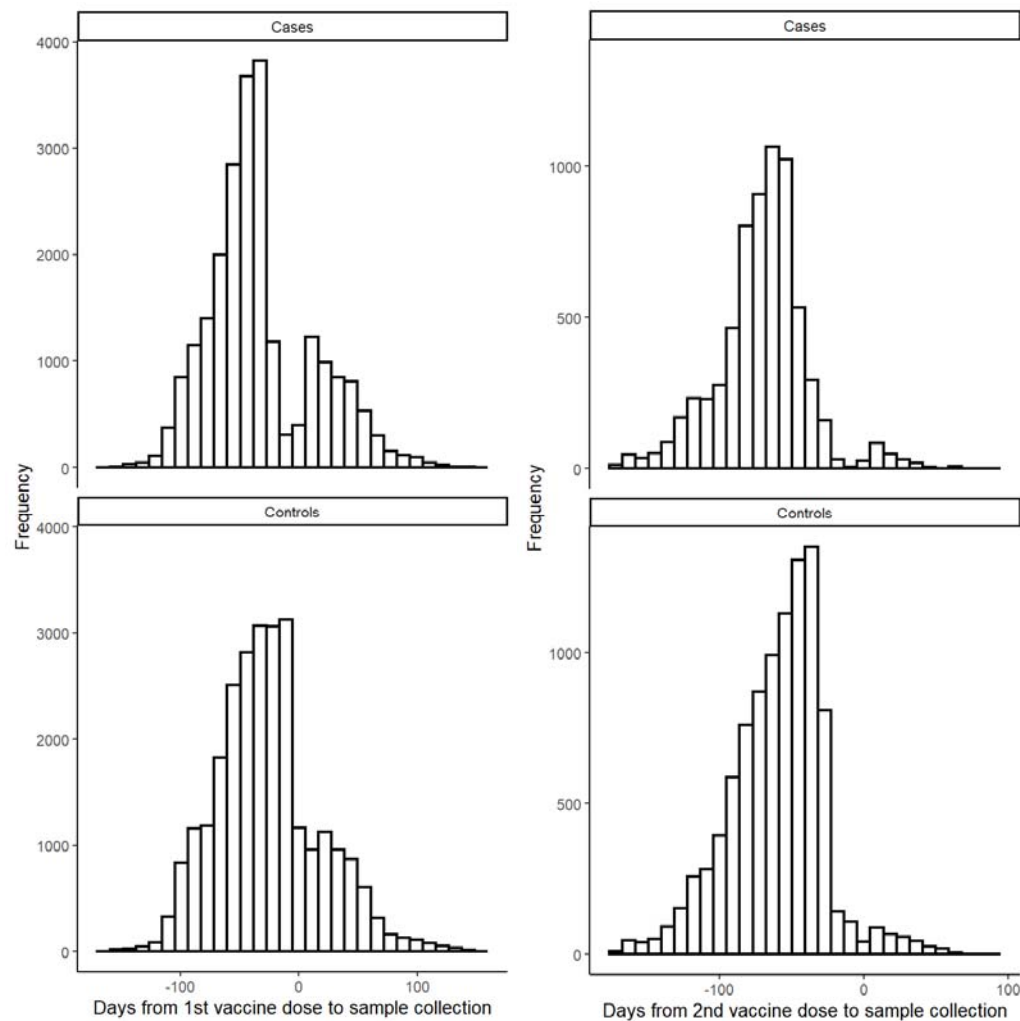
Supplementary appendix

Supplement to: Effectiveness of the ChAdOx1 vaccine in the elderly population during a Gamma variant-associated epidemic of Covid-19 in Brazil



Supplementary Figure 1. Timing of enrolment of discordant case-control pairs by vaccination category

Supplementary Figure 2. Timing of RT-PCR sample collection date relative to 1st (left column) and 2nd (right column) vaccine dose date, among cases (top row) and controls (bottom row) who were vaccinated during the study



period.

Supplementary Table 1. Distribution of concordant and discordant matched case-control pairs.

	Case unvaccinated	Case 1 dose, 0-13 days	Case 1 dose, 14-27 days	Case 1 dose, ≥28 days	Case 2 doses, 0-13 days	Case 2 doses, ≥14 days
Control unvaccinated	23,575	471	313	475	23	11
Control 1 dose, 0-13 days	463	381	155	41	2	0
Control 1 dose, 14-27 days	353	205	658	206	1	4
Control 1 dose, ≥28 days	734	71	232	1922	25	25
Control 2 doses, 0-13 days	30	6	6	22	41	9
Control 2 doses, ≥14 days	60	7	16	65	15	57

Supplementary Table 2. Distribution of concordant and discordant matched case-control pairs with hospitalized cases.

	Case unvaccinated	Case 1 dose, 0-13 days	Case 1 dose, 14-27 days	Case 1 dose, ≥28 days	Case 2 doses, 0-13 days	Case 2 doses, ≥14 days
Control unvaccinated	8,454	190	138	163	11	5
Control 1 dose, 0-13 days	222	143	62	17	0	0
Control 1 dose, 14-27 days	177	79	221	68	0	0
Control 1 dose, ≥28 days	369	25	77	632	17	10
Control 2 doses, 0-13 days	20	4	5	11	21	4
Control 2 doses, ≥14 days	36	2	8	22	8	29

Supplementary Table 3. Distribution of concordant and discordant matched case-control pairs with cases who died.

	Case unvaccinated	Case 1 dose, 0-13 days	Case 1 dose, 14-27 days	Case 1 dose, ≥28 days	Case 2 doses, 0-13 days	Case 2 doses, ≥14 days
Control unvaccinated	3,734	77	54	54	4	2
Control 1 dose, 0-13 days	103	55	16	7	0	0
Control 1 dose, 14-27 days	75	30	90	25	0	0
Control 1 dose, ≥28 days	158	12	30	240	5	2
Control 2 doses, 0-13 days	9	3	4	6	9	1
Control 2 doses, ≥14 days	13	2	3	12	4	11

Supplementary Table 4. Adjusted single-dose vaccine effectiveness against symptomatic Covid-19, ≥28 days after first dose, within subgroups

	aVE* (95% CI)	p-value for interaction
Age		
Age 60-69 years	34.5% (26.6-41.5)	0.83
Age ≥70 years	29.7% (13.3-42.9)	
Sex		
Females	31.3% (21.6-39.9)	0.39
Males	36.0% (25.6-44.9)	
Comorbidities		
None	37.0% (29.6-43.5)	0.02
One or more	27.0% (17.2-35.6)	
CVD		
Not reported	34.9% (27.7-41.5)	0.16
Reported	28.7% (18.0-38.0)	
Diabetes mellitus		
Not reported	35.3% (28.3-41.6)	0.03
Reported	24.2% (11.0-35.4)	
Health regional area		
“Grande São Paulo”	28.3% (16.3-38.5)	0.50
Not “Grande São Paulo”	37.2% (28.4-44.9)	

* All models adjusted for age as a continuous variable, number of reported comorbidities (none vs. one-two vs. three or more) and previous positive SARS-CoV-2 RT-PCR test

Supplementary Table 5. Adjusted one- and two-dose effectiveness against Covid-19 hospitalization and Covid-19-related death by age

	Adjusted one-dose VE* (95% CI)	p-value for interaction	Adjusted two-dose VE* (95% CI)	p-value for interaction
Covid-19 hospitalization				
Age 60-69 years	60.7% (51.1-68.4)	0.09	100.0% (N/A)	<0.001
Age ≥70 years	41.9% (22.5-56.5)		80.8% (65.2-89.4)	
Covid-19-related death				
Age 60-69 years	72.1% (57.6-81.7)	0.12	100.0% (N/A)	0.18
Age ≥70 years	48.0% (22.1-65.3)		89.9% (69.7-96.7)	

* All models adjusted for age as a continuous variable, number of reported comorbidities (none vs. one-two vs. three or more) and previous positive SARS-CoV-2 RT-PCR test