

1 **Antibody responses to BNT162b2 vaccination in Japan: Monitoring vaccine**
2 **efficacy by measuring IgG antibodies against the receptor binding domain of**
3 **SARS-CoV-2**

4

5 **Running title: Determining vaccine efficacy by serological assay**

6

7 Hidetsugu Fujigaki^{1,12*}, Yasuko Yamamoto^{1,12*}, Takenao Koseki^{2,3}, Sumi Banno³,
8 Tatsuya Ando⁴, Hiroyasu Ito⁴, Takashi Fujita⁴, Hiroyuki Naruse⁵, Tadayoshi Hata⁵,
9 Saya Moriyama⁶, Yoshimasa Takahashi⁶, Tadaki Suzuki⁷, Takahiro Murakami⁸,
10 Yukihiro Yoshida⁸, Yo Yagura⁸, Takayoshi Oyamada⁹, Masao Takemura¹,
11 Masashi Kondo^{3,10}, Mitsunaga Iwata¹¹, Kuniaki Saito¹

12

13 ¹Department of Advanced Diagnostic System Development, Fujita Health University
14 Graduate School of Health Sciences, Toyoake, Aichi, Japan.

15 ²Department of Clinical Pharmacy, Fujita Health University School of Medicine, Toyoake,
16 Aichi, Japan.

17 ³Center for Clinical Trial and Research Support, Fujita Health University School of
18 Medicine, Toyoake, Aichi, Japan.

19 ⁴Department of Clinical Laboratory, Fujita Health University Hospital, Toyoake, Aichi,
20 Japan.

21 ⁵Department of Medical Laboratory Science, Fujita Health University Graduate School of

22 Health Sciences, Toyoake, Aichi, Japan.

23 ⁶Reserch Center for Drug and Vaccine Development, National Institute of Infectious
24 Diseases, Tokyo, Japan.

25 ⁷Department of Pathology, National Institute of Infectious Diseases, Tokyo, Japan.

26 ⁸Diagnostics Research Laboratories, Diagnostics Technical Service & Research
27 Operations, Diagnostics Division, FUJIFILM Wako Pure Chemical Corporation,
28 Amagasaki, Hyogo, Japan.

29 ⁹In Vitro Diagnostics Division, FUJIFILM Corporation, Tokyo, Japan.

30 ¹⁰Department of Respiratory Medicine, Fujita Health University School of Medicine,
31 Toyoake, Aichi, Japan.

32 ¹¹Department of Emergency and General Internal Medicine, Fujita Health University
33 School of Medicine, Toyoake, Aichi, Japan.

34 ¹²These authors contributed equally.

35

36 *Corresponding author: Hidetsugu Fujigaki and Yasuko Yamamoto

37 Department of Advanced Diagnostic System Development,

38 Fujita Health University Graduate School of Health Sciences,

39 1-98 Dengakugakubo, Kutsukake-cho, Toyoake, Aichi 470-1192, Japan

40 Tel: +81-562-93-2543

41 Fax: +81-562-93-4595

42 E-mail: fujigaki@fujita-hu.ac.jp, yama-y@fujita-hu.ac.jp

43

44 **Key words:** COVID-19; SARS-CoV-2; Vaccine; BNT162b2; Serological assay

45

46 **Abbreviations:** SARS-CoV-2, severe acute respiratory syndrome coronavirus 2;

47 COVID-19, coronavirus disease 2019; RBD, receptor binding domain; CLEIA,

48 chemiluminescent enzyme immunoassay; S, spike; N, nucleocapsid; RBD-IgG, IgG

49 against RBD; PBS-T, Phosphate buffered saline containing 0.1% Tween 20; MNT,

50 microneutralization test titre

51

52 **Abstract**

53 **BACKGROUND:** To fight severe acute respiratory syndrome coronavirus 2
54 (SARS-CoV-2), which causes coronavirus disease 2019 (COVID-19), mass vaccination
55 has begun in many countries. To investigate the usefulness of a serological assay to
56 predict vaccine efficacy, we analyzed the levels of IgG, IgM, and IgA against the receptor
57 binding domain (RBD) of SARS-CoV-2 in the sera from BNT162b2 vaccinated
58 individuals in Japan.

59 **METHODS:** This study included 219 individuals who received two doses of BNT162b2.
60 The levels of IgG, IgM, and IgA against RBD were measured by enzyme-linked
61 immunosorbent assay before and after the first and second vaccination, respectively.
62 The relationship between antibody levels and several factors including age, gender, and
63 hypertension were analyzed. Virus-neutralizing activity in sera was measured to
64 determine the correlation with the levels of antibodies. A chemiluminescent enzyme
65 immunoassay (CLEIA) method to measure IgG against RBD was developed and
66 validated for the clinical setting.

67 **RESULTS:** The levels of all antibody isotypes were increased after vaccination. Among
68 them, RBD-IgG was dramatically increased after the second vaccination. The IgG levels
69 in females were significantly higher than in males. There was a negative correlation
70 between age and IgG levels in males. The IgG levels significantly correlated with the
71 neutralizing activity. The CLEIA assay measuring IgG against RBD showed a reliable
72 performance and a high correlation with neutralizing activity.

73 **CONCLUSIONS:** Monitoring of IgG against RBD is a powerful tool to predict the efficacy
74 of SARS-CoV-2 vaccination and provides useful information in considering a

75 personalized vaccination strategy for COVID-19.

76

77 **Introduction**

78 Coronavirus disease 2019 (COVID-19) is caused by severe acute respiratory
79 syndrome coronavirus 2 (SARS-CoV-2) infection (1). Since the initial outbreak in Wuhan,
80 China in late 2019, a health emergency with social and economic disruptions has spread
81 worldwide. Efforts to develop a vaccine against SARS-CoV-2 to control the global
82 COVID-19 pandemic became a global effort and resulted in the emergency approval of
83 several vaccines (2-6).

84 One of the first approved COVID-19 vaccines, BNT162b2 (Pfizer/BioNTech), has
85 shown promising efficacy in clinical trials (7, 8). BNT162b2 is an mRNA vaccine that
86 expresses the full prefusion spike (S) glycoprotein of SARS-CoV-2. A two-dose regimen
87 of BNT162b2 was found to be safe with 95% efficacy in preventing symptomatic
88 COVID-19 in persons 16 years of age or older (8). Following the authorization of
89 COVID-19 vaccines for emergency use by the U.S. Food and Drug Administration on
90 December 11th, 2020, a mass vaccination campaign began throughout the world.

91 Now that it has been demonstrated that the COVID-19 vaccines can induce a
92 humoral response thereby protecting individuals from symptomatic COVID-19, several
93 studies attempted to use serological assays to detect antibody production following
94 COVID-19 vaccination (9-13). To monitor the efficacy of vaccines, antibody titer can be
95 used to predict protection against SARS-CoV-2, which is already done as a routine
96 laboratory testing for many viruses, such as measles morbillivirus, rubella virus, and
97 hepatitis virus.

98 There is consensus that serological assays are helpful for predicting vaccine
99 efficacy; however, a variety of antigens used to detect antibodies and a variety of
100 antibody isotypes measured in these assays may cause issues with interpreting the

101 results (14, 15). Also, to monitor the efficacy of a vaccine by measuring antibodies
102 against SARS-CoV-2 in the clinical laboratory, it is necessary to measure antibodies that
103 are highly correlated with the serum neutralizing activity. A previous study from our group
104 determined the kinetics and neutralizing activity of various antigen-specific antibody
105 isotypes against SARS-CoV-2 in the serum of patients with COVID-19 (16). This study
106 used enzyme-linked immunosorbent assay (ELISA) to measure IgG, IgM, and IgA for
107 various antigens, including the full-length S, S1, receptor binding domain (RBD), and
108 nucleocapsid (N) proteins. As a result, the measurement of IgG against the RBD
109 (RBD-IgG) not only showed good clinical performance for diagnosing SARS-CoV-2
110 infection, but also exhibited a high correlation with serum neutralizing activity. Therefore,
111 monitoring RBD-IgG may be the best indicator to quantifying the immunogenicity of
112 vaccines.

113 To evaluate the usefulness of measuring anti-SARS-CoV-2 antibodies to monitor
114 vaccination efficacy, we analyzed antibody responses including RBD-IgG, -IgM, and -IgA
115 after the first and second dose of the BNT162b2 vaccine in a well-defined cohort of
116 employees in Japan. We also analysed how the antibody response changes in
117 correlation with several factors such as age, gender, and hypertension. Furthermore, we
118 examined which antibody isotypes against RBD were strongly correlated with the
119 neutralization titer. Finally, we developed and validated a chemiluminescent enzyme
120 immunoassay (CLEIA) method to measure RBD-IgG for clinical settings. This study not
121 only provides valuable information with respect to antibody responses after BNT162b2
122 vaccination in the Japanese population, but also the usefulness of RBD-IgG for
123 monitoring vaccine efficacy in clinical laboratories.

124 **Materials and Methods**

125 ***Ethics statement, participants, and sample processing***

126 This study was approved by the Ethics Committee for Clinical Research of the
127 Center for Research Promotion and Support at Fujita Health University (authorization
128 number HM20-526 and HM21-167). The study was carried out with accordance to
129 Declaration of Helsinki. All participants provided written informed consent before
130 undergoing any study procedure.

131 The study included a series of 219 employees at Fujita Health University, who
132 received two doses of BNT162b2 at Fujita Health University Hospital. The demographic
133 and clinical characteristics of the participants are presented in Table 1. No participant
134 had a history of SARS-CoV-2 infection. Blood samples were collected from all
135 participants 3 times; 1) before the first vaccination, 2) an average of 14.6 days after the
136 first vaccination, and 3) an average of 14.3 days after the second vaccination. Serum
137 was obtained by centrifugation for 15 min at 1,500 g at room temperature, aliquoted and
138 stored at -80°C until use.

139 To compare the hypertension and control groups, we selected 45 samples (18
140 hypertension subjects and 27 age-matched controls) from this cohort. The subjects in
141 the hypertension group were selected according to the following criteria: subjects
142 diagnosed with hypertension, regardless of uses of antihypertensive medications. The
143 subjects in the control group were selected according to the following criteria: no current
144 medications. To compare the allergy and control groups, we selected 174 samples (101
145 allergy subjects and 73 age-matched controls) from this cohort. The subjects in the
146 allergy group were selected according to the following criteria: subjects diagnosed with

147 allergy regardless of uses of anti-allergy medications. Those in the control group were
148 selected according to the following criteria: no current medications.

149 For correlation analysis between antibody titers and neutralization activity using
150 COVID-19 patient sera, we used 53 residual serum samples from 38 patients who were
151 admitted to Fujita Health University Hospital from 28 February 2020 to 16 September
152 2020.

153

154 ***Measurement of RBD-IgG, IgM, and IgA by ELISA***

155 RBD-IgG was measured using an ELISA kit from FUJIFILM Wako Pure
156 Chemical Corporation. All procedures were performed in accordance with the
157 manufacturer's instructions. IgM and IgA in serum samples were measured using ELISA
158 assays that were developed in the previous study (16). Briefly, 96-well plates (Thermo
159 Fisher Scientific) were coated with 250 ng of recombinant RBD protein (Acro
160 Biosystems) and used for ELISA assays. Fifty microliter of each serum sample, which
161 were diluted 1:201 for IgA assays or 1:2010 for IgM assays in PBS containing 2% bovine
162 serum albumin, were added per well and incubated at room temperature for 60 min. The
163 plates were washed three times with PBS containing 0.1% Tween 20 (PBS-T),
164 peroxidase-labelled anti-human IgM or IgA antibody (Midrand Bioproducts) was added
165 as secondary antibody and incubated at room temperature for 60 min. After incubation,
166 the plates were washed five times with PBS-T and substrate solution (TMB/H₂O₂)
167 (FUJIFILM Wako Pure Chemical) was added and incubated at room temperature for 10
168 min. The reaction was stopped by the addition of 1 M HCl and the absorbance was
169 measured at 450 nm using a 620 nm reference filter using a microplate reader

170 (Molecular Devices). Serially diluted pooled serum from 10 patients with COVID-19 who
171 had strong IgA positivity and 5 patients who had strong IgM positivity were used to
172 prepare a standard curve. The OD450 of the standard of 0.015 was converted to 1 U/mL
173 and these values were fitted onto a line graph using linear regression analysis. The
174 antibody units in the test serum samples were then calculated from their OD450 values
175 using the parameters estimated from the standard curve.

176

177 ***SARS-CoV-2 neutralizing assay***

178 The neutralizing assay was conducted according to the method described in a
179 previous report with minor modifications (16, 17). Briefly, serum samples were
180 heat-inactivated at 56°C for 30 min and then serially diluted with Dulbecco's Modified
181 Eagle medium (FUJIFILM Wako Pure Chemical) supplemented with 2% fetal bovine
182 serum (Biowest), 100 U/mL penicillin and 100 mg/mL streptomycin (Thermo Fisher
183 Scientific). The mixture of diluted sera and 100 tissue culture infectious dose 50
184 hCoV-19/Japan/TY-WK-521/2020 strain (EPI_ISL_408667) were incubated at 37°C and
185 5% CO₂. On day 5, the plates were fixed with 20% formalin (FUJIFILM Wako Pure
186 Chemical) and stained with crystal violet solution (Sigma-Aldrich) to evaluate the
187 cytopathic effect. The index of the highest serum dilution factor with cytopathic effect
188 inhibition was defined as the microneutralization test titer (MNT).

189

190 ***Measurement of RBD-IgG by CLEIA***

191 We utilized another laboratory test kit (18) for the Accuraseed automated
192 immunoassay system (FUJIFILM Wako Pure Chemical Corporation) to develop a CLEIA

193 method to measure RBD-IgG in serum samples. Principle and procedures of RBD-IgG
194 measurement by Accuraceed is shown in Fig. S1. A 10 μ L serum sample and 140 μ L of
195 an immune reaction buffer were added to 12.5 μ g of recombinant SARS-CoV-2
196 RBD-bound particles and incubated at 37°C for 3 min. After the bound and free fractions
197 were separated, 50 μ L of peroxidase-labelled anti-human IgG antibody was added and
198 incubated at 37°C for 3 min, followed by separation of the bound and free fractions.
199 Finally, 100 μ L of the substrate solution and 100 μ L of the hydrogen peroxide solution
200 were added, and the amount of light emitted per unit time was measured. Using pooled
201 serum from the patients with COVID-19 described above in the ELISA assay, a standard
202 curve was generated, and the sample luminescence was applied to the calibration curve
203 to calculate the RBD-IgG antibody units in the serum samples. The basic performance of
204 the assay such as limit of quantification, limit of detection, accuracy and precision are
205 provided in the supplementary information (Fig. S2–S4, Table S1–S3).

206

207 ***Statistical analysis***

208 Statistical analysis was performed using GraphPad Prism version 8.4.3 for
209 windows (GraphPad Software). Quantitative data were analyzed by a two-tailed
210 Mann–Whitney U test and $p < 0.05$ was considered statistically significant. Correlation
211 analysis was performed using Spearman's correlation test. Linear regression was
212 performed to assess the correlation of RBD-IgG levels between Accuraseed and ELISA.

213

214 **Results**

215 Volunteers (n = 219) that participated in this study were vaccinated with two
216 doses of BNT162b2 mRNA vaccine. The characteristics of the subjects are shown in
217 Table 1. Serum was collected 3 times according to the following time points: before the
218 first vaccination, after the first vaccination, and after the second vaccination. The
219 antibody titer of RBD-IgG, IgM and IgA were measured by ELISA assay. All antibody titer
220 increased after the first and second vaccinations compared with before the first
221 vaccination, but dramatically increased after the second vaccination (Fig. 1). The IgG
222 titers in the serum of all subjects ranged between 0.0 and 1.8 U/mL with a mean of $0.1 \pm$
223 0.2 U/mL before the first vaccination, between 0.0 and 100.9 U/mL with a mean of $11.8 \pm$
224 12.8 U/mL after the first vaccination and between 17.2 and 762.4 U/mL with a mean of
225 246.6 ± 153.6 U/mL after the second vaccination (Fig. 1A). The average titer after the
226 second vaccination increased more than 20 times from the average titer after the first
227 vaccination ($p < 0.01$). In serum after the second vaccination, IgM titers in all subjects
228 ranged between 0.7 and 146.8 U/mL with a mean of 8.7 ± 13.1 U/mL and IgA titers
229 ranged between 2.1 and 127.5 U/mL with a mean of 34.1 ± 21.5 U/mL (Fig. 1B and C).

230 The antibody titers showed differences between genders. Each antibody titer
231 was compared between males and females. The IgG titer after the second vaccination of
232 females was significantly higher compared with that of males ($p < 0.05$) (Fig. 1D). The
233 average antibody titer was 263.6 ± 158.0 U/mL for females and was 209.9 ± 137.6 U/mL
234 for males. Previous data showed that age was also an important factor of antibody titer
235 after vaccination (9). Therefore, correlations were established between age and each
236 antibody titer. In males, age correlates negatively with RBD-IgG ($r = -0.410$) and IgM (r

237 = -0.283) (Fig. 2A and B, upper panel). In contrast, each antibody titer did not show a
238 correlation with age for females (Fig. 2, lower panel). Several diseases, such as cancer,
239 chronic kidney disease, hypertension, and diabetes, have been reported to be
240 associated with the severity of COVID-19. The IgG titers of hypertensive subjects were
241 significantly decreased compared to control subjects in male, but there was no difference
242 in female (Fig. 3A). Antibody titer did not show differences between those with allergies
243 and no medical treatment controls (Fig. 3B).

244 For the protection against COVID-19 infection, whether the antibody exhibits
245 neutralizing activity produced by vaccination is the most important factor. Among 219
246 serum samples collected from subjects after the second vaccination, 30 samples were
247 selected considering the distribution of antibody levels and virus-neutralizing activity was
248 assessed. The correlation between antibody titer of IgG, IgM, and IgA and
249 virus-neutralizing activity was examined in the serum of subjects after the second
250 vaccination. Neutralizing activity correlated positively with IgG, IgM, and IgA titer (Fig. 4).
251 Among the isotypes, IgG showed a higher correlation with neutralizing activity ($r =$
252 0.896).

253 A rapid and accurate method to monitor antibody titers is a useful tool to
254 investigate the efficacies of vaccination in clinical laboratories. Therefore, we developed
255 a new CLEIA method using a two-step sandwich method to measure anti-SARS-CoV-2
256 antibody with the Accuraseed automated immunoassay system. This method measured
257 antibody titers within about 10 minutes (Fig. S1). To validate the CLEIA assay, the limit of
258 blank, limit of detection and limit of quantification, repeatability (intra-day precision) and
259 linearity within assay range were established (Fig. S2–S4, Table S1–S3). To assess this

260 new method, we examined the relationship between RBD-IgG levels measured by ELISA
261 and that of the CLEIA assay. The correlation was determined between RBD-IgG levels
262 by ELISA and RBD-IgG levels by CLEIA assay ($R = 0.979$, $y = 0.92x - 0.27$) (Fig. 5A).
263 Furthermore, the levels of the RBD-IgG by CLEIA assay correlated with the
264 virus-neutralizing activity ($r = 0.869$) (Fig. 5B). Increasing evidence suggests that
265 disease severity is positively correlated with higher antibodies, of which IgG subclasses
266 exhibited a weakly negative correlation with viral load. We compared the RBD-IgG levels
267 by CLEIA assay with virus-neutralizing activity in patients with COVID-19. RBD-IgG
268 levels determined by CLEIA assay in patients with COVID-19 showed a good correlation
269 with neutralizing activity ($r = 0.723$) (Fig. S5). These data indicate that the CLEIA assay
270 is a useful tool to validate the efficiency of vaccination and monitor the severity of
271 COVID-19 in patients.
272

273 Discussion

274 This study investigated the antibody response produced by the SARS-CoV-2
275 vaccination in a well-defined cohort of employees in Japan. In all enrolled subjects, the
276 levels of RBD-IgG, IgM and IgA antibody increased after vaccination compared to before
277 the first vaccination. The levels of RBD-IgG in serum after the second vaccination
278 showed a higher correlation with the virus-neutralizing activity compared with that of the
279 other isotypes. A previous study which used COVID-19 patient serum showed that the
280 levels of RBD-IgG were useful markers for diagnosing SARS-CoV-2 infection and
281 neutralizing activity (16). These data indicate that the second dose vaccination
282 potentiates neutralizing activity against COVID-19.

283 Persons who have been infected with SARS-CoV-2 are thought to have
284 protective immunity and memory responses (19). IgM antibodies against SARS-CoV-2
285 are the first isotype to be generated against the novel antigen and can be detected as
286 early as day 3 post COVID-19 symptoms (20). IgA antibodies also plays an important
287 role in mucosal immunity. IgA is the most important immunoglobulin for fighting infectious
288 pathogens in the respiratory and digestive systems at the point of pathogen entry. As an
289 immune barrier, secretory IgA can neutralize SARS-CoV-2 before it reaches and bind to
290 epithelial cells (20). The present data show that the antibody titer of IgG, IgM, and IgA
291 significantly increased after the second vaccination compared with before the first
292 vaccination (Fig. 1). In some subjects, the levels of IgA or IgM antibody increased
293 immediately after the first vaccination and decreased after the second vaccination (Fig.
294 1B and C). Further studies are needed to monitor the effects of isotype differences
295 during SARS-CoV-2 infection, but our data suggest that two doses of vaccine is valuable

296 to protect from the infection of SARS-CoV-2 because the titer of all isotypes increased in
297 all subjects after the second dose of vaccine.

298 The RBD-IgG levels after the second vaccination of males were significantly
299 lower compared with those of females (Fig. 1D). Several studies suggest that there are
300 many differences between males and females with respect to the immune response to
301 SARS-CoV-2 infection and inflammatory diseases (21). Females generally produce
302 higher levels of antibodies which remain in the circulation longer. The activation of
303 immune cells is higher in females than males, and it correlates with the trigger of TLR7
304 and the production of interferon. Therefore, women with COVID-19 show a better
305 outcome than men with the infection (22). These studies support our findings that
306 females have a higher antibody-producing ability than males following the vaccination.

307 In the present study, elderly males had a lower RBD-IgG antibody-producing
308 ability than their younger counterparts (Fig. 2A). Previous data have shown that there are
309 age-related differences in antibody responses raised after BNT162b2 vaccination, in
310 particular, lower frequencies of neutralizing antibodies in the elderly group (12). These
311 data suggest that the vaccination is effective for all ages, but it is important to continue
312 preventive measures for COVID-19, especially in elderly males at least until more
313 longitudinal real-world data emerges.

314 Several diseases, such as cancer, chronic kidney disease, hypertension and
315 diabetes, have been reported to be associated with the severity of COVID-19. The
316 present results show that the antibody titers of hypertensive subjects in male were
317 significantly lower compared with control subjects, but there was no statistical difference
318 in females. Also, our analysis showed that there was no correlation between antibody

319 titer and allergies. A previous study using a cohort of 248 health care workers in Italy
320 reported that age and gender were statistically associated with differences in antibody
321 response after vaccination, which is consistent with our results, whereas body mass
322 index and hypertension had no statistically significant association. Further studies are
323 needed to investigate what factors influence antibody responses from SARS-CoV-2
324 vaccination using a larger cohort.

325 We developed and validated a new method for measuring RBD-IgG using an
326 automated CLEIA method. RBD-IgG measured by Accuraseed is a rapid, accurate and
327 precise method that strongly correlates with neutralizing activity (Fig. 5, Fig. S2–S5,
328 Tables S1–S3). Since monitoring antibody response that correlates with neutralizing
329 activity after SARS-CoV-2 vaccination is highly advisable for predicting protection
330 against SARS-CoV-2, this method may become a useful tool to monitor the efficacy of
331 vaccination in clinical laboratories.

332 In conclusion, this study demonstrated that IgG, IgM, and IgA antibodies against
333 RBD were produced after BNT162b2 vaccination in all subjects. Among these antibodies,
334 RBD-IgG correlated best with neutralizing activity. These results suggest that monitoring
335 of RBD-IgG is a powerful tool to predict efficacy of SARS-CoV-2 vaccination. The level of
336 RBD-IgG after the second vaccination was affected by gender and age, which provide
337 useful information to consider a personalized vaccination strategies for COVID-19.

338

339 **Acknowledgments**

340 We thank all the participants for participating in this study. We also thank the support
341 from medical technologists and clinical research coordinators at the Fujita Health

342 University Hospitals. We acknowledge Aika Kosuge, Nao Sueda, Rika Sakai, Hitomi
343 Kurahashi, Yumika Sugawara, Masaya Hasegawa, Honomi Ando, and Maki Namikawa
344 for collecting the samples, and Dr. Yohei Doi for proofreading the manuscript.

345

346 **Funding**

347 This study was supported by the Japan Agency for Medical Research and Development
348 (JP19fk0108110, JP20fk0108534, and JP20he1122003) and the FUJIFILM Wako Pure
349 Chemical Corp.

350

351 **Author Contributions**

352 H. Fujigaki, Y. Yamamoto, H. Ito, Y. Takahashi, T. Suzuki, Y. Yagura, T. Oyamada, M.
353 Takemura, and K. Saito conceived and planned the experiments. H. Fujigaki, Y.
354 Yamamoto, T. Ando, S. Moriyama, T. Murakami, and Y. Yoshida contributed to data
355 acquisition and analysis. H. Fujigaki and Y. Yamamoto wrote the manuscript. T. Koseki, S.
356 Banno, H. Ito, T. Fujita, H. Naruse, T. Hata, M. Kondo, and M. Iwata contributed to the
357 recruitment of subjects and sample processing. H. Fujigaki, Y. Yamamoto, T. Koseki, H.
358 Ito, Y. Takahashi, T. Suzuki, T. Murakami, Y. Yoshida, Y. Yagura, and K. Saito contributed
359 to interpretation of the results.

360

361 **Conflict of Interest**

362 T. Murakami, Y. Yoshida, and Y. Yagura are employees of FUJIFILM Wako Pure
363 Chemical Corp. T. Oyamada is an employee of FUJIFILM Corp. The other authors have
364 no financial conflicts of interest.

365 **References**

- 366 1. Zhu N, Zhang D, Wang W, Li X, Yang B, Song J, Zhao X, et al. A Novel
367 Coronavirus from Patients with Pneumonia in China, 2019. *N Engl J Med* 2020
368 Feb 20;382 8:727-33. Epub 2020/01/25 as doi: 10.1056/NEJMoa2001017.
- 369 2. Zhu FC, Li YH, Guan XH, Hou LH, Wang WJ, Li JX, Wu SP, et al. Safety,
370 tolerability, and immunogenicity of a recombinant adenovirus type-5 vectored
371 COVID-19 vaccine: a dose-escalation, open-label, non-randomised,
372 first-in-human trial. *Lancet* 2020 Jun 13;395 10240:1845-54. Epub 2020/05/26 as
373 doi: 10.1016/S0140-6736(20)31208-3.
- 374 3. Sahin U, Muik A, Derhovanessian E, Vogler I, Kranz LM, Vormehr M, Baum A, et
375 al. COVID-19 vaccine BNT162b1 elicits human antibody and TH1 T cell
376 responses. *Nature* 2020 Oct;586 7830:594-9. Epub 2020/10/01 as doi:
377 10.1038/s41586-020-2814-7.
- 378 4. Mulligan MJ, Lyke KE, Kitchin N, Absalon J, Gurtman A, Lockhart S, Neuzil K, et
379 al. Phase I/II study of COVID-19 RNA vaccine BNT162b1 in adults. *Nature* 2020
380 Oct;586 7830:589-93. Epub 2020/08/14 as doi: 10.1038/s41586-020-2639-4.
- 381 5. Ewer KJ, Barrett JR, Belij-Rammerstorfer S, Sharpe H, Makinson R, Morter R,
382 Flaxman A, et al. T cell and antibody responses induced by a single dose of

- 383 ChAdOx1 nCoV-19 (AZD1222) vaccine in a phase 1/2 clinical trial. Nat Med 2021
384 Feb;27 2:270-8. Epub 2020/12/19 as doi: 10.1038/s41591-020-01194-5.
- 385 6. Yang J, Wang W, Chen Z, Lu S, Yang F, Bi Z, Bao L, et al. A vaccine targeting the
386 RBD of the S protein of SARS-CoV-2 induces protective immunity. Nature 2020
387 Oct;586 7830:572-7. Epub 2020/07/30 as doi: 10.1038/s41586-020-2599-8.
- 388 7. Walsh EE, Frenck RW, Jr., Falsey AR, Kitchin N, Absalon J, Gurtman A, Lockhart
389 S, et al. Safety and Immunogenicity of Two RNA-Based Covid-19 Vaccine
390 Candidates. N Engl J Med 2020 Dec 17;383 25:2439-50. Epub 2020/10/15 as doi:
391 10.1056/NEJMoa2027906.
- 392 8. Polack FP, Thomas SJ, Kitchin N, Absalon J, Gurtman A, Lockhart S, Perez JL, et
393 al. Safety and Efficacy of the BNT162b2 mRNA Covid-19 Vaccine. N Engl J Med
394 2020 Dec 31;383 27:2603-15. Epub 2020/12/11 as doi:
395 10.1056/NEJMoa2034577.
- 396 9. Pellini R, Venuti A, Pimpinelli F, Abril E, Blandino G, Campo F, Conti L, et al. Initial
397 observations on age, gender, BMI and hypertension in antibody responses to
398 SARS-CoV-2 BNT162b2 vaccine. EClinicalMedicine 2021 Jun;36:100928. Epub
399 2021/06/11 as doi: 10.1016/j.eclinm.2021.100928.
- 400 10. Padoan A, Dall'Olmo L, Rocca FD, Barbaro F, Cosma C, Basso D, Cattelan A, et

- 401 al. Antibody response to first and second dose of BNT162b2 in a cohort of
402 characterized healthcare workers. Clin Chim Acta 2021 Aug;519:60-3. Epub
403 2021/04/16 as doi: 10.1016/j.cca.2021.04.006.
- 404 11. Herishanu Y, Avivi I, Aharon A, Shefer G, Levi S, Bronstein Y, Morales M, et al.
405 Efficacy of the BNT162b2 mRNA COVID-19 vaccine in patients with chronic
406 lymphocytic leukemia. Blood 2021 Jun 10;137 23:3165-73. Epub 2021/04/17 as
407 doi: 10.1182/blood.2021011568.
- 408 12. Muller L, Andree M, Moskorz W, Drexler I, Walotka L, Grothmann R, Ptok J, et al.
409 Age-dependent immune response to the Biontech/Pfizer BNT162b2 COVID-19
410 vaccination. Clin Infect Dis 2021 Apr 27. Epub 2021/04/28 as doi:
411 10.1093/cid/ciab381.
- 412 13. Salvagno GL, Henry BM, Pighi L, De Nitto S, Gianfilippi GL, Lippi G. Monitoring of
413 the immunogenic response to Pfizer BNT162b2 mRNA COVID-19 vaccination in
414 healthcare workers with Snibe SARS-CoV-2 S-RBD IgG chemiluminescent
415 immunoassay. Clin Chem Lab Med 2021 Jun 23. Epub 2021/06/24 as doi:
416 10.1515/cclm-2021-0687.
- 417 14. Lustig Y, Sapir E, Regev-Yochay G, Cohen C, Fluss R, Olmer L, Indenbaum V, et
418 al. BNT162b2 COVID-19 vaccine and correlates of humoral immune responses

- 419 and dynamics: a prospective, single-centre, longitudinal cohort study in
420 health-care workers. *Lancet Respir Med* 2021 Jul 2. Epub 2021/07/06 as doi:
421 10.1016/S2213-2600(21)00220-4.
- 422 15. Fujigaki H, Takemura M, Osawa M, Sakurai A, Nakamoto K, Seto K, Fujita T, et al.
423 Reliability of serological tests for COVID-19: comparison of three
424 immunochromatography test kits for SARS-CoV-2 antibodies. *Heliyon* 2020 Sep;6
425 9:e04929. Epub 2020/09/29 as doi: 10.1016/j.heliyon.2020.e04929.
- 426 16. Fujigaki H, Inaba M, Osawa M, Moriyama S, Takahashi Y, Suzuki T, Yamase K, et
427 al. Comparative Analysis of Antigen-Specific Anti-SARS-CoV-2 Antibody Isotypes
428 in COVID-19 Patients. *J Immunol* 2021 May 15;206 10:2393-401. Epub
429 2021/05/05 as doi: 10.4049/jimmunol.2001369.
- 430 17. Matsuyama S, Nao N, Shirato K, Kawase M, Saito S, Takayama I, Nagata N, et al.
431 Enhanced isolation of SARS-CoV-2 by TMPRSS2-expressing cells. *Proc Natl*
432 *Acad Sci U S A* 2020 Mar 31;117 13:7001-3. Epub 2020/03/14 as doi:
433 10.1073/pnas.2002589117.
- 434 18. Ozeki Y, Tanimura Y, Nagai S, Nomura T, Kinoshita M, Shibuta K, Matsuda N, et al.
435 Development of a New Chemiluminescent Enzyme Immunoassay Using a
436 Two-Step Sandwich Method for Measuring Aldosterone Concentrations.

437 Diagnostics (Basel) 2021 Mar 4;11 3. Epub 2021/04/04 as doi:
438 10.3390/diagnostics11030433.

439 19. Dan JM, Mateus J, Kato Y, Hastie KM, Yu ED, Faliti CE, Grifoni A, et al.
440 Immunological memory to SARS-CoV-2 assessed for up to 8 months after
441 infection. Science 2021 Feb 5;371 6529. Epub 2021/01/08 as doi:
442 10.1126/science.abf4063.

443 20. Chao YX, Rotzschke O, Tan EK. The role of IgA in COVID-19. Brain Behav
444 Immun 2020 Jul;87:182-3. Epub 2020/05/27 as doi: 10.1016/j.bbi.2020.05.057.

445 21. Takahashi T, Ellingson MK, Wong P, Israelow B, Lucas C, Klein J, Silva J, et al.
446 Sex differences in immune responses that underlie COVID-19 disease outcomes.
447 Nature 2020 Dec;588 7837:315-20. Epub 2020/08/28 as doi:
448 10.1038/s41586-020-2700-3.

449 22. Conti P, Younes A. Coronavirus COV-19/SARS-CoV-2 affects women less than
450 men: clinical response to viral infection. J Biol Regul Homeost Agents 2020
451 March-April;34 2:339-43. Epub 2020/04/08 as doi: 10.23812/Editorial-Conti-3.

452

453

454

455 **Table 1. Characteristics of subjects in this cohort.**

		Number	Age	
Total subjects		219	45.6 ± 11.0	
Gender	Male	69	47.2 ± 12.3	
	Female	150	44.8 ± 10.3	
Age	Male	20-39yr	18	31.6 ± 6.3
		40-49yr	18	43.5 ± 3.2
		50-59yr	20	53.8 ± 3.0
		> 60yr	13	63.8 ± 4.3
	Female	20-39yr	43	31.6 ± 5.6
		40-49yr	55	45.1 ± 2.7
		50-59yr	43	54.2 ± 2.6
		> 60yr	9	61.3 ± 1.7
Hypertension	Male	12	59.1 ± 5.0	
	Female	6	52.2 ± 5.3	
Allergies	Male	26	43.1 ± 13.7	
	Female	75	43.0 ± 11.1	

456

457

458 **Figure Captions**

459

460 **Figure 1. Antibody responses of IgG (A), IgM (B), and IgA (C) in all the subjects**
461 **induced by BNT162b2 vaccination and differences of IgG (D), IgM (E), and IgA (F)**
462 **levels between males and females after the second vaccination**

463 Serum samples were collected before vaccination, after the first vaccination, and after
464 the second vaccination (A-C). Antibody levels after the second vaccination were
465 compared between males and females (D-F). The horizontal solid lines indicate the
466 mean of antibody levels. Statistical analysis was done by a two-tailed Mann–Whitney
467 test (* $p < 0.05$, ** $p < 0.01$, ns: not significant).

468

469 **Figure 2. Correlation between age and IgG (A), IgM (B), and IgA (C) levels of males**
470 **(upper panel) and females (lower panel) after second vaccination**

471 Correlation analysis was calculated using a Spearman's correlation coefficient. The
472 values of Spearman's r and p are presented in each figure.

473

474 **Figure 3. Levels of RBD-IgG of subjects who have hypertension (A) and allergy (B)**

475 (A) Subjects diagnosed with hypertension with or without antihypertensive medications
476 (12 males and 6 females) were selected as hypertension group and compared to
477 age-matched control group (11 males and 16 females). (B) Subjects who have allergies
478 (26 males and 75 females) were selected as allergy group and compared to
479 age-matched control group (21 males and 52 females). The horizontal solid lines
480 indicate the mean of antibody levels. Statistical analysis was done by a two-tailed

481 Mann–Whitney test (*p < 0.05, ns: not significant).

482

483 **Figure 4. Correlation between virus neutralizing activity and IgG (A), IgM (B), and**
484 **IgA (C) levels after second vaccination**

485 Antibody measurement by ELISA and neutralization assays were performed using sera
486 from 30 subjects after the second vaccination. The index of the highest sera dilution
487 factor with cytopathic effect inhibition was defined as the microneutralization test titer
488 (MNT). Correlation was calculated using Spearman's correlation coefficient. The values
489 of Spearman's r and p are presented in each figure.

490

491 **Figure 5. (A) Relationship between RBD-IgG levels measured by ELISA and that of**
492 **the CLEIA assay. (B) Correlation between virus neutralizing activity and RBD-IgG**
493 **obtained by Accuraseed.**

494 (A) RBD-IgG levels in serum samples from all subjects (total 657 samples) were
495 measured by both ELISA and Accuraseed. Correlation R were calculated by Pearson's
496 correlation. (B) Antibody measurement by Accuraseed and neutralization assays were
497 performed using sera from 30 subjects after the second vaccination. The index of the
498 highest sera dilution factor with cytopathic effect inhibition was defined as the
499 microneutralization test titer (MNT). Correlation was calculated using Spearman's
500 correlation coefficient. The values of Spearman's r and p are presented.

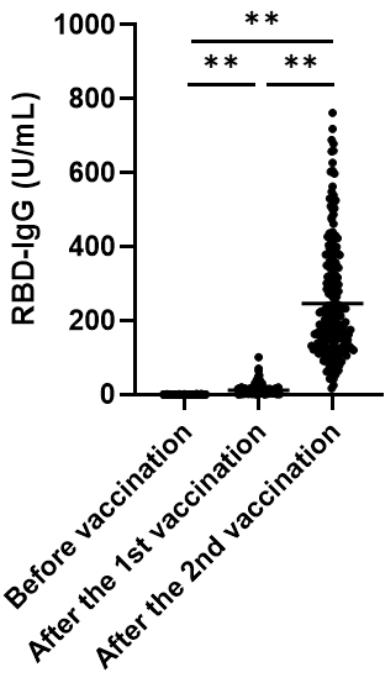
501

502

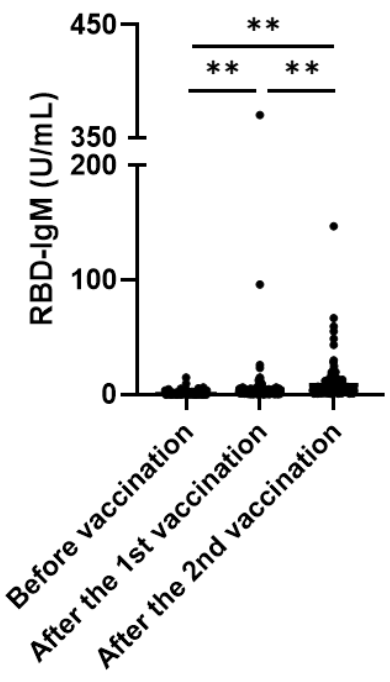
503

Figure 1.

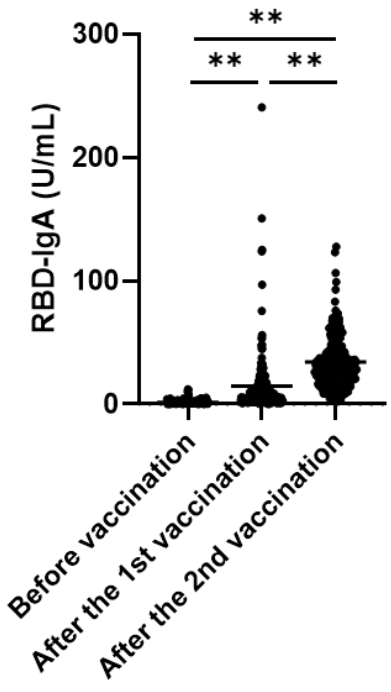
A. IgG



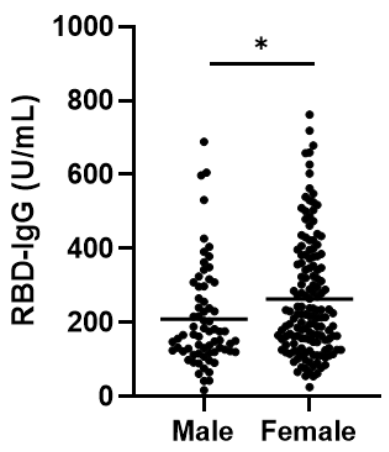
B. IgM



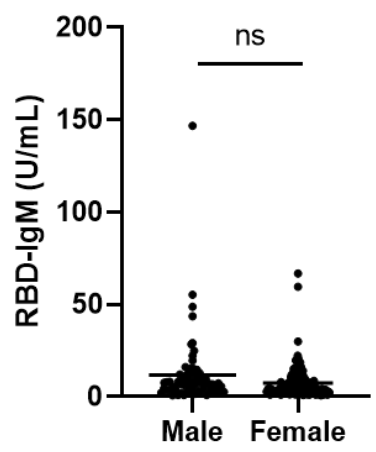
C. IgA



D. IgG



E. IgM



F. IgA

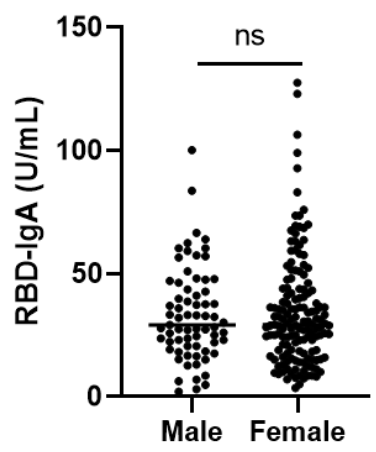
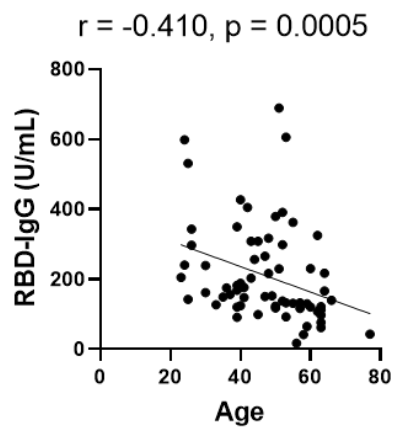
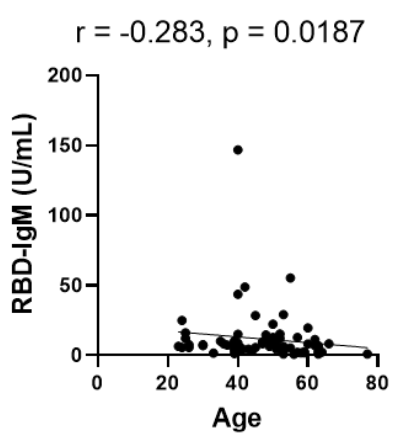


Figure 2.

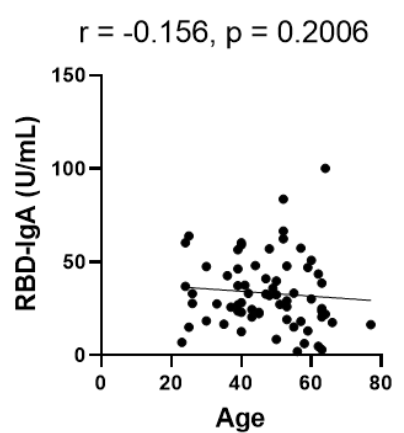
A. IgG



B. IgM



C. IgA



Female

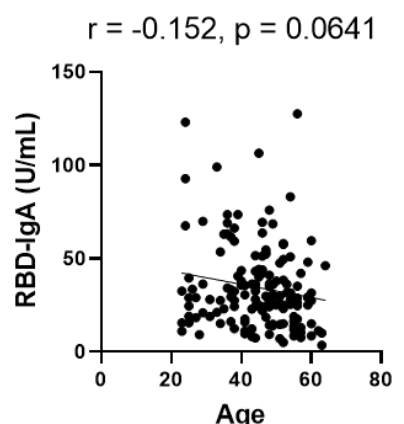
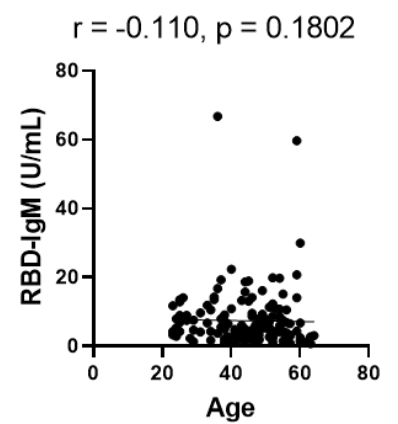
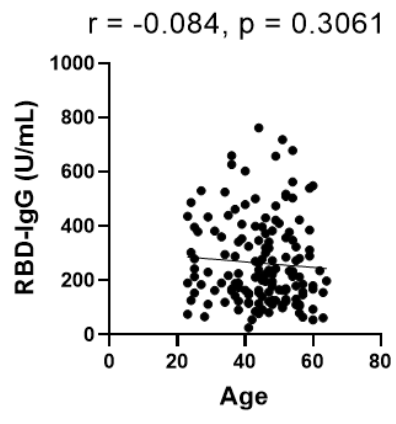


Figure 3.

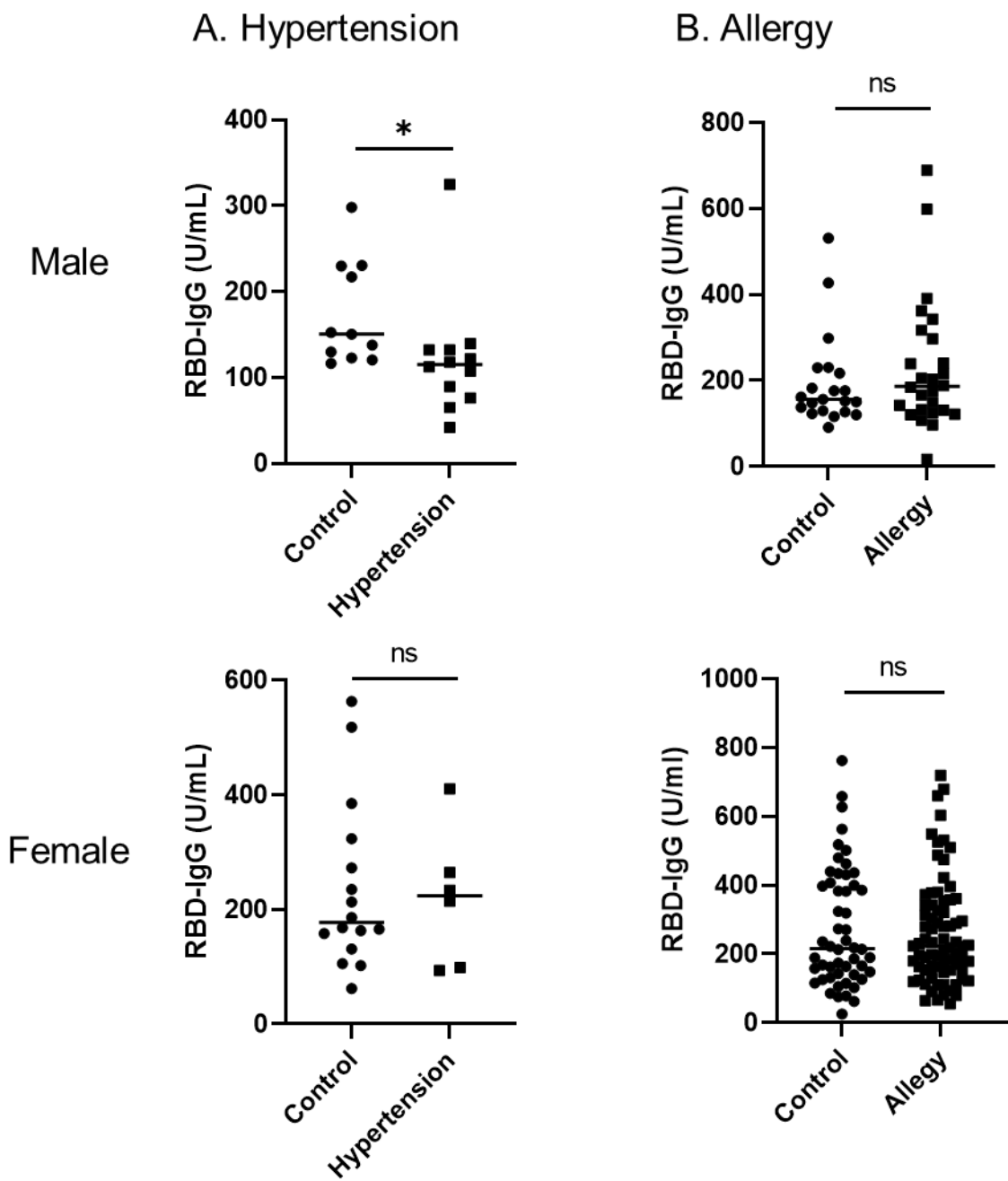
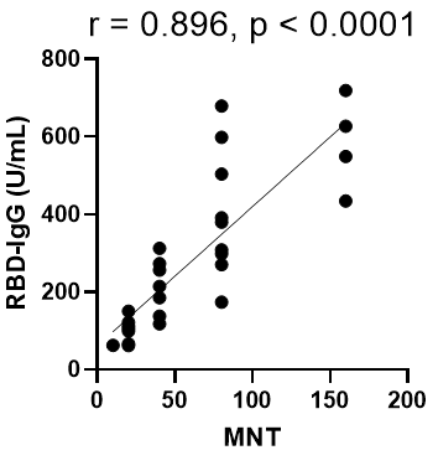
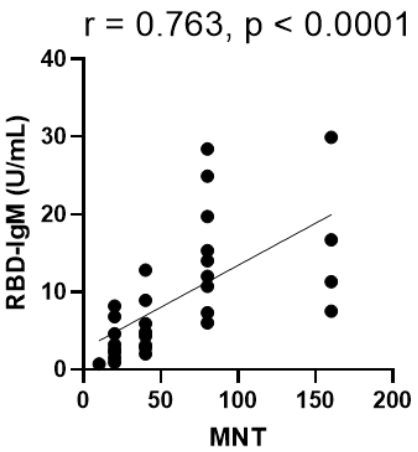


Figure 4.

A. IgG



B. IgM



C. IgA

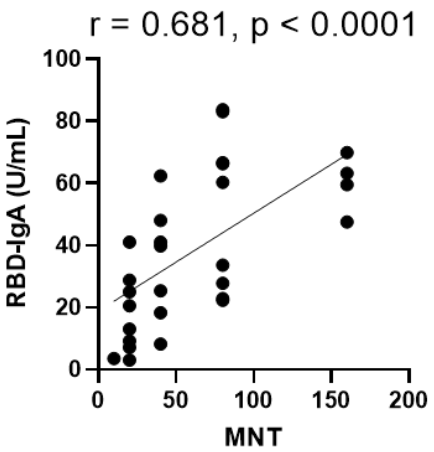
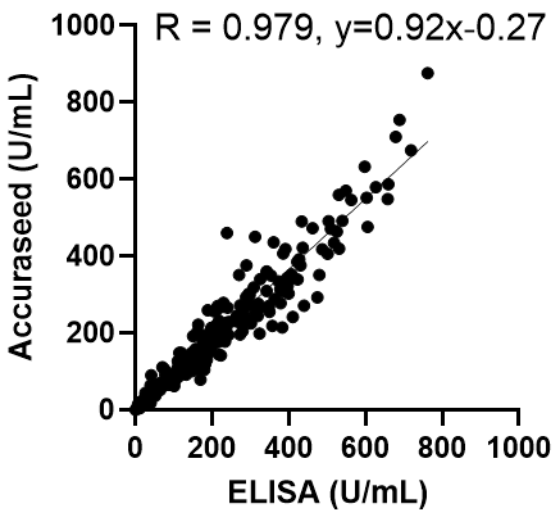


Figure 5.

A



B

