

1 Evolution of SARS-CoV-2 seroprevalence and clusters in school
2 children from June 2020 to April 2021 reflect community
3 transmission: prospective cohort study *Ciao Corona*

4
5 **Authors:**

6 Agne Ulyte*, Thomas Radtke*, Irene A. Abela, Sarah R. Haile, Priska Ammann, Christoph
7 Berger, Alexandra Trkola, Jan Fehr, Milo A. Puhan#, Susi Kriemler#

8

9 *shared first authorship

10 # shared last authorship

11

12 **Corresponding author:**

13 Susi Kriemler

14 Tel: +41 44 634 63 20

15 susi.kriemlerwiget@uzh.ch

16 ORCID ID: 0000-0002-3384-7940

17 Epidemiology, Biostatistics and Prevention Institute (EBPI), University of Zurich

18 Hirschengraben 84

19 8001 Zürich, Switzerland

20

21 **Author positions, emails, affiliations and addresses:**

22 **Agne Ulyte**, postdoctoral researcher, agne.ulyte@uzh.ch, Epidemiology, Biostatistics and
23 Prevention Institute (EBPI), University of Zurich, Hirschengraben 84, 8001 Zürich,
24 Switzerland

25 **Thomas Radtke**, senior researcher, thomas.radtke@uzh.ch, Epidemiology, Biostatistics and
26 Prevention Institute (EBPI), University of Zurich, Hirschengraben 84, 8001 Zürich,
27 Switzerland

28 **Irene A. Abela**, senior researcher, abela.irene@virology.uzh.ch, Institute of Medical
29 Virology, University of Zurich, Winterthurerstrasse 190, 8057 Zürich, Switzerland;
30 Division of Infectious Diseases & Hospital Epidemiology, University Hospital Zurich,
31 Rämistrasse 100, 8091 Zurich, Switzerland

32 **Sarah R. Haile**, senior statistician, sarah.haile@uzh.ch, Epidemiology, Biostatistics and
33 Prevention Institute (EBPI), University of Zurich, Hirschengraben 84, 8001 Zürich,
34 Switzerland

NOTE: This preprint reports new research that has not been certified by peer review and should not be used to guide clinical practice.

35 **Priska Ammann**, junior researcher, priska.ammann@outlook.com, Epidemiology,
36 Biostatistics and Prevention Institute (EBPI), University of Zurich, Hirschengraben 84, 8001
37 Zürich, Switzerland

38 **Christoph Berger**, professor, Christoph.Berger@kispi.uzh.ch, University Children Hospital
39 Zurich, Steinwiesstrasse 75, 8032 Zürich, Switzerland

40 **Alexandra Trkola**, professor, trkola.alexandra@virology.uzh.ch, Institute of Medical
41 Virology, University of Zurich, Winterthurerstrasse 190, 8057 Zürich, Switzerland

42 **Jan Fehr**, professor, jan.fehr@uzh.ch, Epidemiology, Biostatistics and Prevention Institute
43 (EBPI), University of Zurich, Hirschengraben 84, 8001 Zürich; Division of Infectious Diseases
44 & Hospital Epidemiology, University Hospital Zurich, Rämistrasse 100, 8091 Zurich,
45 Switzerland

46 **Milo A. Puhan**, professor, miloalan.puhan@uzh.ch, Epidemiology, Biostatistics and
47 Prevention Institute (EBPI), University of Zurich, Hirschengraben 84, 8001 Zürich,
48 Switzerland

49 **Susi Kriemler**, professor, susi.kriemlerwiget@uzh.ch, Epidemiology, Biostatistics and
50 Prevention Institute (EBPI), University of Zurich, Hirschengraben 84, 8001 Zürich,
51 Switzerland

52

53

54 Word count: 6265

55

56 **Abstract**

57

58 **Objectives:** To longitudinally assess severe acute respiratory syndrome coronavirus 2 (SARS-
59 CoV-2) seroprevalence and clustering of seropositive children within school classes in
60 March-April 2021 compared to June-July and October-November 2020. To examine the
61 evolution of symptoms and the extent of under-detection of SARS-CoV-2 in children.

62

63 **Design:** Prospective cohort study of randomly selected schools and classes.

64

65 **Setting:** Schools remained open for physical attendance in Switzerland from May 2020 to
66 the end of 2020/2021 school year. Lower school level (age range 7-10 years) and middle
67 school level (8-13 years) children in primary schools, and upper school level (12-17 years)
68 children in secondary schools were invited for SARS-CoV-2 serological testing in the *Ciao*
69 *Corona* study in the canton of Zurich, Switzerland. Three testing rounds were completed in
70 June-July 2020 (T1; after the first wave of SARS-CoV-2 infections), October-November 2020
71 (T2; during the peak of the second wave), and March-April 2021 (T3; after the second wave
72 and with SARS-CoV-2 variants of concern becoming dominant). Parents completed
73 questionnaires on sociodemographic information and symptoms.

74

75 **Participants:** 2487 children (median age 12 years, age range 7-17 years) recruited from 275
76 classes in 55 schools participated in the testing in March-April 2021; total of 2974 children
77 participated in at least one of the 3 testing rounds.

78

79 **Main outcome measures:** SARS-CoV-2 serology results; clustering of seropositive children
80 within classes; reported symptoms.

81

82 **Results:** The proportion of children who were SARS-CoV-2 seropositive increased from 1.5%
83 (95% credible interval (CrI) 0.6% to 2.6%) in June-July 2020, to 6.6% (95% CrI 4.0% to 8.9%)
84 in October-November, and to 16.4% (95% CrI 12.1% to 19.5%) in March-April 2021. By
85 March-April 2021, children in upper school level (12.4%; 95% CrI 7.3% to 16.7%) were less
86 likely to be seropositive than those in middle (19.5%; 95% CrI 14.2% to 24.4%) or lower
87 school levels (16.0%; 95% CrI 11.0% to 20.4%). Children in the upper school level had a 5.1%
88 (95% CI -9.4% to -0.7%) lower than expected seroprevalence by March-April 2021 than
89 those in middle school level, based on difference-in-differences analysis. The ratio of PCR-

90 diagnosed to all seropositive children changed from 1 to 21.7 (by June-July 2020) to 1 to 3.5
91 (by March-April 2021). Symptoms were reported by 37% of newly seropositive and 16%
92 seronegative children. Potential clusters of 3 or more newly seropositive children were
93 detected in 24 of 119 (20%) classes with a high participation rate, from which a median of
94 17 clusters could be expected due to random distribution of seropositive children within the
95 classes. Clustering was lowest in middle and upper school levels. Retention rate in the
96 cohort was high (84% of T1 participants attended T3). Among participants, supporting
97 society and research were reported more commonly for participation than personal
98 reasons. Fear of blood sampling was the most frequently reported reason for non-
99 participation, reported for 64% of children.

100

101 **Conclusions:** By March-April 2021, 16.4% of children and adolescents were seropositive in
102 the canton of Zurich, Switzerland. The majority of clusters of SARS-CoV-2 seropositive
103 children in school classes could be explained by community rather than intra-class
104 transmission of infections. Seroprevalence and clustering was lowest in upper school levels
105 during all timepoints.

106

107 **Trial registration:** ClinicalTrials.gov NCT04448717.

108 **Key words:** SARS-CoV-2, COVID-19, children, adolescents, school, SARS-CoV-2 symptoms,
109 non-participation, participation rate, cohort.

110

111 **What is already known on the topic**

- 112 • Transmission of SARS-CoV-2 in school setting largely followed community
113 transmission in 2020.
- 114 • With implemented preventive measures, secondary attack rates were low and
115 clustering of SARS-CoV-2 infections within classes and schools (outbreaks) were
116 observed rarely.

117

118 **What this study adds**

- 119 • With high community incidence and new variants of SARS-CoV-2, seroprevalence
120 increased in school children between October 2020 – March 2021 in the canton of
121 Zurich in Switzerland, and was higher in lower school levels.
- 122 • Most of the potential clusters of children who tested seropositive within classes
123 could be explained by community rather than intra-class transmission of SARS-CoV-
124 2, especially in middle and upper school levels.
- 125 • More children who tested seropositive in March-April 2021 were diagnosed and
126 reported symptoms potentially related to SARS-CoV-2 infection more frequently
127 than those who tested seropositive in June-July or October-November 2020.
- 128 • The most frequent reason for non-participation was fear of blood sampling (62% of
129 children).

130 Introduction

131 Many countries in the Northern hemisphere experienced a second or third wave of severe
132 acute respiratory syndrome coronavirus 2 (SARS-CoV-2) infection pandemic in the winter of
133 2020/2021 [1]. High community incidence, as well as increasing prevalence of SARS-CoV-2
134 variants of concern (VOC), such as α (B.1.1.7), γ (P.1) and δ (B.1.617.2), made governments
135 reconsider the stringency of public preventive measures. Various studies, including contact-
136 tracing, seroprevalence and real-time polymerase chain reaction (RT-PCR) screening studies,
137 have shown that the spread of SARS-CoV-2 infection within schools was not larger than in
138 the surrounding community in 2020, and secondary attack rates were low, with only rare
139 outbreaks [2–5]. However, less evidence exists if more contagious variants of SARS-CoV-2
140 changed the transmission in schools significantly.

141 Attendance of schools has been disrupted in many countries worldwide in
142 2020/2021, with half of the countries worldwide and in Europe closing schooling for at least
143 30 weeks from March 2020 to June 2021 [6], and schools fully or partially closed for 56
144 weeks in the USA, and for 27 weeks in the UK during this time. In contrast, schools were
145 fully or partially closed only for 7 weeks in the same period in Switzerland, and fully open for
146 physical attendance through the whole 2020/2021 school year. Nevertheless, by November
147 2020, only minimal clustering of seropositive children was observed within randomly
148 selected schools and classes in the canton of Zurich, Switzerland, after 2-3 months of school
149 attendance including 2-6 weeks of high community incidence [7]. These findings implied
150 that intra-class transmission was not a major contributor to SARS-CoV-2 infections among
151 the children. Only scarce information is available on the spread of SARS-CoV-2 infection in
152 schools since December 2020, when α (B.1.1.7) variant of SARS-CoV-2 started spreading in
153 Europe and other countries [8]. In Switzerland, at the beginning of March 2021
154 approximately 80% of SARS-CoV-2 infections were due to the α variant (see Appendix 1) [9].

155 A class is the basic unit within a school, in which children spend the majority of their
156 school time. However, the spread of infections in classes has been only indirectly examined
157 in contact-tracing studies or those analysing diagnosed SARS-CoV-2 infections in children
158 [2,4,10,11]. Transmission within schools in 2021/2022 and subsequent school years remains
159 relevant to study. Children below the age of 12 will be the last group to be offered
160 vaccination. Preventive measures in school will likely need to be adjusted as, on the one
161 hand, new variants spread, and on the other hand, more people, especially the vulnerable
162 populations, become vaccinated.

163 The *Ciao Corona* study uniquely examines SARS-CoV-2 seroprevalence on the class,
164 alongside school and district levels. The objectives of this study were to estimate the
165 proportion of seropositive children and adolescents within school levels, cantonal districts
166 and the region (canton of Zurich) by March-April 2021 and compare it to the previous
167 measurements in June/July 2020 and October/November 2020; assess the association of
168 seropositivity in March-April 2021 with reported symptoms and compare it to that from
169 2020; and assess the frequency and evolution of clustering of seropositive children within
170 classes in schools over time. In addition, we examined the reasons for participation and non-
171 participation in this cohort study, in order to address potential participation bias.

172

173

174 **Methods**

175

176 The protocol with detailed study design [12] and results of the previous measurements of
177 this longitudinal cohort study [7,13] are reported elsewhere. This study is part of the
178 nationally coordinated research network *Corona Immunitas* in Switzerland [14]. The study
179 follows a cohort of randomly selected schools and classes in the canton of Zurich,
180 Switzerland. The canton has a population of 1.5 million linguistically and ethnically diverse
181 inhabitants in both rural and urban settings, and comprises 18% of the Swiss population
182 [15].

183 During the COVID-19 pandemic in Switzerland, physical attendance of schools was
184 interrupted only for two months in March-May 2020. Children attended school continuously
185 in 2020/2021 school year, except during the regular school holidays (6 weeks in July-August,
186 2 weeks in October, 2 weeks in December-January). Preventive measures, such as distancing
187 in classrooms and teachers' rooms, reduced mixing of classes, reduction of large group
188 activities and school trips, were implemented with some variation between schools. All
189 schools required ill children to stay home unless with very mild symptoms. Adults at school
190 were required to wear masks from October 2020, secondary school children (upper school
191 level, approximate ages 12-16 years) from November 2020, and primary school children in
192 middle school level grades (9-13 years) from late January 2021.

193 School-specific contact tracing was implemented in school year 2020/2021, and
194 contact-tracing was triggered by child or school personnel testing positive for SARS-CoV-2.
195 Subsequent testing and quarantine recommendations depended on the specific situation.
196 As a general rule, the whole class was quarantined when two or more infected children
197 were detected in the class simultaneously. In case children were wearing masks, only close
198 contacts were quarantined [16]. School-wide screening with RT-PCR testing was
199 implemented in case of a suspected outbreak starting from February 2021, especially when
200 detecting SARS-CoV-2 variant of concern (VOC). Repetitive pooled RT-PCR screening of
201 children and personnel has been implemented voluntarily in a few schools in the canton and
202 city of Zurich from April 2021, but did not affect schools enrolled in this study. Daily
203 incidence of diagnosed SARS-CoV-2 cases between October 2020 and April 2021 in the
204 canton of Zurich and Switzerland, and the proportion of VOC among them, is shown in
205 Appendix 1.

206

207 **Population**

208 As described in the previous publications [7,12,13], in May-June 2020, we randomly
209 selected primary schools from all schools in the canton of Zurich, and matched the
210 geographically closest secondary school (often, in the same school building). Number of
211 schools invited in the 12 districts of the canton was proportional to population size. From
212 156 invited, 55 schools agreed to participate (Figure 1).

213 We randomly selected classes within participating schools, stratified by school level:
214 grades 1 to 2 in lower level (attended by 6 to 9-year-old-children), grades 4 to 5 in middle
215 level (attended by 9 to 13-year-old children) and grades 7 to 8 in upper school level
216 (attended by 12 to 16-year-old-children). Invited grades were selected to ensure that the
217 same cohort of children will remain in the classes until April 2021 (children in grades 3, 6
218 and 9 often change the class and school in the next year). For this reason, in mixed classes
219 with children from multiple grades, only children in grades 1 and 5 were eligible. Median
220 number of children in invited classes was 20 (range 6-27, interquartile range 18-22). We
221 aimed to enrol at least three classes and at least 40 children in each school level at the
222 invited schools.

223 Children and adolescents (hereafter referred to as children) of the selected classes
224 were invited at each testing round, regardless of their participation in the previous round.
225 Major exclusion criterion was suspected or confirmed SARS-CoV-2 infection in the given
226 child during the testing (precluding the attendance of the testing at school). Children
227 dropped out of the study if they moved to a non-participating school.

228

229 **Testing timeline**

230 Venous blood samples were collected from participating children at schools in three testing
231 rounds in 2020-2021. In the first round of testing (T1) on June 16 – July 9, 2020, 2601
232 children participated; in the second testing (T2) on October 26 – November 19, 2020, 2552
233 children participated; and in the third testing round (T3) in March 15 – April 16, 2021, 2487
234 children participated. Flowchart of study participants is shown in Figure 1. The count of
235 children for whom serology results were available at different combinations of the three
236 testing rounds is shown in Appendix 2.

237

238 **Serological test and outcomes**

239 Venous blood samples were analysed with ABCORA binding assay of the Institute of Medical
240 Virology (IMV) of the University of Zurich, which is based on Luminex technology. The test is
241 described in detail elsewhere [17]. The test analyses immunoglobulins G (IgG), M (IgM) and
242 A (IgA) against four SARS-CoV-2 targets (receptor binding domain (RBD), spike proteins S1
243 and S2, and the nucleocapsid protein (N), as well as S1 protein of human coronavirus HKU1
244 (HCoV-HKU1)), yielding 15 different parameters.

245 The primary serological outcome used in this study was the binary result of ABCORA
246 2.3 algorithm, which integrates the 15 parameters of the ABCORA test holistically in
247 comparison to the reference pre-pandemic and confirmed infection plasma using random
248 forests approach [17]. The approach allows higher accuracy than the ABCORA 2.0 algorithm
249 (based on individual thresholds for 12 serological parameters), which we used previously in
250 our study [7,13]. Accuracy parameters of ABCORA 2.3 were 98.2% sensitivity and 99.4%
251 specificity (the latter established against children pre-pandemic plasma values). Serological
252 results were unavailable if venous blood could not be obtained or previously enrolled
253 children declined venipuncture during testing.

254 Serological outcomes of the three testing rounds were combined to construct a
255 composite (cumulative) outcome – proportion of children who tested seropositive in at least
256 one of the testing rounds (ever-seropositive children). The composite outcome allowed to
257 estimate the proportion of all children who had SARS-CoV-2 antibodies (i.e., were infected)
258 any time by a specific testing, rather than cross-sectional seroprevalence at a single testing,
259 and was measured for T1, T2 and T3 separately (outcomes T_1 , T_{12} , and T_{123}). In addition, to
260 examine the clustering of new cases within tested classes, we defined the outcome of newly
261 seropositive children at T3 (seropositive at T3 but not in the previous testing rounds), similar
262 to the approach in the previous publication [7].

263 Exact definitions of positive and negative T_1 , T_{12} and T_{123} serological outcomes, based
264 on all possible combinations of test results from the three testing rounds, are provided in
265 Appendix 2. For the population-level estimates, serological outcomes were adjusted for test
266 accuracy parameters and study population structure, as described below.

267

268 **Questionnaires and other information sources**

269 We collected questionnaires from parents of participating and declining to participate
270 children, class and school level information from teachers and school principals, and official
271 statistics of SARS-CoV-2 incidence, as detected by RT-PCR testing.

272 Parents of participants filled an online questionnaire upon enrolment at either T1, T2
273 or T3, depending on the entry point to the study, and subsequent follow-up questionnaires
274 approximately every three months. Questionnaires covered information on
275 sociodemographic and health information of the child and household.

276 In March-April 2021, parents of non-participating children in the invited classes were
277 asked to complete an anonymous questionnaire on the reasons for non-participation (paper
278 or online). This questionnaire was distributed in 50 out of the 55 participating schools (5
279 schools did not agree). Detailed methods and results of this survey are described in
280 Appendix 4.

281 Teachers of the invited classes provided information to the tested classes on the
282 total number of children and children absent on the day of testing of T3 (March-April 2021)
283 due to diagnosed or suspected SARS-CoV-2 infection, quarantine, or other reasons.

284 After T3 testing, we performed semi-structured telephone interviews with school
285 principals of schools in which 2 or more classes with clusters of newly T3 seropositive
286 children (defined as 3 or more such children) were detected. Collected information included
287 the numbers of RT-PCR diagnosed and quarantined children and their main teachers in the
288 period between T2 and T3 in the affected classes, temporal sequence of diagnoses and
289 quarantine, and additional information on potential index and secondary cases. One
290 interviewer performed all interviews. Intra-class transmission was deemed possible if time
291 window between any reported RT-PCR diagnosed or quarantined children was within 2
292 weeks and unlikely if longer. We did not assess intra-class transmission if no confirmed or
293 suspected SARS-CoV-2 infection among class children was reported.

294 We obtained official statistics of RT-PCR confirmed SARS-CoV-2 infections in the
295 canton of Zurich [18] in order to calculate cumulative incidence of diagnosed SARS-CoV-2
296 cases by T1, T2 and T3 testing, in children aged 7-17 years. Cumulative incidence was
297 calculated from the first SARS-CoV-2 case in Zurich on February 2 to June 30, 2020 (median
298 time point of T1), to November 6, 2020 (T2), and to March 29, 2021 (T3).

299

300 **Statistical analysis**

301 Descriptive statistics included summaries of participation rates at the school, class and
302 individual level at each testing round. We report key characteristics of participants (age,
303 school level, sex) as well as their reported symptoms summarized as median (range) or
304 count (%). We did not include children without serology results or without filled

305 questionnaires on symptoms in the analysis of the relevant outcomes. There were no
306 missing data of age, sex, class and school identity.

307 We calculated the participation rate in a class as the ratio of tested children to all
308 invited children in the class. Proportion of absent children on the day of testing at T3 was
309 calculated to the total number of children in the classes. We calculated the participation
310 rate in the survey of non-participants to the total of non-participating children in the invited
311 classes who were present at school at the day of testing (and thus received the survey).

312 To estimate the proportion of ever-seropositive children by T1, T2 and T3 testing, we
313 employed Bayesian logistic regression [19], which adjusted for participants' grade at school,
314 sex and geographic district of the school, and contained random effects for school levels
315 (lower, middle and upper). The Bayesian approach permitted adjusting for the sensitivity
316 and specificity of the SARS-CoV-2 antibody test and the hierarchical structure of cohort
317 (individual, school and district levels). To compute estimates representative for the canton
318 of Zurich, we post-stratified our results according to the total population size at the school
319 level and geographic district. We compared the estimates at T3 for the lower, middle and
320 upper school levels for statistically significant differences.

321 Masks were introduced for upper school level children in October 2020. Masks were
322 also obligatory for middle school level children from late January 2021; however, the
323 majority of SARS-CoV-2 infections between T2 and T3 happened earlier, in November 2020
324 – January 2021. We employed difference-in-differences (DD) analysis [20] to examine
325 whether upper school level had different than expected seroprevalence at T3, in regard to
326 the previous trend at T1-T2 and in comparison to middle and lower school levels. Briefly,
327 assuming that the outcome (seroprevalence) would develop in parallel over time in the
328 compared groups (different school levels), DD allows identifying potential deviation from
329 the parallel trend in the intervention group. We modelled DD and examined the parallel
330 trends assumption with a linear probability model. The model included children who were
331 tested three times (n=1965). The binary outcome was ever-testing-positive by T1, T2 and T3.
332 The models controlled for the measurement time point (T1, T2 or T3) and class of the child
333 (thus, implicitly also for district and school grade). Robust cluster-corrected errors at the
334 child level were used. We applied the model to compare upper school level with lower,
335 middle, and combined lower and middle school levels.

336 We compared the cumulative incidence of RT-PCR confirmed SARS-CoV-2 cases with
337 the proportion of ever-seropositive children, in order to estimate the ratio of undiagnosed
338 to all SARS-CoV-2 cases.

339

340 **Analysis of potential clusters**

341 We further examined the potential transmission within classes with at least 3 newly
342 T3 seropositive children (potential cluster). The threshold of 3 or more children was chosen
343 as over a period of 5 months with high community transmission between T2 and T3 testing
344 rounds, two seropositive children in a class are very likely to be detected even if infections
345 are not associated. Thus, three or more cases indicate that potentially transmission could
346 have occurred within a class – even though the associations and temporal sequence cannot
347 be determined with serological testing. Potential clustering was examined in a subset of
348 classes with high participation, in which at least 5 children and at least 50% of the children
349 were successfully tested at the relevant time point. This way, classes with low participation
350 rate were excluded as potentially underpowered to detect potential clusters.

351 We compared the observed distribution of seropositive children within the classes to
352 the distribution expected if SARS-CoV-2 infections were distributed among children across
353 classes independently (randomly). The approach is described in detail in a previous
354 publication [7]. In the simulation study, we created 2500 hypothetical populations of
355 children, corresponding to the study population in terms of the observed overall
356 seroprevalence, number of classes and tested children within them. Only classes with high
357 participation rate were considered, and only newly T3 seropositive or T3 seronegative
358 children (thus, excluding those who tested positive in the previous rounds). We further ran
359 the same simulation study for classes within the lower, middle and upper school levels
360 separately. The outcome of interest in the simulation study was the expected distribution of
361 classes with 3 or more newly T3 seropositive children. By comparing the expected and the
362 observed distributions, we could estimate whether the observed number of classes with
363 clusters is compatible with the hypothesis of no association of SARS-CoV-2 infections within
364 classes. We further compared the results of the simulation to the information obtained in
365 school principal interviews, whether intra-class transmission was possible.

366 Data analysis was performed with R version 4.0.3 [21]. Bayesian hierarchical
367 modelling was performed using the R package rstan [22].

368

369 **Patient and public involvement**

370 As described in the previous publications [7], several school principals were consulted
371 during the development of the protocol to ensure feasibility of the planned study. Feedback
372 was collected from invited and enrolled children and parents, and school principals, in order
373 to adapt the communication strategy and channels, and improve the implementation of the
374 study. Online informational sessions encouraging open exchange and feedback were
375 organised at the onset of the study for invited and enrolled school principals, personnel and
376 parents of the children. Participants could further share feedback via dedicated phone
377 number (hotline) and email. Results of individual tests were communicated to the
378 participants, and individual school-level results disseminated to participating schools.
379 Findings were disseminated in lay language in the national and local press, to the national
380 and regional educational and public health departments and on the website of the study
381 (www.ciao-corona.ch).

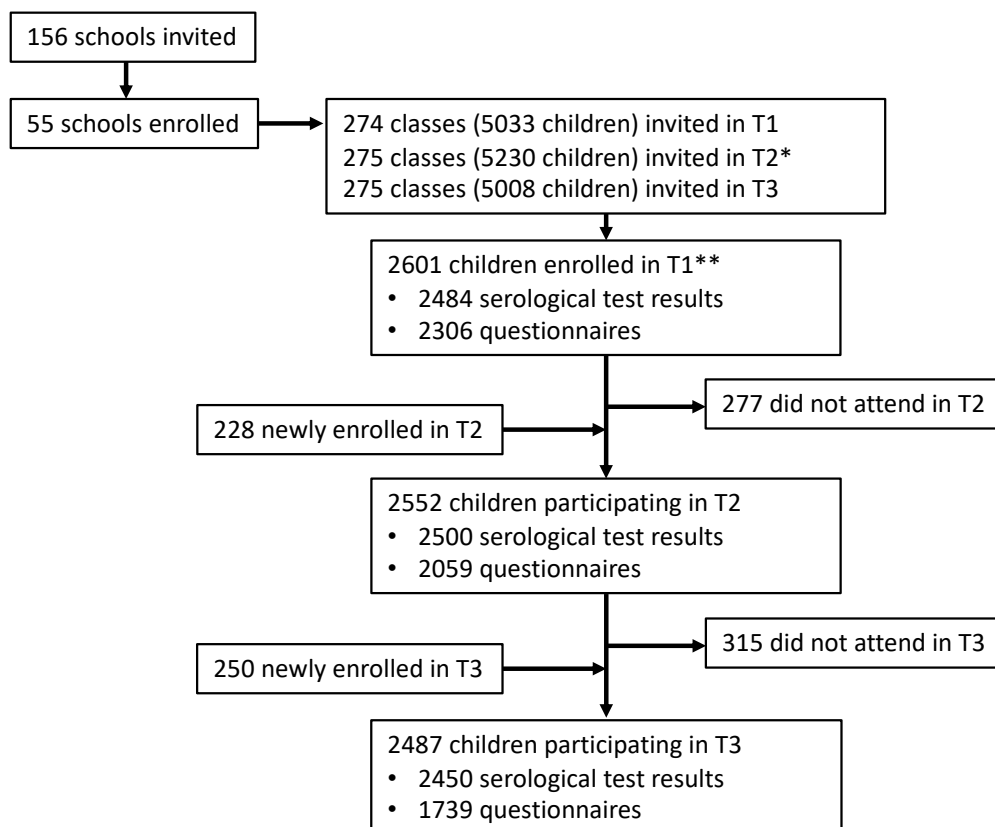
382 Results

383

384 In total, 2487 children from 275 classes in 55 schools in the canton of Zurich were tested in
385 March 15 – April 16, 2021 (T3). Of these, 2237 (90%) participated in the T2 testing in
386 October-November 2020, and 2176 (87%) in the T1 testing in June-July 2020. Retention rate
387 from T1 to T2 was 84% (2176/2601) from T1 to T3, and 88% (2237/2552) from T2 to T3.
388 Serological results were available for 2450/2487 (99%) of participating children at T3. The
389 flowchart of children enrolled and tested at each of the three testing rounds is shown in
390 Figure 1.

391

392 **Figure 1** Flowchart of study participants



393

394 T1 – testing in June-July 2020, T2 – testing in October-November 2020, T3 – testing in March-April
395 2021. *Newly enrolled* were not tested in the previous round; *did not attend* means they did not
396 attend subsequent round.

397 * Some classes were split or rearranged after the summer break.

398 ** 16 of these children were enrolled from late August to early September 2020 (10 serological
399 results, 16 questionnaires available).

400

401 Serological results were available at T3 for 768 children in lower school level (median age 8,
 402 age range 7-10 years), 845 children in middle school level (median age 12, age range 8-13
 403 years) and 837 children in upper school level (median age 14, age range 12-17 years). From
 404 them, 1279 children reported female, 1165 male, and 6 other gender. The median
 405 participation rate within invited classes was 50% (interquartile range 35% - 63%; median
 406 was 45% in lower, 54% in middle and 50% in upper school levels).

407

408 **Serological results**

409 Table 1 presents the distribution of serological results at T1-T3 of children who were tested
 410 in all three testing rounds (see Appendix 2 for distribution of results of children who were
 411 tested in only one or two rounds). Among children with serological results in all three
 412 testing rounds, from 44 testing positive at T1, 29 tested positive again at T2, and from these
 413 26 also in T3 (Table 1). Among children with serological results in the respective two rounds
 414 of testing, 33/52 (63%) of those seropositive at T1 were seropositive after 4 months at T2,
 415 32/46 (70%) after 9 months at T3, and 101/115 (88%) of those seropositive at T2 were
 416 seropositive after 5 months at T3 (Appendix 2).

417

418 **Table 1** Longitudinal serological results of children tested at all three testing rounds
 419 (n=1965)

T1 result		T2 result		T3 result	
Positive	44	Positive	29	Positive	26
				Negative	3
Negative	1921	Negative	15	Positive	5
				Negative	10
Positive	44	Positive	73	Positive	65
				Negative	8
Negative	1921	Negative	1848	Positive	209
				Negative	1639

420 T1 – June 16-July 9, 2020; T2 – October 26-November 19, 2020; T3 – March 15-April 16, 2021.

421 The total number of serological results at each of T1, T2, and T3 is 1965. The table depicts all
 422 possible combinations of test results at the three testing rounds. For example, from 44 children who
 423 tested positive at T1, 29 tested positive at T2 (from them – 26 tested positive and 3 negative at T3)
 424 and 15 tested negative at T2 (from them – 5 positive and 10 negative at T3).

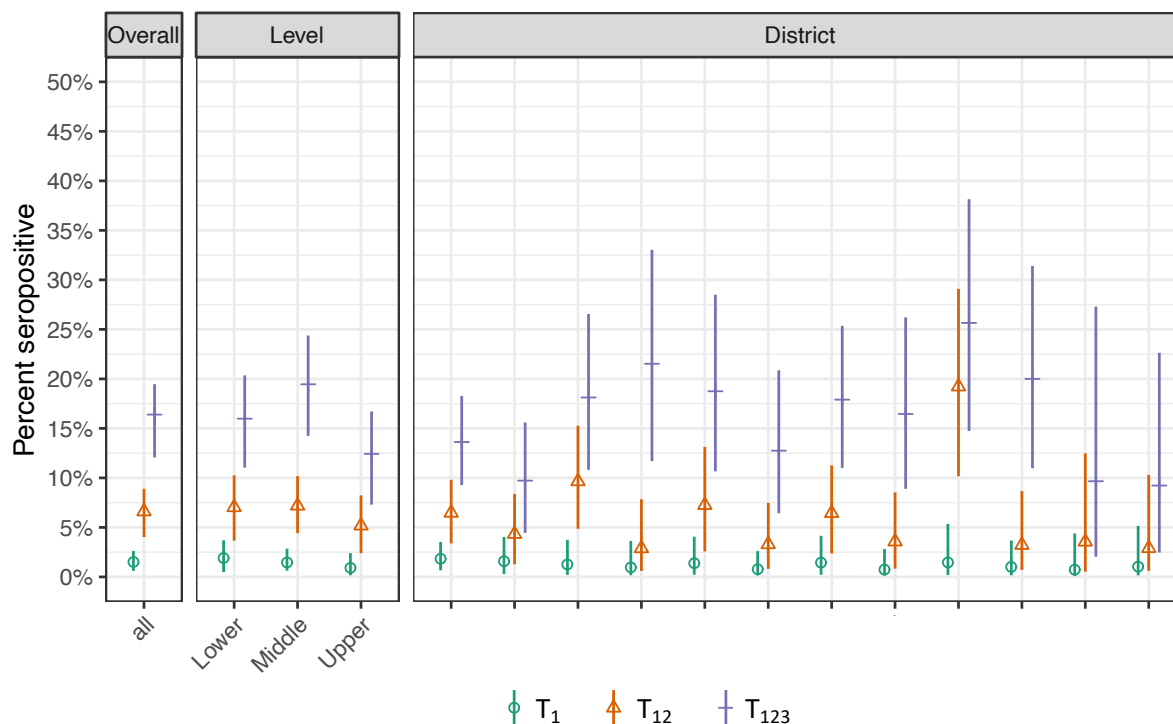
425

426 Figure 2 shows the proportion of ever seropositive children by T1, T2 and T3 in the total
 427 study population, by school levels and in districts of the canton of Zurich. The proportion
 428 was 1.5% (95% credible interval (CrI) 0.6% to 2.6%) at T1, 6.6% (95% CrI 4.0% to 8.9%) at T2
 429 and 16.4% (95% CrI 12.1% to 19.5%) at T3.

430 Proportion of ever seropositive children at T3 was 16.0% (11.0% to 20.4%) in lower,
 431 19.5% (14.2% to 24.4%) in middle, and 12.4% (7.3% to 16.7%) in upper school levels.
 432 Seroprevalence was not statistically significantly different between lower and middle levels
 433 ($p=0.26$) or lower and upper levels ($p=0.18$), but different between middle and upper school
 434 levels ($p=0.02$). The proportion of ever seropositive children ranged from 9.2% to 25.7% in
 435 the geographic districts of Zurich at T3. The proportion did not differ between boys and girls
 436 at any of the testing rounds, although the estimates were slightly higher for boys (T1: 1.8%
 437 vs 1.1%; T2: 7.1% vs 6.1%; T3: 17.2% vs 15.6%).

438

439 **Figure 2** Proportion of ever seropositive children in June-July 2020 (T₁), October-November
 440 2020 (T₁₂) and March-April 2021 (T₁₂₃)



441

442 T₁ – proportion of children testing seropositive by June-July 2020, T₁₂ – by October-November 2020, T₁₂₃ –
 443 by March-April 2021. Districts are ranked by their population size, from largest to smallest.

444 Overall and school level specific estimates (lower school level: grades 1-2, children aged 6-10 years,
 445 middle school level: grades 4-5, children aged 9-13 years, upper school level: grades 7-8, children aged
 446 12-16 years; grades and age range are reported for time point of T1), and district specific estimates for
 447 the canton of Zurich, Switzerland. Districts are ranked in the order of decreasing population size.

448

449 In the difference-in-differences analysis, parallel trends assumption between T1 and
450 T2 was valid based on visual inspection (Appendix 3A) and upon formal examination with
451 the linear probability models (Appendix 3B). In comparison to lower and middle school
452 levels, the proportion of ever-seropositive children in the upper school level was lower at T3
453 than expected (absolute difference of 3.2% (95% CI -7.0% to 0.6%, $p=0.098$), relative
454 difference of 19%). The proportion was lower by 5.1% (95% CI -9.4% to -0.7%, $p=0.022$,
455 relative difference of 27%) when comparing only to the middle school level, and lower by
456 0.8% (95% CI -5.4% to 3.8%, $p=0.718$, relative difference of 6%) when comparing only to the
457 lower school level.

458 The ratio of children testing positive for SARS-CoV-2 infection with RT-PCR test to
459 those testing ever-seropositive was 1 to 21.7 by June-July 2020 (T1), 1 to 5.8 by October-
460 November 2020 (T2), and 1 to 3.5 by March-April 2021 (T3).

461

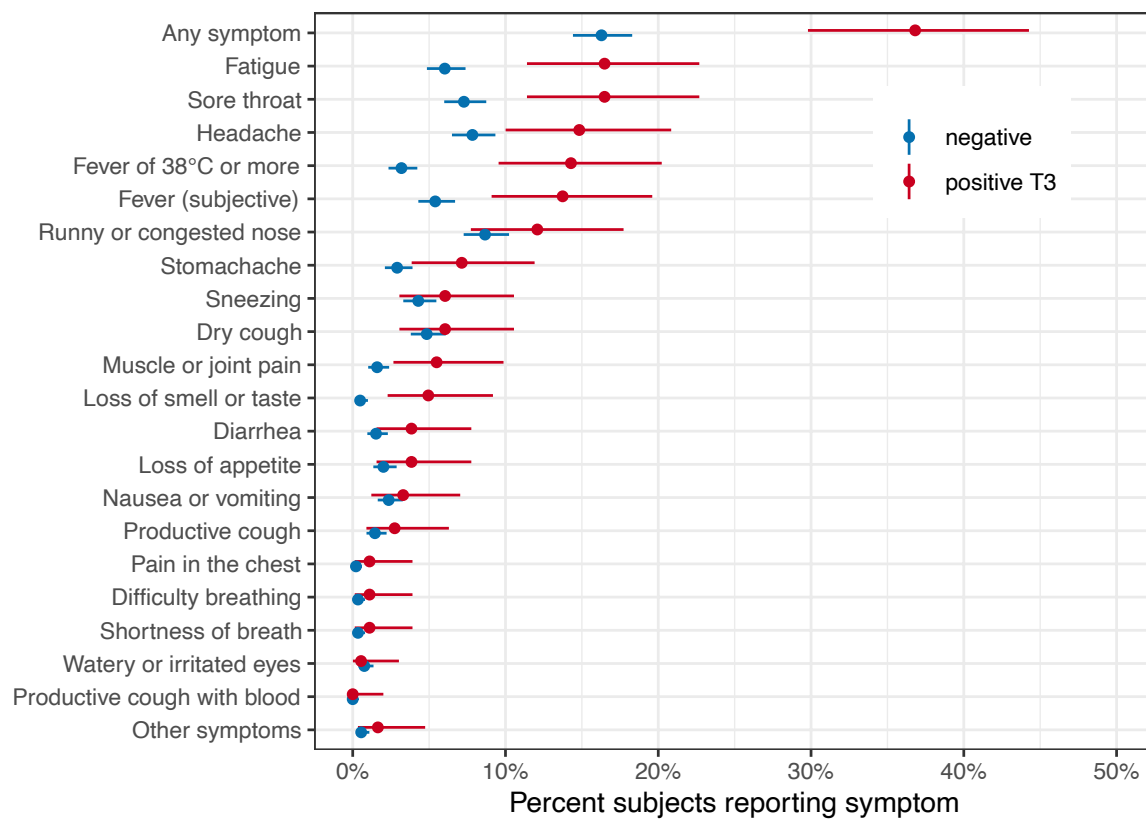
462 **Symptoms**

463 Symptoms between T2 and T3 were reported in 67/182 (37%) of newly seropositive and
464 235/1443 (16%) of seronegative children (Figure 3). The most commonly reported
465 symptoms among children who were newly seropositive were fatigue (30/182, 17%), sore
466 throat (30/182, 17%), headache (27/182, 15%), fever (26/182, 14% for fever $\geq 38^{\circ}\text{C}$ and
467 25/182, 14% for subjective fever) and runny or congested nose (22/182, 12%). Fatigue, sore
468 throat, headache, fever, stomach ache, muscle or joint pain, and loss of smell or taste were
469 reported more frequently by seropositive than seronegative children.

470

471

472 **Figure 3** Symptoms reported between October-November 2020 and March-April 2021 in
 473 children who were seronegative and newly seropositive at T3 (March-April 2021)



474

475

476 Similar proportion of seropositive children reported symptoms in the different
 477 school levels: 35% (22/63) in lower, 40% (32/81) in middle, and 37% (14/38) in upper school
 478 levels. However, among the seronegative, older children were less likely to report
 479 symptoms (21% (101/484) in lower, 16% (78/493) in middle, and 13% (60/466) in upper
 480 school levels).

481 Symptoms among the newly seropositive children were reported the most
 482 frequently in December 2020 and January 2021. None of the participating children reported
 483 hospitalisation between T2 and T3 testing.

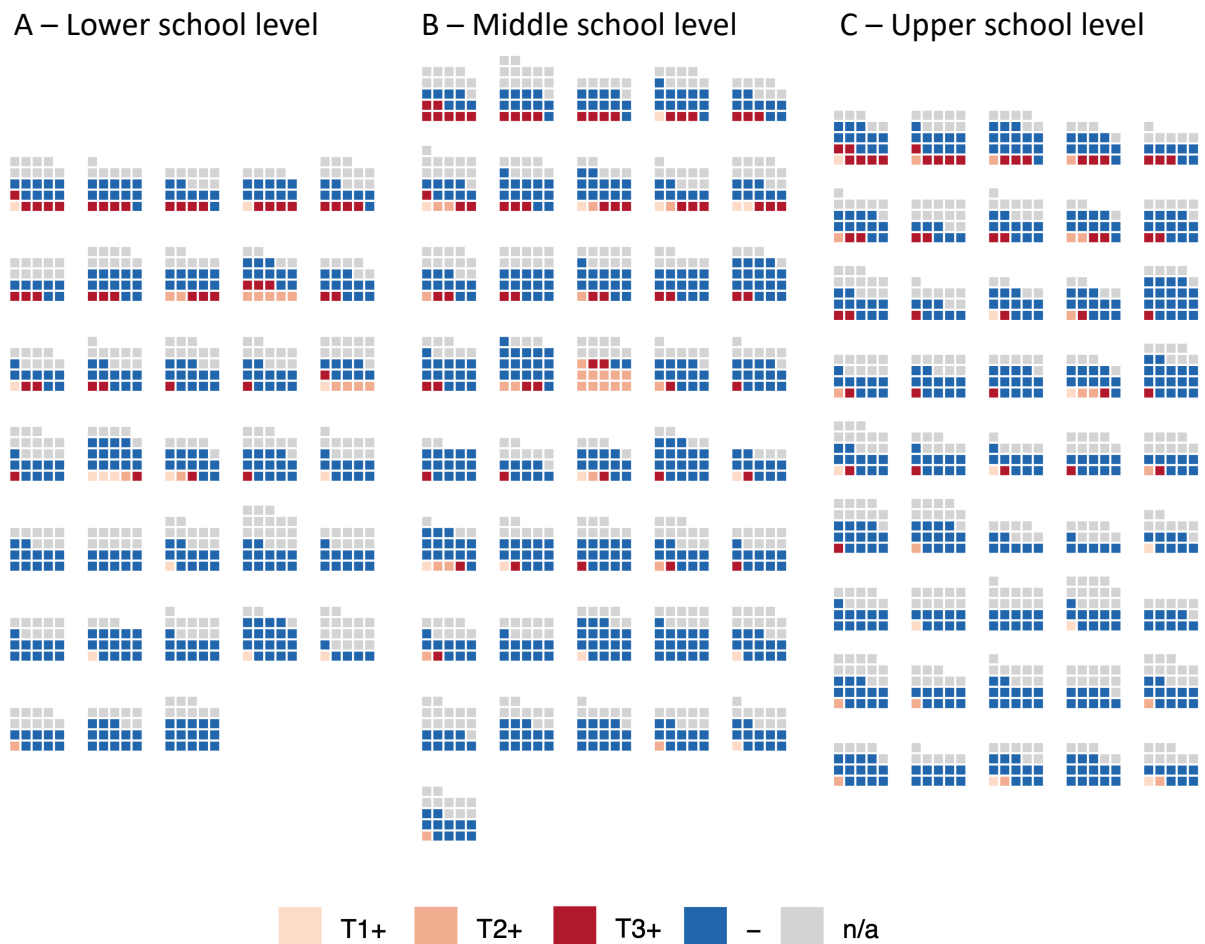
484

485 **Cluster analysis**

486 At least one child who was *newly* seropositive at T3 was detected in 53 of 55 schools and
 487 151 of 275 (55%) classes (76 of 119 (64%) classes with high participation rate). At least one
 488 child who was *ever* seropositive at T3 was detected in all 55 schools and 184 of 275 (67%)
 489 classes (95 of 119 (80%) classes with high participation rate). The number of children who
 490 were *newly* seropositive at T3 ranged from 0 to 13 in a school level (two adjacent grades),
 491 and from 0 to 7 in a class. The number of children who were *ever* seropositive at T3 ranged

492 from 0 to 15 within a school level, and from 0 to 13 within a class. Figure 4 shows the
 493 distribution of children who were seropositive by T1, T2 and T3 within the 119 classes with
 494 high participation rate at T3.

495
 496 **Figure 4** Distribution of children who were seropositive at T1, T2 and T3 in classes with high
 497 participation rate at T3



498
 499 Each block of squares represents a class. High participation rate means that at least 5 and at least
 500 50% children were tested in the class.
 501 T1+ (light pink) – children who tested seropositive at T1 (June-July 2020), T2+ (middle orange) –
 502 children who tested seropositive at T2 (October-November 2020) but not T1, T3+ (dark red) –
 503 children who tested seropositive at T3 (March-April 2021) but not at T1 or T2, - (dark blue) – children
 504 who tested seronegative at T3 and did not test seropositive previously, n/a (grey) – children without
 505 serological result at T3.

506
 507 In total, 39 of 275 (14%) classes had 3 or more children who were newly seropositive at T3:
 508 13 of 94 (14%) in lower school level, 19 of 83 (23%) in middle, and 7 of 98 (7%) in upper
 509 school levels. 24 of 119 (20%) classes with high participation had such clusters: 9 of 33 (27%)

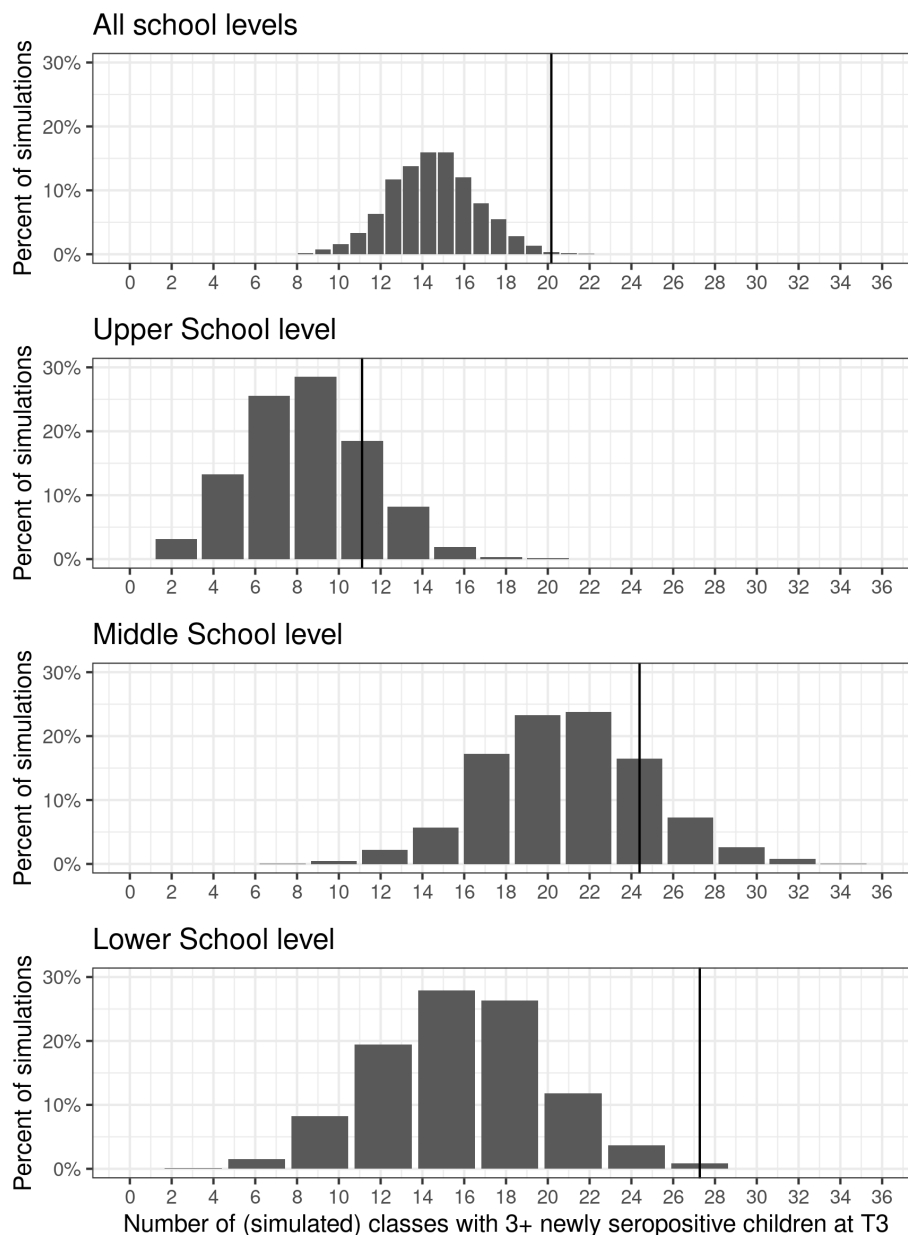
510 in lower school level, 10 of 41 (24%) in middle, and 5 of 45 (11%) in upper school level.
511 Classes with clusters were present in 24 schools (14 schools with one, 6 schools with two, 3
512 schools with 3, and one school with 4 classes with clusters).

513 From 25 classes with potential clusters, on which information was collected during
514 the interviews with school principals, based on the timing of RT-PCR diagnosis and
515 quarantine in children, teachers and household members of children, intra-class
516 transmission could have happened in 12 classes (63%), was improbable in 7 (37%), and
517 could not be assessed due to insufficient information in 6 classes (Appendix 4). A total of 6
518 teachers and 40 children were reported as testing RT-PCR positive between T2 and T3,
519 compared to 84 children testing newly seropositive at T3 in these classes. 5 teachers and 55
520 children were quarantined between T2 and T3, in addition to two whole classes and one
521 whole school. The majority of RT-PCR diagnosed infections and exposure resulting in
522 quarantine in children originated from children's households. Further details on interview
523 results are summarized in Appendix 4.

524 Assuming a uniform 10.9% rate of newly seropositive children among those not
525 previously tested positive (158/1422 within the classes with high participation), we would
526 expect to observe a median of 17 (95% CrI 12 to 22) classes with 3 or more seropositive
527 children out of the 119 classes with high participation. In comparison, we observed 24/119
528 (20%) such classes, making the hypothesis of independent distribution of all seropositive
529 children within classes unlikely ($p=0.0052$). The simulated distribution of expected number
530 of classes with clusters, standardized to 100 such classes, is depicted in Figure 5. In lower
531 school level, a median of 5/33 such classes with clusters was expected based on simulation
532 results compared to 9/33 observed ($p<0.001$), in middle school level – 9/41 expected
533 compared to 10/41 observed ($p=0.27$), and upper school level – 4/45 expected compared to
534 5/45 observed ($p=0.29$).

535
536

537 **Figure 5** Distribution of expected number of classes with clusters (3 or more newly
 538 seropositive children), standardised to 100 classes with high participation rate



539
 540 Vertical line signifies the number of clusters observed in this study, as standardised to 100 classes
 541 (all school levels – 20 (corresponding to 24/119), upper school level 11 (5/45), middle level 24
 542 (10/41), and lower school level 27 (9/33)).

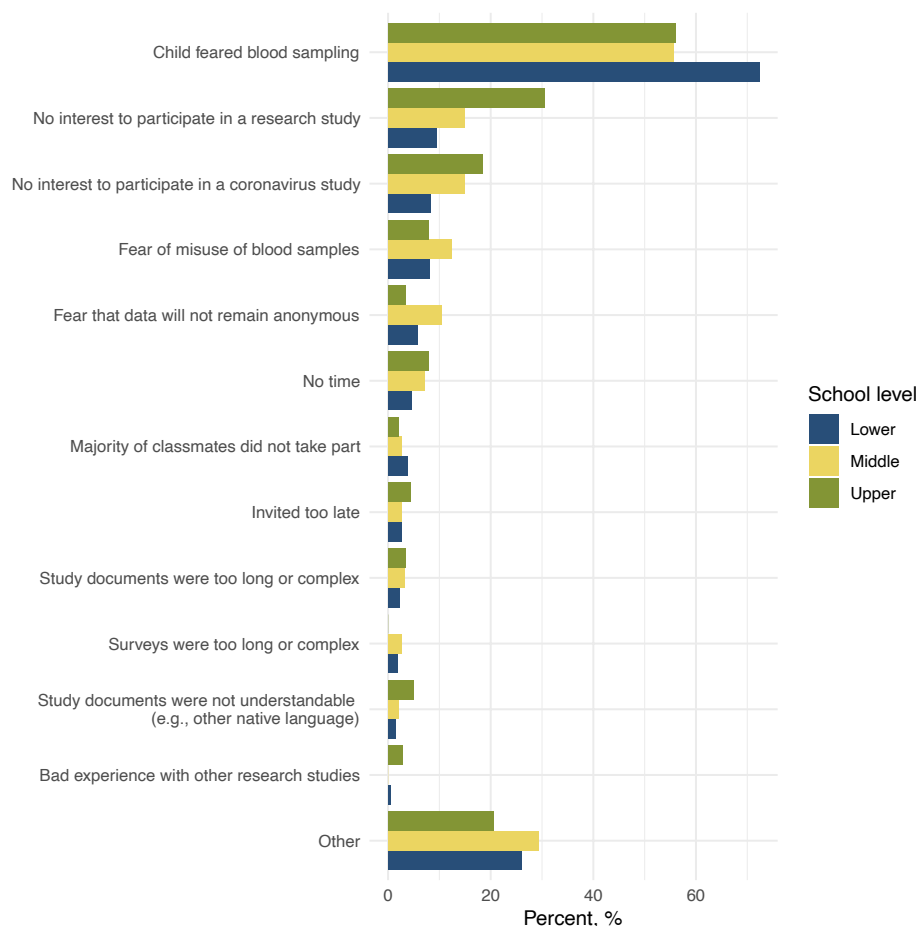
543
 544 **Reasons for participation and non-participation**

545 At the day of testing at T3, 10 of 5517 (0.2%) children in the invited classes were not at
 546 school due to diagnosed or suspected SARS-CoV-2 infection, 47 (0.9%) due to quarantine,
 547 and 164 (3.0%) for other reasons (including non-SARS-CoV-2 illness). Parents of 712 of 2659
 548 (27%) eligible but non-participating children provided responses to the survey on reasons
 549 for non-participation. From those who reported having received information or invitation to

550 the study, the most common reason for non-participation was the child’s fear of the blood
 551 sampling (358/564, 64% of children; 189/276, 69% of girls and 158/259, 61% of boys). Fear
 552 of blood sampling was reported more frequently for children in lower school levels
 553 (191/264, 72%) than in middle (85/153, 56%) and upper school levels (79/141, 56%) (Figure
 554 6). Based on free-text comments provided by parents, 78% (266/341) of children did not
 555 participate due to reasons that could not be modified by the study team (non-modifiable).
 556 Among the participants, 28% (374/1331) reported participating for personal reasons (such
 557 as for a personal serological test result), and 90% (1192/1331) due to societal reasons (such
 558 as contribution to research or containment of the pandemic). Detailed results of these
 559 surveys are provided in Appendix 5.

560

561 **Figure 6** Frequency of reported reasons of non-participation in lower, middle and upper
 562 school levels



563

564 Lower school level: grades 2-3, children aged 7-10 years, middle school level: grades 5-6, children aged 8-
 565 13 years, upper school level: grades 8-9, children aged 13-17 years.

566

567

568 Discussion

569 In this cohort study of more than 2500 children in 55 schools tested three times over a
570 period of 10 months, the proportion of children who tested seropositive for SARS-CoV-2
571 increased from 1.5% in June-July 2020 to 6.6% in October-November and to 16.4% in
572 March-April 2021. In contrast to the previous testing rounds, seroprevalence was lower in
573 upper school level (12.4%, ages 10-17) in comparison to middle (19.5%) and lower (16.0%)
574 school levels. Although potential clusters of at least 3 newly seropositive children were
575 detected in approximately 20% of classes, the majority of them could be explained by SARS-
576 CoV-2 infections not associated within a class, particularly in the middle and upper school
577 levels. In contrast to previous testing rounds in summer and autumn of 2020, newly
578 seropositive children reported a history of acute symptoms more frequently than
579 seronegative children, although 63% of seropositive children still did not report any
580 symptoms. 88% of seropositive children retained their antibodies for at least 5 months,
581 between October 2020 and March 2021.

582 The canton of Zurich experienced an early and stark second wave of SARS-CoV-2
583 pandemic in 2020. Daily incidence of RT-PCR cases peaked at 88 in 100'000 inhabitants on
584 October 28 [23], comparable to the peaks of 75 and 90 new cases in 100'000 inhabitants in
585 the US and UK, respectively, in early January 2021 [1]. In parallel to the general population,
586 the number of new cases was rising also in children and adolescents. Physical attendance of
587 schools was not interrupted but mitigation measures were implemented – such as
588 quarantining of symptomatic children, distancing, non-mixing of classes, a school-based
589 contact tracing system, and a gradual adoption of masks for adults and upper and middle
590 school level children. Our study suggests that a significantly higher proportion of children
591 were tested and diagnosed with RT-PCR in late 2020 and 2021 than in the first wave of the
592 pandemic in early 2020: the ratio of seropositive to RT-PCR detected cases in children
593 decreased from 21.7 by June-July 2020 to 3.5 by March-April 2021. This likely reflects the
594 revised indications for RT-PCR testing in children. Initially restrictive, the indications for
595 children over 12 years were changed in September 2020 to match those for adults, and
596 subsequently extended to children over 6 years from March 2021 [24].

597 The increase in the proportion of seropositive children by March-April 2021 was the
598 smallest (and potential clusters of newly seropositive children less frequent) in upper school
599 level. Age is in general associated with more severe symptoms and worse health outcomes
600 in adults. This higher susceptibility to infection [25,26] is likely related to both biological and

601 behavioural factors. In contrast to our findings, SARS-CoV-2 has been observed to spread
602 more among older children and adolescents [27], partly explained by a different patterns of
603 contacts [28,29]. In Switzerland, adolescents from grade 7 (approximately age 14) were
604 required to wear masks at schools since November 2020. Potentially, consistent masking
605 during the second wave of SARS-CoV-2 infections in November 2020 – January 2021, as well
606 as a different distancing behaviour of teenagers towards their parents compared to young
607 children (given that the majority of infections in children were linked to households), could
608 have contributed to less infections. The preventive effect of masking is supported by the
609 results of the difference-in-differences analysis. In comparison to the middle school level,
610 where masks were introduced three months later, the proportion of children ever testing
611 seropositive in the upper school levels was lower by 5.1% (relative reduction of 27%) than
612 could be expected if seroprevalence developed in the same trend as in the middle school
613 level between T2 and T3. To increase complexity of understanding these age-related
614 differences, no significant difference was found in the development of seroprevalence
615 between T2 and T3 between upper and lower school levels.

616 Our results from the three testing rounds consistently suggest that only a small part
617 of potential clusters of seropositive children within classes were likely associated with intra-
618 class transmission. Although it is very unlikely that all potential clusters could be explained
619 by chance association of infections, 17 of the affected 24 classes with such clusters (from
620 119 classes with high participation rate at T3) could be expected by chance, given the
621 overall seroprevalence observed in this study. Therefore, it is also unlikely that more than
622 half of the potential clusters are due to potential spread of the infection within the class or
623 through a common index case. In middle and upper school levels, the observed number of
624 classes with clusters was not significantly different from that expected due to chance
625 association – in contrast to lower school level, where masks for children were not mandated
626 at any time point. This finding was supported by interviews with school principals, in which
627 we found that at least 33% of the clusters were unlikely to be due to intraclass transmission
628 due to more than 2 weeks between confirmed or suspected infections within a class.

629 In contrast to previous measurements in summer [13] and autumn of 2020 [7],
630 symptoms were reported more frequently in seropositive than seronegative children. It is
631 possible that the retrospective recall of symptoms was influenced by the knowledge of the
632 symptoms, increased attention by participation in previous rounds, population incidence,
633 and personal diagnosis of SARS-CoV-2. The influence of VOC on the symptoms of SARS-CoV-

634 2 infection in children cannot be ruled out. However, the majority of symptom episodes
635 were reported in December 2020 – February 2021 and VOC became predominant in
636 Switzerland only from March 2021 (see Appendix 1) and thus is unlikely to have caused a
637 major proportion of infections in the newly seropositive children. The difference could also
638 be potentially explained as symptoms were assessed over different time periods (June-
639 October 2020 between T1 and T2, October-March 2021 between T2 and T3) at different
640 seasons.

641 In parallel to testing the participating children, we administered a survey to discover
642 the reasons for non-participation (Figure 6). Detailed reasons for non-participation are
643 rarely known in children cohort studies [30]. Although 50% participation rate in our study is
644 rather high for a study with venous blood sampling in children [31], it could still result in
645 selection bias. Indeed, the predominant reason for non-participation was fear of blood
646 sampling, followed by lack of interest to participate in a research study. Non-participation
647 rate was higher than attrition rate (50% vs 16%), meaning that once enrolled, few children
648 dropped out.

649 Most of the studies of SARS-CoV-2 spread in schools rely on contact tracing data
650 [3,4,11]. At the start of the 2020/2021 school year, such studies, also supported by a large
651 online survey in the US [32], pointed to the spread being low in schools with implemented
652 protective measures. The few available seroprevalence studies of school children also
653 showed concordant results [7,33,34]. Studies of RT-PCR screening in schools and general
654 population show that they tend to correlate [5,10,35].

655 Less evidence exists about how SARS-CoV-2 spread within schools might change as
656 VOC with higher infectiousness become more prevalent. The trends are difficult to interpret
657 as a significant proportion of people in high income countries are becoming vaccinated since
658 the first half of 2021. These two important determinants of SARS-CoV-2 infection rate
659 develop independently in different patterns, but also interact. Depending on the
660 transmissibility of the various VOC in the future and their selective transmission among
661 children, relative increase of SARS-CoV-2 infections among children may or may not occur, if
662 schools remain open while other age groups retain reduced contacts or become immunised.
663

664 **Strengths and limitations**

665 The *Ciao Corona* cohort study is a population-based cohort of children within randomly
666 selected schools and classes, with repeated measurements of SARS-CoV-2 serology and high

667 retention rate. Ascertainment of SARS-CoV-2 infections via serological testing means that
668 also the asymptomatic, previously not diagnosed children are detected. This is particularly
669 important to provide a complete picture of SARS-CoV-2 infections in children, as under-
670 detection of SARS-CoV-2 infections remains significant.

671 The study has limitations. First, relying on serological results means that the timing
672 of the infection cannot be known beyond a broad interval between the testing rounds. This
673 means that infection chains cannot be reconstructed as in prospective contact tracing
674 studies, and associations of infections within a class needed to be examined indirectly (e.g.,
675 by comparing to the number of clusters expected if all infections were independent) or
676 retrospectively (e.g., by information gathered from school principals). However, these
677 approaches are either probabilistic only, or rely on not always complete or detailed
678 information from school principals. Second, although we used a serological test with high
679 sensitivity and specificity parameters (the latter even specific to the children population),
680 and further adjusted for them in the Bayesian models, false positive and negative results
681 cannot be completely avoided on the individual level. For example, 10-15 children of 393
682 who tested positive at T3 round of testing could be expected to be false positive, and 5-10
683 of 2061 who tested negative – false negative. Particularly false positive results could impact
684 the analysis of clustering of positive children (by falsely increasing the number of observed
685 clusters), antibody retention rate (by falsely decreasing the retention), and the difference-
686 in-differences models (where individual children results were used as outcomes). Low
687 prevalence in the initial testing rounds meant that positive predictive value of the
688 serological test was not high (approximately 0.75 at T1 and 0.90 at T2), however, it reached
689 0.97 at T3. Retention was slightly lower between T1 and T2 than between T2 and T3
690 potentially as more false positives were expected among T1 participants. Third, although
691 participation rates were high for a study involving venous blood sampling in children,
692 selection bias cannot be ruled out. However, the majority of non-participating parents
693 reported that non-participation was driven by their child's decision and fear of venous blood
694 sampling – reasons not likely associated with particularly biased selection into the study.
695 Yet, participation bias within the non-participating parents in this survey is still possible.

696

697 **Conclusion**

698 Since the beginning of the pandemic in Switzerland in 2020, an increase of SARS-CoV-2
699 seroprevalence from 1.5% in June-July 2020 to 16.4% in March-April 2020 was accompanied

700 by an increase of potential clusters of seropositive children in classes. Despite schools
701 remaining open since May 2020, the majority of the detected potential clusters in classes
702 could be explained by unrelated, independent infections, likely stemming from household
703 or community transmission. The increase in seroprevalence and clustering was lower in
704 upper school level, where masks were introduced in November 2020, compared to lower
705 and middle school levels. Preventive measures including contact tracing system in schools
706 and improved detection of infections in children possibly contributed to mitigate the spread
707 of SARS-CoV-2 within schools.

708

709

710 **Author's Contributions**

711 SK and MAP initiated the project and preliminary design, with support of JF. SK, MAP, CB, TR
712 and AU developed the design and methodology. SK, AU, TR, PA recruited study participants,
713 collected and managed the data. SRH performed statistical analysis. AT and IA developed
714 the serology analysis plan, supervised, conducted and evaluated the serology tests. AU
715 wrote the first draft of the manuscript. All authors contributed to the design of the study
716 and interpretation of its results, and revised and approved the manuscript for intellectual
717 content. SK is the guarantor and accepts full responsibility for the work and the conduct of
718 the study, had access to the data, and controlled the decision to publish. The corresponding
719 author SK attests that all listed authors meet authorship criteria and that no others meeting
720 the criteria have been omitted.

721

722 **Acknowledgements**

723 We would like to acknowledge Miquel Serra-Burriel (Epidemiology, Biostatistics and
724 Prevention Institute, University of Zurich) for his valuable inputs on the implementation of
725 the difference-in-differences analysis.

726

727 **Statement of Competing Interests**

728 All authors have completed the ICMJE uniform disclosure form at
729 www.icmje.org/coi_disclosure.pdf and declare: no support from any organisation for the
730 submitted work; no financial relationships with any organisations that might have an
731 interest in the submitted work in the previous three years; no other relationships or
732 activities that could appear to have influenced the submitted work.

733

734 **Ethics approval**

735 The study was approved by the Ethics Committee of the Canton of Zurich, Switzerland
736 (2020-01336). All participants provided written informed consent before being enrolled in
737 the study.

738

739 **Data sharing statement**

740 Data is still being collected for the cohort study *Ciao Corona*. Deidentified participant data
741 might be available on reasonable request by email to the corresponding author at later
742 stages of the study.

743 **Funding**

744 This study is part of *Corona Immunitas* research network, coordinated by the Swiss School of
745 Public Health (SSPH+), and funded by fundraising of SSPH+ that includes funds of the Swiss
746 Federal Office of Public Health and private funders (ethical guidelines for funding stated by
747 SSPH+ will be respected), by funds of the Cantons of Switzerland (Vaud, Zurich and Basel)
748 and by institutional funds of the Universities. Additional funding, specific to this study is
749 available from the University of Zurich Foundation. The funder/sponsor did not have any
750 role in the design and conduct of the study; collection, management, analysis, and
751 interpretation of the data; preparation, review, or approval of the manuscript; and decision
752 to submit the manuscript for publication. All authors had full access to all data analysis
753 outputs (reports and tables) and take responsibility for their integrity and accuracy.

754

755 **Transparency declaration**

756 The lead authors affirm that the manuscript is an honest, accurate, and transparent account
757 of the study being reported, no important aspects of the study have been omitted, and any
758 discrepancies from the study as originally planned and registered have been explained.

759

760

761 **References**

- 762 1 Roser M, Ritchie H, Ortiz-Ospina E, *et al.* Coronavirus Pandemic (COVID-19). Publ.
763 online OurWorldInData.org. 2020.<https://ourworldindata.org/coronavirus> (accessed
764 1 Jul 2021).
- 765 2 Zimmerman KO, Akinboyo IC, Brookhart MA, *et al.* Incidence and Secondary
766 Transmission of SARS-CoV-2 Infections in Schools. *Pediatrics* 2021;[e2020048090](https://doi.org/10.1542/peds.2020-048090).
767 doi:10.1542/peds.2020-048090
- 768 3 Macartney K, Quinn HE, Pillsbury AJ, *et al.* Transmission of SARS-CoV-2 in Australian
769 educational settings: a prospective cohort study. *Lancet Child Adolesc Heal*
770 2020;[4](https://doi.org/10.1016/S2352-4642(20)30251-0):807–16. doi:10.1016/S2352-4642(20)30251-0
- 771 4 Ismail SA, Saliba V, Bernal JL, *et al.* SARS-CoV-2 infection and transmission in
772 educational settings: a prospective, cross-sectional analysis of infection clusters and
773 outbreaks in England. *Lancet Infect Dis* 2021;[21](https://doi.org/10.1016/S1473-3099(20)30882-3). doi:10.1016/S1473-3099(20)30882-3
- 774 5 Willeit P, Krause R, Lamprecht B, *et al.* Prevalence of RT-qPCR-detected SARS-CoV-2
775 infection at schools: First results from the Austrian School-SARS-CoV-2 prospective
776 cohort study. *Lancet Reg Heal - Eur* 2021;[5](https://doi.org/10.1016/j.lanepe.2021.100086):100086.
777 doi:10.1016/j.lanepe.2021.100086
- 778 6 Education: From disruption to recovery.
779 <https://en.unesco.org/covid19/educationresponse#durationschoolclosures> (accessed
780 16 Jun 2021).
- 781 7 Ulyte A, Radtke T, Abela IA, *et al.* Clustering and longitudinal change in SARS-CoV-2
782 seroprevalence in school children in the canton of Zurich, Switzerland: Prospective
783 cohort study of 55 schools. *BMJ* 2021;[372](https://doi.org/10.1136/bmj.n616). doi:10.1136/bmj.n616
- 784 8 CoVariants. <https://covariants.org/per-country> (accessed 29 Jun 2021).
- 785 9 Covid-19 Schweiz | Coronavirus | Dashboard: Virus variants.
786 <https://www.covid19.admin.ch/de/epidemiologic/virus-variants> (accessed 29 Jun
787 2021).
- 788 10 Southall E, Holmes A, Hill EM, *et al.* An analysis of school absences in England during
789 the COVID-19 pandemic. *BMC Med* 2021;[19](https://doi.org/10.1186/s12916-021-01990-x):137. doi:10.1186/s12916-021-01990-x
- 790 11 Heavey L, Casey G, Kelly C, *et al.* No evidence of secondary transmission of COVID-19
791 from children attending school in Ireland, 2020. *Eurosurveillance* 2020;[25](https://doi.org/10.2807/1560-7917.ES.2020.25.21.2000903):2000903.
792 doi:10.2807/1560-7917.ES.2020.25.21.2000903
- 793 12 Ulyte A, Radtke T, Abela IA, *et al.* Seroprevalence and immunity of SARS-CoV-2

- 794 infection in children and adolescents in schools in Switzerland: design for a
795 longitudinal, school-based prospective cohort study. *Int J Public Health*
796 2020;**65**:1549–57. doi:10.1007/s00038-020-01495-z
- 797 13 Ulyte A, Radtke T, Abela IA, *et al.* Variation in SARS-CoV-2 seroprevalence in school-
798 children across districts, schools and classes. *medRxiv* 2020;:2020.09.18.20191254.
799 doi:10.1101/2020.09.18.20191254
- 800 14 West EA, Anker D, Amati R, *et al.* Corona Immunitas: study protocol of a nationwide
801 program of SARS-CoV-2 seroprevalence and seroepidemiologic studies in Switzerland.
802 *Int J Public Health* 2020;**65**:1529–48. doi:10.1007/s00038-020-01494-0
- 803 15 Portraits of the cantons - Up-to-date key figures on the 26 cantons | Federal
804 Statistical Office. [https://www.bfs.admin.ch/bfs/en/home/statistics/regional-](https://www.bfs.admin.ch/bfs/en/home/statistics/regional-statistics/regional-portraits-key-figures/cantons.html)
805 [statistics/regional-portraits-key-figures/cantons.html](https://www.bfs.admin.ch/bfs/en/home/statistics/regional-statistics/regional-portraits-key-figures/cantons.html) (accessed 6 Jul 2021).
- 806 16 Informationen für die Volksschulen | Kanton Zürich [Contact tracing and quarantine
807 in schools]. [https://www.zh.ch/de/gesundheit/coronavirus/informationen-rund-um-](https://www.zh.ch/de/gesundheit/coronavirus/informationen-rund-um-schulen-kitas-heime/coronavirus-volksschule.html#45343363)
808 [schulen-kitas-heime/coronavirus-volksschule.html#45343363](https://www.zh.ch/de/gesundheit/coronavirus/informationen-rund-um-schulen-kitas-heime/coronavirus-volksschule.html#45343363) (accessed 14 Jul 2021).
- 809 17 Abela IA, Pasin C, Schwarzmüller M, *et al.* Multifactorial SARS-CoV-2 seroprofiling
810 dissects interdependencies with human coronaviruses and predicts neutralization
811 activity. *medRxiv* 2021;:2021.04.21.21255410. doi:10.1101/2021.04.21.21255410
- 812 18 Canton of Zurich. Numbers and Facts on COVID-19 [Kanton Zürich. Zahlen & Fakten zu
813 COVID-19]. [https://www.zh.ch/de/gesundheit/coronavirus/zahlen-fakten-covid-](https://www.zh.ch/de/gesundheit/coronavirus/zahlen-fakten-covid-19.html?keyword=covid19#/home)
814 [19.html?keyword=covid19#/home](https://www.zh.ch/de/gesundheit/coronavirus/zahlen-fakten-covid-19.html?keyword=covid19#/home) (accessed 13 Nov 2020).
- 815 19 Stringhini S, Wisniak A, Piumatti G, *et al.* Seroprevalence of anti-SARS-CoV-2 IgG
816 antibodies in Geneva, Switzerland (SEROCoV-POP): a population-based study. *Lancet*
817 2020;**396**. doi:10.1016/S0140-6736(20)31304-0
- 818 20 Dimick JB, Ryan AM. Methods for evaluating changes in health care policy: The
819 difference-in-differences approach. *JAMA - J Am Med Assoc* 2014;**312**:2401–2.
820 doi:10.1001/jama.2014.16153
- 821 21 R Core Team. R: A language and environment for statistical computing. R Foundation
822 for Statistical Computing, Vienna, Austria. 2020.<https://www.r-project.org/> (accessed
823 17 Dec 2020).
- 824 22 Stan Development Team. RStan: the R interface to Stan. R package version 2.21.2.
825 2020.
- 826 23 COVID-19 Switzerland | Coronavirus | Dashboard.

- 827 <https://www.covid19.admin.ch/en/overview> (accessed 30 Jun 2021).
- 828 24 Pädiatrie Schweiz. COVID-19: neue Test- und Schulausschlusskriterien - pädiatrie
829 schweiz [COVID-19: new testing and absence from school criteria].
830 <https://www.paediatricschweiz.ch/news/neue-test-und-schulausschlusskriterien/>
831 (accessed 14 Jul 2021).
- 832 25 Viner RM, Mytton OT, Bonell C, *et al.* Susceptibility to SARS-CoV-2 Infection Among
833 Children and Adolescents Compared With Adults. *JAMA Pediatr* Published Online
834 First: 25 September 2020. doi:10.1001/jamapediatrics.2020.4573
- 835 26 Davies NG, Klepac P, Liu Y, *et al.* Age-dependent effects in the transmission and
836 control of COVID-19 epidemics. *Nat Med* 2020;**26**:1205–11. doi:10.1038/s41591-020-
837 0962-9
- 838 27 Coronavirus (COVID-19) Infection Survey, UK - Office for National Statistics.
839 [https://www.ons.gov.uk/peoplepopulationandcommunity/healthandsocialcare/condi
840 tionsanddiseases/bulletins/coronaviruscovid19infectionsurveypilot/25june2021](https://www.ons.gov.uk/peoplepopulationandcommunity/healthandsocialcare/conditionsanddiseases/bulletins/coronaviruscovid19infectionsurveypilot/25june2021)
841 (accessed 2 Jul 2021).
- 842 28 Mossong J, Hens N, Jit M, *et al.* Social Contacts and Mixing Patterns Relevant to the
843 Spread of Infectious Diseases. *PLoS Med* 2008;**5**:e74.
844 doi:10.1371/journal.pmed.0050074
- 845 29 Zhang J, Litvinova M, Liang Y, *et al.* Changes in contact patterns shape the dynamics
846 of the COVID-19 outbreak in China. *Science (80-)* 2020;**368**:1481–6.
847 doi:10.1126/science.abb8001
- 848 30 Blom-Hoffman J, Leff SS, Franko DL, *et al.* Consent Procedures and Participation Rates
849 in School-Based Intervention and Prevention Research: Using a Multi-Component,
850 Partnership-Based Approach to Recruit Participants. *School Ment Health* 2009;**1**:3–15.
851 doi:10.1007/s12310-008-9000-7
- 852 31 GD F, B L, T B, *et al.* A School-Based Intervention for Diabetes Risk Reduction. *N Engl J*
853 *Med* 2010;**363**:443–53. doi:10.1056/nejmoa1001933
- 854 32 Lessler J, Grabowski MK, Grantz KH, *et al.* Household COVID-19 risk and in-person
855 schooling. *Science (80-)* 2021;**372**:1092–7. doi:10.1126/science.abh2939
- 856 33 Kirsten C, Unrath M, Lück C, *et al.* SARS-CoV-2 seroprevalence in students and
857 teachers: A longitudinal study from May to October 2020 in German secondary
858 schools. *BMJ Open* 2021;**11**:49876. doi:10.1136/bmjopen-2021-049876
- 859 34 Armann JP, Kirsten C, Galow L, *et al.* SARS-CoV-2 transmissions in students and

860 teachers: Seroprevalence follow-up study in a German secondary school in November
861 and December 2020. *BMJ Paediatr Open* 2021;**5**:1036. doi:10.1136/bmjpo-2021-
862 001036

863 35 COVID-19 Schools Infection Survey Round 4, England - Office for National Statistics.
864 [https://www.ons.gov.uk/peoplepopulationandcommunity/healthandsocialcare/condi](https://www.ons.gov.uk/peoplepopulationandcommunity/healthandsocialcare/conditionsanddiseases/bulletins/covid19schoolsinfectionsurveyround4england/march2021)
865 [tionsanddiseases/bulletins/covid19schoolsinfectionsurveyround4england/march2021](https://www.ons.gov.uk/peoplepopulationandcommunity/healthandsocialcare/conditionsanddiseases/bulletins/covid19schoolsinfectionsurveyround4england/march2021)
866 (accessed 2 Jul 2021).

867

868 **Appendix 1** Weekly incidence of SARS-CoV-2 detected cases and the proportion of the
869 variants of concern (VOC) among them in September 2020 – April 2021

870

871 **Appendix 2** Combinations of longitudinal serological results, at three testing time points,
872 and serological outcomes

873

874 **Appendix 3** Difference-in-differences model of the change in ever-seroprevalence between
875 T2 and T3 in upper school level

876

877 **Appendix 4** Detailed information of classes with potential clusters (3 or more newly
878 seropositive children at T3) in schools with at 2 or more classes with clusters

879

880 **Appendix 5** Detailed results of survey for participants and non-participants on reasons for
881 participation and non-participation