

Gut microbiota alterations in patients with persistent respiratory dysfunction three months after severe COVID-19

Beate Vestad^{1,2}, Thor Ueland^{1,3}, Tøri Vigeland Lerum^{3,4}, Tuva Børresdatter Dahl^{1,5}, Kristian Holm^{1,2,3}, Andreas Barratt-Due^{5,6}, Trine Kåsine^{3,5}, Anne Ma Dyrhol-Riise^{3,7}, Birgitte Stiksrud^{3,7}, Kristian Tonby^{3,7}, Hedda Hoel^{1,3,8}, Inge Christoffer Olsen⁹, Katerina Nezvalova Henriksen^{10,11}, Anders Tveita¹², Ravinea Manotheepan¹³, Mette Haugli¹⁴, Ragnhild Eiken¹⁵, Åse Berg¹⁶, Bente Halvorsen^{1,3}, Tove Lekva¹, Trine Ranheim¹, Annika Elisabeth Michelsen^{1,3}, Anders Benjamin Kildal¹⁷, Asgeir Johannessen^{3,18}, Lars Thoresen¹⁹, Hilde Skudal²⁰, Bård Reiakvam Kittang²¹, Roy Bjørkholt Olsen²², Carl Magnus Ystrøm²³, Nina Vibeche Skei²⁴, Raisa Hannula²⁵, Saad Aballi²⁶, Reidar Kvåle²⁷, Ole Henning Skjønsberg^{3,4}, Pål Aukrust^{1,3,29}, Johannes Roksdund Hov^{1,2,3,28} and Marius Trøseid^{1,3,29} on behalf of the *NOR-Solidarity study group*

¹Research Institute of Internal Medicine, Oslo University Hospital, 0424 Oslo, Norway

²Norwegian PSC Research Center, Department of Transplantation Medicine, Oslo University Hospital, Oslo, Norway

³Institute of Clinical Medicine, University of Oslo, 0315 Oslo, Norway

⁴Department of Pulmonary Medicine, Oslo University Hospital Ullevål, 0424 Oslo, Norway

⁵Division of Critical Care and Emergencies, Oslo University Hospital, 0424 Oslo, Norway

⁶Division of laboratory Medicine, Dept. of Immunology, Oslo University Hospital, 0424 Oslo, Norway

⁷Department of Infectious Diseases, Oslo University Hospital, 0424 Oslo, Norway

⁸Medical Department, Lovisenberg Diaconal Hospital, 0424 Oslo,

⁹Department of Research Support for Clinical Trials, Oslo University Hospital, 0424 Oslo, Norway

¹⁰Department of Haematology, Oslo University Hospital, 0424 Oslo, Norway

¹¹Hospital Pharmacies, South-Eastern Norway Enterprise, 0050 Oslo, Norway

¹²Medical Department, Bærum Hospital, Vestre Viken Hospital Trust, 3004 Drammen, Norway

¹³Division of Medicine, Diakonhjemmet Hospital, 0319 Oslo, Norway

¹⁴Department of Infectious Diseases, Sørlandet Hospital SSK, 4604 Kristiansand, Norway

¹⁵Innlandet Hospital Trust, 2629 Lillehammer, Norway

¹⁶Department of Infectious Diseases, Stavanger University Hospital, 4068 Stavanger, Norway

¹⁷Department of Anesthesiology and Intensive Care, University Hospital of North Norway, 9019 Tromsø, Norway

¹⁸Department of Infectious Diseases, Vestfold Hospital Trust, 3103 Tønsberg, Norway

¹⁹Department of Medicine, Ringerike Hospital, Vestre Viken Hospital Trust, 3511 Ringerike, Norway

²⁰Division of infectious Diseases, Telemark Hospital Trust, 3710 Skien, Norway

²¹Department of Medicine, Haralds plass Deaconess Hospital, 5892 Bergen, Norway

²²Department of Anaesthesiology, Sorlandet Hospital, Arendal, Norway

²³Department of Medicine, Innlandet Hospital Trust, Elverum, 2409 Elverum, Norway

²⁴Department of Anesthesia and Intensive Care, Levanger Hospital, Nord-Trøndelag Hospital Trust, 7601 Levanger, Norway

²⁵Department of Infectious Diseases, Trondheim University Hospital, 7006 Trondheim, Norway

²⁶Department of Infectious Diseases, Østfold Hospital Kalnes, 1714 Grålum, Norway

²⁷Department of Anesthesia and Intensive Care, Haukeland University Hospital, 5021 Bergen, Norway

²⁸Section of Gastroenterology, Department of Transplantation Medicine, Oslo University Hospital, Oslo, Norway

²⁹Section of Clinical Immunology and infectious Diseases, Oslo University Hospital, 0424 Oslo, Norway

Running Title: Gut microbiota and respiratory dysfunction in COVID-19

Word count: 3527

Key words: SARS CoV-2, microbiome, pulmonary function, NOR-Solidarity

Address correspondence: Marius Trøseid, marius.troseid@medisin.uio.no, +47 92440240

Abstract

Objective: Although COVID-19 is primarily a respiratory infection, mounting evidence suggests that the GI tract is involved in the disease, with gut barrier dysfunction and gut microbiota alterations being related to disease severity. Whether these alterations persist and could be related to long-term respiratory dysfunction is unknown.

Design: From the NOR-Solidarity trial (n=181), plasma was collected during hospital admission and after three months, and analyzed for markers of gut barrier dysfunction and inflammation. At the three-month follow-up, pulmonary function was assessed by measuring diffusing capacity of the lungs for carbon monoxide (DL_{CO}), and rectal swabs for gut microbiota analyses were collected (n=97) and analysed by sequencing of the 16S rRNA gene.

Results: Gut microbiota diversity was reduced in COVID-19 patients with persistent respiratory dysfunction, defined as DL_{CO} below lower limit of normal three months after hospitalization. These patients also had an altered global gut microbiota composition, with reduced abundance of *Erysipelotrichaceae UCG-003* and increased abundance of *Flavonifractor* and *Veillonella*, the latter potentially being linked to fibrosis. During hospitalization, increased plasma levels of lipopolysaccharide-binding protein (LBP) were strongly associated with respiratory failure, defined as pO_2/fiO_2 -(P/F-ratio) <26.6 kPa. LBP levels remained elevated during and after hospitalization, and was associated with low-grade inflammation and persistent respiratory dysfunction after three months.

Conclusion: Persistent respiratory dysfunction after COVID-19 is associated with reduced biodiversity and gut microbiota alterations, along with persistently elevated LBP levels. Our results point to a potential gut-lung axis that should be further investigated in relation to long-term pulmonary dysfunction and long COVID.

Summary box:

What is already known about this subject?

- Mounting evidence suggests that the gastrointestinal tract is involved in the pathogenesis of COVID-19, with the putative SARS-CoV-2 receptor ACE 2 ubiquitously expressed in the gut.
- In severe COVID-19, the gut-blood barrier is compromised, and leakage of microbial products, such as lipopolysaccharides (LPS), could affect the host's response to COVID-19 infection.
- COVID-19 patients exhibit an altered gut microbiota composition, which has been related to disease severity. However, it is currently not known whether dysbiosis or gut barrier dysfunction persist long-term after hospitalization, or whether microbiota-related mechanisms could be related to persistent pulmonary dysfunction.

What are the new findings?

- COVID-19 patients with persistent respiratory dysfunction after three months had a lower microbial diversity and an altered gut microbiota composition at the same time point.
- The microbiota alterations included reduced abundance of *Erysipelotrichaceae UCG-003* and increased abundance of *Veillonella* and *Flavonifractor*.
- During hospitalization, increased plasma levels of LBP were strongly associated with respiratory failure.
- LBP levels remained elevated during and after hospitalization, and associated significantly with persistent respiratory dysfunction at three-month follow-up.

How might it impact on clinical practice in the foreseeable future?

Our findings point to a potential gut-lung axis in relation not only to respiratory failure during hospitalization, but also to long-term COVID-19 morbidity. Further studies on gut microbiota composition and gut barrier dysfunction as potential treatment targets and/or disease severity biomarkers in relation to long-term pulmonary dysfunction and long COVID are warranted.

5 Introduction

6 Although COVID-19 is primarily a viral respiratory disease, aberrant immune responses to the
7 causative virus, SARS-CoV-2, resulting in systemic inflammation and multi-organ involvement are
8 central features in severe and critical disease. In addition, mounting evidence suggests that the
9 gastrointestinal (GI) tract is involved in the pathogenesis of COVID-19(1, 2). This includes the ability
10 of SARS-CoV-2 to infect and replicate within human small intestine enterocytes, with viral RNA being
11 detectable in fecal samples long time after symptom relief(3, 4).

12 The GI tract is the largest immunological organ in the body, and its resident microbiota is known to
13 modulate regional as well as systemic host immune responses. It has been hypothesized that the gut
14 microbiota could be a mediator of host inflammatory immune responses during COVID-19 and
15 thereby contribute to the pronounced systemic inflammation seen in patients requiring
16 hospitalization(5, 6). In fact, angiotensin-converting enzyme (ACE) 2, the putative SARS-CoV-2
17 receptor, is ubiquitously expressed in several organs, including the gut, where ACE2 expression in
18 enterocytes may serve as a site for enteric SARS-CoV-2 infection(7).

19 Recent studies suggest that severe SARS-CoV-2 infection could compromise the integrity of the gut-
20 blood barrier, leading to enhanced leakage of microbial products such as lipopolysaccharides (LPS),
21 possibly affecting the host's response to COVID-19 through activation of the innate immune
22 system(3, 8). In a small observational study of hospitalized COVID-19 patients, we recently reported
23 that elevated plasma levels of LPS-binding protein (LBP) were associated with elevated cardiac
24 markers(7). We also found elevated levels of the CCR9-ligand CCL25 in these patients, which is
25 involved in gut homing of T cells(9). However, knowledge on the relationship between markers of gut
26 barrier dysfunction and the degree of respiratory failure, and in particular persistently impaired
27 pulmonary dysfunction following COVID-19 hospitalization, is scarce.

28 COVID-19 patients exhibit an altered gut microbiota composition(3, 4), and gut microbiome
29 alterations were recently found to be related to disease severity(10). Although these alterations

30 persisted when investigated at median six days after a negative SARS-CoV-2 PCR test, it is currently
31 not known whether gut microbiota alterations or gut barrier dysfunction persist long-term after
32 hospitalization. Moreover, whether microbiota-related mechanisms could be involved in the
33 persistent inflammation and pulmonary dysfunction observed in some patients at follow-up after
34 hospitalization for COVID-19 is unknown.

35 The NOR-Solidarity trial is an independent add-on study to the WHO Solidarity trial(11), recently
36 reporting no effects of hydroxychloroquine (HCQ) or remdesivir compared to standard of care (SoC)
37 on clinical outcome, viral clearance or systemic inflammation in hospitalized COVID-19 patients(12).
38 In the present sub-study, we investigated whether gut microbiota collected three months after
39 hospital admission, as well markers of gut barrier dysfunction measured during and after
40 hospitalization, were related to persistent pulmonary dysfunction after COVID-19.

41

42 **Methods**

43 *Study design and participants*

44 NOR-Solidarity is a multicentre, open label, adaptive randomised clinical trial evaluating the effect of
45 antiviral drugs on hospitalized COVID-19 patients admitted to 23 Norwegian hospitals(12). In
46 addition, NOR-Solidarity included collections of blood biobank and outpatient visits at a three-month
47 follow-up after hospital admission. The study was approved by the Committee for Medical Research
48 Ethics Region South East Norway (118684) and by the Norwegian Medicines Agency (20/04950-23)
49 and registered in ClinicalTrials.gov (NCT04321616). Participants were included from March 28th until
50 October 5th 2020, and all participants >18 years admitted to the hospital with PCR-confirmed SARS-2-
51 CoV-2 infection were eligible for inclusion. Exclusion criteria are described in the original study
52 protocol and included severe comorbidity (life expectancy < 3 months), high levels of liver
53 transaminases (AST/ALT > 5 times upper limit of normal), corrected QT interval time as assessed by
54 ECG more than 470 ms, pregnancy, breast feeding, acute comorbidity occurrence in a 7-day period
55 before inclusion, known intolerance to study drugs, concomitant medications interfering with the
56 study drugs or participation in a confounding trial(12). All participants gave informed consent prior to
57 inclusion, either by themselves or a legally authorised representative.

58 *Intervention and outcomes*

59 In the NOR-Solidarity study (n=181), participants were randomized and allocated to one of three
60 treatment arms, 1) local SoC; 2) SoC plus 800 mg of oral HCQ twice daily on day 1, then 400 mg twice
61 daily up to 9 days; or 3) SoC plus 200 mg of intravenous remdesivir on day 1, then 100 mg daily up to
62 9 days. All study treatments were stopped at hospital discharge. Since the interventions had no
63 effect on clinical outcome, viral clearance or systemic inflammation(12), data from the different
64 intervention arms were in this sub-study pooled for analyses to examine whether gut microbiota
65 composition after three months and markers of gut barrier dysfunction during hospitalization and
66 after three months had any effect on:(i) acute respiratory failure defined as pO_2/fiO_2 -(P/F-ratio)
67 <26.6 kPa (<200 mmHg) during hospitalization, (ii) persistent respiratory dysfunction defined as

68 diffusing capacity of the lungs for carbon monoxide (DL_{CO}) below the lower limit of normal (LLN) at
69 the three-month follow-up. To ensure lack of influence of different treatment, data were also
70 adjusted for treatment group.

71 *Circulating markers of gut barrier dysfunction*

72 Peripheral blood samples were drawn at admission, day three and day eight and then weekly until
73 hospital discharge, as well as at outpatient follow-up at three months. Age- and sex-matched
74 controls (Regional Committees for Medical and Health Research 2014/2078) were used as reference
75 material. Plasma levels of LBP, intestinal fatty acid binding protein (IFABP), CCL25 and regenerating
76 islet-derived protein 3 α (REG-3 α) were measured in duplicate by enzyme immunoassays (EIA) using
77 commercially available antibodies (R&D Systems, Minneapolis, MN) in a 384 format using a
78 combination of a SELMA (Jena, Germany) pipetting robot and a BioTek (Winooski, VT)
79 dispenser/washer. Absorption was read at 450 nm with wavelength correction set to 540 nm using
80 an EIA plate reader (Bio-Rad, Hercules, CA). Intra- and inter-assay coefficients of variation were
81 <10%.

82 *Three-month follow-up*

83 Three months after hospital admission, 149 participants attended a follow-up visit that included
84 blood sampling for routine clinical biochemistry and biobanking(12). Rectal swabs were also collected
85 from a sub-group of participants (n=97). Lung function tests (n=108), consisting of spirometry and
86 diffusion capacity of the lungs for carbon monoxide (DL_{CO}), were performed at each participating
87 center, and performed according to the European Respiratory Society's and the American Thoracic
88 Society's guidelines(13, 14), thoroughly described previously(15). Studies have shown that DL_{CO} is the
89 pulmonary measure most frequently affected after hospitalization for COVID-19(15, 16), and for the
90 purpose of this report, we chose DL_{CO} as a measure of pulmonary function. DL_{CO} in per cent of
91 predicted and the lower limit of normal (LLN) were calculated according to the Global Lung Function

92 Initiative Network (GLI)(17), as previously described(15). Of the 108 participants that underwent lung
93 function tests, 83 participants also had rectal swabs available.

94 *Gut microbiota analyses*

95 Rectal swabs were stored on a stabilizing transportation medium (soluble Amies, Thermo Scientific™)
96 and frozen at -80C until analysed. Fecal DNA was extracted using the QIAamp® PowerFecal®Pro DNA
97 Kit (Qiagen, Germany), with slight modifications. Briefly, 700 µL of fecal material was pelleted and
98 homogenized in 800 µL of kit solution CD1 using a bead-beater (2x60s at 5.5 ms, room temperature),
99 and further processed according to the manufacturer's protocol. Libraries for 16S rRNA amplicon
100 sequencing were generated as previously described(18). Briefly, the hypervariable regions V3 and V4
101 of the 16S rRNA gene were amplified using dual-indexed universal primers 319F (forward) and 806R
102 (reverse) and Phusion High-Fidelity PCR Master mix with HF buffer (Thermo Fisher Scientific, USA).
103 Cleaning and normalization of PCR products were performed using the SequalPrep Normalization
104 Plate Kit (Thermo Fisher Scientific, USA). Quality control and quantification of pooled libraries were
105 performed using Agilent Bioanalyzer (Agilent Technologies, USA) and Kapa Library Quantification Kit
106 (Kapa Biosystems, London, UK). Sequencing was performed at the Norwegian Sequencing Centre
107 (Oslo, Norway), applying the Illumina MiSeq platform and v3 kit (Illumina, San Diego, CA, USA),
108 allowing for 300bp paired-end reads.

109 *Sequence processing and bioinformatics*

110 Paired-end reads containing Illumina Universal Adapters or PhiX were discarded using bbdduk version
111 38.90 (BBTools, <https://jgi.doe.gov/data-and-tools/bbtools/>) (parameters adaptor filter: k=23 hdist=1
112 tbo cf=TRUE ftm=5. parameters phix filter: k=31 hdist=1) and the remaining reads were
113 demultiplexed using cutadapt version 3.3(19) (parameters: -e 0.1 --no-indels --overlap 12 --discard-
114 untrimmed --action none). Trimming of indexes, heterogeneity spacers and primers was also done
115 with cutadapt (parameters: -e 0.1 --overlap 20 --discard-untrimmed -m 250) and the paired-end
116 reads were subsequently quality trimmed and merged using bbmerge version 38.90(20) (parameters:

117 qtrim=r trimq=15 maxlength=440 mininsert=390). The merged contigs were trimmed to 400bp and
118 denoised to ASVs (Amplicon Sequence Variants) with deblur(21) in QIIME2 version 2021.2(22).
119 Taxonomic classification of ASVs was done based on RESCRIPt(23) in QIIME2 using a naïve Bayes
120 classifier trained on the V3-V4 region of a preclustered version (99% sequence similarity) of the Silva
121 database version 138(24). Filtering of contaminants was done with the R package microDecon(25)
122 based on a negative extraction control sample, and ASVs from mitochondria, chloroplast or lacking
123 taxonomic annotation on order level were also removed. A de-novo phylogenetic tree was built in
124 QIIME2 based on the remaining ASVs. To reduce the effect of uneven sequencing depths, samples
125 were rarefied (subsamped without replacement) to an even level of 7123 counts per sample and all
126 diversity analyses were performed on this rarefied dataset. Alpha diversity metrics (Observed ASVs
127 and Faith's phylogenetic diversity, PD) and beta diversity metrics (Bray-Curtis dissimilarity) were
128 calculated in QIIME2. Beta diversity comparisons were done with a permutational multivariate
129 analysis of variance test (Permanova). Differential abundance testing with LEfSe(26) was done on the
130 rarefied dataset, while for differential abundance testing with ALDEx2(27), a prevalence-filtered (25%
131 most prevalent) version of the non-rarefied dataset was used.

132 *Statistical analyses*

133 Baseline characteristics were described by median (25th and 75th percentile (IQR)) for continuous
134 variables and percentages for categorical variables. Predefined outcomes (acute respiratory failure
135 defined as P/F-ratio <26.6 kPa during hospitalization and persistent respiratory dysfunction defined
136 as $DL_{CO} < LLN$ after 3 months follow-up) were used as dichotomous variables. Analysis of clinical
137 characteristics at hospital admission (Fig. 4) according to acute respiratory failure was analyzed by
138 receiver operating characteristic (ROC) analysis and precision-recall curves were assessed, as the
139 outcome groups were unbalanced. IFABP, CCL25 and LBP were non-normally distributed and
140 transformed using log₁₀ for comparisons between groups with the linear mixed model analysis, with
141 subject as random effect and time and respiratory failure as fixed effects (also as interaction).
142 Treatment was included as a covariate. Multivariate analysis of LBP in relation to respiratory failure

143 was performed by binary logistic regression, adjusting for the covariates age, gender, treatment and
144 known comorbidities in the base model. Correlation analyses were performed with Spearman's rho
145 (ρ) due to skewed distribution of data. P-values are two-sided and considered significant when <0.05 .
146 Group comparison of LBP levels in relation to persistent respiratory dysfunction was performed using
147 parametric t-test of log₁₀-transformed data. SPSS release 26.0.0.1 and 27.0.0.0 were used for
148 statistical analysis.

149 Results

150 *Baseline characteristics*

151 NOR-Solidarity trial design and main results have recently been published(12). A total of 181
152 randomized patients were included in the present study and 149 completed the three months
153 follow-up, of which 108 performed pulmonary function testing and 97 had collected rectal swab for
154 gut microbiota analyses (Fig. 1). Baseline characteristics for the main study group and for the
155 microbiota sub-group are given in Table 1. In the main study group, participants were on average 59
156 years, mostly male (66%), and the median body mass index (BMI) was 27.4 kg/m² (27% obese, BMI >
157 30 kg/m²). Use of antibiotics during hospitalization was reported in 48% of the participants, and 68%
158 reported any known comorbidities, with hypertension (31%), obesity (27%) and diabetes mellitus
159 (17%) as the most common. Only six per cent reported presence of chronic pulmonary disease.

Table 1. Baseline characteristics

	Main study group (n=181)	Microbiota sub-group (n=97)
Age, years	59 (50.0-71.0)	57 (48.0-65.0)
Male gender (%)	119 (66)	60 (62)
Body Mass Index, kg/m ²	27.4 (24.7-30.9)	27.7 (25.0-31.6)
Antibiotics use (%)	87 (48)	41 (42)
Treatment group		
Standard of Care (SoC) (%)	87 (48)	47 (49)
SoC + Hydroxychloroquine (%)	52 (29)	33 (34)
SoC + Remdesivir (%)	42 (23)	17 (18)
Comorbidities		
Any known comorbidities (%)	122 (68)	66 (68)
Chronic pulmonary disease (%)	10 (6)	5 (5)

Hypertension (%)	55 (31)	28 (29)
Chronic cardiac disease (%)	28 (16)	12 (12)
Diabetes mellitus (%)	31 (17)	19 (20)
Obesity, BMI > 30 kg/m ² (%)	44 (27)	28 (30)
P/F-ratio at admission, kPa	42.1 (32.0-48.1)	42.4 (33.4-49.6)
C-reactive protein, mg/L	70.0 (36.3-70.0)	66.0 (33.5-122.5)
White blood cell count, x 10 ⁹ /L	6.2 (4.7-8.6)	5.8 (4.3-7.6)
Neutrophil count, x10 ⁹ /L	4.3 (3.0-6.6)	3.7 (2.4-6.2)
Ferritin, µg/L	626 (325-1209)	608 (298-1017)
D-dimer, mg/L	0.7 (0.5-1.2)	0.7 (0.4-1.1)
Virus load (log ₁₀ /1000)	1.9 (0.7-3.1)	1.7 (0.0-2.9)
Lipopolysaccharide-binding protein (µg/mL)	16.3 (8.5-26.1)	17.1 (7.3-26.3)

160

161 Results are shown as median values (25th-75th percentile) unless otherwise specified.

162

163 *Respiratory dysfunction after three months is associated with altered gut microbiota*

164 *composition and reduced bacterial diversity in previously hospitalized COVID-19 patients*

165 At the three-month follow-up, 25 out of the 83 (30%) previously hospitalized COVID-19 patients with

166 rectal swabs and DL_{CO} measurements available, had respiratory dysfunction defined as DL_{CO}<LLN.

167 Notably, these patients had an altered global gut microbiota composition assessed by beta diversity

168 (Bray Curtis (Fig. 2A)). Importantly, patients who received antibiotics during hospitalization had

169 overlapping global microbiota composition with those not receiving antibiotics (Fig. 2B). Moreover,

170 there was no statistical interaction between antibiotics use during hospitalization and the association

171 between global microbiota composition and respiratory dysfunction at the three-month follow up.

172 Patients with respiratory dysfunction three months after hospital admission also had reduced

173 bacterial alpha diversity (Observed ASVs and Faith's PD) compared to patients with respiratory

174 function in the normal range (Fig. 2C-D). However, alpha diversity measures did not associate with

175 age, gender, comorbidities, BMI, treatment groups, viral load or antibiotics use.

176 On taxonomic level, screening analysis using LEfSe suggested that respiratory dysfunction after three

177 months was associated with increased relative abundances of five taxa and reduced relative

178 abundances of 20 taxa (Fig. 3A-B), including *Erysipelotrichaceae UCG-003*, and also several members
179 of the Lachnospiraceae and Ruminococcaceae families, which are known producers of butyrate, the
180 main energy source for enterocytes. We subsequently performed the same analysis using the ALDEx2
181 algorithm (filtered to $p < 0.05$), reducing the number of genera identified by both LEfSe and ALDEx2 as
182 associated with respiratory dysfunction to three; reduced abundance of *Erysipelotrichaceae UCG-*
183 *003*, and increased abundance of *Veillonella* and *Flavonifractor* (Fig. 3C). The largest effect size and
184 lowest p-value from ALDEx2 was found for *Veillonella*, an anaerobic opportunistic pathogen,
185 previously reported increased in COVID-19 patients (4) and associated with tissue fibrosis(28).

186

187 *Circulating markers of gut barrier dysfunction in relation to acute respiratory failure during* 188 *hospitalization*

189 As microbiota traits associated with persistent respiratory dysfunction were potentially related to
190 reduced capacity for butyrate production, which is vital for a functional gut barrier, we hypothesized
191 that gut barrier dysfunction could be related to respiratory failure also in acute COVID-19. As
192 microbiota samples from the acute phase of disease were not available, we explored whether
193 circulating markers of gut barrier dysfunction were associated with acute respiratory failure defined
194 as P/F ratio < 26.6 kPa, which occurred in 60 patients (33%) during hospitalization. As depicted in Fig.
195 4, levels of LBP discriminated clearly in ROC analyses (AUC 0.72), whereas CCL25, REG-3 α and IFABP
196 did not provide prognostic information (AUC between 0.62 and 0.51). However, as shown in the in
197 the precision-recall curve (Fig. 4B), only around 60% (recall) of the patients with acute respiratory
198 failure would be identified with only around 55% (precision) being true positives. In multivariate
199 logistic regression adjusting for age, gender, comorbidity and treatment, LBP was associated with
200 acute respiratory failure during hospitalization (adjusted OR (aOR) 6.3 [1.5-27]). Further adjusting for
201 antibiotics use had little impact on the association (aOR 4.6 [1.0-21]).

202

203 *Temporal changes in markers of gut barrier dysfunction during hospitalization*

204 LBP levels remained consistently elevated during hospitalization in patients with acute respiratory
205 failure compared to patients without respiratory failure (Fig. 5A). However, whereas LBP levels
206 showed a declining trend over time, the opposite was observed for REG-3 α (Fig. 5D), a bactericidal C-
207 type lectin with protective antibacterial properties, produced in the intestine. REG-3 α increased
208 during hospitalization, but only in patients with respiratory failure. No changes were observed for
209 IFABP or CCL25 during hospitalization (Fig. 5B-C).

210

211 *The association of LBP with persistent respiratory dysfunction and inflammation*

212 Notably, LBP levels after three months were higher in patients with respiratory dysfunction
213 (DL_{CO}<LLN) (Supplementary Figure 1), and negatively correlated with per cent predicted values of
214 DL_{CO} (ρ -0.27, $p=0.031$). Of note, we found no correlation between LBP and measures of microbiota
215 diversity in the subgroup with both available. Plasma levels of LBP at admission and after three
216 months were significantly associated with several clinical markers of systemic inflammation,
217 including CRP levels, white blood cell and neutrophil count (Supplementary Fig. 2), potentially
218 relating gut leakage to persistent systemic inflammation even several months after hospitalization.

219 **Discussion**

220 In this sub-study of the NOR-Solidarity trial, we investigated a potential gut-lung axis during and after
221 hospitalization for COVID-19. Our results can be summarized as follows: i) three months after
222 hospitalization for COVID-19, patients with persistent respiratory dysfunction (DL_{CO}<LLN) showed a
223 lower microbial diversity and an altered global gut microbiota composition than patients with normal
224 respiratory function, ii) these microbiota alterations included reduced abundance of
225 *Erysipelotrichaceae UCG-003* and increased abundances of *Veillonella* and *Flavonifractor*, iii) during
226 hospitalization, increased plasma levels of LBP were strongly associated with acute respiratory
227 failure, iv) LBP levels remained elevated during and after hospitalization, and were significantly

228 associated with persistent low-grade inflammation and respiratory dysfunction at the three-month
229 follow-up.

230 In a recent report, Yeoh *et al* reported downregulation of several gut commensals with known
231 immunomodulatory potential in COVID-19 patients, including *Faecalibacterium prausnitzii* and
232 *Eubacterium rectale*, which remained low in samples collected up to 30 days after disease
233 resolution(10). Herein, we extend these findings by showing that altered gut microbiota, including
234 decreased alpha diversity three months after hospital admission was associated with impaired
235 pulmonary function at this time point. We also found that several members of the Lachnospiraceae
236 and Ruminococcaceae families, such as *Coprococcus* and *Ruminococcus*, known producers of
237 butyrate, were reduced in COVID-19 patients with pulmonary impairment after three months.
238 Butyrate has local immunomodulatory effects in the gut mucosa, and as the main energy substrate
239 for enterocytes, it is vital for gut barrier maintenance(29). Interestingly, LBP levels as an indirect
240 marker of gut leakage were associated with impaired pulmonary function, not only during
241 hospitalization (P/F-ratio <26.6 kPa; respiratory failure), but also after three months (inverse
242 correlation with DL_{CO}).

243 Of interest, the COVID-related dysbiosis reported by Yeoh *et al* correlated with several inflammatory
244 markers, in line with our finding of LBP being associated with acute inflammation during
245 hospitalization. Notably, we now show that LBP levels are associated with persistent low-grade
246 inflammation even after three months. A potential role of gut barrier dysfunction as a driver for the
247 multisystem inflammatory syndrome occurring in pediatric COVID-19 was recently reported(30), and
248 our findings suggest that similar mechanisms could be relevant in adult patients. Whereas LBP levels
249 showed a declining trend over time, the opposite was observed for REG-3 α , which increased during
250 hospitalization, but only in patients with respiratory failure. REG-3 α is a bactericidal C-type lectin
251 produced in the intestine, with antibacterial properties against Gram positive bacteria, and with a
252 role in maintaining a functional barrier between the gut mucosa and the gut microbial content(31).

253 Hence, a potential interpretation of our findings could be that both elevated LBP levels and
254 downregulation of REG-3 α at admission might reflect an impaired gut barrier. In some chronic
255 inflammatory conditions related to immunodeficiencies, we have also seen a direct correlation
256 between microbiota composition and markers of gut barrier function(32, 33), but this was not seen
257 in the COVID-19 patients at three months. To what degree gut microbiota alterations are directly
258 influencing the gut barrier, is therefore uncertain.

259 Other microbiota related traits could also be relevant. The largest effect size observed in patients
260 with persistent pulmonary dysfunction was the increased relative abundance of *Veillonella*, which
261 has previously been linked to several disease states of the lung and liver where fibrosis is central to
262 the pathogenesis(28, 34, 35). Interestingly, increased relative abundance of *Veillonella* in COVID-19
263 patients was also recently reported by Tao *et al*(36).However, whether this bacterial genus could be
264 relevant for fibrosis development after COVID-19, either as a contributing factor or as a consequence
265 of a fibrotic process, cannot be answered in an observational study.

266 Whether the observed alterations in microbiota composition and gut leakage markers in this trial are
267 related to COVID-19 *per se* or mirror other factors, such as comorbidities and treatment, is not clear.
268 In multivariate analyses, LBP was strongly associated with acute respiratory failure after adjustment
269 for age, gender, treatment, comorbidities and use of antibiotics. LBP is an acute phase protein
270 induced in the liver by several stimuli, and could reflect an acute phase reaction as well as a signal
271 from the gut(37). Also, the fact that both LBP and global gut microbiota composition associated with
272 persistent respiratory dysfunction, irrespective of antibiotics use during hospitalization, suggest an
273 involvement of gut microbial environment.

274 The present study has some limitations. Due to logistic constraints of launching a randomized trial
275 during the first wave of the pandemic, the gut microbiota samples were only collected at the three-
276 month follow-up. We therefore cannot relate the long-term microbiota alterations to potential
277 microbiota alterations during hospitalization. Also, the analysis of microbiota composition was only

278 performed in one cohort, and without a validation panel these must be considered explorative.
279 Moreover, pulmonary function tests beyond P/F-ratio were only performed at three-month follow-
280 up, eliminating the possibility for baseline comparisons. The study also has obvious strengths,
281 including standardized data capture in a randomized trial with longitudinal biobanking, as well as
282 comprehensive long-term follow-up with blood tests, microbiota sampling and assessment of
283 pulmonary function by DL_{CO}. Also, to our knowledge, our study is the first to link pulmonary function
284 to gut microbiota alterations in COVID-19.

285 In conclusion, the decreased microbial diversity and compositional gut microbiota alterations in
286 patients with persistent respiratory dysfunction, as well as the association of persistently raised LBP
287 levels with these clinical features, point to a potential gut-lung axis in COVID-19. These observations
288 could be related to not only acute respiratory failure during hospitalization, but also to long-term
289 COVID-19 morbidity. Our findings warrant further research on the potential role of gut microbiota
290 composition and gut barrier dysfunction in relation to long-term pulmonary dysfunction and long
291 COVID.

292 **Acknowledgements**

293 We thank WHO Solidarity and NOR-Solidarity study groups for the opportunity to perform this add-
294 on study. We would also like to thank Karoline Hansen Skåra and Azita Rashidi at the Institute of
295 Internal Medicine, Oslo University Hospital, Rikshospitalet, for their contributions to the biobank
296 collection, and Mona Skjelland for access to the control plasma biobank. Moreover, we thank Fredrik
297 Müller and Cahtrine Fladeby at the Department of Microbiology, Oslo University Hospital, for access
298 to the viral analysis data.

299 **Conflicts of interest**

300 All authors declare no competing interest.

301 **Funding**

302 The study was funded by the National Clinical Therapy Research in the Specialist Health Services
303 (KLINBEFORSK), Norway and South-Eastern Norway Regional Health Authority (grant number
304 2021071). The microbiota analyses were funded by the strategic research area “Personalized
305 microbiota therapy in clinical medicine” at Oslo University Hospital. The funders had no role in study
306 design, data collection, data analysis, data interpretation, or writing of the report. The corresponding
307 author had full access to all the data in the study and had final responsibility for the decision to
308 submit for publication.

309 **Contributions**

310 BV, TU, PA, JRH and MT were responsible for the study conception and execution of the present
311 substudy. ABD, TK, ICO, AMDR, KNH, PA and MT were responsible for the management,
312 coordination, research activity planning and execution of the NOR-Solidarity trial. TL and OHS were
313 responsible for the three-month follow-up protocol for pulmonary function. TBD, ABD, BH, TR and PA
314 coordinated the collection and storage of the biobank material. AMDR, BS, KT, HH, AT, RM, MH, RE,
315 ÅB, ABK, AJ, LT, HS, BRK, RBO, CMY, NVS, RH, SA and BB were locally responsible for conducting the
316 trial at the various included hospitals providing rectal swab material. BV performed the DNA
317 extraction and library preparation of microbiota samples. TU, TL and AEM performed the gut leakage
318 marker analyses. BV and TU performed the statistical analyses. KH performed the bioinformatics
319 analyses of microbiota data. BV and MT drafted the manuscript. TU, ABD, PA and JRH critically
320 revised the manuscript. All authors revised and approved the final version of the manuscript.

321

322 **Figure legends**

323 **Figure 1.** Flow-chart of patients included in the present add-on study based on the original NOR-
324 Solidarity study protocol.

325 **Figure 2.** Gut microbiota diversity in patients with or without persistent respiratory dysfunction at
326 the three-month follow-up. Beta diversity by principal coordinate analysis showing Bray-Curtis
327 distances separating patients with or without respiratory dysfunction (DLCO<LLN, n=83) (A), with
328 overlapping microbiota composition in relation to antibiotics use (B). Alpha diversity measured by
329 observed ASVs (C) and Faith's PD (D) in patients with or without respiratory dysfunction.
330 Abbreviations: ASVs, amplicon sequence variants; PD, phylogenetic diversity.

331 **Figure 3.** Gut microbial composition in patients with persistent respiratory dysfunction at the three-
332 month follow-up (DLCO<LLN, n=83). A) LDA score of taxa abundance differences using LEfSe analysis.
333 B) Taxonomic cladogram highlighting differentially abundant taxa ($p < 0.05$) by LEfSe. C) Volcano plot
334 from ALDEx2 analysis showing effect size (difference between groups divided by dispersion within
335 groups, on log₂-scale) by p-value of differentially abundant genera. Abbreviations: LDA, linear
336 discriminant analysis; LEfSe, linear discriminant analysis effect size.

337 **Figure 4.** Admission levels (n=144) of markers of gut barrier dysfunction in relation to acute
338 respiratory failure (n=44) during hospitalization (P/F-ratio <26.6 kPa). A) ROC analysis and B)
339 precision-recall curves for LBP (brown), IFABP (green), CCL25 (blue) and REG-3 α (orange). The
340 numbers shown in A) are the AUC from the ROC-analysis *** $p < 0.001$. Abbreviations: LBP,
341 lipopolysaccharide-binding protein; IFABP, intestinal-type fatty acid-binding protein; CCL25,
342 chemokine (C-C motif) ligand 25; REG-3 α , regenerating islet-derived protein 3 alpha; ROC, receiver
343 operating characteristic; AUC, area under the curve.

344 **Figure 5.** Temporal profile of markers of gut barrier dysfunction in relation to acute respiratory
345 failure (RF) during hospitalization (P/F-ratio <26.6 kPa). A) LBP B) IFABP C) CCL25 and D) REG-3 α . The

346 yellow p-values reflect the effect RF from the repeated measures regression analysis, while the blue
347 p-values reflect the interaction between time and RF. Blue areas reflect levels in age- and sex-
348 matched healthy controls (n=24). Observations per time point: BL, n=144; 3-5 days, n=134; 7-10 days,
349 n=84. Abbreviations: LBP, lipopolysaccharide-binding protein; IFABP, intestinal-type fatty acid-
350 binding protein; CCL25, chemokine (C-C motif) ligand 25; REG-3 α , regenerating islet-derived protein 3
351 alpha; RF, respiratory failure.

352

353

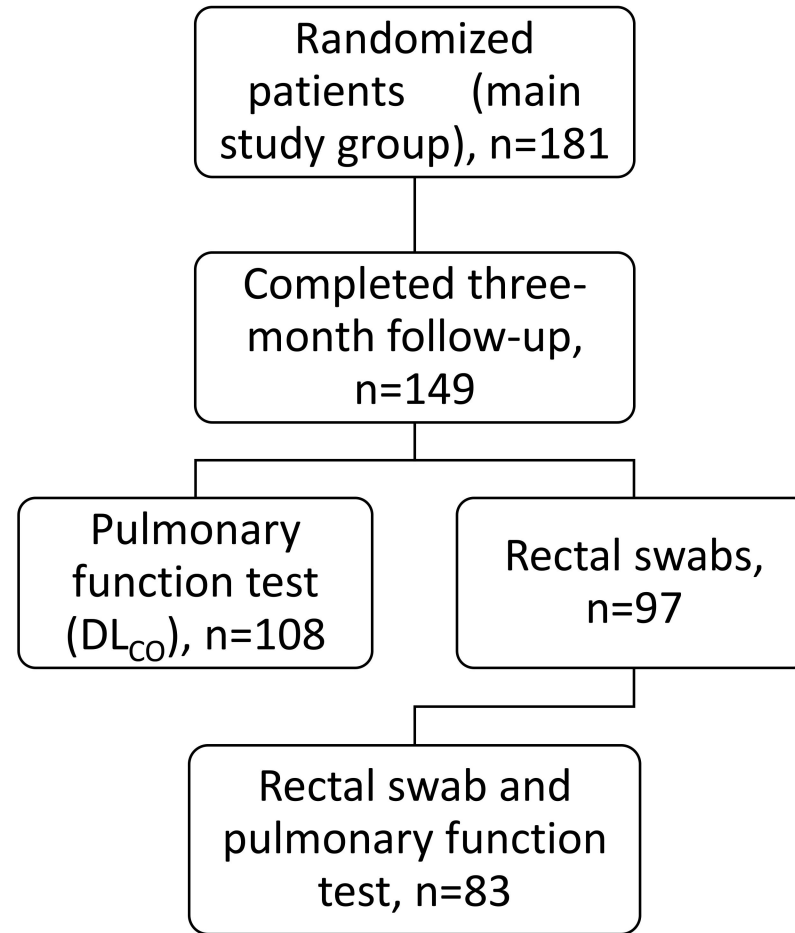
354

- 355 1. Galanopoulos M, Gkeros F, Doukatas A, et al. COVID-19 pandemic: Pathophysiology and
356 manifestations from the gastrointestinal tract. *World J Gastroenterol* 2020;26(31):4579-88.
- 357 2. Tabary M, Khanmohammadi S, Araghi F, et al. Pathologic features of COVID-19: A concise
358 review. *Pathol Res Pract* 2020;216(9):153097.
- 359 3. Zuo T, Zhang F, Lui GCY, et al. Alterations in Gut Microbiota of Patients With COVID-19 During
360 Time of Hospitalization. *Gastroenterology* 2020;159(3):944-55 e8.
- 361 4. Gu S, Chen Y, Wu Z, et al. Alterations of the Gut Microbiota in Patients With Coronavirus
362 Disease 2019 or H1N1 Influenza. *Clin Infect Dis* 2020;71(10):2669-78.
- 363 5. Ferreira C, Viana SD, Reis F. Gut Microbiota Dysbiosis-Immune Hyperresponse-Inflammation
364 Triad in Coronavirus Disease 2019 (COVID-19): Impact of Pharmacological and Nutraceutical
365 Approaches. *Microorganisms* 2020;8(10).
- 366 6. Vignesh R, Swathirajan CR, Tun ZH, et al. Could Perturbation of Gut Microbiota Possibly
367 Exacerbate the Severity of COVID-19 via Cytokine Storm? *Front Immunol* 2020;11:607734.
- 368 7. Hoel H, Heggelund L, Reikvam DH, et al. Elevated markers of gut leakage and inflammasome
369 activation in COVID-19 patients with cardiac involvement. *J Intern Med* 2021;289(4):523-31.
- 370 8. Giron LB, Dweep H, Yin X, et al. Plasma Markers of Disrupted Gut Permeability in Severe
371 COVID-19 Patients. *Front Immunol* 2021;12:686240.
- 372 9. Campbell DJ, Butcher EC. Intestinal attraction: CCL25 functions in effector lymphocyte
373 recruitment to the small intestine. *J Clin Invest* 2002;110(8):1079-81.
- 374 10. Yeoh YK, Zuo T, Lui GC, et al. Gut microbiota composition reflects disease severity and
375 dysfunctional immune responses in patients with COVID-19. *Gut* 2021;70(4):698-706.
- 376 11. Pan H, Peto R, Henao-Restrepo AM, et al. Repurposed Antiviral Drugs for Covid-19 - Interim
377 WHO Solidarity Trial Results. *N Engl J Med* 2021;384(6):497-511.
- 378 12. Barratt-Due A, Olsen IC, Nezvalova-Henriksen K, et al. Evaluation of the Effects of Remdesivir
379 and Hydroxychloroquine on Viral Clearance in COVID-19 : A Randomized Trial. *Ann Intern Med*
380 [Internet]. 2021 Jul 13; 10.7326/m21-0653.
- 381 13. Graham BL, Brusasco V, Burgos F, et al. 2017 ERS/ATS standards for single-breath carbon
382 monoxide uptake in the lung. *Eur Respir J* 2017;49(1).
- 383 14. Graham BL, Steenbruggen I, Miller MR, et al. Standardization of Spirometry 2019 Update. An
384 Official American Thoracic Society and European Respiratory Society Technical Statement. *Am J*
385 *Respir Crit Care Med* 2019;200(8):e70-e88.
- 386 15. Lerum TV, Aalokken TM, Bronstad E, et al. Dyspnoea, lung function and CT findings 3 months
387 after hospital admission for COVID-19. *Eur Respir J* 2021;57(4).
- 388 16. Guler SA, Ebner L, Aubry-Beigelman C, et al. Pulmonary function and radiological features 4
389 months after COVID-19: first results from the national prospective observational Swiss COVID-19 lung
390 study. *Eur Respir J* 2021;57(4).
- 391 17. Stanojevic S, Graham BL, Cooper BG, et al. Official ERS technical standards: Global Lung
392 Function Initiative reference values for the carbon monoxide transfer factor for Caucasians. *Eur*
393 *Respir J* 2017;50(3).
- 394 18. Fadrosch DW, Ma B, Gajer P, et al. An improved dual-indexing approach for multiplexed 16S
395 rRNA gene sequencing on the Illumina MiSeq platform. *Microbiome* 2014;2(1):6.
- 396 19. Martin M. Cutadapt removes adapter sequences from high-throughput sequencing reads.
397 *2011* 2011;17(1):3.
- 398 20. Bushnell B, Rood J, Singer E. BBMerge - Accurate paired shotgun read merging via overlap.
399 *PLoS One* 2017;12(10):e0185056.
- 400 21. Amir A, McDonald D, Navas-Molina JA, et al. Deblur Rapidly Resolves Single-Nucleotide
401 Community Sequence Patterns. *mSystems* 2017;2(2).
- 402 22. Bolyen E, Rideout JR, Dillon MR, et al. Reproducible, interactive, scalable and extensible
403 microbiome data science using QIIME 2. *Nat Biotechnol* 2019;37(8):852-7.
- 404 23. Robeson MS, O'Rourke DR, Kaehler BD, et al. RESCRIPt: Reproducible sequence taxonomy
405 reference database management for the masses. *bioRxiv* 2020:2020.10.05.326504.

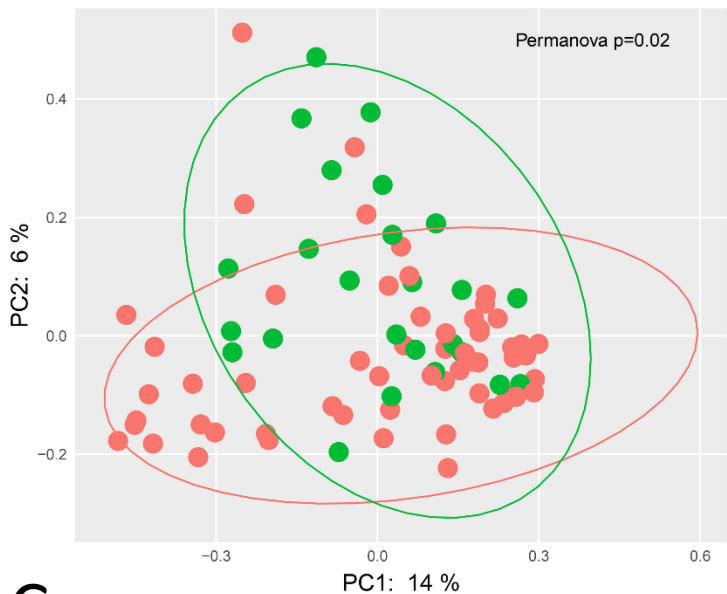
- 406 24. Quast C, Pruesse E, Yilmaz P, et al. The SILVA ribosomal RNA gene database project:
407 improved data processing and web-based tools. *Nucleic Acids Res* 2013;41(Database issue):D590-6.
- 408 25. McKnight DT, Huerlimann R, Bower DS, et al. microDecon: A highly accurate read-subtraction
409 tool for the post-sequencing removal of contamination in metabarcoding studies. *Environmental*
410 *DNA* 2019;1(1):14-25.
- 411 26. Segata N, Izard J, Waldron L, et al. Metagenomic biomarker discovery and explanation.
412 *Genome Biol* 2011;12(6):R60.
- 413 27. Fernandes AD, Macklaim JM, Linn TG, et al. ANOVA-like differential expression (ALDEx)
414 analysis for mixed population RNA-Seq. *PLoS One* 2013;8(7):e67019.
- 415 28. Kummen M, Holm K, Anmarkrud JA, et al. The gut microbial profile in patients with primary
416 sclerosing cholangitis is distinct from patients with ulcerative colitis without biliary disease and
417 healthy controls. *Gut* 2017;66(4):611-9.
- 418 29. Gelpi M, Vestad B, Hansen SH, et al. Impact of Human Immunodeficiency Virus-Related Gut
419 Microbiota Alterations on Metabolic Comorbid Conditions. *Clin Infect Dis* 2020.
- 420 30. Yonker LM, Gilboa T, Ogata AF, et al. Multisystem inflammatory syndrome in children is
421 driven by zonulin-dependent loss of gut mucosal barrier. *J Clin Invest* 2021.
- 422 31. Mukherjee S, Hooper LV. Antimicrobial defense of the intestine. *Immunity* 2015;42(1):28-39.
- 423 32. Nowak P, Troseid M, Avershina E, et al. Gut microbiota diversity predicts immune status in
424 HIV-1 infection. *AIDS* 2015;29(18):2409-18.
- 425 33. Jorgensen SF, Troseid M, Kummen M, et al. Altered gut microbiota profile in common
426 variable immunodeficiency associates with levels of lipopolysaccharide and markers of systemic
427 immune activation. *Mucosal Immunol* 2016;9(6):1455-65.
- 428 34. Thavamani A, Salem I, Sferra TJ, et al. Impact of Altered Gut Microbiota and Its Metabolites in
429 Cystic Fibrosis. *Metabolites* 2021;11(2).
- 430 35. Enaud R, Hooks KB, Barre A, et al. Intestinal Inflammation in Children with Cystic Fibrosis Is
431 Associated with Crohn's-Like Microbiota Disturbances. *J Clin Med* 2019;8(5).
- 432 36. Tao W, Zhang G, Wang X, et al. Analysis of the intestinal microbiota in COVID-19 patients and
433 its correlation with the inflammatory factor IL-18. *Medicine in Microecology* 2020;5:100023-.
- 434 37. Zweigner J, Schumann RR, Weber JR. The role of lipopolysaccharide-binding protein in
435 modulating the innate immune response. *Microbes Infect* 2006;8(3):946-52.

436

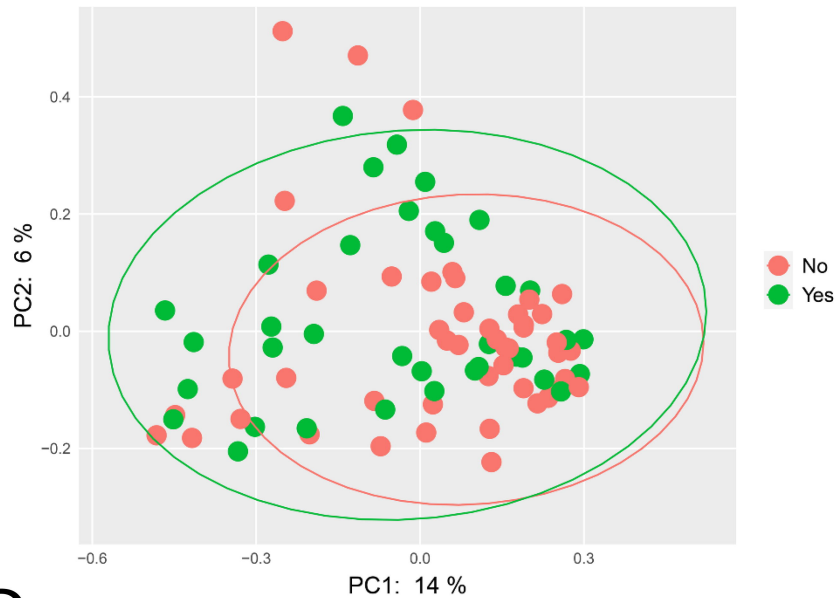
**Hospitalized COVID-19 patients
NOR-Solidarity study**



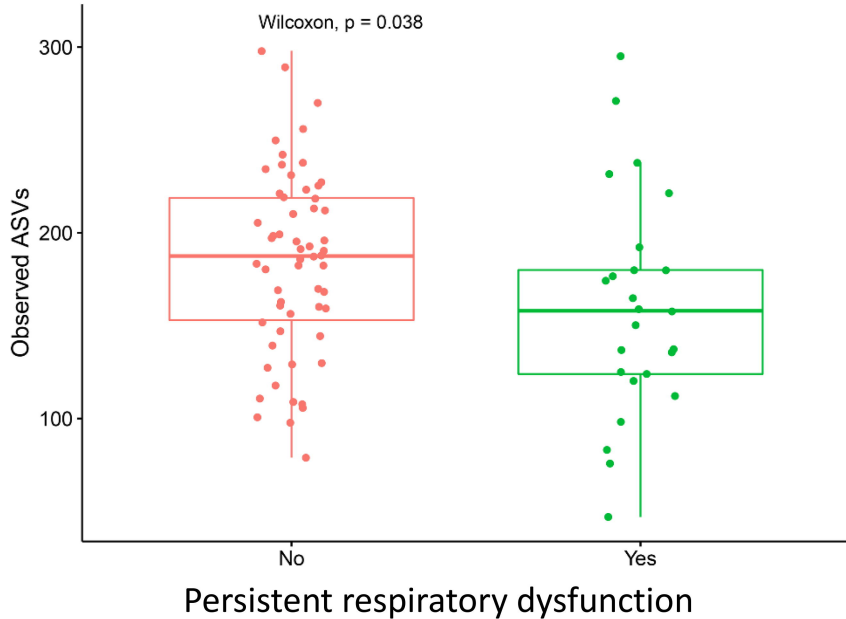
A Persistent respiratory dysfunction



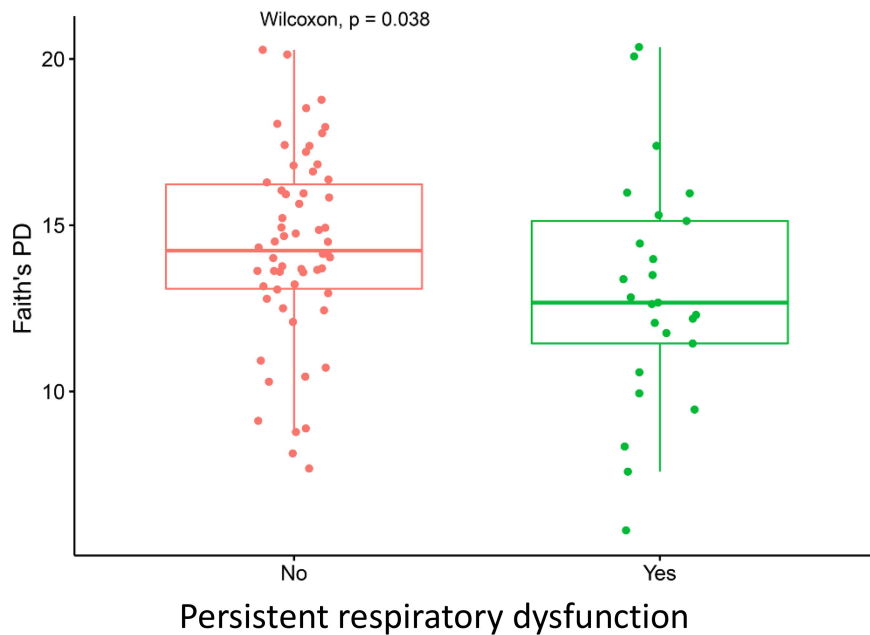
B Antibiotics use



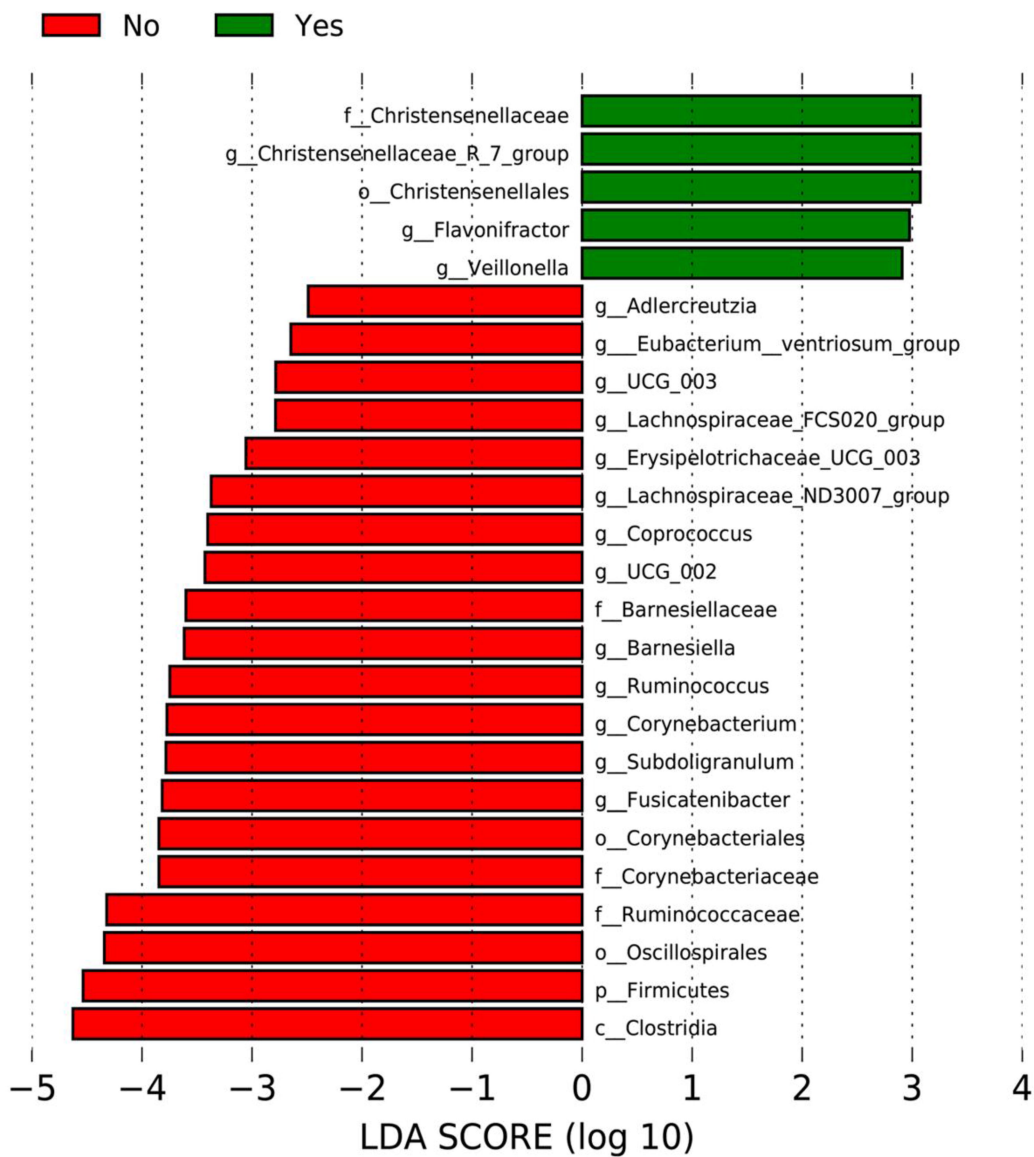
C



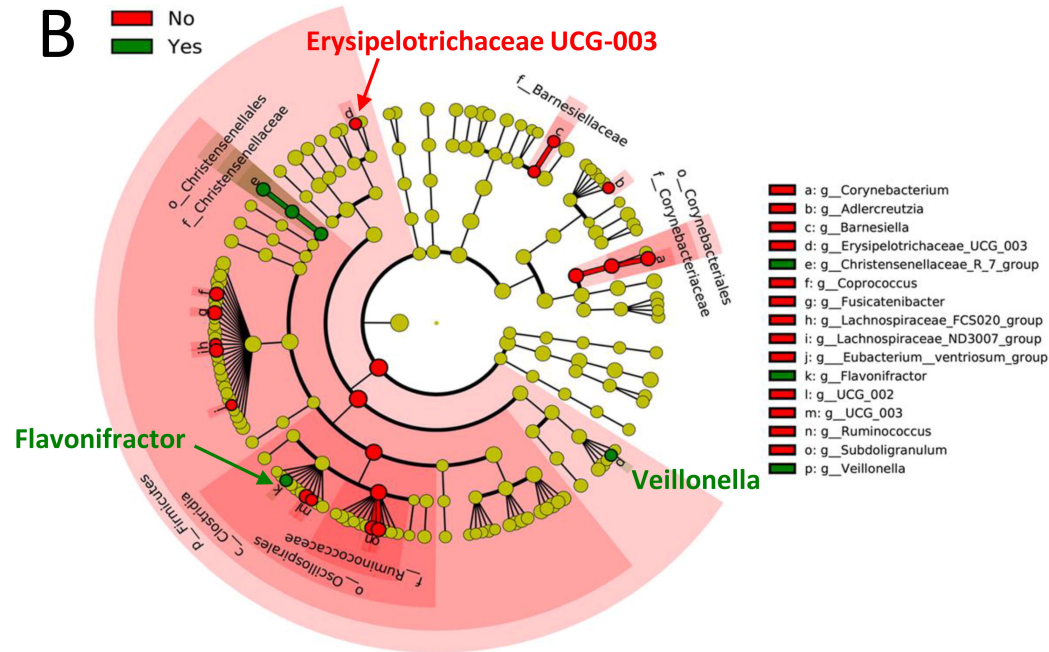
D



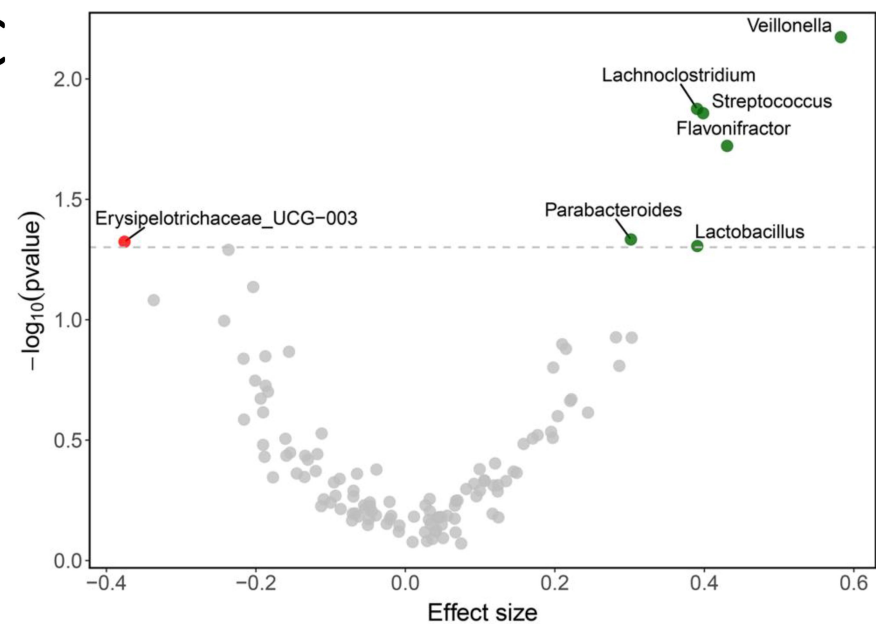
A

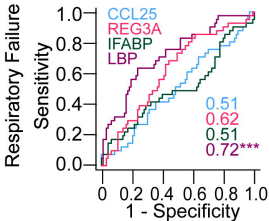


B



C



A**B**