

Impacts of COVID-19 public measures on country-level trade flows: Global panel regression analysis

Sylvia Szabo^a, Worawat Srisawasdi^b, Takuji W Tsusaka^b,
Reuben M.J. Kadigi^c, James Vause^d, Neil D. Burgess^d

a. Department of Social Welfare Counseling, College of Future Convergence, Dongguk University, Seoul 04620, South Korea.

b. Department of Development and Sustainability, School of Environment, Resources and Development, Asian Institute of Technology (AIT), PO. Box 4, Klong Luang, Pathumthani 12120, Thailand.

c. Department of Food and Resource Economics, School of Agricultural Economics and Business Studies, Sokoine University of Agriculture (SUA), PO. Box 3007, Morogoro, Tanzania

d. UN Environment Programme World Conservation Monitoring Centre (UNEP-WCMC), 219 Huntingdon Road, Cambridge CB3 0DL, UK.

Abstract. As of 10 July 2021, there have been over 186 million cases of COVID-19 and more than four million died as a result of this disease. The COVID-19 outbreak has also contributed to tremendous global decline in trade flows. The rapid spread of COVID-19 and the measures implemented by governments to contain the pandemic have had serious consequences for the world's economies. While the pandemic has affected the international movement of people, goods and services, there is still limited systematic research regarding the possible associations between the COVID-19 measures on countries' international trade flows. To fill this gap, we conducted regression analysis based on country level time series data from the United Nations and World Bank datasets. The results of the random effects panel regression models show that, the country import and export values are positively affected by health-related policies, while there is a negative association between stringency measures and import and export values. More specifically, school closing, stay-at-home requirements, and testing policy measures were found to have significant negative effects on countries' trade values. In contrast, facial covering policies were found to have significant positive effects on countries' import, export and total trade values.

Key words: trade flows, COVID-19, UKRI GCRF Trade Hub, panel regression, random effects model, COVID-19 policies

1. Introduction

Since the outbreak of COVID-19, more than four million people have lost their lives due to the pandemic (WHO 2021). The number of new COVID-19 cases has been rising at an alarming rate and many countries have already experienced several 'pandemic waves' (Diaz 2020). While uncertainty still remains as to how and when the pandemic will run its course, the unprecedented economic impact caused by the global health emergency has already sharply exposed the global economy's existing weaknesses in complex supply chains, and is severely slowing down the development progress around the world (UNCTAD 2020). Data show that more people are living in extreme poverty as the global economy experienced sharp contraction in 2020 (UNCTAD 2020).

Recent literature shows that the COVID-19 pandemic has had a direct impact on global economy in a number of ways. Literature surveys by Goodell (2020) and Yarovaya et al. (2020)

further showed that the COVID-19 pandemic has had a direct negative impact on the financial sector. Bachman (2020) pointed out that the COVID-19 pandemic has negatively affected global production, disrupted supply chains and unsettled financial markets globally. Ashraf (2020b) found that higher national-level uncertainty significantly strengthens the negative stock markets' reaction to an increase in COVID-19 confirmed cases. The decline in purchasing power linked to lost income due to COVID-19 pandemic has threatened food security, disrupted the global supply chain, and interrupted the movement of migrant workers (UNEP 2020).

Some past literature has explored COVID-19's impact on globalization. Shrestha (2020b) examined the potential impact of COVID-19 on globalization and global health in terms of mobility, trade, travel, and countries most impacted. The results showed that the pandemic has affected the world economy, healthcare, and globalization through travel, events cancellation, employment workforce, food chain, academia, and healthcare capacity. Certain countries were more vulnerable than others. In Africa, more vulnerable countries included South Africa and Egypt. In Europe, Russia, Germany, and Italy, and in Asia and Oceania, India, Iran, Pakistan, Saudi Arabia, and Turkey. For the Americas, vulnerable countries include Brazil, USA, Chile, Mexico, and Peru (Shrestha et al. 2020b).

The COVID-19 outbreak has led to a contraction in the volume of international trade. For the whole of 2020, trade volume was down 5.3% compared to 2019 (WTO 2021). Exports from large economies including the United States of America (USA), Japan, and the European Union (EU) have been particularly affected. It should be noted that the economic contraction in China was smaller than the global average, as China controlled the outbreak and reopened its economy relatively quickly. At the time of writing, Latin America and the Caribbean were the developing regions which were most affected by the pandemic. Manufacturing activities have been disrupted, first in Asia and then in Europe, North America and the rest of the world (UNECLEC 2020). Widespread border closures have resulted in a steep rise in unemployment, especially in USA, which led to a reduction in the demand for goods and services. Global GDP in 2020 registered its sharpest contraction since the Second World War (UNECLAC 2020).

The rapid spread of COVID-19 and the public measures implemented by governments to contain it have had serious consequences for the world's economies and trade flows. Maliszewska (2020) simulated a model showing the potential impact of COVID-19 on GDP and trade, using a standard global computable general equilibrium model. The results indicate a fall of world's GDP by 2% below the benchmark for the baseline global pandemic scenario and the declines are nearly 4% for amplified pandemic scenario. The biggest negative shock was found in the following areas: reduction in the domestic services output, an increase in international trade costs, a drop in travel services, and reduction in activities that require proximity between people. The World Bank projects that as a result of the COVID-19 crisis the global output will fall between 5.2 and nearly 8 per cent in 2020 and the World Trade Organization projects global merchandise trade to fall by between 13 and 32 per cent in optimistic and pessimistic scenarios (WB 2020; WTO 2020a). Countries were affected by sharp decline in exports, particularly to the European Union and the United States.

The COVID-19 pandemic has also sparked concerns regarding export restrictions being imposed by countries around the world during the pandemic. In an effort to control the pandemic, some countries decided to establish export controls over certain medical products in the form of temporary export bans or due to additional requirements for licensing and authorization. Other countries, concerned with the sufficiency of food supplies, have introduced

export restrictions over agricultural products. These decisions have implications for equitable food distribution in the global market (Nguyen 2020).

While there is already emerging literature on the impact of COVID-19 on some aspects of the economy (Ashraf 2020b), there is still no systematic quantitative examination on the effects of pandemic-related policies and measures on global trade flows. Our paper aims to fill this gap by investigating the impacts of the COVID-19 government response measures on export and imports as well as overall trade flows. In other words, we set out to identify the policy clusters as well as specific government policies and measures that have significant impacts on import and export values in 2020 amid the COVID-19 pandemic. By undertaking this analysis, we aim to contribute not only to the existing literature but also to the ongoing policy discussions and respective choice of policy instruments aimed at effectively controlling the spread of COVID-19 and maintaining positive economic growth.

2. Hypothesis testing

In this section, we present three testable hypotheses regarding the direct and indirect impact of government social distancing measures, containment and health policies and economic support programs to test the impact of COVID-19 government response measures on trade flows. The three government response indices include stringency index (SI), containment and health index (CHI) and economic support index (ESI). CHI, which represents the government emergency policies, is constructed based on from 3 specific policies, i.e. public awareness campaigns, testing policy and contact tracing. SI records data on social distancing measures. The stringency policies include school closing, workplace closing, cancel public events, gathering restrictions, public transport closing, stay at home requirements, and restrictions on internal and international travel. ESI is composed from 2 policies including the government income support and debt relief for households. These economic support policies aim to provide income support to citizens amid crisis (Hale et al. 2020b).

Hypothesis 1: Health-related policies have a positive impact on trade flows.

The CHI include three specific policies, i.e. public awareness campaigns, testing policy and contact tracing (Ashraf 2020b). Our hypothesis is that government containment and health policies have positive effects on trade flows. Ashraf (2020b) shows that the government containment and health policies have a significant negative effects on stock market returns. The government intensive information campaign provides awareness about the benefits of staying at home, sanitization, frequent testing and contact tracing can help to identify infected and suspected cases early on and reduce the number of infected cases (CDC 2020). Such effective measures can boost the public's confidence in the government's ability to deal with the pandemic as well as effectively control the spread of COVID-19 viruses. Consequently, good management of the pandemic including more lives saved, and reduced overall impacts can support overall economic performance (Greenstone and Nigam, 2020; Thunström et al., 2020). The government pandemic management measures can help strengthen economic activities and increase the trade volume during the pandemic crisis.

Hypothesis 2: Closure and social distancing measures are likely to decrease trade value.

Our assumption is that government closure and social distancing measures will reduce trade activities. However, despite the pre-supposed direct negative effect on trade activities, social distancing might have some positive economic impact through reducing the risk of

COVID-19 death rates (Thunström et al. 2020). According to Greenstone and Nigam (2020), moderate social distancing in the USA could save up to 1.7 million lives. The net benefit of social distancing in the USA is estimated at \$5.2 trillion (Thunstr et al. 2020). Countries where government implemented stringent social distancing policies are more likely to have their people complying with these policies and hence have higher chances of limiting the spread of the virus (Hussain 2020). This in turn can have a positive effect on the overall trade flows.

Hypothesis 3: Economic support policies lead to an increase in trade value.

Economic support programs may have positive effects on trade flows due to reduced infection rates that stem from enhanced capacity to comply with restriction measures which in turn leads to a healthier population able to produce more for own consumption and more surplus for sale to earn more income. Some studies found correlations between stay-at-home orders and income. In fact, lower income people may be less likely to comply with government restrictions, thus they are at a higher risk of getting infected (Lou et al. 2020). This points to a pressure experienced by lower income households to leave the house for income-seeking activities. Generous income support programs may thus help control the COVID-19 infection rates by allowing the lower income individuals to be able to stay at home (Wright et al. 2020).

3. Materials and methods

3.1 Data collection

We collected the data for this study from three major sources and categorized variables roughly into three groups, i.e. trade, COVID-19 new cases, and data related to public measures implemented by governments. Table 1 summarizes a list of 70 sample countries for which we were able to obtain the data. This table includes a summary of trade values of a second quarter for the period 2019 to 2020, total cumulative COVID-19 cases, as well as the Government Response Index (GRI) by country. First, we obtained the trade data, more specifically the values of imports, exports and total trade, from the UN Trade Statistics Database (UN Comtrade, 2021). The data used in this study is considered a panel data recorded chronologically on a monthly basis. The period of data collected stretches from January to August 2020 across the 70 sample countries. Second, we downloaded the data of daily COVID-19 confirmed cases for each country from the World Health Organization database (WHO, 2020). Third, we collected the data of COVID-19 government response indices and policies from the Blavatnik School of Government, University of Oxford (Hale et al., 2020b).

Table 1: List of 70 sample countries with export values from 2019-2020(Q2), cumulative COVID-19 cumulative cases, and Government Response Index (GRI) by country

Country name	Country code	2019 export value Q2 (\$millions)*	2020 export value Q2 (\$million)*	Cumulative COVID-19 cases, thousand(Feb 4, 2021)*	Government Response Index (GRI) 2020*
Australia	AUS	65,973	58,951	28.8	79.28
Azerbaijan	AZE	4,845	3,480	230.5	74.03
Belgium	BEL	101,341	64,048	713.3	58.75
Bulgaria	BGR	7,930	6,809	220.5	45.75
Belarus	BLR	7,770	6,230	250.0	23.21

Belize	BLZ	71	68	11.9	72.57
Brazil	BRA	59,156	54,935	9229.3	70.66
Barbados	BRB	109	74	1.6	47.81
Canada	CAN	108,561	77,917	783.6	69.01
Switzerland	CHE	77,660	73,282	524.1	47.42
Chile	CHL	18,113	N/A	734.0	83.63
Colombia	COL	11,359	N/A	2104.5	61.31
Costa Rica	CRI	N/A	N/A	194.6	56.62
Cyprus	CYP	914	888	31.1	66.83
Czech Republic	CZE	49,623	37,516	1003.7	50.24
Germany	DEU	360,987	278,981	2237.8	55.68
Denmark	DNK	27,467	24,375	199.4	62.40
Ecuador	ECU	5,617	4,533	251.3	61.84
Egypt	EGY	7,952	5,666	167.0	66.67
Spain	ESP	83,786	63,171	2705.0	65.42
Estonia	EST	4,195	3,256	45.7	31.78
Finland	FIN	17,772	14,326	45.8	41.67
United Kingdom	GBR	109,640	86,335	3852.6	67.31
Georgia	GEO	910	724	259.9	61.65
Greece	GRC	9,680	7,544	158.7	67.23
Greenland	GRL	N/A	N/A	0.0	42.38
Guatemala	GTM	2,690	2,536	160.3	73.15
Guyana	GUY	418	541	7.7	68.90
Hong Kong, PRC	HKG	130,716	133,800	N/A	72.62
Croatia	HRV	4,287	3,196	233.6	44.17
Hungary	HUN	30,351	23,135	233.6	46.73
India	IND	80,777	51,194	10777.3	76.15
Ireland	IRL	44,998	41,742	198.4	70.85
Iceland	ISL	1,274	1,038	6.0	57.62
Israel	ISR	13,153	10,930	645.6	63.63
Italy	ITA	132,549	98,004	2570.6	61.62
Japan	JPN	155,047	123,973	393.8	42.56
Kyrgyz Republic	KGZ	461	480	84.8	62.86
Lithuania	LTU	8,018	6,710	184.2	51.79
Luxembourg	LUX	3,794	2,934	50.9	59.34
Latvia	LVA	4,752	3,103	67.4	47.42
Macao, PRC	MAC	222	172	N/A	41.07
Morocco	MAR	7,782	N/A	472.3	71.88
Moldova	MDA	616	495	160.7	53.57
Madagascar	MDG	736	N/A	19.1	56.05

Mexico	MEX	116,575	74,528	1869.7	58.43
Mauritius	MUS	587	375	0.6	44.64
Namibia	NAM	N/A	1,006	34.3	58.87
Netherlands	NLD	142,305	117,951	985.2	54.70
Norway	NOR	23,622	17,130	63.3	47.02
Pakistan	PAK	5,865	4,099	547.6	56.49
Peru	PER	11,229	4,836	1142.7	82.74
Philippines	PHL	17,072	12,749	528.9	69.54
Poland	POL	62,460	50,309	1527.0	43.29
Portugal	PRT	16,652	11,704	731.9	63.25
Paraguay	PRY	2,145	2,040	133.8	77.98
Romania	ROU	18,690	12,711	732.7	52.78
Rwanda	RWA	281	250	15.7	78.10
El Salvador	SLV	1,318	743	15.7	73.39
Serbia	SRB	4,932	3,959	398.9	58.75
Slovak Republic	SVK	22464	16,170	254.8	51.04
Slovenia	SVN	9,579	7,971	168.5	52.38
Sweden	SWE	40,863	33,972	576.6	41.07
Turkey	TUR	49,051	26,969	2493.0	72.30
Ukraine	UKR	10,151	10,661	1227.2	64.40
United States	USA	382,198	291,236	26055.5	67.40
Uzbekistan	UZB	2,859	2,649	78.9	65.66
South Africa	ZAF	22330	15,188	1459.0	70.24
Zambia	ZMB	1,688	1,593	56.2	49.70
Zimbabwe	ZWE	963	N/A	33.8	65.26

*Trade data obtained from UN Comtrade Database.

*COVID-19 cumulative cases data obtained from World Health Organization (WHO).

*Government Response Index (GRI) data obtained from Blavatnik School of Government, University of Oxford.

N/A means data are not available.

Figure 1 shows a comparison of export values of the 2nd quarter in 2019 and 2020. The data in this chart consists of information from 70 sample countries that we used in this study. The bar on the left side (“2019 export value Q2”) represents export values of 2019 and the bar on the right (“2020 export value Q2”) represents 2020 export values. As can be noted, export values declined significantly in 2020, compared to the same period (2nd quarter) in 2019. We chose the second quarter of 2020 to represent the change in export values because the COVID-19 pandemic only became a global threat in the very end of March 2020. Thus, before the effects of COVID-19 pandemic did not seriously hinder major economic activities around the world to an extent that would allow for the observation of a major decline. In the second quarter of 2020, however, the effects of COVID-19 pandemic started to show serious negative impacts on economic activities, including international trade. Most countries started to experience a significant decline in trade volume in 2020 from Q2, with the exception of some small low-income countries whose primary source of income does not derive from international trade.

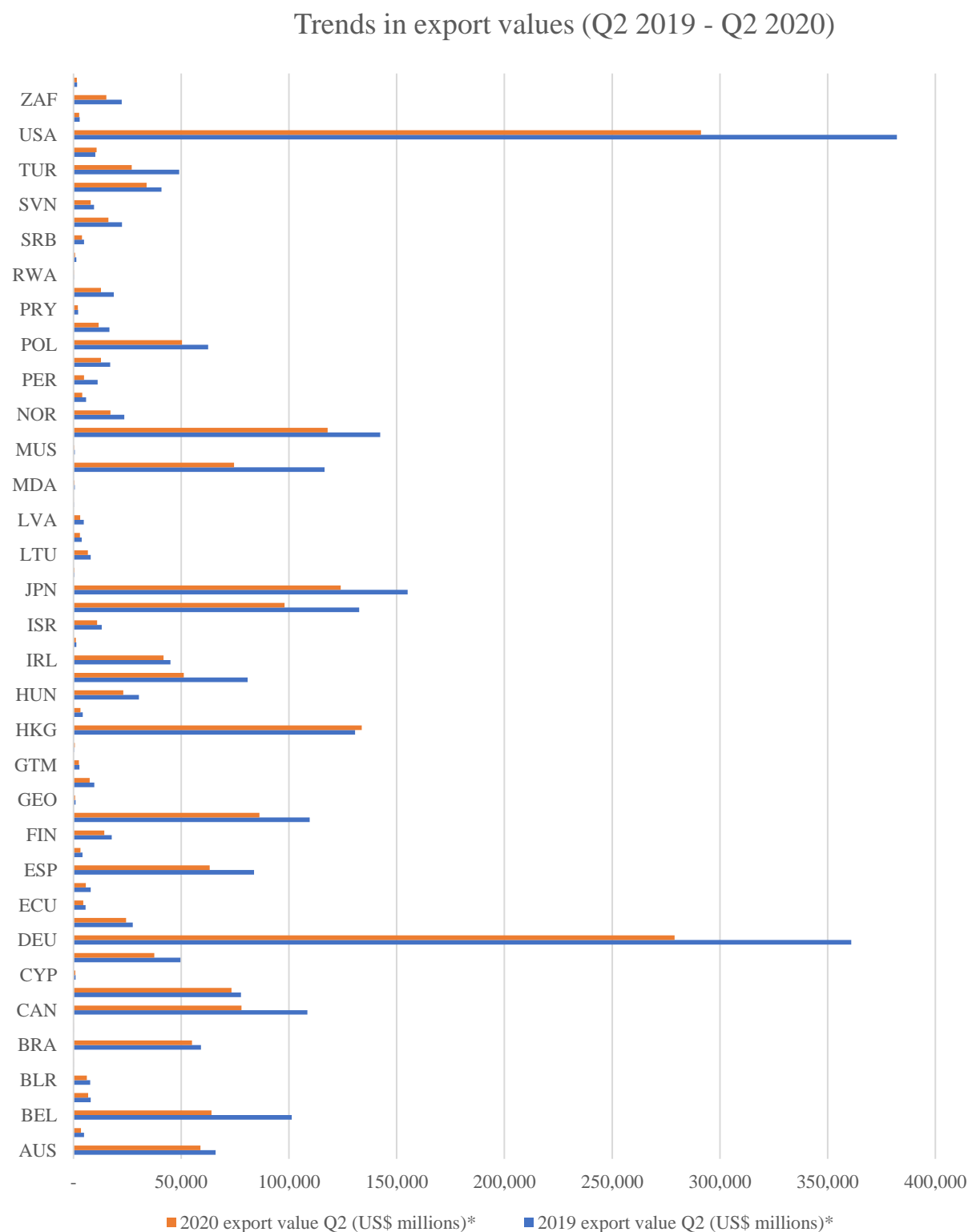


Figure 1: Export value comparison between the second quarter of 2019 and 2020 showing the impact of COVID-19 on international trade.

Figures 2 and 3 show gradual monthly changes in government intervention indices and specific measures indices from January to September 2020. The government intervention indices include GRI, CHI, SI and ESI. The specific measures in figure 3 include school and workplace closing, public event cancelling, gathering restrictions, public transportation closing, stay at home requirements, domestic and international travel restrictions, income support, debt relief, public awareness campaign, testing policy and facial covering. The values of government intervention indices (Fig. 2) were lowest in January and February 2020. The values gradually increase from March 2020 and peaked during April and May. Figure 3 shows that there was a gradual increase in specific policy indices. Restriction measures on limitation of traveling and public gatherings remain relatively high through March to September 2020. Other specific measures also show sharp increase from March onward. The values of specific indices reached the highest point during April and May. It can be inferred that since the COVID-19 pandemic started to spread globally from March 2020 onward, the stringency in the implementation of government intervention measures has remained high for the remainder of the year.

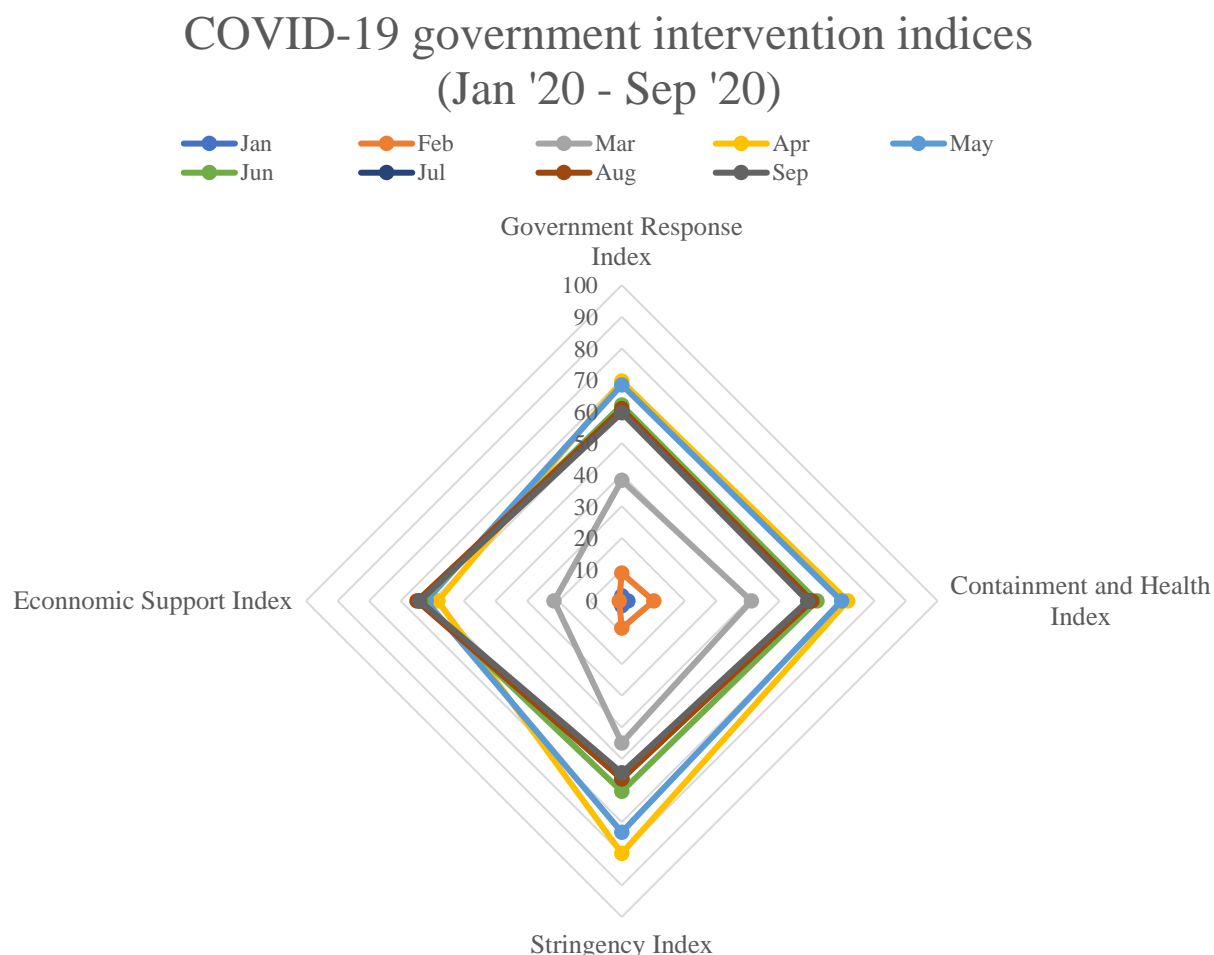


Figure 2: Government intervention indices (Government Response Index, Containment and Health Index, Stringency Index and Economic Support Index) from January 2020 to September

2020.

COVID-19 specific non-pharmaceutical measures indices (Jan '20 - Sep '20)

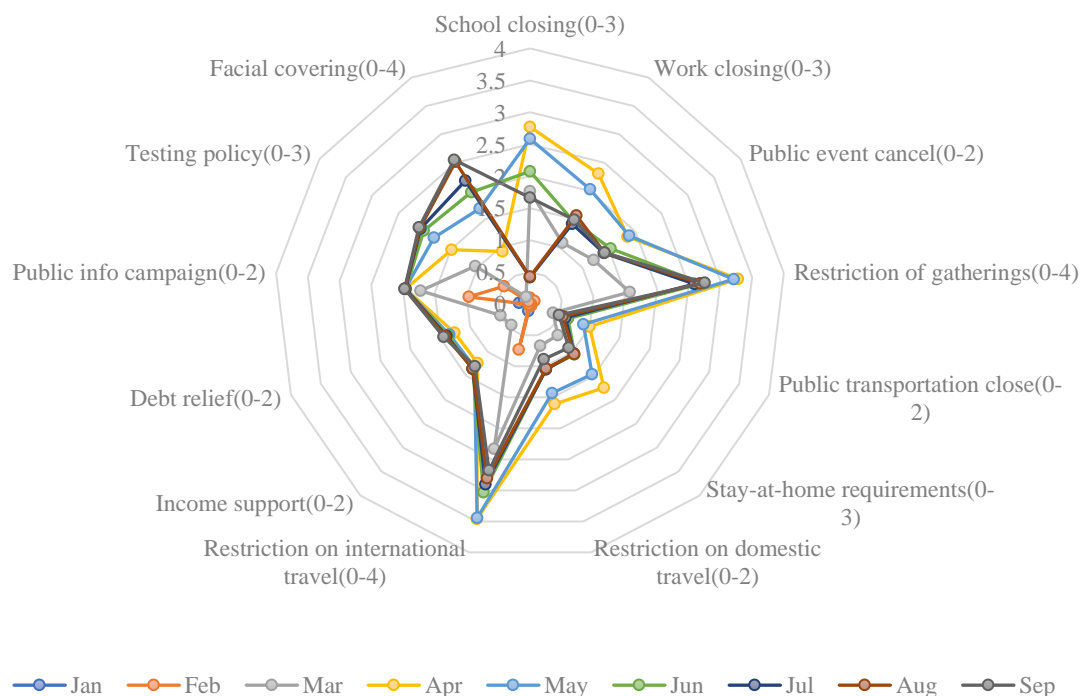


Figure 3: Monthly changes in COVID-19 government specific measures from January 2020 to September 2020.

Figure 4 and 5 show the gradual increase in the number of COVID-19 daily new cases and deaths in six different regions (Africa, Asia, Europe, Oceania, North America, and South America) from January to September 2020. More specifically, there was a sharp spike in number of daily cases from March 2020 onward (Fig. 4). Europe and North America in particular experienced a sharp increase in daily cases compared to other regions during April. From May 2020 onward, other regions including Asia and South America also faced sharp increases in daily cases. Africa and Oceania appeared to be the least affected regions. The number of daily cases in Oceania region in particular remained relatively low throughout the year compared to other regions. In contrast, Asia, Europe and North America were shown to be heavily affected by the substantial increase in daily cases throughout March to September. It can also be observed that the daily new deaths show similar overall trend compared to daily new cases (Fig. 5). However, South Africa appeared to experience high fluctuation in death cases, reaching over 5,000 daily deaths in certain periods. This could be due to poor management of healthcare system compared to other regions. Europe on the other hand tend to experience gradual decline in death cases. Official reported daily death cases in Oceania and Africa remain lower compared to other regions due to having less number of infected cases. Death cases in Asia and North America remain relatively high throughout September 2020.

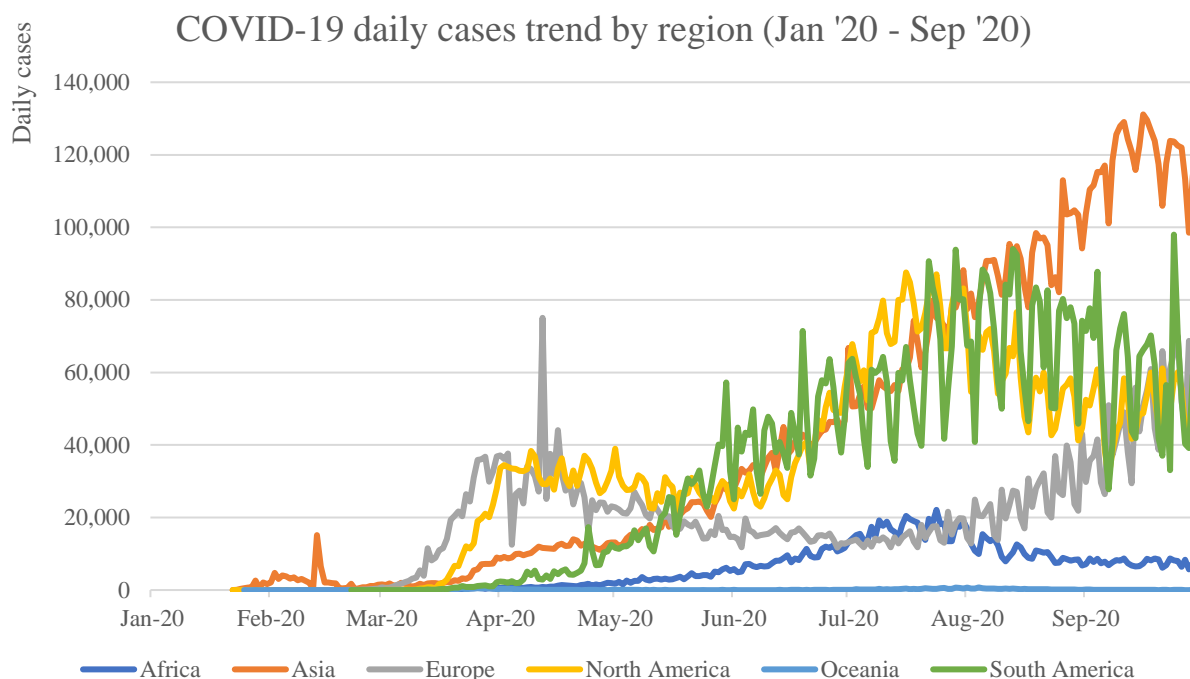


Figure 4: COVID-19 daily cases by region from January 2020 to September 2020.

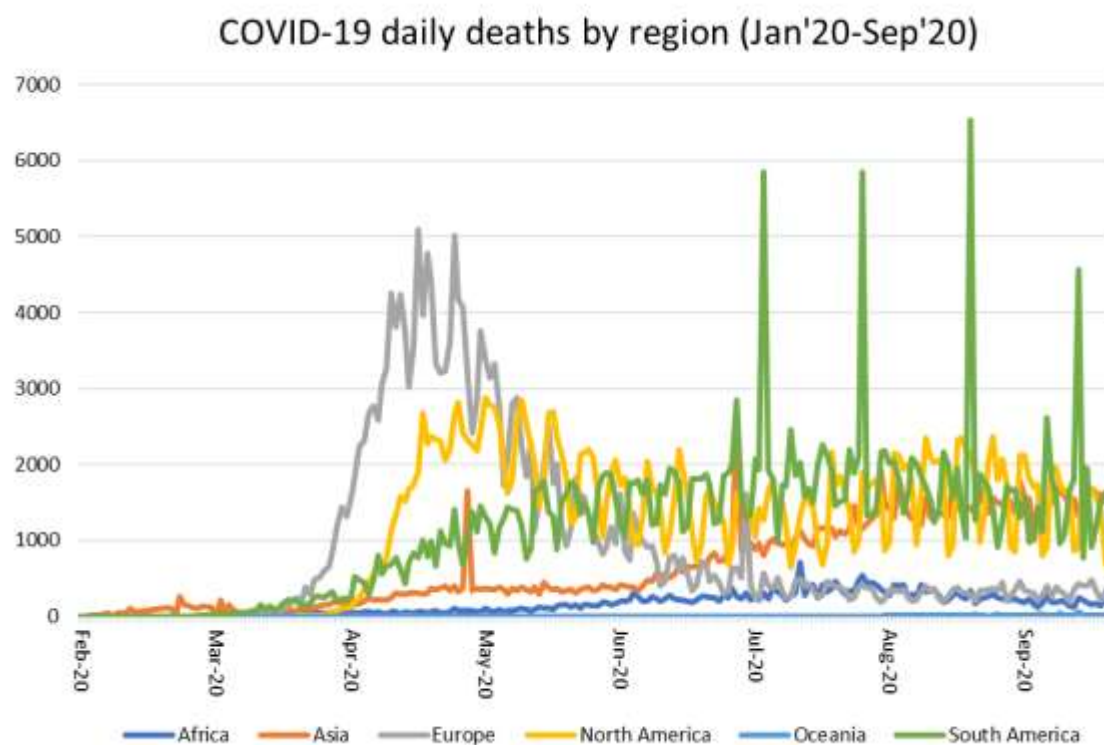


Figure 5: COVID-19 daily new deaths by region from January 2020 to September 2020.

Figure 6 illustrates the effective reproduction rate (R) of regions around the world from

January to September 2020. Effective reproduction number is defined as the average number of secondary cases produced by a primary case (Arryo-Marioli et al. 2021). The effective reproduction number remained high during February to March 2020. The effective reproduction number gradually declined to around 1.0-1.5 from April 2020 onward. In Oceania region, effective reproduction number remained relatively low compared to other regions. This is supported by the fact that the number of daily cases for Oceania region remained relatively low compared to the rest of the world. On average, effective reproduction number for other regions were above 1.0. In this context, the number of infected individuals will keep increasing as long as $R > 1$. Therefore, it can be assumed that other regions apart from Oceania were still facing increase in number of infected individuals throughout 2020.

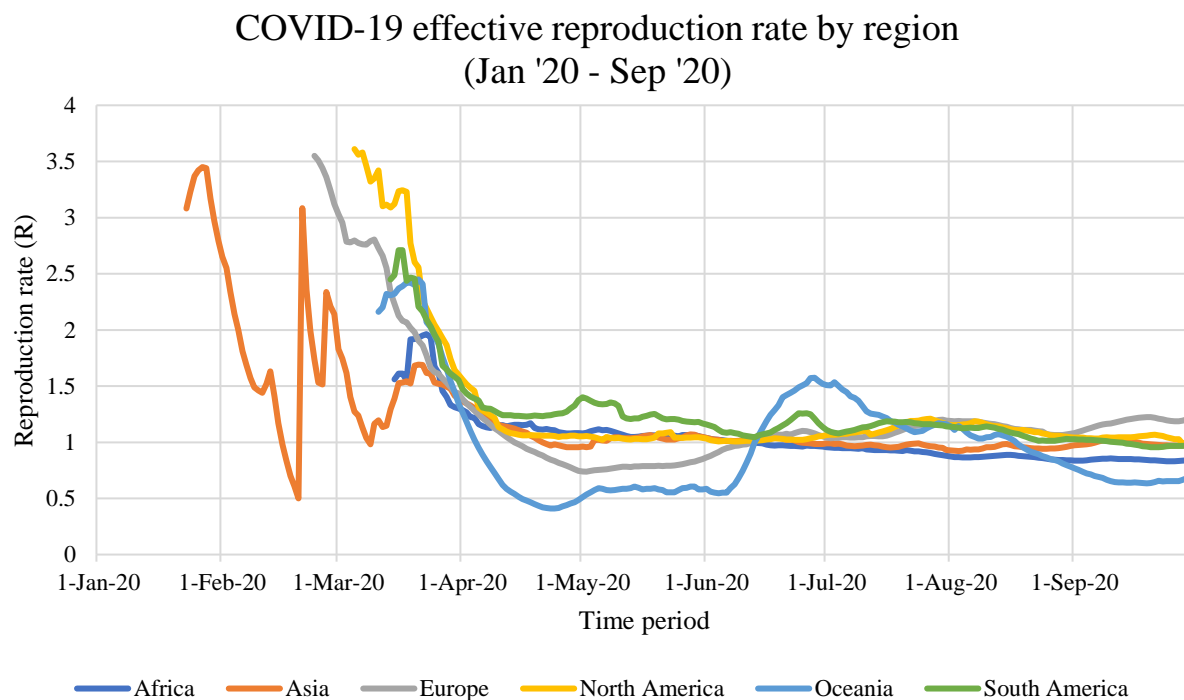


Figure 6: COVID-19 effective reproduction number by region from January 2020 to September 2020.

3.2 Measurement of trade flows and government response policies

In this study, the country's imports, exports and total trade values are assigned as dependent variables. The independent variables include government policy indices and government specific policies and control variables. The government policy indices include 3 distinct indices; containment and health index, stringency index and economic support index (Hale et al. 2020b). The indices are simple averages of the individual component indicators. The government specific policies include specific indicators measured in ordinal scale, which include school closing, workplace closing, cancel public events, gathering restrictions, stay at home requirements, domestic movement restriction, international travel restriction, income support, debt relief, public info campaign, testing policy and facial coverings. The control variables include country's geographic, demographic and economic variables such as GDP, population, population density, life expectancy and surface area.

For government policy indices, we used the Oxford COVID-19 Government Response Tracker database (Hale et al. 2020b). As mentioned previously, there are three main indexes in this database: CHI, SI and ESI. SI records information on closure and social distancing measures using 8 indicators including school closing, workplace closing, cancel public events, restrictions on gathering size, close public transport, stay at home requirements, restrictions on internal movement and restrictions on international travel. ESI is based on 2 specific policies, including the government income support and debt/contract relief for household programs. CHI was coded from indicators for containment policies as well as health system policies, which include public information campaign, testing policy, contact tracing, and facial covering policy (Hale et al. 2020b). It represents government policies concerning healthcare system in the country. Each of the three indices was calculated and rescaled to have a range from 0 to 100. For specific policy variables, we chose the individual policy indicators that make up the containment and health, stringency and economic support indices.

Table 2: Variables Definition

Variables	Type	Scale	Description	Data sources
Exports	Dependent	Ratio	Record of country's monthly export value in 2020	UN Trade Statistics, 2021
Imports	Dependent	Ratio	Record of country's monthly import value in 2020	UN Trade Statistics, 2021
Trade Values	Dependent	Ratio	Record of total trade values which include total monthly imports and exports.	UN Trade Statistics, 2021
COVID-19 New Cases	Dependent	Ratio	Number of new COVID-19 infected cases by country	WHO COVID-19 Dashboard, 2021
COVID-19 New Deaths	Dependent	Ratio	Number of new COVID-19 death cases by country	WHO COVID-19 Dashboard, 2021
Containment and Health Index	Independent	Ordinal	A containment and health index from 0 to 100, which combines lockdown restrictions and closures with measures such as testing policy and contact tracing, short term investment in healthcare, as well investments in vaccine.	(OxCGRT) database
Stringency Index	Independent	Ordinal	The composite measure of stringency policies, rescaled to vary from 0 to 100	(OxCGRT) database, 2020
Economic Support Index	Independent	Ordinal	The composite measure of economic support policies, rescaled to vary from 0 to 100	(OxCGRT) database, 2020
School Closing	Independent	Ordinal	Record closings of schools and universities. 0 - No measures 1 - Recommend closing, or all schools open with alterations resulting in significant differences compared to usual, non-Covid-19 operations 2 - Require closing some levels or categories 3 - Require closing all levels	(OxCGRT) database, 2020
Workplace Closing	Independent	Ordinal	Record closings of workplaces. 0 - No measures 1 - recommend closing 2 - require closing for some sectors or categories of workers 3 - require closing all-but-essential workplaces	(OxCGRT) database, 2020

Public Event Cancellation	Independent	Ordinal	Record cancelling public events. 0- No measures 1 - Recommend cancelling 2 - Require cancelling	(OxCGRT) database, 2020
Gathering Restrictions	Independent	Ordinal	Record the cut-off size for bans on private gatherings 0 - No restrictions 1 - Restrictions on very large gatherings above 1000 people 2 - Restrictions on gatherings between 101-1000 people 3 - Restrictions on gatherings between 11-100 people 4 - Restrictions on all gatherings	(OxCGRT) database, 2020
Public Transportation Closing	Independent	Ordinal	Record closure of public transport 0 - No measures 1 - Recommended closing 2 - Require closing	(OxCGRT) database, 2020
Stay-at-home Requirements	Independent	Ordinal	Record orders to “shelter -in- place” and otherwise confine to home 0 - No measures 1 - recommend not leaving house 2 - require not leaving house with exceptions for grocery and ‘essential’ trips 3 - Require not leaving house with minimal exceptions	(OxCGRT) database, 2020
Domestic Travel	Independent	Ordinal	Record restrictions on internal movement 0 - No measures 1 - Recommend not to travel between regions/cities 2 – internal movement restrictions in place	(OxCGRT) database, 2020
International Travel	Independent	Ordinal	Record restrictions on international travel 0 - No measures 1 - Screening 2 - Quarantine arrivals from high-risk regions 3 - Ban on arrivals from some regions 4 – Ban on all regions or total border closure	(OxCGRT) database, 2020
Income Support	Independent	Ordinal	Record if the government is covering the salaries or providing direct cash payments, universal basic income, or similar, of people who lose their jobs or cannot work. 0 - no income support 1 - government is replacing less than 50% of lost salary 2 - government is replacing 50% or more of lost salary	(OxCGRT) database, 2020
Debt Relief Support	Independent	Ordinal	Record if government is freezing financial obligations of citizens. 0 - No 1 - Narrow relief, specific to one kind of contract 2 - broad debt/contract relief	(OxCGRT) database, 2020
Testing Policy	Independent	Ordinal	Record of the level of COVID-19 testing strictness	(OxCGRT)

			0 – No testing policy 1 – Only those who both (a) have symptoms AND (b) meet specific criteria (e.g. key workers, admitted to hospital, came into contact with a known case, returned from overseas) 2 – testing of anyone showing COVID-19 symptoms	database, 2020
Facial Covering	Independent	Ordinal	Record policies on the use of facial coverings outside home; 0- No policy 1- Recommended 2- Required in some specified shared/public spaces outside the home with other people present 3- Required in all shared/public spaces outside the home with other people present	(OxCGRT) database, 2020
Unemployment rate (%)	Independent	Ratio Scale	The percentage of unemployed workers in the total labor force.	World Bank, 2020
Population	Independent	Ratio Scale	The whole number of people or inhabitants in a country or region.	UNSD, 2021
Population Density	Independent	Ratio Scale	The number of people per unit of area, usually quoted per square kilometer.	UNSD, 2021
Median Age	Independent	Ratio Scale	Age that divides the population in two parts of equal size.	UNSD, 2021
Age 65 or older	Independent	Ratio Scale	The percentage of population age 65 or older.	UNSD, 2021
GDP(Nominal)	Independent	Ratio Scale	The monetary value of final goods and services produced in a country measured in nominal term.	IMF database, 2020
Poverty (%)	Independent	Ratio Scale	Poverty headcount ratio at \$1.90 a day(% of population).	World Bank, 2020
Hospital beds(per thousands)	Independent	Ratio Scale	Number of available hospital beds per 1,000 population.	World Health Organization, 2020
Life Expectancy	Independent	Ratio Scale	Average number of additional years that a person of a given age can expect to live.	UNSD, 2021
Human Development Index	Independent	Interval Scale	A measure of human development that captures health, education, and income.	UNSD, 2021
Surface Area	Independent	Ratio Scale	The total area of the country which comprises land area and inland waters.	UNSD, 2021

3.3 Statistical methods

The random effects regression modelling was used as a method for the analysis. Random effects models are applicable in the context of analyzing data with characteristics that fit the description of panel data (Arellano 2003). That is, data comprising observation units on two or more groups over two or more time periods. In this case, the data were from 70 countries observed over 9 monthly periods, which fits the panel data description.

In econometrics, the random effects models are used in panel data analysis when one assumes no fixed effects (it allows for individual effects). The random effects model is a special case of the fixed effects model. Random effect models assist in controlling for unobserved heterogeneity when it is constant over time and not correlated with independent variables. This constant can be removed from longitudinal data through differencing, since taking a first difference will remove any time invariant components of the model (Woodridge 2010). The rationale behind random effects model is that, unlike the fixed effects model, the variation across entities is assumed to be random and uncorrelated with the predictor or independent variables included in the model (Green 2008).

An advantage of random effects is that it allows for including time invariant variables (i.e. gender). In the fixed effects model these variables are absorbed by the intercept. The random effects model can be presented as in Equation 1:

$$Y_{it} = \beta_1 X_{it} + \alpha_i + U_{it} + \varepsilon_{it} \dots\dots\dots(1)$$

where

α_i is the unknown intercept for each entity (n-entity-specific intercepts)

Y_{it} is the dependent variable (DV) where i = entity and t = time,

X_{it} represents one independent variable (IV),

β_1 is the coefficient for that independent variable,

U_{it} is the between-entity error term,

ε_{it} is the within-entity error term

In this paper, we introduce three models for analyzing the impacts of COVID-19 related public measures on trade. As mentioned previously, the three policy indices include health and containment, stringency and economic support indices. In addition, we introduce another model to identify the impacts of government specific policies on trade during the COVID-19 pandemic. The components of government response indices included as independent variables are CHI, SI and ESI. Furthermore, we include specific policies variables for analyzing the impact of specific policies on trade. The set of specific policies include school closing, work closing, public event canceling, gathering restrictions, stay-at-home requirements, domestic and international travel restrictions, income support, public campaign, testing policy, debt relief, and facial covering. In addition, variables such as country's demographics and geographic and economic variables are added into the model to increase the robustness of the model's results.

4. Results

Table 3 shows a summary of descriptive statistics generated from the data we collected in this study. The descriptive summary illustrates the mean, standard deviation, minimum and maximum values of the data collected from 70 sample countries. To avoid collinearity issues between independent variables, we use the Variance Inflation Factor (VIF) analysis to identify and remove independent variables with high VIF values. The dependent variables in this study include the monthly exports, imports and total trade values. The independent variables include COVID-19 government policy indices and specific policies and actions. Furthermore, we also include control variables to improve robustness of the model such as country's economic, demographic, and geographic variables.

It should be noted that the policy indices and specific policies are treated as interval scale in our data analysis. The policy indices and specific policies are measured by aggregating the daily ordinal scale data and convert them into monthly average data. By taking the average number of the policy indices, the data is therefore converted into interval scale. Data related to trade in terms of exports, imports and total trade values are treated as ratio scale variables. Furthermore, we include control variables to improve the robustness of our models such as GDP, population size, unemployment rate, life expectancy, extreme poverty rate and surface area.

Table 3: Summary descriptive statistics of the variables

Variable	Scale	Mean	Std. Dev.	Min	Max
Imports (million USD)	Ratio	14,503.509	29,732.308	51.029	212,437
Exports (million USD)	Ratio	13,011.582	23,182.466	11.16	134,401
Total trade (million USD)	Ratio	27,515.086	52,119.081	71.091	333,953
Containment and health index	Interval	48.271	27.132	0	94.514
Stringency index	Interval	48.359	29.374	0	100
Econ support index	Interval	44.295	34.261	0	100
School closing	Interval	1.314	1.259	0	3
Work closing	Interval	1.269	.99	0	3
Public event cancel	Interval	1.202	.83	0	2
Gathering restrictions	Interval	2.091	1.558	0	4
Stay at home req.	Interval	.882	.868	0	3
Domestic travel	Interval	.862	.836	0	2
International travel	Interval	2.39	1.394	0	4
Income support	Interval	.927	.802	0	2
Public campaign	Interval	1.628	.702	0	2
Testing policy	Interval	1.475	.948	0	3
Debt relief	Interval	.973	.827	0	2
Facial coverings	Interval	1.336	1.408	0	4
GDP(million USD)	Ratio	985,068.3	2,484,155.7	3111.131	17,948,800
Unemployment rate	Ratio	6.702	4.633	1.03	28.181
Population(million)	Ratio	53.317	170.868	.057	1,380.004
Population density	Ratio	235.272	839.511	.137	7,039.714
Median age	Ratio	35.869	8.255	17.7	48.2
Age 65 and up(%)	Ratio	12.927	6.455	2.48	27.049
GDP per capita	Ratio	25,253.677	18,830.416	1416.44	94,277.969
Extreme poverty(%)	Ratio	6.644	15.469	.1	77.6
Hospital beds/1000	Ratio	3.745	2.517	.2	13.05
Life expectancy	Ratio	76.696	5.599	61.49	84.86
Surface area(1000 km ²)	Ratio	765.917	1,924.544	.03	9,984.67

Table 4 summarizes the random effects regression results of the types of public measures that have significant impacts on the trade flows. Three proposed models in Table 5 show the effects of policy areas on imports, exports, and total trade, respectively. Based on the results, the policy indices that have significant impact on trade values are containment and health and stringency policy areas. Containment and Health index combines lockdown restrictions and closures with healthcare-related measures such as testing policy, contact tracing, short term investment in healthcare, and investments in vaccine. SI involves the strictness of lockdown policies, which include policies that primarily target on restricting citizen's behavior in an attempt to contain the spread of the virus. The results show that containment and health measures have significant positive effects on imports (139.809), exports (98.543) and total trade (236.643). Furthermore, stringency measures have significant negative effects on the imports (-150.912), exports (-122.452) and total trade (-272.351). This means that policies that are related to

healthcare and containment are shown to be effective in containing the contraction of the trade flows during the pandemic crisis. In contrast, policies related to stringent lockdown measures tended to have negative impact on trade flows, both imports and exports, during the pandemic. Other factors shown to have significant impact on trade flows during the pandemic include countries' GDP and land size (surface area). Countries' with high GDP and large surface area are large countries with high trade volume. Therefore, GDP and land size are considered significant determinants of countries' trade value. Log of GDP is shown to have significant positive impacts on imports (6,497.595), exports (5,200.253), and total trade (11,694.885). Furthermore, coefficients for surface area shows significant positive effect on imports (5.889), exports (3.554), and total trade (9.441).

Table 4: Impacts of COVID-19 Policy on Trade Flows: Random Effect Regression

variable	Imports	Exports	Total Trade
Containment & health index	139.809** (57.26)	98.543* (52.954)	236.643** (100.248)
Stringency index	-150.912*** (47.714)	-122.452*** (44.142)	-272.351*** (83.541)
Economic support index	10.763 (12.572)	11.092 (0.34)	22.223 (22.008)
Unemployment rate	-777.593 (670.732)	-399.556 (378.868)	-1178.054 (1,037.953)
Population (million)	-11.844 (21.06)	-9.342 (11.875)	-21.182 (32.58)
Population density	10.29 (24.909)	6.813 (14.066)	17.126 (28.544)
GDP (ln)	6,497.595** (2745.267)	5,200.253*** (1,548.818)	11,694.885*** (4,247.419)
Extreme poverty (%)	0.318 (250.257)	40.516 (141.671)	40.446 (387.638)
Life expectancy	85.255 (764.007)	286.035 (432.292)	368.638 (1,182.641)
Surface area (1,000 km ²)	5.889*** (1.714)	3.554*** (0.967)	9.441*** (2.651)
Constant	-165,408.59** (72,463.325)	-148,711.52*** (40,972.071)	-313,826.84*** (112,155.54)
	$R^2 = 0.590$	$R^2 = 0.667$	$R^2 = 0.627$
	Num. of obs. = 301	Num. of obs. = 301	Num. of obs. = 301
	$\chi^2 = 62.081$	$\chi^2 = 90.887$	$\chi^2 = 76.604$
	$p\text{-value} = 0.000$	$p\text{-value} = 0.000$	$p\text{-value} = 0.000$

The standard errors are in the parentheses.

*** $p < 0.01$, ** $p < 0.05$, * $p < 0.10$

Table 5 reports the regression results of the impacts of specific policies on trade activities during COVID-19 pandemic by using Random Effects regression method. The specific policies included in the models are policies implemented by the government as intervention measures to control the spread of the COVID-19 virus. The specific policies include school closing, workplace closing, cancelling public events, restrictions on gatherings, stay at home requirements, restrictions on domestic and international travel, income support, public campaign,

testing, debt relief, and facial covering policies. The results show that specific policies have different effects on imports, exports, and overall trade. In general, the specific policies that have significant effects on trade are school closing, stay-at-home, COVID-19 testing and facial covering policies. In particular, school closing and stay-at-home policies exhibit negative impacts on imports and overall trade. These policies focus on restricting people's movement and interaction. Therefore, it is possible that these policies can hinder trade activities and reduce the import activities. Testing policy shows negative effect on exports (-912.647). Facial covering policy shows significant positive effects on imports (726.601), exports (1,073.717) and overall trade (1,791.447). Facial covering policy allows manual labor to continue working, under restricted conditions, without having to stop working completely. Therefore, it is possible that facial covering policy can have positive effect on trade.

Furthermore, GDP(log) exhibits significant positive effects on imports (6,407.96), exports (5,095.9) and total trade (11,498.204). Another control variable shown to have significant impacts on trade flows is surface area (1,000 km²). The coefficients for the effects of surface area on trade flows are 5.834, 3.64 and 9.474, for imports, exports and total trade, respectively. The coefficient results are graphically summarized in Fig. 7.

Table 5: Impacts of COVID-19 specific policies on trade flows: Random Effect Regression

Variable	Import	Export	Total Trade Value
School closing	-1030.052*** (300.668)	-280.497 (281.104)	-1302.065** (528.059)
Work closing	-686.588 (599.411)	-849.642 (559.98)	-1541.119 (1,052.607)
Public event cancel	425.844 (733.607)	-18.837 (685.301)	394.052 (1,288.249)
Gathering restrictions	613.517 (448.243)	127.213 (418.091)	730.773 (786.939)
Stay at home	-1478.119** (738.149)	-715.139 (689.054)	-2221.743* (1,296.074)
Domestic Travel	1018.049 (679.659)	149.206 (634.523)	1201.222 (1,193.396)
International Travel	328.242 (353.445)	436.524 (329.265)	761.31 (620.385)
Income support	347.931 (562.588)	-359.797 (525.396)	-39.412 (987.885)
Public campaign	-426.867 (512.981)	-599.131 (479.241)	-1,017.179 (900.828)
Testing policy	-183.095 (456.421)	-912.467** (425.836)	-1,093.608 (801.331)
Debt relief	-606.075 (608.186)	779.635 (567.565)	220.207 (1,067.825)
Facial covering	726.601*** (264.287)	1,073.717*** (246.742)	1,791.447*** (464.057)
Unemployment rate	-759.867 (668.57)	-377.507 (364.978)	-1138.299 (1,023.055)
Population (million)	-10.782 (21)	-9.251 (11.449)	-20.036 (32.127)
Population density	10.935 (24.833)	6.938 (13.557)	17.912 (38)
GDP (ln)	6,407.96** (2,737.11)	5,095.9*** (1,492.872)	11,498.204*** (4,187.731)

Extreme poverty (%)	3.342 (249.435)	47.027 (136.495)	49.747 (381.839)
Life expectancy	140.016 (761.775)	385.811 (416.917)	523.091 (1,166.176)
Surface area (1,000 km ²)	5.834*** (1.709)	3.64*** (0.933)	9.474*** (2.616)
Constant	-167061.09** (72,240.838)	-153,250.43*** (39,493.543)	-319953.38*** (110,570.51)
	$R^2 = 0.594$ Num. of obs. = 301 $\chi^2 = 97.658$ p -value = 0.000	$R^2 = 0.670$ Num. of obs. = 301 $\chi^2 = 129.290$ p -value = 0.000	$R^2 = 0.629$ Num. of obs. = 301 $\chi^2 = 113.181$ p -value = 0.000

The standard errors are in the parentheses.

*** $p < 0.01$, ** $p < 0.05$, * $p < 0.10$

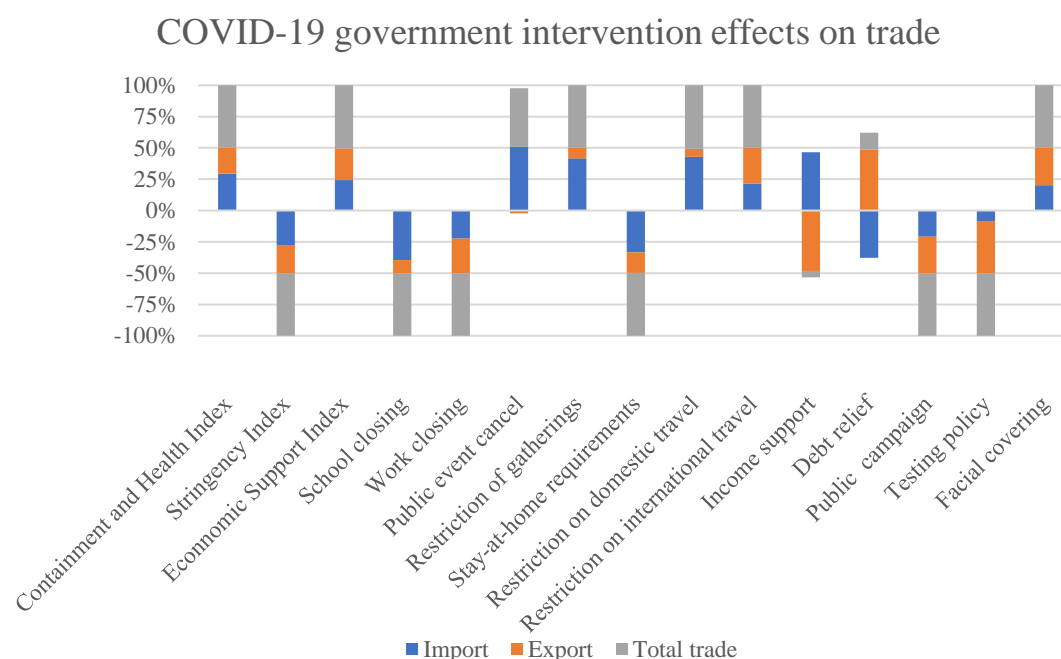


Figure 7: Marginal effects of COVID-19 public intervention indices and specific measures on trade flows.

5. Discussions

This study aimed to test three inter-related hypotheses. Our first hypothesis stated that health related policies have a positive impact on trade flows. In this context, health related policies include public awareness campaign, testing policy, contact tracing and facial covering. A relevant study conducted by Ashraf (2020b) showed that government announcements regarding public awareness programs, testing and quarantining policies, and income support packages largely result in positive stock market returns. Other studies showed that enforcing containment and healthcare policies produce benefits in terms of lowering new infections and death rates and that in turn lower death rates provide significant economic benefits in terms of saving more lives

(Greenstone and Nigam 2020; Thunström et al. 2020). Our results showed that better containment and health policies represented by the containment and health index have positive impact on trade flows. Furthermore, facial covering policy was shown to have statistically significant positive impact on imports, exports and overall trade. This means that facial covering can be an effective policy in controlling the spread of COVID-19, while maintaining a continuation of economic activities in that time period.

Our second hypothesis stated that government stringent measures on closure policies, social distancing and restriction measures have negative effects on trade flows. Closure and social distancing measures in this context include school closing, workplace closing, public events cancelling, gathering restrictions, public transport closing, stay at home requirements, restrictions on internal and international travel. We assumed that restrictions on people's movement and ability to work would greatly hinder the availability of labor force, which is very crucial to business operations. Our results are consistent with our second hypothesis, which means that closure and social distancing policies have strong negative impacts on trade flows. The results are also largely consistent with past literature. For example, Heyden and Heyden (2020), Shanaev et al. (2020) and Zaremba et al. (2020) showed that government social distancing measures are counterproductive to economic activities. A recent study concluded that containment and stringency measures have had, on average, a very large negative impact on economic activity—equivalent to a loss of about 15 percent in industrial production over a 30-day period following their implementation (Deb 2020).

Despite the direct negative impacts of stringent measures on closure and social distancing policies on trade flows, it can be argued that stringency policies can be beneficial to overall economic growth in the long run. This is because closure, movement restrictions and social distancing measures can substantially mitigate economic costs by effectively containing the spread of COVID-19 and subsequent economic effects in the long-run. Deb (2020) pointed out that stringency/containment measures are effective in mitigating some economic costs, especially the costs associated with infections and deaths from COVID-19. It was also found that among different types of containment measures, i.e. workplace closures, stay-at-home orders, and cancellations of events are effective in flattening COVID-19 related infections, but are also the costliest in terms of their impact on economic activities. Less costly containment measures, such as restrictions on international travel, can nonetheless be successful in reducing the volume of COVID-19 infections (Deb 2020).

Our third hypothesis stated that government economic support policies lead to an increase in value of trade volumes. Based on our results, we reject this hypothesis. Our findings showed that the economic support index does not have significant impact on trade flows. Specific policies related to economic support index such as debt relief and income support policies also prove to have no significant impact on trade. One possible reason is that economic support index, which we use, measures the income and debt relief support to households but not to businesses (Ashraf 2020b). However, economic support policies can have positive impact on trade if financial support were given directly to businesses related to international trade. Unfortunately, economic support index does not include financial support to businesses (Hale et al. 2020b). Thus, we can conclude that economic support policies do not have significant impact on the value of trade flows. However, economic support policies should not be entirely ignored because these policies can help alleviate the financial stress of individual citizens during the COVID-19 pandemic. Furthermore, economic support measures can help to stimulate domestic consumption and increase demand for imports in a long run. Despite tremendous government support, it would

take some time for the economy to return to the pre-COVID-19 level. This is due to the fact that the income shock has a long-term impact on the private sector. In addition, businesses, especially the tourism sector, have to take time to alter their business models in order to respond to the new normal where people became more concerned regarding their health safety (BOT 2020). For this reason, economic protection for citizens through financial support to households can help the tourism sector to recover faster by increasing the number of domestic tourists to substitute for a loss of foreign tourists assuming that domestic travel is allowed. Further research on this issue could provide policy relevant evidence.

Our analysis also included the examination of the impact of specific government measures on trade. School closing policy has negative impact on imports and overall trade. School closing policy is part of the containment measures, which have direct negative impact on economic activities. Stay-at-home requirements, which is another containment measure also showed negative impact on imports and overall trade. Past study showed that containment measures have had a very large impact on economic activities, which is equivalent to a loss of 15% in industrial production over a one month period following their implementation (Deb 2020). Testing policy, which measures the implementation strictness of COVID-19 testing showed significant negative impact on exports. In contrast, Facial covering policy showed positive effects on imports, exports and overall trade value. The impact of facial covering policy on economic activities is supported by a few past studies. A recent study from Germany has shown that wearing masks is a cost-effective, less economically harmful, and democracy-compatible containment measure for COVID-19 (Mitze et al. 2020). Another study in the US suggested that facial coverings helped reduce the spread of COVID-19 without greatly disrupting economic activity if they are widely used (Knotek II et al. 2020). Therefore, based on past studies and our findings, facial covering appear to be very effective in controlling COVID-19 infection and death rates, as well as avoiding disruptions on major economic activities.

6. Conclusion

This study aimed to assess the impacts of COVID-19 public intervention measures on trade flows. The results show that containment and health related measures have significant positive impacts on imports, exports and overall trade values. On the other hand, stringent measures on lockdowns and social distancing measured by SI were found to have negative impact on trade. This could be due to the fact that SI focuses on the strictness of lockdown policies and tightening social distancing measures. These measures effectively reduce international trading activities by restricting labor availability and discouraging imports and exports. Economic support policies did not show a statistically significant effect. For the impact of specific policies on trade flows, school closing, stay-at-home requirements and testing policies were shown to have significant negative impact on trade flows. In contrast, facial covering policy showed significant positive impact on imports, exports and overall trade.

It should be noted that there are some limitations to this research. First of all, this paper only focuses on the impact of COVID-19 measures on a single economic activity, which is international trade. It does not take into account the potential impact of COVID-19 measures on other economic sectors that are likely to be heavily affected by the pandemic, such as manufacturing and tourism sectors. In addition, the amount of past literature related to COVID-19 is still relatively limited because the pandemic has started in 2020. Although the number of research outputs on COVID-19 is increasing rapidly, many of them are still currently under development. There is also another limitation regarding the possibility of endogeneity bias. It is

possible that some policy indices and specific policies are correlated with the error terms. This means that including the specific policies into the regression models can lead to endogeneity bias. In this study, we however minimized the endogeneity bias by using Variance Inflation Factor analysis (VIF) to eliminate the variables with high VIF value. Another limitation to consider is that the data used in this study only consist of macro level data. Therefore, the results from this study did not take into account of the potential impact of COVID-19 policies at the household and individual levels.

Based on the results of this study, it is recommended that future research examine other aspects of COVID-19 government interventions, such as potential impacts on other economic sectors. In addition, as the public awareness of different sustainability issues rises, researchers can choose to explore the impact of COVID-19 on biodiversity and BioTrade. This is particularly relevant in the context of the current discussions on the forthcoming post 2020 global biodiversity framework (UNCTAD, 2021).

Furthermore, as more data become available, further research could be undertaken on a full sample of countries, or within countries and regions, which would help provide better assessment of the potential impacts of COVID-19 policies on international trade. Our results show that health-related policies have largely positive impacts on trade values. Facial covering policy in particular shows significant positive impacts on trade flows. On the other hand, stringency measures such as closure policies have negative impacts on trade flows. Therefore, governments should focus on implementing containment and health-related policies as well as maintaining less stringent measures on closure and movement restriction policies in order to minimize the loss in trade flow values amid the pandemic crisis. While we did not find a statistically significant direct effect of economic support policies on trade, such policies can be an effective tool to relieve the financial stress of households and individuals, and thus boost consumption. Further research in this area would be helpful to thoroughly understand the underlying dynamics.

Acknowledgments

The authors gratefully acknowledge the valuable comments from Lisen Runsten, Camilla Blasi Foglietti, and Julia Wentworth of the World Conservation Monitoring Centre and Arlene Gonzales of the Asian Institute of Technology.

Funding

This research was funded by the UKRI GCRF Trade, Environment and Development Hub project, led by the World Conservation Monitoring Centre.

Conflict of interest

We declare no conflict of interest.

References

- Arroyo-Marioli F, Bullano F, Kucinskas S, Rondón-Moreno C. 2021. “Tracking \mathcal{R} of COVID-19: A new real-time estimation using the Kalman filter.” PLoS ONE 16(1): e0244474.
- Ashraf, B.N., 2020a. “Stock markets’ reaction to COVID-19: cases or fatalities?” Res. Int. Bus. Finance 54, 101249.
- Ashraf, B.N., Zheng, C., Jiang, C., Qian, N. 2020. “Capital regulation, deposit insurance and

- bank risk: International evidence from normal and crisis periods.” *Res. Int. Bus. Finance* 52.
- Bank of Thailand. 2020. “Roles of public policies in restoring the Thai economy amid the highly uncertain COVID-19 outbreak”, Monetary Policy Report, June 2020.
- C. Wang, P.W. Horby, F.G. Hayden, G.F. Gao. 2020. “A novel coronavirus outbreak of global health concern.” *Lancet* 395 (10223).
- C. Huang, Y. Wang, X. Li, et al. 2020. “Clinical features of patients infected with 2019 novel coronavirus in Wuhan, China.” *Lancet* 395 (10223).
- Deb P., Furceri D., Ostry J., and Tawk N. 2020. “The Effects of Containment Measures on the COVID-19 Pandemic.” *Covid Economics: Vetted and Real-Time Papers*. 2020(19), pp.53-86.
- Diaz RS, Vergara TR. 2020. “The COVID-19 second wave: A perspective to be explored.” *Braz J Infect Dis*.
- G. Berlinguer. 2020. Globalization and global health, *Int. J. Health Serv.* 29 (3)
- Hale, T., Petherick, A., Phillips, T., Webster, S. 2020a. Variation in Government Responses to COVID-19. Blavatnik School of Government Working Paper 31.
- Hale, T., Webster, S., Petherick, A., Phillips, T., Kira, B. 2020b. Oxford Covid-19 government response tracker. Blavatnik School of Government 25.
- Heyden, K.J., Heyden, T. 2020. “Market reactions to the arrival and containment of COVID-19: an event study.” Available at SSRN 3587497.
- Hsiao, Cheng. 2003. *Analysis of Panel Data* (2nd ed.). New York, NY: Cambridge University Press. pp. 73.
- Maliszewska, Maryla; Mattoo, Aaditya; van der Mensbrugghe, Dominique. 2020. “The Potential Impact of COVID-19 on GDP and Trade : A Preliminary Assessment.” Policy Research Working Paper; No. 9211. World Bank, Washington, DC.
- IMF. 2020. “A Crisis Like No Other, An Uncertain Recovery: A Crisis Like No Other, An Uncertain Recovery”, June 2020.
- K. Prem, Y. Liu, T.W. Russell, et al. 2020. “The effect of control strategies to reduce social mixing on outcomes of the COVID-19 epidemic in Wuhan, China: a modelling study.” *Lancet Public Health* 5 (5).
- S Nguyen. 2020. “Coronavirus: Vietnam Stockpiles Rice as Outbreak Spreads and Food Security Concerns Grow.” *South China Morning Post*, Accessed 28 March 2020.
- Shrestha, N., Shad, M. Y., Ulvi, O., Khan, M. H., Karamahic-Muratovic, A., Nguyen, U. S. D., Haque, U. 2020. “The impact of COVID-19 on globalization.”, *One Health*, 11, 100180.
- Shanaev, S., Shuraeva, A., Ghimire, B. 2020. “The financial pandemic: COVID-19 and policy interventions on rational and irrational markets.” Shanaev, Savva and Shuraeva, Arina and Ghimire, Binam, Available at SSRN: <http://dx.doi.org/10.2139/ssrn.3589557>
- Spelta, A., Flori, A., Pierri, F., Bonaccorsi, G., Pammolli, F. 2020. “After the lockdown: simulating mobility, public health and economic recovery scenarios.” *Scientific reports*, 10(1), pp.1-13.
- Thunström, L., Newbold, S.C., Finnoff, D., Ashworth, M., Shogren, J.F. 2020. “The benefits and costs of using social distancing to flatten the curve for COVID-19.” *J. Benefit-Cost Anal.* 1–27.
- UN Comtrade. 2021. Available at <http://comtrade.un.org/>, Accessed 24 April, 2021.
- UNCTAD. 2020. “Impact of the Coronavirus Outbreak on Global FDI”, March 2020.
- UNCTAD. 2021. “Online workshop on trade and biodiversity for the post-2020 global biodiversity framework”, March 2021.

- UNECLAC. 2020. “The effects of the coronavirus disease (COVID-19) pandemic on international trade and logistics”, August 2020.
- UNEP. 2020. “COVID-19, the Environment, and Food Systems: Contain, Cope and Rebuild Better”, December 2020.
- UN Statistics Division. 2021. Available at <https://unstats.un.org/>, accessed 24 April, 2021.
- World Health Organization (WHO). 2020. “COVID-19: Trade and Trade-Related Measures”, March 2020.
- World Health Organization (WHO). 2021. “COVID-19 shows why united action is needed for more robust international health architecture”, March 2021.
- World Health Organization (WHO). 2021. WHO Coronavirus Disease (COVID-19) Dashboard. Available at <https://covid19.who.int/>, accessed 22 April 2021.
- Wooldridge, Jeffrey. 2010. *Econometric analysis of cross section and panel data* (2nd ed.). Cambridge, Mass.: MIT Press. p. 252.
- Worldometer. 2021. Coronavirus Update (Live) – Worldometer, Available at. <https://www.worldometers.info/coronavirus/#countries>, accessed 12 May 2021.
- World Bank. 2020. “Projected poverty impacts of COVID-19 (coronavirus)”, June 2020.
- WTO. 2020. “WTO report on G20 trade measures”, June 2020.
- WTO. 2021. “World trade primed for strong but uneven recovery after COVID-19 pandemic shock”, March 2021.
- Y. Zhang, B. Jiang, J. Yuan, Y. Tao. 2020. “The Impact of Social Distancing and Epicenter Lockdown on the COVID-19 Epidemic in Mainland China: A Data-Driven SEIQR Model Study.” Available at [<https://www.medrxiv.org/content/10.1101/2020.03.04.20031187v1.full.pdf>], accessed 15 May 2021.
- Zaremba, A., Kizys, R., Aharon, D.Y., Demir, E. 2020. “Infected markets: Novel coronavirus, government interventions, and stock return volatility around the globe.” *Finance Res. Lett.* 101597.