

**Scoping review and interpretation of Myofascial Pain/Fibromyalgia syndrome: an attempt to assemble a medical puzzle** 1  
2  
3

"Fascial Armoring" as a global chronic compartment-like syndrome 4  
5  
6

Shiloh Plaut<sup>1</sup> 7  
8

School of Medicine, St. George's University of London, London, United Kingdom 9

Corresponding author: 10

Shiloh Plaut 11

Shiloh Plaut- sole researcher and author of this manuscript including conception, 12  
organization, literature review, integration of information, findings analysis, 13  
manuscript preparation and writing. 14

15

16

17

18

19

# Scoping review and interpretation of Myofascial Pain/Fibromyalgia syndrome: an attempt to assemble a medical puzzle

## Abstract

Background: Myofascial Pain Syndrome (MPS) is a common, overlooked, and underdiagnosed condition and has significant burden. MPS is often dismissed by clinicians while patients remain in pain for years. MPS can evolve into fibromyalgia, however, effective treatments for both are lacking due to absence of a clear mechanism. Many studies focus on central sensitization. Therefore, the purpose of this scoping review is to systematically search cross-disciplinary empirical studies of MPS, focusing on mechanical aspects, and suggest an organic mechanism explaining how it might evolve into fibromyalgia. Hopefully, it will advance our understanding of this disease.

Methods: Systematically searched multiple phrases in MEDLINE, EMBASE, COCHRANE, PEDro, and medRxiv, majority with no time limit. Inclusion/exclusion based on title and abstract, then full text inspection. Additional literature added on relevant side topics. Review follows PRISMA-ScR guidelines. PROSPERO yet to adapt registration for scoping reviews.

Findings: 799 records included. Fascia can adapt to various states by reversibly changing biomechanical and physical properties. Trigger points, tension, and pain are a hallmark of MPS. Myofibroblasts play a role in sustained myofascial tension. Tension can propagate in fascia, possibly supporting a tensegrity framework. Movement and

mechanical interventions treat and prevent MPS, while living sedentarily predisposes 43  
to MPS and recurrence. 44

Conclusions: MPS can be seen as a pathological state of imbalance in a natural process; 45  
manifesting from the inherent properties of the fascia, triggered by a disrupted 46  
biomechanical interplay. MPS might evolve into fibromyalgia through deranged 47  
myofibroblast in connective tissue ("fascial armoring"). Movement is an 48  
underemployed requisite in modern lifestyle. Lifestyle is linked to pain and suffering. 49  
The mechanism of needling is suggested to be more mechanical than currently 50  
thought. A "global percutaneous needle fasciotomy" that respects tensegrity 51  
principles may treat MPS/fibromyalgia more effectively. "Functional-somatic 52  
syndromes" can be seen as one entity (myofibroblast-generated-tensegrity-tension), 53  
sharing a common rheuma-psycho-neurological mechanism. 54

55

Key words: fascial armoring, myofascial pain syndrome, myofibroblast generated 56  
tensegrity tension, fibromyalgia, global chronic compartment syndrome. 57

58

# Scoping review and interpretation of Myofascial Pain/Fibromyalgia syndrome: an attempt to assemble a medical puzzle

## Introduction

Chronic pain is a major cause of morbidity and has a significant impact on quality of life [1]. Myofascial pain denotes a pain arising from muscle and fascia. Commonly known as "muscle knots" myofascial pain usually arises in trigger points (TrPs) or 'tender spots' [2-4]. TrPs are small and sensitive areas in a contracted muscle, that spontaneously or upon compression cause pain to a distant region, known as a referred pain zone [3,4]. Traditionally, "TrPs" are perceived as associated with MPS and differ from "tender points" mainly in that they radiate pain [2-4].

Myofascial pain syndrome (MPS) is an entity that still lacks a clear definition. Some define it as a regional pain disorder [2], others define it on the basis of tenderness and associated painful spots [3]. Nonetheless, TrPs and myofascial pain are a hallmark [2,4,5]. A fundamental difficulty arises when there is no clear definition, epidemiology, pathophysiology, or diagnosis of MPS. Having no accepted definition or criteria, clearly raises issues for both diagnosis and potential studies [6-8]. The purpose of this paper is to systematically search the empirical studies and components of MPS in an effort to assemble them into a suggested organic mechanism, explaining its pathophysiology and how it may evolve into fibromyalgia. Since much of the subject is still somewhat under dispute, textbooks and medical literature were added to establish a consensus on the elements of MPS.

In clinical practice MPS is often defined by multiple areas of musculoskeletal pain and tenderness associated with painful points [3]. Pain is deep and aching. It may arise after trauma, overuse or sedentarism [3]. A study found laborers who exercise heavily are less likely to develop manifestations of MPS than sedentary workers [3]. Palpation of a TrP can reproduce or accentuate the pain [4]. However, these findings are not unique to MPS: in a controlled study they were also present in “normal” subjects [3]. Literature estimates 45% of men and 54% of women in the general population have TrPs [2,9]. Estimates are 37 to 65 percent of the population have myofascial pain, which costs the united states \$47 billion every year [4,10,11]. MPS is one the most frequently under-diagnosed, under-treated and misunderstood sources of the ubiquitous aches and pains of humankind [4,9]. However, even recently, MPS is considered by some to be fiction, or otherwise paired with psychosomatic disorders since it involves pain and has no clear pathophysiology [11-13].

Although MPS and fibromyalgia are defined as separate entities, the two may co-exist or considerably overlap [2,3]. They are both characterized by painful points, silent routine laboratory investigations and no systemic inflammation [2-4]. In some patients, regionally localized MPS may seem to evolve into fibromyalgia [3]. The puzzle of the mechanism of MPS and how it may develop into fibromyalgia still eludes our understanding. The marked dissociation between the estimated prevalence and burden of MPS, and the length of text on it in common medical textbooks, reflects this lack of understanding.

Studies of fibromyalgia reveal odd findings e.g., complete resolution after 104  
laparoscopic surgery, and strong overlap with other conditions (e.g., hypermobility 105  
syndrome). Many theories exist for fibromyalgia, the most accepted and studied 106  
seems to be central sensitization, but no single theory seems to explain a wide range 107  
of empirical evidence, and the pathophysiology and etiology are still not clear. 108  
Treatments are insufficient, meanwhile patients suffer. This scoping review focuses 109  
on the organic mechanical aspects of myofascial pain with the hope it might advance 110  
our understanding of MPS and fibromyalgia, highlight gaps in current knowledge, 111  
and stimulate research in a less explored field. Findings will be presented with the 112  
purpose of understanding the elements relevant to MPS and fascia, in order to 113  
assemble them and discuss a suggested mechanism for MPS and fibromyalgia. The 114  
discussion is divided into two parts: part 1 focuses on MPS and suggests a theoretical 115  
mechanism ("fascial armoring"), part 2 discusses empirical evidence in support of 116  
fibromyalgia as an entity driven by myofibroblast-generated-tensegrity-tension, as 117  
predicted by this model. 118

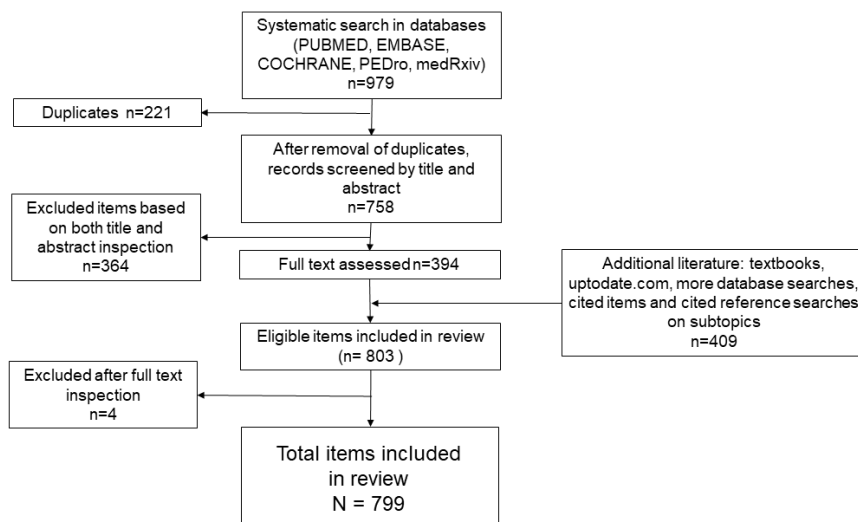
119

## Methods

120

A systematic search was held for multiple combinations of keywords in multiple 121  
databases. Keywords included : "fascia tension pain", "trigger point satellite", "fascia 122  
stiffness pain", "Fascia Densification", "trigger point densification movement", 123  
"biotensegrity", for all fields with no time limit; and for "Risk factors myofascial pain 124  
syndrome" only for title/abstract; Systematic reviews, meta-analyses and randomized 125

controlled trials were searched in title or abstract for "myofascial pain syndrome", 126  
"spinal mobilization sympathetic nervous system", "sympathetic activity induced by 127  
pain" since 2015. The databases used were National Library of Medicine PUBMED 128  
(MEDLINE), COCHRANE, EMBASE, PEDro and medRxiv. Web of science was used to 129  
find items through a cited reference search. All searches were done between 130  
September 2020 and September 2021. Only items published in English were included. 131  
This work follows PRISMA guidelines for scoping reviews. PROSPERO yet to adapt 132  
registration for scoping reviews. A data charting form was used to abstract key data, 133  
as well as a summary document that was updated in an iterative process: that 134  
document evolved into this review. The systematic search yielded 979 items. After 135  
removal of duplicates (N=221), 758 items were screened by assessing both title and 136  
abstract. Items off topic, foreign language, and in journal ranked Q4 were excluded 137  
(N=364). For the remaining items (N=394) a full text determination of eligibility was 138  
then performed. Four items were excluded from the systematic search because they 139  
were off topic. Final number of items included in systematic search was N=390. 140  
  
When side topics were encountered, literature was added to broaden scoping review 141  
via medical textbooks, [www.uptodate.com](http://www.uptodate.com) and more studies from searching 142  
databases (n=409). These side topics were not searched systematically. An attempt 143  
was made to cite more than one source in such cases. Total review items: 799. Fig 1 144  
shows the flowchart of the scoping review. 145



146

**Fig 1. Flowchart of scoping review.**

147

## Results

148

A total of 799 items were included. Numbers of items by recurrent themes were:

149

"MPS and trigger points" (n=95), "properties of fascia" (n=47), "anatomy and

150

movement" (n=43), "nervous system" (n=31), "biotensegrity" (n=26), "myofascial

151

pain treatment" (n=209), "myofibroblasts" (n=93), "fibromyalgia" (n=93), "reviews"

152

(n=33), and "other" e.g., somatic syndromes, stress, chronic pain, Dupuytren's

153

disease, plantar fasciitis (n=129). The systematic search included 127 clinical trials,

154

33 systematic review, and 19 meta-analyses. The findings are presented with the

155

purpose of understanding the elements relevant to MPS and fascia, in order to

156

assemble them and discuss a suggested mechanism of MPS and fibromyalgia. A

157

microscopic view will set the stage for a macroscopic understanding.

158

## Properties of fascia

159



**General** 160

Fascia is an important yet often misunderstood tissue in medicine. Essentially, fascia 161  
is connective tissue composed of irregularly arranged collagen fibers, distinctly 162  
unlike the regularly arranged collagen fibers found in tendons, ligaments, or 163  
aponeurotic sheets [14]. When connective tissue collagen is pressed, it can chondrify 164  
[15]. Fascia pervasively extends from head to toe, it envelops and permeates 165  
muscles, bones, blood vessels, nerves, and viscera, composing various layers at 166  
different depths [16]. Fascia supports the human body in vital functions such as 167  
posture, movement, and homeostasis [14,16-18], as well as containing various 168  
sensory receptors for proprioception, nociception, and even hormones [18]. 169  
Nociception is influenced by the state of the fascia [18]. This means pain can arise 170  
from changes in the connective tissue [18,19]. The interconnectedness of fascia and 171  
its ability to transmit force are at the basis of its functions [18]. Fascia is continuous 172  
from the trunk across the upper and lower limbs and hence has the potential to 173  
influence range of motion [18]. Fascia seems to connect the distant hip and the 174  
ankles, not only anatomically, but also mechanically, supporting the concept of a 175  
myofascial continuity [18]. 176

**Biophysical and mechanical functions** 177

Fascia has properties that enable it to reversibly change its stiffness and decrease 178  
the forces of tension experienced by it. This is a mechanical 'stress relaxation' 179  
resulting from the viscoelasticity of fascia that expresses high or low stiffness, 180  
depending on the rate of loading. Some experimental tests demonstrate a 90% of 181

stress relaxation achieved in about four minutes, afterwards the stress relaxation curve is near linear horizontal [20-23]. Other studies observe increase in stiffness when ligaments are successively stretched, i.e., strains produced by successive and identical loads decrease. They recover to baseline after a rest period. Isometrically maintained stress resulted in gradual tightening of the tissue [14].

Blood vessels and nerves are interspersed in fascia, therefore, involvement of these structures due to fascial changes is commonly seen [14,19]. It is noted a tender point in the gluteus medius can refer pain down the leg and mimic sciatica [3]. Often the patient is aware of numbness or paresthesia rather than pain [9]. Pain is the result of a microenvironment around the nerve composed of connective tissues (e.g., deep fascia, epineurium). Tissue modifications can be translated into change in nerve mobility, with a consequent decrease in the independency of the nerve from its surroundings [24,25]. Altered fibrous tissue around nerves can lead to entrapments and lesions [24,25]. Circulation and perfusion can also be compromised. For example, dysfunction of the posterior layer of thoracolumbar fascia has been reported as a “chronic compartment syndrome” of the paraspinal muscles [26].

## **Hyaluronic acid**

Hyaluronic acid (HA) has a key role for fascia. It is the major glycosaminoglycan of the extracellular matrix (ECM) and a major constituent of connective tissue [27]. Its concentration, as well as the temperature and other physical parameters, determine the physical properties of the ECM [27-30]. In fascia, HA is present within the sublayers and facilitates normal free sliding [27]. Infra-red spectroscopy of viscous

HA indicates water molecules can be arranged tetrahedrally almost like as in ice [29]. 204  
HA interchain interactions are reversible, disaggregation occurring with an increase 205  
in pH and temperature; a gel-like to fluid-like transition occurs at 35-40 °C [29]. HA 206  
solutions can express high viscosity and non-Newtonian flow properties [28], 207  
and HA's osmotic activity is relatively high; Its stiffness occurs in part due to its long 208  
chains forming an entangled large volume network [29,30]. Once viscosity increases, 209  
HA can no longer function as an effective lubricant; this increases resistance in layers 210  
with abnormal sliding [27]. 211

## **Fascia and movement** 212

Fascia acts as a key player for generating movement [16]. Although often a dropped 213  
prefix, fascia is part of the (fascio)musculoskeletal system. It is suggested to be able 214  
to transmit tension and affect other muscles, reflecting the direction of force 215  
vectors, and play a role in properly coordinated movements of the body [31]. 216

## **Sedentarism** 217

Non-versatile movement patterns and sedentarism are an important lifestyle 218  
component for fascial changes and pain [3]. A meta-analysis found that low work 219  
task variation is a risk factor for non-specific neck pain [32]. Immobilization of a limb 220  
or body segment can lead to pathological changes in the connective tissue. Studies 221  
of immobilization suggest an increase in collagen and myofibroblast density as early 222  
as one week after immobilization [33]. After about 4 weeks of immobility in the 223  
shortened position the collagen fibrils become arranged abnormally [34]. Changes 224

start in the perimysium and after longer periods of immobility the endomysium 225  
becomes involved too [34]. Regular physical activity is recommended for treatment 226  
of chronic pain and its effectiveness has been established in clinical trials for people 227  
with a variety of pain conditions [35]. Proper posture and resting positions are 228  
important in preventing muscle tension [3]. Pain often recurs unless appropriate 229  
exercises are prescribed [5]. 230

## **Tensegrity** 231

The fact that fascia can transmit tension to a distance is a basis for a "bio-tensegrity" 232  
framework [36,37]. Bio-tensegrity applies principles of tensegrity to our 233  
understanding of human movement. Tensegrity is an architectural principle. 234  
According to this, structures (or tensegrity systems) are stabilized by continuous 235  
tension with discontinuous compression, and function as one structure [37]. 236

When the tension of fascia increases, the connective tissue can distribute the forces 237  
throughout the surrounding areas, propagating along the myofascial system [14,18]. 238

The forces passively imposed in a muscle by stretching are distributed over the tissue 239  
as a whole by means of the intramuscular connective tissue [34]. According to Wilke 240  
et al. [38] fascia links the skeletal muscles, forming a body-wide network of 241  
multidirectional myofascial continuity. Cadaveric studies suggest a clinically relevant 242  
myofascial force transmission to neighboring structures in the course of muscle- 243  
fascia chains (e.g., between leg and trunk) [38]. A study suggests manual traction to 244  
the biceps femoris tendon results in displacement of the deep lamina of the 245  
thoracolumbar fascia up to level L5–S1 [14]. Acute bout of stretching of the lower 246

limbs increases the maximal range of motion of the distant upper limbs and vice versa [18]. Recent studies indicate that tightness of the gastrocnemius and hamstrings are associated with plantar fasciitis [39]. Since most skeletal muscles of the human body are directly linked by connective tissue, symptoms may develop in areas distant from the locus of dysfunction [40].

Acceptance of the concept that a fascial tensegrity system connects the whole body is not necessary for a scientific discussion of tension spreading to other areas of muscle groups or structures. Some studies indicate that a tensegrity model might not be a true representation of the whole fasciomusculoskeletal system, and some evidence supports tensional propagation only to certain areas [41].

## **Myofascial Pain Syndrome**

There are several phenomena that accompany MPS including: trigger points (TrPs), active loci, taut bands, satellites, and the local twitch response.

Trigger points - Changes in fascia are associated with pain in TrPs and tender spots. Many patients with active (i.e., painful) TrPs have other areas with the same electrophysiologic findings that are not symptomatic, called latent TrPs. Latent TrPs seem to only cause pain upon palpation, while active TrPs cause pain and symptoms both at the site palpated and referred elsewhere [2,4,9]. The arising of pain is attributed to those palpable areas in the connective tissue, which seem to activate nociception [2,4].

Theories of the origin of TrPs emphasize the chronic contraction associated with them or their tendency of appearing at the muscle spindle [2,9]. Others suggest represent hyperactive end-plate regions [7]. More theories that either deny the existence of MPS or believe it represents a focal dystonia, microtrauma, or are of central nervous system origin, are also hypothesized [2,7]. Critics of MPS argue that the findings seen at TrPs are simply variants of a normal physiologic finding [7].

There is reason to suspect this is true: about 50% of adults have active or latent TrPs [2,9], and infants have been observed with point tenderness of the rectus abdominis muscle and colic. These both were relieved by sweeping a stream of vapocoolant, which inactivates myofascial TrPs, over the muscle [5].

TrPs are extremely common. Among 224 non-specific neck pain patients, TrPs were found in all of them [9]. In studies in pain clinics, 74-85% of those presented to a clinic had TrPs the primary cause of their pain [9]. TrPs are one of the most frequent causes of neck pain and back pain [42]. The severity of symptoms caused by TrPs ranges from the agonizing, incapacitating pain caused by extremely active TrPs to the painless restriction of movement and distorted posture caused by latent TrPs [5].

The influence of latent TrPs on physical function is commonly overlooked [5]. Patients who had other kinds of severe pain, such as that caused by a heart attack, broken bones, or renal colic, say that the myofascial pain can be just as severe [5]. Some suggest TrPs are present in up to 85% of individuals with colorectal, urological and gynecological pelvic pain syndromes, and can be responsible for many of the symptoms related to these syndromes [43]. It was suggested that TrPs or myofascial tension, not exerted by external forces, can apply enough force to cause various

abnormalities, including compression and entrapment of anatomical structures [44],	290
decrease joint range of movement [7,16], affect visceral organs [9,45,46], lead to	291
musculoskeletal abnormalities [47], and alter blood and lymph flow [48].	292
Active loci - TrPs show electrical abnormalities called 'active loci'. This is a small	293
region in a muscle that exhibits spontaneous electrical activity (SEA), often	294
characterized as endplate noise measured on electromyography (EMG), leading to	295
chronic contractions [9]. Although some literature does not regard TrPs as a	296
discriminating factor for MPS, the 'Active Locus' seems to be a consensus [7].	297
Taut Band - A taut band is thought to be composed of several TrPs and shows	298
excessive endplate potential activity [9]. Sustained abnormal activation of	299
acetylcholine (Ach) is hypothesized to create an "Energy Crisis" component [9].	300
TrP Satellite - TrP satellites are another disputed aspect of MPS. Some literature	301
states TrPs themselves can induce motor activity (referred spasm) in other muscles	302
[49]. Illustrated by an example where pressure on a TrP in the right soleus muscle	303
induced a strong spasm response in the right lumbar paraspinal muscles. Pressure	304
applied to a TrP in the long head of the triceps brachii muscle induced a strong motor	305
unit response in the upper trapezius muscle only during the 20 seconds that pressure	306
was being applied. This response failed to be reproduced following inactivation of	307
the triceps TrP. It is known as a 'satellite' phenomenon [9,49]. Moreover, it seems	308
TrPs can spread, since an active TrP in one muscle can induce an active satellite TrP	309
in another muscle [9,49].	310

Various hypotheses have been suggested to explain the mechanism of MPS, among 311  
them are trigger points, non-muscular sensitization of the nervi nervorum, central 312  
nervous system, and several other theories [2,7,9,50]. Some relate the muscle 313  
contractions in TrPs to a myotatic (stretch) reflex evoked by fascial tension [7,9]. 314

## **Myofibroblasts** 315

Fascia itself is able to actively contract. Tensional alterations are caused by 316  
contractile cells [51]. Myofibroblasts are present in some developing or normal adult 317  
tissues, altering tissue tension [30,51]. Although most tissues exist under a 318  
mechanical tension, the same is not necessarily true of their resident cells; These are 319  
protected from the relatively massive external loads by the mechanical properties of 320  
the surrounding matrix [51]. In engineering terms, this is called 'stress-shielding', 321  
occurring due to the matrix material that they deposit and remodel [51]. 322

Normal fibroblasts are highly sensitive to the physical stimuli. Tomasek et al. [51] 323  
show certain changes in tissue rigidity, strain, and shear forces are mechanical cues 324  
sensed by fibroblasts that lead them to trans-differentiate into another cell 325  
phenotype [51]. In other words, the transition from fibroblasts to myofibroblasts is 326  
influenced by mechanical stress. If subjected to mechanical tension, fibroblasts will 327  
differentiate into proto-myofibroblasts, which contain cytoplasmic actin stress fibres 328  
that terminate in fibronexus adhesion complexes [51,52]. The adhesion complex 329  
bridges the myofibroblast's internal cytoskeleton and integrins with the ECM 330  
fibronectin fibrils. This enables proto/myofibroblasts to generate contractile force in 331  
the nearby ECM by traction. The force inside the ECM is maintained over time and 332



reinforced further by remodeling and collagen deposition [51]. Functionally, this 333  
provides a mechano-transduction system, so that the force that is generated can be 334  
transmitted to the surrounding ECM [51]. Increased expression of alpha smooth 335  
muscle actin ( $\alpha$ -SMA) is directly correlated with increased force generation by 336  
myofibroblasts in a positive feedback regulation [51]. A vicious cycle is suggested, in 337  
which tension facilitates TGF- $\beta$ 1 signaling, which induces  $\alpha$ -SMA expression. In turn, 338  
this increases development of more tension, which upregulates TGF- $\beta$  and  $\alpha$ -SMA 339  
repeatedly [51]. In short, myofibroblasts generate the mechanical conditions that 340  
enhance their contractility in a detrimental loop [51]. In contrast to the reversible 341  
short-lived contraction of striated and smooth muscles, myofibroblast contractility is 342  
different: with ECM synthesis and degradation (i.e., remodeling) they lead to 343  
irreversible and long contractures in a process that can be maintained for long 344  
periods of time [51]. It is thought that myofibroblasts use a lockstep or 'slip and 345  
ratchet' mechanism, in incremental and cyclic contractile events using Rho-kinase 346  
system, and aside the myosin light chain kinase (MLCK) system [51]. Once achieved, 347  
contracture shortening does not require the continuing action of myofibroblasts 348  
[51]. The visible appearance of continuous tension in pathological contractures is the 349  
consequence of contraction and remodeling [51]. Myofibroblasts might transmit 350  
considerably high forces [51]. 351

It is also possible that myofibroblasts can couple their activity directly to other cells 352  
like myocytes via gap junctions and act as a unite [51,53]. Interestingly, if the 353  
collagen lattice is released from its points of attachment such that stress in the 354

matrix is lost, the cells rapidly undergo isotonic contraction and subsequently lose 355  
their stress fibres and fibronexus adhesion complexes [51]. 356

## **Treatments for MPS 357**

Several pharmacological and non-pharmacological treatments are suggested in 358  
literature. 359

Non-pharmacological [4,9,11,54-57]: including manipulative therapy, vibration 360  
therapy, exercise, etc. Since it is shown that needle insertion reduces pain and SEA 361  
on EMG [58], this suggests a therapeutic role for mechanical needling. 362

Pharmacological [4,9-11,54]: including non-steroidal anti-inflammatory drugs, 363  
opioids, topical creams, and TrP injections. 364

## **Discussion 365**

The discussion includes two parts. Part 1 discusses myofascial pain syndrome (MPS) 366  
and presents a suggested theoretical model which is based on the scoping and 367  
systematic literature search. Part 2 is based on part 1 and discusses implications 368  
derived from the model and further empirical findings in support of the main 369  
hypothesis predicted by this model. 370

### **Part 1 – A theoretical model for MPS 371**

Synthesis of the data gathered in this review leads the author to the following 372  
analysis and suggested mechanism: 373

**Etiological considerations** 374

There are three aspects of fascial induced pain to consider, from the standpoints of 375  
physics, biomechanics, and cellular biology. These seem relevant to fascial tension, 376  
TrPs, and MPS. 377

The standpoint of physics relates to energy. Thermodynamically, the human body 378  
can be seen as an open system of energy, and so can the fascial system. Although 379  
energy and entropy are modulated by various factors, by nature, entropy of this 380  
system will spontaneously tend to increase. To tense the fascia energy needs to be 381  
expended. Once fascia is tense the energy can remain as potential elastic energy or 382  
change due to other modifications, for example molecular rearrangement. 383

Hyaluronic acid (HA) has a molecular structure that enables it to have a high degree 384  
of entropy, like an entropic "sponge". When entropy increases it generates osmotic 385  
pressure and diffusion of fluids and other processes. Thus, when entropy of HA 386  
increases, osmotic pressure increases, and stress decays. If stimulus is not removed 387  
after this acute stressing, fascia will remain in the failure part of the stress relaxation 388  
curve and will be remodeled in this state. Although entropy goes together with 389  
osmosis and stress decay, each oscillation between different energy states will likely 390  
cause a loss of energy being a non-ideal system, for example due to friction. Fascia 391  
has hysteresis and is not a perfect "energetic spring" to oscillate between high- 392  
tension and low-tension states, i.e., it dissipates energy. 393

Secondly, from a biomechanical standpoint, the literature review shows that (i) 394  
simple stress decay and recovery from it is a reversible process due to elasticity of 395

fascia; (ii) trigger points (TrPs) and myofibroblasts are found in normal individuals; 396  
TrPs are seen even in childhood and infancy, and in animals [58]; (iii) fascia 397  
continuously remodels itself and HA is continuously synthesized and excreted; (iv) a 398  
sedentary lifestyle and repetitive overuse of muscles, with low variability of 399  
movements, all lead to fascial changes/fibrosis and possibly MPS; (v) exercise and 400  
proper movement relieve and prevent MPS; (vi) MPS seems to recur unless 401  
appropriate exercises are prescribed. 402

These suggest an underlying ongoing interplay between movement and sedentarism. 403  
Since tensional changes are reversible in fascia of normal individuals and depend on 404  
the mechanical state of the human body, this indicates fascia is meant to withstand 405  
and continuously undergo dynamic changes according to varying dynamic 406  
mechanical states. Since immobility often leads to collagen alterations, HA changes, 407  
myofibroblasts, and pain, we can see MPS as a natural consequence of the sedentary 408  
lifestyle. Resulting from the evolutionary "price" biology paid in a trade-off with 409  
chemistry when trying to "come up" with a tissue as effective, pliable, compliant and 410  
strong as the fascia. This "bargain" served us well to function effectively as an 411  
organism dominated by continuous movement. It seems that by living sedentarily, 412  
the natural disadvantages of the properties of fascia (chondrifying, HA aggregation, 413  
failure to decay, and fibrosis) manifest pathologically. Stiffness and lack of mobility of 414  
fascia has implications beyond a patient being unable to move adequately, it can 415  
affect the behavior of all cells interacting with the connective tissue matrix [16]. If 416  
indeed nature designed a way to relax fascia during movements and reverse these 417  
changes it might happen through (i) dissipation of fascial energy as mentioned 418

above; (ii) mechanical effect of movement that ruptures fascial fibers or shakes off 419  
fibers, which might explain why studies find extra-corporeal shock wave therapy to 420  
be effective for MPS (e.g., Uritis et al. [54]); (iii) friction between sliding layers of 421  
fascia elevating the local tissue temperature, or "warming up" myofascial tissue. 422  
Literature suggests the three-dimensional supramolecular assembly of HA breaks 423  
down progressively at 35-40 degrees Celsius [29]. The more viscous is HA, the more 424  
friction will act to counter viscosity; (iv) increasing clearance of HA due to increased 425  
lymph flow. Higher concentrations of HA lead to its more gel-like state, affecting the 426  
properties of the matrix; (v) pandiculation; (vi) self-aware "palpation" as a part of 427  
one's lifestyle. 428

The third aspect to consider is a cellular one: induction of myofibroblast by tension 429  
and by sedentarism [33,51]. Chronic tension is exacerbated with more tension 430  
generated by myofibroblast smooth muscle actin fiber contractions. This makes it 431  
increasingly more difficult to maintain a relaxation. Tension is converted to HA 432  
aggregation and entropy so long as compensation along the stress relaxation curve 433  
can allow for it. Increase in HA concentration is expected to keep HA in the denser 434  
gel-like state [29,59], which would plausibly be perceived by the individual as bodily 435  
stiffness. If the values of tension reached at the stress relaxation curve plateau tend 436  
be above the value of the threshold for myofibroblast differentiation, it will be a 437  
major driver for MPS (values may vary between individuals). Biologically, the 438  
reinforcing of fascial cells with actin fibers may be the way of the body to express 439  
support of the repetitive muscular effort. Accumulation of many foci of stretching 440  
along a sensory or sympathetic nerve, due to extracellular fibers pulled from 441

multiple directions by proto/myofibroblasts, might cause peripheral nerves to be 442  
hyperirritable chronically. This may explain why a study finds the number of active 443  
and latent TrPs is significantly and negatively associated with pressure pain 444  
thresholds (Do et al. [12]). A chronic peripheral pain could contribute to a central 445  
sensitization and to changes in spinal cord pathways, though, as stated, the central 446  
mechanisms are not the focus of this review. These three dimensions seem to be 447  
relevant to fascial tension, TrPs and the etiology of MPS. 448

### **Pathophysiological considerations** 449

Three elements combined might help explain MPS. These are: (i) tensegrity, (ii) TrPs, 450  
and (iii) myofibroblast contraction and stress shielding. 451

Manifestation of MPS is seen in TrPs. Latent TrPs may be points that have previously 452  
nociceptively sensed tension (i.e., active TrPs), due to sedentary behavior or a 453  
'satellite', and then were mechanically induced to stress shield themselves via 454  
myofibroblasts. The stress shielding does not necessarily eliminate tension (and 455  
pain) completely, thus preserving some mechanical drive for further 456  
proto/myofibroblast activity. Moreover, new myofibroblasts generate alpha smooth 457  
muscle actin ( $\alpha$ -SMA) and contractions themselves [51]. Over time, especially if 458  
mechanical stimuli continue, fascia remains more towards the failure part of the 459  
stress relaxation curve, and cells have time for more stress shielding and matrix 460  
remodeling. Then, latent TrPs (via myofibroblasts) start to exert their own tension. 461  
This reinforces the abnormality. However, that tension would be more diffuse as it 462  
spreads along an intricate web of fibers (i.e., stress shield), inducing more tensions, 463

more force gradients in fascia, more foci of stretch or entrapments of nerves, 464  
contractures, and other painful TrPs further away. If mechanical tension is 465  
sufficiently reduced by shielding or by other means, myofibroblast will 466  
dedifferentiate or undergo apoptosis [51], leaving behind a remodeled dysfunctional 467  
fascia. Multiple iterations of the contractile cycle result in incremental and 468  
irreversible tissue contracture [60]. TrPs appear on ultrasound as focal, hypoechoic 469  
regions and with reduced vibration amplitude, indicating increased stiffness [12]. 470

These dynamics may be the basis for the unexplained "metastasis" of TrPs and 471  
satellites that Quinter et al. [7] refer to. When sedentary behavior continues, it feeds 472  
more tension down the cascade. The clinical manifestation would be determined not 473  
only by the amount of myofibroblasts, but by the interconnectedness of their 474  
adhesion complexes, gap junctions, and fiber-cellular networks as well. Studies 475  
suggest myo/fibroblasts form a cellular network and can exhibit coordinated calcium 476  
oscillations and actively respond to mechanical stimuli [61-63]. Studies suggest 477  
myo/fibroblasts have stretch activated calcium channels, and that intracellular 478  
calcium and myofibroblast contractility is mechanistically linked [60,61]. Langevin et 479  
al. [62] find evidence that leads them to a conclusion that soft tissue fibroblasts form 480  
an extensively interconnected cellular network, suggesting they may have important 481  
and so far unsuspected integrative functions at the level of the whole body. 482

Activating a latent TrP is hypothesized to involve interference with the stress shield 483  
or stretch-activating myofibroblasts to rapidly contract, thus exposing the area to 484  
higher tension and initiate nociception. Eliminating a TrP seems to induce a local 485  
twitch response, which possibly signifies the neuron's or muscle's calcium driven 486

response to a recovery from an active locus or shielded tension. Alternatively, it may 487  
be on-off "flickering" of the myotatic reflex due to nearby myofibroblast rapid MLCK 488  
contractions and their waves of calcium flux. Active loci may be a multifactorial 489  
phenomenon. For example, stress shielding (with or without gap junctions) 490  
superimposed on sympathetic activity, i.e., a myotatic reflex on top of sympathetic 491  
drive. It would seem plausible to expect one to "learn to relax" or "learn to 492  
cognitively override the sympathetic aspect by focusing attention", but not to 493  
willfully override a reflex response. The fact that muscle spindles are surrounded by 494  
a capsule of connective tissue, an area that sometimes might be palpated as a 495  
nodule (i.e., TrP) suggests that if there are microscopic tensions, they might possess 496  
a sensitivity to generate more tension at the spindle (via proto/myofibroblasts 497  
positive feedback), thus locking the stretch reflex to a certain degree. Locking the 498  
reflex would "turn on" an active locus in the associated muscle. To complicate the 499  
above, if electrical coupling of this structure occurs with an end plate (or non- 500  
intrafusal fibers), via myofibroblasts, it might perpetuate an "arrhythmic" picture on 501  
EMG, with background noise, and random spikes upon myofibroblast contractions. 502  
Mechanical disruption of this structure e.g., manipulative therapy, should unlock this 503  
pathology, at least partially. This might be one of the reasons for different degrees of 504  
body relaxation and the inability of some to experience it. If neurotransmitter 505  
molecules (or acetate) leak outside the synaptic cleft they might induce adjacent 506  
fibroblasts to transdifferentiate, which might explain why muscle overuse is 507  
associated with "TrPs" ("TrPs" can be found in peri muscular and myofascial tissue 508  
[4]). 509



"TrPs" and "tender spots" are therefore suggested here to be basically the same 510  
(driven by myofibroblasts), but different in their location and fascial layer. This 511  
notion is made under the now common presupposition that the main difference 512  
between the definition of "TrPs" and the definition of "tender spots" is radiation of 513  
pain. If a large nerve is affected by a nearby population of myofibroblasts that 514  
contract upon mechanical stimuli, it could radiate pain. If a large nerve is not 515  
affected by them, it might not radiate pain. If enough stress shielding and armoring 516  
has been created, nerves will be mechanically shielded from an external force 517  
applied to the tensegrity (i.e., palpation). Snapping palpation held longer would elicit 518  
more of a response (pp. 82 Travel, Simons & Simons [9]). Thus, the terms "TrPs" and 519  
"tender spots" can be used interchangeably throughout this discussion since both 520  
are suggested to be phenomenological variations of the same underlying biology: 521  
myofibroblast-generated-tensegrity-tension. 522

Notwithstanding, other factors are not excluded. Factors associated with the central 523  
nervous system could also be implicated in the genesis of MPS, as well as genetics, 524  
environmental factors, psychosocial aspects, chronic sympathetic "freeze" reaction 525  
to everyday psychological stress, etc. Based on this discussion, we might expect 526  
factors affecting fascial myofibroblasts to have potential to cause tension, pain, or 527  
even lead to MPS. For example, diet is believed to play a role in MPS [9], and studies 528  
suggest myofibroblasts are promoted by certain diets and by pesticides/herbicides 529  
[64-67]. Similarly, the molecule CCN2/CTGF is suggested to play a role in 530  
development of pain due to overuse [68], and CCN2/CTGF is shown to be important 531

in myofibroblast  $\alpha$ -SMA synthesis [69]. Applying this sort of logic, we may find more 532  
factors linking myofibroblasts to myofascial pain [70-73] 533

It is unclear where the tipping point between a status quo of movement-sedentarism 534  
and a deranged myofibroblast activity is. It is likely multifactorial, but lifestyle seems 535  
to be a major factor. A mechanical stimulus causes differentiation to myofibroblast 536  
[51,74], some studies suggest a threshold of ~20-24 kPa [75]. Therefore, mechanical 537  
forces might be one of other possible factors contributing to MPS and myofibroblast 538  
induction. For example: sedentarism and muscle overuse [3,9,76-78], infection or 539  
inflammation [4,7], and trauma/fracture or immobilizing a casted limb 540  
[4,9,74,79,80]. Since MPS is so prevalent, also common overlooked factors in a 541  
lifestyle that is not evolution-oriented may be suspected, e.g., medications that are 542  
shown to both induce myofibroblasts and increase risk of myofascial pain [72,73]. 543

### **Symptomatologic considerations** 544

TrPs and myofascial pain, particularly when severe, can cause various symptoms that 545  
are not limited to the fascial-muscular-skeletal system. It is suggested that the 546  
sympathetic nervous system (SNS) causes TrPs [4]. Reciprocally, pain and TrPs can 547  
activate the SNS [2,4]. This activation may actually be due to coactivation of larger 548  
diameter mechano-sensitive afferents rather than nociceptive afferents [81,82]. If 549  
the SNS is activated by paraspinal mechanical stimuli, then maybe it can be activated 550  
by muscular tension alone. If so, this may serve as a slippery slope for further TrPs, 551  
active loci and MPS. Moreover, it seems that when MPS is severe, a widespread 552  
pathology may manifest like a fasciomuscular armor under the skin (i.e., "fascial 553

armoring"). For example, immunohistochemical examination of sampled fascia from 554  
low back pain patients demonstrates a myofibroblast density comparable to that 555  
found in "frozen shoulders" [14]. Activating many active loci simultaneously, by 556  
nature, might act to sympathetically "shield" an organism from acute threats at the 557  
expense of a fascial change. If tension is not released afterwards, fascia will be 558  
remodeled in that state and symptoms (e.g., muscular tension) will become chronic. 559  
Only, this muscular tension will not be muscular in its essence. This suggests that an 560  
acute sympathetic activity can have lasting effects on the organism's fascia if not 561  
treated early after the acute event. 562

People with MPS fail to relax muscles due to a mechanical reason. Myofibroblasts 563  
can synthesize  $\alpha$ -SMA fibers, which would transform fascia into a pseudo-muscular 564  
contractile tissue. It is not necessarily innervated and can remain contracted for 565  
years [51,83]. Since this tension is not innervated by voluntary control nor by 566  
motoneurons, and despite involvement of the SNS, seeing these patients as people 567  
who just "need to relax" as first line management is counterproductive. Failure to 568  
address the mechanical aspect of myofascial pain is expected to lead to a 569  
detrimental cycle of pain and over medicating (a cycle seen in studies addressing 570  
ineffective treatments) [11,84-86]. Also, if the pain in "non-specific low back pain" 571  
arises due to a fascial pathology, then calling it "non-specific" could be misleading. 572

Finally, sedentary behavior and active lifestyle are widely emphasized in public 573  
health. However, much focus is dedicated to cardiovascular and metabolic aspects. 574  
This review sheds light on the link between lifestyle and pain and suffering. It is 575  
worth noting that the most common recommended treatment of MPS found in this 576

literature review is mechanical, including needle insertion, movement (passive or active, breathwork and vibration), and massage/manipulative therapy. It helps treat MPS or reduce fascial related pain [2,3,4,9,11,43,54-57].

## **Therapeutic considerations**

Needling was found as a recurrent modality in literature. Needle treatment of TrPs increases pressure pain threshold [49]. Three elements might explain how needling can help treat MPS; These are (i) tensegrity mindset (ii) trigger points and satellites (iii) myofibroblast generated tension and stress shielding.

Since needle insertion itself seems to relieve pain [87], this may indicate needling creates a focus for a mechanical tearing action on the fascia. Meaning, the tension and shear stress inside fascia would pull on the weak point of fine needle insertion over time, until the sum force vectors, or horizontal components, at that point is eliminated or needle is removed. Cutting off tension and fascial fibers is expected to cause cells to rapidly contract, and subsequently lose their stress fibres and adhesion complexes [51]. If proto/myo/fibroblasts are present, as a node or a line (e.g., similar to the band described in pp. 23 Travel, Simons & Simons [9]), tearing fascia would affect the tensegrity structure. Mechanical stimuli can induce myofibroblasts stretch activated calcium channels, and calcium is coupled to contraction in these cells [60,61]. After calcium influx, MLCK activity might lead to increased contractile forces and tension acutely, if they do not lose their stress fibres and adhesion complexes. If needles tear the fibers, tension will decrease. Studies observe increase or decrease in contractility and stiffness, and witness "needle grasp" when inserted [88-91].

Myo/fibroblasts create tension in the attached matrix, and upon release of tension 599  
cells undergo contraction leading to a rapid contraction of the collagen matrix [51]. 600  
So, it may be that any "damage" by the needle actually allows for cutting off tensions 601  
between tense nodes in the network of (myofibroblasts) TrPs and satellites, 602  
mechanically inducing changes [88,91], and allowing for the returning of fascia to its 603  
place. If inserted deep enough, it might also free edematous fluid, HA, or other 604  
factors trapped within the layers (e.g., serotonin) [12,92,93]. This would gently 605  
change the dynamics of the structure and the entropy (hidden tension) of the 606  
system. Upon complete freeing of tension cells undergo apoptosis with reduction of 607  
 $\alpha$ -SMA [94]. Studies indicate needling lowers myofascial stiffness as measured by 608  
shear wave elastography [95-97], suggesting a potential for a mechanical "re- 609  
alignment" of the fasciomusculoskeletal system and actual tensional release. 610

The more stress-shielding is present at the locus of insertion, the longer it should 611  
take for relief to happen. Stretch lesions along sensory nerves should be relieved 612  
too. This treatment acts like breaking the connections in a geodesic dome of the 613  
tensegrity model and then allowing for new healthier connections to form by natural 614  
remodeling. (The following video observations may help grasp this model [98-101]) 615  
Eliminating one node is not enough in this framework, on the contrary: if done 616  
improperly, it can only add tensions to other nodes in the structure and exacerbate 617  
the general pathology. Starting the relaxation process away from the focus of pain 618  
makes sense in this framework. It slowly and progressively begins to relax the 619  
primary, secondary, tertiary etc. nodes in the satellite network, approaching the 620  
highest area of unshielded tension later and collapsing the tension in a concentric 621

way. According to the biotensegrity model, the peripheries carry tension affecting 622  
the focus and are equally important. Li et al. [102] state that currently available 623  
needle delivery systems deform and move soft tissue and organs. This may suggest 624  
that inserting a needle causes windup of connective tissue and modulation of the 625  
fascial network based on internal forces. Since fascia is made not only of proteins but 626  
is also composed of cells, the tensegrity dynamics will not be purely dictated by 627  
mechano-physics. "Tensegrity" is an oversimplification for this model. Alignment of 628  
the system should be done properly. The question is: What is properly? What is 629  
proper needling? Where, in which order, depth and time, is best for which 630  
symptom? Studies suggest needling affects fascia at the point of insertion and at a 631  
distance [91,103-105]. How fast should the fascia be released? Indeed, it would be 632  
beneficial if we could monitor the mechanical state of fascia by palpation. By 633  
releasing the tension properly, the tissues can return to their healthy alignment 634  
without other areas exerting pulling forces. Following the "damage" of needling, the 635  
fascia will regenerate via myo/fibroblasts matching the bio-mechanical state. 636  
Evidence suggests that fascia regenerates within approximately 3-24 months after 637  
fasciectomy/fasciotomy [106,107]. It is unlikely that tearing the fascia (if done 638  
properly) will seriously compromise physiology as this would have manifested as a 639  
complication after every invasive surgical operation. New extracellular fiber 640  
deposition will be based on optimized structural conformation [22]. Some may say 641  
inserting several needles subcutaneously sounds like a surgical intervention of the 642  
fascia. A gross illustration of this framework can be found in S1 Fig 1A-D in the 643  
supplementary material (S1 Fig 1A-D). 644

**Demonstrating the model of "Fascial Armoring" with empirical findings** 645

Examples in support of the suggested mechanism may have transpired in several 646  
studies. Three findings are briefly presented as follows. A study of 37 patients who 647  
were all diagnosed with plantar fasciitis and all had been treated with corticosteroid 648  
injection into the calcaneal origin of the fascia [108]. All had a presumptive diagnosis 649  
of plantar fascia rupture. 30% described a sudden tearing in the heel, while the rest 650  
had a gradual change in symptoms. Most of the patients had relief of the original 651  
heel pain, but it had been replaced by a variety of new problems, including dorsal 652  
and lateral midfoot pain, swelling, foot weakness, metatarsal pain, and even 653  
metatarsal fracture [108]. Symptoms tended to localize to the dorsal side of the foot 654  
[108]. In all 37 patients there was a palpable diminution and footprints showing 655  
flattening of involved arch, and MRI showed fascial attenuation [108]. The study's 656  
author concluded that plantar fascia rupture had occurred. The majority had 657  
resolution of the new symptoms within 12 months. In the rest, symptoms remained 658  
[108]. 659

A second study encountered the same enigma: 68% of patients with plantar fasciitis 660  
had a sudden rupture associated with a corticosteroid injection. Although it relieved 661  
the original pain, these patients developed new problems: arch or midfoot strain, 662  
lateral plantar nerve dysfunction, hammertoe deformity, and stress fracture [47]. 663

These examples might suggest there is room for a more sophisticated strategy in 664  
treating the fascia instead of simply aiming and firing at the pain. Maybe this should 665  
be interpreted not as an adverse event, but as a testimony that the treatment 666

modality undermines the tensegrity system. Conceivably, behind this is a release of fascia in an area of very high tension, causing too drastic of a change in the tensegrity structure, instead of approaching this tension gradually. A sudden change might shift the forces to other areas and exacerbate the imbalances [109], perhaps sufficient to cause bone fracture. The mechanism by which the complications resolved over a period of 12 months is expected to happen via ECM remodeling and stress shielding the foot from tensegrity tension. Moreover, it was found that steroid injection decreases fibromatosis, fibrosis, and myofibroblasts in adhesive capsulitis [110], suggesting injection to the plantar fascia has potential to affect myofibroblast generated tensegrity forces.

The third finding that might be interpreted under these principles, is the phenomena of: "following a tooth extraction, a pain behind the ear and on the side of the face in the day or so prior to facial weakness often constitute the earliest symptom of Bell's palsy" (Kasper et al. 2018, p222-223) [3]. Guided with a tensegrity mindset, this may suggest a relationship in the "geodesic" face: a pain develops behind the ear possibly as a "reciprocal" point for tension in the jaw, which happens to be near the emergence of the facial and trigeminal nerves from the skull. This is a reasonably susceptible area with curved bones to serve as a focus for tension. Of course, it does not necessarily mean that releasing tension from around the mastoid process is the key to preventing the complication. Tensegrity domes are made of many nodes, and "to change a node is to change the dome". Therefore, pain behind the ear is first and foremost an indication of extreme tension, and only then pain. A tension like every other myofascial tension, e.g., plantar fasciitis. However, this pain is located at a



dermatome of a cervical root, which is a distant nerve and is unlikely to be directly 690  
injured by tooth extraction. A sudden intervention in the face probably emulates the 691  
same action as a calcaneal injection. If high tension is present (for example a 692  
temporomandibular tension seen in up to 25% of the population [2]) it will have the 693  
same potential energy to damage structures in the face, as implied by a metatarsal 694  
fracture. In the face it seems to cause a palsy of a nerve, like the foot in plantar 695  
fasciitis, as discussed above. The degree of damage is modulated by the degree of 696  
the hidden energy [109]. If correct, this means two possibilities present themselves: 697  
either this palsy is not a Bell's palsy, or a Bell's palsy is not idiopathic. In any case, it 698  
highlights the instrumental importance of gentle and progressive release of fascia in 699  
a proper way. Therefore, "not feeling much" may be a good thing when needling 700  
fascia. In fact, we can predict sometimes pain might worsen at first, reflecting a non- 701  
ideal modulation of force vectors. Less pain during treatment can also lead to more 702  
compliance from patients. Research has yet to establish empirically if fascial release 703  
prior to (or even after) tooth extraction, can affect the rates of this palsy. 704  
Modulation of tensegrity vectors may be a factor in reported cases where (i) 705  
treatment of Dupuytren's disease leads to Boutonniere deformity [111], (ii) carpal 706  
tunnel release increases risk of trigger finger [112,113], (iii) treating the elbow for 707  
tennis elbow requires a supposedly unrelated shoulder arthroscopic decompression 708  
[114], (iv) simultaneous bilateral digital flexor rupture occur [115], or (v) spine 709  
surgery leads to compartment syndrome of the foot [116]. It seems plausible since 710  
fascia is a system. Fascia appears to connect the distant hip and ankle joints, not only 711  
anatomically, but also mechanically, supporting the concept of myofascial 712  
connectivity [18]. Most skeletal muscles of the human body are directly linked by 713

connective tissue [40]. Acute bout of stretching of the lower limbs increases the 714  
maximal range of motion of the distant upper limbs and vice versa [18]. Fascia is 715  
continuous from the trunk across the upper and lower limbs [18], and because of the 716  
direct morphologic relation of the hamstrings and low back region, relieving tension 717  
of the posterior thigh muscles could be a conceivable approach to alleviate back pain 718  
[117]. 719

### **Epilogue to part 1** 720

In conclusion, under the framework of tensegrity, it might be logical to first needle 721  
the dorsal foot and foreleg in plantar fasciitis, for example, assuming connective 722  
tissue is pulling the plantar fascia (i.e., weak link in the tensegrity structure) and 723  
causing pain. Therefore, aiming to primarily treat the underlying tensional 724  
abnormality of fascia, and through this improving the symptoms of pain. Actually, it 725  
seems a TrP with severe localized pain may not be the source of pathological tension 726  
because myofibroblasts stress shield their area from tension: fascia is a living tissue 727  
that pulls rather than pushes. Treating only the painful point is expected to lead to 728  
an endless chase of migrating pain whose location is determined by dynamics of the 729  
tensegrity structure. Tension is likely to focus more near hard and angled surfaces 730  
that have sharp force-gradients; initially generating active TrPs (if a nerve is there to 731  
experience this) that have yet to sufficiently stress-shield themselves with a fiber 732  
web. By this rationale we may expect points to be concentrated more near areas of 733  
fascia adjacent to solid or bony edges (spine, face, pelvis, chest, shoulders, knees, 734  
periosteum, perineurium, etc.). Tension will be present [118,119], but pain depends 735  
on the degree of sensory nerve involvement [120,121]. This understanding may put 736

MPS and fibromyalgia on the spectrum of a common mechanism, whereby a more 737  
widespread pain and tenderness appears, at least in part, perhaps due to 738  
"archipelagos" of stress-shielded points and taut-bands that generate and mask 739  
extreme tension. If true, a severe manifestation of this might be described by some 740  
as equivalent to a sort of mild to moderate chronic compartment-like syndrome of 741  
the whole body. Which may explain why "MPS" can "develop" into "fibromyalgia", at 742  
least in a subset of patients. A biological representation for this might be: 743  
myofibroblast begin to affect the body in a generalized MPS cascade and therefore 744  
transform the fascia into a fibrotic contractile tissue (perhaps with a reciprocal 745  
central sensitization). Recalling that dysfunction of the posterior layer of 746  
thoracolumbar fascia has been reported as a chronic compartment syndrome of the 747  
paraspinal muscles [26]. 748

These conclusions may be part of the explanation to why these "functional" pain 749  
syndromes are epidemiologically so closely associated with one another (as observed 750  
in population studies [122,123]), why significant overlap is seen between various 751  
associated pain syndromes (reflecting anatomical overlap of involved fascia), why 752  
fibromyalgia tender points seem to distribute more near bone protrusions, why a 753  
study finds fibromyalgia symptoms and neuropathic pain correlate with tender point 754  
count (Amris et al. [121]), why chronic fatigue is a common manifestation, why 755  
routine inflammatory markers can be mostly silent, why imaging modalities fail to 756  
illustrate a clear familiar abnormality, why mechanically puncturing their fascia 757  
recurs in literature as an empirical treatment option for them, and why fibromyalgia 758  
manifests with extremely high intramuscular pressures and can be accidentally 759

resolved by invasive surgery (as will be discussed below). It can also help explain 760  
histological and clinical evidence indicating a picture of widespread non-severe 761  
chronic ischemia. Studies of fibromyalgia observe various organic abnormalities 762  
[124-141] which might support this framework. To the best of the author's 763  
knowledge, no study is found to describe the manifestation of MPS when global and 764  
widespread. 765

## **Part 2 – Considering "fibromyalgia" as an entity involving 766**

### **mechanical compression 767**

Part 1 of the discussion focused on the theoretical model of "facial armoring" 768  
formed based on the empirical evidence found in the systematic search and scoping 769  
review. A myofibroblast network generating tensegrity tension (i.e., "facial 770  
armoring"), when widespread, predicts further abnormalities. In this section 771  
empirical evidence is presented in support of fibromyalgia as a global chronic 772  
compartment-like syndrome driven by myofibroblast-generated-tensegrity-tension. 773  
Findings from various fields including cardiovascular, metabolic, musculoskeletal, 774  
integumentary, and surgical, are discussed. 775

### **Cardiovascular findings 776**

Studies show tissue stiffness is significantly increased around TrPs [142], and blood 777  
vessels near TrPs have retrograde flow in diastole, indicating a highly resistive 778  
vascular bed [138]. A global compression might explain a few findings that will be 779  
mentioned here briefly. Various abnormalities in fibromyalgia suggest an underlying 780

widespread organic pathology that impairs perfusion throughout the vascular 781  
system. Capillary microscopy studies of fibromyalgia show fewer capillaries in the 782  
nail fold and significantly more capillary dilatations and irregular formations than the 783  
healthy controls [128]. The peripheral blood flow in fibromyalgia patients was much 784  
less than in healthy controls [128]. This suggests that functional disturbances are 785  
present in fibromyalgia patients [128]. While one study shows a decrease in 786  
transcapillary permeability in fibromyalgia patients [129], few studies find 787  
abnormalities in the arterial system as well [143,144]. However, studies of peripheral 788  
arteries in fibromyalgia are scarce. Findings from a study of biopsies of fibromyalgia 789  
cases without obvious muscle trauma indicate definite but nonspecific muscle 790  
changes which are suspected to be secondary to chronic muscle spasm and ischemia 791  
of unknown etiology [124]. 792

Katz et al. [145] found intramuscular pressure measures substantially higher in the 793  
trapezius of patients with fibromyalgia with a mean value of  $33.48 \pm 5.90$  mmHg. 794  
Only 2 of 108 patients had muscle pressure of less than 23 mmHg. The mean 795  
pressure in rheumatic disease controls was  $12.23 \pm 3.75$  mmHg. The burden of the 796  
pressure abnormality may help explain the diffuse muscle pain of fibromyalgia and 797  
may be an intrinsic feature of fibromyalgia [145]. Therefore, fibromyalgia as a 798  
disorder of exclusively central pain processing should be revisited [145]. Substantially 799  
higher muscle pressure aligns with an analogy of "a sort of mild to moderate global 800  
chronic compartment-like syndrome" which either compresses the muscles or 801  
distends the muscle spindle, or both, and may explain why anxiolytics and muscle 802  
relaxants do not work very effectively with this entity. At the end of arterioles, mean 803

pressure is approximately 30 mmHg, and then decreases further in capillaries and 804  
venules [146]. Chronic intramuscular pressure of  $33.48 \pm 5.90$  mmHg might reflect 805  
some abnormality that ultimately affects Starling forces significantly, as well as the 806  
pressure gradient along arterioles, capillaries, and venules. The most widely used 807  
diagnostic criteria for diagnosing chronic exertional compartment syndrome (CECS) 808  
are those proposed by Pedowitz et al. for CECS of the legs [2] and include at least 809  
one of the following intramuscular compartment pressure measurements: (i) pre- 810  
exercise pressure  $\geq 15$  mmHg (ii) 1-minute post-exercise pressure of  $\geq 30$  mmHg, or 811  
(iii) 5-minute post-exercise pressure  $\geq 20$  mmHg. Therapeutically, reduction of muscle 812  
pressure may change the clinical picture substantially in fibromyalgia [145]. If 813  
myofibroblasts are indeed the generator of tension, then abnormal muscle pressure 814  
should be reduced by releasing the fascia, according to the "fascial armoring" model, 815  
since it is currently not a psychologically generated contraction. If fascial 816  
compression impedes Starling forces and causes low-grade ischemia, it might be 817  
biologically expected that the body will secrete factors that increase total number of 818  
capillaries and venules, and factors that vasodilate veins (e.g., nitric oxide). Such a 819  
biological response would lower total venule resistance via parallel resistance and re- 820  
establish a pressure gradient in the vessels. 821

### **Metabolism related findings** 822

A microdialysis study examined interstitial concentrations of metabolic substances in 823  
fibromyalgia [147]. Concentrations of lactate, glutamate, and pyruvate were 824  
significantly higher in patients compared to controls [147]. A study by McIver et al. 825  
[148] found that during resting conditions, the ethanol outflow/inflow ratio 826

(inversely related to blood flow) increases in fibromyalgia patients over time 827  
compared to healthy controls (p-value <0.05). Fibromyalgia also exhibited a reduced 828  
nutritive blood flow response to aerobic exercise (p-value <0.05). There was an 829  
increase in dialysate lactate in response to acetylcholine in fibromyalgia [148]. A 830  
recent genomic study found the presence of a C allele at the single nucleotide 831  
polymorphism of mitochondria m.2352T>C was significantly associated with 832  
increased risk for fibromyalgia (OR=4.6) [149]. It was linked to decreased 833  
mitochondrial membrane potential under conditions where oxidative 834  
phosphorylation is required. The study suggested that cellular energy metabolism 835  
contributes to fibromyalgia and possibly other chronic pain conditions, indicating a 836  
role of oxidative phosphorylation in pathophysiology of chronic pain [149]. A clinical 837  
trial found hyperbaric oxygen therapy can lead to significant amelioration of all 838  
fibromyalgia symptoms, with significant improvement in quality of life [150]. 839  
Fibromyalgia has a hypomethylation DNA pattern, which is enriched in genes 840  
implicated in stress response and DNA repair/free radical clearance [151]. From the 841  
discussion above, the link between fibromyalgia and oxidative stress, increased 842  
intramuscular pressure (that is higher than all three criteria for CECS by Pedowitz et 843  
al.), and reduced blood flow measurements, is self-explanatory. 844

### **Muscular stiffness and the spine** 845

Wachter et al. [131] quantified muscle damping, which reflects muscle tension, in 846  
fibromyalgia patients, and found all patients had increased muscle damping, some in 847  
both legs [131]. Mean values were more than twice that of controls and maximum 848  
values more than three-fold higher [131]. The increased DNA fragmentation and 849

ultrastructural changes in muscles of fibromyalgia patients suggests it may be a 850  
result of chronic contraction [125]. Wachter et al. stated increased muscle tension is 851  
not mediated by extrafusal muscle fibers and that the alpha and gamma 852  
motoneurons are not involved in those contractions [131]. They suggest stiffness or 853  
tension may be due to sympathetic activity, however, they state this explanation 854  
does not account for why increased damping is seen more often in one leg rather 855  
than in both [131]. TrPs appear on ultrasound as focal hypoechoic regions and with 856  
reduced vibration amplitude on vibration sono-elastography, indicating increased 857  
tissue stiffness [138]. A non-symmetrical tensegrity abnormality could account for 858  
why tension can be mediated not by alpha or gamma motoneurons or extrafusal 859  
fibers, and at the same time unilateral. 860

Other body structures are also involved, among them are nerves. Perez-Ruiz et al. 861  
[152] found high rates of carpal tunnel syndrome in fibromyalgia. Why is a nerve 862  
compression syndrome found to be more common in fibromyalgia, if it does not 863  
reflect some compressive abnormality? (Fascio)musculoskeletal symptoms are 864  
reported often by patients: stiffness is one of the most common complaints 865  
[153,154]. A survey of 2,596 fibromyalgia patients finds patients ranked the intensity 866  
of their pain lower than the intensity of morning stiffness [153]. Considering central 867  
sensitization as a sole mechanism raises several questions: why is morning stiffness 868  
so commonly reported among fibromyalgia patients, and even ranked higher than 869  
pain? Is it simply because of sensitivity, stress, and physical deconditioning? Does 870  
central sensitization occur only in certain sensory tracts like pressure, 871  
proprioception, and pain? There seem to be little to no reports of extreme 872



sensations of vibration, for example. Are the locations of central sensitization 873  
random, or is there some sort of pattern? Painful points seem to be distributed in 874  
the same topography among different individuals. However, if the localization of 875  
pain and hyperalgesia is not random, why can sensitivity appear in almost any area in 876  
the body? Why are these areas not correlated with the homunculus? How does pain 877  
migrate? And what is special about the occiput, second costochondral junctions, 878  
knee pad, and two centimeters distal to the lateral epicondyle - points used to 879  
diagnose fibromyalgia (as described by Kasper et al. 2018; pp. 2637 [3])? 880

Sugawara et al. [155] suggest mechanical compression of the dorsal root ganglion 881  
(DRG) by a mechanical stimulus lowers the threshold needed to evoke a response 882  
and causes action potentials to be fired. Action potentials that may even persist after 883  
the removal of the stimulus and high mechanical sensitivity are suggested by this (in 884  
vitro) study. More in vivo and in vitro studies suggest the same [156-158]. It was 885  
noted that dysfunction of the thoracolumbar fascia has been described as a chronic 886  
compartment syndrome of the paraspinal muscles [26]. It is also plausible that 887  
pulling would also have a similar effect on the DRG. 888

Wang et al. [159] find a bidirectional association between fibromyalgia and 889  
gastroesophageal reflux disease (GERD). Trying to explain this without a mechanical 890  
peripheral element seems difficult. How do current theories explain this bidirectional 891  
linkage? It is possible GERD carries a strong overlooked psychological component, 892  
but maybe we should give fibromyalgia more mechanical credit. This entity, if it is 893  
what it seems, would probably affect gastroesophageal pressures and relaxations, 894  
and mechanically compress the paraspinal and intervertebral fascia and its contents 895

e.g., DRG and the sympathetic chain against a vertebral body. If compression has a similar effect on the sympathetic ganglion/trunk as it does on the DRG, it might add a component of sympathetic abnormalities. Some studies suggest mechanical pressure on the sympathetic trunk due to osteophytes can cause various abnormalities [160]. Studies suggest para-articular fibrosis in the spine can involve neural structures and cause tethering and irritation of nerves [161]. A compressive factor can explain decreased pressure/pain thresholds and explain why they happen to be strongly associated with autonomic abnormalities. It also implies these abnormalities can be illusive and reversible in certain conditions, as will be discussed below. By the same rationale we might expect higher incidence of obstructive rather than central sleep apnea, even after correcting for body mass index.

### **Complete resolution of fibromyalgia**

Several studies point to a peculiar phenomenon: Saber et al. [162] witness high rates of complete resolution of fibromyalgia following laparoscopic Roux-en-Y surgery. By which mechanism does a relentless longstanding central sensitization completely resolve following abdominal surgery? Could this be a result of an overlooked fasciotomy? The authors of that study suggest resolution may be due to weight loss, increased physical activity, and lifestyle changes. However, this idea does not align with findings of Adkisson et al. [163]. They studied the effect of parathyroidectomy on fibromyalgia among 76 patients diagnosed by specialist or primary care physician. Findings show that 21 percent of fibromyalgia patients discontinue all fibromyalgia

drug medications after parathyroidectomy, and 89 percent have relief of one or 918  
more fibromyalgia symptoms postoperatively. These changes occurring as early as 919  
one week after neck surgery [163]. Yet, 11% of patients had no improvement in 920  
symptoms at all. The authors explain the complete resolution in 21 percent by 921  
suggesting a misdiagnosis, i.e., these patients actually did not have fibromyalgia in 922  
the first place. However, if this was true, we might expect these individuals to cluster 923  
more towards the group not diagnosed by a specialist. Surprisingly, 23 out of 76 924  
were diagnosed by a rheumatologist, out of them 96% had symptom improvement, 925  
and 70% were able to discontinue all medications after parathyroidectomy [163]. 926  
Uncannily, 88% of those who did not experience any improvement in fibromyalgia 927  
symptoms were diagnosed by a primary care physician (p-value <0.05) [163]. The 928  
statistics suggest some non-random phenomenon caused a bimodal-like distribution. 929  
In light of this study, it might be hypothesized fibromyalgia is related to a parathyroid 930  
cause. However, a similar enigma is found with irritable bowel syndrome (IBS), a 931  
functional disorder with no definite organic findings and closely associated (or 932  
overlaps) with fibromyalgia. Some suggest fibromyalgia and IBS are actually the same 933  
entity [154]. IBS is shown to be relieved below Rome II criteria in 80 percent of 934  
patients after laparoscopic fundoplication for GERD [164]. Looking for a common 935  
denominator one can hypothesize that relief is achieved due to intense pain 936  
exposure and general anesthesia that resets the brain circuits, somewhat similar to 937  
electroconvulsive therapy combining gate control. But it does not align with findings 938  
that tonsillectomy increases risk of IBS [165], that umbilical hernia repair surgery 939  
seems to predispose to IBS [166], and that patients with fibromyalgia have a higher 940  
incidence of suffering IBS after appendectomies [167]. Laparoscopic 941

cholecystectomy has been shown to deeply influence fibromyalgia symptoms [132]. 942

Moreover, hysterectomy, with or without oophorectomy, seems to worsen 943

fibromyalgia [168]. 944

Oddly, why does the location and type of surgery seem to regulate the positive or 945

negative impact on these somatic conditions? Indeed, it was suggested in this 946

literature review that MPS/TrPs can cause chronic changes in bowel habits. Should 947

we suspect that in these associated disorders, the connecting motif is connective 948

tissue? This may imply that the location of the surgery has different effects on fascia, 949

even remotely, due to- and regulated by- tensegrity forces. The lateral raphe and 950

common tendon of the transversus abdominis are suggested to form connections 951

between, and transfer tensions between the abdomen and the paraspinal muscles 952

and sheath [14,169]. This can explain how laparoscopy might release a compression 953

on the DRG. Interestingly, this would mean the clustering of patients experiencing 954

benefit post-parathyroidectomy towards the group diagnosed by a rheumatologist, 955

and those not experiencing benefit towards the group diagnosed by primary care 956

physician, isn't due to misdiagnosis but precisely because rheumatologist really 957

identify those with fibromyalgia statistically significantly more accurately. 958

Now, what is missing from current theories about fibromyalgia? On one hand, 21st 959

century's best physicians and psychotherapists are not enough for fibromyalgia to 960

relinquish, while on the other hand, parathyroidectomy is. What do the surgeons do, 961

even without special intent, that we haven't tried? How to see that which is being 962

overlooked? It appears this entity, or the tissue that is the veil, is responsive to 963

surgery more than to opioids and anti-epileptics. 964

According to central sensitization, is a parathyroidectomy able to fix the pain matrix? 965

And can hysterectomy impair it? What about below knee amputation? 966

967

### **Multiple theories for one medical puzzle?** 968

More studies indicate fibromyalgia may include also easy bruising [154,170], hair- 969

loss [154], reduced skin innervation [171], tingling, creeping or crawling sensations 970

[172], reduced fecundity or infertility [173,174], urinary urgency [164], changes in 971

bowel habits [3], decreased optic disk perfusion [127], dry eyes [172], dry mouth 972

[154], hearing difficulties [154], functional voice disorders (including muscle tension 973

dysphonia) [175], wheezing [154], seizures [154], impaired cognition [154], and 974

Raynaud's phenomenon [154,176]. 975

There are several theories trying to explain fibromyalgia including: central 976

sensitization and neuroplastic pain circuits, autonomic dysfunction, neuroendocrine 977

and stress, social and psychological (including personality and cognition), and several 978

more theories. Can they be the explanation of all these manifestations? Do 979

psychosocial theories or somatization explain these? No single theory seems to fully 980

account for fibromyalgia. For example (some of the questions below were already 981

answered, others will be answered later while others remain to be answered by 982

further research): 983

984

If it is sympathetic-parasympathetic dysregulation: why is muscle damping found to 985

be increased unilaterally more often than bilaterally, why is postural hypotension not 986

in the diagnostic criteria, and why is it strongly associated with sicca but lacks reports	987
of chronic sialorrhea? Why urinary urgency but not retention, and how to explain	988
empirical findings of autoantibodies?	989
<u>If it is inflammatory or autoimmune</u> : where are the standard inflammatory markers,	990
why is it so closely associated with irritable bowel syndrome of all conditions, and	991
why does it respond to tricyclic antidepressants? What do the occiput, scapula, and	992
knee possess, for example, that is absent from all interphalangeal joints and parietal	993
bones? Are bone ridges a necessary-and-not-sufficient condition for tender points?	994
What underlies the close association with acquired immunodeficiency syndrome	995
[177], and why does a study find placebo has a better outcome than steroids as a	996
treatment for fibromyalgia [178]? The reason pharmacological treatments require	997
prudence is because systemic drugs would distribute in an imbalanced tensegrity	998
structure equally throughout, which can be an inherent disadvantage in this case.	999
According to this framework, systemic steroids are expected to indiscriminately	1000
modulate the tensegrity structure, supposedly arbitrarily leading to an exacerbation	1001
or relief, depending on the structure. More specifically, the success of some	1002
pharmacological agents that target myofibroblasts will depend on the balance	1003
between pro-survival signals (e.g., mechano-transducing signals) and pro-apoptotic	1004
signals.	1005
A low-grade neuroinflammation might occur sub-clinically in fibromyalgia, but what	1006
drives it? The full cytokine profile of MPS and fibroblasts is not covered in this	1007
review, however, some studies suggest chronic myofascial pain is associated with, or	1008
causes, elevation of cytokines and inflammatory mediators, fibroblast growth	1009

factors, serum reactive oxygen species, and neuroendocrine signaling [19,179-181]. 1010

However, not all studies find the same [181]. Fibroblast from fibromyalgia patients 1011

show a differential expression in proteins involved in the turnover of the ECM and 1012

oxidative metabolism that could explain the inflammatory status of these patients 1013

[182]. Biopsy studies of fibromyalgia patients find that, in peripheral fibroblasts, TGF- 1014

$\beta$  gene expression is significantly higher in fibromyalgia patients compared to 1015

controls [130]. If one accepts only alternative theories: why and how is TGF- $\beta$  1016

expression two to three-fold higher in peripheral fibroblasts of fibromyalgia patients 1017

(p-value <0.001)? 1018

Is there any evolutionary sense for support of fibromyalgia as autoimmune? Cancer 1019

is rigid and is affected by connective tissue rigidity [16]. Suppose tissue stiffness 1020

regulated antigen presentation, somehow, as a way of the body to defend itself from 1021

pathological rigidity, what would be the implications for fibromyalgia based on 1022

tensegrity dynamics? If this is part of the explanation for autoantibodies in 1023

fibromyalgia, there is at least some evolutionary background for the autoimmunity 1024

part of it. Substrate stiffness influences phenotype and function of human antigen 1025

presenting dendritic cells and affects B-cells, macrophages, and other immune cells 1026

[183]. Myofibroblast can engulf their surroundings [184], and in certain conditions 1027

are able to present antigens via MHC class II to T lymphocytes [185-188]. A study 1028

from 1990 of 20 patients with fibromyalgia suggests the majority have anti smooth 1029

muscle antibodies [189]. Such a defensive mechanism would be successful in 1030

selection throughout generations only if it allowed for some autoimmunity, in order 1031

to target the suspicious cells. Compromising self-recognition was probably beneficial 1032

in the long term, so long as rigidity in soft tissue was a rare encounter. Therefore, if 1033

rituximab does not do the whole job, maybe some clone population keeps 1034  
presenting antigens. 1035

Central sensitization is the most accepted explanation: however, there are several 1036  
questions that this theory does not seem to fully explain and some empirical findings 1037  
that the theory did not seem to predict. How is fibromyalgia mechanistically 1038  
different from "tension-type-headache", "nonspecific-low-back-pain", "nonspecific- 1039  
neck-pain", and "MPS"? What is the pathophysiological difference between "primary 1040  
fibromyalgia", "secondary fibromyalgia", "secondary-concomitant fibromyalgia", and 1041  
"juvenile fibromyalgia"? Is fibromyalgia the same entity or different from "chronic 1042  
widespread pain"? In terms of "fascial armoring", there is no need to multiply 1043  
entities, it remains myofibroblast-generated-tensegrity-tension, though, each 1044  
tensegrity is different, anatomically. The fascial armoring model, intrinsically, has 1045  
variations. Why does "chronic fatigue syndrome" (CFS) manifest with pain in tender 1046  
points? Since fatigue is the predominant symptom rather than pain, it might indicate 1047  
that deeper layers of connective tissue are more involved. How does the 1048  
pathophysiology of fibromyalgia overlap with that of headaches and CFS, if searching 1049  
for it only within the cranium? The boundary of an entity goes as far as the boundary 1050  
of the cellular process that is behind it. 1051

Can central sensitization be resolved? If so, what is the modality and mechanism of 1052  
action of the cure? In the long term, do opioids worsen the pathology? According to 1053  
central sensitization, why prefer milnacipran, duloxetine, and pregabalin, but not 1054  
venlafaxine, tramadol, or gabapentin? Is diet important? A pharmacological or 1055  
nutritional agent that induces myofibroblasts is expected to be either ineffective or 1056



harmful in the long term in fibromyalgia. From the standpoint of "fascial armoring", 1057  
an antidepressant that induces myofibroblasts might have some positive side effects, 1058  
e.g., improved mood. 1059

Will surgery exacerbate central sensitization, relieve it, or neither? What are tender 1060  
spots and how does the topography remain conserved between individuals? These 1061  
spots seem fundamental because fibromyalgia can be diagnosed based on them. 1062

Why two centimeters distal to the lateral epicondyle and not midway between the 1063  
elbow and wrist? Will this topography change if there are congenital deformities in 1064  
the brain/spine? What if a deformity in the elbow? Which is the constant that allows 1065  
for the preservation of this point distribution? How do we know there is no 1066  
peripheral organic cause for the pain if we haven't looked at tensegrity? Is "post 1067  
COVID-19 syndrome" similar, different, or is it the same? If the same, according to 1068  
this model, COVID-19 should induce myofibroblasts. Which comorbidities interact 1069  
best, and which are the worst for fibromyalgia, based on central sensitization, 1070  
theoretically? One might offer multiple sclerosis, tetraplegia, 1071  
adrenomyeloneuropathy, Cushing's disease, or congenital adrenal hyperplasia. So 1072  
then, why is Ehlers Danlos/hypermobility syndrome so closely related to 1073  
fibromyalgia? 1074

The pathogenesis of peripheral and/or central nervous system changes in chronic 1075  
widespread pain (CWP) is unclear, though, peripheral soft tissue changes are 1076  
implicated [190]. Some evidence from interventions that attenuate tonic peripheral 1077  
nociceptive impulses in patients with CWP syndromes like fibromyalgia suggest that 1078  
overall fibromyalgia pain is dependent on peripheral input [190]. Allodynia and 1079

hyperalgesia can be improved or abolished by removal of peripheral impulse input 1080  
[190]. Central disinhibition is also hypothesized. However, this mechanism also 1081  
depends on tonic impulse input, even if only inadequately inhibited [190]. Thus, a 1082  
promising approach to understanding CWP is to determine whether abnormal 1083  
activity of receptors in deep tissues is part of the manifestation and maintenance of 1084  
this condition [190]. 1085

Perhaps the relationship between fibromyalgia and hypermobility syndrome has to 1086  
do with changes in ECM properties that induce myofibroblasts, thus initiating a 1087  
widespread MPS cascade? Studies of patients with Ehler-Danlos/hypermobility 1088  
syndrome find up to 70-100% have CWP and evidence supports a close association 1089  
between hypermobility syndrome and fibromyalgia [191,192]. Of all associations 1090  
with fibromyalgia, Ehlers-Danlos/hypermobility syndrome is one of the closest, 1091  
perhaps even closer than depression. Why? Studies of hypermobility syndrome find 1092  
cells express an increased transition to the myofibroblast phenotype [193,194]. A 1093  
study suggests changes of collagen microarchitecture regulate myofibroblast 1094  
differentiation and fibrosis independent of collagen quantity and bulk stiffness by 1095  
locally modulating cellular mechanosignaling [195]. The indistinguishable phenotype 1096  
of myofibroblasts identified in hypermobility spectrum disorders resembles an 1097  
inflammatory-like condition, which correlates well with the systemic phenotype of 1098  
patients [193]. These findings suggest that these multisystemic disorders might be 1099  
part of a phenotypic continuum rather than representing distinct clinical entities 1100  
[193]. According to this discussion, widespread induction of myofibroblasts suggests 1101  
a possibility for generalized peripheral pain caused by generalized tensegrity tension 1102  
and compression. Under this framework, the link between fibromyalgia and a variant 1103

of collagen/elastane is somewhat anticipated based on fascial biology. Even at the 1104  
usual shear modulus of fascia, in this population joint laxity might allow tethered 1105  
nerves to be affected more than normal. The above suggests that finding only a 1106  
"normal" range of motion in the joints of a hypermobile individual is abnormal and 1107  
pathological not only because it restricts their movement, but because it is a marker 1108  
for a diseased fascia. 1109

Psychological and social theories: evidence for the input of 1110  
psychological/psychosocial factors and stress in the pathogenesis of fibromyalgia is 1111  
suggested in studies [154]. Cognitive behavioral therapy is recommended in cancer 1112  
pain, but we obviously do not conclude that cancers are psychosomatic. Adverse 1113  
childhood events are associated with increased risk for diabetes mellitus type 2 1114  
[196], yet only a rare few define diabetes mellitus as psychosomatic. So, if 1115  
fibromyalgia is caused by stress and low mood or due to childhood experiences of 1116  
distress, how does it reduce skin innervation and optic disc perfusion, and why 1117  
selective serotonin reuptake inhibitors (SSRIs) or anxiolytics are not the first line 1118  
treatment? If traumatic memories can maintain the pain of fibromyalgia, do strokes 1119  
or Alzheimer's disease relieve it? If abnormalities in cortisol levels can be enough to 1120  
lead to such a clinical picture, why aren't they enough to cause even mild 1121  
hyperglycemia, neutrophilia, or thrombophilia? No osteoporosis? 1122  
Hyperpigmentation? And no salt craving or hyponatremia. If cortisol has a major 1123  
role, why is Cushing syndrome not usually portrayed with morning stiffness and pain 1124  
in 18 arbitrary points (arbitrary from a neurological point of view) that are all 1125  
adjacent to bone protrusions and are also adjacent to strong muscles and fascia 1126  
(shoulder and trapezius, gluteus, thigh muscles, iliotibial tract, thoracolumbar fascia, 1127

pectoralis, muscles of mastication etc.)? Is there any outstanding "fibromyalgia-ness" 1128

in either Addison's or Cushing's disease, or in Pheochromocytoma? Endocrine 1129

entities involving these hormones are not entirely free of emotional distress either. 1130

Psycho-emotional explanations are a double bind for fibromyalgia: if muscle tensions 1131

and contractions are psychologically induced by mental stress, how are they 1132

maintained chronically with such high intramuscular pressures if patients are often 1133

fatigued? On the other hand, if habitual psychological muscle contraction is what 1134

leads to the fatigue, why can't they relax, and how do muscles contract independent 1135

of alpha and gamma motoneurons and extrafusal fibers? Would we not expect a 1136

combination of muscle relaxants and meditation to be more efficacious? What kind 1137

of an entity can be both systemic and unilateral? A sympathetic theory does not 1138

suffice, as stated by Wachter et al. [131]. S1 Fig 1E illustrates a possible solution for a 1139

systemic yet seemingly "unilateral" pathology. 1140

Is depression a causal factor, and if so, why are antidepressants not more effective? 1141

Is there a global abnormality in tryptophan's derivatives? Does physio-emotional 1142

Stress cause fibromyalgia, or does fibromyalgia cause physio-emotional Stress? At 1143

which stage, approximately, does the mechanism of this entity diverge from that of 1144

Stress, and why is it closely associated with Sjögren's syndrome? Why pass over 1145

pancreatitis? And is there a prediction for the interaction with asthma, for example? 1146

The author could not think of an evolutionary rationale in having a self-destructive 1147

infinite positive-feedback of pain in two to six percent of a species, with no 1148

peripheral organic lesion, due to history of emotional trauma, or due to any reason. 1149

These entities were designed throughout evolution, no? Life must go on and we 1150

need to move for life to move on. Cancer uses fetal genes to multiply, cystic fibrosis 1151  
is part of variety and selection, allergies are immune cells being overprotective, iron 1152  
deficiency can cause pica, and COVID-19 is a big accomplishment for viruses. Why 1153  
would the brain amplify pain with no organic lesion? Evolution might be offended; 1154  
and treating that malady with exercise is not all intuitive either. The human mind is 1155  
most complex but is not most frail. Is connective tissue a non-issue? Why is the focus 1156  
specifically on pressure and pain? Does psychology navigate sensitization towards 1157  
predetermined sensory tracts, or is there genuine sensory input of pressure arising 1158  
from the periphery and causing central neurological adaptations? If the former- why 1159  
those tracts? And if the latter- what drives the force that causes pressure in the 1160  
periphery? The character structure? The tensegrity structure? Myofascial tissue? 1161  
Does the reader know of any entity that can sustain generalized mechanical pressure 1162  
with no obvious cause? For the sake of a scientific discussion, let us include any 1163  
hypothetical entity as well. 1164

If fibromyalgia carries such a strong psychological component, why did a study find 1165  
an odds ratio of 2.53 and effect size of only 0.51 for anxiety disorder in fibromyalgia, 1166  
while for fasciitis and muscle spasms it found odds ratios of 5.27 and 6.05, with an 1167  
effect size of 0.92 and 0.99 (p-value <0.0001), respectively [197]? Does fibromyalgia 1168  
as a "functional somatic syndrome" deserve some re-evaluation, and are we to 1169  
dismiss these statistics as not being empirical clues? Why did a study find fasciitis to 1170  
be one of the three most associated conditions with fibromyalgia, while anxiety was 1171  
not? Is there, or is there not, a problem with the fascia of fibromyalgia patients? An 1172  
odds ratio and effect size approximately double that of anxiety disorder, but if the 1173  
answer is yes- what is the problem? To what degree does psychology regulate 1174

fibromyalgia? How to interpret the topography, then? Is there anything we can learn 1175  
from the pattern? Are the points entirely psychological, are they created in the 1176  
central nervous system, or does the theory require a peripheral mechanism to fill 1177  
this gap? Which is largest – the variance of fibromyalgia's prevalence between 1178  
different societies, between the big five personality traits, or the variance of 1179  
prevalence between collagen polymorphisms? Does "post-traumatic anxiety 1180  
syndrome" predispose to fibromyalgia, or are they overlapping conditions? What 1181  
sets the boundary of this entity? 'Psychology' can be infinite. Why not pica too? Is 1182  
there any determinism? Does fibromyalgia originate from the head or from the 1183  
body? And if it comes down to the mind- how does the collagen polymorphism make 1184  
one so much more sensitive to psychological problems? What can we learn about a 1185  
fascial pathology if it affects the mind, in theory? By which mechanism does a 1186  
psycho-neuroplastic pain cause so much muscle spasms but no abnormal Babinski 1187  
sign, no clasp knife spasticity, no paralysis, no fasciculations, no hyperreflexia, no 1188  
sensory loss, no ataxia, no dystonia, no atrophy, and no clonus, and why are these 1189  
spasms different? Even if this shadow hides in the subconscious or elsewhere it 1190  
needs to have some way to get to the muscle. Are these spasms driven by a psycho- 1191  
neurological pathology of the central nervous system that contracts muscles without 1192  
using extrafusal fibers or motoneurons, or that activates a unilateral sympathetic 1193  
response, or should we explore unexplored rheumatological avenues? 1194

"Somatic" needs clarification: Is "fascial armoring" part of "Somatic"? There must be 1195  
some pathophysiology to it because it obviously is not magic and any model that 1196  
tries to tackle fibromyalgia's pain cannot be shy of "Somatic", too. To rely on "using 1197  
imagination" in this case seems to be a weak attempt to simplify such a complex 1198

problem, no? Having schizophrenia seems to be different and unfortunately 1199  
searching only inside cranium limits our options. (The term "inside cranium" is used 1200  
because the brain is certainly not alone in it, the meninges is there, too.) When 1201  
excluding magic, imagination, and schizophrenia, what are we left with? A ghost in 1202  
brain, or a shadow in fascia? Science is free to choose where best to look. Gupta et 1203  
al. [198] studied CWP in somatising individuals. They conclude that while a high 1204  
tender point count is associated with the onset of new CWP, a low pain threshold at 1205  
baseline is not [198]. With our new view of MPS it is logical, since tender point count 1206  
would be a marker for a fascial tensional pathology, leading to widespread pain and 1207  
a lower pain threshold later. 1208

Why and how does MPS develop into fibromyalgia? Is MPS also psychosomatic? 1209  
Essentially, any answer to that would depend on our definition of "psychosomatic". 1210  
If "psychosomatic" has a peripheral factor involving myofibroblasts, then, the answer 1211  
is: probably yes. Therefore, this model suggests that between a treatment that 1212  
focuses mostly on the brain or one that focuses mostly on the tensegrity, the one 1213  
focusing also on the tensegrity should be more effective, at least in the medium to 1214  
long term. In other words, a combination of cognitive behavioral therapy and 1215  
exercise with any current pharmacological treatment protocol, should be less 1216  
effective than, for example, a combination of movement therapy, hyperbaric oxygen 1217  
chamber therapy, psychotherapy, and minimally invasive therapy (tensegrity based 1218  
needling). It also suggests that concentration of myofibroblasts and  $\alpha$ -SMA in 1219  
involved connective tissue should correlate better with the Fibromyalgia Impact 1220  
Questionnaires than do frequency of pain catastrophizing or severity of emotional 1221

trauma. Has the reader ever felt an itching sensation, headache, or repeated muscle	1222
twitching, with no clear reason? Was it ever psychosomatic?	1223
There are those who suggest fibromyalgia is not a real entity or that it is caused by	1224
sleep disturbances [154]. However, the relatively modest efficacy of antipsychotics	1225
and/or melatonin and/or z-drugs implies it is probably neither an imaginary	1226
hallucination nor due to lack of sleep. If it truly is only pain catastrophizing due to	1227
low psychological resilience, then animal models are probably futile, and why are	1228
women more affected than men?	1229
Noteworthy, two parallel mechanisms (or more) might be at work and are not	1230
necessarily incompatible with each other. Notwithstanding, if the mechanism starts	1231
in the fascia, and if we rarely study the fascia in fibromyalgia, how will we find the	1232
mechanism?	1233
How is it that multiple theories, even when combined, do not seem to fully explain	1234
this entity? Is there any tissue out there that all theories have overlooked? A	1235
tensegrity model is not without its questions: (i) How are depression and Lyme	1236
disease linked, and why is there wheezing, insomnia, and small fiber neuropathy? (ii)	1237
Self-mutilation? [199] (iii) Do antidepressants affect myofibroblasts? (iv) How is the	1238
brain involved? (v) Did biopsy studies in fibromyalgia find abnormalities in peripheral	1239
myo/fibroblasts, $\alpha$ -SMA, or TGF- $\beta$ ? (vi) What is altered if myofibroblasts have	1240
chemotaxis? (vii) If the tensegrity's state can be different in each individual, how to	1241
minimize false negative results in research and how to tailor the treatment	1242
accordingly? (viii) What if the "armor" develops in the deep fascia more than the	1243
superficial? (ix) What if an imbalanced tensegrity structure has laxity in its frame? (x)	1244



Why are obesity and menopause associated? (xi) What happens to the tensegrity 1245  
after fasciotomies? (xii) If biology can really hide a pain condition in the tensegrity, 1246  
what else has it hidden there? (xiii) Is having total belief in fibromyalgia a factor, 1247  
does fear of death sustain it, and can one choose to willingly have fibromyalgia, even 1248  
permanently? 1249

Does "fascial armoring" fill in gaps regarding some of these anomalies? If affecting 1250  
the trunk, a constrictive tissue in the chest might be able to impair lung function and 1251  
contribute to wheezing and chest tightness. If involving a compression by the 1252  
cervical fascia, it might affect salivary ducts/glands, affecting salivation. In the neck 1253  
and pretracheal fascia, muscle tension dysphonia. Temporal fascia, tension like 1254  
headache. Periorbital, reduced optic disc perfusion. Wrist, carpal tunnel syndrome. 1255  
Hand, Raynaud's-like phenomena. Under the skin, crawling sensations. Pelvic fascia, 1256  
urinary urgency. Abdomen, peristalsis. Myofibroblasts contract over hours to lock in 1257  
tension in ECM [51], so, under resting conditions stiffness might be exacerbated 1258  
(e.g., sleep). Abnormal ECM properties could predispose to bruising. For impaired 1259  
balance: proprioceptors are present among ECM, they affect coordination [18]. 1260  
Sustained ECM forces might lead to their chronic activity, which, in turn, might 1261  
activate reciprocal regions in the brain chronically. Chronic activity of those 1262  
presynaptic nerve terminals in the brain might cause excitotoxicity, theoretically. A 1263  
link to phenomena like seizures/pseudoseizures will be suggested below when 1264  
mentioning the myodural bridge. Does central sensitization lead to small fiber 1265  
neuropathy or does small fiber neuropathy lead to central sensitization? And how? 1266  
According to this model, the answer is: neither- small fiber pathology in fibromyalgia 1267  
patients was found to be accompanied by reduced axonal diameter and some 1268

abnormalities in Schwann cells seen on electron microscopy [200]. Neurofilaments 1269  
provide mechanical strength and determine axon diameter, whereas microtubule 1270  
functions include intracellular transport and provision of structural rigidity [201]. 1271  
They were both found to exhibit appreciable changes in cytoskeletal spatial 1272  
distributions within neuronal axons, under compressive loading [201]. Axonal 1273  
changes under compressive loading are caliber dependent [201], neurite changes are 1274  
dependent on substrate stiffness and gradient [202]. Substrate stiffness affects 1275  
behavior and function of Schwann cells [203]. 1276

This theoretical model can only go as far as the cellular process that is behind it, so, 1277  
what happens when modulating the cellular process? Interestingly, studies suggest 1278  
certain antidepressants can downregulate myofibroblasts and ACTA2 gene 1279  
expression [204,205], while other antidepressants may actually enhance them [206]. 1280  
It seems gp120 has a stimulatory effect on myofibroblasts as well [71,207]. We could 1281  
similarly predict that the pathogen *Borrelia* may lead to connective tissue changes 1282  
and drive a widespread myofibroblast pathology. Thus, resulting in an infectious 1283  
version of fibromyalgia with or without pronounced inflammation. *Borrelia* and 1284  
fibroblast co-cultures show a significant induction of type I collagen mRNA after 2 1285  
days (p-value <0.02) and a significant upregulation of mRNA expression of TGF- $\beta$  (p- 1286  
value <0.01) [208]. Since TGF- $\beta$  is a cardinal signal for myofibroblast  $\alpha$ -SMA 1287  
synthesis, this may explain why, of all infections, Lyme disease (and not viral 1288  
encephalitis or infective transverse myelitis) is strongly associated with fibromyalgia. 1289

Due to the marked similarity to fibromyalgia, such events can be expected in 1290  
connective tissue in "post COVID-19 syndrome". Unudurthi et al. [209] suggest the 1291  
infiltration of neutrophils, macrophages and CD4+ T lymphocytes in COVID-19 1292

patients can promote the activation of fibroblasts to myofibroblasts in heart. SARS- 1293  
CoV-2 may induce the trans-differentiation of adipocytes or pulmonary 1294  
lipofibroblasts into myofibroblasts, cells that play an integral part in fibrosis [210]. 1295  
Since ECM remodeling is an ongoing chronic process, fibromyalgia-like symptoms 1296  
would arguably be a sequela of infection rather than an acute manifestation. 1297

### **Fascial armoring and the mind** 1298

A study suggested that in fibromyalgia, a global pathology involving tryptophan 1299  
might come at the expense of other serotonergic operations such as in the brain 1300  
[211]. A mechanosensitive effect can trigger serotonin release from 1301  
enterochromaffin or neuroendocrine cells [212,213]. Serotonin is involved in the 1302  
cellular signaling of connective tissue cells [214,215]. Studies of fibromyalgia patients 1303  
indicate an elevated level of serotonin in myofascial tissue and platelets, while a 1304  
decreased level of tryptophan and its derivatives, serotonin and kynurenine, is 1305  
observed in the blood and/or brain [92,211,216-221]. Some fibromyalgia patients are 1306  
found to have decreased rate of transport of tryptophan across the blood brain 1307  
barrier [211]. Theoretically, a peripheral sequestration or depletion of biogenic 1308  
amine metabolites may play a role in the association between mood disorders and 1309  
fibromyalgia in some individuals and might explain why antidepressants seem to 1310  
have such a limited efficacy in a subset of them. 1311

Can an imbalanced tensegrity structure be associated with an imbalanced mind? It is 1312  
possible some individuals feeling persistent tension and crawling sensations might 1313  
try self-mutilation in such a way that physically releases tensegrity tension, rather 1314  
than actually attempting suicide. Consciously or unconsciously: similar to pica, 1315

mentioned earlier. Associating pica with iron deficiency, glucosuria with diabetes, 1316  
and self-harm with a tensegrity abnormality, seems to be a better choice for Nature 1317  
than the other way around. Pica with "fascial armoring" would have pointed the 1318  
author towards the mind. Lacerations would probably be the best first approach for 1319  
this purpose and horizontal incisions might be more effective if vertical to force 1320  
vectors. Unfolding this reason while using the scientific terms would be difficult for 1321  
most common individuals, even for those with an extremely high body awareness; it 1322  
would probably be described as: "trying to release a feeling". 1323

1324

**Compression versus a global percutaneous needle fasciotomy:** 1325

**conclusion** 1326

Studies show obesity induced connective tissue fibrosis is dependent on 1327  
mechanosensitive signaling [222]. Fibrosis, via myofibroblasts, alters subcutaneous 1328  
tissue plasticity and increases connective tissue rigidity and stiffness [222]. Thus, 1329  
obesity might be associated with fibromyalgia by way of mechanically compressing 1330  
fascia with higher forces. Is there any evolutionary sense? Unfortunately, obesity is 1331  
one of the most "punished" conditions by nature. Does insulin-like growth factor 1332  
affect central sensitization, and is weight gain from pregabalin helpful or harmful? A 1333  
study in vivo suggests applying tension on skin induces myofibroblasts [74]. 1334  
Therefore, by this same rationale we might expect a sedentary and/or hypermobile 1335  
individual that tends to wear tight clothes and accessories that mechanically 1336  
compress fascia to be at higher risk for this pathology over time. It was shown the 1337

association between a higher incidence of fibromyalgia and estrogen is unlikely 1338  
 [162,223]. Estrogen is suggested to inhibit myofibroblast differentiation and is 1339  
 associated with lower fascial stiffness [224-227], and hormonal contraceptives may 1340  
 reduce the risk of fibromyalgia in women [228]. Some suggest fibromyalgia may be 1341  
 linked to menopause [229]. This could be part of the explanation to why fibromyalgia 1342  
 is more prevalent in certain females. Other studies show that applying a splint or 1343  
 mechanical tension induces myofibroblasts [80], and ponytails/hijabs/braiders 1344  
 appear to cause myofascial pain [230-234]. This phenomenology appears to be 1345  
 similar to, or the same as, the old practice of applying bandages to treat 1346  
 "rheumatism" patients (William Balfour 1815 [235]), meaning: modulation of the 1347  
 tensegrity structure and/or induction of stress shielding but failing to resolve overall 1348  
 tension (e.g., the case of Mrs. M. pp. 179-180 [235]). Interestingly, experimental 1349  
 models of restraint stress apply mechanical restraint and/or limit movements [236- 1350  
 240]. These models seem to induce mechanical and cold allodynia, depression and 1351  
 anxiety like behavior, gut dysmotility, and other phenomena [236-240]. Thus, one 1352  
 might wonder what is the pluripotent entity that restraint stress tries to model? Is it 1353  
 only psychological stress? 1354

In any case, perhaps a treatment or prophylaxis that applies multiple needles in 1355  
 different areas of the tensegrity system, could be utilized as a global percutaneous 1356  
 needle fasciotomy. The theoretical end purpose for this treatment would be by 1357  
 passively inserting the needles and then allowing the network of cells to lower global 1358  
 fascial stiffness beneath the threshold necessary for myofibroblasts activity (~10-20 1359  
 kPa) and slowly experience a tensional collapse. Each intrafascial (i.e., subcutaneous) 1360

needling therapy would have to be adapted according to the current state of the 1361  
tensegrity structure, meaning: one protocol does not fit all, and does not fit one all 1362  
times. If we ignore tensegrity principles, pain might increase. Patience seems key 1363  
because the longer the duration of severe disease, the slower the change should be 1364  
made. Human physiology does not tolerate sudden changes well, and "the entropy 1365  
must go somewhere". The myofibroblast that remain would be responsible for the 1366  
relapse, at least in part. Elastography studies of fibromyalgia and MPS are scarce. 1367  
Some studies found fascia of patients with myofascial pain measures statistically 1368  
significantly higher on shear wave elastography, and they have increased peri- 1369  
muscular connective tissue thickness and ultrasound echogenicity [241,242]. It was 1370  
found that needling treatment reduces pain [243-247]. Studies suggest needling 1371  
significantly lowers the shear modulus of myofascial tissue as measured by 1372  
elastography (p-value <0.01) [95], causes mechanical changes at the point of 1373  
insertion and at a distance [91,102], causes windup of the connective tissue [105], 1374  
and improves perfusion to the area [248]. Meta-analyses and systematic reviews find 1375  
that needling improves pain and stiffness in people with fibromyalgia and MPS 1376  
[245,246,249]. Support for this modality's capability of improving perfusion is found 1377  
in a study showing infiltration of TrPs reduces symptoms of intermittent claudication 1378  
[250]. Symptomatically, a person constantly exerting effort against such forces of a 1379  
suffocating fascia would likely feel chronic fatigue and soreness, while accumulating 1380  
nociceptive substances in muscles in a chronically tonic body, and active loci induced 1381  
"energy crises". Tryptophan usage would affect melatonin as well, and symptoms of 1382  
cognitive impairment mean the brain is definitely involved. With regards to active 1383  
loci, it is possible the cell has its own ways to oppose this abnormality. When 1384

synaptic neuromuscular activity is maintained over time, an aggregated form of 1385  
amyloid beta is seen to interfere with Ach release ex vivo [251]. One adopting this 1386  
biological ethos might want to examine if amyloid beta is linked to "fascial 1387  
armoring", because studies suggest amyloid beta, like the cytoskeletal protein tau, is 1388  
affected by or compensates for, mechanical stress [252-256]. 1389

At least we might want to exclude an organic fascial cause before perceiving these 1390  
cases as purely psycho-functional disorders, even if the full mechanism is still 1391  
unclear. Is there enough empirical evidence to recognize MPS and fibromyalgia as 1392  
honorable organic diseases, like any other? Internal medicine is used to entities that 1393  
are either immune related, infectious, malignant, endocrine, metabolic, genetic, 1394  
cardiovascular, neurologic, traumatic, or toxic, but not familiar with many 1395  
mechanical ones. If medicine overlooked another system causing pain besides fascia, 1396  
like integumentary or skeletal, it would probably lead to overlying on psychology to 1397  
explain that pain. Maybe it is not some mechanism that has yet to be discovered or 1398  
measured. Maybe it has been both discovered and measured yet overlooked and 1399  
misinterpreted. It is difficult to explain all the empirical evidence relating to 1400  
fibromyalgia (e.g., association with hypermobility syndrome, small fiber neuropathy, 1401  
and the complete resolution soon after surgery) while relying on central sensitization 1402  
and stress or somatization alone. Therefore, investigating a link between 1403  
fibromyalgia and a peripheral mechanical process might benefit our understanding. 1404

The enthusiast of the principle of Occam's razor (i.e., minimize multiplication of 1405  
entities) might consider seeing other functional entities that are known to be 1406  
associated with pluripotent TrPs [2,4,12,43,257,258], as "MPS"/"fibromyalgia" that is 1407

localized to certain anatomical areas; coupled with the reciprocal central nervous system changes. Purely biologically, there really is only one entity (S1 Fig 2 grossly illustrates this overlap of conditions). "Kelley's textbook of rheumatology" and others suggest functional somatic syndromes to be on a continuum of one entity with fibromyalgia [122,154,175]. Myofascial TrPs reproduce the pain pattern of fibromyalgia and are related to widespread mechanical hypersensitivity [259]. A study found that the topography of fibromyalgia tender points consists mostly of myofascial active TrPs ( $r=0.78$ ,  $p\text{-value} < 0.001$ ) [260]. In addition, MPS and fibromyalgia are suggested to be two sides of the same coin [2,154,261]. Etymology does not necessarily reflect pathophysiology, but the term "fibromyalgia syndrome" basically carries the same meaning as "myofascial pain syndrome" but in Greek. The analysis based on this scoping review offers one mechanical aspect as a part of a common rheumapsychoneurological mechanism.

## **Final note and future potential**

Based on this review, it seems that fascia is an intelligent and sophisticated tissue network, at least like any other tissue network we know. It is shown myo/fibroblasts have gap junctions that can couple and directly communicate with each other (Xu et al. [262]) and with other types of cells (with heart [263], hair follicles [264], cancer cells [265], etc.) [51,266-270]. These can contract as a unit or in patterns [271,272], affecting the organ's functionality [53,273-280]. If this theoretical model of myofibroblast-generated-tensegrity-tension is verified empirically, it might be worth



further exploring the possibility that they can couple in vivo (directly, or indirectly 1430  
through myocytes/glia cells) to neurons. Studies suggest the meninges might be 1431  
coupled to the cerebral cortex to form one large network with myo/fibroblasts [281- 1432  
284]. The myodural bridge connects the extracranial occipital fascia with the dura 1433  
[285]. Myo/fibroblasts seem to form a body-wide cellular network; They can respond 1434  
to mechanical cues and exhibit spontaneous calcium oscillations and synchronized 1435  
contractions [62,270-272,279,286-288], and fibroblasts themselves can induce 1436  
contracture through actin beta and gamma pathways [289]. The psychological 1437  
significance of such electrical-mechanical patterns is hypothesized not to be 1438  
negligible. We could consider the hypothetical possibility that this dynamic body- 1439  
wide mechano-electrical network of cells and fibers has an overlooked interplay with 1440  
the network of the human nervous system. This idea might disguise some of the 1441  
pathophysiology of self-psychosomatics and potentially help us understand why a 1442  
remarkable 17 percent of primary care patients are diagnosed with somatic 1443  
symptom disorder (SSD) (defined in studies as at least four or more unexplained 1444  
symptoms [290]), why tender point counts are predictors of CWP in somatising 1445  
subjects [198], and why SSD is associated, or overlaps, with fibromyalgia. There are 1446  
those who believe tensions in the body are closely linked to our emotions and 1447  
personality (e.g., W. Reich and A. Lowen [291,292]). We know biology does not 1448  
separate itself into different medical specialties like we do occupationally. 1449

On a spectrum of "normality" we may all have "MPS" to some extent, technically 1450  
speaking. It seems to be a question of how much we have and how much it affects our 1451  
life. A tradeoff is still being made, no longer by biology but by humans. Not regarding 1452

the molecular design of fascia, but it is an ongoing tradeoff between not moving and 1453  
moving. As it seems to be a natural condition worsened by an un-natural lifestyle, we 1454  
may say living sedentarily misses our evolutionary target (i.e., a "biological sin"). It is 1455  
interesting a study by Younger et al. finds patients with myofascial pain have changes 1456  
in grey matter in the hippocampus, anterior insula, and cingulate cortex, among 1457  
several areas [293]: Forgetting our evolutionary purpose seems to impair our memory, 1458  
while cognitive detachment from our body-awareness seems to impair our cognition, 1459  
and because biogenic amine metabolites are low, the above suggests a lifestyle with 1460  
scarcity of movement will rarely make us blissful. Looking through the given titles of 1461  
these entities, we might find what we most want to find where we least want to look. 1462  
A body that cannot move with total freedom will hold a mind that is seldom totally 1463  
free of dis-ease. This aligns with the notion that the body and the mind are accepted 1464  
to be one being. Just as we can say music is a "collection of noises" or a "divine 1465  
melody", so may we say MPS is "pulled muscles" or a "fascinating disorder of the 1466  
fascia". Assembling these conclusions and concepts to creatively connect this medical 1467  
puzzle is the easier part of this not so easy effort; The major challenge now being the 1468  
research needed to verify or disprove them, and moving forward with evidence on this 1469  
topic while moving ourselves... 1470

## **Limitations** 1471

The main limitation of this scoping review is that a sole researcher evaluated the 1472  
studies. It is based on other empirical studies where some are in vitro studies, as 1473  
mentioned in parts of the discussion. Being a scoping review, although a broad 1474

searching strategy was applied, not every topic was searched systematically. A 1475  
systematic search was done for several main key phrases, in five databases. 1476  
Systematically searching for relevant side topics (i.e., topics not defined in the key 1477  
phrases) was not feasible, unfortunately. For side topics, an attempt to find a reliable 1478  
source of information, like a textbook or study (or both), was the strategy to gather 1479  
information. In such cases an attempt to cite more than one study was made. Worth 1480  
noting, no on topic studies were found when searching "fibromyalgia myofibroblast" 1481  
or "fibromyalgia alpha smooth muscle actin". "Epigenetics and myofibroblasts" was 1482  
not in the search. Kynurenine and the remaining 4% post-parathyroidectomy were 1483  
not analyzed. The full cytokine profile and the topic of vitamin D in fibromyalgia was 1484  
not discussed although a study finds vitamin D might play a role in myofibroblast 1485  
attenuation or de-differentiation [294], and a meta-analysis suggests fibromyalgia is 1486  
associated with a unique cytokine profile: TNF- $\alpha$ , IL-6, IL-8, IL-10 and eotaxin/CCL24 1487  
[295], all of those found to be implicated in myofibroblast cellular signaling [296- 1488  
300]. 1489

## **Acknowledgements** 1490

Professor Pnina Ohanna Plaut for assisting with methodology and editing, Dr. Bronya 1491  
Gorney for assisting with editing and support, Carrie Rodomar, librarian of University 1492  
of Nicosia medical school, for assisting with methodology. 1493

## **Contributions** 1494

This work was done by the sole researcher and author of this manuscript including 1495  
conception, organization, literature review, integration of information, findings 1496  
analysis, manuscript preparation and writing. 1497

## **Conflict of interest** 1498

The author declares no conflict of interests. 1499

## **Funding** 1500

None 1501

1502

<b>References</b>	1503
1. WHO Scientific Group on the Burden of Musculoskeletal Conditions at the Start of the New Millennium. ( 2003 : Geneva, Switzerland). (2003). The burden of musculoskeletal conditions at the start of the new millenium : report of a WHO scientific group. Geneve : World Health Organization.	1504 1505 1506 1507
<a href="https://apps.who.int/iris/handle/10665/42721">https://apps.who.int/iris/handle/10665/42721</a> . Accessed November 2020	1508
2. www.uptodate.com search "myofascial pain syndrome", "pelvic pain", "tmj" accessed November 2020. "Trigger points" "Fibromyalgia", "differential diagnosis of fibromyalgia" accessed April 2021, "Chronic exertional compartment syndrome", "Chronic fatigue syndrome", "Diabetes Mellitus type 2 and menopause" August 2021.	1509 1510 1511 1512 1513
3. Kasper DL, Fauci, A. S., Hauser, S. L., Longo, D. L. 1., Jameson, J. L., & Loscalzo, J. Harrison's Principles of Internal Medicine, 20e. New York; 2018. pp. 222-223, 2637-2639, 2644-2645.	1514 1515 1516
4. Giamberardino MA, Affaitati G, Fabrizio A, Costantini R. Myofascial pain syndromes and their evaluation. Best Pract Res Clin Rheumatol. 2011;25(2):185-98.	1517 1518
5. Siegfried Mense DGS, I. Jon Russell. Muscle Pain: Understanding Its Nature, Diagnosis, and Treatment. Philadelphia; 2001 pp. 1-10.	1519 1520
6. Lucas N, Macaskill P, Irwig L, Moran R, Bogduk N. Reliability of physical examination for diagnosis of myofascial trigger points: a systematic review of the literature. Clin J Pain 2009;25(1): 80-9.	1521 1522 1523
7. Quintner JL, Bove GM, Cohen ML. A critical evaluation of the trigger point phenomenon. Rheumatology (Oxford) 2015;54(3): 392-9.	1524 1525

8.	Meister MR, Sutcliffe S, Ghetti C, Chu CM, Spitznagle T, Warren DK, et al.	1526
	Development of a standardized, reproducible screening examination for assessment	1527
	of pelvic floor myofascial pain. Am J Obstet Gynecol. 2019;220(3):255.e1-255.e9.	1528
9.	Simons DG, Janet G. Travell, and Lois S Simons. Travell & Simons' Myofascial	1529
	Pain and Dysfunction: The Trigger Point Manual. 2nd ed. Baltimore; 1999. pp. xi- 87,	1530
	940-955.	1531
10.	Wheeler AH. Myofascial pain disorders: theory to therapy. Drugs 2004; 64(1):	1532
	45-62.	1533
11.	Fleckenstein J, Zaps D, Ruger LJ, Lehmeyer L, Freiberg F, Lang PM, et al.	1534
	Discrepancy between prevalence and perceived effectiveness of treatment methods	1535
	in myofascial pain syndrome: results of a cross-sectional, nationwide survey. BMC	1536
	Musculoskelet Disord 2010;11: 32.	1537
12.	Do TP, Heldarskard GF, Kolding LT, Hvedstrup J, Schytz HW. Myofascial trigger	1538
	points in migraine and tension-type headache. J Headache Pain. 2018;19(1):84.	1539
13.	Klotz SGR, Ketels G, Lowe B, Brunahl CA. Myofascial Findings and	1540
	Psychopathological Factors in Patients with Chronic Pelvic Pain Syndrome. Pain Med.	1541
	2020;21(2):e34-e44.	1542
14.	Willard FH, Vleeming A, Schuenke MD, Danneels L, Schleip R. The	1543
	thoracolumbar fascia: anatomy, function and clinical considerations. J Anat	1544
	2012;221(6): 507-36.	1545
15.	Atlas of Human Fascial Topography. Fascia Atlas Leipziger Universitatsverlag;	1546
	2018.	1547

16.	Langevin HM, Keely P, Mao J, Hodge LM, Schleip R, Deng G, et al. Connecting (T)issues: How Research in Fascia Biology Can Impact Integrative Oncology. <i>Cancer Res.</i> 2016;76(21):6159-6162.	1548 1549 1550
17.	Barker PJ, Briggs CA. Attachments of the posterior layer of lumbar fascia. <i>Spine (Phila Pa 1976).</i> 1999;24(17):1757-64.	1551 1552
18.	Nordez A, Gross R, Andrade R, Le Sant G, Freitas S, Ellis R, et al. Non-Muscular Structures Can Limit the Maximal Joint Range of Motion during Stretching. <i>Sports Med.</i> 2017;47(10):1925-1929.	1553 1554 1555
19.	Akbar M, McLean M, Garcia-Melchor E, Crowe LA, McMillan P, Fazzi UG, et al. Fibroblast activation and inflammation in frozen shoulder. <i>PLoS One.</i> 2019;14(4):e0215301.	1556 1557 1558
20.	Zeng YJ, Sun XP, Yang J, Wu WH, Xu XH, Yan YP. Mechanical properties of nasal fascia and periosteum. <i>Clin Biomech (Bristol, Avon).</i> 2003;18(8):760-4.	1559 1560
21.	Yahia LH, Pigeon P, DesRosiers EA. Viscoelastic properties of the human lumbodorsal fascia. <i>J Biomed Eng.</i> 1993;15(5):425-9.	1561 1562
22.	Pavan PG, Stecco A, Stern R, Stecco C. Painful connections: densification versus fibrosis of fascia. <i>Curr Pain Headache Rep</i> 2014;18(8): 441.	1563 1564
23.	Nelson-Wong E, Glinka M, Noguchi M, Langevin H, Badger GJ, Callaghan JP. Acute Surgical Injury Alters the Tensile Properties of Thoracolumbar Fascia in a Porcine Model. <i>J Biomech Eng.</i> 2018;140(10):1010121–7.	1565 1566 1567
24.	Kagawa E, Nimura A, Nasu H, Kato R, Akita K. Fibrous Connection Between Cervical Nerve and Zygapophysial Joint and Implication of the Cervical Spondylotic Radiculopathy: An Anatomic Cadaveric Study. <i>Spine (Phila Pa 1976).</i> 2021;46(13):E704-E709.	1568 1569 1570 1571

25. Wertsch JJ, Melvin J. Median nerve anatomy and entrapment syndromes: a review. Arch Phys Med Rehabil. 1982;63(12):623-7. 1572  
1573
26. Konno S, Kikuchi S, Nagaosa Y. The relationship between intramuscular pressure of the paraspinal muscles and low back pain. Spine (Phila Pa 1976). 1994; 1574  
19(19): 2186-9. 1575  
1576
27. McCombe D, Brown T, Slavin J, Morrison WA. The histochemical structure of the deep fascia and its structural response to surgery. J Hand Surg Br 2001;26(2): 89- 1577  
97. 1579
28. Marinelli L, Cacciatore I, Eusepi P, Di Biase G, Morroni G, Cirioni O, et al. 1580  
Viscoelastic behaviour of hyaluronic acid formulations containing carvacrol prodrugs 1581  
with antibacterial properties. Int J Pharm. 2020;582:119306. 1582
29. Matteini P, Dei L, Carretti E, Volpi N, Goti A, Pini R. Structural behavior of 1583  
highly concentrated hyaluronan. Biomacromolecules 2009;10(6): 1516-22. 1584
30. Young, Barbara (Pathologist). Wheater's Functional Histology : a Text and 1585  
Colour Atlas 5<sup>th</sup> edition. Edinburgh ; New York :Churchill Livingstone, 2000. pp. 1586  
67,69,101. 1587
31. Vleeming A, Pool-Goudzwaard AL, Stoeckart R, van Wingerden JP, Snijders CJ. 1588  
The posterior layer of the thoracolumbar fascia. Its function in load transfer from 1589  
spine to legs. Spine (Phila Pa 1976). 1995;20(7):753-8. 1590
32. Jun D, Zoe M, Johnston V, O'Leary S. Physical risk factors for developing non- 1591  
specific neck pain in office workers: a systematic review and meta-analysis. Int Arch 1592  
Occup Environ Health 2017;90(5): 373-410. 1593



33.	Sasabe R, Sakamoto J, Goto K, Honda Y, Kataoka H, Nakano J, et al. Effects of joint immobilization on changes in myofibroblasts and collagen in the rat knee contracture model. <i>J Orthop Res.</i> 2017;35(9):1998-2006.	1594 1595 1596
34.	Williams PE, Goldspink G. Connective tissue changes in immobilised muscle. <i>J Anat</i> 1984;138 (Pt 2): 343-50.	1597 1598
35.	Lima LV, Abner TSS, Sluka KA. Does exercise increase or decrease pain? Central mechanisms underlying these two phenomena. <i>J Physiol.</i> 2017; 595(13):4141-4150.	1599 1600 1601
36.	Caldeira P, Fonseca ST, Paulo A, Infante J, Araújo D. Linking Tensegrity to Sports Team Collective Behaviors: Towards the Group-Tensegrity Hypothesis. <i>Sports Med Open</i> 2020;6(1): 24.	1602 1603 1604
37.	Tadeo I, Berbegall AP, Escudero LM, Alvaro T, Noguera R. Biotensegrity of the extracellular matrix: physiology, dynamic mechanical balance, and implications in oncology and mechanotherapy. <i>Front Oncol</i> 2014;4: 39.	1605 1606 1607
38.	Wilke J, Schleip R, Yucesoy CA, Banzer W. Not merely a protective packing organ? A review of fascia and its force transmission capacity. <i>J Appl Physiol</i> (1985). 2018;124(1):234-244.	1608 1609 1610
39.	Harty J, Soffe K, O'Toole G, Stephens MM. The role of hamstring tightness in plantar fasciitis. <i>Foot Ankle Int.</i> 2005;26(12):1089-92.	1611 1612
40.	Wilke J, Krause F, Vogt L, Banzer W. What Is Evidence-Based About Myofascial Chains: A Systematic Review. <i>Arch Phys Med Rehabil.</i> 2016;97(3):454-61.	1613 1614
41.	Zhou JP, Yu JF, Feng YN, Liu CL, Su P, Shen SH, et al. Modulation in the elastic properties of gastrocnemius muscle heads in individuals with plantar fasciitis and its relationship with pain. <i>Sci Rep</i> 2020;10(1): 2770.	1615 1616 1617

42. Liu L, Huang QM, Liu QG, Ye G, Bo CZ, Chen MJ, et al. Effectiveness of dry needling for myofascial trigger points associated with neck and shoulder pain: a systematic review and meta-analysis. *Arch Phys Med Rehabil.* 2015;96(5):944-55. 1618  
1619  
1620
43. Moldwin RM, Fariello JY. Myofascial trigger points of the pelvic floor: associations with urological pain syndromes and treatment strategies including injection therapy. *Curr Urol Rep* 2013;14(5): 409-17. 1621  
1622  
1623
44. Konno T, Aota Y, Kuniya H, Saito T, Qu N, Hayashi S, et al. Anatomical etiology of "pseudo-sciatica" from superior cluneal nerve entrapment: a laboratory investigation. *J Pain Res.* 2017;10:2539-2545. 1624  
1625  
1626
45. Crowle A, Harley C. Development of a biotensegrity focused therapy for the treatment of pelvic organ prolapse: A retrospective case series. *J Bodyw Mov Ther* 2020;24(1): 115-25. 1627  
1628  
1629
46. Tozzi P, Bongiorno D, Vitturini C. Low back pain and kidney mobility: local osteopathic fascial manipulation decreases pain perception and improves renal mobility. *J Bodyw Mov Ther* 2012;16(3): 381-91. 1630  
1631  
1632
47. Acevedo JI, Beskin JL. Complications of plantar fascia rupture associated with corticosteroid injection. *Foot Ankle Int* 1998;19(2): 91-7. 1633  
1634
48. Klingler W, Velders M, Hoppe K, Pedro M, Schleip R. Clinical relevance of fascial tissue and dysfunctions. *Curr Pain Headache Rep* 2014;18(8): 439. 1635  
1636
49. Hsieh YL, Kao MJ, Kuan TS, Chen SM, Chen JT, Hong CZ. Dry needling to a key myofascial trigger point may reduce the irritability of satellite MTrPs. *Am J Phys Med Rehabil.* 2007;86(5):397-403. 1637  
1638  
1639
50. Quintner JL, Cohen ML. Referred pain of peripheral nerve origin: an alternative to the "myofascial pain" construct. *Clin J Pain* 1994;10(3): 243-51. 1640  
1641

51. Tomasek JJ, Gabbiani G, Hinz B, Chaponnier C, Brown RA. Myofibroblasts and mechano-regulation of connective tissue remodelling. *Nat Rev Mol Cell Biol* 2002; 3(5): 349-63.
52. Stempien-Otero A, Kim DH, Davis J. Molecular networks underlying myofibroblast fate and fibrosis. *J Mol Cell Cardiol* 2016;97: 153-61.
53. Miragoli M, Salvarani N, Rohr S. Myofibroblasts induce ectopic activity in cardiac tissue. *Circ Res.* 2007;101(8):755-8
54. Urits I, Charipova K, Gress K, Schaaf AL, Gupta S, Kiernan HC, et al. Treatment and management of myofascial pain syndrome. *Best Pract Res Clin Anaesthesiol.* 2020;34(3):427-448.
55. Dommerholt J, Hooks T, Chou LW, Finnegan M. A critical overview of the current myofascial pain literature - January 2018. *J Bodyw Mov Ther.* 2018; 22(1):184-191.
56. Arguisuelas MD, Lisón JF, Sánchez-Zuriaga D, Martínez-Hurtado I, Doménech-Fernández J. Effects of Myofascial Release in Nonspecific Chronic Low Back Pain: A Randomized Clinical Trial. *Spine (Phila Pa 1976).* 2017;42(9):627-634.
57. Dommerholt J, Thorp JN, Chou LW, Hooks T. A critical overview of the current myofascial pain literature - January 2020. *J Bodyw Mov Ther* 2020;24(2): 213-24.
58. Chen JT, Chung KC, Hou CR, Kuan TS, Chen SM, Hong CZ. Inhibitory effect of dry needling on the spontaneous electrical activity recorded from myofascial trigger spots of rabbit skeletal muscle. *Am J Phys Med Rehabil* 2001;80(10): 729-35.
59. Hughes EJ, McDermott K, Funk MF. Evaluation of hyaluronan content in areas of densification compared to adjacent areas of fascia. *J Bodyw Mov Ther* 2019;23(2): 324-8.

60. Castella LF, Buscemi L, Godbout C, Meister JJ, Hinz B. A new lock-step mechanism of matrix remodelling based on subcellular contractile events. *J Cell Sci.* 2010;123(Pt 10):1751-60.
61. Arora PD, Bibby KJ, McCulloch CA. Slow oscillations of free intracellular calcium ion concentration in human fibroblasts responding to mechanical stretch. *J Cell Physiol* 1994;161(2): 187-200.
62. Langevin HM, Cornbrooks CJ, Taatjes DJ. Fibroblasts form a body-wide cellular network. *Histochem Cell Biol.* 2004;122(1):7-15.
63. Lembong J, Sabass B, Sun B, Rogers ME, Stone HA. Mechanics regulates ATP-stimulated collective calcium response in fibroblast cells. *J R Soc Interface.* 2015;12(108):20150140.
64. Wolfson B, Zhang Y, Gernapudi R, Duru N, Yao Y, Lo PK, et al. A High-Fat Diet Promotes Mammary Gland Myofibroblast Differentiation through MicroRNA 140 Downregulation. *Mol Cell Biol.* 2017;37(4):e00461-16.
65. Witt W, Buttner P, Jannasch A, Matschke K, Waldow T. Reversal of myofibroblastic activation by polyunsaturated fatty acids in valvular interstitial cells from aortic valves. Role of RhoA/G-actin/MRTF signalling. *J Mol Cell Cardiol* 2014;74:127-38.
66. Yu Q, Wang T, Zhou X, Wu J, Chen X, Liu Y, et al. Wld(S) reduces paraquat-induced cytotoxicity via SIRT1 in non-neuronal cells by attenuating the depletion of NAD. *PLoS One* 2011;6(7): e21770.
67. Tai W, Deng S, Wu W, Li Z, Lei W, Wang Y, et al. Rapamycin attenuates the paraquat-induced pulmonary fibrosis through activating Nrf2 pathway. *J Cell Physiol* 2020;235(2): 1759-68.

68. Barbe MF, Hilliard BA, Amin M, Harris MY, Hobson LJ, Cruz GE, et al. Blocking CTGF/CCN2 reverses neural fibrosis and sensorimotor declines in a rat model of overuse-induced median mononeuropathy. *J Orthop Res.* 2020;38(11):2396-2408.
69. Chen Y, Abraham DJ, Shi-Wen X, Pearson JD, Black CM, Lyons Kmet al. CCN2 (connective tissue growth factor) promotes fibroblast adhesion to fibronectin. *Mol Biol Cell.* 2004;15(12):5635-46.
70. Simms RW, Zerbini CA, Ferrante N, Anthony J, Felson DT, Craven DE. Fibromyalgia syndrome in patients infected with human immunodeficiency virus. The Boston City Hospital Clinical AIDS Team. *Am J Med* 1992;92(4): 368-74.
71. Hong F, Saiman Y, Si C, Mosoian A, Bansal MB. X4 Human immunodeficiency virus type 1 gp120 promotes human hepatic stellate cell activation and collagen I expression through interactions with CXCR4. *PLoS One.* 2012;7(3):e33659.
72. Chen TC, Chang SW, Wang TY. Moxifloxacin modifies corneal fibroblast-to-myofibroblast differentiation. *Br J Pharmacol* 2013;168(6): 1341-54.
73. Ganjizadeh-Zavareh S, Sodhi M, Spangehl T, Carleton B, Etminan M. Oral fluoroquinolones and risk of fibromyalgia. *Br J Clin Pharmacol* 2019;85(1): 236-9.
74. Squier CA. The effect of stretching on formation of myofibroblasts in mouse skin. *Cell Tissue Res* 1981;220(2): 325-35.
75. Goffin JM, Pittet P, Csucs G, Lussi JW, Meister JJ, Hinz B. Focal adhesion size controls tension-dependent recruitment of alpha-smooth muscle actin to stress fibers. *J Cell Biol* 2006;172(2): 259-68.
76. Dolphens M, Vansteelandt S, Cagnie B, Vleeming A, Nijs J, Vanderstraeten G, Danneels L. Multivariable modeling of factors associated with spinal pain in young adolescence. *Eur Spine J.* 2016;25(9):2809-21.

77. Kaergaard A, Andersen JH. Musculoskeletal disorders of the neck and shoulders in female sewing machine operators: prevalence, incidence, and prognosis. *Occup Environ Med* 2000;57(8): 528-34. 1714  
1715  
1716
78. Chen JC, Dennerlein JT, Chang CC, Chang WR, Christiani DC. Seat inclination, use of lumbar support and low-back pain of taxi drivers. *Scand J Work Environ Health*. 2005;31(4):258-65. 1717  
1718  
1719
79. Kalichman L, Lachman H, Freilich N. Long-term impact of ankle sprains on postural control and fascial densification. *J Bodyw Mov Ther* 2016;20(4): 914-9. 1720  
1721
80. Hinz B, Mastrangelo D, Iselin CE, Chaponnier C, Gabbiani G. Mechanical tension controls granulation tissue contractile activity and myofibroblast differentiation. *Am J Pathol* 2001;159(3): 1009-20. 1722  
1723  
1724
81. Burton AR, Brown R, Macefield VG. Selective activation of muscle and skin nociceptors does not trigger exaggerated sympathetic responses in spinal-injured subjects. *Spinal Cord*. 2008;46(10):660-5. 1725  
1726  
1727
82. Amoroso Borges BL, Bortolazzo GL, Neto HP. Effects of spinal manipulation and myofascial techniques on heart rate variability: A systematic review. *J Bodyw Mov Ther* 2018;22(1): 203-8. 1728  
1729  
1730
83. Hinz B, Phan SH, Thannickal VJ, Prunotto M, Desmoulière A, Varga J, et al. Recent developments in myofibroblast biology: paradigms for connective tissue remodeling. *Am J Pathol* 2012;180(4): 1340-55. 1731  
1732  
1733
84. Goldenberg DL, Clauw DJ, Palmer RE, Clair AG. Opioid Use in Fibromyalgia: A Cautionary Tale. *Mayo Clin Proc*. 2016;91(5):640-8. 1734  
1735

85.	Niraj G, Alva S. Opioid Reduction and Long-Term Outcomes in Abdominal	1736
	Myofascial Pain Syndrome (AMPS): A 6-Year Longitudinal Prospective Audit of 207	1737
	Patients. <i>Pain Physician</i> . 2020;23(5):E441-E450.	1738
86.	Rico-Villademoros F, Postigo-Martin P, Garcia-Leiva JM, Ordoñez-Carrasco JL,	1739
	Calandre EP. Patterns of pharmacologic and non-pharmacologic treatment,	1740
	treatment satisfaction and perceived tolerability in patients with fibromyalgia: a	1741
	patients' survey. <i>Clin Exp Rheumatol</i> 2020;38 Suppl 123(1): 72-8.	1742
87.	Frost FA, Jessen B, Siggaard-Andersen J. A control, double-blind comparison	1743
	of mepivacaine injection versus saline injection for myofascial pain. <i>Lancet</i>	1744
	1980;1(8167): 499-500.	1745
88.	Langevin HM, Churchill DL, Cipolla MJ. Mechanical signaling through	1746
	connective tissue: a mechanism for the therapeutic effect of acupuncture. <i>FASEB J</i> .	1747
	2001;15(12):2275-82.	1748
89.	Langevin HM, Churchill DL, Fox JR, Badger GJ, Garra BS, Krag MH.	1749
	Biomechanical response to acupuncture needling in humans. <i>J Appl Physiol</i> (1985)	1750
	2001;91(6): 2471-8.	1751
90.	Tomasek JJ, Haaksma CJ, Eddy RJ, Vaughan MB. Fibroblast contraction occurs	1752
	on release of tension in attached collagen lattices: dependency on an organized actin	1753
	cytoskeleton and serum. <i>Anat Rec</i> 1992;232(3): 359-68.	1754
91.	Fox JR, Gray W, Koptiuch C, Badger GJ, Langevin HM. Anisotropic tissue	1755
	motion induced by acupuncture needling along intermuscular connective tissue	1756
	planes. <i>J Altern Complement Med</i> . 2014;20(4):290-4.	1757

92. Ernberg M, Hedenberg-Magnusson B, Alstergren P, Kopp S. The level of serotonin in the superficial masseter muscle in relation to local pain and allodynia. *Life Sci* 1999;65(3): 313-25. 1758  
1759  
1760
93. Moraska AF, Hickner RC, Kohrt WM, Brewer A. Changes in blood flow and cellular metabolism at a myofascial trigger point with trigger point release (ischemic compression): a proof-of-principle pilot study. *Arch Phys Med Rehabil*. 2013;94(1):196-200. 1761  
1762  
1763  
1764
94. Kural MH, Billiar KL. Myofibroblast persistence with real-time changes in boundary stiffness. *Acta Biomater* 2016;32: 223-30. 1765  
1766
95. Sánchez-Infante J, Bravo-Sánchez A, Jiménez F, Abián-Vicén J. Effects of Dry Needling on Muscle Stiffness in Latent Myofascial Trigger Points: A Randomized Controlled Trial. *J Pain*. 2021;S1526-5900(21)00024-9 1767  
1768  
1769
96. Maher RM, Hayes DM, Shinohara M. Quantification of dry needling and posture effects on myofascial trigger points using ultrasound shear-wave elastography. *Arch Phys Med Rehabil*. 2013;94(11):2146-50. 1770  
1771  
1772
97. Luan S, Zhu ZM, Ruan JL, Lin CN, Ke SJ, Xin WJ, et al. Randomized Trial on Comparison of the Efficacy of Extracorporeal Shock Wave Therapy and Dry Needling in Myofascial Trigger Points. *Am J Phys Med Rehabil* 2019;98(8): 677-84. 1773  
1774  
1775
98. [https://www.youtube.com/watch?v=uzy8-wQzQMY&t=3s&ab\\_channel=RonelleWood](https://www.youtube.com/watch?v=uzy8-wQzQMY&t=3s&ab_channel=RonelleWood) 1776  
1777
- Microscopic view of the dynamic fiber network. Force vectors travel according to the complex architecture.** 1778  
1779



99.		1780
	<a href="https://www.youtube.com/watch?v=cqHtEtZ9mRQ&amp;t=177s&amp;ab_channel=MedFreeLancers">https://www.youtube.com/watch?v=cqHtEtZ9mRQ&amp;t=177s&amp;ab_channel=MedFreeLancers</a>	1781
		1782
	<b>2:59-3:09 top left – fascia tears without diathermy touching it under low forces, or manipulation in areas adjacent to it.</b>	1783
		1784
100.	<a href="https://www.youtube.com/watch?v=3u0hjs53IMU&amp;ab_channel=JeffreyChua">https://www.youtube.com/watch?v=3u0hjs53IMU&amp;ab_channel=JeffreyChua</a>	1785
	<b>Needles vibrate when inserted. Some seem to be moved by horizontal force vectors. Patterns of vibration change as a function of time. It seems some groups of needles vibrate together. Overall a complex dynamic behavior is observed.</b>	1786
		1787
		1788
101.	<a href="https://www.youtube.com/watch?v=eW0lvOVKDXE&amp;ab_channel=UKyOrtho">https://www.youtube.com/watch?v=eW0lvOVKDXE&amp;ab_channel=UKyOrtho</a>	1789
102.	Li ADR, Putra KB, Chen L, Montgomery JS, Shih A. Mosquito proboscis-inspired needle insertion to reduce tissue deformation and organ displacement. Sci Rep. 2020;10(1):12248.	1790
		1791
		1792
103.	Li ADR, Liu Y, Plott J, Chen L, Montgomery JS, Shih A. Multi-Bevel Needle Design Enabling Accurate Insertion in Biopsy for Cancer Diagnosis. IEEE Trans Biomed Eng. 2021;68(5):1477-1486.	1793
		1794
		1795
104.	Langevin HM, Konofagou EE, Badger GJ, Churchill DL, Fox JR, Ophir J, Garra BS. Tissue displacements during acupuncture using ultrasound elastography techniques. Ultrasound Med Biol. 2004;30(9):1173-83.	1796
		1797
		1798
105.	Langevin HM, Churchill DL, Wu J, Badger GJ, Yandow JA, Fox JR, et al. Evidence of connective tissue involvement in acupuncture. FASEB J. 2002;16(8):872-4.	1799
		1800
		1801

106. Soreide E, Murad MH, Denbeigh JM, Lewallen EA, Dudakovic A, Nordsletten L, et al. Treatment of Dupuytren's contracture: a systematic review. *Bone Joint J* 2018;100-B(9): 1138-45.
107. Moog P, Buchner L, Cerny MK, Schmauss D, Megerle K, Erne H. Analysis of recurrence and complications after percutaneous needle fasciotomy in Dupuytren's disease. *Arch Orthop Trauma Surg* 2019;139(10): 1471-7.
108. Sellman JR. Plantar fascia rupture associated with corticosteroid injection. *Foot Ankle Int* 1994;15(7): 376-81.
109. Wu L. Nonlinear finite element analysis for musculoskeletal biomechanics of medial and lateral plantar longitudinal arch of Virtual Chinese Human after plantar ligamentous structure failures. *Clin Biomech (Bristol, Avon)*. 2007;22(2):221-9.
110. Hettrich CM, DiCarlo EF, Faryniarz D, Vadasdi KB, Williams R, Hannafin JA. The effect of myofibroblasts and corticosteroid injections in adhesive capsulitis. *J Shoulder Elbow Surg*. 2016;25(8):1274-9.
111. Sanjuan-Cervero R, Carrera-Hueso FJ, Vazquez-Ferreiro P, Gomez-Herrero D. Adverse Effects of Collagenase in the Treatment of Dupuytren Disease: A Systematic Review. *BioDrugs* 2017;31(2): 105-15.
112. Lin FY, Manrique OJ, Lin CL, Cheng HT. Incidence of trigger digits following carpal tunnel release: A nationwide, population-based retrospective cohort study. *Medicine (Baltimore)*. 2017;96(27):e7355.
113. Acar MA, Kütahya H, Güleç A, Elmadağ M, Karalezli N, Ogun TC. Triggering of the Digits After Carpal Tunnel Surgery. *Ann Plast Surg*. 2015;75(4):393-7.
114. Mishra AK, Skrepnik NV, Edwards SG, Jones GL, Sampson S, Vermillion DA, et al. Efficacy of platelet-rich plasma for chronic tennis elbow: a double-blind,

prospective, multicenter, randomized controlled trial of 230 patients. Am J Sports	1826
Med 2014;42(2): 463-71.	1827
115. Gottlieb NL, Riskin WG. Complications of local corticosteroid injections. JAMA	1828
1980;243(15): 1547-8.	1829
116. Stotts AK, Carroll KL, Schafer PG, Santora SD, Branigan TD. Medial	1830
compartment syndrome of the foot: an unusual complication of spine surgery. Spine	1831
(Phila Pa 1976) 2003;28(6): E118-20.	1832
117. Mierau D, Cassidy JD, Yong-Hing K. Low-back pain and straight leg raising in	1833
children and adolescents. Spine (Phila Pa 1976). 1989;14(5):526-8.	1834
118. Vassaux M, Milan JL. Stem cell mechanical behaviour modelling: substrate's	1835
curvature influence during adhesion. Biomech Model Mechanobiol.	1836
2017;16(4):1295-1308.	1837
119. Hindman B, Ma Q. Carbon nanotubes and crystalline silica induce matrix	1838
remodeling and contraction by stimulating myofibroblast transformation in a three-	1839
dimensional culture of human pulmonary fibroblasts: role of dimension and rigidity.	1840
Arch Toxicol. 2018;92(11):3291-3305.	1841
120. Amris K, Jespersen A, Bliddal H. Self-reported somatosensory symptoms of	1842
neuropathic pain in fibromyalgia and chronic widespread pain correlate with tender	1843
point count and pressure-pain thresholds. Pain 2010;151(3): 664-9.	1844
121. Bordoni B, Bordoni G. Reflections on osteopathic fascia treatment in the	1845
peripheral nervous system. J Pain Res 2015;8: 735-40.	1846
122. Petersen MW, Schröder A, Jørgensen T, Ørnbøl E, Meinertz Dantoft T, Eliassen	1847
M, et al. Irritable bowel, chronic widespread pain, chronic fatigue and related	1848

- syndromes are prevalent and highly overlapping in the general population: DanFunD. 1849  
 Sci Rep 2020;10(1): 3273. 1850
123. Creed F. A review of the incidence and risk factors for fibromyalgia and 1851  
 chronic widespread pain in population-based studies. Pain 2020;161(6): 1169-76. 1852
124. Kalyan-Raman UP, Kalyan-Raman K, Yunus MB, Masi AT. Muscle pathology in 1853  
 primary fibromyalgia syndrome: a light microscopic, histochemical and 1854  
 ultrastructural study. J Rheumatol 1984;11(6): 808-13. 1855
125. Sprott H, Salemi S, Gay RE, Bradley LA, Alarcón GS, Oh SJ, et al. Increased DNA 1856  
 fragmentation and ultrastructural changes in fibromyalgic muscle fibres. Ann Rheum 1857  
 Dis 2004;63(3): 245-51. 1858
126. Elvin A, Siösteen AK, Nilsson A, Kosek E. Decreased muscle blood flow in 1859  
 fibromyalgia patients during standardised muscle exercise: a contrast media 1860  
 enhanced colour Doppler study. Eur J Pain. 2006;10(2):137-44. 1861
127. Zdebik N, Zdebik A, Boguslawska J, Przewdziecka-Dolyk J, Turno-Krecicka A. 1862  
 Fibromyalgia syndrome and the eye-A review. Surv Ophthalmol 2021;66(1): 132-7. 1863
128. Morf S, Amann-Vesti B, Forster A, Franzeck UK, Koppensteiner R, Uebelhart 1864  
 D, et al. Microcirculation abnormalities in patients with fibromyalgia - measured by 1865  
 capillary microscopy and laser fluxmetry. Arthritis Res Ther 2005;7(2): R209-16. 1866
129. Grassi W, Core P, Carlino G, Salaffi F, Cervini C. Capillary permeability in 1867  
 fibromyalgia. J Rheumatol 1994;21(7): 1328-31. 1868
130. Evdokimov D, Kreß L, Dinkel P, Frank J, Sommer C, Üçeyler N. Pain-associated 1869  
 Mediators and Axon Pathfinders in Fibromyalgia Skin Cells. J Rheumatol. 1870  
 2020;47(1):140-148. 1871

131. Wachter KC, Kaeser HE, Gühring H, Ettlin TM, Mennet P, Müller W. Muscle damping measured with a modified pendulum test in patients with fibromyalgia, lumbago, and cervical syndrome. *Spine (Phila Pa 1976)*. 1996;21(18):2137-42.
132. Costantini R, Affaitati G, Massimini F, Tana C, Innocenti P, Giamberardino MA. Laparoscopic Cholecystectomy for Gallbladder Calculosis in Fibromyalgia Patients: Impact on Musculoskeletal Pain, Somatic Hyperalgesia and Central Sensitization. *PLoS One*. 2016;11(4):e0153408.
133. Shang Y, Gurley K, Symons B, Long D, Srikuea R, Crofford LJ, et al. Noninvasive optical characterization of muscle blood flow, oxygenation, and metabolism in women with fibromyalgia. *Arthritis Res Ther*. 2012;14(6):R236.
134. Bengtsson A, Henriksson KG, Larsson J. Muscle biopsy in primary fibromyalgia. Light-microscopical and histochemical findings. *Scand J Rheumatol*. 1986;15(1):1-6.
135. Chen WT, Yu CH, Sun CW. Altered near-infrared spectroscopy response to breath-holding in patients with fibromyalgia. *J Biophotonics*. 2019;12(1):e201800142.
136. Bengtsson A, Henriksson KG, Larsson J. Reduced high-energy phosphate levels in the painful muscles of patients with primary fibromyalgia. *Arthritis Rheum*. 1986;29(7): 817-21.
137. Ciregia F, Giacomelli C, Giusti L, et al. Putative salivary biomarkers useful to differentiate patients with fibromyalgia. *J Proteomics* 2019;190: 44-54.
138. Sikdar S, Shah JP, Gebreab T, Yen RH, Gilliams E, Danoff J, et al. Novel applications of ultrasound technology to visualize and characterize myofascial trigger points and surrounding soft tissue. *Arch Phys Med Rehabil* 2009;90(11): 1829-38.

139. Misono S, Dietrich M, Piccirillo JF. The Puzzle of Medically Unexplained Symptoms-A Holistic View of the Patient With Laryngeal Symptoms. *JAMA Otolaryngol Head Neck Surg.* 2020;146(6):550-551. 1896  
1897  
1898

140. Maekawa K, Clark GT, Kuboki T. Intramuscular hypoperfusion, adrenergic receptors, and chronic muscle pain. *J Pain* 2002;3(4): 251-60. 1899  
1900

141. Gold AR, Dipalo F, Gold MS, Broderick J. Inspiratory airflow dynamics during sleep in women with fibromyalgia. *Sleep.* 2004;27(3):459-66. 1901  
1902

142. Grabowski PJ, Slane LC, Thelen DG, Obermire T, Lee KS. Evidence of Generalized Muscle Stiffness in the Presence of Latent Trigger Points Within Infraspinal. *Arch Phys Med Rehabil.* 2018;99(11):2257-2262. 1903  
1904  
1905

143. Cho KI, Lee JH, Kim SM, Lee HG, Kim TI. Assessment of endothelial function in patients with fibromyalgia--cardiac ultrasound study. *Clin Rheumatol.* 2011; 30(5):647-54. 1906  
1907  
1908

144. Triantafyllias K, Stortz M, de Blasi M, Leistner C, Weinmann-Menke J, Schwarting A. Increased aortic stiffness in patients with fibromyalgia: results of a prospective study on carotid-femoral pulse wave velocity. *Clin Exp Rheumatol.* 2019;37 Suppl 116(1):114-115. 1909  
1910  
1911  
1912

145. Katz RS, Leavitt F, Small AK, Small BJ. Intramuscular Pressure is Almost Three Times Higher in Fibromyalgia Patients: A Possible Mechanism for Understanding the Muscle Pain and Tenderness. *J Rheumatol.* 2020:jrheum.191068. 1913  
1914  
1915

146. Costanzo, L. S. (2018). *Physiology (Sixth edition.)*. Philadelphia, PA: Elsevier. pp. 128,129. 1916  
1917

147. Gerdle B, Söderberg K, Salvador Puigvert L, Rosendal L, Larsson B. Increased interstitial concentrations of pyruvate and lactate in the trapezius muscle of patients with fibromyalgia: a microdialysis study. *J Rehabil Med.* 2010;42(7):679-87.
148. McIver KL, Evans C, Kraus RM, Ispas L, Sciotti VM, Hickner RC. NO-mediated alterations in skeletal muscle nutritive blood flow and lactate metabolism in fibromyalgia. *Pain.* 2006;120(1-2):161-169.
149. van Tilburg MAL, Parisien M, Boles RG, Drury GL, Smith-Voudouris J, Verma V, et al. A genetic polymorphism that is associated with mitochondrial energy metabolism increases risk of fibromyalgia. *Pain.* 2020;161(12):2860-2871.
150. Efrati S, Golan H, Bechor Y, Faran Y, Daphna-Tekoah S, Sekler G, et al. Hyperbaric oxygen therapy can diminish fibromyalgia syndrome--prospective clinical trial. *PLoS One.* 2015;10(5):e0127012
151. Ciampi de Andrade D, Maschietto M, Galhardoni R, Gouveia G, Chile T, Victorino Krepischi AC, et al. Epigenetics insights into chronic pain: DNA hypomethylation in fibromyalgia-a controlled pilot-study. *Pain.* 2017;158(8):1473-1480.
152. Perez-Ruiz F, Calabozo M, Alonso-Ruiz A, Herrero A, Ruiz-Lucea E, Otermin I. High prevalence of undetected carpal tunnel syndrome in patients with fibromyalgia syndrome. *J Rheumatol.* 1995;22(3):501-4.
153. Bennett RM, Jones J, Turk DC, Russell IJ, Matallana L. An internet survey of 2,596 people with fibromyalgia. *BMC Musculoskelet Disord.* 2007; 8:27.
154. Firestein GS, Kelley WN. *Kelley's textbook of rheumatology.* 9th ed. Philadelphia, PA: Elsevier/Saunders; 2013. pp. 351, 730, 733-750.

155.	Sugawara O, Atsuta Y, Iwahara T, Muramoto T, Watakabe M, Takemitsu Y.	1941
	The effects of mechanical compression and hypoxia on nerve root and dorsal root	1942
	ganglia. An analysis of ectopic firing using an in vitro model. <i>Spine (Phila Pa 1976)</i> .	1943
	1996;21(18):2089-94.	1944
156.	Song XJ, Hu SJ, Greenquist KW, Zhang JM, LaMotte RH. Mechanical and	1945
	thermal hyperalgesia and ectopic neuronal discharge after chronic compression of	1946
	dorsal root ganglia. <i>J Neurophysiol</i> . 1999;82(6):3347-58.	1947
157.	Gotoh H, Takahashi A. Mechanical stimuli induce intracellular calcium	1948
	response in a subpopulation of cultured rat sensory neurons. <i>Neuroscience</i> .	1949
	1999;92(4):1323-9.	1950
158.	Gladman SJ, Ward RE, Michael-Titus AT, Knight MM, Priestley JV. The effect	1951
	of mechanical strain or hypoxia on cell death in subpopulations of rat dorsal root	1952
	ganglion neurons in vitro. <i>Neuroscience</i> . 2010;171(2):577-87.	1953
159.	Wang JC, Sung FC, Men M, Wang KA, Lin CL, Kao CH. Bidirectional association	1954
	between fibromyalgia and gastroesophageal reflux disease: two population-based	1955
	retrospective cohort analysis. <i>Pain</i> . 2017;158(10):1971-1978	1956
160.	Nathan H. Osteophytes of the spine compressing the sympathetic trunk and	1957
	splanchnic nerves in the thorax. <i>Spine (Phila Pa 1976)</i> . 1987;12(6):527-32	1958
161.	Weinberg H, Nathan H, Magora F, Robin GC, Aviad I. Arthritis of the first	1959
	costovertebral joint as a cause of thoracic outlet syndrome. <i>Clin Orthop Relat Res</i> .	1960
	1972;86:159-63.	1961
162.	Saber AA, Boros MJ, Mancl T, Elgamal MH, Song S, Wisadrattanapong T. The	1962
	effect of laparoscopic Roux-en-Y gastric bypass on fibromyalgia. <i>Obes Surg</i>	1963
	2008;18(6): 652-5.	1964



163. Adkisson CD, Yip L, Armstrong MJ, Stang MT, Carty SE, McCoy KL. 1965  
Fibromyalgia symptoms and medication requirements respond to 1966  
parathyroidectomy. *Surgery*. 2014;156(6):1614-20; discussion 1620-1. 1967
164. Raftopoulos Y, Papasavas P, Landreneau R, et al. Clinical outcome of 1968  
laparoscopic antireflux surgery for patients with irritable bowel syndrome. *Surg* 1969  
*Endosc*. 2004;18(4):655-9. 1970
165. Wu MC, Ma KS, Wang YH, Wei JC. Impact of tonsillectomy on irritable bowel 1971  
syndrome: A nationwide population-based cohort study. *PLoS One*. 1972  
2020;15(9):e0238242. 1973
166. Rosen JM, Adams PN, Saps M. Umbilical hernia repair increases the rate of 1974  
functional gastrointestinal disorders in children. *J Pediatr*. 2013; 163(4):1065-8. 1975
167. Yang CY, Wu MC, Lin MC, Wei JC. Risk of irritable bowel syndrome in patients 1976  
who underwent appendectomy: A nationwide population-based cohort study. 1977  
*EClinicalMedicine*. 2020;23:100383. 1978
168. Vincent A, Whipple MO, Luedtke CA, Oh TH, Sood R, Smith RL, et al. Pain and 1979  
other symptom severity in women with fibromyalgia and a previous hysterectomy. *J* 1980  
*Pain Res*. 2011;4:325-9. 1981
169. Vleeming A, Schuenke MD, Danneels L, Willard FH. The functional coupling of 1982  
the deep abdominal and paraspinal muscles: the effects of simulated paraspinal 1983  
muscle contraction on force transfer to the middle and posterior layer of the 1984  
thoracolumbar fascia. *J Anat*. 2014;225(4):447-62. 1985
170. Wolfe F, Rasker JJ, Häuser W. Hearing loss in fibromyalgia? Somatic sensory 1986  
and non-sensory symptoms in patients with fibromyalgia and other rheumatic 1987  
disorders. *Clin Exp Rheumatol*. 2012;30(6 Suppl 74):88-93 1988

171. Evdokimov D, Frank J, Klitsch A, Unterecker S, Warrings B, Serra J, et al. 1989  
Reduction of skin innervation is associated with a severe fibromyalgia phenotype. 1990  
Ann Neurol. 2019;86(4):504-516. 1991
172. [https://www.uptodate.com/contents/clinical-manifestations-and-diagnosis-of-fibromyalgia-in-adults?search=fibromyalgia&source=search\\_result&selectedTitle=1~150&usage\\_type=default&display\\_rank=1](https://www.uptodate.com/contents/clinical-manifestations-and-diagnosis-of-fibromyalgia-in-adults?search=fibromyalgia&source=search_result&selectedTitle=1~150&usage_type=default&display_rank=1) By Don L Goldenberg, accessed March 2021. 1992  
1993  
1994  
1995
173. Raphael KG, Marbach JJ. Comorbid fibromyalgia accounts for reduced 1996  
fecundity in women with myofascial face pain. Clin J Pain 2000;16(1): 29-36. 1997
174. Mancuso AC, Summers KM, Mengeling MA, Torner JC, Ryan GL, Sadler AG. 1998  
Infertility and Health-Related Quality of Life in United States Women Veterans. J 1999  
Womens Health (Larchmt) 2020;29(3): 412-9. 2000
175. Piersiala K, Akst LM, Hillel AT, Best SR. Chronic Pain Syndromes and Their 2001  
Laryngeal Manifestations. JAMA Otolaryngol Head Neck Surg. 2020;146(6):543-549. 2002
176. Vaeroy H, Helle R, Forre O, Kass E, Terenius L. Elevated CSF levels of 2003  
substance P and high incidence of Raynaud phenomenon in patients with 2004  
fibromyalgia: new features for diagnosis. Pain 1988;32(1): 21-6. 2005
177. Simms RW, Zerbini CA, Ferrante N, Anthony J, Felson DT, Craven DE. 2006  
Fibromyalgia syndrome in patients infected with human immunodeficiency virus. The 2007  
Boston City Hospital Clinical AIDS Team. Am J Med. 1992;92(4):368-74. 2008
178. Clark S, Tindall E, Bennett RM. A double blind crossover trial of prednisone 2009  
versus placebo in the treatment of fibrositis. J Rheumatol. 1985;12(5):980-3. PMID: 2010  
3910836. 2011

179. Basi DL, Velly AM, Schiffman EL, Lenton PA, Besspiata DA, Rankin AM, et al. 2012  
Human temporomandibular joint and myofascial pain biochemical profiles: a case- 2013  
control study. *J Oral Rehabil.* 2012;39(5):326-37. 2014

180. Grosman-Rimon L, Parkinson W, Upadhye S, Clarke H, Katz J, Flannery J, et al. 2015  
Circulating biomarkers in acute myofascial pain: A case-control study. *Medicine* 2016  
(Baltimore) 2016;95(37): e4650. 2017

181. Niddam DM, Lee SH, Su YT, Chan RC. Brain structural changes in patients with 2018  
chronic myofascial pain. *Eur J Pain.* 2017;21(1):148-158. 2019

182. Ramírez-Tejero JA, Martínez-Lara E, Peinado MÁ, Del Moral ML, Siles E. 2020  
Hydroxytyrosol as a Promising Ally in the Treatment of Fibromyalgia. *Nutrients.* 2021  
2020;12(8):2386. 2022

183. Mennens SFB, Bolomini-Vittori M, Weiden J, Joosten B, Cambi A, van den 2023  
Dries K. Substrate stiffness influences phenotype and function of human antigen- 2024  
presenting dendritic cells. *Sci Rep.* 2017;7(1):17511. 2025

184. Nakaya M, Watari K, Tajima M, Nakaya T, Matsuda S, Ohara H, et al. Cardiac 2026  
myofibroblast engulfment of dead cells facilitates recovery after myocardial 2027  
infarction. *J Clin Invest.* 2017;127(1):383-401. 2028

185. Saada JI, Pinchuk IV, Barrera CA, Adegboyega PA, Suarez G, Mifflin RC, et al. 2029  
Subepithelial myofibroblasts are novel nonprofessional APCs in the human colonic 2030  
mucosa. *J Immunol.* 2006;177(9):5968-79. 2031

186. Elyada E, Bolisetty M, Laise P, Flynn WF, Courtois ET, Burkhardt RA, et al. 2032  
Cross-Species Single-Cell Analysis of Pancreatic Ductal Adenocarcinoma Reveals 2033  
Antigen-Presenting Cancer-Associated Fibroblasts. *Cancer Discov.* 2019;9(8):1102- 2034  
1123. 2035

187.	Fang M, Xia J, Wu X, Kong H, Wang H, Xie W, et al. Adenosine signaling inhibits CIITA-mediated MHC class II transactivation in lung fibroblast cells. <i>Eur J Immunol.</i> 2013;43(8):2162-73.	2036 2037 2038
188.	Boots AM, Wimmers-Bertens AJ, Rijnders AW. Antigen-presenting capacity of rheumatoid synovial fibroblasts. <i>Immunology.</i> 1994;82(2):268-74.	2039 2040
189.	Jacobsen S, Høyer-Madsen M, Danneskiold-Samsøe B, Wiik A. Screening for autoantibodies in patients with primary fibromyalgia syndrome and a matched control group. <i>APMIS.</i> 1990;98(7):655-8.	2041 2042 2043
190.	Staud R. Peripheral pain mechanisms in chronic widespread pain. <i>Best Pract Res Clin Rheumatol.</i> 2011;25(2):155-64.	2044 2045
191.	Sacheti A, Szemere J, Bernstein B, Tafas T, Schechter N, Tsiouras P. Chronic pain is a manifestation of the Ehlers-Danlos syndrome. <i>J Pain Symptom Manage.</i> 1997;14(2):88-93.	2046 2047 2048
192.	Acasuso-Díaz M, Collantes-Estévez E. Joint hypermobility in patients with fibromyalgia syndrome. <i>Arthritis Care Res.</i> 1998;11(1):39-42.	2049 2050
193.	Zoppi N, Chiarelli N, Binetti S, Ritelli M, Colombi M. Dermal fibroblast-to-myofibroblast transition sustained by $\alpha v \beta 3$ integrin-ILK-Snail1/Slug signaling is a common feature for hypermobile Ehlers-Danlos syndrome and hypermobility spectrum disorders. <i>Biochim Biophys Acta Mol Basis Dis.</i> 2018;1864(4 Pt A):1010-1023.	2051 2052 2053 2054 2055
194.	Chiarelli N, Zoppi N, Ritelli M, Venturini M, Capitanio D, Gelfi C, et al. Biological insights in the pathogenesis of hypermobile Ehlers-Danlos syndrome from proteome profiling of patients' dermal myofibroblasts. <i>Biochim Biophys Acta Mol Basis Dis</i> 2021; 1867(4): 166051.	2056 2057 2058 2059

195. Seo BR, Chen X, Ling L, Song YH, Shimpi AA, Choi S, et al. Collagen microarchitecture mechanically controls myofibroblast differentiation. *Proc Natl Acad Sci U S A.* 2020;117(21):11387-11398.

196. Lown EA, Lui CK, Karriker-Jaffe K, Mulia N, Williams E, Ye Y, et al. Adverse childhood events and risk of diabetes onset in the 1979 National longitudinal survey of youth cohort. *BMC Public Health.* 2019;19(1):1007.

197. Gostine M, Davis F, Roberts BA, Risko R, Asmus M, Cappelleri JC, et al. Clinical Characteristics of Fibromyalgia in a Chronic Pain Population. *Pain Pract.* 2018;18(1):67-78.

198. Gupta A, McBeth J, Macfarlane GJ, Morriss R, Dickens C, Ray D, et al. Pressure pain thresholds and tender point counts as predictors of new chronic widespread pain in somatising subjects. *Ann Rheum Dis.* 2007; 66(4):517-21.

199. McHugh J. Increased risk of self-harm in fibromyalgia. *Nat Rev Rheumatol.* 2020;16(8):408.

200. Clauw DJ. What is the meaning of "small fiber neuropathy" in fibromyalgia? *Pain.* 2015 Nov;156(11):2115-2116.

201. Fournier AJ, Hogan JD, Rajbhandari L, Shrestha S, Venkatesan A, Ramesh KT. Changes in Neurofilament and Microtubule Distribution following Focal Axon Compression. *PLoS One.* 2015;10(6):e0131617.

202. Kayal C, Moeendarbary E, Shipley RJ, Phillips JB. Mechanical Response of Neural Cells to Physiologically Relevant Stiffness Gradients. *Adv Healthc Mater.* 2020;9(8):e1901036.

203.	Gu Y, Ji Y, Zhao Y, Liu Y, Ding F, Gu X, et al. The influence of substrate stiffness on the behavior and functions of Schwann cells in culture. <i>Biomaterials</i> . 2012;33(28):6672-81.	2082 2083 2084
204.	Chen JY, Newcomb B, Zhou C, Pondick JV, Ghoshal S, York SR, et al. Tricyclic Antidepressants Promote Ceramide Accumulation to Regulate Collagen Production in Human Hepatic Stellate Cells. <i>Sci Rep</i> . 2017;7:44867	2085 2086 2087
205.	Morrissey JJ. Pleiotropic effects of amitriptyline ameliorate renal fibrosis. <i>Kidney Int</i> . 2009;75(6):583-4	2088 2089
206.	Olianas MC, Dedoni S, Onali P. Antidepressants induce profibrotic responses via the lysophosphatidic acid receptor LPA1. <i>Eur J Pharmacol</i> . 2020;873:172963.	2090 2091
207.	Bruno R, Galastri S, Sacchi P, Cima S, Caligiuri A, DeFranco R, et al. gp120 modulates the biology of human hepatic stellate cells: a link between HIV infection and liver fibrogenesis. <i>Gut</i> . 2010;59(4):513-20.	2092 2093 2094
208.	Aberer E, Surtov-Pudar M, Wilfinger D, Deutsch A, Leitinger G, Schaidler H. Co-culture of human fibroblasts and <i>Borrelia burgdorferi</i> enhances collagen and growth factor mRNA. <i>Arch Dermatol Res</i> . 2018;310(2):117-126.	2095 2096 2097
209.	Unudurthi SD, Luthra P, Bose RJC, McCarthy JR, Kontaridis MI. Cardiac inflammation in COVID-19: Lessons from heart failure. <i>Life Sci</i> . 2020;260:118482.	2098 2099
210.	Kruglikov IL, Scherer PE. The Role of Adipocytes and Adipocyte-Like Cells in the Severity of COVID-19 Infections. <i>Obesity (Silver Spring)</i> . 2020;28(7):1187-1190.	2100 2101
211.	Russell IJ, Vaeroy H, Javors M, Nyberg F. Cerebrospinal fluid biogenic amine metabolites in fibromyalgia/fibrositis syndrome and rheumatoid arthritis. <i>Arthritis Rheum</i> 1992;35(5): 550-6.	2102 2103 2104

212.	Alcaino C, Knutson KR, Treichel AJ, Yildiz G, Strege PR, Linden DR, et al. A population of gut epithelial enterochromaffin cells is mechanosensitive and requires Piezo2 to convert force into serotonin release. Proc Natl Acad Sci U S A. 2018;115(32):E7632-E7641.	2105 2106 2107 2108
213.	Pan J, Copland I, Post M, Yeager H, Cutz E. Mechanical stretch-induced serotonin release from pulmonary neuroendocrine cells: implications for lung development. Am J Physiol Lung Cell Mol Physiol. 2006;290(1):L185-93.	2109 2110 2111
214.	Dolivo DM, Larson SA, Dominko T. Tryptophan metabolites kynurenine and serotonin regulate fibroblast activation and fibrosis. Cell Mol Life Sci 2018;75(20):3663-81.	2112 2113 2114
215.	Stunes AK, Reseland JE, Hauso O, Kidd M, Tømmerås K, Waldum HL, et al. Adipocytes express a functional system for serotonin synthesis, reuptake and receptor activation. Diabetes Obes Metab 2011;13(6): 551-8.	2115 2116 2117
216.	Jaschko G, Hepp U, Berkhoff M, Schmet M, Michel BA, Gay S, et al. Serum serotonin levels are not useful in diagnosing fibromyalgia. Ann Rheum Dis. 2007;66(9):1267-8	2118 2119 2120
217.	Legangneux E, Mora JJ, Spreux-Varoquaux O, Thorin I, Herrou M, Alvado G, et al. Cerebrospinal fluid biogenic amine metabolites, plasma-rich platelet serotonin and [3H]imipramine reuptake in the primary fibromyalgia syndrome. Rheumatology (Oxford). 2001;40(3):290-6.	2121 2122 2123 2124
218.	Russell IJ, Michalek JE, Vipraio GA, Fletcher EM, Javors MA, Bowden CA. Platelet 3H-imipramine uptake receptor density and serum serotonin levels in patients with fibromyalgia/fibrositis syndrome. J Rheumatol. 1992;19(1):104-9. PMID: 1313504.	2125 2126 2127 2128

219.	Groven N, Reitan SK, Fors EA, Guzey IC. Kynurenine metabolites and ratios differ between Chronic Fatigue Syndrome, Fibromyalgia, and healthy controls. Psychoneuroendocrinology. 2021;131:105287.	2129 2130 2131
220.	Russell IJ, Vipraio GA, Morgan WW, Bowden CL. Is there a metabolic basis for the fibrositis syndrome? Am J Med. 1986;81(3A):50-4	2132 2133
221.	Yunus MB, Dailey JW, Aldag JC, Masi AT, Jobe PC. Plasma tryptophan and other amino acids in primary fibromyalgia: a controlled study. J Rheumatol 1992; 19(1): 90-4.	2134 2135 2136
222.	Marcelin G, Silveira ALM, Martins LB, Ferreira AV, Clément K. Deciphering the cellular interplays underlying obesity-induced adipose tissue fibrosis. J Clin Invest. 2019;129(10):4032-4040.	2137 2138 2139
223.	Okifuji A, Turk DC. Sex hormones and pain in regularly menstruating women with fibromyalgia syndrome. J Pain 2006;7(11): 851-9.	2140 2141
224.	Wu M, Han M, Li J, Xu X, Li T, Que L, et al. 17beta-estradiol inhibits angiotensin II-induced cardiac myofibroblast differentiation. Eur J Pharmacol. 2009;616(1-3):155-9.	2142 2143 2144
225.	Ilg MM, Stafford SJ, Mateus M, Bustin SA, Carpenter MJ, Muneer A, et al. Phosphodiesterase Type 5 Inhibitors and Selective Estrogen Receptor Modulators Can Prevent But Not Reverse Myofibroblast Transformation in Peyronie's Disease. J Sex Med. 2020;17(10):1848-1864.	2145 2146 2147 2148
226.	Carthy JM, Sundqvist A, Heldin A, van Dam H, Kletsas D, Heldin CH, et al. Tamoxifen Inhibits TGF-β-Mediated Activation of Myofibroblasts by Blocking Non-Smad Signaling Through ERK1/2. J Cell Physiol. 2015;230(12):3084-92.	2149 2150 2151



227.	Jiang HS, Zhu LL, Zhang Z, Chen H, Chen Y, Dai YT. Estradiol attenuates the	2152
	TGF- $\beta$ 1-induced conversion of primary TAFs into myofibroblasts and inhibits collagen	2153
	production and myofibroblast contraction by modulating the Smad and Rho/ROCK	2154
	signaling pathways. <i>Int J Mol Med.</i> 2015;36(3):801-7.	2155
228.	Tu CH, Lin CL, Yang ST, Shen WC, Chen YH. Hormonal Contraceptive	2156
	Treatment May Reduce the Risk of Fibromyalgia in Women with Dysmenorrhea: A	2157
	Cohort Study. <i>J Pers Med.</i> 2020;10(4):280.	2158
229.	Blümel JE, Palacios S, Legorreta D, Vallejo MS, Sarra S. Is fibromyalgia part of	2159
	the climacteric syndrome? <i>Maturitas.</i> 2012;73(2):87-93.	2160
230.	Ramirez-Moreno JM, Ceberino D, Gonzalez Plata A, Rebollo B, Macias Sedas	2161
	P, Hariramani R, et al. Mask-associated 'de novo' headache in healthcare workers	2162
	during the COVID-19 pandemic. <i>Occup Environ Med.</i> 2020;oemed-2020-106956.	2163
231.	Lim EC, Seet RC, Lee KH, Wilder-Smith EP, Chuah BY, Ong BK. Headaches and	2164
	the N95 face-mask amongst healthcare providers. <i>Acta Neurol Scand.</i> 2006;	2165
	113(3):199-202.	2166
232.	Blau JN. Ponytail headache: a pure extracranial headache. <i>Headache</i> 2004;	2167
	44(5): 411-3.	2168
233.	Ansari HN, Solomon GD. Hijab (headscarf) headache. <i>Headache</i> 2015;55(3):	2169
	437-8.	2170
234.	Lane A. Bra strap headache. <i>Med J Aust.</i> 1983;1(4):155.	2171
235.	Balfour W. Observations on the Pathology and Cure of Rheumatism. <i>Edinb</i>	2172
	<i>Med Surg J.</i> 1815;11(42):168-187.	2173
236.	Bardin L, Malfetes N, Newman-Tancredi A, Depoortere R. Chronic restraint	2174
	stress induces mechanical and cold allodynia, and enhances inflammatory pain in rat:	2175

Relevance to human stress-associated painful pathologies. Behav Brain Res 2009;	2176
205(2): 360-6.	2177
237. Chiba S, Numakawa T, Ninomiya M, Richards MC, Wakabayashi C, Kunugi H.	2178
Chronic restraint stress causes anxiety- and depression-like behaviors,	2179
downregulates glucocorticoid receptor expression, and attenuates glutamate release	2180
induced by brain-derived neurotrophic factor in the prefrontal cortex. Prog	2181
Neuropsychopharmacol Biol Psychiatry 2012;39(1): 112-9.	2182
238. Farhin S, Wong A, Delungahawatta T, Amin JY, Bienenstock J, Buck R, et al.	2183
Restraint stress induced gut dysmotility is diminished by a milk oligosaccharide (2'-	2184
fucosyllactose) in vitro. PLoS One 2019;14(4): e0215151.	2185
239. Sugama S, Sekiyama K, Kodama T, Takamatsu Y, Takenouchi T, Hashimoto M,	2186
et al. Chronic restraint stress triggers dopaminergic and noradrenergic	2187
neurodegeneration: Possible role of chronic stress in the onset of Parkinson's	2188
disease. Brain Behav Immun 2016;51: 39-46.	2189
240. Spyrka J, Hess G. Repeated Neck Restraint Stress Bidirectionally Modulates	2190
Excitatory Transmission in the Dentate Gyrus and Performance in a Hippocampus-	2191
dependent Memory Task. Neuroscience 2018;379: 32-44.	2192
241. Langevin HM, Stevens-Tuttle D, Fox JR, Badger GJ, Bouffard NA, Krag MH, et	2193
al. Ultrasound evidence of altered lumbar connective tissue structure in human	2194
subjects with chronic low back pain. BMC Musculoskelet Disord. 2009;10:151.	2195
242. Taş S, Korkusuz F, Erden Z. Neck Muscle Stiffness in Participants With and	2196
Without Chronic Neck Pain: A Shear-Wave Elastography Study. J Manipulative	2197
Physiol Ther. 2018;41(7):580-588.	2198

243. Castro Sánchez AM, García López H, Fernández Sánchez M, Pérez Mármol JM, Aguilar-Ferrándiz ME, Luque Suárez A, et al. Improvement in clinical outcomes after dry needling versus myofascial release on pain pressure thresholds, quality of life, fatigue, pain intensity, quality of sleep, anxiety, and depression in patients with fibromyalgia syndrome. *Disabil Rehabil.* 2019;41(19):2235-2246.
244. Sarmiento-Hernández I, Pérez-Marín MLÁ, Nunez-Nagy S, Pecos-Martín D, Gallego-Izquierdo T, Sosa-Reina MD. Effectiveness of Invasive Techniques in Patients with Fibromyalgia: Systematic Review and Meta-Analysis. *Pain Med.* 2020;21(12):3499-3511.
245. Deare JC, Zheng Z, Xue CC, Liu JP, Shang J, Scott SW, et al. Acupuncture for treating fibromyalgia. *Cochrane Database Syst Rev.* 2013; 2013(5):CD007070.
246. Zhang XC, Chen H, Xu WT, Song YY, Gu YH, Ni GX. Acupuncture therapy for fibromyalgia: a systematic review and meta-analysis of randomized controlled trials. *J Pain Res.* 2019;12:527-542.
247. Liu L, Huang QM, Liu QG, Thitham N, Li LH, Ma YT, et al. Evidence for Dry Needling in the Management of Myofascial Trigger Points Associated With Low Back Pain: A Systematic Review and Meta-Analysis. *Arch Phys Med Rehabil.* 2018;99(1):144-152.e2.
248. Dong Z, Shun-Yue L, Shu-You W, Hui-Min M. Evaluation of influence of acupuncture and electro-acupuncture for blood perfusion of stomach by laser Doppler blood perfusion imaging. *Evid Based Complement Alternat Med.* 2011; 2011:969231.

249.	Li X, Wang R, Xing X, Shi X, Tian J, Zhang J, et al.. Acupuncture for Myofascial Pain Syndrome: A Network Meta-Analysis of 33 Randomized Controlled Trials. <i>Pain Physician</i> . 2017;20(6):E883-E902.	2221 2222 2223
250.	Dorigo B, Bartoli V, Grisillo D, Beconi D. Fibrositic myofascial pain in intermittent claudication. Effect of anesthetic block of trigger points on exercise tolerance. <i>Pain</i> . 1979;6(2):183-190.	2224 2225 2226
251.	Tomàs M, Garcia N, Santafé MM, Lanuza M, Tomàs J. Protein kinase C involvement in the acetylcholine release reduction induced by amyloid-beta(25-35) aggregates on neuromuscular synapses. <i>J Alzheimers Dis</i> . 2009;18(4):877-84.	2227 2228 2229
252.	Levy Nogueira M, Hamraz M, Abolhassani M, Bigan E, Lafitte O, Steyaert JM, et al. Mechanical stress increases brain amyloid $\beta$ , tau, and $\alpha$ -synuclein concentrations in wild-type mice. <i>Alzheimers Dement</i> . 2018;14(4):444-453.	2230 2231 2232
253.	Drabik D, Chodaczek G, Kraszewski S. Effect of Amyloid- $\beta$ Monomers on Lipid Membrane Mechanical Parameters-Potential Implications for Mechanically Driven Neurodegeneration in Alzheimer's Disease. <i>Int J Mol Sci</i> . 2020;22(1):18.	2233 2234 2235
254.	Kellermayer MS, Grama L, Karsai A, Nagy A, Kahn A, Datki ZL, et al. Reversible mechanical unzipping of amyloid beta-fibrils. <i>J Biol Chem</i> . 2005;280(9):8464-70.	2236 2237
255.	Bigot M, Chauveau F, Amaz C, Sinkus R, Beuf O, Lambert SA. The apparent mechanical effect of isolated amyloid- $\beta$ and $\alpha$ -synuclein aggregates revealed by multi-frequency MRE. <i>NMR Biomed</i> . 2020;33(1):e4174.	2238 2239 2240
256.	Chiasseu M, Cueva Vargas JL, Destroismaisons L, Vande Velde C, Leclerc N, Di Polo A. Tau Accumulation, Altered Phosphorylation, and Missorting Promote Neurodegeneration in Glaucoma. <i>J Neurosci</i> . 2016;36(21):5785-98.	2241 2242 2243

257.	Conti PC, Costa YM, Goncalves DA, Svensson P. Headaches and myofascial	2244
	temporomandibular disorders: overlapping entities, separate managements? J Oral	2245
	Rehabil 2016;43(9): 702-15.	2246
258.	Castro-Sanchez AM, Garcia-Lopez H, Mataran-Penarrocha GA, Fernandez-	2247
	Sanchez M, Fernandez-Sola C, Granero-Molina J, et al. Effects of Dry Needling on	2248
	Spinal Mobility and Trigger Points in Patients with Fibromyalgia Syndrome. Pain	2249
	Physician. 2017;20(2):37-52.	2250
259.	Alonso-Blanco C, Fernández-de-las-Peñas C, Morales-Cabezas M, Zarco-	2251
	Moreno P, Ge HY, Florez-García M. Multiple active myofascial trigger points	2252
	reproduce the overall spontaneous pain pattern in women with fibromyalgia and are	2253
	related to widespread mechanical hypersensitivity. Clin J Pain. 2011;27(5):405-13.	2254
260	Ge HY, Wang Y, Danneskiold-Samsøe B, Graven-Nielsen T, Arendt-Nielsen L.	2255
	The predetermined sites of examination for tender points in fibromyalgia syndrome	2256
	are frequently associated with myofascial trigger points. J Pain. 2010;11(7):644-51.	2257
261.	Bourgaize S, Janjua I, Murnaghan K, Mior S, Srbely J, Newton G. Fibromyalgia	2258
	and myofascial pain syndrome: Two sides of the same coin? A scoping review to	2259
	determine the lexicon of the current diagnostic criteria. Musculoskeletal Care.	2260
	2019;17(1):3-12.	2261
262.	Xu Y, Hu J, Yilmaz DE, Bachmann S. Connexin43 is differentially distributed	2262
	within renal vasculature and mediates profibrotic differentiation in medullary	2263
	fibroblasts. Am J Physiol Renal Physiol. 2021;320(1):F17-F30.	2264
263.	Miragoli M, Gaudesius G, Rohr S. Electrotonic modulation of cardiac impulse	2265
	conduction by myofibroblasts. Circ Res. 2006;98(6):801-10.	2266

264. Iguchi M, Hara M, Manome H, Kobayasi H, Tagami H, Aiba S. Communication network in the follicular papilla and connective tissue sheath through gap junctions in human hair follicles. *Exp Dermatol.* 2003;12(3):283-8.
265. Luo M, Luo Y, Mao N, Huang G, Teng C, Wang H, et al. Cancer-Associated Fibroblasts Accelerate Malignant Progression of Non-Small Cell Lung Cancer via Connexin 43-Formed Unidirectional Gap Junctional Intercellular Communication. *Cell Physiol Biochem.* 2018;51(1):315-336.
266. Gabbiani G, Chaponnier C, Hüttner I. Cytoplasmic filaments and gap junctions in epithelial cells and myofibroblasts during wound healing. *J Cell Biol.* 1978;76(3):561-8.
267. Spanakis SG, Petridou S, Masur SK. Functional gap junctions in corneal fibroblasts and myofibroblasts. *Invest Ophthalmol Vis Sci.* 1998;39(8):1320-8
268. Woodward TL, Sia MA, Blaschuk OW, Turner JD, Laird DW. Deficient epithelial-fibroblast heterocellular gap junction communication can be overcome by co-culture with an intermediate cell type but not by E-cadherin transgene expression. *J Cell Sci.* 1998;111 ( Pt 23):3529-39.
269. Neuhaus J, Gonsior A, Cheng S, Stolzenburg JU, Berger FP. Mechanosensitivity Is a Characteristic Feature of Cultured Suburothelial Interstitial Cells of the Human Bladder. *Int J Mol Sci.* 2020;21(15):5474.
270. Lembong J, Sabass B, Sun B, Rogers ME, Stone HA. Mechanics regulates ATP-stimulated collective calcium response in fibroblast cells. *J R Soc Interface.* 2015;12(108):20150140.

271.	Ikeda Y, Fry C, Hayashi F, Stolz D, Griffiths D, Kanai A. Role of gap junctions in spontaneous activity of the rat bladder. <i>Am J Physiol Renal Physiol.</i> 2007;293(4):F1018-25.	2289 2290 2291
272.	Neuhaus J, Pfeiffer F, Wolburg H, Horn LC, Dorschner W. Alterations in connexin expression in the bladder of patients with urge symptoms. <i>BJU Int.</i> 2005;96(4):670-6.	2292 2293 2294
273.	Askar SF, Bingen BO, Swildens J, Ypey DL, van der Laarse A, Atsma DE, et al. Connexin43 silencing in myofibroblasts prevents arrhythmias in myocardial cultures: role of maximal diastolic potential. <i>Cardiovasc Res.</i> 2012;93(3):434-44.	2295 2296 2297
274.	Zlochiver S, Muñoz V, Vikstrom KL, Taffet SM, Berenfeld O, Jalife J. Electrotonic myofibroblast-to-myocyte coupling increases propensity to reentrant arrhythmias in two-dimensional cardiac monolayers. <i>Biophys J.</i> 2008;95(9):4469-80	2298 2299 2300
275.	Paw M, Borek I, Wnuk D, Ryszawy D, Piwowarczyk K, Kmiotek K, et al. Connexin43 Controls the Myofibroblastic Differentiation of Bronchial Fibroblasts from Patients with Asthma. <i>Am J Respir Cell Mol Biol.</i> 2017;57(1):100-110.	2301 2302 2303
276.	Nagaraju CK, Dries E, Gilbert G, Abdesselem M, Wang N, Amoni M, et al. Myofibroblast modulation of cardiac myocyte structure and function. <i>Sci Rep.</i> 2019;9(1):8879.	2304 2305 2306
277.	Daniel EE, Yazbi AE, Mannarino M, Galante G, Boddy G, Livergant J, et al. Do gap junctions play a role in nerve transmissions as well as pacing in mouse intestine? <i>Am J Physiol Gastrointest Liver Physiol.</i> 2007;292(3):G734-45.	2307 2308 2309
278.	Mewe M, Bauer CK, Schwarz JR, Middendorff R. Mechanisms regulating spontaneous contractions in the bovine epididymal duct. <i>Biol Reprod.</i> 2006;75(4):651-9.	2310 2311 2312

279.	Grand T, Salvarani N, Jousset F, Rohr S. Aggravation of cardiac myofibroblast	2313
	arrhythmogenicity by mechanical stress. <i>Cardiovasc Res</i> 2014;104(3): 489-500.	2314
280.	Nguyen TP, Xie Y, Garfinkel A, Qu Z, Weiss JN. Arrhythmogenic consequences	2315
	of myofibroblast-myocyte coupling. <i>Cardiovasc Res</i> 2012;93(2): 242-51.	2316
281.	Mercier F, Hatton GI. Connexin 26 and basic fibroblast growth factor are	2317
	expressed primarily in the subpial and subependymal layers in adult brain	2318
	parenchyma: roles in stem cell proliferation and morphological plasticity? <i>J Comp</i>	2319
	<i>Neurol.</i> 2001;431(1):88-104.	2320
282.	Grafstein B, Liu S, Cotrina ML, Goldman SA, Nedergaard M. Meningeal cells	2321
	can communicate with astrocytes by calcium signaling. <i>Ann Neurol.</i> 2000;47(1):18-	2322
	25.	2323
283.	Mercier F, Hatton GI. Immunocytochemical basis for a meningeo-glial	2324
	network. <i>J Comp Neurol.</i> 2000;420(4):445-65.	2325
284.	Grafstein B, Liu S, Cotrina ML, Goldman SA, Nedergaard M. Meningeal cells	2326
	can communicate with astrocytes by calcium signaling. <i>Ann Neurol.</i> 2000;47(1):18-	2327
	25.	2328
285.	Zheng N, Yuan XY, Chi YY, Liu P, Wang B, Sui JY, et al. The universal existence	2329
	of myodural bridge in mammals: an indication of a necessary function. <i>Sci Rep.</i>	2330
	2017;7(1):8248	2331
286.	Follonier L, Schaub S, Meister JJ, Hinz B. Myofibroblast communication is	2332
	controlled by intercellular mechanical coupling. <i>J Cell Sci.</i> 2008;121(Pt 20):3305-16.	2333
287.	Camelliti P, Green CR, LeGrice I, Kohl P. Fibroblast network in rabbit sinoatrial	2334
	node: structural and functional identification of homogeneous and heterogeneous	2335
	cell coupling. <i>Circ Res.</i> 2004;94(6):828-35.	2336



288.	Murata K, Hirata A, Ohta K, Enaida H, Nakamura KI. Morphometric analysis in mouse scleral fibroblasts using focused ion beam/scanning electron microscopy. <i>Sci Rep.</i> 2019;9(1):6329.	2337 2338 2339
289.	Ibrahim MM, Chen L, Bond JE, Medina MA, Ren L, Kokosis G, et al. Myofibroblasts contribute to but are not necessary for wound contraction. <i>Lab Invest.</i> 2015;95(12):1429-38.	2340 2341 2342
290.	<a href="https://www.uptodate.com/contents/somatic-symptom-disorder-epidemiology-and-clinical-presentation?search=somatic%20symptom%20disorder&amp;source=search_result&amp;selectedTitle=1~28&amp;usage_type=default&amp;display_rank=1#H3058265287">https://www.uptodate.com/contents/somatic-symptom-disorder-epidemiology-and-clinical-presentation?search=somatic%20symptom%20disorder&amp;source=search_result&amp;selectedTitle=1~28&amp;usage_type=default&amp;display_rank=1#H3058265287</a> By James L. Levenson, Accessed January 2021	2343 2344 2345 2346 2347
291.	C. Gilbert. Breathing: the legacy of Wilhelm Reich. <i>J. Bodyw. Mov. Ther.</i> 1999; 3:97-106.	2348 2349
292.	Alexander Lowen, Leslie Lowen. <i>The Way to Vibrant Health: A Manual of Bioenergetic Exercises.</i> New York; Harper & Row 1977.	2350 2351
293.	Younger JW, Shen YF, Goddard G, Mackey SC. Chronic myofascial temporomandibular pain is associated with neural abnormalities in the trigeminal and limbic systems. <i>Pain.</i> 2010;149(2):222-228.	2352 2353 2354
294.	Sari E, Oztay F, Tasci AE. Vitamin D modulates E-cadherin turnover by regulating TGF- $\beta$ and Wnt signalings during EMT-mediated myofibroblast differentiation in A459 cells. <i>J Steroid Biochem Mol Biol.</i> 2020;202:105723.	2355 2356 2357
295.	O'Mahony LF, Srivastava A, Mehta P, Ciurtin C. Is fibromyalgia associated with a unique cytokine profile? A systematic review and meta-analysis. <i>Rheumatology (Oxford).</i> 2021;60(6):2602-2614.	2358 2359 2360

296.	Hou J, Ma T, Cao H, Chen Y, Wang C, Chen X, et al. TNF- $\alpha$ -induced NF- $\kappa$ B activation promotes myofibroblast differentiation of LR-MSCs and exacerbates bleomycin-induced pulmonary fibrosis. <i>J Cell Physiol.</i> 2018;233(3):2409-2419.	2361 2362 2363
297.	Wang JH, Zhao L, Pan X, Chen NN, Chen J, Gong QL, et al. Hypoxia-stimulated cardiac fibroblast production of IL-6 promotes myocardial fibrosis via the TGF- $\beta$ 1 signaling pathway. <i>Lab Invest.</i> 2016;96(8):839-52.	2364 2365 2366
298.	Yang L, Herrera J, Gilbertsen A, Xia H, Smith K, Benyumov A, et al. IL-8 mediates idiopathic pulmonary fibrosis mesenchymal progenitor cell fibrogenicity. <i>Am J Physiol Lung Cell Mol Physiol.</i> 2018;314(1):L127-L136.	2367 2368 2369
299.	Shi JH, Guan H, Shi S, Cai WX, Bai XZ, Hu XL, et al. Protection against TGF- $\beta$ 1-induced fibrosis effects of IL-10 on dermal fibroblasts and its potential therapeutics for the reduction of skin scarring. <i>Arch Dermatol Res.</i> 2013;305(4):341-52.	2370 2371 2372
300.	Mor A, Segal Salto M, Katav A, Barashi N, Edelshtein V, Manetti M, et al. Blockade of CCL24 with a monoclonal antibody ameliorates experimental dermal and pulmonary fibrosis. <i>Ann Rheum Dis.</i> 2019;78(9):1260-1268.	2373 2374 2375 2376 2377

## **Supporting information** 2378

**Fig 1. Flowchart of scoping review.** 2379

**S1 File. Supplementary material.** 2380

**S1 Fig 1A. Illustration of needling in fascial tensegrity framework.** A) Illustration to assist the reader in imagining a healthy geodesic dome connected by spandex sheets (fascia). 2381  
2382  
2383

With permission from PACIFIC DOMES Inc. [www.eventdome.wordpress.com/](http://www.eventdome.wordpress.com/) 2384

Reprinted from [https://eventdome.files.wordpress.com/2010/07/bm-multi-](https://eventdome.files.wordpress.com/2010/07/bm-multi-colored.jpg) 2385

[colored.jpg](https://eventdome.files.wordpress.com/2010/07/bm-multi-colored.jpg), under a CC BY license, with permission from Sequoia Miller from Pacific 2386

Domes Inc., original copyright. 2387

**S1 Fig 1B. Illustration of needling in fascial tensegrity framework.** B) Normal external 2388

strain applied will tense the fascia and distribute the tension through the network of 2389

nodes. 2390

With permission from Dome guys international [www.domeguys.com](http://www.domeguys.com) 2391

Reprinted from [https://domeguys.com/home/burning-man-2012-domeguys-](https://domeguys.com/home/burning-man-2012-domeguys-international-kcj_-34/) 2392

[international-kcj\\_-34/](https://domeguys.com/home/burning-man-2012-domeguys-international-kcj_-34/) under a CC BY license, with permission from Russell Phillips, 2393

President DomeGuys International LLC, original copyright 2021 2394

**S1 Fig 1C. Illustration of needling in fascial tensegrity framework.** C) Chronic over- 2395

strain causes pathological changes in fascia or changes of myofibroblast and smooth 2396

muscle fibers inside the fascia. The fascia fails to distribute forces properly and keep 2397

the integrity of the structure. Structures on the dome and inside the dome are 2398

affected. 2399

With permission from Erowid.org. Reprinted 2400

from [https://www.erowid.org/culture/burningman/show\\_image.php?i=1999\\_burningm](https://www.erowid.org/culture/burningman/show_image.php?i=1999_burningman/1999_bm_thunderdome3.jpg) 2401

[an/1999\\_bm\\_thunderdome3.jpg](https://www.erowid.org/culture/burningman/show_image.php?i=1999_burningman/1999_bm_thunderdome3.jpg) under a CC BY license, with permission from original 2402

copyright 2021. 2403

**S1 Fig 1D. Illustration of needling in fascial tensegrity framework.** D) After 're-setting' 2404

the system with needling or other techniques: "regeneration and growth of new 2405

connections over time should be determined by natural forces and pullies" [22]. New 2406

areas in the fascia serve as points of focus for changes and realignment. Structures can 2407

relax and return to the minimum energy state. Fascia is always subjected to remodeling pressures and responds to the local mechanical state. However, if spatial deposition of fibers is altered with respect to physiological conditions, the rebuilding will be pathological [22] Mobilization encourages correct healing in order to avoid formation of fibrosis [22].

Taken by Jim Bourg, with permission from REUTERS News Agency. Reprinted from Jim Bourg photo published in <https://www.theatlantic.com/photo/2013/09/photos-of-burning-man-2013/100584/#img06>, with permission from Marc Glanville REUTERS News Agency, original copyright 2021.

**S1 Fig 1E. Illustration of needling in fascial tensegrity framework.** E) A pathological entity in the form of a tensegrity abnormality, it is both systemic and asymmetrical or seemingly "unilateral". With permission from, and taken by, Aaron Neilson-Belman [AaronNeilsonBelman.com](http://AaronNeilsonBelman.com)

Reprinted from <https://hippievanman.com/preview/burning-man-2011/> under a CC BY license, with permission from Aaron Neilson-Belman, original copyright 2013-2020

**S1 Fig 2. Overlap of conditions in the domain of common medicine.** Not all connections are represented in this scheme. The term "Healthy" is open to interpretation. MPS- myofascial pain syndrome (i.e., fascial armoring).

<b>Supplementary material for "Scoping review and interpretation of</b>	2428
<b>Myofascial Pain/Fibromyalgia syndrome: an attempt to assemble a</b>	2429
<b>medical puzzle"</b>	2430
	2431
	2432
<b>Methods</b>	2433
	2434
During the process of the review, certain topics rose that not were not sufficiently covered in	2435
the literature found through the systematic search. Therefore, further literature (through	2436
searches that were not systematic) was gathered for these topics. These topics were:	2437
myofibroblasts contractions and generation of tension, neurology of myofascial pain, myofascial	2438
pain and movement, fascial properties, searching pubmed for the term "unexplained", etc.	2439
Using "ovid" engine to search EMBASE yielded 0 results for the phrase "fascia tension pain"	2440
(whereas 127 items were found on PUBMED) therefore a broader search was performed in	2441
this database using only two word combinations: "fascia tension" (yielded 10 results) and	2442
"fascia pain" yielded 15 results (N=25 combined)	2443
A search on COCHRANE was not done for the phrases "fascia tension pain" and "fascia	2444
stiffness pain" as the reviewer sought for controlled trials for myofascial pain syndrome, more	2445
than 150 items from COCHRANE oriented for MPS sufficed for this purpose.	2446
Searches for "sympathetic activity induced by pain" and "Spinal mobilization sympathetic	2447
nervous system" was expanded for a search in all fields from inception only in databases	2448
where no results were found in title/abstract.	2449
For "myofascial pain syndrome" the search was done on Cochrane but was limited to the title	2450
field only as it was too broad. This yielded 138 results.	2451
Information gathered was summarized in excel document and a long word document	2452
containing key information from items. The word document evolved into the article, over time.	2453
	2454
<b>Needling</b>	2455

To grasp the framework of needling, the reader may try and imagine a geodesic dome 2456  
connected not by straight solid bars, but imagine it connected by extremely thin sheets of 2457  
spandex/elastane. Each sheet can change its spring constant. Then imagine continuously 2458  
applying external forces to this dome from different directions. 2459

Insertion of needles in many "scattered" points while at rest will allow the system to realign 2460  
appropriately and accordingly to the inherent internal forces or pullies [22], eg, the skeleton. 2461  
Now the reader may imagine this dome only in the shape of a human, and it can move. 2462

**S1 Fig. 1. Illustration of needling in fascial tensegrity framework.** 2463

2464



2465

A) Illustration to assist the reader in imagining a healthy geodesic dome connected by 2466  
spandex sheets (fascia). 2467

With permission from PACIFIC DOMES Inc. [www.eventdome.wordpress.com/](http://www.eventdome.wordpress.com/) 2468

Reprinted from <https://eventdome.files.wordpress.com/2010/07/bm-multi-colored.jpg>, under a 2469

CC BY license, with permission from Sequoia Miller from Pacific Domes Inc., original 2470

copyright. 2471

2472



2473

B) Normal external strain applied will tense the fascia and distribute the tension through the network of nodes.

2474

2475

With permission from Dome guys international [www.domeguys.com](http://www.domeguys.com)

2476

Reprinted from [https://domeguys.com/home/burning-man-2012-domeguys-international-kcj\\_-](https://domeguys.com/home/burning-man-2012-domeguys-international-kcj_-34/)

2477

34/ under a CC BY license, with permission from Russell Phillips, President DomeGuys

2478

International LLC, original copyright 2021

2479

2480



2481

**C)** Chronic over-strain causes pathological changes in fascia or changes of myofibroblast and smooth muscle fibers inside the fascia. The fascia fails to distribute forces properly and keep the integrity of the structure. Structures on the dome and inside the dome are affected.

2482

2483

2484

With permission from Erowid.org

2485

([https://www.erowid.org/general/about/about\\_copyrights.shtml](https://www.erowid.org/general/about/about_copyrights.shtml)). Reprinted

2486

from [https://www.erowid.org/culture/burningman/show\\_image.php?i=1999\\_burningman/1999](https://www.erowid.org/culture/burningman/show_image.php?i=1999_burningman/1999)

2487

[bm\\_thunderdome3.jpg](https://www.erowid.org/culture/burningman/show_image.php?i=1999_burningman/1999_bm_thunderdome3.jpg) under a CC BY license, with permission from original

2488





2489

D) After 're-setting' the system with needling or other techniques: "regeneration and growth of new connections over time should be determined by natural forces and pullies" [22]. New areas in the fascia serve as points of focus for changes and realignment. Structures can relax and return to the minimum energy state. Fascia is always subjected to remodeling pressures and responds to the local mechanical state. However, if spatial deposition of fibers is altered with respect to physiological conditions, the rebuilding will be pathological [22] Mobilization encourages correct healing in order to avoid formation of fibrosis [22].

2490

2491

2492

2493

2494

2495

2496

Taken by Jim Bourg, with permission from REUTERS News Agency. Reprinted from Jim Bourg photo published in <https://www.theatlantic.com/photo/2013/09/photos-of-burning-man-2013/100584/#img06>, with permission from Marc Glanville REUTERS News Agency, original copyright 2021.

2497

2498

2499

2500



2501

E) A pathological entity in the form of a tensegrity abnormality, it is both systemic and asymmetrical or seemingly "unilateral".

2502

2503

With permission from, and taken by, Aaron Neilson-Belman [AaronNeilsonBelman.com](http://AaronNeilsonBelman.com)

2504

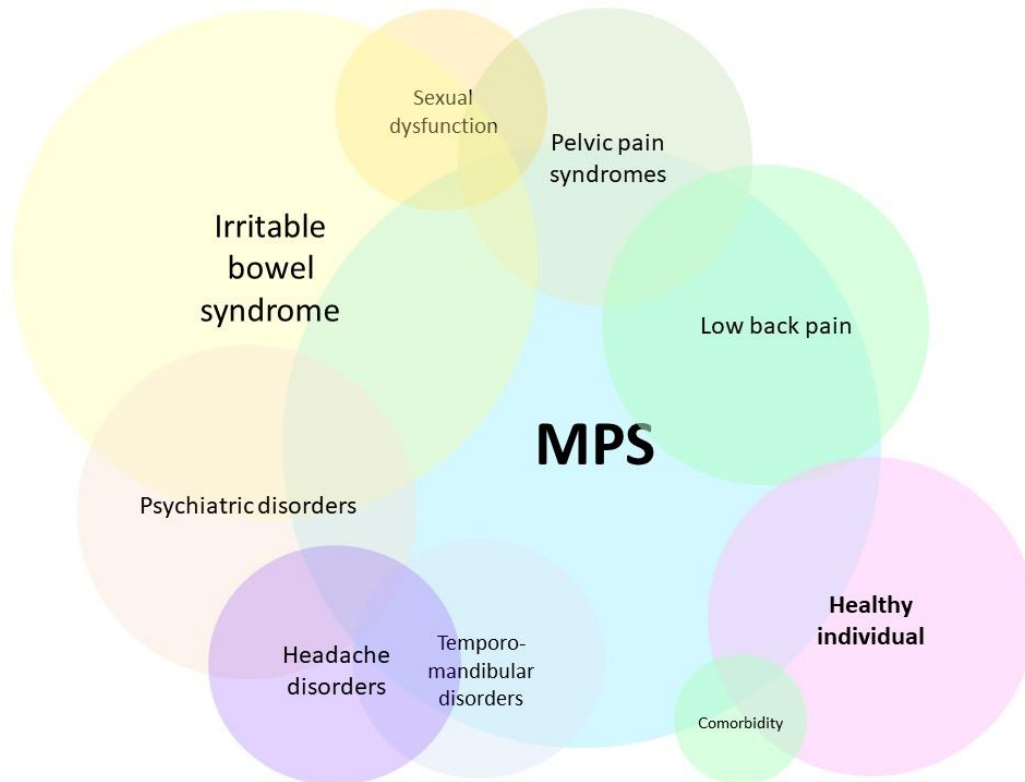
Reprinted from <https://hippievanman.com/preview/burning-man-2011/> under a CC BY license, with permission from Aaron Neilson-Belman, original copyright 2013-2020

2505

2506

2507

2508



**S1 Fig 2. Overlap of conditions in the domain of common medicine.** Not all connections are represented in this scheme. The term "Healthy" is open to interpretation. MPS- myofascial pain syndrome (i.e., fascial armoring)

2509  
 2510  
 2511  
 2512  
 2513