

1
2
3
4
5
6
7
8
9
10
11
12
13
14
15
16
17
18
19
20
21
22
23
24
25
26
27
28
29

Association of socioeconomic and environmental factors with the spatio-temporal variability of suicide rates along a latitudinal gradient

Sergio A. Estay^{a,b*}, Manuel Ruiz-Aravena^c, Tomas Baader^d, Marcelo Gotelli^d, Cristobal Heskia^d, Juan Carlos Olivares^e & Gerardo Rivera^d.

^a Universidad Austral de Chile, Instituto de Ciencias Ambientales y Evolutivas. Valdivia, Chile

^b Center of Applied Ecology and Sustainability (CAPES), Pontificia Universidad Católica de Chile. Santiago, Chile.

^c Department of Microbiology and Immunology, Montana State University, Montana. USA.

^d Universidad Austral de Chile, Instituto de Neurociencias Clínicas, Valdivia, Chile

^e Universidad Austral de Chile, Instituto de Arquitectura y Urbanismo. Valdivia, Chile.

*Corresponding author. Tel.: +56 63 2293913;
sergio.estay@uach.cl

30 **Abstract**

31 *Background:* Suicide results from complex interactions between biological, psychological, and
32 socioeconomic factors. At the population level, the study of suicide rates and their environmental and
33 social determinants allows us to disentangle some of these complexities and provides support for policy
34 design and preventive actions.

35 *Objectives:* To evaluate the associations between environmental and socioeconomic factors and
36 demographically stratified suicide rates on large temporal and spatial scales.

37 *Method:* The dataset contains information about yearly suicides rates by sex and age from 2000 through
38 2017 along a 4,000 km latitudinal gradient. We used zero-inflated negative binomial models to evaluate
39 the spatio-temporal influence of each environmental and socioeconomic variable on suicide rates at
40 each sex/age combination.

41 *Results:* Overall, we found differential patterns of associations between suicide rates and explanatory
42 variables by age and sex. Suicide rates in men increases in middle and high latitude regions and
43 intermediate age classes. For adolescent and adult women, we found a similar pattern with an increase
44 in suicide rates at middle and high latitudes. Sex differences measured by the male/female suicide rate
45 ratio shows a marked increase with age. We found that cloudiness has a positive effect on suicide rates
46 in both men and women 24 years old or younger. Regional poverty shows a major impact on men in
47 age classes above 35 years old, an effect that was absent in women. Alcohol and marijuana
48 consumption showed no significant effect sizes.

49 *Conclusions:* Our findings support high spatio-temporal variability in suicide rates in interaction with
50 extrinsic factors. Several strong differential impacts of environmental and socioeconomic variables on
51 suicide rates depending on sex and age were detected. These results suggest that the design of public
52 policies and interventions to mitigate the impact of the studied variables need to consider the local
53 social and environmental contexts of target populations.

54

55 **Keywords:** suicide rates, poverty, sunlight, cloudiness, drugs consumption, latitude, age classes.

56

57

58

59

60

61

62

63

64

65 Introduction

66

67 Suicide is one of the leading causes of death globally (Roth et al. 2018) , and represents a
68 major concern for health systems. Interventions to prevent or mitigate the risk of suicide are
69 intrinsically challenging since suicide emerges as a result of the complex interactions of biological,
70 psychological and socioeconomic factors at different scales (Jagodic, Agius, and Pregelj 2012) .
71 Nowadays, suicide rates show different trends depending on country, age and/or sex (Sinyor, Tse, and
72 Pirkis 2017; Naghavi 2019) . Even in this situation, some common demographic patterns have
73 emerged from global data. Men, for instance, present higher suicide rates than women in most countries,
74 and adolescents (10 to 19 years old) show a higher rate of suicide than the rest of the population (Roh,
75 Jung, and Hong 2018) . However, beyond these demographic patterns, several others with different
76 trends associated with environmental and socioeconomic factors have been described around the world.
77 At the population level, the spatio-temporal study of suicide rates and their environmental and social
78 determinants allows us to disentangle these complexities and provide support for policy design and
79 preventive actions.

80

81 The environmental conditions of places where human populations inhabit have been described as
82 influencing suicide rates in many countries or territories. Among the most cited factors we find sunlight
83 duration, temperature, altitude, and latitude (either by themselves or as proxies of sunlight or
84 temperature), among others. Sunlight or sunshine duration is often proposed as a predictive
85 environmental variable of suicide or suicide rates. Despite the exact biological mechanisms behind this
86 association, several studies have detected statistical associations of sunlight duration, at daily or yearly
87 time scales, and individual suicide events (Vyssoki et al. 2014; Björkstén, Kripke, and Bjerregaard
88 2009) or suicide rates (Terao et al. 2002; Gao et al. 2019) . In the case of altitude or latitude, both
89 variables represent geographic gradients, but they are not real ecological variables, so the interpretation
90 of their significance is always linked to another variable. Most cases where latitude has shown
91 significant association with suicide rates, the interpretation involved its correlation with light-dark
92 cycles or sunlight duration (Lester and Shephard 1998; Voracek and Formann 2004; Lester 1986;
93 Heerlein, Valeria, and Medina 2006; Davis and Lowell 2002; Gao et al. 2019) .

94

95 Socioeconomic factors, on the other hand, have been more widely analyzed because it has been
96 suggested that they might outweigh climatic factors in explaining regional differences in suicide rates
97 (Jagodic, Agius, and Pregelj 2012; but see Fountoulakis and Gonda 2017). The most studied
98 socioeconomic factors are likely economic deprivation and drug consumption (including alcohol) (e.g.,
99 Iemmi et al. 2016; Hasin 2020) . Economic deprivation has been considered by using several proxies
100 like GDP, income, changes in employment rates or the occurrence of an economic crisis. Evidence is
101 variable, with marked differences depending on sex and age. The same situation occurs with the spatial
102 scale of the study, which seems to play a key role in the result. At local, country or similar spatial scales
103 most studies pointed to poverty being positively associated with suicide rates (Iemmi et al. 2016; Hsu,

104 Chang, and Yip 2019; but see Bando et al. 2012), although with variable effect size depended on
105 sex. However, at regional or global scale some studies have shown a marginally positive trend between
106 income (or some proxy) and suicide rates (Moniruzzaman and Andersson 2008; Noh 2009). In the
107 case of drug consumption, several studies have shown a link between suicide attempts and the use of
108 drugs (marijuana, inhalants, etc.), especially among adolescents or young people (Hahm et al. 2013;
109 Carvalho et al. 2019). However, most of this evidence is from studies at the individual level (cases),
110 while information at the population level (rates) is scarcer. Nevertheless, under some circumstances,
111 this link could also be observed at the population level. The prevalence of alcohol use disorder (AUD)
112 has been linked to suicide attempts (Borges and Loera 2010), suicide events (Edwards et al. 2020;
113 Sher 2006), and suicide rates (Razvodovsky 2011). Most studies have pointed to increasing
114 alcohol consumption as a predictor of suicide or suicide rates despite the strength of the association
115 being highly variable. Thus, the relationship between socioeconomic factors and suicide rates seems to
116 be complex and idiosyncratic, with evidence supporting positive and negative associations.

117

118 Despite this complex scenario, with variables having different impacts on magnitude and direction,
119 clarifying the role of each factor in the suicide rates and their interaction with demography (e.g., sex
120 and age) is a key component in the design and implementation of preventive policies. The task of
121 simultaneously testing the influence of each of these variables demands not only a multidimensional
122 dataset, but also demands widespread spatio-temporal data coverage. In this study, we evaluate the
123 association between demographically stratified suicide rates on large temporal and spatial scales and
124 environmental and socioeconomic factors. By identifying relevant patterns in suicide rates, this study
125 endeavors to provide insight for policy design and implementation at the local and regional scales.

126

127 **Methods**

128

129 Data description

130 *Suicide rates*

131 Data on suicide events were obtained from the open repository of the Department of Health
132 Statistics and Information (DEIS in Spanish, <https://deis.minsal.cl/#estadisticas>), Ministry of Health,
133 Chile. This dataset contains information about a) the number of suicides by sex and age (5-year
134 categories from 0 to 80+) for each year from 2000 to 2017 in each administrative region of Chile (16
135 administrative regions), b) total population at each sex/age/region/year combination, and c) age-
136 specific suicide rate for each combination (a/b). We used data from age classes 10-14 to 80+. In total,
137 our dataset involves 32,769 suicide cases, 27,059 in men and 5,710 in women. Due to the geographical
138 location of Chile, the data represents a large latitudinal gradient from 18°S to 53°S (considering the
139 latitude of each regional capital city), equivalent to more than 4,000 km. This latitudinal gradient
140 involves large environmental differences. At 18°S we find the hot desert climate, and at 54°S we find
141 the subpolar oceanic climate according to the Köppen classification.

142

143 *Environmental data*

144 We used two environmental variables related to the availability of sunlight. The first one is total
145 sunlight hours (hereafter Sunlight) in autumn-winter months. This variable is representative of
146 exposure to natural light during the darkest period of the year. Total sunlight hours were calculated
147 using the formula proposed by Forsythe et al. (2003), which uses latitude and day of the year to
148 calculate the number of hours between sunrise and sunset. For calculations we used the latitude of the
149 capital city of each region, where most of the population lives. This definition of total sunlight hours
150 does not consider meteorological conditions, so it represents the maximum amount of sunlight a person
151 potentially experiences at a given place. For this reason, we included a second variable, the proportion
152 of days in a year with significant cloud cover (hereafter Cloudiness) in the capital city of each region.
153 This variable works as a complement to sunlight hours, and as a measure of the net sunlight availability.
154 Cloudiness was obtained from Wilson & Jetz (2016). Together, both Sunlight and Cloudiness offer
155 us an adequate representation of the availability of sunlight along the latitudinal gradient.

156

157 *Socioeconomic data*

158

159 We included three socioeconomic variables in the analysis. First, we used the percentage of
160 people living with an income below the poverty threshold (hereafter Poverty) as a measure of economic
161 deprivation (as of January 2021 this value is ~245 USD per person living in Chile per month). Data
162 were obtained for every year from the public repository SINIM (National System of Municipal
163 Information in Spanish, <http://datos.sinim.gov.cl>). This poverty index is obtained from the CASEN
164 (Socio-Economic Characterization in Spanish) national survey. Each survey can be representative of
165 one or more years depending on the dates. For example, CASEN for 2000 is representative of 2000 and
166 2001. In addition, we included alcohol and marijuana (cannabis) consumption. In both cases we used
167 the prevalence (%) of consumption in the previous year in the population of each region. Data were
168 obtained from the 13th National Study on Drug Consumption (freely available at
169 <http://www.senda.gob.cl/observatorio/>). Given that the administrative territory of the Region del Ñuble
170 (~36° S) was separated from the original Region del Biobio in 2017, no data about drug consumption
171 are available for the current territory of Ñuble. In the past, this territory was included in the reports
172 from the Region del Biobio. Therefore, in this study, historical data were imputed to both regions
173 (Ñuble and Biobio).

174

175 Statistical analyses

176

177 As a first step, we estimated general characteristics of our dataset. We evaluated the linear
178 trends of each sex/age/region combination over the period. We used Kendall correlation coefficients for

179 this estimation due to the high non-normality of the data. Additionally, to assess sex differences, we
180 calculated the male/female ratio in suicide rates for each year.

181

182 To evaluate the influence of each variable on each sex/age combination, we used a zero-inflated
183 negative binomial model. We chose this kind of model due to the high non-normality of our data
184 because of the high frequency of zeros in some age/sex combinations. In the same vein, our data show
185 a large difference between mean and standard deviation, which makes negative binomial distribution a
186 better choice than the classical Poisson distribution (Gardner, Mulvey, and Shaw 1995; Hilbe 2011;
187 Greene 1994). Suicide rates were modelled by using the number of suicides as a response variable
188 and the logarithm of population size as the offset (McCullagh and Nelder 1989; Madsen and Thyregod
189 2010; Myers et al. 2012). All variables were standardized by using robust transformation $((x_i -$
190 Median)/MAD) (Maronna, Martin, and Yohai 2019); thus, all coefficients are comparable because
191 they are at the same scale. The effect size of each variable is shown as the estimated coefficient and its
192 95% confidence interval (Cumming 2013, 2007). We used McFadden's pseudo- R^2 as an approximate
193 metric of goodness of fit for our model formulations. Analyses were performed in the R environment
194 (R Team 2016) and pscl package (Jackman 2020). Codes for analyses are available as
195 supplementary information 1b.

196

197 **Results**

198

199 Overall, suicide rates did not present general temporal trends in the raw data for either sex.
200 Nevertheless, some trends for specific sex, region or age class were detected. For men, an increase in
201 suicide rates was observed in individuals between 30 and 45 years old at mid- (~30°S) or high- (~45°S)
202 latitude regions (Fig 1a). For adolescent and adult women (<65 years old), a marked trend in increased
203 suicide rates was observed at mid- (30-35°S) and high- (>40°S) latitudes (Fig 1b). For people in age
204 classes >65 years, only a mild increase trend is noted, mainly in women (Fig 1a-b).

205

206 From 2000 to 2017 the ratio of male/female suicides ranged from a minimum of 3.85 in 2015 to 6.12 in
207 2000 (Fig 2a). From 2000 to 2009 the ratio noticeably decreased, but from 2010 it increased. The
208 male/female ratio in adolescents is as low as 1.51 (10-14 years old) and peaks at 8.44 in the 70-74 year
209 age class (Fig 2b). The ratio shows a marked increase with age (Fig 2b) from 10-14 to 20-24-years old.
210 From age class 25-29 to 50-54 the ratio remains almost constant between 4.5 and 5.0. From age class
211 55-59 the ratio increases again.

212

213 Analyses on the effect of each variable on suicide rates reveals some interesting patterns. First, the
214 level of Cloudiness has a clear positive effect on suicide rates on men and women 24 years old or
215 younger (Fig 3-4). The pattern was particularly clear for the first three age classes in men and the first

216 two age classes in women (confidence intervals do not contain a zero). For people over 24 years old,
217 the estimated coefficients are mostly positive, as expected, but the previous pattern disappears. In the
218 case of Sunlight, despite the consistently negative effect observed (as expected) in both sexes and age
219 classes, confident intervals contain a zero in almost all cases (Fig 3-4, Suppl. 1a). Regional poverty
220 shows the clearest pattern in the analysis. In the case of men in age classes >35 years, the effect size
221 was markedly positive and increased with age (Fig 3, Suppl. 1a). However, this pattern is absent in
222 women (Fig 4). Alcohol consumption showed no significant effect sizes with the exception of a few
223 sex/age combinations (Fig 3-4, Suppl. 1a). Marijuana use showed an overall weak negative effect, but
224 this effect is not consistent between sexes (Fig 3-4, Suppl. 1a).

225

226 **Discussion**

227

228 Our results show a highly idiosyncratic scenario for trends in suicide rates depending on
229 location and age class. In Chile, our results show that the global suicide rate has presented relatively
230 stable levels in the last 18 years. However, some worrying results point to significant local increases in
231 suicide rates in both sexes, especially for people under 45 years of age. The age-standardized suicide
232 rate has decreased significantly in the world (Sinyor, Tse, and Pirkis 2017; Naghavi 2019) . The same
233 pattern is observed in Latin America with a clear decrease in recent decades (Naghavi 2019) . The
234 major impact of suicide in young adults has been previously described (Naghavi 2019) , and it is in
235 this age range where suicide has been consistently ranked among the five leading causes of death
236 (Naghavi 2019; Roth et al. 2018) . Similar trends have emerged in other countries, for example in
237 Brazil between 2000 and 2016, an increase in suicide rates was observed in men between 20 and 39
238 years old, while in women the upward trend was detected in people over 40 years (Martini et al.
239 2019) . In South Korea, on the other hand, a clear increase is noted in men between 30 and 49 years
240 old between 1993-2016, but it is absent below or above these age classes (Lee et al. 2018) . In the
241 same country, suicide rates in women 10-19 years old showed a noticeable increase, similar to our case,
242 between 1998 and 2009; however, after this year the increase disappears (Lee et al. 2018) . The
243 upward trend in older adults is weak in both sexes and only detectable at middle to high latitudes (Fig
244 1a-b), which is markedly different to other Latin American countries like Brazil, where this positive
245 trend has been highly significant in the last two decades (Santos et al. 2017) .

246

247 Sex differences in suicide rates have been well documented with the male/female suicide mortality
248 ratio strongly biased to men (Naghavi 2019) ; however, the magnitude of this bias is highly variable.
249 In our study, the male/female ratio decreased from 2000 to 2009 and then rose until 2017. Despite the
250 complexity of comparing with other places, a slightly similar pattern (but with lower values for the
251 ratio) was observed in South Korea, with an initial decrease starting around 1993 until 2005-2010, and
252 then an increase in the range 2011-2016 (Lee et al. 2018) , something quite different to the almost
253 null change in Brazil (Martini et al. 2019) , a Latin American country where more cultural and social

254 commonalities are expected. On the other hand, when we look at the male/female ratio through age
255 classes, the pattern in Chile is substantially different to the global pattern. Globally, the ratio is close to
256 1 in adolescents and increases to values close to 2.5-3 between people 30 to 60 years old. Over 60 years
257 of age, the global pattern shows a decline in the ratio to values close to 1.5 (Global Burden of Disease
258 Collaborative Network 2019) . First, our data show ratio values slightly over 1 in adolescents, which
259 is in line with global patterns, but for middle-aged people we observe higher values for the ratio, with
260 values ranging between 4 and 5 (Fig 2b), which is 30 to 50% higher than global data. The difference is
261 even clearer in people over 60 years old, where ratios rise to values above 8 (Fig 2b). However, ratio
262 values over 4 are not uncommon in Latin America or some countries in Asia (Global Burden of Disease
263 Collaborative Network 2019) , and very high ratios in older adults have been previously reported in
264 Brazil (Martini et al. 2019) . We will discuss some potential explanations for these trends in the next
265 paragraphs.

266

267 The evaluation of environmental and socioeconomic variables showed two main patterns. The first is
268 the positive influence of cloudiness as a metric of the net sunlight available on suicide rates in both
269 sexes under 25 years old. This particular result was, in some sense, backed up by the consistent,
270 although non-significant, negative estimations of the sunlight coefficients. The latitudinal pattern of
271 cloudiness (and sunlight) is remarkable in Chile, with almost cloud-free conditions in northern regions
272 to clouds covering the skies in southern regions for more than 65% of the year (Wilson and Jetz
273 2016) . The association of sunlight availability (or some proxy) with suicide rates or depression has
274 been described many times in previous studies (Olders 2003; Vyssoki et al. 2014; Hernández,
275 Hernández-Sánchez, and Flores-Gutiérrez 2018; Makris et al. 2021) , which supports our results. In
276 fact, studies emphasizing the relationship between suicide rates and latitude often offer explanations
277 using sunlight availability at some temporal scale as the actual variable behind the pattern (Lester and
278 Shephard 1998; Voracek and Formann 2004; Heerlein, Valeria, and Medina 2006; Davis and Lowell
279 2002) . Despite the difficulties of inferring mechanisms from statistical associations, a common
280 explanation for this relationship is that Cloudiness/Sunlight interacts with the biological mechanisms
281 behind the regulation of serotonin and melatonin production, which, in turn, regulate several behaviors
282 linked to suicidal behavior (Vyssoki et al. 2014; White et al. 2015) . However, these explanations
283 should be treated with caution because, beyond the consistent statistical pattern described here and
284 other studies, by accepting these explanations we are downscaling population results to the individual
285 level. The influence of cloudiness disappears in people over 25 years old. Estimated coefficients for
286 sunlight were consistently negative, as expected, but non-significant. This result suggests a hidden
287 interaction between age and sunlight availability which mediates suicide rates. As a hypothesis, we can
288 speculate that the influence of being exposed to sunlight is higher on the young population, still under
289 psychological development, than on adults, and that this differential influence is reflected in latitudinal
290 patterns of suicide rates.

291

292 The second pattern was even clearer. Our results showed a strong positive influence of poverty on
293 suicide rates in men over 35 years old. The poverty coefficients estimated for all age classes over 35

294 years were highly (and increasingly) significant. The link between poverty and high suicide rates has
295 been widely described in North America (Fontanella et al. 2018) , Asia (Lee et al. 2018) , and
296 Europe (Fountoulakis et al. 2014, 2016) . The impact of poverty on health conditions, particularly
297 mental health, is so ubiquitous because its detrimental influence acts via many paths. In an ecological
298 interpretation, chronic poverty is a press disturbance, a constant damaging force with a cumulative
299 effect on people's health, which in turn could be reflected in high chronic suicide rates. Another path is
300 the effect of economic crisis on mental health (Álvaro-Meca et al. 2013; Chang et al. 2013) . In this
301 case, economic crises act as pulse disturbances, which could be reflected in sudden increases in suicide
302 rates with short- or long-term impacts depending on the pace of economic recovery. Previous studies
303 have pointed out the effect of poverty or deprivation on suicide rates using unemployment as a proxy.
304 Unemployment is a representative measure of population well-being and, as such, is a useful
305 representation of deprivation. In this regard, evidence shows sporadic increases both during or
306 immediately after economic crises (a sign over time, (Álvaro-Meca et al. 2013; Chang et al. 2013) ,
307 and a cluster of high suicide rates in localities with high chronic unemployment (a sign over space
308 Trgovac, Kedron, and Bagchi-Sen 2015; Alarcão et al. 2020) .

309

310 The association between poverty and suicide rates was only observed in men. This situation is similar
311 to the results of Fountoulakis et al. (Fountoulakis et al. 2016) . These authors, using unemployment as
312 a measure of economic distress, found that this variable was only important in models for men but not
313 women across Europe. The reason(s) behind these differential results are difficult to evaluate and there
314 is quite likely a complex interaction between biological and cultural factors.

315

316 A surprising result was the null effect of alcohol and a weak and inconsistent effect of marijuana on
317 suicide rates. Both have been positively associated with suicide rates (O'Neill and O'Connor 2020;
318 Hasin 2020; Razvodovsky 2011; Sher 2006; Edwards et al. 2020) . One possible explanation is that
319 the impact of these factors can be better detected at individual scale, but it disappears on a larger scale,
320 although this is only speculation. The effect of marijuana was negative, weak and inconsistent between
321 sexes, which suggests a spurious effect produced by the large increase in marijuana consumption in the
322 last few decades. In Chile, consumption prevalence has increased from 5.7% in 2000 to 12.7% in 2018,
323 peaking at 14.5% in 2016 (SENDA 2019), which is likely the reason behind this result. Another reason
324 for these results is the type of variables included in this study. We used yearly prevalence of
325 consumption, but prevalence of alcohol and drug use disorder in the population could be a better
326 alternative. Unfortunately, we do not have data on these variables for our time window, which prevents
327 their use in this study. Under this scenario, the interpretation of the lack of effect of alcohol and
328 cannabis consumption in this study should be cautionary.

329

330 Our study analyzed suicide rates over a large geographical scale with an ecological approach in the
331 analysis. In this sense, we cannot downscale our conclusions to the individual level. In individuals,
332 promoting and protective factors can interact in ways that can be difficult to detect using population-

333 level data. However, ecological studies like this and several others (e.g., Lee et al. 2018; Sinyor, Tse,
334 and Pirkis 2017; Trgovac, Kedron, and Bagchi-Sen 2015; Dixon et al. 2014) are relevant for
335 designing public policies and interventions to mitigate the impact of the studied variables (Sinyor, Tse,
336 and Pirkis 2017; Steelesmith et al. 2019; World Health Organization 2014) . For populations living at
337 high latitudes, where sunlight is scarce in winter or localities with high levels of cloudiness, the
338 implementation of preventive actions specially designed for young people, including improved access
339 to medical services, could be an advantageous strategy. Also, our results point out to potential
340 advantages of interventions specially designed for adult men in chronically deprived populations and/or
341 rapid response programs during and after economic crises (see similar conclusions in Steelesmith et al.
342 2019; Sinyor, Tse, and Pirkis 2017; Iemmi et al. 2016) . Our results emphasize the design of
343 particular preventive approaches depending on sex, age class, and geographic locations. General
344 strategies can be useful on some level, but to take into account other contextual variables, like those
345 described in this study, could be a significant improvement for the success of preventive actions. These
346 interventions should include psychological and social support, and the necessary financial resources,
347 for at-risk populations. We hope our results will be useful for decision-makers.

348

349 **Acknowledgments**

350 SAE thanks to ANID PIA/BASAL FB0002 for financial support.

351

352 **References**

353

- 354 Alarcão, A., C.M. Dell' Agnolo, J.R. Vissoci, E.C.A. Carvalho, C.A. Staton, L. de Andrade, K.B.
355 Fontes, S.M. Pelloso, J.C. Nievola, and M.D. Carvalho. 2020. Suicide Mortality among Youth in
356 Southern Brazil: A Spatiotemporal Evaluation of Socioeconomic Vulnerability. *Brazilian Journal*
357 *of Psychiatry* 42 (1): 46-53.
- 358 Álvaro-Meca, A., T. Kneib, R. Gil-Prieto, and A. Gil de Miguel. 2013. Epidemiology of Suicide in
359 Spain, 1981-2008: A Spatiotemporal Analysis. *Public Health* 127 (4): 380–85.
- 360 Bando, D.H., A.R. Brunoni, I.M. Benseñor, and P.A. Lotufo. 2012. Suicide Rates and Income in São
361 Paulo and Brazil: A Temporal and Spatial Epidemiologic Analysis from 1996 to 2008. *BMC*
362 *Psychiatry* 12(1): 1-12.
- 363 Björkstén, K.S., D.F. Kripke, and P. Bjerregaard. 2009. Accentuation of Suicides but Not Homicides
364 with Rising Latitudes of Greenland in the Sunny Months. *BMC Psychiatry* 9 (1): 1–10.
- 365 Borges, G. and C. Rafful Loera. 2010. Alcohol and Drug Use in Suicidal Behaviour. *Current Opinion*
366 *in Psychiatry* 23(3): 195-204.

- 367 Carvalho, A.F., B. Stubbs, D. Vancampfort, S. Kloiber, M. Maes, J. Firth, P. A. Kurdyak, D.J. Stein, J.
368 Rehm, and A. Koyanagi. 2019. Cannabis Use and Suicide Attempts among 86,254 Adolescents
369 Aged 12–15 Years from 21 Low- and Middle-Income Countries. *European Psychiatry* 56: 8–13.
- 370 Chang, S.S., D. Stuckler, P. Yip, and D. Gunnell. 2013. Impact of 2008 Global Economic Crisis on
371 Suicide: Time Trend Study in 54 Countries. *BMJ (Online)* 347 (7925): 1–15.
- 372 Cumming, G. 2007. Inference by Eye: Pictures of Confidence Intervals and Thinking About Levels of
373 Confidence. *Teaching Statistics* 29 (3): 89–93.
- 374 ———. 2013. *Understanding The New Statistics*. Routledge. New York. 536 pp.
- 375 Davis, G.e E., and W.E. Lowell. 2002. Evidence That Latitude Is Directly Related to Variation in
376 Suicide Rates. *Canadian Journal of Psychiatry* 47 (6): 572–74.
- 377 Dixon, P.G., M. Sinyor, A. Schaffer, A. Levitt, C.R. Haney, K.N. Ellis, and S.C. Sheridan. 2014.
378 Association of Weekly Suicide Rates with Temperature Anomalies in Two Different Climate
379 Types. *International Journal of Environmental Research and Public Health* 11 (11): 11627–44.
- 380 Edwards, A.C., H. Ohlsson, J. Sundquist, K. Sundquist, and K.S. Kendler. 2020. Alcohol Use Disorder
381 and Risk of Suicide in a Swedish Population-Based Cohort. *American Journal of Psychiatry* 177
382 (7): 627–34.
- 383 Fontanella, C.A., D.M. Saman, J.V. Campo, D.L. H. Steelesmith, J.A. Bridge, H.A. Sweeney, and E.D.
384 Root. 2018. Mapping Suicide Mortality in Ohio: A Spatial Epidemiological Analysis of Suicide
385 Clusters and Area Level Correlates. *Preventive Medicine* 106 (November 2017): 177–84.
- 386 Forsythe, W.C., E.J. Rykiel, R.S. Stahl, H. Wu, and R.M. Schoolfield. 2003. A Model Comparison for
387 Daylength as a Function of Latitude and Day of Year William 80: 1–9.
- 388 Fountoulakis, K.N., I. Chatzikosta, K. Pasiadis, P. Zanis, W. Kawohl, A.J.F.M. Kerkhof, A. Navickas,
389 et al. 2016. Relationship of Suicide Rates with Climate and Economic Variables in Europe during
390 2000-2012. *Annals of General Psychiatry* 15 (1): 1–6.
- 391 Fountoulakis, K.N., and X. Gonda. 2017. Differential Correlation of Suicide and Homicide Rates
392 According to Geographical Areas: A Study with Population-Level Data. *Psychiatry Research* 249
393 (November 2016): 167–71.
- 394 Fountoulakis, K.N., W. Kawohl, P.N. Theodorakis, A.J.F.M. Kerkhof, A. Navickas, C. Höschl, D.
395 Lecic-Tosevski, et al. 2014. Relationship of Suicide Rates to Economic Variables in Europe: 2000-
396 2011. *British Journal of Psychiatry* 205 (6): 486–96.
- 397 Gao, J., Q. Cheng, J. Duan, Z. Xu, L. Bai, Y. Zhang, H. Zhang, S. Wang, Z. Zhang, and H. Su. 2019.
398 Ambient Temperature, Sunlight Duration, and Suicide: A Systematic Review and Meta-Analysis.
399 *Science of the Total Environment* 646: 1021–29.
- 400 Gardner, W., E.P. Mulvey, and E.C. Shaw. 1995. Regression Analyses of Counts and Rates: Poisson,
401 Overdispersed Poisson, and Negative Binomial Models. *Psychological Bulletin* 118 (3): 392–404.

- 402 Global Burden of Disease Collaborative Network. 2019. Global Burden of Disease Collaborative
403 Network. Global Burden of Disease Study 2019 (GBD 2019) Results. *Seattle, United States:*
404 *Institute for Health Metrics and Evaluation (IHME)*. Seattle, United States.
- 405 Greene, W. 1994. Accounting for Excess Zeros and Sample Selection in Poisson and Negative
406 Binomial Regression Models. *NYU Working Paper*.
- 407 Hahm, H.C., J. Jang, C. Vu, L.M. Alexander, K.E. Driscoll, and L. Lundgren. 2013. Drug Use and
408 Suicidality among Asian American Women Who Are Children of Immigrants. *Substance Use and*
409 *Misuse* 48 (14): 1563-1576.
- 410 Hasin, D.S. 2020. Alcohol Use Disorder and Suicide Risk: A Fresh and Closer Look. *American Journal*
411 *of Psychiatry* 177 (7): 572–73.
- 412 Heerlein, A., C. Valeria, and B. Medina. 2006. Seasonal Variation in Suicidal Deaths in Chile: Its
413 Relationship to Latitude. *Psychopathology* 39 (2): 75–79.
- 414 Hernández, O. H., J.A. Hernández-Sánchez, and J.D. Flores-Gutiérrez. 2018. Annual Fluctuations of
415 Sunlight and Suicides in a Region South of the Tropic of Cancer. *Biological Rhythm Research* 49
416 (3): 405–11.
- 417 Hilbe, J.M. 2011. *Negative Binomial Regression, Second Edition*. Cambridge University Press. UK.
418 576 pp.
- 419 Hsu, C. Y., S. S. Chang, and P. S.F. Yip. 2019. Subjective Wellbeing, Suicide and Socioeconomic
420 Factors: An Ecological Analysis in Hong Kong. *Epidemiology and Psychiatric Sciences* 28 (1):
421 112–30.
- 422 Iemmi, V., J. Bantjes, E. Coast, K. Channer, T. Leone, D. McDaid, A. Palfreyman, B. Stephens, and C.
423 Lund. 2016. Suicide and Poverty in Low-Income and Middle-Income Countries: A Systematic
424 Review. *The Lancet Psychiatry* 3 (8): 774–83.
- 425 Jackman, S.,(2020). pscl: Classes and Methods for R Developed in the Political Science Computational
426 Laboratory. United States Studies Centre, University of Sydney. Sydney, New South Wales,
427 Australia. R package version 1.5.5. URL <https://github.com/atahk/pscl/>
- 428 Jagodic, H.K., M. Agius, and P. Pregelj. 2012. Inter-Regional Variations in Suicide Rates. *Psychiatria*
429 *Danubina* 24 (SUPPL. 1): 82–85.
- 430 Lee, E.H.M., C.L.M. Hui, P.Y. Chan, W.C. Chang, S.K.W. Chan, and E.Y.H Chen. 2018. Suicide Rates,
431 Psychiatric Hospital Bed Numbers, and Unemployment Rates from 1999 to 2015: A Population-
432 Based Study in Hong Kong. *American Journal of Psychiatry* 175(3): 285-286.
- 433 Lee, S.U., J.K. Park, S. Lee, I.H. Oh, J.M. Choi, and C.M Oh. 2018. Changing Trends in Suicide Rates
434 in South Korea from 1993 to 2016: A Descriptive Study. *BMJ Open* 8 (9): 1–9.
- 435 Lester, D., and R. Shephard. 1998. Variation of Suicide and Homicide Rates by Longitude and Latitude.
436 *Perceptual and Motor Skills* 87 (1): 186.

- 437 Lester, David. 1986. "Suicide and Homicide Rates: Their Relationship to Latitude and Longitude and
438 to the Weather." *Suicide and Life Threatening Behavior* 16 (3): 356–59.
- 439 Madsen, Henrik, and Poul Thyregod. 2010. *Introduction to General and Generalized Linear Models*.
440 CRC Press. Boca Raton. 316 pp.
- 441 Makris, G.D., R.A. White, J. Reutfors, L. Ekselius, and M. Andersen. 2021. Sunshine , Temperature
442 and Suicidal Behaviour in Patients Treated with Antidepressants : An Explorative Nested Case –
443 Control Study. *Scientific Reports* 11(1): 1–12.
- 444 Maronna, R.A., R.D. Martin, and V.J. Yohai. 2019. *Robust Statistics: Theory and Methods*. John Wiley
445 & Sons. Oxford. 460 pp.
- 446 Martini, M., R.C. da Fonseca, M.H. de Sousa, C. de Azambuja Farias, T. de Azevedo Cardoso, M.
447 Kunz, V.K. Longaray, and P.V. da Silva Magalhães. 2019. Age and Sex Trends for Suicide in
448 Brazil between 2000 and 2016. *Social Psychiatry and Psychiatric Epidemiology* 54 (7): 857–60.
- 449 McCullagh, P, and John A Nelder. 1989. *Generalized Linear Models (Monographs on Statistics and
450 Applied Probability)*. Chapman & Hall/CRC. Boca Raton. 532 pp.
- 451 Moniruzzaman, S., and R. Andersson. 2008. Economic Development as a Determinant of Injury
452 Mortality - A Longitudinal Approach. *Social Science and Medicine* 66 (8): 1699–1708.
- 453 Myers, R.H., D.C. Montgomery, G.G. Vining, and T.J. Robinson. 2012. *Generalized Linear Models:
454 With Applications in Engineering and the Sciences*. John Wiley & Sons. Oxford. 496 pp.
- 455 Naghavi, M. 2019. Global, Regional, and National Burden of Suicide Mortality 1990 to 2016:
456 Systematic Analysis for the Global Burden of Disease Study 2016. *BMJ (Clinical Research Ed.)*
457 364: I94.
- 458 Noh, Y.H. 2009. Does Unemployment Increase Suicide Rates? The OECD Panel Evidence. *Journal of
459 Economic Psychology* 30 (4): 575–82.
- 460 O’Neill, S., and R.C. O’Connor. 2020. Suicide in Northern Ireland: Epidemiology, Risk Factors, and
461 Prevention. *The Lancet Psychiatry* 7 (6): 538–46.
- 462 Olders, H. 2003. Average Sunrise Time Predicts Depression Prevalence. *Journal of Psychosomatic
463 Research* 55 (2): 99–105.
- 464 Razvodovsky, Y.. 2011. Alcohol Consumption and Suicide Rates in Russia. *Suicidology Online* 2: 67–
465 74.
- 466 Roh, B.R., E.H. Jung, and H.J. Hong. 2018. A Comparative Study of Suicide Rates among 10-19-Year-
467 Olds in 29 OECD Countries. *Psychiatry Investigation* 15 (4): 376–83.
- 468 Roth, G.A., D. Abate, K.H. Abate, S.M. Abay, C. Abbafati, N. Abbasi, H. Abbastabar, et al. 2018.
469 Global, Regional, and National Age-Sex-Specific Mortality for 282 Causes of Death in 195
470 Countries and Territories, 1980–2017: A Systematic Analysis for the Global Burden of Disease
471 Study 2017. *The Lancet* 392 (10159): 1736–88.

- 472 Santos, E.G. de Oliveira, Y.O.M. da Costa Oliveira, U. Nascimento de Azevedo, A.D. da Silva Nunes,
473 A.E. Amador, and I.Ribeiro Barbosa. 2017. Spatial Temporal Analysis of Mortality by Suicide
474 among the Elderly in Brazil. *Revista Brasileira de Geriatria e Gerontologia* 20(6): 845-855.
- 475 SENDA, Observatorio Chileno de Drogas. 2019. Ministerio del Interior y Seguridad Pública. Santiago,
476 Chile. 338 pp.
- 477 Sher, L. 2006. Alcohol Consumption and Suicide. *QJM - Monthly Journal of the Association of*
478 *Physicians* 99 (1): 57–61.
- 479 Sinyor, M., R. Tse, and J. Pirkis. 2017. Global Trends in Suicide Epidemiology. *Current Opinion in*
480 *Psychiatry* 30 (1): 1–6.
- 481 Steelesmith, D.L., C.A. Fontanella, J.V. Campo, J.A. Bridge, K.L. Warren, and E.D. Root. 2019.
482 Contextual Factors Associated With County-Level Suicide Rates in the United States, 1999 to
483 2016. *JAMA Network Open* 2 (9): e1910936.
- 484 Team, R Core. 2016. R: A Language and Environment for Statistical Computing. *R Foundation for*
485 *Statistical Computing*.
- 486 Terao, T., S. Soeda, R. Yoshimura, J. Nakamura, and N. Iwata. 2002. Effect of Latitude on Suicide
487 Rates in Japan [11]. *Lancet* 360 (9348): 1892.
- 488 Trgovac, A.B., P.J. Kedron, and S. Bagchi-Sen. 2015. Geographic Variation in Male Suicide Rates in
489 the United States. *Applied Geography* 62: 201–209.
- 490 Voracek, M., and A.K. Formann. 2004. Variation in European Suicide Rates Is Better Accounted for by
491 Latitude and Longitude than by National Percentage of Finno-Ugrians and Type O Blood: A
492 Rebuttal of Lester and Kondrichin (2004). *Perceptual and Motor Skills* 99(3 II): 1243-1250.
- 493 Vyssoki, B., N.D. Kapusta, N. Praschak-Rieder, G. Dorffner, and M. Willeit. 2014. Direct Effect of
494 Sunshine on Suicide. *JAMA Psychiatry* 71 (11): 1231–37.
- 495 White, R.A., D. Azrael, F.C. Papadopoulos, G.W. Lambert, and M. Miller. 2015. Does Suicide Have a
496 Stronger Association with Seasonality than Sunlight? *BMJ Open* 5(6): e007403.
- 497 Wilson, A.M., and W. Jetz. 2016. Remotely Sensed High-Resolution Global Cloud Dynamics for
498 Predicting Ecosystem and Biodiversity Distributions. *PLoS Biology* 14 (3): 1–20.
- 499 World Health Organization. 2014. *Preventing Suicide: A Global Imperative*. World Health Organization.
500 89 pp.
501
502
503
504
505

506 **Figure captions**

507

508 **Figure 1.** Linear trends in suicide rates through time for men (a) and women (b) by age and latitude
509 estimated using the Kendall correlation coefficient. Empty cells are combinations with too low
510 variability for calculating the coefficient.

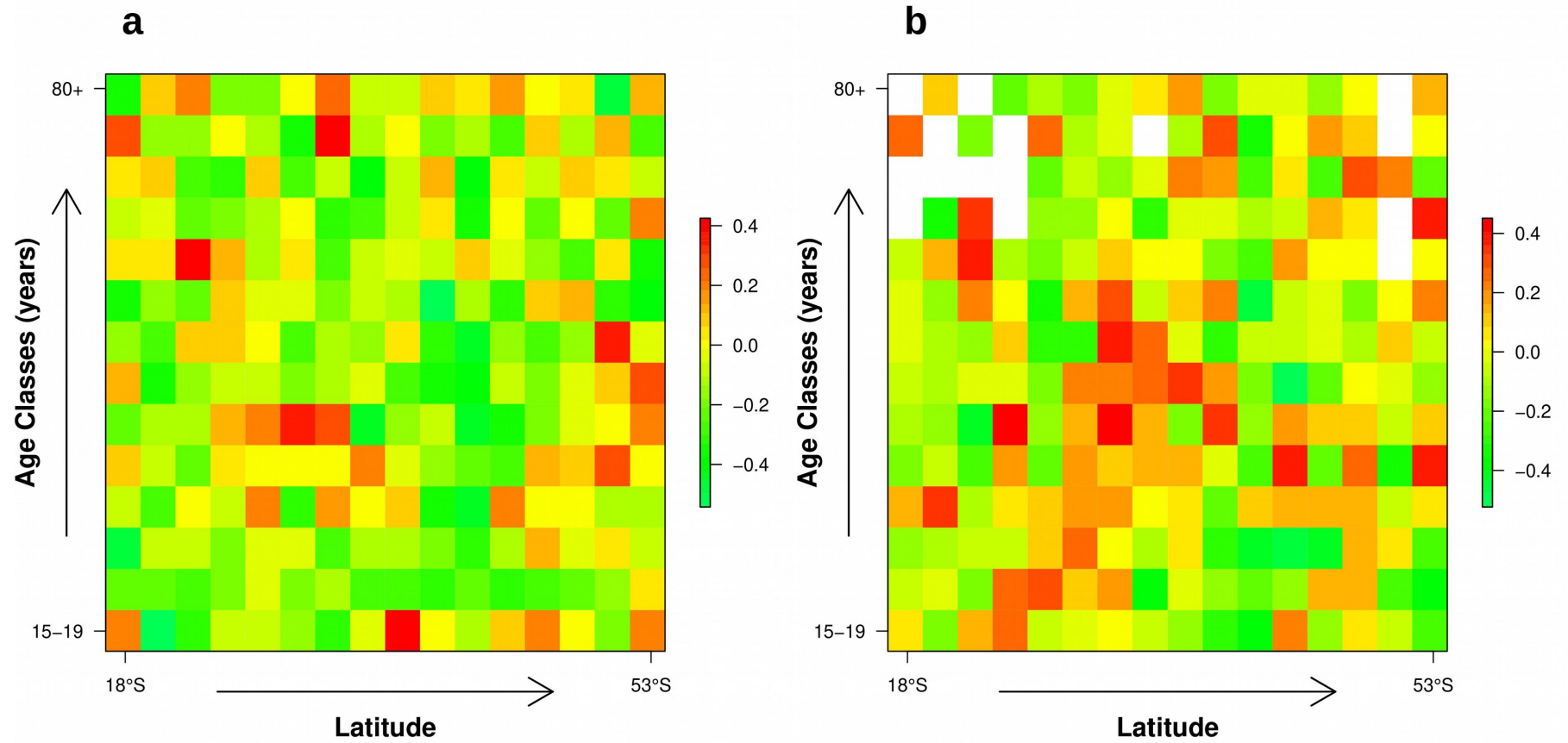
511 **Figure 2.** Trends in the male/female ratios of suicide over time (a) and age classes (b).

512 **Figure 3.** Estimated coefficients and confidence intervals (bars) for the effect of environmental and
513 socioeconomic variables on men by age class.

514 **Figure 4.** Estimated coefficients and confidence intervals (bars) for the effect of environmental and
515 socioeconomic variables on women by age class.

516

517



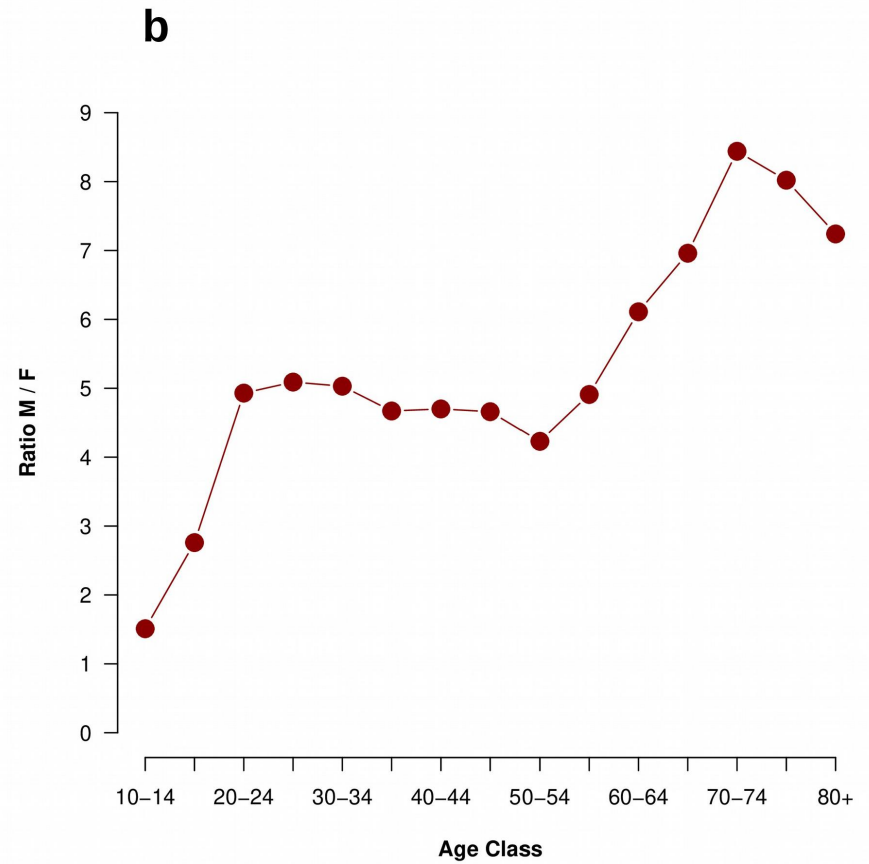
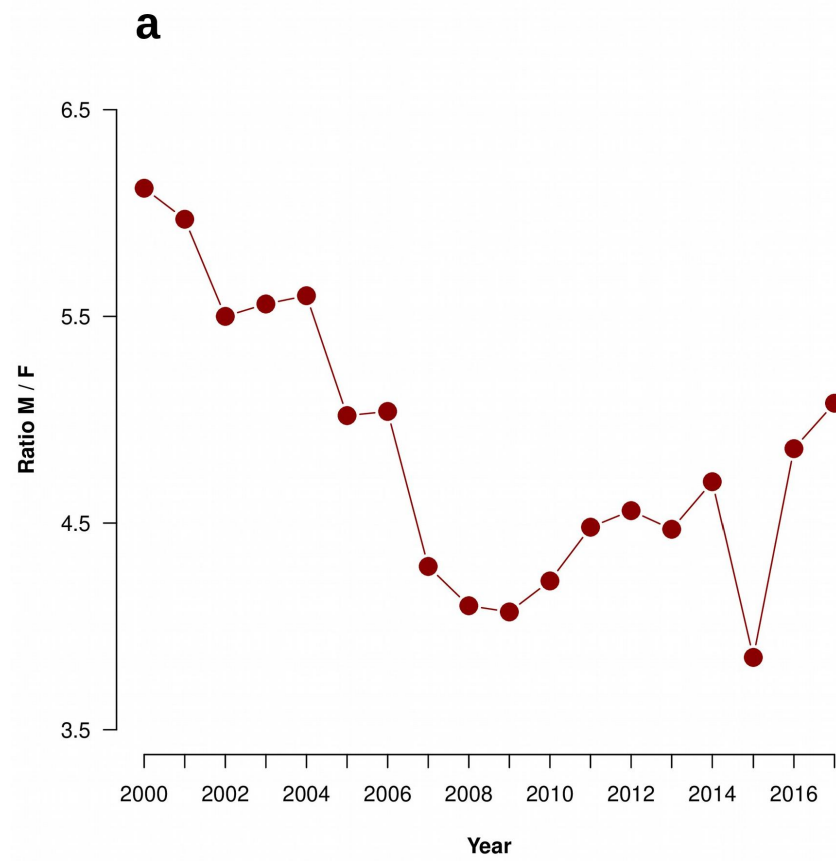
519

520

521

522

523



525

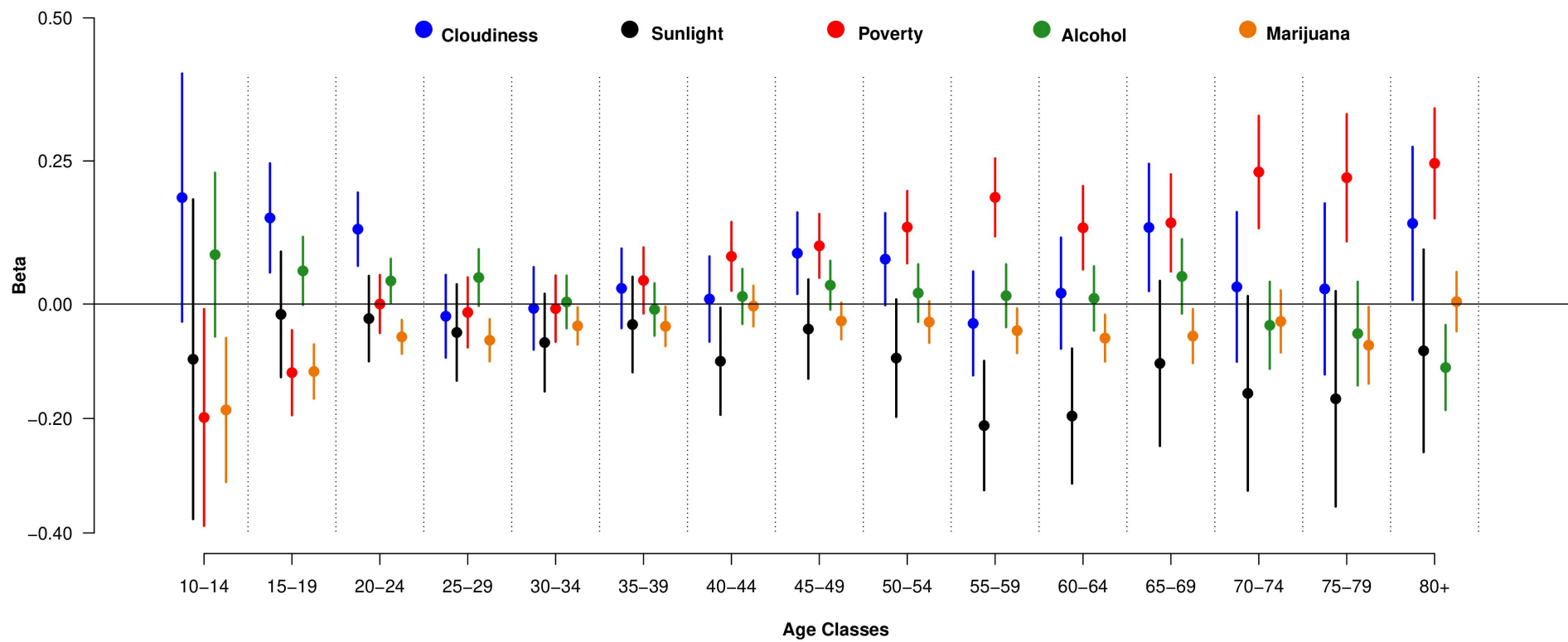
526

527

528

529

530 **Figure 3.**



531

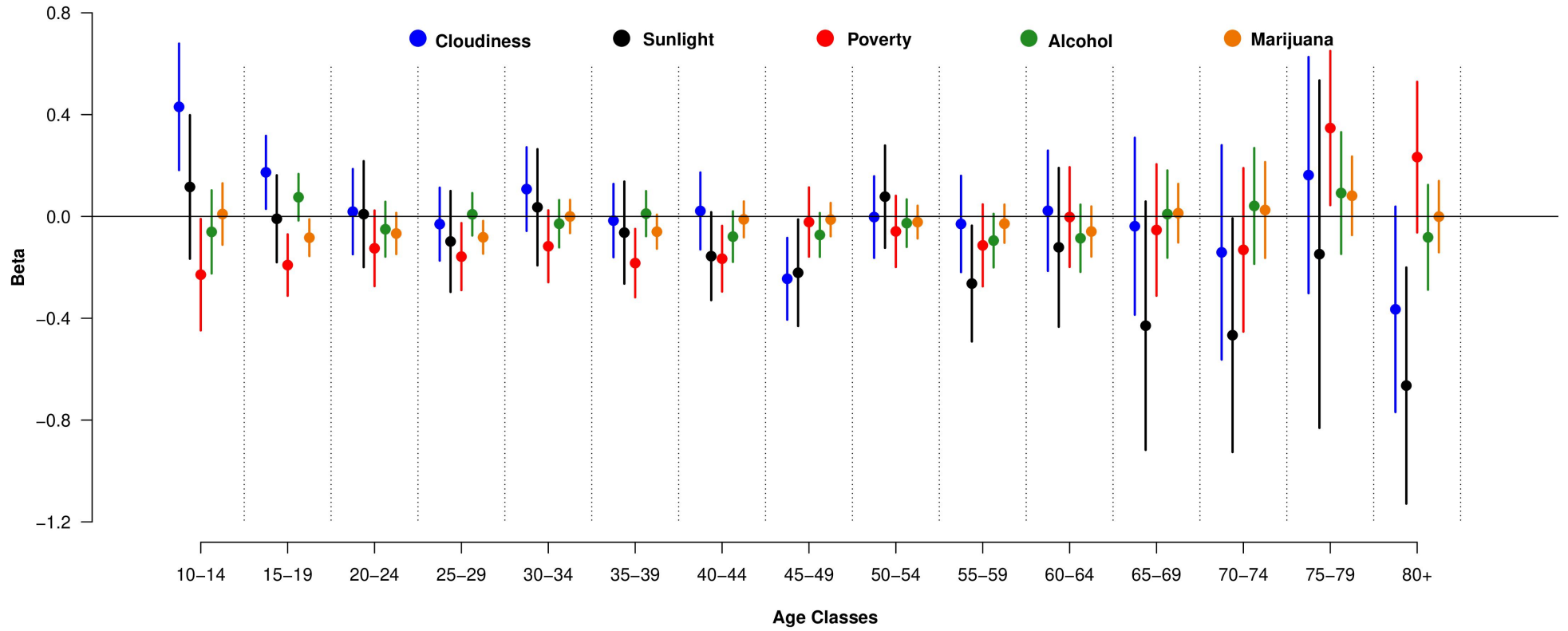
532

533

534

535

536 **Figure 4.**



537

538

539

540

541

542 Supplementary information 1a.

Model results for men																
Age Class	Estimated coefficient					Lower 95% Confidence interval					Upper 95% Confidence interval					Pseudo - R2
	Cloudiness	Sunlight	Poverty	Alcohol	Marijuana	Cloudiness	Sunlight	Poverty	Alcohol	Marijuana	Cloudiness	Sunlight	Poverty	Alcohol	Marijuana	
10-14	0.186	-0.096	-0.198	0.086	-0.185	-0.031	-0.376	-0.387	-0.057	-0.311	0.403	0.183	-0.009	0.229	-0.059	0.21
15-19	0.150	-0.018	-0.120	0.058	-0.118	0.055	-0.128	-0.194	-0.001	-0.165	0.246	0.092	-0.046	0.117	-0.070	0.25
20-24	0.131	-0.025	0.000	0.040	-0.057	0.067	-0.100	-0.051	0.002	-0.087	0.195	0.049	0.051	0.079	-0.028	0.32
25-29	-0.021	-0.050	-0.015	0.046	-0.063	-0.094	-0.134	-0.076	-0.003	-0.100	0.051	0.035	0.046	0.096	-0.026	0.28
30-34	-0.008	-0.067	-0.008	0.004	-0.038	-0.080	-0.153	-0.066	-0.042	-0.071	0.064	0.018	0.050	0.050	-0.006	0.30
35-39	0.027	-0.036	0.041	-0.009	-0.039	-0.042	-0.119	-0.016	-0.055	-0.073	0.097	0.048	0.099	0.036	-0.004	0.29
40-44	0.009	-0.100	0.083	0.013	-0.004	-0.066	-0.194	0.023	-0.035	-0.039	0.083	-0.006	0.143	0.061	0.032	0.29
45-49	0.089	-0.044	0.102	0.033	-0.030	0.018	-0.130	0.046	-0.010	-0.062	0.160	0.043	0.157	0.075	0.003	0.30
50-54	0.078	-0.094	0.134	0.019	-0.031	-0.002	-0.197	0.071	-0.031	-0.068	0.159	0.008	0.198	0.070	0.005	0.29
55-59	-0.034	-0.212	0.186	0.015	-0.047	-0.125	-0.325	0.118	-0.040	-0.085	0.057	-0.099	0.254	0.069	-0.008	0.28
60-64	0.019	-0.196	0.133	0.010	-0.060	-0.078	-0.314	0.061	-0.046	-0.100	0.116	-0.078	0.206	0.066	-0.019	0.29
65-69	0.134	-0.104	0.142	0.048	-0.056	0.023	-0.248	0.057	-0.017	-0.103	0.245	0.041	0.227	0.113	-0.009	0.27
70-74	0.030	-0.156	0.231	-0.037	-0.030	-0.101	-0.326	0.133	-0.113	-0.085	0.161	0.014	0.329	0.039	0.024	0.25
75-79	0.026	-0.166	0.221	-0.052	-0.072	-0.123	-0.354	0.110	-0.142	-0.139	0.176	0.023	0.332	0.039	-0.005	0.24
80+	0.141	-0.082	0.246	-0.111	0.004	0.007	-0.259	0.150	-0.185	-0.048	0.275	0.095	0.342	-0.037	0.056	0.26
Model results for women																
Age Class	Estimated coefficient					Lower 95% Confidence interval					Upper 95% Confidence interval					Pseudo - R2
	Cloudiness	Sunlight	Poverty	Alcohol	Marijuana	Cloudiness	Sunlight	Poverty	Alcohol	Marijuana	Cloudiness	Sunlight	Poverty	Alcohol	Marijuana	
10-14	0.431	0.116	-0.229	-0.061	0.010	0.182	-0.166	-0.448	-0.224	-0.111	0.679	0.398	-0.010	0.103	0.130	0.20
15-19	0.173	-0.009	-0.191	0.075	-0.083	0.030	-0.180	-0.312	-0.016	-0.155	0.317	0.162	-0.070	0.167	-0.011	0.24
20-24	0.019	0.009	-0.125	-0.050	-0.067	-0.149	-0.199	-0.274	-0.158	-0.148	0.186	0.217	0.023	0.058	0.014	0.23
25-29	-0.030	-0.098	-0.158	0.008	-0.082	-0.173	-0.297	-0.289	-0.075	-0.146	0.113	0.100	-0.026	0.092	-0.018	0.27
30-34	0.107	0.036	-0.117	-0.029	0.000	-0.057	-0.192	-0.258	-0.122	-0.065	0.272	0.264	0.024	0.064	0.065	0.27
35-39	-0.016	-0.064	-0.183	0.011	-0.060	-0.160	-0.264	-0.318	-0.078	-0.127	0.128	0.137	-0.049	0.100	0.007	0.27
40-44	0.022	-0.156	-0.166	-0.079	-0.012	-0.130	-0.329	-0.295	-0.179	-0.082	0.173	0.017	-0.037	0.020	0.059	0.25
45-49	-0.245	-0.221	-0.022	-0.073	-0.012	-0.406	-0.431	-0.158	-0.159	-0.078	-0.084	-0.012	0.114	0.014	0.053	0.28
50-54	-0.002	0.078	-0.059	-0.026	-0.022	-0.163	-0.123	-0.199	-0.120	-0.087	0.158	0.279	0.081	0.067	0.042	0.27
55-59	-0.029	-0.264	-0.114	-0.095	-0.028	-0.219	-0.491	-0.275	-0.200	-0.104	0.160	-0.036	0.047	0.010	0.047	0.28
60-64	0.022	-0.121	-0.002	-0.086	-0.059	-0.214	-0.433	-0.198	-0.218	-0.158	0.259	0.191	0.193	0.046	0.039	0.26
65-69	-0.039	-0.429	-0.053	0.009	0.013	-0.386	-0.917	-0.311	-0.162	-0.102	0.309	0.059	0.205	0.181	0.128	0.33
70-74	-0.141	-0.467	-0.131	0.041	0.025	-0.562	-0.926	-0.453	-0.186	-0.163	0.280	-0.007	0.190	0.269	0.214	0.23
75-79	0.162	-0.148	0.347	0.092	0.081	-0.302	-0.831	0.044	-0.147	-0.073	0.626	0.534	0.650	0.331	0.235	0.24
80+	-0.365	-0.664	0.233	-0.082	-0.001	-0.769	-1.128	-0.063	-0.288	-0.141	0.039	-0.201	0.529	0.124	0.139	0.23