

1 **Phylogenomics, Epigenomics, Virulome, and Mobilome of Gram-negative Bacteria Co-**
2 **resistant to Carbapenems and Polymyxins: A One-Health Systematic Review and Meta-**
3 **analyses**

4 Winnie Thabisa Ramaloko and John Osei Sekyere[#]

5 Department of Medical Microbiology, School of Medicine, Faculty of Health Sciences,
6 University of Pretoria, South Africa.

7 [#]Address correspondence to Dr. John Osei Sekyere: jod14139@gmail.com

8 **Running Head:** Genomics of carbapenem & colistin co-resistance

9 **Tweet:** “*Carbapenems & polymyxins are reserved antibiotics for fatal bacterial infections.*
10 *Resistance to both agents is rising in pathogenic bacteria globally, threatening efficient*
11 *antimicrobial chemotherapy.*”

12 **Author summary:**

13 Carbapenem and polymyxin co-resistance in Gram-negative bacteria (GNB) is a growing
14 public health concern globally. China presented a high number of highly resistant bacteria
15 from humans, animals, and environmental samples. *Escherichia coli* isolates were the most
16 dominant in China, while *Klebsiella pneumoniae* isolates dominated Greece, the second
17 country with high numbers of carbapenem and colistin co-resistant strains. Mobile genetic
18 elements including plasmids are responsible for disseminating such resistance genes.
19 Worryingly, GNB with Carbapenem and polymyxin co-resistance also harbours genes that
20 make them resistant to other antibiotics, making them multi-drug resistant.

21

22

23 **Abstract**

24 Gram-negative bacteria (GNB) continue to develop resistance against important antibiotics
25 including last-resort ones such as carbapenems and polymyxins. An analysis of GNB with co-
26 resistance to carbapenems and polymyxins from a One Health perspective is presented.

27 Data of species name, country, source of isolation, resistance genes (ARGs), plasmid type,
28 clones, and mobile genetic elements (MGEs) were deduced from 129 articles from January
29 2016 to March 2021. Available genomes and plasmids were obtained from PATRIC and
30 NCBI. Resistomes and methylomes were analysed using BAcWGSTdb and REBASE whilst
31 Kaptive was used to predict capsule typing. Plasmids and other MEGs were identified using
32 MGE Finder and ResFinder. Phylogenetic analyses were done using RAxML and annotated
33 with MEGA 7.

34 A total of 877 isolates, 32 genomes and 44 plasmid sequences were analysed. Most of these
35 isolates were reported in Asian countries and were isolated from clinical, animal, and
36 environmental sources. Colistin resistance was mostly mediated by *mgrB* inactivation, while
37 OXA-48/181 was the most reported carbapenemase. IncX and IncI were the most common
38 plasmids hosting carbapenemases and *mcr* genes. The isolates were co-resistant to other
39 antibiotics, with *floR* (chloramphenicol) and *fosA3* (fosfomycin) being common; *E. coli*
40 ST156 and *K. pneumoniae* ST258 strains were common globally. Virulence genes and
41 capsular KL-types were also detected. Type I, II, III and IV restriction modification systems
42 were detected, comprising various MTases and restriction enzymes. The escalation of highly
43 resistant isolates drains the economy due to untreatable bacterial infections, which leads to
44 increasing global mortality rates and healthcare costs.

45 **Keywords:** Carbapenem; polymyxins; One Health; resistome; resistance plasmids;
46 methylome; virulome.

47 **1. Introduction**

48 Antibiotics resistance (AR) in Gram-negative bacteria (GNB) result in severe infections that
49 are difficult to treat. Multiple AR genes (ARGs) in GNB, which confer resistance to two or
50 more antibiotics, make the host bacteria multi-drug resistant (MDR) ^{1,2}. GNB are
51 continuously evolving as new genetic elements emerges and outspreads ³⁻⁵, increasing the
52 incidence and dissemination of MDR infections that pose a huge threat to public health
53 globally⁶. High demands for and over prescription of antibiotics in humans and animals have
54 resulted in an increasing burden of AR globally ^{7,8}. Increasing rates of AR in GNB have
55 influenced and driven the need for novel antibiotics and newer treatment therapies ^{9,10}.
56 Antibiotics such as cepheems and carbapenems have successfully been used to treat infections
57 caused by highly resistant GNB, particularly *Enterobacteriaceae* ^{1,11,12}. However, enormous
58 use of these antibiotics in human and veterinary medicine is resulting in the emergence of
59 bacterial resistance to these important antibiotics ¹³. An even more concerning problem is that
60 carbapenem-resistant GNB also develop resistance to other antibiotics, including polymyxins
61 such as polymyxin E (colistin), which is regarded as the last “hope” and has been effective in
62 treating infections caused by MDR GNB thus far ¹⁴⁻¹⁶.

63 Carbapenems are antibiotics that are reserved for treating infections caused by most
64 infectious pathogens, including carbapenem-resistant *Enterobacteriaceae* (CRE^{3,13}). They are
65 β -lactams with an extensive activity against infectious GNB, which cause complex, highly
66 resistant infections ¹. Carbapenems are hydrolyzed by enzymes known as carbapenemases
67 that target the β -lactam ring of a β -lactam antibiotic to deactivate it ^{17,18}. Carbapenemases
68 include the broad-spectrum New Delhi metallo- β -lactamase (NDM), Verona integron-
69 encoded metallo- β -lactamase (VIM), Imipenemase (IMP) ^{19,20}, Oxacillinases (OXA) ²¹,
70 Guiana extended-spectrum β -lactamases (GES) and *Klebsiella pneumoniae* carbapenemase
71 (KPC) ^{17,22}.

72 While there is still an ongoing global battle against acquired carbapenem resistance in GNB,
73 polymyxin resistance is also emerging at a faster pace²³, owing to the global increase in the
74 use of polymyxins to treat carbapenem-resistant infections^{14,15}. Polymyxin resistance is
75 primarily mediated by a mobile colistin resistance (*mcr*) gene^{14,15}, as well as by
76 modification(s) in or loss of lipopolysaccharides (LPS) and increase in capsule production,
77 which often prevents polymyxins from binding to the target site^{23,24}. Polymyxins are
78 positively charged antimicrobial peptides and they target negatively charged LPS of the
79 bacterial outer membranes²⁵. Notably, the *mcr* gene is mostly located on plasmids, giving
80 them an advantage to spread to other bacteria easily and rapidly. Presently, ten variants of the
81 *mcr* gene have been identified, with the *mcr-1* gene being the most common and first
82 identified variant^{14,15}. Chromosomally, polymyxin resistance occurs via active mutations in
83 the two-regulatory systems, which in turn modifies the LPS²⁴. Several studies have now
84 reported that mutations in the two-component systems; CrrA/B, PmrA/B and PhoP/Q and
85 inactivation of the negative regulatory gene *mgrB* are connected to polymyxin resistance in
86 GNB^{22,24,26–28}. These systems play a role in the modification of the LPS, which confers
87 colistin resistance in GNB¹⁵. The two-regulatory systems in GNB regulate cellular function
88 based on various environmental signals including antibiotic exposure²⁹.

89 The *pmrAB* system is part of the *pmrABC* operon, which play a huge role in chromosomal
90 colistin resistance. This operon encodes cytoplasmic membrane-bound sensor kinase (PmrB),
91 regulatory protein (PmrA) and a putative membrane protein (PmrC)¹⁵. LPS is negatively
92 charged, which ideally increase binding affinity for positively charged colistin molecules.
93 However, mutations on the two regulatory system modifies the LPS, reducing its overall
94 negative charges. This in turn lowers the chances of colistin molecules to bind, making a
95 bacterium resistant to colistin³⁰. Mutation(s) on *pmrA* and/or *B* genes may lead to the
96 modification of Lipid A, which may results in colistin resistance²⁹. The *phoPQ* system

97 regulates the *pbgP* operon¹⁵, which encode membrane enzymes that are responsible for the
98 formation and addition Ara4N (4-amino-4deoxy-L-arabinose) to Lipid A³¹. Such enzymes
99 are EptA (phosphothanolamine) and ArnT (glycosyltransferase) and are responsible for the
100 remodelling of the surface structure of the Lipid A by adding Ara4N to 4' position of the
101 Lipid A²⁴. Therefore, the expression of such gene's triggers Lipid A modification, thus
102 mediate bacterial polymyxin resistance. Furthermore, any changes on the *mgrB* and *crrB*
103 regulatory genes also results in the activation of ArnT and EptA through the *arnBCADEF*
104 operon respectively^{24,25}.

105 Co-resistance to polymyxins and carbapenems is critical and more concerning as it threatens
106 global antibiotic chemotherapy, patients' recovery, and the economy^{15, 3}. Unfortunately,
107 such bacteria also harbour other ARGs conferring resistance to aminoglycosides (*rmtA-H*,
108 *armA*, *aac6'-IIIb*), fosfomycin (*fosA*), cephalosporin (*bla_{CTX-M}*), tetracycline (*tet*) and
109 florfenicol (*floR*)^{16,32,33}. Hence, GNB with co-resistance to polymyxins and carbapenems are
110 mostly always MDR. This crisis continues to challenge healthcare facilities, increasing
111 morbidities, mortalities, and healthcare costs³⁴.

112 In addition to ARGs, bacteria have systems that allow them to survive antibiotic stress and
113 other external aggression. Such systems include the production of protective capsules and
114 restriction modification systems (RMS): DNA methylases (MTases) and restriction
115 endonucleases (REs)³⁵. DNA methylation is the principal epigenetic modification in cellular
116 processes including DNA replication and repair, lowering of transformation, transcriptional
117 modulation, regulation of gene expression and defense against foreign DNA³⁵. DNA
118 methylation is also important in regulating gene expression including that of resistance and
119 virulence genes³⁶. MTases and Res have the same DNA recognition site (motif) and are
120 frequently encoded alongside each other³⁵. Mtases methylates DNA by adding a methyl
121 group and restriction endonucleases cleave exogenous DNA owing to different patterns of

122 methylation³⁷. However, MTases can either act with or independent from restriction enzymes
123 and such MTases are referred to as orphan MTases³⁵.

124 Although these processes are also found in eukaryotes, they are very diverse in prokaryotes
125 and are categorized as Type I, II, III and IV^{35,37,38}. These classifications are differentiated by
126 recognition site, cleavage site, subunit composition and the type of substrate³⁸. Type I and II
127 are the most prevalent systems in bacteria. The Type I system constitute three subunits, which
128 are responsible for specificity (S), modification (M) and restriction (R)^{35,38}. On the other
129 hand, the Type II system has the R and M subunits only³⁸. The R and M genes in type II
130 system are separate but has the same binding site³⁸. The type II restriction enzymes
131 recognize and destroy acquired and/or foreign DNA with either incomplete or absence of
132 methylation signature (motif)³⁹.

133 Mtases may be associated with mobile genetic elements (MGEs) such as plasmids and
134 transposons that contribute to the difference in bacterial methylation patterns³⁵. Furthermore,
135 the RMS may also be encoded by genes found on chromosome or plasmids, which are also
136 responsible for disseminating ARGs⁴⁰. Hence, plasmids without the same methylation
137 signatures as the host cell are regarded as “foreign” and will be susceptible to cleavage by
138 restriction endonucleases³⁹.

139 Bacteria also produce and secrete extracellular material called polysaccharide capsules which
140 allow them to bypass the host immune system⁴¹. These are usually made of a chain of simple
141 sugars attached to the outer surface of bacterial cells and are therefore the first elements to
142 interact with the host⁴¹. The formation of these capsules is linked to efflux pumps, which are
143 pervasive membrane transporter proteins and are important for bacterial antibiotic resistance
144⁴²⁻⁴⁴. These systems pump out toxic substances/solutes such as metabolites and antimicrobial
145 agents from the cell⁴². Efflux pump such as knpEF, a regulatory member of small multidrug

146 resistance protein (SMR) group mediates polymyxin resistance^{42,43}. This pump is responsible
147 for the formation of capsular polysaccharides in *K. pneumoniae*⁴²⁻⁴⁴. When this pump is
148 activated, more capsules are synthesized leading to an increase in colistin resistance as they
149 serve as a barrier between colistin and bacterial cells⁴². Therefore, resistance level in GNB
150 may depend on the number of capsular polysaccharides produced⁴². Furthermore, tighter
151 encapsulation in *K. pneumoniae* also contribute to the increase in polymyxin resistance. This
152 occur through the inactivation of the *mgrB* gene, resulting in harder and tightly bound
153 capsular polysaccharides⁴⁵.

154 Antibiotic resistance is commonly disseminated through MGEs including transposons,
155 plasmids, and insertion sequences⁴⁰. Plasmids are the most common vehicle for resistance
156 genes transmission, offering an advantage to bacteria as it may bypass the species barrier
157^{3,4,15}. Therefore, plasmid borne ARGs such as *mcr* and carbapenemases are widespread due to
158 their faster dissemination rate among bacteria species⁴⁰. Owing to the close connection
159 between humans, animals, and the environment (water, soil, air, and communities/built
160 environment), ARGs and virulence mechanisms can be disseminated between these three
161 domains through bacterial hosts and plasmids^{7,8,46}. Thus, antibiotics administration in
162 livestock/food-producing animals may select and spread antibiotic-resistant GNB to humans
163 and the environment through the food chain^{7,8,46} and their faeces/farm effluents,
164 respectively. Therefore, applying the One Health concept, which describes the interaction
165 between humans, animals, and the environment, may be effective in reducing the spread of
166 ARGs between these domains⁴⁷. Herein, we present an epidemiological and molecular
167 analysis of GNB that are co-resistant to carbapenems and polymyxins from a One Health
168 perspective.

169 ***Evidence before this review***

170 Dandachi et al. (2018) published a review based on a study done in the Mediterranean basin,
171 which only focused on co-resistance of carbapenem and colistin among GNB from animal
172 samples⁴⁸. Thus, the study was only based on a specific region and samples were isolated
173 from one source (animals) only. Furthermore, the study did not address the epigenomics,
174 genomics, virulome, and evolutionary phylogenomics of the resistant isolates. So far, not
175 much is known about the depth of the genetic structure of GNB with carbapenem and colistin
176 co-resistance; such evidence is still missing. Another review article on a multidrug-resistant
177 GNB done in the Middle-East was published⁴⁹. Although this study reported from a One
178 Health view from a region, it did not look at the epigenomics and evolutionary phylogenetics
179 of the isolates.

180 ***Purpose of this systematic review***

181 This systematic review and genomic analyses report on a One Health epidemiology of
182 colistin resistance in carbapenemase-producing GNB on a global scale. Further, the
183 epigenomics, mobilome, capsules and virulome of GNB genomes with carbapenem and
184 colistin resistance mechanisms are described alongside their geographic location, sample
185 source, and other ARGs.

186 **2. Methods**

187 ***2.1 Literature search***

188 An extensive literature search was done on PubMed using the following search
189 words/phrases: carbapenem* AND colistin/polymyxin AND resistan* AND Gram-negative
190 bacteria; carbapenem* AND colistin/polymyxin AND resistan* AND bacteria; and
191 carbapenem* AND mcr AND resistan* AND bacteria. The search was done in a factorial

192 fashion. Other search engines used included google scholar, ScienceDirect and ResearchGate,
193 which resulted in twelve additional papers.

194 ***2.1.1 Inclusion and exclusion criteria***

195 Articles published between January 2016 and March 2021 were included. A total of 1769
196 articles that did not address GNB and were excluded (Table S1_A). Further screening
197 excluded 66 articles, which focused on the resistance to one antibiotic. A total of 129 articles,
198 which focused on carbapenem and polymyxin co-resistance in GNB, were included for
199 qualitative synthesis and statistical analyses (Table S1_B).

200 ***2.2 Collection and characterization of isolates in included studies.***

201 For studies included in this review, samples were broadly collected from hospitals, farms, and
202 animal slaughterhouses. GNB were isolated from bodily fluids, wounds, catheter tip, floor,
203 sewage as well as from food. After sample collection, bacteria were cultured, followed by
204 DNA extraction, gene amplification and whole-genome sequencing. For antibiotic
205 susceptibility tests (AST), most studies employed the broth microdilution method (BMD) to
206 determine colistin resistance^{19,22,50-52}. The genomic sequences were also used to identify
207 carbapenemases and colistin resistance mechanisms, as well as assign sequence types (ST) of
208 clones based on multi-locus sequence typing (MLST)⁵³. Conjugation assays were used to
209 assess the transferability of carbapenem and colistin ARGs followed by the selection of
210 transconjugants on various agar plates containing various antibiotics including carbapenem
211 and colistin.

212 For this study, bioinformatics and statistical analyses of downloaded genomes and extracted
213 data were undertaken, respectively. Information such as the geographical distribution, sample
214 source, species, clones, ARGs, MGEs and plasmids replicons/incompatibility (Inc) groups

215 was extracted. A total of 877 GNB isolates from different sources were analyzed (Table
216 S2_A).

217 **2.3 Statistical analysis**

218 Data from 129 articles was analyzed using Microsoft Excel 365. Differences and patterns
219 across different data variables such as countries, species, specimen sources, ARGs, MGEs
220 etc. were also analyzed using Microsoft Excel 365. Furthermore, results were visualized
221 through bar charts, pie charts and maps from Microsoft Excel. Statistical significance
222 between different data sets and variance analysis were calculated using One-way ANOVA
223 and/or One Sample T-test on GraphPad. A probability value (p-value) of <0.05 was defined
224 as a significant correlation between different datasets.

225 **2.4 Included Genomes.**

226 Whole genome (chromosome and plasmid) sequences of isolates with both carbapenem and
227 colistin resistance were downloaded from the NCBI (<https://www.ncbi.nlm.nih.gov/>) and
228 PATRIC (<https://patricbrc.org/>) bacterial genome databases, using the accession numbers
229 provided in the included articles. A total of 32 whole genome sequences and 44 plasmids
230 were retrieved. Of the 44 plasmids, 28 and 16 were respectively associated with
231 carbapenemases and *mcr* genes, respectively. Other isolates were not included in the analysis
232 because their accession numbers were either not provided or not found on the databases.

233 **2.5 In silico analyses of included genomes.**

234 For the available genomes, the DNA methylases (methylome), motifs, RMS were identified
235 on the restriction enzyme databases (REBASE) (<http://rebase.neb.com/rebase/rebase.html>)
236 hosted at the Centre for Genomic Epidemiology. ARGs and plasmids replicon were
237 determined using ResFinder (<https://cge.cbs.dtu.dk/services/ResFinder/>) and plasmidFinder
238 (<https://cge.cbs.dtu.dk/services/PlasmidFinder/>) whilst the virulomes were identified using

239 [BACWGSTdb \(http://bacdb.org/BacWGSTdb/\)](http://bacdb.org/BacWGSTdb/). Other MGEs were identified using using
240 MGE Finder (<https://cge.cbs.dtu.dk/services/MobileElementFinder/>). The evolutionary
241 phylogenetics of the isolates were analysed on RaxML (<https://raxml-ng.vital-it.ch/#/>).
242 Phylogenetic trees were visualized and annotated using Molecular Evolutionary Genetics
243 Analysis version (MEGA) 7.0⁵⁴. Predictions of capsules polysaccharides were done on the
244 Kaptive WEB (<https://kaptive-web.erc.monash.edu/>) based on the K-type serotyping of *K.*
245 *pneumoniae*⁵⁵.

246 3. Results

247 3.1 Global distribution of colistin and carbapenem co-resistant GNB isolates

248 Literature search resulted in a total of 3048 articles published in English with two duplicates,
249 resulting in 3046 articles for screening. Further review and sorting resulted in 195 articles of
250 which 66 were excluded and the remaining 129 articles were used or meta-analyses. (Figure
251 1). A total of 877 isolates from 43 countries were included for analyses. These constituted
252 various species including *Klebsiella* spp. (n = 536), *Escherichia coli* (n = 210), *Acinetobacter*
253 spp. (n = 71), *Enterobacter* species (n = 20), *Pseudomonas aeruginosa* (n = 18), *A.*
254 *calcoaceticus-A.baumannii* complex (n = 13), *Cronobacter sakazakii* (n = 2) and *Citrobacter*
255 *amalonaticus* (n = 1) (Figure 2A).

256 Carbapenem and polymyxin co-resistance in GNB was detected in five continents across the
257 globe, except for Australia (Figure 2B). Asia presented high numbers of carbapenem and
258 polymyxin co-resistance (n = 415), followed by Europe (n = 333), South America (n = 76),
259 Africa (n = 35), and North America (n = 9) (Figure 2B). As shown in Figure 2B, cases of
260 emerging MDR GNB with co-resistance to carbapenem and colistin have mostly been
261 reported in Asian countries. China, having the highest cases globally and in Asia, reported
262 19.54% MDR GNB isolates (n = 171/877) of MDR GNB with carbapenem and polymyxin

263 co-resistance. Although co-resistance to last-resort antibiotics in GNB is more prevalent in
264 China, it is evident that this trend has spread beyond Asian countries into European countries
265 such as Greece and Portugal representing 13.7% (n = 120) and 3.0% (n = 26), respectively.

266 Asia, Europe, and North America reported carbapenem-polymyxin resistance in GNB from
267 animals while Africa and South America only presented GNB isolates from humans. Overall,
268 human samples globally constitute 65.5% (n = 574) while animals, environment and
269 unknown sources represents 8.7% (n = 76), 5.7% (n = 50) and 20.2% (n = 177), respectively
270 (Figure 2C). The statistical analysis of all sample sources was significantly reported in
271 different countries (p = 0.02) (Table S2_B).

272 China presented the most diverse specimen sources than other countries, with four species.
273 China reported resistant isolates from all samples sources but showed a non-significant
274 association among sample source (p = 0.75) Table S2_C). Figure 2C shows that of the cases
275 reported in China, 37.4% (n = 64) of the isolates were from human samples, 35.08% (n = 60)
276 from animals, two from unknown sources (1.2%), and 26.3% (n = 45) from environmental
277 sources including slaughterhouses, farm, water, sewage etc. Furthermore, Liu B et al (2017)
278 and Wang R et al (2018) reported a total of 14 and 26 isolates from animals' source,
279 respectively^{6,56}. Of the isolates reported by Wang R et al (2018), three isolates (*E. coli*
280 WFA16004, *E. coli* WFA16019 and *E. coli* WFA16061) presented a new sequence type. A
281 total of 18.0% (n = 21) of the cases in Greece were from human samples, and the remaining
282 83.0% (n = 99) were of unknown sources. Iran (7.52%, n = 66) and Korea (5.01%, n = 44)
283 also presented more cases of carbapenem and colistin co-resistance in Asia⁶. In contrast to the
284 cases reported in China, Iran and Korea do not have any animal or environmental cases of
285 GNB harbouring carbapenem and polymyxin ARGs (Figure 2C).

286 **3.2 Resistomes of GNB with carbapenem & polymyxin co-resistance**

287 **3.2.1 Carbapenem & polymyxin resistance mechanisms**

288 From a total of 877 reported GNB isolates, there was a significant association between
289 ARGs/resistance mechanisms in different countries ($p = 0$) Table S2_D). Colistin resistance
290 through the inactivation of the *mgrB* gene presented 37.3% ($n = 322$), while resistance
291 through *mcr-1* gene presented 36.2% ($n = 312$) (Figure 3A). Resistance via mutation of the
292 regulatory systems was 5.10% ($n = 44$) and 3.82% ($n = 33$) for *prmA/B/C* and *phoP/Q*,
293 respectively. Furthermore, six isolates were resistant to colistin via mutation on the *crbB*
294 gene: one in Colombia (*K. pneumoniae* C7), France (*K. pneumoniae* 20.70), Greece (*K.*
295 *pneumoniae* G104), and South Africa (*K. pneumoniae* Af44b) and two from Brazil (*K.*
296 *pneumoniae* CrB8i & CrB9i) (Table S2_A). A total of 146 isolates (17.0%) were resistant to
297 colistin, but their resistance mechanisms were not specified. Of the undetected mechanism,
298 one strain, *A. colistiniresistens* from a human sputum in Japan, was reported to be naturally
299 resistant to colistin⁵⁷. *mcr-1*-mediated colistin resistance was more prevalent in *E. coli*
300 isolates ($p = 0.72$) while resistance via mutations in the regulatory systems was only reported
301 in *K. pneumoniae* ($p = 1.00$) and *A. baumannii* ($p = 1.00$) Table S2_E). *mcr-1* was frequently
302 associated with IncX₄ replicon plasmids in *E. coli* species^{58,59}. Another variant in the *mcr*
303 family, *mcr-9*, was detected in *K. pneumoniae* isolates and was more prevalent in European
304 countries including Montenegro ($n = 10$) and Spain ($n=7$)²⁰. This gene was also reported in
305 Japan ($n = 3$)⁵⁷ (Table S2_A). Other identified *mcr* variants included *mcr-1.2* reported in
306 Italy³³, *mcr-1.5*⁶⁰ from Argentina and *mcr-3*⁶⁰, 3.5, and 4.3⁶¹, and *mcr-8*⁶² from China.
307 These were each detected from human samples; except *mcr-8* which was isolated from a
308 swine in China (Table S2_A).

309 Carbapenemases such as NDM, OXA-48 type, IMP, VIM, GES, SCO, BKC and KPC were
310 reported, where OXA-48 type, NDM and KPC were the most common carbapenemases

311 (Figure 3B). The most common carbapenemases reported globally was OXA-48 type
312 presenting 45.0% (n = 411) of 877 isolates and this was prevalent in *K. pneumoniae* isolates
313 (n = 249). This was followed by NDM 29.0% (n =261), KPC 21.0% (n = 192), and VIM
314 4.0% (n = 37), IMP 1.0% (n = 10). IMI (n = 3), GES-5 (n = 1), SCO-1 (n = 1) and BKC-2 (n
315 = 1) were less the 1% of carbapenemases (Figure 3B). The most common variant of NDM
316 was *bla*_{NDM-5}, which was more prevalent in *E. coli* isolates from China. OXA-48 was mostly
317 reported in *K. pneumoniae* and *P. aeruginosa* isolates, while OXA-23 was found in *A.*
318 *baumannii* (in Seoul, South Korea) and in *A. calcoaceticus*-*A. baumannii* complex (in India)
319 from human samples (Table S2_A). Notably, *mcr-1* mostly co-occured with the *ndm-5*
320 and/or *ndm-9*, mostly in *E. coli* isolates. Furthermore, colistin resistance by mutation co-
321 existed with *kpc* in *K. pneumoniae* isolates.

322 **3.2.2 ARGs associated with polymyxins and carbapenem co-resistance in GNB**

323 The resistance profiles of the isolates in Figure 4A & B indicated resistance to a broad
324 spectrum of antibiotics including penicillins, cephalosporins, aminoglycosides,
325 fluoroquinolones, tetracyclines, sulphonamides, and rifampins^{16,22,32,63} The expression of
326 these genes would be problematic as it increases MDR and extensively drug-resistant (XDR)
327 GNB, thus threatening global health.

328 Resistance profiles of 185 isolates are presented in Figure 4A & B. Other isolates were not
329 included because of the unavailability of genome accession numbers and lack of such
330 information from articles. The overall analysis of the resistance profiles showed that *sul1-3*,
331 *floR* and *fosA3* genes, which codes for sulfamethoxazole, chloramphenicol and fosfomycin
332 resistance respectively, were commonly associated with carbapenem and polymyxins
333 resistance determinants. This was particularly true for most *E. coli* isolates globally, whilst
334 extended-spectrum β -lactamases (ESBLs), viz. *bla*_{SHV} and *bla*_{CTX-M}, were more common in
335 *K. pneumoniae* globally, except for *K. pneumoniae* isolates in Portugal. The abundance of

336 other antibiotics' ARGs associated with those of carbapenem and colistin were higher in
337 China, Pakistan, and Vietnam, suggesting that MDR genotypes are rapidly increasing and
338 spreading in Asian countries than on other continents.

339 As shown in Figure 4A & B, *bla*_{CTX-M} was found in *E. coli* isolates from animals in China,
340 but it was absent in *E. coli* IHIT31346 from animal sample in Italy. This gene was also
341 detected in *E. coli* isolates from human samples from China (n = 6) and single isolates from
342 France, Venezuela, Korea, Russia, and Japan. It was also found in *K. pneumoniae* from 10
343 different countries, and in *E. coli* 3w-4 from an environmental sample from Germany (Figure
344 4 A & B). Other common ARGs found in the 19 *E. coli* isolates from animals include *floR*
345 and *fosA3*. Furthermore, three of the 19 *E. coli* isolates from animals also harboured the
346 *erm(B)* gene, which confers resistance to macrolides. Notably, isolates from animals,
347 particularly in China, do not harbour many ARGs alongside carbapenemases and polymyxin
348 ARGs. Except MDR *K. pneumoniae* KP91, only one isolate from animal origin in China,
349 carried more diverse ARGs including *bla*_{SHV}, *tet*, *strA/B*, *qxA/B*, *rmsE*, *mph(A)/(B)*, *sul1-3*,
350 and *aph(4')-Ia*.

351 On the contrary, *E. coli* isolates from humans in China showed more diverse distribution of
352 ARGs (Figure 4A & B). However, this was not the case for *E. coli* BJ13 and NCCHD1261-5,
353 which only harboured two β -lactamases; same was observed for *K. pneumoniae* TK401. As
354 observed in China, human isolates from other countries also showed diverse ARG
355 distribution than isolates from animals and the environment. Nonetheless, one environmental
356 isolate from Germany, *E. coli* 3w-4, harboured more ARGs including *tet (B)*, *aac(6')-lb-cr*,
357 *catB2*, & *catB*, *drfA17*, and *bla*_{CTX-M} (Figure 4B). As shown for *E. coli* isolates in China, the
358 *K. pneumoniae* isolates from human samples in Pakistan and Vietnam were resistant to a
359 broad spectrum of antibiotics including quinolones (*aac(6')-lb-cr*, *oqxA/B*, *qnrB/S*),
360 tetracycline (*tet*), and aminoglycoside (*aac(3)-IIa*, *aac(6')-lb-cr*, *aadA*, *aph(3')-lb*, *aph(6)-ld*)

361 (Figure 4A & B). An uncommon resistance gene, *cmIA5*, which is responsible for
362 chloramphenicol resistance, was detected in *K. pneumoniae* isolates (n = 3) from human
363 samples (Vietnam) and in *E. coli* IHIT31346 of animal origin (Italy)⁶⁴. Furthermore, this
364 gene was also reported in abundance in China (n = 12) from *E. coli* isolates from animal,
365 human, and environmental samples, implying the presence of chloramphenicol resistance in
366 Asian and European countries. In China, human isolates generally had a rich resistome
367 repertoire than isolates from animals and the environment.

368 Libya reported a total of 12 isolates from human samples, all of which harboured the
369 following genes: *tet*, *aadA*, *aac(6')-lb-cr*, *aph(3=)lla*, *aph(3=)-lb*, and *qnrB/S* (Figure 4A).
370 An isolate reported in Libya, *A. baumannii* 28 (ST164) was highly resistant, carrying
371 additional ARGs including those against phenicol (*floR*, *catA/B*) and sulphonamides (*sulI-3*).
372 Furthermore, human isolates in Libya and Portugal lacked ESBL genes except *K.*
373 *pneumoniae* ST45 in Portugal from which the *bla_{SHV}* gene was found. Unlike isolates in
374 Libya, isolates from Portugal did not harbour *sulI-3* genes. However, the *sulI-3* genes and
375 additional ARGs such as *strA/B* and *mph(A)/(E)* were detected in *E. coli* Ec36 from a human
376 sample in Portugal (Figure 4B). Further analysis of the resistance profiles revealed that
377 multidrug resistance genotypes are generally not common in the US as the reported isolates
378 only harboured ESBLs genes. This might be due to the number of carbapenem and colistin
379 co-resistant isolates reported in the country, which calls for further studies.

380 **3.3 Mobilome**

381 **3.3.1 Plasmid profiles of GNB with carbapenem and colistin resistance**

382 (Table S3_D) shows a total of 18 plasmid incompatibility groups. Plasmid replicons
383 associated with carbapenem and colistin resistance genes reported globally includes IncI2/3,
384 IncX3/4, IncH12, IncF/IIK/II/IB, IncN, IncA/C, IncL/M, IncP, IncR, IncY, IncA/C2, IncR,
385 IncY and IncB/O (P= 0.002) (Table S3_B). Additionally, some countries reported hybrid

386 plasmids, which harbors ARGs for different antibiotics. So far, China is the only country
387 reporting the co-existence of carbapenem and colistin ARGs on a hybrid plasmid ⁶⁵. The
388 *bla*_{NDM-5} and *mcr-1* genes were both carried by a single replicon hybrid plasmid, IncX₃-X₄
389 identified in *E. coli* CQ02-121 which was isolated from a patient's rectal swab from a health
390 facility in China ⁶⁵.

391 The IncX plasmids are widely reported as the most common MGE of carbapenems and
392 polymyxins ⁶⁶ (Figure 5A). Various groups of IncX plasmids, including IncX₁-IncX₈ have
393 been identified as carriers for transmissible carbapenem and polymyxin ARGs ^{12,67}. The most
394 prevalent IncX plasmids associated with *bla*_{NDM} (p = 0.107) and *mcr-1* (p = 0.999) ARGs
395 (Table S3_B). IncX₃ and IncX₄, responsible for the transmission of *bla*_{NDM} and *mcr-1* genes
396 respectively ^{16,64,65}. The most common replicons for all isolates were IncX plasmids (n = 107)
397 comprising IncX₄ (n = 57), IncX₃ (n = 49) and IncX₁-N (n = 1). This was followed by IncI (n
398 = 58), IncF (n = 50), IncH (n = 45), and IncB/O (n = 14) (Table S3_D). The least reported
399 replicons were IncP, IncL, IncR, and IncF₁, IncI₁ and IncN, which were each reported in one
400 or two isolates. The most common replicons, IncX₃ and IncF, were associated with
401 carbapenemases, while IncX₄, IncI and IncH were mostly associated with *mcr-1*.

402 As expected, China reported a diverse plasmid replicon due to the high number of reported
403 isolates with carbapenem and polymyxin co-resistance (n = 171). Therefore, IncX plasmid
404 groups were commonly found as the carrier of resistance genes in China (Figure 5A): China
405 reported a total of 84 IncX plasmids which were mostly reported in *E. coli* isolates (n = 72) (p
406 = 0.138) (Table S3_B). Although *K. pneumoniae* in China did not harbour IncX plasmids, 25
407 *K. pneumoniae* human isolates in Portugal had their *mcr-1* gene carried by IncX₄ plasmids
408 (Figure 5B). The second most common plasmid was IncI, especially IncI₂, which carried *mcr-*
409 *I* and was commonly reported in China (n = 39).

410 IncL/M was only reported in Pakistan (n = 5) and it carried *bla_{OXA}* genes in *K. pneumoniae*
411 isolates (p = 0.057), while IncB/O replicon was only reported in *E. coli* (p = 0.138) isolates
412 from animal samples in China (Table S3_B). IncF carried *bla_{NDM}* in various countries, whilst
413 IncR was associated with various carbapenemases such as *bla_{NDM-1}* in *E. coli* isolates from
414 Vietnam (n = 1) and China (n = 1). It was also found with *bla_{KPC-2}* in *E. coli* H17 from USA
415 and *bla_{OXA-181}* in *E. coli* IHIT31346 from animal sample in Italy. Another least common
416 plasmid replicon associated with *bla_{NDM}* in *E. coli* isolates was IncP, reported only in China
417 and Japan (Figure 5B).

418 3.3.2 Other MGEs associated with carbapenem and colistin resistance.

419 In addition to plasmids, other MGEs associated with carbapenem and polymyxin resistance in
420 GNB were reported. Such MGEs were 135 insertion sequences (IS), 60 transposons (Tnp)
421 and four class I integrons (Table S3_A). The most prevalent IS was IS903 (n = 28) and the
422 most prevalent Tnp was *tnp4401d* (n = 31). Both IS903 (n = 108) and *tnp4401d* (n = 74) were
423 more common in *K. pneumoniae* isolates (Table S3_A). The IS903 was found within the *mgrB*
424 gene in two *K. pneumoniae* isolates from the United states²⁷. *mcr-9* was flanked by IS903,
425 IS1 or cupin fold metalloprotein (WbuC) in ten *K. pneumoniae* isolates in Montenegro; as
426 well as in Serbia (n = 1) and Belgium (n = 1). Likewise, these MGEs were further associated
427 with *mcr-9* in *K. pneumoniae* isolates in Spain (n = 7), Slovenia (n = 1), and Denmark (n = 1)
428 (Table S2_A). *Tn4401d* was reported in *K. pneumoniae* isolates in Portugal (n = 21), USA (n
429 = 2) and China (n = 1). This MGE was associated with *bla_{KPC-3}* in Portugal, *mcr-8*, and
430 *bla_{NDM}* in China; and *bla_{KPC-2}* in the United States (Table S2_A). Three class I integrons were
431 reported in two *K. pneumoniae* isolates with *bla_{KPC-2}*, in Brazil and in *A. colinistiniensis*
432 from Japan, which is naturally resistant to colistin⁵⁷ and harboured *bla_{IMP-34}* and *bla_{OXA-58}*.
433 In416 integron was identified from *E. hormaechei* ME-1 isolate carrying VIM-4 in USA
434 (Table S2_A).

435 *ISAb125*, was associated with *bla_{NDM-5}* in seven *E. coli* isolates from animal samples in
436 China. This IS was also found in *Enterobacter cloacae* PIMB10EC27 from a human sample
437 in Vietnam, flanking *bla_{NDM-1}*; *E. cloacae* PIMB10EC27 further harboured *ISIR21*, *ISKpn19*
438 and *Tn6901*⁶⁸. *IS5* was reported in three *Enterobacter* strains from Japan where it was
439 associated with *bla_{IMP-1}*, as well as in two *K. pneumoniae* isolates where it was associated
440 with *bla_{KPC-2}* and *bla_{NDM/OXA}*, from Brazil and Pakistan, respectively. Other reported IS
441 includes *ISApI1* in *A. baumannii* TK1403, which existed alongside *bla_{OXA}* genes, ISR in *K.*
442 *pneumoniae* KP7 occurring with *bla_{KPC}* (Table S2_A).

443 *ISAb125* is the main carrier of *bla_{NDM}*⁶⁹, evinced by its appearance in two *E. coli* isolates
444 facilitating the dissemination of *bla_{NDM-5}* and *bla_{NDM-6}* genes⁷⁰. Ho et al (2018) also reported
445 on *IS26-IAba125* transposon complex that is associated with *bla_{NDM-5}* in isolates from animal
446 origin⁷¹. *E. coli* Ec36 isolated from human urine in Portugal harboured *ISKpn7*, *ISKpn6* and
447 *TN40*⁷². The most prevalent MGE on plasmids harbouring *mcr-1* was the insertion sequence
448 *ISApI1* reported in China, Vietnam, Brazil, and Argentina (Table S2_A). The *ISApI1*
449 insertion is normally responsible for mobilising *mcr-1* in GNB⁴⁰. In China, this MGE was
450 associated with *mcr-1* from *E. coli* HeN001 and *C. sakazaki* WF5-19C (Table S2_A). It was
451 also associated with the acquisition and dissemination of ARGs from animal samples and was
452 identified in *K. pneumoniae* isolates in Brazil and Vietnam from human samples. Further, it
453 was associated with the IncI₂ replicon, which carried both *mcr-1.5* and *bla_{NDM-1}* in *C.*
454 *amalonaticus* isolates from human samples in Argentina.

455 **3.4 Capsular polysaccharides and virulome of GNB isolates**

456 Table S4 shows various plasmid-mediated and chromosomal-borne virulence genes in MDR
457 GNB. Virulence genes were identified in 15 *K. pneumoniae*, 12 *E. coli* and one *E.*
458 *hormaechei* isolates resulting in a total of 29 genes (Table S4). The most common virulence
459 gene in *E. coli* isolates was *gad*, a chromosomal glutamate decarboxylase found on the outer

460 membrane. *E. coli* EC17GD31, isolated from human blood in Vietnam harboured 18
461 chromosomal virulence genes, except for outer membrane protein complement resistance
462 (*TraT*) (Table S4). These isolates also had two copies of the *gad* gene. *E. coli* MCR-1_NJ,
463 isolated in the United States, also harboured 18 virulence genes with duplicates of *Trat*, *terC*
464 (tellurium ion resistance protein) and *KpsE* (capsule polysaccharide export inner-membrane
465 protein) (Table S4). *E. coli* WI1 had a unique virulome structure, possessing unique virulence
466 genes such as colicin B (*cba*), colicin ia (*cia*) and colicin M (*cma*), which were only shared
467 with *E. coli* WI2 (Table S4).

468 For *K. pneumoniae* isolates, ferric aerobactin receptor (*iutA*) was commonly recorded *K.*
469 *pneumoniae* KP-6884 and QS17-0029 harboured high numbers of virulence genes (n = 6).
470 The least number of virulence genes were observed in *K. pneumoniae* CFSAN04457, 65, 73
471 (n = 3) and *E. hormaechei* ME-1 (n = 1). All virulence factors in *K. pneumoniae* QS17-0029
472 were found on the plasmid while KP-6884 had two *iutA* on the chromosome (Table S4). *K.*
473 *pneumoniae* KP-6884 also presented a case where the same gene appeared both on a
474 chromosome and plasmid (Table S4). Likewise, *traT* in *K. pneumoniae* isolates was also
475 found on the plasmid. However, this gene was missing in *K. pneumoniae* CFSAN044572,
476 CFSAN044573 and CFSAN044563 isolates.

477 Capsular polysaccharides were determined for 12 *K. pneumoniae* and one *A. colistiniresistens*
478 isolates (Figure S1). The *Klebsiella* K-locus primary reference and the *Acinetobacter* K-locus
479 primary reference were used to predict capsules for *K. pneumoniae* and *A. colistiniresistens*
480 isolates, respectively. Eight KL-types and zero O-types were identified for *K. pneumoniae*
481 isolates. The KL serotypes KL103, KL51, KL17 and KL2 were each identified in two isolates
482 while KL112, KL107, KL102 and KL24 were present in one isolate, each (Figure S1). The
483 capsular loci had between 15 and 23 genes, with two allelic types: *wzc* and *wzi*. The allelic
484 types were present in all isolates and the genes were 99 to 100% identical to those of the

485 reference K-locus. *K. pneumoniae* HS11286 and CFSAN044563 belonged to KL103, and
486 they had a high number of capsule genes (n = 21). Furthermore, *K. pneumoniae* QS17-0029
487 and PIMBND2KP27 of KL50 presented the same capsular predictions (Figure S1). *A.*
488 *colistiniresistens* NIPH1859 capsular predictions revealed that this isolate had KL132 with 21
489 capsule genes. However, this isolate was missing the allelic types and none of the genes were
490 100% to the primary KL reference (Figure S1).

491 **3.5 Epigenomics analyses in MDR GNB**

492 Herein, the methylome of 29 genomes are described (Table S5), of which 14, 9, three, and
493 one isolate/s belonged to the genera *Klebsiella*, *Escherichia*, *Enterobacter*, and
494 *Acinetobacter*, respectively. In this analysis, Type I, II, III, and IV RMS were identified in
495 GNB isolates with carbapenem and polymyxin co-resistance. As expected, the most common
496 system was Type II RMS, which has an important function in destroying foreign DNA³⁸.
497 The Type II system was found in almost all isolates except four isolates (*A. colistiniresistens*
498 NIPH1859, *E. kobei* MGH244, *E. roggkampii* DSM 16690, and *K. pneumoniae*
499 CFSAN044564) in which no restriction enzyme genes were found (Table S5). Type I
500 restriction enzymes was the second most common system identified. Conversely, Type III
501 and IV were the least common systems amongst the isolates.

502 The Type I system was identified in seven *E. coli* and six *K. pneumoniae* isolates (Table S5).
503 Two *E. coli* isolates MG1655 and MCR1_NJ both honoured chromosomal Type I, II and IV
504 systems. These two isolates had the same Type II system both comprising MTases,
505 *M.Eco4255Dcm* and *M.EcoKII*, albeit with different motifs/recognition sequence of CCWGG
506 and ATGCAT, respectively (Table S5). Furthermore, these isolates had methyl directed
507 restriction enzymes Type IV system with unknown recognition sequences; except for
508 *EcoKMcrA* in MG1655 that had a known sequence (YCGR). Only *E. coli* MG1655 and
509 MCR-1_NJ had a complete set of chromosomal Type I system with a RE, MTase, and

510 specificity subunit, while other *E. coli* isolates only had either MTases or restriction enzyme.
511 However, they had the same recognition sequence. For *K. pneumoniae* isolates, KP-6884 and
512 KL027 were the only isolates having Type I, II and III MTases (Table S5).

513 All *K. pneumoniae* isolates with the Type I system had both MTase and specificity subunit.
514 *K. pneumoniae* CFSAN044571, QS17-0029 and KL027 had chromosomal MTase
515 (*M.Kpn928I*) and specificity subunit (*S.Kpn1420II*), while the same RMS was observed on
516 the plasmid of *K. pneumoniae* CFSAN044563 and CFSAN044569. Furthermore, *K.*
517 *pneumoniae* QS17-0029 also had a chromosomal RE (*EcoR124II*) and two more MTases;
518 *M.EcoprrI* (chromosomal) and *M.Kpn234I* (from plasmid), which were missing in other
519 isolates. The Type I system in *K. pneumoniae* KP-6884 was found on a plasmid hosting a
520 MTase, *M.Kpn928I*, and a specificity subunit, *S.Kpn1420II*, that shared the same recognition
521 sequence, ACGNNNNNNCTG.

522 Type II restriction enzymes were the most common restriction enzymes in bacterial. The
523 Type II MTases included plasmid-mediated *M.Kpn34618Dcm* in *K. pneumoniae* and
524 chromosomal *M.EcoE455Dcm* in *E. coli* isolates, sharing the same recognition site, CCWGG
525 (Table S5). The *M.Kpn34618Dcm* was found in all *K. pneumoniae* isolates (n = 6). However,
526 this MTase was coupled with plasmid-borne *M.EcoRII* in *K. pneumoniae* CFSAN044572 and
527 CFSAN044573, with the same recognition site (Table S5). Furthermore, *K. pneumoniae*
528 CFSAN044569 had two REs, viz *EarI* and *Eco128I*, and four MTases, (*M.EcoRII*,
529 *M.Kpn34618Dcm*, *M1.EarI* and *M2.EarI*). The *EarI*, *M1.EarI* and *M2.EarI* MTases shared
530 recognition sequences, while *Eco128I*, *M.EcoRII* and *M.Kpn34618Dcm* had different motifs
531 (Table S5). For *E. coli* isolates, *M.EcoE455Dcm* was always coupled with *M.EcoKII*, with
532 the recognition sequence ATGCAT in the Type II system. Interestingly, the chromosomal
533 Type II *M.EcoE455Dcm* in *E. coli* Ec36 was coupled with a RE, *Eco128I*, and two copies of

534 *M.EcoRII* MTases (Table S5). Furthermore, the Type II system in *E. coli* W11 was mobilised
535 by a plasmid, with the same recognition sequences as that of the *M.EcoRII* MTases.

536 Types III and IV RMSs were the least common among our isolates. The Type III system was
537 found in *K. pneumoniae* KP-6884 and QS17-0029, consisting of chromosomal *M.Kpn1420I*
538 and *M.Kpn34618Dcm*, respectively. Type IV system was found in *E. coli* EC-129 and
539 MRC1_NJ, consisting of plasmid MTase *EcoAPECGmrSD* and chromosomal *EcoKMrr*,
540 respectively. The Type III MTases have different motifs, while Type IV lacks the recognition
541 sequences (Table S5)

542 **3.6 Phylogenomic analyses of included GNB.**

543 **3.6.1 Clonal lineages of carbapenem and colistin-resistant GNB**

544 Isolates in this study belonged to over 100 sequence types (STs). Figure 6 presents STs that
545 have three or more isolates. Overall, the most common clones were *K. pneumoniae* ST258 (n
546 = 56), followed by *E. coli* ST156 (n= 35), *A. baumannii* ST191 (n = 34), ST101 (n = 29) and
547 *K. pneumoniae* ST45 (n = 21). *A. baumannii* ST191 was only reported in Seoul, South Korea
548 ¹². *K. pneumoniae* ST258 was the most prevalent clone in Greece (n = 50), followed by *E.*
549 *coli* ST156 in China (n = 33) and *A. baumannii* ST191 in Seoul (n = 34).

550 Countries such as Portugal, Greece, USA, and India likewise presented diverse clonal
551 lineages for GNB with co-resistance to carbapenem and colistin (Table S2_F). In terms of
552 diversity across countries, clones such as *K. pneumoniae* ST15 (n = 10) was detected in seven
553 countries, *K. pneumoniae* ST101 (n = 23) and *K. pneumoniae* ST258 (n = 17) were detected
554 in five and four countries, respectively (Table S2_F). Furthermore, none of these clones were
555 reported in animal samples (Table S7). Although carbapenem and colistin co-resistance was
556 not commonly reported in African countries, Libya reported MDR *K. pneumoniae* ST101 (n
557 = 6) and one MDR *A. baumannii* ST101. *K. pneumoniae* Kpn918 and Kpn926 of ST258 from

558 unknown sources were found in the United States, harbouring *bla*_{KPC-2} on IncFIIK plasmids.
559 Twelve *K. pneumoniae* ST147 clones with unknown sources were reported in Greece (n = 5)
560 and Spain (n = 7) while three isolates of the same clone were from human samples in India (n
561 = 2) and Pakistan (n = 1) (Table S2_F). *K. pneumoniae* ST14 (n = 11) isolates with
562 carbapenem and polymyxin co-resistance from human samples were detected in the United
563 Arab Emirates, particularly in Dubai ⁷³. *K. pneumoniae* ST14 was also reported in human
564 samples in India (n = 6).

565 In contrast to *K. pneumoniae* clones, *E. coli* clones did not display high inter-country
566 clonality (Table S2_F). *E. coli* ST156 and *E. coli* ST167 were each reported in three
567 countries. *E. coli* ST156 was more prevalent in animal samples (n = 10) whilst *E. coli* ST167
568 (n=4) was found in human samples and *E. coli* WF5-38 (n=1) was from animal samples.
569 China reported the most cases of carbapenem and colistin co-resistance in GNB, resulting in
570 more diverse clones (Table S2_F). Plasmid replicons associated with carbapenem and colistin
571 ARGs for these clones were also diverse. Of the 158 *E. coli* isolates that were reported in the
572 country, most were members of *E. coli* ST156 (n = 33), followed by *E. coli* ST10 (n = 8). The
573 remaining ST(s) only included about three isolates or less. *E. coli* ST156 was more prevalent
574 in animal samples, accounting for 77.1% (n = 27/ 33) isolates (Table S2_F).

575 In addition to China, *E. coli* BJ10 of ST156 was also reported from human samples in USA.
576 This clone harboured *mcr-1* and *bla*_{NDM-5} on IncX₃ and IncL plasmids, respectively. *K.*
577 *pneumoniae* MAH-3 ST156 from humans in France also harboured *bla*_{OXA} on an IncI₂
578 plasmid replicon. *E. coli* ST10 clone was detected in ten *E. coli* isolates in China (n = 8) and
579 USA (n = 2). China reported two animal and six human samples, while USA reported two
580 isolates from humans infected with the *E. coli* ST10 clone. *E. coli* GZ2a in USA, and three *E.*
581 *coli* ST10 strains in China harboured *mcr-1* and *bla*_{NDM-5} respectively on an IncX₃ and IncI₂
582 plasmid. Notably, new *E. coli* clonal lineages were identified in *E. coli* WFA16004,

583 WFA16019 and WFA16061, isolated from animals in China. These isolates harbored *mcr-I*
584 and *blaNDM_{1/4}* genes. Unfortunately, plasmid types which were associated with these ARGs
585 are unknown⁶⁷.

586 Portugal reported a total of 25 *K. pneumoniae* ST45 isolates from human samples which
587 harbored *mcr-I* on IncX₄ plasmid (Table S2_A). Carbapenem and colistin co-resistance was
588 not commonly reported in *Pseudomonas sp.*, which were all detected from human samples.
589 Ten of these were reported in Turkey i.e., *P. aeruginosa* ST235 (n = 7) and *P. aeruginosa*
590 ST3078 (n = 3). One was reported in India, viz. *P. aeruginosa* ST235, and the last one, *P.*
591 *aeruginosa* ST3357, was reported in Japan (Table S2_F).

592 **3.6.2 Phylogenetic analyses of MDR GNB**

593 **3.6.2.1 Phylogenetic analyses of *K. pneumoniae* and *E. coli* isolates**

594 Mapping the resistance dynamics, virulomes and RMS of *K. pneumoniae* isolates from
595 human hosts against their genome-based phylogeny showed that species from the genus
596 *Klebsiella* are highly resistant to antibiotics (Figure 7A). However, these isolates do not
597 possess a rich virulome and RMS. The phylogenetic tree on Figure 7A, based on *K.*
598 *pneumoniae* genomes revealed three different clades, presented with different colours;
599 Maroon (clade I), blue (clade II) and green (clade III) (Figure 7A). Clade I consisted of *K.*
600 *pneumoniae* ST15 CFSAN04465 and *K. pneumoniae* ST147 CFSAN04469 from Pakistan, as
601 well as *K. pneumoniae* ST15 MLST15 from USA. *K. pneumoniae* ST15 CFSAN04465 and
602 MLST15 clustered together, but showed little similarities on their resistance profiles and
603 virulomes. However, these isolates harbour the same RMS, including MTase and motifs.
604 Interestingly, *K. pneumoniae* MLST15 and *K. pneumoniae* CFSAN04469 of a different
605 clone (*K. pneumoniae* ST147) showed significant similarities in their resistance profiles and
606 virulence determinants. Moreover, these isolates had the same capsular predictions.

607 *K. pneumoniae* CFSAN04472 and CFSAN04473 clustered together under clade II (Figure
608 7A). These isolates were isolated in Pakistan from a patient, both belonged to the *K.*
609 *pneumoniae* ST101 clone and showed similar resistance profiles except that *K. pneumoniae*
610 CFSAN04473 harboured *bla_{OXA-48}* and lacked *bla_{NDM-1}*. Furthermore, these isolates showed
611 the same virulome, methylome, plasmids and capsular structures. The only difference
612 between these isolates is that *K. pneumoniae* CFSAN04472 was isolate from blood and *K.*
613 *pneumoniae* CFSAN04473 from catheter tip¹⁶. Clade III was the most diverse in terms of
614 geographical location comprising of isolates from Pakistan (n = 3), Japan (n = 1), Thailand (n
615 = 1), Vietnam (n = 1) and Italy (n = 1). Overall, *K. pneumoniae* isolates showed different
616 resistomes, virulomes and methylomes. *K. pneumoniae* HS11286 and CFSAN04463
617 belonged to different clones viz. *K. pneumoniae* ST3130 and *K. pneumoniae* ST11,
618 respectively. These isolates showed the same RMS and virulome despite their different
619 clonality. However, their resistance profiles were different (Figure 7A). *K. pneumoniae*
620 CFSAN04463, CFSAN04464 and PI15KP27 belonged to different STs, but showed high
621 similarities in their resistance profiles, with different virulomes and methylomes (Figure
622 7A).

623 Figure 7B depicts the evolution and resistome dynamics, virulomes and RMS of *E. coli*
624 isolates based on genome sequences. Isolates were all from human samples. Overall, grey
625 blocks on the *E. coli* resistome analyses is more dominant than the red blocks, meaning the
626 *E. coli* isolates are not as highly resistant as the *K. pneumoniae* isolates (Figure 7A & B).
627 However, there is an interesting exception for three *E. coli* isolates, viz. EC-129, EC17GD31
628 and WCHEC-LL-123, which harboured more ARGs besides those of carbapenems, colistin
629 and tigecycline (Figure 7B). These species were all from human samples and were isolated
630 from Japan (EC-129), China (WCHEC-LL-123), and Vietnam (EC17GD31). Interestingly, *E.*

631 *coli* isolates revealed a more diverse virulome profiles as compared to those of *K.*
632 *pneumoniae* MDR isolates (Figure 7B).

633 The genome phylogeny of *E.coli* also showed three distinct clades shown by Maroon (clade
634 I), blue (clade II) and green (clade III). Clade I comprises of isolates from China (n = 2),
635 France (n = 2), Portugal (n = 1), USA (n = 1) and Vietnam (n = 1). Clade II and III consist
636 of one isolate each. *E. coli* EC129 and 5CRE51 of clade II were respectively isolated from
637 Japan and Taiwan. Although most of the *E.coli* isolates clustered under clade I, they showed
638 very distinct methylome, virulome, plasmids and resistance profiles. All isolates belonged to
639 a distinct clone, except for *E. coli* ST1288 WI1 and WI2 from France (Figure 7B).
640 Furthermore, these two isolates had similar virulence factors. *E. coli* WI2 of ST1288 and *E.*
641 *coli* Ec36 of ST644 had the same virulome and similar resistance profiles. *E. coli* MCR1_NJ
642 (ST405) and *E. coli* EC17GD31 (ST457) revealed similar resistance profiles and RMS, where
643 MCR1_NJ had a Type IV restriction system that was rare in the included isolates.
644 Furthermore, the two isolates showed similar virulomes, except that *iss* and *iutA* were
645 missing in *E. coli* MCR1_NJ (Figure 7B).

646 **3.6.2.2 Plasmids evolutionary analyses**

647 Figure 8A shows phylogenetic analysis of plasmids associated with carbapenemases, while
648 Figure 8B shows that of plasmids associated with polymyxin resistance. Both phylogenies
649 revealed six distinct clades. On Figure 8A, clade I consisted of four *E. coli* plasmids from
650 human samples which belonged to different STs and harboured different plasmids. However,
651 two of these *E. coli* isolates did not have plasmids replicons (Figure 8A). Clade II showed a
652 bootstrap of 100 and consisted of *E. coli* and *K. pneumoniae* plasmids. It is worth noting that
653 although strains in clade II belonged to different STs, they harbour IncX₃ plasmids, except for
654 *K. pneumoniae* DHQP1605752 that had A/C plasmid. Furthermore, the lower subgroup of

655 this clade consisted of four *E. coli* isolates (P768MEM-011, P788A-032, P785MEM and
656 P744T) from animal samples which clustered tightly (Figure 8A).

657 Clade III was the most diverse clade consisting of carbapenemase-associated plasmids from
658 *K. pneumoniae* (n = 5), *E. coli* (n = 2), *E. roggenkampii* (n = 1) and *E. hormaechei* (n = 1).
659 These plasmids belonged to different STs and were isolated from different locations.
660 However, plasmids in clade III were all from human samples. *K. pneumoniae* GD4 and SZ03
661 harboured IncX₃ plasmid, which was more prevalent in clade II. However, this plasmid
662 carried *bla*_{KPC} and *bla*_{NDM} gene in *K. pneumoniae* GD4 and SZ03, respectively. Clades IV
663 and V were singletons consisting of plasmids from *E. hormaechei* Ec61 (clade IV) and *E.*
664 *cloacae* (clade V) from human samples. Lastly, clade VI had one isolate from human origin
665 and one from animals with unknown sequence types (Figure 8A).

666 Figure 8B shows phylogeny, resistance profiles, RMS and virulome profiles of plasmids that
667 mobilize the *mcr-1* gene. In contrast with carbapenemase-borne plasmid-based phylogeny,
668 this phylogeny comprised of a more diverse clonality. All plasmids in clade I belong to their
669 unique clones. *K. pneumoniae* SZO4 and *K. pneumoniae* SZO3 in clade III plasmids (IncX₄)
670 belong to the same clone ST25 (Figure 8B). IncHI2 plasmids were found in four *E. coli*
671 isolates of different clones. Two of these plasmids were detected in two *E. coli* WCHEC-
672 LL123 and XG-E1 isolated from animal samples. However, these isolates belong to *E. coli*
673 ST206 and *E. coli* ST466, respectively (Figure 8B).

674 **4. Discussion**

675 Increasing antimicrobial resistance in GNB continue to challenge public health globally.
676 Carbapenem and polymyxin co-resistance is even more worrying as these antibiotics are
677 “last-line” treatment therapy for GNB infections. Here, we present in-depth genomic

678 epidemiology, epigenomics, virulome and mobilome analysis of MDR GNB using a One
679 Heath concept, globally.

680 Various countries evidently showed that carbapenem and polymyxin co-resistance
681 disseminate among humans, animals, and the environment. In addition to high numbers of
682 carbapenem and colistin co-resistant isolates, China presented the most diverse specimen
683 from various sources, as well as multiple clones (Table S2_A). The observed outcomes could
684 be due to the over-prescription of antibiotics in health facilities and overuse of antimicrobials
685 for animal growth and wellness ⁷⁴.

686 Although GNB in humans have been the most common reservoirs for antibacterial resistance
687 genes, this trend is now increasing in animals, particularly in swine and poultry in developing
688 countries ⁷⁵. Thus, co-resistance to carbapenem and colistin in GNB have been outspread
689 globally, affecting both human health facilities and veterinary medicine ^{1,76}. Countries such as
690 China, Japan, USA, and Italy have reported carbapenem and colistin co-resistance in both
691 human and animals' samples. Carbapenem and colistin co-resistance in bacteria from animals
692 is of great concern in Asian countries, particularly in China ^{32,77}. Previous studies showed that
693 antibiotic resistance in livestock drastically increased in the past two decades in the North-
694 eastern parts of China and India ⁷⁵. This is due to the increasing demands of meat in
695 developing countries. Such countries frequently use antibiotics to boost animal wellbeing and
696 growth to elevate meat production ^{75,78}. Even though Asia and Europe reported high numbers
697 of carbapenem and colistin co-resistance, European countries reported less numbers from
698 animal samples, because Europe and the United States prohibited the use of antibiotics as
699 growth promoters in animals ⁷⁸. Environmental isolates were only reported in two countries,
700 China, and Germany. These were from farms, slaughterhouse, and sewage systems ^{67,71,79}
701 which suggest that carbapenem and colistin co-resistance may not be common in
702 environmental samples as it is in isolates from animal and human origin.

703 *K. pneumoniae* are commonly known for nosocomial infections, which are often untreatable
704 and fatal ^{3,22}. As expected, our results revealed that *K. pneumoniae* isolates were commonly
705 reported for carbapenem and colistin co-resistance globally (n = 535) (Figure 2A). Other
706 GNB species such as *E. coli*, *P. aeruginosa* and *A. baumannii* are also implicated in
707 nosocomial infections ^{2,4}. Additionally, Enterobacter spp. such as *E. cloacae* and *E.*
708 *hormaechei* have recently been identified as important pathogens in health facilities ⁸⁰. *E.*
709 *cloacae* isolates are naturally resistant to many antibiotics including first-generation
710 cephalosporins, ampicillin, and amoxicillin, which makes them multi-antibiotic resistant ⁸⁰.
711 This explains their rich resistance profiles found alongside carbapenem and colistin co-
712 resistance (Figure 4A &B).

713 Furthermore, these isolates harboured the major plasmid replicons reported in this study viz.,
714 IncI, IncX IncF, and IncHI (Figure 5A &B), which may play a role in the easy transmission
715 of ARGs. *P. aeruginosa* and *A. baumannii* isolates revealed low ARG profiles and/or lack of
716 plasmids, virulence genes, RMS and capsular polysaccharides. This suggests that some *P.*
717 *aeruginosa* and *A. baumannii* isolates are not MDR and their infections may still be treated
718 successfully with antibiotics. Our results revealed that for all *P. aeruginosa* and *A. baumannii*
719 with carbapenem and colistin co-resistance, there were no plasmid-borne *mcr* genes, but only
720 chromosomal resistance mechanisms were identified (Table S2_A). This corroborates the
721 lack of plasmids in these isolates.

722 The reported isolates belong to various clones. The most common clones with carbapenem
723 and colistin co-resistance were *E. coli* ST156 in China, *K. pneumoniae* ST258 in Greece and
724 *A. baumannii* ST191 in Korea (Table S2_F). The international *K. pneumoniae* ST258 was
725 reported in more than one country, indicating its easy transmissibility and wider distribution.
726 This is an international clone that is continually being reported globally ²². This means core
727 resistance genes will be easily disseminated between bacteria, which makes the fight against

728 antibiotic resistance in GNB, particularly *K. pneumoniae* of ST285, almost impossible to win.
729 Furthermore, having this promiscuous clone now involved in co-resistance to the two most
730 important antibiotics calls for the development of effective treatment therapies or even new
731 drugs.

732 *E. coli* isolates belonged to multiple STs, but *E. coli* ST156 was the most common (Table
733 S2_F). This epidemic clone is related to the spread of *mcr-I*, NDM and CTX-M⁸¹, which is
734 also supported by our results where *E. coli* ST156 isolates from human and animals were
735 found to carry *mcr-I* and *bla_{NDM}* ARGs in China and USA (Table S2_A). Furthermore, new
736 *E. coli* STs from animals have been reported in China⁶². The emergence of new clones and
737 high numbers of animal cases suggests that GNB are continually evolving and the crisis of
738 carbapenem and colistin co-resistance is undoubtedly growing. This also suggest that there
739 may be an increasing use of antibiotics in animals for commercial and economic benefits. *A.*
740 *baumannii* ST191 was another common clone in our analyses. It was prevalent in *K.*
741 *pneumoniae* isolates and was only identified in Korea¹². This clone carried OXA-23 along
742 with the disrupted *mgrB* gene for carbapenem and colistin resistance, respectively (Table
743 S2_A).

744 Many studies suggested combination therapies as treatment alternatives due to increasing
745 ESBLs, carbapenemases, and now polymyxin resistance in GNB^{7,13}. Unfortunately, our
746 results revealed that isolates with carbapenem and colistin co-resistance also developed
747 resistance against other antibiotics including tigecycline, aminoglycosides, chloramphenicol,
748 and sulfamethoxazole (Figure 4), therefore challenging combination therapies as treatments.
749 Resistance to various antibiotics, in addition to the rich virulence factors, methylome and
750 capsular polysaccharides (in *K. pneumoniae*) explains the success of *K. pneumoniae* to
751 bypass the host's immune defences, making their infections more challenging to treat/manage

752 ³. NDM, OXA-48 and KPC were previously reported as the most widely distributed
753 carbapenemases, with KPC being the most prevalent in *K. pneumoniae* ³.

754 However, our results revealed that NDM and OXA-48 were predominantly associated with
755 polymyxin resistance globally. An increase in the production of OXA-48 in *K. pneumoniae*
756 isolates was reported in 2019 ⁸², which was also observed in our analyses where OXA-48 was
757 the most most prevalent carbapenemase, followed by NDM (Figure 3B). Similar to other
758 isolates reported in India, Table S2_A showed that *K. pneumoniae* isolates in United Arab
759 Emirates (Dubai) also produced OXA-48 and NDM. However, the polymyxin resistance
760 mechanism for these isolates were not detected. KPC was previously reported as the most
761 prevalent carbapenemases in *K. pneumoniae* ⁴. However, in this study OXA-48 was detected
762 more than KPC globally. OXA-48 was predominant in *K. pneumoniae* isolates from India.
763 OXA-48 was reported to have lower activity against carbapenem but, showed increased
764 activity when it co-exists with ESBLs ¹⁹. Our result showed that OXA-48 was coupled with
765 ESBLs in most isolates (Figure 4), which supports their resistance to carbapenems.

766 Colistin resistance was through plasmid mediated *mcr-1* and/or chromosomal mutation.
767 Furthermore, Table S2_A shows that *mcr-1* is carried by different plasmids, suggesting a
768 rapid and high dissemination of this gene, thus increasing colistin resistance in bacteria.
769 Unfortunately, these plasmids have spread to carbapenemase-producing isolates, resulting in
770 MDR bacteria. Resistance through *crrB* gene was the least common mechanism for polymyxin
771 resistance. This mechanism has recently been reported as another pathway to polymyxin
772 resistance in GNB ⁸³. This suggests that bacteria are continuously evolving, resulting in the
773 emergence of new resistance mechanisms.

774 DNA methylation play a crucial role in the regulation of gene expression and it is part of
775 bacterial defence systems³⁷. Bacteria implement systems that are very crucial in destroying

776 foreign DNA material through recognition sequences^{35,37}. Most *K. pneumoniae* isolates share
777 the same methylation signatures as *E. coli* isolates, suggesting that DNA & MGEs can be
778 easily exchanged between the two species, thus giving them an advantage in acquiring
779 resistance and virulence to more antibiotics and hosts, respectively. Likewise, *mcr*'s ability to
780 easily disseminate as compared to other mechanisms is hinged on its association with MGEs.
781 This suggest that plasmids that carry the *mcr-1* gene may have the same recognition
782 sequences as the host, which makes their transmission between bacteria a success.

783

784 The MGEs that carry carbapenem and colistin ARGs are also associated with a diversity of
785 virulence genes in MDR GNB. Bacteria also produce polysaccharide capsules for their
786 protection, which are one of the most important virulence factors in pathogens³⁸. Bacterial
787 virulence genes/factors enable them to bypass the hosts' defence systems⁸⁴. MGEs, RMSs,
788 virulence genes and capsules all contribute to AMR in GNB. The most common mobile
789 elements were plasmids, followed by insertion sequence (IS), transposon (Tnp) and class I
790 integrons (Table S3_A). IncX plasmids were previously identified as the main carrier of
791 carbapenem and colistin ARGs among GNB^{12,66}. In line with this, our study revealed that
792 IncX was the most common MGE in 43 countries, carrying carbapenemases and *mcr-1* gene
793 (Table S3_B). China, with the highest reported numbers of carbapenem and colistin co-
794 resistant isolates (n = 171), presented diverse plasmids from various sources (Figure 2C).
795 Surprisingly, USA (n = 18), Japan (n = 15), and Vietnam (n = 6) were among countries with
796 the most diverse plasmid replicons despite their low rates of carbapenem and colistin co-
797 resistance. However, this was expected for Japan as it presented a diverse species distribution
798 like China (Figure 2A). The diverse plasmid repertoire in USA and Vietnam could suggest
799 that there are chances of increasing rates of plasmid borne ARGs within these countries. The
800 insertion sequence IS903B was the most common and prevalent in *K. pneumoniae* isolates (p

801 = 0.362). This IS was said to be one of the main elements that facilitated *mcr-8*'s
802 dissemination in GNB⁸⁵. The co-occurrence of the *mcr-8* with NDM was previously
803 documented in *K. pneumoniae*⁸⁵.

804 Colistin resistance has long been occurring through chromosomal mutations. However, the
805 emergence of plasmid-mediated *mcr* genes has put more strain to public health because such
806 genes are easily transmitted than chromosomal resistance mechanisms²⁴. As previously
807 stated⁸⁶, our study revealed that *mcr* co-occurrence with carbapenemases were commonly
808 identified in *E. coli* and showed low detections in *K. pneumoniae*. Further, *mcr* was not
809 identified in any *A. baumannii* and *P. aeruginosa* isolates. This evidently explains the low
810 rates of colistin resistance in *A. baumannii* and *P. aeruginosa* isolates.

811 We showed that carbapenem and colistin co-resistant *K. pneumoniae* isolates from human
812 samples clustered under three distinct clades. Likewise, carbapenem and colistin co-resistant
813 *E. coli* isolates resulted in three clades, with clade I comprising of more isolates while clades
814 II and III comprised of single isolates (Figure 7A & B). In addition to carbapenem and
815 colistin ARGs, *K. pneumoniae* and *E. coli* showed a rich resistance profile, confirming their
816 potential as carbapenemase-producing and polymyxin resistant MDR bacteria. *K.*
817 *pneumoniae* ST101 isolates from the same location showed the same plasmids, virulence
818 genes, methylome and capsules. However, their resistance profiles were not entirely identical
819 (Figure 7A). Contrarily, *K. pneumoniae* ST15 isolates of clade I of the *K. pneumoniae*
820 phylogeny had differences in their resistance profiles and virulomes. This suggests that
821 bacterial resistomes and virulence determinants are independent of their sequence types,
822 which could be due to the presence of different plasmids in the same clones.

823 Furthermore, these isolates showed the same RMS, capsular polysaccharides, and were
824 isolated from different countries. Additionally, this proves that their RMS are also

825 independent from their location of isolation. Having the same RMS allows them to easily
826 transmit genetic material, given that they have the same recognition sequences. Likewise,
827 phylogenetic analyses based on *E. coli* genomes also support the finding that bacterial
828 virulomes and RMS are independent of clonality (STs), source, and geographical location
829 (Figure 7B). These analyses revealed that genome sequences provide higher resolution than
830 STs, and thus show a better relationship between isolates than STs. Therefore, whole genome
831 sequences should be used to type or distinguish clones in epidemiological studies and
832 outbreaks.

833 Phylogenetic analyses based on plasmids demonstrated that with a few exceptions, the same
834 plasmids carrying the same carbapenemase (Figure 8A) and colistin (Figure 8B) ARGs,
835 mostly cluster together regardless of their sequence type and source of isolation. The
836 observed patterns of clustering suggest that plasmids associated with the same ARGs may be
837 genetically related. This is supported by our results that show IncX plasmids as the most
838 common plasmid to host both carbapenemase and polymyxin resistance genes. Hence, the
839 presence of same plasmids in different species indicates that plasmids are constantly
840 transmitted among GNB.

841 ***Conclusion, recommendations, limitations, & future perspectives***

842 One of the major global crises currently facing human and veterinary medicine is increasing
843 antibiotics resistance in bacteria. High demands and over prescription of antibiotics have
844 resulted in an increasing burden of bacterial antibiotic resistance globally. An even more
845 worrying problem is the emergence of bacterial resistance against last-resort antibiotics such
846 as carbapenems and polymyxins. This was commonly reported in GNB isolates from animal,
847 human, and environmental sources. Although carbapenem and polymyxin co-resistance was
848 common in *K. pneumoniae*, a stronger association existed in *E. coli* isolates from animal

849 samples. Countries with high demand for meat production viz., China, India, and Italy,
850 reported more cases of carbapenem and polymyxin resistance in animals.

851 Continuous dissemination carbapenem and polymyxin ARGs is supported by various MGEs,
852 RMS systems and rich virulence determinants. Reported MGEs were integrons, insertion
853 sequences, transposons, and plasmids. These were associated with plasmid-borne *mcr-1* that
854 confers resistance to colistin and with plasmid-borne carbapenemases such as OXA, NDM,
855 KPC, IMP, GES-5, and VIM. A very high number of clones were reported globally for GNB
856 with carbapenem and polymyxin co-resistance. The most common clones were *E. coli* ST156
857 in China, *K. pneumoniae* ST258 in Greece and *A. baumannii* ST191 in Korea. Evidently,
858 these clones each showed their unique resistance profiles, RMS, capsules, virulomes and
859 MGEs, supporting their independent evolutionary trajectories. A new *E. coli* clone was
860 reported in China from animal samples. Such clones need to be studied further.

861 The lack of available genome and/or plasmid accession numbers from published articles
862 limited our bioinformatics studies. Our study showed that there is an urgent need to institute
863 stricter regulations on antibiotic stewardship, prescription, and sales to prevent a return to the
864 pre-antibiotic era as the global dissemination of these MDR strains can take many lives.
865 Further, new antibiotics or new treatment therapies that can combat antimicrobial resistance
866 are urgently needed. Furthermore, more genomic investigations are needed to map current
867 resistance mechanisms and trends globally to facilitate evidence-based clinical and
868 epidemiological decisions in future.

869 **Availability of material and data:** Supplementary data is available and included as Tables
870 and Figures in this manuscript.

871 **Acknowledgements:** None

872 **Funding:** None

873 **Transparency declaration:** The authors declare no conflict of interest.

874 **Author contributions:** Study design and supervision (Dr. J.O.S); Bioinformatic/statistical
875 analyses (W.T.R & Dr. J.O.S); Write-up (W.T.R & J.O.S); Editing, revision, and formatting
876 (Dr. J.O.S).

877 5. References

- 878 1. Delgado-Blas, J. F., Ovejero, C. M., Abadia-Patino, L. & Gonzalez-Zorn, B. Coexistence of mcr-1 and
879 blaNDM-1 in Escherichia coli from Venezuela. *Antimicrob. Agents Chemother.* **60**, 6356–6358 (2016).
- 880 2. Pedersen, T. *et al.* Spread of plasmid-encoded NDM-1 and GES-5 carbapenemases among extensively
881 drug-resistant and pandrug-resistant clinical enterobacteriaceae in durban, South Africa. *Antimicrob.*
882 *Agents Chemother.* **62**, 1–12 (2018).
- 883 3. Kopotsa, K., Mbelle, N. M. & Osei Sekyere, J. Epigenomics, genomics, resistome, mobilome, virulome
884 and evolutionary phylogenomics of carbapenem-resistant Klebsiella pneumoniae clinical strains.
885 *Microb. Genomics* **6**, (2020).
- 886 4. Kopotsa, K., Osei Sekyere, J. & Mbelle, N. M. Plasmid evolution in carbapenemase-producing
887 Enterobacteriaceae: a review. *Ann. New* **1457**, 61–91 (2019).
- 888 5. Serra-Burriel, M. *et al.* Impact of multi-drug resistant bacteria on economic and clinical outcomes of
889 healthcare-associated infections in adults: Systematic review and meta-analysis. *PLoS One* **15**,
890 e0227139 (2020).
- 891 6. Wang, R. *et al.* The prevalence of colistin resistance in Escherichia coli and Klebsiella pneumoniae
892 isolated from food animals in China: coexistence of mcr-1 and blaNDM with low fitness cost. *Int. J.*
893 *Antimicrob. Agents* **51**, 739–744 (2018).
- 894 7. Osei Sekyere, J. & Reta, M. A. Genomic and Resistance Epidemiology of Gram-Negative Bacteria in
895 Africa: a Systematic Review and Phylogenomic Analyses from a One Health Perspective. *mSystems* **5**,
896 (2020).
- 897 8. Sekyere, J. O. & Reta, M. A. Global evolutionary epidemiology, phylogeography and resistome
898 dynamics of Citrobacter species, Enterobacter hormaechei, Klebsiella variicola, and Proteaceae clones: A
899 One Health analyses. *medRxiv* (2020).
- 900 9. Tacconelli, E. *et al.* Discovery, research, and development of new antibiotics: the WHO priority list of
901 antibiotic-resistant bacteria and tuberculosis. *Lancet. Infect. Dis.* **18**, 318–327 (2018).
- 902 10. World Health Organization. *Global Priority List Of Antibiotic-Resistant Bacteria To Guide Research,*
903 *Discovery, And Development Of New Antibiotics.* WHO (2017).
- 904 11. Beyrouthy, R. *et al.* MCR-1 and OXA-48 In Vivo Acquisition in KPC-Producing Escherichia coli after
905 Colistin Treatment. *Antimicrob. Agents Chemother.* **61**, AAC.02540-16 (2017).
- 906 12. Du, H., Chen, L., Tang, Y.-W. & Kreiswirth, B. N. Emergence of the mcr-1 colistin resistance gene in
907 carbapenem-resistant Enterobacteriaceae. *Lancet. Infect. Dis.* **16**, 287–288 (2016).
- 908 13. Sekyere, J. O. Current state of resistance to antibiotics of last-resort in South Africa: A review from a
909 public health perspective. *Front. Public Heal.* **4**, 209 (2016).
- 910 14. Osei Sekyere, J., Maningi, N. E., Modipane, L. & Mbelle, N. M. Emergence of mcr-9.1 in ESBL-
911 producing Clinical Enterobacteriaceae in Pretoria, South Africa: Global Evolutionary Phylogenomics,
912 Resistome and Mobilome. *mSystems* **5**, e00148-20 (2020).
- 913 15. Mmatli, M., Mbelle, N. M., Maningi, N. E. & Osei Sekyere, J. Emerging Transcriptional and Genomic
914 Mechanisms Mediating Carbapenem and Polymyxin Resistance in Enterobacteriaceae: a Systematic

- 915 Review of Current Reports. *mSystems* **5**, (2020).
- 916 16. Mediavilla, J. R. J. R. *et al.* Colistin- and Carbapenem-Resistant *Escherichia coli* Harboring *mcr-1* and
917 *bla*NDM-5, Causing a Complicated Urinary Tract Infection in a Patient from the United States. *MBio* **7**,
918 5–8 (2016).
- 919 17. Somboro, A. M., Osei Sekyere, J., Amoako, D. G., Essack, S. Y. & Bester, L. A. Diversity and
920 proliferation of metallo- β -lactamases: a clarion call for clinically effective metallo- β -lactamase
921 inhibitors. *Appl. Environ. Microbiol.* **27**, AEM.00698-18 (2018).
- 922 18. Sawa, T., Kooguchi, K. & Moriyama, K. Molecular diversity of extended-spectrum β -lactamases and
923 carbapenemases, and antimicrobial resistance. *J. intensive care* **8**, 13 (2020).
- 924 19. Arabaci, C., Dal, T., Basyigit, T., Genisel, N. & Durmaz, R. Investigation of carbapenemase and *mcr-1*
925 genes in carbapenem-resistant *Klebsiella pneumoniae* isolates. *J. Infect. Dev. Ctries.* **13**, 504–509
926 (2019).
- 927 20. Wang, Y. *et al.* Detection of mobile colistin resistance gene *mcr-9* in carbapenem-resistant *Klebsiella*
928 *pneumoniae* strains of human origin in Europe. *J. Infect.* **80**, 578–606 (2020).
- 929 21. Kieffer, N. *et al.* Colistin-resistant carbapenemase-producing isolates among *Klebsiella* spp. and
930 *Acinetobacter baumannii* in Tripoli, Libya. *J. Glob. Antimicrob. Resist.* **13**, 37–39 (2018).
- 931 22. Mavroidi, A. *et al.* Characterization of ST258 Colistin-Resistant, *bla*KPC-Producing *Klebsiella*
932 *pneumoniae* in a Greek Hospital. *Microb. Drug Resist.* **22**, 392–398 (2016).
- 933 23. Jayol, A. *et al.* High-Level Resistance to Colistin Mediated by Various Mutations in the *crrB* Gene
934 among Carbapenemase-Producing *Klebsiella pneumoniae*. *Antimicrob. Agents Chemother.* **61**, (2017).
- 935 24. Zafer, M. M. *et al.* Emergence of colistin resistance in multidrug-resistant *Klebsiella pneumoniae* and
936 *Escherichia coli* strains isolated from cancer patients. *Ann. Clin. Microbiol. Antimicrob.* **18**, 40 (2019).
- 937 25. Jayol, A. *et al.* High-Level Resistance to Colistin Mediated by Various Mutations in the *crrB* Gene
938 among Carbapenemase-Producing *Klebsiella pneumoniae*. *Antimicrob Agents Chemother* **61**, (2017).
- 939 26. Pillonel, T. *et al.* Resistome Analysis of a Carbapenemase (OXA-48)-Producing and Colistin-Resistant
940 *Klebsiella pneumoniae* Strain. *Antimicrob Agents Chemother* **62**, (2018).
- 941 27. Kanwar, A. *et al.* Emergence of Resistance to Colistin During the Treatment of Bloodstream Infection
942 Caused by *Klebsiella pneumoniae* Carbapenemase-Producing *Klebsiella pneumoniae*. *Open Forum*
943 *Infect Dis* **5**, ofy054 (2018).
- 944 28. Lomonaco, S. *et al.* Resistome of carbapenem- and colistin-resistant *Klebsiella pneumoniae* clinical
945 isolates. *PLoS One* **13**, e0198526 (2018).
- 946 29. Bhagirath, A. Y. *et al.* Two Component Regulatory Systems and Antibiotic Resistance in Gram-
947 Negative Pathogens. *Int. J. Mol. Sci.* **20**, (2019).
- 948 30. Carretero-Ledesma, M. *et al.* Phenotypic changes associated with Colistin resistance due to
949 Lipopolysaccharide loss in *Acinetobacter baumannii*. *Virulence* **9**, 930–942 (2018).
- 950 31. Choi, M.-J., Kim, S. & Ko, K. S. Pathways Regulating the *pbgP* Operon and Colistin Resistance in
951 *Klebsiella pneumoniae* Strains. *J. Microbiol. Biotechnol.* **26**, 1620–1628 (2016).
- 952 32. Yao, X., Doi, Y., Zeng, L., Lv, L. & Liu, J. Carbapenem-resistant and colistin-resistant *Escherichia*
953 *coli* co-producing NDM-9 and MCR-1. *The Lancet. Infectious diseases* vol. 16 288–289 (Elsevier Ltd,
954 2016).
- 955 33. Di Pilato, V. *et al.* *mcr-1.2*, a New *mcr* Variant Carried on a Transferable Plasmid from a Colistin-
956 Resistant KPC Carbapenemase-Producing *Klebsiella pneumoniae* Strain of Sequence Type 512.
957 *Antimicrob. Agents Chemother.* **60**, 5612–5615 (2016).
- 958 34. Feng, S. *et al.* Co-production of MCR-1 and NDM-5 in *Escherichia coli* isolated from a colonization
959 case of inpatient. *Infect. Drug Resist.* **11**, 1157–1161 (2018).
- 960 35. Ashcroft, M. M. *et al.* Strain and lineage-level methylome heterogeneity in the multi-drug resistant

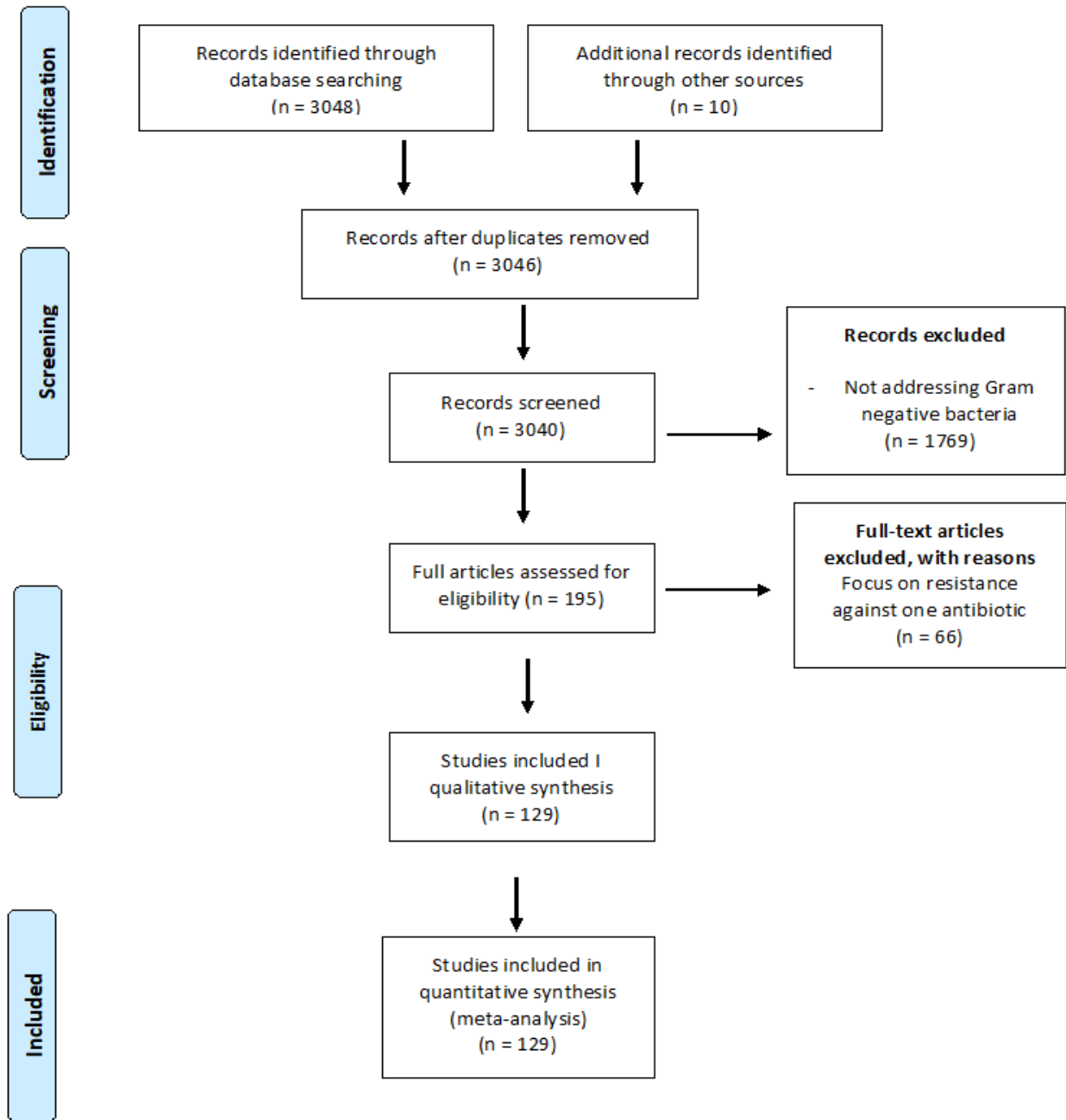
- 961 pathogenic *Escherichia coli* ST101 clone. *bioRxiv* (2020).
- 962 36. Taylor, D. L. *et al.* Integrative analysis of gene expression, DNA methylation, physiological traits, and
963 genetic variation in human skeletal muscle. *Proc. Natl. Acad. Sci. U. S. A.* **116**, 10883–10888 (2019).
- 964 37. Payelleville, A. *et al.* The complete methylome of an entomopathogenic bacterium reveals the existence
965 of loci with unmethylated Adenines. *Sci. Rep.* **8**, 12091 (2018).
- 966 38. Johnston, C. D. *et al.* Systematic evasion of the restriction-modification barrier in bacteria. *Proc. Natl.*
967 *Acad. Sci. U. S. A.* **116**, 11454–11459 (2019).
- 968 39. Wang, R., Lou, J. & Li, J. A mobile restriction modification system consisting of methylases on the
969 IncA/C plasmid. *Mob. DNA* **10**, 26 (2019).
- 970 40. Partridge, S. R., Kwong, S. M., Firth, N. & Jensen, S. O. Mobile Genetic Elements Associated with
971 Antimicrobial Resistance. *Clin. Microbiol. Rev.* **31**, 1–61 (2018).
- 972 41. Mostowy, R. J. & Holt, K. E. Diversity-Generating Machines: Genetics of Bacterial Sugar-Coating.
973 *Trends Microbiol.* **26**, 1008–1021 (2018).
- 974 42. Aghapour, Z. *et al.* Molecular mechanisms related to colistin resistance in Enterobacteriaceae. *Infect.*
975 *Drug Resist.* **12**, 965–975 (2019).
- 976 43. Baron, S. *et al.* Molecular mechanisms of polymyxin resistance: knowns and unknowns. *Int. J.*
977 *Antimicrob. Agents* **48**, 583–591 (2016).
- 978 44. Berglund, B. Acquired resistance to colistin via chromosomal and plasmid-mediated mechanisms in
979 *Klebsiella pneumoniae*. *Infect. Microbes Dis.* **1**, 10–19 (2019).
- 980 45. Mmatli, M., Mbelle, N. M., Maningi, N. E. & Osei Sekyere, J. Emerging Transcriptional and Genomic
981 Mechanisms Mediating Carbapenem and Polymyxin Resistance in Enterobacteriaceae: a Systematic
982 Review of Current Reports. *mSystems* **5**, (2020).
- 983 46. Osei Sekyere, J. & Mensah, E. Molecular epidemiology and mechanisms of antibiotic resistance in
984 *Enterococcus* spp., *Staphylococcus* spp., and *Streptococcus* spp. in Africa: a systematic review from a
985 One Health perspective. *Ann. N. Y. Acad. Sci.* **1465**, 29–58 (2020).
- 986 47. Hernando-Amado, S., Coque, T. M., Baquero, F. & Martínez, J. L. Defining and combating antibiotic
987 resistance from One Health and Global Health perspectives. *Nat. Microbiol.* **4**, 1432–1442 (2019).
- 988 48. Dandachi, I., Chabou, S., Daoud, Z. & Rolain, J.-M. Prevalence and Emergence of Extended-Spectrum
989 Cephalosporin-, Carbapenem- and Colistin-Resistant Gram Negative Bacteria of Animal Origin in the
990 Mediterranean Basin. *Front. Microbiol.* **9**, 2299 (2018).
- 991 49. Dandachi, I., Chaddad, A., Hanna, J., Matta, J. & Daoud, Z. Understanding the Epidemiology of Multi-
992 Drug Resistant Gram-Negative Bacilli in the Middle East Using a One Health Approach. *Front.*
993 *Microbiol.* **10**, 1941 (2019).
- 994 50. Liu, B.-T., Song, F.-J., Zou, M., Hao, Z.-H. & Shan, H. Emergence of Colistin Resistance Gene *mcr-1*
995 in *Cronobacter sakazakii* Producing NDM-9 and in *Escherichia coli* from the Same Animal. *Antimicrob.*
996 *Agents Chemother.* **61**, 1–6 (2017).
- 997 51. Le, L. *et al.* Coexistence Of Plasmid-Mediated *mcr-1* And *bla* NDM-4 Genes In A *Klebsiella*
998 *pneumoniae* Clinical Strain In Vietnam. *Infect Drug Resist* **12**, 3703–3707 (2019).
- 999 52. da Silva, H. R. F., Vilela, M. A., Almeida, A. C. S. & de Morais, M. M. C. Colistin-resistant KPC-2-
1000 producing *Klebsiella pneumoniae* ST423 harboring an IS5-like element in the *mgrB* gene isolated from
1001 cerebrospinal fluid. *Diagn. Microbiol. Infect. Dis.* **91**, 184–185 (2018).
- 1002 53. Li, X. *et al.* Detection and characterization of a clinical *Escherichia coli* ST3204 strain coproducing
1003 NDM-16 and MCR-1. *Infect. Drug Resist.* **11**, 1189–1195 (2018).
- 1004 54. Kumar, S., Stecher, G. & Tamura, K. MEGA7: Molecular Evolutionary Genetics Analysis Version 7.0
1005 for Bigger Datasets. *Mol. Biol. Evol.* **33**, 1870–1874 (2016).
- 1006 55. Wyres, K. L. & Holt, K. E. *Klebsiella pneumoniae* Population Genomics and Antimicrobial-Resistant

- 1007 Clones. *Trends Microbiol.* **24**, 944–956 (2016).
- 1008 56. Liu, B.-T. *et al.* High Incidence of Escherichia coli Strains Coharboring mcr-1 and blaNDM from
1009 Chickens. *Antimicrob. Agents Chemother.* **61**, pii: e02347-16 (2017).
- 1010 57. Yildiz, S. S., Kaşatepe, B., Şiğirli, H. & Sarıgüzel, F. M. High rate of colistin and fosfomycin
1011 resistance among carbapenemase-producing Enterobacteriaceae in Turkey. *Acta Microbiol. Immunol.*
1012 *Hung.* **66**, 103–112 (2019).
- 1013 58. Peng, Z. *et al.* Characteristics of Carbapenem-Resistant and Colistin-Resistant Escherichia coli Co-
1014 Producing NDM-1 and MCR-1 from Pig Farms in China. *Microorganisms* **7**, (2019).
- 1015 59. Peng, Z. *et al.* Characteristics of a Colistin-Resistant Escherichia coli ST695 Harboring the
1016 Chromosomally-Encoded mcr-1 Gene. *Microorganisms* **7**, (2019).
- 1017 60. Faccone, D. *et al.* Characterization of a multidrug resistant Citrobacter amalonaticus clinical isolate
1018 harboring blaNDM-1 and mcr-1.5 genes. *Infect. Genet. Evol.* **67**, 51–54 (2019).
- 1019 61. Chavda, B. *et al.* Coidentification of mcr-4.3 and blaNDM-1 in a Clinical Enterobacter cloacae Isolate
1020 from China. *Antimicrob. Agents Chemother.* **62**, (2018).
- 1021 62. Wang, X. *et al.* Emergence of a novel mobile colistin resistance gene, mcr-8, in NDM-producing
1022 Klebsiella pneumoniae. *Emerg. Microbes Infect.* **7**, 122 (2018).
- 1023 63. Nishida, S. & Ono, Y. Genomic analysis of a pan-resistant Klebsiella pneumoniae sequence type 11
1024 identified in Japan in 2016. *Int. J. Antimicrob. Agents* **55**, 105854 (2020).
- 1025 64. Pulss, S., Semmler, T., Prenger-Berninghoff, E., Bauerfeind, R. & Ewers, C. First report of an
1026 Escherichia coli strain from swine carrying an OXA-181 carbapenemase and the colistin resistance
1027 determinant MCR-1. *Int. J. Antimicrob. Agents* **50**, 232–236 (2017).
- 1028 65. Shen, Z. *et al.* Emerging Carriage of NDM-5 and MCR-1 in Escherichia coli From Healthy People in
1029 Multiple Regions in China: A Cross Sectional Observational Study. *EClinicalMedicine* **6**, 11–20 (2018).
- 1030 66. Guo, Q. *et al.* IncX2 and IncX1-X2 hybrid plasmids coexisting in a FosA6-producing Escherichia coli
1031 strain. *Antimicrob. Agents Chemother.* **61**, (2017).
- 1032 67. Wang, Y. *et al.* Comprehensive resistome analysis reveals the prevalence of NDM and MCR-1 in
1033 Chinese poultry production. *Nat. Microbiol.* **2**, 16260 (2017).
- 1034 68. Le-Ha, T. D. *et al.* Characterization of a carbapenem- and colistin-resistant Enterobacter cloacae
1035 carrying Tn6901 in bla NDM-1 genomic context. *Infect Drug Resist* **12**, 733–739 (2019).
- 1036 69. Poirel, L., Kieffer, N., Liassine, N., Thanh, D. & Nordmann, P. Plasmid-mediated carbapenem and
1037 colistin resistance in a clinical isolate of Escherichia coli. *Lancet Infect Dis* **16**, 281 (2016).
- 1038 70. Kong, L.-H. *et al.* Various Sequence Types of Escherichia coli Isolates Coharboring blaNDM-5 and
1039 mcr-1 Genes from a Commercial Swine Farm in China. *Antimicrob. Agents Chemother.* **61**, (2017).
- 1040 71. Ho, P. L. *et al.* IncX3 Epidemic Plasmid Carrying bla(NDM-5) in Escherichia coli from Swine in
1041 Multiple Geographic Areas in China. *Antimicrob Agents Chemother* **62**, (2018).
- 1042 72. Tacao, M. *et al.* mcr-1 and blaKPC-3 in Escherichia coli Sequence Type 744 after Meropenem and
1043 Colistin Therapy, Portugal. *Emerg. Infect. Dis.* **23**, 1419–1421 (2017).
- 1044 73. Moubareck, C. A. *et al.* Clonal emergence of Klebsiella pneumoniae ST14 co-producing OXA-48-type
1045 and NDM carbapenemases with high rate of colistin resistance in Dubai, United Arab Emirates. *Int. J.*
1046 *Antimicrob. Agents* **52**, 90–95 (2018).
- 1047 74. Wang, M. Antimicrobial resistance in China: challenges and actions. *Clin. Infect. Dis.* **67**, S127–S127
1048 (2018).
- 1049 75. Mega, E. R. Alarm as antimicrobial resistance surges among chickens, pigs and cattle. *Nature* (2019).
- 1050 76. Zhou, Y.-F. *et al.* Increased activity of colistin in combination with amikacin against Escherichia coli
1051 co-producing NDM-5 and MCR-1. *J. Antimicrob. Chemother.* **72**, 1723–1730 (2017).

- 1052 77. Kong, L. H. *et al.* Various Sequence Types of Escherichia coli Isolates Coharboring blaNDM-5 and
1053 mcr-1 Genes from a Commercial Swine Farm in China. *Antimicrob Agents Chemother* **61**, (2017).
- 1054 78. Van, T. T. H., Yidana, Z., Smooker, P. M. & Coloe, P. J. Antibiotic use in food animals worldwide,
1055 with a focus on Africa: Pluses and minuses. *J. Glob. Antimicrob. Resist.* **20**, 170–177 (2020).
- 1056 79. Schages, L., Wichern, F., Kalscheuer, R. & Bockmühl, D. Winter is coming - Impact of temperature on
1057 the variation of beta-lactamase and mcr genes in a wastewater treatment plant. *Sci Total Env.* **712**,
1058 136499 (2020).
- 1059 80. Annavajhala, M. K., Gomez-Simmonds, A. & Uhlemann, A.-C. Multidrug-resistant Enterobacter
1060 cloacae complex emerging as a global, diversifying threat. *Front. Microbiol.* **10**, 44 (2019).
- 1061 81. Yang, R.-S. *et al.* Emergence of NDM-5-and MCR-1-producing Escherichia coli clones ST648 and
1062 ST156 from a single muscovy duck (*Cairina moschata*). *Antimicrob. Agents Chemother.* **60**, 6899–6902
1063 (2016).
- 1064 82. Lowe, M. *et al.* Klebsiella pneumoniae ST307 with blaOXA-181, South Africa, 2014–2016. *Emerg.*
1065 *Infect. Dis.* **25**, 739 (2019).
- 1066 83. McConville, T. H. *et al.* CrrB Positively Regulates High-Level Polymyxin Resistance and Virulence in
1067 Klebsiella pneumoniae. *Cell Rep.* **33**, 108313 (2020).
- 1068 84. Choi, M. *et al.* The Diversity of Lipopolysaccharide (O) and Capsular Polysaccharide (K) Antigens of
1069 Invasive Klebsiella pneumoniae in a Multi-Country Collection. *Front. Microbiol.* **11**, 1249 (2020).
- 1070 85. Jin, L. *et al.* Emergence of mcr-1 and carbapenemase genes in hospital sewage water in Beijing, China.
1071 *J. Antimicrob. Chemother.* **73**, 84–87 (2018).
- 1072 86. Wang, Q. *et al.* Phenotypic and Genotypic Characterization of Carbapenem-resistant
1073 Enterobacteriaceae: Data from a Longitudinal Large-scale CRE Study in China (2012-2016). *Clin.*
1074 *Infect. Dis.* **67**, S196–S205 (2018).
- 1075

1076 **Figures and supplementary material**

1077 **Figures**



1078

1079 **Figure 1:** A flow chart showing the literature search strategy, inclusion, and exclusion

1080 criteria used for sorting the data.

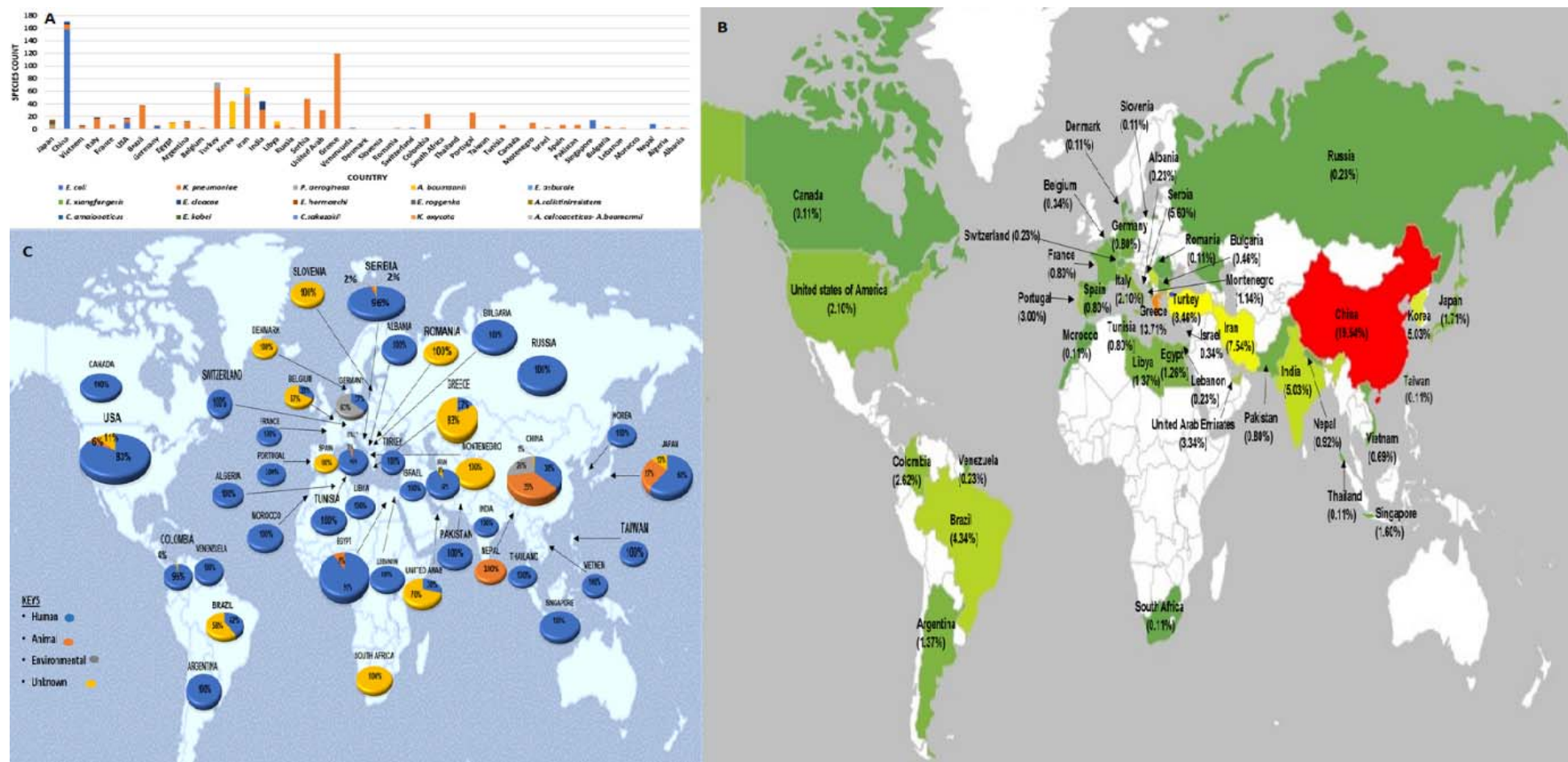
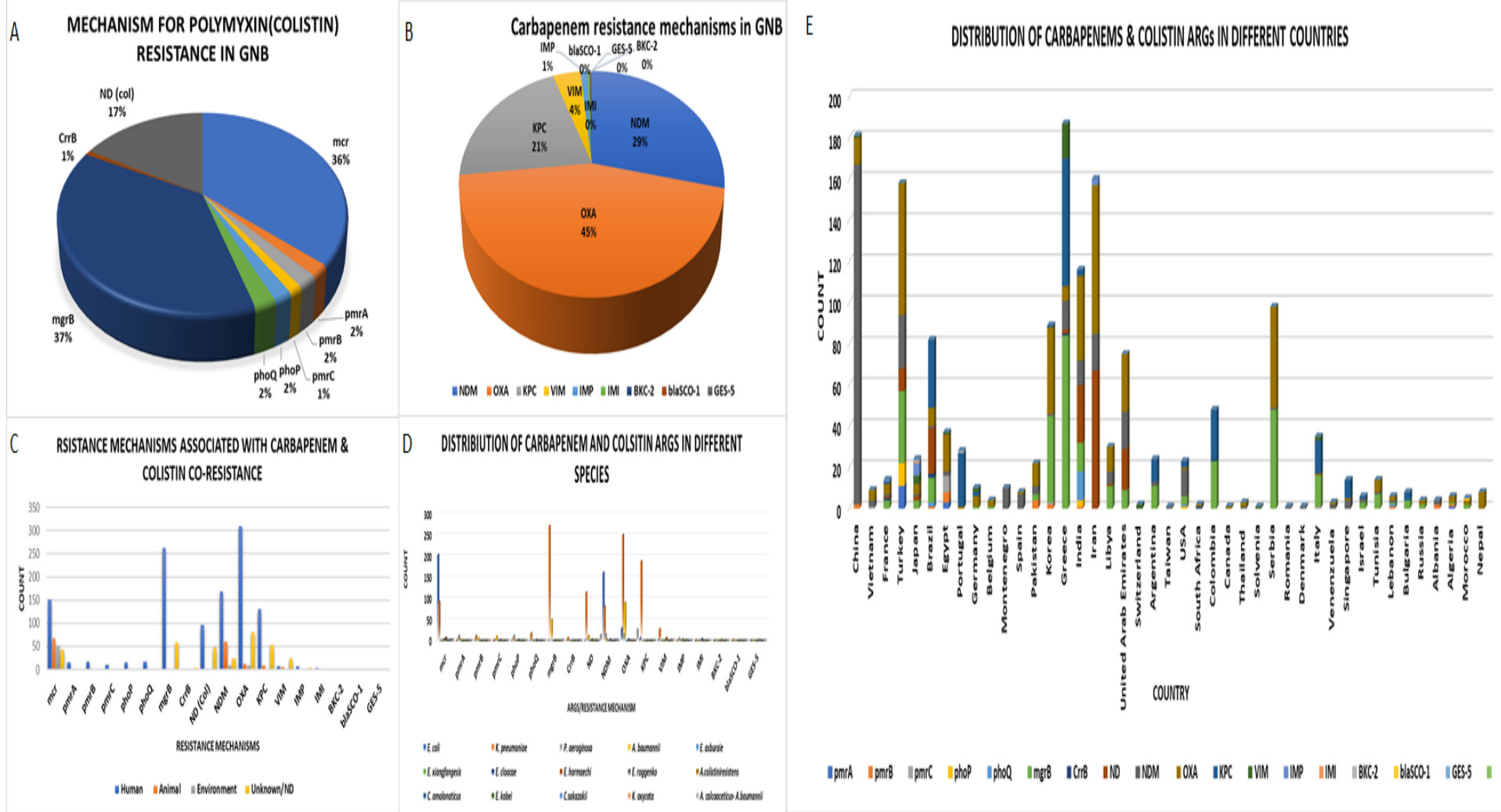


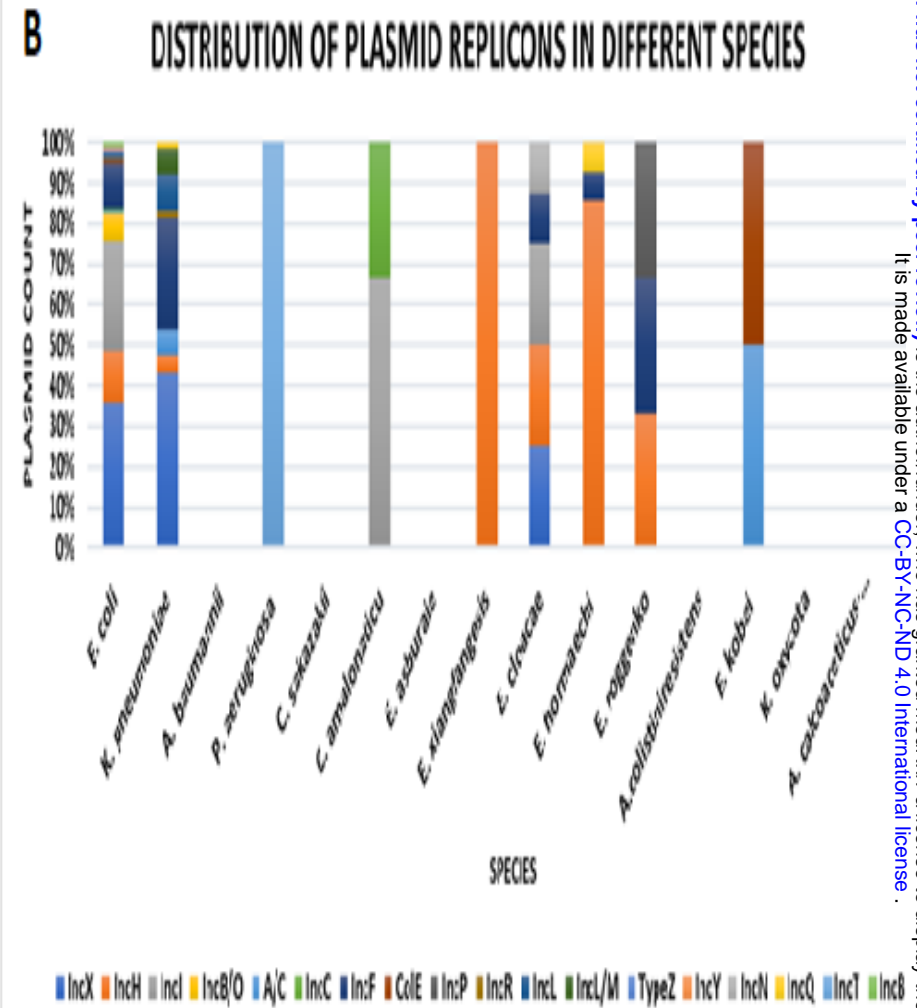
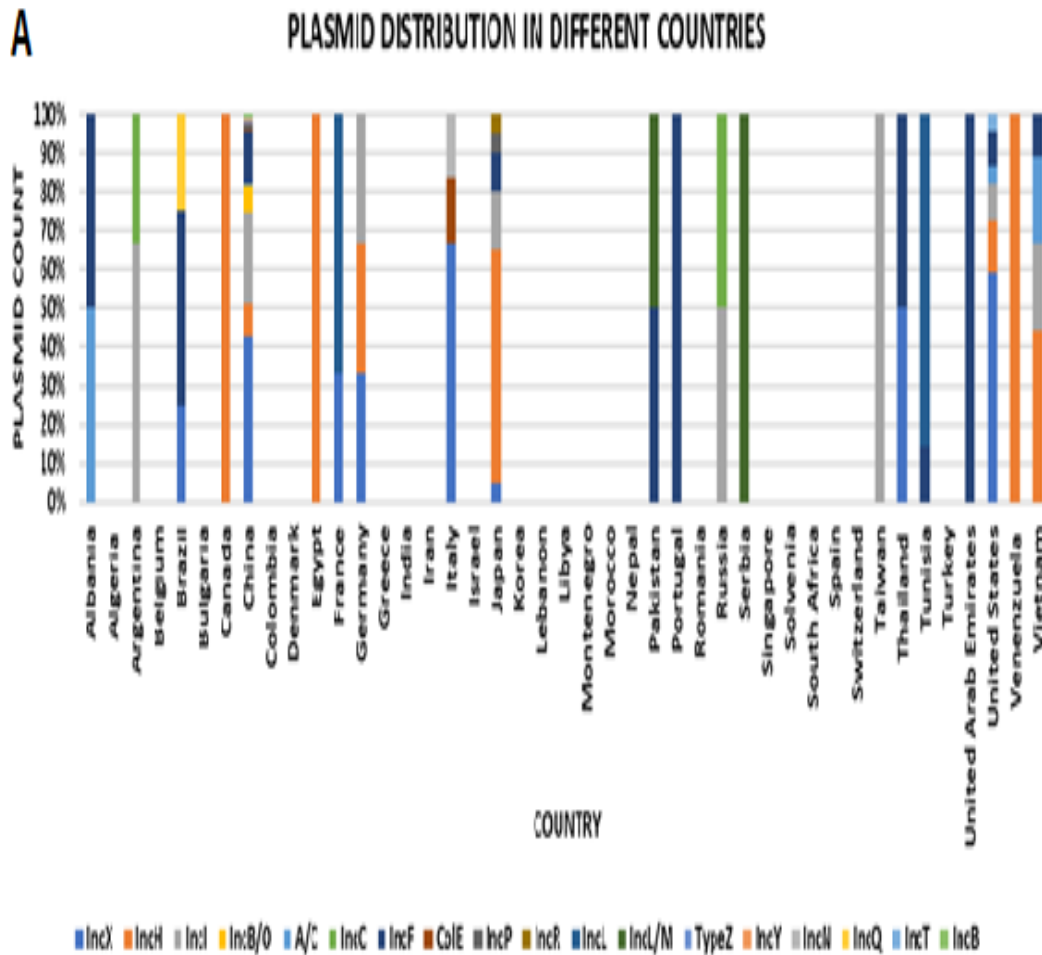
Figure 2: Global distribution of species and sample sources from which carbapenem and polymyxin-resistant Gram-negative bacteria were isolated from. (A) shows the global species distribution of GNB with carbapenem and colistin co-resistance per country, (B) Global distribution of carbapenem and colistin co-resistance in GNB. The scale ranges from a country with the highest prevalence (red) to the one with the lowest distribution (green) and (C) shows species count in different countries based on the source of isolation.



7 **Figure 3: Types and distribution of colistin and carbapenem resistance mechanisms and associated resistance genes.** (A) Resistome dynamics of colistin in GNB that are co-resistant to
8 carbapenem and colistin. (B) Carbapenem resistance mechanisms in GNB that are co-resistant to carbapenem and colistin. (C) shows resistance mechanisms based on species source. (D)
9 shows carbapenem and colistin resistance mechanisms in different species. (E) shows the distribution of carbapenamases and colistin ARGs in different countries.

3 **Figure 4: Global genomic resistome analysis of Gram-negative bacteria with carbapenem and polymyxin co-resistance**
4 **genes.** (A) and (B) both show the global distribution of other ARGs in addition to carbapenamases and colistin resistance genes in
5 GNB in different countries.

6



7

8

9

Figure 5: Global distribution of plasmid types found in Gram-negative bacteria with carbapenem and polymyxin co-resistance genes. (A) shows plasmid replicons associated with carbapenemases and colistin ARGs in different countries. (B) shows plasmid replicons in different species.

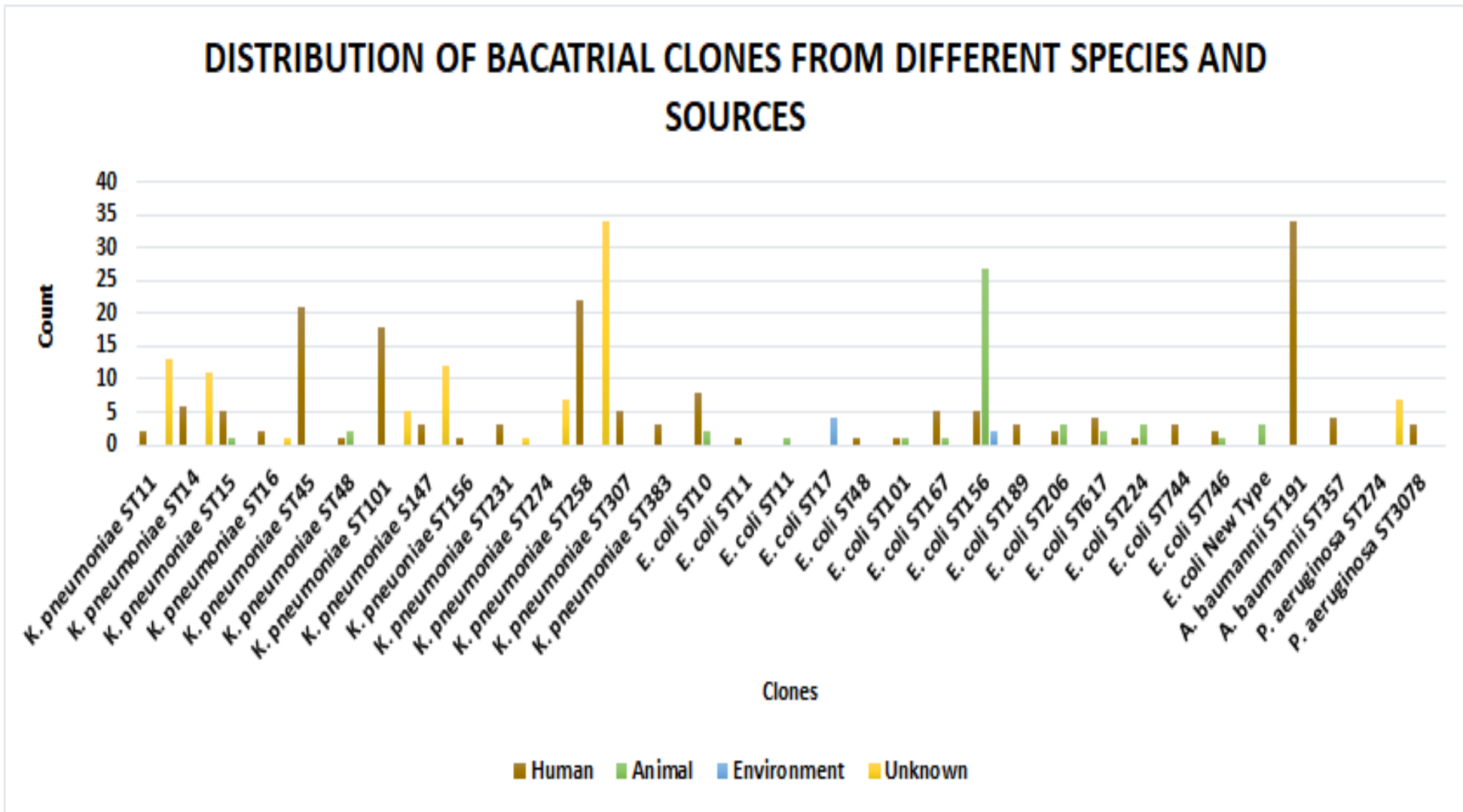


Figure 6: Distribution of bacterial sequence types based on country, species, and specimen source.

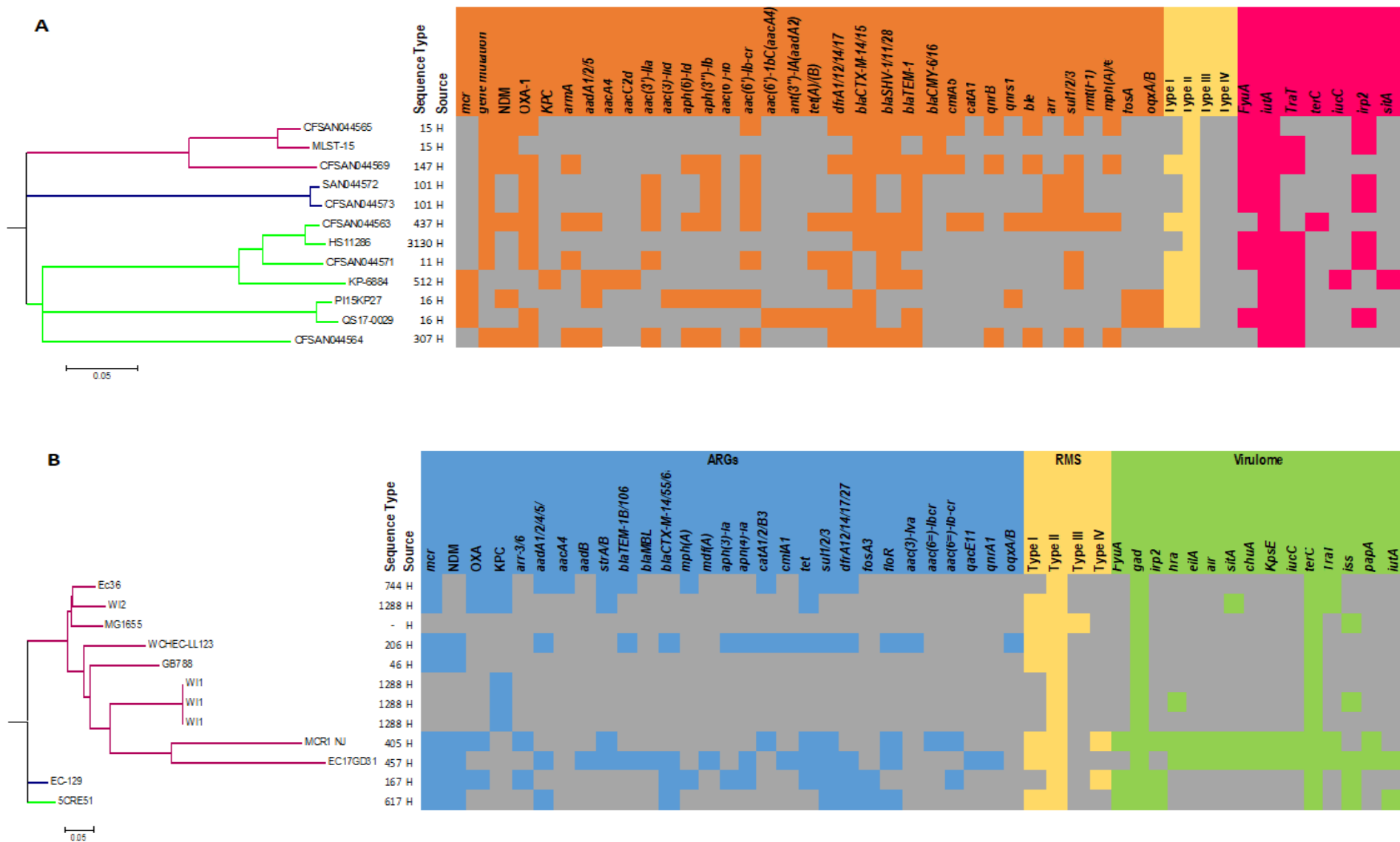
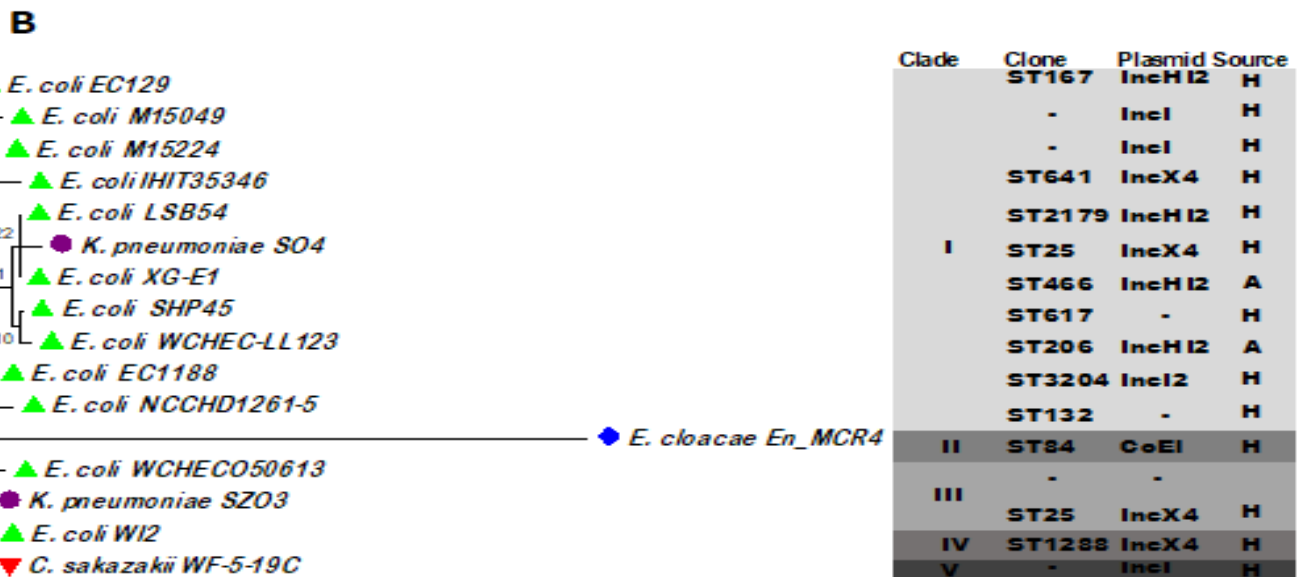
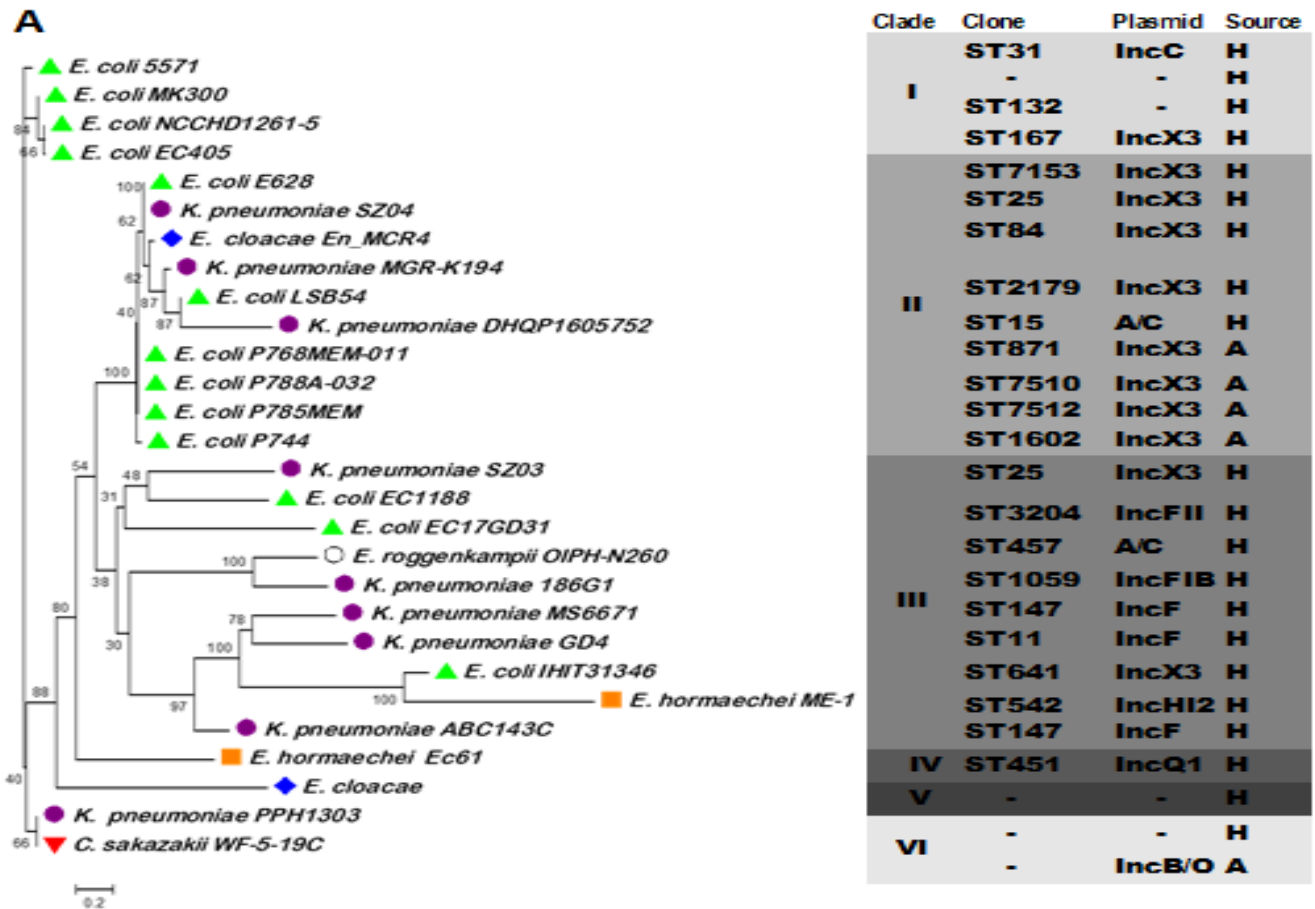


Figure 7: (A): Resistome dynamics of *K. pneumoniae* isolates with carbapenem and colistin co-resistance. Orange and white blocks represents presence and absence of ARGs, respectively.

(B): Resistome dynamics of *E. coli* isolates with carbapenem and colistin co-resistance. Red and white blocks represents presence and absence of ARGs, respectively.



15 **Figure 8: Evolutionary phylogenetics of plasmids harbouring carbapenem and polymyxin resistance determinants. (A)**
 16 Plasmid evolutionary analyses of plasmids replicons associated with carbapenemases. **(B)** Plasmid evolutionary analyses of
 17 plasmids replicons associated with colistin ARG, *mcr-1*. *E. coli*, *K. pneumoniae*, *E. cloacae*, *E. roggenkampii*, *E. hormaechei* and
 18 *C. sakazakii* isolates are shown by green triangle, purple circle, blue diamond shape, clear circle orange square and red triangle,
 19 respectively.

0 **Supplementary Figures**



1
2 **Figure S1: Capsular polysaccharide predictions of carbapenem and colistin resistant GNB based on the K-locus of *K. pneumoniae*.**

3 **Supplementary Tables**

4 **Table S1. Excluded and included articles.** (A): Data showing excluded papers and (B): shows papers included for meta-analyses.

5 **Table S2. Dataset of extracted data from included articles.** (A): Data showing geographical location, sample source, species, clones, genetic environment, antibiotic resistant genes (ARGs),
6 mobile genetic elements (MGEs) and plasmids replicons/incompatibility (Inc) of GNB isolates which are co-resistant to carbapenem and colistin, (B): species distributions per country, (C):
7 specimen source in different countries, (D): ARG distributions in different countries, (E): ARG distributions in different species, (F) Sequence types for isolates with carbapenem and colistin
8 co-resistance globally based on country of isolation, specimen source and species type.

9 **Table S3. Dataset of genomic analysis of downloaded genomes.** (A): Data showing the MGEs that are responsible for the transmissions of carbapenem and colistin resistance among GNB,
0 (B): global distribution of plasmid replicons associated with carbapenemases and colistin ARGs from included articles and (C): Plasmid distributions in different species.

1 **Table S4: Analysis of virulence factors (virulome) in carbapenem and colistin resistant isolates from various countries.**

2 **Table S5: Methylome data of carbapenem and colistin resistant isolates showing Type I, II, III and IV restriction modification systems in different isolates.**