

TITLE: Immunogenicity of COVID-19 Vaccination in Immunocompromised Patients: An Observational, Prospective Cohort Study Interim Analysis

AUTHORS:

Ghady Haidar MD^{a*}, Mounzer Agha MD^b, Amy Lukanski DNP^c, Kelsey Linstrum MS^d, Rachel Troyan MBA^c, Andrew Bilderback MS^c, Scott Rothenberger PhD^e, Deborah K. McMahon MD^a, Melissa Crandall MBA^g, P. Nathan Enick BS^a, Michelle Sobolewski MS^a, Kevin Collins MBA^h, Marc B. Schwartz MD^f, Jeffrey M. Dueker MDⁱ, Fernanda P. Silveira MD^a, Mary E. Keebler MD^j, Abhinav Humar MD^k, James D. Luketich MD^l, Matthew R. Morrell MD^m, Joseph M. Pilewski MD^m, John F. McDyer MD^m, Bhanu Pappu PhD^b, Robert L. Ferris MD^b, Stanley M. Marks MD^b, Cynthia Klammar-Blain^a, Urvi M. Parikh PhD^a, Amy Heaps MS^a, Paula L. Kip PhD^c, Alan Wells MD^{gm}, Tami Minnier MS^c, Derek Angus MD^d, and John W. Mellors MD^a

AFFILIATIONS:

^aDivision of Infectious Diseases, University of Pittsburgh School of Medicine, Pittsburgh, PA, USA

^bHillman Cancer Center, University of Pittsburgh Medical Center, Pittsburgh, PA, US

^cWolff Center, University of Pittsburgh Medical Center, Pittsburgh, PA, USA

^dHealth Care Innovation, University of Pittsburgh Medical Center, Pittsburgh, PA, USA

^eDivision of General Internal Medicine, University of Pittsburgh School of Medicine, Pittsburgh, PA, USA

^fDepartment of Medicine, University of Pittsburgh School of Medicine, Pittsburgh, PA, USA

^gClinical Laboratory, University of Pittsburgh Medical Center, Pittsburgh, PA, USA

^hClinical Analytics, University of Pittsburgh Medical Center, Pittsburgh, PA, USA

USA

ⁱDivision of Gastroenterology, Hepatology and Nutrition, University of Pittsburgh School of Medicine, Pittsburgh, PA, USA

^jDepartment of Cardiology, University of Pittsburgh School of Medicine, Pittsburgh, PA, USA

^kDivision of Transplantation, Department of Surgery, University of Pittsburgh School of Medicine, Pittsburgh, PA, USA

^lDepartment of Cardiothoracic Surgery, University of Pittsburgh School of Medicine, Pittsburgh, PA, USA

^mDivision of Pulmonary, Allergy and Critical Care Medicine, University of Pittsburgh School of Medicine, Pittsburgh, PA, USA

ⁿDepartment of Pathology, University of Pittsburgh Medical Center, Pittsburgh, PA, USA

***CORRESPONDANCE:**

Ghady Haidar, MD

Division of Infectious Diseases, University of Pittsburgh

3601 Fifth Ave, Falk Medical Building, Suite 5B

Pittsburgh, PA 15213, USA

haidarg@upmc.edu

Office: 412-648-6601

Fax: 412-648-6399

ABSTRACT

Objectives: Immunocompromised patients were excluded from COVID-19 vaccine clinical trials. The objectives of the study were to measure antibody responses, levels, and neutralization capability after COVID-19 vaccination among immunocompromised patients and compare these variables to those of immunocompetent healthcare workers.

Methods

This is an interim analysis of an ongoing observational, prospective cohort study which launched on April 14, 2021 across Western Pennsylvania. Participants were healthy healthcare workers (HCW) and immunocompromised patients who had completed their COVID-19 vaccination series. Individuals with a history of COVID-19 were not eligible. Serum was collected to measure for the presence of IgG against the SARS-CoV-2 Spike protein using a semi-quantitative assay; antibody levels were available for comparisons. A quasi-random subset of patients was selected for pseudovirus neutralization assays. Seropositivity with 95% Clopper-Pearson exact confidence intervals and distribution of antibody levels were measured. To identify risk factors for seronegativity, clinical characteristics were univariately compared between antibody reactive and non-reactive individuals within the immunocompromised group.

Results: 107 HCW and 489 immunocompromised patients were enrolled. Compared to HCWs, seropositivity was significantly lower ($p < .001$) among immunocompromised patients with Solid organ transplant (SOT), autoimmune, hematological malignancies, and solid tumors (HCW=98.1%; SOT=37.2%; autoimmune=83.8%; hematological malignancies=54.7%; and solid tumor=82.4%, $p < 0.05$). Over 94% of patients with Human Immunodeficiency Virus were seropositive. Among seropositive patients, antibody levels

were much lower among SOT (4.5 [2.1,13.1], $p=0.020$). Neutralization titers tightly correlated with antibody levels (Spearman $r = 0.91$, $p < 0.0001$).

Conclusion: Our findings demonstrate the heterogeneity of the humoral immune response to COVID-19 vaccines based on underlying immunosuppressive condition and highlight an urgent need to optimize and individualize COVID-19 prevention in these patients. These findings also have implications on public health guidance, particularly given revised Centers for Disease Control and Prevention recommendations permitting vaccinated individuals to abandon masking and social distancing in most settings. Future studies are warranted to determine assessment of cellular immunity, longitudinal measurement of immune responses, and the safety and efficacy of revaccination.

INTRODUCTION

Immunocompromised patients are at risk for severe and protracted severe acute respiratory syndrome coronavirus 2 (SARS-CoV-2) infection with the potential to generate and spread multiply-mutated variants.^{1,2} These patients should therefore be prioritized for COVID-19 vaccination but were excluded from clinical trials evaluating the immunogenicity and efficacy of COVID-19 vaccines due to confounding comorbidities.³⁻⁵ Not surprisingly, recent studies in transplant, oncology, and rheumatology patients have demonstrated that COVID-19 vaccines elicit demonstrable antibody responses well below the 100% response rates seen in healthy volunteers in the reported phase 1/2 trials.⁶⁻⁹

Despite these emerging data, several unknowns persist, including the degree of the antibody response in seropositive immunocompromised patients, and whether antibodies from immunocompromised patients are capable of neutralizing SARS-CoV-2. To address these knowledge gaps, we implemented the COVID-19 Vaccination in the Immunocompromised Study (CoVICS). The objectives of the study were to measure antibody responses, levels, and neutralization capability after COVID-19 vaccination among immunocompromised patients and compare these variables to those of immunocompetent healthcare workers (HCW). We hypothesized that compared to HCW, seropositivity, antibody levels, and neutralization titers will be lower among immunocompromised patients based on underlying disease and iatrogenic immunosuppression. We present here an interim analysis of our findings.

METHODS

CoVICS is an ongoing observational, prospective cohort study embedded in the electronic medical record (EMR) of adult patients who had completed their COVID-19 vaccine series. The study was approved by the University of Pittsburgh Institutional Review Board (Study ID: 21030056/HCC 21-032). Enrollment began on April 14th, 2021. To obtain serum from patients across the entire University of Pittsburgh Medical Center (UPMC) Health System, a customized SARS-CoV-2 IgG order set was built in the EMR that was only used by the study team and was not billed to the patient. Serum could be drawn at any of 16 UPMC hospital-based labs across Western Pennsylvania; and test results were shared with the patients. The study was advertised through social media, e-mail, and the UPMC EMR. Participants were enrolled online using a contact-free system for electronic consent.

Participants

Eligibility criteria for the immunocompromised arm of CoVICS included any of the following medical conditions: solid organ transplant (SOT), hematological malignancies, solid tumors being treated with systemic or radiation therapy over the past 12 months, autoimmune or chronic inflammatory conditions being treated over the past 12 months, and Human Immunodeficiency Virus (HIV) infection. For the control arm, we enrolled healthy HCWs at UPMC. Participants with a known history of prior COVID-19 infection were excluded. All participants were required to have completed a two-dose mRNA vaccination (Moderna mRNA-1273 or Pfizer BNT162b2) or a single dose of Ad26.COV2.S (Johnson & Johnson) at least 14 days prior to testing.

Data Collection and Outcomes

Study data were collected by the project coordinators and managed using the Research Electronic Data Capture (REDCap) hosted at the University of Pittsburgh.¹⁰ REDCap is a secure, web-based software platform designed to support data capture for research studies.¹¹ Serum was collected from participants after completion of their COVID-19 vaccine series and processed at UPMC's CLIA-88 accredited Central Lab. The primary outcome was seropositivity, defined as the proportion of patients who had a reactive SARS-CoV-2 Spike protein IgG result following vaccination. As secondary analyses, we compared antibody levels across patient groups, pseudovirus neutralization titers, and risk factors for seronegativity, defined as having a negative SARS-CoV-2 Spike protein IgG result following vaccination.

Antibody assays. Serum underwent antibody testing using the Beckman Coulter SARS-CoV-2 platform (Spike (S) receptor-binding domain (RBD) IgG).¹² These results are expressed as extinction coefficient (signal/cutoff) ratios or “levels” and interpreted as positive (≥ 1.00), equivocal (> 0.80 to < 1.00), or non-reactive (≤ 0.80).¹³ The assay was run according to the manufacturer's instructions.¹⁴ Test result interpretations were automatically shared with the study participants through UPMC's EMR. For data analysis, reactive results were defined as positive (seropositive), and equivocal or non-reactive results were defined as negative (seronegative). Antibody levels were available for comparisons.

Pseudovirus neutralization assays. We evaluated SARS-CoV-2 pseudovirus neutralization titer levels in a subgroup of patients. SARS-CoV-2 pseudovirus (PSV) was generated in 293T cells by co-transfection of pFC37K-CMV-S, an enhanced expression plasmid encoding for codon-optimized full-length SARS-CoV-2 S (Wuhan-1 sequence containing D614G substitution)

with the N-term HiBit tag removed, and pNL4-3.luc.R-E-mCherry-luciferase, an envelope deficient HIV-1 dual reporter construct that was cloned by recombination of the pNL.luc.R-E- plasmid (NIH AIDS Reagent Program) and the fully infectious pNL4-3 mCherry luciferase plasmid (Addgene).¹⁵⁻¹⁸ After harvest, PSV was centrifuged at 400xg for 10 minutes at room temperature (RT) and supernatant removed and filtered with a 0.45 micron syringe filter to remove producer cells. For neutralization assays, 104 293T-hACE2 cells were plated in 100 microliters (μL) media per well in 96 well white-wall white-bottom plates (Perkin Elmer) and incubated overnight at 37°C. Sera was diluted 1:3, then serially diluted 3-fold and incubated with 50 μL of 1:10 PSV for 1 hour at 37°C. After incubation, media was removed from wells containing 293T-hACE2 cells and replaced with PSV/sera, and spinoculation was performed at 1,000xg for 1 hour at RT. Plates were then incubated for 48 hours at 37°C. After 48 hours, plates were analyzed for luciferase production by adding 100 μL of BriteLite Plus reagent (Perkin Elmer), incubating at RT for 2 minutes, and reading on a Victor Nivo microplate luminometer (Perkin Elmer). Results are reported as the highest serum dilution that neutralizes >50% of the PSV termed the NT50.

Statistical Methods

Descriptive statistics for the study sample are expressed as means, standard deviations, counts, and percentages. Baseline socio-demographic characteristics, seropositivity, and post-vaccine antibody levels were compared between immunocompromised and immunocompetent participants using two-sample student *t*-tests (or Wilcoxon rank sum tests in the case of skewed distributions) for continuous variables and chi-square tests for categorical variables. Within the immunocompromised group, these same characteristics were presented descriptively, stratified by immunocompromising condition.

Seropositivity along with 95% Clopper-Pearson exact confidence intervals were plotted for immunocompetent individuals and immunocompromised patients by condition (autoimmune disease, hematological malignancy, solid tumor, SOT, and HIV) and compared by chi-square tests. The distributions of antibody levels were plotted for healthy controls versus individual immunocompromised conditions. Compared to controls, the distributions of antibody levels among immunocompromised patients were compared by the Wilcoxon rank sum test.

As essentially all immunocompetent individuals were reactive (98%), socio-demographic and clinical characteristics were univariately compared between antibody reactive and non-reactive individuals within the immunocompromised group. Again, student *t*-tests or Wilcoxon tests were used for continuous variables with chi-square tests used for categorical variables.

For the subsets of individuals with pseudovirus neutralization quantification, antibody levels and corresponding neutralization titer levels were plotted for immunocompetent versus immunocompromised individuals. The Spearman correlation coefficient was estimated between antibody and neutralization titer levels given their potentially nonlinear relationship. Analyses were performed using Stata SE, version 16.1 (College Station, TX) assuming a significance level of $\alpha=0.05$. Methods and results are reported in accordance with Strengthening the Reporting of Observational Studies in Epidemiology (STROBE) statement.¹⁹

RESULTS

Participants

During the interim analysis period (April 14, 2021 through June 25, 2021), 596 participants were enrolled, 107 were healthy HCW (18%) and 489 were immunocompromised patients (82%). The distribution of immunocompromising conditions was as follows

(**Table 1**): 183 SOT (37.4%), 160 autoimmune conditions (32.7%), 75 hematological malignancy (15.3%), 37 HIV (7.6%), and 34 solid tumors (7.0%). Overall, the majority of participants (98.2%) received the mRNA-1273 (Moderna=48.5%) or BNT162b2 (Pfizer=49.7%) vaccine series. Compared to HCWs, immunocompromised patients were older (mean age for HCW=43.7, Patients=59.5, $p<.001$) and less likely to be female (HCW=72%, Patients=51.1%, $p<.001$). Median days from 2nd vaccine dose to antibody level drawn was 78 (IQR 58-105) and was longer for HCW compared to immunocompromised patients (HCW median days=119, Patient median days=77, $p <.001$).

Study Outcomes

Seropositivity. Compared to HCWs of whom 98.1% [93.4%-99.8%] were seropositive, seropositivity was significantly lower among persons with SOT (37.2% [30.1%-44.6%], $p<.001$), hematological malignancies (54.7% [42.7%-66.2%], $p<.001$), solid tumors (82.4% [65.5%-93.2%], $p=.009$), and autoimmune/chronic inflammatory conditions (83.8% [77.1%-89.1%], $p<.001$), (**Figure 1**). In contrast, there was no difference in seropositivity between healthy HCW and patients with HIV (94.6% [81.2%-99.3%], $p = 0.26$), all of whom were receiving antiviral therapy, had undetectable viral loads, and CD4 counts > 200 cell/mm³. There was no association between time from vaccination and seropositivity.

Type of vaccine was not associated with antibody response in either the HCW (both vaccines $> 90\%$) or in the immunocompromised cohorts regardless of subgroup (seropositivity of 50.5% versus 49.5% for mRNA-1273 versus BNT162b2, respectively, $p=0.427$). Unadjusted risk factors for seronegativity after vaccination are shown in **Table 2**. Overall, age > 44 and male sex were associated with failure to produce SARS-CoV-2 antibodies. Among SOT recipients, lung transplant recipients had the lowest seropositivity (22.2%), but this was not statistically significantly different from the combined heart/liver/kidney group seropositivity

of 38.8% ($p=0.167$). Liver transplant recipients in contrast had significantly higher seropositivity compared to other transplant types (60.6% vs 32.0%, respectively, $p=0.002$.) Additionally, use of an anti-metabolite and time from SOT (less than 1 year versus > 1 year) were associated with seronegativity. Similarly to the overall immunocompromised group, there was no statistically significant difference in the seropositivity by type of vaccine among SOT recipients (41.8% versus 33.0% for mRNA-1273 and BNT162b2, respectively, $p=0.22$).

Among hematological malignancy patients, there was no difference between seropositivity among chronic myelogenous leukemia (CLL) (52.6%, 10/19) versus non-CLL patients (55.4%, 31/56) ($p=.837$). In contrast, among patients with solid tumors, radiation therapy was associated with vaccine failure compared to radiation therapy (61.5%, 8/13 vs 95.2%, 20/21) seropositive, respectively ($p=.012$). Finally, use of an anti-CD20 monoclonal antibody within the prior 12 months was associated with failure to generate antibodies among patients with autoimmune or chronic inflammatory conditions, compared to no anti-CD20 monoclonal antibody (40.0%, 2/5 vs 85.3%, 128/150) seropositive, respectively ($p =.007$).

Antibody levels. Next, we analyzed IgG SAR-CoV-2 antibody levels across patient subgroups. While it appeared that levels were significantly lower in immunocompromised patients compared to HCW (**Figure 2A**), this finding was not surprisingly driven by the higher proportion of patients with negative antibody results in the immunocompromised group. When we excluded seronegative patients and analyzed only seropositive study participants (**Figure 2B**), there were no statistically significant differences between antibody levels of seropositive healthy individuals (median [IQR] 7.2 [4.1,13.7]) and those of seropositive persons with autoimmune (median [IQR] 7.1 [3.0,13.4]), hematological malignancy (median [IQR] 10.5 [3.7,27.1]) and HIV (median [IQR] 8.2 [5.5,17.2]).

Solid tumor appeared to have a higher median antibody level when compared to the HCW (median [IQR] = 11.5 [6.5,20.1], $p=0.021$). In contrast, antibody levels were significantly lower among SOT recipients compared to healthy controls (median [IQR] 0.2 [0.0,2.8], $p=0.02$). Since a recent report suggested that IgG responses vary even among individual with “negative” results,²⁰ we compared antibody levels among patients with non-reactive or equivocal antibody levels (i.e., levels < 1) only (**Figures 2C and 2D**). Overall, antibody levels from “seronegative” SOT (median [IQR] 0.0 [0.1,0.7]) and hematological malignancy (median [IQR] 0.1 [0.0,0.2]) patients were significantly lower than antibody levels from other seronegative patient groups (median [IQR] 0.3 [0.1,0.7], $p < .001$). Furthermore, antibody levels from seronegative CLL patients were not significantly lower than those of other patients with hematological malignancies (non-CLL median [IQR] = 0.1 [0.0,0.5]; CLL 0 [0,0.1], $p = .2090$). The effect of time from vaccination on antibody level was similar among HCW compared to immunocompromised patients, with a decline in -2.2 versus -1.1 units per 1 month from vaccination, respectively ($p=0.158$).

Pseudovirus neutralization assays. Neutralization titers were performed on a quasi-random subset of 66 participants (HCW=30, immunocompromised=36). Characteristics of these participants are shown in **Table 4**, and neutralization titers are shown in **Figures 3A and 3B**. We observed a strong, positive correlation between antibody levels and neutralization titers (Spearman $r = 0.91$, $p < 0.0001$). Neutralization titers appeared to be lower among immunocompromised patients (median [IQR] = 33.0 [9.2,76.9]) compared to HCW (median [IQR] = 133.7 [69.6,340.6], $p < .001$), mirroring the lower antibody levels from this sample of immunocompromised patients (healthy median [IQR] = 8.2 [3.6,13.7] vs immunocompromised = 1.2 [0.6,9.1], $p < .001$).

DISCUSSION

In this prospective, longitudinal study of immunocompromised patients who have completed their COVID-19 vaccine series, we found that compared to healthy HCW, seropositivity was much lower in SOT recipients and patients with hematologic cancers (37.2% and 54.7%, respectively). In contrast, seropositivity among patients with solid neoplasms and autoimmune conditions approached those of HCW though remained lower (over 80% each versus 98.1%, respectively). Importantly, well-controlled patients with HIV mounted antibody responses nearly identical to those of healthy HCW. SARS-CoV-2 neutralization titers were generally proportional to antibody levels, though larger studies will be needed to fully assess whether subsets of immunocompromised patients fail to neutralize the virus. Finally, even among immunocompromised patients, some individuals mounted both antibody levels and neutralization capabilities that matched those of healthy HCW. Taken together, our findings demonstrate the heterogeneity of the humoral immune response to COVID-19 vaccines based on underlying immunosuppressive condition and highlight an urgent need to optimize and individualize COVID-19 prevention in these patients. Our findings also have implications on public health guidance, particularly given revised CDC recommendations permitting vaccinated individuals to abandon masking and social distancing in most settings.

We found several risk factors of vaccine failure in the different subgroups of immunocompromised patients, such as lung transplantation, use of antimetabolites or anti-CD20 monoclonal antibodies, and radiation therapy. Only 22.2% of lung transplant recipients in our cohort were seropositive, compared to 38.8% of other SOT recipients combined. Although this difference did not reach statistical significance, this observation remains biologically plausible, as lung transplant recipients generally receive higher

doses of immunosuppressive medications than other organ transplant recipients and are considered to be at a much greater risk for infection. Similarly to a report by Boyarsky et al.,²¹ we found that patients who underwent their transplants within a year of vaccination were less likely to respond, a finding that is an indicator of a heightened state of immunosuppression in the early post-transplant period. Contrary to previous findings,²⁰ among the participants with hematological malignancies, there was no statistically significant difference in the seropositivity of CLL versus non-CLL patients. Nonetheless, since circulating lymphocytes in patients with CLL are usually non-functional CLL cells, seronegative patients with CLL had much lower antibody levels than did other patients with hematological malignancies, suggesting true absence of an antibody response. Use of anti-CD20 monoclonal antibodies predicted vaccine failure in patients with autoimmune conditions, confirming that patients with B-cell aplasia cannot produce antibodies. Furthermore, radiation therapy was associated with failure to generate antibodies in patients with solid tumors, which is likely due to the toxic effects of radiation therapy on lymphocyte function.²² Finally, although it is extremely encouraging that 94% of participants with HIV responded to the vaccines, this group of patients continues to be a marginalized group of patients with poor access to vaccination,²³ and outreach efforts should focus on increasing awareness of vaccination in these patients. Unlike a prior report,²¹ there was no association between type of mRNA vaccine and antibody response.

Despite the associations between specific immunosuppressive drugs and vaccine failure, we urge our patients not to self-discontinue these potentially life-saving medications. This is particularly true for organ transplant recipients, in whom the discontinuation of antimetabolites for the theoretical possibility of responding to vaccination will place the patient at risk for developing allograft rejection. This guidance is echoed by the American Society of Transplantation (AST),²⁴ which recommends

against any modification in immunosuppressive medications at this time. Similarly, the National Comprehensive Cancer Network (NCCN) recommends the administration of COVID-19 vaccines when available, given the complete lack of data regarding whether vaccinating patients between chemotherapy cycles or during neutrophil recovery would have any beneficial impact on vaccine responses.²⁵ In contrast, the American College of Rheumatology does recommend temporary interruptions in certain immunosuppressive medications (such as methotrexate, anti-CD20 monoclonal antibodies, and biologics) around the time of vaccination in patients with stable rheumatological diseases.²⁶ Patients receiving such medications should discuss decisions to interrupt therapy with their providers.

Whether routine measurement of COVID-19 vaccine responses will become part of clinical practice remains to be seen. Multiple US societies such as CDC,²⁷ Food and Drug Administration,²⁸ AST,²⁴ NCCN,²⁵ and American Society of Hematology, Transplantation and Cellular Therapy²⁹ currently recommend against routine assessment of antibody responses after vaccination outside of a study irrespective of the underlying immunocompromising condition. Additionally, immune correlates of protection, seroprotection titers, the association between neutralization and protection, and the contribution of T-cell responses to protection are not yet defined. For instance, although our seropositive immunocompromised patients (except SOT recipients) had antibody levels comparable to those of HCWs, neutralization titers appeared lower in some but not all immunocompromised patients. The clinical implications of these observations remain uncertain. Nonetheless, there is historical precedence for post-vaccine serological monitoring in immunocompromised patients, such as with hepatitis B vaccination, for which a booster series is recommended for non-responders.³⁰⁻³¹ However, for many other vaccines such as influenza and herpes zoster, post-vaccine serological monitoring is not

standard of care.^{32,33} Instead, immunocompromised patients are simply counseled that their risk of infection is higher than that of the general population.

There has been immense interest in re-vaccinating immunocompromised patients, but due to the regulatory landscape within the U.S. and the dearth of data on safety and efficacy, re-vaccination in the U.S. is not currently advised. In contrast, re-vaccination of immunocompromised patients, such as SOT recipients and patients receiving anti-CD20 monoclonal antibodies has been standard of care in France since the spring of 2021.²⁸ Two recent studies from the U.S. and France of SOT recipients who did not respond to the initial vaccine series showed that 67% and 56% of patients also failed to respond to boosters, respectively.³⁴ There was some evidence that response to the booster was associated with the initial post-vaccine antibody titer; indeed, our results suggest that some patients with non-reactive antibody levels may have some low-level antibody production compared to others (such as SOT recipients and CLL patients), in whom a negative result appears to indicate near absence of antibodies. Although we anxiously await the results of an ongoing randomized trial of revaccination in SOT recipients (NCT04885907),³⁵ it is not surprising that many immunocompromised patients will never mount an antibody response. Should boosters and serological monitoring become routine care, patients who fail to respond to re-vaccination should be referred to clinical trials of other preventive measures such as monoclonal antibodies and prophylactic antivirals.

Limitations of this study include lack of longitudinal sampling and assessment of cellular immunity. Nonetheless, our data call for the need for funding to better understand immune responses to COVID-19 vaccines in immunosuppressed patients. Future studies should focus on correlating immune responses with clinical efficacy of COVID-19 vaccines and measurement of other correlates of

immunity such as T-cell and memory B-cell responses, particularly in seronegative patients. There is a critical need to develop studies of revaccination, and for countries providing revaccination to publish their data. There is also a critical need to design trials of passive immunity using monoclonal antibodies or direct-acting antivirals for the prevention of COVID-19 in immunocompromised patients. Finally, results such as ours should not be used to fuel vaccine hesitancy, but rather to encourage vaccination and emphasize the need for ongoing vigilance until additional interventions are available.

Acknowledgements: The authors thank the following individuals for providing multidisciplinary commitment to advance scientific discovery and quality of patient care in response to the COVID-19 pandemic: Jordan Bartlow, Logan Baylor, Sarah Behr, Shannon Buono, Vibha Chauhan, Maddie Chrisman, Shawna Chylinski, Cathy Cochran, Lindsay Coughenour, Nicole Czolba, Celeste Duprey, Kelly Friday, Megan Fritz, Kailey Hughes, Trevor Katich, Kristin Kerfoot, Joshua Kohl, Elaine Lander, Michelle Lucas, Aimee Majeski, Traci McGaha, Rachel McGargle, Audrey Paul, Amber Shaffer, Jordan Shayer, Lisa Sheehan, Kristin Shoemaker, Lori Snyder, Courtney Starrett, Abbey Sung, Christina Tedesco, and Jamie Voyten.

Funding Statement: Research reported in this publication was supported by the National Institute of Allergy and Infectious Diseases of the National Institutes of Health under Award Number K23AI154546. The content is solely the responsibility of the authors and does not necessarily represent the official views of the National Institutes of Health.

Conflict of Interest/Disclosure: GH receives research funds from Karius, Inc. JWM is a consultant to Gilead Sciences, and owns shares in Co-Crystal Pharmaceuticals, Infectious Disease Connect, and Abound Bio.

REFERENCES

1. Haidar G, Mellors JW. Improving the outcomes of immunocompromised patients with COVID-19. *Clin Infect Dis*. 2021:ciab397.
2. Walti CS, Loes AN, Shuey K, et al. Humoral immunogenicity of the seasonal influenza vaccine before and after CAR-T-cell therapy. *medRxiv* [Preprint]. 2021 May 11:2021.05.10.21256634.
3. Fung M, Babik JM. COVID-19 in immunocompromised hosts: what we know so far. *Clin Infect Dis*. 2021;72:340-350.
4. Jackson LA, Anderson EJ, Roupael NG, et al. An mRNA vaccine against SARS-COV-2 – preliminary report. *N Engl J Med*. 2020;383:1920-1931.
5. Walsh EE, Frenck RW Jr, Falsey AR, et al. Safety and immunogenicity of two RNA-based Covid-19 vaccine candidates. *N Engl J Med*. 2020;383(25):2439-2450.
6. Kates OS, Haydel BM, Florman SS, et al. COVID-19 in solid organ transplant: a multi-center cohort study. *Clin Infect Dis*. 2020 Aug 7:ciaa1097.
7. Sharma A, Bhatt NS, St. Martin A, et al. Clinical characteristics and outcomes in COVID-19 haematopoietic stem-cell transplantation recipients: An observational cohort study. *Lancet Haematol*. 2021;8:E185-E193.
8. Tesoriero JM, Swain CE, Pierce JL, et al. COVID-19 outcomes among persons living with or without diagnosed HIV infection in New York state. *JAMA Netw Open*. 2021;4:e2037069.
9. Hensley MK, Bain WG, Jacobs J, et al. Intractable COVID-19 and prolonged SARS-CoV-2 replication in a CAR-T-cell therapy recipient: a case study. *Clin Infect Dis*. 2021 January 28:ciab072.

10. Harris PA, Taylor R, Thielke R, et al. Research electronic data capture (REDCap) – A metadata-driven methodology and workflow process for providing translational research informatics support. *J Biomed Inform* 2009;42: 377-381.
11. Harris PA, Taylor R, Minor BL, et al. The REDCap consortium: Building an international community of software partners. *J Biomed Inform* 2019;95:103208.
12. Zilla M, Wheeler BJ, Keetch C, et al. Variable performance of commercially available EUA SARS-CoV-2 antibody assays in critically ill and mildly symptomatic patients assessed at a large academic medical center. *Am J Clin Pathol*. 2021 March; 155(3): 343-353.
13. Zilla ML, Keetch C, Mitchell G, et al. SARS-CoV-2 serologic immune response in exogenously immunosuppressed patients. *J Appl Lab Med*. 2021 March; 6(2):486-490.
14. FDA Emergency Use Authorization. Beckman Coulter access immunoassay systems instructions for use. Available at <https://www.fda.gov/media/139627/download>. Accessed June 25, 2021.
15. Connor RI, Chen BK, Choe S, Landau NR. Vpr is required for efficient replication of human immunodeficiency virus type-1 in mononuclear phagocytes. *J Virol*. 1995 February; 206(2): 935-944.
16. He J, Choe S, Walker R, et al. Human immunodeficiency virus type 1 viral protein R (Vpr) arrests cells in the G2 phase of the cell cycle by inhibiting p34cdc2 activity. *J Virol*. 1995 November; 69(11): 6705-6711.

17. Chen BK, Saksela K, Andino R, Baltimore D. Distinct modes of human immunodeficiency virus type 1 proviral latency revealed by superinfection of nonproductively infected cell lines with recombinant luciferase-encoding viruses. *J Virol.* 1994 February 1; 68(2): 654-660.
18. Lassen KG, Hebbeler AM, Bhattacharyya D, et al. A flexible model of HIV-1 latency permitting evaluation of many primary CD4 T-cell reservoirs. *PLoS One.* 2012;7: e30176.
19. von Elm E, Altman DG, Egger M, et al. The Strengthening the Reporting of Observational Studies in Epidemiology (STROBE) statement: Guidelines for reporting observational studies. *BMJ* 2007;335:806.
20. Agha M, Blake M, Chilleo C, et.al. Suboptimal response to COVID-19 mRNA vaccines in hematologic malignancy patients: a need for vigilance in the post-masking era. *medRxiv* (Pre-Print). doi: <https://doi.org/10.1101/2021.04.06.21254949>.
21. Boyarsky BJ, Werbel WA, Avery RK, et al. Antibody response to 2-dose SARS-CoV-2 mRNA vaccine series in solid organ transplant recipients. *JAMA.* 2021;325(21):2204–2206.
22. Uh S, Lee SM, Kim HT, et al. The effect of radiation therapy on immune function in patients with squamous cell lung carcinoma. *Chest.* 1994 Jan;105(1):132-137.
23. World Health Organization. Coronavirus disease (COVID-19): COVID-10 vaccines and people living with HIV. Available at [https://www.who.int/news-room/q-a-detail/coronavirus-disease-\(covid-19\)-covid-19-vaccines-and-people-living-with-hiv](https://www.who.int/news-room/q-a-detail/coronavirus-disease-(covid-19)-covid-19-vaccines-and-people-living-with-hiv). Accessed June 25, 2021.

24. American Society of Transplantation. COVID-19 Vaccine FAQ Sheet. Available at <https://www.myast.org/sites/default/files/2021%2005%2018%20COVID19%20VACCINE%20FAQS-final%20update.pdf>. Accessed June 25, 2021.
25. National Comprehensive Cancer Network. Recommendations of the NCCN COVID-19 Vaccination Advisory Committee. Available at https://www.nccn.org/docs/default-source/covid-19/2021_covid-19_vaccination_guidance_v3-0.pdf?sfvrsn=b483da2b_60. Accessed June 25, 2021.
26. American College of Rheumatology. COVID-19 vaccine clinical guidance summary for patients with rheumatic and musculoskeletal diseases. Available at <https://www.rheumatology.org/Portals/0/Files/COVID-19-Vaccine-Clinical-Guidance-Rheumatic-Diseases-Summary.pdf>. Accessed June 25, 2021.
27. Centers for Disease Control and Prevention. Interim Public Health Recommendations for Fully Vaccinated People. Available at <https://www.cdc.gov/coronavirus/2019-ncov/vaccines/fully-vaccinated-guidance.html>. Accessed June 25, 2021.
28. U.S. Food and Drug Administration. Antibody Testing Is Not Currently Recommended to Assess Immunity After COVID-19 Vaccination: FDA Safety Communication. Available at <https://www.fda.gov/medical-devices/safety-communications/antibody-testing-not-currently-recommended-assess-immunity-after-covid-19-vaccination-fda-safety>. Accessed June 25, 2021.
29. American Society for Transplantation and Cellular Therapy. ASH-ASTCT COVID-19 Vaccination for HCT and CAR-T Cell Recipients: Frequently Asked Questions. Available at <https://www.astct.org/viewdocument/ash-astct-covid-19-vaccination-for-1?CommunityKey=d3949d84-3440-45f4-8142-90ea05adb0e5&tab=librarydocuments>. Accessed June 25, 2021.

30. Teo EK, Lok ASF. Hepatitis B virus immunization in adults. Available at <https://www.uptodate.com/contents/hepatitis-b-virus-immunization-in-adults#!> Accessed June 25, 2021.
31. Kamar N, Selves J, Mansuy JM, et al. Hepatitis E virus and chronic hepatitis in organ-transplant recipients. *N Engl J Med*. 2008;358:811-817.
32. Bosaeed M, Kumar D. Seasonal influenza vaccine in immunocompromised persons. *Hum Vaccin Immunother*. 2018;14:1311-1322.
33. Zbinden D, Manuel O. Influenza vaccination in immunocompromised patients: efficacy and safety. *Immunotherapy*. 2014;6:131-139.
34. Kamar N, Abravanel F, Marion O, et al. Three doses of an mRNA Covid-19 vaccine in solid-organ transplant recipients. *NEJM*. 2021; June 23.
35. Kumar D. Third dose of Moderna COVID-19 vaccine in transplant recipients. Available at <https://clinicaltrials.gov/ct2/show/NCT04885907>. Accessed June 25, 2021.

TABLES

Table 1. Descriptive characteristics in healthcare workers and immunocompromised patients (N=596).

Characteristic	Healthcare Workers (N=107) (18.0%)	Immuno-compromised Patients (N=489) (82.0%)	Solid Organ Transplant (N=183) (37.4%)	Patients by Immunocompromised Condition			
				Autoimmune (N=160) (32.7%)	Hematologic Malignancy (N=75) (15.3%)	HIV* (N=37) (7.6%)	Solid Tumor (N=34) (7.0%)
Age in years, mean (SD)	43.7 (13.7)	59.5 (13.7)	61.2 (13.4)	54.2 (14.8)	66.3 (10.4)	57.1 (10.1)	63.1 (9.9)
Age in years, n (%)							
19 to 44 years	62 (57.9%)	79 (16.2%)	24 (13.1%)	47 (29.4%)	2 (2.7%)	3 (8.1%)	3 (8.8%)
45 to 60 years	33 (30.8%)	140 (28.6%)	45 (24.6%)	49 (30.6%)	15 (20.0%)	20 (54.1%)	11 (32.4%)
>60 years	12 (11.2%)	270 (55.2%)	114 (62.3%)	64 (40.0%)	58 (77.3%)	14 (37.8%)	20 (58.8%)
Sex, n (%)							
Female	77 (72.0%)	250 (51.1%)	73 (39.9%)	112 (70.0%)	38 (50.7%)	3 (8.1%)	24 (70.6%)
Male	30 (28.0%)	239 (48.9%)	110 (60.1%)	48 (30.0%)	37 (49.3%)	34 (91.9%)	10 (29.4%)
Race, n (%)							
Non-White, n (%)	11 (10.3%)	31 (6.3%)	12 (6.6%)	9 (5.6%)	6 (8.0%)	4 (10.8%)	0 (0.0%)
White, n (%)	96 (89.7%)	458 (93.7%)	171 (93.4%)	151 (94.4%)	69 (92.0%)	33 (89.2%)	34 (100%)
Days from second vaccine to antibody sample, mean (SD)	110.6 (43.0)	74.1 (27.4)	69.8 (25.9)	79.3 (28.0)	73.5 (26.2)	75.3 (29.0)	73.2 (30.7)

*HIV: Human Immunodeficiency Virus.

Table 2. Seropositivity and antibody levels in healthcare workers and immunocompromised patients (N=596).

Outcome	Healthcare Workers (N=107)	Immuno-compromised Patients (N=489)	Solid Organ Transplant (N=183)	Patients by Immunocompromised Condition			
				Auto-immune (N=160)	Hematologic Malignancy (N=75)	HIV* (N=37)	Solid Tumor (N=34)
Seropositivity, n (%)	105 (98.1%)	306 (62.6%)	68 (37.2%)	134 (83.7%)	41 (54.7%)	35 (94.6%)	28 (82.4%)
Beckman Coulter antibody level, mean (SD)	10.1 (8.7)	7.0 (9.6)	3.4 (7.6)	8.2 (8.3)	8.6 (12.7)	10.9 (8.6)	12.6 (11.8)
Beckman Coulter antibody level, n (%)							
0 to < 5	40 (37.4%)	296 (60.7%)	151 (82.5%)	78 (49.1%)	46 (61.3%)	10 (27.0%)	11 (32.4%)
5 to 10	26 (24.3%)	70 (14.3%)	13 (7.1%)	31 (19.5%)	7 (9.3%)	13 (35.1%)	6 (17.6%)
More than 10	41 (38.3%)	122 (25.0%)	19 (10.4%)	50 (31.4%)	22 (29.3%)	14 (37.8%)	17 (50.0%)

*HIV: Human Immunodeficiency Virus.

Table 3. Clinical characteristics in immunocompromised patients by antibody testing results (N=489).

Characteristic	Antibody result		p-value
	Reactive (N=306)	Non-reactive (N=183)	
Age group			<.001
19-44	62 (78.5%)	17 (21.5%)	
45-60	95 (67.9%)	45 (32.1%)	
60+	149 (55.2%)	121 (44.8%)	
Sex			.048
Female	167 (66.8%)	83 (33.2%)	
Male	139 (58.2%)	100 (41.8%)	
Race			.592
Non-white	18 (58.1%)	13 (41.9%)	
White	288 (62.9%)	170 (37.1%)	
Vaccine received			.427
mRNA-1273 (Moderna)	205 (70.9%)	84 (29.1%)	
BNT162b2 (Pfizer)	201 (67.9%)	95 (32.1%)	
Underlying condition			.015
Solid Organ Transplant			
Kidney	30 (34.5%)	57 (65.5%)	
Liver	20 (60.6%)	13 (39.4%)	
Lung	4 (22.2%)	14 (77.8%)	
Heart	14 (31.1%)	31 (68.9%)	
-Receiving anti-metabolite			<.001
Yes	32 (26.7%)	88 (73.3%)	
No	36 (57.1%)	27 (42.9%)	
-Treated for rejection within 3 months			.290
Yes	2 (66.7%)	1 (33.3%)	
No	66 (36.9%)	113 (63.1%)	
-Time from Solid Organ Transplant			.004
0-1 year	8 (28.6%)	20 (71.4%)	
2-5 years	12 (22.6%)	41 (77.4%)	
6-10 years	18 (36.0%)	32 (64.0%)	
11+ years	28 (56.0%)	22 (44.0%)	
Hematological malignancy			.837

Chronic lymphocytic leukemia	10 (52.6%)	9 (47.4%)	
Non-Chronic lymphocytic leukemia	31 (55.4%)	25 (44.6%)	
Solid tumor			
-Systemic therapy			.211
Yes	22 (78.6%)	6 (21.4%)	
No	6 (100.0%)	0 (0.0%)	
-Radiation therapy			.012
Yes	8 (61.5%)	5 (38.5%)	
No	20 (95.2%)	1 (4.8%)	
-Anti-CD20 monoclonal antibody			-
Yes	0	0	
No	25 (92.6%)	2 (7.4%)	
Unsure	3 (42.9%)	4 (57.1%)	
Human Immunodeficiency Virus viral load			-
Undetectable	35 (94.6%)	2 (5.4%)	
Detectable	0	0	
Human Immunodeficiency Virus CD4			-
>200	35 (95.6%)	2 (5.4%)	
<200	0	0	
Autoimmune or chronic inflammatory condition			
Inflammatory Bowel Disease			.399
Yes	53 (86.9%)	8 (13.1%)	
No	81 (81.8%)	18 (18.2%)	
Rheumatological			.711
Yes	62 (84.9%)	11 (15.1%)	
No	72 (82.8%)	15 (17.2%)	
Tumor Necrosis Factor-alpha inhibitor			.322
Yes	58 (80.6%)	14 (19.4%)	
No	76 (86.4%)	12 (13.6%)	
Receiving anti-CD20 monoclonal antibody			.006
Yes	2 (40.0%)	3 (60.0%)	
No	130 (85.5%)	22 (14.5%)	

Table 4. Characteristics and pseudovirus neutralization testing in healthcare workers and immunocompromised patients (N=66).

Characteristic/Outcome	Healthcare Workers (N=30) (45.5%)	Immuno-compromised Patients (N=36) (54.5%)	Patients by Immunocompromised Condition			
			Solid Organ Transplant (N=10) (27.8%)	Autoimmune (N=16) (44.4%)	Hematologic Malignancy (N=6) (16.7%)	Solid Tumor (N=4) (11.1%)
Age in years, mean (SD)	47.1 (13.2)	52.1 (15.3)	55.7 (18.0)	51.3 (16.4)	65.8 (10.5)	64.1 (7.0)
Female, n (%)	23 (76.7%)	20 (55.6%)	3 (15.0%)	11 (55.0%)	3 (15.0%)	3 (15.0%)
Seropositive, n (%)	30 (100.0%)	21 (58.3%)	5 (23.8%)	9 (42.9%)	4 (19.0%)	3 (14.3%)
Antibody level, median [IQR]	8.2 [3.6,13.7]	1.2 [0.6,9.1]	0.9 [0.6,1.5]	1.9 [0.6,4.1]	1.0 [0.6,10.2]	9.1 [4.9,14.7]
NT50, median [IQR]	133.7 [69.6,340.6]	33.0 [9.2,76.9]	36.7 [18.3,72.9]	32.0 [9.0,70.3]	12.3 [8.8,181.0]	66.1 [34.1,167.0]

FIGURES

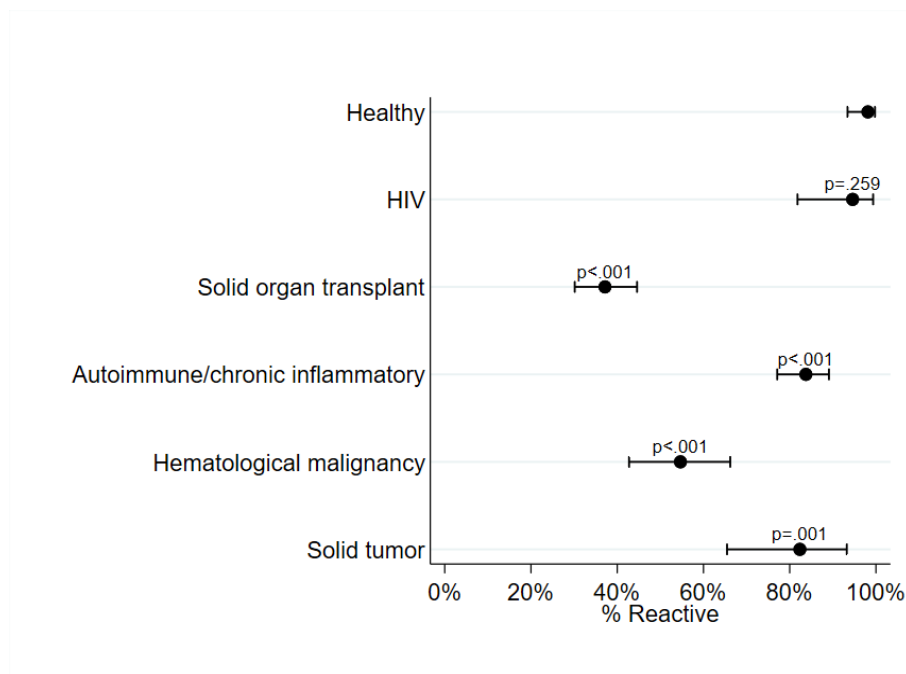
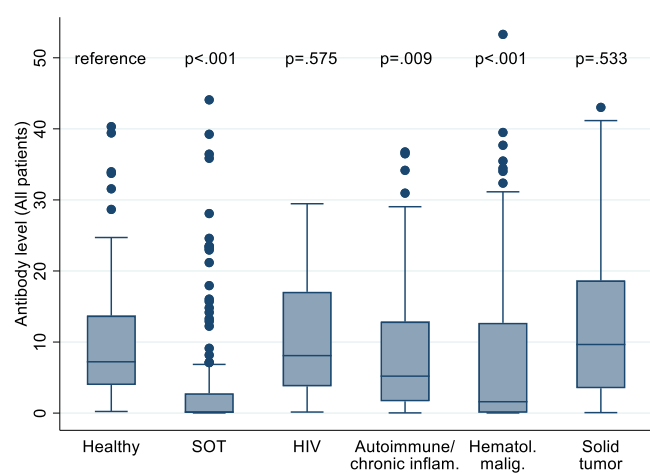
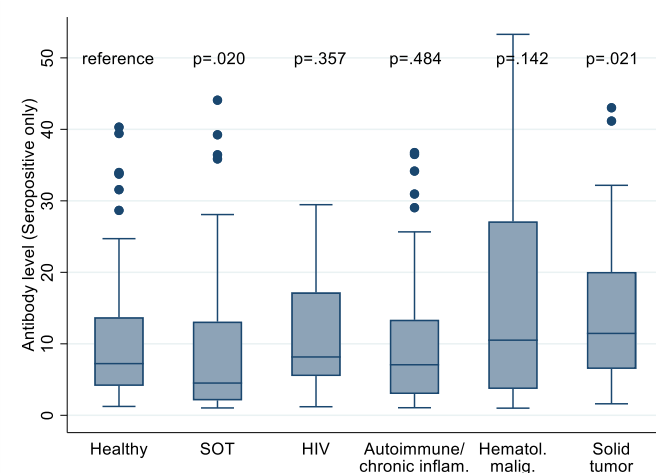


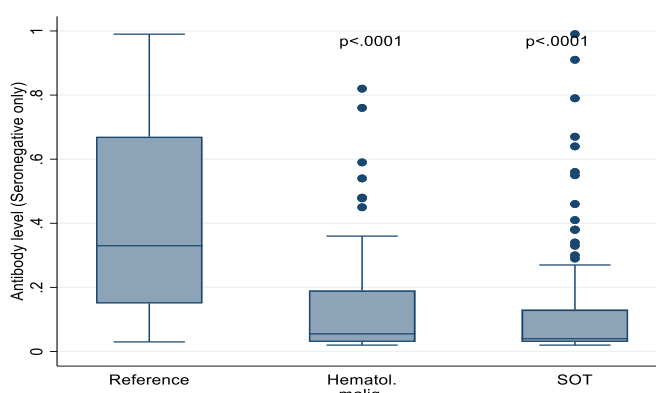
Figure 1. Seropositivity in healthy healthcare workers and immunocompromised patients. Comparisons between HCW and immunocompromised patients. Whiskers denote 95% confidence intervals. HIV, human immunodeficiency virus.



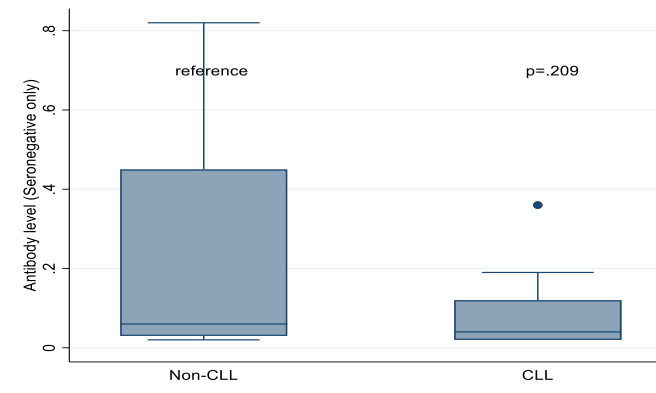
2A.



2B.

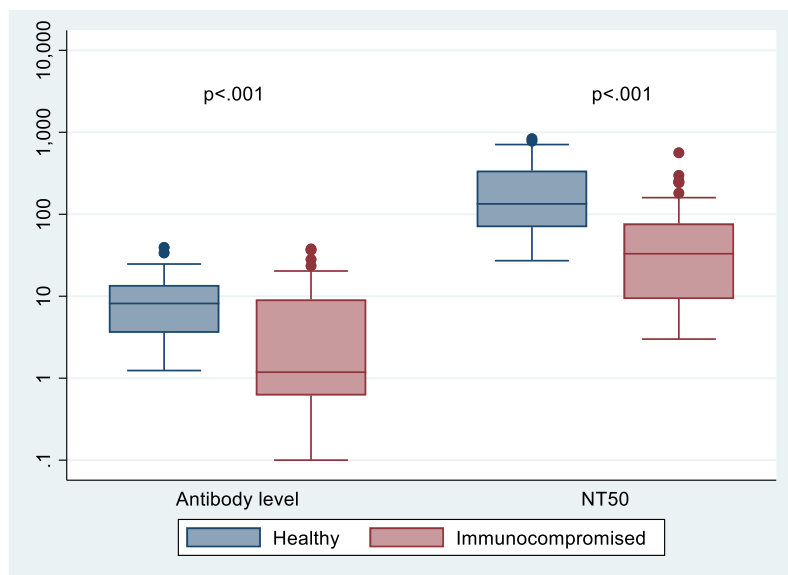


2C.

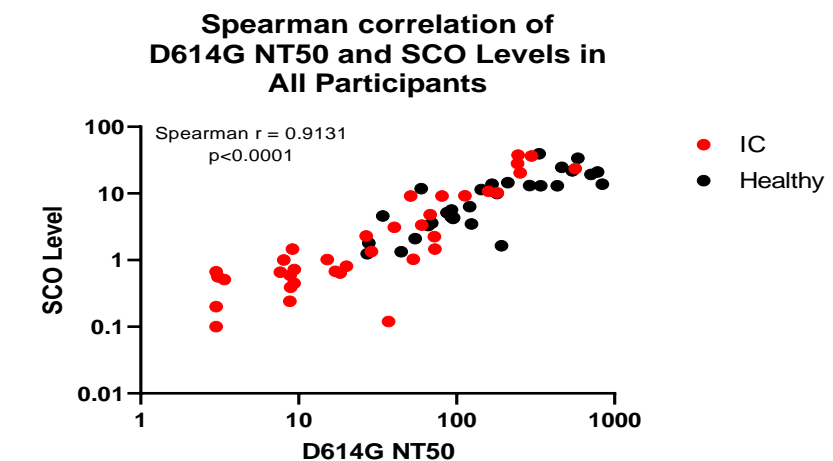


2D.

Figure 2A. All antibody levels (seropositive and seronegative patients) in healthy healthcare workers and immunocompromised patients. **Figure 2B.** Comparisons of antibody levels among only patients with positive results. **Figure 2C.** Comparison of antibody levels among only patients with negative results, demonstrating that near absence of antibodies in many SOT recipients and patients with hematological malignancies. **Figure 2D.** Comparison of antibody levels CLL vs non-CLL hematological malignancy patients with negative results.



3A.



3B.

Figure 3A. Comparisons of antibody levels and NT50 across the 30 HCW and 36 immunocompromised patients whose serum underwent pseudovirus neutralization testing. The NT50 was defined as the highest serum dilution that neutralizes >50% of the pseudovirus and antibody levels.

Figure 3B. Scatter plot of D614G NT50 pseudovirus (x-axis) by Beckman Coulter extinction coefficients (y-axis). Black filled round dots depict health healthcare workers and red filled dots depict immunocompromised patients.

Supplemental Table 1. The Strengthening the Reporting of Observational Studies in Epidemiology (STROBE) Checklist.

	Recommendation	Page No
Title and abstract	(a) Indicate the study’s design with a commonly used term in the title or the abstract	1
	(b) Provide in the abstract an informative and balanced summary of what was done and what was found	3-4
Background/rationale	Explain the scientific background and rationale for the investigation being reported	5
Objectives	State specific objectives, including any prespecified hypotheses	5
Study design	Present key elements of study design early in the paper	6
Setting	Describe the setting, locations, and relevant dates, including periods of recruitment, exposure, follow-up, and data collection	6
Participants	(a) <i>Cohort study</i> —Give the eligibility criteria, and the sources and methods of selection of participants. Describe methods of follow-up	6
	<i>Case-control study</i> —Give the eligibility criteria, and the sources and methods of case ascertainment and control selection. Give the rationale for the choice of cases and controls	
	<i>Cross-sectional study</i> —Give the eligibility criteria, and the sources and methods of selection of participants	
	(b) <i>Cohort study</i> —For matched studies, give matching criteria and number of exposed and unexposed	n/a
	<i>Case-control study</i> —For matched studies, give matching criteria and the number of controls per case	
Variables	Clearly define all outcomes, exposures, predictors, potential confounders, and effect modifiers. Give diagnostic criteria, if applicable	7-8
Data sources/ measurement	For each variable of interest, give sources of data and details of methods of assessment (measurement). Describe comparability of assessment methods if there is more than one group	7-8
Bias	Describe any efforts to address potential sources of bias	6
Study size	Explain how the study size was arrived at	6-7
Quantitative variables	Explain how quantitative variables were handled in the analyses. If applicable, describe which groupings were chosen and why	7-8
Statistical methods	(a) Describe all statistical methods, including those used to control for confounding	8-9
	(b) Describe any methods used to examine subgroups and interactions	8-9
	(c) Explain how missing data were addressed	n/a
	(d) <i>Cohort study</i> —If applicable, explain how loss to follow-up was addressed	n/a
	<i>Case-control study</i> —If applicable, explain how matching of cases and controls was addressed	
	<i>Cross-sectional study</i> —If applicable, describe analytical methods taking account of sampling strategy	
	(e) Describe any sensitivity analyses	8-9
Results		
Participants	(a) Report numbers of individuals at each stage of study—eg numbers potentially eligible, examined for eligibility, confirmed eligible, included in the study, completing follow-up, and analysed	9-10

	(b) Give reasons for non-participation at each stage	n/a
	(c) Consider use of a flow diagram	n/a
Descriptive data	(a) Give characteristics of study participants (eg demographic, clinical, social) and information on exposures and potential confounders	9-10
	(b) Indicate number of participants with missing data for each variable of interest	n/a
Outcome data	(c) <i>Cohort study</i> —Summarise follow-up time (eg, average and total amount)	n/a
	<i>Cohort study</i> —Report numbers of outcome events or summary measures over time	10-12
	<i>Case-control study</i> —Report numbers in each exposure category, or summary measures of exposure	n/a
	<i>Cross-sectional study</i> —Report numbers of outcome events or summary measures	n/a
Main results	(a) Give unadjusted estimates and, if applicable, confounder-adjusted estimates and their precision (eg, 95% confidence interval). Make clear which confounders were adjusted for and why they were included	10-12
	(b) Report category boundaries when continuous variables were categorized	n/a
	(c) If relevant, consider translating estimates of relative risk into absolute risk for a meaningful time period	n/a
Other analyses	Report other analyses done—eg analyses of subgroups and interactions, and sensitivity analyses	10-12
Discussion		
Key results	Summarise key results with reference to study objectives	13-17
Limitations	Discuss limitations of the study, taking into account sources of potential bias or imprecision. Discuss both direction and magnitude of any potential bias	16-17
Interpretation	Give a cautious overall interpretation of results considering objectives, limitations, multiplicity of analyses, results from similar studies, and other relevant evidence	13-17
Generalisability	Discuss the generalisability (external validity) of the study results	13-17
Other information		
Funding	Give the source of funding and the role of the funders for the present study and, if applicable, for the original study on which the present article is based	18