

Different features of the cortical sensorimotor rhythms are uniquely linked to the severity of specific symptoms in Parkinson's disease

Authors

Mikkel C. Vinding* 1), Allison Eriksson 1)2), Cassia Man Ting Low 1)3), Josefine Waldthaler 4)5), Daniel Ferreira 6,7), Martin Ingvar 1), Per Svenningsson 4), Daniel Lundqvist 1).

Affiliations

1. NatMEG, Department of Clinical Neuroscience, Karolinska Institutet, Sweden.
2. Department of Women's and Children's Health, Uppsala University, Sweden.
3. Cognitive Neuroimaging Centre, Lee Kong Chien School of Medicine, Nanyang Technological University, Singapore.
4. Neuro Svenningsson, Department of Clinical Neuroscience, Karolinska Institutet, Sweden.
5. Department of Neurology, University Hospital Marburg, Marburg, Germany.
6. Division of Clinical Geriatrics, Center for Alzheimer's Research, Department of Neurobiology, Care Sciences, and Society, Karolinska Institutet, Stockholm, Sweden.
7. Department of Radiology, Mayo Clinic, Rochester, MN, USA.

Abstract

Parkinson's disease (PD) is associated with functional changes in the neural activity within the brain's sensorimotor network, which in turn are related to the characteristic motor symptoms in PD. The functional changes in PD are particularly prominent in terms of oscillatory neuronal activity in the characteristic sensorimotor alpha and beta rhythms. However, summaries in terms of alpha or beta power do not capture the full range of the complex dynamic nature of the signals from the somatosensory cortex. This raises the question of how to quantify and summarise the functional changes in such oscillatory features in a manner that captures the relevant disease- and symptom-related neural activity.

We investigated the role of spontaneous cortical somatosensory activity in the electrophysiological alpha and beta bands among a cohort of early- to mid-stage PD patients (N=78) and age- and gender-matched healthy controls (N=60) using source reconstructed resting-state magnetoencephalography (MEG) recordings. We quantified the oscillatory features of the neural time series by its oscillatory alpha power, beta power, and 1/f broadband characteristics using power spectral density, and additionally by characterising "burst" properties in the signals. We examined the relationship between the signal features and disease state, age, sex, and cortical thickness. Using multiple regression, we examined the relative contribution of the oscillatory features on the clinical manifestation of motor symptoms in the PD group.

Our results show that PD patients differ from healthy controls on several of the oscillatory features, showing higher beta-band power, higher burst amplitude, and steeper 1/f broadband characteristics compared to healthy controls, as well as a steeper age-related decrease in the bursts rate. While there was a high degree of correlation between some of the oscillatory features, several features also appeared functionally separated,

showing independent feature-to-symptom relationships. For instance, oscillatory beta power increased with the severity of midline function symptoms, while burst rate decreased with the severity of bradykinesia.

Our study shows that quantification of distinct features within the oscillatory sensorimotor neural time series in PD captures different underlying mechanisms related to disease progression and symptom severity, which in turn has a potential for a more individualised and precision-based approach to assessing functional neural changes in PD.

1 Introduction

2 Parkinson's disease (PD) is a common neurodegenerative disease characterised by gradual death of
3 dopaminergic neurons and loss of the neurotransmitter dopamine.^{1,2} The pathogenesis of PD begins long
4 before the initial manifestation of symptoms and gradually deteriorates from the initial stages. Accumulation of
5 Lewy bodies leads to lesions in the substantia nigra pars compacta, which typically spread to and affect the
6 brain stem, basal ganglia and, in the final stages, the neocortex.³ The progressive structural and neurochemical
7 changes in PD are accompanied by widespread functional changes in neuronal activity, which in turn lead to
8 worsening clinical symptoms, commonly in the form of movement disorders such as tremor, rigidity, and
9 bradykinesia with co-occurring non-motor systems like sleep disorders, depression, fatigue, and cognitive
10 deficits.¹

11 The changes in brain function in PD are particularly prominent in the oscillatory activity of neurons.⁴
12 Spontaneous oscillatory beta band (13–30 Hz) activity in the sub-thalamic nucleus (STN) exhibits a systematic
13 disease-related increase in synchronicity in PD that is related to the dopamine level^{5–8}, and correlated with the
14 severity of bradykinesia and rigidity.^{9,10} Changes in the beta band extend beyond the STN through the basal
15 ganglia-thalamic cortical sensorimotor network.

16 The cortical manifestation of the disease-related changes in the sensorimotor network can be measured non-
17 invasively from the cortex, using electro- or magnetoencephalography (EEG or MEG). Non-invasive neural
18 recordings can potentially provide prospective biomarkers of disease or symptom-related neural changes in PD.
19 Increased oscillatory beta-band activity in the sensorimotor cortex has been linked to increased symptom
20 severity, such as rigidity and bradykinesia.^{11,12} The cortical beta-band power has also been shown to increase by
21 dopaminergic medication^{13–15}, though others have found no effect of medication on cortical beta-band
22 power.^{11,16,17} Deep brain stimulation of the STN in PD patients has shown to lead to a decrease in the power of

23 spontaneous activity in the cortical sensorimotor beta and alpha (8-12Hz) bands^{18,19} (but see also^{13,20}).

24 Importantly, there is evidence that the beta-band changes are not in the same direction across the different
25 stages of PD. For example, there are reports of increased cortical beta-band power in the early stages of PD²¹,
26 whereas the later stages are associated with decreased beta-band power.²²

27 The beta-band power is not the only feature of the sensorimotor rhythms that is altered in PD. Several studies
28 have found a shift in the beta-band centre frequency (the frequency at which the power spectrum density
29 peaks in the beta-band) towards a lower frequency in PD patients compared to healthy controls.²³⁻²⁵ The shift
30 towards lower beta-band centre frequency is more pronounced in PD patients with dementia²⁶⁻²⁹ and
31 correlates with reduced cognitive ability.^{25,30} Notably, the centre frequency shift is detectable already in the
32 early stages of PD²⁴, and dopaminergic medication does not appear to affect the centre frequency shift.³¹ The
33 changes in beta band power and centre frequency in PD could indicate that different features of the oscillatory
34 beta-band activity reflect different underlying neural functions expressed in the measured sensorimotor
35 signals. Changes in beta-band power could be functionally related to sensorimotor disturbances, and changes
36 in centre frequency could be related to cognitive function.

37 Notably, the characteristics of neuronal oscillatory activity may hold additional information of disease-related
38 changes in PD. Both beta-band power and centre frequency reflect a quantification of power spectral density
39 (PSD). While these features can provide valuable information about disease-related changes in PD, the
40 quantification of a neural time series by the PSD provides a static summary of the oscillatory activity across the
41 entire time series. PSD does not account for inherent dynamics in this activity or changes in the time series on
42 shorter time scales—as is prevalent in neural time series. The beta-band exhibits a great degree of variation
43 over time and contains characteristic high-amplitude "bursts" that last about 50-200 ms, both in the cortical
44 and sub-cortical beta-band.³²⁻³⁵ Functionally, the transient bursts appear to play a pivotal role in sensorimotor
45 processing through the basal ganglia-thalamic-cortical network. For instance, the presence of a beta burst in

46 the sensorimotor cortex close to a tactile stimulation decreased the likelihood of tactile detection³⁶, and the
47 rate of beta bursts is shown to decrease in the time leading up to a movement both in STN^{37–39} and in the
48 sensorimotor cortex.⁴⁰

49 In PD, quantification of beta-band burst activity from recordings in the STN has shown that beta-burst rate and
50 duration are reduced by dopaminergic medication^{41,42} and deep brain stimulation.³⁵ Furthermore, at the
51 cortical level, PD patients exhibit a decrease in the rate of beta burst compared to healthy controls.¹⁷ This
52 decrease in beta burst rate scale with increased severity of bradykinesia and postural-kinetic tremor symptoms
53 but does not change as an effect of dopaminergic medication.¹⁷ Notably, the burst rate showed a higher
54 sensitivity than PSD beta power for discriminating PD patients from healthy controls, demonstrating that the
55 choice of method for beta-band characterisation directly influences the sensitivity of subsequent analyses.

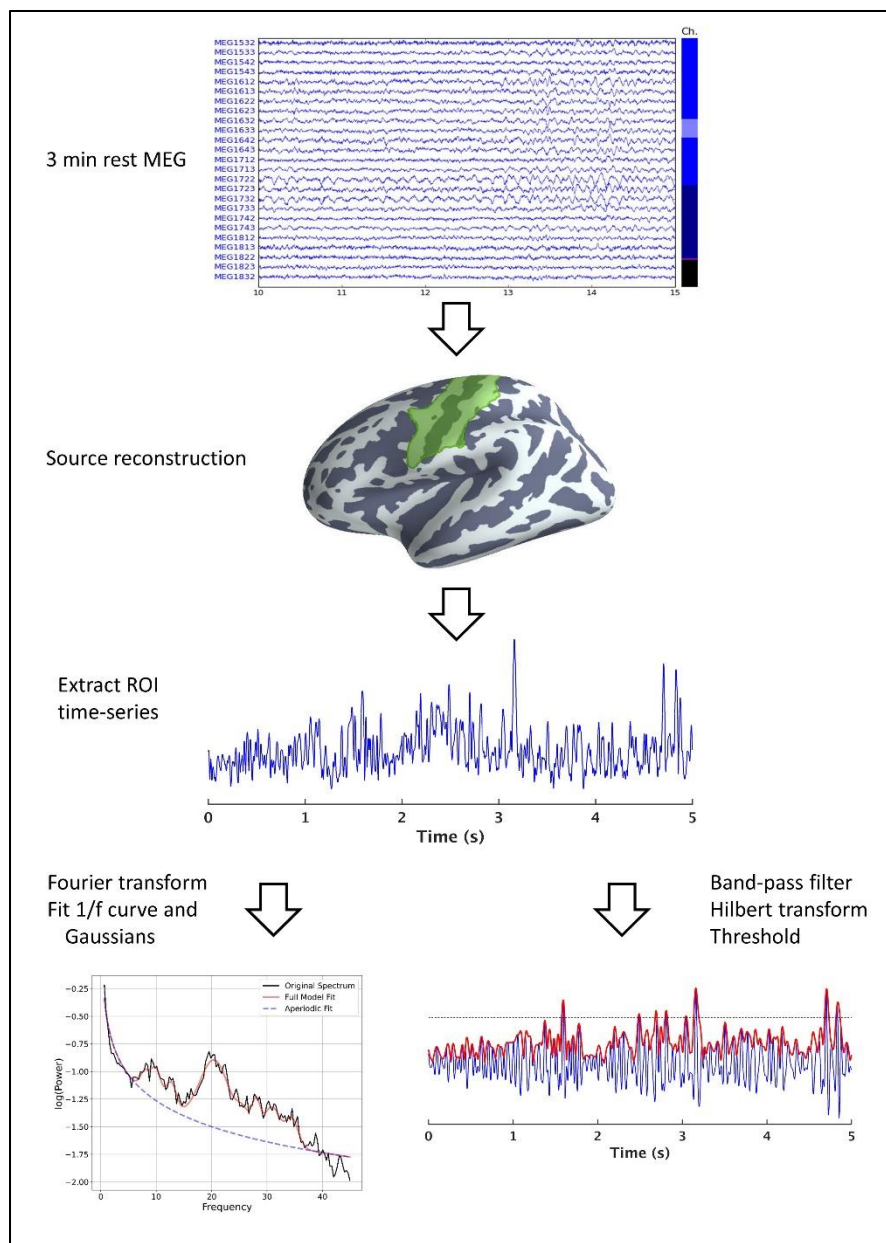
56 In sum, there is solid evidence of functional changes in the oscillatory sensorimotor neural activity in PD—
57 whether assessed as PSD band power, peak shift or burst rate. The measures differ between PD patients and
58 healthy controls and scale with PD symptom severity. Sensorimotor activity measured non-invasively with
59 MEG/EEG contains rich information about the functional state of the sensorimotor system and how this
60 changes in PD. The central challenge is quantifying the measured neural signals to extract the disease's relevant
61 features from the signals, be it the spectral power, centre frequencies, or burst-like features. This is further
62 complicated by the fact that in addition to disease-related changes, these features likely differ with age, and
63 the available data come from studies with small sizes—typically in the range of 5-30 participants.⁴³

64 In the current study, we aimed to compare how different oscillatory features of cortical sensorimotor activity
65 change in PD to elucidate what oscillatory features in the neural time-series differ between PD patients and
66 healthy controls and how these features are associated with different motor symptoms in PD. We extracted
67 the sensorimotor neural resting-state activity from source reconstructed resting-state MEG signals in the
68 sensorimotor cortex (Figure 1) and quantified the time-series in terms of the PSD in the canonical mu-band,

69 consisting of the sensorimotor alpha (8-12 Hz) and beta (13-30 Hz) bands. The two frequency components of
70 the mu band are co-occurring in the sensorimotor areas but appear to be functionally independent.^{44,45} In
71 addition to the band-specific analysis, we compared the 1/f broadband characteristics of the PSD.^{46,47} Finally,
72 we compared features of the sensorimotor rhythm in terms of time-domain analysis of spontaneous transient
73 bursts.^{17,36} We tested this hypothesis by analysing how these features differed between PD patients and
74 healthy controls and how the difference interacted with age and sex. As ageing is associated with structural
75 and functional changes in the sensorimotor cortex^{48,49}, we investigated if the potential changes in sensorimotor
76 activity in PD differ across age. Since both healthy ageing and PD disease progression are linked to thinning of
77 the cortex⁵⁰, we further included thickness of the sensorimotor cortex in the analysis.

78 The central hypothesis was that there would be differences in features of the sensorimotor signals, but
79 different features may be related to different functional changes. We hypothesised that individual oscillatory
80 features would reflect different underlying neural function in the sensorimotor system and thereby show
81 different relationships to the clinical manifestations of specific motor symptoms in PD. We tested this
82 hypothesis in two steps: first by examining the inter-relationship between all different measures, and
83 subsequently by examining what feature—or combination of features—best explained the variation in severity
84 within each motor symptoms.

85 To enable a sensitive assessment of disease-related oscillatory changes in PD, we aimed for a large cohort of PD
86 patients (N=78) and healthy controls (N=60), balanced across gender and age, and with gender- and age-
87 matched groups (Table 1).



88

89

Figure 1: Overview of the data processing pipeline from three minutes raw resting-state MEG, through

90

source reconstruction and extracting the activity in the sensorimotor cortex. To compare features, we did a

91

Fourier transformation of the signal to calculate the PSD and quantified sensorimotor bursts in the time

92

series in the sensorimotor ROI.

93

94 **2 Results**

95 The main analyses tested the effect of *group* (PD patients/healthy controls; Table 1), *age*, *sex*, and *cortical*
96 *thickness* in the sensorimotor cortex on the features explained in Table 2. Second, we tested for associations
97 between the clinical rating of motor symptoms in the PD group by a multiple regression analysis including the
98 sensorimotor signal features in Table 2 and age, sex, and cortical thickness to regress out the contribution
99 hereof and estimate the relative effect size of each signal feature. Figure 2 displays the PSD of the
100 sensorimotor signal.

101 *Table 1: Group-level summary of the participants included in the analysis. Mean (standard deviation).*

Measure	Parkinson's patients	Healthy controls	Statistics
<i>N</i>	78	60	
<i>Sex (female/male)</i>	29/49	27/33	$\chi^2 = 0.57, p = 0.45$
<i>Age</i>	65.6 (9.5)	63.93 (8.4)	Welsh $t(138.0) = 1.08, p = 0.28$
<i>Disease duration</i>	4.4 (3.7) years	-	-
<i>LEDD</i>	548 (273) mg	-	-
<i>MDS-UPDRS-III</i>	18.9 (10.8)	-	-
<i>MoCA</i>	26.1 (2.8)	26.2 (2.1)	Welsh $t(136) = 0.10, p = 0.92$

102

103 *Table 2: Explanation of the main outcome variables in the analysis*

Variable Category	Variable	Explanation
PSD	<i>Beta power</i>	The maximum peak in the 13-30 Hz band. Estimated as the height of the Gaussian function fitted to the PSD after regressing out the 1/f regression line.
	<i>Beta centre frequency (Hz)</i>	The dominant frequency bin in the 13-30 Hz band. Estimated as the mean of the Gaussian function fitted to the PSD after regressing out the 1/f regression line
	<i>Alpha power</i>	The maximum peak in the 8-12 Hz band. Estimated as the height of the Gaussian function fitted to the PSD after regressing out the 1/f regression line.
	<i>Alpha centre frequency (Hz)</i>	The dominant frequency bin in the 8-12 Hz band. Estimated as the mean of the Gaussian function fitted to the PSD after regressing out the 1/f regression line.
	<i>1/f intercept</i>	The intercept of the log-linear regression estimated from the full PSD in the 0.5-40 Hz range.
	<i>1/f exponent</i>	The exponent of the log-linear regression—corresponding to the slope of the log-log transformed PSD—estimated from the full PSD in the 0.5-40 Hz range
Bursts	<i>Rate</i>	The number of burst events in the sensorimotor time series divided by the length of time series.
	<i>Duration (ms)</i>	Duration of the burst events defined as the time the time-series is above threshold until the next time-point it drops below the threshold.
	<i>Interval (ms)</i>	Time from the mu/beta time-series drops below threshold until the next time-point it reaches threshold again.
	<i>Amplitude</i>	The maximum amplitude of the mu/beta time-series within one burst event.

104

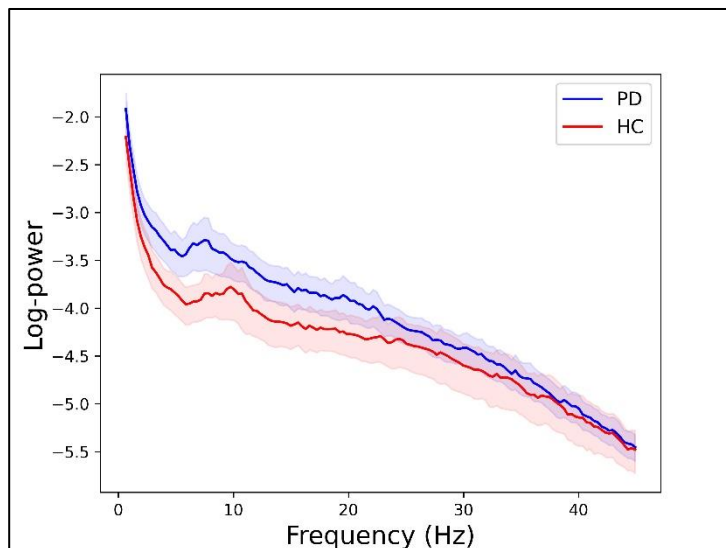
105 **2.1 Differences in PSD features between groups**

106 For the first analysis, we wanted to examine if PSD features differed between PD patients and healthy controls
 107 and how this might interact with sex, age and cortical thickness. The model parameters and statistical
 108 significance of predictors in the regression analysis for all outcome measures are presented in Table 3.

109 *Table 3: regression coefficients and 95% CI for the regression models of the sensorimotor signal features*
 110 *(Table 2) with Group, Age, Sex, and Cortical Thickness. Values in red indicate coefficients of statistically*
 111 *significant factors in the model comparison (see main text). LL: lower limit, UL: upper limit.*

Variable category	PSD features						Burst features			
	Beta power	Beta centre freq.	Alpha power	Alpha centre freq.	1/f intercept	1/f exponent	Rate	Length	Interval	Amplitude
<i>Intercept</i>	0.291	21.3	0.291	10.5	-1.34	0.64	3.60	-3.40	-0.27	0.59
	LL: 0.250	LL: 19.8	LL: 0.234	LL: 9.89	LL: -1.47	LL: 0.59	LL: 3.54	LL: -3.47	LL: -0.40	LL: 0.46
	UL: 0.331	UL: 22.9	UL: 0.353	UL: 11.2	UL: -1.21	UL: 0.69	UL: 3.67	UL: -3.33	UL: -0.13	UL: 0.71
<i>Group</i>	0.070	-0.945	0.040	-0.643	0.31	0.08	-0.005	0.002	-0.05	0.34
	LL: 0.019	LL: -3.17	LL: -0.044	LL: -1.63	LL: 0.13	LL: 0.00	LL: -0.10	LL: -0.10	LL: -0.24	LL: 0.17
	UL: 0.126	UL: 1.35	UL: 0.118	UL: 0.276	UL: 0.50	UL: 0.15	UL: 0.09	UL: 0.10	UL: 0.14	UL: 0.53
<i>Age</i>	-0.001	-0.098	0.000	0.048	0.01	-0.000	0.009	-0.001	-0.01	0.01
	LL: -0.005	LL: -0.259	LL: -0.007	LL: -0.032	LL: -0.01	LL: -0.01	LL: 0.001	LL: -0.01	LL: -0.02	LL: -0.01
	UL: 0.004	UL: 0.082	UL: 0.006	UL: 0.123	UL: 0.02	UL: 0.01	UL: 0.02	UL: 0.01	UL: 0.01	UL: 0.02
<i>Sex</i>	-0.006	-1.04	-0.043	-0.174	0.07	0.02	-0.15	-0.10	0.16	0.05
	LL: -0.061	LL: -3.013	LL: -0.124	LL: -1.10	LL: -0.10	LL: -0.05	LL: -0.23	LL: -0.20	LL: -0.01	LL: -0.12
	UL: 0.045	UL: 0.944	UL: 0.029	UL: 0.713	UL: 0.24	UL: 0.10	UL: -0.06	UL: -0.01	UL: 0.33	UL: 0.21
<i>Cortical Thickness</i>	-0.020	0.544	0.021	0.305	-0.06	-0.02	-0.083	-0.02	0.09	-0.06
	LL: -0.064	LL: -1.01	LL: -0.052	LL: -0.452	LL: -0.21	LL: -0.08	LL: -0.16	LL: -0.10	LL: -0.04	LL: -0.19
	UL: 0.022	UL: 2.27	UL: 0.089	UL: 1.08	UL: 0.09	UL: 0.03	UL: -0.013	UL: 0.05	UL: 0.23	UL: 0.07
<i>Group:Age</i>	0.002	-0.022	-0.001	-0.064	0.000	0.005	-0.015	-0.01	0.01	-0.001
	LL: -0.004	LL: -0.299	LL: -0.012	LL: -0.185	LL: -0.02	LL: -0.01	LL: -0.03	LL: -0.02	LL: -0.01	LL: -0.02
	UL: 0.009	UL: 0.243	UL: 0.010	UL: 0.066	UL: 0.02	UL: 0.01	UL: -0.003	UL: 0.01	UL: 0.03	UL: 0.02
<i>Group:Sex</i>	-0.056	1.08	-0.016	0.559	-0.19	-0.02	0.09	0.06	-0.09	-0.25
	LL: -0.130	LL: -1.89	LL: -0.118	LL: -0.619	LL: -0.43	LL: -0.12	LL: -0.03	LL: -0.06	LL: -0.34	LL: -0.47
	UL: 0.0151	UL: 3.80	UL: 0.095	UL: 1.91	UL: 0.04	UL: 0.08	UL: 0.20	UL: 0.20	UL: 0.16	UL: -0.02
<i>Group: Cortical Thickness</i>	0.016	-0.678	-0.049	-0.46	0.04	0.02	0.02	0.04	-0.04	0.06
	LL: -0.042	LL: -2.97	LL: -0.140	LL: -1.54	LL: -0.14	LL: -0.06	LL: -0.08	LL: -0.07	LL: -0.21	LL: -0.12
	UL: 0.076	UL: 1.58	UL: 0.037	UL: 0.648	UL: 0.24	UL: 0.10	UL: 0.12	UL: 0.14	UL: 0.15	UL: 0.23
<i>Age:Sex</i>	-0.001	0.193	0.000	0.005	-0.001	0.001	-0.01	-0.001	0.02	-0.003
	LL: -0.007	LL: -0.051	LL: -0.010	LL: -0.110	LL: -0.02	LL: -0.01	LL: -0.02	LL: -0.01	LL: -0.01	LL: -0.02
	UL: 0.006	UL: 0.435	UL: 0.009	UL: 0.117	UL: 0.02	UL: 0.01	UL: 0.00	UL: 0.01	UL: 0.04	UL: 0.02
<i>Age: Cortical Thickness</i>	0.002	0.062	0.003	-0.021	-0.01	-0.003	0.001	-0.000	0.001	-0.001
	LL: -0.002	LL: -0.103	LL: -0.004	LL: -0.104	LL: -0.02	LL: -0.01	LL: -0.01	LL: -0.01	LL: -0.01	LL: -0.01
	UL: 0.006	UL: 0.230	UL: 0.010	UL: 0.065	UL: 0.01	UL: 0.00	UL: 0.01	UL: 0.01	UL: 0.02	UL: 0.01
<i>Sex: Cortical Thickness</i>	0.032	-0.476	0.015	0.255	0.05	0.000	0.08	0.02	-0.07	0.11
	LL: -0.022	LL: -2.71	LL: -0.078	LL: -0.820	LL: -0.15	LL: -0.08	LL: -0.03	LL: -0.08	LL: -0.28	LL: -0.08
	UL: 0.089	UL: 1.95	UL: 0.110	UL: 1.34	UL: 0.25	UL: 0.08	UL: 0.19	UL: 0.13	UL: 0.12	UL: 0.29
<i>Group: Age: Sex</i>	0.001	-0.160	0.002	-0.045	-0.01	-0.004	0.01	-0.000	-0.01	-0.01
	LL: -0.007	LL: -0.493	LL: -0.012	LL: -0.206	LL: -0.04	LL: -0.02	LL: -0.01	LL: -0.02	LL: -0.04	LL: -0.03
	UL: 0.010	UL: 0.186	UL: 0.016	UL: 0.115	UL: 0.02	UL: 0.01	UL: 0.02	UL: 0.02	UL: 0.02	UL: 0.02
<i>Group: Age: Cortical Thickness</i>	0.003	-0.053	0.000	-0.008	0.02	0.01	-0.00	0.01	-0.003	0.003
	LL: -0.003	LL: -0.270	LL: -0.008	LL: -0.110	LL: -0.01	LL: -0.00	LL: -0.01	LL: -0.00	LL: -0.02	LL: -0.01
	UL: 0.008	UL: 0.163	UL: 0.008	UL: 0.087	UL: 0.025	UL: 0.01	UL: 0.01	UL: 0.02	UL: 0.01	UL: 0.02
<i>Group: Sex: Cortical Thickness</i>	-0.043	0.948	-0.007	-0.028	-0.04	-0.02	-0.01	-0.06	0.05	-0.11
	LL: -0.124	LL: -2.11	LL: -0.126	LL: -1.46	LL: -0.30	LL: -0.13	LL: -0.15	LL: -0.20	LL: -0.23	LL: -0.34
	UL: 0.028	UL: 4.043	UL: 0.104	UL: 1.43	UL: 0.22	UL: 0.08	UL: 0.13	UL: 0.08	UL: 0.29	UL: 0.14
<i>Age: Sex: Cortical Thickness</i>	-0.007	0.076	-0.006	0.080	0.005	-0.005	0.005	-0.001	-0.005	0.01
	LL: -0.012	LL: -0.125	LL: -0.013	LL: -0.016	LL: -0.01	LL: -0.01	LL: -0.00	LL: -0.01	LL: -0.02	LL: -0.01
	UL: -0.002	UL: 0.267	UL: 0.001	UL: 0.169	UL: 0.02	UL: 0.00	UL: 0.01	UL: 0.01	UL: 0.01	UL: 0.02

112



113

114 *Figure 2: Grand average PSD (mean+se) for the PD group (blue) and healthy control group (red).*

115 2.1.1 Beta power

116 The PSD beta power showed significant effects of group ($\chi^2(1) = 5.42$; $p = 0.020$), age ($\chi^2(1) = 4.00$; $p=0.46$) and
117 the three-way interaction between age, sex, and cortical thickness ($\chi^2(1) = 8.05$; $p = 0.005$). The relative effect
118 of group corresponded to an increase in beta power of 23.8% [CI: 3.6:48.5] for PD patients. The relative effect
119 of age corresponded to a relative change of -0.2% per year of age (Figure 3). The direction of interaction three-
120 way interaction between age, sex, and cortical thickness indicated that higher cortical thickness was associated
121 with a steeper decrease in beta power, with a larger decrease in beta power in older ages for males compared
122 to females.

123 2.1.2 Beta centre frequency

124 There were no significant effects of any predictor on beta centre frequency.

125 2.1.3 Alpha power

126 There were no significant effects of any predictor on PSD alpha power.

127 2.1.4 Alpha centre frequency

128 The analysis of alpha centre frequency showed a significant interaction between group and age ($\chi^2(1) = 5.82$; $p = 0.016$) and a significant interaction between group and cortical thickness ($\chi^2(1) = 3.95$; $p = 0.047$). The age-
129 = 0.016) and a significant interaction between group and cortical thickness ($\chi^2(1) = 3.95$; $p = 0.047$). The age-
130 related differences in alpha centre frequency increased by 0.05 Hz [CI: -0.03:0.12] per year of age for healthy
131 controls. The difference was -0.02 Hz [CI: -0.11:0.08] per year of age for PD patients. Higher cortical thickness
132 was associated with a 0.30 Hz [CI: -0.45:1.08] difference in alpha centre frequency per standardised unit
133 increase in cortical thickness for healthy controls and a difference of -0.16 Hz [CI: -0.80:0.60] per standardised
134 unit increase in cortical thickness for PD patients.

135 2.1.5 Broadband 1/f intercept

136 The 1/f intercept of the PSD spectrum showed a significant effect of group ($\chi^2(1) = 12.19$; $p = 0.0005$) and
137 interaction between Group and Sex ($\chi^2(1) = 4.41$; $p = 0.036$). The 1/f intercept were 23.5% [CI: 10.5:35.3]
138 higher for female PD patients compared to female healthy controls and 9.5% [CI: -2.0:26.1] higher for male PD
139 patients compared to male healthy controls. Male PD patients had -12.1% [CI: -30.4:3.8] lower 1/f intercepts
140 compared to female PD patients. Male healthy controls showed a slight increase in PSD intercept of 5.3% [CI: -
141 8.1:16:4] compared to female healthy controls.

142 2.1.6 Broadband 1/f exponent

143 The analysis of the 1/f exponent or the PSD showed a significant effect of group ($\chi^2(1) = 8.48$; $p = 0.003$) and a
144 significant effect of cortical thickness ($\chi^2(1) = 6.02$; $p = 0.014$).
145 PD patients had relative steeper decay with 11.9% [CI: 1.0:26.1%] higher 1/f exponent than healthy controls.
146 Higher cortical thickness was associated with a -3.6% [CI: -12.8:5.5] difference in 1/f exponent per standardised
147 unit increase in cortical thickness (Figure 3).

148 2.2 Differences in burst features between groups

149 2.2.1 Burst rate

150 The analysis of burst per minute showed main effects of age ($\chi^2(1) = 5.10$; $p = 0.024$) and sex ($\chi^2(1) = 7.86$; $p =$
151 0.038) as well as interactions between group and age ($\chi^2(1) = 11.74$; $p = 0.001$), age and sex ($\chi^2(1) = 5.39$; $p =$
152 0.020), age and cortical thickness ($\chi^2(1) = 6.55$; $p = 0.010$), and sex and cortical thickness ($\chi^2(1) = 4.35$; $p =$
153 0.037).

154 The age-related effect corresponded to a lower burst rate of -0.7% [CI: $-1.5:0.3$] per year for female PD patients
155 and -0.9% [CI: $-1.4:-0.4$] lower rate per year for male PD patients, whereas female controls had a relative
156 increase in burst rate of 0.9% [CI: $0.1:1.6$] per year and male controls had a stable trend of -0.2% [CI: $-0.9:0.6$]
157 per year. The interaction between sex and cortical thickness showed a relative difference of -8.0% [CI: $-14.4:-$
158 1.7] per standardised unit increase in cortical thickness for females but did not vary across age for men with an
159 estimated relative difference of -0.8% [CI: $-8.1:6.7$] per standardised unit increase in cortical thickness (Figure
160 3). The direction of the interaction between age and cortical thickness meant that thicker cortex was
161 associated with an additional relative difference in burst rate per year of age of -7.1% [CI: $-13.5:-0.7$] per
162 standardised unit increase in cortical thickness.

163 2.2.2 Burst duration

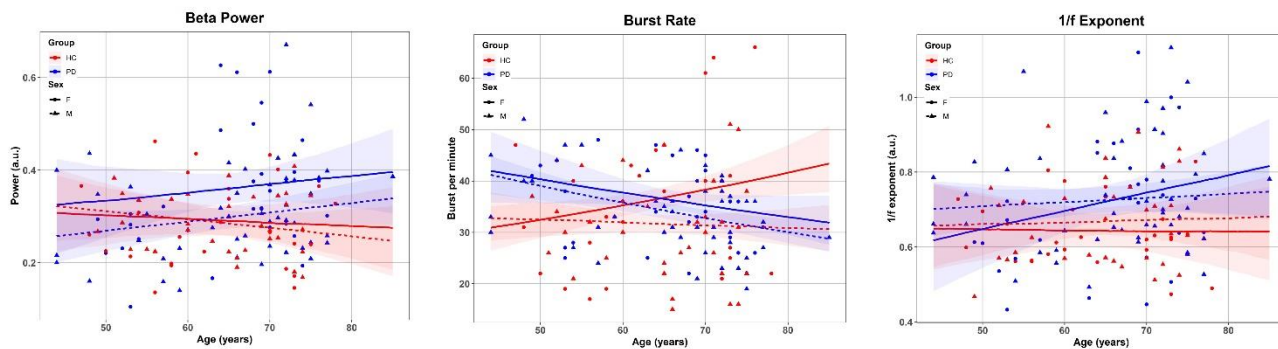
164 The mixed-model analysis of burst duration revealed a group-level main effect of age ($\chi^2(1) = 7.83$; $p = 0.005$)
165 and sex ($\chi^2(1) = 4.32$; $p = 0.038$) and an effect of the interaction between age and cortical thickness ($\chi^2(1) = 4.10$;
166 $p = 0.043$). The relative effect of sex showed that men had an overall 9.8% [CI: $-18.3:-1.1$] shorter burst
167 duration than females. The age-related difference in burst duration corresponded to a difference of 0.14% [$-$
168 $0.9:0.7$] per year of age. The age-related difference was further modified by -2.1% [CI: $-13.5:-0.7$] per
169 standardised unit increase in cortical thickness.

170 2.2.3 Burst interval

171 The mixed-model analysis of the burst interval only showed significant main effect of age ($\chi^2(1) = 6.52$; $p =$
172 0.011) and interaction between age and sex ($\chi^2(1) = 4.41$; $p = 0.036$). The model predicted a relative difference
173 in interval per year of age of -0.6% [CI: $-2.1:0.9$] for females and difference of 1.0% [CI: $-0.6:2.5$] per year of age
174 for males.

175 2.2.4 Burst amplitude

176 The mixed-model analysis of burst amplitudes showed a significant main effect of group ($\chi^2(1) = 10.94$; $p =$
177 0.0009) and interaction between group and sex ($\chi^2(1) = 6.35$; $p = 0.012$). Female PD patients had on average
178 41.0% [CI: $18.0:68.3$] higher burst amplitude than female controls, while male PD patients had 15.6% [CI: $-$
179 $2.2:35.7\%$] higher burst amplitude than male controls. Male PD patients had a relative lower burst amplitude
180 than female PD patients of -18.0% [CI: $-29.8:-3.3$] compared to a negligible relative amplitude difference of
181 5.3% [CI: $-10.1:22.8$] between male and females healthy controls.



182

183 *Figure 3: Scatterplots of the individual measures and model predictions over age for (A) PSD beta power, (B)*
184 *burst rate, and (C) PSD broadband 1/f exponent, split between PD patients (blue) and healthy controls (red),*
185 *and female (solid) and male (dashed).*

186 2.3 Clinical symptoms and sensorimotor oscillatory features

187 The analysis of axial symptoms (*midline function* rating in MDS-UPDRS-III) showed a positive significant effect of
188 median burst duration ($\chi^2(1) = 5.00$; $p = 0.025$) and a marginally significant effect PSD beta power ($\chi^2(1) = 3.86$;
189 $p = 0.049$) showing that longer burst duration and higher beta power was associated with an increase in
190 midline function symptoms. In addition, there were significant effects of covariates age ($\chi^2(1) = 7.12$; $p = 0.005$)
191 and sex ($\chi^2(1) = 8.25$; $p = 0.004$) on midline function.

192 Upper limbs bradykinesia showed significant effects of burst rate ($\chi^2(1) = 9.29$; $p = 0.002$) and alpha centre
193 frequency ($\chi^2(1) = 6.14$; $p = 0.013$) as well as a significant effect of the covariate cortical thickness ($\chi^2(1) = 6.09$;
194 $p = 0.014$). The negative effect of burst rate means that reduced burst rate was associated with increased
195 symptom rating.

196 There were no significant effects of the main predictors on symptom rating for rest tremor, rigidity,
197 postural/kinetic tremor, nor lower limb bradykinesia, though there was a significant effect of sex on rest

198 tremor ($\chi^2(1) = 7.81$; $p = 0.005$). The standardised regression coefficients of each predictor variable on the
199 motor symptoms measured with MDS-UPDRS-III are presented in Table 4.

200 *Table 4: Standardised regression coefficients (95% CI) for the six regression models on motor symptoms*
 201 *measured with the MDS-UPDRS-III. Values in bold indicate significant factors in the model comparison.*

Variable category	Variable	Midline function	Rest tremor	Rigidity	Bradykinesia upper extremity	Postural and kinetic tremors	Bradykinesia lower limb
	<i>Intercept</i>	-0.42 LL: -0.80 UL: -0.04	-0.52 LL: -0.93 UL: -0.13	-0.33 LL: -0.80 UL: 0.13	0.02 LL: -0.40 UL: 0.40	-0.26 LL: -0.71 UL: 0.16	0.12 LL: -0.71 UL: 0.19
	<i>Beta power</i>	0.33 LL: -0.06 UL: 0.70	0.24 LL: -0.16 UL: 0.64	0.33 LL: -0.12 UL: 0.78	-0.18 LL: -0.57 UL: 0.17	0.00 LL: -0.41 UL: 0.42	-0.22 LL: -0.43 UL: 0.44
	<i>Beta centre frequency</i>	0.02 LL: -0.27 UL: 0.30	-0.20 LL: -0.50 UL: 0.10	0.03 LL: -0.32 UL: 0.36	-0.11 LL: -0.38 UL: 0.20	-0.13 LL: -0.46 UL: 0.20	0.01 LL: -0.45 UL: 0.19
PSD	<i>Alpha power</i>	-0.11 LL: -0.50 UL: 0.28	-0.22 LL: -0.61 UL: 0.21	-0.12 LL: -0.58 UL: 0.35	0.24 LL: -0.14 UL: 0.66	0.11 LL: -0.34 UL: 0.57	0.02 LL: -0.34 UL: 0.54
	<i>Alpha centre frequency</i>	0.01 LL: -0.24 UL: 0.24	0.13 LL: -0.16 UL: 0.40	0.12 LL: -0.16 UL: 0.43	0.29 LL: 0.01 UL: 0.56	0.08 LL: -0.21 UL: 0.38	0.22 LL: -0.22 UL: 0.38
	<i>1/f intercept</i>	-0.13 LL: -1.11 UL: 0.89	0.47 LL: -0.66 UL: 1.54	0.45 LL: -0.86 UL: 1.70	-0.59 LL: -1.63 UL: 0.42	0.35 LL: -0.84 UL: 1.51	-0.98 LL: -0.89 UL: 1.50
	<i>1/f exponent</i>	-0.05 LL: -0.67 UL: 0.56	-0.26 LL: -0.87 UL: 0.39	-0.16 LL: -0.86 UL: 0.63	0.17 LL: -0.47 UL: 0.81	-0.02 LL: -0.74 UL: 0.70	0.46 LL: -0.73 UL: 0.68
	<i>Rate</i>	0.13 LL: -0.28 UL: 0.56	0.05 LL: -0.40 UL: 0.53	0.06 LL: -0.48 UL: 0.61	-0.60 LL: -1.01 UL: -0.17	-0.08 LL: -0.59 UL: 0.43	0.15 LL: -0.57 UL: 0.40
Burst	<i>Length</i>	0.31 LL: 0.00 UL: 0.60	-0.15 LL: -0.46 UL: 0.16	0.07 LL: -0.32 UL: 0.45	0.09 LL: -0.22 UL: 0.42	-0.07 LL: -0.42 UL: 0.29	0.27 LL: -0.42 UL: 0.29
	<i>Interval</i>	0.29 LL: -0.07 UL: 0.66	0.12 LL: -0.31 UL: 0.55	0.18 LL: -0.31 UL: 0.64	-0.21 LL: -0.58 UL: 0.20	-0.01 LL: -0.44 UL: 0.43	0.35 LL: -0.46 UL: 0.44
	<i>Amplitude</i>	0.04 LL: -0.83 UL: 0.88	-0.19 LL: -1.12 UL: 0.72	-0.30 LL: -1.34 UL: 0.78	0.67 LL: -0.20 UL: 1.59	-0.15 LL: -1.10 UL: 0.88	0.64 LL: -1.19 UL: 0.84
Other	<i>Age</i>	0.03 LL: 0.01 UL: 0.06	0.00 LL: -0.03 UL: 0.03	0.00 LL: -0.03 UL: 0.03	0.01 LL: -0.02 UL: 0.04	0.01 LL: -0.02 UL: 0.04	0.01 LL: -0.02 UL: 0.04
	<i>Sex</i>	0.70 LL: 0.17 UL: 1.18	0.74 LL: 0.17 UL: 1.32	0.55 LL: -0.04 UL: 1.22	-0.14 LL: -0.70 UL: 0.45	0.33 LL: -0.31 UL: 0.97	-0.25 LL: -0.31 UL: 0.94
	<i>Cortical thickness</i>	-0.17 LL: -0.41 UL: 0.07	-0.05 LL: -0.29 UL: 0.22	-0.05 LL: -0.34 UL: 0.25	-0.27 LL: -0.51 UL: -0.03	-0.18 LL: -0.48 UL: 0.11	-0.10 LL: -0.46 UL: 0.11
	<i>Multiple R-squared</i>	<i>0.441</i>	<i>0.277</i>	<i>0.156</i>	<i>0.375</i>	<i>0.193</i>	<i>0.173</i>

202

203 2.4 Correlation between variables

204 Table 5 presents the significant correlations between the PSD summaries, burst features, age, cortical thickness
205 and clinical rating scales. There was generally high correlations between the PSD features and burst features.

206 The PSD beta power correlated with the burst rate ($r=0.26$, $p=0.002$), burst duration ($r=0.20$, $p=0.022$), burst
207 amplitude ($r=0.52$, $p<0.001$), and correlated negatively with the burst interval ($r=-0.24$, $p=0.005$). The PSD alpha
208 power also correlated with the burst rate ($r=0.26$, $p<0.001$), burst amplitude ($r=0.32$, $p<0.001$) and showed a
209 negative correlation with the bursts interval ($r=-0.23$, $p=0.011$). The PSD centre frequencies in neither the beta-
210 band nor alpha-band showed any significant correlation with burst features.

211 The 1/f broadband characteristic of the PSD showed high degree of correlation with the measures of the
212 oscillatory peaks in the PSD for both the 1/f intercept (beta power: $r=0.52$, $p<0.001$; beta centre frequency: $r=-$
213 0.18 , $p=0.035$; alpha power: $r=0.41$, $p<0.001$; alpha centre frequency: $r=-0.19$, $p=0.035$) and 1/f exponent (beta
214 power: $r=0.57$, $p<0.001$; beta centre frequency: $r=-0.30$, $p<0.001$; alpha power: $r=0.40$, $p<0.001$; alpha centre
215 frequency: $r=-0.43$, $p<0.001$). The 1/f intercept further showed a high degree of correlation with all four burst
216 features (burst rate: $r=0.55$, $p<0.001$; burst duration: $r=0.31$, $p<0.001$; bursts interval: $r=-0.48$, $p<0.001$; burst
217 amplitude: $r=0.91$, $p<0.001$), though the 1/f exponent only correlated with the burst amplitude ($r=0.30$,
218 $p<0.001$).

219 *Table 5: Statistically significant correlation coefficients between all main variables. Green colours indicate a*
 220 *positive correlation between variables, and red colours indicate a negative correlation between variables—*
 221 *the intensity of the colour scales with the correlation coefficient.*

Variable category		PSD						Burst				Other			UPDRS					
Variable category	Variable	Beta power	Beta centre frequency	Alpha power	Alpha centre frequency	1/f intercept	1/f exponent	Rate	Duration	Inteval	Amplitude	Age	Cortical thickness	MoCA	Midline function	Rest tremor	Rigidity	Bradykinesia upper.	Post./kinetic tremors	Bradykinesia lower.
PSD	Beta power		-0,35	0,63	-0,32	0,52	0,57	0,26	0,2	-0,24	0,52	0,18		-0,21	0,28					0,24
	Beta centre frequency	-0,35		-0,34		0,22	-0,18	-0,3				-0,17								
	Alpha power	0,63	-0,34		-0,36	0,41	0,4	0,32		-0,23	0,45		-0,2							
	Alpha centre frequency	-0,32	0,22	-0,36		-0,19	-0,43					0,18								
	1/f intercept	0,52	-0,18	0,41	-0,19		0,56	0,55	0,31	-0,48	0,91			-0,21						
	1/f exponent	0,57	-0,3	0,4	-0,43	0,56					0,3	0,18	-0,25	-0,19					0,25	
Burst	Rate	0,26		0,32		0,55			0,55	-0,8	0,55							-0,23		
	Duration	0,2				0,31		0,55		-0,61	0,29									
	Inteval	-0,24		-0,23		-0,48		-0,8	-0,61		-0,44	0,2								
	Amplitude	0,52		0,45		0,91	0,3	0,55	0,29	-0,44			-0,21							
Other	Age	0,18	-0,17				0,18			0,2			-0,19	-0,22	0,37			0,26		
	Cortical thickness				0,18		-0,25					-0,19		0,19	-0,38					
	MoCA	-0,21		-0,2		-0,21	-0,19			-0,21		-0,22	0,19		-0,37			-0,26	-0,23	
UPDRS	Midline function	0,28									0,37	-0,38	-0,37		0,38	0,38	0,4	0,28	0,32	
	Rest tremor													0,38		0,37	0,28	0,53	0,23	
	Rigidity													0,38	0,37				0,25	
	Bradykinesia upper extremity							-0,23				0,26		-0,26	0,4	0,28		0,32	0,49	
	Postural and kinetic tremors	0,24					0,25							-0,23	0,28	0,53		0,32		
	Bradykinesia lower limb														0,32	0,23	0,25	0,49		

222

223 **3 Discussion**

224 In this study, we aimed to explore how different features of somatosensory oscillatory neuronal activity
225 differed between PD patients and healthy controls across age and gender, and how these features relate to
226 motor symptoms in PD. In agreement with our primary hypothesis, the PD patients differed from healthy
227 controls on several oscillatory features as expected, showing higher beta-band power, higher burst amplitude,
228 a steeper broadband 1/f slope and exponent compared to healthy controls. Furthermore, the analysis of bursts
229 showed that the burst rate was reduced in PD patients compared to healthy controls, confirming previous
230 results on bursts and PD from our group¹⁷—here on a cohort with three times as many participants. Notably,
231 our current results show that the reduced burst rate in PD is not a static group-level difference but interacts
232 with age, gender and cortical thickness and results in a steeper reduction in burst rate in PD with age compared
233 to healthy controls.

234 Following our secondary hypothesis, we expected that different oscillatory features would reflect distinct
235 underlying functional neural properties and manifest as different motor symptoms in PD. Examining the inter-
236 relationship between the features, we observed significant correlations between most oscillatory features,
237 indicating that we had some redundancy among our measures. For instance, the 1/f intercept showed a
238 significant positive correlation with the 1/f slope and beta-band PSD and a high correlation with burst
239 amplitude. We did, however, also see evidence of independent features. Using regression models to examine
240 which oscillatory features were associated with different symptoms, our results showed that the oscillatory
241 features had distinctive relationships with specific symptom scales: bradykinesia severity was related to the
242 burst rate, and alpha centre frequency (and also to cortical thickness) but midline symptoms were related to
243 burst duration and beta power.

244 While we did see correlations between the band-specific oscillatory power in the PSD and the burst rate and
245 burst amplitude—as expected since increased rate and amplitude would necessarily lead to higher PSD—it
246 was, unexpectedly, the intercept of the broadband 1/f regression that showed the highest correlation with the

247 burst features. This study adds to the growing evidence that a narrow-band focus—e.g. the beta-band in
248 isolation—could potentially miss essential aspects of the neural signals. Quantifying only the peaks in the PSD
249 misrepresents the actual oscillatory response at those frequencies as the peaks are influenced by the
250 broadband offset and $1/f$ decay exponent, so any unaccounted-for systematic differences in either PSD offset
251 or decay exponent can lead to a false conclusion that there is a difference in the oscillatory response.^{46,47}

252 These results show that the different features capture different neural processes, reflecting that a neural time
253 series obtained by electrophysiological recordings differs along various dimensions. In the time domain,
254 increased oscillatory power can reflect both increased burst duration and change in burst amplitude and an
255 expression of "true" sustained oscillations in the signal.^{34,51} The presence of more sustained oscillation in the
256 sensorimotor rhythm, particularly the beta band, might reflect a higher level of inhibition of sensorimotor
257 information as is seen in recordings from STN⁵ and, to some extent, at the cortical level.^{36,52} However, sustained
258 oscillations are not in contrast to the bursting properties of the sensorimotor rhythm. The neural time-series
259 can express both a degree of sustained oscillations while also exhibiting variation in the degree of transient
260 bursts—e.g. a signal of steady oscillation with transient high-amplitude bursts.

261 The observed disease-related changes in spontaneous cortical bursts in the form of increased burst power and
262 a more rapid decrease in rate over age for PD patients could reflect inhibited projections along the thalamic-
263 cortical pathways caused by disturbances in the dopamine-dependent structures projecting to the cortex. The
264 bursting properties of the cortical sensorimotor neural activity are proposed to occur due to long-range input
265 through the ascending thalamic-cortical connection to the cortex, leading to an increase in the local neural
266 excitation and resulting in a burst of synchronous activity.³⁴ Interestingly, we did not find significant group
267 differences in burst duration in the current study, supporting the view that the central mechanisms of the
268 cortical bursts are not primarily affected in PD. The sub-cortical beta-band activity is directly influenced by the
269 activity of dopamine-responding neurons, as there is a high density of dopamine-dependent neurons in these

270 subcortical brain structures in contrast to the cortex, where the density of dopamine-receptive neurons is low.
271 Any effect of dopamine and dopaminergic medication on the cortical beta-band is likely an indirect effect
272 mediated by neural connectivity in the direct and indirect neural pathways between basal ganglia, thalamus,
273 and cortex. The differences in the cortical sensorimotor burst rate in PD might be an indirect effect of the loss
274 of dopamine and changes in the beta band in the sub-cortical structures projecting to the sensorimotor cortex.
275 The notion that the cortical sensorimotor activity is indirectly related to dopamine depletion in PD is further
276 supported by findings from animals studies showing that hydroxydopamine injections lead to exaggerated
277 beta-band oscillations only after several days had passed, suggesting that oscillatory changes occurred as an
278 effect after dopamine depletion rather than a direct consequence of the depletion itself.⁷ The indirect
279 influence of dopamine on the cortical beta-band might also explain the often weak or even absent effect of
280 dopaminergic medication on cortical beta-band activity.^{11,16,17,53} However, the current study cannot directly
281 address the role of dopamine on cortical oscillations since all patients in the study were tested on their regular
282 dose of medication.

283 We explored how age-related differences in cortical sensorimotor neural activity might interact with disease-
284 related changes in PD within the current study. Age-related effects on spontaneous sensorimotor activity are
285 commonly dealt with by matching the age distributions of the patient group and the healthy control group—
286 usually within a narrow age span. The analysis showed, as expected, age-related differences in the
287 sensorimotor activity—most notably in the beta PSD and for the burst duration, burst interval, and burst rate.
288 The age-related differences in burst rate differed between PD patients and healthy controls, with PD patients
289 showing a more considerable reduction of burst as a function of age than healthy controls. The steeper
290 reduction in burst rate with age in PD seems in accordance with the fact that higher age at PD onset is
291 associated with a faster disease progression and more rapid decline in motor function⁵⁴, though a longitudinal
292 design is needed to confirm the relation between disease progression, reduction in burst rate, and age.

293 We did not see a significant "slowing" of the beta PSD centre frequency between groups, as reported in several
294 previous studies.⁴³ An explanation might be that such slowing is more pronounced in PD patients with
295 dementia^{26–29} and correlates with cognitive ability.²⁵ The PD patients in the current study were cognitively well-
296 functioning and did not differ in their cognitive ability from the healthy controls. Another explanation is that we
297 focused on the activity in the sensorimotor cortex, whereas the slowing of alpha and beta PSD is usually found
298 in frontal areas and globally throughout the brain.^{24,27,30}

299 We included measures of cortical thickness within the same region of interest (ROI) from which we extracted
300 the function time-series, as we hypothesised that age-related effects upon the functional measures might be
301 mediated through the age-related structural changes in the cortex. However, despite the negative correlation
302 between age and cortical thickness (as expected), we did not find pervasive evidence that cortical thickness
303 affected the functional measures. Cortical thickness did show an effect on the burst rate through interaction on
304 the age-related effect. The only measure that showed a group-specific difference in cortical thickness was the
305 alpha centre frequency, where a higher cortical thickness was associated with a lower alpha PSD peak.

306 We also included sex to explore if disease-related changes in sensorimotor oscillatory activity differed between
307 males and females, as there are well-documented sex differences in the manifestation of PD.^{1,55} Male sex is a
308 risk factor for developing PD, with average incidence ratios of approximately 2:1 male-female ratio across all
309 stages of the disease.⁵⁶ The disease debuts on average two years earlier in males than females and differs in
310 the initial manifestation of symptoms, with women more likely to develop tremor specific symptoms and men
311 more likely to develop rigidity.⁵⁷ We are not aware of any previous studies that explicitly included sex as a
312 factor in analysing neural oscillations in PD.

313 We found significant differences between males and females in the bursting properties in the sensorimotor
314 signal. The burst amplitude was more prominent for female PD patients than for male PD patients, and the
315 age-related differences in both burst rate and burst intervals differed between males and females. These

316 finding clearly illustrate the need for further studies into the sex-specific changes in neural function and how
317 they manifest and relate to PD.

318 A possible factor behind the sex differences in PD is the contribution of sex hormones on the nigrostriatal
319 pathway and linked to the deterioration of the dopaminergic system, where testosterone levels appear to
320 enhance dopamine loss while estrogen has been identified as a neuroprotective agent for PD. Estrogen has
321 been demonstrated by how it generally influences incidence levels and how menopause-related variations in
322 estrogen levels are linked to variations in symptom severity.⁵⁸ If this influences oscillations in the sensorimotor
323 cortex is unclear at the current stage.

324 The present study quantified the neural time series from the sensorimotor cortex based on pre-defined
325 summary measures of the PSD and burst properties. Our study is a broader approach with more sensorimotor
326 rhythm features than other studies more focused on specific signal features, and we also included more PD
327 patients and healthy controls than similar functional studies.⁴³

328 However, focusing the analysis on different features within a narrow ROI potentially ignores other types of
329 measurements that might be relevant to understanding the development of PD and motor symptoms; for
330 example, the long-range connectivity between the sensorimotor cortex and other cortical areas and the
331 connections between the sensorimotor cortex and the basal ganglia and thalamus (though the subcortical
332 structures are practically invisible in MEG). Treating the activity in the sensorimotor cortex as single time series
333 also means that we remove the sensitivity to spatial features of the signals, e.g. focal versus spatially blurred
334 activity in one group or the other. If the oscillatory activity extends over a larger cortical surface area, then that
335 signal will also manifest as power differences in the measured signal.⁵¹ There are potentially many more
336 features to be uncovered, and future studies may explore how the PSD- and burst features further interact
337 with other aspects of brain activity in the global function of the brain to fully understand the interaction
338 between functional and structural changes in PD.

339 We investigated a relatively large cohort of PD patients and healthy controls (for a neuroimaging study) to
340 make meaningful inferences about how age and sex interact with the group level difference between PD
341 patients and healthy controls, but a limitation is that our study is cross-sectional. We aim to follow this cohort
342 longitudinally to estimate the development trajectories of the sensorimotor oscillatory activity in PD compared
343 to healthy ageing.

344 There are myriads of ways to quantify brain dynamics, and finding features of neural signals that can explain
345 disease mechanism or symptoms, even if extracted along with a reduced number of dimensions, will be helpful
346 if they provide adequate information about the disease- or symptom-state. Further characterisation of the
347 association between features in the non-invasive brain signals and motor symptoms can potentially be a
348 valuable tool to aid in the diagnosis and evaluation of treatments. Understanding how features in the neural
349 time series are related to motor symptoms in PD will also help develop non-invasive neural stimulation that can
350 potentially relieve motor symptoms.^{35,59}

351 4 Methods

352 4.1 Participants

353 80 PD patients (age 44-85; 32 female) and 71 healthy controls (age 46–78; 46 female) participated in the study.

354 The study was approved by the regional ethics committee (Etikprövningsnämnden Stockholm, DNR 2019-00542)

355 and followed the Declaration of Helsinki. All participants gave written informed consent before participation.

356 The PD patients were recruited from the Parkinson's Outpatient Clinic, Department of Neurology, Karolinska

357 University Hospital, Stockholm, Sweden. The healthy controls were recruited by advertising or amongst

358 spouses of PD patients. 22 participants (18 patients, 4 healthy controls) were included from a previous study¹⁷

359 who were qualified based on the recruitment criteria of the present study and had done the same MEG and

360 MRI procedures as in the present study. All data were reanalysed following the procedure described below.

361 The inclusion criteria for the PD group were a diagnosis of PD according to the United Kingdom Parkinson's

362 Disease Society Brain Bank Diagnostic Criteria with Hoehn and Yahr stage 1-3.⁶⁰ Inclusion criteria for the control

363 group were not having a diagnosis of PD, no form of movement disorder, and no history of neurological

364 disorders, epilepsy, or psychiatric disorders.

365 Exclusion criteria for both groups were a diagnosis of major depression, dementia, history or presence of

366 schizophrenia, bipolar disorder, epilepsy, or history of alcoholism or drug addiction according to the *Diagnostic*

367 *and Statistical Manual of Mental Disorders*.⁶¹

368 One participant declined to do the MRI scanning, one participant had a scanner malfunction during MRI

369 acquisition, and eleven participants had their MRI scans cancelled and were not included in the analysis. Two

370 PD patients and 11 healthy controls were excluded. Table 1 is a summary of the participants included in the

371 analysis.

372 The PD patients participated in the study while they were on their regular prescribed dose of medication. The
373 Levodopa equivalent daily dose (LEDD) was calculated according to Tomlinson et al.⁶² Motor symptoms in the
374 PD group were assessed using the Movement-Disorder Society Unified Parkinson's Disease Rating Scale (MDS-
375 UPDRS-III).⁵⁹ Global cognition was assessed with the Montreal Cognitive Assessment battery (MoCA).⁶⁴

376 4.2 MEG recordings

377 MEG data were recorded with a Neuromag TRIUX 306-channel MEG system, with 102 magnetometers and 102
378 pairs of planar gradiometers. Data were sampled at 1000 Hz with an online 0.1 Hz high-pass filter and 330 Hz
379 low-pass filter. The MEG scanner was located inside a two-layer magnetically shielded room (Vacuumschmelze
380 GmbH) with internal active shielding active to suppress electromagnetic artefacts. The subjects' head position
381 and head movements inside the MEG scanner were measured during recordings with head-position indicator
382 coils (HPI) attached to subjects' heads. The HPI location and additional points sampled uniformly across the
383 subjects' head shape were digitalised with a Polhemus Fastrak motion tracker before the measurements.
384 Horizontal and vertical electrooculogram (EOG) and electrocardiogram (ECG) were recorded simultaneously
385 with the MEG.

386 We recorded three minutes of resting-state MEG while the participants sat with their eyes closed. The
387 participants were instructed to close their eyes and relax for three minutes. The recordings began after
388 assuring the participant sat still with their eyes closed.

389 4.3 MRI acquisition

390 3D T1-weighted magnetisation-prepared rapid gradient-echo (MPRAGE) sequence structural images (voxel size:
391 1 x 0.94 x 0.94 mm) were obtained on a GE Discovery 3.0 T MR scanner for morphological analysis and creating
392 source spaces for MEG source reconstruction. Multi-echo "FLASH"⁶⁵ images were obtained to create volumetric
393 headmodels for MEG source reconstruction (see below).

394 4.4 MRI processing

395 The MRI images were processed with Freesurfer⁶⁶ (v. 5.3) to get surface reconstructions of the cortical mantle.
396 The surfaces were obtained with the automatic routine for extracting cortical surfaces in Freesurfer from the
397 individual T1-weighted MRI.

398 We defined the cortical sensorimotor area by segmenting the cortical surface using the anatomical labels
399 provided by Freesurfer automatic labelling.⁶⁷ The analysis focused on a region of interest (ROI) consisting of the
400 left pre- and post-central gyri and central sulcus. The pre/postcentral gyri were combined because a
401 biomagnetic source on either sulci wall will leave a trace on the other side due to the close distance and the
402 field spread of MEG signals. The ROI was defined for each subject based on the individual cortical
403 reconstructions. The average cortical thickness in the ROI was estimated with Freesurfer.⁶⁸

404 4.5 MEG pre-processing

405 The MEG was processed by applying temporal signal space separation (tSSS) to suppress artefacts from outside
406 the scanner helmet and correct head movement during the recording.⁶⁹ The tSSS had a buffer length of 10 s
407 and a cut-off correlation coefficient of 0.95. Movement correction was done by shifting the head position to a
408 position based on the median of the continuous head position during the three-minute recording.

409 The MEG data processing and source reconstruction was done with MNE-Python⁷⁰ in Python 3.8. First, we
410 marked data segments containing muscle artefacts and SQUID jumps (marked by the automatic artefact
411 detection in MNE-Python). The data was filtered with a 48 Hz low-pass filter and 50 Hz notch filter to remove
412 line noise. The continuous data were cut into 1.0 s epochs. Epochs marked with muscle artefacts or extreme
413 values (above 5000 fT for magnetometers and 4000 fT/cm for gradiometers) were rejected. Between 0-65 %
414 (median: 6.0 %) of data was rejected resulting in 63.0-180 s (median: 174.0 s) useful MEG data per participant.
415 The remaining data length was not significantly different between groups (Wilcoxon rank sum test, $p = 0.98$).

416 We then used independent component analysis (ICA) using the *fastica* algorithm.⁷¹ Components representing
417 artefacts from blinks and heartbeats were identified based on their correlation with the EOG and ECG,
418 respectively and removed from the raw data. Between 0-5 (median 3) components were removed per
419 participant. The number of removed ICA components was not significantly different between groups (Wilcoxon
420 rank sum test, $p = 0.71$).

421 We then applied source reconstruction using noise weighted minimum-norm estimates.⁷² The noise covariance
422 matrix was estimated from two minutes of empty room data recorded before each session. The source space
423 consisted of 5124 evenly spaced points sampled across the white matter surfaces per participant. The inner
424 skull boundary was estimated from the multi-echo MRI to create a single shell volume conductor model. The
425 time series from the sensorimotor ROI was then extracted from the estimated source time series by singular
426 value decomposition of all source points within the ROI.

427 4.6 Power spectral analysis

428 We analysed the spectral properties of the sensorimotor activity by calculating the PSD from 0.5 to 40 Hz
429 across the entire ROI time series using Welch's method by segmenting the continuous data into 3.072 s epochs
430 with 50% overlap and averaging the PSD across the segments.

431 Since the narrow-band beta power in the PSD is dependent on the broader features of the broadband
432 spectrum, we further analysed the $1/f$ broadband characterises of the sensorimotor activity as this could play a
433 role in the functional properties of the beta-band and has been shown to differ between healthy control and
434 PD patients.¹⁷ We used the *fitting oscillations & one over f* (FOOOF) toolbox⁴⁶ to analyse the $1/f$ broadband
435 characteristic of the PSD (intercept and exponent) and the oscillatory peaks in the canonically defined beta
436 band (13-30 Hz) and alpha band (8-12 Hz). A log-linear regression is fitted to the PSD and subtracted before
437 fitting Gaussian functions to the peaks in the PSD. The midpoint of the Gaussians corresponds to the centre

438 frequency (i.e. peak frequency) and the height represents the signal power. A new log-linear function is fitted
439 to the PSD after subtracting the Gaussian function to estimate the $1/f$ characteristic.

440 All participants showed a discernable beta peak in the PSD. Nine PD patients and nine healthy controls did not
441 show a peak in the PSD alpha band (no difference between groups, $\chi^2(1) = 0.12$; $p = 0.73$).

442 4.7 Burst analysis

443 To calculate the burst properties of the sensorimotor activity in the time domain, we band-pass filtered the
444 time-series with an 8-30 Hz band-pass filter using FieldTrip⁷³ in MATLAB (R2016b; MathWorks Inc.) and
445 calculated the Hilbert envelope of the signal (Fig. 1). The burst threshold was defined as three times the
446 median of the signal. The burst onset was defined as the time-point where the signal first reached half the max
447 amplitude of the burst and ending at the time-point where the signal again dropped below half the max
448 amplitude of the burst. The *burst amplitude* was defined as the maximum value of the burst. The burst
449 *duration* was defined as the time from burst onset to burst end. The *burst interval* was defined as the time
450 from the end of a burst to the time-point where the next burst began.

451 4.8 Statistics

452 4.8.1 Analysis of sensorimotor rhythm features

453 The main analyses tested the effect of *group* (PD patients/healthy controls), *age*, *sex*, and *ROI cortical thickness*
454 on the features listed in Table 2 to describe how these factors might influence the features. For the PSD
455 features, we modelled the outcomes as a linear function of group (PD patients/healthy controls), age, sex, and
456 cortical thickness with linear regression in R (v. 4.0.2).⁷⁴ The regression models were fit to the data for each
457 participant with all factors and up to their three-way interactions between the four predictors. One regression
458 model was estimated per PSD feature. The burst rate (burst per minute) was modelled with Poisson regression
459 using the same predictor variables.

460 4.8.2 Relation between clinical scores and sensorimotor oscillatory features

461 The MDS-UPDRS-III scores were divided into subscales based on symptoms: *midline function, rest tremor,*
462 *rigidity, upper-body bradykinesia, postural and kinetic tremor, and lower limb bradykinesia*; according to Goetz
463 et al.⁷⁵, with the exception that left- and right-side upper-body bradykinesia were combined into a single factor.

464 Each symptom score was analysed by multiple regression and modelled as a function of the burst rate, median
465 burst duration, median bursts interval, median burst amplitude, PSD 1/f intercept, PSD 1/f exponent, PSD beta
466 power, PSD beta centre frequency, PSD alpha power, and PSD alpha centre frequency for each PD patient. The
467 models further included the age, sex, and cortical thickness to regress out the contribution hereof and estimate
468 the relative effect size of each signal feature. All symptom ratings and continuous predictor variables, except
469 age, were z-transformed to get the standardised effect size from the regression models. Significance testing
470 was done by removing one predictor from the model and comparing the variance explained between the full
471 model and the model with a predictor removed by log-likelihood ratio tests.

472 4.8.3 Correlation between variables

473 Since the features analysed in the main analysis are all extracted from the same signal, we wanted to explore
474 the mutual relation between variables. We computed the Pearson correlation between the signal features in
475 Table 2, age, cortical thickness, MoCA, and MDS-UPDRS-III subscales for all pairwise complete cases.

476 4.9 Data Availability

477 Parts of the data used in this analysis will be made available at a public data repository. Scripts for running the
478 analysis presented in the paper are available at www.github.com/mcvinding/PD_beta_bursts2.

479 References

- 480 1. Kalia, L. V. & Lang, A. E. Parkinson's disease. *The Lancet* **386**, 896–912 (2015).
- 481 2. Rodriguez-Oroz, M. C. *et al.* Initial clinical manifestations of Parkinson's disease: features and
482 pathophysiological mechanisms. *The Lancet Neurology* **8**, 1128–1139 (2009).
- 483 3. Braak, H. *et al.* Staging of brain pathology related to sporadic Parkinson's disease. *Neurobiology of aging*
484 **24**, 197–211 (2003).
- 485 4. Jenkinson, N. & Brown, P. New insights into the relationship between dopamine, beta oscillations and
486 motor function. *Trends in Neurosciences* **34**, 611–618 (2011).
- 487 5. Alonso-Frech, F. *et al.* Slow oscillatory activity and levodopa-induced dyskinesias in Parkinson's disease.
488 *Brain* **129**, 1748–1757 (2006).
- 489 6. Giannicola, G. *et al.* The effects of levodopa and ongoing deep brain stimulation on subthalamic beta
490 oscillations in Parkinson's disease. *Experimental Neurology* **226**, 120–127 (2010).
- 491 7. Mallet, N. *et al.* Disrupted Dopamine Transmission and the Emergence of Exaggerated Beta Oscillations in
492 Subthalamic Nucleus and Cerebral Cortex. *Journal of Neuroscience* **28**, 4795–4806 (2008).
- 493 8. Neumann, W.-J. *et al.* Long term correlation of subthalamic beta band activity with motor impairment in
494 patients with Parkinson's disease. *Clinical Neurophysiology* **128**, 2286–2291 (2017).
- 495 9. Kühn, A. A., Kupsch, A., Schneider, G.-H. & Brown, P. Reduction in subthalamic 8-35 Hz oscillatory activity
496 correlates with clinical improvement in Parkinson's disease: STN activity and motor improvement.
497 *European Journal of Neuroscience* **23**, 1956–1960 (2006).
- 498 10. Martin, S. *et al.* Differential contributions of subthalamic beta rhythms and 1/f broadband activity to motor
499 symptoms in Parkinson's disease. *npj Parkinson's Disease* **4**, 32 (2018).
- 500 11. Airaksinen, K. *et al.* Somatomotor mu rhythm amplitude correlates with rigidity during deep brain
501 stimulation in Parkinsonian patients. *Clinical Neurophysiology* **123**, 2010–2017 (2012).

- 502 12. Feldmann, L. K. *et al.* Subthalamic beta band suppression reflects effective neuromodulation in chronic
503 recordings. *European Journal of Neurology* ene.14801 (2021) doi:10.1111/ene.14801.
- 504 13. Cao, C. *et al.* L-dopa treatment increases oscillatory power in the motor cortex of Parkinson's disease
505 patients. *NeuroImage: Clinical* **26**, 102255 (2020).
- 506 14. Heinrichs-Graham, E. *et al.* Hypersynchrony despite pathologically reduced beta oscillations in patients
507 with Parkinson's disease: a pharmaco-magnetoencephalography study. *Journal of Neurophysiology* **112**,
508 1739–1747 (2014).
- 509 15. Melgari, J.-M. *et al.* Alpha and beta EEG power reflects L-dopa acute administration in parkinsonian
510 patients. *Frontiers in Aging Neuroscience* **6**, 302 (2014).
- 511 16. Hall, S. D. *et al.* GABA-mediated changes in inter-hemispheric beta frequency activity in early-stage
512 Parkinson's disease. *Neuroscience* **281**, 68–76 (2014).
- 513 17. Vinding, M. C. *et al.* Reduction of spontaneous cortical beta bursts in Parkinson's disease is linked to
514 symptom severity. *Brain Communications* (2020) doi:10.1093/braincomms/fcaa052.
- 515 18. Abbasi, O. *et al.* Unilateral deep brain stimulation suppresses alpha and beta oscillations in sensorimotor
516 cortices. *NeuroImage* **174**, 201–207 (2018).
- 517 19. Luoma, J. *et al.* Spontaneous sensorimotor cortical activity is suppressed by deep brain stimulation in
518 patients with advanced Parkinson's disease. *Neuroscience Letters* **683**, 48–53 (2018).
- 519 20. Cao, C.-Y. *et al.* Modulations on cortical oscillations by subthalamic deep brain stimulation in patients with
520 Parkinson disease: A MEG study. *Neuroscience Letters* **636**, 95–100 (2017).
- 521 21. Pollok, B. *et al.* Motor-cortical oscillations in early stages of Parkinson's disease: Suppression of motor
522 cortical beta oscillations is altered in early PD. *The Journal of Physiology* **590**, 3203–3212 (2012).
- 523 22. Olde Dubbelink, K. T. E. *et al.* Resting-state functional connectivity as a marker of disease progression in
524 Parkinson's disease: A longitudinal MEG study. *NeuroImage: Clinical* **2**, 612–619 (2013).

- 525 23. Boon, L. I. *et al.* Motor effects of deep brain stimulation correlate with increased functional connectivity in
526 Parkinson's disease: An MEG study. *NeuroImage: Clinical* **26**, 102225 (2020).
- 527 24. Stoffers, D. *et al.* Slowing of oscillatory brain activity is a stable characteristic of Parkinson's disease
528 without dementia. *Brain* **130**, 1847–1860 (2007).
- 529 25. Vardy, A. N. *et al.* Slowing of M1 activity in Parkinson's disease during rest and movement – An MEG study.
530 *Clinical Neurophysiology* **122**, 789–795 (2011).
- 531 26. Bosboom, J. L. W., Stoffers, D., Wolters, E. Ch., Stam, C. J. & Berendse, H. W. MEG resting state functional
532 connectivity in Parkinson's disease related dementia. *Journal of Neural Transmission* **116**, 193–202 (2009).
- 533 27. Bosboom, J. L. W. *et al.* Resting state oscillatory brain dynamics in Parkinson's disease: An MEG study.
534 *Clinical Neurophysiology* **117**, 2521–2531 (2006).
- 535 28. Olde Dubbelink, K. T. E. *et al.* Predicting dementia in Parkinson disease by combining neurophysiologic and
536 cognitive markers. *Neurology* **82**, 263–270 (2014).
- 537 29. Ponsen, M. M., Stam, C. J., Bosboom, J. L. W., Berendse, H. W. & Hillebrand, A. A three dimensional
538 anatomical view of oscillatory resting-state activity and functional connectivity in Parkinson's disease
539 related dementia: An MEG study using atlas-based beamforming. *NeuroImage: Clinical* **2**, 95–102 (2013).
- 540 30. Olde Dubbelink, K. T. E. *et al.* Cognitive decline in Parkinson's disease is associated with slowing of resting-
541 state brain activity: a longitudinal study. *Neurobiology of Aging* **34**, 408–418 (2013).
- 542 31. Stoffers, D., Bosboom, J. L. W., Wolters, E. Ch., Stam, C. J. & Berendse, H. W. Dopaminergic modulation of
543 cortico-cortical functional connectivity in Parkinson's disease: An MEG study. *Experimental Neurology* **213**,
544 191–195 (2008).
- 545 32. Feingold, J., Gibson, D. J., DePasquale, B. & Graybiel, A. M. Bursts of beta oscillation differentiate
546 postperformance activity in the striatum and motor cortex of monkeys performing movement tasks. *Proc*
547 *Natl Acad Sci USA* **112**, 13687–13692 (2015).

- 548 33. Leventhal, D. K. *et al.* Basal Ganglia Beta Oscillations Accompany Cue Utilization. *Neuron* **73**, 523–536
549 (2012).
- 550 34. Sherman, M. A. *et al.* Neural mechanisms of transient neocortical beta rhythms: Converging evidence from
551 humans, computational modeling, monkeys, and mice. *Proceedings of the National Academy of Sciences*
552 **113**, E4885–E4894 (2016).
- 553 35. Tinkhauser, G. *et al.* The modulatory effect of adaptive deep brain stimulation on beta bursts in Parkinson's
554 disease. *Brain* **140**, 1053–1067 (2017).
- 555 36. Shin, H., Law, R., Tsutsui, S., Moore, C. I. & Jones, S. R. The rate of transient beta frequency events predicts
556 behavior across tasks and species. *eLife* **6**, (2017).
- 557 37. Duchet, B. *et al.* Average beta burst duration profiles provide a signature of dynamical changes between
558 the ON and OFF medication states in Parkinson's disease.
559 <http://biorxiv.org/lookup/doi/10.1101/2020.04.27.064246> (2020) doi:10.1101/2020.04.27.064246.
- 560 38. Khawaldeh, S. *et al.* Subthalamic nucleus activity dynamics and limb movement prediction in Parkinson's
561 disease. *Brain* **143**, 582–596 (2020).
- 562 39. Lofredi, R. *et al.* Beta bursts during continuous movements accompany the velocity decrement in
563 Parkinson's disease patients. *Neurobiology of Disease* (2019) doi:10.1016/j.nbd.2019.03.013.
- 564 40. Little, S., Bonaiuto, J., Barnes, G. & Bestmann, S. Human motor cortical beta bursts relate to movement
565 planning and response errors. *PLoS Biol* **17**, e3000479 (2019).
- 566 41. Tinkhauser, G. *et al.* Beta burst coupling across the motor circuit in Parkinson's disease. *Neurobiology of*
567 *Disease* **117**, 217–225 (2018).
- 568 42. Tinkhauser, G. *et al.* Beta burst dynamics in Parkinson's disease OFF and ON dopaminergic medication.
569 *Brain* **140**, 2968–2981 (2017).
- 570 43. Boon, L. I. *et al.* A systematic review of MEG-based studies in Parkinson's disease: The motor system and
571 beyond. *Hum Brain Mapp* **40**, 2827–2848 (2019).

- 572 44. Salmelin, R., Hämäläinen, M., Kajola, M. & Hari, R. Functional Segregation of Movement-Related Rhythmic
573 Activity in the Human Brain. *NeuroImage* **2**, 237–243 (1995).
- 574 45. Salmelin, R. & Hari, R. Spatiotemporal characteristics of sensorimotor neuromagnetic rhythms related to
575 thumb movement. *Neuroscience* **60**, 537–550 (1994).
- 576 46. Donoghue, T. *et al.* Parameterising neural power spectra into periodic and aperiodic components. *Nat*
577 *Neurosci* **23**, 1655–1665 (2020).
- 578 47. He, B. J., Zempel, J. M., Snyder, A. Z. & Raichle, M. E. The Temporal Structures and Functional Significance
579 of Scale-free Brain Activity. *Neuron* **66**, 353–369 (2010).
- 580 48. Bardouille, T., Bailey, L. & CamCAN Group. Evidence for age-related changes in sensorimotor
581 neuromagnetic responses during cued button pressing in a large open-access dataset. *NeuroImage* **193**,
582 25–34 (2019).
- 583 49. Wolpe, N. *et al.* Ageing increases reliance on sensorimotor prediction through structural and functional
584 differences in frontostriatal circuits. *Nature Communications* **7**, (2016).
- 585 50. Yau, Y. *et al.* Network connectivity determines cortical thinning in early Parkinson's disease progression.
586 *Nat Commun* **9**, 12 (2018).
- 587 51. Zich, C., Quinn, A. J., Mardell, L. C., Ward, N. S. & Bestmann, S. Dissecting Transient Burst Events. *Trends in*
588 *Cognitive Sciences* S136466132030173X (2020) doi:10.1016/j.tics.2020.07.004.
- 589 52. Muralidharan, V. & Aron, A. R. Behavioral Induction of a High Beta State in Sensorimotor Cortex Leads to
590 Movement Slowing. *Journal of Cognitive Neuroscience* 1–18 (2021) doi:10.1162/jocn_a_01717.
- 591 53. Vinding, M. C. *et al.* Attenuated beta rebound to proprioceptive afferent feedback in Parkinson's disease.
592 *Scientific Reports* **9**, (2019).
- 593 54. De Pablo-Fernández, E., Lees, A. J., Holton, J. L. & Warner, T. T. Prognosis and Neuropathologic Correlation
594 of Clinical Subtypes of Parkinson Disease. *JAMA Neurol* **76**, 470 (2019).

- 595 55. Göttgens, I. *et al.* The Impact of Sex and Gender on the Multidisciplinary Management of Care for Persons
596 With Parkinson's Disease. *Frontiers in Neurology* **11**, (2020).
- 597 56. Elbaz, A. *et al.* Risk tables for parkinsonism and Parkinson's disease. *Journal of Clinical Epidemiology* **55**,
598 25–31 (2002).
- 599 57. Georgiev, D., Hamberg, K., Hariz, M., Forsgren, L. & Hariz, G.-M. Gender differences in Parkinson's disease:
600 A clinical perspective. *Acta Neurol Scand* **136**, 570–584 (2017).
- 601 58. Gillies, G. E., Pienaar, I. S., Vohra, S. & Qamhawi, Z. Sex differences in Parkinson's disease. *Frontiers in*
602 *Neuroendocrinology* **35**, 370–384 (2014).
- 603 59. Cook, A. J., Pfeifer, K. J. & Tass, P. A. A Single Case Feasibility Study of Sensorimotor Rhythm
604 Neurofeedback in Parkinson's Disease. *Front. Neurosci.* **15**, 623317 (2021).
- 605 60. Hoehn, M. M. & Yahr, M. D. Parkinsonism: onset, progression, and mortality. *Neurology* **17**, 427–427
606 (1967).
- 607 61. American Psychiatric Association. *Diagnostic and Statistical Manual of Mental Disorders*. (American
608 Psychiatric Publishing, 2013).
- 609 62. Tomlinson, C. L. *et al.* Systematic review of levodopa dose equivalency reporting in Parkinson's disease.
610 *Movement Disorders* (2010) doi:10.1002/mds.23429.
- 611 63. Goetz, C. G. *et al.* Movement disorder society-sponsored revision of the unified Parkinson's disease rating
612 scale (MDS-UPDRS): Process, format, and clinimetric testing plan. *Movement Disorders* (2007)
613 doi:10.1002/mds.21198.
- 614 64. Nasreddine, Z. S. *et al.* The Montreal Cognitive Assessment, MoCA: a brief screening tool for mild cognitive
615 impairment. *Journal of the American Geriatrics Society* **53**, 695–699 (2005).
- 616 65. Fischl, B. *et al.* Sequence-independent segmentation of magnetic resonance images. *NeuroImage* **23**, S69–
617 S84 (2004).

- 618 66. Dale, A. M., Fischl, B. & Sereno, M. I. Cortical Surface-Based Analysis: I. segmentation and surface
619 reconstruction. *NeuroImage* **9**, 179–194 (1999).
- 620 67. Destrieux, C., Fischl, B., Dale, A. & Halgren, E. Automatic parcellation of human cortical gyri and sulci using
621 standard anatomical nomenclature. *NeuroImage* **53**, 1–15 (2010).
- 622 68. Fischl, B. & Dale, A. M. Measuring the thickness of the human cerebral cortex from magnetic resonance
623 images. *Proceedings of the National Academy of Sciences* **97**, 11050–11055 (2000).
- 624 69. Taulu, S. & Simola, J. Spatiotemporal signal space separation method for rejecting nearby interference in
625 MEG measurements. *Physics in Medicine and Biology* **51**, 1759–1768 (2006).
- 626 70. Gramfort, A. *et al.* MEG and EEG data analysis with MNE-Python. *Frontiers in Neuroscience* **7**, 267 (2013).
- 627 71. Hyvarinen, A. Fast and robust fixed-point algorithms for independent component analysis. *IEEE*
628 *Transactions on Neural Networks* **10**, 626–634 (1999).
- 629 72. Dale, A. M. *et al.* Dynamic Statistical Parametric Mapping: Combining fMRI and MEG for High-Resolution
630 Imaging of Cortical Activity. *Neuron* **26**, 55–67 (2000).
- 631 73. Oostenveld, R., Fries, P., Maris, E. & Schoffelen, J.-M. FieldTrip: Open Source Software for Advanced
632 Analysis of MEG, EEG, and Invasive Electrophysiological Data. *Computational Intelligence and Neuroscience*
633 **2011**, 1–9 (2011).
- 634 74. R Core Team. *R: A Language and Environment for Statistical Computing*. (R Foundation for Statistical
635 Computing, 2020).
- 636 75. Goetz, C. G. *et al.* Movement Disorder Society-sponsored revision of the Unified Parkinson's Disease Rating
637 Scale (MDS-UPDRS): Scale presentation and clinimetric testing results. *Movement Disorders* **23**, 2129–2170
638 (2008).
- 639

1 Figure and table legends

2 [Figure 1](#)

3 Overview of the data processing pipeline from three minutes raw resting-state MEG, through source
4 reconstruction and extracting the activity in the sensorimotor cortex. To compare features, we did a Fourier
5 transformation of the signal to calculate the PSD and quantified sensorimotor bursts in the time series in the
6 sensorimotor ROI.

7 [Figure 2](#)

8 Grand average PSD (mean+se) for the PD group (blue) and healthy control group (red).

9 [Figure 3](#)

10 Scatterplots of the individual measures and model predictions over age for (A) PSD beta power, (B) burst rate,
11 and (C) PSD broadband 1/f exponent, split between PD patients (blue) and healthy controls (red), and female
12 (solid) and male (dashed).

1 [Tables](#)

2 [Table 1](#)

3 Group-level summary of the participants included in the analysis. Mean (standard deviation).

Measure	Parkinson's patients	Healthy controls	Statistics
<i>N</i>	78	60	
<i>Sex (female/male)</i>	29/49	27/33	$\chi^2 = 0.57, p = 0.45$
<i>Age</i>	65.6 (9.5)	63.93 (8.4)	Welsh $t(138.0) = 1.08, p = 0.28$
<i>Disease duration</i>	4.4 (3.7) years	-	-
<i>LEDD</i>	548 (273) mg	-	-
<i>MDS-UPDRS-III</i>	18.9 (10.8)	-	-
<i>MoCA</i>	26.1 (2.8)	26.2 (2.1)	Welsh $t(136) = 0.10, p = 0.92$

4 [Table 2](#)

5 Table 2: Explanation of the main outcome variables in the analysis

Variable Category	Variable	Explanation
PSD	<i>Beta power</i>	The maximum peak in the 13-30 Hz band. Estimated as the height of the Gaussian function fitted to the PSD after regressing out the 1/f regression line.
	<i>Beta centre frequency (Hz)</i>	The dominant frequency bin in the 13-30 Hz band. Estimated as the mean of the Gaussian function fitted to the PSD after regressing out the 1/f regression line.
	<i>Alpha power</i>	The maximum peak in the 8-12 Hz band. Estimated as the height of the Gaussian function fitted to the PSD after regressing out the 1/f regression line.
	<i>Alpha centre frequency (Hz)</i>	The dominant frequency bin in the 8-12 Hz band. Estimated as the mean of the Gaussian function fitted to the PSD after regressing out the 1/f regression line.
	<i>1/f intercept</i>	The intercept of the log-linear regression estimated from the full PSD in the 0.5-40 Hz range.
	<i>1/f exponent</i>	The exponent of the log-linear regression—corresponding to the slope of the log-log transformed PSD—estimated from the full PSD in the 0.5-40 Hz range.
Bursts	<i>Rate</i>	The number of burst events in the sensorimotor time series divided by the length of time series.
	<i>Duration (ms)</i>	Duration of the burst events defined as the time the time-series is above threshold until the next time-point it drops below the threshold.
	<i>Interval (ms)</i>	Time from the mu/beta time-series drops below threshold until the next time-point it reaches threshold again.
	<i>Amplitude</i>	The maximum amplitude of the mu/beta time-series within one burst event.

6

7 [Table 3](#)

8 Regression coefficients and 95% CI for the regression models of the sensorimotor signal features (Table 2) with

9 Group, Age, Sex, and Cortical Thickness. Values in red indicate coefficients of statistically significant factors in

10 the model comparison. LL: lower limit, UL: upper limit.

Variable category	Variable	Midline function	Rest tremor	Rigidity	Bradykinesia upper extremity	Postural and kinetic tremors	Bradykinesia lower limb
	<i>Intercept</i>	-0.42 LL: -0.80 UL: -0.04	-0.52 LL: -0.93 UL: -0.13	-0.33 LL: -0.80 UL: 0.13	0.02 LL: -0.40 UL: 0.40	-0.26 LL: -0.71 UL: 0.16	0.12 LL: -0.71 UL: 0.19
	<i>Beta power</i>	0.33 LL: -0.06 UL: 0.70	0.24 LL: -0.16 UL: 0.64	0.33 LL: -0.12 UL: 0.78	-0.18 LL: -0.57 UL: 0.17	0.00 LL: -0.41 UL: 0.42	-0.22 LL: -0.43 UL: 0.44
	<i>Beta centre frequency</i>	0.02 LL: -0.27 UL: 0.30	-0.20 LL: -0.50 UL: 0.10	0.03 LL: -0.32 UL: 0.36	-0.11 LL: -0.38 UL: 0.20	-0.13 LL: -0.46 UL: 0.20	0.01 LL: -0.45 UL: 0.19
PSD	<i>Alpha power</i>	-0.11 LL: -0.50 UL: 0.28	-0.22 LL: -0.61 UL: 0.21	-0.12 LL: -0.58 UL: 0.35	0.24 LL: -0.14 UL: 0.66	0.11 LL: -0.34 UL: 0.57	0.02 LL: -0.34 UL: 0.54
	<i>Alpha centre frequency</i>	0.01 LL: -0.24 UL: 0.24	0.13 LL: -0.16 UL: 0.40	0.12 LL: -0.16 UL: 0.43	0.29 LL: 0.01 UL: 0.56	0.08 LL: -0.21 UL: 0.38	0.22 LL: -0.22 UL: 0.38
	<i>1/f intercept</i>	-0.13 LL: -1.11 UL: 0.89	0.47 LL: -0.66 UL: 1.54	0.45 LL: -0.86 UL: 1.70	-0.59 LL: -1.63 UL: 0.42	0.35 LL: -0.84 UL: 1.51	-0.98 LL: -0.89 UL: 1.50
	<i>1/f exponent</i>	-0.05 LL: -0.67 UL: 0.56	-0.26 LL: -0.87 UL: 0.39	-0.16 LL: -0.86 UL: 0.63	0.17 LL: -0.47 UL: 0.81	-0.02 LL: -0.74 UL: 0.70	0.46 LL: -0.73 UL: 0.68
Burst	<i>Rate</i>	0.13 LL: -0.28 UL: 0.56	0.05 LL: -0.40 UL: 0.53	0.06 LL: -0.48 UL: 0.61	-0.60 LL: -1.01 UL: -0.17	-0.08 LL: -0.59 UL: 0.43	0.15 LL: -0.57 UL: 0.40
	<i>Length</i>	0.31 LL: 0.00 UL: 0.60	-0.15 LL: -0.46 UL: 0.16	0.07 LL: -0.32 UL: 0.45	0.09 LL: -0.22 UL: 0.42	-0.07 LL: -0.42 UL: 0.29	0.27 LL: -0.42 UL: 0.29
	<i>Interval</i>	0.29 LL: -0.07 UL: 0.66	0.12 LL: -0.31 UL: 0.55	0.18 LL: -0.31 UL: 0.64	-0.21 LL: -0.58 UL: 0.20	-0.01 LL: -0.44 UL: 0.43	0.35 LL: -0.46 UL: 0.44
	<i>Amplitude</i>	0.04 LL: -0.83 UL: 0.88	-0.19 LL: -1.12 UL: 0.72	-0.30 LL: -1.34 UL: 0.78	0.67 LL: -0.20 UL: 1.59	-0.15 LL: -1.10 UL: 0.88	0.64 LL: -1.19 UL: 0.84
Other	<i>Age</i>	0.03 LL: 0.01 UL: 0.06	0.00 LL: -0.03 UL: 0.03	0.00 LL: -0.03 UL: 0.03	0.01 LL: -0.02 UL: 0.04	0.01 LL: -0.02 UL: 0.04	0.01 LL: -0.02 UL: 0.04
	<i>Sex</i>	0.70 LL: 0.17 UL: 1.18	0.74 LL: 0.17 UL: 1.32	0.55 LL: -0.04 UL: 1.22	-0.14 LL: -0.70 UL: 0.45	0.33 LL: -0.31 UL: 0.97	-0.25 LL: -0.31 UL: 0.94
	<i>Cortical thickness</i>	-0.17 LL: -0.41 UL: 0.07	-0.05 LL: -0.29 UL: 0.22	-0.05 LL: -0.34 UL: 0.25	-0.27 LL: -0.51 UL: -0.03	-0.18 LL: -0.48 UL: 0.11	-0.10 LL: -0.46 UL: 0.11
	<i>Multiple R-squared</i>	0.441	0.277	0.156	0.375	0.193	0.173

12 Table 4

13 Standardised regression coefficients (95% CI) for the six regression models on motor symptoms measured with
14 the MDS-UPDRS-III. Values in bold indicate significant factors in the model comparison.

Variable category	Variable	Midline function	Rest tremor	Rigidity	Bradykinesia upper extremity	Postural and kinetic tremors	Bradykinesia lower limb
	<i>Intercept</i>	-0.42 LL: -0.80 UL: -0.04	-0.52 LL: -0.93 UL: -0.13	-0.33 LL: -0.80 UL: 0.13	0.02 LL: -0.40 UL: 0.40	-0.26 LL: -0.71 UL: 0.16	0.12 LL: -0.71 UL: 0.19
	<i>Beta power</i>	0.33 LL: -0.06 UL: 0.70	0.24 LL: -0.16 UL: 0.64	0.33 LL: -0.12 UL: 0.78	-0.18 LL: -0.57 UL: 0.17	0.00 LL: -0.41 UL: 0.42	-0.22 LL: -0.43 UL: 0.44
	<i>Beta centre frequency</i>	0.02 LL: -0.27 UL: 0.30	-0.20 LL: -0.50 UL: 0.10	0.03 LL: -0.32 UL: 0.36	-0.11 LL: -0.38 UL: 0.20	-0.13 LL: -0.46 UL: 0.20	0.01 LL: -0.45 UL: 0.19
PSD	<i>Alpha power</i>	-0.11 LL: -0.50 UL: 0.28	-0.22 LL: -0.61 UL: 0.21	-0.12 LL: -0.58 UL: 0.35	0.24 LL: -0.14 UL: 0.66	0.11 LL: -0.34 UL: 0.57	0.02 LL: -0.34 UL: 0.54
	<i>Alpha centre frequency</i>	0.01 LL: -0.24 UL: 0.24	0.13 LL: -0.16 UL: 0.40	0.12 LL: -0.16 UL: 0.43	0.29 LL: 0.01 UL: 0.56	0.08 LL: -0.21 UL: 0.38	0.22 LL: -0.22 UL: 0.38
	<i>1/f intercept</i>	-0.13 LL: -1.11 UL: 0.89	0.47 LL: -0.66 UL: 1.54	0.45 LL: -0.86 UL: 1.70	-0.59 LL: -1.63 UL: 0.42	0.35 LL: -0.84 UL: 1.51	-0.98 LL: -0.89 UL: 1.50
	<i>1/f exponent</i>	-0.05 LL: -0.67 UL: 0.56	-0.26 LL: -0.87 UL: 0.39	-0.16 LL: -0.86 UL: 0.63	0.17 LL: -0.47 UL: 0.81	-0.02 LL: -0.74 UL: 0.70	0.46 LL: -0.73 UL: 0.68
	<i>Rate</i>	0.13 LL: -0.28 UL: 0.56	0.05 LL: -0.40 UL: 0.53	0.06 LL: -0.48 UL: 0.61	-0.60 LL: -1.01 UL: -0.17	-0.08 LL: -0.59 UL: 0.43	0.15 LL: -0.57 UL: 0.40
Burst	<i>Length</i>	0.31 LL: 0.00 UL: 0.60	-0.15 LL: -0.46 UL: 0.16	0.07 LL: -0.32 UL: 0.45	0.09 LL: -0.22 UL: 0.42	-0.07 LL: -0.42 UL: 0.29	0.27 LL: -0.42 UL: 0.29
	<i>Interval</i>	0.29 LL: -0.07 UL: 0.66	0.12 LL: -0.31 UL: 0.55	0.18 LL: -0.31 UL: 0.64	-0.21 LL: -0.58 UL: 0.20	-0.01 LL: -0.44 UL: 0.43	0.35 LL: -0.46 UL: 0.44
	<i>Amplitude</i>	0.04 LL: -0.83 UL: 0.88	-0.19 LL: -1.12 UL: 0.72	-0.30 LL: -1.34 UL: 0.78	0.67 LL: -0.20 UL: 1.59	-0.15 LL: -1.10 UL: 0.88	0.64 LL: -1.19 UL: 0.84
Other	<i>Age</i>	0.03 LL: 0.01 UL: 0.06	0.00 LL: -0.03 UL: 0.03	0.00 LL: -0.03 UL: 0.03	0.01 LL: -0.02 UL: 0.04	0.01 LL: -0.02 UL: 0.04	0.01 LL: -0.02 UL: 0.04
	<i>Sex</i>	0.70 LL: 0.17 UL: 1.18	0.74 LL: 0.17 UL: 1.32	0.55 LL: -0.04 UL: 1.22	-0.14 LL: -0.70 UL: 0.45	0.33 LL: -0.31 UL: 0.97	-0.25 LL: -0.31 UL: 0.94
	<i>Cortical thickness</i>	-0.17 LL: -0.41 UL: 0.07	-0.05 LL: -0.29 UL: 0.22	-0.05 LL: -0.34 UL: 0.25	-0.27 LL: -0.51 UL: -0.03	-0.18 LL: -0.48 UL: 0.11	-0.10 LL: -0.46 UL: 0.11
	<i>Multiple R-squared</i>	0.441	0.277	0.156	0.375	0.193	0.173

16 Table 5

17 Statistically significant correlation coefficients between all main variables. Green colors indicate a positive
 18 correlation between variables and red colors indicate a negative correlation between variables. The intensity of
 19 the color scales with the correlation coefficient.

Variable category		PSD						Burst				Other			UPDRS					
Variable category	Variable	Beta power	Beta centre frequency	Alpha power	Alpha centre frequency	1/f intercept	1/f exponent	Rate	Duration	Inteval	Amplitude	Age	Cortical thickness	MoCA	Midline function	Rest tremor	Rigidity	Bradykinesia upper.	Post./kinetic tremors	Bradykinesia lower.
PSD	Beta power		-0,35	0,63	-0,32	0,52	0,57	0,57	0,26	0,2	-0,24	0,52	0,18		-0,21	0,28				0,24
	Beta centre frequency	-0,35		-0,34		0,22	-0,18	-0,3					-0,17							
	Alpha power	0,63	-0,34		-0,36	0,41	0,4	0,32		-0,23	0,45			-0,2						
	Alpha centre frequency	-0,32	0,22	-0,36		-0,19	-0,43						0,18							
	1/f intercept	0,52	-0,18	0,41	-0,19		0,56	0,55	0,31	-0,48	0,91			-0,21						
	1/f exponent	0,57	-0,3	0,4	-0,43	0,56					0,3	0,18	-0,25	-0,19					0,25	
Burst	Rate	0,26		0,32		0,55			0,55	-0,8	0,55							-0,23		
	Duration	0,2				0,31		0,55		-0,61	0,29									
	Inteval	-0,24		-0,23		-0,48		-0,8	-0,61		-0,44	0,2								
	Amplitude	0,52		0,45		0,91	0,3	0,55	0,29	-0,44				-0,21						
Other	Age	0,18	-0,17				0,18			0,2					0,37			0,26		
	Cortical thickness				0,18		-0,25					-0,19		0,19	-0,38					
	MoCA	-0,21		-0,2		-0,21	-0,19			-0,21		-0,22	0,19		-0,37			-0,26	-0,23	
UPDRS	Midline function	0,28										0,37	-0,38	-0,37		0,38	0,38	0,4	0,28	0,32
	Rest tremor														0,38		0,37	0,28	0,53	0,23
	Rigidity														0,38	0,37				0,25
	Bradykinesia upper extremity							-0,23				0,26		-0,26	0,4	0,28			0,32	0,49
	Postural and kinetic tremors	0,24					0,25								0,28	0,53		0,32		
	Bradykinesia lower limb														0,32	0,23	0,25	0,49		

20