

Title: A Retrospective analysis of DIC score and SIC score in prediction of COVID-19 severity

Running title: Coagulopathy markers vs COVID severity

Authors: Mayank Kapoor¹, Prasan Kumar Panda¹, Lokesh Kumar Saini², Yogesh Arvind Bahurupi³

Affiliations: Department of Internal Medicine¹, Pulmonary Medicine², and Community and Family Medicine³

Author's Details

Dr. Mayank Kapoor

MBBS

Junior Resident, Department of Internal Medicine

Mob: +91-9997139399

ORCID ID: 0000-0002-7764-0044

Dr. Prasan Kumar Panda

MD

Assistant Professor, Department of Internal Medicine (Infectious disease division)

Mob: +91-9868999488

ORCID ID: 0000-0002-3008-7245

Dr. Lokesh Kumar Saini

MD

Assistant Professor, Department of Pulmonary Medicine

Mob: +91-8890293424

ORCID ID: 0000-0002-6972-3966

Dr. Yogesh Arvind Bahurupi

MD

Assistant Professor, Department of Community and Family Medicine

Mob: +91-9655007473

ORCID ID: 0000-0003-2433-1624

Corresponding author:

Dr. Lokesh Kumar Saini

Address: Assistant Professor, Department of Pulmonary Medicine, Level 6, Administrative block, AIIMS Rishikesh,
Rishikesh, District – Dehradun, Uttarakhand, India, Pin Code - 249203

Email ID: dr1ssaini@gmail.com

Mobile No: +91-8890293424

Contributions:

MK, PKP, LKS designed the study. MK was directly involved in acquisition of the data. YAB interpreted the data. All authors contributed to the writing of the manuscript. All authors had full access to and verified all the data. LKS had final responsibility for the decision to submit for publication.

Keywords

COVID-19

Disseminated Intravascular Coagulation (DIC) score

Sepsis Induced Coagulopathy (SIC) score

Pulmonary Embolism

Hospital Mortality

Abstract

Background: The novel Disseminated Intravascular Coagulation (DIC) score [platelet count, prolonged prothrombin time, D-dimer, and fibrinogen] and Sepsis Induced Coagulopathy (SIC) score [platelet count, International normalized ratio, and Sequential organ failure assessment score] are markers of coagulopathy, which, for the first time, are explored in line with the COVID-19 disease outcomes. The correlation of D-dimer with these findings is also studied.

Patients and methods: A retrospective analysis of hospital-based records of 168 COVID-19 patients. Data including D-dimer, routine investigations, DIC and SIC scorings (all within three days of admission) were collected and correlated with the outcomes. The study was conducted in a tertiary care center catering to population of North India.

Results: Higher DIC score (1.59 ± 1.18 v/s 0.96 ± 1.18), SIC score (1.60 ± 0.89 v/s 0.63 ± 0.99), and D-dimer titers (1321.33 ± 1627.89 v/s 583.66 ± 777.71 ng/ml) were significantly associated with severe COVID-19 disease ($P < 0.05$). DIC score and SIC score ≥ 1 , and D-dimer ≥ 1315 ng/ml for severe disease; DIC score ≥ 1 , SIC score ≥ 2 , and D-dimer ≥ 600 ng/ml for Pulmonary Embolism (PE); and DIC score and SIC score ≥ 1 , and D-dimer level ≥ 990 ng/ml for mortality were the respective cut-off values we found from our study.

Conclusion: Higher DIC scores, SIC scores, and D-dimer values are associated with severe COVID-19 disease, in-hospital mortality, and PE risk. They can serve as easily accessible early markers of severe disease and prioritize hospital admissions in the presently overburdened scenario, and may be used to develop prognostic prediction models.

Highlights

DIC scores, SIC scores, and D-dimer values are hereby studied in association with COVID-19 disease severity, in-hospital mortality, and PE risk. They serve as easily accessible early markers of severe disease and prioritize hospital admissions in the presently overburdened scenario, and may be used to develop prognostic prediction models.

Introduction

The Coronavirus disease 2019 (COVID-19) pandemic has taken the whole world by storm. Despite the falling number of cases in few areas, it has re-emerged in many countries, raising concerns. Various prognostic markers are proposed to recognize severe disease so that priority is given to those patients first for hospitalization given the overburdened healthcare infrastructure.

DIC (Disseminated Intravascular Coagulation) score(1,2): The International Society for Thrombosis and Hemostasis (ISTH) proposed it as a DIC scoring system. The presence of a disease associated with DIC (malignancy, severe infection, or sepsis) is a prerequisite for using this scoring system. Increasing scores highly correlate with higher mortality rates. The coagulation profile [platelet count, prolonged prothrombin time (PT), D-dimer, and fibrinogen) is a marker of DIC's dynamic nature (Table 1). These must be repeated serially.

SIC (Sepsis Induced Coagulopathy) score(3): SIC is the first scoring system that considers the coagulation abnormalities in sepsis following the new Sepsis-3 definition.(4) It is used when the physician considers possible sepsis-induced coagulopathy. It takes into account the Sequential Organ Failure Assessment (SOFA) score values along with the coagulopathy parameters [International Normalized Ratio (INR) and platelet count] (Table 1) and has a high predictive value for 28-days mortality.

Table 1: DIC and SIC scoring system

^a No increase (<400), moderate increase (1–10x upper limit of normal, 400-4,000), and strong increase (>10x upper limit of normal, >4,000)

PT: Prothrombin Time; INR: International Normalized Ratio; SOFA: Sequential Organ Failure Assessment

N/A: Not available

Criteria	DIC Score	SIC Score
Prolonged PT (seconds)	<3 =0 3-5 =1 ≥6 =2	N/A
INR	N/A	≤1.2 = 0 1.2-1.4 = 1 >1.4 = 2
Fibrinogen (mg/dl)	>100 = 0 <100 = 1	N/A
D-dimer ^a (ng/ml)	No increase = 0 Moderate increase = 2 Strong increase = 3	N/A
Platelet count (per mm ³)	>1,00,000 = 0 50,000-1,00,000 = 1 <50,000 = 2	>1,50,000 = 0 1,00,000-1,50,000 = 1 <1,00,000 = 2
SOFA score	N/A	1 = 1 point ≥2 = 2 points
Interpretation	≥5 points: overt DIC <5 points: patient may still have non-overt DIC	Suspect SIC if total score is ≥4.

D-dimer from the very beginning has been shown to correlate with the severity and mortality in the ongoing COVID-19 pandemic.(5–7) D-dimer forms as a by-product of the clotting mechanism in the body. When a blood

clot breaks, D-dimer gets released into the bloodstream. The average D-dimer value is less than 500 ng/ml; any value greater than 500 ng/ml is considered high.(8–12)

As is well known, a patient with COVID infection is predisposed to venous thromboembolism,(13) and this is one of the factors responsible for the worse outcomes. Hence, we explore these new scoring systems, the DIC score and the SIC score, along with the D-dimer values, all of which are markers of coagulopathy, in line with the COVID-19 disease severity, mortality, and the risk of Pulmonary Embolism (PE) development.

Methods

Study site

The study was carried out at All India Institute of Medical Sciences, Rishikesh (AIIMS Rishikesh), a tertiary care center catering to North India's population.

Participants and Study Design

We retrospectively analyzed all the case records of lab-confirmed COVID-19 patients at least 18 years of age from March 2020 till December 2020. COVID-19 positivity was defined as a positive result on reverse transcriptase-polymerase chain reaction (RT-PCR) SARS-CoV-2 assay of nasopharyngeal or oropharyngeal swab specimens. SD Biosensor standard M nCoV real-time detection kit was used for PCR. Biorad CFX 96 real-time thermocycler, and a Thermo flex 96 extractor machine was used for RNA extraction. All laboratory tests were performed in the institutional laboratory, according to the institutional standards. All patients received routine care as per hospital protocol. The D-dimer levels (calculated by immune-turbidometric assay) and routine blood investigations within three days of hospital admission were collected. DIC scores and SIC scores were calculated according to the respective guidelines.(1)(3) Patients having active thromboembolic disease before symptom onset or before testing for COVID-19 and pregnant females were excluded from the analysis. CT pulmonary angiogram (CTPA) was done based on the clinical judgment of the physician. We categorized the patients during hospitalization into various severity categories according to the Ministry of Health and Family Welfare (MoHFW), India guidelines (Table 2).(14)

Table 2: Ministry of Health and Family Welfare (MoHFW) COVID severity categorization(14)

SpO2: Oxygen saturation

Category	Characteristics
Mild	Without evidence of breathlessness or hypoxia (normal saturation at room air).
Moderate	Clinical features of dyspnea, including SpO2 <94% (range 90-94%) on room air, Respiratory Rate \geq 24 per minute
Severe/Critical	Clinical signs of pneumonia plus one of the following; respiratory rate >30 breaths/min, severe respiratory distress, SpO2 <90% on room air

We determined the correlation of DIC score, SIC score, and D-dimer levels at admission with the clinical outcome and severity in COVID-19 patients and estimated the cut-offs of these parameters in predicting the severity, mortality, and PE risk.

Sample size:

Logistic regression of a binary response variable (Y) on a binary independent variable (X) with a sample size of 127 observations achieved 80% power. Considering a 20 % drop rate, we took a sample size of 168.

Statistical Analysis:

Continuous data following normal distribution and homogeneity of variance was expressed as mean \pm SD. Comparison done by independent samples t-test or expressed as median (25–75th percentile) and compared by Wilcoxon rank-sum test. Categorical variables were expressed as number (percentage) and compared by Chi-square tests or Fisher's exact test. ANOVA followed by Bonferroni's test was done to correlate the variables with the

offs for the various outcomes. D-dimer showed the highest likelihood ratio (LR+) for all the outcomes followed by SIC score. [Figures 2 (a),(b),(c); Table 8]

Table 3: Baseline Characteristics of the patients

RR: Respiratory Rate; SBP: Systolic Blood Pressure; DBP: Diastolic Blood Pressure; SpO2: Oxygen Saturation; mmHg: millimeters of mercury; SD: Standard Deviation; TLC: Total Leucocyte Count; mm³: millimeter cubed; Hb: Hemoglobin; gm/dl: grams per deciliter; ng/ml: Nanogram per milliliter; PT: Prothrombin time; INR: International Normalized Ratio; DIC: Disseminated Intravascular Coagulation; SIC: Sepsis Induced Coagulation; CTSI: CT severity index (calculated with the minimum of 0 and the maximum value of 40)

Variable	Mean ± SD
Age (years)	46.3 ± 15.1
Duration of Hospital stay (days)	16.3 ± 11.8
Vitals at the time of hospital admission	
Temperature (°F)	98.4 ± 1
RR (per min)	23.9 ± 5.9
HR (per min)	91.9 ± 14.9
SBP (mm hg)	125.1 ± 18.9
DBP (mm hg)	78.3 ± 11.5
SpO2 (%)	91.5 ± 7.4
Lab Parameters	
TLC (per mm³)	10062 ± 13620

Hb (gm/dl)	11.8 ± 2.4
D-Dimer (ng/ml)	970.9 ± 1326.2
Fibrinogen (mg/dl)	351 ± 242
Platelet count (thousand/mm³)	194.1 ± 88.9
PT (seconds)	12.8 ± 2.1
INR	1 ± 0.1
DIC score	1.3 ± 1.2
SIC score	1.1 ± 1
CTSI	23.2 ± 11.5

Table 4: Association of variables with the severity of COVID

§ Mean ± sd

* number(% age)

Variable	Mild	Moderate	Severe	P-value	
Sex*	Male	41 (61.2%)	27 (71.1%)	45 (71.4%)	0.394
	Female	26 (38.8%)	11 (28.9%)	18 (28.6%)	
Age (years)[§]	40.28 ± 14.63	47.50 ± 15.81	52.08 ± 12.85	0.0001	
Duration of hospital stay (days)[§]	13.88 ± 8.44	15.63 ± 14.82	19.37 ± 12.38	0.02	

Table 5: Correlation of DIC scores and SIC scores with outcomes

Variable	Outcome	Mean \pm SD	P-value
DIC score	Mild	0.96 \pm 1.18	0.01
	Moderate	1.50 \pm 1.50	
	Severe	1.59 \pm 1.18	
SIC score	Mild	0.63 \pm 0.99	0.0001
	Moderate	1.16 \pm 1.07	
	Severe	1.60 \pm 0.89	
DIC score	Death	2.1 \pm 1.22	0.001
	Discharge	1.1 \pm 1.29	
SIC score	Death	2 \pm 0.90	0.001
	Discharge	0.89 \pm 1.06	
DIC score	PE	2.00 \pm 1.59	0.05
	Non-PE	1.19 \pm 1.27	
SIC score	PE	1.92 \pm 0.99	0.03
	Non-PE	1.26 \pm 0.95	
DIC score	Diabetic	1.57 \pm 1.32	0.09
	Non- diabetic	1.21 \pm 1.26	
	Hypertensive	1.85 \pm 1.37	0.002
	Non- hypertensive	1.14 \pm 1.22	
SIC score	Diabetic	1.39 \pm 0.97	0.03
	Non- diabetic	1.00 \pm 1.08	
	Hypertensive	1.56 \pm 0.95	

Non- hypertensive	0.97 ± 1.06
-------------------	-------------

Table 6: Correlation of D-dimer values with the outcomes

Variable	Outcome	Mean ± SD	P-value
D-dimer (ng/ml)	Discharge	672.91 ± 972.87	0-0001
	Death	2239.16 ± 1825.84	
D-dimer (ng/ml)	Mild	583.66 ± 777.71	0-005
	Moderate	1072.82 ± 1388.72	
	Severe	1321.33 ± 1627.89	
D-dimer (ng/ml)	PE	2025.80 ± 1814.02	0-01
	Non-PE	904.34 ± 1285.98	
D-dimer (ng/ml)	Diabetic	1281.08 ± 1508.30	0-05
	Non- diabetic	843.22 ± 1227.86	
	Hypertensive	1551.19 ± 1686.63	
	Non- hypertensive	783.60 ± 1132.86	0-001

Table 7: Correlation of Diabetes Mellitus and Hypertension with variables

Variable	Diabetics	Non-Diabetics	P-value	Hypertension	Non- Hypertensive	P-value	
PE	Yes	6 (50%)	0-39	3 (25%)	9 (75%)	0-72	
	No	26 (37.1%)		44 (62.9%)	21 (30%)		49 (70%)
Severity	Mild	5 (7.5%)	0-0001	5 (7.5%)	62 (92.5%)	0-0001	
	Moderate	12 (31.6%)		26 (68.4%)	9 (23.7%)		29 (76.3%)
	Severe	32 (50.8%)		31 (49.2%)	27 (42.9%)		36 (57.1%)

a significant association with the severity of COVID-19 disease in our study, with higher DIC score (1.59 ± 1.18 v/s 0.96 ± 1.18) and SIC score (1.60 ± 0.89 v/s 0.63 ± 0.99) being significantly associated with severe COVID-19 disease ($P < 0.05$). We propose DIC and SIC score ≥ 1 as the cut-off for predicting severe disease (sensitivity 76%/91%). DIC is a strong predictor of mortality, with studies showing up to 71.4% of the expired patients fulfilling the criteria for DIC compared to 0.6% of the survivors.(19) In our study too, higher DIC (2.1 ± 1.22 v/s 1.1 ± 1.29) and SIC (2.00 ± 0.90 v/s 0.89 ± 1.06) scores demonstrated significant association with mortality ($P < 0.05$). We found DIC (sensitivity 91%) and SIC (sensitivity 100%) score ≥ 1 as the cut-off for predicting mortality in this study. As is well known, the pro-thrombotic state can lead to events of venous thromboembolism, particularly PE. PE occurs whenever a clot forms within the pulmonary vasculature.(20) SIC scoring showed a significant association with PE probability, whereas DIC scores, although elevated in the PE patients, were not statistically significant. We found DIC (sensitivity 100%) score ≥ 1 and SIC (sensitivity 67%) score ≥ 2 as the cut-offs for predicting PE.

Patients with higher d-dimer values had more severe disease (1321.33 ± 1627.89 v/s 583.66 ± 777.71 ng/ml, $P=0.0005$). D-dimer's use as a marker of severity of COVID-19 is under evaluation from the beginning, with various studies stating the same.(21–24) D-dimer levels rise due to the inflammatory reaction associated with COVID, as the inflammatory cytokines released can lead to the imbalance of coagulation and fibrinolysis in the alveolus. This leads to the activation of the fibrinolytic pathway, which increases the D-dimer values.(25)(26) A D-dimer cut-off ≥ 1315 ng/ml predicted severe disease in our study. It has been shown that median D-dimer levels in non-survivors were significantly higher than those in the survivors.(27,28) We also found that non-survivors showed higher D-dimer levels (2239.16 ± 1825.84 v/s 672.91 ± 972.87 ng/ml, $P=0.0001$) as compared with survivors. Amongst the measured coagulation variables, D-dimer demonstrated the highest ability to predict the mortality in COVID-19 patients in our study, followed by SIC and DIC scores. D-dimer value ≥ 990 ng/mL correlated with higher (sensitivity 72%) in-hospital mortality.(29) COVID patients having PE have demonstrated significantly elevated D-dimer values.(30) Hence, D-dimer forms an excellent marker for predicting PE development in COVID patients; prophylactic anti-coagulation must be considered in patients having higher D-dimer levels to prevent the development of venous thromboembolism. We found higher D-dimer levels in the PE patients (2025.80 ± 1814.02 v/s 904.34 ± 1285.98 ng/ml, $P=0.01$) as compared to those with normal CTPA findings, and propose a D-dimer cut-off of 600 ng/ml as a threshold (sensitivity 83%) for PE, although further studies are required. Even though

previous studies have labeled the cut-off as >2000 ng/ml or even more,(31) our D-dimer value cut-off for PE is lower. One explanation is that we have assessed the D-dimer values within three days of admission and not at the time of PE occurrence, as we are studying D-dimer as a prognostic marker. As is seen with any test, false-negative and false-positive results may be seen. Many physiologic states can lead to elevated D-Dimer levels, including pregnancy, malignancy, smoking, trauma, infections, or sepsis. In addition to these, elderly patients, chronic immobilization, autoimmune diseases, and patients with recent surgeries can also present with high D-Dimer values. An age-adjusted cut-off for D-Dimer is being proposed due to the increase in D-Dimer values as age progresses.(32,33) We can calculate D-dimer values easily, and hence utilizing D-dimer values we can quickly determine patients requiring aggressive care and intensive care unit admissions well in advance.(34)

As most of the patients have diabetes mellitus or hypertension as their significant comorbidities, we evaluated their correlation with the various parameters. Both of these correlated reasonably well with the disease severity. We found the D-dimer levels to be significantly higher amongst the hypertensive (1551.19 ± 1686.63 v/s 783.60 ± 1132.86 ng/ml, $P=0.001$) as shown in previous studies also.(35) It is well known that people with diabetes are at a higher risk for thrombotic events due to the imbalance between clotting factors and fibrinolysis.(36) Diabetic subgroup has higher D-dimer titers amongst the COVID positive patients.(37) Our study also demonstrated higher D-dimer levels in the diabetics (1281.08 ± 1508.30 v/s 843.22 ± 1227.86 ng/ml, $P=0.05$). DIC score was high in the hypertensive patients (1.85 ± 1.37 v/s 1.14 ± 1.22), whereas the SIC score was significantly higher in both the hypertensives (1.56 ± 0.95 v/s 0.97 ± 1.06) and the diabetics (1.39 ± 0.97 v/s 1.00 ± 1.08) (For all $P<0.05$). This again strengthens the fact that both these groups have a higher probability of thromboembolic events, hence demand more focused treatment in the ongoing COVID pandemic.

Our study has limitations. First, owing to our study design we could analyze only the hospitalized patients which allowed us to include fewer mild severity disease cases in comparison to high prevalence of mild COVID 19 cases in the population. So, the results of mild cases cannot be extrapolated to the population as a whole. Hence, larger population studies are needed to confirm our finding. Second, the decision to perform CTPA was purely at the discretion of the treating physician. Hence, CTPA could not be done for all the 168 subjects. As a result, we could have missed some sub-clinical PE cases.

Conclusion

The novel DIC score, SIC score, and D-dimer levels correlate with the COVID-19 disease severity, in-hospital mortality, and PE probability. Hence, they serve as excellent and easily accessible objective parameters to triage COVID-19 patients by predicting severity and outcome. This can help identify the severe cases early in the disease and decide the bed allocations in the presently overburdened hospitals. We propose the following cut-offs: DIC score and SIC score ≥ 1 , and D-dimer ≥ 1315 ng/ml for severe disease; DIC score ≥ 1 , SIC score ≥ 2 , and D-dimer ≥ 600 ng/ml for PE; and DIC score and SIC score ≥ 1 , and D-dimer level ≥ 990 ng/ml for mortality prediction, although further studies are required to strengthen these claims.

Declaration of Interest: None

Acknowledgement: None

Funding: None

References

1. Chandrashekar V. DIC Score: Statistical Relationship with PT, APTT, and Simplified Scoring Systems with Combinations of PT and APTT. *ISRN Hematol.* 2012 Mar 5;2012:1–4.
2. Taylor F, Toh C-H, Hoots K, Wada H, Levi M. Towards Definition, Clinical and Laboratory Criteria, and a Scoring System for Disseminated Intravascular Coagulation. *Thromb Haemost* [Internet]. 2001 Dec 13 [cited 2021 Apr 9];86(11):1327–30. Available from: <http://www.thieme-connect.de/DOI/DOI?10.1055/s-0037-1616068>
3. Iba T, Di Nisio M, Levy JH, Kitamura N, Thachil J. New criteria for sepsis-induced coagulopathy (SIC) following the revised sepsis definition: A retrospective analysis of a nationwide survey [Internet]. Vol. 7, *BMJ Open*. BMJ Publishing Group; 2017 [cited 2021 Jan 17]. Available from:

/pmc/articles/PMC5623518/?report=abstract

4. Singer M, Deutschman CS, Seymour C, Shankar-Hari M, Annane D, Bauer M, et al. The third international consensus definitions for sepsis and septic shock (sepsis-3) [Internet]. Vol. 315, JAMA - Journal of the American Medical Association. American Medical Association; 2016 [cited 2021 Apr 9]. p. 801–10. Available from: /pmc/articles/PMC4968574/
5. Huang C, Wang Y, Li X, Ren L, Zhao J, Hu Y, et al. Clinical features of patients infected with 2019 novel coronavirus in Wuhan, China. Lancet [Internet]. 2020 Feb 15 [cited 2021 Jan 17];395(10223):497–506. Available from: <https://pubmed.ncbi.nlm.nih.gov/31986264/>
6. Why COVID-19 Makes Some People Sicker Than Others - The Atlantic [Internet]. [cited 2021 Jan 15]. Available from: <https://www.theatlantic.com/health/archive/2020/04/coronavirus-immune-response/610228/>
7. Velavan TP, Meyer CG. Mild versus severe COVID-19: Laboratory markers [Internet]. Vol. 95, International Journal of Infectious Diseases. Elsevier B.V.; 2020 [cited 2021 Jan 15]. p. 304–7. Available from: <https://doi.org/10.1016/j.ijid.2020.04.061>
8. Michel L, Rassaf T, Totzeck M. Biomarkers for the detection of apparent and subclinical cancer therapy-related cardiotoxicity [Internet]. Vol. 10, Journal of Thoracic Disease. AME Publishing Company; 2018 [cited 2021 Jan 15]. p. S4282–95. Available from: <https://pubmed.ncbi.nlm.nih.gov/30701097/>
9. Ryu SH, Min SW, Kim JH, Jeong HJ, Kim GC, Kim DK, et al. Diagnostic significance of fibrin degradation products and d-dimer in patients with breast cancer-related lymphedema. Ann Rehabil Med [Internet]. 2019 [cited 2021 Jan 15];43(1):81–6. Available from: <https://pubmed.ncbi.nlm.nih.gov/30852874/>
10. Payus AO, Rajah R, Febriany DC, Mustafa N. Pulmonary embolism masquerading as severe pneumonia: A case report. Open Access Maced J Med Sci [Internet]. 2019 Feb 15 [cited 2021 Jan 15];7(3):396–9. Available from: <https://pubmed.ncbi.nlm.nih.gov/30834009/>
11. Tasić N, Paixão TRLC, Gonçalves LM. Biosensing of D-dimer, making the transition from the central hospital laboratory to bedside determination. Vol. 207, Talanta. Elsevier B.V.; 2020. p. 120270.
12. Favresse J, Lippi G, Roy PM, Chatelain B, Jacqmin H, ten Cate H, et al. D-dimer: Preanalytical, analytical,

- postanalytical variables, and clinical applications [Internet]. Vol. 55, *Critical Reviews in Clinical Laboratory Sciences*. Taylor and Francis Ltd; 2018 [cited 2021 Jan 15]. p. 548–77. Available from:
<https://pubmed.ncbi.nlm.nih.gov/30694079/>
13. Boonyawat K, Chantrathammachart P, Numthavej P, Nanthatanti N, Phusanti S, Phuphuakrat A, et al. Incidence of thromboembolism in patients with COVID-19: a systematic review and meta-analysis. *Thromb J* [Internet]. 2020 Dec 1 [cited 2021 Mar 5];18(1):34. Available from:
<https://thrombosisjournal.biomedcentral.com/articles/10.1186/s12959-020-00248-5>
 14. (No Title) [Internet]. [cited 2021 Jan 17]. Available from:
<https://www.mohfw.gov.in/pdf/UpdatedClinicalManagementProtocolforCOVID19dated03072020.pdf>
 15. England imposes new national lockdown to combat COVID-19 resurgence | Reuters [Internet]. [cited 2021 Jan 22]. Available from: <https://www.reuters.com/article/uk-health-coronavirus-britain-lockdown/england-imposes-new-national-lockdown-to-combat-covid-19-resurgence-idUKKBN27G0TM?edition-redirect=uk>
 16. Kapoor M, Dhar M. A look into Possible New Treatment Modality for COVID-19: ACE 2 [Internet]. 2020. Available from: <https://www.omicsonline.org/open-access/a-look-into-possible-new-treatment-modality-for-covid-19-ace-2.pdf>
 17. Pedersen SF, Ho YC. SARS-CoV-2: A storm is raging [Internet]. Vol. 130, *Journal of Clinical Investigation*. American Society for Clinical Investigation; 2020 [cited 2021 Apr 9]. p. 2202–5. Available from:
<https://pubmed.ncbi.nlm.nih.gov/32217834/>
 18. Guo H, Sheng Y, Li W, Li F, Xie Z, Li J, et al. Coagulopathy as a Prodrome of Cytokine Storm in COVID-19-Infected Patients. *Front Med* [Internet]. 2020 Oct 23 [cited 2021 Apr 9];7:572989. Available from:
</pmc/articles/PMC7645068/>
 19. Lillicrap D. Disseminated intravascular coagulation in patients with 2019-nCoV pneumonia [Internet]. Vol. 18, *Journal of Thrombosis and Haemostasis*. Blackwell Publishing Ltd; 2020 [cited 2021 Apr 9]. p. 786–7. Available from: <https://pubmed.ncbi.nlm.nih.gov/32212240/>
 20. Venous Thromboembolism | NHLBI, NIH [Internet]. [cited 2021 Jan 15]. Available from:

<https://www.nhlbi.nih.gov/health-topics/venous-thromboembolism>

21. Paliogiannis P, Mangoni AA, Dettori P, Nasrallah GK, Pintus G, Zinellu A. D-Dimer Concentrations and COVID-19 Severity: A Systematic Review and Meta-Analysis. *Front Public Heal* [Internet]. 2020 Aug 4 [cited 2021 Jan 22];8:1–7. Available from:
<https://www.frontiersin.org/article/10.3389/fpubh.2020.00432/full>
22. Yu HH, Qin C, Chen M, Wang W, Tian DS. D-dimer level is associated with the severity of COVID-19. *Thromb Res* [Internet]. 2020 Nov 1 [cited 2021 Jan 22];195:219–25. Available from:
</pmc/articles/PMC7384402/?report=abstract>
23. Ozen M, Yilmaz A, Cakmak V, Beyoglu R, Oskay A, Seyit M, et al. D-Dimer as a potential biomarker for disease severity in COVID-19. *Am J Emerg Med* [Internet]. 2021 Feb 1 [cited 2021 Jan 22];40:55–9. Available from: <https://doi.org/10.1016/j.ajem.2020.12.023>
24. Gungor B, Atici A, Baycan OF, Alici G, Ozturk F, Tugrul S, et al. Elevated D-dimer levels on admission are associated with severity and increased risk of mortality in COVID-19: A systematic review and meta-analysis [Internet]. Vol. 39, *American Journal of Emergency Medicine*. W.B. Saunders; 2021 [cited 2021 Jan 22]. p. 173–9. Available from: <https://doi.org/10.1016/j.ajem.2020.09.018>
25. Li XY, Du B, Wang YS, Kang HYJ, Wang F, Sun B, et al. [The keypoints in treatment of the critical coronavirus disease 2019 patient]. *Zhonghua Jie He He Hu Xi Za Zhi* [Internet]. 2020 Feb 29 [cited 2021 Jan 22];43(0):E026. Available from: <http://www.ncbi.nlm.nih.gov/pubmed/32111113>
26. Tang N, Bai H, Chen X, Gong J, Li D, Sun Z. Anticoagulant treatment is associated with decreased mortality in severe coronavirus disease 2019 patients with coagulopathy. *J Thromb Haemost* [Internet]. 2020 May 1 [cited 2021 Jan 22];18(5):1094–9. Available from: <https://pubmed.ncbi.nlm.nih.gov/32220112/>
27. Yao Y, Cao J, Wang Q, Shi Q, Liu K, Luo Z, et al. D-dimer as a biomarker for disease severity and mortality in COVID-19 patients: A case control study. *J Intensive Care* [Internet]. 2020 Jul 10 [cited 2021 Jan 22];8(1):49. Available from: <https://jintensivecare.biomedcentral.com/articles/10.1186/s40560-020-00466-z>

28. Zhou F, Yu T, Du R, Fan G, Liu Y, Liu Z, et al. Clinical course and risk factors for mortality of adult inpatients with COVID-19 in Wuhan, China: a retrospective cohort study. *Lancet* [Internet]. 2020 Mar 28 [cited 2021 Jan 22];395(10229):1054–62. Available from: <https://doi.org/10.1016/>
29. Soni M, Gopalakrishnan R, Vaishya R, Prabu P. D-dimer level is a useful predictor for mortality in patients with COVID-19: Analysis of 483 cases. *Diabetes Metab Syndr Clin Res Rev* [Internet]. 2020 Nov 1 [cited 2021 Jan 22];14(6):2245–9. Available from: </pmc/articles/PMC7670909/?report=abstract>
30. Kho J, Ioannou A, Van den Abbeele K, Mandal AKJ, Missouriis CG. Pulmonary embolism in COVID-19: Clinical characteristics and cardiac implications. *Am J Emerg Med* [Internet]. 2020 Oct 1 [cited 2021 Jan 22];38(10):2142–6. Available from: </pmc/articles/PMC7378013/?report=abstract>
31. Ventura-Díaz S, Quintana-Pérez J V., Gil-Boronat A, Herrero-Huertas M, Gorospe-Sarasúa L, Montilla J, et al. A higher D-dimer threshold for predicting pulmonary embolism in patients with COVID-19: a retrospective study. *Emerg Radiol* [Internet]. 2020 Dec 1 [cited 2021 Apr 9];27(6):679–89. Available from: <https://doi.org/10.1007/s10140-020-01859-1>
32. Wu Y, Xiao YX, Huang TY, Zhang XY, Zhou HB, Zhang XX, et al. What makes D-dimer assays suspicious–heterophilic antibodies? *J Clin Lab Anal* [Internet]. 2019 Feb 1 [cited 2021 Jan 15];33(2). Available from: <https://pubmed.ncbi.nlm.nih.gov/30320416/>
33. Zhang D, Li F, Du X, Zhang X, Zhang Z, Zhao W, et al. Diagnostic accuracy of biomarker D-dimer in patients after stroke suspected from venous thromboembolism: A diagnostic meta-analysis. *Clin Biochem* [Internet]. 2019 Jan 1 [cited 2021 Jan 15];63:126–34. Available from: <https://pubmed.ncbi.nlm.nih.gov/30261183/>
34. Terpos E, Ntanasis-Stathopoulos I, Elalamy I, Kastritis E, Sergentanis TN, Politou M, et al. Hematological findings and complications of COVID-19 [Internet]. Vol. 95, *American Journal of Hematology*. Wiley-Liss Inc.; 2020 [cited 2021 Jan 22]. p. 834–47. Available from: <https://pubmed.ncbi.nlm.nih.gov/32282949/>
35. Lip GYH, Blann AD, Jones AF, Lip PL, Beevers DG. Relation of endothelium, thrombogenesis, and hemorheology in systemic hypertension to ethnicity and left ventricular hypertrophy. *Am J Cardiol*. 1997 Dec 15;80(12):1566–71.

36. Apicella M, Campopiano MC, Mantuano M, Mazoni L, Coppelli A, Del Prato S. COVID-19 in people with diabetes: understanding the reasons for worse outcomes. *Lancet Diabetes Endocrinol.* 2020;8(9):782–92.
37. Mishra Y, Pathak BK, Mohakuda SS, Tilak TVSVGK, Sen S, P H, et al. Relation of D-dimer levels of COVID-19 patients with diabetes mellitus. *Diabetes Metab Syndr Clin Res Rev [Internet].* 2020 Nov 1 [cited 2021 Mar 5];14(6):1927–30. Available from: [/pmc/articles/PMC7528836/](#)

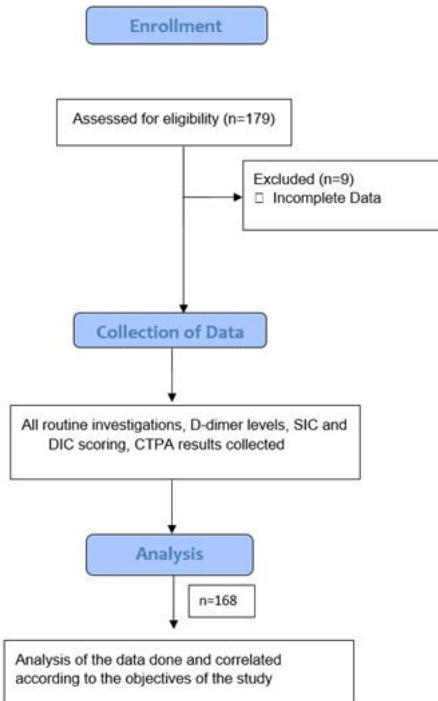


Figure 1: Study Flow

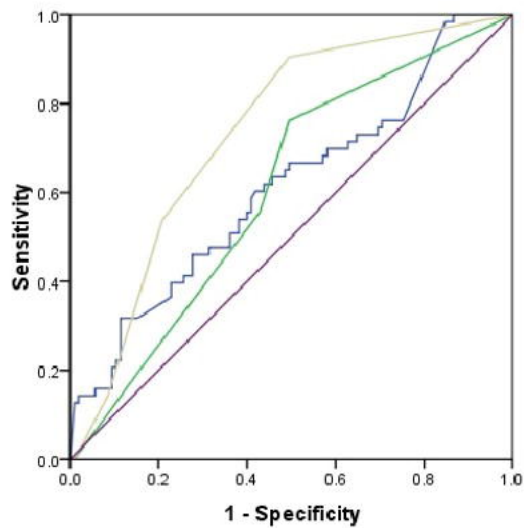


Figure 2(a)

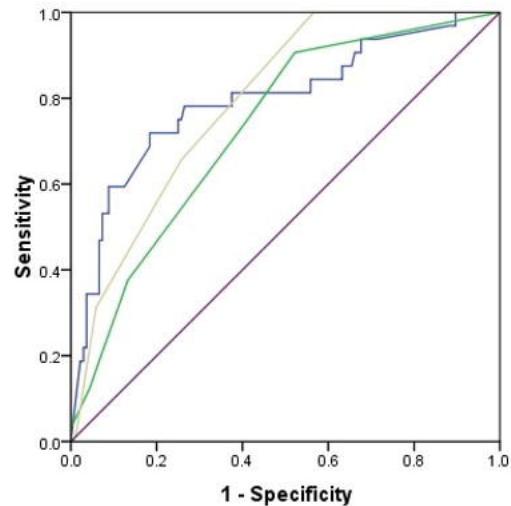


Figure 2(b)

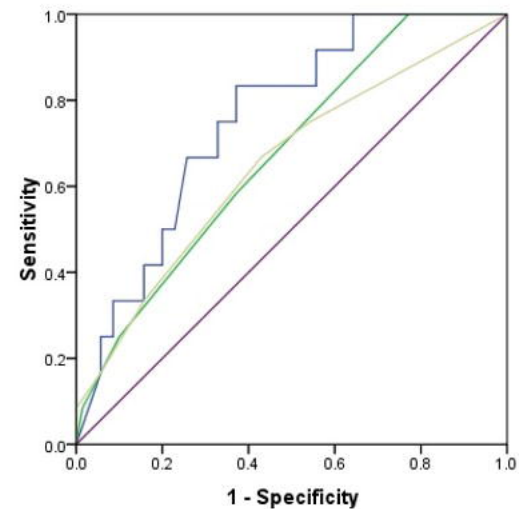


Figure 2(c)

Source of the Curve
 — D-Dimer
 — SIC SCORE
 — DIC SCORE
 — Reference Line

Figure 2: ROC cut-offs for (a) Severe disease (b) Mortality (c) PE