

1 **Full title: Automated, miniaturized, and scalable screening of healthcare workers, first**
2 **responders, and students for SARS-CoV-2 in San Diego County**

3
4 **Short title: High-throughput screening for SARS-CoV-2**

5
6 **Authors:**

7 Sydney C Morgan^{1,13,¶}, Stefan Aigner^{1,4,31,¶}, Catelyn Anderson^{14,¶}, Pedro Belda-Ferre^{3,31,¶}, Peter
8 De Hoff^{1,13,31,¶}, Clarisse A Marotz^{3,31,¶}, Shashank Sathe^{1,4,31,¶}, Mark Zeller^{14,¶}, Noorsher Ahmed^{1,4},
9 Xaver Audhya²¹, Nathan A Baer³¹, Tom Barber³¹, Bethany Barrick¹⁸, Lakshmi Batachari⁹,
10 Maryann Betty^{2,3,31}, Steven M Blue^{1,4}, Brent Brainard⁷, Tyler Buckley²⁷, Jamie Case¹⁸, Anelizze
11 Castro-Martinez³¹, Marisol Chacón³¹, Willi Cheung^{1,5,31}, LaVonnye Chong², Nicole G
12 Coufal^{1,2,3,30}, Evelyn S Crescini³¹, Scott DeGrand², David P Dimmock³⁰, J Joelle Donofrio-
13 Odmann^{2,3,6,7}, Emily R Eisner³¹, Mehrbod Estaki³, Lizbeth Franco Vargas³¹, Michele Freddock³⁰,
14 Robert M Gallant^{21,22,24,25}, Andrea Galmozzi¹⁰, Nina J Gao³, Sheldon Gilmer², Edyta M Grzelak²⁹,
15 Abbas Hakim³¹, Jonathan Hart¹⁰, Charlotte Hobbs³⁰, Greg Humphrey^{3,31}, Nadja Ilkenhans^{22,26},
16 Marni Jacobs¹³, Christopher A Kahn^{6,7}, Bhavika K Kapadia³¹, Matthew Kim^{1,13}, Sunil Kurian¹⁸,
17 Alma L Lastrella³¹, Elijah S Lawrence³¹, Kari Lee^{1,4}, Qishan Liang^{1,4}, Hanna Liliom²⁷, Valentina
18 Lo Sardo²⁷, Robert Logan⁷, Michal Machnicki³¹, Celestine G Magallanes^{1,13}, Clarence K
19 Mah^{1,4,8,34}, Denise Malacki², Ryan J Marina^{1,4}, Christopher Marsh¹⁸, Natasha K Martin³³,
20 Nathaniel L Matteson¹⁴, Daniel J Maunder³¹, Kyle McBride², Bryan McDonald²², Michelle
21 McGraw¹⁴, Audra R Meadows³², Michelle Meyer¹⁸, Amber L Morey^{1,4,5}, Jasmine R Mueller^{1,4},
22 Toan T Ngo³¹, Julie Nguyen¹⁴, Viet Nguyen¹⁴, Laura J Nicholson^{10,11}, Alhakam Nouri³¹, Victoria
23 Nudell²⁷, Eugenio Nunez³¹, Kyle O'Neill⁷, R Tyler Ostrander³¹, Priyadarshini Pantham^{1,13},
24 Samuel S Park^{1,4}, David Picone⁷, Ashley Plascencia³¹, Isaraphorn Pratumchai¹⁴, Michael
25 Quigley¹⁹, Michelle Franc Ragsac^{4,34}, Andrew C Richardson², Refugio Robles-Sikisaka¹⁴,
26 Christopher A Ruiz³¹, Justin Ryan², Lisa Sacco², Sharada Saraf¹⁴, Phoebe Seaver³¹, Leigh
27 Sewall²³, Elizabeth W Smoot³¹, Kathleen M Sweeney², Chandana Tekkattē^{1,13}, Rebecca Tsai³¹,
28 Holly Valentine^{1,13}, Shawn Walsh²³, August Williams²⁸, Min Yi Wu³¹, Bing Xia³¹, Brian Yee^{1,4},
29 Jason Z Zhang¹², Kristian G Andersen^{14,15*}, Lauge Farnaes^{3,30*}, Rob Knight^{3,16,17*}, Gene W
30 Yeo^{1,4*}, Louise C Laurent^{1,13*}

31
32 ¶ These authors contributed equally to this work.

33 *Senior authors.

34
35
36 **Affiliations:**

37 ¹Sanford Consortium of Regenerative Medicine, University of California San Diego, La Jolla, CA

38 ²Rady Children's Hospital, San Diego, CA

39 ³Department of Pediatrics, University of California San Diego, La Jolla, CA

40 ⁴Dept of Cellular and Molecular Medicine, University of California San Diego, La Jolla, CA

41 ⁵San Diego State University, San Diego, CA

42 ⁶Department of Emergency Medicine, University of California San Diego, San Diego, CA

43 ⁷San Diego Fire-Rescue Department

- 44 ⁸Division of Medical Genetics, Department of Medicine, University of California San Diego, La
45 Jolla, CA
- 46 ⁹Department of Medicine, University of California San Diego, La Jolla, CA
- 47 ¹⁰Department of Molecular Medicine, Scripps Research, La Jolla, CA
- 48 ¹¹Department of Medicine, Scripps Clinic, La Jolla, CA
- 49 ¹²Department of Bioengineering, University of California San Diego, La Jolla, CA
- 50 ¹³Department of Obstetrics, Gynecology, and Reproductive Sciences, University of California
51 San Diego, USA
- 52 ¹⁴Department of Immunology and Microbiology, The Scripps Research Institute, La Jolla, CA,
53 USA
- 54 ¹⁵Scripps Research Translational Institute, La Jolla, CA, USA
- 55 ¹⁶Department of Computer Science and Engineering, University of California San Diego, La
56 Jolla, CA, USA
- 57 ¹⁷Department of BioEngineering, University of California San Diego, La Jolla, CA, USA
- 58 ¹⁸Scripps Clinic Bio-Repository and Bio-Informatics Core, Scripps Clinic, La Jolla, CA
- 59 ¹⁹Department of Pathology, Scripps Clinic, La Jolla, CA
- 60 ²⁰University of California San Diego School of Medicine
- 61 ²¹Division of Biological Sciences, University of California San Diego, La Jolla, CA
- 62 ²²NOMIS Center for Immunobiology and Microbial Pathogenesis, Salk Institute for Biological
63 Studies, La Jolla, CA
- 64 ²³Departments of Integrative Structural and Computational Biology and Chemistry, The Scripps
65 Research Institute, La Jolla, CA, USA
- 66 ²⁴Molecular and Systems Physiology Lab, Salk Institute for Biological Studies, La Jolla, CA,
67 USA
- 68 ²⁵Gene Expression Lab, Salk Institute for Biological Studies, La Jolla, CA, USA
- 69 ²⁶Ruperto Carola University, Heidelberg, Germany
- 70 ²⁷Department of Neuroscience and Dorris Neuroscience Center, Scripps Research, La Jolla, CA
- 71 ²⁸Department of Dermatology, University of California San Diego, La Jolla, CA
- 72 ²⁹Department of Chemistry, Scripps Research, La Jolla, CA
- 73 ³⁰Rady Children's Institute for Genomic Medicine
- 74 ³¹Expedited COVID Identification Environment (EXCITE) Laboratory, Department of Pediatrics,
75 University of California San Diego, La Jolla, CA
- 76 ³²Perinatal neonatal quality improvement network of Massachusetts, March of Dimes
77 Foundation, Westborough, MA
- 78 ³³Division of Infectious Diseases and Global Public Health, University of California San Diego,
79 La Jolla, CA
- 80 ³⁴Bioinformatics & Systems Biology Program, University of California San Diego, La Jolla, CA
- 81
- 82
- 83
- 84
- 85
- 86
- 87

88 **Abstract**

89 **Background:** Successful containment strategies for SARS-CoV-2, the causative virus of the
90 COVID-19 pandemic, have involved widespread population testing that identifies infections early
91 and enables rapid contact tracing. In this study, we developed a rapid and inexpensive RT-
92 qPCR testing pipeline for population-level SARS-CoV-2 detection, and used this pipeline to
93 establish a clinical laboratory dedicated to COVID-19 testing at the University of California San
94 Diego (UCSD) with a processing capacity of 6,000 samples per day and next-day result
95 turnaround times.

96 **Methods and findings:** Using this pipeline, we screened 6,786 healthcare workers and first
97 responders, and 21,220 students, faculty, and staff from UCSD. Additionally, we screened 6,031
98 preschool-grade 12 students and staff from public and private schools across San Diego County
99 that remained fully or partially open for in-person teaching during the pandemic. Between April
100 17, 2020 and February 5, 2021, participants provided 161,582 nasal swabs that were tested for
101 the presence of SARS-CoV-2. Overall, 752 positive tests were obtained, yielding a test positivity
102 rate of 0.47%. While the presence of symptoms was significantly correlated with higher viral
103 load, most of the COVID-19 positive participants who participated in symptom surveys were
104 asymptomatic at the time of testing. The positivity rate among preschool-grade 12 schools that
105 remained open for in-person teaching was similar to the positivity rate at UCSD and lower than
106 that of San Diego County, with the children in private schools being less likely to test positive
107 than the adults at these schools.

108 **Conclusions:** Most schools across the United States have been closed for in-person learning
109 for much of the 2020-2021 school year, and their safe reopening is a national priority. However,
110 as there are no vaccines against SARS-CoV-2 currently available to the majority of school-aged
111 children, the traditional strategies of mandatory masking, physical distancing, and repeated viral
112 testing of students and staff remain key components of risk mitigation in these settings. The

113 data presented here suggest that the safety measures and repeated testing actions taken by
114 participating healthcare and educational facilities were effective in preventing outbreaks, and
115 that a similar combination of risk-mitigation strategies and repeated testing may be successfully
116 adopted by other healthcare and educational systems.

117

118 **Key words:** SARS-CoV-2; COVID-19; viral load; symptoms; testing; population; age; sex;
119 demographics

120

121 **Introduction**

122 Coronavirus Disease 2019 (COVID-19) is a serious respiratory illness caused by the
123 Severe Acute Respiratory Syndrome Coronavirus 2 (SARS-CoV-2). The COVID-19 pandemic
124 has had a dramatic and negative impact on the health, well-being, and productivity of
125 communities around the world, with over 165 million confirmed cases and 3.4 million deaths
126 worldwide, including more than 33 million confirmed cases and 587,000 deaths in the United
127 States (US) alone, within the 18 months since this virus was discovered (1).

128 Given the lack of widely available and highly effective preventative or therapeutic agents
129 besides the recent ramp-up of vaccine availability, social interventions such as “stay-at-home”
130 orders, temporary school and business closures, and mask-wearing/physical distancing
131 measures have been enacted in much of the world to slow the spread of the SARS-CoV-2 virus.
132 While many of these measures are effective at slowing viral spread through a community when
133 carried out correctly (2–4), they do not completely halt the spread of the virus, nor are they
134 sustainable long term. Indeed, a major concern in the US and other similarly affected countries
135 is how to safely reopen schools. Some schools and universities in the US have partially
136 reopened, using a hybrid of online and in-person teaching, or have fully reopened with
137 increased safety measures in place. The CDC has recently issued recommendations on how to

138 limit the spread of COVID-19 in schools (<https://www.cdc.gov/coronavirus/2019->
139 [ncov/community/schools-childcare/operation-strategy.html](https://www.cdc.gov/coronavirus/2019-ncov/community/schools-childcare/operation-strategy.html)), which include universal and correct
140 use of masks, physical distancing, handwashing, and contact tracing, but, so far, few studies
141 have investigated how these measures may work in practice in this environment (5–8).

142 The countries that have demonstrated the greatest success in controlling the COVID-19
143 pandemic, including New Zealand, Australia, and South Korea, have combined risk-mitigating
144 strategies with large-scale and widespread testing, as well as aggressive contact tracing, to
145 both identify outbreaks and curb community transmission. Importantly, this broad testing must
146 be implemented with a minimal turnaround time to allow for effective contact tracing and
147 isolation of affected persons. Even now, nearly 1.5 years after the initial reports of COVID-19
148 infections, it can be difficult for many people in the US and other countries to obtain a test for
149 SARS-CoV-2 if they do not exhibit symptoms or have not been in known contact with a person
150 with a confirmed case of COVID-19. In the context of overall limited testing capacity, these
151 measures are intended to allow medical doctors to triage patients into appropriate treatment
152 pipelines. However, in the context of a pandemic, these measures exclude key demographics,
153 namely asymptomatic and pre-symptomatic carriers, who contribute to the “silent spread” of the
154 virus (9,10). Therefore, the current symptom- and contact-based testing strategies employed in
155 much of the world are both unlikely to accurately capture the full extent to which this novel
156 coronavirus can spread throughout our communities.

157 Some regions have screened large, representative proportions of their target populations
158 with great success, and provide an insight into the proportion of COVID-19 cases that may be
159 missed with current testing restrictions. These studies, which estimate that the rate of
160 asymptomatic COVID-19 infection may be as high as 40-45%, highlight the importance of
161 routine asymptomatic testing (11–13). Additionally, we now know that asymptomatic and pre-
162 symptomatic infections are transmissible (14,15).

163 The objective of this study was to develop and establish an accurate, high-throughput,
164 rapid, and inexpensive SARS-CoV-2 screening pipeline for use at the population level. To this
165 end, we performed SARS-CoV-2 screening on over 5,000 healthcare workers from two large
166 healthcare systems in San Diego County and 1,162 first responders from San Diego Fire and
167 Rescue. Additionally, we screened 21,220 students, faculty, and staff from the University of
168 California, San Diego (UCSD), and 6,031 students and staff from preschool-grade 12 schools
169 across San Diego County that had remained fully or partially open for in-person teaching
170 throughout the COVID-19 pandemic (4,750 from 11 private schools and 1,281 from 13 public
171 schools). We developed a RT-qPCR testing pipeline that included the miniaturization of a
172 testing kit that was granted Emergency Use Authorization by the U.S. Food and Drug
173 Administration. This pipeline was then used to establish a Clinical Laboratory Improvement
174 Amendments (CLIA) certified laboratory at UCSD, and further refinements were made to
175 increase throughput capacity to 6,000 samples per day with next-day results, and to enable
176 accurate detection from self-collected anterior-nares swab samples. A secondary objective of
177 this study was to identify asymptomatic and pre-symptomatic infections, and to evaluate the
178 effectiveness of health and safety measures implemented by healthcare and educational
179 facilities in response to the COVID-19 pandemic, particularly those developed at educational
180 facilities to safely re-open schools for in-person learning.

181

182 **Methods**

183 **SEARCH Study**

184 The SEARCH study (San Diego Epidemiology and Research Study for CCOVID-19
185 Hhealth) was a multi-site study whose aim was to evaluate the presence of COVID-19 infection in
186 potentially exposed healthcare worker and first responder populations in San Diego County (SD
187 County). In particular, employees from Rady Children’s Hospital San Diego (RCHSD), Rady

188 Children's Institute for Genomic Medicine (RCIGM), Scripps Health, and the San Diego Fire-
189 Rescue Department (SDFD) were screened, along with a small number of employees from
190 other institutions who heard of the study by word of mouth and were allowed to participate.
191 These other institutions included the University of California, San Diego (UCSD), Children's
192 Primary Care Medical Group, Rady Children's Specialists of San Diego, and Sharp HealthCare.
193 Screening took place from April 17 through June 30, 2020. Nasopharyngeal (NP) swabs were
194 obtained from study participants by trained healthcare workers, and RT-qPCR testing was
195 performed in collaborating basic science labs at UCSD and Scripps Research to test for the
196 presence of SARS-CoV-2 in the samples. Participant samples that tested positive using the
197 research lab screening protocol were subjected to confirmatory clinical tests, at which point the
198 positive results were reported to both the survey participant and the SD County Department of
199 Public Health. The members of the research team had final responsibility for the survey design,
200 clinical protocol, and trial oversight. The UCSD Institutional Review Boards (IRB) provided
201 human subject protection oversight of the SEARCH study (IRB approval #200470).

202 **Nasopharyngeal swab production**

203 Due to a shortage of NP swabs when the SEARCH study began, 3D-printed swabs were
204 designed and printed for testing. The swab shafts were 3D-printed in nylon, utilizing material
205 extrusion (i.e. fused filament fabrication) on an Onyx One Professional Desktop 3D Printer
206 (Markforged, Watertown, MA, USA). The nylon swab tips were wrapped with rayon fibers and
207 steam-sterilized. While rayon fibers have previously been found to be slightly inferior to flocked
208 nylon (16), they were readily available and more easily manufactured in this setting.

209 We validated the performance of these 3D-printed swabs in parallel with commercially
210 available NP swabs (FLOQSwab, Copan Diagnostics Inc., Murrieta, CA, USA), using both a
211 commercially available standard viral respiratory panel in pediatric patients, as well as SARS-
212 CoV-2 testing in known positive adult patients. The detailed protocol and complete validation

213 information has been made available on protocols.io (17). Briefly, at Rady Children’s Hospital
214 San Diego (RCHSD, CA, USA), 25 pediatric patients were swabbed by respiratory therapists
215 using both the 3D-printed swabs and the commercially-sourced swabs, of which 22 samples
216 were run on the ePlex Respiratory Pathogen (RP) Panel (GenMark Dx, Carlsbad, CA, USA),
217 which test for viruses including adenovirus, human metapneumovirus, respiratory syncytial virus
218 (RSV), and variants of influenza and parainfluenza. The remaining three samples, two negative
219 and one positive for SARS-CoV-2, were analyzed using the Simplexa COVID-19 Direct Kit
220 (DiaSorin Molecular, Cypress, CA, USA). Finally, nine adult outpatients who had previously
221 tested positive for SARS-CoV-2 using various FDA-approved tests performed self-swabs 3 to 14
222 days later, some patients with paired parallel commercial and 3D printed swabs ($n = 4$) and
223 others with the 3D-printed swabs alone ($n = 5$). Results from the 3D-printed swab validation are
224 presented in Table S1.

225 **Sample collection and population screening**

226 Inclusion criteria for this study included: (1) Individuals 18 years of age or older with
227 possible exposure to COVID-19 in a work setting. Exclusion criteria included: (1) individuals
228 from whom it was not possible to obtain an adequate nasopharyngeal swab; (2) individuals who
229 needed immediate medical intervention.

230 In an effort to include healthcare workers throughout SD County, multiple study sites at
231 hospitals and clinics were set up; each study site was staffed by individuals from that hosting
232 location. A fixed testing location was set up at RCHSD and a mobile testing unit was created to
233 serve nine Scripps Health locations (Scripps Green Hospital; Scripps Memorial La Jolla
234 Hospital; Scripps Memorial Encinitas Hospital; Scripps Mercy San Diego Hospital; Scripps
235 Mercy Chula Vista Hospital; Scripps Clinic Rancho Bernardo; Scripps Coastal Vista Center;
236 Scripps Clinic Mission Valley; and Scripps Campus Point).

237 Potential healthcare worker participants were informed of the study through an
238 organizational all-user email communication as well as a flyer that was sent to Rady and
239 Scripps Health employees and which contained a QR code that allowed them to fill out an
240 electronic consent form and symptom questionnaire prior to arrival at a study site using
241 REDCap (Research Electronic Data Capture) software hosted at RCHSD. REDCap is a secure,
242 web-based software platform designed to support data capture for research studies (18,19).
243 Paper versions of these forms were also available at the study site if an eligible participant was
244 not able to complete them electronically. Potential firefighter and lifeguard participants were
245 informed of the study through an assignment that was posted to every SDFD worker on their
246 Target Solutions (Vector Solutions, Tampa, FL, USA) accounts. Target Solutions is an online
247 training management system which requires assignments to be opened, read, and confirmed
248 prior to the assignment deadline, to ensure all personnel receive and acknowledge their
249 contents. The assignment contained the details of the study as well as instructions on how to
250 participate. In this way, all firefighters and lifeguards in the SDFD were informed of this study.

251 Potential participants were then asked to complete a three-question quiz: (1) Is
252 participation in this study voluntary? (Answer: yes); (2) Will participants be told about their study
253 findings? (Answer: not necessarily); (3) Is participating in this study the same as receiving a
254 clinical test? (Answer: no). Those who answered any questions incorrectly were re-educated by
255 study staff prior to final enrollment and the collection of samples. The Enrollment Screening
256 Form - completed either electronically using a secure REDCap survey, or using a paper version
257 - collected identifiable information including name, address, contact phone number, date of
258 birth, workplace information, and date and site of testing, in addition to information regarding
259 comorbidities and any active symptoms on the day of testing. A barcode was entered into an
260 electronic data capture file for each participant with matching labels placed on a participant
261 information sheet as well as on the NP swab collection tube, in order to link each sample with
262 the participant. A barcode-associated "synthetic name" was also generated, and was cross-

263 checked with each participant at registration and again at the swabbing station to prevent
264 sample mix-up. Protected health information (PHI) was not provided to the research testing
265 laboratories. Instead, names and identifiable information were stored on REDCap at RCHSD, as
266 specified in the IRB protocol (IRB approval #200470).

267 An NP swab sample was collected from each participant by sampling the posterior
268 nasopharynx through both nares, according to instructions for NP swab collection from the CDC
269 (<https://www.cdc.gov/flu/pdf/professionals/flu-specimen-collection-poster.pdf>). A qualified team
270 member with appropriate personal protective equipment (PPE), consisting of gown, gloves, N95
271 respirator, and face shield, obtained the sample and placed the NP swab into the barcode-
272 labeled collection tube containing 3 mL viral transport medium (VTM), which was prepared
273 according to CDC guidelines ([https://www.cdc.gov/coronavirus/2019-ncov/downloads/Viral-](https://www.cdc.gov/coronavirus/2019-ncov/downloads/Viral-Transport-Medium.pdf)
274 [Transport-Medium.pdf](https://www.cdc.gov/coronavirus/2019-ncov/downloads/Viral-Transport-Medium.pdf)). At the end of each sampling day, samples were transported on wet ice
275 in a cooler to a Biosafety Laboratory 2 Plus (BSL-2+) laboratory at Scripps Research (La Jolla,
276 CA, USA) for sample accessioning and plating, as described in the Sample processing, RNA
277 extraction, and RT-qPCR section below.

278 At RCHSD, NP sample collection of healthcare workers and firefighters for this study
279 involved 192 screening hours over 33 sampling days, between April 17 and June 30, 2020, with
280 two registered nurses (RNs) involved in consenting participants for the study, two respiratory
281 therapists involved in swabbing participants, and two additional RNs acting as support staff
282 involved in participant information data entry and specimen handling support, for a total of six
283 healthcare workers at each screening site on each day. Across all the Scripps Health locations,
284 NP sample collection for this study involved 76 screening hours over 20 sampling days,
285 between April 24 and June 30, 2020. The mobile sample collection team increased from six to
286 ten staff (four additional support staff for data entry and specimen handling) for locations with
287 high demand. For the SDFD employees, NP samples were collected at the permanent sampling
288 location at RCHSD between June 1 and June 30, 2020.

289

290 **INSPECT application development**

291 Specimens and results were tracked through the processing pipeline using the INSPECT
292 (Instant Service Platform for Emergency CCOVID-19 Tests) application. This Laboratory
293 Information Management System (LIMS) was designed specifically for tracking SARS-CoV-2
294 tests, and includes tracking of specimen ID, plate layouts, plate barcodes, RT-qPCR test
295 results, and participant IDs. All code and protocols needed to create a lab-tailored version of the
296 INSPECT app are freely available on GitHub (<https://github.com/SEARCH-Alliance/inspect>) and
297 protocols.io (20).

298 **SEARCH sample processing, RNA extraction, and RT-qPCR**

299 Sample processing and viral RNA extraction was performed using a KingFisher™ Flex
300 automated sample preparation machine (Thermo Fisher, Waltham, MA, USA) and an Eppendorf
301 epMotion® 5070 automated liquid handling workstation (Enfield, CT, USA). RNA was extracted
302 with the Omega Bio-tek Mag-Bind Viral DNA/RNA kit. A detailed protocol of the RNA extraction
303 process used in the SEARCH study is available on protocols.io (21). Following RNA extraction
304 of samples, SARS-CoV-2 detection was performed using a miniaturized and automated RT-
305 qPCR procedure. Viral RNA was detected using the TaqPath COVID-19 Combo Kit
306 (ThermoFisher Scientific, Waltham, MA, USA). This viral RNA detection kit is approved by the
307 Emergency Use Authorization (EUA) authority of the US FDA for the detection of SARS-CoV-2,
308 and targets three regions of the SARS-CoV-2 genome - N gene, S gene, and ORF1ab gene - as
309 well as an internal positive control, MS2. The miniaturization of the RT-qPCR process (from the
310 standard 25 µL to a 3 µL reaction volume) involved the use of two Mosquito robotic liquid
311 handlers (STP Labtech Ltd., formerly TTP Labtech Ltd., Boston, MA, USA): a 16-channel liquid
312 handler (HV Genomics), and an HV X1 hit/cherry picker single-channel liquid handler. RT-qPCR
313 was performed on a QuantStudio™ 5 Real-Time PCR System (Applied Biosystems). A detailed

314 protocol of the miniaturized and automated RT-qPCR process used in this study is available on
315 protocols.io (22). Using the TaqPath COVID-19 Multiplex Real-Time RT-PCR Assay, samples
316 are considered positive when at least two out of three viral target genes (S gene, N gene, and
317 ORF1ab) amplify using a threshold cycle (Ct) of 37 cycles, and samples are considered
318 negative when none of the three viral target genes amplify but the internal control (MS2) does
319 amplify. Inconclusive test results are those in which only one of three viral target genes
320 amplifies, while invalid tests are those in which no viral target genes amplify, and the internal
321 control also fails to amplify. Samples that produced inconclusive and invalid results from the
322 initial analysis were re-extracted and re-amplified, and the decision tree recommended by the
323 manufacturer (Thermo Fisher) was used to determine the final result; data presented here are
324 the final results obtained after re-extraction and re-amplification, in cases where this was
325 necessary.

326 **Validation of RT-qPCR miniaturization and research workflow**

327 A technical validation of the RT-qPCR miniaturization was performed by comparing the
328 miniaturization reactions to full-scale reactions. RT-qPCR performance of the miniaturized
329 reactions was compared to published results for full-scale reactions to evaluate equivalency (Fig
330 S1). The limit of detection (LOD) was calculated for the miniaturized reactions using two
331 different methods: (1) SARS-CoV-2 viral RNA was spiked into the RT-qPCR reaction in different
332 concentrations (1-128 viral genome equivalents per reaction) along with RNA extracted from
333 negative NP control samples; (2) SARS-CoV-2 viral RNA was spiked into negative NP control
334 samples in lysis buffer, before RNA extraction, in different concentrations (1-100,000 viral
335 genome equivalents/mL input sample) (Fig S2). RT-qPCR performance of the miniaturized
336 reactions were found to be equivalent to the full-scale reactions (Fig S1). The limit of detection
337 for the miniaturized reactions (using the evaluation criteria recommended by the manufacturer,

338 and requiring all three replicates to show a positive result) was found to be 500 viral RNA
339 copies/mL input sample, with >4 viral RNA copies per RT-qPCR reaction (Fig S2).

340 Samples that tested positive through the research pipeline were subjected to
341 confirmatory clinical tests by a collaborating Clinical Laboratory Improved Amendments (CLIA)
342 lab at UCSD. A number of negative samples were also sent to the collaborating CLIA lab to
343 confirm their negative status as determined through the research pipeline. In total, 21 positive
344 and 141 negative samples obtained through the research pipeline were re-tested by the
345 collaborating CLIA lab: all 141 negative samples were confirmed negative, and 18/21 positive
346 samples were confirmed as true positives, with 3/21 samples returning a false-positive result.
347 The true positives were reported to the study participants and the SD County Public Health
348 Department.

349 **EXCITE Lab**

350 After the SEARCH study (the initial proof-of-concept study) was complete, the
351 methodology developed by the SEARCH team was adapted to establish the Expedited COVID-
352 19 Identification Environment (EXCITE) lab, a CLIA-certified laboratory at UCSD dedicated to
353 COVID-19 testing. The EXCITE lab was developed to provide rapid, asymptomatic population
354 screening for UCSD students/faculty/staff, and also partnered with local public and private
355 preschool-grade 12 schools and SDFD to test their populations. The UCSD Institutional Review
356 Boards (IRB) provided human subject protection oversight of the data obtained by the EXCITE
357 lab (IRB approval #210817X).

358 **Translation of the research workflow into the CLIA environment**

359 The research workflow from the SEARCH study was adapted for clinical use by the
360 EXCITE lab, with the goal of repeated screening of large populations as a component of
361 programs developed to safely increase educational and business activities during the COVID-19
362 pandemic. Five major changes to the SEARCH pipeline were implemented by the EXCITE lab

363 to improve patient acceptability, enhance the safety of testing personnel, increase assay
364 throughput, ensure compliance with College of American Pathologists (CAP) and CLIA
365 regulations, and enable reporting of clinical results to patients' medical records and to the
366 required public health agencies.

367 First, we validated anterior nares (AN) sample collection via self-swabbing. NP swabs
368 are considered the gold standard sample type used to test for SARS-CoV-2. However, these
369 swabs are uncomfortable for the patient and require collection by a clinical provider at close
370 proximity, which decreases compliance and increases cost and risk, making it infeasible for
371 large-scale repeated screening programs. Anterior nares swabs can be self-collected with
372 minimal discomfort, while providing comparable test results.

373 Second, to enable safer handling of large numbers of samples, we changed from sample
374 collection in VTM, in which viral particles remain infectious, to PrimeStore® Molecular Transport
375 Medium (MTM), which immediately inactivates the SARS-CoV-2 virus. Following validation with
376 MTM, we additionally validated sample collection in Mawi DNA Technologies iSWAB
377 Microbiome buffer (Mawi) as well as 5% sodium dodecyl sulfate (SDS). AN swabs in MTM,
378 Mawi, and SDS are referred to here as "ANM", "ANW", and "AND", respectively. All three media
379 types inactivate the virus, allowing for self-collection and safer handling, but Mawi and SDS
380 have the additional benefit of being non-toxic substances, allowing for unsupervised self-
381 collection of samples.

382 Third, to increase assay throughput, we centralized our operations from three research
383 laboratories located ~10 min drive apart into two adjacent rooms in the same building, and
384 obtained and integrated two Hamilton® Microlab STAR liquid handling systems for automated
385 accessioning and transfer of samples from collection tubes to 96-well plates prior to RNA
386 extraction (see "EXCITE sample accessioning, RNA extraction, and RT-qPCR" section below).

387 Fourth, we obtained a CLIA extension from the existing Biochemical Genetics high-
388 complexity CLIA laboratory in the Department of Pediatrics at UCSD, and established Standard
389 Operating Procedures for each aspect of the workflow.

390 Finally, we built secure links between the INSPECT application and the UCSD instance
391 of the EPIC electronic health record, as well as the California Reportable Disease Information
392 Exchange (CalREDIE) Electronic Lab Reporting (ELR) system, using Redox as the integration
393 application programming interface (API).

394 These changes were implemented in parallel, allowing us to translate the research
395 workflow into a clinical assay in only forty days. The EXCITE lab was designed to accommodate
396 up to 6,000 samples per day with next-day results.

397 **Validation of anterior nares samples**

398 We clinically validated our clinical workflow using AN swabs collected in MTM (“ANM”),
399 Mawi (“ANW”), and 5% SDS (“AND”). First, we performed a technical validation by determining
400 the LOD of all three sample types using contrived samples with a range of SARS-CoV-2 viral
401 particle (VP) concentrations, from 250 VP/mL up to 32,000 VP/mL, with each test performed in
402 triplicate. We demonstrated that the sensitivity of our clinical workflow is excellent, with a
403 technical LOD of 500 VP/mL for MTM and 250 VP/mL for Mawi and SDS (Table S2). Next, a
404 second technical validation was performed using contrived samples containing 1,000 VP/mL; a
405 minimum of 20 replicate samples were run per sample type, and a minimum of 19/20 were
406 required to return a positive result via RT-qPCR (see “EXCITE sample accessioning, RNA
407 extraction, and RT-qPCR” section below). All ANM and AND replicates returned a positive
408 result, and 19/20 ANW replicates returned a positive result (Table S3). Last, we performed
409 clinical validation on all three sample types, first validating ANM samples and then using the
410 validated ANM as a comparator to clinically validate ANW and AND. We used remnant AN
411 samples collected in MTM from 30 positive cases and 32 negative cases, kindly provided by

412 Helix OpCo, LLC (San Diego, CA, USA). These samples had previously been tested/validated
413 by Helix under their EUA (<https://www.fda.gov/media/140420/download>), and the test results
414 obtained from Helix were used as the comparator for our results (Table S4). Following ANM
415 validation and EUA authorization, we validated ANW and AND sample types with clinically-
416 obtained positive and negative cases for SARS-CoV-2, and using the recently-validated ANM
417 sample type as the comparator. Clinical validation required a minimum of 90% compliance
418 between the EUA authorized comparator and the experimental sample types on the same
419 samples. For ANW, 34 positives and 54 negatives were tested, and for AND, 38 positives and
420 55 negatives were tested (Table S4). The sensitivity (the ability of the test to correctly identify
421 positives), specificity (the ability of the test to correctly identify negatives), and accuracy (overall
422 probability that a test is correct) for each sample type can be seen in Table 1.

423
424 **Table 1.** Sensitivity, specificity, and accuracy of anterior nares swabs in MTM (ANM), Mawi
425 (ANW), or 5% SDS (AND) media, tested for the presence of SARS-CoV-2 during clinical
426 validation. Numbers in brackets are 95% confidence intervals.

	Sensitivity	Specificity	Accuracy
ANM	100% (88.43 - 100)	100% (89.11 - 100)	100% (94.22 - 100)
ANW	100% (89.11 - 100)	100% (93.40 - 100)	100% (95.80 - 100)
AND	94.59% (81.81 - 99.34)	100% (93.40 - 100)	97.80% (92.29 - 99.73)

427 428 **EXCITE sample collection**

429 Self-swabbed anterior nares (AN) samples were collected using nylon flocked swabs
430 ([https://renonlab.en.made-in-china.com/product/zKEnIjuyEdrC/China-Medical-Virus-Test-
431 Collection-Nylon-Flocked-Nasopharyngeal-Nasal-Swabs.html](https://renonlab.en.made-in-china.com/product/zKEnIjuyEdrC/China-Medical-Virus-Test-Collection-Nylon-Flocked-Nasopharyngeal-Nasal-Swabs.html)), which were placed in tubes
432 containing 1 mL of either MTM, Mawi, or 5% SDS. All participants >12 years of age self-
433 collected samples, and children 12 years of age or younger in participating schools had samples
434 collected by trained staff at each school. Sample collection occurred on-site at participating fire
435 departments and schools, and all samples were sent daily to the EXCITE lab for testing. For
436 UCSD participants, sample test kits were available in dedicated vending machines throughout

437 campus, with sample drop sites located next to the vending machines that were collected
438 multiple times per day for testing by the EXCITE lab. EXCITE samples reported in this study
439 were collected between September 15, 2020 and February 5, 2021.

440 **EXCITE sample accessioning, RNA extraction, and RT-qPCR**

441 The workflow of the EXCITE lab was modeled after the SEARCH study, but updated and
442 further automated to increase throughput. Sample accessioning was performed using
443 Hamilton® Microlab STAR liquid handling systems. RNA was extracted using the MagMax Viral
444 Pathogen (MVPII) kit, and extraction was semi-automated via the use of an epMotion® 5075
445 liquid handling workstation (Eppendorf) and a KingFisher™ Flex purification system (Thermo
446 Fisher). A detailed protocol of the semi-automated sample accessioning and RNA extraction
447 process used by the EXCITE lab is available on protocols.io (23).

448 Viral RNA was detected using the TaqPath COVID-19 Combo Kit (ThermoFisher
449 Scientific, Waltham, MA, USA). RT-qPCR reaction preparation was performed using a
450 Mosquito® HV Genomics robotic liquid handler (SPT LabTech), and miniaturized 3 µL RT-
451 qPCR reactions were performed on a QuantStudio™ 7 Pro Real-Time PCR System (Applied
452 Biosystems). A detailed protocol of the miniaturized and automated RT-qPCR process used by
453 the EXCITE lab is available on protocols.io (22). Test results were determined as described
454 above in the “SEARCH sample processing, RNA extraction, and RT-qPCR” section. Samples
455 that tested positive through the EXCITE pipeline were re-extracted and re-amplified to confirm
456 the positive result, and then reported to SD County. EXCITE participants received the results of
457 every test they submitted, regardless of positivity.

458 **Data analysis and visualization**

459 Data curation was conducted in R (version 4.0.3) using the ‘tidyverse’ (version 1.3.0)
460 package (24) and the associated ‘readr’ (version 1.4.0) package. Statistical analyses including *t*-
461 tests and Kruskal-Wallis tests were performed in R (version 4.0.3) or Python (version 3.6.11).

462 Chi-square tests and data summaries from Tables 5 and 6 were performed/created using SAS
463 (version 9.4).

464 Data visualization was accomplished using a combination of R (version 4.0.3), Python
465 (version 3.6.11), Tableau (Desktop version 2019.2.5 and Server version 2019.2.0), Excel 2010
466 (version 2103), Inkscape (version 1.0), and Leaflet (version 0.7.7). Figs 1C; S1; S2; S3; and S6
467 were created in Excel and edited in Inkscape. Figs 1A; 1B; 2; and 4 were created in Tableau
468 and edited in Inkscape. Figs 3 and 5 were created in Python. Figs 6; 8; S4; S5; and S6 were
469 created in R using the following packages: 'lubridate' (version 1.7.9.2) (25); 'ggstatsplot' (version
470 0.7.0) (26); 'ggpubr' (version 0.4.0); 'tidyverse' (version 1.3.0) (24) and the associated packages
471 'readr' (version 1.4.0), 'readxl' (version 1.3.1), 'ggplot2' (version 3.3.3), and 'ggpubr' (version
472 0.4.0). Figs 6 and 8 were created in Leaflet (<https://leafletjs.com/>) and OpenStreetMap
473 (<https://www.openstreetmap.org/copyright>), using coordinate data from zipcodeR package
474 (<https://cran.r-project.org/web/packages/zipcodeR/index.html>) and Google Maps
475 (<https://maps.google.com>).

476 Full datasets, as well as scripts for data analysis and visualization used in this
477 publication, are made available at <https://osf.io/3fguz/>.

478

479 **Results and Discussion**

480 **Overall Testing Results**

481 Samples were collected for the SEARCH study between April 17 and June 30, 2020,
482 and by the EXCITE lab between September 15, 2020 and February 5, 2021. The SEARCH
483 study was designed to screen healthcare workers and first responders from San Diego County
484 (SD County); in particular, employees from Rady Children's Hospital San Diego (RCHSD), Rady
485 Children's Institute for Genomic Medicine (RCIGM), Scripps Health, and the San Diego Fire-
486 Rescue Department (SDFD) were screened, along with a small number of employees from

487 other institutions who heard of the study by word of mouth and were allowed to participate. The
488 EXCITE lab was designed for repeated screening of UCSD students and employees, but has
489 also partnered with a number of private and public preschool-grade 12 schools and SDFD to
490 provide repeated testing of their members. A recent study highlighted the potential positive
491 implications of institutions expanding their COVID-19 testing efforts to include members of
492 surrounding communities, which can benefit the institution itself as well as the community as a
493 whole (27).

494 Both SEARCH and EXCITE included repeat testing of participants; in total, 8,066
495 nasopharyngeal (NP) swabs were obtained from 6,376 individuals via the SEARCH study, and
496 153,516 anterior nares (AN) swabs were obtained from 28,293 individuals via the EXCITE lab.
497 During the time period of this study, the EXCITE lab processed an average of 1,124 samples
498 per day. Additionally, the average total time from sample barcode scan to return of results was
499 15.2 ± 0.03 h, with an average of 6.6 ± 0.01 h of in-lab processing time (Fig S3). Results were
500 returned within 24 h of receipt at the lab for 98.1% of samples, and between 24-60 h for 1.2% of
501 samples. The latter were largely samples that returned with Inconclusive or Invalid results on
502 the first analysis run, and were analyzed a second time before reporting a clinical result. We
503 note that there was a small proportion (0.7%) of samples with processing times >60 h; these
504 were primarily samples for which the lab did not initially receive the required patient-level
505 demographic information to report a clinical result, and therefore needed to request additional
506 information from the ordering healthcare provider prior to returning results.

507 The breakdown of test results by sample type is presented in Table 2. In the SEARCH
508 study, 21 samples initially returned a positive result based on the RT-qPCR performed by the
509 collaborating SEARCH research labs. Samples from all positive tests based on the research
510 testing pipeline were sent to a CLIA-certified lab for validation using their clinical testing pipeline
511 before results were returned to participants. Of the 21 initial positive tests, 18 were validated as
512 true positives, and three were returned as false positives. Therefore, the false-positive rate for

513 the SEARCH study was 0.037%. Because the EXCITE lab is itself a CLIA-certified lab, positive
 514 results were reported directly without external validation. Of the 752 true positive results
 515 identified through both SEARCH and EXCITE, 715 tests were obtained from unique individuals,
 516 with 35 individuals testing positive on two different occasions and one individual testing positive
 517 on three different occasions. The average time between positive tests for the same individual
 518 was 5 days; no individuals from this study were identified to be re-infected after recovering from
 519 COVID-19.

520 While the SEARCH study only collected NP swabs in VTM, the EXCITE lab used AN
 521 swabs in three different preservation media; MTM, Mawi, and 5% SDS, corresponding to ANM,
 522 ANW, and AND sample types, respectively. All three media inactivate the SARS-CoV-2 virus,
 523 enabling self-collection. The ANM sample type was validated first, but was soon replaced by
 524 ANW and AND, which are non-toxic, allowing for unobserved self-collection. AND samples
 525 produced invalid results significantly more often than samples collected in other preservation
 526 media (Table 2); AND samples comprised only 4.7% of all samples, but 67.8% of all invalid test
 527 results. As a consequence, the EXCITE lab quickly discontinued the use of AND samples,
 528 focusing instead on ANW samples.

529 **Table 2.** SARS-CoV-2 RT-qPCR test results obtained from SEARCH and EXCITE, by sample
 530 type: AND (anterior nares swab in 5% SDS); ANM (anterior nares swab in MTM); ANW (anterior
 531 nares swab in Mawi); NPV (nasopharyngeal swab in VTM). All NPV samples were obtained
 532 from SEARCH, and all AND, ANM, and ANW samples were obtained from EXCITE. Samples
 533 where no viral target genes amplified but the internal control did amplify were considered
 534 negative. Samples where at least two out of three viral target genes amplified were considered
 535 positive. Samples where neither the viral target genes nor the internal control amplified were
 536 considered invalid. Samples where only one out of three viral target genes amplified were
 537 considered inconclusive.

	AND	ANM	ANW	NPV	Total
	n (%)	n (%)	n (%)	n (%)	n (%)
Negative	7288 (96.56)	20959 (99.90)	124182 (99.35)	8032 (99.58)	160461 (99.31)
Positive	38 (0.50)	15 (0.07)	681 (0.54)	18 (0.22)	752 (0.47)
Invalid	221 (2.93)	3 (0.01)	90 (0.07)	12 (0.15)	326 (0.20)
Inconclusive	1 (0.01)	2 (0.01)	36 (0.03)	4 (0.05)	43 (0.03)

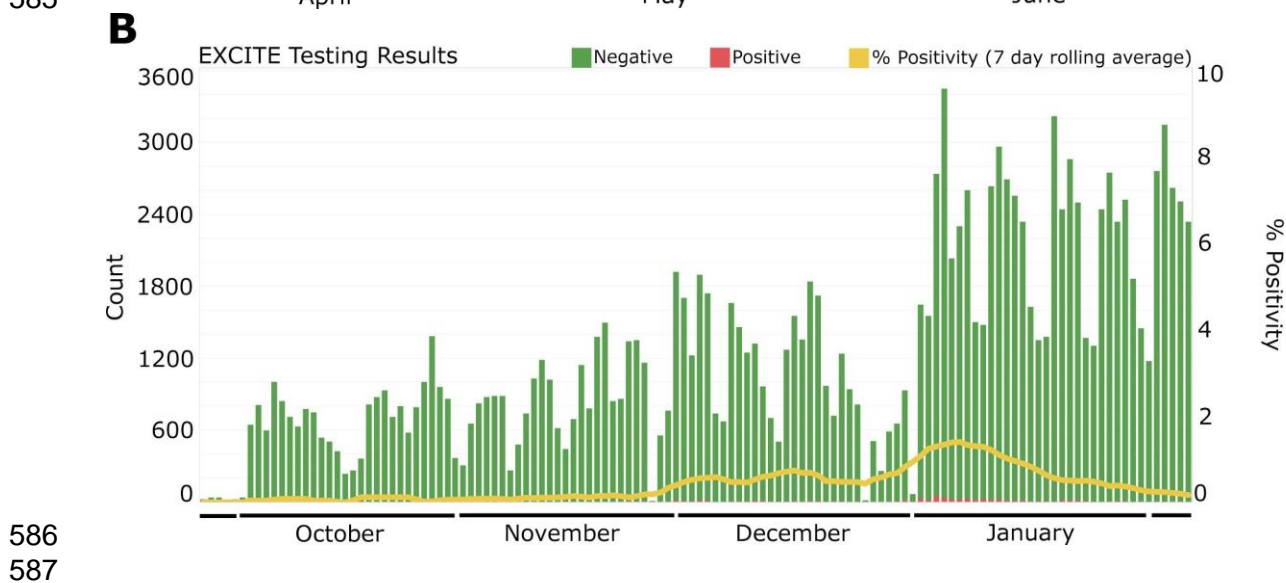
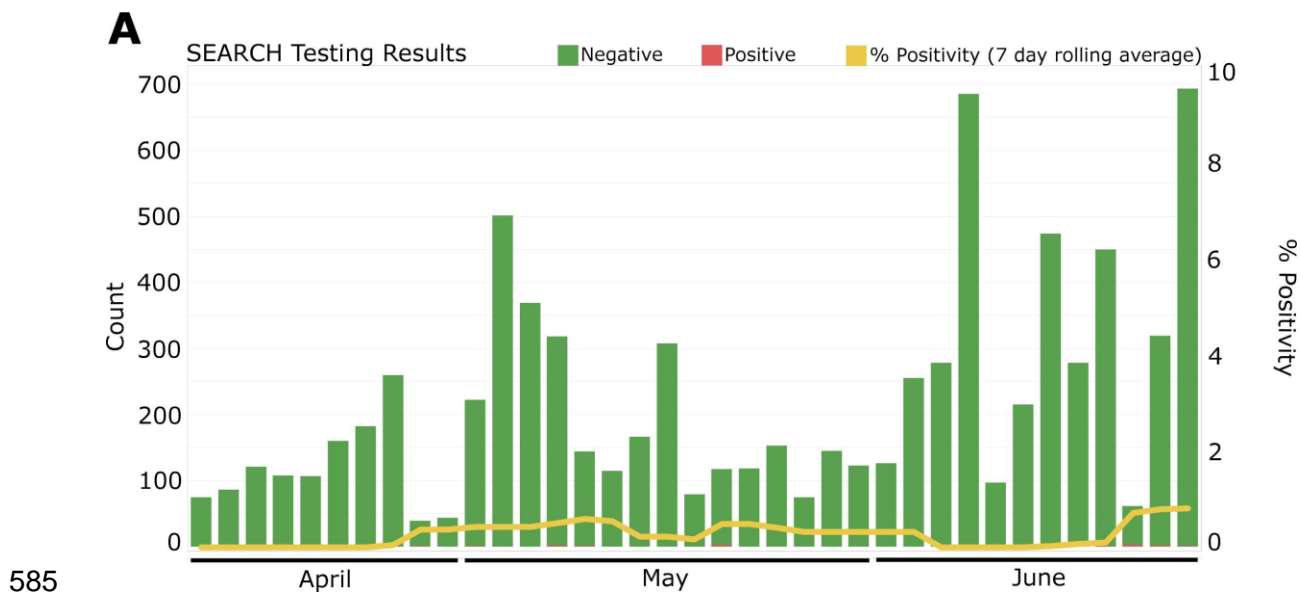
<i>Total</i>	<i>7548 (100)</i>	<i>20979 (100)</i>	<i>124989 (100)</i>	<i>8066 (100)</i>	<i>161582 (100)</i>
--------------	-------------------	--------------------	---------------------	-------------------	---------------------

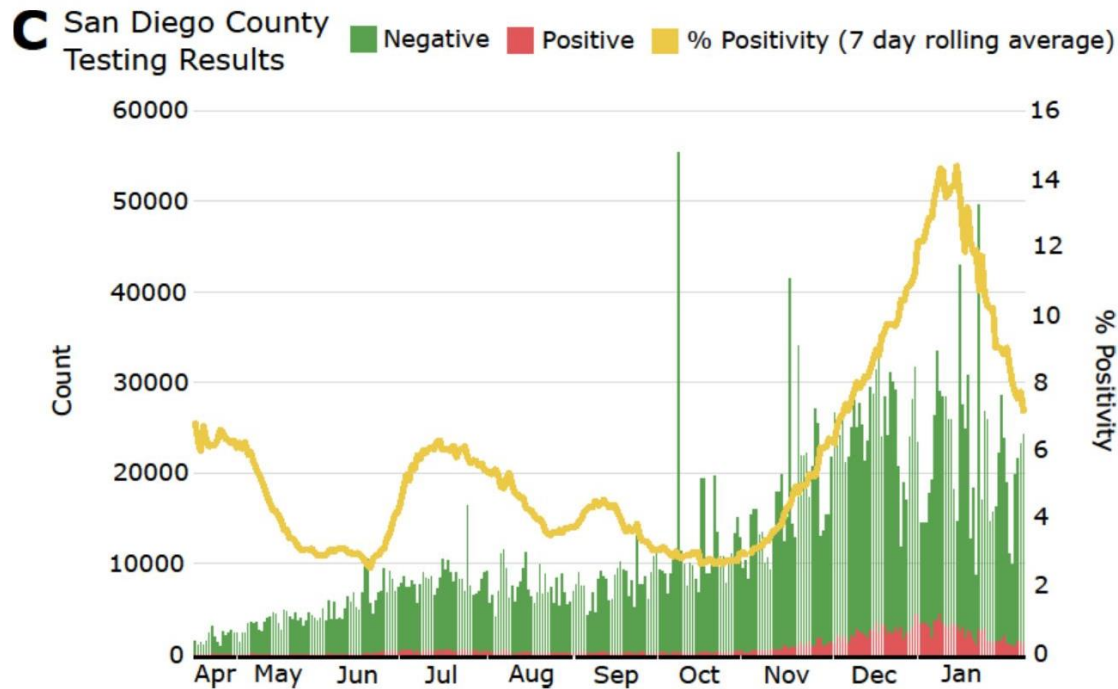
538
539 The percentage of positive tests from the SEARCH study was very low: only 17
540 participants (0.27%) had a positive COVID-19 test throughout the 2.5 month duration of the
541 study (one of these participants submitted two positive samples, resulting in the count of 18
542 positive NPV test results in Table 2), and positive cases were spread relatively evenly
543 throughout the timeframe of the study, with the rolling average always below 1% positivity (Fig
544 1A). Comparatively, SD County testing reported much higher positivity, with rolling average
545 positivity ranging from ~2-7% over the same time period (Fig 1C). In the EXCITE lab, positivity
546 changed over time, starting low from mid-September through mid-November, and then rising
547 following the Thanksgiving holiday (Nov 26, 2020), and rising again to a peak in early January
548 2021, after the winter holidays (Fig 1B). The number of tests performed per day increased
549 throughout the fall, as the program was ramped up to test students residing in campus-owned
550 housing or coming to campus every two weeks, and then decreased in late December 2020
551 when many students left the UCSD campus for the holidays. Overall testing was highest in early
552 January 2021, when students residing in campus-owned housing or coming to campus were
553 required to participate in intensive testing upon their return to campus (at days 1, 5, and 10 after
554 return), and then went to a weekly testing cadence thereafter (see “Return to Learn at UCSD”
555 section below for more details). The EXCITE data show a similar trend in positive test rates to
556 the data from data from SD County (Fig 1C), except that the increase in positive cases in the fall
557 started later (at the end of November 2020 for EXCITE, compared to the beginning of
558 November for SD County) and show a slightly earlier drop in positive cases in January 2021 at
559 EXCITE. The positivity rate of the SD County data was much higher than the rates reported by
560 both SEARCH and EXCITE over the same time frame; the rolling average positivity rate for
561 SEARCH never rose above 1%, and for EXCITE was less than 2% at its peak, as compared to
562 the SD County data, where test positivity ranged from 2-15% across the same time period (April

563 17, 2020 - February 5, 2021). We note that the populations being tested by SD County are
564 different from those tested in our study. Our data collection involved repeated screening of
565 asymptomatic populations, while samples collected by SD County are more often from
566 individuals who exhibit symptoms or have been exposed to a known COVID-19 case, likely
567 explaining the large discrepancy in positivity rates. In particular, students at UCSD who were
568 experiencing symptoms were referred to the Center for Advanced Laboratory Medicine (CALM),
569 a separate CLIA-certified laboratory on campus, to be tested. Similarly, students and staff at the
570 preschool-grade 12 partner schools were asked to stay home and obtain testing at SD County
571 testing sites if they experienced any symptoms.

572 The winter holidays are typically a very social time for people living in the US, and
573 despite the COVID-19 pandemic, millions of Americans traveled during the holidays in late
574 2020, contributing to a sharp increase in cases reflected both in our data and in the SD County
575 data. The decline in UCSD cases throughout January 2021 was due to early detection of cases
576 after return from winter break, minimal transmission on campus, and reduced community
577 transmission in SD County. The decline in SD County cases observed in January 2021 is likely
578 due to people returning to their homes following the winter holiday and the subsequent
579 decrease in travel and social gatherings, and to a lesser extent, an increase in vaccination
580 rates, which began in late 2020. Countries with higher vaccination rates in early 2021, including
581 the UK and Israel, saw sharp declines in new COVID-19 cases and hospital admissions in
582 February 2021, highlighting the remarkable efficacy of these vaccines, even after one dose
583 (28,29).

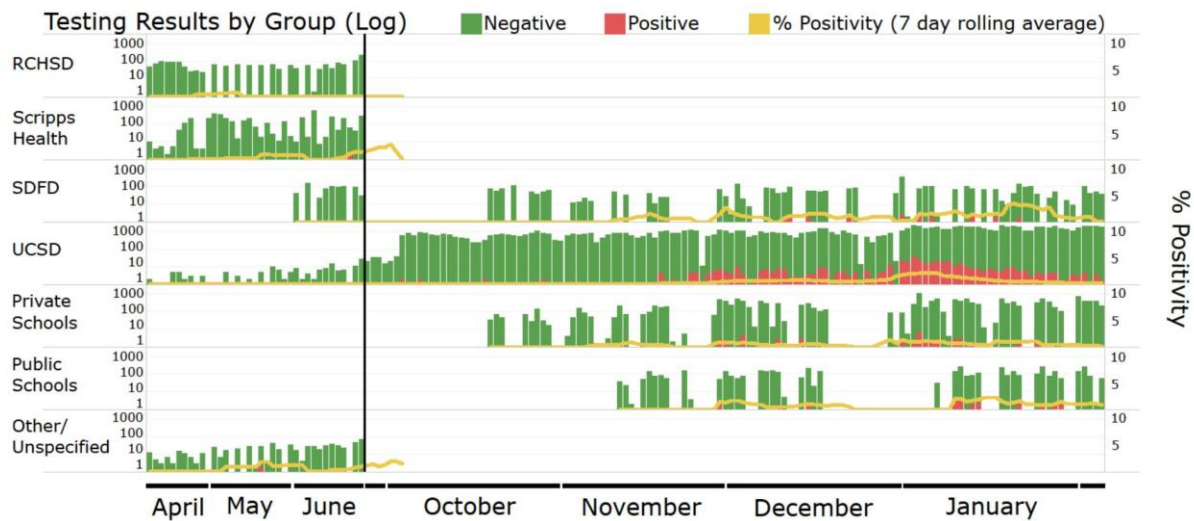
584





588
589 **Fig 1.** COVID-19 test results and rolling average of positivity rate for (A) SEARCH study
590 participants (Apr 17 - Jun 30, 2020), (B) EXCITE lab participants (Sep 15, 2020 - Feb 5, 2021),
591 and (C) San Diego County testing results (Apr 17, 2020 - Feb 5, 2021).
592

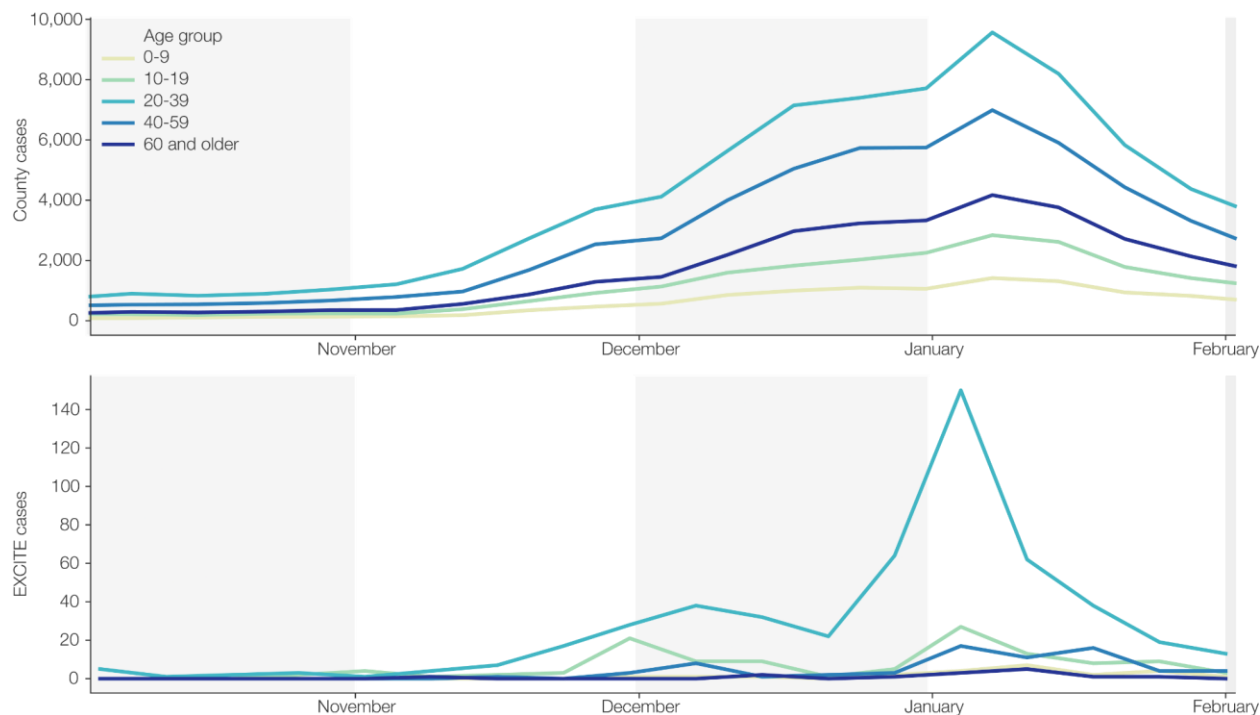
593 Almost all of the positive tests for this study came from the EXCITE lab dataset, and
594 most positive tests were obtained between mid-November, 2020, and mid-January, 2021.
595 UCSD participants made up most of the positive tests, which was expected because most of the
596 EXCITE testing was conducted on UCSD students and staff (Fig 2). Only SDFD and UCSD
597 participants were tested by both SEARCH and EXCITE (Fig 2). However, the UCSD population
598 tested during the SEARCH study was different than that tested by the EXCITE lab. During the
599 SEARCH study, some UCSD employees involved in the study chose to participate in testing.
600 While these employees likely also participated in testing through the EXCITE lab, they were not
601 the main targets of either testing effort; the SEARCH study was designed to screen healthcare
602 workers and first responders, and the EXCITE lab was established to screen students, faculty,
603 and staff at UCSD and some partner institutions, with a focus on testing schools.
604



605
606 **Fig 2.** Log-transformed graph of COVID-19 testing results over time (by day), separated by
607 source group. Participants being tested belonged to one of seven groups: RCHSD (Rady
608 Children’s Hospital San Diego); Scripps Health (Scripps HealthCare); SDFD (San Diego Fire-
609 Rescue Department); UCSD (University of California, San Diego); Private Schools (preschool-
610 grade 12); Public Schools (preschool-grade 12); Other/Unspecified (healthcare workers from
611 other locations).

612
613 COVID-19 case data from SD County show that the 20-39 age group represents the
614 highest number of cases (and case rates), followed by the 40-59 age group (Fig 3). The age
615 groups represented by children (0-9 and 10-19) reported the lowest number of cases in the
616 County. Within the EXCITE data from this study, participants in the 20-39 age group also made
617 up the majority of cases, with all other age groups falling well below (Fig 3). This is largely due
618 to the demographics of the EXCITE testing population, where the majority of participants were
619 university students. We note that the 10-19 age range represents a higher proportion of cases in
620 the EXCITE data than in the County data, also likely because of the large number of university
621 students in the 18-19 age range in our study.

622



623
624 **Fig 3.** Number of positive cases per week, separated by age group. Top: San Diego County
625 COVID-19 cases over time (Sep 15, 2020 to Feb 5, 2021). Bottom: EXCITE lab COVID-19
626 cases over the same timeframe.

627
628 No significant differences in viral load (estimated by Ct value) were observed for
629 participants from different age groups (Fig S4). Previous studies have varied in their reports of
630 viral loads in patients of different age groups. Some, like this current study, have not found any
631 significant correlation between viral load and age groups (30–33), while others have (34–37). In
632 the studies that did observe a difference, the results are conflicting: Euser et al. (37) reported
633 that children <12 years had lower viral loads than adults, while Heald-Sargent et al. (36)
634 reported children <5 years had higher viral loads than older children and adults. Additionally,
635 Hasanoglu et al. (35) reported decreasing viral load with increasing age in adults, while To et al.
636 (34) reported the opposite trend. Consistent with previous reports (10,31), we did not find any
637 significant difference in viral load between male and female participants ($t = 0.02$, $df = 645.7$, p
638 $= 0.98$).

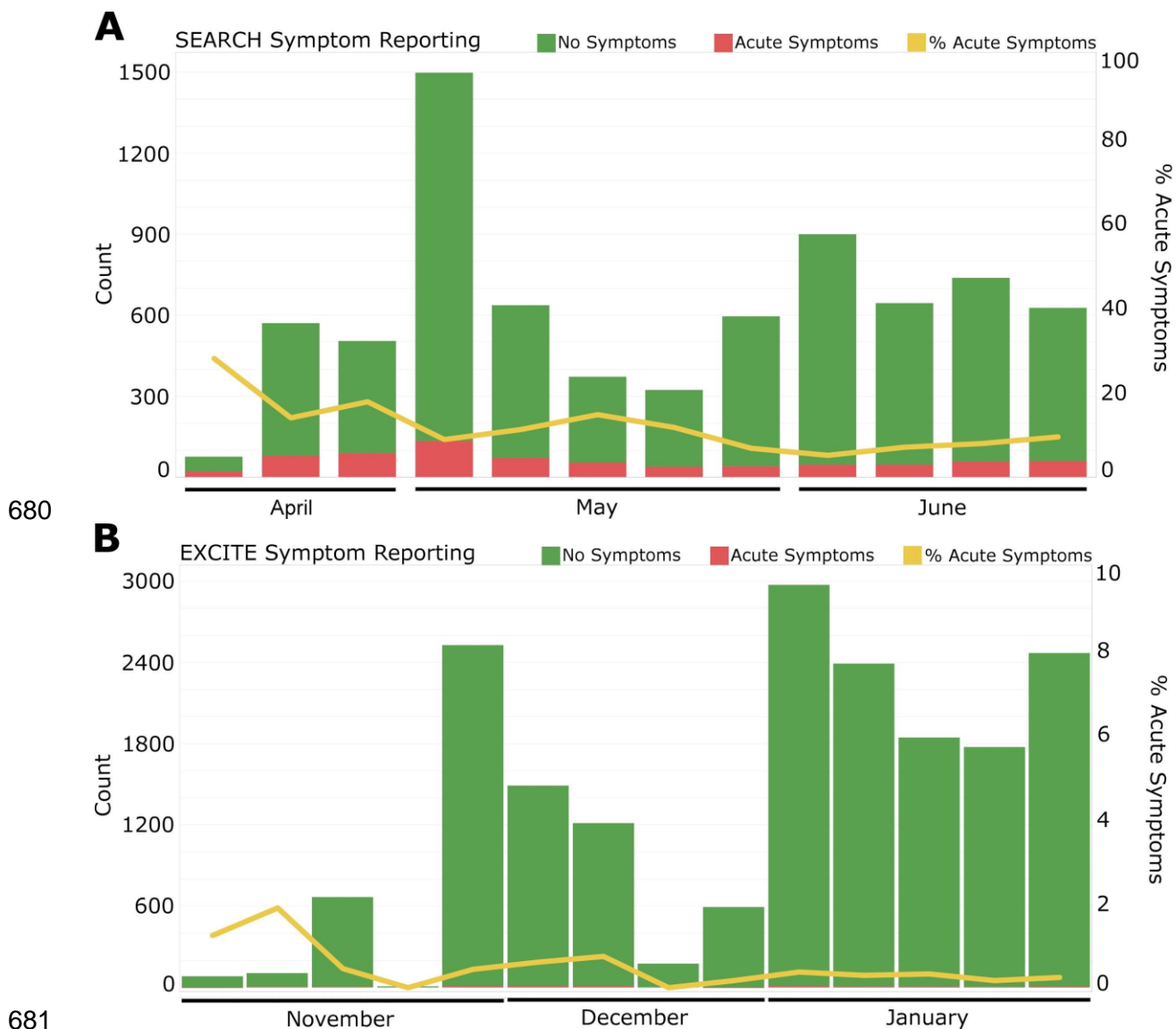
639 Only two of the three SARS-CoV-2 target genes were required to amplify for a test to be
640 considered positive. The S-gene was the most common 'dropout' (i.e. the gene that failed to

641 amplify), occurring in approximately 10% of positive cases; N-gene and ORF1ab dropouts
642 occurred in approximately 1-2% of positive cases, respectively. With the exception of the cases
643 in this study infected with the B.1.1.7 SARS-CoV-2 variant of concern, which show a
644 characteristic S-gene dropout with low Ct values (<30) for the other two viral genes (38),
645 samples with viral gene dropouts had higher average Ct values (i.e. lower viral load) as
646 compared to samples without dropouts (Fig S5); samples containing gene dropouts had an
647 average Ct value of 32.3 ± 1.1 , while samples without dropouts averaged 23.0 ± 5.3 ($t = -29.7$,
648 $df = 2.2$, $p = 0.001$). Seven cases were identified that were consistent with the B.1.1.7 variant
649 (9.2% of all cases with S-gene dropouts), and the average Ct value for these seven cases was
650 21.9 ± 5.5 .

651 **Symptom Reporting**

652 Symptom reporting differed between SEARCH and EXCITE (Fig 4). In total, SEARCH
653 participants filled out 7,489 symptom questionnaires (Table 3), and EXCITE participants filled
654 out 18,318 (Table 4). Therefore, 92.8% of SEARCH samples were accompanied by symptom
655 reporting, compared with just 11.9% of EXCITE samples. This discrepancy is due to the
656 different nature of each screening system. The SEARCH study was designed as a prospective
657 research study, so occupation and symptom information was requested from all participants.
658 The EXCITE lab was designed for high-throughput screening of asymptomatic populations, with
659 no UCSD participants being asked to report symptoms at the time of testing, and participants
660 from other partners being asked an abbreviated set of questions. Additionally, EXCITE
661 participants were generally assumed to be asymptomatic, because any symptomatic individuals
662 were encouraged to stay home and seek other means of testing. Conversely, at the time when
663 SEARCH was implemented (April 2020), it was the only means of obtaining a COVID-19 test for
664 many participants, resulting in a number of participants seeking out testing through SEARCH
665 specifically because they were exhibiting symptoms they felt might be related to COVID-19. The

666 timing of the SEARCH study also overlapped with the end of flu season, potentially explaining
667 the higher number of participants reporting symptoms at the beginning of the study as
668 compared to later in the study (Fig 4A). Indeed, when SEARCH participants waiting in line to be
669 tested were asked why they chose to participate, their reasons mostly fell within four common
670 themes: (1) early in the study, many believed their symptoms could represent COVID-19 illness
671 but were unable to qualify for clinical testing because they were “not sick enough” per the
672 testing triage protocols in place at the time; (2) later in the study, others believed their symptoms
673 more likely represented seasonal allergies than COVID-19 but wanted to confirm, and
674 understood the importance of reporting these symptoms nonetheless; (3) some reported intense
675 stress regarding the pandemic and believed their symptoms of headache, fatigue, or muscle
676 aches might be due to worry or poor sleep, but again wanted to confirm; (4) finally, several said
677 they sought the privacy of testing outside their own healthcare workplaces. These unanticipated
678 explanations for study participation illuminate some unmet needs for frontline workers in
679 healthcare environments during the uncertainties of an unprecedented pandemic.



680

681

682 **Fig 4.** Symptom reporting by (A) SEARCH participants and (B) EXCITE participants over time.

683

684 **Table 3.** Symptom reporting by SEARCH participants who completed a symptom questionnaire
 685 at the time of testing. Results are per test, not per participant, in the case of participants testing
 686 on multiple occasions. Invalid and Inconclusive tests are included in the “All Tests” column but
 687 are not represented in subsequent columns.

Symptoms	All Tests n (%)	Negative Tests n (%)	Positive Tests n (%)
No symptoms	6746 (90.08)	6723 (90.17)	10 (55.56)
Any symptoms	743 (9.92)	733 (9.83)	8 (44.44)
Fever	18 (0.24)	15 (0.20)	3 (16.67)
Chills	47 (0.63)	43 (0.58)	4 (22.22)
Cough	152 (2.03)	147 (1.97)	4 (22.22)
Sore throat	177 (2.36)	173 (2.32)	4 (22.22)

Trouble breathing	45 (0.60)	44 (0.59)	1 (5.56)
Stuffy nose	205 (2.74)	200 (2.68)	5 (27.78)
Runny nose	190 (2.54)	185 (2.48)	5 (27.78)
Nausea	77 (1.03)	74 (0.99)	3 (16.67)
Vomiting	13 (0.17)	13 (0.17)	0 (0)
Diarrhea	61 (0.81)	58 (0.78)	3 (16.67)
Fatigue	169 (2.26)	165 (2.21)	4 (22.22)
Myalgia	149 (1.99)	143 (1.92)	5 (27.78)
Rash	24 (0.32)	24 (0.32)	0 (0)
<i>Total</i>	<i>7489 (100)</i>	<i>7456 (100)</i>	<i>18 (100)</i>

688
689 **Table 4.** Symptom reporting by EXCITE participants who completed a symptom questionnaire
690 at the time of testing. Results are per test, not per participant, in the case of participants testing
691 on multiple occasions.

Symptoms	All Tests	Negative Tests	Positive Tests
	n (%)	n (%)	n (%)
No symptoms	18249 (99.62)	18093 (99.68)	90 (89.11)
Any symptoms	69 (0.38)	58 (0.32)	11 (10.89)
Fever	7 (0.04)	2 (0.01)	5 (4.95)
Cough	11 (0.06)	8 (0.04)	3 (2.97)
Trouble breathing	2 (0.01)	2 (0.01)	0 (0)
Fatigue	10 (0.05)	6 (0.03)	4 (3.96)
Headache	25 (0.14)	20 (0.11)	5 (4.95)
Anosmia	4 (0.02)	2 (0.01)	2 (1.98)
Sore throat	9 (0.05)	8 (0.04)	1 (0.99)
Stuffy/runny nose	28 (0.15)	23 (0.13)	5 (4.95)
Nausea	8 (0.04)	8 (0.04)	0 (0)
Diarrhea	6 (0.03)	6 (0.03)	0 (0)
<i>Total</i>	<i>18318 (100)</i>	<i>18151 (100)</i>	<i>101 (100)</i>

692
693 Among all SEARCH participants, the most common symptoms reported at the time of
694 testing were stuffy nose, runny nose, sore throat, fatigue, and cough (Table 3). The least
695 common symptoms reported were vomiting, trouble breathing, and fever. Among the
696 participants who tested positive and also completed a symptom questionnaire, the most
697 common symptoms at the time of testing were stuffy nose, runny nose, and myalgia (muscle
698 pain), and the least common symptoms were rash, vomiting, and trouble breathing (Table 3).
699 More than 90% of participants who tested negative reported no symptoms, compared with
700 ~55% of participants who tested positive; nearly 45% of participants who tested positive

701 reported at least one symptom at the time of their test, with five being the average number of
702 symptoms reported per person, out of a possible 14. The average age of SEARCH participants
703 who completed symptom questionnaires was 42.9 ± 12.2 . Of the 18 positive tests, 17 belonged
704 to different individuals. One participant tested positive twice, reporting symptoms at the time of
705 their first positive test, and reporting no symptoms at the time of their second positive test, nine
706 days later. This participant tested negative on their third test, 16 days after their first positive
707 test.

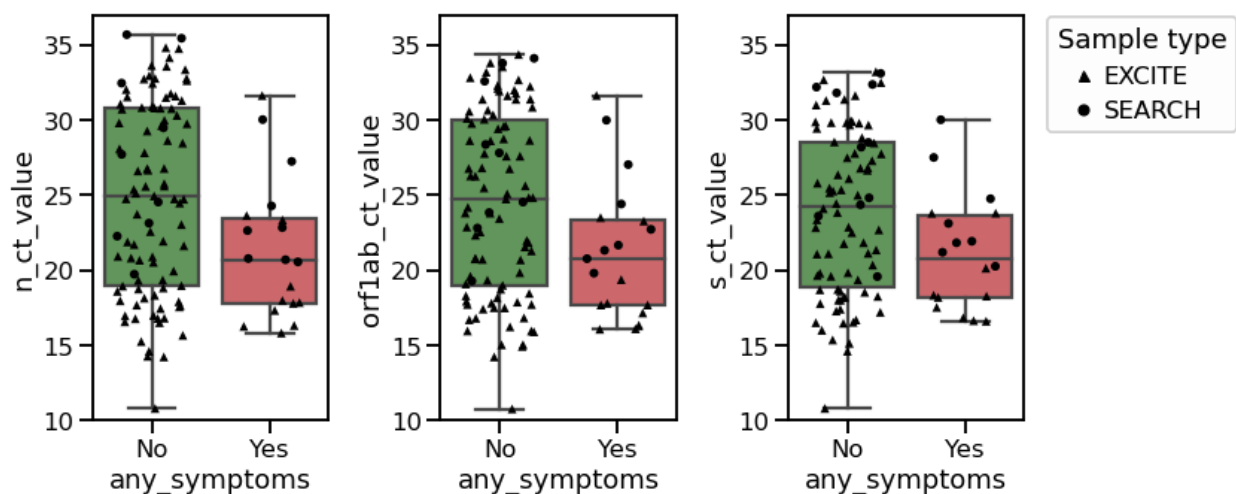
708 Among the EXCITE participants who completed symptom questionnaires, the most
709 common symptoms reported at the time of testing were headache and stuffy/runny nose (Table
710 4). The least common symptoms reported were trouble breathing and anosmia (loss of sense of
711 smell). Among the participants who tested positive and also completed a symptom
712 questionnaire, the most common symptoms at the time of testing were fever, headache, and
713 stuffy/runny nose, and the least common symptoms were trouble breathing, nausea, and
714 diarrhea (Table 4). More than 99% of participants who tested negative reported no symptoms,
715 compared with 89% of participants who tested positive; nearly 11% of participants who tested
716 positive reported at least one symptom at the time of their test, with two being the average
717 number of symptoms reported per person, out of a possible 10. The average age of EXCITE
718 participants who completed symptom questionnaires was 24.1 ± 16.4 .

719 Different symptom questions were asked of SEARCH and EXCITE participants. Some
720 symptoms characteristic of COVID-19, such as anosmia (loss of sense of smell), were not
721 included in the SEARCH study because sample collection began before this symptom was
722 recognized as an indicator of COVID-19. Other symptoms, such as myalgia (muscle soreness)
723 and rash, were included in the SEARCH questionnaire but not the EXCITE questionnaire. This
724 is because only the most common cold, flu, and COVID-19 symptoms were included in the
725 EXCITE questionnaire.

726 Of the 17 SEARCH patients who tested positive for SARS-CoV-2, 11 were available for
727 regular telephone follow-ups, undertaken for 2-3 weeks in order to gain an understanding of
728 symptom progression. Only three of these 11 people reported symptoms at the time of testing:
729 one reported fever, one reported fatigue, muscle aches, and chills, and one reported cough,
730 nasal congestion, and sore throat. Among the eight who did not report symptoms at the time of
731 testing, five developed symptoms within 24 h of participating in the study, ranging from ageusia
732 (loss of sense of taste) ($n = 2$) to sore throat with rhinorrhea (runny nose) ($n = 1$) to fever and
733 cough ($n = 2$). One patient developed anosmia within 72 h, followed by severe fatigue and later
734 a cough. Finally, two patients reported no symptoms of illness by two and three weeks,
735 respectively. None of the ill participants required hospitalization, though one had an extended
736 productive cough that began two days after testing positive and was placed on work leave for
737 three weeks. While more than half of the SEARCH participants who tested positive for SARS-
738 CoV-2 in our study did not report any symptoms at the time of testing, most went on to develop
739 symptoms within 2-3 days of their first positive test, suggesting that within our study, being pre-
740 symptomatic at the time of testing was more common than having an asymptomatic infection.
741 Interestingly, shortness of breath/trouble breathing, which is considered a hallmark symptom of
742 COVID-19, was reported by only one positive participant at the time of testing across both
743 SEARCH and EXCITE, suggesting that this symptom may typically develop later on in the
744 progression of the disease, as noted by some previous studies (39,40), and may not be a good
745 screening question to determine whether a person qualifies for a COVID-19 test. Reporting of
746 the prevalence of shortness of breath/trouble breathing as a major symptom is inconsistent: one
747 study also found shortness of breath to be a less common symptom (41), but other studies have
748 reported shortness of breath to be one of the most common symptoms (42–44). However, it
749 should be noted that these studies involved assessing symptoms in hospitalized patients, or
750 even patients who suffered fatal cases of COVID-19, which represents a small fraction of
751 infections.

752 Viral load was significantly correlated with the presence of symptoms for all three target
753 genes (Fig 5), and only one of the 19 positive tests that were accompanied by a positive
754 reporting of symptoms contained a gene dropout, suggesting that presentation of symptoms
755 may indicate higher viral load in the body. Some previous studies have identified a correlation
756 between viral load and symptom severity (45,46), but most of these studies were conducted on
757 hospitalized patients. Conversely, other studies have found viral loads to be unchanged (13) or
758 even higher (35) in asymptomatic patients as compared to symptomatic patients. Interestingly,
759 overall Ct values from SEARCH positives were higher than those from EXCITE positives,
760 regardless of symptom reporting ($t = -2.7$, $df = 18.1$, $p = 0.01$) (Fig 5). It is possible that
761 differences in the tested populations, sample type (nasopharyngeal versus anterior nares
762 swabs), collection media, or RNA extraction kits used in SEARCH compared to EXCITE
763 contributed to this observation.

764
765



766
767 **Fig 5.** Ct values of three SARS-CoV-2 gene targets as a function of symptom reporting ($n =$
768 119). Samples from positive participants who also reported having symptoms had significantly
769 lower Ct values (i.e. higher viral load) for all three gene targets, as compared with samples from
770 positive participants who reported no symptoms (independent t -test p -value for N-gene,
771 ORF1ab, and S-gene = 0.023, 0.031, 0.044, respectively).

772

773

774 **Healthcare Workers and First Responders**

775 In order to keep the healthcare worker and first responder data together, we have
776 included the SDFD first responders who were tested through the EXCITE lab in this section.
777 Therefore, this section contains data from 6,786 individuals, while the SEARCH study itself only
778 included 6,376 individuals. Of 11,964 total swabs, 3,935 were collected at RCHSD, 4,138 were
779 collected at Scripps Health locations, and 3,891 were collected by the EXCITE lab. A proportion
780 of study participants (1,167) chose to be tested on multiple occasions, some as many as 22
781 times, although the majority of high-repeat participants were those from SDFD who were tested
782 routinely through the EXCITE lab (Fig S6a). Of the 12,143 eligible Scripps employees who
783 received an invitation to participate in this study, 3,838 (31.6%) participated at least once. Of the
784 1,470 eligible SDFD employees, 1,162 (79.0%) participated in testing at least once: 120 (8.2%)
785 participated only in SEARCH, 410 (27.9%) participated only in EXCITE, and 632 (43.0%)
786 participated in both. Approximately 8,000 Rady employees received an email inviting them to
787 participate, but only approximately 6,000 opened the email. Additionally, this email was sent to
788 employees of Rady Children’s Hospital San Diego (RCHSD), Rady Children’s Institute for
789 Genomic Medicine (RCIGM), and Rady Children’s Specialists of San Diego (RCSSD), but on
790 the intake form, only RCHSD was one of the pre-specified options, meaning employees of
791 RCIGM and RCSSD likely would have selected the “Other” option as their employer, or simply
792 not specified. A conservative estimate of participation, therefore, suggests that out of
793 approximately 8,000 eligible Rady employees, 1,220 RCHSD employees (15.3%) participated.
794 A more liberal estimate of participation would include both RCHSD and “Other” employees, and
795 only those employees who opened their invitation email, resulting in 1,562 employees being
796 tested out of an estimated possible 6,000 (26.0%). However, a small number of employees from
797 Sharp HealthCare were informed of this study by word-of-mouth and were allowed to
798 participate; these employees would likely have chosen “Other” or “Unspecified” as their

799 organization as well. The true proportion of the target population tested is therefore likely
800 somewhere between 15.3-26.0% for Rady employees. For simplicity, tables and Figs in this
801 section combine the employees who selected “RCHSD” and “Other/Unspecified” into a single
802 category, “Rady”. A small number of UCSD Health employees (112) also opted to be tested one
803 or more times. These participants selected “UCSD” as their employer, but because UCSD
804 employees were not targeted by the SEARCH study, we cannot estimate the proportion of
805 employees tested for this population.

806 Participants were asked to add a job description on their intake forms. Because these
807 job descriptions were free-text and not pre-specified categories, a wide range of occupations
808 were reported. These occupations were manually combined into 14 major categories with the
809 remainder being assigned to “Other/Unspecified” (Table 5). Approximately one-third (34.0%) of
810 healthcare worker participants from Scripps and Rady were employed as nurses, with the next
811 most common job category being general healthcare worker (24.2%), followed by doctor
812 (11.9%). The proportions of nurses and doctors in this study is similar to their actual proportions
813 at the hospitals and clinics from this study. The most common occupation among COVID-19
814 positive participants was first responder (66.7%) - this is because SDFD members additionally
815 participated in repeated screening through the EXCITE lab in late 2020 and early 2021, and the
816 entirety of the positive first responder cases came from that later time period, when cases in SD
817 County were markedly higher. During the SEARCH study timeframe (April - June 2020), no
818 SDFD members tested positive through our pipeline, and the most common occupations testing
819 positive at that time were general healthcare workers and nurses (5 participants each). While
820 some of these participants were presumed to have contracted the virus from work, others were
821 able to trace their infection to other sources, such as a family gathering or a spouse with a
822 public-facing job.

823

824 **Table 5.** Occupations of healthcare workers and first responders.

Occupation	All Participants	Positive Participants
	n (%)	n (%)
Administrative	302 (4.45)	1 (1.96)
Dental worker	23 (0.34)	
Dentist	30 (0.44)	
Dietitian	34 (0.50)	
Doctor	689 (10.15)	1 (1.96)
First Responder	1242 (18.30)	34 (66.67)
Food Service	37 (0.55)	1 (1.96)
Healthcare worker (general)	1340 (19.75)	5 (9.80)
IT	43 (0.63)	
Management	332 (4.89)	2 (3.92)
Nurse	1884 (27.76)	5 (9.80)
Pharmacist	76 (1.12)	
Pharmacy worker	29 (0.43)	
Student	35 (0.52)	1 (1.96)
Other/Unspecified	690 (10.17)	1 (1.96)
<i>Total</i>	<i>6786 (100)</i>	<i>51 (100)</i>

825 Demographic questions were asked of the participants; these questions were not
826 mandatory for participation, but the majority of participants responded to most or all of the
827 questions. The median age of healthcare workers was 41 for all target populations (Scripps
828 Health, Rady, and SDFD) (Fig 6, Table 6). The median age of those participants who tested
829 positive was significantly lower overall (35 years) and for healthcare workers (32 and 28 years
830 for Scripps Health and Rady participants, respectively), but not significantly lower for SDFD
831 participants (38.5 years) (Table 6). The overall data are consistent with CDC observations that
832 the median age of COVID-19 infections has declined over time, from >40 years to <36 years
833 between the months of March and July 2020 (47), and are in line with the median age (36
834 years) of confirmed COVID-19 cases among SD County residents at large
835 ([https://www.sandiegocounty.gov/content/dam/sdc/hhsa/programs/phs/Epidemiology/COVID-
836 19%20Watch.pdf](https://www.sandiegocounty.gov/content/dam/sdc/hhsa/programs/phs/Epidemiology/COVID-19%20Watch.pdf)). Greene et al. (47) suggest that this decrease in the median age of confirmed
837 COVID-19 cases is a result of changing testing patterns, not changes in the epidemiology of
838 SARS-CoV-2 infection.

839 Female participants made up 74.0% of healthcare workers, which is representative of
840 the makeup of the workforce at the hospitals and clinics involved in this study, which are
841 approximately 74% female across Scripps Health and approximately 83% female at RCHSD.
842 Conversely, male participants made up 84.9% of first responders from SDFD, which is slightly
843 lower than the national proportion of male firefighters (96%) (<https://nfpa.org>). Of the
844 participants who tested positive for SARS-CoV-2, 70.6% of healthcare employees were female,
845 while 85.7% of SDFD employees were male. Overall, males were significantly more likely to test
846 positive than females (Table 6); however, when separated by source (Scripps Health, Rady,
847 SDFD), no differences were observed. This is because the majority of the positive tests came
848 from SDFD workers, who were predominantly male. Previous studies have suggested that
849 males may be more susceptible to this virus (48), but our results are proportional to the
850 populations tested in this study.

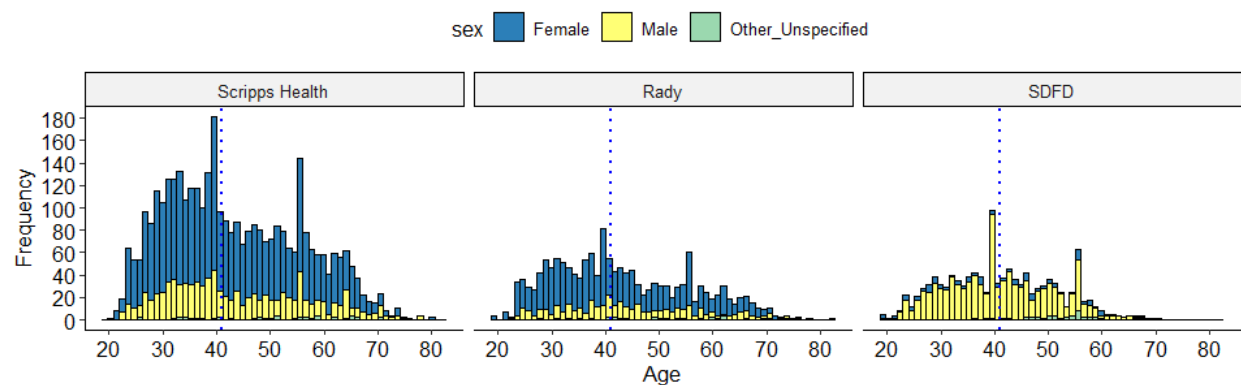
851 The majority of participants (72.1%) did not report their ethnicity, and almost one third
852 (28.4%) did not report their race (Table 6). For the SEARCH study, race and ethnicity were
853 presented as a single “check all that apply” question, which resulted in many people choosing
854 only a race, only an ethnicity, or neither. Most participants did not select an ethnicity, and those
855 that did select an ethnicity overwhelmingly selected Hispanic and did not also select a race. For
856 the SDFD participants who were tested through the EXCITE lab, race and ethnicity were
857 included as separate questions, which we believe improved reporting compliance. The EXCITE
858 demographic data are presented for every SDFD participant who was tested through EXCITE,
859 regardless of whether they were also originally tested through SEARCH. As a result, fewer
860 SDFD participants did not specify their ethnicity or race, as compared to healthcare workers
861 from Scripps Health and Rady (Table 6). SD County is ethnically diverse, with 34.1% of the
862 population identifying as Hispanic (<https://www.census.gov/>). However, only 15.3% of the
863 participants in this study selected Hispanic as their ethnicity. It is possible that the population in
864 our study is not representative of the population of SD County, but it is also possible that

865 Hispanic participants were less likely to report their ethnicity. There are many reasons why
866 people choose not to divulge this information in their medical or employment records, or when
867 participating in studies, including confusion over what category they fall into (especially when
868 there are limited and pre-specified categories from which to choose) as well as fear of
869 marginalization or receiving unequal quality of care (49). Additionally, both race and ethnicity
870 having been combined into a single “check all that apply” question for the SEARCH study likely
871 caused additional confusion. Most people who selected both a race and an ethnicity identified
872 as White and Hispanic. In the case of the SEARCH study, it may not have been clear to
873 participants that they were meant to select more than one option, and therefore most
874 participants selected the one answer they identified most strongly with.

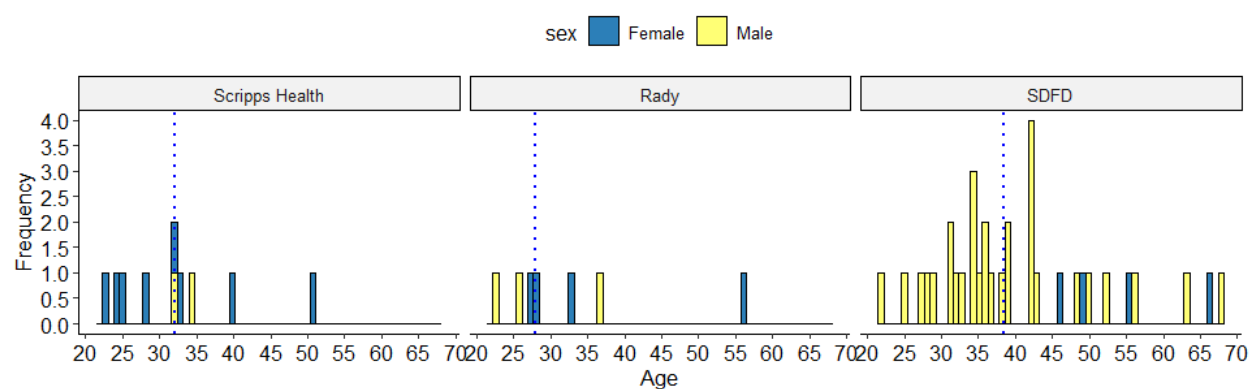
875 More healthcare workers identified as Asian (16.9% for Scripps Health and 11.9% for
876 Rady, as compared to 2.7% for SDFD), while more SDFD participants identified as Other/Mixed
877 Race (9.0% for SDFD, compared to 2.0% for Scripps Health and 1.6% for Rady). In all three
878 populations, the majority of participants identified as White (44.8%, 47.7%, and 72.9% for
879 Scripps Health, Rady, and SDFD, respectively). However, direct comparisons between
880 healthcare workers and SDFD first responders may be inappropriate, since the methods used to
881 obtain demographic information were different for these populations. Overall, participants
882 identifying as White, Black/African American, and Other/Mixed Race were more likely to test
883 positive ($p = 0.03$), but no differences were observed when separated by source (Table 6). Non-
884 Hispanic SDFD participants were more likely to test positive than Hispanic or Unspecified
885 participants ($p = 0.02$), but no similar differences were observed among healthcare workers.

886

A Age distribution of participants (n=6672)



B Age distribution of positive participants (n=51)



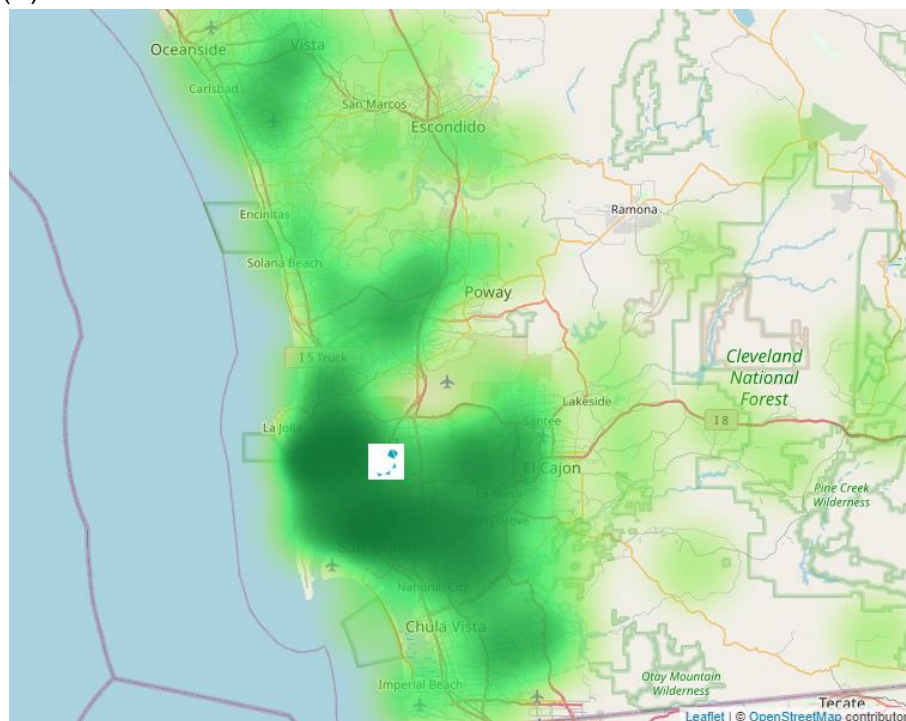
887
888 **Fig 6.** Age and sex distribution of (A) all participants and (B) positive participants from Scripps
889 Health and Rady healthcare systems, and from the San Diego Fire-Rescue Department
890 (SDFD). SEARCH participants who selected UCSD as their employer were excluded from this
891 Fig because they were not a targeted population for the SEARCH study. The dotted line in each
892 plot represents the median age.

893 **Table 6.** Demographic information of SEARCH healthcare worker participants (Scripps Health, Rady) and the San Diego Fire-
894 Rescue Department (SDFD) first responders. Participants who selected UCSD as their employer are included in the Overall
895 category. The Positive column includes individuals who tested positive for COVID-19 at least once, while the Negative column
896 includes individuals who never tested positive. Chi-square and *t*-tests were performed to test for differences among groups.
897 Differences were considered significant at $p \leq 0.05$ and are indicated in bold. The first column (Total) was not included in statistical
898 analysis and was included to show the demographics of the entire population, regardless of test result.

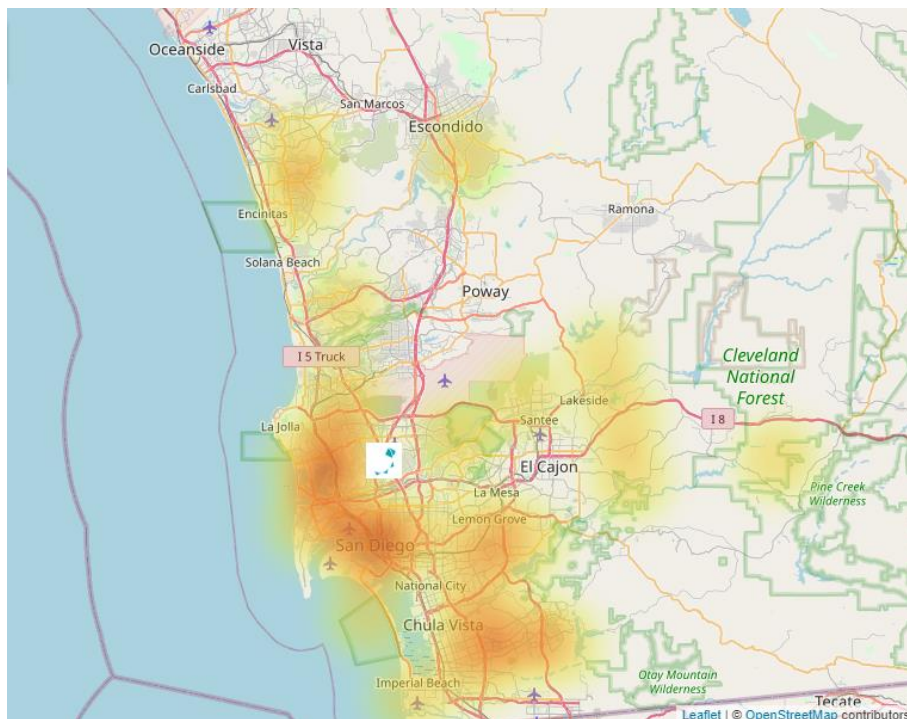
	Total	Overall			Scripps			Rady			SDFR		
		Positive	Negative	<i>p</i> -value	Positive	Negative	<i>p</i> -value	Positive	Negative	<i>p</i> -value	Positive	Negative	<i>p</i> -value
Age, mean (SD), median	42.7 (12.1) 41	38.0 (11.4) 35	42.7 (12.1) 41	0.005	32.2 (8.4) 32	43.3 (12.4) 41	0.005	32.9 (11.2) 28	43.1 (12.5) 41	0.03	40.7 (11.5) 38.5	41.2 (10.2) 41	0.79
Age, n (%)													
< 30	947 (14.6)	13 (1.4)	934 (98.6)	0.07	4 (0.8)	494 (99.2)	0.15	4 (1.7)	229 (98.3)	0.04	5 (2.9)	165 (97.1)	0.14
30-39	2027 (31.3)	20 (1.0)	2007 (99.0)		4 (0.3)	1156 (99.7)		2 (0.4)	471 (99.6)		14 (3.9)	345 (96.1)	
40-49	1562 (24.2)	9 (0.6)	1553 (99.4)		1 (0.1)	815 (99.9)		0 (0.0)	381 (100.0)		8 (2.3)	345 (97.7)	
50-59	1224 (18.9)	6 (0.5)	1218 (99.5)		1 (0.1)	702 (99.9)		1 (0.4)	271 (99.6)		4 (1.7)	235 (98.3)	
60+	707 (10.9)	3 (0.4)	704 (99.6)		0 (0.0)	466 (100.0)		0 (0.0)	204 (100.0)		3 (8.6)	32 (91.4)	
Race, n (%)													
Unspecified	1926 (28.4)	10 (0.5)	1916 (99.5)	0.03	6 (0.5)	1183 (99.5)	0.19	4 (0.7)	586 (99.3)	0.70	0 (0.0)	114 (100.0)	0.06
White	3432 (50.6)	30 (0.9)	3402 (99.1)		1 (0.1)	1719 (99.9)		3 (0.4)	795 (99.6)		26 (3.1)	821 (96.9)	
Black/AA	173 (2.6)	4 (2.3)	169 (97.7)		0 (0.0)	102 (100.0)		0 (0.0)	32 (100.0)		4 (10.3)	35 (89.7)	
Other/mixed	210 (3.1)	4 (1.9)	206 (98.1)		0 (0.0)	77 (100.0)		0 (0.0)	27 (100.0)		4 (3.9)	100 (96.1)	
Asian	892 (13.1)	3 (0.3)	889 (99.7)		3 (0.5)	647 (99.5)		0 (0.0)	199 (100.0)		0 (0.0)	31 (100.0)	
Indigenous/NA	20 (0.3)	0 (0.0)	20 (100.0)		0 (0.0)	13 (100.0)		0 (0.0)	4 (100.0)		0 (0.0)	3 (100.0)	
Pacific Islander	133 (2.0)	0 (0.0)	133 (100.0)		0 (0.0)	88 (100.0)		0 (0.0)	21 (100.0)		0 (0.0)	24 (100.0)	
Ethnicity, n (%)													
Unspecified	4891 (72.1)	11 (0.2)	4880 (99.8)	< 0.0001	6 (0.2)	3254 (99.8)	0.10	5 (0.4)	1361 (99.6)	0.39	0 (0.0)	169 (100.0)	0.02
Hispanic	1036 (15.3)	11 (1.1)	1025 (98.9)		4 (0.7)	554 (99.3)		2 (0.7)	294 (99.3)		5 (3.0)	161 (97.0)	
Non-Hispanic	859 (12.7)	29 (3.4)	830 (96.6)		0 (0.0)	21 (100.0)		0 (0.0)	9 (100.0)		29 (3.5)	798 (96.5)	
Sex, n (%)													
Female	4270 (62.9)	16 (0.4)	4254 (99.6)	< 0.0001	8 (0.3)	2822 (99.7)	1.00	4 (0.3)	1244 (99.7)	0.47	4 (3.0)	129 (97.0)	0.78
Male	2373 (35.0)	35 (1.5)	2338 (98.5)		2 (0.2)	950 (99.8)		3 (0.8)	380 (99.2)		30 (3.0)	957 (97.0)	
Other/unspecified	143 (2.1)	0 (0.0)	143 (100.0)		0 (0.0)	57 (100.0)		0 (0.0)	40 (100.0)		0 (0.0)	42 (100.0)	

900 Participant-provided zip codes of residence were overlaid on a map of SD County (Fig
901 7). Study participants were spread throughout the County, with the highest concentration in San
902 Diego and the communities slightly further north towards La Jolla, which was expected given
903 that many of the healthcare systems monitored in this study are located in or near these
904 regions. However, the broad distribution of participants across SD County suggests that the
905 mobile testing sites were successful in enabling a more representative population to participate.
906 The distribution of positive participants largely matched the overall distribution of participants,
907 with concentrations in more heavily tested/populated areas. We note that even when
908 participants chose to be tested multiple times, they are represented only once in Fig 7.

909 (A)



910
911 (B)



912
913 **Fig 7.** Zip codes of residence of (A) all healthcare worker and first responder participants tested
914 through the SEARCH study and EXCITE lab, and (B) all healthcare worker and first responder
915 participants who tested positive for COVID-19. The deepness of color is proportionate to the
916 number of participants who chose that zip code as their area of residence. The icon on both
917 images represents the location of Rady Children's Hospital San Diego, where the permanent
918 testing location was established during the SEARCH study.

919

920 **UCSD and Preschool-Grade 12 Schools**

921 **Population Demographics**

922 Data from UCSD, 11 private preschool-grade 12 (P-12) schools, and a group of 13
923 public P-12 schools located in SD County are included in this section. All participants were
924 tested via the EXCITE lab at UCSD, and this section contains data from 27,252 individuals, with
925 21,221 coming from UCSD, 1,281 coming from public P-12 schools, and 4,750 coming from
926 private P-12 schools. Because EXCITE was designed for repeated testing of asymptomatic
927 populations, the majority of participants (81.7%) were tested on multiple occasions, some over
928 40 times (Fig S6b). The participants who tested most frequently were likely a combination of

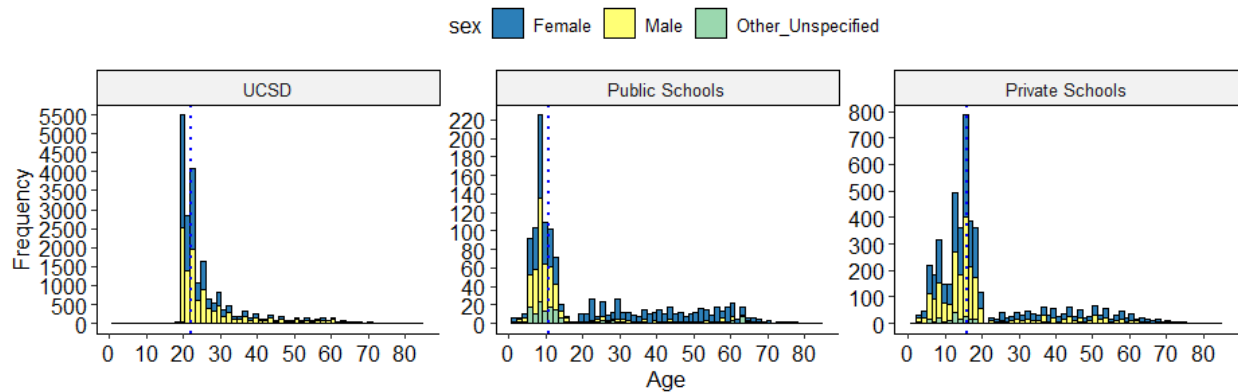
929 EXCITE lab employees and UCSD student athletes, who were required to test frequently to
930 decrease the chance that their activities would be interrupted due to COVID-19 infections.

931 Demographic information was obtained from the participants. In this section, each
932 participant was counted once, regardless of how many times they participated in testing; for
933 positivity status, “positive” participants are those who tested positive through EXCITE at least
934 once, while “negative” participants are those who never tested positive. For UCSD participants,
935 demographic information was gathered from pre-existing student/employee records. For P-12
936 school participants, demographic information was gathered either as part of the consent
937 process for participation in this testing program, from student/employee records, or a
938 combination of the two. The median age was 22 for UCSD participants, 11 for public school
939 participants, and 16 for private school participants (Fig 8, Table 7). Most participants from each
940 group belonged to the ‘student’ age ranges appropriate for each educational facility. Overall,
941 participants were evenly split between male and female; however, within the P-12 schools, sex
942 was evenly split for student age ranges but skewed female for adult (teachers and staff) age
943 ranges (Fig 8). We found no differences in positivity rate by sex, overall or within any of the
944 three populations studied. Our finding was similar to the overall case reporting by sex by SD
945 County (<https://www.sandiegocounty.gov/>). However, SD County did report a higher fatality rate
946 for males than for females, and previous research investigating sex disparities also found that
947 while males are not more likely to test positive, they are more likely to be hospitalized or die
948 from COVID-19 (50). We have no information on whether any of the participants testing positive
949 through the EXCITE lab were hospitalized.

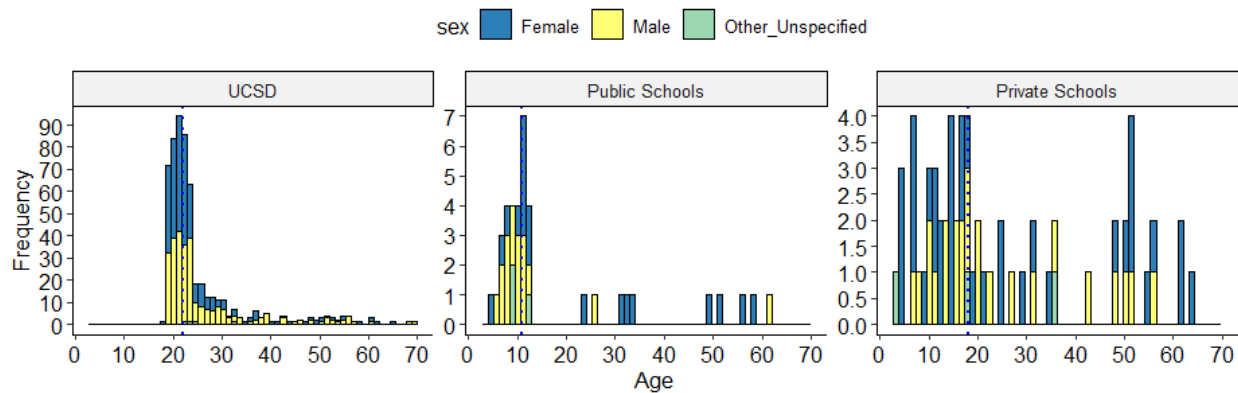
950 Adults 19+ were overall more likely to test positive than younger age groups ($p <$
951 0.0001), partly because the majority of the participants were adults from UCSD (Table 7). While
952 almost all UCSD participants were aged 19+, the average age of people testing positive at
953 UCSD was slightly lower than those testing negative (25.2 vs. 26.4, respectively; $p = 0.002$). For
954 private school participants, we found that students tested positive less frequently than adults,

955 but this trend was not extended to public school participants. At private schools, adults were
956 more likely to test positive than children (2.3% of adults as compared to 1.0% of children, $p =$
957 0.002), but at public schools, children aged 11-13 were the most likely to test positive ($p = 0.04$).
958 This could be due to differences in testing uptake by the schools: for most private schools,
959 students and staff who attended in-person learning at school were required to participate in
960 regular testing, but for public schools, participation was voluntary. This testing program was
961 designed for asymptomatic screening, and participants who felt sick were discouraged from
962 coming to school and were encouraged to seek testing from SD County testing sites or primary
963 care providers. Therefore, these data do not show the complete picture, but they do show that
964 with proper protective measures, students attending in-person schooling are not testing positive
965 more frequently than the general population (Fig 3), and in the case of the private schools in this
966 study, may be testing positive less frequently than adults in the same settings. Our private
967 school results are similar to other studies, which have also shown that transmission rates in
968 schools are low (5,6), and that students were less likely to test positive than staff in educational
969 settings (8). Also of note, there were no outbreaks in participating schools in this study that were
970 attributable to in-school transmission. The low positivity among school-aged children provides
971 an argument for opening P-12 schools for in-person learning; with teachers and some school-
972 aged children eligible for vaccination across the US, and children representing the age group
973 that is currently least likely to test positive, our study and others suggest that schools can re-
974 open with minimal risk of community transmission (5–8). However, it should be noted that the
975 low rate of positivity among children observed at the County level (Fig 2) could be a result of
976 school closures during this time, which would have drastically reduced the number of contacts
977 each child would have.
978

A Age distribution of participants (n=27252)



B Age distribution of positive participants (n=664)



979
980 **Fig 8.** Age and sex distribution of (A) all EXCITE UCSD/school participants, and (B) all COVID-
981 19 positive participants from the same population. The dotted line in each plot represents the
982 median age.

983
984 A large proportion of participants chose not to identify their race (39.9%) or ethnicity
985 (60.9%) (Table 7). Across all three populations studied, approximately 40% of participants did
986 not report their race, but the reporting of ethnicity varied by population: two-thirds (67%) of
987 UCSD participants did not report their ethnicity, compared to ~40% of private school participants
988 and just ~20% of public school participants. Because UCSD student/employee records default
989 to unspecified race and ethnicity unless a participant changes their status themselves, or their
990 status is changed by a healthcare worker during a medical visit, this could account for a
991 significant proportion of the participants who did not report a race or ethnicity. However, the
992 discrepancy between race reporting and ethnicity reporting at UCSD suggests that there is a
993 portion of this population reporting race, but declining to report ethnicity. Similar proportions of

994 participants did not report their race at both public and private schools, but twice as many
995 private school participants (proportionally) declined to report their ethnicity. As with the
996 SEARCH study, legal status in the US was not a requirement for participation in the EXCITE
997 testing program, nor was it a question asked of potential participants.

998 More UCSD participants identified as Asian (22.4%, as compared to 7.6% and 4.1% for
999 private and public schools, respectively), while more P-12 school participants identified as White
1000 (44.9% and 46.7% for private and public schools, respectively, as compared to 22.9% for
1001 UCSD). While the overall number of participants identifying as Black/African American,
1002 Indigenous/Native American, or Pacific Islander was comparatively low, more public school
1003 participants selected these options as their race identity (Table 7). Additionally, approximately
1004 half of public school participants identified as Hispanic, compared to just 6.8% of UCSD and
1005 private school participants (Table 7). Overall, participants identifying as Black/African American
1006 or Other/Mixed Race were more likely to have a positive test, as well as those with an
1007 unspecified race ($p < 0.0001$), although when separated by group the result was not statistically
1008 significant for P-12 schools. Additionally, participants identifying as Hispanic were also more
1009 likely to test positive, although this difference was only statistically significant for UCSD
1010 participants ($p < 0.0001$), not for P-12 schools. Even though the result was not statistically
1011 significant, there was a trend toward a larger proportion of Black/African American and Hispanic
1012 participants from the public schools testing positive for COVID-19 (Table 7). Similar racial and
1013 ethnic disparities have been noted previously by other researchers, highlighting the
1014 disproportionate toll the COVID-19 pandemic has had on already-marginalized population in the
1015 US (51–55). In particular, Gil et al. (51) identified potential reasons why Hispanic people may
1016 test positive for COVID-19 more frequently, including: higher rates of coexisting medical
1017 conditions; lower rates of health insurance; immigration status; and language barriers. Similarly,
1018 Millett et al. (54) note that counties with a larger Black population were also more likely to have
1019 higher rates of air pollution, comorbidities, and lower rates of health insurance. Factors such as

1020 language barriers and lack of health insurance prevent access to testing or hospital care, while
1021 factors such as air pollution and comorbidities can increase the severity of an infection.

1022 **Table 7.** Demographic information of EXCITE participants. The Positive column includes individuals who tested positive for COVID-
 1023 19 at least once, while the Negative column includes individuals who never tested positive. Chi-square and *t*-tests were performed to
 1024 test for differences among groups. Differences were considered significant at $p \leq 0.05$ and are indicated in bold. The first column
 1025 (Total) was not included in statistical analysis and was included to show the demographics of the entire population, regardless of test
 1026 result.

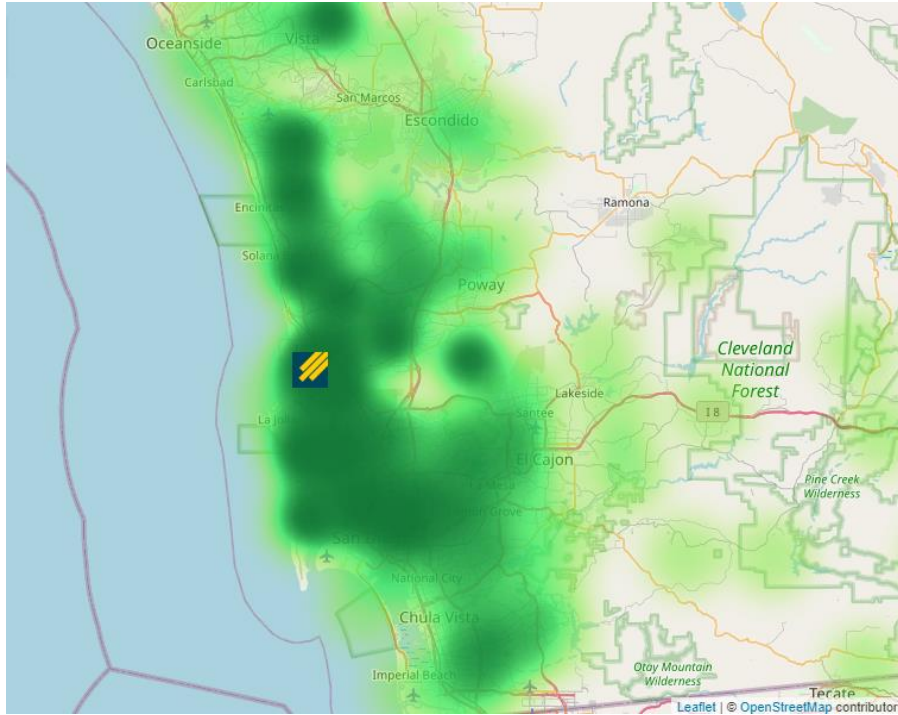
	Total	Overall			UCSD			Public Schools			Private Schools		
		Positive	Negative	<i>p</i> -value	Positive	Negative	<i>p</i> -value	Positive	Negative	<i>p</i> -value	Positive	Negative	<i>p</i> -value
Age, mean (SD), median	25.1 (11.9) 22	24.8 (10.9) 22	25.2 (11.9) 22	0.95	25.2 (9.1) 22	26.4 (10.1) 22	0.002	18.1 (16.3) 11	21.8 (18.9) 11	0.63	25.1 (17.8) 18	20.7 (15.3) 16	0.05
Age group, n (%)													
2-10	1497 (5.5)	30 (2.0)	1467 (98.0)	< 0.0001	--	--	1.00	17 (3.1)	535 (96.9)	0.04	13 (1.4)	932 (98.6)	0.002
11-13	814 (3.0)	18 (2.2)	796 (97.8)		--	--		11 (6.4)	162 (93.6)		7 (1.1)	634 (98.9)	
14-18	1989 (7.3)	15 (0.8)	1974 (99.2)		1 (1.7)	57 (98.3)		0 (0.0)	32 (100.0)		14 (0.7)	1885 (99.3)	
19+	22829 (84.2)	597 (2.6)	22232 (97.4)		558 (2.6)	20574 (97.4)		10 (2.2)	445 (97.8)		29 (2.3)	1213 (97.7)	
Race, n (%)													
Unspecified	10866 (39.9)	294 (2.7)	10572 (97.3)	< 0.0001	253 (2.9)	8329 (97.1)	< 0.0001	17 (3.2)	519 (96.8)	0.35	24 (1.4)	1724 (98.6)	0.54
White	7601 (27.9)	149 (2.0)	7452 (98.0)		102 (2.1)	4766 (97.9)		17 (2.8)	581 (97.2)		30 (1.4)	2105 (98.6)	
Black/AA	497 (1.8)	14 (2.8)	483 (97.2)		9 (2.6)	339 (97.4)		5 (8.5)	54 (91.5)		0 (0.0)	90 (100.0)	
Other/mixed	2940 (10.8)	109 (3.7)	2831 (96.3)		103 (4.0)	2454 (96.0)		--	--		6 (1.6)	377 (98.4)	
Asian	5166 (19.0)	96 (1.9)	5070 (98.1)		91 (1.9)	4659 (98.1)		1 (1.9)	52 (98.1)		4 (1.1)	359 (98.9)	
Indigenous/NA	108 (0.4)	2 (1.8)	106 (98.2)		1 (1.4)	70 (98.6)		0 (0.0)	19 (100.0)		1 (5.6)	17 (98.4)	
Pacific Islander	74 (0.3)	0 (0.0)	74 (100.0)		0 (0.0)	45 (100.0)		0 (0.0)	16 (100.0)		0 (0.0)	13 (100.0)	
Ethnicity, n (%)													
Unspecified	16601 (60.9)	403 (2.4)	16198 (97.6)	< 0.0001	372 (2.6)	14100 (97.4)	< 0.0001	8 (2.8)	278 (97.2)	0.35	23 (1.3)	1820 (98.7)	0.13
Hispanic	2398 (8.8)	103 (4.3)	2295 (95.7)		71 (4.9)	1376 (95.1)		24 (3.8)	606 (96.2)		8 (2.5)	313 (97.5)	
Non-Hispanic	8253 (30.3)	158 (1.9)	8095 (98.1)		116 (2.2)	5186 (97.8)		8 (2.2)	357 (97.8)		34 (1.3)	2552 (98.7)	
Sex, n (%)													
Female	13367 (49.1)	336 (2.5)	13031 (97.5)	0.50	279 (2.7)	9904 (97.3)	0.65	20 (2.8)	688 (97.2)	0.33	37 (1.5)	2439 (98.5)	0.73
Male	13332 (48.9)	318 (2.4)	13014 (97.6)		276 (2.5)	10597 (97.5)		17 (4.1)	399 (95.9)		25 (1.2)	2018 (98.8)	
Other/unspecified	553 (2.0)	10 (1.8)	543 (98.2)		4 (2.4)	161 (97.6)		3 (1.9)	154 (98.1)		3 (1.3)	228 (98.7)	

1027

1028 Participant-provided zip codes of residence were overlaid on a map of SD County (Fig
1029 9). Participants involved in testing through the EXCITE lab came from all across SD County. For
1030 P-12 schools, testing was conducted on-site at each school, and for UCSD participants, testing
1031 was conducted on campus. Participant density was highest in regions surrounding UCSD in La
1032 Jolla, with densely tested regions extending north and south along the coast away from UCSD,
1033 and decreasing in density when moving inland and when approaching the US-Mexico border
1034 (Fig 9a). Interestingly, participants who tested positive did not necessarily follow the same
1035 density pattern as overall testing (Fig 9b). The highest density of positive participants was
1036 located around UCSD, which was expected given the large proportion of on-campus students
1037 participating in testing through the EXCITE lab. Apart from the UCSD campus, the areas with
1038 the highest proportion of positive participants included San Diego, National City, and Chula
1039 Vista, all located south of UCSD. Areas such as Encinitas and Solana Beach, to the north of
1040 UCSD, were heavily tested, but represented a disproportionately small portion of positive
1041 participants. Conversely, Chula Vista was not heavily tested, but represented a
1042 disproportionately large portion of positive participants. There are many possible explanations
1043 for this discrepancy. Median household income (2019) in Encinitas and Chula Vista was
1044 \$116,022 and \$81,272, respectively (<https://www.census.gov/>). A previous study found that a
1045 decrease of \$10,000 median household income in New York City was correlated with a 1.6%
1046 increase in COVID-19 positivity rate (55). If this correlation is applied to San Diego County, we
1047 would expect positivity rates to be approximately 5.4% higher in Chula Vista as compared to
1048 Encinitas. This same study found an increase in COVID-19 positivity in more densely populated
1049 areas (55); these areas are more likely to have multi-family housing such as apartment
1050 buildings, where physical distancing is more challenging. In Encinitas, population density in
1051 2010 was 3,164 people per square mile, while in Chula Vista, population density was 4,915/sq
1052 mi (<https://www.census.gov/>). Chula Vista also has significantly more Black/African American

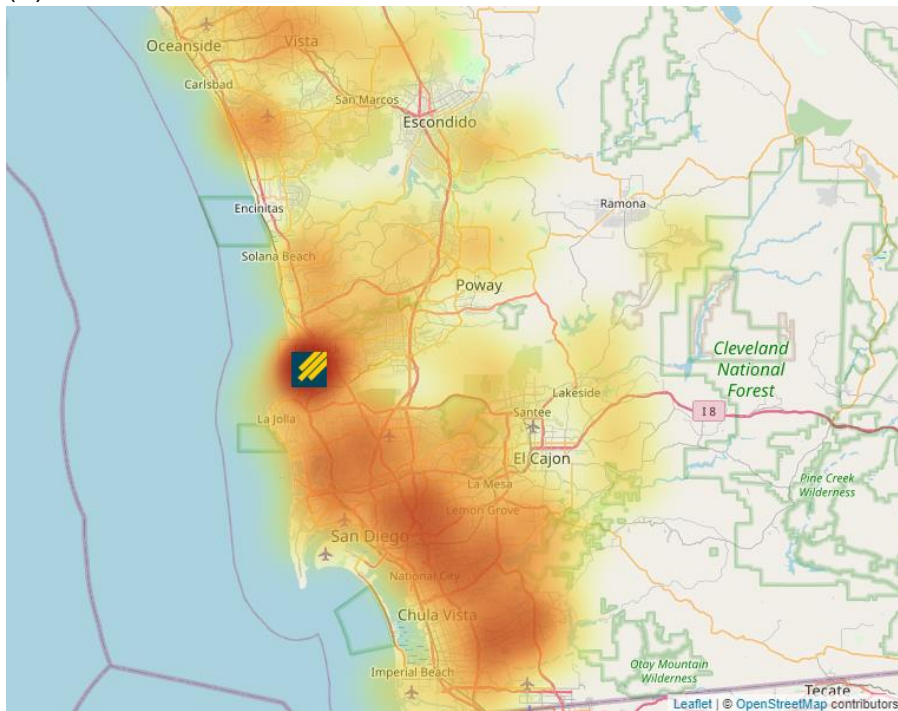
1053 and Hispanic residents as compared to Encinitas, and both of these communities have been
1054 identified by previous studies as being at higher risk for COVID-19, as discussed above.

1055 (A)



1056
1057

(B)



1058
1059
1060

Fig 9. Zip codes of residence of (A) all UCSD/P-12 school participants tested through the EXCITE lab, and (B) UCSD/P-12 school participants who tested positive for COVID-19 through

1061 the EXCITE lab. The deepness of color is proportionate to the number of participants who chose
1062 that zip code as their area of residence. Zip codes from outside of San Diego County were
1063 assumed to belong to UCSD students living on-campus who provided their home address, and
1064 were re-assigned as such. The icon on both images represents the location of the UCSD
1065 campus.
1066

1067 **Return to Learn at UCSD**

1068 During the fall 2020 quarter, UCSD housed 9,129 on-campus students, and COVID-19
1069 testing on a bi-weekly basis was mandatory for any students who lived in campus owned
1070 housing or came to campus for classes. Student athletes were tested weekly when training, and
1071 more often when competing. During the fall quarter, 6% of classes were taught in-person, with a
1072 maximum in-person class size of 50, but this was reduced to 2% of classes in-person mid-
1073 quarter as SD County restrictions on indoor teaching were implemented. Following County
1074 restrictions on indoor teaching, all in-person classes were moved to outdoor settings, with large
1075 tents acting as outdoor classrooms. Testing was provided free-of-charge to students, faculty,
1076 and staff, and while testing was not mandatory for faculty and staff, it was recommended. High-
1077 volume testing sites for students moving on-campus were set up at the beginning of each
1078 quarter, and student move-in was staggered to allow for adequate testing and social distancing.
1079 Testing at term start among students moving/returning to campus-owned housing was provided
1080 at days 1 and 10 in the fall quarter. Sequestration (masking in all areas including in residences
1081 with the exception of when inside a single bedroom or bathroom) was implemented during the
1082 move in testing period.

1083 Students living on-campus who tested positive at term start or at any point thereafter
1084 were given options on how to self-isolate for the required 14 days before being allowed to move
1085 into/return to their residential suites. Many students availed themselves of the temporary
1086 isolation housing that was provided on campus, while others chose to return home to isolate,
1087 and some, mainly graduate students, chose to isolate in their campus residence with their

1088 families or alone (this option was not presented to students living in shared housing). Students
1089 living off-campus who tested positive could remain in their homes if they could effectively isolate
1090 themselves from others, or were provided isolation housing on campus if desired.

1091 Masking was required in all public spaces on campus, both indoors and outdoors, and
1092 beginning mid-way through the fall quarter, students were allowed to gather in groups of three
1093 for up to two hours at a time, provided everyone was outdoors, masked, and socially distanced.
1094 At certain points throughout the quarter, cases rose and students were required to sequester
1095 temporarily. Bi-weekly asymptomatic testing was accomplished via the installation of vending
1096 machines throughout campus that supplied COVID-19 testing kits containing a collection tube
1097 pre-filled with media, a swab, and instructions on how to self-collect, as well as drop-off bins,
1098 from which samples were collected multiple times per day for processing by the EXCITE lab. If
1099 at any point a student developed symptoms characteristic of COVID-19, they were tested via
1100 the CALM lab on campus and asked to self-isolate until their test results were returned.

1101 Integration of the testing program with two smartphone applications - the UCSD
1102 student/employee app and the UCSD Health EPIC Electronic Health Record MyChart app -
1103 allowed for an easy method for linking test tube barcodes with student/employee ID numbers,
1104 and provided students and employees with their test results, whether they were negative or
1105 positive. Individuals with positive test results also received a telephone call from a clinical
1106 provider at UCSD Health, and were contacted daily during the isolation period. Most results
1107 were returned the day after sample collection. We believe this combination of quick turnaround
1108 time and the return of results for every sample increased compliance, because it provided
1109 continuous feedback to students and employees.

1110 The number of students residing on campus decreased after the Thanksgiving 2020
1111 weekend, because students who left for the holiday were incentivized (with partial refunds of
1112 housing costs) to remain at home until the winter quarter started in January 2021. This measure
1113 aimed to reduce an influx of new COVID-19 cases from students who gathered with other

1114 households over the Thanksgiving weekend. Students returning to campus from fall break were
1115 tested at days 1, 5, and 10 after return. Between Thanksgiving and the beginning of the winter
1116 quarter, weekly testing was encouraged but not mandatory, while bi-weekly testing remained
1117 mandatory.

1118 When the winter quarter began in early January 2021, student move-in was again
1119 staggered to allow for all students to get tested and to prevent crowding; students were also
1120 asked to test themselves on days 1, 3, and 5 after move-in, after which time weekly testing was
1121 mandatory for those residing in campus owned housing or coming to campus. During the winter
1122 quarter, UCSD housed 8700 on-campus students who were required to test weekly, in addition
1123 to 1850 off-campus students who came to campus for classes, not including student athletes
1124 who came to campus for training and were required to test more frequently. During the winter
1125 quarter, 2% of classes were taught in-person, all of which were taught in an outdoor classroom
1126 setting. In addition to asymptomatic screening by the EXCITE lab, UCSD also offered
1127 symptomatic and exposure testing via the CALM lab. Together, the EXCITE and CALM labs
1128 made up the entirety of COVID-19 testing conducted on-campus at UCSD. Testing data from
1129 the CALM lab were not included in this study.

1130 **Return to Learn at Preschool-Grade 12 Schools**

1131 The EXCITE lab collaborated with 11 private schools and a group of 13 public schools in
1132 SD County to provide repeated screening of students, teachers, and staff. These schools
1133 offered different in-person learning schedules, with some offering in-person learning five days a
1134 week and others alternating between in-person and remote learning, with a portion of students
1135 attending in-person learning on different days. During the timeframe this study took place, the
1136 large majority of public schools in SD County were fully remote. However, some schools were
1137 allowed to remain open for in-person learning on a limited basis, based on the CDC's social
1138 vulnerability index and the California Department of Public Health's (CDPH) Healthy Places

1139 Index (HPI). Public schools that were in the lowest HPI quartile were selected, as they
1140 represented students from low socio-economic status communities, including many immigrant,
1141 refugee, and other socially vulnerable communities. Not all students from these communities
1142 participated in on-site learning; schools offered this choice to children who were struggling with
1143 remote learning due to their housing situation (homelessness, overcrowded housing, poor wifi)
1144 and/or those who were struggling academically. For public schools, testing was offered weekly
1145 but was not mandatory, and compliance was lower for students than for staff at these schools,
1146 with an average of 68% of students and 92% of staff who consented to testing. For most private
1147 schools, testing was mandatory in order to attend in-person learning, but remote learning was
1148 also available to students. The testing schedule varied for each private school, from weekly
1149 testing to exposure-based testing, but most schools required students and staff to provide a
1150 negative test before returning to school after breaks and holidays (Table S5). Schools used a
1151 variety of safety and risk mitigation measures to attempt to ensure the health of those
1152 participating in in-person learning. We were provided general information for the public schools,
1153 and more specific information for most participating private schools, detailed in Table S5 and
1154 summarized below.

1155 At the private schools for which we obtained details of their risk mitigation strategies,
1156 cohort size ranged from 9-14 students up to the entire grade level. For at least one private
1157 school, a single positive test within a cohort meant that the entire cohort stayed at home for
1158 remote learning for two weeks, and contact tracing was used to determine any possible
1159 exposures outside the cohort. Because this method was quite disruptive for the students,
1160 administrative staff at this school recommend creating smaller cohort sizes. Desks in
1161 classrooms were placed at a distance of 4-6 ft (1.2-1.8 m), and while the established
1162 recommended distance is 6 ft (1.5 m), a recent report that has been adopted by the CDC
1163 suggests that a 3 ft (0.9 m) spacing may be just as effective at preventing the spread of SARS-
1164 CoV-2, as long as everyone is masked (56). Masking was required at all times, with exceptions

1165 for very young children and when eating (physically distanced, outside) and napping (for young
1166 children). For most schools, indoor classrooms were either retrofitted with portable home-made
1167 HEPA air filtration systems or had upgraded HVAC systems installed with higher-quality air
1168 filters. Different schools employed different indoor/outdoor instruction methods, with some
1169 schools teaching exclusively indoors, some teaching almost exclusively in outdoor classrooms,
1170 and others using a combination, emphasizing mandatory time outdoors. We note that outdoor
1171 instruction or mandatory outdoor time may not be feasible everywhere, especially in the winter
1172 months. One private school described one-way walking traffic set up throughout the campus, as
1173 well as staggering student drop-off and pick-up to prevent crowding. Different schools used
1174 different methods of contact tracing and daily symptom checking, and all six private schools that
1175 provided details of their symptom screening policies mentioned using dedicated applications,
1176 including Eموcha, SchoolPass, and ProCare. These schools also implemented temperature
1177 checks upon arrival on campus. At the presence of any symptoms of illness, students and staff
1178 were required to switch to remote teaching until symptoms resolved.

1179 At the public schools, the following extra measures were taken to ensure the health and
1180 safety of students and staff, following CDC and CDPH guidance: mandatory masking for
1181 students and staff; grouping students into cohorts to minimize interactions; 6 ft (1.5 m) distance
1182 between desks; scheduled drop-off and pick-up times; heightened ventilation in classrooms;
1183 increased sanitization and hand-washing protocols; daily symptom checks and mandatory two-
1184 week at-home quarantines for students who present symptoms of illness; restricting
1185 parents/guardians and volunteers from campus; restricting the sharing of materials between
1186 students. For most of the public schools, a single positive test within a cohort resulted in the
1187 entire cohort returning to remote learning for two weeks.

1188

1189

1190 **Conclusions**

1191 In this study, we developed a high-throughput semi-automated pipeline for RT-qPCR
1192 detection of SARS-CoV-2, with scalable capacity and rapid turnaround times that was used for
1193 large-scale repeated asymptomatic screening on an individual basis. This pipeline was first
1194 used to test more than 6,000 healthcare workers and first responders in San Diego, California in
1195 the spring of 2020. The pipeline was then modified in the fall of 2020 and used to establish a
1196 dedicated CLIA-certified COVID-19 testing lab at the University of California, San Diego,
1197 allowing students and staff to return to campus safely by providing repeated asymptomatic
1198 screening. Testing was expanded to include firefighters and some preschool-grade 12 schools
1199 across San Diego County. Thus far, we have tested more than 150,000 nasal swabs from over
1200 28,000 individuals. More than half of participants who tested positive reported no symptoms at
1201 the time of testing, highlighting the importance of asymptomatic/pre-symptomatic screening. The
1202 presence of symptoms was significantly correlated with higher viral load. Hispanic and
1203 Black/African American participants from UCSD and partnering schools were more likely to test
1204 positive, highlighting the disproportionate toll the COVID-19 pandemic has had on already-
1205 marginalized populations within the US. At UCSD and at public schools, students were more
1206 likely to test positive for COVID-19 than staff. However, in private schools, students were less
1207 likely to test positive than staff. No correlation between age/sex and viral load was observed.
1208 We note that the results reported here were obtained during a time period (April 17, 2020 to
1209 February 5, 2021) when COVID-19 vaccination rates in San Diego were less than 10%. Our
1210 results suggest that schools ranging from preschool to university may be opened safely, even
1211 without vaccination, when proper health and safety measures are implemented, such mandatory
1212 masking, increased desk spacing, reduced cohort size, and repeat testing.

1213

1214

1215 **Acknowledgements**

1216 We would like to acknowledge the San Diego COVID Research Enterprise Network (SCREEN)
1217 Initiative for engineering a 3D printable NP swab and scaling to meet the immediate diagnostic
1218 demands of the SEARCH study. We thank the RCHSD employees and leadership who
1219 supported the SEARCH initiative by providing their time and effort to test participants at multiple
1220 testing sites. We would like to thank the following members of the Altman Clinical &
1221 Translational Research Institute (ACTRI) for their assistance creating Figs: Melissa Generoso,
1222 Perry Shipman, Nguyen Trieu. We would like to thank the following people from the University
1223 of California San Diego (UCSD): Dr. Mana Parast from the Sanford Consortium of Regenerative
1224 Medicine for the use of her QuantStudio 5 qPCR machine; the members of the UCSD Return to
1225 Learn (RTL) program; Stosh Ozog, Joanna Coker, and Denis Smirnov from the UCSD School of
1226 Medicine. We would like to thank the following people from our partnering healthcare facilities
1227 during the SEARCH study: Cassidy Callahan, Joey Principato, and Kyle McBride from Rady
1228 Children's Hospital, San Diego; Rowena Carino from the Department of Pathology, Scripps
1229 Clinic; Aaron Fort, Andrew Ruoff, Jessica Malley, Jamie Rullman, Amanda Beggs, and Gracie
1230 Gagliano from the Department of Surgery, Division of Transplantation, Scripps Clinic.

1231 **Funding**

1232 Funding for the SEARCH study was provided by: the Scripps Health COVID-19 Research Fund
1233 to CM and Scripps Health collaborators (<https://www.scripps.org/>); a personal donation by the
1234 Shekhter Family to the SEARCH study initiative, A Centers for Disease Control and Prevention
1235 (CDC) Broad Agency Announcement (BAA) contract to KGA (contract #75D30120C09795), and
1236 departmental funds from the UCSD Department of Obstetrics, Gynecology, and Reproductive
1237 Sciences to LCL (<https://medschool.ucsd.edu/som/obgyn/Pages/default.aspx>). The funders had

1238 no role in study design, data collection and analysis, decision to publish, or preparation of the
1239 manuscript.

1240 **Competing Interests**

1241 Anterior nares swab samples for clinical validation of the Expedited COVID-19 Identification
1242 Environment (EXCITE) Laboratory Developed Tests (LDT) were donated by Helix Opco, LLC.
1243 We disclose that Dr. Laurent's spouse is an employee of Helix Opco, LLC.

1244

1245 **References**

- 1246 1. Roser M, Ritchie H, Ortiz-Ospina E, Hasell J. Coronavirus Pandemic (COVID-19)
1247 [Internet]. Our World In Data. 2020 [cited 2020 Jul 7]. Available from:
1248 <https://ourworldindata.org/coronavirus>
- 1249 2. Sen S, Karaca-Mandic P, Georgiou A. Association of stay-at-home orders with COVID-19
1250 hospitalization in 4 states. *J Am Med Assoc.* 2020;323(24):2522–3.
- 1251 3. Juneau CE, Pueyo T, Bell M, Gee G, Collazzo P, Potvin L. Evidence-based, cost-
1252 effective interventions to suppress the COVID-19 pandemic: A systematic review.
1253 *medRxiv.* 2020;1–27.
- 1254 4. Fowler JH, Hill SJ, Levin R, Obradovich N. The effect of stay-at-home orders on COVID-
1255 19 cases and fatalities in the United States. *arXiv.* 2020;1–16.
- 1256 5. Dawson P, Worrell MC, Malone S, Tinker SC, Fritz S, Maricque B, et al. Pilot
1257 Investigation of SARS-CoV-2 Secondary Transmission in Kindergarten Through Grade
1258 12 Schools Implementing Mitigation Strategies — St. Louis County and City of
1259 Springfield, Missouri, December 2020. *Morb Mortal Wkly Rep.* 2021;70(12):449–55.
- 1260 6. Macartney K, Quinn HE, Pillsbury AJ, Koirala A, Deng L, Winkler N, et al. Transmission of
1261 SARS-CoV-2 in Australian educational settings: a prospective cohort study. *Lancet Child
1262 Adolesc Heal.* 2020;4:807–16.
- 1263 7. Panovska-Griffiths J, Kerr CC, Stuart RM, Mistry D, Klein DJ, Viner RM, et al.
1264 Determining the optimal strategy for reopening schools, the impact of test and trace
1265 interventions, and the risk of occurrence of a second COVID-19 epidemic wave in the UK:
1266 a modelling study. *Lancet Child Adolesc Heal.* 2020;4:817–27.
- 1267 8. Ladhani SN, Baawuah F, Beckmann J, Okike IO, Ahmad S, Garstang J, et al. SARS-
1268 CoV-2 infection and transmission in primary schools in England in June-December, 2020
1269 (sKIDs): an active, prospective surveillance study. *Lancet Child Adolesc Heal* [Internet].
1270 2021;1–11. Available from: [https://doi.org/10.1016/S2352-4642\(21\)00061-4](https://doi.org/10.1016/S2352-4642(21)00061-4)
- 1271 9. Gandhi M, Yokoe DS, Havlir D V. Asymptomatic Transmission, the Achilles' heel of
1272 current strategies to control Covid-19. *N Engl J Med.* 2020;382(22):2158–60.
- 1273 10. Benefield AE, Skrip LA, Clement A, Althouse RA, Chang S, Althouse BM. SARS-CoV-2
1274 viral load peaks prior to symptom onset: a systematic review and individual-pooled
1275 analysis of coronavirus viral load from 66 studies. *medRxiv.* 2020;1–23.
- 1276 11. Oran DP, Topol EJ. Prevalence of Asymptomatic SARS-CoV-2 Infection. *Ann Intern Med.*
1277 2020;1–7.
- 1278 12. Gudbjartsson DF, Helgason A, Jonsson H, Magnusson OT, Melsted P, Norddahl GL, et
1279 al. Spread of SARS-CoV-2 in the Icelandic population. *N Engl J Med.*

- 1280 2020;382(24):2302–15.
- 1281 13. Lavezzo E, Franchin E, Ciavarella C, Cuomo-Dannenburg G, Barzon L, Del Vecchio C, et al. Suppression of COVID-19 outbreak in the municipality of Vo, Italy. medRxiv [Internet]. 1282 2020;1–23. Available from:
- 1283 <https://www.medrxiv.org/content/10.1101/2020.04.17.20053157v1>
- 1284
- 1285 14. Arons MM, Hatfield KM, Reddy SC, Kimball A, James A, Jacobs JR, et al.
- 1286 Presymptomatic SARS-CoV-2 Infections and Transmission in a Skilled Nursing Facility. N
- 1287 Engl J Med. 2020;382(22):2081–90.
- 1288 15. Rothe C, Schunk M, Sothmann P, Bretzel G, Froeschl G, Wallrauch C, et al.
- 1289 Transmission of 2019-nCoV Infection from an Asymptomatic Contact in Germany. N Engl
- 1290 J Med. 2020;382(10):970–1.
- 1291 16. Daley P, Castriciano S, Chernesky M, Smieja M. Comparison of flocked and rayon swabs
- 1292 for collection of respiratory epithelial cells from uninfected volunteers and symptomatic
- 1293 patients. J Clin Microbiol. 2006;44(6):2265–7.
- 1294 17. Ryan J, Coufal N, Aronson S, Ladt K, Andersen C, Zeller M, et al. 3D printed
- 1295 nasopharyngeal swabs with wrapped rayon fibers developed and validated by SCREEN
- 1296 (San Diego Covid 19 Research Enterprise Network) [Internet]. Protocols.io. 2020. p. 1–9.
- 1297 Available from: <https://dx.doi.org/10.17504/protocols.io.bemxjc7n>
- 1298 18. Harris PA, Taylor R, Thielke R, Payne J, Gonzalez N, Conde JG. Research electronic
- 1299 data capture (REDCap) - A metadata-driven methodology and workflow process for
- 1300 providing translational research informatics support. J Biomed Inform. 2009;42(2):377–
- 1301 81.
- 1302 19. Harris PA, Taylor R, Minor BL, Elliott V, Fernandez M, O’Neal L, et al. The REDCap
- 1303 Consortium: building an international community of software platform partners. J Biomed
- 1304 Inform. 2019;95:103208.
- 1305 20. Sathe S, Mah C, Ahmed N, Ragsac MF, Williams J, Yeo G. INSPECT sample tracking
- 1306 system [Internet]. protocols.io. 2020 [cited 2021 May 26]. p. 1–8. Available from:
- 1307 <https://www.protocols.io/view/inspect-sample-tracking-system-bis8kehww>
- 1308 21. Marotz L, Belda-Ferre P, Zeller M, Anderson C, Morgan SC, Knight R, et al. Semi-
- 1309 Automated Extraction of Viral RNA using the Omega Bio-tek Mag-Bind Viral DNA / RNA
- 1310 96 Kit for SARS- CoV-2 Detection [Internet]. protocols.io. 2021 [cited 2021 May 26]. p. 1–
- 1311 15. Available from: dx.doi.org/10.17504/protocols.io.brqhm5t6
- 1312 22. De Hoff P, Morgan SC, Laurent LC. Semi-Automated and Miniaturized SARS-CoV-2
- 1313 Detection using TaqPath COVID-19 Multiplex Real-Time RT-PCR Assay [Internet].
- 1314 protocols.io. 2021 [cited 2021 May 26]. p. 1–14. Available from:
- 1315 dx.doi.org/10.17504/protocols.io.brhvm366
- 1316 23. Belda-Ferre P, Marotz L, Humphrey G, Morgan SC, Knight R. Semi-Automated Extraction
- 1317 of Viral RNA using the MagMax Viral Pathogen (MVPII) 96 Kit for SARS-CoV-2
- 1318 Detection [Internet]. protocols.io. 2021 [cited 2021 May 26]. p. 1–15. Available from:
- 1319 dx.doi.org/10.17504/protocols.io.brcvm2w6
- 1320 24. Wickham H, Averick M, Bryan J, Chang W, McGowan LD, François R, et al. Welcome to
- 1321 the Tidyverse. J Open Source Softw. 2019;4(43):1686.
- 1322 25. Golemund G, Wickham H. Dates and times made easy with lubridate. J Stat Softw.
- 1323 2011;40(3):1–25.
- 1324 26. Patil I. Visualizations with statistical details: the “ggstatsplot” approach. J Open Source
- 1325 Softw. 2021;6(59):1–10.
- 1326 27. Specht I, Sani K, Botti-Lodovico Y, Hughes M, Heumann K, Bronson A, et al. The Case
- 1327 for Altruism in Institutional Diagnostic Testing. medRxiv [Internet]. 2021;1–18. Available
- 1328 from: <http://medrxiv.org/content/early/2021/03/25/2021.03.16.21253669.abstract>
- 1329 28. Dagan N, Barda N, Kepten E, Miron O, Perchik S, Katz MA, et al. BNT162b2 mRNA
- 1330 Covid-19 Vaccine in a Nationwide Mass Vaccination Setting. N Engl J Med. 2021;1–12.

- 1331 29. Dean N. Hospital admissions due to COVID-19 in Scotland after one dose of vaccine.
1332 Lancet. 2021;397:1601–3.
- 1333 30. Baggio S, L'Huillier AG, Yerly S, Bellon M, Wagner N, Rohr M, et al. Severe Acute
1334 Respiratory Syndrome Coronavirus 2 (SARS-CoV-2) Viral Load in the Upper Respiratory
1335 Tract of Children and Adults With Early Acute Coronavirus Disease 2019 (COVID-19).
1336 Clin Infect Dis. 2020;1–3.
- 1337 31. Jacot D, Greub G, Jatou K, Opota O. Viral load of SARS-CoV-2 across patients and
1338 compared to other respiratory viruses. Microbes Infect [Internet]. 2020;22(10):617–21.
1339 Available from: <https://doi.org/10.1016/j.micinf.2020.08.004>
- 1340 32. Mahallawi WH, Alsamiri AD, Dabbour AF, Alsaedi H, Al-Zalabani AH. Association of
1341 Viral Load in SARS-CoV-2 Patients With Age and Gender. Front Med. 2021;8:1–5.
- 1342 33. Madera S, Crawford E, Langelier C, Tran NK, Thornborrow E, Miller S, et al.
1343 Nasopharyngeal SARS-CoV-2 viral loads in young children do not differ significantly from
1344 those in older children and adults. Sci Rep [Internet]. 2021;11(3044):1–4. Available from:
1345 <https://doi.org/10.1038/s41598-021-81934-w>
- 1346 34. To KK-W, Tsang OT-Y, Leung W-S, Tam AR, Wu T-C, Lung DC, et al. Temporal profiles
1347 of viral load in posterior oropharyngeal saliva samples and serum antibody responses
1348 during infection by SARS-CoV-2: an observational cohort study. Lancet Infect Dis.
1349 2020;20:565–74.
- 1350 35. Hasanoglu I, Korukluoglu G, Asilturk D, Cosgun Y, Kalem AK, Altas AB, et al. Higher viral
1351 loads in asymptomatic COVID-19 patients might be the invisible part of the iceberg.
1352 Infection [Internet]. 2021;49:117–26. Available from: [https://doi.org/10.1007/s15010-020-](https://doi.org/10.1007/s15010-020-01548-8)
1353 [01548-8](https://doi.org/10.1007/s15010-020-01548-8)
- 1354 36. Heald-Sargent T, Muller WJ, Zheng X, Rippe J, Patel AB, Kociolek LK. Age-related
1355 differences in nasopharyngeal Severe Acute Respiratory Syndrome Coronavirus 2
1356 (SARS-CoV-2) levels in patients with mild to moderate Coronavirus Disease 2019
1357 (COVID-19). JAMA Pediatr. 2020;174(11):902–3.
- 1358 37. Euser S, Aronson S, Manders I, Lelyveld S Van, Herpers B, Sinnige J, et al. SARS-CoV-2
1359 viral load distribution reveals that viral loads increase with age: a retrospective cross-
1360 sectional cohort study. medRxiv [Internet]. 2021;1–25. Available from:
1361 <https://doi.org/10.1101/2021.01.15.21249691>
- 1362 38. Washington NL, Gangavarapu K, Zeller M, Bolze A, Cirulli ET, Schiabor Barrett KM, et al.
1363 Emergence and rapid transmission of SARS-CoV-2 B.1.1.7 in the United States. med.
1364 2021;1–19.
- 1365 39. Wang D, Hu B, Hu C, Zhu F, Liu X, Zhang J, et al. Clinical characteristics of 138
1366 hospitalized patients with 2019 novel coronavirus-infected pneumonia in Wuhan, China. J
1367 Am Med Assoc. 2020;323(11):1061–9.
- 1368 40. Huang C, Wang Y, Li X, Ren L, Zhao J, Hu Y, et al. Clinical features of patients infected
1369 with 2019 novel coronavirus in Wuhan, China. Lancet. 2020;395:497–506.
- 1370 41. Chen J, Qi T, Liu L, Ling Y, Qian Z, Li T, et al. Clinical progression of patients with
1371 COVID-19 in Shanghai, China. J Infect [Internet]. 2020;80:e1–6. Available from:
1372 <https://doi.org/10.1016/j.jinf.2020.03.004>
- 1373 42. Arentz M, Yim E, Klaff L, Lokhandwala S, Riedo FX, Chong M, et al. Characteristics and
1374 outcomes of 21 critically ill patients with COVID-19 in Washington state. J Am Med
1375 Assoc. 2020;323(16):1612–4.
- 1376 43. Qin C, Zhou L, Hu Z, Zhang S, Yang S, Tao Y, et al. Dysregulation of Immune Response
1377 in Patients With Coronavirus 2019 (COVID-19) in Wuhan, China. Clin Infect Dis.
1378 2020;71(15):762–8.
- 1379 44. Du Y, Tu L, Zhu P, Mu M, Wang R, Yang P, et al. Clinical features of 85 fatal cases of
1380 COVID-19 from Wuhan: A retrospective observational study. Am J Respir Crit Care Med.
1381 2020;201(11):1372–9.

- 1382 45. Liu Y, Yan LM, Wan L, Xiang TX, Le A, Liu JM, et al. Viral dynamics in mild and severe
1383 cases of COVID-19. *Lancet Infect Dis* [Internet]. 2020;20:656–7. Available from:
1384 [http://dx.doi.org/10.1016/S1473-3099\(20\)30232-2](http://dx.doi.org/10.1016/S1473-3099(20)30232-2)
- 1385 46. Wang Y, Zhang L, Sang L, Ye F, Ruan S, Zhong B, et al. Kinetics of viral load and
1386 antibody response in relation to COVID-19 severity. *J Clin Invest*. 2020;130(10):5235–44.
- 1387 47. Greene DN, Jackson ML, Hillyard DR, Delgado JC, Schmidt R. Decreasing median age
1388 of COVID-19 cases in the United States - changing epidemiology or changing
1389 surveillance? *PLoS One* [Internet]. 2020;15(10):e0240783. Available from:
1390 <https://doi.org/10.1101/2020.07.22.20160119>
- 1391 48. Bwire GM. Coronavirus: Why men are more vulnerable to COVID-19 than women? *SN*
1392 *Compr Clin Med*. 2020;1–3.
- 1393 49. Egede LE. Race, ethnicity, culture, and disparities in health care. *J Gen Intern Med*.
1394 2006;21(6):667–9.
- 1395 50. Peckham H, de Grijter NM, Raine C, Radziszewska A, Ciurtin C, Wedderburn LR, et al.
1396 Male sex identified by global COVID-19 meta-analysis as a risk factor for death and ICU
1397 admission. *Nat Commun* [Internet]. 2020;11(6317):1–10. Available from:
1398 <http://dx.doi.org/10.1038/s41467-020-19741-6>
- 1399 51. Gil RM, Marcelin JR, Zuniga-Blanco B, Marquez C, Mathew T, Piggott DA. COVID-19
1400 pandemic: Disparate health impact on the Hispanic/Latinx population in the United
1401 States. *J Infect Dis*. 2020;222:1592–5.
- 1402 52. Rodriguez-Diaz CE, Guilamo-Ramos V, Mena L, Hall E, Honermann B, Crowley JS, et al.
1403 Risk for COVID-19 infection and death among Latinos in the United States: examining
1404 heterogeneity in transmission dynamics. *Ann Epidemiol* [Internet]. 2020;52:1–10.
1405 Available from: <https://doi.org/10.1016/j.annepidem.2020.07.007>
- 1406 53. DiMaggio C, Klein M, Berry C, Frangos S. Black/African American Communities are at
1407 highest risk of COVID-19: spatial modeling of New York City ZIP Code-level testing
1408 results. *Ann Epidemiol* [Internet]. 2020;51:7–13. Available from:
1409 <https://doi.org/10.1016/j.annepidem.2020.08.012>
- 1410 54. Millett GA, Jones AT, Benkeser D, Baral S, Mercer L, Beyrer C, et al. Assessing
1411 differential impacts of COVID-19 on black communities. *Ann Epidemiol* [Internet].
1412 2020;47:37–44. Available from: <https://doi.org/10.1016/j.annepidem.2020.05.003>
- 1413 55. Whittle RS, Diaz-Artiles A. An ecological study of socioeconomic predictors in detection
1414 of COVID-19 cases across neighborhoods in New York City. *BMC Med*. 2020;18(271):1–
1415 17.
- 1416 56. van den Berg P, Schechter-Perkins EM, Jack RS, Epshtein I, Nelson R, Oster E, et al.
1417 Effectiveness of 3 versus 6 ft of physical distancing for controlling spread of Coronavirus
1418 Disease 2019 among primary and secondary students and staff: A retrospective,
1419 statewide cohort study. *Clin Infect Dis*. 2021;1–8.

1420
1421

1422

1423

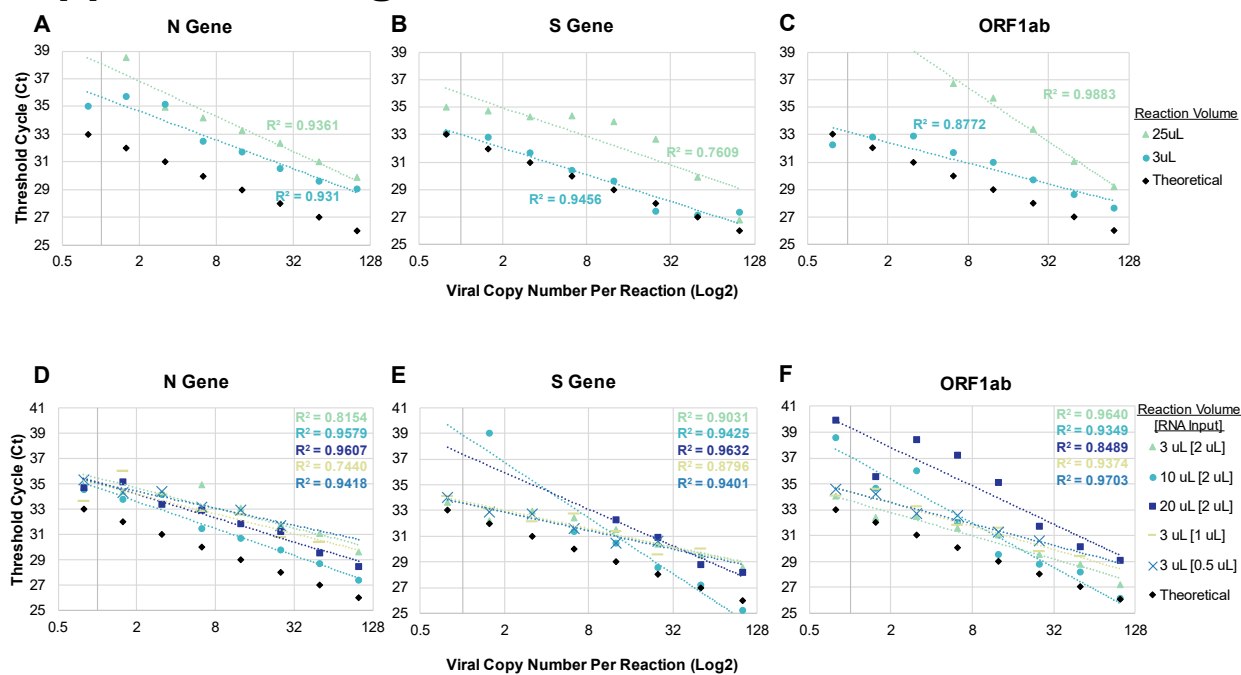
1424

1425

1426

1427

Supplemental Figs



1428

1429

Fig S1. (A-C) RT-qPCR performance of miniaturized (3 μ L) and full-scale (25 μ L) reactions as compared to theoretical results, for three targeted regions of the SARS-CoV-2 genome: (A) N Gene; (B) S Gene; (C) ORF1ab. (D-F) RT-qPCR performance of different reactions (varied total reaction volume and RNA input volume) as compared to theoretical results, for three targeted

1430

regions of the SARS-CoV-2 genome: (A) N Gene; (B) S Gene; (C) ORF1ab. Every point in each graph represents the average of 3 technical replicates.

1431

1432

1433

1434

1435

1436

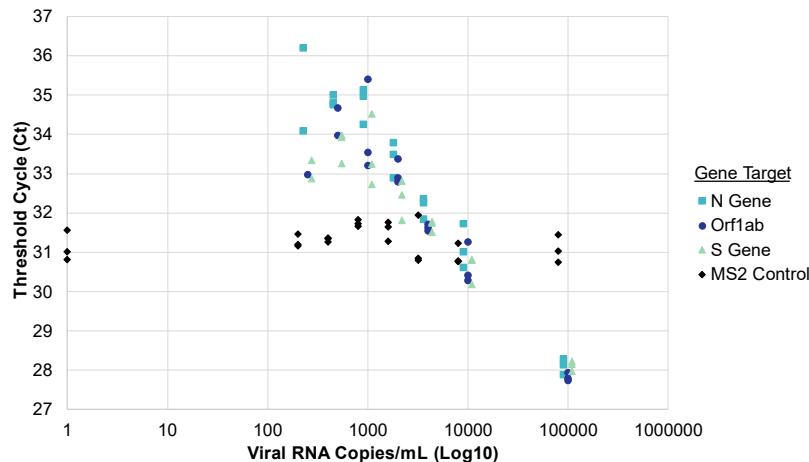
1437

1438

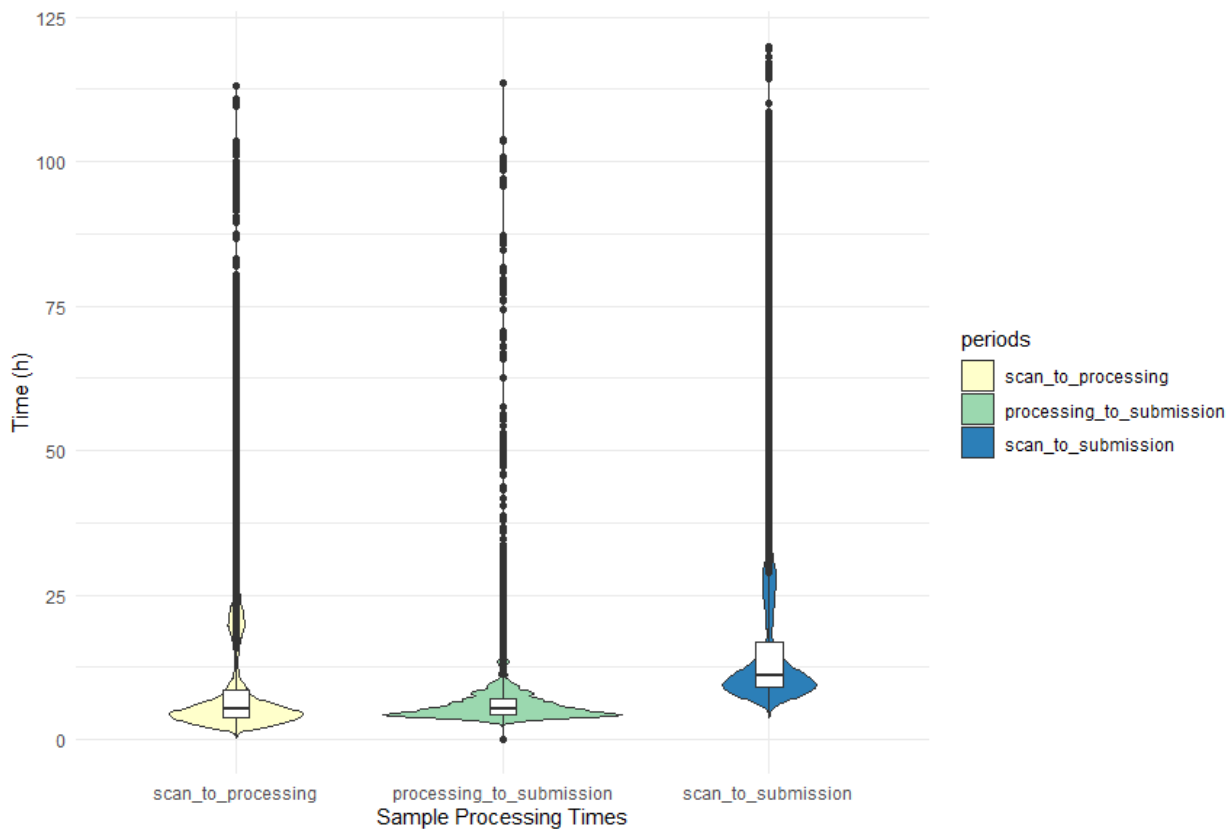
1439

1440

1441



1442
1443 **Fig S2.** Limit of detection of SARS-CoV-2 viral RNA at different concentrations, with viral RNA
1444 spiked into negative NP control samples prior to RNA extraction. Each point represents a single
1445 replicate reaction.
1446



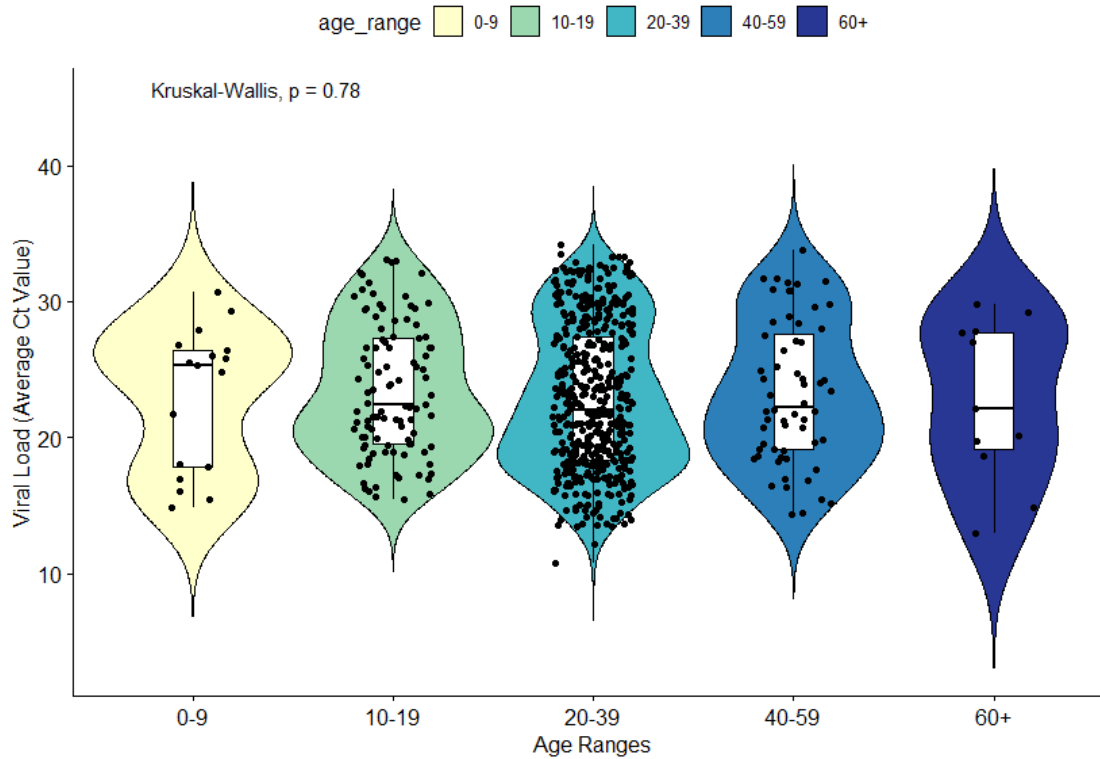
1447
1448 **Fig S3.** Sample processing times for samples at the EXCITE lab (n = 144,971).
1449 “Scan_to_processing” refers to the time from when a participant scans a tube barcode for self-
1450 collection to when the sample is received by the EXCITE lab and begins processing.
1451 “Processing_to_submission” refers to the time it takes to process the sample by the EXCITE
1452 lab, from the time the sample is received to the time the result is returned.
1453 “Scan_to_submission” refers to the sum of the two previous times, the total time it takes to

1454 receive results. Samples that were recorded as taking longer than five days to process were
1455 considered technical errors and were removed from this plot, along with samples with missing
1456 data for one or more of the timepoints.

1457

1458

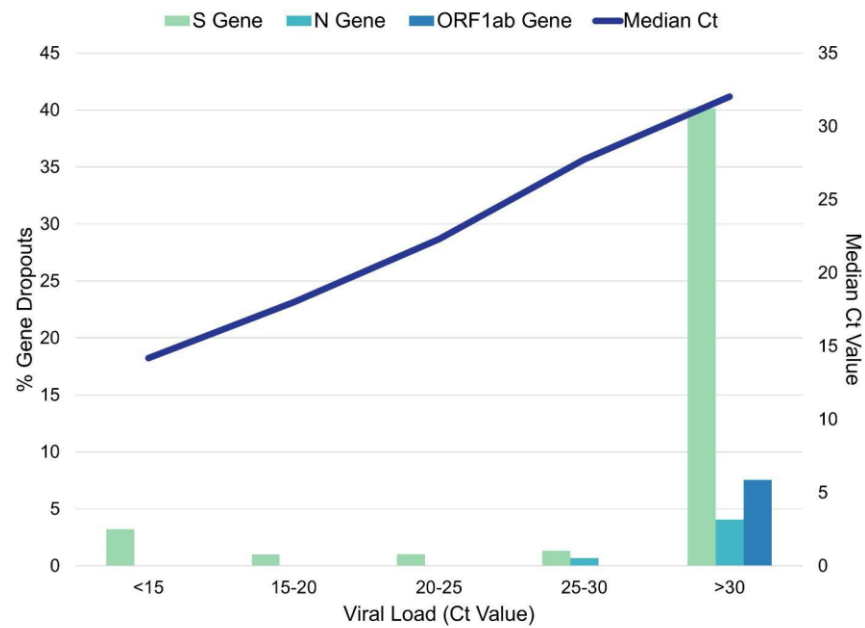
1459



1460

1461 **Fig S4.** Viral load (estimated by average Ct value) of COVID-19 positive individuals, separated
1462 by age group. A Kruskal-Wallis test indicated no significant difference in viral load among age
1463 groups ($p = 0.78$).

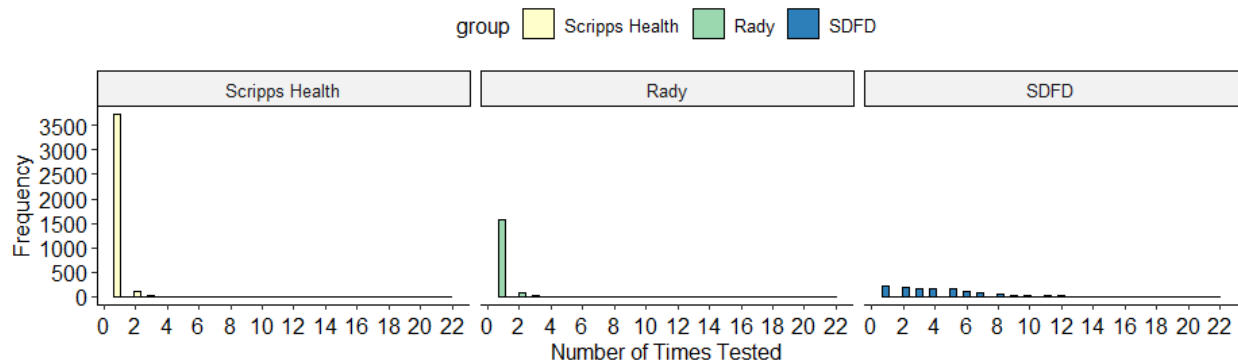
1464



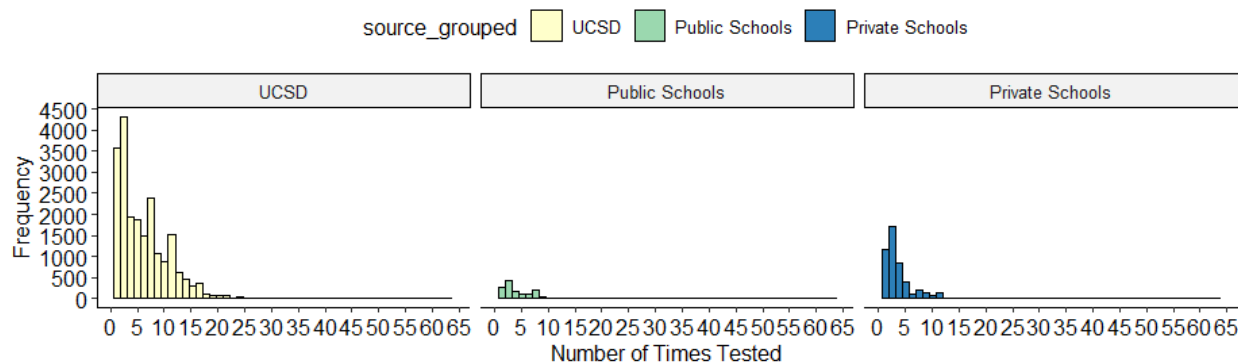
1465
1466
1467
1468
1469
1470

Fig S5. SARS-CoV-2 viral gene dropouts during RT-qPCR detection as a function of median viral load (Ct value).

A Number of times participants were tested (n=6672)



B Number of times participants were tested (n=27252)



1471
1472 **Fig S6.** The number of times (A) SEARCH study participants and (B) EXCITE lab participants
1473 chose to be tested for SARS-CoV-2. Healthcare workers from Scripps Health and Rady systems
1474 were tested between April 17 and June 30, 2020 via the SEARCH study. Students, faculty, and
1475 staff from the University of California, San Diego (UCSD) and from public and private schools in
1476 San Diego County were tested between Sept 15, 2020 and February 5, 2021 via the EXCITE
1477 lab. San Diego Fire-Rescue Department (SDFD) participants were tested via both the SEARCH
1478 study and the EXCITE lab during the same timeframes.

1479
1480

1481

1482

1483

1484

1485

1486

1487

1488

1489 Supplemental Tables

1490 **Table S1.** Comparison of 3D-printed and commercially-sourced nasopharyngeal swabs. In total,
1491 25 pediatric patients and nine adult patients were swabbed to perform the validation of the 3D-
1492 printed swabs. Of the 25 pediatric samples, 22 were tested using a viral respiratory panel, and
1493 three were tested using a COVID-19 test. All nine adult samples were COVID-19 positive;
1494 however, only four had both 3D-printed and commercial swabs.

	Commercial Swab	3D-Printed Swab
Pediatric		
Respiratory Viral Panel		
Negative	16/16 (100%)	16/16 (100%)
Positive (single)	3/5 (60%)	5/5 (100%)
Positive (multiple)	1/1 (100%)	1/1 (100%)
COVID-19 negative	2/2 (100%)	2/2 (100%)
COVID-19 positive	1/1 (100%)	1/1 (100%)
Adult		
COVID-19 positive (in parallel)	2/4 (50%)	4/4 (100%)
COVID-19 positive (3D swab only)	Not available	5/5 (100%)

1495

496
497
498
499
500
501

Table S2. Technical validation of anterior nares swabs in different media for SARS-CoV-2 detection: PrimeStore® Molecular Transport Medium (MTM media/ANM sample type); Mawi DNA Technologies iSWAB Microbiome buffer (Mawi media/ANW sample type), and 5% sodium dodecyl sulfate (SDS media/AND sample type). Limit of detection for triplicate contrived samples containing different concentrations of viral particles (VP) per mL (250 - 32,000). Rows in bold indicate the limit of detection for that media type. Three SARS-CoV-2 viral genes were targeted for amplification (N gene, Orf1ab, and S gene), as well as an internal control (MS2). A minimum of 2/3 viral gene targets were required to amplify within each replicate to be considered a positive result.

	VP/mL	N Gene			Orf1ab			S Gene			MS2		
		1	2	3	1	2	3	1	2	3	1	2	3
ANM	32000	28.56724	27.30496	29.05796	28.123	26.74671	28.40087	28.23621	26.90927	28.74655	30.88804	30.39208	31.40189
	16000	28.59086	29.10027	30.37453	27.87927	28.2653	29.04837	28.28125	28.63926	30.22964	30.47556	30.3301	32.33632
	8000	29.622	29.6161	31.03946	28.8252	28.9988	30.13729	29.59232	29.40543	30.42216	30.80075	30.81684	32.18524
	4000	30.55292	29.34379	31.57382	29.06067	28.92757	30.08623	30.36565	30.0086	30.64664	30.94963	31.10299	32.24866
	2000	29.79179	30.78633	32.3596	29.65664	29.51823	30.53481	30.80253	30.60761	32.05163	30.91378	30.87834	32.21166
	1000	31.95534	31.63872	32.23191	30.48554	30.74818	31.60106	31.6986	30.66024	31.82981	31.09695	30.54766	31.51518
	500	31.8007	32.17833	32.93955	31.25087	30.67037		31.43116	31.69549	32.06826	31.05981	31.16852	31.70178
	250	32.91542	32.62193		31.56975	31.78306	32.0334	32.01559	31.93159		30.60415	30.89187	32.10643
ANW	32000	27.6949	27.62062	28.6829	26.75763	27.07014	27.86881	27.33813	27.60611	28.84602	29.7765	29.94439	30.21699
	16000	27.77016	27.98963	30.38937	27.51569	27.56042	28.88784	28.21654	28.12109	29.61706	30.10374	30.00491	30.40088
	8000	29.58683	28.77404	29.10565	28.46152	28.83664	28.64296	29.12567	29.02891	29.54257	30.49041	30.77581	30.56796
	4000	30.67838	30.55936	30.49048	28.79253	29.14261	29.4781	30.15295	29.68094	29.89257	30.60305	30.637	30.54589
	2000	30.89805	31.18324	32.13199	30.06639	29.95144	30.58552	31.16762	30.60806	31.78862	30.70745	30.53986	31.03023
	1000	30.69853	31.70212	33.70245	30.83089	31.16146	31.39502	31.41211	31.37258	32.74824	30.87244	30.66293	31.0696
	500	33.08861	32.74819	33.7467	31.24067	31.50742	32.27259	32.32956	31.97728	32.70442	30.81637	30.69168	31.30658
	250	32.69856		33.85752	31.97604	31.24246	32.41334	31.77786	31.17495		30.5527	30.24898	30.31604
AND	32000	26.56684	26.48251	26.43064	26.01545	25.92576	25.85998	26.34711	26.31556	26.20625	30.40321	30.30017	30.44547
	16000	27.63647	27.65226	27.66501	26.83035	26.90872	27.02284	27.21644	27.42337	27.63582	30.42951	30.16785	30.07215
	8000	28.48938	28.46131	28.30104	27.79799	27.74197	27.61454	27.76735	28.23767	27.80854	30.27699	30.45726	30.03353
	4000	28.95999	28.80925	28.81392	28.00529	28.47926	28.04047	28.37351	28.91348	28.77715	30.12698	30.34609	29.99662
	2000	30.77094	30.59611	29.90652	29.35722	29.33499	29.5718	29.733	29.9439	29.90099	30.43141	30.74416	30.84527
	1000	30.85673	30.78722	31.12153	29.11394	29.77203	29.98141	29.87768	29.8279	30.48528	30.46241	30.82404	30.39688
	500	31.41748	32.30139	31.82398	29.82488	30.51586	30.76725	30.77686	30.89876	30.61647	30.47791	30.87041	30.89983
	250	32.77331	33.0288	32.94244	29.98244	30.56765	30.93435	31.60111	31.51474	31.75622	30.88731	30.77039	30.52082

502
503

504
505
506
507
508
509

Table S3. Technical validation of anterior nares swabs in different media for SARS-CoV-2 detection: PrimeStore® Molecular Transport Medium (MTM media/ANM sample type); Mawi DNA Technologies iSWAB Microbiome buffer (Mawi media/ANW sample type), and 5% sodium dodecyl sulfate (SDS media/AND sample type). A minimum of 20 contrived samples all containing the same concentration of viral particles (1000 VP/mL) were tested for each media type. Three SARS-CoV-2 viral genes were targeted for amplification (N gene, Orf1ab, and S gene), as well as an internal control (MS2). A minimum of 2/3 viral gene targets were required to amplify within each replicate to be considered a positive result, and a minimum of 19/20 samples were required to return a positive result for this technical validation step.

	ANM				ANW				AND			
	N Gene	Orf1ab	S Gene	MS2	N Gene	Orf1ab	S Gene	MS2	N Gene	Orf1ab	S Gene	MS2
Replicate 1	33.20503	31.2742	33.32748	32.13901	32.328	29.96588	31.68405	30.2813	30.36313	28.84117	29.74154	29.97011
Replicate 2	33.11781	31.22991	31.90709	31.49288	32.665	30.83412	32.83377	30.47811	30.81601	30.43513	30.74937	30.34116
Replicate 3	32.15603	30.20218	31.47673	31.44101	33.419	30.95764	31.92202	30.8268	31.02649	30.16447	30.39575	30.27942
Replicate 4	32.12903	30.85151	31.2922	31.45474	33.009	30.14325	31.71588	30.55374	31.50233	30.96156	30.56672	30.63448
Replicate 5	32.66456	30.69429	31.49954	31.66452	33.065	30.48087	32.26574	30.59831	30.90308	29.73466	29.95023	29.85332
Replicate 6		30.76613	31.83545	31.09046			32.32624	30.43625	30.81576	29.68443	29.94711	29.85306
Replicate 7	31.54116	30.99806	30.75484	31.44883	31.949	30.05961	31.15406	30.01067	31.22313	28.91922	29.96547	30.3383
Replicate 8	31.26402	30.47032	30.82045	31.08399	30.934	30.81955	30.36134	29.98146	31.09156	29.31754	30.72157	30.03009
Replicate 9	31.64176	30.93807	30.8849	30.83263	31.736	31.03576	31.92403	30.77339	31.06431	30.29006	30.41665	30.08424
Replicate 10	32.00396	31.02591	31.52836	31.55012	33.078	30.57624	31.86759	30.87953	30.85805	30.70002	30.23393	30.21832
Replicate 11	32.84344	30.4075	31.35707	31.26224	33.776	30.80046	31.88817	30.70583	30.83426	30.12243	30.41913	30.12273
Replicate 12	31.63306	30.15641	31.23138	31.56804	32.900	30.88295	31.94054	31.03309	31.44029	30.38277	30.81528	30.20662
Replicate 13	31.4435	30.99032	30.90512	31.36599	32.569	30.44113	32.60187	30.92437	30.65612	30.03494	29.91626	29.9131
Replicate 14	31.06826	30.82614	30.56917	30.77931	33.554	31.75565	32.11547	30.57389	30.29833	29.73377	29.77454	29.81347
Replicate 15	31.12846	30.33739	30.75388	30.90927	31.823	30.77881	30.93723	30.43053	31.29008	28.71616	30.271	29.92114
Replicate 16	32.10682	30.81051	31.40603	30.78367	33.312	30.96995	31.25103	30.42333	30.91602	29.76852	29.95509	31.00376
Replicate 17	31.30213	30.68539	31.46759	30.47551	32.177	30.40417	32.03503	31.32467	30.81853	30.25693	30.90988	30.38307
Replicate 18	31.28477	30.36862	30.79565	30.63984	32.393	30.88316	31.48466	31.36795	30.81384	29.5703	30.3437	30.28908
Replicate 19	31.48638	30.27696	30.66186	30.81963	32.470	30.78672	31.53987	31.22123	30.9675	30.30584	30.77847	29.92241
Replicate 20	30.9396	30.73603		30.78493	32.968	30.75034	31.76518	31.39022	30.77984	29.19349	30.61045	30.16572
Replicate 21	N/A	N/A	N/A	N/A	N/A	N/A	N/A	N/A	31.18732	30.29526	30.71653	30.28227
Replicate 22	N/A	N/A	N/A	N/A	N/A	N/A	N/A	N/A	31.24267	30.011	30.23237	30.0241

510
511
512
513

514
515
516
517
518
519
520
521
522
523

Table S4. Clinical validation of anterior nares swabs in different media for SARS-CoV-2 detection: PrimeStore® Molecular Transport Medium (MTM media/ANM sample type); Mawi DNA Technologies iSWAB Microbiome buffer (Mawi media/ANW sample type), and 5% sodium dodecyl sulfate (SDS media/AND sample type). A minimum of 30 positive and 30 negative clinical samples were tested for each media type. Clinical validation involved testing each sample twice, once using the experimental test to be validated and once with an FDA Emergency Use Authorization (EUA) validated comparator. For ANM validation, the comparator was an EUA-authorized test developed by Helix LLC that also used MTM media; for ANW and AND validation, the newly-validated ANM test was used as the comparator. Three SARS-CoV-2 viral genes were targeted for amplification (N gene, Orf1ab, and S gene), as well as an internal control (MS2). A minimum of 2/3 viral gene targets were required to amplify within each replicate to be considered a positive result, and a minimum 90% sensitivity/specificity (positive/negative agreement between samples tested with the experimental and comparator tests, respectively) was required for clinical validation. Numbers in brackets represent 95% confidence intervals.

	ANM		ANW		AND	
	Positive	Negative	Positive	Negative	Positive	Negative
Comparator Positive	30	0	32	0	35	2
Comparator Negative	0	32	0	54	0	54
Sensitivity	100% (88.43 - 100)		100% (89.11 - 100)		94.59% (81.81 - 99.34)	
Specificity	100% (89.11 - 100)		100% (93.40 - 100)		100% (93.40 - 100)	
Accuracy	100% (94.22 - 100)		100% (95.80 - 100)		97.80% (92.29 - 99.73)	

524
525

Table S5. Private school partners - health and safety modifications for in-person learning.

School_ID	School 01	School 02	School 03	School 04	School 05	School 06	School 07	School 08	School 09	School 10	School 11
Students	750	219	124	1300	261	1118	620	349	800	110	169
Staff	100	no data	33	410	65	250	150	85	200	18	39
Total # Tests	394	203	438	1761	212	4723	2066	3212	2772	53	519
Overall Test Positivity (%)	0.51	1.97	0.91	0.23	0.94	0.55	0.15	0.25	0.36	0	0.39
Date In-Person Instruction Resumed	2020-09-01	no data	2020-09-08	2020-09-07	2020-09-01	2020-09-02	2020-09-07	2020-08-28	2020-09-02	2020-10-16	2020-09-14
Student Testing Plan	Upon return from breaks, when there is an exposure on campus	no data	Upon return from breaks, as parents choose to utilize	Testing once a month for lower school students, twice monthly for middle school/high school students, special program for athletics	Asymptomatic, surveillance testing of roughly 1/2 the elementary students each week. All after breaks of a week or longer.	1/3 of the campus (students/staff) every week, test whole community after breaks such as Thanksgiving and Christmas	Testing in accordance with California Dept. of Public Health recommendations (frequency determined by County tier)	Testing all staff and students every week for December and January, reassess in late January for February plan	10% tested each month. Greater percentage following breaks. (Entire student body encouraged to test following breaks)	Asymptomatic testing - all students - once before returning from Winter Break in January future testing of asymptomatic students is TBD	Testing entire school community upon return from breaks and if there is a potential exposure on campus. Testing offered to students that may have been exposed, are

											participating in outside club cohorts, and/or who have been randomly selected each week (approximately 30 tests per week).
Staff Testing Plan	Every 2 weeks, as requested, also offered if exposure on campus	no data	Monthly, usually coincides with return from a break	Weekly	Every 2 weeks	1/3 of the campus (students/staff) every week, test whole community after breaks such as Thanksgiving and Christmas	Weekly	Testing all staff and students every week for December and January, reassess in late January for February plan	Weekly	Twice a month	Testing entire school community upon return from breaks and if there is a potential exposure. Testing staff every two weeks and as requested.
Instruction Model	50% of students on campus each day. Starting Mid-March we will bring all students back 4 days a week	no data	no data	In person, a/b cohort for MS and US. LS A/B on campus daily.	In person, full-day, students move to outdoor classrooms several times throughout each day. Families can opt for virtual learning (approx 10%). Students can join virtual learning if in quarantine or isolation.	In person, students could opt for elearning but there is no hybrid option, approximately 135 e learning	Three of six grades on campus (50%); families have option to remain fully remote	1/3 of student body in person each day.	on campus is offered to all students, parents have the option to choose hybrid or 100% remote	We are offering a full day (9am-3pm) on-campus program daily for all students. 85% of students are on-campus for instruction; 15% have selected our at-home option. Teachers are teaching concurrent classes using hybrid Owls and Zoom to broadcast classes to at-home learners.	
Classroom Size & Location	Various indoor and outdoor options.	no data	no data	12-16 in a class depending on room size, LS, 12 per class.	11-16 per class depending on room size	varies by division 12-20	Various indoor and outdoor options.		Various indoor and outdoor options.	varies from 9 to 14 stable groups, outside classroom	Various indoor and outdoor options

										tents is primary location	
Other Safety Procedures	Screening, masks, increased distance, air filters, improved HVAC filters, grab and go lunch, lower density in classrooms, outdoor performing arts	no data	no data	Utilized "Health and Safety FIRST" protocol for general safety (Face masks / Ill? Stay at home / Remove germs / Six feet apart / Temperature check). Also used Eموcha health-screening app used to report symptoms.	physical distance, masks, symptom screening, ventilation, outdoor learning, staggered arrival, stable groups, modified on-campus movement (not all apply to preschool)	Health Screen, Mandatory masks, increased distance seating, outdoor classrooms, no more than 45 at time in indoor classroom, CO2 sensors, fans, air filters, Daily disinfecting procedures. staggered drop off and pick up	Screening, masks, increased distance, air filters, improved HVAC filters, grab and go lunch, lower density in classrooms, outdoor performing arts	Screening, masks, increased distance, air filters, lower density classrooms	Screening, masks, increased distance, air filters, improved HVAC filters, grab and go lunch, lower density in classrooms, outdoor performing arts	staggered arrival and dismissal, morning screenings, masks for all, increased physical distancing, outside instruction for the majority of the time, air purifiers, handwashing stations in each outdoor classroom	Screening, mandatory masks, increased distance, air filters, improved HVAC filters, increased hand washing stations, more outdoor classrooms, increased cleaning and sanitation
Face Covering Requirements	Masks required for everyone while on campus. Teachers are offered disposable surgical masks.	no data	no data	Required at all times for students and faculty. Staff may remove if in a private office.	Masks required at all times except eating for everyone ages 3 and up	Masks required, all ages, at all times except eating and naptime	no data	no data	no data	Required for all	Masks required at all times (except for lunch where students are socially distanced)
Minimum Spacing Between Desks	6 feet (1.8 m)	no data	no data	6 feet (1.8 m)	6 feet (1.8 m) for elementary students	4-6 feet (1.2-1.8 m)	no data	no data	no data	5-6 feet (1.5-1.8 m)	6 feet (1.8 m)
HVAC Modifications	UV-C disinfecting lamps on the supply end of HVAC	no data	no data	Upgraded HVAC air filters, portable air purifiers	Increased air filter to M13-grade, added UV	Portable HEPA systems	no data	no data	no data	Upgraded HVAC air filters, portable air purifiers	Upgraded air filtration systems to M13-grade, added portable HEPA systems and fans
Indoor/Outdoor Instruction	no data	no data	no data	Indoor with max ventilation at all times.	Both indoor and outdoor, alternating throughout the day	CO2 monitors with mandatory outside time if >700 ppm. At least 15 minutes outdoor time per hour. All eating is outdoors.	no data	no data	no data	Fully functioning outdoor classroom tents with TV monitors, white boards, doc cam and battery power, indoor is permitted but	CO2 monitors with mandatory outside time; most classes are conducted outdoors for at least 50% time

										encouraged to be very little time	
Cohort Size	no data	no data	no data	Currently 12	Each grade level (approx 25-30 students)	Elementary: classroom. Middle and High School: grade level	no data	no data	no data	9 to 14	Each grade level
Cleaning	Regular disinfecting of high touch areas throughout the day, nightly electrostatic disinfecting of entire campus	no data	no data	Circulating, 3x and after room use.	Day porter added to disinfect surfaces in classrooms while students are outside	Cleaning service, including electrostatic sanitization	no data	no data	no data	Daily janitorial service, recess PE/equipment sprayed with disinfectant after each use; teachers instructed to wipe down surfaces if rotating between classrooms	Regular disinfection of high touch surfaces; nightly disinfection; janitorial service daily
Symptom Screening	Yes - upon entry to campus using the SchoolPass wellness app	no data	no data	Yes - using Emocho	Yes - using ProCare app	Yes - Using commercial app. Checked at arrival	no data	no data	no data	Yes - parents and staff fill out screening app each morning	Yes - daily using in-house proprietary check-in system
Temperature Checks	Yes - through the SchoolPass app and again as they enter campus	no data	no data	Yes - part of Emocho and staff at gate	Yes - at arrival at school for all	Yes - checked at arrival to school	no data	no data	no data	Yes - checked at arrival gate	Yes - through daily health check-in. Students that have not yet checked in are screened prior to entering campus.
Result Notification for Positive Tests	Yes - by Phone call and email	no data	no data	Yes - by School Nurse	Yes - by school nurse/Pandemic Coordinator	Yes - By athletic trainer	no data	no data	no data	Yes - by Director of Operations	Yes - by Phone call and e-mail
Result Notification for Negative Tests	Yes - by email	no data	no data	No	No	No	no data	no data	no data	Yes - by Director of Operations	Yes - by E-mail
Contact Tracing, Isolation, & Quarantine	Conducted in partnership with the school nurse and San Diego County	no data	no data	Conducted by school nurse and team of support with Director of Security and Environmental Health and Safety	Conducted by school nurse/Head of School/Assistant Head of School	By athletic trainer according to CDC guidelines	no data	no data	no data	Conducted by Director of Operations, Head of School, Administrative Assistant	Conducted by Principal, who is the lead with all testing, result notification, contact tracing, isolation, and quarantine