

Association of lung clearance index with survival in individuals with cystic fibrosis

Johanna Manuela Kurz^{1,2}, Kathryn Angela Ramsey¹, Romy Rodriguez¹, Ben Spycher³, Reta Fischer Biner⁴, Philipp Latzin¹, Florian Singer¹

1. Division of Respiratory Medicine, Department of Paediatrics, Inselspital University Hospital Bern, University of Bern, Bern, Freiburgstrasse 15, 3010 Bern, Switzerland
2. Graduate School for Health Sciences, University of Bern, Bern, Switzerland
3. Institute of Social and Preventive Medicine, University of Bern, Mittelstrasse 43, 3012 Bern, Switzerland
4. Quartier Bleu, Lindenhofspital, Bremgartenstrasse 117, 3012 Bern, Switzerland

CORRESPONDING AUTHOR

Florian Singer MD PhD

Division of Respiratory Medicine, Department of Paediatrics,

Inselspital University Hospital Bern, Freiburgstrasse 15, 3010 Bern, Switzerland;

Email: florian.singer@insel.ch; Phone : +4131632 2111; Fax: +41316325528

TAKE HOME MESSAGE:

Lung clearance index (LCI) is a measure of global ventilation inhomogeneity which increases early during the course of Cystic Fibrosis (CF) lung disease. This study shows that LCI is predictive of death or lung transplantation in individuals with CF.

Word count manuscript: 2998

Study registration number: NCT04016194

KEYWORDS (MeSH): Respiratory function tests; Cystic fibrosis, Analysis, Survival; Mortality; Lung transplantaion

ABSTRACT

Background: Lung clearance index (LCI) quantifies global ventilation inhomogeneity, a sensitive biomarker of airway function in cystic fibrosis (CF) lung disease.

Objectives: We examined the association of LCI with the risk of death or lung transplantation (LTX) in individuals with CF.

Methods: We performed a retrospective analysis in a cohort of individuals with CF aged \geq five years with available LCI and FEV₁ measurements between 1980 and 2006. Outcome was time until death or LTX. We applied Cox proportional hazard regressions using the earliest available LCI and FEV₁ values and adjusted for demographic and clinical variables. For sensitivity analyses, we used the mean of the first three LCI and FEV₁ measurements, stratified the cohort based on age, and investigated individuals with normal FEV₁.

Results: In total, 237 individuals with CF aged mean (range) 13.9 (5.6–41.0) years were included. This time-to-event analysis accrued 3813 person-years, 94 (40%) individuals died or received LTX. Crude hazard ratios [95% CI] were 1.04 [1.01–1.06] per one z-score increase in LCI and 1.25 [1.11–1.41] per one z-score decrease in FEV₁. After adjusting LCI and FEV₁ mutually in addition to sex, age, BMI and the number of hospitalisations, hazard ratios were 1.04 [1.01-1.07] for LCI, and 1.12 [0.95-1.33] for FEV₁. Sensitivity analyses yielded similar results and using the mean LCI strengthened the associations.

Conclusions: Increased ventilation inhomogeneity is associated with greater risk of death or LTX. Our data support LCI as novel surrogate of survival in individuals with CF.

Word count abstract: 246

Introduction

Cystic fibrosis (CF) is the most prevalent inherited lethal multi-organ disease in the general Caucasian population[1]. The progression of chronic lung disease leads to lung function decline and respiratory failure, which remains the major cause of morbidity and mortality[2]. Spirometry derived forced expired volume in the first second (FEV_1) is used as physiological surrogate to predict survival and for referral to lung transplantation (LTX)[3]. Within the past 20 years, the progression of CF lung disease has slowed and FEV_1 is often normal despite physiological and radiological signs of subclinical lung disease[4]. In individuals with mild CF lung disease, FEV_1 is less responsive to treatment[5]. The lung clearance index (LCI) derived from multiple breath inert gas washout (MBW) quantifies global ventilation inhomogeneity and is a sensitive biomarker of central and peripheral airway function[6]. MBW is safe and requires minimal patient cooperation[7]. LCI is more strongly correlated with structural lung damage than FEV_1 [4]. However, the clinical interpretation of increased (abnormal) LCI is currently constrained, as the ability to predict adverse respiratory disease outcomes has not been established yet[8]. In particular, it remains unclear if LCI can be considered as a surrogate endpoint for survival.

We utilised an existing cohort of individuals with CF, who were longitudinally followed including MBW measurements performed during routine clinical visits since the 1980s[9]. We hypothesized that individuals with CF who have elevated LCI are at increased risk of death or LTX. The objective of this study was to determine the association of LCI with adverse respiratory disease outcomes. The secondary aim was to compare the predictive values of the two parameters LCI and FEV_1 .

Methods

Study design

We performed a retrospective, observational analysis (NCT04016194) in a cohort of paediatric and adult individuals with CF at the paediatric CF outpatient clinic at the University Children's Hospital Bern, Switzerland. Source data were electronic patient records. We collated lung function and clinical data within three years after the first available MBW measurement. Routine assessments at each clinical visit were: MBW measurements using nitrogen (N₂) as tracer gas (N₂MBW) and spirometry, microbiological culture from cough swabs or sputum, body height and weight, records of medication, number of exacerbations, and hospitalisations[10]. Lung function indices from spirometry but not MBW were routinely disclosed to treating clinicians. Ethical approval was obtained by the local ethics committee (KEK BE 2018-01642). Written informed consent from survivors and relatives of the individuals who died was not required from the ethics committee and therefore not obtained for this study.

Inclusion- and exclusion criteria

Eligible individuals were screened by systematic review. Eligibility criteria were: Confirmed CF diagnosis, age \geq five years, available records on routine clinical care in the paediatric CF-centre Bern. Inclusion criteria were: Availability of at least one N₂MBW and FEV₁ measurement between 1986/01/01-2006/12/31. At that time, CF was diagnosed clinically in presence of typical respiratory symptoms or failure to thrive, two disease-causing CFTR mutations, and abnormal sweat chloride[11]. We excluded individuals if CF diagnosis was not confirmed, or if lung function tests were available only after LTX.

Variables and definitions

Outcome was defined as time until death or LTX. End of study was on 2018/12/31. We refer to survival as respiratory survival, where death and LTX are regarded as equivalent markers for terminal pulmonary disease as previously described[12]. We included LCI as primary and FEV₁ as secondary predictor variable. We *a priori* selected the following variables to account for possible confounding[13]: year of birth, age at CF diagnosis, age at lung function measurement, sex, and body mass index (BMI, normalized to z-scores[14]). Birth year was used as proxy for temporal trends in medical care. In addition, the following clinical variables were investigated[15-17]: genotype, pancreas function, CF-related diabetes (CFRD), infection with *Staphylococcus aureus* and *Pseudomonas aeruginosa*, allergic bronchopulmonary aspergillosis (ABPA), antibiotic treatment, and the number of pulmonary exacerbations, and hospitalisations. All variables collected from the source data were entered into an online database (RedCap database)[18]. Variable definitions are summarized in Table S1, online supplement (OLS). Age was used as the underlying analysis time. Children entered the study at the age of the first LCI measurement and contributed time at risk until the event (death or LTX), loss to follow-up or the end of the study period, whichever occurred first. Time at risk of individuals who were lost to follow-up was right censored on the date of the last available visit.

Lung function measurement

Trained lung function technicians performed N₂MBW according to in-house measurement standards using a customized open-bypass setup (SensorMedics 2200, Yorba Linda, CA, USA)[19]. The N₂MBW setup and LCI analysis remained unmodified throughout the whole study period. N₂MBW analysis was performed off-line; LCI was calculated according to the recommendations at that time: cumulative expired volume divided by function residual capacity[10, 19]. LCI values are dimensionless “lung turnovers” and referred to LCI units[7]. Generally applicable reference equations for MBW indices do not currently exist[20].

Therefore, LCI was standardized to z-scores using the distributional estimates mean (standard deviation, SD) of LCI derived from the same N₂MBW setup in 54 healthy subjects aged between 7 and 16 years [19]: 7.64 (0.86) units. Z-scores were calculated as:

$$\frac{\text{Observation} - \text{Mean (healthy subjects)}}{\text{Standard Deviation (healthy subjects)}}$$

Spirometry was performed using a commercial setup (Jaeger Würzburg, Germany)[10] and in accordance with standards of the European Respiratory Society (ERS) and American Thoracic Society (ATS) at that time[21-23]. To assess lung function independent from sex, age, and height, data were expressed as z-scores[24]. The Global Lung Initiative (GLI) reference equations include data collected before 2006 and were therefore considered applicable.

We additionally expressed LCI and FEV₁ values as standard deviation (SD-score) score based on the CF study population to account for unequal variances of LCI and FEV₁ in the CF

population:
$$\frac{\text{Observation} - \text{Mean (subjects with CF)}}{\text{Standard Deviation (subjects with CF)}}$$

Statistical methods

In the main analysis, we fitted Cox proportional hazard regressions to investigate the association of baseline LCI with survival vs. death or LTX with age (years) as the underlying time variable. The baseline was defined as the first available LCI value (date of study entry), combined with the clinical information derived within the three subsequent years after study entry. In sensitivity analyses, we first included only individuals with at least three available LCI values and used the mean of the first three available LCI and FEV₁ measurements within three years as baseline values. Average lung function values were expected to account for variability in lung function values between visits and to avoid possible confounding by indication[25]. As none of the included individuals received LTX or died within the first three years, the prediction started at the date of the third available LCI value and immortal time bias was avoided. Second, we stratified individuals based on age and repeated the analysis using

the initial baseline definition (first available LCI and FEV₁ measurement) as in the main analysis (i) in children aged ≤ 16.0 years at baseline, (ii) in individuals born within 30 years prior study end (excluding individuals born earlier than 1987) and (iii) in adults aged > 16.0 years at baseline. Third, we investigated the association of LCI with death or LTX including only individuals with normal FEV₁ (FEV₁ ≥ -1.96 z-score). We report unadjusted and adjusted estimates (Hazard Ratios, HR), and 95% confidence intervals (CI). The Cox proportional hazard regression analysis was performed in five steps (Figure S1, OLS): (i) *Crude model*: unadjusted, including LCI and FEV₁ separately; (ii) *Mutual model*: including both, LCI and FEV₁; (iii) *Complete model*: including LCI and FEV₁ separately, adjusted for all demographic and clinical variables; (iv) *Reduced model*: including LCI and FEV₁ separately, adjusted for selected demographic and clinical variables only; (v) *Final model*: including both, LCI and FEV₁, adjusted for selected demographic and clinical variables. We selected all clinical variables *a priori*, variable reduction in the reduced and final models were based on examining correlations between clinical variables and stepwise removing variables with $p > 0.2$ in likelihood-ratio tests.

We computed Kaplan Meier survival-curves for the following two groups: (i) Individuals with baseline LCI below the study population median, and (ii) individuals above the study population median. Analyses were performed using Stata 14.2 software package (StataCorp LP, College Station, TX, USA). P-values of <0.05 were considered statistically significant.

Results

Study participants

In total, 263 individuals \geq five years of age and treated in the CF-centre Bern between 1980-2006 were assessed for eligibility (Figure 1). Lung function data was available in 237 individuals with CF. Included individuals ($n = 237$, 47.7% females) were born between 1952-2000 and accrued 3813.3 person-years at risk during the study period. At baseline, mean (SD) age was 13.9 (8.2) years with a range from 5.6 to 41.0 years (Table 1). Mean (SD) LCI and FEV₁ was 8.7 (7.3) z-score and -2.5 (2.0) z-score, respectively. Average time between visits within the baseline was 10.0 (6.1) months, mean duration of follow-up was 16.1 (6.6) years. The majority of subjects (73.4%) were followed annually, 36.7% were followed semi-annually across the baseline period. Seventy individuals (39.7%) received LTX or died by 2018/12/31. Mean (SD) age at death or LTX was 30.0 (10.0) years. Fifteen individuals (6.33%) were lost to follow-up within the study period and 143 individuals (60.3%) were alive at the end of the study (right censored). Reasons for loss to follow-up were clinical care elsewhere ($n = 10$) and moving abroad ($n = 5$). Compared to individuals who received LTX, individuals who died were older but had similar FEV₁, LCI and BMI at baseline. Follow-up duration was comparable between individuals who died and those who received LTX, further details are provided in Table S2, OLS. All included variables contained less than 5.0% of missing values.

Main findings

Higher baseline LCI and lower baseline FEV₁ were associated with increased risk (HR) of death or LTX in individuals with CF. In the main analysis, estimated HR [95% CI] for death or LTX from the *Crude model* were 1.04 [1.01 – 1.06] per 1.0 z-score increase in LCI and 1.25 [1.11 – 1.41] per 1.0 z-score increase in FEV₁ (Table 2). After adjusting for selected demographic and clinical variables (sex, age, BMI, year of birth and the number of

hospitalisations) in the *Reduced model* the HR was 1.04 [1.01 – 1.07] for LCI and 1.18 [1.01 – 1.38] for FEV₁. Consequently, per 1.0 z-score increase in LCI, the risk of dying or receiving LTX increased by 4%. Per 1.0 z-score decrease in FEV₁, the risk of dying or receiving LTX increased by 18%. Therefore, an increase by 2.4 z-score in LCI or a 0.6 z-score decrease in FEV₁, were associated with the same risk increase of 10%. In the *Final model*, we mutually adjusted LCI and FEV₁ in addition to the aforementioned variables. In this model, the HR for LCI was 1.04 [1.01 – 1.07]. The corresponding HR for FEV₁ was no longer statistically significant: 1.12 [0.95 – 1.33]. Results are displayed in Figure 2. Estimates from the *Mutual* and *Complete models* can be found in Table S3, OLS. Further details on the *Complete* and *Final* models are given in Tables S6 and S7, OLS.

Effect sizes were influenced by the unequal variances of LCI and FEV₁ in this CF population (Table 1 and 2). In the *Crude model* the HR for death or LTX was 1.30 [1.08 – 1.58] per 1.0 SD-score increase in LCI, and 1.55 [1.22 – 1.96] per 1.0 SD-score increase in FEV₁. In the *Final model* the HR for death or LTX was 1.30 [1.06 – 1.60] per 1.0 SD-score increase in LCI, and 1.26 [0.91 – 1.74] per 1.0 SD-score decrease in FEV₁.

Kaplan Meier survival curves show that individuals with LCI values above the population median LCI (7.3 z-score) had a higher risk of death or LTX compared to those with a LCI below the population median LCI at baseline (Figure 3). Findings for FEV₁ were similar (Figure S2, OLS).

Sensitivity analyses

Sensitivity analyses were performed in subgroups of individuals, who (i) had three or more MBW tests within the first three years (n = 188, Table S5, OLS) of which the average LCI of the first three visits was derived as alternate baseline, or were (ii) born after 1987 (n = 102, Table 4), or (iii) aged ≤ 16.0 years (n = 168, Table 4), or (iv) had FEV₁ ≥ -1.96 z-score (n =

108, Table S5, OLS). Sensitivity analyses confirmed the primary analysis: LCI predicted death or LTX in children aged ≤ 16.0 years and in younger individuals born after 1987. Using the mean over three LCI and FEV₁ measurements as baseline values resulted in even higher estimates. The population characteristics in the sensitivity analyses are summarized in Table 3 and Table S4, OLS. Kaplan Meier survival curves are shown in Figure S3, OLS.

Discussion

Summary

This is the first study to show that LCI is associated with survival in individuals with CF. We found that per one z-score increase in LCI, the risk (HR) of death or LTX increased on average by 4%. After adjustment for heterogeneous variance of lung function values in the CF population, the risk of death or LTX increased on average by 30% per one SD-score increase in LCI. We verified this association in regression models adjusting for clinical and anthropometric variables and in sensitivity analyses. Baseline lung function values averaged across three visits provided stronger association with death or LTX compared to baseline lung function including single LCI and FEV₁ values only. LCI predicted death or LTX in children and younger individuals (born after 1987).

Association of lung function with respiratory disease outcomes

This study links LCI with respiratory survival in individuals with CF. These data are essential for biomarkers to be recognized as novel surrogate end-points of long-term prognosis[8]. LCI was associated with death or LTX after adjusting for known risk factors [26]. As expected, several variables were removed from the final model, as they either were strongly correlated or did not contribute to the prediction of survival. Few other studies assessed the degree to which LCI may predict the clinical course in CF. In school-aged children with CF, the risk of future pulmonary exacerbations increased by 12% after an LCI increase of \square 0.5 units at baseline[27]. We have recently demonstrated that per one LCI unit increase, the risk of future pulmonary exacerbation increased by 13% in children and adults with Primary Ciliary Dyskinesia[28]. These data suggest that LCI is predictive of adverse respiratory events in muco-obstructive lung diseases.

We confirmed that FEV₁ continues to be an important surrogate endpoint of survival in CF[3, 29]. However, after adjusting FEV₁ with LCI, the association between FEV₁ and survival was

weakened substantially. In line with previous findings, the variables sex, age, BMI and number of hospitalisations partially explained the association of FEV₁ with survival[26]. We assume that the ability of FEV₁ to predict survival may further decline in the current era of CF care including CFTR modulators and evolving survival patterns[1, 26]. There are several reasons why LCI should be further considered. FEV₁ may remain normal in childhood and studies assessing treatment regimens targeted to improve lung function may be constrained by ceiling effects from normal FEV₁[30]. In addition, the predictive value of FEV₁ for structural lung disease is poor. LCI is a reliable measure of global ventilation inhomogeneity arising from central and mainly peripheral airways[31]. MBW is characterized by a high feasibility and good repeatability[32, 33]. We and others have demonstrated the validity of LCI, *i.e.* the correlation with “gold standard” outcomes such as infection with *Pseudomonas aeruginosa* and structural lung disease[4, 6].

We showed that both, a single “snap shot” LCI measurement and averaged triplicate LCI measurements predicted respiratory survival. LCI averaged across three visits provided even stronger association with death or LTX compared to a single LCI value. Clinically important events such as ABPA or pulmonary exacerbations contribute to LCI variability and may therefore influence the predictive capacity of LCI [34, 35]. In our study, LCI, but not FEV₁, was predictive of death or LTX in younger individuals and individuals with mild CF lung disease. LCI seems to deteriorate more rapidly compared to FEV₁[10, 26]. We assume that clinical care improved during the study and possibly altered lung disease phenotypes from multi-airway generations obstruction in older individuals to mainly peripheral airway generations obstruction in younger individuals[9]. The influence of birth year on the association of FEV₁ with survival was more pronounced compared to LCI, which indicated a temporal trend in our study. We considered birth year, age at CF diagnosis and age at baseline

as proxies for improvements in clinical care and decreasing annual death rate in CF and adjusted for the latter variables.

Strengths and limitations

Major strengths of our study are the large sample size and wide spectrum of disease severity including individuals born over five decades, and the low number of missing values. While prevalence of *Pseudomonas aeruginosa* was greater compared to most contemporary cohorts, spirometry indices were comparable. We acknowledge the historical treatment regimens in our study. As the clinical course usually differs between pre- and post-LTX, we did not include deaths post-LTX as study outcome[26]. Censoring subjects at the date of LTX may have slightly underestimated the person-years at risk. Further studies are required to externally validate our findings in large populations. Yet, current CF cohorts investigating LCI started 15 years ago and therefore the association with survival can be studied earliest in one or two decades[36, 37].

The CF centre Bern already had extensive experience in MBW at the time of our study and has collated one of the largest LCI datasets to our knowledge[10, 19]. N₂MBW was performed regularly during clinical visits but did not influence clinical decisions, reducing the risk of selection bias or confounding by indication. The N₂MBW setup was standard at that time and remained unchanged during the study, but is no longer available. It appears unlikely that measurement error would have positively confounded the association of LCI with survival. Our findings appear relatively independent of evolving MBW technologies as suggested by the consistent risk estimates derived from normalized LCI values calculated from an external healthy population and the current study population. Thereby we also accounted for unequal variance of lung function indices in the study population using parametric (SD-score based on the study population) and non-parametric (median LCI based

on the study population) approaches. Yet, absolute LCI values in our study should be interpreted cautiously. The upper limit of normal LCI was 9.5 units which is higher compared to current N₂MBW setups[19, 38].

Clinical considerations

Our data support the use of LCI in routine clinical surveillance of individuals with CF. Time to death or LTX in individuals with higher LCI values was shorter compared to those with lower LCI. Future decision algorithms to recommend LTX may need to include LCI. LCI is increasingly used as study endpoint of trials assessing efficacy of CFTR modulators in children[39]. Recent evidence suggests that LCI correlates with the extent of naïve CFTR function suggesting LCI as a candidate treatable trait[40]. Increase in LCI could be used to timely initiate CFTR modulator treatment in otherwise asymptomatic individuals with CF and normal FEV₁.

Conclusion

The association between LCI and death or LTX may be considered as a milestone in the establishment of LCI as surrogate endpoint of survival. By measuring LCI, health care providers and individuals with CF may gain better understanding of possible implications of increments in ventilation inhomogeneity. Further research is necessary to determine whether LCI guided treatment improves respiratory disease outcomes.

Acknowledgements

The authors thank to all individuals and families for allowing their MBW and clinical data to be used for research. The authors thank Christian Benden¹, Carmen Casaulta², Gianluca Calderari³, Kathleen Jahn⁴, Angela Koutsokera⁵Anna Ruedeberg², Bernhard Schwizer⁶, Alain Sauty⁷, Michael Tamm⁸, Gisela Wirz², Maura Zanolari^{3,9}, and all other collaborators helping with data collection.

¹Division of Pulmonary Medicine, University Hospital of Zurich, Zurich, Switzerland

²Division of Respiratory Medicine, Department of Paediatrics, Inselspital University Hospital Bern, University of Bern, Bern, Freiburgstrasse 15, 3010 Bern, Switzerland

³Studio Medico, Corso Pestalozzi 11, 6900 Lugano , Switzerland

⁴Department of Pneumology, University Hospital Basel, Switzerland

⁵Service de pneumologie, centre hospitalier universitaire Vaudois, 1011 Lausanne, Suisse

⁶Department of Nuclear Medicine and Radiology, Cantonal Hospital Lucerne, Lucerne, Switzerland

⁷Pneumologist, Service de Pneumologie, Hôpital Neuchâtelois, Neuchâtel, Switzerland

⁸Dept of Internal Medicine, University Hospital, Basel, Switzerland

⁹Dept of Paediatrics, Hospital of Bellinzona, Bellinzona, Switzerland

Financial support for the study

This project was funded by unrestricted educational grants from Vertex Pharmaceuticals Incorporated, Swiss National Science Foundation (SNSF) and Swiss Society of Cystic Fibrosis (CFCH).

References

1. Bell SC, Mall MA, Gutierrez H, Macek M, Madge S, Davies JC, Burgel PR, Tullis E, Castanos C, Castellani C, Byrnes CA, Cathcart F, Chotirmall SH, Cosgriff R, Eichler I, Fajac I, Goss CH, Drevinek P, Farrell PM, Gravelle AM, Havermans T, Mayer-Hamblett N, Kashirskaya N, Kerem E, Mathew JL, McKone EF, Naehrlich L, Nasr SZ, Oates GR, O'Neill C, Pypops U, Raraigh KS, Rowe SM, Southern KW, Sivam S, Stephenson AL, Zampoli M, Ratjen F. The future of cystic fibrosis care: a global perspective. *The Lancet. Respiratory medicine* 2020; 8(1): p. 65–124.
2. Estrada-Veras J, Groninger H. Palliative care for patients with cystic fibrosis #265. *Journal of palliative medicine* 2013; 16(4): p. 446–447.
3. Robinson W, Waltz DA. FEV(1) as a guide to lung transplant referral in young patients with cystic fibrosis. *Pediatric pulmonology* 2000; 30(3): p. 198–202.
4. Ramsey KA, Rosenow T, Turkovic L, Skoric B, Banton G, Adams AM, Simpson SJ, Murray C, Ranganathan SC, Stick SM, Hall GL, Arest CF. Lung Clearance Index and Structural Lung Disease on Computed Tomography in Early Cystic Fibrosis. *American journal of respiratory and critical care medicine* 2016; 193(1): p. 60–67.
5. Kent L, Reix P, Innes JA, Zielen S, Le Bourgeois M, Braggion C, Lever S, Arets HG, Brownlee K, Bradley JM, Bayfield K, O'Neill K, Savi D, Bilton D, Lindblad A, Davies JC, Sermet I, De Boeck K, European Cystic Fibrosis Society Clinical Trial Network Standardisation C. Lung clearance index: evidence for use in clinical trials in cystic fibrosis. *J Cyst Fibros* 2014; 13(2): p. 123-138.
6. Singer F, Kieninger E, Abbas C, Yammine S, Fuchs O, Proietti E, Regamey N, Casaulta C, Frey U, Latzin P. Practicability of nitrogen multiple-breath washout measurements in a pediatric cystic fibrosis outpatient setting. *Pediatric pulmonology* 2013; 48(8): p. 739–746.
7. Robinson PD, Latzin P, Verbanck S, Hall GL, Horsley A, Gappa M, Thamrin C, Arets HG, Aurora P, Fuchs SI, King GG, Lum S, Macleod K, Paiva M, Pillow JJ, Ranganathan S, Ratjen F, Singer F, Sonnappa S, Stocks J, Subbarao P, Thompson BR, Gustafsson PM. Consensus statement for inert gas washout measurement using multiple- and single- breath tests. *The European respiratory journal* 2013; 41(3): p. 507–522.
8. De Boeck K, Kent L, Davies J, Derichs N, Amaral M, Rowe SM, Middleton P, de Jonge H, Bronsveld I, Wilschanski M, Melotti P, Danner-Boucher I, Boerner S, Fajac I, Southern K, de Nooijer RA, Bot A, de Rijke Y, de Wachter E, Leal T, Vermeulen F, Hug MJ, Rault G, Nguyen-Khoa T, Barreto C, Proesmans M, Sermet-Gaudelus I, European Cystic Fibrosis Society Clinical Trial Network Standardisation C. CFTR biomarkers: time for promotion to surrogate end-point. *Eur Respir J* 2013; 41(1): p. 203-216.
9. Kraemer R, Blum A, Schibler A, Ammann RA, Gallati S. Ventilation inhomogeneities in relation to standard lung function in patients with cystic fibrosis. *American journal of respiratory and critical care medicine* 2005; 171(4): p. 371–378.
10. Kraemer R, Baldwin DN, Ammann RA, Frey U, Gallati S. Progression of pulmonary hyperinflation and trapped gas associated with genetic and environmental factors in children with cystic fibrosis. *Respiratory research* 2006; 7: p. 138.
11. Rosenstein BJ, Cutting GR. The diagnosis of cystic fibrosis: a consensus statement. Cystic Fibrosis Foundation Consensus Panel. *J Pediatr* 1998; 132(4): p. 589-595.
12. Milla CE, Warwick WJ. Risk of death in cystic fibrosis patients with severely compromised lung function. *Chest* 1998; 113(5): p. 1230–1234.

13. Steinkamp G , Wiedemann B. Relationship between nutritional status and lung function in cystic fibrosis: cross sectional and longitudinal analyses from the German CF quality assurance (CFQA) project. *Thorax* 2002; 57(7): p. 596–601.
14. Butte NF, Garza C , de Onis M. Evaluation of the feasibility of international growth standards for school-aged children and adolescents. *The Journal of nutrition* 2007; 137(1): p. 153–157.
15. Aaron SD, Stephenson AL, Cameron DW , Whitmore GA. A statistical model to predict one-year risk of death in patients with cystic fibrosis. *Journal of clinical epidemiology* 2015; 68(11): p. 1336–1345.
16. McKone EF, Emerson SS, Edwards KL , Aitken ML. Effect of genotype on phenotype and mortality in cystic fibrosis: a retrospective cohort study. *Lancet* 2003; 361(9370): p. 1671–1676.
17. Moran A, Dunitz J, Nathan B, Saeed A, Holme B , Thomas W. Cystic fibrosis-related diabetes: current trends in prevalence, incidence, and mortality. *Diabetes care* 2009; 32(9): p. 1626–1631.
18. Harris PA, Taylor R, Minor BL, Elliott V, Fernandez M, O'Neal L, McLeod L, Delacqua G, Delacqua F, Kirby J, Duda SN , Consortium RE. The REDCap consortium: Building an international community of software platform partners. *Journal of biomedical informatics* 2019; 95: p. 103208.
19. Kraemer R, Zehnder M , Meister B. Intrapulmonary gas distribution in healthy children. *Respiration physiology* 1986; 65(2): p. 127–137.
20. Anagnostopoulou P, Latzin P, Jensen R, Stahl M, Harper A, Yammine S, Usemann J, Foong RE, Spycher B, Hall GL, Singer F, Stanojevic S, Mall M, Ratjen F , Ramsey KA. Normative data for multiple breath washout outcomes in school-aged Caucasian children. *The European respiratory journal* 2019.
21. Gardner RB, C.; Broennle, A.; Burrows, B.; Ferris, B.; Gaensler, E.; Glindmeyer, H.; Gold, P.; Hankinson, J.; Hazucha, M.; Hopewell, P; Hurd, S.; Kanner, R., Knudson, R. ATS statement--Snowbird workshop on standardization of spirometry. *The American review of respiratory disease* 1979; 119(5): p. 831–838.
22. Gardner RM , Hankinson JL. Standardization of spirometry--1987 ATS update (American Thoracic Society). *Journal of occupational medicine. : official publication of the Industrial Medical Association* 1988; 30(3): p. 272–273.
23. Quanjer PH, Tammeling GJ, Cotes JE, Pedersen OF, Peslin R , Yernault JC. Lung volumes and forced ventilatory flows. Report Working Party Standardization of Lung Function Tests, European Community for Steel and Coal. Official Statement of the European Respiratory Society. *The European respiratory journal. Supplement* 1993; 16: p. 5–40.
24. Quanjer PH, Stanojevic S, Cole TJ, Baur X, Hall GL, Culver BH, Enright PL, Hankinson JL, Ip MS, Zheng J, Stocks J , Initiative ERSGLF. Multi-ethnic reference values for spirometry for the 3-95-yr age range: the global lung function 2012 equations. *The European respiratory journal* 2012; 40(6): p. 1324–1343.
25. Svedberg M, Gustafsson PM, Robinson PD, Rosberg M , Lindblad A. Variability of lung clearance index in clinically stable cystic fibrosis lung disease in school age children. *J Cyst Fibros* 2018; 17(2): p. 236-241.
26. Stephenson AL, Tom M, Berthiaume Y, Singer LG, Aaron SD, Whitmore GA , Stanojevic S. A contemporary survival analysis of individuals with cystic fibrosis: a cohort study. *The European respiratory journal* 2015; 45(3): p. 670–679.
27. Vermeulen F, Proesmans M, Boon M, Havermans T , De Boeck K. Lung clearance index predicts pulmonary exacerbations in young patients with cystic fibrosis. *Thorax* 2014; 69(1): p. 39–45.

28. Singer F, Schlegte A, Nyilas S, vermeulen F, Boon M , Koerner-Rettberg C. Lung clearance index predicts pulmonary exacerbations in individuals with primary ciliary dyskinesia - a multicentre cohort study. *Thorax* 2021.
29. Kerem E, Reisman J, Corey M, Canny GJ , Levison H. Prediction of mortality in patients with cystic fibrosis. *The New England journal of medicine* 1992; 326(18): p. 1187–1191.
30. Shaw M, Khan U, Clancy JP, Donaldson SH, Sagel SD, Rowe SM, Ratjen F , Network PlotCFSTD. Changes in LCI in F508del/F508del patients treated with lumacaftor/ivacaftor: Results from the prospect study. *Journal of cystic fibrosis : official journal of the European Cystic Fibrosis Society* 2020; 19(6): p. 931-933.
31. Oude Engberink E, Ratjen F, Davis SD, Retsch-Bogart G, Amin R , Stanojevic S. Inter-test reproducibility of the lung clearance index measured by multiple breath washout. *The European respiratory journal* 2017; 50(4).
32. Fuchs SI, Eder J, Ellemunter H , Gappa M. Lung clearance index: normal values, repeatability, and reproducibility in healthy children and adolescents. *Pediatric pulmonology* 2009; 44(12): p. 1180–1185.
33. Yammine S, Summermatter S, Singer F, Lauener R , Latzin P. Feasibility of nitrogen multiple-breath washout in inexperienced children younger than 7 years. *Pediatric pulmonology* 2016; 51(11): p. 1183–1190.
34. Frauchiger BS, Binggeli S, Yammine S, Spycher B, Kruger L, Ramsey KA , Latzin P. Longitudinal Course of Clinical Lung Clearance Index in Children with Cystic Fibrosis. *The European respiratory journal* 2020.
35. Perrem L, Stanojevic S, Shaw M, Jensen R, McDonald N, Isaac SM, Davis M, Clem C, Guido J, Jara S, France L, Solomon M, Grasmann H, Waters V, Swezey N, Sanders DB, Davis SD , Ratjen F. Lung Clearance Index to Track Acute Respiratory Events in School-age Children with Cystic Fibrosis *American journal of respiratory and critical care medicine* 2020.
36. Aurora P, Bush A, Gustafsson P, Oliver C, Wallis C, Price J, Stroobant J, Carr S, Stocks J , London Cystic Fibrosis C. Multiple-breath washout as a marker of lung disease in preschool children with cystic fibrosis. *American journal of respiratory and critical care medicine* 2005; 171(3): p. 249–256.
37. Ramsey KA, Ranganathan S, Park J, Skoric B, Adams AM, Simpson SJ, Robins-Browne RM, Franklin PJ, de Klerk NH, Sly PD, Stick SM, Hall GL , Arest CF. Early respiratory infection is associated with reduced spirometry in children with cystic fibrosis. *American journal of respiratory and critical care medicine* 2014; 190(10): p. 1111–1116.
38. Poncin W, Singer F, Aubriot AS , Lebecque P. Agreement between multiple-breath nitrogen washout systems in children and adults. *Journal of cystic fibrosis : official journal of the European Cystic Fibrosis Society* 2017; 16(2): p. 258-266.
39. Davies J, Sheridan H, Bell N, Cunningham S, Davis SD, Elborn JS, Milla CE, Starner TD, Weiner DJ, Lee PS , Ratjen F. Assessment of clinical response to ivacaftor with lung clearance index in cystic fibrosis patients with a G551D-CFTR mutation and preserved spirometry: a randomised controlled trial. *The Lancet. Respiratory medicine* 2013; 1(8): p. 630–638.
40. Bernasconi N, Kieninger E, Shaw M, Kurz J, Moeller A, Ratjen F, Rochat I, Stanojevic S , Singer F. CFTR-function and ventilation inhomogeneity in individuals with cystic fibrosis. *Journal of cystic fibrosis : official journal of the European Cystic Fibrosis Society* 2020.

Figure legends

Figure 1. Participant flow diagram. *Eligibility criteria:* Age ≥ 5 years, confirmed CF diagnosis, routine clinical care in CF-Centre Bern between 1986–2006. *Inclusion criteria:* Availability of at least one MBW test. CF = Cystic fibrosis, LCI = Lung clearance index, MBW = Multiple breath washout, LTX = Lung transplantation.

Figure 2. Risk of death or lung transplantation according to baseline lung function.

Crude and adjusted Hazard Ratios [95% CI] for the risk of death or lung transplantation per one z-score increase in LCI (left panel) or per one z-score decrease in FEV₁ (right panel) in 237 individuals with CF using the first available LCI and corresponding FEV₁ value as baseline. X-axis shows log-transformed HR. Additive inverse of FEV₁ (FEV₁*-1) was used to allow better comparison of LCI with FEV₁. *Definitions:* Crude model: unadjusted HR per one z-score increase in LCI and one z-score decrease in FEV₁, Reduced model: Adjusted HR per one z-score increase in LCI and one z-score decrease in FEV₁, adjusted for the selected variables sex, age, BMI, year of birth, number of hospitalisations; Final model: HR per one z-score increase in LCI and per one z-score decrease in FEV₁, adjusted mutually in addition to the aforementioned variables. BMI = Body mass index, CF = Cystic fibrosis, LCI = Lung clearance index, LTX = Lung transplantation.

Figure 3. Respiratory survival in individuals with CF according to baseline LCI.

Individuals with baseline LCI value \leq study population median of 7.3 z-score, n = 119 are highlighted in blue. Individuals with baseline LCI value $>$ study population median of 7.3 z-score, n = 118 are highlighted in red. *Definitions:* p = 0.50: 50% of the individuals in each group died or received LTX. BMI = Body mass index, CF = Cystic fibrosis, LCI = Lung clearance index.

Figure 4. Risk of death of lung transplantation in the sensitivity analysis. Crude and adjusted Hazard Ratios [95% CI] for the risk of death or lung transplantation in the sensitivity analysis: (i) per one z-score increase in LCI A) and per one z-score decrease in FEV₁ B) in individuals ≥ 3 LCI measurements within three years after study entry using the average of the first three available LCI and corresponding FEV₁ values as baseline (n = 188), (ii) per one z-score increase in LCI C) and per one z-score decrease in FEV₁ D) in children ≤ 16.0 years of age (n = 168) using the first available LCI and corresponding FEV₁ value as baseline, and (iii) per one z-score increase in LCI E) and per one z-score increase in FEV₁ F) in individuals born after 1987 (n = 102) using the first available LCI and corresponding FEV₁ value as baseline. Additive inverse of FEV₁ (FEV₁*-1) was used to allow better comparison between LCI and FEV₁. *Definitions:* Crude model: unadjusted HR per one z-score increase in LCI and one z-score decrease in FEV₁, Reduced model: Adjusted HR per one z-score increase in LCI and one z-score decrease in FEV₁, adjusted for the selected variables sex, age, BMI, year of birth, number of hospitalisations; Final model: HR per one z-score increase in LCI and per one z-score decrease in FEV₁, adjusted mutually in addition to the aforementioned variables. BMI = Body mass index, CF = Cystic fibrosis, LCI = Lung clearance index, LTX = Lung transplantation.

Tables

Table 1. Population characteristics and study end-points.

	Baseline
N [females, %]	237 [96, 51.1]
Year of birth	1983 [10.7; 1952 – 2000]
Median age at CF diagnosis [IQR, range]	0.0 [0.0 – 2.0; 0.0 – 28.0]
Age at prediction start (years)	13.9 [8.2; 5.6 – 41.0]
BMI at prediction start (z-score)	-0.9 [1.1; -4.0 – 2.4]
F508del homozygous, n [%]	136 [57.4]
F508del heterozygous, n [%]	74 [31.2]
Other, n [%]	27 [11.4]
Pancreatic insufficiency, n [%]	200 [84.4]
CFRD, n [%]	49 [20.7]
LCI (units)	17.5 [7.3; 3.5 – 59.8]
LCI (z-score)	8.7 [7.3; -5.4 – 50.9]
FEV ₁ (z-score)	-2.4 [2.0; -6.4 – 1.7]
FEV ₁ (%pred.)	70.3 [24.7; 19.8 – 120.8]
Pseudomonas aeruginosa, n [%]	173 [73.0]
Staphylococcus aureus, n [%]	137 [57.8]
ABPA, n [%]	19 [8.0]
Individuals hospitalized at least once during baseline, n (%)	107 [45.2]
Number of hospitalisations per individual during baseline	2.2 [1.7; 1.0 – 9.0]

Antibiotic treatment (oral, inhaled, intravenous), n (%)	201 [84.1]
Inhaled medication (mucolytics, bronchodilators, steroids), n (%)	204 [86.1]
Follow-up duration (years) until outcome event or end of study	16.1 [6.6; 0.3 – 32.3]
Outcome (Death or LTX), n [%]	94 [39.7]
Death, n [%]	41 [17.3]
males, n [%]	22 [53.7]
females, n [%]	19 [46.3]
LTX, n [%]	53 [22.4]
males, n [%]	27 [50.9]
females, n [%]	26 [49.1]
Loss to follow-up, n [%]	15 [6.3]
Person-years at risk	3813.3

Legend Table 1: Data presented as mean [SD, range], unless indicated otherwise.

Definitions: Baseline = First available LCI (= study entry) and corresponding FEV₁ values;

Demographic and clinical data derived within the first three years after study entry. Prediction

start = Date of third LCI value within the first three years after study entry; Follow-Up:

Duration (years) from prediction start until outcome event or end of study in 2018/12/30.

Abbreviations: ABPA = Allergic bronchopulmonary aspergillosis, BMI = Body mass index,

CF = Cystic fibrosis, CFRD = Cystic fibrosis-related diabetes, FEV₁ = Forced expired volume

in the first second, LCI = Lung clearance index, LTX = Lung transplantation.

Table 2. Risk of death or lung transplantation according to baseline lung function.

A)	LCI (z-score)	FEV₁ (z-score)
Crude model	1.04 [1.01 – 1.06], p = 0.006	1.25 [1.11 – 1.41], p < 0.001
Reduced model	1.04 [1.01 – 1.07], p = 0.003	1.18 [1.01 – 1.38], p = 0.043
Final model	1.04 [1.01 – 1.07], p = 0.011	1.12 [0.95 – 1.33], p = 0.164
B)	LCI (SD-score)	FEV₁ (SD-score)
Crude model	1.30 [1.08 – 1.58], p = 0.006	1.55 [1.22 – 1.96], p < 0.001
Reduced model	1.34 [1.10 – 1.62], p = 0.003	1.38 [1.01 – 1.88], p = 0.043
Final model	1.30 [1.06 – 1.60], p = 0.011	1.26 [0.91 – 1.74], p = 0.164

Legend Table 2: Crude and adjusted Hazard Ratios [95% CI], p-values for the risk of death or lung transplantation per (A) one z-score increase in LCI or per one z-score decrease in FEV₁ and (B) one SD-score increase in LCI or per one SD-score increase in FEV₁, in 237 individuals with CF using the first available LCI and corresponding FEV₁ value as baseline. *Definitions:* Crude model: unadjusted HR per one z-score increase in LCI and one z-score decrease in FEV₁, Reduced model: Adjusted HR per one z-score increase in LCI and one z-score decrease in FEV₁, adjusted for the selected variables sex, age, BMI, year of birth, number of hospitalisations; Final model: HR per one z-score increase in LCI and per one z-score decrease in FEV₁, adjusted mutually in addition to the aforementioned variables. Results for the *Mutual* and *Complete* models are provided in Table S3, OLS. *Abbreviations:* BMI = Body mass index, CF = Cystic fibrosis, CI = Confidence interval, FEV₁ = Forced expired volume in the first second, LCI = Lung clearance index, LTX = Lung transplantation.

Table 3. Population characteristics in the sensitivity analyses.

	Individuals with ≥ 3 LCI/ FEV₁ measurements	Children ≤ 16.0 years of age	Individuals born after 1987
N [females, %]	188 [96, 51.1]	168 [78, 46.4]	102 [49, 48.0]
Year of birth	1984 [10.4; 1952 – 2000]	1988 [6.7; 1971– 2000]	1992 [3.7; 1987–2000]
Median age at CF diagnosis [IQR, range]	0.0 [0.0 – 2.0; 0.0 – 28.0]	0.0 [0.0–2.0; 0.0– 14.0]	1.6 [0.0–2.0; 0.0–14.0]
Age (years)	13.2 [8.1; 5.6 – 41.0]	9.5 [3.0; 5.6–16.0]	7.8 [2.3; 5.6–17.7]
BMI (z-score)	-0.9 [1.0; -4.0 – 1.8]	-0.8 [1.0; -4.1–1.8]	-0.3 [0.8; -2.6–1.8]
LCI (z-score)	9.0 [5.7; -2.6 – 32.1]*	8.8 [7.5; -5.4 – 50.9]**	9.5 [8.0, -1.6 – 50.9]**
FEV ₁ (z-score)	-2.4 [1.9; -6.3 – 1.3]*	-1.8 [1.8; -6.1–1.7]**	-1.1 [1.47; -4.5–1.7]**
Outcome (death or LTX), n [%]	70 [37.2]	54 [32.1]	13 [13.7]
Loss to follow-up, n [%]	9 [4.8]	8 [5.4]	4 [4.2]

Legend Table 3: Data presented as mean [SD; range], unless indicated otherwise. *In individuals with ≥ 3 LCI measurements within the first 3 years after study entry, we used the average LCI of the first three available LCI and corresponding FEV₁ values as baseline. **In individuals stratified by age, the first available LCI and corresponding FEV₁ were used as

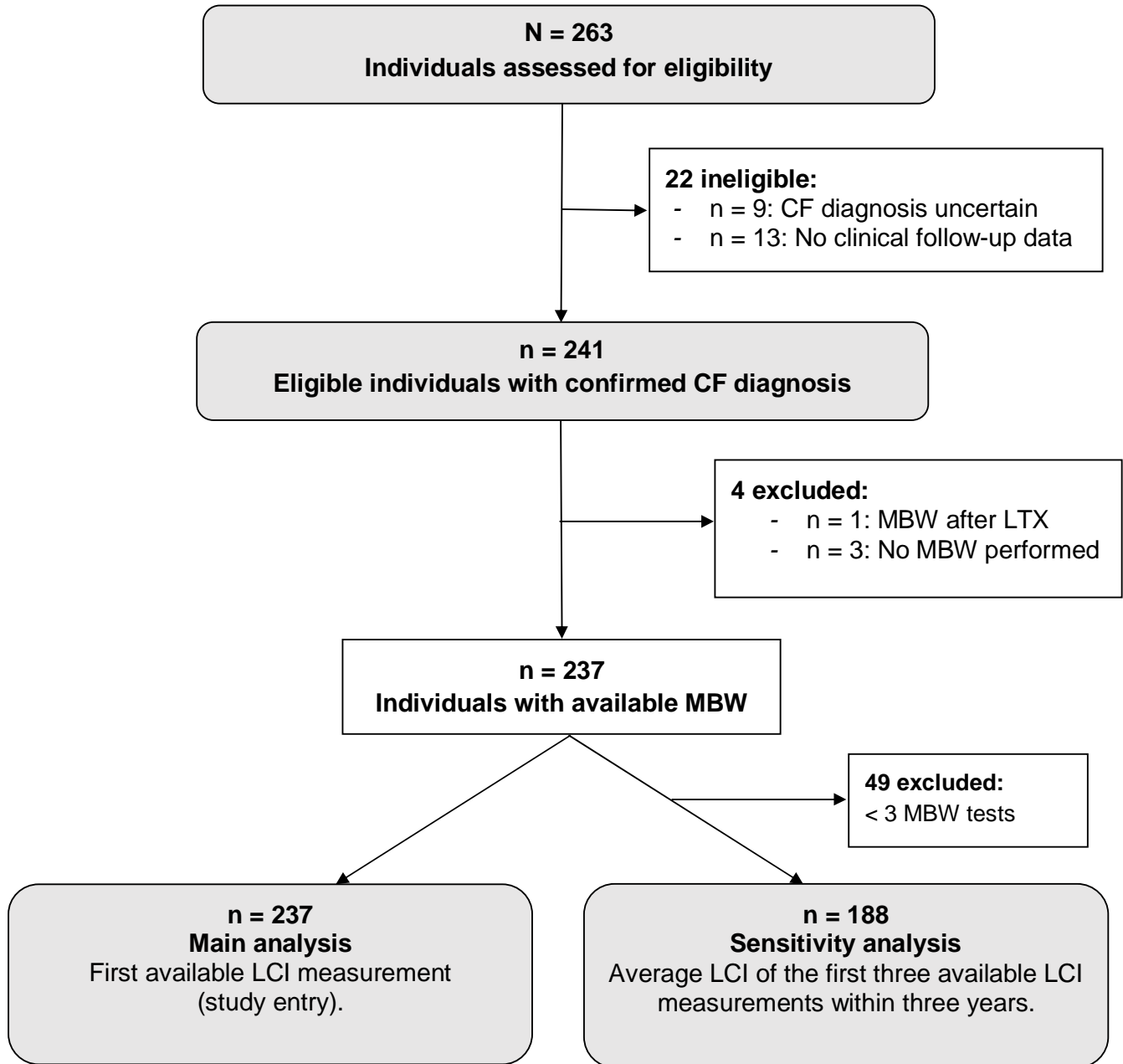
baseline. *Abbreviations:* CF = Cystic fibrosis, FEV₁ = Forced expired volume in the first second, LCI = Lung clearance index, LTX = Lung transplantation.

Table 4. Risk of death or lung transplantation in the sensitivity analyses.

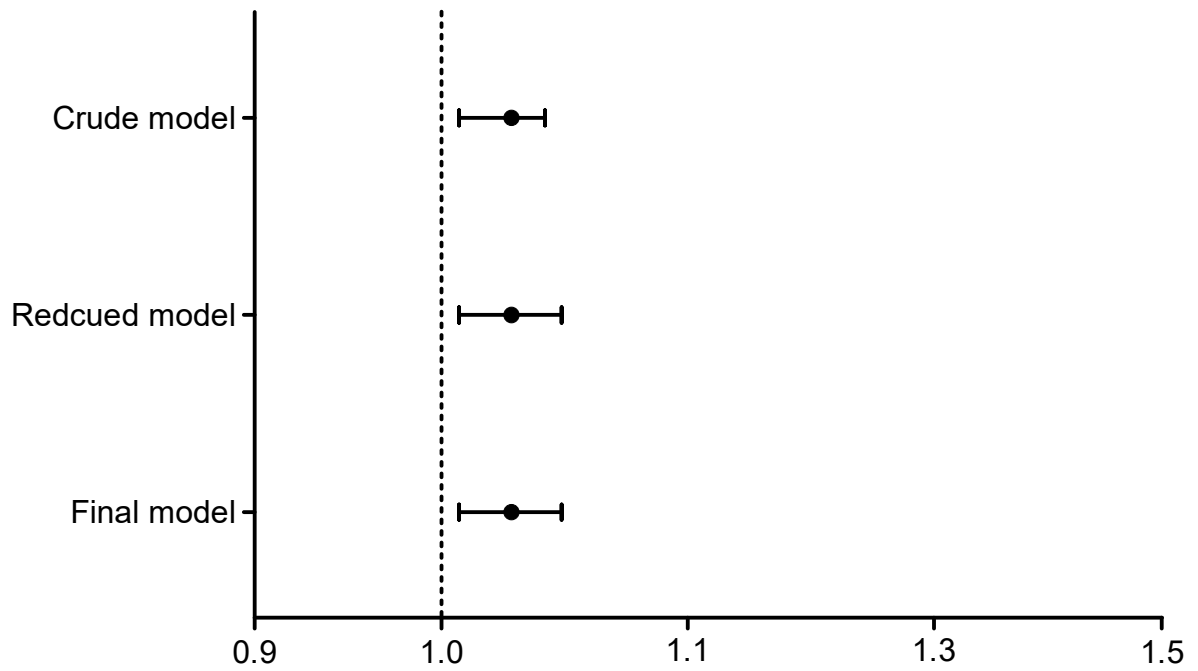
	Individuals with ≥ 3 LCI/ FEV₁ measurements within 3 years	Children ≤ 16.0 years of age	Individuals born after 1987
N	188	168	102
LCI			
Crude model	1.08 [1.04 – 1.13], p < 0.001	1.05 [1.02 – 1.08], p = 0.001	1.04 [1.00 – 1.08], p = 0.042
Reduced model	1.08 [1.03 – 1.13], p = 0.001	1.04 [1.01 – 1.08], p = 0.007	1.04 [1.00 – 1.08], p = 0.052
Final model	1.06 [1.01 – 1.12], p = 0.025	1.04 [1.01 – 1.08], p = 0.010	1.04 [1.00 – 1.08], p = 0.054
FEV₁			
Crude model	1.37 [1.18 – 1.59], p < 0.001	1.41 [1.19 – 1.67], p < 0.001	1.62 [1.14 – 2.30], p = 0.008
Reduced model	1.34 [1.06 – 1.69], p = 0.006	1.17 [0.96 – 1.43], p = 0.120	1.31 [0.85 – 2.02], p = 0.219
Final model	1.24 [0.97 – 1.57], p = 0.086	1.12 [0.91 – 1.38], p = 0.294	1.29 [0.83 – 2.00], p = 0.263

Legend Table 4: Crude and adjusted Hazard Ratios [95% CI], p-values for the sensitivity analyses using the average LCI and average FEV₁ of the first three available LCI and corresponding FEV₁ measurements as baseline in individuals with ≥ 3 LCI measurements within three years, and in age strata using the first available LCI and corresponding FEV₁ as

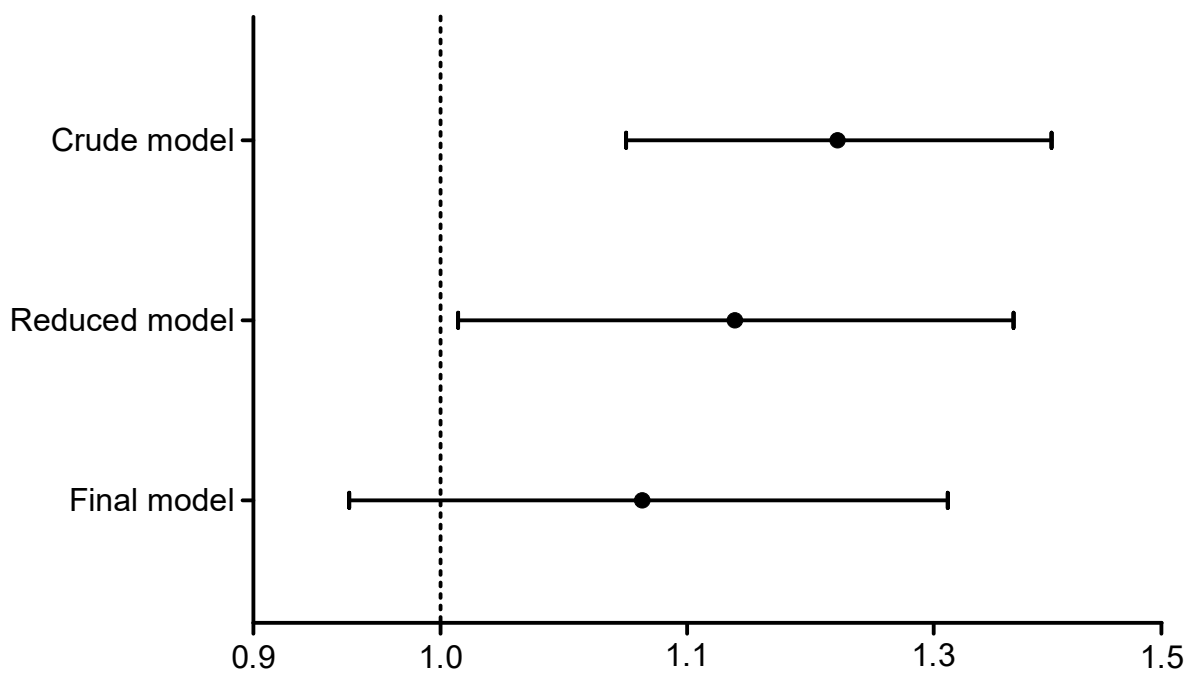
baseline. *Definitions:* Crude model: unadjusted HR per one z-score increase in LCI and one z-score decrease in FEV₁; Reduced model: Adjusted HR per one z-score increase in LCI and one z-score decrease in FEV₁, adjusted for the selected variables sex, age, BMI, year of birth, number of hospitalisations; Final model: HR per one z-score increase in LCI and per one z-score decrease in FEV₁, adjusted mutually in addition to the aforementioned variables. *Abbreviations:* ABPA = Allergic bronchopulmonary aspergillosis, BMI = Body mass index, CF = Cystic fibrosis, CI = Confidence interval, FEV₁ = Forced expired volume in the first second, HR = Hazard ratio, LCI = Lung clearance index, LTX = Lung transplantation.

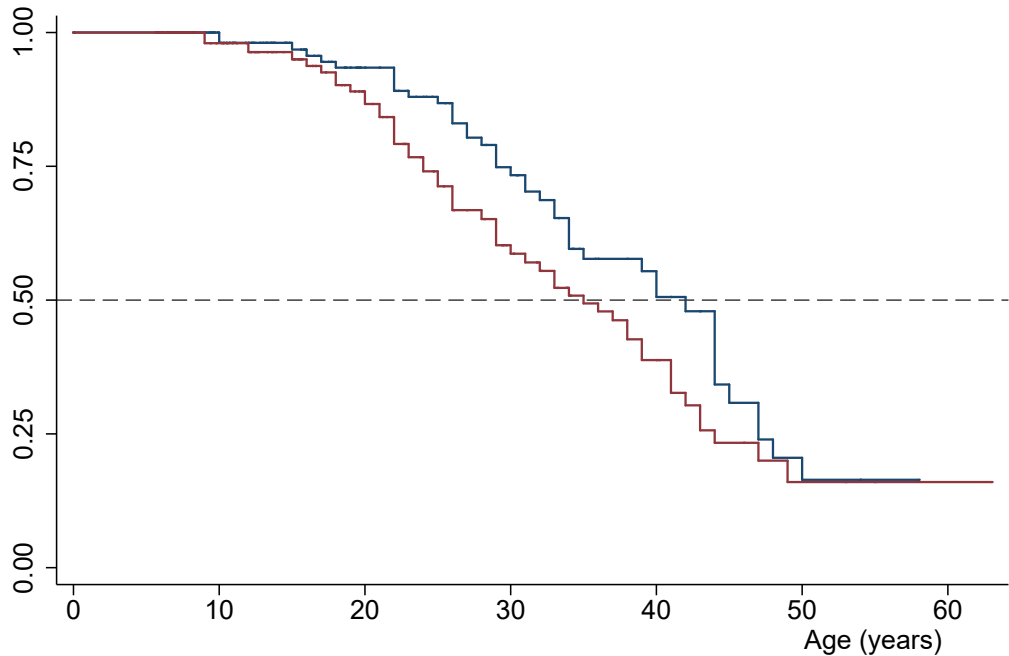


A) LCI

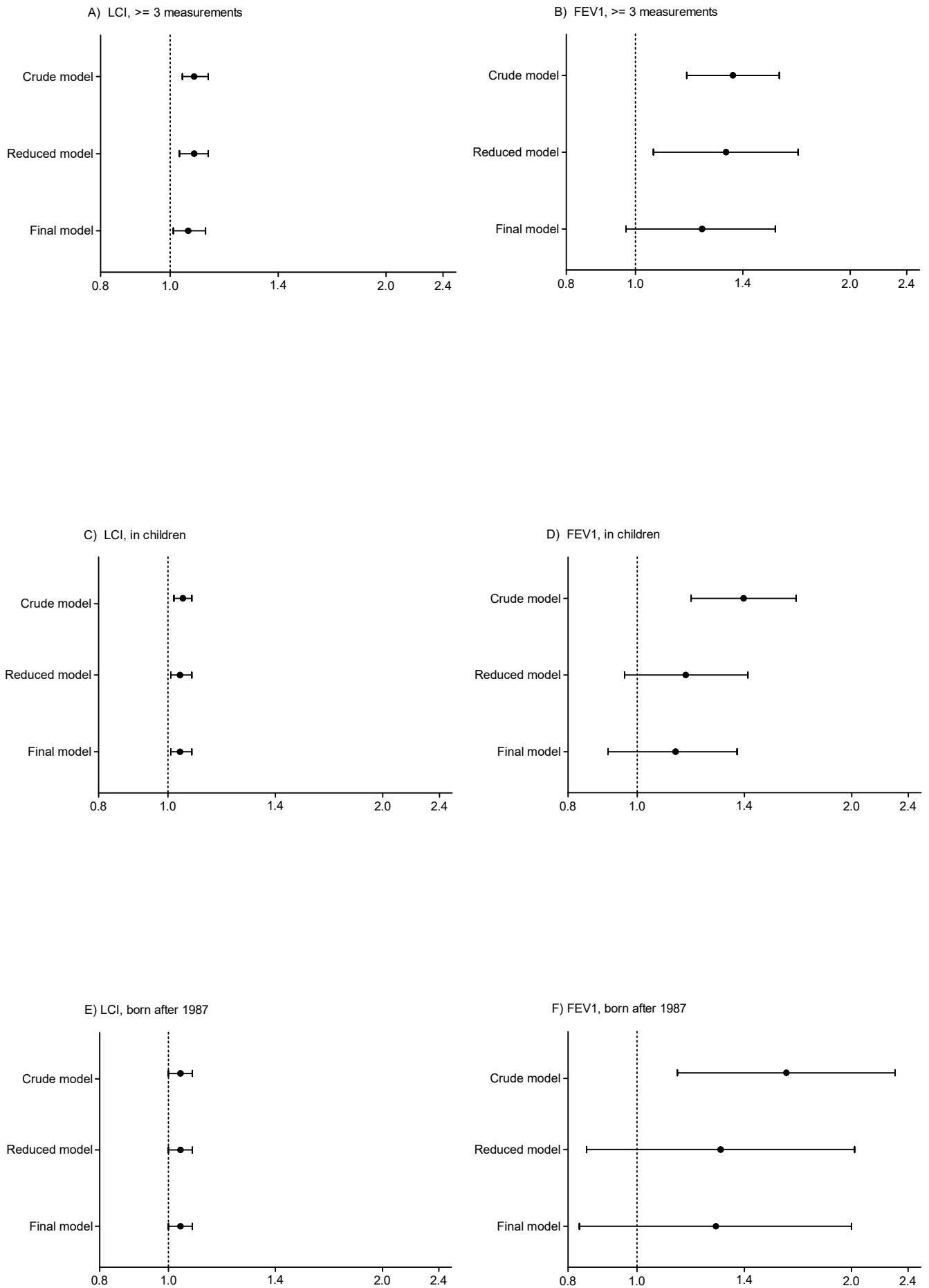


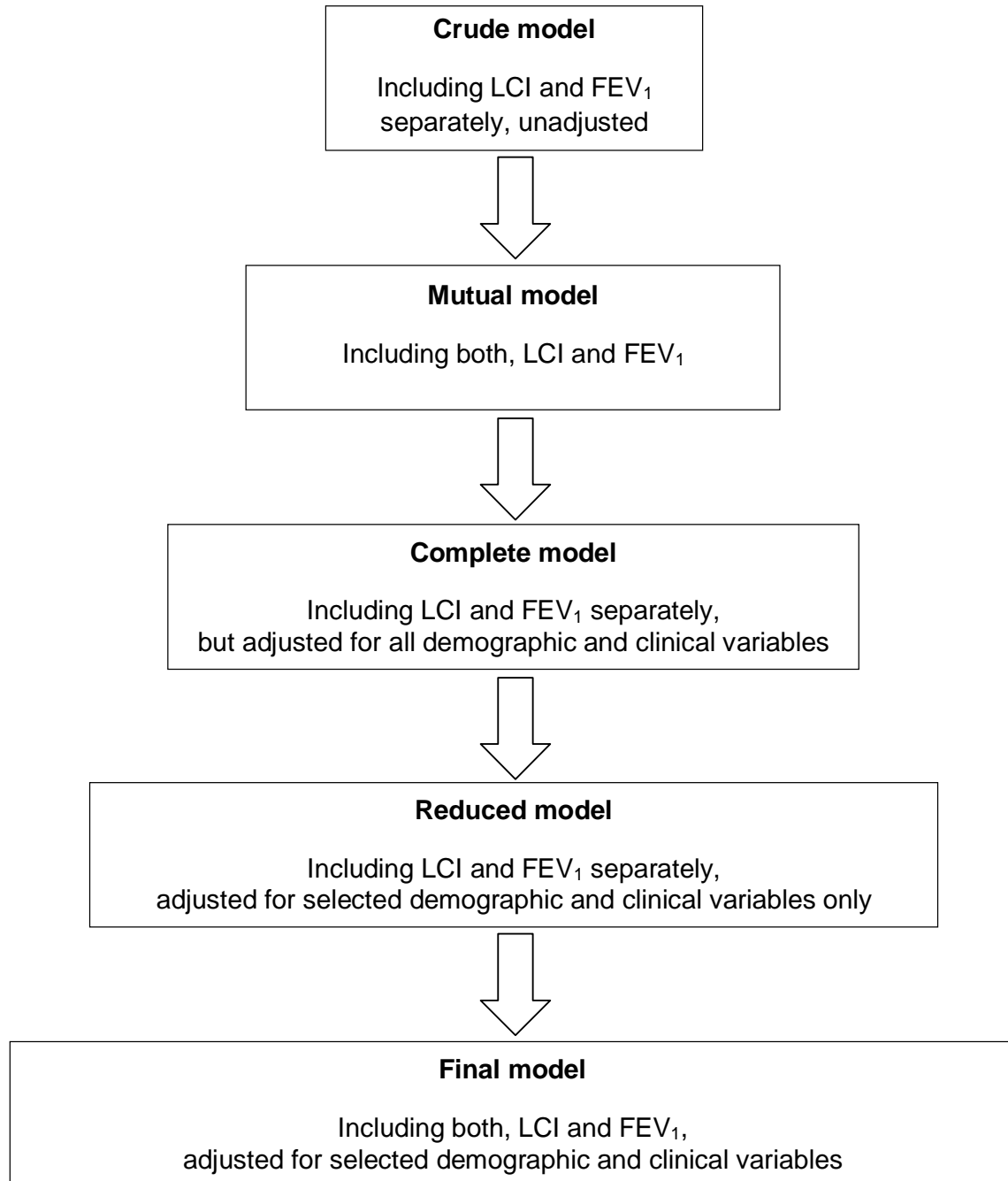
B) FEV1

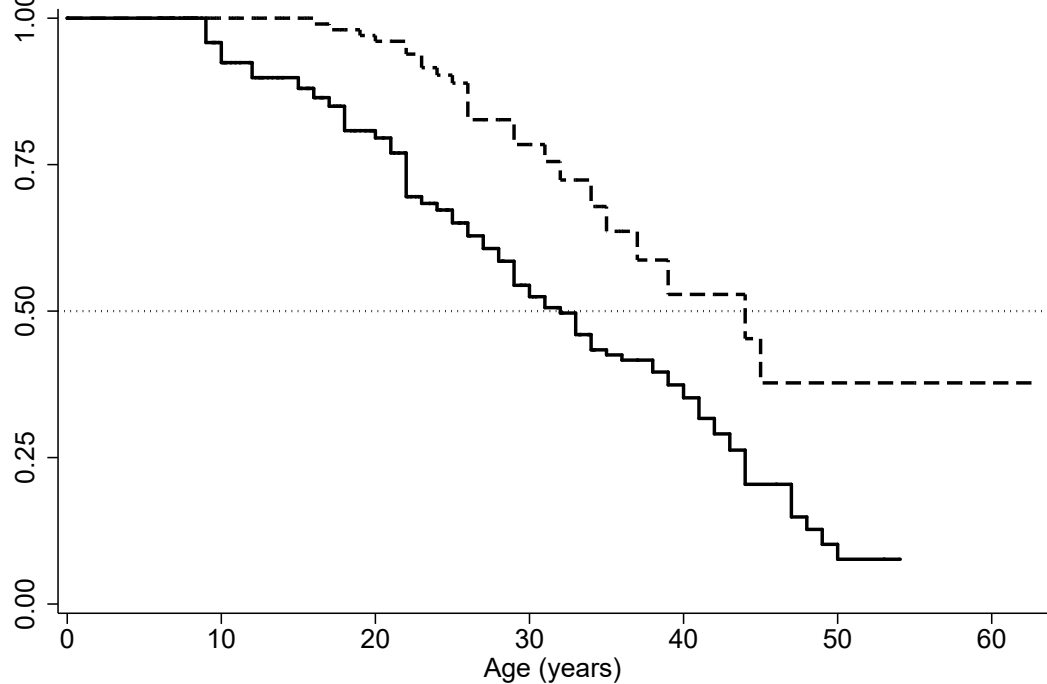




— LCI ≤ 7.3 z-score — LCI > 7.3 z-score







----- FEV1 ≥ -2.3 z-score, n = 119 — FEV1 < -2.3 z-score, n = 118

