

1 Title Page

2 HbA1c and FIB-4 as Serologic Markers for the Risk of Progression of Stage A Heart
3 Failure

4 First author: Grigg DO

5 Authors:

6 William Grigg DO 1, Faisal Mahfooz MD 1, Dharmista Chaudhary MD 1, Isain
7 Zapata PhD 2, Douglas Duffee MD, MDiv, FACP 1, 3.

8 Affiliations:

9 1 Department of Internal Medicine, Parkview Medical Center, Pueblo, CO 81003

10 2 Department of Biomedical Sciences, Rocky Vista University, Parker, CO 80134

11 3 Department of Graduate Medical Education, Parkview Medical Center, Pueblo,
12 CO 81003

13 NO organizational funding support

14 Corresponding author:

15 Douglas Duffee MD, MDiv, FACP. Mail Address: 315 W. 15th St. Pueblo, Colorado
16 81003. Phone: +1(719)595-7968. Email: douglas_duffee@parkviewmc.com

17 Total word count = 3200

18 Total pages = 15

19 Subject terms: Diabetic Cardiomyopathy, HbA1c, Glyco%, Fib-4 index, Diastolic
20 dysfunction, Stage A heart failure

21

22

23

24 Abstract

25 Background-- The classic association of glycemic control as represented by
26 glycosylated hemoglobin (Glyco% or HbA1c) with progression of micro and macro
27 vascular clinical complications is well documented. However, use of the advanced
28 glycation end product (AGE) axis as a marker for early diastolic hemodynamic
29 changes leading to clinical heart failure has been suggested but is less well
30 characterized. This study explored the association between elevated Glyco% and
31 Fibrosis 4 (FIB-4, a 4-component marker for liver fibrosis) values and worsening
32 measures of diastolic cardiac function in order to assess their utility as early
33 serologic markers in cardiovascular disease prevention.

34 Methods and Results-- A Retrospective cohort analysis was conducted in 102
35 patients presenting to the Parkview Medical Center health system who had
36 received a full resting echo characterized by normal systolic ejection fraction and
37 clinical risk factors associated with stage A heart failure in conjunction with
38 Glyco% and FIB-4 scores all within a 3-month time window. Using regression
39 analysis, measures of diastolic cardiac function were assessed in conjunction with
40 rising Glyco% levels characterized as <6.5 and >6.5 and FIB-4 scores after
41 controlling for the presence of hypertension, coronary artery disease and valvular
42 heart disease. Glyco% levels >6.5 were significantly associated with a higher E/e'
43 ratio and closely associated with an elevated left atrial volume index both
44 indicative of elevated left atrial pressure as a sensitive marker for diastolic cardiac
45 dysfunction. FIB-4 scores did not appear to be clinically associated with
46 progression of diastolic dysfunction.

47 Conclusions—Glyco%, long known to be a marker for metabolic glycemic control
48 can also act as an early marker for identifying patients at increased risk for the
49 progression of stage A heart failure. FIB-4 scores cannot.

50 Registration—

51 <https://clinicaltrials.gov/ct2/show/NCT04450576?term=duffee&draw=2&rank=3>

52

53 Text

54 Introduction-- The classic association of glyceemic control, as represented by
55 glyco%, with progression or improvement of microvascular and macrovascular
56 clinical complications is well documented¹⁻⁵. Additionally, while the association of
57 glyco% elevation with an advanced clinical cardiovascular syndrome described as
58 diabetic cardiomyopathy (beyond the classic cardiac risk factors associated with
59 diabetes mellitus) has also been well documented the use of advanced glycation
60 end products (AGE) as both a marker of and treatment target for the early
61 diastolic hemodynamic changes of diabetic cardiomyopathy has been suggested
62 but less well characterized^{6-8,14}. In light of newer diabetic agents such as sglT2
63 inhibitors, which exert a cardio protective natriuretic effect in addition to a
64 hypoglycemic effect, markers for early initiation of these medications both inside
65 and outside the diabetic context, are important to elucidate. Stage A heart failure
66 is defined as persons with normal cardiac structure and function who have
67 predisposing risks for cardiovascular disease but have not yet manifested
68 symptoms of heart failure⁹⁻¹¹. Estimates suggest that Stage A heart failure may
69 comprise greater than 50% of a community's patient population and are patients
70 commonly seen in primary care, endocrinology, cardiology and other clinics⁵.

71 In light of cardio metabolic agents such as sglT2 inhibitors which show promise in
72 cardiovascular disease primary prevention¹²⁻¹⁷, stage A heart failure patients may
73 be an important target for a new therapeutic mechanism to deploy widely in
74 preventative cardiovascular care. Showing an association between a commonly
75 used metabolic marker and progressive hemodynamic cardiac disease would
76 provide support for the logic of initiating medication therapy classically prescribed
77 in the diabetic context to earlier use in the cardiac context with or without a
78 concomitant indication for hypoglycemic therapy. Our study examined whether
79 glyco% could be isolated as a hemodynamic marker of diastolic cardiac
80 dysfunction in diabetics with stage A heart failure who may or may not yet need
81 initiation or titration of hypoglycemic therapy. Secondly a non-invasive easily
82 obtainable marker for liver fibrosis (FIB-4) was also assessed for its correlation to
83 diastolic function and potential utility as a treatment marker.

84 Methods--

85 Participants--A community-based population cohort registry of all patients was
86 identified by retrospective chart review who had presented to Parkview Medical
87 Center's in-patient and outpatient services in Pueblo County Colorado from
88 1/2019 to 6/2020 and who had obtained a full resting echo characterized by
89 normal LV systolic function in conjunction with glyco%, brain natriuretic peptide
90 (BNP), CBC and CMP within a concomitant 3-month time frame. 2263 patients
91 were identified. A sample of 102 participants was randomly selected for this
92 study. The selected sample size was determined by power analysis ($1-\beta>0.8$) for
93 detection of a 5% change in Left atrial volume (LAV) examining the registry from
94 most to less recent index encounter to a p value less than 0.05 until the N value
95 was met. We also included a measure of liver fibrosis as estimated by the FIB-4
96 equation to assess for an association between a non-invasive marker for liver
97 fibrosis and the same measures of diastolic cardiac function and a measure of the
98 glycemic status of study groups at a cutoff level of 6.5 to include those with mild
99 diabetes who may not yet require hypoglycemic therapy according to current
100 guidelines.¹⁵ Patient's age, gender (M=Male, F=Female) Body Mass index (BMI),
101 Body Surface Area (BSA), Brain Natriuretic Peptide (BNP), previous history of
102 hypertension (HTN), cardiac valvular disease and Coronary Artery Disease (CAD)
103 were also recorded. All data was compiled from retrospective medical records for
104 the participants selected for the sample. This study was sanctioned and approved
105 by the Parker Medical Center Institutional Review Board.

106 Echocardiography--Transthoracic echocardiography was performed in accordance
107 with published standards and interpreted by a board-certified cardiologist
108 independent of any knowledge of this study¹⁶. The presence of hypertension was
109 defined as greater than 140/90 measured closest in time to the index
110 echocardiogram. Valvular disease was defined as any regurgitation or stenosis
111 noted to be greater than mild. Coronary artery disease was defined as any of the
112 following: any regional wall motion abnormality on echo and/or cardiac
113 catheterization showing at least one vessel with 50% or more stenosis. All labs
114 were processed through Parkview's central laboratory.

115 Statistical analysis--Means, standard deviation and range were calculated for
116 continuous variables while frequencies and proportional percentages were
117 calculated for categorical variables. All descriptive statistics were calculated using
118 PROC MEANS and PROC FREQ from SAS/STAT v.9.4 (SAS Institute, Cary NC).
119 Generalized Additive Models (GAMs) were used to evaluate the association of the
120 dependent variables Glycemic percentage (Glyco%) and liver Fibrosis (Fib-4) to
121 the independent variables of HTN, Valvular disease, CAD, Age, BMI, BNP, LAVI and
122 E/e'. Effects were introduced into a semiparametric model by including the
123 effects of gender, HTN, valve disease and CAD as parametric independent
124 variables (categorical variables) and age, BMI, BNP, LAVI and E/e' as smoothing
125 splines with 3 degrees of freedom (continuous variables). Models were fitted
126 independently by dependent variable (Glyco% and Fib-4) and assumed a Gaussian
127 distribution for the residuals. Some variables were removed from the final model
128 to avoid multi-collinearity: first, BMI and BSA which are intimately correlated¹⁷
129 and thus, BMI was the only one included; second, E, Lateral e' and E/e' are
130 functionally related with each other and thus only E/e' was included in the model;
131 last, LAVI and LADI where only LAVI was included in the model since it is the
132 strongest method to predict any and moderate to severe diastolic dysfunction.¹⁸
133 All modeling was performed using PROC GAM in SAS/STAT v.9.4. Modeling effects
134 are displayed as Risk Ratios with their 95% confidence intervals and non-linearity
135 associations of the continuous variables evaluated as smoothing splines are
136 evaluated through an analysis of deviance using a cubic pattern (3 degrees of
137 freedom). Smoothing component plots included a 95% curve-wise Bayesian
138 confidence band for each component.. Two-tailed P-values <0.05 were considered
139 statistically significant

140 Results—In total, 102 patients were retrospectively identified who met inclusion
141 and exclusion criteria. Their descriptive characteristics which include mean,
142 standard deviation and range of values are shown in Table 1 for continuous
143 variables and frequency and percentage proportion are shown in Table 2 for
144 categorical variables. Patients with a left ventricular ejection fraction less than
145 50% were excluded.

146 Parameter estimates obtained through GAMs displayed as risk ratio significant
147 association ($p < 0.05$) between Glyco% (HbA1c) with BMI ($P=0.0043$) and E/e'
148 ($P=0.0345$). For both models, Glyco% and Fib-4, neither sex nor comorbidity
149 confounders of CAD, Valve disease and HTN were significantly associated. No
150 significant associations to Fib-4 in general were detected in this model mode.
151 However, spline smoothing components for linearly defined effects are presented
152 in Figure 2 where only one significant spline smoothing component was detected
153 for BNP ($P=0.0019$, through analysis of deviance) in the Fib-4 model. Although its
154 association remained as non-significant towards Fib-4 prediction ($P=0.2043$).

155 On a subsequent model iteration where parameter estimates were differentiated
156 based on Glyco% grouping low group vs high group (the “low group” being
157 defined as having Glyco% 6.5 or less while the “high group” being defined as
158 having Glyco% over 6.5) detected only increased risk associated to age for the low
159 group when estimating Glyco%. This data is presented in Table 3. Also in these
160 models, neither sex nor comorbidity associations to Glyco% and Fib-4 were
161 detected. In summary, some predictive potential for BMI and E/e' was observed
162 for Glyco% models adjusted for comorbidities although no comorbidities were
163 associated. For low group vs high group models only age was detected as
164 significantly predictive. No predictive potential was detected in general for Fib-4
165 criteria in the main model and in the subsequent low group vs high group model
166 iteration.

167 Discussion

168 AGE formation is characterized by the glycation of plasma proteins during
169 longstanding hyperglycemia. These AGE's then stimulate transmembrane
170 receptors of advance glycation end products (rAGE) on somatic cells including
171 cardiac myocytes resulting in alteration of intracellular signaling, gene expression,
172 release of pro-inflammatory molecules and free radicals.¹⁹ These processes at
173 least in part are thought to play a role in the development of cardiac fibrosis
174 independent of the classic vascular complications related to diabetes mellitus. In
175 contrast to transmembrane rAGE, soluble receptors for advance glycation end
176 products (sRAGE) function to reduce risk associated with transmembrane rAGE by

177 the pre-transmembrane binding of AGE's and subsequent reduction of
178 intracellular rAGE signaling. Specific sRage's have been identified and may have
179 the potential to serve as markers for AGE related cardiac risk.²⁰ As an early
180 glycation end product, glyco% is nicely positioned as a hemodynamic risk marker
181 inside this mechanism. Additionally, as lipids are thought to play a role in hepatic
182 steatosis and liver fibrosis as well as in cross linking to form more advanced
183 glycation end products capable of stimulating transmembrane rAGE, easily
184 obtainable markers for liver fibrosis could serve as markers for cardiac fibrosis²¹
185 which is what prompted the evaluation of FIB-4 in this study.

186 Stage A heart failure patients, namely those with preclinical risk factors for
187 progression to more advanced heart failure stages are an attractive cohort to
188 study in that early intervention may provide significant attenuation of disease in
189 this patient population. The definition of stage A heart failure in this study was
190 applied to a cohort primarily defined by normal LV systolic function. In controlling
191 for patients with underlying hypertension, CAD and valvular heart disease we
192 further isolated the cohort to a stage A definition.²² The difficulty was in using
193 diastolic dysfunction as an independent variable which could be seen as excluding
194 our cohort from true stage A characteristics. In that the degree of diastolic
195 dysfunction based on E/A changes needed to advance patients from the stage A
196 category is not clear in the definition of stage A heart failure, we tried to utilize
197 the more sensitive "pre-clinical" markers for left atrial pressure and chronic
198 diastolic dysfunction LAVI and E/e'.

199 The use of the dependent variables glyco% and FIB-4 was designed to capture
200 simple and easily obtainable markers for cardiac fibrosis. In that current diabetes
201 guidelines recommend a goal for hypoglycemic therapy to a glyco% less than 7.5,
202 defining the study group as those who meet a definition for DM but may not yet
203 require hypoglycemic therapy makes the results more applicable for cardiac risk
204 reduction as opposed to simple glycemic control. FIB-4, used as a marker for liver
205 fibrosis which is often associated with hyperglycemia and hyperlipidemia and of
206 the same potential mechanism as metabolic cardiac fibrosis was attractive in that
207 age as detected in our low group model iteration, platelets, AST and ALT are its

208 formulaic components, however we did not find an association between FIB-4
209 and measures of diastolic dysfunction.

210 2 measures of diastolic function were used to assess the AGE-myocardial
211 hypertrophy hypothesis.²³ Left atrial volume was seen as reflective of “the
212 cumulative chronic effect of LV filling pressure over time”. The E/e’ ratio was also
213 used as a doppler measure of diastolic function because it combines the ratio of a
214 trans mitral flow measurement (a marker for the trans mitral pressure gradient)
215 with a tissue doppler measurement (a marker of LV diastolic pressure) which is
216 more sensitive for diastolic dysfunction.²⁴

217 Distinguishing glyco% as a compliance marker for progressive cardiac diastolic
218 dysfunction beyond a non-specific vascular risk marker has been demonstrated.²⁵
219 This distinction is what sets diabetic cardiomyopathy apart from standard diabetic
220 vascular risk factors and raises the specter of earlier hemodynamic primary
221 preventative cardiac therapy even earlier than standard glycemic goals may
222 dictate, especially in light of sglT2 inhibitor effects.

223 Conclusion--In patients with clinical cardiovascular risk characterized as stage A
224 heart failure, glyco% can be used as a sensitive marker to identify those most at
225 risk for disease progression based on diastolic hemodynamic parameters.
226 Additionally, the glyco% can be used to identify those who may benefit from
227 preventative cardiovascular treatment via the natriuretic effects of newer
228 glycemic agents prior to a glycemic indication for therapy.

229 Tables and Figures

230 Table 1: Descriptive statistics continuous parameters evaluated in the study
231 cohort

Variable	Mean	Std Dev	Range
Age _{yrs}	69.245	12.916	(31 - 94)
BMI _{kg/m²}	30.559	9.055	(14.8 - 55)
BSA _{m²}	1.941	0.334	(1.28 - 2.85)
Glyco%	6.850	1.879	(4.7 - 14)
BNP _{pg/ml}	2487.9	4733.9	(6 - 35000)
Fib4	2.427	2.773	(0.26 - 21.47)
LAVI _{ml/m²}	34.176	12.372	(11 - 69)
LADI _{cm/m²}	2.077	0.473	(1.2 - 4.1)
E _{m/sec}	1.005	0.346	(0.088 - 2.074)
Lat e' _{m/sec}	0.107	0.161	(0.035 - 1.23)
E/e'	13.936	6.041	(4 - 34)

232

233

234

235

236

237 Table 2: Descriptive statistics of categorical parameters evaluated in the study
238 cohort

Variable	Frequency	Percent
Gender		
Female	58	56.86
Male	44	43.14
CADrwma		
No	76	74.51
Yes	26	25.49
Valve Disease		
No	95	93.14
Yes	7	6.86
HTN		
No	23	22.55
Yes	79	77.45

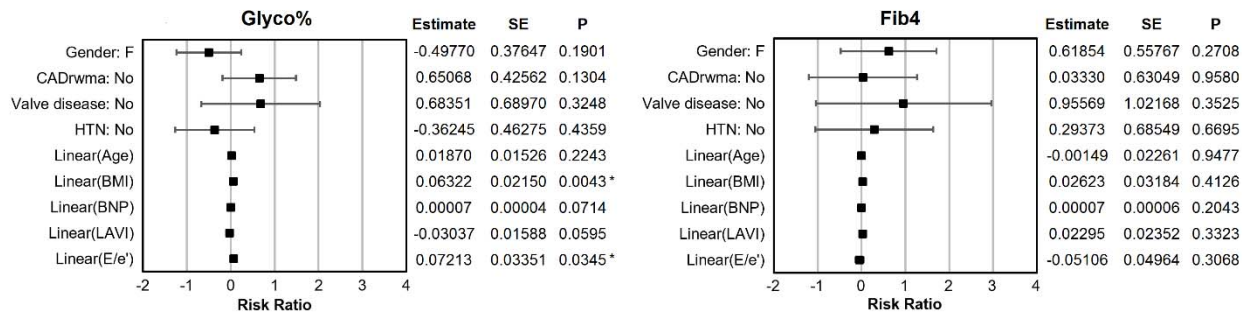
239

240

241

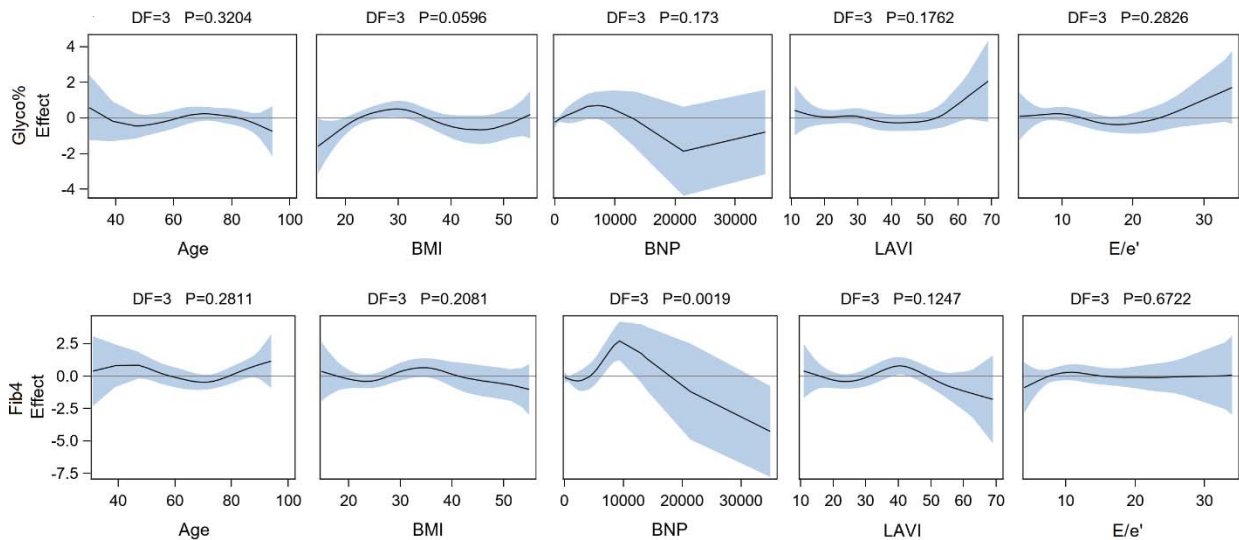
242

243 Figure 1: Risk ratio parameter estimates of Glyco% and Fib-4 models. Sex (M/F)
244 and comorbidities (Yes/No) were defined as parametric responses while age, BMI,
245 BNP, LAVI and E/e' were defined as spline smoothing components. Significantly
246 associated effects ($P < 0.05$) are marked by an asterisk (*).



247

248 Figure 2: Spline smoothing component evaluation of deviance for linearly defined
 249 parameters in the generalized additive models. Curve-wise confidence band is at
 250 95% confidence level. P values presented are for the analysis of deviance of each
 251 spline smoothing component where significant deviance is declared at $P < 0.05$.



252

253 Table 3: Low group vs high group parameter estimates. “Low group” being
 254 defined as having Glyco% 6.5 or less while the “high group” being defined as
 255 having Glyco% over 6.5. Groupings were evaluated independently for each
 256 Glyco% and Fib-4. Sex (M/F) and comorbidities (Yes/No) were defined as
 257 parametric responses while age, BMI, BNP, LAVI and E/e' were defined as spline
 258 smoothing components. Significantly associated effects ($P < 0.05$) are marked by an
 259 asterisk (*).

Parameter	Low Group Glyco% (6.5% or less)			High Group Glyco% (Over 6.5%)		
	Estimate	Standard Error	P	Estimate	Standard Error	P
Glyco%						
Gender: F	-0.019	0.123	0.8782	0.720	0.688	0.3074
CADrwma: No	0.003	0.125	0.9811	0.980	0.847	0.2600
Valve disease: No	0.264	0.183	0.1581	-0.595	1.582	0.7107
HTN: No	0.153	0.136	0.2667	-0.810	0.947	0.4023
Linear(Age)	0.009	0.005	0.0472*	-0.023	0.029	0.4366
Linear(BMI)	0.014	0.008	0.0865	-0.044	0.040	0.2781
Linear(BNP)	1.9E-05	9.7E-06	0.0621	1.1E-04	1.2E-04	0.3634
Linear(LAVI)	-0.004	0.005	0.4711	-0.015	0.028	0.5918
Linear(E/E')	0.008	0.012	0.4953	0.090	0.057	0.1264
Fib4						
Gender: F	0.790	0.915	0.3947	-0.547	0.598	0.3710
CADrwma: No	0.934	0.923	0.3196	-0.775	0.736	0.3039
Valve disease: No	0.973	1.354	0.4776	2.077	1.374	0.1456
HTN: No	0.801	1.005	0.4317	-1.596	0.823	0.0660
Linear(Age)	-0.020	0.033	0.5518	-0.015	0.025	0.5597
Linear(BMI)	0.051	0.057	0.3772	0.011	0.035	0.7615
Linear(BNP)	6.0E-05	7.2E-05	0.4089	5.8E-05	1.1E-04	0.5952
Linear(LAVI)	0.019	0.039	0.6280	-0.022	0.025	0.3854
Linear(E/E')	-0.066	0.088	0.4575	-0.014	0.049	0.7858

260

261 Bibliography

- 262 1. Fowler MJ. Microvascular and Macrovascular Complications of Diabetes.
263 Clinical Diabetes. 2011;29(3). doi:10.2337/diaclin.29.3.116
- 264 2. The UK Prospective Diabetes Group. Intensive blood glucose control with
265 sulfonylureas or insulin compared with conventional treatment and risk of
266 complications in patients with type 2 diabetes. Lancet 1998;352 (9131):837-853
- 267 3. The Effect of Intensive Treatment of Diabetes on the Development and
268 Progression of Long-Term Complications in Insulin-Dependent Diabetes Mellitus.
269 New England Journal of Medicine. 1993;329(14).
270 doi:10.1056/NEJM199309303291401
- 271 4. Beckman JA, Creager MA, Libby P. Diabetes and Atherosclerosis. JAMA.
272 2002;287(19). doi:10.1001/jama.287.19.2570

- 273 5. Fox CS. Trends in Cardiovascular Complications of Diabetes. JAMA.
274 2004;292(20). doi:10.1001/jama.292.20.2495
- 275 6. van Heerebeek L, Hamdani N, Handoko ML, et al. Diastolic Stiffness of the
276 Failing Diabetic Heart. Circulation. 2008;117(1).
277 doi:10.1161/CIRCULATIONAHA.107.728550
- 278 7. Levelt E, Gulsin G, Neubauer S, McCann GP. MECHANISMS IN
279 ENDOCRINOLOGY: Diabetic cardiomyopathy: pathophysiology and potential
280 metabolic interventions state of the art review. European Journal of
281 Endocrinology. 2018;178(4). doi:10.1530/EJE-17-0724
- 282 8. Singh VP, Bali A, Singh N, Jaggi AS. Advanced Glycation End Products and
283 Diabetic Complications. The Korean Journal of Physiology & Pharmacology.
284 2014;18(1). doi:10.4196/kjpp.2014.18.1.1
- 285 9. Jia G, DeMarco VG, Sowers JR. Insulin resistance and hyperinsulinaemia in
286 diabetic cardiomyopathy. Nature Reviews Endocrinology. 2016;12(3).
287 doi:10.1038/nrendo.2015.216
- 288 10. Hunt SA, Abraham WT, Chin MH, et al. ACC/AHA 2005 Guideline Update
289 for the Diagnosis and Management of Chronic Heart Failure in the Adult—
290 Summary Article. Circulation. 2005;112(12).
291 doi:10.1161/CIRCULATIONAHA.105.167587
- 292 11. Ammar KA, Jacobsen SJ, Mahoney DW, et al. Prevalence and Prognostic
293 Significance of Heart Failure Stages. Circulation. 2007;115(12).
294 doi:10.1161/CIRCULATIONAHA.106.666818
- 295 12. Mahaffey KW, Jardine MJ, Bompont S, et al. Canagliflozin and
296 Cardiovascular and Renal Outcomes in Type 2 Diabetes Mellitus and Chronic
297 Kidney Disease in Primary and Secondary Cardiovascular Prevention Groups.
298 Circulation. 2019;140(9). doi:10.1161/CIRCULATIONAHA.119.042007
- 299 13. Lam CSP, Chandramouli C, Ahooja V, Verma S. SGLT-2 Inhibitors in Heart
300 Failure: Current Management, Unmet Needs, and Therapeutic Prospects. Journal
301 of the American Heart Association. 2019;8(20). doi:10.1161/JAHA.119.013389

- 302 14. From AM, Scott CG, Chen HH. The Development of Heart Failure in
303 Patients With Diabetes Mellitus and Pre-Clinical Diastolic Dysfunction. *Journal of*
304 *the American College of Cardiology*. 2010;55(4). doi:10.1016/j.jacc.2009.12.003
- 305 15. Older Adults: Standards of Medical Care in Diabetes—2019. *Diabetes Care*.
306 2019;42(Supplement 1). doi:10.2337/dc19-S012
- 307 16. Lang RM, Bierig M, Devereux RB, et al. Recommendations for Chamber
308 Quantification: A Report from the American Society of Echocardiography’s
309 Guidelines and Standards Committee and the Chamber Quantification Writing
310 Group, Developed in Conjunction with the European Association of
311 Echocardiography, a Branch of the European Society of Cardiology. *Journal of the*
312 *American Society of Echocardiography*. 2005;18(12).
313 doi:10.1016/j.echo.2005.10.005
- 314 17. Verbraecken J, van de Heyning P, de Backer W, van Gaal L. Body surface
315 area in normal-weight, overweight, and obese adults. A comparison study.
316 *Metabolism*. 2006;55(4). doi:10.1016/j.metabol.2005.11.004
- 317 18. Stefano GT, Zhao H, Schluchter M, Hoit BD. Assessment of
318 Echocardiographic Left Atrial Size: Accuracy of M-Mode and Two-Dimensional
319 Methods and Prediction of Diastolic Dysfunction. *Echocardiography*. 2012;29(4).
320 doi:10.1111/j.1540-8175.2011.01643.x
- 321 19. Singh VP, Bali A, Singh N, Jaggi AS. Advanced Glycation End Products and
322 Diabetic Complications. *The Korean Journal of Physiology & Pharmacology*.
323 2014;18(1). doi:10.4196/kjpp.2014.18.1.1
- 324 20. Dozio E, Vianello E, Bandera F, et al. Soluble Receptor for Advanced
325 Glycation End Products: A Protective Molecule against Intramyocardial Lipid
326 Accumulation in Obese Zucker Rats? *Mediators of Inflammation*. 2019;2019.
327 doi:10.1155/2019/2712376
- 328 21. Anstee QM, Mantovani A, Tilg H, Targher G. Risk of cardiomyopathy and
329 cardiac arrhythmias in patients with nonalcoholic fatty liver disease. *Nature*

330 Reviews Gastroenterology & Hepatology. 2018;15(7). doi:10.1038/s41575-018-
331 0010-0

332 22. Ammar KA, Jacobsen SJ, Mahoney DW, et al. Prevalence and Prognostic
333 Significance of Heart Failure Stages. Circulation. 2007;115(12).
334 doi:10.1161/CIRCULATIONAHA.106.666818

335 23. Andersen OS, Smiseth OA, Dokainish H, et al. Estimating Left Ventricular
336 Filling Pressure by Echocardiography. Journal of the American College of
337 Cardiology. 2017;69(15). doi:10.1016/j.jacc.2017.01.058

338 24. Mitter SS, Shah SJ, Thomas JD. A Test in Context. Journal of the American
339 College of Cardiology. 2017;69(11). doi:10.1016/j.jacc.2016.12.037

340 25. van Heerebeek L, Hamdani N, Handoko ML, et al. Diastolic Stiffness of the
341 Failing Diabetic Heart. Circulation. 2008;117(1).
342 doi:10.1161/CIRCULATIONAHA.107.728550

343

344

345

346

347

348

349

350