

1 ***RIC3* variants are not associated with Parkinson's Disease in large European,**
2 **Latin American, or East Asian cohorts**

3
4 Kajsa Brodin¹, Sara Bandres-Ciga², Hampton Leonard^{2,3,4}, Mary B. Makarios^{2,4,5,6}, Cornelis
5 Blauwendraat², Ignacio F Mata⁷, Jia Nee Foo^{8,9}, Lasse Pihlstrøm¹⁰, Maria Swanberg¹, Ziv
6 Gan-Or^{11,12,13} Manuela MX Tan¹⁰, International Parkinson's Disease Genomics Consortium
7 (IPDGC)

8
9 ¹Lund University, Translational Neurogenetics Unit, Wallenberg Neuroscience Center,
10 Department of Experimental Medical Science, Lund, Sweden

11 ²Molecular Genetics Section, Laboratory of Neurogenetics, National Institute on Aging,
12 National Institutes of Health, Bethesda, MD, 20892, USA

13 ³Center for Alzheimer's and Related Dementias, National Institute on Aging, Bethesda, MD,
14 20892, USA

15 ⁴Data Tecnica International, Glen Echo, MD, 20812, USA

16 ⁵Department of Clinical and Movement Neurosciences, UCL Queen Square Institute of
17 Neurology, University College London, London, UK

18 ⁶UCL Movement Disorders Centre, University College London, London, UK

19 ⁷Lerner Research Institute, Genomic Medicine, Cleveland Clinic Foundation, Cleveland, OH,
20 USA

21 ⁸Lee Kong Chian School of Medicine, Nanyang Technological University Singapore,
22 Singapore

23 ⁹Human Genetics, Genome Institute of Singapore, A*STAR, Singapore.

24 ¹⁰Department of Neurology, Oslo University Hospital, Oslo, Norway

25 ¹¹Department of Human Genetics, McGill University, Montreal, Quebec, Canada

26 ¹²Montreal Neurological Institute, McGill University, Montreal, Quebec, Canada

27 ¹³Department of Neurology and Neurosurgery, McGill University, Montreal, Quebec, Canada

28

29

30 Corresponding authors: Kajsa Brodin, kajsa.brodin@med.lu.se; Manuela MX Tan,
31 manuela.tan@medisin.uio.no

32 Keywords: Parkinson's disease; *RIC3*; Genetics

33

NOTE: This preprint reports new research that has not been certified by peer review and should not be used to guide clinical practice.

34 **Abstract**

35

36 Parkinson's disease (PD) is a complex neurodegenerative disorder in which both rare and
37 common genetic variants contribute to disease risk. Multiple genes have been reported to be
38 linked to monogenic PD, but these only explain a fraction of the observed familial aggregation.
39 Rare variants in *RIC3* have been suggested to be associated with PD in the Indian population.
40 However, replication studies yielded inconsistent results. We further investigate the role of
41 *RIC3* variants in PD in European cohorts using individual-level genotyping data from 14,671
42 PD patients and 17,667 controls, as well as whole-genome sequencing data from 1,615 patients
43 and 961 controls. We also investigated *RIC3* using summary statistics from a Latin American
44 cohort of 1,481 individuals, and from a cohort of 31,575 individuals of East Asian ancestry.
45 We did not identify any association between *RIC3* and PD in any of the cohorts. However,
46 more studies of rare variants in non-European ancestry populations, in particular South Asian
47 populations, are necessary to further evaluate the world-wide role of *RIC3* in PD etiology.

48

49

50 **Introduction**

51

52 Parkinson's disease (PD) is a progressive neurodegenerative disorder, for which the genetic
53 causes are largely still unknown. Variants in resistance to inhibitors of cholinesterase 3 (*RIC3*)
54 were first identified in Indian PD patients (Sudhaman *et al.*, 2016). A rare missense variant,
55 p.P57T, was identified in a large Indian PD family with an autosomal-dominant pattern of
56 inheritance, where it was present in all nine affected individuals and absent in five unaffected
57 family members (Sudhaman *et al.*, 2016). Another rare heterozygous missense *RIC3* variant,
58 p.V168L, was found in the same study through targeted screening of an independent cohort of
59 288 Indian PD patients and 186 controls (Sudhaman *et al.*, 2016). However, no association was
60 found between *RIC3* variants and PD risk in later studies of French-Canadian and French
61 cohorts (Ross *et al.*, 2017) and a Chinese cohort (He *et al.*, 2017). The *RIC3* gene encodes for
62 a member of the resistance to inhibitors of cholinesterase 3-like family. It functions as a
63 chaperone for nicotinic acetylcholine receptors, specifically the alpha-7 subunit of homomeric
64 nicotinic acetylcholine receptors (CHRNA7). These receptors are important for promoting the
65 release of dopamine in the nigrostriatal pathway (Gotti and Clementi, 2004; Quik and Kulak,
66 2002) where the degeneration and loss of dopaminergic neurons occurs in PD. In addition,
67 there is some suggestion that smoking and nicotine are protective against PD (Breckenridge et

68 al., 2016; Li et al., 2015). The original study showed that both variants in *RIC3* reduced the
69 level of these receptors in mutant cell lines (Sudhaman *et al.*, 2016). The authors suggest this
70 is potentially through a dominant-negative effect of the mutations, as the level of CHRNA7 in
71 the mutant cell lines was lower than in untransfected cells (Sudhaman *et al.*, 2016).

72
73

74 Here, we assessed the role of *RIC3* variants in PD risk in several cohorts of different ethnicities:
75 large European cohorts from the International Parkinson's Disease Genomics Consortium
76 (IPDGC) (Nalls et al., 2019) and the Accelerating Medicines Partnership in Parkinson's Disease
77 (AMP-PD) (<https://amp-pd.org/>). We further examined variants in *RIC3* in summary statistics
78 from 1,481 individuals from the Latin American Research consortium on the Genetics of PD
79 (LARGE-PD) (Loesch et al., 2020), as well as from 31,575 individuals of East Asian ancestry
80 (Foo et al., 2020).

81

82

83 **Methods**

84

85 We analyzed individual-level data from two large European datasets of PD patients and
86 controls: IPDGC genome-wide genotyping data (14,671 PD patients and 17,667 controls), and
87 AMP-PD whole-genome sequencing data (1,615 PD patients and 961 controls after quality
88 control and removal of individuals of non-European ancestry [Supplementary Methods]).
89 Analysis and quality control of the AMP-PD dataset (release 1) were performed on the cloud-
90 native platform Terra (<https://app.terra.bio/>). In each dataset, GWAS analysis was performed
91 using logistic regression in PLINK v1.9 (Chang et al., 2015). We adjusted for age at study entry,
92 sex, and the first 10 genetic principal components (PCs). In both datasets, we also assessed the
93 burden of rare variants in *RIC3*, using RVTESTS version 2.1.0 (Zhan et al., 2016) with standard
94 settings. Variants were annotated using the latest available version (2019Oct24) of ANNOVAR
95 (Wang et al., 2010). Only variants with minor allele frequency (MAF) less than 3% were
96 included for burden analysis. All code for these analyses is available at:
97 <https://github.com/ipdgc/IPDGC-Trainees/blob/master/RIC3.ipynb>.

98 Subsequently,
99 associations between variants in *RIC3* and PD were investigated in GWAS summary statistics
100 from two large additional cohorts, LARGE-PD with 1,481 individuals (798 cases and 683
101 controls) (Loesch et al., 2020), and an Asian PD case-control cohort (Foo et al., 2020). The
Asian PD GWAS included 31,575 individuals (6,724 PD patients and 24,851 controls) from

102 East Asia, including Singapore/Malaysia, Hong Kong, Taiwan, mainland China, and South
103 Korea (Foo et al., 2020). LocusZoom plots were generated using the LocalZoom tool available
104 at <https://my.locuszoom.org>.

105
106

107 **Results**

108

109 Using IPDGC genotyping data, we identified 143 variants within the *RIC3* gene (base pair
110 coordinates 11:8,127,603-8,190,602 in genome build hg19/GRCh37; 11:8,106,056-8,169,055
111 in build GRCh38), including 3 missense variants ([Supplementary Table 1](#)). Neither of the two
112 variants from the original study, p.P57T and p.V168L, were observed in this dataset. None of
113 the *RIC3* variants were associated with PD risk after Bonferroni correction (p-value threshold
114 3.5×10^{-4} , Figure 1A). We performed gene-based burden analysis of *RIC3* to assess the
115 cumulative effect of rare variants (MAF < 3%). There was no significant association between
116 *RIC3* and PD risk in burden analysis (N variants = 6, CMC p-value = 0.67, Fp p-value = 0.78,
117 Madson-Browning p-value = 0.79, SKAT-O p-value = 0.79, Zeggini p-value = 0.76)
118 ([Supplementary Table 2](#)). There were no missense variants in the genotyping data with MAF
119 < 3%.

120

121 In the AMP-PD whole-genome sequencing data, we identified 773 variants in *RIC3*, including
122 14 missense variants and 5 synonymous variants ([Supplementary Table 3](#)). The two variants
123 from the original study were not present in this dataset. No variants were associated with PD
124 risk after Bonferroni correction (p-value threshold 5.1×10^{-5} , Figure 1B).

125

126 There was no significant burden of rare variants in *RIC3* in association with PD risk using
127 AMP-PD data (N variants = 571, all p-values > 0.05) ([Supplementary Table 2](#)). There was also
128 no significant association between *RIC3* with PD risk when assessing rare coding variants only
129 (N variants = 15, all p-values > 0.05).

130

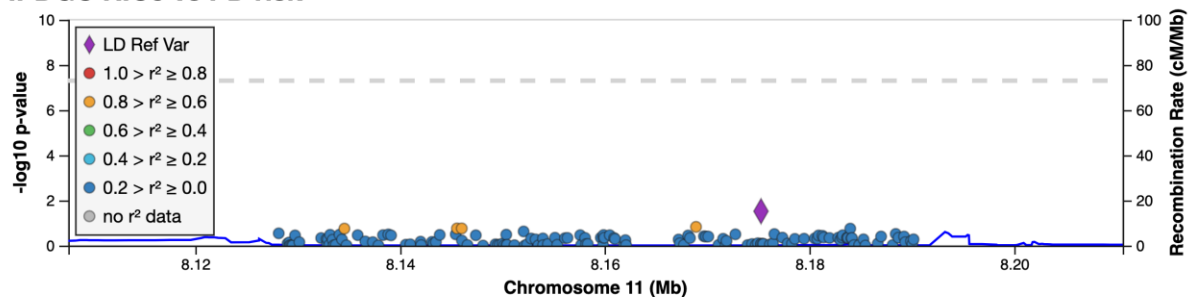
131 In the LARGE-PD data, 293 variants with a MAF > 1% were identified in *RIC3* whereas in the
132 Asian dataset, 126 variants were identified. None of the variants in *RIC3* in either of the datasets
133 were associated with PD risk (Figure 1C and 1D).

134

135

136 A)

IPDGC RIC3 vs PD risk



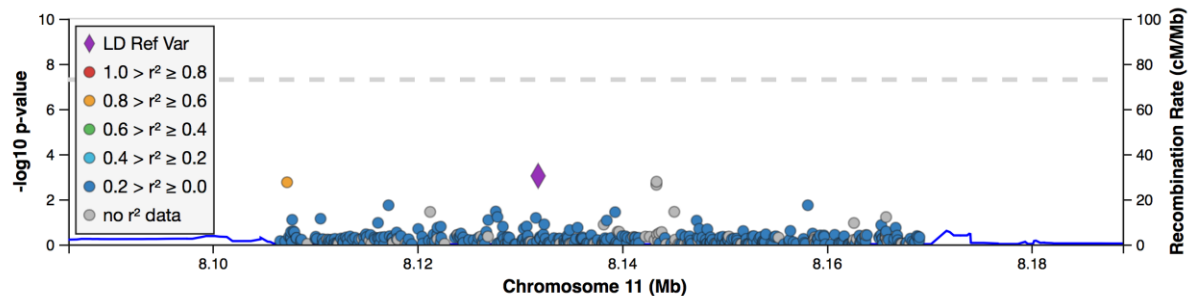
Hits in GWAS Catalog



137

138 B)

AMP-PD RIC3 vs PD risk



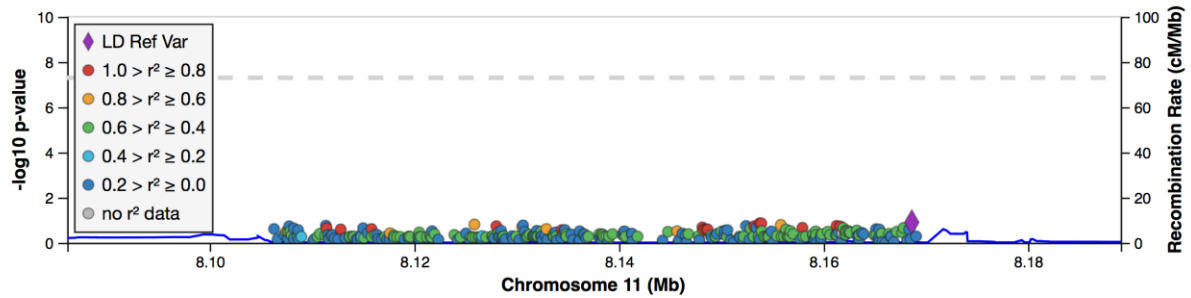
Hits in GWAS Catalog



139

140 C)

LARGE-PD RIC3 vs PD risk



Hits in GWAS Catalog

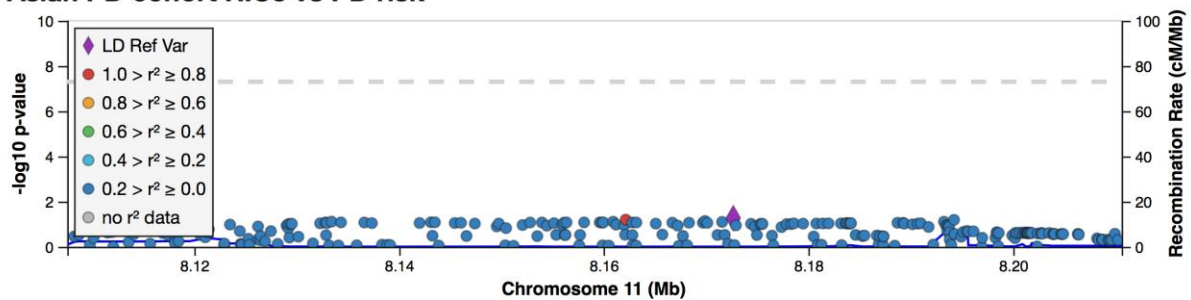


141

142

143 D)

Asian PD cohort RIC3 vs PD risk



Hits in GWAS Catalog



144

145 Figure 1. LocusZoom plots of the *RIC3* region, showing the p-values and recombination rate of the SNPs analyzed
146 in the A) IPDGC genotyping data (hg19/GRCh37), B) AMP-PD WGS data (GRCh38), C) LARGE-PD GWAS
147 summary statistic data (GRCh38), and D) East Asian GWAS summary statistic data (hg19/GRCh37). The variant
148 with the lowest p-value from the logistic regression analyses is annotated with a purple diamond in each plot.

149

150

151 Discussion

152

153 We did not find any association between either single variants or the burden of rare variants in
154 *RIC3* and PD risk in the European datasets. These are the largest publicly available European
155 PD case-control cohorts that have been screened for *RIC3*. We also did not observe any
156 associations between variants in *RIC3* and PD in GWAS summary statistics in cohorts from

157 Latin America and East Asia. Overall, we did not find evidence to support the hypothesis that
158 *RIC3* is associated with PD risk in individuals of European, Latin American, or East Asian
159 ancestry.

160

161 However, we cannot rule out the possibility that rare *RIC3* variants may be associated with PD
162 in specific families or populations. We did not identify the two originally reported variants
163 p.P57T and p.V168L in WGS data, while the other datasets only included common variants. In
164 addition, it is possible that only a few select rare variants in *RIC3* are pathogenic for PD, and
165 this may not be detected by rare variant burden tests if the majority of other rare variants across
166 the gene are not associated with PD.

167

168 It is also important to recognize that *RIC3* variants were identified in the Indian population as
169 described in the original report, whereas our analysis of rare variants has been conducted in
170 European populations. Only variants with a MAF > 1% were available in the GWAS summary
171 statistics for the datasets of Latin American and Asian ancestry. It is possible that rare variants
172 in this gene have a population-specific effect on PD risk. GWASs of PD in East Asian
173 populations have identified novel variants for PD risk not found in European GWASs (Foo et
174 al., 2020). In the Genome Aggregation Database (gnomAD) (Karczewski et al., 2020), both of
175 the variants reported in the original study have higher allele frequencies in the South Asian
176 population. For the p.P57T mutation (rs778138358), a total of 14 alleles were identified in
177 30,596 total alleles (MAF 0.05%). For the p.V168L mutation (rs777471396), 25 alleles were
178 identified in the South Asian population out of a total of 30,614 alleles (MAF 0.08%). One
179 allele carrier for each variant was also identified in the category group ‘Other’ (population not
180 assigned). In contrast, the variants were absent in all other populations on gnomAD, including
181 European, Latino, and East Asian. This suggests that the reported variants in *RIC3* are specific
182 to South Asian populations, but does not answer the question of whether they are associated
183 with PD risk, as individuals in gnomAD may not have been systematically screened for PD
184 (Karczewski et al., 2020). Further studies or rare variants in South Asian populations are
185 needed to clarify the role of *RIC3* variants in PD etiology.

186

187 In summary, we did not find evidence that *RIC3* variants are associated with PD risk in
188 European cohorts. We also did not find evidence of more common variants (MAF > 1%) being
189 associated with PD in cohorts from Latin America and East Asia. Based on the varying
190 frequency of *RIC3* rare variants across geographic populations, further studies are encouraged

191 of rare variants in *RIC3* in non-European populations, in particular South Asian populations,
192 in order to fully evaluate the suggested role for *RIC3* in PD etiology.

193
194

195 **Disclosure statement**

196
197
198
199

The authors declare that they have no conflict of interest.

200 **CRedit authorship contribution statement**

201

202 **Kajsa Brodin:** Formal analysis, Software, Visualization, Writing - original draft. **Sara**

203 **Bandres-Ciga:** Conceptualization, Formal analysis, Software, Data Curation, Supervision,

204 Writing - review and editing. **Hampton Leonard:** Data curation, Software, Writing - review

205 and editing. **Mary B. Makarious:** Data curation, Software, Writing - review and editing.

206 **Cornelis Blauwendraat:** Investigation, Software, Data curation, Writing - review and editing.

207 **Ignacio F Mata:** Investigation, Data curation, Writing - review and editing. **Jia Nee Foo:**

208 Investigation, Data curation, Writing - review and editing. **Lasse Pihlstrøm:** Funding

209 acquisition, Writing - review and editing. **Maria Swanberg:** Funding acquisition, Writing -

210 review and editing. **Ziv Gan-Or:** Conceptualization, Writing - review and editing. **Manuela**

211 **MX Tan:** Formal analysis, Software, Supervision, Writing - original draft.

212
213

214 **Acknowledgments**

215

216 We would like to thank the participants who donated their time and biological samples, making

217 this study possible. We would like to thank all members of the International Parkinson's

218 Disease Genomic Consortium (IPDGC), the Latin American Research consortium on the

219 Genetics of PD (LARGE-PD), and the East Asian PD GWAS. For a complete overview of

220 members, acknowledgments and funding, please see <http://pdgenetics.org/partners> and

221 <http://large-pd.org/>. This work was supported in part by the Norwegian South-East Regional

222 Health Authority (Helse Sør-Øst RHF) (supporting MMXT and LP) and in part by the Swedish

223 Research Council (VR) and Åke Wiberg's foundation (supporting KB and MS). We would also

224 like to thank the Accelerating Medicines Partnership - Parkinson's disease (AMP-PD). Data

225 used in preparation of this article were obtained from the AMP-PD Knowledge Platform in
226 which the clinical data and biosamples were obtained from the Fox Investigation for New
227 Discovery of Biomarkers (BioFIND), the Harvard Biomarker Study (HBS), the Parkinson's
228 Progression Markers Initiative (PPMI), and the Parkinson's Disease Biomarkers Program
229 (PDBP). The investigators for each cohort have not participated in reviewing the data analysis
230 or content of the manuscript. More information on the cohorts can be found in the
231 supplementary material. Up-to-date information for AMP-PD can be found at
232 <https://www.amp-pd.org>.

233
234

235

236 **References**

237

238 Alexander, J.K., Sagher, D., Krivoshein, A. V., Criado, M., Jefford, G., Green, W.N., 2010.

239 Ric-3 promotes $\alpha 7$ nicotinic receptor assembly and trafficking through the ER
240 subcompartment of dendrites. *J. Neurosci.* 30, 10112–10126.

241 <https://doi.org/10.1523/JNEUROSCI.6344-09.2010>

242 Bandres-Ciga, S., Diez-Fairen, M., Kim, J.J., Singleton, A.B., 2020. Genetics of Parkinson's
243 disease: An introspection of its journey towards precision medicine. *Neurobiol. Dis.*

244 137, 104782. <https://doi.org/10.1016/j.nbd.2020.104782>

245 Ben-David, Y., Treinin, M., 2017. Regulation of RIC-3 and of nAChR expression.

246 *Oncotarget* 8, 5662–5663. <https://doi.org/10.18632/oncotarget.13925>

247 Blauwendraat, C., Nalls, M.A., Singleton, A.B., 2020. The genetic architecture of

248 Parkinson's disease. *Lancet Neurol.* 19, 170–178. <https://doi.org/10.1016/S1474->

249 4422(19)30287-X

250 Breckenridge, C.B., Berry, C., Chang, E.T., Sielken, R.L., Mandel, J.S., 2016. Association

251 between Parkinson's disease and cigarette smoking, rural living, well-water

252 consumption, farming and pesticide use: Systematic review and meta-analysis. *PLoS*

253 *One* 11, 1–42. <https://doi.org/10.1371/journal.pone.0151841>

254 Burghaus, L., Schütz, U., Krempel, U., Lindstrom, J., Schröder, H., 2003. Loss of nicotinic
255 acetylcholine receptor subunits $\alpha 4$ and $\alpha 7$ in the cerebral cortex of Parkinson patients.

256 *Park. Relat. Disord.* 9, 243–246. [https://doi.org/10.1016/S1353-8020\(03\)00028-2](https://doi.org/10.1016/S1353-8020(03)00028-2)

257 Chang, C.C., Chow, C.C., Tellier, L.C.A.M., Vattikuti, S., Purcell, S.M., Lee, J.J., 2015.

258 Second-generation PLINK: Rising to the challenge of larger and richer datasets.

259 Gigascience 4, 1–16. <https://doi.org/10.1186/s13742-015-0047-8>

260 Foo, J.N., Chew, E.G.Y., Chung, S.J., Peng, R., Blauwendraat, C., Nalls, M.A., Mok, K.Y.,
261 Satake, W., Toda, T., Chao, Y., Tan, L.C.S., Tandiono, M., Lian, M.M., Ng, E.Y.,
262 Prakash, K.M., Au, W.L., Meah, W.Y., Mok, S.Q., Annuar, A.A., Chan, A.Y.Y., Chen,
263 L., Chen, Y., Jeon, B.S., Jiang, L., Lim, J.L., Lin, J.J., Liu, C., Mao, C., Mok, V., Pei, Z.,
264 Shang, H.F., Shi, C.H., Song, K., Tan, A.H., Wu, Y.R., Xu, Y.M., Xu, R., Yan, Y.,
265 Yang, J., Zhang, B., Koh, W.P., Lim, S.Y., Khor, C.C., Liu, J., Tan, E.K., 2020.
266 Identification of Risk Loci for Parkinson Disease in Asians and Comparison of Risk
267 between Asians and Europeans: A Genome-Wide Association Study. *JAMA Neurol.* 77,
268 746–754. <https://doi.org/10.1001/jamaneurol.2020.0428>

269 Gotti, C., Clementi, F., 2004. Neuronal nicotinic receptors: From structure to pathology.
270 *Prog. Neurobiol.* 74, 363–396. <https://doi.org/10.1016/j.pneurobio.2004.09.006>

271 Halevi, S., Yassin, L., Eshel, M., Sala, F., Sala, S., Criado, M., Treinin, M., 2003.
272 Conservation within the RIC-3 gene family: Effectors of mammalian nicotinic
273 acetylcholine receptor expression. *J. Biol. Chem.* 278, 34411–34417.
274 <https://doi.org/10.1074/jbc.M300170200>

275 He, D., Hu, P., Deng, X., Song, Z., Yuan, L., Yuan, X., Deng, H., 2017. Genetic analysis of
276 the RIC3 gene in Han Chinese patients with Parkinson’s disease. *Neurosci. Lett.* 653,
277 351–354. <https://doi.org/10.1016/j.neulet.2017.06.007>

278 International HapMap Consortium, 2003. International HapMap Consortium. The
279 International HapMap Project. *Nature* 426, 789–796.

280 Karczewski, K.J., Francioli, L.C., Tiao, G., Cummings, B.B., Alföldi, J., Wang, Q., Collins,
281 R.L., Laricchia, K.M., Ganna, A., Birnbaum, D.P., Gauthier, L.D., Brand, H.,
282 Solomonson, M., Watts, N.A., Rhodes, D., Singer-Berk, M., England, E.M., Seaby,
283 E.G., Kosmicki, J.A., Walters, R.K., Tashman, K., Farjoun, Y., Banks, E., Poterba, T.,
284 Wang, A., Seed, C., Whiffin, N., Chong, J.X., Samocha, K.E., Pierce-Hoffman, E.,
285 Zappala, Z., O’Donnell-Luria, A.H., Minikel, E.V., Weisburd, B., Lek, M., Ware, J.S.,
286 Vittal, C., Armean, I.M., Bergelson, L., Cibulskis, K., Connolly, K.M., Covarrubias, M.,
287 Donnelly, S., Ferriera, S., Gabriel, S., Gentry, J., Gupta, N., Jeandet, T., Kaplan, D.,
288 Llanwarne, C., Munshi, R., Novod, S., Petrillo, N., Roazen, D., Ruano-Rubio, V.,
289 Saltzman, A., Schleicher, M., Soto, J., Tibbetts, K., Tolonen, C., Wade, G., Talkowski,
290 M.E., Aguilar Salinas, C.A., Ahmad, T., Albert, C.M., Ardissino, D., Atzmon, G.,
291 Barnard, J., Beaugerie, L., Benjamin, E.J., Boehnke, M., Bonnycastle, L.L., Bottinger,
292 E.P., Bowden, D.W., Bown, M.J., Chambers, J.C., Chan, J.C., Chasman, D., Cho, J.,

293 Chung, M.K., Cohen, B., Correa, A., Dabelea, D., Daly, M.J., Darbar, D., Duggirala, R.,
294 Dupuis, J., Ellinor, P.T., Elosua, R., Erdmann, J., Esko, T., Färkkilä, M., Florez, J.,
295 Franke, A., Getz, G., Glaser, B., Glatt, S.J., Goldstein, D., Gonzalez, C., Groop, L.,
296 Haiman, C., Hanis, C., Harms, M., Hiltunen, M., Holli, M.M., Hultman, C.M., Kallela,
297 M., Kaprio, J., Kathiresan, S., Kim, B.J., Kim, Y.J., Kirov, G., Kooner, J., Koskinen, S.,
298 Krumholz, H.M., Kugathasan, S., Kwak, S.H., Laakso, M., Lehtimäki, T., Loos, R.J.F.,
299 Lubitz, S.A., Ma, R.C.W., MacArthur, D.G., Marrugat, J., Mattila, K.M., McCarroll, S.,
300 McCarthy, M.I., McGovern, D., McPherson, R., Meigs, J.B., Melander, O., Metspalu,
301 A., Neale, B.M., Nilsson, P.M., O'Donovan, M.C., Ongur, D., Orozco, L., Owen, M.J.,
302 Palmer, C.N.A., Palotie, A., Park, K.S., Pato, C., Pulver, A.E., Rahman, N., Remes,
303 A.M., Rioux, J.D., Ripatti, S., Roden, D.M., Saleheen, D., Salomaa, V., Samani, N.J.,
304 Scharf, J., Schunkert, H., Shoemaker, M.B., Sklar, P., Soininen, H., Sokol, H., Spector,
305 T., Sullivan, P.F., Suvisaari, J., Tai, E.S., Teo, Y.Y., Tiinamaija, T., Tsuang, M., Turner,
306 D., Tusie-Luna, T., Vartiainen, E., Ware, J.S., Watkins, H., Weersma, R.K., Wessman,
307 M., Wilson, J.G., Xavier, R.J., Neale, B.M., Daly, M.J., MacArthur, D.G., 2020. The
308 mutational constraint spectrum quantified from variation in 141,456 humans. *Nature*
309 581, 434–443. <https://doi.org/10.1038/s41586-020-2308-7>

310 Li, X., Li, W., Liu, G., Shen, X., Tang, Y., 2015. Association between cigarette smoking and
311 Parkinson's disease: A meta-analysis. *Arch. Gerontol. Geriatr.* 61, 510–516.
312 <https://doi.org/10.1016/j.archger.2015.08.004>

313 Loesch, D., Horimoto, A.R.V.R., Heilbron, K., Sarihan, E.I., Inca-Martinez, M., Mason, E.,
314 Cornejo-Olivas, M., Torres, L., Mazzetti, P., Cosentino, C., Sarapura-Castro, E., Rivera-
315 Valdivia, A., Medina, A.C., Dieguez, E., Raggio, V., Lescano, A., Tumas, V., Borges,
316 V., Ferraz, H.B., Rieder, C.R., Schumacher-Schuh, A., Santos-Lobato, B.L., Velez-
317 Pardo, C., Jimenez-Del-Rio, M., Lopera, F., Moreno, S., Chana-Cuevas, P., Fernandez,
318 W., Arboleda, G., Arboleda, H., Arboleda-Bustos, C.E., Yearout, D., Zabetian, C.P., The
319 23andMe Research Team, Cannon, P., Thornton, T.A., O'Connor, T.D., Mata, I.F., on
320 behalf of the Latin American Research Consortium on the Genetics of Parkinson's
321 Disease (LARGE-PD), 2020. Characterizing the genetic architecture of Parkinson's
322 disease in Latinos. *medRxiv* November.

323 Nalls, M.A., Blauwendraat, C., Vallerga, C.L., Heilbron, K., Bandres-Ciga, S., Chang, D.,
324 Tan, M., Kia, D.A., Noyce, A.J., Xue, A., Bras, J., Young, E., von Coelln, R., Simón-
325 Sánchez, J., Schulte, C., Sharma, M., Krohn, L., Pihlstrøm, L., Siitonen, A., Iwaki, H.,
326 Leonard, H., Faghri, F., Gibbs, J.R., Hernandez, D.G., Scholz, S.W., Botia, J.A.,

327 Martinez, M., Corvol, J.C., Lesage, S., Jankovic, J., Shulman, L.M., Sutherland, M.,
328 Tienari, P., Majamaa, K., Toft, M., Andreassen, O.A., Bangale, T., Brice, A., Yang, J.,
329 Gan-Or, Z., Gasser, T., Heutink, P., Shulman, J.M., Wood, N.W., Hinds, D.A., Hardy,
330 J.A., Morris, H.R., Gratten, J., Visscher, P.M., Graham, R.R., Singleton, A.B., Adarmes-
331 Gómez, A.D., Aguilar, M., Aitkulova, A., Akhmetzhanov, V., Alcalay, R.N., Alvarez, I.,
332 Alvarez, V., Barrero, F.J., Bergareche Yarza, J.A., Bernal-Bernal, I., Billingsley, K.,
333 Blazquez, M., Bonilla-Toribio, M., Botía, J.A., Bongiorno, M.T., Brockmann, K.,
334 Bubb, V., Buiza-Rueda, D., Cámara, A., Carrillo, F., Carrión-Claro, M., Cerdan, D.,
335 Chelban, V., Clarimón, J., Clarke, C., Compta, Y., Cookson, M.R., Craig, D.W.,
336 Danjou, F., Diez-Fairen, M., Dols-Icardo, O., Duarte, J., Duran, R., Escamilla-Sevilla,
337 F., Escott-Price, V., Ezquerro, M., Feliz, C., Fernández, M., Fernández-Santiago, R.,
338 Finkbeiner, S., Foltynie, T., Garcia, C., García-Ruiz, P., Gomez Heredia, M.J., Gómez-
339 Garre, P., González, M.M., Gonzalez-Aramburu, I., Guelfi, S., Guerreiro, R., Hardy, J.,
340 Hassin-Baer, S., Hoenicka, J., Holmans, P., Houlden, H., Infante, J., Jesús, S., Jimenez-
341 Escrig, A., Kaishybayeva, G., Kaiyrzhanov, R., Karimova, A., Kinghorn, K.J., Koks, S.,
342 Kulisevsky, J., Labrador-Espinosa, M.A., Leonard, H.L., Lewis, P., Lopez-Sendon, J.L.,
343 Lovering, R., Lubbe, S., Lungu, C., Macias, D., Manzoni, C., Marín, J., Marinus, J.,
344 Marti, M.J., Martínez Torres, I., Martínez-Castrillo, J.C., Mata, M., Mencacci, N.E.,
345 Méndez-del-Barrio, C., Middlehurst, B., Mínguez, A., Mir, P., Mok, K.Y., Muñoz, E.,
346 Narendra, D., Ojo, O.O., Okubadejo, N.U., Pagola, A.G., Pastor, P., Perez Errazquin, F.,
347 Perrián-Tocino, T., Pihlstrom, L., Plun-Favreau, H., Quinn, J., R'Bibo, L., Reed, X.,
348 Rezola, E.M., Rizig, M., Rizzu, P., Robak, L., Rodriguez, A.S., Rouleau, G.A., Ruiz-
349 Martínez, J., Ruz, C., Ryten, M., Sadykova, D., Schreglmann, S., Shashkin, C., Sierra,
350 M., Suarez-Sanmartin, E., Taba, P., Taberner, C., Tan, M.X., Tartari, J.P., Tejera-
351 Parrado, C., Tolosa, E., Trabzuni, D., Valldeoriola, F., van Hilten, J.J., Van Keuren-
352 Jensen, K., Vargas-González, L., Vela, L., Vives, F., Williams, N., Zharkinbekova, N.,
353 Zharmukhanov, Z., Zholdybayeva, E., Zimprich, A., Ylikotila, P., Shulman, L.M.,
354 Reich, S., Savitt, J., Agee, M., Alipanahi, B., Auton, A., Bell, R.K., Bryc, K., Elson,
355 S.L., Fontanillas, P., Furlotte, N.A., Huber, K.E., Hicks, B., Jewett, E.M., Jiang, Y.,
356 Kleinman, A., Lin, K.H., Litterman, N.K., McCreight, J.C., McIntyre, M.H., McManus,
357 K.F., Mountain, J.L., Noblin, E.S., Northover, C.A.M., Pitts, S.J., Poznik, G.D.,
358 Sathirapongsasuti, J.F., Shelton, J.F., Shringarpure, S., Tian, C., Tung, J., Vacic, V.,
359 Wang, X., Wilson, C.H., Anderson, T., Bentley, S., Dalrymple-Alford, J., Fowdar, J.,
360 Halliday, G., Henders, A.K., Hickie, I., Kassam, I., Kennedy, M., Kwok, J., Lewis, S.,

- 361 Mellick, G., Montgomery, G., Pearson, J., Pitcher, T., Sidorenko, J., Silburn, P.A.,
362 Vallerga, C.L., Visscher, P.M., Wallace, L., Wray, N.R., Zhang, F., 2019. Identification
363 of novel risk loci, causal insights, and heritable risk for Parkinson's disease: a meta-
364 analysis of genome-wide association studies. *Lancet Neurol.* 18, 1091–1102.
365 [https://doi.org/10.1016/S1474-4422\(19\)30320-5](https://doi.org/10.1016/S1474-4422(19)30320-5)
- 366 Perry, E.K., Morris, C.M., Court, J.A., Cheng, A., Fairbairn, A.F., McKeith, I.G., Irving, D.,
367 Brown, A., Perry, R.H., 1995. Alteration in nicotine binding sites in Parkinson's disease,
368 Lewy body dementia and Alzheimer's disease: Possible index of early neuropathology.
369 *Neuroscience* 64, 385–395. [https://doi.org/10.1016/0306-4522\(94\)00410-7](https://doi.org/10.1016/0306-4522(94)00410-7)
- 370 Purcell, S., Neale, B., Todd-Brown, K., Thomas, L., Ferreira, M.A.R., Bender, D., Maller, J.,
371 Sklar, P., De Bakker, P.I.W., Daly, M.J., Sham, P.C., 2007. PLINK: A tool set for
372 whole-genome association and population-based linkage analyses. *Am. J. Hum. Genet.*
373 81, 559–575. <https://doi.org/10.1086/519795>
- 374 Quik, M., Kulak, J.M., 2002. Nicotine and nicotinic receptors; relevance to Parkinson's
375 disease. *Neurotoxicology* 23, 581–594. [https://doi.org/10.1016/S0161-813X\(02\)00036-0](https://doi.org/10.1016/S0161-813X(02)00036-0)
- 376 Quik, M., Zhang, D., McGregor, M., Bordia, T., 2015. Alpha7 nicotinic receptors as
377 therapeutic targets for Parkinson's disease. *Biochem. Pharmacol.* 97, 399–407.
378 <https://doi.org/10.1016/j.bcp.2015.06.014>
- 379 Rinne, J.O., Myllykylä, T., Lönnberg, P., Marjamäki, P., 1991. A postmortem study of brain
380 nicotinic receptors in Parkinson's and Alzheimer's disease. *Brain Res.* 547, 167–170.
381 [https://doi.org/10.1016/0006-8993\(91\)90588-M](https://doi.org/10.1016/0006-8993(91)90588-M)
- 382 Ross, J.P., Dupré, N., Dauvilliers, Y., Strong, S., Dionne-Laporte, A., Dion, P.A., Rouleau,
383 G.A., Gan-Or, Z., 2017. RIC3 variants are not associated with Parkinson's disease in
384 French-Canadians and French. *Neurobiol. Aging* 53, 194.e9-194.e11.
385 <https://doi.org/10.1016/j.neurobiolaging.2017.01.005>
- 386 Schaaf, C.P., 2014. Nicotinic acetylcholine receptors in human genetic disease. *Genet. Med.*
387 16, 649–656. <https://doi.org/10.1038/gim.2014.9>
- 388 Sudhaman, S., Muthane, U.B., Behari, M., Govindappa, S.T., Juyal, R.C., Thelma, B.K.,
389 2016. Evidence of mutations in RIC3 acetylcholine receptor chaperone as a novel cause
390 of autosomal-dominant Parkinson's disease with non-motor phenotypes. *J. Med. Genet.*
391 53, 559–566. <https://doi.org/10.1136/jmedgenet-2015-103616>
- 392 Wang, K., Li, M., Hakonarson, H., 2010. ANNOVAR: functional annotation of genetic
393 variants from high-throughput sequencing data. *Nucleic Acids Res.* 38, e164.
394 <https://doi.org/10.1093/nar/gkq603>

395 Zhan, X., Hu, Y., Li, B., Abecasis, G.R., Liu, D.J., 2016. RVTESTS: An efficient and
396 comprehensive tool for rare variant association analysis using sequence data.
397 *Bioinformatics* 32, 1423–1426. <https://doi.org/10.1093/bioinformatics/btw079>
398