

Title: Burden of COVID-19 and Case Fatality Rate in Pune India: An Analysis of First and Second Wave of the Pandemic

Prasad Bogam^{1,2}, Aparna Joshi³, Sanket Nagarkar³, Divyashri Jain¹, Nikhil Gupte^{1,2}, LS

Shashidhara^{3,4,5}, Joy Merwin Monteiro^{3,5}, Vidya Mave^{1,2,5}

1. BJ Government Medical College-Johns Hopkins University Clinical Research Site (CRS), Pune, India
2. Johns Hopkins India, Pune, India
3. Indian Institute of Science Education and Research, Pune, India
4. Ashoka University, Sonapat, Haryana
5. Pune Knowledge Cluster, Pune, India

Corresponding author: Prasad Bogam, MPH,

G-4 & G-5, PHOENIX Building, OPP. to Residency Club, Pune, India-411001.

Email: drprasadbogam@gmail.com

Co-Corresponding author: Joy Merwin Monteiro Ph.D.

IISER campus,

Baner, Pune 411012.

Email: joy@iiserpune.ac.in

Abstract word count: 295

Text word count: 3,118

Keywords: COVID-19, burden, case fatality rate, mortality, Pandemic waves, India

Abstract.

Background. The recent second wave in India in April-May 2021 placed an unprecedented burden on the Indian health systems. However, limited data exist on the epidemiology of the COVID-19 pandemic from the first wave through the second wave in India. With detailed epidemiologic data, we aimed to assess trends in incident cases and case fatality, its risk between pandemic waves in Pune, an epicenter of COVID-19 cases in India, a country with the second-largest absolute burden worldwide.

Methods. Programmatic COVID-19 data from Pune city between the first wave (March 09th 2020-October 31st, 2020), maintenance phase (November 01st 2020-February 14th, 2021), the second wave (February 15th, 2021-May 31st, 2021) were assessed for trends of incident cases, time-to-death, and case fatality rate (CFR). In addition, Poisson regression models adjusted for age and gender were used to determine the independent effect of pandemic waves on mortality.

Results. Of 465,192 COVID-19 cases, 162,182 (35%) were reported in the first wave, and 4,146 (2.5%) died among them; Maintenance period registered 27,517 (6%) cases with 590 (2.1%) deaths; Second wave reported 275,493 (59%) cases and 3184 (1.1%) deaths ($p < 0.01$). The overall CFR was 1.16 per 1000 person-days (PD), which declined from 1.80 per 1000 PD during the first wave to 0.77 per 1000 PD in the second wave. The risk of death was 1.49 times higher during the first wave (adjusted case fatality rate ratio- aCFRR, 1.49; 95% CI: 1.37–1.62) and 35% lower in the second wave (aCFRR, 0.65; 95% CI: 0.59 – 0.70), compared to the maintenance phase.

Interpretation. The absolute burden of COVID-19 cases and deaths were more significant in the second wave in Pune, India; however, the CFR declined as the pandemic progressed. Nevertheless, investigating newer therapies and implementing mass vaccinations against COVID-19 are urgently needed.

Introduction

The global COVID-19 cases exceeded 171 million as of May 31st, 2021, leading to a loss of more than 3.69 million human lives.¹ Data to date suggests that elderly males and those with comorbidities are at higher risk for developing poor clinical outcomes, including mortality, during and after acute SARS-CoV-2 infection.² India shares about 16% of the reported global burden of COVID-19 cases and ranks second in the absolute number of cumulative COVID-19 cases. The first wave of the COVID-19 pandemic commenced with increased detection of cases in January-March 2020, and after the September 2020 peak, cases declined by the end of October 2020.³ We previously reported that the national lockdown in India delayed the peak of the first wave of the pandemic by approximately eight weeks.⁴ Subsequently, a low COVID-19 incidence period occurred between November and mid-February. However, the recent second wave in India in April-May 2021 placed an unprecedented burden on the Indian health systems, which contributed almost 47% of single-day incident cases in the world during its peak.⁵ Limited data exist on the epidemiology of the progression of the COVID-19 pandemic from the first wave through the second wave in India.

With 334,608 COVID-19 related deaths to date, India ranks third in the absolute number of deaths.¹ Interestingly, the observed case fatality ratio at 1.2% is the lowest among the top 20 high burden countries.⁶ In general, the lower COVID-19 case fatality ratio reported in India can be attributed to the younger demographic profile of the population compared to that of other high-income countries.⁷ However, the explanation might be far more complex given the data collecting and reporting structure, prevalence of comorbid diseases in India, testing strategy, sex differences, and death attribution to COVID-19 infections.⁸⁻⁹ While emerging evidence from western countries supported the use of glucocorticoids, antivirals, monoclonal antibodies, and optimal critical care illness management of COVID-19,¹⁰⁻¹² limited data exists on its impact in resource-limited countries at a programmatic level. As Pune city in India has a system of

reporting detailed mortality data, we sought to describe an epidemiological analysis of the burden and COVID-19 mortality data comparing the first and second wave in the city, one of India's epicenters of COVID-19 cases.

Methods

Between March 01st, 2020, and May 31st, 2021, we conducted a retrospective analysis of the COVID-19 mortality data from Pune city, India. As part of the COVID-19 surveillance program, the public and private hospitals under the jurisdiction of Pune Municipal Corporation (PMC) in Pune city, India, shared daily reports of COVID-19 incident cases and related deaths with PMC. The data elements included age, sex, date of diagnosis, and for those who died, date of death. Aggregate daily data on the number of SARS-CoV-2 tests, new diagnoses, active cases, and critical care cases were compiled at the city level. The individual hospital-level data on deaths were collected centrally, and the cause of death remark was curated to elicit the comorbidities from the remarks.

The details of programmatic management of the pandemic in India, including lockdowns during the early phases, have been described elsewhere.^{4,13} In brief, between 25-March-2020 and 31-May-2020, the nationwide lockdown was implemented, and the regional lockdown of two weeks was implemented in the Pune region in July 2020. During the second wave of the pandemic, regional lockdown in Maharashtra state, including Pune, was implemented in April-May 2021. In the early phases of the first wave, COVID-19 testing was available only for symptomatic close contacts of laboratory-confirmed cases and international travelers with a history of travel to COVID-19 affected countries who develop respiratory symptoms.¹⁴ However, in the last week of March 2020, the testing expanded to symptomatic healthcare workers, all hospitalized patients with severe acute respiratory illness, and the asymptomatic direct and high-risk contacts of confirmed cases.¹⁵ Subsequently, the Indian Council of Medical Research (ICMR) devised a strategy to increase accessibility and availability of testing by engaging with

Government and private laboratories to add the optimum number of testing centers in the country.¹⁶ Rapid antigen testing was added into the testing strategy in April 2020 to test the symptomatic in hotspot areas.¹⁷ In the later months of the pandemic, rapid antigen tests and RT-PCR were suggested to test all individuals residing in the containment zones as part of community surveillance. During the second wave, RT-PCR was advised for all symptomatic testing negative on rapid antigen test.

Home isolation for mild/pre-symptomatic patients was permitted starting 27-April-2020; hospitalization was only recommended to those with moderate and severe COVID-19 illness. The moderate disease was defined as the presence of breathlessness, respiratory rate (RR) of ≥ 24 /min, or oxygen saturation (SpO₂) of $< 93\%$ on room air; severe disease was defined as the presence of breathlessness, RR of > 30 /min or SpO₂ of $< 90\%$ on room air. The local authorities compiled the mandated data on testing and death outcomes among cases from individual facility level-testing centers, laboratories, hospitals, care centers and shared nationally.

COVID-19 management. The Ministry of Health and Family Welfare (MoHFW) issued guidelines on clinical management of COVID-19 starting 17-Mar-2020 and subsequently revised them based on the available evidence.¹⁸ Initially, the treatment strategies were primarily based on early supportive therapy with supplemental oxygen, empirical antimicrobials, and management of acute respiratory distress syndrome (ARDS) with non-invasive mechanical ventilation or invasive mechanical ventilation if required. Glucocorticoids were also recommended for a short period (3-5 days) in deteriorating patients. Hydroxychloroquine (HCQ) was repurposed and indicated as an off-label treatment for COVID combined with Azithromycin among patients with severe illness requiring ICU admissions. In the subsequent months, the treatment strategies evolved, and the indicated use of HCQ shifted from severe cases to milder cases or at-risk populations such as healthcare workers. On June 13th and 27th, MoHFW

revised guidelines and recommended a 0.1-0.2mg/kg dose of dexamethasone or its equivalent glucocorticoid among patients with increasing oxygen requirements. In addition, multiple investigational therapies were advised as ad-hoc, including remdesivir (an antiviral agent), convalescent plasma therapy, and tocilizumab (an anti-interleukin-6 monoclonal antibody) as off label treatment for COVID-19 for moderate disease.

Statistical analysis. For this analysis, we divided the COVID-19 pandemic into three phases based on the trend of incident cases and test positivity rates in Pune: the first phase representing the first wave of the pandemic from March 09th,2020, until October 31st, 2020, followed by the maintenance phase from November 01st,2020 until February 15th, 2021. The last phase starting February 16th,2021, represents the second wave currently ongoing in the country, and this analysis was censored for May 31st, 2021, for incident cases (**Supplementary Table 1**). Characteristics of COVID-19 cases in the first wave, maintenance phase, and second-wave were summarized using frequencies and compared with a Chi-Squared test. The overall case burden for India abstracted from publicly available data was plotted over the study period. The test positivity rates were derived and plotted from the aggregated daily public reports. Case fatality ratio was measured by dividing the total deaths from total diagnosed cases. The ratio of critical care cases to daily active cases was plotted. The COVID-19 deaths were censored for June 07th, 2021. Case fatality rate (CFR) overall and age groups, sex, and the three pandemic phases were calculated as the total number of deaths divided by total cases diagnosed per 1000 person-days (PD). Cumulative time to death was estimated using the Kaplan-Meier product-limit estimator and compared within the risk groups using a log-rank test. Univariable and multivariable Poisson regression was used to assess the effects of sex, age categories, and three pandemic phases on mortality for the overall pandemic and stratified by three phases of the pandemic. Furthermore, we compared the CFR before and after the national guidelines for intravenous steroids and their impact on mortality using logistic

regression analysis. The Indian Institute of Science Education and Research ethics committee, Pune, India, approved this analysis of the public health monitoring program.

Results

COVID-19 in the first wave, second wave, and maintenance phase

During the study period, 465,192 COVID-19 cases were diagnosed in Pune city; 162,182 (35% of total cases) in the first wave, 27,517 (6%) in the maintenance period, and 275,493 (59%) in the second wave. The trends in COVID-19 case detection in Pune city and that of India are shown in **Figure 1a**, and the peak of the second wave was delayed by 12 days for India compared to Pune city. Overall, the test positivity of cases was 19%; it was highest at 22% ($p<0.01$) during the first wave, followed by the 19% ($p<0.01$) in the second wave and 8% ($p=0.18$) in the maintenance period (**Supplementary Figure 1**). As shown in **Table 1**, the 30-45 years age group ($p<0.01$) and males ($p<0.01$) contributed to most COVID-19 cases across all three phases of the pandemic. The most increase in the proportion of weekly cases was observed among the 30-44 years age group ($p<0.01$) followed by 45-64 ($p=0.02$); 65-85 ($p=0.003$) year age group during the analysis period (**Figure 1b**). The ratio of critical care cases to the active cases (**Figure 1c**) was 6% in the first wave, 8% in the maintenance phase, and 3% in the second wave ($p<0.01$).

Death characteristics and time to death

Of 465,192 cases, 7,920 (1.7%) died. The median age of those who died was 65 (IQR, 54 - 73) years; with almost half of the deaths, 3,755 (47%) reported between 65-85 years of age, and 5185 (65%) were males. Of these, 3,704 (47%) had one or more comorbidities; 2,699 (34%) had hypertension and 2,239 (28%) had diabetes (**Supplementary Figure 2**). Among those who died, the median time to death from diagnosis was six days (IQR, 2-11). As shown in **Figure 2a**,

time to death was slightly different for males vs. females (6 (IQR, 2-12) vs. 5 (IQR, 2-11) days, $p < .01$). For age group categories, median time to deaths in days was in the following order: 6 (IQR, 3-10) for >85 years; 6 (IQR, 2-11) for 65-85 years; 6 (2-12) for 45-64 years; 6 (1-12) for 30-44 years; 3 (0-9) for 18-29 years; 3 (0-7) for <17 years (**Figure 2b**, $p < 0.01$).

Case Fatality Rate and Risk Factors

Of 7,920 who died, 4,146 (52%) died in the first wave, 590 (8%) in the maintenance phase and 3,184 (40%) in the second wave ($p < 0.01$). The case fatality rate rapidly declined from 3.91 per 1000 PD (95% CI: 3.56 - 4.25) to 1.66 per 1000 PD (95% CI: 1.61 - 1.72) during the first wave after the introduction of clinical management focused mainly on intravenous steroids use for severe COVID-19 in June 2020 (**Figure 3a**, $p < 0.01$). It further declined to 0.77 per 1000 PD in the second wave. Moreover, the case fatality rate was 3.53 times greater before intravenous steroid use for severe illness (CFRR, 3.53, 95% CI 3.23-3.86).

Overall case fatality rate per 1000 person-days (PD) was 1.16; it was lowest for 0-17 & 18-39 age groups at 0.06/ 1000 PD and highest for ages >85 years at 8.62/ 1000 PD (**Table 2**). The rate decreased over time; 1.80/ 1000 PD in the first wave, 1.42/ 1000 PD in the maintenance phase, and 0.77/ 1000 PD in the second wave. Age group 65-85 saw the highest decline in CFR over time (**Figure 3b**). In Poisson regression models, males (adjusted case fatality rate ratio [(aCFRR), 1.46; 95% CI: 1.40 – 1.53); ages 65-85 years (aCFRR, 90.15; 95% CI: 72.44 – 112.20) and age >85 years (aCFRR, 155.04; 95% CI: 121.49 - 197.86) had increased risk of mortality (**Table 2**). Furthermore, the risk for deaths was 1.49 times higher for the first wave (aCFRR, 1.49; 95% CI: 1.37 – 1.62) as compared to the maintenance phase, while it was almost 35% lower for the second wave (aCFRR, 0.65; 95% CI: 0.59 – 0.70) (**Table 2**). Furthermore, the fatality rate is 47% lower in the second wave than in the first wave (aCFRR, 0.43; CI: 0.41-0.45). Risk factor analysis for deaths by three analysis periods did not change significantly except for

the 0-17 years age group (aCFRR, 1.7; 95% CI: 1.0 – 2.9) who had a higher likelihood of deaths in the first wave compared to the maintenance phase (**Supplementary Table 2**).

Discussion

Our report encompasses the full spectrum of Pune city's COVID-19 pandemic up to close to the end of the second wave. The trend of COVID-19 incidence cases in Pune city followed a pattern like that of India with two exceptions. First, the peak of the second wave in Pune occurred about 12 days earlier than the country. Second, there was a slight dip in cases during the first wave corresponding to Pune regional lockdown.⁴ The first wave of the COVID-19 pandemic lasted 7-8 months, and the maintenance phase had low COVID-19 incidence. The second wave had exponential growth of cases and has the world's largest peak and the absolute number of cases.¹ The overall case fatality ratio was 1.7% in Pune city, higher than the reported nationwide case fatality ratio of 1.2%. Notably, the CFR declined sharply during the first wave, but it was 1.49 times higher than the phase between two pandemic waves. Furthermore, the CFR of the second wave was 35% lower than the phase between the pandemic waves and 61% lower than the first wave.

The reasons for the decline in CFR as the pandemic progressed are unclear and need further exploration. First, the proportion of COVID-19 cases among middle-aged adults (30-44 years) whose risk of deaths is relatively lower increased over time, resulting in fewer deaths. Further, the ratio of critical care cases to total active cases during the second wave was lower compared to the first wave. Second, since the first wave ended, the predominant circulating strains in India, a new variant of SARS-CoV-2-B.1.617, are known to be highly transmissible, as demonstrated by the rapid growth of cases during the second wave. Although the World Health Organization has recently categorized this strain as a variant of concern, the severity of the disease associated with this strain is yet to be investigated.¹⁹⁻²¹ But, our data suggest that the

COVID-19 caused by SARS-CoV-2-B.1.617 may be less severe and hence less fatal. Third, during the pandemic, our test positivity analysis indicates that more cases were identified during the second wave with a lower test positivity rate than the first wave. Hence the CFR is likely to be closer to the infection fatality rate in the second wave,²² indicating that the increased availability of testing may have led to early diagnosis and access to care preventing further complications and deaths.

The sharp decline of COVID-19 mortality during the first wave also appears to coincide with the availability of more information and revised national guidelines on clinical management such as optimal use of corticosteroid, antivirals, and appropriate early supportive treatment following hospitalization of moderate and severe COVID-19.^{23, 24,25} Indeed, before the nationwide recommendation of advanced clinical management in early June 2020, the case fatality rate was 3.53 times higher during the first wave, before becoming stable at ~2%.

The relatively higher cumulative case-fatality ratio observed in Pune city at 1.7% than the countrywide reported ratio of ~1% can be explained by access to better curated and granular data at the Pune city level. Although it was much lower than western counterparts, consistent with prior studies,²⁶⁻²⁷ the oldest age groups, particularly those above 65, had the highest likelihood of deaths across the pandemic and the most decline in the CFR over time.²⁸ Sex bias in a higher likelihood of mortality among males was also noted, similar to prior studies,²⁹ although time to death was longer for both older age groups and males.¹³ Moreover, the risk of death among children was lowest overall.³⁰ Notably, the children had a 1.75 times risk of mortality during the first wave compared to young adults; however, this needs to be interpreted with caution as the proportion of children with COVID-19 were comparatively smaller, and comorbid conditions for them were not captured.

Even though the older adults had the highest risk of deaths, the proportion of deaths among the incident cases in the 18-65 years age group and males who are traditionally the wage-earners of the Indian family were closer to 50% and 66% respectively. Furthermore, considering the emerging reports of post COVID-19 sequelae and associated morbidity and mortality for this group,³¹ the economic repercussions of the pandemic may remain for the foreseeable future in India.³² Notably, the total disease burden and proportional critical cases were significantly higher during the second wave that required hospital beds, oxygenation, ventilator support, and health care workers to manage the illness. In this context, our report gives an insight into how the Indian health system had to manage the unprecedented burden placed by the second wave of COVID-19 pandemic widely publicized in Indian and global media reports.^{33-34.}

Strengths of our analysis include the availability of more complete data enabling comparative analysis of first and second waves with that of the maintenance phase of the pandemic. While the period demarcation for these waves can be countered as arbitrary, arbitrary delineation of pandemic waves has been done worldwide to assess the progression of the pandemic.³⁵ To reduce period bias, we used trends in weekly case data and test positivity to assign three phases for this analysis. The absence of data on comorbidities among COVID-19 survivors limited our ability to assess the relationship between comorbidities and mortality. However, we show that over half had one or more comorbidities among those who died, suggesting the relationship between comorbidities and mortality.³⁶ Only aggregate data of critical cases were available; detailed data on hospitalization, oxygenation, and ventilator support requirements were unavailable. Furthermore, data were unavailable on SARS-CoV-2 variants and their impact on case burden and deaths and whether providers uniformly implemented the MOHFW recommendations in Pune city. The majority of deaths (99%) occurred in the hospital settings in this dataset; thus, COVID-19 deaths in the community may not have been captured, thus underreporting of COVID-19 deaths for Pune city cannot be ruled out. Despite these limitations,

to our knowledge, this is the first real-world epidemiologic analysis of the progression of the pandemic and related mortality in a COVID-19 hotspot city, one of many such affected cities in India.

In conclusion, we demonstrate that as the burden of COVID-19 expanded from the first wave to the second wave, the CFR declined. Our report suggests the role of evolving therapeutics in the reduction of CFT, but further confirmation is needed. In addition, investigation of the impact of predominant circulating strains on mortality is urgently required. Notably, our report highlights the need for healthcare preparedness, including hospital beds, oxygenation, ventilator support, and health care workers to manage the pandemic of this scale worldwide. Further, there is an urgent need to investigate newer or repurposed therapies and implement mass vaccinations to halt the morbidity and mortality of the devastating COVID-19 pandemic in India and worldwide.

Acknowledgments

We thank the Pune Knowledge Cluster members, Dr. Ajit Kembavi and Dr. Ashwini Keskar, for supporting data acquisition. We acknowledge the generous support and congratulate the PMC commissioner, officials, and staff involved in the successful COVID-19 surveillance program.

Author contributions

VM, JM, NG, PB, SN, AJ, LS conceived the study. SN, JM, AJ performed data management and curation. DJ, PB, VM, NG conducted the data analysis, and all authors contributed to data interpretation and manuscript writing.

Competing interests

Authors declare no conflicts of interest.

Funding

This analysis was done as part of the Pune Knowledge Cluster (PKC) comprising Pune-based academics, academic institutions, and industry partners. The PKC principal investigators, Dr. LS Shashidhara and Dr. Ajit Kembavi received funding support from Pune Knowledge Cluster Initiative under the Government of India. This study was not funded separately. This paper's content is solely the authors' responsibility and does not necessarily represent the official views of the PKC or its funder.

Figure Legends

Figure 1a. The trajectory of weekly incident COVID-19 cases in India and Pune Municipal Corporation (PMC) from 30th, January 2020, until May 31st, 2021. The weekly cases in PMC are shown on the secondary axis. **Figure 1b.** The trajectory of incident COVID cases in Pune across different age groups from March 09th, 2020 until May 31st, 2021. **Figure 1c.** Monthly

active COVID-19 cases and critical care cases in Pune city from March 09th, 2020 to May 31st, 2021.

Figure 2a shows the median time to death from diagnosis among males and females. **Figure 2b.** Kaplan Meier curve showing median time to death from diagnosis among different age categories.

Figure 3a. Monthly Case Fatality Rate (CFR) per 1000 person-days in Pune from March 09th, 2020 until May 31st, 2021, and the absolute number of deaths. **Figure 3b** Case Fatality Rate per 1000 person days over time among different age categories.

Tables

Table 1 - Characteristics of COVID-19 incident cases and deaths in the first wave, maintenance phase, and second wave in Pune, India.

Characteristics	Total Cases		First Wave		Maintenance phase		Second Wave	
	Cases n (%)	Deaths n (%)	Cases n (%)	Deaths n (%)	Cases n (%)	Deaths n (%)	Cases n (%)	Deaths n (%)
Overall	465192	7920 (2)	162182 (35)	4146 (3)	27517 (6)	590 (2)	275493 (59)	3184 (1)
Median Age, IQR	38 (28 – 52)	65 (54 – 73)	38 (27 – 52)	65 (55 – 73)	41 (30 – 55)	66 (55 – 75)	38 (28 – 52)	64 (52 – 73)
Age categories								
0 – 17	43859 (9)	37 (0)	17577 (11)	28 (0)	2105 (8)	1 (0)	24177 (9)	8 (0)
18 – 29	92218 (20)	82 (0)	31304 (19)	29 (0)	4708 (17)	14 (0)	56206 (20)	39 (0)
30 – 44	155588 (33)	726 (1)	51228 (32)	306 (1)	8601 (31)	51 (1)	95759 (35)	369 (0)
45 – 64	123015 (26)	3015 (3)	45115 (28)	1618 (4)	8594 (31)	196 (2)	69306 (25)	1201 (2)
65 – 85	47991 (10)	3755 (8)	16287 (10)	2026 (12)	3359 (12)	300 (9)	28345 (10)	1429 (5)
>85	2521 (1)	305 (12)	671 (0)	139 (21)	150 (1)	28 (19)	1700 (1)	138 (8)

Gender								
Female	199446 (43)	2729 (1)	68089 (42)	1342 (2)	11661 (42)	201 (2)	119696 (43)	1186 (1)
Male	265623 (57)	5185 (2)	94071 (58)	2799 (3)	15855 (58)	389 (3)	155697 (57)	1997 (1)

The first wave of the pandemic is between March 09th,2020, and October 31st, 2020; the maintenance phase is between November 01st,2020, and February 15th, 2021. The second wave is between February 16th,2021, and May 31st, 2021, and this analysis was censored for May 31st, 2021, for incident cases and June 07th, 2021, for deaths.

Table 2- Factors Associated with COVID-19 Mortality using Poisson Regression Analysis in Pune city, India.

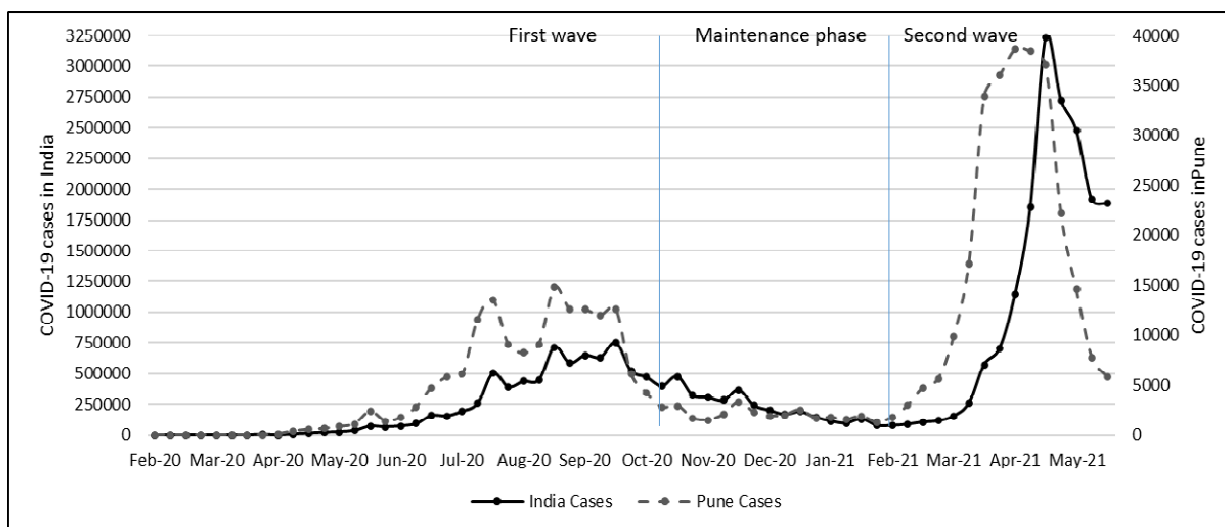
Characteristics	Time to Death Median (IQR)	CFR/1000 Person Days (95% CI)	Unadjusted case fatality rate ratio (95% CI)	Adjusted case fatality rate ratio (95% CI)
Overall	6 (2 – 11)	1.16 (1.13 – 1.19)	-	
Age, median (IQR)		-	1.073 (1.072 – 1.074)	-
Age categories				
0 – 17	3 (0 – 7)	0.06 (0.04 – 0.08)	0.95 (0.65 – 1.41)	0.92 (0.62 – 1.35)
18 – 29	3 (0 – 9)	0.06 (0.05 – 0.07)	1	1
30 – 44	6 (1 – 12)	0.32 (0.29 – 0.34)	5.24 (4.17 – 6.58)	5.23 (4.16 – 6.57)
45 – 64	6 (2 – 12)	1.67 (1.61 – 1.73)	27.72 (22.26 – 34.51)	26.96 (21.65 – 33.58)
65 – 85	6 (2 – 11)	5.45 (5.28 – 5.63)	90.38 (72.62 – 112.48)	90.15 (72.44 – 112.20)
>85	6 (3 – 10)	8.62 (7.68 – 9.64)	142.85 (111.94 – 182.29)	155.04 (121.49 – 197.86)
Gender				
Female	5 (2 – 11)	0.93 (0.89 – 0.97)	1	1
Male	6 (2 – 12)	1.33 (1.29 – 1.37)	1.43 (1.36 – 1.50)	1.46 (1.40 – 1.53)

Period				
First wave	6 (2 – 11)	1.80 (1.75 - 1.86)	1.27 (1.16 – 1.38)	1.49 (1.37 – 1.62)
Maintenance	7 (2 – 13)	1.42 (1.31 - 1.54)	1	1
Second wave	6 (2 – 11)	0.77 (0.75 - 0.80)	0.54 (0.50 – 0.59)	0.65 (0.59 – 0.70)

The first wave of the pandemic is between March 09th,2020, and October 31st, 2020; the maintenance phase is between November 01st,2020, and February 15th, 2021. The second wave is between February 16th,2021, and May 31st, 2021, and this analysis was censored for May 31st, 2021, for incident cases and June 07th, 2021, for deaths.

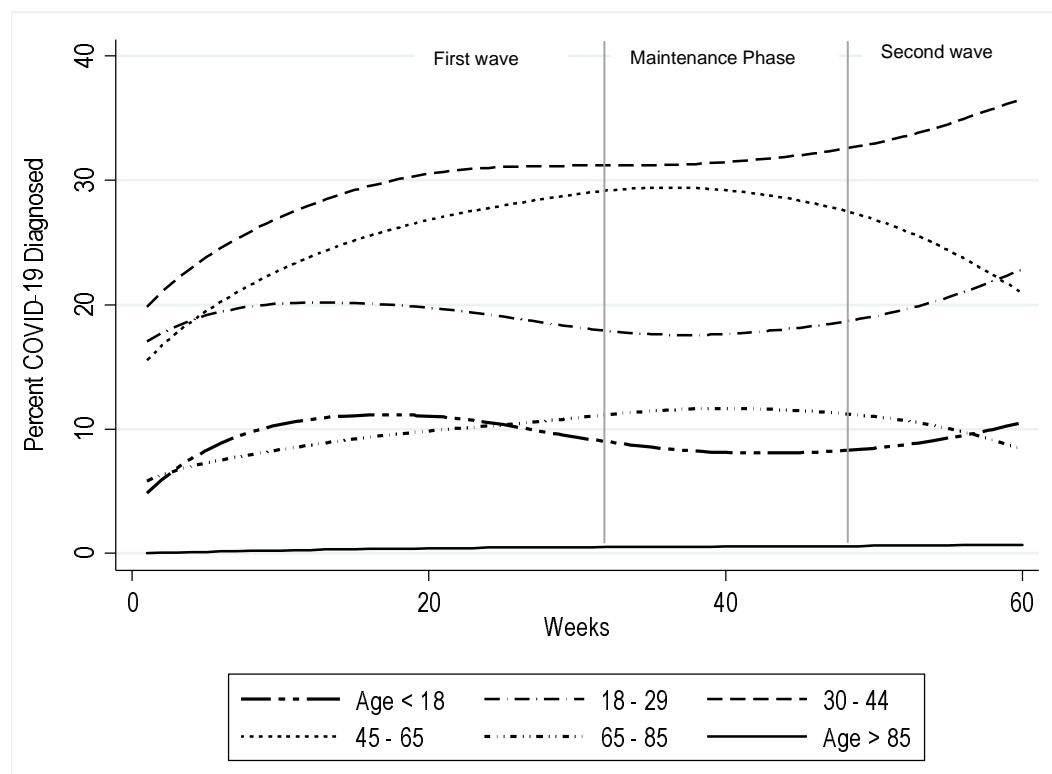
FIGURES

Figure 1a - Weekly incident COVID-19 cases in Pune and India from March 09th,2020, until May 31st,2021.



The first wave of the pandemic is between March 09th,2020, and October 31st, 2020; the maintenance phase is between November 01st,2020, and February 15th, 2021. The second wave is between February 16th,2021, and May 31st, 2021, and this analysis was censored for May 1st, 2021, for incident cases and June 07th, 2021, for deaths.

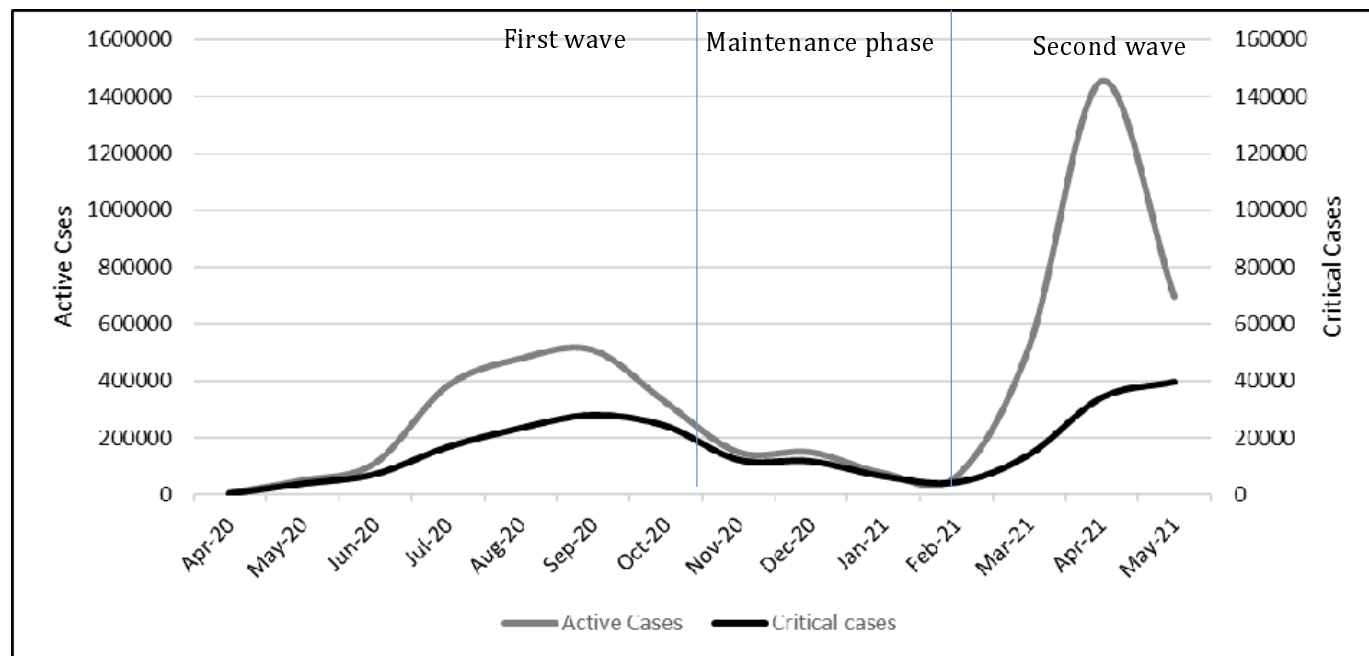
Figure 1b – Weekly incidents of COVID-19 cases in Pune among age groups from March 09th,2020 until May 31st,2021



Age	Change in Diagnosis/week (95% CI)	p-value
< 18	-0.04 (-0.08, 0.01)	0.12
18 – 29	-0.01 (-0.08, 0.05)	0.66
30 – 44	0.16 (0.10 – 0.22)	p < 0.001
45 – 64	0.09 (0.02 – 0.17)	0.02
65 – 85	0.06 (0.02 – 0.11)	0.003
> 85	0.01 (0.01 – 0.012)	p < 0.001

The first wave of the pandemic is between March 09th,2020, and October 31st, 2020; the maintenance phase is between November 01st,2020, and February 15th, 2021. The second wave is between February 16th,2021, and May 31st, 2021, and this analysis was censored for May 1st, 2021, for incident cases and June 07th, 2021, for deaths.

Figure 1c: Monthly Active cases and Critical Care cases in Pune City



The first wave of the pandemic is between March 09th,2020, and October 31st, 2020; the maintenance phase is between November 01st,2020, and February 15th, 2021. The second wave is between February 16th,2021, and May 31st, 2021, and this analysis was censored for May 1st, 2021, for incident cases and June 07th, 2021, for deaths.

Figure 2a Kaplan Meier curve showing median time to death from diagnosis among males vs females.

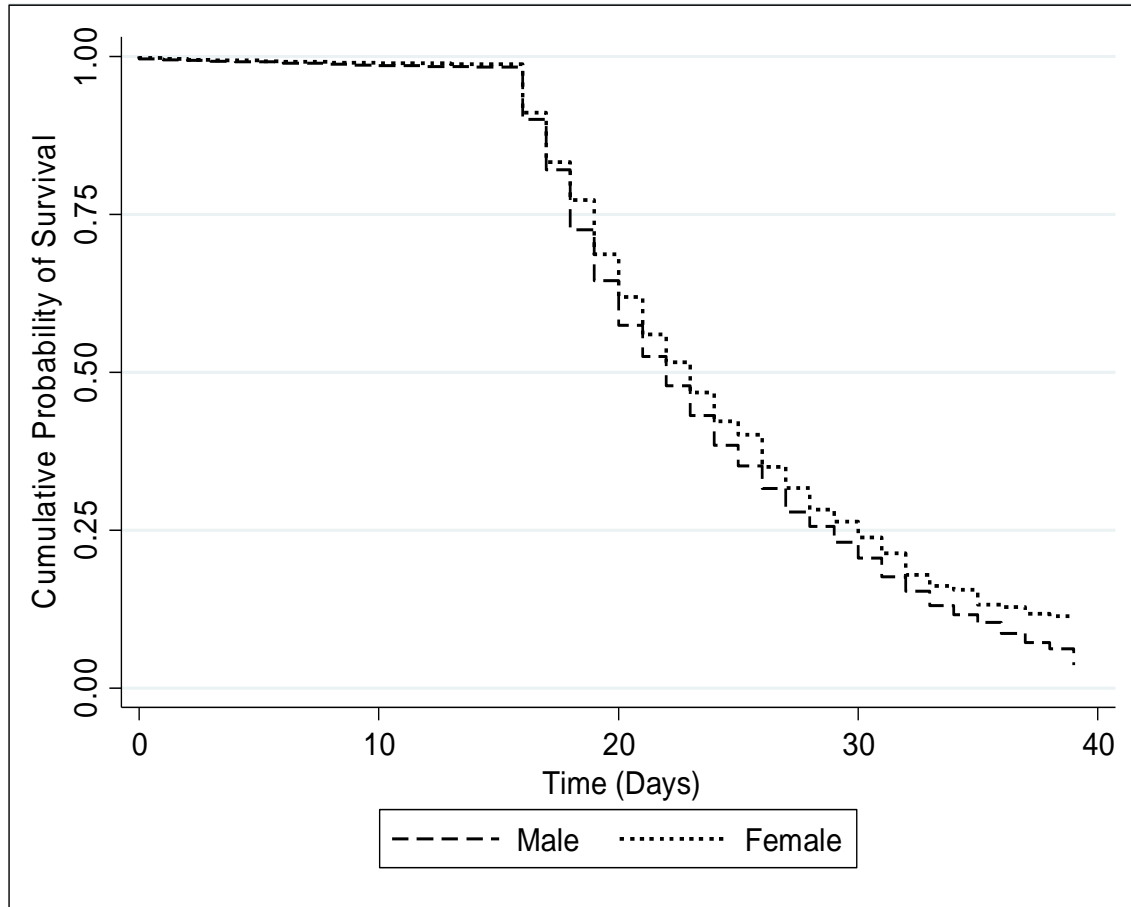


Figure 2b Kaplan Meier curve showing median time to death from diagnosis among different age categories.

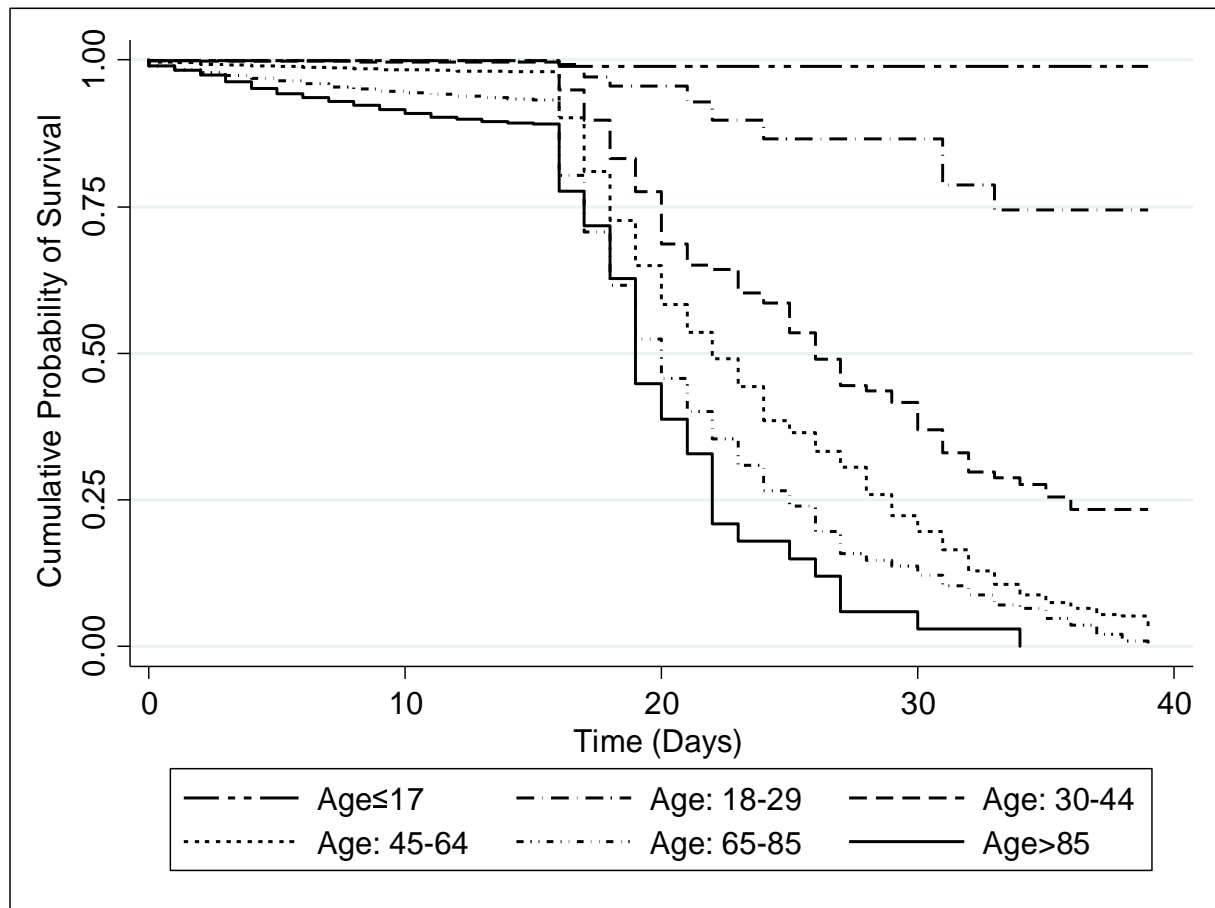
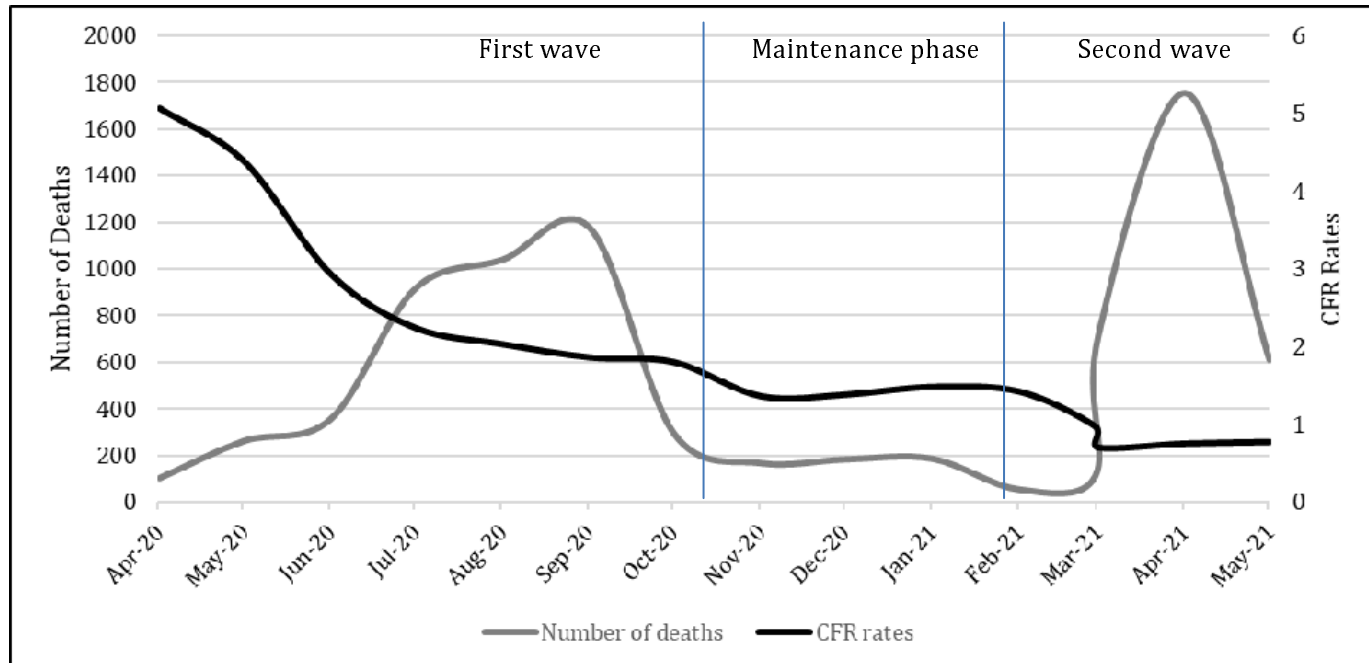
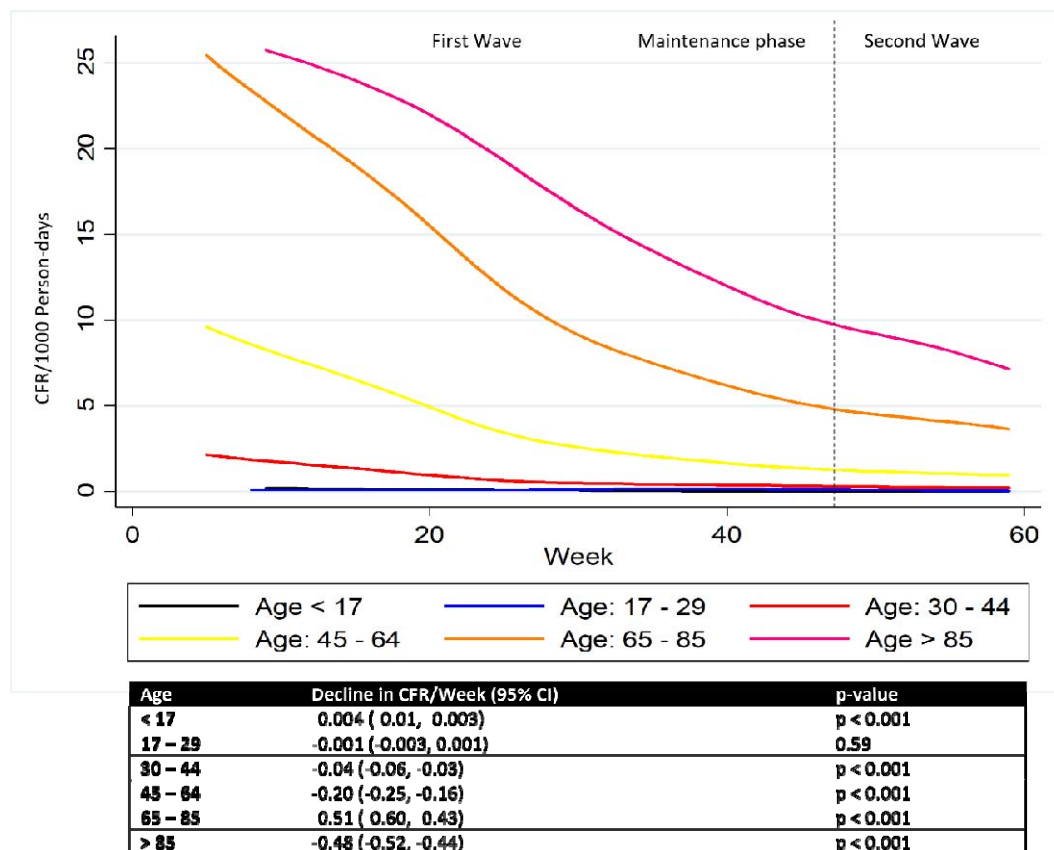


Figure 3a. Cumulative Case Fatality Rate (per 1000 person-days) and monthly deaths in Pune.



The first wave of the pandemic is between March 09th,2020, and October 31st, 2020; the maintenance phase is between November 01st,2020, and February 15th, 2021. The second wave is between February 16th,2021, and May 31st, 2021, and this analysis was censored for May 31st, 2021, for incident cases and June 07th, 2021, for deaths.

Figure 3b Case Fatality Rate (per 1000 person-days) over time among different age categories.



The first wave of the pandemic is between March 09th,2020, and October 31st, 2020; the maintenance phase is between November 01st,2020, and February 15th, 2021. The second wave is between February 16th,2021, and May 31st, 2021, and this analysis was censored for May 31st, 2021, for incident cases and June 07th, 2021, for deaths.

REFERENCES

- (1) Dong E, Du H, Gardner L. An interactive web-based dashboard to track COVID-19 in real time. *Lancet Infect Dis*; published online Feb 19. [https://doi.org/10.1016/S1473-3099\(20\)30120-1](https://doi.org/10.1016/S1473-3099(20)30120-1).
- (2) Mesas AE, Cavero-Redondo I, Álvarez-Bueno C, Sarriá Cabrera MA, Maffei de Andrade S, Sequí-Dominguez I, et al. Predictors of in-hospital COVID-19 mortality: A comprehensive systematic review and meta-analysis exploring differences by age, sex and health conditions. *PLoS One* 2020;15(11):e0241742.
- (3) Banerjee S. Pune prepared to deal with second wave: Divisional Commissioner. *The Hindu* 2020 -11-04T00:03:00+05:30.
- (4) Mave V, Shaikh A, Monteiro JM, Bogam P, Pujari BS, Gupte N. Impact of National and Regional Lockdowns on Growth of COVID-19 Cases in COVID-Hotspot City of Pune in Western India: A Real-World Data Analysis. *medRxiv* 2021:2021.05.05.21254694.
- (5) Ministry of Health and Family Welfare, Government of India. MoHFW dashboard for COVID-19. 2021;2021(02-Jun-2021).
- (6) Mortality Analysis. Johns Hopkins Coronavirus Resource center 2021;2021(02-Jun-2021). Available at <https://coronavirus.jhu.edu/data/mortality>
- (7) India Population (2021) - Worldometer. Available at: <https://www.worldometers.info/world-population/india-population/>.(02-Jun-2021).
- (8) Samaddar A, Gadepalli R, Nag VL, Misra S. The Enigma of Low COVID-19 Fatality Rate in India. *Front Genet.* 2020;11:854. Published 2020 Jul 28. doi:10.3389/fgene.2020.00854
- (9) Price-Haywood EG, Burton J, Fort D, Seoane L. Hospitalization and Mortality among Black Patients and White Patients with Covid-19. *N Engl J Med* 2020 -06-25;382(26):2534-2543.
- (10) Goldman JD, Lye DCB, Hui DS, Marks KM, Bruno R, Montejano R, et al. Remdesivir for 5 or 10 Days in Patients with Severe Covid-19. *N Engl J Med* 2020 -11-05;383(19):1827-1837.
- (11) Horby P, Lim WS, Emberson JR, Mafham M, Bell JL, Linsell L, et al. Dexamethasone in Hospitalized Patients with Covid-19. *N Engl J Med* 2021 -02-25;384(8):693-704.
- (12) Tomazini BM, Maia IS, Cavalcanti AB, Berwanger O, Rosa RG, Veiga VC, et al. Effect of Dexamethasone on Days Alive and Ventilator-Free in Patients With Moderate or Severe Acute Respiratory Distress Syndrome and COVID-19: The CoDEX Randomized Clinical Trial. *JAMA* 2020 -10-06;324(13):1307-1316.
- (13) Laxminarayan R, Wahl B, Dudala SR, Gopal K, Mohan B C, Neelima S, et al. Epidemiology and transmission dynamics of COVID-19 in two Indian states. *Science* 2020 -11-06;370(6517):691-697.
- (14) Testing strategy for COVID-19 testing in India. 2020; Available at: <https://www.mohfw.gov.in/pdf/ICMRstrategyforCOVID19testinginIndia.pdf>.
- (15) ICMR strategy for COVID Testing in India. 2020; Available at: <https://www.mohfw.gov.in/pdf/LabTestingAdvisory.pdf>.
- (16) Research, Indian Council of Medical. Revised Strategy of COVID19 testing in India (Version 3, dated 20/03/2020). 2020.
- (17) Advisory to start rapid antibody based blood test for COVID-19 . 2020; Available at: <https://www.mohfw.gov.in/pdf/Advisory&StrategyforUseofRapidAntibodyBasedBloodTest.pdf>.
- (18) Ministry of Family Health and Welfare Resources on COVID-19. 2020;2021(10-May-2021).
- (19) GISAID - hCov19 Variants. Available at: <https://www.gisaid.org/hcov19-variants/>. Accessed 05-Jun-, 2021.
- (20) Gayathri V. Coronavirus variants are spreading in India - what scientists know so far. 2021.
- (21) Risk assessment for SARS-CoV-2 variant: Delta (VOC-21APR-02, B.1.617.2). *Public Health England* 2021, June 03.

- (22) Wei C, Lee CC, Hsu TC, Hsu WT, Chan CC, Chen SC, et al. Correlation of population mortality of COVID-19 and testing coverage: a comparison among 36 OECD countries. *Epidemiology and Infection* 2020 Dec 28;149:e1.
- (23) Gavriatopoulou, M., Ntanasis-Stathopoulos, I., Korompoki, E. et al. Emerging treatment strategies for COVID-19 infection. *Clin Exp Med* 21, 167–179 (2021). <https://doi.org/10.1007/s10238-020-00671-y>.
- (24) Dennis JM, McGovern AP, Vollmer SJ, Mateen BA. Improving Survival of Critical Care Patients With Coronavirus Disease 2019 in England: A National Cohort Study, March to June 2020*. *Critical Care Medicine* 2021 February;49(2):209–214.
- (25) Anesi GL, Jablonski J, Harhay MO, Atkins JH, Bajaj J, Baston C, et al. Characteristics, Outcomes, and Trends of Patients With COVID-19–Related Critical Illness at a Learning Health System in the United States. *Ann Intern Med* 2021 January 19th,;174(5):613-621.
- (26) Cao Y, Hiyoshi A, Montgomery S. COVID-19 case-fatality rate and demographic and socioeconomic influencers: worldwide spatial regression analysis based on country-level data. *BMJ Open* 2020 -11-03;10(11):e043560.
- (27) Jain VK, Iyengar K, Vaish A, Vaishya R. Differential mortality in COVID-19 patients from India and western countries. *Diabetes & Metabolic Syndrome: Clinical Research & Reviews* 2020 September 1,;14(5):1037-1041.
- (28) Signorelli C, Odone A. Age-specific COVID-19 case-fatality rate: no evidence of changes over time. *Int J Public Health*; 2020. p. 1435-1436.
- (29) Roth GA, Emmons-Bell S, Alger HM, Bradley SM, Das SR, de Lemos JA, et al. Trends in Patient Characteristics and COVID-19 In-Hospital Mortality in the United States During the COVID-19 Pandemic. *JAMA Netw Open* 2021 -05-03;4(5):e218828.
- (30) Tsabouri S, Makis A, Kosmeri C, Siomou E. Risk Factors for Severity in Children with Coronavirus Disease 2019. *Pediatr Clin North Am* 2021 -2;68(1):321-338.
- (31) Nalbandian A, Sehgal K, Gupta A, Madhavan MV, McGroder C, Stevens JS, et al. Post-acute COVID-19 syndrome. *Nature medicine* 2021 Apr;27(4):601-615.
- (32) Dhar R, Jee B, Karmakar S. Balancing Healthcare and Economy Amidst the COVID-19 Pandemic: An Indian Experience. *Risk Manag Healthc Policy* 2021;14:827-833.
- (33) Thevar Steffy. Pune sees a stronger second Covid wave. *Hindustan Times* 2021 -04-15T00:30:54+05:30.
- (34) How India's second wave became the worst COVID-19 surge in the world. 2021; Available at: <https://www.nationalgeographic.co.uk/science-and-technology/2021/04/how-indias-second-wave-became-the-worst-covid-19-surge-in-the-world>. Accessed May 25th, 2021.
- (35) Li R, Chen B, Zhang T, Ren Z, Song Y, Xiao Y, et al. Global COVID-19 pandemic demands joint interventions for the suppression of future waves. *PNAS* 2020 -10-20 00:00:00;117(42):26151-26157.
- (36) Singh AK, Gillies CL, Singh R, Singh A, Chudasama Y, Coles B, et al. Prevalence of comorbidities and their association with mortality in patients with COVID-19: A systematic review and meta-analysis. *Diabetes Obes Metab* 2020 -10;22(10):1915-1924.

Supplementary Table 1: Weekly CFR in Pune, India

Time	Time (weeks)	Number of Patients	Number of Deaths	Cumulative number of pts	Cumulative number of deaths	Cumulative CFR (95% CI)
First Wave						
Mar-20	1st Week	0	0	0	0	NA
	2nd Week	5	0	5	0	NA
	3rd Week	7	0	12	0	NA
	4th Week	25	4	37	4	10.81 (2.94 - 24.81)
Apr-20	1st Week	112	24	149	28	19.01 (12.87 - 26)
	2nd Week	180	19	329	47	14.29 (10.69 - 18.54)
	3rd Week	375	16	704	63	8.95 (6.95 - 11.30)
	4th Week	709	40	1413	103	7.29 (5.99 - 8.77)
May-20	1st Week	618	50	2031	153	7.53 (6.42 - 8.77)
	2nd Week	996	67	3027	220	7.27 (6.37 - 8.25)
	3rd Week	1465	58	4492	278	6.19 (5.50 - 6.93)
	4th Week	1961	87	6453	365	5.66 (5.10 - 6.25)
Jun-20	1st Week	1770	64	8223	429	4.86 (4.42 - 5.33)

	2nd Week	2115	83	10338	512	4.95 (4.54 - 5.39)
	3rd Week	3075	80	13413	592	4.41 (4.07 - 4.77)
	4th Week	5623	130	19036	722	3.79 (3.52 - 4.07)
Jul-20	1st Week	6052	157	25088	879	3.50 (3.28 - 3.74)
	2nd Week	7219	186	32307	1065	3.30 (3.10 - 3.50)
	3rd Week	9919	217	42226	1282	3.04 (2.87 - 3.20)
	4th Week	14142	355	56368	1637	2.90 (2.77 - 3.05)
Aug-20	1st Week	7887	204	64255	1841	2.86 (2.74 - 3.00)
	2nd Week	8056	245	72311	2086	2.88 (2.76 - 3.01)
	3rd Week	8892	241	81203	2327	2.87 (2.75 - 2.98)
	4th Week	14700	348	95903	2675	2.79 (2.69 - 2.90)
Sep-20	1st Week	12492	306	108395	2981	2.75 (2.65 - 2.85)
	2nd Week	14347	359	122742	3340	2.72 (2.63 - 2.81)
	3rd Week	11762	300	134504	3640	2.71 (2.62 - 2.79)
	4th Week	12097	211	146601	3851	2.63 (2.55 - 2.71)
Oct-20	1st Week	5910	108	152511	3959	2.60 (2.52 - 2.68)
	2nd Week	3997	78	156508	4037	2.58 (2.50 - 2.66)
	3rd Week	2626	46	159134	4083	2.57 (2.49 - 2.64)

	4th Week	3048	63	162182	4146	2.56 (2.48 - 2.63)
Maintenance Phase						
Nov-20	1st Week	1511	39	1511	39	2.58 (1.84 - 3.51)
	2nd Week	1313	37	2824	76	2.69 (2.13 - 3.36)
	3rd Week	2098	32	4922	108	2.19 (1.80 - 2.64)
	4th Week	3356	59	8278	167	2.02 (1.72 - 2.34)
Dec-20	1st Week	2169	48	10447	215	2.06 (1.79 - 2.35)
	2nd Week	1896	26	12343	241	1.95 (1.71 - 2.21)
	3rd Week	2014	58	14357	299	2.08 (1.85 - 2.33)
	4th Week	2627	51	16984	350	2.06 (1.85 - 2.28)
Jan-21	1st Week	1912	61	18896	411	2.17 (1.97 - 2.39)
	2nd Week	1754	30	20650	441	2.13 (1.94 - 2.34)
	3rd Week	1540	29	22190	470	2.12 (1.93 - 2.32)
	4th Week	1823	66	24013	536	2.23 (2.05 - 2.43)
Feb-21	1st Week	1333	19	25346	555	2.19 (2.01 - 2.38)
	2nd Week	2171	35	27517	590	2.14 (1.98 - 2.32)
Second Wave						

Feb-21	3rd Week	2807	50	2807	50	1.78 (1.33 - 2.34)
	4th Week	4836	62	7643	112	1.47 (1.21 - 1.76)
Mar-21	1st Week	5970	54	13613	166	1.22 (1.04 - 1.42)
	2nd Week	10244	96	23857	262	1.10 (0.97 - 1.24)
	3rd Week	18479	180	42336	442	1.04 (0.95 - 1.15)
	4th Week	35835	380	78171	822	1.05 (0.98 - 1.13)
Apr-21	1st Week	39043	372	117214	1194	1.02 (0.96 - 1.08)
	2nd Week	37078	403	154292	1597	1.04 (0.99 - 1.09)
	3rd Week	37643	420	191935	2017	1.05 (1.01 - 1.10)
	4th Week	36680	558	228615	2575	1.13 (1.08 - 1.17)
May-21	1 st Week	21021	304	249636	2879	1.15 (1.11 - 1.20)
	2 nd Week	13528	169	263164	3048	1.16 (1.12 - 1.20)
	3rd Week	6938	89	270102	3137	1.16 (1.12 - 1.20)
	4th Week	5391	47	275493	3184	1.16 (1.12 - 1.20)

Supplementary Table 2- Demographic Factors Associated with COVID-19 Mortality using Poisson Regression Analysis in first wave, maintenance phase and second wave.

Characteristics	First Wave		Maintenance Phase		Second Wave	
	CFR/1000 P. Days (95% CI)	aCFRR (95% CI)	CFR/1000 P. Days (95% CI)	aCFRR (95% CI)	CFR/1000 P. Days (95% CI)	aCFRR (95% CI)
Overall	1.80 (1.75 – 1.86)		1.42 (1.31 – 1.54)		0.71 (0.68 – 0.73)	
Age categories						0.48 (0.23 – 1.03)
0 – 17	0.11 (0.07 – 0.16)	1.75 (1.04 – 2.95)	0.03 (0 – 0.18)	0.16 (0.02 – 1.21)	0.01 (0 – 0.03)	1
18 – 29	0.06 (0.04 – 0.09)	1	0.16 (0.08 – 0.28)	1	0.04 (0.03 – 0.06)	5.55 (3.99 – 7.72)
30 – 44	0.41 (0.37 – 0.46)	6.33 (4.32 – 9.26)	0.33 (0.24 – 0.44)	1.96 (1.09 – 3.54)	0.23 (0.21 – 0.26)	25.48 (18.52 – 35.05)
45 – 64	2.51 (2.38 – 2.64)	38.71 (26.81 – 55.88)	1.28 (1.09 – 1.49)	7.57 (4.40 – 13.01)	1.04 (0.97 – 1.11)	75.20 (54.71 – 103.36)
65 – 85	9.03 (8.64 – 9.43)	139.1 (96.41 – 200.68)	5.63 (4.98 – 6.34)	29.47 (17.24 – 50.37)	3.15 (2.98 – 3.33)	125.39 (87.88 – 178.92)
>85	15.64 (13.14 – 18.46)	238.71 (159.99 – 356.16)	13.05 (8.60 – 18.99)	68.79 (36.21 – 130.68)	5.12 (4.24 – 6.12)	

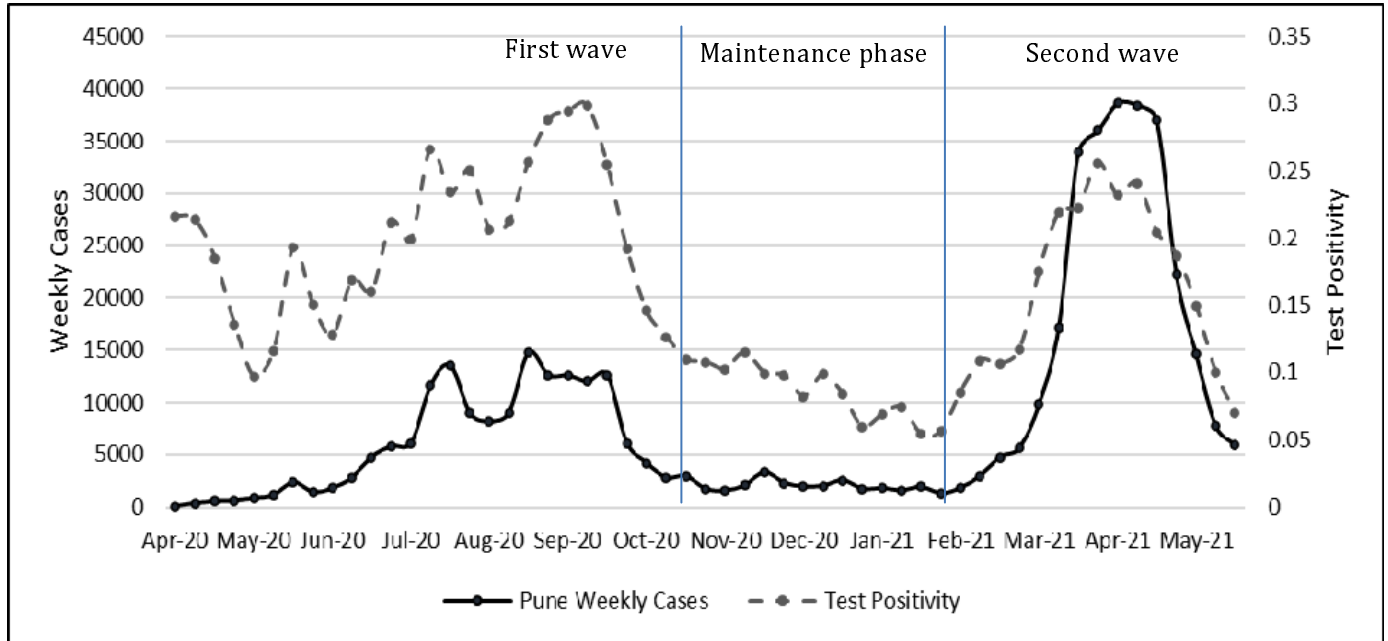
Gender						
Female	1.38 (1.31 – 1.46)	1	0.96 (0.82 – 1.12)	1	0.59 (0.055 – 0.63)	1
Male	2.08 (2.01 – 2.16)	1.53 (1.44 – 1.64)	1.49 (1.33 – 1.65)	1.43 (1.21 – 1.70)	0.79 (0.75 – 0.83)	1.39 (1.30 – 1.50)

The first wave of the pandemic is between March 09th,2020 and October 31st, 2020; the maintenance phase is between November 01st,2020 and February 15th, 2021. The second wave is between February 16th,2021 and May 31st, 2021, and this analysis was censored for May 31st, 2021, for incident cases and June 07th, 2021 for deaths.

SUPPLEMENTARY FIGURES

Supplementary Figure 1- COVID-19 weekly cases and test positivity in Pune

city.



Supplementary Figure 2 – Proportion of comorbidities among COVID-19 in Pune, India – disaggregated by age groups.

