

Waning of Vaccine Effectiveness for the COVID-19 vaccine in Japan

Junko Kurita¹⁾, Tamie Sugawara²⁾, Yasushi Ohkusa²⁾

1) Department of Nursing, Tokiwa University, Ibaraki, Japan

2) National Institute of Infectious Diseases, Tokyo, Japan

Corresponding author: Junko Kurita, kuritaj@tokiwa.ac.jp

ICMJE Statement

Contributors JK was responsible for the coordination of the study and responsible for the data setting. YO developed the model and TS illustrated the results. All authors contributed to the writing of the final manuscript.

Keywords: COVID-19, effective reproduction number, waning, vaccine coverage, variant strain

Abstract

Background: As of the end of 2021 year, the rate of completion for second-dose administration was almost 80% in Japan.

Object: We evaluated waning of vaccine effectiveness for COVID-19 in Japan, controlling for mutated strains, the Olympic Games, and countermeasures.

Method: The effective reproduction number $R(t)$ was regressed on current vaccine coverage and data of a certain number of days prior, as well as shares of mutated strains, and an Olympic Games dummy variable along with data of temperature, humidity, mobility, and countermeasures. The study period was February, 2020 through December 7, as of December 28, 2021.

Results: Estimation results indicate that the past vaccine coverage of older than 60 days prior raises $R(t)$ significantly and cancelled vaccine effectiveness completely.

Discussion and Conclusion: Results indicate significant waning of vaccine effectiveness from 60 days after the second dose.

Introduction

Wide coverage of COVID-19 vaccination has altered the outbreak situations in European countries and in the US. Unfortunately, vaccination in Japan started only in February, 2021 using BNT162b2 mRNA (Pfizer, BioNTech) and mRNA-1273 (Moderna) vaccines. Among the latest of starting dates of economically developed countries. Later, ChAdOx1 adenoviral vector (Oxford, AstraZeneca) also became available. As of the end of year 2021, the rate of completion for second dose vaccine administration was almost 80% in Japan (Figure 1) [1,2]. The next challenge posed by vaccine issues might be waning of vaccine effectiveness.

In fact, waning of vaccine effectiveness has been reported [3,4]. One study revealed that the log of IgG antibody titer decreased by a factor of 18.3 when measured at six months after second-dose vaccination. Another study revealed that vaccine effectiveness was 77.5% after one month later since the second vaccination, but it decreased about 20% after 5-7 month later.. However, in the real world, vaccines of several types have been used. Moreover, vaccinated persons might change their behaviors. Therefore, we assess the vaccine effectiveness and its waning through infectiousness in the real world, particularly in Japan.

By the time vaccinations started in Japan, alpha variant strain had emerged and had expanded to dominate the recorded infections. Subsequently, new mutant strain alpha

variant strain appeared in May. Its infectiousness and pathogenicity were estimated as 35–90% higher than those of the original strain circulating before the emerging variant strain, based mainly on data reported by the UK [5–8]. Therefore, we consider the prevalence of these mutated strains together when evaluating vaccine effects.

Contemporaneously, the Olympic Games and Paralympic Games of 2020 began on July 23, 2021. A subject of great concern for COVID-19 outbreak effects in Japan was whether audiences would be allowed to attend game events, or not. As part of this controversy, some experts asserted that the Games should be abandoned because they would expand the outbreak explosively [9]. As a result, the game events were held with no live audience. Under the state of emergency declared in Tokyo, effects of the Tokyo Games 2020 must be included to evaluate vaccine effectiveness.

As countermeasures against the COVID-19 outbreak in Japan, school closure and voluntary event cancellation were adopted from February 27, 2020 through the end of March. Large commercial events were cancelled. Subsequently, a state of emergency was declared for April 7 through 25 May, stipulating voluntary restrictions against leaving home. Consumer businesses such as retail shops and restaurants were shuttered. During this period, the first peak of infection was reached on April 3. Infections subsequently decreased through July 29. The so-called “Go To Travel Campaign”

(GTTC) was launched on July 22 as a 50% subsidized travel program aimed at supporting sightseeing and tourism businesses with government-issued coupons for use at shopping at tourist destinations. It was expected that the campaign might expand the outbreak. Thereafter, GTTC continued to the end of December, by which time a third wave of infection had emerged. The third wave in December, which was larger than either of the preceding two waves, reached its highest peak at the end of December. Therefore, GTTC was inferred as the main reason underlying the third wave [10].

To suppress that third wave of infection, a second state of emergency was declared from January 8, 2021 through March 15, 2021. However, a fourth wave emerged at the end of February, probably because of the spread of variant strains. To support hosting of the Olympics and Paralympics games in Tokyo in July, a third state of emergency was declared on April 25, 2021. It had ceased on June 20, 2021 in Tokyo. Nevertheless, the outbreak commenced again before the Tokyo Games 2020 started. Therefore, a fourth state of emergency was declared on July 13, 2021. It continued thereafter until the Tokyo Games 2020 had closed.

Although results have been mixed, some results of earlier studies suggest that COVID-19 is associated with climate conditions [11–14]. If that were true for Japan, then GTTC might not have been the main factor contributing to the third wave.

Moreover, mobility was inferred as the main cause of the outbreak dynamics for the first wave in Japan [15] and throughout the world [16–19]. This study was conducted to estimate vaccine effects on SARS-CoV-2 infectiousness for the outbreak in Japan as well as the mutated strain, the Olympic Games, countermeasures and other factors which might affect infectiousness.

Methods

This study examined the numbers of symptomatic patients reported by the Ministry of Health, Labour and Welfare (MHLW) for February 1, 2020 – August 29, 2021 published [20] as of December 28, 2021. Some patients were excluded from data for Japan: those presumed to be persons infected abroad or infected as Diamond Princess passengers. Those patients were presumed not to represent community-acquired infection in Japan. For some symptomatic patients with unknown onset dates, we estimated the onset dates from an empirical distribution with duration extending from onset to the report date among patients for whom the onset date had been reported.

Onset dates among patients who did not report this information and a reporting delay were adjusted using the same procedures as those used for earlier studies [21,22]. As described hereinafter, we estimated the onset dates of patients for whom onset dates

had not been reported. Letting $f(k)$ represent this empirical distribution of the incubation period and letting N_t denote the number of patients for whom onset dates were not published and available at date t , then the number of patients for whom the onset date was known is $t-1$. The number of patients with onset date $t-1$ for whom onset dates were not available was estimated as $f(1)N_t$. Similarly, patients with onset date $t-2$ and for whom onset dates were not available were estimated as $f(2)N_t$. Therefore, the total number of patients for whom the onset date was not available, given an onset date of s , was estimated as $\sum_{k=1}^{t-s} f(k)N_{s+k}$ for the long duration extending from s .

Moreover, the reporting delay for published data from MHLW might be considerable. In other words, if $s+k$ is larger than that in the current period t , then $s+k$ represents the future for period t . For that reason, N_{s+k} is not observable. Such a reporting delay engenders underestimation of the number of patients. For that reason, it must be adjusted as $\sum_{k=1}^{t-s} f(k)N_{s+k} / \sum_{k=1}^{t-s} f(k)$. Similarly, patients for whom the onset dates were available are expected to be affected by the reporting delay. Therefore, we have $M_{s|t} / \sum_{k=1}^{t-s} f(k)$, where $M_{s|t}$ represents the reported number of patients for whom onset dates were period s as of the current period t .

We defined $R(t)$ as the number of infected patients on day t divided by the number of patients who were presumed to be infectious. The number of infected patients was

calculated from the epidemic curve by the onset date using an empirical distribution of the incubation period, which is $\sum_{k=1} f(k)E_{t+k}$, where E_t denotes the number of patients for whom the onset date was period t . The distribution of infectiousness in symptomatic and asymptomatic cases $g(k)$ was assumed to be 30% on the onset day, 20% on the following day, and 10% for the subsequent five days [23]. Then the number of infectiousness patients was $\sum_{k=1} g(k)E_{t-k}$. Therefore, $R(t)$ was defined as

$$\frac{\sum_{k=1} f(k)E_{t+k}}{\sum_{k=1} g(k)E_{t-k}}.$$

Data indicating the shares of mutated variants among all cases were published by the Tokyo Metropolitan Government. Unfortunately, detailed information about mutated strains has not been published for the entirety of Japan. We used two measures for the mutant strain shares in Tokyo, Japan: alpha and delta variant strain [24].

We use average temperature and relative humidity data for Tokyo during the day as climate data because national average data are not available. We obtained data from the Japan Meteorological Agency (<https://www.data.jma.go.jp/gmd/risk/obsdl/index.php>). Additionally, we identified several remarkable countermeasures in Japan: two state of emergency declarations, GTTC, and school closure and voluntary event cancellation (SCVEC). The latter, SCVEC, extended from February 27 through March: this countermeasure required school closure and cancellation of voluntary events, and even

cancellation of private meetings. The first state of emergency was declared April 7. It ceased at the end of May. It required voluntary restriction against going out, school closures, and shutting down of some businesses. To subsidize travel and shopping at tourist destinations, GTTC started on July 22. It was halted temporarily at the end of December. The second state of emergency was declared on January 7, 2021 for the 11 most affected prefectures. This countermeasure required restaurant closure at 8:00 p.m., with voluntary restrictions against going out, but it did not require school closure. It continued until March 21, 2021. The third state of emergency was declared on April 25, 2021 for four prefectures: Tokyo, Osaka, Hyogo, and Kyoto. Later, the application areas were extended gradually. They never covered the entirety of Japan.

To clarify associations among $R(t)$ and the Olympic Games in addition to vaccine coverage, the mutant strains, climate, mobility, and countermeasures, we regressed the daily $R(t)$ on daily current vaccine coverage and daily past vaccine coverage as well as dummy variables for the Games, weekly shares of alpha and delta variant strains, daily climate, mobility, and dummy variables for countermeasures using ordinary least squares regression. Temperatures were measured in degrees Celsius, with humidity, and mobility as percentages in regression, not as standardized. Variables found to be not significant were excluded from explanatory variables. Then the equation was estimated

again.

We define vaccine coverage as the completion rate of the second dose without delay. If a vaccine perfectly protects the recipient from infection, then the estimated coefficient of vaccine coverage would be 0.01 if one assumes an average of $R(t)$ with no vaccination in the study period. That would mean that increasing vaccine coverage by one percentage point can be expected to reduce $R(t)$ by one percentage point. If the estimated coefficient of vaccine coverage were smaller than -0.01, then it might reflect imperfect personal prevention. Conversely, if the estimated coefficients of vaccine coverage were smaller than -0.01, then herd immunity can be inferred to have contributed to prevention of infection among non-recipients.

Waning of vaccine effectiveness was measured by the estimated coefficient of vaccine coverage in the past. Particularly, we examined every 30 days prior until 180 days prior. We expected the estimated coefficient to be positive if waning was occurring. If its estimated coefficient was positive but smaller than the absolute value of the estimated coefficient of current vaccine coverage, then waning was presumed to be partially occurring. Vaccination was presumed to be effective even if a part of effectiveness was waning. If the estimated coefficient of vaccine coverage in the past was positive and almost equal to the absolute value of the estimated coefficient of

current vaccine coverage, then waning was presumed to be complete. We might not expect vaccine effectiveness until that time. Conversely, if the estimated coefficient of vaccine coverage in the past was positive and larger than the absolute value of the estimated coefficient of current vaccine coverage, then the vaccine might raise infectiousness eventually. We adopted 5% as the level at which we inferred significance of results.

Results

Figure 1 depicts vaccine coverage for the first dose with a 12-day delay and depicts the second dose as scatter diagrams. It also shows the shares of alpha and delta variant strains as bars. These are increasing almost monotonically during the period.

Adjustments were made for double counting for the number of vaccine recipients.

Therefore, the vaccine coverage was sometimes smaller than it was earlier. Figure 2 depicts $R(t)$ during the study period.

Figure 3 presents an empirical distribution of the duration of onset to reporting in Japan. The maximum delay was 31 days. Figure 4 presents an empirical distribution of incubation periods among 91 cases for which the exposed date and onset date were published by MHLW in Japan. The mode was six days. The average was 6.6 days. The

calculated $R(t)$ is presented in Figure 1.

Table 1 presents estimation results. Current vaccine coverage reduced infectiousness significantly when vaccine coverage in the past was defined as more than 60 days prior. The estimated coefficients increased along with their duration of time into the past: from -0.0711 for vaccination coverage of 60 days prior to -0.0169 for vaccination coverage of 180 days prior.

The estimated coefficients of vaccine coverage in the past were significantly positive when vaccine coverage in the past was defined as more than 60 days prior. The estimated coefficients also increased along with time into the past: from 0.0557 to 0.4173.

The sums of the estimated coefficients of current and past vaccine coverage were not significantly different from zero for 60 or 90 days prior assumed for the past vaccine coverage. When assuming coverage as 120, 150 or 180 days prior, the estimated coefficients of the past vaccine coverage were significantly larger in absolute terms than the current vaccine coverage.

The estimated coefficients of the share of the alpha variant strain were significantly negative except for assuming past vaccine coverage as 150 days prior. Conversely, share of delta variant strain were not significant except for assuming past vaccine coverage as

30 days prior. These results were inconsistent with the expected effects of the variant strain.

Mobility was found to be positive and significant. The first three state-of-emergency periods and GTTC were found to be significantly negative. However, SCVEC was found to be significantly positive. The fourth state-of-emergency period was consistently insignificant. Olympic games was significantly positive only when assuming past vaccine coverage as 30 days prior and otherwise were not significant. Climate conditions were not significant, consistently.

Discussion

Results showed complete waning by 60 days after the second dose of vaccine was administered. This duration is remarkably shorter than those reported from earlier waning studies [3,4] which reached their results based on antibody titer or test negative design. Readers must be reminded that waning estimated for the present study might include behavioral changes among the vaccinated persons to adoption of more risky behavior that is prone to infection. Such behaviors and the vaccine itself affect waning results, but they are not separately discernible from results of this study. Weakening of immunoreaction and behavioral change are separate factors, but their mutual effects

might be the most important for management of public health.

Vaccine efficacy was estimated as 95% through clinical trials [25]. In the real world, it was also estimated as 46–80% for the first dose and 86–90% for the second dose [26–31] through case–control studies or test-negative design. However, even in the real world, such studies specifically examine protection for vaccine recipients only and ignore herd immunity, meaning vaccine effects on non-vaccine recipients. The latter was not able to be estimated through clinical trials, case–control studies, or test negative design. In this sense, these earlier studies have been incapable of evaluating the overall effects of vaccination on the community. Instead of those methods, we evaluated vaccine effectiveness on the entire community, of course including herd immunity, through its effects on SARS-CoV-2 infectiousness.

Results indicated no significant result of momentary effect from the current vaccine coverage or waning from past vaccine coverage when the past vaccine coverage was defined as shorter than 60 days prior. Particularly, these estimated coefficients had unexpected signs but significance. These results were probably caused by multicollinearity among the current and past vaccine coverage. Because of smaller time differences among these variables, correlation among them should be higher. Therefore, the smaller time differences distorted estimation results.

Conversely, when the past vaccine coverage was defined as older than 120 days prior, the estimated coefficients of the past vaccine coverages were much larger than the estimated coefficients of the current vaccine coverage in absolute terms. Statistically, the result probably reflected that the past vaccine coverage longer ago should be a very small number, as shown in Figure 1. Therefore, the estimated coefficients should be larger than the correspondence when the past vaccine coverage was defined as older than 180 days prior. Expressed semantically, because that waning may not reduce the immunization level to less than before the vaccination was administered, these results imply that behavioral changes to adopt more risky behaviors prone to infection among vaccinated persons raise infectiousness considerably.

No evidence exists to indicate that the Tokyo Games 2020 reinforced the outbreak of COVID-19. Expectations by some experts before the Games might have been wrong. It seems likely that most Japanese people watched TV at home and rooted for athletes. The no-audience policy might have contributed to reduction in infectiousness during the Games. Even though lower infectiousness prevailed during the Games, if it actually became higher than unity, then the number of newly infected or newly confirmed patients would be expected to grow during the period. Therefore, the number of patients has not represented the outbreak situation. We must specifically examine infectiousness

during that period to evaluate policies.

The share of alpha variant strain were significant and negative and the share of delta variant strain were not significant with some exception. These results were not consistent with results reported from earlier studies [5–8].

The present study has some limitations. First, we assumed implicitly that epidemiological characteristics including incubation period or delay in reports were the same among the original strain, alpha and delta variant strains. However, results of one study indicated that delta variant strain has a shorter incubation period than either original strain [32].

Secondly, readers must be reminded when interpreting the obtained results that they do not indicate causality. Results of this study demonstrated that a negative association exists between the vaccine coverage and infectiousness. That finding does not necessarily mean that the vaccine coverage reduced infectiousness. The lower infectiousness might have caused or might have even simply coincided with higher vaccine coverage.

Conclusion

The estimation results are evidence of significant waning in vaccine effectiveness from 60 days after the second dose.

The present study is based on the authors' opinions: it does not reflect any stance or policy of their professionally affiliated bodies.

Acknowledgments

We acknowledge the great efforts of all staff at public health centers, medical institutions, and other facilities who are fighting the spread and destruction associated with COVID-19.

Ethical considerations

All information used for this study was published data on the web were used. There is therefore no ethical issue related to this study.

Competing Interest

No author has any conflict of interest, financial or otherwise, to declare in relation to this study.

Reference

1. Prime Minister and his Cabinet. Novel Coronavirus Vaccines.
<https://www.kantei.go.jp/jp/headline/kansensho/vaccine.html> (in Japanese)
[accessed on December 28, 2021]
2. Japan Ministry of Health, Labour and Welfare. Situation of vaccine coverage for COVID-19.
https://www.mhlw.go.jp/stf/seisakunitsuite/bunya/vaccine_sesshujisseki.html (in Japanese) [accessed on December 28, 2021]
3. Levin EG, Lustig Y, Cohen C, Fluss R, Indenbaum V, Amit S, Doolman R, Asraf K, Mendelson E, Ziv A, Rubin C, Freedman L, Kreiss Y, Regev-Yochay G. Levin EG, et al. Waning Immune Humoral Response to BNT162b2 Covid-19 Vaccine over 6 Months. *N Engl J Med* 2021:NEJMoa2114583.
4. Chemaitelly H, Tang P, Hasan MR, AlMukdad S, Yassine HM, Benslimane FM, Al Khatib HA, Coyle P, Ayoub HH, Al Kanaani Z, Al Kuwari E, Jeremijenko A, Kaleeckal AH, Latif AN, Shaik RM, Abdul Rahim HF, Nasrallah GK, Al Kuwari MG, Al Romaihi HE, Butt AA, Al-Thani MH, Al Khal A, Bertollini R, Abu-Raddad LJ. Waning of BNT162b2 Vaccine Protection against SARS-CoV-2 Infection in Qatar. *N Engl J Med*. 2021 Oct 6:NEJMoa2114114.

5. Leung K, Shum MHH, Leung GM, Lam TTY, Wu JT. Early transmissibility assessment of the alpha variant strain of SARS-CoV-2 in the United Kingdom, October to November 2020. *Euro Surveill* 2021;26:2002106. doi: 10.2807/1560-7917.ES.2020.26.1.2002106.
6. Graham MS, Sudre CH, May A, Antonelli M, Murray B, Varsavsky T, Klaser K, Canas LS, Molteni E, Modat M, Drew DA, Nguyen LH, Polidori L, Selvachandran S, Hu C, Capdevila J; COVID-19 Genomics UK (COG-UK) Consortium, Hammers A, Chan AT, Wolf J, Spector TD, Steves CJ, Ourselin S. Changes in symptomatology, reinfection, and transmissibility associated with the SARS-CoV-2 variant B.1.1.7: an ecological study. *Lancet Public Health* 2021;6:e335-e345.
7. Davies NG, Abbott S, Barnard RC, Jarvis CI, Kucharski AJ, Munday JD, Pearson CAB, Russell TW, Tully DC, Washburne AD, Wenseleers T, Gimma A, Waites W, Wong KLM, van Zandvoort K, Silverman JD; CMMID COVID-19 Working Group; COVID-19 Genomics UK (COG-UK) Consortium, Diaz-Ordaz K, Keogh R, Eggo RM, Funk S, Jit M, Atkins KE, Edmunds WJ. Estimated transmissibility and impact of SARS-CoV-2 lineage B.1.1.7 in England. *Science* 2021;372(6538):eabg3055. doi: 10.1126/science.abg3055.

8. Zhao S, Lou J, Cao L, Zheng H, Chong MKC, Chen Z, Chan RWY, Zee BCY, Chan PKS, Wang MH. Quantifying the transmission advantage associated with alpha variant strain substitution of SARS-CoV-2 in the UK: an early data-driven analysis. *J Travel Med* 2021;28:taab011.
9. Hoang VT, Al-Tawfiq JA, Gautret P. The Tokyo Olympic Games and the Risk of COVID-19. *Curr Trop Med Rep* 2020 :1-7. doi: 10.1007/s40475-020-00217-y.
10. Anzai A. “Go To Travel” Campaign and Travel-Associated Coronavirus Disease 2019 Cases: A Descriptive Analysis, July-August 2020. *J. Clin. Med* 2021, 10, 398. <https://doi.org/10.3390/jcm10030398>
11. Shi P, Dong Y, Yan H, Zhao C, Li X, Liu W, He M, Tang S, Xi S. Impact of temperature on the dynamics of the COVID-19 outbreak in China. *Sci Total Environ.* 2020 ;728:138890.
12. Tobias A, Molina T. Is temperature reducing the transmission of COVID-19 ? *Environ Res.* 2020 ;186:109553.
13. Yao Y, Pan J, Liu Z, Meng X, Wang W, Kan H, Wang W. No association of COVID-19 transmission with temperature or UV radiation in Chinese cities. *Eur Respir J.* 2020 ;55:2000517.

14. Walrand S. Autumn COVID-19 surge dates in Europe correlated to latitudes, not to temperature-humidity, pointing to vitamin D as contributing factor. *Scientific Reports* volume 11, Article number: 1981 (2021) Cite this article <https://www.nature.com/articles/s41598-021-81419-w>
15. Kurita J, Sugishita Y, Sugawara T, Ohkusa Y. Mobility data can reveal the entire COVID19 outbreak course in Japan. *JMIR Public Health & Surveillance* 2021,7. <https://publichealth.jmir.org/2021/2/e20335>
16. Bergman N, Fishman R. Mobility Reduction and Covid-19 Transmission Rates. **doi:** <https://doi.org/10.1101/2020.05.06.20093039>
17. Flaxman S, Mishra S, Gandy A, Unwin HJT, Mellan TA, Coupland H, Whittaker C, Zhu H, Berah T, Eaton JW, Monod M, Imperial College COVID-19 Response Team; Ghani AC, Donnelly CA, Riley S, Vollmer MAC, Ferguson NM, Okell LC, Bhatt S. Estimating the effects of non-pharmaceutical interventions on COVID-19 in Europe. *Nature* 2020 ;584(7820):257-61. doi: 10.1038/s41586-020-2405-7.
18. Li Y, Campbell H, Kulkarni D, Harpur A, Nundy M, Wang X, Nair H, for the Usher Network for COVID-19 Evidence Reviews (UNCOVER) group. The temporal association of introducing and lifting non-pharmaceutical interventions with the time-varying reproduction number (R) of SARS-CoV-2: a modelling study across

131 countries. *Lancet Infect Dis* 2021; 21: 193–202

DOI:[https://doi.org/10.1016/S1473-3099\(20\)30785-4](https://doi.org/10.1016/S1473-3099(20)30785-4)?

[https://www.thelancet.com/journals/laninf/article/PIIS1473-3099\(20\)30785-4/fulltext](https://www.thelancet.com/journals/laninf/article/PIIS1473-3099(20)30785-4/fulltext)

19. Larrosa JMC. SARS-CoV-2 in Argentina: Lockdown, mobility, and contagion. *J*

Med Virol 2020. doi: 10.1002/jmv.26659.

<https://onlinelibrary.wiley.com/doi/10.1002/jmv.26659>

20. Japan Ministry of Health, Labour and Welfare. Press Releases.

https://www.mhlw.go.jp/stf/newpage_10723.html (in Japanese) [accessed on October 18, 2021].

21. Kurita J, Sugawara T, Ohkusa Y. Estimated effectiveness of school closure and

voluntary event cancellation as COVID-19 countermeasures in Japan. *J Infect*

Chemother 2021, 27:62-4. doi: 10.1016/j.jiac.2020.08.012.

22. Sugishita Y, Kurita J, Sugawara T, Ohkusa Y. Effects of voluntary event

cancellation and school closure as countermeasures against COVID-19 outbreak in

Japan. *Plos one* 2020. <https://doi.org/10.1371/journal.pone.0239455>

23. Kimball A, Hatfield KM, Arons M, James A, Taylor J, Spicer K, Bardossy AC,

Oakley LP, Tanwar S, Chisty Z, Bell JM, Methner M, Harney J, Jacobs JR, Carlson

- CM, McLaughlin HP, Stone N, Clark S, Brostrom-Smith C, Page LC, Kay M,
Lewis J, Russell D, Hiatt B, Gant J, Duchin JS, Clark TA, Honein MA, Reddy SC,
Jernigan JA; Public Health ? Seattle & King County; CDC COVID-19
Investigation Team. Asymptomatic and Presymptomatic SARS-CoV-2 Infections in
Residents of a Long-Term Care Skilled Nursing Facility - King County,
Washington, March 2020. *Morb Mortal Wkly Rep.* 2020 Apr 3;69(13):377-381.
doi: 10.15585/mmwr.mm6913e1.
24. Tokyo metropolitan Government. Data of COVID-19 monitoring meeting in Tokyo
metropolitan.
<https://www.bousai.metro.tokyo.lg.jp/taisaku/saigai/1013388/index.html> (in
Japanese) [accessed on October 21,2021]
25. Polack FP, Thomas SJ, Kitchin N, Absalon J, Gurtman A, Lockhart S, Perez JL,
Perez Marc G, Moreira ED, Zerbini C, Bailey R, Swanson KA, Roychoudhury S,
Koury K, Li P, Kalina WV, Cooper D, Frenck RW Jr, Hammitt LL, Tureci O, Nell
H, Schaefer A, Unal S, Tresnan DB, Mather S, Dormitzer PR, ?ahin U, Jansen KU,
Gruber WC; C4591001 Clinical Trial Group. Safety and Efficacy of the BNT162b2
mRNA Covid-19 Vaccine. *N Engl J Med.* 2020;383:2603-15.

26. Chung H, He S, Nasreen S, Sundaram ME, Buchan SA, Wilson SE, Chen B, Calzavara A, Fell DB, Austin PC, Wilson K, Schwartz KL, Brown KA, Gubbay JB, Basta NE, Mahmud SM, Righolt CH, Svenson LW, MacDonald SE, Janjua NZ, Tadrus M, Kwong JC, Canadian Immunization Research Network (CIRN) Provincial Collaborative Network (PCN) Investigators. Effectiveness of BNT162b2 and mRNA-1273 covid-19 vaccines against symptomatic SARS-CoV-2 infection and severe covid-19 outcomes in Ontario, Canada: test negative design study. *BMJ* 2021; 374.
27. Dagan N, Barda N, Kepten E, Miron O, Perchik S, Katz MA, Hernan MA, Lipsitch M, Reis B, Balicer RD. BNT162b2 mRNA Covid-19 vaccine in a nationwide mass vaccination setting. *N Engl J Med* 2021; 384: 1412-23.
28. Vasileiou E, Simpson CR, Shi T, Kerr S, Agrawal U, Akbari A, Bedston S, Beggs J, Bradley D, Chuter A, de Lusignan S, Docherty AB, Ford D, Hobbs FR, Joy M, Katikireddi SV, Marple J, McCowan C, McGagh D, McMenemy J, Moore E, Murray JL, Pan J, Ritchie L, Shah SA, Stock S, Torabi F, Tsang RS, Wood R, Woolhouse M, Robertson C, Sheikh A. Interim findings from first-dose mass COVID-19 vaccination roll-out and COVID-19 hospital admissions in Scotland: a national prospective cohort study. *Lancet* 2021; 397: 1646-57.

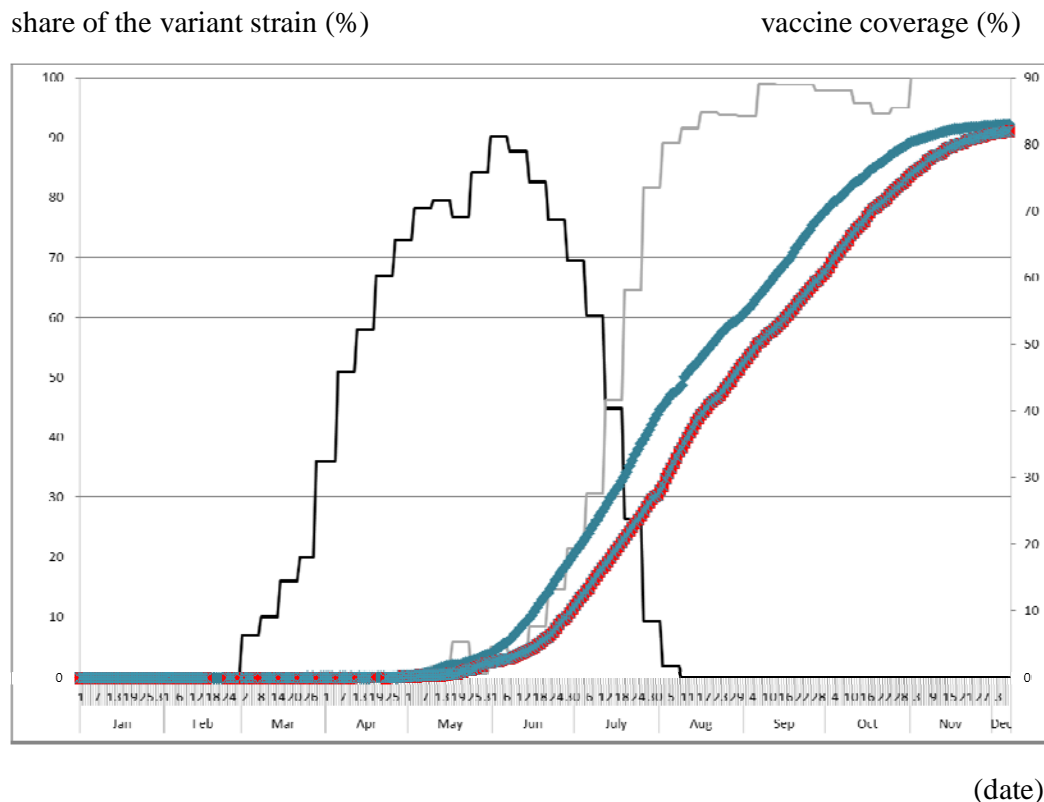
29. Bernal JL, Andrews N, Gower C, Robertson C, Stowe J, Tessier E, Simmons R, Cottrell S, Roberts R, O'Doherty M, Brown K, Cameron C, Stockton D, McMenamin J, Ramsay M. Effectiveness of the Pfizer-BioNTech and Oxford-AstraZeneca vaccines on covid-19 related symptoms, hospital admissions, and mortality in older adults in England: test negative case-control study. *BMJ* 2021; 373: n1088.
30. Bjork J, Inghammar M, Moghaddassi M, Rasmussen M, Malmqvist U, Kahn F. Effectiveness of the BNT162b2 vaccine in preventing COVID-19 in the working age population ? first results from a cohort study in Southern Sweden. *Infect Dis (Lond)* 2021;1-6.
31. Pawlowski C, Lenehan P, Puranik A, Agarwal V, Venkatakrishnan AJ, Niesen MJM, O'Horo JC, Virk A, Swift MD, Badley AD, Halamka J, Soundararajan V. FDA-authorized COVID-19 vaccines are effective per real-world evidence synthesized across a multi-state health system. *Med (N Y)* 2021;2:979-92.e8.
32. Li B, Deng A, Li K, Hu Y, Li Z, Xiong Q, Liu Z, Guo Q, Zou L, Zhang H, Zhang M, Ouyang F, Su J, Su W, Xu J, Lin H, Sun J, Peng J, Jiang H, Zhou P, Hu T, Luo M, Zhang Y, Zheng H, Xiao J, Liu T, Che R, Zeng H, Zheng Z, Huang Y, Yu J, Yi L, Wu J, Chen J, Zhong H, Deng X, Kang M, Pybus OG, Hall M, Lythgoe KA, Li

Y, Yuan J, He J, Lu J. Viral infection and transmission in a large, well-traced

outbreak caused by the SARS-CoV-2 Delta variant. medRxiv

2021.07.07.21260122; doi: <https://doi.org/10.1101/2021.07.07.21260122>

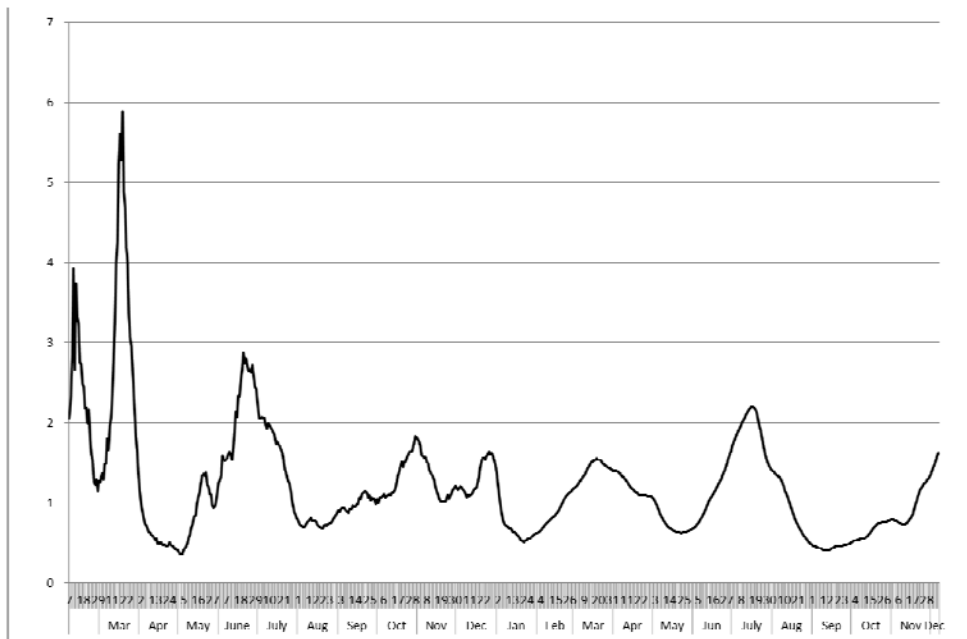
Figure 1: Vaccine coverage and shares of alpha and delta variant strains in 2021



Note: Black line represents shares of alpha variant strain. Gray line represents shares of delta variant strain, in Tokyo measured at the left-hand side. Red scattered points denote vaccine coverage as defined by the first dose with a 12-day delay. Blue scattered points denote vaccine coverage defined by the second dose. The vaccine coverage data were measured at the right-hand side. Because daily vaccine coverage was not reported on weekends and national holidays, data of vaccine coverage are missing for these days. Moreover, there were adjustment for double counting for the number of vaccine recipients and thus vaccine coverage was sometimes smaller than before.

Figure 2: Effective reproduction number from February, 2020 through December 7, 2021.

$R(t)$

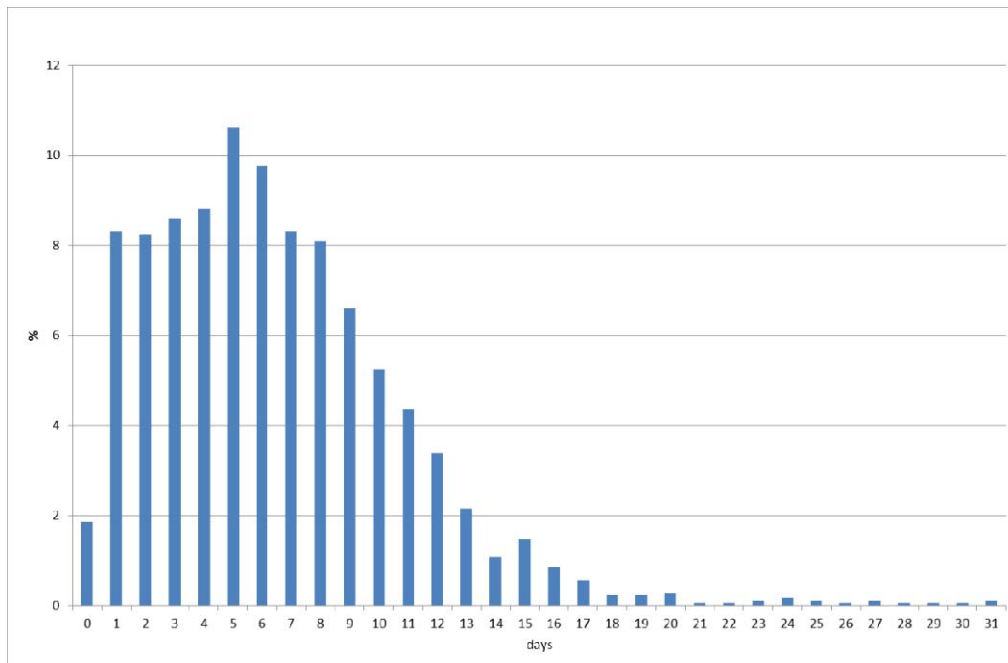


(date)

Note: Line represent the effective reproduction number from February, 2020 through November 4, 2021, in Japan, as of December 28, 2021. Procedures for calculation was explained in the main text.

Figure 3: Empirical distribution of duration from onset to report by MHLW, Japan.

(%)

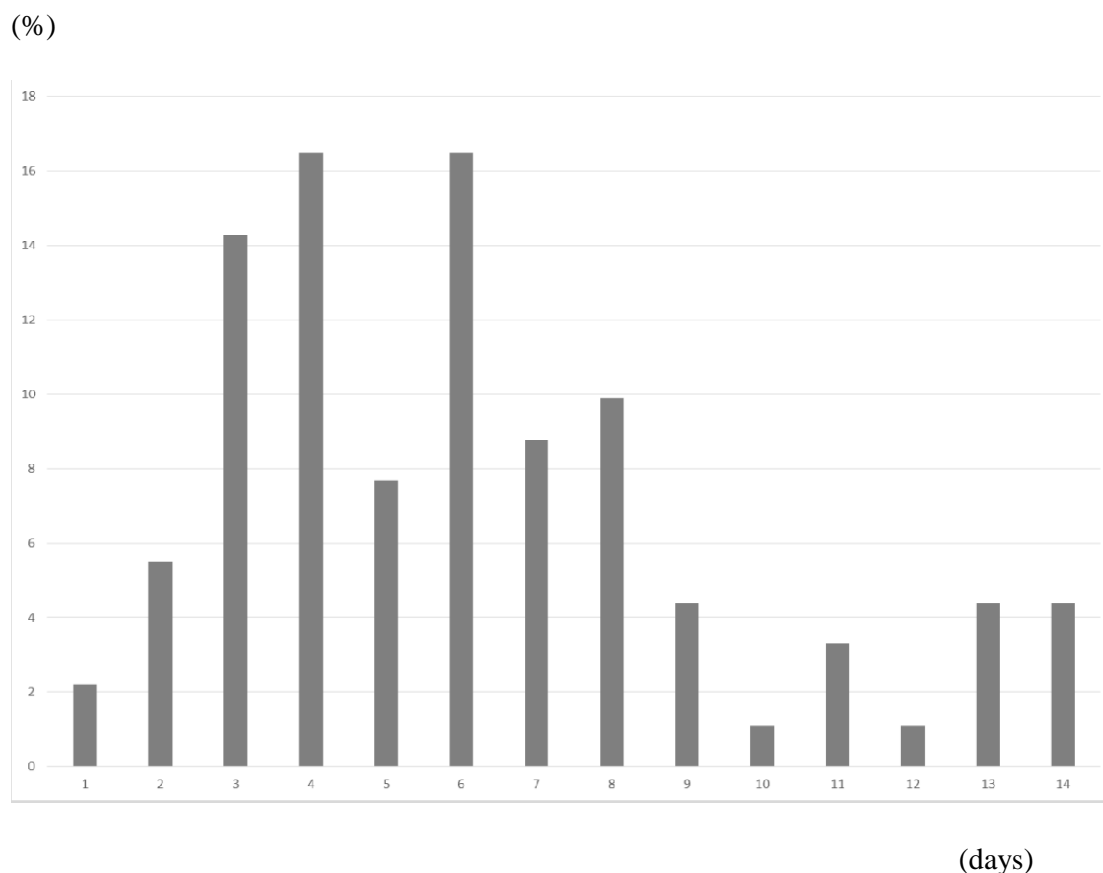


Note: Bars represent the probability of duration from onset to report based on 657

patients for whom the onset date was available in Japan. Data were obtained from

MHLW, Japan.

Figure 4: Empirical distribution of the incubation period published by MHLW, Japan.



Notes: Bars show the distribution of incubation periods for 91 cases for which the exposure date and onset date were published by MHLW, Japan. Patients for whom incubation was longer than 14 days are included in the bar shown for day 14.

Table 1: Estimation results of $R(t)$ with vaccine coverage, prevalence of the variant strains, and Olympic Games with the climate condition, mobility, and countermeasures

Lag for waning		30		60		90	
Explanatory variable	Estimated coefficient	<i>p</i> -value	Estimated coefficient	<i>p</i> -value	Estimated coefficient	<i>p</i> -value	
Temperature	-0.0051	0.190	-0.0030	0.425	-0.0032	0.385	
Humidity	-0.0004	0.767	0.0002	0.850	0.0005	0.676	
Mobility	0.0075	0.000	0.0073	0.000	0.0073	0.000	
SCVEC	0.7920	0.000	0.8240	0.000	0.8188	0.000	
1 st State of emergency	-0.8876	0.000	-0.8819	0.000	-0.8902	0.000	
GTTC	-0.8591	0.000	-0.8503	0.000	-0.8565	0.000	
2 nd State of emergency	-1.0243	0.000	-0.9920	0.000	-0.9914	0.000	
3 rd State of emergency	--.6497	0.000	-0.8526	0.000	-0.7296	0.000	
4 th State of emergency	0.2366	0.199	0.1099	0.540	0.0752	0.669	

Olympic Games	0.6155	0.000	0.1235	0.504	0.1127	0.520
Vaccine	0.0528	0.019	-0.0711	0.000	-0.0441	0.000
coverage (%)						
Vaccine	-0.0370	0.022	0.0557	0.000	0.0437	0.000
coverage with						
lag (%)						
Share of alpha	-0.01048	0.003	-0.0017	0.237	-0.0034	0.015
variant strain						
(%)						
Share of delta	-0.0292	0.000	-0.0140	0.128	0.0069	0.311
variant strain						
(%)						
Constant	1.1942	0.000	1.1180	0.000	1.1101	0.000
<hr/>						
Adjusted R^2		0.547		0.556		0.571
<hr/>						
Number of			642			
observations						

Notes: The dependent variable was $R(t)$; GTTC stands for “Go To Travel Campaign”;

SCVEC denotes school closure and voluntary event cancellation. The sample period

was February 1, 2021 through December 7, 2021, as of December 28, 2021. Table 1

(cont.)

Lag for waning		120		150		180	
Explanatory variable	Estimated coefficient	<i>p</i> -value	Estimated coefficient	<i>p</i> -value	Estimated coefficient	<i>p</i> -value	
Temperature	-0.0026	0.485	-0.0027	0.468	-0.0026	0.481	
Humidity	0.0002	0.876689	0.0002	0.686858	0.0001	0.929	
Mobility	0.0075	0.000	0.008079	0.000	0.0079	0.000	
SCVEC	0.8152	0.000	0.8116	0.000	0.8112	0.000	
1 st State of emergency	-0.8829	0.000	-0.8692	0.000	-0.8691	0.000	
GTTC	-0.8636	0.000	-0.8690	0.000	-0.8688	0.000	
2 nd State of emergency	-0.9915	0.000	-0.9892	0.000	-0.9906	0.000	
3 rd State of emergency	-0.7197	0.000	-0.7191	0.000	-0.7247	0.000	
4 th State of emergency	-0.0561	0.755	-0.0224	0.902	-0.0447	0.804	

Olympic Games	0.1419	0.389	0.2486	0.112	0.3032	0.050
Vaccine	-0.0318	0.001	-0.0202	0.014	-0.0169	0.031
coverage (%)						
Vaccine	0.0488	0.000	0.0942	0.000	0.4173	0.000
coverage with						
lag (%)						
Share of alpha	-0.0037	0.008	-0.0037	0.007	-0.0037	0.008
variant strain						
(%)						
Share of delta	0.0039	0.528	-0.0018	0.751	-0.0033	0.554
variant strain						
(%)						
Constant	1.1011	0.000	1.0615	0.000	1.0692	0.000
<hr/>						
Adjusted R^2		0.570		0.569		0.568
<hr/>						
Number of			642			
observations						
<hr/>						