

Title page

Title:

Evidence for a serotonergic subtype of major depressive disorder: A NeuroPharm-1 study.

Authors:

Kristin Köhler-Forsberg, PhD^(1, 2, 3), Brice Ozenne, PhD^(1, 4), Elizabeth B. Landman, MD⁽¹⁾, Søren V. Larsen, MD⁽¹⁾, Asbjørn S. Poulsen, MD⁽¹⁾, Vibeke H. Dam, PhD^(1, 2), Cheng-Teng Ip, PhD^(1, 2, 5), Anders Jørgensen, PhD^(2, 3), Michal Meyer, BSc⁽⁶⁾, Hans R. L. Eiberg, Professor⁽⁷⁾, Claus Svarer, PhD⁽¹⁾, Martin B. Jørgensen, Professor^(2, 3), Vibe G. Frokjaer, Asst. Professor^{(1, 2, 3)*}, Gitte M. Knudsen, Professor^{(1, 2)*#}

* Shared senior authorship

Corresponding Author

Affiliations:

¹ Neurobiology Research Unit, Copenhagen University Hospital Rigshospitalet, Denmark

² Institute of Clinical Medicine, University of Copenhagen, Denmark

³ Psychiatric Center Copenhagen, Rigshospitalet, Copenhagen, Denmark

⁴ Department of Public Health, Section of Biostatistics, University of Copenhagen, Denmark

⁵ Department of Clinical Pharmacology, H. Lundbeck A/S, Valby, Denmark

⁶ Center for Referral and Diagnostics, Mental Health Services, Capital Region of Copenhagen

⁷ Department of Cellular and Molecular Medicine, University of Copenhagen, Denmark

#Corresponding Author:

Gitte Moos Knudsen

MD, DMSc, Professor at University of Copenhagen

Chair of Center for Experimental Medicine Neuropharmacology (www.neuropharm.eu)

8 Inge Lehmanns vej, section 8057

Rigshospitalet, Copenhagen, Denmark

Phone: +45 3545 6720

Email: gmk@nru.dk

Running title: A serotonergic subtype of major depressive disorder

Keywords: major depressive disorder – serotonin – brain-5-HT₄ – PET – SSRI-antidepressive response

Abstract

Selective serotonin reuptake inhibitors (SSRIs) are the first line pharmacological treatment of Major Depressive Disorder (MDD), but only about half of patients benefit from it. Cerebral serotonin 4 receptor (5-HT₄R) binding measured with positron emission tomography (PET) is inversely related to serotonin levels and can serve as a proxy for brain serotonin levels. We here determine if 5-HT₄R differs between healthy and MDD individuals and if it is associated with successful outcomes of serotonergic treatment of MDD. We [¹¹C]-SB207145 PET-scanned 100 (71 F) untreated patients with moderate to severe MDD and 91 (55 F) healthy controls; 40 patients were re-scanned after 8 weeks treatment. All patients started treatment with the SSRI escitalopram and were followed clinically after 1, 2, 4, 8 and 12 weeks. Treatment response was measured as change from baseline.

Before treatment, patients with MDD had 8% lower global 5-HT₄R binding than controls (95%CI[-13.1%;-2.5%], p<0.001). Non-responders did not differ from controls, whereas remitters had 9% lower binding than controls ([-16.1%;-2.7%], p=0.004). Independent of treatment outcomes, patients reduced their neostriatal 5-HT₄R binding (-9%, [-12.8%;-5.0%], p<0.001) after serotonergic intervention.

Overall, patients with MDD have lower cerebral 5-HT₄R binding than controls, suggesting that 5-HT₄R is a biomarker for MDD. The observation that SSRI treatment leads to reduced neostriatal 5-HT₄R binding supports that the treatment does indeed increase brain 5-HT levels. Patients who remit to SSRIs have lower cerebral 5-HT₄R prior to treatment than controls whereas non-responders do not differ. We propose that non-responders to SSRI's constitute a subgroup with non-serotonergic depression.

ClinicalTrials.gov Identifier: NCT02869035

Registry name: Treatment Outcome in Major Depressive Disorder

URL: <https://clinicaltrials.gov/ct2/show/NCT02869035?term=NCT02869035&draw=2&rank=1>

Main text

Introduction

Major depressive disorder (MDD) is one of the most frequent mental disorders worldwide¹ and the demand for efficient and reliable treatments of MDD is high. The primary pharmacological treatment of MDD is selective serotonin reuptake inhibitors (SSRI) but about half of patients do not respond adequately to SSRI treatment.² Currently, clinical practice is to make trial-and-error drug prescriptions which clearly has direct and adverse implications for those patients who are insufficiently treated. While the lack of predictability of antidepressant drug response remains a tremendous clinical challenge, it can be argued that one reason for inconsistent treatment response is due to patient heterogeneity within the broader diagnosis of MDD and that a better stratification is necessary to properly anticipate drug efficacy. For this purpose, access to biomarkers that allow for distinction between MDD subtypes would be highly valuable. Lack of response to drug treatment could potentially be due to different underlying pathophysiological mechanisms that happen to generate a clinical picture best described by a diagnosis of MDD. That is, identification of patient subgroups with different etiologies would enable a precision medicine approach where the treatment targets the specific neurobiological dysfunction.^{3,4} Additionally, identification of biomarkers that can identify patient subgroups who do not benefit from SSRIs could also be enormously helpful for optimizing clinical care and for future drug development programs.

Molecular neuroimaging with positron emission tomography (PET) and specific serotonergic radioligands is a highly sensitive method for direct investigation of the brain's serotonergic transmitter system. The serotonin transporter (5-HTT) and the 5-HT_{1A} receptor (5-HT_{1A}R) are the to date most studied serotonergic targets. PET studies of the 5-HTT have generated mixed outcomes of either none,

decreased or even increased cerebral binding in MDD versus healthy controls.⁵ PET studies of the 5-HT_{1A}R have also generated discrepant findings regarding the direction of 5-HT_{1A}R modulation between MDD and healthy controls, depending on the quantification methodology used; the most pronounced difference was seen in the raphe nuclei and only in males.⁶ One study report that high raphe nuclei 5-HT_{1A}R binding was associated with remission to escitalopram treatment 6-8 weeks later⁷ while others found higher 5-HT_{1A}R orbital cortex binding in non-responders.⁸ Importantly, these PET studies typically include maximally 25 patients each, with some of the patients being medicated and or having significant comorbidity that could confound the interpretation.

The serotonin 4 receptor (5-HT₄R) has been recognized as a new potential therapeutic target and both preclinical and human data support its involvement in MDD.⁹ The 5-HT₄R is a G_s protein-coupled postsynaptic heteroreceptor, widely distributed in the brain.¹⁰ PET neuroimaging with the 5-HT₄R radiotracer [¹¹C]-SB207145 allows for studies of the receptor *in vivo*. In rodents, cerebral 5-HT₄R binding is inversely related to changes in brain serotonin levels,^{11–13} and in a study of healthy individuals PET-scanned before and after three weeks of SSRI or placebo found reduced 5-HT₄R binding, also in support of an inverse relation between 5-HT₄R and cerebral serotonin levels.¹⁴ Some evidence for cerebral 5-HT₄R being a trait biomarker for MDD comes from studies of healthy people with first-degree relatives with the disorder: having a family history of MDD is associated with lower striatal 5-HT₄R binding, and the more relatives with MDD, the lower the striatal and limbic 5-HT₄R binding.¹⁴

Here, we applied a naturalistic study design and enrolled 100 pharmacologically untreated patients with moderate to severe MDD; they were assessed clinically and investigated at baseline with [¹¹C]-SB207145 PET and magnetic resonance imaging (MRI) neuroimaging before they were started on

standard SSRI treatment. To take into account that the clinical effect of SSRIs can be delayed for weeks,¹⁵ we regularly assessed the patients clinically for up to 12 weeks. After 8 weeks of treatment, 43 of the patients were rescanned with PET and MRI. The aims of our study were to investigate if:

- a) patients with MDD differ in cerebral 5-HT₄R binding at baseline compared to healthy controls
- b) cerebral 5-HT₄R binding in patients with MDD is associated with remission within 8 weeks after starting SSRI treatment
- c) remitted patients with MDD show larger reduction in their cerebral 5-HT₄R binding than non-responders.

Subjects and methods

One hundred antidepressant-free outpatients with moderate to severe MDD were recruited from the mental health system in the capital region of Denmark and included in a non-randomized, 12-week longitudinal, open clinical trial where they received standard antidepressant drug treatment. All participants provided written informed consent prior to inclusion and recruitment was performed by a trained study physician. The study protocol was approved by all relevant authorities (the Health Research Ethics Committee of the Capital Region of Denmark (H-15017713), the Danish Data Protection Agency (04711/RH-2016-163) and Danish Medicines Agency (EudraCT- 2016-001626-34)) and registered as a clinical trial before initiation (NCT02869035). The study was monitored by an external good clinical practice unit from the capital region of Copenhagen, Denmark. Patients between 18–65 years of age and with a Hamilton Depression Rating Scale 17 items (HAMD₁₇)¹⁶ score >17 were included. Patients were screened with the Mini International Neuropsychiatric Interview¹⁷ and the diagnosis was confirmed by a specialist in psychiatry. Exclusion criteria were: use of antidepressant medicine within the last two months; duration of the present depressive episode exceeding two years; more than one attempt with an antidepressant treatment in the current episode; previous non-response or known contraindications to an SSRI drug, other primary axis I psychiatric disorder; alcohol/substance abuse or dependence; severe somatic illness; insufficient language skills in Danish; acute suicidal ideation or psychosis; current or planned pregnancy or breast feeding; use of medical treatment affecting CNS (e.g., metoclopramide, ondansetron, serotonergic drugs for migraine, clonidine); contraindications to PET/MRI scans; history of severe brain injury or significant cognitive impediments. Ninety-one healthy controls were included for baseline comparisons and recruited either from our quality-controlled repository¹⁸ or from an online recruitment site, meeting the same in- and exclusion criteria as the patients (except no past or present psychiatric disorders). The healthy controls

matched the patients' age and sex as closely as possible. The method and study design are described in detail elsewhere.¹⁹

Study assessments for participants and treatment course for patients

Before inclusion, medical history and prior medical treatment was assessed. All participants underwent somatic and psychiatric screening, urine screening for pregnancy or toxicology, and routine blood tests. At baseline, participants were brain scanned with MRI and [¹¹C]-SB207145 PET and 43 of the patients were PET and MRI rescanned at week 8. After completion of the baseline program, patients started antidepressant treatment with escitalopram, individually adjusted to 10-20 mg daily depending on response and side effects. Clinical treatment response was monitored after 1, 2, 4, 8 and 12 weeks of treatment by face-to face visits and HAMD₁₇ and HAMD₆ ratings²⁰. Regular co-ratings between study investigators were implemented. Patients with intolerable side effects or < 25 % reduction from baseline in HAMD₆ at week 4 were offered to switch to the serotonin-norepinephrine reuptake inhibitor, duloxetine, individually adjusted (30-120 mg daily). Serum concentration of escitalopram or duloxetine was determined at week 8.

Clinical outcome measures

The primary clinical outcome measure was change in HAMD₆ from baseline to week 8. Remitters were defined as having a ≥ 50 % reduction in HAMD₆ at week 4 (early responders) and HAMD₆ score < 5 at week 8. Non-responders had < 25% reduction in HAMD₆ at week 4 (early non-responder) and < 50% reduction in HAMD₆ at week 8. Patients in between these categories were categorized as intermediate

responders. As a secondary clinical outcome measure, we used relative percentage change in HAMD₆ (rΔHAMD₆) from baseline to week 2, 4, 8 and 12.

PET and MRI procedure

PET/MRI acquisition, pre-processing and PET quantification was performed as previously described.¹⁹ Briefly, PET images were acquired during a 120 minutes dynamic scan using a high-resolution research tomography Siemens PET scanner (CTI/Siemens, Knoxville, TN, USA) after intravenous injection of [¹¹C]-SB207145. All patients and 53 controls were scanned with a Siemens 3-Tesla Prisma and 38 controls with a Siemens Magnetom Trio 3-Tesla MRI scanner. 3D T1-weighted MRI was co-registered to PET images to obtain structural information. PET scans were motion corrected using the Air 5.2.5 method.²¹ PVE-lab was used to extract region of interest (ROIs),²² delineated on the individuals' MRI. The mean tissue time activity for hemisphere-averaged grey matter volumes was used for kinetic modeling with cerebellum (excluding vermis) as a reference region.²³ The calculated non-displaceable binding potential (BP_{ND}) served as an outcome measure for the 5-HT₄R binding.

Statistics

We included 100 patients to reach a statistical power of 0.8 for detection of a 7% difference in BP_{ND} between remitters and non-responders, with an expected drop-out rate of 20%. For the descriptive statistics, the p-value was computed using Fisher's exact t-test for categorical and Mann Whitney U-test for continuous variables respectively. For the primary analysis, we used a latent variable model

(LVM) to test for global and regional differences in (i) baseline 5-HT₄R BP_{ND} between patients and controls, (ii) baseline 5-HT₄R BP_{ND} between remitters, non-responder, and controls, and (iii) change in BP_{ND} between baseline and follow up (Δ BP_{ND}) and whether Δ BP_{ND} differed between remitters and non-responders. We included neocortex, hippocampus, caudate nucleus and putamen²² as regions of interest in the LVM because of their relevance in mood disorders.

Secondary analyses included testing with LVM (ii') for an association between baseline BP_{ND} and r Δ HAMD₆ (ii''), for a difference in baseline BP_{ND} between early responder, early non-responder, and healthy controls, and (iii') for an association between Δ BP_{ND} and r Δ HAMD₆. In order to assess the data by more commonly used statistics, analyses (i), (ii), (ii'), and (ii'') were also performed using multiple linear regressions one for each brain region (neocortex, a limbic region and neostriatum).

Beyond testing for associations, we also evaluated the prognostic value of 5-HT₄R binding in baseline for the outcome of antidepressant treatment. For each brain region, the prognostic value of a low 5-HT₄R BP_{ND} was assessed using the area under the ROC curve (AUC). Here the AUC is the probability that a remitter has a lower 5-HT₄R BP_{ND} than a non-responder, 0.5 indicating no prognostic value. The positive predictive value (PPV) and negative predictive value (NPV) of the 5-HT₄R BP_{ND} were assessed by dichotomizing 5-HT₄R BP_{ND} at the threshold which maximized the Youden-Index. All analyses were adjusted for age, sex, injected SB207145 (mass/kg), the 5-HT transporter polymorphism (5-HTTLPR) genotype (L_AL_A or non-L_AL_A), and MR-scanner,²⁴⁻²⁷ except within subject rescans-analyses (iii) and (iii') that were only adjusted for the difference in injected SB207145 (mass/kg) between baseline and week 8. When using LVMs, the covariates were included in the measurement model. 5-HT₄R BP_{ND} values were log-transformed. When using LVMs, score tests were used to detect model misspecifications and additional parameters were included until no misspecification could be

detected. Missing data in analysis (ii) were handled using complete case analysis. We also adapted an alternative approach where missing values in the primary clinical outcome were imputed based on the clinical outcome at week 4. Nine patients left the study prematurely: those leaving due to early remission were classified as remitters; those leaving because of side effects or suicidality as non-responders. Inverse probability weighting was used to handle other types of dropout using baseline covariates as predictors of dropout. Secondary analyses were performed using complete case analysis. Reported p-values and 95% confidence intervals were two-sided. When performing tests across several brain regions we adjusted p-values (p.adj) and confidence intervals using a single-step Dunnett procedure.²⁸ All analyses were performed in R.

Results

Patients were recruited and followed between the Aug 15, 2016 to April 17, 2019. Supplementary Figure 1 shows the CONSORT diagram. Demographics, clinical profile and tracer data (Table 1) showed that patients and controls were comparable, except for injected mass/kg and a minor difference in education. We included 91 patients for baseline analyses and 78 in the longitudinal analyses; of the latter, 22 were remitters and 13 non-responders after 8 weeks, and 34 were early responders and 14 early non-responders after 4 weeks. Supplementary Table 1 describes baseline psychopathological profile for non-responders and remitters. Six patients switched to duloxetine before week 8. Re-scan data was obtained from 12 remitters, five non-responders and 23 responders. No serious adverse events occurred during the study. Remission rate was 48% at week 12 according to remission-criteria used in, e.g., STAR*D study ($\text{HAMD}_{17} \leq 7$)²⁹ and comparable to similar clinical trials.³⁰

We found 7-8% lower regional BP_{ND} in untreated patients with MDD compared to controls ($p < 0.001$), (Figure 1 and Supplementary Figure 2). Linear regression models generated the same outcome (Supplementary Table 2). Since BP_{ND} in the caudate nucleus and putamen were especially correlated, these regions were pooled into “neostriatum” for the subsequent analyses.

Global BP_{ND} was lower in remitters than in controls ($p=0.004$, Table 2), with 8-10% lower binding in neocortex (Figure 2), hippocampus and neostriatum. Supplementary Figure 3 displays the baseline BP_{ND} for patients according to clinical response group and controls. There was no statistically significant difference in global BP_{ND} between non-responders and controls ($p=0.31$) or between remitters and non-responders ($p=0.18$). Handling missing data using a combination of imputation and

inverse probability weighting lead to estimates and conclusions that were similar to the complete case analysis (Supplementary Table 3). Response categories at week 4 (Table 2) showed 8-10% lower BP_{ND} in early responders than in controls ($p=0.002$), and 7-9% lower BP_{ND} in early responders compared to early non-responders ($p=0.046$). There was no difference between early non-responders and controls ($p=0.79$). Similar results were found when using multiple linear regression (Supplementary Table 4). Further, we found a correlation between baseline BP_{ND} and $r\Delta HAMD_6$ at week 4 ($p=0.03$), but not at week 8 ($p=0.98$) using LVM. Univariate analysis identified the correlation in neocortex at week 4 only (Supplementary Table 5).

Regional baseline BP_{ND} did not show prognostic power for identifying non-responders from remitters: neocortex (AUC: 0.63 [0.43; 0.84], $p=0.20$), limbic region (AUC: 0.57 [0.35; 0.79], $p=0.54$), neostriatum (AUC: 0.57 [0.36; 0.77], $p=0.52$). Based on the Youden index, the regional baseline BP_{ND} was dichotomized at 0.69 (neocortex), 3.76 (neostriatum), and 0.90 (limbic). The estimated PPV were, respectively, 0.76 [0.55; 0.91], 0.72 [0.51; 0.88], and 0.72 [0.53; 0.87] and the estimated NPV were, respectively 0.70 [0.35; 0.93], 0.60 [0.26; 0.88], and 0.83 [0.36; 1]. This can be compared to a classifier using only the observed prevalence of remitters: classifying 63% of the patients as remitters and the rest as non-responders would lead to a PPV of 0.63 and a NPV of 0.37. The predictive values for various response status using baseline 5-HT₄R binding are shown in Supplementary Table 6.

Eight weeks after initiating SSRI treatment, patients showed a decrease in global BP_{ND} compared to baseline ($p<0.001$, LVM-model, $N=40$). At a regional level, the decrease in BP_{ND} constituted 9.0% [-12.8%; -5.0%] in neostriatum ($p_{adj}<0.0001$) but no significant change was seen in neocortex (-1.4% [-6.2%; 3.6%], $p_{adj}=0.79$) or hippocampus (-1.7% [-7.5%; 4.5%], $p_{adj}=0.80$) (Figure 3 and

Supplementary Figure 4). The decline was not associated with categorical response at week 8 ($p=0.60$) or $r\Delta\text{HAMD}_6$ ($p=0.74$).

Discussion

In this to date largest single clinical PET trial investigating the serotonin system in MDD, we show that antidepressant-free patients with a moderate to severe major depressive episode on average have 7-8% lower cerebral 5-HT₄R binding than healthy controls. Intriguingly, patients who remit after 4 or 8 weeks of serotonergic medication have 8-10% lower cerebral 5-HT₄R baseline binding whereas non-responders do not differ from controls. When patients were PET-rescanned 8 weeks after starting SSRI treatment, their striatal 5-HT₄R binding had decreased, irrespective of the clinical treatment outcome. These results support the notion that only a subgroup of patients with MDD have a serotonergic dysfunction and that accordingly patients within this subgroup are effectively treated with SSRI.

Our finding of abnormally low 5-HT₄R binding in the subgroup of unmedicated MDD patients that remit on SSRI treatment could constitute a trait or a state feature. A previous study reported that the more first degree relatives with MDD a healthy individual has, the lower is striatal 5-HT₄R binding,³¹ and it was suggested that low 5-HT₄R binding could be a trait marker for increased risk of MDD, possibly reflecting increased cerebral serotonin levels that ensured euthymia. Since we here find a lower global 5-HT₄R binding specifically in patients that remit in response to SSRI treatment, it seems less likely that low 5-HT₄R binding is a *general* trait marker for unmedicated MDD. With the observed inverse relation between 5-HT₄R binding and cerebral serotonin levels,¹¹⁻¹⁴ one interpretation is that already prior to treatment, remitters have higher brain serotonin levels. Increased serotonin levels could be the brain's attempt to maintain euthymia, and addition of serotonergic acting drugs increases

serotonin levels sufficiently for remission to occur. Alternatively, or in combination, patients responding to SSRIs may be genetically predisposed for low cerebral 5-HT₄R density.

Our observation that striatal 5-HT₄R binding decreases in response to increased serotonin levels also in patients with MDD (Supplementary Figure 5) is consistent with observations in preclinical studies and in healthy individuals^{11–14}. After 8 weeks of treatment, we found across response-groups a 9% decrease in neostriatum 5-HT₄R binding, suggesting that it was not a failure of the drug to affect the brain serotonin levels that explained a poor clinical drug response. Interestingly, whereas the reduction in 5-HT₄R binding seen after serotonergic treatment was specific for neostriatum, differences between patients with MDD and controls showed a global effect across all brain regions. The regional difference in the rescan data could be due to the drug intervention having a specific effect by increasing serotonin in neostriatum¹³ which together with thalamus is massively innervated by serotonergic fibers and has among the highest density of serotonin transporters.¹⁰

Short-term administration of 5-HT₄R agonists to rodents generates rapid antidepressant/anxiolytic-like behavior,^{32,33} hippocampal neurogenesis,³⁴ prophylactic antidepressant and anxiolytic characteristics³⁵ and the first translational study recently confirmed that administration of the 5-HT₄R agonist prucalopride enhances memory effects in healthy volunteers.³⁶ It remains to be tested in clinical trials if 5-HT₄R agonists could constitute a new therapeutic target for the MDD serotonergic subtype patients. Our data also opens for an interesting possibility of identification of a distinct biological subtype within MDD with a “non-serotonergic”-related depression; such a subgroup would be amenable for investigation of non-serotonergic drug effects.

In conclusion, we here provide novel support that MDD patients with a primary serotonergic dysfunction constitute a subgroup where SSRI/SNRI treatment is particularly effective. Neuroimaging of the 5-HT₄R can thus be regarded as a biomarker that aids to identify subgroups of patients with MDD (e.g., non-serotonergic related depression) which can guide future clinical trials in MDD and enable future precision medicine approaches.

Acknowledgements

We thank all participants and their relatives for taking part in this study. We gratefully acknowledge all investigators involved, collaborating general practitioners, the Center for Referral and Diagnostics, Mental Health Services, Capital Region of Copenhagen and other collaborators who helped throughout the study. We especially thank Lone Ibsgaard Freyr, Bente Dall, Gerda Thomsen, Svitlana Olsen, Agnete Dyssegaard, Arafat Nasser, Ida Marie Brandt and Anna Maria Florescu for their excellent laboratory and technical assistance. Economic support was granted from the Innovation Fund Denmark, The Lundbeck Foundation alliance BrainDrugs (R279-2018-1145), Research Fund of the Mental Health Services - Capital Region of Denmark, Independent Research Fund Denmark, G.J. Foundation, Research Council of Rigshospitalet, Augustinus Foundation, Savværksejer Jeppe Juhl og hustru Ovita Juhls Mindelegat, and the H. Lundbeck A/S. H. The funders of the study had no role in study design, data collection, data analysis, data interpretation, or writing of the report. The corresponding author had full access to all the data in the study and had final responsibility for the decision to submit for publication.

Disclosures

Prof. Knudsen has received honoraria as expert advisor for Sage Therapeutics and Sanos. Dr. Frokjaer has served as consultant for SAGE therapeutics. Prof. Jørgensen has given talks sponsored by Boehringer Ingelheim and H. Lundbeck. All other authors declare no conflict of interest.

References

1. James SL, Abate D, Abate KH, et al. Global, regional, and national incidence, prevalence, and years lived with disability for 354 Diseases and Injuries for 195 countries and territories, 1990-2017: A systematic analysis for the Global Burden of Disease Study 2017. *Lancet*. 2018. doi:10.1016/S0140-6736(18)32279-7
2. Rush AJ, Trivedi MH, Wisniewski SR, et al. Acute and longer-term outcomes in depressed outpatients requiring one or several treatment steps: A STAR*D report. *Am J Psychiatry*. 2006. doi:10.1176/ajp.2006.163.11.1905
3. Pitsillou E, Bresnehan SM, Kagarakis EA, et al. The cellular and molecular basis of major depressive disorder: towards a unified model for understanding clinical depression. *Mol Biol Rep*. 2019. doi:10.1007/s11033-019-05129-3
4. Penninx BWJH, Milaneschi Y, Lamers F, Vogelzangs N. Understanding the somatic consequences of depression: Biological mechanisms and the role of depression symptom profile. *BMC Med*. 2013. doi:10.1186/1741-7015-11-129
5. Spies M, Knudsen GM, Lanzenberger R KS. The serotonin transporter in psychiatric disorders: insights from PET imaging. *Lancet Psychiatry*. 2015. doi:10.1016/S2215-0366(15)00232-1
6. Kaufman J, DeLorenzo C, Choudhury S PR. The 5-HT1A receptor in Major Depressive Disorder. *Eur Neuropsychopharmacol*. 2016. doi:10.1016/j.euroneuro.2015.12.039
7. Miller JM, Hesselgrave N, Ogden RT, et al. Brain serotonin 1A receptor binding as a predictor of treatment outcome in major depressive disorder. *Biol Psychiatry*. 2013. doi:10.1016/j.biopsych.2013.03.021
8. Moses-Kolko EL, Price JC, Thase ME, et al. Measurement of 5-HT1A receptor binding in depressed adults before and after antidepressant drug treatment using positron emission tomography and [11C]WAY-100635. *Synapse*. 2007. doi:10.1002/syn.20398
9. Rebholz H, Friedman E, Castello J. Alterations of Expression of the Serotonin 5-HT4 Receptor in Brain Disorders. *Int J Mol Sci*. 2018. doi:10.3390/ijms19113581
10. Beliveau V, Ganz M, Feng L, et al. A high-resolution in vivo atlas of the human brain's serotonin system. *J Neurosci*. 2017. doi:10.1523/JNEUROSCI.2830-16.2016
11. Jennings KA, Licht CL, Bruce A, Lesch KP, Knudsen GM, Sharp T. Genetic variation in 5-hydroxytryptamine transporter expression causes adaptive changes in 5-HT4 receptor levels. *Int J Neuropsychopharmacol*. 2012. doi:10.1017/S1461145711001258

12. Licht CL, Marcussen AB, Wegener G, Overstreet DH, Aznar S, Knudsen GM. The brain 5-HT₄ receptor binding is down-regulated in the Flinders Sensitive Line depression model and in response to paroxetine administration. *J Neurochem*. 2009. doi:10.1111/j.1471-4159.2009.06050.x
13. Vidal R, Valdizán EM, Mostany R, Pazos A, Castro E. Long-term treatment with fluoxetine induces desensitization of 5-HT₄ receptor-dependent signalling and functionality in rat brain. *J Neurochem*. 2009. doi:10.1111/j.1471-4159.2009.06210.x
14. Haahr ME, Fisher PM, Jensen CG, et al. Central 5-HT₄ receptor binding as biomarker of serotonergic tone in humans: A [¹¹C]SB207145 PET study. *Mol Psychiatry*. 2014. doi:10.1038/mp.2013.147
15. Uher R, Mors O, Rietschel M, et al. Early and delayed onset of response to antidepressants in individual trajectories of change during treatment of major depression: A secondary analysis of data from the genome-based therapeutic drugs for depression (GENDEP) study. *J Clin Psychiatry*. 2011. doi:10.4088/JCP.10m06419
16. HAMILTON M. Development of a Rating Scale for Primary Depressive Illness. *Br J Soc Clin Psychol*. 1967. doi:10.1111/j.2044-8260.1967.tb00530.x
17. Sheehan D V., Lecrubier Y, Sheehan KH, et al. The Mini-International Neuropsychiatric Interview (M.I.N.I.): The development and validation of a structured diagnostic psychiatric interview for DSM-IV and ICD-10. In: *Journal of Clinical Psychiatry*. ; 1998.
18. Knudsen GM, Jensen PS, Erritzoe D, et al. The Center for Integrated Molecular Brain Imaging (Cimbi) database. *Neuroimage*. 2016. doi:10.1016/j.neuroimage.2015.04.025
19. Köhler-Forsberg K, Jorgensen A, Dam VH, et al. Predicting Treatment Outcome in Major Depressive Disorder Using Serotonin 4 Receptor PET Brain Imaging, Functional MRI, Cognitive-, EEG-Based, and Peripheral Biomarkers: A NeuroPharm Open Label Clinical Trial Protocol. *Front Psychiatry*. 2020. doi:10.3389/fpsyt.2020.00641
20. Timmerby N, Andersen JH, Søndergaard S, Østergaard SD, Bech P. A Systematic Review of the Clinimetric Properties of the 6-Item Version of the Hamilton Depression Rating Scale (HAM-D6). *Psychother Psychosom*. 2017. doi:10.1159/000457131
21. Woods RP, Cherry SR, Mazziotta JC. Rapid automated algorithm for aligning and reslicing pet images. *J Comput Assist Tomogr*. 1992. doi:10.1097/00004728-199207000-00024
22. Svarer C, Madsen K, Hasselbalch SG, et al. MR-based automatic delineation of volumes of interest in human brain PET images using probability maps. *Neuroimage*. 2005. doi:10.1016/j.neuroimage.2004.10.017
23. Marner L, Gillings N, Comley RA, et al. Kinetic Modeling of ¹¹C-SB207145 Binding to 5-HT₄ Receptors in the Human Brain In Vivo. *J Nucl Med*. 2009. doi:10.2967/jnumed.108.058552
24. Madsen K, Haahr MT, Marner L, et al. Age and sex effects on 5-HT₄ receptors in the human

- brain: A 11 CSB207145 PET study. *J Cereb Blood Flow Metab.* 2011. doi:10.1038/jcbfm.2011.11
25. Fisher PM, Holst KK, Mc Mahon B, et al. 5-HTTLPR status predictive of neocortical 5-HT 4 binding assessed with [11C]SB207145 PET in humans. *Neuroimage.* 2012. doi:10.1016/j.neuroimage.2012.05.013
26. Marner L, Gillings N, Madsen K, et al. Brain imaging of serotonin 4 receptors in humans with [11C]SB207145-PET. *Neuroimage.* 2010. doi:10.1016/j.neuroimage.2010.01.054
27. Fisher PM, Holst KK, Adamsen D, et al. BDNF Val66met and 5-HTTLPR polymorphisms predict a human in vivo marker for brain serotonin levels. *Hum Brain Mapp.* 2015. doi:10.1002/hbm.22630
28. Dmitrienko A, D'Agostino R. Traditional multiplicity adjustment methods in clinical trials. *Stat Med.* 2013. doi:10.1002/sim.5990
29. Rush AJ, Fava M, Wisniewski SR, et al. Sequenced treatment alternatives to relieve depression (STAR*D): Rationale and design. *Control Clin Trials.* 2004. doi:10.1016/S0197-2456(03)00112-0
30. Sinyor M, Levitt AJ, Cheung AH, et al. Does inclusion of a placebo arm influence response to active antidepressant treatment in randomized controlled trials? Results from pooled and meta-analyses. *J Clin Psychiatry.* 2010. doi:10.4088/JCP.08r04516blu
31. Madsen K, Torstensen E, Holst KK, et al. Familial risk for major depression is associated with lower striatal 5-HT₄ receptor binding. *Int J Neuropsychopharmacol.* 2015. doi:10.1093/ijnp/pyu034
32. Lucas G, Rymar V V, Du J, et al. Serotonin(4) (5-HT(4)) receptor agonists are putative antidepressants with a rapid onset of action. *Neuron.* 2007. doi:10.1016/j.neuron.2007.07.041
33. Mendez-David I, David DJ, Darcet F, et al. Rapid anxiolytic effects of a 5-HT₄ receptor agonist are mediated by a neurogenesis-independent mechanism. *Neuropsychopharmacology.* 2014. doi:10.1038/npp.2013.332
34. Pascual-Brazo J, Castro E, Díaz Á, et al. Modulation of neuroplasticity pathways and antidepressant-like behavioural responses following the short-term (3 and 7 days) administration of the 5-HT₄ receptor agonist RS67333. *Int J Neuropsychopharmacol.* 2012. doi:10.1017/S1461145711000782
35. Chen BK, Mendez-David I, Luna VM, et al. Prophylactic efficacy of 5-HT₄R agonists against stress. *Neuropsychopharmacology.* 2019. doi:10.1038/s41386-019-0540-3
36. Murphy SE, Wright LC, Browning M, Cowen PJ, Harmer CJ. A role for 5-HT₄ receptors in human learning and memory. *Psychol Med.* 2019. doi:10.1017/S0033291719002836

Tables

	Patients with MDD			Healthy controls			p-value ^a
		n	%		n	%	
Sex	Female	65	71.4		55	60.4	0.16
	Male	26	28.6		36	39.6	
5-HTTLPR genotype	L _A L _A	26	28.6		27	29.7	1
	Non-L _A L _A	65	71.4		64	70.3	
	Range	n	Mean (SD)	Range	n	Mean (SD)	p-value ^b
Age (years)	18.3-57.3	91	27.1 (8.2)	19.2-60.1	91	27.1 ± 8.0	0.57
Years of education	5-12	76	11.6 (1.1)	9-12	91	11.9 (0.5)	0.003
BMI (kg/m ²)	17.1-45.1	91	24.5 (5.6)	18.3-36.9	91	23.6 (3.1)	0.96
HAMD ₁₇	18-31	91	22.9 (3.4)	NA		NA	NA
HAMD ₆	7-17	91	12.3 (1.6)	NA		NA	NA
MDI	16-50	89	34.7 (7.2)	0-18	91	5.6 (4.2)	< 0.001
Injected dose (MBq)	263.0-615.0	91	577.4 (56.0)	226-617	91	569.4 (76.3)	0.20
Injected mass/kg (µg/kg)	0.004-0.082	91	0.013 (0.015)	0.003-0.07	91	0.017 (0.015)	0.028
Cerebellum, area under curve (kBq/ml)	3.9-17.8	91	10.3 (2.6)	3.2-16.2	85	10.3 (2.5)	0.75

Table 1. Clinical profile, demographic and radiotracer data for patients with MDD and controls at baseline. BMI: body mass index. HAMD_{17/6}: Hamilton depression rating scale 17 or 6 items. MDI: Major depressive inventory. NA: not applicable. ^a p-value computed using a Fisher's exact t-test, ^b p-value computed using a Mann Whitney U-test.

	Early responder vs. controls	Early non-responder vs. controls	Early responder vs. early non-responder	Remitter vs. Control	Non-responder vs. Control	Remitter vs. Non-responder
n	34 vs. 91	14 vs. 91	34 vs. 14	22 vs. 91	13 vs. 91	22 vs. 13
Week	4	4	4	8	8	8
Global effect						
p	0.002	0.79	0.046	0.004	0.31	0.18
Regional effect						
Neocortex	-8.96% [-14.63; -2.91]	-1.03% [-8.37; 6.9]	-8.01% [-15.61; 0.27]	-9.5% [-15.85; -2.66]	-3.89% [-11.16; 3.98]	-5.84% [-14.04; 3.16]
Hippocampus	-10% [-16.27; -3.25]	-1.16% [-9.34; 7.77]	-8.94% [-17.34; 0.31]	-9.92% [-16.54; -2.77]	-4.07% [-11.65; 4.17]	-6.1% [-14.65; 3.31]
Neostriatum	-7.68% [-12.6; -2.47]	-0.88% [-7.17; 5.84]	-6.86% [-13.45; 0.23]	-8.19% [-13.76; -2.27]	-3.34% [-9.64; 3.4]	-5.02% [-12.16; 2.7]

Table 2. Cerebral 5-HT₄R binding in controls and in MDD, according to treatment response at week 4 and 8. The p-values refer to the testing of BP_{ND} between two groups across all regions. The last three rows display the region-specific difference in BP_{ND} between two groups with confidence interval, corrected for three comparisons (i.e. across the three regions). All estimates originate from the latent variable model.

Figures 1-3

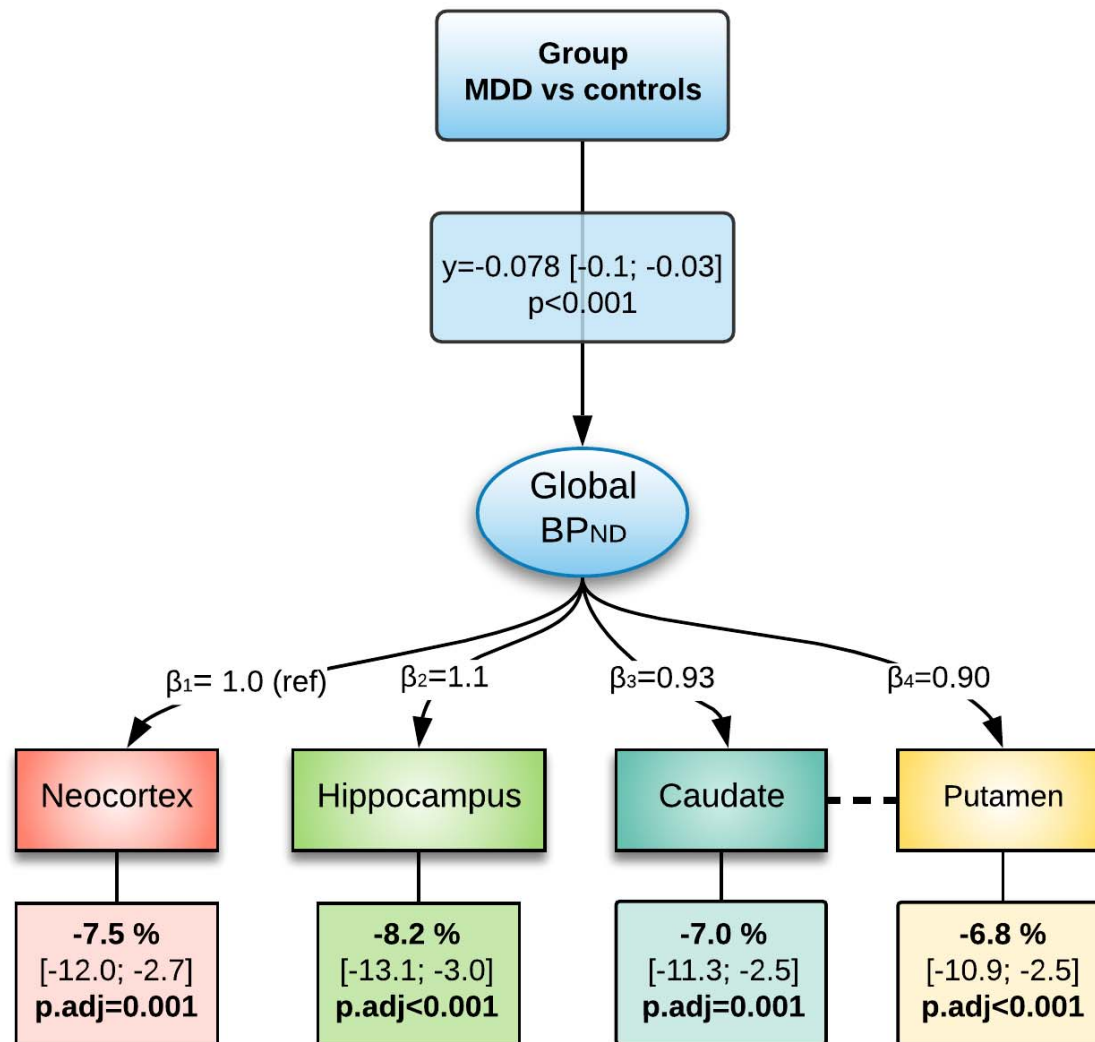


Figure 1. Estimated latent variable model for the 5-HT₄R binding in untreated patients with MDD and controls. γ is the effect of group-status on the global (log-transformed) BP_{ND}, β is the loading, the dashed line indicates additional shared correlations between caudate nucleus and putamen. The lower boxes indicate, for each brain region, the percentage difference in baseline 5-HT₄R binding between MDD and controls (p-values and confidence intervals are adjusted for 4 comparisons). Age, sex, 5-HTTLPR gene-status, MR-scanner type and injected mass/kg are included as covariates in the model.

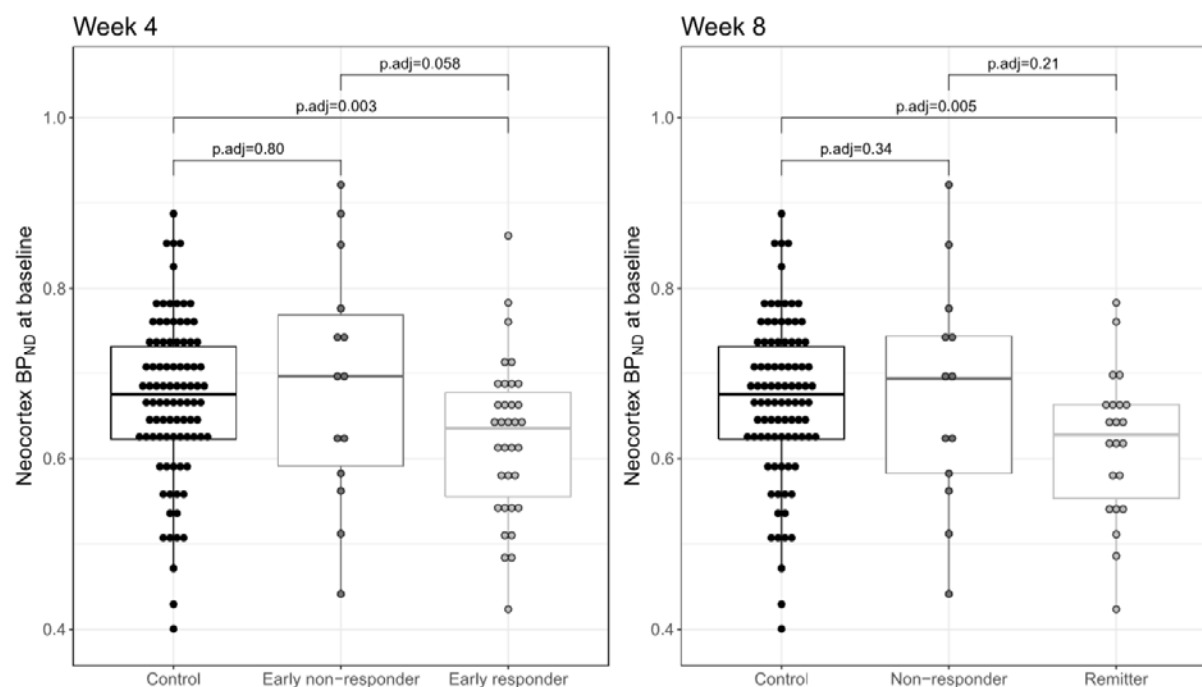


Figure 2. Scatter plot of 5-HT₄R baseline binding in neocortex for healthy controls and patients with MDD according to clinical outcome at week 4 and 8. Week 4: Controls (n=91), early responders (n=34), and early non-responders (n=14). Week 8: Controls (n=91), remitters (n=22), and non-responders (n=13). P-values originate from the latent variable model and were adjusted for 3 comparisons.

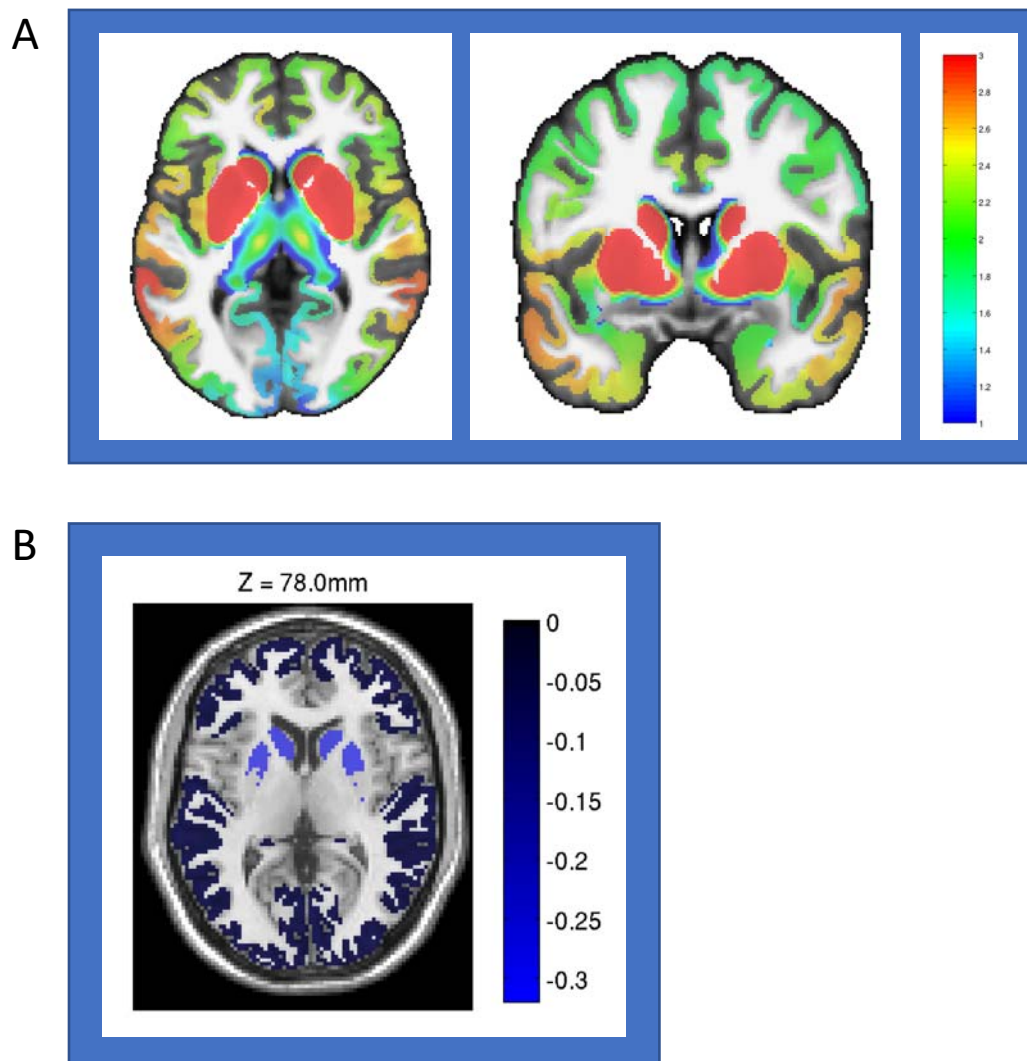


Figure 3. Panel A. Average density maps (pmol/ml) for the 5-HT₄R at baseline in patients with MDD (n=91). Atlas used from Beliveau and colleagues (2017).¹⁰ **Panel B.** Difference in mean 5-HT₄R binding from baseline and rescan in patients (N=40). Regions of interest for the latent variable model analyses (neocortex, hippocampus and neostriatum) are shown. The post-SSRI effect was most prominent in neostriatum (lighter blue).