

## **Enrichment of *SARM1* alleles encoding variants with constitutively hyperactive NADase in patients with ALS and other motor nerve disorders**

Jonathan Gilley<sup>1</sup>, Oscar Jackson<sup>1</sup>, Menelaos Pipis<sup>2</sup>, Mehrdad A. Estiar<sup>3,4</sup>, Ammar Al-Chalabi<sup>5,6</sup>, Matt C. Danzi<sup>7</sup>, Kristel R. van Eijk<sup>8</sup>, Stephen A. Goutman<sup>9</sup>, Matthew B. Harms<sup>10</sup>, Henry Houlden<sup>2</sup>, Alfredo Iacoangeli<sup>5,11,12</sup>, Julia Kaye<sup>13</sup>, Leandro Lima<sup>13</sup>, Queen Square Genomics<sup>2</sup>, John Ravits<sup>14</sup>, Guy A. Rouleau<sup>3,4,15</sup>, Rebecca Schüle<sup>16</sup>, Jishu Xu<sup>16</sup>, Stephan Züchner<sup>7</sup>, Johnathan Cooper-Knock<sup>17</sup>, Ziv Gan-Or<sup>3,4,15</sup>, Mary M. Reilly<sup>2</sup> and Michael P. Coleman<sup>1†</sup>.

<sup>1</sup> John van Geest Centre for Brain Repair, Department of Clinical Neurosciences, University of Cambridge, Forvie Site, Robinson Way, Cambridge, CB2 0PY, UK

<sup>2</sup> Department of Neuromuscular Disease, UCL Queen Square Institute of Neurology and The National Hospital for Neurology, London, WC1N 3BG, UK

<sup>3</sup> Department of Human Genetics, McGill University, Montreal, H3A 1A1, Canada

<sup>4</sup> The Neuro (Montreal Neurological Institute-Hospital), McGill University, Montreal, H3A 2B4, Canada

<sup>5</sup> Department of Basic and Clinical Neuroscience, Maurice Wohl Clinical Neuroscience Institute, Institute of Psychiatry, Psychology and Neuroscience, King's College London, London, SE5 8AF, UK

<sup>6</sup> Department of Neurology, King's College Hospital, King's College London, London, SE5 9RS, UK

<sup>7</sup> Dr. John T. Macdonald Foundation Department of Human Genetics and John P. Hussman Institute for Human Genomics, University of Miami Miller School of Medicine, Miami, FL, USA

<sup>8</sup> Department of Neurology, UMC Utrecht Brain Center, University Medical Center Utrecht, Utrecht University, Utrecht, 3584 CG, The Netherlands

<sup>9</sup> Department of Neurology, University of Michigan, Ann Arbor, MI, USA

<sup>10</sup> Institute for Genomic Medicine, Columbia University, New York, NY100332, USA

<sup>11</sup> Department of Biostatistics and Health Informatics, Institute of Psychiatry, Psychology & Neuroscience, King's College London, SE5 8AF, London, UK

<sup>12</sup> National Institute for Health Research Biomedical Research Centre and Dementia Unit at South London and Maudsley NHS Foundation Trust and King's College London, London, SE5 8AF, UK

<sup>13</sup> Finkbeiner lab, Center for Systems and Therapeutics, Bioinformatics Core, Institute of Data Science and Biotechnology, Gladstone Institutes, 1650 Owens Street, San Francisco, CA 94158, USA

<sup>14</sup> Department of Neurosciences, University of California, San Diego, La Jolla, CA92093, USA

<sup>15</sup> Department of Neurology and Neurosurgery, McGill University, Montreal, H3A 1A1, Canada

<sup>16</sup> Center for Neurology and Hertie Institute für Clinical Brain Research, University of Tübingen, German Center for Neurodegenerative Diseases, Tübingen, Germany

<sup>17</sup> Sheffield Institute for Translational Neuroscience, University of Sheffield, Sheffield, S10 2HQ, UK

**NOTE: This preprint reports new research that has not been certified by peer review and should not be used to guide clinical practice.**

Correspondence to:

† Prof Michael Coleman      Email: mc469@cam.ac.uk

Dr Jonathan Gilley          Email: jg792@cam.ac.uk

† Lead contact

## ABSTRACT

SARM1, a protein with critical NADase activity, is a central executioner in a conserved programme of axon degeneration. We report seven rare missense or in-frame microdeletion human *SARM1* variant alleles in patients with amyotrophic lateral sclerosis (ALS) or other motor nerve disorders that alter the SARM1 auto-inhibitory ARM domain and constitutively hyperactivate SARM1 NADase activity. The constitutive NADase activity of these seven variants is similar to that of SARM1 lacking the entire ARM domain and greatly exceeds the activity of wild-type SARM1, even in the presence of nicotinamide mononucleotide (NMN), its physiological activator. This rise in constitutive activity alone is enough to promote neuronal degeneration in response to otherwise non-harmful, mild stress. Importantly, these strong gain-of-function alleles are completely patient-specific in the cohorts studied and show a highly significant association with disease at the single gene level. These findings of disease-associated coding variants that alter SARM1 function build on previously reported genome-wide significant association with ALS for a neighbouring, more common *SARM1* intragenic single nucleotide polymorphism (SNP) to support a contributory role of SARM1 in these disorders. A broad phenotypic heterogeneity and variable age-of-onset of disease among patients with these alleles also raises intriguing questions about the pathogenic mechanism of hyperactive SARM1 variants.

## INTRODUCTION

The toll-like receptor adaptor protein SARM1 is required for axon degeneration after injury, in response to toxins and other insults, and in several models of neurodegenerative disease (Conforti et al., 2014; Coleman & Höke, 2020). In many of these situations the intimate interplay between pro-degenerative SARM1 (sterile alpha and TIR motif containing protein 1) (Osterloh et al., 2012; Gerdts et al., 2013) and its upstream, pro-survival regulator NMNAT2 (nicotinamide mononucleotide adenylyltransferase 2) (Gilley & Coleman, 2010; Gilley et al., 2015) is critical and most likely involves a disruption to normal nicotinamide adenine dinucleotide (NAD<sup>+</sup>) homeostasis (Gerdts et al., 2016; Figley & DiAntonio, 2020) or related metabolites (Angeletti et al., 2021). NMNAT2 is one of three NMNAT isoforms that catalyse the last step in NAD<sup>+</sup> biosynthesis and is the predominant NMNAT in axons. The SARM1 TIR domain has a critical NAD<sup>+</sup> consuming multifunctional glycohydrolase (NADase) activity (Essuman et al., 2017; Horsefield et al., 2019; Wan et al., 2019) and, intriguingly, NMNAT substrate, NMN, and its product, NAD<sup>+</sup>, can both influence this activity: NMN activates SARM1 NADase by binding to an allosteric site in the auto-inhibitory ARM domain of the enzyme (Zhao et al., 2019; Figley et al., 2021), whereas NAD<sup>+</sup> can oppose this activation by competing for binding to the same site (Jiang et al., 2020; Sporny et al., 2020; Figley et al., 2021). Rising NMN and declining NAD<sup>+</sup> as a consequence of loss of very short-lived NMNAT2 in damaged axons (Di Stefano et al., 2015) thus leads directly to activation of SARM1 NADase and a self-reinforcing NAD<sup>+</sup> decline that represents one possible cause of degeneration.

As well as its established role in axons, SARM1 can promote neuronal cell death under certain conditions. In most cases, the extent to which cell death and concurrent axon degeneration are primary or secondary events has not been fully elucidated (Gerdts et al., 2013; Summers et al., 2014; Gerdts et al., 2015; Summers et al., 2016; Bratkowski et al., 2020). However, recent studies do suggest direct involvement of SARM1 in neuronal cell death in some situations, including photoreceptor loss in models of retinal degeneration and

Leber congenital amaurosis (LCA) (Ozaki et al., 2020; Sasaki et al., 2020) and as a result of Vacor neurotoxicity when specifically applied to cell bodies (Loreto et al., 2020).

Extensive evidence from animal models has implicated NMNAT-sensitive and SARM1-dependent axon degeneration and/or cell death in a variety of neurodegenerative disorders (Conforti et al., 2014; Coleman & Höke, 2020), but knowledge of genetic association with human diseases is more limited. To date, biallelic *NMNAT2* loss-of-function (LoF) variants have been associated with two rare polyneuropathies that broadly resemble the corresponding mouse models (Gilley et al., 2013, 2019; Huppke et al., 2019; Lukacs et al., 2019), and *NMNAT1* mutations cause photoreceptor loss in LCA via a mechanism involving SARM1 (Sasaki et al., 2020). While no firm association between *SARM1* variation and human disease has yet been established, genome wide association studies (GWAS) have linked the *SARM1* chromosomal locus, including an intragenic SNP, to sporadic ALS (Fogh et al., 2014; van Rheenen et al., 2016), although whether *SARM1* is the causative gene is not known.

Motor nerve disorders are neurodegenerative disorders that affect motor neurons in the brain, brainstem, and spinal cord. These include ALS, the most common adult-onset motor nerve disorder, as well as other inherited conditions like hereditary spastic paraplegia (HSP) (Goutman, 2017). There is also some phenotypic and genetic overlap with the hereditary motor neuropathies (Rossor et al., 2012). These disorders exhibit broad phenotypic heterogeneity and variable age-of-onset. Recently, SARM1-dependent death mechanisms have been found to play a significant role in a mutant TDP-43 model of ALS (White et al., 2019). This is important as TDP-43 aggregation is an almost universal pathologic feature in ALS (Arai et al., 2006; Neumann et al., 2006). While removal of SARM1 does not alleviate motor neuron degeneration in a *SOD1* model of ALS (Peters et al., 2018), this could be explained by the finding that TDP-43 aggregation is usually not seen in ALS linked to *SOD1* or *FUS* mutations (Mackenzie et al., 2007; Maekawa et al., 2009; McAlary et al., 2019). It therefore remains possible that SARM1 plays an important role in a majority of ALS cases.

Here, we have identified a number of rare alleles specific to ALS patients in Project MinE initiative data freeze 1 (Project MinE ALS Sequencing Consortium, 2018; van der Spek et al.,

2019) and the Answer ALS project (Rothstein, 2020) encoding missense substitutions and in-frame microdeletions in the auto-inhibitory ARM domain of SARM1 that confer substantial pro-degenerative NADase gain-of-function (GoF). A number of these GoF alleles were subsequently identified in additional ALS patients and in HSP or other motor nerve disorder patients in other databases but, crucially, were not seen at all in any individuals in the control groups. Based on their strongly skewed distribution between patients and controls, we propose that these *SARM1* GoF alleles are thus strong candidates for risk alleles in ALS and other motor nerve disorders and raises the possibility that other mechanisms of SARM1 activation could make a wider contribution.

## RESULTS

### Identification of a cluster of ALS patient-specific SARM1 ARM domain coding variants in Project MinE data freeze 1

Previous studies have shown that artificial missense mutations and in-frame deletions in the auto-inhibitory ARM domain of SARM1 are more likely to result in pro-degenerative GoF than disruption of its SAM multimerization domains or catalytic TIR domain, which instead is more likely to give rise to protective LoF (Gerdtts et al., 2013; Summers et al., 2016; Essuman et al., 2017; Horsefield et al., 2019; Jiang et al., 2020; Sporny et al., 2020; Bratkowski et al., 2020; Figley et al., 2021; Shen et al., 2021). Therefore, if SARM1 contributes to ALS pathogenesis, we predicted that there might be a relative paucity of naturally-occurring coding variation in the SAM and TIR domains and/or an enrichment of coding variation in the ARM domain among patients, with the opposite in unaffected individuals.

To explore this, we assessed the distribution of mostly rare *SARM1* missense SNP and small, in-frame deletion alleles between cases and controls in Project MinE consortium data freeze 1 (DF1), a public database containing WGS data for 4,366 mostly sporadic ALS patients and 1,832 non-ALS controls (Project MinE ALS Sequencing Consortium, 2018; van der Spek et al., 2019). Even accounting for the fact that a proportion of the coding variation is likely to be functionally neutral, the distribution of alleles was notably skewed (Figure 1 and Table 1). Specifically, of the 16 alleles encoding changes between amino acids 112 and 385 of the SARM1 ARM domain, all are seen in patients, but only the two relatively more common alleles are also seen in controls, whereas the distribution of coding variation between patients and controls for the remainder of the gene is largely unremarkable, being much more proportional to the sizes of the patient and control groups. Based on this uneven distribution, we thus hypothesised that some of the patient-specific Project MinE DF1 ARM domain alleles are risk alleles for ALS through pro-degenerative GoF.

## **Several ALS patient-specific SARM1 ARM domain coding variants in Project MinE DF1 increase NAD<sup>+</sup> depletion in transfected HEK 293T cells**

We first tested the functional consequences of coding variation in the region spanning amino acids 112 to 385 of the SARM1 ARM domain by assessing the ability of variants to deplete NAD<sup>+</sup> in transfected HEK 293T cells. We hypothesised that some of them confer a harmful, and thus potentially pathogenic NADase GoF, but established assay conditions able to detect either GoF or LoF of the exogenously-expressed SARM1 (Figure 2 - figure supplement 1A). Importantly, any contribution from endogenous SARM1 in these assays was expected to be negligible due to its comparatively very low level of expression in the HEK 293T cell clone used (Figure 2 - figure supplement 1B).

Under these conditions, NAD<sup>+</sup> levels are approximately halved in cells expressing exogenous WT SARM1 (due to overexpression of a low constitutive NADase activity) but we observed a substantially greater lowering of NAD<sup>+</sup> for six of the ALS-specific variants - L223P,  $\Delta$ 229-235 (alternatively named  $\Delta$ 226-232 - see Table 1 legend),  $\Delta$ 249-252, V331E, E340K and T385A SARM1 - suggestive of strong NADase GoF (Figure 2A). Smaller, but still statistically-significant lowering of NAD<sup>+</sup> was also seen for a further three variants - V112I, A275V and A341V SARM1 - suggestive of more modest/moderate GoF. All other variants depleted NAD<sup>+</sup> to a similar extent as WT SARM1. The variants that had the strongest effect on NAD<sup>+</sup> levels also caused greater depletion of NADP<sup>+</sup> and ATP than WT SARM1 (Figure 2B and 2C), with NADP<sup>+</sup> representing an alternative substrate of SARM1 glycohydrolase activity (Essuman et al., 2018; Horsefield et al., 2019; Wan et al., 2019) and ATP loss likely to be a lagging consequence of NAD<sup>+</sup> loss.

Importantly, the lower level of NAD<sup>+</sup> seen for some variants in these assays was not a result of greater variant overexpression. Instead, we found that the variants that caused the greatest NAD<sup>+</sup> depletion are barely detectable by immunoblotting (Figure 2D). By using antibodies against either the C-terminal Flag tag or the N-terminus of SARM1, we can rule out any contribution of truncated forms of the variants (Figure 2 - figure supplement 2A). This indicates that enhanced NAD<sup>+</sup> depletion is achieved by substantially lower levels of full-length



versions of some of the variants and suggests very strong GoF. IRES-driven expression of ZsGreen (in a bicistronic cassette with SARM1) was also found to be substantially lower in cells with the greatest NAD<sup>+</sup> depletion (Figure 2D). Crucially, fluorescence imaging suggested that this reflected suppressed ZsGreen expression within cells rather than reduced transfection efficiency (Figure 2E), which would anyhow be incompatible with almost complete NAD<sup>+</sup> depletion if many cells remained untransfected. However, this appears to be consistent with a previous report showing that overexpression of (WT) SARM1 suppresses *de novo* synthesis of exogenous proteins in an NADase-dependent manner (Izadifar et al., 2021). In support of this mechanism, we found that the cell permeable NAD<sup>+</sup> precursor nicotinamide riboside (NR) allows higher levels of expression of both zsGreen and the putative strong NADase GoF SARM1 variants themselves, presumably by boosting NAD<sup>+</sup> synthesis and thus delaying the point at which NAD<sup>+</sup> becomes limiting for *de novo* protein synthesis as a result of enhanced SARM1 NADase activity (Figure 2 - figure supplement 2B and 2C). Even so, we cannot exclude reduced stability as also contributing to the low expression levels of these variants.

Previously, reduced cell viability has been reported in transfected HEK cells expressing active SARM1 mutants (Panneerselvam et al., 2012; Gerdts et al., 2013; Sporny et al., 2019, 2020), but we did not see any obvious change in cell morphology suggestive of a loss of cell viability in our assays (Figure 2E), even when NAD<sup>+</sup> was substantially depleted. While this probably partly reflects that we use a lower amount of SARM1 expression construct in our assays, we also found that SARM1 activity-dependent loss of viability of transfected HEK 293T cells is very dependent on cell density, with the high cell densities we routinely use also conferring substantial protection (Figure 2 - figure supplement 3).

### **Project MinE DF1 putative GoF SARM1 variants have very high constitutive NADase activity**

Our measurements of NAD<sup>+</sup> levels in transfected HEK 293T cells indirectly pointed to variable degrees of NADase GoF for a number of the Project MinE patient-specific SARM1 ARM

domain coding variants. Therefore, we next directly tested the NADase activity of purified recombinant WT and variant SARM1. Recombinant proteins were purified from transfected HEK 293T cell lysates by immunoprecipitation following NR supplementation of the HEK 293T cell medium to boost expression and maximise yield, particularly of the strong GoF variants (see above) (Figure 3 - figure supplement 1).

Constitutive (basal) NADase activity of the purified proteins in reactions containing just NAD<sup>+</sup> was assayed first. We used 25 μM NAD<sup>+</sup>, which is close to the K<sub>m</sub> for the SARM1 catalytic site (Essuman et al., 2018; Sporny et al., 2020; Angeletti et al., 2021) and obtained an NAD<sup>+</sup> consumption rate for WT SARM1 (~1 mol/min/mol enzyme) comparable to that reported in a previous study (Zhao et al., 2019). Importantly, these assays confirmed the hypothesised NADase GoF for most of the variants that increased depletion of NAD<sup>+</sup> in transfected HEK 293T cells, but in some cases their constitutive activity was unexpectedly high: rates for five of the patient-specific variants - L223P, Δ229-235, Δ249-252, V331E and E340K - were found to be up to 20 times higher than WT SARM1 and a sixth - T385A - around 10 times higher (Figure 3A). In fact, these very high per mol constitutive NADase activities are similar to that of SARM1 lacking the extreme N-terminus and auto-inhibitory ARM domain (SAM-TIR fragment, amino acids 409-724) (Figure 3B).

Of the three other variants that increased NAD<sup>+</sup> depletion in transfected HEK 293T cells, V112I SARM1 has a rate a little more than twice as high as WT SARM1, whereas the activities of A275V and A341V SARM1 are not significantly raised (Figure 3A), although we cannot rule out subtle differences in the activities of the recombinant proteins compared to their activities in cells. Interestingly, the constitutive NADase rates calculated for P332Q and N337D, the variants present in both the patient and control groups, and R310H, a patient-specific variant, suggest partial LoF (Figure 3A).

## **Project MinE DF1 SARM1 variants with high constitutive NADase activity are not further activated by NMN**

The NADase activity of full-length SARM1 can be induced by NMN (Zhao et al., 2019; Loreto et al., 2020; Figley et al., 2021), a nucleotide that plays a critical role in triggering axon degeneration (Di Stefano et al., 2015, 2017). Greater activation by NMN could thus represent an alternative pro-degenerative GoF mechanism. We therefore tested the recombinant SARM1 ARM domain coding variants for NMN-dependent triggering of their NADase activity.

We first assessed activation by 50  $\mu$ M NMN. This is a higher level of NMN than would likely occur in neurons and/or axons, even after injury (Angeletti et al., 2021), and should thus promote robust SARM1 NADase activation in these assays. Under these conditions, the NADase activity of WT SARM1 roughly tripled but there was no clear increase for the six variants with very high constitutive activity (L223P,  $\Delta$ 229-235,  $\Delta$ 249-252, V331E, E340K and T385A SARM1) (Figure 3C). This mirrors a lack of NMN-responsiveness for the SAM-TIR fragment lacking the allosteric binding site in the auto-inhibitory ARM domain (Zhao et al., 2019 and data not shown).

In contrast, with the exception of V112I SARM1, all the variants with a constitutive activity closer to that of WT SARM1 were found to be NMN-inducible to some extent, with most showing levels of inducibility similar to WT SARM1 (Figure 3C and Figure 3 - figure supplement 2A and 2C). P332Q SARM1, a more common variant equally abundant in ALS patients and controls, appears much more inducible than WT SARM1 (Figure 3 - figure supplement 2C), but this largely reflects its substantially lower constitutive activity with its NMN-activated rate being only marginally higher than that of WT SARM1 (Figure 3C and Figure 3 - figure supplement 2A). Indeed, none of the NMN-activated rates of any of the other NMN-responsive variants were significantly higher than that of WT SARM1, and for some (R244S, R310H and N337D SARM1) the activated rate was lower (Figure 3C and Figure 3 - figure supplement 2A). On the other hand, V112I SARM1, which has moderately raised constitutive NADase activity, instead showed no NMN-responsiveness and its activity in the

presence of 50  $\mu\text{M}$  NMN is lower than the NMN-induced activity of WT SARM1 (Figure 3 - figure supplement 2A).

Increased sensitivity to lower concentrations of NMN could represent an alternative pro-degenerative GoF mechanism, so we next assessed triggering of NADase activity by 10  $\mu\text{M}$  NMN (excluding the non-responsive strong GoF variants). This concentration of NMN is likely to be closer to the concentration in damaged neurons / axons (Angeletti et al., 2021) but is the lowest concentration that gives consistent activation of WT SARM1 in these *in vitro* assays. The increase in activity of WT SARM1 in the presence of 10  $\mu\text{M}$  NMN was roughly half that seen with 50  $\mu\text{M}$  NMN (in parallel assays) and all the ALS patient variants previously found to be responsive to 50  $\mu\text{M}$  NMN showed a similar or even lower relative level of activation with 10  $\mu\text{M}$  NMN (Figure 3D and Figure 3 - figure supplement 2B and 2D), apart from V112I SARM1 which again is not inducible (Figure 3D). As with 50  $\mu\text{M}$  NMN, 10  $\mu\text{M}$  NMN induced P332Q SARM1 activity to a greater extent than that of WT SARM1 but its activated rate in the presence of 10  $\mu\text{M}$  NMN in this case was below that of WT SARM1 (Figure 3D and Figure 3 - figure supplement 2B and 2D).

Together, these NADase activity data indicate that six of the exclusively patient-associated *SARM1* ARM domain alleles in Project MinE DF1 encode variants with greatly enhanced constitutive activity comparable to that of the fully disinhibited SAM-TIR fragment, and one additional patient-associated variant showed more moderate constitutive NADase GoF. Surprisingly, however, no variants showed enhanced responsiveness to NMN from the normal basal level. Thus, the point mutations and small in-frame deletions that confer the strongest GoF mimic the effects of complete removal of ARM domain auto-inhibition.

### **Identification of an additional ALS patient-associated strong GoF SARM1 variant in the Answer ALS project database.**

We next extended our search for putative ALS-associated *SARM1* GoF alleles to the Answer ALS project database consisting of WGS data for 706 ALS patients and 92 matched controls (Rothstein, 2020). Some of the Project MinE DF1 variants were independently found in this

new, non-overlapping dataset, including one occurrence of the strong NADase GoF  $\Delta$ 229-235 *SARM1* allele in a patient, but we also found three new patient-associated alleles and one new control-associated allele encoding changes within the ARM domain or just N-terminal to it (encompassing amino acids 29-397) (Figure 1 and Table 2). Three additional coding variants are also present in this expanded region in control subjects in Project MinE DF1 (Table 1). Therefore, given the precise N-terminal boundary of the ARM domain is not well-defined, we assessed the NADase function of all these previously untested coding variants from both databases, with the exception of Project MinE DF1 frameshift variant L76fs that can reasonably be assumed to be a full LoF allele.

Using the same assays as for the original Project MinE variants, we identified patient-associated Answer ALS variant, R267W *SARM1*, as an additional strong GoF, with robust NAD<sup>+</sup>-consuming activity in transfected HEK 293T cells combined with low expression (Figure 4A and 4B) and a constitutively high, non-inducible NADase activity equivalent to that of the strongest Project MinE GoF variants (Figure 4C and 4E). Interestingly, two of the control-associated variants, V88M *SARM1* (Project MinE DF1) and A210V *SARM1* (Answer ALS), also reduced NAD<sup>+</sup> levels more than WT *SARM1* in transfected HEK 293T cells (Figure 4A), but their constitutive activities in NADase assays were only modestly increased relative to WT *SARM1* and far below the 10 times higher activity we define for strong GoF variants (Figure 4D). In addition, both show normal NMN-inducibility (Figure 4F). The remaining patient- and control-associated variants had properties similar to WT *SARM1* or appeared to be modest LoF (Figure 4).

### **Strong NADase GoF $\Delta$ 229-235 *SARM1* retains its GoF properties in complexes with WT *SARM1*.**

Given the very low levels of endogenous *SARM1* in our HEK 293T cell line, our data so far will largely reflect the properties of each *SARM1* variant in isolation. However, ALS patients heterozygous for *SARM1* GoF alleles will express the *SARM1* variant alongside WT *SARM1*. Therefore, to mimic heterozygosity, we co-expressed WT and strong GoF *SARM1* in HEK

293T cells, using  $\Delta 229-235$  SARM1 as a representative strong GoF variant as it is most frequently seen in patients.

We found that NAD<sup>+</sup> depletion in HEK 293T cells co-transfected with equal amounts of WT and  $\Delta 229-235$  SARM1 expression constructs was broadly similar to that in cells transfected with the  $\Delta 229-235$  SARM1 construct alone (Figure 5A), although enzyme assays of the recombinant proteins are more effective at differentiating between moderate and high NADase GoF (see below). Expression of ZsGreen and SARM1 (both  $\Delta 229-235$  and WT SARM1) was also strongly suppressed in both situations where  $\Delta 229-235$  SARM1 is present in the transfected HEK 293T cells (Figure 5B), further supporting the model in which *de novo* synthesis of proteins is suppressed by enhanced SARM1 NADase activity.

SARM1 readily homo-multimerises in solution to form an octameric ring structure (Gerdt et al., 2013; Horsefield et al., 2019; Sporny et al., 2019; Bratkowski et al., 2020; Jiang et al., 2020; Sporny et al., 2020; Figley et al., 2021; Shen et al., 2021) and our finding that (Flag-tagged)  $\Delta 229-235$  SARM1 efficiently co-immunoprecipitates with (HA-tagged) WT SARM1 from co-expressing cells is indicative that hetero-oligomers of WT and variant SARM1 are also readily formed (Figure 5C). Direct assaying of the NADase activity of hetero-oligomers revealed their constitutive NADase activity to be intermediate between that of each protein alone, but this still represents very strong GoF relative to WT SARM1 alone (Figure 5D). This is consistent with each protein retaining its own individual constitutive activity within the hetero-oligomers, although their lack of NMN-responsiveness suggests that WT SARM1 within the complexes may be altered in that respect (Figure 5E).

### **Acute expression of strong GoF $\Delta 229-235$ SARM1 reduces viability of sympathetic neurons under stress conditions in an NADase-dependent manner.**

To test the effects of greatly enhanced constitutive activity in neurons, we used an established method involving microinjection of controlled amounts of expression constructs into cultured

sympathetic neurons from the superior cervical ganglion (SCG neurons), a neuronal subtype very amenable to this approach (Gilley & Loreto, 2020).

We first compared the effects of our representative strong GoF SARM1 variant,  $\Delta 229-235$  SARM1, with those of WT SARM1. We used wild-type SCG neurons for these experiments so that exogenous  $\Delta 229-235$  SARM1 would be expressed alongside endogenous (WT) SARM1 in order to partially model neurons in individuals heterozygous for the  $\Delta 229-235$  SARM1 allele. However, we minimised the amount of SARM1 expression vector injected to reduce possible artefacts of high expression, whilst still maintaining levels that are functionally relevant (Figure 6 - figure supplement 1), so the endogenous murine SARM1 will likely be in excess of the exogenous SARM1 in these experiments. A DsRed expression construct was co-injected to improve visualisation of the targeted neurons and their neurites (co-expression of ZsGreen from the SARM1 construct being insufficient under these conditions) and we consistently saw substantially fewer DsRed labelled neurons 24 h after injection with the  $\Delta 229-235$  SARM1 construct compared to the WT SARM1 construct or empty vector (Figure 6A and 6B and Figure 6 - figure supplement 2A). The intensity of DsRed in the few labelled  $\Delta 229-235$  SARM1 neurons that were present was also greatly reduced. We found that NR supplementation boosted DsRed expression and visualisation of the  $\Delta 229-235$  SARM1 neurons (Figure 6A and 6B) suggesting that strong NADase GoF suppresses DsRed expression in neurons in the same way that it suppresses co-expression of ZsGreen in transfected HEK 293T cells (Figure 2D and 2E and Figure 2 - figure supplement 2B and 2C), although a separate effect on neuronal viability also cannot be ruled out.

The greatly improved visualisation of neurons injected with the  $\Delta 229-235$  SARM1 expression construct in the presence of NR allowed us to next assess their response to various stresses. Intriguingly, we found that the modest stresses associated with changes in culture conditions as a result of media change, even to new NR-containing medium, was sufficient to trigger a substantial loss of the  $\Delta 229-235$  SARM1 neurons (compared to not changing media), and further manipulations designed to reduce NAD<sup>+</sup> biosynthesis - removal of NR, or a



combination of NR removal and incubation with NAMPT inhibitor FK866 to block the rate-limiting step in the NAD<sup>+</sup> salvage pathway - caused additional, incremental decreases in cell survival (Figure 6C and 6D). In contrast, neurons injected with the WT SARM1 construct or empty vector were not substantially affected by any of the manipulations (Figure 6C and 6D and Figure 6 - figure supplement 2B). Importantly, we could not differentiate the timing of cell death and neurite degeneration in these experiments, suggesting either that the primary effect is on neuronal viability or that separate cell body and neurite death mechanisms occur simultaneously.

In order to assess whether NADase activity is required for the pro-death effects of  $\Delta$ 229-235 SARM1, we combined the  $\Delta$ 229-235 deletion with the E642A NADase-inactivating mutation (Essuman et al., 2017). We found that double mutant  $\Delta$ 229-235/E642A SARM1, like single mutant E642A SARM1, has little or no effect on NAD<sup>+</sup> levels in transfected HEK 293T cells (Figure 7A), consistent with a lack of NADase activity. We also saw much more robust expression of  $\Delta$ 229-235/E642A SARM1 and co-expressed ZsGreen compared to cells expressing  $\Delta$ 229-235 SARM1 (Figure 7B). This further supports a correlation between SARM1 NADase activity and *de novo* protein synthesis. Crucially, in contrast to  $\Delta$ 229-235 SARM1, SCG neurons injected with a  $\Delta$ 229-235/E642A SARM1 construct were easily identified, even in the absence of NR supplementation, and were not sensitive to combined NR removal and incubation with NAMPT inhibitor FK866 (after being cultured in the presence of NR) (Figure 7C and 7D). Therefore, NADase activity is required for the pro-death effects of  $\Delta$ 229-235 SARM1 in this assay.

### **Evidence for enrichment of strong GoF SARM1 variants in ALS, HSP and other motor nerve disorder patients.**

Among the total of 23 SARM1 ARM domain and other N-terminal coding variants seen in patients and controls in the Project MinE DF1 and Answer ALS databases, we have identified a group of seven of the exclusively patient-associated variants - L223P,  $\Delta$ 229-235,  $\Delta$ 249-252,



R267W, V331E, E340K and T385A SARM1 - as having very strong constitutive NADase GoF, with each being 10-20 times more active than WT SARM1. No other variants came close to this level, although V112I (in a patient) and V88M and A210V (in controls) showed more modest increases in constitutive activity to 1.7-2.2 times that of WT SARM1. Therefore, within these datasets, strong NADase GoF *SARM1* alleles are only seen in patients and never in controls. This is consistent with our hypothesis that strong SARM1 NADase GoF is a risk factor for ALS.

In order to investigate this association in more depth, we assessed whether any of the 23 variants assessed for function in this study appear in other relevant cohorts, including cohorts containing patients with HSP and other motor nerve disorders. If the association is robust, then the rare, strong GoF variant alleles identified here should remain enriched in patients and underrepresented in control individuals, while variants with properties more like WT SARM1 would not show consistent association with either group. We identified the following additional datasets for this purpose: case and control samples in Project MinE data freeze 2 (DF2) that were not part of DF1; samples from motor nerve disorder cases and selected control groups (see Materials and Methods) from the GENESIS project (Gonzalez et al., 2015) and a UCL rare disease (neurology) dataset; cases and controls from an HSP study; and the Lothian birth cohort (LBC) (<http://www.lothianbirthcohort.ed.ac.uk>) as an additional aged control cohort. Among these datasets, four additional cases are heterozygous for one of the strong GoF alleles (two ALS cases, one HSP case and one upper and lower motor nerve disorder case) whereas no controls in any dataset were identified as carriers of these alleles (Table 3). Therefore, in total, 13 of the 11,117 patients in the combined datasets are heterozygous for a strong GoF *SARM1* allele (13 out of 22,234 alleles), with no carriers among 10,402 controls (0 out of 20,804 alleles) (Table 3). In contrast, a number of the other alleles encoding variants with properties more similar to WT SARM1, including some of those previously only associated with cases in Project MinE DF1 and Answer ALS, were present in both cases and controls in the new datasets (Table 3).

We next performed statistical analyses on aggregated data from all the datasets to test the strength of the association specifically between *SARM1* GoF and motor nerve disorders. Crucially, burden testing of the group of seven strong GoF variant alleles together in the combined datasets revealed a highly significant association with disease (burden test and SKAT-O  $p=0.00017$ ) whereas there was no clear association with disease when considering all the other alleles as a group (burden test  $p=0.47$ , SKAT-O  $p=0.61$ ). In addition, there is a greater than four times enrichment of the strong GoF alleles among our aggregated patient cohorts compared to European (non-Finnish) non-neuro samples from gnomAD v3.1.1 (Table 4 - MAF of 0.00058 versus 0.00014) and, despite the presence of a few carriers of strong GoF *SARM1* alleles in this gnomAD cohort and the uncertainty regarding their health status (see Table 4 legend), their inclusion as additional controls in the statistical tests actually strengthens the association between the *SARM1* strong GoF alleles and disease (burden test  $p=0.000025$ , SKAT-O  $p=0.000057$ ). Notably, disease-association also remains even when the patient-associated V112I *SARM1* allele and control-associated V88M and A210V *SARM1* alleles, encoding more modest GoF variants, are grouped with the strong GoF alleles (burden test  $p=0.0042$ , SKAT-O  $p=0.0021$  excluding gnomAD samples, and burden test  $p=0.000047$ , SKAT-O  $p=0.00019$  including gnomAD samples). Together, these tests suggest that *SARM1* ARM domain coding variation that results in constitutive NADase hyperactivation is very strongly associated with ALS and other motor nerve disorders. Individual-level data were not available for all datasets to identify covariates to correct for population stratification, but the use of broadly matched datasets to minimise the effect of population variation (see Materials and Methods) means that results are likely to reflect true disease-associated genetic variation.

### **Phenotypic heterogeneity and variable age-of-onset in patients with *SARM1* GoF alleles**

Finally, we collated clinical information for all the individuals in our combined datasets that are heterozygous for the *SARM1* alleles encoding the strong GoF variants identified in this study (Table 5). Information is also provided for one additional ALS case heterozygous for the  $\Delta 229-235$  variant *SARM1* allele from an independent source, and for the one individual

heterozygous for the allele encoding moderate GoF V112I *SARM1* for comparison. Intriguingly, as well as confirming there is no patient duplication among the group, this reveals a broad range of clinical presentation and a highly variable age-of-onset among the cases, with no obvious heritability.

The lack of any clear and consistent trend in disease severity probably indicates that *SARM1* GoF is not the only driver of disease in some or all of these cases. In this respect it is notable that two of the ALS cases are also heterozygous for I114T (previously reported as I113T) *SOD1* and L17P *FIG4* variant alleles that have previously been linked to ALS or recessive Charcot-Marie-Tooth disease type 4J (CMT4J). Given that the I114T *SOD1* allele shows incomplete penetrance (Lopate et al., 2010) and the L17P *FIG4* allele has previously only been associated with CMT4J in combination with a null allele (Nicholson et al., 2011), it raises the possibility that an interaction with the *SARM1* GoF alleles is critical for pathogenesis in these ALS cases. Therefore, an interaction between *SARM1* GoF alleles and other risk alleles may enhance phenotypic expressivity and underlie some of the variability in clinical presentation.

## DISCUSSION

Here, we have identified seven disease-associated *SARM1* alleles in patients with ALS or other motor nerve disorders that encode missense or in-frame microdeletion variants with constitutive NADase activity as much as ten to twenty times higher than that of WT *SARM1*. This level of activity is comparable to that of *SARM1* lacking any auto-inhibition and is substantially higher than the activity of WT *SARM1* in the presence of NMN, a natural activator of *SARM1* NADase during injury-induced and other related forms of axon degeneration. Although co-expression experiments suggest that the NADase activity of hetero-oligomers of WT and strong NADase GoF *SARM1* will be around half that of homo-oligomers of strong GoF *SARM1* alone, this still represents a considerable increase in activity. Consistent with this, acute expression of strong NADase GoF *SARM1* alongside WT *SARM1* in primary cultured neurons is sufficient to promote robust NADase-dependent cell death (and simultaneous or secondary axon degeneration) in response to otherwise non-harmful mild stress. Crucially, these seven strong GoF alleles are enriched in the motor nerve disorder cohorts studied compared to control groups or the wider population implicating constitutively hyperactivated *SARM1* as a risk factor for these diseases.

Despite the robust association between *SARM1* strong GoF variants and disease in these cohorts, the proportion of motor nerve disorder cases that are heterozygous for the strong GoF alleles identified here is only 0.12%. However, other ALS patient-associated *SARM1* alleles encoding variants with predicted strong NADase GoF have been identified concurrently with this study (Bloom et al., 2021), and there are many other ARM domain variant alleles among our extended datasets that remain untested and could, therefore, include additional GoF alleles. The real percentage may thus be higher. Furthermore, in light of this association, we expect that other *SARM1* GoF and/or activation mechanisms will also be found to play a key role in motor nerve disorders. For example, the GWAS association between a *SARM1* intragenic SNP and ALS (Fogh et al., 2014; van Rheenen et al., 2016) could be driven by

increased *SARM1* expression as a result of more common variants which impact transcriptional regulation of the *SARM1* gene. Reduced expression of Stathmin-2 (*STMN2*, also known as *SCG10*), which potentiates programmed axon degeneration (Shin et al., 2012), has also been linked to the disease via a mechanism that is expected to involve aberrant *SARM1* activation. Specifically, *STMN2* depletion increases the vulnerability of ALS patient iPSC-derived neurons (Klim et al., 2019; Melamed et al., 2019), and a non-coding *STMN2* variant that influences gene expression has recently also been associated with increased risk of sporadic disease (Theunissen et al., 2021). An age-related decline in *NMNAT2* expression and/or delivery to axons or exposure to environmental toxins could also result in aberrant *SARM1* activation and increased risk of disease (Milde et al., 2015; Loreto et al., 2020; Wu et al., 2021).

The association between motor nerve disorders and functionally-confirmed strong GoF variants of *SARM1* we report here is highly significant at the individual gene level and contrasts with the absence of disease association for neighbouring variants with properties more comparable to WT *SARM1* (thereby representing good controls for testing our hypothesis). Thus, unlike a conventional gene burden analysis, it is the functional consequence of each variant, rather than its location, that correlates with disease. The low allele frequency of the GoF variants, even after their enrichment in ALS, means there is insufficient power to show genome-wide significance, although the lead SNP in an ALS GWAS study, rs35714695, which is far more common and hence does show genome-wide significance, is located only 8.3-11.4 kb from each of these strong GoF variants within the same ~200 kb linkage disequilibrium block (Fogh et al., 2014; van Rheenen et al., 2016). Although these are essentially independent observations, as it is not feasible to confirm linkage disequilibrium between such rare SNPs and rs35714695, they separately support the notion that *SARM1* contributes to ALS. Hypothesis-driven studies such as this one are, of course, not unbiased in the way that GWAS is, but instead depend substantially on the strength of the hypothesis and the availability of clear functional data to support it. However, where these are both provided they have a vital role to play in complementing GWAS studies by closing the large heritability gap

in ALS and other disorders (Van Damme, 2018), since genome wide significance for genuinely pathogenic, but very rare alleles, may not be an achievable goal. The current study also illustrates the importance of publicly available datasets such as Project MinE in making such work possible.

Among the SARM1 variants tested for function in this study, the seven with strong NADase GoF can be clearly differentiated from the rest. However, we cannot rule out that a more modest increase in constitutive NADase GoF, directly demonstrated for some variants in NADase assays of recombinant protein (V88M, V112I and A210V SARM1) or possibly implied for others based on their ability to modestly enhance NAD<sup>+</sup> loss in HEK cells (A275V and A341V SARM1), might also have biologically-relevant consequences. It was also surprising to us that raised constitutive activity was the only GoF effect we identified among the ALS patient-associated *SARM1* alleles, with no evidence of enhanced triggering by NMN from a normal basal level. While our recombinant protein assays provide a useful insight into the relative NMN-responsiveness of the different variants, and can clearly identify reduced NMN sensitivity, it is possible that some GoF relating to enhanced inducibility may not yet have been identified and that this could contribute to pathogenesis in some patients.

Recently, substantial progress has been made into elucidating the mechanism of auto-inhibition of SARM1 NADase activity by the ARM domain (Jiang et al., 2020; Sporny et al., 2020; Shen et al., 2021) and the strong GoF variants identified here could represent useful tools for further understanding. Given their vastly higher activities relative to NMN-activated WT SARM1, it seems unlikely that the amino acid changes in the strong GoF variants simply mimic the effects of NMN binding and/or block NAD<sup>+</sup> binding in the allosteric site in the ARM domain and, notably, there is little direct overlap with residues that appear to be critical for NAD<sup>+</sup>/NMN interactions (Figley et al., 2021). Instead, constitutive activities similar that of the SAM-TIR fragment of SARM1 lacking the entire auto-inhibitory ARM domain suggest that the amino acid changes probably cause more profound structural changes that disrupt inhibitory interaction between the ARM and TIR domains completely. This would also explain the complete unresponsiveness of the variants to NMN. Consistent with this, some of the changes

in the strong GoF variants involve residues located at an ARM-TIR interface (R249 and E252), an ARM-SAM interface (V331) or an ARM-ARM interface (T385) (Shen et al., 2021).

Given the potent pro-death effect of constitutively hyperactivated SARM1 in primary neuronal cultures, the heterogeneous clinical presentation of motor nerve disorder patients with strong GoF *SARM1* alleles is surprising. In fact, that they survive at all with such high constitutive SARM1 NADase activity is, in itself, unexpected given that our data indicate that WT SARM1 in the presence of NMN is less active than hetero-oligomers of WT and strong GoF SARM1 but is still predicted to be responsible for the early lethality in both mice and humans lacking functional NMNAT2 (Gilley et al., 2013, 2015; Lukacs et al., 2019). We therefore propose that chronic, physiological expression of constitutively hyperactivated SARM1 specifically triggers compensatory responses during development to limit its impact. Suppressed expression of SARM1 itself, as seen in transfected HEK 293T cells, is one possible compensatory change that could restrict NADase activity *in vivo*, although this seems to be a direct consequence of acute and extensive SARM1-dependent depletion of NAD<sup>+</sup> (and/or ATP) resulting in suppression of *de novo* protein synthesis and it is hard to imagine long-term neuron survival under these conditions. Intriguingly, differential responses to constitutive or acute silencing of a single *Nmnat2* allele is also suggestive of compensatory changes in the chronic condition (Gilley et al., 2013) and it is tempting to speculate that they might be related.

It will also be important to firmly establish the extent of the penetrance of the GoF alleles identified here and whether any show a familial association with motor nerve disorders. However, their presence in sporadic cases, and co-occurrence with partially-penetrant disease variants of other genes in some patients, suggest that they have to interact with other risk factors to reveal their pathogenicity. Future human genetics studies should help to address these possible associations. There are also a number of drug development programmes and other avenues of therapeutic intervention targeting SARM1 currently being pursued (Geisler et al., 2019; Hughes et al., 2021; Bosanac et al., 2021) and individuals with *SARM1* GoF alleles would thus be ideal test subjects if other requirements are met.

In summary, we report seven rare *SARM1* alleles encoding variants with constitutive NADase activity much higher than NMN-activated wild-type *SARM1*, and broadly comparable to that of completely uninhibited *SARM1*, that show clear association with ALS and other motor nerve disorders in a small percentage of patients. There is phenotypic heterogeneity in the clinical presentation, reminiscent of other ALS disease genes, and this raises intriguing questions both about the potential pathogenic role of constitutively hyperactive *SARM1* and about why their extraordinarily high NADase activity is not immediately lethal. Association of function-altering coding variants also supports the notion that *SARM1* has a wider contribution to ALS. While further replication in other cohorts is important, along with direct evidence that *SARM1* activity is necessary for pathogenesis to firmly establish causation, the results presented here strongly implicate *SARM1* as a risk factor in this group of diseases.



## MATERIALS AND METHODS

### Constructs and reagents

The bicistronic pLVX-IRES-ZsGreen1 vector (Clontech / Takara Bio 632187) was the backbone for all SARM1 expression constructs used in this study, unless stated otherwise. SARM1 and ZsGreen(1) are co-expressed from a bicistronic mRNA transcript under the control of the CMV promoter. The complete open reading frame (ORF) of the canonical 724 amino acid human SARM1 protein was cloned into the first cistron between the *EcoRI* and *SpeI* restriction sites. An in-frame Flag tag followed by a stop codon were introduced between the *XbaI* and *BamHI* restriction sites immediately 3' to SARM1 ORF at the C-terminus. The expressed SARM1 thus possesses a C-terminal Flag (after a 4 amino acid linker). ZsGreen occupies the second cistron and undergoes IRES-driven translation. For experiments in Figure 6 - figure supplement 1, untagged SARM1 was expressed from a pCMV-Tag4A vector backbone (Agilent Technologies) with the 724 amino acid ORF, including a consensus Kozak sequence immediately 5' to the ATG codon and a stop codon at the 3' end of the ORF, cloned between the *BamHI* and *XhoI* restriction sites of the multiple cloning site. Point mutations were introduced into constructs by QuikChangeII site-directed mutagenesis (Stratagene) and microdeletions were introduced using overlap extension PCR (J. Lee et al., 2010). The presence of the mutations and absence of other PCR errors was confirmed by DNA sequencing (Department of Biochemistry, University of Cambridge). pDsRed2-N1 (Clontech) was used for expression of variant *Discosoma* red fluorescent protein (DsRed) to label microinjected neurons and their neurites.

PBS without calcium and magnesium (Merck) was used throughout, unless stated otherwise. NAD<sup>+</sup> and NMN (both Merck) were dissolved in water and stored frozen as concentrated stocks. Nicotinamide riboside (NR) was prepared as a 100 mM stock from Tru Niagen<sup>®</sup> capsules by dissolving the contents in PBS and passing through a 0.22 µm filter. NAMPT inhibitor FK866 was a kind gift from Prof. Armando Genazzani, University of Novara.

## **Cell lines and transfection**

Human embryonic kidney (HEK) 293T cells (clone 17, [HEK 293T/17]) were obtained from the American Type Culture Collection (ATCC, CRL-11268, RRID:CVCL\_1926) and had been authenticated by STR profiling. Mycoplasma contamination was not detected. Cells were grown in DMEM with 4,500 mg/L glucose and 110 mg/L sodium pyruvate (PAA), supplemented with 2 mM glutamine, 1% penicillin/streptomycin (both Invitrogen), and 10% fetal bovine serum (PAA). Cells at 50-70% confluence were transfected with expression constructs (as described in the text / figure legends) using Lipofectamine 2000 reagent (Invitrogen) according to the manufacturer's instructions. Amounts of DNA constructs transfected are described in the figure legends.

## **Measurements of nucleotide levels in transfected HEK 293T cell extracts**

Transfected HEK 293T cells (from individual wells of 24-well plates) were collected and washed in ice-cold PBS 24 h after transfection and lysed in ice-cold KHM buffer (110 mM potassium acetate, 20 mM HEPES pH 7.4, 2 mM MgCl<sub>2</sub>, 0.1 mM digitonin) containing cComplete™, Mini, EDTA-free protease inhibitor cocktail (Roche). Efficient lysis with KHM buffer required an initial trituration by pipetting and intermittent vortexing over a 10 min incubation on ice. Lysates were centrifuged for 5 min at 3000 rpm in a microfuge at 4°C to pellet insoluble material, and supernatants were then collected on ice and diluted to 0.5 µg/µl in cold KHM buffer after protein concentrations had been determined using the Pierce BCA assay (Thermo Fisher Scientific). The NAD/NADH-Glo™ and NADP/NADPH-Glo™ assays (Promega) were used to measure NAD<sup>+</sup> and NADP<sup>+</sup> in extracts. First, 25 µl of each extract was mixed with 12.5 µl 0.4M HCl and heated to 60°C for 15 min to degrade NADH and NADPH before being allowed to cool to room temperature (RT) for 10 min. Reactions were then neutralised by adding 12.5 µl 0.5 M Tris base and 10 µl of each neutralised reaction was mixed with 10 µl of the relevant detection reagent on ice in wells of a 384-well white polystyrene

microplate (Corning). Once all reactions had been set up the plate was moved to a GloMax® Explorer plate reader (Promega) and incubated for 40 min at 25°C before reading for luminescence. The CellTiter-Glo® assay (Promega) was used to measure ATP in extracts. Here, 10 µl of extract was mixed directly with 10 µl of assay reagent on ice in wells of a 384-well white polystyrene microplate. Luminescence was then read after 10 min at 25°C using a GloMax® Explorer plate reader. Concentrations of nucleotides were determined from standard curves generated from dilution series of the relevant nucleotides and then calculated as proportions of the amount in extracts from cells transfected in parallel with empty vector.

### **Immunoprecipitation of recombinant SARM1 from HEK 293T cells**

Recombinant, C-terminal Flag-tagged or HA-tagged human SARM1 (WT or variant) was purified from HEK 293T cells by immunoprecipitation. HEK 293T cells in 10 cm and 6 cm dishes and individual wells of a 6 cm dish were respectively transfected with 24 µg, 10 µg and 4 µg of SARM1 expression construct. Media was supplemented with 2 mM NR at the time of transfection. Cells were lysed in KHM buffer as for the measurements of nucleotide levels in transfected HEK 293T cells (see above) but extracts were instead diluted to 1 µg/µl in cold KHM buffer after determining protein concentration. For immunoprecipitation, extracts were incubated overnight at 4°C with rotation with 20 µg/ml mouse ANTI-FLAG® M2 monoclonal antibody (Sigma-Aldrich F3165, RRID:AB\_259529) or 2 µg/ml mouse anti-HA monoclonal antibody, clone 12CA5 (Sigma-Aldrich 11583816001, RRID:AB\_514505) and 50 µl/ml of pre-washed Pierce magnetic protein A/G beads (Thermo Fisher Scientific). For co-immunoprecipitations, beads were collected on a magnetic rack and washed 3x with KHM buffer and 1x with PBS (with protease inhibitors) and then resuspended in PBS containing 1 µg/µl BSA. Beads were resuspended in 150 µl per ml of the original immunoprecipitation volume for normal yield proteins, or 25-50 µl for low yield proteins. Inclusion of BSA in the re-suspension buffer allowed samples to be frozen without substantial loss of SARM1 activity (activity is almost completely lost after one freeze/thaw cycle without its inclusion). The

concentrations of SARM1 proteins in the bead suspension were determined by comparison to a standard curve generated from a dilution series of recombinant SARM1 of known concentration (purified from insect cells) after detection by immunoblotting using a rabbit polyclonal antibody raised against the SAM domains of human SARM1 (both kindly provided by AstraZeneca).

Of particular note, the use of KHM lysis buffer is critical for subsequent assaying of the NADase activity of the purified SARM1 protein. Harsher lysis buffers with high concentrations of strong detergents (e.g., RIPA-based buffers) themselves cause substantial activation of SARM1 NADase and a loss of responsiveness to NMN.

### **NADase assays of recombinant purified SARM1**

A series of test assays were first performed to define appropriate concentrations of immunoprecipitated SARM1 proteins and the earliest, reliable assay timepoints to obtain rates as close as possible to the maximal rate under the various reaction conditions used. Optimised reaction conditions were as follows: 25  $\mu$ l reactions (overall 1x PBS) contained 1 ng/ $\mu$ l SARM1 protein for strong GoF variants (L223P,  $\Delta$ 229-235,  $\Delta$ 249-252, V331E, E340K and T385A) or SAM-TIR fragment, or 5 ng/ $\mu$ l of WT SARM1 and other variants, together with 25  $\mu$ M NAD<sup>+</sup>  $\pm$  10  $\mu$ M or 50  $\mu$ M NMN. Reactions were kept on ice until all had been set up. All reactions were performed with the recombinant SARM1 still attached to beads as inefficient elution severely restricted the yield of the poorly-expressed GoF variants. Bead suspensions were thoroughly mixed prior to addition to the reactions. Constitutive (basal) NAD<sup>+</sup> consumption was measured from reactions containing just NAD<sup>+</sup> as the difference between starting levels (0 h) and levels remaining after a 1 h (for strong GoF variants) or 2 h (for all other variants) incubation at 25°C. NAD<sup>+</sup> consumption in the presence of NMN (both 10  $\mu$ M and 50  $\mu$ M) was calculated after a 1 h incubation for all variants. Reactions were each mixed once mid-way through the incubation period to resuspend the beads. To measure NAD<sup>+</sup> using the NAD/NADH-Glo™ assay, 5  $\mu$ l aliquots of the reaction were removed immediately after setting up (whilst still on ice), to obtain

precise starting levels in individual reactions, and after the defined times listed above. Aliquots were then mixed with 2.5  $\mu$ l of 0.4 M HCl, to stop the reaction, and neutralised by mixing with 2.5  $\mu$ l 0.5 M Tris base after 10 mins. To bring NAD<sup>+</sup> concentrations down to the linear range of the NAD/NADH-Glo™ assay, neutralised samples were subsequently diluted 1 in 50 in a buffer consisting of 50% PBS, 25% 0.4 M HCL, 25% 0.5 M Tris base. 10  $\mu$ l of the diluted sample was then mixed with 10  $\mu$ l of detection reagent on ice in wells of a 384-well white polystyrene microplate (Corning). Once all reactions had been set up the plate was moved to a GloMax® Explorer plate reader (Promega) and incubated for 40 min at 25°C before reading for luminescence. NAD<sup>+</sup> concentrations were determined from standard curves (as above). NAD<sup>+</sup> consumption rates were converted to mol consumed per min per mol of SARM1 protein (mol/min/mol SARM1). This allows a direct comparison of rates between full-length SARM1 and the SAM-TIR fragment. Individual data points for each separate protein preparation are the means of two technical replicates in most cases. Non-specific activity on bead/antibody complexes in control immunoprecipitations (from HEK 293T cells transfected with empty vector) was negligible at less than 0.5% of the constitutive NAD<sup>+</sup> consumption seen for WT SARM1 (average of n=4 assays).

### **Immunoblotting**

Protein extracts from transfected HEK 293T cells used for nucleotide measurements (0.5  $\mu$ g protein/ $\mu$ l, see above) were diluted 1 in 2 with 2x SDS-PAGE loading buffer, and bead suspensions of immunoprecipitated recombinant SARM1 proteins were diluted 1 in 16 for immunoblotting. Samples were incubated at 100°C for 3 mins and 10  $\mu$ l of sample per lane resolved on 4-20% gradient gels (Bio-Rad) before being transferred to Immobilon-P membrane (Millipore). Blots were blocked in TBS (20 mM Tris p.H. 8.3, 150 mM NaCl) containing 5% skim milk powder for 30 mins at RT before being incubated overnight at 4°C with primary antibody in TBS containing 0.05% Tween-20 (Merck) (TBST) and 5% milk. After 3x 10 min washes in TBST, blots were incubated for 1-2 h at RT with appropriate HRP-

conjugated secondary antibodies (diluted 1 in 3,000, Bio-Rad) in TBST with 5% milk. After 3x 10 min washes in TBST and one rinse in TBS, blots were incubated with Pierce™ ECL Western Blotting Substrate or SuperSignal™ West Dura Extended Duration Substrate (both Thermo Fisher Scientific) and imaged using an Alliance chemiluminescence imaging system (UVITEC Cambridge). Relative band intensities on captured digital images were determined from areas under histogram peaks using Fiji software (<http://fiji.sc>).

The following primary antibodies were used: mouse ANTI-FLAG® M2 monoclonal antibody (Sigma-Aldrich F3165, RRID:AB\_259529, 2 µg/ml as standard or 0.5 µg/ml for probing immunoblots of co-immunoprecipitations), mouse anti-ZsGreen1 monoclonal antibody, clone OTI2C2 (OriGene TA180002, RRID:AB\_2622267, 1 in 1,000), mouse anti-GAPDH monoclonal antibody, clone 6C5 (Abcam ab8245, RRID:AB\_2107448, 1 in 2,000), mouse anti-HA monoclonal antibody, clone 12CA5 (Sigma-Aldrich 11583816001, RRID:AB\_514505, 0.2 µg/ml as standard or 0.05 µg/ml for immunoblots of co-immunoprecipitations), a rabbit polyclonal antibody raised against the SAM domains of human SARM1 (kindly provided by AstraZeneca, 1 in 2,000) and a mouse anti-SARM1 monoclonal antibody (Chen et al., 2011) (1 in 2,000).

### **Primary SCG neuron cultures and microinjection**

SCG neuron cultures were prepared from wild-type P1-P3 mouse pups (C57BL/6J, RRID:IMSR\_JAX:000664), or *Sarm1*<sup>-/-</sup> P1-P3 pups (RRID:MGI:3765957) for Figure 6 - Figure Supplement 1 only, and were microinjected following established protocols (Gilley & Loreto, 2020). Mice were used in accordance with the Home Office Animal Scientific Procedures Act (ASPA), 1986 under project licence P98A03BF9. Dissected SCG ganglia were incubated at 37°C for 20 min in 0.025% trypsin (Sigma) dissolved in PBS followed by 20 min in 0.2% collagenase type II (Gibco) in PBS (with calcium and magnesium). After, ganglia were gently triturated using a pipette tip in SCG culture medium comprising Dulbecco's Modified Eagle's Medium (DMEM) (4500 mg/L glucose and 110 mg/L sodium pyruvate, Sigma) supplemented with 2 mM glutamine (Invitrogen), 1% penicillin/streptomycin (Invitrogen), 10% fetal bovine

serum (Sigma), 2 µg/ml aphidicolin (Calbiochem), and 100 ng/ml 7S NGF (Invitrogen). After a 1-2 h pre-plating stage to remove non-neuronal cells, dissociated neurons were plated in a small laminin-coated area on ibidi µ-dishes pre-coated with poly-L-lysine (Thistle Scientific). Cultures were maintained in SCG medium, which was changed every 2-3 days, and were injected after 5-7 days. The inclusion of aphidicolin in the medium suppressed growth and proliferation of any non-neuronal cells.

SCG neurons were microinjected using a Zeiss Axiovert 200 microscope with an Eppendorf 5171 transjector and 5246 micromanipulator system and Eppendorf Femtotips. Expression constructs were diluted in 0.5x PBS and cleared by spinning through a Spin-X filter (Costar). The mix was injected into the nuclei of SCG neurons. The concentrations of expression constructs in the injection mix are listed in figure legends. 40-45 neurons were injected per dish. Although ZsGreen is co-expressed from the SARM1 vector used in these studies, restricting the amount of vector injected to limit SARM1 expression meant that the resulting ZsGreen expression was itself not sufficient for clear visualisation of injected neurons and their neurites. For the purposes of visualisation we thus had to co-inject a DsRed expression construct at a higher concentration.

## Imaging

Fluorescence and phase contrast images of transfected HEK 293T cells and injected SCG neurons were acquired with a Leica DFC365FX fluorescence monochrome camera attached to a Leica DMI8 inverted fluorescence microscope using 10x and 20x objectives.

## Database resources

The different datasets used in this study are annotated to different genome builds, either Genome Reference Consortium Human Build 37 (GRCh37), also known as hg19 (for Project MinE, GENESIS and the HSP cohort) or GRCh38 / hg38 (for Answer ALS, UCL and the LBC). GRCh37 is annotated to a non-canonical *SARM1* cDNA and there are sequence irregularities compared to GRCh38 (see Figure 1 legend). Therefore, throughout this study we only report



*SARM1* genetic variation using numbering for genome build to GRCh38 and the canonical 724 amino acid *SARM1* protein (having converted all GRCh37-based information from datasets that use that build). For this reason we also use population MAFs reported in gnomAD v3.1.1 in this study as it is referenced to GRCh38 (as opposed to gnomAD v2.1.1 which is referenced to GRCh37 and consequently contains a number of MAF discrepancies and additionally a lack of coverage for some alleles).

Many neurological disorders are represented in the complete GENESIS and UCL databases. Therefore, for the purposes of this study, our disease cohorts are restricted to individuals with motor nerve disorders and our control cohorts are restricted to unaffected individuals and individuals with non-neurological conditions. For GENESIS, the disease cohort consisted of individuals with ALS, pure or complex HSP, distal hereditary motor neuropathy and frontotemporal dementia with motor neuron disease, and the control cohort consisted of unaffected individuals, individuals with dilated cardiomyopathy and small numbers of individuals with metabolic or congenital disorders. For the UCL dataset, the disease cohort consisted of cases of spinal muscular atrophy and related disorders (including ALS), HSP and hereditary motor and sensory neuropathy, and the control cohort consisted of unaffected (control) individuals and a smaller number of individuals with Cluster headache syndrome.

Sample sequencing, variant calling and quality control methods for each dataset are broadly comparable. These are described elsewhere for Project MinE (Project MinE ALS Sequencing Consortium, 2018) and the LBC (Wragg et al., 2020). Information for *SARM1* variants in the Answer ALS project was obtained using ANNOVAR (Wang et al., 2010) annotation on GRCh38 positions, after read mapping with Burrows-Wheeler Alignment tool (BWA) (Li & Durbin, 2010), variant calling with GATK (McKenna et al., 2010), and joint-genotype using Sentieon (Freed et al., 2017). For GENESIS samples, Illumina WGS sequencing samples were aligned to the GRCh37 reference using BWA. Duplicate reads were marked using Picard's MarkDuplicates utility. The bam file containing de-duplicated reads was then used to call single nucleotide variations and indels using Freebayes, prior to October 2018, or later with GATK (v4). For the UCL rare disease dataset, exome sequencing was



performed using the Agilent SureSelect Human All Exon V6 enrichment and enriched libraries underwent 150 base pair, paired-end sequencing on an Illumina HiSeqX10 next-generation sequencing platform. Sequence data were aligned to GRCh38 and variant calling using GATK with filtering of PCR duplicates. For the HSP study samples. WES and WGS sequencing data were processed by GSvar pipeline (<https://github.com/imgag/ngs-bits>) and sequencing files were aligned to GRCh37 human reference by BWA. Variants were called by GATK v4 with filtering of PCR duplicates. It was not feasible within the context of this study to validate variants by obtaining raw sequencing data or DNAs for Sanger sequencing but there is strong confidence in calling all variants tested in this study based on phred-scaled quality scores, when available.

Although complete ancestry information is not available to us, the vast majority of samples in all datasets used in this study, other than those in the GENESIS cohorts, are expected to be of predominantly European ancestry, and even within the GENESIS cohorts a smaller majority are expected to be of European origin. This is broadly supported by the observed frequency of the P332Q *SARM1* allele in each cohort, an allele that is relatively more common in the European (non-Finnish) population than other populations (Table 3). As such, ancestry is not expected to have a substantial effect on the association statistics we have performed using aggregated data.

No new datasets or code were generated for this study. The Project MinE initiative data browser for Data Freeze 1 for searching genetic variation in patient and control cohorts was accessed at <http://databrowser.projectmine.com/>. Access to additional WGS / WES data in Project MinE (for DF2) and the other databases explored in this study was obtained upon request. Researchers can apply for similar access via the following links or lead investigators (who can be contacted via the corresponding author):

Project MinE - <https://www.projectmine.com/research/data-sharing/>

Answer ALS - <https://www.nygenome.org/als-consortium/>

GENESIS - <https://neuropathycommons.org/genetics/genesis-platform>

UCL rare disease (neurology) dataset - Prof. Henry Houlden (listed author).

HSP study - Dr. Rebecca Schüle (listed author).

Lothian Birth Cohort - <https://www.ed.ac.uk/lothian-birth-cohorts/data-access-collaboration>

There may be restrictions for commercial companies in some cases.

### **Patient details**

This is a retrospective study using anonymised data so specific consent was not obtained by the authors, but consent was obtained at each site that contributed patient information to this study in accordance with their local Institutional Review Boards (IRBs). Patient information for the Answer ALS project patients (patient IDs NEUMA411HJP and NEUBD218YR3) was already publicly available at <https://dataportal.answerals.org/search>.

### **Statistics**

Multiple comparisons, multiple paired *t* tests and one- or two-way ANOVA were performed using Prism software (GraphPad Software Inc., La Jolla, CA, USA) as described in the figure legends. Log transformation of the data was performed prior to statistical testing where appropriate as indicated in figure legends; however, non-transformed data were plotted on graphs in all Figures for ease of interpretation. A *p*-value of <0.05 was considered significant and values above this cut-off are considered not significant (ns). For tests applying a false discovery rate (FDR) correction, the adjusted *p*-value we report is the *q*-value.

To determine whether there is a burden of rare variants (minor allele frequency <0.01) in the *SARM1* gene based on their functional properties (as determined in this study), we performed burden and optimized sequence kernel association test (SKAT-O) as implemented in the SKAT-O R package (S. Lee et al., 2012). 'Burden' refers to a linear sum of  $\chi^2$  random variables where each variable is assigned a genetic variant (Davies, 1980).

## ACKNOWLEDGMENTS

This work was supported by a grant from the Robert Packard Center for ALS Research at Johns Hopkins (to M.P.C, also supporting J.G.) and in part by data provided by the Answer ALS Consortium – also administered by the Robert Packard Center. Its contents are solely the responsibility of the authors and do not necessarily represent the official views of The Johns Hopkins University or any grantor providing funds to its Robert Packard Center for ALS Research. Parts of this work were also supported by UK Biotechnology and Biological Sciences Research Council (BBSRC) / AstraZeneca Industrial Partnership award BB/S009582/1 (to M.P.C, also supporting J.G., O.J.) and Wellcome Trust Collaborative award 220906/Z/20/Z (to M.P.C and M.M.R, also supporting J.G., O.J., M.P.). Additional support was provided by UK Medical Research Council (MRC) awards MR/L501529/1 and MR/R024804/1 and the UK Economic and Social Research Council (ESRC) award ES/L008238/1 under the aegis of the EU Joint Programme - Neurodegenerative Disease Research (JPND) ([www.jpnd.eu](http://www.jpnd.eu)) (to A.A-C.), the Motor Neurone Disease (MND) Association and the National Institute for Health Research (NIHR) Biomedical Research Centre at South London and Maudsley NHS Foundation Trust and King's College London (A.A-C., A.I.), National Institute of Neurological Diseases and Stroke (NINDS) and office of Rare Diseases awards U54NS065712 (to M.M.R., also supporting M.P.), and 5R01NS072248-10 and 5R01NS105755-03 (to S.Z., also supporting M.C.D.), National Institute of Environmental Health Sciences (NIEHS) award K23ES027221 (to S.A.G.), and Wellcome Trust award 216596/Z/19/Z (to J.C.K.). Samples used in this research were in part obtained from the UK National DNA Bank for MND Research, funded by the MND Association and the Wellcome Trust. Sample management was undertaken by Biobanking Solutions funded by the MRC at the Centre for Integrated Genomic Medical Research, University of Manchester. Whole-genome sequencing of the Lothian Birth Cohorts was funded by the Biotechnology and Biological Sciences Research Council. Anne Segonds-Pichon kindly helped with statistical analyses. We are grateful to the following for accessing Project MinE data: Evelijn Zeijdner

and Jan Veldink (UMC Utrecht). We also thank the following for useful discussion and feedback: Jemeen Sreedharan, Ahmet Höke, David Bennett, Steve Finkbeiner, Giuseppe Orsomando and all members of the Coleman group. We would like to thank people with MND/ALS and their families for their participation in this project.

## REFERENCES

- Angeletti, C., Amici, A., Gilley, J., Loreto, A., Trapanotto, A. G., Antoniou, C., Coleman, M. P., & Orsomando, G. (2021). *Programmed axon death executor SARM1 is a multi-functional NAD(P)ase with prominent base exchange activity, all regulated by physiological levels of NMN, NAD, NADP and other metabolites* (p. 2021.07.14.451805). <https://doi.org/10.1101/2021.07.14.451805>
- Arai, T., Hasegawa, M., Akiyama, H., Ikeda, K., Nonaka, T., Mori, H., Mann, D., Tsuchiya, K., Yoshida, M., Hashizume, Y., & Oda, T. (2006). TDP-43 is a component of ubiquitin-positive tau-negative inclusions in frontotemporal lobar degeneration and amyotrophic lateral sclerosis. *Biochemical and Biophysical Research Communications*, 351(3), 602–611. <https://doi.org/10.1016/j.bbrc.2006.10.093>
- Bloom, A. J., Mao, X., Strickland, A., Sasaki, Y., Milbrandt, J., & DiAntonio, A. (2021). Constitutively active SARM1 variants found in ALS patients induce neuropathy. *BioRxiv*, 2021.04.16.439886. <https://doi.org/10.1101/2021.04.16.439886>
- Bosanac, T., Hughes, R. O., Engber, T., Devraj, R., Brearley, A., Danker, K., Young, K., Kopatz, J., Hermann, M., Berthemy, A., Boyce, S., Bentley, J., & Krauss, R. (2021). Pharmacological SARM1 inhibition protects axon structure and function in paclitaxel-induced peripheral neuropathy. *Brain: A Journal of Neurology*. <https://doi.org/10.1093/brain/awab184>
- Bratkowski, M., Xie, T., Thayer, D. A., Lad, S., Mathur, P., Yang, Y.-S., Danko, G., Burdett, T. C., Danao, J., Cantor, A., Kozak, J. A., Brown, S. P., Bai, X., & Sambashivan, S. (2020). Structural and Mechanistic Regulation of the Pro-degenerative NAD Hydrolase SARM1. *Cell Reports*, 32(5), 107999. <https://doi.org/10.1016/j.celrep.2020.107999>
- Chen, C.-Y., Lin, C.-W., Chang, C.-Y., Jiang, S.-T., & Hsueh, Y.-P. (2011). Sarm1, a negative regulator of innate immunity, interacts with syndecan-2 and regulates neuronal morphology. *The Journal of Cell Biology*, 193(4), 769–784. <https://doi.org/10.1083/jcb.201008050>
- Coleman, M. P., & Höke, A. (2020). Programmed axon degeneration: From mouse to mechanism to medicine. *Nature Reviews. Neuroscience*, 21(4), 183–196. <https://doi.org/10.1038/s41583-020-0269-3>
- Conforti, L., Gilley, J., & Coleman, M. P. (2014). Wallerian degeneration: An emerging axon death pathway linking injury and disease. *Nature Reviews. Neuroscience*, 15(6), 394–409. <https://doi.org/10.1038/nrn3680>
- Davies, R. B. (1980). Algorithm AS 155: The Distribution of a Linear Combination of  $\chi^2$  Random Variables. *Journal of the Royal Statistical Society. Series C (Applied Statistics)*, 29(3), 323–333. <https://doi.org/10.2307/2346911>
- Di Stefano, M., Loreto, A., Orsomando, G., Mori, V., Zamporlini, F., Hulse, R. P., Webster, J., Donaldson, L. F., Gering, M., Raffaelli, N., Coleman, M. P., Gilley, J., & Conforti, L. (2017). NMN Deamidase Delays Wallerian Degeneration and Rescues Axonal Defects Caused by NMNAT2 Deficiency In Vivo. *Current Biology: CB*, 27(6), 784–794. <https://doi.org/10.1016/j.cub.2017.01.070>
- Di Stefano, M., Nascimento-Ferreira, I., Orsomando, G., Mori, V., Gilley, J., Brown, R., Janeckova, L., Vargas, M. E., Worrell, L. A., Loreto, A., Tickle, J., Patrick, J., Webster, J. R. M., Marangoni, M., Carpi, F. M., Pucciarelli, S., Rossi, F., Meng, W., Sagasti, A., ... Conforti, L. (2015). A rise in NAD precursor nicotinamide mononucleotide (NMN) after injury promotes axon degeneration. *Cell Death and Differentiation*, 22(5), 731–742. <https://doi.org/10.1038/cdd.2014.164>

- Essuman, K., Summers, D. W., Sasaki, Y., Mao, X., DiAntonio, A., & Milbrandt, J. (2017). The SARM1 Toll/Interleukin-1 Receptor Domain Possesses Intrinsic NAD<sup>+</sup> Cleavage Activity that Promotes Pathological Axonal Degeneration. *Neuron*, 93(6), 1334-1343.e5. <https://doi.org/10.1016/j.neuron.2017.02.022>
- Essuman, K., Summers, D. W., Sasaki, Y., Mao, X., Yim, A. K. Y., DiAntonio, A., & Milbrandt, J. (2018). TIR Domain Proteins Are an Ancient Family of NAD<sup>+</sup>-Consuming Enzymes. *Current Biology*, 28(3), 421-430.e4. <https://doi.org/10.1016/j.cub.2017.12.024>
- Figley, M. D., & DiAntonio, A. (2020). The SARM1 axon degeneration pathway: Control of the NAD<sup>+</sup> metabolome regulates axon survival in health and disease. *Current Opinion in Neurobiology*, 63, 59–66. <https://doi.org/10.1016/j.conb.2020.02.012>
- Figley, M. D., Gu, W., Nanson, J. D., Shi, Y., Sasaki, Y., Cunnea, K., Malde, A. K., Jia, X., Luo, Z., Saikot, F. K., Mosaiab, T., Masic, V., Holt, S., Hartley-Tassell, L., McGuinness, H. Y., Manik, M. K., Bosanac, T., Landsberg, M. J., Kerry, P. S., ... Ve, T. (2021). SARM1 is a metabolic sensor activated by an increased NMN/NAD<sup>+</sup> ratio to trigger axon degeneration. *Neuron*, 109(7), 1118-1136.e11. <https://doi.org/10.1016/j.neuron.2021.02.009>
- Fogh, I., Ratti, A., Gellera, C., Lin, K., Tiloca, C., Moskvina, V., Corrado, L., Sorarù, G., Cereda, C., Corti, S., Gentilini, D., Calini, D., Castellotti, B., Mazzini, L., Querin, G., Gagliardi, S., Del Bo, R., Conforti, F. L., Siciliano, G., ... SLAGEN Consortium and Collaborators. (2014). A genome-wide association meta-analysis identifies a novel locus at 17q11.2 associated with sporadic amyotrophic lateral sclerosis. *Human Molecular Genetics*, 23(8), 2220–2231. <https://doi.org/10.1093/hmg/ddt587>
- Freed, D., Aldana, R., Weber, J. A., & Edwards, J. S. (2017). The Sentieon Genomics Tools—A fast and accurate solution to variant calling from next-generation sequence data. *BioRxiv*, 115717. <https://doi.org/10.1101/115717>
- Geisler, S., Huang, S. X., Strickland, A., Doan, R. A., Summers, D. W., Mao, X., Park, J., DiAntonio, A., & Milbrandt, J. (2019). Gene therapy targeting SARM1 blocks pathological axon degeneration in mice. *The Journal of Experimental Medicine*, 216(2), 294–303. <https://doi.org/10.1084/jem.20181040>
- Gerds, J., Brace, E. J., Sasaki, Y., DiAntonio, A., & Milbrandt, J. (2015). SARM1 activation triggers axon degeneration locally via NAD<sup>+</sup> destruction. *Science (New York, N.Y.)*, 348(6233), 453–457. <https://doi.org/10.1126/science.1258366>
- Gerds, J., Summers, D. W., Milbrandt, J., & DiAntonio, A. (2016). Axon Self-Destruction: New Links among SARM1, MAPKs, and NAD<sup>+</sup> Metabolism. *Neuron*, 89(3), 449–460. <https://doi.org/10.1016/j.neuron.2015.12.023>
- Gerds, J., Summers, D. W., Sasaki, Y., DiAntonio, A., & Milbrandt, J. (2013). Sarm1-mediated axon degeneration requires both SAM and TIR interactions. *The Journal of Neuroscience: The Official Journal of the Society for Neuroscience*, 33(33), 13569–13580. <https://doi.org/10.1523/JNEUROSCI.1197-13.2013>
- Gilley, J., Adalbert, R., Yu, G., & Coleman, M. P. (2013). Rescue of peripheral and CNS axon defects in mice lacking NMNAT2. *The Journal of Neuroscience: The Official Journal of the Society for Neuroscience*, 33(33), 13410–13424. <https://doi.org/10.1523/JNEUROSCI.1534-13.2013>
- Gilley, J., & Coleman, M. P. (2010). Endogenous Nmnat2 is an essential survival factor for maintenance of healthy axons. *PLoS Biology*, 8(1), e1000300. <https://doi.org/10.1371/journal.pbio.1000300>
- Gilley, J., & Loreto, A. (2020). Microinjection of Superior Cervical Ganglion Neurons for Studying Axon Degeneration. *Methods in Molecular Biology (Clifton, N.J.)*, 2143, 25–39. [https://doi.org/10.1007/978-1-0716-0585-1\\_3](https://doi.org/10.1007/978-1-0716-0585-1_3)



- Gilley, J., Mayer, P. R., Yu, G., & Coleman, M. P. (2019). Low levels of NMNAT2 compromise axon development and survival. *Human Molecular Genetics*, 28(3), 448–458. <https://doi.org/10.1093/hmg/ddy356>
- Gilley, J., Orsomando, G., Nascimento-Ferreira, I., & Coleman, M. P. (2015). Absence of SARM1 rescues development and survival of NMNAT2-deficient axons. *Cell Reports*, 10(12), 1974–1981. <https://doi.org/10.1016/j.celrep.2015.02.060>
- Gonzalez, M., Falk, M. J., Gai, X., Postrel, R., Schüle, R., & Zuchner, S. (2015). Innovative genomic collaboration using the GENESIS (GEM.app) platform. *Human Mutation*, 36(10), 950–956. <https://doi.org/10.1002/humu.22836>
- Goutman, S. A. (2017). Diagnosis and Clinical Management of Amyotrophic Lateral Sclerosis and Other Motor Neuron Disorders. *Continuum (Minneapolis, Minn.)*, 23(5, Peripheral Nerve and Motor Neuron Disorders), 1332–1359. <https://doi.org/10.1212/CON.0000000000000535>
- Horsefield, S., Burdett, H., Zhang, X., Manik, M. K., Shi, Y., Chen, J., Qi, T., Gilley, J., Lai, J.-S., Rank, M. X., Casey, L. W., Gu, W., Ericsson, D. J., Foley, G., Hughes, R. O., Bosanac, T., von Itzstein, M., Rathjen, J. P., Nanson, J. D., ... Kobe, B. (2019). NAD<sup>+</sup> cleavage activity by animal and plant TIR domains in cell death pathways. *Science (New York, N.Y.)*, 365(6455), 793–799. <https://doi.org/10.1126/science.aax1911>
- Hughes, R. O., Bosanac, T., Mao, X., Engber, T. M., DiAntonio, A., Milbrandt, J., Devraj, R., & Krauss, R. (2021). Small Molecule SARM1 Inhibitors Recapitulate the SARM1<sup>-/-</sup> Phenotype and Allow Recovery of a Metastable Pool of Axons Fated to Degenerate. *Cell Reports*, 34(1), 108588. <https://doi.org/10.1016/j.celrep.2020.108588>
- Huppke, P., Wegener, E., Gilley, J., Angeletti, C., Kurth, I., Drenth, J. P. H., Stadelmann, C., Barrantes-Freer, A., Brück, W., Thiele, H., Nürnberg, P., Gärtner, J., Orsomando, G., & Coleman, M. P. (2019). Homozygous NMNAT2 mutation in sisters with polyneuropathy and erythromelalgia. *Experimental Neurology*, 320, 112958. <https://doi.org/10.1016/j.expneurol.2019.112958>
- Izadifar, A., Courchet, J., Virga, D. M., Verreet, T., Hamilton, S., Ayaz, D., Misbaer, A., Vandenberghe, S., Monteiro, L., Petrovic, M., Sachse, S., Yan, B., Erfurth, M.-L., Dascenco, D., Kise, Y., Yan, J., Edwards-Faret, G., Lewis, T., Polleux, F., & Schmucker, D. (2021). Axon morphogenesis and maintenance require an evolutionary conserved safeguard function of Wnk kinases antagonizing Sarm and Axed. *Neuron*, S0896-6273(21)00505-5. <https://doi.org/10.1016/j.neuron.2021.07.006>
- Jiang, Y., Liu, T., Lee, C.-H., Chang, Q., Yang, J., & Zhang, Z. (2020). The NAD<sup>+</sup>-mediated self-inhibition mechanism of pro-neurodegenerative SARM1. *Nature*, 588(7839), 658–663. <https://doi.org/10.1038/s41586-020-2862-z>
- Klim, J. R., Williams, L. A., Limone, F., Guerra San Juan, I., Davis-Dusenbery, B. N., Mordes, D. A., Burberry, A., Steinbaugh, M. J., Gamage, K. K., Kirchner, R., Moccia, R., Cassel, S. H., Chen, K., Wainger, B. J., Woolf, C. J., & Eggan, K. (2019). ALS-implicated protein TDP-43 sustains levels of STMN2, a mediator of motor neuron growth and repair. *Nature Neuroscience*, 22(2), 167–179. <https://doi.org/10.1038/s41593-018-0300-4>
- Lee, J., Shin, M.-K., Ryu, D.-K., Kim, S., & Ryu, W.-S. (2010). Insertion and deletion mutagenesis by overlap extension PCR. *Methods in Molecular Biology (Clifton, N.J.)*, 634, 137–146. [https://doi.org/10.1007/978-1-60761-652-8\\_10](https://doi.org/10.1007/978-1-60761-652-8_10)
- Lee, S., Emond, M. J., Bamshad, M. J., Barnes, K. C., Rieder, M. J., Nickerson, D. A., NHLBI GO Exome Sequencing Project—ESP Lung Project Team, Christiani, D. C., Wurfel, M. M., & Lin, X. (2012). Optimal unified approach for rare-variant association testing with application to small-sample case-control whole-exome sequencing studies. *American Journal of Human Genetics*, 91(2), 224–237. <https://doi.org/10.1016/j.ajhg.2012.06.007>

- Li, H., & Durbin, R. (2010). Fast and accurate long-read alignment with Burrows-Wheeler transform. *Bioinformatics (Oxford, England)*, 26(5), 589–595. <https://doi.org/10.1093/bioinformatics/btp698>
- Lopate, G., Baloh, R. H., Al-Lozi, M. T., Miller, T. M., Filho, J. A. F., Ni, O., Leston, A., Florence, J., Schierbecker, J., & Allred, P. (2010). Familial ALS with extreme phenotypic variability due to the I113T SOD1 mutation. *Amyotrophic Lateral Sclerosis*, 11(1–2), 232–236. <https://doi.org/10.3109/17482960902898069>
- Loreto, A., Angeletti, C., Gilley, J., Arthur-Farraj, P., Merlini, E., Amici, A., Desrochers, L. M., Wang, Q., Orsomando, G., & Coleman, M. P. (2020). Potent activation of SARM1 by NMN analogue VMN underlies vacor neurotoxicity. *BioRxiv*, 2020.09.18.304261. <https://doi.org/10.1101/2020.09.18.304261>
- Lukacs, M., Gilley, J., Zhu, Y., Orsomando, G., Angeletti, C., Liu, J., Yang, X., Park, J., Hopkin, R. J., Coleman, M. P., Zhai, R. G., & Stottmann, R. W. (2019). Severe biallelic loss-of-function mutations in nicotinamide mononucleotide adenylyltransferase 2 (NMNAT2) in two fetuses with fetal akinesia deformation sequence. *Experimental Neurology*, 320, 112961. <https://doi.org/10.1016/j.expneurol.2019.112961>
- Mackenzie, I. R. A., Bigio, E. H., Ince, P. G., Geser, F., Neumann, M., Cairns, N. J., Kwong, L. K., Forman, M. S., Ravits, J., Stewart, H., Eisen, A., McClusky, L., Kretzschmar, H. A., Monoranu, C. M., Highley, J. R., Kirby, J., Siddique, T., Shaw, P. J., Lee, V. M.-Y., & Trojanowski, J. Q. (2007). Pathological TDP-43 distinguishes sporadic amyotrophic lateral sclerosis from amyotrophic lateral sclerosis with SOD1 mutations. *Annals of Neurology*, 61(5), 427–434. <https://doi.org/10.1002/ana.21147>
- Maekawa, S., Leigh, P. N., King, A., Jones, E., Steele, J. C., Bodi, I., Shaw, C. E., Hortobagyi, T., & Al-Sarraj, S. (2009). TDP-43 is consistently co-localized with ubiquitinated inclusions in sporadic and Guam amyotrophic lateral sclerosis but not in familial amyotrophic lateral sclerosis with and without SOD1 mutations. *Neuropathology: Official Journal of the Japanese Society of Neuropathology*, 29(6), 672–683. <https://doi.org/10.1111/j.1440-1789.2009.01029.x>
- McAlary, L., Plotkin, S. S., Yerbury, J. J., & Cashman, N. R. (2019). Prion-Like Propagation of Protein Misfolding and Aggregation in Amyotrophic Lateral Sclerosis. *Frontiers in Molecular Neuroscience*, 12. <https://doi.org/10.3389/fnmol.2019.00262>
- McKenna, A., Hanna, M., Banks, E., Sivachenko, A., Cibulskis, K., Kernytzky, A., Garimella, K., Altshuler, D., Gabriel, S., Daly, M., & DePristo, M. A. (2010). The Genome Analysis Toolkit: A MapReduce framework for analyzing next-generation DNA sequencing data. *Genome Research*, 20(9), 1297–1303. <https://doi.org/10.1101/gr.107524.110>
- Melamed, Z., López-Erauskin, J., Baughn, M. W., Zhang, O., Drenner, K., Sun, Y., Freyermuth, F., McMahon, M. A., Beccari, M. S., Artates, J. W., Ohkubo, T., Rodriguez, M., Lin, N., Wu, D., Bennett, C. F., Rigo, F., Da Cruz, S., Ravits, J., Lagier-Tourenne, C., & Cleveland, D. W. (2019). Premature polyadenylation-mediated loss of stathmin-2 is a hallmark of TDP-43-dependent neurodegeneration. *Nature Neuroscience*, 22(2), 180–190. <https://doi.org/10.1038/s41593-018-0293-z>
- Milde, S., Adalbert, R., Elaman, M. H., & Coleman, M. P. (2015). Axonal transport declines with age in two distinct phases separated by a period of relative stability. *Neurobiology of Aging*, 36(2), 971–981. <https://doi.org/10.1016/j.neurobiolaging.2014.09.018>
- Neumann, M., Sampathu, D. M., Kwong, L. K., Truax, A. C., Micsenyi, M. C., Chou, T. T., Bruce, J., Schuck, T., Grossman, M., Clark, C. M., McCluskey, L. F., Miller, B. L., Masliah, E., Mackenzie, I. R., Feldman, H., Feiden, W., Kretzschmar, H. A., Trojanowski, J. Q., & Lee, V. M.-Y. (2006). Ubiquitinated TDP-43 in frontotemporal lobar degeneration and amyotrophic lateral sclerosis. *Science (New York, N.Y.)*, 314(5796), 130–133. <https://doi.org/10.1126/science.1134108>



- Nicholson, G., Lenk, G. M., Reddel, S. W., Grant, A. E., Towne, C. F., Ferguson, C. J., Simpson, E., Scheuerle, A., Yasick, M., Hoffman, S., Blouin, R., Brandt, C., Coppola, G., Biesecker, L. G., Batish, S. D., & Meisler, M. H. (2011). Distinctive genetic and clinical features of CMT4J: A severe neuropathy caused by mutations in the PI(3,5)P<sub>2</sub> phosphatase FIG4. *Brain: A Journal of Neurology*, 134(Pt 7), 1959–1971. <https://doi.org/10.1093/brain/awr148>
- Osterloh, J. M., Yang, J., Rooney, T. M., Fox, A. N., Adalbert, R., Powell, E. H., Sheehan, A. E., Avery, M. A., Hackett, R., Logan, M. A., MacDonald, J. M., Ziegenfuss, J. S., Milde, S., Hou, Y.-J., Nathan, C., Ding, A., Brown, R. H., Conforti, L., Coleman, M., ... Freeman, M. R. (2012). DSarm/Sarm1 is required for activation of an injury-induced axon death pathway. *Science (New York, N.Y.)*, 337(6093), 481–484. <https://doi.org/10.1126/science.1223899>
- Ozaki, E., Gibbons, L., Neto, N. G., Kenna, P., Carty, M., Humphries, M., Humphries, P., Campbell, M., Monaghan, M., Bowie, A., & Doyle, S. L. (2020). SARM1 deficiency promotes rod and cone photoreceptor cell survival in a model of retinal degeneration. *Life Science Alliance*, 3(5). <https://doi.org/10.26508/lsa.201900618>
- Panneerselvam, P., Singh, L. P., Ho, B., Chen, J., & Ding, J. L. (2012). Targeting of pro-apoptotic TLR adaptor SARM to mitochondria: Definition of the critical region and residues in the signal sequence. *The Biochemical Journal*, 442(2), 263–271. <https://doi.org/10.1042/BJ20111653>
- Peters, O. M., Lewis, E. A., Osterloh, J. M., Weiss, A., Salameh, J. S., Metterville, J., Brown, R. H., & Freeman, M. R. (2018). Loss of Sarm1 does not suppress motor neuron degeneration in the SOD1G93A mouse model of amyotrophic lateral sclerosis. *Human Molecular Genetics*, 27(21), 3761–3771. <https://doi.org/10.1093/hmg/ddy260>
- Project MinE ALS Sequencing Consortium. (2018). Project MinE: Study design and pilot analyses of a large-scale whole-genome sequencing study in amyotrophic lateral sclerosis. *European Journal of Human Genetics: EJHG*, 26(10), 1537–1546. <https://doi.org/10.1038/s41431-018-0177-4>
- Rossor, A. M., Kalmar, B., Greensmith, L., & Reilly, M. M. (2012). The distal hereditary motor neuropathies. *Journal of Neurology, Neurosurgery, and Psychiatry*, 83(1), 6–14. <https://doi.org/10.1136/jnnp-2011-300952>
- Rothstein, J. (2020, October 28). *Answer ALS: A Large-Scale Resource for Sporadic and Familial ALS Combining Clinical Data with Multi-Omics Data from Induced Pluripotent Cell Lines*. <https://doi.org/10.21203/rs.3.rs-96858/v1>
- Sasaki, Y., Kakita, H., Kubota, S., Sene, A., Lee, T. J., Ban, N., Dong, Z., Lin, J. B., Boye, S. L., DiAntonio, A., Boye, S. E., Apte, R. S., & Milbrandt, J. (2020). SARM1 depletion rescues NMNAT1-dependent photoreceptor cell death and retinal degeneration. *ELife*, 9. <https://doi.org/10.7554/eLife.62027>
- Shen, C., Vohra, M., Zhang, P., Mao, X., Figley, M. D., Zhu, J., Sasaki, Y., Wu, H., DiAntonio, A., & Milbrandt, J. (2021). Multiple domain interfaces mediate SARM1 autoinhibition. *Proceedings of the National Academy of Sciences of the United States of America*, 118(4). <https://doi.org/10.1073/pnas.2023151118>
- Shin, J. E., Miller, B. R., Babetto, E., Cho, Y., Sasaki, Y., Qayum, S., Russler, E. V., Cavalli, V., Milbrandt, J., & DiAntonio, A. (2012). SCG10 is a JNK target in the axonal degeneration pathway. *Proceedings of the National Academy of Sciences of the United States of America*, 109(52), E3696–3705. <https://doi.org/10.1073/pnas.1216204109>
- Sporny, M., Guez-Haddad, J., Khazma, T., Yaron, A., Dessau, M., Shkolnisky, Y., Mim, C., Isupov, M. N., Zalk, R., Hons, M., & Opatowsky, Y. (2020). Structural basis for SARM1

- inhibition and activation under energetic stress. *ELife*, 9.  
<https://doi.org/10.7554/eLife.62021>
- Sporny, M., Guez-Haddad, J., Lebediker, M., Ulisse, V., Volf, A., Mim, C., Isupov, M. N., & Opatowsky, Y. (2019). Structural Evidence for an Octameric Ring Arrangement of SARM1. *Journal of Molecular Biology*, 431(19), 3591–3605.  
<https://doi.org/10.1016/j.jmb.2019.06.030>
- Summers, D. W., DiAntonio, A., & Milbrandt, J. (2014). Mitochondrial dysfunction induces Sarm1-dependent cell death in sensory neurons. *The Journal of Neuroscience: The Official Journal of the Society for Neuroscience*, 34(28), 9338–9350.  
<https://doi.org/10.1523/JNEUROSCI.0877-14.2014>
- Summers, D. W., Gibson, D. A., DiAntonio, A., & Milbrandt, J. (2016). SARM1-specific motifs in the TIR domain enable NAD<sup>+</sup> loss and regulate injury-induced SARM1 activation. *Proceedings of the National Academy of Sciences of the United States of America*, 113(41), E6271–E6280. <https://doi.org/10.1073/pnas.1601506113>
- Theunissen, F., Anderton, R. S., Mastaglia, F. L., Flynn, L. L., Winter, S. J., James, I., Bedlack, R., Hodgetts, S., Fletcher, S., Wilton, S. D., Laing, N. G., MacShane, M., Needham, M., Saunders, A., Mackay-Sim, A., Melamed, Z., Ravits, J., Cleveland, D. W., & Akkari, P. A. (2021). Novel STMN2 Variant Linked to Amyotrophic Lateral Sclerosis Risk and Clinical Phenotype. *Frontiers in Aging Neuroscience*, 13, 658226.  
<https://doi.org/10.3389/fnagi.2021.658226>
- Van Damme, P. (2018). How much of the missing heritability of ALS is hidden in known ALS genes? *Journal of Neurology, Neurosurgery, and Psychiatry*, 89(8), 794.  
<https://doi.org/10.1136/jnnp-2018-318354>
- van der Spek, R. A. A., van Rheenen, W., Pulit, S. L., Kenna, K. P., van den Berg, L. H., & Veldink, J. H. (2019). The project MinE databrowser: Bringing large-scale whole-genome sequencing in ALS to researchers and the public. *Amyotrophic Lateral Sclerosis and Frontotemporal Degeneration*, 20(5–6), 432–440.  
<https://doi.org/10.1080/21678421.2019.1606244>
- van Rheenen, W., Shatunov, A., Dekker, A. M., McLaughlin, R. L., Diekstra, F. P., Pulit, S. L., van der Spek, R. A. A., Vösa, U., de Jong, S., Robinson, M. R., Yang, J., Fogh, I., van Doormaal, P. T., Tazelaar, G. H. P., Koppers, M., Blokhuis, A. M., Sproviero, W., Jones, A. R., Kenna, K. P., ... Veldink, J. H. (2016). Genome-wide association analyses identify new risk variants and the genetic architecture of amyotrophic lateral sclerosis. *Nature Genetics*, 48(9), 1043–1048. <https://doi.org/10.1038/ng.3622>
- Wan, L., Essuman, K., Anderson, R. G., Sasaki, Y., Monteiro, F., Chung, E.-H., Osborne Nishimura, E., DiAntonio, A., Milbrandt, J., Dangl, J. L., & Nishimura, M. T. (2019). TIR domains of plant immune receptors are NAD<sup>+</sup>-cleaving enzymes that promote cell death. *Science (New York, N.Y.)*, 365(6455), 799–803. <https://doi.org/10.1126/science.aax1771>
- Wang, K., Li, M., & Hakonarson, H. (2010). ANNOVAR: Functional annotation of genetic variants from high-throughput sequencing data. *Nucleic Acids Research*, 38(16), e164.  
<https://doi.org/10.1093/nar/gkq603>
- White, M. A., Lin, Z., Kim, E., Henstridge, C. M., Pena Altamira, E., Hunt, C. K., Burchill, E., Callaghan, I., Loreto, A., Brown-Wright, H., Mead, R., Simmons, C., Cash, D., Coleman, M. P., & Sreedharan, J. (2019). Sarm1 deletion suppresses TDP-43-linked motor neuron degeneration and cortical spine loss. *Acta Neuropathologica Communications*, 7(1), 166.  
<https://doi.org/10.1186/s40478-019-0800-9>
- Wragg, D., Liu, Q., Lin, Z., Riggio, V., Pugh, C. A., Beveridge, A. J., Brown, H., Hume, D. A., Harris, S. E., Deary, I. J., Tenesa, A., & Prendergast, J. G. D. (2020). Using regulatory variants to detect gene–gene interactions identifies networks of genes linked to cell

immortalisation. *Nature Communications*, 11(1), 343. <https://doi.org/10.1038/s41467-019-13762-6>

Wu, T., Zhu, J., Strickland, A., Ko, K. W., Sasaki, Y., Dingwall, C., Yamada, Y., Figley, M. D., Mao, X., Neiner, A., Bloom, J., DiAntonio, A., & Milbrandt, J. (2021). *Neurotoxins subvert the allosteric activation mechanism of SARM1 to induce neuronal loss* (p. 2021.07.16.452689). <https://doi.org/10.1101/2021.07.16.452689>

Zhao, Z. Y., Xie, X. J., Li, W. H., Liu, J., Chen, Z., Zhang, B., Li, T., Li, S. L., Lu, J. G., Zhang, L., Zhang, L.-H., Xu, Z., Lee, H. C., & Zhao, Y. J. (2019). A Cell-Permeant Mimetic of NMN Activates SARM1 to Produce Cyclic ADP-Ribose and Induce Non-apoptotic Cell Death. *iScience*, 15, 452–466. <https://doi.org/10.1016/j.isci.2019.05.001>

## FIGURE LEGENDS

### **Figure 1. SARM1 coding variants in ALS patient and control groups.**

Schematic representation of the canonical 724 amino acid human SARM1 protein showing basic domain structure and the approximate locations of the coding variation present in the Project MinE DF1 and Answer ALS datasets. Variants are separated into those seen only in ALS patients, those seen in ALS patients and controls (both), and those seen only in controls. MTS, "mitochondrial" targeting sequence; ARM, HEAT/Armadillo motif domain; SAM, sterile alpha motif domains; TIR, Toll/Interleukin receptor domain.

Special note: Variants are annotated according to the canonical 724 amino acid SARM1. Project MinE DF1 currently uses gnomAD v2.1.1, which is based on genome build GRCh37 / hg19, and annotates variants to a 690 amino acid product of a non-canonical reference *SARM1* cDNA sequence. This cDNA, and genome build GRCh37, contain single nucleotide substitutions, insertions and deletions at its 5' end when compared to gnomAD v3.1.1 and GRCh38 / hg38 which annotate to the canonical 724 amino acid SARM1. These differences mean that the 690 amino acid "isoform" has a truncated N-terminus, due to use of an alternative ATG codon, and switches frame until it eventually synchronises with 724 amino acid SARM1 at amino acid 107 (73 in the 690 amino acid "isoform"). As such, numbering of SARM1 variants in Project MinE DF1 (and any databases annotated to gnomAD v2.11 / GRCh37) is 34 residues lower than that shown here over the synchronised region and differences more N-terminal to this must be determined individually by lift over from GRCh37 to GRCh38. Notably, the NCBI Single Nucleotide Polymorphism Database (dbSNP, including rsIDs) uses numbering based on the 724 amino acid SARM1 protein.

### **Figure 2. Several ALS patient-specific SARM1 ARM domain coding variants in Project MinE increase NAD<sup>+</sup> depletion in transfected HEK 293T cells.**

**(A-C)** Levels of NAD<sup>+</sup> (A), NADP<sup>+</sup> (B) and ATP (C) in extracts of HEK 293T cells 24 h after transfection with expression constructs for Flag-tagged WT or variant SARM1 (as listed). 50

ng SARM1 vector combined with 750 ng empty vector (24-well plate format) was transfected for optimal assay conditions (see Figure 2 - Figure supplement 1). Data are shown as a proportion of levels in cells transfected with empty vector (ev) alone performed in parallel (set at 1, grey dashed line). Means  $\pm$ SEM with individual data points are plotted (n=4 or 5). \* $p$ <0.05, \*\* $p$ <0.01 and \*\*\* $p$ <0.001, multiple pairwise comparisons to WT SARM1 with FDR correction (after log transformation of data in parts A and B). Bars for WT SARM1, and the P332Q and N337D SARM1 variants, which are seen in both patient and control groups in Project MinE, are hatched to differentiate them from patient-specific variants (bold text, filled bars).

**(D)** Representative immunoblots of the extracts described in parts A-C showing Flag-tagged WT or variant SARM1, ZsGreen (co-expressed with the exogenous SARM1 from a bicistronic mRNA) and GAPDH (acting as a loading control). Molecular weight markers (kDa) are shown on the right of each panel. Four times the amount of extract and enhanced detection was needed to detect SARM1 variants that cause the greatest NAD<sup>+</sup> depletion (bottom right blot).

**(E)** Representative ZsGreen fluorescence and phase contrast imaging of HEK 293T cells 24 h after transfection with WT or  $\Delta$ 229-235 SARM1 expression constructs (brightness and contrast have been increased equally in each pair of images to enhance visualisation). Reduced ZsGreen signal intensity, as seen here for  $\Delta$ 229-235 SARM1, was consistently seen (n=5) for variants that reduced NAD<sup>+</sup> levels more than WT SARM1.

**Figure 3. Constitutive NADase activity and NMN responsiveness of SARM1 ARM domain variants in Project MinE.**

Each panel is designed to show different statistical comparisons and some of the same data are used in different tests, as described. WT SARM1, and P332Q and N337D SARM1 (seen in both patient and control groups in Project MinE), are shown as hatched bars throughout to differentiate them from patient-specific variants (bold text, filled bars).

**(A)** and **(B)** Constitutive (basal) NADase activities of immunoprecipitated WT SARM1, variant SARM1, or SAM-TIR fragment (as indicated) in the presence of 25  $\mu$ M NAD<sup>+</sup>. In part A, data for variants with high or low NADase activity, obtained in parallel, are plotted separately,

against different scales, to more clearly show all differences relative to WT SARM1 (included on both). Means  $\pm$ SEM with individual data points ( $n=4$  or  $5$ ) are plotted.  $*p<0.05$ ,  $**p<0.01$ ,  $***p<0.001$  and ns (not significant) =  $p>0.05$ , multiple pairwise comparisons to WT SARM1 with FDR correction for part A and one-way ANOVA with Tukey's correction for part B (both after log transformation).

**(C)** Activation of SARM1 NADase by  $50 \mu\text{M}$  NMN (in the presence of  $25 \mu\text{M}$   $\text{NAD}^+$ ). Constitutive activities (no NMN) are as in part A with rates +NMN calculated from assays performed in parallel. High and low NADase activity variants are plotted separately (as in part A). Means  $\pm$ SEM with individual data points ( $n=4$  or  $5$ ) are plotted.  $*p<0.05$  and  $**p<0.01$ , multiple paired  $t$  tests of rates  $\pm$ NMN with FDR correction (after log transformation).

**(D)** Activation of SARM1 NADase by  $10$  or  $50 \mu\text{M}$  NMN (in the presence of  $25 \mu\text{M}$   $\text{NAD}^+$ ). NMN-insensitive variants with very high constitutive NADase activity were not tested. Constitutive and  $+50 \mu\text{M}$  NMN activities are a subset of those shown in part B and are only those from assays performed in parallel with  $10 \mu\text{M}$  NMN. Means  $\pm$ SEM with individual data points ( $n=4$ ) are plotted.  $*p<0.05$ ,  $**p<0.01$  and  $***p<0.001$ , two-way ANOVA with Šidák's correction (after log transformation).

**Figure 4. Functional characterisation of additional ARM domain and other N-terminal SARM1 coding variants in the Answer ALS database and Project MinE DF1.**

Bars for WT and variants that are only seen in controls are hatched throughout to differentiate them from patient-specific variants (bold text, filled bars).

**(A)**  $\text{NAD}^+$  levels in extracts of HEK 293T cells 24 h after transfection with expression constructs for Flag-tagged WT or variant SARM1 (as listed). Details are as per Figure 2. Means  $\pm$ SEM with individual data points ( $n=7$ ) are plotted.  $*p<0.05$ ,  $**p<0.01$  and  $***p<0.001$ , multiple pairwise comparisons to WT SARM1 with FDR correction (after log transformation).

**(B)** Representative immunoblots of extracts as described in part A. Blots were probed as in Figure 2D. Four times the amount of extract and enhanced detection was needed to detect R267W SARM1 (right). Molecular weight markers (kDa) are shown on the right of each panel.



**(C)** and **(D)** Constitutive NADase activities (at 25  $\mu\text{M}$  NAD<sup>+</sup>) of recombinant WT and variant SARM1, as indicated. Predicted strong GoF R267W SARM1 was compared directly to WT SARM1 and strong NADase GoF  $\Delta$ 229-235 SARM1 in part C, separately from the other variants in part D. Means  $\pm$ SEM with individual data points (n=4 or 5) are plotted. \* $p$ <0.05, \*\* $p$ <0.01, \*\*\* $p$ <0.001 and ns (not significant) =  $p$ >0.05, one-way ANOVA with Tukey's correction (after log transformation) in part C and multiple pairwise comparisons to WT SARM1 with FDR correction in part D.

**(E)** and **(F)** Activation of the NADase activity of recombinant WT and variant SARM1, as indicated, by 50  $\mu\text{M}$  NMN (in the presence of 25  $\mu\text{M}$  NAD<sup>+</sup>). Constitutive activities (no NMN) are as in parts C and D with rates +NMN calculated from assays performed in parallel. Means  $\pm$ SEM with individual data points (n=4 or 5) are plotted. \* $p$ <0.05 and \*\* $p$ <0.01, multiple paired  $t$  tests of rates  $\pm$ NMN with FDR correction (after log transformation in part E).

**Figure 5.  $\Delta$ 229-235 SARM1 retains its strong NADase GoF properties in complexes with WT SARM1.**

**(A)** NAD<sup>+</sup> levels in extracts of HEK 293T cells 24 h after transfection with individual expression constructs or mixtures of constructs for HA- or Flag-tagged WT SARM1 and/or Flag-tagged  $\Delta$ 229-235 SARM1. Details as per Figure 2, except that 50 ng SARM1 vector was combined with 750 ng empty vector for single constructs and 25 ng each for mixtures. Means  $\pm$ SEM with individual data points (n=5) are plotted. \*\* $p$ <0.01, \*\*\* $p$ <0.001 and ns (not significant) =  $p$ >0.05, one-way ANOVA with Tukey's correction (after log transformation). Only relevant comparisons are shown.

**(B)** Representative immunoblots of extracts as described in part A. Duplicate blots were probed with Flag or HA antibodies to independently assess levels of co-expressed Flag- or HA-tagged WT or Flag-tagged  $\Delta$ 229-235 SARM1. Both blots were probed for ZsGreen and GAPDH (acting as a loading control) to confirm the blots were representative replicates. A faint, non-specific cross-reaction of the HA antibody to Flag-tagged SARM1 was consistently

seen under the conditions used (WT-Flag only lane). Molecular weight markers (kDa) are shown on the right of each panel.

**(C)** Representative immunoblots (of  $n=3$ ) of reciprocal co-immunoprecipitation of HA-tagged WT SARM1 with Flag-tagged WT or  $\Delta 229-235$  SARM1. Immunoprecipitations using Flag or HA antibodies or no antibody were performed on the same extracts of transfected HEK 293T cells co-expressing HA-tagged WT SARM1 with Flag-tagged WT or Flag-tagged  $\Delta 229-235$  SARM1 (from equal amounts of construct), or expressing individual proteins. Duplicate immunoblots of immunoprecipitated proteins, and the original extracts used in the immunoprecipitations (input), were probed with Flag or HA antibodies. A small amount of non-specific binding of tagged proteins to protein A/G beads was consistently seen for inputs with the highest expression levels. Molecular weight markers (kDa) are shown on the right of each panel.

**(D)** Constitutive NADase activity (in the presence of  $25 \mu\text{M NAD}^+$ ) of immunoprecipitated WT +  $\Delta 229-235$  SARM1 complexes compared to WT or  $\Delta 229-235$  SARM1 alone. All proteins were Flag-tagged to ensure complete immunoprecipitation of complexes of WT and  $\Delta 229-235$  SARM1. Means  $\pm$ SEM with individual data points ( $n=4$ ) are plotted.  $*p<0.05$  and  $**p<0.01$ , one-way ANOVA with Tukey's correction (after log transformation).

**(E)** Inducibility of immunoprecipitated WT +  $\Delta 229-235$  SARM1 complexes and WT or  $\Delta 229-235$  SARM1 alone by  $50 \mu\text{M NMN}$  (in the presence of  $25 \mu\text{M NAD}^+$ ). Constitutive activities (no NMN) are as in part D with rates +NMN calculated from assays performed in parallel. Means  $\pm$ SEM with individual data points ( $n=4$ ) are plotted.  $**p<0.01$ , multiple paired  $t$  tests of rates  $\pm$ NMN with FDR correction (after log transformation).

**Figure 6. Strong NADase GoF  $\Delta 229-235$  SARM1 reduces SCG neuron viability under mild stress conditions.**

**(A)** Representative images of DsRed-positive wild-type SCG neurons 24 h after microinjection with expression constructs for WT or  $\Delta 229-235$  SARM1 and DsRed (at  $2.5 \text{ ng}/\mu\text{l}$  and  $40 \text{ ng}/\mu\text{l}$



in the injection mix, respectively), with or without supplementation of the culture medium with 2 mM NR at the time of injection. Equal numbers of neurons were injected.

**(B)** Quantification of DsRed-positive neurons for the conditions described in part A. Means  $\pm$ SEM with individual data points ( $n=5$  or  $17$ ) are plotted.  $*p<0.05$  and  $***p<0.001$ , one-way ANOVA with Tukey's correction. Only relevant comparisons are shown.

**(C)** Time course of survival of DsRed-positive neurons after manipulation of culture conditions as indicated. Neurons were injected as in part A and maintained in medium containing NR. Manipulations were performed 24 h after injection which corresponds to time 0 on the graphs. Survival of injected, DsRed-labelled neurons was assessed as described in part D and is expressed as a percentage of those present at time 0. Means  $\pm$ SEM ( $n=4$  or  $5$ ) are plotted.  $***p<0.001$ , two-way ANOVA with Šidák's correction.

**(D)** Representative images for data presented in part C. Only one representative condition is shown for neurons injected with the WT SARM1 construct. Survival of DsRed-positive neurons was assessed by comparing signal intensity and neuron size / shape at different timepoints, a method that provides an accurate reflection of survival rates (Gilley & Coleman, 2010).

### **Figure 7. NADase activity is required for the pro-death effects of $\Delta$ 229-235 SARM1 in SCG neurons.**

**(A)** Relative levels of NAD<sup>+</sup> in extracts of HEK 293T cells 24 h after transfection with expression constructs for WT, E642A,  $\Delta$ 229-235 or  $\Delta$ 229-235/E642A SARM1, as per Figure 2. Means  $\pm$ SEM with individual data points ( $n=4$ ) are plotted.  $*p<0.05$ ,  $**p<0.01$ ,  $***p<0.001$  and ns =  $p>0.05$ , one-way ANOVA with Tukey's correction (after log transformation). Only relevant comparisons are shown.

**(B)** Representative immunoblots of extracts as described in part A. Blots were probed as in Figure 2D. Molecular weight markers (kDa) are shown on the right of each panel.

**(C)** Numbers of DsRed-positive neurons 24 h after microinjection with expression constructs for  $\Delta$ 229-235 SARM1 or  $\Delta$ 229-235/E642A SARM1 and DsRed (at 2.5 ng/ $\mu$ l and 40 ng/ $\mu$ l in the injection mix, respectively), with or without supplementation of the culture medium with 2

mM NR at the time of injection. Equal numbers of neurons were injected. Means  $\pm$ SEM with individual data points (n=4) are plotted. \*\* $p$ <0.01, \*\*\* $p$ <0.001 and ns (not significant) =  $p$ >0.05, one-way ANOVA with Tukey's correction. Only relevant comparisons are shown.

**(D)** Time course of survival of DsRed-positive neurons injected as in part C and maintained in medium containing NR prior to removal of NR and addition of 100 nM FK866 24 h after injection (corresponding to time 0 on the graphs). Survival of injected neurons was assessed as described in Figure 5D and is expressed as a percentage of those present at time 0. Means  $\pm$ SEM (n=4) are plotted. \*\*\* $p$ <0.001, two-way ANOVA with Šidák's correction.

SARM1 domain	Coding variant <sup>a</sup>	rsID	Chr.17 position and change <sup>b</sup>	European MAF <sup>c</sup>	Carriers		
					Cases (4,366)	Controls (1,832)	
ARM	T39M	rs988047470	28372148 C>T	0		1	
	L76fs	-	28372255 del	0		1	
	V88M	rs1555584160	28372294 G>A	0		1	
	V112I	rs1032963037	28372366 G>A	0.000015	1		
	L223P	-	28381400 T>C	0	1		
	Δ229-235 <sup>d</sup>	rs782325355	28381417_37 del	0.000059	2		
	A240E	rs1449836804	28381451 C>A	0.000015	1		
	R244S	-	28381462 C>A	0	1		
	Δ249-252	-	28381475_86 del	0	1		
	A250T	rs1555585243	28381480 G>A	0	1		
	A275V	rs376587698	28381556 C>T	0.000029	1		
	A301S	rs782606059	28381633 G>T	0.00012	3		
	R310H	rs369186722	28381661 G>A	0.00016	1		
	V331E	rs1555585331	28381724 T>A	0	1		
	P332Q	rs140811640	28381727 C>A	0.012	107	47	
	N337D	rs375690432	28381741 A>G	0.00038	3	1	
	E340K	rs781854217	28381750 G>A	0.000059	1		
	A341V	rs373458416	28381754 C>T	0.00012	2		
	SAM	T385A	rs2068039068	28384420 A>G	0	1	
		Q418H	rs1194545365	28384521 G>T	0.000029	1	1
Y429F		-	28384553 A>T	0		1	
E431G		rs1555585662	28384559 A>G	0	1		
R465T		-	28385039 G>C	0	1		
C482Y		-	28385090 G>A	0		1	
R484C		rs1555585809	28385095 C>T	0	1		
A488E		rs782228906	28385108 C>A	0.00012	2		
Y501H		rs144613221	28385146 T>C	0.0029	32	13	
T502P		rs782421919	28385149 A>C	0.000074	1		
V518L		rs782106973	28385197 G>C	0.000088	3		
S558N		-	28388216 G>A	0		1	
TIR	R569C	rs571724138	28388248 C>T	0.000029	1		
	R615H	rs782753946	28388460 G>A	0.000044		1	
	G624*	rs141324431	28388486 G>T	0.000073		1	
	D637Y	rs1451417529	28388525 G>T	0	1		
	A646S	rs782676389	28395917 G>T	0	1		
	Q673*	-	28395998 C>T	0	1		
	A719V	rs146812537	28396267 C>T	0.00050		2	
G722V	rs1298702390	28396276 G>T	0	1	1		

**Table 1. SARM1 coding variants in Project MinE DF1.**

<sup>a</sup> numbering based on the canonical 724 amino acid human SARM1.

<sup>b</sup> numbering according to GRCh38 after lift over from GRCh37 which contains sequence discrepancies that result in anomalous numbering (see Figure 1 legend and Materials and Methods).

<sup>c</sup> minor allele frequency for European (non-Finnish) population in gnomAD v3.1.1 as the best ethnicity match for this dataset.

<sup>d</sup> This variant is reported as Δ226-232 elsewhere (Bloom et al., 2021). At the DNA level the deletion encompasses a 32-bp region with 11-bp identical repeats at each end and, as such, any 21-bp deletion within this region will have an identical effect at both the DNA and protein level. Δ226-232 and Δ229-235 are thus identical proteins. We have used the Δ229-235 nomenclature for consistency with its rsID. All ARM domain and other N-terminal variants, barring L76fs, have been tested for function in this study. An additional frameshift variant (corresponding to 28372175dup, G46fs, rs11437592) was reported, but it appears to be an artefact due to sequence discrepancies in the GRCh37 genome build.

SARM1 domain	Coding variant <sup>a</sup>	rsID	Chr.17 position and change <sup>b</sup>	European MAF <sup>c</sup>	Carriers	
					Cases (706)	Controls (92)
	G35E	rs1480321233	28372136 G>A	0.000015	1	
	R131G	rs1389320808	28372423 C>G	0.000015	1	
	A210V	-	28381361 C>T	0		1
ARM	Δ229-235 <sup>†</sup>	rs782325355	28381417_37 del	0.000059	1	
	R267W	rs11658194	28381531 C>T	0.000015	1	
	A301S <sup>†</sup>	rs782606059	28381633 G>T	0.00012	1	
	P332Q <sup>†</sup>	rs140811640	28381727 C>A	0.012	16	3
SAM	Y501H <sup>†</sup>	rs144613221	28385146 T>C	0.0029	5	5
TIR	S684F	rs782256561	28396162 C>T	0.000044	1	
	A719V <sup>†</sup>	rs146812537	28396267 C>T	0.00050	1	

**Table 2. SARM1 coding variants in Answer ALS.**

<sup>a</sup> numbering based on the canonical 724 amino acid human SARM1.

<sup>b</sup> numbering according to genome build GRCh38.

<sup>c</sup> minor allele frequency for European (non-Finnish) population in gnomAD v3.1.1 as the best ethnicity match for this dataset.

<sup>†</sup> Variants also present in the Project Mine DF1 dataset.

All ARM domain and other N-terminal variants have been tested for function in this study.

	Total alleles	Strong GoF							Other											P332Q <sup>b</sup>							
		L223P	Δ229-235	Δ249-252	R267W	V331E	E340K	T385A	Combined	G35E	T39M	L76fs	V88M	V112I	R131G	A210V	A240E	R244S	A250T		A275V	A301S	R310H	N337D	A341V	Combined	
<b>Cases</b>																											
MinE DF1	8,732	1	2	1	-	1	1	1	7	-	-	-	-	1	-	-	1	1	1	1	3	1	3	2	14	107	
Answer ALS	1,412	-	1	-	1	-	-	-	2	1	-	-	-	-	1	-	-	-	-	-	1	-	-	-	3	16	
MinE DF2+ <sup>a</sup>	3,176	-	-	-	-	-	-	1	1	-	-	-	-	-	-	-	-	-	-	-	-	1	-	-	1	40	
GENESIS	5,936	-	2	-	-	-	-	-	2	-	-	-	-	-	-	-	-	-	-	-	-	-	-	1	15		
UCL	1,366	-	-	-	1	-	-	-	1	-	-	-	-	-	-	-	-	-	-	2	-	-	-	2	5		
HSP study	1,612	-	-	-	-	-	-	-	0	-	-	-	-	-	-	-	-	-	-	-	-	-	-	0	15		
<b>Total</b>	<b>22,234</b>	<b>1</b>	<b>5</b>	<b>1</b>	<b>2</b>	<b>1</b>	<b>1</b>	<b>2</b>	<b>13</b>	<b>1</b>	<b>0</b>	<b>0</b>	<b>0</b>	<b>1</b>	<b>1</b>	<b>0</b>	<b>1</b>	<b>1</b>	<b>1</b>	<b>1</b>	<b>6</b>	<b>2</b>	<b>3</b>	<b>3</b>	<b>21</b>	<b>198</b>	
<b>Controls</b>																											
MinE DF1	3,664	-	-	-	-	-	-	-	0	-	1	1	1	-	-	-	-	-	-	-	-	-	1	-	4	47	
Answer ALS	184	-	-	-	-	-	-	-	0	-	-	-	-	-	1	-	-	-	-	-	-	-	-	-	1	3	
MinE DF2+ <sup>a</sup>	812	-	-	-	-	-	-	-	0	-	-	-	-	-	-	-	-	-	-	-	-	-	1	-	1	15	
GENESIS	7,330	-	-	-	-	-	-	-	0	-	-	-	-	-	-	-	-	-	1	-	-	1	1	3	58		
UCL	3,616	-	-	-	-	-	-	-	0	-	-	-	-	-	-	-	-	-	1	1	2	-	-	4	38		
HSP study	2,490	-	-	-	-	-	-	-	0	-	-	-	-	-	-	-	-	-	-	-	-	-	-	0	19		
LBC	2,708	-	-	-	-	-	-	-	0	-	-	-	-	-	-	-	-	-	-	-	-	-	2	2	26		
<b>Total</b>	<b>20,804</b>	<b>0</b>	<b>0</b>	<b>0</b>	<b>0</b>	<b>0</b>	<b>0</b>	<b>0</b>	<b>0</b>	<b>0</b>	<b>1</b>	<b>1</b>	<b>1</b>	<b>0</b>	<b>0</b>	<b>1</b>	<b>0</b>	<b>0</b>	<b>0</b>	<b>2</b>	<b>1</b>	<b>2</b>	<b>4</b>	<b>2</b>	<b>15</b>	<b>206</b>	

**Table 3. Occurrences of *SARM1* alleles encoding ARM domain and other N-terminal variants in individual datasets.**

<sup>a</sup> Extra samples in Project MinE DF2 that were not part of DF1.

<sup>b</sup> MAFs for the P332Q *SARM1* allele in each dataset (in cases plus controls combined) of 0.012 (MinE DF1), 0.012 (Answer ALS), 0.014 (MinE DF2 extras), 0.0055 (GENESIS), 0.0086 (UCL), 0.0010 (LBC) and 0.0083 (HSP study) are, barring the more ethnically-diverse GENESIS cohorts, broadly consistent with each dataset containing predominantly European samples as the European MAF of 0.012 is substantially higher than in other populations (gnomAD v3.1.1).

Variant	Study alleles <sup>a</sup>			Study MAF <sup>a</sup>		gnomAD MAF <sup>b</sup>	
	Cases	Controls	gnomAD alleles <sup>b</sup>	Cases	Controls		
	/22,234	/20,804	/63,882				
<b>Strong GoF</b>	L223P	1	0	0	0.000045	0	0
	Δ229-235	5	0	4	0.00022	0	0.000063
	Δ249-252	1	0	0	0.000045	0	0
	R267W	2	0	1	0.000090	0	0.000016
	V331E	1	0	0	0.000045	0	0
	E340K	1	0	4	0.000045	0	0.000063
	T385A	2	0	0	0.000090	0	0
	<b>Combined</b>	<b>13</b>	<b>0</b>	<b>9</b>	<b>0.00058</b>	<b>0</b>	<b>0.00014</b>
<b>Other</b>	G35E	1	0	1	0.000045	0	0.000016
	T39M	0	1	0	0	0.000048	0
	L76fs	0	1	0	0	0.000048	0
	V88M	0	1	0	0	0.000048	0
	V112I	1	0	1	0.000045	0	0.000016
	R131G	1	0	1	0.000045	0	0.000016
	A210V	0	1	0	0	0.000048	0
	A240E	1	0	0	0.000045	0	0
	R244S	1	0	0	0.000045	0	0
	A250T	1	0	0	0.000045	0	0
	A275V	1	2	2	0.000045	0.000096	0.000031
	A301S	6	1	8	0.00027	0.000048	0.00013
	R310H	2	2	11	0.000090	0.000096	0.00017
	N337D	3	4	26	0.00013	0.00019	0.00041
	A341V	3	2	8	0.00013	0.000096	0.00013
	<b>Combined</b>	<b>21</b>	<b>15</b>	<b>58</b>	<b>0.00094</b>	<b>0.00072</b>	<b>0.00091</b>
	* P332Q	198	206	789	0.0089	0.010	0.012

**Table 4. Occurrences and MAFs of *SARM1* alleles encoding ARM domain and other N-terminal variants aggregated from all datasets used in this study.**

<sup>a</sup> Aggregated values for all datasets listed in Table 3.

<sup>b</sup> Values for the non-neuro European (non-Finnish) population in gnomAD v3.1.1. These values do not include case samples collected as part of a neurologic or psychiatric case/control study. However, that does not guarantee that any carriers of the alleles listed are not already affected or will not go on to develop a motor nerve disorder.

Clinical diagnosis (site of onset)	SARM1 variant	Cohort	Sex	Age-of-onset / progression	Other variants	Close relatives affected
ALS (bulbar)	L223P	Project MinE	M	55-59 / 3 yr. dead	None <sup>a</sup>	Not known
ALS (bulbar)	Δ229-235	Answer ALS	F	70-74 / 2 yr. dead	None <sup>b</sup>	Not known
ALS	Δ229-235	GENESIS	M	65-69 / 1 yr. dead	*SOD1	None
ALS (spinal)	Δ229-235	Unattributed	F	70-74 / 2 yr. dead	Not available	None
ALS (spinal)	Δ229-235	Project MinE	M	40-44 / 3 yr. dead	None <sup>a</sup>	Not known
ALS (spinal)	Δ229-235	Project MinE	M	55-59 / 3 yr. dead	None <sup>a</sup>	Not known
ALS (bulbar)	Δ249-252	Project MinE	M	65-69 / 4 yr. dead	None <sup>a</sup>	Not known
ALS (spinal)	R267W	Answer ALS	M	55-59 / 2 yr. dead	**FIG4 <sup>b</sup>	Not known
ALS (spinal)	V331E	Project MinE	M	50-54 / 5 yr. dead	None <sup>a</sup>	Not known
ALS (spinal)	E340K	Project MinE	M	75-79 / 6 yr. dead	None <sup>a</sup>	Not known
ALS (spinal)	T385A	Project MinE	M	65-69 / 6 yr. alive	None <sup>a</sup>	Not known
ALS (bulbar)	T385A	Project MinE	F	60-64 / 1 yr. dead	None <sup>a</sup>	Not known
HSP (pure)	Δ229-235	GENESIS	F	5-9 / 14 yr. alive	Not available	None
Upper and lower motor nerve disorder	R267W	UCL	M	40-44 / 25 yr. alive	None <sup>c</sup>	None
ALS (spinal)	V112I	Project MinE	M	50-54 / 17 yr. dead	None <sup>a</sup>	Not known

**Table 5. Clinical information for motor nerve disorder patients heterozygous for SARM1 GoF alleles.**

\* Heterozygous for the partially-penetrant I114T *SOD1* variant associated with sporadic ALS

\*\* Heterozygous for the L17P *FIG4* variant, a variant that has previously only been associated with CMT4J in combination with a null allele.

<sup>a</sup> Screened for variation in *C9orf72*, *FUS*, *SOD1* and *TARDBP*.

<sup>b</sup> Screened for variation in *ALS2*, *ATXN2*, *C9orf72*, *CCNF*, *CHCHD10*, *FUS*, *OPTN*, *PFN1*, *SOD1*, *TARDBP*, *TBK1*, *UBQLN2*, *VAPB* and *VCP*.

<sup>c</sup> Screened for variation in *Androgen Receptor* expansion, *ALS2*, *ANG*, *C9orf72*, *CYP7B1*, *DCTN1*, *FA2H*, *FIG4*, *FUS*, *GJC2*, *KIAA0196*, *KIF5A*, *NIPA1*, *OPTN*, *PLP1*, *PNPLA6*, *REEP1*, *RTN2*, *SPAST*, *SPG7*, *SLC52A1*, *SLC52A2*, *SLC52A3*, *SMN*, *SOD1*, *TARDBP*, *UBQLN2*, *VAPB*, *VCP*, whole mtDNA sequencing in blood.

FTD; frontotemporal dementia, COPD; chronic obstructive pulmonary disease



Figure 1

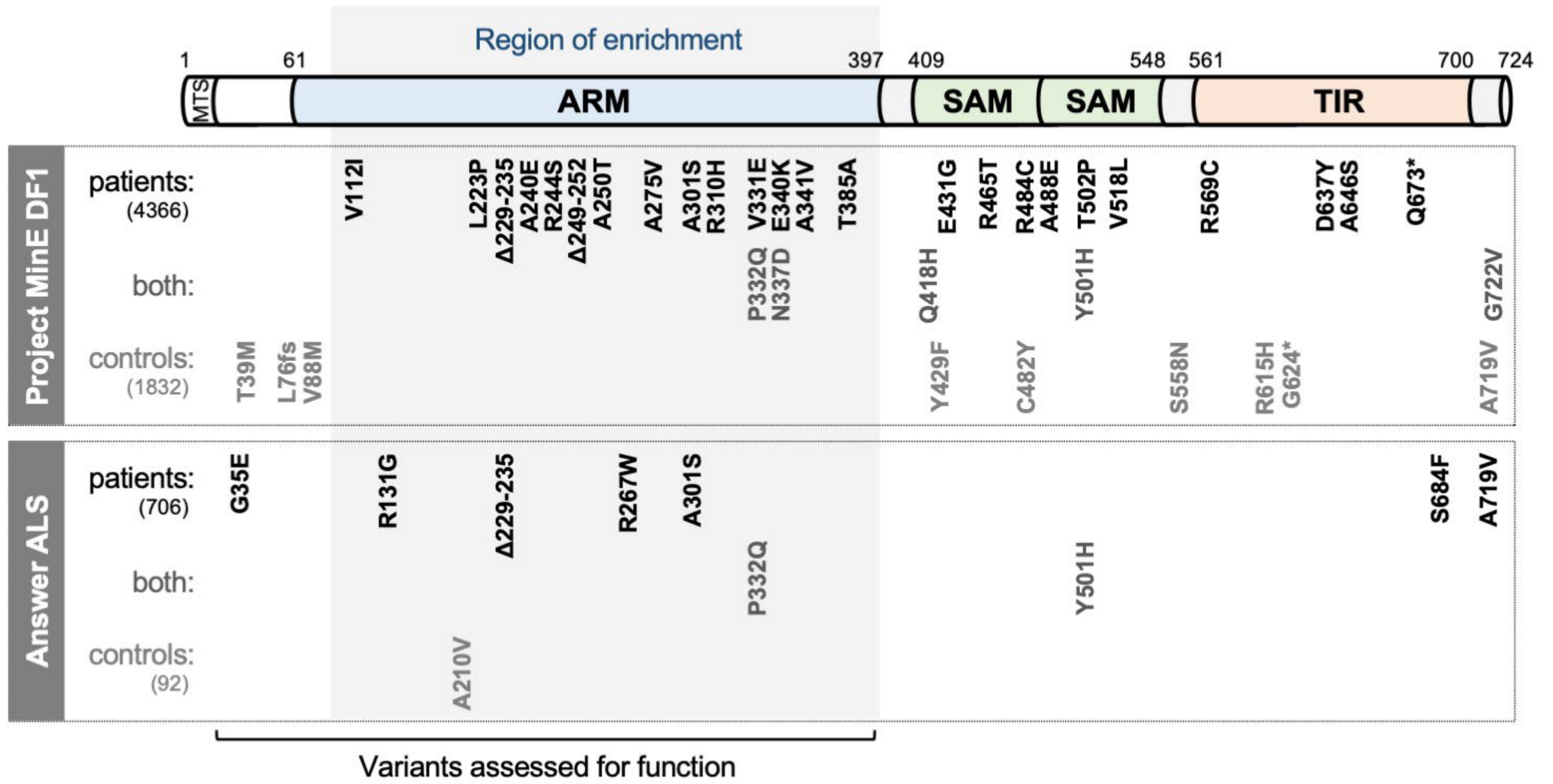




Figure 2

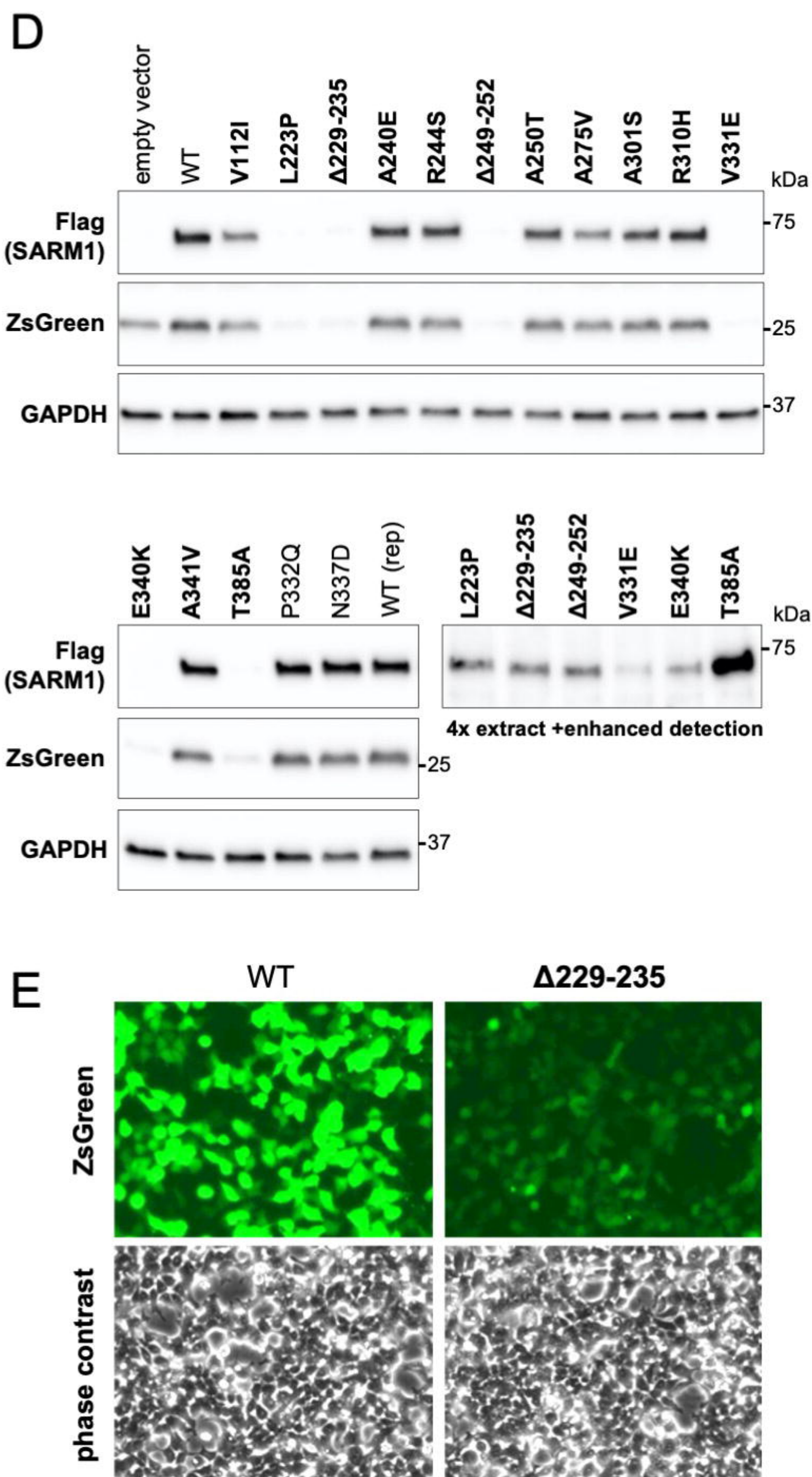
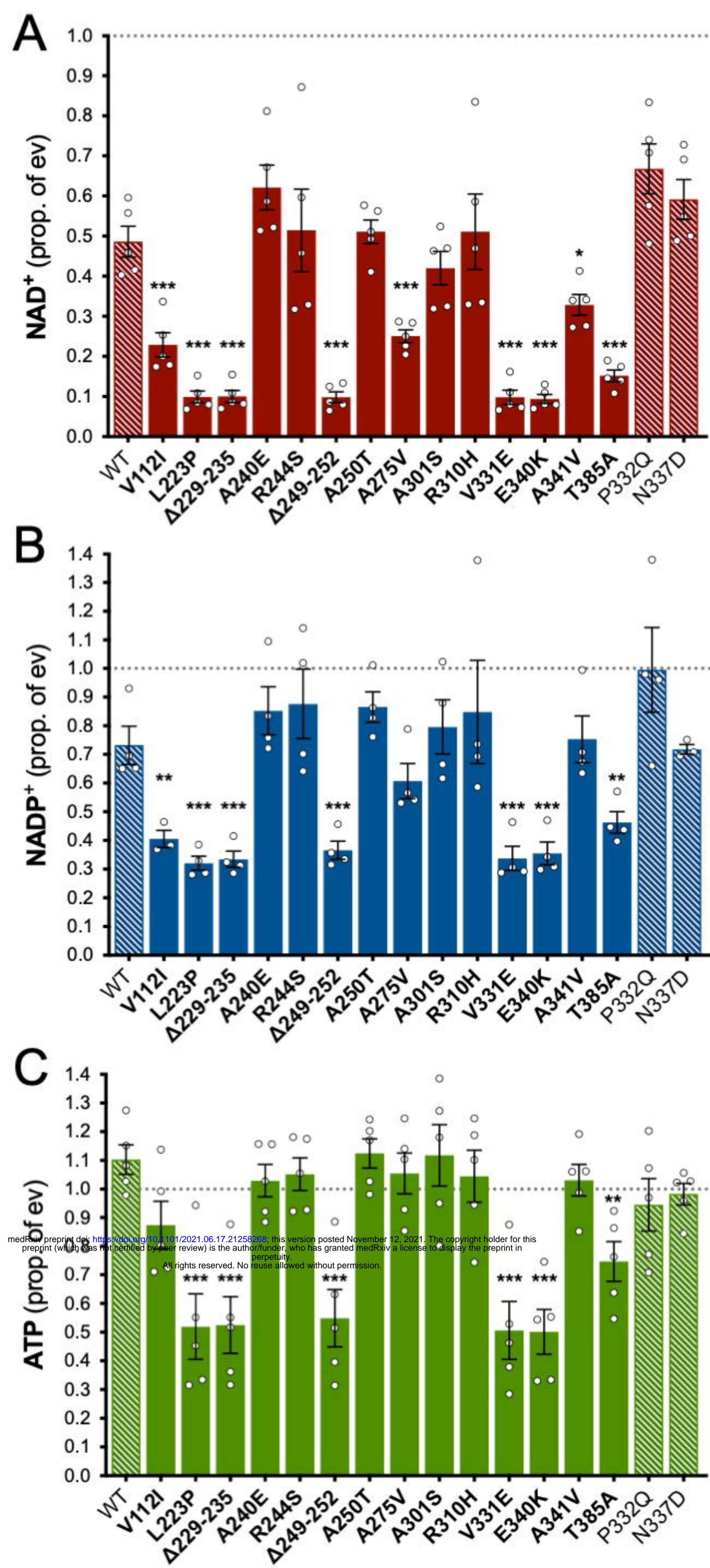




Figure 3

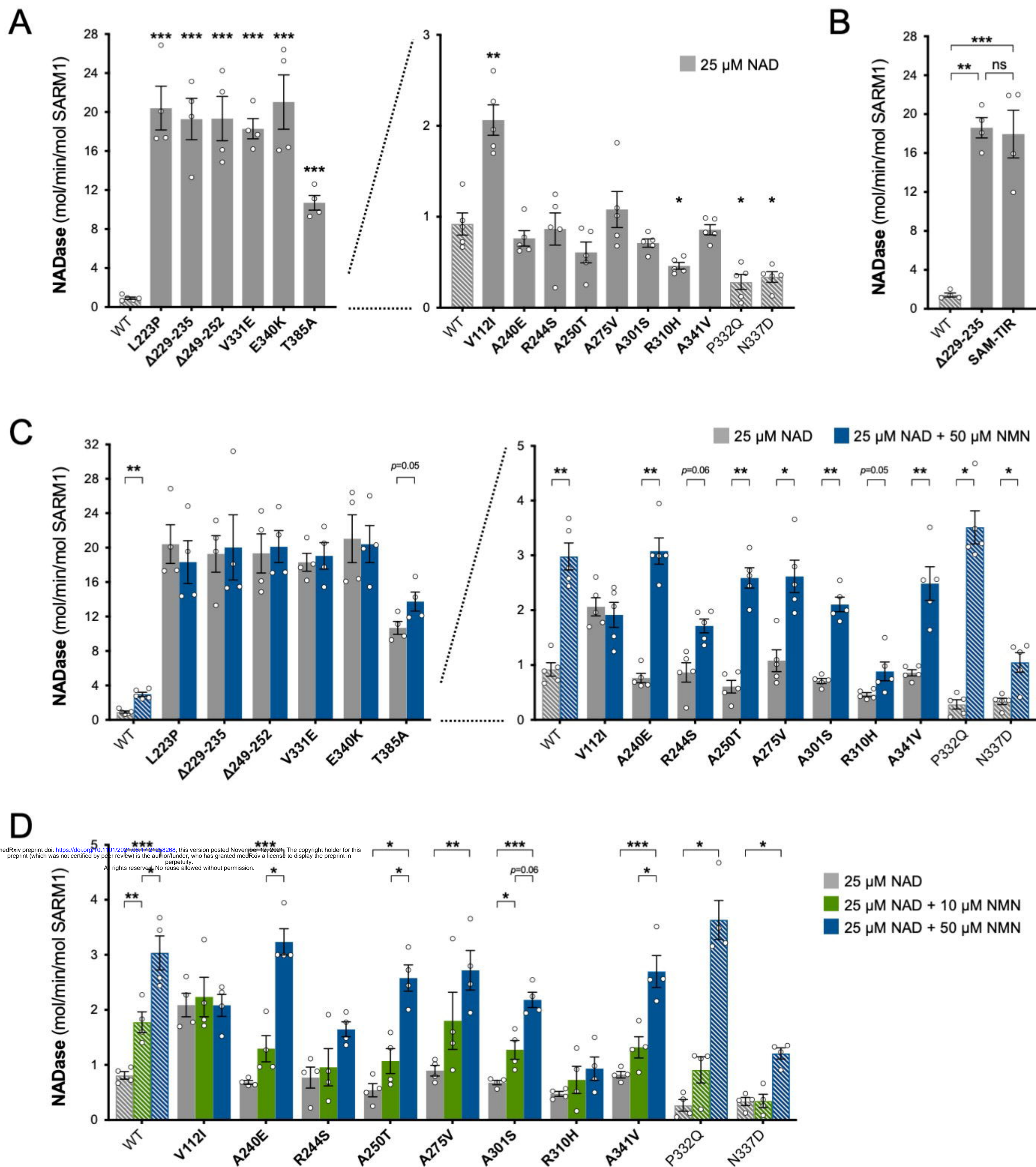




Figure 4

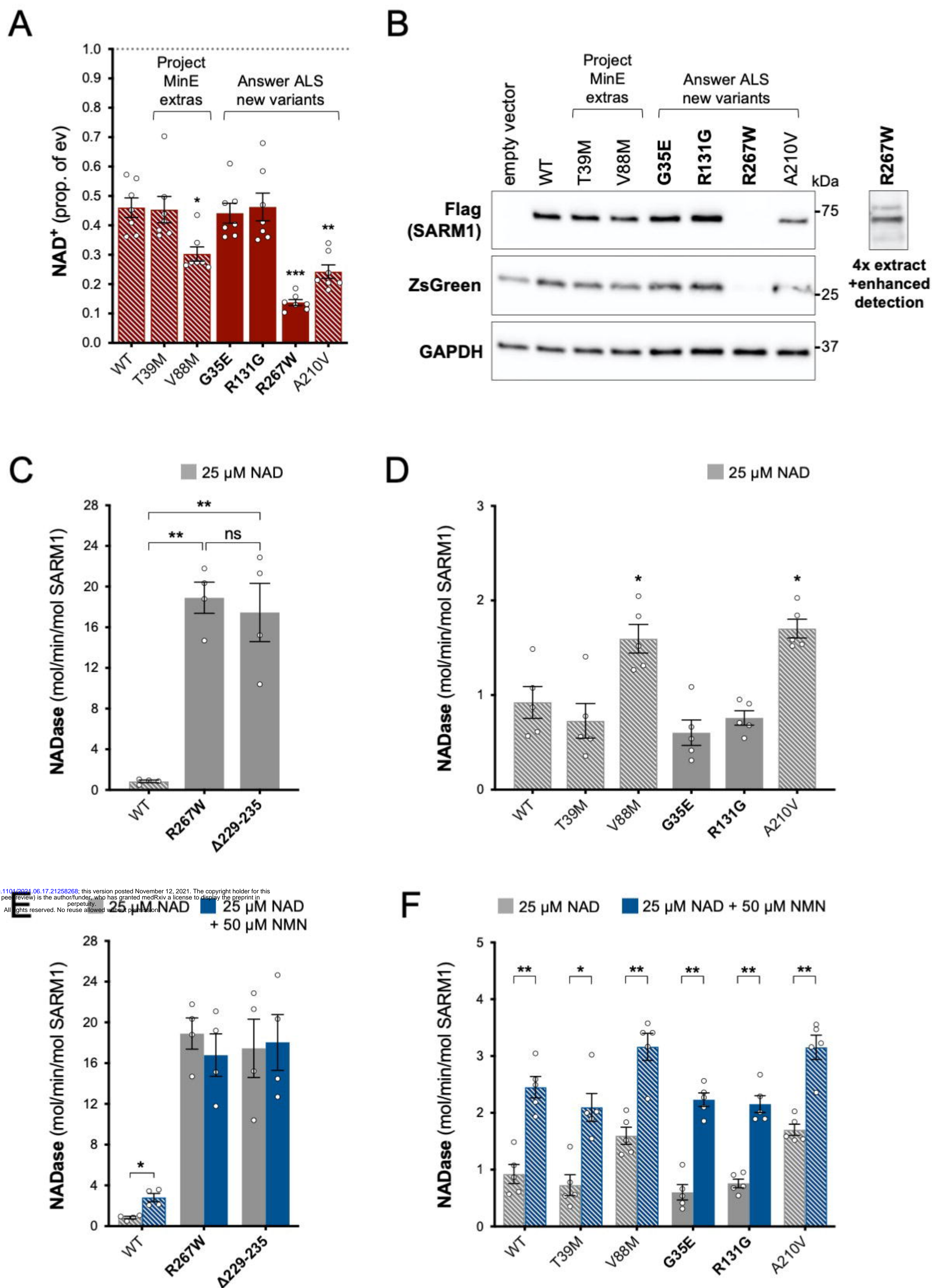
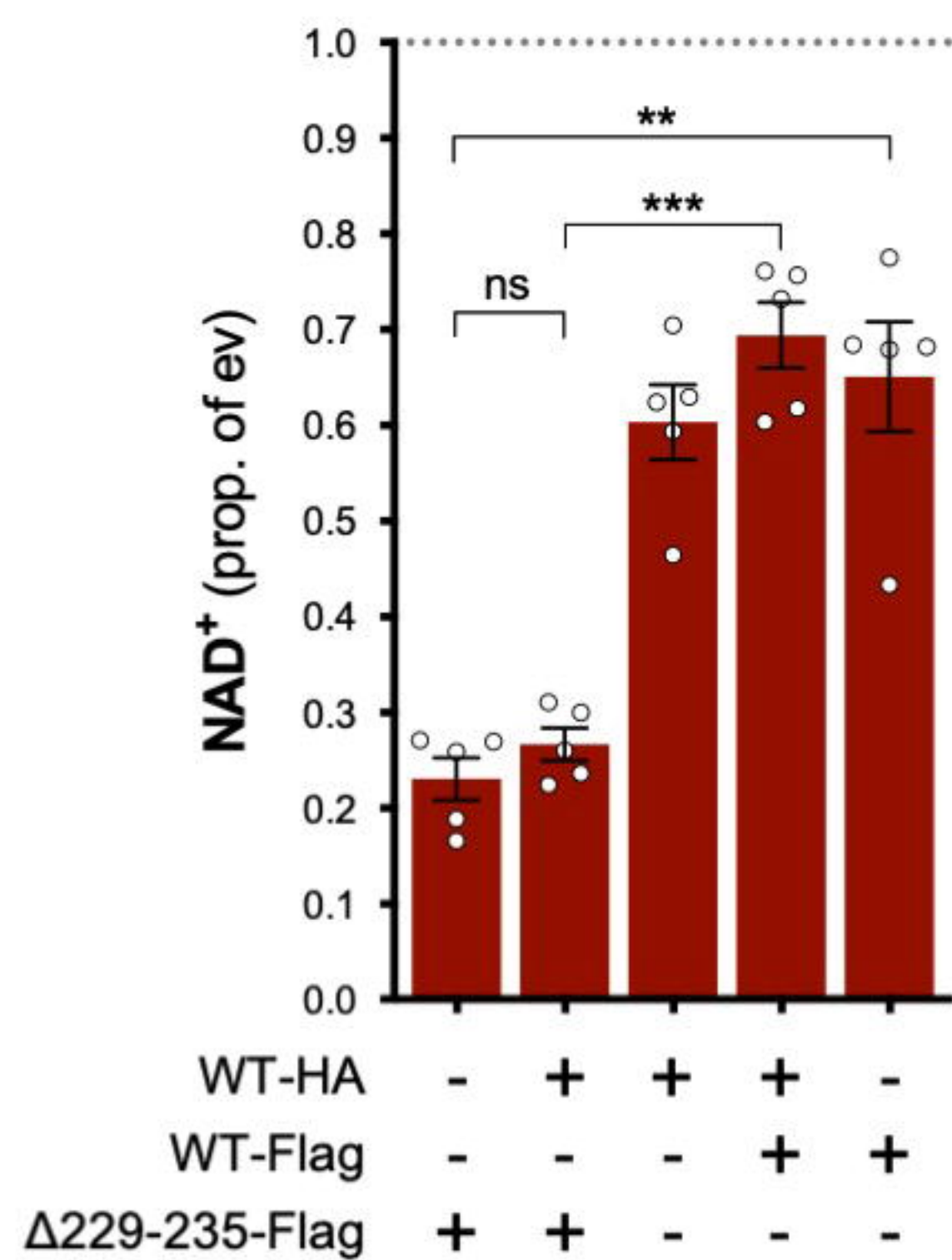


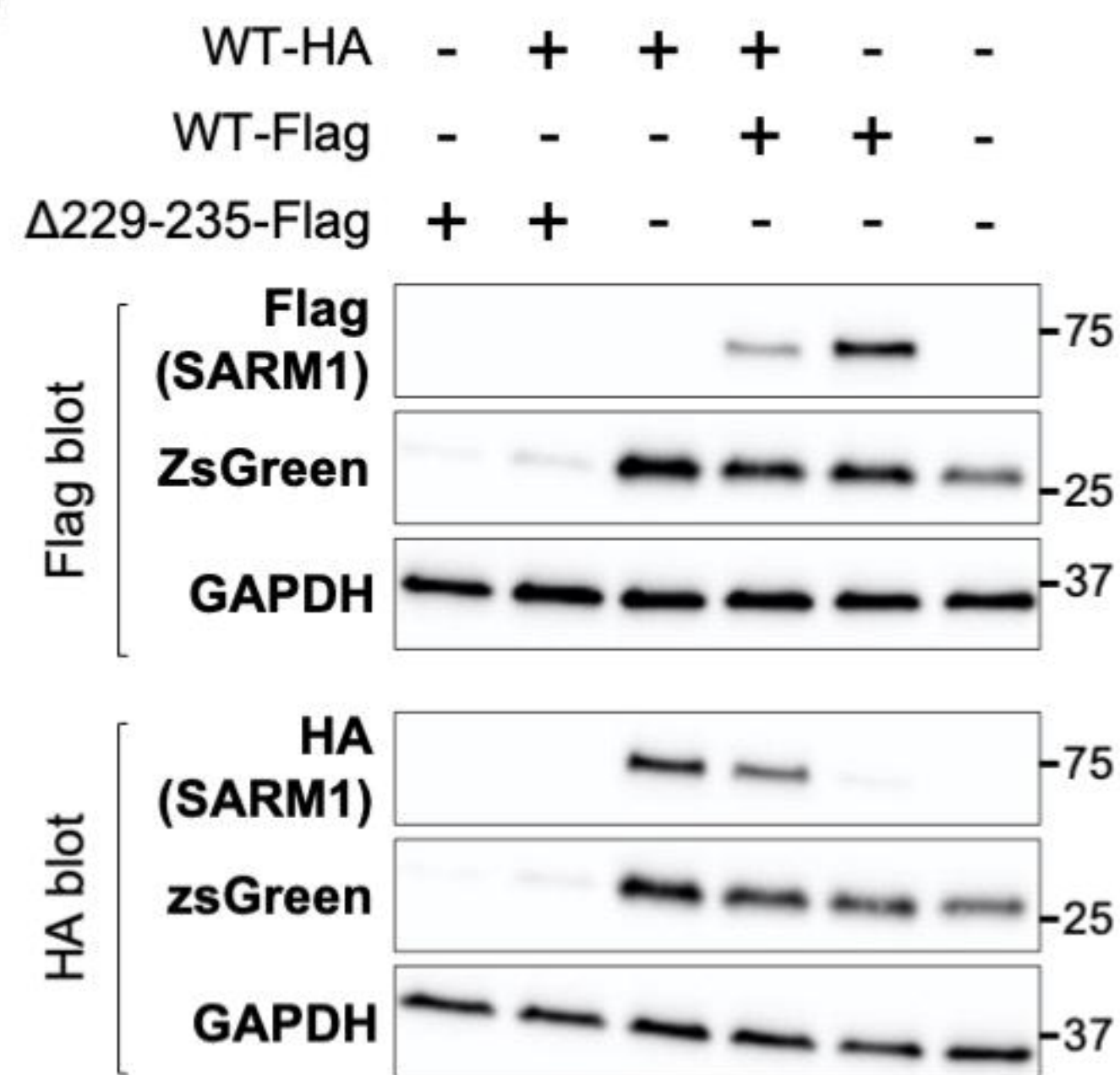


Figure 5

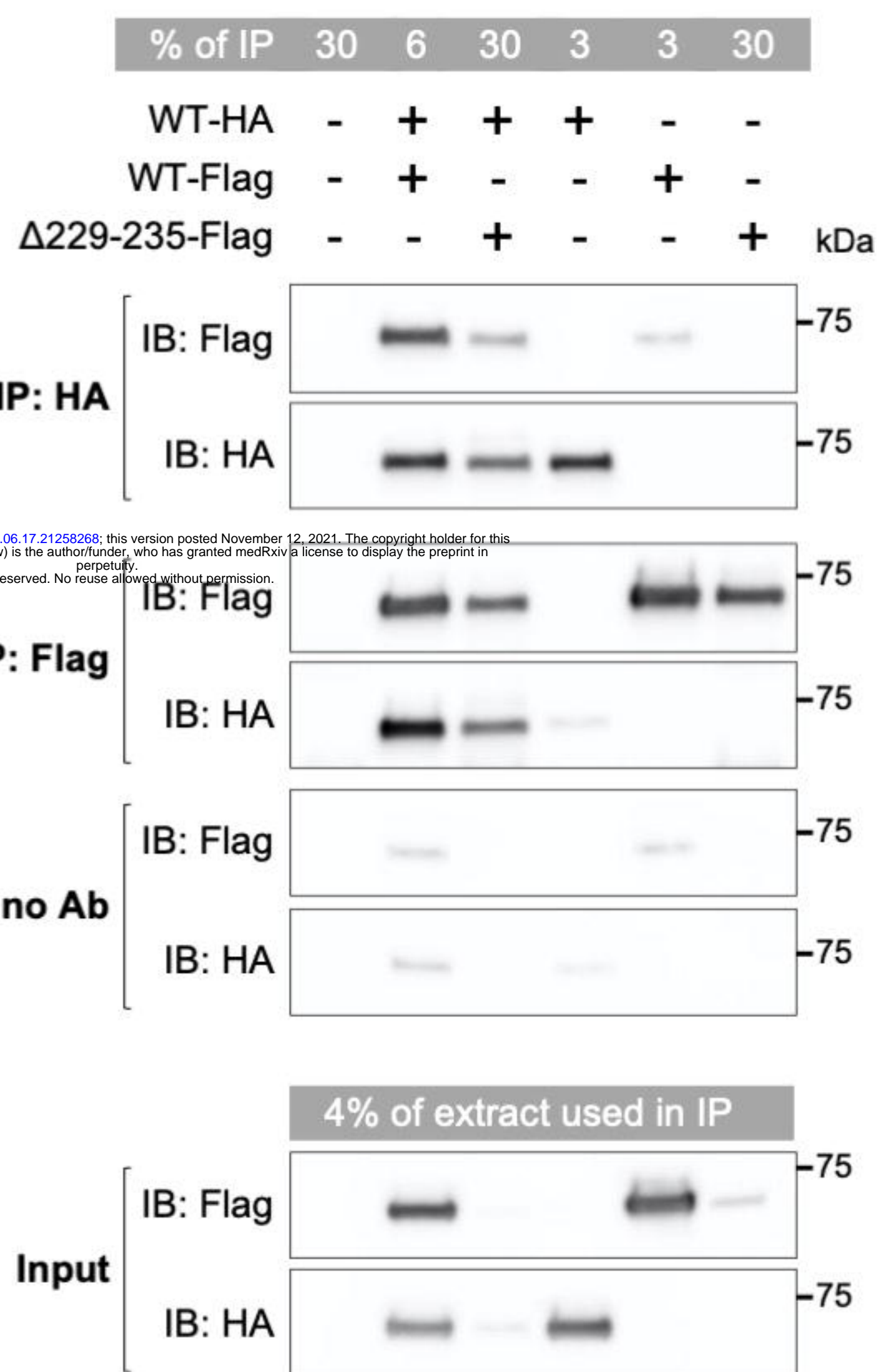
**A**



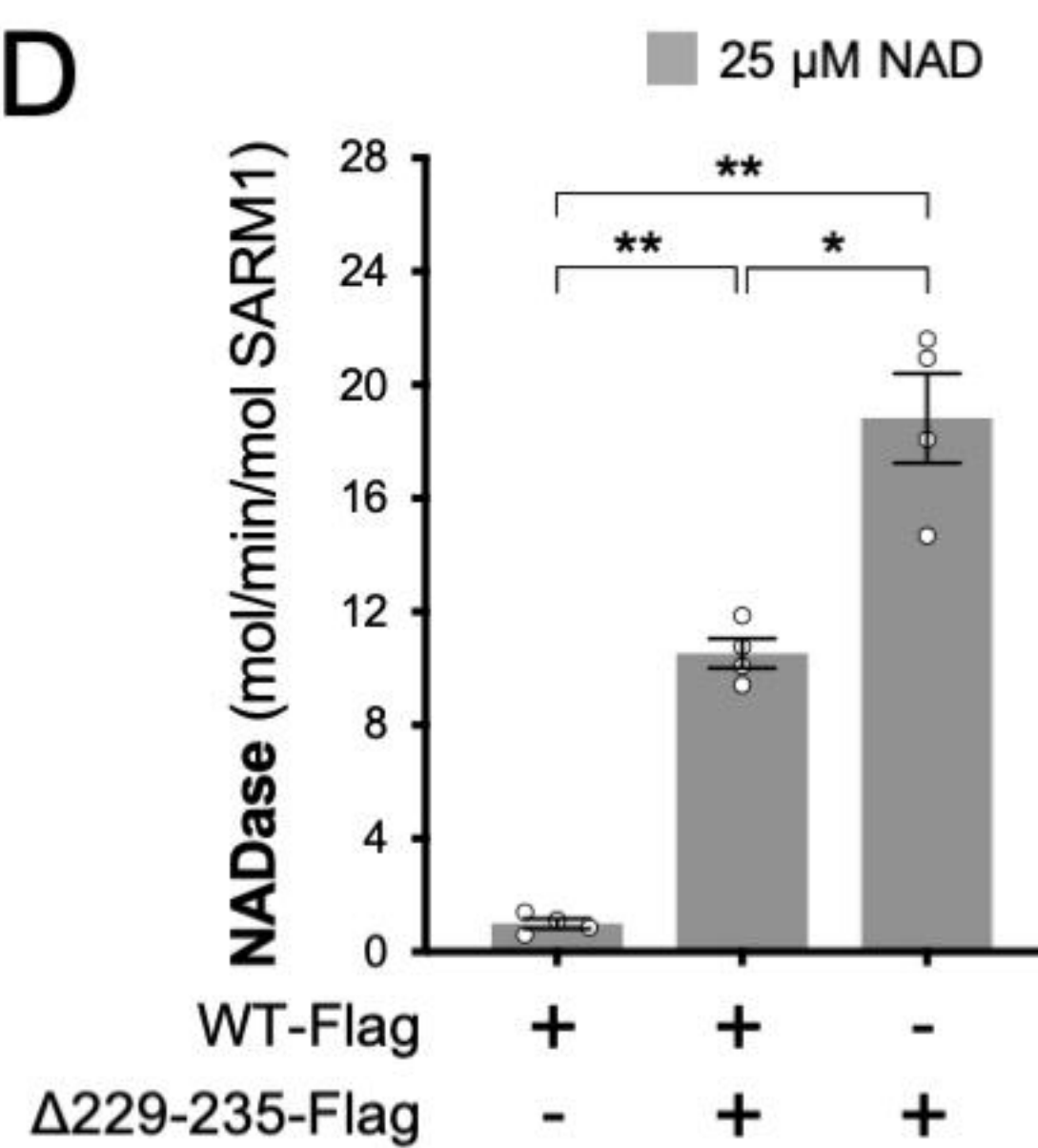
**B**



**C**



**D**



**E**

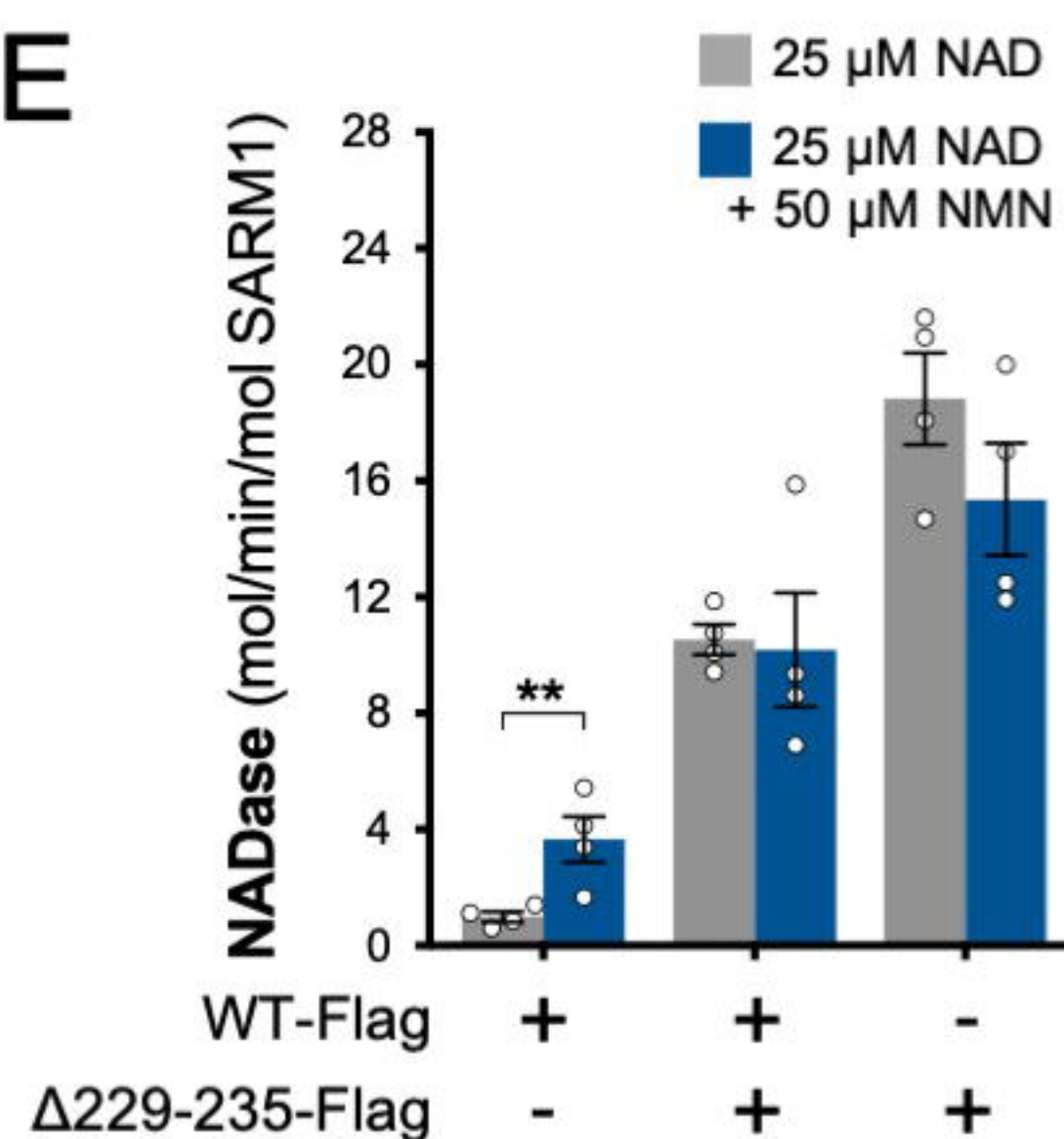




Figure 6

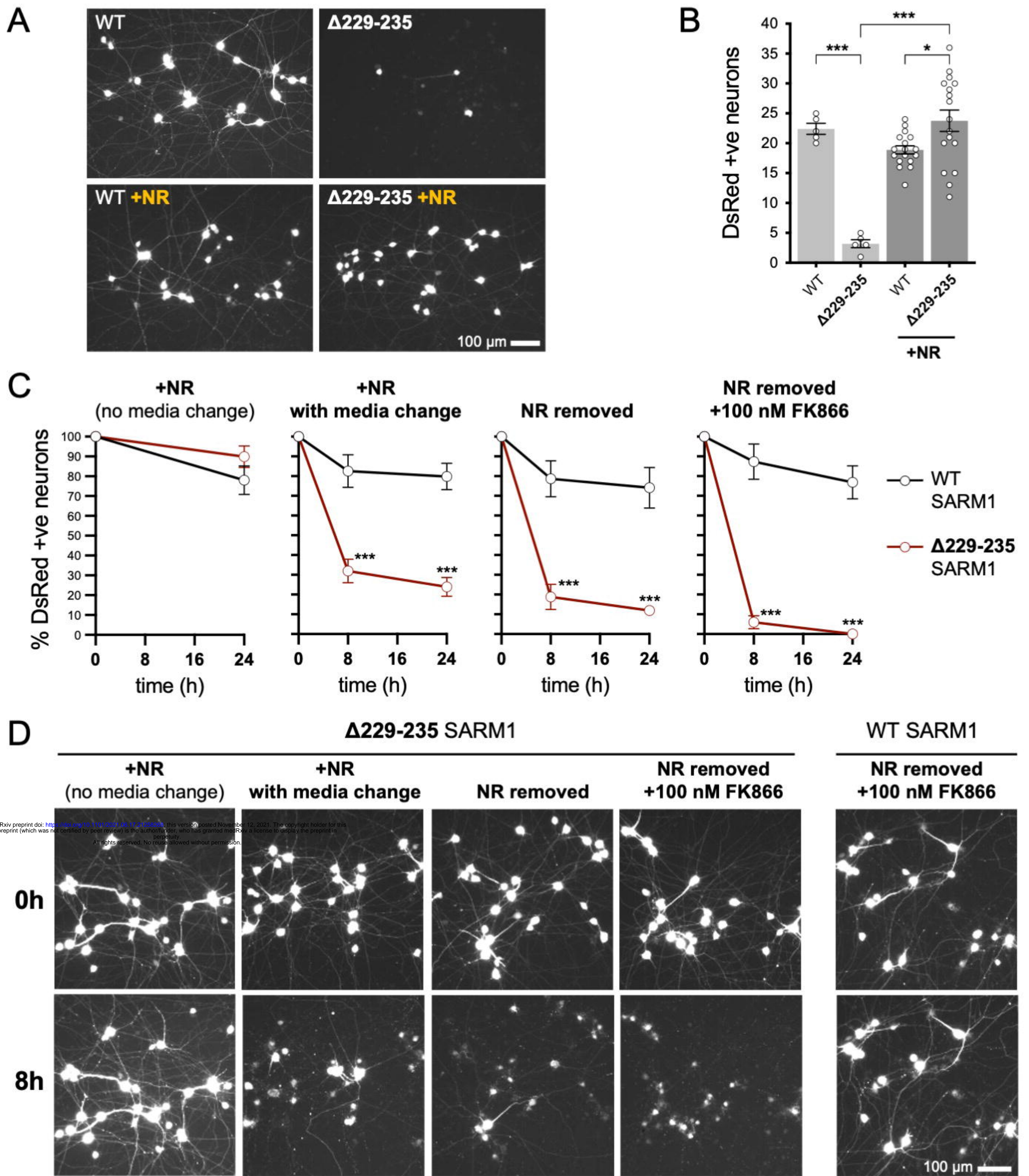




Figure 7

