

1 Abstract word count: 292

2 Manuscript word count: 3,190

3

4 **Early but not late convalescent plasma is associated with better survival in moderate-to-**
5 **severe COVID-19**

6

7 Neima Briggs, MD, PhD,^{a,*} Michael V. Gormally, MD, PhD,^{a,*} Fangyong Li, MPH, MS,^b Sabrina L.
8 Browning, MD,^c Miriam M. Treggiari MD, PhD, MPH,^d Alyssa Morrison,^e Maudry Laurent-Rolle,
9 MD, PhD,^f Yanhong Deng, MPH,^b Jeanne E. Hendrickson, MD,^{g,h} Christopher A. Tormey, MD,^g
10 Mahalia S. Desruisseaux, MD^{††}

11

12 a Department of Medicine, Yale School of Medicine, New Haven, CT

13 b Yale Center for Analytical Sciences, Yale University, New Haven CT

14 c Section of Hematology, Department of Medicine, Yale School of Medicine and Yale Cancer
15 Center, New Haven CT

16 d Department of Anesthesiology, Yale School of Medicine, New Haven, CT

17 e Yale School of Medicine, New Haven, CT

18 f Section of Infectious Diseases, Department of Medicine, Yale School of Medicine, New Haven,
19 CT

20 g Department of Laboratory Medicine, Yale School of Medicine, New Haven, CT

21 h Department of Pediatrics, Yale School of Medicine, New Haven, CT

22

23 * Dr. Neima Briggs and Dr. Michael Gormally contributed equally as co-first authors

24 † Corresponding author: Mahalia S. Desruisseaux, MD

25 Yale School of Medicine

26 PO Box 208022

27 New Haven, CT 06520-8022

28 Email: Mahalia.desruisseaux@yale.edu

29

30 All authors declare no conflicts of interest.

31

32 This project has been funded in whole or in part with Federal funds from the US Department of
33 Health and Human Services; Office of the Assistant Secretary for Preparedness and Response;
34 Biomedical Advanced Research and Development Authority under Contract No.
35 75A50120C00096. This publication was also made possible by the Yale University Dean's
36 Diversity Initiative Faculty Excellence award (to MSD); the CTSA Grant Number UL1 TR000142
37 (to FL, YD) from the National Center for Advancing Translational Science (NCATS) and the
38 National Institutes of Health; the Immunohematology/Transfusion Medicine Research Training
39 Grant Number T32 HL007974 (to MLR) from the National Heart, Lung, and Blood Institute
40 (NHLBI); the DeLuca Center for Innovation in Hematology Research at Yale Cancer Center
41 and The Frederick A. DeLuca Foundation (to SLB); the Bernard Forget Scholarship in the Section
42 of Hematology and Yale Cancer Center (to SLB).

43

44

45

46 **Key words:** Severe acute respiratory syndrome coronavirus 2, respiratory failure, serotherapy,
47 passive immunization, mortality.

48

49 **Abbreviations:**

ALC	Absolute lymphocyte count
AA	African American
ALT	Alanine transaminase
AST	aspartate aminotransferase
BMI	Body mass index
CCI	Charlson cormorbidity index
COVID-19	Coronavirus disease 2019
CCP	COVID-19 convalescent plasma
EAP	Expanded Access Program
ECMO	Extracorporeal membrane oxygenation
FDA	Food and Drug Administration
ICU	Intensive care unit
L	Liters
NT-PROBNP	N-terminal-pro B-type natriuretic peptide
O ₂	Oxygen
SPO ₂	Oxygen saturation
RECOVERY	Randomized evaluation of COVID-19 therapy
SARS-CoV-2	severe acute respiratory syndrome coronavirus 2
WHO	World Health Organization
YNHHS	Yale-New Haven Health System

50

51 **ABSTRACT**

52 **Background:** Limited therapeutic options exist for coronavirus disease 2019 (COVID-19). COVID-
53 19 convalescent plasma (CCP) is a potential therapeutic, but there is limited data for patients
54 with moderate-to-severe disease.

55 **Research Question:** What are outcomes associated with administration of CCP in patients with
56 moderate-to-severe COVID-19 infection?

57 **Study Design and Methods:** We conducted a propensity score-matched analysis of patients
58 with moderate-to-severe COVID-19. The primary endpoints were in-hospital mortality.
59 Secondary endpoints were number of days alive and ventilator-free at 30 days; length of
60 hospital stay; and change in WHO scores from CCP administration (or index date) to discharge.

61 Of 151 patients who received CCP, 132 had complete follow-up data. Patients were transfused
62 after a median of 6 hospital days; thus, we investigated the effect of convalescent plasma
63 before and after this timepoint with 77 early (within 6 days) and 55 late (after 6 days)
64 recipients. Among 3,217 inpatients who did not receive CCP, 2,551 were available for matching.

65 **Results:** Early CCP recipients, of whom 31 (40%) were on mechanical ventilation, had lower 14-
66 day (15% vs 23%) and 30-day (38% vs 49%) mortality compared to a matched unexposed
67 cohort, with nearly 50% lower likelihood of in-hospital mortality (HR 0.52, [95% CI 0.28-0.96];
68 $P=0.036$). Early plasma recipients had more days alive and ventilator-free at 30 days (+3.3 days,
69 [95% CI 0.2 to 6.3 days]; $P=0.04$) and improved WHO scores at 7 days (-0.8, [95% CI: -1.2 to -
70 0.4]; $P=0.0003$) and hospital discharge (-0.9, [95% CI: -1.5 to -0.3]; $P=0.004$) compared to the
71 matched unexposed cohort. No clinical differences were observed in late plasma recipients.

72 **Interpretation:** Early administration of CCP improves outcomes in patients with moderate-to-
73 severe COVID-19, while improvement was not observed with late CCP administration. The
74 importance of timing of administration should be addressed in specifically designed trials.
75

76 **Introduction**

77 Severe acute respiratory syndrome coronavirus 2 (SARS-CoV-2), a positive-sense, single-
78 stranded RNA virus of the *Coronaviridae* family, is the etiologic agent of Coronavirus disease
79 2019 (COVID-19) and is responsible for greater than 126 million global infections and
80 approximately 2.7 million deaths since December 2019.[1-3] During the first 6 months of the
81 COVID-19 pandemic, treatment was largely supportive. In June 2020 the Randomized
82 Evaluation of Covid-19 Therapy (RECOVERY) trial reported that dexamethasone reduced
83 mortality in patients on respiratory support; thus, corticosteroids have become standard of
84 care for patients on supplementary oxygen.[4, 5] Furthermore, remdesivir, a nucleotide
85 analogue that disrupts viral replication, is the only other pharmacologic approved for COVID-19
86 in the United States [6], although with little to no effect on mortality or clinical course in
87 hospitalized patients.[7] No additional therapeutics have yet to show efficacy in hospitalized
88 patients with COVID-19.

89
90 Convalescent plasma containing antibodies generated following pathogens' exposure has been
91 employed in past epidemics as a means of passively transferring immunity from individuals with
92 resolved infection. In addition to antibody-mediated protection via neutralization, therapeutic
93 antibodies can directly induce cellular cytotoxicity, complement activation, and phagocytosis.
94 Furthermore, convalescent plasma may contain beneficial anti-inflammatory cytokines,
95 defensins, and pentraxins that quell a severe inflammatory response.[8] During the SARS [9]
96 epidemic in 2003 and more recently during the H1N1[10] pandemic of 2009, treatment with
97 convalescent plasma resulted in significant mortality reduction.

98

99 In the current pandemic, single-arm observational studies have reported administration of
100 COVID-19 convalescent plasma (CCP) to patients with mild to severe COVID-19 with variable
101 results and limited cohort sizes.[11-15] Two randomized open-label trials were terminated prior
102 to full enrollment; one due to drop in local COVID-19 incidence and a second due to concerns
103 that the recruited cohort had preexisting anti-SARS-CoV-2 antibodies prior to enrollment.[16,
104 17] A third, randomized open-label trial of 464 hospitalized adults with moderate COVID-19
105 failed to show benefit in 28-day mortality or progression to severe disease; however, the study
106 was limited by low or undetectable antibody titers in the donor plasma [18]. Most recently, a
107 randomized, double-blinded, placebo-controlled trial found that administration of higher-titer
108 CCP within 72 hours after symptom onset among mildly infected older adults reduced risk of
109 progression to severe respiratory disease by 48%.[19]

110
111 There is increasing evidence that clinical response to CCP might depend on the timing of
112 administration. We conducted a propensity score matched analysis in one of the largest
113 reported cohort of hospitalized patients with moderate-to-severe COVID-19 to investigate
114 outcomes associated with early versus late transfusion of CCP.

115

116 **Methods**

117

118 ***Study Design***

119 This was a cohort study that included 3,368 patients hospitalized with moderate (supplemental
120 oxygen flow rate of $\geq 3\text{L}/\text{min}$) to severe or life-threatening (respiratory failure, shock, or multi-
121 organ failure) COVID-19 managed within the Yale New Haven Health system (YNHHS) from

122 March 8, 2020 to July 25, 2020. Of those, a total of 151 patients were transfused with CCP. We
123 dichotomized the cohort based on the median time to CCP administration (6 days; interquartile
124 range: 3, 11 days): The early CCP cohort received treatment within 6 days of hospitalization,
125 while the late CCP cohort received treatment after 6 days of hospitalization. This cut-off was
126 consistent with transfusion time used in another study.[15] For the early or late CCP cohorts,
127 we conducted distinct propensity score matchings to generate two 1:1 matched unexposed
128 cohorts, as previously described.[20] Index dates for the unexposed patients were assigned
129 corresponding to the day of CCP administration within each matched pair.

130

131 This study was approved by the Yale University Institutional Review Board (HIC#: 2000027871)
132 with a waiver of informed consent.

133

134 ***Eligibility and Selection of Convalescent Plasma Recipients***

135 In April 2020 the U.S. Food and Drug Administration (FDA) provided physicians access to
136 convalescent plasma through the US National Expanded Access Program (EAP), which was led
137 by the Mayo Clinic (IRB# 20-003312). Patients hospitalized with COVID-19 within YNHHS were
138 screened for eligibility to receive CCP through the EAP based on shared decision making
139 between the Convalescent Plasma Clinical Team, primary medical team, and the patient or
140 Legally Authorized Representative. Patients were eligible to receive CCP if they were 18 years of
141 age or older, had a laboratory confirmed diagnosis of SARS-CoV-2 infection, were hospitalized
142 within YNHHS with COVID-19 complications, and had moderate-to-severe disease as indicated
143 by the following characteristics: 1. Supplementary oxygen requirements (≥ 3 L/min nasal
144 cannula) with pulmonary infiltrates on chest imaging; 2. Refractory acute respiratory failure; 3.

145 Septic shock; or 4. Multisystem organ dysfunction. Absolute contraindication to the
146 administration of CCP was confirmed new thromboembolic event. Relative contraindications
147 were: 1. Confirmed or high suspicion for bacterial or fungal infection; 2. Suspicion of a new
148 thromboembolic event; 3. Recent significant hemorrhage; 4. High risk for hemorrhage and on
149 therapeutic anticoagulation; and 5. Severe IgA deficiency. At least two physicians on the
150 Convalescent Plasma Clinical Team reviewed each CCP request and approved them based on
151 the adherence to the inclusion criteria and absolute or relative contraindications.

152

153 ***Convalescent Plasma Donors***

154 CCP was obtained from the hospital system's blood suppliers, including New York Blood Center
155 (New York, NY), Rhode Island Blood Center (Providence, RI), and the American Red Cross
156 (Farmington, CT). Over the course of the study period the criteria for eligibility for CCP donation
157 was modified by the FDA, though generally required PCR-confirmed diagnosis of COVID-19 and
158 complete resolution of symptoms for greater than 14 days prior to donation. The units
159 transfused were not labeled by the blood suppliers with an anti-SARS-CoV-2 IgG titer.

160

161 ***Preparation and Administration of Convalescent Plasma***

162 Each patient received one unit of ABO compatible CCP, with a typical unit being approximately
163 200 mL in volume. Units were thawed on demand once requested and the patient was
164 confirmed to have met all eligibility criteria.

165

166 ***Outcome measures***

167 The primary endpoint was in-hospital mortality. Time was censored on the date of discharge or
168 administratively on August 3, 2020, the date of closure of data extraction. Secondary endpoints
169 included days alive and free from mechanical ventilation 30 days post-index date, length of
170 hospital stay post CCP or index date in the unexposed cohort, and change in 8-point WHO
171 ordinal scale at 7 days post CCP or index date and at hospital discharge (**S1 Table**).

172

173 ***Statistical Analysis***

174 Patient demographics and pre-existing comorbidities were collected at admission. Vital signs,
175 oxygen therapy, concomitant medications, and laboratory tests were collected longitudinally
176 during the hospitalization. Descriptive statistics were used to summarize patient demographics
177 and clinical characteristics. In bivariate analysis, two-sample Student's t-test, Wilcoxon rank-
178 sum test, Chi-square or Fisher's exact tests were used for comparisons of exposed and
179 unexposed cohorts, as appropriate.

180

181 Two separate propensity-score matches were carried out to select unexposed patients for the
182 early CCP cohort or unexposed patients for the late CCP cohort (**S2 Figure and S3 Figure**). CCP
183 recipients were matched with unexposed patients using both propensity scores and exact
184 matching on the worst WHO scores preceding CCP administration or index date, and on
185 administration of remdesivir. No replacement was allowed for matching, and matched
186 unexposed patients in the early cohort were allowed in the late cohort. The standardized mean
187 difference between matched groups was set at ≤ 0.25 . Because of the stringent exact matching
188 criteria, the optimal algorithm that minimized differences between the matching pairs was only
189 able to yield 1:1 unexposed match. Group comparisons were performed to confirm expected

190 balance between matched groups. For each matched cohort, a multivariate logistic regression
191 model was fitted to estimate the probability of receiving CCP within the specified time frame
192 and create propensity for each individual (**S2 Table**). The models included demographic and
193 clinical characteristics at hospital admission; concomitant medications, laboratory results prior
194 to CCP administration, and supplemental oxygen status as covariates. The list of covariates was
195 presented in S2 Table.

196
197 For the primary analysis, we used the Kaplan-Meier product-limit estimator to estimate the
198 hospital mortality function. We compared CCP exposed and unexposed patients for the early
199 and for the late cohorts using the log-rank test. Mortality at 14 days and 30 days post CCP or
200 index date was estimated and reported with 95% confidence intervals. Secondary outcomes
201 were analyzed using mixed effects models or ordinal logistic regression with robust variance
202 estimation to compare treatment groups with their respective matched unexposed cohort. The
203 effect sizes are presented as mean difference with 95% confidence interval. A two-sided alpha
204 level of 0.05 was required for statistical significance. All statistical analyses were performed
205 using SAS 9.4 (Cary, NC) software.

206

207 **Results**

208 Of 3,368 patients with confirmed SARS-CoV-2 infection within YNHHS, 151 eligible patients
209 received CCP under the US National Expanded Access Program (**Figure 1**). Among the CCP
210 recipients, 80 received CCP within 6 days after admission, and 71 received CCP after 6 days of
211 hospitalization. Of those who received CCP, 3 early and 16 late recipients were excluded from
212 propensity score matching due to missing laboratory values and/or supplemental oxygen

213 information during the first week of hospitalization, leaving a total of 77 CCP patients in the
214 early cohort and 55 CCP patients in the late cohort available for inclusion in the analyses. One
215 of three excluded early recipients died (33%), and 9 out of 16 excluded late recipients died
216 (56.3%). Among 3,217 SARS-CoV-2 positive hospitalized patients who did not receive CCP
217 transfusion, 666 were excluded from the unexposed cohort due to incomplete clinical data,
218 leaving 2,551 patients eligible for propensity score matching.

219
220 Baseline demographic characteristics and clinical factors for the early and late cohorts are
221 summarized in **Table 1**. Overall, age, sex, race, ethnicity, BMI, and Charlson Comorbidity Index
222 were equally distributed between the CCP and the unexposed group. Likewise, the mean
223 maximum WHO score prior to the index date and the level of supplemental oxygen were
224 comparable between CCP and unexposed group. Baseline laboratory values obtained prior to
225 CCP administration or index date were similar among the CCP and unexposed group, with the
226 exception of mean fibrinogen level which was higher in the CCP treated group compared with
227 the unexposed group in the late cohort. Concomitant medications, including
228 hydroxychloroquine, remdesivir, tocilizumab, and dexamethasone were well balanced in the
229 early cohort. Tocilizumab was administered more frequently in the CCP group compared with
230 the unexposed group in the late cohort (**Table 1**).

231

232 ***Primary Endpoint***

233 In the propensity score matched analysis, the estimated in-hospital mortality was 15% by day
234 14 among early CCP recipients, compared with 23% in their matched unexposed cohort. At day
235 30, estimated in-hospital mortality was 38% in early CCP recipients compared to 49% in their

236 matched unexposed cohort (**Table 2**). Overall, early CCP recipients were nearly 50% less likely
237 to die in the hospital compared to patients in the matched unexposed cohort (HR 0.52, [95% CI
238 0.28 to 0.96]; $P=0.036$) (**Figure 2a**). In contrast, there were no differences in mortality among
239 late CCP recipients compared to their matched unexposed cohort (HR 0.98, [95% CI 0.53 to
240 1.83]; $P=0.95$) (**Figure 2b, Table 2**). In the late cohort, the estimates of 14-day and 30-day in-
241 hospital mortality were 28% vs 29% and 42% vs 47%, comparing CCP recipients vs matched
242 unexposed patients, respectively.

243

244 **Secondary Endpoints**

245 The early CCP cohort had more days “alive and ventilator free” by 30 days post-index date
246 compared with their matched unexposed cohort (mean 3.3 days, [95% CI 0.2 to 6.3]; $P=0.04$,
247 **Table 2**). There were no differences comparing CCP recipients and matched unexposed patients
248 in the late cohort (mean -3.5 days, [95% CI -8.6 to 1.7]; $P=0.18$).

249

250 In the early CCP cohort, WHO scores were significantly lower at 7 days post administration or
251 post index date (difference in means -0.8, [95% CI -1.2 to -0.4]; $P=0.0003$) and at hospital
252 discharge (difference in means -0.9, [95% CI -1.5 to -0.3]; $P=0.004$) compared to their matched
253 unexposed cohort. Early CCP recipients were nearly twice as likely to demonstrate an
254 improvement in their WHO scores at discharge from baseline index day scores (OR 1.9, [95% CI
255 1.1 to 3.3]; $P=0.02$, **Figure 3a, Table 2**). 42.9% of CCP recipients on mechanical ventilation at
256 baseline (WHO score of 6) no longer required supplementary oxygen at the time of discharge
257 (WHO score of 3) compared to 36.4% of unexposed matches (**S1 Figure**). There were no

258 differences in length of hospital stay post treatment or index date (mean, 18.4 days vs 17.5
259 days, $P=0.57$) or likelihood of discharge (HR for discharge 0.9, 95% CI 0.6 to 1.3; $P=0.46$).

260
261 In the late cohort, there were no differences in WHO scores at day 7 (mean +0.2, [95% CI -0.3 to
262 0.8]; $P=0.41$) or at discharge (mean +0.6, [95% CI -0.4 to 1.5]; $P=0.23$) between CCP recipients
263 and their matched unexposed cohort (**Figure 3b, Table 2**). The change from baseline (CCP
264 transfusion or index date) to discharge in WHO scores was not different either (OR 0.6 [95% CI
265 0.3 to 1.3]; $P=0.22$). Hospital length of stay was longer in CCP recipients compared with
266 unexposed matches, (mean, 24.7 days vs 19.9 days, $P=0.01$), although the likelihood of
267 discharge was not different (HR for discharge 0.6, 95% CI 0.3 to 1.1) (**Table 2**).

268
269 ***Adverse Outcomes***

270 No immediate transfusion-related adverse events were observed after CCP administration in
271 any of the cohorts and no transfusion reactions were reported to the blood bank.

272
273 **Discussion**

274 In this cohort study of CCP transfusion in patients with moderate-to-severe COVID-19, we found
275 a nearly 50% lower in-hospital mortality, fewer days spent on mechanical ventilation, and
276 greater improvement in WHO scores after early administration of CCP (within 6 days of
277 hospitalization) when compared to a propensity score-matched unexposed cohort. When
278 administered after 6 days of hospitalization, CCP transfusion was not associated with improved
279 mortality or clinical outcomes.

280

281 On August 23, 2020, the FDA granted Emergency Use Authorization for the use of CCP in the
282 management of COVID-19 based on preliminary analysis of the EAP which found that CCP
283 administered within 3 days of admission produced clinical benefit. Specifically, the
284 observational study reported by Joyner et al. found lower 30-day mortality in patients who
285 received plasma within 72 hours of first positive SARS-CoV-2 PCR compared to patients
286 transfused after 72 hours.[14] There is a growing body of literature supporting a biological
287 rationale for the early administration of CCP as a means to enhance response to this
288 treatment.[15, 21-24] Active viral shedding is highest within the first week of symptoms, with
289 peak replication occurring within the first 5 days.[21, 22] Moreover, antibody responses to
290 SARS-CoV-2 start to develop in the first week, with antiviral immunoglobulin peaks by day 22 of
291 symptoms.[23] With the SARS epidemic of 2003, Cheng et. al. described higher hospital
292 discharge and lower mortality in patients who received anti-SARS convalescent plasma prior to
293 14 days after the onset of illness.[9] This is also consistent with data observed by Libster and
294 colleagues, who found a 48% relative risk reduction in developing severe respiratory disease in
295 older adults receiving CCP within 72 hours after the onset of mild COVID-19 symptoms.[19]
296 However, this aforementioned study failed to detect any benefit in mortality due to very few
297 deaths. Another small study using propensity score matched method reported benefit for
298 patients with severe COVID receiving CCP within 7 days with a HR of 0.34.[15] The results of our
299 investigation support these findings utilizing a larger sample size and suggest that the
300 administration of CCP after the first week of hospitalization does not attain the same results as
301 earlier CCP administration.

302

303 In contrast, there have been multiple randomized controlled trials of CCP with negative
304 findings, the most recent being the CCP arm of RECOVERY, which found no benefit in mortality,
305 mechanical ventilator liberation or hospital discharge.[25] An important distinction from the
306 present study is that the median time to CCP in RECOVERY was 9 days from symptoms. Zeng
307 and colleagues reported that administration of CCP 21 days after initial SARS-CoV-2 detection
308 failed to improve survival despite successful viral clearance.[26] Simonovich et al. also reported
309 no benefit to CCP in patients who had a median time from symptoms onset to CCP transfusion
310 of 8 days in a recent study.[27] Indeed, our findings in the late cohort are consistent with this
311 prior work and further emphasize the importance of early administration of CCP to achieve
312 clinical improvement.

313
314 It is important to note that 40% of early CCP recipients in our cohort were on mechanical
315 ventilation, suggesting that the clinical benefits of early CCP administration extend to even
316 patients who are critically ill. Although previous uncontrolled case series reported improvement
317 in mechanically ventilated patients who received CCP, [28, 29] an open-label, randomized trial
318 by Li et. al. failed to demonstrate any significant clinical improvement in a small subset of
319 patients with life-threatening COVID-19,[16] although fewer patients in the CCP group died
320 compared to unexposed patients.[16] To our knowledge, our study is among the first to report
321 significant clinical benefit with early administration of CCP in hospitalized patients with
322 moderate-to-severe COVID-19.

323
324 Interestingly, in our study late CCP recipients had longer lengths of hospitalization than their
325 matched unexposed counterparts despite having similar likelihood of discharge, mortality, and

326 WHO scores at day 7 and discharge. Future studies should help elucidate potential explanations
327 for these observations.

328

329 ***Limitations***

330 The interpretation of our findings is limited by the observational nature of the study. However,
331 propensity score matching to parse electronic medical record data is a valid and commonplace
332 method in medical research.[20, 30] Matching characteristics were comparable between
333 exposed and unexposed patients. We acknowledge that it is possible that despite the adequate
334 matching, patients in the late cohort were intrinsically different from matched unexposed
335 patients, and indication bias might have played a stronger role, or the late administration of
336 CCP might not be an adequate rescue intervention. While results from multi-center,
337 randomized, controlled trials will be available in the future, our study is the first adequately
338 powered to evaluate CCP for use in moderate-to-severe disease.

339

340 Although other studies may use different cut-offs for timing of CCP administration, our study
341 used hospitalization date as a reliable time point that could be easily implemented to guide
342 hospital treatment algorithms. It would be more challenging to establish timing of treatment
343 based on the date of symptom onset, because initial COVID-related symptoms are often more
344 difficult to precisely identify, and even more so in the early stages of the pandemic. Symptom
345 onset information was also not feasible to obtain for our entire 2,551 patient cohort used for
346 propensity matching. Another limitation of the present study is that each pool of plasma was
347 unique without individual titer levels available, given that data for this study were collected

348 prior to a validated serologic test. This information on donor plasma would have enabled us to
349 confirm a dose-response relationship, supporting the concept of the biological effects of CCP.

350

351 ***Conclusion***

352 Among patients hospitalized with moderate-to-severe COVID-19, administration of CCP within 6
353 days of hospitalization in conjunction with standard of care treatment was associated with
354 improved in-hospital mortality compared to standard of care treatment alone. Furthermore,
355 the early administration of CCP was associated with increased 30-day alive and ventilator free
356 days and improved WHO ordinal scale scores compared with the matched unexposed cohort.
357 However, these associations were not observed among patients transfused 7 days or later into
358 their hospital course. Further clinical trials are required to confirm the efficacy and safety of
359 CCP, especially considering the importance of timing of administration, in order to address the
360 limitations of this propensity-matched analysis and confirm our findings.

361

362 **Acknowledgments**

363 Co-first authors: NB, MVG. Conception and design of work: NB, MVG, SLB, MMT, JEH, CAT,
364 MSD; Acquisition of data: NB, MVG, SLB, AM, MLR, MSD; statistical analysis: FL, YD;
365 interpretation: NB, MVG, SLB, FL, MMT, YD, MSD; Drafting or critically revising for important
366 intellectual content: NB, MVG, FL, SLB, MMT, AM, MLR, YD, JEH, CAT, MSD; Final approval of
367 the version published: NB, MVG, FL, SLB, MMT, AM, MLR, YD, JEH, CAT, MSD; Guarantors
368 ensuring accuracy and integrity of the work: NB, MVG, FL, MSD

369

370 The authors thank members of the Yale New Haven Health System COVID-19 Convalescent
371 Plasma Group: Dr. Gregory Buller, Chief of Medicine, Department of Medicine, Bridgeport
372 Hospital; Dr. Herbert Archer, Chief of Medicine and Dr. Gavin McLeod, Infectious Diseases,
373 Greenwich Hospital; Dr. Prakash Kandel, Hospital Medicine, Lawrence and Memorial Hospital;
374 Dr. Mudassar Khan, Hospital Medicine, Westerly Hospital; Dr. Joseph Ladines-Lim, Yale School
375 of Medicine; Dr. Muye Li and Dr. Alan Zakko, Department of Medicine, Yale School of Medicine
376 and Dr. Kent Owusu, PharmD, Clinical Redesign Consultant Yale New Haven Health for their
377 input in developing criteria for enrolment into the EAP and in enrolling patients into the
378 program. The authors also thank Dr. Peter Peduzzi, Dr. James Dziura, and Dr. Denise Esserman
379 of the Yale Center for Analytical Sciences for their guidance with the analyses.

380

381 ***Disclaimer:*** The contents of this publication are the sole responsibility of the authors. The views
382 and opinions expressed in this publication are those of the authors and do not reflect the
383 official policy or position of the US Department of Health and Human Services and its agencies
384 including the Biomedical Research and Development Authority, the Food and Drug
385 Administration, and the National Institutes of Health, as well as any agency of the U.S.
386 government. Assumptions made within and interpretations from the analysis are not reflective
387 of the position of any U.S. government entity.

388 **References (managed with EndNote)**

389

- 390 1. Zhou P, Yang XL, Wang XG, Hu B, Zhang L, Zhang W, et al. A pneumonia outbreak
391 associated with a new coronavirus of probable bat origin. *Nature*. 2020;579(7798):270-3. Epub
392 2020/02/06. doi: 10.1038/s41586-020-2012-7. PubMed PMID: 32015507; PubMed Central
393 PMCID: PMCPMC7095418.
- 394 2. Wu F, Zhao S, Yu B, Chen YM, Wang W, Song ZG, et al. A new coronavirus associated
395 with human respiratory disease in China. *Nature*. 2020;579(7798):265-9. Epub 2020/02/06. doi:
396 10.1038/s41586-020-2008-3. PubMed PMID: 32015508; PubMed Central PMCID:
397 PMCPMC7094943.
- 398 3. Dong E, Du H, Gardner L. An interactive web-based dashboard to track COVID-19 in real
399 time. *The Lancet Infectious Diseases*. 2020;20(5):533-4. doi: 10.1016/S1473-3099(20)30120-1.
- 400 4. Group RC, Horby P, Lim WS, Emberson JR, Mafham M, Bell JL, et al. Dexamethasone in
401 Hospitalized Patients with Covid-19 - Preliminary Report. *N Engl J Med*. 2020. Epub 2020/07/18.
402 doi: 10.1056/NEJMoa2021436. PubMed PMID: 32678530; PubMed Central PMCID:
403 PMCPMC7383595.
- 404 5. Group WHOREAfC-TW, Sterne JAC, Murthy S, Diaz JV, Slutsky AS, Villar J, et al.
405 Association Between Administration of Systemic Corticosteroids and Mortality Among Critically
406 Ill Patients With COVID-19: A Meta-analysis. *JAMA*. 2020;324(13):1330-41. Epub 2020/09/03.
407 doi: 10.1001/jama.2020.17023. PubMed PMID: 32876694; PubMed Central PMCID:
408 PMCPMC7489434.
- 409 6. Beigel JH, Tomashek KM, Dodd LE, Mehta AK, Zingman BS, Kalil AC, et al. Remdesivir for
410 the Treatment of Covid-19 - Final Report. *N Engl J Med*. 2020. Epub 2020/05/24. doi:
411 10.1056/NEJMoa2007764. PubMed PMID: 32445440; PubMed Central PMCID:
412 PMCPMC7262788.
- 413 7. Pan H, Peto R, Karim QA, Alejandria M, Henao-Restrepo AM, García CH, et al.
414 Repurposed antiviral drugs for COVID-19 –interim WHO SOLIDARITY trial results. *medRxiv*.
415 2020:2020.10.15.20209817. doi: 10.1101/2020.10.15.20209817.
- 416 8. Rojas M, Rodríguez Y, Monsalve DM, Acosta-Ampudia Y, Camacho B, Gallo JE, et al.
417 Convalescent plasma in Covid-19: Possible mechanisms of action. *Autoimmunity Reviews*.
418 2020;19(7):102554. doi: <https://doi.org/10.1016/j.autrev.2020.102554>.
- 419 9. Cheng Y, Wong R, Soo YO, Wong WS, Lee CK, Ng MH, et al. Use of convalescent plasma
420 therapy in SARS patients in Hong Kong. *Eur J Clin Microbiol Infect Dis*. 2005;24(1):44-6. Epub
421 2004/12/24. doi: 10.1007/s10096-004-1271-9. PubMed PMID: 15616839; PubMed Central
422 PMCID: PMCPMC7088355.
- 423 10. Hung IFN, To KKW, Lee CK, Lee KL, Yan WW, Chan K, et al. Hyperimmune IV
424 immunoglobulin treatment: a multicenter double-blind randomized controlled trial for patients
425 with severe 2009 influenza A(H1N1) infection. *Chest*. 2013;144(2):464-73. Epub 2013/03/02.
426 doi: 10.1378/chest.12-2907. PubMed PMID: 23450336.
- 427 11. Duan K, Liu B, Li C, Zhang H, Yu T, Qu J, et al. Effectiveness of convalescent plasma
428 therapy in severe COVID-19 patients. *Proc Natl Acad Sci U S A*. 2020;117(17):9490-6. Epub
429 2020/04/08. doi: 10.1073/pnas.2004168117. PubMed PMID: 32253318; PubMed Central
430 PMCID: PMCPMC7196837.
- 431 12. Salazar E, Perez KK, Ashraf M, Chen J, Castillo B, Christensen PA, et al. Treatment of
432 Coronavirus Disease 2019 (COVID-19) Patients with Convalescent Plasma. *Am J Pathol*.

- 433 2020;190(8):1680-90. Epub 2020/05/31. doi: 10.1016/j.ajpath.2020.05.014. PubMed PMID:
434 32473109; PubMed Central PMCID: PMC7251400.
- 435 13. Perotti C, Baldanti F, Bruno R, Del Fante C, Seminari E, Casari S, et al. Mortality reduction
436 in 46 severe Covid-19 patients treated with hyperimmune plasma. A proof of concept single
437 arm multicenter trial. *Haematologica*. 2020. Epub 2020/07/25. doi:
438 10.3324/haematol.2020.261784. PubMed PMID: 32703797.
- 439 14. Joyner MJ, Senefeld JW, Klassen SA, Mills JR, Johnson PW, Theel ES, et al. Effect of
440 Convalescent Plasma on Mortality among Hospitalized Patients with COVID-19: Initial Three-
441 Month Experience. *medRxiv*. 2020:2020.08.12.20169359. doi: 10.1101/2020.08.12.20169359.
- 442 15. Liu STH, Lin HM, Baine I, Wajnberg A, Gumprecht JP, Rahman F, et al. Convalescent
443 plasma treatment of severe COVID-19: a propensity score-matched control study. *Nat Med*.
444 2020. Epub 2020/09/17. doi: 10.1038/s41591-020-1088-9. PubMed PMID: 32934372.
- 445 16. Li L, Zhang W, Hu Y, Tong X, Zheng S, Yang J, et al. Effect of Convalescent Plasma Therapy
446 on Time to Clinical Improvement in Patients With Severe and Life-threatening COVID-19: A
447 Randomized Clinical Trial. *JAMA*. 2020;324(5):460-70. Epub 2020/06/04. doi:
448 10.1001/jama.2020.10044. PubMed PMID: 32492084; PubMed Central PMCID:
449 PMC7270883.
- 450 17. Arvind Gharbharan CCEJ, Corine GeurtsvanKessel, Jan G. den Hollander, Faiz Karim,
451 Femke P.N. Mollema, Janneke E. Stalenhoef, Anton Dofferhoff, Inge Ludwig, Ad Koster, Robert-
452 Jan Hassing, Jeannet C. Bos, Geert R. van Pottelberge, Imro N. Vlasveld, Heidi S.M. Ammerlaan,
453 Elena Segarceanu, Jelle Miedema, Menno van der Eerden, Grigorios Papageorgiou, Peter te
454 Broekhorst, Francis H. Swaneveld, Peter D. Katsikis, Yvonne Mueller, Nisreen M.A. Okba,
455 Marion P.G. Koopmans, Bart L. Haagsmans, Casper Rokx, Bart Rijnders. Convalescent Plasma for
456 COVID-19. A randomized clinical trial. *medRxiv*. 2020;Preprint. doi:
457 10.1101/2020.07.01.20139857.
- 458 18. Agarwal A, Mukherjee A, Kumar G, Chatterjee P, Bhatnagar T, Malhotra P. Convalescent
459 plasma in the management of moderate covid-19 in adults in India: open label phase II
460 multicentre randomised controlled trial (PLACID Trial). *BMJ*. 2020;371:m3939. doi:
461 10.1136/bmj.m3939.
- 462 19. Libster R, Pérez Marc G, Wappner D, Coviello S, Bianchi A, Braem V, et al. Early High-
463 Titer Plasma Therapy to Prevent Severe Covid-19 in Older Adults. *N Engl J Med*. 2021. Epub
464 2021/01/07. doi: 10.1056/NEJMoa2033700. PubMed PMID: 33406353; PubMed Central PMCID:
465 PMC7793608.
- 466 20. Austin PC. Propensity-score matching in the cardiovascular surgery literature from 2004
467 to 2006: a systematic review and suggestions for improvement. *J Thorac Cardiovasc Surg*.
468 2007;134(5):1128-35. Epub 2007/11/03. doi: 10.1016/j.jtcvs.2007.07.021. PubMed PMID:
469 17976439.
- 470 21. Wölfel R, Corman VM, Guggemos W, Seilmaier M, Zange S, Müller MA, et al. Virological
471 assessment of hospitalized patients with COVID-2019. *Nature*. 2020;581(7809):465-9. doi:
472 10.1038/s41586-020-2196-x.
- 473 22. Cevik M, Kuppalli K, Kindrachuk J, Peiris M. Virology, transmission, and pathogenesis of
474 SARS-CoV-2. *BMJ*. 2020;371:m3862. doi: 10.1136/bmj.m3862.
- 475 23. Long Q-X, Liu B-Z, Deng H-J, Wu G-C, Deng K, Chen Y-K, et al. Antibody responses to
476 SARS-CoV-2 in patients with COVID-19. *Nature Medicine*. 2020;26(6):845-8. doi:
477 10.1038/s41591-020-0897-1.

- 478 24. Group FI-C-. Prevention of severe COVID-19 in the elderly by early high-titer plasma.
479 medRxiv. 2020. doi: 10.1101/2020.11.20.20234013.
- 480 25. Group RC. Convalescent plasma in patients admitted to hospital with COVID-19
481 (RECOVERY): a randomised controlled, open-label, platform trial. *Lancet*. 2021. Epub
482 2021/05/18. doi: 10.1016/S0140-6736(21)00897-7. PubMed PMID: 34000257.
- 483 26. Zeng QL, Yu ZJ, Gou JJ, Li GM, Ma SH, Zhang GF, et al. Effect of Convalescent Plasma
484 Therapy on Viral Shedding and Survival in Patients With Coronavirus Disease 2019. *J Infect Dis*.
485 2020;222(1):38-43. Epub 2020/04/30. doi: 10.1093/infdis/jiaa228. PubMed PMID: 32348485;
486 PubMed Central PMCID: PMCPMC7197534.
- 487 27. Simonovich VA, Burgos Pratz LD, Scibona P, Beruto MV, Vallone MG, Vazquez C, et al. A
488 Randomized Trial of Convalescent Plasma in Covid-19 Severe Pneumonia. *N Engl J Med*. 2020.
489 Epub 2020/11/25. doi: 10.1056/NEJMoa2031304. PubMed PMID: 33232588.
- 490 28. Shen C, Wang Z, Zhao F, Yang Y, Li J, Yuan J, et al. Treatment of 5 Critically Ill Patients
491 With COVID-19 With Convalescent Plasma. *JAMA*. 2020;323(16):1582-9. Epub 2020/03/29. doi:
492 10.1001/jama.2020.4783. PubMed PMID: 32219428; PubMed Central PMCID:
493 PMCPMC7101507.
- 494 29. Zhang B, Liu S, Tan T, Huang W, Dong Y, Chen L, et al. Treatment With Convalescent
495 Plasma for Critically Ill Patients With Severe Acute Respiratory Syndrome Coronavirus 2
496 Infection. *Chest*. 2020;158(1):e9-e13. Epub 2020/04/04. doi: 10.1016/j.chest.2020.03.039.
497 PubMed PMID: 32243945; PubMed Central PMCID: PMCPMC7195335.
- 498 30. Nahid P, Mase SR, Migliori GB, Sotgiu G, Bothamley GH, Brozek JL, et al. Treatment of
499 Drug-Resistant Tuberculosis. An Official ATS/CDC/ERS/IDSA Clinical Practice Guideline. *Am J*
500 *Respir Crit Care Med*. 2019;200(10):e93-e142. Epub 2019/11/16. doi: 10.1164/rccm.201909-
501 1874ST. PubMed PMID: 31729908; PubMed Central PMCID: PMCPMC6857485.
502

Table 1: Baseline demographic characteristics and clinical factors.

	All Patients (N=3368)	CCP Early (n=77)	Unexposed Early (n=77)	P value	CCP Late (n=55)	Unexposed Late (n=55)	P value
Demographics							
Age, years	64 ± 20	60 ± 14	62 ± 17	0.49	66 ± 13	66 ± 15	0.95
Gender, n (%)				0.87			0.12
Female	1718 (51)	34 (44)	35 (46)		17 (31)	25 (46)	
Male	1650 (49)	43 (56)	42 (55)		38 (69)	30 (55)	
Race, n (%)				0.98			0.33
White	1610 (48)	24 (31)	24 (31)		24 (44)	27 (49)	
Black or AA	870 (26)	18 (23)	17 (22)		10 (18)	14 (26)	
Other	888 (26)	35 (46)	36 (47)		21 (38)	14 (26)	
Ethnicity, n (%)				0.74			0.68
Hispanic or Latino	873 (256)	33 (43)	31 (40)		19 (35)	17 (31)	
Other	2495 (74)	44 (57)	46 (60)		36 (66)	38 (69)	
BMI	30 (8)	33 (11)	33 (10)	0.97	31 (7)	32(8)	0.73
Comorbidities							
Charlson Comorbidity Index	5 ± 4	4 ± 3	4 ± 3.4	0.43	5 ± 3	5 ± 3	0.82
Hypertension, n (%)	2322 (69)	43 (55)	45 (58)	0.74	43 (78)	44 (80)	0.81
Diabetes mellitus, n (%)	1354 (40)	27 (35)	30 (39)	0.62	28 (51)	28 (51)	1.00
Chronic kidney disease, n (%)	851 (32)	11 (14)	18 (23)	0.15	23 (42)	14 (26)	0.07
Chronic lung disease, n (%)	1095 (33)	24 (31)	26 (34)	0.73	19 (35)	21 (38)	0.69
Heart disease (CVD), n (%)	792 (24)	11 (14)	12 (16)	0.82	9 (16)	9 (16)	1.00
Smoke, n (%)				0.87			0.85
Never smoke	1482 (44)	29 (38)	28 (36)		19 (35)	17 (31)	
Current/former smoker	1886 (56)	48 (62)	49 (64)		36 (66)	38 (70)	
Max WHO scale	4 ± 1	5 ± 1	5 ± 1	1.00	6 ± 1	6 ± 1	1.00
O2 by face mask or nasal cannula, n (%)	1265 (39)	4(5.2%)	4(5.2%)	1.00	2 (4)	2 (4)	1.00
Non-Invasive ventilation or high-flow O ₂ , n (%)	810 (24)	41 (53)	41 (53)	1.00	24 (44)	24 (44)	1.00
Intubation and mechanical	386 (12)	31 (40)	31 (40)	1.00	29 (53)	29 (53)	1.00

ventilation, n (%)							
Max FiO ₂	35 ± 27	76 ± 35	65 ± 37	0.08	76 ± 34	68 ± 36	0.23
ECMO, n (%)	10 (1)	0	2 (3)	0.50	1 (2)	1 (2)	1.00
Lab value (maximum value prior to index treatment day)							
ALC, x 1000/μl	1.7 ± 5.9	1.4 ± 0.6	1.4 ± 0.7	0.70	1.7 ± 3.8	1.3 ± 0.5	0.45
D-dimer, mg/L	4.7 ± 5.9	9.4 ± 10.8	9.3 ± 10.2	0.96	8.2 ± 8.6	6.2 ± 5.5	0.17
Creatinine, mg/dL	36.9 (92.1)	67.5 (176.7)	72.5 (186.1)	0.86	53.0 (90.1)	44.9 (80.2)	0.62
AST, U/L	114 ± 503	354 ± 1352	113 ± 128	0.12	139 ± 162	136 ± 157	0.92
ALT, U/L	76 ± 190	185 ± 445	92 ± 109	0.08	81.2 ± 86.1	101 ± 141	0.38
ALP, U/L	104 ± 79	117 ± 88	98 ± 41	0.09	107 ± 66	102 ± 69	0.70
NT-proBNP, pg/mL	3.3 ± 9.6	1.3 ± 2.3	1.8 ± 5.9	0.50	4.1 ± 11.2	3.0 ± 9.1	0.58
Fibrinogen, mg/dL	575 ± 157	654 ± 143	643 ± 120	0.62	674 ± 139	597 ± 139	0.005
C-reactive protein, mg/dL	12.5 ± 8.7	17.7 ± 8.0	17.7 ± 8.1	0.96	17.8 ± 8.4	15.8 ± 7.2	0.17
Medications, n (%)							
Hydroxychloroquine	2229 (66)	53 (69)	53 (69)	1.00	53 (96)	48 (87)	0.16
Dexamethasone	67 (2)	4 (5)	4 (5)	1.00	3 (5)	1 (2)	0.62
Remdesivir	305 (9)	38 (49)	38 (49)	1.00	13 (24)	13 (24)	1.00
Received within 6 days	226 (7)	30 (39)	30 (39)		10 (18)	10 (18)	
Received after 6 days	74 (2)	8 (10)	8 (10)		3 (6)	3 (6)	
Tocilizumab	1304 (39)	69 (90)	67 (87)	0.38	53 (96)	46 (84)	0.03*
Pressor use, n (%)	528 (16)	35 (46)	31 (40)	0.51	42 (76)	33 (60)	0.07

Comparative baseline demographics, comorbidities, laboratory values, and medications among of all COVID-19 patients, early CCP recipients, late CCP recipients and the respective early/late unexposed cohorts. P-values represent significance of bivariate analyses using Student's t-test, Wilcoxon rank-sum test, Chi-square or Fisher's exact tests to compare exposed and unexposed cohorts as appropriate. Abbreviations: ALC = absolute lymphocyte count, ALT = alanine transaminase, AST = aspartate aminotransferase, BMI = body mass index, CCP = COVID-19 convalescent plasma, ECMO = extracorporeal membrane oxygenation, NT-proBNP = N-terminal-pro b-type natriuretic peptide. *, **, and *** correspond to significant p-values for comparison between groups of <0.05, <0.01, and <0.001 respectively.

Table 2: Primary and secondary study endpoints.

	CCP Early	Unexposed Early	Difference or HR (95% CI)	p-value	CCP Late	Unexposed Late	Difference or HR (95% CI)	p-value
Primary outcomes								
14-day mortality	15%	23%			28%	29%		
30-day mortality	38%	49%	0.52 (0.28, 0.96)	0.036*	42%	47%	0.98 (0.53, 1.83)	0.95
Secondary outcomes								
Alive and mechanical ventilation-free, days (SD)	21.4 (11.6)	18.1 (12.6)	3.3 (0.2, 6.3)	0.04*	13.4 (12.3)	16.9 (12.8)	-3.5 (-8.6, 1.7)	0.18
Length of hospitalization, days (95% CI)	18.4 (16.3, 20.7)	17.5 (14.9, 20.1)	1.0 (-2.4,4.4)	0.57	24.7 (22.6, 26.8)	19.9 (16.9, 22.9)	4.9(1.2, 8.5)	0.01*
WHO score on index date, mean (SD)	5.2 (0.7)	4.9 (0.9)	0.3 (0.2,0.5)	0.0002***	5.7 (0.5)	5.3 (0.9)	0.4 (0.1, 0.6)	0.0001***
WHO score change at 7-days, mean (SD)	-0.5 (1.1)	0.3 (1.6)	-0.8 (-1.2, -0.4)	0.0003***	0 (1.3)	-0.2 (1.6)	0.2 (-0.3, 0.8)	0.41
Change of WHO score at discharge, mean (SD)	-0.7 (2.0)	0.2 (2.2)	-0.9 (-1.5, -0.3)	0.004**	-0.1 (2.3)	-0.4 (2.1)	0.6 (-0.4, 1.5)	0.23

Table reports primary and secondary outcomes for the two separate propensity score matched cohorts of early and late transfused patients. CCP effect on mortality is reported as a hazard ratio and secondary outcomes report differences in days or WHO score, each with 95% confidence intervals and p-values shown. Differences in alive and mechanical ventilation free days are measured at 30-days post index. Length of hospitalization is measured from index day. *, **, and *** correspond to significant p-values for comparison between groups of <0.05, <0.01, and <0.001 respectively.

Figure Legends

Figure 1: Consort selection tree.

Patient disposition in the observational cohort analysis.

Figure 2: Kaplan-Meier curves of survival in early (A) and late (B) convalescent plasma recipients vs respective matched unexposed patients.

Shown are Kaplan-Meier estimates of survival from time of index in (A) early CCP recipients (solid line) vs matched unexposed patients (dashed line) (B) late CCP recipients (solid line) vs matched unexposed patients (dashed line). Survival improved for early CCP at 14-days (15% vs 23%) and 30-days (38% vs 49%) compared to matched unexposed patients (HR 0.52, [95% CI 0.28-0.96]; $p=0.0367$). There was no difference in mortality at 14-days (28% vs 29%) or 30-days (42% vs 47%) among late CCP recipients compared to their matched unexposed patients (HR 0.98, [95% CI 0.53 to 1.83]; $p=0.95$). Censoring is indicated by the tick mark “+” with number by each ten-day interval marked below the number at risk.

Figure 3: Histogram plots of WHO ordinal scale scores before and after intervention in the early (A) and late CCP (B) compared to matched unexposed cohorts.

Shown is a histogram of the change in WHO COVID-19 severity score from time of index to discharge in (A) early CCP recipients (gray solid bars) vs matched unexposed patients (black solid bars) (B) late CCP recipients (gray dashed bars) vs matched unexposed patients (black solid bars). WHO scores in (A) early CCP recipients were significantly improved at discharge (difference in mean -0.9, [95% CI -1.5 to -0.3]; $p=0.004$) when compared to unexposed patients. Relative to the unexposed patients, early CCP recipients were nearly twice as likely to demonstrate an improvement in their WHO scores at discharge from baseline index day scores (OR 1.9, [95% CI 1.1 to 3.3]; $p=0.02$). Among (B) late CCP recipients, there was no effect of CCP on WHO scores at discharge (difference in mean +0.6, [95% CI -0.4 to 1.5]; $p=0.23$). The odds ratio for improvement at discharge was 0.6 (95% CI 0.3 to 1.3; $p=0.22$).

Supporting information:

S1 Figure: Heatmap of change in WHO score for COVID-19 disease severity from time of index to discharge.

S2 Figure: Cloud plots showing the distribution of matched propensity scores by patients receiving CCP and not receiving CCP.

A: Matching for early CCP sub-cohort.

B: Matching for late CCP sub-cohort.

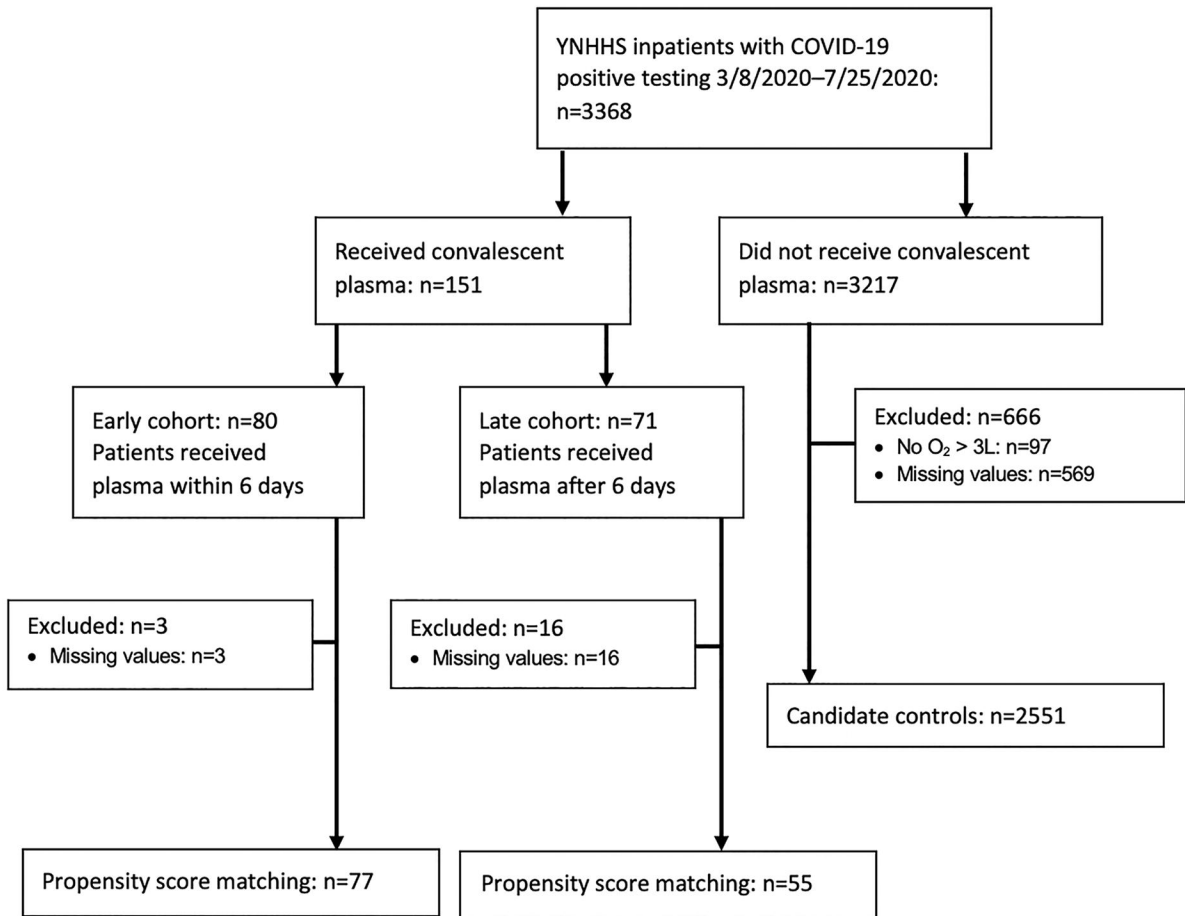
S3 Figure: Standardized differences for key parameters between CCP recipients and matched unexposed patients.

A: Matching for early CCP sub-cohort.

B: Matching for late CCP sub-cohort.

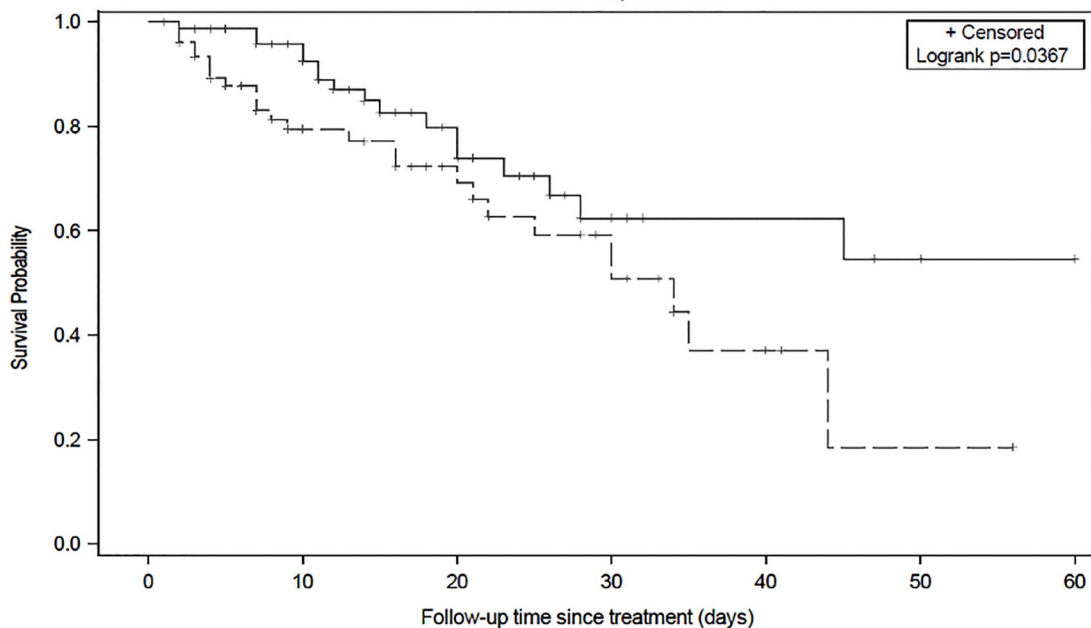
S1 Table: WHO Ordinal Scale for COVID-19 disease severity.

S2 Table: Results of propensity score model using logistic regression.



A**Product-Limit Survival Estimates**

With Number of Subjects at Risk

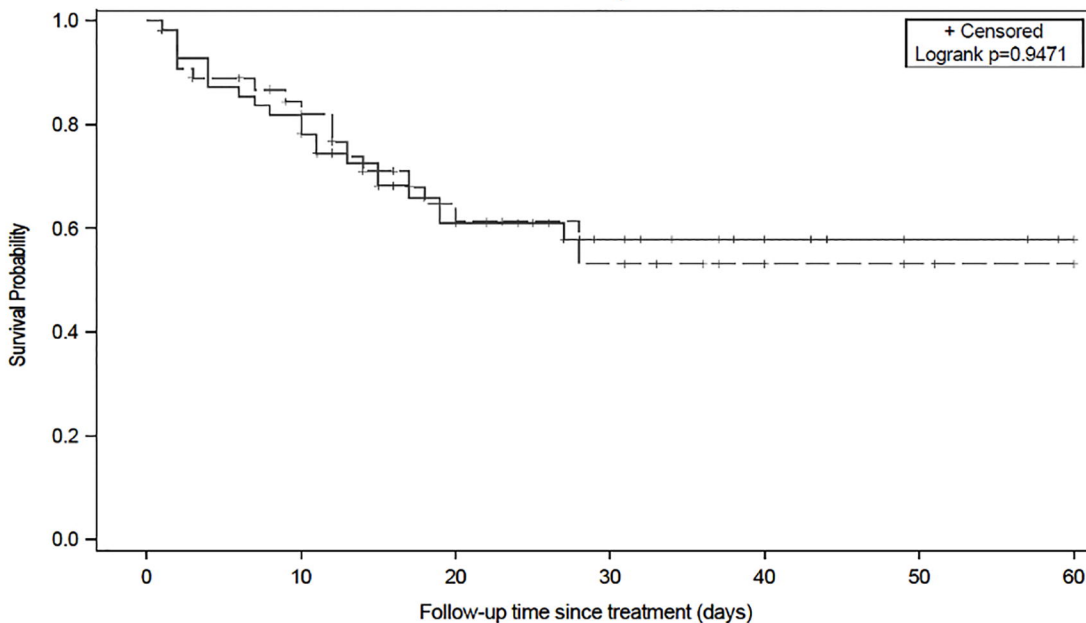
**No. at Risk**

Group ——— 1: CCP recipient — - - 2: Matched control

1	77	59	27	12	8	5	4
2	77	37	23	14	5	1	0

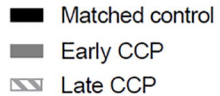
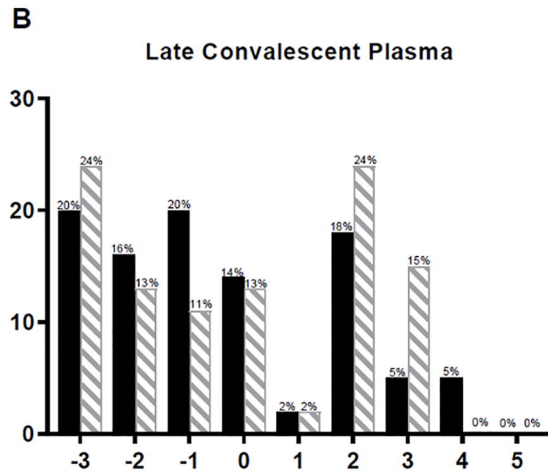
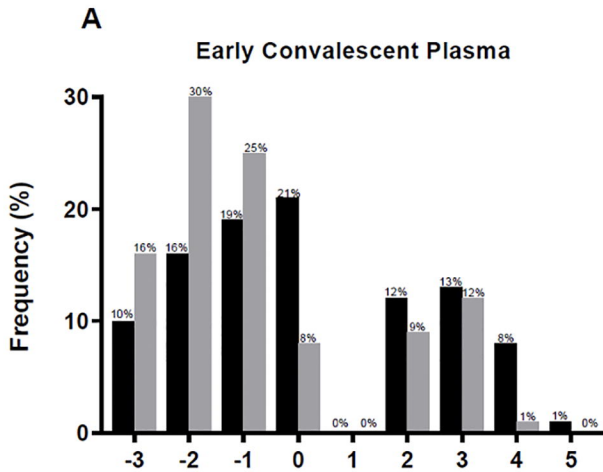
B**Product-Limit Survival Estimates**

With Number of Subjects at Risk

**No. at Risk**

Group ——— 1: CCP recipient — - - 2: Matched control

1	55	45	25	15	7	3	1
2	55	35	19	13	7	4	3



WHO score change