

1 **Stable IgG-antibody levels in patients with mild SARS-CoV-2 infection**

2 Thomas Åkerlund^{1*}, Katherina Zakikhany¹, Charlotta Löfström², Evelina Lindmark², Henrik
3 Källberg¹, Ulla Elofsson², Karin Cederbrant², Erik Nygren², Anders Kallin², Nina Lagerqvist¹,
4 Peter Nilsson³, Sophia Hober³, Anna Ridderstad Wollberg², Åsa Szekely Björndal¹

5 ¹Public Health Agency of Sweden, Solna, Sweden

6 ²RISE Research Institutes of Sweden, Borås, Sweden

7 ³KTH Royal Institute of Technology, SciLifeLab, Stockholm, Sweden

8

9 *Corresponding author: Thomas Åkerlund, Department of Microbiology, Public Health Agency
10 of Sweden, Solna Sweden; email: thomas.akerlund@folkhalsomyndigheten.se;
11 telephone;+46102052467

12

13 **Abstract**

14 More knowledge regarding persistence of antibody response to SARS-CoV-2 infections in the
15 general population with mild symptoms is needed. We measured and compared levels of SARS-
16 CoV-2 spike- and nucleocapsid-specific IgG-antibodies in serum samples from 145 laboratory-
17 confirmed COVID-19 cases and 324 non-cases. The IgG-antibody levels against the spike protein
18 in cases were stable over the time-period studied (14 to 256 days), while antibody levels against
19 the nucleocapsid protein decreased over time.

20

21 **Introduction**

22 The ongoing pandemic of the severe acute respiratory syndrome coronavirus 2 (SARS-
23 CoV-2) and its associated respiratory disease, coronavirus disease 2019 (COVID-19), poses a
24 major and unprecedented threat to global public health (1).

25 To date, serological tests are widely used to screen for antibodies made in response to a
26 SARS-CoV-2 infection. The antibody responses to SARS-CoV-2 infection are directed against
27 multiple viral antigens including the spike and the nucleocapsid protein (2). Antibodies against the
28 spike-S1 protein, more specifically, the receptor-binding domain, have shown virus-neutralizing
29 activity (3).

30 Understanding the antibody kinetics over prolonged periods is of crucial importance
31 especially with the ongoing roll out of general vaccination and immunity passports being
32 discussed. Recent reports describe detectable IgG levels in approximately 80-90% of infected
33 COVID-19 patients 4-8 months post infection (4-8). Several studies have included health-care
34 workers with confirmed COVID-19 (9, 10), whose immune response may differ from that of the
35 general population. In this context, there is a need for better understanding of antibody responses
36 in the general population with largely mild symptoms.

37 Here, we characterize 469 serum samples collected from the general population in Sweden
38 during October to December 2020. The samples were collected to establish a well-characterized
39 national serum panel consisting of SARS-CoV-2 antibody-positive and negative samples for
40 performance evaluation and quality assurance of serological tests. We assessed the antibody levels
41 against SARS-CoV-2 nucleocapsid and spike proteins in sera from 145 COVID-19 patients 14 to
42 256 days after diagnosis.

43 **Materials and methods**

44 *Recruitment of study participants*

45 Study participants were recruited from three Swedish Counties via internet-based
46 advertisement. The advertisement was specifically directed towards persons who either had or had
47 not contracted COVID-19 during 2020. A web-based questionnaire was used to collect information
48 on basic demographics and anamnesis concerning COVID-19 (Figure S1). The purpose of the
49 questionnaire was to pre-screen for candidates likely to donate either antibody-positive or negative
50 serum samples, as well as to allow for weighing of samples regarding gender, age, county of
51 residence (county 1-3) and symptoms of respiratory tract infection (RTI) other than COVID-19.
52 Of 5444 persons completing the questionnaires, 780 individuals were selected for serum sampling
53 according to the criteria mentioned above. Of these, 484 donated serum for the study (Table S1).
54 Written consent was obtained from all study-participants. At the time of serum sampling,
55 vaccination campaigns had not yet started in Sweden.

56 *Serum sampling*

57 Venous blood (5-40 mL) was collected into Serum Sampling Tubes (SST BD Vacutainer)
58 on county level and transported at ambient temperature to regional laboratories for centrifugation
59 and isolation of serum. Serum sample aliquots were subsequently shipped to RISE Research
60 Institutes of Sweden for further analysis.

61 *Case definitions*

62 Patient-cases were defined as study participants with a laboratory-confirmed SARS-CoV-
63 2 infection, i.e. with positive real-time reverse transcription PCR test (rRT-PCR), as reported in

64 the national Swedish SmiNet database (electronic monitoring system for notifications received in
65 accordance with the Communicable Diseases Act). For data analysis, dates for rRT-PCR-
66 diagnostics were primarily used, and if missing, disease notification dates were used.

67 Non-cases were defined as study participants with no reported laboratory-confirmed
68 SARS-CoV-2 infection (i.e. rRT-PCR test) as per recording in the SmiNet database up to the
69 serum sampling date.

70 Of 484 participants, 15 were excluded due to incomplete personal identification number,
71 missing serum samples, or if serum sampling had occurred within 14 days of disease onset.

72 One follow-up search in the SmiNet database for possible reinfections and/or new
73 infections for the cohort was performed on April 12, 2021.

74 *Antibody testing*

75 Sera were tested for the presence of IgG antibodies against SARS-CoV-2 at the Science
76 for Life Laboratory (SciLifeLab) in Solna, Sweden. Testing was performed using a semi-
77 quantitative multiplex bead-based serologic assay for detection of antibodies to two different
78 SARS-CoV-2 viral proteins, the C-terminal part of the nucleocapsid protein (NCP-C) and the
79 soluble spike glycoprotein (spike-foldon) (11). The sensitivity and specificity of the method was
80 specified as 99.7% (95% CI: 98.3-100%) and 100% (95% CI: 99.8-100%), respectively. Results
81 were obtained as fluorescence intensity in a FlexMap3D instrument (Luminex) and are here given
82 as arbitrary units (AU). Each run included twelve negative and four positive reference samples.
83 Cut-off was determined as the “mean + 6 × SD” of the twelve negative reference samples.
84 Seropositivity was defined as AU above the cut-off for both the nucleocapsid and spike protein.
85 The median AU value of the four positive samples was used for normalization between assays.

86 Three separate runs were performed, and the values were normalized against the run with the
87 largest number of samples. Testing was performed blinded, i.e. without disclosing any case
88 information of the samples.

89 *Statistical analysis*

90 To compare groups, i.e. cases vs. non-cases and cases only regarding severity (hospital vs.
91 ill at home) we performed pairwise t-test, Mann-Whitney U-test and ANCOVA. ANCOVA was
92 used to allow for correction of variability of gender, age and time between diagnosis (positive rRT-
93 PCR) and serum sampling. We only present P-values based on ANCOVA for group comparisons.
94 Furthermore, we estimated Pearsons correlation coefficient for the log of nucleocapsid and spike
95 antibody levels (AU) in cases. R version 3.6.2 was used for all analysis.

96 *Ethical approval and financing*

97 Ethical approval for this study was obtained from the Swedish Ethical Review Board: Dnr
98 2020-03584. This project was exclusively funded by the Public Health Agency of Sweden via an
99 assignment (S2020_05026) from the Ministry of Health and Social Affairs, Government of
100 Sweden.

101

102 **Results**

103 *Demographics and clinical characteristics*

104 Serum samples from the 469 included study participants were collected between October
105 30 and December 8, 2020. Of all participants, 145 were found to be laboratory-confirmed COVID-
106 19-patients in the national registry system (SmiNet) and subsequently classified as patient-cases.
107 All patient-cases had sampling/diagnosis dates between March 6 and November 9, 2020 and had
108 until April 21, 2021 only one record in SmiNet. Thus, there were no patient-cases with a recorded
109 re-infection. The remaining 324 participants had no record in SmiNet and were subsequently
110 denoted as non-cases (Table 1). Of note, 28/324 non-cases (8.6%) were registered with a COVID-
111 19 diagnosis in the follow-up search on April 12, 2021.

112 Most patient-cases, 85%, self-reported severity of illness as mild (Table 1) and symptoms
113 were dominated by influenza-like symptoms (Table S2). About 39% of non-cases reported
114 symptoms of respiratory-tract infection during 2020 and furthermore, 17% of non-cases reported
115 that they had or suspected to have had contracted COVID-19 during 2020 (Table 1).

116 *IgG antibody levels in patient-cases and non-cases*

117 About 95% of patient-cases (137/145) were classified as seropositive, i.e. serum samples
118 showed IgG antibody levels above the threshold for both the nucleocapsid and spike proteins
119 (Table 2). Of the eight seronegative samples, four had antibodies against either spike or
120 nucleocapsid and another four had no detectable antibodies against any of the included antigens.
121 The four non-reactive samples showed background levels in the same range as the majority of non-
122 case samples for the spike protein (Figure 1) and the fluorescence intensity levels showed a
123 discontinuous distribution (Figure 2). These four non-reactive samples were thus considered as

124 outliers and were excluded for the analyses. There were no significant differences in seropositivity
125 or antibody levels between age groups (Figure S2) or gender (not shown).

126 Fourteen non-cases (4%) were classified as seropositive (Table 2). Among the 55 non-
127 cases that self-reported to have contracted COVID-19 during 2020, 10 tested seropositive (18%)
128 and 45 tested negative (82%). Geographically, County 1 had a higher proportion of seropositive
129 samples among non-cases than the other two counties (Table S1).

130 *IgG antibody levels and severity of disease*

131 Among patient-cases, antibody levels against the spike protein were higher in patients with
132 moderate to severe disease compared to patients with mild disease ($P = 0.004$, ANCOVA, Figure
133 3). A similar association was found for antibody levels against the nucleocapsid protein ($P = 0.007$,
134 ANCOVA).

135 *IgG antibody levels in patient-cases in relation to time after diagnosis*

136 For 141 patient-cases (excluding the four outliers), disease notification dates were recorded
137 between March 6 and November 9, 2020, with a majority (30%) recorded in June, followed by
138 17% in May and October, respectively. The median time between disease notification date and
139 serum sampling was 156 days (range 15-256 days). Four samples were collected 15–20 days after
140 disease notification and 137 samples between 21–256 days. For the 4/141 samples that were
141 classified as seronegative, three samples tested positive for antibodies against the spike protein
142 and one sample tested positive for antibodies against the nucleocapsid protein. These samples were
143 collected at day 160, 176, 207, and 232 after diagnosis.

144 There were no significant differences in IgG antibody levels against the spike protein over
145 time (Figure 4, $R = -0.059$, $P = 0.49$). Conversely, antibody levels against the nucleocapsid protein
146 were lower for patients diagnosed earlier during spring compared to those in the autumn ($R = -$
147 0.19 ; $P = 0.02$).

148 **Discussion**

149 We describe the IgG antibody levels in 145 serum samples from patients with a confirmed
150 COVID-19 diagnosis between March and November 2020 in Sweden. The 145 patient samples
151 were part of 469 serum samples, collected with the purpose to establish a national serum panel for
152 validation and quality assessment of serological assays.

153 Our data showed that 95% of patient-cases seroconverted after a laboratory-confirmed
154 infection with SARS-CoV-2, and there was no difference with respect to age group or gender.
155 Early studies reported 15-90% seroconversion rate in COVID-19 patients, with lower rates among
156 asymptomatic patients (12, 13). One explanation for the varying results are performance
157 differences among serological methods (14-16). Despite the high performance of the method used
158 in this study, eight samples were classified as seronegative. Whereas four patient-cases had
159 detectable IgG levels against one of the two antigens, the remaining four were distinguished by
160 having background fluorescence levels similar to those of the negative controls. Although not
161 conclusive, these outliers most likely represent false positive rRT-PCR diagnostic results. Large
162 scale diagnostic testing in low prevalence settings increases the risk for false positives (17), and
163 highlights the need for careful interpretation of serological non-responders as well as adherence to
164 the case definition of putative reinfections (18).

165 The levels of IgG antibodies against the spike and nucleocapsid proteins were higher in
166 patients with moderate to severe disease than in patients with mild disease. Reports have shown
167 various results regarding the antibody levels in patients with severe and mild disease (16, 19, 20),
168 which may be due to timing of antibody response in relation to the phase of the infection (21).

169 One strength of this study is that samples were collected from the general population,
170 covering patients with mostly mild disease. The results indicate that the antibody levels,
171 particularly against the spike protein, remain at detectable levels for more than eight months. This
172 is in agreement with other studies showing a sustained antibody response, e.g. 6-9 months after
173 infection (4, 5, 7, 22-24). Neutralizing antibodies are evidently important for protection against
174 disease (25), and protection over longer time-periods depends on the evolution of memory B cells
175 (26). In this context, it is interesting to note that only one episode of COVID-19 per case was
176 registered between March 6, 2020 and April 12, 2021, while 9% of the non-cases were diagnosed
177 with COVID-19 during the 3.5 months that passed after serum sampling.

178 Due to the unknown number of undiagnosed SARS-CoV-2 infections in the population,
179 one challenge of our approach was to collect true negative serum samples. Twelve of the 55 non-
180 cases who self-reported a suspected COVID-19 infection also reported positive rRT-PCR-test
181 results in the questionnaires, despite not being registered in the national registry system. Possible
182 explanations for this discrepancy are that they had received their diagnoses abroad, or that there
183 was a misinterpretation of the questionnaire. Nevertheless, excluding those who had reported being
184 tested positive for SARS-CoV-2 with rRT-PCR among the non-cases, we found 7/312 seropositive
185 samples among the non-cases. Six of these were from County 1 which had the highest surge of
186 COVID-19 during the first months of the pandemic in Sweden. About 9% of non-cases in County
187 1 had detectable antibody levels against either the spike or nucleocapsid protein, compared to 2%

188 in the other two Counties (Table S3). Due to the non-random selection and bias in the sampling
189 algorithm used here, the result is most likely an underestimate of the proportion of undiagnosed
190 cases in the population.

191 The well-characterized panel of serum samples presented here will be valuable for
192 diagnostic performance and quality assessments of current and new serological assays.

193 **Acknowledgments**

194 We thank all voluntary participants for donating blood. We also want to thank the health
195 care centres and regional laboratories for blood sampling and serum preparation as well as the
196 SciLifeLab Autoimmunity and Serology profiling facility for analysis of serum samples. Jenny
197 Belin, Carolina Sandman, Jenny Lindahl and Ingela Persson, RISE Research Institutes of Sweden,
198 are acknowledged for setting up the quality management system handling the serum samples,
199 technical assistance and for providing valuable advice on sampling. We are grateful to Karin
200 Tegmark-Wisell, Charlotta Nilsson and Jonas Klingström, Public Health Agency of Sweden, and
201 Magnus Larsson, RISE Research Institute of Sweden, for reading and giving valuable input to the
202 manuscript.

203 **References**

- 204 1. Cucinotta D, Vanelli M. WHO Declares COVID-19 a Pandemic. *Acta Biomed.* 2020 Mar
205 19;91(1):157-60.
- 206 2. Li D, Li J. Immunologic Testing for SARS-CoV-2 Infection from the Antigen
207 Perspective. *J Clin Microbiol.* 2021 Apr 20;59(5).

- 208 3. Liu L, Wang P, Nair MS, Yu J, Rapp M, Wang Q, et al. Potent neutralizing antibodies
209 against multiple epitopes on SARS-CoV-2 spike. *Nature*. 2020 Aug;584(7821):450-6.
- 210 4. Sherina N, Piralla A, Du L, Wan H, Kumagai-Braesch M, Andrell J, et al. Persistence of
211 SARS-CoV-2-specific B and T cell responses in convalescent COVID-19 patients 6-8 months
212 after the infection. *Med (N Y)*. 2021 Mar 12;2(3):281-95 e4.
- 213 5. Anand SP, Prevost J, Nayrac M, Beaudoin-Bussieres G, Benlarbi M, Gasser R, et al.
214 Longitudinal analysis of humoral immunity against SARS-CoV-2 Spike in convalescent
215 individuals up to 8 months post-symptom onset. *bioRxiv*. 2021 Jan 25.
- 216 6. Abayasingam A, Balachandran H, Agapiou D, Hammoud M, Rodrigo C, Keoshkerian E,
217 et al. Long-term persistence of RBD(+) memory B cells encoding neutralizing antibodies in
218 SARS-CoV-2 infection. *Cell Rep Med*. 2021 Apr 20;2(4):100228.
- 219 7. den Hartog G, Vos ERA, van den Hoogen LL, van Boven M, Schepp RM, Smits G, et al.
220 Persistence of antibodies to SARS-CoV-2 in relation to symptoms in a nationwide prospective
221 study. *Clin Infect Dis*. 2021 Feb 24.
- 222 8. Gudbjartsson DF, Norddahl GL, Melsted P, Gunnarsdottir K, Holm H, Eythorsson E, et
223 al. Humoral Immune Response to SARS-CoV-2 in Iceland. *N Engl J Med*. 2020 Oct
224 29;383(18):1724-34.
- 225 9. Lumley SF, Wei J, O'Donnell D, Stoesser NE, Matthews PC, Howarth A, et al. The
226 duration, dynamics and determinants of SARS-CoV-2 antibody responses in individual
227 healthcare workers. *Clin Infect Dis*. 2021 Jan 6.

- 228 10. Dan JM, Mateus J, Kato Y, Hastie KM, Yu ED, Faliti CE, et al. Immunological memory
229 to SARS-CoV-2 assessed for up to 8 months after infection. *Science*. 2021 Feb 5;371(6529).
- 230 11. Rudberg AS, Havervall S, Manberg A, Jernbom Falk A, Aguilera K, Ng H, et al. SARS-
231 CoV-2 exposure, symptoms and seroprevalence in healthcare workers in Sweden. *Nat Commun*.
232 2020 Oct 8;11(1):5064.
- 233 12. Long QX, Tang XJ, Shi QL, Li Q, Deng HJ, Yuan J, et al. Clinical and immunological
234 assessment of asymptomatic SARS-CoV-2 infections. *Nat Med*. 2020 Aug;26(8):1200-4.
- 235 13. Wellinghausen N, Plonne D, Voss M, Ivanova R, Frodl R, Deininger S. SARS-CoV-2-
236 IgG response is different in COVID-19 outpatients and asymptomatic contact persons. *J Clin*
237 *Virol*. 2020 Sep;130:104542.
- 238 14. Harris RJ, Whitaker HJ, Andrews NJ, Aiano F, Amin-Chowdhury Z, Flood J, et al.
239 Serological surveillance of SARS-CoV-2: Six-month trends and antibody response in a cohort of
240 public health workers. *J Infect*. 2021 Mar 22.
- 241 15. Marklund E, Leach S, Axelsson H, Nystrom K, Norder H, Bemark M, et al. Serum-IgG
242 responses to SARS-CoV-2 after mild and severe COVID-19 infection and analysis of IgG non-
243 responders. *PLoS One*. 2020;15(10):e0241104.
- 244 16. Wolf J, Kaiser T, Pehnke S, Nickel O, Lubbert C, Kalbitz S, et al. Differences of SARS-
245 CoV-2 serological test performance between hospitalized and outpatient COVID-19 cases. *Clin*
246 *Chim Acta*. 2020 Dec;511:352-9.
- 247 17. Surkova E, Nikolayevskyy V, Drobniowski F. False-positive COVID-19 results: hidden
248 problems and costs. *Lancet Respir Med*. 2020 Dec;8(12):1167-8.

- 249 18. Yahav D, Yelin D, Eckerle I, Eberhardt CS, Wang J, Cao B, et al. Definitions for
250 coronavirus disease 2019 reinfection, relapse and PCR re-positivity. *Clin Microbiol Infect.* 2021
251 Mar;27(3):315-8.
- 252 19. Wu F, Liu M, Wang A, Lu L, Wang Q, Gu C, et al. Evaluating the Association of
253 Clinical Characteristics With Neutralizing Antibody Levels in Patients Who Have Recovered
254 From Mild COVID-19 in Shanghai, China. *JAMA Intern Med.* 2020 Oct 1;180(10):1356-62.
- 255 20. Sun B, Feng Y, Mo X, Zheng P, Wang Q, Li P, et al. Kinetics of SARS-CoV-2 specific
256 IgM and IgG responses in COVID-19 patients. *Emerg Microbes Infect.* 2020 Dec;9(1):940-8.
- 257 21. Li K, Huang B, Wu M, Zhong A, Li L, Cai Y, et al. Dynamic changes in anti-SARS-
258 CoV-2 antibodies during SARS-CoV-2 infection and recovery from COVID-19. *Nat Commun.*
259 2020 Nov 27;11(1):6044.
- 260 22. Wu J, Liang B, Chen C, Wang H, Fang Y, Shen S, et al. SARS-CoV-2 infection induces
261 sustained humoral immune responses in convalescent patients following symptomatic COVID-
262 19. *Nat Commun.* 2021 Mar 22;12(1):1813.
- 263 23. Mahallawi W, Alzahrani M, Alahmadey Z. Durability of the humoral immune response
264 in recovered COVID-19 patients. *Saudi J Biol Sci.* 2021 Feb 16.
- 265 24. Schaffner A, Risch L, Weber M, Thiel S, Jungert K, Pichler M, et al. Sustained SARS-
266 CoV-2 nucleocapsid antibody levels in nonsevere COVID-19: a population-based study. *Clin*
267 *Chem Lab Med.* 2020 Nov 19;59(2):e49-e51.

- 268 25. Khoury DS, Cromer D, Reynaldi A, Schlub TE, Wheatley AK, Juno JA, et al.
269 Neutralizing antibody levels are highly predictive of immune protection from symptomatic
270 SARS-CoV-2 infection. *Nat Med.* 2021 May 17.
- 271 26. Gaebler C, Wang Z, Lorenzi JCC, Muecksch F, Finkin S, Tokuyama M, et al. Evolution
272 of antibody immunity to SARS-CoV-2. *Nature.* 2021 Mar;591(7851):639-44.

273

274 **Table 1.** Age, gender and self-reported symptoms of patient-cases and non-cases.

	Patient-cases (%)	Non-cases (%)	Total (%)
N	145 (31)	324 (69)	469 (100)
Gender			
Female	89 (61)	181 (56)	270 (58)
Male	56 (39)	143 (44)	199 (42)
Age group			
18-29	14 (10)	45 (14)	59 (13)
30-44	39 (27)	78 (24)	117 (25)
45-59	70 (48)	114 (35)	184 (39)
≥60	22 (15)	87 (27)	109 (23)
Symptoms of respiratory-tract infections during 2020*			
Yes	115 (79)	127 (39)	242 (52)

No [†]	30 (21)	197 (61)	227 (48)
Severity of symptoms[‡]			
Mild	123 (85)	52 (16)	175 (37)
Moderate	16 (11)	3 (0.9)	19 (4.1)
Severe	5 (3.4)	0 (0)	5 (1.1)
No data	1 (0.7)	269 (83)	270 (58)

275 *Symptoms of respiratory tract infections and severity of disease were extracted from the
276 questionnaires.

277 [†]Of those that reported no RTI-symptoms, 29/30 of patient-cases and 12/197 of non-cases,
278 respectively, reported symptoms that they suspected were due to COVID-19.

279 [‡]The question of severity of symptoms applied only to those who answered “Yes” on the question
280 “Did you have symptoms during 2020 that you know, or suspect were due to COVID-19” (n = 144
281 for cases, and n = 55 for non-cases). Mild disease was defined as staying at home while being ill,
282 moderate as hospital admission and severe as ICU admission.

283

284

285

286

287

288

289 **Table 2.** IgG-antibodies detected in serum samples of patient-cases and non-cases.

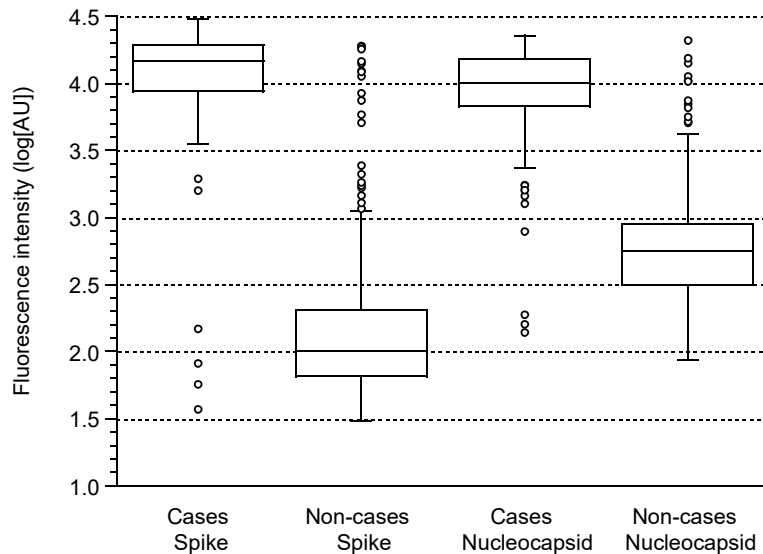
Reactive IgG antibody	Patient-cases	% (95% CI)	Non-cases	% (95% CI)
against	(n=145)		(n=324)	
Spike	140	96.6 (92.2-98.5)	21	6.5 (4.3-9.7)
Nucleocapsid	138	95.2 (90.4-97.6)	18	5.6 (3.6-8.6)
Spike and Nucleocapsid	137	94.5 (89.5-97.2)	14	4.3 (2.6-7.1)
None	4	2.8 (1.1-6.9)	299	92.3 (88.9-94.7)

290

291

292 **Figures**

293 **Figure 1.** Antibody levels against viral spike and nucleocapsid proteins in patient-cases (n = 145)
294 and non-cases (n = 324), respectively. Boxes include values between the first (Q1) and third (Q3)
295 quartile, whiskers limits shows values within $Q1-IQR \times 1.5$ and $Q3+IQR \times 1.5$. Outliers are defined
296 as values outside the whisker limits and median values are indicated by a line. IQR: Interquartile
297 range.



298

299

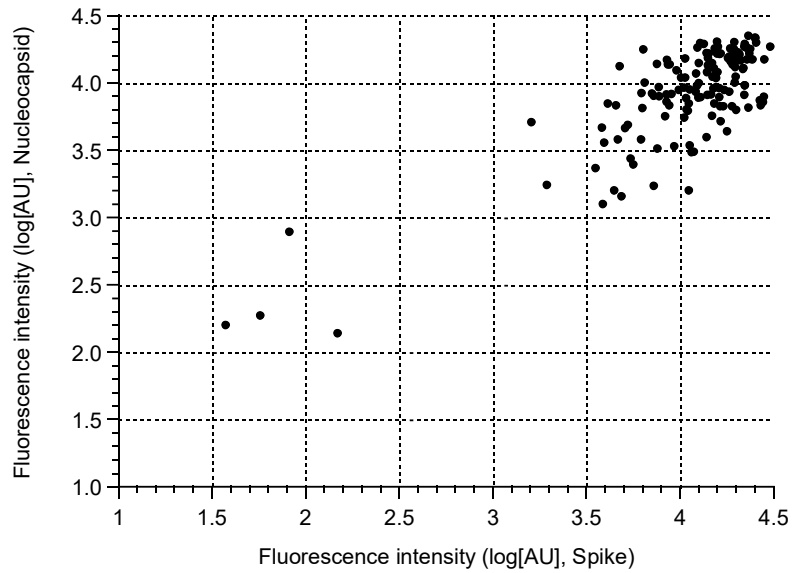
300

301

302

303

304 **Figure 2.** Correlation of IgG antibody levels against nucleocapsid and spike proteins among
305 patient-cases (n=145).



306

307

308

309

310

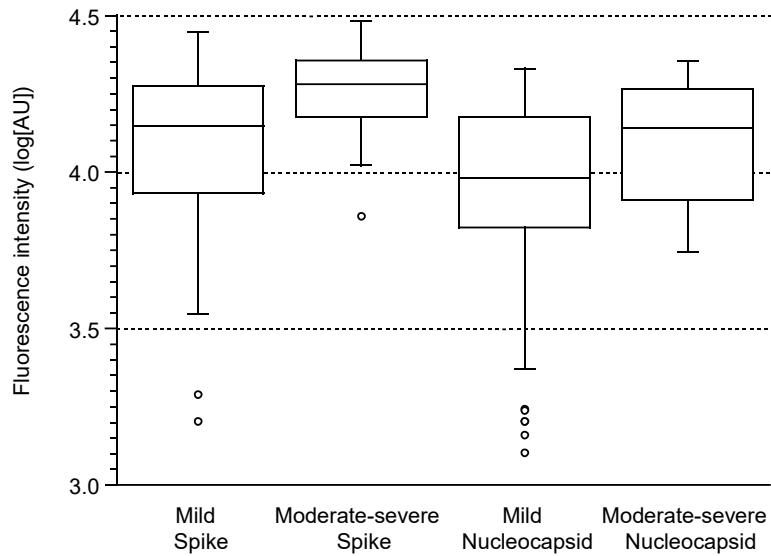
311

312

313

314

315 **Figure 3.** Antibody levels in patient-cases with mild vs. moderate-severe disease (n = 120 vs. n =
316 21, respectively, four outliers removed). For explanation of boxes, see legend to Figure 1.



317

318

319

320

321

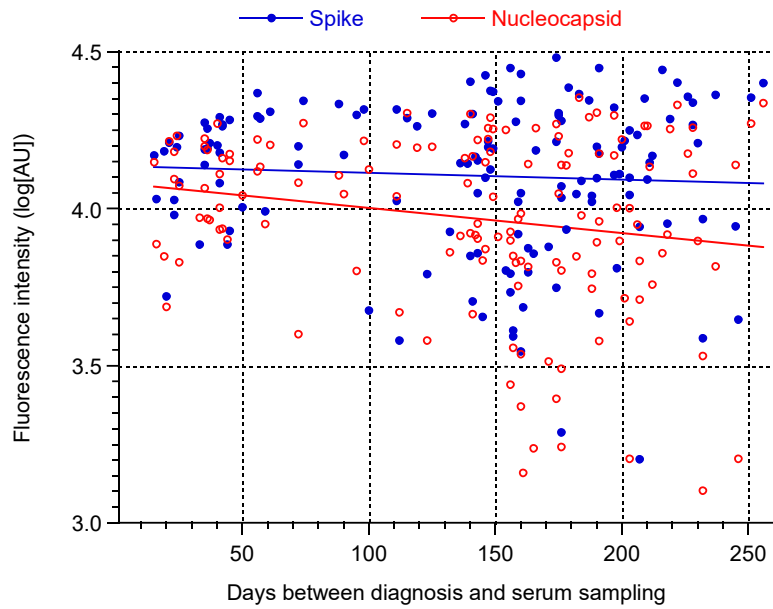
322

323

324

325

326 **Figure 4.** Correlation of antibody levels among patient-cases and time between disease notification
327 and serum sampling (n = 141, 4 outliers removed).



328

329

330

331 .