

1

2

3 **Convalescent Plasma in Critically ill Patients with** 4 **Covid-19**

5

6 **The REMAP-CAP Investigators***

7

8 ***Author and Group Information**

9 The members of the writing committee appear at the end of the main text and the full list of
10 investigators and collaborators appear in the Supplementary Appendix.

11 **Running Head**

12 **REMAP-CAP COVID-19 Convalescent Plasma RCT**

13 **Keywords**

14 Adaptive platform trial; randomized controlled trial, intensive care; pneumonia; pandemic;
15 COVID-19; convalescent plasma; passive immunity; antibody

16 **Revision date**

17 June 10, 2021

18 **Word Count**

19 2680

20 **Corresponding Author**

21 Lise J Estcourt

22 NHS Blood and Transplant

23 Level 2, John Radcliffe Hospital

24 Oxford

25 UK

26 OX3 9BQ

27 Email: lise.estcourt@nhsbt.nhs.uk

28

REMAP-CAP COVID-19 Immunoglobulin Domain RCT

29

30 **Abstract**

31 **BACKGROUND** The evidence for benefit of convalescent plasma for critically ill patients with
32 Covid-19 is inconsistent. We hypothesized that convalescent plasma would improve outcomes
33 for critically ill adult patients with Covid-19.

34 **METHODS** In an ongoing adaptive platform trial, critically ill patients with confirmed Covid-19,
35 defined as receiving intensive care-level organ support, were randomized to open-label
36 convalescent plasma or not (i.e., control group). The primary end point was organ support-free
37 days (i.e., days alive and free of ICU-based organ support) up to day 21. The primary analysis
38 was a Bayesian cumulative logistic model with predefined criteria for superiority or futility. An odds
39 ratio greater than 1 represented improved survival, more organ support-free days, or both.

40 **RESULTS** The convalescent plasma intervention was stopped after pre-specified criteria for
41 futility were met. At that time, 1084 participants had been randomized to convalescent plasma and
42 916 to no convalescent plasma (control). The median organ support-free days were 0
43 (interquartile range, -1 to 16) for the convalescent plasma group and 3 (interquartile range, -1 to
44 16) days for the control group. The median adjusted odds ratio (OR) was 0.97 (95% credible
45 interval 0.83 to 1.15) and posterior probability of futility (OR < 1.2) was 99.4% for convalescent
46 plasma compared to control. In-hospital mortality was 37.3% (401/1075) in convalescent plasma
47 group, and 38.4% (347/904) in controls. The observed treatment effects were consistent across
48 primary and secondary outcomes.

49 **CONCLUSIONS** In critically ill adults with confirmed Covid-19, treatment with convalescent
50 plasma, did not improve clinical outcomes.

51 [Clinicaltrials.gov: NCT02735707](https://clinicaltrials.gov/NCT02735707)

52 **Introduction**

53 Coronavirus disease 2019 (Covid-19) is an acute illness caused by the severe acute respiratory
54 syndrome coronavirus 2 (SARS-CoV-2).¹ Amongst the many treatments studied,² only two
55 immunomodulatory drugs have been shown to save lives in hospitalized adults with Covid-19 -
56 corticosteroids and interleukin-6 receptor antagonists,^{3,4} with critically ill patients showing
57 greater benefit with corticosteroids.⁵ Convalescent plasma (blood product containing SARS-
58 CoV-2 specific antibodies), is a biologically plausible antiviral treatment with immunomodulatory
59 properties⁶⁻⁹ that may offer greater benefit to critically ill patients with Covid-19, in whom
60 multiorgan dysfunction could be driven by the higher prevalence of viral RNAemia, and by
61 progressive host response.^{10,11} However, convalescent plasma use in Covid-19 patients has
62 either been outside of clinical trials, with 500,000 estimated to have received it in the United
63 States,¹² or in randomized clinical trials (RCTs) that have not focused on critically ill patients
64 with Covid-19, including the recently published RECOVERY Trial.¹³⁻¹⁹

65 Therefore, we conducted an international, multicenter randomized clinical trial (RCT) to address
66 this uncertainty in the evidence and to determine whether convalescent plasma compared to no
67 convalescent plasma (control) improves outcomes in critically ill patients with Covid-19 within
68 the Randomized, Embedded, Multifactorial, Adaptive Platform Trial for Community-Acquired
69 Pneumonia (REMAP-CAP).

70 **Methods**

71 **Trial Design**

72 REMAP-CAP is an international, multicenter, open-label adaptive platform designed to
73 determine the best treatment strategies for patients with severe pneumonia in both pandemic

REMAP-CAP COVID-19 Immunoglobulin Domain RCT

74 and non-pandemic settings. REMAP-CAP's design and results regarding corticosteroids,
75 anticoagulants, antivirals, and IL-6 receptor antagonists (IL-6ra) in Covid-19 have been reported
76 previously.^{3,4,20-22}

77 Patients are assessed for eligibility and randomized to different interventions across several
78 domains. The trial is overseen by an International Trial Steering Committee (ITSC) blinded to
79 the treatment allocation and an independent Data and Safety Monitoring Board (DSMB).

80 REMAP-CAP is funded through multiple sources, approved by relevant regional research ethics
81 committees, and conducted in accordance with Good Clinical Practice guidelines and the
82 principles of the Declaration of Helsinki.

83 The Immunoglobulin Domain evaluating convalescent plasma enrolled participants at trial sites in
84 Australia, Canada, the United Kingdom, and the United States. Informed consent, in accordance
85 with local regulations, was obtained from all patients or their surrogates. Details of the trial
86 design have been reported previously and in the **Protocol**.²⁰

87 **Participants**

88 Patients aged 18 years or older with confirmed SARS-CoV-2 infection admitted to hospital and
89 classified as moderately or severely ill were eligible for enrollment in the Covid-19 Immunoglobulin
90 Domain, equivalent to severely or critically ill respectively, as per the World Health Organization
91 (WHO) case definitions.²³ Outcomes for the critically ill participants, defined as patients admitted
92 to an intensive care unit (ICU) and receiving respiratory or cardiovascular organ support, are
93 reported in this manuscript.^{3,4,20-22}

94 REMAP-CAP exclusion criteria included presumption that death was imminent with lack of
95 commitment to full support, or participation in REMAP-CAP in the prior 90 days. Immunoglobulin
96 Domain-specific exclusion criteria included: known hypersensitivity to convalescent plasma;

REMAP-CAP COVID-19 Immunoglobulin Domain RCT

97 objection to receiving plasma products; previous history of transfusion-related acute lung injury
98 (TRALI; and more than 48h elapsed since ICU admission or 14 days since hospital admission.
99 Further details regarding eligibility are listed in the **Protocol** and **Supplementary Appendix**.

100 **Treatment Allocation**

101 The Covid-19 Immunoglobulin Domain contained three interventions, convalescent plasma at
102 randomization, delayed convalescent plasma (given if clinical deterioration - only available at
103 one site in the United States), and control. Participants were randomized via a centralized
104 computer program to each intervention (available locally) starting with balanced assignment.
105 The funders of the trial had no role in trial design, data collection, data analysis, data
106 interpretation, or writing of the manuscript. Members of the writing committee had full access to
107 all data and had final responsibility for the decision to submit for publication.

108 **Procedures**

109 The trial used an open-label design, where convalescent plasma was supplied by each site's
110 transfusion laboratory, and the clinical team were provided instructions for convalescent plasma
111 administration. Details of donor selection, plasma manufacture, testing of convalescent plasma
112 in each country, and convalescent plasma administration are in the **Supplementary Appendix**.
113 Other aspects of care were provided as per each site's standard of care. In addition to
114 assignments in the Immunoglobulin Domain, participants could be randomized to additional
115 interventions within other domains, depending on domains active at the site, patient eligibility,
116 and consent (see www.remapcap.org). Randomization to the Corticosteroid Domain for Covid-
117 19 closed on June 17, 2020.²⁰ Thereafter, corticosteroids were allowed as per recommended
118 standard of care.

REMAP-CAP COVID-19 Immunoglobulin Domain RCT

119 Although clinical staff were aware of their individual patient's intervention assignment, neither
120 they nor the ITSC were provided any information about aggregate patient outcomes.

121 **Interventions**

122 Participants were randomized to receive high-titer ABO compatible convalescent plasma (total
123 volume approximately 550 +/- 150 ml) within 48 hours of randomization, or control. All
124 convalescent plasma used in the trial were tested for SARS-CoV-2 antibodies and met a minimum
125 titer criterion prior to administration. The details of the method of testing and minimum titer criterion
126 for convalescent plasma in each country are in the **Supplementary Appendix**.

127 **Outcomes**

128 The primary outcome was respiratory and cardiovascular organ support-free days up to day 21.
129 The definitions of respiratory and cardiovascular organ support were the same as in the
130 inclusion criteria. In this composite ordinal outcome, all deaths within the hospital, up to day 90,
131 are assigned the worst outcome (-1 day). Among survivors, respiratory and cardiovascular
132 organ support-free days were calculated up to day 21, such that a higher number represents
133 faster recovery. Prespecified secondary outcomes included: 28-day survival; 90-day survival;
134 progression to invasive mechanical ventilation, extra corporeal mechanical oxygenation (ECMO)
135 or death; intensive care and hospital length-of-stay; and World Health Organization ordinal scale
136 at day 14. (**Supplementary Appendix**).

137 **Trial Power and Sample Size**

138 REMAP-CAP uses a Bayesian design with no maximum sample size. Regular adaptive
139 analyses are conducted, and randomization continues, potentially with response-adaptive
140 randomization with preferential assignment to those interventions that appear most favorable,

REMAP-CAP COVID-19 Immunoglobulin Domain RCT

141 until a pre-defined statistical trigger of superiority or futility is met. Response-adaptive
142 randomization was used in the Immunoglobulin Domain from November 23,2020.

143 **Statistical Analysis**

144 The statistical analysis plan for the Covid-19 Immunoglobulin Domain was written blinded to
145 treatment allocation and posted online (www.remapcap.org) before data lock and analyses
146 (**Protocol and SAP**). The primary analysis was generated from a Bayesian cumulative logistic
147 model, which calculated posterior probability distributions of organ support-free days at day 21
148 (primary outcome) based on evidence accumulated in the trial and assumed prior knowledge in
149 the form of a prior distribution. Prior distributions for individual treatment effects were neutral.
150 The primary model adjusted for location (site, nested within country), age (categorized into six
151 groups), sex, and time-period (two-week epochs). The model contained treatment effects for
152 each intervention within each domain.

153 The primary analysis was conducted on all randomized patients as of, January 18, 2021, and not
154 just those randomized within the Immunoglobulin Domain. This approach allowed maximal
155 incorporation of all information, providing the most robust estimation of the coefficients of all
156 included covariates. Importantly, not all patients were eligible for all domains nor for all
157 interventions within each domain (depending on site participation, baseline entry criteria, and
158 patient or surrogate preference).

159 Because the primary model included information about assignment to interventions within
160 domains whose evaluation is on-going, it was run by the Statistical Analysis Committee
161 unblinded to the treatment allocation (**Protocol and SAP**), who conduct all protocol-specified
162 trial adaptive analyses and report results to the DSMB.

REMAP-CAP COVID-19 Immunoglobulin Domain RCT

163 The cumulative log odds for the primary endpoint were modeled such that a parameter >0
164 reflects an increase in the cumulative odds for the organ support free-days outcome, which
165 implies benefit. The model assumed proportional effects across the ordinal organ support-free
166 days scale. There was no imputation of missing primary (or secondary) endpoint values.

167 The posterior distribution of the odds ratios is summarized by, allowing calculation of odds ratios
168 with 95% credible intervals (CrI) and the probability that convalescent plasma was superior or
169 futile compared with control. An odds ratio >1 represents improved survival and/or more organ
170 support-free days. The pre-defined statistical triggers for trial conclusions and disclosure of
171 results were: superiority if $>99\%$ posterior probability the odds ratio was >1 compared with
172 control; or futility if $>95\%$ posterior probability the odds ratio was <1.2 compared with control.

173 Analysis of the primary outcome was then repeated using only data from those critically ill
174 patients with Covid-19 enrolled in domains that had stopped and were unblinded at the time of
175 analysis with no adjustment for assignment in other ongoing domains. The secondary outcomes
176 were also analyzed in this secondary analysis population. The prespecified six subgroups were
177 binary categories for: presence of SARS-CoV-2 antibodies at baseline; detectable virus at
178 baseline in an upper respiratory sample; need for mechanical ventilation; immunosuppressed
179 state; time from hospitalization to enrolment in recipients (categorized as <3 , $3-7$ and >7 days);
180 and antibody titer of the convalescent plasma transfused. Further details of all analyses are
181 provided in the **Supplementary Appendix**. Pre-specified analyses are listed in the statistical
182 analysis plan (**Protocol and SAP**).

183 Results

184 At a scheduled adaptive analysis, the statistical trigger for futility in critically ill participants with
185 Covid-19 was met (posterior probability of futility 96.4%, (OR 0.95, 95% Credible Interval (CrI)

REMAP-CAP COVID-19 Immunoglobulin Domain RCT

186 0.73 to 1.23). Assignment to this domain closed on January 11, 2021 for critically ill participants
187 (randomization continued for participants who were not critically ill). After announcement of the
188 preliminary RECOVERY trial results on January 15,2021, the ITSC halted recruitment to all
189 patients within the domain.²⁴

190 **Participants**

191 Between March 9, 2020 and January 18, 2021, of 10,282 screened patients, 4,763 who were
192 hospitalized with Covid-19, were enrolled in REMAP-CAP, and randomized within at least one
193 therapeutic domain (Fig. 1). Patients were recruited to the Immunoglobulin Domain from May 5,
194 2020 at 129 sites. Among the 2,097 participants enrolled in the domain, 2,011 were critically ill,
195 and were randomly assigned to convalescent plasma at randomization (n=1084), convalescent
196 plasma if clinical deterioration (n=11), and control (n=916). Further information about
197 hospitalized participants with Covid-19 who were not critically ill and participants in the
198 convalescent plasma if clinical deterioration group are in the **Supplementary Appendix**.

199 Thirteen participants subsequently withdrew consent, and eight participants had missing primary
200 outcome data. The baseline characteristics of the participants randomized to convalescent
201 plasma were similar across intervention groups and typical of patients requiring ICU care for
202 Covid-19 (Table 1 and Table S1). All but three participants were receiving respiratory support at
203 the time of randomization, including high flow nasal oxygen (22%), noninvasive (45%) and
204 invasive (33%) mechanical ventilation.

205 **Interventions and co-interventions**

206 In the convalescent plasma group, 85.6% (920/1075) received convalescent plasma as per
207 protocol (definition **Supplementary Appendix**), and 94.5% (1016/1075) received some
208 convalescent plasma. In the control group, 0.6% (5/905) received convalescent plasma.

REMAP-CAP COVID-19 Immunoglobulin Domain RCT

209 Most patients were enrolled after the announcement of the dexamethasone result from the
210 RECOVERY trial,²⁵ and therefore 94% (1859/1987) of participants were treated with
211 corticosteroids (Table S1). Remdesivir use, as part of routine care, was recorded in 45% of
212 participants. Most participants were enrolled before the announcement of the IL6-receptor
213 antagonist result from the REMAP-CAP trial (Table S1 and S2).⁴

214 **Primary Outcome**

215 The median number of organ support-free days was 0 (interquartile range, -1 to 16) in the
216 convalescent plasma group and 3 (interquartile range, -1 to 16) in the control group (Fig.2 and
217 Fig.3). Relative to control, the median adjusted odds ratio from the primary model was 0.97
218 (95% CrI 0.83 to 1.15), yielding a 99.4% posterior probability of futility. Hospital mortality was
219 37% (401/1075) for convalescent plasma and 38% (347/904) for control. Compared with control,
220 the median adjusted odds ratio for in-hospital survival was 1.04 (95% CrI 0.85 to 1.27) for
221 convalescent plasma, yielding a 91.8% posterior probability of futility. The sensitivity analyses
222 were consistent with the primary analysis (Tables S4 and S5). Potential interactions between
223 convalescent plasma and other interventions were evaluated and reported (Table S2 and S6).
224 There were no significant interactions.

225 The pre-specified secondary analyses of the primary outcome using only data from participants
226 in the Immunoglobulin Domain were consistent with the primary analysis (Table S3).

227 In the pre-specified subgroup analyses, based on participant characteristics at baseline, there
228 were no differences seen in the effect of convalescent plasma based on SARS-CoV-2 PCR
229 status, detectable anti-SARS-CoV-2 antibody at baseline, mechanical ventilation at baseline, or
230 antibody titer in plasma product (Fig. 4). In the small number of participants (n=126) with
231 immunodeficiency at baseline, convalescent plasma demonstrated potential benefit (89.8%
232 posterior probability of superiority). In the subgroup of participants randomized more than 7

REMAP-CAP COVID-19 Immunoglobulin Domain RCT

233 days into hospitalization (n=126) convalescent plasma may be harmful (90.3% posterior
234 probability of harm, OR < 1.0).

235 **Secondary Outcomes**

236 The secondary outcomes are presented in (Figure 3 and Table S3). Full model results of all
237 outcome analyses are provided in eAppendices A and B in the **Supplementary Appendix**.
238 Compared with control, convalescent plasma had treatment effects consistent with the primary
239 outcome, for the pre-specified secondary outcomes.

240 There were 44/1980 (2.2%) participants who had at least one serious adverse event, 32/1075
241 (3.0%), in the convalescent plasma group and 12/905 (1.3%) in the control group. (Table S7).

242 **Discussion**

243 In critically ill patients with Covid-19, treatment with convalescent plasma did not improve organ-
244 support free days compared with no convalescent plasma (control) with a 99.4% probability of
245 futility. The observed treatment effects were consistent across secondary outcomes, and in all
246 sensitivity analyses. Among the pre-defined subgroups, there was no evidence for
247 heterogeneity of treatment effect with convalescent plasma compared with controls.

248 This trial's results are consistent with the lack of benefit of convalescent plasma for patients
249 hospitalized with moderate or severe Covid-19 reported in the RECOVERY trial,¹³ and with the
250 meta-analyses within the Cochrane systematic review.^{15,26} In this trial, 75% of participants
251 received advanced respiratory support which often occurs between 7-10 days after symptom
252 onset, and by which stage in the disease many immunocompetent patients will have developed
253 endogenous antibody responses responses.¹⁴ This could explain our overall results, including
254 the effect observed in the pre-specified immunodeficiency subgroup (Fig. 4). These findings

REMAP-CAP COVID-19 Immunoglobulin Domain RCT

255 warrant further investigation of the hypotheses that benefit with convalescent plasma may be
256 different early on in the illness,^{14,27} and perhaps in patients with an impaired immune system
257 who are unable to mount effective immune responses, including antibody responses.^{27,28}

258 The pre-specified anti-SARS-CoV-2 antibody and SARS-CoV-2 PCR status subgroups
259 evaluated the hypotheses that the antibody negative population and respiratory PCR positive
260 population may derive benefit from convalescent plasma therapy. Overall, anti-SARS-CoV-2
261 antibody negative participants had a higher mortality compared with antibody positive
262 participants and the viral load in respiratory samples were high,²⁹ consistent with greater
263 prevalence of viral RNAemia in critically ill Covid-19 patients.¹⁰ However, no differences in
264 treatment effect were observed within these two subgroups, even when RECOVERY data were
265 taken into consideration (Figure S2).

266 Strengths of this trial include a design that assessed the impact of administration of high-titer
267 convalescent plasma in critically ill adults on patient-centered outcomes, with the majority of
268 participants (72.7%) randomized within three days of hospitalization. In this trial, the dose of
269 convalescent plasma administered, was at least one unit Euroimmun (EI) titer ≥ 8 in 56.6% of
270 participants and EI ≥ 6 in all participants for which data were available, which represents higher
271 titers than the emergency use authorization recommendation by the FDA (EI ≥ 3.5).³⁰

272 The trial has limitations. The trial used an open-label design, although clinician and patient
273 awareness of trial assignment likely had minimal effect on the primary outcome. Only 85.9% of
274 participants received convalescent plasma in the intervention group as per protocol and 0.6% of
275 patients in the control group received convalescent plasma, however, this is unlikely to have
276 biased the results towards null, as the per protocol analyses were similar to the primary
277 analysis. Although most participants received very high titer convalescent plasma, viral
278 neutralization properties were not measured prior to administration. Finally, the trial has only

REMAP-CAP COVID-19 Immunoglobulin Domain RCT

279 been able to test the potential effectiveness of convalescent plasma in critically ill patients and it
280 remains possible that convalescent plasma or other high-titer antibody-based therapy (alone or
281 in combination with anti-viral chemotherapy) may have a therapeutic effect earlier in the disease
282 process or in some patient groups.

283 **Conclusions**

284 In critically ill patients with Covid-19, treatment with convalescent plasma did not improve
285 clinical outcomes, including organ-support free days or hospital survival.

286

287 **Article Information**

288 **Authors/Members of the Writing Committee**

289 Lise J. Estcourt, MB BChir, DPhil^{1,2*}; Alexis F. Turgeon, MD, MSc^{3,4*}; Zoe K. McQuilten, MBBS,
290 PhD^{5,6*}; Bryan J. McVerry, MD^{7*}; Farah Al-Beidh, PhD⁸; Djillali Annane, MD, PhD^{9,10,11};
291 Yaseen M. Arabi, MD¹²; Donald M. Arnold MD MSc¹³; Abigail Beane, MSc¹⁴; Philippe Bégin MD
292 PhD¹⁵; Wilma van Bentum-Puijk, MS¹⁶; Lindsay R. Berry, PhD¹⁷; Zahra Bhimani, MPH,
293 PMP¹⁸; Janet E. Birchall, MBChB¹⁹; Marc J.M. Bonten, MD^{16,20}; Charlotte A. Bradbury, MD,
294 PhD^{21,22}; Frank M. Brunkhorst, MD²³; Meredith Buxton, PhD²⁴; Jeannie L. Callum, MD^{25,26,27};
295 Michael Chassé MD, PhD¹⁵; Allen C. Cheng, MD^{28, 29}; Matthew E. Cove, MBChB³⁰; James Daly,
296 MBBS³¹; Lennie Derde, MD^{16,32}; Michelle A. Detry, PhD¹⁷; Menno De Jong, MD³³; Amy Evans,
297 MMedSci³⁴; Dean A. Fergusson, PhD³⁵; Matthew Fish, MSc³⁶; Mark Fitzgerald, PhD¹⁷; Claire
298 Foley, BSc³⁴; Herman Goossens, MD³⁷; Anthony C. Gordon, MD⁸; Iain B. Gosbell, MBBS,
299 MD^{31,38}; Cameron Green, MSc²⁹; Rashan Haniffa, MD^{39,40}; Heli Harvala MD, PhD⁴¹;
300 Alisa M. Higgins, PhD²⁹; Thomas E. Hills, MBChB, DPhil⁴²; Veronica C. Hoad, MBBS,
301 MPH³¹; Christopher Horvat MD MHA⁴³; David T. Huang MD MPH⁴⁴; Cara L. Hudson MSc⁴⁵; Nao
302 Ichihara MD, MPH, PhD⁴⁶; Emma Laing BSc³⁴; Abigail A. Lamikanra, PhD¹; Francois
303 Lamontagne, MD, MSc⁴⁷; Patrick R. Lawler, MD, MPH⁴⁸; Kelsey Linstrum, MS⁴⁹; Edward Litton,
304 MD⁵⁰; Elizabeth Lorenzi, PhD¹⁷; Sheila McLennan, MB BS⁵¹; John Marshall, MD^{18,52}; Daniel F.
305 McAuley, MD⁵³; John F. McDyer, MD⁷; Anna McGlothlin, PhD¹⁷; Shay McGuinness, MD^{29,54,55};
306 Gail Mifflin⁵⁶; Stephanie Montgomery, MSc^{49,57}; Paul R. Mouncey, MSc⁵⁸; Srinivas Murthy, MD⁵⁹;
307 Alistair Nichol, MD^{29,60,61,62}; Rachael Parke, RN, PhD^{54,55,63}; Jane C. Parker, RN²⁹; Nicole Pridee,
308 MB BCh⁶⁴; Damian F.J. Purcell, PhD⁶⁵; Luis F. Reyes, MD, PhD^{66,67}; Peter Richardson,
309 BPharm¹⁹; Nancy Robitaille, MD^{68,69,70}; Kathryn M. Rowan, PhD⁵⁸; Jennifer Rynne, MSc³⁶; Hiroki
310 Saito, MD, MPH⁷¹; Marlene Santos, MSc¹⁸; Christina T. Saunders, PhD¹⁷; Ary Serpa Neto, MD
311 MSc PhD^{29,72}; Christopher W. Seymour, MD, MSc^{49,57}; Jon A. Silversides, PhD⁵³; Alan
312 A. Tinmouth MD MSc³⁵; Darrell J. Triulzi, MD⁷³; Anne M. Turner, RN, MPH⁵⁵; Frank van
313 de Veerdonk, MD⁷⁴; Tim Walsh, MD⁷⁵; Erica M. Wood^{5,6}; Scott Berry, PhD¹⁷; Roger J. Lewis, MD,
314 PhD^{17,76,77}; David K. Menon MD, PhD^{78**}; Colin McArthur, MD^{58,79**}; Ryan Zarychanski, MD,
315 MSc^{80**}; Derek C. Angus, MD, MPH^{49,57**}; Steven A. Webb, MD, PhD^{4,20,32**}; David J.
316 Roberts, MBChB, DPhil^{1,2**}; Manu Shankar-Hari MD, PhD^{36,81**}.

317 * joint first author

REMAP-CAP COVID-19 Immunoglobulin Domain RCT

318 ** joint last author

319

320 Affiliations of Authors/Members of the Writing Committee

321 ¹ NHS Blood and Transplant, Oxford, UK

322 ² Radcliffe Department of Medicine and BRC Haematology Theme, University of Oxford, Oxford,
323 UK

324 ³ Department of Anesthesiology and Critical Care Medicine, Division of Critical Care
325 Medicine, Université Laval, Québec City, Québec, Canada

326 ⁴ CHU de Québec-Université Laval Research Center, Population Health and Optimal Health
327 Practices Unit, Trauma – Emergency – Critical Care Medicine, CHU de Québec-
328 Université Laval, Québec City, Québec, Canada

329 ⁵ Transfusion Research Unit, School of Public Health & Preventive Medicine, Monash University,
330 Melbourne, Australia

331 ⁶ Department of Clinical Haematology, Monash Health, Melbourne, Australia

332 ⁷ Department of Medicine, University of Pittsburgh School of Medicine, Pittsburgh, Pennsylvania,
333 USA

334 ⁸ Division of Anaesthetics, Pain Medicine and Intensive Care Medicine, Department of Surgery
335 and Cancer, Imperial College London and Imperial College Healthcare NHS Trust, London,
336 UK

337 ⁹ Intensive Care Unit, Raymond Poincaré Hospital (AP-HP), Paris, France

338 ¹⁰ Simone Veil School of Medicine, University of Versailles, Versailles, France

339 ¹¹ University Paris Saclay, Garches, France

340 ¹² Intensive Care Department, College of Medicine, King Saud Bin Abdulaziz University for
341 Health Sciences, King Abdullah International Medical Research Center, Ministry of National
342 Guard Health Affairs, Riyadh, Saudi Arabia

REMAP-CAP COVID-19 Immunoglobulin Domain RCT

- 343 ¹³ McMaster University, Hamilton, Ontario, Canada
- 344 ¹⁴ Nuffield Department of Clinical Medicine, University of Oxford, Oxford, UK
- 345 ¹⁵ Université de Montréal, Montréal, Québec, Canada
- 346 ¹⁶ Julius Center for Health Sciences and Primary Care, University Medical Center Utrecht,
347 Utrecht University, Utrecht, the Netherlands
- 348 ¹⁷ Berry Consultants, LLC, Austin, Texas, USA
- 349 ¹⁸ Li Ka Shing Knowledge Institute, Unity Health Toronto, St. Michael's Hospital, Toronto,
350 Ontario, Canada
- 351 ¹⁹ Welsh Blood Service, UK
- 352 ²⁰ Department of Medical Microbiology, University Medical Center Utrecht, Utrecht University,
353 Utrecht, the Netherlands
- 354 ²¹ University Hospitals Bristol and Weston NHS Foundation Trust, Bristol, UK
- 355 ²² Faculty of Health Sciences, University of Bristol, Bristol, UK
- 356 ²³ Center for Clinical Studies and Center for Sepsis Control and Care (CSCC), Department of
357 Anesthesiology and Intensive Care Medicine, Jena University Hospital, Jena, Germany
- 358 ²⁴ Global Coalition for Adaptive Research, San Francisco, California, USA
- 359 ²⁵ Canadian Blood Services, Ottawa, Ontario, Canada
- 360 ²⁶ Department of Pathology and Molecular Medicine, Kingston Health Sciences Centre and
361 Queens University, Kingston, Ontario, Canada
- 362 ²⁷ Department of Laboratory Medicine and Molecular Diagnostics, Sunnybrook Health Sciences
363 Centre, Toronto, Ontario, Canada
- 364 ²⁸ Infection Prevention and Healthcare Epidemiology Unit, Alfred Health, Melbourne, Victoria,
365 Australia

REMAP-CAP COVID-19 Immunoglobulin Domain RCT

- 366 ²⁹ Australian and New Zealand Intensive Care Research Centre, School of Public Health and
367 Preventive Medicine, Monash University, Melbourne, Victoria, Australia
- 368 ³⁰ Department of Medicine, Yong Loo Lin School of Medicine, National University of Singapore,
369 1E Kent Ridge Road, NUHS Tower Block, Level 10, Singapore 119228
- 370 ³¹ Australian Red Cross Lifeblood, Australia
- 371 ³² Intensive Care Center, University Medical Center Utrecht, Utrecht University, Utrecht, the
372 Netherlands
- 373 ³³ Department of Medical Microbiology, Amsterdam UMC, University of Amsterdam, the
374 Netherlands; NHS Blood and Transplant, Bristol, UK
- 375 ³⁴ NHSBT Clinical Trials Unit, NHS Blood and Transplant, Cambridge, UK
- 376 ³⁵ Ottawa Hospital Research Institute, Clinical Epidemiology Unit, Canada
- 377 ³⁶ School of Immunology & Microbial Sciences, Kings College London, SE1 9RT
- 378 ³⁷ Department of Microbiology, Antwerp University Hospital, Antwerp, Belgium
- 379 ³⁸ Western Sydney University, Australia
- 380 ³⁹ Network for Improving Critical Care Systems and Training, Colombo, Sri Lanka
- 381 ⁴⁰ Mahidol Oxford Tropical Medicine Research Unit, Bangkok, Thailand
- 382 ⁴¹ NHS Blood and Transplant, London, UK
- 383 ⁴² Medical Research Institute of New Zealand, Wellington, New Zealand
- 384 ⁴³ UPMC Children's Hospital of Pittsburgh, Pittsburgh, Pennsylvania, USA
- 385 ⁴⁴ Department of Critical Care Medicine, University of Pittsburgh School of Medicine, Pittsburgh,
386 Pennsylvania, USA
- 387 ⁴⁵ NHSBT Clinical Trials Unit, Bristol, UK
- 388 ⁴⁶ Department of Healthcare Quality Assessment, Graduate School of Medicine, The University
389 of Tokyo, Japan

REMAP-CAP COVID-19 Immunoglobulin Domain RCT

- 390 ⁴⁷ Université de Sherbrooke, Sherbrooke, Québec, Canada
- 391 ⁴⁸ Cardiac Intensive Care Unit, Peter Munk Cardiac Centre, University Health Network,
392 Interdepartmental Division of Critical Care Medicine, University of Toronto, Toronto, Canada
- 393 ⁴⁹ The Clinical Research Investigation and Systems Modeling of Acute Illness (CRISMA) Center,
394 Department of Critical Care Medicine, University of Pittsburgh School of Medicine,
395 Pittsburgh, Pennsylvania, USA
- 396 ⁵⁰ School of Medicine and Pharmacology, University of Western Australia, Crawley, Western
397 Australia, Australia
- 398 ⁵¹ NHS Blood and Transplant, Barnsley, UK
- 399 ⁵² Interdepartmental Division of Critical Care, University of Toronto, Toronto, Ontario, Canada
- 400 ⁵³ Centre for Experimental Medicine, School of Medicine, Dentistry and Biomedical Sciences,
401 Queen's University Belfast, Belfast, UK
- 402 ⁵⁴ Cardiothoracic and Vascular Intensive Care Unit, Auckland City Hospital, Auckland, New
403 Zealand
- 404 ⁵⁵ The Medical Research Institute of New Zealand, Wellington, New Zealand
- 405 ⁵⁶ NHS Blood and Transplant, 500 North Bristol Park, Filton, Bristol, UK
- 406 ⁵⁷ The UPMC Health System Office of Healthcare Innovation, Pittsburgh, Pennsylvania, USA
- 407 ⁵⁸ Clinical Trials Unit, Intensive Care National Audit & Research Centre (ICNARC), London, UK
- 408 ⁵⁹ University of British Columbia School of Medicine, Vancouver, Canada
- 409 ⁶⁰ Department of Anesthesia and Intensive Care, St Vincent's University Hospital, Dublin,
410 Ireland
- 411 ⁶¹ School of Medicine and Medical Sciences, University College Dublin, Dublin, Ireland
- 412 ⁶² Department of Intensive Care, Alfred Health, Melbourne, Victoria, Australia
- 413 ⁶³ School of Nursing, University of Auckland, Auckland, New Zealand

REMAP-CAP COVID-19 Immunoglobulin Domain RCT

- 414 ⁶⁴ Scottish National Blood Transfusion Service, Edinburgh, Scotland, UK
- 415 ⁶⁵The Peter Doherty Institute for Infection and Immunity, The University of Melbourne,
416 Melbourne, Australia
- 417 ⁶⁶ Universidad de La Sabana, Chia, Colombia
- 418 ⁶⁷ Clinica Universidad de La Sabana, Chia, Colombia
- 419 ⁶⁸ Héma-Québec, Montréal, Québec, Canada
- 420 ⁶⁹ Division of Hematology and Oncology, Department of Pediatrics, CHU Sainte-Justine,
421 Montréal, Québec, Canada
- 422 ⁷⁰ Department of Pediatrics, Université de Montréal, Montréal, Québec, Canada
- 423 ⁷¹ Department of Emergency and Critical Care Medicine, St. Marianna University School of
424 Medicine Yokohama City Seibu Hospital, Yokohama, Japan
425
- 426 ⁷² Department of Critical Care Medicine, Hospital Israelita Albert Einstein, São Paulo, Brazil
- 427 ⁷³ Department of Pathology, University of Pittsburgh School of Medicine, Pittsburgh,
428 Pennsylvania, USA
- 429 ⁷⁴ Radboud Institute for Molecular Life Sciences, Radboud University Medical Center, Nijmegen,
430 Netherlands
- 431 ⁷⁵ University of Edinburgh, Scotland, UK
- 432 ⁷⁶ Department of Emergency Medicine, Harbor-UCLA Medical Center, Torrance, California,
433 USA
- 434 ⁷⁷ Department of Emergency Medicine, David Geffen School of Medicine at UCLA, Los Angeles,
435 California, USA
- 436 ⁷⁸ University Division of Anaesthesia, Addenbrooke's Hospital Cambridge, Cambridge, UK
- 437 ⁷⁹ Department of Critical Care Medicine, Auckland City Hospital, Auckland, New Zealand
- 438 ⁸⁰ Department of Medicine, Critical Care and Hematology/Medical Oncology, University of
439 Manitoba, Winnipeg, Manitoba, Canada

REMAP-CAP COVID-19 Immunoglobulin Domain RCT

440 ⁸¹ Guy's and St Thomas' NHS Foundation Trust, ICU support Offices, 1st Floor, East Wing, St
441 Thomas' Hospital, SE1 7EH, UK

442

443

444

445 **Author contributions**

446 To be generated from author contribution forms.

447 **Conflict of Interest Disclosures**

448 See submitted ICMJE forms for declared potential conflict of interests.

449 **Funding/Support**

450 The Platform for European Preparedness Against (Re-) emerging Epidemics (PREPARE)
451 consortium by the European Union, FP7-HEALTH-2013-INNOVATION-1 (#602525), the
452 Australian National Health and Medical Research Council (#APP1101719), the Australian
453 Medical Research Future Fund (#APP2002132); the New Zealand Health Research Council
454 (#16/631), the Canadian Institutes of Health Research COVID-19 Rapid Research Funding
455 Grant (#447335), the Canadian Institute of Health Research Strategy for Patient-Oriented
456 Research Innovative Clinical Trials Program Grant (#158584), the National Institute for Health
457 Research (UKRIDHSC COVID-19 Rapid Response Rolling Call, "The use of convalescent
458 plasma to treat hospitalised and critically ill patients with COVID-19 disease" (COV19-
459 RECPLAS), the UK National Institute for Health Research (NIHR) and the NIHR Imperial
460 Biomedical Research Centre, the Health Research Board of Ireland (CTN 2014-012), the UPMC
461 Learning While Doing Program, the Translational Breast Cancer Research Consortium, the
462 Pittsburgh Foundation, the French Ministry of Health (PHRC-20-0147), the Minderoo
463 Foundation, and the Wellcome Trust Innovations Project (215522). Australian governments fund
464 Australian Red Cross Lifeblood for the provision of blood products and services to Australia.

REMAP-CAP COVID-19 Immunoglobulin Domain RCT

465 Collection of UK plasma was funded by the DHSC through core funding under COVID-19 and
466 EU SoHo Grants.

467 **Role of the Funder/Sponsor**

468 The funders had no role in the design and conduct of the trial; collection, management, analysis,
469 and interpretation of the data; preparation, review, or approval of the manuscript; and decision
470 to submit the manuscript for publication. The platform trial has four regional non-profit sponsors
471 (Monash University, Melbourne, Australia (Australasian sponsor); Utrecht Medical Center,
472 Utrecht, the Netherlands (European sponsor); St. Michael's Hospital, Canada (Canadian
473 sponsor), and; Global Coalition for Adaptive Research (GCAR), San Francisco, USA (US
474 sponsor)). Several authors are employees of these organizations. However, beyond the
475 declared author contributions, the sponsors had no additional role.

476 **The REMAP-CAP Investigators**

477 See attachment 'REMAP-CAP Investigators'.

478 **Data Sharing Statement**

479 See Data Sharing Statement.

480 **Acknowledgement**

481 The views expressed in this publication are those of the author(s) and not necessarily those of
482 the NHS, the UK National Institute for Health Research or the Department of Health and Social
483 Care.

484 We are grateful to the NIHR Clinical Research Network (UK), UPMC Health System Health
485 Services Division (US), and the Direction de la Recherche Clinique et de l'Innovation de l'AP-HP
486 (France) for their support of participant recruitment. ACG is funded by an NIHR Research
487 Professorship (RP-2015-06-18). AFT is the chairholder of a Canada Research Chair. ZM is

REMAP-CAP COVID-19 Immunoglobulin Domain RCT

488 supported by an NHMRC Emerging Leader Fellowship (APP194811). MSH is funded by an
489 NIHR Clinician Scientist Fellowship (CS- 2016-16-011).

REMAP-CAP COVID-19 Immunoglobulin Domain RCT

490 **References**

- 491 1. Gupta A, Madhavan MV, Sehgal K, et al. Extrapulmonary manifestations of COVID-19. *Nature Medicine*
492 2020;26:1017-32.
- 493 2. Rochwerg B, Siemieniuk RA, Agoritsas T, et al. A living WHO guideline on drugs for covid-19. *BMJ*
494 2020:m3379.
- 495 3. Angus DC, Derde L, Al-Beidh F, et al. Effect of Hydrocortisone on Mortality and Organ Support in Patients
496 With Severe COVID-19. *JAMA* 2020;324:1317.
- 497 4. Interleukin-6 Receptor Antagonists in Critically Ill Patients with Covid-19. *New England Journal of*
498 *Medicine* 2021;384:1491-502.
- 499 5. Sterne JAC, Murthy S, Diaz JV, et al. Association Between Administration of Systemic Corticosteroids and
500 Mortality Among Critically Ill Patients With COVID-19. *JAMA* 2020;324:1330.
- 501 6. Bloch EM, Shoham S, Casadevall A, et al. Deployment of convalescent plasma for the prevention and
502 treatment of COVID-19. *J Clin Invest* 2020.
- 503 7. Luke TC, Kilbane EM, Jackson JL, Hoffman SL. Meta-Analysis: Convalescent Blood Products for Spanish
504 Influenza Pneumonia: A Future H5N1 Treatment? *Annals of Internal Medicine* 2006;145:599.
- 505 8. Mair-Jenkins J, Saavedra-Campos M, Baillie JK, et al. The Effectiveness of Convalescent Plasma and
506 Hyperimmune Immunoglobulin for the Treatment of Severe Acute Respiratory Infections of Viral Etiology: A
507 Systematic Review and Exploratory Meta-analysis. *Journal of Infectious Diseases* 2015;211:80-90.
- 508 9. Casadevall A, Pirofski L-A. The convalescent sera option for containing COVID-19. *Journal of Clinical*
509 *Investigation* 2020.
- 510 10. Gutmann C, Takov K, Burnap SA, et al. SARS-CoV-2 RNAemia and proteomic trajectories inform
511 prognostication in COVID-19 patients admitted to intensive care. *Nature Communications* 2021;12.
- 512 11. Bermejo-Martin JF, González-Rivera M, Almansa R, et al. Viral RNA load in plasma is associated with
513 critical illness and a dysregulated host response in COVID-19. *Critical Care* 2020;24.
- 514 12. Casadevall A, Dragotakes Q, Johnson PW, et al. Convalescent plasma use in the United States was
515 inversely correlated with COVID-19 mortality. *eLife* 2021;10.
- 516 13. Abani O, Abbas A, Abbas F, et al. Convalescent plasma in patients admitted to hospital with COVID-19
517 (RECOVERY): a randomised controlled, open-label, platform trial. *The Lancet* 2021.
- 518 14. Libster R, Pérez Marc G, Wappner D, et al. Early High-Titer Plasma Therapy to Prevent Severe Covid-19 in
519 Older Adults. *New England Journal of Medicine* 2021.
- 520 15. Piechotta V, Iannizzi C, Chai KL, et al. Convalescent plasma or hyperimmune immunoglobulin for people
521 with COVID-19: a living systematic review. *Cochrane Database of Systematic Reviews* 2021.
- 522 16. Agarwal A, Mukherjee A, Kumar G, Chatterjee P, Bhatnagar T, Malhotra P. Convalescent plasma in the
523 management of moderate covid-19 in adults in India: open label phase II multicentre randomised controlled trial
524 (PLACID Trial). *BMJ* 2020:m3939.

REMAP-CAP COVID-19 Immunoglobulin Domain RCT

- 525 17. Li L, Zhang W, Hu Y, et al. Effect of Convalescent Plasma Therapy on Time to Clinical Improvement in
526 Patients With Severe and Life-threatening COVID-19. JAMA 2020.
- 527 18. Simonovich VA, Burgos Pratz LD, Scibona P, et al. A Randomized Trial of Convalescent Plasma in Covid-19
528 Severe Pneumonia. New England Journal of Medicine 2020.
- 529 19. Xia X, Li K, Wu L, et al. Improved clinical symptoms and mortality among patients with severe or critical
530 COVID-19 after convalescent plasma transfusion. Blood 2020;136:755-9.
- 531 20. Angus DC, Berry S, Lewis RJ, et al. The REMAP-CAP (Randomized Embedded Multifactorial Adaptive
532 Platform for Community-acquired Pneumonia) Study. Rationale and Design. Ann Am Thorac Soc 2020;17:879-91.
- 533 21. Zarychanski R. Therapeutic Anticoagulation in Critically Ill Patients with Covid-19 – Preliminary Report.
534 Cold Spring Harbor Laboratory; 2021.
- 535 22. Lawler PR, Goligher EC, Berger JS, et al. Therapeutic Anticoagulation in Non-Critically Ill Patients with
536 Covid-19. Cold Spring Harbor Laboratory; 2021.
- 537 23. (WHO) WHO. COVID-19 Clinical management. 2021.
- 538 24. RECOVERY trial closes recruitment to convalescent plasma treatment for patients hospitalised with
539 COVID-19. 2021. at <https://www.recoverytrial.net/news/statement-from-the-recovery-trial-chief-investigators-15-january-2021-recovery-trial-closes-recruitment-to-convalescent-plasma-treatment-for-patients-hospitalised-with-covid-19>.
540
541
- 542 25. Dexamethasone in Hospitalized Patients with Covid-19 — Preliminary Report. New England Journal of
543 Medicine 2020.
- 544 26. Horby PW, Estcourt L, Peto L, et al. Convalescent plasma in patients admitted to hospital with COVID-19
545 (RECOVERY): a randomised, controlled, open-label, platform trial. Cold Spring Harbor Laboratory; 2021.
- 546 27. Laing AG, Lorenc A, Del Molino Del Barrio I, et al. A dynamic COVID-19 immune signature includes
547 associations with poor prognosis. Nature Medicine 2020;26:1623-35.
- 548 28. Mathew D, Giles JR, Baxter AE, et al. Deep immune profiling of COVID-19 patients reveals distinct
549 immunotypes with therapeutic implications. Science 2020;369:eabc8511.
- 550 29. Ratcliff J, Nguyen D, Fish M, et al. Virological and serological characterization of critically ill patients with
551 COVID-19 in the UK: Interactions of viral load, antibody status and B.1.1.7 variant infection. The Journal of
552 Infectious Diseases 2021.
- 553 30. FDA. Convalescent Plasma EUA Letter of Authorization March 9, 2021. 2021.
- 554
- 555

REMAP-CAP COVID-19 Immunoglobulin Domain RCT

556 **Summary of Supplements**

557 **1. Trial Protocol and SAP Documents**

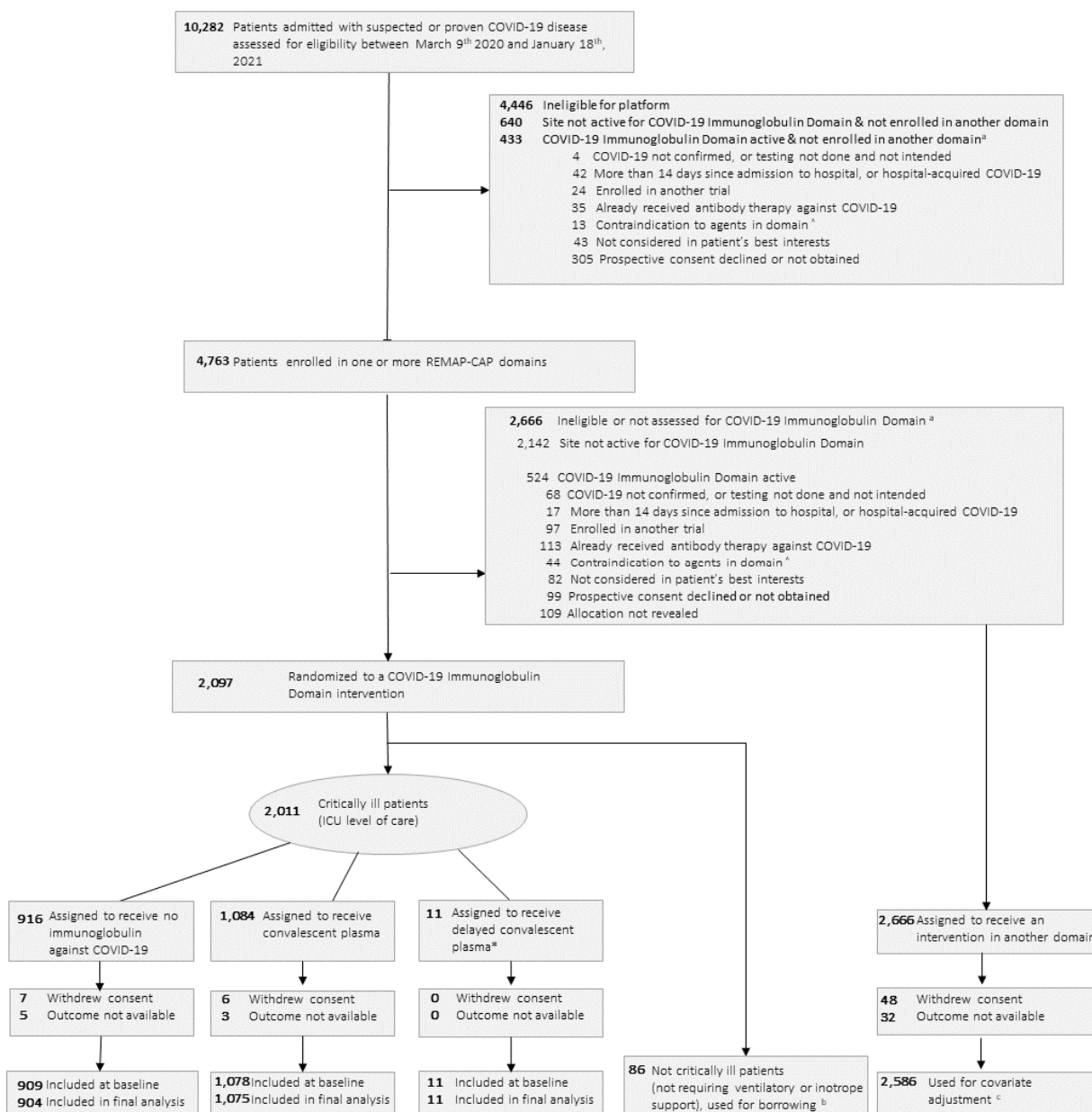
558 **2. Supplementary Appendix**

559

REMAP-CAP COVID-19 Immunoglobulin Domain RCT

560 **Figure 1. Screening, Randomization, and Follow-up of Participants in the REMAP-CAP COVID-19**
 561 **Immunoglobulin Domain Randomized Clinical Trial**

562



563
564

565 ^a Patients could meet more than 1 ineligibility criterion.

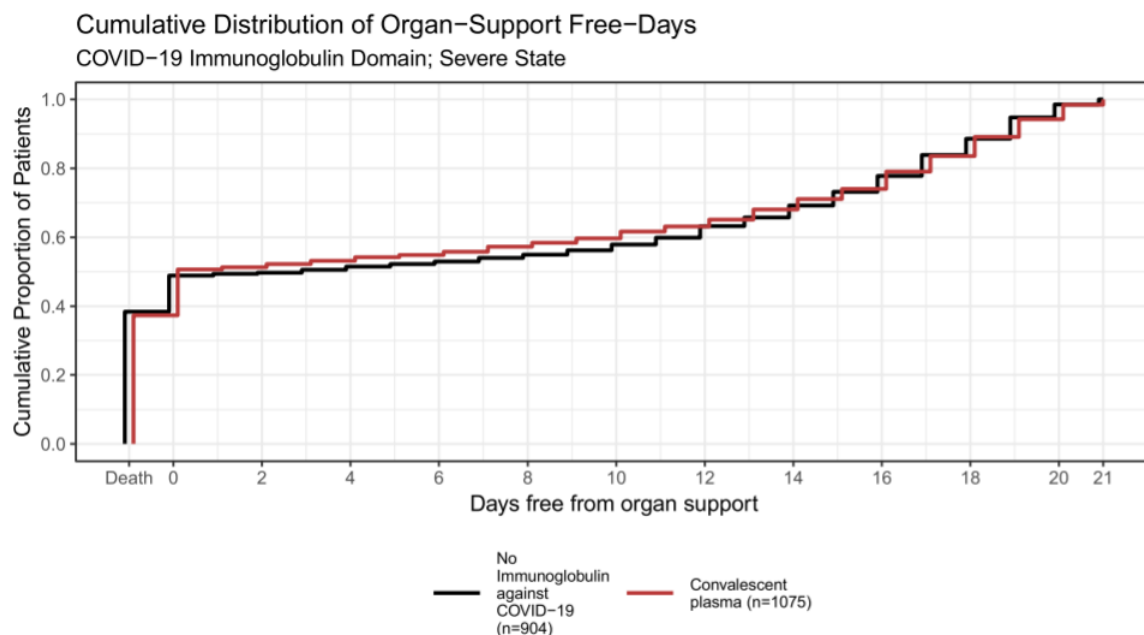
566 ^b Results for patients who were not critically ill were used for borrowing within the primary model

567 ^c The primary analysis of alternative interventions within the Immunoglobulin Domain is estimated from a model that
 568 adjusts for patient factors and for assignment to interventions in other domains. To obtain the most reliable
 569 estimation of the effect of these patient factors and of other interventions on the primary outcome, all patients
 570 enrolled in the COVID-19 cohort (for whom there is consent and follow-up) are included. Importantly, however, the
 571 model also factors eligibility for the Immunoglobulin Domain and its interventions, such that the final estimate of an
 572 Immunoglobulin Domain intervention's effectiveness relative to any other within that domain is generated from
 573 those patients that might have been randomized to either.

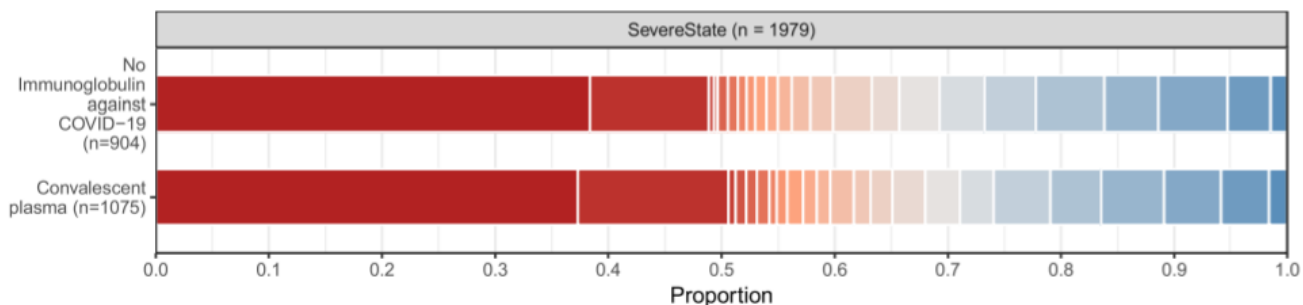
REMAP-CAP COVID-19 Immunoglobulin Domain RCT

574 **Figure 2. Organ Support-free Days**

575



576



577

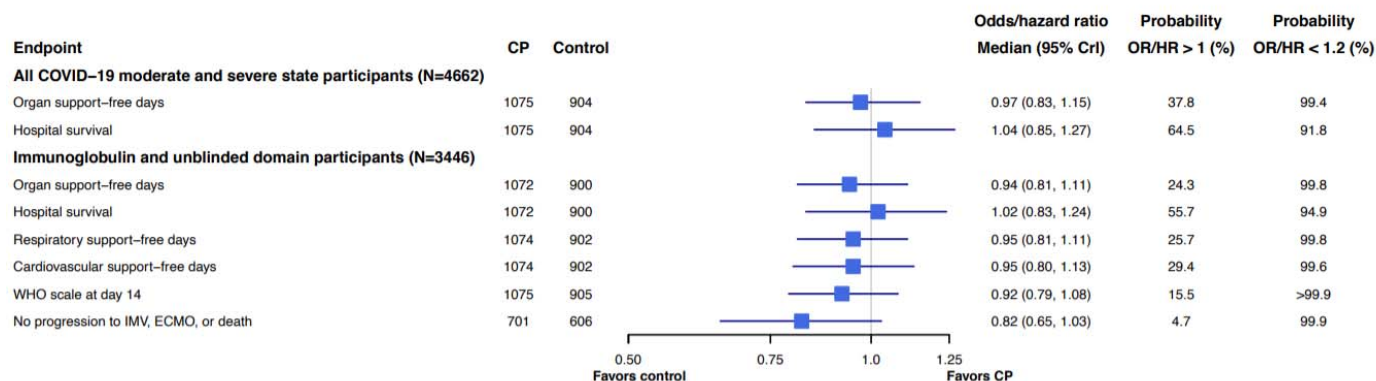
578 The upper panel displays the distributions of organ support-free days (see Methods for definition) by trial group as the
579 cumulative proportion (y axis) for each trial group by day (x axis), with death listed first. Curves that rise more slowly
580 are more favorable. The lower panel displays organ support-free days as horizontally stacked proportions by trial
581 group. Red represents worse values and blue represents better values. The median adjusted odds ratios from the
582 primary analysis, using a Bayesian cumulative logistic model, was 0.97, 95% credible interval 0.83 to 1.15 for
583 convalescent plasma group compared with the no convalescent plasma(control) group, yielding 37.8% probability of
584 superiority and 99.4% probability of futility over the control group.

585

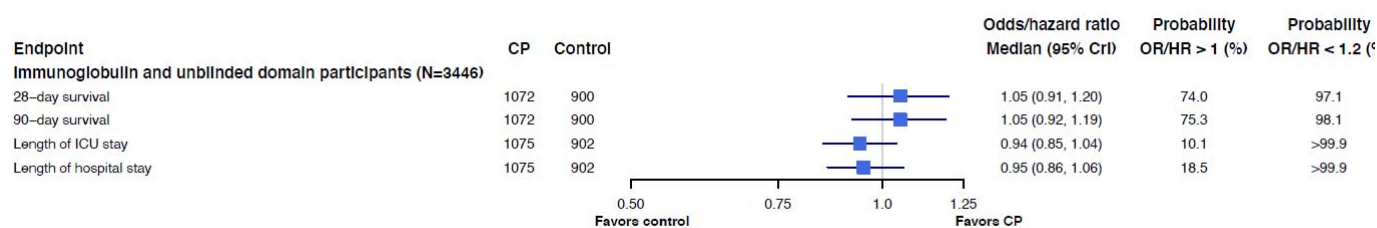
586

REMAP-CAP COVID-19 Immunoglobulin Domain RCT

587 Figure 3a. Dichotomous primary and secondary outcomes 588



589 Figure 3b. Time to event secondary outcomes 590 591



592

Data for secondary analyses excluded participants who had been randomized within another domain within the moderate stratum and then randomized to the immunoglobulin domain in the severe stratum (excluded 7 participants), maximum of 1980 participants included within secondary analyses (See Table S3).

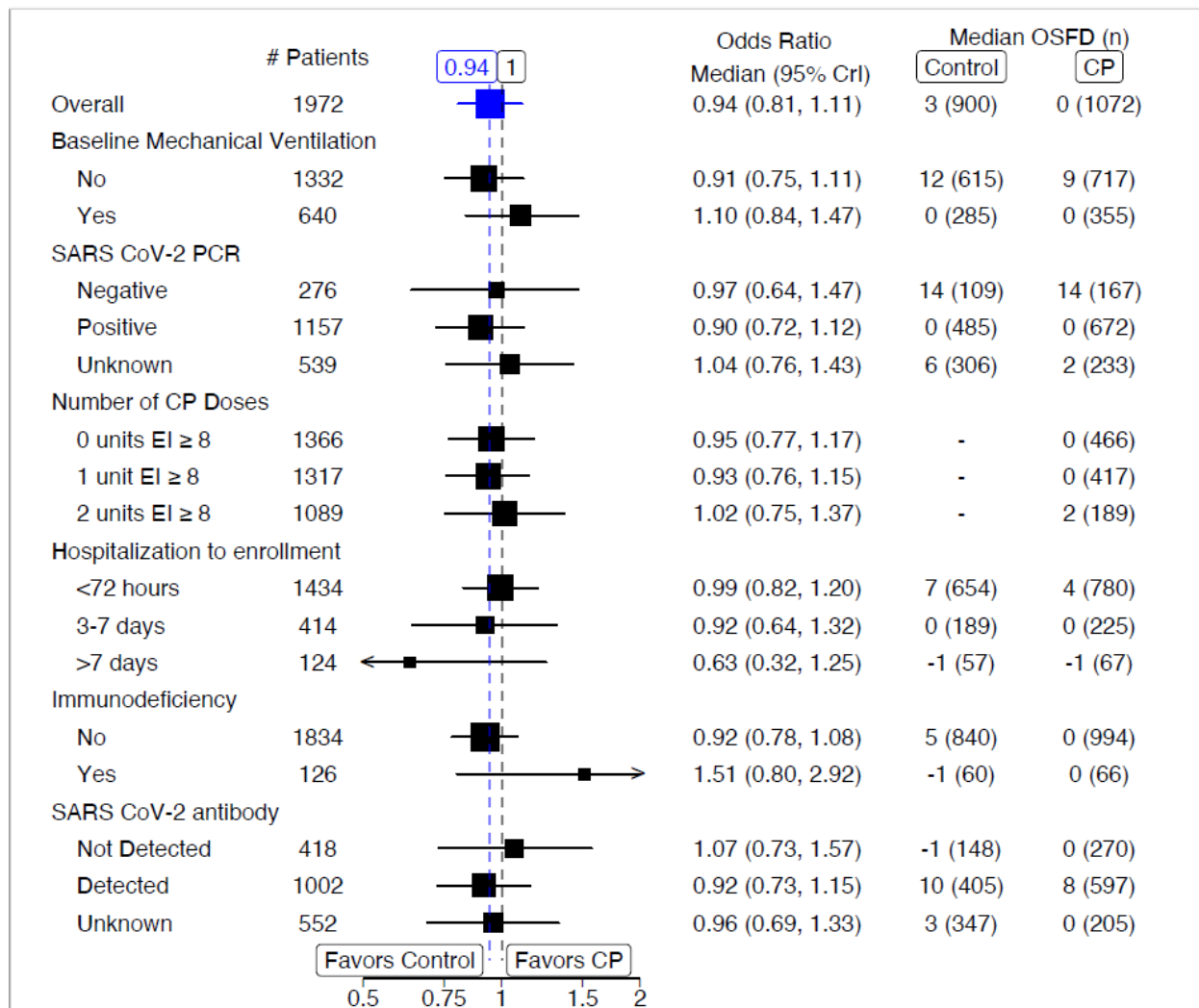
An odds ratio < 1.2 equates to the threshold for futility for the primary outcome

593

REMAP-CAP COVID-19 Immunoglobulin Domain RCT

594 **Figure 4 Pre-specified sub-group analyses***

595



596

597

598

REMAP-CAP COVID-19 Immunoglobulin Domain RCT

Abbreviations: CP - convalescent plasma; EI – Euroimmun; PCR – polymerization chain reaction.

*Data for sub-group analyses excluded participants who had been randomized within another domain within the moderate stratum and then randomized to the immunoglobulin domain in the severe stratum (excluded 7 participants), maximum of 1980 participants included within the sub-group analyses. An odds ratio < 1.2 equates to the threshold for futility for the primary outcome.

For the number of convalescent plasma doses administered with a Euroimmun titer ≥ 8 , the number of participants analyzed equaled the total number in the control group (900) plus the number in the intervention group who received those number of convalescent plasma doses.

Immunodeficiency was defined as immunosuppressive treatment or disease (See supplementary appendix for full definition)

Table 1. Participant Characteristics at Baseline

Characteristic	No. (%) of participants *	
	Convalescent plasma (N=1078)	Control (N=909)
Age – mean (SD), years	60.2 (12.7)	60.2 (13.1)
Sex – Male	727 (67.4)	618 (68.0)
Race/Ethnicity † - White – n/N (%)	731 / 976 (74.9)	619 / 832 (74.4)
Asian – n/N (%)	144 / 976 (14.8)	133 / 832 (16.0)
Black – n/N (%)	51 / 976 (5.2)	38 / 832 (4.6)
Mixed – n/N (%)	16 / 976 (1.6)	8 / 832 (1.0)
Other † – n/N (%)	34 / 976 (3.5)	34 / 832 (4.1)
APACHE II score ‡ - median (IQR)	13.0 (8.0 - 19.0) (n = 1044)	12.0 (8.0 - 19.0) (n = 888)
Pre-existing conditions – n/N (%)		
Diabetes mellitus	339 / 1078 (31.4)	268 / 907 (29.5)
Respiratory disease	245 / 1078 (22.7)	216 / 907 (23.8)
Kidney disease	107 / 1000 (10.7)	83 / 837 (9.9)
Severe cardiovascular disease	96 / 1053 (9.1)	67 / 890 (7.5)
Immunosuppressive disease or therapy	67 / 1066 (6.3)	60 / 907 (6.6)
SARS-CoV-2 RNA detected (respiratory sample) at randomization – n/N (%)§	676 / 845 (80.0)	489 / 599 (81.6)
SARS-CoV-2 Antibody negative at baseline – n/N (%)	271 / 874 (31.0)	149 / 558 (26.7)
Time to enrollment - median (IQR)		
From hospital admission - days	1.8 (1.0 - 3.3)	1.7 (0.9 - 3.5)
From ICU admission - hours	17.7 (10.2 - 23.5)	17.2 (10.6 - 23.2)
Acute respiratory support		
None/supplemental oxygen only	2 (0.2)	1 (0.1)
High flow nasal cannula	225 (20.9)	211 (23.2)
Non-invasive ventilation only	493 (45.7)	407 (44.8)

Invasive mechanical ventilation	356 (33.0)	289 (31.8)
ECMO – n/N (%)	2 (0.2)	1 (0.1)
Vasopressor support	207 (19.2)	175 (19.3)

Abbreviations: SD, standard deviation; APACHE, Acute Physiology and Chronic Health Evaluation; IQR, interquartile range; ECMO, extracorporeal membrane oxygenation.

* Unless otherwise indicated. Percentages may not sum to 100 because of rounding.

† Data collection not approved in Canada and continental Europe. 'Other' includes 'declined' and 'multiple'.

‡ Range: 0 - 71, with higher scores indicating greater severity of illness.

§ Classified as positive when the SARS-CoV-2 PCR test was positive between 24 hours before and after randomization.☒