

## Prevalence of long-term effects in individuals diagnosed with COVID-19: an updated living systematic review

### Authors:

Francesca Reyes Domingo MSc<sup>1</sup>, Lisa A Waddell MSc PhD<sup>2</sup>, Angela M. Cheung MD FRCPC<sup>3</sup>, Curtis L. Cooper MD FRCPC<sup>4</sup>, Veronica J. Belcourt MSc PhD<sup>1</sup>, Alexandra M. E. Zuckermann PhD<sup>1</sup>, Tricia Corrin MPH<sup>2</sup>, Rukshanda Ahmad MBBS MHA<sup>5</sup>, Laura Boland SLP-C PhD<sup>1</sup>, Claudie Laprise MSc PhD<sup>6,7</sup>, Leanne Idzerda MSc PhD<sup>1</sup>, Anam Khan MPH<sup>5</sup>, Kate Morissette MSc<sup>1</sup>, Alejandra Jaramillo Garcia MSc<sup>1</sup>

### Affiliations:

<sup>1</sup> Evidence Synthesis and Knowledge Translation Unit, Applied Research Division, Public Health Agency of Canada

<sup>2</sup> Public Health Risk Sciences Division, National Microbiology Laboratory, Public Health Agency of Canada

<sup>3</sup> Department of Medicine, University Health Network and University of Toronto, Canada

<sup>4</sup> Department of Medicine, University of Ottawa; Ottawa Hospital Research Institute

<sup>5</sup> Health Professionals Guidance Unit, Centre for Food-borne, Environmental and Zoonotic Infectious Diseases, Public Health Agency of Canada

<sup>6</sup> Public Health Capacity and Knowledge Management Unit, Quebec Regional Office, Public Health Agency of Canada

<sup>7</sup> Division of Oral Health and Society, Faculty of Dentistry, McGill University

**Corresponding author:** Francesca Reyes Domingo ([francesca.reyes.domingo@phac-aspc.gc.ca](mailto:francesca.reyes.domingo@phac-aspc.gc.ca))

**Funding Statement:** Funding for the conduct of this review is provided by the Public Health Agency of Canada.

**Competing interests:** none

## Abstract

**Objective:** Post COVID-19 condition refers to persisting or recurring symptoms weeks after acute COVID-19 illness which can significantly impact quality of life and health systems. It is important to understand the manifestation and magnitude of this condition. The objective of this living systematic review is to summarize the prevalence of symptoms and sequelae reported by people  $\geq 4$  weeks after COVID-19 diagnosis.

**Design:** Systematic review, meta-analysis and narrative synthesis.

**Data sources:** Embase, Medline, PsychInfo, Cochrane Central and select grey literature up to April 14, 2021.

**Methods:** We adapted a previous search strategy used by the U.K. National Institute for Health and Care Excellence and updated it to search for new literature. Two reviewers screened references independently; one extracted data and assessed risk of bias and certainty of the evidence while another verified them. Prevalence data from laboratory-confirmed populations were meta-analyzed using a random effects model and synthesized separately in the short-term (4-12 weeks) and long-term ( $>12$  weeks) periods after diagnosis. Data from clinically-diagnosed populations were synthesized narratively.

**Results:** Of the 4444 unique citations, 84 observational studies met our inclusion criteria. Over 100 post COVID-19 symptoms and sequelae were reported. Sixty-one percent (95% CI: 44-76%, *low certainty*) and 53% (95% CI: 41-65%, *low certainty*) of laboratory-confirmed individuals reported persistence or presence of one or more symptoms in the short- and long-term periods, respectively. The most prevalent symptoms in both periods included: fatigue, general pain or discomfort, shortness of breath, cognitive impairment and mental health symptoms.

**Conclusions:** A substantial proportion of individuals reported a variety of symptoms  $\geq 4$  weeks after COVID-19 diagnosis. Due to gaps in the research base, and the low certainty of the evidence currently available, further research is needed to determine the true burden of post COVID-19 condition in the general population and in specific subgroups.

**PROSPERO registration number:** CRD42021231476.

## Introduction

Severe acute respiratory syndrome-coronavirus-2 (SARS-CoV-2) has resulted in over 230 million cases of COVID-19 and over 4 million deaths worldwide as of September 2021 (1). The typical duration of acute illness is two to six weeks, however, some patients have described debilitating symptoms persisting or recurring for weeks or months after acute illness(2). Affected patients are commonly referred to as post COVID or COVID long-haulers (3-5).

In this review, we used the term “post COVID-19 condition” to describe persistent or recurring symptoms. Other terms used in the literature have included long COVID, post-COVID conditions, chronic COVID syndrome and post-acute sequelae of SARS-CoV-2 infection (PASC) (2,6-9). Definitions of ‘long-term’ have varied from  $\geq 4$  to  $\geq 12$  weeks after COVID-19 diagnosis (10-13). On October 6, 2021, the World Health Organization published a clinical case definition for post COVID-19 condition, which was developed using a Delphi consensus process, noting that the definition may change as new information on the condition emerges(14). Post COVID-19 condition was defined as symptoms that usually appear three months from onset of COVID-19 symptoms and last for at least two months in individuals with a history of probable or confirmed SARS-CoV-2 infection.

Due, in part, to the lack of a standard case definition for post COVID-19 condition prior to October 2021(15), prevalence estimates have varied from 3% to as high as 80%(16-18). Given the millions of individuals who have been infected with COVID-19, serious ramifications on quality of life, health care utilization, and workforce productivity are anticipated even if the lowest prevalence estimates were found accurate. Improved understanding of the prevalence of post COVID-19 condition, the symptoms and sequelae observed, its effects on COVID-19 survivors, and its resolution over time is important to address this issue. Other reviews have also looked at estimating the prevalence of various symptoms related to post COVID-19 condition (13,19-26); however, none have assessed for certainty in the evidence body of evidence. The objective of this systematic review is to identify and summarize studies reporting the frequency of symptoms, sequelae, and difficulties in conducting usual activities experienced by individuals living with post COVID-19 condition at four weeks or more after initial COVID-19 diagnosis and provide certainty in the findings for select outcomes.

## Methods

We conducted a systematic review that adhered to Cochrane methodology and the Preferred Reporting Items for Systematic Reviews and Meta-Analyses (PRISMA) guidelines (27,28). Our multidisciplinary team included methodologists and subject matter experts currently treating patients with post COVID-19 condition. The review question and methodology were determined *a priori* (protocol registered in PROSPERO: CRD42021231476) (29). This living review will be periodically updated on a quarterly basis or as resources permit. Detailed methods are provided in Supplementary File 1 – Detailed methodology.

### *Information Sources and Search strategy*

Our formative search identified a systematic review conducted by the National Institute for Health and Care Excellence (NICE) that examined post COVID-19 condition. We adapted the NICE review search strategy (NICE search dates were January 1<sup>st</sup> to October 21<sup>st</sup>, 2020) in consultation with a health librarian (12) (see Supplementary File 1 for the detailed search strategy). All studies included in the NICE review and any French articles they excluded were eligible for inclusion. We then updated the search (October 22, 2020 to January 15, 2021 and again from January 16, 2021 to April 14, 2021) using the following

databases: Embase, Medline, PsycINFO, and Cochrane Central. We conducted a complementary search for grey literature in January and again in April 2021 and included any relevant literature.

### *Eligibility Criteria*

We included primary studies in English or French that included 50 or more participants of any age with laboratory-confirmed SARS-CoV-2 infection (“laboratory-confirmed”) or with COVID-19 clinically-diagnosed by a health professional (“clinically-diagnosed”), and reported the prevalence of symptoms or sequelae four or more weeks after COVID-19 diagnosis. For participants who self-reported their laboratory diagnosis for COVID-19, and where proof of laboratory findings was not required for inclusion in the study, then we considered these participants as clinically-diagnosed. We excluded pre-prints, and non-peer reviewed articles and primary studies that recruited participants specifically because they reported experiencing such long-term effects.

“Time since COVID-19 diagnosis” was used synonymously with time since symptom onset, positive laboratory result, or diagnosis by a health professional. We defined short- and long-term outcomes as those measured between four and 12 weeks and those measured more than 12 weeks after COVID-19 diagnosis, respectively.

### *Study selection and data collection process*

*A priori*, we developed multi-stage (title/abstract and full text) screening questions and data extraction forms that were piloted by all reviewers (Supplementary File 1). Two reviewers screened citations and full texts independently. At the title and abstract screening stage, citations passed to full text screening if they were included by at least one reviewer, but both reviewers had to agree on exclusions. At the full text stage, consensus was required for both inclusion and exclusion. For data extraction, one reviewer extracted data from included studies, which were verified by a second reviewer. At each stage, reviewers resolved conflicts through consensus or consultation with a third reviewer.

### *Outcomes*

The main outcomes of interest were any symptom, sequelae or outcomes pertaining to difficulties conducting usual activities (i.e. functional outcomes) reported by individuals four or more weeks after a COVID-19 diagnosis. We identified the following key symptoms or sequelae: fatigue, shortness of breath, neurocognitive impairment, pain (in the joints, chest, or muscles), organ damage, dizziness, tachycardia, chest tightness or heaviness, mental health, olfactory and gustatory impairments, and sleeping disturbances. Additional outcomes, such as those from diagnostic imaging or pulmonary function tests, which may often provide abnormal results despite resolution of patient symptoms, were considered as outcomes of interest in the long-term period only.

### *Evidence synthesis*

Our primary synthesis focused on outcomes in individuals who had laboratory-confirmed COVID-19 to reduce likelihood of including results due to unrelated conditions. We synthesized short- and long-term outcomes separately. When outcomes were reported at multiple time points within a study, we used results from the longest follow-up time point.

Where appropriate, we conducted meta-analyses for outcomes with two or more studies using a random effects model. To explore reasons for high heterogeneity across studies, we determined subgroup analyses *a priori* and considered these for key outcomes. We stratified results by level of care received during the acute stage of COVID-19 infection (i.e., admitted to ICU, hospitalized, non-hospitalized), which was used as a proxy for severity of COVID-19 (i.e., patients with more severe COVID-19 were more likely to require hospitalized care). We performed the analyses using R statistical software version 4.0.4 (30), with package metafor version 2.4-0 (31) and package meta version 4.18-0 (32). The pooled results with 95% confidence intervals are presented in forest plots. We conducted narrative syntheses for the outcomes in the clinically-diagnosed population and did not explore heterogeneity across these studies.

#### *Assessing risk of bias and certainty in the evidence*

We used a modified version of the Joanna Briggs Institute critical appraisal tool for prevalence studies (33) to assess risk of bias. After consulting with the authors of this tool, we omitted questions 3-5 to avoid duplication with the criteria on imprecision and indirectness used to assess the certainty of the evidence. We rated the risk of bias for each outcome separately for questions 6-8 and then categorized questions into three domains (participants [questions 1, 2 and 9], outcome measures [questions 6-7], and statistics [question 8]). Studies that met the criteria in these domains were rated as low risk of bias, those partially met were rated moderate, and those that did not meet the criteria were rated high risk of bias. The criteria and schema used to assess risk of bias are provided in Appendix 4 of Supplementary File 1. One reviewer assessed risk of bias, which was verified by a second reviewer. Reviewers resolved conflicts through consensus or consultation with a third reviewer.

We assessed certainty in the body of evidence for key symptoms or sequelae and the most prevalent outcomes using the Grading of Recommendations Assessment, Development and Evaluation (GRADE) approach (34). In the absence of a formal framework for prevalence and GRADE, and in consultation with GRADE experts, we adapted the GRADE framework for assessment of incidence estimates in the context of prognostic studies(35) as a basis to assess prevalence estimates similar to those used previously by Righy et al.(36)

In the context of prevalence, observational studies may provide robust estimates due to broad eligibility criteria and enrollment of representative populations (35). Thus, the quality of the evidence from observational studies were initially assigned as “high” for all outcomes. The quality of the evidence was then downgraded (to “moderate”, “low”, or “very low”) if there were serious or very serious concerns over any of the following five domains that reduce certainty in the prevalence estimates: risk of bias, inconsistency, indirectness, imprecision, or publication bias. In instances where there were minor concerns with one of these domains, a decision was made to downgrade by half a point instead of a full point. Half-points were then combined across domains to yield a total score (e.g., downgrading by 1.5 points for risk of bias and 0.5 points for indirectness for a total of 2 points from “high” to “low”). In the event that the final rating included a half point (e.g., 1.5 points), we conservatively rounded up (i.e., in this case to downgrade by 2). Due to the nature of prevalence outcomes and design of the application of GRADE criteria to these outcomes, no criteria for upgrading were considered applicable. The specific

decision rules that we applied for judgments in relation to the five GRADE domains are described in detail in Appendix 5 of Supplementary File 1.

After piloting the tool, one reviewer assessed risk of bias and graded the evidence while a second verified the assessments. Reviewers resolved conflicts through consensus or consultation with a third reviewer.

#### *Patient and Public Involvement*

We did not involve patients in the conduct of this review.

## **Results**

### *Study Selection*

Of the 4444 unique citations yielded in the search, 779 met criteria for full-text screening (Figure 1). The list of studies excluded in full-text screening by reason of exclusion are provided in Supplementary File 2. Eighty-four studies met our inclusion criteria, of which 62 included prevalence data for individuals with laboratory-confirmed COVID-19, 21 included prevalence data for individuals who were clinically-diagnosed with COVID-19, and one included prevalence data on both. (Table 1, Supplementary Table 1)

### ***Prevalence in laboratory-confirmed COVID-19 population (all ages)***

#### *Study Characteristics*

Study characteristics of 63 studies with data from participants with laboratory-confirmed COVID-19 are shown in Table 1. All studies were observational (cohort or cross-sectional) and included between 58 and 1733 individuals, with most studies (42/63) having less than 200 participants. The majority were conducted in Europe (38/63), with the remaining in Asia (8/63), North America (6/63) and others (11/63). More than half of the studies (37/63) only recruited adult participants, 24/63 did not restrict recruitment by age, and 2/63 studies focused on a pediatric sample. Almost half of the studies (27/63) only recruited participants who were hospitalized or admitted to the intensive care unit (ICU) due to COVID-19. Outcome data were reported with mean or median times from COVID-19 diagnosis occurring in the short-term for 56% (35/63), in the long-term for 36% (23/63) and in both the short- and long-term for 8% (5/63) of the studies.

#### *Risk of bias and certainty of the evidence*

Of the 63 studies, we assessed 45 to be at moderate risk of bias and 18 to be at high risk of bias [Supplementary Table 2]. The most common sources of potential biases were from participant selection (i.e. convenience samples or study population was not representative of the target population) and poor objectivity/validity of outcome measurement (i.e. many outcomes were self-reported or obtained using non-validated measures).

We assessed certainty (or confidence) of the body of evidence for 81 key outcomes and found moderate certainty in 6% (5/81), low certainty in 62% (50/81) and very low certainty in 32% (26/81) of these outcomes. (Table 2, Supplementary Table 3)

#### *Prevalence of symptoms, sequelae, and difficulties conducting usual activities*

Over 100 different outcomes were reported for which the prevalence estimates in the short- and long-term are provided in Table 2.

#### SHORT-TERM (4-12 WEEKS AFTER COVID-19 DIAGNOSIS)

Approximately 3 in 5 individuals (61%, 95% CI: 44-76%, *low certainty*) reported the persistence or presence of one or more symptoms in the short-term. The most prevalent symptoms were: fatigue (41%, 95% CI: 30-52%, *low certainty*), general pain or discomfort (40%, 95% CI: 24-58%, *low certainty*), shortness of breath (34%, 95% CI: 25-45%, *low certainty*), cognitive impairment (29%, 95% CI: 19-41%, *low certainty*), depression (23%, 95% CI: 14-34%, *low certainty*), post-traumatic stress disorder (PTSD) (23%, 95% CI: 14-35%, *low certainty*) and hyposmia (23%, 95% CI: 8-49%, *low certainty*). General functional impairment was reported in 35% of individuals (95% CI: 18-56%, *low certainty*) and 41% (95% CI: 28-55%, *low certainty*) reported feeling ill or not back to full health in the short-term.

#### LONG-TERM (>12 WEEKS AFTER COVID-19 DIAGNOSIS)

Approximately half of individuals (53%, 95% CI: 41-65%, *low certainty*) reported persistence or presence of one or more symptoms in the long-term. The most prevalent symptoms were: anxiety (32%, 95% CI: 22-43%, *very low certainty*), general pain or discomfort (28%, 95% CI: 23-34%, *moderate certainty*), fatigue (25%, 95% CI: 19-34%, *low certainty*), insomnia (22%, 95% CI: 17-28%, *moderate certainty*) and cognitive impairment (20%, 95% CI: 5-54%, *very low certainty*). The following symptoms had similar prevalence of 17%-18% (*low to very low certainty*): depression, PTSD and shortness of breath. General functional impairment was reported in 17% (95% CI: 5-44%, *very low certainty*) of individuals in the long-term.

#### PREVALENCE IN CHILDREN ( $\leq 18$ YEARS OF AGE)

Only two studies specifically recruited children ( $\leq 18$  years) to determine the prevalence of short- and long-term effects after COVID-19 infection (37,38). One study (37) reported 58% (95% CI: 50-67%, *low certainty*) of children experienced at least one symptom 162.5  $\pm$  113.7 days after laboratory-confirmed COVID-19 diagnosis, which is similar to the proportion reported for the whole laboratory-confirmed population studied in this review. The most prevalent of these symptoms (ranging from 10-19%, *low certainty*) included: insomnia, nasal congestion or runny nose, fatigue, headache, concentration problems, muscle pain (Table 3). The other study (38) only reported on the prevalence of one outcome in children – hyposmia – and found that none (0%, n=72) experienced hyposmia 2 months after COVID-19 diagnosis.

#### *Potential reasons for heterogeneity*

Subgroup analyses by level of care received during the acute COVID-19 infection appeared to explain some of the heterogeneity in prevalence of outcomes such as fatigue and shortness of breath (Figure 2, Supplementary File 3). However, we still observed moderate to high heterogeneity within some of the subgroups, particularly among hospitalized populations. Differences in how outcomes were measured (i.e., self-reported versus validated tests) and the thresholds used in each study to indicate an adverse outcome (e.g. binary versus a multi-point scale) may have contributed to differences in prevalence estimates across studies (analyses not shown). In addition, measurement of outcomes at different

points or periods of follow-up within the short- or long-term (e.g. outcomes measured at 4, 8 and 12 weeks reported together in the short-term) may have contributed to differences in prevalence estimates across studies; however, there were insufficient data to conduct subgroup analyses at each separate time point.

### ***Prevalence in clinically-diagnosed COVID-19 population (all ages)***

Characteristics of the 22 included studies with prevalence data for individuals (all ages) who were clinically-diagnosed with COVID-19 are presented in Supplementary Table 1. About half of the studies (12/22) recruited participants who were hospitalized for COVID-19, 64% (14/22) included adult participants only and 55% (12/22) were conducted in Europe. Outcome data were reported with mean or median times from COVID-19 diagnosis occurring in the short-term for 6/22 studies, in the long-term for 13/22 studies and in both the short- and long-term for 3/22 studies. Seventeen of 22 studies were assessed to be at moderate risk of bias while 5/22 were at high risk of bias. [Supplementary Table 2]

The prevalence of various symptoms, sequelae, and complications from COVID-19 in the short- and long-term in the clinically-diagnosed population are presented in Supplementary Table 4.

### **Interpretation**

Based on data from this systematic review, most laboratory-confirmed COVID-19 patients experienced one or more symptoms in the short- (61%) and long-term (53%) after diagnosis. The most commonly reported symptoms included fatigue, general pain or discomfort, sleep disturbances, shortness of breath, cognitive impairment and mental health symptoms. A large proportion of convalescent COVID-19 patients experienced other mild to severe and debilitating symptoms as well. Consequently, roughly 30% and 10% of individuals were unable to return to work in the short- and long-term following COVID-19 diagnosis, respectively. Because a large proportion of population included in our review represent those who experienced moderate to severe COVID-19 during their acute phase, it is possible that the kinds of symptoms or the frequencies of symptoms reported in those who experienced a milder COVID-19 infection may be different from those reported in our review. In addition, due to limited data available, and low certainty in the existing evidence, clarity around the burden of post COVID-19 condition will require additional research to untangle the sequelae caused directly by COVID-19 infection from those arising from related factors such as extensive hospitalization due to severe illness. The prevalence and complex nature of this condition will require multi-disciplinary approaches in developing appropriate diagnostic models and tools, patient care pathways, and support structures to address the needs of those suffering from post COVID-19 condition.

Several systematic reviews, most of which conducted meta-analyses to arrive at prevalence estimates for the long-term effects of COVID-19, similarly reported two or more of the following symptoms as the most frequently reported: fatigue, shortness of breath, mental health-related symptoms and cognitive impairment (13,19-26). Such similarities in findings across reviews helps advance our understanding of post COVID-19 condition and its burden, and substantiates the need for ongoing support for many COVID-19 survivors. Where prevalence estimates for specific symptoms or sequelae varied widely between the findings from our review and those of others', we believe that the variability may in part be explained by methodological differences across reviews. For example, the other reviews synthesized



both laboratory-confirmed and clinically-diagnosed populations, while we analyzed these populations separately in order to minimize bias in capturing symptoms that may be due to other causes. We wanted to identify all possible symptoms that may be associated with post COVID-19 condition, therefore we did not restrict inclusion of studies in our review, nor our syntheses of the findings, to only select symptoms, whereas other reviews did (21,24,26). Other reviews also excluded studies with less than 100 participants (23,25) while our review included relevant studies with a sample size of 50 or more; thereby increasing our likelihood of capturing additional relevant studies compared to others. Some reviews included studies with follow-up periods occurring between 2 and 3 weeks post-infection (19-21,25). We excluded such studies in our review in order to minimize the likelihood of capturing symptoms from acute COVID-19 infection. We also thought it was important to report prevalence separately for the short-term and long-term after COVID-19 infection, and to gain insight into any potential differences in what may be observed over time, whereas most reviews combined results from follow-up periods spanning both short and long-terms (13,20-22,24) or only reported on the long-term (23,26). Similar to the other reviews, we critically assessed studies for risk of bias. However, distinct from other reviews, we used the GRADE approach to provide certainty of the evidence for select outcomes. This information provides clinicians and policy-makers with an understanding of how confident we are in the findings given the limitations of the available data.

Some limitations should be considered including the possible omission of relevant studies. We adapted and updated our search based on the evidence review conducted by NICE in October 2020; the only studies that were eligible for inclusion in our review that were published prior to October 2020 were studies that were included in the NICE review, or French-language studies that were excluded from that review (12). To minimize the potential for missing relevant studies we supplemented with grey-literature searches. Another limitation is the inclusion of only English and French articles that may have introduced a language bias, but this was likely minimal (39). Finally, although we had consulted with GRADE experts on our modified process for assessing evidence on prevalence using the GRADE approach, this process has yet to be validated.

#### *Evidence gaps and Research Priorities*

There were limited data (i.e. estimates based on a single study) or no studies identified for many outcomes in this systematic review. The majority of studies in this review included adults only or individuals who were hospitalized or treated for moderate-to-severe COVID-19; therefore, the prevalence of long-term effects in children (particularly very young children between 0-5 years of age), and in individuals who were asymptomatic or who presented with mild COVID-19 symptoms in the acute stage may not be sufficiently represented in our results. Additionally, investigating how post COVID-19 condition may differ across specific populations (e.g., sex/gender, race, age, underlying conditions) will be important to inform equity considerations for future health program and policy decisions.

Just over half of our included studies (n=43) reported on long-term effects beyond 12 weeks post-diagnosis (laboratory-confirmed or clinically-diagnosed). However, only a few (n= 6) of these included mean follow-up periods beyond 6 months from initial COVID-19 diagnosis. Longer-term follow up is needed to help inform how post COVID-19 condition changes or resolves over time. Many of the included studies had small sample sizes (<200 participants) or were at moderate or high risk of bias due to the selection of participants and use of non-validated outcome measures. The Post-COVID Core Outcome Set (PC-COS) group, along with the World Health Organization, are in the process of creating a

core set of outcomes for use in research studies and clinical care for individuals with post COVID-19 condition (40). The use of a standardized approach, such as the one being developed by the PC-COS group for measuring symptoms and other outcomes in individuals with post COVID-19 condition, would help reduce heterogeneity and bias and subsequently increase confidence in the research findings. Given the lack of contemporaneous control groups, it was not possible to determine whether symptoms were due exclusively to COVID-19. Other possible contributing factors could include the presence of pre-existing symptoms or conditions prior to COVID-19 infection, effects of treatment received or effects of being hospitalized or admitted to the ICU, and effects due to the pandemic itself (e.g., barriers to seeking treatment, psychosocial impacts). However, the extensive list of symptoms reported in this review provide a good starting point for further detailed investigations as to which ones are more closely associated with post-infection sequelae versus those related to other factors.

#### *Health policy implications*

Understanding the burden and characteristics of post COVID-19 condition is important in the planning and development of mitigation strategies to support those in need of rehabilitation, medical care and other community resources for recovery after COVID-19 infection. This evidence is expected to support national and international health organizations who are in the process of planning for and developing supportive measures for patients with post COVID-19 condition. Such efforts include developing clinical practice and public health guidelines, innovative patient care pathways, education materials for patients and healthcare professionals, and creating appropriate services and social constructs to support COVID-19 survivors for a full recovery (41). Understanding the burden of post COVID-19 condition will also help inform broader public health measures to mitigate COVID-19 transmission.

#### **Conclusion**

A substantial proportion of individuals reported a variety of symptoms and sequelae more than four weeks after COVID-19 diagnosis. These physical and mental health symptoms have led to difficulties in conducting usual activities and resulted in diminished quality of life among COVID-19 survivors. This review provides a snapshot of symptoms presenting in COVID-19 survivors in the months after diagnosis. The data indicate that many are experiencing post COVID-19 condition, the range and impact of which are broad and will require a multidisciplinary approach to develop appropriate diagnostics, clinical practice and public health guidelines, and patient care pathways. Research on post COVID-19 condition is rapidly being produced and work is on-going to gather evidence which will lead to better and more refined estimates and understanding of the burden of post COVID-19 condition, the social and economic impacts, and resources needed to support a large number of survivors.

#### **Ethics statements:**

Ethics approval was not required to conduct this systematic review of previously published literature.

**Acknowledgements:** The authors would like to thank the following individuals: Dr. Adrienne Stevens for providing methodological support and conducting risk of bias assessments; Dr. Adrienne Stevens, Dr. Maicon Falavigna and Dr. Zachary Munn for their guidance in the application of risk of bias using the

Joanna Briggs Institute checklist for prevalence studies and modified GRADE for prevalence; Nana Amankwah, Judy Niles and Janet-Leigh Potvin from the Public Health Agency of Canada (PHAC) for helping with screening and data extraction; Gareth Leung from PHAC for helping with screening and risk of bias and GRADE assessments; Dr. Muhammad Mullah from PHAC for providing guidance on the meta-analyses; Linda Gamble from the Health Canada Library for conducting the literature searches.

AM Cheung is partially supported by a Tier 1 Canada Research Chair in Musculoskeletal and Postmenopausal Health as well as the KY and Betty Ho Chair in Integrative Medicine at the University of Toronto.

#### **Author contributions:**

Francesca Reyes Domingo – conception & design/methods, screening and data extraction, analysis and interpretation of the data, critical appraisal (risk of bias & GRADE), drafting and revision of the manuscript, final approval of the article

Lisa A Waddell – conception & design/methods, interpretation of the data, drafting and revision of the manuscript, final approval of the article

Angela M Cheung – conception & design/methods, interpretation of the data, revision of the manuscript, final approval of the article

Curtis L Cooper – conception & design/methods, interpretation of the data, revision of the manuscript, final approval of the article

Veronica J Belcourt - design/methods, interpretation of the data, critical appraisal (risk of bias & GRADE), revision of the manuscript, final approval of the article

Alexandra M E Zuckermann - design/methods, screening and data extraction, interpretation of the data, critical appraisal (risk of bias), drafting and revision of the manuscript, final approval of the article

Tricia Corrin – design/methods, screening and data extraction, interpretation of the data, drafting and revision of the manuscript, final approval of the article

Rukshanda Ahmad - design/methods, interpretation of the data, critical appraisal (risk of bias), drafting and revision of the manuscript, final approval of the article

Laura Boland – design/methods, screening, interpretation of the data, critical appraisal (risk of bias & GRADE), revision of the manuscript, final approval of the article

Claudie Laprise – design/methods, screening, interpretation of the data, critical appraisal (risk of bias), revision of the manuscript, final approval of the article

Leanne Idzerda – screening and data extraction, interpretation of the data, critical appraisal (risk of bias), revision of the manuscript, final approval of the article

Anam Khan - screening and data extraction, interpretation of the data, revision of the manuscript, final approval of the article

Kate Morissette - critical appraisal (risk of bias & GRADE), drafting and revision of the manuscript, final approval of the article

Alejandra Jaramillo Garcia – conception & design/methods, interpretation of the data, critical appraisal (risk of bias & GRADE), drafting and revision of the manuscript, final approval of the article

## References

- (1) Center for Systems Science and Engineering at Johns Hopkins University. COVID-19 Dashboard. 2021; Available at: <https://coronavirus.jhu.edu/map.html>. Accessed September, 2021.
- (2) World Health Organization. **Update 36 – Long-term effects of COVID-19**. 2020; Available at: <https://www.who.int/publications/m/item/update-36-long-term-effects-of-covid-19>. Accessed September, 2021.
- (3) Baig AM. Chronic COVID syndrome: Need for an appropriate medical terminology for long-COVID and COVID long-haulers. *Journal of medical virology* 2020;93(5):2555-2556.
- (4) Callard F, Perego E. How and why patients made Long Covid. *Social science & medicine* 2021;268.
- (5) Komaroff A. The tragedy of long COVID. 2020; Available at: <https://www.health.harvard.edu/blog/the-tragedy-of-the-post-covid-long-haulers-2020101521173>. Accessed September, 2021.
- (6) Centers for Disease Control and Prevention. **Post-COVID Conditions**. 2021; Available at: <https://www.cdc.gov/coronavirus/2019-ncov/long-term-effects.html>. Accessed September, 2021.
- (7) Vehar S, Boushra M, Ntiamoah P, Biehl M. Post-acute sequelae of SARS-CoV-2 infection: Caring for the 'long-haulers'. *Cleve Clin J Med* 2021 May 3;88(5):267-272.
- (8) Venkatesan P. NICE guideline on long COVID. *Lancet Respir Med* 2021 Feb;9(2):129-2600(21)00031-X. Epub 2021 Jan 13.
- (9) World Health Organization. Update on Clinical long-term effects of COVID-19 (Coronavirus Update 54). 2021; Available at: [https://www.who.int/docs/default-source/coronaviruse/risk-comms-updates/update54\\_clinical\\_long\\_term\\_effects.pdf?sfvrsn=3e63eee5\\_8](https://www.who.int/docs/default-source/coronaviruse/risk-comms-updates/update54_clinical_long_term_effects.pdf?sfvrsn=3e63eee5_8). Accessed May, 2021.
- (10) Nalbandian A, Sehgal K, Gupta A, Madhavan MV, McGroder C, Stevens JS, et al. Post-acute COVID-19 syndrome. *Nat Med* 2021 Apr;27(4):601-615.
- (11) Greenhalgh T, Knight M, A'Court C, Buxton M, Husain L. Management of post-acute covid-19 in primary care. *BMJ* 2020 Aug 11;370:m3026.
- (12) National Institute for Health and Care Excellence, Practitioners RCoG, Scotland HI. COVID-19 rapid guideline: managing the long-term effects of COVID-19. *NICE Guidelines* 2020(18):1-35.
- (13) Aiyegbusi OL, Hughes SE, Turner G, Rivera SC, McMullan C, Chandan JS, et al. Symptoms, complications and management of long COVID: a review. *J R Soc Med* 2021 Sep;114(9):428-442.
- (14) World Health Organization. **A clinical case definition of post COVID-19 condition by a Delphi consensus, 6 October 2021**. 2021; Available at: [https://www.who.int/publications/i/item/WHO-2019-nCoV-Post\\_COVID-19\\_condition-Clinical\\_case\\_definition-2021.1](https://www.who.int/publications/i/item/WHO-2019-nCoV-Post_COVID-19_condition-Clinical_case_definition-2021.1). Accessed October, 2021.

(15) World Health Organization. **Expanding our understanding of post COVID-19 condition: Webinar 2.** 2021; Available at: <https://www.who.int/news-room/events/detail/2021/06/15/default-calendar/expanding-our-understanding-of-post-covid-19-condition-webinar-2>. Accessed September, 2021.

(16) Taquet M, Dercon Q, Luciano S, Geddes JR, Husain M, Harrison PJ. Incidence, co-occurrence, and evolution of long-COVID features: A 6-month retrospective cohort study of 273,618 survivors of COVID-19. *PLoS Med* 2021 Sep 28;18(9):e1003773.

(17) Centers for Disease Control and Prevention. Evaluating and Caring for Patients with Post-COVID Conditions: Interim Guidance. 2021; Available at: <https://www.cdc.gov/coronavirus/2019-ncov/hcp/clinical-care/post-covid-background.html>. Accessed September, 2021.

(18) Office for National Statistics. **Technical article: Updated estimates of the prevalence of post-acute symptoms among people with coronavirus (COVID-19) in the UK: 26 April 2020 to 1 August 2021.** 2021; Available at: <https://www.ons.gov.uk/peoplepopulationandcommunity/healthandsocialcare/conditionsanddiseases/articles/technicalarticleupdatedestimatesoftheprevalenceofpostacutesymptomsamongpeoplewithcoronaviruscovid19intheuk/26april2020to1august2021>. Accessed September, 2021.

(19) Iqbal FM, Lam K, Sounderajah V, Clarke JM, Ashrafian H, Darzi A. Characteristics and predictors of acute and chronic post-COVID syndrome: A systematic review and meta-analysis. *EClinicalMedicine* 2021 May 24;36:100899.

(20) Malik J, Zaidi SMJ, Iqbal R, Khan K, Ali M, Rana AS, et al. Post-acute COVID-19 syndrome and its prolonged effects: An updated systematic review. medRxiv 2021 Cold Spring Harbor Laboratory Press:2021.05.09.21256911.

(21) Hoshijima H, Mihara T, Seki H, Hyuga S, Kuratani N, Shiga T. Incidence of Long-term Post-acute Sequelae of SARS-CoV-2 Infection Related to Pain and Other Symptoms: A Living Systematic Review and Meta-analysis. medRxiv 2021 Cold Spring Harbor Laboratory Press:2021.04.08.21255109.

(22) Nasserie T, Hittle M, Goodman SN. Assessment of the Frequency and Variety of Persistent Symptoms Among Patients With COVID-19: A Systematic Review. *JAMA Netw Open* 2021 May 3;4(5):e2111417.

(23) Michelen M, Manoharan L, Elkheir N, Cheng V, Dagens A, Hastie C, et al. Characterising long COVID: a living systematic review. *BMJ Glob Health* 2021 Sep;6(9):10.1136/bmjgh-2021-005427.

(24) Badenoch, James B., Rengasamy, Emma R., Watson, Cameron J., Jansen, Katrin, Chakraborty, Stuti, Sundaram, Ritika D., Hafeez, Danish, Burchill, Ella, Saini, Aman, Thomas, Lucretia, Cross, Benjamin, Hunt, Camille K., Conti, Isabella, Ralovska, Sylvia, Hussain, Zain, Butler, Matthew, Pollak, Thomas A., Koychev, Ivan, Michael, Benedict D., Holling, Heinz, Nicholson, Timothy R. Rogers, Jonathan P., Rooney, Alasdair G., for the SARS-CoV-Neuro Collaboration. Persistent neuropsychiatric symptoms after COVID-19: a systematic review and meta-analysis. 2021.

- (25) Lopez-Leon S, Wegman-Ostrosky T, Perelman C, Sepulveda R, Rebolledo PA, Cuapio A, et al. More than 50 Long-term effects of COVID-19: a systematic review and meta-analysis. medRxiv 2021 Jan 30.
- (26) Sanchez-Ramirez DC, Normand K, Zhaoyun Y, Torres-Castro R. Long-Term Impact of COVID-19: A Systematic Review of the Literature and Meta-Analysis. Biomedicines 2021 Jul 27;9(8):10.3390/biomedicines9080900.
- (27) Higgins JPT, Thomas J, Chandler J, et al editors. *Cochrane Handbook for Systematic Reviews of Interventions* version 6.2 (updated February 2021). : Cochrane; 2021.
- (28) Page MJ, McKenzie JE, Bossuyt PM, Boutron I, Hoffmann TC, Mulrow CD, et al. Updating guidance for reporting systematic reviews: development of the PRISMA 2020 statement. J Clin Epidemiol 2021 Feb 9;134:103-112.
- (29) Reyes Domingo F, Jaramillo Garcia A, Boland L, Laprise C, Waddell L, Corrin T, et al. Prevalence of long-term symptoms in individuals diagnosed with COVID-19: A rapid review (CRD42021231476). PROSPERO: International Prospective Register of Systematic Reviews 2021.
- (30) R CT. R Studio. 2013.
- (31) Viechtbauer W. Conducting Meta-Analyses in R with the metafor Package. Journal of Statistical Software 2010;36(3).
- (32) Schwarzer G. General Package for Meta-Analysis. 2021; Available at: <https://cran.r-project.org/web/packages/meta/meta.pdf>. Accessed August, 2021.
- (33) Munn Z, Moola S, Lisy K, Riitano D, Tufanaru C. Chapter 5: Systematic reviews of prevalence and incidence. In: Aromataris E, Munn Z, editors. : JBI; 2017.
- (34) Balshem H, Helfand M, Schünemann HJ, Oxman AD, Kunz R, Brozek J, et al. GRADE guidelines: 3. Rating the quality of evidence. J Clin Epidemiol 2011 04;64(4):401-406.
- (35) Iorio A, Spencer FA, Falavigna M, Alba C, Lang E, Burnand B, et al. Use of GRADE for assessment of evidence about prognosis: rating confidence in estimates of event rates in broad categories of patients. BMJ 2015 03;350:h870-h870.
- (36) Righy C, Rosa RG, da Silva R, Teixeira Amancio, Kochhann R, Migliavaca CB, Robinson CC, et al. Prevalence of post-traumatic stress disorder symptoms in adult critical care survivors: a systematic review and meta-analysis. Critical Care 2019 12;23(1):213-213.
- (37) Buonsenso D, Munblit D, De Rose C, Sinatti D, Ricchiuto A, Carfi A, et al. Preliminary Evidence on Long Covid in children. Acta Paediatr 2021.
- (38) Rusetsky Y, Meytel I, Mokoyan Z, Fisenko A, Babayan A, Malyavina U. Smell status in children infected with SARS-CoV-2. Laryngoscope 2021.

(39) Boutron I, Page MJ, Higgins JPT, Altman DG, Lundh A, Hróbjartsson A. Chapter 7: Considering bias and conflicts of interest among the included studies. In: Higgins JPT, Thomas J, Chandler J, Cumpston M, Li T, Page MJ, Welch VA, editor. *Cochrane Handbook for Systematic Reviews of Interventions* version 6.2 (updated February 2021).

(40) **Post-COVID Condition Core Outcomes**. 2021; Available at: <https://www.pc-cos.org/>. Accessed October, 2021.

(41) Rajan S, Khunti K, Alwan N, Steves C, MacDermott N, Morsella A, et al. Policy Brief 39 - In the wake of the pandemic - Preparing for Long COVID. 2021.

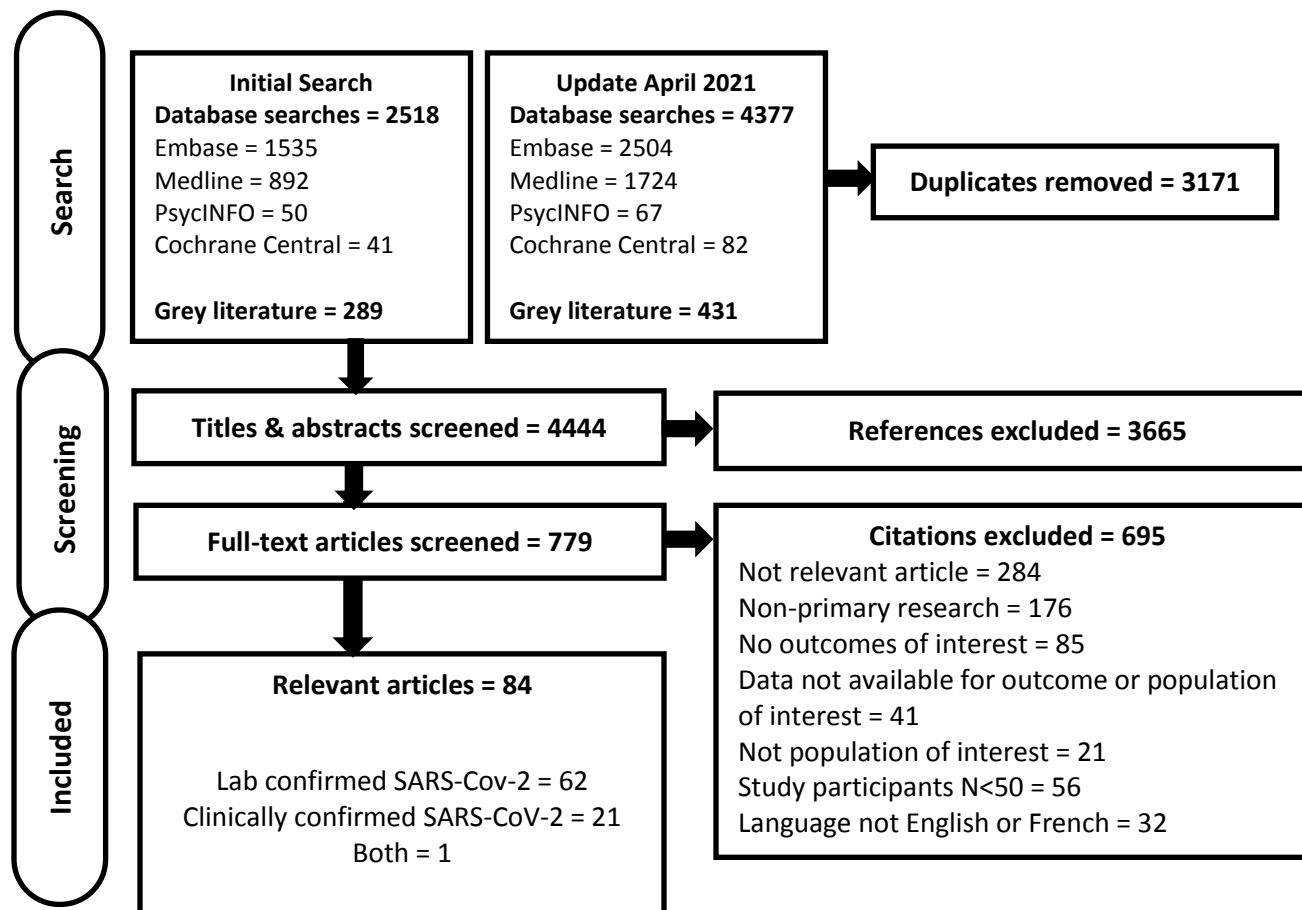


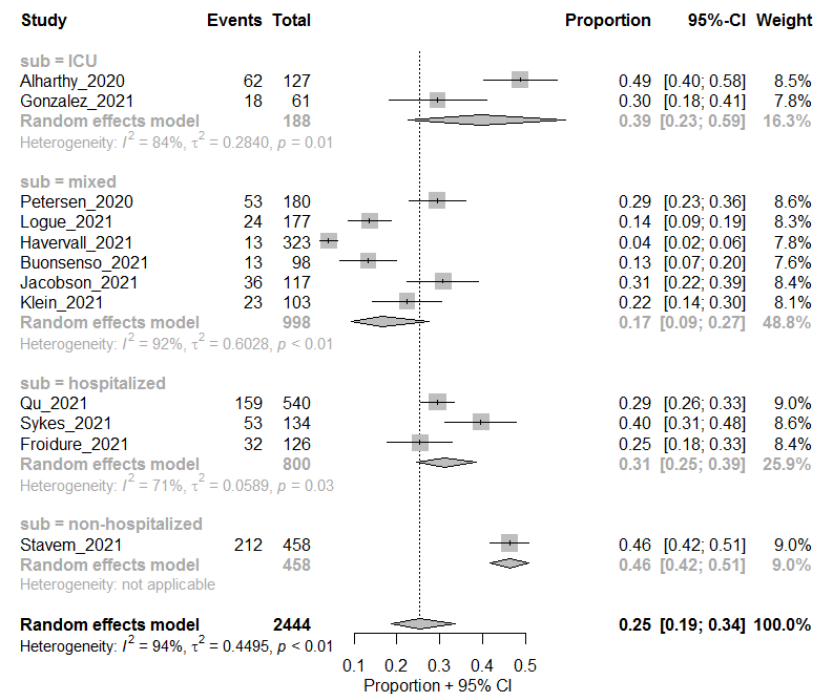
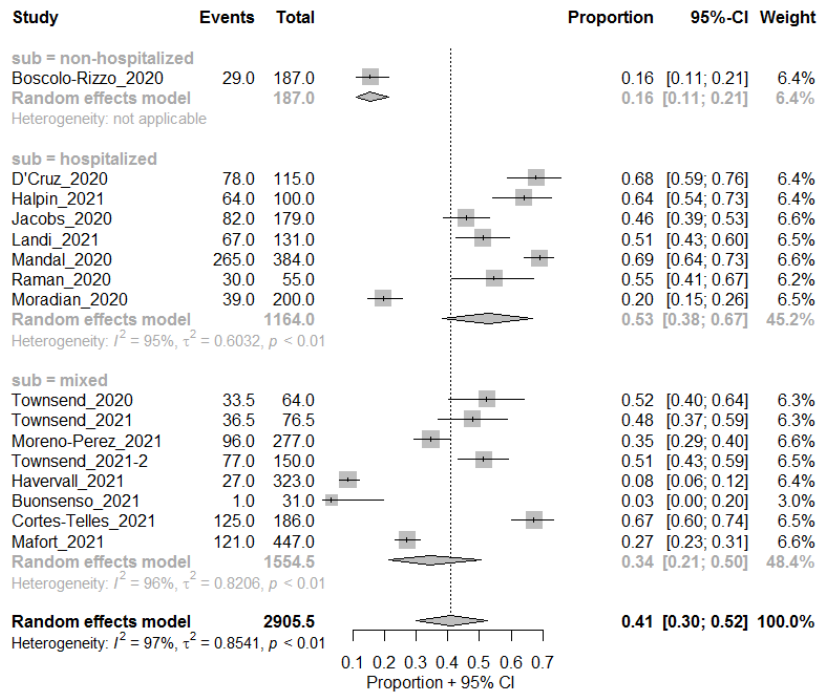
Figure 1: PRISMA flow diagram of articles through the systematic review process



**(a) Fatigue**

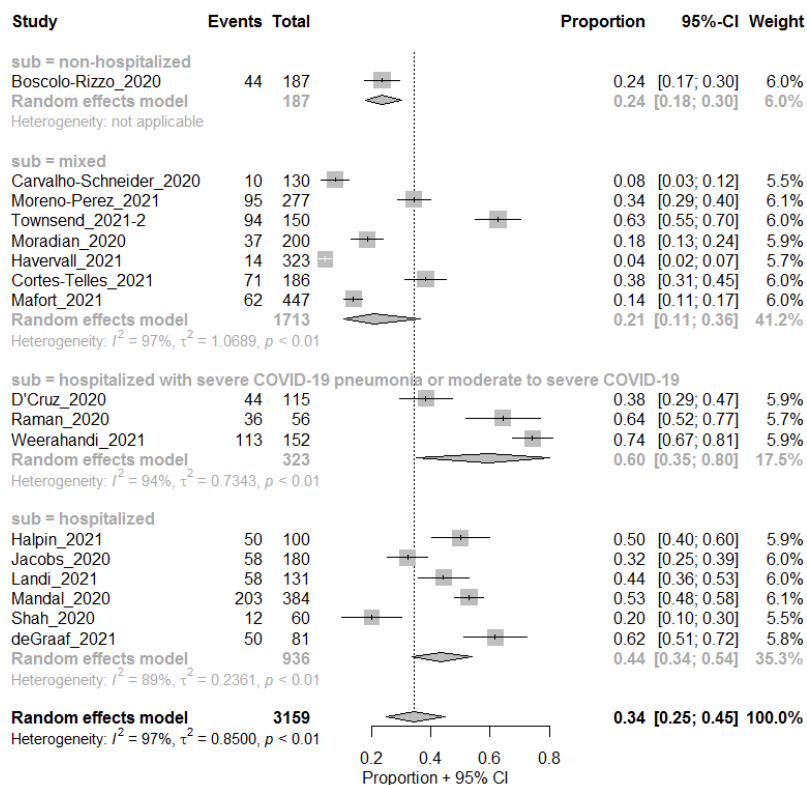
4-12 WEEKS

>12 WEEKS

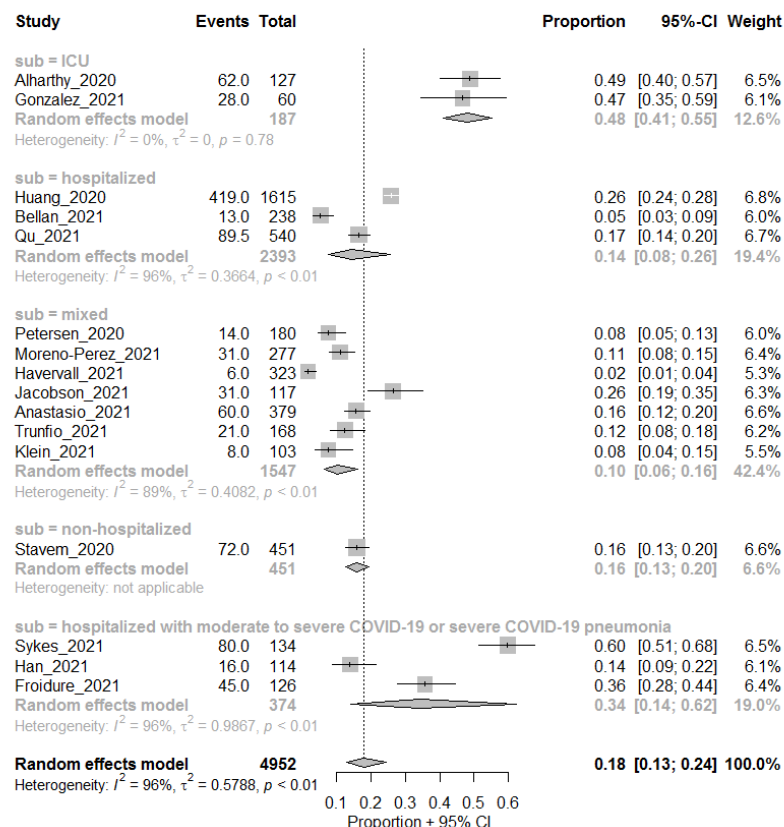


## (b) Shortness of breath

4-12 WEEKS



>12 WEEKS



**Figure 2. Prevalence (proportion of study sample) of (a) fatigue and (b) shortness of breath, at 4-12 weeks and >12 weeks after COVID-19 diagnosis and by level of care received at the acute stage of COVID-19 infection. Note that level of care may be considered a proxy for severity of COVID-19 (i.e., such that patients with more severe COVID-19 were more likely to require hospitalized care).**

**Table 1: Characteristics of Included Studies with Laboratory-Confirmed Participants**

First author, publication year, study title & link	Country, study design, study recruitment dates	Study Population (# with lab-confirmed COVID- 19; mean or median age or range; % female)	COVID-19 disease severity inclusion criteria	Time of outcome follow-up	Main symptoms/sequelae measured at follow-up
Akter, 2020 <a href="#">Clinical characteristics and short term outcomes after recovery from COVID-19 in patients with and without diabetes in Bangladesh</a>	Bangladesh, Cross-Sectional Study, April 1- June 30, 2020	734 patients  Age range: 0 to >60 years  24.0% female	n/a	4 weeks after recovery from COVID-19	Mobility issues Self care issues Pain/discomfort Anxiety/depression Sleep disturbances Panic attack Loss of concentration Memory loss Hair fall
Alemanno, 2021 <a href="#">COVID-19 cognitive deficits after respiratory assistance in the subacute phase: A COVID rehabilitation unit experience</a>	Italy, Prospective Cohort Study, March 27-June 20, 2020	87 patients  Mean age 67.23 ± 12.89 years  29.0% female	Patients admitted in the COVID-19 Rehabilitation Unit	1 month after home-discharge from COVID-19	cognitive deficit - MoCA test cognitive deficit - MMSE test depression PTSD symptoms
Alharthy, 2020 <a href="#">Residual Lung Injury in Patients Recovering From COVID-19 Critical Illness: A Prospective Longitudinal Point-of-Care Lung Ultrasound Study</a>	Saudi Arabia, Prospective Cohort Study, April 2020	171 adults (≥18 years)  Mean age (SD): 47.00 ± 11.38 years  21.1% female	Individuals diagnosed with severe COVID-19 pneumonia and admitted to ICU	4 month follow-up after hospital discharge	Pulmonary embolism Pulmonary hypertension Breathing difficulties Fatigue Walking difficulties Deep vein thrombosis Interstitial lung disease Symptomatic
AlShakhs, 2021 <a href="#">The Association of Smell and Taste Dysfunction with COVID19, And Their Functional Impacts: 7822753 CSR - Reports results</a>	Saudi Arabia, Cross-Sectional Study, June 5-July 30, 2020	274 patients  Age range: 18–50 years  55.0 % female	Mild to moderate	Unspecified	dysgeusia

First author, publication year, study title & link	Country, study design, study recruitment dates	Study Population (# with lab-confirmed COVID- 19; mean or median age or range; % female)	COVID-19 disease severity inclusion criteria	Time of outcome follow-up	Main symptoms/sequelae measured at follow-up
Anastasio, 2021 <a href="#">Medium-term impact of COVID-19 on pulmonary function, functional capacity and quality of life</a>	Italy, Prospective Cohort Study March 1, 2020 June 1, 2020	379 patients  20–80 years, median 56 (IQR 49–63)  54.1 % female	Any	4 months after SARS-COV-2 diagnosis	inactive breathlessness at least one symptom
Bellan, 2021 <a href="#">Respiratory and Psychophysical Sequelae Among Patients With COVID-19 Four Months After Hospital Discharge</a>	Italy, Prospective Cohort Study, between March 1 and June 29, 2020	238 patients  61 (50-71) years  40.3 % female	Individuals hospitalized due to COVID-19	4 months after discharge from COVID-19	Fever Cough Dyspnea Ageusia Anosmia Diarrhea Arthralgia Myalgia Chest pain Sore throat Headache DLCO < expected Limited physical performance on SPPB test 2-minute walk test Some degree of functional impairment Tolerance to exercise Posttraumatic stress symptoms
Blair, 2021 <a href="#">The Clinical Course of COVID-19 in the Outpatient Setting: A Prospective Cohort Study</a>	United States of America, Prospective Cohort Study,	118 patients  56.0 (50.0–63.0) years	Any	Median (IQR) of 20 (13–38) days from symptom onset	not returned to usual health not returned to doing usual activities any symptoms perception of health - poor

First author, publication year, study title & link	Country, study design, study recruitment dates	Study Population (# with lab-confirmed COVID- 19; mean or median age or range; % female)	COVID-19 disease severity inclusion criteria	Time of outcome follow-up	Main symptoms/sequelae measured at follow-up
	April 21 and July 23, 2020	57.6 % female			effect of symptoms on activities weakness dry cough
Blanco, 2021 <a href="#">Pulmonary long-term consequences of COVID-19 infections after hospital discharge</a>	Spain, Prospective Cohort Study, 45 days after discharge	100 patients 54.98 ± 10.72 36.0 % female	Severe acute respiratory syndrome coronavirus 2 (SARS-CoV-2)	Days after onset of symptoms 104 (IQR 89.25, 126.75)	Abnormal lung function 6MWT - Pathological Pathological CT
Boscolo-Rizzo, 2020 <a href="#">Evolution of altered sense of smell or taste in patients with mildly symptomatic COVID-19</a>	Italy, Cross Sectional Study, March 2020	187 adults (≥18 years)  Median age: 56 (range: 20-89) years  55.1% female	Mildly symptomatic individuals with no evidence of pneumonia and not requiring hospitalization	4 weeks after first swab test	Fever Dry cough or coughing up mucus Blocked nose Problems breathing Headache Sore throat Muscle or joint pains Chest pain Sinonasal pain Loss of appetite Felt tired Diarrhea Nausea Vomiting Abdominal pain Dizziness Altered sense of smell or taste
Brandao, 2021 <a href="#">Chemosensory Dysfunction in COVID-19: Prevalences, Recovery Rates, and Clinical</a>	Brazil, Prospective Cohort Study, April 2020	655 patients  Mean age 37.7 (SD 10.4) years	Any	36 to 119 days after symptom onset (median,	olfactory deficit taste dysfunction

First author, publication year, study title & link	Country, study design, study recruitment dates	Study Population (# with lab-confirmed COVID- 19; mean or median age or range; % female)	COVID-19 disease severity inclusion criteria	Time of outcome follow-up	Main symptoms/sequelae measured at follow-up
<a href="#">Associations on a Large Brazilian Sample</a>		64.7 % female		76; interquartile range, 66-88)	
Bulgurcu, 2020 Assessment of Smell and Taste Disorders in COVID-19: A Cross-sectional Study	Turkey Cross-Sectional Study March- May 2020	418 patients  mean age of 46.50 ± 15.20 (18–85 years' old)  47% female	n/a	4th week after recovery	Non-recovery of smell loss Non-recovery of taste loss
Buonsenso, 2021 <a href="#">Preliminary Evidence on Long Covid in children</a>	Italy, Cross-Sectional Study, March and November, 2020	129 patients  mean age of 11 ± 4.4 years  48.1 % female	Individuals hospitalised & non-hospitalised	Patients were assessed on average 162.5 ± 113.7 days after COVID-19 microbiological diagnosis	fatigue Insomnia Nasal congestion/rhinorrea Persistent muscle pain Headache Lack of concentration Weight loss Joint pain or swelling Skin rashes Chest tightness Constipation Persistent cough Altered smell Palpitations Chest pain Altered taste Hypersomnia Stomach/abdominal pain Diarrhoea Change in menstruation Number of persisting symptoms Symptoms distress child

First author, publication year, study title & link	Country, study design, study recruitment dates	Study Population (# with lab-confirmed COVID-19; mean or median age or range; % female)	COVID-19 disease severity inclusion criteria	Time of outcome follow-up	Main symptoms/sequelae measured at follow-up
					Hair loss Skin peeling
Carvalho-Schneider, 2020 <a href="#">Follow-up of adults with noncritical COVID-19 two months after symptom onset</a>	France, Prospective Cohort Study), March-June 2020	150 adults ( $\geq 18$ years)  Mean age (SD): 49 $\pm 15$ years  56% female	Individuals not requiring admission to ICU	Up to 2 months after symptom onset	fever Dyspnea Chest pain Flulike symptoms Digestive disorders Weight loss >5% anosmia/ageusia palpitations arthralgia Cutaneous signs Sick leave presence of one or more symptoms at follow-up # of patients who still felt ill or were in worse clinical condition that at COVID-19 onset
Chiesa-Estomba, 2020 <a href="#">Patterns of smell recovery in 751 patients affected by the COVID-19 outbreak</a>	Unclear, Prospective Cohort Study	751 adults (>18 years old)  The mean age of patients was 41 $\pm 13$ (range: 18 – 60)  63.5% female	n/a	47 $\pm 7$ days (range 30-71) from the first consultation,  All patients had at least 30 days of follow-up after their last negative COVID-19 test	Persistent subjective smell loss Partial recovery of smell loss
Cortes-Telles, 2021 <a href="#">Pulmonary function and functional capacity in</a>	Mexico, Prospective Cohort Study,	186 patients  47.0 $\pm 13$	Mild/moderate/severe symptoms	30 and 90 days following the onset of acute	fatigue on effort dyspnoea myalgias

First author, publication year, study title & link	Country, study design, study recruitment dates	Study Population (# with lab-confirmed COVID- 19; mean or median age or range; % female)	COVID-19 disease severity inclusion criteria	Time of outcome follow-up	Main symptoms/sequelae measured at follow-up
<a href="#">COVID-19 survivors with persistent dyspnoea</a>	prior to December, 2020	39.0 % female		COVID-19 symptoms	cough chest pain sore throat sputum production diaphoresis headache rhinitis telogen effluvium anosmia/ageusia dermatological symptoms wheezing conjunctivitis diarrhea
D’Cruz, 2020 <a href="#">Chest radiography is a poor predictor of respiratory symptoms and functional impairment in survivors of severe COVID-19 pneumonia</a>	UK, Prospective Cohort Study, June-July 2020	119 adults ( $\geq 18$ years old)  mean $\pm$ SD age 58.7 $\pm$ 14.4 years  38% female	Hospitalized with severe COVID-19 pneumonia	61 (51–67) days post-discharge	Persistent symptoms Disease-specific functional impairment Burdensome breathlessness Persistent cough Burdensome cough Fatigue Sleep disturbance Pain Depression Anxiety Cognitive impairment Post-Traumatic Stress Disorder
de Graaf, 2021 <a href="#">Short-term outpatient follow-up of COVID-19 patients: A multidisciplinary approach</a>	United States of America, Prospective Cohort Study, March 23 2020 and June 23 2020	81 patients  60.8 $\pm$ 13  37.0 % female	High/severe symptoms	6 weeks after discharge	Post COVID functional status score chest pain dyspnea palpitations Anxiety



First author, publication year, study title & link	Country, study design, study recruitment dates	Study Population (# with lab-confirmed COVID- 19; mean or median age or range; % female)	COVID-19 disease severity inclusion criteria	Time of outcome follow-up	Main symptoms/sequelae measured at follow-up
					Depression PTSD Psychiatric morbidities Cognitive functioning Cognitive functioning by partners
Einvik, 2021 <a href="#">Prevalence and Determinants of Fatigue after COVID-19 in Non-Hospitalized Subjects: a Population-Based Study; 7921928 CSR - Reports results</a>	Norway, Cross-Sectional Study, end of June, 2020	458 patients 49.6 (17.7 to 87.9) 56.0 % female	Non-hospitalized	1.5–6 months after COVID-19	PTSD
Froidure, 2021 <a href="#">Integrative respiratory follow-up of severe COVID-19 reveals common functional and lung imaging sequelae</a>	Belgium, Prospective Cohort Study March 10 and June 30, 2020	134 patients 60 (IQR 53–68) 41.0 % female	Severe and critical COVID-19 patients	Three-month follow-up	fatigue dyspnea requiring oxygen supplementation at exercise chronic dry cough chest oppression FEF <2 SD impaired FVC (forced vital capacity) impaired FEV1 (forced expired volume in 1) impaired FEF25-75 (forced expiratory flow at 25–75% of forced vital capacity) impaired DLCO (lung diffusion capacity) ground glass opacities consolidations isolated reticulations

First author, publication year, study title & link	Country, study design, study recruitment dates	Study Population (# with lab-confirmed COVID-19; mean or median age or range; % female)	COVID-19 disease severity inclusion criteria	Time of outcome follow-up	Main symptoms/sequelae measured at follow-up
					signs of fibrosis lung parenchyma lesions
Gambini, 2020 Ocular Surface Impairment After Coronavirus Disease 2019: A Cohort Study	Italy, Prospective, Cohort Study, April 2020, to May 2020	64 individuals  The mean age in the post-COVID-19 group was 56.2 ± 14.2 years  34.4% female	Hospitalized with COVID-19	Days since symptoms onset: 60.3 ± 13.6	Eye irritations Dry eye disease
Gonzalez, 2021 <a href="#">PULMONARY FUNCTION AND RADIOLOGICAL FEATURES IN SURVIVORS OF CRITICAL COVID-19: A 3-MONTH PROSPECTIVE COHORT</a>	Spain, Prospective Cohort Study, February 2020 to April 2020	62 patients  60 (48-65)  25.8 % female	all critical COVID-19 survivors 3 months after discharge	3 months after hospitalization discharge	symptomatic Dry cough Wet cough Dyspnea Muscular fatigue Depression Anxiety fever wheeze abdominal pain receiving supplemental oxygen incidental pulmonary thromboembolism Density ground glass Density mixed ground glass Density consolidation Internal structures interlobular septal thickening Internal structures bronchiectasis Internal structures atelectasis Internal structures solid nodule

First author, publication year, study title & link	Country, study design, study recruitment dates	Study Population (# with lab-confirmed COVID- 19; mean or median age or range; % female)	COVID-19 disease severity inclusion criteria	Time of outcome follow-up	Main symptoms/sequelae measured at follow-up
					Nonsolid nodule Lesions reticular Lesions fibrotic DLCO - abnormal TLC - altered Severe decrease of oxygen saturation after 6MWT
Halpin, 2020 <a href="#">Postdischarge symptoms and rehabilitation needs in survivors of COVID-19 infection: A cross-sectional evaluation</a>	UK, Cross-Sectional Study, May-June 2020	100 adults (≥18 years old)  Mean age: Ward patients, 70.5 years (20-93) ICU patients, 58.5 years (34-84)  Female Ward (48.5%) ICU (40.6%)	Hospitalized with COVID-19	Between 29 and 71 days post-discharge (mean 48 days and SD 10.3 days).	Fatigue Breathlessness PTSD symptoms related to illness Neuropsychological symptoms Thoughts of self-harm New or worsened concentration problem New or worsened short-term memory problem Swallow problem Laryngeal sensitivity Voice change Communication difficulty SLT referral criteria Concern about weight/nutrition Appetite problem Dietetics referral criteria met New bowel control problem New bladder control problem Quality of life Worsened mobility Worsened self-care Worsened usual activities

First author, publication year, study title & link	Country, study design, study recruitment dates	Study Population (# with lab-confirmed COVID- 19; mean or median age or range; % female)	COVID-19 disease severity inclusion criteria	Time of outcome follow-up	Main symptoms/sequelae measured at follow-up
					Worsened pain/discomfort Worsened anxiety/depression Perceived health Decrease
Han, 2021 <a href="#">Six-Month Follow-up Chest CT findings after Severe COVID-19 Pneumonia; 7841877 CSR - Reports results</a>	China, Prospective Cohort Study, December 25, 2019 and February 20, 2020	114 patients  mean age, 54 years ± 12  30.0 % female	Severe COVID-19 patients who were discharged from the hospital	6-month follow-up	fibrotic-like changes or abnormalities residual ground glass opacity or interstitial thickening ground glass opacities consolidation reticulation Pleural effusion Emphysema Thickening of the adjacent pleura Interlobar pleural traction Honeycombing Pulmonary atelectasis Bronchiectasis dry cough expectoration slight dyspnea on exertion abnormal pulmonary diffusion
Havervall, 2021 <a href="#">Symptoms and Functional Impairment Assessed 8 Months After Mild COVID-19 Among Health Care Workers</a>	Sweden, Prospective Cohort Study, April 2020-May 2020	1395 patients  Seropositive: Median (IQR) 43 (33-52) years; seronegative: 47 (36-56) years  86 % female	Mild symptoms	8 months after positive antibody test	Any persistent symptom Anosmia Fatigue Ageusia Dyspnea Sleeping disorder Headache Palpitations Concentration impairment Muscle/ joint pain

First author, publication year, study title & link	Country, study design, study recruitment dates	Study Population (# with lab-confirmed COVID- 19; mean or median age or range; % female)	COVID-19 disease severity inclusion criteria	Time of outcome follow-up	Main symptoms/sequelae measured at follow-up
					memory impairment moderately or markedly disrupted work life moderate or marked disruption in any Sheehan Disability Scale Category and at least 1 moderate or severe symptom lasting at least 8 months
Horn, 2021 <a href="#">Is COVID-19 Associated With Posttraumatic Stress Disorder?</a>	France, Prospective Cohort Study, March-May 2020	180 adults (≥18 years)  Median age was 53 years (± 16)  56.1% female	n/a	7 weeks after onset of COVID-19 symptoms	Post-traumatic stress disorder
Huang, 2021 <a href="#">6-month consequences of COVID-19 in patients discharged from hospital: a cohort study</a>	China, Ambi-Directional Cohort Study, January- May 2020	1733 individuals  median age of 57·0 (IQR 47·0–65·0) years  48% female	Hospitalized with COVID-19	At 6 months after acute infection,  Time from symptom onset to follow-up, days 186·0 (175·0–199·0)	Reported 1 symptom at follow-up Fatigue or muscle weakness Sleep difficulties Hair loss Smell disorder Palpitations Joint pain Decreased appetite Taste disorder Dizziness Diarrhoea or vomiting Chest pain Sore throat or difficult to swallow Skin rash Myalgia Headache

First author, publication year, study title & link	Country, study design, study recruitment dates	Study Population (# with lab-confirmed COVID- 19; mean or median age or range; % female)	COVID-19 disease severity inclusion criteria	Time of outcome follow-up	Main symptoms/sequelae measured at follow-up
					Low grade fever Dyspnoea Mobility: problems with walking around Personal care: problems with washing or dressing problems with usual activity Pain or discomfort Anxiety or depression distance walked in 6 minutes
Jacobs, 2020 <a href="#">Persistence of symptoms and quality of life at 35 days after hospitalization for COVID-19 infection</a>	US, Prospective Cohort Study, March–April 2020	183 adults  57yrs (48–68) median age  38.5% female	Hospitalized with COVID-19	35 ± 5 days after hospital discharge	Fatigue Shortness of breath Cough Lack of taste Muscular pain Diarrhea Lack of smell Phlegm Headache Joint pain Confusion Eye irritation Fever Ulcer General health - poor, fair Quality of life - poor, fair Physical health - poor, fair Mental health - poor, fair Social relationships - poor, fair Social active role - poor, fair Physical activity - not at all, a little

First author, publication year, study title & link	Country, study design, study recruitment dates	Study Population (# with lab-confirmed COVID- 19; mean or median age or range; % female)	COVID-19 disease severity inclusion criteria	Time of outcome follow-up	Main symptoms/sequelae measured at follow-up
					Emotional - always, often fatigue Dressing - some/much difficulty Walking - some/much difficulty Stairs - some/much difficulty Meal preparation - some/much difficulty Wash dishes - some/much difficulty Sweep - some/much difficulty Make bed - some/much difficulty Lift - some/much difficulty Lift and carry - some/much difficulty Walk fast - some/much difficulty
Jacobson, 2021 <a href="#">Patients with uncomplicated COVID-19 have long-term persistent symptoms and functional impairment similar to patients with severe COVID-19: a cautionary tale during a global pandemic</a>	United States of America, Prospective Cohort Study, Aug, 2020-Nov-2020	118 patients 43.3 (14.4) 46.6 % female	Confirmed COVID-19 infection	Median of 119.3 days after initial COVID-19 diagnosis	Fatigue Dyspnea Loss of taste/smell Myalgias Memory problems Chest pain Hair loss Cough Headache Congestion/Rhinorrhea Nausea/Vomiting/Diarrhea Palpitations Sore throat Fever/Chills

First author, publication year, study title & link	Country, study design, study recruitment dates	Study Population (# with lab-confirmed COVID- 19; mean or median age or range; % female)	COVID-19 disease severity inclusion criteria	Time of outcome follow-up	Main symptoms/sequelae measured at follow-up
					Any Symptom Missed work due to health Any work impairment due to health Any activity impairment due to health
Khasawneh, 2020 <a href="#">The correlation between BMI and COVID-19 outcomes</a>	Jordan, Retrospective Cohort Study, July - August 2020	210 individuals  34.7-years old, SD ± 18 years  37% female	n/a	>4 weeks post COVID-19 infection	Duration of symptoms
Klein, 2021 <a href="#">Onset, duration and unresolved symptoms, including smell and taste changes, in mild COVID-19 infection: a cohort study in Israeli patients</a>	Israel, Prospective Cohort Study, March 2020 -April 2020	103 patients  35 ± 12  38.0 % female	Mild symptoms	Over a 6-month period	Any unresolved symptom Fatigue Smell changes breathing difficulty Taste changes Memory disorder Muscle aches Headache Musculoskeletal pain Hair loss Anxiety and depression Abdominal pain Concentration disorders Diarrhea Dizziness Ear pain Eye disorders Hearing disorder Low physical performance Mouth sores Nose blockage



First author, publication year, study title & link	Country, study design, study recruitment dates	Study Population (# with lab-confirmed COVID- 19; mean or median age or range; % female)	COVID-19 disease severity inclusion criteria	Time of outcome follow-up	Main symptoms/sequelae measured at follow-up
					Palpitations Paresthesia Throat ache Vomiting
Konstantinidis, 2020 <a href="#">Short-Term Follow-Up of Self-Isolated COVID-19 Patients with Smell and Taste Dysfunction in Greece: Two Phenotypes of Recovery</a>	Greece, Prospective Cohort Study, March- May 2020	79 individuals  mean age of 30.7 ± 5.3 years  46.7% female	Individuals with mild-to-moderate disease who were instructed to quarantine at home	4 weeks after COVID-19 diagnosis	Persistent chemosensory deficits
Landi, 2021 <a href="#">Predictive Factors for a New Positive Nasopharyngeal Swab Among Patients Recovered From COVID-19</a>	Italy, Retrospective Cohort, April 2020 - May 2020	131 adults  55.8 ± 14.8 years  39% female	Hospitalized with COVID-19	Days from COVID-19 onset 55.8± 10.8	Cough Fatigue Diarrhea Headache Smell disorders Dysgeusia Red eyes joint pain Short of breath Loss of appetite Sore throat Rhinitis Fever No clinical improvement
Lascarrou, 2021 <a href="#">Identifying Clinical Phenotypes in Moderate to Severe Acute Respiratory Distress Syndrome Related to COVID-19: The COVADIS Study</a>	Multiple Prospective Cohort Study, between March 10, 2020 and April 15, 2020	416 patients  63 (55-71)  22.8 % female	Moderate to severe symptoms	28 ventilatory free days	Breathing with assistance

First author, publication year, study title & link	Country, study design, study recruitment dates	Study Population (# with lab-confirmed COVID-19; mean or median age or range; % female)	COVID-19 disease severity inclusion criteria	Time of outcome follow-up	Main symptoms/sequelae measured at follow-up
Liang, 2020 <a href="#">Three-month Follow-up Study of Survivors of Coronavirus Disease 2019 after Discharge</a>	China, Prospective Cohort Study	76 adult ( $\geq 18$ years old)  median age was 41.3 $\pm$ 13.8 years (age range 24-76 years)  72% females	Hospitalized with COVID-19	follow-up at 3-months after hospital discharge	Return to work Impaired pulmonary function Abnormal Lung HRCT
Logue, 2021 <a href="#">Sequelae in Adults at 6 Months After COVID-19 Infection</a>	United States of America, Prospective Cohort Study, between August and November 2020	177 patients  48.0 (15.2)  57.1 % female	Any	6 months after COVID-19 infection	Number of persistent symptoms Fatigue Loss of smell or taste Brain fog Quality of Life (HRQoL) Activity of daily living (ADL)
Mafor, 2021 <a href="#">One-month outcomes of patients with SARS-CoV-2 infection and their relationships with lung ultrasound signs</a>	Brazil, Retrospective Cohort Study, prior to April 2020	447 patients  40 (34–50) years  68.2 % female	Need for hospitalization, ICU and death.	1 month after LUS screening	general fatigue dyspnoea cough fever
Mandal, 2020 <a href="#">‘Long-COVID’: a cross-sectional study of persisting symptoms, biomarker and imaging abnormalities following hospitalisation for COVID-19</a>	UK Cross-Sectional Study	384 patients  Mean age of 59.9 $\pm$ 16.1 years  38% female	Hospitalized with COVID-19	Median of 54 (IQR 47–59) days following hospital discharge	breathlessness Cough fatigue depression anosmia one or more of the following persistent symptoms (breathlessness, cough, fatigue & poor sleep quality)

First author, publication year, study title & link	Country, study design, study recruitment dates	Study Population (# with lab-confirmed COVID- 19; mean or median age or range; % female)	COVID-19 disease severity inclusion criteria	Time of outcome follow-up	Main symptoms/sequelae measured at follow-up
Mazza, 2021 <a href="#">Persistent psychopathology and neurocognitive impairment in COVID-19 survivors: Effect of inflammatory biomarkers at three-month follow-up</a>	Italy, Prospective Cohort Study, April 6-June 9, 2020	226 patients 58.52 ± 12.79 34.0 % female	COVID-19 pneumonia survivors after admission to the ED	Three months (90.1 ± 13.4 days) after hospital discharge	Depression PTSD Anxiety Obsessive compulsive Insomnia Verbal memory Verbal fluency Working Memory Attention and Information Processing Psychomotor coordination Executive Functions Symptoms in at least one psychopathological dimension At least one current major psychiatric disorder Major depressive disorder Anxiety Disorders Insomnia Other major psychiatric disorder
Moradian, 2020 <a href="#">Delayed Symptoms in Patients Recovered from COVID-19</a>	Iran, Cross-Sectional February to April, 2020	200 patients 55.58±13.52 20 % female	Hospitalized due to COVID-19	6 weeks after discharge	Fever Dyspnea Cough myalgia activity intolerance fatigue weakness weight loss dizziness headache shivering

First author, publication year, study title & link	Country, study design, study recruitment dates	Study Population (# with lab-confirmed COVID- 19; mean or median age or range; % female)	COVID-19 disease severity inclusion criteria	Time of outcome follow-up	Main symptoms/sequelae measured at follow-up
					otalgia sore throat sputum sneezing rainfall odor disorder taste disorder nausea vomiting diarrhea anorexia dyspepsia anxiety one or more symptoms
Moreno-Perez, 2021 <a href="#">Post-acute COVID-19 syndrome. Incidence and risk factors: A Mediterranean cohort study</a>	Spain, Prospective Cohort Study, February 2020 to April 2020	277 patients  Median age 62.0 years (53.0–72.0)  47.3 % female	Mild to severe symptoms	77 days (IQR 72–85) after disease onset	Post-acute COVID-19 syndrome (PCS) not recovered relevant neurological symptoms Fatigue Anosmia-dysgeusia Myalgias-arthralgias Dyspnea Cough Any headache Mnesic complaints Diarrhoea Skin features Visual loss Fever
Niklassen, 2021 <a href="#">COVID-19: Recovery from Chemosensory Dysfunction.</a>	Multiple Prospective Cohort Study,	111 patients	Any	3 days of diagnosis and 28	Anosmia Hyposmia

First author, publication year, study title & link	Country, study design, study recruitment dates	Study Population (# with lab-confirmed COVID- 19; mean or median age or range; % female)	COVID-19 disease severity inclusion criteria	Time of outcome follow-up	Main symptoms/sequelae measured at follow-up
<a href="#">A Multicentre study on Smell and Taste</a>	April 2020- October 2020	age of 44.5 years (standard deviation 15.0) ranging from 18 to 77 years  47.0 % female		to 169 days after infection	combined olfactory and gustatory dysfunction Gustatory dysfunction
Otte, 2020 <a href="#">Olfactory dysfunction in patients after recovering from COVID-19</a>	Germany, Prospective Cohort Study	91 adults  mean age was 43.01 years ( $\pm 12.69$ )  49.5% female	Mild course of COVID-19 disease (non-hospitalized)	An average of 57.94 ( $\pm 1.40$ ) days since onset of symptoms	Self-reported olfactory and tasting impairment Hyposmia Anosmia
Petersen 2020 <a href="#">Long COVID in the Faroe Islands - a longitudinal study among non-hospitalized patients</a>	Faroe Islands, Prospective Cohort Study, April- August 2020	180 individuals  mean (SD, range) age was 39.9 years (19.4, 0-93),  54.4% female	n/a	number of days (mean (SD, range)) from onset of symptoms to last follow-up was 125 (17, 45-153) days	Loss of smell Loss of taste Fatigue Headache Had symptoms at last follow-up Had 1-2, 3-5, 6-8, 9-12 or 13+ symptoms at last follow-up Fever Headache Chills Myalgia Dry cough Rhinorrhea Anorexia Sore throat Arthralgia Dyspnea Diarrhea

First author, publication year, study title & link	Country, study design, study recruitment dates	Study Population (# with lab-confirmed COVID- 19; mean or median age or range; % female)	COVID-19 disease severity inclusion criteria	Time of outcome follow-up	Main symptoms/sequelae measured at follow-up
					Cough with expectoration Nausea Chest tightness Rashes
Printza, 2021 <a href="#">Smell and taste loss recovery time in covid-19 patients and disease severity</a>	Greece, Cross-Sectional Study, March 2020-April, 2020	150 patients  Mean age of 51.6 ± 16.8 (ranging from 18 to 89 years)  38.0 % female	Mild/moderate/severe, and critical (ICU-treated) symptoms	2 months	non-recovery of sense of smell non-recovery of sense of taste
Qu, 2021 <a href="#">Health related quality of life of COVID-19 patients after discharge: A multicenter follow up study</a>	China, Cross-Sectional Study, February 2020-March, 2020	540 patients  47.50 years (IQR: 37.00–57.00)  50.0 % female	Mild to severe symptoms; hospitalized	3 months after discharge	One or more uncomfortable symptoms Number of physical symptoms HRQoL - physical component summary (PCS) HRQoL - mental component summary (MCS) Fatigue Cough Sputum Dyspnoea Diarrhoea Shortness of breath Joint pain Dysbasia Palpitations Other symptoms
Raman, 2020 <a href="#">Medium-term effects of SARS-CoV-2 infection on</a>	UK, Prospective Cohort Study,	58 individuals  55.4yrs (13-2)	Hospitalized individuals with moderate to	2-3 months from disease-onset	breathlessness Fatigue

First author, publication year, study title & link	Country, study design, study recruitment dates	Study Population (# with lab-confirmed COVID-19; mean or median age or range; % female)	COVID-19 disease severity inclusion criteria	Time of outcome follow-up	Main symptoms/sequelae measured at follow-up
<a href="#">multiple vital organs, exercise capacity, cognition, quality of life and mental health, post hospital discharge</a>	March-May 2020	41.4% female	severe COVID-19 infection		desaturation at the end of a 6-minute walk test cognitive function - abnormal anxiety depression
Riestra-Ayora, 2021 <a href="#">Long-term follow-up of olfactory and gustatory dysfunction in COVID-19: 6 months case-control study of health workers</a>	Spain, Case-Control March 15, 2020- October 15, 2020	320 patients  Control & Case- group 46.5 (20–64) 41.62 (18–65)  80.0 % female	Any	6 months	olfactory symptoms
Rusetsky 2021 <a href="#">Smell Status in Children Infected with SARS-CoV-2</a>	Russia Cross-Sectional Study, April-May 2020	79 children  12.9yrs ± 3.4 (range: 6-17 years)  53.2% female	Hospitalized with COVID-19	60 days after hospital discharge	hyposmia
Shah, 2020 <a href="#">A prospective study of 12-week respiratory outcomes in COVID-19-related hospitalisations</a>	Canada, Prospective Cohort Study, March-May 2020	60 adults  Median age was 67 years (IQR 54–74)  32% female	Hospitalized with COVID-19	12 weeks following symptom onset (permitted range 8–12 weeks)	Dyspnoea 6MWT - abnormal Cough
Song, 2021 <a href="#">Self-reported Taste and Smell Disorders in Patients with COVID-19: Distinct Features in China</a>	China, Retrospective Cohort Study, January 2020- March, 2020	117 patients  61 years (IQR, 48–68)  50.8 % female	Laboratory-confirmed cases - severe and non- severe symptoms at the time of admission	30 days after discharge from hospital	Loss of smell Loss of taste

First author, publication year, study title & link	Country, study design, study recruitment dates	Study Population (# with lab-confirmed COVID- 19; mean or median age or range; % female)	COVID-19 disease severity inclusion criteria	Time of outcome follow-up	Main symptoms/sequelae measured at follow-up
Stavem, 2020 <a href="#">Persistent symptoms 1.5–6 months after COVID-19 in non-hospitalised subjects: a population-based cohort study</a>	Norway, Cross-Sectional Study  until 1 June 2020	451 adults (≥18 years)  49.8 years (15.2)  56% female	non-hospitalised COVID- 19 patients	median 117 days (range 41–193) after symptom onset	Fever Loss/disturbance of taste Headache Dry cough Loss/disturbance of smell Myalgia Chills Dyspnoea Sore throat Arthralgia Runny nose Diarrhoea Abdominal pain Productive cough Vomiting/nausea Wheeze Confusion/changed consciousness Skin rash Vision disturbance/blurring ear pain seizures/cramps Conjunctivitis Any symptom
Stavem, 2021 <a href="#">Prevalence and risk factors for post-traumatic stress in hospitalized and non-hospitalized COVID-19 patients</a>	Norway, Cross-Sectional Study, June, 2020	458 patients  Mean age (range): 49.6 (17.7 to 87.9)  56.0 % female	Non-hospitalized	Median of 117.5 days (range = 41–200) after first symptom of COVID-19	Fatigue



First author, publication year, study title & link	Country, study design, study recruitment dates	Study Population (# with lab-confirmed COVID- 19; mean or median age or range; % female)	COVID-19 disease severity inclusion criteria	Time of outcome follow-up	Main symptoms/sequelae measured at follow-up
Sykes, 2021 <a href="#">Post-COVID-19 Symptom Burden: What is Long-COVID and How Should We Manage It?</a>	United Kingdom, Prospective Cohort Study, prior to November 2020	134 patients 59.6 (14.0) 34.3 % female	Any	Median of 113 days (range = 46–167) post-discharge	At least one residual symptom Dyspnoea Myalgia Anxiety Extreme fatigue Low mood Memory impairment Sleep disturbances Cough Attention deficit Pleuritic chest pain Sore throat Fever Anosmia Cognitive impairment Taste deficiency Rash Symptom clusters
Townsend, 2020 <a href="#">Persistent fatigue following SARS-CoV-2 infection is common and independent of severity of initial infection</a>	Ireland, Cross-Sectional Study, March – May 2020	128 individuals mean age: 49.5 ± 15 years 54% female	COVID-19 severity (need for inpatient admission, supplemental oxygen or critical care) and fatigue following COVID-19	Median (IQR) was 71 days (68-85) to 73 days (56-88)	Fatigue Not feeling back to full health Not returning to work
Townsend, 2021 <a href="#">Persistent Poor Health Post-COVID-19 Is Not Associated with Respiratory Complications or Initial Disease Severity</a>	Ireland, Cross-Sectional Study, March – May 2020	153 individuals (Admitted, non-ICU N = 55) Age - 56.4 years (15.5) 47.3% female	n/a	Median 78 days (IQR 66-108) after diagnosis	Significant oxygen desaturation during 6MWT Perceived lack of full health Fatigue

First author, publication year, study title & link	Country, study design, study recruitment dates	Study Population (# with lab-confirmed COVID- 19; mean or median age or range; % female)	COVID-19 disease severity inclusion criteria	Time of outcome follow-up	Main symptoms/sequelae measured at follow-up
		(Admitted, ICU N = 19) Age - 54.5 years (11.6) 26.3% female  (Non-admitted, N = 79) Age - 40.2 years (11.4) 72.2% female			
Townsend, 2021-2 <a href="#">Prolonged elevation of D-dimer levels in convalescent COVID-19 patients is independent of the acute phase response</a>	Ireland, Prospective Cohort Study, May 2020-September, 2020	150 patients  Mean 47.3 (SD 15.4)  56.7 % female	Any	Median 80.5 (range 44–155) days after initial diagnosis	Fatigue Breathlessness
Trunfio, 2021 <a href="#">Diagnostic SARS-CoV-2 Cycle Threshold Value Predicts Disease Severity, Survival, and Six-Month Sequelae in COVID-19 Symptomatic Patients; 7917896 CSR - Reports results</a>	Italy, Cross-Sectional Study, March 2020	200 patients  Median age was 56 years (43–69)  42.0 % female	Hospital admission, worst oxygen support required, and survival	(194 (181–198) days after COVID-19 onset	any sequelae dyspnea olfactory/gustatory dysfunction chronic cough others

First author, publication year, study title & link	Country, study design, study recruitment dates	Study Population (# with lab-confirmed COVID-19; mean or median age or range; % female)	COVID-19 disease severity inclusion criteria	Time of outcome follow-up	Main symptoms/sequelae measured at follow-up
Tudoran, 2021 <a href="#">Alterations of left ventricular function persisting during post-acute COVID-19 in subjects without previously diagnosed cardiovascular pathology; 8004210 CSR - Reports results</a>	Romania, Cross-Sectional Study, February 2020-July, 2020	125 patients Median age 47 (40–51.5) 50.4 % female	Hospitalized for mild/moderate SARS-CoV-2 with pneumonia	6–10 weeks after discharge	Symptoms (most frequently fatigue, dyspnea, and palpitations)
Vaira 2020 <a href="#">Smell and taste recovery in coronavirus disease 2019 patients: a 60-day objective and prospective study</a>	Italy, Prospective Cohort Study	138 adults (≥18 years) 51.2 years (8.8) with IQR 46.7–58.0 50.7% female	n/a	30-60 days after onset of symptoms	olfactory dysfunction taste disorder Combined chemosensitive dysfunction Isolated smell impairments Isolated taste disorders Persistent chemosensitive disorders
Walle-Hansen, 2021 <a href="#">Health-related quality of life, functional decline, and long-term mortality in older patients following hospitalisation due to COVID-19</a>	Norway, Prospective Cohort Study, March 1- July 1, 2020	106 patients 74.3 (range 60–96) years 43.0 % female	Individuals admitted to hospital with COVID-19	6 months	Worse health-related quality of life Decline in mobility Decline in ability to perform daily activities More pain or discomfort Increased anxiety Decline in self-care ability Major change in mobility Major change in usual activities Negative change in cognitive function

First author, publication year, study title & link	Country, study design, study recruitment dates	Study Population (# with lab-confirmed COVID- 19; mean or median age or range; % female)	COVID-19 disease severity inclusion criteria	Time of outcome follow-up	Main symptoms/sequelae measured at follow-up
Wang, 2020 <a href="#">Impact of Covid-19 in pregnancy on mother's psychological status and infant's neurobehavioral development: a longitudinal cohort study in China</a>	China, Prospective Cohort Study, May-July 2020	72 pregnant females  31 years (28, 34)  100% female	n/a	35 (± 5 days) after delivery/abortion	Post-traumatic stress disorder Postpartum depression Suffering from post-traumatic stress disorder or depression
Weerahandi, 2021 <a href="#">Post-Discharge Health Status and Symptoms in Patients with Severe COVID-19</a>	US, Prospective Cohort Study	161 adults (≥18 years)  62 years (IQR], 50–677)  37% female	Hospitalized with severe COVID-19	median of 55 days (range 38–95) after hospital admission	Dyspnea Requiring oxygen
Zhang, 2021 <a href="#">Thin-section computed tomography findings and longitudinal variations of the residual pulmonary sequelae after discharge in patients with COVID-19: a short-term follow-up study</a>	China, Cross-Sectional January 11- July 5, 2020	310 patients  51 (31.8, 61.0)  50.3 % female	(Severe and non-severe COVID-19)	1-4 weeks; 5-8 weeks; 9-12 weeks; >12 weeks	cumulative values of incomplete absorption cumulative values of non-absorption of fibrosis-like findings Incomplete absorption of lesions Density Fibrosis like findings Irregular interface of the pleural surfaces Irregular interface of the bronchovascular surfaces Irregular interface of the mediastinal surfaces

**Table 2. Prevalence of various symptoms, sequelae and difficulties conducting usual activities post-COVID-19 infection in laboratory-confirmed individuals**

Symptoms, sequelae and difficulties conducting usual activities	Short-term (4-12 weeks after COVID-19 diagnosis) (prevalence* in %, [95% CI], (number of studies), risk of bias across studies [low <span style="color: green;">■</span> , moderate <span style="color: orange;">■</span> or high <span style="color: red;">■</span> ], GRADE assessment where applicable)	Long-term (>12 weeks after COVID-19 diagnosis) (prevalence* in %, [95% CI], (number of studies), risk of bias across studies [low <span style="color: green;">■</span> , moderate <span style="color: orange;">■</span> or high <span style="color: red;">■</span> ], GRADE assessment where applicable)
<b>One or more symptoms</b>		
Persistence or presence of one or more symptoms at follow-up	61% [44%, 76%] (9 studies)(1-9) <span style="color: orange;">■</span> <i>low certainty</i>	53% [41%, 65%] (14 studies)(3,4,10-21) <span style="color: orange;">■</span> <i>low certainty</i>
Cluster of symptoms: Neurological (headache, memory disorders/cognitive deterioration)	12% [8%, 16%] (1 study)(2) <span style="color: red;">■</span>	No studies
Myalgia, fatigue	No studies	31% [23%, 38%] (1 study)(14) <span style="color: orange;">■</span>
Low mood, anxiety, sleep disturbance	No studies	16% [10%, 22%] (1 study)(14) <span style="color: orange;">■</span>
Symptoms lasting >4 weeks	4% [1%, 6%] (1 study)(22) <span style="color: orange;">■</span>	No studies
Number of symptoms:		
1-2	39% [22%, 56%] (1 study)(4) <span style="color: orange;">■</span>	27% [21%, 35%] (4 studies)(4,13,15,16) <span style="color: orange;">■</span>
≥2	No studies	50% [41%, 59%] (1 study)(17) <span style="color: orange;">■</span>
≥3	26% [10%, 41%] (1 study)(4) <span style="color: orange;">■</span>	23% [17%, 31%] (5 studies)(4,13,15-17) <span style="color: orange;">■</span>
≥5	No studies	9% [7%, 12%] (1 study)(13) <span style="color: orange;">■</span>
>5	8% [4%, 12%] (1 study)(8) <span style="color: orange;">■</span>	6% [3%, 10%] (1 study)(15) <span style="color: red;">■</span>
<b>Fatigue</b>		
All	41% [30%, 52%] (16 studies)(3,4,10,11,13-18,23,24) <span style="color: orange;">■</span> <i>low certainty</i>	25% [19%, 34%] (12 studies)(3,4,10,11,13-18,21,23) <span style="color: orange;">■</span> <i>low certainty</i>
By level of care received during the acute phase:		
Non-hospitalized	16% [11%, 21%] (1 study)(24) <span style="color: orange;">■</span> <i>low certainty</i>	46% [42%, 51%] (1 study)(21) <span style="color: orange;">■</span> <i>low certainty</i>
Both (hospitalized & non-hospitalized)	34% [21%, 50%] (8 studies)(2-4,25-29) <span style="color: orange;">■</span> <i>low certainty</i>	17% [9%, 27%] (6 studies)(3,4,15-18) <span style="color: orange;">■</span> <i>low certainty</i>
Hospitalized	53% [38%, 67%] (7 studies)(5,6,8,30-33) <span style="color: orange;">■</span> <i>low certainty</i>	31% [25%, 39%] (3 studies)(13,14,23) <span style="color: orange;">■</span> <i>low certainty</i>
Admitted to ICU	No studies	39% [23%, 59%] (2 studies)(10,11) <span style="color: red;">■</span> <i>very low certainty</i>
Fatigue or muscle weakness	No studies	63% [60%, 65%] (1 study)(12) <span style="color: orange;">■</span>
Weakness	16% [13%, 21%] (2 studies)(8,9) <span style="color: red;">■</span>	No studies
<b>Respiratory</b>		
<b>Shortness of breath:</b>		
All	34% [25%, 45%] (17 studies)(1-3,5,6,8,25-27,30-37) <span style="color: orange;">■</span> <i>low certainty</i>	18% [13%, 24%] (16 studies)(2,3,10-15,17-21,23,38,39) <span style="color: orange;">■</span> <i>low certainty</i>

<b>Symptoms, sequelae and difficulties conducting usual activities</b>	<b>Short-term (4-12 weeks after COVID-19 diagnosis)</b> (prevalence* in %, [95% CI], (number of studies), risk of bias across studies [low <span style="color: green;">■</span> , moderate <span style="color: orange;">■</span> or high <span style="color: red;">■</span> ], <i>GRADE assessment where applicable</i> )	<b>Long-term (&gt;12 weeks after COVID-19 diagnosis)</b> (prevalence* in %, [95% CI], (number of studies), risk of bias across studies [low <span style="color: green;">■</span> , moderate <span style="color: orange;">■</span> or high <span style="color: red;">■</span> ], <i>GRADE assessment where applicable</i> )
By level of care received during the acute phase:		
Non-hospitalized	24% [18%, 30%] (1 study)(34) <span style="color: orange;">■</span> <i>very low certainty</i>	16% [13%, 20%] (1 study)(21) <span style="color: red;">■</span> <i>very low certainty</i>
Both (hospitalized & non-hospitalized)	21% [11%, 36%] (7 studies study)(1-3,8,25-27) <span style="color: orange;">■</span> <i>low certainty</i>	10% [6%, 16%] (7 studies)(2,3,15,17-20) <span style="color: orange;">■</span> <i>low certainty</i>
Hospitalized	44% [34%, 54%] (6 studies)(6,30-32,36,37) <span style="color: orange;">■</span> <i>low certainty</i>	14% [8%, 26%] (3 studies)(12,13,38) <span style="color: orange;">■</span> <i>low certainty</i>
Hospitalized (with moderate to severe COVID-19 or severe COVID-19 pneumonia)	60% [35%, 80%] (3 studies)(5,33,35) <span style="color: orange;">■</span> <i>low certainty</i>	34% [14%, 62%] (3 studies)(14,23,39) <span style="color: orange;">■</span> <i>low certainty</i>
Admitted to ICU	No studies	48% [41%, 55%] (2 studies)(10,11) <span style="color: red;">■</span> <i>low certainty</i>
<b>Other respiratory symptoms/sequelae:</b>		
Cough		
Any kind	21% [15%, 27%] (12 studies)(2,4-6,8,9,26,27,31,32,34,36) <span style="color: orange;">■</span>	7% [4%, 12%] (12 studies)(2,4,11,13-15,17,20,21,23,38,39) <span style="color: orange;">■</span>
Dry cough	21% [9%, 40%] (2 studies)(9,34) <span style="color: red;">■</span>	8% [5%, 12%] (5 studies)(11,15,21,23,39) <span style="color: red;">■</span>
Productive cough	No studies	8% [3%, 18%] (3 studies)(11,15,21) <span style="color: red;">■</span>
Rhinitis or runny nose	10% [5%, 19%] (4 studies)(4,8,26,32) <span style="color: orange;">■</span>	7% [4%, 11%] (4 studies)(4,15,17,21) <span style="color: red;">■</span>
Sore throat	8% [4%, 15%] (4 studies)(8,26,32,34) <span style="color: orange;">■</span>	3% [1%, 7%] (6 studies)(14,15,17,18,21,38) <span style="color: red;">■</span>
Voice change	20% [12%, 28%] (1 study)(30) <span style="color: orange;">■</span>	No studies
Laryngeal sensitivity	17% [10%, 24%] (1 study)(30) <span style="color: orange;">■</span>	No studies
Phlegm	12% [7%, 21%] (3 studies)(8,26,31) <span style="color: orange;">■</span>	10% [8%, 12%] (2 studies)(13,39) <span style="color: red;">■</span>
Blocked nose	14% [10%, 18%] (2 studies)(34,40) <span style="color: orange;">■</span>	1% [0%, 3%] (1 study)(18) <span style="color: orange;">■</span>
Requiring supplemental oxygen:		
- after discharge	14% [8%, 19%] (1 study)(35) <span style="color: orange;">■</span>	8% [1%, 15%] (1 study)(11) <span style="color: red;">■</span>
- at exercise	No studies	3% [0%, 6%] (1 study)(23) <span style="color: red;">■</span>
Still needing mechanical ventilation at 28 days post-ICU admission	58% [54%, 63%] (1 study)(41) <span style="color: red;">■</span>	No studies
Wheezing	7% [12%, 23%] (1 study)(26) <span style="color: orange;">■</span>	3% [2%, 5%] (2 studies)(11,21) <span style="color: red;">■</span>
Sinonasal pain	3% [1%, 6%] (1 study)(34) <span style="color: orange;">■</span>	No studies
Sneezing	0.5% [0%, 3%] (1 study)(8) <span style="color: orange;">■</span>	No studies
<b>Flu-like symptoms</b>		
Flu-like symptoms	22% [14%, 29%] (1 study)(1) <span style="color: orange;">■</span>	No studies
Headaches	9% [6%, 14%] (8 studies)(2-4,8,26,31,32,34) <span style="color: orange;">■</span>	4% [2%, 7%] (9 studies)(2-4,12,15,17,18,21,38) <span style="color: orange;">■</span>

<b>Symptoms, sequelae and difficulties conducting usual activities</b>	<b>Short-term (4-12 weeks after COVID-19 diagnosis)</b> (prevalence* in %, [95% CI], (number of studies), risk of bias across studies [low <span style="color: green;">■</span> , moderate <span style="color: orange;">■</span> or high <span style="color: red;">■</span> ], <i>GRADE assessment where applicable</i> )	<b>Long-term (&gt;12 weeks after COVID-19 diagnosis)</b> (prevalence* in %, [95% CI], (number of studies), risk of bias across studies [low <span style="color: green;">■</span> , moderate <span style="color: orange;">■</span> or high <span style="color: red;">■</span> ], <i>GRADE assessment where applicable</i> )
Fever	1% [0%, 3%] (7 studies)(1,2,8,27,31,32,34) <span style="color: red;">■</span>	1% [0%, 5%] (6 studies)(11,12,14,15,21,38) <span style="color: red;">■</span>
Fever/chills	No studies	1% [0%, 3%] (1 study)(17) <span style="color: orange;">■</span>
Chills	0.5% [0%, 1%] (1 study)(8) <span style="color: orange;">■</span>	2% [0%, 13%] (2 studies)(15,21) <span style="color: red;">■</span>
<b>Olfactory and Gustatory</b>		
Smell or taste dysfunction	19% [12%, 28%] (8 studies)(1,2,26,34,42-45) <span style="color: orange;">■</span> <i>low certainty</i>	13% [8%, 23%] (3 studies)(16,17,20) <span style="color: orange;">■</span> <i>low certainty</i>
Smell dysfunction		
Any	13% [7%, 23%] (16 studies)(3,4,6,8,31,32,40,42,44-51) <span style="color: orange;">■</span> <i>low certainty</i>	13% [9%, 19%] (10 studies)(3,4,12,14,15,18,21,38,45,48) <span style="color: orange;">■</span> <i>low certainty</i>
Hyposmia	23% [8%, 49%] (3 studies)(42,45,50) <span style="color: orange;">■</span> <i>low certainty</i>	18% [5%, 31%] (1 study)(45) <span style="color: red;">■</span> <i>very low certainty</i>
Anosmia	7% [3%, 14%] (4 studies)(3,6,42,45) <span style="color: orange;">■</span> <i>low certainty</i>	7% [5%, 11%] (4 studies)(3,14,38,45) <span style="color: orange;">■</span> <i>low certainty</i>
Taste dysfunction		
Any	7% [4%, 14%] (11 studies)(3,4,8,31,32,40,44-46,49,51) <span style="color: orange;">■</span> <i>low certainty</i>	7% [5%, 10%] (8 studies)(3,4,12,14,15,18,21,38) <span style="color: orange;">■</span> <i>low certainty</i>
Ageusia	8% [5%, 11%] (1 study)(3) <span style="color: orange;">■</span> <i>low certainty</i>	4% [3%, 6%] (2 studies)(3,38) <span style="color: red;">■</span> <i>low certainty</i>
Dysgeusia	11% [6%, 17%] (1 study)(32) <span style="color: red;">■</span> <i>very low certainty</i>	No studies
Dysgeusia lasting >2 months	1% [0%, 2%] (1 study)(52) <span style="color: red;">■</span>	No studies
<b>Neurocognitive</b>		
Cognitive impairment	29% [19%, 41%] (4 studies) (5,33,37,53) <span style="color: orange;">■</span> <i>low certainty</i>	20% [5%, 54%] (4 studies)(14,16,54,55) <span style="color: red;">■</span> <i>very low certainty</i>
Concentration problems	11% [4%, 26%] (4 studies) (3,4,30,56) <span style="color: orange;">■</span> <i>low certainty</i>	5% [1%, 19%] (4 studies)(3,4,14,18) <span style="color: orange;">■</span> <i>low certainty</i>
Memory problem	11% [6%, 20%] (4 studies)(2,3,30,56) <span style="color: orange;">■</span> <i>very low certainty</i>	12% [5%, 23%] (6 studies)(2,3,14,17,18,55) <span style="color: orange;">■</span> <i>very low certainty</i>
Cluster of symptoms: Memory impairment, attention deficit, cognitive impairment Attention and Information Processing (poor performance)	No studies No studies	14% [8%, 20%] (1 study)(14) <span style="color: orange;">■</span> 33% [25%, 41%] (1 study)(55) <span style="color: red;">■</span>
Confusion	9% [5%, 13%] (1 study)(31) <span style="color: red;">■</span> <i>very low certainty</i>	2% [1%, 4%] (1 study)(21) <span style="color: red;">■</span> <i>very low certainty</i>
Dizziness	3% [2%, 5%] (2 studies)(8,34) <span style="color: orange;">■</span> <i>moderate</i>	3% [1%, 16%] (2 studies)(12,18) <span style="color: orange;">■</span> <i>low certainty</i>

<b>Symptoms, sequelae and difficulties conducting usual activities</b>	<b>Short-term (4-12 weeks after COVID-19 diagnosis)</b> (prevalence* in %, [95% CI], (number of studies), risk of bias across studies [low <span style="color: green;">■</span> , moderate <span style="color: orange;">■</span> or high <span style="color: red;">■</span> ], <i>GRADE assessment where applicable</i> )	<b>Long-term (&gt;12 weeks after COVID-19 diagnosis)</b> (prevalence* in %, [95% CI], (number of studies), risk of bias across studies [low <span style="color: green;">■</span> , moderate <span style="color: orange;">■</span> or high <span style="color: red;">■</span> ], <i>GRADE assessment where applicable</i> )
Dysbasia	No studies	4% [2%, 6%] (1 study)(13) <span style="color: orange;">■</span>
Psychomotor coordination (poor performance)	No studies	57% [48%, 66%] (1 study)(55) <span style="color: red;">■</span>
Executive Functions (poor performance)	No studies	50% [41%, 59%] (1 study)(55) <span style="color: red;">■</span>
Communication difficulty	6% [1%, 11%] (1 study)(30) <span style="color: orange;">■</span>	No studies
Verbal fluency (poor performance)	No studies	32% [24%, 40%] (1 study)(55) <span style="color: red;">■</span>
Verbal memory (poor performance)	No studies	10% [4%, 16%] (1 study)(55) <span style="color: red;">■</span>
<b>Neuromuscular</b>		
Muscle or joint pain	9% [4%, 23%] (3 studies)(2,3,34) <span style="color: orange;">■</span> <i>very low certainty</i>	0.6% [0%, 1%] (1 study)(3) <span style="color: orange;">■</span> <i>low certainty</i>
Muscle pain	18% [10%, 32%] (4 studies)(4,8,26,31) <span style="color: orange;">■</span> <i>very low certainty</i>	9% [4%, 22%] (8 studies)(4,12,14,15,17,18,21,38) <span style="color: orange;">■</span> <i>very low certainty</i>
Joint pain	18% [14%, 24%] (4 studies)(1,4,31,32) <span style="color: red;">■</span> <i>low certainty</i>	10% [6%, 16%] (6 studies)(4,12,13,15,21,38) <span style="color: red;">■</span> <i>low certainty</i>
Musculoskeletal pain	No studies	4% [0%, 8%] (1 study)(18) <span style="color: orange;">■</span>
Paresthesia	No studies	1% [0%, 3%] (1 study)(18) <span style="color: orange;">■</span>
Swallow problem	8% [3%, 13%] (1 study)(30) <span style="color: orange;">■</span>	No studies
Sore throat or difficulties with swallowing	No studies	4% [3%, 5%] (1 study)(12) <span style="color: orange;">■</span>
Referral to a Speech and Language Therapist	23% [15%, 31%](30) (1 study) <span style="color: orange;">■</span>	No studies
<b>Cardiovascular</b>		
Palpitations	8% [3%, 19%] (3 studies)(1,3,37) <span style="color: red;">■</span> <i>very low certainty</i>	5% [3%, 11%] (6 studies)(3,4,12,13,17,18) <span style="color: orange;">■</span> <i>moderate certainty</i>
Chest pain	14% [7%, 25%] (5 studies)(1,4,26,34,37) <span style="color: orange;">■</span> <i>very low certainty</i>	6% [2%, 13%] (5 studies)(4,12,14,17,38) <span style="color: orange;">■</span> <i>low certainty</i>
Chest tightness	16% [5%, 34%] (1 study)(4) <span style="color: orange;">■</span> <i>very low certainty</i>	5% [3%, 8%] (3 studies)(4,15,23) <span style="color: red;">■</span> <i>moderate certainty</i>
<b>Digestive</b>		
Digestive disorders	12% [6%, 17%] (1 study)(1) <span style="color: orange;">■</span>	No studies
Appetite problem	10% [7%, 13%] (3 studies)(30,32,34) <span style="color: orange;">■</span>	8% [7%, 10%] (1 study)(12) <span style="color: orange;">■</span>
Diarrhea	5% [3%, 8%] (6 studies)(2,8,26,31,32,34) <span style="color: red;">■</span>	2% [1%, 5%] (6 studies)(4,13,15,18,21,38) <span style="color: red;">■</span>
Abdominal pain	4% [1%, 6%] (1 study)(34) <span style="color: orange;">■</span>	3% [1%, 5%] (3 studies)(11,18,21) <span style="color: red;">■</span>
Weight loss	9% [6%, 13%] (3 studies)(1,4,8) <span style="color: orange;">■</span>	8% [3%, 14%] (1 study)(4) <span style="color: orange;">■</span>
New bladder control problem	10% [4%, 16%] (1 study)(30) <span style="color: orange;">■</span>	No studies
New bowel control problem	3% [0%, 6%] (1 study)(30) <span style="color: orange;">■</span>	No studies



<b>Symptoms, sequelae and difficulties conducting usual activities</b>	<b>Short-term (4-12 weeks after COVID-19 diagnosis)</b> (prevalence* in %, [95% CI], (number of studies), risk of bias across studies [low <span style="color: green;">■</span> , moderate <span style="color: orange;">■</span> or high <span style="color: red;">■</span> ], <i>GRADE assessment where applicable</i> )	<b>Long-term (&gt;12 weeks after COVID-19 diagnosis)</b> (prevalence* in %, [95% CI], (number of studies), risk of bias across studies [low <span style="color: green;">■</span> , moderate <span style="color: orange;">■</span> or high <span style="color: red;">■</span> ], <i>GRADE assessment where applicable</i> )
Nausea	1% [1%, 3%] (2 studies)(8,34) <span style="color: orange;">■</span>	4% [1%, 8%] (1 study)(15) <span style="color: red;">■</span>
Vomiting	1% [0%, 2%] (2 studies)(8,34) <span style="color: orange;">■</span>	1% [0%, 3%] (1 study)(18) <span style="color: orange;">■</span>
Cluster of symptoms: Diarrhea or vomiting Vomiting/nausea Nausea/Vomiting/Diarrhea Stomach/abdominal pain	No studies No studies No studies 3% [0%, 9%] (1 study)(4) <span style="color: orange;">■</span>	5% [4%, 6%] (1 study)(12) <span style="color: orange;">■</span> 2% [1%, 4%] (1 study)(21) <span style="color: red;">■</span> 7% [2%, 11%] (1 study)(17) <span style="color: orange;">■</span> 1% [0%, 3%] (1 study)(4) <span style="color: orange;">■</span>
Indigestion	1% [0%, 2%] (1 study)(8) <span style="color: orange;">■</span>	No studies
Constipation	No studies	6% [2%, 10%] (1 study)(4) <span style="color: orange;">■</span>
Ulcer	1% [0%, 3%] (1 study)(31) <span style="color: red;">■</span>	No studies
Nutritional concerns: Necessitating a dietetics referral Concern about weight/nutrition	16% [9%, 23%] (1 study)(30) <span style="color: orange;">■</span> 12% [6%, 18%] (1 study)(30) <span style="color: orange;">■</span>	No studies No studies
<b>Organ damage</b>		
No studies		
<b>Eye-related</b>		
Eye irritations	21% [3%, 68%] (2 studies)(31,57) <span style="color: red;">■</span>	No studies
Red eyes	8% [2%, 33%] (2 studies)(32,57) <span style="color: red;">■</span>	No studies
Conjunctivitis	4% [1%, 7%] (1 study)(26) <span style="color: orange;">■</span>	2% [1%, 4%] (1 study)(21) <span style="color: red;">■</span>
Vision disturbance/blurring	No studies	4% [2%, 6%] (1 study)(21) <span style="color: red;">■</span>
Visual loss	5% [3%, 8%] (1 study)(2) <span style="color: red;">■</span>	No studies
Dry eye disease: From objective tests From subjective tests	62% [51%, 74%] (1 study)(57) <span style="color: red;">■</span> 47% [35%, 59%] (1 study)(57) <span style="color: red;">■</span>	No studies No studies
Eye disorders	No studies	1% [0%, 3%] (1 study)(18) <span style="color: orange;">■</span>
<b>Mental Health</b>		
At least one mental health symptom (depression/anxiety/PTSD/obsessive compulsive)	No studies	36% [30%, 42%] (1 study)(55) <span style="color: red;">■</span>
At least one current major psychiatric disorder (DSM-5 criteria for diagnosis)	No studies	24% [19%, 30%] (1 study)(55) <span style="color: red;">■</span>
Anxiety	19% [10%, 32%] (4 studies)(5,8,33,37) <span style="color: orange;">■</span> <i>low certainty</i>	32% [22%, 43%] (4 studies)(11,14,54,55) <span style="color: orange;">■</span> <i>very low certainty</i>
Major anxiety disorder (DSM-5 criteria for diagnosis)	No studies	9% [5%, 13%] (1 study)(55) <span style="color: red;">■</span>
Depression	23% [14%, 34%] (5 studies)(5,6,33,37,53) <span style="color: orange;">■</span> <i>low certainty</i>	17% [13%, 22%] (3 studies)(11,55,58) <span style="color: orange;">■</span> <i>low certainty</i>
Major depressive disorder (DSM-5 criteria for diagnosis)	No studies	9% [5%, 13%] (1 study)(55) <span style="color: red;">■</span>

<b>Symptoms, sequelae and difficulties conducting usual activities</b>	<b>Short-term (4-12 weeks after COVID-19 diagnosis)</b> (prevalence* in %, [95% CI], (number of studies), risk of bias across studies [low <span style="color: green;">■</span> , moderate <span style="color: orange;">■</span> or high <span style="color: red;">■</span> ], <i>GRADE assessment where applicable</i> )	<b>Long-term (&gt;12 weeks after COVID-19 diagnosis)</b> (prevalence* in %, [95% CI], (number of studies), risk of bias across studies [low <span style="color: green;">■</span> , moderate <span style="color: orange;">■</span> or high <span style="color: red;">■</span> ], <i>GRADE assessment where applicable</i> )
Anxiety or depression	22% [19%, 25%] (2 studies)(30,56) <span style="color: orange;">■</span> <i>low certainty</i>	23% [21%, 25%] (1 study)(12) <span style="color: orange;">■</span>
Anxiety and depression	No studies	2% [0%, 5%] (1 study)(18) <span style="color: orange;">■</span>
Postpartum depression	No studies	17% [8%, 27%] (1 study)(58) <span style="color: orange;">■</span>
Post-traumatic stress disorder	23% [14%, 35%] (5 studies)(5,30,37,53,59) <span style="color: orange;">■</span> <i>low certainty</i>	18% [7%, 41%] (4 studies)(38,55,58,60) <span style="color: red;">■</span> <i>very low certainty</i>
Depression or post-traumatic stress disorder	No studies	22% [12%, 32%] (1 study)(58) <span style="color: orange;">■</span> <i>very low certainty</i>
Obsessive compulsive	No studies	26% [18%, 34%] (1 study)(55) <span style="color: red;">■</span> <i>low certainty</i>
Feelings of distress due to symptoms (only a little/quite a lot/a great deal)	35% [19%, 52%] (1 study)(4) <span style="color: orange;">■</span>	42% [32%, 52%] (1 study)(4) <span style="color: orange;">■</span>
Overall mental health (poor/fair)	17% [12%, 22%] (1 study)(31) <span style="color: red;">■</span>	No studies
Mental health - poor	No studies	33% [27%, 37%] (1 study)(13) <span style="color: orange;">■</span>
Psychiatric morbidities	17% [7%, 27%] (1 study)(37) <span style="color: orange;">■</span>	No studies
<b>Other mental health symptoms</b>		
Low mood	No studies	40% [31%, 48%] (1 study)(14) <span style="color: orange;">■</span>
Panic attack	13% [11%, 16%] (1 study)(56) <span style="color: orange;">■</span>	No studies
Always/often emotional	14% [9%, 19%] (1 study)(31) <span style="color: red;">■</span>	No studies
Thoughts of self-harm	2% [0%, 5%] (1 study)(30) <span style="color: orange;">■</span>	No studies
Anorexia	2% [0%, 4%] (1 study)(8) <span style="color: orange;">■</span>	No studies
<b>Quality of life (QoL)</b>		
Decreased or worsened QoL	53% [43%, 63%] (1 study)(30) <span style="color: orange;">■</span>	30% [23%, 37%] (1 study)(16) <span style="color: orange;">■</span>
Worse health-related QoL	No studies	54% [44%, 63%] (1 study)(54) <span style="color: orange;">■</span>
QoL (poor or fair)	23% [17%, 29%] (1 study)(31) <span style="color: red;">■</span>	No studies
Social relationships (poor or fair)	60% [53%, 68%] (1 study)(31) <span style="color: red;">■</span>	No studies
Social active role (poor or fair)	31% [25%, 38%] (1 study)(31) <span style="color: red;">■</span>	No studies
Disrupted social life (moderately or markedly)	15% [11%, 19%] (1 study)(3) <span style="color: orange;">■</span>	No studies
Disrupted home life (moderately or markedly)	12% [9%, 16%] (1 study)(3) <span style="color: orange;">■</span>	No studies
<b>Sleep-related</b>		
Sleep disturbances or difficulties	18% [4%, 51%] (3 studies)(3,5,56) <span style="color: orange;">■</span> <i>very low certainty</i>	15% [6%, 34%] (3 studies)(3,12,14) <span style="color: orange;">■</span> <i>low certainty</i>
Insomnia	12% [5%, 25%] (2 studies)(4,56) <span style="color: orange;">■</span> <i>low certainty</i>	22% [17%, 28%] (2 studies)(4,55) <span style="color: orange;">■</span> <i>moderate certainty</i>
Major insomnia disorder (DSM-5 criteria for diagnosis)	No studies	3% [1%, 5%] (1 study)(55) <span style="color: red;">■</span>
Hypersomnia	3% [0%, 9%] (1 study)(4) <span style="color: orange;">■</span>	3% [0%, 6%] (1 study)(4) <span style="color: orange;">■</span>
Nightmare	2% [1%, 3%] (1 study)(56) <span style="color: orange;">■</span>	No studies
<b>Overall functioning</b>		

<b>Symptoms, sequelae and difficulties conducting usual activities</b>	<b>Short-term (4-12 weeks after COVID-19 diagnosis)</b> (prevalence* in %, [95% CI], (number of studies), risk of bias across studies [low <span style="color: green;">■</span> , moderate <span style="color: orange;">■</span> or high <span style="color: red;">■</span> ], <i>GRADE assessment where applicable</i> )	<b>Long-term (&gt;12 weeks after COVID-19 diagnosis)</b> (prevalence* in %, [95% CI], (number of studies), risk of bias across studies [low <span style="color: green;">■</span> , moderate <span style="color: orange;">■</span> or high <span style="color: red;">■</span> ], <i>GRADE assessment where applicable</i> )
General functional impairment (i.e. difficulties conducting usual activities)	35% [18%, 56%] (5 studies)(5,8,9,30,37) <span style="color: orange;">■</span> <i>low certainty</i>	17% [5%, 44%] (6 studies)(3,12,16,17,38,54) <span style="color: orange;">■</span> <i>very low certainty</i>
Still felt ill or not back to full health	41% [28%, 55%] (5 studies)(1,2,9,28,29) <span style="color: orange;">■</span> <i>low certainty</i>	No studies
Decrease in perceived health	39% [29%, 49%] (1 study)(30) <span style="color: orange;">■</span>	No studies
General perception of health (poor/fair or poor)	10% [2%, 39%] (2 studies)(9,31) <span style="color: red;">■</span>	No studies
Physical health (poor/fair or poor)	27% [21%, 34%] (1 study)(31) <span style="color: red;">■</span>	15% [12%, 18%] (1 study)(13) <span style="color: orange;">■</span>
Decreased tolerance to exercise	No studies	21% [16%, 26%] (1 study)(38) <span style="color: red;">■</span>
Physical activity (none/little) or inactive	14% [9%, 19%] (1 study)(31) <span style="color: red;">■</span>	18% [14%, 22%] (1 study)(19) <span style="color: red;">■</span>
Low physical performance	No studies	1% [0%, 3%] (1 study)(18) <span style="color: orange;">■</span>
<b>Difficulties with the following activities related to mobility:</b>		
Worsened or decline in mobility	37% [28%, 46%] (1 study)(30) <span style="color: orange;">■</span>	22% [14%, 30%] (1 study)(54) <span style="color: orange;">■</span>
Walking	15% [13%, 18%] (2 studies)(31,56) <span style="color: red;">■</span>	7% [6%, 8%] (1 study)(12) <span style="color: orange;">■</span>
Walking fast	46% [37%, 54%] (1 study)(31) <span style="color: red;">■</span>	No studies
Confined to bed (unable to walk)	2% [1%, 3%] (1 study)(56) <span style="color: orange;">■</span>	No studies
Climbing stairs	30% [23%, 37%] (1 study)(31) <span style="color: red;">■</span>	No studies
Lifting	20% [14%, 27%] (1 study)(31) <span style="color: red;">■</span>	No studies
Lifting and carrying	25% [19%, 32%] (1 study)(31) <span style="color: red;">■</span>	No studies
Sweeping	12% [7%, 17%] (1 study)(31) <span style="color: red;">■</span>	No studies
Making the bed	6% [2%, 10%] (1 study)(31) <span style="color: red;">■</span>	No studies
Poor results in the 6-minute walk test:		
Unable to complete test	No studies	49% [40%, 58%] (1 study)(10) <span style="color: red;">■</span>
Walked less than the normal range	No studies	23% [21%, 25%] (1 study)(12) <span style="color: orange;">■</span>
Desaturation or abnormal results at the end of the test	7% [4%, 13%] (2 studies)(33,36) <span style="color: red;">■</span>	12% [0%, 88%] (2 studies)(11,61) <span style="color: orange;">■</span>
Desaturation during the test	3% [0%, 6%] (1 study)(28) <span style="color: orange;">■</span>	No studies
<b>Difficulties with the following activities related to self-care:</b>		
Worsened or decline in self-care	16% [9%, 23%] (1 study)(30) <span style="color: orange;">■</span>	17% [10%, 24%] (1 study)(54) <span style="color: orange;">■</span>
Washing or dressing oneself	10% [7%, 12%] (1 study)(56) <span style="color: orange;">■</span>	1% [0%, 1%] (1 study)(12) <span style="color: orange;">■</span>
Dressing oneself	3% [1%, 7%] (1 study)(31) <span style="color: red;">■</span>	No studies
Meal preparation	6% [3%, 10%] (1 study)(31) <span style="color: red;">■</span>	No studies
Washing dishes	4% [1%, 8%] (1 study)(31) <span style="color: red;">■</span>	No studies
<b>Employment-related:</b>		
Not returned to work	31% [23%, 40%] (1 study)(28) <span style="color: orange;">■</span> <i>very low certainty</i>	9% [3%, 16%] (1 study)(62) <span style="color: orange;">■</span> <i>very low certainty</i>
Sick-leave	11% [5%, 16%] (1 study)(1) <span style="color: red;">■</span> <i>very low certainty</i>	No studies

<b>Symptoms, sequelae and difficulties conducting usual activities</b>	<b>Short-term (4-12 weeks after COVID-19 diagnosis)</b> (prevalence* in %, [95% CI], (number of studies), risk of bias across studies [low <span style="color: green;">■</span> , moderate <span style="color: orange;">■</span> or high <span style="color: red;">■</span> ], <i>GRADE assessment where applicable</i> )	<b>Long-term (&gt;12 weeks after COVID-19 diagnosis)</b> (prevalence* in %, [95% CI], (number of studies), risk of bias across studies [low <span style="color: green;">■</span> , moderate <span style="color: orange;">■</span> or high <span style="color: red;">■</span> ], <i>GRADE assessment where applicable</i> )
Any work impairment due to health	No studies	39% [28%, 50%] (1 study)(17) <span style="color: orange;">■</span> <i>low certainty</i>
Missed work due to health	No studies	12% [4%, 19%] (1 study)(17) <span style="color: orange;">■</span> <i>very low certainty</i>
Disrupted work life (moderately or markedly)	8% [5%, 11%] (1 study)(3) <span style="color: orange;">■</span>	No studies
<b>Complications from COVID-19*</b>		
Interstitial lung disease	Not applicable	12% [6%, 17%] (1 study)(10) <span style="color: red;">■</span>
Deep vein thrombosis	Not applicable	7% [3%, 12%] (1 study)(10) <span style="color: red;">■</span>
Pulmonary hypertension	Not applicable	7% [3%, 12%] (1 study)(10) <span style="color: red;">■</span>
Pulmonary embolism	Not applicable	3% [2%, 7%] (2 studies)(10,11) <span style="color: red;">■</span>
Pleural effusion	Not applicable	0% [0%, 0%] (1 study)(39) <span style="color: orange;">■</span>
Emphysema	Not applicable	2% [0%, 4%] (1 study)(39) <span style="color: orange;">■</span>
<b>Computed tomography findings:</b>		
Abnormal findings	Not applicable	24% [3%, 78%] (2 studies)(61,62) <span style="color: orange;">■</span>
Incomplete absorption	Not applicable	61% [52%, 69%] (1 study)(63) <span style="color: orange;">■</span>
Ground glass opacities	Not applicable	49% [29%, 70%] (4 studies)(11,23,39,63) <span style="color: orange;">■</span>
Fibrosis-like findings	Not applicable	28% [20%, 37%] (3 studies)(23,39,63) <span style="color: orange;">■</span>
Bronchial dilation	Not applicable	11% [6%, 17%] (1 study)(63) <span style="color: orange;">■</span>
Parenchymal band	Not applicable	32% [24%, 40%] (1 study)(63) <span style="color: orange;">■</span>
Irregular interfaces	Not applicable	20% [13%, 28%] (1 study)(63) <span style="color: orange;">■</span>
Interlobular septal thickening	Not applicable	81% [70%, 91%] (1 study)(11) <span style="color: orange;">■</span>
Thickening of the adjacent pleura	Not applicable	32% [24%, 41%] (1 study)(39) <span style="color: red;">■</span>
Bronchiectasis	Not applicable	47% [10%, 87%] (2 studies)(11,39) <span style="color: orange;">■</span>
Atelectasis	Not applicable	17% [8%, 34%] (2 studies)(11,39) <span style="color: orange;">■</span>
Nodules	Not applicable	28% [10%, 57%] (2 studies)(11,39) <span style="color: orange;">■</span>
Lesions:		
Reticular	Not applicable	49% [36%, 62%] (1 study)(11) <span style="color: orange;">■</span>
Fibrotic	Not applicable	4% [0%, 8%] (1 study)(11) <span style="color: orange;">■</span>
Lung parenchyma	Not applicable	38% [29%, 48%] (1 study)(23) <span style="color: orange;">■</span>
Interlobar pleural traction	Not applicable	17% [10%, 24%] (1 study)(39) <span style="color: orange;">■</span>
Honeycombing	Not applicable	3% [0%, 6%] (1 study)(39) <span style="color: orange;">■</span>
At least one lobe affected by ground glass or consolidative opacities	Not applicable	60% [47%, 72%] (1 study)(11) <span style="color: orange;">■</span>
<b>Pulmonary function test findings:</b>		
Impaired pulmonary function	Not applicable	42% [31%, 53%] (1 study)(62) <span style="color: orange;">■</span>
Less than expected or abnormal findings:		
Diffusing capacity (DLCO)	Not applicable	52% [38%, 65%] (5 studies)(11,23,38,39,61) <span style="color: orange;">■</span>
Total lung capacity (TLC)	Not applicable	37% [25%, 49%] (1 study)(11) <span style="color: orange;">■</span>
Forced vital capacity (FVC)	Not applicable	13% [5%, 29%] (2 studies)(23,61) <span style="color: orange;">■</span>

<b>Symptoms, sequelae and difficulties conducting usual activities</b>	<b>Short-term (4-12 weeks after COVID-19 diagnosis)</b> (prevalence* in %, [95% CI], (number of studies), risk of bias across studies [low <span style="color: green;">■</span> , moderate <span style="color: orange;">■</span> or high <span style="color: red;">■</span> ], <i>GRADE assessment where applicable</i> )	<b>Long-term (&gt;12 weeks after COVID-19 diagnosis)</b> (prevalence* in %, [95% CI], (number of studies), risk of bias across studies [low <span style="color: green;">■</span> , moderate <span style="color: orange;">■</span> or high <span style="color: red;">■</span> ], <i>GRADE assessment where applicable</i> )
Forced expiratory volume (FEV1)	Not applicable	10% [4%, 24%] (2 studies)(23,61) <span style="color: orange;">■</span>
FVC/FEV1	Not applicable	0% [0%, 0%] (1 study)(61) <span style="color: orange;">■</span>
Forced expiratory flow (FEF)	Not applicable	4% [1%, 8%] (1 study)(23) <span style="color: orange;">■</span>
<b>Other symptoms/sequelae</b>		
General pain/discomfort	40% [24%, 58%] (2 studies)(5,56) <span style="color: orange;">■</span> <i>low certainty</i>	28% [23%, 34%] (2 studies)(12,54) <span style="color: orange;">■</span> <i>moderate certainty</i>
Worsened pain/discomfort	19% [11%, 27%] (1 study)(30) <span style="color: orange;">■</span>	No studies
Hair fall/loss	10% [8%, 12%] (2 studies)(26,56) <span style="color: orange;">■</span>	7% [3%, 19%] (4 studies)(4,12,17,18) <span style="color: orange;">■</span>
Skin-related	10% [8%, 13%] (3 studies)(1,2,26) <span style="color: orange;">■</span>	No studies
Sweating	17% [12%, 23%] (1 study)(26) <span style="color: orange;">■</span>	No studies
Rashes	3% [0%, 9%] (1 study)(4) <span style="color: orange;">■</span>	4% [2%, 7%] (5 studies)(4,12,14,15,21) <span style="color: orange;">■</span>
Change in menstruation	No studies	3% [0%, 8%] (1 study)(4) <span style="color: orange;">■</span>
Skin peeling	No studies	1% [0%, 2%] (1 study)(4) <span style="color: orange;">■</span>
Seizures/cramps	No studies	1% [0%, 2%] (1 study)(21) <span style="color: red;">■</span>
Ear pain	0.5% [0%, 1%] (1 study)(8) <span style="color: orange;">■</span>	1% [0%, 2%] (2 studies)(18,21) <span style="color: red;">■</span>
Hearing disorder	No studies	1% [0%, 3%] (1 study)(18) <span style="color: orange;">■</span>
Mouth sores	No studies	1% [0%, 3%] (1 study)(18) <span style="color: orange;">■</span>

**Risk of Bias in the majority of studies reporting the outcome:** ■ >50% were at low risk of bias; ■ >50% were at moderate risk of bias; ■ ≥50% were at high risk of bias

\* Prevalence estimate and 95% confidence interval for the outcome; results of a random effects meta-analysis of proportions were provided where 2 or more studies were included.; \* Prevalence data in the short-term for these outcomes were out of scope for this review.

## References:

- (1) Carvalho-Schneider C., Laurent E., Lemaigen A., Beaufile E., Bourbao-Tournois C., Laribi S., et al. Follow-up of adults with noncritical COVID-19 two months after symptom onset. *Clin Microbiol Infect* 2020.
- (2) Moreno-Perez O, Merino E, Boix V, Leon-Ramirez J, Asensio S, Ruiz-Torregrosa P, et al. Post-acute COVID-19 syndrome. Incidence and risk factors: A Mediterranean cohort study. *J Infect* 2021;82(3):378-383.
- (3) Havervall S, Rosell A, Mangsbo SM, Nilsson P, Hober S, Thalin C. Symptoms and Functional Impairment Assessed 8 Months After Mild COVID-19 Among Health Care Workers. *JAMA* 2021 Apr 7.
- (4) Buonsenso D, Munblit D, De Rose C, Sinatti D, Ricchiuto A, Carfi A, et al. Preliminary Evidence on Long Covid in children. *Acta Paediatr* 2021.
- (5) D'Cruz, R. F., Waller, M. D., Perrin, F., Periseneris, J., Norton, S., Smith, L. J., Patrick, T., Walder, D., Heitmann, A., Lee, K., Madula, R., McNulty, W., Macedo, P., Lyall, R., Warwick, G., Galloway, J. B., Birring, S. S., Patel, A., Patel, I., & Jolley, C. J. Chest radiography is a poor predictor of respiratory symptoms and functional impairment in survivors of severe COVID-19 pneumonia. *ERJ Open Research* 2021;7(1).
- (6) Mandal S., Barnett J., Brill S.E., Brown J.S., Denny E.K., Hare S.S., et al. 'Long-COVID': A cross-sectional study of persisting symptoms, biomarker and imaging abnormalities following hospitalisation for COVID-19. *Thorax* 2020:2020-215818.
- (7) TG, Tudoran M, Tudoran C, Lazureanu VE, Marinescu AR, Pop GN, Pescariu AS, Enache A, Cut. Alterations of left ventricular function persisting during post-acute COVID-19 in subjects without previously diagnosed cardiovascular pathology; 8004210 CSR - Reports results. *Journal of personalized medicine* 2021;11(3).
- (8) Moradian ST, Parandeh A, Khalili R, Karimi L. Delayed Symptoms in Patients Recovered from COVID-19. *Iran J Public Health* 2020;49(11):2120-2127.
- (9) Blair PW, Brown DM, Jang M, Antar AAR, Keruly JC, Bachu VS, et al. The Clinical Course of COVID-19 in the Outpatient Setting: A Prospective Cohort Study. *Open forum infect dis* 2021;8(2):ofab007.
- (10) Alharthy A., Abuhamdah M., Balhamar A., Faqih F., Nasim N., Ahmad S., et al. Residual Lung Injury in Patients Recovering From COVID-19 Critical Illness: A Prospective Longitudinal Point-of-Care Lung Ultrasound Study. *J Ultrasound Med* 2020.
- (11) Gonzalez J, Carmona P, Santistev S, Monge A, Zuil M, Torres G, et al. PULMONARY FUNCTION AND RADIOLOGICAL FEATURES IN SURVIVORS OF CRITICAL COVID-19: A 3-MONTH PROSPECTIVE COHORT. *Chest* 2021.
- (12) Huang C, Huang L, Wang Y, Li X, Ren L, Gu X, et al. 6-month consequences of COVID-19 in patients discharged from hospital: a cohort study. *Lancet* 2021.
- (13) Qu G, Zhen Q, Wang W, Fan S, Wu Q, Zhang C, et al. Health-related quality of life of covid-19 patients after discharge: A multicenter follow-up study. *J Clin Nurs* 2021:No-Specified.

- (14) Sykes DL, Holdsworth L, Jawad N, Gunasekera P, Morice AH, Crooks MG. Post-COVID-19 Symptom Burden: What is Long-COVID and How Should We Manage It? *Lung* 2021.
- (15) Petersen M.S., Kristiansen M.F., Hanusson K.D., Danielsen M.E., A Steig B, Gaini S., et al. Long COVID in the Faroe Islands - a longitudinal study among non-hospitalized patients. *Clin Infect Dis* 2020.
- (16) Logue JK, Franko NM, McCulloch DJ, McDonald D, Magedson A, Wolf CR, Chu, H.Y. Sequelae in Adults at 6 Months After COVID-19 Infection. *JAMA network open* 2021;4(2):e210830.
- (17) Jacobson KB, Bonilla H, Subramanian A, Grant P, Rao M, Hack I, et al. Patients with uncomplicated COVID-19 have long-term persistent symptoms and functional impairment similar to patients with severe COVID-19: a cautionary tale during a global pandemic. *Clin Infect Dis* 2021.
- (18) Klein H, Asseo K, Niv MY, Benjamini Y, Karni N, Nir-Paz R, et al. Onset, duration and unresolved symptoms, including smell and taste changes, in mild COVID-19 infection: a cohort study in Israeli patients. *Clin Microbiol Infect* 2021.
- (19) Anastasio F, Barbuto S, Cosma P, Fugagnoli A, Rossi G, Parravicini M, et al. Medium-term impact of COVID-19 on pulmonary function, functional capacity and quality of life. *Eur Respir J* 2021.
- (20) A, Trunfio M, Venuti F, Alladio F, Longo BM, Burdino E, Cerutti F, Ghisetti V, Bertucci R, Picco C, Bonora S, Di Perri G, Calcagno. Diagnostic SARS-CoV-2 Cycle Threshold Value Predicts Disease Severity, Survival, and Six-Month Sequelae in COVID-19 Symptomatic Patients; 7917896 CSR - Reports results. *Viruses* 2021;13(2).
- (21) Stavem K., Ghanima W., Olsen M.K., Gilboe H.M., Einvik G. Persistent symptoms 1.5-6 months after COVID-19 in non-hospitalised subjects: A population-based cohort study. *Thorax* 2020;216377.
- (22) Khasawneh L., Al-Omar K., Tarifi A.A., Shaout D.M.K., Abu-Ghazal S.Y.A., Alfazza'A T.S.M. The correlation between BMI and COVID-19 outcomes. *Syst Rev Pharm* 2020;11(6):1236-1239.
- (23) Froidure A, Mahsouli A, Liistro G, De Greef J, Belkhir L, Gérard L, Bertrand A, Koenig S, Pothén L, Yildiz H, Mwenge B, Aboubakar F, Gohy S, Pilette C, Reyckler G, Coche E, Yombi JC, Ghaye B. Integrative respiratory follow-up of severe COVID-19 reveals common functional and lung imaging sequelae. *Respir Med.* 2021 May;181:106383. doi: 10.1016/j.rmed.2021.106383. Epub 2021 Apr 4. PMID: 33839588; PMCID: PMC8019490.
- (24) G, Stavem K, Ghanima W, Olsen MK, Gilboe HM, Einvik. Prevalence and Determinants of Fatigue after COVID-19 in Non-Hospitalized Subjects: a Population-Based Study; 7921928 CSR - Reports results. *International journal of environmental research and public health* 2021;18(4).
- (25) JS, Townsend L, Fogarty H, Dyer A, Martin-Loeches I, Bannan C, Nadarajan P, Bergin C, O'Farrelly C, Conlon N, Bourke NM, Ward SE, Byrne M, Ryan K, O'Connell N, O'Sullivan JM, Ni Cheallaigh C, O'Donnell. Prolonged elevation of D-dimer Levels in Convalescent COVID-19 patients is Independent of the Acute Phase Response. *Journal of thrombosis and haemostasis : JTH* 2021.
- (26) Cortes-Telles A, Figueroa-Hurtado E, Pou-Aguilar Y, Lopez-Romero S, Wong AW, Milne KM, et al. Pulmonary function and functional capacity in COVID-19 survivors with persistent dyspnoea. *Respir Physiol Neurobiol* 2021;288:103644.

- (27) Mafort TT, Rufino R, da Costa CH, da Cal MS, Monnerat LB, Litrento PF, et al. One-month outcomes of patients with SARS-CoV-2 infection and their relationships with lung ultrasound signs. *Ultrasound J* 2021;13(1):19.
- (28) Townsend L., Dyer A.H., Jones K., Dunne J., Mooney A., Gaffney F., et al. Persistent fatigue following SARS-CoV-2 infection is common and independent of severity of initial infection. *PLoS ONE* 2020;15(11):e0240784.
- (29) Townsend L, Dowds J, O'Brien K, Sheill G, Dyer AH, O'Kelly B, et al. Persistent Poor Health Post-COVID-19 Is Not Associated with Respiratory Complications or Initial Disease Severity. *Ann Am Thorac Soc* 2021.
- (30) Halpin SJ, McIvor C, Whyatt G, Adams A, Harvey O, McLean L, et al. Postdischarge symptoms and rehabilitation needs in survivors of COVID-19 infection: A cross-sectional evaluation. *J Med Virol* 2021;93(2):1013-1022.
- (31) Jacobs L.G., Paleoudis E.G., Bari D.L.-D., Nyirenda T., Friedman T., Gupta A., et al. Persistence of symptoms and quality of life at 35 days after hospitalization for COVID-19 infection. *PLoS ONE* 2020;15(12):e0243882.
- (32) Landi F, Carfi A, Benvenuto F, Brandi V, Ciciarello F, Lo Monaco MR, et al. Predictive Factors for a New Positive Nasopharyngeal Swab Among Patients Recovered From COVID-19; 33041095. *Am J Prev Med* 2021;60(1):13-19.
- (33) Raman B., Cassar M.P., Tunnicliffe E.M., Filippini N., Griffanti L., Alfaro-Almagro F., et al. Medium-term effects of SARS-CoV-2 infection on multiple vital organs, exercise capacity, cognition, quality of life and mental health, post-hospital discharge. *EClinicalMedicine* 2021;31:100683.
- (34) Boscolo-Rizzo P, Borsetto D, Fabbris C, Spinato G, Frezza D, Menegaldo A, et al. Evolution of Altered Sense of Smell or Taste in Patients with Mildly Symptomatic COVID-19; 32614442. *JAMA Otolaryngology - Head and Neck Surgery* 2020;146(8):1-5.
- (35) Weerahandi H, Hochman KA, Simon E, Blaum C, Chodosh J, Duan E, et al. Post-Discharge Health Status and Symptoms in Patients with Severe COVID-19. *J Gen Intern Med* 2021.
- (36) Shah A.S., Wong A.W., Hague C.J., Murphy D.T., Johnston J.C., Ryerson C.J., et al. A prospective study of 12-week respiratory outcomes in COVID-19-related hospitalisations. *Thorax* 2020;216308.
- (37) de Graaf MA, Antoni ML, Janssen VR, Omara S, Schalijs MJ, ter Kuile MM, et al. Short-term outpatient follow-up of COVID-19 patients: A multidisciplinary approach. *EClinicalMedicine* 2021;32:100731.
- (38) M, Bellan M, Soddu D, Balbo PE, Baricich A, Zeppego P, Avanzi GC, Baldon G, Bartolomei G, Battaglia M, Battistini S, Binda V, Borg M, Cantaluppi V, Castello LM, Clivati E, Cisari C, Costanzo M, Croce A, Cuneo D, De Benedittis C, De Vecchi S, Feggi A, Gai M, Gambaro E, Gattoni E, Gramaglia C, Grisafi L, Guerriero C, Hayden E, Jona A, Invernizzi M, Lorenzini L, Loreti L, Martelli M, Marzullo P, Martino E, Panero A, Parachini E, Patrucco F, Patti G, Pirovano A, Prosperini P, Quaglino R, Rigamonti C, Sainaghi PP, Vecchi C, Zecca E, Pirisi. Respiratory and Psychophysical Sequelae Among Patients With COVID-19 Four Months After Hospital Discharge. *JAMA network open* 2021;4(1):e2036142.



- (39) H, Han X, Fan Y, Alwalid O, Li N, Jia X, Yuan M, Li Y, Cao Y, Gu J, Wu H, Shi. Six-Month Follow-up Chest CT findings after Severe COVID-19 Pneumonia; 7841877 CSR - Reports results. *Radiology* 2021;203153.
- (40) Printza A, Valsamidis K, Constantinidis J, Katotomichelakis M, Metallidis S, Panagopoulos P, et al. Smell and taste loss recovery time in covid-19 patients and disease severity. *J Clin Med* 2021;10(5):1-9.
- (41) Lascarrou J, Ottavy G, Gaultier A, Soumagne T, Serck N, Sauneuf B, et al. Identifying Clinical Phenotypes in Moderate to Severe Acute Respiratory Distress Syndrome Related to COVID-19: The COVADIS Study. *Front Med* 2021;8:632933.
- (42) Otte M.S., Eckel H.N.C., Poluschkin L., Klussmann J.P., Luers J.C. Olfactory dysfunction in patients after recovering from COVID-19. *Acta Otolaryngol* 2020;140(12):1032-1035.
- (43) Konstantinidis I., Delides A., Tsakiropoulou E., Maragoudakis P., Sapounas S., Tsiodras S. Short-Term Follow-Up of Self-Isolated COVID-19 Patients with Smell and Taste Dysfunction in Greece: Two Phenotypes of Recovery. *ORL* 2020;82(6):295-303.
- (44) Vaira L.A., Hopkins C., Petrocelli M., Lechien J.R., Chiesa-Estomba C.M., Salzano G., et al. Smell and taste recovery in coronavirus disease 2019 patients: A 60-day objective and prospective study. *J Laryngol Otol* 2020;134(8):703-709.
- (45) Niklassen AS, Draf J, Huart C, Hintschich C, Bocksberger S, Trecca EMC, Klimek L, Le Bon SD, Altundag A, Hummel T. COVID-19: Recovery from Chemosensory Dysfunction. A Multicentre study on Smell and Taste. *Laryngoscope*. 2021 May;131(5):1095-1100. doi: 10.1002/lary.29383. Epub 2021 Jan 15. PMID: 33404079.
- (46) Bulgurcu S., Oztutgan T., Baz E., Yonem A., Koc N.G., Erkul E., et al. Assessment of Smell and Taste Disorders in COVID-19: A Cross-sectional Study. *J Craniofac Surg* 2020.
- (47) Chiesa-Estomba C.M., Lechien J.R., Radulesco T., Michel J., Sowerby L.J., Hopkins C., et al. Patterns of smell recovery in 751 patients affected by the COVID-19 outbreak. *Eur J Neurol* 2020;27(11):2318-2321.
- (48) Riestra-Ayora J, Yanes-Diaz J, Esteban-Sanchez J, Vaduva C, Molina-Quiros C, Larran-Jimenez A, Martin-Sanz E. Long-term follow-up of olfactory and gustatory dysfunction in COVID-19: 6 months case-control study of health workers. *Eur Arch Otorhinolaryngol*. 2021 Mar 28:1–7. doi: 10.1007/s00405-021-06764-y. Epub ahead of print. PMID: 33774737; PMCID: PMC8004560.
- (49) Brandao Neto D, Fornazieri MA, Dib C, Di Francesco RC, Doty RL, Voegels RL, et al. Chemosensory Dysfunction in COVID-19: Prevalences, Recovery Rates, and Clinical Associations on a Large Brazilian Sample. *Otolaryngol Head Neck Surg* 2021;164(3):512-518.
- (50) Rusetsky Y, Meytel I, Mokoyan Z, Fisenko A, Babayan A, Malyavina U. Smell status in children infected with SARS-CoV-2. *Laryngoscope* 2021.
- (51) Song J, Deng Y, Wang H, Wang Z, Liao B, Ma J, et al. Self-reported Taste and Smell Disorders in Patients with COVID-19: Distinct Features in China. *Curr Med Sci* 2021;41(1):14-23.

- (52) Z, AlShakhs A, Almomen A, AlYaeesh I, AlOmairin A, AlMutairi AA, Alammam Z, Almomen H, Almomen. The Association of Smell and Taste Dysfunction with COVID19, And Their Functional Impacts; 7822753 CSR - Reports results. Indian journal of otolaryngology and head and neck surgery 2021:1-6.
- (53) Alemanno F, Houdayer E, Parma A, Del Forno A, Scatolini A, Angelone S, et al. COVID-19 cognitive deficits after respiratory assistance in the subacute phase: A COVID rehabilitation unit experience. PLoS ONE 2021;16(2):e0246590.
- (54) Walle-Hansen M, Ranhoff AH, Mellingsaeter M, Wang-Hansen M, Myrstad M. Health-related quality of life, functional decline, and long-term mortality in older patients following hospitalisation due to COVID-19. BMC Geriatr 2021;21(1):199.
- (55) Mazza MG, Palladini M, De Lorenzo R, Magnaghi C, Poletti S, Furlan R, Ciceri F; COVID-19 BioB Outpatient Clinic Study group, Rovere-Querini P, Benedetti F. Persistent psychopathology and neurocognitive impairment in COVID-19 survivors: Effect of inflammatory biomarkers at three-month follow-up. Brain Behav Immun. 2021 May;94:138-147. doi: 10.1016/j.bbi.2021.02.021. Epub 2021 Feb 24. PMID: 33639239; PMCID: PMC7903920.
- (56) Akter F., Mannan A., Mehedi H.M.H., Rob M.A., Ahmed S., Salauddin A., et al. Clinical characteristics and short term outcomes after recovery from COVID-19 in patients with and without diabetes in Bangladesh. Diabetes Metab Syndr Clin Res Rev 2020;14(6):2031-2038.
- (57) Gambini G., Savastano M.C., Savastano A., De Vico U., Crincoli E., Cozzupoli M.G., et al. Ocular surface impairment after COVID-19: a cohort study. Cornea 2020.
- (58) Wang Y., Chen L., Wu T., Shi H., Li Q., Jiang H., et al. Impact of Covid-19 in pregnancy on mother's psychological status and infant's neurobehavioral development: a longitudinal cohort study in China. BMC Med 2020;18(1):347.
- (59) Horn M, Wathélet M, Fovet T, Amad A, Vuotto F, Faure K, et al. Is COVID-19 Associated With Posttraumatic Stress Disorder? J Clin Psychiatry 2020;82(1).
- (60) Einvik G, Dammen T, Ghanima W, Heir T, Stavem K. Prevalence and risk factors for post-traumatic stress in hospitalized and non-hospitalized COVID-19 patients. Int J Environ Res Public Health 2021;18(4):1-12.
- (61) Blanco J, Romero L, Cobos-Ceballos M, Jurado-Gamez B, Navarro F, Olalla J, et al. Pulmonary long-term consequences of COVID-19 infections after hospital discharge. Clin Microbiol Infect 2021.
- (62) Liang L., Yang B., Jiang N., Fu W., He X., Zhou Y., et al. Three-month Follow-up Study of Survivors of Coronavirus Disease 2019 after Discharge. J Korean Med Sci 2020;35(47):e418.
- (63) L,Zhang D, Zhang C, Li X, Zhao J, An C, Peng C, Wang. Thin-section computed tomography findings and longitudinal variations of the residual pulmonary sequelae after discharge in patients with COVID-19: a short-term follow-up study; 7950423 CSR - Reports results. Eur Radiol 2021.

**Table 3. Most prevalent symptoms post-COVID-19 infection in children**

<b>Symptoms, sequelae and difficulties conducting usual activities</b>	<b>Prevalence (<math>\geq 4</math> weeks after COVID-19 diagnosis)*</b> (prevalence in %, [95% CI], (number of studies), risk of bias across studies [low <span style="color: green;">■</span> , moderate <span style="color: orange;">■</span> or high <span style="color: red;">■</span> ], <i>GRADE assessment</i> )
Persistence or presence of one or more symptoms at follow-up	58% [50%, 67%] (1 study) <span style="color: orange;">■</span> <i>low certainty</i>
Insomnia	19% [12%, 25%] (1 study) <span style="color: orange;">■</span> <i>low certainty</i>
Nasal congestion or runny nose	12% [7%, 18%] (1 study) <span style="color: orange;">■</span> <i>low certainty</i>
Fatigue	11% [5%, 16%] (1 study) <span style="color: orange;">■</span> <i>low certainty</i>
Concentration difficulties	10% [5%, 15%] (1 study) <span style="color: orange;">■</span> <i>low certainty</i>
Headache	10% [5%, 15%] (1 study) <span style="color: orange;">■</span> <i>low certainty</i>
Muscle pain	10% [5%, 15%] (1 study) <span style="color: orange;">■</span> <i>low certainty</i>
Weight loss	8% [3%, 12%] (1 study) <span style="color: orange;">■</span> <i>low certainty</i>

\* all findings were from a single study (Buonsenso 2021)