

1 **Language systems from lesion-symptom mapping in aphasia: A** 2 **meta-analysis of voxel-based lesion mapping studies**

3 Yoonhye Na^{1,2*}, JeYoung Jung^{3*}, Christopher Tench⁵⁻⁶, Dorothee P. Auer⁴⁻⁶, & Sung-
4 Bom Pyun^{2,7,8}

5

6 ¹ Department of Biomedical Sciences, Korea University College of Medicine, Seoul,
7 Republic of Korea

8 ² Brain convergence research center, Korea University College of Medicine, Seoul,
9 Republic of Korea

10 ³ School of Psychology, University of Nottingham, Nottingham, UK

11 ⁴ Sir Peter Mansfield Imaging Centre, University of Nottingham, Nottingham, UK

12 ⁵ Mental Health and Clinical Neurosciences, School of Medicine, University of
13 Nottingham, Nottingham, UK

14 ⁶ NIHR Nottingham Biomedical Research Centre, University of Nottingham,
15 Nottingham, UK

16 ⁷ Department of Physical Medicine and Rehabilitation, Anam Hospital, Korea
17 University College of Medicine, Seoul, Republic of Korea

18 ⁸ BK21 Graduate Program, Department of Biomedical Sciences, Korea University
19 College of Medicine, Seoul, Republic of Korea

20 * Joint first authors.

21 Corresponding author:

22 Prof Dorothee P. Auer, Radiological Sciences, Division of Clinical Neuroscience,
23 University of Nottingham, Nottingham, UK NG7 2UH. Email:

24 Dorothee.Auer@nottingham.ac.uk

25 Prof Sung-Bom Pyun, Department of Physical Medicine and Rehabilitation, Korea
26 University College of Medicine, Seoul, Republic of Korea. Goryodae-ro 73,
27 Seongbuk-gu, 02841, Email: mpyun@korea.ac.kr

28

29 Abstract

30 Background: Aphasia is one of the most common causes of post-stroke disabilities.
 31 As the symptoms and impact of post-stroke aphasia are heterogeneous, it is
 32 important to understand how topographical lesion heterogeneity in patients with
 33 aphasia is associated with different domains of language impairments. Here, we aim
 34 to provide a comprehensive overview of neuroanatomical basis in post-stroke
 35 aphasia through coordinate based meta-analysis of voxel-based lesion-symptom
 36 mapping studies.

37 Methods: We performed a meta-analysis of lesion-symptom mapping studies in post-
 38 stroke aphasia. We obtained coordinate-based functional neuroimaging data for
 39 2,007 individuals with aphasia from 25 studies that met predefined inclusion criteria.

40 Results: Overall, our results revealed that the distinctive patterns of lesions in
 41 aphasia are associated with different language functions and tasks. Damage to the
 42 insular-motor areas impaired speech with preserved comprehension and a similar
 43 pattern was observed when the lesion covered the insular-motor and inferior parietal
 44 lobule. Lesions in the frontal area severely impaired speaking with relatively good
 45 comprehension. The repetition-selective deficits only arise from lesions involving the
 46 posterior superior temporal gyrus. Damage in the anterior-to-posterior temporal
 47 cortex was associated with semantic deficits.

48 Conclusion: The association patterns of lesion topography and specific language
 49 deficits provide key insights into the specific underlying language pathways. Our
 50 meta-analysis results strongly support the dual pathway model of language
 51 processing, capturing the link between the different symptom complexes of aphasia
 52 and the different underlying location of damage.

53

54 Keywords

55 Stroke, Aphasia, Voxel-based lesion mapping, Meta-analysis, Neuroimaging

56

1. Introduction

Stroke is the most common cerebrovascular disease which occurs from interrupted or reduced blood supply or haemorrhage from the vessels to the brain tissue. The prevalence of stroke as well as stroke-related death and disability have increased over the last 25 years (Benjamin et al., 2019; Feigin et al., 2019; Lindsay et al., 2019). People suffer from various kinds of functional deficits after a stroke such as language disorders (e.g., aphasia or dyslexia), which affects at least one third of people with stroke, causing severe impact on daily life and communication. Post-stroke aphasia is heterogeneous and was classically defined by various categorical subtypes (e.g., motor [Broca] aphasia or sensory [Wernicke] aphasia) with distinct differences in the underlying lesion location identified in small autopsy studies. To better understand the granular brain-behaviour relationship in stroke populations and predict stroke outcome access to vast amount of imaging data has been instrumental (Hope, Seghier, Leff, & Price, 2013; Seghier et al., 2016). Here, we aim to provide an overview of neuroanatomical basis in post-stroke aphasia through coordinate based meta-analysis (CBMA) of voxel-based lesion-symptom mapping studies.

Over a century, lesion-symptom mapping studies have established the relationship between brain and behaviour building on the pioneering discovery by Paul Broca based on autopsy findings in a stroke patient. Traditional lesion-symptom mapping approaches have used lesion overlap and lesion subtraction methods, comparing a group of patients with a healthy or other patient control group (Damasio, 1989). More recent approaches have introduced advanced statistical methods for detailed topographical analysis of the brain function-lesion interrelation such as voxel-based lesion-symptom mapping (VLSM) (Bates et al., 2003), that has been widely used in stroke lesion analysis. VLSM is an image analysis technique to investigate the relationship between brain tissue damage and associated symptom development on a voxel-by-voxel basis, typically using magnetic resonance images. The first VLSM study revealed that speech fluency and language comprehension in patients with aphasia showed distinctive representations in anterior and posterior regions in the left hemisphere such that fluency was most impaired when stroke lesions affected the insular and arcuate fasciculus, and comprehension was most

88 affected by lesions in the middle temporal gyrus (MTG) (Bates et al., 2003). Since
89 then, VLSM has been used in examining various aspects of language impairments in
90 post-stroke aphasia including naming (Baldo, Arévalo, Patterson, & Dronkers, 2013),
91 reading (Piras & Marangolo, 2009), repetition (Baldo, Katseff, & Dronkers, 2012) and
92 semantic processing (Harvey & Schnur, 2015; Schwartz et al., 2009). These findings
93 have provided novel insights into the neuroanatomical basis of aphasia by examining
94 the relationship between the lesions and heterogeneous symptoms exploiting the
95 power of automated topographical analysis of large and well phenotyped patient
96 groups.

97 The traditional neurological model of language illustrates a division between
98 production and comprehension within the left perisylvian cortex including Broca's
99 area (Berker, Berker, & Smith, 1986) and Wernicke's area (Bogen & Bogen, 1976):
100 lesions in Broca's area (inferior frontal regions) disturb speech production, lesions in
101 Wernicke's area (posterior superior temporal regions) interrupt language
102 comprehension, and the disconnection between these regions (lesions in arcuate
103 fasciculus) disrupts their communication, resulting in the failure in repetition of heard
104 speech (Lichtheim, 1885). Building on rich evidence from neurological and functional
105 imaging studies, Hickock and Poeppel (Hickok & Poeppel, 2000, 2004) and others
106 proposed a dual stream model that language is subserved by two distinctive
107 pathways (Warren, Wise, & Warren, 2005; Wise, 2003). The ventral stream projects
108 ventrolaterally to middle and inferior posterior temporal cortex which serves as an
109 interface between sound-based representations of speech to widely distributed
110 conceptual representations. The dorsal stream involved in mapping sound onto
111 articulatory representations projects dorsoposteriorly toward inferior parietal and
112 frontal regions. Most recent models include brain areas beyond the classical
113 perisylvian language areas such as the anterior temporal lobe involved in processing
114 of word and sentence meaning (Binder & Desai, 2011; Dronkers, Wilkins, Van Valin,
115 Redfern, & Jaeger, 2004; Patterson, Nestor, & Rogers, 2007). In addition, the
116 advance of diffusion tensor imaging has led to significant understanding of white
117 matter pathways in the brain and language, providing re-evaluation of classical
118 disconnection accounts for aphasia. Yet, there is limited consensus and granularity

of functional anatomical associations of specific language deficits from stroke patients. Accordingly we aim to generate overall understandings between the lesions and language processing in post-stroke aphasia making use of advanced spatial meta-analysis of VLSM studies from large populations.

In this study, we investigated the neuroanatomical basis of language from post-stroke aphasia, drawing on a meta-analysis of published lesion-symptom mapping studies. Our work evaluated the concurrence between findings from various lesion-symptom mapping studies by employing coordinate based meta-analysis. Specifically, we examined (i) the overall convergence between the results from studies concerned language comprehension and production, (ii) the concurrence in lesion sites associated with various language function such as semantics, phonology, and speech fluency, and (iii) the concurrence in lesion sites associated with deficits in language tasks such as repetition, naming, and reading. Our analyses evaluated whether behavioural differences in language processing can be matched with different lesion patterns in stroke patients. We expect that language deficits in post-stroke aphasia link to both distinct and common patterns of lesions. Our results would provide insights into the discrepancies that exist in previous literature examining lesions in post-stroke aphasia. We will discuss our findings in terms of functional accounts of aphasia and theoretical language models based on both healthy and impaired language functions.

2. Methods

2.1 Literature search and selection

We undertook a literature search of scopus (<http://www.scopus.com>), pubmed (<http://pubmed.ncbi.nlm.nih.gov>) and google scholar (<http://scholar.google.com>) databases for lesion mapping and/or VLSM studies with stroke patients published in English. Searching keywords were the combinations of several terms from various language functions: 'stroke', 'cerebral infarction', 'cerebral hemorrhage', 'aphasia', 'post-stroke', 'language', 'comprehension', 'production', 'speech', 'semantic', 'word', 'lexical', 'naming', 'repetition', 'sentence', 'phonology', 'syntactic', 'phonotactic',

'grammar', 'voxel', 'voxel-based', 'VLSM', 'lesion' and 'lesion mapping'.

Two researchers (JJ and YN) independently conducted the literature search, and reviewed the methodological quality of the assessed behavioural tests of the original studies. Finally, 568 studies were found from the databases with searching time as "all year" till April, 2020, and overlapping articles were removed. One hundred six relevant studies were remained after the abstract screening and 58 articles were removed after full paper reading. Finally, 25 articles were entered into the meta-analysis (Table 1). The final 25 articles were selected out of 48 candidates, following the inclusion criteria: i) studies reported brain coordinates of the lesion mapping results in a standard space (MNI or Talairach), ii) studies using neuropsychological batteries (e.g., Philadelphia Naming Test (Roach, Schwartz, Martin, Grewal, & Brecher, 1996), Comprehensive Aphasia Test (Swinburn, Howard, & Porter, 2004), The Western Aphasia Battery (Risser & Spreen, 1985), and etc.) assessing language functions and/or language task, iii) studies conducting whole brain analysis. Figure 1 illustrates the process of study search and selection. And the exclusion criteria were as follows: i) studies unrelated to the language function, ii) studies conducted without neuroimaging (e.g., neurosurgical research), iii) studies reported results without the brain coordinates.

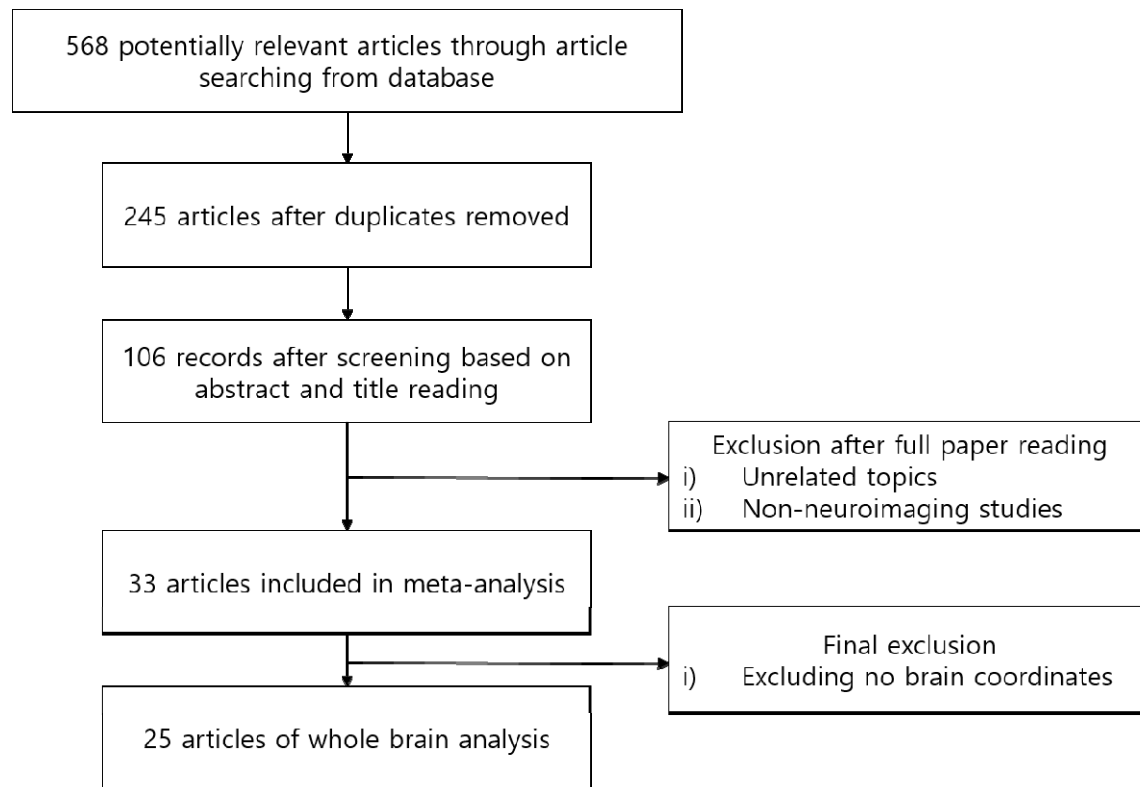


Figure 1 Flowchart of lesion-mapping studies included in the analysis

	Study	Test domain	N	language	Lesion side ^a	Stage of stroke ^b
1	Reem. S. W. Alyahya, Halai, Conroy, and Lambon Ralph (2018)	Verb semantic processing	48	English	left	chronic
2	Reem S. W. Alyahya, Halai, Conroy, and Lambon Ralph (2020a)	Naming	42	English	left	chronic
3	Baldo et al. (2013)	Picture naming	96	English	left	chronic

4	Baldo et al. (2012)	Repetition	84	English	left	chronic
5	Binder et al. (2016)	Reading error	45	English	left	chronic
6	Ouden et al. (2019)	Morphosyntactic deficit	71	English	left	chronic
7	Dickens et al. (2019)	Reading error	73	English	left	chronic
8	Døli, Andersen Helland, Helland, and Specht (2020)	Repetition, naming, reading	42	Norwegian	both/ left *	acute
9	Dronkers et al. (2004)	Sentence comprehension	72	English	left/ right	chronic
10	Faroqi-Shah et al. (2014)	Repetition, speech production, naming	31	English	left	chronic
11	Gajardo-Vidal, Lorca- Puls, Crinion, et al. (2018)	Naming	35 9	English	left	Sub- acute & chronic
12	Ghaleh et al. (2018)	Phonotactic deficit	44	English	left	chronic
13	Harvey and Schnur (2015)	Lexical and semantic access	15	English	left	chronic
14	Kümmerer et al. (2013)	Repetition, comprehension	10 0	German	left	acute
15	Lau et al. (2015)	Naming	28	English	left/ sub-	sub-

			0		right	acute
16	Pillay, Stengel, Humphries, Book, and Binder (2014)	Morphosyntactic deficit	40	English	left	chronic
17	Piras and Marangolo (2009)	Number and word reading	20	Italian	left	chronic
18	Schmidt et al. (2019)	Semantic and phonological fluency	85	German	left	sub-acute & chronic
19	Schwartz et al. (2009)	Semantic error	64	English	left	sub-acute & chronic
20	Schwartz, Faseyitan, Kim, and Coslett (2012)	Phonological error	106	English	left	sub-acute & chronic
21	Stark et al. (2019)	Speech production error	120	English	left	chronic
22	Sul et al. (2019)	Comprehension, naming, repetition	31	Korean	left	chronic
23	Walker et al. (2011)	Semantic error	64	English	left	Sub-acute & chronic
24	Woollams, Halai, and Lambon Ralph (2018)	Phonology, semantic, fluency, reading	43	English	left/right	chronic

		Repetition,				
		naming,				
25	Xing et al. (2016)	spontaneous	32	English	left	chronic
		speech				

171 **Table 1** The list of 25 studies included in the meta-analysis.

172 * Døli et al (2020) excluded only right-hemisphere damaged patients from the original
173 paper and included both hemispheric stroke when the lesion contained left-
174 hemispheric lesion

175 ^a The included type of stroke differs depending on the original literature and includes
176 both ischaemic and haemorrhagic stroke.

177 ^b The stages of stroke were defined by the time point of post-stroke shown in
178 Bernhardt et al. (2017). Three stages of stroke represent 'acute' (within 7 days),
179 'subacute' (a week to 6 months), and 'chronic' (more than 6 months) from the onset
180 of the stroke, respectively.

181

182 **2.2 Data analysis**

183 In order to examine the common and distinctive lesion patterns in relation to
184 language deficits in aphasia, we performed several different meta-analyses (Table 2).
185 The first analysis included all data from all papers reporting the neural substrates of
186 aphasia, providing the overall lesion patterns associated with aphasia. Then, we
187 examined the link between language functions and lesion patterns, categorizing the
188 neuropsychological batteries/tasks into language comprehension and production,
189 respectively. Comprehension category included studies tested language receptive
190 function such as verb comprehension or word-picture matching, whereas production
191 category comprised of studies tested overall expressive language function such as
192 speech fluency, sentence production and word/number reading aloud. Then, we
193 categorized the data for a specific language function such as semantic or phonology
194 when they meet the sufficient number of studies more than 3. Accordingly, semantics,
195 phonology and speech fluency were included in the meta-analysis. Semantics
196 included studies used semantic fluency or semantic error, and phonology contained
197 studies tested phonological fluency or phonological error/deficits. Speech fluency

category comprised of studies tested spontaneous speech fluency/frequency or sentence production from picture description. Additional analyses were conducted for task types including repetition, naming and reading.

Category	Description/examples	N of study	N of foci
General language	overall language function	25	424
Comprehension	sentence comprehension, word-picture matching	5	84
Production	sentence production, fluency, speech, naming, reading aloud, reading error	20	313
Semantics	semantic error, semantic fluency	16	144
Phonology	phonological fluency, phonological error	13	128
speech fluency	spontaneous speech, sentence production, naming frequency	4	44
Repetition	word or non-word repetition	6	29
Naming	verb naming, Philadelphia naming test, naming error	12	92
Reading	word reading, number reading, reading error	5	73

Table 2 the number of studies, foci, and description or examples of the tasks according to language functions/tasks

2.3 Coordinate based meta-analysis (CBMA)

We performed the meta-analyses using LocalALE tool implemented in NeuRoi (<https://www.nottingham.ac.uk/research/groups/clinicalneurology/neuroi.aspx>) (Tench, Tanasescu, Auer, & Constantinescu, 2013). Extracted lesion coordinates were

entered into a series of CBMA to estimate the concurrence between the reported lesions in aphasia from different published studies and to examine common and different lesion patterns underlying different language deficits in aphasia. The detailed description of the method for generating the likelihood estimates can be found in Tench et al. (2013). LocalALE models each reported coordinate foci as a spatial 3D truncated Gaussian distribution and is similar to the popular activation likelihood estimation (ALE) method (Eickhoff et al., 2009; Turkeltaub, Eden, Jones, & Zeffiro, 2002), but modified to overcome some limitations. Importantly, the full width half maxima (FWHM) was automatically modified to account for the number of studies included in the analysis helping to prevent false positive results for large number of studies and false negatives for small number of studies (Tench, Tanasescu, Auer, Cottam, & Constantinescu, 2014). Furthermore, LocalALE does not require a minimum of at least 17 studies to avoid individual studies dominating the significant results (Eickhoff et al., 2016). The results were considered significant by cluster-wise thresholding at $p < 0.05$ from a nonparametric permutation test after false cluster discovery rate (FCDR) correction (Tench et al., 2013); this performs a correction such that the proportion of clusters expected to be significant under the null hypothesis of random coordinates is only 5%. All results are reported in Talairach space.

2.4 Neurosynth

In order to link the lesion sites identified from VSLM meta-analyses to functional systems derived from published brain activation studies, we performed additional meta-analyses using Neurosynth (<http://neurosynth.org>). Neurosynth is an online platform offering automated synthesis of functional MRI data on the basis of large-scale database (Yarkoni, Poldrack, Nichols, Van Essen, & Wager, 2011). We used the peak coordinate of each cluster from our CBMA results as a seed region (a 6mm sphere) to generate the meta-analytic coactivation maps and keywords associated with the maps. All the coordinates were converted from Talairach system to MNI coordinates and entered into Neurosynth. Neurosynth produces a z-score map that corresponds to the likelihood that a term of interest had been used in a journal article

given the presence of activation. The Neurosynth results were voxel-wise thresholded at the level of 0.01 after FDR correction. Keywords were extracted on the basis of the z-score was greater than 0 and up to 10 keywords were chosen in order of the z-score.

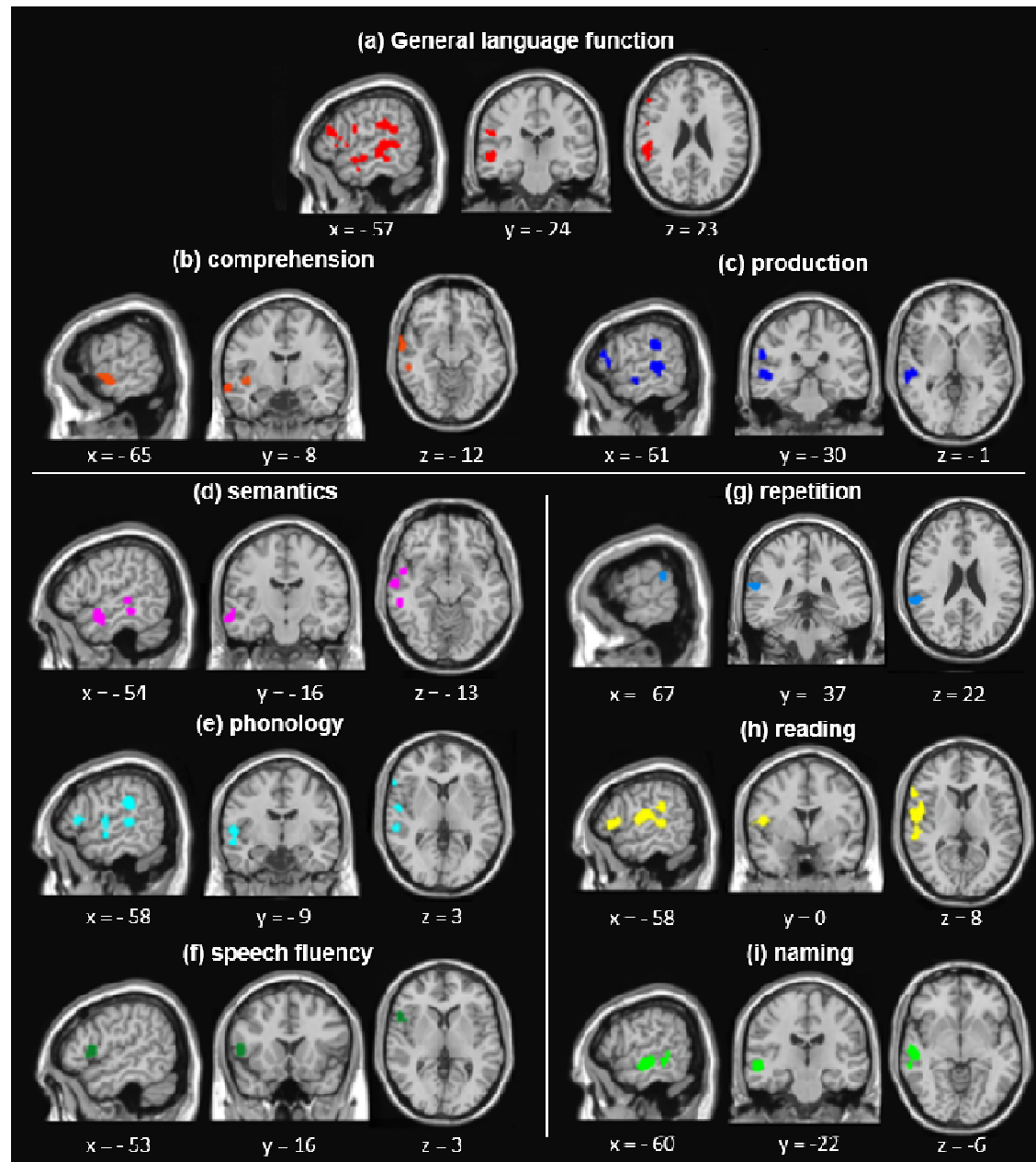
3. Results

3.1 CBMA analyses

Twenty-five studies (2,007 aphasia patients; total of 45 experiments with 424 relevant foci; 410 in the left hemisphere and 14 in the right) that met the inclusion criteria were identified and their data were entered into the analyses. The results are summarized in Figure 2 and Table 3. The primary analysis with all data revealed the regions within the left perisylvian cortex including the middle and superior temporal gyrus (MTG and STG, respectively), inferior frontal gyrus (IFG), insula, precentral gyrus, fusiform gyrus (FG), and inferior parietal lobule (IPL) (Fig. 2a). And there was no significant cluster in the right hemisphere due to small number of input foci. The analyses examining the language comprehension and production showed the distinctive patterns for each function: two significant clusters in the STG and FG associated with comprehension impairments (Fig. 2b) and six significant clusters associated with language production deficits including the IFG, precentral gyrus, STG, MTG, and insula (Fig. 2c).

Distinctive lesion patterns were found according to language functions. Semantic function was associated with anterior and middle MTG, FG, and parahippocampal gyrus (Fig. 2d). Phonological deficits were involved in the insular, IFG, precentral gyrus, STG, and supramarginal gyrus (SMG) (Fig. 2e). Speech fluency was associated with lesions in the insula, IFG, and precentral gyrus (Fig. 2f). We found task-specific lesion patterns in aphasia. The posterior STG was associated with repetition (Fig. 2g). Reading impairments were related to the ventral IFG, temporoparietal junction (TPJ), and posterior STG (Fig. 2h), overlapping with the phonology results (Fig. 2e). Naming task revealed the middle/posterior STG and MTG (Fig. 2i), overlapping with the results of semantic (Fig. 2d).

270



271

272 **Figure 2** meta-analysis results. (a) result for the general language function. (b-f)

273 results according to language functions. (g-i) task-based results.

274

275

category	region	BA	x	y	z	p
			Talairach coordinate			
General language	middle temporal gyrus		-41	-35	-1	0.00001
	precentral gyrus	BA 6	-54	-5	7	0.00001
	insula	BA 13	-39	-39	23	0.00001
	middle temporal gyrus	BA 20	-46	-14	-14	0.00014
	inferior frontal gyrus	BA 45	-45	22	10	0.00018
	inferior frontal gyrus	BA 13	-31	8	-10	0.00022
	insula	BA 13	-39	5	6	0.00025
	superior temporal gyrus	BA 38	-53	2	-5	0.00070
	inferior parietal lobule	BA 40	-58	-43	22	0.00085
	fusiform gyrus	BA 20	-38	-4	-20	0.00107
	inferior frontal gyrus	BA 9	-41	-2	20	0.00122
	middle temporal gyrus	BA 21	-55	-5	-18	0.00190
Comprehension	superior temporal gyrus	BA 21	-51	-4	-11	0.00051
	fusiform gyrus	BA 37	-46	-34	-9	0.00224
Production	superior temporal gyrus	BA 41	-42	-34	0	0.00000
	precentral gyrus	BA 6	-57	-3	7	0.00000
	insula	BA 13	-43	-34	25	0.00001
	middle temporal gyrus	BA 21	-46	-11	-14	0.00028
	inferior frontal gyrus	BA 45	-45	20	9	0.00035
	superior temporal gyrus	BA 38	-37	2	-15	0.00094
Semantics	middle temporal gyrus	BA 21	-51	-15	-13	0.00000

	fusiform gyrus	BA 20	-40	-1	-18	0.00002
	parahippocampal gyrus	BA 36	-43	-35	-5	0.00007
	insula	BA 13	-42	-33	23	0.00007
	superior temporal gyrus	BA 41	-42	-34	5	0.00014
	insula		-40	-8	2	0.00055
Phonology	inferior frontal gyrus	BA 45	-47	20	7	0.00065
	precentral gyrus	BA 6	-57	-3	5	0.00072
	supramarginal gyrus	BA 40	-60	-45	22	0.00112
	insula	BA 13	-39	12	8	0.00102
Speech fluency	precentral gyrus	BA 4	-54	-3	14	0.00260
Repetition	superior temporal gyrus	BA 13	-55	-40	22	0.00036
	superior temporal gyrus	BA 22	-43	-24	-9	0.00006
Naming	superior temporal gyrus	BA 22	-59	-11	7	0.00154
	superior temporal gyrus	BA 13	-44	-19	9	0.00043
Reading	inferior frontal gyrus	BA 13	-43	23	4	0.00069

276 **Table 3** the summary of the meta-analyses. BA = Brodmann's area

277 There were systematic differences in the patterns of lesions across language
278 functions/tasks (Fig. 3). Within the left perisylvian cortex, the ventral regions in the
279 temporal lobe were associated with comprehension and semantic processing,
280 whereas the dorsal areas in frontoparietal cortex were involved in expressive
281 language function, phonology, and speech fluency. In summary, our findings suggest
282 the neuroanatomical basis of language deficits in aphasia, supporting the
283 contemporary dual pathway model of language processing (Hickok & Poeppel, 2004;
284 Saur et al., 2008; Ueno, Saito, Rogers, & Lambon Ralph, 2011).

285

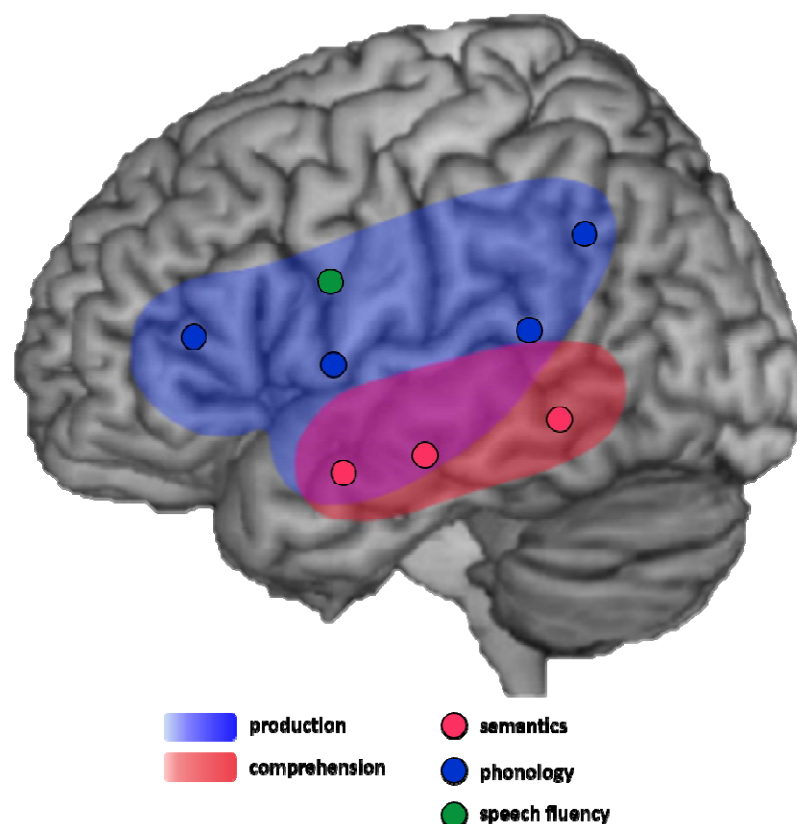


Figure 3 A schematic diagram summarizing the meta-analysis results. Colors (pink and sky-blue) indicate the coverage of general language functions, production and comprehension, respectively. Each dot points each peak cluster according to functional categories.

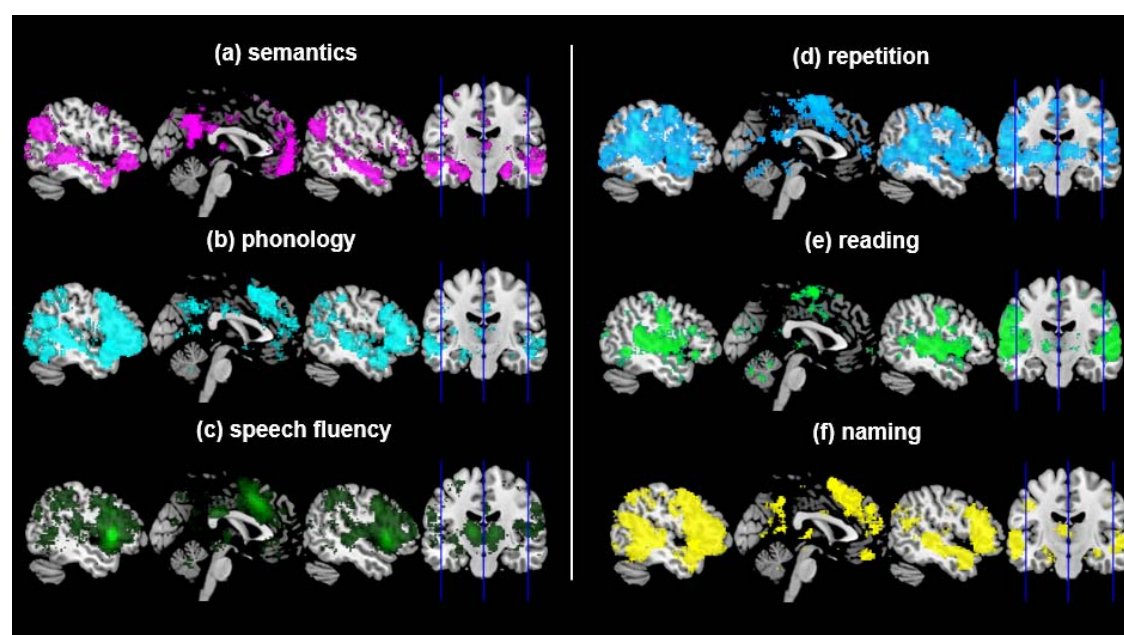
3.2 Neurosynth

In order to examine functional systems associated with the clusters from our meta-analysis, we performed meta-analytic coactivation analysis using Neurosynth. The results are summarized in the Figure 4 and Table S1 & S2. The coactivation maps of the semantic clusters included the IFG, medial prefrontal cortex, middle cingulate cortex (MCC), STG, MTG, SMG, AG, thalamus, putamen, and caudate (Figure 4a). The related keywords of the coactivation maps of semantic clusters were ‘semantic’, ‘read’, ‘word’, and ‘comprehension’. The clusters of the phonology were coactivated with the IFG, MTG, and insular (Figure 4b) and the related keywords were ‘auditory’,

301 'speech', 'listening', and 'sound'. The coactivation maps of speech fluency clusters
302 covered the insular, MCC, supplementary motor area (SMA), thalamus, cerebellum,
303 and visual cortex (Figure 4c) and the related keywords were 'phonological', 'auditory',
304 'speech perception/production', and 'acoustic'.

305 The task-related clusters revealed the similar patterns of meta-analytic
 306 coactivated maps covering the fronto-temporo-parietal system. The repetition
 307 clusters were coactivated with the IFG, MCC, STG, SMG, superior parietal lobe
 308 (SPL), and precuneus (Figure 4d) and involved in keywords such as 'auditory',
 309 'motor', 'hearing', 'production', 'phonological', and 'mirror'. The reading clusters
 310 revealed the coactivation maps including the IFG, STG, MTG, IMG, FG, SMG, AG,
 311 cerebellum, and visual cortex (Figure 4e) and the related keywords were 'auditory'.
 312 'listening', 'language', 'comprehension', 'semantic', 'words', and 'sentences'. The
 313 naming clusters were coactivated with the IFG, MCC, SMA, rolandic operculum,
 314 STG, MTG, ITG, FG, hippocampus, parahippocampal gyrus, posterior cingulate
 315 cortex, precuneus, cerebellum, thalamus, caudate, and visual cortex (Figure 4f).
 316 These maps were associated with keywords such as 'episodic', 'recall', 'amnesic',
 317 'semantic memory', 'auditory', and 'speech'.

318



319

320 **Figure 4** The meta-analytic coactivation maps from the Neurosynth. Each figure
 321 represents the functionally coactivated region with the peak cluster of the CBMA
 322 results. Each sagittal plane is shown at x=-50, 0, 50.

323

4. Discussion

In order to identify the lesion patterns in post-stroke aphasia and to investigate whether there are consistent differences in the patterns of lesions across different language function and tasks, we performed a coordinate based meta-analysis of lesion-symptom mapping studies in post-stroke aphasia. We obtained coordinate-based lesion-symptom mapping data from 2,007 aphasia patients and identified different patterns of function- and task- specific lesions associated with language processing. Using the additional meta-analytic coactivation approach with the clusters, we identified the functional neural systems associated in healthy controls with the lesion sites identified in post-stroke aphasia. The CBMA results revealed that the overall patterns of the language processing such as the production and the comprehension was in line with the dual pathway model (Hickok & Poeppel, 2004; Ueno et al., 2011) and a specific pattern of lesion in the model was associated with selective deficits in language functions. Especially, damage to the frontal lobe impaired language production including phonology and speech fluency and lesions in the dorsal-posterior temporal lobe was exclusively associated with the repetition task. In contrary, the lateral temporal lobe lesions were attributed to impairment in language comprehension including semantic processing. The results provide novel insights into the neuroanatomical basis of language processing from post-stroke aphasia.

The patterns of lesion sites in post-stroke aphasia were broadly consistent with dual pathway models of language processing that propose a dorsal pathway connecting frontal and temporal-parietal cortex for language production and a ventral pathway linking temporal-frontal cortex for language comprehension (Hickok & Poeppel, 2000; Saur et al., 2008; Scott, 2000; Ueno et al., 2011). According to the dual-pathway model (Hickok & Poeppel, 2004), the dorsal route serves speech production as well as auditory-motor integration, the essential function for speech production and some speech recognition tasks. Our results supports the model demonstrating that patients with post-stroke aphasia had language production deficits with lesions in the dorsal route connecting from the supramarginal gyrus through precentral sensorimotor regions and insular involved in articulatory motor

control to the inferior frontal cortex (Reem S. W. Alyahya, Halai, Conroy, & Lambon Ralph, 2020b; McKinnon et al., 2018). In the present study, the lesion sites of language production overlap with the ventral pathway including the superior and middle temporal gyrus. A meta-analysis of functional neuroimaging studies reported that the auditory ventral stream covering the anterior-to-posterior STG were associated with the speech processing from recognition of speech sounds to spoken words (Dewitt & Rauschecker, 2012). Our results converge with previous findings that language production accompanies the intrinsic comprehension of words or objects used in the task (M. A. Lambon Ralph, McClelland, Patterson, Galton, & Hodges, 2001; Morton, 1985) and that language production tasks such as reading aloud and naming are attributed to the ventral pathway (Moore & Price, 1999).

Subsequent analyses for a specific language function and task in production revealed the similar pattern of lesions. The CBMA results of phonology and reading were identical to the lesions of language production including the IFG, precentral gyrus, insula, SMG and STG. fMRI studies have demonstrated that these regions are associated with phonological processing in healthy individuals (Burton, Small, & Blumstein, 2000; Gold, Balota, Kirchoff, & Buckner, 2005; Poldrack et al., 2001). Especially, the STG is involved in phonological aspects of both speech perception and production (Buchsbaum, Hickok, & Humphries, 2001; Burton, Small, & Blumstein, 2000; Gold, Balota, Kirchoff, & Buckner, 2005; Poldrack et al., 2001). Importantly, these regions in the dorsal pathway are connected via arcuate fasciculus which plays a crucial role in conducting phonological and motor processing of articulation for speaking (Catani & Mesulam, 2008; Saur et al., 2008). Our analysis for speech fluency revealed two clusters in the insula and precentral gyrus. These regions have been repeatedly associated with articulatory planning (Basilakos, Smith, Fillmore, Fridriksson, & Fedorenko, 2018; Dronkers, 1996) and motor coordination of speech (Ackermann & Riecker, 2004; Baldo, Wilkins, Ogar, Willock, & Dronkers, 2011). Accumulating clinical and functional imaging evidence highlights the role of the left insula in speech motor control, supporting the temporo-spatial pattern of vocal tract muscle innervation during speech (Ackermann & Riecker, 2004). Contrary to other sub-categories of language production, we found

one cluster associated with repetition in the left posterior STG (pSTG). The evidence supporting the involvement of pSTG in the repetition task comes from conduction aphasia characterized by good auditory comprehension, fluent speech, and the inability to repeat words or phrases (Buchsbaum et al., 2001; Hickok et al., 2000). Furthermore, direct electrical stimulation over the pSTG induced conduction aphasia-like symptoms (Anderson et al., 1999). Thus, our data supports the view that conduction aphasia is a disorder of cortical dysfunction rather than a disconnection syndrome (Buchsbaum et al., 2001; Hickok et al., 2000). Our findings directly fit into the neuroanatomical-constrained dual-pathway models of language, showing the impact of lesions to the perisylvian regions. Damage to the insular-motor areas impaired spoken output with preserved comprehension and a similar pattern was observed when the lesion covered the insular-motor and SMG. Lesions in the IFG severely impaired speaking with relatively good comprehension. The repetition-selective deficits only arise from the lesion the pSTG (Ueno et al., 2011). Overall, our results suggest these regions in the dorsal pathway serves a crucial role in recognizing and generating speech and a damage in this pathway produces various deficits in language production function, specific to the different patterns of lesions in aphasia.

Our results demonstrated the role of the ventral stream along with the anterior-to-posterior temporal cortex in language comprehension, especially semantic processing (Hickok & Poeppel, 2000; Saur et al., 2008; Scott, 2000; Ueno et al., 2011). Specifically, the anterior temporal lobe (ATL) is a transmodal hub for semantic representation (Matthew A Lambon Ralph, Jefferies, Patterson, & Rogers, 2017) supported by converging evidence from patients' studies (Bozeat, Lambon Ralph, Patterson, Garrard, & Hodges, 2000; Hodges & Patterson, 2007), intracranial recording (Chen et al., 2016; Shimotake et al., 2015), fMRI (Coutanche & Thompson-Schill, 2015; Peelen & Caramazza, 2012), and brain stimulation (Jung & Lambon Ralph, 2016, 2021). The computational modelling of the dual-pathway also supports that damage in the ATL (STG and MTG) generated impairment in comprehension and naming. Consistent with Ueno et al (2011)'s model, semantic fluency, naming, and naming errors were strongly associated with the anterior and

lateral STG and MTG damage in post-stroke aphasia patients. As the ATL receives inputs from auditory and visual cortex, showing the graded sensory-to-semantic rostral progression (Jung, Cloutman, Binney, & Lambon Ralph, 2017; Jung, Visser, Binney, & Lambon Ralph, 2018; Scott, 2000), the neighboring STG and fusiform gyrus found in our results may be involved in the progression in semantic processing.

Despite of the large number of patients and clear findings, this study has limitations. Most of patients included had a single left hemisphere stroke, which led to no CBMA clusters in the right hemisphere. As language functions are lateralized to the left hemisphere, the most original literature reviewed in this study included only patients with left hemispheric lesion. However, recent studies have demonstrated that the right hemisphere damage after stroke cause language disorders (Gajardo-Vidal, Lorca-Puls, Hope, et al., 2018; Ross, 1981). It might explain the discrepancy between our meta-analysis results and Neurosynth findings. The functional neural systems connected to the lesion sites resided in the bilateral hemispheres including prefrontal, temporal, and parietal cortices. A recent fMRI meta-analysis in post-stroke aphasia showed bilateral activation in the fronto-temporo-parietal network during language processing in aphasic patients with the left hemisphere lesion (Stefaniak, Alyahya, & Lambon Ralph, 2020). Thus, future studies are warranted to investigate stroke patients with right hemisphere lesions to elucidate the relationship between the right hemisphere damage and language deficits in post-stroke aphasia. Finally, most languages used in the original literature were English. Future studies are required to have languages varieties in order to confirm our findings in patients with aphasia across different languages.

In conclusion, our results strongly support the dual pathway model of language processing, capturing the link between the different symptom complexes of aphasias and the different underlying location of damage. The patterns of lesions provide key insights about the underlying process of each language pathway. The present study demonstrates the functional and neural architecture of language system.

Author contributions

JJ, DPA, and SBP conceptualised the study and designed the research; YN and JJ obtained and analyzed the data; YN and CT performed the statistical analysis; YN and JJ, wrote the initial manuscript. All co-authors edited the manuscript.

Funding

This work was supported by the National Research Foundation of Korea (NRF) grant funded by the Korea government (MSIT) (No. 2019R1A2C2003020) to SBP and MRC-KHIDI Korea Partnering Awards to DPA (MC_PC_19089) and SBP (HI20C0066).

Declaration of Competing Interest

The authors declare that there are no conflicts of interest relevant to this article.

References

Uncategorized References

- Ackermann, H., & Riecker, A. (2004). The contribution of the insula to motor aspects of speech production: a review and a hypothesis. *Brain and language*, 89(2), 320-328.
- Alyahya, R. S. W., Halai, A. D., Conroy, P., & Lambon Ralph, M. A. (2018). The behavioural patterns and neural correlates of concrete and abstract verb processing in aphasia: A novel verb semantic battery. *Neuroimage Clin*, 17, 811-825. doi:10.1016/j.nicl.2017.12.009
- Alyahya, R. S. W., Halai, A. D., Conroy, P., & Lambon Ralph, M. A. (2020a). Mapping psycholinguistic features to the neuropsychological and lesion profiles in aphasia. *Cortex*, 124, 260-273. doi:10.1016/j.cortex.2019.12.002
- Alyahya, R. S. W., Halai, A. D., Conroy, P., & Lambon Ralph, M. A. (2020b). A unified model of post-stroke language deficits including discourse production and their neural correlates. *Brain*, 143(5), 1541-1554. doi:10.1093/brain/awaa074
- Anderson, J., Gilmore, R., Roper, S., Crosson, B., Bauer, R. M., Nadeau, S., . . . Kortencamp, S. (1999). Conduction aphasia and the arcuate fasciculus: a reexamination of the Wernicke-Geschwind model. *Brain and language*, 70(1), 1-12.
- Baldo, J. V., Arévalo, A., Patterson, J. P., & Dronkers, N. F. (2013). Grey and white matter correlates of picture naming: Evidence from a voxel-based lesion analysis of the Boston Naming Test. *Cortex*, 49(3), 658-667. doi:10.1016/j.cortex.2012.03.001

480 Baldo, J. V., Katseff, S., & Dronkers, N. F. (2012). Brain regions underlying repetition and auditory-
481 verbal short-term memory deficits in aphasia: Evidence from voxel-based lesion symptom
482 mapping. *Aphasiology*, 26(3-4), 338-354. doi:10.1080/02687038.2011.602391

483 Baldo, J. V., Wilkins, D. P., Ogar, J., Willock, S., & Dronkers, N. F. (2011). Role of the precentral
484 gyrus of the insula in complex articulation. *Cortex*, 47(7), 800-807.

485 Basilakos, A., Smith, K. G., Fillmore, P., Fridriksson, J., & Fedorenko, E. (2018). Functional
486 Characterization of the Human Speech Articulation Network. *Cerebral Cortex*, 28(5), 1816-
487 1830. doi:10.1093/cercor/bhx100

488 Bates, E., Wilson, S. M., Saygin, A. P., Dick, F., Sereno, M. I., Knight, R. T., & Dronkers, N. F. (2003).
489 Voxel-based lesion-symptom mapping. *Nature Neuroscience*, 6(5), 448-450.
490 doi:10.1038/nn1050

491 Benjamin, E. J., Muntner, P., Alonso, A., Bittencourt, M. S., Callaway, C. W., Carson, A. P., . . . Virani,
492 S. S. (2019). Heart Disease and Stroke Statistics—2019 Update: A Report From the
493 American Heart Association. *Circulation*, 139(10). doi:10.1161/cir.0000000000000659

494 Berker, E. A., Berker, A. H., & Smith, A. (1986). Translation of Broca's 1865 report: Localization of
495 speech in the third left frontal convolution. *Archives of Neurology*, 43(10), 1065-1072.

496 Bernhardt, J., Hayward, K. S., Kwakkel, G., Ward, N. S., Wolf, S. L., Borschmann, K., . . . Cramer, S.
497 C. (2017). Agreed definitions and a shared vision for new standards in stroke recovery
498 research: The Stroke Recovery and Rehabilitation Roundtable taskforce. *International Journal*
499 *of Stroke*, 12(5), 444-450. doi:10.1177/1747493017711816

500 Binder, J. R., & Desai, R. H. (2011). The neurobiology of semantic memory. *Trends in cognitive*
501 *sciences*, 15(11), 527-536.

502 Binder, J. R., Pillay, S. B., Humphries, C. J., Gross, W. L., Graves, W. W., & Book, D. S. (2016).
503 Surface errors without semantic impairment in acquired dyslexia: a voxel-based lesion-
504 symptom mapping study. *Brain*, 139(5), 1517-1526. doi:10.1093/brain/aww029

505 Bogen, J. E., & Bogen, G. (1976). Wernicke's region--Where is it. *Annals of the New York Academy of*
506 *Sciences*(280), 834-843.

507 Bozeat, S., Lambon Ralph, M. A., Patterson, K., Garrard, P., & Hodges, J. R. (2000). Non-verbal
508 semantic impairment in semantic dementia. *Neuropsychologia*, 38(9), 1207-1215.

509 Buchsbaum, B. R., Hickok, G., & Humphries, C. (2001). Role of left posterior superior temporal gyrus
510 in phonological processing for speech perception and production. *Cognitive Science*, 25(5),
511 663-678. doi:10.1207/s15516709cog2505_2

512 Burton, M. W., Small, S. L., & Blumstein, S. E. (2000). The Role of Segmentation in Phonological
513 Processing: An fMRI Investigation. *Journal of cognitive neuroscience*, 12(4), 679-690.
514 doi:10.1162/089892900562309

515 Catani, M., & Mesulam, M. (2008). The arcuate fasciculus and the disconnection theme in language
516 and aphasia: History and current state. *Cortex*, 44(8), 953-961.

doi:10.1016/j.cortex.2008.04.002

Chen, Y., Shimotake, A., Matsumoto, R., Kunieda, T., Kikuchi, T., Miyamoto, S., . . . Lambon Ralph, M. A. (2016). The 'when' and 'where' of semantic coding in the anterior temporal lobe: Temporal representational similarity analysis of electrocorticogram data. *Cortex*, 79, 1-13.

Coutanche, M. N., & Thompson-Schill, S. L. (2015). Creating concepts from converging features in human cortex. *Cerebral Cortex*, 25(9), 2584-2593.

Damasio, H. (1989). Lesion Analysis. *Neuropsychology*.

Dewitt, I., & Rauschecker, J. P. (2012). Phoneme and word recognition in the auditory ventral stream. *Proceedings of the National Academy of Sciences*, 109(8), E505-E514. doi:10.1073/pnas.1113427109

Dickens, J. V., Fama, M. E., Demarco, A. T., Lacey, E. H., Friedman, R. B., & Turkeltaub, P. E. (2019). Localization of Phonological and Semantic Contributions to Reading. *The Journal of Neuroscience*, 39(27), 5361-5368. doi:10.1523/jneurosci.2707-18.2019

Dronkers, N. F. (1996). A new brain region for coordinating speech articulation. *Nature*, 384(6605), 159-161.

Dronkers, N. F., Wilkins, D. P., Van Valin, R. D., Redfern, B. B., & Jaeger, J. J. (2004). Lesion analysis of the brain areas involved in language comprehension. *Cognition*, 92(1-2), 145-177. doi:10.1016/j.cognition.2003.11.002

Døli, H., Andersen Helland, W., Helland, T., & Specht, K. (2020). Associations between lesion size, lesion location and aphasia in acute stroke. *Aphasiology*, 1-19. doi:10.1080/02687038.2020.1727838

Eickhoff, S. B., Laird, A. R., Grefkes, C., Wang, L. E., Zilles, K., & Fox, P. T. (2009). Coordinate-based activation likelihood estimation meta-analysis of neuroimaging data: A random-effects approach based on empirical estimates of spatial uncertainty. *Human Brain Mapping*, 30(9), 2907-2926. doi:<https://doi.org/10.1002/hbm.20718>

Eickhoff, S. B., Nichols, T. E., Laird, A. R., Hoffstaedter, F., Amunts, K., Fox, P. T., . . . Eickhoff, C. R. (2016). Behavior, sensitivity, and power of activation likelihood estimation characterized by massive empirical simulation. *Neuroimage*, 137, 70-85. doi:10.1016/j.neuroimage.2016.04.072

Faroqi-Shah, Y., Kling, T., Solomon, J., Liu, S., Park, G., & Braun, A. (2014). Lesion analysis of language production deficits in aphasia. *Aphasiology*, 28(3), 258-277. doi:10.1080/02687038.2013.853023

Feigin, V. L., Nichols, E., Alam, T., Bannick, M. S., Beghi, E., Blake, N., . . . Vos, T. (2019). Global, regional, and national burden of neurological disorders, 1990–2016: a systematic analysis for the Global Burden of Disease Study 2016. *The Lancet Neurology*, 18(5), 459-480. doi:10.1016/s1474-4422(18)30499-x

Gajardo-Vidal, A., Lorca-Puls, D. L., Crinion, J. T., White, J., Seghier, M. L., Leff, A. P., . . . Price, C. J.

(2018). How distributed processing produces false negatives in voxel-based lesion-deficit analyses. *Neuropsychologia*, 115, 124-133. doi:10.1016/j.neuropsychologia.2018.02.025

Gajardo-Vidal, A., Lorca-Puls, D. L., Hope, T. M., Parker Jones, O., Seghier, M. L., Prejawa, S., . . . Price, C. J. (2018). How right hemisphere damage after stroke can impair speech comprehension. *Brain*, 141(12), 3389-3404.

Ghaleh, M., Skipper-Kallal, L. M., Xing, S., Lacey, E., Dewitt, I., Demarco, A., & Turkeltaub, P. (2018). Phonotactic processing deficit following left-hemisphere stroke. *Cortex*, 99, 346-357. doi:10.1016/j.cortex.2017.12.010

Gold, B. T., Balota, D. A., Kirchoff, B. A., & Buckner, R. L. (2005). Common and Dissociable Activation Patterns Associated with Controlled Semantic and Phonological Processing: Evidence from fMRI Adaptation. *Cerebral Cortex*, 15(9), 1438-1450. doi:10.1093/cercor/bhi024

Harvey, D. Y., & Schnur, T. T. (2015). Distinct loci of lexical and semantic access deficits in aphasia: Evidence from voxel-based lesion-symptom mapping and diffusion tensor imaging. 67, 37-58. doi:10.1016/j.cortex.2015.03.004

Hickok, G., Erhard, P., Kassubek, J., Helms-Tillery, A. K., Naeve-Velguth, S., Strupp, J. P., . . . Ugurbil, K. (2000). A functional magnetic resonance imaging study of the role of left posterior superior temporal gyrus in speech production: implications for the explanation of conduction aphasia. *Neuroscience letters*, 287(2), 156-160.

Hickok, G., & Poeppel, D. (2000). Towards a functional neuroanatomy of speech perception. *Trends in cognitive sciences*, 4(4), 131-138. doi:10.1016/s1364-6613(00)01463-7

Hickok, G., & Poeppel, D. (2004). Dorsal and ventral streams: a framework for understanding aspects of the functional anatomy of language. *Cognition*, 92(1-2), 67-99.

Hodges, J. R., & Patterson, K. (2007). Semantic dementia: a unique clinicopathological syndrome. *The Lancet Neurology*, 6(11), 1004-1014.

Hope, T. M. H., Seghier, M. L., Leff, A. P., & Price, C. J. (2013). Predicting outcome and recovery after stroke with lesions extracted from MRI images. *NeuroImage: Clinical*, 2, 424-433. doi:10.1016/j.nicl.2013.03.005

Jung, J., Cloutman, L. L., Binney, R. J., & Lambon Ralph, M. A. (2017). The structural connectivity of higher order association cortices reflects human functional brain networks. *Cortex*, 97, 221-239.

Jung, J., & Lambon Ralph, M. A. (2016). Mapping the Dynamic Network Interactions Underpinning Cognition: A cTBS-fMRI Study of the Flexible Adaptive Neural System for Semantics. 26(8), 3580-3590. doi:10.1093/cercor/bhw149

Jung, J., & Lambon Ralph, M. A. (2021). Enhancing vs. inhibiting semantic performance with transcranial magnetic stimulation over the anterior temporal lobe: Frequency- and task-specific effects. *Neuroimage*, 234, 117959. doi:10.1016/j.neuroimage.2021.117959

591 Jung, J., Visser, M., Binney, R. J., & Lambon Ralph, M. A. (2018). Establishing the cognitive signature
592 of human brain networks derived from structural and functional connectivity. *Brain Structure*
593 *and Function*, *223*(9), 4023-4038.

594 Kümmerer, D., Hartwigsen, G., Kellmeyer, P., Glauche, V., Mader, I., Klöppel, S., . . . Saur, D. (2013).
595 Damage to ventral and dorsal language pathways in acute aphasia. *Brain*, *136*(2), 619-629.
596 doi:10.1093/brain/aws354

597 Lambon Ralph, M. A., Jefferies, E., Patterson, K., & Rogers, T. T. (2017). The neural and
598 computational bases of semantic cognition. *Nature Reviews Neuroscience*, *18*(1), 42-55.

599 Lambon Ralph, M. A., McClelland, J. L., Patterson, K., Galton, C. J., & Hodges, J. R. (2001). No Right
600 to Speak? The Relationship between Object Naming and Semantic
601 Impairment: Neuropsychological Evidence and a Computational Model. *13*(3), 341-356.
602 doi:10.1162/08989290151137395

603 Lau, J. K. L., Humphreys, G. W., Douis, H., Balani, A., Bickerton, W.-L., & Rotshtein, P. (2015). The
604 relation of object naming and other visual speech production tasks: A large scale voxel-based
605 morphometric study. *NeuroImage: Clinical*, *7*, 463-475. doi:10.1016/j.nicl.2015.01.015

606 Lichtheim, L. (1885). On aphasia. *Brain*, *7*, 433-484.

607 Lindsay, M. P., Norving, B., Sacco, R. L., Brainin, M., Hacke, W., Martins, S., . . . Feigin, V. (2019).
608 World Stroke Organization (WSO): Global Stroke Fact Sheet 2019. *International Journal of*
609 *Stroke*, *14*(8), 806-817. doi:10.1177/1747493019881353

610 McKinnon, E. T., Fridriksson, J., Basilakos, A., Hickok, G., Hillis, A. E., Spampinato, M. V., . . . Bonilha,
611 L. (2018). Types of naming errors in chronic post-stroke aphasia are dissociated by dual
612 stream axonal loss. *Scientific Reports*, *8*(1). doi:10.1038/s41598-018-32457-4

613 Moore, C. J., & Price, C. J. (1999). Three distinct ventral occipitotemporal regions for reading and
614 object naming. *Neuroimage*, *10*(2), 181-192.

615 Morton, J. (1985). Naming. *Current perspectives in dysphasia*, 217-230.

616 Ouden, D. B., Malyutina, S., Basilakos, A., Bonilha, L., Gleichgerrcht, E., Yourganov, G., . . .
617 Fridriksson, J. (2019). Cortical and structural-connectivity damage correlated with impaired
618 syntactic processing in aphasia. *Human Brain Mapping*, *40*(7), 2153-2173.
619 doi:10.1002/hbm.24514

620 Patterson, K., Nestor, P. J., & Rogers, T. T. (2007). Where do you know what you know? The
621 representation of semantic knowledge in the human brain. *Nature Reviews Neuroscience*,
622 *8*(12), 976-987. doi:10.1038/nrn2277

623 Peelen, M. V., & Caramazza, A. (2012). Conceptual object representations in human anterior
624 temporal cortex. *Journal of Neuroscience*, *32*(45), 15728-15736.

625 Pillay, S. B., Stengel, B. C., Humphries, C., Book, D. S., & Binder, J. R. (2014). Cerebral localization
626 of impaired phonological retrieval during rhyme judgment. *Annals of Neurology*, *76*(5), 738-
627 746. doi:10.1002/ana.24266

628 Piras, F., & Marangolo, P. (2009). Word and number reading in the brain: Evidence from a Voxel-
629 based Lesion-symptom Mapping study. *47*(8-9), 1944-1953.
630 doi:10.1016/j.neuropsychologia.2009.03.006

631 Poldrack, R. A., Temple, E., Protopapas, A., Nagarajan, S., Tallal, P., Merzenich, M., & Gabrieli, J. D.
632 E. (2001). Relations between the Neural Bases of Dynamic Auditory Processing and
633 Phonological Processing: Evidence from fMRI. *Journal of cognitive neuroscience*, *13*(5), 687-
634 697. doi:10.1162/089892901750363235

635 Risser, A. H., & Spreen, O. (1985). The Western Aphasia Battery. *Journal of clinical and experimental*
636 *neuropsychology*, *7*(4), 463-470. doi:10.1080/01688638508401277

637 Roach, A., Schwartz, M. F., Martin, N., Grewal, R. S., & Brecher, A. (1996). The Philadelphia naming
638 test: scoring and rationale. *Clinical Aphasiology*, *24*, 121-133.

639 Ross, E. D. (1981). The Aprosodias: Functional-Anatomic Organization of the Affective Components
640 of Language in the Right Hemisphere. *Archives of Neurology*, *38*(9), 561-569.
641 doi:10.1001/archneur.1981.00510090055006

642 Saur, D., Kreher, B. W., Schnell, S., Kümmerer, D., Kellmeyer, P., Vry, M.-S., . . . Weiller, C. (2008).
643 Ventral and dorsal pathways for language. *Proceedings of the National Academy of Sciences*,
644 *105*(46), 18035-18040. doi:10.1073/pnas.0805234105

645 Schmidt, C. S. M., Nitschke, K., Bormann, T., Römer, P., Kümmerer, D., Martin, M., . . . Kaller, C. P.
646 (2019). Dissociating frontal and temporal correlates of phonological and semantic fluency in a
647 large sample of left hemisphere stroke patients. *NeuroImage: Clinical*, *23*, 101840.
648 doi:10.1016/j.nicl.2019.101840

649 Schwartz, M. F., Faseyitan, O., Kim, J., & Coslett, H. B. (2012). The dorsal stream contribution to
650 phonological retrieval in object naming. *135*(12), 3799-3814. doi:10.1093/brain/aww300

651 Schwartz, M. F., Kimberg, D. Y., Walker, G. M., Faseyitan, O., Brecher, A., Dell, G. S., & Coslett, H. B.
652 (2009). Anterior temporal involvement in semantic word retrieval: voxel-based lesion-
653 symptom mapping evidence from aphasia. *132*(12), 3411-3427. doi:10.1093/brain/awp284

654 Scott, S. K. (2000). Identification of a pathway for intelligible speech in the left temporal lobe. *Brain*,
655 *123*(12), 2400-2406. doi:10.1093/brain/123.12.2400

656 Seghier, M. L., Patel, E., Prejawa, S., Ramsden, S., Selmer, A., Lim, L., . . . Price, C. J. (2016). The
657 PLORAS Database: A data repository for Predicting Language Outcome and Recovery After
658 Stroke. *Neuroimage*, *124*, 1208-1212. doi:10.1016/j.neuroimage.2015.03.083

659 Shimotake, A., Matsumoto, R., Ueno, T., Kunieda, T., Saito, S., Hoffman, P., . . . Takahashi, R. (2015).
660 Direct exploration of the role of the ventral anterior temporal lobe in semantic memory: cortical
661 stimulation and local field potential evidence from subdural grid electrodes. *Cerebral Cortex*,
662 *25*(10), 3802-3817.

663 Stark, B. C., Basilakos, A., Hickok, G., Rorden, C., Bonilha, L., & Fridriksson, J. (2019). Neural
664 organization of speech production: A lesion-based study of error patterns in connected

speech. *Cortex*, 117, 228-246. doi:10.1016/j.cortex.2019.02.029

Stefaniak, J. D., Alyahya, R. S., & Lambon Ralph, M. A. (2020). Language networks in aphasia and health: a 1000 participant Activation Likelihood Estimate analysis. *bioRxiv*.

Sul, B., Lee, K. B., Hong, B. Y., Kim, J. S., Kim, J., Hwang, W. S., & Lim, S. H. (2019). Association of Lesion Location With Long-Term Recovery in Post-stroke Aphasia and Language Deficits. *Frontiers in Neurology*, 10. doi:10.3389/fneur.2019.00776

Swinburn, K., Howard, D., & Porter, G. (2004). *CAT : comprehensive aphasia test*. Hove : Psychology Press.

Tench, C. R., Tanasescu, R., Auer, D. P., & Constantinescu, C. S. (2013). Coordinate Based Meta-Analysis of Functional Neuroimaging Data; False Discovery Control and Diagnostics. 8(7), e70143. doi:10.1371/journal.pone.0070143

Tench, C. R., Tanasescu, R., Auer, D. P., Cottam, W. J., & Constantinescu, C. S. (2014). Coordinate Based Meta-Analysis of Functional Neuroimaging Data Using Activation Likelihood Estimation; Full Width Half Max and Group Comparisons. *PLoS ONE*, 9(9), e106735. doi:10.1371/journal.pone.0106735

Turkeltaub, P. E., Eden, G. F., Jones, K. M., & Zeffiro, T. A. (2002). Meta-Analysis of the Functional Neuroanatomy of Single-Word Reading: Method and Validation. *Neuroimage*, 16(3), 765-780. doi:10.1006/nimg.2002.1131

Ueno, T., Saito, S., Rogers, T., & Lambon Ralph, M. A. (2011). Lichtheim 2: Synthesizing Aphasia and the Neural Basis of Language in a Neurocomputational Model of the Dual Dorsal-Ventral Language Pathways. *Neuron*, 72(2), 385-396. doi:10.1016/j.neuron.2011.09.013

Walker, G. M., Schwartz, M. F., Kimberg, D. Y., Faseyitan, O., Brecher, A., Dell, G. S., & Coslett, H. B. (2011). Support for anterior temporal involvement in semantic error production in aphasia: New evidence from VLSM. *Brain and language*, 117(3), 110-122. doi:10.1016/j.bandl.2010.09.008

Warren, J. E., Wise, R. J., & Warren, J. D. (2005). Sounds do-able: auditory-motor transformations and the posterior temporal plane. *Trends in neurosciences*, 28(12), 636-643.

Wise, R. J. (2003). Language systems in normal and aphasic human subjects: functional imaging studies and inferences from animal studies. *British Medical Bulletin*, 65(1), 95-119.

Woollams, A. M., Halai, A., & Lambon Ralph, M. A. (2018). Mapping the intersection of language and reading: the neural bases of the primary systems hypothesis. *Brain Structure and Function*, 223(8), 3769-3786. doi:10.1007/s00429-018-1716-z

Xing, S., Lacey, E. H., Skipper-Kallal, L. M., Jiang, X., Harris-Love, M. L., Zeng, J., & Turkeltaub, P. E. (2016). Right hemisphere grey matter structure and language outcomes in chronic left hemisphere stroke. *Brain*, 139(1), 227-241. doi:10.1093/brain/awv323

Yarkoni, T., Poldrack, R. A., Nichols, T. E., Van Essen, D. C., & Wager, T. D. (2011). Large-scale automated synthesis of human functional neuroimaging data. *Nature Methods*, 8(8), 665-670.

702 doi:10.1038/nmeth.1635

703

568 potentially relevant articles through article searching from database

245 articles after duplicates removed

106 records after screening based on abstract and title reading

33 articles included in meta-analysis

25 articles of whole brain analysis

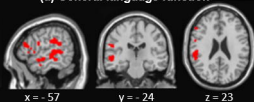
Exclusion after full paper reading

- i) Unrelated topics
- ii) Non-neuroimaging studies

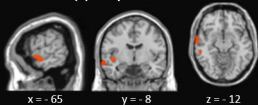
Final exclusion

- i) Excluding no brain coordinates

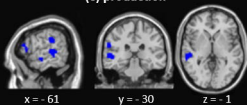
(a) General language function



(b) comprehension



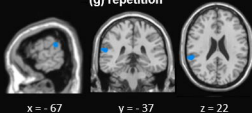
(c) production



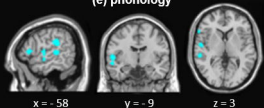
(d) semantics



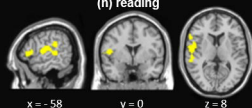
(g) repetition



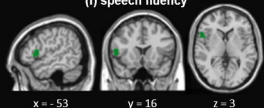
(e) phonology



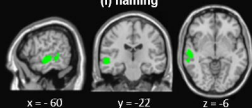
(h) reading

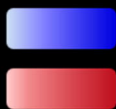
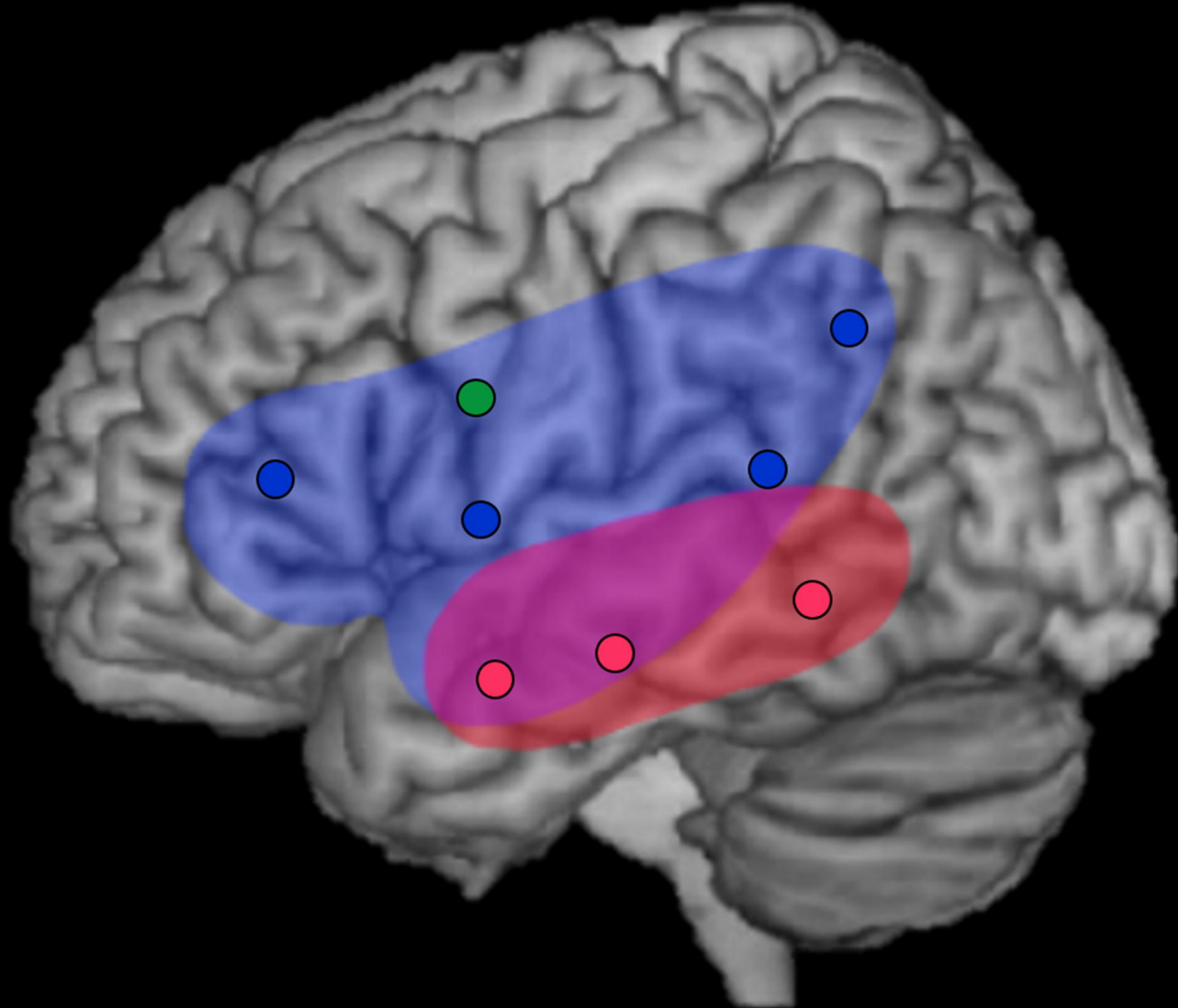


(f) speech fluency

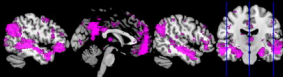


(i) naming

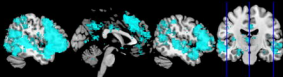




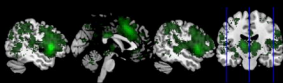
(a) semantics



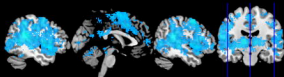
(b) phonology



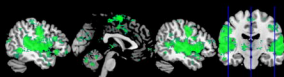
(c) speech fluency



(d) repetition



(e) reading



(f) naming

