

How is the distribution of psychological distress changing over time? Who is driving these changes? Analysis of the 1958 and 1970 British birth cohorts.

D. Gondek¹, R. E. Lacey¹, D. Blanchflower^{2,3,4}, P. Patalay^{5,6}

¹Research Department of Epidemiology and Public Health, University College London, London, England

²Department of Economics, Dartmouth College, Hanover, United States

³Adam Smith Business School, University of Glasgow, Glasgow, Scotland

⁴National Bureau of Economic Research, Cambridge, United States

⁵Centre for Longitudinal Studies, Department of Social Science, UCL Institute of Education, University College London, London, England

⁶MRC Unit for Lifelong Health and Ageing, Department of Population Science and Experimental Medicine, University College London, London, England

Word count: 3997

Abstract

Aims

Despite the large variance in distress, most research investigating lifecourse development and cross-cohort trends have focused on its mean levels at the population level. The main objective of this study is to investigate distributional shifts underlying observed age and cohort differences in mean levels of psychological distress in the 1958 and 1970 British birth cohorts. Further, we examine whether observed distributional shifts are driven by specific socio-demographic subgroups, according to gender, parental social class at birth, and highest achieved qualification by age 30/33. Finally, we compare cohort and age differences in the distribution of individual symptoms of psychological distress.

Methods

This study used data from the 1958 National Child Development Study and 1970 British birth cohort. Our analytical sample ($n=24,707$) included those who had at least one measure of distress, were still alive and were not permanent emigrants from Britain by age 50 in the 1958 birth cohort ($n=13,250$) and by age 46-48 in the 1970 birth cohort ($n=11,457$). Psychological distress was measured by the Malaise Inventory at ages 23, 33, 42 and 50 in the 1958 cohort and 26, 34, 42 and 46-48 in the 1970 cohort.

Results

The shifts in the distribution across age appear to be mainly due to changing proportion of those with moderate symptoms, except for midlife (age 42-50) when we observed polarisation in distress – increased proportions of people with no or multiple symptoms. The elevated levels of distress in the 1970 cohort, compared with the 1958 cohort, appeared to be due to an increase in the proportion of individuals with both moderate and high symptoms. For instance, at age 33/34 34.2% experienced no symptoms in 1970 compared with 54.0% in the 1958 cohort, whereas 42.3% endorsed at least two symptoms in the 1970 cohort vs 24.7% in 1958. These observed shifts were driven to some extent by a larger proportion of men and individuals with high qualification in the moderate and high distress groups in the more recent cohort. Fatigue, nervousness, and tension were particularly prevalent in

this life phase and all examined symptoms were more prevalent in the younger cohort.

Conclusions

Our study demonstrates the importance of studying not only mean levels of distress over time, but also the underlying shifts in its distribution. Due to the large dispersion of distress scores at any given measurement occasion, understanding the underlying distribution provides a more complete picture of population trends.

Introduction

Psychological distress captures a continuous distribution of symptoms of depression and anxiety (Mirowsky and Ross, 2002). Examining changes in mental health across age groups and between generations is an important endeavour in research on population health, as it helps to identify vulnerable life stages for mental ill-health and elucidate whether these are changing between generations. Albeit the large heterogeneity of distress across the distribution at the population level (Prior et al., 2020, Colman et al., 2007), most research investigating lifecourse development (age effects) and cross-cohort trends (cohort effects) have focused on mean levels of distress (Spiers et al., 2012, Blanchflower, 2020, Sacker and Wiggins, 2002, Jokela et al., 2013, Ploubidis et al., 2017, Gondek et al., 2021).

Previous research focussing on trajectories of mean distress suggests that average levels of distress may be somewhat elevated in mid-20s and midlife (age 45-55) (Keyes et al., 2014, Gondek et al., 2021, Jokela et al., 2013, Spiers et al., 2012), and that those born more recently are more likely to experience higher levels of distress throughout adulthood (Spiers et al., 2012, Gondek et al., 2021, Ploubidis et al., 2017). It is unclear, however, whether the distribution of distress changed across age groups and birth cohorts, and if these changes were driven by specific symptoms. Looking only at the population mean may mask differences in trends within the distribution, and this equally applies to age and cohort effects. For instance, when the proportion of those with high and low distress increases with age or across cohorts, considering means only would suggest a stable trend over time, hiding the more warranted conclusion of increased polarisation in the distribution. On the other hand, an increase in mean distress may be driven by individuals across the entire distribution (i.e., the whole distribution shifts right), or only by those with high levels of symptoms (i.e., change in the shape of the distribution). Identifying subpopulations that drive these changes would help to priorities the allocation of resources to these groups. To our knowledge, only one previous study considered distributional shifts and focused on late adolescence, finding polarisation between those at extreme ends of the spectrum of distress among those aged 16-24 years old in the British Household Panel Survey (Ross et al., 2017).

The main objective of this study was to investigate distributional shifts underlying observed age and cohort differences in mean levels of psychological distress across adulthood in the 1958 and 1970 British birth cohorts. This was done both by studying cross-sectional and longitudinal heterogeneity in the distribution. Further, we examined whether observed distributional shifts were driven by specific socio-demographic subgroups, according to gender, parental social class at birth, and highest achieved qualification by age 30/33. Finally, we compared cohort and age differences in the distribution of individual symptoms of psychological distress.

Methods

Sample

The 1958 British birth cohort (1958 National Child Development Study; NCDS) follows the lives of 17,415 people born in England, Scotland, and Wales in a single week of March 1958 (Power and Elliott, 2006) and the 1970 British birth cohort (the British birth cohort; BCS70) follows 17,196 people born in England, Scotland, and Wales in a single week of April 1970 (Wadsworth and Bynner, 2011). Both cohorts include information on physical and educational development, a range of bio-measures, economic circumstances, employment, family life, health behaviours, wellbeing, social participation, and attitudes (Power and Elliott, 2006, Wadsworth and Bynner, 2011, Brown and Peters, 2019).

Our analytical sample ($n=24,707$) included those who had at least one measure of distress, were still alive and were not permanent emigrants from Britain by age 50 in the 1958 cohort ($n=13,250$) and by age 46-48 in the 1970 cohort ($n=11,457$) (see eFigure 1 for the sample flow diagram). Both 1958 and 1970 cohorts were granted ethical approval for each sweep from 2000 by the National Health Service Research Ethics Committee and all participants have given informed consent.

Measure of psychological distress

Psychological distress was measured by the Malaise Inventory at ages 23, 33, 42 and 50 in the 1958 cohort and 26, 34, 42 and 46-48 in the 1970 cohort (Rutter et al., 1970). The 9-item version with “yes-no” response option was used across ages and cohorts (see eTable 1 for items of the questionnaire), with the total distress score ranging from 0-9, where a higher score indicates greater distress.

The Malaise Inventory has good psychometric properties (McGee et al., 1986), it has been used in the general population and high-risk groups (Furnham and Cheng, 2015). As implied by scalar invariance (Muthén and Asparouhov, 2013), symptoms captured by the items of the Malaise Inventory were interpreted equivalently by participants, regardless of their age (23-50), cohort membership (1958 vs 1970), gender (man vs woman), or measurement modes (face-to-face interview vs self-administered questionnaire etc.) (Ploubidis et al., 2019, Ploubidis et al., 2017).

Demographic variables

Variables used for comparing the demographic composition of subgroups of trajectories of psychological distress were gender, social class at birth, and highest qualification obtained by age 30/33. Gender (man and woman) was based on sex identified at birth by a midwife. Social class at birth represented father's occupation, coded according to the Register General's classification, and was categorised as "low" (IV partly skilled/V unskilled), "medium" (III skilled non-manual/manual), or "high" (I professional/II intermediate). The highest qualification obtained by age 30/33 refers to vocational or occupational qualifications (National Vocational Qualifications – NVQ) obtained since school, categorised as "low" (none-NVQ 1), "medium" (NVQ 2-3), or "high" (NVQ 4-5).

Analytical strategy

First, we described the cross-sectional heterogeneity in the distribution across age within each cohort and across cohorts (1958 vs 1970) using histograms.

Second, we studied heterogeneity in the longitudinal distribution of psychological distress within each cohort. We used multilevel regression analysis to model cohort-stratified average trajectories of psychological distress across age 23-50 (see eAppendix 2 for details on the analysis). We identified a large variance around average trajectories, which may indicate that there may be multiple subgroups (classes) of individuals who shared similar longitudinal trajectories of psychological distress in terms of their intercept and slope (Herle et al., 2020).

Third, we conducted a latent class growth analysis (LCGA) to identify such subgroups (Asparouhov and Muthen, 2014). LCGA was conducted using pooled samples from both cohorts. Models with an increasing number of classes, from two to five, were estimated to identify the optimum solution. Alternative specifications were compared based on model fit indicators – Akaike Information Criterion (AIC), Bayesian Information Criterion (BIC), adjusted Bayesian Information Criterion (adj BIC), (Vuong) Lo–Mendell–Rubin likelihood ratio tests ((V)LMR-LRT) – entropy, the class size (>5%) and interpretability of the classes (Asparouhov and Muthen, 2014, Herle et al., 2020). Subsequently, due to high entropy (>0.80) – participants were allocated to different classes according to their posterior probabilities (Asparouhov and Muthen, 2014).

Fourth, we used robust Poisson regression to compare the demographic composition of each class across cohorts (1958 vs 1970), gender, social class at birth, and highest qualification obtained by age 30/33 (White et al., 2011). Differences in the likelihood of being in each class were expressed in relative terms as a risk ratio. Separate regression analyses were run for each demographic exposure, with a dummy indicator of each class being an outcome. Any differences between the cohorts in the demographic composition of classes were tested, with Wald tests, by including an exposure*cohort interaction term in the regressions.

Finally, to examine whether any distributional shifts were driven by specific symptoms captured by the Malaise Inventory, we descriptively compared the proportion of cohort members endorsing individual symptoms of the Malaise Inventory across age and cohorts.

Missing information in multilevel regression analysis and LCGA was accounted for by using Full Information Maximum Likelihood (FIML). Missing information on individual symptoms and demographic variables used in Poisson regression were multiply imputed, resulting in 20 datasets (see eAppendix 1 for more details). LCGA was conducted using MPlus Version 8 (Muthen and Muthen, 1997-2017), all other analyses were run using Stata 16 (StataCorp, 2020).

Results

Cross-sectional distribution of psychological distress

Age differences within each cohort (1958 and 1970)

The mean score of psychological distress was highest at age 42 and 50 (mean at both ages: 1.54) in the 1958 cohort, and at age 42 (mean: 1.90) in the 1970 cohort. The spread of the distribution increased with age, to a greater extent in the 1970 cohort, being largest at age 50 in the 1958 cohort (standard deviation: 1.98) and at age 46-48 in 1970 (standard deviation: 2.17) (see eFigure 2).

As presented in Figure 2, there was a modest decline in the proportion of those with 4+ symptoms (considered as high levels of distress) between age 23/26 and 33/34 in both cohorts (e.g., in 1958, age 23 vs 33: 9.6% vs 7.8%). Hence, the improvement in the mean of psychological distress between these ages (see Figure 1) was mainly due to a greater decline in the proportion of those with 1-3 symptoms (e.g., in 1958, 23 vs 33: 46.4% vs 38.2%), with a simultaneous increase in the proportion of those with 0 symptoms (e.g., in 1958, 23 vs 33: 44.0% vs 54.0%) (see Figure 1).

Subsequently, it appears that the increase in psychological distress between age 33/34 and 42 was driven by both an increase in the proportion of those with 1-3 symptoms (e.g., in 1958, 33 vs 42: 38.2% vs 49.1%) and 4+ symptoms (e.g., in 1958, 33 vs 42: 7.8% vs 13.2%). The proportion of those with 0 symptoms declined (e.g., in 1958, 33 vs 42: 54.0% vs 37.7%).

After age 42, we observed both a higher proportion of those with 0 symptoms (e.g., in 1958, 42 vs 50: 37.7% vs 43.3%) and 4+ symptoms (e.g., in 1958, 42 vs 50: 13.2% vs 15.4%), and a lower proportion of those with 1-3 symptoms (e.g., in 1958, 42 vs 50: 49.1% vs 41.3%) – resulting in polarisation in distress.

Cohort differences (1958 vs 1970) at each age

Members of the 1970 cohort experienced higher psychological distress than those of 1958 across all ages, with the greatest difference at age 33/34 (mean difference: 0.69, 95% CI 0.64 to 0.73) (see Figure 2). The 1970 cohort also had a greater spread of distribution across all ages, with the difference being the greatest at age 33/34 (standard deviation, 1970 vs 1958: 1.91 vs 1.55) (see Figure 2).

There was a lower proportion – across all ages – of individuals who did not experience any symptoms in the 1970 cohort compared with 1958, with a largely stable proportion of those with one symptom, and an increase across the distribution of those with at least two symptoms (see Figure 2). For instance, at age 33/34 34.2% experienced no symptoms in 1970 compared with 54.0% in the 1958 cohort, whereas 42.3% endorsed at least two symptoms in the 1970 cohort vs 24.7% in 1958. Hence, the entire distribution of psychological distress shifted towards the more severe end of the spectrum in 1970 compared with 1958.

<Figure 1. Cohort-stratified age distribution of participants with varying proportions of symptoms.>

<Figure 2. Cross-sectional distribution of psychological distress across cohorts at overlapping ages.>

Longitudinal distribution of psychological distress

Psychological distress was higher in the 1970 cohort than in 1958 throughout all ages (23/26 – 46-48/50) (see eFigure 3) – with the mean difference between cohorts reducing with age (age 23/26 vs 46-48/50: 0.55, 95% CI 0.51 to 0.60 vs 0.30, 95% CI 0.25 to 0.36). There was a large spread in the span of trajectories of psychological distress (see eFigure 4). This was mainly due to large between-individuals variance in intercept (centered at age 23/26), which was greater in 1970 than in 1958 cohort (1.74, 95% CI 1.64 to 1.84 vs 1.25, 95% CI 1.19 to 1.31) (see eTable 3 for more details). As shown by eFigure 4, the trajectories of distress tended to diverge with age to a similar extent in both cohorts. However, within-individual variance – the fluctuations in distress from occasion to occasion – were greater in the 1970 cohort compared with 1958 (1.52, 95% CI 1.48 to 1.56 vs 1.22, 95% CI 1.19 to 1.24) (see eTable 3). A larger proportion of the total variance in distress was attributed to between-individuals differences in the 1970 cohort than 1958 (53.4% vs 50.6%), whereas a greater amount of variance was explained by within-individual fluctuations in the 1958 cohort (49.4% vs 46.6%).

Due to substantial heterogeneity in the average trajectories of psychological distress, we conducted LCGA in a pooled sample of 1958 and 1970 cohorts identifying four subgroups (classes) of individuals who shared similar trajectories. Comparisons of models with an alternative number of classes pointed towards the model with four

classes as the most suitable solution. The four-class solution showed a better fit than solutions with fewer classes (lower values of AIC, BIC and adj BIC; highly significant LMR-LRT and VLMR-LRT) (see eTable 4). In addition, it had a higher entropy than the model with five classes (0.817 vs 0.785) and, as opposed to the solution with five classes, it did not include classes with less than 5% of cohort members. Comparison of cohort-stratified LCGA models also pointed towards the four-class model as the most suitable solution (see eTable 5 for details).

Most participants were in the group with relatively stable “low symptoms”, experiencing on average 0.86 symptoms (standard deviation: 1.16) between age 23/26 – 46-48/50 (see Figure 4). The proportion of these participants decreased in the 1970 cohort compared with 1958 (77.6 vs 67.1%). Two other classes with largely stable symptomatology were identified, “moderate symptoms” (mean: 2.94, standard deviation: 1.69) with stable symptoms until age 42 and a subsequent marginal decrease in symptoms, and “high symptoms” (mean: 5.14, standard deviation: 2.22), with stable symptoms until age 33/34 and a subsequent marginal increase in symptoms. Prevalence of both classes was higher in the 1970 cohort (16.3 vs 9.1% for moderate and 7.7 vs 4.0% for high). The final class, “increasing symptoms in midlife”, had a similar prevalence in both cohorts (9.3% in 1958 and 8.9% in 1970) and comprised individuals who experienced a sharp increase in the mean number of symptoms between age 33/34 and 46-48/50.

< Figure 3. Mean number of symptoms across the subgroups of age trajectories of psychological distress, identified with the 4-classes LCGA.>

Demographic composition of subgroups of distress trajectories

The “low symptoms” subgroup was more likely to comprise men (vs women) by 20% (95% CI 1.18 to 1.22) in relative terms, individuals with a high social class at birth (vs low) by 11% (95% CI 1.08 to 1.13), and cohort members with high (vs low) attained qualification by age 30/33 by 21% (95% CI 1.18 to 1.24). See eTable 6 for information on absolute differences in proportions. There was no evidence for cross-cohort differences in the demographic composition of the “low symptoms” subgroup (see Figure 5 & eTable 7).

The “moderate symptoms” and “high symptoms” subgroups were more likely to include women than men and individuals with low (vs high) social class at birth and

low (vs high) qualification attained by age 30/33 (see Figure 4 & eTable 6). However, the composition of these subgroups shifted in the 1970 cohort compared with 1958, with a greater proportion of men and those with medium and high qualification attained by age 30/33 in symptomatic groups. For instance, women were 2.77 times (risk ratio: 2.77, 95% CI 2.31 to 3.32) more likely to be in the “high symptoms” subgroup in the 1958 cohort compared with 1.63 times (95% CI 1.63 to 1.86) in 1970 cohort. For those with low (vs high) qualification attained by age 30/33, the risk of being in the “high symptoms” subgroup was 4.94 times (95% CI 3.63 to 6.72) higher in the 1958 cohort compared with 2.43 (95% CI 2.00 to 2.96) in 1970 cohort. We found no cross-cohort differences due to social class at birth.

The “symptoms increasing in midlife” subgroup was more likely, to a similar extent in both cohorts, to include individuals with low attained qualification by age 30/33 compared with high (e.g., in 1958 cohort: risk ratio: 1.54, 95% CI 1.30 to 1.82). The likelihood of women being in this subgroup, compared with the “low symptoms”, was lower in the 1970 cohort (risk ratio: 1958 vs 1970: 1.89, 95% CI 1.69 to 2.11 vs 1.52, 95% CI 1.26 to 1.82).

<Figure 4. Demographic characteristics of each subgroup of age trajectories of psychological distress – across 1958 and 1970 cohorts.>

Symptom level analysis

The prevalence of most symptoms tended to increase in 20s and 40s across both cohorts. The most prevalent symptoms at both ages were worry (age 23/26 vs 33/34 vs 42 – 1958 and 1970 combined: 48.4% vs 39.1% vs 50.2%), feeling upset or irritated (26.4% vs 19.4% vs 25.5%), and low mood (18.8% vs 14.4% vs 20.9%). Feeling of rage was most prevalent in 20s and reduced with age (age 23/26 vs 33/34 vs 42: 7.1% vs 5.2% vs 4.3%), whereas several other symptoms were most prevalent in 40s, including fatigue (25.5% vs 25.9% vs 36.7%), nervousness (3.6% vs 3.4% vs 7.7%), and tension (4.4% vs 4.4% vs 6.9%).

We observed a higher prevalence of all symptoms in the 1970 cohort compared with 1958 (see eFigure 5) – particularly worry (mean across all ages: 50.7% vs 41.0%), fatigue (36.8% vs 24.2%), feeling upset or irritated (28.9% vs 21.4%), low mood (21.0% vs 16.4%), and nervousness (4.5% vs 8.1%). There were more modest

increases in the prevalence of panic (7.5% vs 9.8%), feeling scared (7.3% vs 9.0%), tension (5.4% vs 6.8%), and rage (4.7% vs 5.5%).

Discussion

Summary of main findings

The shifts in the distribution across age groups were mainly due to changing proportion of those with moderate symptoms, except for midlife (age 42-50) when we observed polarisation in distress – increased proportions of people without and with multiple symptoms. The elevated levels of distress in the 1970 cohort, compared with the 1958 cohort, appeared to be due to an increase in the proportion of individuals with both moderate and high symptoms. These observed cohort differences were driven to some extent by an increasing proportion of men and individuals with high qualification in the moderate and high distress groups. Fatigue, nervousness, and tension were particularly prevalent in this life phase and all examined symptoms were more prevalent in the more recent cohort.

Interpretation and implications of the findings

Considering distributional shifts in the population across age or cohorts is important for public health policy. It helps us understand who drives the trends over time, which in turn, may facilitate monitoring of these populations at risk, understanding risk factors that they are affected by, and devise more targeted interventions. Based on the observed shifts in the distribution of distress, we speculate on circumstances contributing to the changes in the distribution of distress across age and cohorts.

Age differences across cohorts (1958 and 1970)

In line with previous evidence (Prior et al., 2020), we found that levels of distress tend to be highly variable across age and fluctuate considerably within a person from occasion to occasion. These within-person situational fluctuations in distress appear to be more pronounced in 1970, compared with 1958 cohort, suggesting that members of the more recent cohort can be more affected by stressful life events occurring between measurement occasions, for instance, related to family or employment.

Interestingly, higher distress in early-40s, compared with 30s, appeared to be due to a higher proportion of those with moderate, and to a lesser extent, high levels of symptoms. However, from age 42 we observed a simultaneous increase in the proportion of those with no symptoms and high symptoms. As the mean of distress

remained largely stable between age 42 and 46/50, this polarisation would be masked when examining mean differences.

Hence, as people approach midlife they may share certain stressors that affect the population across the distribution. However, as they progress through midlife some might be better equipped to deal with these stressors, whereas others experience further increases in distress. This diverging trend can be explained by midlife being described both as the life phase of considerable challenges and opportunities (Infurna et al., 2020, Lachman et al., 2015). Midlife tends to be characterised by an increase in intensity and load of multiple concurrent stressors, including caring for ageing parents and children, managing peaking careers, dealing with early signs of declining health (Infurna et al., 2020, Lachman et al., 2015). These factors can help to explain a particularly high prevalence of symptoms such as fatigue, nervousness, and tension during this life phase, as found in our study and previous evidence (Blanchflower, 2020). At the same time, midlife also tends to be a peak time for earnings, self-confidence, and responsibility across various areas of life (Infurna et al., 2020, Lachman et al., 2015), with some being better equipped to deal with midlife adversity, utilising available resources to a greater extent.

Cohort differences (1958 vs 1970) across age

The entire distribution of distress shifted towards a more severe end of the spectrum in 1970, compared with the 1958 cohort. We did not observe polarisation in distress over time previously found in the younger population (16-24 years old), between 1991 and 2008, in the British Household Panel Survey (Ross et al., 2017).

'Generation X' (born between 1961-1981), compared with 'Baby boomers' (1946-1964), experienced a plethora of risk factors strongly associated with mental health, such as rising inequality, unemployment among young people in the mid-1980s, or changes to the family structure (e.g., increasing rates of divorce) (Sullivan et al., 2015), which may explain why the more recent cohort experienced an increase in distress across the entire distribution of distress and all studied symptoms.

It is important to understand how these risk factors contributed to a greater increase in the proportion of men and those with a medium and high attained qualification in symptomatic groups. One potential reason for more men experiencing high distress during their adulthood may be declining manufacturing that disproportionately affected

job opportunities among men (Sullivan et al., 2015), reporting mental health problems being more acceptable in this gender, or men being increasingly involved in household chores and balancing work and childcare (McMunn et al., 2015). However, more recent cohort trends, particularly among young adults, suggest that the gender gap may be widening again (Ross et al., 2017, Spiers et al., 2012).

Socioeconomically advantaged individuals experienced a greater increase in distress in the more recent cohort. This is a somewhat surprising finding in the context of rising inequality over time which one would expect to benefit more advantaged groups (Sullivan et al., 2015). However, social inequality has been linked with poor social cohesion, which is associated with higher levels of distress among those from both advantaged and disadvantaged socioeconomic groups (Umberson and Montez, 2010). In addition, some have posited that rising house prices have affected relatively well-off members of the middle class, who tend to work increasingly longer hours, borrow more, commute longer and save less to keep up with this increase – all of which may contribute to worsening mental health among those with high qualification in more recent cohorts (Frank, 2007).

Strengths and limitations

The main strength of our study is that it is broadly representative of British men and women born around 1958 and 1970. However, both cohorts suffered from missing data due to non-response and attrition, which may have introduced bias. This limitation was mitigated by FIML and multiple imputation, while taking advantage of rich information available in both cohorts to minimise bias in estimates (Mostafa et al., 2021). The study is limited by the gaps between assessments in the two cohorts, more frequent assessments would have permitted a more age nuanced picture of the changing distributions across cohorts. Similarly, comparing a greater number of generations would also provide a fuller picture of long-term trends, however, long-term longitudinal studies across multiple generations are limited in availability. As recent cohorts highlight further increases in distress at younger ages, examining these distributions as they move into adulthood will be valuable (Patalay and Gage, 2019).

Conclusion

Midlife appears to have a polarising effect on the experience of distress, with a rising proportion of individuals with both no symptoms and high symptoms. We also found that the 1970 cohort, compared to 1958, experienced a shift in the entire distribution of distress towards the more severe end of the spectrum. Our study demonstrates the importance of studying not only mean levels of distress over time, but also the underlying shifts in its distribution. Due to the large dispersion of distress scores at any given measurement occasion, understanding the underlying distribution provides a more complete picture of the population trends.

Acknowledgements

We thank the Centre for Longitudinal Studies (CLS), UCL Institute of Education, for the use of these data and the UK Data Service for making them available. Neither CLS nor the UK Data Service bear any responsibility for the analysis or interpretation of these data.

Financial Support

This work was supported by the UK's Economic and Social Research Council (RL & DG, grant number ESP010229/1).

Conflicts of Interest

None.

Ethical Standards

The authors assert that all procedures contributing to this work comply with the ethical standards of the relevant national and institutional committees on human experimentation and with the Helsinki Declaration of 1975, as revised in 2000.

Availability of Data and Materials

Cohort data comply with ESRC data sharing policies, readers can access data via the UK Data Archive (www.data-archive.ac.uk), through a formal request.

References

- ASPAROUHOV, T. & MUTHEN, B. 2014. Auxiliary Variables in Mixture Modeling: Three-Step Approaches Using Mplus. *Structural Equation Modeling*, 21, 329-41.
- BLANCHFLOWER, D. G. 2020. *Unhappiness and age*. NBER Working Paper No. 26642, National Bureau of Economic Research.
- BROWN, M. & PETERS, A. 2019. 1970 British Cohort Study. Age 46 Survey User Guide. Institute of Education.
- COLMAN, I., PLOUBIDIS, G. B., WADSWORTH, M. E., JONES, P. B. & CROUDACE, T. J. 2007. A longitudinal typology of symptoms of depression and anxiety over the life course. *Biol Psychiatry*, 62, 1265-71.
- FRANK, R. 2007. *Falling Behind: How Rising Inequality Harms the Middle Class*. Berkeley and Los Angeles: University of California Press.
- FURNHAM, A. & CHENG, H. 2015. The stability and change of malaise scores over 27 years: Findings from a nationally representative sample. *Personality and Individual Differences*, 79, 30-34.
- GONDEK, D., BANN, D., PATALAY, P., GOODMAN, A., RICHARDS, M. & PLOUBIDIS, G. B. 2021. Psychological distress from adolescence to early old age: Evidence from the 1946, 1958 and 1970 British birth cohorts. *Psychological Medicine*.
- HERLE, M., MICALI, N., ABDULKADIR, M., LOOS, R., BRYANT-WAUGH, R., HUBEL, C., BULIK, C. M. & DE STAVOLA, B. L. 2020. Identifying typical trajectories in longitudinal data: modelling strategies and interpretations. *Eur J Epidemiol*, 35, 205-222.
- INFURNA, F. J., GERSTORF, D. & LACHMAN, M. E. 2020. Midlife in the 2020s: Opportunities and challenges. *Am Psychol*, 75, 470-485.
- JOKELA, M., BATTY, G. D. & KIVIMAKI, M. 2013. Ageing and the prevalence and treatment of mental health problems. *Psychological Medicine*, 43, 2037-45.
- KEYES, K. M., NICHOLSON, R., KINLEY, J., RAPOSO, S., STEIN, M. B., GOLDNER, E. M. & SAREEN, J. 2014. Age, Period, and Cohort Effects in Psychological Distress in the United States and Canada. *American Journal of Epidemiology*, 179, 1216-1227.
- LACHMAN, M. E., TESHALE, S. & AGRIGOROAELI, S. 2015. Midlife as a pivotal period in the life course: Balancing growth and decline at the crossroads of youth and old age. *IJBD*, 39, 20-31.
- MCGEE, R., WILLIAMS, S. & SILVA, P. A. 1986. An evaluation of the Malaise inventory. *Journal of Psychosomatic Research*, 30, 147-152.
- MCMUNN, A., LACEY, R., WORTS, D., MCDONOUGH, P., STAFFORD, M., BOOKER, C., KUMARI, M. & SACKER, A. 2015. De-standardization and gender convergence in work-family life courses in Great Britain: A multi-channel sequence analysis. *Advances in Life Course Research*, 26, 60-75.
- MIROWSKY, J. & ROSS, C. E. 2002. Measurement for a human science. *Journal of Health and Social Behavior*, 43, 152-70.
- MOSTAFA, T., NARAYANAN, M., PONGIGLIONE, B., DODGEON, B., GOODMAN, A., SILVERWOOD, R. & PLOUBIDIS, G. 2021. Missing at random assumption made more plausible: evidence from the 1958 British birth cohort. *Journal of Clinical Epidemiology*.
- MUTHÉN, B. & ASPAROUHOV, T. 2013. New methods for the study of measurement invariance with many groups. Mplus (<https://www.statmodel.com/download/PolAn.pdf>).
- MUTHEN, L. K. & MUTHEN, B. 1997-2017. Mplus User's Guide. Eighth Edition. Los Angeles, CA: Muthén & Muthén.
- PATALAY, P. & GAGE, S. H. 2019. Changes in millennial adolescent mental health and health-related behaviours over 10 years: a population cohort comparison study. *Int J Epidemiol*, 48, 1650-1664.
- PLOUBIDIS, G., MCELROY, E. & MOREIRA, H. 2019. A longitudinal examination of the measurement equivalence of mental health assessments in two British birth cohorts. *Longitudinal and Life Course Studies* 10, 471-489.

- PLOUBIDIS, G. B., SULLIVAN, A., BROWN, M. & GOODMAN, A. 2017. Psychological distress in mid-life: evidence from the 1958 and 1970 British birth cohorts. *Psychological Medicine*, 47, 291-303.
- POWER, C. & ELLIOTT, J. 2006. Cohort profile: 1958 British birth cohort (National Child Development Study). *Int J Epidemiol*, 35, 34-41.
- PRIOR, L., JONES, K. & MANLEY, D. 2020. Ageing and cohort trajectories in mental ill-health: An exploration using multilevel models. *PLoS One*, 15, e0235594.
- ROSS, A., KELLY, Y. & SACKER, A. 2017. Time trends in mental well-being: the polarisation of young people's psychological distress. *Soc Psychiatry Psychiatr Epidemiol*, 52, 1147-1158.
- RUTTER, M., TIZARD, J. & WHITMORE, K. 1970. *Education, Health and Behaviour*, London, Longmans.
- SACKER, A. & WIGGINS, R. D. 2002. Age-period-cohort effects on inequalities in psychological distress, 1981-2000. *Psychological Medicine*, 32, 977-90.
- SPIERS, N., BRUGHA, T. S., BEBBINGTON, P., MCMANUS, S., JENKINS, R. & MELTZER, H. 2012. Age and birth cohort differences in depression in repeated cross-sectional surveys in England: the National Psychiatric Morbidity Surveys, 1993 to 2007. *Psychological Medicine*, 42, 2047-55.
- STACORP 2020. Stata Statistical Software: Release 16. College Station, TX: StataCorp LLC.
- SULLIVAN, A., BROWN, M. & BANN, D. 2015. Guest Editorial: Generation X enters middle age. *Longitudinal and Life Course Studies*, 6, 120 – 30.
- UMBERSON, D. & MONTEZ, J. K. 2010. Social relationships and health: a flashpoint for health policy. *J Health Soc Behav*, 51 Suppl, S54-66.
- WADSWORTH, M. & BYNNER, J. 2011. *A Companion to Life Course Studies: the social and historical context of the British birth cohort studies*, London, Routledge.
- WHITE, I. R., ROYSTON, P. & WOOD, A. M. 2011. Multiple imputation using chained equations: issues and guidance for practice. *Stat Med.* , 30, 377–99.

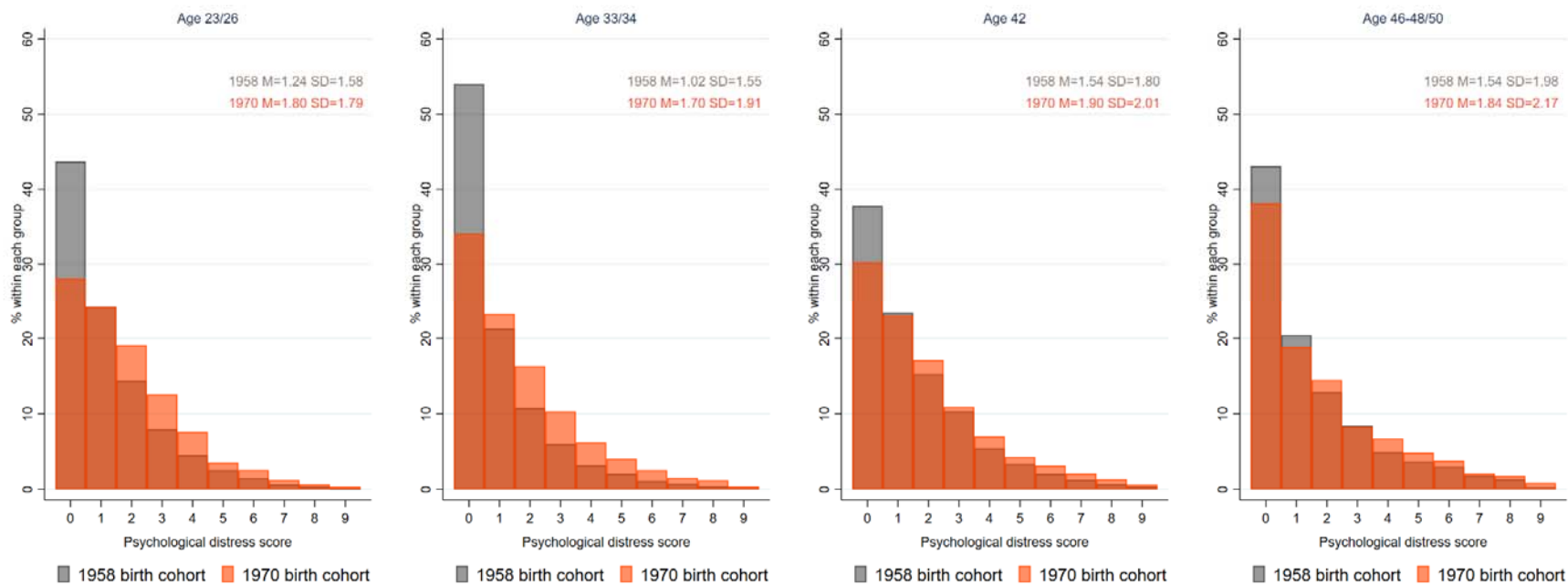


Figure 1. Distribution of psychological distress scores across age and cohorts.

Note. The figure represents a cross-sectional distribution of psychological distress at each age across cohorts. In addition, mean (M) and standard deviation (SD) are given.

Heterogeneity in psychological distress

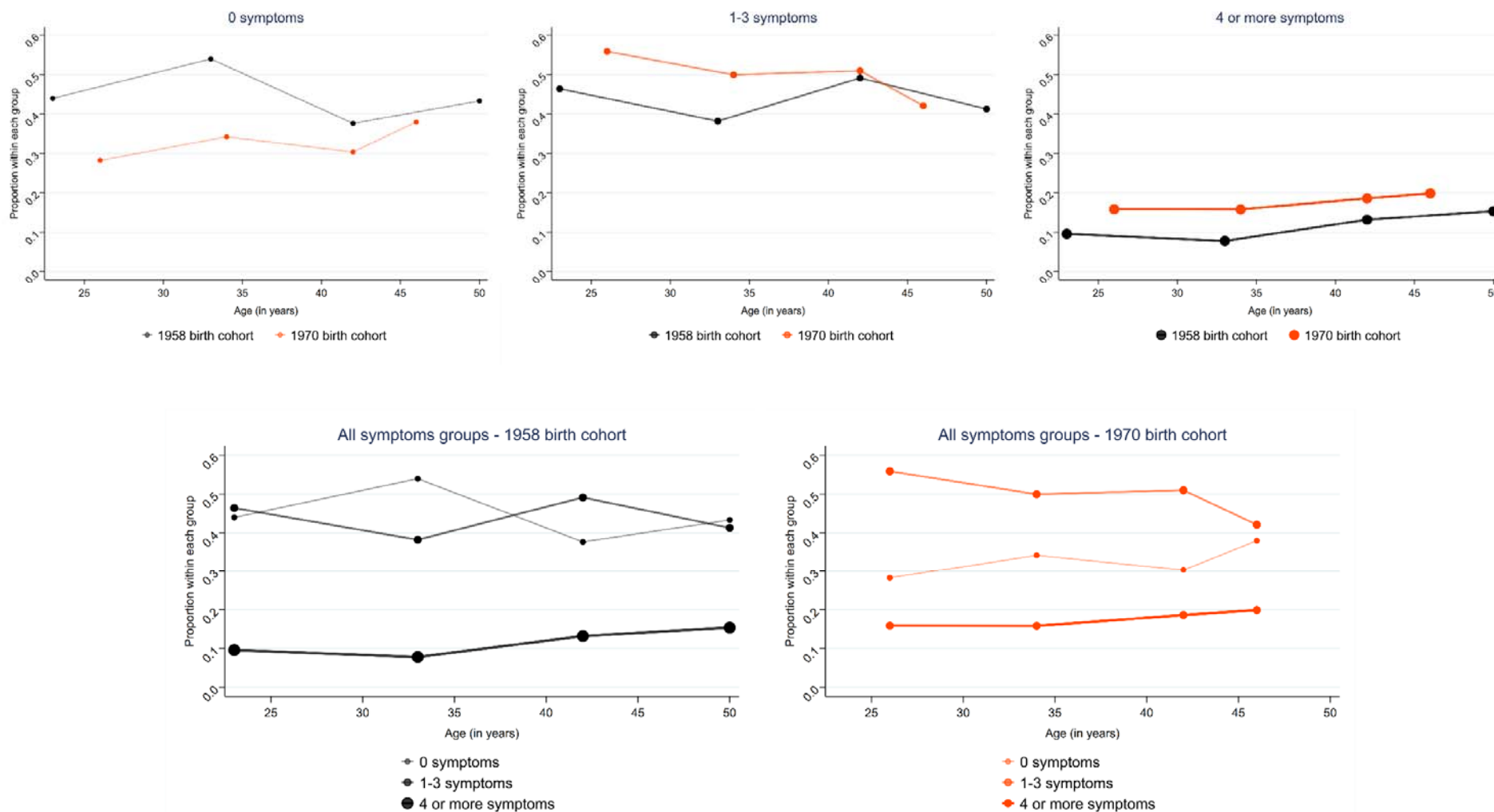


Figure 2. Cohort-stratified age distribution of participants with varying proportions of symptoms.

Note. The figure represents proportion of individuals with different proportion of symptoms across age groups and cohorts. Cohort-stratified graphs with all groups of symptoms are given on the same axis to facilitate interpretation of age effects. This graph is an adapted form of a graph in Gondek et al 2021.

Heterogeneity in psychological distress

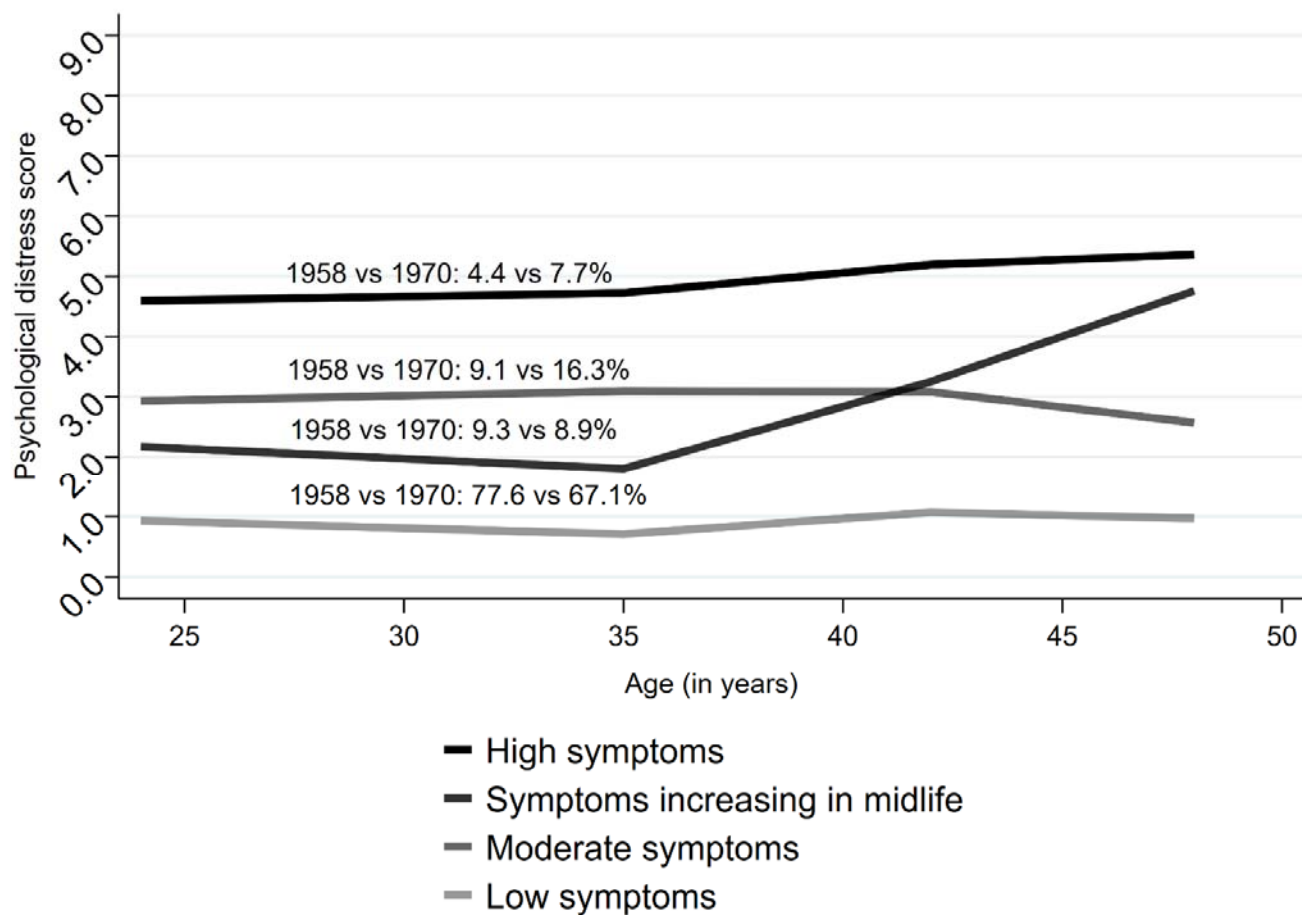


Figure 3. Mean psychological distress across the subgroups of age trajectories of psychological distress, identified with the 4-classes LCGA.

Note. The figure represents mean psychological distress across age for each subgroup of age trajectories as identified by the final-solution LCGA model. In addition, the prevalence of each class across cohorts is given.

Heterogeneity in psychological distress

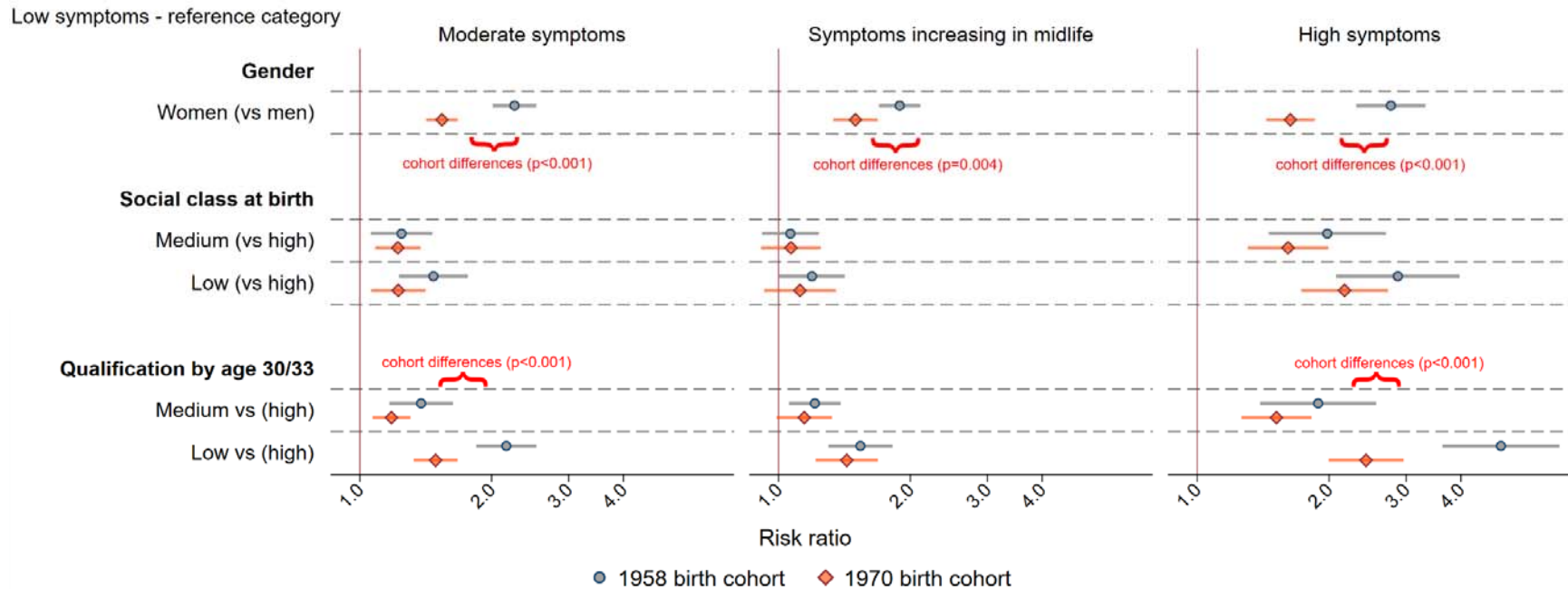


Figure 4. Demographic characteristics of different subgroups of age trajectories of psychological distress – across 1958 and 1970 cohorts.

Note. The figure represents estimates from Poisson regression using “low symptoms” as a reference category. Curly brackets represent strong evidence for cross-cohort differences in the composition of a given class, indicated as $p < 0.001$ according to a Wald test of a cohort*exposure interaction term. Risk ratio represents relative difference in proportions.

Heterogeneity in psychological distress