

1 **Temporal stability and detection sensitivity of the dry swab-based**
2 **diagnosis of SARS-CoV-2**

3

4 CG Gokulan^{1,*}, Uday Kiran^{1,2,*}, Santosh Kumar Kuncha^{1,3,*}, Rakesh K Mishra^{1, †}

5

6 * These authors contributed equally to the work

7

8 **Affiliation:**

9

10 ¹ CSIR-Centre for Cellular and Molecular Biology (CSIR-CCMB), Hyderabad, India

11

12 ² Academy of Scientific and Innovative Research (AcSIR)

13

14 ³ Current address: Buchmann Institute for Molecular Life Sciences, Goethe University
15 Frankfurt, Germany

16

17 [†] Corresponding author

18

19 Correspondence should be addressed to mishra@ccmb.res.in

20

21 **Abstract**

22 The rapid spread and evolution of various strains of SARS-CoV-2, the virus responsible for
23 COVID-19, continues to challenge the disease controlling measures globally. Alarming
24 concern is, the number of second wave infections surpassed the first wave and the onset of
25 severe symptoms manifesting rapidly. In this scenario, testing of maximum population in less
26 time and minimum cost with existing diagnostic amenities is the only possible way to control
27 the spread of the virus. The previously described RNA extraction-free methods using dry
28 swab have been shown to be advantageous in these critical times by different studies. In this
29 work, we show the temporal stability and performance of the dry swab viral detection method
30 at two different temperatures. Contrived dry swabs holding serially diluted SARS-CoV-2
31 strains A2a and A3i at 25°C (room temperature; RT) and 4°C were subjected to direct RT-
32 PCR and compared with standard VTM-RNA based method. The results clearly indicate that
33 dry swab method of RNA detection is as efficient as VTM-RNA-based method in both
34 strains, when checked for up to 72 hours. The lesser C_T values of dry swab samples in
35 comparison to that of the VTM-RNA samples suggest better sensitivity of the method within
36 48 hours of time. The results collectively suggest that dry swab samples are stable at RT for
37 24 hours and the detection of SARS-CoV-2 RNA by RT-PCR do not show variance from
38 VTM-RNA. This extraction free, direct RT-PCR method holds phenomenal standing in the
39 present life-threatening circumstances due to SARS-CoV-2.

40

41 **Key words**

42 COVID-19, Viral strains, Diagnosis, Stability, Proteinase K, Dry swab

43 **Introduction**

44 The life-threatening and repeated Coronavirus Disease 2019 (COVID-19) pandemic waves
45 clubbed with the emergence of new strains and scarceness of the vaccines for majority of the
46 world population, the only way out is to follow COVID-19 protocols and mass testing to stop
47 the spread of the virus. In a year's time the COVID-19 testing facilities has evolved to test
48 more samples by implementing automation and involving more skilled people. Regardless of
49 all these preparations, due to multiple waves of infection and new strains with fast spreading
50 ability, the present testing setup is unable to test the large number of samples in a time bound
51 manner. Along with this, there are multiple challenges such as shortage of Ribonucleic acid
52 (RNA) isolation reagents, samples transport facilities, equipment breakdown, and limited
53 human/financial resources (Fomsgaard & Rosenstjerne, 2020). In an attempt to overcome
54 these hurdles, multiple studies attempted to present the advantages of RNA extraction-free
55 direct Reverse Transcription-Polymerase Chain Reaction (RT-PCR), without compromising
56 the sensitivity of detection (Bruce et al., 2020; Kiran et al., 2020; Padgett et al., 2020; Parikh
57 et al., 2021; Smyrlaki et al., 2020; Visseaux et al., 2021) which is being effectively
58 implemented in few countries (ICMR, 2021; Srivatsan, Heidl, et al., 2020).

59 Besides the existence of promising extraction-free RT-PCR methods, there are apprehensions
60 in implementing such methods in large scale. Those include temporal stability of the samples,
61 detection sensitivity, other logistics, and mainly the fact that diagnostic personnel being
62 accustomed to traditional methods. But the current circumstances demand more flexibility to
63 implementation of extraction-free detection methods that saves considerable time, manpower,
64 and reduce the economic burden. In this work we convincingly added more scientific
65 dimensions to the dry swab extraction-free method for Severe Acute Respiratory Syndrome-
66 Coronavirus-2 (SARS-CoV-2) diagnosis that we have reported earlier (Kiran et al., 2020).
67 This work illuminates further advantages of the method and discusses the scope for
68 commercialization.

69 **Materials and methods**

70 **Viral strains, log dilutions and swab preparation**

71 Strains representing two different clades of SARS-CoV-2, namely A2a and A3i (GISAID ID:
72 EPI_ISL_458046; virus ID- hCoV-19/India/TG-CCMB-L1021/2020 , and EPI_ISL_458075;
73 virus ID- hCoV-19/India/TG-CCMB92 O2-P1/2020) have been reported previously and have
74 been tested for the temporal stability (Gupta et al., 2021). A concentration of 4.55×10^6 pfu/ml
75 and 8×10^6 pfu/ml viral cultures of A2a and A3i strains, respectively, were serially diluted to
76 up to 6 log folds. The swabs were immersed in different dilutions for 10-15 seconds and then
77 stored as either dry swab in 15 ml sterile tubes or in 3 ml VTM-containing tubes at room
78 temperature (RT; $25 \pm 1^\circ\text{C}$) and 4°C for up to 3 days. Independent swabs were sampled at an
79 interval of 24 hours and processed as discussed below.

80 **Sample processing**

81 The sample processing was performed in the BSL-3 facility of CSIR-CCMB, Hyderabad,
82 India by following Standard Operating Procedures.

83 a) Extraction of biological material from dry swabs:

84 A volume of 400 μl of TE buffer [Tris pH-7.4 10 mM, EDTA 0.1 mM] with 2mg/ml
85 proteinase K was added and the samples were incubated at RT for 30 min to ensure the
86 release of biological material (unless mentioned otherwise).

87 b) Heat Inactivation:

88 The samples were then heated at 98°C for 6 min in a dry bath placed inside the laminar
89 hood. The heat-treated samples were directly used as a template for RT-PCR.

90 **Proteinase K concentration optimisation**

91 Nasopharyngeal swab samples from three COVID-19 positive individuals with informed
92 consents were collected. 400 μl of TE buffer was added to the swab samples at first and the
93 samples were let at RT for 15 minutes. Later, four 50 μl aliquots of the samples were taken
94 and appropriate volume of 100 mg/ml proteinase K solution was added to the aliquots,
95 respectively, to get 2 mg/ml, 1 mg/ml, 0.5 mg/ml of proteinase K. One tube was processed
96 without proteinase K (0 mg/ml). The samples were let at RT for another 15 minutes and were
97 processed as described above.

98 **RNA extraction and RT-PCR**

99 The RNA was extracted from the VTM samples using QIAamp Viral RNA isolation kit
100 (Qiagen, Germany) by following the manufacturer's protocol. The RNA samples were
101 checked for the presence of SARS-CoV-2 RNA using FDA (Food and Drug Administration,
102 USA Government)-approved Fosun COVID-19 RT-PCR Detection Kit (Shanghai Fosun
103 Long March Medical Science Co., Ltd, China). The kit provides primers and probes for target

104 genes, the envelope gene (E-gene; ROX labelled), nucleocapsid gene (N-gene; JOE labelled),
105 and open reading frame1ab (ORF1ab; FAM labelled) of SARS-CoV-2. The RT-PCR was
106 performed as per manufacturer recommendation on QuantStudioTM5. The Positive and
107 negative controls provided in the kit were included each time in the amplification plates, and
108 the C_T values were in the range of the manufacturer protocol proving to be efficient and
109 devoid of contamination. All the samples were tested in triplicates.

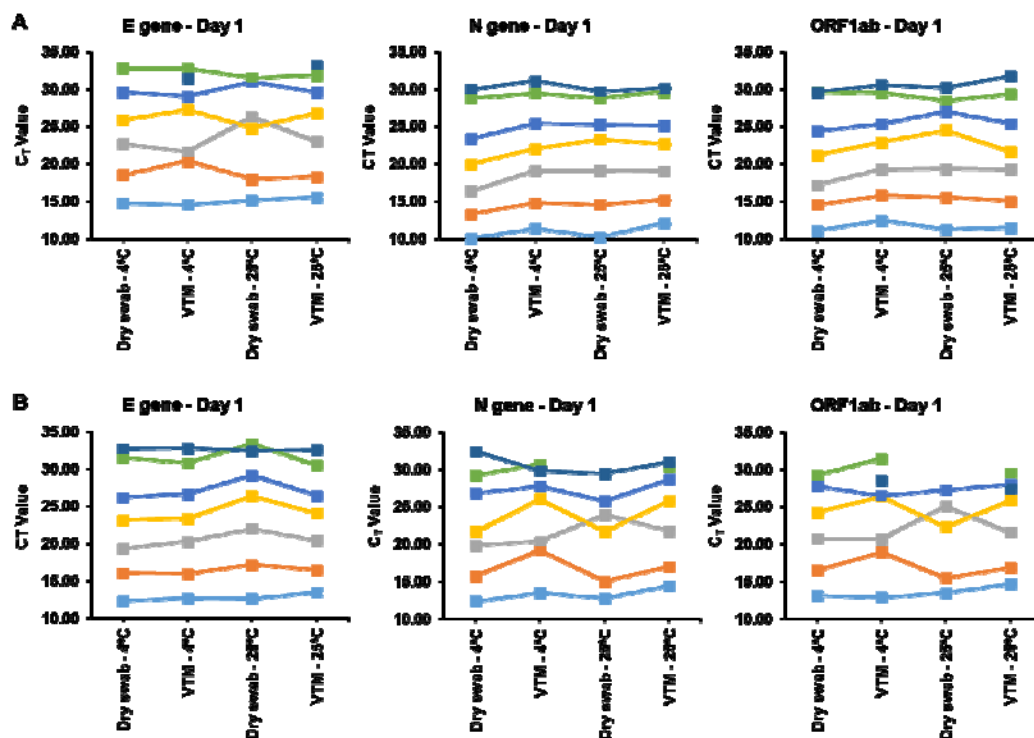
110 **Statistical analysis**

111 Microsoft excel was used for statistical analysis and plotting. GraphPad prism 6 was also
112 used for plotting.

113 Results

114 Detection of SARS-CoV-2 RNA is independent of storage temperature till 24 hours

115 One of the major concerns for adopting dry swab-based diagnosis at large scale is the
116 stability of the viral RNA during shipping and storage. Presence of intact RNA is essential for
117 reliable diagnosis, and the integrity of RNA is dependent on multiple factors of which
118 temperature is a crucial factor. Here, the detection of SARS-CoV-2 RNA was assessed by
119 subjecting contrived swabs in VTM and contrived dry swabs at two temperatures for different
120 periods of time. The results indicate that storing the contrived dry swabs at room temperature
121 (RT; $25\pm 1^\circ\text{C}$) does not affect the detection ability for up to 24 hours. In addition, the C_T
122 values of the dry swab samples and that of the RNA isolated from corresponding VTM
123 samples were comparable when stored at RT. Similarly, samples stored at 4°C showed no
124 differences when incubated in VTM and as dry swabs for 24 hours (Figure 1; Supplementary
125 File 1).

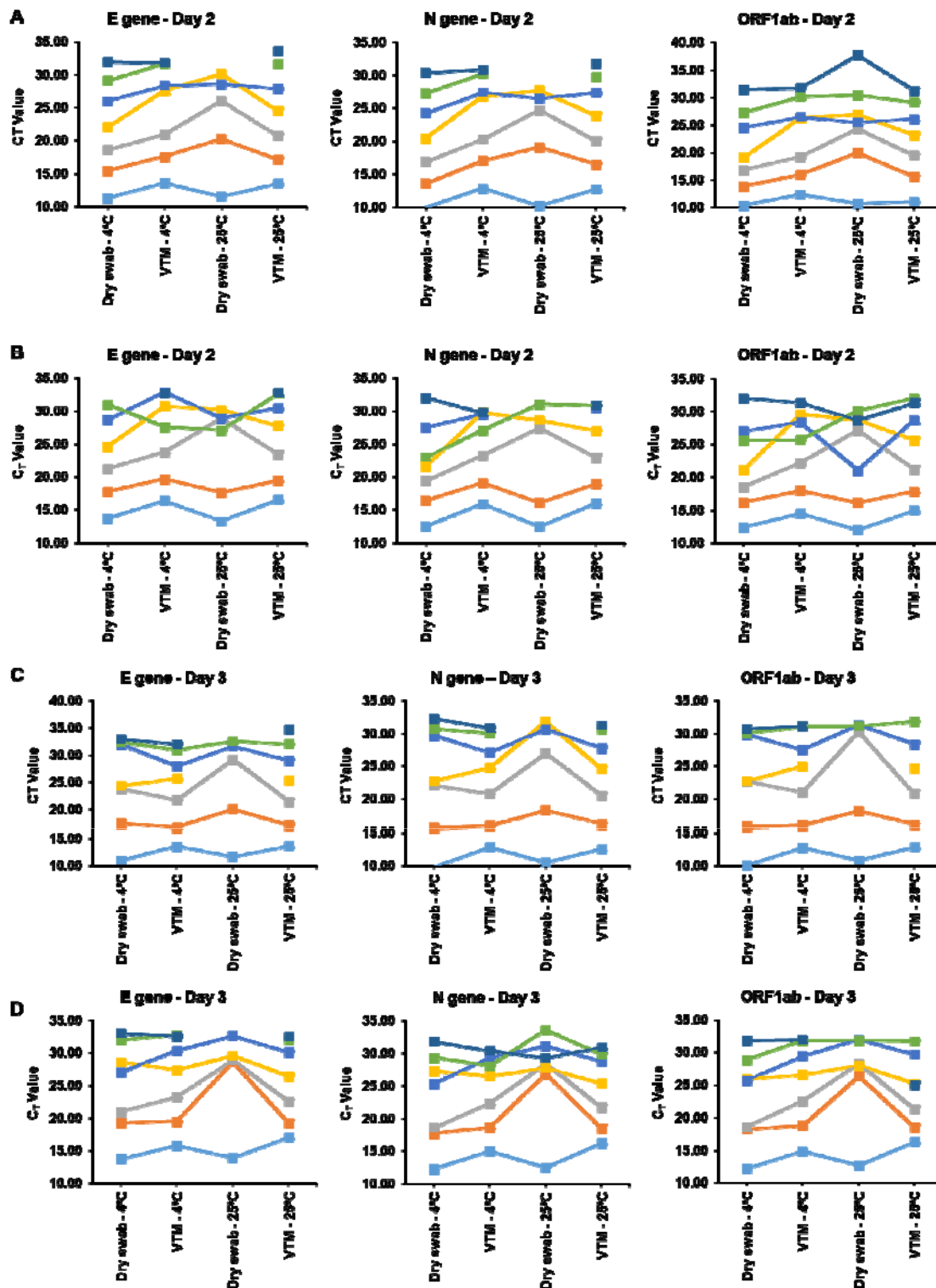


126 **Figure 1:** Stability of the viral RNA is unaffected by different storage conditions for up to 24 hours of
127 storage. C_T values of the viral genes in (A) A2a strain and (B) A3i strain after 1 day of storage in the
128 mentioned conditions. RT-PCR was carried out in triplicates for every sample and the average C_T
129 values are plotted. Each coloured line represents one sample.

130

131 **Long-term stability of the viral RNA is temperature-dependent**

132 While the above results provide the stability of viral RNA unperturbed up to 24 hours at RT,
133 the long-term storage/shipping for performing genome analysis is unexplored. Therefore, we
134 studied the effect of long-term storage of the contrived samples at different temperatures.
135 Results indicated that storing the samples at 4°C could help in maintaining the integrity of
136 RNA for up to 3 days irrespective of the presence or absence of VTM. The C_T values of the
137 VTM samples and dry swab samples stored at 4°C were comparable for majority of the
138 samples suggesting that storing the swabs in the absence of media does not affect the
139 integrity of the RNA (Figure 2; Supplementary File 1). However, when stored at RT, the dry
140 swab samples showed increased C_T indicating the loss of RNA copies after 2 days of storage.
141 As a result, samples with low viral titres went undetected. Even so, samples stored in VTM at
142 RT, and 4°C and the dry swabs stored at 4°C remained intact as suggested by the C_T values
143 that are comparable to a greater extent (Figure 2).



144 **Figure 2:** Long-term storage of dry swab samples at RT causes loss in detection of low titre samples.
 145 CT values of the viral genes in (A) A2a strain and (B) A3i strain after 2 days of storage and similarly
 146 that of (C) A2a strain and (D) A3i strain after 3 days of storage. RT-PCR was carried out in triplicates
 147 for every sample and the average CT values are plotted. Each coloured line represents one sample.

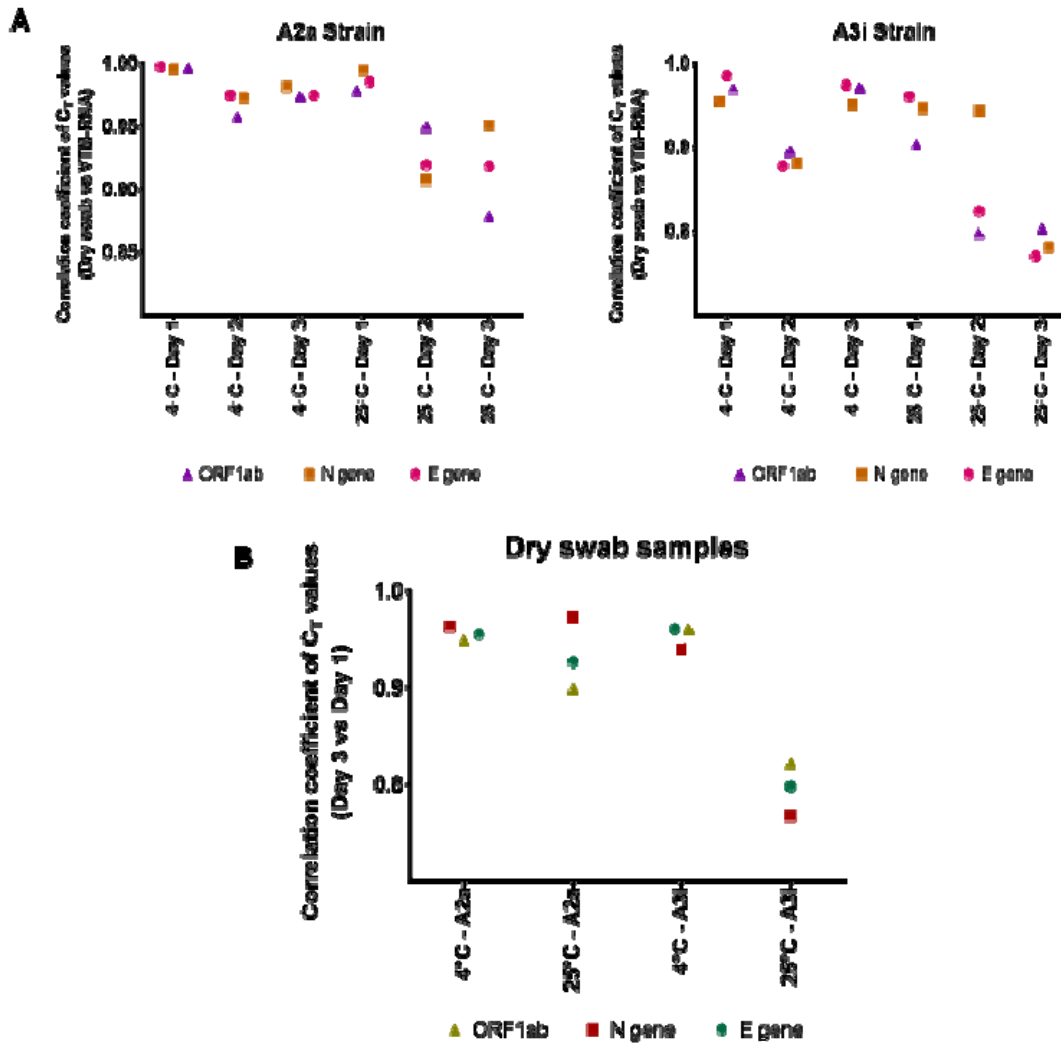
148

149

150 **Prolonged storage of dry swabs at 4°C is as efficient as storing in VTM**

151 The reduced viral RNA integrity upon storage at higher temperatures in different media has
152 been previously reported (Druce et al., 2012). To overcome this problem of reduced stability
153 the storage of samples at lower temperatures can be of probable solution. In this regard, a
154 comparison of the samples stored in different conditions revealed a temporal increase in the
155 C_T values of the dry swab samples when stored at RT but not at 4°C. The median C_T values of
156 the dry swab samples stored at 4°C at all time points are comparable to that of the VTM
157 samples (Supplementary Figure 1). Statistical correlation analyses revealed that there is a
158 strong positive correlation between the C_T values of dry swab samples and VTM-RNA when
159 stored at 4°C for 3 days and at RT for 1 day (Figure 3A; Supplementary Table 1). Moreover,
160 the C_T values of the dry swab samples stored at 4°C showed strong correlation between 3 days
161 and 1 day of storage (Figure 3B; Supplementary Table 2). Together, the data suggest that dry
162 swab-based sample collection could be a potential alternate for sample collection in VTM
163 given the availability of refrigeration and when the samples has to be stored or transported for
164 a longer time. Additionally, the delta C_T values between dry swab and VTM-RNA confirms
165 the validity of the above claim, wherein the dry swab samples stored at 4°C shows negative to
166 no difference in the delta C_T values when compared to VTM-RNA samples (Supplementary
167 Figure 2).

168

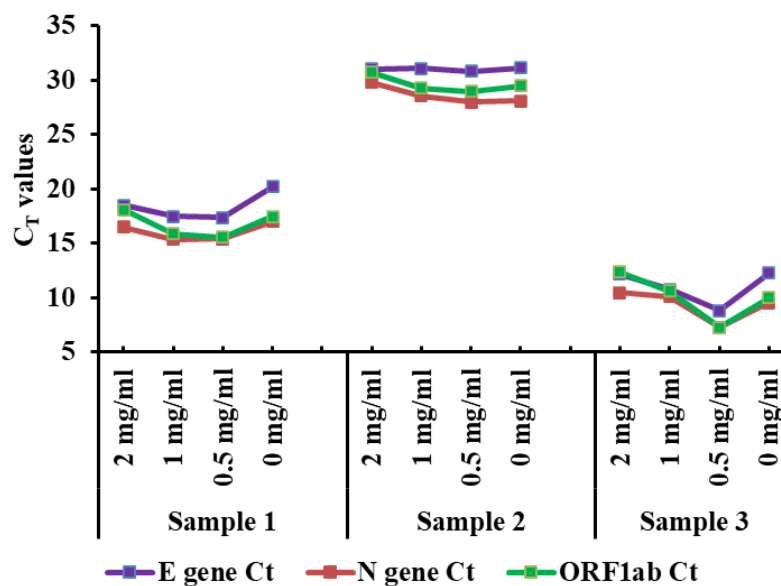


169 **Figure 3:** Scatter plots showing (A) the comparison of the correlation coefficients between the C_T
170 values of the dry swab and VTM-RNA samples subjected to the given conditions and (B) the
171 correlation between the C_T values of the dry swab samples between day 3 and day 1. RT-PCR was
172 performed in triplicates for each sample and the average C_T values were used to calculate the
173 correlation coefficient using.

174

175 Optimization of proteinase K concentration

176 Use of proteinase K in RNA extraction-free methods is reported to increase the detection
177 efficiency (Srivatsan, Han, et al., 2020). The FDA-authorized SalivaDirect method also uses
178 proteinase K at a concentration of 2.5 mg/ml as the major ingredient for effective detection
179 (Vogels et al., 2020). For the dry swab method using TE buffer and proteinase K, the major
180 cost component is proteinase K and finding the minimum concentration of proteinase K could
181 help in increasing the throughput of tests with a given amount of the enzyme thereby cutting
182 down the per test cost. In an attempt to optimise the concentration of proteinase K required
183 for efficient detection, we tested dry swabs from three independent COVID-19 positive
184 nasopharyngeal samples with different viral loads at four proteinase K final concentrations.
185 Results suggest that a final concentration of 0.5 mg/ml of proteinase K produces comparable
186 with that of 2 mg/ml (Figure 4). In accordance with previous reports, lack of proteinase K
187 affected the detection as suggested by increased C_T values when compared to samples with
188 proteinase K (Figure 4; Supplementary Table 3).



189 **Figure 4:** Line chart showing the effect of proteinase K concentration on the detection of SARS-CoV-
190 2 targets in 3 independent COVID positive individuals' samples.

191

192 **Discussion**

193 Considering the exponential raise in the number of SARS-CoV-2 infected people and
194 hospitalisations, it is imperative to look for alternative methods to quickly diagnose and
195 control the disease spread. Based on the availability of resources and sample burden,
196 diagnostic labs need to adopt methods with faster turnover time to cater the present health
197 care demands. Here in this work, we presented an additional advantage of the dry-swab
198 method over time consuming traditional way and highlighted the elimination of cold chain
199 for shorter sample transport. The study on temporal stability of the two strains of SARS-
200 CoV-2 at two different temperatures indicates that, for shorter distance transportation cold
201 chain can be avoided and the dry swab samples with low viral load also is stable at RT for 24
202 hours. In case of high sample surge the swabs can be stored at 4°C for up to 3 days without
203 compromising the detection sensitivity. The dry swab method is expected to hold similar
204 advantages in case of other emerging variants of SARS-CoV-2 as indicated by multiple
205 sewage surveillance and sequencing studies (Crits-Christoph et al., 2021; Martin et al., 2020).
206 This suggests that the virus variants could be different with respect to the rate of infection and
207 eliciting immune response, but they are generally stable for longer time in different
208 conditions. Additionally, as a measure to cut cost incurred per test, we optimised the
209 minimum final concentration of proteinase K that can produce reliable results. Our results
210 indicate that a minimum final concentration of 0.5 mg/ml of proteinase K is enough to
211 produce results comparable to that of 2 mg/ml. This evidently suggests that the throughput of
212 the tests can be increased four times in addition to bringing down the cost by four times.

213 In conclusion, the dry swab method facilitates multiple advantages at the present critical time
214 while the testing facilities are failing to cater the requirements. With the present testing
215 facilities and resources, the dry swab method can increase the throughput of a lab by three-
216 folds. The challenges like reagent shortage, limited human resources and high transmission
217 rate can be handled in a better manner. The recent study on culturing virus from dry swab
218 clearly showed that virus culture can be established from dry swabs stored for days at RT in
219 TE buffer devoid of proteinase K (Ram et al., 2021). Shortly, the dry swab method conserves
220 all the advantages of gold-standard method and can deliver reliable results even faster. In the
221 present scenario, implementation of this method could provide multiple advantages in
222 containing the infection and better allocation of medical resources in the developed and
223 developing nations alike.

224 **Ethical Statement:**

225 The study follows the institutional ethics committee guidelines. Informed consents were
226 taken from the participants of the optimisation of proteinase K concentration study.

227

228 **Competing Interests:**

229 The authors declare no competing interests.

230

231 **Acknowledgements:**

232 UK and CGG thank the financial support received from UGC and CSIR, India, respectively.

233 All the authors acknowledge the support received from CSIR, India. The authors gratefully

234 acknowledge Divya Gupta, Vishal Sah, and Krishnan H Harshan, CSIR-CCMB for providing

235 the cultured viral strains.

236 **References:**

- 237 Bruce, E. A., Huang, M. L., Perchetti, G. A., Tighe, S., Laaguiby, P., Hoffman, J. J., Gerrard, D. L.,
238 Nalla, A. K., Wei, Y., Greninger, A. L., Diehl, S. A., Shirley, D. J., Leonard, D. G. B., Huston,
239 C. D., Kirkpatrick, B. D., Dragon, J. A., Crothers, J. W., Jerome, K. R., & Botten, J. W. (2020).
240 Direct RT-qPCR detection of SARS-CoV-2 RNA from patient nasopharyngeal swabs without an
241 RNA extraction step. *PLoS Biology*, *18*(10), e3000896.
242 <https://doi.org/10.1371/journal.pbio.3000896>
- 243 Crits-Christoph, A., Kantor, R. S., Olm, M. R., Whitney, O. N., Al-Shayeb, B., Lou, Y. C., Flamholz,
244 A., Kennedy, L. C., Greenwald, H., Hinkle, A., Hetzel, J., Spitzer, S., Koble, J., Tan, A., Hyde,
245 F., Schroth, G., Kuersten, S., Banfield, J. F., & Nelson, K. L. (2021). Genome sequencing of
246 sewage detects regionally prevalent SARS-CoV-2 variants. *MBio*, *12*(1), 1–9.
247 <https://doi.org/10.1128/mBio.02703-20>
- 248 Druce, J., Garcia, K., Tran, T., Papadakis, G., & Birch, C. (2012). Evaluation of swabs, transport
249 media, and specimen transport conditions for optimal detection of viruses by PCR. *Journal of*
250 *Clinical Microbiology*, *50*(3), 1064–1065. <https://doi.org/10.1128/JCM.06551-11>
- 251 Fomsgaard, A. S., & Rosenstjerne, M. W. (2020). An alternative workflow for molecular detection of
252 SARS-CoV-2 - Escape from the NA extraction kit-shortage, Copenhagen, Denmark, March
253 2020. *Eurosurveillance*, *25*(14), 6–9. <https://doi.org/10.2807/1560-7917.ES.2020.25.14.2000398>
- 254 Gupta, D., Ahmed, F., Tandel, D., Parthasarathy, H., Vedagiri, D., Sah, V., Mohan, K. B., Daga, S.,
255 Ahmad Khan, R., Savari, P., Jain, S., Daga, J., Reddy, S., & Harinivas Harshan, K. (2021).
256 Development of Equine Immunoglobulin Fragment F(ab')₂ with High Neutralizing 1 Capability
257 against SARS-CoV-2 2 3. *BioRxiv*, 2021.03.09.434030.
258 <https://doi.org/10.1101/2021.03.09.434030>
- 259 ICMR. (2021, April 20). *Advisory on use of Dry Swab RNA Extraction-Free RT-PCR Method*.
260 [https://www.icmr.gov.in/pdf/covid/techdoc/Advisory_Dry_Swab_RNAExtraction_20042021_.p](https://www.icmr.gov.in/pdf/covid/techdoc/Advisory_Dry_Swab_RNAExtraction_20042021_.pdf)
261 [df](https://www.icmr.gov.in/pdf/covid/techdoc/Advisory_Dry_Swab_RNAExtraction_20042021_.pdf)
- 262 Kiran, U., Gokulan, C., Kuncha, S. K., Vedagiri, D., Chander, B. T., Sekhar, A. V., Dontamala, S.,
263 Reddy, A. L., Tallapaka, K. B., Mishra, R. K., & Harshan, K. H. (2020). Easing diagnosis and
264 pushing the detection limits of SARS-CoV-2. *Biology Methods and Protocols*.
265 <https://doi.org/10.1093/biomethods/bpaa017>
- 266 Martin, J., Klapsa, D., Wilton, T., Zambon, M., Bentley, E., Bujaki, E., Fritzsche, M., Mate, R., &
267 Majumdar, M. (2020). Tracking SARS-CoV-2 in sewage: Evidence of changes in virus variant
268 predominance during COVID-19 pandemic. *Viruses*, *12*(10). <https://doi.org/10.3390/v12101144>
- 269 Padgett, L. R., Kennington, L. A., Ahls, C. L., Samarasinghe, D. K., Tu, Y. P., Wallander, M. L.,
270 Elliott, J. S., & Rains, D. (2020). Polyester Nasal Swabs Collected in a Dry Tube are a Robust
271 and Inexpensive, Minimal Self-Collection Kit for SARS-CoV-2 Testing. In *medRxiv*. medRxiv.
272 <https://doi.org/10.1101/2020.10.09.20210302>
- 273 Parikh, B. A., Wallace, M. A., McCune, B. T., Burnham, C.-A. D., & Anderson, N. W. (2021). The

- 274 Effects of “Dry Swab” Incubation on SARS-CoV-2 Molecular Testing. *The Journal of Applied*
275 *Laboratory Medicine*. <https://doi.org/10.1093/jalm/jfab010>
- 276 Ram, S., Ghalib Enayathullah, M., Parekh, Y., Bharadwaj Tallapaka, K., Mishra, R. K., & Kumar
277 Bokara, K. (2021). Dry Swab Method of sample collection for SARS-CoV2 testing can be used
278 for culturing virus. *BioRxiv*, 2021.03.23.436593. <https://doi.org/10.1101/2021.03.23.436593>
- 279 Smyrlaki, I., Ekman, M., Lentini, A., Rufino de Sousa, N., Papanicoloau, N., Vondracek, M., Aarum,
280 J., Safari, H., Muradrasoli, S., Gigliotti Rothfuchs, A., Albert, J., Högberg, B., & Reinius, B.
281 (2020). Massive and rapid COVID-19 testing is feasible by extraction-free SARS-CoV-2 RT-
282 PCR. *MedRxiv*, 2020.04.17.20067348. <https://doi.org/10.1101/2020.04.17.20067348>
- 283 Srivatsan, S., Han, P. D., van Raay, K., Wolf, C. R., McCulloch, D. J., Kim, A. E., Brandstetter, E.,
284 Martin, B., Gehring, J., Chen, W., Kosuri, S., Konnick, E. Q., Lockwood, C. M., Rieder, M. J.,
285 Nickerson, D. A., Chu, H. Y., Shendure, J., & Starita, L. M. (2020). Preliminary support for a
286 “dry swab, extraction free” protocol for SARS-CoV-2 testing via RT-qPCR. In *bioRxiv*.
287 *bioRxiv*. <https://doi.org/10.1101/2020.04.22.056283>
- 288 Srivatsan, S., Heidl, S., Pfau, B., Martin, B. K., Han, P. D., Zhong, W., Van Raay, K., Mcdermot, E.,
289 Opsahl, J., Gamboa, L., Smith, N., Truong, M., Cho, S., Barrow, K. A., Rich, L. M., Stone, J.,
290 Wolf, C. R., McCulloch, D. J., Kim, A. E., ... Starita, L. M. (2020). SwabExpress: An end-to-
291 end protocol for extraction-free COVID-19 testing. *BiorXiv*.
292 <https://doi.org/10.1101/2020.04.22.056283>
- 293 Visseaux, B., Collin, G., Houhou-Fidouh, N., Le Hingrat, Q., Ferré, V. M., Damond, F., Ichou, H.,
294 Descamps, D., & Charpentier, C. (2021). Evaluation of three extraction-free SARS-CoV-2 RT-
295 PCR assays: A feasible alternative approach with low technical requirements. *Journal of*
296 *Virological Methods*, 291. <https://doi.org/10.1016/j.jviromet.2021.114086>
- 297 Vogels, C. B., Watkins, A. E., Harden, C. A., Brackney, D. E., Krumholz, H. M., Matheus, J., Hui, P.,
298 Liu, C., Farhadian, S. F., Sikka, R., Wyllie, A. L., & Grubaugh, N. D. (2020). SalivaDirect: A
299 simplified and flexible platform to enhance SARS-CoV-2 testing capacity. *BioRxiv*.
300 <https://doi.org/10.1101/2020.08.03.20167791>
- 301