

1 **Assessing multiplex tiling PCR sequencing approaches for detecting**
2 **genomic variants of SARS-CoV-2 in municipal wastewater**

3
4
5 Xuan Lin¹, Melissa Glier², Kevin Kuchinski^{2,3}, Tenysha Ross-Van Mierlo⁴, David
6 McVea⁵, John R. Tyson², Natalie Prystajecy^{2,3}, Ryan M. Ziels^{1, #}

7
8 ¹ Civil Engineering, The University of British Columbia, Vancouver, BC, Canada

9 ² Environmental Microbiology, British Columbia Center for Disease Control Public Health
10 Laboratory, Vancouver, BC, Canada

11 ³ Pathology and Laboratory Medicine, The University of British Columbia, Vancouver,
12 BC, Canada

13 ⁴ Biological Sciences, Simon Fraser University, Burnaby, BC, Canada

14 ⁵ Environmental Health Services, British Columbia Center for Disease Control Public
15 Health Laboratory, Vancouver, BC, Canada

16
17
18 #Corresponding Author: ziels@mail.ubc.ca

19 **Abstract**

20 Wastewater-based genomic surveillance of the SARS-CoV-2 virus shows promise to
21 complement genomic epidemiology efforts. Multiplex tiled PCR is a desirable approach
22 for targeted genome sequencing of SARS-CoV-2 in wastewater due to its low cost and
23 rapid turnaround time. However, it is not clear how different multiplex tiled PCR primer
24 schemes or wastewater sample matrices impact the resulting SARS-CoV-2 genome
25 coverage. The objective of this work was to assess the performance of three different
26 multiplex primer schemes, consisting of 150bp, 400bp, and 1200bp amplicons, as well as
27 two wastewater sample matrices, influent wastewater and primary sludge, for targeted
28 genome sequencing of SARS-CoV-2. Wastewater samples were collected weekly from
29 five municipal wastewater treatment plants (WWTPs) in the Metro Vancouver region of
30 British Columbia, Canada during a period of increased COVID-19 case counts from
31 February to April, 2021. RNA extracted from clarified influent wastewater provided
32 significantly higher genome coverage (breadth and median depth) than primary sludge
33 samples across all primer schemes. Shorter amplicons appeared more resilient to sample
34 RNA degradation, but were hindered by greater primer pool complexity in the 150bp
35 scheme. The identified optimal primer scheme (400bp) and sample matrix (influent) was
36 capable of detecting the emergence of mutations associated with genomic variants of
37 concern, of which the daily wastewater load significantly correlated with clinical case
38 counts. Taken together, these results provide guidance on best practices for
39 implementing wastewater-based genomic surveillance, and demonstrate its ability to
40 inform epidemiology efforts by detecting genomic variants of concern circulating within a
41 geographic region.

42

43 **Importance**

44 Monitoring the genomic characteristics of the SARS-CoV-2 virus circulating in a
45 population can shed important insights into epidemiological aspects of the COVID-19
46 outbreak. Sequencing every clinical patient sample in a highly populous area is a difficult
47 feat, and thus sequencing SARS-CoV-2 RNA in municipal wastewater offers great
48 promise to augment genomic surveillance by characterizing a pooled population sample
49 matrix, particularly during an escalating outbreak. Here, we assess different approaches
50 and sample matrices for rapid targeted genome sequencing of SARS-CoV-2 in municipal
51 wastewater. We demonstrate that the optimal approach is capable of detecting the
52 emergence of SARS-CoV-2 genomic variants of concern, with strong correlations to
53 clinical case data in the province of British Columbia. These results provide guidance on
54 best practices on, as well as further support for, the application of wastewater genomic
55 surveillance as a tool to augment current genomic epidemiology efforts.

56 **Observation**

57 Genomic surveillance of the SARS-CoV-2 virus plays a critical role in tracking its evolution
58 during the current global COVID-19 pandemic (1–3). Recently, several emerging lineages
59 of SARS-CoV-2, so-called variants of concern (VoCs), have been associated with
60 increased levels of transmission (4), disease severity (5), and/or immune escape (6, 7).
61 These VoCs have originated from various locations globally (4, 8), but are spreading
62 within new geographic regions due to travel-associated and local transmission (9).
63 Providing rapid detection of VoC infections within a population could thus help to inform
64 effective public health outbreak mitigation strategies.

65

66 As the SARS-CoV-2 virus is shed in feces during infection (10), viral genome fragments
67 can be detected in municipal wastewater, and have been associated with clinical case
68 numbers within contributing regions (11–14). Previous work has demonstrated the
69 potential to sequence SARS-CoV-2 fragments in municipal wastewater and detect single
70 nucleotide variants (SNVs) that correspond to clinical cases in the contributing sewershed
71 (15–17). As SARS-CoV-2 titers in wastewater are relatively low (11, 13), an enrichment
72 step is typically needed prior to sequencing to improve sensitivity (15). The two main
73 approaches for enriching SARS-CoV-2 RNA in wastewater include oligonucleotide based
74 capture (15), and multiplex tiled PCR based targeted amplification (16, 17). The latter
75 approach is promising for wastewater-based viral genomic surveillance due to its lower
76 reagent cost and potential to be deployed rapidly and in remote locations (18). An
77 important consideration for applying multiplex tiled PCR is the average amplicon length,
78 as this can impact assay sensitivity in the case of RNA degradation (19). This could be

79 particularly important for its application to wastewater based epidemiology, as SARS-
80 CoV-2 particles and free RNA can undergo variable levels of degradation (20, 21), and
81 may vary based on the type of wastewater sample matrix (e.g. influent versus primary
82 sludge) (22). We therefore hypothesized that there may be an optimal tiled PCR amplicon
83 size and wastewater sample matrix type that enables adequate genome coverage of
84 SARS-CoV-2 for the identification of genomic VoCs.

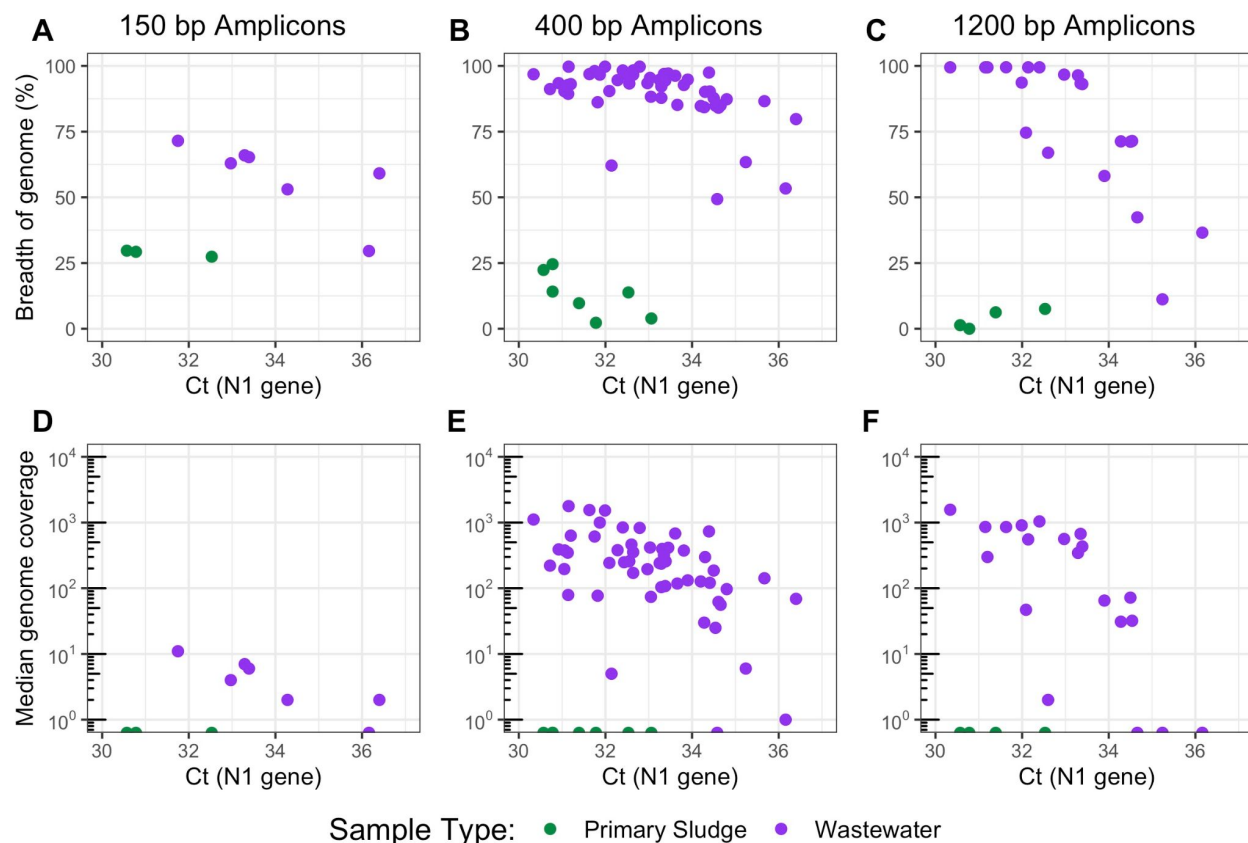
85

86 ***Wastewater sample matrix and multiplex tiled PCR amplicon length impact SARS-***
87 ***CoV-2 genome coverage.***

88 We sequenced a total of 96 wastewater samples collected between February 7th to April
89 18th 2021 across five municipal WWTPs in Vancouver, Canada using three different
90 primer schemes for multiplex tiled PCR of SARS-CoV-2: Swift Bioscience's 150bp
91 amplicon scheme (n = 10 total, 3 sludge and 7 influent), ARTIC 400bp amplicon scheme
92 (23) (n = 62 total, 8 sludge and 54 influent), and Freed/midnight 1200bp amplicon scheme
93 (24) (n = 24 total, 4 sludge and 20 influent) (detailed methods in Text S1). Sludge samples
94 failed to produce libraries with over 32% breadth of genome coverage across all primer
95 schemes and sample cycle thresholds (C_t 's) (Figure 1a-c). Conversely, influent
96 wastewater samples produced libraries that had significantly higher breadth of coverage
97 across all primer schemes ($p < 0.01$, Tukey Test; Figure 1). One possible explanation for
98 this finding could be that the sludge matrix was inhibitory to RT-PCR (11); however, no
99 inhibition of RT-qPCR on sludge RNA extracts was detected using internal controls (Text
100 S1, Table S2). Another potential reason for the lower genome coverage in sludge is that
101 SARS-CoV-2 was more nonintact or its RNA more degraded with the direct sludge

102 extraction compared to ultrafiltration of influent wastewater, as has been previously
103 hypothesized (22). A third potential cause of discrepancies in genome coverage between
104 sludge and influent wastewater samples could be higher off-target amplification in sludge
105 extracts. Correspondingly, the sample type significantly impacted read mapping rates for
106 all schemes after accounting for C_t values ($p < 0.01$, two-way ANCOVA), with mean
107 mapping rates of sludge samples being over 100-times lower than that of influent samples
108 (0.01% vs. 11.3%, respectively; Table S1). Therefore, ultrafiltration of influent wastewater
109 provided more suitable RNA extracts for multiplexed tiled PCR of SARS-CoV-2 than did
110 direct extraction from wastewater sludge, likely due to a combination of greater SARS-
111 CoV-2 RNA degradation and off-target amplification in sludge.

112



113

114 **Figure 1:** SARS-CoV-2 whole genome sequencing coverage results from three multiplex
115 tiled PCR primer schemes, including breadth of genome coverage (over a read depth of
116 50) for (A) 150bp amplicons, (B) 400bp amplicons, and (C) 1200bp amplicons, as well as
117 the median depth of coverage across the genome for (D) 150bp amplicons, (E) 400bp
118 amplicons, and (F) 1200bp amplicons. Values are plotted versus the sample C_t value for
119 the US CDC N1 assay, measured by RT-qPCR (see Text S1). Data points aligned with
120 the x-axis (plots D-F) had values of zero, and could not be log-transformed.
121

122 If the level of RNA degradation within a wastewater sample impacts the resulting SARS-
123 CoV-2 genome coverage, we would expect to see less of a drop-off in coverage at high
124 C_t's for schemes with shorter amplicons. Indeed, we detected a significant effect of
125 amplicon length on the breadth of genome coverage as a function of C_t ($p < 0.01$, two-way
126 ANCOVA). The median genome coverage with the 150bp amplicon scheme spanned one
127 order of magnitude within influent wastewater samples with C_t values ranging from 31 to
128 37 (Figure 1d), while that from the 400bp and 1200bp schemes spanned 3.2 and 3.0

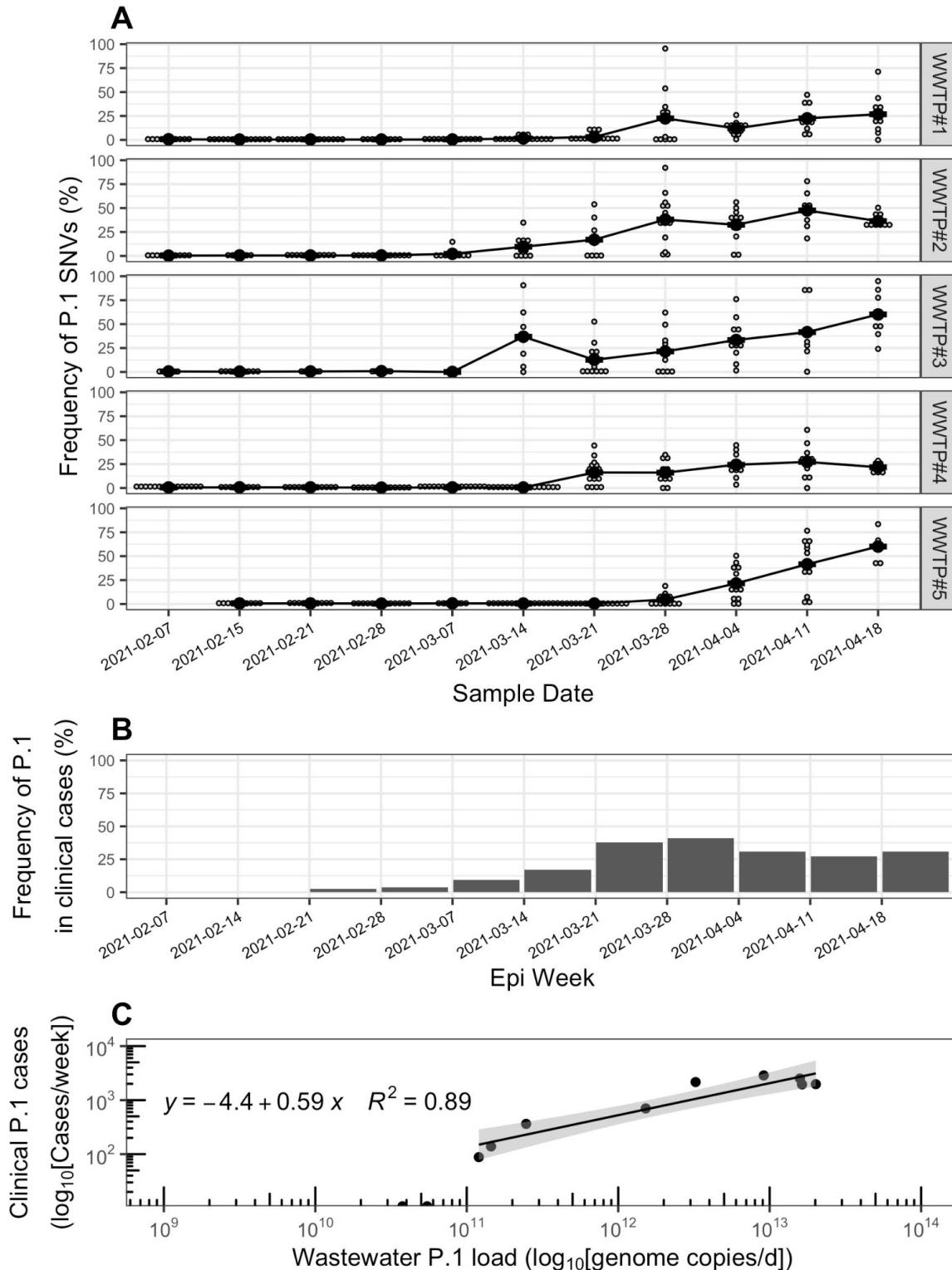
129 orders of magnitude, respectively (Figure 1e and 1f). Improvements with the 400bp
130 versus the 1200bp scheme were marginal, yet 83% of paired influent samples with C_t
131 values over 32.5 (10 of 12) showed higher breadth of coverage with the 400bp scheme
132 (Figure S1). Thus, shorter amplicon schemes may be more robust to sample RNA
133 degradation at higher C_t values. However, there was a tradeoff between amplicon length
134 and genome coverage, as the magnitudes of the median genome coverage and breadth
135 of coverage obtained with the 150bp scheme and influent samples were significantly
136 lower than that of the 400bp scheme ($p=0.022$, $5.0e-9$, respectively, Tukey Test). The
137 lower breadth of coverage with the 150bp scheme could have been caused by more
138 primer-primer interactions with a larger number of primers (19). Therefore, the 400bp
139 primer scheme appears to strike a balance between resilience to sample RNA
140 degradation and mitigating issues around primer pool complexity and multiplex amplicon
141 balancing.

142

143 ***SARS-CoV-2 whole genome sequencing from wastewater captures emergence of***
144 ***genomic variants in a geographic region.***

145 The sequence data produced via the 400bp primer scheme and influent wastewater
146 samples was used to measure the frequency of VoC-associated SNVs (Table S3) across
147 the five WWTPs over the study period. SNVs associated with the VoC lineages, B.1.1.7
148 and P.1, both increased to a maximum mean frequency of 60% across all WWTPs,
149 respectively (Figure 2a, Figures S2-S4), while that of B.1.351 did not substantially
150 increase (Figure S5). These findings align with the results clinical screening and
151 sequencing of patient samples over the same period within the province of British

152 Columbia, during which P.1 and B.1.1.7 became the dominant lineages while B.1.351 did
153 not appreciably spread (25) (Figure 2b, Figures S3 and S5). At the time of publishing,
154 VoC frequency data for clinical cases was only available at the provincial level; yet the
155 health service areas corresponding to the 5 WWTP sewersheds accounted for 74% of
156 total cases in the province during the study period (25). The flow-normalized daily loads
157 of P.1 and B.1.1.7 across all WWTPs (in genome copies/day) were strongly correlated
158 with clinical case counts of those lineages within the province for the corresponding
159 epidemiological weeks (\log_{10} - \log_{10} transformed, $R^2 = 0.89$ and 0.87 , respectively; Fig. 2c
160 and Figure S3). The frequency of VoC-associated SNVs within influent wastewater
161 measured with multiplex tiled PCR is therefore suitable to monitor community
162 transmission of genomic variants within a sewershed. The onset of P.1- and B.1.1.7-
163 associated SNVs within influent wastewater followed different patterns for the five
164 WWTPs, providing additional support that wastewater SARS-CoV-2 sequencing can
165 illuminate localized spread of genomic variants on a regional scale (15, 17). The rapid
166 turnaround time (~3 days from sampling to data generation here), low capital cost and
167 high portability of nanopore sequencing combined with highly multiplexed tiled PCR for
168 SARS-CoV-2 sequencing of wastewater shows great promise to complement genomic
169 epidemiology efforts during the COVID-19 pandemic by detecting the emergence of VoCs
170 within a pooled population sample.



171
 172 **Figure 2:** (A) Frequency of single nucleotide variants (SNVs) associated with the P.1
 173 lineage of SARS-CoV-2 within influent wastewater samples from five wastewater
 174 treatment plants in Vancouver, British Columbia (BC), from February 7th to April 18th,
 175 2021. Smaller grey dots represent the frequency of SNVs on sample dates, while the
 176 larger black points represent the mean across all detected SNVs. Only genome positions

177 with a read coverage over 50 are included in SNV frequency calculations. **(B)** Frequency
178 of the P.1 lineage in clinical COVID-19 patient cases in the province of BC, Canada over
179 the study period. The frequencies in clinical patient cases correspond to an average value
180 detected over an epidemiology (epi) week, and were adapted from (25). **(C)** Correlation
181 between the wastewater cumulative daily load of P.1 genomes summed across all five
182 WWTPs and the total P.1 clinical cases in the province of BC observed within the same
183 epidemiological week. The wastewater P.1 daily load (genome copies/d) was
184 approximated by normalizing copies of the US CDC N1 gene (copies/L) by daily flow rates
185 (L/d) to obtain N1 loads (copies/d) for all WWTPs, and multiplying that by the mean
186 frequency of P.1-associated SNVs in each WWTP across all sample dates. For each
187 date, the cumulative P.1 daily load was determined by summing the P.1 loads across all
188 five WWTPs. The P.1 clinical case counts by week were adapted from (25) by multiplying
189 total provincial COVID-19 case counts by the frequency of P.1 in clinical provincial cases.
190 Data points with zero clinical cases are shown aligned to the x-axis.
191

192 **Data Availability**

193 The raw reads associated with all samples are available in the Short Read Archive under
194 BioProject PRJNA731975. The accession numbers for each sample are also provided in
195 Table S1, along with the sample metadata.

196

197 **Acknowledgements**

198 We would like to thank Farida Bishay, Rob MacArthur, Daisy Espinosa and Alvin Louie,
199 and the entire Metro Vancouver Environmental Management & Quality Control WWTP
200 Laboratory Staff for collecting and delivering wastewater samples for this study and
201 providing sample metadata. We would also like to thank Ziwen Ran for help with method
202 development, and Matthias Krushel for help with processing wastewater samples. We
203 also thank the Molecular and Microbial Genomics and Environmental Microbiology
204 Laboratories at BCCDC Public Health Laboratory for materials and access to testing
205 equipment, and the BCCDC and BC Regional Health Authorities for publicly sharing data
206 on clinical case counts and variants of concern. This work was funded by the Natural
207 Sciences and Engineering Research Council of Canada (NSERC, Alliance Grant, ALLRP
208 554612-20), BCCDC Foundation, Metro Vancouver, and Innovate BC.

209 References

- 210
- 211 1. Rambaut A, Holmes EC, O’Toole Á, Hill V, McCrone JT, Ruis C, du Plessis L, Pybus OG.
- 212 2020. A dynamic nomenclature proposal for SARS-CoV-2 lineages to assist genomic
- 213 epidemiology. *Nature Microbiology* 5:1403–1407.
- 214 2. Bedford T, Greninger AL, Roychoudhury P, Starita LM, Famulare M, Huang M-L, Nalla A,
- 215 Pepper G, Reinhardt A, Xie H, Shrestha L, Nguyen TN, Adler A, Brandstetter E, Cho S,
- 216 Giroux D, Han PD, Fay K, Frazar CD, Ilcisin M, Lacombe K, Lee J, Kiavand A, Richardson
- 217 M, Sibley TR, Truong M, Wolf CR, Nickerson DA, Rieder MJ, Englund JA, Investigators†
- 218 TSFS, Hadfield J, Hodcroft EB, Huddleston J, Moncla LH, Müller NF, Neher RA, Deng X,
- 219 Gu W, Federman S, Chiu C, Duchin JS, Gautom R, Melly G, Hiatt B, Dykema P, Lindquist
- 220 S, Queen K, Tao Y, Uehara A, Tong S, MacCannell D, Armstrong GL, Baird GS, Chu HY,
- 221 Shendure J, Jerome KR. 2020. Cryptic transmission of SARS-CoV-2 in Washington state.
- 222 *Science* 370:571–575.
- 223 3. Candido DS, Claro IM, Jesus JG de, Souza WM, Moreira FRR, Dellicour S, Mellan TA,
- 224 Plessis L du, Pereira RHM, Sales FCS, Manuli ER, Thézé J, Almeida L, Menezes MT,
- 225 Voloch CM, Fumagalli MJ, Coletti TM, Silva CAM da, Ramundo MS, Amorim MR,
- 226 Hoeltgebaum HH, Mishra S, Gill MS, Carvalho LM, Buss LF, Prete CA, Ashworth J,
- 227 Nakaya HI, Peixoto PS, Brady OJ, Nicholls SM, Tanuri A, Rossi ÁD, Braga CKV, Gerber
- 228 AL, Guimarães AP de C, Gaburo N, Alencar CS, Ferreira ACS, Lima CX, Levi JE, Granato
- 229 C, Ferreira GM, Francisco RS, Granja F, Garcia MT, Moretti ML, Perroud MW, Castiñeiras
- 230 TMPP, Lazari CS, Hill SC, Santos AA de S, Simeoni CL, Forato J, Sposito AC, Schreiber
- 231 AZ, Santos MNN, Sá CZ de, Souza RP, Resende-Moreira LC, Teixeira MM, Hubner J,
- 232 Leme PAF, Moreira RG, Nogueira ML, Brazil-UK Centre for Arbovirus Discovery D,
- 233 Ferguson NM, Costa SF, Proenca-Modena JL, Vasconcelos ATR, Bhatt S, Lemey P, Wu
- 234 C-H, Rambaut A, Loman NJ, Aguiar RS, Pybus OG, Sabino EC, Faria NR. 2020. Evolution

- 235 and epidemic spread of SARS-CoV-2 in Brazil. *Science* 369:1255–1260.
- 236 4. Davies NG, Abbott S, Barnard RC, Jarvis CI, Kucharski AJ, Munday JD, Pearson CAB,
237 Russell TW, Tully DC, Washburne AD, Wenseleers T, Gimma A, Waites W, Wong KLM,
238 Zandvoort K van, Silverman JD, Group1‡ CC-19 W, Consortium‡ C-19 GU (COG-U, Diaz-
239 Ordaz K, Keogh R, Eggo RM, Funk S, Jit M, Atkins KE, Edmunds WJ. 2021. Estimated
240 transmissibility and impact of SARS-CoV-2 lineage B.1.1.7 in England. *Science* 372.
- 241 5. Davies NG, Jarvis CI, Edmunds WJ, Jewell NP, Diaz-Ordaz K, Keogh RH. 2021. Increased
242 mortality in community-tested cases of SARS-CoV-2 lineage B.1.1.7. *Nature* 1–5.
- 243 6. Wibmer CK, Ayres F, Hermanus T, Madzivhandila M, Kgagudi P, Oosthuysen B, Lambson
244 BE, de Oliveira T, Vermeulen M, van der Berg K, Rossouw T, Boswell M, Ueckermann V,
245 Meiring S, von Gottberg A, Cohen C, Morris L, Bhiman JN, Moore PL. 2021. SARS-CoV-2
246 501Y.V2 escapes neutralization by South African COVID-19 donor plasma. 4. *Nature*
247 *Medicine* 27:622–625.
- 248 7. Wang P, Nair MS, Liu L, Iketani S, Luo Y, Guo Y, Wang M, Yu J, Zhang B, Kwong PD,
249 Graham BS, Mascola JR, Chang JY, Yin MT, Sobieszczyk M, Kyratsous CA, Shapiro L,
250 Sheng Z, Huang Y, Ho DD. 2021. Antibody resistance of SARS-CoV-2 variants B.1.351
251 and B.1.1.7. *Nature* 1–6.
- 252 8. Tegally H, Wilkinson E, Giovanetti M, Iranzadeh A, Fonseca V, Giandhari J, Doolabh D,
253 Pillay S, San EJ, Msomi N, Mlisana K, Gottberg A von, Walaza S, Allam M, Ismail A,
254 Mohale T, Glass AJ, Engelbrecht S, Zyl GV, Preiser W, Petruccione F, Sigal A, Hardie D,
255 Marais G, Hsiao M, Korsman S, Davies M-A, Tyers L, Mudau I, York D, Maslo C, Goedhals
256 D, Abrahams S, Laguda-Akingba O, Alisoltani-Dehkordi A, Godzik A, Wibmer CK, Sewell
257 BT, Lourenço J, Alcantara LCJ, Pond SLK, Weaver S, Martin D, Lessells RJ, Bhiman JN,
258 Williamson C, Oliveira T de. 2020. Emergence and rapid spread of a new severe acute
259 respiratory syndrome-related coronavirus 2 (SARS-CoV-2) lineage with multiple spike
260 mutations in South Africa. medRxiv 2020.12.21.20248640.

- 261 9. Washington NL, Gangavarapu K, Zeller M, Bolze A, Cirulli ET, Schiabor Barrett KM,
262 Larsen BB, Anderson C, White S, Cassens T, Jacobs S, Levan G, Nguyen J, Ramirez JM,
263 Rivera-Garcia C, Sandoval E, Wang X, Wong D, Spencer E, Robles-Sikisaka R, Kurzban
264 E, Hughes LD, Deng X, Wang C, Servellita V, Valentine H, De Hoff P, Seaver P, Sathe S,
265 Gietzen K, Sickler B, Antico J, Hoon K, Liu J, Harding A, Bakhtar O, Basler T, Austin B,
266 MacCannell D, Isaksson M, Febbo PG, Becker D, Laurent M, McDonald E, Yeo GW,
267 Knight R, Laurent LC, de Feo E, Worobey M, Chiu CY, Suchard MA, Lu JT, Lee W,
268 Andersen KG. 2021. Emergence and rapid transmission of SARS-CoV-2 B.1.1.7 in the
269 United States. *Cell* <https://doi.org/10.1016/j.cell.2021.03.052>.
- 270 10. Pan Y, Zhang D, Yang P, Poon LLM, Wang Q. 2020. Viral load of SARS-CoV-2 in clinical
271 samples. *The Lancet Infectious Diseases* 20:411–412.
- 272 11. D'Aoust PM, Mercier E, Montpetit D, Jia J-J, Alexandrov I, Neault N, Baig AT, Mayne J,
273 Zhang X, Alain T, Langlois M-A, Servos MR, MacKenzie M, Figeys D, MacKenzie AE,
274 Graber TE, Delatolla R. 2021. Quantitative analysis of SARS-CoV-2 RNA from wastewater
275 solids in communities with low COVID-19 incidence and prevalence. *Water Research*
276 188:116560.
- 277 12. Wolfe MK, Archana A, Catoe D, Coffman MM, Dorevich S, Graham KE, Kim S, Grijalva
278 LM, Roldan-Hernandez L, Silverman AI, Sinnott-Armstrong N, Vugia DJ, Yu AT, Zambrana
279 W, Wigginton KR, Boehm AB. 2021. Scaling of SARS-CoV-2 RNA in Settled Solids from
280 Multiple Wastewater Treatment Plants to Compare Incidence Rates of Laboratory-
281 Confirmed COVID-19 in Their Sewersheds. *Environ Sci Technol Lett*
282 <https://doi.org/10.1021/acs.estlett.1c00184>.
- 283 13. Peccia J, Zulli A, Brackney DE, Grubaugh ND, Kaplan EH, Casanovas-Massana A, Ko AI,
284 Malik AA, Wang D, Wang M, Warren JL, Weinberger DM, Arnold W, Omer SB. 2020.
285 Measurement of SARS-CoV-2 RNA in wastewater tracks community infection dynamics.
286 10. *Nature Biotechnology* 38:1164–1167.

- 287 14. Wu F, Zhang J, Xiao A, Gu X, Lee WL, Armas F, Kauffman K, Hanage W, Matus M, Ghaeli
288 N, Endo N, Duvallet C, Poyet M, Moniz K, Washburne AD, Erickson TB, Chai PR,
289 Thompson J, Alm EJ. 2020. SARS-CoV-2 Titers in Wastewater Are Higher than Expected
290 from Clinically Confirmed Cases. *mSystems* 5.
- 291 15. Crits-Christoph A, Kantor RS, Olm MR, Whitney ON, Al-Shayeb B, Lou YC, Flamholz A,
292 Kennedy LC, Greenwald H, Hinkle A, Hetzel J, Spitzer S, Koble J, Tan A, Hyde F, Schroth
293 G, Kuersten S, Banfield JF, Nelson KL. 2021. Genome Sequencing of Sewage Detects
294 Regionally Prevalent SARS-CoV-2 Variants. *mBio* 12.
- 295 16. Nemudryi A, Nemudraia A, Wiegand T, Surya K, Buyukyoruk M, Cicha C, Vanderwood KK,
296 Wilkinson R, Wiedenheft B. 2020. Temporal Detection and Phylogenetic Assessment of
297 SARS-CoV-2 in Municipal Wastewater. *Cell Reports Medicine* 1:100098.
- 298 17. Izquierdo-Lara R, Elsinga G, Heijnen L, Munnink BBO, Schapendonk CME, Nieuwenhuijse
299 D, Kon M, Lu L, Aarestrup FM, Lycett S, Medema G, Koopmans MPG, Graaf M de.
300 Monitoring SARS-CoV-2 Circulation and Diversity through Community Wastewater
301 Sequencing, the Netherlands and Belgium - Volume 27, Number 5—May 2021 - Emerging
302 Infectious Diseases journal - CDC <https://doi.org/10.3201/eid2705.204410>.
- 303 18. Quick J, Loman NJ, Duraffour S, Simpson JT, Severi E, Cowley L, Bore JA, Koundouno R,
304 Dudas G, Mikhail A, Ouédraogo N, Afrough B, Bah A, Baum JHJ, Becker-Ziaja B,
305 Boettcher JP, Cabeza-Cabrerizo M, Camino-Sánchez Á, Carter LL, Doerrbecker J, Enkirch
306 T, Dorival IG-, Hetzelt N, Hinzmann J, Holm T, Kafetzopoulou LE, Koropogui M, Kosgey A,
307 Kuisma E, Logue CH, Mazzarelli A, Meisel S, Mertens M, Michel J, Ngabo D, Nitzsche K,
308 Pallasch E, Patrono LV, Portmann J, Repits JG, Rickett NY, Sachse A, Singethan K,
309 Vitoriano I, Yemanaberhan RL, Zekeng EG, Racine T, Bello A, Sall AA, Faye O, Faye O,
310 Magassouba N, Williams CV, Amburgey V, Winona L, Davis E, Gerlach J, Washington F,
311 Monteil V, Jourdain M, Bererd M, Camara A, Somlare H, Camara A, Gerard M, Bado G,
312 Baillet B, Delaune D, Nebie KY, Diarra A, Savane Y, Pallawo RB, Gutierrez GJ, Milhano N,

- 313 Roger I, Williams CJ, Yattara F, Lewandowski K, Taylor J, Rachwal P, J. Turner D, Pollakis
314 G, Hiscox JA, Matthews DA, Shea MKO, Johnston AM, Wilson D, Hutley E, Smit E, Di
315 Caro A, Wölfel R, Stoecker K, Fleischmann E, Gabriel M, Weller SA, Koivogui L, Diallo B,
316 Keïta S, Rambaut A, Formenty P, Günther S, Carroll MW. 2016. Real-time, portable
317 genome sequencing for Ebola surveillance. 7589. *Nature* 530:228–232.
- 318 19. Quick J, Grubaugh ND, Pullan ST, Claro IM, Smith AD, Gangavarapu K, Oliveira G,
319 Robles-Sikisaka R, Rogers TF, Beutler NA, Burton DR, Lewis-Ximenez LL, de Jesus JG,
320 Giovanetti M, Hill SC, Black A, Bedford T, Carroll MW, Nunes M, Jr LCA, Sabino EC,
321 Baylis SA, Faria NR, Loose M, Simpson JT, Pybus OG, Andersen KG, Loman NJ. 2017.
322 Multiplex PCR method for MinION and Illumina sequencing of Zika and other virus
323 genomes directly from clinical samples 16.
- 324 20. Bivins A, Greaves J, Fischer R, Yinda KC, Ahmed W, Kitajima M, Munster VJ, Bibby K.
325 2020. Persistence of SARS-CoV-2 in Water and Wastewater. *Environ Sci Technol Lett*
326 7:937–942.
- 327 21. Wurtzer S, Waldman P, Ferrier-Rembert A, Frenois-Veyrat G, Mouchel JM, Boni M, Maday
328 Y, Marechal V, Moulin L. 2021. Several forms of SARS-CoV-2 RNA can be detected in
329 wastewaters: implication for wastewater-based epidemiology and risk assessment. *Water*
330 *Research* 117183.
- 331 22. Kantor RS, Nelson KL, Greenwald HD, Kennedy LC. 2021. Challenges in Measuring the
332 Recovery of SARS-CoV-2 from Wastewater. *Environ Sci Technol* 55:3514–3519.
- 333 23. Tyson JR, James P, Stoddart D, Sparks N, Wickenhagen A, Hall G, Choi JH, Lapointe H,
334 Kamelian K, Smith AD, Prystajeky N, Goodfellow I, Wilson SJ, Harrigan R, Snutch TP,
335 Loman NJ, Quick J. 2020. Improvements to the ARTIC multiplex PCR method for SARS-
336 CoV-2 genome sequencing using nanopore. *bioRxiv*
337 <https://doi.org/10.1101/2020.09.04.283077>.
- 338 24. Freed NE, Vlková M, Faisal MB, Silander OK. 2020. Rapid and inexpensive whole-genome

339 sequencing of SARS-CoV-2 using 1200 bp tiled amplicons and Oxford Nanopore Rapid
340 Barcoding. *Biology Methods and Protocols* 5.
341 25. BC Center for Disease Control. 2021. Weekly update on Variants of Concern (VOC). May
342 6, 2021