

## **Geographical and temporal distribution of SARS-CoV-2 globally: An attempt to correlate case fatality rate with the circulating dominant SARS-CoV-2 clades**

**<sup>1</sup>Rakesh Sarkar<sup>\*</sup>, <sup>1</sup>Mamta Chawla-Sarkar<sup>\*</sup>, <sup>2</sup>Swagata Majumdar, <sup>1</sup>Mahadeb Lo,  
<sup>3</sup>Shiladitya Chattopadhyay<sup>#</sup>**

<sup>1</sup>ICMR-National Institute of Cholera and Enteric Diseases, Kolkata, West Bengal, India.

<sup>2</sup>Center for Liver Research, School of Digestive and Liver Diseases, Institute of Post Graduate Medical Education and Research, Kolkata, West Bengal, India

<sup>3</sup>Department of Molecular Microbiology, Rappaport Faculty of Medicine, Technion-Israel Institute of Technology, Haifa 31096, Israel

**\*Contributed equally to this study and share first authorship**

**#Corresponding Author:**

Shiladitya Chattopadhyay

Email: [chattopadhyayshiladitya@gmail.com](mailto:chattopadhyayshiladitya@gmail.com)

## Abstract

Uncontrolled high transmission is driving the continuous evolution of SARS-CoV-2, leading to the nonstop emergence of the new variants with varying sensitivity to the neutralizing antibodies and vaccines. We have analysed of 8,82,740 SARS-CoV-2 genome sequences, collected and sequenced during late December 2019 to 25 March 2021 from all across the world. The findings revealed differences in temporal and spatial distribution, and predominance of various clades/variants among six different continents. We found no clear association between the pathogenic potential of the various clades by comparing the case fatality rate (CFR) of 170 countries with the predominant SARS-CoV-2 clades in those countries, demonstrating the insignificance of the clade specific mutations on case fatality. Overall, relying on a large-scale dataset, this study illustrated the time-based evolution and prevalence of various clades/variants among different geographic regions. The study may help in designing continent specific vaccines in the future.

**Keywords:** SARS-CoV-2, COVID-19, Clades, Variant of concern, Case fatality rate (CFR)

## 1. Introduction

The novel coronavirus disease 2019 (COVID-19) caused by severe acute respiratory syndrome coronavirus 2 (SARS-CoV-2) was first reported in late December, 2019 in the city of Wuhan, China. As of 31 March, 2021, about one year since the pandemic was declared, the disease had spread to 221 countries across the world, infecting around 132 million people and causing 2.8 million casualties (<https://www.worldometers>). Since its eminence, the virus has been continuously evolving by procuring new mutations which may also be a crucial factor in driving rapid transmission and governing severity of the disease. Notably, the nature of pandemic's progression and the case fatality rate (CFR) vary among different countries. This is possibly due to difference in demographic composition of the population, the government policies to mitigate transmission of the disease and most importantly the pathogenic potential of different SARS-CoV-2 clades (**Forster et al., 2020**).

Phylogenetic studies, till early March, 2020, reported the emergence of three different clades of SARS-CoV-2 namely A, B and C (**Mercatelli et al., 2020**), which were subsequently named L, S and V clade respectively by the Global Initiative on Sharing All Influenza Data (GISAID) (<https://www.gisaid.org/>). With the progression of the pandemic, five more different clades (Clade G, GH, GR, GV and O according to GISAID nomenclature) having specific set of novel coexisting mutations emerged and predominated until December 2020. The G clade is characterized by the presence of four coexisting mutations 241C>T in 5'-UTR, F106F (3037C>T) in NSP3, P323L (14408C>T) in RdRp and D614G (23403A>G) in S glycoprotein; whereas the GH, GR and GV clades have additional Q57H (25563G>T) in ORF3a, RG203KR (28881GGG>CCA) in N protein, and A222V (22227C>T) in S glycoprotein respectively (**Hodcroft et al., 2020; To et al., 2020; Ceraolo et al., 2020**). The missense mutation L84S (28144T>C) in ORF8 and the silent mutation S76S in NSP4 (8782C>T) are the signature mutations of the S clade (**Brufsky et al., 2020**). The V clade is distinguished by the hallmark mutations G251V (26144G>T) in ORF3a and L37F (11083G>T) in NSP6 (**Mercatelli et al., 2020**). The first emerging L clade carries the reference alleles for all the loci defined in the G, GH, GR, GV, S, O and V clades. Genome

sequences not matching the mutational criteria of above mentioned six clades are considered as the O clade (**Hodcroft et al., 2020**).

Emerging SARS-CoV-2 variants with evidence of increased transmissibility, increased severity, reduced sensitivity to neutralizing antibodies and reduced vaccine-induced protection were termed "variants of concern" (VOCs) by CDC (<https://www.cdc.gov>). At the transition of 2020-2021 four VOCs emerged, each with several mutations throughout the genome, including the S gene, and rapidly predominated globally. The VOC202012/01 (Variant of Concern, year 2020, month 12, variant 01) (also known as B.1.1.7 or 20I/501Y.V1 or GRY or UK variant) contains 17 lineage defining non-synonymous mutations, including the D614G mutation and 8 additional mutations in Spike glycoprotein:  $\Delta$ H69-V70,  $\Delta$ Y144, N501Y, A570D, P681H, T716I, S982A, and D1118H (**Rambaut et al., 2020, Wang et al., 2021**). The VOC B.1.351 (also known as 20H/501Y.V2 or South African variant) had 9 spike mutations in addition to D614G, including a cluster of mutations ( $\Delta$ 242-244&R246I) in NTD, three mutations (K417N, E484K, & N501Y) in RBD, and one mutation (A701V) near the furin cleavage site (**Tegally et al., 2020; Wang et al., 2021**). The VOC P.1 (also known as Brazilian variant or 20J/501Y.V3 or B.1.1.248) encompasses 10 spike mutations in addition to D614G, including three mutations (K417N/T, E484K, and N501Y) in the receptor-binding domain (RBD), five mutations (L18F, T20N, P26S, D138Y and R190S) in the N-terminal domain (NTD), and H655Y near the furin cleavage site (**Faria et al., 2021; Sabino et al., 2021**). The VOC P.1.427/429 (also known as California variant or 20C/S:452R) holds five mutations in addition to D614G, including three mutations (S13I; W152C; L452R) in spike protein, one in OFR1a (I4205V) and one in OFR1b (D1183Y) (**Zhang et al., 2021**).

High transmissibility or infection rate of SARS-CoV-2 had enabled the virus to acquire continuous mutations, having the potential to give enhanced fitness, that lead to the emergence of multiple clades despite being low evolutionary rate of SARS-CoV-2 ( $\sim 0.8 \times 10^{-3}$  substitutions per site per year) compared to other RNA viruses (**Day et al., 2020; Fontanet et al., 2021**). Several studies have been attempted to uncover the relevance of gained mutations in the context of viral spread and immune invasion. Primary importance was given to spike protein mutations because this glycoprotein is involved in receptor binding and entry into the host cell, and is also the prime target for neutralizing antibodies (**Ou et al., 2020; Piccoli et al., 2020**). Several studies have claimed the role of D614G mutation of spike protein in amplified infectivity *in vitro* (**Korber et al., 2020; Hou et al., 2020**), enhanced spread in hamsters (**Hou et al., 2020**) and a mild escalation in neutralization susceptibility (**Weissman et al., 2020**), all of which were demonstrated by D614G induced more open conformation of the receptor binding domain (RBD) of the spike protein (**Yurkovetskiy et al., 2020**). The A222V mutation of S glycoprotein, which is present within the B cell immuno-dominant epitope, has also been linked with the reinfection of SARS-CoV-2 (**Ceraolo et al., 2020**). The functional relevance of mutations acquired within the non-structural and structural proteins except spike protein remains largely undetermined. Though, recent studies have claimed the role of L37F mutation of NSP6 in asymptomatic infection based on clinical data (**Aiewsakun et al., 2020; Wang et al., 2020**). Therefore, the overall pathogenic potential and/or transmissibility of SARS-CoV-2 could be influenced by

cumulative effect of all the mutations selected in different genes throughout the genome. It is still unclear whether the difference in case fatality rate and speed of disease transmission among different countries are due to discrepancy in the pathogenic potential of different clades or variants.

In the present study, we provided a snapshot of geographical and temporal distribution of different clades all across the world to give a better understanding of the gradual emergence and predominance of different clades/variants over time. We also attempted to evaluate the pathogenic potential of different clades by correlating the case fatality rate of 170 countries with the SARS-CoV-2 clades that were prevalent in those countries.

## **2. Materials and Methods**

### **2.1. Sequence retrieval and analysis**

In total, we analyzed 8,82,740 SARS-CoV-2 genome sequences, that were collected during late December, 2019 to 25 March, 2021 from all across the world, available at the global initiative of sharing all influenza data (GISAID) (<https://www.gisaid.org/>) (Shu et al., 2017). Distribution of different clades of SARS-CoV-2 among various continents and associated countries were analyzed by using “Location” and “Clade” specific filters offered by GISAID database, whereas temporal distribution of different clades/variants was analyzed by using “Location”, “Collection Date” and “Clade/Variant” specific filters. First isolated SARS-CoV-2 strains of different clades/variants from six different continents were identified by initially sorting sequences using “Location” and “Clade/variant” specific filters and then analysing the first collection date.

### **2.2. CFR calculation**

We have accessed WHO site (<https://covid19.who.int/>) on 25 March, 2021 to compile the total number of reported COVID cases and confirmed COVID deaths in various countries. Then, case fatality rate (CFR) of each country was calculated by using the formula: (Total number of COVID deaths/Total number of confirmed COVID cases) X 100.

## **3. Results**

### **3.1. Geographical root monitoring and temporal distribution of SARS-CoV-2 globally**

In the present study, we have analyzed 8,82,740 genome sequences of SARS-CoV-2 deposited in GISAID from 170 countries of six different continents during late December 2019 to March 2021. Most of the genomes were deposited from Europe (560187 samples, 63.46%) followed by North America (235458 samples, 26.67%), Asia (48012 samples, 5.44%), Oceania (19063 samples, 2.16%), Africa (10557 samples, 1.20%) and South America (9463 samples, 1.07%) (**Figure 1A, Supplementary Table 1**). Frequency distribution of different clades/variants showed the worldwide predominance of the B.1.1.7 (214443, 24.29%) followed by the GH (183066, 20.74%), GR (167474, 18.97%), GV (138595, 15.70%) and G (117588, 13.32%) clades, which together constitute around 93% of

the total sequences. The frequencies of the L, O, S, V, B.1.351, P.1, B.1.427/B1.429 and B.1.525 clades range from 0.10-1.96% (**Figure 1B, Supplementary Table 1**). Geographical root monitoring based on first collection date and month wise frequency distribution of different clades revealed the first detection of the L clade (the first emerged clade) and the S clade in December 2019 at Wuhan of China. The V clade was first collected from China in January 2020. These three clades (L, S and V) surged in March 2020 and subsequently declined. In January 2020, the four clades (G, GH, GR and GV) emerged in Europe. The G clade was first detected in Germany whereas the GH, GR and GV clades were first detected in Netherlands. The G, GH and GR clades remained dominant from March 2020 to August 2020. The GV clade suddenly surged in September, 2020 and dominated over G, GH and GR clades until December, 2020. Though, we found the first appearance of the B.1.1.7 or UK variant in Spain in February 2020, B.1.1.7 continued to surge from October 2020 and dominated worldwide from January 2021 to March 2021. Initial emergence of the B.1.427/429 or California variant was seen in Mexico in July, 2020 followed by continuous increase in frequency from November 2020. After initial detection in South Africa in October 2020, the B.1.351 (South African variant) gradually spread out with the progression of time. The Brazilian variant (P.1) and the Nigerian variant (B.1.525) were first seen in Brazil and Nigeria respectively in December 2020, however no significant escalation in their frequencies were witnessed in the subsequent months (**Table 1, Table 2, Figure 1C, Supplementary Table 2**). Overall, we observed worldwide predominance of the GH clade in March 2020, the GR clade from April 2020 to September 2020, the GV clade from October 2020 to December 2020, and the UK variant from January 2021 to March 2021 (**Figure 1C**).

### **3.2. Temporal distribution of SARS-CoV-2 in Asia**

The frequency distribution of various clades in Asia is different from the worldwide scenario. Asia was mostly predominated by the GR clade (28544, 59.45%) followed by GH (7681, 16.00%), G (3155, 6.57%), O (3871, 8.06%), B.1.1.7 (1630, 3.39%), S (1377, 2.87%) and L (1039, 2.16%). The frequency of the each of GV, V, B.1.351, P.1, B.1.427/B1.429 and B.1.525 clades was less than 1% (**Figure 2A, Supplementary Table 3**). Temporal distribution presented that Asia has been consistently dominated by the GR clade, first observed in India among all the Asian countries in January 2020, since March 2020 to January 2021. In December 2020, the UK variant made its first appearance in India among Asian countries, and in February 2021, it became the dominant variant in Asia. The presence of the UK variant was detected in 24 of the 38 Asian countries studied. India, Israel, Japan, Jordan, Philippines, Singapore and South Korea all had considerably high incidence of UK variant. The South African variant and the California variant were first observed in Japan and South Korea respectively among Asian countries in December 2020, however, their occurrence remained very low throughout Asia in the following months, with the exception of the South African variant in Israel and the California variant in South Korea. In Asia, the Brazilian and Nigerian variants were first noticed in Japan and Jordan, respectively, and these mostly predominated in Japan. (**Figure 2B, Table 1, Table 2, Supplementary Figure 4**).

### **3.3. Temporal distribution of SARS-CoV-2 in Africa**

Overall, Africa was predominated by the GR clade (3377, 31.99%) followed by G (2716, 25.73%), B.1.351 (2222, 21.05%), GH (995, 9.43%), S (490, 4.64%), B.1.1.7 (258, 2.44%), O (247, 2.34%) and B.1.525 (116, 1.10%). The frequency of the each of GV, L and V clades was less than 1%. The Brazilian and California variants were not found in Asia among all the genome sequences available at GISAID till 25 March, 2021 (**Figure 3A, Supplementary Figure 3**). Though, the three clades G, GH, and GR were first detected in Africa in the last week of February 2020, the G clade dominated the continent for the next three months (March 2020-May 2020). Incidence of the GR clade gradually surged from March and became the leading clade in Africa since June 2020 to October 2020, with highest frequency in July. Frequency of the GH clade remained consistently low from February 2020 to March 2021, with a pick in January 2021. After first appearance in South Africa in October 2020, the B.1.351 dominated Africa since November 2020 to February 2021. B.1.525 was first detected in Nigeria in December 2020, and by March 2021, it had established itself as the dominant strain in Africa (**Figure 3B, Table 1, Table 2, Supplementary Figure 4**).

### **3.4. Temporal distribution of SARS-CoV-2 in North America**

Altogether, North America was largely predominated by the GH clade (128115, 54.41%) followed by G (43647, 18.54%), GR (30264, 12.85%), B.1.427/429 (17144, 7.28%), B.1.1.7 (7626, 3.24%) and S (4679, 1.99%) clade. The frequency of the each of GV, L, O, V, B.1.351, P.1 and B.1.525 clades was less than 1% (**Figure 4A, Supplementary Figure 3**). Temporal distribution showed that the GH clade, which first seen in USA in February 2020, consistently predominated North America since March 2020 to March 2021. Incidence of the G clade (first appeared USA in January 2020) and the GR clade (first appeared Mexico in February 2020) were comparably low to the GH clade but constantly present throughout the all months since March 2020. The California variant (B.1.427/429) and the UK variant (B.1.1.7) were first detected in California/USA in March 2020 and Idaho/USA in May 2020 respectively, but their frequencies began to rise in November 2020. The South African variant and the Brazilian variant were first observed in Nova Scotia/Canada in December 2020 and in Minnesota/USA in January 2021 respectively, and their prevalence increased in the following months (**Figure 4B, Table 1, Table 2, Supplementary Table 4**).

### **3.5. Temporal distribution of SARS-CoV-2 in South America**

South America was mostly dominated by the GR clade (6087, 64.32%) followed by GH (1228, 12.98%), G (1011, 10.68%), P.1 (496, 5.24%), B.1.1.7 (263, 2.78%) and O (169, 1.79%). The frequency of the each of GV, L, S, V, B.1.351, B.1.427/429 clades was less than 1%. The Nigerian variant (B.1.525) was not seen in South America (**Figure 5A, Supplementary Table 3**). Spatial and temporal distribution showed the predominance of the GR clade in South America since its first detection in Chile in February 2020 to February 2021, with highest occurrence in April 2020. The G and GH clades, which were first detected in Brazil in February and March 2020 respectively, peaked in frequencies in April and May of 2020, and then steadily declined in frequency until November 2020. The incidence of the G clade has risen suddenly since December, 2020 and became the predominant clade in South America in March, 2021. The Brazilian variant was first isolated from Brazil in December, 2020 and peaked in frequencies in January, 2021 and declined subsequently.

Since its first emergence in December 2020, the UK variant has gradually increased in frequency (**Figure 5B, Table 1, Table 2, Supplementary Table 4**).

### **3.6. Temporal distribution of SARS-CoV-2 in Europe**

Geographical distribution of different clades showed Europe was largely predominated by B.1.1.7 clade (204407, 36.49%) followed by the GV (137937, 24.62%), GR (85301, 15.23%), G (65836, 11.75%), GH (43340, 7.74%) and O (7769, 1.39%). The frequency of the each of L (3530, 0.63%), S (2973, 0.53%), V (5154, 0.92%), B.1.351 (2702, 0.48%), P.1 (548, 0.10%), B.1.427/429 (69, 0.01%) and B.1.525 (585, 0.10%) clades was less than 1% (**Figure 6A, Supplementary Figure 3**). Though, four clades G, GH, GR and GV were first isolated from Europe in January 2020 with respect to the global scenario, the GR clade predominated Europe until August 2020. The GV clade surged in frequency since August 2020 and dominated Europe from September 2020 to December 2020 with a steady rise in prevalence. The UK variant was first collected from Spain in February 2020, however, started to surge in frequency from December 2020 and dominated Europe from January 2021 to March 2021. The South African variant (First detected in Switzerland in November 2020), the Brazilian variant (First detected in Italy in January 2021), the California variant (First detected in England in December 2020) and the Nigerian variant (First detected in England in December 2020) remained very low in frequencies after their first detection (**Figure 6B, Table 1, Table 2, Supplementary Table 4**).

### **3.7. Temporal distribution of SARS-CoV-2 in Oceania**

Oceania was largely predominated by the GR clade (13901, 72.92%) followed by the GH (1707, 8.95%), G (1223, 6.42%), S (892, 4.68%), O (512, 2.69%), V (330, 1.73%) and B.1.1.7 (259, 1.36%). Each of the GV, L, B.1.351, P.1, B.1.427/429 and B.1.525 clades had a frequency of less than 1% (**Figure 7A, Supplementary Table 3**). In Oceania, the G clade was first detected in Australia and surged in March 2020. The GH and GR clades were first detected in March 2020 in Australia and New Zealand respectively. The GH clade dominated Oceania from March 2020 to May 2020 and also from November 2020 to March 2021, whereas GR clade prevailed during June to October 2020. The UK variant was first detected in Australia in November 2020 and became the second most prevalent clade after GH in 2021. No significant surge in frequencies of the South African variant (First detected in Western Australia in December 2020), the Brazilian variant (First detected in Sydney/Australia in March 2021), the California variant (First detected in Auckland/New Zealand in December 2020), and the Nigeria variant (First detected in Australia in January 2021) was noticed after their first detection (**Figure 7B, Table 1, Table 2, Supplementary Table 4**).

### **3.8. The impact of the circulating dominant clade over a country's CFR**

We have estimated the CFR of 170 countries all around the world, including 38 countries from Asia, 39 countries from Africa, 22 countries from North America, 18 countries from South America, 48 countries from Europe and 5 countries from Oceania. Though, the global CFR was estimated to be 2.19, we observed a wide range of CFR across countries, ranging from 0.00 to 9.06. Among 170 countries, 7 countries had CFR of >4, 17 countries had CFR

between 3 to 4, 31 countries had CFR between 2 to 3, 71 countries had CFR between 1-2 and 44 countries had CFR between 0 to 1 (**Table 3, Supplementary Table 5**). Estimation of the CFR by continents showed that Asia had the lowest average CFR (1.58) among the six continents, with 38 countries having CFR ranging from 0.00 to 4.72. Africa had the highest average CFR (2.64) among the continents, with CFRs ranging from 0.55 to 5.94 in 39 countries. The average CFRs for Europe, North America, Oceania, and South America were 2.20 (48 countries, CFR range: 0.15-3.88), 2.30 (22 countries, CFR range: 0.00-9.06), 2.52 (5 countries, CFR range: 1.00-3.10), and 2.60 (18 countries, CFR range: 0.00-5.15), respectively (**Table 3, Supplementary Table 6**).

To evaluate the effect of the dominant clade on a country's CFR, we further looked at the prevalence of various clades in each of the 170 countries. We noticed that most of the countries were dominated by the G clade (32 countries, CFR range among countries: 0.08-4.52), GH clade (42 countries, CFR range among countries: 0.00-4.39), GR clade (42 countries, CFR range among countries: 0.33-9.06) and O clade (14 countries, CFR range among countries: 0.00-3.35). UK variant and South African variant were found to be prevalent among 13 countries (CFR range: 0.40-3.87) and 6 countries (CFR range: 0.80-4.13), respectively. Surprisingly, we did not notice any strong correlation between the dominant clade and country's CFR; each of the clades was responsible for varying levels of CFRs (low to high) among different countries where they were predominant (**Table 4, Supplementary Table 7**).

#### 4. Discussion

All viruses are immensely potent in adapting to new hosts (**Sanjuan et al., 2016**). Genotypic diversity among viruses occurs due to the accumulating mutations that might lead to various phenotypic changes in them. The continuous replacement of the branches in the tree of life (clade) is the key characteristic of biodiversity (**Silvestro et al., 2015**). The viral biodiversity could be addressed by phylogenetic studies by analyzing the nucleotide/ amino acid homology (**Das et al., 2021**). Clades are the monophyletic groups of organisms that share a common ancestor along with all its lineal descendants. Various viral clades are generated through the process of evolutionary pressure on host immunogenics (**Tyor et al., 2013**). The study of the viral clades, which share sequence similarity and are descendants of a common ancestor can throw light on the evolutionary process. Different clades depict different extent of disease manifestation and pathological conditions. The host immunological determinants of disease severity are maximally gene-regulated (**Kumar et al., 2020**). Evolution of viral genome facilitates it to evade the host immunity at times (**DeDiego et al., 2008; Li et al., 2020**). Therefore, understanding the plethora of mutations in the viral genome leading to the clade-diversification could determine the importance of regulatory variation in evolution. Thorough study of the SARS-CoV-2 genomic mutations and characterizing them based on the clades from which they are derived can reveal the actual evolutionary history of the virus.

The proclivity of disease severity depends upon the type of circulating virus clade in a particular geographical region and it causes different case fatality rates across different countries. Therefore, elucidation of the SARS-CoV-2 clades with temporal and spatial differences can underscore the evolutionary crosstalk amongst them. The process of natural



selection maximally determines the dynamics of an emerging mutation. The variants resulting due to mutations that impart a competitive and selection advantage in context to viral replication, transmission, or evasion of immune response will upsurge and eventually out-compete all other circulating variants. Though, other potential factors like chronic infection among immuno-compromised subjects, change of host-reservoirs, chance-events, faulty proof-reading mechanisms in the virus could be potential drivers of viral evolution. Based on the large-scale genome dataset of SARS-CoV-2, our present study depicted the global as well as continent wise emergence and prevalence of various clades/ variants as the COVID-19 pandemic progressed from its beginning in December 2019 to March 2021.

Cryo EM analyses by some researchers reveal that the N501Y mutation found among the preponderant SARS-CoV-2 UK variant (B.1.1.7) highly increases viral infectivity (**Zhu et al., 2021**). This is at par to the observation of our study where the total frequency distribution showed the global predominance of the UK variant (24.3%), currently. The UK variant possesses the characteristic feature of high transmission ability, contributing to an upsurge in the number of positive cases and hospitalizations worldwide. This is imposing an immense pressure on the health care system, especially during the second wave of the pandemic. Epidemiological surveillances and computational modelling underscore that the SARS-CoV-2 UK variant spreads 56% faster than pre-existing variants, resulting in higher nasopharyngeal viral titer compared to the prototype strain (**Davies et al., 2021a**). Studies estimate a 35% (12–64%) increased risk of death associated with this highly transmissible UK variant, indicating that it can cause serious disease manifestation, though there is no confirmatory evidence of this variant causing severity among children (**Davies et al., 2021b; Brookman et al., 2021**). It is not evident how this B.1.1.7 achieved prominence, although the unusual genetic divergence of the B.1.1.7 lineage may have resulted, at least in part, from the evolution of the virus in an individual with chronic infection (**Rambaut et al., 2020**). Surveillance studies revealed the upsurge in SARS-CoV-2 clades harbouring the D614G mutation with the predominance of the clade GV during the last three months, which is consistent to our results. Our results underscored the temporal preponderance of mostly the GR clade, followed by others like GH, GR, GV and UK variant. As per Hamed et. al., 2021, among all the currently circulating SARS-CoV-2 clades, GR predominated worldwide, subsequently followed by GV and GH clades. Severe or deceased COVID-19 patients were more susceptible to the GH and GR clades, while the asymptomatic/ mildly symptomatic individuals revealed a higher frequency of G and GV clades (**Hamed et al., 2021**).

However, it will be worth noting that due to the recent outbreak of pandemic COVID-19, people around the world are trying by every means to reach the origin, to get some ways of prevention and therapeutic pathways. Constant global monitoring of the SARS-CoV-2 clades and variants will help in tracking viral evolution. G and G-derived clades had been reported from North America and Asia in March 2020 and are currently the predominating viral subpopulation, globally (**Mercatelli et al., 2020**). Other in silico studies also reported the diversity of SARS-CoV-2 infection in ten Asian countries which focused on the prevalence of clades such as G, GH, GR, L, S, O, and V (**Sengupta et al., 2021**). The geographical distribution of Nextstrain and GISAID clades revealed that clade 19B/S prevailed rarely, except in Spain and Kazakhstan, while the frequencies of the rest of the clades varied across

the other countries in the WHO European Region (**Alm et al., 2020**). Even the Eastern Mediterranean Region countries reported the dominance of G, GH and GR clades (**Omais et al., 2021**). Through this study, we observed an upsurge of G clade strains along with its derivatives like the GH and GR clades; while clades L and V eventually diminished. Across the United States and Spain, clade S, though declined, nevertheless can be seen sporadically.

During the first wave of the pandemic in 2020, a study revealed that the clade with variants ORF1ab L3606F, A4489V, S2015R, T2016K, and N P13L is common to Singapore which had been attributed to the low case fatality rate of Singapore (**Koyama et al., 2020**). Another study analyzed SARS-CoV-2 genomic sequences from Eastern Mediterranean Region countries and revealed no association between increased CFR and the G, GH and GR clades (**Omais et al., 2021**). A study from Washington also showed that no significant difference exists in the rates of hospitalization or death due to the predominating two clades in that region. Major risk factors for hospitalization and death for either major clade of virus include patient age and comorbid conditions (**Nakamichi et al., 2021**). In consistent with the studies by Omais et al., 2021 and Nakamichi et al., 2021, our current analysis has not found any correlation among the prevalence of a particular clade and its association to high CFR in that particular geographical area. Few clades and variants might have high infectivity, but studies in terms to their lethality are limited to date. Therefore, the differences in case fatality rate among different countries could be regulated by several factors including comorbidity risk and demographic, economic and political factors (**Sorci et al., 2020**).

In order to design the preventive measures and therapeutic approaches, tracing the evolutionary and phylogenetic history of SARS-CoV-2 is the need of the hour. Dissecting out the viral genomic diversity, clinical manifestations in conjunction with epidemiological surveillance data will certainly prove beneficial in chalking out avenues to overcome the disease burden. SARS-CoV-2 is continuing to mutate and evolve, leading to the emergence of differential genomic sequences, with higher infectivity, lethality along with clinical and pharmacological repercussions. To date, limited studies have been done to elucidate and compare the genomic, molecular and phenotypic differences between the various circulating clades of SARS-CoV-2. The current study has shed enough light on the clade-wise temporal and spatial analyses across all the 6 continents, globally. This study underscores the dynamicity of the different viral clades, which can lead to personalized/ customized prevention and treatment strategies for each geographical region depending on the circulating clade.

### **Acknowledgement**

We would like to acknowledge all the scientists, researchers and laboratory staffs for their valued contribution in SARS-CoV-2 genome sequencing and deposition in GISAID. We would also like to applaud GISAID consortium for allowing us the open access to the deposited SARS-CoV-2 sequences.

### **Author contributions**

RS and M-CS designed the study, collected data, performed data analysis and wrote the paper. SW, ML and AB performed data analysis. SD provided vital guidance on the scientific

content. SC conceived the study, supervised data analysis, provided scientific inputs and edited the draft manuscript.

### Conflict of Interest

Authors declare no conflict of interest

### Funding

This research did not receive any specific grant from funding agencies in the public, commercial or not-for profit sectors.

### References

1. Forster, P., Forster, L., Renfrew, C. and Forster, M., 2020. Phylogenetic network analysis of SARS-CoV-2 genomes. *Proceedings of the National Academy of Sciences*, 117(17), pp.9241-9243.
2. Mercatelli, D. and Giorgi, F.M., 2020. Geographic and Genomic Distribution of SARS-CoV-2 Mutations. *Frontiers in microbiology*, 11, p.1800.
3. Hodcroft, E.B., Zuber, M., Nadeau, S., Comas, I., Candelas, F.G., Stadler, T. and Neher, R.A., 2020. Emergence and spread of a SARS-CoV-2 variant through Europe in the summer of 2020. *medRxiv*.
4. To, K.K.W., Hung, I.F.N., Ip, J.D., Chu, A.W.H., Chan, W.M., Tam, A.R., Fong, C.H.Y., Yuan, S., Tsoi, H.W., Ng, A.C.K. and Lee, L.L.Y., 2020. Coronavirus disease 2019 (COVID-19) re-infection by a phylogenetically distinct severe acute respiratory syndrome coronavirus 2 strain confirmed by whole genome sequencing. *Clinical Infectious Diseases*.
5. Ceraolo, C. and Giorgi, F.M., 2020. Genomic variance of the 2019-nCoV coronavirus. *Journal of medical virology*, 92(5), pp.522-528.
6. Brufsky, A., 2020. Distinct Viral Clades of SARS-CoV-2: Implications for Modeling of Viral Spread. *Journal of medical virology*.
7. Rambaut, A., Loman, N., Pybus, O., Barclay, W., Barrett, J., Carabelli, A., Connor, T., Peacock, T., Robertson, D.L., Volz, E., 2020. Preliminary genomic characterisation of an emergent SARSCoV-2 lineage in the UK defined by a novel set of spike mutations. <https://virological.org/t/preliminary-genomic-characterisation-of-an-emergent-sars-cov-2-lineage-in-the-uk-defined-by-a-novel-set-of-spike-mutations/563>
8. Wang, P., Nair, M.S., Liu, L., Iketani, S., Luo, Y., Guo, Y., Wang, M., Yu, J., Zhang, B., Kwong, P.D. and Graham, B.S., 2021. Antibody resistance of SARS-CoV-2 variants B. 1.351 and B. 1.1. 7. *Nature*, 10.
9. Tegally, H., Wilkinson, E., Giovanetti, M., Iranzadeh, A., Fonseca, V., Giandhari, J., Doolabh, D., Pillay, S., San, E.J., Msomi, N. and Mlisana, K., 2020. Emergence and rapid spread of a new severe acute respiratory syndrome-related coronavirus 2 (SARS-CoV-2) lineage with multiple spike mutations in South Africa. *medRxiv*.
10. Faria NR, Claro IM, Candido D. Genomic characterisation of an emergent SARS-CoV-2 lineage in Manaus: preliminary findings. *Virological*. January, 2021.

- <https://virological.org/t/genomic-characterisation-of-an-emergent-sars-cov-2-lineage-in-manaus-preliminary-findings/586>
11. Sabino, E.C., Buss, L.F., Carvalho, M.P., Prete, C.A., Crispim, M.A., Fraiji, N.A., Pereira, R.H., Parag, K.V., da Silva Peixoto, P., Kraemer, M.U. and Oikawa, M.K., 2021. Resurgence of COVID-19 in Manaus, Brazil, despite high seroprevalence. *The Lancet*, 397(10273), pp.452-455.
  12. Zhang, W., Davis, B.D., Chen, S.S., Martinez, J.M.S., Plummer, J.T. and Vail, E., 2021. Emergence of a novel SARS-CoV-2 variant in Southern California. *JAMA*.
  13. Day, T., Gandon, S., Lion, S. and Otto, S.P., 2020. On the evolutionary epidemiology of SARS-CoV-2. *Current Biology*, 30(15), pp.R849-R857.
  14. Fontanet, A., Autran, B., Lina, B., Kieny, M.P., Karim, S.S.A. and Sridhar, D., 2021. SARS-CoV-2 variants and ending the COVID-19 pandemic. *The Lancet*, 397(10278), pp.952-954.
  15. Ou, X., Liu, Y., Lei, X., Li, P., Mi, D., Ren, L., Guo, L., Guo, R., Chen, T., Hu, J. and Xiang, Z., 2020. Characterization of spike glycoprotein of SARS-CoV-2 on virus entry and its immune cross-reactivity with SARS-CoV. *Nature communications*, 11(1), pp.1-12.
  16. Piccoli, L., Park, Y.J., Tortorici, M.A., Czudnochowski, N., Walls, A.C., Beltramello, M., Silacci-Fregni, C., Pinto, D., Rosen, L.E., Bowen, J.E. and Acton, O.J., 2020. Mapping neutralizing and immunodominant sites on the SARS-CoV-2 spike receptor-binding domain by structure-guided high-resolution serology. *Cell*, 183(4), pp.1024-1042.
  17. Korber, B., Fischer, W.M., Gnanakaran, S., Yoon, H., Theiler, J., Abfalterer, W., Hengartner, N., Giorgi, E.E., Bhattacharya, T., Foley, B. and Hastie, K.M., 2020. Tracking changes in SARS-CoV-2 Spike: evidence that D614G increases infectivity of the COVID-19 virus. *Cell*, 182(4), pp.812-827.
  18. Hou, Y.J., Chiba, S., Halfmann, P., Ehre, C., Kuroda, M., Dinno, K.H., Leist, S.R., Schäfer, A., Nakajima, N., Takahashi, K. and Lee, R.E., 2020. SARS-CoV-2 D614G variant exhibits efficient replication ex vivo and transmission in vivo. *Science*, 370(6523), pp.1464-1468.
  19. Weissman, D., Alameh, M.G., de Silva, T., Collini, P., Hornsby, H., Brown, R., LaBranche, C.C., Edwards, R.J., Sutherland, L., Santra, S. and Mansouri, K., 2021. D614G spike mutation increases SARS CoV-2 susceptibility to neutralization. *Cell host & microbe*, 29(1), pp.23-31.
  20. Yurkovetskiy, L., Wang, X., Pascal, K.E., Tomkins-Tinch, C., Nyalile, T.P., Wang, Y., Baum, A., Diehl, W.E., Dauphin, A., Carbone, C. and Veinotte, K., 2020. Structural and functional analysis of the D614G SARS-CoV-2 spike protein variant. *Cell*, 183(3), pp.739-751.
  21. Aiewsakun, P., Wongtrakoongate, P., Thawornwattana, Y., Hongeng, S. and Thitithanyanont, A., 2020. SARS-CoV-2 genetic variations associated with COVID-19 severity. *medRxiv*.
  22. Wang, R., Hozumi, Y., Yin, C. and Wei, G.W., 2020. Decoding asymptomatic COVID-19 infection and transmission. *arXiv preprint arXiv:2007.01344*.
  23. Shu, Y. and McCauley, J., 2017. GISAID: Global initiative on sharing all influenza data—from vision to reality. *Eurosurveillance*, 22(13), p.30494.

24. Sanjuán, R. and Domingo-Calap, P., 2016. Mechanisms of viral mutation. *Cellular and molecular life sciences*, 73(23), pp.4433-4448.
25. Silvestro, D., Antonelli, A., Salamin, N. and Quental, T.B., 2015. The role of clade competition in the diversification of North American canids. *Proceedings of the National Academy of Sciences*, 112(28), pp.8684-8689.
26. Das, J.K., Sengupta, A., Choudhury, P.P. and Roy, S., 2021. Mapping sequence to feature vector using numerical representation of codons targeted to amino acids for alignment-free sequence analysis. *Gene*, 766, p.145096.
27. Tyor, W., Fritz-French, C. and Nath, A., 2013. Effect of HIV clade differences on the onset and severity of HIV-associated neurocognitive disorders. *Journal of neurovirology*, 19(6), pp.515-522.
28. Kumar, S.U., Kumar, D.T., Christopher, B.P. and Doss, C., 2020. The rise and impact of COVID-19 in India. *Frontiers in medicine*, 7, p.250.
29. DeDiego, M.L., Pewe, L., Alvarez, E., Rejas, M.T., Perlman, S. and Enjuanes, L., 2008. Pathogenicity of severe acute respiratory coronavirus deletion mutants in hACE-2 transgenic mice. *Virology*, 376(2), pp.379-389.
30. Li, Y., Yang, X., Wang, N., Wang, H., Yin, B., Yang, X. and Jiang, W., 2020. The divergence between SARS-CoV-2 and RaTG13 might be overestimated due to the extensive RNA modification. *Future Virology*, 15(6), pp.341-347.
31. Zhu, X., Mannar, D., Srivastava, S.S., Berezuk, A., Demers, J.P., Saville, J., Leopold, K., Li, W., Dimitrov, D.S., Tuttle, K. and Zhou, S., 2021. Cryo-EM Structure of the N501Y SARS-CoV-2 Spike Protein in Complex with a Potent Neutralizing Antibody. *BioRxiv*.
32. Davies, N.G., Abbott, S., Barnard, R.C., Jarvis, C.I., Kucharski, A.J., Munday, J., Pearson, C.A., Russell, T.W., Tully, D.C., Washburne, A.D. and Wenseleers, T., 2021. Estimated transmissibility and severity of novel SARS-CoV-2 Variant of Concern 202012/01 in England. *MedRxiv*, pp.2020-12.
33. Davies, N.G., Jarvis, C.I., Edmunds, W.J., Jewell, N.P., Diaz-Ordaz, K., Keogh, R.H. and CMMID COVID-19 Working Group, 2021. Increased hazard of death in community-tested cases of SARS-CoV-2 Variant of Concern 202012/01. *MedRxiv*.
34. Brookman, S., Cook, J., Zucherman, M., Broughton, S., Harman, K. and Gupta, A., 2021. Effect of the new SARS-CoV-2 variant B. 1.1. 7 on children and young people. *The Lancet Child & Adolescent Health*, 5(4), pp.e9-e10.
35. Hamed, S.M., Elkhatib, W.F., Khairalla, A.S. and Noreddin, A.M., 2021. Global dynamics of SARS-CoV-2 clades and their relation to COVID-19 epidemiology. *Scientific reports*, 11(1), pp.1-8.
36. Sengupta, A., Hassan, S.S. and Choudhury, P.P., 2021. Clade GR and clade GH isolates of SARS-CoV-2 in Asia show highest amount of SNPs. *Infection, Genetics and Evolution*, 89, p.104724.
37. Alm, E., Broberg, E.K., Connor, T., Hodcroft, E.B., Komissarov, A.B., Maurer-Stroh, S., Melidou, A., Neher, R.A., O'Toole, Á. and Pereyaslov, D., 2020. Geographical and temporal distribution of SARS-CoV-2 clades in the WHO European Region, January to June 2020. *Eurosurveillance*, 25(32), p.2001410.

38. Omais, S.O., Kharroubi, S.O. and Zaraket, H., 2021. No association between the SARS-CoV-2 variants and mortality rates in the Eastern Mediterranean Region. *medRxiv*.
39. Koyama, T. and Parida, L., 2020. Identification of a low pathogenicity clade of SARS-CoV-2.
40. Nakamichi, K., Shen, J.Z., Lee, C.S., Lee, A., Roberts, E.A., Simonson, P.D., Roychoudhury, P., Andriesen, J., Randhawa, A.K., Mathias, P.C. and Greninger, A.L., 2021. Hospitalization and mortality associated with SARS-CoV-2 viral clades in COVID-19. *Scientific reports*, 11(1), pp.1-11.
41. Sorci, G., Faivre, B. and Morand, S., 2020. Explaining among-country variation in COVID-19 case fatality rate. *Scientific reports*, 10(1), pp.1-11.

### Figure legends:

**Figure 1:**(A) Frequency distribution of SARS-CoV-2 sequences taken into analysis from six different continents. (B) Global frequency distribution of different SARS-CoV-2 clades. (C) Worldwide temporal distribution of different SARS-CoV-2 clades from December, 2019 to March, 2021.

**Figure 2:**(A) Frequency distribution of different SARS-CoV-2 clades in Asia. (B)Temporal distribution of different SARS-CoV-2 clades from December, 2019 to March, 2021 in Asia.

**Figure 3:** (A) Frequency distribution of different SARS-CoV-2 clades in Africa. (B)Temporal distribution of different SARS-CoV-2 clades from December, 2019 to March, 2021 in Africa.

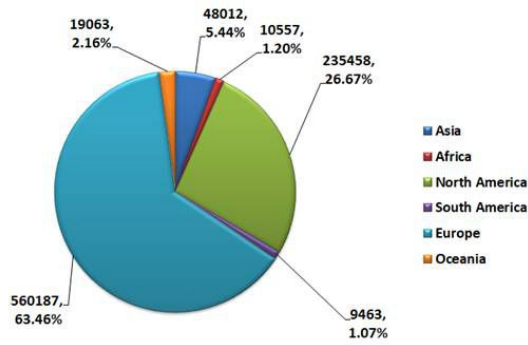
**Figure 4:** (A) Frequency distribution of different SARS-CoV-2 clades in North America. (B)Temporal distribution of different SARS-CoV-2 clades from December, 2019 to March, 2021 in North America.

**Figure 5:** (A) Frequency distribution of different SARS-CoV-2 clades in South America. (B)Temporal distribution of different SARS-CoV-2 clades from December, 2019 to March, 2021 in South America.

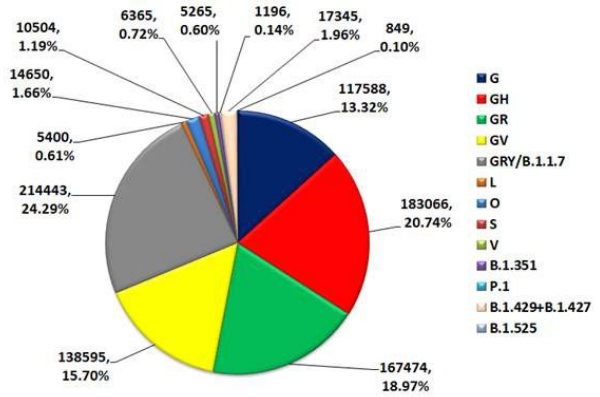
**Figure 6:** (A) Frequency distribution of different SARS-CoV-2 clades in Europe. (B)Temporal distribution of different SARS-CoV-2 clades from December, 2019 to March, 2021 in Europe.

**Figure 7:** (A) Frequency distribution of different SARS-CoV-2 clades in Oceania. (B)Temporal distribution of different SARS-CoV-2 clades from December, 2019 to March, 2021 in Oceania.

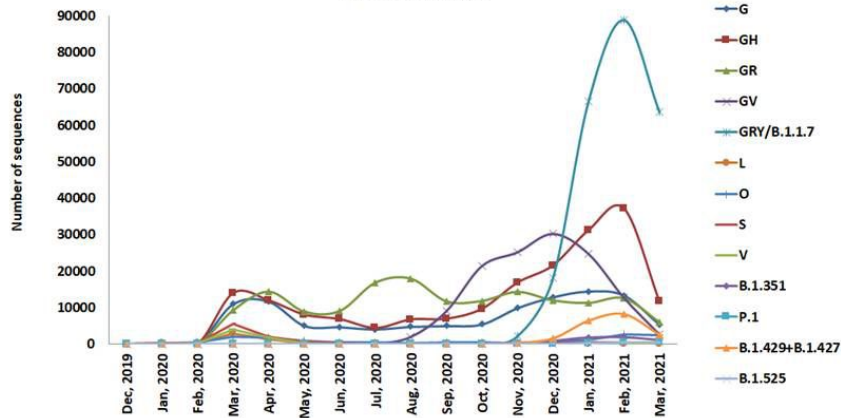
**A.** Frequency distribution of sequences taken into analysis (N=882740)



**B.** Worldwide frequency distribution of different clades (N=882740)



**C.** Temporal distribution of different clades worldwide



**Figure 1**

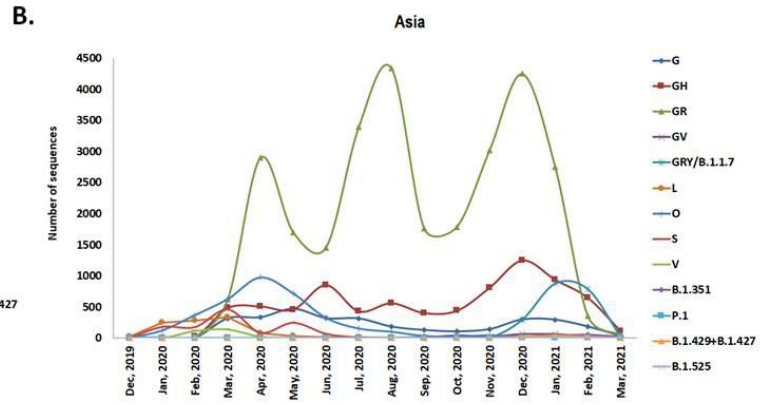
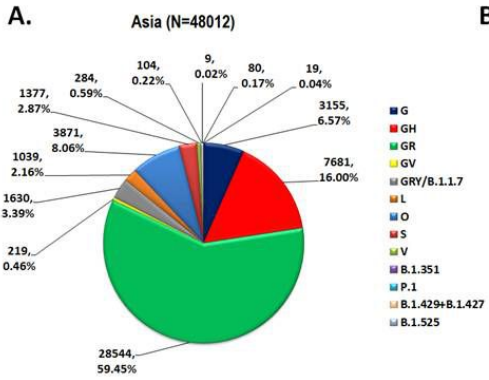


Figure 2



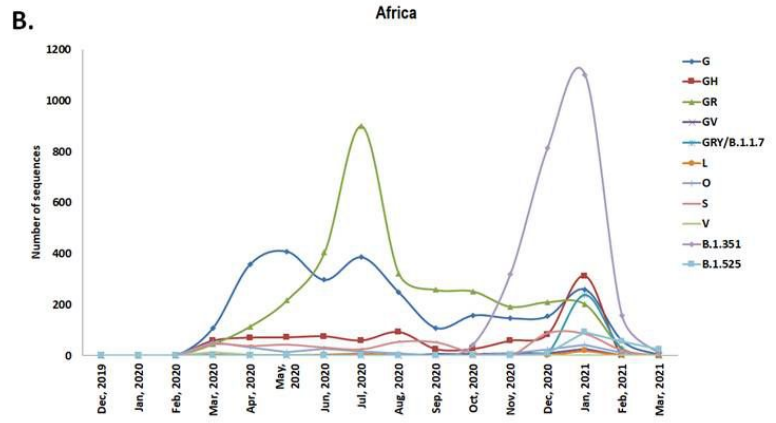
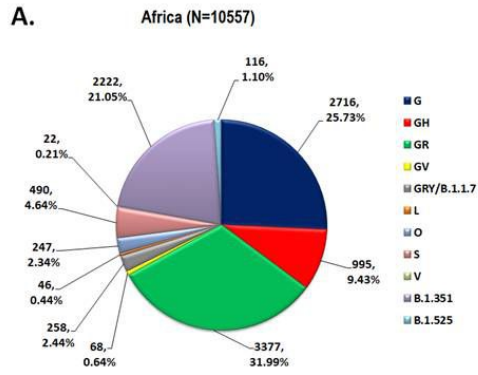
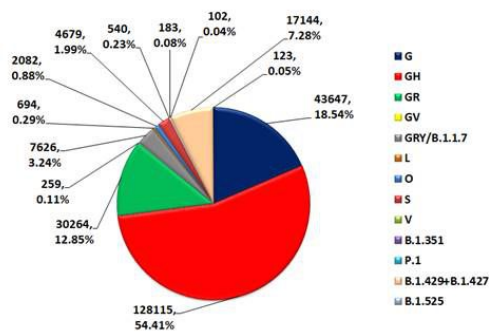


Figure 3

**A.** North America (N=235458)



**B.**

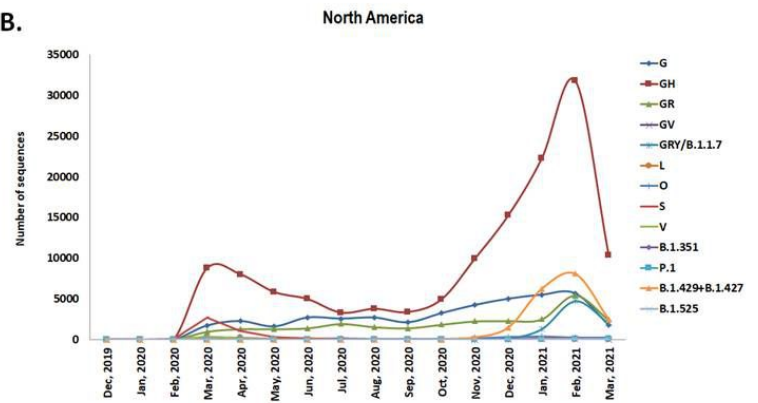


Figure 4

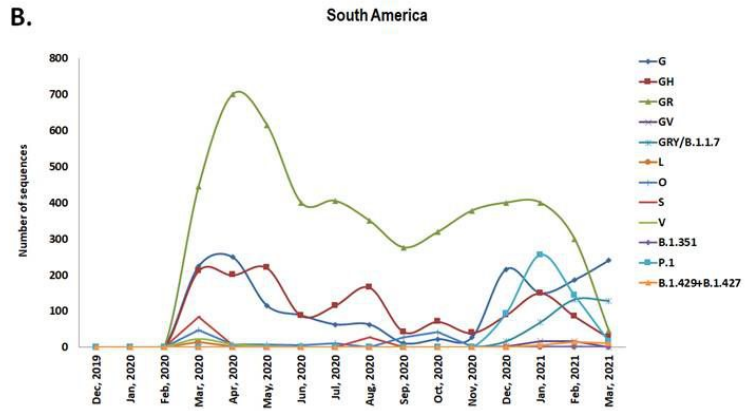
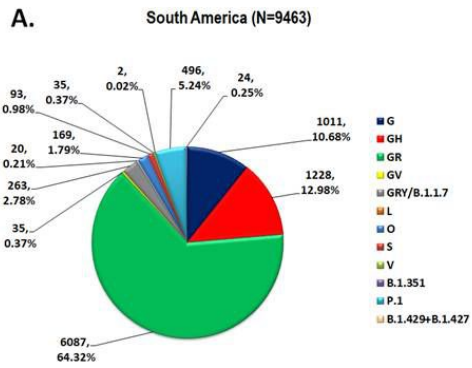
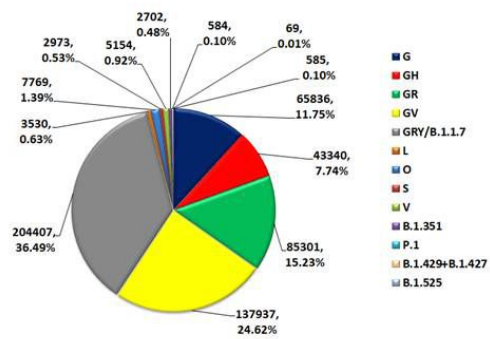
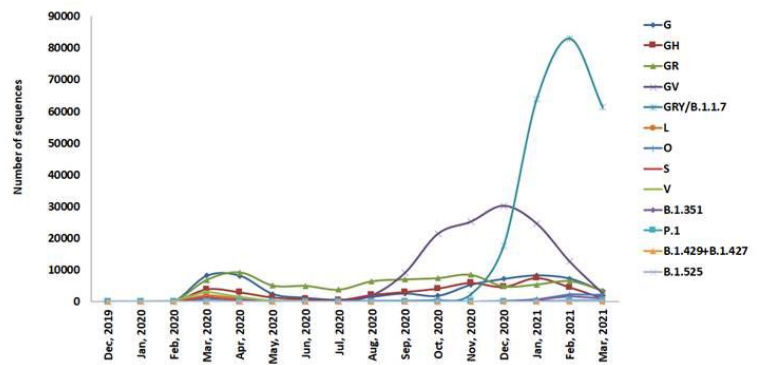


Figure 5

**A.** Europe (N=560187)



**B.** Europe



**Figure 6**

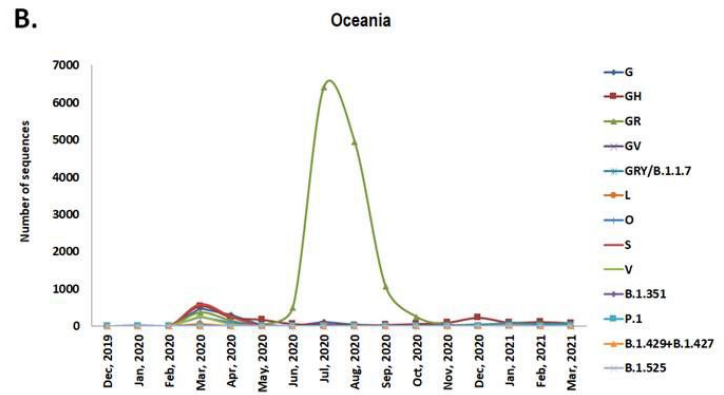
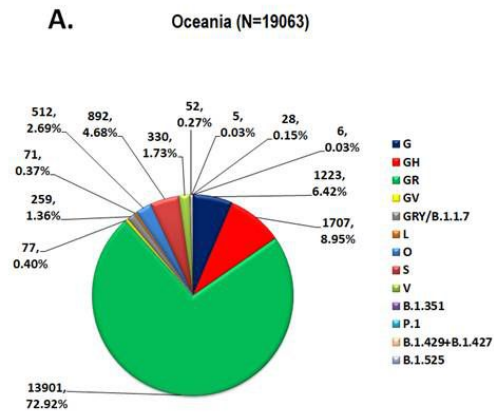


Figure 7

Asia			
Clade	Collection date	Location	Accession ID
G	24-01-2020	Sichuan/China Zhejiang/China	hCoV-19/Sichuan/SC-PHCC1-022/2020 EPI_ISL_451345 2020-01-24 hCoV-19/Zhejiang/HZ103/2020 EPI_ISL_422425 2020-01-24
GH	29-01-2020	India / Maharashtra	hCoV-19/India/MH-NCCS-172247/2020 EPI_ISL_1384829 2020-01-29
GR	12-01-2020	India / Maharashtra	hCoV-19/India/MH-NCCS-154558/2020 EPI_ISL_1384826 2020-01-12
GV	03-2020	Iran	hCoV-19/Iran/K1r-14/2020 EPI_ISL_591321 2020-03
L*	24-12-2019	China/Hubei/Wuhan	hCoV-19/Wuhan/IPBCAMS-WH-01/2019 EPI_ISL_402123 2019-12-24
S*	30-12-2019	China/Hubei/Wuhan	hCoV-19/Wuhan/IME-WH01/2020 EPI_ISL_529213 2019-12-30
V*	23-01-2020	China/ Hangzhou	hCoV-19/Hangzhou/HZCDC0167/2020 EPI_ISL_421223 2020-01-23
GRY/ B.1.1.7	05-10-2020	India / Maharashtra	hCoV-19/India/MH-NCCS-87458/2020 EPI_ISL_1415244 2020-10-05
B.1.351	19-12-2020	Japan	hCoV-19/Japan/IC-0433/2020 EPI_ISL_768642 2020-12-19
P.1	02-01-2021	Japan	hCoV-19/Japan/IC-0561/2021 EPI_ISL_792680 2021-01-02 hCoV-19/Japan/IC-0562/2021 EPI_ISL_792681 2021-01-02 hCoV-19/Japan/IC-0563/2021 EPI_ISL_792682 2021-01-02 hCoV-19/Japan/IC-0564/2021 EPI_ISL_792683 2021-01-02
B.1.429+B.1.427	17-12-2020	South Korea	hCoV-19/South Korea/KDCA1834/2020 EPI_ISL_1209443 2020-12-17
B.1.525	07-01-2021	Jordan / Amman	hCoV-19/Jordan/PHBC3/2021 EPI_ISL_935041 2021-01-07 hCoV-19/Jordan/PHBC2/2021 EPI_ISL_935039 2021-01-07
Africa			
Clade	Collection date	Location	Accession ID
G	27-02-2020	Morocco	hCoV-19/Morocco/refstage1/2020 EPI_ISL_476559 2020-02-27
GH	28-02-2020	Senegal/Dakar	hCoV-19/Senegal/003/2020 EPI_ISL_418206 2020-02-28
GR	27-02-2020	Nigeria/Lagos	hCoV-19/Nigeria/Lagos01/2020 EPI_ISL_413550 2020-02-27
GV	16-03-2020	Tunisia / Monastir	hCoV-19/Tunisia/3942/2020 EPI_ISL_699657 2020-03-16

L	06-03-2020	South Africa/GP	hCoV-19/South Africa/R02827/2020 EPI_ISL_430297 2020-03-06
S	01-03-2020	Zimbabwe	hCoV-19/Zimbabwe/ZW-169/2020 EPI_ISL_647976 2020-03-01
V	21-02-2020	Nigeria/Edo	hCoV-19/Nigeria/ED01-CV155/2020 EPI_ISL_527873 2020-02-21
GRY/ B.1.1.7	25-11-2020	Malawi / Southern Region	hCoV-19/Malawi/KRISP K010155/2021 EPI_ISL_1407116 2020-11-25
B1.351*	08-10-2020	South Africa / Eastern Cape	hCoV-19/South Africa/N00390/2020 EPI_ISL_712081 2020-10-08
P.1			Not detected
B.1.429+B.1.427			Not detected
B.1.525*	December, 2020	Nigeria / Edo State	hCoV-19/Nigeria/CV714/2020 EPI_ISL_1093465 2020
<b>Europe</b>			
<b>Clade</b>	<b>Collection date</b>	<b>Location</b>	<b>Accession ID</b>
G*	January, 2020	Germany/Bavaria Germany/Bavaria Germany/Bavaria Germany/Bavaria	hCoV-19/Germany/BY-ChVir-1247/2020 EPI_ISL_450201 2020-01 hCoV-19/Germany/BY-ChVir-1248/2020 EPI_ISL_450202 2020-01 hCoV-19/Germany/BY-ChVir-1433/2020 EPI_ISL_450205 2020-01 hCoV-19/Germany/BY-ChVir-1459/2020 EPI_ISL_450206 2020-01
GH*	08-01-2020	Netherlands / Zuid-Holland	hCoV-19/Netherlands/ZH-EMC-1909/2020 EPI_ISL_1311784 2020-01-08
GR*	08-01-2020	Netherlands / Zuid-Holland	hCoV-19/Netherlands/ZH-EMC-1926/2020 EPI_ISL_1311218 2020-01-08
GV*	09-01-2020	Netherlands / Noord-Brabant	hCoV-19/Netherlands/NB-EMC-748/2020 EPI_ISL_1311088 2020-01-09
L	29-01-2020	France/Paris Finland/Lapland	hCoV-19/France/IDF0626/2020 EPI_ISL_408431 2020-01-29 hCoV-19/Finland/1/2020 EPI_ISL_407079 2020-01-29
S	29-01-2020	UK/England	hCoV-19/England/01/2020 EPI_ISL_407071 2020-01-29
V	29-01-2020	Italy /Lazio /Rome	hCoV-19/Italy/LAZ-INMI-SPL1/2020 EPI_ISL_412974 2020-01-29
GRY/ B.1.1.7*	07-02-2020	Spain / Castilla y Leon	hCoV-19/Spain/CL-COV00781/2020 EPI_ISL_1603195 2020-02-07
B1.351	12-11-2020	Switzerland / Bern	hCoV-19/Switzerland/BE-ETHZ-500115/2020 EPI_ISL_1119292 2020-11-12
P.1	07-01-2021	Italy / Umbria	hCoV-19/Italy/UMB-ISS-6678/2021 EPI_ISL_1014675 2021-01-07

			hCoV-19/Italy/UMB-ISS-6677/2021 EPI_ISL_1014545 2021-01-07
B.1.429+B.1.427	10-12-2020	United Kingdom / England	hCoV-19/England/MILK-C90968/2020 EPI_ISL_777080 2020-12-10 hCoV-19/England/MILK-C90977/2020 EPI_ISL_777184 2020-12-10
B.1.525	15-12-2020	United Kingdom / England	hCoV-19/England/CAMC-C769B3/2020 EPI_ISL_760883 2020-12-15
North America			
Clade	Collection date	Location	Accession ID
G	01-01-2020	USA / New York	hCoV-19/USA/NY-Yale-1980/2020 EPI_ISL_1293138 2020-01-01
GH	29-02-2020	USA/New Hampshire USA/California	hCoV-19/USA/NH_0004/2020 EPI_ISL_420791 2020-02-29 hCoV-19/USA/CA-SCCPHD-UC104/2020 EPI_ISL_435583 2020-02-29
GR	27-02-2020	Mexico/Mexico City	hCoV-19/Mexico/CMX-InDRE-01/2020 EPI_ISL_412972 2020-02-27
GV	15-05-2020	Mexico / Sonora	hCoV-19/Mexico/SON-InDRE_35/2020 EPI_ISL_516622 2020-05-15
L	23-01-2020	Canada/Ontario Canada/Ontario	hCoV-19/Canada/ON_VIDO-01/2020 EPI_ISL_413015 2020-01-23 hCoV-19/Canada/ON_ON-VIDO-01-2/2020 EPI_ISL_425177 2020-01-23
S	19-01-2020	USA/Washington	hCoV-19/USA/WA1/2020 EPI_ISL_404895 2020-01-19
V	15-02-2020	Panama/Bella Vista	hCoV-19/Panama/328927/2020 EPI_ISL_496615 2020-02-15
GRY/ B.1.1.7	16-05-2020	USA / Idaho	hCoV-19/USA/ID-IBL-620653/2020 EPI_ISL_1363167 2020-05-16
B.1.351	25-12-2020	Canada / Nova Scotia	hCoV-19/Canada/NS-NML-5181/2020 EPI_ISL_960225 2020-12-25
P.1	09-01-2021	USA / Minnesota	hCoV-19/USA/MN-MDH-2399/2021 EPI_ISL_873257 2021-01-09
B.1.429+B.1.427*	15-03-2020	USA / California	hCoV-19/USA/CA-CZB-28778/2020 EPI_ISL_1529208 2020-03-15
B.1.525	30-12-2020	USA / New York / Kings County	hCoV-19/USA/NY-Wadsworth-21017703-01/2020 EPI_ISL_1226710 2020-12-30
South America			
Clade	Collection date	Location	Accession ID
G	25-02-2020	Brazil/Sao Paulo	hCoV-19/Brazil/SP-01/2020 EPI_ISL_412964 2020-02-25
GH	08-03-2020	Brazil/Minas Gerais Brazil/Sao Paulo Brazil/Rio de Janeiro	hCoV-19/Brazil/MG-CV2/2020 EPI_ISL_429665 2020-03-08 hCoV-19/Brazil/SP-L13-CD22/2020 EPI_ISL_476230 2020-03-08 hCoV-19/Brazil/RJ-L4-CD09/2020 EPI_ISL_476403 2020-03-08



GR	16-02-2020	Chile / La Araucania	hCoV-19/Chile/AR-265171/2020 EPI_ISL_1167830 2020-02-16
GV	Not detected		
L	03-03-2020	Brazil/Sao Paulo	hCoV-19/Brazil/SP-11/2020 EPI_ISL_416033 2020-03-03
S	02-03-2020	Chile/Talca	hCoV-19/Chile/Talca-1/2020 EPI_ISL_414577 2020-03-02
V	28-02-2020	Brazil/Sao Paulo	hCoV-19/Brazil/SP-02/2020 EPI_ISL_413016 2020-02-28
GRY/ B.1.1.7	21-12-2020	Brazil / São Paulo	hCoV-19/Brazil/SP-900B/2020 EPI_ISL_763074 2020-12-21
B.1.351	25-02-2021	Aruba	hCoV-19/Aruba/AW-RIVM-16039/2021 EPI_ISL_1232714  2021-02-25
P.1*	04-12-2020	Brazil / Amazonas / Manaus	hCoV-19/Brazil/AM-FIOCRUZ-20842882CA/2020 EPI_ISL_833137  2020-12-04
B.1.429+B.1.427	27-12-2020	Chile / Región Metropolitana de Santiago	hCoV-19/Chile/RM-263441/2020 EPI_ISL_1167914 2020-12-27
B.1.525	Not detected		
<b>Oceania</b>			
<b>Clade</b>	<b>Collection date</b>	<b>Location</b>	<b>Accession ID</b>
G	25-01-2020	Australia/New South Wales	hCoV-19/Australia/NSW2153/2020 EPI_ISL_509505 2020-01-25
GH	09-03-2020	Australia/Victoria	hCoV-19/Australia/VIC22/2020 EPI_ISL_419742 2020-03-09
GR	02-03-2020	New Zealand /Auckland	hCoV-19/New Zealand/20VR0189/2020 EPI_ISL_416519 2020-03-02
GV	21-03-2020	Australia	hCoV-19/Australia/QLD1276/2020 EPI_ISL_693277 2020-03-21
L	22-01-2020	Australia/Sydney	hCoV-19/Australia/NSW02/2020 EPI_ISL_408976 2020-01-22
S	24-01-2020	Australia/Sydney Australia/Sydney	hCoV-19/Australia/NSW01/2020 EPI_ISL_407893 2020-01-24 hCoV-19/Australia/NSW04/2020 EPI_ISL_417030 2020-01-24
V	03-03-2020	New Zealand/Waikato	hCoV-19/New Zealand/20VR1109/2020 EPI_ISL_456190 2020-03-03
GRY/ B.1.1.7	30-11-2020	Australia / New South Wales / Sydney	hCoV-19/Australia/NSW3456/2020 EPI_ISL_678386 2020-11-30
	10-12-2020	Australia / Western Australia	hCoV-19/Australia/WA556/2020 EPI_ISL_794728 2020-12-10

BI.351			
P.1	01-03-2021	Australia / New South Wales / Sydney	hCoV-19/Australia/NSW4318/2021 EPI_ISL_1121976 2021-03-01
B.1.429+B.1.427	03-12-2021	New Zealand / Auckland	hCoV-19/New Zealand/20CV0636/2020 EPI_ISL_707800 2020-12-03
B.1.525	06-01-2021	Australia / Queensland	hCoV-19/Australia/QLD1500/2021 EPI_ISL_1300532 2021-01-06

\*Represents the first collected SARS-CoV-2 of a specific clade/variant worldwide

**Table 1:** Details of the first collected SARS-CoV-2 of twelve different clades from six different continents

	2020												2021		
	Jan	Feb	Mar	Apr	May	Jun	Jul	Aug	Sep	Oct	Nov	Dec	Jan	Feb	Mar
Worldwide			G,GH,GR						GV			B.1.1.7			
Asia			GR												B.1.1.7
Africa			G			GR						B.1.351			B.1.525
North America			GH												
South America			GR												G
Europe			GR						GV			B.1.1.7			
Oceania			GH			GR						GH			

**Table 2:** Temporal dominance of different clades/variants of SARS-CoV-2 in six different continents

<b>Continent</b>	<b>Total confirmed cases</b>	<b>Total confirmed deaths</b>	<b>CFR</b>	<b>CFR range among countries</b>	<b>Number of countries</b>
<b>Asia</b>	24527049	387471	1.58	0.00-4.72	38
<b>Europe</b>	42773531	942005	2.20	0.15-3.88	48
<b>North America</b>	34390178	791741	2.30	0.00-9.06	22
<b>Oceania</b>	44790	1127	2.52	1.00-3.10	5
<b>South America</b>	21043537	547963	2.60	0.00-5.15	18
<b>Africa</b>	4070145	107440	2.64	0.55-5.94	39
<b>Worldwide</b>	<b>126849230</b>	<b>2777747</b>	<b>2.19</b>	<b>0.00-9.06</b>	<b>170</b>

**Table 3:**Case fatality rate (CFR) of different continents

<b>Predominant clade</b>	<b>CRF range among countries</b>	<b>Number of countries</b>
G	0.08-4.52	31
GH	0.00-4.39	42
GR	0.33-9.06	42
GV	0.47-3.06	8
L	4.72	1
S	0.55-3.87	8
O	0.00-3.35	14
G+GH	0.12-3.52	2
GH+GR	1.09-2.55	2
GH+GR+O	1.64	1
GRY/B.1.1.7	0.40-3.87	13
B.1.351	0.80-4.13	6

**Table 4:** CFR range of countries predominated by specific clade(s)